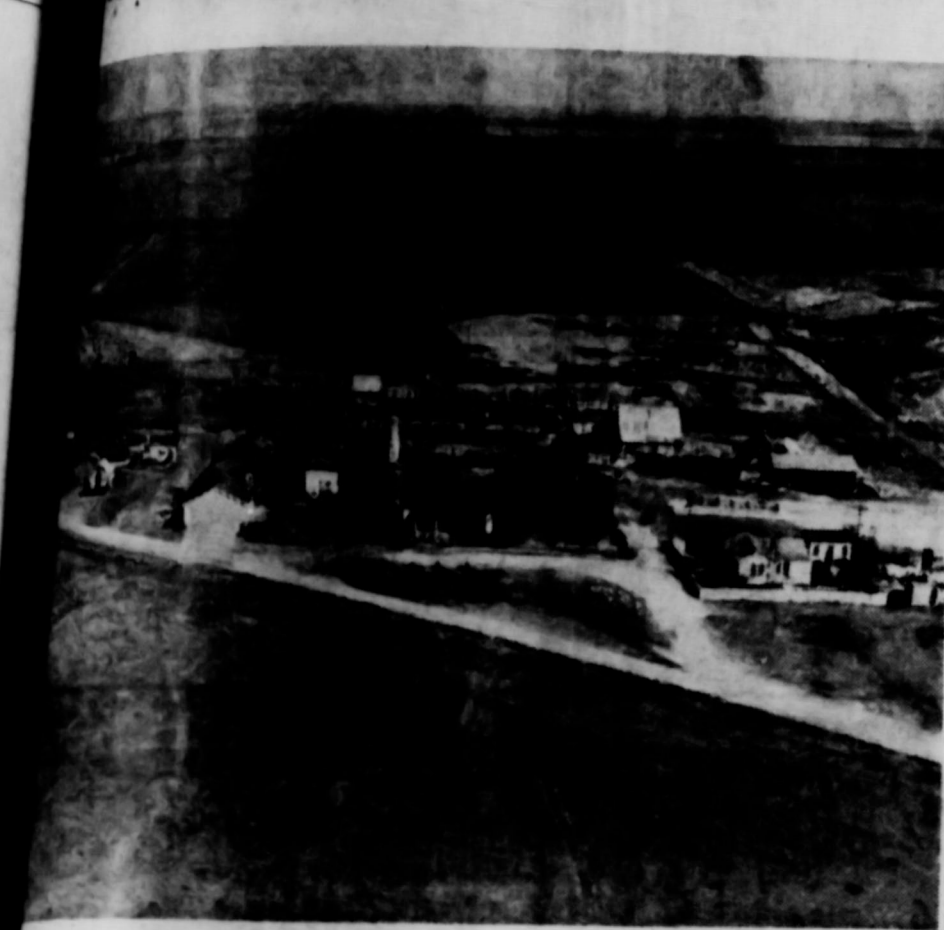


The Spearman Reporter

THE SPEARMAN REPORTER, HANSFORD COUNTY, THURSDAY, OCT. 10, 1957

Mystery Farm of This Area



Another of the series of Mystery Homes to be published each week for months. If you can identify this home phone or mail a card of the Spearman and you may receive a one year subscription free. Please send in your identification as soon as possible. This enables us to visit the home and prepare for the next weeks newspaper.

Oklahoma Team Plays Gruver

Texas and Oklahoma will clash at Gruver Friday night, when the Greyhounds entertain the Boise City, Oklahoma team. The Greyhounds were defeated by the outstanding Canadian Wildcats, 24 to 7 the past week and they will be ready for revenge against the Oklahoma boys Friday night. This will be the only game in the county as the Lynx travel to Texline for their game with Paul Robertson's Tornadoes.

Corner Drug Remodeling

Gordon's Corner Drug is right in the middle of one of the biggest remodeling jobs in Spearman. Gordon says the store is installing a complete new front and a new floor covering. He especially wants to thank everyone for using the side door to the store, during the remodeling operation. The store will be closed down for two days, sometime in the future, in order to install the new floor covering. Gordon says he does not have any idea when this will be; otherwise the store will be open as usual.

Teen Town News For October 4th.

There was a very large crowd of 128 teenagers at Teen Town last Friday, October 4th. Every one had a lot of fun! The recreation program consisted of dancing, ping pong, volley ball, shuffle board and cards.

Due to the large attendance we have omitted the names of those who attended the October 4th meeting.

We would like to thank Mrs. Hall Jones and Mrs. Herb Butts for helping make this meeting possible.

There will not be a Teen Town meeting on October 11th, because of the football game at Texline. But there will be Teen Town on October 18th right after the game here with Vega Be sure to come! There is fun for everyone!

Girl Scout News

Leaders from Spearman and Perryton met October 1 at the H. D. club room for a four hour training course. The course was given by Mrs. Glen Martin, Panhandle Area Girl Scout Executive, and her assistant Mrs. Gladys Hull from Guymon, Oklahoma. This first meeting covered the administrative part of troop leadership, behavior problems, songs and games. Twenty-six leaders from Spearman and Perryton enjoyed a covered dish luncheon at noon. The next four hour course will be held October 17th at 9:30 A. M. at the Home De-

Teen Town Talent Show October 19th.

There will be a talent show put on by the Teen Agers of Spearman Teen Town Saturday October 19th, at the school auditorium starting at 7:30 p. m. The admission charge will be adults 50c and children 25c. The money will go to the Teen Town fund to buy equipment for the Community building. Everyone come out and back the kids in what they are trying to do. We guarantee you will laugh until your sides hurt and then some. We will see you Saturday night at 7:30 p. m. at the auditorium. You can buy your tickets from Don Floyd or any of the Teen Town members. The tickets will be sold at the door.

Card Of Thanks

I take this means of thinking everyone who visited with me during my recent illness. Also, many thanks for the cards and flowers, and your prayers.

Mrs. O. C. Rainey, and family

Change Of Meeting

Fine Arts Study club members are notified that the meeting today, Thursday Oct. 10th, will be with Mrs. W. H. Gandy at 3:00 p. m. Mrs. Sansing was to be hostess, but due to illness meeting place has been changed.

There's Color, Fun At The Fair, You Can Capture It All On Film

By ARTHUR W. SEDLER
Technical Editor, Eastman Kodak Company

Ever think of lazing the whole big State Fair of Texas? Like to bring it back home with you complete in all its color, action and thrills?

This is easy. Just take your camera along. Advance planning and careful use of your still or movie camera will let you capture the Fair and hold it for years on film.

Here's some simple advice to help you make better pictures at the State Fair:

The first suggestion is important to a good cook or a seasoned traveler as well as a photographer: plan ahead. What you're reading about the Fair will provide good ideas of what you'll want to see and photograph. Decide on the sequence of pictures you'll take at the Fair. Later on, this sequence will tell a complete story about the day. Take pictures before and after your actual stay at the Fair. Snaps, to take pictures at the Fair, and to make it a complete story, plan slides or movies of the family getting ready for the Fair should be included as well as pictures of the sleepy children arriving home at the end of an enjoyable day.

Be sure you're equipped to take good pictures. If the family camera has been on a shelf for several months perhaps it should be checked by a photo dealer. You can have this done at the same time you buy an enough film to shoot all the pictures you'll want at the Fair.

Take enough pictures on one job. To be sure, this is more than general advice. The camera is uninteresting and unrelated to people looking at the camera is uninteresting and unrelated to what's going on at the Fair. Have the family watch some one of the Fair's attractions in different poses. And vary your camera angle and distance. Shoot some pictures from eye-level, others from a kneeling position or get up high and look down at the subjects. Try close-ups to facial expressions, tight group shots and long-range pictures to achieve variety.

Some of the most exciting activities at the Fair take place indoors and at night. Here's where you'll probably need to use flash. A tiny flash bulb packs a lot of action-stopping light. It fills in the shadows and can be an effective means to better photos extra snappy. A supply of facial expressions, tight group shots and long-range pictures to achieve variety.

How about exposures... what lens opening and shutter speed to use? There's a wide range of cameras and films on the market today and the best general advice is to follow the manufacturer's instructions which are enclosed with each carton of film.

At the State Fair of Texas, you have a center where photographic experts are on hand to answer any and all questions about picture-taking. Drop by and ask for the answers at the Kodak Photographic Information Center, General Exhibits Building.

Barber Shop Installs Chairs, Mirrors, Etc.

Owner of the Barber Shop, has completed his barber shop. The new Barber Shop has installed chairs, mirrors, etc. The Barber Shop is located on the public one in Texas, and is a most comfortable place. The Barber Shop has been in the new Barber Shop. The Barber Shop has been in the new Barber Shop. The Barber Shop has been in the new Barber Shop.

Program For The Brownie Rally Oct. 12 At Memorial Bldg.

10:00 A. M. Present Colors
Pledge of Allegiance
1st verse of America
Welcome to all by Mrs. Olin Sheets, Pres. of Spearman Neighborhood Association.
Singing of songs indoors—Assisted by Spearman Senior Scouts
Games played outdoors in groups of 1st and 3rd year Brownies—Assisted by Spearman Senior Scouts
11:00 A. M. Announcements indoors
11:15 A. M. Juliette Low Birthday celebration ceremony
12:00 Noon Lunch
1:00 P. M. Singing of Songs indoors
Stunts
Good-by Mrs. Sheets
Closing ceremony
Daytime Tapes
Retire Colors
2:00 P. M. Start Home
Spearman will welcome approximately 528 Brownies and leaders from Guymon, Boise City, Keves, Beaver, Texhoma, Goodwell, Tyrone in Oklahoma and Gruver and Perryton in Texas. We hope their visit will be a pleasant one and that they will want to return another year.

Census County

Hansford county, in a joint program with the state of Texas and each of its counties, the bureau of census is establishing areas, known as "Census County Divisions" for use in statistical reporting. Similar areas were established in the state of Washington prior to 1950 census, and since 1950 have been put into effect in eleven states.

Jack Burkhardt, a member of the census staff, is here from Washington to consult with county officials and solicit their advice in regards to the proposed areas for Hansford county.

The proposed census county division should be useful for local administration purposes. The census county divisions are generally larger and more populated than the Justice and Commissioners' precincts; they have clear cut boundaries which can be easily identified; and they are intended to remain as permanent areas. For the most part they are based on communities.

GRUVER FOLKS IN CAR ACCIDENT IN ARIZONA WEDNESDAY

After the paper was on the press today (Thursday) we learned of a serious accident to a Hansford county family at Maise, Arizona, Wednesday evening, causing the death of the baby of the former Billie Morine Bayless Mr. and Mrs. Lewey Bailles. Allen and the former Billie Morine Bayless (now married but we were unable to secure her name) and baby were enroute to California. A car accident at Maise, Arizona caused the death of the infant child, and the other members of the family are in the hospital in Arizona. This is all the information available as we go to press. The Bayless family live near Gruver.



See it Live!

"MY FAIR LADY"
ICE CAPEDES
AUT SWENSON THRILLCADE
COTTON BOWL FOOTBALL
PAT BOONE, OCT. 13
GORDON MAC RAE, OCT. 15
FLYING INDIANS
now playing
STATE FAIR OF TEXAS
(It's a whopper!)
dallas

R. V. Converse Is Appointed Member Of Water Plan Board

R. V. Converse of Spearman has been appointed as a member of the Water Planning Board of the State of Texas, according to word received Thursday. Governor Price Daniel notified Converse of the appointment, and sent along an outstanding certificate of appointment. Signed by the Governor personally.

Mr. Converse will represent this district, and has been very active in the water planning, and irrigation plans for this area for some time.

Mother Of Ben Upchurch Buried At Box Elder

Mrs. Gertrude Upchurch, age 81, mother of Ben Upchurch of Spearman, died in the Clarksville hospital, Clarksville, Texas, Thursday October 3rd. Memorial rites were held at the Box Elder, Tex., as Baptist church at 2:00 p. m. Saturday October 5th.

At the time of death, Ben was at Stephenville, Texas, where he is attending a special Soil Conservation school. He joined Mrs. Upchurch and the children at Ft. Worth, Texas, where a sister accompanied them to Box Elder Upchurch was at the home of a daughter at Fort Worth, Texas when she suffered a stroke. The family sent her to Clarksville hospital to her family physician. Following the funeral rites, Ben returned to Stephenville to complete his assignment, and Mrs. Upchurch returned to Spearman.

Revival Meeting At Local Church



Brother Paul Smith, who is presently conducting a Gospel meeting in Spearman, is enjoying renewed old acquaintances. Brother Smith lived in Spearman for a number of years and last year moved to Ft. Collins, Colorado to preach in that city. He states that he enjoys his work in Colorado very much. Mrs. Smith accompanied him here and is also enjoying the visit with old friends.

Brother Smith invites all to come to the building of the Church of Christ in Spearman and enjoy these lessons together.

After the sermon next Sunday evening which will begin at 7:00 p. m. Brother Parker will show slides and talk on the work of preaching the gospel in Vancouver, British Columbia, Canada.

Elks Edge Lynx 13-7

The underdog Spearman Lynx gave the Stratford Elks a big scare last Friday night, as the Lynx dropped a close one to the Elks by a score of 13-7. Stratford is picked as being the team to beat in the district by most scribes.

Stratford got the scoring going early in the game as they used a fake punt and baffled the Lynx defense as McMinn toted the ball for 48 yards to score. The Elks banked off into a deep punt formation, then used a short snap to McMinn who zig-zagged through the Spearman defenses to the goal line. The try for extra point was blocked by the hard charging Lynx line.

Failure to get off a punt down deep in their own end of the field, again put the Lynx in the hole as the Elks took possession of the ball of the Spearman. Five plays later found fullback Auddell going over from the three to score the second Stratford touchdown. A gain a fake kick caught the Lynx off guard and Kendrick romped around his own right end to make the score 13-0.

The Lynx had several opportunities to score in the first half, but costly fumbles kept the locals on defense most of the first half.

The second half was mostly the Lynx as fierce play dominated the second half. Neither side threatened to score in the third quarter, but just as the third quarter was ending, the Lynx started a drive on their own 30 yard line and were not to be denied until they had scored early in the fourth period. The score was set up by numerous pass plays. With 3rd down and 8 to go, Poole, left halfback faked a run around right end and found Mitts down in the end zone, and immediately pumped the ball in the touch-down area. Mitts handled the grab easily and gave the Lynx a chance to get their number on the scoreboard. Poole again took a hand-off and went into the center of the line for the extra point.

Spearman used a on side kick after their touchdown and for a minute it seemed as though the Lynx would again be in possession of the ball. The official ruling was that the Elks had held the ball long enough to keep possession so again they began a series of ball control. The Lynx held well, but a 70 yard kick from the toe of Mitts, right halfback of the Elks, put the Spearman charges in the hole again and they were never able to get out.

This week the Lynx will travel to Texline to take on the highly touted Tornadoes. The Tornadoes have won 3 out of 1, and tied one this year. Injuries have kept the Texline crew from being outstanding this year, but from all reports, they will be at full strength for the Spearman outing. This will be the first time they have been in top shape since their first ballgame. Let's all go to Texline and boost the fighting Lynx. The loss to Stratford was a costly one but the Lynx are still raring to go as they have been each game this season. Top notch physical condition has really been showing for the Lynx.

13 points is the least scoring that Stratford has had so far this season, so the Lynx have again proved that they are in high contention for the district flag.

Lee McClellan Rebuilding

Lee McClellan is coming along satisfactorily with his new elevator, here in Spearman. Already the boys have completed most of the superstructure for the elevator and the covering of steel on the building should go fast. The outstanding feature of the rebuilding program, will be the installation of the new scales. These are the large scales which will enable weighing of every kind of truck there is. The scales are located just off the highway at the Grain Co. Many people thought Lee was putting in a silage pit, but it is an extra long set of scales.

Attend Area Convention

Members of Rho Rho Chapter, Beta Sigma Phi, attended the Area Convention held at the Jim Hill Hotel in Hereford on Sunday, Sept. 29. They were Vera Beth Hicks, Helen Etter, Altha Townsend, Gertrude Jones and Barbara McClellan. Main events on the program were a coffee at 9:00 and church attendance at 11:00. The Luncheon at 1:00 featured a style show and a wonderful talk by the guest speaker of the day, Eugenia Slaton, who is the Texas representative of Beta Sigma Phi International. Delegates from Rho Rho Chapter were proud to be awarded the Attendance Award at this luncheon. The 1956-57 scrapbook also was awarded Honorable Mention. Forms were held at 3:00 for officers and committee chairmen. A tea and closing ritual program closed the convention at Hereford.

400 Club Holds Open House At Community Building

Members of Rho Rho Chapter of Beta Sigma Phi acted as hostesses for the 400 Club last Sunday, October 6, at the Community Bldg. Guests were served coffee and cookies from a table decorated with a yellow table cloth and a pumpkin centerpiece which was made up with a ladies face and a new fall hat. Black candelabra and pewter serving pieces completed the decor.

The general public was invited to come and see how much better the Community Building looks since the 400 Club has started their renovation. The interior walls which were bare grey tile have been reinforced with two coats of 3/4 inch plaster. Loose blocks were filled with cement, the final coat of plaster was white. These new bright walls certainly improve the appearance of the building.

New front doors have been installed. These new doors are steel construction, light weight and the light grey color looks good on the brick front.

The wood panels above the front doors have been filled in with brick to match the exterior walls.

Broken windows were replaced all over the building. In the front alone, 63 glass bricks were replaced. To date, the 400 Club has spent a total of \$1877.50 on their program of redecorating and repairing the Community Building.

Members of the 400 Club certainly have every right to be proud of what their \$1.00 a month has accomplished so far. The Club hopes to complete the redecoration within the next few years. This will include a ceiling (the original steel beams are exposed and acoustics are terrible), at least two large club rooms to be built in on either side of the front doors and large improvements in the stage and rest room facilities. Landscaping and kitchen facilities are also needed.

If you are not already a member of the 400 Club, you are urged to call the Secretary, Helen Etter, or Chamber of Commerce manager, Donald Floyd and add your dollar a month to those already coming in for this work-

Oslo News

Mrs. Ed Fisher of Optima visited Wednesday afternoon with her sister, Mrs. Joe Walker and two children of Phillip Plant. Sharon Knudson, little daughter of Jodie Knudson, spent three days last week with Nancy, little daughter of Mr. and Mrs. Clifford Stedje. Besides having a lot of other fun, the little girls celebrated Nancy's fifth birthday.

Mr. and Mrs. Elmo Dahl visited Wednesday night in the Bill Johnson home.

Mrs. Sogn and her mother, Mrs. John C. Dahl, visited Sunday afternoon in the Sherman Schibler home.

Mr. and Mrs. Dwayne TeBeest and son and Mrs. Ruth Hull had Sunday dinner in the Ruben TeBeest home.

Bill Johnson went to Amick Monday morning with a pickup full of hogs for market.

The Joe Walker family visited Sunday afternoon in the Bill Johnson home.

Mr. and Mrs. James Stedje and children attended a Spivey reunion near Clifton, Texas, over the week end.

IMPORTANT NOTICE TO RED CROSS MEMBERS

In anticipation of a Flu epidemic in this area, the Potter County Red Cross is sponsoring a training class in the care of sick and injured. This is a Panhandle Wide class, and any member of the Hansford County Red Cross interested in attending are asked to get in touch with Roy Lee McClellan or Helen Fisher for further details. The class will be held October 19th from 9:00 a. m. to 5:00 p. m.

Weather

DATE	MAX.	MIN.	RAIN
1	90	49	0.00
2	94	45	0.00
3	91	49	0.00
4	91	55	0.00
5	90	60	0.00
6	88	63	0.00
7	74	55	0.23

monstration Building in Spearman.

AC
MONEY
BL
Co.

Payment
Down
E

AND
OWN
5 6962
I QUALIFY

TEXAS PRESS ASSOCIATION Member 1957

The Spearman Reporter Successor to the Hansford Headlight, Published Thursday of each week in Hansford County, at Spearman, Texas

WILL J. MILLER, Editor and Publisher Entered as second class matter Nov. 21, 1919 at the Post Office at Spearman, Texas, under the Act of March 3, 1879.

In Hansford and adjoining counties, One Year \$2.50 Out of Hansford and adjoining counties, One Year \$3.00

CLASSIFIED ADVERTISING First insertion, 4c per word; 2c a word for every issue thereafter. Card of Thanks, 4c per word. Display Rates on Request

NOTICE TO THE PUBLIC: Any erroneous reflection upon the reputation or standing of any individual, firm or corporation that may appear in the columns of The Spearman Reporter will be corrected when called to the attention of the management.

Don't Name It Reckon most everyone was so busy they did not have time to check up on an error the country editor made last week. Right up on the front page just below the Masthead of the paper we informed the world that a gas well would be drilled within 200 yards of the South city water well. This was an error. Good ole Vernie Rosson came rushing into the Reporter office just as we was printing the first issue of the paper and informed us about Kiff White Well and the fact that there was a yellow flag in the shadow of the city water well. It was the same kind of flag that the Humble Organization places on a new location, so naturally Vernie and I thought that a gas well would be drilled on the Marion Glover land, and we did not take time to check up and verify the facts, since the paper was already rolling. Our efficient Oil Editor W. L. Russell was the one who ferried out the error. He expressed doubt right off the reel and Friday at noon he informed the country editor that the flag out in the back yard of our city was a flag for the location of a radio tower that the Humble organization would build at that location. Terribly sorry, and we are willing to shave down the lease price on our two city lots a little today. So if you want get in on the kill. Come in and sign us up with a little cash.

What in the name of progress has happened to the cost of living. I never worked harder in my life or had less. Can't take off from working hard to keep living to find out where all the money is going that crosses my palm. Sumpin has gotta happen pretty soon cause I will deplete my bank account to minus. Most everyone I talk with seems to take it for granted that no one can get ahead anymore. THAT AINT RIGHT. A man that works hard and doesn't have time to spend morn the necessary sites of life should orter get ahead. One good thing about the whole situation is that I aims to get up into Colorado and forget it all, comes October 17th. This year the great Bull Elk hunters, Bill Hutton, Bruce Sheets and Doc Bennett of Canadian have decided to make camp at the brow of the hill instead of riding a hoss 14 miles up into the mountains. The theory is that none of us wana kill a nice gentle Elk this year, but we will take our rifles along for self protection, and spend our time fishn for trout in the streams and lakes at the foot of the mountains. Don't even plan to buy a hunting license, except one for the group to kill us some camp meat. Aim to sit around and play Nigger Eight and gossip and listen to the radio and sleep what time we aint fishing.

Guess we went too far last week when I accused "we Baptist" of not working at the job like the Church of Christ members do. I kinda wanted to needle out members into working harder in our campaign to raise a bit of income for the new educational building. Finally had to single out a couple of my good Baptist brethren, and ask em what they thought about the comments I FOUND OUT. While they didn't wana take anything from the Church of Christ members, they even complimented them on their hard work, but one of the brethren was so right when he kindly informed me that I don't associate enough with the Baptist members to know how hard they worked at their job. He is right, and we apologize. The Baptist not only in Spearman but all over the world are alert-ed to a campaign of evangelism. More power to the Baptist and the Church of Christ members. You both are doing a good job. Feel kinda sorry for our good friend R. V. Converse. He is the key man for the Democratic party in this area, and the state Democratic headquarters is urging him to get after the Democrats and ship a thousand dollars for the deficit and coming campaign. He has gotta make an effort to get this money in. Candidly, we believe it is a good investment. We shore need

Producers participating in the program may cancel the application at any time at which time marketing quota regulations for the 1958 crop will be effective. Producers having any interest in the wheat crop on the farm that has been signed up will not be allowed to participate in the 1959 wheat quota referendum. The 15 acres allowable under past programs is not applicable to producers signing this agreement. For example: A producer may seed up to 15 acres under existing regulations and sell the harvest crop penalty free, but under this program, none of the harvest crop may be sold.

Plenty Foods Lists For Oct. Revealed College Station — The crisp fall evenings are hard to beat so far as the choice of seasons for an outdoor meal is concerned. Outdoor chefs will find one of their favorites, broiling and frying chickens, heading the list of plentiful foods for October. The U. S. Department of Agriculture's Marketing Service report that industry and government will cooperate during October to promote the sale of broilers and fryers as well as cheese and dry peas. These foods headline the

Your Rexall Druggist presents MICKEY ROONEY WALTER SLEZAK in PINOCCHIO with FRAN ALLISON JERRY COLONNA STUBBY KAYE MARTYN GREEN MATA and HARI NEW MUSICAL SPECTACULAR ON NBC-TV and Radio SUNDAY, OCT. 13 KGNC TV. 4:30 P. M. Spearman Drug Your Rexall Store

Your Rexall Druggist presents MICKEY ROONEY WALTER SLEZAK in PINOCCHIO new musical spectacular with an all-star cast NBC-TV and Radio SUNDAY, OCT. 13

KGNC tv. 4:30 pm Spearman Drug Your Rexall Store I WILL BAKE German Chocolate cakes for \$3.00. Call Mary Faith Nolmer, Ol 9-5126 or Ol 9-4831 49 3t.c

STATE SOIL CONSERVATION OF TEXAS DUE NOTICE OF ELECTION SUPERVISOR WITHIN SUB-DIVISION NUMBER FOUR OF THE HANSFORD SOIL CONSERVATION DISTRICT. To all natural persons holding title to farm or ranch lands lying within the above named subdivisions of House Bill No. 444, Acts of the 47th Legislature, who has attained the age of 21 years, and reside within a County, all or any part of which is included in the said Soil Conservation District and who held title to lands lying within the said Sub-Division. Notice is hereby given: In accordance with the provisions of the State Soil Conservation Laws, Acts of the 47th Legislature, regular session, qualified voters of said Sub-Division will assemble at The High School at 7:00 P. M. at Morgo, Texas on the first day of October, 1957, then and there to elect one of the qualified voters residing within said Sub-Division to serve as a member of the Board of District Supervisors. BY DIRECTION OF THE STATE SOIL CONSERVATION BOARD. A. C. Spencer, Executive Director.

KEEP THIS AD! Over 20,000 Arthritis and Rheumatic sufferers have taken this medicine since it has been on the market. It is inexpensive, can be taken in the home. For Free information, give name and address to P. O. Box 522, Hot Springs, Arkansas. No. 44 runs 9 times-c

Quality Lumber Everything For The Builder FHA LOANS ARRANGED -FREE -Estimates -ALLIED PAINTS -TOOLS -HARDWARE Thermador Built-in Ranges Floor and Wall Tile PLUMBING - HEATING COOLING -Orto Dockins, Licensed Plumber -Call Us For Your Plumbing Needs. -Dial Ol 9-6681 Day Dial Ol 9-4451 Nights

Callaway Lbr. Company MOTOR WISE

"Best doggoned service man I ever saw." A. & G. Humble Service WYATT ATKINS RAYMOND GILLEY Not a Filling Station—but a Service Station. Jim's SERVICE and APPLIANCES -Appliance Service Work -New Appliances -JIM SUTHERLAND Phone Olive 9-5081 Spearman, Texas GAS-TOONS BY DON AND LOUIS PATTERIES 10 MONTH GUARANTEED

FOR SALE — Light baking hens R. C. Porter, Spearman, Texas Phone Ol 9-4466 No. 43-rtn-nc

FOR SALE—1948 5 passenger Chevrolet. See Ray Churchhill 122 Dressen. No. 44 24p

PASTURE WANTED: Want pasture for 30 steers, weigh approximately 550 lbs. Please call Billy Miller, 5591, or call Spearman Reporter, 5411.

FINISH HIGH SCHOOL OR GRADE SCHOOL at home, part time. Books furnished. Diploma awarded. Start where you left school. Write Columbia School, Box 1514, Amarillo, Texas. No. 44 1 Year paid

FOR SALE—Singer Sewing Machine. See E. E. Williams, Gordon's Corner Drug Store, Phone Olive 9-4216. No. 40 rtn-c

BARGAINS In house trailers. New Trailers up to \$1 foot. Five year financing, bank rates. Some used ones. Best Tailor Sales Pampe and Perryton, Texas. No. 4 rjn Nobody ever gets anything for nothing, but a lot of people keep trying. For the life of your car GO GULF! Looking for Service Try Orange Disc Service! ALTON WAYNE Phone 2381

FOR SALE — Light baking hens R. C. Porter, Spearman, Texas Phone Ol 9-4466 No. 43-rtn-nc

FOR SALE—1948 5 passenger Chevrolet. See Ray Churchhill 122 Dressen. No. 44 24p

PASTURE WANTED: Want pasture for 30 steers, weigh approximately 550 lbs. Please call Billy Miller, 5591, or call Spearman Reporter, 5411.

FINISH HIGH SCHOOL OR GRADE SCHOOL at home, part time. Books furnished. Diploma awarded. Start where you left school. Write Columbia School, Box 1514, Amarillo, Texas. No. 44 1 Year paid

FOR SALE—Singer Sewing Machine. See E. E. Williams, Gordon's Corner Drug Store, Phone Olive 9-4216. No. 40 rtn-c

NECCHI - ELNA Sewing Machine Call Or Write For Demonstration GRAGG Sewing Supply 708 North Main Phone Pr 36521 BORGER, TEXAS ANTHONY ELECTRIC Industrial Commercial House Wiring Contracting and Repairing Electric Motors and controls sold and serviced L. L. Anthony Phone 3361 Box 727 Spearman, Texas

JUST A REMINDER! Stock up on LIGHT BULBS —for the longer nights ahead! Make your home brighter, cheerier! Get enough right-sized bulbs to fill all your empty sockets... plus an extra carton or two for "spares". At your light bulb dealer's or our office. Sixty-watt, 21c; 75-watt, 21c; 100-watt, 23c; 150-watt, 27c; 100-200-300 watt, 88c. Federal tax included. Twenty per cent discount on purchases of \$5.00 or more. COMMUNITY PUBLIC SERVICE

GET YOUR—1958 Safety Sticker Now. Pettitt Garage, Spearman, Texas. No. 42 rtn

FOR SALE—1952 Dodge Truck. Grain Bed and Hoist. Good tires. Low Mileage. Also 1957 Gleaner Baldwin Combine. Self Propelled. Used very little. O. H. Burkes. Phone Main 4-4692 Liberal, Kansas. No. 42 24-p

FOR SALE—Massey Harris No. 21 in good shape. With Maize bar. Price \$650.00 See or write Jack Whitson, 5 mi. SW Spearman, highway 15. No. 42 24-c

STRAYED—From my place 5 miles north east of Gruver. One black, white face cow, and bull calf. Cow branded half circle H on left hip. Calf not branded. \$100. reward. Henry Raiston, Gruver, Texas. No. 42 14-c

DITCH DIGGING Service. Water, Sewer and foundation ditches. Call Ol 9-3671. No. 41, 44-p

WANTED TO BUY Steel Hay rack for feeding cattle, Billy Miller. Phone Olive 9-5591 or Olive 9-5441.

WE ARE — Experts in installing linoleums. Let us figure your next job. Free estimates. We do cabinet tops, floor linoleums, cove walls. We stock linoleums up to 12' wide, sink frames, metal rims etc. DALEY'S IN PERRYTON No. 27 rtn

ALCOHOLIC — If liquor is your problem and you sincerely want help to quit write Alcoholic Anonymous, box 513, Spearman. No fees, no pledges, no pills. No. 36 rtn

FOR SALE: 90 cages for laying hens. Double row arrangement, feed troughs, and automatic waterer. R. C. Porter, Spearman, Texas, Phone Ol 9-4466. Rtn-nc

FOR SALE: 1956 Norge Automatic Washer, \$125.00. Also, 1 set Dollies for pulling trailer house, \$40.00. See Carrell Martin Alsop Trailer Park. No. 44 34-p

FOR SALE — Light baking hens R. C. Porter, Spearman, Texas Phone Ol 9-4466 No. 43-rtn-nc

FOR SALE—1948 5 passenger Chevrolet. See Ray Churchhill 122 Dressen. No. 44 24p

PASTURE WANTED: Want pasture for 30 steers, weigh approximately 550 lbs. Please call Billy Miller, 5591, or call Spearman Reporter, 5411.

FINISH HIGH SCHOOL OR GRADE SCHOOL at home, part time. Books furnished. Diploma awarded. Start where you left school. Write Columbia School, Box 1514, Amarillo, Texas. No. 44 1 Year paid

FOR SALE—Singer Sewing Machine. See E. E. Williams, Gordon's Corner Drug Store, Phone Olive 9-4216. No. 40 rtn-c

Check the So... DS gives you... HANSFORD AND C... Perryton, Texas 213 ROY K. SAN... Padua J. BLUFORD JO... General S. O. U. MON... Obstetrics - Ge... AMBUL... FLOW... Num... Dial... SPEARMAN... HANSFORD V. P. W. POST... Regular Meeti... 2nd and 4th... of each M... Commander, Sr. Vice Com... Jr. Vice Com... Chaplain John... Qtr. Master John... AN members are... these meetings. Boxwell Funeral and Flower S... Day - Night... SPEARMAN

day after Mrs. Billy Othel host Calvin Spri Porter and The honor a corsage o Mum tied o The table and centred of small y held satin r ing "Baby flanked wil white holdi was also ca which were corations. B were place where many Mrs. Ma guest book, guests betw until 5:00 p Crayfish grow a net replace one

INTRODUCI ter Grain and Spearman, Tex appointed as an in this territe EKAL brid Sorg Baby Chi Seed

ated with him today. You' what you with your farming facts he offers have come fro grams—established and oper ment of American Agriculture Hybrid Grain Sorghum, DE

HYBRID SORGHUM

Check the So... DS gives you

OUR OLDSMOBILE QUALITY

Staufffer's May... HAVE A BEAUTIFUL BODY REDUCE IN THE PRIVACY OF with the STAUFFER HOME PLAI exercise and caloric reduction. Se Coach, the Posture-Rest®, gently eas lean wastline, thighs, hips, legs, in and proportions your figure into luscious lines. WANT IT FOR A MONTH—BUY IT F FREE HOME DEMONST

Boxwell Funeral and Flower S... Day - Night... SPEARMAN

IDEAL WILL NOT BE UNDER SOLD

You can depend on buying Mdse. at Ideal any day in the week at Prices as Low or Lower than any in Town. Check the hundreds of Prices that do not Appear in the Ads. That's where the big savings are. Ideals Prices are Consistently Lower at Ideals. Store.

CHAMPION MEATS

WEINERS ... 3 lbs. 98¢

BACON IDEAL SLICED 59¢

STEAK FRESH PORK 39¢

GROUND BEEF LEAN FRESH GROUND 29¢

STEAK Round 69¢

BACON IDEAL THICK SLICED 2 1/2 lbs. 1.19



FOR LESS AT IDEAL!

MAYFLOWER WHOLE APRICOTS No. 2 1/2 Can	25c
SUZAN SALAD DRESSING 1/2 Jar	27c
ALL SWEET MARGARINE lb.	27c
BAKERITE SHORTENING 3 Can	69c
DINING CAR COFFEE lb.	79c
HUNT'S TOMATO JUICE 300 Can	10c
SUNSHINE HYDROX COOKIES 12-Oz. Can	39c
WESSON OIL 1/2 Gal.	63c

MAYFLOWER Yellow Cling Sliced

PEACHES

Packed in Syrup No. 2 1/2 Can

19¢

CIDER Matt's Pure Fresh, Sweet - Made From Fresh Picked Apples Gr. Bl. 29c Gal. Jug 98c 1/2 GAL JUG 55¢

PILLSBURY'S **CAKE MIX** CHOCOLATE - WHITE - YELLOW - ORANGE 11-Oz. Pkg. 29¢

DONUTS CAKE GLAZED 29¢ (12 for 29¢) BROWN 'N SERVE ROLLS 2 FOR 29¢ CHOC. ANGEL FOOD CAKES EACH 49¢

EXTRA FANCY LIGHT MEAT! Star Kist Tuna 6 1/2-Oz. Can 29¢

IDEAL TASTY **ICE CREAM** 1/2 Gal. 59¢

GRIFFITH'S FRESH SHREDDED COCOANUT 8-Oz. Pkg. 23c

BROOKS OLD ORIGINAL CATSUP 12-Oz. Bottle 23c

MARSHMALLOW FLUFF CREAM 7 1/2-Oz. Jar 27c

IDEAL **DOG FOOD** 2 1-lb. Cans 29c

GERBER'S STRAINED BABY FOOD 3 cans 25c

Better Food For Less **IDEAL FOOD STORES**

HERSHEY'S INSTANT COCOA MIX 1-Lb. Can 49¢

FRUITS & VEGETABLES

U. S. NO. 1 COLORADO RED McCLURE Potatoes, 10 Lbs. 39¢

COLORADO RED DELICIOUS Apples, 4 Lbs. 49¢

FANCY MED. SIZE YELLOW Onions, 3 Lbs. 10¢

U. S. NO. 1 PORTO RICAN Yams, 3 Lbs. 29¢

FRESH OCEAN SPRAY Cranberries, 1 LB. Day 25¢

Charmin Tissue 1-Lb. Box 27¢

GAINES MEAL 5 LB. BOX ONLY 69¢

Pillsbury Or Ballard Biscuits 3 For 10¢

Charmin Napkins 60 for 10¢

Everyday Prices at Ideal

IDEAL BREAD	19c	25c
BROWN and SERVE ROLLS	2 pkg.	29c
DELMONTE SPINACH NO. 303	CAN	15c
FROZEN ORANGE JUICE	2 6 oz. Cans	27c
KARO SYRUP	Quart Jar	45c
KARO SYRUP	5 lb. Can	69c
KARO SYRUP	5 lb. Can	67c
KARO SYRUP	5 lb. Can	69c
PEACHES No. 2 1/2 Can		33c
Instant MAXWELL HOUSE COFFEE	6 oz. Jar	\$1.39
Campbells Vegetable SOUPS	2 Cans For	29c
ICE MILK	1/2 Gal.	49c
BAKERITE	3 lb. Can	79c
BABO	Large Size	19c
ELLIS LIMA BEANS and HAM		33c

WHY PAY MORE??? ARE YOU PAYING MORE??? EVERY WEDNESDAY IS DOUBLE STAMP DAY

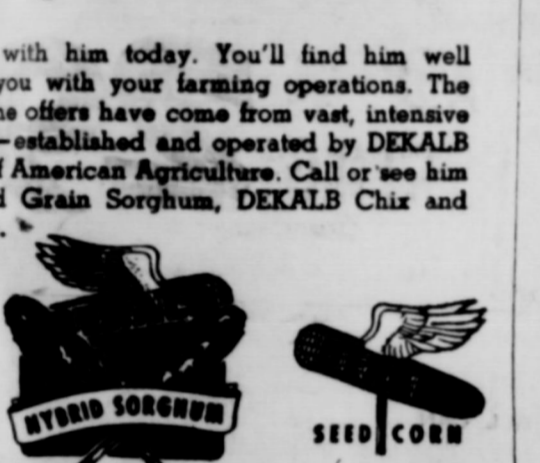
WE GIVE GUNN BROS. STAMPS

day afternoon in the home of Mrs. Billy Miller, 819 S. Bernice. Other hostesses included: Mrs. Calvin Springer, Mrs. Chalmers Porter and Mrs. Albert Mackie. The honoree was presented with a corsage of a single large white Mum tied with silver ribbon. The table was draped in white and centred with an arrangement of small yellow daisies. A stork held satin ribbons with the lettering "Baby Barnes", and was flanked with yellow tapers in white holders. The color scheme was also carried out in the cakes which were yellow with white decorations. Bouquets of yellow roses were placed in the bedroom where many gifts were displayed. Mrs. Mackie presided at the guest book, and registered many guests between the hours of 2:00 until 5:00 p. m.

Crayfish like lobsters, can grow a new leg or antenna to replace one that is amputated.

INTRODUCING Winter Grain and Seed Co. Spearman, Texas

appointed as an authorized agent in this territory for **DEKALB Hybrid Sorghum Baby Chix** ✓ Seed Corn



Check the Score... **IDS** gives you more!

It's money in your pocket to deal NOW for a Rocket!

Stuffer's Magic Couch

LOSE UNWANTED INCHES

HIPS TUMMY THIGHS LEGS

HAVE A BEAUTIFUL BODY TO LIVE IN REDUCE IN THE PRIVACY OF YOUR HOME with the STAUFFER HOME PLAN of effortless exercise and caloric reduction. Stauffer's Magic Couch, the Posture-Resc, gently tones excess inches from waistline, thighs, hips, legs, improves posture and reproporions your figure into more youthful, lovelier lines.

BUY IT FOR A MONTH - BUY IT FOR 60¢ A DAY FOR FREE HOME DEMONSTRATION

IN LUISIANA, TEXAS, 108 Grand-Plains Dr. 4-3751 or

Boxwell Funeral Home

Light baking hens er. Spearman, Texas 1,4466 43-rtn-ne

Keim

October 14 Teachers in regular auditorium. The meeting will be held at the High School. A program of the Curri- will be introduced. Membership and the cafe. Social hour. Social hour in

No. 44 1 Year paid

inger Sewing Ma- E. Williams, Gor- Drug Store. Phone

No. 40 rtn-c

lers. New Trail- feet. Five year rates. Some at Teller Sales irryton, Texas. No. 4 rtn

ets anything for lot of people

of your can ULFI

Dr. D. OSTEO

Office Phone 4851

Dr. R. OPTO OFF

9 to 12 a.m. Sat. Ph. No. 18 Perry

NA line For in S Y C No. 16 S. W. Phone Spearman

SANFORD AND Perryton. Phone 282 ROY K. SANFORD

J. BLUFORD JO General O. U. MON Obsterics - Ge

AMBUL FLOW Num Dial 2 SPEARMAN

Hansford V. P. W. POST Regular Meetin 2nd and 4th of each Mo

Commander, Jr. Vice Com. Clk. Chaplain John Dr. Master John LK members are at these meetings.

Funeral Flower

Day - High

SAVE
Down the Line
with Every
9

BIG 9¢ Sale



9's the winning number this week—for you with a 9 is a SUPER-SAVER... an extra value at an extra-special low price for you. We've gone through every department... many of your favorite foods... and with 9-for-savings prices! You'll see many more in our... on our shelves... and in our... —9's the number to go by for the BEST foods and household supplies.

BORDENS OVEREADY BISCUITS 2 For	9¢	ARROW BRAND PINTO BEANS lb. Bag	9¢
HERSHEYS 5c BARS CANDY 3 For	9¢		9¢
HEINZ TALL CAN TOMATO SOUP	9¢	HEINZ STRAINED GLASS BABY FOOD	9¢
SCHILLINGS 1½ OZ. BOX BLACK PEPPER	9¢	TALL CAN BABO	9¢

TENDERCRUST BROWN AND SERVE ROLLS ... **19¢**

SU ZAN QUART SALAD DRESSING **29¢**

CAMPBELLS VEGETABLE - TALL CAN SOUP ... 3 For **39¢**

FOOD KING SYRUP PAC WHOLE - BIG NO. 2½ CAN APRICOTS ... 2 For **49¢**

GROUND BEEF
FRESH & LEAN 3 lbs.
89¢

10 LB. RED POTATOES U. S. NO. 1 QUALITY
39¢

DOLE 46 OZ. CAN PINEAPPLE JUICE ... 2 For **59¢**

FRANKS ... 3 lbs. **99¢**

PANHANDLE BRAND SAUSAGE ... 2 lbs. **59¢**

FRESH PORK LIVER ... lb. **19¢**

FRESH FRYERS and HENS

OCEAN SPRAY CRANBERRIES 2 pk. For **49¢**

UTAH D'ANJOY PEARS ... 2 lbs. **29¢**

COLO. MEDIUM HEAD CABBAGE ... 2 lbs. **9¢**

Frozen Foods

MITE NICE NO. 10 STRAWBERRIES 2 pkg. **29¢**

LANES Pineapple Sherbert ½ gal. **39¢**

SWIFTS PREM ... **39¢**

SWANDOWN LEMON FLAKE CAKE MIX 2 for **69¢**

GARDEN CLUB 20 OZ. TUMBLER STRAWBERRY PRESERVES 2 For **69¢**

FOOD KING BARTLETT NO. 2½ CAN PEARS ... 3 For **79¢**

MARYLAND CLUB COFFEE ... lb. **89¢**

SHURFINE HEAVY SYRUP NO. 2½ CAN FRUIT COCKTAIL 3 For **99¢**

Double Stamps Every Wednesday

CUT-RATE FAMOUS FOR SERVICE
GROCERY MARKET SP. FARMAN TEXAS

One Co
WITH EAC
LARGE ECO
59¢ SCOT
BATHROOM
79¢ SCOT
SCOTS CUT
89¢ WAX
ALUMINUM
REYI
3 LB. CAN
39¢ MRS.
PY O MY A
99¢ APPI

these special



000 Wi
PRIZES
ation Wagon
WINNERS
television set
AVAILABLE HERE

One Carton Regular Size Plus Deposit

COCA COLAS

WITH EACH PURCHASE OF \$5.00 & OVER

LARGE ECONOMY SIZE ROLL

SCOT TOWELS 29¢

BATHROOM 1000 SHEET ROLL

SCOT TISSUE 4 Rolls 49¢

SCOTS CUT RITE 125 FT. ROLL

WAX PAPER 2 For 49¢

ALUMINUM 25 FT. ROLL

REYNOLDS WRAP 29¢

3 LB. CAN SHORTENING

MRS. TUCKERS 69¢

BUY MY ALUMINUM PAN FREE WITH EACH PACKAGE

APPLE THINS 29¢

Zack Jagers Tells Of Life In Foreign Countries

Letter From Zack Jagers

September 8, 1957 (Sunday) C/O American Consulate Medan, Indonesia

Bill Miller Spearman, Reporter Dear Bill:

Tomorrow is my twenty fifth anniversary here in Medan. Twenty five months, that is. But before the "tangkal sembulan" comes around we will be on the high seas. Last Friday I met with the Mantries and Mr. Samosir in their monthly meeting for my last time. They had gone to Parapat the day before to spend the week-end, which was quite a treat for some of them. The Kepala in that area who was there before Mr. Samosir would not allow the Mantries Agric. Extension (Village Workers) to use the Pasangrahan (the Agricultural guest house on lake Toba) there, because he felt like they were too low in the hierarchial system to enjoy such privileges. Mr. Samosir, their boss, has been to the States for a year of study, and he got some progressive ideas there. So he is making some of the things available to his people, and they like it, although they had not expected to be able to participate in the better things. People here are born into a position in life and there is very little opportunity to get very far out of it.

Anyway these Mantries are mostly all native. Patak from the Tapinula area. Since they knew that I was coming to meet with them for the last time they decided to prepare something special on my behalf. They held a conference the night before, and half of the group wanted to arrange for us all to eat at the hotel, but the others said no that they wanted to make us their guest of honor for one of their tribal festive meals. So that is just what they SURE DID. I had anticipated the food situation at the hotel and had carried along some pork sausage sandwiches and cookies. While the meeting was having its preliminary openings, and Samosir was carrying on his palaver, I slipped outside and ate my sandwiches and cookies. The cook saw me out there and came out to tell me that he was preparing "Makanan" for me, and wanted to know if I preferred "Ikan ajam or Ikan babi". He said my driver had told him that I did not (or would not eat "ikan babi). He is Islam, and they do not eat pork, so I guess he figured I shouldn't eat it also. I told the cook to go ahead and I would try his food. I thought he (This tribe ate a couple of American missionaries near Lake Toba about 1880. Parapat is on Lake Toba) was terribly interested about my eating at that time, but it didn't occur to me what they were up to. I had heard about their ceremonial lunch, but I didn't have any idea that this might be an occasion for such a celebration. I told the cook that I probably would prefer the "ikan ajam". So when I came back through the kitchen he showed me the chicken in the pot, and how good it looked. After we had finished our speakings, etc., the oldest man in the group, a mantrie who had been on the job for many years, having been prepared for the presentation (It is custom for the oldest to be the honored master of ceremonies), made me a little speech and presented me with a "Ragihidup". This is a piece of many colored cloth about the size of a table cloth. It, or its counterpart is worn by most of the people, men and women alike, as a sling to carry their babies in to wrap themselves in when it gets cool, as a bed or cover, to carry wood in, to carry potatoes or what-not in. This old man gave me words of appreciation for the help I had given them in their work here, thanked God for my coming this way and for our continued friendship etc., and bade me God's speed on my way to Texas, and a long and happily and prosperous life after I got home. Then he spread the "Kain" over my shoulders. Then I had to make a farewell, and gratitude speech, telling them that I would carry the "Kain" or "Ragihidup" with me as a symbol of our friendship, not only between them and me but between their country and mine, and that when the cold winds of Texas struck me I would be warmed by the symbolic friendship of the people of Sumatra. Then Mr. Samosir told me that eating together was another symbolic gesture of binding our friendship, so the table was loaded with rice and chicken. They gave Mr. Samosir and me a separate table for we were the "big shot". They had a nice, well browned drum stick on my plate and a big platter of "nasi" (rice). So I started to eat, but here the cook came with a great big platter loaded with the "dad-gumndist mess of stuff imaginable. They had a large hog-head, with the snout and face removed, in the center. Draped around that was the jaw bones, jowls, tongues, hearts, and other such junk meat, but to top it all off they had the chicken intestines, all cooked nice and brown, arranged on top of the whole putrid mess. This "appetizing" dish was set in front of me. I looked at it, and at Samosir, and at the platter again, and finally Samosir explained that this was

their way "adat" of telling me that I was accepted as one of them. He said that it was my honor and privilege to cut the hogs head and divide it among the members present, and that in so doing I was being honored as the ceremonial head of this tribal meeting and was delegating hierarchial position to those present by the order in which I gave each a piece of the head. Another one of the Mantries had made a little presentation speech to me when I had been given the hoghead, so I had to serve him first. I think actually it is customary to divide the head between two of the top rankers, after the chief has been served, and then they in turn divide it to others, who in turn divide it again until all have been served, with the lowest rank getting the last serving.

Afetr I had taken my bit (I cut a piece out of the center of the forehead first, but when Samosir said that the mantries required that I eat some before they would eat theirs, I cut off a small piece of the heart, which looked to be well cooked, and ate it.) Samosir then told me that since I had taken a symbolic piece and had eaten some, was considered eating together, and it would not be necessary for me to eat any more of it, but that I could go ahead with my rice and chicken if I wanted it. He then told them they could have the rest of the dish and it was removed from my presence. They ate it all with relish. Later a dish of blood, cooked in some kind of sauce was served. I didn't eat it but they ate it like it was good. They ate the hogs ears and all. I really wasn't very hungry for I had already eaten my sausage, but I did eat some rice and a little chicken. We all had our pictures made together, my wearing the robe, and the others clustered around me, like they thought I was "somebody Come". Then we shook hands all around, they hoped that I would come to Sumatra again on my next assignment, because I already knew their problems, and understood them now, and a new man would just have to start from scratch and learn it all over again. I finally got away amid waves of parting and "HORAS".

I thought you might just like to hear about this interesting and unusual experience. Zack Jagers

This'n That



Around Gruver

The flu epidemic, if you can call it that seems to be dying down. Only forty-six children were out of school Monday. That is well below what it has been. Perhaps if the seasonal weather sets in it will die out completely. But there has been a lot of it, and Dr. Jones has been kept on the run.

Mr. and Mrs. Ed Vernon have left for one extended trip through Alabama. Ed has a great many relatives there, that being his home State.

Mr. and Mrs. King of Los Angeles, Calif. are the house guests of the Ed Rafferty's. Pat and Johnnie Ireland of Abilene and their four children are also visiting the Rafferty's.

Mrs. Winkler, John Haden Hart, and Billy Lieb are all in the hospital with the flu.

Mrs. Blanch Taber, Mr. and Mrs. T. J. Bergin, and the two little girls went to Pueblo, Colo. Saturday. The occasion was a sad one, to attend the funeral of Tommy Joe's uncle.

Mrs. Rueben Hintergardt and Mrs. Ruth Hutton drove to New Mexico and Colorado last week to see the Aspens in full color. We'd like to do that too.

Linda Kay McClellan and her room mate at San Marcus Academy are coming to spend the week-end with her parents Mr. and Mrs. Ted McClellan.

Every once in a while we like to say a word about some of our friends who do not get about very much. We are glad to say that Minda Etling is keeping fairly well. Although we do not see much of her, she is still very much interested in the community and its people. She has been a great benefactor to a great many people.

Mr. and Mrs. Price Miller are

visiting friends and relatives in Oklahoma.

Mrs. Ownby is being moved from the hospital in Amarillo to the Spearman Hospital. This will make it more convenient for her daughters, Mrs. Ralph Bort and Mrs. Claud Watkins to care for her. We understand also that the Claud Watkins are preparing an apartment for their father, so that he can be close by.

Gruver School News

The number of students out of school with "flu" has not diminished a great deal. Monday's figures are 33 absent in grade school. This represents a little above 10% of the entire school. One teacher was absent Monday.

The P-TA meeting Monday evening with discussions by Bill Etling on school finances.

P-TA Study will meet Tuesday 2:30 in school auditorium. Book review by Mrs. W. H. Willoughby "Our Children, Everybody's Business."

Gruver High School Students Council voted to attend the state meeting and send four representatives. The Council also voted to go along with the city on the Halloween program the same as last year.

Hansford County Teachers Association met at the Gruver High school cafeteria Monday, September 30th, and voted to go on record as advocating the state fees for the TSTA to be increased from \$7.00 to \$10.00 for next year.

Gruver high school students taking driver education this semester will be allowed to obtain their drivers license upon completion of the course according to the law on drivers licenses for people under 17 years of age. The Gruver Motor Company of Gruver furnishes the driver education car for the instruction.

Texas County Motor Company of Guymon has furnished the school a new pick-up for the FFA boys and school use.

Mr. Clyde Barber, Gruver High School vocational agriculture, and fifteen agriculture students left Friday evening after the football game for the State Fair at Dallas. They returned Saturday evening, and reported a very nice trip.

Busy Bee 4-H Club

The Busy Bee 4-H club met October 1st at the home demonstration club rooms with President Susan Hutchison presiding. Miss Fain, Agent, gave the demonstration. Each girl made a puzzle out of leather.

Present were: Shirley Ayres, Sherry Bands, Deanie Leftet, Norma Stowe, Kathy Pattison, Susan Holt, Paula Mackie, Karen Gibson, Sandra Kitchens, Ina Sue Fryrear, Susan Hutchison, reporter, Patsy Kingsley and Mrs. Fred Holt, Mrs. Flaviil Ayres and Mrs. Richard Kingsley.

Gruver W. S. C. S.

The Gruver WSCS met in the church Oct. 3, with Mrs. Campbell in charge. Mrs. Bort gave the devotional beginning with a song "Breathe on Me Breath of God."

Mrs. W. L. Harris had charge of the study and gave a part on the responsibility of the church in all social welfare work.

Mrs. Tom Dozier gave a part on Mission schools in USA and what WSCS is doing around the world.

Mesdames present: Arthur Bort R. Murrell, Ted McClellan, W. H. Willoughby, A. Evans, Carry Neilson, W. J. Eddleman, M. F. Barkley, E. Rafferty, R. Campbell, E. Sluder, Bill Johnson, D. L. McClellan, Tom Dozier and W. L. Harris.

Troop 607 Met October 2nd.

Troop 607 met October 2nd in the home of their leader Mrs. John R. Collard, Jr. The troop was introduced to their new assistant leaders Mrs. Don Hall and Mrs. Bill Topper. The President, Helen Collard called the meeting to order and asked for a reading of the minutes for the first meeting. The girls practiced presenting the Flag and their promise and laws for the benefit of the new members. The first project for the troop will be to cover their handbooks with red leatherette and whip the edges with white lacing. The assistant leaders served refreshments to the following girls: Helen Collard, Vicki Kunkle, Karen Hall, Mary Ellen Novak, Sharon Gage, Sandra Kitcher, Mae Bell Witcheer, Johnny Jo Vernon, Nancy Wilmeth, Linda Topper, Noreen Sutton, Evelyn McCaulley, Paluette Ellis and Doris Slaughter. The next meeting will be October 9th.

Rose Garden Flower Club

met at the home of Mrs. Kiff White, Jr. on Friday, October 4, at 3 o'clock p. m. Delicious refreshments were served after which the meeting came to order. Old and new business was presented and discussed and the minutes were read. Mrs. Bill Weston presented the program on bulbs.

Roll call was given by each member answering with some current event. The mystery box was brought by Mrs. Kiff White, Jr. and won by Mrs. Don McLain. Two lovely flower arrangements were brought by Mrs. Doyle Jackson and Mrs. Kiff White, Jr.

Members attending the meeting were Mesdames: Sonny Nollner, Willis Sheets, Doyle Jackson, Troy Sloan, Don McLain, Bill Weston, Kiff White, Jr., Joel

Lackey, Glenn Mackey.

Medlin H. D. Club

Met in the home of Mrs. C. R. Jackson Oct. 4. Meeting called to order by Mrs. John Trindle. Roll call answered with Helpful Household Hints A short business session was held.

Mrs. Johnnie Close gave a very good demonstration on "Preparation of fish for the family."

Lovely refreshments were served to Mesdames: John Trindle, Johnnie Close, Virgil Hull, Robert Novak, L. T. Dosssett, James Sparks, Lelan Close, Bob Hays, and the hostess, Mrs. C. R. Jackson.

Next meeting will be at the club room Oct. 18th with Mrs. Dosssett as hostess.

Francis Morris Is First Alternate

Francis Maurine Morris, a outstanding Gruver 4-H Club Girl, has been chosen first alternate in the 1957 State Frozen Foods Awards Program. She is the daughter of Mr. and Mrs. J. R. Morris of Gruver.

This is the second year for Francis to receive top honors in State Competition. Her records reflect a good frozen food record as well as a well rounded 4-H Club personality with accomplishments in all areas.

Lone Star 4-H Club Met At Club Room

The Lone Star 4-H club met at the club room at 4:00 p. m. Monday October 7, 1957.

The new officers who were elected September 16 took charge of the meeting.

Marilyn Schubert led a game. Barbara Fain, H. D. Agent, showed us how to make a game puzzle.

Refreshments were served by Sandy Stump. Present were: Karen Crain, Barbara Hand, Linda Holt, Helen Greover, Janice Phelps, Marilyn Schubert, Judy Stump, Sandy Stump, Marilyn Beck, and our leaders, Mrs. Jack McWhirter and Mrs. J. R. Stump. We also had two visitors present, Carol Presnel and Joy Ladd.

RECENT GUESTS IN THE GEORGE BUZZARD HOME

Mrs. S. G. Blazer of Enid, Oklahoma; Mr. and Mrs. Charles Wekle, of Marshall, Texas; Mr. and Mrs. Maxwell George, of Springfield, Mo.; Mr. and Mrs. Edward Buzzard of Waynesboro, Va.; Mrs. Edith and Lillian Long of Miami, Florida; Mrs. George Dulaney of La Jolla, Calif.; Mrs. Womack of Snyder, Texas.

Mad Hatter's Coffee

The Rho Rho chapter, Beta Sigma Phi honored their fall rushers with a Mad Hatter's Coffee at the home of Joanne Blodgett on Wednesday, October 2nd. This was the first rushing event of the season and guests were asked to wear the most fantastic hat they could find or borrow or make. Honored guests were Dorothy Baggerly, Nelda Sheets, Elsie Matthews, Sybil Miller, Ruth Ann Jones, Doris Jean Wilmeth and Mary Brock.

The mantle was decorated with a pumpkin lady with black pipe cleaner eyelash and a black stove pipe hat resplendent with fall mums and a golden veil. She was the belle of the ball. Prizes for best hats were awarded to Nelda Sheets as guest and Barbara McClellan as member. Members who attended were Helen Watson, Altha Townsend, Ola Sparks, Ruth Skinner, Barbara McClellan, Beuna Lyon, Elizabeth Holton, Vera Beth Hicks, Lois Gibner, Pat Donnell, Dorcas Collard, Doris Anthony, Christine Rosson, Honorary member and hostess, Joan, ne Blodgett.

Rho Rho Chapter Beta Sigma Phi

Gertrude Jones was hostess to the Rho Rho Chapter, Beta Sigma Phi, Monday, September 23. Members present were Doris Anthony, Joanne Blodgett, Pat Donnell, Helen Etter, Lois Gibner, Vera Beth Hicks, Elizabeth Holton, Beuna Lyon, Barbara McClellan, Ruth Skinner, Ola Sparks, Altha Townsend and Helen Watson. The chapter approved the plan to order more Beta Sigma Phi International Cookbooks. These cookbooks have become very popular and any member will take orders.

The President, Vera Beth Hicks, announced the Area convention to be held at the Jim Hill hotel at Hereford, Sunday, Sept. 29. Several members planned to attend. Plans were also made to hold Open House at the Community Building for the 400 club, Sunday October 6th.

Bring Back Our Wandering Cow

Some time ago our good friend Henry Ralston lost a prize cow that strayed away from the pasture 5 miles North East of Gruver. The cow was branded circle H on the left hip. The bovine was a black colored cow with a white face. She was accompanied by a bull calf. The calf was not branded.

Henry placed a small classified advertisement in this newspaper last week offering a \$25.00 reward for the return of the cow and calf. Tuesday of this week he came in and upped the reward to an even \$100.00. This sure should get the animal. Fact is we may take off this week end and look for

19 Lower Sale

29% OFF

39% OFF

49% OFF

59% OFF

69% OFF

79% OFF

89% OFF

99% OFF

100% OFF

100% OFF

100% OFF

100% OFF

100% OFF

100% OFF

100% OFF



GIANT SIZE Spic and Span WIFE-SAVER PRICE REGULAR 79¢

WIFE-SAVER PRICE MEDIUM BAR 6 For 49¢

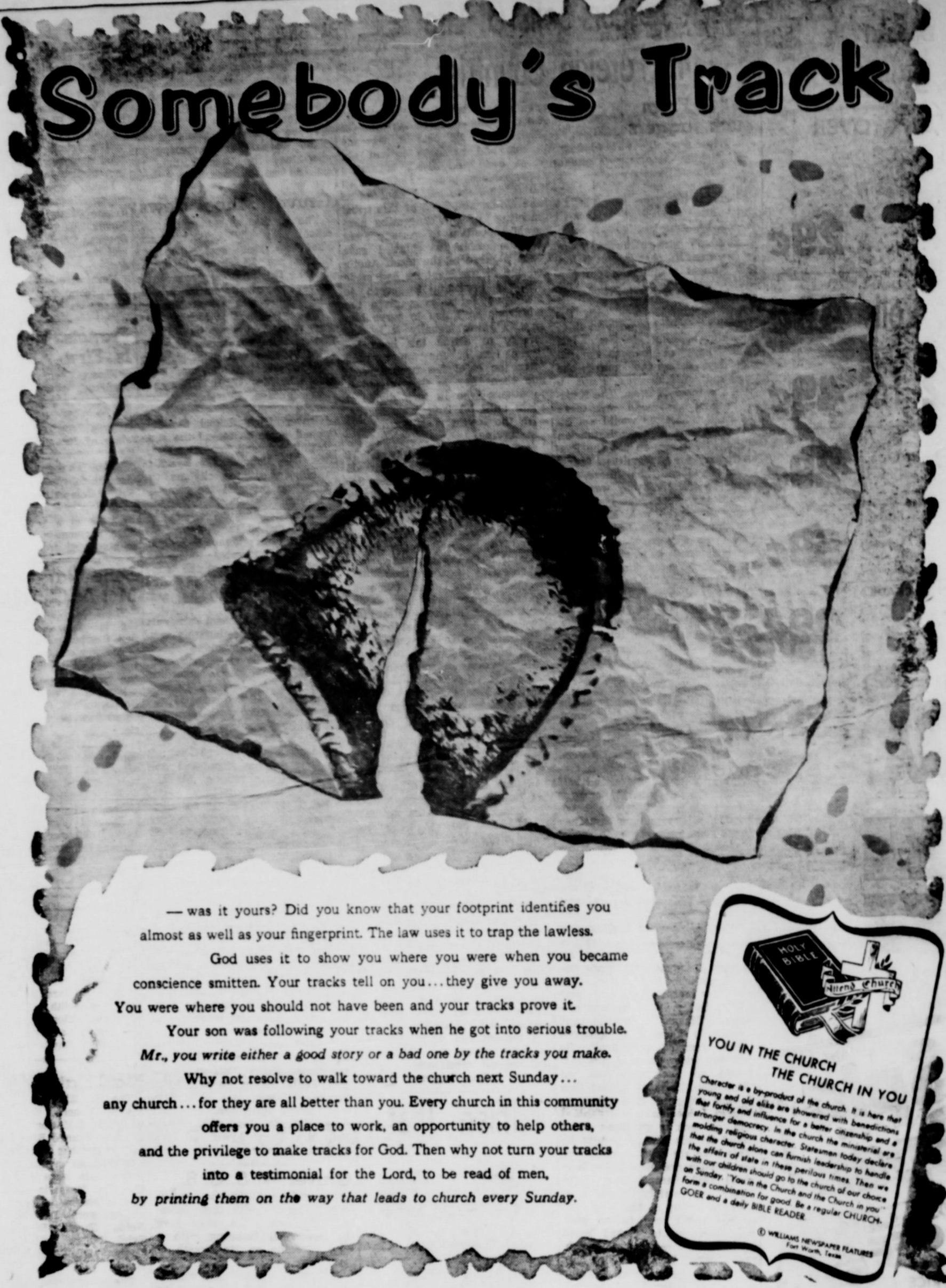
WIFE-SAVER PRICE REGULAR SIZE 4 For 29¢

1000 Wife-Saver Contest

FIRST PRIZE \$20,000

Available Here

Somebody's Track



— was it yours? Did you know that your footprint identifies you almost as well as your fingerprint. The law uses it to trap the lawless. God uses it to show you where you were when you became conscience smitten. Your tracks tell on you...they give you away. You were where you should not have been and your tracks prove it. Your son was following your tracks when he got into serious trouble. Mr., you write either a good story or a bad one by the tracks you make. Why not resolve to walk toward the church next Sunday... any church... for they are all better than you. Every church in this community offers you a place to work, an opportunity to help others, and the privilege to make tracks for God. Then why not turn your tracks into a testimonial for the Lord, to be read of men, by printing them on the way that leads to church every Sunday.

**YOU IN THE CHURCH
THE CHURCH IN YOU**

Character is a by-product of the church. It is here that the young and old alike are showered with benedictions molding religious character. Statesmen today decline the affairs of state in these perilous times. Then we with our children should go to the church of our choice on Sunday. You in the Church and the Church in you... GO! and a daily BIBLE READER.

© WILLIAM NEWSPAPER FEATURES
Fort Worth, Texas

We Need Greater Churches And Greater Faith

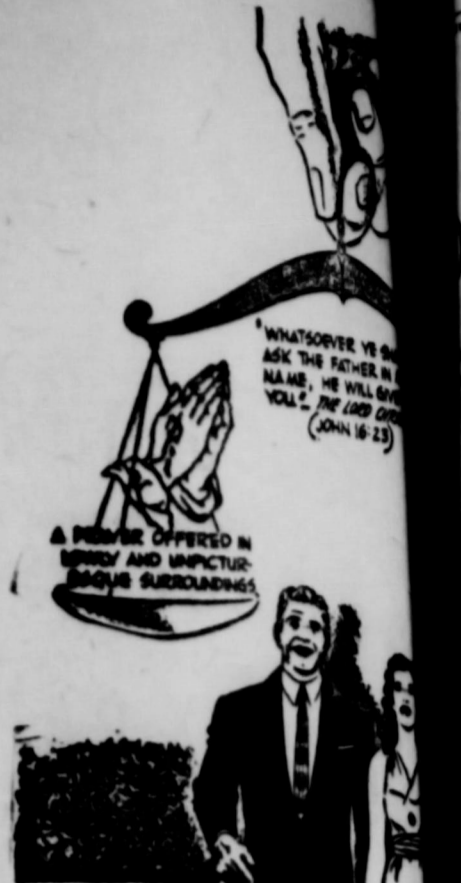
to give us POWER for LIVING and to COMBAT ATHEISTIC "ISMS"

MAY THIS PAGE BE A BLESSING TO MANY IS THE SINCERE WISH OF HANSFORD COUNTY MINISTERS
This religious service is paid for by the public spirited firms 100% interested in the spiritual life of Hansford County. They urge regular church attendance and support.

- B. L. Kleeberger, M. D.**
- Spearman Drug Co.**
Bruce Sheets
- Equity Exchange**
E. J. Copeland
- B. L. McClellan Grain Co.**
Lee Roy Lee, Wilson McClellan
and J. K. Hicks
- Orange Disc Service**
Alton and Wayne Ellsworth
- Hansford Implement Company**
Gene Gadd
- Deana May's Beauty Shop**
Deana May Douglas

- Gruver Motor Company**
Ted McClellan
- North Plains Electric Co-op**
Earl Waide, Manager
- Super Service Station**
Gene Cline and W. E. Sparks
- Spearman Steak House**
Mr. and Mrs. Howard Huffman
- White Auto Store**
Mr. and Mrs. I. P. Bagerly
- Boxwell Brothers**
Mrs. C. E. Blackburn
- Consumers Service Co.**
Vester H. H.

- Panhandle Furniture Mart**
Bud King
- Jameson Chevrolet Co.**
Spearman Body Shop
L. L. Jameson
- Wardrobe Cleaners**
Oscar Donnell
- First State Bank**
Clay Gibner
- Callaway Lumber Co.**
E. J. Callaway and Sons
- Cactus Petroleum, Inc.**
Aubrey Covington, Supervisor



- FIRST BAPTIST CHURCH**
Bro. Bill Burton, Pastor
- Sunday School
- Preaching Service
- Training Union
- Preaching Service
- Wednesday Prayer Service
- UNION CHURCH — S.P.**
Rev. Calvin Springer, Pastor
- Sunday School
- Morning Worship
- Bible Classes, Sunday
- Evening Worship
- Wednesday Bible Study
- FIRST CHRISTIAN CHURCH**
- Sunday School
- Morning Worship
- Youth Meetings
- Evening Worship
- Wednesday: Choir Practice
- MORSE METHODIST CHURCH**
Allen C. Forbis, Pastor
- Sunday School
- Morning Services
- M. Y. F.
- Evening Worship
- ASSEMBLY OF GOD — S.P.**
Rev. M. C. Cox, Pastor
- Sunday School
- Morning Worship
- Evening Worship
- Mid Week Services, Wednesday
- FIRST CHRISTIAN CHURCH**
J. W. Dake, Pastor
- Sunday School
- Morning Worship
- Evening Worship
- 1st Weds. Monthly Fellowship
- FIRST METHODIST CHURCH — S.P.**
Bro. J. Waid Griffin, Pastor
- Church School
- Morning Worship
- Methodist Youth Fellowship
- Evening Worship
- Womens Society of Christian Service, Wednesday
- Mid Week Services, Wednesday
- Choir Rehearsal
- CHURCH OF CHRIST — S.P.**
David E. Parker, Pastor
- Bible Class
- Communion
- Preaching
- Worship
- Monday: Mens Training Class
- Wednesday, Ladies Bible Class
- Wednesday, Midweek Bible Classes
- MORSE BAPTIST CHURCH — S.P.**
Rev. Geo. M. Rickles, Pastor
- Sunday School
- Worship
- Training Union
- Worship
- Mid Week Service Wednesday
- CHURCH OF CHRIST**
North of City Park
Gruver, Texas
R. Elmer Adcock, Pastor
- Lord's Days:
- Bible Study
- Worship
- Worship
- Week Days:
- Bible Study, Wednesday
- Ladies Classes, Thursdays
- Senior Ladies
- (Small Children Cared For)
- Junior Ladies
- GRUVER METHODIST CHURCH — S.P.**
Rev. R. H. Campbell
- Sunday School
- Morning Services
- Methodist Youth Fellowship
- Evening Services
- Wednesday Prayer Service
- Wednesday Choir Practice
- Thursday W. S. C. S.
- Wesley Circle, Thursday
- SACRED HEART CATHOLIC CHURCH — S.P.**
Father M. J. Mathison, Pastor
MASSES
- Sundays
- Weekdays (Mon. Tues. Fri. Sat.)
- First Friday of Month
- Holy Days of Obligation
- FIRST BAPTIST CHURCH — S.P.**
Bro. O. L. Bryant, Pastor
- Sunday School
- Morning Worship
- Training Union
- Evening Worship
- Wednesday Mid-Week Services: Prayer Hour
- Wednesday Choir Rehearsal
- Officers, Teachers, R. GA & RA
- OSLO LUTHERAN CHURCH — S.P.**
J. P. Knudson, Pastor
- Sunday Worship
- Ladies Aid every last Thursday afternoon of each month
- Luther League on Sunday evening every three weeks

ER
YING
WNER
RATOR
FARM
GE 1
ERY FARM TI

get a kick out of every week, and the lovely, efficient Holt. We have known Fred was winners and Wren was

ns the home section and during no head of steers for market his row crop are not handling migration wells go for a sizeable portion

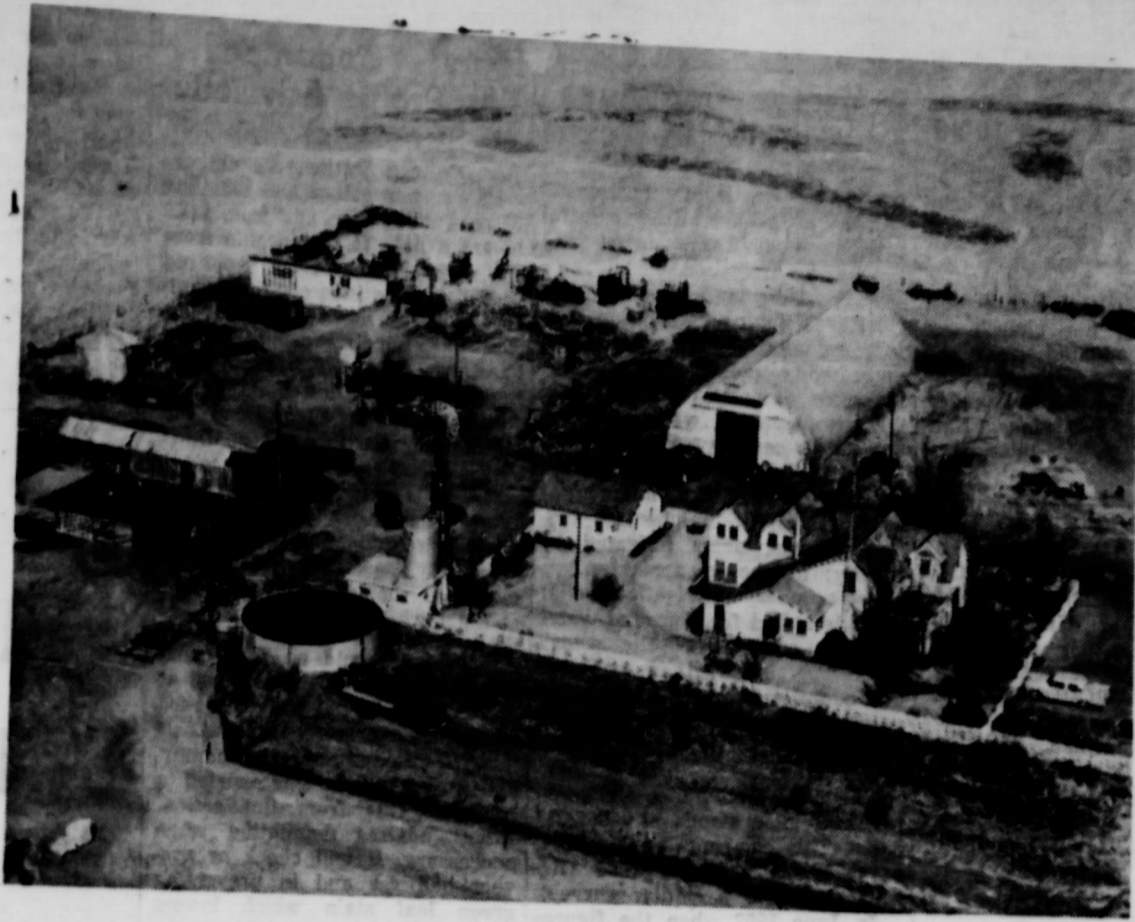
GOOD THE SPE

G CAPACITY

means big profits for John Deere "820" 1 21-Foot "FW" Disk M: HANSFORD IMPLEMENT Grain — Storage CITY RANGE CU — 20 percent — 32 Complete line of poultry and equipment. Soda and Borascu. S treating chemicals GRAIN — FEED — SE Grain And Hay Conditioned & operated by farmers for their mutual s

EQUIT

WILL RECEIVE
ONE YEAR'S
SUBSCRIPTION
TO THE
REPORTER
FREE



THE OWNER
OR OPERATOR
OF THE FARM
ON PAGE 1
IS ASKED TO
CALL AT THE
REPORTER
AND RECEIVE

A BEAUTIFUL
FULL PHOTO-
MOUNTED
FREE
OF
CHARGE

EVERY FARM THIS WEEK IS THE NINE ROOM MODERN FARM HOME OF FRED, WREN HOLT OF HOLT COMMUNITY

get a kick out of writing up the Mystery every week, and especially this week. It's the lovely, efficient farm home of Fred Holt. We have known these two youngsters since Fred was winning 4-H club prizes and Wren was a Red Headed beauty. The home section and rents another and during normal times will handle head of steers for grazing on his wheat market his row crop feed. Right now the steers are not handling many steers, but do have irrigation wells going full blast and are a sizeable portion of the home section

of land. They alternate with wheat and row crop on their irrigated crops.

The beautiful nine room home comprises six bed rooms, kitchen, dining room and living room. The home is a two story house, and a part of the building which may be the first residence ever built in the Holt Community. Mr. and Mrs. Ben Holt built the original building when they moved out of their dug-out home as real early settlers in this county.

Fred has built too and modernized the home as well as building a quonset type Hut, large graineries, chicken houses and a shop that probably would make city repair shops envious of the building and equipment. Fred does most of the repair work for the

entire area in which he lives, and is rated an outstanding mechanic.

Fred is the son of the late Ben Holt and Mrs. B. C. Holt of the Holt community. Wren is the daughter of the late Rev. A. F. Loftin and Mrs. A. F. Loftin of Spearman.

The young couple have three children, Hazel a 16 year-old daughter, a senior at Spearman high school, Mike, a 15 year-old son, a sophomore at Spearman school and Susan a nine year-old daughter a fourth grader at Spearman grade school.

Fred has been active in the Farm Bureau, Baptist Church, and the children have made a habit of making outstanding records in 4-H club work.

GOOD PRINTING PAYS
THE SPEARMAN REPORTER

"Built on Confidence, Growing on Service"
FIRST STATE BANK
Banking Hours 9:00 A. M. -3:00 P. M.

STORAGE CAPACITY

It means **Big Profits for you!**

John Deere "820" Diesel
21-Foot "FW" Disk Harrow

HANSFORD IMPLEMENT CO.

WELCOME

Mystery Home owners and all citizens of this area to the

SPEARMAN STEAK HOUSE

Mr. and Mrs. Howard Huffman, Owners

22 INCH DISCS

for one way plows \$6.50 Ea.

B. and C. EQUIPMENT CO.

Your health... is our Business

SPEARMAN DRUG STORE

Mr. and Mrs. Bruce Sheets
Spearman, Texas

PURINA CHOWS

Gooch Feed For All Needs

Borascu for Bindweed Kill

October is the month to apply

Malathion Fly Bait

Seed Wheat

Austrian Winter Pea Seed

R. L. McCLELLAN GRAIN CO.

Grain — Storage

EQUITY

... and operated by farmers & ... for their mutual savings

Are you ready with that temporary pasture . . . See us for . . .

Fence charger

Fence Insulators

Electric fence wire

Stock Tanks

To measure that land, don't guess-timate . . . Use our land measuring wheel . . .

SPEARMAN HARDWARE

Phone Olive 9-3671 . . . Spearman, Texas

John Bishop

SEWING MACHINES REDUCED

\$99.95 UP

We stock the New Homemaker Mch. Both portable and Cabinet model

Also Domestic and White Rotary Machines. All machines in plain or automatic Zig-Zag

WHITE AUTO STORE

Ike Baggerly

- AUTOMOTIVE -

Parts and Supplies

OWENS SALES COMPANY

Claude Owens



By S. V. Whitehorn

The deer and turkey season for the Panhandle will open November 16th and close November 25th. Shooting hours will be from one-half hour before sunrise until sunset. Bag limit will be one buck deer with pronged antlers...

Last year the Canadian dove was assembled at approximately 1000 feet above the river buggies. Dogs and other vehicles are being used at about 30 mph up and down the river. The river or sand buggies only spring into use a few years back. They were rare then but there are probably a hundred scattered up and down the river from Fritch east to Pampa...

The Quail Season will open this fall on the same dates as in the past. The season will be from Dec. 1 thru January 16 with a daily bag limit of ten birds. Shooting hours will be from sunrise until sunset.

In 1956 there were fifteen percent of the bird population was hatched after September 1st. In all probability there will be at least this amount hatched after Sept. 1st. I have observed three broods of Bohls, about one day of age this month. The quail population should be fair at least.

DEER RIFLES There are so many calibres and makes of rifles on the market today that a hunter can choose about any type of gun he desires. (For Texas game, deer, javalina, antelope, coyotes etc there are a few calibres that I consider better than others. First choice would be a 270 with bolt action running a close second would be the 243, 244, 257 calibre.) I observed a hunter shoot three bullet holes in the same hole at a hundred yards with a Remington 270 bolt action.

HUNTING KNIVES Most hunters carry Bowie knives for skinning and preparing deer carcasses. My preference is common folding or pocket knife of German manufacture. The Bokar, tree brand, knives have proved far superior, in my opinion. These knives are also popular with stockmen. The two bladed knife with both blades being the same length and one of the blades a spaying blade is my choice. Frank Addington at Pampa has a pocket knife. Mr. Addington also stated that he will attempt to get a shipment of common paring knives of German manufacture. These are handy around a deer camp or handy to take fishing. Meet paring knives that I have used will not hold an edge.

Panhandle Antelope Hunts The season on prong-horned antelope for the Panhandle, will open October 14 thru October 19, with two separate hunts being conducted for the six day period. The hunts this year will be conducted in the north west part of the Panhandle near Dalhart only. The area north of Pampa will not be hunted. Total count of Panhandle antelope this year showed a decrease over a similar count for last year, but more bucks are present, according to W. M. Sprott, Director of law enforcement of the Texas Game and Fish Commission. The count was made by Pilot Warden Frank Namer, Jr. and biological Bob Van Cleave. They flew 57 hours in making the check and counted 1,594 antelope. On a similar count last year Hamer checked 1,822 antelope. This showed a decrease of 299, with 806 antelope killed in the Panhandle hunt in 1956. "In 1956 there were 863 bucks counted in the area", Hamer said. "There were 205 taken on the

hunt leaving 358. This year there were 419 adult buck antelope counted, giving a gain of 61 bucks since October of 1956." The count showed 838 does and 307 fawns, all in good condition. Hammer believed many of the antelope might have been driven across the line into New Mexico by recent aerial spraying for grasshoppers just prior to the count.

It is surprisingly just how quickly a dog will take training. Practically all bird dogs can be trained in a short time, to retrieve perfectly. In fact many pointers and setters will retrieve without any training at all. That's what some call a natural retriever. Some bird dogs do not retrieve at all.

A good example of what the average dog owner can do with his canine would be work of J. A. Warren with his pointer called Gettun Bird. Mr. Warren has owned this dog for about two years or since the dog was a pup. At this time Gettun Bird is the retrieverest dog I ever saw. For the last year or so Gettun Bird is always in the back seat when Mr. Warren takes to the outdoors. When dove season rolled around the dog was on every hunt. Gettun Bird will heel and stay at the owners side with both eyes wide open when a dove flies by. The minute the dove is shot the dog merrily bounds out and fetches the bird to the owner or takes the bird to the auto and neatly places it on the floorboard. Gettun Bird doesn't half way retrieve. He places all the birds in a small group. If the bird falls in to a tank the dog swims after the game. How did all this education come about? To start with the dog was given a little attention in the yard and encouraged to retrieve objects. When the dog was taken to the field and a bird was 'down' the owner called his canine in and with an interested fashion yelled Gettun Bird over and over again. Joe Reed first started saying gettun bird and hence the name. After the dog was retrieving nicely on land a bird was tossed into the brink. With a few lessons in this man or the dog has developed into about the best retriever in the Panhandle. Mr. Warren stated that any pointer or setter will perform in a like manner with a little encouragement and a few lessons.

Hunters that have little or no experience in dog training should if they wish to train a dog purchase a book written by an expert on dog training. As far as I know there are none at book stores in these parts but they can be ordered in a few days. One of the better ones is Dog Training Today and Tomorrow by Mr. Shelby. About three fifty is the usual price. How To Train Hunting Dogs is another excellent book that tells everything that can be put into a book about dog training. The address - The American Field Publishing Company, 222 West Adams St. Chicago 6, Illinois.

The Panhandle Bird Dog Ass'n conduct their fall trials near Canadian on the Texas Game and Fish Commission area which is referred to as the Gene Howe Wildlife Management Area. The Panhandle Association have had these excellent grounds at their disposal from the time the Game and Fish Commission Purchased the area. The dates of the famed trial will be November 15 16 and 17 with the drawing of braces held November 14th at the City Hall in Canadian. Jim Bell, president of the Panhandle dog club stated that this year there will be at least 20 entries from the State of Colorado. Dr. J. M. Shearer, Claude Wiley together with a group from Denver will spend the week-end at Canadian participating in the running. Wichita Falls, Lubbock, Ft. Worth, Tyler, Oklahoma City plus many other cities will furnish part of the contestants. With a small county meet and a few handlers there would be little esteem gathered from winning but if John Doe from Sunray wins over these noted participants there would be something to talk about. Every year we in the Panhandle, walk off with a good percentage of the trophies. All it takes to win the 'shooting or gun dog' event is a dog that will find and handle birds. Usually the judges are trying to pick a dog that they would like to kill birds over in the shooting dog stake. Captain Jim Maggard of the Texas Game Department has won this event twice in the last few years. Some dog owners think that a field trial is for professionals. Other think that a dog has to leave a cloud of dust behind him in order to win. These are all mistaken ideas. If old rover will find birds then he has a good chance to win even if some of the other dogs are from more than a five-hundred miles away. The piccolo is the highest pitched of all instruments. Barley losses were estimated

Miss Felts To Wed Local Boy

Mr. and Mrs. Floyd Felts, Des Arc, Arkansas, announce the betrothal and approaching marriage of their daughter, Carole Nadine to John Elbert Pool, son of Mr. and Mrs. J. M. Pool of Spearman. The wedding will be Oct. 19, at 6 o'clock in the Gospel Mission Church in Des Arc, Ark.

Miss Felts is a graduate of Des Arc High School and is now a missionary in her church. Mr. Pool graduated from the Spearman High School with the class of 1956. He later attended school in Baxter Springs, Kansas. He is also in the missionary work.

STATEMENT REQUIRED BY THE ACT OF AUGUST 24, 1912, AS AMENDED BY THE ACTS OF MARCH 3, 1933, AND JULY 2, 1946 (Title 39, United States Code, Section 233) SHOWING THE OWNERSHIP, MANAGEMENT, AND CIRCULATION OF THE SPEARMAN REPORTER PUBLISHED WEEKLY AT SPEARMAN, HANSFORD COUNTY, TEXAS FOR OCTOBER, 1957.

1. The names and addresses of the publisher, editor, editor, managing editor, and business managers. Publisher: W. J. Miller, Spearman, Texas. Editor: W. J. Miller, Spearman, Texas. Managing editor: W. M. Miller, Spearman, Texas. Business manager: W. M. Miller, Spearman, Texas.

2. The owner is: (If owned by incorporation, its name and address must be stated and also immediately there under the names and addresses of stockholders owning or holding 1 percent or more of total amount of stock. If not owned by a corporation, the names and addresses of the individual owners must be given. If owned by a partnership or other unincorporated firm, its name and address, as well as that of each individual member, must be given.) W. J. Miller, Spearman, Texas.

3. The known bondholders, mortgagees, and other security holders owning or holding 1 percent or more of total amount of bonds, mortgages, or other securities are: (If there are none, so state.) David M. Warren, Panhandle, Texas.

4. Paragraphs 2 and 3 include in cases where the stockholder or security holder appears upon the books of the company as trustee or in any other fiduciary relation, the name of the person or corporation for whom such trustee is acting; also the statements show the affiant's full knowledge and belief as to the circumstances and conditions under which stockholders and security holders who do not appear upon the books of the company as trustees, hold stock and securities in a capacity other than that of a bona fide owner.

5. The average number of copies of each issue of this publication sold or distributed, through the mails or otherwise, to paid subscribers during the 12 months preceding the date shown above was: (This information is required from daily, weekly, semi-weekly, and tri-weekly newspapers only.) 1170.

W. J. Miller, Publisher. Sworn to and subscribed before me this 30 day of Sept. 1957 (SEAL) P. A. LYON, Jr. Notary Public (My com. expires 8/1/1958)

Irrigation Continues To Expand In Texas

College Station. — A contributing factor and a mighty important one to the overall agricultural production of Texas' farms and ranches is irrigation.

R. V. Thurmond, extension agricultural engineer-irrigation, has just released a statewide summary which points up the great economic importance of irrigation that supplemental water plays in the state's economy. Figures were collected from each county in the relative to the total number of acres irrigated; number of irrigated farms; acres irrigated by gravity; number of sprinkler systems; number of irrigation wells; acres irrigated from ground water and the acreages of the principal crops irrigated in each of the counties. County agricultural agents supplied the information and Thurmond made the final compilation.

The total land under irrigation in Texas now stands at 6,962,234 acres. This compares with a total of 6,208,022 acres in 1955 (figures are from a similar survey). In June 1957 when the figures were taken, 39,706 farms were listed as being irrigated. Only 10 counties in the state reported no irrigation. The number of irrigation wells rose from 42,974 in 1955 to 54,994 in 1957. The number of sprinkler systems in use almost doubled during this same period with a 200,000 acre increase in the land thus irrigated.

Grain sorghums on almost 2.3 millions of acres were the principal crop irrigated. Cotton was a close second with almost 2.2 millions of acres under irrigation. Other major crops included wheat, alfalfa, field corn, oats and barley, forage sorghums, orchards and others.

Hale county with 500,000 acres under irrigation leads all counties in this respect but is closely followed by Swisher with 480,000 acres. Many other counties in this same general area have in excess of 300,000 acres under irrigation. Counties in the Lower Rio Grande Valley and the rice belt are also among the leading

Harvest Cotton For Top Profits Advised By Specialist

College Station, September Proper harvesting and handling of seed cotton can add from \$2.50 to \$19 a bale to the income from this year's cotton crop, says Fred C. Elliott, extension cotton specialist. Careless methods of harvesting and handling on the other hand can cause great damage to lint quality and lower its value.

Here are his suggestions for maintaining the inherent qualities of the crop. Do not harvest cotton when it is wet. Wait until 9 or 9:30 to start harvesting operations regardless of whether hand or machine are used. Cotton harvesting machines should not be operated at night when dew is present.

Machines should be kept clean and in good repair and serviced at the end of each day in accordance with the operator's manual. It must be remembered that the most elaborate gin cannot be expected to remove grass from lint cotton. Elliott advises defoliating when necessary. It will check or prevent boll rot and in preventing green leaf stain which lowers quality.

If a stripper is to be used, the specialist advises waiting from 7 to 14 days after penta or other desiccants are applied before starting operation. A green boll should be used on the front of a wire-sided or flat-sided trailer and bolls caught, if infested with boll weevils or pink bollworms, should be burned. The stripper should be equipped with a blower under the elevator and cotton should not be tramped in the trailer.

Elliott says cooperation with the ginner in grouping cotton on the gin yard according to method of harvesting, moisture and trash content can add dollars to price of a bale of cotton.

Mechanical harvesting of cotton points out Elliott, means much more than putting machines into the field. It includes all aspects of production including plant breeding, field arrangement, soil care, crop residue disposal, seedbed preparation, planting, fertilization, weed, insect and disease control, harvesting and improved ginning.

TEXAS FERTILIZER SALES UP

The total tonnage of fertilizer sold in Texas during the spring of 1957 was about five percent higher than during the same periods of 1955 and 1956. Mixed fertilizer accounted for 46 percent of the tonnage sold this year, as compared with 53 percent sold in the first six months of 1956. Grades of the 1-2-1 ratio accounted for 85 percent of this total and the 1-1-1 ratio for 12 percent.

Reports from individual counties indicated a varied fertilizer purchase pattern in different regions of the state, said State Chemist J. F. Fudge. East Texas used 46 percent of the total tonnage of mixed goods

sold in Texas and 45 percent of the tonnage of mixed goods in the 1-2-1 ratio. More than 77 percent of the mixed goods sold in Texas was used in the three eastern regions East Texas, Gulf Coast and North Central. Mixed goods carried 19 percent of the nitrogen, 50 percent of the available phosphoric acid and 94 percent of the potash used during the spring of 1957. East Texas used more than 40 percent of the available nitrogen, available phosphoric acid and potash carried by mixed goods. West Texas used more than half of the phosphoric acid and 69 percent of the materials nitrogen and 59 percent of the total sales

NATIONAL AND STATE DRIVE

DOLLARS for DEMOCRATS

Date: October 11, 12

Purpose:

- THE DEMOCRATIC PARTY IN TEXAS DESIRES: (1) Broaden the base of party giving. This brings political life to the local, state, and national levels of party by set on sound financial basis. (2) Achieve greater party harmony. (3) Every Democrat in Texas can participate in this contributing at least one dollar for each voting member of the party. (4) To get an up-to-date mailing list of active Democrats. STATE GOAL: At least \$10,000 from each Congressional District.

SEND YOUR \$\$\$ FOR DEMOCRATS TO

R. V. CONVERSE

SPEARMAN, TEXAS

NAME ADDRESS CITY



Mystery Farm

member of the series of My... If you can identify this... you may receive a one... as soon as possible. Th... for the next weeks news...

Nips

October 8, 19... poses Day. M... er Jr. presen... program Club... by the Music... Mrs. Homer C... introduction of... Houston Brigh... Brooks, The... a Composer, b... shi. Meditation... man. The Clu... ght's humorou... talk on compo... sentation of h... positions. Refr... ved to the fo... members. Mess... less. H. Alexar... B. Bolton, A... Homer Cluck... Eddleman, W... Hale, Don Har... Henderson, K... ght, R. Mathi... W. R. Murrell... Thoreson, W... A. McMillan... H. Campbell, P... Glenn Truax... ge. K. Garrett... Cluck, V. H. (... G. Adeock, F... Catheart, and... ert Alexander... Alexander.

Shemales

The thirty C... Shemales T... out again Th... near 14 19. Th... in an 8A land... ning but for... name out in... allowed one... the Bloomer... than what is... as and the S... ash Snake etc... as the reason... center field... name broke the... night.

Closes Coffee

Flower club... program with... home of Mrs... Morning Mrs... assistant hoste... was covered... and centered... of Dallas in a... Bishop and... old south... from Cuba

Shemales At Grove

The thirty C... Shemales T... out again Th... near 14 19. Th... in an 8A land... ning but for... name out in... allowed one... the Bloomer... than what is... as and the S... ash Snake etc... as the reason... center field... name broke the... night.

Shemales At Grove

The thirty C... Shemales T... out again Th... near 14 19. Th... in an 8A land... ning but for... name out in... allowed one... the Bloomer... than what is... as and the S... ash Snake etc... as the reason... center field... name broke the... night.

Shemales At Grove

The thirty C... Shemales T... out again Th... near 14 19. Th... in an 8A land... ning but for... name out in... allowed one... the Bloomer... than what is... as and the S... ash Snake etc... as the reason... center field... name broke the... night.

Shemales At Grove

The thirty C... Shemales T... out again Th... near 14 19. Th... in an 8A land... ning but for... name out in... allowed one... the Bloomer... than what is... as and the S... ash Snake etc... as the reason... center field... name broke the... night.

Shemales At Grove

The thirty C... Shemales T... out again Th... near 14 19. Th... in an 8A land... ning but for... name out in... allowed one... the Bloomer... than what is... as and the S... ash Snake etc... as the reason... center field... name broke the... night.

Shemales At Grove

The thirty C... Shemales T... out again Th... near 14 19. Th... in an 8A land... ning but for... name out in... allowed one... the Bloomer... than what is... as and the S... ash Snake etc... as the reason... center field... name broke the... night.

Shemales At Grove

The thirty C... Shemales T... out again Th... near 14 19. Th... in an 8A land... ning but for... name out in... allowed one... the Bloomer... than what is... as and the S... ash Snake etc... as the reason... center field... name broke the... night.

Shemales At Grove

The thirty C... Shemales T... out again Th... near 14 19. Th... in an 8A land... ning but for... name out in... allowed one... the Bloomer... than what is... as and the S... ash Snake etc... as the reason... center field... name broke the... night.

Shemales At Grove

The thirty C... Shemales T... out again Th... near 14 19. Th... in an 8A land... ning but for... name out in... allowed one... the Bloomer... than what is... as and the S... ash Snake etc... as the reason... center field... name broke the... night.

Shemales At Grove

The thirty C... Shemales T... out again Th... near 14 19. Th... in an 8A land... ning but for... name out in... allowed one... the Bloomer... than what is... as and the S... ash Snake etc... as the reason... center field... name broke the... night.

Shemales At Grove

The thirty C... Shemales T... out again Th... near 14 19. Th... in an 8A land... ning but for... name out in... allowed one... the Bloomer... than what is... as and the S... ash Snake etc... as the reason... center field... name broke the... night.

Shemales At Grove

The thirty C... Shemales T... out again Th... near 14 19. Th... in an 8A land... ning but for... name out in... allowed one... the Bloomer... than what is... as and the S... ash Snake etc... as the reason... center field... name broke the... night.

Shemales At Grove

The thirty C... Shemales T... out again Th... near 14 19. Th... in an 8A land... ning but for... name out in... allowed one... the Bloomer... than what is... as and the S... ash Snake etc... as the reason... center field... name broke the... night.

Here are the FACTS

HOMES and BUILDING MONEY ARE AVAILABLE

ARE AVAILABLE

In Spearman

Macias Construction Co.

OFFERS THE FOLLOWING:

FHA HOUSES

Up to \$10,000 Low Down Payment Over \$10,000 Only 3% Down

Choice Locations Near Park, Church, School

A FEW G. I. LOANS AVAILABLE

JUST 2% MOVES YOU IN!

WE HAVE HOUSES UNDER CONSTRUCTION—SEVERAL FHA AND GI APPROVED PLANS TO CHOOSE FROM. THESE HOUSES SHOWN AT ANY TIME—CALL GE 5-4531 — EVENINGS GE 5-6631 OR GE 5 6962

PLENTY OF MONEY AVAILABLE FOR THOSE WHO CAN QUALIFY

—SEE— MACIAS CONSTRUCTION CO.

The Firm with the Enviably Record of hundreds of homes in the Panhandle.