

# The Spearman Reporter

THE SPEARMAN REPORTER, HANSFORD COUNTY, THURSDAY JUNE 26, 1958

Vol. 50, No.

## Daily Rainfall Stops Harvest! Combines Moving North:

### Mail At Morse Big As Golf Balls Thursday Night

Mail at Morse was big as golf balls Thursday night, according to Doyle Smith, who has the mail there. Doyle will be in the area today. The wind-blown mail bags in several places, and some of the mail is on the body of the mail. In fact, it is almost unbelievable how the heavy dust that the mail bags are carrying. The Spearman Body Shop, said the mail bags are about midday, and some of the mail is on the body of the mail. There was some high wind, and some damage to crops in some areas.

The Hansford County Harvest, sixty or seventy percent complete, was at a standstill early this week, because of the daily rainfall. The rains started last week-end, and have been a daily occurrence since then. In fact, on Monday, a hard wind, with some rain fell in the area, and Monday night, another rain fell, with a total of one-half inch for the two rains. Some of the wheat is going down, according to combine men, but so far, most of it is still standing. Custom cutters are getting calls from Kansas and Colorado, and are leaving the county. The weather has certainly fouled-up the farmers and custom cutters this year; in fact, this may go down as one of those unusual harvest situations, where the farmers will be cutting wheat till frost!

The city of Spearman is almost at a standstill as of Tuesday of this week. Saturday, Sunday and Monday the harvest crews were all in town waiting for a break in the weather to go to cutting, but with the increase in rains, the crews have left this area, and it looks like there might be another serious shortage of machines if it ever quits raining.

Weather men say that the rain today (Thursday), but that we had an extra large amount of moisture over us.

If you have a combine available to cut wheat, be sure and check with your neighbor, who has wheat still standing in the field. Let's get this wheat cut before frost!

Wheatmen from the rain-soaked area, a total of 48 inches was reported Thursday evening. The rain reported 3.57 inches on the edge of town, and heavy squalls almost everywhere in Spearman. Official weather man Fred Brink reported a total of more than three inches of rain in two showers on Wednesday, and our Reporter from the South part of Spearman had only .48 out of these rains. Also, in the North part of town, heavier rains fell, amounting to an inch or better on that of Spearman, at least.

Thursday and Friday of harvest was pretty well from the rains. Many farmers had to stop cutting on Friday and Saturday because of the weather. The ideal weather against the ideal weather we had at the moment.

Wheatmen from the rain-soaked area, a total of 48 inches was reported Thursday evening. The rain reported 3.57 inches on the edge of town, and heavy squalls almost everywhere in Spearman. Official weather man Fred Brink reported a total of more than three inches of rain in two showers on Wednesday, and our Reporter from the South part of Spearman had only .48 out of these rains. Also, in the North part of town, heavier rains fell, amounting to an inch or better on that of Spearman, at least.

Wheatmen from the rain-soaked area, a total of 48 inches was reported Thursday evening. The rain reported 3.57 inches on the edge of town, and heavy squalls almost everywhere in Spearman. Official weather man Fred Brink reported a total of more than three inches of rain in two showers on Wednesday, and our Reporter from the South part of Spearman had only .48 out of these rains. Also, in the North part of town, heavier rains fell, amounting to an inch or better on that of Spearman, at least.

Wheatmen from the rain-soaked area, a total of 48 inches was reported Thursday evening. The rain reported 3.57 inches on the edge of town, and heavy squalls almost everywhere in Spearman. Official weather man Fred Brink reported a total of more than three inches of rain in two showers on Wednesday, and our Reporter from the South part of Spearman had only .48 out of these rains. Also, in the North part of town, heavier rains fell, amounting to an inch or better on that of Spearman, at least.

Wheatmen from the rain-soaked area, a total of 48 inches was reported Thursday evening. The rain reported 3.57 inches on the edge of town, and heavy squalls almost everywhere in Spearman. Official weather man Fred Brink reported a total of more than three inches of rain in two showers on Wednesday, and our Reporter from the South part of Spearman had only .48 out of these rains. Also, in the North part of town, heavier rains fell, amounting to an inch or better on that of Spearman, at least.

Wheatmen from the rain-soaked area, a total of 48 inches was reported Thursday evening. The rain reported 3.57 inches on the edge of town, and heavy squalls almost everywhere in Spearman. Official weather man Fred Brink reported a total of more than three inches of rain in two showers on Wednesday, and our Reporter from the South part of Spearman had only .48 out of these rains. Also, in the North part of town, heavier rains fell, amounting to an inch or better on that of Spearman, at least.

Wheatmen from the rain-soaked area, a total of 48 inches was reported Thursday evening. The rain reported 3.57 inches on the edge of town, and heavy squalls almost everywhere in Spearman. Official weather man Fred Brink reported a total of more than three inches of rain in two showers on Wednesday, and our Reporter from the South part of Spearman had only .48 out of these rains. Also, in the North part of town, heavier rains fell, amounting to an inch or better on that of Spearman, at least.

Wheatmen from the rain-soaked area, a total of 48 inches was reported Thursday evening. The rain reported 3.57 inches on the edge of town, and heavy squalls almost everywhere in Spearman. Official weather man Fred Brink reported a total of more than three inches of rain in two showers on Wednesday, and our Reporter from the South part of Spearman had only .48 out of these rains. Also, in the North part of town, heavier rains fell, amounting to an inch or better on that of Spearman, at least.

Wheatmen from the rain-soaked area, a total of 48 inches was reported Thursday evening. The rain reported 3.57 inches on the edge of town, and heavy squalls almost everywhere in Spearman. Official weather man Fred Brink reported a total of more than three inches of rain in two showers on Wednesday, and our Reporter from the South part of Spearman had only .48 out of these rains. Also, in the North part of town, heavier rains fell, amounting to an inch or better on that of Spearman, at least.

Wheatmen from the rain-soaked area, a total of 48 inches was reported Thursday evening. The rain reported 3.57 inches on the edge of town, and heavy squalls almost everywhere in Spearman. Official weather man Fred Brink reported a total of more than three inches of rain in two showers on Wednesday, and our Reporter from the South part of Spearman had only .48 out of these rains. Also, in the North part of town, heavier rains fell, amounting to an inch or better on that of Spearman, at least.

Wheatmen from the rain-soaked area, a total of 48 inches was reported Thursday evening. The rain reported 3.57 inches on the edge of town, and heavy squalls almost everywhere in Spearman. Official weather man Fred Brink reported a total of more than three inches of rain in two showers on Wednesday, and our Reporter from the South part of Spearman had only .48 out of these rains. Also, in the North part of town, heavier rains fell, amounting to an inch or better on that of Spearman, at least.

### Garnett and Lynn Campaign Managers For Yarborough



Senator Ralph Yarborough

Stanley Garnett and James P. Lynn of Spearman have been named Hansford County campaign managers for Ralph Yarborough in his campaign for election to the U. S. Senate for his first full term. Senator Yarborough was named to the Senate in a special election held in April 1957. Announcement of the appointment was made by Kenneth Kendrick of Stratford, wheat farmer and former president of the National Wheat Growers Association, who is directing Senator Yarborough's campaign in 26 Panhandle and South Plains counties. Senator Yarborough expects to visit this area before the Democratic primary July 26.

### Judge Boyer Donates Flags

The American and Texas flags, gifts from Judge and Mrs. Max Boyer, now hang in the district courtroom of Hansford County. Judge Boyer is presiding judge of the 84th District Court. Judge Boyer said that he had noticed the absence of the flags and placed an order for them sometime ago. The jurist said, "I believe that the flag of our Country and State should be displayed at all times in a court of justice. The courtroom is the forum or place where a citizen's property or personal rights are protected. These rights exist only by reason of the fundamental laws of our state and nation. The flags are the emblems which represent the sacrifices made to create and preserve those rights."

### Gruver Boy Receives Air Force Award

Airman Second Class Robert L. Dahl, son of Mr. and Mrs. Oscar Dahl, Gruver, Texas, took honors this past month at the Fordland Air Force Base, Fordland, Mo. His crew was awarded honor of "Crew of the month". Dahl was chosen as top airman of the crew, judged on neatness, aggressiveness, ability and ambition in the operation of radar, and personal appearance. The following week he was chosen as top airman of Radar Operations at Fordland Air Base, competing against some 100 men. From there he placed fourth as "Airman of the Month" over the entire air base. He has been stationed Fordland Air Base for 1 1/2 years, after taking radar training at Keesler Air Force Base, Biloxi, Mississippi. At present, he is one of the top radar operators at the base.

### George Robinson Suffers Severe Burns Friday

George Robinson, one of the popular school teachers at Spearman, suffered severe burns last Friday afternoon in the Gruver Motor Company shop at Gruver. Mr. Robinson was helping Wilson McClellan cleaning Combine parts with gasoline. The gasoline fumes were ignited and Robinson suffered the burns on his arms and legs. He was rushed to the Hansford county hospital in Spearman where he remains at this time. We understand he is not critically burned, but very painful.

You are invited to attend our open house, Sunday June 29th, from 1:00 P. M., until 5:00 P. M. Our home is located at 1016 Barkley Street. The home is ready for inspection, other than curb and gutter. You are cordially invited to attend.

Mr. and Mrs. Pete Fisher, and Timmy Dick Kilgore, Contractor  
Phone OL 9-3806  
Spearman, Texas

### News in Hansford

NEWS IN HANSFORD  
S C D, June 1958

This is the first of a series of articles sponsored by your Soil Conservation District to better acquaint you with the purposes and objectives of the Soil Conservation District and benefits you may receive.

A good many years ago, during the dust bowl of the 1930s, people saw a need to take action to conserve the valuable soil and water resources of this country. SOIL and WATER (the Butcher and the Baker, the Candlestick Maker, the Doctor, Lawyer and Indian Chief) are all dependent on for food, clothing and shelter.

The various States passed legislation enabling land owners to organize districts (Local State Sub-Divisions) for the purpose of controlling erosion. These Districts came into being by a majority vote of land owners in the district. These districts are governed by a board of five Supervisors elected by the land owners to represent them in their conservation needs and problems.

### Storm At Morse Last Week Was One Of Worst In Towns History

A staff reporter visited Morse Sunday, and learned that the hail storm was severe. All of the cars that were caught out in the storm were damaged heavily, and windows in the school were knocked out, plus windows in the Baptist Church, and probably every home, business, church and public building was damaged by the big hail storm of last week. We tried to find L. M. Womble's house while we were inspecting Morse, but missed him. However, from a complete survey from the car, we could see most of the damage was on the North and West side of the buildings, plus some damage from the East. In fact residents of Morse were probably lucky that they didn't get caught in a twister.

### Grasshopper Still Big Problem In Hansford County

The most extensive grasshopper control program in state history has been launched in the Panhandle of Texas with the addition of 19 more counties to the highway spraying project, Agriculture Commissioner John White announced.

County officials were urged by Commissioner White to participate in joint federal, state and local efforts to combat the serious grasshopper infestation. The federal government has agreed to share costs up to one-third, and not to exceed 25c per acre. The Texas Department of Agriculture, the State Highway Department and the Texas National Guard will bear an additional one-third expenses, with local governments furnishing the remainder.

"It is vitally important that as many counties participate as possible," White said. Even if the grasshopper threat is not serious in some areas yet, the migration from infested areas will result in the deposit of millions of eggs in relatively "free" counties. Next year, the emergence of hoppers from these eggs could reach drastic proportions."

### Mrs. Collard To Pave Block In Near Future

Another new block of paving, and curb and gutter, will soon be added to Spearman's fast growing residential district. Mrs. John Collard stated that plans were almost complete for the new paving, between 3rd and 4th on Hazelwood, and Mrs. Collard also said that she was sure that some more paving, possibly another block would be completed along with the block she is having paved. Lots will be made available in this new district, and prospective home builders are urged to contact her for description and price of these new lots. The lots will be 55 feet, and are in a good location.

### Soil Conservation District

The U. S. Soil Conservation Service does provide personnel to assist the farmers and ranchers in planning and applying Conservation Practices. This is done at the request of the Board of Supervisors. If, at any time, the Board feels that they aren't getting the kind of assistance they want, they do not have to accept the assistance from the SCS. The Hansford Soil Conservation District is composed of all of Hansford County. It was organized by the landowners, and is governed by local farmers and ranchers, to serve you.

Week Duties of SCS assisting the Soil Conservation District.

### Calvin S. Mitts Commissioned



Calvin S. Mitts, son of Mr. and Mrs. C. E. Mitts of Gruver, Texas, and husband of the former Miss Judith M. Harms of 1014 Cheviz, Dallas, was commissioned a Marine second Lieutenant June 7. Lt. Mitts is a graduate of Texas Technological College, Lubbock, Texas. He is now undergoing the 32-week Marine Officers Basic Course at Quantico, becoming a qualified infantry platoon leader. Before being commissioned he completed the 10-week Officer Candidate Course, also at Quantico.

### Nancy Ownby Is District Winner

Nancy Ownby, 13, an 8th grader from Stinnett, has made next to the highest class in baton and band at Summer Band Camp at Texas Tech College for the annual 3-week training period. Miss Ownby, an accomplished pianist, plays saxophone, and was a member of the Stinnett Junior High Band the past year. She was selected as second twirler in the baton section for next year, and was one of the four students chosen for participation in senior high band for 1958-59.

On the honor roll and active in extra curricular activities, and Church, Miss Ownby was the only seventh grader at Stinnett the past season to qualify for the A Team in Girls' Basketball, coached by Keith Crawford. His girls won the district championship this year for the first time in several seasons.

She is the daughter of Mr. and Mrs. Robert J. Ownby of Spearman. She will attend school in Spearman next year, as will the other six Ownby and Eaker children.

### Four Spearman Students On Honor Roll

Four students from Spearman were among the 94 named to the spring semester honor roll at West Texas State College by Dean Walter H. Juniper. The dean's honor list is composed of the upper five per cent of the WT undergraduate student body.

From Spearman are Gladys Irene Smith, Helen Lorene Mundy, Anita Groves, and Joe Lynn Copeland. Mrs. Smith, a 1951 graduate of Spearman High School, is one of nine students who compiled perfect 3.00, or straight "A" averages. She is the daughter of Mr. and Mrs. J. E. Haden, Route 1, Perryton. She will be a junior secondary education major this fall at WT.

Daughter of Mr. and Mrs. E. D. Mundy, Miss Mundy will be a junior music and elementary education major this fall. She was a member of the Mary E. Hudspeth Honor Society and the Buffalo Band. Miss Mundy was secretary of Tau Beta Sigma, national band fraternity for women.

Miss Groves will be a sophomore at WT this fall. She is the daughter of Mr. and Mrs. W. O. Groves. Jo Lynn, who will be a sophomore English major, is daughter of Mr. and Mrs. E. J. Copeland, 321 South Barkley in Spearman.

### Near Four Million Bushels Wheat Processed In This Area

#### Twister Hits Theatre

A small twister, which was heard by many Spearman residents Monday morning, did some damage at the Wagon Wheel Drive In. The storm cloud came in about 6 a. m., and woke most everyone: J. D. and Jo Wilbanks said the wind also woke them, and amount of dust accompanied the storm. Damage at the theatre included blowing out the theatre fence along the highway, knocking down a TV tower, and unroofing some barns at the house. Many Spearman residents scampered to their cellars early Monday morning, and many reported hearing the loud roar of the tornado.

#### WEATHER

Date	Max	Min	Rain
17	90	60	0
18	91	65	0
19	97	61	0.91
20	84	64	0.45
21	85	53	0.10
22	62	53	0.12
23	78	54	0.25
TOTAL			1.84

Nearly four million bushels of wheat had been processed in the elevators early Tuesday morning according to a survey made by this newspaper. This represents wheat stored and shipped and does not account for perhaps 200,000 bushel private storage that is not counted at the Porter Elevator and McLain brothers Hansford County Grain Company. Here is the estimates:

Equity at Spearman 550,000 bushels.  
Equity at Morse 270,000 bushels.  
R. L. McClellan Grain at Spearman-McKibben 405,000 bushels.  
B. & B. Grain Company 600,000 bushels.  
Gruver Elevators Inc. at Gruver 570,000 bushels.  
Gruver Elevator Inc. at Capps 470,000 bushels.  
J. C. Harris Grain at Gruver, 200,000 bushels.  
A. G. Wilson and Fox Elevator at Gruver 300,000 bushels.  
Kimbell Elevator at Gruver 125,000 bushels.  
We did not get an estimate from R. L. Porter Grain Company but we are making a conservative estimate of 300,000 bushels. In every elevator interviewed we had an estimate of 65 to 75 per cent complete for this harvest up to Tuesday morning. This indicates a total harvest for 1958 that will exceed five million bushels.

### DO NOT BURN STUBBLE



A field of wheat stubble that has been plowed with sweeps to kill weeds, but have the crop residue on top of the ground. This is in good shape to absorb rainfall.

Most farmers will have a very large amount of wheat stubble left on the land this year. The manner in which this stubble is handled can have a very definite effect on future crops. For a good many years now farm magazines published east of the Mississippi River have advocated turning this stubble or crop residue under. No doubt this is good advice for farmers in a high rainfall belt. However, this part of the United States has farming problems which are not found in any other part of the country. We have strong winds, extended periods of drought, small ineffective showers, and fast hard rains. With this type of climate, we need to keep the ground covered as much as possible. This can be done by leaving part or all of the stubble on top of the ground.

Furthermore the hot fire kills a great many of the beneficial soil bacteria.

Wheat stubble that is turned under as advocated by the eastern farm magazines will temporarily "tie-up" a large part of the available nitrogen in the soil. As this stubble decomposes or rots, the plant nutrients are released to be used by other growing crops. The decomposition process will be slow during periods of dry weather, so large amounts of stubble turned under will tie up the nitrogen that may be needed by the following crop. This is why many farmers are beginning to farm their land in such a way as to leave a part of the stubble on top of the ground acts as a blotter to soak up hard fast rains. It keeps the ground cooler, thus reducing water loss by evaporating. And finally, the stubble will keep the land from blowing.

SCS personnel assisting the Hansford Soil Conservation District will be glad to assist you on this or other Conservation measures needed for the protection of your land.



A field of bare ground. During a hard rain the bare soil runs together and washes off much of the rainfall resulting in water loss and erosion.

### WHEAT REFERENDUM CARRIES

While only about 40 per cent of the eligible voters of Hansford County took time out from the busy harvest to vote, the election results showed 161 favored price support and 9 voted against price support. While this outstanding vote emphasized the need in this area for price support, we learn that the nine votes against price support is the largest number ever cast in Hansford County against our present wheat program.

### ATTENTION

Daily Vacation Bible School begins at Union Church Monday, June 30th, and will continue through July 10th. Classes begin at 8:45 A. M. and close at 11:15 A. M. each day. The theme of VBS this year is "Exploring God's Wonders." Classes will be in progress beginning with the nursery group through the teenagers. Parents see that your children attend Vacation Bible School.

### START WORK ON SCHOOL BUILDING

Work is now progressing on Spearman's new school buildings. Mr. Hartman informed us this week that the band building had been moved just South of the Agriculture Building, and that the ground work for the beautiful new buildings was being done. It is impossible to determine when the new buildings will be ready, but present plans call for completion of the new school sometime in March.

### Visitors At The Raymond Kirk Home

Mr. and Mrs. Herbert Kirk and son Richard had as their guests, Captain and Mrs. Willis H. Bledsoe and daughters Bronwen and Karen of Lake Charles La. Captain Bledsoe is Judge Advocate with Strategic Air Command, currently stationed at Lake Charles, after having spent three years in England. The Bledsoes expect to be sent to Japan in the near future.

### MARKET REPORT

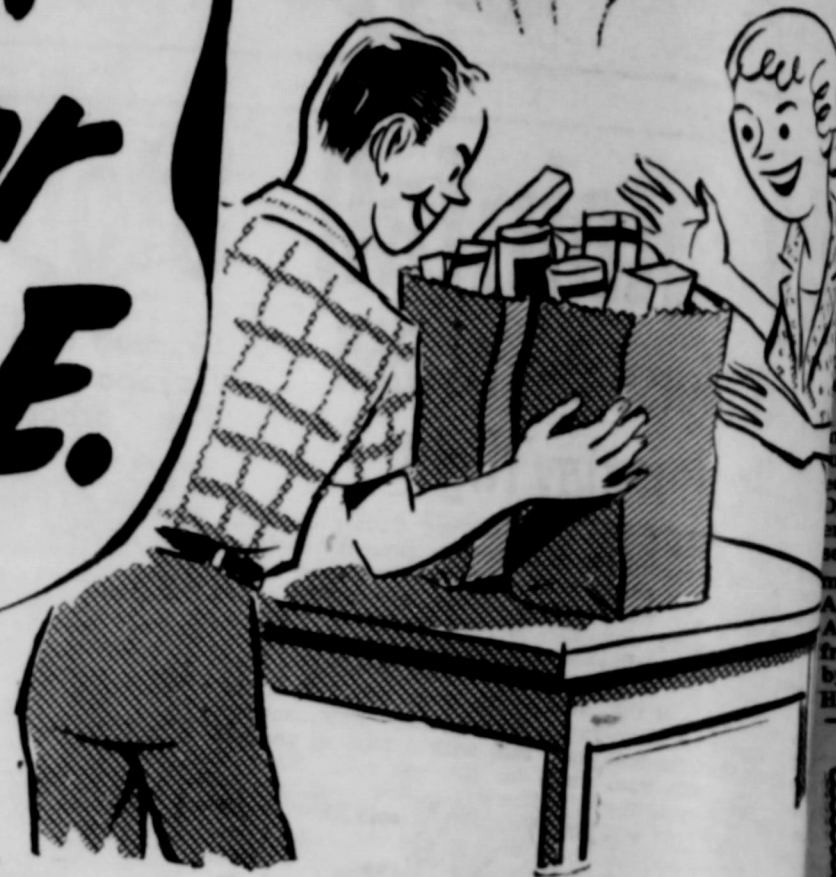
Item	Price
Wheat	\$1.70
Barley	80
Oats	80
Hay	11.00

Police Department  
Fire Department  
Sheriff's Department



Won't My Wife Be Surprised!

ALL THIS for SO LITTLE.



**HANDLE**  
By S. V. Whitehorn  
The knowledge of the finer... in fishing is many times the... between a successful... and one that is not so success... Getting an education in the... of catching fish sometimes... men about quite accidentally... For example, last week Dr. Henry... was fishing in a private... and, together with friends, when... cast his plug (an ell) into an... hole on the lake. The reel... and it was some time... before Dr. Mamra got the line... rightened out. The plug had... tilted to the bottom of the lake... a minute or so before it was... reeled in.  
Just as soon as the plug was... reeled from the original casting... position, a 3 1/2 pound bass connect... ed and was landed. The next time... Dr. Mamra cast out, he delibe... rately gave the plug time to... settle to the bottom and then... moved it an inch or so. What!... Another 3 1/2 pounder was landed... Altogether, five bass were caught... from the same place in the lake... by the same method. Usually Dr... Mamra and practically all of

Friday and Saturday



SO FRESH SO DELICIOUS!  
**FAIRMONT Old Fashioned SMALL CURD COTTAGE CHEESE 25¢**



FRESH and DELICIOUS 2 lb.  
**FAIRMONT CREAMED COTTAGE CHEESE 43¢**

HUNTS NO. 2 1/2 CAN

**PEACHES 2 for 49¢**

HI - C 46 oz. CAN

ORANGE DRINK 25¢

Libbys Luncheon 12 oz. Can

MEAT 43¢

Krafts Salad Dressing Quart

MIRACLE WHIP 49¢

FOOD KING NO. 2 1/2 CAN

PORK N BEANS 2 for 29¢

Frozen Foods  
Shurfine 6 oz. Frozen  
**LEMONADE 2 for 15¢**

Underwoods Beef, Lb.  
**BAR B QUE 59¢**

Libbys Fancy Spear  
**BROCCOLI 25¢**

Libbys French Fried  
**POTATOES 19¢**

SIMPLE SIMON LARGE APPLE - CHERRY - PEACH OR PINEAPPLE

**PIES 2 for 99¢**

Quality Meats

Boneless, Rolled & Tied  
**FRESH HAM ROAST lb. 69¢**

Swifts Oriole  
**FRANKS 2 lb. pkg. 95¢**

Hickory Smoked, Dry Cure  
**LONGHORN BACON 2 lb pkg. \$1.39**

Grain Fed Beef - Boneless  
**RIB STEAK lb. 93¢**

Double Stamps Wednesday



FRESH FRYERS & HENS

Fruits & Vegetables



GOLDEN - RIPE - THICK - MEATED  
**CANTALOUPE 2 lbs. 15¢**

PICK - O - MORN - PKG.  
**TOMATOES 2pkg. 35¢**

SWEET - GOLDEN - BANTAM  
**CORN 6 ears 19¢**

DELICIOUS - MERRILL - BEAUTY  
**PEACHES lb. 19¢**

Salad Wafer Lb.

**CRACKERS 25¢**

Hunts 14 oz.  
**CATSUP 2 for 29¢**

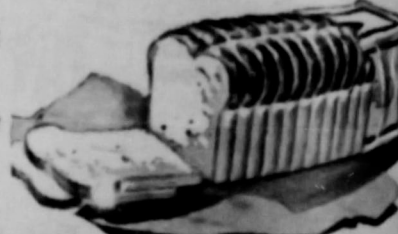
Gerbers Strained  
**BABY FOOD 3 for 25¢**

MY T Fine  
**PUDDING 4 for 29¢**

**BREAD**

FAVORITE KING SIZE

**2 for 29¢**



**Waldorf BATHROOM TISSUE IN COLOR**



4 ROLL PAC  
**33¢**



**CANADA DRY**

ROOT BEER - COLA - STRAWBERRY - ORANGE CREAM SODA

28 OZ.  
**10¢**

Plus Deposit



KING SIZE

**COCA COLA**

**29¢**

PLUS DEPOSIT



BORDENS GLAZIER CLUB

**ICE CREAM**

ONE HALF GALLON

**53¢**



BETTY CROCKER WHITE DEVILS, GOLDEN OR SPICE

**CAKE MIX**

4 FOR

**\$1.00**



FRIENDLIEST STORE IN THE PANHANDLE

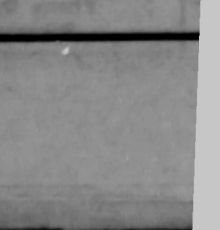
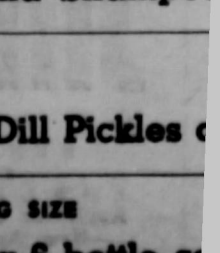
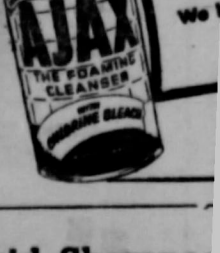
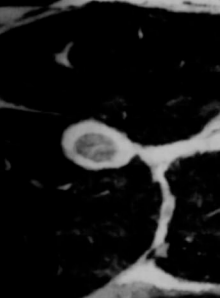
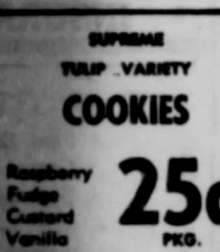
**CUT-RATE**

FAMOUS FOR SERVICE

MAIN STREET

**GROCERY MARKET**

SPEARMAN TEXAS





# PANHANDLE OUTDOOR LIFE



By S. V. Whitehorn  
The knowledge of the finer points in fishing is many times the difference between a successful angler and one that is not so successful. Getting an education in the art of catching fish sometimes comes about quite accidentally. For example, last week Dr. Henry Hamba was fishing in a private pond, together with friends, when he cast his plug (an ell) into an open hole on the lake. The reel clicked and it was some time before Dr. Hamba got the line straightened out. The plug had settled to the bottom of the lake for a minute or so before it was pulled in.

The other fishermen cast the lure out and reel it in quickly. It wasn't but a few minutes until all of the fishermen on this particular outing were using the same morue operandi and the trip produced something like 40 pounds of black bass for the four fishermen.

H. W. Stidham and H. A. Shipley returned recently from Lake Marvin with 30 bass that weighed from 1 to 4 pounds. Two of the 30 weighed 4 pounds. Mr. Stidham and friend were employing the inertube method and were using spincast reels. They were using the new lure called "Heddon's Dying Flutter". This lure is very similar to the "Devil's Horse" but has a spinner at the front as well as the back of the plug. Mr. Stidham also said that they fished parts of two days. The first day they began fishing at 6:30 p. m. and fished until 9:00 the next morning they fished from 5:15 a. m. until 1:30 p. m. These two expert fishermen are the two that I referred to a year

or so ago who always brought fish home with them. They have fishing Lake Marvin enough to know all the tricks about catching fish.

Top water lures are usually the best to use this time of the summer. Night fishing especially in clear lakes, will produce the best results, according to latest reports.

**History Making Wildlife Technicians**  
Norrel Wallace, Wildlife Biologist, Lake Black, Flying Game Warden, recently completed an aerial survey of deer and turkey in the eastern part of the Panhandle. They put in 17 hours of flying time and covered a large part of the game areas east of Highway 70. The Washita and Canadian Rivers, blue Gageby Creek, made up the largest part of the survey.

During much of the flying time, the visibility was very poor; however, these two fellows tabulated 990 turkeys and 516 deer. This is the first time in history that an aerial survey has been made with the idea in mind of calculating the deer and turkey in this part of the state. Mr. Wallace stated that the flying time allotted was very inadequate

and just an initial start on what would take place in years to come. "This survey was to get our feet wet for a better longer survey next year. We should be able to get an excellent count by using this method."

About a quarter of a mile on each side of these streams was all that was observed. There is a considerable amount of game from Highway 70 west, including Roberts and Hutchinson Counties. One calculation that Mr. Wallace made was that there was an adequate amount of bucks per number of does and also an adequate amount of strutting turkey gobblers for the number of turkey hens. He also surmised that it might be practical to increase the yearly kill as a result of the survey.

By using this method in the future, wildlife technicians will be able to make a fairly accurate count of the total amount of game on the range during the summer and be in a better position to recommend hunting regulations that will coincide with the amount of game to be harvested, this adding to the hunter's sporting pleasure and success.

A fishing license is required for all anglers fishing the waters of this state with these

exceptions: No person under seventeen years of age and no person over sixty-five years of age is required to possess a fishing license. No person, or member of such person's immediate family shall be required to hold the license provided for in this act (regular fishing license) when fishing upon the property he owns or resides. No license shall be required of a person fishing with a trotline, throw line, or ordinary pole and line having no reel or winding device attached when fishing in the county of his residence. No other fishing license shall be required of a person who holds a commercial fisherman license.

The above isn't the whole statute intact but is roughly the gist of same regarding license requirements. All state Game and Fish Commission license expire August 31 of each year.

**Commercial Fisherman License**  
A "Commercial Fisherman" is any person who takes fish or oysters or shrimp or other edible aquatic products from the waters of this state, for pay or for the purpose of sale, barter or exchange. The fee for this license is \$3.00.

The above is taken from the law books in part, however, the

following is on the lighter side and is a story that has been making the rounds. It goes something like this. There was a very strict Game Warden who was tipped off that a certain colored ranch cook, here in the Panhandle was selling catfish. Of course, the warden knew that there would be the requirements of a commercial fisherman's license involved and he surmised that the cook was selling fish without same.

The warden approached the cook and inquired if he could buy a few fish and readily the cook-fisherman said that he had a few for sale. "How much do you want for this string of fish?" said the warden. The reply was "Ten dollars, Suh."

The warden pulled out his roll, peeled off ten dollars and purchased the few catfish and then said, "Now let me check your commercial fisherman license." The cook reached into his billfold and pulled out a commercial fisherman license much to the consternation of the Game Warden.

There was a college boy who was hard pressed for money. On a weekend he told his father who was farming, "Say, Pop, there is a feller up at college that can teach old Rover to talk for a

finlayvenue in New York. It was against the law to ob- be some street in the serve Christmas in the U.S. in really talk 1685.

The son took his school together with sand dollars and after a few weeks wrote home that old Rover was doing to good in school and it would take another five hundred to really have him talking like he should. The anxious father wired him the five hundred.

When school was out the son and old Rover boarded the train and headed home. After a few miles journey the son began to think that it would be foolish for him and Rover to arrive and the dog not be able to speak a word, so he tossed the canine out the window of the train. When he arrived the father was there to greet him and said, "Where is old Rover?"

"Well, Pop, it's something like this. Do you remember the time that you got arrested for hunting out of seasons and that people here at home don't know about it?" "Yes, I remember that."

"Well, do you also remember the time that you were arrested for killing too many quail?" "Yes, I remember that, too," said the father. "Well, you do know that old Rover always went with you, even the times you came in late at night, so on the way over here, since he talked so much, I just tossed him from the train window and he was killed."

The father seriously thought for a few minutes and then spoke up. "Son, are you danged sure that that dog was killed?"

**Brittany Spaniel Bird Dogs**  
First time in many months there is a litter of bird dogs pups for sale in this part of the country. Dr. Walter W. Willis, Borger dentist, has a few Brittany Spaniel bird dog pups for sale. These puppies are about six weeks of age and should be old enough to hunt with this autumn. The price is right. Contact Dr. Willis at 1300 Cooley Drive in Borger.

An average bale of cotton weighs 480 pounds.

Last week Mr. Borger Hospital. As we out of the hospital and with her daughter. Probably be home late this week.

Mr. and Mrs. Don Gros and the two children returned home this week from a two week vacation. They spent most of the time resting and fishing in Lake City Colorado. Don says they had a wonderful time.

We do not have a report on Mr. and Mrs. Robert Alexander's European trip, Bob did tell us that they had a wonderful time.

Mr. and Mrs. Jack Wheeler from Washington D. C. are here visiting their parents Mr. and Mrs. R. C. Green.

Valene (Henderson) Lunn and the boys have been visiting her parents Mr. and Mrs. A. R. Henderson.

Raymond Pearson is here visiting his mother Mrs. Pearson and working in the barber shop with Alvin Byers. Thus combining business with pleasure.

We have two new citizens. Mr. and Mrs. Merle Pearson are the proud parents of a new baby. Mr. and Mrs. Arnold Bayless are happy over the arrival of a new son. Congratulations.

We would like to express our appreciation of the members of the Civil Defense unit for the work in watching and warning of storms. We do not know who all does the work, but we do know, the Riley brothers, Fred Womble, Fred Chase and are always on the job. O. V. Walker Sr. Thanks a lot.

We are glad to report that James Allen Ayres is making a good recovery. His hand is beginning to heal nicely. But it will be a long time before it is completely well. Have you seen James Allen beautiful new home. And have you seen the new homes being built by Anson Ward and George Paul Odum? They are lovely.

Have you seen the new elevator built by Mr. Wilson and Phoebe Fox? It is a tremendous thing and worth looking at. The Gruver Elevators Inc. are also building a huge addition to their facilities.

**This'n That**

Since writing our column last week, we have had all kinds of weather. Rain, Hail, Wind and what have you. We spent several hours in a storm cellar, with several others. At two o'clock one morning last week we received 40 of rain, at 1:30 that same night, we received 38 more. Monday morning about 6 a. m. we received another 60 in about half an hour. This morning at 2:30 a. m. we received .07. Among those who received severe hail damage, were Randolph McClellan, Sam Cluck, Grandma Cluck, Bob



**'round Gruver**

Since writing our column last week, we have had all kinds of weather. Rain, Hail, Wind and what have you. We spent several hours in a storm cellar, with several others. At two o'clock one morning last week we received 40 of rain, at 1:30 that same night, we received 38 more. Monday morning about 6 a. m. we received another 60 in about half an hour. This morning at 2:30 a. m. we received .07. Among those who received severe hail damage, were Randolph McClellan, Sam Cluck, Grandma Cluck, Bob

**Elect Judge Sarah T. HUGHES**  
To Supreme Court

**NEW 3 BEDROOM BRICK!**

HARVEST SPECIAL!  
WILL TRADE FOR ANYTHING

**MACIAS CONSTRUCTION CO.**  
Phone OL 9-3808  
Spearman, Texas

**CRACKERS**  
Hormels SPAM 12 oz. can 45c  
Sunshine Hi-Mo 1 lb. Box 35c

**CAL GROVE FROZEN LEMONADE**  
3 6 Oz. Cans 29c

**VAN CAMP'S Pork & Beans**  
300 Can 10c

**SWIFT PREMIUM GRAIN FED BEEF ROUND STEAK**  
89¢ lb.

TRY A K.C. TOP LOIN T-BONE OR CLUB STEAK IN YOUR CHARCOAL BROILER TO-NITE

**FRANKS** LARGE H.C. FOR ROASTING 55¢ lb.  
**BACON** SLAB 1/2 OR WHOLE 8-10 LB. AVERAGE 59¢ lb.  
**GROUND CHUCK** EXTRA LEAN FOR BROWNING 59¢ lb.  
**BACON** SWIFT PREMIUM THICK SLICED 2 lb. 1.29

**Chermin Toilet TISSUE** 4 rolls 35c

**TON SALE!**  
We buy AJAX by the TON to cut the price for everyone!  
4 large cans 49c  
2 giant cans 35c

**Holiday ahead!**

**PACK YOUR BASKET WITH TEMPTING, LOW COST FOODS**

AT YOUR FRIENDLY

Better Food For Less

**IDEAL FOOD STORES**

**IDEAL TASTY ICE CREAM** 1/2 Gal 53¢

**Star-Kist CHUNK STYLE Tuna**  
Only 29c

**IDEAL Thin Sliced Sandwich Jumbo BREAD** 1 1/2 lb. Loaves 21c

**IDEAL's Coney or Hamburger BUNS** Pkg Of 8 21c

**IDEAL ENRICHED BREAD** 2 1/2 lb. Loaves 29c

**Snow Crop Fresh Frozen PEAS or CORN**  
2 10 Oz. Pkgs. 29c

**KINGSFORDS CHARCOAL BRIQUETS** 10 lb. Bag 79c

**GOLDEN FLAKE POTATO CHIPS** Reg. 59c 49c

**SANTA ROSA PINEAPPLE JUICE** 46 Oz. Can 25c

**LADS ROOT BEER** 1/2 Gal. Jug 49c

**TOWIE STUFFED OLIVES** 7 1/2 Oz. Ref. Jar 47c

**BANQUET TURKEY-CHICKEN or BEEF FROZEN PIES** 5 for \$1.00

**JIFFY CAKE MIX** 9 Oz. Box 10c

**IDEAL PURE STRAWBERRY PRESERVES** 12 Oz. Jar 25c

**ALL FAVORS KOOL ADE** 6 Pkgs. 25c

**VAN CAMP'S VIENNA SAUSAGE** 1 Oz. Can 21c

**VAN CAMP'S BEANEE WEENIES** 12 Oz. Can 25c

**HUNTS CATSUP** 2 14 Oz. Btles. 29c

**White Swan COFFEE** lb. 79c

**Friskies DOG FOOD PRIME GRADE NOURISHMENT** 2 Cans 29c

**Royal Gorg. Whole Dill PICKLES** 2 Full Qt. Jars 49c

**WESTERN MAID PURE APPLE BUTTER** Big 58 Oz. Jar 53c

**Produce**

**FIRM CRISP HEADS LETTUCE** lb. 15c

**FANCY WAXY GREEN PEPPERS** lb. 19c

**LONG GREEN SLICING CUCUMBER** lb. 10c

**FIRM RED RIPE SLICING TOMATOES** 2 lb. 29c

**FRESH CORN** 6 ears 19c

**Prell Liquid Shampoo \$1.00 Size only 79c**

**SPRING PACK Stokelys Dill Pickles quart jar** 33c

**REG. OR KING SIZE Coca-Cola 6 bottle carton** 29c plus Deposit

**SAVE GUNN BROS. STAMPS**  
The most popular thrift  
Stamps in the Panhandle. Double  
**STAMPS EVERY WEDNESDAY on \$2.50 orders or over.**

**Bakerite Shortening** 3 lb. can 69c

**Gold Medal Flour** 25 lb. bag. \$1.89

**Folgers Coffee** lb. 63c





Developed and designed by Kaiser Aluminum Corporation, the Casa Manana dome is 145 feet in diameter and will seat approximately 1,832 persons around a centrally located stage. The dome's clear-span principle is ideally suited for musicals, symphonies, operas and other dramatic productions.

With architectural design by A. George King and Associates, the Casa Manana project will include wings extending from the central dome to house dressing rooms, executive offices, property shop, wardrobe and rehearsal rooms. The ultra-modern building will be 62 1/2 feet high with 29,000 square feet of floor space on the main floor. The additional areas will cover 9,500 square feet of floor space. A projection room located on the mezzanine will contain 1,000 square feet. The circular stage is located in the center of the main floor and is 32 feet in diameter. The stage is removable and the orchestra pit can be covered to adapt the building for other uses such as motion pictures, conventions and other gatherings.

The dome was erected by Lydick Roofing Company of Fort Worth and the General Construction Company, also of Fort Worth. Scheduled for completion June 27, the work is well along and the builders say it will be finished on time.

1956 JULY FOURTH VACATION DRIVING  
Going to have a Bang-Up 4th? I hope not, remarked Captain L. W. Blackwell this week, when he heard the question put to the region 5 motorists who are panning to go on highways over the July fourth holiday.

Speaking in behalf of the highway patrol and the National Safety Council, Captain Blackwell said that more firm enforcement policy by the Texas Highway patrol and courts means a safer vacation for those traveling our highways. The highways are loaded with people who want to get away from it all and if they aren't careful they won't live to come back to it all. If every driver realized that traffic accidents do not always happen to the other guy he will make it his business

"One way every one can help to back the attack on traffic accidents is to include safety in his holiday and vacation plans. He reminded motorists that the Texas Highway Patrol, police and other traffic officials are doing all they can to protect summer travelers. Captain Blackwell said that more firm enforcement policy by the Texas Highway patrol and courts means a safer vacation for those traveling our highways.

The highways are loaded with people who want to get away from it all and if they aren't careful they won't live to come back to it all. If every driver realized that traffic accidents do not always happen to the other guy he will make it his business

Elect Judge Sarah T. **HUGHES**  
To Supreme Court

WHY RISK NEEDLESS LOSS from chronic coccidiosis?



reduces loss due to chronic coccidiosis  
Don't let chronic coccidiosis pull down your pullet flock, cause loss of weight and general unthriftiness. Use Dr. Salsbury's SULFA VETERINARY to reduce damage from intestinal coccidiosis. Low in cost and easy to use—just mix with feed. Now you can reduce loss from chronic coccidiosis, speed up gains and cut down on feed cost—with Dr. Salsbury's SULFA VETERINARY. It safeguards birds—and profits!  
Spearman Drug Store  
Spearman, Texas

LOST: Safety box keys in a key case and house keys on a separate key chain. Lost between bank and Rube's Boot Shop. Contact Reporter if found.  
No. 30 2tp

SPINET PIANO  
Responsible party can arrange most attractive purchase of fine spinet piano. Small monthly payments. Write before we send truck. McFarland Music Co., 722 W. 3rd, Elk City Oklahoma.  
No. 30 rtn-c

FOR RENT — I have space, sleeping rooms and apartments for 12 men. Mrs. A. E. Rowland, 122 South Endicott Street.  
No. 30 1tc

FOR SALE  
Super W-6 International Tractor, 14 section John Deere drag harrow, 2-8 hole Dempster drills with hitch, and marker 1-12 ft. Kruse, one way plow over-hauled and new discs. I skill saw and chest of carpenter tools. I set stock racks for pickup. Metal vat for irrigation well, water to run in.  
Mrs. Charles D. Ross  
No. 30 2tp

DEKALB — We have secured additional Dekalb hybrid seed in all four varieties. If you will advise your needs at once, it will be appreciated.  
R. L. PORTER GRAIN & SEED CO.

FOR CASH RENT: July 1st 320 acres irrigated farm. Excellent 8-in. well powered by natural gas. Underground pipe watering system. Deep fertile soil. Perfect natural slope. Blacktop highway one-half mile. Good market 4 miles. 100 acre wheat allotment. 6 acre cotton allotment. If you want the best, this is it. For further information, see The Reporter.  
No. 29 2tp

STRAYED from Henry Roper's place 10 miles north of Gruver, 1 white-faced heifer. Weight about 500 lbs. Brand is backward E connected to an R. Notify or call Fireside 7-2219.  
No. 29 2tp

NOTICE TO CREDITORS OF THE ESTATE OF R. R. FULLBRIGHT, DECEASED  
Notice is hereby given that Original Letters Testamentary upon the estate of R. R. Fullbright, deceased, were granted to me on the 23rd day of June, 1956, by the County Court of Hansford County, Texas. All persons having claims against said estate are hereby required to present the same to me within the time prescribed by law. My residence and post office address are Spearman, Hansford County, Texas.  
Myrtle Fullbright  
Estate of R. R. Fullbright  
Deceased.  
No. 30 1tc

RELIABLE PARTY MALE OR FEMALE wanted to service and collect from a route of CIGARETTE machines. No selling. Route is fully established for operator. Full or part time. Up to \$300 per month to start, \$1,000 to \$2,000 cash required which is secured. Write, giving full particulars and phone number to P. O. Box 4728, Dallas 6, Texas.  
No. 30 1tp

**WANTED**  
Custom Plowing Good Equipment  
Call "Doc" OL 9-5736  
Leo "Doc" Campbell

FOR SALE - Dinette table and four chairs, Mohair Divan, See E. E. Williams or phone Olive 9-6731.  
No. 28 rtn

FOR SALE - Good used 8x10 tent - \$18.00. Also Coleman Camp stove - \$10.00. Harold Crooks Spearman  
No. 28 rtn c

BUSINESS OPPORTUNITY  
Local area man or lady wanted to service and collect from coin operated dispensing equipment. 4 to 8 hours weekly earns operator up to \$290.00 monthly. No age limit or selling but must have car, reference and \$402.00 to \$804.00 working capital. For interview give personal particulars, phone number. Write to box 4728, Dallas 6, Texas.  
No. 28 1tp

GRAIN RINS  
One 3300 bushel galvanized and one 1200 bushel frame bin One mile East of McKibben, South side Charles Palaski.  
No. 28 rtn

FOR SALE - One hundred Hy-line sexed pullets four months old \$1.50 apiece. Call Reporter office for further information.

TRAILER SPACE for 2 trailers, shade trees, private parking place. See Mrs. Luella Rooks.

OPPORTUNITY MAN OR WOMAN  
Responsible person from this area to service and collect from automatic dispensers. No selling. Age not essential. Car, reference and \$400. to \$700. investment necessary. 7 to 12 hours weekly nets excellent monthly income. Possibility full time work. For local interview give phone and particulars. Write P. O. Box 146, Minneapolis 40, Minn.  
No. 28 1tp

FOR SALE - Wide front end of IHC tractor in good condition for \$135.00.  
Harold Crooks, Spearman  
No. 28 rtn c

FOR SALE - One hundred Hy-line sexed pullets four months old \$1.50 apiece. Call Reporter office for further information.

TRAILER SPACE for 2 trailers, shade trees, private parking place. See Mrs. Luella Rooks.

FOR SALE - 16 foot house trailer cheap. 716 Dressen. Phone Olive 9-6891.  
No. 28 2tp

WANTED: Ironing to do. Phone Olive 9-6046.

Strahan's 66 Sta. ONE STOP SERVICE  
Bait—Fishing Tackle  
TEXAS make our piece your HOME  
24 Hour Service  
Canton, Oklahoma

BRUCE & SON  
VAN AND STORAGE  
Local—Long Distance  
MOVING  
Modern Equipment  
Responsible Men  
Expert Packers  
Call Collect For Free Estimate  
ER 4-2229 Borger, Texas

FOR RENT apartment for 4 men  
122 S. Endicott St. rs. A. E. Townsend.  
14 rtn

FOR SALE - Male Pekinese. \$25.00. See 18 Jackson Trailer Court.

ALFALFA HAY for sale: See Bill Hutton, Phone OL 9-5487, Spearman.  
26 rtn-c

FOR SALE: Equity in home on corner lot at 900 South Bernice. Bob Skinner, Spearman, Texas  
No. 23 rtn

STRAYED from Monroe Lance Farm by Phillips-Hansford Plant: 4 head of 650 lb. steers. Branded quarter circle lazy 8 on Right thigh. Marked shallow Fork on Right ear, in addition to any other marks or brands. Anyone knowing whereabouts of these cattle contact Henry C. Hitch Ranch, Guyton, Oklahoma. Phone 000782 or 943.  
21-rtn

POLITICAL ANNOUNCEMENTS  
ED VERNON  
Commissioner Precinct No. 2  
MRS. MERLE WASHINGTON  
County Treasurer  
MRS. SADA HOSKINS  
County Clerk  
J. W. (BUCK) BUCHANAN  
State Representative,  
95th District  
BOB PORTER OF DUMAS  
State Representative  
95th District  
JOHNNIE C. LEE  
County Judge, Hansford Co.  
George C. (Bud) Lowe  
Weldon Green  
Commissioner Precinct No. 4  
Judge Max Boyer  
District Judge  
84th Judicial District

FOR RENT Sleeping rooms for men. 122 S. Endicott st. Mrs. A. E. Townsend.  
14 rtn

GOLIATH DEALER - Clarence Pettitt is now dealer for the new Foreign Goliath. See him today for a test ride in the new 1956 Goliath!

ALCOHOLIC - If liquor is your problem and you sincerely want help to quit write Alcoholic Anonymous, box 613, Spearman. No fees, no pledges, no pills.  
No. 26 rtn

BARGAINS in house trailers. Now Trailers up to 51 feet. Five year financing, bank rates. Some used ones. Best Trailer Sales Pampo and Perryton, Texas.  
No. 4 rtn

WE ARE - Experts in installing Radios. Let us figure your next job. Free estimates. We do cabinet tops, floor linings, compasses. We check batteries up to 12' olds, clock radios, metal film etc.  
SALBY'S IN PERRYTON

For Lease Or For Sale  
Modern two stall service station Third stall in the open for washing large trucks. Gallonage rental if leased, or can be purchased for a few hundred dollars down and the balance can be paid like rent under a ten year contract. A wonderful opportunity to own a valuable property with a very small investment. This station is located in Gruver, Texas. See W. A. Ellsworth, Gulf Wholesale Phone OL 9-3741, Spearman, Texas.

Kirby Vacuum Cleaners Sales & Service  
221 N. Maddox Ph. WE 5-2554 Dumas, Texas

FOR SALE House with 6 metal outside blinds and 1 metal blind to fit screen door. See Raymond Kirk.

FOR SALE 16 foot house trailer cheap. 716 Dressen. Phone Olive 9-6891.  
No. 28 2tp

WANTED: Ironing to do. Phone Olive 9-6046.

Strahan's 66 Sta. ONE STOP SERVICE  
Bait—Fishing Tackle  
TEXAS make our piece your HOME  
24 Hour Service  
Canton, Oklahoma

BRUCE & SON  
VAN AND STORAGE  
Local—Long Distance  
MOVING  
Modern Equipment  
Responsible Men  
Expert Packers  
Call Collect For Free Estimate  
ER 4-2229 Borger, Texas

FOR RENT apartment for 4 men  
122 S. Endicott St. rs. A. E. Townsend.  
14 rtn

FOR SALE - Male Pekinese. \$25.00. See 18 Jackson Trailer Court.

ALFALFA HAY for sale: See Bill Hutton, Phone OL 9-5487, Spearman.  
26 rtn-c

FOR SALE: Equity in home on corner lot at 900 South Bernice. Bob Skinner, Spearman, Texas  
No. 23 rtn

STRAYED from Monroe Lance Farm by Phillips-Hansford Plant: 4 head of 650 lb. steers. Branded quarter circle lazy 8 on Right thigh. Marked shallow Fork on Right ear, in addition to any other marks or brands. Anyone knowing whereabouts of these cattle contact Henry C. Hitch Ranch, Guyton, Oklahoma. Phone 000782 or 943.  
21-rtn

POLITICAL ANNOUNCEMENTS  
ED VERNON  
Commissioner Precinct No. 2  
MRS. MERLE WASHINGTON  
County Treasurer  
MRS. SADA HOSKINS  
County Clerk  
J. W. (BUCK) BUCHANAN  
State Representative,  
95th District  
BOB PORTER OF DUMAS  
State Representative  
95th District  
JOHNNIE C. LEE  
County Judge, Hansford Co.  
George C. (Bud) Lowe  
Weldon Green  
Commissioner Precinct No. 4  
Judge Max Boyer  
District Judge  
84th Judicial District

FOR RENT Sleeping rooms for men. 122 S. Endicott st. Mrs. A. E. Townsend.  
14 rtn

GOLIATH DEALER - Clarence Pettitt is now dealer for the new Foreign Goliath. See him today for a test ride in the new 1956 Goliath!

ALCOHOLIC - If liquor is your problem and you sincerely want help to quit write Alcoholic Anonymous, box 613, Spearman. No fees, no pledges, no pills.  
No. 26 rtn

BARGAINS in house trailers. Now Trailers up to 51 feet. Five year financing, bank rates. Some used ones. Best Trailer Sales Pampo and Perryton, Texas.  
No. 4 rtn

WE ARE - Experts in installing Radios. Let us figure your next job. Free estimates. We do cabinet tops, floor linings, compasses. We check batteries up to 12' olds, clock radios, metal film etc.  
SALBY'S IN PERRYTON

CONSTRUCTION  
IRRIGATION WELL SERVICE  
Full and Set Pumps (All Makes)  
Pump and Bowl Repairs  
Clean Out Holes  
Gear Head Repairs  
B & C EQUIP. CO.  
Phone OL 9-2351  
Spearman, Texas

ANTHONY ELECTRIC  
Industrial and Oil Field Wiring  
Commercial and House Wiring  
Contracting and Repairs  
L. L. ANTHONY  
Phone OL 9-3361  
413 S. Barkley St.  
Box 777  
Spearman, Texas

Macias Construction Co.  
Homes under construction in South Spearman.

G. I., FHA Loans WILL TRADE  
See Us For Your Building Needs  
Alex Macias  
1002 Evans  
Spearman, Texas  
Phone OL 9-3806

TRACTOR WITH SCOOP AND FRONT-END LOADER AND DUMP TRUCK

SELLING OUT OUR STOCK OF B. F. GOODRICH TIRES  
SALE PRICES - STOCK WILL CONSIST OF GENERAL, GATES AND FISK TIRES.

WE ARE DISTRIBUTORS OF BLACKLEG SERIUM AND VACCINE.

ALSO - TORNADO SIGNALS  
Floor Mats - Mufflers - Mirrors  
AUTOMOTIVE ACCESSORIES

ROSS'S TEXACO SERVICE STATION  
S & H GREEN STAMPS  
DOUBLE STAMPS MONDAYS  
Phone OL 9-2031  
B. F. Goodrich & FISK TIRES

MOTOR WISE



A. & G. Humble Service  
WYATT ATKINS  
RAYMOND GILLEY  
For the life of your car GO GULF!

Looking for Service Try Orange Disc Service!  
ALTON Phone 2501 WAYNE

MEDICINE  
Dr. D. E. Hoot  
OSTEOPATHIC PHYSICIAN AND SURGEON  
304 MAIN ST.  
Office Hours: 9-12 and 2-5  
Saturday: 9-12  
Office Phone - 4851

Dr. Reese N. O'POMEY  
OPTOMETRIST  
OFFICE HOURS  
9 to 12 a.m.  
Saturday 9-11  
Phone 568  
No. 10 SW 2nd  
Perryton, Texas

R. L. Kleebe  
M. D.  
Physician and Surgeon  
Medicine, Surgery and Obstetrics  
Hours: 9-12 a.m.  
CLOSED ALL DAY AND SATURDAY  
Phonics: Office 218  
Res. 218  
16 S. W. Center  
Daily Ride  
Spearman, Texas

Dr. F. J. De...  
DENTIST  
No. 16 S. W. Center  
Phone 291  
Spearman, Texas

SANFORD HOSPITAL AND CLINIC  
Perryton, Texas  
Phonics 2821 or 28  
ROY K. SANFORD, M.D.  
Pediatrics  
J. BLUFORD JOHNSON  
General Surgery  
O. U. MONROE, M.D.  
Obstetrics - General Practice

INSURANCE  
E. C. GREEN  
Real Estate  
Loans  
Insurance  
Phone 4261 - Main  
Spearman, Texas

B. M. A. INSURANCE  
E. K. SNIDER  
Spearman, Texas

AMBULANCE FLOWER  
Number Dial 2751  
SPEARMAN, TEXAS

Boxwell Bros.  
Funeral Home and Flower Shop  
Day - Night Phone 2751  
SPEARMAN, TEXAS

C. and J. Drilling Company  
BLUM CATES - BUD JACKSON  
Featuring Irrigation well casing and domestic wells for water and small pumps  
TELEPHONES OL 140  
Office 9-4736

GLASS REPLACEMENT  
Body Shop and Painting  
R. L. (Smoky) Huns  
Spearman, Texas

Hansford Lodge 1040  
A. F. & A. M.  
Regular Communications 2nd and 4th Monday of each month  
Dexter Kirk, W. M.  
Roy L. McClellan, Secretary

Jim's SERVICE AND APPLIANCES  
- Auto Service -  
JIM O'NEILL  
Phone 568  
Spearman, Texas

PRESS ASSOCIATION

TO THE HANSFORD HEADLIGHT, PUBLISHED BY HANSFORD COUNTY, AT SPEARMAN, TEXAS  
WILL J. MILLER, EDITOR AND PUBLISHER  
THE SPEARMAN REPORTER  
PUBLISHED WEEKLY, UNDER THE ACT OF MAILING AND CARRYING COPIES, ONE YEAR  
CLASSIFIED ADVERTISING  
For 40 words: \$5 a word for every 10 words, 40 per word. Display Rates on Request.  
THE PUBLISHER: Any erroneous reflection on the contents of The Spearman Reporter called to the attention of the manager.

friends at Boys Ranch years, and Ernest untact to discuss his, saying, "Well, I going to help out in."  
At least ten eagles as the symbol  
Pure radium rest table salt.  
Officially, the h three miles from  
June was name goddess of marriage  
Brazil is larger t States.

It's the...  
What a lift time to be! sales success less than y Rocket En nationally

DRIVE Y h  
What a lift time to be! sales success less than y Rocket En nationally

DRIVE Y h  
What a lift time to be! sales success less than y Rocket En nationally

DRIVE Y h  
What a lift time to be! sales success less than y Rocket En nationally

DRIVE Y h  
What a lift time to be! sales success less than y Rocket En nationally

DRIVE Y h  
What a lift time to be! sales success less than y Rocket En nationally



**MEDICINE**  
**Dr. D. E. Hoot**  
 OSTETRIC PATIENTS  
 AND SURGERY  
 304 MAIN ST.  
 Office Hours: Wed. 8-12 and 4-8  
 Saturday 9-12  
 Phone 4851

**Dr. Reese**  
 OPTOMETRIST  
 OFFICE HOURS  
 10 to 12 a.m. - 1  
 Saturday 9-12  
 Phone 548  
 10 SW 2nd  
 Perryton, Texas

**L. Kleebe**  
 M.D.  
 Physician  
 and  
 Surgeon  
 Medicine, Surgery  
 and  
 Obstetrics  
 9-12 a.m. - 1  
**D ALL DAY**  
**SATURDAY AM**  
 Phone: Office 2181  
 Res. 2181  
 6 S W Court  
 Daily Blvd  
 Spearman, Texas

**Dr. F. J. De**  
 DENTIST  
 16 S. W. Court  
 Phone 3561  
 Spearman, Texas

**HANSFORD HOSPITAL**  
 AND CLINIC  
 Jones 2821 or 28  
**K. SANFORD**  
 Pediatric  
**FORD JOHNSON**  
 General Surgeon  
**L. MONROE**  
 X-ray - General Pa

**INSURANCE**  
**C. GREEN**  
 Real Estate  
 Loans  
 Insurance  
 4261 - Jones  
 Spearman, Texas

**M. A.**  
**URANCE**  
**K. SNIDER**  
 mcn, Texas

**BALANCE**  
**LOWER**  
 Number  
 ical 2751  
**MAN, TEXAS**

**Well Bro**

**eral Home**  
 and  
**wer Snop**  
 Night Phone  
**MAN, TEXAS**

**J. Drilling**

**pany**  
 - BUD JACKSON  
 agation well  
 wells for water  
 mps  
**PHONES OL 48**

**REPLACEMENT**  
 p and Paint  
**okky) Ham**  
 man, Texas

**ord Lodge**  
**1040**  
**& A. M.**  
 Communication  
 4th Monday  
 ch month  
**Elk, W. H.**  
**Sellan, Secretary**

**n's**

**VICE**  
**LANCERS**  
 Service Wash  
**ERLASS**  
 Live 9-000  
 on, Texas

**PRESS ASSOCIATION**  
**1958**

TO THE HANSFORD HEADLIGHT, PUBLISHED THURSDAY OF  
 IN HANSFORD COUNTY, AT SPEARMAN, TEXAS.

**WILL J. MILLER, EDITOR AND PUBLISHER**  
**THE SPEARMAN REPORTER**  
 REG. AD. SERVICE CLASS. MATTER NOV. 21, 1919 AT THE P.O.B.  
 SPEARMAN, TEXAS, UNDER THE ACT OF MARCH 3, 1879.  
 and adjoining counties, One Year \$2.50  
 and adjoining counties, One Year \$3.00

**CLASSIFIED ADVERTISING**  
 per line, 40 per word; 2c a word for every issue thereafter  
 10c per word. Display Rates on Request

**TO THE PUBLIC:** Any erroneous reflection upon the  
 character of any individual, firm or corporation that  
 appears in the columns of The Spearman Reporter will be  
 held subject to the attention of the management.

**WCS**  
 Society of Christian  
 Scientists in the Fellowship  
 of the Methodist Church on  
 June 19, 1958.

**J. Eddleman** our presi-  
 dent at our meeting with  
 the vote to go on with  
 our supply Sec., Mrs.  
 Eddleman read a letter she  
 the Boys Ranch, Hans-  
 ford, Texas, for  
 the boys there. There  
 at Boys Ranch, Mrs.  
 Eddleman gave the Devotional.  
 Res. 2181  
 with a song, "Where  
 Crowded Ways of Life".  
 L. Harris gave our  
 different rooms, with  
 J. Eddleman and Mrs.  
 Eddleman taking service. Mrs.  
 Eddleman read a story about  
 a young girl, Mrs.  
 Eddleman about the ladies on  
 vacation. Mrs. A. Bert  
 Eddleman with the scrip-  
 tures from Luke 10:25-27.  
 Eddleman were Eddleman:  
 Eddleman, A. Eddleman, D.  
 Eddleman, C. E. Eddleman, W. J.  
 Eddleman, L. E. Eddleman, L. E.  
 Eddleman, Tom Eddleman,  
 Eddleman, Tom Eddleman.

friends at Boys Ranch for several  
 years, and Ernest, although reluc-  
 tant to discuss his feat or hero-  
 ism, says, "Well, sure anybody's  
 going to help out a buddy, if he  
 can."

At least ten countries use the  
 eagle as the symbol of supremacy.  
 Our supply Sec., Mrs.  
 Eddleman read a letter she  
 the Boys Ranch, Hans-  
 ford, Texas, for  
 the boys there. There  
 at Boys Ranch, Mrs.  
 Eddleman gave the Devotional.  
 Res. 2181  
 with a song, "Where  
 Crowded Ways of Life".  
 L. Harris gave our  
 different rooms, with  
 J. Eddleman and Mrs.  
 Eddleman taking service. Mrs.  
 Eddleman read a story about  
 a young girl, Mrs.  
 Eddleman about the ladies on  
 vacation. Mrs. A. Bert  
 Eddleman with the scrip-  
 tures from Luke 10:25-27.  
 Eddleman were Eddleman:  
 Eddleman, A. Eddleman, D.  
 Eddleman, C. E. Eddleman, W. J.  
 Eddleman, L. E. Eddleman, L. E.  
 Eddleman, Tom Eddleman,  
 Eddleman, Tom Eddleman.



6 A. M. — Air pressure began to inflate 2.3-acre steel roof of world's largest air-supported building, erected Tuesday in Fort Worth by Cargill, Incorporated, leading grain handling firm. The roof, weighing more than 50 tons, was raised by four giant fans placed along far edge of building. More than 1,800,000 bushels of grain will be stored in the air-tight, cement-floored structure.



10 HOURS LATER — World's largest air-supported building, erected in Fort Worth Tuesday by Cargill, Incorporated, required four giant fans to lift the 2.3-acre, 50-ton steel roof 38 feet from the ground level. The grain handling and processing firm will use the air-tight, cement-floored building to store 1,800,000 bushels of grain

It would take 53 years for an airplane, traveling 200 miles per hour, to go from earth to the sun.

One twentieth of the world's population lives south of the equator.

Broadway avenue in New York City is the longest street in the world.

It was against the law to observe Christmas in the U.S. in 1695.

A whitesmith is one who works with tin.

Forty out of every thousand men are color blind.

It is colder at the South than at the North Pole

An average bale of cotton weighs 480 pounds.

**HUMBLE**

**Stop for service ...**

**A & G HUMBLE SERVICE STATION**

Highway 15  
 Spearman, Texas  
 Phone OL 9-6401

**...under the Humble sign**

Whether you're driving across Texas and New Mexico . . . whether you live around the corner . . . you're invited to shift the care of your car to the shoulders of a Humble service station manager.

You will appreciate the cleanliness of his sanitary rest rooms. You will like his quiet friendliness, and the personal interest he takes in your car. You will value his dependability . . . his pride in his work . . . his knowledge of what your car needs to keep it running right and looking good.

Stop for service under his Humble sign. He's a man you ought to know!

HUMBLE OIL & REFINING COMPANY **HUMBLE**

When it's too hot to cook...

**An Electric Freezer FREES HER!**

With an Electric Freezer, you can bake and cook ahead, freeze complete meals for future use. Then, when the weather's hot and you don't feel like cooking, you just take the prepared food from your freezer, warm it in the oven and it's ready to serve. For time-saving convenience and money-saving economy, get an Electric Freezer now.

See Your Local Appliance Dealer

**COMMUNITY PUBLIC SERVICE**

**POWER**

It's time to join the fun...

*Convert to Olds!*

What a lift for your spirits! What a great time to buy! Now, during the big convertible sales season, you'll discover it costs far less than you'd guess to move up to a Rocket Engine Olds—the most popular car nationally in the medium price class!

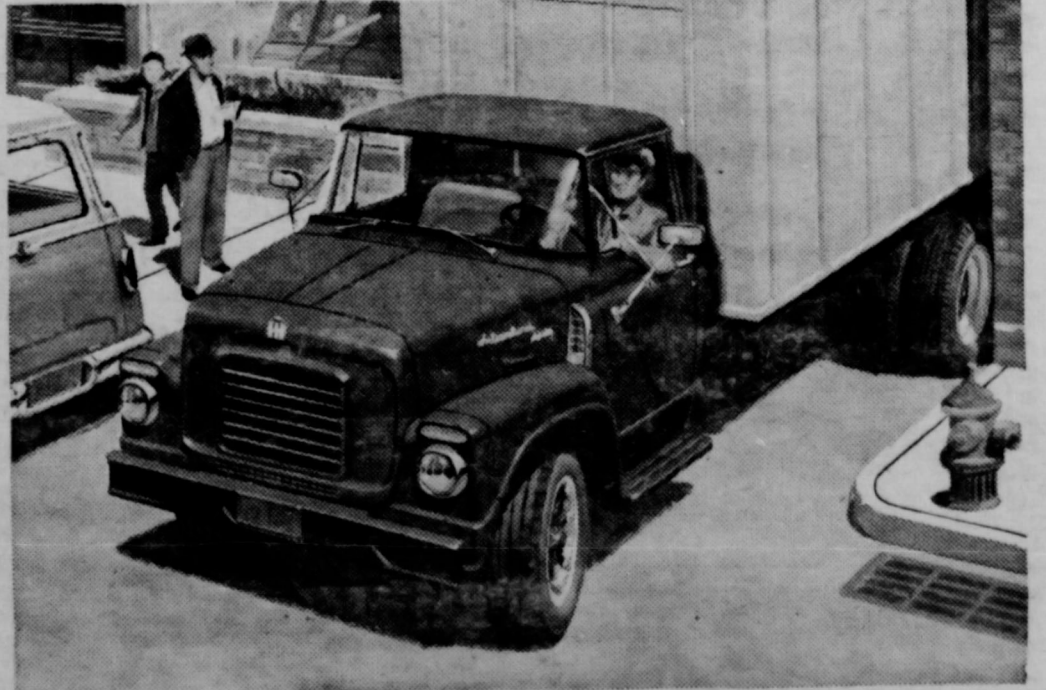
You're Always Welcome at your Local Authorized **OLDSMOBILE QUALITY DEALER'S**

YOUR NEW CAR IS A SIGN OF PROSPERITY!

**C. and H. MOTOR COMPANY**

Highway 15 Spearman, Texas PHONE 5251

DRIVE IT ONCE...  
 You'll tell us how easy it handles!



The world's most complete truck line—1½-ton to 96,000 lbs. GVW.

Everyone who drives a new INTERNATIONAL cab-forward model tells us how easy it is to maneuver.

Would you give it your own personal maneuvering test? Note how nimble this INTERNATIONAL Truck is . . . in traffic, or on the road. Reason? The short cab and the way IH designed it. Only 89 inches long, bumper-to-back-of-cab!

That short dimension not only gives better maneuverability—it allows more payload in back. Yet the cab is full-size—doors and all. Nothing cramped about it.

Like all INTERNATIONAL Trucks, this cab-forward model costs least to own.

Come in and drive a new INTERNATIONAL cab-forward yourself. Then you tell us how good it is!

**INTERNATIONAL TRUCKS cost least to own!**

**B and C Equipment Co.**  
 Main St. Spearman, Texas OL 9-2351

**PROTECT COUNTRY PROFITS**  
 W. H. SALSBUARY'S

**WAVAC**

Don't let too much invested money go to risk unnecessary loss. Help protect your profits with Salsbury's WAVAC, the new drinking-water disinfectant. It kills disease-causing germs. Other disinfectants protect food and laryngitis. Don't take chances. Salsbury's disinfectant costs so little.

**Dr. J. H. Salsbury's**  
 Drug Store  
 Texas







**WS from**  
**only Home**  
**stration Agent**  
**A. M. College**  
**ision Service**

CalXXXXX  
 visited the Home  
 Club Room recent-  
 ly, you have enjoyed  
 a new paint  
 made by Home  
 Club Women.  
 The cure of the Club  
 room, and we  
 everyone who uses  
 to become familiar  
 Turn off the lights.  
 and turn low  
 minimum door open.  
 for accidents.  
 room clean.  
 -barrel is in  
 own tea towels and  
 chairs in rack.  
 off air conditioner and  
 Leave room locked and  
 to Mrs. B. J. Garnett  
 to Mr. who has informed these  
 to Mrs. Joe Traylor, who  
 the Home.

**SAFETY**  
 new leaflets — Buying  
 Buying a Girl's School  
 have been released by  
 Agricultural Extension  
 and are available at the  
 local County Home  
 Agent.

**REVUE**  
 the most completion for  
 4-5 Dren Revue. The  
 revue will be staged at  
 July 15, 1958, 8:00 p. m.  
 Auditorium. Mrs. Ted  
 is serving as Chair-  
 of the Devotion Committee,  
 led by Mrs. J. R. Stump, with  
 members of the County co-  
 ord.

Hal Mayfield, of K. G. N. C.  
 and T. V., will be present to  
 the Revue to be presented  
 parents and friends in the  
 evening. Mark this date on your  
 calendar.

**GOOD MEMBER**  
 members make good clubs  
 and club fills a definite  
 community and is worth  
 the effort, says Bonnie Cox,  
 organization specialist,  
 with home demonstra-  
 tion.  
 suggestions for mak-  
 ing a good one:  
 meeting place and

seated at the time the meeting starts.  
 \* Pay close attention to both the business meeting and the program. Take part in the discussion and give your ideas to the club.  
 \* Accept your share of the responsibility for the work of the club. Tell the president what your interests are so you can be put on committees where you can serve best. Accept offices when you are asked to serve. It is an honor to be asked to take an office. Do the "home work" your club promotes.  
 \* Show your appreciation to officers, committee chairmen and people who have a part on the program. Don't complain.  
 \* Be friendly and get to know the members of your club. Friends work well together.

**SPECIAL STORY JUNE 20, 1958**  
 Announcement has been made that Sandra Stump, daughter of Mr. and Mrs. J. R. Stump, Waka, Texas has been awarded the State Fair Award of Honor in special recognition by the State Fair of Texas for one 4-H Club boy and one 4-H Club girl from each Extension District and one Future Farmer and one Future Homemakers from each Vocational Area.

Sandra was a senior this year at Spearman and has completed seven years of Club work. She

plans to attend Texas Tech. this fall.

**Don't Name It**

We have often headlined the big moisture stories "Million Dollar Rain". Now wonder if we should not headline the recent rains, hail and wind as "Million Dollar Loss. Fact is that TV report around Hereford alone showed that nearly one Million Dollars in insurance had been paid on grain losses up to the past week end. When we consider the loss of 40 and 50 bushel wheat in the Morse and Gruver area, and the big loss all over the county by the moisture that still defies the harvest activities, we do not know just how much the loss will be in this county, but it will be a lot . . . and we have suffered small crop production for seven years and needed this banner harvest to pay back interest and a little on back loans that were made to keep body and soul to-

gether.  
 On the other hand, there is a lot of maize acreage in this county. The rainfall is saving lots of money to maize producers who do not have to pre-water their land to get the maize started. Many feel that this county is climatically best suited for maize. So far as we can learn even the heavy investment and higher cost of pumping water at a depth of more than 300 to 400 feet leaves a profit to irrigation farmers who have been producing maize in the past.  
 Of course we have been spared the heavy expense of fertilizing in the past . . . or rather most of our maize producers have not yet begun the process of building back the minerals in their land that year after year maize production destroys. However, the records on the South Plains prove the production of maize as very profitable even after fertilizing the land each year to insure maximum production.  
 The maize producer will share with the wheat producer in the advantages gained from ample seems to be promised for this year. We have not checked our own moisture, but feel sure that we are above normal for this year, and even above last years seasonal high of moisture at this time of

the year. This seems to be the rule in most of the golden spread, and even with considerable loss to individual farmers on wheat damage and entirely lost to rain, and hail, we will end the harvest season far above the average harvest of wheat. We sincerely hope that those wheat producers who suffered losses by moisture and hail and wind had some help from insurance. No doubt they did, because the prospects for wheat were so good that normal intelligent wheat producers would have protected his big loss with a normal hail and wind insurance policy. We know that most of the wheat producers of this area who have suffered losses from fire were protected by fire insurance. It seems the rates for fire protection this year was very low. . . no doubt after many losses are paid this year the rate will go higher next year . . . but only the very RICH can afford to do without insurance.  
 Apparently Spearman is destined to continue to grow as result of irrigation and gas and oil. We have not yet been able to locate the owner and promoter, but there laid out and marked off in the is a new location of new homes Hazelwood street area East of the business district. Apparently there will be about 3 blocks of new homes. We have heard rumors that the new homes would be built by Macias Company, but the most likely rumor is that a promoter out of Borger, who built a series of GI homes in Spearman some two years ago will promote the new series of city homes.  
 When one realizes that the total production of gas in this area is approaching a world's record, we can realize that there is no other program but growth for Spearman, and better economy for the people who own property and live in this area. The average well must be approximately fifteen million cubic feet in initial production possibilities. We can recall many, many wells that exceeded this amount, and a few that have exceeded a hundred million, and of course the big one that went 282 million cubic feet. Of course the take out of these wells is regulated. Normally a well will be allowed to sell only 25 percent of the natural output. Even this figure will bring lots of money into this area, and when there is money, there is room for investments, and no doubt there will be many activities featured in this area in addition to the normal growth of the gas and oil production.

and attention are necessary for the maintenance of a beautiful lawn. One of the basic factors involved, says E. M. Trew, extension pasture specialist, is mow-

ing. Improper mowing is responsible for the deterioration of many lawns. Mowing too close encourages the thinning of the turf and

shallowing rooting, resulting in lower resistance to drought, diseases and invasion by weeds.  
**IDEAL**

**GOVERNOR PRICE DANIEL**  
 for  
**A SECOND TERM**



**Hear**  
 Statewide Radio  
 Broadcast  
**8 P. M.**  
**MONDAY**  
**JUNE 30th**

For Unity, Progress  
 and Good Government

**FUNDS PLACED WITH US ARE:**

- (1) **Safely Protected—Each Account Insures Up to \$10,000.00**
- (2) **Earn 3 1/2% per Annum**
- (3) **Ready When Needed**

Funds Received by the 10th Will Receive Dividends for the Full Month

**Open your account by mail**

Amarillo Savings & Loan Association  
 407 W. 8th, Amarillo, Texas

Gentlemen:  
 Please send me all details regarding an account with you.

Name \_\_\_\_\_  
 Address \_\_\_\_\_  
 City \_\_\_\_\_ State \_\_\_\_\_

Current Annual Dividend Rate 3 1/2%

**Amarillo SAVINGS & LOAN ASSOCIATION**  
 407 W. 8th Phone DR-4-9022

**Lawn Maintenance Aided By Proper Mowing**  
 College Station, Constant care

**A BANG-UP TREAT FOR 4th OF JULY!**  
**Barbecued Chicken...Plenty of Coke!**

**TO BRIGHTEN UP EVERY BITE, SERVE COKE...WORLD'S FAVORITE SPARKLING DRINK!**



- BARBECUED CHICKEN**  
Brush halved broiler-chickens with barbecue sauce, broil 12 inches from heat about 1 1/2 hours, turning and basting frequently. Serve with Coke.
- FOIL POTATOES**  
Bake potatoes beforehand, bring them along wrapped in aluminum foil. Then just reheat them over the coals. Great with Coca-Cola... favorite of the world.
- SUPER SALAD**  
Serve a green salad, tossed with dressing, sliced stuffed olives. Guests will enjoy sipping Coke with this. Coca-Cola... so good to taste, in such good taste.
- CRANBERRY CUPS**  
Heat canned cranberry jelly until melted, pour into squeezed-out half shells of oranges. Chill until set. For extra sparkle, stir in the Coke and serve ice-cold.



**V8 WITH VITAMINS!**

When you feel the full-blown vigor of CHEVROLET'S TURBO-THRUST V8,\* you'll agree that here's a car with a healthy heart. And it looks as good as it goes—the only car of the low-priced three with Fisher Body "fitness" and that fine new Chevy shape. Try it on the road . . . and in your driveway!

Here's a gentle giant designed to just dream along at cruising speeds, using only a velvety fraction of its tremendous strength. So everything Turbo-Thrust does is superlatively easy, supremely quiet—with fully machined combustion chambers for exact power-metering, aero-light valve gear for effortless "breathing," extra-short stroke for long, long engine life. Cradled in a more rigid, road-holding Safety-Girder frame, Turbo-Thrust offers a whole new way of going—as your Chevrolet dealer will be delighted to demonstrate!

The only all-new car  
**CHEVROLET**  
 in the low-price field.



The beautiful Brookwood Station Wagon. Every window of every Chevrolet is Safety Plate Glass. Air Conditioning—temperatures made to order. Get a demonstration. TOP TV—The Dinah Shore Chevy Show—Sunday—NBC-TV and the Pat Boone Chevy Showroom—weekly on ABC-TV.

See your local authorized Chevrolet dealer  
**JAMESON CHEVROLET CO.**  
 120 Main Spearman, Texas Phone OL 9-2291

**Enjoy double convenience**



**with an electric REFRIGERATOR-FREEZER**

It's super-handly! Combines a roomy refrigerator and a large-capacity food freezer in a single compact cabinet. Gives you plenty of room for both fresh and frozen foods, yet takes up no more floor space than a refrigerator alone. Enjoy the double convenience of two appliances in one . . . with a space-saving combination Refrigerator-Freezer!



See Your Local Appliance Dealer





## BILL BARKLEY IS HONORED



In a ceremony at the First Methodist Church of Spearman, held on Sunday, June 15, 1958, Bill Barkley, 16 year old son of Mr. & Mrs. Freeman Barkley was presented the "God and Country Award" in Scouting. John R. Collard, Jr. presented Mr. Barkley for the award which was conferred by Rev. J. Waid Griffin, minister of the Church. Mr. Collard outlined the three-step requirements which lead to the award, and Rev. Griffin told of the projects which had led to the earning of this distinction. The "God and Country Award" is equal in rank to the Eagle Scout award, and is worn on an equal with it. These two constitute the highest awards that a young man can attain in Boy Scout work.

Bill began work on his God and Country award on December 1, 1956, soon after receiving his Eagle Scout Badge, in Nov. 1956. For his major project Bill prepared a map of Continental Africa, locating on it all missions and schools of the Methodist Church. In connection with this, he also read "Land of Witness and Decision", which was the emphasis study of the Missions of the Methodist Church for 1957. Bill was required to memorize and recite four lengthy passages of Scripture as well as all the books of the Bible.

For his physical improvements projects, Bill built a volleyball court at the church and helped finance the Official Board to erect lights for night play. He utilized abilities learned in an earlier merit badge in rebinding a number of the hymnals used in the Church.

Beginning in Cub Scouts at the age of 8 years, Bill received the highest awards possible to attain in Cub Scouting before moving to Boy Scout work. Presently, Bill is Senior Crew Leader of Explorer Post 51.

The parents, Mr. and Mrs. Freeman Barkley, were recognized during the award ceremony with the presentation to them of lapel pins, commending them for the encouragement and assistance given their son, as he worked on the "God and Country" award.

Only two other younger men of this area have received this high Boy Scout Award. These were Howell Ray Phelps and Myrel Guy Jones.

### Eastern Star At Stinnett Install Officers For Year

Stinnett, (Special) Impressive Installation Services were held Saturday at 8:00 P. M. in the Masonic Hall for the Order of Eastern Star.

New officers for the chapter include: Worthy Matron, Geneva Worsham; Worthy Patron, Homer Creager; Associate Matron, Dolores Yount; Associate Patron, Robert J. Ownby (Spearman); secretary, Helen Creager; Treasurer, Effie Smith; Conductress, Mildred Morris; Assoc. Conductress, Forene Evans; Chaplain, Margaret Page; Marshal, Kathryn Pool; Organist, Thelma O'Bryan; Adah, Bea Reimer; Ruth, Lorene Childers; Martha, Velma Richie; Electra, Joyce Price; Warder, Pearl Kolight; and Sentinel Hugo Reimer.

Installing officers were June Christian, LaVerne Early, Eunice Bentley, Thelma Love (Borger), and Kyle Reagan.

### Social Security News

June 30, 1958 is a very important date for many disabled people. John R. Sanderson, District Manager of the Amarillo Social Security Office said today.

Many people who are disabled have already filed for disability insurance benefits under the provisions of the Social Security Act. Sanderson said. There may still be some who have not applied for benefits to which they may be entitled and if not applied for before June 30, 1958 deadline will lose them.

Workers both men and women, who have been disabled for over a year have until June 30, 1958 to file application for the disability freeze or for disability benefits if they are 50 or older. Those who have been disabled for a long period and wait until after June 30th may forfeit their rights to disability benefits at age 50, to old-age benefits, and to benefits for their survivors.

Sanderson pointed out that there is no deadline for those who file for a freeze within a year from the time they become disabled. The June 30, 1958 deadline applies only to those who have been disabled for a prolonged period and who file for a

freeze, not disability payments after age 50.

In addition to being "disabled," a worker must have worked under social security for some time in order to be eligible for disability insurance benefits or to have his social security record frozen. A worker must have social security credit for work in 5 out of 10 years before he became disabled, including a year and half out of the 3 years before the disability began.

### Spearman Teacher At NTSC

DENTON. — Charles Gill, Spearman high school teacher, is one of 17 students enrolled in a Northern Texas State College summer course for preparation of driver education instructors.

Completion of this class and an advance one in the second summer term enables the student to earn certification from the Texas Education Agency.

During the summer some 20 teachers will study in the NTSC program under \$100.00 scholarships from the allstate foundation grants totaling \$18,500.00 for such study.

Gill is working toward a master of education degree.

Joe Womble and daughter, Linda of Abilene, Texas, visited Sunday in the home of his parents, Mr. and Mrs. J. E. Womble. Linda remained for a longer stay with her grandparents.

### Forms Available For Gas Refunds

Robert Adamson, county agent, reports that form 2240, claim for refund of federal tax on gasoline used on a farm, is available in the county agents office in Spearman.

Form 2240 will be mailed directly by Internal Revenue Service to all farm and ranch operators who filed a refund claim last year. Only new users and those who failed to claim a refund last year will need to get these forms at the county agents office.

The period covered for the 1958 claims is July 1, 1957 to June 30, 1958. Amount of tax refund is 3 cents per gallon.

The claims for the past 12 months, for gasoline used in farming, should be made before September 30, 1958.

Proper records should be kept for substantiating all claims.

Ireland Island in the Bermudas has the largest floating drydock in the world.

### KINDERGARTEN NEWS

May 18th marked the closing of another year for the kindergarten class.

On September 3rd 1957 the following children were enrolled: Karen Baggerly, Janice Bevins, Wesley Brown, Janice Callaway, Thomas Collard, Edwin Cornilus, Joe Ed Crawford, Gayle Ellsworth, Robbie Jackson, Richard Larson, Becky McClellan, Denise McIntyre, Stewie Hicks, Mary Frances Nolner, Mike Pritchett, Vicki Shodeck, Dana Sheets, Mike Trueblood, Kaudy Vaughn, Terry Vernon, Barbara Winters, Wally Windom, Pamela Wysong.

We have been very happy working and playing together, coloring, folding and cutting paper, free hand drawing, finger painting and such has been fun.

We enjoyed our story hour, having dramatized some of the more familiar ones.

We have learned many action songs and plays.

Each holiday has been appropriately celebrated.

Each month we have observed our birthdays with a party, with cake, candles and ice cream. Also a ceremony crowning the honoree as kings or queens.

We strive to prepare the preschool child through training in language, numbers, color discrimination, hand crafts and physical education through games and playing. Thus they may learn lessons in patience and helpfulness, and gain a social feeling which will develop as the child grows older.

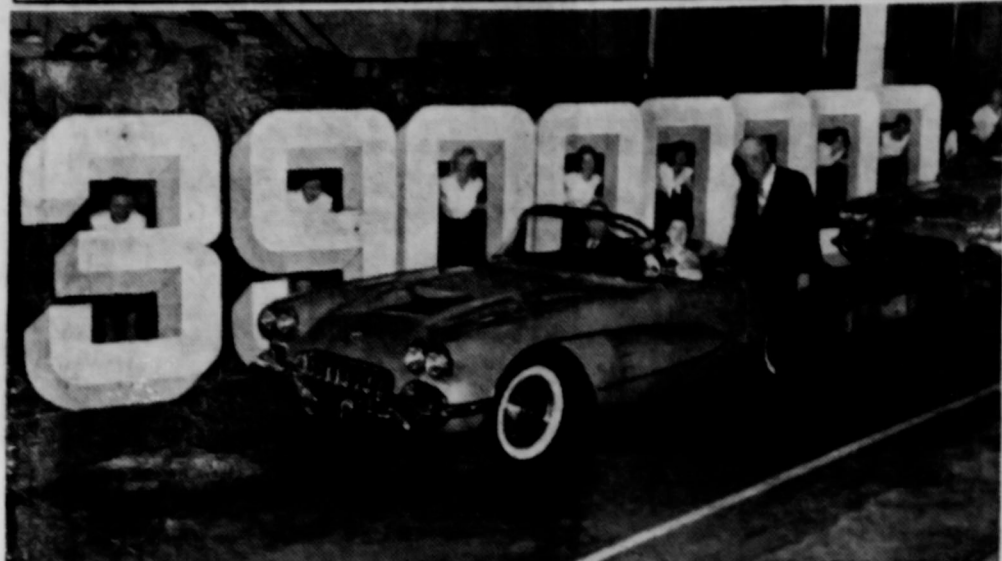
— May I take this opportunity to express my sincere appreciation and thanks to the parents for their cooperation and helpfulness, especially to the mothers for the many lovely things (too numerous to mention you did for us. You have helped to make this year's work very pleasant.

Each time we say "good bye" to a group there comes a feeling of awe and wonderment, and when the room is silent it is not the daily grind that you remember, but voices so lately saying, "will you pray for my eye to get well?" or "will my little dog go to heaven?" he got runned over—and so the memories linger, and one better understands the meaning. "Except you be come as a little child".

Sincerely,  
Mrs. J. E. Womble

A town must have a population of 12,000 before it can be a city.

### Chevrolet Builds Its 39,000,000th



Pretty Ann Garner Long, 16-year-old brunette daughter of Lieutenant Governor Edward V. Long of Missouri, gets ready to drive the 39,000,000th vehicle made by Chevrolet Motor Division off the assembly line at Chevrolet's St. Louis Corvette plant last week. With her are her father, seated at left, and Edward H. Kelley of Detroit, general manufacturing manager for Chevrolet. Eight hand majorities peek through large numerals at the gold-painted sports car.

When it comes to driving . . .

## Economy is what you save — not what you do without

That's why Ford economy is true economy! The facts are plain. With the 58 FORD:

1. You don't have to do without modern styling to own a car within your budget  
World-famed Thunderbird styling, a Ford exclusive, gives luxurious beauty to every 58 Ford. Yet Ford has the lowest-priced convertible . . . and the lowest-priced V-8 sedans and station wagons on the market today! You'll drive these beautiful cars with pride!



2. You don't have to do without big-car comfort to obtain a low price  
Every Ford car has Automatic Ride Control . . . Angle-Poised Ball-Joint Front Suspension combined with long, tailored-to-weight rear springs . . . for a real luxury ride. For still greater comfort, front seats are foam rubber padded in every Ford model at no extra cost!



3. You don't have to do without lively performance to save on gas  
The liveliest, most powerful Six you can buy is Ford's Mileage Maker Six. It's the only truly modern Six in any car today. With its exclusive short-stroke, low-friction design, this engine delivered the most actual miles per gallon of any car in Class A in the last two Mobilgas Economy Runs! Six or V-8 the savings are great in a Ford!

### 58 FORD WITH PERFORMANCE, STYLE AND COMFORT THAT MATCH ITS SAVINGS!

TWO GREAT TV SHOWS — Watch the Ford Show with Ernie Ford Thursday 8:30 P. M. Channel 4 — and Zane Grey Theatre with Dick Powell 7:30 P. M. Friday Channel 10.

### JOE TRAYLER UNIVERSAL MOTORS

Your Friendly Ford Dealers  
Spearman, Texas Gruver, Texas

FOR A BETTER BUY IN A USED CAR OR TRUCK, BE SURE TO SEE OUR ATV OR OTHER SELECTIONS

This is A DROOPIN'-TROUPER!

... It's got the high-road droops, the low-road poops! It turns vacation into vexation.

THIS IS A TRIP-ZIPPER!

... It's got high-low, hot-cold, town-country conditioning. It's as good on the long-haul as on the short-pull.

THIS IS THE MAN!

... who fills the Droopin'-Troupier with Trip-Zipper! He's the motorist's best friend because he puts playaction into vacation.

However light-hearted you are on vacation, you'll find that from Wyoming to Texas, Kansas to Arizona, one thing you can take seriously is SHAMROCK QUALITY . . .

Quality You Can Measure by your car's Performance



### HUGHES To Supreme Court

# Round up THRIFT STAMP

PANHANDLE FURNITURE MART  
CUT RATE GROCERY  
ORANGE DISC SERVICE

For aerial spraying contact  
Harvey Jr., Fireside 7-2631  
Inc., Fireside 7-2376.

Did You Ever Think?  
You don't have to be in the  
to buy from us. We've got a lot  
can use — Including a bunch  
Power 4 Cycle Wisconsin engine

### SPEARMAN

### SOUTHWELL SUPPLY

### AMERICAN STEEL BUILDING

The lowest cost grain storage  
American market up to 30' wall height  
to 150' clear span rigid frame  
custom made to fit your need.

Box 2183 Phone Drake  
Amarillo, Texas

### 10,000 Bales Of Hay Go In Smoke At Mathews

10,000 bales of good hay was destroyed in a fire at Mathews Ranch, North of Spearman Sunday. The fire was started from sparks off of a welding torch, according to authorities, and it was one of the worst hay fires in the county history. The fire burned until late in the morning Monday, and of course the Spearman fire department fought the fire until it was out. Extreme caution is urged among farmers and ranchers this time of the year to help prevent all farm fires.

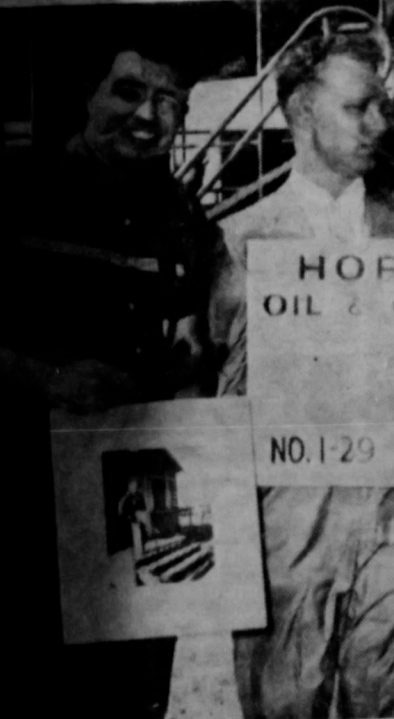
### July Be H

Accordit the Spearmence Fri a Holiday stores of l all day. So be closed day July!

CHECKING PLANS for the county courthouse at Spearman are, from J. B. Cooke, sheriff and tax collector, Lee, county Judge.



EXPERIMENTAL FEEDING — feeding out 120 choice heifers have been in the feed lot to successful. He has been feeding protein plus from four or five are included on an experiment



### SPOONEMORE

DRILLING AWARD: D. E. (5) colored picture of Rig No. 10th discovery well for Horn are, Gilbert Freeman and Horn Tracy of Spearman. Horizon Krepelka, Horizon draftsman Taylor for 12 years, drilled well is located on the Stump

The picture was made last week for the location, where Spoonemore brought in this well, which was dual producer. The two Spearman men, Tracy and Spoonemore are now full-fledged Spearman citizens. Tracy has a new beautiful brick home, located between Harry Crooks and Max Sagerly. Spoony, is more famous