

nsford C
Prin

State Superintendent Of Schools Visits Spearman Tues.

The Spearman Reporter

VOL. 31—NO. 13

SPEARMAN, HANSFORD COUNTY, TEXAS, THURSDAY, MARCH 17, 1938

6 Pages Today

DON'T NAME IT

WILL J. MILLER

Tex DeWeese, writing in his column "Tex's Topics," Pampa Daily News states "I wrote here more than a week ago, that I looked into the crystal ball and told you that a MAJOR news item of importance would rock the world before long—what do you think is going on in Austria now . . . But I'm not even close to count that—You haven't anything yet—just hold your seats and wait to see happens before March 28 . . . uncanny how Ole Tack and other newspaper men can see the future so successfully—I knew this March wind thing some time this month, just didn't have enough thought to predict it like did, and thus become famous.

As a wonder that Mrs. Roosevelt didn't get caught in just a March storm as we are this week. Might have been valuable to our county publicity we received government help and able cooperation from out this year . . . and with Roosevelt going back home tell Franklin that this country just too—too wonderful, it turn out all wrong

Since other newspaper men have been so successful in predicting future events, this writer will make this offering. The Panhandle Press Association members their annual press meet at Amarillo in April will not have usual dust storm. The speakers and members who have been ten year old gags about the storms had as well get busy think up sompin else to wise about—because by the time press meets the prospects will rosy that it will be out of wise crack about the

The world is concerned this with the rapidly developing nation in Europe. No readers of this paper have listened to radio comment they are thoroughly war talk. This writer like to give you this warning. The United States maintain a continued position. Sooner or later we will be called on to take part great struggle. Without the United States Democracy will not stand. With democracy, sooner or later the States would become the of conquest. If we must ourselves, it does seem logical we should make the fight organized democracies are sition to uphold their rights.

ports coming to Spearman today after three days of g, indicates the damage this section was not nearly as first thought. Some moved, but only small action various plots where the hit just right to start the moving. Much complaint is registered about the way highway department is leaving narrow ditches. The statement de that it contributes much blowing next to highways.

FUNERAL SERVICES HELD FOR MRS. ELLSWORTH

Funeral services for Rose D. Ellsworth, mother of W. A. Ellsworth of Spearman were held at the First Baptist church Sunday evening March 13, at 5 p. m. conducted by Rev. A. F. Loftin, interment was in the Hansford cemetery following the services.

Mrs. Ellsworth had made her home in Spearman with her son W. A., since last June, coming to Spearman from Wichita Falls, Texas her former home. The deceased had been at the Shattuck hospital for several weeks suffering from a paralytic condition of the throat, and death came as result of complications from the throat ailment.

WARNING IS ISSUED BY COUNTY AGENT

JOE HATTON

Wheat growers of Hansford county are warned that they have quite a battle before them, in protecting their young wheat from the grasshopper pests this year. Hatton stated Tuesday that with the warm weather of the past few weeks, and the top moisture the hatching season for the Hoppers might be expected at any time. Normally the pests hatch just after a warm spell along the middle of April, but Agent Hatton feels that local wheat growers should begin NOW to look for the hatching grounds along fence rows and in pastures. Hatton declares that the time to fight the hoppers is while the hatching season is on, and before the pests grow wings. Hansford county has more than 600 sacks of hopper poison mixture stored and ready for the early fight. More have been ordered out from the government, and Hansford wheat growers are urged to begin their fight early.

LITTLE MATTHEW GRANDON WAS YMCA SECRETARY

This week the editor of the Reporter ran onto a clipping from the Burton Graphic, published at Burrton, Kans., which might interest we Spearman people. The clipping was from the 20 years ago column of the paper and informed the world that Little Matthew Grandon was elected secretary of the school YMCA.

High School Talent Furnish Program At Lion Club Tuesday

J. D. Wilbanks and Martha Delon Kirk were guest talent that provided a very interesting and entertaining program at the noon day luncheon of the Lion club Tuesday. C. E. Campbell program leader introduced the youngsters. Martha Delon gave a reading "Ropes" and J. D. gave a song and guitar number.

PEKOE CAFE IN NEW QUARTERS

The Pekoe Cafe is now located in new quarters with much more room and convenience. The cafe

Important Notice To Citizens Of Spearman

The Reporter takes great pleasure in announcing the names of three well-known, successful, conservatively progressive business men of Spearman, whose names will appear on the ballot at the general city election, to be held on Tuesday, April 5, at the City Hall.

The candidates are E. C. Womble, for mayor, and J. S. Caldwell and A. F. Hardin, for commissioners.

In an interview with these men, the Reporter suggested that the public would be interested to learn now what attitude is to be taken by them, as city officials, with respect to important problems that perplex the City; in reply, a signed statement has been submitted to this paper, which we are glad to publish herewith:

Spearman Boy To Be In Championship AAU Tournament

Fighting his way up to the middleweight championship of the Plains country, Milton (Chick) Neilson, son of Mr. and Mrs. Pat Neilson of Spearman will represent Amarillo in Dallas at the A. U. tournament to be held Mar. 23, 24 and 25.

Spearman School Faculty Will Attend School Meeting Friday

CANYON, March 17 — More than 2,000 persons will come to the campus of West Texas State College Friday and Saturday for the fifth annual sessions of the Northwest Texas Conference for Education.

REPORT FROM THE SICK

Ben Beck, who remains at an Amarillo hospital is reported much improved (Wednesday). Mr. Beck suffered from pneumonia, and his condition the past week end was serious.

everything that we undertake. "As regards our unfinished WPA project, we consider it our duty to salvage the large investment already made; we are not afraid to state that we do not favor a swimming pool; our reasons are that its operation by the City would be extremely costly to the taxpayers and would be of no real public benefit; on the other hand, it would not be intelligent to wreck the project; some practical, sensible disposition must be made of this job, to convert it into an asset rather than perpetuate it as a liability. The federal government is willing to assume the completion of the work; and we will cooperate in this endeavor to the best of our ability.

We plan, in any event, to make this site into an attractive public park.

"We know that the city needs street lights. It shall be our aim to find some feasible solution for this problem, that will fit in with the City's plan of finance and growth.

"Necessary street work will be continued, to the extent that we can pay for it.

"Our waterworks, as well as other municipal departments, will be operated efficiently always.

"But the real obstruction to all civic betterment at present is our overwhelming funded debt. The pending settlement shall be carried out, in all fairness to our taxpayers as well as the bondholders; but we pledge our word that the City shall not longer be encumbered and stifled with a debt that it cannot hope to pay.

"Under all circumstances, we promise if, by the favor of your votes, we are elected to serve as the city government, to give to the City's affairs our best thought and judgment, honestly and impartially, for the common good.

"We are all friends and neighbors; we expect to treat the public as such; and when we all cooperate in good faith, Spearman, our home town, can be made the kind of town we want it to be.

WANT HOME DEMONSTRATION AGENT FOR HANSFORD COUNTY

By an overwhelming vote members of the Hansford county Agricultural Association voted to sponsor a movement to secure a Home Demonstration agent for the county. The association has appointed committees for each community, who will circulate petitions asking the commissioners' court to employ an agent.

M. R. GRANDON ENTERS COMMISSIONERS' RACE

This week the Spearman Reporter is authorized to carry the political announcement of M. R. Grandon, as a candidate to the office of Commissioner for Prec. No. 1, subject to the action of the Democratic voters at the primary election. Mr. Grandon has been a resident of Hansford county for 12 years, and during the time he has lived among Hansford people has made many friends, and has proven himself to be an upright gentleman, a hard worker, and outstanding honest citizen. Grandon has had considerable experience in road construction work, and believes his experience will be of benefit to precinct one citizens, if they see fit to elect him to the office he seeks.

Hansford County Agricultural Ass'n. Met Thursday

The regular monthly meeting of the Hansford County Agricultural Association was held at the Courthouse in Spearman, Thursday evening March 10, with a very fine attendance of farmers and others interested. Among the audience was quite a number of ladies of the County who took a very active interest in the discussion of matters coming before the Association and added no little to the success of the meeting.

After a concert played by Pat Bennett's spring band, which was very much enjoyed, and which brand of music really made a fellows tingle, John Vennemann, chairman, called the meeting to order and invited discussion of any matters of interest to the Association and to farming generally.

W. M. Deck, director in the State Agricultural Association was present and was called upon for a talk, in which he told of the activities of the State Association, and among other things urged members to take a more active interest in the circulation of the Farmer Banner, the association's publication.

Raymond Jarvis, a member and visitor from the Hutchinson county Association, was present and gave an interesting account of the activities of his association, which seems to be doing things.

Harry Shedeck suggested, and it was made a matter of record, that the Farmers Banner should give more consideration to the wheat farmer and the government program relating thereto, to be set out separate and apart from the program relating to other types of farming.

Mrs. R. C. Bennett was very much interested in the employment of a County Demonstration Agent for Hansford county, in the discussion of which she was joined by Mrs. Shedeck, Mrs. C. E. Hutchison, Mrs. Church and others, and if a like interest is manifested throughout the county something will very likely be accomplished.

DUST STORM ARRIVES TO DAMPEN SPIRITS OF WHEAT GROWERS

With just a sample of what was coming later, a dust storm Saturday was followed by more severe conditions Sunday and Monday. The coming into Hansford county of a low in May,



DR. L. A. WOOD

SENTENCE PICTURE OF EDUCATION IN TEXAS AS PRESENTED BY OUR STATE SUPERINTENDENT

Texas schools are Governed by the two branches of our Legislature, the state automatic Tax board, the state superintendent, a state educational committee, and 28,000 members of boards of trustees. Without the most perfect cooperation much waste and loss effort will come from the cumbersome supervision.

Six and a half million students are enrolled in the schools of Texas the past year. With this enrollment the state of Texas numbered 37 in the standing of the nation. More than 350,000 students of the state subject to enrollment in the schools never darkened the doors of our educational institutions, despite the compulsory school laws.

Teachers and educators have been called tax eaters and spend thrifts by some large tax payers of the state. The schools of Texas spent 67 billion dollars for education of our future Americans last year, and at the same time spent 150 million dollars for picture show amusement alone. The State of Texas spent 420 million dollars protecting civilization from the depredations of criminals. It is time we go at this problem with good logic. Criminals are made up of young people who have not received the proper training. When our educational training reaches a point of efficiency the cost of crime protection will be reduced to a minimum.

FRANK NORFLEET TO SPEAK AT PANHANDLE FRIDAY

Sponsored by the Christian church of Panhandle, Frank Norfleet, famous detective, from Hale Center, Texas will deliver a lecture at Panhandle Friday evening. Rev. Todd, former Spearman pastor is responsible for the trip to Panhandle, and since several from Spearman will attend, it is believed that arrangements can be made to bring Mr. Norfleet to Spearman at a later date.

COMMISSIONERS' COURT WILL SEEK HIGHWAY

Hansford county's Commissioners' court will leave Saturday for a business trip to Austin, where they will petition the Highway commission to designate the county road leading to Stratford as a State highway. Much encouragement has been given this court and the Shearman county court, and both courts will attend the hearing in Austin March 21st.

Mr. and Mrs. W. R. Murrell of Vernon transacted business in Gruber Monday. Mr. and Mrs. Frank Fleck and Jean were Shattuck visitors Wed. They also visited Mrs. Fleck's parents in Oklahoma.

TALK MADE AT SCHOOL AND LIONS CLUB TUESDAY

Perhaps for the first time in the history of Texas a State Superintendent of Public Instruction crossed the Canadian River and visited among the schools and citizens of the North Panhandle.

Dr. L. A. Wood, State Superintendent was a visitor in Spearman Tuesday, speaking at the high school building to students and visitors at 11:30 a. m. and speaking to business men and Lion club members at the noon luncheon of the Club Tuesday noon.

From comments made at the Lion club, following the address of the state educator, this section of the country is proud of Dr. Wood, and his splendid logic and intense interest in education. Dr. Wood brought out more vital facts in a few minutes talk than this writer has ever heard from one man in the same length of time. He pictured scholastic educational programs of the State, reviewed the progress that has been made during the past ten years and gave Lion club members some thought provoking statements relative to the records we are making, and the importance of improvement in educational lines.

C. P. ARCHER CALVES MAKE GOOD SHOWING AT STOCK SHOW

Three calves entered in the Amarillo stock show by 4-H club member C. P. Archer of Spearman made an excellent showing and brought a good price at the Sales Friday. The Hansford county champion calf entered against 200 other 4-H club boys calves won 33rd place in the judging. Young Archer sold his calves for an average of above 11c per pound, which was some 2 cents above the market price. County Agent Joe Hatton bidding in one calf for the Lion club sold the calf at a 2 cent per pound loss, rather than bring the beef back to Hansford county and incur more loss. The Spearman Lion club authorized the bidding by Hatton and will make up the slight difference.

County Committee Will Help Settle Farm Debt

County farm debt adjustment committees are urging payment of obligations to the full ability of the debtor, T. L. Taylor, rural rehabilitation supervisor for the Farm Security Administration, said today.

Individuals and all types of business firms benefit, as well as farmers, from the farm debt adjustment activities of this federal agency, it was pointed out, since adjustment does not always mean debt reduction, but may consist of an extension of time in which to pay obligations, or a new source of credit.

"Some people believe," Mr. Taylor said, "because a settlement usually results in reduction of the amount owed, that the debtor is the only one benefiting. However, the creditor receives just as much, if not more, advantages from such an arrangement, since a farmer who has been unable to pay any part of his debts is then able to pay a substantial amount of his obligations."

This service is available to any farmer who has excessive debts, even though he is not a borrower from the FSA. He merely applies to the local county FSA supervisor who contacts the FDA committee. If it is determined that the farmer has debts so large that he cannot meet them under existing circumstances, the committee attempts to work out an arrangement favorable to both debtor and creditor. The arrangement, however must be voluntary with all concerned.

COMPLETING COMPLIANCE PAPERS THIS WEEK

At request of the government wheat growers who have under the 1938 government farm program completed their dryland which will be in production this year grower designated the cultivated land. A program less than 100 acres in county.

S.H.S.

THE LYNX

S.H.S.

EDWIN REED - EDITOR-IN-CHIEF

Our Aim: FIRST "To Make Spearman High The Best" Second "To Make The Lynx The Link"

MISS SYBIL GRAHAM - SPON

State Superintendent Speaks In Chapel

Tuesday morning the students heard Dr. L. A. Wood, state superintendent of schools, speak. He spent the day visiting in school. Everyone enjoyed his talk very much. With him was Mr. Speer, deputy superintendent whom we all know and like. Also present was Judge Barkley and Supt. Wilson of Gruver. We hope he will visit us again.

SENIORS

CHESTER L. JONES

Chester L. Jones was born Oct. 17, 1920 at Oklahoma City, Okla., he has attended Spearman schools all of his young life. He wants to attend college at Texas in Austin and his major is to be engineering. His hobby is aviation. Chester is 5 feet 11 inches, has blonde hair and blue eyes and is he proud possessor of personality plus. His favorite sport is football, his favorite study is science, his favorite cinema star is Anita Louise, and his favorite radio program is the Luck Strike Hit Parade. Chester has belonged to the 4-H and was also a boy scout. If he had the privilege of reorganizing the school system, he would turn the whole thing over to the students to manage as best they could. What an education our younger generation wouldn't get then.

VIRGINIA JUNE PETERS

June was born March 3, 1921 at Tonganoxie, Kans., (think twice before you try to pronounce it). She attended Tonganoxie grade school before coming to Spearman in her freshman year. She wants to attend College at Kansas University and to major in History. Her hobby is collecting old coins. June is 5 feet 6 inches tall and has blue eyes and black hair. Her preference in sports is Football. Her favorite cinema star is Janet Gaynor, her favorite study is biology and her favorite radio program is The Sons of the West. Her pet aversion is exam questions of any sort, kind or description. If she had the privilege of reorganizing the school system, she would install more men teachers. Maybe it is the gypsy in her.

Two Spearman Hi

Students Exhibit Calves

—Nolan Holt
C. P. Archer and Nolan Holt exhibited calves at the Amarillo Fat Stock Show last week. They did not win any prize money but their calves were good enough to be in the individual sale. The calves sold for an average of 11 and 1-4 cents per pound. C. P. says it is a great life if you don't weaken but from his looks he was beginning to weaken. The boys enjoyed themselves to the fullest extent. They want to express their appreciation to all those who supported them and helped make their 4-H club a success. Each boy will make a little money and will have attained much valuable experience.

Band Appreciates New Band Uniforms

The Spearman high band have been enjoying the Military Uniforms bought for them by business men of Spearman and vicinity. The members of this musical organization wish to express their sincere appreciation to the school board and to each firm and each individual listed below for purchasing the uniforms. The uniforms arrived about 6 o'clock evening and distributed them to the use in the Mother held in Amarillo. As "Boy, aren't fits just right. How do you my pants are from major. were the Spearman Reporter, Barkley and Gardin Co., L. Porter, rows, Inc.

A Plea For Peace!

—Martha Delon Kirk
Have you a son? Can you visualize him rising from an uncomfortable pallet on the damp floor of a trench and looking out into a dismal, sunless sky while making preparations for meeting the enemy. Can you visualize him carefully cleaning his gun and marching out on the battlefield, the human slaughter pen, perhaps to a rendezvous with death. If every parent in America would stop to think over these things there would be less patriotic propaganda...

paganda to the theme of "America I Raised My Son for Thee." Johnny was a fine young man who loved his wife and wanted to live. He was forced to enlist in a war which he did not want to fight in, the war to end all wars. Johnny was quickly sent to the front ranks, because America had to furnish her share of cannon fodder. When the charge began Johnny saw a man fall with a bullet from his gun through the heart. "He's dead."

"Yes," his buddy answered. For what more was there to say—"But I didn't mean to kill him." The mocking echoes of the guns answered, "No." The next instant a shell struck Johnny in the pit of the stomach, and he lay writhing in agony and pain; dying a horrible death on the lonely battlefield. Do you think Johnny wanted to kill his fellow being. No. Did he want to die like a dog in a pool of his own blood. No—Johnny represented the millions of peace advocates among American youth. His young life was sacrificed on the altar of peace to make the world safe for Democracy, and from the minute he gasped his last painful breath until that very moment the world has been preparing for bigger and better wars. To the makers of war and breakers of men, American youth gives this answer: "We renounce war because of the degradation and general chaos that invariably follows war and because of inhuman grief that it directly and indirectly causes."

TENNIS TEAM MAKES GOOD SHOWING

The tennis team had its first match here Friday afternoon with Perryton. In the first match our boys doubles, Earnest Wilmeth and L. M. Womble, defeated Perryton 6-1, Wilmeth and Womble later played Mr. Haggard, Perryton tennis coach and Mr. Addison Cutter and lost to the more experienced players 2-6, 7-9. In the second doubles match, Perryton won 4-6, 6-3, 6-4. Our girls doubles made a creditable showing against a boys' doubles team but lost 3-6.

In singles Neilson took his match 6-4 and Lyon downed his man 6-1. Porter won her match 6-3 and Baley won hers 7-5. Womble and Wilmeth think they are pretty fair and they want to extend a challenge to any doubles team in Spearman or surrounding community. The team is looking forward to their return match with Perryton.

STUDENTS TO GET HOLIDAY

There will be no school Friday March 18. The teachers are going to be in Canyon attending a teachers meeting.

DO YOU KNOW THAT

—J. D. Wilbanks
Women do about 9-10 of the retail buying in the United States. It is said that fresh tomato juice loses at least 40 percent of its vitamin content in three or four days, even when the jar is covered. In some states the law requires that hotel sheets measure 108 inches in length. Not a passenger or employee in a Pullman car has been killed in the last 3 years, although approximately 50,000,000 passengers have been transported during that period. One explanation for the term "pin money" was the old custom in England of selling pins only on January 1 and 2nd, an event for which the ladies saved their money. Cider was so popular in the early 1700's in New England that it was freely used by children even at breakfast.

PAPER WADS

—by Edwin Reed
To my dear public: This column is a little different from my usual master-pieces; in other words, here will be no editorial this week if I can help it. Nothing has happened this week that you haven't already heard about; so I won't mention anything about the track season starting.

That reminds me: I am coming out for track and am I fast? Listen, when I was playing baseball for the Giants, everytime I hit one of my many homers, I reached first before the spectators could hear the crack of the bat. Then when I rounded second the second baseman usually made me sore so I slapped the third baseman on the catcher's mouth. This isn't worth saying about, but I will just glance over it. According to the calendar there are only about 9 weeks of school left; so, the seniors has best start taking those long last glances at the old SHS campus.

I could tell you all about what Nolan Holt, C. P. Archer, and the rest of the boys did at Amarillo last week, but there isn't enough really interesting material there to make a good story so I just won't mention it. I could tell my dear public about the dust we have been putting up with and the rain that we have been enjoying this year, but I guess she knows more about it than I.

I believe I could tell you about a few social events that have been held lately, such as the little luncheon that was held in the press room, but I dare not. That, my dear public is all for this week. I can think of nothing else to tell you in order to enlighten you about the doings and undoings that go on around and in Spearman High school so before I quit, I'd just as well tell you: this is the end.

SCRAPS

GREAT THOUGHTS
The tissue of the life to be, We weave with colors all our own. And in the field of destiny We reap as we have sown. —Raphael.

Freshman Honor Roll

- A Average Emmett Sanders. B Average Chalmers Porter, June Reed, Anta Clea Reed, Ola Jean Reed, Francis Sheets, Merolyn Snyder, Georgia Thompson, Della Uptergrove. W. B. Johnson Grain Co., J. W. Davis, Smith Variety, G. T. Higgins, Mrs. Bessie Tuttle, W. R. Finley, Fred Ratton, New System Grocery, McClellan Chevrolet, Inc., Homer Allen, A. L. Jackson, George Buzzard, C. P. Jackson, W. M. Glover, Perry Hawkins, Garrett Allen, May Jones, Sid Clark, D. B. Keim, J. O. Klutts, E. C. Greene, Bill Hutto, L. P. Baggerly, Marvin Chambers, Tom and Frank Allen, Walter Good, Delon Kirk, R. E. Lee, G. A. Davis, J. R. Collard, W. T. Hays, Joe Hatton, Home Bakery, Dick Kiker, C. E. Campbell, J. E. Gunn, Alvino Richardson, J. E. Womble, Albert Richards, Dr. Gibner, H. E. Campbell, W. H. Neilson, Fred Hoskins, J. G. Dougherty, Opal Childs. Jimmy Cooke, Ben Beck, Lest Sanders, N. Jones

BANDS PARADE IN NEW UNIFORMS

The citizens of Spearman were treated Friday when the Bands (namely Senior Band, Junior Band, and Rhythm Band) paraded for them. The first of the parade was led by the junior band and then came the Rhythm Band. The junior band has shown a lot of progress since the first of school. The senior band came next in the new suits and were led by their drum majors. They marched to the Court house where some pictures were taken by the Perry studio. The staff wishes to take this opportunity to express our appreciation for the good work that the bands are accomplishing.

Girls Play Tennis Matches Friday

—Dekota Becker
Friday evening after school we were visited by several boys' and men's tennis teams from Perryton. There being no girls, Mr. Gunn matched a few games for the girls' teams with the boys. Elsie Ruth Porter, senior singles, played 12 games and won 7. Estelle Bailey, Junior singles, played 11 games and won 7. Maxine Allen and Dekota Becker, Senior doubles, played 7 games and won three. The teams of girls did very well but they hope to do much better if they can manage some pretty days so that they can all practice.

Students See Big Mother in law Parade

—Chester Jones
As you know the Band and 4-H club of Spearman attended the Mother-in-law day at Amarillo. Personally, I enjoyed seeing the First Lady of the land and the parade which was one of the best that I have ever seen. Everyone was proud of the way that the Band represented its school. We are sure that our school has talent. And we like to have the privilege to show it. I heard much talk about the big day; so, I will let you in on some of the things they said.

Mr. Ratton: "Some of the things that impressed me most were the large number of cars in the ditch between Panhandle and Amarillo, the large number of bands that were represented in the parade. And the large number of Mother's in law riding together on the float without pulling hair." Mr. Gunn: "It was an event that progressive people could not well afford to miss." Hazel Jenkins: "It may take me a week to recuperate, but I shall never regret seeing the First Lady and I had a grand time!" Ruby Ruth Kelly: "The First Lady impressed me as being a regular fellow, and I don't think that her position puffed her up any."

Rosa Lee Clement: "I thought it a great privilege to see the First Lady as well as the 500 mother in laws riding in the float. Each day should be practice day in the art of living. The best way to kill time is to work it to death. I ask not money, but power to take and use the things I have a right; Not years, but wisdom that shall make My life a profit and delight. —Enaelle Cary.

If you would climb to heights sublime, Give my advice a trial: Don't drift and shirk, "Butt in" and work and smile, smile, smile. 'Tis not in titles nor in rank 'Tis not in wealth like London' bank That makes us truly blessed If happiness has not her seat. And center in the breast, We may be wise or rich or great But never can be blessed. —Longfellow.

Something cheerful to think about during a dust storm

LYNX GROWLS

Did you see Spearman bands parading Friday? If you didn't, you really missed a thrill. Colleen and Totie almost visited Mrs. Roosevelt during the Mother-in-law day. Well, well, Alice, when did you and Dekota and Ida Mae take to hitch hiking. We are wondering just why Mac and Edward were late to the bus Wednesday. At last the Juniors and Seniors have gotten together haven't you Hazel and Everette. Jim just what were you doing in town Sunday.

Add confusion: Howard, Edward, Mac Kyble, Kelly and yours truly trying to drown out Verna Gail, Doris Jean, Virginia White and company in "99 bottles hung on the wall." Don't tell anyone but I think Harlan enjoyed the stock show. Perrin and Bob lost their doubles match and won their singles—I can't figure it out. Vera Beth reports a nice visit with our ex-class mate, Billye Hitchcock. "Life is a joke. All things show it. They always told me so Now I know it." More truth than poetry.

When a fellow gets the gloom Feeling bad, all tucked out, Then the trouble starts a coming But that's no time to pout Chast away the gloom— Force a smile and say: I'm not giving over Now or any other day." —Copied.

Boy's faults are many, Girl's have only two— Every single thing they say, And everything they do. When a fellow gets the gloom Feeling bad, all tucked out, Then the trouble starts a coming But that's no time to pout Chast away the gloom— Force a smile and say: I'm not giving over Now or any other day." —Copied.

THE ENGLISH LOVE LESSON
You see a beautiful walking down the street. She is singular and you are nominative. You walk across to her and she is verbal. So you become dative—if she isn't objective. You become plural and walk along together. Her mother is accusative and you become imperative. You talk of the future and she changes to objective. You become masculine and kiss her. Her father becomes present. And you are a past participle.

Until next time let me remind you that: A stitch in time will save you a lot of embarrassment. BLODGETT NEWS
Mr. and Mrs. E. S. F. Brainard spent the past week at an Antonio at the Cattlemen's Convention returning Sunday. Mr. and Mrs. O. D. Gowen and baby were Spearman shoppers Monday evening. R. D. Gowen spent Monday

Mr. and Mrs. F. J. Sirm shopping in Spearman Saturday. Mr. Ralph Blodgett and Mrs. Mearl Beck were trading in Spearman Saturday. Mrs. E. S. F. Brainard a Spearman shopper Monday. Mrs. Ralph and J. M. Blodgett were transacting business in ryton Tuesday.

FUN AND FROLIC
—Perren Lyon
The following prayer is dedicated to the enterprising seniors who haven't caught up on their sleep. "Now I sit me down in class to sleep I pray my classmates my notes to keep If I should snore before I wake Do noko"

JUST HUMANS By GENE CARR



"Dere Goes a Fallin' Star, Sadie!" "Dey Got T'fall Some Time Dey Can't Hang Up Dere Fer Ever."

For everyone, and so The leaves of her engagement book, Were always white as snow. They sat on the porch at midnight Their lips were closely pressed The father gave a signal The bulldog did the rest. —copied.

There was an old man from Calcutta, Who covered his tonsils with buttah Thus converting his snore From a thunderous roar To a soft oleaginous muttah.

A FUTURE IN STORE
Hush little handkerchief Don't you cry, You'll be a bathing suit By and by. —Spotlight.

Boy's faults are many, Girl's have only two— Every single thing they say, And everything they do.

When a fellow gets the gloom Feeling bad, all tucked out, Then the trouble starts a coming But that's no time to pout Chast away the gloom— Force a smile and say: I'm not giving over Now or any other day." —Copied.

THE ENGLISH LOVE LESSON
You see a beautiful walking down the street. She is singular and you are nominative. You walk across to her and she is verbal. So you become dative—if she isn't objective. You become plural and walk along together. Her mother is accusative and you become imperative. You talk of the future and she changes to objective. You become masculine and kiss her. Her father becomes present. And you are a past participle.

Until next time let me remind you that: A stitch in time will save you a lot of embarrassment. BLODGETT NEWS
Mr. and Mrs. E. S. F. Brainard spent the past week at an Antonio at the Cattlemen's Convention returning Sunday. Mr. and Mrs. O. D. Gowen and baby were Spearman shoppers Monday evening. R. D. Gowen spent Monday

Mr. and Mrs. F. J. Sirm shopping in Spearman Saturday. Mr. Ralph Blodgett and Mrs. Mearl Beck were trading in Spearman Saturday. Mrs. E. S. F. Brainard a Spearman shopper Monday. Mrs. Ralph and J. M. Blodgett were transacting business in ryton Tuesday.

16 Boys Report For Track Practice

In preparation for the County Track meet which is to be held at Spearman, March 31 and April 1, 16 boys are training for the meet. The dashes will be run by Jim Winters, Vance Priddy and The field events will be handled by Ledru Jacobs, J. R. Sanders, Billy Brand, Douglas, Floyd Becker.

THE LYNX

Published exclusively a week in the Spearman Reporter by students of Spearman High School under the supervision of the faculty.

Member of Interscholastic League Press Conference And Panhandle High School Press Association

Edwin Reed Editor in Chief Polly Smith Asst Editor Miss Sybil Graham Sponsor Perren Lyon Exchange Martha Delon Kirk The Lynx Elizabeth Miller Scray

ATHLETICS Boys Sports REPORTERS

Elsie Ruth Porter Sent Vera Beth Hoskins Jar Betty Morton S Mary Horn I Vera Beth Hoskins H Marguerite Stephen H Ruby Ruth Kelly H

Typists Elizabeth Ann Francis Hoskins Read ar

STUDENTS HEAR VARIED PROGRAM

—Verna Gail Allen
Friday morning the students gathered in the auditorium for a varied and entertaining program. The first number was solo by Elsie Porter, who sang "The Rhythm Band" of three numbers. The Rhythm Band wore their new caps and blue and white and looked nice. The sub-junior department Barbara Jean Dally, Betty Hill, Billy Joe Thorne and Rep Schell, then gave their rendition. Next the story-tellers, Retta Howard, and Lois Buzzard. Chapel was then dismissed at the 11:15 classes.

evening with his aunt reared Blodgett. Mrs. J. M. Blodgett being Monday from a weeks with her daughter and family in the heart. While there the fathering Mother in law is m

Mr. and Mrs. F. J. Sirm shopping in Spearman Saturday. Mr. Ralph Blodgett and Mrs. Mearl Beck were trading in Spearman Saturday. Mrs. E. S. F. Brainard a Spearman shopper Monday. Mrs. Ralph and J. M. Blodgett were transacting business in ryton Tuesday.

Professional Directory

C. H. DUNLAP

Registered Optometrist
Have Your Eyes Tested
106 E. 5th St. Borger, Tex.

J. E. GOWER, M. D.

Room 205
McLain Building
Phone res. 98 Office 33



DR. J. P. POWELL
Eye, Ear, Nose, Throat
SPECIALIST

Glasses fitted, Tonsils and Adenoids removed.
In Spearman Wednesday
MARCH 30
Office Dr. J. E. Gower

SPEARMAN-AMARILLO

FRED M. MIZAR
Truck Line

Spearman Phone 112
Amarillo Phone 5351

R. F. J. DAILY

DENTIST
X-RAY
McLain Building Ph. 156
SPEARMAN, TEXAS

Campbell Tailor Shop

Odorless Dry Cleaning—
Suits Made to Measure
\$20.00 and up.

Phone 113

GLASS

For Your House
or Car
All Kinds—All Sizes
DALEY GLASS SHOP
Perryton, Texas

Dine Here!

Drop in and enjoy any of the tasty dinners listed on our menu. Every dish is prepared especially for discriminating palates and priced so that the "bad-news" won't spoil your dinner! Complete change of menu every day!

BURL'S CAFE

Frank E. Buckingham

Income Tax Specialist
Enrolled to practice before U. S. Treasury Department

Estate Tax — Inheritance Tax
Social Security - Unemployment Reports

Room 421 Amarillo Building
Amarillo, Texas

HANSFORD LODGE NO. 1040

Regular Communications
1 Monday of each month
at 7:30

CITATION BY PUBLICATION

The State of Texas—
To the Sheriff or any Constable of Hansford County—
Greetings: You are hereby commanded to summon G. F. Border, Mary G. McGregor, a Feme sole, individually and as executrix of the estate of F. H. McGregor, deceased, Frank Harrison McGregor, a minor, Robert Aubrey McGregor, a minor, N. F. Holt, Maude S. Holt, George C. White, and the unknown heirs of F. H. McGregor, deceased, if living, and if deceased, their unknown heirs and legal representatives, by making publication of this Citation once in each week for four successive weeks previous to the return day hereof, in some newspaper published in your County, if there be a newspaper published therein, but if not, then in any newspaper published in the 84th Judicial District; but if there be no newspaper published in said Judicial District, then a newspaper published in the nearest District to said 84th Judicial District, to appear at the next regular term of the District Court of Hansford County, to be holden at the Court House thereof, in Spearman, Texas, on the first Monday in April, A. D. 1938, the same being the 4th day of April, A. D. 1938, and there to answer a petition filed in said Court on the 1st day of March, A. D. 1938 in a suit, numbered on the docket of said Court No. 318, wherein the Kansas City Life Insurance Company, a corporation, is Plaintiff, and G. F. Border, Mary G. McGregor, a Feme sole, individually and as executrix of the estate of F. H. McGregor, deceased, Frank Harrison McGregor, a minor, Robert Aubrey McGregor, a minor, N. F. Holt, Maude S. Holt, George C. White, and the unknown heirs and legal representatives, and Hamon-Whittington Mortgage Company, a corporation, are Defendants, and said petition alleging as follows: Plaintiff alleges the execution and delivery of 9 certain promissory notes for \$400.00 each and one for \$6,000.00 executed and delivered by defendants G. F. Border and Mary G. McGregor, and her husband F. H. McGregor, now deceased, payable to the order of plaintiff, dated May 7th, 1931, and maturing respectively on the 1st day of August in the years 1932 to 1941 inclusive, said notes bearing interest from August 1st 1931 until maturity, at the rate of 6 percent per annum, payable Aug. 1st annually principal and interest not paid when due to bear 10 percent interest, said notes providing that if default be made in the payment of any interest, the lawful owner may declare the principal and interest of the entire series due and pay-

able, and may proceed to collect same, and providing for attorney's fees of 10 percent additional if placed in the hands of an attorney for collection or to collect and to establish by proceedings in any court. That the notes maturing respectively on Aug. 1st 1935, 1936 1937, are past due and unpaid, except the sum of \$62.65, and plaintiff declared all of said notes due after demand, and has exercised its option to mature the entire indebtedness; that to secure the payment of said notes, and simultaneously with the execution thereof and as part of the same transaction, said G. F. Border, F. H. McGregor, Mary G. McGregor, executed and delivered to plaintiff their deed of trust upon Survey No. Seven (7) Block No. 2, Certificate No. 20180, S. A. and M. G. Railway Company, Original Grantee, Patent No. 412, Vol. 7, containing Six Hundred Forty (640) acres of land in Hansford County, Texas, conveying said land to L. R. Williams as Trustee to secure plaintiff in the payment of said notes according to the face, tenor, effect and reading of said notes; that said deed of trust was filed for record in the Deed of Trust Records in Hansford County, Texas, on May 16, 1931, and recorded in Vol. 16 page 290 et seq., and is a valid, subsisting and unsatisfied lien on said property to secure the payment of said notes. That notes are placed in hands of its attorneys for collection after maturity, that said F. H. McGregor died about Jan. 5, 1935 testate, and that his will was duly admitted to probate in the County Court of Greer, County, Oklahoma, on the 7th day of February 1935, and under the terms of said will, his surviving wife, Mary G. McGregor was appointed executrix of his estate without bond, and that she has duly qualified as such executrix and is still administering said estate. That under the terms of said will, said testator devised and bequeathed all his property to said Mary G. McGregor, who is the owner of his interest in the above described land. That F. H. McGregor left surviving him as his heirs and only heirs at law, his wife Mary G. McGregor, and two minor sons, Frank Harrison McGregor, aged 15 years and Robert Aubrey McGregor aged 11 years, and that all of them and Mary G. McGregor in her capacity as executrix and defendants N. F. Holt, Maude S. Holt, George C. White, Hamon-Whittington Mortgage Company, and the unknown heirs of F. H. McGregor, deceased, if they be living, and if deceased, their unknown heirs and legal representatives are each claiming some interest in said land, but whatever interest same may be it is subsequent to and inferior to the rights of plaintiff therein. Plaintiff asks that the defendants and each of them be cited to appear and answer herein and that upon a final hearing it have judgment against the defendants G. F. Border and Mary G. McGregor, individually and as executrix of the estate of F. H. McGregor, deceased, for its debt both principal, interest and attorneys fees and for costs of suit, and that plaintiff's deed of trust lien upon the above described tract of land as it existed on May 7th 1931 be n. all things foreclosed as against all of the defendants and that plaintiff have its order of sale, and that said property be sold and the proceeds applied to the payment of costs

of sale, court costs, and to plaintiffs judgment as provided by law and also asks for general and special, legal and equitable relief.

Herein Fail not but have before said Court, at its aforesaid regular term, this writ with your return thereon, showing how you have executed the same.

Given under my hand and the seal of said Court, at office in Spearman, Texas, On this the 1st day of March, A. D. 1938, Fred J. Hoskins, Clerk, District Court Hansford Co., Texas, by F. A. Shapley, Jr., Deputy. (seal)

CITATION BY PUBLICATION
The State of Texas—
To the Sheriff or any Constable of Hansford County—
Greetings: You are hereby commanded to summon Everett J. Overton by making publication of this Citation once in each week for four successive weeks previous to the return day hereof, in some newspaper published in your County, if there be a newspaper published therein, but if not, then in any newspaper published in the 84th Judicial District; but if there be no newspaper published in said Judicial District, then in a newspaper published in the nearest District to said 84th Judicial District, to appear at the next regular term of the District Court of Hansford County, to be holden at the Court House thereof, in Spearman, Texas, on the 1st Monday in April, A. D. 1938, the same being the 4th day of April, A. D. 1938, and there to answer a petition filed in said Court on the 2nd day of March, A. D. 1938 in a suit numbered on the docket of said Court No. 319, wherein Rhoda Tower Overton is Plaintiff, and Everett J. Overton is Defendant, and said petition alleging to be an action for divorce, wherein the Plaintiff alleges desertion, and non-support for the two minor children, and wherein Plaintiff is suing for \$20.00 monthly allowance for the support of said minor children.

Herein Fail not but have before said Court at its aforesaid regular term, this writ with your return thereon, showing how you have executed the same.

Given under my hand and the seal of said Court, at office in Spearman, Texas On this the 2nd day of March A. D. 1938.
F. J. Hoskins, Clerk District Court, Hansford Co., Texas. (seal)

FAST RELIEF FOR DISTRESSING SYMPTOMS OF COLDS
12 TABLETS 15c
2 FULL DOZEN 25c
INSIST ON GENUINE BAYER ASPIRIN

Envelopes to Match
HAMMERMILL BOND or Letterheads
ORDER FROM US REPORTER

NERVOUS?
Do you feel so nervous that you want to scream? Are there times when you are cross and irritable—times when you scold those who are dearest to you?
If your nerves are on edge, try that world-famous LYDIA E. PINKHAM'S VEGETABLE COMPOUND. It will help Nature calm your quivering nerves and give you the strength and energy to face life with a smile.
For three generations one woman has told another how to go "Smiling Through" with Lydia E. Pinkham's Vegetable Compound. It helps Nature tone up the system, thus lessening the discomforts from the functional disorders which women must endure in the three ordeals of life: 1. Turning from girlhood to womanhood. 2. Preparing for motherhood. 3. Approaching "middle age."
Don't be a three-quarter wife, take LYDIA E. PINKHAM'S VEGETABLE COMPOUND and Go "Smiling Through" with this reliable, time-tested medicine made especially for women from wholesome herbs and roots. More than a million grateful women have written to me telling me what they had to say.

Ride The Bus
For —SAFETY— CONVENIENCE—ECONOMY
2—DAILY SCHEDULES—2
—Direct connections for all America.

Panhandle Trailways

THE SPEARMAN REPORTER

CITATION BY PUBLICATION
The State of Texas—
To the Sheriff or any Constable of Hansford County—
Greetings: You are hereby commanded to summon Everett J. Overton by making publication of this Citation once in each week for four successive weeks previous to the return day hereof, in some newspaper published in your County, if there be a newspaper published therein, but if not, then in any newspaper published in the 84th Judicial District; but if there be no newspaper published in said Judicial District, then in a newspaper published in the nearest District to said 84th Judicial District, to appear at the next regular term of the District Court of Hansford County, to be holden at the Court House thereof, in Spearman, Texas, on the 1st Monday in April, A. D. 1938, the same being the 4th day of April, A. D. 1938, and there to answer a petition filed in said Court on the 2nd day of March, A. D. 1938 in a suit numbered on the docket of said Court No. 319, wherein Rhoda Tower Overton is Plaintiff, and Everett J. Overton is Defendant, and said petition alleging to be an action for divorce, wherein the Plaintiff alleges desertion, and non-support for the two minor children, and wherein Plaintiff is suing for \$20.00 monthly allowance for the support of said minor children.

Herein Fail not but have before said Court at its aforesaid regular term, this writ with your return thereon, showing how you have executed the same.

Given under my hand and the seal of said Court, at office in Spearman, Texas On this the 2nd day of March A. D. 1938.
F. J. Hoskins, Clerk District Court, Hansford Co., Texas. (seal)

FAST RELIEF FOR DISTRESSING SYMPTOMS OF COLDS
12 TABLETS 15c
2 FULL DOZEN 25c
INSIST ON GENUINE BAYER ASPIRIN

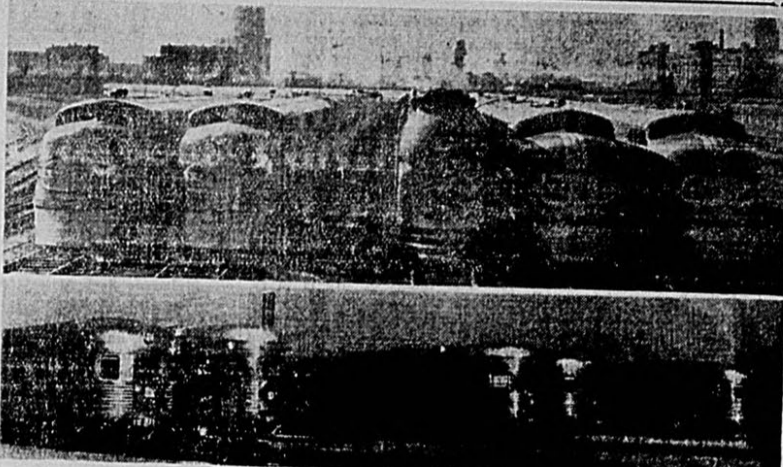
Envelopes to Match
HAMMERMILL BOND or Letterheads
ORDER FROM US REPORTER

NERVOUS?
Do you feel so nervous that you want to scream? Are there times when you are cross and irritable—times when you scold those who are dearest to you?
If your nerves are on edge, try that world-famous LYDIA E. PINKHAM'S VEGETABLE COMPOUND. It will help Nature calm your quivering nerves and give you the strength and energy to face life with a smile.
For three generations one woman has told another how to go "Smiling Through" with Lydia E. Pinkham's Vegetable Compound. It helps Nature tone up the system, thus lessening the discomforts from the functional disorders which women must endure in the three ordeals of life: 1. Turning from girlhood to womanhood. 2. Preparing for motherhood. 3. Approaching "middle age."
Don't be a three-quarter wife, take LYDIA E. PINKHAM'S VEGETABLE COMPOUND and Go "Smiling Through" with this reliable, time-tested medicine made especially for women from wholesome herbs and roots. More than a million grateful women have written to me telling me what they had to say.

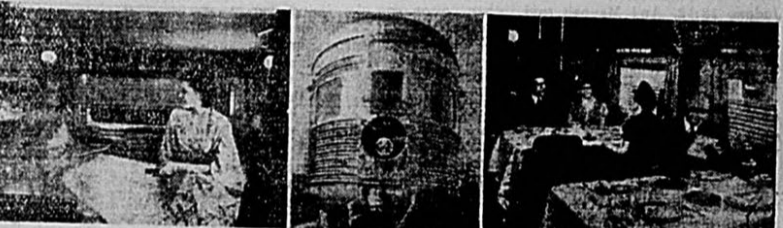
Ride The Bus
For —SAFETY— CONVENIENCE—ECONOMY
2—DAILY SCHEDULES—2
—Direct connections for all America.

Panhandle Trailways

New Streamliners for Western Travel



Five of the 13 racing new trains, streamlined in stainless steel, the Santa Fe Railroad is placing in service for California and Southwestern travel. The Super Chief, El Capitan, Chicagoan, Kansas Cityan, and San Diegan, flag bearers of this new fleet of trains, will be drawn by Diesel-electric locomotives; the famous Chief by giant Pacific type steam locomotives.



Section of new sleeping car on the Chief and Super Chief. Center: View of observation car on new streamlined Super Chief. Right: Corner of one of the new Fred Harvey diners. The cocktail-lounge, diner and observation car of the Super Chief are paneled in rare woods and decorated in the Navajo Indian motif.



The new El Capitan, 3 3/4 hour flyer between Chicago and Los Angeles, is unique because it is the only transcontinental train in America reserved exclusively for chair car passengers. It is equipped with dandy cushioned reclining chairs, broad windows, large dressing rooms and a lunch-counter diner.

A LOT OF CAR
for a VERY LOW PRICE

HEAT OR
out of
and for
any

The Ford effort to make your dollars buy a constantly better car is well illustrated in the Standard Ford V-8. It has all the basic Ford advantages. It is built on the same chassis as the De Luxe Ford V-8. It gives you a choice of smooth 85-horsepower or 60-horsepower V-8 engines. But it sells at low prices, and includes bumpers, spare tire, cigar lighter, twin horns and other equipment that make it a still bigger bargain. With the thrifty 60-horsepower engine, the Standard Ford V-8 is priced especially low and gives the greatest gas mileage in Ford history. Hundreds of owners report averages of 22 to 27 miles a gallon—or even more. Your pocketbook will approve of Standard Ford in every way. And you will when you drive it!

STANDARD FORD

International Sunday School Lesson

By Dr. J. E. Nunn

General Topic: Keeping The Body Strong (A personal aspect of temperance).

Scripture Lesson: Mark 6:53-56; Judge 13:12-14; 1 Cor. 3:16, 17; Rom. 12:1, 2.

Mark 6:53. And when they had crossed over, they came to the land unto Gennesaret, and moored to the shore.

54. And when they were come out of the boat, straightway the people knew him.

55. And ran round about that whole region, and began to carry about on their beds those that were sick, where they heard he was.

56. And wheresoever he entered into villages, or into cities, or into the country, they laid the sick in the marketplaces, and besought him that they might touch if it were but the border of his garment; and as many as touched him were made whole.

Judges 13:12. And Manoah said, Now let thy words come to pass: what shall be the ordering of the child, and how shall we do unto him?

13. And the angel of Jehovah said unto Manoah, Of all that I said unto the woman let her beware.

14. She may not eat of any thing that cometh of the vine, neither let her drink wine or strong drink, nor eat any unclean thing: all that I commanded her let her observe.

1 Cor. 3:16. Know ye not that ye are a temple of God, and that the Spirit of God dwelleth in you?

17. If any man destroyeth the temple of God, him shall God destroy: for the temple of God is holy, and such are ye.

Romans 12:1. I beseech you therefore, brethren, by the mercies of God, to present your bodies a living sacrifice, holy, acceptable to God, which is your spiritual service.

2. And be not fashioned according to this world: but be ye transformed by the renewing of your mind, that ye may prove what is the good and acceptable and perfect will of God.

Text: Now Therefore, I pray Thee, And Drink Wine nor Strong Drink, and

Eat not any Unclean thing, Judge 13:4.

Introduction
It is well known that intemperance in work, in eating, as in many other commendable phases of life, affects life adversely. We ought to use our intelligence in the use of the good things of life. The only attitude an intelligent being can assume toward the bad things of life is to refuse to use them, expose the evil land dangers in them, or destroy them if, and when, it is possible to do so. It is absurd to talk about being temperate in taking poison into one's system. Modern science has found beyond question that alcohol, once supposed to be the 'water of life' formerly thought to be food, stimulant and medicine, is in reality the deadliest of all poisons, poisoning not only the organs and tissues of the individual who drinks and shortening his life, but, as no other poison can do, fixing degeneracy in the sacred germ plasma and blighting offspring unborn, until that degeneracy, under nature's wrath, snaps the chain of life that has come down through the ages."

Jesus Heals The Bodies of the Sick, Mark 6:53-56.

The events recorded in this concluding paragraph of the 6th chapter of Mark's Gospel are also recorded in Matt. 14:34-36. "And when they had crossed over," v. 53. The crossing here is from the eastern shore of the Sea of Galilee to which Jesus had retired with his disciples, and where, when a great multitude followed, he had fed five thousand men besides women and children. It was in returning from the far side of the Sea of Galilee that Christ and his disciples were overtaken by a storm which is described in the preceding seven verses. "They came to land unto Gennesaret." This is a semi-elliptical plain on the western shore of the Sea of Galilee, about three miles long and something more than a mile wide.

And when they were come out of the boat, straightway the people knew him. v. 54. "Well, Jesus is here too. But do we recognize him? When you set out to church is your heart skipping excitedly

like a happy child, and sniveling to itself for your gladness 'I am going to see Jesus Christ! I always do! He never fails me, but is always there! And today again he will lay his hand in healing on me, and will give me some great word of blessed warning, it may be or of astonishing hope: will surely pause beside me and will say to me, "What wilt thou I should do for you?"—J. Gossip.

The Multitude Seek Material Blessings, Not Spiritual vs. 55-56.

"And ran round about that whole region, and began to carry about on their beds those that were sick, where they heard he was," v. 55. As then, so now, many are eager for the temporal and material benefits which Christ gives, who do not want his teaching of himself. Our present day institutions for the care of the sick and the poor are products of Christianity, yet multitudes who are willing enough to secure the benefits of these, turn their backs upon the supreme Blessing. It were better to have a healthy soul in a sick body than to have a sick soul in a healthy body. But this is not the prevailing view: the multitude prefer leaves to life, and fishes to faith, and health to holiness. Do You?

And besought him that they might touch if it were but the border of his garment: and as many as touched him were made whole. v. 56. There was no virtue in the garment of Christ itself, and hundreds could touch the garment, without faith, and receive no blessing whatever. Christ simply honored the faith of these people by healing them when they manifested such faith by eagerly attempting to come near him that they might but touch the border of his garment. The Angel of the Lord Instructed Manoah Regarding The Diet Of The Mother of Samson. Judges 13:12-14.

"And Manoah said, Now let thy words come to pass: what shall be the ordering of the child, and how shall we do unto him? And the angel of Jehovah said unto Manoah, Of all that I said unto the woman let her beware. She may not eat of any thing that cometh of the vine, neither let

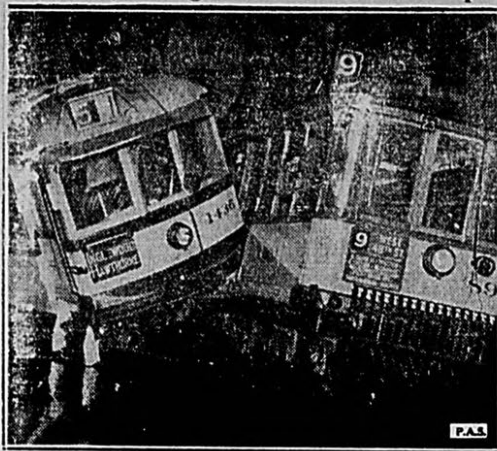
her drink wine or strong drink, nor eat any unclean thing; all that I commanded her let her observe." In the earlier part of this chapter we are told that an angel of the Lord had appeared to the wife of Manoah, announcing that she would have a son who should be a Nazirite unto God all the days of his life, and who would "begin to deliver Israel out of the hand of the Philistines". In making this announcement the angel had told her to drink neither wine nor strong drink, and not to eat any unclean thing. It should be carefully noticed that not only was the Nazirite himself not to drink strong drink, but the mother of the one who was to live under a Nazirite vow all of his life was told to refrain from drinking any strong drink from the time of the conception of the child to the day of his birth. "That indulgence in the use of strong drink by expectant mothers would be injurious to their offspring was known to the learned and wise among the ancients.

Presenting Our Bodies To God.

I beseech you therefore, brethren, by the mercies of God." Throughout these chapters the mercies of God have been unfolded. These mercies include God's love for men, his grace toward men, the sending of His Son, who is the very righteousness of God, to men that men might be justified in God's sight, the death which Christ died as a propitiation for our sins, the new life which we have in Jesus Christ, the indwelling of the Holy Spirit, the access that is ours to the Father in prayer, our sonship and co-heirship with Christ, our present sanctification, our future glorification, and all the hope of the life to come, together with a consciousness that everything works together for good to those that love God, from whose love nothing will ever be able to separate us; these are the mercies of God which should prove the motive power of our life. God's mercy comes first and our consecration afterwards, never vice versa.

Your bodies a living sacrifice Holy, acceptable to God. Our body is to be a living sacrifice utterly devoted to God in the life which is lived in these bodies.

Trolleys Stage Real-Life Crack Up



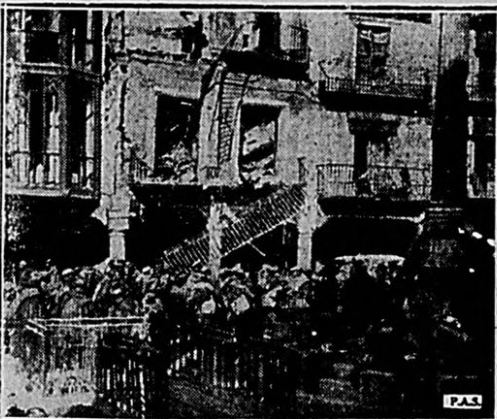
LOS ANGELES... One of the most spectacular happenings during the recent floods here was the crash of these two street cars at a downtown intersection. Staged better than any Hollywood set, the careening trolleys rammed each other at the height of a rainstorm at night. None of the ten passengers on board were injured.

Predicts Stalin's Fall



NEW YORK CITY... Prophecy- ing that the Stalin regime would crumble in "maybe one, maybe two years," Alexander Kerensky, Premier of the Russian Provisional Government after the fall of the Czar, arrives here for the first time in eleven years for a lecture tour. Kerensky interpreted recent Soviet mass trials and executions as beginning of the end of "Bolshevist terror."

Franco Wins — And Finds A Rain



TERUEL, Spain... Lost to the Government forces a few months ago, the Spanish Insurgents under General Franco recaptured this city at an enormous cost of men and munitions. Regarded by foreign military experts as a Pyrrhic victory, the occupation of the city by Franco's troops revealed only a battered and deserted shambles.

Dead or Alive?



NEW ROCHELLE, N. Y. (Special) Peter Levine, 12, son of a New York attorney and the latest victim of the "snatch" racket, was last seen Feb. 24. Since then his father has received ransom notes demanding \$30,000. Although law-enforcement authorities have promised to stay out of the case, no reliable contact has been made with the kidnapers and it is believed the boy is dead.

WE NEED GOOD USED CARS AND TRUCKS!

CHEVROLET DEALERS' USED CAR STOCKS WERE GREATLY REDUCED DURING NATIONAL USED CAR EXCHANGE WEEK

Now's the time to trade your car for a NEW CHEVROLET... Come in today and get our liberal offer

CHEVROLET So great have been Chevrolet dealers' sales of used cars and trucks—so low is our supply of certain makes and models—that we need good used cars and trucks to balance our stocks. This means we are in an excellent position to talk "trade-in allowances" on the purchase of new Chevrolet passenger cars and trucks.

Come in—this week!... See the beautiful new Chevrolet for 1938—the car that is complete—and the new 1938 Chevrolet trucks—the thrift-carriers for the nation!... Learn how easily you can purchase a smart, new, modern-to-the-minute Chevrolet by letting us take your present car or truck in trade!

General Motors Installment Plan—Convenient, Economical Monthly Payments. A General Motors Value.

"YOU'LL BE AHEAD WITH A CHEVROLET"

McClellan Chevrolet Co. Spearman
Gruver Motor Co.



His head and shoulders above mere "oil-changers"... because

ONLY YOUR MILEAGE MERCHANT OIL-PLATES YOUR ENGINE

Does Spring begin on March 20th?... or on the 21st? "Begin it today!" pleads your engine. "Bleed out my Winter-poisoned oil. But this Spring help me with more than an oil-change. Change to Your Mileage Merchant! And that's changing to Conoco Germ Processed oil—the only way to change me into an OIL-PLATED engine."

You want this modern exclusive OIL-PLATING because especially in Summer your steady driving demands more than the plain old type of oil-film that slithers OFF the working parts like drops of

quicksilver. Exactly the opposite is achieved by the Germ Process—patented. It makes droplets of oil act like a billion tiny suction cups, powerfully attracted and OIL-PLATED to every working surface... Never draining down, never inviting friction, no matter how many thousands of starts and thousands of miles you make all Spring and Summer. And you'll notice Germ Processed oil sticking so close to "Full!"—even in older cars—that you'll stick to Your Mileage Merchant. Continental Oil Company

CONOCO GERM PROCESSED OIL

KIRK'S
COOPER
TIRES



STATION
PHONE 133
SPEARMAN, TEX.

Department of Agriculture Gives Summary of Provisions Agricultural Adjustment Act

A short summary of the provisions of the Agricultural Adjustment Act of 1938.

In the Agricultural Adjustment Act of 1938, Congress declared the purposes of the new national farm legislation to be: To conserve the Nation's soil resources and use them efficiently. To assist in the marketing of farm products for domestic consumption and export. To regulate interstate and foreign commerce in cotton, wheat, corn, tobacco, and rice, so as to minimize violent fluctuations in supplies, marketing and price of farm commodities. Protect consumers by maintaining adequate reserves of food and feed; and Assure farmers a fair share in the national income. These purposes are for the benefit of agriculture and for the welfare of the entire Nation.

The Agricultural Adjustment Act of 1938, approved Feb. 16, provides for a farm program open to participation by all farmers in the United States. One part of the Act strengthens and continues those provisions of the Soil Conservation and Domestic Allotment Act under which about 4 million farmers took part in the Agricultural Conservation programs of 1936 and 1937. These provisions will be available, as in the past 2 years, to every farmer. They authorize continued payments to farmers to take part in the agricultural conservation program.

Another part of the new Act supplements the conservative programs with provisions for regulating interstate and foreign commerce in the five commodities listed in the Act—cotton, wheat, corn, tobacco and rice.

General Objectives of the Act
Both parts of the Act are designed to safeguard the productivity of agriculture. All payments are to be conditioned upon participation in measures for soil conservation. Both parts of the Act are designed to stabilize commerce in agricultural products and to give farmers a fair share in the national income. Broadly summarized, the provisions of the Act are seen to give a basis for a 6-point program designed to assist farmers to produce abundantly year after year. They are designed to protect agriculture against the price depresses that heretofore have plagued heavy production. The Act provides actual methods such as acreage allotments, marketing agreements, and commodity loans, to give the stability of income

A Regal PERFUME
for a NEW EFFECT
THE PERFUME OF ROYAL LONDON



Bond Street
weeping along the crest of every wave of formal, glittering festivity in London... "Bond Street," rich, new perfume... darling of day's gay young worldlings here and abroad. Presented solely in its daily blazoned packaging. \$2.50 to \$3.50.

that farmers need in order to grow and to maintain ample reserves of farm commodities for the Nation's use. In effect, this means that an Ever-Normal Granary will be started. It is estimated that the Act's provisions affecting reserve supplies will result in about doubling the average annual carry-overs of corn and wheat.

This 6-point program may be outlined as follows:
1. The AAA soil-conservation program is continued and its objectives established as a part of permanent farm policy in the interests of future abundance of food and fiber.
2. National acreage allotments are set at levels giving production ample for domestic consumption for exports and for reserve supplies, and payments are made to encourage farmers to produce up to these allotments.

3. Systematic storage of food and feed surpluses from big crop years for use in years of shortage is assisted by loans.

4. Marketing quotas for commercial producers of cotton, wheat, corn, tobacco, and rice, backed by penalties on sales in excess of the quotas can be used subject to approval of two-thirds of the producers voting, to obtain general participation of farmers in a program designed to hold surplus supplies of the five listed commodities off the market until they are needed.

5. Release of supplies withheld from market under marketing quotas is provided to meet any shortage.

6. Crop insurance for wheat, starting with the 1939 crop, will give wheat producers and bread customers better protection against crop failure. Gradual accumulations of wheat paid in by farmers as insurance premiums will contribute to the Ever-Normal Granary supplies.

Wheat
The new farm act recognizes that the wheat farmer faces two chronic dangers. One is the risk of crop failure. This overtook him with successive short crops from 1933 to 1936. The other is the danger of tremendous surplus. Accumulation of successive surpluses without export outlets burdened the farmer in 1932 under a mountain of 35-cent wheat. The present situation is this: Wheat production in 1937 totaled 874 million bushels. Domestic consumption, plus limited wheat exports, will probably leave a carry-over on July 1 of more than 200 million bushels. Wheat plantings for harvest in 1938 are expected to be close to record levels. Meanwhile drought has been overshadowed by dust storms in the Southwest. Right now the wheat farmer does not know whether this year he will be the victim of drought or of surplus, or whether he will escape both for another year.

Under the Act a national wheat acreage allotment is to be announced every year. It is to be such as will normally make available for market a supply equal to 130 percent of a normal year's domestic consumption and exports, a total of about 910 million bushels. The allotment for 1938 is set by the Act at 62 1-2 million acres. This national allotment is to be apportioned among the States chiefly according to past acreage,

among the counties on a similar basis, and among producers on the basis of tillable acreage, crop-rotation practices, type of soil, and topography.

A marketing quota for wheat is to apply, unless disapproved in the referendum during any marketing year when the estimated total supply is more than 135 percent of a normal year's domestic consumption and exports (a total of about 950 million bushels). The quota must make available for market 130 percent of normal needs, less the estimated carry-over and the wheat needed for seed and livestock feeding during the year. In general, the quota for any farm is to be the normal yield of a marketing percentage of the acreage allotment, plus any nonpenalty wheat held over from previous years. No quota is to be applied in any year to a producer whose acreage that year with normal yields would produce less than 100 bushels.

Under special provision in the Act, no quota is to apply in 1938 unless before May 15 provision has been made by law for payment in whole or in part in 1938 of parity payments on wheat.

Crop Insurance For Wheat
Is one of the most significant parts of the Act. It inaugurates the first Federal crop-insurance program in this country. It provides insurance for the wheat farmer against loss through crop failure and forecasts eventual extension of the plan to other commodities.

It creates the Federal Crop Insurance Corporation to carry out the crop insurance provisions. Commencing with the wheat crop planted for harvest in 1939, the Corporation is authorized to insure wheat producers against loss of yield. Since amounts of losses are calculated in terms of wheat, the protection is given against losses of yield rather than price declines. The insurance applies to losses of yield resulting from drought, flood, hail, or other weather hazard, and from insect pests and plant disease.

Such insurance will cover not less than 50 percent nor more than 75 percent of the average yield of wheat on insured farms. Insured farmers will be paid the amount of actual wheat, or its cash equivalent, by which their yields in short crop years fall below the insurance coverage.

The Corporation will fix premiums which, like claims are payable either in wheat or in its cash equivalent on the date due. The rate of these premiums will be determined on the basis of the average losses in yield, over a representative period, on the insured farm and on all farms in the

POLITICAL ANNOUNCEMENT COLUMN

The Spearman Reporter is authorized to announce the following candidates for office under heading which their name appears, subject to the action of the Democratic primary, July 23, 1938:

For Sheriff, Tax Collector and Assessor:
HIX WILBANKS (Re-election)

For County Treasurer:
MRS. MAY JONES (Re-election)

For County and Dist. Clerk:
F. J. (Fred) HOSKINS (Re-election)

For County Judge and Ex-officio County Supt. of Schools:
A. F. BARKLEY (Re-election)

Commissioner Precinct No. 1:
M. R. GRANDON

GRUVER NEWS

SULLINS - McCLELLAN NUPTIALS SUNDAY

On Sunday March 6, Miss Charlene Sullins became the bride of Ted McClellan in Oklahoma City. The ceremony was performed by Rev. Alfred H. Freeman a former Gruver pastor and friend of the couple.

The bride is the daughter of Henry Sullins of Missouri but has made her home in Gruver for the past five years. She took post graduate work in Gruver High School and attended McMurray College at Abilene one year. She was employed by the Gruver Motor Company.

Mr. McClellan is the son of Mr. and Mrs. L. S. McClellan of Spearman, a pioneer Hansford county family. He has lived in Gruver for about 9 years and has charge of the Gruver Motor Co. here.

Mr. and Mrs. McClellan will make their home in Gruver.

D. F. GIBSON MARRIES FRIDAY
Friday evening at the Methodist

parsonage in Elk City. Miss Neola Rayfield of Elk City became the bride of Mr. D. F. Gibson also of Elk City, son of Mr. and Mrs. F. O. Gibson of Gruver.

The families of the couple attended the wedding. Mrs. F. O. Gibson, the groom's mother, his sister Mrs. V. H. McRee and his brother Edwin all of Gruver were in attendance.

A large number of Gruver people attended the celebration in Amarillo several days last week.

Mr. and Mrs. J. R. Renner returned home last week from Arizona where they visited their son and daughter and their families for several months.

Mr. and Mrs. F. O. Gibson moved this week to the old Broadhurst place six miles west of town.

Mr. and Mrs. V. H. McRee visited last week end at Plainview at the home of Mr. and Mrs. W. L. Broadhurst.

Mrs. Mary Fletcher returned home Wednesday from El Paso where she made an extended visit with her daughter, Mrs. C. E. Winder and family.

Word was received here of the birth of a daughter to Mrs. Rex McRee of Magnalene New Mexico. Mrs. McRee will be remembered as the former Mabel Willey.

Mrs. Harvey Shapley returned home last week from Shattuck where she underwent an operation recently.

BABIES ARE C. O. D. IN ROYSE CITY, TEX.

ROYSE CITY, Tex., March 13.—Stork Strike: Babies in Royse City are to be C.O.D. for two doctors—and no pun intended. The doctors advertising in their home town paper told the world: "To whom this may concern: "If you are expecting the stork to visit your home this year, and he has to come by way of Royse City, he will have to bring a check book to pay his bill before delivery, as the undersigned doctors delivered many babies during 1937 and over half of them have not been paid for.

"We do not need the experience and if you can not pay the bill, please do not call us, as you had nine months to prepare for this.

"To those who have not paid their 1937 bill in full or made satisfactory arrangements, do like the stork—be sure to bring your check book, when you call again."

Presbyterian Church

Sunday school 10 a. m. Morning worship 11 a. m., theme "The Church of the Living God" Young People's Leagues 7 p. m. Evening worship 7:45 p. m., theme "The Reality of Worship". In this pre-Easter season a busy

world needs to be 'still' and know God. Along the highways these signs 'Slow Down and Know God'. Painted underneath the canvas 'Admire and Know God' Instead of airplane bombers in the skies: 'Look up and Know God' along the Broadway of life neon signs flashing out 'Stop, Listen and Know God' in magazines and newspapers, big print, 'Read and Know God.'

Europe is in turmoil. The world changing national boundaries! God's people have a message of peace and calm 'Be still and know that I am God.'

The Presbyterian church urges that Spearman begin the psychology of putting God first in their own hearts, then advertise the fact by deliberate poise and undisturbed attitude of reverence. God has a message for every soul, whosoever seeks, shall find. Go to Church this Sunday.

NOTICE

Four small graders, the property of Hansford county are missing. Citizens who have borrowed these machines MUST report immediately to the commissioner in their precinct or county judge A. F. Barkley. Return the machinery if not in use. Signed Judge A. F. Barkley.

WANTED
BY DEPARTMENT OF JUSTICE TO HOMEKERS
Your energy-robbing time-stealing
OLD IRON
DESCRIPTION: Rickety plug, broken handle, tarnished soleplate, frayed cord set, excessive weight.

We'll allow you \$100 for it in exchange for this new

Sunbeam IRONMASTER



Fastest Heating Iron Made
DON'T throw away that energy-sapping old iron with the rickety plug, broken handle and battered ironing surface. We'll give you \$1.00 for it in exchange for a new Sunbeam IRONMASTER—with double-automatic heat control.

IRONMASTER permits you to start ironing rays 30 seconds after you connect it. Reaches full high heat for heavy damp linens in 2 1/2 minutes. Stays hotter all through ironing, yet will not scorch your most delicate fabrics when set for them.

IRONMASTER is the only automatic iron with heat regulator in the handle, away from fingers, conveniently marked for all fabrics. Weighs only 3 1/2 pounds. Has comfortable cool, wrist-resting handle. Comes complete with Sunbeam Master cord and plug set.

Regularly \$8.95, less \$1.00 for old iron
Only **\$7.95**
Pay only \$1.95 down—\$2.00 per month

THUMB-TIP HEAT REGULATOR
Up in the handle—out of the way. Plainly marked for all fabrics. Maintains any desired heat automatically.
LARGER IRONING SURFACE
Fewer strokes—more work in less time. Beveled tip and sides for ironing around buttons and ruffles.
LIGHT WEIGHT—ONLY 3 1/2 POUNDS
Weighs only 3 1/2 pounds. Irons smoothly without action. Ends tired at ironing wrists, weary!

23,000 Eggs Set Sunday
AND MANY CHICKS FROM THESE EGGS ALREADY SOLD
SO ORDER EARLY. 14 Varieties included. See last week's ad.
PRICES—Heavies, \$8.50 per 100 postpaid. In lots of 300 \$8.25 per 100. In lots of 500 up, \$8.00. Leghorns, Anconas, 50c less per 100.
Munson Hatchery
ALVA, OKLAHOMA PHONE 338

Charlie McCarthy...
COULD OPERATE THE MODERN GAS EQUIPPED HOME WITHOUT THE AID OF HIS PRESENT ABLE ASSISTANT—
Due to the COMPLETELY AUTOMATIC Controls now being featured on Modern Gas Appliances, temperatures in homes may be held at a constant, healthful level WITHOUT ATTENTION—whole meals may be cooked in the automatic gas range WITHOUT ATTENTION—twenty-four hour hot water service is provided by the automatic gas water heater WITHOUT ATTENTION—constant silent refrigeration is available thru the gas refrigerator WITHOUT ATTENTION—humidity is controlled within healthful, comfortable limits with gas appliances WITHOUT ATTENTION.
Inquire—Investigate—INSTALL Modern gas appliances in Your Home and enjoy easy living WITHOUT ATTENTION.



Elizabeth Ann Miller—Call 10

DAVIS - CURTIS

Two popular members of the younger set of Spearman stole a march on their friends Saturday evening when they slipped away from home to wed at the home of Rev. and Mrs. Todd, Panhandle, Texas.

Miss Margerie is the talented and lovely daughter of Mr. and Mrs. Frank Davis, well known farmer of this county.

A. J. a popular football star and hero of his student friends of 1935 graduated from the Spearman high school that year.

The young married couple left Wednesday for their home at Kennie, Wyoming, where A. J. assumes his position with the Highway department.

This paper joins with the many friends of the youngsters in wishing them a life of happiness and prosperity.

BELLE BENNETT

MISSIONARY SOCIETY

The Belle Bennett Missionary society met in the home of Mrs. Garrett Allen, Wednesday afternoon.

Mrs. H. E. Campfield gave the devotional, Spiritual cultivation, Mrs. Gibner, the conclusion and summary of the Study book by Mrs. Keim.

Members present Mesdames, L. W. Mathews, H. H. Jones, J. D. Hester, H. P. Bailey, F. W. Maize R. L. McClellan, D. B. Keim, H. Campfield, G. P. Gibner, LeRoy white, P. A. Lyon and the Mrs. Allen.

BYPU ENTERTAINS PERRYTON GROUP

On Monday night the Senior BYPU entertained the Senior BYPU from Perryton with a party held at the First Baptist Church. Entertainment for the party was under the direction of Miss Dorothy Ewing, director of the BTU.

Refreshments were served: Polly Smith, Elizabeth Miller, Marilyn and Patricia Snider, Roy and Edwin Reed, Truitt Brannen Merle Mizar, R. E. Sanders, Delmar Fields, Ida Mae McLeod, Eula Fay Carpenter, Mary Ann Sparks, Rue Sanders, S. R. McClung, Jr., Lloyd Drake, Harry Stump, Bill Hammond, Winnell Jackson, Bob Lawrence, Weldon Wright, Mary Elizabeth Horn, Elaine Shockley, Avis Lee Wooten, Leland Horne, Fount Wade, Doris Jean Russell, J. R. Keim, Frances and Vera Beth Hoskins, Veda and Wayne Hutchison, Dorothy Ewing and Cleo Leverton.

LUCKY EIGHT CLUB

Mrs. Pete Vernon was hostess to the Lucky Eight Bridge club March 15. High score was awarded Mrs. J. P. Richards. Members playing were Mesdames, Walter Good, Ray Platt, Gene Cline, J. P. Richards, Lester Howell, Tad Platt, Basil Good and the hostess.

BIRTHDAY PARTY

Tommy Howell entertained a number of his friends with a birthday party Monday March 14. A number of games were played refreshments were served to: Jean Rosson, Joyce Delaney, Gerry Stephen, Virginia Buchanan, George Ruth Hightower, Billy Miller, Jr. Sparks, Le Roy Easley, Delbert Mizar, Everett Dale Clement, D. W. Hazlewood, J. E. Gerber and the host Tommy Howell who received many nice gifts.

WILL ATTEND PTA MEETING

Mrs. Fred Daily, Mrs. Vester Hill, Mrs. Paul Roach, Mrs. Sid Clark, and Mrs. H. E. Campfield will attend a PTA luncheon at Cousins Hall in Canyon Friday March 18th. The luncheon program will be a discussion on PTA problems led by Supt. W. B. Weathered of Pampa with 20 other educators assisting.

MISSIS GANTT, ENGLAND AND BAGGERLY ENTERTAIN

Tuesday evening at the home of Mr. and Mrs. Ike Baggerly Misses Ruby England, Mary Gantt, and Merle Baggerly entertained the instructors of the Spearman Schools and their guests.

High score prizes was awarded Miss Dorothy Ewing. Traveling prize was won by John R. Collard Jr.

Guests present were: Misses: Lois Bailey, Sybil Graham, Barbara Hawkins, Lois Hale, Margaret Douglas, Merle Baggerly, Ruby England, Mary Gantt, Ewing, Evelyn Roach, Messers: J. E. Gunn, Hayden Hensley, Sam Patterson, John R. Collard, Billy Jarvis, J. D. Amend, Bill Burran, T. H. Etter, Preach Loftin and Mr. and Mrs. Ike Baggerly.

MARY MARTHA

The Mary Martha Missionary Society met with Mrs. Joe Hatton Wednesday.

The lesson on World Outlook was led by Mrs. Geo. Buzzard. Devotional by Mrs. Bill Hutton. Spiritual Cultivation, Mrs. Hutton.

Lovely refreshments were served the following Mesdames, Geo. Buzzard, Allen, Hutton, Sheets, Gibner, Raymond Kirk, Berry Richardson, Russell, Jones, Lee, Clifton and Will Miller.

A CAPELLA CHOIR

The members of the order of Rainbow of Spearman take great pleasure in announcing a musical to be given here on April 12 by the A Capella Choir from Goodwell, Oklahoma.

This choir has much distinction and popularity as they have sung in all the surrounding towns. It is composed of forty members, both boys and girls. Their director is Dr. Falscom D. Jackson.

The program is to be free and the public is cordially invited to be at the High School auditorium at 8 o'clock on April 12. Supper will be served to the visitors at six in the Masonic hall by the Rainbow girls.

LOCKETT CIRCLE

Mrs. Roach was hostess to members of the Lockett circle Wednesday afternoon.

The first chapter of the Basil Lee Lockett Book was reviewed in a general discussion.

Refreshments were served to 7 members.

WOMAN'S COUNCIL MET

The Woman's Council of the First Christian church met in the church Wednesday for their regular meeting. The Bible lesson was from the 17th chapter of Matthew and was led by Bro. Bradford.

Those attending were: Mesdames Bert Briley, Frank Dressen Floyd Wilbanks, Lawrence Wilbanks, Rube Birdwell, A. N. Meadows, Yates, Marion Close, Vance Close, Hix Wilbanks, H. Fields, Bradford, Homer Allen, Vina Richardson.

BLANCHE ROSE WALKER CIRCLE

The Blanche Rose Walker circle met with Mrs. Lester Howell this week. There were 6 members present and two visitors. The lesson was on Acts 8, with Mrs. Bob Bailey as leader.

DORCAS MISSIONARY SOCIETY

The Dorcas Missionary Society met in the home of Mrs. C. L. Schell, with Mrs. Lelan Close as hostess on Thursday March 10.

Devotional, taken from the 7th chapter of Revelation was read by Miss Carrie B. Nesbitt. Mrs. Yates led the lesson study on the 3rd and 4th chapters of Acts.

Refreshments were served to Mesdames: Yates, L. E. Wilbanks, Bradford, Schell, Alvino Richardson, Woodie Davis, Vester Hill, Chester Mitts, Clint Bennett, Lelan Close, and Miss Carrie B. Nesbitt.

The next meeting will be at the home of Mrs. Woodie Davis on Thursday, March 17.

CARD OF THANKS

Let this little message convey to our many friends our heartfelt thankfulness for their kindness, consideration and sympathetic words tendered us during the recent illness and death of our mother. You have lightened the burden and grief to the family and have our kindest feelings. May God's rich blessings rest on each of you.

Mr. and Mrs. W. A. Ellsworth, Roy Ellsworth, and Mrs. Laur Stanfield.

FOR SALE ENSILAGE

600 tons ensilage, \$2.50 per ton. Ralph Parks, Eureka, Kans.

WANTED WHEAT LAND

2 sections of wheat land—house on it.—If close to town, house not necessary, write or see Jimmie Kerokie, DeLuxe Cafe Borger.

FOR SALE —WHEAT LAND

160 acres, east side, 440 yds., off section no. 76 block no. 45. \$30 per acre cash. It must sell. Write Mrs. Elsie D Lane JV Star route, Medford, Oregon, Box 69.

NUMBER 5

—Continued from page 1—rounding counties. Hansford county is about the only county left in the Panhandle who does not employ an agent. Much Value To County

Observers who are familiar with the work of Home Demonstration agents declare they are of much value to the counties. The agents arrange regular schools of instruction that are beneficial to rural ladies, and in many instances are able to train farm ladies to the extent that they can greatly reduce their family living costs. The agents sponsor and encourage canning of vegetables and meats, instruct in sewing and encourage improvement of appearances of members of the clubs. Real rural problems that tend to improve the standard of living are handled in

such a manner that work becomes a social event. The agents also supervise and encourage social activities in the rural communities.

It is generally understood that the Commissioners' court is anxious to do the will of the tax payers, and have no serious objections to employing a home demonstration agent, but must be convinced that a majority of the people want this additional service and are willing for the court to spend the tax money needed to secure such an agent. It has been suggested that the county is now saving a sizable sum formerly spent in some of the agricultural work, and that this additional expense would not require any additional annual expenditure. If, after thinking over the matter you deem it advisable to employ a Home Demonstration agent, do not fail to sign the petition when it is presented by a committee member from the agricultural association in the near future.

NUMBER 2

—Continued from page one—were recorded this large operator harvested 22 bushels to the acre on land that had two years moisture conserved on terraced and bottled land.

The trend of times indicate that this country is a dry country normally. If the government finds that success can be attained when land is properly treated and left out so that moisture accumulation

will insure production one year out of two, then we predict that wheat growers will be driven to such a program in the near future. If we review in our minds the past production of wheat we will remember that the greatest production has always been on summer fallowed land. It is just one time out of an average of ten or twelve years that we receive sufficient moisture to insure real production all over the plains country.

There is certainly a ray of hope in the new farm program. One can glean from a study of the program that the government is determined to correct misuses in land. If land is not capable of producing wheat and should be turned back to grass, the quicker the change is made, the better for the county as a whole. If land is not properly treated for wheat production, and will produce cover crops under normal condition, it is the intention of the government to weed out such land from the wheat production and set up a farmer on a common sense basis of using his land to the best of advantage.

Generally speaking, it takes as much as a section of land in this area to produce a comfortable living and pay a normal interest rate on investment, if the program of water conservation is followed and the half the land is allowed to lie idle each year. This will become an economic necessity in the opinion of this writer, and gradually the small operator will be compelled to leave the Panhandle country.



PEP UP YOUR BUSINESS

BLOTTERS, circulars, post cards, and other direct-mail pieces can be produced cheaply and efficiently in our job department. If you need bill-heads, ledger sheets, stationery or any other office form, we can make it for you at low cost. Remember, it pays to advertise, and wise advertisers say it in print—and say it often.

THE SPEARMAN REPORTER

Phone 10

SPRING BUILDING

The annual building and clean up for Spring is just around the corner. We are fully stocked to take care of your needs in this line and pledge our earnest cooperation in any problems that arise.

WHITE HOUSE LUMBER CO.

F E E D

SEE McClellan Grain Co., for the proper balanced feed for chickens, cattle, livestock. We handle two lines of specially prepared feeds, and can take care of your needs in this line. R. L. McCLELLAN GRAIN CO.

SINCLAIR PRODUCTS Proven quality, meeting the highest demands of U. S. Government Navy specifications. They are available to every motor car owner and user, and at prices that are in line with most all grades of motor fuel.

FRANK HARDIN Wholesale Agt.

CELLO GLASS FOR CHICKEN COOPS

See us for this most practical material for chicken coops. TIME to Paint Up. We have the paint priced right. FOXWORTH - GALBRAITH LUMBER COMPANY

WOLF, WOLF, WOLF.

We have been hollering "Wolf" about cold weather for the past three weeks... but sure nuf... cold weather is just around the corner. Be prepared for winter with the Nationally known Sprodex heater. Burns all oil by year fuel with greater economy, test efficiency.

SPEARMAN HARDWARE

Act as a quot help

We have devoted this space the past few months to the Goods department of our Now we would like to call your attention to the fact that we have been serving high quality goods to customers of Hansford county for more than a quarter of a century. If you buy it at Brandt's it must be QUALITY. F. W. BRANDT & CO.

CALLING ALL CARS AND TRACTORS

We want your business. We are saving our customers money every day, on Quality oils, tires, batteries, radios and auto supplies—why? Because we buy direct, our operating expenses are low. We pass these savings on to our customers.

NO SQUAT — NO STOOP NO SQUINT

New Model Philco Radio the latest and most modern of all previous showings. See them today. DELON KIRK BATTERY SHOP

POPULARITY.

Our popularity has been increasing as our SERVICE and QUALITY merchandise continues to reach the large number of our customers in this county. This organization, a non-profit, home owned business firm servicing a half thousand stock-holder customers and a thousand other customers of this and adjoining counties will continue to give our patrons the same consistent reliable service and quality merchandise we have given during the past seven years of our rapid growth. We feel a pardonable pride in the POPULARITY of our organization. We want to continue to serve our customers WELL—and will welcome any suggestion that may be given to the public. We think you will like it.

REPORT OF CONDITION OF FIRST STATE BANK of Spearman, in the State of Texas, a member of the Federal Reserve System, at the close of business on March 7, 1938. ASSETS: Loans and discounts \$145,460.96; Overdrafts 303.98; United States Government obligations, direct and or fully guaranteed 56,900.00; Other bonds, stocks, and securities 93,553.25; Banking house \$5,000.00; Furniture and fixtures \$2,000.00; Reserve with Federal Reserve bank 66,424.55; Cash, balances with other banks, and cash items in process of collection 164,931.88; TOTAL \$534,574.62. LIABILITIES: Demand deposits of individuals, partnerships, and corporations \$397,411.15; Time deposits of individuals, partnerships, and corporations 5,331.54; State, county, and municipal deposits 83,790.19; Deposits of other banks, certified and officers' checks outstanding, etc 730.99; TOTAL of Items 14 to 18, Inclusive: Secured by the pledge of loans and or investments \$30,000.00; Not secured by the pledge of loans and or investments 457,263.67; Total Deposits \$487,263.67. CAPITAL ACCOUNT: Common stock, 250 shares, par \$100.00 per share \$25,000.00; Surplus 12,500.00; Undivided profits—net 9,810.95; Total Capital Account 47,310.95; TOTAL, Including Capital Account \$534,574.62. Memorandum: Loans and Investments Pledged To Secure Liabilities: Other bonds, stocks, and securities 30,000.00; TOTAL Pledged, excluding rediscounts 30,000.00. Pledged \$ 30,000.00. Officers: J. R. Collard, P. B. Higgs and H. B. Hart, Directors. Notary: W. J. Miller, Notary Public.

McCORMICK-DEERING Field Cultivators. GET THE EGGS. You can't make bricks from straw and a hen can't make eggs from grain alone. If you want lots of eggs from your flock feed Ful-O-Pep Egg Mash. It gets the eggs because it supplies egg making elements that the hen needs. FUL-O-PEP EGG MASH. This balanced feed of liberal oatmeal content, keeps heavy producing hens up in body weight while they work for you. Feed Ful-O-Pep Egg Mash. It pays. World famous Ful-O-Pep are the only poultry feeds of strictly oatmeal base. We carry Quaker's feeds, poultry, oats, baby chick scratch mixtures, etc., because we want to offer you the safest feeds at a reasonable cost. Ask us about the free service and quick delivery of sturdy baby chicks. Ask your grocer for Quaker's Aunt Jemima Cream meal and Silk Floss flour. FREE DELIVERY ON STURDY BABY CHICKS. R. L. Porter Grain and Seed Co. Distributors Gold Medal, Silk Floss and Quaker Products. Phone 175 We Deliver.

Whitman's CHOCOLATES for EASTER. The Sampler is the finest box of candy in America — \$1.50 for the 17-oz. size. Other packages, 25c up. Easter Eggs... at 10c up. SPEARMAN DRUG STORE Phone 258—We Deliver.

GET THE EGGS. You can't make bricks from straw and a hen can't make eggs from grain alone. If you want lots of eggs from your flock feed Ful-O-Pep Egg Mash. It gets the eggs because it supplies egg making elements that the hen needs. FUL-O-PEP EGG MASH. This balanced feed of liberal oatmeal content, keeps heavy producing hens up in body weight while they work for you. Feed Ful-O-Pep Egg Mash. It pays. World famous Ful-O-Pep are the only poultry feeds of strictly oatmeal base. We carry Quaker's feeds, poultry, oats, baby chick scratch mixtures, etc., because we want to offer you the safest feeds at a reasonable cost. Ask us about the free service and quick delivery of sturdy baby chicks. Ask your grocer for Quaker's Aunt Jemima Cream meal and Silk Floss flour. FREE DELIVERY ON STURDY BABY CHICKS. R. L. Porter Grain and Seed Co. Distributors Gold Medal, Silk Floss and Quaker Products. Phone 175 We Deliver.

Read the CLASSIFIED ADS. WE ARE NOT SISSIES. —but believe we can cook just as good as your wife, mother or sister. It's a gift, and of course our several years practice helps. Let us do your cooking when you eat away from home. Good wholesome food, well prepared, served correctly, at reasonable prices. PEKOE CAFE Walter Goode, owner. LOOK WHAT WE OFFER. A full line of Chevrolet Cars and Trucks, genuine Chevrolet repair parts, Delco Radios for city or farm homes. Gates Tires and Tubes and many other standard lines of merchandise, seat covers, auto accessories and supplies. And it will cost you nothing to come in and look at them. McCLELLAN CHEVROLET CO. INC. Ask for a Demonstration PHONE 29. PLOW WANTED. Anyone having Moline Wheat-land Plow with large disc for sale either in 6 ft. 8 ft. or 10 ft. sizes write me giving price. Must be worth the money! H. L. Brady 1631 Broadway, Lubbock, Texas. FAMILY STYLE MEALS. Clean comfortable rooms with gas heat. Rates reasonable. Board and room by the week. SPEARMAN HOTEL. HERE TO SERVE YOU. Thru dust storms, crop failures prosperity. The Burran Grocery has been serving a large number of Hansford folk the past 20 years. We will be here, we hope for many years to come. However you can depend on quality merchandise at a reasonable margin of profit. When we cannot operate on that basis we will close our doors. BURRAN BROS. GROCERY AND MARKET. GROCERIES - PRODUCE FARM PRODUCE. Will play an important part in the future of Panhandle farmers. We encourage this program along with the government by paying the highest market price for your produce. AND we positively sell you the best merchandise at the lowest possible margin of profit. J. M. CATES AND SON. HELPY SELFY LAUNDRY. A real benefit to Hansford citizens. We offer a very reasonable service for doing your own laundry work, that is proving not only economical but much more efficient to house wives of this area. WE NOW include the drier service in our rental contracts. Prices 15c per load or 2 for 25c. USE THE HELPY SELFY SERVICE. If you are not in position to do your own Laundry work, our delivery price on rough dry and finished work is very reasonable.

SEE McClellan Grain Co., for the proper balanced feed for chickens, cattle, livestock. We handle two lines of specially prepared feeds, and can take care of your needs in this line. R. L. McCLELLAN GRAIN CO. SINCLAIR PRODUCTS Proven quality, meeting the highest demands of U. S. Government Navy specifications. They are available to every motor car owner and user, and at prices that are in line with most all grades of motor fuel. FRANK HARDIN Wholesale Agt. CELLO GLASS FOR CHICKEN COOPS See us for this most practical material for chicken coops. TIME to Paint Up. We have the paint priced right. FOXWORTH - GALBRAITH LUMBER COMPANY WOLF, WOLF, WOLF. We have been hollering "Wolf" about cold weather for the past three weeks... but sure nuf... cold weather is just around the corner. Be prepared for winter with the Nationally known Sprodex heater. Burns all oil by year fuel with greater economy, test efficiency. SPEARMAN HARDWARE Act as a quot help We have devoted this space the past few months to the Goods department of our Now we would like to call your attention to the fact that we have been serving high quality goods to customers of Hansford county for more than a quarter of a century. If you buy it at Brandt's it must be QUALITY. F. W. BRANDT & CO. CALLING ALL CARS AND TRACTORS We want your business. We are saving our customers money every day, on Quality oils, tires, batteries, radios and auto supplies—why? Because we buy direct, our operating expenses are low. We pass these savings on to our customers. — Pay Cash & Pay Less — DAVIS & BROS. NO SQUAT — NO STOOP NO SQUINT New Model Philco Radio the latest and most modern of all previous showings. See them today. DELON KIRK BATTERY SHOP POPULARITY. Our popularity has been increasing as our SERVICE and QUALITY merchandise continues to reach the large number of our customers in this county. This organization, a non-profit, home owned business firm servicing a half thousand stock-holder customers and a thousand other customers of this and adjoining counties will continue to give our patrons the same consistent reliable service and quality merchandise we have given during the past seven years of our rapid growth. We feel a pardonable pride in the POPULARITY of our organization. We want to continue to serve our customers WELL—and will welcome any suggestion that may be given to the public. We think you will like it.