

The Spearman Reporter

THE SPEARMAN REPORTER, HANSFORD COUNTY, THURSDAY MAY 16, 1957

ARM OF THIS AREA



Spearman Senior Programs To Be Held 19th - 23rd

COMMENCEMENT program

Spearman High School May 19 and 23, 1957

BACCALAUREATE PROGRAM FIRST BAPTIST CHURCH
May 19, 1957 - 8:00 P. M.

COMMENCEMENT PROGRAM SCHOOL AUDITORIUM
May 23, 1957 - 8:00 P. M.

HONOR GRADUATES

Phyllis Pattison	96.65
Claudine Stowe	95.69
Anita Groves	95.44
Joe Lynn Copeland	93.75
Diana Witcher	93.41
Eleanor Seedig	93.07
Patsy George	91.93
Larry Jacobs	90.69

BACCALAUREATE

Prelude	
Processional	Mrs. Marvin Jones, Mrs. Rue Sanders
Invocation	Rev. M. C. Cox
"Wonderful Grace of Jesus"	Choir
Sermon	Rev. Marshall Walker
"Face To Face"	Choir
Benediction	Rev. J. Waid Griffin
Recessional	Mrs. Marvin Jones, Mrs. Rue Sanders
Junior Escorts	Hazel Holt, Gene Stephens
Junior Ushers	Tommy White, Roger Davis, Howell Phephis Carol Ladd

COMMENCEMENT

Processional	Mrs. Elma Gunn
Invocation	Rev. O. L. Bryant
Presentation of Program	H. R. Hartman, Supt.
Salutatory	Claudine Stowe
Valedictory	Phyllis Pattison
Commencement Address	Rev. J. Waid Griffin
Presentation of Graduates	J. C. Carpenter, Principal
Presentation of diplomas	Floyd Cates, President of Board
School Song	Senior Class
Benediction	Rev. D. E. Parker
Recessional	Mrs. Elma Gunn
Junior Escorts	Kay Chambers, Jimmie Greene
Junior Ushers	LaVega Parker, Don Dillow, Robert Spoonemore, Douglas King.



...of the new series of Mystery Homes to be published each week. If you can identify this home phone or mail a card to the Reporter and you may receive a free one year subscription to the paper. Please send in your identification as soon as possible. Staff members will go visit the Mystery farm and write the story that will be located in Hutchinson and Ochiltree counties.

Clean-Up Day, May 25

Interested in the beautification of the city are urged to be present on "clean-up" day. The day has been set for Saturday May 25, at 9:30 a. m. Trucks, pickups and hoes and shovels will be served at noon. Make this the biggest and best clean-up day we have ever had. !!!

Honor Grads Gruver High School, 1957



BILLY COX
One point less than Perfect average.
Valedictorian



JANET EDDLEMAN
Salutatorian
Three points less than a Perfect average.

Russell Townsend Wins Subscription

Russell Townsend won the subscription for naming the Phil Jenkins home the past week. John F. Lackey would have won the subscription, but he guessed the house as Bill Jarvis's. Those guessing were: Mrs. Raymond Kirk, Doyle Jackson, Oliver Leverton, Buster Kirk, John F. Lackey, Mrs. O. K. Pendergraft, L. A. Harbur, Raymond Kirk, Ray Martin, Gerald Schibner, Johnny Pipkin, and Russell Townsend, who won the free paper.

Jim DeArmond Receives Bachelor's Degree From ACC

ABILENE, May 16, (Spl.) — Jimmy N. DeArmond of Spearman is one of 234 students who are candidates to receive bachelor's degrees from Abilene Christian College on May 27. DeArmond is the son of Mr. and Mrs. Leonard DeArmond of Spearman. He is scheduled to receive the Bachelor of Science degree in physical education.

Phillips Will Make Test In New Gas Field

Phillips Oil Corporation is drilling this week on Section 145, an offset to the new Gas field discovery well, George Buzzard No. 1. The new well is located on Mrs. Robert Meek land just across the road East from the Buzzard well. We understand there will be another offset to the Buzzard well on the Collard Estate Land in the near future. The discovery well for the new field The George Buzzard No. 1 is unofficially rated as a fifty five million gasser, with three pay zones.

Gruver Seniors Plan To Visit Twelve State

Twenty-six seniors, and their sponsors from Gruver High School will leave Gruver Saturday morning for a guided tour to Washington, D. C. They will visit Oklahoma City, Memphis Tenn, Nashville, Tenn, Knoxville, Tenn, Roanoke, Va, and Washington, D. C. They will return by way of Columbus, Ohio, Indianapolis, Ind, St. Louis and Kansas City, Mo. In Washington they will visit the National Zoological Gardens, White House, F. B. I., National Art Gallery, Supreme, Lincoln Memorial and Arlington Cemetery, Jefferson Memorial. They will travel by Continental Trailways. The trip will cover nine days and twelve states.

The Supreme Court has barred the Union Pacific Railroad from drilling for oil and gas on the right-of-way given it by Congress in 1882.

OBITUARY, D. B. KIRK

D. B. Kirk was born March 2, 1879 in Tennessee, the youngest son of Martha Simms and Joseph Newton Kirk. He departed this life May 5th, 1957 at 1:15 p. m. in the Hansford hospital, where he had been a patient for six weeks.

He married Minnie Crawford at Stephenville, December 25, 1895. To this union were born six sons: Delon, Herbert, Raymond and Buster all of Spearman; Bill of Amarillo and A. D. of Lake Jackson. Three daughters: Mrs. Ivey Duncan and Mrs. Charles Stovall of Pampa and Mrs. Herschell Maxey of Lubbock.

Mr. Kirk moved to Dallas county with his family when he was three years old. Later the family settled in Erath county, where he lived until 1900. He moved to the North Plains in what is now Hutchinson county.

He settled there on two claim sections and lived several years in true pioneer fashion in a dugout.

In 1955 Mr. and Mrs. Kirk celebrated their 60th wedding anniversary on the original home section near the spot where their first dugout was.

Mr. Kirk was engaged in farming and ranching and managed his business until his health declined two years ago.

He underwent surgery in October of 1956 and was confined to his home most of the time after this illness.

Mr. Kirk was a member of the Spearman Methodist church where his funeral services were conducted by his pastor, Rev. Waid Griffin.

Other than the nine children who survive are his wife, five sisters: Mrs. J. C. Crawford of Mullin; Mrs. Annie Harris, of Morse; Mrs. Sally Penner of Weatherford; Mrs. B. C. Holt and Mrs. Ben Jenkins of Spearman. Thirteen grand children and six great grand children.

Wheat Quota Election Set For June 20th

June 20 has been set as the date on which wheat growers in Hansford County will vote "yes" or "no" on the 1958 wheat marketing quotas, recently proclaimed by Secretary Benson, according to Hix Wilbanks, chairman of the county ASC committee. The county ASC office will set up polling places for the different communities of the county. Wilbanks pointed out that the recent marketing quotas announcement marks the fifth successive year in which wheat quotas have been proclaimed. The proclamation of quotas must be made, in compliance with the law, when the wheat supply is 20 per cent or more above normal. This year's supply is 56% above normal.

Two thirds of the producers voting in the referendum must approve quotas before they can be put into effect. He also stated that individual farm quotas generally will be the actual production from the farm's wheat acreage allotment.

Should quotas be approved, wheat growers who comply with their allotment will be eligible for price support on their entire production. Those who exceeded their allotment will be subject to penalties of the excess.

If quotas are not approved, there will be no restriction on wheat marketing but allotments will remain in effect, and the price support will be cut to 50 per cent of parity.

Hansford county's 1957 wheat allotment was 229,550 acres. Ellzey Vanderburg, head of the ASC office in Spearman, is busy working on the soil bank wheat payment prices for the county now. It will be determined some time in the later part of July. Final wheat measurements will take place after May 20th, deadline of plowing up excess wheat acreage.

FUNERAL SERVICES

Funeral services for Mrs. Ike Vernon, Perryton, Texas, were held on Tuesday of this week. Mrs. Vernon died rather unexpectedly of a short illness. A complete story will appear in next weeks issue.

AUTOMATIC PROTECTION

Atlantic City — Within fifteen minutes after Sol Caviness reported his car stolen, police found it — within a few blocks of his home. The gas tank was empty.

United Nations has estimated

that the cost of clearing the Suez Canal would be less than \$11,000,000.

Rose Garden Club Float Is Winner At Spearman, Guymon Parades



Interment was in the Holt Cemetery, under the direction of Boxwell Brothers Funeral Home.

General Information on Flower Exhibitions

Exhibition and Judging Horticultural Classes of Garden Flowers

ANNUALS — Corn flowers, phlox, poppies, alyssum, etc.

General Consideration
Conditions, color, stem, foliage, size, floriferousness.

Merits
Large flowers; many flowers per stem; freshness; bright, clear pure colors; attractive form; healthy foliage; stiff stems.

FAULTS
Poor color and shadings; wilting; under or over developed; fading; poor foliage, weak stems, poor form in flowers, panicles, spikes, etc.

ANTIRRHINUM — Snapdragon

GENERAL CONSIDERATION
Color, form, size of florets, length of spikes, placement of florets, stem and foliage.

MERITS — pure colors and delicate, harmonious shadings, large florets, large, shapely, full spikes, large number of expanded florets, attractive form of florets with broad lip, florets attractively placed, top of spike tapering to point.

FAULTS — Unpleasant color or coloring, small florets, florets too closely or too widely spaced, spiked unsymmetrical crooked, weak stems, broken or undeveloped tip of spike, overabundance of foliage and side shoots.

AQUILEGIA — Columbine

GENERAL CONSIDERATION
Color, shading and harmony, size, length of spurs, condition, substance, foliage, number of flowers per stem.

MERITS — Attractive colors and harmonious combinations, long, graceful spurs, fresh and crisp, clean foliage, good form in flower and picnic.

FAULTS — Dull colors, short, stubby spurs, except in European type, small flowers, wilting, insect and disease injury.

ASTERS

GENERAL CONSIDERATION
Color, size, form, depth and substance.

MERITS — Large size, regular outline, deep bloom, pure color, freshness, one bloom to each long, stiff stem, clean foliage. (disbud early)

FAULTS — Fading and wilting, secondary blooms or late disbudding, not at best stage of development, irregular unsymmetrical blooms, too many rays in double varieties, short stems, poor foliage.

CAMPULA (Cantbury Bells, Peach Bells, etc.)

GENERAL CONSIDERATION
Size, color, number of blooms per stalk, shape of pedicel or spike.

MERITS — Bright color, large size, well shaped, regular blooms, many open in well shaped inflorescence.

FAULTS — Dull, muddy color, too few blooms open or too widely spaced, blooms small, wilted or stained.

CARNATIONS

GENERAL CONSIDERATION
Color, size, stem, substance, fragrance.

MERITS — Purity of color and clearness of markings, broad petals, regular hemispherical form, split calyx, strong fragrance, still, straight stems, freshness.

FAULTS — Faded dull colors, well defined markings, if any, irregular form, misshapen petals; split calyx, late or improper disbudding, crooked stems; poor carriage of flowers; wilting or tendency to "go to sleep".

CENTAUREA — Bachelor's Button (Cornflower, Sweet Sultan, Etc.)

GENERAL CONSIDERATION
Size, color, form, substance, stem.

MERITS — Large size, clear color, regular form; straight stiff stems.

FAULTS — Short stem; wilting; small blooms

DELPHINIUM

GENERAL CONSIDERATION — Color; length and symmetry of spike; size, form, placement and substance of florets; foliage.

MERITS — Large spikes branching at base; large flowers evenly spaced to form pleasing spikes; many open florets; spikes tapering to point; bright clear colors.

FAULTS — Weak, thin spikes; too few florets open; lower florets withering; spike ending abruptly; dull colors; filmy, transparent petals; unharmonious hues; florets overcrowded; broken foliage.

GLADIOLUS

GENERAL CONSIDERATION — Color, form of spike and florets, placement of florets, proportion of open flowers to bud.

MERITS — Large shapely flowers; well proportioned spike; large number of florets open; good substance; long spike; florets attractively arranged according to type.

FAULTS — Filmy, transparent flowers; too few blooms open; withered lower florets; crooked spikes; too widely separated florets; too crowded; poor floret form; weather stains; insect injury; bruises.

HEMORICALLIS — Daylily

GENERAL CONSIDERATION — Condition, number of bloom and buds; size; stem and foliage; fragrance.

MERITS — Long, stiff stems; several flowers and buds; good condition in flower; large according to variety; fragrance.

FAULTS — Too few flowers or buds, "blomed out."

IRIS

GENERAL CONSIDERATION — Color, form, substance, texture, poise, stems.

MERITS — Flower firm, head well balanced and poised, color clear, sparkling iridescent; size proportionate to stem; fragrance; standard arched or doomed; halls flaring.

FAULTS — Poor condition; wilting; flowers poorly placed, crowded, unbalanced; contorted form; falls too strongly reflexed; standards drooping and bruised.

LILIUM

GENERAL CONSIDERATION — Size, number of flowers per stalk; color and form according to species.

MERITS — Large blooms, form typical of species; clear colors and harmonious markings or shadings; many flowers open and in good condition; foliage clean and disease-free; flowers unblemished from pollen stains, dust, etc.

FAULTS — Poor form and color for species of variety; too few flowers open; blooms stained and spotted; short or spindly stem; evidence of disease or insect injury.

PANSIES

GENERAL CONSIDERATION — Form, coloring, condition, stem

MERITS — Circular outline; good size; substances; overlapping petals; well defined eye; purity and richness in ground color; pleasing markings and shading; long stem.

FAULTS — Small filmy blooms; short stems; poor coloring.

PEONIES

GENERAL CONSIDERATION — Color, form, size, distinctiveness, stem, fragrance.

MERITS — Large size; pure, rich color; good form for type; firm substance; stiff, esquisite stem; pleasant odor.

FAULTS —

Weak, faded, blotched, blue colors; blackened stems; hard unopened centers; petals spreading too much and showing carpels irregularities in form.

ROSES

GENERAL CONSIDERATIONS — Form, color, substance, stem and foliage, size.

MERITS — pure, rich luminous colors; firm, crisp petals, clean, healthy foliage; long stems; large blooms for type and variety; high centers in exhibition varieties; at most perfect phase of possible beauty.

FAULTS — Spindly or weak in habits; poor colored foliage; small; out of proportion with container; too few flowers; lopsided or undesirable in shape.

SPECIMEN PLANTS — FOLIAGE

GENERAL CONSIDERATION — Cultural perfection, size distinctiveness, rarity, condition, shape according to variety.

MERITS — Large size and in good proportion to container; attractive shape full and dense; well balanced; healthy and vigorous.

FAULTS — Poor shape; poor color; weak or spindly growth; small.

TUBEROSA BEGONIAS

GENERAL CONSIDERATION — Number and size of blooms; color, stem and foliage, form according to type.

MERITS — Vigorous, robust growth; several erect flower stems bearing flowers of clear color and good substance.

FAULTS — Weak stems; poor foliage, deformed flowers; lack of apparent vigor.

TULIPS

GENERAL CONSIDERATION — Color, substance and texture, size, stem, form, condition.

MERITS — Large blooms; clear, rich coloring, firm, thick petals; stiff straight stems.

FAULTS — Improper stage of development; petal deformities such as falcation; disease on foliage; bruises.

VIOLAS

GENERAL CONSIDERATION — Form, coloring, stem and foliage, substance.

MERITS — Good shape; broad petals; clear, rich coloring; well defined eye; well defined edge coloring and definite bright contrasts; stiff stems.

FAULTS — Poor coloring; fading; wilting.

FAULTS — Improper stage of development split centers; abnormal irregularities in petalage; overgrown or dressed; petals wilted or soft; weak; faded, blue or dull color or dull color; too small; weak stems; foliage too open or sparse stems not disbudded; weather stains; insect and disease injury; conspicuous spray residue on the foliage.

SPECIMEN PLANTS — Cultural perfection, size, floriferousness, form, foliage, rarity.

MERITS — Appearance of well-being; vigorous; large or proportionate to container; in full flower; attractive shape.

Elements Of The Flower Arrangement

FLOWER ARRANGEMENT — Containers and plant materials are the elements used in flower arrangement. When accessories are permitted, these also become elements of the composition.

BEAUTY of an arrangement may be defined as its appeal to the observer. **SIMPLICITY** in flower arrangement is the elimination of all unnecessary details to confuse the eye. Even in a mass arrangement, the quality of simplicity may be achieved.

EXPRESSION in flower arrangement is the creative quality in a distinctive arrangement which reveals to the observer an idea, feeling, mood or story. Without originality of expression an arrangement is just an arrangement. Possessing it, an arrangement may be true art.

HARMONY in flower arrangement is the **INTERRELATIONSHIP** of the component parts which result in a unified whole.

Flower arrangement is the art of organizing the elements used according to the principles of design, to attain beauty, simplicity, expression and harmony.

Elements of design — In flower arrangement the elements of design employed are line, form, pattern, texture and color.

LINE — The plant materials provide the line structure or skeleton of the arrangement. A definite linear plan is desirable except in the strict interpretation of certain arrangements.

FORM — The shape resulting from the structural lines of the arrangement is its form. Successful arrangements are planned in relation to one of the three basic forms: sphere, cube, pyramid, a division of one of these, or a combination of more than one.

PATTERN — The silhouette made by an arrangement against its background is its pattern. This consists of solids (plant material) and voids (spaces between).

Variety in the size and form of plant materials and in the size and forms of voids must be considered if the pattern is to be interesting.

TEXTURE — In flower arrangement the tissue structure of the plant material is referred to as texture. This may be smooth or rough, glossy or dull. The container used must blend in texture with some dominant or emphatic part of the plant material.

to make a harmonious whole. **COLOR** — In flower arrangement color forms the most compelling element of design.

PRINCIPLES OF DESIGN — In flower arrangement the principles of design followed are **BALANCE, DOMINANCE, CONTRAST, RHYTHM, PROPORTION, SCALE.**

BALANCE — The disposition of elements about a central axis so that there is an equal amount of visual weight on each side of the axis is balance.

DOMINANCE — By presenting one outstanding structural feature to which all else is subordinated, a unification of elements is attained which creates dominance. This unification must be the result of the correct and skillful arrangement of all elements of design; line, form, pattern, texture and color.

CONTRAST — is the unification of opposing elements to emphasize a dominant feature by means of the difference between that feature and the elements used near it. Dominance may be obtained in flower arrangement by the use of repetition, but without contrast, repetition becomes monotonous.

RHYTHM — in flower arrangement is the unification of elements by creating a feeling of motion in an arrangement which carries the eye through the design. Rhythm is usually created by the use of repetition and transition.

REpetition — in flower arrangement is the use of the same element of design more than once in an arrangement.

TRANSITION — Flower arrangement is a gradual change in size from large to small, from dark to light, from dull to bright, from color to color. Transition between container and plant material is attained by bringing some of the plant material down over the rim of the container.

PROPORTION — is the graceful relationship of one part of an arrangement to another. It is two and one half to one is usually closely allied to scale. The ra-

pleasing, as in the height of an arrangement which is at least one and one half times the height or breadth of the container.

SCALE — is the size relationship of the component parts of an arrangement or composition. By unifying the elements through the introduction of a measured relationship or sequence between the elements used, scale is attained. These elements, the container, accessories, if any, individual blossoms, leaves and stems must be so related in flower arrangement that each element assumes its true size.

SPECIAL CLASSES OF FLOWER ARRANGEMENT — **MINIATURE ARRANGEMENT** — These reproduce in miniature the effect of flower arrangements of large size. All measurements include container and base unless the flower show schedule states otherwise. Three inch overall (flowers and container) is the recommended maximum measurement for miniatures. Scale is the most important principle to be applied in making miniatures.

SMALL ARRANGEMENTS — This is the designation for arrangements just a little larger than miniatures. Small arrangements would run from three to eight inches.

TABLE ARRANGEMENTS — Table settings present a special problem to the exhibitor. Here the composition involves an architectural design in which the flower or fruit or vegetable arrangement is only a part of the whole rather than a dominant element. Strive for beauty and functionalism. Functionalism in table setting is the practical approach to the basic problem of serving food in the most attractive manner, and with out it any table setting loses its value and meaning.

Do you know that every four minutes someone is saved from cancer? This year about 150,000 Americans will be saved from cancer, says the American Cancer Society.

Rev. And Mrs. Giles Appointed Missionaries By Southern Baptist

Rev. and Mrs. James E. Giles, of Spearman, Texas, were appointed missionaries to Columbia today by the Southern Baptist foreign mission board at its regular monthly meeting in Richmond, Va.

Mrs. Giles, the former Mary Nell Morrison, was born near Gruver, Texas. She received the bachelor of arts degree from Hardin - Simmons University, Abilene, Texas, and the Master of Religion degree from Southern Baptist Theological Seminary, Fort Worth, Texas.

She has taught in public school of Dalhart, in the day school of First Baptist church, Sherman; and as a substitute in Fort Worth. She has also been a vacation bible school worker for the Baptist General Convention of Texas.

Concerning her commitment to mission service, Mrs. Giles said that one morning as she was listening to the radio she heard some girl from Cuba tell about the work of missionaries there. "The Lord spoke to me," she said. "At that time I promised Him I would serve Him with my life."

During college days her interest in foreign missions grew stronger and after seeing a mission film and realizing the need of people in other lands she made public her decision to serve on a mission field.

Mr. Giles is pastor of the Dewey Avenue Mission of First Baptist church, Sherman, where he has served since June 1947. Prior to that he was pastor of Pleasant Mound Baptist church, Granfield, Okla.; Baptist student Union secretary for New Mexico for the Southern Baptist Home Mission board.

A native of Bailey County, Tex., he moved to Clovis, N. M. with his family while he was in Jun-

ior high school. He attended Hardin Simmons University and received the bachelor of science degree from New Mexico Western College and the bachelor of divinity degree from Southern Baptist Seminary. He will receive the doctor of theology degree from Southwestern on May 17.

Mr. Giles told the Board that his interest in foreign mission service began after he entered the seminary. Then one summer he worked with vacation bible schools in the Bahama Islands. "It was while there that I came to feel I could be completely happy in that type of work," he said. "I felt that my life had made a great investment."

The next year at the seminary his decision for mission service was solidified.

Mr. and Mrs. Giles have two children: David Wayne, 20 months, and Karen Ruth, two months. They are among 14 young people appointed for overseas service at the May meeting of the Board, bringing the total number of active Southern Baptist foreign missionaries to 1,154.

WORLD THAN THE DEVIL WOULD HAVE YOU BELIEVE?

The good people here and pray for the best in this life and prepare for the worst. This is a good world, for it is God's world. He made it and he has never turned it over to the devil, and He will. How thankful we should be for the sunshine and the rain. The cold and heat show the changes in the season. How we should set down on our knees and thank God for this wonderful rain. It shows a greater spirit to thank God for a good rain, than it does to pray for a rain and forget to give thanks after it comes. If it was not for the prayers of the christian people this old world would not stand.



New A-Line models range from Pickups through 33,000 lbs. GVW Six-Wheelers. Other INTERNATIONAL Trucks, to 96,000 lbs. GVW, round out world's...

NEW Golden Anniversary INTERNATIONALS

NEW ACTION-STYLING! MORE HORSEPOWER! BUILT TO COST LEAST!

Come in and see the crowning achievement of fifty years of truck building—the new Golden Anniversary INTERNATIONALS!

They're Action-Styled with new, low silhouette, wider cabs for greatest driving and riding comfort.

New Golden Jubilee Pickup! A look of action from front to back. Longest pickup body in its class! Widest cabs, biggest Sweep-Around windshields. More usable horsepower.

New Travelall! More leg and head room, lower overall height and bigger glass area than any comparable vehicle. Extra-low

loading height. Seats eight Third door standard.

New 3-Door Panel! Only panel available with extra third-door on the curb side. Make deliveries faster, more efficiently. Style and power that's a real asset to your business!

New Cab-Forward Design! Short 89-inch bumper-to-back-of-cab

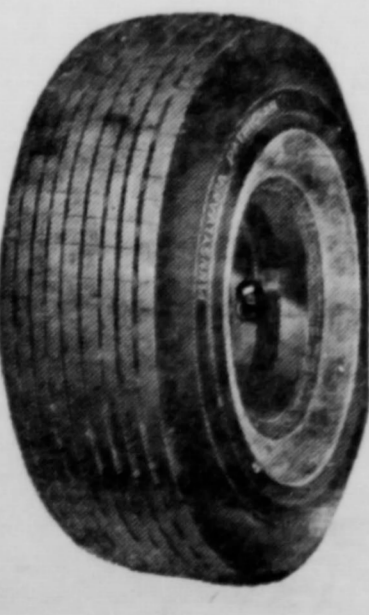
dimension with conventional type engine accessibility. Full size cab and doors. Maximum maneuverability.

New Tractors! Greater comfort, visibility and handling ease. New power, more usable power where it's needed most. New stamina and economy. New optional Select-O-Matic® transmission.



See them! Drive them today! B. & C. EQUIPMENT COMPANY

TIRE SALE



- 6.70 x 15 White Wall Nylon tube type — Exchange price \$21.75
- 6.70 x 15 White Wall tubeless Nylon — Exchange price \$24.75
- 7.10 x 15 White Wall Nylon tube type — \$23.65 and old tire
- 7.10 x 15 White Wall tubeless — \$26.65 and old tire
- 7.60 x 15 White Wall Nylon tube type — \$25.65 and old tire
- 7.60 x 15 White Wall tubeless — \$28.65 and old tire

PRICES GOOD UNTIL PRESENT STOCK IS GONE
No Sales To Dealers
DAVIS OIL CO.

FRIDAY PARTY
Friday party at home of her gr...
Stewart...
of her cla...
but due...
them could...
the occasion...
Friday. Gam...
from 4:00 to 5:0...
Refreshments...
and punch...
grocery: Janice...
Groover, Bill B...
Kay Cloß, Bill...
Graham, Perry...
Washington

FAMILY REUN
Mrs. Nan Pru...
her family for...
for the first tim...
These present...
ren McNabb...
Mr. and Mrs...
and family of...
and Mrs. A. I...
family, Los A...
Mrs. Earl Prutt...
Washington; M...
les Pruttsman...
and Mr. and...
art and family

AFFILIATED FOOD STORES

FRESH BLACK SPIN ASP.

Tominy

FRESH M GRADE OLEO

MONTE N WHOLE LAKE GRE

Tom DEL MOY WHOLE GOLDEN

MONTE IN GARDEN PEA

MONTE N 303 CAN LIM

Beef

GROUND BEEF

Baby Beef ROUND STEAK

Baby Beef LOIN and T-BONE

Baby Beef CHUCK ROAST

Baby Beef ARM ROAST

Beef Boneless B STEAK

WHOLE OR HA

es Appointed
thern Baptist
gh school He attended
Simmons University
d the bachelor of science
from New Mexico Wes
college and the bachelor
degree from Southwes
tern. He will receive
ctor of theology degree
outhwestern on May 11.
Giles told the Board that
erest in foreign mission
egan after he entered
inary. Then one summer
ked with vacation bible
in the Bahama Islands
while there that I came
I could be completely
that type of work, he
felt that my life had
great investment."
ext year at the seminary
sion for mission service
ified.
d Mrs. Giles have two
David Wayne, 20 months
Karen Ruth, two months
e among 14 young men
ranted for overseas ser
the May meeting of the
ing the total number
Southern Baptist foreign
ies to 1,154.

WEDNESDAY PARTY
Mary Mahis was honored with
Wednesday party recently at the
home of her grandmother, Mrs.
C. Stewart.
All of her classmates were in-
vited, but due to rain, many of
them could not be there.
The occasion was Mary's 11th
birthday. Games were played
from 4:00 to 6:00 p. m.
Refreshments of ice cream,
cake and punch was served to the
guests: Janice Phelps, Helen
Groover, Bill Blackburn, Sharon
Kay Cloe, Bill Campbell, Pris-
cilla Graham, Nan Sheets and
Perry Washington.

FAMILY REUNION

Mrs. Nan Prutsman had all of
her family home Mother's Day
for the first time in twenty years.
Those present were: Mrs. War-
ren McNabb, of Albuquerque;
Mr. and Mrs. Vance Prutsman
and family of Albuquerque; Mr.
and Mrs. A. L. Prutsman and
family, Los Angeles; Mr. and
Mrs. Earl Prutsman of Longview
Washington; Mr. and Mrs. Char-
les Prutsman of Hobbs, N. M.;
and Mr. and Mrs. Robert Stew-
art and family of Spearman.

**Margueret Winder
A Tech Graduate
In Journalism**

We learn that Margueret Win-
der of Gruver will graduate from
Texas Tech at Lubbock in June
of this year. Miss Winder will re-
ceive her degree in Journalism.
She plans to marry after gradu-
ation in June. She plans to com-
bine newspaper work with home-
making.

**Rev. Marshall Walker
President Student
Body At Seminary**

Marshall L. Walker, Jr., from
Spearman, has been elected to
serve as president of the 1957-58
Student Body Council at South-
west Baptist Seminary in Fort
Worth, where he a student.
The son of Mr. and Mrs. M.
W. Walker of Route 2, Spearman,
he received his BA degree in
speech from Wayland College,
Plainview. At Wayland he served
as president of the Volunteer
Mission Band and the BSU Choir,
and was a member of the Execu-
tive Council of the BSU, and
served on the Men's Dormitory
Council.

This year at Southwestern,
Marshall has been treasurer of
the religious education club. Next
year he will also serve as Enlist-
ment Vice-President for the Mis-
sion Band.
Last year Marshall had the pri-
vilege of going to the Bahama
Islands and spending the summer
as a student missionary from the
seminary.
Marshall is Minister of Music
and Youth Director at the First
Baptist Church of Wilmer, Texas.
He is planning to do foreign mis-
sion work and expects to graduate
next summer.

**Marine Cpl. Angelly
Of Gruver In Service**

KWAJALEIN, Marshall Islands
(FHTNC)—Marine Cpl. Onnie M.
Angelly, son of Mr. and Mrs. O.
P. Angelly of Gruver, Texas, is
serving with the Marine Detach-
ments at Kwajalein, Marshall Is-
lands. He reported to Kwajalein
from the 1st Marine Division at
Camp Pendleton, Calif., and is
performing duties as a Security
Guard.
Before entering the service in
Nov. 1954, he graduated from
Stafford High School in Stafford,
Oklahoma.

**Lease And Record
Contract Take-Off**

Phillips Pet. Company to Ralph
E. Randel, et al return of
lease covering portions of 3 sec-
tions GH*H survey.
Wallace and White, Inc. to
Geo. Andrews Gochnaur, etux,
return of lease 2 sections in the
GH*H survey.
Betty Stavlo et al to Gulf Oil
Corp. OG*ML, 5 years, 160 ac-
res section 256, blk 2 GHandH
survey.
Union Oil Co. of Calif. to Vir-
gil Mathews et ux, return of a
lease, sec. 3, blk 4 T*NO.
Sharples Oil Corp. to Phillip
P. Sharples, assignment 2 per
cent interest in 7.10 A out of
section 122, blk 45, H*TC.
Sharples Oil Corp. to Mrs. P.
T. Sharples, assignment 3 per
cent interest in 7.10 A out sec.
122, blk 45 H*TC.
Sharples Oil Corp. to P. T.
Sharples assignment one-fourth
int in 7.10 A out sec. 122, blk
45, H*TC.
Sharples Oil Cor. to Baker and
Taylor Drilling Co., assignment
one-half interest in 7.10 A out
of section 122, blk 45, H*TC.
The Shamrock Oil and Gas Cor-
poration to Emerald Pipe Line
Corp. assignment which covers

many sections in several sur-
veys.
Rip C. Underwood to South-
land Royalty Corp. assignment
320 A S-2 sec. 188, blk 45, H*TC.
E. J. Dunnigan, Jr. to I. J.
Huval, assignment one-eighth in-
terest Sec. 6, blk 1, WC.
E. J. Dunnigan, Jr. to Billy
B. Davis, assignment one eighth
interest sec. 6, blk 1, WC.
Gulf Oil Corp. to T. I. Har-
bour et ux, return lease 298 A
section 22, blk 3 SA*MG.
Civilization may be the product
of the world but it depends very
largely upon the United States
for its present defense.
Spearman can forge ahead if
local citizens work together and
money for the common good;
there's no other way.
There is no use trying to re-
gulate the world—unless you can
first demonstrate that you can
regulate and control yourself.
The compliments that are ac-
corded the Spearman Reporter
brighten up the lives of those
connected with it, but the dollars
that come in are what keeps it
and them going.

**Insure Your Wheat
And Small Grain Crops
TODAY!!!**



J. L. Brock Insurance Agency
P. O. BOX 913 Phone Olive 9-6861
212 Main St. Spearman, Texas
FIRE-AUTO-TRUCK-SURGLARY-LIABILITY-CROP-BOND

THAN THE DEVIL
HAVE YOU BELIEVE
d people hope and pray
est in this life and pre-
the worst. This is a good
it is God's world. He
and he has never turned
the devil, and He re-
thankful we should be
unshine and the rain
and heat show the cha-
eason. How we should
on our knees and
d for this wonderful
shows a greater spirit
God for a good rain.
es to pray for a rain
to give thanks after
If it was not for the
the christian people
world would not stand



Parade of Popular Brands



Featuring **Shurfine Libby's Del Monte**

Plus \$20,000 Cash Giveaway!

- FRESH BLACK EYE PEAS 8 For \$1.
- FANCY SPINACH 8 For \$1.
- ASPARAGUS 4 For \$1.
- Tominy SHURFINE 11 for \$1
- OLEO 5 lb. \$1.
- GREEN BEANS 4 For \$1.
- corn DEL MONTE 303 CAN WHOLE KERNAL GOLDEN 6 for \$1
- PEAS 5 For \$1.
- LIMA BEANS 4 For \$1.



SHURFINE CATSUP 5 For \$1.



SHURFINE SHORTENING 3 lb. Tin 79¢

SHURFINE

FLOUR 10 lb. 79¢ 25 lb. 1.69

SHURFINE VACUM PACKED COFFEE lb. 89¢

MARYLAND CLUB COFFEE lb. 97¢

Libby's 16 OZ. CAN Spaghetti And Meat Balls 4 For \$1.

Libby's VIENNA SAUSAGE 6 For \$1.

Libby's HOME MADE STYLE SWEET PICKLES 4 For \$1.

California - Fancy - Fresh STRAWBERRIES 3 Pint 79¢

Home - Grown - Fresh - Green ONIONS 2 Bunches 19¢

Texas - Fresh - Green OKRA lb. 23¢

MEATS

- Ground Beef lb. 35¢
- Baby Beef Ground Steak lb. 79¢
- Baby Beef LOIN and T-BONE STEAK lb. 75¢
- Baby Beef CHUCK ROAST lb. 39¢
- Baby Beef ARM ROAST lb. 43¢
- Beef Boneless RIB STEAK lb. 75¢
- WHOLE OR HALF CARCUS lb. 36¢



Shurfine "Tattered Toms" Fancy Elbertas No. 2 1/2 Can **PEACHES 3 for \$1.**



Tomato Juice Libby's 46 oz. Can **4 for \$1.00**

TENDERCRUST CRUST KING SIZE LOAF BREAD 21¢

SUNSHINE HI-Ho's LB. CRACKERS 35¢

NAISCO GRAHAMS LB. CRACKERS 34¢

Crisco 3 lb. 93¢

GIANT SIZE DEAL PAC. TIDE 74¢

REGULAR SIZE BATH Comet Cleanser 23¢

SHURFINE FROZEN 6 OZ. ORANGE JUICE 7 For \$1.

LIBBYS SLICED FROZEN 10 OZ. STRAWBERRIES 5 For \$1.

LANES ONE-HALF GALLON MELLORINE 45¢

OUT-RATE FANOUS FOR SERVICE
MAIN STREET GROCERY MARKET SPEARMAN TEXAS

ROUND UP STAMPS

Have YOU had your POLIO



To you who have been reading these appeals for the past Three Weeks and have not taken advantage of the opportunity to protect yourself and your family against Polio, may we remind you that the time is growing short to start the series of Polio Shots so that adequate protection may be obtained before the onset of the peak Polio season. There is still time, but you must act promptly. The schedule for Polio injections can be arranged as follows: Take your First Injection NOW. Four weeks later, you will take your second injection. Then, seven months later, you will receive your Third injection. As recommended now by the National Foundation, a Booster injection of Polio vaccine is advised each year, during May or June, before the onset of the Polio Season.

May we also remind those of you who have had your three injections, the latest more than 4 to 5 months ago, that you are due for your Booster injection NOW. DO NOT NEGLECT THIS VITAL PROTECTION.

The Spearman Lion's Club is sponsoring this series of informative articles because they firmly believe in this program of protection against Polio and they are sincerely interested in maintaining the co-operation of the citizens of the community in the preservation of the health of our people.

Will you be one of those who fail to heed this appeal or will you be one of our citizens who is likewise concerned about the future health of yourself, your family and your community?

Contact your doctor TODAY.

Spearman Lions Club

This Advertisement Sponsored By . . .

**LYON INSURANCE AGENCY
HANSFORD ABSTRACT CO.**

Lions Devour Chicken

The Spearman Lions Club devoured some of the finest fried chicken they ever tasted Tuesday night, when the Club honored the Athletes and Band of Spearman High School, with their annual chicken fry. Lion President Ed Mundy, and his fine cooking crew received a sincere thanks from the entire band and athletic personnel of the Spearman School.

Lion President Mundy urges everyone to be present at the annual Ladies Night, to be held at the Spearman Steak House Tuesday night, 7 p. m.

This and That

The big news this week is graduation, the Senior trip and the long vacation. A good congregation gathered in the high school auditorium for the Baccalaureate service Sunday morning. Tuesday evening the auditorium was filled to watch the graduates receive their diplomas and give a fine program. Saturday morning the Seniors will leave on their trip. The full story of the trip will be found on another page in this paper. Tonight a group of fine young people will receive their certificates, promoting them to high school.

Mr. and Mrs. Sam Cluck will be leaving here in a few days for Waco and Baylor University. Their daughter Patsy, will not graduate until next February, but she will take part in the graduation exercises. She will take part in the "Ring Ceremony" a very colorful affair.

Mr. and Mrs. Gay Fletcher returned from a short trip to Ft. Worth. They visited with Richard and Phyllis and the children. They also visited with Donnie who is being transferred to Ft. Worth, and Gay helped them choose a house to live in.

Mrs. Homer Cluck and her daughter Effie Pearl have just returned from a visit to her daughter May and her family. They are living in Victoria. May has recently been in the hospital for treatment, but is now on the way to recovery.

Brother Dokes young son Jerry is in a Perryton hospital being treated for a throat ailment.

This was news to us. Mrs. Mickey Delano is in the Shattuck hospital. She recently underwent surgery. We understand that now she is well on the road to recovery, and will soon be home.

Mr. and Mrs. Browder and Louella are here from Sherman for the graduation of their grandson, Byron Peddy. They are staying with their daughter, Mrs.

Elise Peddy

Mr. and Mrs. A. C. Bort returned from Dallas where Mrs. Bort underwent two major operations. We are glad to report that she is making a good recovery.

Mrs. R. D. McClellan and Judy spent the Mother's Day week end with her mother in Olton. In addition to Judy, they took Billy Lee's little girl, and "Corky's" little girl.

Mrs. Bess Voyles of Hooker is visiting her mother, Mrs. Mary Fletcher.

Mrs. Gertrude Ogle and Mrs. Bill Hutton are going to Pueblo, Colorado for a few days. They will be taking art lessons.

ONE OF THE OLD TIMERS OF THE PANHANDLE IN THE EARLY DAYS PASSED AWAY IN LOS ANGELES, CALIF.

Carl D. Works, better known to friends in Hansford and Hutchinson Counties as Judge Works, passed away at Hotel Milner, in the city of Los Angeles on January 7, 1957.

C. D. Works was a pioneer school teacher at the turn of the century on the North Plains.

Many citizens in this area went to school to him more than a half century ago. Judge Works ran an Abstract plant in Borger, and was at one time County Attorney of Hutchinson county. He was well known on the North Plains of Texas. He was a good citizen and a christian gentleman.

He was buried in Los Angeles, California. He was 82 years old at the time of death.

Soil Conservation Notes

It isn't too late to plant grass. Of course we wish all the grass was already coming up with these fine showers we keep having, but since some cooperators couldn't get a grass drill to seed when it was dry, maybe during these next few days will see a good many more acres seeded with a good cover on the ground and surface moisture available anytime during the remainder of May should give good good results.

The demand for grass seed is high and the supply, short right now. Some of you farmers who have good stands of Blue grass or Western Wheat grass can probably make some good money by deferring grazing and combining the seed this fall. Quite a large number of farmers who have entered the Conservation Reserve part of the Soil Bank Program do not presently have cover on their land. This means they must plant cover this year and seed their grass next year.

If you have any questions on planting or harvesting grass, drop by your Soil Conservation District office.

New Officers Installed For Music Club

For the closing of this term the Spearman Music Club enjoyed a banquet in the dining room of the Son's Cafe Last Thursday evening at 7:30.

The tables were decorated with seasonal cut flowers and place cards were music note shaped cups.

Mrs. Rae Sanders introduced Mrs. Johnny Fagan of Borger Music Club who had charge of the installation of new officers. She performed the lovely ceremony using lighted tapers and followed it with a note of congratulations to the newly elected Spearman Club.

New officers installed included President, Mrs. Sanders, Vice President, Mrs. Max Baggerly, Secretary, Mrs. Sam Watson, Treasurer, Mrs. Pat Cates, and Librarian, Mrs. Don Knox.

Mrs. D. L. Daren of Borger was also a guest. She is head of the Junior division of Music clubs in Borger.

Members present for this occasion included Mesdames: Max Baggerly, P. A. Lyon, Jr., Pat Cates, Joel Lee Lackey, Sam Watson, Chalmers Porter, James Crawford, Rue Sanders, Billy Miller, Tommy Brown, J. D. W. banks, Don Knox, Tom Sutton.

Gruver P-TA Study Group

P-TA Study group met May 8th, in the audio-visual room of the Elementary building for their last study of this year. The title of this study was "Beginning of Commencement", and was a discussion by the two first grade teachers on pre-school children. Since Mrs. Hoy was ill Mrs. Tom Hudson and Mrs. Hubert McClellan supervised the discussion and answered any questions that arose. Those who enjoyed the study were: Mrs. Glenn Hiller, Mrs. Bill Maupin, Mrs. Cecil Ralston, Mrs. Darrell McQuinn, Mrs. Keith Gross, Mrs. Elvin Wright, Mrs. Skeez Riley, Mrs. Theodore Bayless, Mrs. Morris Payne, Mrs. Don Hart, Mrs. Don Hudson, Mrs. Ray Etter, Mrs. Bob Pierce, Mrs. Ward Nolder, Mrs. J. C. Harris, Mrs. F. W. Thomas, Mrs. Willoughby.

Card of Thanks

We wish to express our sincere thanks to everyone for their kindness and sympathy to us for the meals you served, your cards, and lovely floral offerings.

All Good Wishes to the Graduate

Graduates...

- Berry's Cleaners
- Bruce Pontiac
- Chamber of Commerce
- Consumers Sales
- Crawford Implement
- Campbell Tailor Shop
- Chambers Dry Goods
- Equity
- Foxworth Galbraith Lumber Co.
- Floyd's Lockers
- First State Bank
- Hansford Implement Co.
- Jameson Chevrolet Co.
- R. L. McClellan Grain Co.
- R. L. McClellan & Sons.
- Spearman Drug
- Super Service
- Spearman Dry Goods
- Spearman Steak House
- Spearman Barber Shop
- White Auto Store
- Western Auto Store
- White House Lumber Co.

What does the future hold for you? For each of you, the answer will vary with individual talents, aptitudes and ambitions. But for all of you, this is true: Right here in your own home town, you will find broad scope for growth, progress and outstanding achievement in the career of your choice. Whatever your aim may be . . . from industry to retailing, from banking to journalism . . . you will find here a world of opportunities to build solidly for success. When you look to the future, look first at home!



W
O
S
L
R
R
MYST
e first time in mo
ublishing the Myst
no one has corr
that was printed c
spaper.
ad two identific
L. Dixon Home near
C
GI
Sheds!
Thank you're Grand
of?
RD IMPLEMENT
ETE TURN-KEY JO
PLANE SPRAYING
to offer customers a compl
ing for greenbugs, lice, weed
advances.
COMPLETE STOCK
MUM CHLORATE
destroying bindweed
OR OUR SERVICE
RAIN SORGHUM

ew Officers
 nstalled For
 Music Club
 ER
 YING
 NER
 TOR
 FARM
 E 1

WILL RECEIVE
 ONE YEAR'S
 SUBSCRIPTION
 TO THE
 REPORTER
 FREE



THE OWNER
 OR OPERATOR
 OF THE FARM
 ON PAGE 1
 IS ASKED TO
 CALL AT THE
 REPORTER
 AND RECEIVE

A BEAUTIFUL
 FULL PHOTO-
 MOUNTED
 FREE
 OF
 CHARGE

MYSTERY HOME FOR THIS WEEK STILL A MYSTERY

the first time in more than one year and 3
 publishing the Mystery Home series in this
 no one has correctly identified the Mys-
 that was printed on the front page of last
 newspaper.
 and two identifications of the Mystery farm
 L. Dixon Home near Morse, but we checked

with Mrs. H. H. Jones and Mrs. Hall Jones of Spear-
 man and they assured this newspaper that the Mys-
 tery home is not the P. M. Dixon home.

SO NEXT WEEK we will offer a 5 year paid sub-
 scription to the Reporter for the proper identification
 of the Mystery home. We will write up the owner of
 the home, either on this page with the correctly iden-

tified Mystery home of this week, which is printed
 on the front page of this paper . . . or if we are crowd-
 ed for space we will write up the story in the news
 columns of next weeks Reporter. Get your thinking
 cap on . . . you can win a \$12.50 prize by properly
 identifying the Mystery home in last weeks (May 9th)
 issue of the Reporter.

CONGRATULATIONS.....
 GRADUATES OF HANSFORD COUNTY PUBLIC
 May you enjoy a pleasant and profitable future
CORNER DRUG STORE
 Mr. and Mrs. Gordon Parish

"Built on Confidence, Growing on Service"
FIRST STATE BANK
 Banking Hours 9:00 A. M. -3:00 P. M.

Sheds!
Make you're Grand!

IMPLEMENT CO.

WELCOME
 Mystery Home owners and all
 citizens of this area to the
SPEARMAN STEAK HOUSE
 Mr. and Mrs. Howard Huffman, Owners
SPECIALS... Used Tractors
 1954 Case D. C. and 4 row lister
 1952 John Deere G and 4 row lister
 1946 IHC M and tool Bar
 Several used IHC WD-9 Tractors
B. and C. EQUIPMENT CO

Your health .. is our Business

 Watch for the announcement
 of our 25th anniversary
SPEARMAN DRUG STORE
 Mr. and Mrs. Bruce Sheets
 Spearman, Texas

Gooch Feeds Purina Chows
 Hybrid Corn and Sorghum
 Grain Seeds
SORGHUM ALMUM
 Concentrated Burascu and Polybor
 Chlorate Weed Killer.
 Organic Garden and Field Fertilizer.
 Tusco Laying Cages
R. L. McCLELLAN GRAIN CO.

COMPLETE TURN-KEY JOB
PLANE SPRAYING.
 on to offer customers a complete turnkey
 ing for greenbugs, lice, weeds or grass-
 advances.
A COMPLETE STOCK OF
MUM CHLORATE
 destroying bindweeds.
OR OUR SERVICE
RAIN SORGHUM SEED
UNITY

ORTHO
 Insecticide spray and **STOP**
 dust. Destroys Bugs worrying about
 and insects. **WEEDS!**
KORDIMULCH
 WITH POLIUM
 Farm and Garden
 Fertilizers
 Bone Meal
 Rose Food
 • Smothers weeds
 • Saves water
 104-foot roll, 40" wide
 (enough to cover 324 sq.
 ft. garden) **\$5⁹⁵**
SPEARMAN HARDWARE
 John Bishop

Eureka Vacuum Cleaners ONLY
\$49.88
GROup No. 1 Batteries - 48 Month
 Guarantee **\$11.88**
 Steam or Dry Electric Iron
\$8.97
WHITE AUTO STORE
 Ike Bggerly

CONGRATULATIONS
 To Graduates Of
 Hansford County Schools
 We Wish For You
 A Happy and Prosperous Future
OWENS SALES COMPANY
 Claude Owens
 It will pay you to buy a
MAYTAG

Delphinium Flower Club Annual Flower Show

First Methodist Church Spearman, Texas
May 16, 1957

Mrs. Ray Phelps General Chairman

General Rules

- Exhibits must be placed between the hours of 8:00 and 10:00 o'clock A. M. of May 16, 1957.
- Any amateur gardener in this community or surrounding community may compete.
- Only one entry in each name variety may be made by an exhibitor.
- Flowers for arrangements are to be home grown, but not necessarily by the exhibitor. Wild flowers will be accepted.
- Foliage allowed in all arrangement classes.
- All entries in Horticultural classes must be grown by exhibitor and should be labeled as to variety whenever possible.
- pot plants must be in possession of exhibitor for at least three months.
- The decision of the Judges will be final.
- Containers will be furnished by Show Committee for specimens only to those not belonging to any flower club.
- The Delphinium Flower Club assumes no responsibility for damage or loss of property, although care will be exercised.
- All exhibits must be removed between 6:00 and 6:30 o'clock p. m., May 16, 1957.
- Any exhibitor may bring own tables and accessories.
- CONSULTANT—Mrs. John Bishop
- COLLECTION — 3 of same kind, Group — 3 varieties or colors
- SECTION A (Bearded Iris) Horticulture name if possible
- SPECIMEN BLOOM
 - Class 1. Blue (a) light (b) Medium (c) dark
 - Class 2. White
 - Class 3. Cream (a) buff
 - Class 4. Pink
 - Class 5. Orchid
 - Class 6. Red
 - Class 7. Yellow (a) light (b) dark
 - Class 8. Gold
 - Class 9. Brown (a) Copper (b) Bronze
 - Class 10. Purple
 - Class 11. Plicatas (all colors)
 - Class 12. Bi-colors (a) Blends
 - Class 13. Amoena (fr example Pinnacle)
 - Class 14. Variegata (example Extravaganza)
 - Class 15. Blue (a) Light (b) Medium (c) Dark
 - Class 16. Cream (a) buff
 - Class 17. Pink
 - Class 18. Orchid
 - Class 19. Red
 - Class 20. Yellow (a) Light (b) Dark
 - Class 21. Brown (a) Copper (b) Bronze
 - Class 22. Purple
 - Class 23. Plicatas (all colors)
 - Class 24. Bi-colors (all Blends)
 - Class 25. Amoena
 - Class 26. Variegata
- SECTION C DUTCH IRIS
 - Class 1. Blue Specimen Stalk 1

- Class 2. Whites Specimen Stalk 2 A Collection
- Class 3. Yellow Specimen Stalk 3 A Collection
- Class 4. Bi-colors Specimen Stalk 4 A Collection
- Class 5. Bronze Specimen Stalk 5 A Collection
- SECTION C "2" Oriental Iris
 - Class 1. Specimen Stalk any color
 - Class 2. Collection of three one or more varieties.
- SECTION D ANNUALS
 - Class 1. Corn Flowers, 5 stems
 - Class 2. Phlox 3 stems
 - Class 4. Any Annuals, (not previously listed 5 blooms)
 - Class 5. Collection any variety 1 bloom or spray
- SECTION E PERENNIALS
 - Class 1. Dianthus (hardy garden pink) 10 stems one variety
 - Class 2. Dianthus (hardy garden pink) 10 stems ne or more varieties
 - Class 3. (Columbine), Specimen spray
 - Class 4. Columbine 2 sprays, one or more varieties.
 - Class 5. Poppy, 3 blooms, Oriental
 - Class 6. Oriental poppy Specimen bloom
 - Class 7. Poppy 3 blooms of any other variety
 - Class 8. Gaillardias, 5 stems
 - Class 9. Delphinium Pacific Hybrids, 3 sprays
 - Class 10. Delphinium Pacific Hybrids Specimen spike
 - Class 11. Lillium Candium (Madonna Lilly) 1 stalk
 - Class 12. Lillium Any other variety 1 stalk
 - Class 13. Daisies Painted, Collection 3 of one variety
 - Class 14. Daisies Painted, Group 3 varieties or color
 - Class 15. Daisies, Shasta Collection
 - Class 16. Daisies, Shasta Group
 - Class 17. Daisies, Any other variety Collection
 - Class 18. Daisies, any other variety Group
 - Class 19. Tulip, Specimen Bloom
 - Class 20. Tulip, Collection
 - Class 21. Tulip, Group
 - Class 22. Any Perennial worthy of exhibit 3 blooms or less
- SECTION F BIENNIALS
 - Class 1. Sweet William, 5 stems 1 variety
 - Class 2. Sweet William, Group 3 Variety of color
 - Class 3. Canterbury Bells, 1 spike
 - Class 4. Violas 10 stems, one or more varieties
 - Class 5. Pansies, 10 stems, one or more varieties or color.
 - Class 6. Snapdragon, Specimen bloom
 - Class 7. Snapdragon, Group 3 varieties or color.
- SECTION G PEONIES

- Class 1. Specimen bloom any variety any color Double
- Class 2. Three blooms 1 variety double
- Class 3. Three varieties one bloom each double
- Class 4. Specimen bloom any variety or color, single
- Class 5. Three blooms 1 variety, single
- SECTION H ROSES
 - Class 1. Hybrid tea — Specimen bloom, 1 variety, any color
 - Class 2. Hybrid tea — 3 blooms, 1 variety, any color
 - Class 3. Polyantha — Specimen bloom, any variety
 - Class 4. Polyantha — 3 sprays, 1 variety, any color
 - Class 5. Any other type of Rose Specimen bloom
 - Class 6. Floribunda, Specimen, bloom or spray
 - Class 7. Climbing Rose, Specimen spray any variety, not over 2 feet long
- SECTION I FLOWERING SHRUBS
 - Class 1. Specimen Spray, any variety, not to exceed 3 feet
- SECTION J POTTED PLANTS
 - Class 1. African Violets, Specimen plant
 - Class 2. African Violets, Collection of several varieties
 - Class 3. Begonias, Specimen Plant
 - Class 4. Geranium, Specimen plant
 - Class 5. Geranium, Collection of several varieties
 - Class 6. Foliage Plants, Specimen plant any variety
- SECTION K GARDEN PRODUCE
 - Class 1. Collection of vegetables or fruit grown by exhibitor.
- SECTION L UNSCHEDULED
 - Class 1. Any worthy exhibit not provided for in schedule.
- SECTION M ARRANGEMENT CLASSES
 - Class 1. Arrangement for dining table
 - Class 2. Arrangement for coffee table
 - Class 3. Arrangement for console table
 - Class 4. Arrangement for buffet table
 - Class 5. Arrangement for bedside table
 - Class 6. Arrangement for bridal shower
 - Class 7. Arrangement for baby shower
 - Class 8. Arrangement of Roses in Glass
 - Class 9. Basket Arrangement (glass or straw)
 - Class 10. Arrangement of spring bloom in any container
 - Class 11. Arrangement for mantel
 - Class 12. Arrangement of White flowers in white container.
 - Class 13. Composition of flowering material in combination with fruit or vegetables.
- SECTION N NOVELTY Arrangements
 - Class 1. Arrangement for pitcher or teapot
 - Class 2. Miniature arrangements, not to exceed 3 inches overall dimensions
 - Class 3. Small arrangements, over 3 inches not to exceed 8 inches overall dimensions.
- SECTION O Public Arrangements
 - Class 1. Arrangement for office

FOR SALE—1955, 45 foot, 2 bedroom trailer. Inquire at Farnsworth Trailer Park No. 22 24-p

FOR SALE—2600 feet of 2 inch gas pipe line in 30 foot lengths. See or phone W. B. Barnes, Spearman, Phone OL-9 5696. No. 22rtn

WILL MAKE electric lamps from discarded juags, bottles or other materials. Or will repair broken or damaged lamps. Mrs. Faus, 115 North Bernice, Phone OL 9-5741 No. 22rtn

DREAMS COME TRUE. Home ownership, new car, new furniture. Earn extra money as an Avon Representative. Established territory open. —Write Avon Mgr 4015 Parker, Amarillo Texas 23 11-c

FOR SALE—12,000 Acre A-1 Ranch priced to sell. Good improvements (3 sets) Good location. Good terms - No interest. ALSO 1002 acres cultivated land same price as grass. Eligible for Soil Bank. See J. L. BROCK, Main Street, Spearman, Texas No. 23 rtn

13 unit Motel - wall to wall carpet, telephone and TV in each room. Small down payment - terms on balance. Plenty room for expansion. SEE J. L. BROCK, Main street, Spearman, Texas No. 23 rtn

FOR SALE—two bed room home on 2 lots \$5000 Phone 5311 or 5261, Spearman. No. 11 rtn

FOR SALE—5 room modern home with 100 ft. frontage, textone decorated throughout, large kitchen with dish washer and disposal built-ins; extensive cabinets, formica tops. Attached garage 18 x 38 with apartment in back. Inquire at Reporter office. No. 12 rtn

FOR SALE—One bed room Modern home. Wall to wall carpeted. Telephone OLive 9-4841. No. 22 rtn

FOR SALE—2 Bed Room Home, South of School in New Addition \$8,000.00 - \$2,000.00 Down \$49.00 Monthly See J. L. Brock or L. S. McLain No. 18 rtn

Lawn Mowers Sharpened
Precision ground by hand and properly adjusted. Mowing a pleasure. D. R. 824 South Haney.

FOR SALE—Two bed room home. Attached garage. FHA or GI approved. OLive 9-4796

HELLO

A. L. [unclear]
If you [unclear] know your [unclear] South Coast

CITATION BY PUBLICATION THE STATE OF TEXAS
TO: Willard H. Miller, Defendant, Greeting:
YOU ARE HEREBY COMMANDED to appear before the Honorable District Court of Hansford County at the Courthouse thereof, in Spearman, Texas, by filing a written answer at or before 10 o'clock A. M. of the first Monday next after the expiration of forty-two days from the date of the issuance of this citation, same being the 17th day of June A. D. 1957, to Plaintiff's Petition filed in said court, on the 26 day of September A. D. 1956, in this cause numbered 838 on the docket of said court and styled Nicky Myrtle Miller, Plaintiff, vs. Willard H. Miller, Defendant.
A brief statement of the nature of this suit is as follows to-wit: Plaintiff is suing for divorce from Defendant Willard H. Miller, alleging no children born of the marriage and no community property involved, as is more fully shown by Plaintiff's Petition on file in this suit.
If this citation is not served within ninety days after the date of its issuance, it shall be returned unserved.
The officer executing this writ shall promptly serve the same according to requirements of law and the mandates thereof, and make due return as the law directs.
Issued and given under my hand and the seal of said court at Spearman, Texas, this 2nd day of May A. D. 1957. (SEAL).
Attest: Fred J. Hoskins, Clerk, District Court Hansford County, Texas.

Not every reader who urges the editor of the Reporter to "hop on" something is willing to be quoted by name.

President Eisenhower denied, as "the worst of" he had heard since taking office, reports that he would resign before the end of his second term and turn his duties over to Vice President Nixon.

Senator Byrd (D. Va.) has drafted an appropriations bill which he said would enable Congress to regain its lost control of Federal spending.

CHAMPLIN
APRIL & MAY OIL PRICES
Reg. Champlin, 51c Gal. plus tax and drum.
Champlin Turbine, 45c Gal. plus tax and drum.
H. Duty Champlin, 60c Gal. plus tax and drum.
Champlin LPG Oil 61c Gal. plus tax and drum.
DAVIS OIL CO.
Phone OL 9-3071

MOTOR WISE
Big Enough to Accommodate
Small Enough to Appreciate

CATTLE HAULING
RAYMOND MCCAMMOND
Phone OL-9-6751
1957 - 40 Ft. Trailer
P. O. Box 283
SPEARMAN, TEXAS

WANTED—BABY Sitter from 12 noon to 9:30 p. m. Contact Mrs. Bertha Gonzales, at Club Cafe From 1 to 9 p. m. No. 24, 1-4-c

FOR SALE—Three room modern house located 315 N. Hazelwood st. If interested call 2936, Fritch, Texas. Leonard Pottman NO. 24 22-rtn

FOR SALE—Electric saw with attachments. \$75.00 Phone OLive 9-4391 No. 24 2-4-p

"DO IT YOURSELF" and Do it now. Take orders for Avon Cosmetics near your home. Work 10:00 a. m. to 3:30 p. m. Five day week. Earn as much as \$2.00 per hour. Write Avon Mgr. 4015 Parker, Amarillo. No. 24, 1-4-c

The Soviet Union recently exploded another nuclear bomb, the Atomic Energy Commission announced. This was the fourth blast in the current series of Soviet tests since April 3.

East German Reds warlike maneuvers.

Republican party chiefs, preparing for next year's Congressional elections, will hold an unusual strategy conference in Washington on June 6 and June 7.

FOR RENT—Light house keeping rooms for men. 122 S. Endicott. No. 18 8-4-p

WE ARE — Experts in installing linoleums. Let us figure your next job. Free estimates. We do cabinet tops, floor linoleums, cove walls. We stock linoleums up to 12' wide, sink frames, metal tims etc. DALEY'S IN PERRYTON No. 27 rtn

ALCOHOLIC — If liquor is your problem and you sincerely want help to quit write Alcoholic Anonymous, Box 251, Spearman. No fees, no pledges, no pills. No. 36 rtn

BARGAINS in house trailers. New Trailers up to 51 feet. Five year financing, bank rates. Some used ones. Best Trailer Sales Pampa and Perryton, Texas. No. 4 rtn

B. M. A. INSURANCE
ACCIDENT & HEALTH HOSPITAL & LIFE For Each Member of the Family
E. K. SNIDER
Lubbock

RESIDENTIAL AND BUILDING CONTRACTOR
E. D. MURPHY
115 DRESSEN STREET
PHONE 438

by planning ahead
Telephone wires
outlets can be provided for free
Easy and inexpensive:
Pre-planning will make your glad to talk it over with you. course. For further information telephones Need To Be Planned
GENERAL TELEPHONE OF THE SC
Member of One of the Great Co.

Lee Roy Mitter
Dirt Contractor
Phone Fireside 138
Box 103 — Grover

ANTHONY ELECTRIC
Industrial
Commercial
House Wiring
Contracting and Repair
Electric Motors controls sold serviced
L. L. ANTHONY
Phone 3361
Spearman, Texas

Hansford Local
1040
A. F. & A. M.
Regular Communication 2nd and 4th Months of each month
Phillip A. Jenkins W. M. Clarence R. Blodgett Sec.

E. C. GREENE
Real Estate
Loans
Insurance
Phone 4261 — Box 14
Spearman, Texas

BUILT-IN
eliminate waste motion
your kitchen... with a Built-in electric oven and surface unit of step-saving arrangements right for you. They can be... or in standard metal... plenty of handy storage space... with a Built-in Electric Range
See your builder, appliance dealer or architect for full information about a Built-in Electric Range

They're all truck... Chevy's handsome, hard-working pickups!



With hefty steel-muscle truck chassis and high-capacity bodies!
With the industry's shortest stroke V8 or the 6 most famous for economy!
With the latest in cab comfort—de luxe features at no extra cost!

Most popular half-tonner!

Carries Carrier—sharp pickup on any job!

Drive with care—entirely new!

CHEVROLET Only franchised Chevrolet dealers display this famous trademark

SEE YOUR LOCAL AUTHORIZED CHEVROLET DEALER

Jim's
SERVICE and APPLIANCES
Appliance Service Work — New Appliances —
JIM SUTHERLAND
Phone OL 9-5801
Spearman, Texas

GLASS REPLACEMENT
Body Shop and Painting
R. L. (Smoky) Huse
Spearman, Texas

GAS-TOONS
BY DON AND LOUIS

For the life of your car
GO GULF!

Looking for Service Try Orange Disc Service!
ALTON WAYNE
Phone 2301

SPEARMAN
Texaco Service
Phone: OL 9-2391
B. F. Goodrich Tires

SHORT'S IRRIGATION SERVICE
Box 727 - Phone Day or Night
Grover, Texas
Complete Well Service
Any make or size pump
Clean out and ball wells
Free Estimates on any job
Also check draw down in well
FREE
Get our estimates on a complete turkey job. All work guaranteed. Give us a call Located in Fred Womble

DALEY'S IN PERRYTON
No. 27 rtn

ALCOHOLIC — If liquor is your problem and you sincerely want help to quit write Alcoholic Anonymous, Box 251, Spearman. No fees, no pledges, no pills. No. 36 rtn

BARGAINS in house trailers. New Trailers up to 51 feet. Five year financing, bank rates. Some used ones. Best Trailer Sales Pampa and Perryton, Texas. No. 4 rtn

Lawn Mowers Sharpened
Precision ground by hand and properly adjusted. Mowing a pleasure. D. M. 824 South Haney.

FOR SALE—Two bed room home. Attached FHA or GI approved. Olive 9-4796

HELLO

A. L. ...

South Coast

ASSOCIATION
1957

Don't Name It

This writer has never been a citizen to fear Tornados. However, we are beginning to be concerned about the weather situation. Guess it has been almost 35 years since this writer entered a storm cellar. Never have visited one since have lived in the Panhandle of Texas. Can remember when Amarillo had the bad Tornado. There were radio warnings out and seems that one such warning suggested a twister was coming down the Canadian River. Billy and Sybil Miller, phoned our apartment a little after mid-night to warn our family of the im-

pending danger. This writer was hardly awakened, and when the information soaked thru our brain, we figured we were in the best place in Spearman, since our building is solid cement on two sides, and is nearly as secure as a storm cellar. However, Elizabeth and Eddie Faye woke up and after we had gone back to bed wanted to know what the phone call was all about. We told em that Billy had phoned about a twister coming down the Canadian River. BOY— it got action. Both the ladies of my family hit the floor and there was not any more sleep that night. We got up and visited Club Cafe and hunted around for a place to go. Arranged to go to Jess Womble house and go down in his basement if the twister started our way—but it did not. We are writing this article to suggest that those folk who have storm cellars write or phone in their names so we can inform the public of their locations. Have been noticing that newspapers over the Panhandle are listing local locations of storm cellars. It is a program of the Ground Observation corp, and seems practical to this writer. A sample of such listings as printed in the Shamrock newspaper is printed below. "Mr. and Mrs. Durwood, Vinyard, 801 North Houston, 8 x 14 cellar."

with the location of your storm cellar. If you will phone or write in your location, we will publish a listing of all storm cellars in the respective towns of this county.

Early Monday morning—and all the "No Parking" signs are gone from the standards on Main street. Maybe the city officials have them collected each night and replaced next day, but I had rather believe that it is a case of vandalism.

As we used to say in the army—"Another Day Another Dollar"—and now regarding the weather we are beginning to commence to say "Another week another rain". We are delighted to know that the official weather bureau has recognized these pleasant facts—as evidence from a clipping from the Ochiltree County Herald at Perryton. Here it is:

IT'S OFFICIAL NOW

THE DROUGHT IS BROKEN

From the Ochiltree County Herald
The weather bureau, which doesn't move with reckless abandon, came close to a flat declaration this week that the drought in the Southwest has ended—for the coming growing season, at least.

This amounts to wild forecasting for the bureau.
Their forecast and statement was made at a time when the parched Southwest was flooded—every major creek and river in the state is flowing bank-to-bank, and the fields are washing, towns and cities in most of Texas are being evacuated against flood damage, all of Oklahoma is soggy from a long period of rain and snow.

The weather bureau says a "new weather regime" is in the

cards. "Rainmaking" and the atomic bomb had nothing to do with it, either. The change in weather had resulted from changes in the major air currents over the northern hemisphere which produced the droughts that have characterized the past few years. These major air currents are expected to continue in good behavior and the precipitation outlook is favorable.

Weather men are cautious about predicting the end of the seven year drought, but they say things are looking good right now. Things are also looking good to the farmer, the business man and everyone else in this over-parched region.

GRUVER METHODIST CHURCH ACTIVITIES

Work Day

A good crowd of women met at the church on Tuesday to quilt, sew, mend and pack boxes for supplies. One quilt was finished for Boys Ranch, two crib quilts for Lubbock, one box for M. C. O. R. and two for Home Missions. The husbands enjoyed covered dish dinner with them. They work every First Tuesday.

The W.S.C.S. is completing their fourth study for the year. They have held their election and the pastor will install the new officers at the joint meeting the fourth Thursday of May.

Mother's Day Observed

Due to no services in local churches Sunday A. M., we observed Mother's Day in the evening service with special music and sermon.

Vacation Church School

All children are asked to meet at the church this Saturday May

18, for social and parade opening our annual vacation church school, to continue all the next week.

Bridal Shower

Fellowship Hall was the scene of a lovely shower honoring Miss Jewell Sluder. The table was decorated with the traditional flowers, candles and miniature bridal party. Fifty eight guests registered.

District Check Up Meeting

Brother and Sister Campbell will go to Pampa on Wednesday to meet with all Methodist pastors of Pampa district, to turn in local reports for the year. Pastor's wives will meet for business and fellowship. The annual conference will convene at the Sa Jacinto church, Amarillo on May 28.

This has been a good year for our work here but still much to be done.

NOTICE

TO ALL PLASTER CONTRACTORS, Notice is hereby given, that the Spearman Chamber of Commerce and Board of City Development of Spearman, Hansford county, Texas, will accept bids on June 1, 1957 at 10:00 o'clock a. m. in the office of the Manager of the Spearman Chamber of Commerce, Court House, Spearman, Texas, for the finishing of the interior of the Spearman Memorial Building.

Information covering the type and scope of work to be done may be secured from Mr. Don Floyd, Manager of the Spearman Chamber of Commerce.

The right to reject any and all bids is hereby reserved.

DON FLOYD, Manager
Spearman Chamber of Commerce

The Nation's debt problems are becoming more difficult.

DeKALB HYBRIDS

All the unclaimed allotments of Dekalb milo and field corn will soon be picked up. Those wanting hybrid corn and hybrid maize should see us as soon as possible.

See us also for Cane Seed, Gold Seal Arizona-grown Hegari, Caprock, Redbine, Martin, German Millet, grazing Sudan and Northern garden seeds.

Inquire for Vitrea, the John Deere fertilizer which you can spread safely and accurately with your wheat drills.

R. L. PORTER GRAIN & SEED CO.

B. M. A. INSURANCE
ACCIDENT - HEALTH - HOSPITAL & LIFE For Each Member of the Family

E. K. SNIDER
Lubbock

RESIDENTIAL AND BUILDING CONTRACTOR

E. D. MURPHY
115 DRESSEN STREET
PHONE 4331

Builders
Motorcycles
Carryalls
Winch Trucks

Lee Roy Miller
Dirt Contractor
Phone Fireside 733
Box 103 - Gruver, Texas

building a new home or remodeling?

Telephones need to be planned, too!

Make your new home really modern by planning ahead for "built-in" telephone facilities.

Telephone wires can be concealed inside the walls. Outlets can be provided for present and future telephone extensions. Easy and inexpensive while you're building or remodeling.

Pre-planning will make your home attractive, convenient, saleable. Glad to talk it over with you, your architect, builder or contractor. For further information, send for a free copy of the booklet "Telephones Need To Be Planned, Too" Or call our Business Office.

GENERAL TELEPHONE COMPANY OF THE SOUTHWEST
Member of One of the Great Communications Systems Serving America

WE GIVE GUNN BROS. STAMPS.

EVER WED. IS DOUBLE DAY.

Week-End SUPER-VALUES
CHECK THE EXTRA SAVINGS

Gift's FOR YOUR GRADUATE
AT NO COST TO YOU
USE YOUR IDEAL PINK CASH REGISTER RECEIPTS. FOR THE GIFT THAT YOUR GRADUATE WILL LONG CHERISH.

IDEAL FOOD STORES

REGISTER EACH AND EVERY TIME YOU VISIT YOUR IDEAL STORE

THERE'S NO OBLIGATION - ANYONE 16 YEARS OF AGE OR OVER IS ELIGIBLE TO REGISTER.

DRAWING SATURDAY NITE, JUNE 8th

YOU DO NOT HAVE TO BE PRESENT TO WIN.

STARCH
Liquid Starch 1/2 Gal. 49c

Don't Forget Alkasetzer
35c Size 33c
65c Size 59c

FLOOR WAX
Lustrax Self Polishing
Quart 69c

TOILET SOAP
LUX
White or Beautiful Pastel Colors
3 Reg. Size 29c
2 Bath Size 29c (White Only)

LIFEBUOY TOILET SOAP
2 Bath Size 29c

Lux Flakes
35c

Blue Rinso
1 GE GIANT 35c 79c

Liquid Lux DETERGENT
39c-69c-99c

BREEZE DETERGENT
LGE GIANT KING 31c 73c 1.23

FREE BAB-O
Giant Economy Size 18c

NEW SUPREME Potato Snax 12-Oz Box 39c

SUNSHINE HYDROX Cookies 12-Oz Pkg 39c

SPRY PURE VEGETABLE Shortening 3-Lb Can 93c

Orange Ade 46-Oz Can 25c

BETTY CROCKER WHITE OR CONFETTI Angel Food Mix 17-Oz Pkg 53c

BRACH'S ASSORTED WINDOW BOX Chocolates Each 39c

CHICKEN-OF-THE-SEA Tuna 6 1/2-Oz Can 29c

SWIFT'S Prem 12-Oz Can 39c

MORTON HOUSE—SLICED WITH GRAVY Beef or Pork 16-Oz Can 49c

IDEAL Dog Food 2 1/2 Can 29c

Rainbow Ice Cream CONES PKG of 12 19c

IDEAL Tasty ICE CREAM 1/2 Gal. 59c

GROUND BEEF EXCELLENT FOR HAMBURGER
3 LBS. \$1.00

BACON ARMOUR LB. 45¢

ROAST U.S. GOOD CHUCK LB. 39¢

PORK STEAK LB. 45¢

PORK CHOPS FIRST CUTS LB. 45¢

CANNED FOOD VALUES

CORN Kurer's Whole Kernel Vacuum Packed 2 12-Oz Cans 25¢

TOMATOES Kurer's 2 303 Cans 27¢

JUICE Kurer's Tomato 4 46-Oz Cans \$1.00

APRICOTS Hunt's Whole 4 No. 2 1/2 Cans \$1.00

PEACHES Val Vita Sliced 4 No. 2 1/2 Cans \$1.00

PEARS Mayflower Salad Bartlets No. 2 1/2 Can 29¢

PINEAPPLE Tropic Isle Crushed 2 303 Cans 37¢

BLK BERRIES Wolco 2 303 Cans 45¢

POTATOES Kurer's Diced 300 Can 10¢

BUILT-IN Convenience Beauty

BUILT-IN Electric Range

... eliminate waste motion ... add beauty and your kitchen ... with a Built-in Electric Range.

Electric oven and surface units can be arranged in a variety of step-saving arrangements and at the working height right for you. They can be installed in brick, stone ... or in standard metal or wood cabinets. Plenty of handy storage space nearby. Enjoy the cooking convenience ... in a kitchen distinctively with a Built-in Electric Range!

COMMUNITY PUBLIC SERVICE

POWER

LIGHT

See your builder, appliance dealer or electrician for full information about a Built-in Electric Range.

FRESH FRUITS AND VEGETABLES
FANCY LGE. RIPE CALIFORNIA

Strawberries 29c box 4 for \$1.00

CUCUMBERS LONG GREEN SLICING lb. 10¢

GREEN ONIONS FRESH CRISP SWEET 5¢

CABBAGE SOLID GREEN HEADS lb. 5¢

RHUBARB RED FRESH CHERRY 2 lbs. 19¢

Maple Sticks PKG OF 6 29¢

Cherry Twists PKG OF 6 29¢

IDEAL WHEAT BREAD LOE LOAF 19¢

Charmin Tissue
Babies your Skin

MONEY SAVING 4 ROLLS FOR 29¢

WE GIVE GUNN BROS. STAMPS DOUBLE STAMPS ON WEDNESDAY

Little Leaguer



It's time to start that rigorous training program that makes a man out of a boy... a big leaguer out of a little leaguer. He must learn to play fair and keep the rules of the game. He must play with good sportsmanship. Every father should give to his youngster everything he has. Long ago the greatest teacher surprised His disciples with the strange prophecy... "greater things than these shall you do." *The Master expected them to do better because His spirit would be working with them.* That's the wonder and the impossible miracle of life... your daughter or your son may surpass you. Our best, and God's best, and His best, make a winning combination. So, "When the one great scorer comes to write against his name, it matters not if he won or lost, but how he played the game."

**YOU IN THE CHURCH
THE CHURCH IN YOU**

Character is a by-product of the church. It is here that young and old alike are showered with benedictions that fortify and influence for a better citizenship and a stronger democracy. In the church the ministerial are molding religious character. Statesmen today declare that the church alone can furnish leadership to handle the affairs of state in these perilous times. Then we with our children should go to the church of our choice on Sunday. "You in the Church and the Church in you" form a combination for good. Be a regular CHURCHGOER and a daily BIBLE READER.

© WILLIAMS NEWSPAPER FEATURES
Fort Worth, Texas

We Need Greater Churches And Greater Faith

to give us POWER for LIVING and to COMBAT ATHEISTIC "ISMS"

MAY THIS PAGE BE A BLESSING TO MANY IS THE SINCERE WISH OF HANSFORD COUNTY MINISTERS
This religious service is paid for by the public spirited firms 100% interested in the spiritual life of Hansford County. They urge regular church attendance and support.

- Morse Supply Co.
Willard McCloy
- R. L. Kleeberger, M. D.
- Spearman Drug Co.
Bruce Sheets
- Equity Exchange
E. J. Copeland
- R. L. McClellan Grain Co.
Lee, Roy Lee, Wilson McClellan and J. K. Hicks
- Orange Disc Service
Alton and Wayne Ellsworth
- Hansford Implement Company
Gene Cudd
- Deana May's Beauty Shop
Deana May Douglas
- White Auto Store
Mr. and Mrs. I. P. Baggerly

- First State Bank
Clay Gibner
- Gruver Motor Company
Ted McClellan
- North Plains Electric Co-op
Earl Waide, Manager
- Super Service Station
Gene Cline and W. E. Sparks
- Spearman Steak House
Mr. and Mrs. Howard Huffman
- White House Lumber Company
Ed Hutton
- Boxwell Brothers
Mrs. C. E. Blackburn
- Consumers Sales Co.
Vester Hill
- Tom Mott Oliver Co.
Machine Shop

- Panhandle Furniture Mart
Bud King
- Stanley Garnett Implement Co.
Continental Irrigation Engines
- Wardrobe Cleaners
Oscar Donnell
- Universal Oil Co.
Gruver, Tex. Grover Taylor, Mgr.
- Jameson Chevrolet Co.
L. L. Jameson
- Callaway Lumber Co.
E. J. Callaway and Sons
- Cactus Petroleum, Inc.
Aubrey Covington, Supervisor
- Mr. and Mrs. Aaron Love
Agts. For Canadian Truck Lines



FIRST BAPTIST
Sunday School
Preaching Service
Training Union
Preaching Service
Wednesday Prayer Service

UNITED METHODIST
Sunday School
Morning Worship
Bible Classes
Evening Worship
Wednesday Bible Study

FIRST CHURCH
Sunday School
Morning Worship
Youth Meetings
Evening Worship
Wednesday Choir Practice

MORSE BAPTIST
Sunday School
Morning Services
M. Y. F.
Evening Worship

ASSEMBLY
Sunday School
Morning Worship
Evening Worship
Mid Week Services

FIRST CHURCH
Sunday School
Morning Worship
Evening Worship
1st Week- Monthly Fellowship

FIRST METHODIST
Church School
Morning Worship
Methodist Youth Fellowship
Evening Worship
Womens Society of Christian Endeavor
Mid Week Services
Choir Rehearsal

CHURCH OF CHRIST
Bible Class
Communion
Preaching
Worship
Monday: Mens Training
Wednesday: Ladies Bible
Wednesday: Midweek Bible

MORSE BAPTIST
Sunday School
Worship
Training Union
Worship
Mid Week Service Wednesday

GRUVER METHODIST
Sunday School
Morning Services
Methodist Youth Fellowship
Evening Services
Wednesday Prayer Service
Wednesday Choir Practice
Thursday W. S. C. S.
Wesley Circle, Thursday

SACRED HEART CATHOLIC
Sundays
Weekdays (Mon. Tues. Thurs. Fri.)
First Friday of Month
Holy Days of Obligation

FIRST BAPTIST
Sunday School
Morning Worship
Training Union
Evening Worship
Wednesday Mid-Week Service
Wednesday Choir Rehearsal

OSLO LUTHERAN
Sunday Worship
Ladies Aid every last Thursday
Luther League on Sunday

Clean-Up Day

Persons interested in the beautification of our city are urged to be present. A meeting has been set for Saturday morning, July 1, 1937. Bring trucks, pickups and hoes. Lunch to be served at noon. Cooperate and make this the best we have ever had. !!!

Letter To People Of Hansford

I am leaving the hands of Dr. Kleeberger on July 1, 1937. I am in socialization and joining the medical profession. The following training post-graduate training moving to...

Billy Vern Tech Grad

Among the graduates of the School of Engineering who are candidates for the position of Chief Engineer at the Vernon, Tex. plant of the D. Vernon Co.

Dr. C. A. Kleeberger

Dr. Kleeberger, who has been in the hospital at Houston, Tex., is expected to return to his home in Hansford, Tex., on Saturday, July 1, 1937.

Dust Hits Area

The wind cut loose in the week. Winds hour, and have hit the area. Many farms knee deep in dust. The following table shows the amount of dust reported by the Hansford County office for the week ending July 1, 1937.

Date	Ma	72	81	75	69	66	67	77
July 1	14	15	16	17	18	19	20	21

Card C

We would appreciate the First sponsorship contribution entered in the parade. HAPPY HO