

ick with him from the and will visit in the id Sherman Schibler or a while Willie Schibler and the Schibler family had in the John O. Dahl Saturday night. in this community will played golf and surprised. Gruver The Gruver Methodist church is the center of the community. Mrs. C. W. is the president of the church. Mrs. G. W. is the secretary. Mrs. J. W. is the treasurer. Mrs. K. W. is the librarian. Mrs. L. W. is the organist. Mrs. M. W. is the choir director. Mrs. N. W. is the Sunday school teacher. Mrs. O. W. is the Bible class teacher. Mrs. P. W. is the prayer class leader. Mrs. Q. W. is the sewing society leader. Mrs. R. W. is the flower society leader. Mrs. S. W. is the book society leader. Mrs. T. W. is the card party leader. Mrs. U. W. is the bridge club leader. Mrs. V. W. is the tennis club leader. Mrs. W. W. is the golf club leader. Mrs. X. W. is the swimming club leader. Mrs. Y. W. is the fishing club leader. Mrs. Z. W. is the hunting club leader.

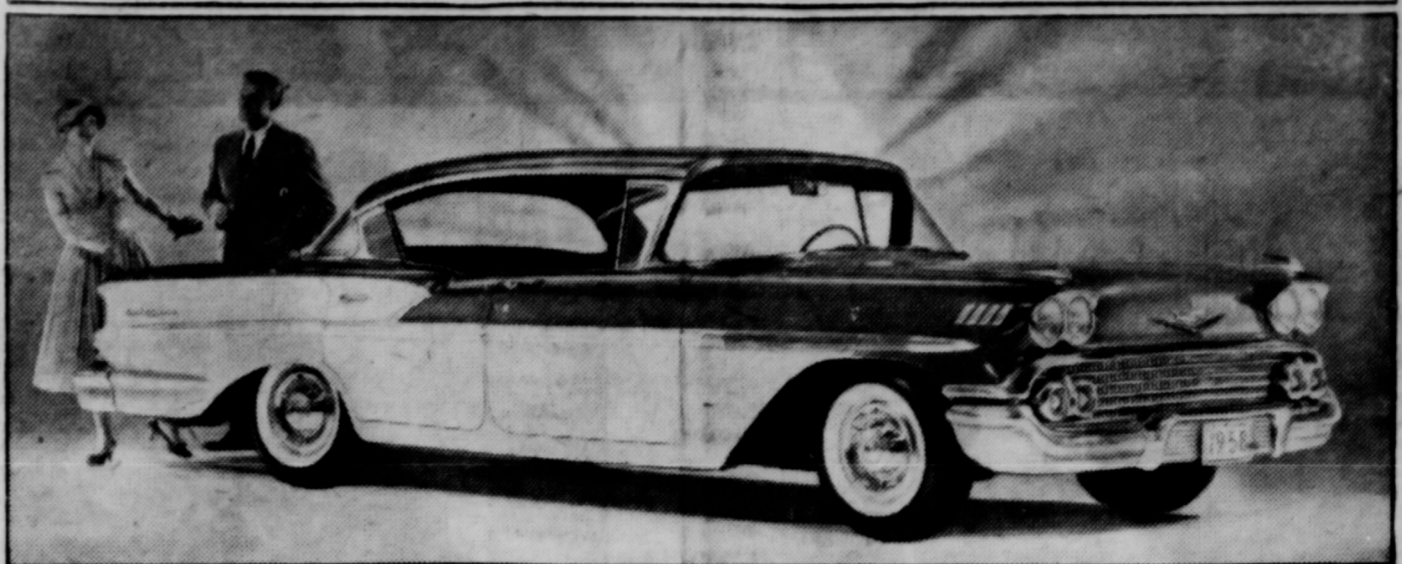


PERENNIAL FAVORITE is this big, luxurious and exquisitely styled Star Chief Catalina designed to make the heart of every motorist beat faster. Solidly built wheelbase, the Star Chief Catalina is synonymous with big car styling and is available in four models; two and four-door Catalinas, a four-door sedan and a four-door Custom Safari station wagon. Among the fine features is the big "Tempest 395" V-8 engine and "prestige" interior of glamorous fabric.

Scientific New 1958 Cars On This Week End Here
Scientific new 1958 automobiles are starting to roll out to the public this week end.

The Desoto-Plymouth will go on display tomorrow, Friday, at Spearman Motor Company. We tried to find a picture of the new cars for the front page of our paper, but could not find one. The new Ford will be on display November 7th. Of course next week we expect to have pictures of the Ford. The new Mercury picture is in this weeks paper. Tommy Bruce will show his new Pontiac on November 9th. We have a picture of one that we are running on the front page. Olin Chambers will show the new 1958 Rocket 88' on Friday November 8th. We have a picture of the new Olds on the front page this week. These new cars are real beauties, and we urge all of you people, especially the new people with the oil field organizations, to come into town and see these new cars this week end, and also next week. These local dealers will treat you right, and give you the best service on your new cars that you can get anywhere.

LEAN, LOW LINES SPARK CHEVROLET BEAUTY



Chevrolet stylists have taken full advantage of nine inches in added length to mold low, fleet beauty into their 1958 models, as shown by this view of the Bel Air sport sedan. Strong eye-appeal is found in the modish grille, the dual headlamps and low, flat hood. Notable also is an unusual Sculpturamie styling which supplies an air of distinction. A new engine, new frame and two new suspension systems are only a few of the major chassis advances. Station Wagon, Bel Air, Biscayne and Delray Series are offered.

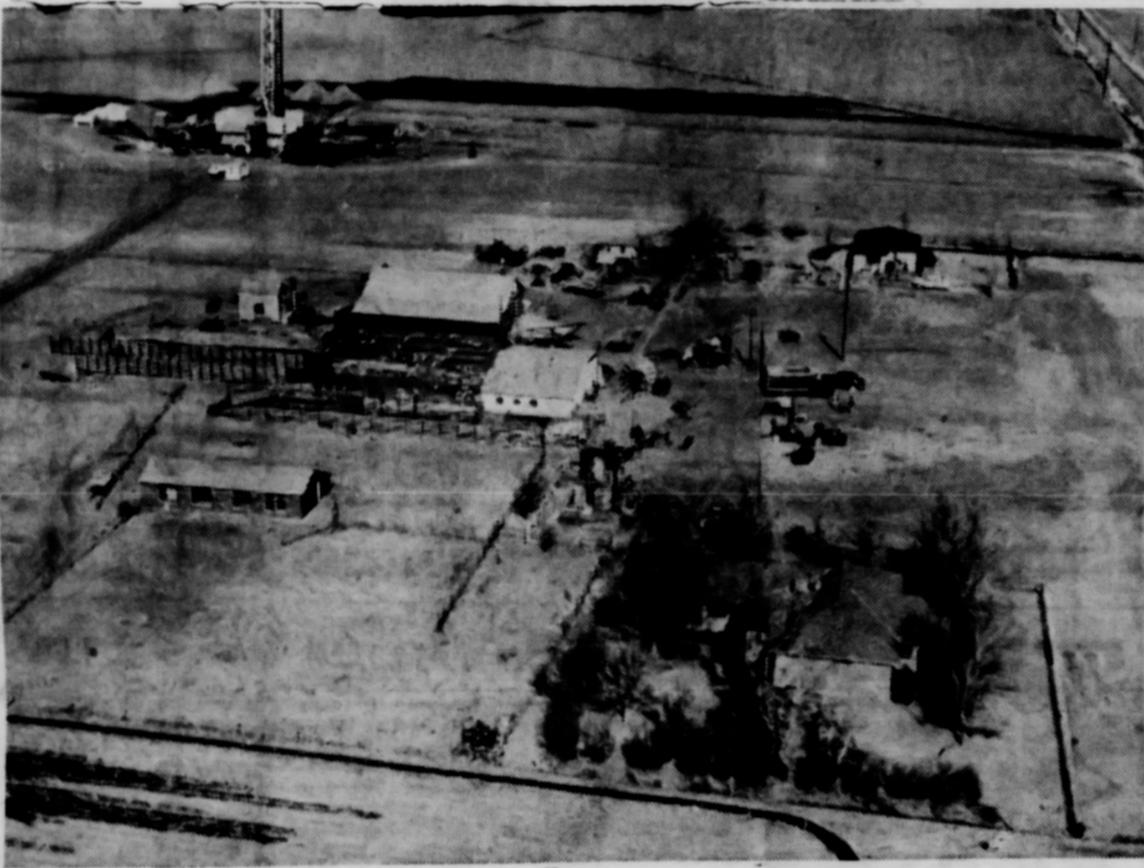
The Spearman Reporter

NO. 48 THE SPEARMAN REPORTER, HANSFORD COUNTY, THURSDAY OCT. 31, 1957

Man To Get New Office Building

Donald Smith announced the acceptance of a new Post Office building to be on Hancock street and Main, opposite the center of the building will be modern in design and equipped with all new postal including lock boxes. The building is to be occupied by February.

MYSTERY FARM OF THIS AREA



This is another of the series of Mystery Homes to be published each week for many months. If you can identify this home phone or mail a card to the Spearman Reporter and you may receive a one year subscription free. Please send in your identification as soon as possible. This enables us to visit the home and prepare a write-up for the next weeks newspaper.

Methodist Youth Will Play 'Trick Or Treat' For Crop October 31st

Thousands of young people to night are collecting coins so that needy children all over the world can have milk to drink and food to eat. Members of the Methodist Youth Fellowship and the First Christian Church Youth Fellowship are sponsoring a "Trick or Treat" for overseas relief. The young people will visit your home, and the "treat" will not be a selfish one—they will ask for a donation for CROP, which stands for Christian rural overseas program. The food is provided by the U. S. Government to Church World Service. Your donation to the appeal of the young people in your community will help to pay distribution costs. The young people will begin their project around 4:00 p. m. today, October 31st. Your gift supplements theirs, so give very freely.

Rev. Wm. Dirks To Preach Revival At Union Church



Rev. William Dirks of Templeton, California will begin a series of revival services at the Union church November 6th, continuing through November 24th.

Greyhounds Rest This Friday

The Gruver Greyhounds will not have a game this Friday. They will play Stinnett November 8th, at Stinnett, and then will finish their schedule at Gruver November 15th, against the Panhandle Panthers.

Two Elections To Be Held In County November 5th.

Voters of Hansford county will vote Tuesday November 5th, on three state constitutional amendments and on the issuance of a \$175,000. bond to build a jail and an addition to the Hansford court house. All the voting boxes of this county will be open to the voters at 7:30 a. m. and will remain open until 7:00 p. m. The same set of election judges and clerks will handle both elections, but the voter will have two separate ballots, one for voting on the amendments and the other for voting for or against the bond issue. Despite the fact that the county Commissioners' court has issued a statement that no additional taxes will be levied to liquidate the proposed bond, it seems that some voters are not clear on the matter and insist taxes will be raised. The voting boxes and the personnel for the election are as follows: PRECINCT NO. 1 E. J. Copeland, presiding judge; clerks, Dot Jenkins, Mrs. R. C. Birdwell and Mrs. Joe Traylor. PRECINCT NO. 10 C. Ralph Blodgett, presiding judge; clerks, Mrs. B. J. 'Gannett, Mrs. J. H. Buchanan. PRECINCT NO. 2 R. D. Tomlinson, Presiding judge; clerk, Ralph Reynolds. PRECINCT NO. 3 L. E. Morrison, presiding judge; R. H. Greene, clerk. PRECINCT NO. 4 Herbert Hughes, Presiding judge; Mrs. Margie Barkley, Mrs. O. V. Walker, Sr., Frank Fleck, clerks. PRECINCT NO. 5 Mrs. J. H. Dondlinger, presiding judge, Mrs. Bill H. Logsdon, clerk. PRECINCT NO. 6 J. F. Hogner, presiding judge, M. L. Johnson, clerk. PRECINCT NO. 7 Gordon Stedie, presiding judge and Rueben TeBeest, clerk. PRECINCT NO. 8 Dale Lewis, presiding judge and J. M. Hampton, clerk. PRECINCT NO. 9 Willard McCloy, presiding judge and Mack Dortch, clerk.

Lynx Go To Claude

The Spearman Lynx will journey to Claude tomorrow night, Friday, to meet the Claude Mustangs. The Lynx will be favored to win this one, and a large crowd will follow them to Claude. After last weeks outstanding game at Groom, the Lynx are heavy favorites to down Claude, but this could be a real game.

Walter Bradley Is Seriously Burned

Walter Bradley, an employee of the Cactus plant of Spearman was seriously burned at about 7:00 p. m. Tuesday on this week. Bradley was servicing a lease location on the Oil Development property twelve miles Northeast of Spearman when the accident occurred. Apparently the gas tank overflowed and caught fire from the heater. Bradley in an attempt to save the truck caught fire and was severely burned on his back and chest and arms. It will be three days before the degree of burn can be determined.

1958 Oldsmobile is All New from Head to Taillamps



The 1958 Oldsmobile offers a completely restyled exterior and tasteful styling in the "58" Holiday. The harmoniously employed horizontal trim to the long, flowing lines and low silhouette. The ultra-modern thin line roof sweeps to the top of the enlarged single-piece window. The redesigned front end is distinguished by new four-beam headlamps, recessed style grille with narrow aluminum louvers, and lower sleek hood line. Dominant in Oldsmobile's 1958 styling are striking twin blades that sweep down the rear fender crown. Choice of three Rocket engines with improved economy is offered in the 1958 Oldsmobile, which has a smoother Jetaway Hydra-Matic transmission and New-Matic Ride, a new concept of air suspension, available as a desirable option.

Demonstration Will Be Held November 12

A Fire Demonstration, using dry powder and other chemicals will be held in Spearman on the night of Tuesday November 12. The Demonstration will be staged across the street from the city hall on the city property, and will be under the supervision of Robert Bergin, an expert from Amarillo. Mr. Bergin was to come and demonstrate this on October 23, but he was ill with the flu so plans had to be postponed. The program is sponsored by the Spearman Fire Department and the public is invited to attend the Demonstration which is scheduled to begin at 7:45.

Weather

22	55	45	0.30
23	70	46	0.15
24	63	33	0
25	58	31	0.42
26	37	21	0
27	48	22	0
28	59	35	0
Total for week			0.87

Maize Harvest Underway After Big Freeze This Week

Maize harvest is officially underway this week, after the big freeze over the past week-end. The temperatures set probably all time low for this early, when it dipped to 21 degrees, and of course all of the maize and cotton that was not matured, is snow matured. Several farmers began cutting Monday of this week, but their maize is still rather high in moisture content. Probably by the last of this week, maize harvest will really be underway in high gear!

Government Run by Women is Called Gynarchy.

The program is sponsored by the Spearman Fire Department and the public is invited to attend the Demonstration which is scheduled to begin at 7:45.

Halloween Features Tonight At Lyric And Drive-In Theatre

A triple header will be on tap for the kids tonight. Beginning at 7:15 P. M. the Lyric Theatre will present their regular feature, and this show will be free for the "Trick or Treat" kiddies, from first grade, through 12 years old. Teen Town will start at 8:00 P. M. and will feature a Halloween costume party, and prizes for the best dressed spook!

Maize Harvest Underway After Big Freeze This Week

Should they encounter any more wet weather, or high winds, some of the maize surely will be lost.

Pvt. Horace H. Dixon At Fort Leonard Wood

Should they encounter any more wet weather, or high winds, some of the maize surely will be lost.



The biggest and most luxurious Mercury ever built—the new Park Lane series—was designed to appeal to the more discriminating buyers in the upper-medium price bracket. Striking styling features and big car size—220.2 inches long and 125-inch wheelbase—distinguish the Park Lane. Mercury will offer 20 models for 1958. The Park Lane series includes a convertible, a phaeton coupe and a phaeton sedan, pictured here.

TEXAS PRESS ASSOCIATION Member 1957

The Spearman Reporter Successor to the Hansford Headlight, Published Thursday of each week in Hansford County, at Spearman, Texas...

First insertion, 4c per word; 2c a word for every issue thereafter. Card of Thanks, 4c per word. Display Rates on Request...

New Court House Construction Is A "Must" For County Oslo News

The new building program for the county which is to be voted on November 5th, is a "Must" for all of Hansford County. In the first place, this county is growing faster than just about any county in the state...

Mr. and Mrs. C. A. Hardwick Sr. were in Corpus Christi on Friday to attend the wedding of their son, C. A. who is stationed there in his service to the Navy. Gordon Olsen who is serving in the Navy and stationed at Corpus Christi is home here on a furlough...

\$175,000.00 Building

On November 5th, 1957, the tax paying voters of Hansford County will be given the opportunity to vote for or against the proposition of issuing \$175,000 in bonds to construct much needed improvements to the County Courthouse. Recent legislation which became law in May 1957, makes it imperative that Counties in Texas provide adequate jail facilities...

AIN'T IT THE TRUTH? As Texas faces the possibility of Federal troops to enforce integration at Dallas in January of next year, many Texans are taking the typical exaggerated Texas view of the very serious situation. We have a letter this week from our good friend E. K. Snider, former Spearmanite that reflects some of the wise-cracks being made in Texas. HERE IT IS: Lubbock, Texas October 23, 1957 Billy Miller, Spearman Reporter I just heard a "funny" joke you might have room in your paper for. The best description I have heard of a Liberal. "The Lord helps those who help themselves SO the government should take care of the rest of us". Likely you have heard. About the farmer who bought a herd of trained monkeys, trained them to gather his cotton and maize crop. They were doing such a fine job of it, the farmers on both sides of him went to their banker to borrow money to buy themselves a herd of monkeys. The banker said "No, we will put a stop to this monkey business RIGHT NOW, because of it continues, some Dam Yankee will come in and make us integrate them into our schools and marry them." Another One: Somebody wrote Governor Faubus and suggested he call up all highway patrol and state troopers, organize all the city police over Arkansas and declare war on Ike. Then before anybody gets hurt, surrender and ask for foreign aid." E. K. SNIDER

Don't Name It

Back home again... and all ready to work... if I can learn how to work again... after lolling in the lap of luxury in a deep freeze tent on the bank of Willow creek, South of Hayden, Colorado for the past ten days. When I say lolling I MEAN LOLLING. Never before in my life did I ever spend so much time in a sack with both ends tied and the middle zipped, with a small slot for the nose to peek out in the frigid air for oxygen and other fuel. Mind you I aint complaining —The Russians were first to launch a Spud-nig, but I was first to discover that I could outlast Bill Hutton and let him finally get out of his sack, build a red hot fire in the stove in our tent, boil the coffee and (YOU

AIN'T GONA BELIEVE THIS... serve me a cup of coffee in bed. It happened. So anything can happen in the future. The occasion was the annual trek to the happy hunting grounds in the Colorado Rockies. This writer had declared he would never go again on such a trip—but when the boys (Bruce and Bill and Doc) decided that they would not ride a donkey up a mountain for 14 miles, and would change the name of the trip from a hunting trip to a fishing jaunt, this writer assented for the usual reservation as fire builder and dish washer. Our first indication of fraud came when we were loading our five ton truck with camping equipment. All but this writer carried along their high powered rifles—and they said not for hunting, but for protection against the bears and ferocious bull elk that infest the wilds of the Colorado Rockies. It took the first day of our vacation to establish camp—and I use the word establish rather reluctantly—since it should have been a contract lay out, subject to the lowest bid of competent engineers. Briefly we had a complete butane cooking unit, with the sub division including a 3 burner Coleman range, the deluxe wood stove and the 600 pound barbecue kettle. The large tent was launched (and I mean thrown up) the floor covered with 4 bales of hay, a massive strip of duck cloth covered the hay and the bed room was located in the Northeast corner of the tent. The portable kitchen cabinet was installed in the Southwest end of the tent and the small country grocery store was placed neatly and efficiently despite the fact that Doc Bennett said he could not read—but Bill Hutton informed him "DAMIT the cans all have pictures on em, and you can match up the pictures like a cross word puzzle". To make a long story short, all but the country editor began tramping the snow clad mountain side with rifles and hunting license with the avowed intent of providing camp meat for the big fact that we had 18 pounds of good beef, a 11 pound tenderloin ham, and 19 bantam chickens neatly plucked and cut in half for barbecuing. Since the country editor only had the fishing license and worms that were frozen in six inch strips, we were assigned the task of providing the change of menu. Anytime you think you can tie a six inch frozen worm to a fishing line and harpoon a native trout from among the rocks and swift water of willow creek, you got yourself another guess coming. Needless to say we only had one mess of fish on this ten day fishing trip. Bruce Sheets was First Cook for the camp, and made such a great success in appeasing the appetites of his friends that he branched out and invited nine folk from the Ray Bunn ranch for a banquet Wednesday night of last week. It was a great success and all voted Sheets as the Barbecue King of the Rockies. Will Hutton stalled around four days before he overtook a decrepit Mama Deer and closed his eyes and killed her for camp meat. She was a bit on the tough side of life, and must have led a rather sinful life— but Sheets prepared a special barbecue sauce, and she tasted mighty good. Hutton was rather critical of the country editor because we would not venture outside of the tent stakes, and tried to persuade us to take a trip up to the bald mountain. We agreed, but held our ground. It was on the day for the trip it was snowing so fast and furious that the country editor could not get the car, and Hutton would not agree to tying him to his apron strings. This was a real break for the country editor since he had lost for seven a. m. and was not out for 13 solid hours. He came in camp so tired that he would not eat but biscuits and lard steak—and if you know Hutton, you know he was exhausted. When we got the news of the stock crash over the radio, thought old Doc Bennett would have a fit. Finally asked him if he owned any stock or bonds, he said he did not, but he was afraid that the heralded depression was on the way. It was his only excuse for not killing a Bull Elk. He declared he was so worried about the future of the country that he could not concentrate on Elk hunting. Anyway, we recommend just such a trip to any of our friends—you can shore forget your ordinary cares and worries a got new ones to contend with in the frigid air of the Rockies. Positive action by families and entire neighborhoods can greatly reduce farm and home accidents. The harvest season is in full swing, and warns the Texas Farm and Ranch Safety Council, that means longer hours for farmers and their families, more highway travel with farm equipment, and increased chances for accidents. Be safe by eliminating accidents hazards. Farmers and ranchmen are reminded by C. H. Bates extension farm management specialist, that September 30 is the last day for submitting claims for a refund of the Federal tax on gasoline used for farming purposes since July 1, 1955. Fertilization, according to E. M. Trew, extension agronomist, is the main practice to emphasize in the fall care of lawns. The fertilizer application should be made at least a month before the first expected frost and a complete fertilizer with 2-1-1 or 1-1-1 ratio should be used. Two new publications have been issued with subjects relative to irrigation are now available from the office of local county agents or the Agricultural Experiment Station, College Station, Texas. They are 1-355 "How to Control Soil Moisture by Piel" and 1-357 "Irrigation Siphon Tubes". High production, long period of low loss and good feed efficiency are the "bread and butter" of the present-day egg producer. The modern hen is bred to lay at a high rate, but skillful management must be practiced if maximum profits are to be gained say extension poultry husbandmen. The tempo of the harvest season is picking up and that means farmers and their families will be exposed to more accident hazards. Farm accident rates will climb warns the Texas Farm and Ranch Safety Council, unless safety rules are observed especially those dealing with traffic. Dairyman should now begin checking their management to make sure that they are ready for the colder weather that lies ahead, advise A. M. Meekma and J. W. Davis, extension dairy husbandmen. Care a comfort, determining the best feed to buy, dehorning and castrating desirable calves are the main points stressed by extension men. Ask the man who contours farms. The walnut caterpillar has been reported increasing in several counties South and Central Texas. It may be controlled with DDT, but only if read carefully. Cuckoos place their eggs in the nest of other birds, first growing out the contents belonging to the rightful owner. Benjamin Franklin was the first Postmaster of the United States. General Lee and Grant fought on the same side in the Mexican war. John Adams was the first U. S. ambassador to England. Letter carrier's uniforms are a 50-50 blend of the Union Blue and Confederate Gray. A dead person may vote, legally, if he mails an absentee ballot and then died before election day. In a 20-mile race, a man

STOCK UP DURING THIS SALE 5 Big Days Friday, Nov. 1st Thru Wed. Nite, Nov. 6th

STRIKE IT RIGHT at IDEAL'S STOKEY-VAN CAMP GOLD DOLLAR SALE

Table listing various food items and prices during the Gold Dollar Sale, including Kidney Beans, Pork & Beans, Catsup, Vienna Sausage, etc.

Advertisement for Stokely's Finest Fruit Cocktail, Apple Sauce, and Peaches.

Advertisement for Stokely's Finest Round Steak, Beef, and Sausage.

Advertisement for Stokely's Finest BEEF, SAUSAGE, and ARMOUR STAR SLICED BACON.

Advertisement for BUD. WAFFLE SYRUP and ZESTIE PURE RED PLUM PRESERVES.

Advertisement for HALLOWEEN CAKES and Donuts.

Advertisement for FLOUR, OLEO, and Jello.

Advertisement for IDEAL'S PEACHES, 3 No. 2 1/2 Cans 89c.

Advertisement for IDEAL FOOD STORES, listing various food items like Chopped Kraut, Peas, etc.

Large table listing various frozen food items and prices under the heading 'Stock Your Freezer'.

Vertical text on the right edge of the page, including 'That Gruver' and 'Announc'.

...ings for po-
...d two regis-
...ge 21 to 35
...cellent annual
...physical and
...Con-
...Police Depart-
...St. Ama
...between 8 a. m.
...Monday through

That Gruver
...round up some
...but did not
...back. Everyone
...staying at home
...in business. There
...all around, but the
...are all on the road
...of conversation is
...The recent mois-
...with delight, by
...primarily interest-
...and pasture. But
...and cotton growers
...er story. We had
...prettiest cotton
...but today it is just
...pretty discourag-
...the long run the
...wonderful.
...after that is not
...so much interest is
...on November 4th,
...some amendmets to
...stitution to be voted
...if many of us even
...they are. Yet they
...and our pocket-

Card Of Thanks
I want to thank all my friends and neighbors for the lovely gifts, cards and kindness shown me while in the hospital and at home during my illness and operation. May God Bless you all.
MRS. LOYD ANDREWS
Mr. and Mrs. J. H. Martin and Mrs. Lillie Bowling spent a few days visiting Mr. and Mrs. Dick Allison in Ulysess, Kansas.



books. Then there is one much closer to home, the County bond issue for \$175,000. That is a lot of money. Do you think it is a good thing, vote for it. If not vote against it, because you are going to pay it.

Installation service for officers of the Gruver Harmony club. Front row: Mrs. O. L. Brooks, counselor; Jennie Jones, President; Kathryn Peddy, Janice Erling, treasurer; Mona Hale Vice President; and Mrs. Bobby Alexander, counselor. Lu Ann Carter for the secretary was ill when the picture was taken.

Mrs. Carrie Cotter has been gone a about a week. She is visiting in San Angelo with her son, and Mrs. Omar Cotter.

REWARD yourself and your cattle. Use Ray's applicator and insecticide to grooms, lice, and flies. Guaranteed results. See your dealer or write Farm and Ranch Supply, box 142 Boise City, Okla. No. 47 6-t-c

COLLIE PUPPIES—For Sale. 613 E. Kenneth. John Schubert. No. 47 2-t-c

WE ARE — Experts in installing linoleums. Let us figure your next job. Free estimates. We do cabinet tops, floor linoleums, congowalls. We stock linoleums up to 12' wide, sink frames, metal tins etc. **DALEY'S IN PERRYTON** No. 27 r/n

ALCOHOLIC — If liquor is your problem and you sincerely want help to quit write **Alcoholic Anonymous**, box 513, Spearman. No fees, no pledges, no pills. No. 36 r/n

KEEP THIS AD!
Over 20,000 Arthritis and Rheumatic sufferers have taken this medicine since it has been on the market. It is inexpensive, can be taken in the home. For Free information, give name and address to P. O. Box 322, Hot Springs, Arkansas. No. 44 runs 9 times-c

Quality Lumber
Everything For The Builder
FHA LOANS ARRANGED - FREE
- Estimates
- ALLIED PAINTS
- TOOLS
- HARDWARE
Thermador Built-in Ranges
Floor and Wall Tile
PLUMBING - HEATING
COOLING
- Otto Dockins, Licensed Plumber
- Call Us For Your Plumbing Needs.
- Dial OI 9-6681 Day
Dial OI 9-4451 Nights

Callaway Lbr. Company
MOTOR WISE
Big Enough to Accomodate
Small Enough to Appreciate

For the life of your car GO GULFI!
Looking for Service Try Orange Disc Service!
ALTON WAYNE
Phone 2301

A. & G. Humble Service
WYATT ATKINS
RAYMOND GILLEY
Not a Filling Station—but a Service Station

Jim's SERVICE and APPLIANCES
Appliance Service Work — New Appliances —
JIM SUTHERLAND
Phone OLive 9-5081
Spearman, Texas

GAS-TOONS
BY DON AND LOUIS
"Louis always lining up NEW BUSINESS!
It's only "natural" that so many people appreciate our FAST SERVICE!"
SPEARMAN
Texaco Service
Phone OL 9-2031
S. P. Goodrich Tire

GET YOUR—1958 Safety Sticker
Now, Pettitt Garage, Spearman, Texas. No. 42 r/n

FOR SALE—20 acres of minerals in East 1/4 of sec. 192, blk. 45. H. & T. C. survey in Hansford County, Texas, undivided mineral, at \$100.00 per acre. Roscoe Sparks No. 42 1-t-c

FOR RENT—Small furnished house (2 rms and bath) to 3 or 4 men. 122 S. Endicott St. No. 48 1-t-c

FOR SALE—White and Tan Guinea Pigs. 50 cents each. Mrs. J. A. Bruce. No. 46 4-t-c

SCHOOL SUPPLIES—All colors construction paper. New shipment. Also office supplies. Spearman Reporter. No. 44 1 Year paid

FINISH HIGH SCHOOL OR GRADE SCHOOL at home, part time. Books furnished. Diplomas awarded. Write where you left school. Write Columbia School, Box 1514, Amarillo, Texas. No. 44 1 Year paid

BARGAINS in house trailers. New Trailers up to 51 feet. Five year financing, bank rates. Some used ones. Best Trailer Sales Pampa and Perryton, Texas. No. 4 r/n

Nobody ever gets anything for nothing, but a lot of people keep trying.

Keim Beauty Salon
Now open for business - SPOT REDUCING -
VIBRA - LAXER Method
819 S. Archer St.
Phone 6116
Spearman, Texas

RESIDENTIAL AND BUILDING CONTRACTOR

E. D. Mundy
115 DRESSEN STREET
PHONE 4595

B. M. A.

INSURANCE
ACCIDENT - HEALTH HOSPITAL & LIFE
For Each Member of the Family
E. K. SNIDER
Lubbock Spearman

Dr. D. E. Hackley
OSTEOPATHIC PHYSICIAN
AND SURGEON
304 MAIN ST
Office Hours: Week Days 9-12 and 1-5 Saturday: 9-12
Office Phone — Residence Phone 4851 5181

Dr. Reese Nowlin
OPTOMETRIST
OFFICE HOURS
9 to 12 a.m. 1 to 5 p.m.
Saturday 9 - 1
Phone 3484
No. 10 SW 2nd Avenue
Perryton, Texas

R. L. Kleeberger
M. D.
Physician and Surgeon
Medicine, Surgery and Obstetrics
Hours: 9-12 a. m. - 2-5 p. m. CLOSED ALL DAY THURSDAY AND SATURDAY AFTERNOON
Phones: Office 5781 Res. 2161
16 S. W. Court St.
Daily Bldg
Spearman, Texas

Dr. F. J. Dally
DENTIST
No. 16 S. W. Court St.
Phone 3561
Spearman, Texas

SANFORD HOSPITAL AND CLINIC
Perryton, Texas
Phones 2821 or 2831
ROY K. SANFORD, M. D.
Pediatrics
J. BLUFORD JOHNSON, M.D.
General Surgery
O. U. MONROE, M. D.
Obstetrics - General Practice

AMBULANCE FLOWER Number
Dial 2751
SPEARMAN, TEXAS

Hansford County
V. F. W. POST NO. 6289
Regular Meeting Nights 2nd and 4th Tuesday of each Month
Commander, Warren Joffins Sr. Vice Com. Kenneth Smith Jr. Vice Com. Clarence Mitchell Chapter Com. Johnson Lutz Cir. Master Johnny P. Vannum
All members are urged to attend these meetings.

Boxwell Bros.
Funeral Home and Flower Shop
Day - Night Phone 522
SPEARMAN, TEXAS

WOMEN'S FINEST
YELLOW CLING
ACHES
2 1/2 89c
- You Save 16c

Star of the Forward Look

	WHOLE PRICE	SALE PRICE
10-CL. Pig	19c	3/4c
10-CL. Pig	19c	3/4c
10-CL. Pig	36c	3/9c
10-CL. Pig	35c	3/0c
10-CL. Pig	27c	3/7c
10-CL. Pig	23c	3/5c
10-CL. Pig	29c	3/7c
10-CL. Pig	27c	3/5c
10-CL. Pig	53c	3/1.31
10-CL. Pig	17c	3/3c
10-CL. Pig	25c	3/5c
10-CL. Pig	27c	3/7c
10-CL. Pig	21c	3/4c
10-CL. Pig	25c	3/5c
10-CL. Pig	20c	3/4c
10-CL. Pig	20c	3/4c
10-CL. Pig	35c	3/8c
10-CL. Pig	27c	3/7c
10-CL. Pig	27c	3/4c
10-CL. Pig	19c	3/4c
10-CL. Pig	29c	3/7c
10-CL. Pig	79c	3/2.11



Announcing the car that's
AHEAD FOR KEEPS!

Here is newness . . . unchallenged by any other car in the low-price field. Simple comparison proves that no car measures up to the one car that began with a three-year lead: the triumphant new Plymouth. The dramatic debut of this greatest of low-price cars takes place at your Plymouth dealer's today. One look, one ride will convince you . . . this is your car . . . the car that's ahead for keeps!

- Improved Torque-Aire Ride
- Silver Dart Styling
- Golden Commando V-4*
- Directional Stabilizer Fins
- Push-Button TorquePilot*
- Total-Contact Brakes
- Luxury-Line Interiors
- True, big-car riding comfort
- Long, low sweep of beauty
- The years-ahead engine
- Assure safer highway travel
- Smoothest, easiest driving yet
- Sure, safe, non-fade
- Beauty-blended fabrics

There's no catching **Plymouth**



Installation service for officers of the Gruber Harmon Club. Front row: Mrs. O. L. Brooks, counselor; Jennie Jones, President; Kathryn Paddy, Janice E. King, Treasurer; Mona Hale Vice President; and Mrs. Bobby Alexander, counselor. Lu Ann Carter for the secretary was ill when the picture was taken. Mrs. Carrie Cotter has been gone about a week. She is visiting in San Angelo with her son, and Mrs. Omar Cotter.

books. Then there is one much closer to home, the County bond issue for \$175,000. That is a lot of money. Do you want to pay it or not? If you think it is a good thing, vote for it. If not, vote against it, because you are going to pay it.

Guests in the Clark-Winkler home this past week-end were Mrs. Ruth Whitehurst of Fort Worth; Jane Carroll, Betty Burnett, Janell and Allen Winkler all students at Texas Wesleyan College; and Ginger Hill Home Demonstration Agent at Claude.

Three's A Crowd" is the subject of the next meeting of the Gruber PTA study group. It is a panel discussion conducted by our student council on what is a chaperone — why and when they are needed. This should be a meeting of interest to all parents who are interested in their youth's social development. The meeting will be held in the high school auditorium on Wednesday November 6 at 2:30 p. m.

Card Of Thanks
I want to thank all my friends and neighbors for the lovely gifts, cards and kindness shown me while in the hospital and at home during my illness and operation. May God Bless you all.
MRS. LOYD ANDREWS

Mr. and Mrs. J. H. Martin and Mrs. Lillie Bowling spent a few days visiting Mr. and Mrs. Dick Allison in Ulysses, Kansas.

round up some... That Gruver... There is no much interest in... Lots of people... on the road... conversation is... The recent mois... with delight, by... primarily interest... and pasture. But... and cotton growers... story. We had... prettiest cotton... to-day it is just... pretty discourag... the long run the... wonderful.

water that is not... so much interest in... on November 4th... amendments to... situation to be voted... if many of us even... they are. Yet they... and our pocket-

That Gruver... round up some... There is no much interest in... on November 4th... amendments to... situation to be voted... if many of us even... they are. Yet they... and our pocket-

water that is not... so much interest in... on November 4th... amendments to... situation to be voted... if many of us even... they are. Yet they... and our pocket-

water that is not... so much interest in... on November 4th... amendments to... situation to be voted... if many of us even... they are. Yet they... and our pocket-

water that is not... so much interest in... on November 4th... amendments to... situation to be voted... if many of us even... they are. Yet they... and our pocket-

water that is not... so much interest in... on November 4th... amendments to... situation to be voted... if many of us even... they are. Yet they... and our pocket-

water that is not... so much interest in... on November 4th... amendments to... situation to be voted... if many of us even... they are. Yet they... and our pocket-

water that is not... so much interest in... on November 4th... amendments to... situation to be voted... if many of us even... they are. Yet they... and our pocket-

water that is not... so much interest in... on November 4th... amendments to... situation to be voted... if many of us even... they are. Yet they... and our pocket-

water that is not... so much interest in... on November 4th... amendments to... situation to be voted... if many of us even... they are. Yet they... and our pocket-

water that is not... so much interest in... on November 4th... amendments to... situation to be voted... if many of us even... they are. Yet they... and our pocket-

water that is not... so much interest in... on November 4th... amendments to... situation to be voted... if many of us even... they are. Yet they... and our pocket-

water that is not... so much interest in... on November 4th... amendments to... situation to be voted... if many of us even... they are. Yet they... and our pocket-

water that is not... so much interest in... on November 4th... amendments to... situation to be voted... if many of us even... they are. Yet they... and our pocket-

water that is not... so much interest in... on November 4th... amendments to... situation to be voted... if many of us even... they are. Yet they... and our pocket-

water that is not... so much interest in... on November 4th... amendments to... situation to be voted... if many of us even... they are. Yet they... and our pocket-

water that is not... so much interest in... on November 4th... amendments to... situation to be voted... if many of us even... they are. Yet they... and our pocket-

water that is not... so much interest in... on November 4th... amendments to... situation to be voted... if many of us even... they are. Yet they... and our pocket-

REWARD yourself and your cattle. Use Ray's applicator and insecticide for gouts, lice, and flies. Guaranteed results. See your dealer or write Farm and Ranch Supply, box 142 Boise City, Okla. No. 47 64-c

COLLIE PUPPIES—For Sale. 613 E. Kenneth John Schubert. No. 47 24-c

WE ARE — Experts in installing linoleums. Let us figure your next job. Free estimates. We do cabinet tops, floor linoleums, congo walls, We stock linoleums up to 12' wide, sink frames, metal trim etc. **DALEY'S IN PERRYTON** No. 27 rfn

ALCOHOLIC — If liquor is your problem and you sincerely want help to quit write **Alcoholic Anonymous**, box 513, Spearman. No fees, no pledges, no pills. No. 36 rfn

KEEP THIS AD!
Over 20,000 Arthritis and Rheumatic sufferers have taken this medicine since it has been on the market. It is inexpensive, can be taken in the home. For Free information, give name and address to P. O. Box 322, Hot Springs, Arkansas. No. 44 runs 9 times-c

Quality Lumber
Everything For The Builder
FHA LOANS ARRANGED - FREE
— Estimates
• ALLIED PAINTS
• TOOLS
• HARDWARE
Thermador Built-in Ranges
Floor and Wall Tile
PLUMBING - HEATING
COOLING
— Otto Dockins, Licensed Plumber
— Call Us For Your Plumbing Needs.
— Dial OI 9-6681 Day
Dial OI 9-4451 Nights

Callaway Lbr. Company
FROM WYOMING TO TEXAS... KANSAS TO ARIZONA

MOTOR WISE
Big Enough to Accomodate
Small Enough to Appreciate



A. & G. Humble Service
WYATT ATKINS
RAYMOND GILLEY
Not a Filling Station—but a Service Station

Jim's
SERVICE and APPLIANCES
— Appliance Service Work —
— New Appliances —
JIM SUTHERLAND
Phone Olive 9-5081
Spearman, Texas

GAS-TOONS
BY DON AND LOUIS
"Louis always lining up NEW BUSINESS!
It's only "natural" that so many people appreciate our FAST SERVICE!"

SPEARMAN
Texaco Service
Phone OL 9-2031
S. F. Goodrich Tire

GET YOUR—1958 Safety Sticker
Now, Pettitt Garage, Spearman, Texas. No. 42 rfn.

FOR SALE—20 acres of minerals in East 1/2 of sec. 192, blk. 45, H. & T. C. survey in Hansford County, Texas, undivided mineral, at \$100.00 per acre. Roscoe Sparks No. 42 1-c

FOR RENT—Small furnished house (2 rms and bath) to 3 or 4 men. 122 S. Endicott St. No. 48 1-c

FOR SALE—White and Tan Guinea Pigs 50 cents each. Mrs. J. A. Bruce. No. 45 4-c

SCHOOL SUPPLIES—All colors construction paper. New shipment. Also office supplies. Spearman Reporter. No. 44 1 Year paid

BARGAINS in house trailers. New Trailers up to 51 feet. Five year financing, bank rates. Some used ones. Best Tailor Sales Pampa and Perryton, Texas. No. 4 rfn

For the life of your car GO GULF!
ALTON WAYNE
Phone 2301

Looking for Service Try Orange Disc Service!
ALTON WAYNE
Phone 2301

ANTHONY ELECTRIC
• Industrial
• Commercial
• House Wiring
Contracting and Repairing
Electric Motors and controls sold and serviced
L. L. Anthony
Phone 3361 Box 727
Spearman, Texas

Hansford Lodge 1040
A. F. & A. M.
Regular Communication 2nd and 4th Monday of each month
Buster Kirk, W. M.
Roy L. McClellan, Secretary

E. C. GREENE
• Real Estate
• Loans
• Insurance
Phone 4261 — Box 148
Spearman, Texas

GLASS REPLACEMENT
Body Shop and Painting
R. L. (Smoky) Huse
Spearman, Texas

Keim Beauty Salon
Now open for business
• SPOT REDUCING •
VIBRA - LAXER Method
819 S. Archer St.
Phone 6116
Spearman, Texas

RESIDENTIAL AND BUILDING CONTRACTOR
E. D. Mundy
115 DRESSEN STREET
PHONE 4596

B. M. A. INSURANCE
ACCIDENT - HEALTH HOSPITAL & LIFE
For Each Member of the Family
E. K. SNIDER
Lubbock - Spearman

Dr. D. E. Hackley
OSTEOPATHIC PHYSICIAN AND SURGEON
304 MAIN ST
Office Hours: Week Days 9-12 and 1-5 Saturday: 9-12
Office Phone — Residence Phone 4851 5181

Dr. Reese Nowlin
OPTOMETRIST
OFFICE HOURS
9 to 12 a.m. 1 to 5 p.m.
Saturday 9 - 1
Phone 5481
No. 10 SW 2nd Avenue
Perryton, Texas

R. L. Kleeberger M. D.
Physician and Surgeon
Medicine, Surgery and Obstetrics
Hours: 9-12 a. m. - 2-5 p. m.
CLOSED ALL DAY THURSDAY AND SATURDAY AFTERNOON
Phones: Office 5781 Res. 2161
16 S. W. Court St.
Daily Bldg
Spearman, Texas

Dr. F. J. Dally
DENTIST
No. 16 S. W. Court St.
Phone 3361
Spearman, Texas

SANFORD HOSPITAL AND CLINIC
Perryton, Texas
Phones 2821 or 2831
ROY K. SANFORD, M. D.
Pediatrics
J. BLUFORD JOHNSON, M.D.
General Surgery
O. U. MONROE, M. D.
Obstetrics - General Practice

AMBULANCE FLOWER
Number
Dial 2751
SPEARMAN, TEXAS

Hansford County V. F. W. POST NO. 6207
Regular Meeting Nights 2nd and 4th Tuesday of each Month
Commander, Warren Joffins
Sr. Vice Com. Kenneth Burns
Jr. Vice Com. Clarence Mitchell
Chaplain Johnnie Lee
Gr. Master Johnny P. Warren
All members are urged to attend these meetings.

Boxwell Bros.
Funeral Home and Flower Shop
Day — Night Phone 5881
SPEARMAN, TEXAS

OKELY'S FINEST
ED YELLOW CLING
ACHES
2 1/2 89c
— You Save 14c

Per Food For Less
DEAL
GOOD STORES

KRAUT	7 3/4 Can 14c
	5 3/4 Can 14c
HAM	2 1/2 Can 57c
	2 1/2 Can 57c

Your Freezer
WAKE UP WITH
new Crop

10-Oz. Can	19c	3/45c
10-Oz. Can	19c	3/45c
10-Oz. Can	36c	3/90c
10-Oz. Can	35c	3/87c
10-Oz. Can	27c	3/77c
10-Oz. Can	23c	3/59c
10-Oz. Can	29c	3/77c
10-Oz. Can	27c	3/77c
10-Oz. Can	53c	3/1.39
10-Oz. Can	17c	3/39c
10-Oz. Can	25c	3/59c
10-Oz. Can	27c	3/77c
10-Oz. Can	21c	3/49c
10-Oz. Can	25c	3/59c
10-Oz. Can	20c	3/49c
10-Oz. Can	20c	3/49c
10-Oz. Can	35c	3/89c
10-Oz. Can	27c	3/77c
10-Oz. Can	21c	3/49c
10-Oz. Can	19c	3/45c
10-Oz. Can	29c	3/77c
10-Oz. Can	29c	3/77c

Star of the Forward Look



Announcing the car that's
AHEAD FOR KEEPS!

Here is newness . . . unchallenged by any other car in the low-price field. Simple comparison proves that no car measures up to the one car that began with a three-year lead: the triumphant new Plymouth. The dramatic debut of this greatest of low-price cars takes place at your Plymouth dealer's today. One look, one ride will convince you . . . this is your car . . . the car that's ahead for keeps!

- Improved Torque-Aire Ride
- Silver Dart Styling
- Golden Commando V-8*
- Directional Stabilizer Fins
- Push-Button TorquePile*
- Total-Contact Brakes
- Luxury-Line Interiors
- True, big-car riding comfort
- Long, low sweep of beauty
- The years ahead engine
- Assure safer highway travel
- Smoothest, easiest driving yet
- Sure, safe, non-fade
- Beauty-blended fabrics

There's no catching **Plymouth**



At thirty minutes before sun rise November 1st, the fall duck, goose and coot season opens in Texas except on state preserves, statutory State wildlife sanctuaries, United States wildlife sanctuaries, and on public roads and highways, within the state.

The shooting hours shall be thirty minutes before sunrise until sunset. The daily bag limit will be for ducks, five in the aggregate with not more than one wood duck including plus not more than one hooded merganser in the daily bag. The possession limit is ten ducks without more than one each of the wood and hooded merganser species.

Mergansers are the fish eating ducks and are also the type that will drive you from the kitchen while they are being cooked. They are not nearly so desirable as some of the other species for good eating.

Many duck hunters have difficulty in determining what species of ducks they have in the game bag. In the October issue of the Texas Game and Fish, a monthly publication of the Game Department there is a very instructive feature on duck data. It is by Jean Richmond and it is an article that every hunter should read. For example the managing editor has this to say about some of the waterfowl—Pintail, a spring and fall migrant and winter resident, is smaller than the mallard. Long neck and slender. Male—chiffy gray, black and white with brown head. Bill and feet gray. Middle tail feathers long and pointed. Wing patch, iridescent bronze, green and purple bordered with buffy on the front edge. Bordered with a bar of black, then a bar of white on the hind edge. Female—streaked and mottled with browns. Resembles to female mallard and gadwall. Bill and feet gray. Wing patch on speculum, mostly brown, speckled with black, with some iridescent green. Pointed tail. Average weight slightly over 2 pounds. Average wingspread, 35 inches.

The timely article on the different species of waterfowl that frequent the Panhandle should be a must on every hunter's reading list. The October issue can be obtained from the Texas Game and Fish Commission for twenty cents. A year's subscription costs only two dollars.

How much does a mallard weigh? Five pounds? Six pounds? A fellow once told me that they weigh up to ten pounds. I know that, they didn't get that large but was at a loss to state specifically what the average weight of mallards was. Miss Richmond,

in the article, can set any hunter straight when it comes to facts. Here is what is said about mallards. Best known of the ducks in Texas, is a fall spring migrant and a winter resident. It frequents all winterways, occasionally feeding in upland fields. Green heads of male identifies it. Other markings, ruddy breast, white neck, gray body, black rump, white tail. Bill yellow. Feet pinkish to orange red. Weight? Average 2 pounds and 11 ounces with a wingspread of 36 inches.

With the duck article in hand it would be simple for any hunter to identify each species of ducks in the game bag. The daily bag limit of coots (some call them mud hens) is ten and possession limit is the same. Many hunters shy away from coots but they make a very tasty meal especially if they are baked with dressing.

They are the small waterfowl that you see in groups from two to twenty or more, that are black with a white bill. Not quite half the size of pintails is about the size of these birds.

The duck and coot season closes at sunset January 14. The Goose season closes at sunset December 30.

Mystery Farm Winners

Several people identifying the mystery farms the past week. They were the farms of O. W. Jarvis and O. K. Pendergraft. Those identifying the Jarvis home were A. D. Reed, Robert Phelps, Johnnie Lackey, Major Lackey, Loy Hiller, J. B. Buchanan and Mrs. Chas. Rossen. The winners for the Jarvis home is Major Lackey, who will receive a year's free subscription.

A large number also identifying the Pendergraft home. They were: Virginia Mathis, Mrs. Oliver Leverton, Joe H. Reising, Mrs. Chas. Rossen, Mrs. Richard Gaines, Chas. Davis, Mrs. J. R. Kirk, and Mrs. C. W. Kirk.

The winner for identifying the Pendergraft home was Mrs. Richard Gaines, Rt. A. Spearman, Texas.

Request From Reporter Office

The Spearman Reporter wishes to invite the public to please turn their news items into this office for printing in our local paper. When you have company, or go somewhere, or have a party—just any local news items is desirable for our home town paper. Call it in, or stop by the office and tell it to us, or drop us a card. PLEASE???

Rho Rho Chapter Beta Sigma Phi

The president, Vera Beth Hicks, called the thirty-ninth meeting of Rho Rho Chapter to order on October 14, at the home of Doris Anthony with all members repeating the Opening Ritual.

Pat Donnell, rushing captain, welcomed the rushers to this open meeting before further business was conducted. Rushes present were Mary Brock, Nel-da Sheets and Ruth Ann Jones.

After the regular business was concluded, the Vice President, Pat Donnell took charge of the meeting and introduced Dorcas Collard, who gave a short talk on the aims and purposes of Beta Sigma Phi. Using a recent copy of Torch magazine, the sorority publication, Dorcas gave a comprehensive view of the work and play that makes up the life of the sorority. Pat then introduced Barbara McClellan who presented the history of the chapter.

Helen Etter, program chairman, then took charge of the meeting and led the program on Prose Assignments on short stories, essays, and book reviews were given by the following members: Ruth Skinner, Altha Townsend, Vera Beth Hicks, Gertrude Jones, Ola Sparks, Johanne Blodgett, Dorcas Collard, Barbara McClellan, Pat Donnell, and Elizabeth Holton.

On October 28, the chapter met with Lois Gibner. Members attending were: Doris Anthony, Johanne Blodgett, Dorcas Collard, Pat Donnell, Helen Etter, Lois Gibner, Vera Beth Hicks, Elizabeth Holton, Gertrude Jones, Beuna Lyon, Barbara McClellan, Ruth Skinner, Ola Sparks, and Altha Townsend.

The chapter voted yes on a ballot for the International Office to support the Cistic Fibrosis Foundation in Philadelphia with a part of the money from the International Endowment fund.

Helen Etter, program chairman, reported on a special program on painting to be held at the home of Vera Beth Hicks, on November 8th or 9th. Mrs. Bill Hutton will have charge of this program and she will display at that time, the painting from the classes of Dord Fitz which have been recently shown in New York City.

Plans of the ways and means committee were approved to hold a Bazaar on November 15 at the Home Demonstration building.

The chapter discussed service projects to be adopted for the current year. A motion carried to support the 400 club as the principle service project for this year.

The program on poetry was given by Helen Etter.

Planned selections will pay off in any breeding flock of sheep. A recently released Bulletin, B-858, gives helpful information on selection practices. It is available from local county agents.

BUY 'EM BY THE NUMBERS.... A TERRIFIC WAY TO SAVE FOOD DOLLARS

3¢ 4¢ 5¢ 7¢

DURING THE Shurfine CARNIVAL OF '57

Not pennies not nickels not dimes but Dollars! Yes, you'll save precious dollars when you buy 'em by the numbers now, during the Shurfine Carnival of '57. Shurfine items are priced to give you really big savings in quantity purchases. Take advantage of it.

- SHURFINE 303 BARTLETT PEARS 4 for \$1.
- SHURFINE FANCY CLINGS NO. 2 1/2 CAN Peaches 4 for \$1.
- SHURFINE 24 OZ. GRAPE JUICE 3 for \$1.
- SHURFINE TALL ALL GREEN CUT ASPARAGUS 4 for \$1.
- SHURFINE TALL CAN PORK and BEANS 10 for \$1.
- SHURFINE CUT BLUELAKE GREEN BEANS 5 for \$1.
- SHURFINE 303 FANCY SPINACH 7 for \$1.
- SHURFINE 303 FANCY HOMINY 11 for \$1.

- SHURFINE APRICOTS 5 for \$1.
- SHURFINE 303 - RSP CHERRIES 5 for \$1.
- SHURFINE 303 - FRUIT COCKTAIL 5 for \$1.
- SHURFINE TALL CAN CRANBERRY SAUCE 5 for \$1.
- CHUNK STYLE OLEO 5 lbs. \$
- Shurfresh 2 Lb. Loaf Spread CHEESE
- Shurfine Orange Frozen 6 oz. JUICE 3 for \$1.
- Shurfine Vac. Pac. COFFEE
- Shurfine 28 oz. APPLE BUTTER
- Shurfine Quart, Sour DILL PICKLES
- Shurfine 1 1/2 oz. Strawberry PRESERVES
- Shurfine 14 oz. Tomato CATSUP

CORN 7 for \$1.00 Tuna 4 for \$1.00

SHURFINE 303 WHOLE KERNAL OR CREAM GOLDEN

SHURFINE WHOLE NO. 2 - SYRUP PAC SWEET POTATOES 4 for \$1.

- Shurfine T&I can Blackeye PEAS 8 for \$1.
- Shurfine 2-3-4-5v. PEAS 5 for \$1.
- Shurfine Tall Can MILK 8 for \$1.
- Shurfine 3 Lb. Can SHORTENING 73c

- FLOUR
- Shurfine 10 Lbs. 79c
- Shurfine 25 Lbs. \$1.69

Garden-Fresh VEGETABLES



FREE PLASTIC BASKETS - WITH EACH CHASE OF \$15.00 AND MORE.

Quality Meats

HAMS

- Armours Star Sliced Bacon Lb. 4
- Armours Star All Meat Franks Lb. 4
- Arm. star purepork sausage, lb. roll 3
- HICKORY SMOKED AND READY TO EAT HAMS
- BE SAMPLED SATURDAY
- BUTT PORTION Lb.
- SHANK PORTION Lb.
- WHOLE HAM Lb.

FRIENDLIEST STORE IN THE PANHANDLE MAIN STREET CUT-RATE GROCERY MARKET



Party F J. Madd

Carl J. Mr. and Mrs. was honored his seventh mother was to 5:00 p. at 530 West er Park on Games and during the umbrellas miniature balloons for favors. Mrs. the decorati and the Ha carried out. Refreshme cake and p the following: Pat Meadow Daniel E. S. Wanda J. G. Kenneth Ray Mills, Paula Steed, Char Mrs. Carl M. and Joe La mes Gilbert Dany. Lin May, and M. e Davis, I Me Elhamey Linda Morpl Enox, Rod S Martha Buff Mrs. Mad the entertai Vaughn and Mrs. Dick pictures wi mery, while his present: Happy Birth

Hansfo: S. C. D

What is tl soil survey asked quite when they employee o tion Service soil survey. unty has t veyed it is article to uses of a s to a road is made for ing travel that will l they desire is made fo ing farmer sirable us their farm. tion office ial training and ident

NOV. 8th

Your date to meet the NEW OLDS AT

C. And H. MOTORS

See - Drive

'58 Rockets

Coming

Nov. 8th

Early Triumph

CONCHO

Kiowa

ARTER GRAIN & Spearman, Te



Party Honors Carl J. Maddux III

Carl J. Maddux III, son of Mr. and Mrs. Carl J. Maddux Jr. was honored with a party on his seventh birthday when his mother was hostess from 3:30 to 5:00 p. m. at their home at 530 West 4th. Jackson Trailer Park on Friday October 18th. Games and contests were played during the afternoon. Miniature umbrellas for the girls and balloons for the boys, and favors, Mrs. Jack Tucker made the decorations for the party, and the Halloween theme was carried out. Refreshments of ice cream cake and pop were served to the following: P. A. Lyons III, Pat Meadows, Joe C. Hutchison, Daniel E. Smith, Vickie Welch, Wanda J. Goodman, Debra Green, Kenneth Ray Gray, Debra Ann Mills, Paula Little, and Mary Steed, Charles Flemmons, and Mrs. Carl Metcalf, Judy Roberts, and Joe Lairy, Mike Allen, James Gilbert Kay Metcalf Carolyn Danny, Linda Vaughn, Derby May, and Marilan Allison, Buckle Davis, David Fawn, Susan Mc Elhane, Cinda Danny, and Linda Morphew, Tony and Terry Enox, Rod Sims, Peggy, Pat, and Martha Buffington. Mrs. Maddox was assisted in the entertaining by Mrs. W. C. Vaughn and Mrs. Kenneth Gray. Mrs. Dick Metcalf made group pictures with her polaroid camera, while Carl was opening his presents the children sang Happy Birthday.

Hansford S. C. D. News

What is the need of making a soil survey? This question is asked quite often by farmers when they are visiting with an employee of the Soil Conservation Service who is making the soil survey. Since Hansford county has been completely surveyed it is the purpose of this article to explain some of the uses of a soil map. A soil map can be compared to a road map. The road map is made for the purpose of helping travelers to select a route that will lead them to where they desire to go. A soil map is made for the purpose of helping farmers plan the most desirable use for each acre of their farm. The Soil Conservation office hires men with special training in soils to go out and identify the different types

of soils. These identifications are placed on an aerial photograph which is kept in the SCS office to be used in helping the farmers of the district plan proper land use. A soil survey may be thought of as an inventory. It shows what kind of soils occur on the different farms and thus serves as a basis for determining the conservation practices that are needed on any particular farm. It is just as important for a farmer to take inventory as it is for a business man. With a rapidly increasing population more and more people are depending on each farmer for their daily food supply. There are less than three cultivated acres per person in the United States today. Therefore, it is very necessary that each acre be protected in an effort to reduce soil erosion.

The most important reason for making soil surveys is so that the Soil Conservation District can be of greater service to the farmers of the district. For example, if a farmer stops by the SCS office about the kind of grass to plant on one of his abandoned fields, the SCS employee can check the soil map and give the farmer an answer to what varieties are best adapted to that type of soil. This is only an example of why it is necessary for the people working with the Soil Conservation District to know as much about the soil as possible so that they may give the farmers reliable advice concerning the proper use of conservation practices. The soil inventory is just one of the services that are avail-

able to the farmers of the Soil Conservation District. It serves as the foundation for good conservation farm plans. There are approximately 16 different soil types in Hansford county. Each one has its own particular need which must be met if the land is to remain productive. Only by recognizing the characteristics of each soil type is it possible to plan the treatment that is needed. Soils are like cattle. Certain breeds of cattle are especially good milk producers, while others are best suited for beef production. Certain types of soil are especially adapted to the production of short grasses while others are best suited for tall grasses. To realize the most from each acre of land, it must be used according to its capabilities and treated according to its needs.

J. H. Nichols III.
J. H. Nichols has been ill at his home at 109 Barkley Street the past week. He is now recuperating and will be glad for his friends to call in to see him.
Mr. and Mrs. A. N. Weant of Turkey Track Ranch had as their guest their brother and wife, Mr. and Mrs. W. M. Weant from Albuquerque, New Mexico recently.
Mr. and Mrs. Don Allison and boys of Dumas and Mr. and Mrs. Dick Allison of Ulysses, Kansas visited in the home of Mrs. Lilly Bowling recently.

County HD Council Meeting Held October 22ND.

The regular meeting of the H. D. Council was held in the club room October 22. Mrs. John Trindle, vice chairman, presided over the business meeting. Plans were discussed for the boys and girls 4-H banquet to be held March 16 at the school cafeteria. The annual meeting will be held November 26 at 2:00 p. m. in the club room. Judge Johnnie Lee and Mr. John Works of Amarillo gave a talk on needs and plans for a new jail. Present were: Mesdames John Trindle, Joe Reising, Mack Dorch, Daniel Sheets, Frank Davis, Pete Fisher, Johnnie Gaither, Bert Sheppard, C. P. Jackson, M. O. McGuire, Bob Maupin, B. J. Garnett, Jack Kemper, Kenneth Bailey, Ora Gibson, Lester Beamer, and Miss Barbara Pain, county H. D. Agent.

Elect Officers For . . . Legion At Oct. 24 . . . Meeting at Gruver . . .

At a regular meeting of the Hansford county American Legion held at the Legion building at Gruver October 24 new officers for the organization were elected. The meeting was presided over by retiring Commander Tom Spivey. The following new officers were elected: Bob Ferguson, Commander,

A. L. McElhane, Vice Commander
Paul Gruver, Adjutant
Elmo McClellan, Chaplain
Joe S. Gruver, Finance Officer
Johnnie C. Lee, Historian
Johnny P. Vernon, Post Service Officer
Ross Walker, Sgt. -At-Arms.

Morse P. T. A. Executive Meeting Held Saturday

The executive board meeting of the Morse PTA was held October 19, 1957 with the president, Mrs. Erlis Pittman presiding. The following members were present: Mrs. Fay Gillespie, Mrs. A. C. Womble, Mrs. Dave Schick, Mrs. Earl Henderson, Mrs. Joe Reising, Mrs.

Frank Karr, Mrs. Willard McCloy, Mrs. R. C. Womble, Jim Highsmith. Topics for discussion were: Halloween carnival, and budget for the year 1957-1958. The PTA will sponsor the food booth at the carnival and the white elephant sale to help raise funds for the coming year.

The Morse PTA meeting was held October 14 at 7:30 p. m. "Partnership new?" was the topic. Songs were sung by the audience. Devotional was by Mrs. Oliver Leverton. New business was to start a special program sponsoring a child welfare program. A wonderful program by the 3rd and 4th grade and sponsored by Mrs. Lillian Smith, was enjoyed by all. Responsible parents must work in partnership with responsible teachers to produce responsible outh.

Mrs. Thorbjornson Died Here Monday

Mrs. Mildred Ann Thorbjornson, 21, a resident of Spearman the past seven weeks, died at one o'clock October 28 in the Hansford Hospital following a three days illness. The body was carried to the Fisher Funeral Home, Oregon, Tuesday. Arrangements were under Boxwell Brothers Funeral Home. Survivors are: the husband, Omar; two sons, Allen Lee and Arne Wade, all of Spearman; three parents Mr. and Mrs. Joe R. Wrightman; two brothers, Ralph and Bobby and a sister, Zoe all of Albany, Oregon. "Veto" comes from the Latin meaning "I forbid."

Sewin "Gyro 66" STALK SHREDDER
Cuts stalks and brush up to 3" diam. on 66" swath.
3-pt. lift model also available.

Heavy duty — proved by 8 years' use in the field. Stands up under toughest jobs; yet, small (20-40 H.P.) tractors handle it.
Cuts brush — easily cuts 3" thick, tough growth like bois d'arc, salt cedar, broom corn.
Shredding attachment (see inset below) — a patented optional feature shreds all types grain and cotton stubble for turning under.
Suction blades — fan-type blades available to lift such light materials as corn stalks off the ground for shredding.
Lift model — fits Fordson Major Diesel, Farmall 300 & 400, and other large lift-type tractors. Foolproof against stump damage. Also 57" and 64" models.

B. and C. EQUIPMENT CO.



Bel Air Impala Sport Coupe — such luxury never came out of the low-price field before!

ALMOST TOO NEW TO BE TRUE!
'58 CHEVROLET! The biggest, boldest move any car ever made!



New '58 Chevrolet Corvette — America's only sports car goes even sportier!

Meet the beautifully moving '58 Chevrolet . . . panther-quick, silk-smooth! It brings a V8 unlike any other, a Full Coil suspension system, a real air ride and even two new super models! See it today!
Look at Chevrolet's airy new styling. That's how new Chevrolet is all over! It's lower, wider—nine inches longer.
There's an all-new Turbo-Thrust V8* engine. Pair it up with Turboglide*, you'll command the quickest combination of all!

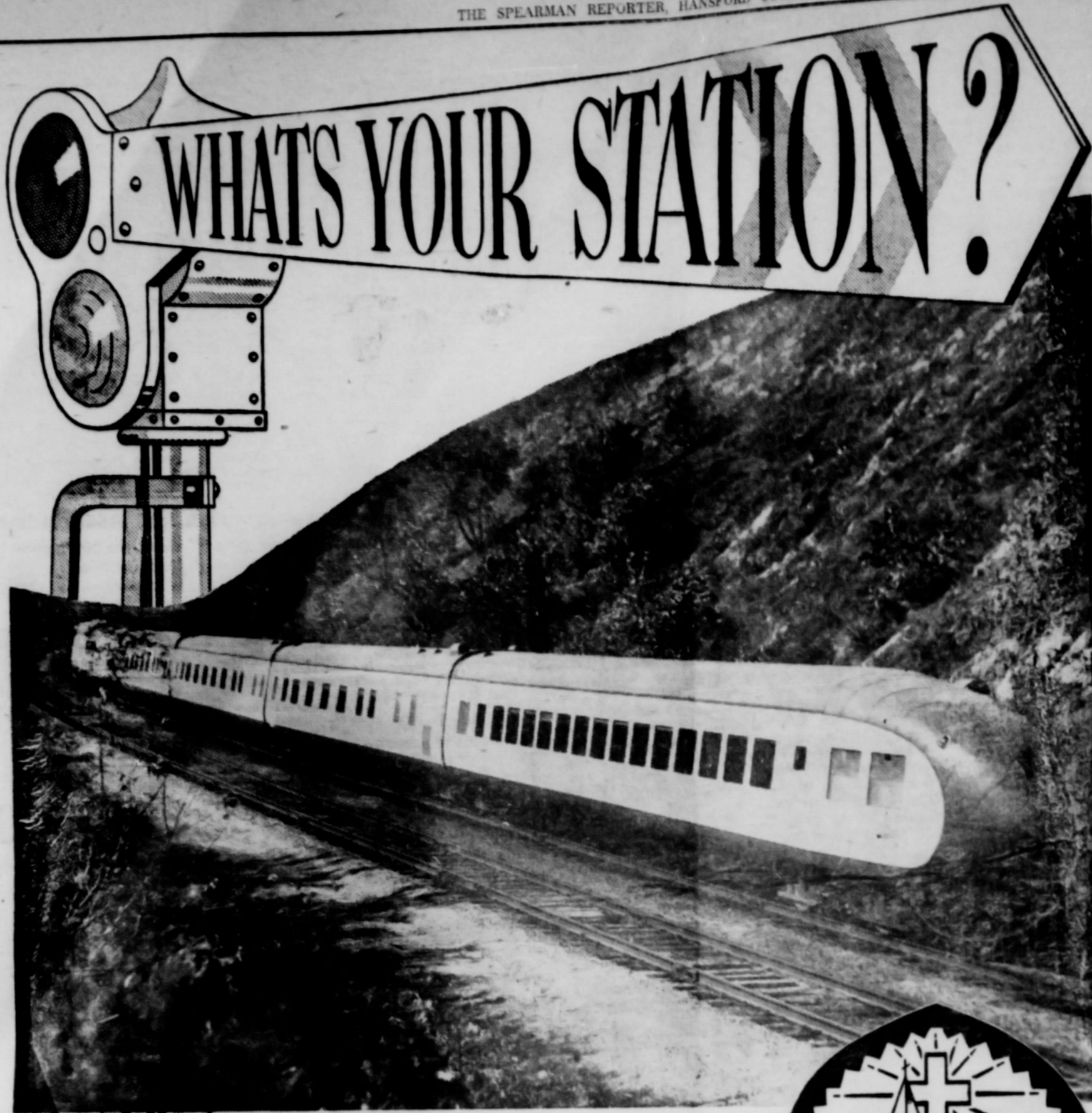
There are two new rides—Full Coil suspension—and the first real air ride* in Chevy's field. The body-frame design is new, the wheelbase is longer.
There's plenty more—a new 4-headlight system for safer seeing, new 6 and V8 power, a foot-operated parking brake. And two new super models—the Bel Air Impala Sport Coupe and Convertible, most luxurious Chevrolets of all.
See all that's new at your Chevrolet dealer's! *Optional at extra cost.



Bel Air 4-Door Sedan — bold new beauty and Fisher Body quality.

Only franchised Chevrolet dealers display this famous trademark **CHEVROLET** See Your Local Authorized Chevrolet Dealer

FOOD MARKETS
but Colford Yes, you'll save prices
now, during the Skifline Carnival of 37
ing savings in quantity purchases. Take advan
TS \$5.00
RIES \$5.00
TAIL \$5.00
RRY SAUCE \$5.00
OLEO
bs. \$
Leaf Spread
E
Frozen 6 oz.
36
E
Lb.
TER
ur
ES
erry
VES
ato
4 for
FREE
SKETS - WITH EACH
5.00 AND MORE.
y Meats
MS
con Lb. 4
ranks Lb. 4
sage, lb. roll 3
ADY TO EAT HAM
Lb.
Lb.
Lb.
EED WHEAT
Early Triumph
CONCHO
Kiowa
ARTER GRAIN & SEED CO.
Spearman, Texas



What's your station? What is your destination? "There is a way that seemeth right unto a man, but the ends thereof are the ways of death." We are all aboard the train of life. Around the next curve may be your station. This is the road which leads to life eternal. You may travel in this way if you will. Are you ready, prepared? Are your plans made? "The path of the just is as a drawing light that shineth more and more unto the perfect day." The 'Great Conductor' counsels: "Strive to enter in by the narrow gate!" To those who follow His counsel he says: "Ye shall find rest unto your souls." What is your station?



**You In The Church...
The Church In You**
Form a combination for good. We should attend church regularly. Every man, woman and child needs the influence of the CHURCH. Be faithful Be a Churchman!
© Williams Newspaper Features Fort Worth, Texas

We Need Greater Churches And Greater Faith

to give us POWER for LIVING and to COMBAT ATHEISTIC "ISMS"

MAY THIS PAGE BE A BLESSING TO MANY IS THE SINCERE WISH OF HANSFORD COUNTY MINISTERS
This religious service is paid for by the public spirited firms 100% interested in the spiritual life of Hansford County. They urge regular church attendance and support.

R. L. Kleeberger, M. D.

Spearman Drug Co.
Bruce Sheets

Equity Exchange
E. J. Copeland

R. L. McClellan Grain Co.
Lee Roy Lee, Wilson McClellan
and J. K. Hicks

Orange Disc Service
Alton and Wayne Ellsworth

Hansford Implement Company
Gene Cudd

Beauty Shop
Douglas

Gruver Motor Company
Ted McClellan

North Plains Electric Co-op
Earl Waide, Manager

Super Service Station
Gene Cline and W. E. Sparks

Spearman Steak House
Mr. and Mrs. Howard Huffman

White Auto Store
Mr. and Mrs. I. P. Bagerly

Boxwell Brothers
Mrs. C. E. Blackburn

Consumers Svc. Co.
Vester Hill

Panhandle Furniture Mart
Bud King

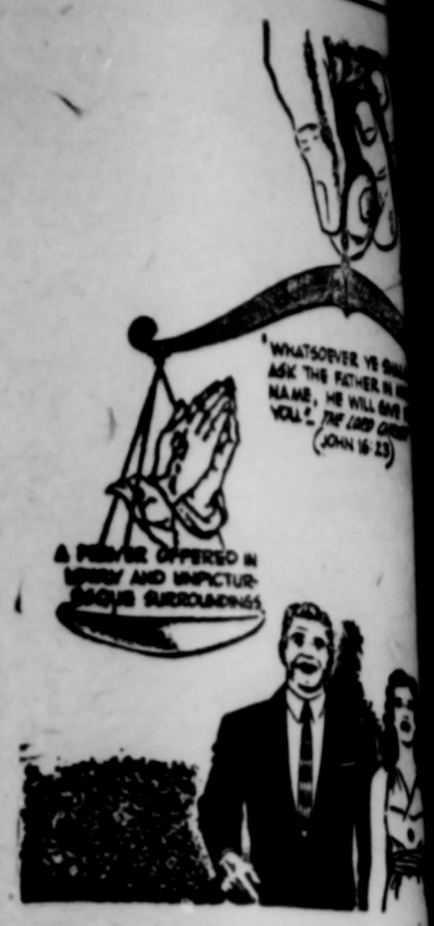
Jameson Chevrolet Co.
Spearman Body Shop
L. L. Jameson

Wardrobe Cleaners
Oscar Donnell

First State Bank
Clay Gibner

Callaway Lumber Co.
E. J. Callaway and Sons

Cactus Petroleum, Inc.
Aubrey Covington, Supervisor



FIRST BAPTIST CHURCH
Bro. Bill Burton, Pastor
Sunday School
Preaching Service
Training Union
Preaching Service
Wednesday Prayer Service

UNION CHURCH
Rev. Calvin Springer, Pastor
Sunday School
Morning Worship
Bible Classes, Sunday
Evening Worship
Wednesday Bible Study

FIRST CHRISTIAN CHURCH
Sunday School
Morning Worship
Youth Meetings
Evening Worship
Wednesday: Choir Practice

MORSE METHODIST CHURCH
Allen C. Forbis, Pastor
Sunday School
Morning Services
M. Y. F.
Evening Worship

ASSEMBLY OF GOD
Rev. M. C. Cox, Pastor
Sunday School
Morning Worship
Evening Worship
Mid Week Services, Wednesday

FIRST CHRISTIAN CHURCH
J. W. Duke, Pastor
Sunday School
Morning Worship
Evening Worship
1st Weds. Monthly Fellowship

FIRST METHODIST CHURCH
Bro. J. Waid Griffin, Pastor
Church School
Morning Worship
Methodist Youth Fellowship
Evening Worship
Womens Society of Christian Service, Wednesday
Mid Week Services, Wednesday
Choir Rehearsal

CHURCH OF CHRIST
David E. Parker, Pastor
Bible Class
Communion
Preaching
Worship
Monday: Mens Training Class
Wednesday, Ladies Bible Class
Wednesday, Midweek Bible Classes

MORSE BAPTIST CHURCH
Rev. Geo. M. Rickles, Pastor
Sunday School
Worship
Training Union
Worship
Mid Week Service Wednesday

CHURCH OF CHRIST
North of City Park
Gruver, Texas
R. Elmer Adcock, Pastor
Lord's Days:
Bible Study
Worship
Worship
Week Days:
Bible Study, Wednesday
Ladies Classes, Thursdays
Senior Ladies
(Small Children Cared For)
Junior Ladies

GRUVER METHODIST CHURCH
Rev. R. H. Campbell
Sunday School
Morning Services
Methodist Youth Fellowship
Evening Services
Wednesday Prayer Service
Wednesday Choir Practice
Thursday W. S. C. S.
Wesley Circle, Thursday

SACRED HEART CATHOLIC CHURCH
Father M. J. Matthews, Pastor
MASSES
Sundays
Weekdays (Mon. Tues. Fri. Sat.)
First Friday of Month
Holy Days of Obligation

FIRST BAPTIST CHURCH
Bro. O. L. Bryant, Pastor
Sunday School
Morning Worship
Training Union
Evening Worship
Wednesday Mid-Week Services: Prayer Hour
Wednesday Choir Rehearsal
Officers, Teachers, R. GA & RA

OSLO LUTHERAN CHURCH
J. P. Knudsen, Pastor
Sunday Worship
Ladies Aid every last Thursday afternoon of each month
Luther League on Sunday evening every third Sunday

DER
FYING
OWNER
RATOR
FARM
AGE 1

ful home pict
Mrs. O. K. Pen
ated 17 miles
the home of
lived on the pl
cke Kirk, and c
ool.

ndergrafts hav
is now Mrs. Ri
now lives at l
and James ha
grafts are extre

ndergrafts ha
have seen many

GOO
THE SP

G CAPACIT

means
ig Profits f

John Deere "82"

21-Foot "FW" Dis

FORD IMPLE

Grain — Sta
CITY RANGE
ent — 20 percent
Complete line of f
ds and equipmen
olorate and Boras
treating chemi
RAIN — FEED
tain And Hay Co

ne time to use Aure
ep crumbles in yo
get quicker & larg
We have a complet
ance.

QU

WILL RECEIVE
ONE YEAR'S
SUBSCRIPTION
TO THE
REPORTER
FREE



THE OWNER
OR OPERATOR
OF THE FARM
ON PAGE 1
IS ASKED TO
CALL AT THE
REPORTER
AND RECEIVE

A BEAUTIFUL
FULL PHOTO-
MOUNTED
FREE
OF
CHARGE

MYSTERY FARM THIS WEEK IS THE HOME OF MR. AND MRS. O. K. PENDERGRAFT.

The beautiful home pictured above is the home of Mrs. O. K. Pendergraft. The Pendergraft farm is located 17 miles South of Spearman. Also the home of Mr. and Mrs. Chas. Davis lived on the place for 12 years. Mr. Davis was a school teacher, and drives a school bus for the school.

The Pendergrafts have two children. Betty, now Mrs. Richard Gaines, and James now lives at Enid, Okla. Betty has two children and James has one little girl. Of course the Pendergrafts are extremely proud of these grand children.

The Pendergrafts have lived 23 years on this farm. They have seen many changes in these 23 years.

A beautiful new 7 room home, brooder houses, chicken houses, and many other outstanding storage facilities are on this farm. The farm was probably first broke-out in 1900, and was originally the Will Storrs place.

The Pendergrafts are members of the farm bureau, and First Christian Church, in Spearman. Their hobbies are many, and include fishing, traveling, and interior decorating; and, their home is an example of their outstanding taste, when it comes to doing their own decorating.

There is an irrigation well on the home place, and Owen raises maize and wheat, and Brahmas. Of all of the interesting information gathered in interviewing the Pendergrafts, the information about his

cattle was the most surprising. He is probably one of the few stockmen in this area that raises brahmas, in preference to any other type of cattle. The reason he prefers brahmas, is because they do not get sick, and never have any pink eye. Even a calf with one-fourth brahma in him, will hardly ever get sick, according to Mr. Pendergraft. They now have a herd of 13 brahma cows, plus some other stocker cattle.

Mr. Pendergraft graduated from Goodwell school, and Owen graduated from Spearman, with the class of 1931. Mr. Pendergraft has worked with Phillips Products pipe line for 16 years at their booster camp, near his home. Truly, this is an outstanding couple, and they are well liked by all of their many friends and neighbors, of the Spearman area.

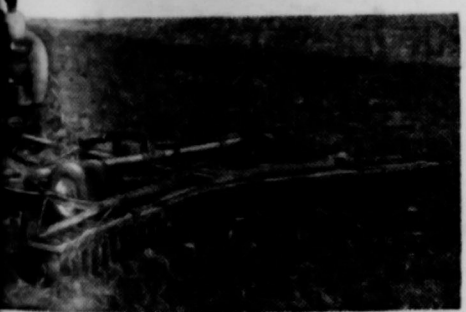
**GOOD PRINTING PAYS
THE SPEARMAN REPORTER**

"Built on Confidence, Growing on Service"

FIRST STATE BANK

Banking Hours 9:00 A. M. - 3:00 P. M.

Large Capacity



means big profits for you!

John Deere "820" Diesel

21-Foot "FW" Disk Harrow

FORD IMPLEMENT CO.

WELCOME
Mystery Home owners and all citizens of this area to the
SPEARMAN STEAK HOUSE

Mr. and Mrs. Howard Huffman, Owners

22 INCH DISCS
for one way
plows \$6.50 Ea.

B. and C. EQUIPMENT CO



SPEARMAN DRUG STORE

Mr. and Mrs. Bruce Sheets
Spearman, Texas

PURINA CHOWS

- Calf Startena
- Milk Chow
- Hog Chow
- Range Checkers
- Omolene (Horse Feed)
- Rabbit Chow
- Dog Chow
- Lay Chow
- Pigeon Chow

R. L. McCLELLAN GRAIN CO.

Grain — Storage
QUALITY RANGE CUBES
20 percent — 32 percent
Complete line of poultry
feeds and equipment. Sodium
chlorate and Borascu. Seed
treating chemicals
GRAIN — FEED — SEED
Grain And Hay Conditioner

Best time to use Aureomycin Soluble
crumbles in your Feeding pro-
gram get quicker & larger gains on your
poultry. We have a complete stock for your
convenience.

EQUITY

For Cold Weather,
See Our Dearborn
Hang On The Wall Heater
Heater Supplies

SPEARMAN HARDWARE

Phone Olive 9-3671 Spearman, Texas
John Bishop

**SEWING MACHINES
REDUCED**

\$99.95 UP

We stock the New Homemaker Mch.
Both portable and Cabinet model
Also

Domestic and White Rotary Machines.
All machines in plain or automatic Zig-Zag

WHITE AUTO STORE
Ike Baggerly

**- AUTOMOTIVE -
Parts and Supplies**

OWENS SALES COMPANY

Claude Owens

Washington News Letter From Your Congressman Walter Rogers

October 1957
TO THE PEOPLE OF THE 18TH DISTRICT
THE FUROR OVER THE SUPREME COURT

In view of recent developments on a federal level and the requests of several people I am reprinting the newsletter that I wrote in 1956.

Where did it all start? Few people have taken the trouble to find out the history of the doctrine which seems to be causing so much trouble today. That is, the doctrine that the Supreme Court has the power to declare an Act passed by the duly elected officials of the United States, repugnant to the Constitution and therefore unconstitutional and of no force and effect thus vesting in the Supreme Court the final veto power concerning the rules, regulations and laws by which our daily lives are governed.

It all started in 1801 immediately after Thomas Jefferson was sworn in as President of the United States. At that time the political parties were the Federalists on the one side and the Democratic-Republicans on the other side. The general philosophies of these parties were in keeping with the general alignments of thought as between Jefferson and Hamilton. The Jefferson doctrine was based upon a distrust of centralized government and the advocacy of confidence in the people's capacity to govern. The Hamiltonian philosophy supported a strong national government by a sort of "royal purple" group who would have full control of the centralized powers and be able to govern without interference from the people.

At that time President Adams was leader of the Federalists, while Vice-President Jefferson was leader of the Democratic-Republicans. The Federalists had gotten in bad favor with the public and realized that they would be turned out of office

in the December 3, 1800, election. They were correct. Thomas Jefferson was elected President at that time and prepared to be inaugurated on March 4, 1801. The Federalists, in an effort to perpetuate their power, undertook between the date of the election, December 3, 1800, and the date of Jefferson's inauguration, March 4, 1801, to fill all open offices with Federalist followers. The number one appointment in this plan went to John Marshall, President Adams' Secretary of State and a loyal Federalist. He was appointed the third Justice of the United States Supreme Court. There were a number of other appointments made by President Adams, among them being the appointment of a Justice of the Peace for the District of Columbia. The recipient of this appointment was Mr. William Marbury, who was appointed on March 2, 1801, just two days before Jefferson's inauguration.

In the confusion of the change of Administrations, the then Secretary of State, John Marshall, signed and sealed the appointment, but apparently got busy on other matters and forgot to issue the commissions to several appointees, including William Marbury. Jefferson, upon inauguration, had instructed his Secretary of State, James Madison, to withhold the issuance of these commissions. Whereupon, Marbury filed suit against James Madison, the new Secretary of State, in the Supreme Court of the United States. This was the famous case of Marbury vs Madison, with which all students of the law are familiar.

Since the Supreme Court's power to take original jurisdiction in cases is limited to a very narrowly defined class of cases, there was much discussion about Marbury having filed his suit in the Supreme Court rather than a trial court. The filing of the case in the Supreme Court created a situation where by John Marshall, Chief Justice of the Supreme Court, was called upon to decide whether or not the Court could compel James Madison, Secretary of State, to issue a commission that Chief Justice John Marshall, while serving as Secretary of State John Marshall, had neglected to issue. Since the Marbury case was clearly outside of the original jurisdiction of the Supreme Court, the normal procedure would have been for the Court to decline to hear the case and permit the complainant to file his suit in a proper court. However, for some reason Chief Justice Marshall brought into the picture the Judiciary Act of 1789, an Act to control the procedures in federal courts. He indicated that although the Supreme Court could not hear the Marbury case under the Constitutional restrictions, there were provisions in the Judiciary Act, a statute passed by Congress, that would permit the

Supreme Court to hear the case. He then proceeded to hold that because according to his conclusions the Judiciary Act was in conflict with the Constitution, the Judiciary Act became unconstitutional and therefore void. This action on the part of Chief Justice Marshall has been interpreted as a master stroke of a devoted advocate to centralize a government. It created the doctrine that the Supreme Court had the power to declare Acts of Congress unconstitutional—power which was bitterly opposed by Jefferson's followers.

Had John Marshall held against Jefferson's followers on the Marbury case and had entered a judgment requiring Madison to issue Marbury a commission, there was a strong chance that Marshall might have been impeached. Many thought that Marshall realized this and thereupon conceived his idea of not endangering his position as Chief Justice, but at the same time, creating a strong weapon in the hands of advocates of centralized government. This approach left the Jeffersonian followers in the position of having won the Marbury case, for which they could not complain, but of having had to accept, as a thorn which the roses so to speak, the establishment of a doctrine that vested the Supreme Court with final veto powers on all legislative actions. It is interesting to note that in the 35 years that John Marshall served as Chief Justice of the Supreme Court, he never again declared an Act of Congress unconstitutional.

It is also well to remember in this connection that as matters now stand, the laws passed by the duly elected officials of this land are in a strange position. These laws can be knocked down by the Supreme Court of the United States as being unconstitutional. Yet, a treaty between this country and a foreign country, written and entered into by the Executive Branch of the government and duly approved by the Senate, is on a parity with, if not superior to the Constitution. But in any event, as the law presently stands, the laws passed by the Congress are subservient to such treaties as well as the Constitution so you can imagine how far down this puts the laws of the several states.

VISITORS

It was nice to have as visitors in our office this week Mr. Raymond W. Miller and Mr. Harold W. Lipper, who are with the Bureau of Mines, Amarillo, Tex. Walter Rogers, Member of Congress, 18th District of Texas.

Home From Trip

Mrs. Francis Sim and Mother Mrs. Kate Gray returned home the past week end from an extended vacation through the Northern States. They left Spearman August 27, and spent their time visiting relatives: Mr. and Mrs. James E. Markle and family of Batesland, South Dakota, and Mr. and Mrs. Ora Schroder of Walsh, Colorado.

Cows have four stomachs.

Why be a Washday Weight Lifter?



save work
with an

ELECTRIC DRYER

Drying clothes is as easy as turning a dial . . . electrically! Washday can be any day, any time, at your convenience. You just pop wet clothes into your Electric Dryer, set the controls and the dryer does the rest . . . automatically. See your electric appliance dealer soon. Ask for a free demonstration.



Here are the FACTS

HOMES and BUILDING MONEY ARE AVAILABLE

In Spearman

Macias Construction Co.

OFFERS THE FOLLOWING:

FHA HOUSES

Up to \$10,000 Only 3% Down
Over \$10,000 Low Down Payment
Choice Locations Near Park, Church, School

A FEW G. I. LOANS AVAILABLE

JUST 2% MOVES YOU IN!

WE HAVE HOUSES UNDER CONSTRUCTION—SEVERAL FHA AND GI APPROVED PLANS TO CHOOSE FROM. THESE HOUSES SHOWN AT ANY TIME—CALL GE 5-4531 — EVENINGS GE 5-6631 OR GE 5 6962

PLENTY OF MONEY AVAILABLE FOR THOSE WHO CAN QUALIFY

—SEE—

MACIAS CONSTRUCTION CO.

The Firm with the Envious Record of hundreds of homes in the Panhandle.

Hansford Soil Conservation District Income statement for year ending August 31, 1957

The following statements are published according to State Law enacted in the regular session of the Legislature, Chapter 410, Senate Bill No. 131:

	Trust Fund	State Fund	Service Account
INCOME			
Conservation work	\$5,972.92		\$9,363.32
Rent of Machinery	94.25		120.00
Miscellaneous and Discounts Earned	191.36		71.58
Gross Income	\$6,258.53		\$9,554.90
EXPENSE			
Labor	\$125.00		\$6,617.11
Fuel for Pickup			520.48
Fuel for Tractor			740.25
Oil & Grease			168.05
Repairs			991.82
Equipment Maintenance			911.82
Office Supplies			28.65
Rent on Warehouse			450.00
Miscellaneous Expense			544.55
Insurance			244.08
Payroll Tax (1956 & 1957)			234.76
Depreciation		\$1,098.53	
Total Expense	\$125.93	\$1,098.53	\$11,451.87
Cash on hand at end of Fiscal year ending August 31, 1957	\$9,132.50	\$1,727.38	\$414.37

statement.

I hereby certify that the above is a true and

SIGNED

R. V. CONVERSE

Secretary, Treasurer

PERENNIAL FAVOR
Catalina designed
4-inch wheelbase, the
and is available in
edan and a four-door
is the big "Tempest"
fabric.

cient New
This Week

cient new 1958 aut



NO. 48

nan To Get
Office Builc

Donald Smith an-
week the accep-
Post Office Depart-
proposal by Mr.
Amarillo, Tex.
new Post Office
erman.

ocation will be on
of Hancock street
ers and Main, ap-
the center of the
building will be
The new building
modern in design
one of six typical
ed by the Post
ment. It will be a
ble Concrete block
faced, overhead
conditioned and
lighting. From in-
available at this time.
will be equipped
with all new postal
including lock box-

ctor will be W. C.
of Amarillo. Con-
ll begin at an early
the building is to be
occupancy by Febru-

White
Lumb

der
? ?

seems to have been
under control here
n, although some he-
eism was noted in
grades at school early
However, as county
er Dr. Kleeberger
doors are still open".
everyone is still going
at the Reporter office.
members of our staff
the flu, and if we
paper out we will be

re and take good care
elf and get lots of rest.
you get to feeling bad.
the professional care at
people are dying with this
n know!

and Mrs. J. R. Dixon and
p's left last week end
e. They have been visit-
atives here for the past
y, and returned Friday
nce, California.

Olds is All Ne

able for 1958 offers a cool
y, featuring the new "mot
ative and tasteful styling in
p harmoniously employs in-
pize its long, flowing lines
e. The ultra-modern thin
wards to the top of the only
p window. The redesigned
h by new four-beam he