

The Spearman Reporter Kills

THE SPEARMAN REPORTER, HANSFORD COUNTY, THURSDAY, JUNE 13, 1957



for he's a jolly good father

FARM OF THIS AREA...



The new series of Mystery Homes to be published each week... If you can identify this home phone or mail a card to the editor... you may receive a free one year subscription to the Spearman Reporter. Please send in your identification as soon as possible. Staff members will go visit the Mystery farm and write the story that will appear in the next issue. This advertisement is sponsored by local merchants. Some of the homes are located in Hutchinson and Ochiltree counties.

Wardrobe Cleaners Edge Equity Rockets In Opening Game, Tues.

Burl Buchanan At Ft. Riley

Burl Buchanan is in the army now, and doing his basic training at Fort Riley, Kansas. He is the son of Mr. and Mrs. J. B. Buchanan.

At Summer Camp

Mark and Tommy Gould are at the Salvation Army Youth camp, near Midlothian, Texas. This camp enrolls boys from 8 to 14 years of age. The camp has a 340 acre campus. It has brick cabins, hospital, chapel, craft lodge and tiled swimming pool. There are many out-door recreations. The boys are taught crafts and sports and are given lessons in christian living. The program is under the supervision of trained and dedicated Salvation Army officers. This camp is supported by the Texas Community Chest, United Funds and annual financial campaigns.

Commissioners' Court

The Hansford County Commissioners' court met Monday. No special business was on the agenda. Plans for civil defense were discussed. Only two orders passed; one approved the minutes and the other approved the bills.

County Board Meeting

The Hansford County School Board met this week at the county house. Homer Miller, of Phillips plant is chairman of the six man board. The board approved scholastic transfers, county bus routes, the Superintendent's annual report and tax report.

Repeat Bond Election

Due to a technicality the \$50,000 bond election for County bridge construction that carried on April 22, will have to be held again. Tuesday June 25 is the date for the election at the Hansford County Court house in Spearman.

Teen - Town Meet To Be Friday P. M.

All interested in a summer Teentown please meet Friday night at the court house at 8:30. Parents and leaders are asked to attend.

Graduates From Texas Tech June 3

Jerry Gibner graduated from Texas Tech. Lubbock, on June 3, with his degree in Agriculture. Jerry will teach in the Textline school this year. Mr. and Mrs. Pope Gibner attended the graduation exercises of their son.

Pioneer Ball Teams Off To Good Start

The Perryton Pioneers won two games in a three game series with the Cessna Bobcats, from Wichita, Kansas, in Perryton this weekend. In a double-header Saturday night, the Pioneers won the first game 10-2, with Aubrey Bristow of Phillips University, the winning pitcher. The second seven inning game was called because of rain with the Bobcats on in front, 5-2. On Sunday afternoon the Pioneers won, 13-10, with Junior Wolf the winner.

NOTICE TO THE PUBLIC

In compliance with the request of the Federal Land Bank in order to cut operating expenses, the Panna, Spearman and Perryton National Farm Loan Associations have grouped together with the key Association of five located at 115 West Francis Street in Panna. I will be in Spearman in the office with Alvin Richardson in the back part of the Hansford Abstract Building all day Friday of each week. My mailing address in Panna is Box 1539, and my telephone number in Panna is Mohawk 4-3881. I shall make every effort to service the needs of the people in Hansford and Hutchinson Counties to the best of my ability.

J. E. GUNN.
FOR SALE: Air conditioner, 4000 cfm used only 2 months. O. C. Rath, Phone Olive 9-2348.

Hobson Hartman of the Wardrobe Cleaners softball team, knocked a home run in the last half of the last inning to break a tie with the Equity Rockets, in the opening game of the summer series, Tuesday night. The score was tied 4-4, and Hartman slammed a home run to send his team to victory in this first game. In the second game, the Case 400's won 18 to 3 over the Lion club team. Spectators are warned to stay behind the stops at the field. This is a must, and everyone is urged to follow the instructions of the officials at the local field. Games will be played Tuesday, Thursday and Friday nights. Schedules are available and a girls softball and a hardball league will be organized Thursday night at the field across from the court house.

Who Has The Water Sprinkler??

The Rose Garden club ladies have been working on the corner plot of ground just in front of Equity Elevator endeavoring to beautify this spot at Spearman's highway junctions. They had it plowed and planted to grass and everything was going fine, UNTIL... someone took the ten dollar water sprinkler the club had purchased for this project. Who could do such a thing? If these hard working ladies have this much civic pride to do such a nice thing, how could anyone take the sprinkler? So, if you just borrowed it—that's fine, but won't you PLEASE return it today so the newly planted grass won't be ruined? ? ?

Oslo News

Mrs. John O. Dahl and Mrs. Ingeborg Sogn visited Mr. and Mrs. Carol Nields Jr. of Hardisty, on Tuesday afternoon. Dennis and Diane Stedje helped John Mark Stavio celebrate his 8th birthday with a picnic supper on Saturday.

Receive Bachelor Of Music Degree

Mrs. W. A. Schubert and John Schubert attended the 28th annual Commencement for the Musical Arts Conservatory in Amarillo on June 2, where her daughter, Nova Schubert Bair received her Bachelor of Music Degree. The exercises were held in the Playhouse at 1710 Tyler, at four o'clock in the afternoon.

WEATHER

Date	Max	Min	Rain
4	72	50	0
5	75	54	0
6	84	58	0
7	88	60	0
8	90	60	0
9	88	60	0
10	89	52	0.30

RECEIVES BACHELOR OF MUSIC DEGREE

Mrs. W. A. Schubert and John Schubert attended the 28th annual Commencement for the Musical Arts Conservatory in Amarillo on June 2, where her daughter, Nova Schubert Bair received her Bachelor of Music Degree. The exercises were held in the Playhouse at 1710 Tyler, at four o'clock in the afternoon.

RECEIVES BACHELOR OF MUSIC DEGREE

Mrs. W. A. Schubert and John Schubert attended the 28th annual Commencement for the Musical Arts Conservatory in Amarillo on June 2, where her daughter, Nova Schubert Bair received her Bachelor of Music Degree. The exercises were held in the Playhouse at 1710 Tyler, at four o'clock in the afternoon.

RECEIVES BACHELOR OF MUSIC DEGREE

Mrs. W. A. Schubert and John Schubert attended the 28th annual Commencement for the Musical Arts Conservatory in Amarillo on June 2, where her daughter, Nova Schubert Bair received her Bachelor of Music Degree. The exercises were held in the Playhouse at 1710 Tyler, at four o'clock in the afternoon.

RECEIVES BACHELOR OF MUSIC DEGREE

Mrs. W. A. Schubert and John Schubert attended the 28th annual Commencement for the Musical Arts Conservatory in Amarillo on June 2, where her daughter, Nova Schubert Bair received her Bachelor of Music Degree. The exercises were held in the Playhouse at 1710 Tyler, at four o'clock in the afternoon.

RECEIVES BACHELOR OF MUSIC DEGREE

Mrs. W. A. Schubert and John Schubert attended the 28th annual Commencement for the Musical Arts Conservatory in Amarillo on June 2, where her daughter, Nova Schubert Bair received her Bachelor of Music Degree. The exercises were held in the Playhouse at 1710 Tyler, at four o'clock in the afternoon.

RECEIVES BACHELOR OF MUSIC DEGREE

Mrs. W. A. Schubert and John Schubert attended the 28th annual Commencement for the Musical Arts Conservatory in Amarillo on June 2, where her daughter, Nova Schubert Bair received her Bachelor of Music Degree. The exercises were held in the Playhouse at 1710 Tyler, at four o'clock in the afternoon.



Join Father At Your Favorite Church Services Next Sunday, Father's Day, June 16th.

Notice

Will whoever has my shoulder screw, please return it. I have either loaned it to some one or they have borrowed it without my knowledge. The screws are growing very fast and I need it. Joe S. Kirk
215 Hazelwood Street or The Spearman Reporter.

Who Has The Water Sprinkler??

The Rose Garden club ladies have been working on the corner plot of ground just in front of Equity Elevator endeavoring to beautify this spot at Spearman's highway junctions. They had it plowed and planted to grass and everything was going fine, UNTIL... someone took the ten dollar water sprinkler the club had purchased for this project. Who could do such a thing? If these hard working ladies have this much civic pride to do such a nice thing, how could anyone take the sprinkler? So, if you just borrowed it—that's fine, but won't you PLEASE return it today so the newly planted grass won't be ruined? ? ?

Oslo News

Mrs. John O. Dahl and Mrs. Ingeborg Sogn visited Mr. and Mrs. Carol Nields Jr. of Hardisty, on Tuesday afternoon. Dennis and Diane Stedje helped John Mark Stavio celebrate his 8th birthday with a picnic supper on Saturday.

RECEIVES BACHELOR OF MUSIC DEGREE

Mrs. W. A. Schubert and John Schubert attended the 28th annual Commencement for the Musical Arts Conservatory in Amarillo on June 2, where her daughter, Nova Schubert Bair received her Bachelor of Music Degree. The exercises were held in the Playhouse at 1710 Tyler, at four o'clock in the afternoon.

RECEIVES BACHELOR OF MUSIC DEGREE

Mrs. W. A. Schubert and John Schubert attended the 28th annual Commencement for the Musical Arts Conservatory in Amarillo on June 2, where her daughter, Nova Schubert Bair received her Bachelor of Music Degree. The exercises were held in the Playhouse at 1710 Tyler, at four o'clock in the afternoon.

RECEIVES BACHELOR OF MUSIC DEGREE

Mrs. W. A. Schubert and John Schubert attended the 28th annual Commencement for the Musical Arts Conservatory in Amarillo on June 2, where her daughter, Nova Schubert Bair received her Bachelor of Music Degree. The exercises were held in the Playhouse at 1710 Tyler, at four o'clock in the afternoon.

RECEIVES BACHELOR OF MUSIC DEGREE

Mrs. W. A. Schubert and John Schubert attended the 28th annual Commencement for the Musical Arts Conservatory in Amarillo on June 2, where her daughter, Nova Schubert Bair received her Bachelor of Music Degree. The exercises were held in the Playhouse at 1710 Tyler, at four o'clock in the afternoon.

RECEIVES BACHELOR OF MUSIC DEGREE

Mrs. W. A. Schubert and John Schubert attended the 28th annual Commencement for the Musical Arts Conservatory in Amarillo on June 2, where her daughter, Nova Schubert Bair received her Bachelor of Music Degree. The exercises were held in the Playhouse at 1710 Tyler, at four o'clock in the afternoon.

RECEIVES BACHELOR OF MUSIC DEGREE

Mrs. W. A. Schubert and John Schubert attended the 28th annual Commencement for the Musical Arts Conservatory in Amarillo on June 2, where her daughter, Nova Schubert Bair received her Bachelor of Music Degree. The exercises were held in the Playhouse at 1710 Tyler, at four o'clock in the afternoon.

RECEIVES BACHELOR OF MUSIC DEGREE

Mrs. W. A. Schubert and John Schubert attended the 28th annual Commencement for the Musical Arts Conservatory in Amarillo on June 2, where her daughter, Nova Schubert Bair received her Bachelor of Music Degree. The exercises were held in the Playhouse at 1710 Tyler, at four o'clock in the afternoon.

This n' That

Will whoever has my shoulder screw, please return it. I have either loaned it to some one or they have borrowed it without my knowledge. The screws are growing very fast and I need it. Joe S. Kirk
215 Hazelwood Street or The Spearman Reporter.

Who Has The Water Sprinkler??

The Rose Garden club ladies have been working on the corner plot of ground just in front of Equity Elevator endeavoring to beautify this spot at Spearman's highway junctions. They had it plowed and planted to grass and everything was going fine, UNTIL... someone took the ten dollar water sprinkler the club had purchased for this project. Who could do such a thing? If these hard working ladies have this much civic pride to do such a nice thing, how could anyone take the sprinkler? So, if you just borrowed it—that's fine, but won't you PLEASE return it today so the newly planted grass won't be ruined? ? ?

Oslo News

Mrs. John O. Dahl and Mrs. Ingeborg Sogn visited Mr. and Mrs. Carol Nields Jr. of Hardisty, on Tuesday afternoon. Dennis and Diane Stedje helped John Mark Stavio celebrate his 8th birthday with a picnic supper on Saturday.

RECEIVES BACHELOR OF MUSIC DEGREE

Mrs. W. A. Schubert and John Schubert attended the 28th annual Commencement for the Musical Arts Conservatory in Amarillo on June 2, where her daughter, Nova Schubert Bair received her Bachelor of Music Degree. The exercises were held in the Playhouse at 1710 Tyler, at four o'clock in the afternoon.

RECEIVES BACHELOR OF MUSIC DEGREE

Mrs. W. A. Schubert and John Schubert attended the 28th annual Commencement for the Musical Arts Conservatory in Amarillo on June 2, where her daughter, Nova Schubert Bair received her Bachelor of Music Degree. The exercises were held in the Playhouse at 1710 Tyler, at four o'clock in the afternoon.

RECEIVES BACHELOR OF MUSIC DEGREE

Mrs. W. A. Schubert and John Schubert attended the 28th annual Commencement for the Musical Arts Conservatory in Amarillo on June 2, where her daughter, Nova Schubert Bair received her Bachelor of Music Degree. The exercises were held in the Playhouse at 1710 Tyler, at four o'clock in the afternoon.

RECEIVES BACHELOR OF MUSIC DEGREE

Mrs. W. A. Schubert and John Schubert attended the 28th annual Commencement for the Musical Arts Conservatory in Amarillo on June 2, where her daughter, Nova Schubert Bair received her Bachelor of Music Degree. The exercises were held in the Playhouse at 1710 Tyler, at four o'clock in the afternoon.

RECEIVES BACHELOR OF MUSIC DEGREE

Mrs. W. A. Schubert and John Schubert attended the 28th annual Commencement for the Musical Arts Conservatory in Amarillo on June 2, where her daughter, Nova Schubert Bair received her Bachelor of Music Degree. The exercises were held in the Playhouse at 1710 Tyler, at four o'clock in the afternoon.

RECEIVES BACHELOR OF MUSIC DEGREE

Mrs. W. A. Schubert and John Schubert attended the 28th annual Commencement for the Musical Arts Conservatory in Amarillo on June 2, where her daughter, Nova Schubert Bair received her Bachelor of Music Degree. The exercises were held in the Playhouse at 1710 Tyler, at four o'clock in the afternoon.

RECEIVES BACHELOR OF MUSIC DEGREE

Mrs. W. A. Schubert and John Schubert attended the 28th annual Commencement for the Musical Arts Conservatory in Amarillo on June 2, where her daughter, Nova Schubert Bair received her Bachelor of Music Degree. The exercises were held in the Playhouse at 1710 Tyler, at four o'clock in the afternoon.

Annual Texas 4-H Roundup

Texas 4-H Club members and their leaders who attended the 1957 Texas 4-H Roundup will launch the People-to-People Program through-out 4-H Club work in Texas.

Who Has The Water Sprinkler??

The Rose Garden club ladies have been working on the corner plot of ground just in front of Equity Elevator endeavoring to beautify this spot at Spearman's highway junctions. They had it plowed and planted to grass and everything was going fine, UNTIL... someone took the ten dollar water sprinkler the club had purchased for this project. Who could do such a thing? If these hard working ladies have this much civic pride to do such a nice thing, how could anyone take the sprinkler? So, if you just borrowed it—that's fine, but won't you PLEASE return it today so the newly planted grass won't be ruined? ? ?

Oslo News

Mrs. John O. Dahl and Mrs. Ingeborg Sogn visited Mr. and Mrs. Carol Nields Jr. of Hardisty, on Tuesday afternoon. Dennis and Diane Stedje helped John Mark Stavio celebrate his 8th birthday with a picnic supper on Saturday.

RECEIVES BACHELOR OF MUSIC DEGREE

Mrs. W. A. Schubert and John Schubert attended the 28th annual Commencement for the Musical Arts Conservatory in Amarillo on June 2, where her daughter, Nova Schubert Bair received her Bachelor of Music Degree. The exercises were held in the Playhouse at 1710 Tyler, at four o'clock in the afternoon.

RECEIVES BACHELOR OF MUSIC DEGREE

Mrs. W. A. Schubert and John Schubert attended the 28th annual Commencement for the Musical Arts Conservatory in Amarillo on June 2, where her daughter, Nova Schubert Bair received her Bachelor of Music Degree. The exercises were held in the Playhouse at 1710 Tyler, at four o'clock in the afternoon.

RECEIVES BACHELOR OF MUSIC DEGREE

Mrs. W. A. Schubert and John Schubert attended the 28th annual Commencement for the Musical Arts Conservatory in Amarillo on June 2, where her daughter, Nova Schubert Bair received her Bachelor of Music Degree. The exercises were held in the Playhouse at 1710 Tyler, at four o'clock in the afternoon.

RECEIVES BACHELOR OF MUSIC DEGREE

Mrs. W. A. Schubert and John Schubert attended the 28th annual Commencement for the Musical Arts Conservatory in Amarillo on June 2, where her daughter, Nova Schubert Bair received her Bachelor of Music Degree. The exercises were held in the Playhouse at 1710 Tyler, at four o'clock in the afternoon.

RECEIVES BACHELOR OF MUSIC DEGREE

Mrs. W. A. Schubert and John Schubert attended the 28th annual Commencement for the Musical Arts Conservatory in Amarillo on June 2, where her daughter, Nova Schubert Bair received her Bachelor of Music Degree. The exercises were held in the Playhouse at 1710 Tyler, at four o'clock in the afternoon.

RECEIVES BACHELOR OF MUSIC DEGREE

Mrs. W. A. Schubert and John Schubert attended the 28th annual Commencement for the Musical Arts Conservatory in Amarillo on June 2, where her daughter, Nova Schubert Bair received her Bachelor of Music Degree. The exercises were held in the Playhouse at 1710 Tyler, at four o'clock in the afternoon.

RECEIVES BACHELOR OF MUSIC DEGREE

Mrs. W. A. Schubert and John Schubert attended the 28th annual Commencement for the Musical Arts Conservatory in Amarillo on June 2, where her daughter, Nova Schubert Bair received her Bachelor of Music Degree. The exercises were held in the Playhouse at 1710 Tyler, at four o'clock in the afternoon.

TEXAS PRESS ASSOCIATION Member 1957

The Spearman Reporter

Successor to the Mansford Headlight, Published Thursday of each week in Mansford County, at Spearman, Texas

WILL J. MILLER, Editor and Publisher

Entered as second class matter Nov. 21, 1919 at the Post Office at Spearman, Texas, under the Act of March 3, 1879.

In Mansford and adjoining counties, One Year \$2.50 Out of Mansford and adjoining counties, One Year \$3.00

CLASSIFIED ADVERTISING

First insertion, 4c per word; 2c a word for every issue thereafter. Card of Thanks, 4c per word

DISCOUNTS ON REQUEST NOTICE TO THE PUBLIC: Any erroneous reflection upon the reputation or standing of any individual, firm or corporation that may appear in the columns of The Spearman Reporter will be corrected when called to the attention of the management.

June 20 Referendum Vote Day For Wheat Growers

College Station, June—Wheat farmers will decide by referendum on June 20 whether or not they want marketing quotas on the 1958 wheat crop.

According to R. C. Shrauner, chairman, Texas Agricultural Stabilization and Conservation Committee, the recent proclamation of marketing quotas for the 1958 crop of wheat conforms with legislative directives. Under the governing legislation, the Secretary of Agriculture must proclaim marketing quotas for the next wheat crop when the available supply is 20 percent above the normal supply.

The quotas do not become effective, points out the chairman, unless at least two-thirds of the producers voting in the referendum favor the quotas. The outcome of the referendum will decide the level of the available price support for the 1958 crop as well as whether quotas and penalties on "excess" wheat are used for the crop.

All wheat growers are eligible to vote in the June 20 referendum who will share in the 1958 wheat crop from a farm in the commercial wheat area on which the wheat acreage to be harvested, plus any acreage to be placed in the Soil Bank's wheat Acreage Reserve will be more than 15 acres.

Ballots in the referendum may be cast at local polling places which will be announced prior to June 20. Shrauner urges all eligible wheat growers to vote and suggested if they have questions regarding wheat marketing quotas, that they get in touch with their local county ASC office.

The outlook for improved egg prices in the months ahead is good, says Extension Economist John McFaney. For the first four months of 1957, commercial hatcheries in Texas produced 23 percent fewer egg-type chicks than during the same period in 1956 and in the nation, the reduction was 21 percent. Egg prices to producers, he says, should be higher for the last months of 1957 and the first quarter of 1958.

Plymouth Sales At All Time High

Plymouth automobile sales in the Southwest are at a record level and last month (May) hit an all time high with volume up 97 per cent over the corresponding period last year. The May sales record topped the previous high month, March 1957, by 5 per cent and was ahead of April sales total by 13 per cent.

S. L. Noble, Southwest zone manager of Chrysler's sales group, in commenting on the record month said, "This achievement is a strong indication that the economy in this area is firm. We expect sales to continue at this high level."

Noble continued, "It is obvious to us that the auto market today reflects the widespread public acceptance of the advanced styling and engineering features of the new Plymouth and other cars of the Chrysler Corporation."

Plymouth's sales gain contributed to a strong showing by the Chrysler Corporation in the Southwest last month. Sales for Chrysler Corporation cars and trucks in May were up 81 per cent over May 1956.

Since the introduction of the 1957 models last October, Plymouth has moved back into third place in national automobile sales and according to the latest (June 1) Automobile News estimate has a production lead of 105,666 units over the nearest competitor.

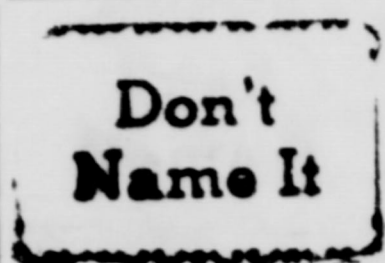
Don't be misled into believing that somehow the world owes you a living. The boy who believes that his parents, or the government, or anyone else owes him his livelihood and that he can collect it without labor will wake up one day and find himself working for another boy who did not have that belief and, therefore, earned the right to have others work for him.

Bus Boxford and John Berry spent the long week end fishing at Conchos Dam.

The Texas Home Demonstration Association will conduct a Civil Defense Workshop at Houston August 2.

William Howard Taft was the first U. S. president to receive a salary of \$75,000 a year.

Noah Webster began writing the dictionary in 1807 and finished in 1828.



There is something seriously wrong with our economy. This week the Country editor decided we were eating too much ice cream to pay out to the Amarillo and Borger cream factories. So we up and buy us a half gallon home freezer for eight bucks and that is the first thing that is wrong with our economy. This writer back in the good old days bought gallon freezers for a buck and a half. We went to the ice house and told em we wanted enough ice to freeze a half gallon of cream, and it took another half buck, forty cents for the ice and ten cents for the bag to carry the ice home in. Well, by the time we counted the cost of our sugar, eggs, milk and flavoring, plus a 3c contingent of fresh strawberries, and the 5c worth of ice cream salt used, we figure the half gallon of ice cream cost pert near a buck and a half. Monday morning we were setting up Pete Fishers grocery advertisement and noted that he was selling a half gallon of Bordens ice cream (not melon) for 55c. Can't get well making your own ice cream, and it don't taste that much better than factory packed cream.

Margaret and Delon Kirk have raised pullets and sold eggs in this area for the past 20 years. This year they have been unusually successful and have been harvesting literally hundreds of dozen eggs each month. Up un-

all very recently they just carried the eggs to the grocery store in a bucket or case and settled with the groceryman at the end of the month. Recently the egg market was mighty slow and their eggs were not settling. A groceryman at Borger told em to buy the fanciest package boxes they could buy, print or stamp their name, date and "Infertile" on the box, raise the price 15c per dozen. They did, and now their eggs are always in demand. Folk don't mind paying for eggs if they know they are getting fresh, candled eggs that they will always be good to eat. But of course we want you all to think about the importance of advertising. That's what it amounts to, when egg producers stamp their name and guarantee on the package of eggs.

This writer is going to write about a very delicate subject. Changing religion. The country editor was born and bred a member of the Baptist church. We did all our courting in the Baptist and Methodist churches of Collinsville, Texas. We up and married the piano player of the Methodist church, and both of us (Eddie Faye and I) figured we could go thru life with loyalty and appreciation for our respective churches. We raised our two children and each Sunday I would go to the Baptist, and the kids and Eddie Faye would go to the Methodist church. We really missed the family religious services together. And I believe that we could have made a better job of training our children if we had all attended the same church.

Last Sunday our other son, Stevie had a tantrum at Sunday school time. He first decided he was not going anywhere. Then he allowed he would go with his daddy to the Baptist church. He has enrolled at the Methodist church, and has attended all of the churches including the Union. Finally, as a sort of a peace offering the country editor suggested that he visit the Methodist church with his grand son and wife. That suited Stevie to a picture, and he even offered to stay in the nursery so we old folk could stay for the preaching services. He strutted around like a wild turkey, had Faye and I line up while he led us into his church. Then he called the roll and marched us out after the church services. I really did not know he was so interested in his daddy. Fact is I shore wish he could get the idea out of his head that Dad hung the moon. It's quite a job to live up to such expectations. But to you younguns, it's just as easy to fall in love with a member of your own church as it is to tumble for another church member. . . . and when you are training a family, for goodness sake go to the same church together. It will help your morale, and it will help cement your children in the activities of your church. Even if you never do change denominations, you can make a lot of visits with the family to the accepted family

church. As for me, I ain't ever going to be anything but a Baptist, and I reckon Eddie Faye will always be a Methodist, but if I had known what I know NOW, when our first child was born, I would at least match nickles or draw straws with Eddie Faye to see which of us joined tother church.

Been hearing some discouraging comments about the red rust in the wheat. Some seem to think that we will be damaged pretty badly. Others seem to think that the late moisture will help fill out some of the very late wheat. Facts are, we will not know much about the 1957 Harvest until late July. But that is the way things have been in this county for the last 28 years, as long as this writer has lived in Hansford county.

Farmers Face Big Wheat Issue

Farmers have two issues to decide in the June 20 wheat referendum, according to Elzie Vanderburg of Hansford County Agricultural Stabilization and Conservation office.

The first issue is whether marketing quotas will be in effect carrying with them penalties on "excess" wheat from farms with more than 15 acres of wheat harvested as grain on which allotment is exceeded. The second issue is the level of the available price support.

A two-thirds favorable vote is required to approve wheat marketing quotas. Once quotas are approved, penalties for production, in excess of the farm's quota are in effect for all farms in commercial wheat States which harvest over 15 acres of wheat for grain. The farm is generally all the wheat produced on the acreage allotment. Under quotas, also, price support on the 1958 wheat crop will be available at a minimum national average of \$1.78 per bushel—to those farmers who are in compliance with their farm allotments.

Mr. Vanderburg explains that if more than one-third of the voters disapprove quotas, there will be no marketing quotas and no penalties for excess production. However, acreage allotments will remain in effect in the commercial area, and the price support will be available at 50 percent of parity to those farmers who comply with their allotments.

Wheat marketing quotas and acreage allotments operate only in the 36 states designated as "commercial" wheat States, which include Texas. States must have allotments of more than 25,000 acres of wheat to rate as a commercial wheat State.

The National flower of the United States is the goldenrod.

Eligibility For Wheat Vote

Hansford County farmers were told today who will be eligible to vote in the June 20 wheat marketing quota referendum.

Elzie Vanderburg, Chairman, Hansford County Agricultural Stabilization and Conservation Committee, put it this way: All persons are eligible to vote in the June 20 quota referendum who will share in the 1958 wheat crop from a farm in the commercial wheat area on which the wheat acreage to be harvested, plus any acreage to be placed in the wheat Acreage Reserve, will be more than 15 acres.

Mr. Vanderburg pointed out that such farmers are eligible to vote even though their names are not on the County ASC registers. Farmers eligible to vote include those who are entitled to share in proceeds of the wheat crop as owner-operator, cash tenant, standing rent or fixed rent tenant, landlord or a share tenant, share tenant, or sharecropper. A guardian, administrator, executor or trustee who engaged in production of wheat may vote, but the person for whom he is acting will not be eligible to vote.

Mr. Vanderburg also explained that where a farmer's eligibility of cannot be proved immediately, he may nevertheless vote a "challenged" ballot, and if the farmer is judged "eligible" from the facts presented his vote will be tabulated as valid. The determination must be made within 4 days after the date of the referendum.

Watermelon growers are warned by Extension Plant Pathologist Arlan Smith to be on the alert for anthracnose. Weather conditions are right for the development of the disease and one serious outbreak has already been reported. If the disease is found Smith recommends starting control measures at once. He suggests that the local county agent be contacted for details on a control program.

Some 2,000 4-H club members, 4-H leaders, county extension agents and friends of 4-H will attend the annual Texas 4-H Roundup at Texas A & M College

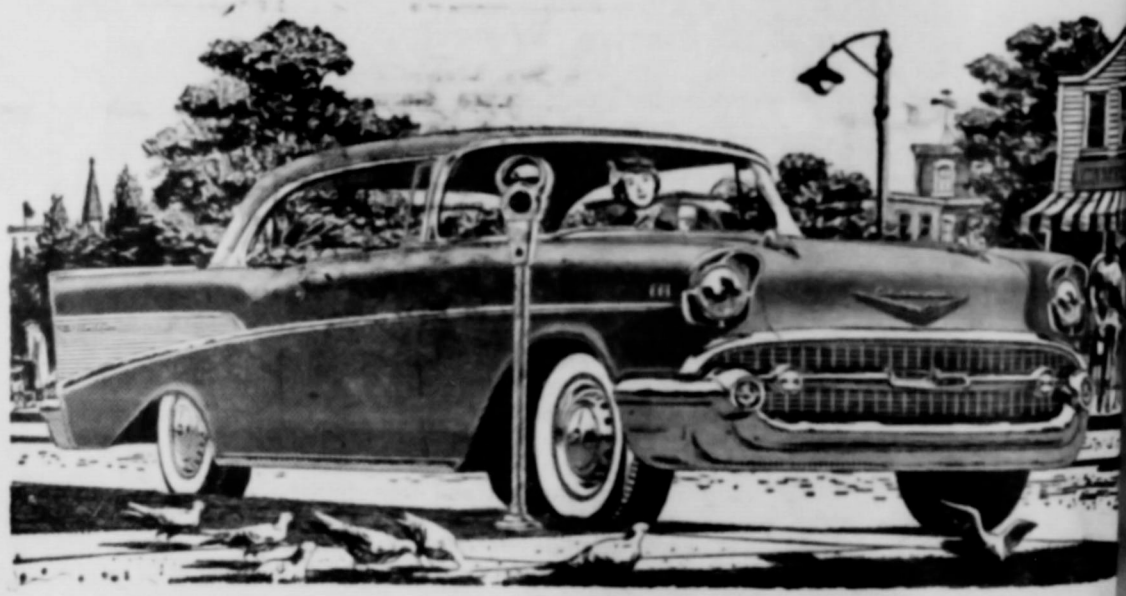
on June 11-13. State winners in 21 judging and team demonstration contests will be determined on June 12.

June is dairy month in the United States. According to Arch Meekma, extension dairy husbandman, over 2,000,000 farm families in the nation derive all or part of their income from dairy cows. Dairy products furnish 30 percent of the nation's diet of animal proteins and accounts for 15 percent of total retail food sales, he says.

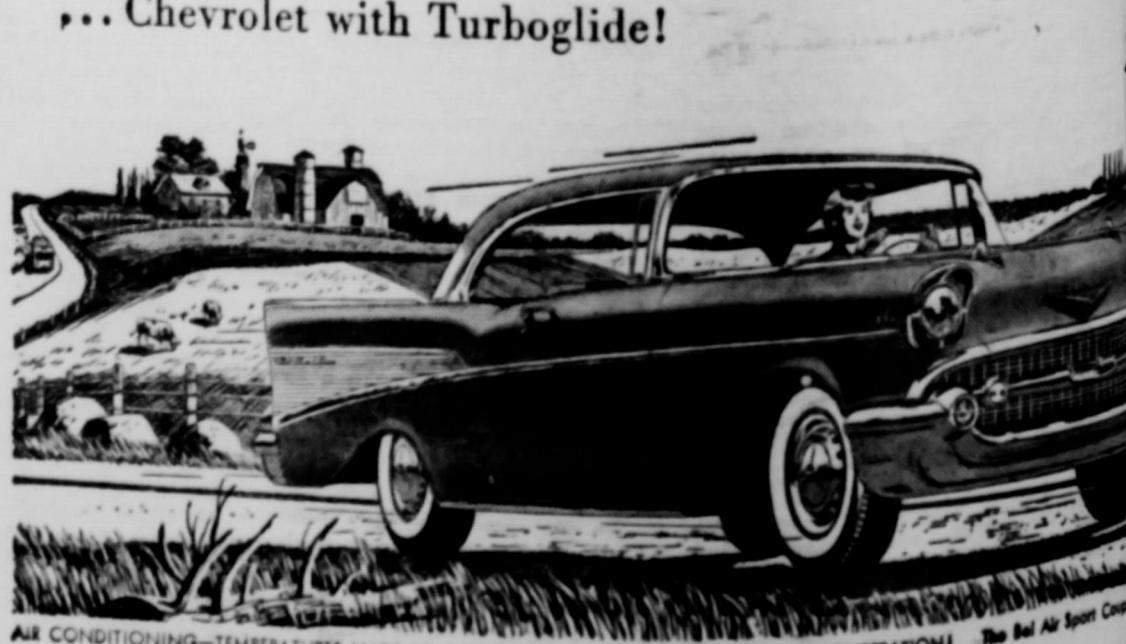
A carefully planned and conducted mowing or chemical control is the only efficient answer to the pasture weed problem. Extension Pasture Specialist E. M. Trew advises mowing when the worst weeds start blooming since they are most easily damaged at this stage and are prevented from producing a seed crop. Local county agents can supply details on mowing and chemical weed control programs.

Tremendous opportunity available or woman who has the qualifications rendering professional services. Professional people in affiliation with a substantial business, well known in many areas. Party selected must furnish good character references of or become member of local civic organizations. This is not a job as you will be trained by our organization. Cash plus temporary working capital is available as you will be handling connection for party selected. Income. If you can fulfill all of the more per year, then write A. M. Missouri, fully about yourself. Personal interview.

Advertisement for General Telephone of the South, featuring a telephone booth illustration and text: 'everyone's buzzin'... about those new EXTENSIONS IN COLOR! 8 lovely colors, your favorite among them. So stop buzzin', cousin... order through our Business Office today.'



Chevy's come up with the newest, sweetest, smoothest automatic drive—Turboglide. It's the first and only triple-turbine transmission! Turboglide is something really new and different in automatic drives. In the first place, there's only one forward-speed position on the control panel. There's no "Low" needed. Turboglide handles everything with the oil-smooth action of triple turbines. You travel from a standstill to top cruising speeds with never a lurch or lag to mar your motion.



Only franchised Chevrolet dealers display this famous trademark. See Your Local Authorized Chevrolet Dealer.

Come in and "COMFORT TEST" a new Golden Anniversary INTERNATIONAL



New Golden Anniversary INTERNATIONALS range from Pickups to 33,000 lbs. GVW six-wheelers. Other INTERNATIONALS, to 95,000 lbs. GVW, round out world's most complete line.

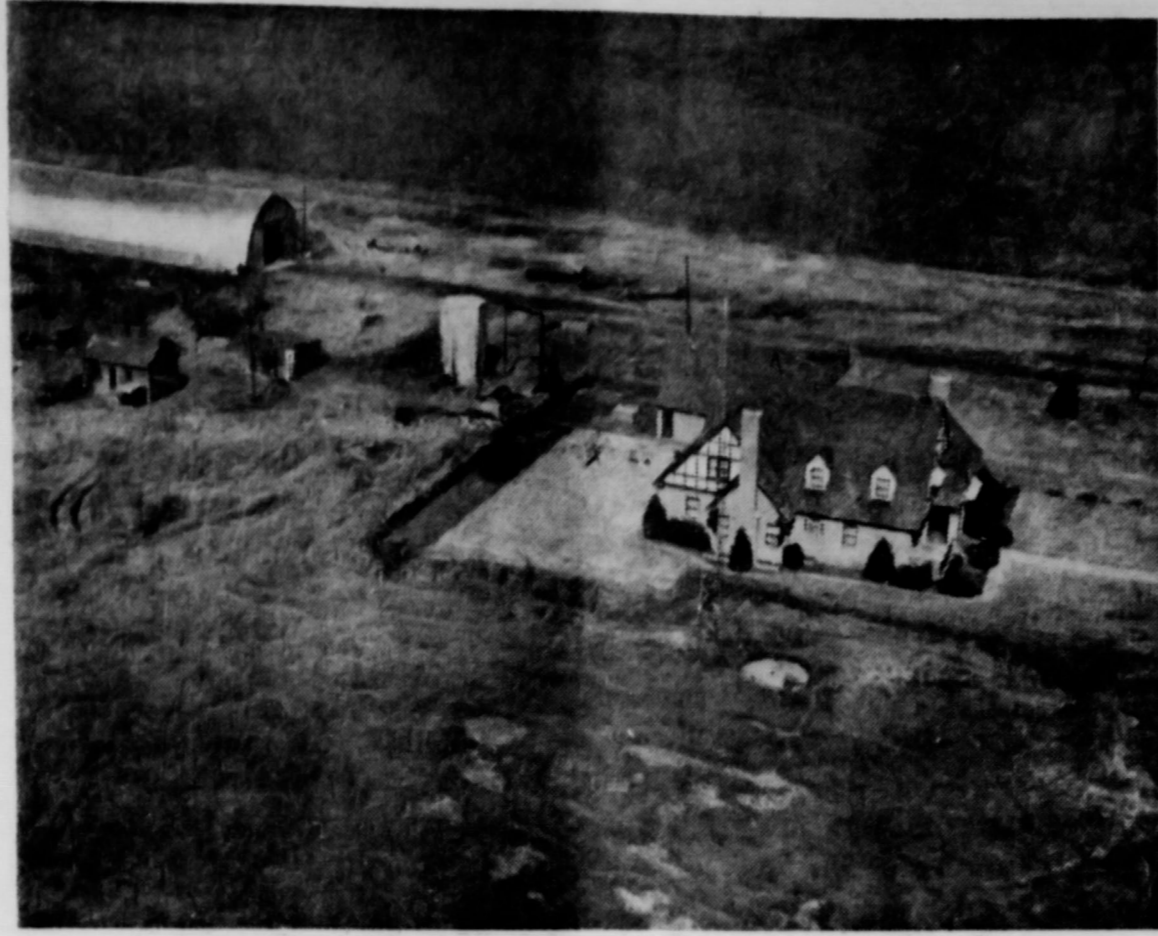
There's a look of action in every fresh, clean line of the new Golden Anniversary INTERNATIONAL Trucks. And there's a feel of comfort that's hard to believe. You just have to take our "Comfort Test" to believe it. We'd like you to check the comfort on roads you know are rough. Try out INTERNATIONAL for easy handling, roominess, quietness... for visibility of the new Sweep-Around windshield. Compare it, too, for power and performance. And keep this in mind all the time: INTERNATIONAL Trucks cost least to own over the years—cost records prove it! Come in for this eye-opening test.

INTERNATIONAL TRUCKS cost least to own!

B. & C. EQUIPMENT COMPANY Phone 2351 — 200 North Main — Spearman, Texas

MANAGER... OWNER OPERATOR... THE FARM PAGE 1... MYSTERY FARM... The mystery farm... Billy Conner, and... COMPLETE TURN-ON AIRPLANE SP... HAVE A COMPLETE SODIUM CHLORIDE for destroying... EQU

WILL RECEIVE
ONE YEAR'S
SUBSCRIPTION
TO THE
REPORTER
FREE



THE OWNER
OR OPERATOR
OF THE FARM
ON PAGE 1
IS ASKED TO
CALL AT THE
REPORTER
AND RECEIVE

A BEAUTIFUL
FULL PHOTO-
MOUNTED
FREE
OF
CHARGE

MYSTERY FARM THE PAST WEEK IS THE LOVELY HOME OF MR. AND MRS. BILLY CONNER

The mystery farm the past week, is the lovely ranch home of Mrs. Dean Conner; Mr. and Mrs. Billy Conner now live in this beautiful home, along with their three fine daughters. Mrs. Dean Conner lives in Perryton.

The Conners moved to this part of the country 40 years ago. Mrs. Conner is the former Beatrice Fulton.

Billy Conner, and his wife Becky were celebrating their 7th wedding anniversary Monday of this week, when we interviewed Becky for this mystery

farm story. Becky is from Celina, Texas, North of Dallas.

The Conners are members of the 1st Christian Church, and this fine young couple is a credit to the farming occupation in this great wheat belt. Becky stated that Billy runs black angus cattle on their farm, and that Billy farms three and one-half sections. The mystery farm is located one mile South of Farnsworth.

A total of six people identified the mystery farm

as the Conner farm. They were, J. W. Pipkin, Charles Madden, Howard Huffman, Mrs. Don Smith, Mrs. E. J. Copeland, and J. E. Batson. Mrs. Don Smith won the free subscription for identifying the farm.

The mystery farm two weeks ago, has been positively identified as that of the Hall place, North of Farnsworth. Dick Hall is now farming this place, and his brother Jim is staying at this place with him. We were unable to interview the Halls but we talked with their hired hand, J. W. Pipkin, and Louise Archer identified this Mystery Farm, and J. W. Pipkin won the free subscription for identifying this farm.

OLIO SHOT?

"Built on Confidence, Growing on Service"
FIRST STATE BANK
Banking Hours 9:00 A. M. -3:00 P. M.

Enjoy the
NEW EARNING POWER

OF A
JOHN DEERE DIESEL

HANSFORD IMPLEMENT CO.

WELCOME
Mystery Home owners and all citizens of this area to the
SPEARMAN STEAK HOUSE

Mr. and Mrs. Howard Huffman, Owners

New 14 cubic foot Norge Upright
FREEZER SPECIAL

\$285.00

New 18 cubic foot Norge Upright
\$335.00

B. and C. EQUIPMENT CO



SPEARMAN DRUG STORE

Mr. and Mrs. Bruce Sheets
Spearman, Texas

Goch Feeds :- Purina Chows
Hybrid Corn and Sorghum
Grain Seeds
SORGHUM ALMUM
Concentrated Burascu and Polybor
Chlorate Weed Killer.
Organic Garden and Field Fertilizer.
Tusco Laying Cages

R. L. McCLELLAN GRAIN CO.

COMPLETE TURN-KEY JOB ON AIRPLANE SPRAYING.
are in a position to offer customers a complete turnkey airplane spraying for greenbugs, lice, weeds or grass as the season advances.
HAVE A COMPLETE STOCK OF SODIUM CHLORATE for destroying bindweeds. ASK FOR OUR SERVICE CITY OF GRAIN SORGHUM SEED

QUITY

ORTHO

Insecticide spray and dust. Destroys Bugs and insects.
STOP worrying about WEEDS!



Farm and Garden
Fertilizers
Bone Meal
Rose Food

KORDIMULCH WITH POLIUM
\$5.95
• Smothers weeds
• Saves water
104-foot roll, 40" wide (enough to cover 324 sq. ft. garden)

SPEARMAN HARDWARE
John Bishop

SEWING MACHINES REDUCED \$99.95 UP

We stock the New Homemaker Mch. Both portable and Cabinet model Also Domestic and White Rotary Machines. All machines in plain or automatic Zig-Zag

WHITE AUTO STORE
Ike Bggerly

AIR CONDITIONING Clear-View Air Conditioners

Don't be fooled by the cool Weather. Be ready for Hot Weather. Check your air conditioners for minor repairs. Service and Supplies for all makes of Air Conditioners.

OWENS SALES COMPANY
Claude Owens
It will pay you to buy a MAYTAG

CONTRACTORS' NOTICE OF TEXAS HIGHWAY CONSTRUCTION

Sealed proposals for constructing 0.586 miles of Bridges & Approaches Between SH 282 2.0 mi. W. of Spearman & 5.8 mi. North on Highway No. FM 2387, covered by S 2188 (1), in Hansford County, will be received at the Highway Department, Austin, until 9:00 A. M., June 19, 1957, and then publicly opened and read.

This is a "Public Works" Project, as defined in House Bill No. 54 of the 43rd Legislature of the State of Texas and House Bill No. 115 of the 44th Legislature of the State of Texas and House Bill No. 115 of the 44th Legislature of the State of Texas, and as such is subject to the provisions of said House Bills. No provisions herein are intended to be in conflict with the provisions of said Acts.

In accordance with the provisions of said House Bills, the State Highway Commission has ascertained and set forth in the proposal the wage rates, for each craft or type of workman or mechanic needed to execute the work on above named project, now prevailing in the locality in which the work is to be performed, and the Contractor shall pay not less than these wage rates as shown in the proposal for each craft or type of laborer, workman or mechanic employed on this project.

Legal holiday work shall be paid for at the regular governing rates.

Plans and specifications available at the office of Jay L. Hawley Jr. Resident Engineer, Borger, Texas, and Texas Highway Department, Austin. Usual rights reserved. NNo. 27-21-c

The Stars and Stripes has flown over West Point continuously since the academy was built.

Youngsters at Boys Ranch near Amarillo now man a ground observation post in the state's civil defense preparedness program.

A civil defense communications network sped fire trucks and other equipment from South Houston, Galena Park and several industrial plants to Pasadena when an explosion occurred at a paper company there.

Mrs. Grace Martin, state coordinator of women's activities in defense and disaster relief, has been invited to serve as supervisor to the 4-H Clubs of Texas on civil defense.

Afternoon Tea For Public Marks 25th Anniversary For Delphinium Flower Club

The Delphinium Flower Club members are planning an afternoon tea in celebration of their 25th anniversary club year. The tea will be held in the fellowship rooms of the First Christian Church Monday June 17 between the hours of 3:4 and 4:5. Everyone is invited to attend.

A program of entertainment will include special piano music and the showing of a colored film during these hours.

Mrs. P. A. Lyon, Mrs. Vester Hill and Mrs. Sid Clark are three of the original members who are still active in the club. These ladies extend a special invitation to all Flower club members in the various organizations of the community.

Mrs. Brillhart Coffee Hostess

Mrs. H. C. Brillhart was hostess for a morning coffee for members of the Delphinium Flower club Tuesday June 11. This was a called meeting to hear reports from various committees and make final plans for the club's 25th anniversary party for the public.

Members present included Mesdames: Ray Phelps, Joe Dan Bryan, Vester Hill, W. B. Seitz, Pope Gibner, Sid Clark, S. B. Mobley, P. A. Lyon and the hostess.

Rose Garden Club Met Friday June 7

The Rose Garden Flower club met June 7 with Mrs. L. W. Rosenbaum Jr. Mrs. Sonny Nollner, president, presided over the business meeting during which members voted to join the 44 club for one year.

Mrs. A. L. Wilson resigned from the club, as she is moving from Spearman, and the club presented her with a going away gift.

Mrs. Joel Lee Lackey brought the mystery box to this meeting, and Mrs. Hershel Jones won it. An arrangement of yellow snapdragons won the flower vote for Mrs. Nollner.

Mesdames present included: Kiff White, Jr. Joel Lee Lackey, Glenn Mackie, L. W. Rosenbaum, Wilson McClellan, Doyle Jackson, Hershel Jones and Sonny Nollner.

Texas is being used as a testing ground for the Military Affiliated Radio System (MARS) in which licensed amateur radio operators are trained in military procedures as another factor in defense preparedness.

HANSFORD H. D. CLUB MEETING

Mrs. Joe Trayler was hostess to the Hansford H. D. club May 27th.

The roll call was answered with favorite patterns of china and silver.

Mrs. Joe Trayler gave a demonstration on china and silver, which included how to select china and silver that is a compliment to your place setting as well as yourself.

Coffee and pie was served to the following: Mesdames: Floyd Vanderburg, Daniel Sheets, Joe Trayler, Chevalier, Parker, Davis, Spoonmore, Fisher, Ayers and guests, Mrs. Vernon Crooks, Mrs. Branch Sheets, Mrs. Bud King.

The severe spring weather of 1957 has subjected the state's disaster warning network to a series of rigid tests which have all been successfully met.

This was reported today by William L. McGill, state coordinator of defense and disaster relief, in a review of agency activities since the start of the tornado season.

"Never before have such wide areas been hit so hard in so short a time," McGill said. "Undoubtedly the toll of life and property would have been much greater had it not been for the cooperative action which is translated into the state's disaster warning system."

The system depends on teamwork between the Weather Bureau, the Highway Patrol and civil defense volunteers. These groups are given valuable assistance by various other state and federal agencies.

Lovely Church Ceremony Unites Ouida Pipkin, Elrick Wilson Saturday, June 8



Ouida Pipkin, daughter of Mr. and Mrs. Knox Pipkin, became the bride of Elrick Wilson, son of Mrs. Dave Wilson, and the late Dave Wilson, on Saturday June 8 at 5:00 p. m. in a lovely service at the Union Church. Rev. Calvin Springer, pastor.

read the double ring ceremony before the altar decorated with floor baskets of white gladioli and seven branched candelabra. White satin ribbon and bows marked the bridal aisle.

Miss Frances Flowers registered the guests as they entered the church. Mrs. Gale Miller, organist, and sister of the bride, played a prelude of wedding music. Mrs. J. W. Pipkin sang "I Love You Truly" as a prelude, and "Whither Thou Goest" as the couple stood before the altar, and "A Wedding Prayer" as they knelt for the benediction.

Yvonia Pipkin, and Orlene Fullbright, nieces of the bride, lighted the candles. They wore identical dresses of pink net with matching head bands.

Anesia Ann Smith and Gary Miller, niece and nephew of the bride, were flower girl and ring bearer.

Given in marriage by her father, the bride was attired in a ballerina length dress of white lace and net fashioned with a fitted bodice, Peter Pan collar and pointed sleeves. The full skirt was finished with tiers of ruffles. Her veil of illusion net fell from a crown of pearls and rhinestone beads. She carried a white Bible lapped with an orchid, surrounded by stephanotis and showered by white satin streamers.

Bride's maid was Miss Wilma Spearman. She wore an ankle length gown of blue net fashioned with a fitted bodice and billowing skirt. Maid of honor, Imogene Graves, wore a yellow net gown identical to the bride's maid. Both girls carried colonial bouquets of white carnations tied with satin streamers.

Junior Wilson was his brother's best man and Donald Flowers, John Pipkin, Ralph Longhofer and Lindon Flowers were ushers. Lindon Flowers and Don-

ald Flowers also acted as groomsmen.

Flowing the wedding ceremony the bridal party was led at a reception in the Home Demonstration club building. Sisters of the bride: Mrs. Preston Smith, Mrs. Robert Graves, Mrs. Sena Robinson and Mrs. Grville Fullbright were hostesses.

The serving table was laid with a lace cloth over yellow and white centerpieces and the bouquets of the wedding party. The large four tiered wedding confection was topped with a bride and groom and decorated with pink roses. Mrs. Ralph Longhofer, sister of the bride, served the wedding cake, and the hostesses alternated in serving the punch and ice cream.

Mrs. Junior Wilson presided at the gift table. Others in the house party included Mesdames: John Pipkin, Calvin Springer, Chalmers Porter, Bernard Barnes and Billy Miller.

Other courtesies extended the bride and groom included two wedding showers, and the rehearsal dinner given Friday night by Mr. and Mrs. Preston Smith.

For traveling the bride chose a navy silk suit with white accessories, and the orchid from her wedding bouquet.

After a wedding trip to Colorado and other Western States, the couple will be at home on their ranch twenty five miles southwest of Perryton.

Mr. and Mrs. Marvin Chambers and Mrs. Lester Howell attended the graduation exercises at North Texas State College at Denton where their daughters Mary Nolle Chambers and Kay Howell received their bachelors degrees.

Nearly 30,000 pamphlets on civil defense preparedness were packed up by visitors at the State Fair of Texas in Dallas last fall.

Treats for DAD
MAKE HIS... A DAY TO REMEMBER.

Give Dad A Gift That Doesn't Cost Him Anything
USE YOUR GUNN BROS. STAMPS

Every Wednesday Is Double Day
The Winner of the Ford Sunbeam Jr. is Mrs. J. R. Tompkin

Dad's Day deserves special attention. Serve him the foods he loves most—ham'n eggs for breakfast. His favorite salad for lunch, a handsome beef steak for dinner, along with baked potato and plenty of melted butter... Top His Day with a delicious Chocolate Cake, always a man's favorite. We've priced the ingredients specially low.

Hill's Bros. COFFEE Lb. 93¢	Betty Crocker CAKE MIX Pkg. 29¢	Ideal Tasty ICE CREAM 1/2-Gal. 59¢	Realemon ORANGE DRINK 5 46-oz. Cans \$1.00	Jack Sprat Colored Qtrs. MARGARINE Lb. 17¢
---------------------------------------	---	--	--	--

Van Camp's Vienna Sausage 2 4-oz. Cans 35¢	Van Camp's Beanee Weenie 2 12-oz. Cans 49¢	SUPREME TOASTED COGNACUT CREME Cookies 1-Lb. 49¢	SUNSHINE HYDROX Cookies 12-oz. 39¢	MY-T-FINE INSTANT Puddings 2 Pkg. 19¢	MORTON HOUSE SLICED—WITH GRAVY Beef or Pork 16-oz. 49¢	BETTY CROCKER ANGEL FLUFF Frosting Mix ... 7 1/4-oz. 33¢
--	--	---	---	--	---	---

TREAT DAD TO A DELICIOUS TENDER STEAK

BLACK DIAMOND WATERMELONS lb. **.05¢**
GOLDEN SWEET CORN 6 ears **29¢**
CALIF. SUNKIST LEMONS 2 lbs. **25¢**
FRESH PERSIAN LIMES lb. **19¢**
U. S. NO. 1 CALIF. WHITE POTATOES 10 lbs. **45¢**

BEEF SHORT RIBS LB. **23¢**
SIRLOIN STEAK LB. **79¢**
T-BONE STEAK LB. **89¢**
ARMOUR SLICED Bacon **49¢**

LET'S COOK OUT! **Mexico II**
HUNT'S Catsup 2 14-oz. **35¢**
KUNER'S TOMATO Juice 4 46-oz. **1.00**
VAL VITA SLICED Peaches ... 4 2 1/2 **1.00**
KUNER'S Tomatoes . 2 303 **29¢**
IDEAL Dog Food 2 1-Lb. **29¢**

SKINNER Spaghetti 7 OZ. Pkg 2 for **25¢**
OLD SOUTHERN Sauce 18-oz. **55¢**
MAMBO Punch 46-oz. **27¢**
DAD'S Root Beer 200 **29¢**
BONWELL'S PREPARED Spaghetti 300 **10¢**
STOKELY'S FRESH PACK Dill Pickles 3 **1.00**

Insure Your Wheat And Small Grain Crops **TODAY!!!**



J. L. Brock Insurance Agency
P. O. BOX 913 Phone OLive 9-6861
212 Main St. Spearman, Texas
FIRE-AUTO-TRUCK-BURGLARY-LIABILITY-CROP-BOND

TIRE SALE



6.70 x 15 White Wall Nylon tube type — Exchange price \$21.75
6.70 x 15 White Wall tubeless Nylon — Exchange price \$24.75
7.10 x 15 White Wall Nylon tube type — \$23.65 and old tire
7.10 x 15 White Wall Nylon tubeless — \$26.65 and old tire
7.60 x 15 White Wall Nylon tube type — \$25.65 and old tire
7.60 x 15 White Wall Nylon tubeless — \$28.65 and old tire
PRICES GOOD UNTIL PRESENT STOCK IS GONE

No Sales To Dealers
DAVIS OIL CO.

pe Juice
UNA
Food

Better food for
IDEAL FOODS

ASSORTED - 2 1/2" SIZE
CANDIES
23¢

PREMIUM GRADE
OLEO
lb. **39¢**

SPRY
lb. tin **93¢**

RIFT
W OIL Quart
OOD For
Sweet
ES
PKG. OF
Rolls pkg. **2**

21

5
3



DON'T READ THIS AD

IF YOU'VE MONEY TO BURN



That's right! If you've money to burn . . . if you can afford to shop without checking prices . . . then this ad isn't for you! This ad is for those families who operate on a fixed food budget . . . and are looking for the BIGGEST and BEST VALUES for the money they have to spend. Actually all these LOW PRICES are but a small fraction of all the BIG SAVINGS you'll find on every shelf and counter . . . and in every case and freezer . . . when you come to our store. So, start adding S-T-R-E-T-C-H to your food dollar by shopping at YOUR CUT RATE GROCERY and MARKET daily!

MEATS

- Sun - Ray 1 Lb. Roll SAUSAGE lb. **35¢**
- Sun - Ray All Meat FRANKS lb. **45¢**
- Top Of Texas Family Style BACON **2 lbs. For \$1.29**
- Fresh Dressed FRYERS lb. **45¢**
- LUCKY LEAF NO. 2 CAN CHERRY PIE FILLING **39¢**
- LIBBY'S 46 OZ. CAN TOMATO JUICE **25¢**



- Orange Juice Shurline Fancy 24 oz. **29c**
- SPAGHETTI Shurline Chunk - Style 5 oz. Pkg. Shurline Egg Noodles FREE With Each Can **25c**
- Apple Food Cake Countess Fresh Large Rings 49c Size **39c**

Frozen Foods

- BLUE PLATE BRANDED SHRIMP 65c
- CAPE HAN 1 Lb. PEACHES, LB. . . . 29c
- LIBBY'S ELDERBERRY OK R R A, Pkg. . . . 15c
- LIBBY'S 10 OZ. STRAWBERRIES 19c
- MINUTE MAID 6 OZ. ORANGE JUICE 15c

ICE CREAM

Bordens One-Half Gallon **59**

Fruits & Vegetables



Calif. - Fancy Strawberries 29c pint or **\$3.50 For 12 pints**

Crisp - Red RADISHES **3 bunches 10¢**

Arizona - Red POTATOES **10 lb. Bag 47¢**

Calif. Sweet - Med. - Size APRICOTS lb. **19¢**



- BLUELAKE ROSEDALE Green Beans **2 for 33c**
- BAKERS INSTANT - 2 LB. SIZE CHOCOLATE **89¢**
- SANKA INSTANT 4 OZ. COFFEE **99¢**



TENDERCRUST HAMBURGER BUNS Cluster of 8 **21¢**

SHURFINE CREAM STYLE 303 CAN CORN **2 For 27¢**

DEL MONTE 303 CAN PEAS **21¢**

- ASSORTED - 2 1/2" SIZE CANDIES **23¢**

- PREMIUM GRADE OLEO lb. **39¢**

- SPRY lb. tin **93¢**

- CRISP RIFTS 79c
- W OIL Quart 63c
- FOOD For 29c
- Sweet ES 23c
- PKG. OF Rolls pkg. **29¢**

21c

59¢

39¢



FRIENDLIEST STORE IN THE PANHANDLE

CUT-RATE

FAMOUS FOR SERVICE

MAIN STREET

GROCERY MARKET

SPEARMAN TEXAS



Father's Day

In the memory of every child is enshrined the thoughtful and devoted, self-sacrificing, happy comradeship of a GOOD FATHER. It doesn't make any difference what your trade is, you are all the FATHER your child knows. Dad doesn't ask for a special day but let's give him one... pour on the attention and season it with tenderness. Surprise him! Catch him with the guards of age and dignity down. Let him be the center of all your plans on this one big day... Father's Day. He may be gruff, and steady, and firm but he is an easy victim of love's attack. An x-ray picture of his heart would reveal true concern you never dreamed could be there. Take him to church this Father's Day. Gladden his heart this one day by making all your plans his plans.

**YOU IN THE CHURCH
THE CHURCH IN YOU**

Character is a by-product of the church. It is here that young and old alike are showered with benedictions that fortify and influence for a better citizenship and a stronger democracy. In the church the ministerial are molding religious character. Statesmen today declare that the church alone can furnish leadership to handle the affairs of state in these perilous times. Then we with our children should go to the church of our choice on Sunday. "You in the Church and the Church in you" form a combination for good. Be a regular CHURCHGOER and a daily BIBLE READER.

© WILLIAMS NEWSPAPER FEATURES
FORT WORTH, TEXAS

We Need Greater Churches And Greater Faith

to give us POWER for LIVING and to COMBAT ATHEISTIC "ISMS"

MAY THIS PAGE BE A BLESSING TO MANY IS THE SINCERE WISH OF HANSFORD COUNTY MINISTERS
This religious service is paid for by the public spirited firms 100% interested in the spiritual life of Hansford County. They urge regular church attendance and support.

- | | | |
|---|--|---|
| Morse Supply Co.
Willard McCloy | First State Bank
Clay Gibner | Panhandle Furniture Mart
Bud King |
| R. L. Kleeburger, M. D. | Gruver Motor Company
Ted McClellan | Stanley Garnett Implement Co.
Continental Irrigation Engines |
| Spearman Drug Co.
Bruce Sheets | North Plains Electric Co-op
Earl Waide, Manager | Wardrobe Cleaners
Oscar Donnell |
| Equity Exchange
E. J. Copeland | Super Service Station
Gene Cline and W. E. Sparks | Universal Oil Co.
Gruver, Tex. Grover Taylor, Mgr. |
| E. L. McClellan Grain Co.
Lee, Roy Lee, Wilson McClellan and J. K. Hicks | Spearman Steak House
Mr. and Mrs. Howard Huffman | Jameson Chevrolet Co.
L. L. Jameson |
| Orange Disc Service
Alton and Wayne Ellsworth | White House Lumber Company
Ed Hutton | Callaway Lumber Co.
E. J. Callaway and Sons |
| Hansford Implement Company
Gene Cudd | Boxwell Brothers
Mrs. C. E. Blackburn | Cactus Petroleum, Inc.
Aubrey Covington, Supervisor |
| Deana May's Beauty Shop
Deana May Douglas | Consumers Sales Co.
Vester Hill | |
| White Auto Store
Mr. and Mrs. I. P. Baggerly | | |

REPORTER, HANSFORD COUNTY

ension dairy husband
is one of the
the American agricu
prises. Over 2,000
lies in the nation
major part of the
dairy cows. Daryin
9 percent of the
income from agri
products furnish
of the nation's die
proteings and acc
percent of total fo
out the specialis
dairy products an
contribution to ma
States the best
on earth.
dry month, acc
ma, is also a good
men to take stock
tions. Rising p
coupled with decl
have put a pres
ent production, says
While Texas
and are making
pping the milk p
ow, the state av
pounds is far b
al average of 6.00
less than half the
tion for the natio
ate, California.

has dairymen can
production, believe
by doing a better
ing their herds.
ing program will bri
increased efficiency and
turns for the individual
Funding according to p
and providing the he
plenty of good grazing,
also will help cut
costs.

"We have a lot of
advantages in Texas for
a strong dairy industry
plus our rapidly growing
can should insure our
program," says Meekma

**Annual 4-H
Round-Up At A
Next Week**

College Station, June
rounding time in Texas,
that is. On June 1
club members from all
of the state will be
Texas A & M College
for their annual meeti
big day will be the 12
state winners will be det
in 31 different judging a
demonstration contest.

Floyd Lynch, state 4-H
says that each may se
boys and girl delegates
adult man and woman v
act as chaperons. In
members of district winn
ma who will participate
state finals may attend
attendance, according to
should approximate 2,000

Registration is schedul
1 to 6 p. m. on June 11
first general assembly
8 p. m. Extension Directo
Gibson will be the keynot
er. The Share-The-Festiv
be presented as a part
opening night program.

LD S

sure knows how
ou mean Lucile... or are you talking
oth! But I was really looking at the
they sure are a lucky couple.
nd smart, too. That Olds costs less th
ple that will stay in style. They ge
nderful ride... and the big Rocket
e looked so lovely...

ay'll really find out how smart they
de-in time. Why, an Olds brings a l
most expensive cars, even after a
e think what I wish? I wish that
all you can own an Olds? Don't
wish. Let's take a ride in my G
son Olds. Maybe your dreams'll com
e true just as you expect.

AUTHORIZ

FIRST BAPTIST
Rev. B. L. King

Sunday School
Preaching Service
Training Union
Preaching Service
Wednesday Prayer Service

UNION CHURCH
Rev. C. L. King

Sunday School
Morning Worship
Bible Classes, Sunday
Evening Worship
Wednesday Bible Study

FIRST CHRISTIAN
Rev. C. L. King

Sunday School
Morning Worship
Youth Meetings
Evening Worship
Wednesday, Choir Practice

MORSE METHODIST
Rev. A. L. King

Sunday School
Morning Services
M. Y. F.
Evening Worship

ASSEMBLY
Rev. A. L. King

Sunday School
Morning Worship
Evening Worship
Mid Week Services, Wednes

FIRST CHRISTIAN
Rev. A. L. King

Sunday School
Morning Worship
Evening Worship
1st Weds. Monthly Fellowship

FIRST METHODIST
Rev. J. B. King

Church School
Morning Worship
Methodist Youth Fellowship
Evening Worship
Womens Society of Christian
Mid Week Services, Wed
Choir Rehearsal

CHURCH OF
Rev. E. L. King

Bible Class
Communion
Preaching
Worship
Monday: Mens Training Un
Wednesday, Ladies Bible
Wednesday, Midweek E

MORSE
Rev. A. L. King

Sunday School
Worship
Training Union
Worship
Mid Week Service Wednes

CHURCH
Rev. J. B. King

Lord's Days
Bible Study
Bible Study
Worship
Week Days:
Bible Study, Wednesday
Ladies Classes, Thursdays
Juniors
(Small Children Caret. Pro
Senior Ladies

GRUVER METHODIST
Rev. E. L. King

Sunday School
Morning Services
Methodist Youth Fellowship
Evening Services
Wednesday Prayer Service
Wednesday Choir Practice
Thursday W. S. C. S.
Wesley Circle, Thursdays

SACRED HEART CATHOLIC
Father M. J. King

Sundays
Weekdays (Mon. Tues. Fri. Sat.)
First Friday of Month
Holy Days of Obligation

FIRST BAPTIST
Rev. C. L. King

Sunday School
Morning Worship
Training Union
Evening Worship
Wednesday Mid Week Services
Wednesday Choir Rehearsal

OSLO LUTHERAN
J. P. King

Sunday Worship
Ladies Aid every last Thursday
Luther League on Sunday

...dairy husbandman, dairies is one of the largest of the American agricultural enterprises. Over 2,000,000 farm families in the nation derive all major part of their income from dairy cows. Dairying produces 9 percent of the gross national income from agriculture. Dairy products furnish 30 percent of the nation's diet of animal proteins and accounts for 10 percent of total food sales. Dairy is the specialist. Too, he dairy products are a major contribution to making the United States the best fed nation on earth. Dairy month, according to the dairy industry, is also a good time for dairy men to take stock of their operations. Rising production coupled with declining returns have put a premium on dairy production, says the specialist. While Texas dairymen are making progress in improving the milk production now, the state average of 10.5 pounds is far below the national average of 16.06 pounds. Less than half the per cow production for the nation's lead state, California. Texas dairymen can improve production, believes Meekma, by doing a better job of managing their herds. A strict management program will bring about increased efficiency and up returns for the individual producer. According to production specialists, providing the herd with plenty of good grazing, hay or silage will also help cut production costs. "We have a lot of natural advantages in Texas for building a strong dairy industry and this plan our rapidly growing population should insure our continued progress," says Meekma.

Annual 4-H Round-Up At A & M Next Week
College Station, June — It's roundup time in Texas, the 4-H Round-Up. On June 11-13 4-H members from all sections of the state will be on the Texas A & M College campus for their annual meeting. The big day will be the 12th when state winners will be determined in 21 different judging and team demonstration contests. Floyd Lynch, state 4-H leader, says that each may send two boys and girl delegates and one adult man and woman who will act as chaperons. In addition, members of district winning teams who will participate in the state finals may attend. Total attendance, according to Lynch, should approximate 2,000. Registration is scheduled from 1 to 5 p. m. on June 11 with the first general assembly set for 8 p. m. Extension Director G. O. Gibson will be the keynote speaker. The Share-The-Festival will be presented as a part of the opening night program.

On Wednesday, delegates and their ladies will participate in a general assembly and later in discussion groups developing ideas for use in launching the People to People Program among the 4-H clubs of the state. All judging and team demonstration team members will be voting for state honors and the right in several instances to represent Texas in national contests. The Chuckwagon Barbecue, sponsored by the Texas 4-H Recognition Committee, will follow the completion of all contests. The final program will be held in the G. Rollie White Coliseum following the barbecue and will feature Chancellor M. T. Harrington, entertainment provided by the Sears-Roebuck Foundation and the Heart H by 4-H club members. Broilers by the truck load will be required to provide the barbecue for an estimated 15,000 persons expected to attend the Texas Broiler Festival in Nacogdoches on May 31 and June 1. The broiler barbecue will be the largest of its kind yet staged in Texas and will be held on June 1. Featured speaker for the occasion are Governor Price Daniel and Dr. Cliff Carpenter, resident, Institute of American Poultry Industries, Chicago. F. Z. Beasblossom, extension poultry marketing specialist and chairman of the Festival's General Committee, says, "It's our opportunity to recognize and compliment a great state industry." Chickens need elbow room. Efficient broiler production demands at least two linear inches of available feed space per bird. Tests conducted by the Texas Agricultural Experiment Station showed that growth response was from two to five percent greater when chicks get sufficient feeder space.

Perhaps the greatest array of modern mechanized farm equipment ever to take to the fields of Texas will go forth when conditions permit. With it will go, of course the human operators who will be striving to get the delayed farm work done as quickly as possible and he warns the Texas Farm and Ranch Safety Council "Haste could make waste." "Don't they say, 'drive yourself or hired help to exhaustion for a costly accident could result. Don't let down your safety guard.'" **NOTICE OF ROAD BOND ELECTION**
THE STATE OF TEXAS
COUNTY OF HANSFORD
TO THE RESIDENT QUALIFIED ELECTORS OF SPEARMAN INDEPENDENT ROAD DISTRICT NO. 1 OF HANSFORD COUNTY, TEXAS, WHO OWN TAXABLE PROPERTY IN SAID DISTRICT AND WHO HAVE DULY RENDERED THE SAME FOR TAXATION: TAKE NOTICE of an election

to be held on the 25th day of June, 1957, within SPEARMAN INDEPENDENT ROAD DISTRICT NO. 1 OF HANSFORD COUNTY, TEXAS, for the purpose of submitting to the qualified electors who own taxable property in said District, and who have duly rendered the same for taxation, the following proposition: "WHETHER OR NOT the bonds of said SPEARMAN INDEPENDENT ROAD DISTRICT NO. 1 OF HANSFORD COUNTY, TEXAS, embracing land wholly within said Hansford County, shall be issued in the total principal sum of FIFTY THOUSAND DOLLARS (\$50,000), for the purpose of the construction, maintenance and operation of macadamized, graveled or paved roads and turnpikes, or in aid thereof, within and for said District, under and by virtue of the Constitution and laws of the State of Texas, particularly Section 52 of Article 3 of the Constitution, and Chapter 16 of the General Laws passed by the Thirty-ninth Legislature of Texas at its First Called Session in 1926, and amendments thereto, and which bonds are to bear interest at a rate of not to exceed FOUR PER CENTUM (4%) per annum, and to be issued in such denominations and payable at such time as may be deemed most expedient by the Commissioners' Court, but not to exceed twenty (20) years from the date thereof; and shall there also be submitted to the qualified resident property tax-paying voters of said Spearman Independent Road District No. 1 the question of whether or not ad valorem taxes shall be levied on all taxable property within said Road District for the purpose of paying the interest on said bonds and to provide a sinking fund for the redemption or payment thereof at maturity?" **FURTHER TAKE NOTICE** that the manner of holding said election and canvassing and making returns thereof, shall be governed by the General Laws of this State, when not in conflict with the provisions of Chapter 16 of the General Laws, passed by the Thirty-ninth Legislature at its First Called Session in 1926; that the ballots for said election shall be prepared in sufficient number and in conformity with V. A. T. S. Election Code, adopted by the Fifty-second Legislature in 1951, and that printed on such ballots shall appear the following: "FOR THE ISSUANCE OF BONDS AND THE LEVY OF AD VALOREM TAXES IN PAYMENT THEREOF" "AGAINST THE ISSUANCE OF BONDS AND THE LEVY OF AD VALOREM TAXES IN PAYMENT THEREOF" AS TO the foregoing proposition, each voter may mark out with black ink or pencil one of such expressions, thus leaving the other as indicating his vote on the proposition; or, in the alternative, each voter may vote on the proposition by placing an "X" in

the square appearing on the ballot beside the expression of his choice. **AND FURTHER TAKE NOTICE** that the voting place of said election shall be the County Courthouse, Spearman, Texas, and the election officers are hereby designated as follows: E. J. COPELAND, Presiding Judge; DOT JENKINS, Judge; MRS. JOE TRAYLER, Clerk; and MRS. R. C. BIRDWELL, Clerk. Only qualified electors who own taxable property in said Spearman Independent Road District No. 1 of Hansford County, Texas, and who have duly rendered the same for taxation, shall be qualified to vote at said election. The above and foregoing NOTICE OF ROAD BOND ELECTION is issued and given by me, by order of the Commissioners' Court, ordering said bond election, duly passed and adopted on the 22nd day of May, 1957. **WITNESS MY HAND AND THE SEAL OF THE COMMISSIONERS' COURT OF HANSFORD COUNTY, TEXAS,** this 22nd day of May, 1957. **FRED J. HOSKINS,** County Clerk and Ex-officio Clerk of the Commissioners' Court of Hansford County, Texas. (Com. Cr. Seal) No. 25 3-c
WILL DO PLAIN—Sewing and every day mending in my home. See at 203 N. Bernice or Phone 3351.
MOTOR WISE
Enough to Accommodate
Enough to Appreciate

"Don't believe this guy trusts us."
A. & G. Humble Service
WYATT ATKINS
RAYMOND GILLEY
Not a Filling Station—but a Service Station
Jim's
SERVICE and APPLIANCES
Appliance Service Work — New Appliances —
JIM SUTHERLAND
Phone OLIVE 9-5081
Spearman, Texas
GLASS REPLACEMENT
Body Shop and Painting
R. L. (Smoky) Huse
Spearman, Texas
GAS-TOONS
BY **DON AND LOUIS**

"By golly! There is a difference in ETHYL."
There's a BIG difference between POOR SERVICE and OUR SERVICE!!!
SPEARMAN
Texaco Service
Phone: OL 9-2391
B. F. Goodrich Tires

If you find life is empty, try putting something into it. It takes 10 inches of snow to equal an inch of rain. Success comes before work only in the dictionary.
FOR SALE—G4 M & M Combine, and 1950 model Ford tudor. W. W. Smith, 612 S. Evans. Phone OLIVE 9-6146 No. 26 2-1-p
FOR SALE—Electric Saw with attachments. \$75.00 Phone OLIVE 9-4261. No. 26 2-1-p
FOR SALE—12,000 Acre A-1 Ranch priced to sell. Good improvements (3 sets) Good location, Good terms - No interest. A L S O 1602 acres cultivated land same price as grass. 1/2 eligible for Soil Bank. See J. L. BROCK, Main Street, Spearman, Texas. No. 23 rtn
15 unit Motel - wall to wall carpet, telephone and T.V. in each room. Small down payment - terms on balance. Plenty room for expansion. SEE J. L. BROCK, Main street, Spearman, Texas. No. 23 rtn
FOR RENT—Office space, formerly occupied by the National Farm Loan Association. Modern, good location, ideal for any type office. Phone OLIVE 9-2621, Mrs. E. C. Womble, Spearman, Texas. No. 27 r t n
WANTED—WILL DO ironing in my home. Emmalene Green, 504 S. Evans. No. 27 1-t-p
Notice
All bills due me may be paid at my office at any time during regular office hours, or mailed to my post office, box 325, Spearman, Texas. Perry M. White, M. D. No. 27 8-t-c
For the life of your car GO GULF!

Looking for Service Try Orange Disc Service!
ALTON WAYNE
Phone 2307
FOR SALE—One bed room Modern home. Wall to wall carpeted. Telephone OLIVE 9-4841. No. 22 rtn
FOR SALE—2 Bed Room Home, South of School in New Addition. \$8,000.00 - \$2,000.00 Down \$49.00 Monthly. See J. L. Brock or L. S. McLain No. 18 rtn
JUNE PRICES
Reg. Champlin, 51c Gal. plus tax and drum.
Champlin Turbine, 45c Gal. plus tax and drum.
H. Duty Champlin, 60c Gal. plus tax and drum.
Champlin LPG Oil 61c Gal. plus tax and drum.
DAVIS OIL CO.
Phone OL 9-3071
EFFICIENT—economical and excellent, for carpets and upholstery. Chartier's Carpet and Upholstery Cleaner, at Panhandle Furniture Mart.
FOR RENT—Light house keeping rooms for men. 122 S. Endicott. No. 18 8-t-p
WE ARE—Experts in installing linoleums. Let us figure your next job. Free estimates. We do cabinet tops, floor linoleums, covegalls. We stock linoleums up to 12" wide, sink frames, metal tiles etc.
DALEY'S IN PERRYTON
No. 27 rtn
ALCOHOLIC—If liquor is your problem and you sincerely want help to quit write Alcoholics Anonymous, Box 251, Spearman. No fees, no pledges, no pills. No. 36 rtn
BARGAINS in house trailers. New Trailers up to 51 feet. Five year financing, bank rates. Some used ones. Best Tailor Salos Pampe and Perryton, Texas. No. 4 rtn

FOR SPECIAL PRICES—ON ALJO
Vacation trailers See Harold Crooks. No. 26 3 tp
FOR SALE—F20 Farmall tractor, two row lister and planter equipment. \$200.00. Also 1952 Ford Pick-up, new motor overhaul and paint job. Phone Dr. 3-5547, 513 Lee Street, Berger, Texas. No. 26 3-t-c
FOR SALE—1-1946 Chevrolet 2 ton truck with 2 speed, 6700 Tires and Grain Box. 1-1944 Chevrolet 1 1/2 ton truck with Grain Box and Steels Racks. Laubhan Motor Co. Follett, Texas Phone 65. No. 28, 3-4-c
WOULD TRADE a girls 26" inch Western flyer bicycle for a 20" inch girls bicycle. Call OLIVE 9-4886. No. 25 1-1-1-p
HELLO AGAIN
A. L. Wilson, Jr.
If you don't know Life Insurance, know your Life Insurance man.
South Coast Life Ins Co.
B. M. A. INSURANCE
ACCIDENT - HEALTH HOSPITAL & LIFE For Each Member of the Family
E. K. SNIDER
Lubbock - Spearman
RESIDENTIAL AND BUILDING CONTRACTOR
E. D. Mundy
115 DRESSEN STREET
PHONE 4596
★ MR. FARMER
★ Let us do your
★ Land Leveling
★ Terracing
★ Reservoirs
Lee Roy Mitchell
Dirt Contractor
Phone Fireside 7-2384
Box 103 - Gruver, Texas
ANTHONY ELECTRIC
* Industrial
* Commercial
* House Wiring
Contracting and Repairing
Electric Motors and controls sold and serviced
L. L. Anthony
Phone 3361 Box 727
Spearman, Texas
Hansford Lodge 1040
A. F. & A. M.
Regular Communication 2nd and 4th Monday of each month
Phillip A. Jenkins W. M.
Clarence R. Blodgett, Secretary
E. C. GREENE
* Real Estate
* Loans
* Insurance
Phone 4261 - Box 145
Spearman, Texas
SHORT'S IRRIGATION SERVICE
Box 727 - Phone Day or Nite 179
Gruver, Texas
Complete Well Service
Any make or size pumps
Clean out and bail wells
Free Estimates on any job
Also check draw down in wells
FREE
Get our estimates on a new complete turnkey job.
All work guaranteed.
Give us a call
Located in Fred Womble Shop.

Dr. D. E. Hackley
OSTEOPATHIC PHYSICIAN
AND SURGEON
304 MAIN ST
Office Hours: Week Days 9-12 and 1-5
Saturday: 9-12
Office Phone - Residence Phone 4851 5181
Dr. Reese Nowlin
OPTOMETRIST
OFFICE HOURS
9 to 12 a.m. 1 to 5 p.m.
Saturday 9 - 1
Phone 5481
No. 10 SW 2nd Avenue
Perryton, Texas
R. L. Kleeberger
M. D.
Physician and Surgeon
Medicine, Surgery and Obstetrics
Hours: 9-12 a. m. - 2-5 p. m.
CLOSED ALL DAY THURSDAY AND SATURDAY AFTERNOON
Phones: Office 5781
Res. 2161
16 S. W. Court St.
Daily Bldg
Spearman, Texas
Dr. F. J. Daily
DENTIST
No. 16 S. W. Court St.
Phone 3561
Spearman, Texas
SANFORD HOSPITAL AND CLINIC
Perryton, Texas
Phones 2821 or 2837
ROY K. SANFORD, M. D.
Pediatrics
J. BLUFORD JOHNSON, M.D.
General Surgery
O. U. MONROE, M. D.
Obstetrics - General Practice
PERRYTON HOSPITAL AND CLINIC
Dr. G. L. Kengle, M. D.
Res. Phone 5041
Dr. D. B. Pearson, M. D.
Res. Phone 5471
Perryton Hospital Phone 2821
CLINIC PHONE 3361
AMBULANCE FLOWER
Number
Dial 2751
SPEARMAN, TEXAS
Hansford County
V. F. W. POST NO. 6207
Regular Meeting Nights 2nd and 4th Tuesday of each Month
Commander, Warren Jeffries
Sr. Vice Com. Kenneth Evans
Jr. Vice Com. Clarence Mitchell
Chaplain Johnnie Lee
Qtr. Master Johnny P. Vernon
All members are urged to attend these meetings.
Boxwell Bros.
Funeral Home
and
Flower Shop
SPEARMAN, TEXAS

OLDSMOBILE



...sure knows how to pick 'em!"
...mean Lucille... or are you talking about their Oldsmobile?
...oh! But I was really looking at their car. What a beauty!
...they sure are a lucky couple.
...smart, too. That Olds costs less than you'd think. It has the ride that will stay in style. They get real comfort... a wonderful ride... and the big Rocket Engine...
...looked so lovely...
...I'll really find out how smart they are to own an Olds at this time. Why, an Olds brings a better price than lots of most expensive cars, even after a couple of years of use.
...I wish that someday...
...you can own an Olds? Don't waste your wishes. Let's take a ride in my Golden Rocket. Maybe your dreams'll come true when you expect.

AUTHORIZED OLDSMOBILE QUALITY DEALER

Panhandle Outdoor Life

by s. v. whitehorn

Here in the Texas Panhandle the Texas Game and Fish Commission has the privilege of regulating the fish and game. The laws are made by the Commission. The Texas Legislature gave the Commission this assignment with the stipulation that before the laws are set by the Commission each year that there will be a scientific survey made of the game available for each season and that the Commission will stage county meetings each year for the purpose of inviting the public and landowners to a discussion of the rules and regulations desired by the people in this part of the state.

These meetings are now in progress in different parts of the Panhandle. The meetings will be conducted by the district game warden plus a wildlife biologist. The set together is for the benefit of the Panhandle hunters and fishermen in that they have the opportunity to express their ideas pertaining to the bag limits when the season should open etc. A few years back one hunter stated that he thought it should be legal for a person to hunt deer with a shotgun using a slug. Since this request was passed on to the Commission who in turn included this method of kill in the regulations.

In the past there have been a very small amount of sportsman show up at these advertised meets. If you are interested in the rules and regulations pertaining to fish and game in this part of the country then by all means come out to the meeting. Listed below is part of the schedule that pertains to the central top part of the Panhandle.

(June 10. Wheeler.) (June 11. Clarendon.) (June 11. Borger.) (June 12. Silverton.) (June 12. Pampa.) (June 13. Lipscomb.) (June 14. Spearman, Claude and Perryton.) All of these meetings listed will be at the county court house with the exception of Borger where the meeting will be conducted as in the past at the Jr. High School. 8:15 P. M. is the usual meeting time. Your attendance will be appreciated.

There is more successful fishing than probably is realized by the average angler. For example bass fishing at lake Marvin is usually fair for the ordinary fisherman but from what I have been hearing for the last couple of years there are a group of fishermen from Phillips that practically always catch their limit of whoppers every time this three- or four-ounce fish at Marvin. How do they do it? P. D. Moseley, State Game Warden from Canadian stated that these fellows have been fishing figured out to a fine art. They converge on the lake and after making the necessary arrangements, fishing permit, making camp etc. choose up between them to see who does the besting of the waters. The fishermen use the innertube method plus frog feet and maneuver around in the lurking places of the bass homeland. These fishermen fish around the clock but only one at a time until the bass start striking. In the meantime the others are around camp, taking turns at testing until the biting starts then the hole party gets started with the innertube plus seat method with frog feet used to maneuver around to the choice places. As far as I know these are the only fishermen that "team up" on the bass and these fellows are having a successful outing on each trip. Outsporting almost any kind of game fish takes a certain amount of laying awake at night.

Common plugging with artificial lures is the most popular way to catch bass and it is very fine when the fish are really striking but for my money I will take a bucketful of golden shiner minnows any day and come up with more fish. I think cane pole is O. K. if you can place the minnow in the right spot. The art of catching fish is equal to the art of raising fish. With a little know how and a little practice the average fisherman could increase his string.

Fishing license will cost a little more this fall the old license expire August 31. The new ones will be \$2.15 instead of \$1.95 for fishermen between the ages of 17 and 65. The increase in the fee will very directly assist the anglers since it will give the Game Dept. a few more dollars to work with in improving fishing for the people. There have been many vital projects that have simply been left undone for the lack of funds.

The Texas Legislature made it possible for these extra dollars and if the anglers will notice there will be more lake improvement work done in this part of the state as a result of this helpful bit of legislation. What if we had no fish hatcheries, no Warden to see that such fishermen abided by the rules in the first place there wouldn't be hatchery trucks bringing hundreds of thousands of fingerlings to the Panhandle each summer and fall. Unsportsmanlike fishermen could seine, blast, poison, trap or otherwise take what choice fish we have and leave the legal fisherman fishing with no luck and found out later that a group had poisoned or seined the pond? The Texas Legislature and the Game Dept. is doing more work than you can imagine to improve the fishing in this state and it is like most anything else worthwhile, it takes a certain amount of funds. Much

of the money taken in by the Game Dept. comes from the fishing license that you buy. This money in return is spent to assist the fisherman.

More Profit For Pay As You Go Poultry Producers

College Station, June — It pays to take chances with broilers. Lower chick and feed costs for cash-operating producers usually adds up to about \$30 per thousand birds more than credit growers profits.

Credit has made its mark in poultry production, however. Agricultural Economist Harley Bebout says feed manufacturers and dealers have shaped several new ideas in broiler development by providing much required production and market financing. Investment capital is now obtained principally from individuals and lumber companies, he says, while most operating capital is supplied by feed dealers.

Broiler production is an expensive business compared to other farm enterprises. Bebout figures about 75 cents a square foot is needed to construct and equip a 6,000 bird-capacity broiler house. Operating capital by market time would tack on an additional 60 cents a bird.

Still, Texas has experienced a seven fold increase in broiler production since 1946. Real estate security is generally given for broiler house costs and grower's birds are good for production cost security. Operating capital such as chicks and feed are paid for in the dealer markup, Bebout explains, assisted slightly by financing charges.

Producers now tend to shift loss risk to dealers by operating under a "no-loss" or "guaranteed income" plan during low broiler price periods. Dealers charge more or widen margins on chicks and feed in proportion to amount of risk involved.

Complete details of Bebout's survey concerning need, sources and terms of credit used by Texas broiler producers are available from the Agricultural Information Office at College Station. Ask for Bulletin 849.

Agricultural Research Briefs

By grazing oats pasture 1-hour a day, Jersey cows on a three year test at the Texas Agricultural Experiment Station near Tyler increased milk production 1.93 pounds and saved 24 pounds of sorgo silage. The extra milk and saving on silage totaled 23 cents

per cow per day. Shannon Carpenter, associate dairy husbandman at the experiment station, said each acre of oats produced 264 hours of grazing, or a gross income of \$60 per acre. Cost of seed, fertilizer and labor was \$16 per acre leaving a net return of \$44 per acre per year. For each dollar spent to produce oat grazing the return was \$3.75.

Over a 6-year test Texas 28 hybrid corn outyielded all others at the Denton Experiment Station. A yellow strain corn, Texas 28 also has shown less earworm damage and unsound ears than other hybrids recommended in the Denton area. Agronomist J. W. Gardenshire who conducted the test said Texas 28, one of the older hybrids, is slightly earlier in maturity and has performed equally well in the area. He said also that Texas 36, an early yellow hybrid, was released recently for use in areas where adverse weather conditions occur frequently.

Texas 17W, a white hybrid which has been in tests two years appears to be better adapted to the Denton area than Texas 15W. Texas 17W's large white seed is readily accepted by the mills. Both Texas 28 and 17W produced an average of 24.5 bushels an acre even though rainfall during the 6-year test period was much below normal.

African variety outyields eight other warm season legumes in tests at the Texas Agricultural Experiment Station at Crystal City. African produced 4,290 pounds of dry forage per acre, compared with 3,430 pounds produced by Southwest Common, 710 pounds for Ranger Buffalo and 660 pounds for Ranger. African and Indian, which produced 4,020 pounds, varieties not only made the most growth, but recovered more quickly after cutting than other varieties tested. Southwest Common grew faster after germination, but rate of growth slowed considerably within three weeks.

Rice following improved pasture yielded four to five barrels per acre more than rice following unimproved pasture for equal amounts of nitrogen in tests conducted by the Rice-Pasture Experiment Station near Beaumont. Use of up to 80 pounds of nitrogen per acre increased rice yield whether it followed improved or unimproved pasture, however, Agronomist Dr. Ralph M. Wehling advises farmers to be careful in applying as much as 80 pounds per acre to rice planted on land following improved pasture. He said experienced rice growers may want to observe his crop and apply

less than 60 to 80 pounds per acre if it shows unusually good growth. Fast high growth often causes lodging.

Nitrogen applications from several different sources produced about the same increase in cotton yields in six tests conducted over a 3-year period in the El Paso Valley by the Texas Agricultural Experiment Station at Ysleta.

Anhydrous ammonia, ammonium phosphate (16-20-0), ammonium nitrate, ammonia sulfate and urea were compared by D. E. Longnecker and Dr. Paul Lyster, resulting in an average increase of 416 pounds of seed cotton from applications of 98 pounds of nitrogen per acre. In similar tests using superphosphate there were no significant yield increases.

Vigrou Grasses Crowd Out Undesirable Weeds

College Station, June — A "Keep out" sign won't scare undesirable weeds from your pasture. A carefully-planned mowing or chemical control program is the only efficient answer to the pasture weed problem.

Farmers can get a head start on weeds with proper establishment of desirable grasses. Good stands of desirable grasses can usually "outgrow" pasture weeds under optimum conditions, says Extension Pasture Specialist E. M. Trew, especially when properly fertilized. Good grazing also limits pasture weed population.

Trew advises mowing when the worst weeds start looming since they are more easily damaged at this stage. Mow all weeds before seed is produced, and remember that some require several operations. Sometimes fall-blooming weeds can call for both early summer and fall mowing.

Avoid mowing when desirable grass is scarce or during hot, dry weather if grass stand is not thick enough to shade the soil. CAUTION—many mild and tall native burch-grasses such as blue-stem cannot stand repeated mowings.

Mowing excess growth for hay or silage is like putting money in the bank. Mowing also stimulates new growth on near-nature plants and even up growth after grazing. It removes old grass growth and allows entrance of volunteer fall clovers. Mow high and as early as is practical. A rotary-type mower is generally faster and cheaper.

Chemical control is usually more economical than mowing, Trew says. Spray annual broad-leaved weeds early with 2 1/2 to 3.4 pound 2, 4-D or M. C. P. A. to the acre. Apply with a low-volume, low-pressure broadcast spray-

er in 20 or 30 gallons water per acre. Add about 4 ounces liquid detergent or 1 pound dry for best leaf coverage. Perennials may require slightly higher chemical rates.

Be familiar with herbicide regulations before using these chemicals. They will severely damage asters, legumes such as white, hop, Persian, crimson and red clovers, lespedeza, black medic and alfalfa. Broad-leaved crops such as cotton, tomatoes and sweetclover are susceptible to chemical drift. See your county agent for local recommendations.

Texas Goat Future Looks Good

College Station, June — The future looks pretty good for Texas goat producers. Many farmers and ranchers are now combining sheep, cattle and goats on the same range and getting better weight gains with higher monetary returns.

Selection of heavier-fleeced bucks for breeding herds has increased the average mohair clip three-fourths of a pound in 12 years, says Agricultural Economist John McNeely. Value of 1955 mohair, estimated at 13.6 million dollars, compared very well with the 19.9 million dollars for Texas wool.

Texas' goat supply is seasonal and most producers market culls and undesirables regardless of price at the time. There seems to be no short term production or marketing response to high or low prices. Farmers buy or sell goats because of range conditions and mohair price. Packers vary purchases with the spread between goat prices and canner and cutter cows.

About 47 percent of Texas producers sell some goats to neighbors or individual buyers, but over half the total annual volume passes through stockyards and auctions. About 27 percent market goats through livestock auctions and approximately 20 percent use the Union Stockyards San Antonio. Marketing season starts in March and April and is relatively steady through July, but a larger volume is marketed in August, September and October.

Spanish goats are produced for meat, brush control or slaughter and stocker sales. Anzora goats are raised primarily for the production and sale of mohair, but are also useful for brush control and eventually are sold for slaughter.

Details of the Texas goat situation, compiled largely from a mailed questionnaire sent to farmers and ranchmen in the Texas goat raising areas, are available from the Agricultural Information Office at College Station. Ask for Bulletin 844.

The extended right arm of the Statue of Liberty is forty-two feet long.

Choose a JOHN DEERE and Enjoy Championship FUEL



WHEN it comes to fuel economy, no other tractor can match the performance of the new John Deere 5-Flow "720" Standard and 5-6 Flow "820" Diesel Tractors. The "720" features the same engine that set a new all-time tractor fuel-economy record in recent Nebraska Tests. The new "820" features the same engine that powered the "80" Diesel to an official record; it's the economy leader in the 5-6 flow field.

Both the "720" and "820" Diesels offer you tremendous work capacity that will greatly increase your daily output. New Custom Power-Trol, Advanced Power Steering, new Independent PTO and new Float-Ride Seat are just a few of the features available to make farming easier and much more enjoyable for you. Stop in soon and let us show you how a new John Deere "720" or "820" Diesel Tractor can make more profits for you.



HANSFORD IMPLEMENT

See Us For JOHN DEERE QUALITY

Shop for dinner in your own kitchen



with an ELECTRIC FREEZER

You can keep food for weeks of meals at your fingertips when you have an Electric Freezer. It saves daily trips to market... enables you to buy more when you shop... lets you shop when you choose. With a well-stocked Freezer, menu planning is quick and easy, and you're always ready for unexpected guests. Live Better Electrically... with a Food Freezer!

Life is easier with a Freezer. See your local appliance dealer

COMMUNITY PUBLIC SERVICE

LIGHT POWER

Never Before Has One Car Four Top Awards



The men who know the most about cars pick Plymouth as tops in value, style, and performance.



PLYMOUTH — "Your overall best buy" — Car Life Magazine. "After testing all the 1957 cars we choose Plymouth as today's overall best buy because we feel that it offers more and better transportation value than any other 1957 car regardless of price." (From the June issue of CAR LIFE, the family auto magazine.)

PLYMOUTH — "Style leader of the year" — Dell's 1957 Cars Annual. "Style Leader of the Year Award, presented to Plymouth Division of Chrysler Corporation, by the editor of Dell's 1957 Cars Annual who has chosen the 1957 Plymouth as the style leader of the American automotive industry." (Inscription on the actual award.)

PLYMOUTH — "Economy leader of its field" — 1957 Mobilgas Economy Run. "In the 1957 Mobilgas Economy Run Plymouth won first place in Class 'A', the highest honor that includes all of the well-known low-price cars. The Plymouth was powered by a V-8 engine with automatic transmission." (From U. S. Auto Club records.)

First in every way! The only low-priced car with road-taming Torsion-Aire Ride... breath-taking Flight-Sweep Styling... Push-Button TorqueFlite or PowerFlite

Plymouth... the Car of Versatility

SPEARMAN MOTOR COMPANY

316 W. Kenneth Phone OLive 9-3781 Spearman

Begins On Memorial Bldg.

to plaster the interior of the Spearman Memorial Bldg. given to the Art Association and Building Board of Dallas. The Memorial Bldg. will be located on the corner of Main and Beville streets. The building will be a four-story structure and will contain a museum, a library, and a reading room. The building is expected to be completed by the end of the year. The Spearman Memorial Bldg. is a gift from the Spearman family to the community. The building will be a landmark in the city and will provide a place for the community to gather and learn. The building is expected to be a great asset to the city and will provide a place for the community to gather and learn. The building is expected to be a great asset to the city and will provide a place for the community to gather and learn.

RY FARM O



of the new series of year. If you can identify the car and you may receive a prize. Please send in your identification card to the sponsor. The advertisement sponsor is located in Hutchinson.

NEW DAUGHTER

A daughter, Delborn Wednesday J. and Mrs. Regor of North Plains hospital. She weighed 6 lbs. Maternal grandparent Mrs. C. W. Kirk. Mrs. Georgia All. Okla. is visiting here. J. R. Kirk. Mr. and Mrs. Ows attended a Pendergust union Sunday at 1. Mrs. John Routh. I turned with them to visit.

Dean Mitchell, Fager of Ideal Grocer returned from camp where he attended 1 training for two weeks. Mrs. Vance Closter of Coleman, Texas, and Mrs. Sonny P. Patterson had sur Hansford Hospital. Close will remain in hospital several days. Mr. and Mrs. J. Lakeside Calif., his ing with his parent Ed Hutton. Gayle Moore, T. dent, visited with and Mrs. Ray Moor. She will attend classes at Lubbock. Mrs. Archa Morsing from a fall one ankle badly a other one.

Mrs. Andy Geo nia visited last week Mrs. Bob Ratliff of Canyon spent with her mother. Mrs. Omar Cottle who has been Carrie Cotter and O. L. Williams. Tuesday. Mrs. J. Y. Boyd visiting her daughter the Herbert Kirks. Mr. and Mrs. J. Mrs. Lula Mae in Spearman s of her house resided at Dallas. Mrs. E. Agent h Mrs. Cecil Crow her college co is home after time in Canyon work on writing. Ruth Mary, Be Whitson are on vacation after sp year at school in Whitson, a Senior do some of her in Spearman Gra Mrs. D. B. Kirk lives in Goldwith son Texas. Mr. and Mrs. K Mrs. Mrs. B. children have m farm near Happy The Barkley f. Sid Clark gave the First Method day in memory of Barkley and Sid. The James H. on their way to Ohio where to were being broad Marvin Lee W. received his B.S. Science at Texas ock. He is employ