

# The Spearman Reporter

SPEARMAN REPORTER, HANSFORD COUNTY, THURSDAY, OCTOBER 20, 1955

## Blasts 40-7

Textline 40-7 in a Conference 1-B was the home of the Greyhounds had...

## ELKS DEFEAT CONFERENCE PLAY

charging line from the second quarter was responsible for the Lynx defense and...

## Social Security News

A representative from the Social Security Office in Amarillo will be in Spearman, Thursday, October 25...

## LYNX BAND ENTERS STATE CONTEST

Spearman high school band will be one of 23 bands to enter the state interscholastic league...

## Mystery Farm of County

the owner of this farm to the Reporter. The owner of this farm is requested to get in touch with the Reporter office...

## Pontiac Introduces Catalina Four-door 'Hardtop' For '56

For the first time in its price field, Pontiac for 1956 is introducing four-door "hardtops" in all three series—the Star Chief, the 870 and the 800. In addition, the company is producing two-door Catalina "hardtops" in all lines...

Engineering high point of the new Catalina Sedan is the belt-high steel center pillar, to which the rear door is attached. Constructed of outer and inner posts, which are joined and welded to the underbody, the pillar curves to a wide base at the bottom for exceptional support and rigidity.

Also of interest is the operation of the rear side windows. The windows move not only up but also forward, sealing the opening ordinarily occupied by the center post. This design also eliminates the need for a "flipper" seal previously used along the roof.

The 205 h. p. Strato-Streak V-8 engine will be offered in the Catalina four-door in the 870 and 800 series. These series offer interior trims of Morrokide, nylon and coated fabric in a wide range of choices.

## Hazel Holt Attends State Dress Revue



"How does it feel to be in a State Dress Revue?" Hazel Holt of the Happy Hearts 4-H club can tell you now. October 15th was Hazel Youth Day at the big State Fair in Dallas and the climax of the day was State Dress Revue.

Hazel had won this honor at the district Dress Revue on Aug. 21. She won as one of the top five girls in District 1. She was one of the youngest girls in the group. Her dress was styled in a long torso blouse over a pleated skirt. It was a beautiful white cotton in blue and black.

Hazel's mother, Mrs. Fred Holt, was selected sponsor for the girls from District 1, at the Revue. On Thursday October 13, 1955, Mrs. Holt, and Sandra Stump left for Dallas. Sandra went along as guest of Hazel's.

The group had reservations at Hotel Adolphus where the other 15 girls were placed. Here they were treated royally and experienced many new things.

The Revue was staged in the State Fair Auditorium at 10:00 a. m. by the Extension clothing specialists, Nena Roberson, Graham Hard and Medeline Russell. Mrs. Jessie Southworth, fashion coordinator for Sanger Bos, instructed the models and served as commentator for the revue.

## Spearman P. T. A. Meeting Oct. 10th.

Supt. H. R. Hartman's informative discussion of the building program for the Spearman schools opened the program when the Spearman P. T. A. met Monday night, October 10th, in the school auditorium.

Others taking part on the program were R. E. Dickson, Spearman grade teacher who gave a devotional; and Mary Louise Crawford and Mary Frances Vernon, high school students who presented a twin piano number.

## Christian Women Met For Lunch

The Christian Women Fellowship circle One of the First Christian church met at the country home of Deta Blodgett on Oct. 12, for a Bible study, and covered dish luncheon. Mrs. Blodgett served baked turkey with all the trimmings.

After a wonderful dinner and fellowship, the Bible study was opened by Hazel Wilbanks. Mrs. Elnor Reed gave a devotional from Eph. 5:10-13.

An interesting roll call was made by giving a scripture reading. Rev. Van Dyke closed the meeting with prayer.

## School Bond Vote Carries 10 To 1

According to information from Freeman Barkley of the Spearman School Board Election Staff, the \$212,000.00 school bond election resulted in a ten to one vote favoring issuing the bonds and completing the building program at Spearman.

A school official stated Monday of this week that preparations would be completed and perhaps the bonds sold and construction work may begin at some date in the month of December 1955.

## Lions Enjoy Piano Music

Lorene Mundy was guest entertainer for the regular program of the Lion club held at the Steak House at noon Tuesday. The talented young lady gave several piano numbers, which were greatly appreciated by the audience.

Lion R. V. Converse explained that a legislative program for a comprehensive water control program was in the making, and asked Lions for their opinion on taxes to finance this program.

## Farm Bureau To-Night

The Hansford county Farm Bureau will meet tonight, Thursday Oct. 20th at the school cafeteria in Gruber.

This is a most important meeting of this year. New officers will be elected and delegates chosen to attend State FB convention at Ft. Worth in November.

## Weather

DATE	MAX.	MIN.	Rain
11	82	54	0.00
12	89	46	0.00
13	68	39	0.00
14	76	38	0.00
15	76	41	0.00
16	86	45	0.00
17	70	35	0.00

Those Kress Kangaroos continue to set the pace in the regional Class B rating as outlined in the Amarillo News-Globe.

Stratford climbed into the No. 3 spot this week—replacing the idle Groom Tigers.

Coach Haskell Billbrey's outfit has amazed a number of close observers this season and have already compiled a 4-2 record.

It gives the Mustangs an impressive 4-2 mark and sets the stage for another conference engagement with Vega this week.

The lower four teams in the big ten this week all suffered defeats. Spearman, skippered by Roy Pennington, fell to Stratford.

This is Pennington's first year at the helm of the Lynx and he has produced a contender—winning 2 and losing 3. The Lynx did not win a game last year.

Here is the standing of the Big ten in district play—1. Kress (6-0) Austin Bowes 2. Gruver (5-1) Austell Burru 3. Stratford (4-3) Haskell Billbrey 4. Groom (3-2) D. W. Harkins 5. Claude (4-2) J. D. Trwell 6. Wheeler (4-2) J. D. Trwell 7. Spearman (2-3) Roy Pennington 8. Farwell (3-2) Russell Young 9. Darrouzett (2-2-1) Paul Richie 10. Eastline (2-2) Pete Wood

## Last Rites For Mrs. Lela Hawkins

Spearman was saddened Friday to learn Mrs. Lela Pauline Hawkins had passed away Thursday night at 10:30 in Hansford County Hospital.

Her death came unexpectedly following a heart attack suffered at her home Wednesday at 4:00 p. m. She had made her home across the street from her daughter, Mrs. Sam Patterson, since 1948.

Mrs. Hawkins was born in Hamilton County. She married Clifford A. Hawkins Feb. 18, 1913. They lived at Lawton, Oklahoma until 1919 when they moved to Carson County. They lived on a farm 5 miles N. E. of Panhandle until Mr. Hawkins' death in 1947.

Mrs. Hawkins moved to her home at 603 South Rowland street where she was still living when stricken with a heart attack Wednesday.

Her father was Walter Lee Herndon and her mother was Alice Eddy.

A son, Lt. Donald Hawkins, navigator in the AAF, was killed in 1945 while on a mission in Italy.

Survivors are a daughter, Mrs. Sam Patterson of Spearman; a son Phil Hawkins of Panhandle; two grandsons, Wayne Hawkins, son of the late Lt. Hawkins, of Fritch, and Jerry Hawkins of Panhandle; three grand daughters, Phyllis and Shelia Patterson, of Spearman and Sherry Hawkins of Panhandle; a sister, Mrs. Fred Sloan of Pampa, and a brother W. C. Herndon of Perryton.

The body lay in state at the Boxwell Funeral Home in Spearman until 10:00 a. m. October 15, when it was taken to Boxwell's Ivy Chapel in Amarillo.

Rev. James Todd, pastor of the First Christian Church of Muleshoe, conducted funeral services Saturday Oct. 15, at 3:30 p. m. Burial was in Memorial Park Cemetery, Amarillo.

## CHARLIE MADDEN WINS REPORTER SUBSCRIPTION

Charlie Madden, who has been on most of the lists since we started the Mystery farm program, finally won a years subscription by correctly identifying the home of Mr. and Mrs. E. E. Walker.

Others identifying the home included Elmond Jacobs, Mrs. F. K. Bannister, Joe Entreklin and W. A. Van Cleve.

## New Aerodynamic '56 Plymouth To Be Displayed Friday

DETROIT—Plymouth's new aerodynamic 1956 cars will be displayed by dealers throughout the nation beginning Friday, October 21.

Plymouth president John P. Mansfield said the new models incorporate major advances in every phase of automobile design, with special emphasis on engine performance, safety and aerodynamic styling.

Plymouth has a wholly new engine for 1956. It is more powerful. The new 277 cubic inch displacement and an 8 to 1 compression ratio.

Other major innovations include: Airfoil rear fenders which emphasize and contribute to the aerodynamic feeling of the new models.

A push button drive selector for Plymouth's PowerFlite automatic transmission.

New 90-90 Turbo Torque PowerFlite on V-8 models. Ninety degree angle at the inlet and outlet blades of the torque converter impeller give faster breakaway performance.

A new four-door Hardtop (Sport Sedan) with an ingenious rear window operating mechanism allowing full side vision for all passengers.

A new line of Suburbans. In Plymouth's line-up, the Suburbans are an entirely separate group of cars and are available in a wide selection of two-door, four-door, two-seat, three-seat, V-8 and six cylinder models.

New safety door latches to keep doors closed even under severe impact.

New 12-volt electrical system, new pull-type door handles and new deck lid latch.

Highway Hi-Fi, a new car phonograph providing an hour of uninterrupted entertainment, and new Search-Tube radio.

Safety Features—Plymouth dealers will continue to offer safety belts, anchored to the frame and available for both front and rear seats, on all models.

All other Plymouth Safety features are standard items. They include an independent hand brake dual cylinder front wheel hydraulic brakes, safety rim wheels, electric windshield wipers and new safety beam headlights.

Optional power devices, in addition to push button PowerFlite transmission, includes full-time coaxial power steering, improved power brakes, push button power front seat adjustment and push button window regulators.

The 1956 models are an inch Standard sedans have an inch more headroom in front, and almost an inch more head room in the rear.

longer than their predecessors.

## Don Is President Of Junior Class In Pharmacy



Don R. Cooke, son of Sheriff and Mrs. J. B. Cooke, is a Junior student in the University of Texas School of Pharmacy. Don has maintained highest honors scholastically since he enrolled in the University, and has been cited by the Dean of the Professional school.

The latest honor to be conferred on this popular young man is his having been chosen by acclamation, President of his Junior class.

Don and Mrs. Cooke and their young son Jim, reside in Austin where Mrs. Cooke is employed as business manager for an Automobile company and Don is employed in the Avandale Drug Co.

Everyone remembers when Don worked in the Spearman Drug, and we know that Bruce Sheets is as proud of Don as all of us are. Congratulations Don.

## Winners Announced IN CEAN-UP WEEK

Last week the Spearman Garden Council sponsored the annual Fall clean-up for the city of Spearman. City officials cooperated with trucks for trash disposal.

After the week of cleaning up, homes over the entire city were judged by a group of selected women. They divided the city into three sections, and one home for each section was selected for first place winner. The home and its premises were judged strictly on cleanliness alone.

In section one, the home of Mr. and Mrs. Clarence Russell, 104 N. Hazelwood, won first.

In section two, the home of Mr. and Mrs. S. W. Robertson 209 S. Haney, won first.

In section three, the home of Mr. and Mrs. Wesley Garnett, 607 S. Roland, won first.

Lovely flowering shrubs were presented to the winners.

Homes making honorable mention were: Pete Fisher, Alton Ellis, worth, Laura Vernon, Louis Schell, Johnnie Lee. These homes were outstanding in cleanliness.



PONTIAC 860 TWO-DOOR SEDAN—Pontiac's 1956 two-door sedan, the most economical model in the big-car class, rides on a 122 inch wheelbase with 206 inches over-all length. It's big 205 h.p. Strato-Streak V-8 engine gives it power and performance unequalled in the medium priced range. "Vogue" two-toning and luxurious interiors are other features that make it the best dollar for dollar buy.



Belvedere four-door sedan is one of 15 attractive models in Plymouth's 1956 line of cars. Aerodynamic styling, push button driving and powerful new Hy-Fire 277 engine are among outstanding features. Safety door latches and other safe driving items are standard equipment.

Vertical text on the left edge of the page, including 'The national such a fear...' and 'One thing Russo-German...'.

Vertical text on the left edge of the page, including 'Sal', 'Folks, Thank', 'STAMPS', 'Your Extra At Allen's', 'SATURDAY OCT 14 &', '3 1/2 Cans', 'No. 2 Can', 'b. Can', 'DILL RED RIVER', 'EANS 2 For 2', 'in Oil', 'en's', 'ROCERY'.

# We Need Greater Churches And Greater Faith

to give us POWER for LIVING and to COMBAT ATHEISTIC "ISMS"

## The GLAD Way

Too long have we thought of The Way of the Cross as the "sad way." There may be sad moments along every noble path, but not all great ways are sad ways. The path of motherhood may have sad turns but it is a satisfying path. The path of education climbs some difficult and steep places but it is a thrilling way. Isaiah talked about the highway of God, where faithful servants passed on good errands. *The way of the Cross is the way one takes when he serves God.* It is not the "Sad Way" but rather the "Glad Way." Jesus came by way of the Cross, and the Book of Books on which the cross is planted, tells us to "take up our cross and follow." Whether atop the church steeple or on the highest mountain, it is *The Glad Way.* Heaven and God are at the end of that way. It is today aglow with the light of forgiving grace. *It challenges the weak to walk by faith and offers pardon to those who fall at its foot.* It is where Jesus prayed, "Father, forgive them; for they know not what they do." *It is The Glad Way.*



**YOU IN THE CHURCH  
THE CHURCH IN YOU**

Character is a by-product of the church. It is here that young and old alike are showered with benedictions stronger democracy. In the church the ministerial are molding religious character. Storemen today delegate the affairs of state in their perilous times. Then we with our children should go to the church of our choice on Sunday. You in the Church and the Church in you form a combination for good. Be a regular CHURCH-GOER and a daily BIBLE READER.

MAY THIS PAGE BE A BLESSING TO MANY IS THE SINCERE WISH OF HANSFORD COUNTY MINISTERS  
This religious service is paid for by the public spirited firms 100% interested in the spiritual life of Hansford County. They urge regular church attendance and support.

Western Auto Associate Store  
• Floyd and Lucy

Dr. R. L. Kleeberger M. D.

Spearman Drug Co.  
• Bruce Sheets

Equity Exchange  
• E. J. Copeland

R. L. McClellan Grain Co.  
• Lee, Roy Lee and Wilson McClellan and J. K. Hicks

Orange Disc Service  
• Alton and Wayne Ellsworth

Hansford Implement Co.  
• Gene Cudd

White Auto Store  
• Mr. and Mrs. I. P. Baggerly

Campbell Tailors  
• C. E. Campbell

First State Bank  
• Clay Gibner

Peddy's Butane & Oil Co.  
• Mr. and Mrs. Aubrey Peddy

Gruver Lumber Co.  
• Jack Thomas

Gruver Motor Company  
• Ted McClellan

North Plains Electric Co-op  
• Earl Waide, Manager

Kirkland Pump Co.  
• J. D., Jeral, and J. D. Kirkland, Jr.

Cates Bros. Irrigation Supplies  
• J. C. and Slim Cates

Buddy's Super Market  
• Cliff Sheppard, Mgr.

Super Service Station  
• Gene Cline & W. E. Sparks

Riley Bros., Gruver

Gruver Cafe and Fountain  
• G. G. Wright

Farm Machine Service  
• Roy Murrah & Elvin Wright

Spearman Hardware  
• Mr. and Mrs. John Bishop

Spearman Steak House  
• Mr. and Mrs. Howard Huffman

White House Lumber Co.  
• Ed Hutton

Boxwell Brothers  
• Mrs. C. E. Blackburn

Byrd and Shook Texaco  
• Leroy Byrd & Wayne Shook

Gruver State Bank  
• Bob Thom

Gruver Drug  
• Don Gross

Universal Oil & Universal Motors  
• Gruver

Morse Supply Co.  
• Willard McCloy

Gruver Elevators, Inc.  
• Your Conoco Men



FIRST BAPTIST CHURCH — GRUVER  
Bro. Bill Burton, Pastor

Sunday School  
Preaching Service  
Training Union  
Preaching Service  
Wednesday Prayer Service

UNION CHURCH — SPEARMAN  
Rev. Calvin Springer, Pastor

Sunday School  
Morning Worship  
Bible Classes, Sunday  
Evening Worship  
Wednesday Bible Study

FIRST CHRISTIAN CHURCH — SPEARMAN  
Rev. C. N. Van Dyke, Pastor

Sunday School  
Morning Worship  
Youth Meetings  
Evening Worship  
Wednesday: Choir Practice

MORSE METHODIST CHURCH — MORSE  
Rev. A. N. Motes, Pastor

Sunday School  
Morning Services  
M. Y. F.  
Evening Worship

ASSEMBLY OF GOD — SPEARMAN  
Rev. W. V. Bentley, Pastor

Sunday School  
Morning Worship  
Evening Worship  
Mid Week Services, Friday

FIRST CHRISTIAN CHURCH — GRUVER  
J. W. Duke, Pastor

Sunday School  
Morning Worship  
Evening Worship  
1st Weds. Monthly Fellowship

FIRST METHODIST CHURCH — SPEARMAN  
Bro. Aubrey C. Haynes, Minister

Church School  
Morning Worship  
Methodist Youth Fellowship  
Evening Worship  
Womens Christian Society Wednesday  
Mid Week Services, Wed.  
Choir Rehearsal

CHURCH OF CHRIST — SPEARMAN  
R. Paul Smith, Preacher

Bible Class  
Preaching  
Communion  
Young Peoples Classes  
Worship  
Ladies Bible Class  
MONDAY: Mens Training Class From 8:00 P. M.  
Wednesday: Midweek Bible classes from 8:00 P. M.

MORSE BAPTIST CHURCH — MORSE  
Bro. H. G. Verner Pastor

Sunday School  
Worship  
Training Union  
Worship  
Mid Week Service Wednesday

CHURCH OF CHRIST  
North of City Park  
Gruver, Texas  
James O. Wilburn, Evangelist

Lord's Days:  
Bible Study  
Worship  
Training Class  
Worship  
Week Days:  
Bible Study, Wednesday  
Ladies Classes, Thursdays  
Juniors  
(Small Children Cared For)  
Senior Ladies

GRUVER METHODIST CHURCH — GRUVER  
Rev. Cecil Ottinger, Pastor

Sunday School  
Morning Services  
Methodist Youth Fellowship  
Evening Services  
Wednesday Prayer Service  
Wednesday Choir Practice  
Thursday W. S. C. S.  
Wesley Circle, Thursday

SACRED HEART CATHOLIC CHURCH — SPEARMAN  
Father M. J. Matthesen, Pastor

Mass 1st and 2nd Sundays  
3rd, 4th and 5th Sundays  
All other Services announced at Masses.

FIRST BAPTIST CHURCH — SPEARMAN  
Bro. O. L. Bryant, Pastor

Sunday School  
Morning Worship  
Training Union  
Evening Worship  
Wednesday Mid-Week Services: Family Hour  
Wednesday Mid-Week Services: Prayer Hour  
Thursday Choir Rehearsal

OSLO LUTHERAN CHURCH — OSLO  
J. P. Knudson, Pastor

Sunday Worship  
Ladies Aid every last Thursday afternoon of each month  
Luther League on Sunday evening every three weeks.

GETT NEWS  
Mrs. John Hennig  
of Pampa spent the  
week-end with her  
brother and  
Mrs. Ben Hennig.  
Mrs. Kenney and Mrs.  
visited Mrs. Velma  
last Sunday.  
Ray of Goodwell,  
a week-end guest of  
Mrs. Kenney visited her  
Mrs. Kathleen Conrad  
in Dumas last week.  
Mrs. J. R. Morris, al-  
the first year she en-  
received in the coun-  
that Francis has  
first alternate in the  
Food contest of  
her 4-H record in  
headquarters Aug-  
she won over dis-  
wood was then sent  
Station, where she  
against the whole  
is a great honor to  
alternate on the first  
contest.  
has an 4 standing  
4-H club work. Her  
are Mrs. Ted Mc-  
Mrs. Bill Eling.  
A. Hawk  
Master  
Of Area  
A Hawk family,  
is one of ele-  
in Texas select-  
Progressive Farmer  
receive the "Master  
award. This is one  
honors that is giv-  
farm families in  
award is based up-  
accomplishments  
making and com-  
put many years The  
farmer has had the  
that we could render  
service to Texas agri-  
to seek out and  
families of outstand-  
Eugene Butler  
editor. "In almost  
of human endeavor  
accomplishments  
and publicly hon-  
has not always been  
of farmers. Many no  
families have gone  
honored regardless  
The Progressive  
the Master Farm  
er Farm Family pro-  
contest." There are  
requirements  
must take good care  
while making it pay  
profit on farming.  
There must be a good  
attractive surround-  
family must take a  
in community life  
show interest in  
good schools, farm  
Vo Ag, 4-H club  
tion, and all those  
that are so vital  
prosperous farm life  
A. Hawk family  
of the title Master  
This farm, home  
activities meet  
standards.  
armed all his adu-  
can as a renter i  
owned his 1540 ac-  
years, and has live  
farm 31 years. Whe-  
and beef cattle  
will balanced farm-  
practices an  
are used to i  
on the farm. Six tr-  
power machine  
to farm the larg-  
family.  
is also interest-  
and plans to beco-  
partner.



**DR. FRANK BROWN**

OPTOMETRIST  
THURSDAYS

Room 215 McLain Bldg.  
FOR APPOINTMENT  
Call Dr. F. E. Hackley  
Phone 4851  
Phone 4851 Spearman, Texas

GLASS REPLACEMENT  
Body Shop and Painting  
**R. L. (Smoky) Huse**  
Spearman, Texas



Looking for Service  
Try Orange Disc  
Service!

ALTON Phone 2301 WAYNE

**ANTHONY  
ELECTRIC**

• Industrial  
• Commercial  
• House Wiring  
Contracting and Repairs  
Electric Motors and  
controls sold and  
serviced  
L. L. Anthony  
Phone 3361 Box 727  
Spearman, Texas

The  
AMBULANCE  
FLOWER  
Number  
Dial 2751  
SPEARMAN, TEXAS

**B. M. A.**

INSURANCE  
ACCIDENT - HEALTH  
HOSPITAL & LIFE  
For Each Member  
of the Family  
E. K. SNIDER  
Lubbock Spearman

WANTED—Person to help in  
Beauty Shop and home. Ivan  
Vernon Phone 5631.  
No. 38 r-t-n

WE ARE—Experts in installing  
linoleums. Let us figure your  
next job. Free estimates. We  
do cabinet tops, floor linoleums,  
congruities. We stock linoleums  
up to 12' wide, sink frames,  
metal trim and etc.  
DALEY'S IN FERRYTON  
No. 27 r-t-n

For the life of your car  
GO GULFI

Dr. Reese Nowlin  
OPTOMETRIST  
OFFICE HOURS  
9 to 12 a. m. — 1 to 5 p. m.  
Saturday 9 — 1  
Phone 5431  
No. 16 SW 2nd Avenue  
Ferryton, Texas

COMMERCIAL  
AND  
RESIDENTIAL  
BUILDING  
CONTRACTOR

**E. D. Mundy**

115 DRESSEN STREET  
PHONE 4596

Dr. D. E. Hackley  
OSTEOPATHIC PHYSICIAN  
AND SURGEON

McLain Bldg.  
9:00 — 12:00  
1:30 — 5:30  
Office Phone — Residence Phone  
4851 5181

**COLLARD & RAY**

Real Estate - Loans - Insurance

Low interest real estate loans  
for irrigation, improvements,  
or expansion

John R. Collard Jr. — Billy C. Ray  
Phone 5281 — 407 Davis

**Christian Ladies Met  
In Fellowship Hall**

The General Christian Women  
Fellowship met in the Fellowship  
Hall of the Christian Church 7:30  
Oct. 17.

The meeting opened with pray-  
er by Rev. Van Dyke.  
A short business meeting was  
conducted. The Handy Work Ba-  
zaar was discussed, date set  
December 2 and 3.

Mrs. Ruth Bryan read the devo-  
tional: Roman: 10-1-15 Rev: 3-  
23-1 Thes 14-5.

The missionary on lesson was  
given by the Phelco Circle, The  
Master and I. on Evangelism.

Benediction in Union.  
Members present were: Rev.  
and Mrs. C. N. Van Dyke, Mes-  
dames: Dorothy Buzzard, Marg-  
arette Evans, Betty Jean Davis,  
Marisa Lamb, Rose Kunselman.

**Hansford County,**

V. F. W. POST NO. 6207  
Regular Meeting Nights  
2nd and 4th Tuesday  
of each Month  
A. L. McElhany, Commander  
All members are urged to attend  
these meetings.

STRAYED—From pasture 4 mi.  
East Gruver, 400 lb. white face  
steer. Probably branded O a-  
bove O on right hip. Had pink  
eye. Bob Cox, Gruver, Box 733.  
No. 44 r-t-n

**Mr. Farmer-Rancher**

FOR  
**Swathing  
MOWING RAKING  
BAILING**  
WITH  
**NEW HOLLAND  
WIRE-TIE BALER**  
SEE  
**Claude Sheets, Jr.**  
Phone 5331 — Box 302  
SPEARMAN, TEXAS

**FOR SALE RECAPS**

ADD MANY MILES TO YOUR  
OLD TIRES  
COMPLETE TIPE Guarantee 12  
Months.  
We Buy Capable Tires  
ORANGE DISC SERVICE  
STATION

NEW AND OLD TRAILERS—Com-  
pletely Modern. Up to 5 year  
Financing. Best Trailer Sales.  
816 Wilka. Phone 423259 Pamp-  
pa, Texas. No. 40 r-t-n

ALCOHOLIC—If liquor is your  
problem and you sincerely  
want help to quit write Alco-  
holic Anonymous, Box 251,  
Spearman. No fees, no pledges,  
no pills. No. 36 r-t-n

PANCH LOANS, to irrigate,  
purchase or refinance. Call  
4261 or write Box 145.  
E. C. Greene, Spearman, Texas.  
No. 23 r-t-n

SANFORD HOSPITAL  
AND CLINIC  
Ferryton, Texas  
Phones 2821 or 2831  
ROY K. SANFORD, M. D.  
Pediatrics  
J. BLUFORD JOHNSON, M.D.  
General Surgery  
C. U. MONROE, M. D.  
Obstetrics - General Practice

DAY OR NIGHT  
H. & H. IRRIGATION  
Well Service  
Complete Cleanout\*  
GOOD EQUIPMENT  
and Service  
Sanding  
SETTING AND ULLING  
PUMPS  
JIMMY HESTER -  
RICHARD HOLTON  
Phone Day or Night  
4006

R. L. Kleeberger  
M. D.  
Physician  
and  
Surgeon  
Medicine, Surgery  
and  
Obstetrics  
Hours: 9-12 a. m. - 2-5 p. m.  
CLOSED THURSDAYS  
Phones: Office 5781 - 2161  
Res. 2161  
16 S. W. Court St.  
Daily Bldg.  
Spearman, Texas.

FOR SALE—2 piece living room  
suit, Divan makes bed.  
1 - Baby Bassinet, With Mattress  
1 - End Table, 1 - High Chair,  
1 - Baby Walker, 1 - Gas Heater  
See Mrs. Virgil Floyd at  
Floyd's Locker.

FOR SALE—2 piece living room  
suit. Divan makes bed. Mrs.  
J. M. Cates, Tel. 4601.  
No. 45 2-t-p

HAMMOND ORGAN—Large con-  
sole, used, excellent condition.  
For details write Clark Music  
Co., 409 North 8th St. Garden  
City, Kansas. No. 45 3-t-c

SPINET PIANO—Demonstrator,  
perfect condition, only slightly  
used, generous discount. For  
details, write Clark Music Co.,  
409 North 8th St., Garden  
City, Kansas. No. 45 3-t-c

EL. STUDIO—Invites you. Friday  
and Saturday in the afternoons,  
seating capacity, 10. It's on the  
Daffodil Trail 110 S. Bernice.  
No. 45 1-t-p

ALL THINGS—Resembling Ben-  
evolent gifts are unappreciated.  
Please refrain from offering.  
Lula Moore. No. 45 1-t-p

WILL BUY—Used typewriter. I.  
L. Harris box 572 Gruver, Tel.  
9002-FH. No. 45 3-t-p

FOR SALE - New radio, record  
player. Used high chair, good  
condition. Baby bed. Call at  
4th trailer at Miller's Trail-  
er court. 45-1-t-p

FOR RENT - Furnished Ap-  
artments and houses. Also  
sleeping rooms. Have some  
traverse drapery rods for  
sale. Mrs. Maude Mathews.  
Phone 2971 - 45-1-t-c

FOR RENT—Large nice house  
See Mrs. J. S. Caldwell 112  
South Endcott. or Phone  
2881. No. 46 1-t-c

WANTED—Baby-sitting Mrs. Ge-  
orge Rook. Phone 5321. Back of  
Slim Cates. No. 46 4-t-n

average person listens to the man  
who talks loudest, not to the one  
who knows anything about the  
subject?

**Spearman Future  
Homemakers**

The Spearman Chapter of Fu-  
ture Homemakers held its second  
meeting October 3 at 8:30 in the  
homemaking department with Nor-  
ma Archer, president, presiding.  
Forty-two girls attended.

The group discussed plans and  
made arrangements for entering a  
booth in the Hansford County  
free fair.

The FHA favorite was chosen  
for the year.  
After the regular business meet-  
ing, Elma Pool, program chair-  
man, with the assistance of her  
committee entertained the new  
members with a surprise party.  
Refreshments of sandwiches, cookies,  
and cakes were served. The girls  
then played volleyball in the  
gym.  
Anne Chevalier—Reporter.

**Harmony Music Club  
Meeting Held Oct. 11**

The Harmony Music Club of  
Gruver met in the Gruver Meth-  
odist Church at 7:30 p. m. on  
October 11, to install officers and  
initiate the new members.

Mrs. Aubrey Peddy played the  
professional and recessional. Mrs.  
Robert Alexander, Sr. was the  
installing officer and Miss Janelle  
Winkler was the installing chap-  
lain.

The following officers were in-  
stalled:  
Kathryn Knutson - President.  
Marlene Gruver - Vice - Presid-  
ent.

Ramona Jones - Secretary  
Gloria Delano - Treasurer.  
Kathy Truax was chairman of  
the initiation committee. The fol-  
lowing girls were initiated into  
the club: Shirley Bratton, Mona  
Hale, Jennie Jones, Judy Ottinger,  
Devonna Wilson, Kay Winger, Sue  
McClellan, and Betty Mathews.  
Mrs. W. J. Eddleman and Mrs.  
Otho Brooks are the advisors for  
this year.  
Janet Eddleman-Reporter

Mrs. Marceta Martin had as  
Sunday dinner guests: Mr. and  
Mrs. Ray Robertson, Danny and  
Brenda, and Mr. and Mrs. Billy  
Miller. The occasion was a birth-  
day dinner for her daughters.

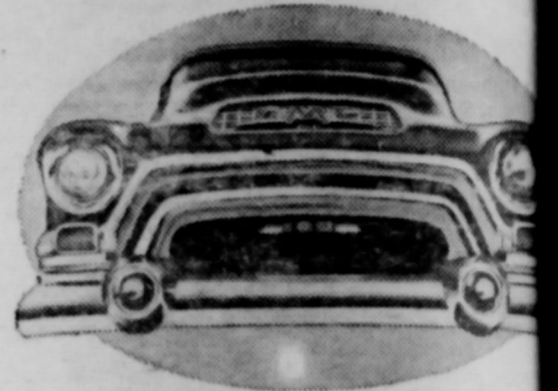
**Boxwell Bros'**

Funeral Home  
and  
Flower Shop  
Day — Night Phone 2751  
SPEARMAN, TEXAS



**Why pay more  
for less?**

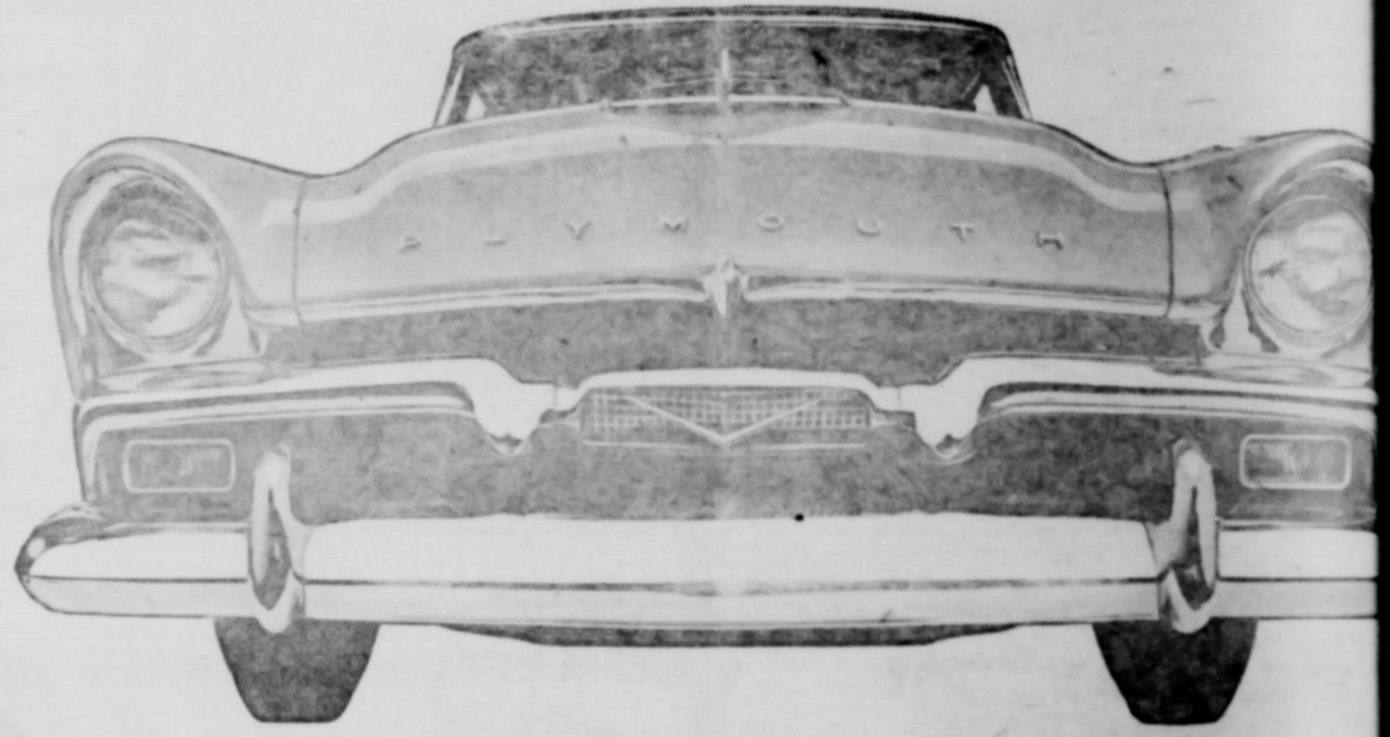
Did you know that the new Blue Chip GMC  
—acknowledged leader in modern features  
—in smart styling—can now be bought for  
less than many competitive trucks—due to  
recent price increases in the industry? Take  
advantage of GMC's present prices today.  
You'll get Blue Chip GMC quality at the  
greatest bargain in history.



**COURY MOTOR COMPANY**

Highway 117 — Phone 5251 — Spearman, Texas

See us, too, for Triple-Checked used trucks



Now...you can buy one! All-new

**AERODYNAMIC  
PLYMOUTH '56**

Revolutionary new Push-Button Driving... first in the low-price three!  
Fabulous new Aerodynamic Styling... bigger... longer... roomier... as  
new as the jet age! Blazing new 90-90 Turbo-Torque Power to give you  
Top Thrust at Take-Off! See the thrilling new Plymouth '56 today!

**PUSH-BUTTON DRIVING**

With a finger-tip touch on a button you select your  
driving range. As easy as flicking a light switch!  
Then Plymouth's fully automatic PowerFlite—the  
world's smoothest, most advanced transmission—  
takes over. It's the ultimate in driving ease and  
another Plymouth first in the low-price 3.



200 V-8 hp available with PowerPak in all 4 lines—Belvedere, Savoy, Plaza and Suburban. Or choose 187 hp  
in Belvedere and Suburban lines. In Savoy and Plaza lines you get 180 V-8 hp. If you prefer the super-  
economy of Plymouth's PowerFlow 6—also available in all 4 lines—you get 125 hp, or 131 hp with PowerPak.

The car that's going places with the Young in Heart!

**SPEARMAN MOTOR COMPANY**  
316 West Kenneth - Phone 3781 - Spearman, Texas

Sparrman Re...  
Standard Headlight, Put...  
MILLER, Editor...  
Texas, under the Act...  
adjoining counties, On...  
CLASSIFIED ADVERT...  
per word; 2c a word...  
PUBLIC: Any error...  
of any individual...  
columns of The Sp...  
to the attention of...  
chell w...  
Point...  
Charlie...  
have Pa...  
ing and...  
for the...  
there w...  
curing...  
chells I...  
did not...  
weeks...  
editor...  
Hazel...  
and not...  
we cou...  
craving...  
loit. W...  
even lo...  
but ju...  
and inf...  
was th...  
and it...  
story o...  
went 1...  
a great...  
ture w...  
and no...  
chell...  
and M...  
ance o...  
GI...  
the sit...  
ies an...  
the pr...  
Gru...  
Gue...  
It...  
Gruver...  
Metho...  
ober...  
view...  
Cator...  
Feder...  
Musier...  
Onio...  
Donal...  
Book...  
Medit...  
The...  
Dort...  
Claud...  
Go...  
Arno...  
Dick...  
Loth...  
V. W...  
Me...  
dame...  
CALL...  
world's...  
Cloth...  
a step...  
atic wa...  
wonderful time...  
I just take...  
dryer. Then wh...  
washer. My au...  
dry them faste...  
LIGHT...  
COMMUNITY...  
SERVICE

**The Spearman Reporter**  
 Published Thursday of each week  
 at Spearman, Texas  
**Editor and Publisher**  
 W. J. Eddleman  
 Nov. 21, 1919 at the Post Office  
 under the Act of March 3, 1879.  
 Second-class postage paid at Spearman, Texas, under the Act of March 3, 1879.  
 One Year \$2.50  
 Six Months \$1.50  
 Three Months \$1.00  
 Classified Advertising  
 10c per word; 2c a word for every issue thereafter.  
 Display Rates on Request  
 Any erroneous reflection upon the  
 publisher or any individual, firm or corporation that  
 appears in the columns of The Spearman Reporter will be  
 referred to the attention of the management.

chell winning the national Hot Point range contest. I asked Charlie to get me a picture and have Paul Loftin make an engraving and send it to me in time for the paper. Unfortunately, there was a bit of delay in securing the print for Mrs. Mitchell's picture, and the engraving did not arrive in time for last week's newspaper. The country editor got the engraving of Miss Hazel Holt out of the mail, and not having met Mrs. Mitchell, we could not tell that the engraving represented Miss Hazel Holt. We confess that we did not even look for the original photo, but just grabbed the engraving and informed our foreman that it was the picture of Mrs. Mitchell, and it went with the two column story on page one. That's how it went. But we have learned from a great many folk that the picture was that of Miss Hazel Holt and not the picture of Mrs. Mitchell. WE DO thank Mrs. Mitchell and Miss Holt for their acceptance of this explanation, and we are GLAD that we can clear-up the situation with live news stories and the proper picture with the proper stories this week.

**Gruver Music Club Guest Day**  
 It was Guest Day when the Gruver Music Club met at the Methodist Church, Tuesday October 11, 1955, for a Book Review, The President, Mrs. J. H. Cator, presided.  
 Club Musical Note Mrs. Darrell Cooper "Onions in the Stew" Betty McDonald.  
 Book Review, Mrs. W. L. Maupin Meditation, Mrs. S. B. Hale.  
 The Hostesses were Mrs. A. C. Bart, Mrs. Marie Delano, and Mrs. Claude Watkins.  
 Guests present were: Madam Arnold-Bayless, J. B. Dooly, Dick Haffey, Don Hudson, Tris Leatherman, D. L. McClellan, O. V. Walker.  
 Members present were: Mrs. James Robert Alexander, Arthur

**THIS and THAT Around Gruver**

A lot of maize is being cut around this end of the county. Most of it is making good, we have heard as much as one hundred bushels to the acre. Some of it is still a little green and they have had to stop cutting for a while.

Do you know who played in the girls Basketball team in 1937, and who played football when you are in town walk down to the G. & G. Food Store. In the window you will see an enlarged picture of the girls basketball team and the boys football team. See if you can recognize them. If you would like a copy we'll make one for you.

Do you remember "Buck" Luttrell when he played basketball for Gruver? Then he went into the navy, where he has been ever since. He married Donna Kindy, now they are making their home at Norfolk, Va. Buck is stationed at the navy air base there. Their address 1205 W. Oceanview Ave, Norfolk, Va.

Mr. and Mrs. Gene Woods, were in Amarillo on business last Monday. Mrs. Woods is the former Anna Beth Winder. We also saw Ray and Mrs. Cecil Ottinger over there.

Mrs. Robert Alexander has been entertaining guests in her home. Mrs. Arnie Morgan and daughter Marilyn were here from Tulsa. They came from Stratford, with Mrs. Alexander's sister, Jimp Vincent.

Frankie and Olin Ector of Ocala, Fla., spent Thursday night with Mr. and Mrs. E. C. Barnes. They have finished harvesting their maize in Sherman County and were on their way home in their new green Ford bus.

Mr. and Mrs. Fred Womble and family went to Amarillo on Wednesday. Fred is one of those who had to stop harvesting

ing maize for the time being. Mrs. Edna Stewart is seriously ill in the Spearman Hospital. Her son Ronnie Luther is here from Austin where he is a student at T. U. Her daughter Mrs. Shirley Faben of North Carolina is also with her.  
 Mrs. Ray Brandvik, the former Christine Williams has been very ill and underwent surgery at an Amarillo hospital. We understand that she is much better and is back at home.

We express our sincere sympathy. Mr. and Mrs. Ted McClellan and Linda Kay flew to Dallas this week end. Linda has not been well lately and they are taking her to a clinic. Ted will also have a check up, and he too, has not been well.  
 Every year since the Harmony Club organized it has been our privilege to attend the installation of its officers, and take a picture of the group. This year we attended again, last Thursday evening in the Methodist Church. Mrs. Robert Alexander, who worked hard to get this organization started, was the installing officer. Miss Jancee Winkler was the installing chaplain. Mrs. L. O. Brooks, one of the counselors presented the officers elect. Mrs. J. Eddleman is the other counselor. Mrs. Aubrey Peddy was or-

ganized. The officers installed were: Kathryn Knutson, president; Martine Gruver, vice-president; Ramona Jones, secretary and Gloria Delano, treasurer.  
 A quartet, Gloria Delano, Janet Eddleman, KKathy Truax and Georgia Bratton, sang "Sentimental Journey". The other members of the club are: Shirley Bratton, Lu Ann Cator, Adeline Dahl, Jolene George, Mona Hale, Gail Wells, Batty Matthews, Judy Ottinger, Saellen Hawkins, Jennie Jones, Pat Lane, Lou Melton, Sue Melton, Frances Morris, Sue McClellan, Linda McClellan, Kay Winger and Devonna Wilson.  
 At least four American League teams are taking their baseball pretty seriously these days.  
 One thing for which 1955 will be remembered is the widespread first time in the U. S.



**HI-OCTANE**  
**SHAMROCK**  
**GASOLINES**

**Cloud Master**  
 A clean burning premium gasoline that puts new life into your engine... gives quicker starts, longer mileage and smoother, more powerful performance.

**Trail Master**  
 A higher octane gasoline that offers extra power and greater anti-knock performance for users of regular gasoline... and at no additional cost.

**Quality You Can Measure By Your Car's Performance**

**2**

Announcing the Fabulous '56 Pontiac

THE STAR CHIEF 4-DOOR CATALINA

Introducing A BIG AND VITAL GENERAL MOTORS "AUTOMOTIVE FIRST"!

A new Strato-Flight Hydra-Matic—coupled with Pontiac's 227-H.P. Strato-Streak V-8—results in performance so new and dramatic it must be experienced to be believed!

With all that's newest in glamour—and all that's greatest in "go"—the fabulous '56 Pontiac, now on display, awaits your hands on the wheel. And when you drive it, you will get the biggest thrill in all your motoring experience—because this car is really loaded! The big and vital General Motors "First", which heads its long list of look-ahead features, couples the two most advanced high-performance developments in the industry:  
 1. An all-new, big-bore Strato-Streak V-8 engine that puts 227 blazing horse power at your toe-tip.  
 2. A completely new Strato-Flight Hydra-Matic\* that delivers this terrific "go" with a smooth surge of power at any speed. You now sweep from take-off to performance with the ease of a sail! You slow down for traffic, speed up passing, or gun for a high hill with the changing pressure of your toe on the accelerator the only sign of effort. You may have had it smooth before—but never like this! It literally must be experienced to be believed. That's plenty—but there's much more to make this a date to be long remembered.

There's smart, new beauty and luxury for America's most distinctive car. There's the safety of big brakes and road-hugging length... the security of a smooth new ride and sure-footed cornering. There are many, many other things which mark this beauty as the glamorous pattern for tomorrow's cars. But come in and see for yourself. Take a long look at the six luxurious new Four-door and Two-door Catalina hardtops. Sample the results of its fabulous General Motors "First". Sure as you enjoy thrilling action, here's your next car! \*Optional at extra cost.

**SEE AND DRIVE IT! ON DISPLAY TOMORROW**

**BRUCE PONTIAC**  
 206 Hancock — Phone 4331 — Spearman, Texas

CALL IT THE World's Shortest Clothesline

a step from my automatic wasner to my electric dryer

wonderful time, work and step saver my automatic electric  
 I just take clean clothes out of my washer and pop them  
 dryer. Then while they're drying, I put another load of clothes  
 washer. My automatic electric laundry lets me wash clothes  
 dry them faster... right in my own home. Weather worries  
 and back-breaking washday work  
 are banished forever!

For a modern automatic electric laundry see your appliance dealer or visit our office soon.

**LIGHT COMMUNITY SERVICE**

ore  
 n't  
 e It  
 ANY  
 an, Texas  
 MIC  
 '56  
 e low-price three!  
 er... roomier... as  
 Power to give you  
 mouth '56 today!  
 urban. Or choose 187 hp  
 If you prefer the super-  
 131 hp with PowerPak.  
 art!  
 PANY  
 n, Texas

**Coffee Closes Year For Delphinium Club**

The Delphinium Flower Club closed their year's program with a coffee in the home of Mrs. C. A. Gibner on Monday October 17, at 10:00 a. m.

The serving table was laid with a white cut-work cloth, in linen. Mrs. Bob Schnell and Mrs. Pope Gibner presided over the tea and coffee services.

Mrs. Pope Gibner, retiring President, was presented with an appreciative gift.

New officers for the coming year are: President, Mrs. Sid Clark; Vice-pres. Mrs. J. A. Tipton; Secy. Mrs. P. A. Lyon; Treasurer Mrs. John R. Collard.

Members present included Mesdames: Bob Schnell, John Bishop, Jo Dan Bryan, Sid Clark, John R. Collard, Pope Gibner, Vester Hill, P. A. Lyon, Ray Phelps, W. B. Seitz, J. A. Tipton, Jane Meek, Jack Pitzer and the hostess Mrs. Gibner.

**Birthday Dinner Enjoyed Sunday**

Mrs. Dixie Ruth Gill and family of Canyon had her father L. M. Buchner of Follett as dinner guest Sunday in honor of his birthday.

Other guests were his sister, Mrs. James Sparks, Evan and Jerry of Spearman, two brothers, Don of Lubbock, and Gene and family of Amarillo; Larry Sparks and Ann Vaughn, students of West Texas College of Canyon.

Mrs. James Sparks spent the long week end with her sister.

**Medlin H. D. Club**

Medlin club met in the home of Mrs. Frank Davis on Oct. 14, for an all day meeting.

Mrs. Johnnie Close gave a demonstration on the use of powdered milk in the family diet. Meat loaf, bacon slaw, creamed asparagus, Jello with a whipped topping was served to Mesdames: John Trindle, Frank Davis, Virgil Hill, Allen Pierce, Johnnie Close, Jack Whitson, Lawrence Dossett, Bob Hays and Miss Gibbs.

The club will meet again Oct. 21, with Mrs. Virgil Hill, at 2:30

**Gruver Girl Scouts**

Mrs. Reynolds is the leader this year. We met at the Methodist church from 4:00 to 5:00. We elected officers on Tuesday Oct. 3, as follows: Margaret Clawson, Reporter, Alicia Williams, Sec. Judy Brown, drew officers. Other members are: Martha Walker, Linda Lar, Eva Cator and Sandra Walker, and Patty Reynolds.

All these girls are 10 and 11

years of age and in the fifth and sixth grades of the Gruver School.

**Mrs. Roberts To Give Book Review Here October 24**

A book review will be given by the Hansford Home Demonstration Club Monday, October 24, 1955 at 7:30 in the Home Demonstration Club room. Mrs. Luther G. Roberts of Borger will review "Remember These Things" by Paul Harvey. This Book is one of the selections of the Texas Home Demonstration Association for this year. Mrs. Roberts gave a book review for this club last year and was very well received.

The public is invited and the Home Demonstration Club members of the county are urged to attend.

There will be no admission charge.

**Noon Luncheon For Hansford H. D. Club**

The Hansford Home Demonstration Club met October 10, 1955 in the home of Mrs. Paul Smith. The business meeting was held in the morning before the luncheon served at noon. Plans for the book review to be in the club

room October 24 were discussed. All who are interested are invited as guests and especially all Home Demonstration Club members are urged to attend.

A report of Achievement Day in November was given, including the information that all who are making dresses in the Advanced Dressmaking Course, will be expected to model their dresses at that time.

Mrs. Charles Brock resigned from the club. Her resignation was accepted with reluctance.

Miss June Gibbs, the County Home Demonstration Agent, had as her guest Mrs. Eula J. Newman who is an Extension Specialist in Home Management at College Station. The club felt very fortunate that Mrs. Newman was here on its meeting day.

A luncheon, furnished by club members, was served to the two guests and members. The menu consisted of the following foods containing powdered milk: meat loaf, creamed asparagus, baked potato, bacon slaw, hot rolls, and peaches with whipped topping.

After lunch, Mrs. Newman gave a very interesting lesson on "Family Spending". This is a part of the course of study, for next year, of all Home Demonstration Clubs in Hansford County. Mrs.

Richard Kingsley will be the club's demonstrator for this course next year.

Those attending were: Mrs. Virgil Floyd, Mrs. D. B. Keim, Mrs. Richard Kingsley, Mrs. Harry Shedeck, Mrs. Daniel Sheets, Mrs. Joe Traylor, Mrs. Pete Fisher, Mrs. Newman, Miss Gibbs, and the hostess, Mrs. Smith.

**Layman's Day**

One service each year in Methodism is known as Layman's Day. This next Sunday Evening October 23 at 7:00 O'clock will be conducted by the Charge Lay Leader of the First Methodist Church F. B. Schubert.

You are invited to attend this Layman's Service and to bring the family or a friend.

**LUNCH LAST 40 YEARS.**

Milwaukee, Wis. — Plumbers, making repairs on a house which was built in 1915, cut into a wall and found a sandwich, wrapped in a newspaper dated Sept. 7, 1915. The sandwich was intact—rye bread, crust and all. The filling had blackened too much to tell what it was—and the bread was hard as a rock.

Immigration to the USA in 1820 was 8,385. In 1952 it was 265,520.

**MR. IRRIGATION FARMER**

Conserve your water. Save labor on ditches. Save soil by eliminating open ditches. Make your irrigation easier. Did you know that according to tests at Texas Tech College, the irrigation water lost in open ditches from seepage and evaporation runs as high as 40 percent of what you pump. You eliminate this loss, cover more acres, and make your irrigation a lot easier with an Aray Concrete Irrigation Pipeline System.

Highest grade Concrete Pipe Manufactured at Pampa, Texas. Our location saves you hundreds of dollars in freight. Get our free estimate before you buy. Write or hone.

**AREY CONCRETE PIPE CO.**

OR

Box 1501, Pampa, Tex. - 106 S. Fordham, Perryton, Ter.  
Phone - Pampa 4-7487 Phone Perryton 8934

**TROP-ARTIC**  
*Guaranteed\**

**ALL-WEATHER MOTOR OIL**

**THE RIGHT OIL FOR RIGHT NOW IS RIGHT HERE**



\*OUR GUARANTEE: Use a case-full of Trop-Artic Motor Oil for ten days or up to 1,000 miles. If you aren't completely satisfied that it lives up to all the claims made for it, your Phillips 66 Dealer will replace it with any other available oil you prefer—at no expense to you.

**Be Weather-Wise! Change Today!**

For the weather ahead . . . all kinds of weather . . . get the extra engine protection that goes with TROP-ARTIC All-Weather Motor Oil.

TROP-ARTIC is versatile. It won't get too thick in cold weather. It won't get too thin in a hot engine. It reduces wear tremendously . . . keeps your engine cleaner. That's why, compared to older types of oils, it can even double engine life!

For easy starting and protection against wear on cold days . . . and for continued protection when your engine temperature goes up, get TROP-ARTIC All-Weather Motor Oil from your Phillips 66 Dealer.

PHILLIPS PETROLEUM COMPANY

**IT'S PERFORMANCE THAT COUNTS!**

COMING IN THE '56 OLDSMOBILES!  
—A BRAND NEW CONCEPT IN AUTOMATIC TRANS.

NEW

*Jetaway*

HYDRA-MATIC DRIVE



ALL THE *Flow* OF FLUID . . .  
ALL THE *Go* OF GEARS!

Jetaway! . . . rocketing your way in the dazzling Oldsmobiles for 1956! Jetaway! . . . powerful, powerfully smooth—an entirely new idea in automatic transmissions! Jetaway! . . . just one of the major advancements you can count on in Oldsmobile's new Jetaway Hydra-Matic will give you the smoothest, most wonderful driving experience.

Plus all the getaway and positive power—the economy and dependability that millions of Hydra-Matic owners know so well. Just wait for Jetaway, the "new Olds idea" on its way in the terrific '56 Oldsmobiles!



Oh-h-h! those '56 OLDSMOBILES!  
Coming November 3rd

**COURY MOTOR COMPANY**

SPEARMAN, TEXAS

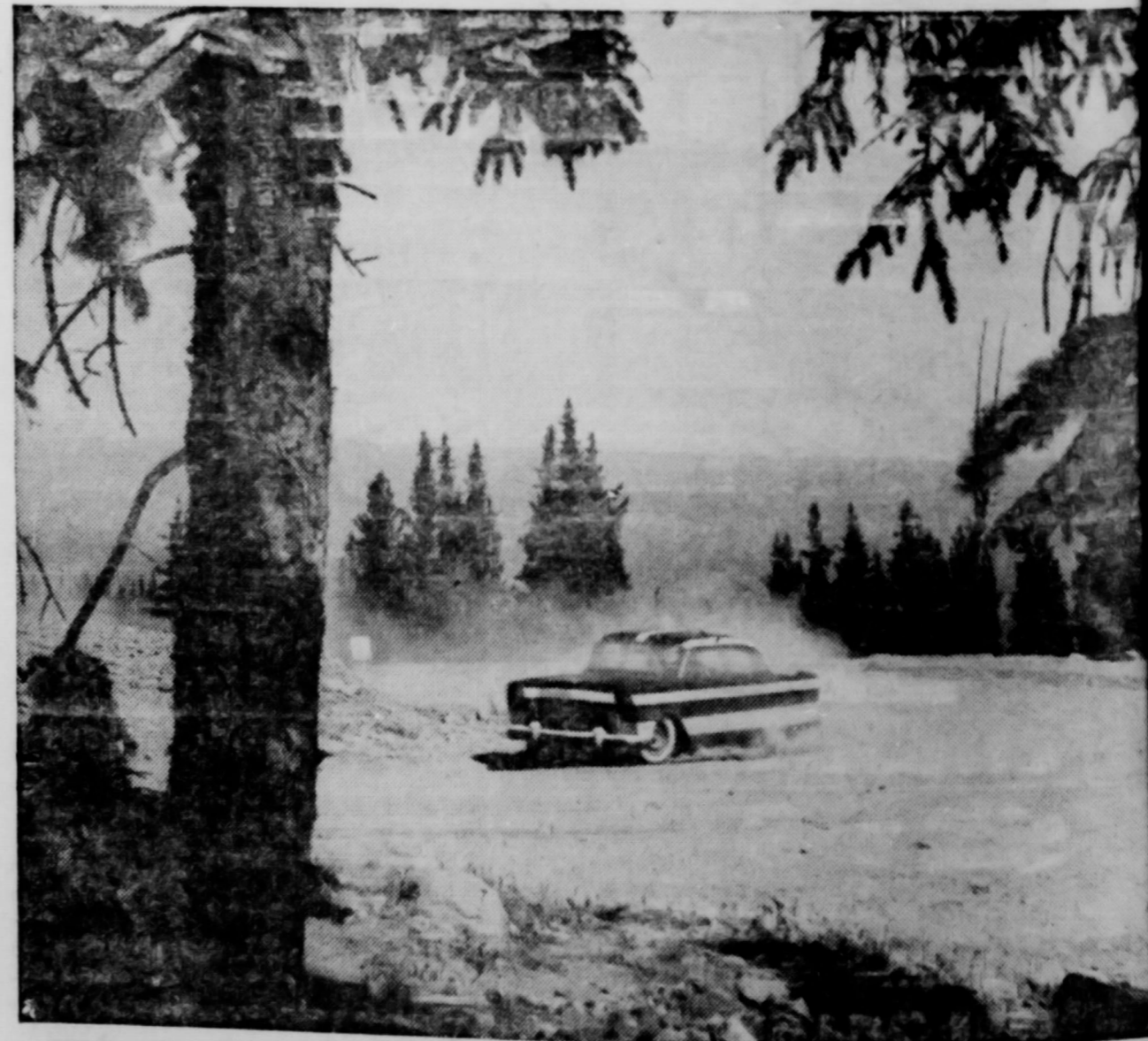
HIGHWAY 117

VISIT THE "ROCKET ROOM" . . . AT YOUR OLDSMOBILE DEALER'S!

**'56 Chevrolet sets new Pikes Peak record in top-secret test!**

Not long ago a hush-hush, the '56 Chevrolet scorched the winding road up Colorado's Pikes Peak, setting a new NASCAR\* certified record the first time that old King of the Mountain has seen a new official stock car in years! And what a road! 14 turns and no guardrail! It's the only time a new model ever produced such a great road car before its time! The '56 Chevrolet shows performance that makes drivers and more fun. So wait for the beat the King of the Mountain!

\*National Association for Stock Car Auto Racing tested and certified the performance of this record.



A RECORD-BREAKING NEW CHEVROLET  
**FRIDAY, NOV. 4**

The hot one's even hotter

**JAMESON CHEVROLET CO.**

120 Main Street - Phone 2291 - Spearman, Texas

WILL RECEIVE  
ONE YEAR'S  
SUBSCRIPTION.  
TO THE  
REPORTER  
FREE



THE OWNER  
OR OPERATOR  
OF THE FARM  
ON PAGE 1  
IS ASKED TO  
CALL AT THE  
REPORTER  
AND RECEIVE

A BEAUTIFUL  
FULL PHOTO-  
MOUNTED  
FREE  
OF  
CHARGE

HOME IS HOME OF MR. AND MRS. E. E.

Mystery Home of the week is that of Mr. and Mrs. Walker, located just Northwest of Spearman. This three-quarter section Mystery Home is owned by E. E. Walker and his son.

The land was purchased from Oil Development Company in 1941. The Walker family consisted of Mr. and Mrs. Walker and two sons and two daughters, all of the North Plains. Mr. Walker, the eldest of the family (now deceased) moved to the state in 1924, locating at Groom,

Texas. In 1934 the family moved to Hansford county and located on the Sutton land, where they farmed and handled white face cattle for a number of years. Mrs. Walker, mother of the family died in 1935, and Mr. Walker married the present Mrs. Walker in 1938. The Mystery Home is a comfortable two bed room farm home, with barn, wheat storage and a battery of chicken houses.

Mr. Walker was born in Illinois, and married in 1898 spending his entire married life in the Panhandle area.

Of the two sons, Otto resides at a farm home less than a mile from his father. J. W. (Bill) Walker the eldest son, lives at Perryton, Texas. One daughter lives at Amarillo, Texas and the remaining daughter

lives at Providence, R. I.

Mr. Walker has been a successful wheat and small grain farmer during his more than a quarter of a century in this area. He did handle white face cattle until his pasture land was sold and he reverted to strict farming of small grain. He has been a very successful chicken raiser, and to this day has quite a number of chickens on his farm.

We were unable to talk with Mr. E. E. Walker, but his son J. W. (Bill) Walker tells us that his father raised some outstanding wheat crops at the Mystery farm. He recalls that more than an average of 35 bushels per acre was harvested in the years 1942 and 1944.

SMOBIL  
3rd  
MPANY  
SMOBILE DEALER'S



YOUR FOOD DOLLARS HAVE MORE VALUE

CUT RATE GROCERY & MARKET

BANKING HOURS  
9 A. M. - 3 P. M.

FIRST STATE BANK

SPEARMAN, TEXAS

GETTING OFF

TO A GOOD START . . . . .

Your best start toward financial success is to open an account with us and save regularly where your money earns more for you. Insured? Certainly. All accounts are insured up to \$10,000. Why not get off to that good start NOW?

atic Farmer Reports . . .  
ELL Hay Chopper Cuts  
Feed 'Ever' for Stock



A SMALL Investment!  
A BIG Return!  
ONE OPERATION!  
The LUNDELL Hay Chopper cuts through hay, corn stalks, weeds, straw—chops or shreds it thoroughly, places it in sugar and blows it into your wagon. Easy maintenance—only 14 parts. Time saved! Labor saved!

FORD IMPLEMENT CO.

Eversman AUTOMATIC LAND LEVELER AND HYDRAULIC SCRAPER



Eversman precision smoothed, automatically leveled fields save water, lower production costs and SUBSTANTIALLY INCREASE crop yields on irrigated fields. Only Eversman patented crank axle takes off the high places and fills in the low ones automatically producing a firm well packed seed bed as the machine moves along. The Eversman doubles as an efficient dirt mover or scraper for filling pot holes, healing gullies, and producing the proper grade on fields for efficient farming.

Announcing New Eversman Hydraulic Models 9H & 12H  
Six Models . . . 9H, 12H, 28H, and 48H with Hydraulic Controls . . . PPL and 12PL with Mechanical Controls. Spring-tooth attachment available.

Eversman Land Levelers and Ditchers For Sale and For Rent

B. AND C. EQUIPMENT CO.  
SPEARMAN, TEXAS

SAVE ON DRUG NEEDS

SPEARMAN DRUG STORE  
Your Rexall Store  
We're in Business For Your Health!

R. L. McCLELLAN GRAIN CO.

The Month of October is said to be the best time to apply CONCENTRATED BORASCU on Bindweeds for a permanent kill. A sure way to rid your farm of these noxious weeds. Heptachlor for treating wheat seed to prevent damage by wire worms.



ty of storage space for your  
MAIZE  
We have a fresh shipment of sodium Chlorate, for Johnson grass and weeds.  
Equity of Builder and Bailer Twine  
EQUITY

FABSPRAY  
PUTS NEW COLOR BACK IN FABRICS  
SPEARMAN HARDWARE  
Mr. and Mrs. John Bishop



GIVE ME JUST ENOUGH GAS TO GET TO LOVER'S LANE  
No purchase too small to get our prompt, courteous attention. No job too big for us to take in stride. Drive in . . . if it's only for free air or water . . . get acquainted with our aimed-to-please service!

CONSUMER SALES CO.

FURNITURE  
APPLIANCES  
GIFTS  
Panhandle Furniture Mart

OMATIC TRANS  
y  
IC DRIV  
WING  
NER  
ATOR  
ARM  
E 1  
rocketing your way in the dazzl  
for 1956! Jetaway! . . . powerfu  
mouth—an entirely new idea in aut  
Jetaway! . . . just one of the  
vements you can count on in Old  
new Jetaway Hydra-Matic will  
oothest, most wonderful driving  
getaway and positive power—the  
pendability that millions of Hydra  
so well. Just wait for Jetaway.  
idea" on its way in the terrific '56  
SMOBIL  
3rd  
MPANY  
SMOBILE DEALER'S  
Not long ago a hush-hush, ca  
'56 Chevrolet scorched the ne  
ing road up Colorado's Pikes  
new NASCAR\* certified r  
first time that old King of ca  
has seen a new official stock ca  
years! And what a road! It t  
turns and no guardrail! It's t  
only time a new model ever pe  
such a great road car before it  
tion! The '56 Chevrolet showe  
of performance that makes dri  
and more fun. So wait for th  
beat the King of the Mountai  
\*National Association for Stock Car Auto Racin  
lined and certified the performance of this pro  
The hot one's  
even ho  
VROLET CO.  
91 - Spearman, Texas

