

The Spearman Reporter

THE SPEARMAN REPORTER, HANSFORD COUNTY, THURSDAY, SEPT. 29, 1955

ST FOR I

oil in natural gas
good results, use
Drip has a unifor
the day and the c
ice. Remember, oil
most efficient in
Seed Wheat ad
ases, oils. Turbine
wire and twine.

er Grain &
Phone 3751

ELLIN

LOTS, 200 H
CHIEF POLLE
hart, Texas LIVEST
OCTOBER 4, Startin
S. COWS BRED, R
OPEN HEIFERS
TON AND S
ratford, Texo



Community Exhibits
Club Exhibits
Art Exhibits
Poultry and Livestock Exhibits



FRIDAY AND SATURDAY MEET YOUR NEIGHBOR AT THE HANS-

OCTOBER 7TH. AND 8TH. FORD COUNTY FAIR



comes to you in a n
venient way to se
Cola. Same quality
hed. Almost every
Coke on hand.

work or on th
othing like a C

Now! In
both King
Standard
every ha

AREA
NY

"Coke"

Washington News Letter From Your Congressman Walter Rogers

September 9, 1955
To The People Of The 18th
District:
BACK TO THE CAPITAL CITY

The Rogers family arrived back in the Capital City at 11:59 p. m. September 8th. It was the end of a long day and a long trip. There is a common expression in this section of the country that a trip to the south or southwest is "down hill". This no doubt finds its origin in the fact that the top side of a map is north and the lower side is south. Although the Panhandle is well over 2 thousand feet higher above sea level than most of the eastern sections, I must admit that the Rogers family found the trip home to the Panhandle "down hill and easy sailing all the way". The trip back to Washington was up hill all the way and I don't know whether the children dragging their feet had anything to do with it, but it sure a hard pull. This is true no matter how the trip is made. I had been all ways but one so we came back that route. We left Texas at Texarkana, crossed Louisiana, Mississippi, Alabama, turned north through Georgia into the Carolinas, both North and South, anti-goglin' across the State of Virginia to Richmond and north to Washington, D. C. Our last day on the road is one of the most important ones in our life, not only because we arrived back in Washington safely, but because it is the birthday of our youngest. We started the day at Seneca, South Carolina, which is about 40 miles from Greenville. First on the schedule was the fanfare and trumpet blowing that always takes place in the Rogers household on everyone's birthday, including the old man's Mary Catherine was seven. Four of her birthdays have been celebrated on the road. Her mother told her that she was the only girl she had ever known who had had birthdays all over the United States. This pleased Mary C. very much.

Many interesting things happened on the trip, some humorous and some otherwise. We drove into a filling station in a southern town and the minute the wheels stopped, Robert the eight year old was out and gone as was his usual practice. Just as we started to leave Jean counted heads and found only five. She jumped out of the car in a startled manner and said, "Where is Robert?" A short, fat negro attendant grinned and said, "He quit". Jean said, "I'm taking about my Robert, not yours". We found him at the funny book stand and departed in good order.

HIGHWAYS

A trip through seventeen states and the District of Columbia makes one feel that he is pretty well versed on the highway situation. It is not difficult to point out many of the highways defects in the several states. However, it is very difficult to provide an overall solution to the many arms of the problems involved. The Texas highways, in my opinion, are far and away ahead of most states. In many of the other states the highways are poor and the traffic regulations are cumbersome. There must be some drastic changes, about which much complaint can be expected. However, we would be foolish to spend money on a gigantic highway program without using a little foresight to correct some of the mistakes that have been made in trying to do patchwork on antiquated systems. The program must be a well planned program, fully recognizing the increased traffic that can be expected from the increased production of automobile equipment and the inevitable increase in the population. Had such a program been presented at the last Congress, it would have been adopted.

I feel confident that in the early days of the coming Congress adequate authorizing legislation will be placed on the law books so that this program can be commenced without delay.

THE FOREIGN SITUATION
It is interesting to note that soundings are being made by some large concerns in this country relative to trade with Russia. You can expect more of these. Russia and Red China are two vast markets for manufactured goods. This has been recognized in England for a long time. Some of those who are secretly advocating unlimited trade in this field might remember what a good scrap iron customer Japan was before 1941.

Walter Rogers,
Member of Congress
18th District of Texas.

Because written Chinese contains no alphabet, telephone operators in Chinatown of San Francisco have to memorize names, addresses and numbers of subscribers.

Arizona has the largest U. S. Indian population.

The world's largest cotton plantation is in Mississippi.

Connecticut was the first state to have a written constitution, the Fundamental Orders in 1639.

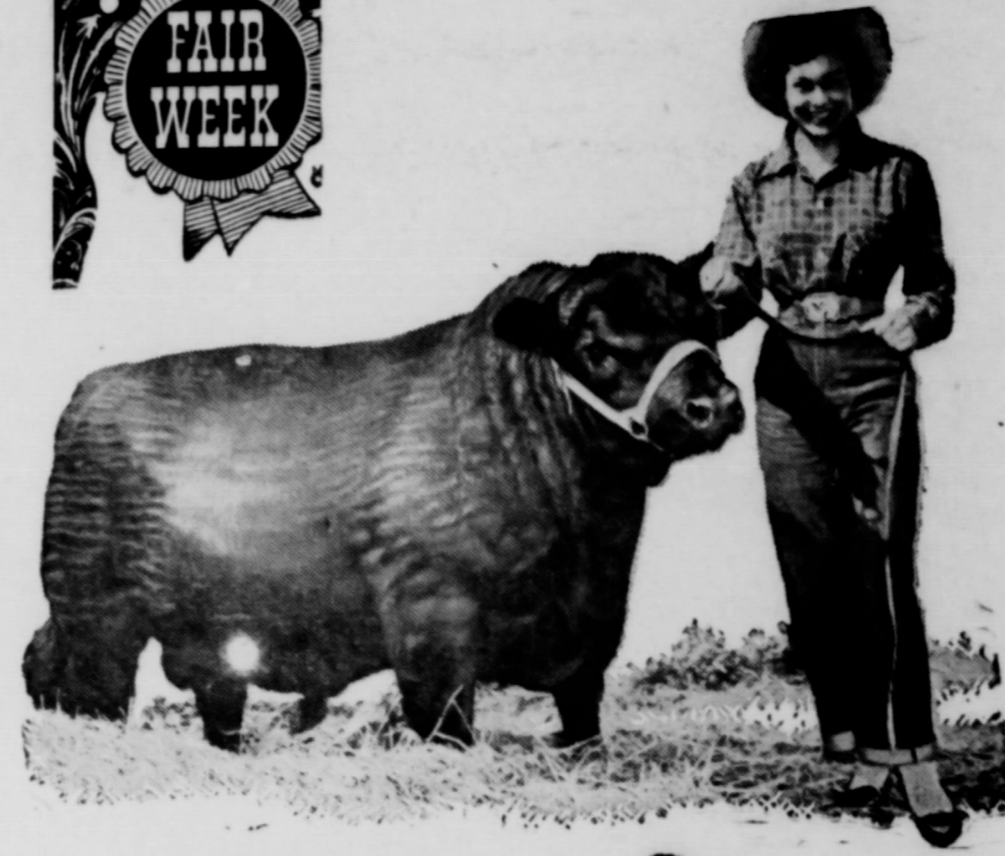


Davy Crockett Meets Indian



Mark Welch, 5, is puzzled by the strangest-looking redskin he's ever seen in a busy career of pioneering. To art connoisseurs, however, the Indian is "Thunder," a 104-pound jade statue by Donal Hord. It represents an American Indian enticing rain by beating a drum. The piece, valued at \$25,000 is one of numerous exhibits of fabulous jewels and art objects at Arthur A. Everts Company, pioneer Dallas jeweler, following opening of the concern's new store. Mark is the great grandson of the store's founder.

WELCOME To Hansford Fair



Community Exhibits
4-H Club Exhibits
Art Exhibits
Poultry and Livestock Exhibits
One of the most interesting and educational programs of Hansford County.
MEET YOUR NEIGHBOR AT THE HANSFORD COUNTY FAIR

Hansford County

- | | |
|--|---|
| Johnnie C. Lee, County Judge | Merle Washington, Treasurer |
| Joe Day, Com. Precinct 1 | G. E. Oakes, Justice Of Peace |
| Ed Vernon, Com. Precinct 2 | Johnny P. Vernon, Veterans Service Officer. |
| B. W. Renner, Com. Precinct 3 | Bill Goldston, County Agent |
| Weldon Greene, Com. Precinct 4 | June Gibbs, Home Demonstration Agent |
| Fred J. Hoskins, County and District Clerk | Viola Campbell, Office Clerk |
| J. B. Cooke, Sheriff and Tax Collector | Arleen Maglaughlin, Office Clerk |
| | Keesee Richardson, Office Clerk |
| | Jean Hart, Office Clerk |
| | Helen Fisher, Office Clerk |

WE'RE RIDIN' HIGH!



Super "88" Holiday Sedan
... SO WE'RE
TRADIN' HIGH!

Record-breaking sales mean record-breaking deals for you!

What a wonderful time to deal for an Oldsmobile! For there's nothing like an Olds in the whole wide world . . . not another car so easy to own, so packed with thrills! "Rocket" Engine! "Flying color" styling! Here's action and glamor that really stand out! Stop in—get our generous appraisal! This month, more than ever . . . there's a "Rocket" for every pocket! So get out of the ordinary . . . into an Olds today!



A "ROCKET" FOR EVERY POCKET!
And you'll find one priced just right for you! Choose from thirteen gorgeous models in Oldsmobile's three thrilling series . . . luxurious Ninety-Eight, the brilliant Super "88" and the budget-priced "88" Oldsmobile "88" 2-Door Sedan illustrated.

This is "Big Deal Week" . . . come in today!
OLDSMOBILE
VISIT THE "ROCKET ROOM" . . . AT YOUR OLDSMOBILE DEALER'S!
COURY MOTOR COMPANY
SPEARMAN, TEXAS HIGHWAY 117 PHONE 5621
BE CAREFUL—DRIVE SAFELY

The Spearman Reporter
to the Hansford Headlight, P
book in Hansford County, at
WILL J. MILLER, Editor
second class matter Nov. 21
of Spearman, Texas, under the A
of Hansford and adjoining counties, Or
of Hansford and adjoining counties
CLASSIFIED ADVERT
insertion, 4c per word; 2c a word
of Thanks, 4c per word
TO THE PUBLIC: Any error
or standing of any individual
appear in the columns of The S
when called to the attention

Hopper Control
Panhandle
Of
September—A
Station. survey made in eight Pan-
counties showed that from
percent control of grass-
was obtained by chemical
Only in isolated areas
the terrain was rough and
rank was the control
of the surveyors, J. M.
of the USDA's Plant
Control Branch and Assist-
Entomologist C. F.

report that approximately
acres of rangeland was
during 1955 in 13 Pan-
counties with a resulting
of \$225,000 to the ranch-
The average increase in
growth where infestation
more than 200 percent.
have shown that only
hoppers per square yard
can consume grass at
rate as a cow. Infesta-
of 30 to 60 'hoppers per
yard may get all of the

On the
timate
has be-
logists
cents
the pr-
most
The
rangel
gram
well a
Follow
grams
bers
years.
helpfu
tation
may
within
The
trol i
too li
had i
centa
speic
contr
They
conce
next
meat
spring
NOTE
Wh
such
It i
that
FUN FUN
Easy to learn and
MINIATURE GOLF -
VISIT THE SPEARMAN
Free Games - Free Sho
bring the family and enjoy an o
Grocery.
Fun daily except Sundays from
11 till 10:30 p. m.

The Spearman Reporter

Published Thursday of each week in Hansford County, at Spearman, Texas.
WILL J. MILLER, Editor and Publisher
 Second class matter Nov. 21, 1919 at the Post Office at Spearman, Texas, under the Act of March 3, 1879.
 One Year \$2.50
 Six Months \$1.50
 Three Months \$1.00
 Single Copies 5c
CLASSIFIED ADVERTISING
 10c per word; 2c a word for every issue thereafter.
 Display Rates on Request
NOTICE TO THE PUBLIC: Any erroneous reflection upon the character or standing of any individual, firm or corporation that appears in the columns of The Spearman Reporter will be removed when called to the attention of the management.

Bulletin Available On Photosensitization Of Cattle

College Station, September—Photosensitization, a disease produced as a result of the reaction of light-colored skin to sunlight after a sensitizing subject or agent has been absorbed through

the animal's system, is the title of a joint Texas Agricultural Experiment Station and Extension Service publication.
 The new bulletin number 812 is available at the office of county agents or from the Agricultural Information Office at College Station.
 Basis for the publication is a study which has been underway

for three years with more than 50 pastures in 30 counties included. The area studied extends from Atascosa county to Wharton county with experimental feeding done in DeWitt and Wharton counties.
 The authors report that all outbreaks of the disease studied occurred on pastures with a high percentage of annual grasses and weeds and a low percentage of

good perennial grasses. Spring and summer are seasons of the most serious outbreaks.
 Each outbreak in the studies fitted in a definite climate-plant growth cycle. Most outbreaks have occurred within two weeks following rain and during periods of rising temperatures. Outbreaks have occurred in Brazos, Polk, and Jasper counties in East Texas and several counties on the

Rio Grande Plain.
 While the disease is seldom fatal, monetary losses are due to loss of weight, damaged udders and secondary infections. No specific treatment is known and symptoms must be treated as they appear.
 Preventives aids include an intensive range improvement program for the problem pastures to include reduced stocking, defer-

red or rotation grazing and conservation practices and plans to develop a high percentage of desirable perennial grasses. Also listed are suggestions for treatment of affected animals.
 The Soviet encourages culture visitors from West.
 August crop estimates promise record farm output.

WEEK'S NEWS



MISS AMERICA, Sharon Kay Ritchie, Denver, crown and scepter, with trophy, after winning title of Miss America of 1956 at Atlantic City.



DISCUSS JAPANESE REARMAMENT—Nobusuke Kishi (left), Secretary General of the Japanese Democratic Party and Senator Walter George of Georgia, meet to discuss Japanese Rearmament and foreign policy.



THE SUNDAY LUCY SHOW was such a hit this summer that Desi Arnaz and Lucille Ball will launch the Fall series of THE LUCY SHOW with one of their all-time great episodes, "The Marriage License" on CBS-TV, sponsored by Dorothy Gray beauty preparations.



FOR AFTERNOON WEAR—Start, Gloria Talbott models a lovely afternoon dress from her latest picture "Lucy Gallant." It is a lemon yellow eyelet embroidered pique backed with black taffeta. Semi-full skirt has unpressed plaits.

RECIPE FOR BEAUTY
 —More important than ever in the winter fashion picture is the "barely there," light-footed flattery of Hanes seamless stockings with invisible heel shadows to complete the long, uncluttered line and slenderize the legs.

Hopper Control

On the uncontrolled lands an estimated \$1,875,000 worth of grass has been destroyed. The entomologists says an expenditure of 60 cents an acre for spray applied at the proper time could have saved most of this loss.
 They point out a successful rangeland hopper control program has longtime results as well as those of immediate value. Following area wide control programs a decrease in hopper numbers will be noted for several years. Spraying small areas is helpful in reducing initial infestations but hoppers migrate and may infest the treated areas within a short time.
 They say most agree that control measures were commenced too late this year. Grasshoppers had already eaten a large percentage of the forage and some species had deposited eggs before control measures were started. They are hopeful that everyone concerned will be on the alert next year and will begin control measures at the proper time next spring.

Station, September—A survey made in eight Panhandle counties showed that from 75 to 90 percent control of grasshoppers was obtained by chemical means. Only in isolated areas where the terrain was rough and the grass rank was the control was the control less than 75 percent. The surveyors, J. M. C. of the USDA's Plant Control Branch and Assistant Entomologist C. F. report that approximately 200,000 acres of rangeland was infested during 1955 in 13 Panhandle counties with a resulting loss of \$225,000 to the ranchmen. The average increase in grasshopper growth where control was practiced was more than 200 percent. It was shown that only 10 hoppers per square yard can consume grass at the rate of a cow. Infestation of 30 to 60 hoppers per square yard may get all of the grass.

NOTES, COMMENTS
 Why is it that newsmen are such characters?
 It is now time to start planning that 1955 vacation.

FUN FUN FUN
 Easy to learn and fun to play
MINIATURE GOLF — ARCHERY
AT THE SPEARMAN PLAYLAND
 Free Games - Free Shots - Cold Drinks
 Bring the family and enjoy an evening of fun. 1 Block East of Grocery.
 Open daily except Sundays from 4 till 9:30 p. m. Saturdays 1 till 10:30 p. m.



It puts your business on Quality Street

While the prosperous looks of this Blue Chip GMC build reputation, its performance builds profits. The ability of its 155-H.P. V8 engine, the strength of its construction, and the savings of its Hydra-Matic* add up to a great buy. See us about one!

Coury Motor Co.

Spearman, Texas Highway 117 Phone 5621

MEET YOUR NEIGHBOR AT THE HANSFORD COUNTY FAIR



**FRIDAY AND SATURDAY
 OCTOBER 7TH. AND 8TH.**

One of the most interesting and educational programs of Hansford County.

FIRST STATE BANK
 Member Federal Reserve System



Fall Opening

ty
 reasurer
 f Peace
 erans Servic
 Agent
 Demonstration
 Clerk
 Office Clerk
 Office Clerk
 Clerk

Exten.
 September 1, 1955
 146 employ-
 Agricultural Ex-
 tended college
 which they be-
 in their
 families.
 G. G. Gib-
 announcement,
 was taken
 offered at

the land-grant college and univer-
 sities for extension workers. Tex-
 as workers were enrolled at the
 University of Arkansas; Colorado
 A. & M. College; Cornell Univer-
 sity; Iowa State College; North
 Carolina State College; Stephens
 F. Austin State College; Texas
 Prairie View A. & M. and Texas
 Southern University.
 Director Gibson said this large
 number of people receiving pro-
 fessional training indicates real
 interest on the part of Extension
 workers in improving their pro-
 fessional abilities which in turn
 means more efficient and effec-

tive demonstrations and programs
 of work in the counties and state.
 A breakdown of attendance by
 jobs shows 71 county agents; 57
 home demonstration agents and
 18 staff members.
 Another group of 126 county
 agricultural agents and assistants
 received training in irrigation,
 sheep and wool and soils. These
 training seasons required less
 than one week and were held at
 College Station, Canyon and Junc-
 tion. No college credits were giv-
 en for the courses but the train-
 ing will be of great value in the
 counties, said Gibson.

one of the toughest problems
 faced by the ranchmen or stock
 farmer. Weather variables, too
 dry and less frequently too wet,
 make necessary continuous adjust-
 ments in stocking rates, says A.
 H. Walker, extension range speci-
 alist.
 The well planned livestock pro-
 gram, explains the specialist,
 should be based on average years
 and not on a single good year.
 The program should make provi-
 sions for deferred grazing of at
 least one pasture each year; the
 planting of supplemental grazing
 crops—summer and winter; ade-
 quate reserves of hay and silage;
 grazing off only about half the
 growth of native grasses and buy-
 ing feeds needed early and in
 season.
 Deferred grazing, points out

Walker, is usually the cheapest
 and best method or range recov-
 ery. It provides for seed, plant
 vigor and litter, that is, if the
 deferred pastures are not grazed
 until frost. Too, he adds, close
 grazing results in less forage
 produced; invasion of pastures
 by poorer kinds of plants; soil
 washing or erosion and perhaps
 of most importance—rainfall pen-
 etration is greatly reduced. During
 May and June 10 inches of rain
 were recorded at the Spur Ex-
 periment Station, on bare soil
 moisture penetration was 9 inches
 but was 51 inches on soil with
 a good grass cover.
 If calves or lambs are being
 held over for the winter, Walker
 says only a plentiful supply of
 grass will make the holding a
 paying proposition. He says too

many operators wait for rain in
 September and October to produce
 their range feed for the winter
 season. "It's a big gamble which
 seldom pays off and making need-
 ed adjustments in livestock num-
 bers before a lack of grass forces
 marketing is a better method to
 follow," says Walker.
 His final suggestion, try to
 keep a reserve of cured grass on
 the range; hay in the barn and
 silage in the ground.

ect:n program outlined in Bul-
 letin 809, Performance As A
 Guide to Beef Cattle Selection,
 says the authors J. K. Riggs, pro-
 fessor of animal husbandry and
 L. A. Maddox, Jr., associate coun-
 ty agent, both of the Texas A. &
 M. College System.
 The new bulletin is available
 at the offices of county agents.
 Outlined in detail are economic
 characteristics that deal with the
 production of beef; a plan for
 selecting more productive breed-
 ing cattle and an explanation,
 with filled in record sheets, of
 the type and kind of records re-
 commended for use in connec-
 tion program.
 The Texas Agricultural Experi-
 ment Station commenced in 1941
 at the Balmorhea station a test-
 ing program for bulls and in
 more recent years the selection
 program has been operating at
 Bluebonnet and Pan Tech sta-
 tions, the latter in cooperation
 with Texas Technological College
 of Lubbock.
 The authors say, "There is a
 sound basis for improvement based
 on performance and the co-
 operative spirit shown by beef
 cattle breeders will carry pro-
 duction to new heights."

Small nations weigh the use of
 nuclear power reactors.
 U. S. acts to make a smaller
 atomic submarine.

The successful will always bear
 the brunt of envious tongues.
 If the weather is still hot, en-
 joy it. The last will soon be gone.



ARE THERE BE ANY ONE WHO LEADS YOU AWAY AS
 HIS REASONS OF HIS PHILOSOPHY AND IDLE FANCIES,
 HUMAN TRADITIONS AND THE WORLD'S CRUDE NOTIONS
 FOLLOWING CHRIST. — COL. 2:8 (WYOMOUTH 10)



A Real Problem
 College Station, September —
 Maintaining the right balance be-
 tween livestock numbers and av-
 ailable range feed and forage is

Here's where your
**FOOD BUDGET
 GETS A BREAK!**

Crisco

3 Lb. Can 79¢

10c COUPON ON EACH CAN

Chili Kimbell's No. 2 Can 41¢

APPLE SAUCE	WHITE SWAN	303 Can	15¢	POPRITE	POPCORN IN OIL	19¢
CRACKERS	1 LB. NABISCO		23¢	POPRITE	POPCORN REG. CAN	2 For 29¢
TOMATO SOUP	CAMPBELL'S REG. CAN		10¢	PINEAPPLE	SLICED NO. 2 CAN	4 For 99¢

FLOUR Buddy's 10 lb. Bag	69¢	Salmon Honey Boy Tall Can	41¢	
CORN	KOUNTY KIST WHOLE KERNAL 12 OZ. CAN	2 For 25¢	WAXED PAPER CUTRITE 125 FT. ROLL	25¢

Potted Meat

Sell Well Reg. Can 5c

FROZEN FOODS

FROZEN PEACHES	10 oz. Can	17¢
Fresher Brand Fish Sticks	10 Sticks per pkg.	35¢
Sunkise Frozen Lemonade	6 oz. Can	2 for 29¢
PET RITZ BUTTER CRUST FROZEN PIES		
CHERRY	APPLE	Each 49¢
PEACH	MINCE	Each 59¢

APRICOTS	WHOLE UNPEELED NO. 23 CAN	25¢
TOMATO SAUCE	WHITE SWAN REG. CAN	3 For 25¢
Blakeyed Peas	WAPCO FRESH SHELLLED 300 SIZE	3 For 39¢
KLEENEX	200 COUNT 2 BOXES	25¢

P r o d u c e

BELL PEPPERS	CALIF FANCY	lb. 10¢
YELLOW ONIONS	1 LB. BAG	9¢
CELERY	CALIF. PASCAL	lb. 9¢
GRAPES	THOMPSON SEEDLESS	10¢
RUSSETS	COLORADO NO. 1, 10 LB. CELLO BAG	45¢

MEATS

FRESH GROUND BEEF	3 LBS.	79¢
PURE PORK SAUSAGE	PINKNEY'S 1 LB. BAG	29¢
FRANKS	PINKNEY'S ALL MEAT 3 LB. BAG	89¢
BOLOGNA	PINKNEY'S ALL MEAT	lb. 35¢
HENS	FRESH DRESSED	lb. 39¢

BUDDY'S

Hi-C

Orange Drink

46 oz. Can

25¢

News Letter From Walter Rogers

At that time, it has dropped to 274,100,000,000.00, in March of 1955, when tax collections were at their height, but immediately started up after that, and is now almost 277 billion dollars. The authorization to borrow money was increased from 275 billion to 281 billion. I voted against this proposal because it does not present a true picture of the fiscal situation in this country. Actually, borrowing money to balance the budget is merely creating more obligations with more interest to pay.

Many people having read about the proposed expansion of the helium facilities in the Panhandle, have asked me what helium is being used for other than a lifting gas for airships and balloons. Of course, it is still being used for that purpose in connection with submarine warfare, but there are a number of other uses. Helium shielded arc welding made it possible to join magnesium airplane parts safely and effectively. The process is being used now on aluminum, stainless steel and titanium. These processes are the heaviest consumers of helium. Use of a helium furnace atmosphere plays an important part in the production of the new metals titanium and zirconium. Both of these metals, if melted in air, would pick up enough nitrogen

method is known for removing this impurity. Helium is being used as a mixture with oxygen to relieve the discomfort of asthma and other respiratory diseases. It is being mixed with certain flammable anesthetics to minimize the risk of operating-room explosions. There are many other uses for the gas and many more are being discovered each year.

VISITORS

Visiting in the office with us this week was Master Sergeant William F. Pierce, of Amarillo. Walter Rogers, Member of Congress, 18th District of Texas.

Next year's small grain crop, either for grazing or grain production, can be given a real boost by advanced preparations. Right now the area to be planted should be selected; soil samples from the area should be submitted to a soil laboratory for testing; fertilizers recommended by the soils lab should be purchased; an adapted variety selected along with source of certified planting seed and finally prepare the seed bed early.

During the past year competition in the consumer market has become extremely keen. Credit has been used to promote sales with the result that credit outstanding has increased faster than income and is near peak levels.

Slaughter Calf Production New Bulletin Title
College Station, September — The production of slaughter calves is an important part of the

beef industry in Texas and the South. Figures released for the month of June by the U. S. Department of Agriculture show that Texas led all states in the number of calves slaughtered for the month with 97,000 head.

First secretary of the U. S. Treasury, Alexander Hamilton, was the father of our financial system.



IT'S NEW... for farm and Suburban Homes

AMERICA'S NEWEST ELECTRICAL APPLIANCE



A SINGLE ELECTRICAL UNIT THAT DELIVERS BOTH HOT AND COLD RUNNING WATER UNDER PRESSURE. CONSISTS OF WATER SYSTEM, COLD WATER TANK, AND HOT WATER HEATER. OPERATES ON 110-VOLT AC CURRENT. PERFECT FOR SMALL HOMES, RESORT COTTAGES, TENANT HOUSES, FARM OUT-BUILDINGS.



CELLAR DRAINER SO SMALL!
you could drop it into a large fish bowl!

TINY SUBMERSIBLE DRAINER FITS IN SUMP IN BASEMENT, OUT OF SIGHT. WORKS PERFECTLY UNDER WATER. GOES INTO ACTION AUTOMATICALLY WHEN WATER RISES... WEIGHS ONLY 35 LBS.

These two remarkable inventions are produced by Dayton Pump and Mfg. Co., Dayton, Ohio, headed by Frank M. Tall (left), one-time associate of Thomas Edison. Deciding to test electricity pump water, Tall built first fully automatic electric water system back in 1908.



AVERAGE FOR FIVE YEARS

Cheyenne dark hard winter, stiff straw, 20.9 bu.; Comanche, medium stiff straw, 18.7 bu.; Wichita, weak straw, 18.5 bu.; Westar medium strength straw, 18.2 bu.; Ponca, stiff straw, 17.2 bu.

"Cheyenne differs from Turkey in being more winter-hardy and in having shorter and much stronger straw, denser and more erect heads. Cheyenne makes a heavier fall growth than Turkey, and consequently makes more fall and winter pasture."

The above table and descriptive remarks are taken from the results obtained at the U. S. Southern Great Plains Field Station on wheat. We have certified seed, germination 96%, test weight, 64, purity 99.51%. We have more material concerning this wheat. Come in and look it over.

R. L. Porter Grain & Seed Co.

Phone 3751



We join the Merchants of Hansford County in inviting you to attend the annual Fall Fair to be held at the Memorial Building in Spearman

Community Exhibits
4-H Club Exhibits
Art Exhibits
Poultry and Livestock Exhibits

One of the most interesting and educational programs of Hansford County. MEET YOUR NEIGHBOR AT THE HANSFORD COUNTY FAIR

FRIDAY AND SATURDAY
OCTOBER 7TH. AND 8TH.



BIG
E
CATTLE
CUBES

18% Protein
Balanced Ration

ABSOLUTELY HAS ALL THE VITAMIN A NEEDED FOR DAILY REQUIREMENTS!

PER TON \$56

EQUITY

MINERAL FEED

50% MINERALS

50% SALT

Contains All Major Minerals and All Trace Minerals Needed . . .
And Equity Mineral Feed Is Exactly Right for Stalk Pasture!

COMPARE — WHY PAY MORE?
PER TON

\$50.00

EQUITY

Also Equity Cattle Cubes 20 per cent and 32 per cent Protein

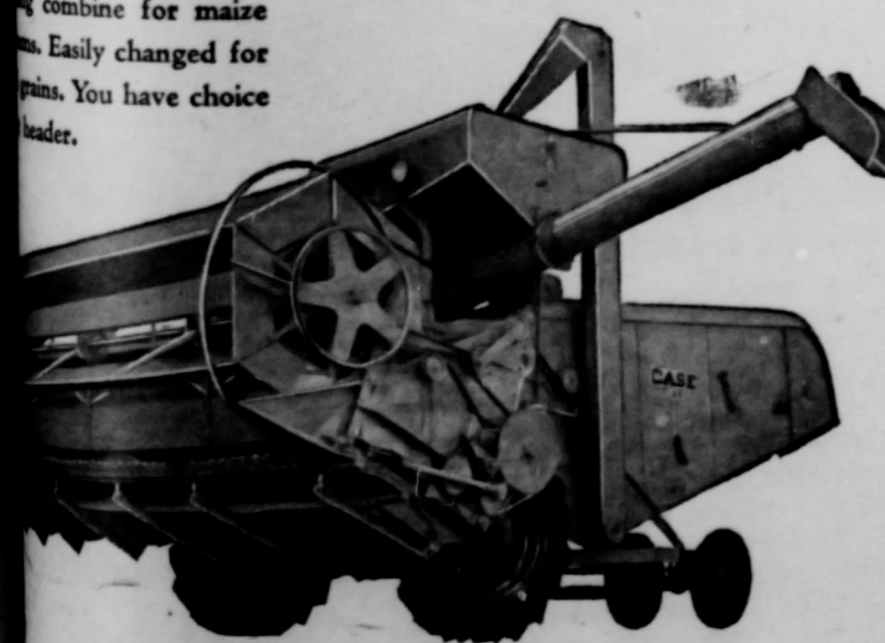
CASE "120" COMBINE WITH SORGHUM ATTACHMENT

Best for Harvesting

...that's really engineering for maize harvesting. ...cutter-bar extension ...heavy maize, lodged ...bats save the heads ...put them in the auger. ...reel ends, too, that ...leaning heads.

Maize

...extra-long straw rack ...separating capacity ...and waste due to ...and learn all about ...combine for maize ...Easily changed for ...grains. You have choice ...header.



McClellan & Sons

Social Security News Block

The 1950 amendments to the Social Security Act lowered, considerably, the amount of work required of the worker before payments could be made to survivors of deceased persons. For example, the case of a 40 year old employee who died in August, 1950, originally had to have worked most 7 years in social security covered work for payments to be made to his survivors. Had he died one month later, in September, the requirements would have been only 1 1/2 years of covered work. This change however, did not change the requirements for death occurred before September, 1950.

The 1954 amendments correct this situation. Payments can now be made to the following survivors of a person who died before September, 1950, with at least 1 1/2 years of covered work: 1. Minor children still under 18 who were living with the worker or dependent upon him at the time of his death. 2. Unremarried widows of such workers who have such children in their care, and unremarried widows at age 65.

Dependent parents of such workers, if now 65 years of age and if worker left no child now entitled to payments.

The following points should be noted in connection with this change: No lump-sum death payments are possible in these cases. Rules for payments to dependent parents remain unchanged; payments can be retroactive as much as 12 months, but no earlier than September, 1954. Inquires about these changes should be addressed to the Social Security Office, Amarillo, Texas. A Representative from the Social Security Administration Office in Amarillo will be in Spearman, on Tuesday, September 27, at the Court House, at 1:00 P. M.

Questions & Answers

— I understand that if I apply for disability compensation within year from my discharge and am not eligible, the payments can be made retroactive to the date of my discharge. What happens if that one-year deadline falls on a Saturday, Sunday or holiday?

— If it falls on Saturday, Sunday or a holiday, your one-year deadline will be extended to cover the next regular working day.

— I am going to school under the Korean GI Bill. Would I also be entitled to a GI loan to buy a car?

— You would be entitled to a loan, even though you are in school under the Korean GI Bill—provided your lender will make the loan. The law does not prohibit simultaneous use of both benefits.

— If I enroll in a correspondence course under the Korean GI Bill before my starting cut-off date, will I be permitted to switch to classroom training in the same field, after that date has passed?

— No. A correspondence course considered a program of training within itself. A change from correspondence training to classroom training would be considered a change of program, regardless of the subject of the course. Change of program generally are not permitted after a veteran's starting cut-off date has passed.

— I want to change the beneficiaries on my GI insurance policy. Must I inform the present beneficiaries of my action?

— No. You have the right to change beneficiaries at any time, without their consent or knowledge.

— I have made arrangements for my GI insurance payments to be paid to my beneficiary in a lump sum. In case she doesn't want a lump sum, does she have a right to change the method of payment?

— Under your lump sum designation, your beneficiary may elect to receive GI insurance payments under any of the installment plans available.

— I am taking a correspondence course under the Korean GI Bill. What does VA consider as the official beginning and ending dates of my course?

— The beginning date is the date the school supplies you with your first lesson. The ending date is the date the school services your final lesson.

— I am receiving disability compensation payments, and, according to a statement by my physician, my condition has become worse. Would that statement alone qualify me for increased payments?

— The evidence provided by your physician must be verified by an official VA physical examination. If VA finds that your condition has become worse, the compensation increase may be made effective as of the date you received the evidence from your physician.

— I am planning to take flight training under the Korean GI Bill. At what rate will I use up my GI training entitlement?

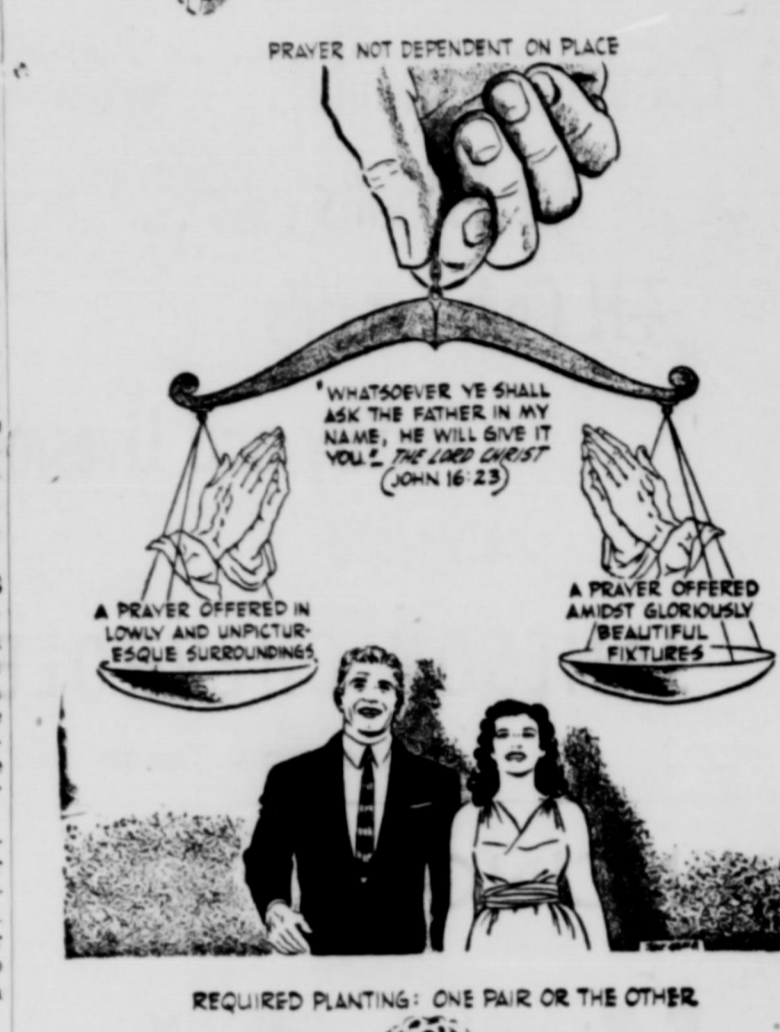
— Your entitlement will be used up at the rate of one day or each \$1.25 paid to you as a flight training allowance.

Once again, crops foil United States control.

Bon has told Moscow that Chancellor Adenauer would travel to the Soviet capital Sept. 9, to negotiate an agreement on diplomatic economic and cultural relations.

U. S. auto makers face German "squeeze."

Japan plans to send top party leader to talks in U. S.



The Benson Family
wishes to express their deep appreciation to the many friends of **Dr. Robert J. Benson** who made expressions of their sorrow and sympathy.

Dr. W. Lindy Benson wishes to announce that he will assume the practice of his father **Dr. Robert J. Benson** on or about October 1, 1955.

Due to the necessary delay in leaving his practice in Odessa, Texas, Dr. Frances Benson of Amarillo will see patients on Wednesday and Saturday.

LOWER COST FOR IRRIGATION

Wanda LPG motor oil in natural gas and butane engines, is warranted to give you good results, use less oil and lubricate better. Wanda Turbine Drip has a uniform consistency, and will drop evenly through the day and the cold night. You will be surprised at the low price. Remember, oil that is good in gasoline motors, is not the most efficient in natural gas and butane motors. See our Certified Seed Wheat ad in this issue, and see us for the best in greases, oils, Turbine drip oil, Gearhead oil, Binder Twine, baling wire and twine, Quaker State oil and Zerex Anti-froze.

Phone 3751

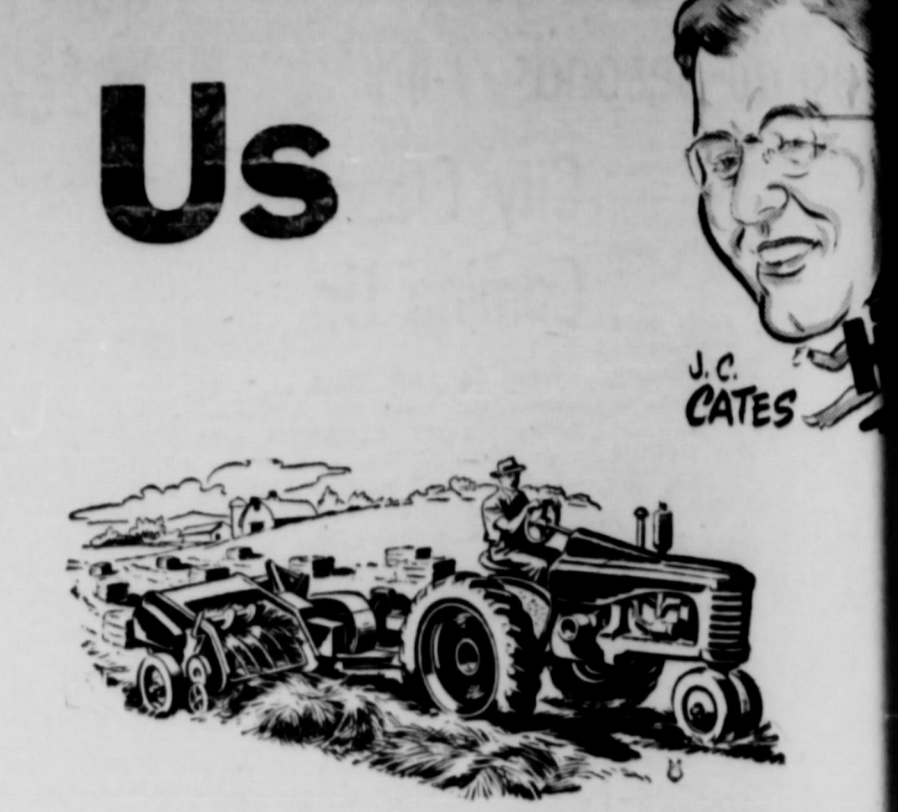


Join Us

We join the Merchants of Hansford County in inviting you to attend the annual Fall Fair to be held at the Memorial Building in Spearman

**FRIDAY AND SATURDAY
OCTOBER 7TH. AND 8TH.**

Cates Brothers - Layne and Bowler Pumps



Community Exhibits
Art Exhibits
4-H Club Exhibits
Poultry and Livestock Exhibits

One of the most interesting and educational programs of Hansford County

MEET YOUR NEIGHBOR AT THE HANSFORD COUNTY FAIR



New Chevrolet Task-Force Trucks

They're the most modern trucks on the road. If you don't get all the advantages they offer, you stand to lose money on the job today . . . and again at trade-in-time!

Most modern power—V8 or 6
In most new Chevrolet truck models, you have your choice of V8* or 6. Chevrolet's new truck V8's have the shortest stroke of any V8 in any leading truck! That means less friction and wear per mile. The valve-in-head sixes are new editions of the engines that have long been famous as the "work horses" of the truck world! And all Chevrolet truck engines have a modern 12-volt electrical system for quicker starting, better ignition and a greater electrical reserve.

The truck driver's "dream cab"
That's the closest we can come to describing the new Flite-Ride De Luxe cab. What truck driver wouldn't go for features like these: panoramic windshield for wider, safer vision; concealed Safety Step that stays clear of snow, mud and ice; High-Level ventilation that provides a more constant supply of outside air in all kinds of weather.

Most modern truck styling
We call it Work Styling—and you get it only in new Chevrolet trucks! Two fresh, functional styling treatments are offered—one for light- and medium-duty models, another for heavy-duty models. Your Chevrolet truck will do your job better—and look better doing it!

Most modern features throughout
Advanced suspensions, more rigid, ladder-type frames! Tubeless tires standard on 1/2-ton models! Come in and see—all the ways you're way ahead with new Chevrolet trucks!

*V8 standard in L.C.F. models, an extra-cost option in all others except Forward Control models.

CHEVROLET Year after year, America's best selling truck!

McCLELLAN CHEVROLET CO. GRUVER MOTOR COMPANY
Spearman, Texas Gruver, Texas

The Law
Texas
Corpus Delicti
The legal phrases which are more misunderstood and by laymen more than are "habeas corpus" and "corpus delicti." The words "habeas corpus" are commonly used in a writ to describe a judge's order to the sheriff or jailer to bring a prisoner or to any person physically detaining him and commanding him to produce the body (alive) before the person detained) before the judge. The person of the order is to allow the judge to determine whether or not the person should be set free. The writ of habeas corpus is a law enforcement officer abusing the constitutional of personal liberty and has a jealously guarded privilege.

words "corpus delicti" are and, liberally translated, the elements of the crime or offense. Laymen incorrectly use "corpus delicti" as meaning "the body," as in a case.

ing technically in a legal corpus delicti is that which is proved in every criminal case. Each proof must show that the act has been committed by a human agency. The mere presence of a dead body or a burning does not mean that a murder on the one hand or a fire on the other. To prove a crime, it must be shown that the body of the crime, literally set on fire by a human agency.

When up then, habeas corpus is designed to prevent the detention or imprisonment of any person Corpus delicti on the other hand, literally the body of the crime, in general, the substance of the column, based on Texas law, is written to inform—not to interpret any law with-

Build
for
for
for

come to the

We join the County in inviting annual Fall Fair to Building in Sp

**FRIDAY
OCTOBER**

**Community Exhibits
4-H Club Exhibits
Art Exhibits
Poultry**

One of the national programs

MEET YOUR NEIGHBOR AT THE HANSFORD COUNTY FAIR

SPEARMAN
Phone 2121

The Law
Texas
Corpus Delicti

Legal phrases which are more misunderstood and by laymen more than are "habeas corpus" or "corpus delicti."

Words "habeas corpus" are for "you have the body." It is commonly used in the profession to describe a writ signed by the judge to the sheriff or jailer to bring a prisoner or to any person who is physically detaining him and commanding him to produce the body (alive) before the judge. The person of the prisoner or person detained by the judge in order to allow the order is to allow the judge to determine whether the person is being held lawfully or unlawfully. The judge should be set free by law enforcement officers obeying the constitutional right of personal liberty and has a jealously guarded privilege.

Words "corpus delicti" are and, liberally translated, the elements of the crime or offense. Laymen incorrectly use "corpus delicti" as meaning "the body", as in a murder case.

When technically in a legal case, the corpus delicti is that which is proved in every criminal case. The proof must show that a crime has been committed and that it has been committed by a human agency. The mere fact of a dead body or a burning does not mean that a murder or on the one hand a fire must be shown that the body cannot be found in the burning building, it is shown that the building was lawfully set on fire by a human agency.

When set up then, habeas corpus is designed to prevent the detention or imprisonment of any person. Corpus delicti in the other hand, literally the body of the crime, in general, the substance of the crime, based on Texas law, is written to inform—not to inform a person should ever interpret any law with-

out the aid of an attorney who knows the facts because the facts may change the application of the law.)

New Early Crystal 281 Onion Available For Fall Planting

College Station, Sept. 26. Seed of Early Crystal 281, a new Crystal Wax-Type onion that matures about 10 days earlier than Eclipse, will be available in very limited quantities for commercial planting in the South this fall, the U. S. Department of Agriculture announces. This new variety has considerable resistance to pink root and is less subject to splitting and bolting (forming seed prematurely) than other varieties of similar type.

In cooperative tests by USDA's Agricultural Research Service and the Texas Agricultural Experiment Station in Southern Texas during 1953 and 1954, Early Crystal 281 yielded 12.45 tons per acre of U. S. No. 1's. Only 0.3 per cent of these onions bolted and 0.8 per cent were doubles. This compares with yields of 14.1 tons per acre of U. S. No. 1's for

Eclipse, which had 3.3 percent bolters and 1.4 percent doubles. A low percentage of onions that bolt or split means a higher number grading U. S. No. 1, and consequently, very few culls.

Researchers do not expect Early Crystal 281 to become a main crop onion because it yields less than Eclipse. However, because of its early maturity and resistance to bolting and splitting, it will probably be used for early marketing, with Eclipse or a similar variety as the main crop.

On soil heavily infested with pink root fungus, the roots of Early Crystal 281, will show some pink, but injury is not severe enough to reduce yields appreciably.

To retain the desirable non-bolting character of Early Crystal 281, it is recommended that at least the foundation seed of this variety be grown from bulk stock. Crystal Wax, an old standard variety of onion, and Excel (986) provided breeding stock from which this new variety was selected. Foundation seed was provided to seed growers for increase in 1953 and again last year.

Maine has 2,465 lakes.

Cow Care Is The Answer

College Station, Sept.—Cow care according to R. E. Burlison and A. M. Meekma, extension dairy husbandmen, is giving the dairy cow an opportunity to produce her best. Breeding has fixed the high point of her inherited ability to produce but her actual producing ability can be decreased by withholding the opportunity she needs.

They point out that many cows have more ability than opportunity. These cows will produce more for some dairymen because their opportunities are looked after more carefully and they are working for better managers.

The specialists have prepared, and it's available from your local county agent, a leaflet—L-247, Cow Care that is chuck-full of helpful hints on making opportunities for the dairy animal from calfhood right on through old age.

They say the care the growing heifer receives largely determines the kind of cow she will be and that well-bred, well-developed heifers make large, productive cows. The well-developed two-year old heifer will return during her first lactation period just about enough income to pay for her keep from birth and good cow care gives her an opportunity to make a profit for her owner during the rest of her life.

The leaflet contains sections on growing the heifer; the two-year old; the dry cow; the fresh cow and finally the milking cow. The information given is brief and to the point but they say the whole story in summary is simple—a good cow plus good cow care equals good production.

at the Texas Agricultural Experiment Station near Sonora, Superintendent W. T. Hardy has announced. All sheep intended for the test should arrive prior to this date.

This test is a cooperative effort by breeders and experiment station personnel to improve important economic factors in sheep such as daily rate of gain, fleece weight and staple length. Other traits evaluated include face covering, conformation, belly wool and skin folds.

This test is open to any sheep breeder who wants to test his ram for their production of these characteristics. Rules for entrance of rams require that they be subject to registry, that they be a group of four rams by one sire, between November 1, 1954 and April 15, 1955. Further information may be obtained by writing to Dr. Hardy.

The only cost to the breeder is for feed the ram eat while on test. Oscar L. Carpenter, animal

husbandman at the Sonora station, will handle the feeding and management of these ram lambs.

Sheep breeders who will be at the Sonora station September 7 will be asked to consider suggested changes in procedure recommended by a small group of co-operators. These include shortening the feeding period from 224 to 180 days and that samples of wool be taken from each at the beginning and at the end of the test to determine the effect of feeding on the grade of the wool.

President Ramon Magsaysay recently won two victories in campaign to achieve unchallenged political leadership of Philippines.

Built like a desk!



Cole's 'UTILITY TABLE' No. 759 \$13.15

Ideal for the student in the family. Makes homework more attractive. Use it as a typewriter table, "TV" stand or work bench. Has roomy center drawer and shelf for books. Also handy in the kitchen. Rolls smoothly on four casters... opens up to 39" x 17" and is typewriter desk height. Heavy gauge steel and strong piano hinges. Will last a lifetime. Green or gray finish.

for Typing

for the Student

for the Kitchen

Ninth Annual Ram Tests Set

Sonora, September — Texas Sheep breeders will begin their ninth annual ram performance and progeny test, September 7,

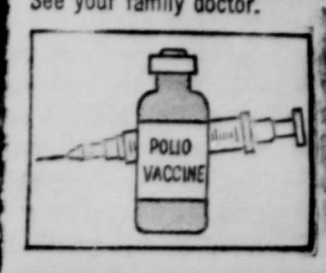
THE AMERICAN WAY



Better Take The High Road

THE NEW POLIO VACCINE

—developed with your March of Dimes funds—has been licensed by the U.S. and some is available commercially. See your family doctor.



BUT POLIO IS STILL WITH US

When polio is around, follow these precautions:

- DON'T GET OVERTIRED
- DON'T GET CHILLED
- DON'T MIX WITH NEW GROUPS
- BUT DO KEEP CLEAN

THE NATIONAL FOUNDATION FOR INFANTILE PARALYSIS

stock Exchange and education County THE HA

models ranging from the low tractor-trailer unit at right.

constant of weather.

you get it Two fresh, re offered—models, an—four Chev— and look

out rigid, ladder—dard on 1/2— all the ways rolet trucks! —cost option models.

OMPAN

SPEARMAN DRUG-Rexall Store
 Phone 2121 216 Main St. Spearman, Texas

FAIR EVENTS EXHIBITIONS

FRIDAY AND SATURDAY OCTOBER 7TH. AND 8TH.

Community Exhibits
 4-H Club Exhibits
 Art Exhibits
 Poultry and Livestock Exhibits

One of the most interesting and educational programs of Hansford County.

MEET YOUR NEIGHBOR AT THE HANSFORD COUNTY FAIR



For 1956 THE BIG M



LOOKS BIG...FEELS BIG...ACTS BIG...IS BIG!

THE BIG BUY FOR 1956

- Great new 210- and 225-hp SAFETY-SURGE V-8 engines
- New high in usable power—faster getaway than ever
- More styling innovations, new freshness everywhere
- 12 big models, new fleet of low-silhouette hardtops
- Brilliant new Flo-Tone color styling, illustrated above
- New smartly-tailored, color-matched interiors
- New Safety-Engineered features including safety door locks, impact-absorbing safety steering wheel, safety seat belts*, padded instrument panel* and padded sun visor*

ON DISPLAY TODAY...THE BIG MERCURY

JOE TRAYLER

Your Friendly Mercury Dealer

Spearman, Texas

We Need Greater Churches And Greater Faith

to give us POWER for LIVING and to COMBAT ATHEISTIC "ISMS"

Faith

*You In The Church... The Church In You...
Form a combination for good. Every man, woman and child needs the influence of the church. Be a faithful worker. Attend every service.*

Spon of man, whenever I doubt of life I think of Thee." So wrote George Matheson in his blindness. Whenever you and I doubt either God or man, we would do well to think of Jesus. His cross is a symbol of what God is and what we may become. The proud Roman at the foot of the cross said, "This man was the son of God." Jesus was supremely a man of faith. He had great faith in both God and man. We have faith in God largely because we must have Him. *We are not sufficient unto ourselves.* Do you have faith? Life becomes a radiant thing for people of faith, since they see so much deeper into the secrets of life. The universe opens its heart to eyes of faith; closed doors swing ajar when faithful steps approach; loving spirits smile their welcome to trustworthy souls; latent powers blossom in the presence of fidelity; young children and wise old age give themselves with abandon to those who offer confidence. *God waits to share His blessings on men who can be trusted.* Of the Pilgrims of yesterday, guided by the Divine, it was said, "They were men of faith and very sure of God." Are you sure of God?

MAY THIS PAGE BE A BLESSING TO MANY IS THE SINCERE WISH OF HANSFORD COUNTY MINISTERS
This religious service is paid for by the public spirited firms 100% interested in the spiritual life of Hansford County. They urge regular church attend-ance and support.

Western Auto Associate Store
• Floyd and Lucy

Dr. R. L. Kleeberger M. D.

Spearman Drug Co.
• Bruce Sheets

Equity Exchange
• E. J. Copeland

R. L. McClellan Grain Co.
• Lee, Roy Lee and Wilson McClellan and J. K. Hicks

Orange Disc Service
• Alton and Wayne Ellsworth

Hansford Implement Co.
• Gene Cudd

White Auto Store
• Mr. and Mrs. I. P. Baggerly

Campbell Tailors
• C. E. Campbell

First State Bank
• Clay Gibner

Peddy's Butane & Oil Co.
• Mr. and Mrs. Aubrey Peddy

Gruver Lumber Co.
• Jack Thomas

Gruver Motor Company
• Ted McClellan

North Plains Electric Co-op
• Earl Waide, Manager

Kirkland Pump Co.
• J. D., Jeral, and J. D. Kirkland, Jr.

Cates Bros. Irrigation Supplies
• J. C. and Slim Cates

Buddy's Super Market
• Cliff Sheppard, Mgr.

Super Service Station
• Gene Cline & W. E. Sparks

Bobby Wray's Phillips Serv. Sta.
• Bobby Wray

Westerfield Dry Goods
• Mr. and Mrs. P. H. Westerfield

C. N. Van Dyke, Minister
• First Christian Church

Spearman Hardware
• Mr. and Mrs. John Bishop

Spearman Steak House
• Mr. and Mrs. Howard Huffman

White House Lumber Co.
• Ed Hutton

Boxwell Brothers
• Mrs. C. E. Blackburn

Byrd and Shook Texaco
• Leroy Byrd & Wayne Shook

Gruver State Bank
• Bob Thom

Gruver Drug
• Don Gross

Universal Oil & Universal Motors
• Gruver

Morse Supply Co.
• Willard McCloy

Gruver Elevators, Inc.

PERSONAL ATTENTION TO THE "NOBODIES"

OBSCURITY

- FIRST BAPTIST CHURCH — GRUVER**
Bro. Bill Burton, Pastor
Sunday School
Preaching Service
Training Union
Evening Service
Wednesday Prayer Service
- UNION CHURCH — SPEARMAN**
Rev. Calvin Springer, Pastor
Sunday School
Morning Worship
Bible Classes, Sunday
Evening Worship
Wednesday Bible Study
- FIRST CHRISTIAN CHURCH — SPEARMAN**
Rev. C. N. Van Dyke, Pastor
Sunday School
Morning Worship
Youth Meetings
Evening Worship
Wednesday: Choir Practice
- MORSE METHODIST CHURCH — MORSE**
Rev. A. N. Motes, Pastor
Sunday School
Morning Services
M. Y. F.
Evening Worship
- ASSEMBLY OF GOD — SPEARMAN**
Rev. W. V. Bentley, Pastor
Sunday School
Morning Worship
Evening Worship
Mid Week Services, Friday
- FIRST CHRISTIAN CHURCH — GRUVER**
J. W. Dove, Pastor
Sunday School
Morning Worship
Evening Worship
1st Weds. Monthly Fellowship
- FIRST METHODIST CHURCH — SPEARMAN**
Bro. Aubrey C. Haynes, Minister
Church School
Morning Worship
Methodist Youth Fellowship
Evening Worship
Womens Christian Society Wednesday
Mid Week Services, Wed.
Choir Rehearsal
- CHURCH OF CHRIST — SPEARMAN**
R. Paul Smith, Preacher
Bible Class
Preaching
Communion
Young Peoples Classes
Worship
Ladies Bible Class
Wed. Mid. Week Services
- MORSE BAPTIST CHURCH — MORSE**
Bro. H. G. Verner Pastor
Sunday School
Worship
Training Union
Worship
Mid Week Service Wednesday
- CHURCH OF CHRIST — GRUVER**
North of City Park
Gruver, Texas
James O. Wilburn, Evangelist
Lord's Days:
Bible Study
Worship
Training Class
Worship
Week Days:
Bible Study, Wednesday
Ladies Classes, Thursdays
Juniors
(Small Children Cared For)
Senior Ladies
- GRUVER METHODIST CHURCH — GRUVER**
Rec. Cecil Ottinger, Pastor
Sunday School
Morning Services
Methodist Youth Fellowship
Evening Services
Wednesday Prayer Service
Wednesday Choir Practice
Thursday W. S. C. S.
Wesley Circle, Thursday
- SACRED HEART CATHOLIC CHURCH — GRUVER**
Father M. J. Mathieson, Pastor
Mass 1st and 2nd Sundays
3rd, 4th and 5th Sundays
All other Services announced at Masses.
- FIRST BAPTIST CHURCH — SPEARMAN**
Bro. O. L. Bryant, Pastor
Sunday School
Morning Worship
Training Union
Evening Worship
Wednesday Mid-Week Services
Choir Rehearsal
- OBLO LUTHERAN CHURCH — GRUVER**
J. P. Knudson, Pastor
Sunday Worship
Ladies Aid every last Thursday afternoon of each month
Luther League on Sunday evening every three weeks

WILSON
ON
SUB
OWNER
OPERATOR
FARM
AGE 1
HOME OWNED
OF LUBBOCK
BRILLHART
many folk who i
past week as the pr
news for you . . .
Joe sold that
ack, Texas last marc
well and leased
Tiny Brillhart. Don
who lives in the
ence at the Mystery
the farm while Do
is married and has

Hay Chop
Feed 'Ever' fo

FORD IMPLEME

of storage space

MAIZE

have a fresh ship
odium Chlorate, f
grass and we
Builder and Bailor Twin

EQUITY

WILL RECEIVE
ONE YEAR'S
SUBSCRIPTION
TO THE
REPORTER
FREE



THE OWNER
OR OPERATOR
OF THE FARM
ON PAGE 1
IS ASKED TO
CALL AT THE
REPORTER
AND RECEIVE

A BEAUTIFUL
FULL PHOTO-
MOUNTED
FREE
OF
CHARGE

HOME OWNED BY R. C. JOHN
OF LUBBOCK AND OPERATED
BY BRILLHART OF SPEARMAN.

Many folk who identified the Mystery Home last week as the property of Joe Entrekin... Joe doesn't live there... that Joe sold that farm to R. C. Johnson... Mr. Johnson drilled... well and leased the farm to Don Brillhart... Tiny Brillhart... who lives in the comfortable two bed... at the Mystery Home. Tiny Brillhart... the farm while Don is attending College... is married and has three children. Their

eldest child is a daughter who is married, and the other two children attend school at Spearman.

Joe purchased the farm from the Oil Development Company back in 1941 and lived on the place for a number of years. He now owns the section adjoining the Mystery Farm on the East... and Joe also has an irrigation well at his farm.

Tiny Brillhart is one of the very successful farm and cattle men of this section of the state. He operates three to 6 sections of farm land on the dry land basis, and normally owns and cares for five hundred to a thousand head of cattle.

Joe Entrekin made many of the improvements that are of record at the Mystery farm. He improved the family residence and moved in another building for a renter, which is now a shop for the Mystery farm activities.

In addition to the family residence and shop there are two large barns and three small chicken

houses among the improvements at the Mystery farm.

Both Joe Entrekin and Tiny Brillhart have lived in this area almost since the year one. They have been diligent workers and pretty careful operators, and safely be classified as careful successful farming and ranching citizens of the Panhandle of Texas.

Candidly, the country editor gave Tiny Brillhart credit for having too much judgment to become involved in an irrigation project. Such farm-ranch programs interfere with fishing and hunting and require a lot of attention. Maybe Tiny is so good that he can manage all his various activities and still put in some time fishing and hunting... but just for fun fun... ask him if he is going Elk hunting this year... I'll bet a years subscription to the Reporter that he can't leave that fine irrigated Maize field... and that's bad.

The country Editor will be glad when Don Brillhart gets back from College so we can persuade Tiny to take us fishing.

YOUR FOOD DOLLARS HAVE MORE VALUE

CUT RATE GROCERY & MARKET

BANKING HOURS
9 A. M. - 3 P. M.

GETTING OFF
TO A GOOD START

FIRST STATE BANK
SPEARMAN, TEXAS

Your best start toward financial success is to open an account with us and save regularly where your money earns more for you. Insured? Certainly. All accounts are insured up to \$10,000. Why not get off to that good start NOW?

Automatic Farmer Reports . . .
WELL Hay Chopper Cuts Feed Ever' for Stock

A SMALL Investment!
A BIG Return!

ONE OPERATION!
The LUNDELL Hay Chopper cuts through hay, corn stalks, weeds, straw—chops or shreds it thoroughly, places it in sugar and blows it into your wagon. Easy maintenance—only 14 parts. Time saved! Labor saved!

FORD IMPLEMENT CO.

Everman AUTOMATIC LAND LEVELER AND HYDRAULIC SCRAPER

Everman precision smoothed automatically leveled fields save water, lower production costs and SUBSTANTIALLY INCREASE crop yields on irrigated fields. Only Everman patented crank axle takes off the high places and fills in the low ones automatically producing a firm well packed seed bed as the machine moves along. The Everman doubles as an efficient dirt mover or scraper for filling pot holes, healing gullies, and producing the proper grade on fields for efficient farming.

Announcing New Everman Hydraulic Models 9H & 12H
Six Models . . . 9H, 12H, 25H, and 45H with Hydraulic Controls . . . 9PL and 12PL with Mechanical Controls. Spring-tooth attachment available.

Eversman Land Levelers and Ditchers For Sale and For Rent

B. AND C. EQUIPMENT CO.
Spearman, Texas

SAVE ON DRUG NEEDS

SPEARMAN DRUG STORE

Your Rexall Store
We're in Business For Your Health!

R. L. McCLELLAN GRAIN CO.

The Month of October is said to be the best time to apply CONCENTRATED BORASCU on Bindweeds for a permant kill. A sure way to rid your farm of these noxioua weeds.

Heptachlor for treating wheat seed to prevent damage by wire worms.

of storage space for your
MAIZE

have a fresh shipment
Sodium Chlorate, for
grass and weeds.

Builder and Bailer Twine

EQUITY

PERFECTION
Heating Stoves

Get Ready For
WINTER NOW!

SPEARMAN HARDWARE

Mr. and Mrs. John Bishop

GIVE ME JUST ENOUGH GAS TO GET TO LOVER'S LANE

No purchase too small to get our prompt, courteous attention. No job too big for us to take in stride. Drive in . . . if it's only for free air or water . . . get acquainted with our aimed-to-please service!

CONSUMER SALES CO.

IT'S HOME Fashion TIME

YOUR FURNISHINGS ARE THE HEART OF YOUR HOME

NEW FURNITURE ARRIVING DAILY!

Panhandle Furniture Mart

ION TO THE 'NOBODIES'
NDER
IFYING
OWNER
RATOR
E FARM
AGE 1
CHURCH — GRUV
ll Burton, Pastor
URCH — SPEARMAN
in Springer, Pastor
AN CHURCH — SPEAR
N. Van Dyke, Pastor
ODIST CHURCH — M
A. N. Motes, Pastor
OF GOD — SPEARM
V. Bentley, Pastor
TIAN CHURCH — GR
W. Duke, Pastor
rship
DIST CHURCH — SPEAR
rey C. Haynes, Minister
ip
Wednesday
OF CHRIST — SPEARMAN
Paul Smith, Preacher
PTIST CHURCH — M
H. G. Verner Pastor
sday
URCH OF CHRIST
orth of City Park
Gruver, Texas
O. Wilburn, Evangelist
ys
or)
THODIST CHURCH —
Cecil Ottinger, Pastor
ship
ce
ice
CATHOLIC CHURCH —
M. J. Mathiesen, Pastor
ys
ys
unced at Masses.
TIST CHURCH — SPEAR
O. L. Bryant, Pastor
Services
YMERAN CHURCH —
P. Knudsen, Pastor
sunday afternoon of ea
y evening every threo



**BUY 'EM
BY THE
CARLOAD**

SALE

Pork Roast
lb. **35¢**

FRYERS

CHUBBY CHICK
WHOLE FRYERS lb. **47¢**
CUT UP
PAN READY FRYERS lb. **53¢**

JUNG FRESH AND TENDER
CALF LIVER ... lb. **19¢**
ARMOUR'S STAR
SLICED BACON lb. **59¢**

YAMS MARYLAND SWEETS FANCY NO. 1 **2 lbs 15¢**

MARGARINE Blue Seal **2 lbs 35¢**

When you see this week's super specials, you'll want to buy them by the carload because you don't get savings like these very often. So drive to YOUR CUT RATE GROCERY and MARKET—there's always plenty of room to park easily. By all you want of everything you like best. Fill the trunk deck . . . pile 'em on the rear seat. If you won't hold all you want to buy—make a second trip. We're making it most profitable for you to buy your favorite foods by your carload-full.

ROSDALE - TALL CAN - CREAM STYLE
CORN 2 For 25¢
DOLE FLAT CAN - SLICED
PINEAPPLES 3 For 45¢
ZESTEE 20 oz. TUMBLER STRAWBERRY
PRESERVES 49¢
HEINZ STRAINED
BABY FOOD 10¢
HERSHEYS DAINTIES
CHOC. CHIPS 19¢
BORDENS 5 QT. INSTANT
STARLAC 34¢
IMPERIAL POWDERED OR BROWN
SUGAR lb. 10¢
JEWEL 3 LB. TIN
SHORTENING 67¢

Farm-Fresh Produce

JUICY - RED - DELICIOUS
Apples 2lbs 29¢
CALIFORNIA - TOKAY
Grapes 2lbs 25¢
RED - CRISP - EATMOR
Cranberries lb 25¢
CAPE ANN FROZEN
LIBBYS FROZEN
FROZEN BLUE PLATE
FISH STICKS pkg. 33¢
Chicken Pot Pies 2 for 39¢
BREADED SHRIMP 53¢
Salad Wafer
CRACKERS lb. 23¢

CUT-RATE FAMOUS FOR SERVICE
GROCERY MARKET SPEARMAN TEXAS
MAIN STREET

Tomato Soup
Campbells Tall Can
2 for 19¢

Cream cheese
Pkg.
Bordens 10¢

Orange Drink
RealLemon 46 oz. Can
23¢

ICE CREAM
Lanes One-Half Gal.
65¢

JELLO
All Flavors
2 pkg. 15¢

New Sc
Galloping Greyhound
Sunray 26 to 1

Marine Will Be Spearm
Galloping Greyhound
to the advance rat-
by the Regional
they annexed their
game in de-
Sunray team
night game played
evening seems to
with each
and if they are
the high rated
in their game at
Friday evening, they
to the favorites to
win honors.
was responsible
touchdown, scored
run in the first

Glenn
SSGT
SSgt. Gle
charge of
cruiting Sta
be in Spea
October to
for enlist
Marines. Y
ages of sev
eight, unm
physically
eligible.
For the
years men
Marines for
the old fa
effect until
no waiting
man wishes
cruit train
plication.
SSgt Sm
Office her
A. M. Till
Corps Recr
visit Spea
Thursday o

Hansio To Hav
The Han
tion club
semi-month
home of 3
During
Mrs. Sheet
of the c
Sheets wa
the remai
office. Pla
the booth
The boo
24 at 7:30
Mrs. Luth
will revie
book rees
Home Des
This even
public and
of all elu
The net
10 with
will be a
menu will
Powdered
ding more
diet.

Mystery Fa
THE MYSTERY
THIS WEEK.
urged to phone or
identification of
the o
Repor
form
back