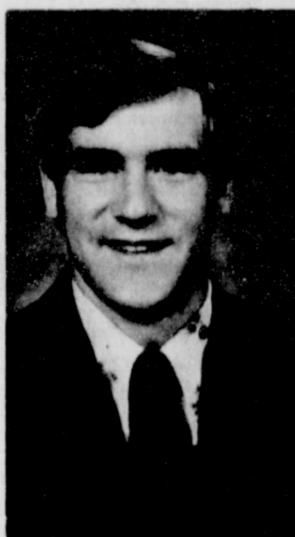


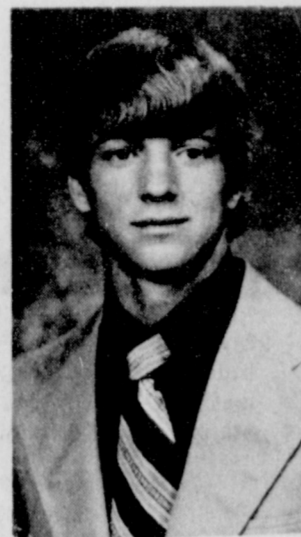
# Lynx must beat Dalhart to win District



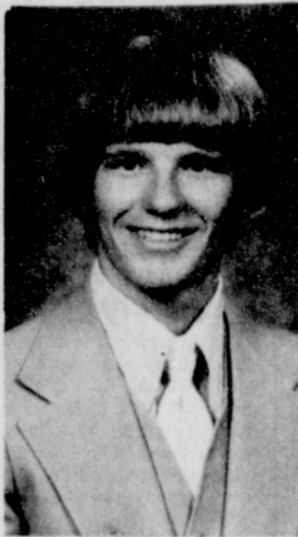
Zane Newton



Sam Boone



Steve Goff



David Cummings



Carey Bridges



David Ortega



Billy Snider

\*\*\*\*\*  
We proudly salute the remaining Seniors of the 1978-79 Lynx Football team... This should include all of the seniors, unless we have missed one! Good Luck, to all of our seniors, in their district 1-AA encounter at Lynx Field this Friday nite, at 7:30 p. m.  
\*\*\*\*\*

## Game No. 10 is always the toughest

**The Spearman Reporter**

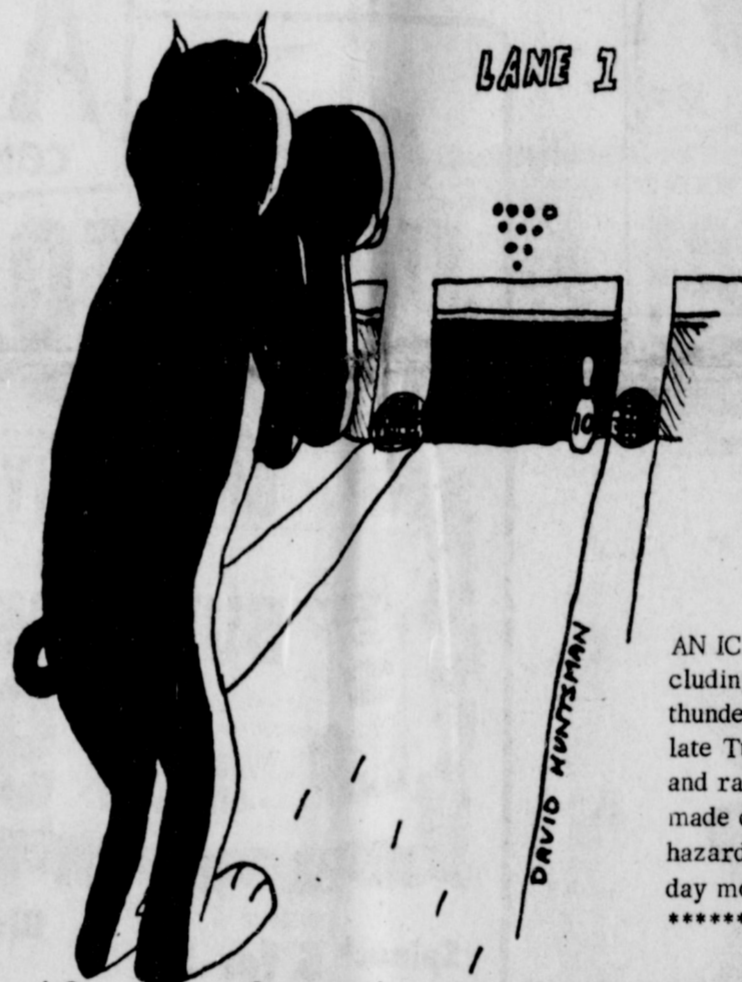
VOL. 70 No. 1      THE SPEARMAN REPORTER, SPEARMAN, TEXAS 79081      THURSDAY, NOVEMBER 16, 1978

# Flea Market Saturday

## Bruce Stinson Fund To Benefit

New booths have been added to the previous list for the Gigantic Flea Market set for Saturday, Nov. 18 at the Skinner building at Plains Shopping Center. The Lions Club will have a homemade ice cream booth, and the Moose Lodge will sponsor Bingo games which are scheduled to start at 2 p.m. Francisco Lozano will be selling homemade tamales, she will take orders in advance. You may call 2610 to place an order. Ladies from Waka will be taking apart in the flea market after 5 p.m. The Fire-Ettes are donating baked good to the Bake Sale. Members of the FCA of Spearman High School have volunteered to do cleanup chores before the big day Saturday and afterwards on Sunday. Other organizations taking part will be Baker & Taylor Women's Association with a miscellaneous booth; Rho Rho and the Twentieth Century Club with a bake sale; Golden Spread Senior Citizens, a country kitchen; Servitors, beverages; Spearman Study Club, Sandwiches and stew; Home Demonstration Clubs, homemade candy, W.I.F.E., scrap iron and batteries; Georgia Holt and

Linda Jarvis, garage sale and handmade crafts; Xi Zeta will be helping overall with the flea market. The flea market will open from 8 a.m. until ??? to raise money for Bruce Stinson's medical expenses. Bruce remains in Parkland Memorial Burn Center at Dallas where he has been since he was injured in early September. He will probably still have several weeks of hospitalization before being able to return home. This is a community project with local clubs and organizations managing individual booths with everyone invited to donate items to these booths. If you want to donate items to any of these booths and cannot take them to the Skinner Building on Thursday or Friday from 9 to 12 and 1 to 5, you may contact Nancy Phillips at 2788 or Mae Hargis at 2317. The Lady Fair will donate 10% of their sales on Nov. 18 and challenge other businesses to do the same. Be sure and get out to the Flea Market Saturday, for without citizen participation, all works these clubs and organizations have done will be vain.



NUMBER 10 IS ALWAYS THE TOUGHEST.

AN ICE STORM, including lightning and thunder hit the area late Tuesday evening, and rain and sleet has made driving very hazardous on Wednesday morning.  
\*\*\*\*\*

It just isn't fair! The Lynx have played near perfect football in every one of their conference 1-AA games, but it is all in vain, unless they beat the Dalhart Wolves here Friday nite. And, after tying the Rangers from Perryton in the game of the "century", staving off a band of Wildcats from Canadian, and upsetting a fantastic team from Boys Ranch, it still boils down to what kind of game we play here on Friday night.

Coach Smith is overly optimistic about this big game Friday nite, but he is not taking the Wolf Pack lightly. In fact, he doesn't know who he will run in place of Bodey, his latest injured half-back. Probably, the coach will go with different ones brought up from the B team, including three that played at Boys Ranch, and did a great job Friday nite. The district standings did not change any after Friday's games. If Spearman wins the game against their arch foe the Dalhart Wolves, they win the entire district championship, and do not share with anyone. If they lose, and Perryton beats Canadian at Perryton, Friday night, Spearman and Perryton will once again declared co-champions of the district, but Perryton will represent the district in the play offs. If Spearman and Perryton both lose, the classy 'Cats from Canadian will waltz into the playoffs! None of the other teams have an outside chance of advancing.

Weather could be a big factor in the game here Friday night. The sleet, rain and cold have made playing conditions at Lynx field almost un-bearable. None of the passing or quick-opener plays could be used on a day like we had in Spearman today Wednesday! In other action, the 7th and 8th graders will put on a real show for the local fans at Lynx Field Thursday. Hagar's Heroes will start at 5 p.m., followed by the 8th graders. The Freshmen and B-teamers will travel to Dalhart for their outings. Pan See you at the "big one" this Friday, with kick-off at 7:30!

# Community Thanksgiving Service

## 4-H Gold Star Winners To Be Honored

Two outstanding 4-H members from Hansford County, Julie Farr of Spearman and Ty Williams of Gruver will be honored at the District 1 4-H Gold Star Award Banquet at 6 p.m. on Saturday, November 18 at The Inn, 601 Amarillo Boulevard West, Amarillo. Paul Gross and Sue Farris, District Agents for the Texas Agricultural Extension Service, said the pair will be among 37 youths to receive the Gold Star honor. A boy and a girl from each of the 20 counties in District 1 are eligible to receive this highest county award each year. It recognizes outstanding achievement, leadership, and contribution to the county 4-H program. The event is sponsored annually by Deaf Smith, North Plains, Rita Blanca and Swisher Electric Cooperatives. Mrs. Becky King, Dallam County Judge will be the banquet speaker. The theme is "The Future Is Ours." Phil Moreman of Donley County, Chairman of the District 1 4-H Council, will be master of ceremonies. The District 1 4-H Gold Star Committee is the district council which will direct the program. Special guests will be parents, adult leaders, Extension service officials, county commissioners and judges, representatives of the cooperatives and other friends of 4-H. To qualify for the Gold Star Award, a 4-H'er must be at least 13 years old, have completed at least 3 years of club work, and be currently active in 4-H. The award is to stimulate winners toward higher achievements and to encourage other young people to participate in the county 4-H program. The grants were among 81 approved by Governor Briscoe statewide from Law Enforcement

## Briscoe Approves Panhandle Grants

AUSTIN--Governor Dolph Briscoe has approved three criminal justice grants for the Panhandle region. They are: --\$14,882 to the Panhandle Regional Planning Commission for law enforcement radio equipment in Armstrong, Donley and Hartley county sheriffs' departments, and police in Amarillo, Pampa, Tulia, Gruver West Texas State University and Texas State Technical Institute. --\$22,862 to PRPC for specialized law enforcement equipment for sheriffs' departments in Deaf Smith, Hutchinson, Swisher and Wheeler counties, and the Amarillo Police Department. --\$60,074 to PRPC for continuation of the Panhandle Regional Law Enforcement Academy which provides basic, specialized and advanced training for law enforcement agencies in the 29 municipalities, 25 counties, two constables' offices, and one city marshal's office in the area.

## Annual Thanksgiving dinner set

The Union Church Missionaries Ladies will hold their annual Thanksgiving Dinner November 16 at the Union Church. The meal will be served from 11:30 till they run out of food. Adult tickets will be \$3.50, children tickets are \$1.50 and children under six will be free. The menu will consist of turkey, dressing, gravy, sweet potatoes, Irish potatoes, pea salad, jello salad, green beans, cranberry sauce, hot rolls, tea coffee and three kinds of pie: pumpkin, cherry, and apple.

GO BIG LYNX win District 1-AA again!

## Muri Pearsons brother dies

Services are pending with Morrison Funeral Directors of Dumas for Raymond Lee Pearson, 51, of Dumas who died Monday. He is a brother of Muri Pearson of Spearman. Mr. Pearson was born at Newcastle and moved to Dumas 12 years ago. He was a truck driver and a Baptist. Surviving are his wife, Minnie; five sons, Joseph of Dumas, Marvin of Sunray, John of Amarillo and Jeffery and Tommy, both of the home; four daughters, Mrs. Gary Byrd of Dumas, Mrs. Delbert Duby of Sunray, and Carla Sue of the home; his mother, Mrs. Cora Pearson of Gruver; a brother, Muri of Spearman; two sisters, Mrs. Chuck Bennett of White Deer and Mrs. Mozell Moore of Seagraves; and eight grandchildren.

## History Book Meeting

A meeting will be held Monday, Nov. 27 at 7:30 p.m. at Martin's Steak Garden to form a Hansford Book Committee. Judy Cotton, Representative of Craftsman Printers of Lubbock, will be the speaker and the organizer. The committee will consist of Chairperson, Publicity Chairperson, Bookkeeper and several Field Representatives. The Field Representatives job will be to talk about the book to citizens and organizations. You are urged to attend this meeting if you are interested in helping form a history book for Hansford County.

## Hospital News

Patients in Hansford Hospital are Diana Barrett, Edna Briley, Jose Gomez, Deana May Douglas, Caron Stephan and son, Quinn Underwood, Bertha Nava, Eugene Schoenhals, Kenny Red, Reba Bennett and Calvin Dan Pearson. Dismissed were Geneva Pope, Felix Sandoval, Annie Hollis, Gloria Kingham, Bessie Swan, Detera Prather and daughter, Jerry Russelburg, Pat Ochoa, Cathy West and Ross Tucker.

The Community Thanksgiving Service of Worship will be held in the First United Methodist Church of Spearman on Sunday evening November 19 at 7:00 p.m. This service is sponsored by the Spearman Ministerial Alliance.

The speaker for the evening will be Mr. Bob Boxwell, a layman in the First Christian Church, Spearman. We know you will enjoy sharing Christ with him. He was born August 31, 1947 in Perryton, grew up there and graduated from Perryton High School in 1965. He attended T.C.U. graduating in 1969 with a Bachelor of Business Administration. Bob served in the U.S. Army during 1969-71, nineteen months, fourteen of which were spent in Viet Nam. After returning to the states, he attended Dallas Institute of Mortuary Science, graduating in 1972. He married Candy Combs in 1973 in Ft. Worth, and moved to Spearman to make their home. They have a daughter, Regan, born in 1977.

Bob and his brother Dick own and operate Boxwell Brothers Funeral Homes and Flower Shops in Spearman and Perryton. Bob says: "I grew up in the First Christian Church in Perryton, I was baptized at the age of ten, but never really knew Christ, a practicing atheist until

1973 when I experienced a gradual spiritual awakening. Since that time I have been "struggling" to become a genuine, practicing Christian, as I mature spiritually."

Bob has served the church as a Deacon and an Elder at First Christian, Chairman of the Board, Chairman of the Evangelism Ministry, Chairman of the Stewardship Ministry, Jr. Hi. Youth Sponsorship; a member of the Hi-Plains Area Christian Church Adult Work Council, a member of the Directors of the Golden Spread Center and the City Planning and Zoning Commission.

This special season of the year is so very important to each person and to each family in our community. It is a time when we recognize the bounty of the gifts we receive from God. We urge each of you to join with us in praise and thanksgiving to our God.

As the Psalmist of old spoke, "Enter the Temple gates with thanksgiving; go into it's courts with praise. Give thanks to Him and praise His Name." (T.E.V.) So come, give thanks to Him and praise His Name as we share this time of worship and praise.

Freezing rain is falling in Spearman as we go to press.

MARKETS	
WHEAT	\$3.08
MILO	\$3.82
CORN	\$2.43
SOYBEANS	\$5.91
BARLEY	\$1.84



### Youth Walk-a-Thon Successful

The Youth (C. A.'s) of First Assembly of God set a goal, in the month of March, of \$1500

for their Speed-The-Light Missions giving this year. They have had car washes, bake sales, car smashes, and their annual

Walk-A-Thon, to try and reach their goal. They believe that God has smiled upon their efforts to help them accomplish their goal.

Walking in behalf of Missions were Tessa Pate, Mitzi Pearson, Kathy Vanlandingham, Pastor Nuckels, Jeff Vanlandingham, Trena Nuckels, Sharon Pearson, Edward Cook, Lois Cook, Carla Thompson from Borger, Gale Vanlandingham, David Pearson, Becky Brown, Shirley Pate, and Kili Hodges of Borger.

These young people and the

old Pastor walked an accumulated 177 miles. There were ten people who walked all of the fourteen miles to Gruver, well some finished on their knees but they got there.

The C.A.'s of First Assembly of God want to thank everyone who sponsored a walker in their annual Walk-A-Thon. When all the monies are collected the C.A.'s group will amass approximately \$900.00 for missions. They look forward to next year when they hope to raise over \$1000.00 for missions in their Walk-A-Thon.



Sharon Pearson, left and Becky Brown finished the Walk-A-Thon on their knees.

### Warning For Women

"Don't jog without a bra!" This advice for women comes from Miami plastic surgeon Charles B. Radlauer, M.D., who warns of Cooper's Droop years before nature intended.

Cooper's Droop is a condition of sagging bosoms that gets its name from Cooper's ligaments, tissues which hold breasts in place.

Without the support of a bra, these ligaments tend to tear. When that happens, Dr. Radlauer says, the bloom of youth sags prematurely.

Gravity pulls down on all the structures of the body, particularly the female bosom, and even non-jogging ladies have problems in this respect.

While bra-less jogging can add to the number of candidates for corrective surgery, it is still not among the most common causes of sagging breasts, according to Dr. Radlauer.

A woman with large breasts stretches the supporting ligaments and the skin, and the breasts sag.

During pregnancy, breasts enlarge. After nursing stops, the breast gland shrinks again. Unfortunately, the skin doesn't, particularly after several pregnancies. This leaves a large sac of skin with nothing in it—the classic droopy breast.

The operation to correct this condition is called a mastopexy, or uplifting of the breasts. A woman may find herself running to the plastic surgeon for a mastopexy as a result of obesity,

**Sears** ..where America Shops

See **SANTA** in person

3 P.M. to 9 P.M.  
MONDAY • TUESDAY  
NOVEMBER 20, 21st



FREE GIFTS TO KIDS  
VALUES GALORE  
IN THE STORE

PLAINS SHOPPING CT.  
SPEARMAN, TEXAS 79081

Sears



CA YOUTH walking in behalf of missions

"Friendship's the wine of life."  
Edward Young

Early American colonists painted with a milk solution in which blueberries had been boiled to obtain a gray color for houses.

### Across The Great Divide



A PACIFIC INTERNATIONAL ENTERPRISES RELEASE  
PUBLISHED BY ARTHUR R. DUBS

COMMING SOON  
LYRIC  
113 Main 659-2812  
ONLY PAC. INT'L PASSES ACCEPTED

### VETERANS NEEDED PART-TIME

The Army Reserve can use your military experience 16 hours a month. If you qualify, you'll start at a higher than usual pay grade. Visit your local unit and find out what your experience is worth.



THE ARMY RESERVE.  
PART OF WHAT YOU EARN IS PRIDE.

Receipts at the Texhoma Livestock Comm., this week were 4327 cattle and calves. A very active and higher market on all classes. Stocker steers \$4.00 higher. Stocker heifers \$3.00 to \$4.00 higher. Feeder steers \$2.00 higher. Feeder heifers \$2.00 higher. Packer cows \$1.00 higher, selling from \$37.00 to \$40.00. Stock field cows \$40.00 to \$45.00. Bologna Bulls \$40.00 to \$44.00.

Steer Calves 300# to 560# @ \$67.40 to \$78.25  
Heifer Calves 300# to 515# @ \$62.00 to 69.50  
Feeder Steers 600# to 870# @ \$58.00 to \$64.00  
Feeder Heifers 600# to 700# @ \$57.50 to \$59.20

For next Thursday, November 16, we are expecting 3000 cattle of all classes.

YOUR DEPENDABLE LIVESTOCK  
TEXHOMA LIVESTOCK COMM., CO. INC.  
P.O. BOX 70 TEXHOMA, OKLA. 73949  
PHONE 405-423-7511 & 423-7512

CATTLE DEPARTMENT -- LLOYD GOODNER & RAYMOND CHOAET  
GOODNER RESIDENT PHONE -- 405-423-7427



### Join the other wise homeowners who are stretching their energy dollars

Get all you can from your energy dollar with a home that qualifies under the National Energy Watch (N.E.W.) Program. Homes conforming to N.E.W. recommendations are constructed so that energy can be used more efficiently. Insulation with the correct "R" value, weatherstripping and caulking, as well as efficient heating and cooling equipment and much, much more are thoroughly inspected before the N.E.W. sign goes on a home. That sign is your assurance that a home was built for comfort and efficient use of energy.

Helping you save energy and money is what the National Energy Watch Program is all about! For more information call or come by the Community Public Service Company office.



COMMUNITY PUBLIC SERVICE  
Your Electric Light & Power Company



# ALLSUP'S CONVENIENCE STORES

SHOP ALLSUP'S AND SAVE! PRICES EFFECTIVE NOV. 16-18 1978

## INVENTORY CLEARANCE SALE

SHURFINE Bacon..... LB. \$1.39

**GREAT BUYS!**

BORDEN'S BUTTERMILK 79¢

1/2 GAL. CTN.

SHURFINE Spinach 5 for \$1

SELF-MASTING / BUILT IN TIMER

SHURFRESH TURKEY 79¢

1/2 LB.

SHURFINE Blackeyed Peas... 5 for \$1

Whole Sweet Potatoes SHURFINE 2 for 99¢

**GREAT BUYS!**

BORDEN'S HI-PRO MILK 79¢

1/2 GAL. CTN.

SHURFINE Bartlett Pears 3 for \$1

SHURFINE Ice Cream 99¢

SHURFINE Tomato Sauce 5 for \$1

**GREAT BUYS!**

BORDEN'S FUDGE OR FROSTY POPS \$1.09

24 CT. BOX

SHURFINE Fruit Cocktail 3 for \$1.

SHURFINE Shurfine Crackers 1 lb. box 39¢

SHURFINE Shurfine Sugar 5 lb. bag 89¢

SHURFINE Shurfine Vanilla Waters 3 for \$1.00

SHURFINE Ocean Cranberry Sauce Spray 3 for \$1.

SHURFINE Cream style Corn 5 for 1

SHURFINE Shurfine sliced or whole PEACHES 4 for 1

SHURFINE SWEET PEAS 5 for 1



# WANT ADS

**CAPROCK MONUMENT CO.**  
 Dealers of Georgia Granite, Georgia Marble, Colored Granite, & Bronze.  
 represented by  
**BOXWELL BROS. FUNERAL HOME**  
 519 S. EVANS  
 659-3802

**FOR SALE-** AKC Registered, Salt & Pepper miniature Schnauzers. Call 2105 for more information.  
 4T-C

**FOR SALE-** Two Shotguns. Remington 870-Hi-Standard. Both 12 Gauge Mod. Barrels; 1 22-22 Mag Ruger Pistol. Call 659-3657 or come by 212 S. Dressen after 5 p.m.  
 1-2tp

**FOR SALE-** Nice doublewide mobilhome, \$15,000. Call 659-3292 for appointment.  
 47-rtn

**FOR SALE-** Firewood, Burton Schubert 659-2667.  
 47S-rtn

**FOR SALE-** Pickup camper, paneled, nice small cabinets, in very good condition. Can be seen at 30 S. Dressen. or call 659-3051.

**FOR SALE-** 1975 Hillcrest Mobile Home 12 x 54 \$6000.00. 1975 Chevy Van, \$1500.00. Call 659-2201.  
 52-rtn

Need to sell one Ford diesel tractor and a pick-up camper frame made of steel tubing. Will sell both very reasonable. Come by 706 Steele or call 659-3867.  
 49S-rtn

Pole barns custom built, color or galvanized steel siding. Nov. special 20 x 30 \$1800; 24 x 30, \$2300; 30 x 40, \$3400; 40 x 60, \$6200. Custom Builders, 6345 Canyon Drive, Marillo, Texas, 806-755-8749.  
 52-7s

Shade & fruit trees. Evergreens, junipers and pines. Plant this fall for early spring growth. Orchid tree growers, 8 miles south of Perryton on Hwy. 70.  
 51-8tc

**FOR SALE-** 1976 Chevette, low mileage, deluxe interior, op rack, Michelin tires, CB radio, good mileage. Call 806-733-2384.  
 51-rtn

Frank Phillips College Livestock Judging Team is now selling, for a limited time only, delicious Longhorn whole hams. They are dry cured, hickory smoked, no water added hams at only 1.90 per pound. The hams make excellent Christmas gifts. Please call your order in to Carmon Laird at 659-2105 and help out her team. The delivery dates are November 21st and December 12th. Discounts to those who order over 10 hams.  
 8T-C

**FOR RENT**  
 Furnished apartments for rent. Handyman could work out part rent. 303 Davis St.  
 49S-rtn

**FOR RENT:** LBL Trailer Space. 659-3627.  
 39S-rtn

**REAL ESTATE FOR SALE**  
**FOR SALE** approximately 1 1/2 acres on corner of Kenneth & FM 760. Property has partially framed 25 x 30 shop, now has sewer, and is reduced in price. Call 659-3867 or 659-3880.  
 49S-rtn

**FOR SALE:** Residential Lots, 115 ft. wide. Extra deep. Excellent neighborhood. 1100 Block S. Archer. All utilities available. Too good to pass up. Call 659-3021 or write Box 522, Spearman.  
 50-rtn

**WANTED**  
 Experienced baby sitting, hourly, daily or weekly and drop-ins. Call 3854.  
 1-rtn

Water Hauling Wanted, Jack Kemper, 612 S. Evans, Call 659-3475 after 5.  
 48S-rtn

**WANTED TO RENT**  
 Dry land or irrigated land. Please call Gene Leatherman, 806-733-2272 after 5:00 P.M.

**WANTED-** To buy good bird dogs. Will pay top price. Contact Tony Taylor, 405-256-2069.  
 52S-2tp

Interested in buying pre 1965 silver coins will pay 3.75 per \$1.00 face value. Write Dr. Ellis Gill 3404 Monte Vista Austin, Tex. 78731 or call collect 512-472-0883  
 52-3tp

**SPECIAL SALE:** Turquoise jewelry. Lay away now for Christmas. Call 659-2317.  
 45-T only

## HELP WANTED

**HELP WANTED-** The Gruver Equity Elevator, Gruver, Tx. now taking applications for elevator attendant. Good pay, good benefits. Call 733-2880 or come by to apply.  
 51S-2tc

**TRUCK DRIVER NEEDED**  
 Must Have Commercial License phone 659-3642 Clois (Billy) Baker  
 52S-rtn

**OFFERED BY:**  
**Emmett R. Sanders**  
 Realtor  
**R**  
 REALTOR  
 +++

Dwelling and store building, small detached apartment, on wide lot, ideal for professional office-dwelling combined.  
 \*\*\*\*\*

2 1/2 section ranch-farm, 400 acres cultivated, 1200 acres grass, 2 irrigation wells, 3 bedroom ranch house; owner will carry paper.  
 \*\*\*\*\*

150' x 140' commercial, zoned heavy retail, with 2 bedroom home and detached garage, terms available.  
 \*\*\*\*\*

308 S. Hoskins, 5 room house, carpet, fenced yard.  
 \*\*\*\*\*

Lovely brick home on 11 acres only 5 minutes from Spearman shown by appointment only.  
 \*\*\*\*\*

Two new homes, each with 3 bedrooms, 2 baths, carpets, nice kitchens, utility rooms, central heat & air, yards will be fenced.  
 \*\*\*\*\*

240 acre farm, one 6" well, on pavement 15 miles southwest of town, one-fourth minerals, owner will carry paper.  
 \*\*\*\*\*

**EMMETT R. SANDERS**  
 REALTOR  
 659-2516  
 659-2601 [nights]  
 34S-rtn

## LEGAL NOTICE

**NOTICE TO ALL PERSONS HAVING CLAIMS AGAINST THE ESTATE OF F. L. ALLEN\* DECEASED**  
 Notice is hereby given that original Letters Testamentary for the Estate of F. L. Allen, were issued on November 13, 1978, in Cause No. 1563, pending in the County Court of Hansford County, Texas, to Nell McClellan. The residence of such Executrix is Norman, Cleveland County, Oklahoma. The post office address is: 1509 Peter Pan, Norman, Oklahoma 73069.

All persons having claims against this Estate which is currently being administered are required to present them within the time and in the manner prescribed by law.  
**DATED This 13th day of November, 1978.**

John L. Hutchison  
 Box 506  
 Spearman, Texas 79081  
**ATTORNEY FOR THE ESTATE**  
 1-1tc

## HELP WANTED

**We are now taking applications for a waitress and a night cook.**  
 Apply at  
**Martin's Steak Garden**  
 Hwy 207 South, Spearman, Tex.

## Special Youth Activities At FB Convention

DALLAS --Texas Farm Bureau will involve several groups of outstanding young people from Texas farms and ranches in three special activities during the 45th annual convention in Dallas Nov. 26-29.

Young people's activities will include a Discussion Meet, a Talent Find contest, and the finals of the 1978 Texas Farm Bureau Queen contest. These events will be in the Dallas Convention Center Theater. Other convention activities will be in the Dallas Hilton Hotel.

The Discussion Meet, a contest involving problem-solving abilities, will take place on Sunday night, Nov. 26, between four young people. Winner of their respective county Discussion Meets, the contestants are John Paul Barre, Yoakum; Lisa Crain, Lometa; Bruce Lee Dugger, Robstown; and Dean Nelson, Katy. Bob Gruner, Canyon, chairman of the TFB Young Farmers and Ranchers Advisory Committee, will be moderator.

The winner will receive an expense paid trip to the American Farm Bureau Federation annual convention in Miami Beach, Florida, in January, 1979, to compete in the AFBF Discussion Meet, as well as to the AFBF Young Farmer and Rancher Leadership Conference in Denver, Colorado, in February.

The Talent Find finals, also scheduled for Sunday evening, will feature young entertainers who have won their respective county and district Talent Find contests. Millard Shivers, Dallas, rural activities director for Blue Cross/Blue Shield of Texas, will be master of ceremonies.

Participants will be Terry Peterson, Happy; Leslie Mayor,

Petrolia; Jan Brashears, Greenville; Sandy Hudson, Canton; Terri Kvapil, San Angelo; Lauri Pruser, Winters, and Pam Holle, Ballinger; Rusty McHargue, Andy Gomez and Valerie Garman, Gatesville; Nancy Williams, Liberty; Tammie Sue Jones, Wharton; and Richard Oncken, Gonzales.

The finals of the 1978 Texas Farm Bureau Queen contest will be Monday evening, Nov. 27. Ten young beauties have progressed through county and district competitions to become finalists in the state pageant. Layton Black, Goldthwaite rancher, will be master of ceremonies.

This year's finalists are: Mittee Green, Gruver; Stacy Edwards, Henrietta; Kathy Pipkin,

Greenville; Kassandra Sain, Detroit; Dee Ann Daffern, Lamasa; Kathryn Bredemeyer, Winters; Theresa Ann Dyer, Lometa; Sammi Gayle Damek, Dayton; LaCricia Hlavinka, East Bernard; and Melissa Lane Cosper, Edna.

The Talent Find winner and 1978 State Queen will receive an expense paid trip to Washington, D.C., and Williamsburg, Virginia, in April, 1979.

Voting delegates from 212 counties will be in attendance at the Texas Farm Bureau state convention formulating policy on state and national issues. National policy recommendations will be forwarded to the American Farm Bureau Federation annual convention for consideration as 1979 policies.

## ED WHEELER REAL ESTATE

**HOMES-FARM COMMERCIAL**  
 \*\*\*\*\*  
 905 Haney St. 2 bedroom, 1 bath, attached garage, fenced backyard.  
 \*\*\*\*\*  
 906 King, Gruver, 3 bedroom, 1 bath, detached garage, fenced yard.  
 \*\*\*\*\*  
 1121 S. Dressen, 3 bedroom, 2 bath, corner lot, fenced backyard.  
 \*\*\*\*\*  
 706 Steele Drive. 3 bedroom, den, 1 1/2 baths, fenced backyard.  
 \*\*\*\*\*  
 1114 S. Haney - 3 bedroom, 1 bath with garage and fenced yard. Priced to sell.  
 \*\*\*\*\*  
 Jerry Gee 659-3664  
 Doris Beck 659-2618  
 659-2074

## Hightower On Japan Trade Trip

(Washington, D.C.)-The House of Representatives Committee on Agriculture announced today that Congressman Jack Hightower of Texas is one of eight members of the committee invited to participate in an Interparliamentary Symposium in Tokyo, Japan starting November 14.

Hightower will be the principal speaker for the United States delegation on concerns in trade with Japan in the areas of wheat, feed grains and beef. Citrus, cotton and soybeans will be among the other commodity areas discussed in the agricultural sector of the symposium.

The United States delegation will go from Tokyo to Peking in the Peoples Republic of China November 20th. The China meetings will focus on cotton with the official hosts being ChinaTex and the China Council for the Promotion of International Trade. ChinaTex is the official organization for purchasing imported fibers and for the sale of exporting fibers for the country.

In the Japan meeting Hightower is expected to address the problems of access to Japanese markets and the overall trade deficit problems existing with Japan.

In response to questions about trade with the two countries, Hightower stated, "While Japan is the United States best customer of agricultural commodities with the dollar level reaching over \$4 billion this year, there still exists a very distressing overall trade deficit between the countries. This deficit has played no small part in the problems the United States dollar has had this year in overseas valuation."

The delegation will be back in the United States the first week in December.

**TEXAS PRESS**  
 MEMBER 1977 ASSOCIATION  
 PUBLICATION NO. 509660  
 SPEARMAN, TEXAS 79081  
 213 Main Box 458 659-3434  
 Published Weekly at 213 Main Street  
 Spearman, Texas 79081  
 Owner-Publisher.....William M. Miller  
 Second Class postage paid at Spearman, Texas  
 ANY ERRONEOUS REFLECTION UPON THE CHARACTER OF ANY PERSON OR FIRM APPEARING ON THESE COLUMNS WILL BE GLADLY AND PROMPTLY CORRECTED UPON BEING BROUGHT TO THE ATTENTION OF THE MANAGEMENT.  
 SUBSCRIPTION RATE: Hansford, adjoining counties, combination with the Hansford Plainsman, \$10.40.  
 Other points, \$14.40.


**WELCOME TO THE ALBANY**  
 The oldest existing town of the thirteen original American colonies is Albany, New York, first reached by the French in 1540.  
 "An old man in love is like a flower in winter."  
 Portuguese Proverb

**NOW OPEN - PRO SPORT CENTER**  
 319 Main - Stratford  
 A/C 806-396-2062  
 Rental ski equipment.  
 For Sale: ski equipment, ski boots, clothes. Full line of ski clothing...  
**PRO SPORT CENTER**  
 Stratford, Texas

**Get Ready For Winter**  
 Use storm windows to insulate your windows. Double glass resists heat loss almost twice as well as single glass. By doing this, you keep warm air in, & cold air out. When buying new storm windows or doors, buy the best that you can buy in order to get the best savings on your fuel bills. For the ultimate in quality storm windows & doors,  
 Contact Howard Moyer at  
**ONLY ALUMINUM INDUSTRIES**  
 114 W. 1st Guymon, Okla.  
 338-6966 or 338-6170

**FALL CLEARANCE**  
 We hope every every farmer gets top yields and prices. The farmers are cutting maize and  
 We are cutting prices  
 We have over a dozen 79 GMC pickups in stock right now.  
 And more are coming in shortly  
 We have 2 new GMC tandem grain trucks rigged and ready to work  
 We have a fine selection of 79 models.  
 A few Pontiacs, and Buicks...With many more coming in  
 We have a few 78 models left....  
 Better hurry ....We also have some of the nicest used car and trucks we have ever traded for.  
 We know with the trades we are making that we will be trading for a lot more, too  
 Come on out, we are looking forward to doing business with you!

**HERGERT**  
**Pontiac, Buick, GMC**  
 "The Best For Sales, Service & Body Shop"  
 WE APPRECIATE YOUR PATRONAGE!!!  
 So. Hwy. 207  
 Spearman, Texas 806/659-3722





**Agricultural News**

**AGRICULTURAL NEWS**  
Layton Barton  
County Extension Agent

**AGRI-BUSINESS SEMINAR**

The third Annual Golden Spread Agri-Business Seminar will be held in Amarillo at the Villa Inn on I-40 and Grand on Friday, November 17 from 8:30 a.m. to 4:45 p.m.

The seminar, sponsored by the Amarillo Chamber of Commerce, will have for its title this year "Decisions for Profits." Many outstanding speakers are listed on the program with some very interesting topics. Speakers and topics will be: E. M. Gossett, Jr., President of Gossets, Inc., "Managing for Profit"; L. S. "Bill" Pope, Dean, School of Agriculture, New Mexico State University, "Future Trends in Crop & Livestock Management"; James R. Cook, President American National Bank, "Money and Inflation as it Affects Agriculture"; Harvey Davis, Executive Director of the Texas Dept. of Water Resources, "Future Resource Alternatives"; and W. T. "Dub" Berry, Senior Vice President, Western Farm Management of Denver, "Short and Long Term Money Management."

Registration for the seminar will begin at 8:30 a.m. and the cost will be \$15 per person and \$7.50 per student. Anyone who is interested in attending the seminar may pick up registration forms in the Extension Office.

**A LOOK AT BEEF TRADING IN FUTURES MARKET**

The Commodity Futures Market can be an alternative way to purchase feeder cattle.

Feeder or stocker operators may want to go this route when cattle are unattainable, or when location costs are excessive. But cattlemen should have a workable knowledge of commodity futures trading before attempting this method.

Commodity Futures Markets reflect the slow realization of the magnitude of price recovery in the cattle industry as herd build-up begins. During a recovery market, distant commodity futures contracts often lag current cash markets and outlook forecasts.

A par delivery unit on the feeder cattle contract is 42,000 pounds of approximately 70 Choice feeder steers, averaging between 550 and 650 pounds. A USDA grader inspects, weighs and grades each lot.

Most producers receiving delivery of feeder cattle have been satisfied with the quality and uniformity of the lots.

A buyer, or long hedger, may receive delivery by having the "buy" contract longer than any other long open position. A long position is established when the trader buys a contract and the product (feeder cattle) is owed to him.

Delivery is usually made at the decision of the seller. The buyer can force delivery by holding the contract beyond the maturity date, usually the 20th day of the contract month.

There are 11 possibilities for delivery locations. They are Omaha, Neb.; Sioux City, Iowa; St. Paul, Minn.; Greeley, Colo.; Kansas City and St. Joseph, Mo.; Dodge City and Wichita, Kan.; Oklahoma City, Okla.; Amarillo, Tex.; and Billings, Mont.

A buyer needs to know various rate charges from each of these delivery points to the desired destination and have transportation available upon notification of delivery.

The seller, or short hedger, decides on the delivery location. A delivery lot will be discounted 50 to 75 cents per hundred-weight if it is not delivered at the par delivery points of Omaha or Sioux City.

Delivery is made on the first day of the month of the contract month. The two exceptions are that it must be a business day of Monday through Thursday, and it must not be a holiday or the day before a holiday. Delivery days extend six deliverable days beyond the final trading day of a contract.

A buyer also needs to know the "basis" and understand how to use it. Basis is defined as the difference between the local cash price and the futures market price on market day.

Basis is an important tool to decide whether to take delivery of a contract. If basis adds more to the price than transportation and location costs, take delivery. If transportation and location costs are higher than basis, lift the hedge on the futures market and buy feeder cattle on the local cash market.

Cattlemen using this method also can be assured that all contracts will be honored. The Commodity Futures Trading Commission and the Chicago Mercantile Exchange have various regulatory devices to in-

sure delivery of cattle.

**FALL FERTILIZATION**

Applying Fertilizer in the fall for spring crops has certain advantages as well as disadvantages.

A major advantage of fall fertilization is to avoid the spring rush for fertilizer that local suppliers may have difficulty meeting.

It doesn't make much difference whether potassium or phosphorus is applied in the spring or fall. However, studies have shown that any differences from nitrogen are in favor of spring applications.

Nitrogen applied in the fall must be from an ammonium source and should be used only after the soil temperature is below 50 degrees F. If the nitrate form of nitrogen is applied, it can be lost by leaching. Also, nitrates can be lost from denitrification in clay soils if they remain water logged for a long time.

Each farmer should consider the advantages and disadvantages of fall fertilization in his operation and decide when to fertilize. Of course, any fertilization program should be based on the level of each nutrient in the soil and requirements for the crop to be planted. A soil test will provide information about available nutrients in the soil.

More information on soil testing as well as fertilization results can be obtained from the county Extension office.

**STOCK SHOW ENTRIES**

All Hansford County 4-H'ers who plan to exhibit their livestock projects at a major show in Texas this year, need to contact me as soon as possible. Entry deadlines for Amarillo, Ft. Worth, San Antonio and Houston Stock Shows are December 10, 1978.

If you plan on entering any of these shows contact me at the Extension office at 659-2136 or 733-2901.

**Crop & Livestock Reports Needed**

From mid-November to early January, thousands of Texas farmers and ranchers will receive a crop or livestock questionnaire from the Texas Crop and Livestock Reporting Service or will be personally interviewed from the Texas Crop and Livestock Reporting Service or will be personally interviewed by the Service's field staff. The information gathered through the questionnaires and interviews provides the basis for determining the final acreage, yield, and production of crops and end-of-the-year livestock and poultry numbers for each county.

Reliable information on what is produced, how much, and where is important to farmers, ranchers, and others in making production and marketing decisions and in providing an unbiased picture of Texas agriculture. These are also essential to legislation and are used in establishing acreages and payment levels to producers under the various commodity programs.

The collection and publication of agricultural statistics are a cooperative effort between the Texas Department of Agriculture and USDA. This cooperation avoids duplication of effort, promotes economies, and increases the effectiveness of statistical reports. All individual farm and ranch information is kept confidential, and only state and county summaries become part of the final published estimate.

All Hansford County farmers and ranchers receiving the questionnaire are urged to fill it out carefully and return it promptly.

County statistics for 1977 and January 1, 1978, are available on livestock, Poultry, Dairy, Field Crops, Small Grains, Cotton, Vegetables, Fruits and Pecans, and Cash Receipts from the Sale of Texas Farm Commodities. Bulletins can be obtained from the Texas Crop and Livestock Reporting Service, P. O. Box 70, Austin, Texas 78767, or by writing Reagan V. Brown, Commissioner of Agriculture, P. O. Box 12847 Capitol Station, Austin, Texas 78711.

Mr. and Mrs. R.E. Latham, former Spearman residents, now of Elmor City, Oklahoma, spent the week-end with Mr. and Mrs. Pat Cates, and visited with friends several days last week.

**Emergency Loans Available From FHA**

Emergency loans for farmers and ranchers are available through county offices of the Farmers Home Administration (FmHA). Robert J. Holloway, FmHA County Supervisor, said today.

Mr. Holloway asked that those who need farm credit as a result of drought make their needs known at the Farmers Home Administration office at Perryton, Texas.

Application for assistance in the disaster stricken counties

will be accepted by Farmers Home until July 24, 1979 for physical losses and October 29, 1979 for production losses.

FmHA loans covering actual physical and production losses may be used to replace installations, equipment, or buildings, (including homes) lost through this disaster. Funds may be used to buy feed, seed, fertilizer, livestock, or to meet interest and depreciation payments on current real estate and chattel debts. Other loans, be-

yond actual losses, can be made for annual operating expenses or to make major adjustments in a farming (or ranching) operation.

"Funds can be used for essential operating and living costs," Mr. Holloway said.

Loans covering actual losses are made at an interest rate of three and five percent and are scheduled for repayment as rapidly as feasible consistent with the applicant's reasonable ability to pay loans beyond

actual losses have various maturities, depending upon the purpose of the loan.

The interest rate for short-term loans for farm operating purposes is 3 to 5 percent, depending on the date of the loss.

Other credit under this program is currently 8 1/2%.

To be eligible for an emergency loan, an applicant must have suffered losses from the disaster and be unable to get credit from other sources.

Emergency loans can be used to help the farmer restore damage farm operations and additional loans based upon the emergency designation can be used to reorganize the farm for greater efficiency and better production.

Americans spend 17 per cent of their income on food. Britons spend 24 per cent, and Russians spend 58 per cent. Meat accounts for almost one-third of U.S. consumers' food expenditures.

The U. S. exports more farm products than any other country. Farm exports are key to a favorable balance of trade. The U.S. agricultural trade surplus is expected to widen to a new high of almost \$13 billion in FY 1978. This is a major factor in helping to restrain inflation.

75 per cent of U.S. cattle are in herds of less than 500 head, and 99 per cent of U.S. farms have less than 500 cattle. The average size cattle herd is 75 head. Most large as well as small operations are family-owned.

**Now...7-Days**



**HAVE A HAPPY**

PRICES EFFECTIVE THRU NOV. 22, 1978. QUANTITY RIGHTS RESERVED. NO SALES TO DEALERS.

MON.-SAT.  
8a. m. -9p. m.  
SUNDAY  
10a. m. -7p. m.

**THANKSGIVING STORE HOURS**  
**9 A.M. - 2 P.M.**  
**THANKSGIVING DAY!**  
AT MOST STORES!



**ENRICHED Gold Medal Flour 5 LB. BAG 78¢**  
**ALL VEGETABLE Crisco Shortening 3 LB. CAN \$1.68**  
**ALL GRINDS Folger's Coffee 1-LB. CAN \$2.59**

**Thanksgiving BARGAINS Thanksgiving BARGAINS Thanksgiving BARGAINS**

**DEL MONTE THANKSGIVING SPECIALS!**  
Green Beans 2 75¢  
Golden Corn 2 65¢  
Whole Potatoes 2 59¢  
Fruit Cocktail 2 89¢

**KRAFT JET PUFF OR MINIATURE Marshmallows 3 1.00**  
**OCEAN SPRAY STRAINED OR WHOLE Cranberry Sauce 2 73¢**  
**LIBBY CANNED Pumpkin 1 33¢**  
**BETTY CROCKER LAYER "SUPER MOIST" Cake Mixes 1 63¢**

**DOUBLE GUNN BROS. STAMPS**  
**SUN - WED NOV. 19-22**

**Presenting the CULTURA COLLECTION**  
A stunning selection of casual and formal jewelry.

**5 PIECE COSTUME JEWELRY \$4.99**

**SPECIAL 4 WEEK OFFER**  
ROSE PETALS STICK PIN AND EARRING SET FREE

**DEL MONTE SLICED, CHUNK OR CRUSHED Pineapple in Juice 2 78¢**

**FROZEN FOODS**

**BIRDSEYE Cool Whip 9-OZ. TUB 48¢**  
**MRS. SMITH GOLDEN DELUXE Pumpkin Pie 46-OZ. PKG. \$1.68**  
**RHODES BAKE-N-SERVE Rolls 7-1/2 OZ. PKG. 53¢**  
**PET RITZ 9-INCH Pie Shells 2-1/2 OZ. PKG. 49¢**  
**CAMELOT WHOLE Strawberries 16-OZ. BOX 79¢**  
**CAMELOT SPEARS Broccoli 2-10 OZ. PKG. 79¢**  
**CAMELOT WHOLE KERNEL Cut Corn 16-OZ. CAN 46¢**  
**CAMELOT CORN ON THE COB 4-5/8 OZ. PKG. 87¢**

**FRESH DAIRY**

**CAMELOT GRADE "A" Eggs 62¢**  
**HYDE PARK FRESH WHIPPING Cream 1/2-PT. CTN. 38¢**  
**CAMELOT GRADE "A" Fresh Butter 1-LB. 1.39**  
**KRAFT PARKAY Margarine 1-LB. 49¢**  
**PILLSBURY CRESCENT Rolls 2-1/2 OZ. 53¢**  
**KRAFT PHILADELPHIA Cream Cheese 8-OZ. 58¢**  
**PHILADELPHIA REG. OR CHIVE SOUR CREAM 8-OZ. 38¢**

**Ideal**

**EMPIRE BRAND HEN Turkeys 10 TO 14 LBS. AVERAGE 73¢**

**U.S.D.A. GRADE "A" ALL SIZES Young Turkeys 1.77¢**

**PRICES PIMENTO (14-OZ. CTN.) Cheese Spread 7 1/2 OZ. 1.79**

**Ham Center Slices 1.99**

**HICKORY SMOKED SHANK PORTION Smoked Hams 1.29**

**HICKORY SMOKED RUMP PORTION Smoked Hams 1.39**

**JIMMY DEAN PURE Pork Sausage 2-LB. PKG. \$1.39**

**HEALTH & BEAUTY AID SPECIALS...**  
**HERBAL ESSENCE Shampoo 7-OZ. 1.29**  
**REGULAR OR UNSCENTED Final Net 6-OZ. 1.89**

**SHOP IDEAL WHERE YOU GET GUNN BROS.**



# Cattlemen To Stress Economic Understanding During Farm-City Week

The subject of agricultural economics needs much more understanding on the part of the American public. That's why the Calico Cowbelles are participating in Farm-City Week, Nov. 17-23.

According to Mrs. Bernice Brown of Spearman State, Farm City Week Chairman, the Calico Cowbelles will join in the national event with women of the American National Cowbelles, the women's auxiliary of the National Cattlemen's Association. Coordinating organization

for the annual observance, which began twenty-three years ago, is Kiwanis International. "This year's theme for Farm-City Week is 'Partners in Economic Progress,'" Mrs. Brown said. "The theme was developed after a survey by the United States Chamber of Commerce revealed an urgent need for basic economic understanding in America. The survey found, for example, that value conflicts among young people combine an adherence of 'money grubbing' on the one hand with a

desire for good salaries on the other. It appears from this survey and other indicators that understanding of the economic system is fragmentary, at best."

According to Mrs. Brown, one of the economic concepts most misunderstood about the agricultural sector of our economy is that farming and ranching is not a margin-added business where margins are added to costs of materials, like conventional manufacturing and merchandising businesses.

"The prices we receive for our cattle," said Mrs. Brown, "are determined strictly by supply and demand at the time of sale. That's why live cattle prices have fluctuated so much over the past few years. We are currently nearing the end of a cyclical over-supply situation in which the numbers of basic producing cows have been too large for demand to hold prices at profitable levels. It has taken us several years to reverse the build up pattern in cow numbers. Because of the nature of

our product and the large number of cattlemen, each making independent decisions, we are not able to stop production one day, place our product on the shelf and resume production when the price improves," added Mrs. Brown.

"It is our hope," said Chairman Brown "that Farm-City Week will help develop a basic understanding among all people of the roles of land, labor and capital in the scheme of things. We need each other. We clothe

and feed each other."

Cattlemen from all across the nation will participate in Farm-City Week activities.

Between the producer and the dinner table, agriculture requires the service of eight to 10 million persons to store, process and merchandise the output.

## Rebekah Lodge Meets

The Rebekah Lodge met Thursday, November 9 at the Lodge Hall with Grand Noble, Inez Holland and Pro Tem vice-Grand, Ruth Caro presiding. Nominations for the officers for 1979 were opened. Election of new officers will be held December 14. Practice for the initiation of Verna Finley will be held November 13, 20 and 27. Initiation for Verna Finley will be November 30 at a called meeting.

The Christmas party for Lodge members and their families will be December 15 at 7:00 p.m. at the Lodge Hall with a pot luck supper and the exchanging of gifts. Refreshments were served to 10 members by Evelyn Kingsley and Mona Slater. The members are reminded to remember the Rebekah Lodge Bakesale and any member wishing to donate may do so.



## Jamie's Jabber FOOTBALL

by Jamie Morley

Well this week is the game all Spearman fans have been looking forward to. The Spearman V. Dalhart game. As most of you know Spearman and Dalhart are sworn enemies! Well, this year you can be sure that the Mighty LYNX are going to show the Dalhart Wolves what the LYNX team can really do. This year we are going to make those wolves howl in pain!! Spearman is still number 1 in District and we intend to stay number 1 and no wolf is going to show us any different. Usually, when we go to Dalhart something has been done and blamed on LYNX fans. This year if that happens I'm afraid that the wolves are going to have to cope with some angry LYNX'S. Now I know and you know that the Spearman Lynx Fans and players have more of a sense of Pride than to do something that would reflect on our school and our players! I encourage you to come out this week and watch the Spearman LYNX team pulverize the Dalhart Wolves! The game is here at the LYNX stadium at 7:30. So less chance of Hanky Panky! Show your might LYNX GOOD LUCK!!

## Band News

Sixteen Spearman High School Band Students made All Region Band. The tryouts were held in Phillips Saturday, November 11th. The members left at 9:00 a.m. They arrived home late that afternoon. They were treated to dinner at Sutphens in Borger.

The members are as follows: Carey Bridges, Senior, Trumpet; Twana Byrd, Freshman, Coronet; Dawn Bridges, Sophomore, Saxophone; Becky Lusby, Sophomore, French Horn; Jennifer Umphress, Senior, French Horn; John Reneau, Senior, Drums; Brent Ware, Junior, Drums; Tina Cochran, Senior, Clarinets; Pam Largent, Senior, Clarinets; Lesa Thomas, Sophomore, Clarinets; Angie Francis, Freshman, Bass Clarinet; Julie Farr, Sophomore, Contra Bass; April Pearcey, Sophomore, Flute; Jimmy Morley, Freshman, Baritone; Wayne Meek, Sophomore, Baritone; Kevin Kirk, Sophomore, Tuba; Brenda Fanning, Senior, Alternate Contra Bass; and Jerry Laird, Freshman, Alternate Drums. Congratulations to all the People who made it or tried out!

Congratulations also to Mr. and Mrs. Prather and their new **ADDITION TO THE FAMILY! IT'S A GIRL!!!**

\*\*\*\*\*

**JUST A LITTLE REMINDER!** Friday the High School is on the Alternate, Alternate Bell Plan! Which means, we will have 7th hour first and have first hour starting at 9:11. **NO EXCUSED TARDYS!** Lunch will be according to 5th. Pep Rally will be at 2:44.

The meat and poultry alone employs 315,000 workers with a payroll of more than \$2.7 billion.

The farmer/rancher receives an average of about 40 cents out of each dollar apart from farm-grown food. The balance of the dollar represents the labor and other costs involved in transporting, processing and distributing food. Prices received by cattlemen are determined strictly by supply and demand at the time of sale. That is why prices fluctuate with changes in supply. Agriculture is not a margin-added business where margins are added to costs of materials, like conventional manufacturing and merchandising businesses. However, this strictly free market system has helped bring a doubling of beef production since 1954, despite discouraging financial results at times.

One American farmer/cattlemen produces enough food and fiber for 56 persons. In 1957 he was producing enough for only 29. One Russian farm worker produces food for seven persons.

# of Saving At Ideal FOOD STORES

## THANKS GIVING WE AT IDEAL ARE THANKFUL FOR YOUR CONTINUED SUPPORT THROUGHOUT THE YEAR...

POWDER OR BROWN <b>C&amp;H Sugar</b>	BROWN & SERVE <b>Mel-O-Crust Rolls</b>	CHICKEN OR BEEF <b>Swanson Broth</b>	MARSHMALLOW <b>Kraft Creme</b>	MILK <b>Eagle Brand</b>
<b>68¢</b>	<b>29¢</b>	<b>24¢</b>	<b>38¢</b>	<b>64¢</b>
2-LB. BAG	12-CT. PKG.	13 3/4-OZ. CAN	7-OZ. JAR	14-OZ. CAN

Thanksgiving BARGAINS Thanksgiving BARGAINS Thanksgiving BARGAINS Thanksgiving BARGAINS Thanksgiving BARGAINS

WELCH'S Grape Juice..... 48-PT. BTL. <b>\$1.19</b>	KLEENEX Dinner Napkins..... 40-CT. PKG. <b>49¢</b>
SEMI-SWEET MINI OR MILK CHOCOLATE CHIP Hershey Chips..... 12-42 PKG. <b>\$1.43</b>	HEAVY DUTY Reynolds Wrap..... 2 12-17 INCHES <b>73¢</b>
GREAT FOR STORING FOODS Glad Wrap..... 100-FT. ROLL <b>48¢</b>	ANGEL FLAKE Baker's Coconut..... 14-42 OZ. <b>\$1.29</b>
THICK & THIRSTY Paper Towels..... 400-PT. ROLL <b>53¢</b>	TAYLOR VAC PAC Sweet Potatoes..... 17-42 OZ. <b>63¢</b>

MEADOWDALE  
**Ice Cream**  
ALL FLAVORS  
3/4-GAL. CTN. **89¢**

## Thanks giving Turkey!

**Honeysuckle Turkey**  
**79¢**  
LB.

WELCH'S Grape Jelly..... 3 1/2-LB. JAR **\$1.29**

**RED, RIPE FRESH Cranberries**  
1-LB. PKG. **43¢**

FRESH **Pork Loin Roast** **\$1.99**  
CENTER RIB CUTS LB.

U.S.D.A. CHOICE BUTCHER BLOCK BEEF **Rib Roast ... LB. \$1.99**  
LARGE END BEEF RIB

RATH BLACKHAWK **Sliced Bacon..... \$3.57**  
HICKORY SMOKED

RATH BLACKHAWK **Sliced Bacon..... \$1.79**  
HICKORY SMOKED

CUDAHY CHUCKWAGON **Boneless Ham** **\$1.99**  
FULLY COOKED HALVES 3 TO 5 LBS.

WILSON'S CERTIFIED OR **Boneless Ham** **\$2.99**  
1 TO 5 LBS. FULLY COOKED

SMALL STALKS **Celery** **29¢**  
EACH

WASHINGTON EXTRA FANCY **Apples** **39¢**  
GOLDEN DELICIOUS LB.

COLORADO ALL PURPOSE **Russet Potatoes..... 1089¢**  
1-LB. BAG

FANCY GOLDEN YAMS **Sweet Potatoes..... 29¢**  
1-LB. BAG

U.S. #1 SWEET SPANISH **Yellow Onions..... 233¢**  
LBS.

GARDEN FRESH **Green Onions..... 239¢**  
BUNCH

BEAUTIFUL THANKSGIVING PLANTS **Mums** **\$3.29**  
6-IN. POT EACH

CALIFORNIA NEW CROP ENGLISH **Walnuts** **\$1.59**  
1-LB. PKG.

**STAMPS ...**

**Food Stamps Buy More At Ideal...**

**IDEAL FOOD STORES**

## Presbyterian Church News

There is a Sunday Church School class for everyone every Sunday at 9:45 a.m. with a concerned teacher with a well prepared, interesting Bible lesson.

"God Our Maker Doth Provide" is the subject of Pastor Edward D. Freeman's sermon at the service for the public worship of God on Sunday, November 19 at 11:00 a.m. There will be a fellowship dinner following morning worship.

This year's union Thanksgiving service will be held Sunday, November 19 at 7:00 p.m. at the First United Methodist Church.

The Session will meet on Wednesday, November 22 at 7:30 p.m. First Presbyterian Church is proud of its unique character as a caring, sharing church.



Main Office  
514 Collard  
Phone 659-3711

**Speartex  
Grain  
Co.**

**KRDF  
Stereo 98**

**H & H  
Water  
Well Service  
Inc.**

Gruver Hwy.  
Phone 659-2242

Clothes  
for the  
family at the  
Family Store!

Full line of Boys clothes by Donmore

**BAKERS'  
Dept. Store**

Phone 3213 Spearman, Texas

**Consumers  
Sales Co.**



421 W Kenneth Ave  
Phone 659-2021



**FOOTBALL**  
Spearman  
vs.  
Dalhart  
**FRIDAY NIGHT  
7:30 O'CLOCK**  
Spearman Lynx

VARSITY Football Schedule 1978  
Nov. 17 DALHART 7:30 HOME

**7th Grade & 8th Grade Lynx**

Sept. 14	PERRYTON	5:00	HOME
SEPT. 28	CANADIAN	5:00	AT CANADIAN
Oct. 5	BOYS RANCH	5:00	HOME
Oct. 12	DALHART	5:00	AT DALHART
Oct. 19	RIVER ROAD	5:00	HOME
Oct. 26	PERRYTON	5:00	AT PERRYTON
Nov. 2	CANADIAN	5:00	HOME
Nov. 9	BOYS RANCH	5:00	AT BOYS RANCH
Nov. 16	DALHART	5:00	HOME

**9th Grade**

Sept. 14	PERRYTON	5:00	AT PERRYTON
Sept. 21	STRATFORD	5:00	HOME
Sept. 28	BOOKER	5:00	HOME
Oct. 5	GUYMON	7:00	AT GUYMON
Oct. 12	DALHART	5:00	HOME
Oct. 19	RIVER ROAD	5:00	AT RIVER ROAD
Oct. 26	PERRYTON	5:00	HOME
Nov. 2	BOOKER	5:00	AT BOOKER
Nov. 9	BOYS RANCH	5:00	HOME
Nov. 16	DALHART	5:00	AT DALHART

**Lynx B Team**

Sept. 14	PERRYTON	7:00	AT PERRYTON
SEPT. 28	CANADIAN	7:00	HOME
Oct. 5	BOYS RANCH	7:00	AT BOYS RANCH
Oct. 12	DALHART	7:00	HOME
Oct. 19	RIVER ROAD	7:00	AT RIVER ROAD
Oct. 26	PERRYTON	7:00	HOME
Nov. 2	CANADIAN	7:00	AT CANADIAN
Nov. 9	BOYS RANCH	7:00	HOME
Nov. 16	DALHART	7:00	AT DALHART

Here  
Support  
The  
Advertisers  
Who  
Support  
The  
**LYNX**

**Hansford  
Impl. Co.**



SALES & SERVICE  
Hwy. 207 Spearman  
Phone 659-2712

**Dairy  
Queen**

BE WITH THE  
"IN" CROWD  
&  
"LIVE A LITTLE"

700  
Stinnett Hwy  
Phone 3324

*The Big Game is*  
**NOW**  
**GO TEAM GO**

**Brock  
Insurance  
Agency**

Phone 659-2514  
206 Main

**TG&Y**

Your best buy is at TG&Y!

521 Hwy 207 S.  
Phone 659-3741

**Hi Plains Auto  
& Conoco**



118 N. Main  
Phone 659-2506  
415 Collard  
Phone 659-3555

10	Kyle Beedy	RB	170	63	Kirby Hargis	G	190
12	Dayton Edwards	QB	165	64	Shawn Swenn	T	170
20	Karey Bodey	RB	175	65	Greg Hazelwood	G	165
21	Doug Hohertz	SB	170	67	Dean Schaifer	T	145
23	Billy Sellers	SB	165	68	John Kenney	G	160
30	John Reneau	FB	180	70	Clay Reid	T	235
31	Zane Newton	QB	175	71	David Cummings	C	175
37	Billy Snider	SB	170	73	Steve Goff	T	175
42	Tony Papay	SB	165	74	Karl Smith	T	225
44	Frank Lozano	FB	170	76	Florencio Martinez	G	185
45	Sam Boone	RB	185	77	David Ortega	T	190
50	Ray Ortega	T	190	78	Todd Brock	T	195
51	Brent Ware	T	195	80	James Whitaker	E	185
52	Clifton Morrison	C	170	81	Scot Martin	E	175
55	Carey Bridges	C	195	84	Chris Bodey	E	195
58	James Pierce	G	165	85	Jimmy Ladd	E	195
60	Jose Avila	G	160	86	Andy Francis	E	160
				88	Kelly Mahany	E	180

**Jr. Lusby  
Cats**

W. Gruver Hwy  
Phone 659-3766



**Spearman Spinners To Meet**



Phil Nolan of Phillips will be the guest caller for the Nov. 16 meeting of the Spearman Spinners Square Dance Club, which will be held at 8 p.m. at the County Barn. The public is invited to attend.

**Bridge Club**

The Ladies Duplicate Bridge Club met Monday, November 13 at Martin's Steak Garden. High was won by Rosa Lee Butt and Carolyn Gressett; second high was won by Barbara McClellan and Virginia Head. Guests present were Mmes. Barbara McClellan and Virginia Head and members Mmes. Charlotte Pearson, Verna Strawn, Helen Gressett, Irene Baker and Karen Countiss. The December meeting will be in the home of Verna Strawn.

You are cordially invited to a  
bridal shower honoring  
Camille Baggerly  
bride-elect of  
Marc Williamson  
at the home of  
Mrs. Thomas H. Etter, 711 Gibner Drive  
Saturday, November 25, 1978  
3:00 to 4:30 p.m.  
Hostesses, Mesdames  
Richard Holton  
Ralph Blodgett  
Roy L. McClellan  
J. L. Brock  
Ray Martin  
Rue Sanders  
Bob Hohertz  
M. D. McLaughlin  
Thomas H. Etter  
Herbert Butt  
Bill K. Jackson  
J. D. Wilbanks  
Don Knox  
Irvin Davis  
Garland Head  
F. J. Largent  
R. C. Porter  
Thomas H. Etter  
1-3tc

**Golden Spread Directors Meet**

Golden Spread Center Board met on Thursday, November 9 at 6:00 p.m. After being called to order by president Orvil Brummett, the meeting was opened with prayer by Ed Freeman.

Board members present were Bob Boxwell, Colene and Orvil Brummett, Rosa Lee Butt, Ed Freeman, Frances Loftin, and Thelma Scott.

Minutes of past meetings were read and approved and treasurer's report was approved and bills ordered paid.

It was announced that the Golden Spread Club would participate in Bruce Stinson Day.

The Sustaining Membership Drive was reported doing well but still incomplete. Persons who have been missed are asked to send a sustaining membership of \$25 to Golden Spread Club, Box 817, Spearman, TX 79081. The telethon made it possible to obtain the building. Remodeling is taking place in the building and operating expenses need to be met each month.

It was voted to take out liability insurance.

Thelma Scott donated a Christmas tree for the Center.

It was decided to have a Christmas decorating party on Tuesday, November 28. Baker & Taylor Women will be hostesses for the December 5 and 19 dinner and game evenings. On Tuesday, December 12, club members will make Christmas card holders for the hospital.

Golden Spread Center van-bus took thirteen senior citizens to Amarillo on Friday, November 10. They arrived in Amarillo early enough to eat and do a little Christmas shopping. Then they toured the Discovery Center and viewed a movie, "Sunward". On the return trip they stopped and toured the excellent Aquarium and Wild Life Museum at Frith.

Drive of the bus was the Rev. Edward D. Freeman. Others making the trip were Lena Beeson, Mildred Chamberlain, Matilda Entekin, Betty Freeman, Sada Hoskins, Addie Novak, Rhoda Overton, Bruce and Ruth Reardon, Mae Shaull, and Willie Wallis.



**Engagement Announced**

Mr. and Mrs. Eugene S. Passmore of Lubbock are announcing the engagement and forthcoming marriage of their daughter, Sean Suzanne to Gregory Allen Wilson, son of Mr. and Mrs. David L. Wilson of Waka.

Gregory is the grandson of Mr. and Mrs. John Allen of Spearman.

A December 30 wedding in the St. Luke's United Methodist Church in Lubbock is being planned.

The bride-elect is a senior geology major at WTSU, Canyon; a member of Sigma Gamma Epsilon Honorary Geology Society at WTSU; and also a member of WTSU Geological Society; Panhandle Geological Society; and Geological Society of America.

The prospective bridegroom is also a senior geology major at WTSU, member of Lambda Chi Fraternity; Sigma Gamma Epsilon Honorary Geology Society; WTSU Geological Society; Panhandle Geological Society; and American Association of Petroleum Geologists.

**TG & Y** family centers

521 HWY 207 S. SPEARMAN TX. OPEN 9 AM to 9 PM MON.-SAT. PRICES GOOD THRU NOV. 18

**BLOCK BUSTERS FOR THE HUNTER shotguns**

**Remington** 12 or 20 ga Pump Shotgun - Plain Barrel Model 870. Semi-automatic gas operated action reduces recoil. Pistol grip. Artistic scroll work as shown. **139.00**

**Remington** 12 or 20 ga. Pump Shotgun - Vent Rib Model 870. Easier and faster sighting for swinging on target. 5-shot capacity and 3-shot plug. Dependable operation. **159.00**

**Remington** 12 or 20 gauge Auto Shotgun Model 1100. Double action bars for smooth, dependable operation. 5-shot capacity with 3-shot plug. Plain Barrel. **179.00**

**Remington** #1100 VENT RIB 12, 20 - GAUGE AUTOMATIC SHOTGUNS. 12-GA. 26, 28 & 30" barrel. M, F & IC choke; 20-GA. 26 & 28" barrel, M & IC choke. **199.00**

**rifles**

**Marlin** Glenfield 75 .22 Auto With Scope. 4 power X 15mm scope. Semi-Automatic in 9-shot tubular fed. Swivels for sling, hardwood stock. **39.99**

**Remington** Nylon 66 Auto .22 Rifle With Scope. Stock & forearm constructed from DuPont® structural nylon with 9-shot tubular magazine and 4-power X 15mm scope. **59.00**

**Marlin** Level Action RIFLE 30/30 Caliber. Slide ejection and pistol grip, gold plate steel trigger. Hard wood stock with walnut finish. **97.00**

12 or 20 Gauge Shotgun Shells Your Choice **2.87**

**PETERS** Game Load Shotgun Shells 12 and 20 gauge **3.57 EA.**

22 Long Rifle Shells Box of 50 **.79**

Clay Target Thrower Hand-held target thrower, adj. spring. **2.47**

**Your best buy is at TG&Y!**

**HD Club News**

The Spearman Home Demonstration Club met Friday, November 10 in the home of Mrs. Richard Shedeck. The devotional was given by Mrs. Colleen Shedeck. Roll call was answered to "A New Kitchen Gadget".

Agent Peggy Winegarner presented the program on "Entertaining Buffet Style."

Mrs. Shedeck's home was beautifully decorated with fresh cut flowers.

Members present were

**Mmes. A.D. Reed, W.V. Hull, B.J. Garnett, Ed Hutton, W.H. Tarbox, hostess Richard Shedeck and agent Peggy Winegarner.**

**Arts & Crafts Guild News**

The Arts & Crafts met Friday, November 10 in the home of Mrs. W.H. Gandy. Members present were Mmes. Fred Daily, Joe Traylor, Guy Fuller, W.L. Russell and W.H. Gandy. The next meeting will be November 17 at Martin's Steak Garden with Mrs. C.A. Gibner as hostess.



**LYRIC THEATRE**

PHONE 806-659-2812

ONE SHOW AT 7:30 P.M. SUNDAY, MONDAY, TUESDAY, WEDNESDAY, AND THURSDAY

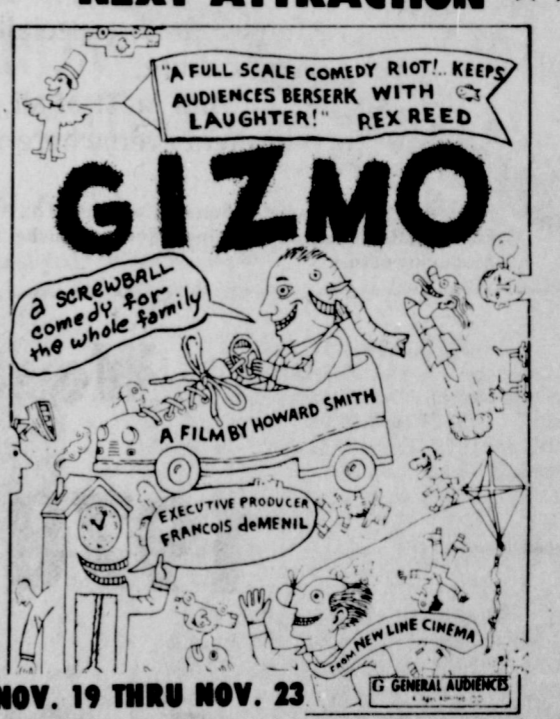
TWO SHOWS AT 7:00 P.M. AND 9:00 FRIDAY AND SATURDAY

**NOW SHOWING**

**NEXT ATTRACTION**



NOV. 15 THRU NOV. 18



NOV. 19 THRU NOV. 23

**PELICULAS MEXICANAS**



SUNDAY NOV. 19 - 2 P.M.







**We Salute  
Southwestern farmers . . .  
they have it tougher than most**

All U. S. farmers have a difficult financial row to hoe. That's been proven. But here in the Southwest, the farmer's income problems are magnified.

Crop-killing heat spells get national news coverage when they happen in the Midwest. But Southwestern growers accept heat and drought as just two of the normal hazards they regularly face.

And fuel bills? Southwestern farmers who irrigate spend more dollars on fuel alone than Midwestern farmers spend on seed, chemicals, labor, repairs, grain drying and fuel! (Based on U.S.D.A. figures for 1978.)

You may think these facts affect only farmers. But agriculture is so important in this part of the U. S. that nearly everyone is touched by the Southwestern farmer's special plight.

What can you do? Help spread these facts to those who don't understand, especially business and political leaders whose decisions affect agriculture.

And most of all, be appreciative. The Southwestern farmer . . . and farmers everywhere . . . deserve our thanks . . . and support.

Source: U.S.D.A. report to Senate Committee on Agriculture, Nutrition and Forestry. Regional comparisons reflect per-bushel and / or per-acre costs for producing corn.

Artwork courtesy of Pioneer Hi-Bred International, Inc. - Southwestern Division.

**We salute our farmers this  
1978 MILO HARVEST**

**B. and B. Farm Industries, Inc.**

703 Collard Phone 659-2551 Spearman, Texas

**PIONEER Hi-Bred International, Inc.**

Southwestern Division







**Fred Groves is honored.**

A select group of farmers, from Texas Panhandle were honored here Tuesday, October 31, in observance of Farm Demonstration Month.

Honored from Hansford County was Fred Groves.

The program at the Texas A&M University Agricultural Research and Extension Center here commemorated the 75th anniversary of the first successful farm demonstration in which a volunteer producer applied new scientific methods to improve local production.

The introduction of this teaching method in 1903 on the Walter C. Porter farm near Terrell, east of Dallas, led to the formation of the nation's Cooperative Extension Service. It has been credited with making America's agriculture the most bountiful in the world and has been adopted by countries around the globe.

Honored by the Texas Agricultural Extension Service Tuesday were farmers in each of the 20 counties of Extension District I. They have been leaders in conducting agricultural demonstrations to introduce new methods of their communities.

Fred Groves, 36 year old native Hansford County was honored as the outstanding farm demonstrator of Hansford County.

Fred has been involved in demonstration for eight years. He has had demonstrations in soybeans, milo, and wheat. He is an innovative farmer using his shop to make tools and equipment that help in his farming operation.

He is currently serving as Chairman of the Hansford County Crop Committee and is on the steering committee for the North Plains Research Station at Etter.

Fred is the President of the Hansford County Historical Society, a Boy Scout Leader, on the Perryton Equity Board of Directors, Elder of the First Christian Church of Spearman, a 4-H Leader, and member of the Panhandle Regional Planning Committee in Spearman.

Kenneth Holloway, Moore County Extension agent and director of the Texas County Agents Association, was master of ceremonies. The recipients and guests were welcomed by Gaines Franks, Potter County Extension Agent and vice president of the TCAA.

District Extension Agent Paul Gross related the origin of the farm demonstration method and its history in the Texas Panhandle. A documentary film, "I Am Thinking of the Harvest," traced the history of the Porter farm demonstration and the organization of the Extension Service.

Reporting on research and demonstrations conducted in the Panhandle were area Extension specialists Dr. Frank Petr, agronomy; Dr. Ray Sammons, economist-farm management; Dr. Gene Cope, animal health; Dr. John McNeill, beef cattle; Dr. Carl Patrick, entomology, and Dr. Tommy Welch, range management.

Gross and Holloway noted that the farmers being honored were representing the hundreds who have assisted Panhandle agriculture over the years.

"This is a two-way street," responded Carl Jahnel, honoree from Hemphill County. "There hasn't been a demonstration carried on at the Jahnel farm that we haven't gotten more from it than anyone." He also noted that it was an early Extension agent who had encouraged him to go to college.

Each American consumes an average of 84 lbs. of beef on a retail weight basis per year. On a cooked weight basis, the average is 42 lbs. per year.

## 1978 Suggested Mailing Dates

The Christmas 1978 "Shop Early-Mail Early" drive is now getting underway. No suggested mail early dates have been made this year for domestic surface parcels, letters and priority mail within the contiguous United States, but other suggested mailing dates are listed below.

### DOMESTIC MAIL

December 1, Surface parcels to Alaska and Hawaii.

December 16, First-class and Priority mail to Alaska and Hawaii.

### MILITARY MAIL

November 18, Parcel Airlift (PAL) mail to Africa, Australia, Central & South America and South Asia.

November 21, Space Available Mail (SAM) to Europe & the Far East.

November 22, Space Available Mail (SAM) to Caribbean/West Indies and Iceland. Surface parcels to Iceland.

November 25, Space Available Mail (SAM) to Greenland. Surface parcels to Greenland.

November 28, Parcel Airlift (PAL) mail to Europe & Far East.

November 30, Parcel Airlift (PAL) mail to Iceland and the Caribbean/West Indies.

December 1, Surface parcels to Alaska and Hawaii. Parcel Airlift (PAL) mail to Greenland.

December 2, Space Available Mail (SAM) to Alaska. First-class and priority mail to Australia, Central & South America and Southeast Asia.

December 5, First-class and Priority mail to the Mid East.

December 9, First-class and Priority mail to Africa & Greenland. Parcel Airlift (PAL) mail to Alaska.

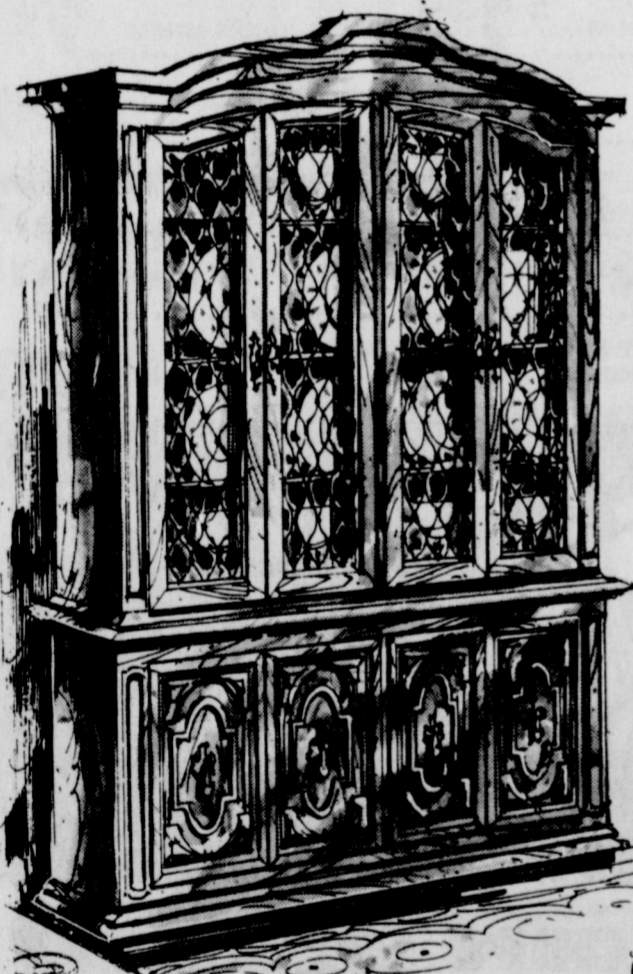
December 12, First-class and Priority mail to Europe & the Far East.

December 14, First-class and Priority mail to the Caribbean/West Indies and Iceland.

# SEGOVIA

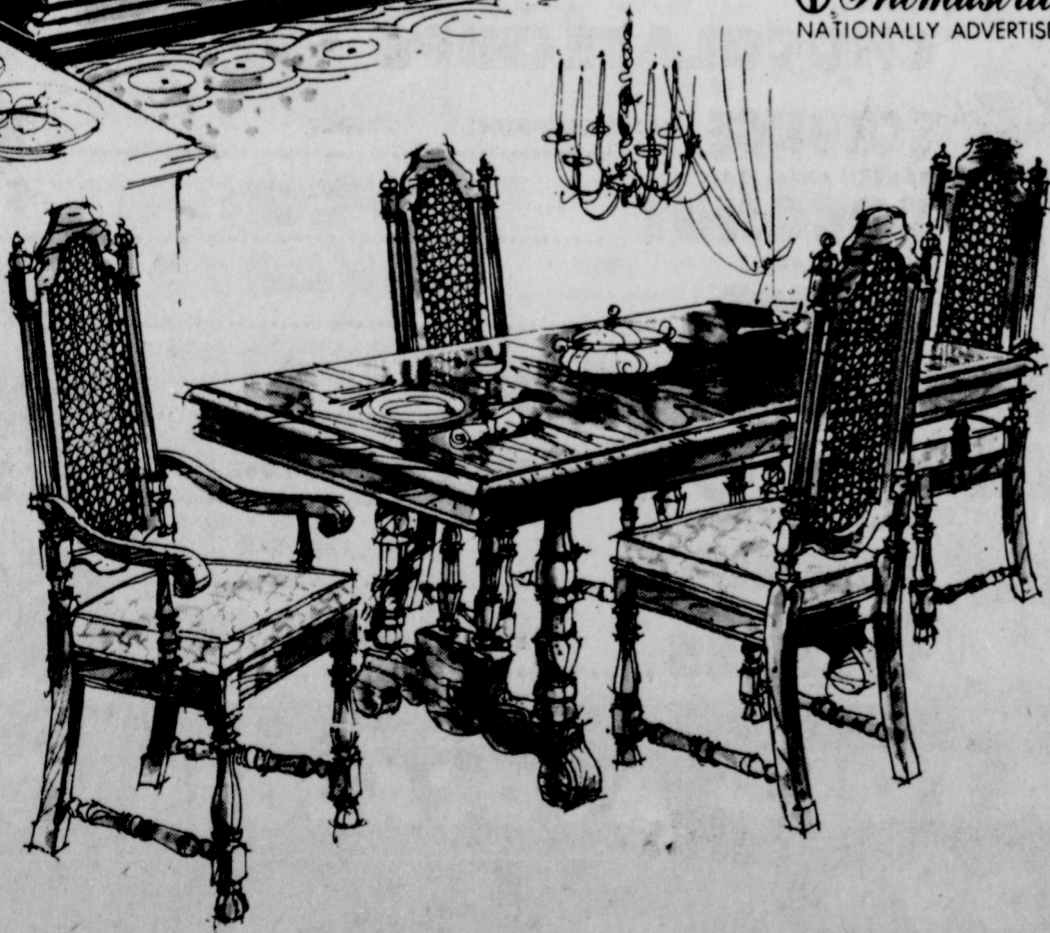
by

Thomasville



The grandeur of Spanish conquests and explorations of the 17th century reflected in the furnishings of the noble houses. In SEGOVIA, Thomasville has again recreated this exciting era for today's romantically-inclined tastes with this dining room design of imposing proportions and Spanish drama. Cherished details of this popular Mediterranean look are the bold architectural moldings and heavily grained woods. Door and drawer sections are elaborate with curved block inserts and narrow ogee moldings to create the effect of deeply recessed panels. In these panels, the custom-designed baroque pulls and pendants are handsomely framed as in shadow boxes. The effect of this stunning recurring motif is one of balanced classical order and vigorous baroque grace. SEGOVIA features pecky pecan veneers, oak solids and wood products carefully selected and blended together by skilled craftsmen. For crisp design detailing, certain decorative elements are of simulated wood. Typically Spanish are the rhythmic patterns of the flowing cornices of the two china storage pieces. Three table styles and sizes permit decorative variety for small or large dining rooms. Two chair styles—a spindle-back and a cane-back, feature dramatic Spanish boldness. And with all that it owes the past for styling, SEGOVIA offers strictly contemporary interior design and storage convenience. One tray or drawer is lined and partitioned for silver in each case piece. The mobile server moves easily from one entertaining area to another. SEGOVIA is available in two aristocratic finishes—a sun-drenched medium fruitwood color and a mellow fruitwood tone of exceptional depth and clarity. Satin smooth to the touch, each finish has been carefully created to reveal the dramatic beauty and graining of the wood. Whether selected for the elegant dining room or the more functional dining area, SEGOVIA offers the dramatic Spanish beauty and Thomasville quality your home deserves.

**Thomasville**  
NATIONALLY ADVERTISED



# Beedy Furniture

723 W. 7th

Spearman, Texas

Phone 659-3701

On  
Bruce Stinson  
Day  
We Will Give  
10% Of Our Sales  
To  
Bruce Stinson  
Fund  
Lady Fair

**CRUM REAL ESTATE**

1105 S. BARKLEY

SALESPERSON

WE NEED LISTINGS! Want to Sell your Home? We have BUYERS.

WE NEED LISTINGS

WE NEED LISTINGS

CALL ANYTIME

NEED LISTINGS

659-2053

659-2053

**SUPER FAMILY LIVING**  
Spacious 5 BEDROOMS, formal living room, 1 1/2 baths, LARGE FAMILY ROOM in basement with floor to ceiling BRICK FIREPLACE. Fenced. UNDERGROUND SPRINKLER SYSTEM. NEAR SCHOOL. too many features to list all. Call today!

**JUST LISTED - 706 COLLIER**  
This THREE BEDROOM brick home with ATTACHED GARAGE is in GOOD LOCATION. Has 1 1/2 baths, carpet, central heat, utility room, fenced. DON'T MISS THIS ONE! CALL TODAY FOR AN APPOINTMENT.

**HOME OF DISTINCTION**  
Wouldn't it be lovely to have a really DISTINCTIVE HOME. This beautiful, spacious, older home has all the amenities for comfortable living including living room, dining room, den, four bedrooms, 3 baths, built-in ovens and cooktop in sunny kitchen, double car attached garage with electric door opener, and detached single car garage, fenced, and much more. Call for an appointment.

**TRUE COMFORT**  
You'll enjoy the comfortable lifestyle offered by this charming older home on a tree-lined street. NEAR SCHOOL, 3 bedrooms, living room, family room, kitchen has beautiful coppertone built-ins including side-by-side refrigerator. Lots of cabinets. Carpeted, 2 baths, 2 water heaters, central heat and air, extra large detached double garage with room and bath in back, fenced, beautifully landscaped yard. Buy now-be settled in before the holidays.

**WHY RENT**  
This three bedroom, 1 bath is a dandy buy for a starter home. Nice carpet, clean, NEAR SCHOOL, fenced, See it Today.

**SPRUCE ME UP!**  
and you will have two value packed houses on 6 lots near Elementary School. Each with 3 bedrooms and two baths. Will sell separately. Good RENTAL PROPERTY or GOOD FAMILY HOMES, Call for an appointment.

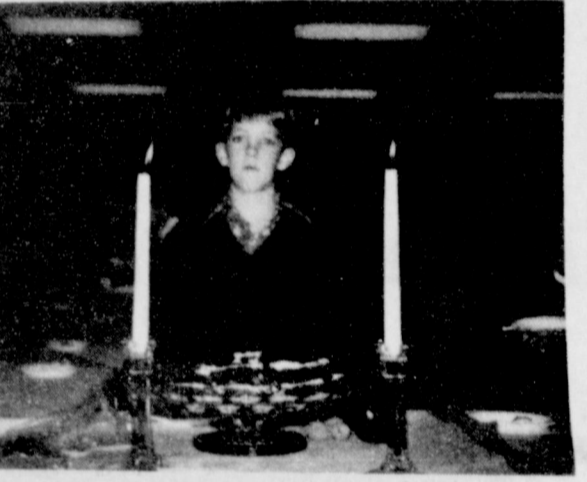




Karen Kenney of Spearman will represent Hansford County in the Senior Division, at the District 4-H Food Show with her prize entry "Snowball Cake."



Looking forward to the District 4-H Food Show in Amarillo is Teresa Tindell of Spearman. She won top awards at the County Show with her side dish "Potato Casserole."



Mark Garnett of Spearman took top award in the County 4-H Food Show with his "Apple Cake."



Viva Renner of Gruver will represent Hansford County at the District 4-H Show December 2 with her delicious "Sour Cream Coffee Cake" Snack.



"Dixie Chicken" proved a winning dish for Mary Kenney of Spearman in the Main Dish Division of the County 4-H Food Show, November 11.

# 4-H Favorite Foods Winners Named

Top awards were presented to five youth in the 4-H Favorite Food Show held Saturday, November 11 in the Catholic Parish Hall in Spearman. Mary Kenney, Viva Renner, Mark Garnett and Teresa Tindell will be competing in Junior division and Karen Kenney will be competing in the Senior division at the District Food Show December 2 in Amarillo. Thirty-four 4-H members competed in the County Show with entries in Main Dish, Side Dish, Snacks and Beverages and Breads and Desserts. Contestants demonstrated a knowledge of nutrition, meal planning, food buying and meal service as well as the ability to prepare food.

Mary Kenney placed first and Christie Black second in the Main Dish category, with Kerri Holt, Will Jarvis and Ross Donahue receiving blue awards. Red awards were presented to Mack McLain, Linda Evans, Chad Guthrie and Cayla Eaton.

Teresa Tindell placed first and Susan Davis second in the Side Dish division with Cheryl Green and Pam Stumpf receiving blue awards. Dee Virden and Vicki Hand were presented red ribbons.

Mark Garnett placed first and Stacy Poole second in Breads and Desserts with April Patterson and Kelli McWhirter receiving blue awards. Red awards were presented to Julie Latta, Anne Marie Jarvis, Kristi Wright and Tisha Peary. Karen Kenney received the top award in the Senior Division with her Dessert entry.

Snacks and Beverages provided most competition with ten entries. Viva Renner placed first and Travis Patterson second with Carlee Dixon, Melissa McLain, Jon Garnett, Jan Allen, Jana Pittman and Carrie Guthrie also receiving blue awards. Sandi McLeod and Rhonda Mathews received red awards for their entries. Eighty-five 4-H youth, par-

enters, leaders and guests were present for the awards program and enjoyed the Tasting Bee which followed.

Karen Kenney served as Mistress of Ceremonies for the occasion. Jon Garnett gave the Welcome and Kerri Ann Holt led the audience in the Pledge of Allegiance. Anne Marie Jarvis led the 4-H Motto and Pledge. Special recognition of leaders was given by Mary Kenney.

Mesdames: Doug Steger, Billy Brown, Jack McWhirter, Monty Black, Red Hamilton, Eldon Vernon, Verlin Beck, Britt Jarvis, Don Dillow, Lynn Davis, Loyd Poole, Julie Farr and Karen Kenney were recognized for their leadership of 4-H Food project groups this year.

Awards were presented to each participant by Peggy Winegarner, County Extension Agent. Favors were donated by the Home Demonstration Council. Stacy Poole was in charge of registration.

Judges for the event were Mrs. Rick Barkley and Mrs. Jerry Hart of Gruver, Mrs. W. C. Womble of Morse and Mrs. Vernon Pipkin of Spearman.

Agriculture is the nation's largest employer.

One of five jobs in private employment is related to some phase of agriculture—from growing food and fiber to selling it at the supermarket. For every job on the farm, there are three jobs off the farm.

## Young Pianists Guest Artists at Music Teachers Meet

The Oklahoma Music Teacher Association of the Northwest District convention was held at Panhandle State University at Goodwell, Oklahoma, Sunday, November 5th.

The winner of the Northwest District Junior Auditorium held earlier this year were presented in a Student Recital at 2:00 P.M. Mary Ann Kenny of Spearman played "Fantasia" by Mattheson and Jessica Adams of

Gruver played "Acrobats" by Shostakovich.

Both of these young pianists are students of Mrs. Lon Godley of Hardey, Oklahoma, and presented their numbers in a most professional manner.

Area residents can indeed be proud of these young pianists for their accomplishments—they are musical ambassadors of goodwill where ever they go.

Productivity or output per man-hour in agriculture is three times higher than it was 20 years ago, as compared with manufacturing where productivity is only 1.8 times higher. If it were not for agriculture's improved production efficiency, inflation would be even more than it is.

The productivity of one segment of agriculture—the cattle industry—has doubled over the past 20 years. This type of improvement has kept food prices from rising as much as other prices most of the time.

QUANTITY RIGHTS RESERVED

**U**

PRICES GOOD THROUGH NOV. 18 TH

**UNITED SUPER MARKETS**

Perryton, Texas

HARVEST

**MILK** 14 OZ. **59¢**

IMPERIAL POWDERED OR BROWN SUGAR 2 LB. BAG **69¢**

**HEFTY TRASH CAN LINERS** 10 CT. **\$1.09**

**COMET LIQUID CLEANER** 14 OZ. **39¢**

**REYNOLDS ALUMINUM FOIL** 12" x 75' ROLL **98¢**

**CHINET PAPER PLATES** 40 CT. LUNCHEON **\$1.29** 15 CT. COMPARTMENT **79¢**

**DIXIE EASY DAY COLD CUPS** 16 OZ. 18 CT. PKG. **69¢**

**CORONET PRINTED NAPKINS** 180 CT. **69¢**

**FOLGER'S FLAKED COFFEE** 26 OZ. **\$4.35** 39 OZ. **\$6.59** 13 OZ. **\$2.19**

**NABISCO COOKIES** CHIP ANDY COCONUT 13 OZ. **89¢** CHOC. CHIP PECAN SHORTBREAD

**SHOP UNITED AND SAVE**

**FINE FARE CRANBERRY SAUCE** 16 OZ. CANS **\$1.39**

**NEW CROP ELLIS PECANS** HALVES OR PIECES 6 OZ. PKG. **\$1.09**

**KRAFT MIRACLE WHIP** 32 OZ. JAR **\$1.09**

**CAMPFIRE MINI MARSHMALLOWS** 16 OZ. REG. 29¢ 10 1/2 OZ. PKG. **19¢**

**FINE FARE PUMPKIN** 15 OZ. CANS **\$1.49**

**BAKER'S CHOCOLATE CHIPS** 12 OZ. **99¢**

**SCRUNGE SCOURING SPONGES** 2-COUNT **69¢**

**BAKER'S ANGEL FLAKE COCONUT** 14 OZ. PKG. 20' OFF **\$1.09**

**SUGARY SAM YAMS** 24 OZ. **59¢**

**BLACKBURN CRYSTAL WHITE SYRUP** 32 OZ. **79¢**

**HEATH BITS "O" BRICKLE** 7.8 OZ. PKG. **69¢**

**FISHER RAW SPANISH PEANUTS** 12 OZ. PKG. **69¢**

**HEINZ PICKLES** KOSHER OR POLISH 32 OZ. JAR **69¢**

**NO. 1 RUSSET POTATOES** 5 LB. BAG **59¢**

**GOLDEN YELLOW BANANAS** 4 LBS. **\$1.49**

**CALIFORNIA GREEN SKIN AVOCADOES** 3 FOR **\$1.49**

**CELLO CARROTS** 16 OZ. BAG **2 FOR 39¢**

**4 PACK CRTN. TOMATOES** **39¢**

### Automotive Safety



### Our Heritage of Faith... notes from Faith Lutheran Church

The summer is now far behind us and it seems that Autumn is rapidly slipping through our fingers. About all that remains of the past seasons are the golden leaves laying around the yard, the brown grass burnt from the hot summer sun and warm memories of good times that were spent with friends and loved ones.

Now the days are cold and we need to bundle up to keep warm. Conversations on the street are cut short in order to seek out shelter from the cutting cold. In a real sense this year is dying. Soon this year will be a memory in the minds of all of us.

The Church year is also coming to its end. Soon we will be celebrating a new Advent season. In two weeks we can sing Happy New Year Church. This past year can be put into memory and we can look to the things God will do for us in this

coming year. As this year dies we can be thankful that God has been with us and given us protection. He has provided for us all that we need. He has been our God as He said he would be.

Let us give Him praise and thanksgiving these last few weeks of this year for all that He has given us.

Faith Lutheran Church will change its time of worship beginning the first Sunday of December to 9:00. Christian Education will begin at 10:00. There will be a Farewell Potluck Supper given to honor Pastor Andersen and his family on the 19th of November at 5:30 in the evening. Come and say thank you for the ministry that he has provided over the past years. Also wish him God's blessings as he moves to minister to God's people in another location.

### Bowling News

MONDAY NITE SCATTER  
PINS 11-13-78

TEAM	WON	LOST
Equity	31	9
Harry's An.	27	13
Anthony El.	25	15
Co-op	20	20
Baker's B.	18	22
Dairy Queen	18	22
Excel	11	29
Gordon's G.	10	30

HIGH TEAM SERIES  
Equity 1962  
Harry's Angels 1925  
Anthony Electric 1885

HIGH TEAM GAME  
Harry's Angels 692  
Equity 679  
Dairy Queen 671

HIGH IND. SERIES  
Penny Thomas 533  
Joyce Keetch 505  
Judy Black 501

HIGH IND. GAME  
Penny Thomas 202

THURSDAY NIGHT MIXED  
LEAGUE 11-9-78

TEAM	WON	LOST
Anthony Ele.	29	11
Moose	25	15
Elliott Const.	23	17
Cliffhangers	21	19
B & J Supply	20	20
York Electric	18	22
Golden Spread	13	27
Daco	11	29

HIGH  
TEAM HIGH SERIES  
Moose 2014  
Anthony Elect. 1999  
Elliott Const. 1872

TEAM HIGH GAME  
Moose 718  
Moose 718  
York 688

MEN'S HIGH SERIES  
Charles Elliott 632  
Tommy Reger 578  
Verlin Behne 567

MEN'S HIGH GAME  
Charles Elliott 226  
Verline Behn 223

WOMEN'S HIGH SERIES

Joyce Keetch	533
Penny Thomas	517
Shirley Greenwood	501
Penny Thomas	200
Shirley Greenwood	192
Joyce Keetch	190

MONDAY NIGHT SCATTER  
PINS - Nov. 6, 1978

TEAM	WON	LOST
Equity	27	9
An. Elec.	25	11
Harry's An.	24	12
Co-op	19	17
Dairy Queen	15	21
Baker's Bat.	14	22
Gordon's G.	10	26
Excel Chev.	10	26

TEAM HIGH SERIES  
Equity 1884  
Baker's Batter 1869  
Anthony Electric 1841

TEAM HIGH GAME  
Baker's Batter 720

IND. HIGH SERIES

Penny Thomas	501
Linda Pearson	500
Jewel McCalmon	498

IND. HIGH GAME

Jean West	203
Marion Nollner	198
Linda Beeson	193

Just four per cent of the American population produces food-freeing the other 96 per cent of produce other goods and services. (In India, 68 per cent produce the food and in Russia, it's 32 per cent.) That is the basic reason why the U.S. has the highest standard of living.

Twenty years ago, there were 2 1/2 times as many farmers/cattlemen as there are today. Yet our food output is twice what it was 20 years ago.

Mr. and Mrs. James L. Morley  
of Spearman  
cordially invite you to the wedding

of their daughter

Jamie Lynn

to

George Rex Casdorff

son of Mr. and Mrs. Charlie Casdorff  
of Gruver

Church of Christ

Friday, November 24, 1978

7:00 P.M.

Reception following

# OF SAMIN'S

<b>CHUCK ROAST</b>	BLADE CUTS	LB.	88¢
<b>GROUND BEEF</b>	FRESH FAMILY PACK	LB.	98¢
<b>RUMP ROAST</b>	UNITED TRU-TENDR BEEF	LB.	\$1.49
<b>BONELESS SHOULDER ROAST</b>	WASTE FREE BEEF	LB.	\$1.49
<b>PORK LOINS</b>	SWIFT TENDER LEAN HALF OR WHOLE	LB.	\$1.29
<b>TYSON'S CHICKEN LIVERS</b>	8 OZ. PKG.		39¢
<b>COUNTRY PRIDE DUCKS</b>	3 TO 5 LB. AVG.	LB.	\$1.09

SAVE 50¢  
Charmcraft Stoneware  
SAVE 50¢  
**SAVE 50¢**  
OVAL PLATTER  
WITH THIS COUPON  
EXPIRES NOV. 18TH  
SAVE 50¢

FARMLAND  
**HAMS**

BONELESS	3 LB. CAN	\$6.49
FULLY	5 LB. CAN	\$10.59

<b>TURKEYS</b>	FINE FARE GRADE A	SELF BASTING	10 TO 22 LB. AVG.	LB.	79¢
<b>CREAM CHEESE</b>	KRAFT PHILADELPHIA	8 OZ. PKG.			59¢
<b>TURKEY BREASTS</b>	COUNTRY PRIDE	4 TO 6 LB. AVG.			\$1.79

<b>CHICKEN BROTH</b>	13 3/4 OZ. CAN	4 \$1
<b>SEASONING</b>	3/4 OZ.	49¢
<b>STUFFING MIX</b>	8-OZ. PLAIN - CORNBREAD CUBE OR HERB SEASONED	49¢
<b>MARGARINE</b>	QTRS. 1 LB.	49¢
<b>CRESCENT ROLLS</b>	8 OZ.	59¢
<b>EGG NOG</b>	QUART	69¢
<b>BUTTER</b>	1 LB.	\$1.33
<b>CREAM OR DIPS</b>	8 OZ.	3/\$1

**PLAY BLACKOUT BINGO WIN 1000 STAMPS**

GREEN STAMPS

**JOHNSTON PUMPKIN PIES** 26 OZ. 69¢

<b>STRAWBERRIES</b>	WHOLE 16 OZ.	98¢
<b>APPLE PIES</b>	26 OZ.	89¢
<b>MINCEMEAT PIES</b>	26 OZ.	98¢
<b>ROLLS</b>	12 OZ. 25 CT. PKG.	59¢
<b>PIE SHELLS</b>	2 CT. PKG.	49¢
<b>OKRA</b>	12 OZ.	59¢

QUANTITY RIGHTS RESERVED  
PRICES GOOD THRU NOV. 18TH

**UNITED SUPER MARKETS**  
Perryton, Texas

### Library Books from your Library

**War & Remembrance** by Herman Wouk. This current best seller is a continuation of Wouk's *Winds of War* published several years ago. That novel dealt with events leading up to Pearl Harbor. This historical novel depicts events during World War II.

**The Stand** by Stephen King. A new novel of terror by the author of *Carrie* and *The Shining*. This one is about the confrontation between Good & Evil.

**Mommie Dearest** by Christina Crawford. Joan Crawford's life and flaws as interpreted by her adopted daughter who witnessed it all.

**Somebody's Darling** by Larry McMurtry. The setting for this novel is Hollywood and the movie business. McMurtry shows the unpredictability of people's lives and emotions. McMurtry is a Texas writer, author of *Moving On* and *The Last Picture Show*.

**The Bunker** by James P. O'Donnell. The incredible but true story of Hitler's last days inside his Berlin hideout. The author was bureau chief for *Newsweek* in Germany in 1945, and is now a free lance writer in Berlin.

**The Luck of Ninevah** by Arnold C. Brackman. Unravels the mystery surrounding the search for Ninevah, powerful city that disappeared in 600 B.C. and was not discovered until 25 centuries later.

**From the High Plains** by John Fischer. Is an informal history of the High Plains of Texas and Oklahoma, the last legendary frontier of the Old West.

### Girl Scout News

Troop #42 met November 10 in the Brownie Hut. Mrs. Georgia Gaither Invested Kathy Love into the troop. Mrs. Betty Love presented her daughter her pin. The girls played games and sang songs. Angelia Gaither served refreshments to Kathy Love, Mrs. Betty Love and Mrs. Georgia Gaither.

The First grade Brownies met Thursday November 9 in the Brownie Hut with leaders Mrs. Jack Love, Mrs. Johnny Ring and Mrs. Ruth Kizziar. The girls said the Brownie Promise in order to earn their Brownie Pin. Refreshments were served by Pam Ring to Lori Bynum, Joy Kizziar, Theresa Shedeck, Lisa Love, Pam Dean, and the leaders.

Brownie Troop #99 met Monday at 3:00 P.M. in the Brownie Hut. The girls made favors for the patients in Hansford Hospital.

Refreshments were served by Jan Crawford.

Troop Leader, Janie Flores and Assistant Leader Vicky Bullard led the girls in the Brownie Prayer.

Those present were: Melissa Bulard, Melissa Beck, Julie Countiss, Colleen McCormack, Anita Flores, Sherri Hall, Vickie Hamilton, Beatrice Lozano, Misha Lesly, Jennifer Reimer, Kathy Vanlandingham, and Patty Younger.

### Rotary Club News

Rotary Club told about the CO2 program at a meeting of the Spearman Rotary Club Monday noon at Martin's Steak Garden. He said that at first there were only two uses for CO2: to make soda pop fizz and dry ice. Pan American experimented and it is now used in drilling oil wells primarily in New Mexico, but also in the Panhandles of Texas and Oklahoma, Colorado, and Washington, as a tertiary recovery aid and a tracking process. It is used widely by Pan American, Amoco, Baker & Taylor, Shell, and Texas Pacific. Baker & Taylor produce 75% of all CO2 in New Mexico. It manufactures forty tons a day in its New Mexico plant.

Guests Monday were Earl Wirsdorfer of Tacoma, Washington and Ronald Burke of Spearman.

Members present were Carrie Marie Berry, Eschol Blankenship, J. L. Brock, Kim Brock, Roy Bulls, Archie Burress, John R. Collard, Jr., Robert Elliott, Ed Freeman, Ed Garner, John Hutchison, Edwin Limbocker, Jack McWhirter, Jim McLain, Frank Oglesby, Jim Shirley, Lenis Simpson, Gary Sims, Vance Snider, Jerry Taylor, Don Wirsdorfer, Steve Wisniewski, and Tim Woodington.

Members absent were E. J. Copeland, Pete Fisher, Kerry Henton, Junior Lusby, Mario Manese, Larry Murphy, Coy Palmer, Chung Yang.

Agriculture is the nation's largest industry, with assets totaling more than \$700 billion as of January 1, 1978. Assets in the agricultural sector of the economy are equal to about three-fifths of the capital assets of all corporations in the United States.

Mr. and Mrs. Randy Kirk are the parents of a son, Tom Benjamin, born Nov. 6 at North Plains Hospital in Borger. He weighed 7 lbs. 8 oz. and was 21 inches long at birth.

Maternal grandparents are Mr. and Mrs. Tom Dortch of Morse. Paternal grandparents are Mr. and Mrs. Buster Kirk of Borger. Maternal grandparents are Mr. and Mrs. A.L. Blankenship of Amarillo and Mrs. Mack Dortch of Morse.

"He that can endure all can dare all."  
Vauvenargues



# Artist Of The Month



BETH PHELPS

November Artists of the Month at Hansford County Library are Ruth Bryan and Beth Phelps, twin sisters who have resided in Spearman all their lives. Paintings on display at the library include oils and watercolors by both artists. Beth and

Ruth have painted for almost 20 years and have taken art lessons under Dord Fitz, Ruth Hutton, Stefan Kramar, Ben Konis, and Dr. Cabillero. Beth's family include her husband, Ray, and their son, Howell, his wife Sandra and



RUTH BRYAN

their two sons, David and Todd, from Austin. A daughter, Janice lives in Dallas. Ruth and her husband, Joe Dan, have three sons. Joe Michael, his wife, Dee and their sons, Chris and Tim, live in Houston. Another son,

Mansell & wife, Charlene live in Tacoma, Washington. James resides in Lubbock. Ruth and Beth's father, Hicks Wilbanks was sheriff of Hansford County for twenty years.

# Great American Smokeout November 16th

November is generally highlighted by two (maybe three) big, big events, such as Thanksgiving, Election Day, and Armistice Day—but November 1978 will also be noted for the American Cancer Society's Great American Smokeoff—an effort to get every smoker in America to quit smoking for one day and then maybe—just maybe—for always.

"The lung cancer death rate for women has more than doubled over the last decade in the U. S.," says Johnnie Lee, chairman of the Hansford Unit of the American Cancer Society. "In about another ten years or

even less there may be as many women smokers as there are men smokers."

Dr. E. Dwyler Hammond of the American Cancer Society is one of the key figures involved in studies showing a causal relationship between cigarette smoking and lung cancer. The ACS estimates today that cigarette smoking is responsible for at least 80 percent of the nation's lung cancer.

Lee says the American Cancer Society emphasizes the smoking link with lung cancer because it is one cancer for which the principal cause is

known. In addition, the survival rates are the poorest of any of the major sites.

"When treated promptly, 33 percent of the patients are alive and well after five years but early detection of lung cancer is difficult. The five-year survival rate for advanced cases is only 10 percent."

He noted that the production of cigarettes in the United States has climbed from about \$4 billion to \$76 billion since the turn of the century and today one person in three is a smoker. One encouraging note is that the tar content of cigarettes—a major factor in linking cigarettes to lung cancer—now is 50 percent lower than it was 20 years ago. Besides nicotine—a drop of which could kill a person in minutes—cigarettes give off carbon monoxide and contain other potentially harmful substances such as formaldehyde and hydrogen cyanide.

Smoking is known to raise the blood pressure, block the lungs' filtering capacity, and limit the

flow of oxygen to unborn babies—hindering their growth", noted Johnnie Lee, Hansford Unit ACS president.

## Rho Rho Sorority Meets

Members of Rho Rho Chapter of Beta Sigma Phi are selling raffle tickets for a trip for two to Las Vegas. Tickets are \$5.00 each and may be purchased from any Rho Rho member. A total of 300 tickets will be sold, so get yours while the supply lasts. The trip consists of 3 days and 2 nights for two people at a total cost of \$500.00. The drawing will be November 30, during the Community Christmas Tree lighting on Main Street—your presence will not be required at the drawing. Deadline for the trip to be taken is March 31, 1979. This is a fund raising project for Rho Rho. For your ticket contact any Rho Rho member, or call Jody Rex at 2453.

The Spearman Lions Club will have their annual Ladies night, Thursday night, 7 p. m. at the Methodist Church.

In other Lions business, the club voted to charge \$1.50 for raffle tickets to win a choice of a new 13 inch portable TV or a Microwave oven. The extra .50 charge for the tickets, will go to the Bruce Stinson fund, and if the Lions sell all 1,000 tickets, they plan to give the Stinson fund a total of \$500.00! So, be sure and buy a ticket

Also the club will sell home-made ice cream at the Flea Market Saturday. Each Lions lady, is expected to fix a gallon of home-made ice cream, and everyone is urged to stop by the Lions Club booth at the Flea Market on Saturday, and buy some ice cream. All of the money goes to the Bruce Stinson fund.

Wives are informed that they are to bring the following to the ladies night this Thurs: Meat, Elbert, Cunningham, Hudson, Connelly, Goodheart, and Tracty. Vegetables, Yarbrough, Biggers, Gibner, Donnell, McClellan,

## CONGRESSMAN JACK HIGHTOWER

"The vote of confidence from the people of the 13th Congressional District is extremely gratifying to me and my family. We deeply appreciate the many people throughout the district who have worked so hard to elect me to Congress three successive times, and all who expressed their support at the polls. I will do my best to justify your confidence by giving you full-time, energetic representation in Washington. I pledge again to do my homework, to represent your views to the best of my ability, and to carry out my duties in a manner befitting the independence and integrity of the people of the Panhandle and Northwest Texas. Thank each of you for your support."

Paid for by Hightower for Congress Committee, Wilson Friberg, chairman, P.O. Box 1973, Vernon, Texas 76384

and J. W. Gibner. Salad, Steger, Newell, Oaks, Ellsworth, Davey and Kleeberger; Dessert, Heinrich, Hall, Ingle, Miller, Sloan, and Chandler. Iced tea, coffe-ice Warren Proctor and Bryan Jones. Plates, napkins cups glasses, Bob Boxwell and Dan Desimone; Tables, Chairs, clean-up, Burl Buchanan and Johnny Lee; Bread-Butter, Russell Pogue!

## by January first,



75% of our seed supply will be spoken for.

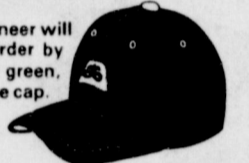
### Order Your Share NOW

Most good farmers don't wait until planting time to buy Pioneer-brand seed . . . not anymore.

The best farmers seem to think that having the seed with the greatest potential is too important to leave to chance. So ordering next year's seed as soon as they've seen this year's results is becoming a habit . . . practically a tradition.

Why? Because, when you compare Pioneer performance to brands that are always available and compare the advantages of ordering early to the disadvantages, you've got to pick up the phone and call a Pioneer dealer.

AND TO CAP IT OFF — Pioneer will acknowledge your early order by sending you a sprightly green, foam-lined gabardine cap.



PIONEER HI-BRED INTERNATIONAL, INC., SOUTHWESTERN DIVISION, Plainview, Texas

Registered trademark of Pioneer Hi-Bred International, Inc. Pioneer is a brand name, numbers identify varieties. PHVB 78

Reach out & touch someone special

Copper

WICKER WONDER

ROCKY MOUNTAIN CANES

Slip U.P.S.

Monograms on sheets and towels - 3-4 week delivery

Bath Beautiful!

OLD & NEW fashion

Embroidery Kits Needlepoint Kits

A grab-bag of gifts for kids, collectors, teachers, students & stocking stuffers

Christmas Ornaments

IN OUR OLD STORE

Stained Glass Lamps

Antiques

Peuter

Antiques

SOLID BRASS PORTHOLE MIRROR Really does open so class people might put a seascape picture inside to surprise curious guests. 12" diam. Has holes for screw mounting. Striking in hall or bath.

Live simply, love well, and take time to smell the flowers along the way...

WHERE TO FIND IT Sacks Third Ave. Main St. Spearman, Texas

Monograms

Towels

MIRROR, MIRROR

SOAPS

BATH ACCESSORIES

PERSONALIZED STATIONERY

DECALS

Lotion

SACKS

Spittoon

BITS OF NOSTALGIA

STAINED GLASS Lamps

Brass

Peuter

Antiques

Gold

A Touch of Elegance

Silver

Candles

Texas Fireframe

BRILLIANT BRASS Our hand-drawn solid brass collection