

Track meet here

The Spearman Lynx had 13 of 34 boys from Spearman enter the track meet at Dalhart last week end, as 21 of the boys had to stay home and show their livestock at the Jr. livestock show in Spearman. However, Kyle Brack a member of the 9th grade team that entered the Dalhart meet, was only one, one-hundredth of a second of the XII relays record in the 120 intermediate hurdles. Others entering the Dalhart meet included: Bridges, Davis, Dennis, Haden, Lackey, Lozano, Mahaney, Schaffer, Vernon, Ware, and Whitaker.

Highlighting the week-end of track meets, will be the big Spearman combined boys and girls meet this Friday and Saturday, at Spearman high school. Boys team from the 7th, 8th and Varsity will be entered from Canadian, Dalhart, Gruver, Guymon, Panhandle, Stratford and Sunray. Girls teams from the 7th, 8th and Varsity classes will be entered from Canadian, Dalhart, Gruver, Stratford and Sunray.



The Spearman Reporter

VOLUME 70, NO. 20 THE SPEARMAN REPORTER, SPEARMAN, TEXAS 79081 THURSDAY, MARCH 22, 1979

Livestock Show Sets Record

The 1979 Hansford County Livestock Show was held March 16 and 17 at the County Barn in Spearman. A grand total of \$94,035.40 was paid to exhibitors in the show at the sale which climaxed activities Saturday night.

Scott Henderson, Hansford 4H member showed the Grand Champion Lamb. The lamb was purchased by Hansford Imp. for \$4.00 per lb., total price \$400.00.

Curt Porter, Hansford 4H member, had the Grand Champion Swine which weighed 243 lbs. and brought \$3.75 per lb. for a total price of \$911.25. It was purchased by H & H Water Well Service.

The Grand Champion Steer was shown by Sam Boone, Spearman FFA, weighing 1201 lbs. and sold to B & B Farm Industries for \$2.60 per lb., total price of \$3,125.20.

Reserve Champion Lamb was shown by Karla Latta, 4H, and brought \$4.40 lb. for a total of \$19.20 and was purchased by Dee Allen Cattle Co.

Mike Barber, Gruver FFA, showed the Reserve Champion Swine which weighed 244 lbs. and brought \$2.75 per lb. for a total of \$671.00 and was purchased by Gruver State Bank.

Ron Clark, Spearman FFA, showed the Reserve Champion Steer weighing 1058 lbs. and was sold to Hansford Implement for \$1.10 per lb. for a total price of \$1163.80.

The Breed Champion Dorset Lamb was shown by Scott Dahl, Gruver FFA. The lamb weighed 110 lbs. and was bought by Gruver Equity for \$3.25 per lb. total price, \$357.50.

Kelly Mills, Gruver FFA, showed by Breed Champion Chester weighing 239 lbs. and bringing 3.25 per lb. for a total price of \$776.75 bought by Sparks Bros.

The 1st place Lt. Wt. Steer was shown by Rex Shook, 4H, weighing 970 lbs. and sold to Jon Hart for \$1.40 per lb. bringing a total price of \$1358.00.

Tracy Logsdon, 4H, showed the Reserve Breed Champion Dorset weighing 105 lbs. to Hitchland Grain for \$5.00 per lb. for a total of \$525.00.

Rory Sheppard, Spearman FFA, showed the Breed Champion Hampshire, weighing 244 lbs. and sold for \$2.50 per lb. for a total price of \$610.00.

Darin Winger, Gruver FFA, showed the Reserve Breed Champion Yorkshire, weighing 236 lbs. It sold for \$4.50 per lb. to Gruver Farm Supply for a total of \$1062.00.

Mike Barber, Gruver FFA, showed the 3rd Place Lt. Wt. Dorset, weighing 86 lbs. It sold to Hansford Veterinary Clinic for \$5.00 per lb. for a total of \$430.00.

Kenny Gammon, Gruver FFA, showed the Reserve Breed Champion Cross Hog, weighing 226 lbs. It sold to Delbert McCloy for \$2.50 per lb. for a total of \$565.00.

Chad Logsdon, 4H showed the 3rd Place Hvy. Wt. Steer, weighing 1284 lbs. Gruver State Bank was the purchaser paying \$1.45 per lb. for a total of \$1861.80.

Anselmo Vela, Spearman FFA, showed the 3rd Place Hvy. Wt. Dorset, weighing 105 lbs. selling to B & B Farm Industries for \$3.50 per lb. for a total of \$367.50.

Marva Winger, 4H showed the 1st place Lt. Wt. Chester, weighing 220 lbs. Gruver State Bank paid \$4.00 per lb. for a total of \$880.00.

Shawn Swenn, Spearman FFA, showed the 4th Place Med. Wt. Steer weighing 960 lbs. It sold to Swenn Cattle Co. for \$1.50 per lb. total \$1440.00.

Loyd Lee Cator, 4H, showed the 3rd Place Lt. Wt. Med. Wool Lamb, weighing 94 lbs. It was sold to Erlis Pittman for \$6.75 per lb., total \$634.50.

Jackie Sparks, 4H, showed the 3rd Place Lt. Wt. Duroc, weighing 217 lbs. Gruver Insurance Agency purchased it for

a total price of \$406.00 to Jerry Williams.

Karl Smith, Spearman FFA, showed the 2nd Place Med. Hvy. Steer, weighing 1190 lbs. for \$1.00 per lb. for a total price of \$1190.00 to H & H Water Well Service.

Shonna Thompson, 4H, showed the 2nd place Lt. Wt. Dorset, weighing 95 lbs. for \$4.25 per lb. for a total price of \$403.75 to Lynn Hart.

Hank Sutterfield, Spearman FFA, showed the Reserve Breed Champion Duroc, weighing 249 lbs., bringing \$3.00 per lb. for a total of \$747.00 sold to Hansford Implement.

Todd Williams, showed the 2nd Place Hvy. Wt. Steer, weighing 1229 lbs. which sold to E. A. Williams for \$1.30 per lb. for a total price of \$1597.70.

John Weakley, Spearman FFA, showed the 2nd Place Med. Wt. Med. Wool Lamb, weighing 98 lbs. for \$3.75 per lb., total \$367.50 to Spearman Super Service.

Ron Clark, Spearman FFA, showed the Reserve Breed Champion Hampshire, weighing 216 lbs. and selling to Hi-Plains Auto for \$3.00 per lb., total price, \$648.00.

Rex Reid, Spearman FFA, showed the 3rd Place Lt. Wt. Steer, weighing 980 lbs. for \$1.10 per lb. to Dean Cluck for a total price of \$1078.00.

Jo Anne Odgaard, 4H, showed the 2nd place Med. Hvy. Med. Wool Lamb, weighing 107 lbs. which sold for \$4.85 per lb., total of \$518.95 to Carter Crawford.

Connie Vernon, 4H, showed the Reserve Breed Champion Spot, weighing 246 lbs. It was purchased by Anthony Electric at \$2.50 per lb. for a total price of \$615.00.

Trevor Williams, 4H, showed the 3rd place Med. Wt. Steer, weighing 1055 lbs. which sold to H & H Livestock for \$1.20 per lb. for a total of \$1266.00.

Kermit Mahaney, Spearman FFA, showed the 2nd place Hvy. Wt. Med. Wool Lamb, weighing 118 lbs. It was sold to the Bunkhouse for \$3.25 per lb. for a total of \$383.50.

Quentin Hart, Gruver FFA, showed the 3rd Place Med. Hvy. Wt. Steer, weighing 1105 lbs. It was sold to Dean Cluck for \$1.60 per lb. for a total price of \$1768.00.

Darin Winger, Gruver FFA, showed the Reserve Breed Champion Yorkshire, weighing 236 lbs. It sold for \$4.50 per lb. to Gruver Farm Supply for a total of \$1062.00.

Mike Barber, Gruver FFA, showed the 3rd Place Lt. Wt. Dorset, weighing 86 lbs. It sold to Hansford Veterinary Clinic for \$5.00 per lb. for a total of \$430.00.

Kenny Gammon, Gruver FFA, showed the Reserve Breed Champion Cross Hog, weighing 226 lbs. It sold to Delbert McCloy for \$2.50 per lb. for a total of \$565.00.

Chad Logsdon, 4H showed the 3rd Place Hvy. Wt. Steer, weighing 1284 lbs. Gruver State Bank was the purchaser paying \$1.45 per lb. for a total of \$1861.80.

Anselmo Vela, Spearman FFA, showed the 3rd Place Hvy. Wt. Dorset, weighing 105 lbs. selling to B & B Farm Industries for \$3.50 per lb. for a total of \$367.50.

Marva Winger, 4H showed the 1st place Lt. Wt. Chester, weighing 220 lbs. Gruver State Bank paid \$4.00 per lb. for a total of \$880.00.

Shawn Swenn, Spearman FFA, showed the 4th Place Med. Wt. Steer weighing 960 lbs. It sold to Swenn Cattle Co. for \$1.50 per lb. total \$1440.00.

Loyd Lee Cator, 4H, showed the 3rd Place Lt. Wt. Med. Wool Lamb, weighing 94 lbs. It was sold to Erlis Pittman for \$6.75 per lb., total \$634.50.

Jackie Sparks, 4H, showed the 3rd Place Lt. Wt. Duroc, weighing 217 lbs. Gruver Insurance Agency purchased it for

\$3.25 per lb. for a total of \$705.25.

Ty Williams, 4H, showed the 4th Place Med. Wt. Steer, weighing 1028 lbs. It sold to Nick Holt for 1.25 per lb. for a total of \$1285.00.

Ricky Renteria, Gruver FFA, showed the 3rd Place Med. Wt. Wool Lamb, weighing 104 lbs. It was sold to Vance Morris for \$4.00 per lb. Total price \$416.00.

Alvin Byers, Spearman FFA, showed the 2nd Place Lt. Wt. Chester, weighing 229 lbs. Spearman Super Service paid \$2.25 per lb for a total of \$515.25.

Shelly Lackey, Gruver FFA, showed the 4th Place Med. Hvy. Wt. Steer, weighing 1165 lbs. It was purchased by Caprock Industries for \$1.25 per lb., total \$1456.25.

Will Jarvis, 4H, showed the 3rd Place Med. Hvy. Med. Wool Lamb weighing 114 lbs. It sold for \$4.25 per lb., total \$484.50 to Nolan Holt.

Tom Brandvik, Gruver FFA, showed the 2nd place Lt. Wt. Duroc, weighing 229 lbs. Hansford Implement paid \$3.25 per lb. for a total of \$744.25.

Kenny Gammon, 4H, showed the 4th Place Hvy. Wt. Med. Wool Lamb, weighing 119 lb. Dean Cluck paid \$5.50 per lb. for a total of \$664.50.

Danny Dear, Spearman FFA, showed the 2nd Place Lt. Wt. Hampshire, weighing 230 lbs., which sold for \$3.50 per lb. for a total of \$805.00 to Dee Allen.

Shonna Thompson, 4H, showed the 5th Place Lt. Wt. Steer, weighing 1005 lbs. It sold for \$1.30 per lb., total \$723.60 to Continental Grain.

Brad Guthrie, 4H, showed the 4th place Lt. Wt. Dorset, weighing 84 lbs. It sold for \$4.75 per lb. Total \$399.00 to Preston Smith.

Donnie Hartranft, showed the 2nd Place Hvy. Wt. Hampshire, weighing 241 lbs. It sold for \$2.75 per lb. for a total of \$662.75 to Williams Hogs.

Roy Don Gammon, 4H, showed the 5th Place Med. Wt. Steer, weighing 1024 lbs. It sold to G.Y.G. Foodliner for \$1.40 per lb., total \$1433.50.

Scott Atwood, Gruver FFA, showed the 4th Place Hvy. Wt. Dorset, weighing 100 lbs. It sold for \$5.00 per lb., Total \$500.00 to Dean Cluck and Caprock.

Lori White, 4H, showed the 2nd Place Lt. Wt. Spot, weighing 222 lbs. It sold for \$3.25, total \$721.50 to H & H Water Well.

Scott Strawn, 4H, showed the 5th Place Med. Hvy Steer, weighing 1116 lbs. It sold to First State Bank for \$1.40 per lb., total \$1562.40.

Sally Holt, 4H, showed the 4th Place Lt. Wt. Med. Wool Lamb, weighing 91 lbs. It sold to Gruver State Bank for \$4.50 per lb., total \$409.50.

Mike Blanton, Spearman FFA, showed the 2nd Place Hvy. Wt. Spot, weighing 237 lbs. It sold to Baker & Taylor for \$3.25 for \$770.25.

Debbie Burton, 4H, showed the 5th Place Hvy. Wt. Steer, weighing 1239 lbs. It sold to John Armes for \$1.25 per lb., total \$1548.75.

Tai Jackson, Spearman FFA, showed the 4th Place Med. Wt. Med. Wool Lamb, weighing 103 lbs. It sold to 4-Tex for \$5.25 per lb., total \$540.75.

Roy Don Gammon, Gruver FFA, showed the 2nd place Lt. Wt. Cross, weighing 228 lbs. It sold for \$2.25 per lb., total \$513.00 to Delbert McCloy.

Scott Henderson, 4H, showed the 6th Place Lt. Wt. Steer, weighing 1003 lbs. It sold to First State Bank for \$1.15 per lb., total \$1153.45.

Kirby Hargis, Spearman FFA, showed the 4th Place Med. Hvy. Med. Wool Lamb, weighing 107 lbs. It sold to Baker & Taylor for \$7.00 per lb., total \$749.00.

Mendy Gammon, 4H, showed the 2nd Place, Hvy Wt.

Cross, weighing 239 lbs. IT sold to Delbert McCloy for \$2.25 per lb. Total, \$537.75.

Chad Clawson, 4H, showed the 6th Place Med. Wt. Steer, weighing 1039 lbs. IT sold for \$1.35 per lb., total \$1402.65 to H & H Water Well.

Roy Don Gammon, Gruver FFA, showed the 4th Place Hvy Wt. Med. Wool Lamb, weighing 115 lbs. It sold to Clifford George for \$4.00 per lb. total \$460.00.

Kurt Spoonemore, Spearman FFA, showed the 3rd Place Lt. Wt. Duroc, weighing 219 lbs. It sold to Baker & Taylor for \$4.25 per lb. Total \$930.75.

Scott Dahl, Gruver FFA, showed the 6th Place Med. Hvy. Steer, weighing 1098 lbs. It sold to Nick Holt for \$1.15 per lb., total \$1262.70.

Marshall Cator, 4H, showed the 5th Place Lt. Wt. Med. Wool Lamb, weighing 92 lbs. It sold for \$4.50 per lb., total \$414.00 to Don McLain.

Scott Martin, Spearman FFA, showed the 3rd Place Hvy. Wt. Duroc, weighing 249 lbs. It sold for \$4.00 per lb., total \$996.00 to First State Bank.

Chris Cooper, Gruver FFA, showed the 6th Place Hvy. Wt. Steer, weighing 1210 lbs. It sold for \$1.40 per lb. total \$1694.00 to Dean Cluck.

Russell Tiner, Gruver FFA, showed the 5th Place Med. Wt. Med. Wool Lamb, weighing 104 lbs. It sold to Angel's Jet Rail for \$4.00 per lb., total \$416.00.

Rodney Dale Clawson, showed the 3rd Place Lt. Wt. Hampshire, weighing 226 lbs. It sold for \$4.75 per lb., total \$1073.50 to Tony Harper.

Shelly Logsdon, 4H, showed the 7th Place Med. Hvy. Steer, weighing 1091 lbs. It sold for \$1.70 per lb., total \$1854.70 to Hitchland Grain.

James Heddins, Gruver FFA, showed the 5th Place Med. Hvy. Med. Wool Lamb, weighing 113 lbs. It sold to Vance Morris for \$4.25 per lb., total \$480.25.

Florencio Martinez, Spearman FFA, showed the 3rd Place Hvy. Wt. Hampshire, weighing 243 lbs. It sold to Baker & Taylor for \$4.00 per lb. total \$977.00.

Mickey Scarborough, 4H, showed the 7th Place Hvy. Wt. Steer, weighing 1210 lbs. It sold to Dean Cluck for \$1.55 per lb., total \$1875.00.

Shelly Strawn, 4H, showed the 5th Place Hvy. Wt. Med. Wool Lamb, weighing 118 lbs. It sold to Cates Men's Wear for \$4.50 per lb., total \$531.00.

Tracy Vernon, Spearman FFA, showed the 3rd Place Lt. Wt. Spot, weighing 230 lbs. It sold to Mason & Henton for \$2.50 per lb., total \$575.00.

Dee Dee Womack, 4H, showed the 6th Place Lt. Wt. Med. Wool Lamb, weighing 91 lbs. It sold to Hansford Parts & Supply for \$4.25 per lb., total \$386.75.

Jimmy Nickelson, Spearman FFA, showed the 3rd Place Hvy. Wt. Spot, weighing 243 lbs. It sold to Double Circle Coop for \$2.75 per lb., total \$546.75.

Edward Beck, 4H, showed the 6th Place Med. Wt. Med. Wool Lamb, weighing 103 lbs. It sold to Spearman Equity for \$5.25, total \$540.75.

Melanie Morris, 4H, showed the 3rd Place Yorkshire, weighing 250 lbs. It sold to Caprock Industries for \$2.50 per lb., total \$625.00.

Mendy Gammon, 4H, showed the 6th Place Med Hvy Med. Wool Lamb, weighing 113 lbs. It sold to Vance Morris for \$3.75 per lb., total \$423.75.

Clay Reid, Spearman FFA, showed the 3rd Place Lt. Wt. Cross, weighing 226 lbs. It sold to Hansford Implement for \$4.00 per lb., total \$904.00.

Jeff Nicholson, 4H, showed the 6th Place Hvy. Wt. Med. Wool Lamb, weighing 120 lbs. It sold to Brock Insurance for \$5.00 per lb., total \$600.00.

Rickie Dowdy, Spearman FFA, showed the 3rd Place

Hvy. Wt. Cross, weighing 247 lbs. It sold to B & B Farm Industries for \$3.25 per lb., total \$802.75.

Chad Guthrie, 4H, showed the 7th Place Lt. Wt. Med Wool Lamb, weighing 94 lbs. It sold to Nollner Bros. for \$4.50 per lb., total \$423.00.

Craig Cooper, 4-H, showed the 4th Place Lt. Wt. Duroc, weighing 217 lbs. It sold to Hansford Co. Parts for \$3.25 per lb., total \$705.25.

Suzy Steele, 4H, showed the 7th Place Med. Wt. Med Wool Lamb, weighing 100 lbs. It sold to Tammy Nollner for \$5.25 per lb., total \$525.00.

Mary Ann Martin, 4H, showed the 4th Place Hvy. Wt. Duroc, weighing 238 lbs. It sold to Jane Meek for \$4.75 per lb. total \$1130.50.

Jimmy Womack, Gruver FFA, showed the 7th Place Med Hvy. Med. Wool Lamb, weighing 105 lbs. It sold for \$4.00 per lb., total \$420.00 to Caprock Industries.

Kristi Holt, 4H, showed the 4th Place Lt. Wt. Hampshire, weighing 224 lbs. It sold for \$3.25 per lb., total of \$728.00 to Willard McCloy.

Lynette Williams, 4H, showed the 7th Place Hvy. Wt. Med. Wool Lamb, weighing 120 lbs. It sold to Glenn R. Mackie for \$3.50 per lb., total \$420.00.

Alan Gubreath, Spearman FFA, showed the 4th place Hvy. Wt. Hampshire, weighing 240 lbs. It sold to Gruver State Bank for \$4.25 per lb. total \$395.25.

Charles Ross, Spearman FFA, showed the 4th Place Lt. Wt. Spot, weighing 210 lbs. It sold to Punk Jackson for \$3.75 per lb. total \$787.50.

Wayne Meek, Spearman FFA, showed the 8th Place Med Wt. Med. Wool Lamb, weighing 100 lbs. It sold to Jane Meek for \$5.25 per lb., total \$525.00.

Chris Morris, 4H, showed the 4th Place Hampshire, weighing 250 lbs. It sold to Val Winger for \$3.00 per lb., total \$750.00.

Durward Cator, 4H, showed the 8th Place Med Hvy Med. Wool Lamb, weighing 110 lbs. It sold for \$4.75 per lb., total \$522.50 to Spec Cator.

Ty Williams, Gruver FFA, showed the 4th Place Lt. Wt. Cross, weighing 207 lbs. It sold to Shapley Bros. for \$3.50 per lb., total \$724.50.

Jeff Gatlin, Spearman FFA, showed the 8th Place Hvy Wt. Med. Wool Lamb, weighing 119 lbs. It sold to Spearman Auto for \$3.25 lb. total \$386.75.

Brain Sparks, Gruver FFA, showed the 4th Place Hvy. Wt. Cross, weighing 204 lbs. It sold for \$3.00 per lb. to DGC, total \$720.00.

Stephen Tindell, Spearman FFA, showed the 5th Place Lt. Wt. Duroc, weighing 220 lbs. It sold for \$3.50 per lb. total \$770.00 to J.L. Brock.

Gregg Miesner, Spearman FFA, showed the 5th Place Hvy. Wt. Duroc, weighing 235 lbs., It sold to Hansford Implement for \$4.00 per lb., total \$940.00.

Susan Davis, 4H, showed the 5th Place Lt. Wt. Hampshire, weighing 214 lbs. It sold to Frank Pittman for \$3.00 per lb., total 624.00.

Ricky Renteria, Gruver FFA, showed the 6th Place Hvy. Wt. Hampshire, weighing 239 lbs. It sold to Dan Ralston and A.D. Reed for \$3.00 per lb., total \$717.00.

James Scroggs, Spearman FFA, showed the 5th Place Lt. Wt. Cross, weighing 234 lbs. It sold to Cator Crawford for \$3.00 per lbs. total \$702.00.

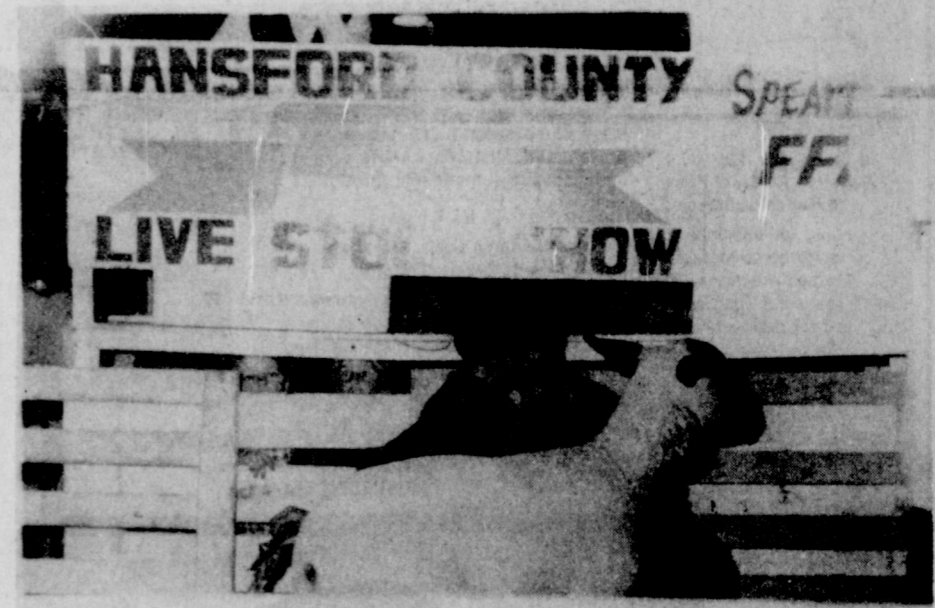
Doug Gossett, 4H, showed the 5th Place Hvy. Wt. Cross, weighing 238 lbs. Gruver State Bank paid \$3.75 per lb., total \$892.50.

Mike Grotegut, Gruver FFA, showed the 6th Place Lt. wt. Duroc, weighing 227 lbs. It sold to Dean Cluck for \$4.50 per lb., total \$1021.50.

Debbie Benton, 4H, showed the 6th Place Hvy Wt. Hampshire, weighing 234 lbs. It sold to Leon Hobbs for \$3.50 per lb.,



Sam Boone--Grand Champion Steer



Scott Henderson--Grand Champion Lamb



Curt Porter--Grand Champion Hog

total \$819.00.

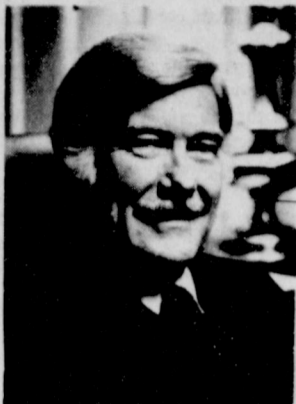
Scott Henderson, Gruver FFA, showed the 6th Place Hvy Wt. Cross, weighing 244 lbs. It sold to Gruver Farm Supply for \$3.25 per lb. total \$793.00.

Todd Williams, showed the 7th place Hvy. Wt. Hampshire, weighing 235 lbs. It sold to Shapley Bros. for \$3.50 per lb. total \$822.50.

Don McLain bought a lamb for \$400.00 and donated it to the Senior Citizens.

Floor prices on the lambs was 63 cents by DGC Feeders; hogs was .51 by Henderson Livestock; steers was 72 cents by Caprock.

Noted Bible Authority To Speak



Hilton Sutton, national recognized as one of the most noted authorities on the subject of current events and world affairs, related to Bible prophecies, will be speaking at the People's Chapel, 9th & Colgate, Perryton from March

23 to 25. Hilton takes the words of the most accurate news report ever—God's Holy Word, and relates it to the layman's level and no attempt is made to demonstrate theological scholarship, and thus "shoot" over the heads of the believers. His message is a positive look at God's plan for us.

He will be speaking at 7:30 p.m. on Friday and Saturday and at 10:45 and 7:00 on Sunday.

Everyone is cordially invited to attend.

High Adventure Trips For Youth Available

High Adventure trips available for young men and women age 14-21. Florida Learn to Sail and Snorkle trip, 6 days of sailing instruction snorkeling and lots of fun and sun, price includes round trip air fare from Amarillo, food lodging and transportation in Miami provided! Two adult leaders will supervise youth of each of the 43 foot sailboats. July 22-29 \$100.00

due now to hold reservation, \$100.00 more due April 1. Total of \$499.00 due by June 1. Only 8 spaces available of 20.

Canadian Canoe trip July 16-31 14 day trip to Charles L. Sommers Wilderness Canoe Base. Adult supervision and guide provided. Depart from Pampa to Ely, Minnesota into the world's greatest canoe country across the border in Canada. Total cost \$375.00 includes transportation to and from the canoe base, lodging for the trip, food canoeing and fishing and camping licenses. Deposit of \$200.00 due now, total due by June 1.

Backpacking trip to Philmont located in the Sangre De Cristo mountains of New Mexico. July 10-22. 12 days and nights of hiking, rock climbing, horse back riding, cooking out, camping and much more for \$190.00 \$25.00 deposit due now. Total due June 1 Adult supervision provided, cost includes everything except personal gear.

Please send reservation deposit with name of trip to Adobe Walls Council 815 N. Summer, Pampa, Texas 79065 or call 6696845 for more info. Interested adults please enquire.

Progress would be faster if people could go forward on excuses.

New Loan-Guarantee Terms For FmHA Loans

WASHINGTON—Liberalized terms for farm loans guaranteed by the Farmers Home Administration (FmHA) go into effect this week. They are designed to encourage more private-lender activity in FmHA-guaranteed farm loans.

Assistant Secretary of Agriculture Alex P. Mercure announced that FmHA, the U. S. Department of Agriculture's credit agency, has completed steps to carry out changes in its non-emergency farm loan programs authorized by the Agricultural Credit Act of 1978.

The changes include: --New limits of \$300,000 for farm ownership and other farm real estate loans, and \$200,000 for farm production loans made by commercial lenders under FmHA guarantee. Previous limits were \$100,000 for real estate loans and \$50,000 for production loans.

--Interest rates on guaranteed loans to be negotiated between borrowers and lenders. This removes arbitrary interest ceiling and lets lenders charge rates within the range of reasonable commercial rates.

--Loan eligibility for family-size farmers doing business as partnerships corporations or co-operatives. In nearly all FmHA non-emergency farm loan programs, eligibility was previously restricted to farmers doing business as individuals.

--Exemption of guaranteed loans from the traditional requirement that borrowers "graduate" as soon as possible from credit associated with FmHA. The prospect that graduation would terminate a loan prematurely has discouraged banks and other commercial lenders from serving farmers under FmHA guarantee.

These and other technical revisions of FmHA-farm loan regulations were published in the March 8 Federal Register.

Mercure said the new provisions for FmHA loan guarantees will "improve the capacity of USDA to cooperate with commercial banks, Federal Land Banks, Production Credit Associations and other local financial institutions in meeting the credit needs of farmers. Although credit is not a substitute for income, better provision for agricultural credit is a vital need in helping many farm families work their way to financial stability."

An FmHA guarantee may cover up to 90 percent of a lender's loss in principal and interest. Inquiries about FmHA loan guarantees may be made at private lending institutions or at FmHA county offices.

LYNX & LYNKETTES RELAYS RUNNING EVENTS TIME SCHEDULE

PRELIMS

FRIDAY AFTERNOON, MARCH 23
1:00 - 1:30 SCRATCH SESSION

| | | |
|------|---------------------|----------------------|
| 2:00 | 440 yd. Relay | (7 & 8 Boys Only) |
| 2:10 | 880 yd. Dash | (7 & 8 Boys & Girls) |
| 2:35 | 60 yd. Int. Hurdles | (7 & 8 Boys) |
| 2:45 | 100 yd. Dash | (7 & 8 Boys) |
| 2:55 | 440 yd. Dash | (7 & 8 Boys & Girls) |
| 3:15 | 220 yd. Dash | (7 & 8 Girls) |
| 3:25 | 100 yd. Low Hurdles | (7 & 8 Boys) |
| 3:35 | 80 yd. Low Hurdles | (7 & 8 Girls) |
| 3:45 | 220 yd. Dash | (7 & 8 Boys) |
| 3:55 | 100 yd. Dash | (7 & 8 Girls) |
| 4:05 | 1320 yd. Run | (7 & 8 Boys & Girls) |

JR. HIGH PRELIMS

SATURDAY MORNING, MARCH 24
9:15 - 10:00 SCRATCH SESSION

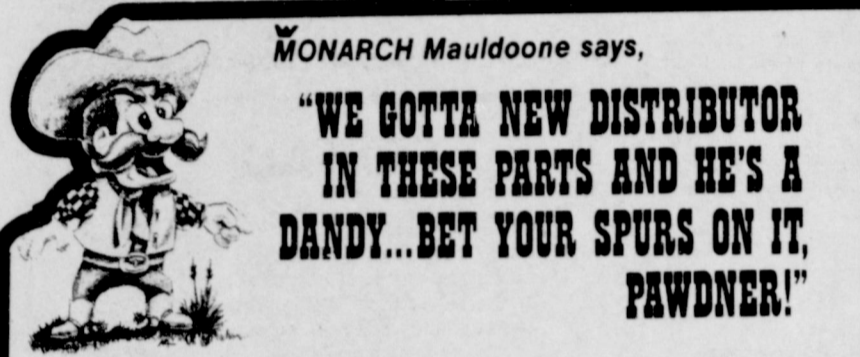
| | | |
|-------|----------------------|------------------------|
| 10:30 | 120 yd. High Hurdles | (Varsity Boys) |
| 10:40 | 100 yd. Dash | (Varsity Boys) |
| 10:50 | 440 yd. Dash | (Varsity Boys & Girls) |
| 11:05 | 220 yd. Dash | (Varsity Girls) |
| 11:15 | 80 yd. Low Hurdles | (Varsity Girls) |
| 11:25 | 330 yd. Int. Hurdles | (Varsity Boys) |
| 11:35 | 100 yd. Dash | (Varsity Girls) |
| 11:45 | 220 yd. Dash | (Varsity Boys) |

VARSITY PRELIMS

FINALS

SATURDAY AFTERNOON, MARCH 24

| | | |
|------|----------------------|--------------------------------|
| 2:00 | 440 yd. Relay | (All Divisions-Including J.V.) |
| 2:20 | 880 yd. Dash | (All Divisions) |
| 2:45 | 60 yd. Int. Hurdles | (7 & 8 Boys) |
| 2:50 | 120 yd. High Hurdles | (Varsity Boys) |
| 2:55 | 100 yd. Dash | (7,8, & Varsity Boys) |
| 3:00 | 440 yd. Dash | (All Divisions) |
| 3:15 | 220 yd. Dash | (7,8, & Varsity Girls) |
| 3:25 | 100 yd. Low Hurdles | (7 & 8 Boys) |
| 3:30 | 80 yd. Low Hurdles | (7, 8, & Varsity Girls) |
| 3:35 | 880 yd. Relay | (7, 8, J.V., & Varsity Girls) |
| 3:55 | 330 yd. Int. Hurdles | (Varsity Boys) |
| 4:00 | 220 yd. Dash | (7, 8, & Varsity Boys) |
| 4:10 | 100 yd. Dash | (7, 8, & Varsity Girls) |
| 4:15 | 1320 yd. Run | (7 & 8 Boys & Girls) |
| 4:30 | Mile Run | (Varsity Boys & Girls) |
| 4:50 | Mile Relay | (All Divisions-Including J.V.) |



MONARCH Mauldoone says,
"WE GOTTA NEW DISTRIBUTOR IN THESE PARTS AND HE'S A DANDY...BET YOUR SPURS ON IT, PAWDNER!"

We don't pick just anyone as a Monarch Distributor. We want distributors that more or less match our products...dependable, reliable with a reputation for quality and honesty. Our new Monarch Distributor in this area is...

Harold Crooks
Rt. 1 - Box 7
Phone 659-2068
Spearman, Texas

ASK HIM ABOUT THESE MONARCH PRODUCTS

Monarch Continuous Flow Bin Drying Systems
Any size to meet your requirements from a small 2-unit operation to large commercial sizes. Monarch proven and Monarch quality construction and components throughout.

Monarch All Steel Farm and Ranch Buildings
Unmatched for design versatility. Pre-engineered for fast, easy do-it-yourself erection. 9 durable colors, clear-span and ASC approved for grain storage.

Monarch Grain Storage and Drying Systems
You'll have to go a long way to beat a Monarch Grain Bin. A wide range of sizes and capacities to meet any need. Quality construction throughout... 1000's now in use.

Rovar Industrial Park, P.O. Box 1768
Kearney, Nebraska 68847
(308) 237-2134

CRUM REAL ESTATE
CALL ANYTIME 659-2053
1105 S. BARKLEY

NADINE CRUM BROKER
VIRGINIA WHITE BROKER

SNUG AS A BUG IN A RUG
When you move into this almost new 3 bedroom, 1 1/2 bath home at 1118 Linn Drive. FIREPLACE in large FAMILY ROOM; SEPARATE FORMAL LIVING-DINING ROOM and great built-in kitchen and double car attached garage. DELIGHTFUL PATIO AREA & much more. By appointment only. Offered EXCLUSIVELY by Crum Real Estate.

QUALITY PLUS
This lovely Ranch style home is located in excellent location on large corner. The home features 4 bdms., 1 1/2 bath - large living room with woodburning fireplace, lots of cabinets and all the kitchen builtins. This is truly a fine home value and one that will offer years of enjoyment. Shown only by appointment. EXCLUSIVELY with Crum Real Estate.

START HERE-706 COLLIER
With this 3 bdrm., 1 1/2 BATHS at a very reasonable price. Perfect for the young family just starting out. GOOD LOCATION, FENCED. CALL TODAY for an appointment. EXCLUSIVELY with Crum Real Estate.

LOVE QUALITY? NEED SPACE?
Like your money's worth? It's all included in this spacious, older home with 4 bdms., 3 baths, kitchen built-ins, formal living, dining, den, basement, storage galore, sprinkler system front and back, fence, and much more. Call for an appointment. EXCLUSIVELY with Crum Real Estate.

A LITTLE BIT COUNTRY
Superb Quality was built into this picturesque home in edge of Farnsworth. LARGE LIVING ROOM with FIREPLACE, BIG BEDROOMS, 1 1/2 baths, a perfect dream of a kitchen and much more. By appointment only; EXCLUSIVELY with Crum Real Estate.

SPRING IS HERE!!!

And we have got quite an inventory of new Pontiacs, Buicks, & GMC's coming in!

We have got to make room for them! The easiest way we know is to make some **SUPER DEALS** on the inventory on hand.

And, because of the demand for used cars this month we are really needing to trade for some more. We have got one of the best selections of new cars & trucks in the Panhandle.

Come On Out Today!
We Need Your Business!!

HERGERT
Pontiac, Buick, GMC

"The Best For Sales,
Service & Body Shop"
Phone 806 659-3721

WE APPRECIATE YOUR PATRONAGE!!!
So. Hwy. 207
Spearman, Texas

WANT ADS

CAPROCK MONUMENT CO.
 Dealers of Georgia Granite,
 Georgia Marble, Colored
 Granite, & Brims.
 represented by
BOXWELL BROS.
FUNERAL HOME
 519 S. EVANS
 659-3802

FOR SALE: 1968, 2-door
 GranPrix Pontiac. Loaded.
 Call 659-2712. Also CJ-5
 4 cylinder jeep engine
 complete. 6t-c

FOR SALE: Wurlitzer Spinnet
 Piano, one 18,500 BTU Refriger-
 ated Air Conditioner, one
 10,000BTU Refrigerated Air
 Conditioner. Call 3283. 16-rtn

YOURS FREE. 20 or more trees
 to be sawed down. Clean up and
 haul away. Call 2082.
 175-rtn

Very Few
 He who falls in love
 with himself has no rivals.
 -Wall Street Journal.

**TOO LATE
 TO CLASSIFY**

FOR SALE-69 Bronco, com-
 pletely rebuilt. Big tires and
 wheels, lights, roll bar, cam
 and headers. 659-3773. 19-2tc

Those Calories

The American Medical
 Association recently pub-
 lished a guide to help
 Americans regulate their
 weight the sensible way.
 The guide debunks fad
 diets and easy solutions
 designed to solve over-
 weight problems.

What the AMA Guide
 says, in effect, is that one
 must change eating or ex-
 ercise habits to lose
 weight--there's no safe
 super-easy way. Protein
 supplements are not
 needed if one enjoys a
 normal diet. Nor must one
 spend a lot of money on
 special, low-calorie foods,
 though some are helpful.

Basically, the best
 weight reducing program
 is a do-it-yourself pro-
 gram. The average indi-
 vidual needs 15 calories
 per pound of weight daily
 to maintain a stable
 weight. Each pound of fat
 stored by your body con-
 tains 3,500 calories. A
 150-pound person (need-
 ing 2250 calories a day)
 must cut his calories by
 7,000 a week to lose
 two pounds.

The Guide suggests
 not losing more than two
 pounds per week. It offers
 sound advice on how to
 burn up calories. Office
 work, for example, con-
 sumes only 120 to 180
 calories an hour. Walking
 burns from 200 to 300.
 Running or swimming can
 burn up to 600 an hour.
 Reasonable limitation of
 calorie intake, and exer-
 cise, then, can easily con-
 trol weight--without the
 necessity of fad diets and
 extreme remedies. (If you
 want the Guide, send \$1
 to the AMA's Department
 of Foods, Box 821,
 Monroe, Wis. 53566.)

Golden Gleams

Come, gentle Spring, ethe-
 real mildness, come!
 -James Thomson.

Spring makes everything
 young again, save
 man.

-Jeanne Paul Richter.


Spring is sooner recog-
 nized by plants than
 by man.

-Chinese Proverb.

In the Spring a young
 man's fancy lightly
 turns to thoughts of
 love.

-Alfred Tennyson.

When lovers are far apart
 they are made even
 sadder by the loveli-
 ness of Spring.

OFFERED BY:
Emmett R. Sanders
 Realtor


Dwelling and store building,
 small detached apartment,
 on wide lot, ideal for profes-
 sional office-dwelling com-
 bined.

150' x 140' commercial, zon-
 ed heavy retail, with 2 bed-
 room home and detached
 garage, terms available.

Half section 11 miles west
 and 2 miles south of Gruver;
 about 240 acres irrigated, 80
 acres grass. Custom built
 three bedroom brick home
 with 2500 square feet en-
 closed and amenities galore,
 free gas for household use.

Supporting corrals, load-
 ing chute, outbuilding, eight
 inch irrigation well, half
 mile underground pipe, and
 tailwater pit.

Farm lease on good adja-
 cent irrigated section negoti-
 ation for purchaser of this
 property.

Owner will carry paper on
 the 240 acres farm land with
 low down payment; purcha-
 ser is to obtain his own loan
 on the 80 acres grass, dwe-
 lling and appurtenances.

EMMETT R. SANDERS
 REALTOR
 659-2516
 659-2601 (nights)
 345-rtn

TEXAS PRESS
 MEMBER 1977 ASSOCIATION
 PUBLICATION (USPS 509-660)

SPEARMAN, TEXAS 79081
 213 Main Box 458 659-3434
 Published Weekly at 213 Main Street
 Spearman, Texas 79081
 Owner-Publisher.....William M. Miller
 Second Class postage paid at Spearman, Texas

ANY ERRONEOUS REFLECTION UPON THE
 CHARACTER OF ANY PERSON OR FIRM
 APPEARING ON THESE COLUMNS WILL BE
 GLADLY AND PROMPTLY CORRECTED UPON
 BEING BROUGHT TO THE ATTENTION OF
 THE MANAGEMENT.

SUBSCRIPTION RATE: Hansford, adjoining
 counties, combination with the Hansford Plains-
 man, \$10.40.

Other points, \$14.40.

Hansford County
 Planned Parenthood
 265. Haney
 659-2483
 Spearman
 Mon.-Fri.
 8 a.m. to 12 noon
 305-rtn

SERVICES
SERVICE: Pits cleaned, wet or
 dry. Dragline or loader. Also,
 dozer, grader, carry-all service.
 Lee Roy Mitchell, 806-733-2384,
 Grover, Texas, 79040.

WILL DO ALL TYPES OF
 CARPENTRY WORK:
 Repairs, Remodels, Additions,
 Floors, Ceilings, Walls & Roofs
 Satisfaction Guaranteed.
 Call Tommy Reger
 659-3425
 659-2174

WINTER RATES
 Jan. thru March
 Steam Rinsevac Shampooer
 \$4.95 per day
 Call Gordon's Drug, 2141.
 After 7 p.m. & Sunday
 call 3437. 716 Cotter Drive

NOTICE
Wallace Monument Co.
 Monuments, Curbing,
 Grave Covers
 Local Representative
LEONARD JAMESON
 659-3406
 20-rtn

Alcoholic Anonymous
 meeting 8 p.m. Friday,
 Home Demonstration Club
 building, 305 N. Bernice.
 Phone 659-3181 for infor-
 mation. ***

Al-Anon meetings 8 p.m.
 Friday, Home Demonstration
 Club building, 305 N. Bernice.
 Phone in back room. Phone
 659-3181 for information.
 Ask for Al-Anon.

For Special Tours & Charters on
 Continental Trailways, check
 with Viola Graves at Bus Station
 659-3446. Brochures, tickets
 available.
 17rtn-Tonly

Pea Wee's Plumbing Service
 Roto-rooter, Acoustical Ceil-
 ings. Blown insulation in
 walls and ceilings. 659-2811
 or 659-3781.
 18-rtn

KIRBY SALES & SERVICE.
 New & reconditioned parts and
 service. 912 S. Bernice. 659-
 2797.
 19-rtn

**MISCELLANEOUS
 FOR SALE**

Feeder Refrigerated Air Condi-
 tioners, 18,500 BTUS, \$165.00.
 call 659-2314.
 19-1tp

FOR SALE: Stand By Electric
 Generators. Call Charles D.
 Smith, Perryton. 435-3781.
 95-rtn

FOR SALE: 3 Bed Room
 Double Wide Mobile Home.
 1 1/2 Bath. Utility Room. Call
 659-3292.
 85-rtn

FOR SALE-1968-95 John
 Deere Combine in good condi-
 tion. Nearly new 357 New
 Holland Bale and Grain Grin-
 der. Contact James Martin.
 659-2716.
 16-rtn

FOR SALE-1976 Suzuki GT500,
 excellent condition. Call Mark
 Sheets, 659-2085.
 17-8tc

FOR SALE-GE electric stove,
 self cleaning oven, in good
 condition. \$75. Call 3269.
 18-4tc

FOR SALE: 1978 S and S 4
 horse gooseneck van, with sleep-
 er. 28 ft. long, 6 ft. wide - 6 1/2
 ft. high. The sleeper is 10 ft. by
 6 ft. Call 733-2720.
 18S-3c

Shasta travel trailer always
 been shopped Excellent Con-
 dition 21' 4675.00 405-253-6588
 18S-4tp

FOR SALE-green gold velvet
 chair, \$100, king size bed-
 spread, earth tones, like new
 \$75. Call after 6, 3384.
 18-3tc

FOR SALE
 Extra Special 74
 Kawasacki 400: Good
 condition: sacrifice.
 Call 2924:3995

FOR SALE: 42" Camper Shell,
 upholstered Foam Bed, Cur-
 tains, carpet, Almost new. Call
 733-2179.
 18S-3p

FOR SALE-Gooseneck trailer, 3
 axles, 6' x 24'; registered
 quarterhorses, mares in foal,
 yearling colts and geldings. Call
 659-2774.
 18S-5tc

ORGAN IN STORAGE - 1978
 Home Model Organ stored
 locally. Reported like new. Res-
 ponsible party can assume low
 balance. Automatic Rhythm,
 Walking Boogie Bass, Single
 Finger Chords, Banjo, etc. Call
 Person-to-Person Collect: Mr.
 Roberts, 512-459-8660. National
 Keyboard Inc. Austin, TX.
 18S-8tp

NURSERY
 We have a good selection of
 shade, fruit trees and ever-
 greens. Plant now for early
 spring growth. Will have a good
 selection of bedding plants,
 tomatoes, peppers, etc. Ochil-
 tree Growers, 8 mi S. of
 Perryton, Hwy 70. Phone 435-
 3545.
 18S-6tc

New Ruger Automatic 22 long
 rifle pistol 6 in. barrel. Used
 Arminious bent ribbed double
 action 22 magnum 6 in. barrel
 has both cylinders. 500 round
 long rifle hollow points, all for
 \$220.00. Used 21 in. Westing-
 house color console TV, 30 day
 warranty, \$120.00; 19 inch color
 portable TV, beautiful cabinet
 and picture 90 day warranty,
 \$175.00 after 5 or all day
 Sunday, 204 S. Archer.
 19-1tp

FOR SALE: Nice riding saddle
 \$150.00. Call 2687 Spearman
 19-rtn

FOR SALE-1975 Buick Regal,
 in good condition. Call 3648.
 19-2tc

FOR SALE-Used Lester spinet
 mahogany piano. \$800. 659-
 3250.
 19-1tc

**REAL ESTATE
 FOR SALE**

Commercial thirty acres corner
 on Highway 3 at Intersection of
 Optima Reservoir Access Road.
 405-338-8289.
 19-4tc

Three bedroom, 1 bath home
 FOR SALE. Family room, patio,
 fruit trees, horse pen or large
 lot edge of town. Call 659-3027.
 17-rtn

FOR SALE: Nicely decorated 2
 bedroom, 1 bath home, corner
 lot. Fenced backyard. Quiet
 neighborhood. Appliances op-
 tional. Call 3802.
 16-rtn

FOR SALE: Brick 3 bedroom
 house with garage, central heat
 & air & storage, 1010 S.
 Barkley, call
 659-2390.

**LARGE, COMFORTABLE,
 IMPRESSIVE.**
 all describe this new home
 located in Glover Place.
 3 bedroom with walkin
 closets, 2 full baths, Fire-
 place. 3 skylight. Double
 insulation and finished patio.
 Approximately 1950 sq. ft.
 THIS HOME MUST BE
 SEEN TO APPRECIATE
 THE FULL VALUE OFFER-
 ED. A lot of extras that most
 contractors do not put in a
 home.
ED WHEELER
REAL ESTATE

HELP WANTED

HELP WANTED- The Texaco
 Wholesale at Gruver needs a
 full time truck driver. Salary
 open. 733-2511
 18S-4tc

MECHANICS WANTED: \$6.00
 per hr. plus benefits. Call for
 more details. Jim Lowing or
 Neil Brewer, 624-3886, Per Hoel
 Ford, Inc. Liberal, Ks.
 19-2tc

HELP WANTED-Grain elevator
 superintendent and one general
 elevator employee. Two bed-
 room house and utilities furn-
 ished, group insurance. Start
 immediately. Call day or night
 806-733-5067.
 16-rtn

WANTED: Full time farm help.
 Experience in irrigation farming
 and cattle operation. Must be
 self-starter, drinkers need not
 apply. Call 806-733-2203 in
 Gruver for appointment.

**UTILITY MAN-
 TRUCK DRIVER**
 Perryton, Tx
 Applicants experienced in hole
 digger, aerial basket truck and
 hydraulic boom truck operation
 are needed. Call Mr. Parker at
 (806) 435-4051 for appointment.

Community Public Service Co.
 An equal Opportunity
 Employer
 19-2tc

MATURE COUPLE: No chil-
 dren. Maintenance of yard and
 improvements and domestic
 service. Good house and util-
 ities furnished. Halfway be-
 tween Sunray and Gruver.
 Good Pay. Mr. and Mrs. Sam
 Cluck, 806-733-2515 or 806-733-
 2646.
 19-2TC

WANTED

I would like to do house-
 cleaning. Call 659-2150.
 17-rtn

GARAGE SALE

FOUR FAMILY GARAGE
 SALE-Saturday, March 24, 9 to
 5. 1117 Dressen.
 19-1tc

NOTICE

March 21th thru March 24th I
 will be open 4:30 to 6:30 p.m.
SPEARMAN BARBER SHOP

LEGAL NOTICE

Hansford County offers for sale
 by sealed bid, one used Model
 170 Allis Chalmers Tractor,
 purchased in 1971. Bids will be
 received until 10:00 A.M., Mon-
 day, March 26, 1979.

The Court reserves the right to
 accept or reject any or all bids.

The tractor may be seen at
 Gruver, Texas by contacting B.
 J. Renner, Phone # 733-2695,
 Gruver, Texas.
 18-2tc

CARD OF THANKS

We wish to express our
 sincere thanks and deep appre-
 ciation to Father Ray, The
 Knights of Columbus, Sacred
 Heart Altar Society, The organ-
 ist and choir. All of our friends
 who took of their time to attend
 the funeral. Also to all of our
 friends and neighbors who cal-
 led, sent flowers, spiritual bou-
 quets and brought food to our
 home at the time of our loss of
 our other and Grandmother. It
 has helped to know you cared.
 Thank you and may God Bless
 each and everyone of you.
 Mr. and Mrs. Don Schmehr and
 Family

BEST OF PRESS

Over The Fence
 Never waste house-
 hold scraps--open the
 windows and let the
 neighbors hear them.
 -News, San Diego.

Explained
 Someone has assured
 the country that the dollar
 still contains 10 dimes and
 20 nickles. The problem
 isn't change, but ex-
 change.
 -Post, Denver.

Age Secret
 Hardening of the heart
 ages people more quickly
 than hardening of the
 arteries.
 -Citizen, Prichard, Ala.

REAL ESTATE ED WHEELER

**HOMES-FARM
 COMMERCIAL**

906 King, Gruver, 3 bed-
 room, 1 bath, detached gar-
 age, fenced yard.

1006 S. Evans, 3 bedroom, 1
 bath, new insulation and
 steel siding.

706 Steele Drive, 3 bedroom,
 den, 1 1/2 baths, fenced back-
 yard.

1114 S. Haney - 3 bedroom, 1
 bath with garage and fenced
 yard. Priced to sell.

Jerry Gee 659-3664
 Doris Beck 659-2618
 659-2074

SPEARMAN INDEPENDENT SCHOOL DISTRICT
 ORVILLE LATHAM, BUS. MGR. - TAX ASSESSOR - COLLECTOR
 403 EAST 11TH.
 SPEARMAN, TEXAS, 79081

Applications for exemptions available to property owners for
 School and City taxes must be made at the School Tax Office during the
 regular time for filing a rendition of property each year, that is
 between January 1st and April 30th. Exemptions now available:

1. Resident homestead exemption for persons 65 years of age
 on or before January 1, 1979, for both school and city taxes.
2. An exemption of \$5,000. off of the market value on all
 owner-occupied residences including mobile homes on leased
 land. This exemption applies to school tax only.
3. Disabled veterans exemption, for school and city taxes.
 Certification of disability from Veterans Administration
 must be filed with the application.

Applications must be received in the school tax office not later
 than April 30, 1979 to qualify.

Terrific Buy In WAKA A great Opportunity



Nice Family Business Must see to appreciate. Gas Station--Grocery
 store, Warner seed business -- 2 bedroom home--
 2 car attached garage -- plus detached 2 car
 garage -- 20 x 40 ft. shop -- 2 car carport.

Ready To Go
 Bud Aylett -- 435-2109
 Christine Aylett -- 435-2109

GOLDEN SPREAD REALTY
 (806) 435-5444 -- 401 S. Main - Perryton

WE'RE THE NEIGHBORHOOD PROFESSIONALS.
 © 1978 Century 21 Real Estate Corporation. © Licensed Trademark of Century 21 Real Estate Corporation.
 Printed USA. Each office is independently owned and operated. Equal Housing Opportunity.

Century 21

If you would like to join us as one of our salespersons in Spearman, call or see us.

WTSU Opea To Present Musical

WTSU—"West Side Story," a contemporary musical, will be presented by the West Texas State University Opera Workshop April 5 through 10 in the Branding Iron Theatre.

"West Side Story" is a modern day Romeo and Juliet set in the environment of slums of the West side of New York in the middle of gang warfare," said Dr. Royal Brantley, producer and musical director.

Written by Arthur Laurents, the music was composed by Leonard Bernstein with lyrics by Stephen Sondheim.

The musical will be performed at 8 p.m. April 5, 6, 7, 9, and 10 with a matinee performance at 3 p.m. April 8. Tickets will be \$4 for general admission, and WTSU students with an ID will be admitted free.

Characters of the musical include two street gangs, the Jets and the Sharks, their girls, adults and ensemble members.

Major roles will be played by Kevin Knapp, Amarillo sophomore of 2727 S. Fairchild, as Riff, leader of the Jets; Ryan Smolik, Canyon senior as Tony, his friend; Royal R. Brantley, Canyon junior, as Bernardo, leader of the Sharks; Cindy Anderson, Lovington, NM junior, as his sister, Maria; and Cindy Steckline, Amarillo sophomore of 1232 Iris, as his girl, Anita.

Other Jets will be played by Grady Basler, Perryton freshman of 610 S. Fordham; Ralph Kimbrough, Canyon junior; John Paul Maudin, Amarillo freshman of 4304 Olsen; Quentin Clark, Denton sophomore of 1129 E. Hickory; Regi Fowler, Canyon freshman; Donny Penney, Freepert junior of 1746 West 11th; Patrick Parsons; Ray Sparkman, Colleyville senior of 6000 Hunter Ct.; and Orville Chambliss, San Antonio sophomore of 1219 Viewride Dr.

Jet Girls will be portrayed by Patricia Wright, Canyon junior

of 2407 13th Ave.; Roma Johnson, Canyon junior of 1124 Hillcrest; Sandra Parker, Amarillo freshman of 3416 Clearwell; Amy Powell, Corpus Christi sophomore of 602 Meadowbrook; Marty Matthews of Amarillo; Jami Winborne, Pampa junior of 446 Hill; Jane Phillips, and Cindy Wilson, Claude junior of Rt. 1.

The Sharks will be portrayed by Ben Rodriguez, Harlingen junior of 2313 Ella; Bryan Kip Watkins, Pampa senior of 1233 N. Russell; Eddie Brow; Ben Flores; Mike Levitt; and Fernie Nunez, El Paso freshman.

Shark girls will include Pat Kelly, Hobbs, NM junior; Gail Partridge, El Paso senior; Michelle Pentecost, Canyon senior; Charlotte Willis, Dalhart sophomore; Stella Levy, El Paso junior; and Jenny Ratje, Borger junior.

Adults will be played by Danny Barnard, Canyon junior; Brent Biles, Spearman sophomore; Mike O'Hern, Canyon sophomore; and Jerry Steen, Amarillo senior.

Ensemble members will be Betsy Hampton, El Paso sophomore; Penny Pennington, Dumas sophomore; Patti Prior, Canyon senior; Melinda Hest, Odessa freshman; Kerry Huffer, Muskogee, OK freshman; Denise Nesom; and Mary Jane Young.

Music for the production will include "Jet Song" sung by Riff and the Jets; "Maria," sung by Tony; "America," sung by Anita and the Shark girls; "Cool," sung by Riff and the Jets; "One Hand, One Heart," sung by Tony and Maria; "Tonight," sung by Maria and the Shark girls; "Somewhere," sung by the full chorus; and "Gee, Officer Krupke," sung by the Jets.

The musical will be staged, choreographed and designed by Neil Hess, dance instructor.

Servitors Club Met

The Servitors met Thursday, March 15 at 7:30 at the B & B Hospitality Room with Stephanie Brock calling the meeting to order and Jackie Pearson leading in the opening prayer. Roll Call was answered by "How Many Traffic Tickets I've Gotten in My Life."

Michelle Davis reported on the Volleyball Tournament the Servitors are sponsoring for their money making project. The members signed up for the times they wanted to work and the foods they wanted to bring. The tournament is set for March 22-24.

Linda Winegarner gave a report on the CPR Clinic that was held here in Spearman March 10 sponsored by the Servitors.

Cindy Schneider also reported on the Sesame Street problem. She found out that the best results would be to complain to the Spearman Cable Office than to the Amarillo station.

Stephanie Brock reported that the Top of Texas District

Meeting will be in Dumas in April. The Club received word that they have to report once a year to the district. They were notified that Gaye Wooley received second place in International Affairs for the Top of Texas District and Beckee Kelp received third place in Home Life reporting.

Refreshments were served by hostesses Molly Holton and Sheila Watley to members Debbie Benton, Candy Boxwell, Stephanie Brock, Linda Butt, Michelle Davis, Patty Harris, Cheryl Lewis, Laura Mackie, Patsy Malone, Marsha Murphy, Jackie Pearson, Susan Pearson, Cindy Schneider, Cindy Sweeney, Kim White and Linda Winegarner.

The next meeting will be Thursday, April 19 at the B & B Hospitality Room.

Rotary Club

Warren Proctor, head honcho of Hansford County's Soil Conservation Service's office, spoke to the Spearman Rotary Club on Monday noon at Martin's Steak Garden.

After telling the usual aggie joke and a raunchy story about a Rotarian, he showed a filmstrip, "Soil Conservation Services--Soil Conservation Districts", giving the history of the Soil Conservation Services and what they do. Upon the urging of President Franklin Delano Roosevelt, in 1939 the Texas legislature passed the Texas Soil Conservation Laws setting up Soil Conservation districts, to be only voted into existence by the vote of land owners. Participation is voluntary because private property rights are respected.

Visitors present were Rotarian Frank Hall of Pampa; Debra Clauson of Gruver who is an applicant for a Rotary graduate

scholarship through Rotary International; and Brice Palmer, John Patterson, and Warren Proctor of Spearman.

Members present were Jim Benson, Carrie Marie Berry, Eschol Blankenship, Kim Brock, Roy Bulls, Archie Burress, John R. Collard, Jr., Robert Elliott, Ed Freeman, Ed Garner, Kerry Henton, John Hutchison, Eddy Limbocker, Junior Lusby, Jim McLain, Jack McWhirter, Larry Murphy, Coy Palmer, Lenis Simpson, Gary Sims, Jerry Taylor, Don Wirsdorfer, Tim Woodington, and Michael Schnell.

Members absent were J.L. Brock, Pete Fisher, Frank Oglesby, Jim Shirley, and Vance Snider.

Jim Benson, executive of the Spearman YMCA, will give a classification talk at next Monday's meeting.

Joseph California, HEW Secretary, approving generic drugs:

"We simply don't think that a piece of paper... the label on the outside of a bottle... is worth paying eight times as much for."

Twentieth Century Club

The Twentieth Century Cotillion Study Club will hold their seventeenth annual Antique Show and Sale the 23rd, 24th, and 25th of March this year at M. K. Brown Auditorium in Pampa, Texas. The show will be open Friday and Saturday from 10:30 A.M. to 9:00 P.M. and Sunday from 1:00 P.M. until 6:00 P.M.

The Young People's "Opportunity Plan, Incorporated," will receive all proceeds from the sale. OPI is a student loan program which assists students throughout the Panhandle area with financial assistance in continuing their education. Students attend the school of their choice, and at present, there are over one hundred college and technical vocational schools being attended by the students participating in our program.

The offices of opportunity plan, incorporated, are located in Canyon, Texas. OPI president, Mr. Milton (Buff) Morris, states that money used for the operations of OPI are raised independently of the funds se-

cured for student loans, so the every dollar given to this project goes directly to the students. The present capital of the Twentieth Century Cotillion Division of the Opportunity Plan, Inc., is \$28,436.50. The Pampa area division was established in April of 1966 with an initial investment of \$1,000, and to date has helped students who have borrowed approximately \$160,000.00 and have repaid \$140,000.00.

Tickets to the antique show and sale may be obtained at a door for \$1.50 donation. Advanced tickets may be obtained for \$1.00 by March 23, 1979 from Citizens Bank or First National Bank in Pampa, Texas or from any Cotillion Member.

Heart Association Meet Set

There will be a general heart association meeting with Region 1 director, Betty Muswednesday, evening at 7 p.m. March 28th in the B & Farm Ind. Fellowship room.

Markets

| | |
|----------|--------|
| Wheat | \$3.03 |
| Milo | 3.65 |
| Corn | 2.45 |
| Soybeans | 6.83 |



ANN LEWIS \$1,000



MIKE ADAMS \$100

PLAY TRIPLE PLAY — DOUBLE PAY BINGO

WIN UP TO \$2,000

MEET THE WINNERS:

- Chuck Mann — \$100
- Marian Potter — \$1,000
- V. Martin — \$100
- R.L. Hardin — \$1,000

SAVE YOUR MARKERS

| MARKER | NO. OF MARKERS | AMOUNT | DATE |
|--------|----------------|---------|---------|
| 1 | 1 | \$100 | 3/22/79 |
| 2 | 1 | \$1,000 | 3/22/79 |
| 3 | 1 | \$100 | 3/22/79 |
| 4 | 1 | \$1,000 | 3/22/79 |

FRESH DAIRY

KRAFT Velveeta 2-LB BOX \$2.48

CAMELOT Half & Half 2 PINTS 76¢

CAMELOT Buttermilk 1/2-GAL 78¢

FROZEN FOOD

ALL VARIETIES MAN PLEASER

Banquet Dinners 19-OZ BOX \$1.04 4 for \$4.16

BRIGHT & EARLY 6-OZ CAN 99¢

ORANGE FAIRMONT ALL FLAVORS 1/2-GAL 1.09

Tas-T-Bak BAKERY

TONY'S PIZZAS

CANADIAN PICON \$1.79

HAMBURGER, SAUSAGE & PEPPERONI \$1.39

SLICED • CHUNK • CRUSHED IN JUICE

Del Monte Pineapple 15 1/2-OZ CANS 287¢

DEL MONTE CUT **Green Beans** 16-OZ CANS 389¢

DEL MONTE WHOLE OR CREAM STYLE **Golden Corn** 17-OZ CANS 96¢

DELICIOUS **Del Monte Catsup** 16-OZ CANS 83¢

Van Camp's PORK & BEANS

16-OZ CANS 389¢

DEL MONTE **Tomato Juice** 46-OZ CAN 62¢

INSTANT **Lipton Tea** 3-OZ JAR 1.89

COOKIES 15-OZ PKG 97¢

MEAL-TIME **Dog Food** 5-LB BAG 98¢

JOHNSON **Diapers** EXTRA ABSORBENT 18-DI 2.34

ALL GRINDS — FOLGER'S **Coffee** 1-LB CAN 2.38

PRICES GOOD 7-DAYS FOR YOUR SHOPPING CONVENIENCE.

U.S.D.A. CHOICE BUTCHER BLOCK BEEF

Round Steak 1-LB. \$2.19

Pork Chops ASSORTED 1-LB. \$1.59

Country Style Ribs 1-LB. \$1.59

Round Steaks 1-LB. \$2.59

Cube Steak 1-LB. \$2.59

HICKORY SMOKED SLAB RANDOM WEIGHT **Sliced Bacon** 1-LB. \$1.19

THRIFTY PACK HUDSON'S Fryers 1-LB. 57¢

WHOLE ONLY

PRE-COOKED **Fish Sticks** RANDOM WEIGHTS 79¢

PRE-COOKED **Fish Cakes** RANDOM WEIGHTS 69¢

BAR-S • MEAT OR BEEF **Skinless Franks** 12-OZ PKG \$1.09

BAR-S • HICKORY SMOKED **Sliced Bacon** 1-LB. \$1.59

RODEO MEAT OR BEEF **Sliced Bologna** 12-OZ PKG \$1.49

Bananas 4 LBS. \$1

GOLDEN RIPE

CALIFORNIA LARGE SIZE **Avocados** 3 FOR \$1

FRESH, VINE RIPE SALAD **Tomatoes** 39¢ PER 4

RED RADISHES—FRESH GREEN **Onions** 2 BUNCHES 29¢

FLORIDA VALENCIA **Oranges** 5 LBS. \$1.69

HEALTH & BEAUTY AID SPECIALS

REG. OR MINT GLEAM **Tooth paste** 7-OZ TUBE \$1.08

UNSCENTED OR REGULAR **Final Net** 8-OZ BTL \$1.89

PRICES EFFECTIVE THRU MARCH 28, 1979. QUANTITY RIGHTS RESERVED. NO SALES TO DEALERS.

Thousands of Chimney Fires Annually Due To Dirty Flues.

"Make Your Home Safer From Fire.... Call Ron, The Chimney Sweep

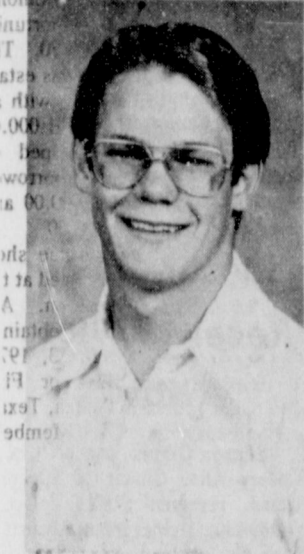
Tues.-Fri. 405-338-3023

Sat.-Mon. 806-733-2040

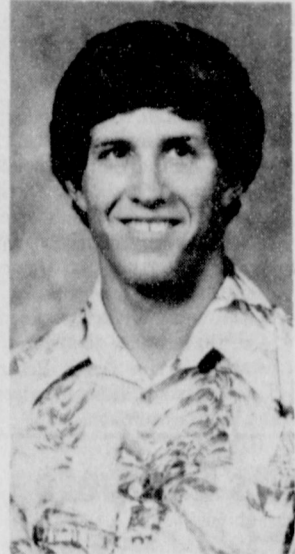
Shop Ideal Cause Nothing Less Will Do!

Ideal FOOD STORES

Boys State Delegates Named



JAMES PIERCE



BRENT WARE

American Legion Boy's State will be held June 6-12 at Austin. Spearman delegates this year are James Pierce and Brent Ware.

James is active at Spearman High school in many activities. Some of them are: Band, One-Act Play UIL Contest, National Honor Society, Choir

and is a member of the student council. He has been named to the All-area choir this year and was the outstanding boy student in choir last year. He is the son of Mr. and Mrs. I. V. Pierce.

Brent Ware participates in Football, track and field events. He is a member of the National Honor Society. He plays in the band and the Stage Band. He also is a member of FCA. He was named all district - Second Team offensive tackle. He was selected to the all Region Band. His parents are Mr. and Mrs. Wayne Ware.

American Legion Boys State is a plan for training in the functional aspects of citizenship. It is a program of education sponsored by The American Legion, Department of Texas. Its purpose is to teach the youth of today constructive attitudes toward the American form of government. Boys State attempts to show that all a

democracy needs is an intelligent citizenry and a clean, honest, and impartial administration responsive to the will of the people.

This program, originated in Illinois in 1934, has been adopted by the National Organization of The American Legion and is now in operation in forty-seven states.

The objective of the Boys State is to "educate our youth in the duties, privileges, rights, and responsibilities of American citizenship. It is wholly a plan for training in the practical aspects of government. It is functional in that applications of the principles of democratic government are made in every way possible. The Constitution and the Statutes of the State of Texas are the patterns from which the Fundamental Law of The American Legion Boys State has been developed. Boys State should be thought of as being a mythical 51st State with a constitution, statutes, and ordinances constructed by its citizens to govern themselves.

Citizens of Boys State not only will be required to review knowledge already acquired concerning the political machinery of a commonwealth, but they will find themselves performing exactly the same functions as real officeholders in the everyday world. In Boys State, citizens organize their own city, county and state governments. They choose their own officials in accordance with regular election procedures. They learn the duties of the various city, county, and state officers. They introduce and argue their own bills in a Legislature. Justice is administered by their own law enforcement agencies and courts. In Boys State, the young citizen has the opportunity to learn for himself that his government is just what he makes it. Here each boy "LEARNS TO DO BY DOING."

James and Brent are sponsored by American Legion Post in Borger and the Spearman Student Council.

Funds for the delegate expenses are being raised. Those who have already made donations are: Excel Chevrolet.

Spartex Grain Co., Bakers Department Store, First State Bank, B & B Farm Industries, J. L. Brook Insurance, Cut-Rate Thriftway, Baker & Taylor, Berry Cleaners, Gordon's Drug, Spearman Super Service, Jarvis & Biggers, J. E. Blackburn, Attorney-at-law, John Hutchinson, attorney-at-law, Brown, Graham & Co. CPA, Mason & Henton CPA, J. G's, The Bunkhouse, Massads', Cates Men & Boys, Inc., Mr. and Mrs. Bill Pittman, Consumer Sales Co., and Dr. and Mrs. Earl Novak. The student council wishes to express our thanks to all for the donations to this worthy cause.

Tax & Estate Planning Seminar Set

Taxes are a fact of life. Everyone is interested in taking advantage of the tax breaks available to us. A Tax and Estate Planning Seminar has been scheduled by the Calico Cowbelles and is sponsored by the National Agri-Marketing Association to take place March 22, 1979, at 7:00 p.m. in the Booker School Cafeteria. The public is invited to attend the Seminar to be held in conjunction with the Calico Cowbelles Third Annual Beef Dinner. Tickets for the scrumptious steak dinner with all the trimmings are \$5.00 per person and may be obtained by calling Karen Schnell at 659-3620. Tickets are also available at the Chamber of Commerce Office in Perryton, and Lemon Insurance in Booker.

A panel of speakers will be featured including Bruce Julian with the First National Bank of Perryton; Irvin Born from Born, Hooten, and Jones in Perryton; along with Randy Phillips and Keith Good from the First Bank and Trust Co. of Booker. The speakers will be available for questions after the presentation.

"The American people are angry about big government, and they want to get off the rollercoaster."

Real Estate Seminar Set

A one day real estate seminar will be held in Pampa on March 29th by Clarendon College - Pampa Center.

The seminar under the direction of Ted Schuler, vice-presi-

dent of Security Federal Savings and Loan Assn. of Amarillo, will be directed at familiarizing area real estate personnel on the new contract forms that will utilize the real estate profession starting April 2.

The six hour seminar will begin at 3:00 p.m. at the Pampa Middle School Cafeteria located at 2401 Charles. The cost of the seminar is \$5.00 per person. Participants must pre-register by March 26 and may do so by contacting Clarendon College - Pampa Center, 900 North Frost.

Price Wants To Exempt Livestock From Ad Valorem Taxation

AUSTIN. . . Senator Bob Price, R-Pampa, has introduced a bill before the Senate which would exempt livestock from ad valorem taxation.

Agricultural livestock is defined as live cattle, sheep, goats, swine, horses and fowl. The bill, S.B. 1036, is designed to stimulate the Texas livestock industry according to Senator Price.

"Other states have similar taxation methods," said the Pampa Senator. "It is my

feeling that a tax advantage to our livestock producers would generate more jobs and more business for our Texas feedlots, cattlemen and farmers. It will also strengthen the market for our Texas grains."

"Livestock producers should receive the same kind of break on taxes as grain farmers who are exempt from ad valorem taxation," added Price.

"The immediate loss of ad valorem taxes would be more

than offset by a healthier business climate which would generate a tax base about four times the present size. The State of Texas should stimulate the livestock industry as we have other industry. Through taxing methods similar to my proposal, other livestock producing states are growing in this area. Texas needs to claim its rightful place in the livestock producing area," concluded Senator Price.

The Permian Corporation has an opening for two drivers in the Spearman area. Must be 21 years old with a minimum of 6 months recent tractor trailer driving experience. Excellent pay and benefits, which includes free hospitalization and life insurance program, free retirement plan, thrift plan, free uniform program, safe driving pay, paid vacations, sick pay and paid holidays, 15% night differential pay. The job will consist of local hauling in the Spearman area. Equal opportunity employer, male or female. Apply in person or call the Spearman office. Highway 207 Phone 659-2571 Spearman, Texas

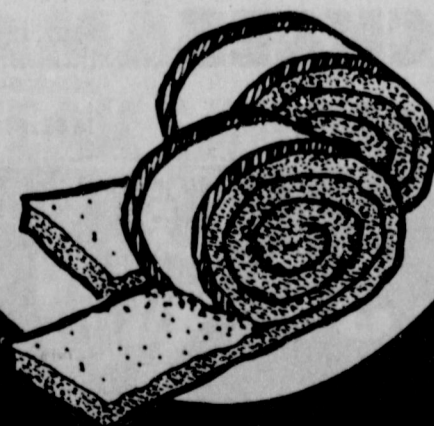
ENERGY CHECK NOW



WRITE SMALLER CHECKS LATER.



INSULATION . . . Adequate insulation is an important step in qualifying under the Energy Checked Program, and can be the biggest energy saving investment you can make. When checking for proper insulation, make sure it meets minimum R-value (resistance to heat loss) requirements for your area. Remember, as long as the R-value is the same, it makes no difference whether you use batts, foam or loose fill insulation. Insulation in walls, ceilings, and floors gives the best protection against heat loss in the winter, and helps hold in cool air during the summer. Insulation is only one of the checkpoints for saving on utility bills under the Energy Checked Efficiency program. To learn how to qualify your home as Energy Checked, just give us a call.



COMMUNITY PUBLIC SERVICE
Your Electric, Light & Power Company

ONE SHOW
SUNDAY, MONDAY, TUESDAY,
WEDNESDAY, AND THURSDAY
AT 7:30 P.M.

LYRIC THEATRE
PHONE 806-659-2812

TWO SHOWS
FRIDAY AND SATURDAY
AT 7:00 P.M.
AND 9:00 P.M.

NOW SHOWING

A triumphant blend of live action and Disney animation

WALT DISNEY PRODUCTIONS'
Bedknobs and Broomsticks

Starring **Angela Lansbury** and **David Tomlinson**

Reddy McDowall Sam Jaffe John Ericson

MARCH 23 THROUGH MARCH 27

NEXT ATTRACTION

In one desperate race for prize and glory, Charlie and Grace join the human race.

David Carradine Brenda Vaccaro

Fast Charlie
...The Moonbeam Rider

Also Starring **L.Q. JONES**
R.G. ARMSTRONG
TERRY KISER
JESSE VINT as Calvin Hawk

A UNIVERSAL PICTURE
© 1979 UNIVERSAL CITY STUDIOS, INC.
ALL RIGHTS RESERVED

MARCH 28 THROUGH APRIL 3

PELICULAS MEXICANAS

UNIVERSAL SA presenta

JORGE RIVERO
RODOLFO DE ANDA
y **MARIO ALMADA**
EL HOMBRE

Con **SUSANA DOSAMANTES**
REBECA SILVA

A COLORES

SUNDAY MARCH 25 AT 2 P.M.

Collier leads East team to Win!



Christy Collier senior Spearman basketball, led the East to a 58-44 win in the all-star game at Amarillo Saturday night. Christy hit an unbelievable 7 of 9 shots from the floor for 14 points to be named as the outstanding player of the entire game! Of course, we knew Christy might do this, and she kept the 2400 fans excited with her fabulous and famous 18 to 24 foot set shot. Christy and her District 1-AA champion Lynxets were one of the finest teams in the schools history!

"I am worried about salaries, the rate of escalation, I see no slowing down."

Tennis Teams Takes 2nd

The Spearman Tennis Team, coached by Chuck Steele, attended the Canadian Tournament Monday, March 19. The team did very well bringing home the overall team trophy and the girls trophy. In doubles, Todd Brock and Kyle Beedy took 2nd place to Perryton and Pam Largent and Beth Ann Flowers took 2nd to Canadian.

The tournament included teams from Spearman, Perryton, White Deer, and Canadian. Those attending on the Spearman team were Todd Brock, Kyle Beedy, Karey Bodey, Jimmy Ladd, Kevin Russell, Wayne Meek, Beth Ann Flowers, Pam Largent, Connie Vernon, Susan Cope, Suzy Steele, and Kelly Shaver.

Their next tournament will be Saturday, March 24 in Perryton.

Master Hypnotist



The Great Dr. Kit, black-bearded hypnotist of international fame, will appear at SPEARMAN HIGH SCHOOL auditorium for one night only THURSDAY MARCH 22 show-time 7:30 p.m. This great showman is being brought here by the SPEARMAN BAND.

Dr. Kit is one of the few Master Hypnotists and showman, who in the past twenty years has continuously broken box office records in City after City throughout Europe, Canada, U.S.A. including Hawaii and Alaska. This Great Entertainer and showman has been acclaimed as one of the greatest attractions on tour today, and he has hypnotized over eighty thousand people in the past. "Professional researchers have been able to achieve remarkable results in correcting such habits as stuttering, stammering, smoking, biting of finger nails, weight reduction, plus others through Hypnosis, says Dr. Kit". During the show the Great Dr. Kit will demonstrate the Phenomanon of mass hypnosis and will actually hypnotize 15 to 20 local volunteers from the audience at one time.

The Great Dr. Kit Show has been described as the most amazing and funniest entertainment sensation to be seen in many years. It is a clean, wholesome show for the entire

family, and without a doubt a night you will always remember. Advance tickets are now on sale by the members of the sponsor. Tickets can also be bought at the door on night of show.

Spelling Bee Winners Named

Spearman students competed in the spelling bee run-off Monday morning at the junior high school. Winners of the run-off will be competing in the County Championship Bee at 1 p.m. Thursday, March 22 at Morse school.

Winner of the junior division, 5th & 6th grade was Christie Black, 6th grader, daughter of Mr. and Mrs. Monte Black, Shannon Vernon, 5th grader, was runner up. She is the daughter of Mr. and Mrs. Eldon Vernon.

In the Senior Division, 7th & 8th grades, Bambi Burger, 7th grader was the winner. Edward E. Cook, 7th grader was the runner up. Bambi's parents are Mr. and Mrs. Bill Burger, and Edward's are Mr. and Mrs. Leland Cook.

The pronouncer at Spearman was Mary Alice Gibner.

The winner at Morse will proceed to the Amarillo Globe News Spelling Bee to be held in Amarillo, April 29. There will be a luncheon for county champions at the Amarillo Country Club at 11:15 a.m. followed by the regional spelling Bee in the auditorium of Stephen F. Austin, junior high school at 1 p.m. The winner of the Amarillo Bee will go to Washington, D.C. for the finals on Sunday, June 4. Superintendent Roy Harris of the Pringle-Morse School is the County director.

Most people are a little smarter than they seem.

Students To Compete In One Act Play Contest

Drama students of Spearman High School will be competing in the One Act Play Contest March 27 at Amarillo College. The cast invites you to a dress rehearsal Friday night, March 23 or Monday night, March 26 at 8 p.m. at the high school auditorium.

The play is entitled "The Cave Dweller" by William Saroyan. Director of the play is

Rebecca Booth.

The cast includes Paul Welch, Kelli Bynum, Rhonda Morrison, Kelly Davis, David Hall, Marietta Davis, James Pierce, Deanne Baker, John Weakley, Jerry Ross, James Pierce.

The crew is Jackie Reed, Mike Dixon and Ken Weakley. Alternatives are Denae Baker, Ken Prachar, Clifton Morrison and Teresa Morrison.

Youth Night At Believer's Cottage

Kathy Miller of Borger, teenage daughter of the Rev. David Miller, pastor of the Borger Christian Center, will speak at a special youth night at the Believer's Cottage on Friday, March 23 at 8:00 p.m.

Stinson Gibner Receives Photo Award

Stinson Gibner, son of Mrs. Mary Alice Gibner of Spearman, received a first place Individual Achievement Award for his yearbook sports photo. Spearman High School in a contest held last week at The University of Texas at Austin.

More than 550 students of junior high and high schools across the state received first, second or third place Individual Achievement Awards for their work on school newspapers and yearbooks around the state.

The students were selected by Interscholastic League Press Conference judges from among thousands of entries.

Hospital News

Patients in Hansford Hospital are Frances Ramiro, William Shields, Allena Gould, Franl Dominguez, Iris Wood, Pauline Harris, Margie Barkley, Essie Burkhardt, Lois Miller, William Powell, Phillip Burnett, Mildred Chamberlain, Albert Mackie Donna Atchison, Charles Little and Larry Delano.

Dismissed were Don Hendricks, Devyn McLain, August Lesterance, Lori Bumpass, Teresa Ramirez, Leslie Scott, Shirley Buzzard, Homes Flores, Tin Fisher, Buford Babitzke, Virginia Sparks, Emma Lopez and Nancy Donohue.

Memory is the product of intelligence and work.

Buy the Number 1 name in air conditioning quality and efficiency...



and get a Coleman Furnace... FREE!

Purchase Coleman's Deluxe Energy Saver (DES) Air Conditioner during our limited-time offer and we'll give you a Coleman Furnace (your choice of fuel).

The DES is the most efficient line of air conditioners you can buy... and that means you get the lowest possible summer cooling bills.

Coleman, providing unmatched reliability year-after-year.

(offer does not include dealer installation)

H & H Heating Service

GRUVER HWAY 659-3577

GUYMON, OKLAHOMA - CATTLE AUCTION MARKET - NEWS - LETTER

GREETINGS TO ALL FRIENDS AND CATTLEMEN:

Last Friday we sold a total of 1984 cattle and calves. A some softer market prevailed thru out most of the auction.

Preg. and blood tested cows were selling steady for the kinds offered. Packer cows were fully steady. Steer and Heifer calves were selling \$1.00 to \$3.00 lower than the previous week. Feeder steers were steady on the green feeder cattle and \$1.00 to \$2.00 lower on the warmed up feeder cattle.

For a consignment large or small, call Bill Blackmore at the Panhandle Livestock Commission Company.

PANHANDLE LIVESTOCK COMMISSION CO. Guymon, Okla. 73942 405-338-3378 P. O. Box 879 Nights 405-349-2254 73942

UNITED STA

Supermarkets Perryton, Texas

QUANTITY RIGHTS RESERVED

PRICES GOOD THRU MARCH 24 TH

\$135,554 IN CASH

ELIZABETH MALONE AMARILLO WON \$2000.00 PLAYING STA-BINGO!

WIN YOUR SHARE OF 25 MILLION S&H GREEN STAMPS

| | |
|---|---|
| COKE 32 OZ. 6 BTL. CRTN. PLUS DEPOSIT \$1.59 | FRUIT DRINK ASST. FLAVORS 10 OZ. 4 FOR \$1 |
| SHOWBOAT PORK N BEANS 5 15 OZ. CANS | BAR-B-Q SAUCE 18 OZ. BTL. 69c |
| MANAGER'S SPECIAL M.J.B. COFFEE POUND \$1.99 LIMITED QUANTITY NO RAIN CHECKS! SINU TAB. 30 CT. \$1.89 TRUCK SHIRT \$1.19 CREAM \$1.19 NIGHT BOARD ANTI-PERSPIRANT \$1.29 | SUNBEAM COOKIES CREAMS & FILLED 7 1/2 OZ. PKG. 3 FOR \$1 |
| DELICIOUS WASH. EXTRA FANCY RED APPLES L.B. 39c | GLADIOLA FLOUR 25 LB. BAG \$3.69 5 LB. BAG 69c |
| CALIF. ICEBERG LETTUCE L.B. 39c | ELIZABETH MALONE AMARILLO WON \$2000.00 PLAYING STA-BINGO! |
| NO. 1 RUSSET POTATOES 5 LB BAG 59c | SWIFT'S PREM LUNCHEON MEAT 12 OZ. CAN 99c |
| WASH. D'ANJOU PEARS L.B. 39c | PURINA MOIST & CHUNKY DOG FOOD 10 LB. BAG \$3.19 |
| GREEN PASCAL CELERY STALK 39c | FRIED RICE RICE-A-RONI WELJI WROBY PETTITE 24 OZ. JAR 98c |
| | KRAFT FRENCH DRESSING 16 OZ. BTL. 98c |

History Book Farm Update Workshop '79 Set March 23

A History Book workshop will be held March 23 at 2 p.m. at Hansford Library. Anyone having trouble with their story or anyone having questions are urged to attend. Please plan to attend.

If you did not receive a letter or have addresses of persons who should receive a letter please call the museum at 3008 Tuesday through Saturday from 1 to 5 p.m. or call Juanita Pierce at 659-3358 or Christine Brandvik in Gruver at 733-2691.

Farm Bureau Ladies Meet

Ladies Committee of Hansford County Farm Bureau met Monday at 2 p.m.

On the top of important things to plan was the Road Runner Fabric Sale. This will be in Spearman at the Hansford County Home Demonstration Building Monday, April 2nd from 9 a.m. to 5 p.m., in Gruver Tuesday, April 3rd 9 a.m. to 5 p.m. in the County Barn. A Queens Contest and Talent Find were discussed. More information about this later.

It was discussed and voted upon to support Bob Womble, Young Farmer and Rancher Committee Chairman, in any efforts to activate a County Committee.

Mrs. Willard McCloy of Morse, Chairman, presided over the election of officers.

Mrs. Elmo Dahl was elected Vice Chairman. Mrs. Randy Brown, Gruver, Sec.-Treasurer. Mrs. Aubrey Rasor, Gruver, Publicity Chairman. Guest was Tina McCloy of Morse, District I Rep. on the Young Farmers and Ranchers Committee of Texas Farm Bureau.

Farm Update '79, an open house program to acquaint Guyton-Perryton area farmers with latest developments in agricultural equipment and methods, will be held at S.N.H. Perryton, on March 22, 1979. According to Duane Stamps, Mgr., this program is held in conjunction with Sperry New Holland.

"We'll have some very interesting films on new products and interesting farm-oriented topics which Sperry New Holland cameramen have covered during the year," Duane says.

Among the stories covered in this farming newsreel is an interesting look at how Wisconsin dairymen are using metal-detectors in forage harvesters to reduce damage to machines and hardware disease in cattle.

Duane says research into hail suppression; early warning for tornado-prone areas; the growth of catfish farming; farm fashions; the growing interest in gasohol and a look at the USDA National Seed Storage Laboratory are among the film topics to be presented.

The program begins at 10:30 a.m. and, according to Duane, door prizes will be awarded.

Company personnel will be on hand to answer any questions concerning New Hollands TR-70 Cataway Combine and 892 Cutaway Forage Harvester which will be on display at the store.

Spearman Music Club

The Spearman Music Club will entertain the Gruver Music Club, at First Christian Church, Tuesday, March 27th, at 6:30 p.m. (note change of time) for a Salad and Pie supper. The Gruver Music Club will give the program a special musical skit

Girl Scout News

Brownie Troop #129 met Thursday, March 15 at the Girl Scout Hut. The girls started a project for Easter which is making sugar cube crosses. The refreshments were served by Pam Ring to Pam Dean, Tricia Shedeck, Lisa Love, Joy Kizziar, and leaders Carolyn Ring and Ruth Kizziar.

The next meeting will be Thursday, March 22 with Joy Kizziar serving refreshments.

Hansford Shrine Club Meets

The Hansford Shrine Club met Thursday, March 15 at Bull's Inn with 23 Shriners attending. They had a business meeting and enjoyed a delicious Steak Dinner with the steak furnished by W. B. Seitz, and cooked at Bull's Inn under the supervision of Jim Shirley.

The business meeting included discussion of taking the children from the Children's Home here in Spearman and Girlstown to the Shrine Circus in Borger and Amarillo and then out to eat.

They also discussed having their closing out meeting in May at Gibner's ranch. They plan to have the first meeting in September at Joel Lackey's ranch.

Tentative plans for the next meeting are to have Ladies Night Thursday, April 19.

Life's hardest task: living each day by the Golden Rule.

"On The Range". All Active, Honorary, Associate and Past members of the Club are encouraged to attend. The Active members will be hostesses, with Mrs. Dean Leighnor as chairperson.

SPEARMAN HIGH SCHOOL

| | | | | | |
|---------------------------|---------------|--|--------------------------------|-----------------|----------------------------------|
| 22 | 081 | 23 | 082 | 24 | 083 |
| DR. KITT SHOW-Band - 7:30 | Borger Tennis | FHA visits Panhandle Home | Girls golf here | Perryton Tennis | WTSU Speech |
| | | SPEARMAN TRACK MEET | | | |
| 26 | 085 | 27 | 086 | 28 | 087 |
| | | UIL One-Act Play Contest-Amarillo Coll. Practice-10:00 | Student Council Dinner Theater | | |
| | | 29 | 088 | 30 | 089 |
| | | | | | 31 |
| | | | | | JR.-SR. Banquet-7:00 |
| | | | | | Boys & girls track meet-Canadian |
| | | | | | Boys golf-here |

1979

MARCH

1979

Our Heritage of Faith... notes from Faith Lutheran Church

Not many years ago on college campuses and many other places young people would raise their hands, sometimes in a first and sometimes with two fingers extended and loudly declare "Peace." It was thought that if the war in Asia would end, then we would be at peace. That was on the political scene. More to home, on the personal level, it seems that the best way for people to get peace was to be unaware of the problems that were being faced. These problems were being avoided and drowned out by the use of drugs, alcohol, sex and whatever else would take minds away from the problems.

Jeremiah talks about a similar problem in Jerusalem and says, "They have healed the wound of my people lightly,

saying 'Peace, peace,' when there is no peace." (6:14)

Just saying 'peace' and hoping 'peace' doesn't bring peace. We may drown out the noise of the battle in our lives, but we will never bring ourselves - peace. True and lasting peace comes from only one place, Jesus. He is willing to share with you and everyone that "peace which passes all understanding."

Faith Lutheran Church gathers for worship on Sunday mornings at 9:00 and for Sunday School at 10:00. Also during the Lenten season we worship at 7:30 on Thursday evenings. Feel free to come worship with this portion of the Body of Christ. We are located at 11th and Bernice here in Spearman.

A.F. Grospron, Oil, Chemical and Atomic Workers Union president:

"We are willing to make a sacrifice for inflation if everyone else does."

Courtesy Honors Bride-Elect

Debi Daniel, bride-elect of Craig Bryant, was honored with a bridal shower in the home of Eloise Renner Saturday, March 17.

The registering table was decorated with a pale pink cloth and included the Bride's Bood and a white plume pen.

The serving table, covered with a white imported sheer linen cloth underlaid with pink, was set with silver appointments with coffee, pink punch and cookies being served.

The centerpiece was a floral arrangement of pink Killian Daisies, white Pom Pom Mums, Pink Sweetheart roses, and baby's breath, in a tall silver container on a pedestal.

Debi was presented with a corsage of snow crystal white mums and pink roses accented with miniature wedding bands.

Special guest was Debi's mother, Mrs. Wes Daniel.

Assisting in the serving and opening and registering of gifts were Debi's sisters Gaye Woolley, Becky Kelp, Thel Lemons, Danna Daniel and Kim Daniel.

The hostesses were Dolly McWhirter, Donita Lusby, Helen Whitaker, Eloise Renner, Connie Steger, Marva Hohertz, Virginia Trindle, Sheila Watley, Betty Lemons and Barbara Schnell.

Turn Off The TV Blackout

The area-wide TV Blackout, planned to impress TV stations and their advertisers that "Sesame Street," a children's educational program recently cancelled should be resumed, is no longer needed for KFDA Channel 10 announced Friday evening that they would begin programming "Sesame Street" March 26th from 9:00 A.M. to 10:00 A.M.

The concerted area plan came as a result of action taken at the Sub District meeting of the United Methodist Women at Perryton March 13th when the

plan for the 9:00 A.M. to 10:00 A.M. April 9th through April 13th TV Blackout was evolved with area UMWs assuming sponsorship of the plan in order to stress the importance of good TV fare for children.

Over twenty-five "Sesame Street-less" towns had been contacted and it is hoped that many from the area will write Channel 10 to show their approval and appreciation.

In this, the International Year of the Child, all facets of childhood should be considered as most important.

Extension Clubs

The Serendipity Home Extension Club met Thursday, March 15 in the home of Linda Sanders with President Debbie Benton calling the meeting to order.

They discussed the upcoming luncheon for the public April 12. The prices for the luncheon will be \$3.00 for adults and \$1.50 for children with those under 5 free. The luncheon will be at the Club Room.

The program, given by Peggy Winegarner, was "First Aid in the Home."

Those attending were Debbie Benton, Cathy Gafford, Linda Winegarner, agent Peggy Winegarner, and hostess Linda Sanders.

The next meeting will be the Luncheon April 12.

Ralph Blodgett will be the speaker at the mid-week Lenten service on Thursday, March 22 at 7:30 p.m.

There is a Sunday Church School class for everyone every Sunday at 9:45 a.m. with a warm, loving teacher with a well-prepared, interesting Bible lesson designed to help you individually in your spiritual life.

"God Loves You" will be the subject of Pastor Edward D. Freeman's sermon at the service for the public worship of God on Sunday, March 25 at 11:00 a.m.

The Session will meet on Wednesday, March 28 at 7:30 p.m.

There is a warm Christian welcome awaiting anyone who attends any of the services or activities of the First Presbyterian Church. Wouldn't you like to be a part of such a warm, caring fellowship?

Presbyterian Church News

Presbyterian Men will have their monthly prayer breakfast on Thursday, March 22 at 6:30 a.m.

It isn't necessary to prime an alert mind with alcohol.

BINGO

THOUSANDS OF INSTANT WINNERS!

52 WAYS TO WIN
Play 4 games at the same time!
WIN \$1000, \$100, \$25, \$5, \$2!

\$135,554 WIN UP TO 5 BOOKS STAMPS
in cash prizes

SWIFT'S TENDER LEAN PORK SPARE RIBS UNDER 3LB. AVG. LB. **\$1.49**

BONELESS SHOULDER ROAST WASTE FREE BEEF LB. **\$1.89**

SWISS STEAK UNITED TRU-TENDER BEEF ROUND BONE CUTS LB. **\$1.89**

CHUCK STEAK BLADE CUTS LB. **\$1.39**

STA-BINGO WINNERS

RENATE RUIZ LUBBOCK WON **\$1000.00**

PERRYTON WINNER \$500

MACK SUITOR

★ MARCH 31ST IS FINAL DAY TO PLAY PHASE I STA-BINGO! YOU HAVE 30 DAYS TO REDEEM!

BONELESS HAM

COUNTRY PRIDE TURKEY FULLY COOKED LB. **\$1.89**

OPPA'S SMOKED SAUSAGE

PORK BEEF TURKEY HEAT & SERVE LB. **\$1.89**

"FROZEN FOODS"

EL CHICO DINNERS 69c

*SALTILLO *ENCHILIDA *BEEF ENCH. *MEXICAN *QUESO

SWIFT'S POTTED MEAT 3 OZ. **5 FOR \$1**

SWIFT'S VIENNA SAUSAGE 5 OZ. **39c**

WOLF TAMALES 15 OZ. CAN **2 FOR \$1**

HEINZ ORIGINAL STEAK SAUCE 10 OZ. BTL. **\$1.09**

OREGON FARMS CARROT CAKE 17 OZ. **\$1.59**

UNITED MELLORINE ASST. FLAVORS 1/2 GAL. **69c**

KRAFT MIRACLE WHIP

SALAD DRESSING **\$1.09**

32 OZ. JAR

BELL COTTAGE CHEESE 24 OZ. **\$1.09**

SOLIDS OLEO LB. **3 FOR \$1**

FINE FARE SWEET OR BUTTERMILK **BISCUITS** 8 10 CT. **\$1**

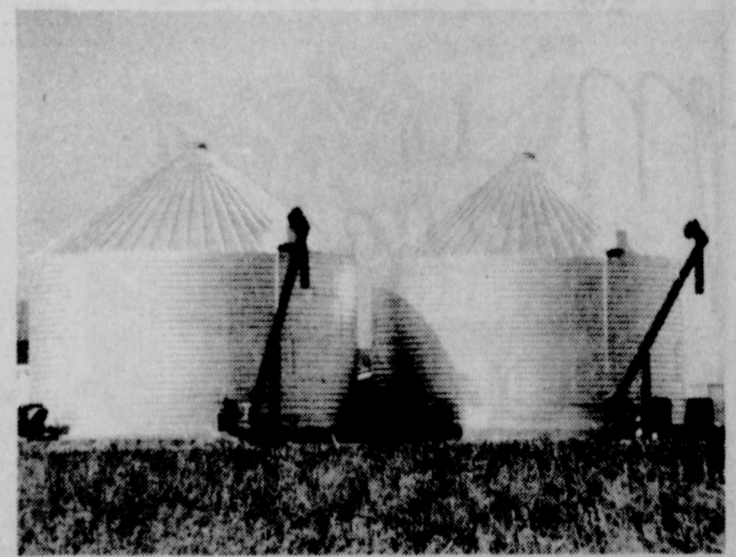
PRICES GOOD THRU MARCH 24TH

UNITED Supermarkets

Perryton, Texas

QUANTITY RIGHTS RESERVED

A system to grow with.



Whatever your present needs or future plans, we'll build you the system to start with and stay with. Behlen.

And we can show you how to take advantage of 7% simple interest, low down payment, investment credit, 8 year payback and 1 year's grace period to give you increased market flexibility.

See us for professional design and construction services. We wouldn't stake our reputation on any other system.

Do it right. Call Hallmark Builders collect at 806-355-9223.

HALLMARK BUILDERS, INC.

8222 CANYON DRIVE AMARILLO, TEXAS

Behlen builders do it right.



USDA Authorizes Grazing & Haying Of 1979 Wheat

WASHINGTON, March 15—Farmers who planted wheat for 1979 harvest now have another option to consider: They may graze or cut hay on their wheat acreage, secretary of agriculture Bob Bergland said today. Wheat grazed or cut for hay under the special acreage grazing and hay program will qualify for the same deficiency payment rate as wheat harvested for grain.

Wheat program participants will be allowed to graze cattle or cut hay on wheat acreage equal to the higher of (1) 50 acres or (2) 40 percent or their total intended plantings or wheat, feed grains (corn, sorghum and barley) and upland cotton.

"We are taking this action to encourage the production of more beef later on this year," Bergland said. "Calves now on wheat pasture ordinarily would

have to come off and be sold about March 15 to permit the wheat to mature for harvest, while the action we are taking today would permit them to remain an additional 60 days or 50. This should result in slightly higher rates of grain and therefore more beef later on this year. It should also encourage the movement of a few more calves onto wheat pasture and more beef from those calves as well.

"While the impacts of this action will be slight, it should non-the-less slow the expected increase in beef prices," he said.

Producers participating in the special wheat acreage grazing and hay program must also comply with crop acreage (NCA) requirements and with set-aside requirements for wheat harvested for grain and

feed grain crops planted on their farm(s). There will be no advance payment or minimum payment guarantee this year as was provided to 1978 special wheat acreage grazing and hay program participants. The deficiency payment rate for 1978-crop wheat was 52 cents per bushel.

The 1979 wheat deficiency payment rate will be determined in December and will be the difference between the established price (13.40 per bushel) and the higher of either the national average market price during the first five months (June through October) of the marketing year, or the national loan rates (12.35).

Producers wishing to use this option may indicate their intentions at their local agricultural stabilization and conservation service (ASCS) county office

during the 1979 wheat and feed grains program sign-up period currently underway. The sign-up period ends April 30.

Price Introduces Legislation

AUSTIN ... Senator Bob Price, R-Pampa, introduced two joint resolutions designed to provide additional tax relief for all Texans before the Senate last Friday.

Senate Joint Resolution No. 56 proposes a constitutional amendment to limit the rates of local ad valorem taxes. The amendment would also call for voter approval of new or increased taxes other than ad valorem taxes.

Specifically, the resolution limits the maximum rate of ad valorem taxes as follows:

(1) A county may not impose ad valorem taxes at a rate that exceeds .2 of one percent of the fair market value of the property tax;

(2) An incorporated city may not impose ad valorem taxes at a rate that exceeds .4 of one percent of the fair market value of the property tax;

(3) A school district that provides general elementary and secondary education may not impose ad valorem taxes at a rate that exceeds .45 of one percent of the fair market value of the property tax; and

(4) Any other political subdivision that imposes ad valorem taxes may not impose them at a rate that exceeds .1 of one percent of the fair market value of the property tax.

It would take a majority of the voters to approve the imposition of a new tax or an increase in an existing tax under S.J.R. No. 56.

The second joint resolution, S.J.R. No. 57, calls for a constitutional amendment restricting the power of a political subdivision of the state to increase taxes.

S.J.R. No. 57 says no political subdivision of the state can levy a new tax or raise any existing tax without approval of the majority of the voters of the political subdivision affected by the tax.

Also, no political subdivision that levies ad valorem taxes may increase the tax rate, the assessment rate or appraised valuation of any property existing under the affected date of the law.

Safeguards are built into S.J.R. No. 57 which would allow the people to have the power to let subdivisions raise the appraised valuation of property to a maximum percentage for specified periods of time through a referendum. Or, by referendum, a subdivision may have the power to impose unlimited increase for a period of time.

Neither S.J.R. No. 56 or S.J.R. No. 57 applies to those ad valorem taxes to pay a principle or interest on any indebtedness approved by the voters prior to the effective date of the resolution.

Dr. Whitehead Attends Study Seminar

Perryton chiropractor, Dr. Jerry Whitehead returned Monday from a three-day postgraduate study seminar in Dallas, Texas. Dr. Whitehead was one of 2,500 professionals from the United States, Canada, Australia, and Europe who attended the series of lectures and study courses devoted to total health care for the chiropractic patient.

Guest lecturers and teachers provided Dr. Whitehead and his colleagues with the latest news and developments in the field of chiropractic, and with instruction in advanced techniques of patient treatment.

The seminar was sponsored by the Parker Chiropractic Research Foundation, headquartered in Fort Worth, Texas. Dr. Whitehead is a graduate of Palmer College of Chiropractic in Davenport, Iowa. He has been in chiropractic for 9 years and his office is located at 806 S. Main, Perryton.

Definition
Highbrow: A person who enjoys a thing until it becomes popular.
—Oak Leaf.

North Plains International To Have Open House

North Plains International, Inc. invites everyone to their open house on Thursday, March 22. The open house will begin from 7 a.m. to 5 p.m. with a pancake and sausage meal served for breakfast and lunch. Donuts and refreshments will be served all day.

The latest in farm equipment will be on display for the open house.

The abundance and technology of agriculture today overshadows the basics of man's oldest yet most modern occupation according to Dick Elbert North Plains International Inc. "AG Day (Agriculture Day) will be observed on March 22 this year. It highlights American agriculture, the most productive food factory in the world", Elbert said.

"AG Day salutes the farmers, ranchers, growers, food proces-

sors, all those in the food and fiber chain of agribusiness. Its primary purpose is to make non-farming consumers more aware of American agriculture, its achievements, and even more importantly, the challenges it faces in continuing to meet the world's food and fiber requirements," he said.

"Since only 4% of the American population now farm (the number was 85% in colonial days), it's easy to see why farm problems or issues generate little consumer interest. Food is simply taken for granted, and the farmer is not visible in the market.

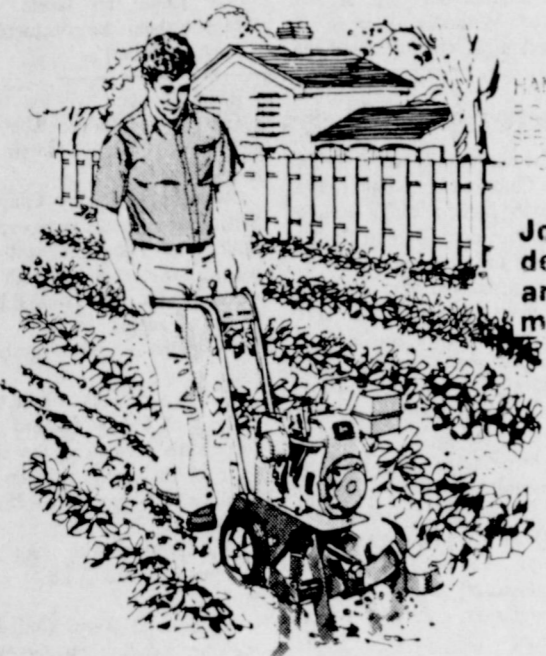
"However, while only 4% of Americans are still farming, 4 out of every 10 non-farmer workers in the U.S. are employed by agribusiness. Agriculture, the total industry of food and fiber, involves millions, and

is the nation's largest single employer," said Elbert.

"That's why" he said, "consumers must be made aware of such pressing farm issues as the shortage of capital, over-regulation, marketing restrictions, environmental pressures, misplaced blame for the inflationary food prices, shrinking farm land, and consumer groups running around with signs declaring... food is for people not for profits."

"We must get across that the farmer, to stay in business, must see the potential for profit. This gives him incentive to produce more. More production acts to drive prices down at the retail level. If there is no profit potential at forecasted prices, production will be reduced. This creates a shortage which drives prices up, then both the farmer and the consumer lose." the IH dealer said.

Spring Gardening Special



HANSFORD IMPLEMENT COMPANY
P.O. BOX 115
SPEARMAN, TEXAS 79081
PHONE 806-659-3297

John Deere design, dependability, and dealers make the difference



For the month of March, Hansford Imp. Co. is offering a limited supply of the Model 624 John Deere Rotary Tiller at a super 20% savings. The 624 features a 6 H.P. engine a reverse gear and a 24 inch tilling width. Get a John Deere Tiller and make this spring a pleasure instead of a chore.

Hwy 207 S. Hansford Imp. Co. Spearman



Check Income Tax: The fine we pay for reckless thriving.

-Louisville Journal.

| | | |
|------------------------|---|---------------|
| USS Steel Siding | Fight the Rising Cost of Utility Bills | Carports |
| T-Loc Vinyl Siding | Insulate and Beautify your Home & Never Paint Again | Patios |
| Styrofoam Insulation | Ron's Exteriors Of Okla. - Texas Panhandle | Room Addition |
| Welded Steel Buildings | A.C. 806-659-2227 | Garages |
| Commercial & Farm | Local Calls Patton Motel or Call Collect | Storm Door |
| | A.C. 405-344-6211 | & Windows |

You get more than phones when you order a phone system from us.

You get us.



Any shrewd business person—you, for example—knows that value is measured by what you get for your money.

That being the case, the service you get from General Telephone is one of the best values around. For instance, we don't vanish the minute your phone system is installed. Our communications service advisors help to train you to operate your equipment. And they don't leave until you're as good at it as they are.

We provide maintenance and repair technicians who really know their stuff. And we make

sure we have enough of them to give you fast, efficient service.

If your system is ever damaged by circumstances beyond your control, we get it working again faster than you'd think possible.

And, of course, our Communications Consultants are always available to analyze and meet your changing communications needs.

You don't pay a penny extra for any of this. When you think about it, you get a lot more than just phones from the phone company.

That's value.



GENERAL TELEPHONE
The complete communications company

Martha's
Paint Pantry

PHONE 806-659-3297
903 SO. BERNICE SPEARMAN, TEXAS 79081

Wood items Boards & Boxes
Canvas & Stretchers
Classes in: Tole, Canvas, DECOURPAGE

TOLE & DECORATIVE PAINTING

Artist supplies and all kinds of goodies

PICTURE FRAMES

Martha & Orville Latham

National Poison Prevention Week

The week of March 18-24 has been designated as National Poison Prevention Week and is designed to help parents, grandparents, etc. in taking a look at the potential poisons in their homes, garages, gardens, and neighborhood.

During 1978 the Texas State Poison Center assisted with nearly 13,000 poisoning cases. Over 72% of these involved

children under five years old. "Children in this age group, and most particularly those in the 6 months to 3 year age bracket, live in a 'hand-to-mouth' world," said Michael D. Ellis, M.S., Director of the Poison Center. "There are certain areas in the home that are particularly dangerous, for instances, under the kitchen sink,

the bathroom sink, and the garage. These areas are where most people store cleaning products. The garage contains lots of petroleum distillate-containing (oil-based) products such as gasoline, paint thinner, enamel paints, etc. With these products as little as one sip, if it gets into the lungs, can potentially be fatal."

The major substances inges-

ted by young children included plants, colognes and perfumes, cosmetics, disinfectants, and household cleaners. Chewable multivitamins rank high on the list of frequently ingested medicines along with cough preparations, aspirin, and aspirin substitutes.

"Over 77% of the cases that the Poison Center has assisted with can be treated at home," Ellis noted, "thus eliminating the necessity of talking the child to either their physician or the emergency room. That's why we encourage the parents of children who have ingested a potentially toxic substance to call the Poison Center first."

Prevention of these numerous poisoning instances is the ultimate goal of the Poison Center. But prevention requires considerable effort on the part of the adults in the home. "This means that traditional storage areas for cleaning products, medicines, furniture polishes, etc. must be altered. Areas, like under the kitchen sink, must be cleaned out and the household products moved to higher locations." Ellis observed that "since most houses don't have an overabundance of storage places, we recommend that canned goods be put under the kitchen sink and the cleaning products be placed in high cabinets." Another way to help keep small children out of poisonous items is to use Mr. YUK stickers.

"When these stickers are used as a teaching tool, they can be very effective in labeling the many substances that the child should not touch. If the parent will take the child with them and go over and over with the child that Mr. YUK is a NO-NO - and will make you sick, the child can be taught to leave Mr. YUK labeled products alone," Ellis noted. "Should all else fail," said Ellis, "and if the child should

require medical attention, we can assist in referring the patient to either their physician, the nearest Member Hospital in the Poison Center Network or the closest emergency room. The Poison Center will call ahead and tell the medical facility what the problem is and also recommend the proper treatment. In that way the child will receive the best and quickest care possible."

"Accidental poisoning is a growing problem," observed Ellis, "and there are some 100,000 cases of poisoning each year in Texas. But we hope that we can help reduce this number by parent education and through emergency occur, the use of the Mr. YUK poison warning symbol." Should a poisoning emergency occur, the Poison Center can be reached by calling 713/765-1420. The Mr. YUK stickers can be obtained by sending a large self-addressed, stamped envelope to the Poison Center, University of Texas Medical Branch, 8th & Mechanic, Galveston, TX 77550. "We urge parents, grandparents, and adults who have young children in their homes to survey their storage areas, and to help us prevent a poisoning from occurring," Ellis concluded.

Texas Exes Round Up Set

The rolling hills of The University of Texas campus will be the site of "Texas Exes Round-Up", as hundreds of former University students re-unite the weekend of March 30-April 1. The event, hosted by The University of Texas Ex-Students' Association, will bring

former students and University supporters to observe the constantly changing University life and to honor the achievements of The University in the areas of academics, research and athletics.

Former students and friends of The University from all over Texas will journey to Austin for festivities and events that will kick off the traditional Round-Up week, with registration from 11:00 a.m. until 7:00 p.m. on Friday, March 30 at Sid Richardson Hall in the LBJ Library Complex. The weekend's activities conclude with a special Band-A-Rama performance of the Longhorn Band in the Special Events Center on Sunday, April 1, at 2:00 p.m.

Early arrivals will be able to hear Clark Clifford, former Presidential advisor, speak in the LBJ Auditorium at 4:15 p.m. on Friday. Clifford's speech, "Pursuit of Peace - Personal Recollections of a White House Aide to Four Presidents" is part of the Distinguished Lecture Series brought to the campus each year by The University in an effort to sustain continued educational excellence.

Friday's main event will be an entertaining UT Sampler, featuring well-known UT personalities and offering an overall view of recent academic and cultural achievements of The University. A wine and cheese reception honoring the UT Regents, President Lorene Rogers and the academic deans will be held afterward to give all participants a chance to renew old friendships and discuss the excitement of the weekend's upcoming activities.

Exes will be up with the springtime sun for the annual membership meeting of The

Ex-Students' Association from 9:00 to 10:00 a.m. on Saturday. Following the Assembly, campus tours led by UT celebrities will revive memories of springs gone by and highlight several different facilities on campus, including the Center for the Performing Arts, the Texas Swimming Center, including the Center for the Performing Arts, the Texas Swimming Center, the Special Events Center, the Harry Ransom Center and the Littlefield Home (an excellent example of Victorian restoration).

At noon, a festive picnic lunch will be served on the mall of the LBJ Library. Participants may sit on the lawn around the Library fountain and eat their lunch while being entertained by various UT musical groups.

Baseball buffs will have the option of watching the Longhorn baseball team in action against Rice at 1:00 p.m. at Disch-Falk Field.

Another special treat for Exes will be the College Showcase. Hosted by each dean, individual colleges will open their doors to give an insider's view of current developments in their particular fields as well as to recognize outstanding professors and students.

The annual Orange and White Game, climaxing spring football practice, is slated for 4:00 p.m. at Memorial Stadium with Round-Up participants as guests of the Athletics Department. Fans will have a chance to see the prospect of what 1979 holds as they watch the UT gridiron's finest in action. Members of The University's 1969 National Championship Team will be honored guests.

An Alumni Center Open House will feature refreshments

and a relaxing atmosphere for everyone who wants to drop by during the afternoon and early evening.

At 8:00 p.m. the UT Drama Department will present the operetta, "The Rape of Lucretia," at B. Iden Payne Theater on the UT campus.

Time will be allotted Sunday morning for participants to worship as special guests in University area churches. A catered Sunday lunch will begin at noon in the Reception Hall of the Special Events Center, followed by Band-A-Rama to end the weekend on the proper "note."

Registration for Round-Up is \$7.50 before March 23 and \$10 after that date. Children's registration is \$5. All events are included in the registration fee except baseball games, refreshments at the Alumni Center Open House, the operetta and Sunday lunch. For more information, contact The Ex-Students' Association, P.O. Box 7278, Austin, TX 78712; telephone (512) 476-6271.

An unintentional error is often stupid but not as stupid as the derision which sometimes greets it.

One of the most valuable discoveries about so-called big men is that under the skin they are just ordinary little men.

The trouble with spring is that it makes you too lazy to work. Incidentally, summer, autumn and winter have the same fault.

SAVE \$40⁹⁵ Mobile Transceiver Channel 9 and 19 priority



\$79

Reg. \$119.95

- 3-Way PA/Monitor/CB Switch
- Large Back-Lighted S/RF Meter

Realistic TRC-422. Save 34% and give your family the convenience and protection of 40-channel CB! Just flip a switch for instant access to Emergency Channel 9 or Highway Information Channel 19. Features S/RF meter, LED channel readout and modulation indicator, squelch, switchable ANL, locking plug-in dynamic mike, external speaker and PA jacks, crystal and ceramic filters for freedom from adjacent channel interference. With universal mounting bracket. Buy now and really save!

VISA

Check the Red Tags
20% - 30% - 40%
Off Many Items
- GREAT BUYS -

PORTER BAKER ENTERPRISES, INC.
Radio Shack

DEALER

701 S. ASH

PERRYTON, TEXAS

CARQUEST AUTO PARTS STORES

1¢ OIL SALE

VALVOLINE MOTOR OIL

Buy 4 quarts #153 or #159 and get the

5th QUART FOR 1¢



AC OIL FILTERS

Popular spin-ons #PF2, 20, 24, 25, 30 for most U.S. cars.



2.99

SPARK YOUR LAWN-MOWER FREE



Buy a set of CHAMPION PLUGS and get your lawnmower plug

FREE.

Good at all participating CARQUEST Auto Parts Stores thru March 25, 1979.



Hi-Plains Auto

Supply, Inc. 118 N. Main
659-2506

Prices may vary from store to store. WE KNOW WHAT YOU MEAN WHEN YOU'RE TALKING PARTS.

ALLSUP'S CONVENIENCE STORES

PARKAY MARGARINE 1LB. QTRS. 39¢ LB

PRICES EFFECTIVE MARCH 22-23-24

FOLGER'S FLAKED COFFEE 13 OZ. CAN \$1.99

BORDEN'S ORANGE JUICE 69¢ QT.

SHURFINE SALTINE CRACKERS 1 LB. BOX 39¢

VANILLA WAFERS 10 OZ. PKG. 33¢ SHURFINE TUNA 6 1/2 OZ. CAN 59¢

MIX OR MATCH FRITOS CHEETOS BAG 69¢ REG. 89¢

BORDEN'S PREMIUM ICE CREAM 1/2 GAL. RD. CTN. \$1.39

SHURFINE CREAM STYLE OR WHOLE KERNEL CORN 25¢ CAN

SHURFINE SWEET PEAS 4 \$1 FOR 1 SHURFINE SLICED OR HALVES PEACHES 3 \$1 FOR 1

COOKED FOOD SPECIAL HOT LINKS 3 99¢ FOR

BORDEN'S BUTTERMILK 98¢ GAL. CTN.

SHURFINE PRESERVES 59¢ PEACH BLUM OR STRAWBERRY 3 \$1 FOR 1

SHURFINE BLEACH 59¢ 1/2 GAL.

NOTICE OF MAINTENANCE TAX AND BOND ELECTION

THE STATE OF TEXAS §
COUNTIES OF SHERMAN, §
HANSFORD AND HUTCHINSON §
PRINGLE-MORSE CONSOLIDATED INDEPENDENT SCHOOL DISTRICT

TO THE RESIDENT QUALIFIED ELECTORS OF THE PRINGLE-MORSE CONSOLIDATED INDEPENDENT SCHOOL DISTRICT:

TAKE NOTICE that an election will be held in the PRINGLE-MORSE CONSOLIDATED INDEPENDENT SCHOOL DISTRICT on the 7th day of April, 1979, in obedience to a resolution and order duly entered by the Board of Trustees of said School District, which is attached hereto and made a part of this Notice for all intents and purposes.

WITNESS MY HAND AND SEAL OF SAID DISTRICT, this the 13th day of March, 1979.

(District Seal)

Secretary, Board of Trustees
Pringle-Morse Consolidated Independent School District

RESOLUTION AND ORDER CALLING MAINTENANCE TAX AND BOND ELECTION

THE STATE OF TEXAS §
COUNTIES OF SHERMAN, §
HANSFORD AND HUTCHINSON §
PRINGLE-MORSE CONSOLIDATED INDEPENDENT SCHOOL DISTRICT

WHEREAS, the Board of Trustees of the PRINGLE-MORSE CONSOLIDATED INDEPENDENT SCHOOL DISTRICT has determined that an election should be held to ascertain whether said governing body shall be authorized to levy maintenance taxes under the provisions of Chapter 20 of the Texas Education Code and issue bonds of said District in accordance with Section 20.04(b)(1) of said Code; now, therefore,

BE IT RESOLVED AND ORDERED BY THE BOARD OF TRUSTEES OF THE PRINGLE-MORSE CONSOLIDATED INDEPENDENT SCHOOL DISTRICT:

SECTION 1: That an election shall be held on the 7th day of April, 1979, in the PRINGLE-MORSE CONSOLIDATED INDEPENDENT SCHOOL DISTRICT for the purpose of submitting to the resident qualified electors of said District the following propositions:

PROPOSITION NUMBER ONE

"SHALL the Board of Trustees of the PRINGLE-MORSE CONSOLIDATED INDEPENDENT SCHOOL DISTRICT of Sherman, Hansford and Hutchinson Counties, Texas, be authorized to levy and cause to be assessed and collected annual ad valorem taxes for the further maintenance of public free schools therein at a rate of not to exceed \$1.50 on each \$100 valuation of taxable property in said School District, as authorized by Section 20.04 of the Texas Education Code?"

PROPOSITION NUMBER TWO

"SHALL the Board of Trustees of the PRINGLE-MORSE CONSOLIDATED INDEPENDENT SCHOOL DISTRICT of Sherman, Hansford and Hutchinson Counties, Texas, be authorized and empowered to issue the bonds of said District to the amount of \$650,000 for school building purposes, to wit: the construction and equipment of school buildings in the District and the purchase of the necessary sites therefor, and shall there be pledged and levied, assessed and collected annually ad valorem taxes on all taxable property in the District sufficient, without limit as to rate or amount, to pay the principal of and interest on said bonds as the same become due, said bonds to be issued in one or more series or issues, to mature serially or otherwise not more than FORTY(40) years from their date, and to bear interest at such rate or rates as in its discretion the Board of Trustees shall determine?"

Economy is the axe to be applied to the other fellow's expenditures.

The people who smile often have more friends than the people who frown.

We regret to report that many New Year's resolutions have already been forgotten.

People who violate the sound laws of nature will pay the penalty without fail.

District Jamboree To Be Here

The Texas District Jamboree will be held in Spearman Saturday, March 24 at the Community Building, with the Boots and Slippers Square Dance Club of Gruver hosting. Square dancers from all over the Texas Panhandle and some from out of state will be attending this Jamboree. All area square dancers are invited to participate.

The regular business meeting for the Panhandle Square Dance Association will be at 2:30, the work shop for the dancers at 6:00 p.m. The Grand March will start at 8:00 p.m. The Rebekahs will be serving refreshments and the public is invited to watch.

The Jamboree will feature callers from all over the district. Work hard and complain less.



Pheasant need good permanent cover for protection and nesting.



Irrigation has changed the face of the land. New crops, new industries, new conservation practices and even different wildlife species have come to the district.

John Patterson of the SCS presented the program at the Lions Club Tuesday, on the Hansford Soil and Water Conservation District. In other activities at the club, Boss Lion Elbert informed that club that the regular Ladies Night would be held April 10th, at the Methodist church, 7 p. m. Serving will be by the Methodist Ladies.

SECTION 2: That the entire District shall constitute one election precinct for this election and the polling place shall be the School Cafeteria, Pringle-Morse School, Morse, Texas. The persons hereby appointed to serve as officers of this election at said polling place are as follows:

GLYNDA JOHNSON Presiding Judge
JO TOLLESON Alternate Presiding Judge

The Presiding Judge shall appoint not less than two(2) nor more than TEN (10) qualified clerks to serve and assist in holding said election; provided that if the Presiding Judge herein appointed actually serves, the Alternate Presiding Judge shall be one of the clerks.

On election day the polls shall be open from 7:00 A.M. to 7:00 P.M.

ROY HARRIS is hereby appointed as the Clerk and NELDA CURRY as Deputy Clerk for absentee voting for said election, and the Superintendent's Office, Pringle-Morse School, Morse, Texas (Mailing Address: P.O. Box 109, Morse, Texas 79062) in said District, is hereby designated as the place at which absentee voting shall be conducted for said election. For the period absentee voting is permitted by law, the hours designated for absentee voting shall be from 8:00 A.M. to 4:00 P.M. on each day except Saturdays, Sundays and official State holidays.

SECTION 3: That paper ballots shall be used for said election, which ballots shall be prepared in accordance with the V.A.T.S. Election Code so as to permit the electors to vote "FOR" or "AGAINST" each of the aforesaid propositions which shall be set forth in substantially the following form:

PROPOSITION NUMBER ONE

"AUTHORITY TO LEVY MAINTENANCE TAXES UNDER CHAPTER 20 OF THE TEXAS EDUCATION CODE"

PROPOSITION NUMBER TWO

"THE ISSUANCE OF BONDS AND THE LEVYING OF THE TAX IN PAYMENT THEREOF"

The word "FOR" and beneath it the word "AGAINST" shall be made to appear on the left of each of the propositions. A square shall be printed on the left of each of the words "FOR" and "AGAINST", and each elector shall place an "X" in the square beside the statement indicating the way he wishes to vote.

SECTION 4: All resident qualified electors of the District shall be permitted to vote at said election. In addition, this election shall be conducted and held in accordance with the provisions of the Texas Election Code except as modified by the provisions of the Texas Education Code, and as may be required by law, election materials and proceedings for this election shall be printed in both English and Spanish.

SECTION 5: A substantial copy of this resolution and order shall serve as proper notice of said election, and said notice, including a Spanish translation thereof, shall be published one time at least ten(10) days prior to the date set for the election in a newspaper of general circulation in the District.

PASSED AND APPROVED, this the 13th day of March, 1979.

President, Board of Trustees
Pringle-Morse Consolidated Independent School District

ATTEST:

Secretary, Board of Trustees
Pringle-Morse Consolidated Independent School District

(District Seal)

STALLION SERVICE STANDING DOC QUICK His Sire is by Doc Bar - His Dam is by Quick Silver King Making a top cutting horse. FOR INFORMATION CALL: 435-4956 - Nights Perryton, Texas

AVISO DE ELECCION PARA IMPUESTOS DE MANTENIMIENTO Y PARA BONOS

EL ESTADO DE TEXAS §
CONDADOS DE SHERMAN, § DISTRITO ESCOLAR CONSOLIDADO
HANSFORD Y HUTCHINSON § INDEPENDIENTE DE PRINGLE-MORSE

A LOS RESIDENTES CON DERECHO A VOTAR DEL DISTRITO ESCOLAR CONSOLIDADO INDEPENDIENTE DE PRINGLE-MORSE:

AVISO de que una eleccion tendra lugar en EL DISTRITO ESCOLAR CONSOLIDADO INDEPENDIENTE DE PRINGLE-MORSE el dia 7 de abril de 1979 en cumplimiento de una resolucion y decreto debidamente presentado por la Junta Directiva de dicho Distrito Escolar, el cual se acompaña y se hace parte de este Aviso para todo objeto practico.

Doy testimonio de mi firma y del sello de dicho Distrito, este dia 13 de marzo de 1979.

W.C. Wamble
Secretario, Junta Directiva
Distrito Escolar Consolidado
Independiente de
Pringle-Morse

RESOLUCION Y DECRETO DECLARANDO UNA ELECCION PARA IMPUESTOS DE MANTENIMIENTO Y PARA BONOS

EL ESTADO DE TEXAS §
CONDADOS DE SHERMAN, § DISTRITO ESCOLAR CONSOLIDADO
HANSFORD Y HUTCHINSON § INDEPENDIENTE DE PRINGLE-MORSE

VISTO QUE, la Junta Directiva del DISTRITO ESCOLAR CONSOLIDADO INDEPENDIENTE DE PRINGLE-MORSE ha determinado que se debe llevar a cabo una eleccion para determinar si dicho cuerpo directivo debera ser autorizado a gravar impuestos de mantenimiento bajo las estipulaciones del Capitulo 20 del Codigo Educativo de Texas y a emitir bonos de dicho Distrito de acuerdo con la Seccion 20.04(b)(1) de dicho Codigo; ahora, por consiguiente,

SE RESUELVE Y SE DECRETA POR LA JUNTA DIRECTIVA DEL DISTRITO ESCOLAR CONSOLIDADO INDEPENDIENTE DE PRINGLE-MORSE:

SECCION 1: Que una eleccion tome lugar en el Distrito Escolar Consolidado Independiente de Pringle-Morse el dia 7 de abril de 1979 con el fin de presentar a todos los residentes con derecho a votar del Distrito las siguientes proposiciones:

PROPOSICION NUMERO UNO

"Debera la Junta Directiva del DISTRITO ESCOLAR CONSOLIDADO INDEPENDIENTE DE PRINGLE-MORSE de los condados de Sherman, Hansford and Hutchinson, en Texas, ser autorizada a gravar, tasar y anualmente cobrar impuestos ad valorem para adicionales mantenimientos de las escuelas publicas en esto a un porcentaje no sobrepasando el \$1.50 por cada \$100 de evaluacion de propiedad imponible en dicho distrito escolar, como sea autorizada por la seccion 20.04 del Codigo Educativo de Texas"

PROPOSICION NUMERO DOS

"Debera la Junta Directiva del DISTRITO ESCOLAR CONSOLIDADO INDEPENDIENTE DE PRINGLE-MORSE de los condados de Sherman, Hansford and Hutchinson, en Texas, ser autorizada y otorgada el poder de emitir bonos de dicho Distrito por un total de \$650,000 para edificios escolares, o sea: la construccion y el equipamiento de edificios escolares en el Distrito y la compra para estos de los terrenos necesarios, y habra de ser caucionados y gravados, tasados y anualmente cobrados los impuestos segun el valor de todas las propiedades imponibles en el Distrito, sin limite en lo que se refiere a la cantidad, para pagar el principal e interes de dichos bonos cuando los mismos vengzan, dichos bonos a ser emitidos en una o mas series o emisiones a madurar en forma escalonada o de otra manera por un periodo no mayor de CUARENTA(40) años a partir de la fecha de emision y a devengar interes al porcentaje o porcentajes a ser determinado a voluntad de la Junta Directiva?"

SECCION 2: Que todo el Distrito forme un recinto electoral para esta eleccion y el lugar para votar sera la Cafeteria de la Escuela, Escuela Pringle-Morse, Morse, Texas. Las personas por este medio nombradas para servir los cargos de oficiales de esta eleccion en dicho lugar para votar seran las siguientes:

GLYNDA JOHNSON Juez Actuante
JOE TOLLESON Juez Actuante Suplente

El juez actuante nombrara no menos de dos(2) ni mas de diez (10) oficiales calificados para trabajar y ayudar en dicha eleccion; con tal que si el juez actuante aqui dentro nombrado desempeña sus funciones, el juez actuante suplente sera uno de los oficiales.

Durante el dia de eleccion, los lugares para votar estaran abiertos desde las 7:00 de la manana hasta las 7:00 de la noche.

Se nombra por este medio a ROY HARRIS como oficial principal y a NELDA CURRY como oficial menor de los votos absentistas para dicha eleccion, y la Oficina de Superintendente, Escuela Pringle-Morse, Morse, Texas (Correo: P.O. Box 109, Morse, Texas 79062) en dicho Distrito se designa por este medio como el lugar para registrar los votos absentistas en dicha eleccion. De acuerdo al periodo del voto en ausencia permitido por la ley, las horas nombradas para registrar los votos absentistas seran desde las 8:00 de la manana hasta las 4:00 de la tarde todos los dias con la excepcion de los sabados, domingos y los dias de fiesta oficial del Estado.

SECCION 3: Que se usen balotas electorales de papel en dicha eleccion, se prepararan las cuales balotas de acuerdo con el Codigo Electoral, V.A.T.S. de manera de permitir a los electores votar "EN PRO" o "EN CONTRA" a dichas proposiciones que se presentaran de la siguiente manera:

PROPOSICION NUMERO UNO

"AUTORIDAD PARA GRAVAR IMPUESTOS DE MANTENIMIENTO BAJO EL CAPITULO 20 DEL CODIGO EDUCACIONAL DE TEXAS"

PROPOSICION NUMERO DOS

"LA EMISION DE BONOS Y EL GRAVAMEN DE IMPUESTOS EN PAGO DE ESTO"

Se pondran las palabras "EN PRO" y bajo ellas las palabras "EN CONTRA" a la izquierda de cada proposicion. Se dibujara un cuadrado a la izquierda de las palabras "EN PRO" y "EN CONTRA", y cada votador pondra una "X" en el cuadro al lado de la proposicion indicando como desea votar.

SECCION 4: A todos los residentes con derecho a votar del Distrito se les permitira votar en dicha eleccion. Además, esta eleccion se dirigira y tendra lugar de acuerdo con las estipulaciones del Codigo Electoral de Texas fuera de las modificaciones hechas por las estipulaciones en el Codigo Educativo de Texas; y como pueda ser requerido por la ley, se imprimiran los materiales de la eleccion y los procedimientos para esta eleccion en ingles y en espanol.

SECCION 5: Una copia fidedigna de esta resolucion y decreto servira como aviso adecuado de dicha eleccion y dicho aviso, incluyendo una traduccion al espanol de esto, se publicara en el periodico de circulacion general en el Distrito al menos una vez diez(10) dias antes de la fecha establecida para la eleccion.

PASADO Y APROBADO, este dia 13 de marzo de 1979.

Presidente, Junta Directiva
Distrito Escolar Consolidado Independiente
de Pringle-Morse

ATESTIGUA:

W.C. Wamble
Secretario, Junta Directiva
Distrito Escolar Consolidado
Independiente de
Pringle-Morse

(Sello del Distrito)

Independent Papers

It's very much in the public interest for American newspaper ownership to remain diverse and widely distributed throughout the country. As chains continue to buy newspaper properties, some have wondered where the line should be drawn, or if any line can, or should, be drawn.

A recent National Newspaper Association study showed twenty-five of the nation's largest chains publish more than half of the nation's 61,000,000 daily newspapers. (And this study, by Steve Weinberg of the University of Missouri School of Journalism, didn't include either the Hearst or Newhouse chains.)

To encourage family-owned newspapers to remain independent, or better put, not to be forced into sale by estate taxes, three U.S. Senators recently introduced legislation which would provide the estate tax relief to enable more locally-owned papers to remain local.

One, North Carolina's Robert Morgan, says chains are "gobbling up" locally-owned newspapers too rapidly. Morgan believes a community based, locally-owned paper provides something special for its readers and is better tuned to the needs of the community.

He is, of course, right, and the people's interest will be served if the bill offered by Morgan, Larry Pressler (D-SD) and Congressman Morris Udall (D-Ariz), is speedily enacted into law.

Spring, 1979

On the 21st the hours of daylight will approximately equal those of night for the first time since September and spring will begin in the northern hemisphere. It's a season awaited eagerly through the winter by many, perhaps the loveliest exhibition of nature during the year.

Spring means new life, which is evident all around us; it brings Easter (April 15th), a symbol of new life, warmer weather, baseball, the approach of holidays and spring fever and taxes. As we witness the resurgence of nature's vital forces around us, many seek to grasp the moral, the hope represented therein.

These inexorable laws of nature continue year after year their inevitable procession, inviting men and women to enjoy the delightful experience, to think about spring's meaning and the fundamental purpose and cycle of life, death, and time.

From the 21st until September, six months hence, our days will be longer than nights. They will also be the warmest of the year, at the end of which we will once again welcome cooler air and brisk days--and be ready again for what nature has in store--in its life cycle.

There are many ways to make big money quickly; unfortunately, most of them are dishonorable.

Despite the short routes and quick cures, there is no easy way to anything that is worth while.

WHO KNOWS?

- 1. Where is the world's highest waterfall?
2. Who was the 3rd U.S. President?
3. The yellow Jasmine is the flower of which state?
4. Who wrote Rip Van Winkle?
5. What was the internal revenue yield in 1794?
6. Which state has the most Representatives in

- the 96th Congress?
7. Name the Sooner State.
8. What is the diameter of the sun?
9. Define coruscate.
10. Lent began on what Sunday?

Answers To Who Knows

- 1. Angel Falls, Venezuela.
2. Thomas Jefferson.
3. 3,212 feet.

- 4. March 4.
5. \$274,000.
6. California.
7. Indiana.
8. 864,000 miles.
9. To glitter; give off flashes of light.
10. March 4.

Spring is a virgin, Summer a mother, Autumn a widow, and Winter a stepmother.

"BEDKNOBS AND BROOMSTICKS" IS DISNEY EASTER SURPRISE

"Bedknobs and Broomsticks," the delightful film fantasy that combines live action, animation and an array of dazzling musical numbers, will be re-released this April as Walt Disney Productions' Easter treat for movie patrons. Angela Lansbury stars as a prim and proper student witch and David Tomlinson is her con man side-kick. With the aid of three Cockney waifs, the unlikely quintet romp their way through adventure after adventure eventually saving war-torn Britain from a Nazi invasion.

Co-starring in the musical comedy are Roddy McDowall, Sam Jaffe, John Ericson, Bruce Forsyth, Tessie O'Shea and Reginald Owen.

Five rollicking songs were composed for "Bedknobs and Broomsticks" by the Academy Award-winning ("Mary Poppins") brothers, Richard M. and Robert B. Sherman.

"Bedknobs and Broomsticks" was directed by Robert Stevenson from a screenplay by producer Bill Walsh and Don DaGradi. The new revised version, in color by Technicolor, is a Buena Vista re-release.

BIBLE VERSE

"To every thing there is a season, and a time to every purpose under the heaven."

1. Who made the above statement?
2. Whose son was he?
3. What was the theme of the book from which it was taken?
4. Where may this statement be found?

Answers to Bible Verse

1. Most scholars agree that it was Solomon.
2. The son of David.
3. How man may obtain real, substantial happiness.
4. Ecclesiastes 3:1.

SPORTS TEAMS
Visit Our New "TEAM ROOM" To Completely Equip Your Team!

All Baseball and Softball Bats 10% Off With This Ad.

(One Ad Per Customer) Good til April 14, 1979

VANCE HALL
Team Room At 10th At Polk

ON STAGE

Spearmen High School Auditorium
Thur, March 22
At 7:30 P.M.
Tickets at door on night of show ADULT \$2.00
STUDENT \$2.00
GRADESCHOOL CHILD \$1.00
Advance tickets sold now at \$1.50.
From any Spearmen Band Member.



THE FANTASTIC Dr. Kit Show
Magician & Hypnotist

The show that has broken records all over Europe, Hawaii, Alaska, Canada and the U.S.A.

A truly fascinating show for the entire family DON'T MISS IT!

TG&Y
FABRIC SHOPS

**Why pay more?
Sew the best
with these bargains.**

SPECIAL

| | | | | |
|---|--|---|--|--|
| <p>save 15% Interlock Prints</p> <p>Comfortable 100% Polyester interlock prints, 58/60" wide. Makes beautiful and colorful coordinates for Spring. Sew's easily, keeps its good looks wash after wash.</p> <p>Reg. 1.97 1.67 Yd.</p> | <p>save 13% Bright Cloud Qiana* Solids</p> <p>Spring's perfect fabric for soft, stunning dresses, blouses and lingerie. 100% Qiana* Nylon 63/65" wide. Fresh solid colors. *Registered Trademark of DuPont.</p> <p>Reg. 3.98 3.47 Yd.</p> | <p>save 15% Dancheck Woven Gingham Checks</p> <p>Eye-catching gingham in bright colors. 65% Polyester/35% Cotton, 44/45" wide. A perfect fabric to round out a wardrobe or brighten up a room - sale priced now!</p> <p>Reg. 1.49 1.27 Yd.</p> | <p>save 10% Stretch Gabardeme</p> <p>100% Textured Dacron® Polyester, 58/60" wide. 15-20% extra stretch. A no-fuss fabric for sensational pant suits, coordinates and more.</p> <p>Reg. 2.98 2.67 Yd.</p> | <p>save 15% Embroidered Eyelet Batiste</p> <p>Just the right touch for a soft, feminine look. 65% Polyester/35% Cotton, 44/45" wide. Ideal for trim on blouses, dresses and loungewear.</p> <p>Reg. 3.49 2.97 Yd.</p> |
| <p>save 10% Silky Linen-Look Solids</p> <p>67% Kodel® Polyester/23% Cotton/10% Silk. Soft permanent press solids, 44/45" wide, is great for tops and dresses.</p> <p>Reg. 2.98 2.67 Yd.</p> | <p>save 16% Crepe Jolie Prints</p> <p>50% Dacron® Polyester/50% Avril® Rayon, 44/45" wide, is an ideal dress weight fabric. A cool collection of permanent press prints.</p> <p>Reg. 2.69 2.27 Yd.</p> | <p>save 11% Courtesy Prints Plains</p> <p>Pure 100% Cotton percale in a wide array of Spring prints and solids. 36" wide. A lightweight, breezy choice for sunny days.</p> <p>Reg. 98¢ .87 Yd.</p> | <p>save 11% Frozen Daiquiri Laundered Gauze Solids</p> <p>Flattering, breezy colors for Spring. Lightweight 50% Kodel® Polyester/50% Cotton, 41/42" wide. A natural for non-wilting wear.</p> <p>Reg. 1.98 1.77 Yd.</p> | <p>save 11% Wash-Up Laundered Gauze Plains</p> <p>Making a new dress or blouse? Choose the ideal fabric 50% Fortrel® Polyester/50% Cotton, 44/45" wide, in soft solids.</p> <p>Reg. 1.98 1.77 Yd.</p> |

| | | |
|--|---|--|
| <p>coupon Yellow Band Sewing Machine Needles</p> <p>Size 11 needles 3 per pkg. .77</p> | <p>coupon Fiskars® Scissors</p> <p>8" lightweight stainless steel blades. 5.97</p> | <p>coupon Ball Point Pins</p> <p>275 stainless steel dressmaker pins. .57</p> |
| <p>coupon Polyester 1/4" Elastic</p> <p>3/4"x 3 yds. white elastic. .37</p> | <p>coupon Stitch Witchery®</p> <p>3/4"x15" yds. Joins fabric without stitching. .77</p> | <p>coupon TG&Y® Thread</p> <p>225 yard spools in many colors. A great buy! 8 For \$1</p> |

TG&Y'S ADVERTISED MERCHANDISE POLICY—TG&Y's policy is to always have advertised merchandise in adequate supply in our stores. In the event the advertised merchandise is not available due to unforeseen reasons, TG&Y will provide a Rain Check, upon request, in order that the merchandise may be purchased at the sale price when it becomes available, or you may purchase similar quality merchandise at a similar price reduction. It is the policy of TG&Y to see that you are happy with your purchases. • We will be happy to refund your money if you are not satisfied with your purchase. • It is TG&Y's policy to be priced competitively in the market. Regular Sale Prices may vary market by market, but the sale price will always be as advertised.



March 26-31

Your best buy is at TG&Y!

PRICES GOOD ONLY AT T.G. & Y. FAMILY CENTER

521 HWY. 207 SOUTH SPEARMAN, TEXAS 659-3742 OPEN 9 TIL 9