

## County All Stars Take 1st & 2nd

### HANSFORD COUNTY ALL STARS TAKE FIRST & SECOND

The All Star Teams from Gruver and Spearman ended the baseball season by attending the Guymon Kids Inc. Invitational Tournament last week. The Gruver All-Stars went undefeated and won First Place and the Spearman All-Stars were defeated only by Gruver and placed Second.

The boys played exceptionally good baseball and showed good sportsmanship and represented Hansford County well. They are boys we can be proud to say are from Gruver and Spearman.

Those boys representing Gruver were: Louie Gallegos, Rod Been, Jack Rodman, Trevor Williams, Scott Tout, Brett Hobbs, Mark Johnson, Shawn Ammons, Scott Duncan, Greg Haight, Bart Shapley, Marvin Sparks, Kip Pittman, Chad Logsdon, Wes Wood. Coaches for the All Stars were Leon Hobbs, Farrell Johnson and Billy Logsdon. President of the Gruver Baseball program and coordinator from Gruver was Joe Wood.

Those boys representing Spearman were: Ross Donahue, Mike Ross, Timmy Willis, Ernie Bowan, Brian Williams, Mark Pearson, Damon Goodheart, Steve Burke, Justin Ooley, Bobby Cook, Coby Gamblin, Cole Ivey, Brent Depee. Coaches from Spearman were: Toby Kuehl, Bobby Snider and Billy Giles. Commissioner for the

baseball program from Spearman was Jim Ivey.

### SPEARMAN ALL STARS IN BABE RUTH LEAGUE

Five players from the Spearman Senior Babe Ruth baseball program were elected to the All-Star Team from among five teams representing the panhandle area from Perryton, Canadian, Booker, Follet and Spearman.

Those chosen were: Danny Dear, Chuck Eaton, Robin Keetch, Kirby Hargis and Billy Snider. Coaching this fine team all summer has been Charles Eaton.

### SPEARMAN HOSTS ANNUAL INVITATIONAL SLOW PITCH TOURNAMENT

Ray Thomas, local commissioner of softball for the YMCA directed a benefit softball tournament this past weekend. Twelve teams from the area competed in the marathon three-day event. Twenty-six games were played on Friday, Saturday and Sunday. Proceeds were for the YMCA youth baseball program.

First place went to TADCO from Borger; Second place to ALDRICH from Dumas; Third place to COMAC from Borger.

The YMCA would like to thank Ray and Gail Thomas, Eugene and Donna Yarbrough for the fine work of umpiring and scorekeeping this fine event. Others from teams in Spearman helped by umpiring and groundskeeping throughout the weekend. To them a hearty thanks, as well.

## Deposits Up In County Banks

Consolidated reports of the two banks in Hansford County indicate that deposits are up and loans remain about steady as compared to reports from the same time a year ago.

First State Bank of Spearman listed deposits of \$28,129,000 and loans of \$13,031,000 at the close of business on June 29, 1979. Deposits for the same period of 1978 were \$25,234,000; with loans at \$13,593,000.

Gruver State Bank of Gruver listed deposits of \$15,692,000 and loans of \$9,548,000 at the close of business June 30, 1979. Deposits for the same period last year were \$14,947,000 and loans were listed at \$9,477,000.

The financial statement for Interstate Savings and Loan Association list assets of \$47,013,964.82 with savings accounts of \$41,641,687.08. Interstate Savings & Loan's main office is in Perryton, and they have branch offices in Spearman and Canadian, so these totals are for all three offices.

## City Receives Sales Tax Check

The City of Spearman received a check from State Comptroller Bob Bullock's office for \$5,547.63 for July sales tax. This compares to \$3,699.93 for the same period last year.

1979 payments to date to the City of Spearman are \$60,276.89 compared to \$63,041.21 for the same period last year, down some 4 percent.

### TURKEY LEGS TOWNSEND IS NOW HOME

Russell Townsend is now home after a stay in the Amarillo hospital the past week.



BOTTOMS-UP TEAM shown above, left to right, kneeling, Dana Sue Baker, Debbie Padilla, Deborah Jones, Linda Lujaw, Tammy Garcia, Kindra Ivey, Merry Shelton. Left to right standing, Coach R.L. McFarlin, Shirley Pate, Emma Martinez, Lou Padilla, Carol Stavlo, Kaye McFarlin, Rosetta Tindell, Mary Nava, Manager.

The current standing in the lassies slow pitch league is as follows:  
Spearman Bottoms Up.....Won 4.....Lost 1  
John Deere Does.....Won 4.....Lost 2  
First State Bank Red Hots.....Won 3.....Lost 3  
Sport Tally Odds and Ends.....Won 4.....Lost 3  
Junior Lusby Cats.....Won 1.....Lost 3  
Fire Department Firettes.....Won 0.....Lost 5  
The Red Hots handed the Bottoms Up their first loss Monday night, 8-4!

## Sheriff's Dept. Is Busy

Sheriff R.L. McFarlin received word Tuesday, from Denver, Colorado, that they have in custody, Allen Aippersach, wanted in Hansford County on Grand Jury indictment for Forgery, in 1976. He allegedly forged a check on a local citizen at a Gruver Cafe in 1976. Bond has been set at \$10,000. He was unable to post bond. If he waives extradition, the local sheriffs dept. will pick him up and return him to Hansford County for trial.

The Gov. of New Mexico extradited George Zamoro, and we now have him in custody. Zamoro was returned to Hansford County by Chief Deputy Jeff Hawkins. He was indicted by the Grand Jury for allegedly taking a TV and radio, etc., out of a residence in Spearman.

Arrested on a Sheriff's warrant, was Pamela McCord Owens; she was charged with forgery of a check and forged prescription to obtain dangerous drugs. She was arrested in Oklahoma City. She posted fugitive bond in Oklahoma, and will appear here when date for trial is set.

Charles Keller was arrested on Sheriff's warrant in Palm Bay, Florida, for passing worthless checks over \$200.00.

Calvin Battiste and Norman Lewis Poole, were arrested several months ago in Lawton, Oklahoma, and refused extradition. The Governor of Oklahoma has signed extradition papers and they will be returned to Hansford County to stand trial. The saddles were allegedly stolen from Red Hamilton.

The local Sheriff's Department now has only 4 people still wanted in fugitives from this county who have not been arrested; the four are: John Craig Darling, stolen auto. 2. Jimmy Clark burglary of habitat, stolen auto. 3. James David Cruse, Forgery. 4. James Paul Starr, solicitation of capital murder.

Out of 400 indictments, only 4 fugitives have not been picked up.

The local sheriffs dept. is still holding one juvenile, connected with a stolen vehicle last week.

### Lions Club News

Boss Ray Ingle has conducted the last two Lions Club meetings in a real professional way! Last week we had Roger "Iron Man" Jones speak to us. Roger is a sensational Red Raider from Texas Tech and is a credit to his college and the town of Spearman. He spoke on the FCA (Fellowship of Christian Athletes) emphasizing the fact that God, first, You, second, and I last come in this order for a Christian. If everyone would live and think in this manner, our country would never be in the situation it is now in. This Tuesday, Kelly

Shaver reported on her trip to Girls State. She was accompanied by Valerie Hagerman. Kelly is the Lions Club Sweetheart and she and Valerie are coming in for a picture and an interview for the next paper.

Also, at the Lions Club meeting, Boss Lion Ray urged everyone to pool their cars and ride with someone to Lions Club each Tuesday. Also, remember to turn your thermostats up to 78 degree, and park your car one day a week.

### MARKETS

|          |        |
|----------|--------|
| WHEAT    | \$4.02 |
| CORN     | 3.20   |
| MILO     | 4.90   |
| SOYBEANS | 6.65   |
| BARLEY   | 2.34   |

### Hospital News

Patients in Hansford Hospital are Dorothy Welch, Rosa Rojas, Terri Nava, Vernell Byrd, Pam Spence and daughter, Eddie Thomason, Stella Cummings, Mammie Dry, Dick Kilgore, Jo Cochran, Mary TeBeest, Wayne Ellsworth, Luke Pittman, Colleen Shedeck, Carolyn Close, Howard Thompson, Eula Hartsell, Ethel Cookston, I.W. Ayres and Marvin Sparks.

Dismissed were Dan Ralston, Linda Davis, Sam Boone, Hattie Hoggatt, Darlene Brooks, Cheryl Stepp, James Smith, Candace Collier and Amanda Brown.

## Nationally known scientist to speak

John Clayton, a nationally known scientist and lecturer, will be lecturing July 27, 28 and 29 at the Gruver school auditorium, sponsored by the Church of Christ of Gruver. "Is It Science VS The Bible", is the title for the lectures.

Clayton is a teacher of physics, earth science and chemistry. He has a B.S. Physics and Math, and a M.S. Chemistry and Education from Indiana University and a M.S. in Geology from Notre Dame University.

Born in 1938, Clayton was an atheist until his early 20's and was then baptized into Christ. He has been educational director, coordinator of youth program and acting minister of different Church of Christ congregations.

He presented his first lecture in February, 1969 and since that time has lectured to several denominations in the U. S. and Canada, an average of 15-20 colleges or universities per year, and in an average of 20 congregations of the Church of Christ each year.

Since 1969, special programs in the area of Christian Evidences have been developed, including: audio-tutorial programs of instruction, TV and radio programs upon request, editorial articles for newspapers and periodicals; question-answering mail service to letter and phone inquiries, filmstrips, books, correspondence course, special booklets on related topics, video tapes and 16mm films.

The lecture schedule on Friday, July 27, will begin at 7:30 p.m. and the topic for the hour session will be "Cosmology's Proof of God." "The Source-Design or Change" will be the topic for the session beginning at 8:30 p.m. and Open Discussion will follow at 9:30 p.m.

Saturday, July 28, the lectures will begin at 9:30 a.m. with the topic "Evidences For Children". The 10:30 a.m. session will be "Teacher's Workshop". At 7:30 p.m. the topic will be "The Nature Of God"; 8:30 p.m. "God, Man and Caveman" followed by an open discussion at 9:30 p.m.

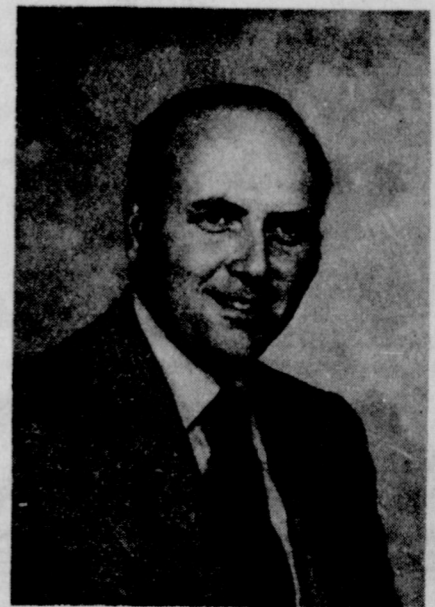
Sunday, July 29, at the 9:30 a.m. session he will lecture on "Do Not Sin Against The Child" and at 10:20 a.m. Clayton will be explaining "Why I Left Atheism."

There will be questions and answer sessions.

Anyone wishing more information may call 733-2760.

Lectures are free of charge. Presentation will include filmstrips, fossils, etc.

Louene Hutchison's mother, from Kilgore is visiting in her home this week.



JOHN CLAYTON

## Crop Production Report

CORN - Production is forecast at 6.66 billion bushels (169 million metric tons) based on crop conditions as of July 1, 6 percent below the record high 1973 crop. The 90 percent confidence interval for this production is 5.74 to 7.55 billion bushels.

ALL WHEAT - production is forecast at 2.10 billion bushels (57.2 million metric tons), up 17 percent from the 1970 crop. The 90 percent confidence interval for this production is 1.98 to 2.23 billion bushels.

WINTER WHEAT - Production at 1.56 billion bushels (42.5 million metric tons) is up 25 percent from 1978.

DURUM WHEAT - Production is forecast at 111 million bushels (3.03 million metric tons), 17 percent below 1978 production.

SPRING WHEAT other than Durum is forecast at 429 million bushels (11.7 million metric tons), 3 percent above the 1978 crop.

OATS - Production is forecast at 510 million bushels (7.40 million metric tons), 15 percent below last year.

BARLEY-PRODUCTION is placed at 345 million bushels (7.51 million metric tons), down 23 percent from 1978.

### Robert Bruner Services Held

Funeral services for Robert S. Bruner, 47, of Pampa will be held at 10 a.m. Tuesday in Carmichael-Whitley Colonial Chapel. The Rev. Hugh Daniel, pastor of First United Methodist Church of Quanah, officiated. Burial was in Memory Gardens Cemetery.

Survivors include his wife; a son, Denver of Pampa; a daughter, Miss Kelly Bruner of Pampa; his mother, Mrs. Grace Bruner of Spearman; a brother, W. A. of Abilene; three sisters, Mrs. Betty Stephens of Albuquerque, and Mrs. Joyce Keetch and Mrs. Helen Whitaker, both of Spearman, and a grandchild.

The family requests memorials to favorite charities.



Dr. Zae Y. Zeon, his wife, and 5 week old daughter Frances, have moved to Gruver, where he began medical practice this week. Dr. Zeon is from Korea, and came to Gruver from New Jersey. He will be open at the Gruver Clinic from 9 to 12 and 1 to 5, Monday through Friday. He will be closed on Thursday afternoon, Saturday and Sunday. His staff at Gruver will consist of Betty Pugh of Gruver and Edith Womble of Spearman.

### Pheasant Hunting Season Profitable

LUBBOCK--Texas Panhandle pheasants bring tens of thousands of dollars into the area's economy every year, and that's not just birdseed to the restaurant, hotel and motel, and service station owners who benefit.

Dr. Fred S. Guthery of the Texas Tech University Range and Wildlife Management faculty says pheasants need promoters and lobbyists to protect their interests.

Guthery, who has just completed a paper on the history, habitat needs, and habitat development opportunities of pheasants on the Texas Panhandle, says the conflict between land owners and fowl hunters restricts appropriate habitats and results in fewer pheasants.

Farmers who have become wary of damage to their property caused by careless hunters will plane off stubble left in fields after crops are harvested. That stubble is prime habitat for pheasants, said Guthery.

Farmers could generate extra income from pheasants on their land, he said. No tradition exists in the Panhandle for selling hunting leases, but the opportunity is there to sell either day or season leases.

The lessee would then help the landowner control trespassing and protect his interests. The landowner would know exactly who was using his land and how it was being used.

Guthery said he is encouraged by the formation of a group started in Plainview called

"Pheasants Unlimited, Inc." The group is working to and growing cover and food crops for pheasants on set aside lands.

"Winter wheat would be the best possible crop to plant on the set aside lands to benefit pheasants," said Guthery. "It's a cool season plant that starts growing early and can be grown dryland. Pheasants like to nest in it and it provides both food and brood cover."

However, federal regulations prohibit the planting of wheat on set aside lands. If that regulation could be changed to prohibit only the harvesting of the wheat rather than the planting of it, those set aside acres could provide a superior habitat for the birds, he said.

Pheasants are not native to this country, but were imported from Asia in the 1880's. They range from the Gulf Coast of Texas to the southern provinces of Canada, and from the Atlantic to the Pacific Ocean. However, said Guthery, the only area in Texas colonized by the birds other than the Gulf Coast is the Texas Panhandle.

Records suggest that pheasants naturally colonized the Panhandle in the late 1930's or 1940's, but their range has rapidly expanded because of private liberations of the birds by landowners.

Most of the Panhandle provides only marginal pheasant habitat, and without playa lake basins it would support few birds. High value of cropland severely limits opportunities for habitat developments, but cover plantings are feasible around playa lake basins, tail-water recovery pits, along roadsides, and in dry corners associated

with center-pivot irrigation systems, he said.

These youngsters, scheduled to arrive between September 1 and January 1, will need host homes. They want to live with U.S. families for 3, 6 or 9 months, and attend the high school which the children of the neighborhood go. High schools, as a rule, are anxious to participate in exchange programs when there is no cost involved.

The students range from 14 to 18. They are recommended by their own schools, screened by the foreign chapter of I.F.I. and for the most part, speak English. They come, not as guests but as members of the family, sharing in the tasks, and the family hosting them may claim them for income tax purposes. Students have their own money for personal expenses and are insured against accidents, illness, precriptions. The receiving family agrees to provide a bed, three meals daily, transportation to school and church, and laundry. Students may share a room.

For each foreign student attending a U.S. High School, that school is eligible to send a student abroad. The scholarship fee includes transportation both ways, room, board, tuition, insurance and the services of the I.F.I. chapter in the foreign country.

Families willing to host a student may write or call collect to the Western Office of International Fellowship, Inc., Post Office Box 1212, Sedona, Arizona 86336, or call the principal or other concerned educator at your High School and ask him to contact I.F.I.

In an era when peaceful international relations depends more and more on one nation's sympathetic understanding of another's culture and problems, such programs can be valuable. The foreign student who gets a chance to sample family and school life here will return to his own country with a better

understanding of our nation. And it is from their ranks that the foreign leaders of tomorrow may come. So in addition to broadening the horizons of the visiting student and the people he or she meets, the Student Exchange Program, in a small way, may further the cause of international peace.

### City of Spearman

P.O. Box 37 Phone 659-7524  
Spearman, Texas 79081

#### NEW STREET SWEEPER FOR SPEARMAN

The city council met in regular session at the city hall Tuesday evening. Gene Cudd led the pledge of allegiance and Ralph Blodgett gave the invocation.

The minutes of regular city council meeting of June 26 were approved. The consideration of a service agreement with Panhandle Emergency Medical Service, Inc., was passed over at this particular time.

The council agreed to add a \$5.00 service charge to all ambulance runs in the future. Also, they agreed to increase aid to H & S Ambulance from \$100 monthly to \$150 per month.

The council will advertise for a new street sweeper in the near future.

The monthly fire, ambulance, animal control, and municipal court reports were reviewed.

The council adjourned at 9:30.

FOR SALE-1979 Ford pickup super cab. One owner, only 6 months old, less than 14,000 miles. Big 460 cu. inch motor. This pickup has everything and a lot more that can be put on one. If interested call me in next few days. Ernest Wilmeth, 806-659-2406. 36-2tc

## LYRIC THEATRE

Phone 806-659-2812

ONE SHOW AT 7:30 P.M.  
SUNDAY, MONDAY, TUESDAY,  
WEDNESDAY, AND THURSDAY

TWO SHOWS AT  
7:00 P.M. AND 9:00 P.M.  
FRIDAY & SATURDAY

NOW SHOWING



JULY 18 THROUGH JULY 24

## HOLIDAY DRIVE-IN

PHONE 806-659-3922

ONE SHOW ONLY EACH EVENING  
SHOW STARTS AT DUSK

NOW SHOWING

This is T.M. Pryor.  
Armed and dangerous.  
Carrying a .38 Police Special,  
a .357 Magnum, and a Beagle  
puppy who isn't housebroken.



**George Peppard**  
in **Five Days from Home**  
A UNIVERSAL RELEASE Prints by TECHNICOLOR®  
©1978 UNIVERSAL CITY STUDIOS, INC. ALL RIGHTS RESERVED. PG

JULY 18 THROUGH JULY 24

### PELICULAS MEXICANAS

Conozca la historia del mariachi...  
Cuándo se fundó, quiénes lo formaron,  
cómo llegó a ser lo que  
actualmente es...



**mariachi**

SUNDAY JULY 22, at 2 P.M.

## GENERAL AUCTION FRIDAY, JULY 20, 1979 8 p.m.

New and used furniture,  
miscellaneous items, clothing.  
Consignments Welcome.

We will be open Wednesday,  
Thursday & Friday for consignments

Open Monday and Tuesday for  
pick up of merchandise.

Spearman Trading Post  
Plains Shopping Center  
Spearman, Texas

# PERRYTON SIDEWALK SALE

## SATURDAY, JULY 21

Starts 8 a.m. and lasts until?  
23 participating



The Perryton Ranger Cheerleaders will be serving soft drinks.

# WANTED ADS

## CAPROCK MONUMENT CO.

Dealers of Georgia Granite, Georgia Marble, Colored Granite, & Bronze.

represented by

## BOXWELL BROS. FUNERAL HOME

519 S. EVANS  
659-3802

Hansford County  
Planned Parenthood  
265. Haney  
659-2483  
Spearman  
Mon.-Fri.  
8 a.m. to 12 noon  
30S-rtm

## SERVICES

**SERVICE:** Pits cleaned, wet or dry. Dragline or loader. Also, dozer, grader, carry-all service. Lee Roy Mitchell, 806-733-2384, Gruver, Texas 79040.

**Pee Wee's Plumbing Service**  
Roto-rooter, Acoustical Ceilings. Blown Insulation in walls and ceilings. Appliance Service, used appliances for sale. 659-2811 or 659-3781.  
20-rtm

**NEW STEAM SHAMPOOER**  
with brushes  
Rental \$8.95 per day. Available at 716 Cotter Drive after 4:00 p.m. and Saturdays and Sundays. Call 659-3437. Regular Steam Rinse & Vac Shampooer, \$5.95 per day at Gordon's Drug and after 4:00 p.m. and Saturdays and Sundays at 716 Cotter Drive.

**NOTICE**  
Wallace Monument Co., Monuments, Curbing, Grave Covers  
Local Representative  
**LEONARD JAMESON**  
659-3406  
20-rtm

Alcoholic Anonymous meeting 8 p.m. Friday, Home Demonstration Club building. 305 N. Bernice. Phone 659-3181 for information.

Al-Anon meetings 8 p.m. Friday, Home Demonstration Club building. 305 N. Bernice in back room. Phone 659-3181 for information. Ask for Al-Anon.

**KIRBY SALES & SERVICE\***  
New & reconditioned vacuum cleaners. 912 S. Bernice. 659-2797.  
19-rtm

**CUSTOM HAY BALING** - 16 x 18 bale. Jerry D. Virder, Box 595, Gruver, Texas. 737-2236.  
27-rtm

**Need After Harvest Clean-up?**  
Need Your Office Carpet Cleaned?  
Rent the pro or let us clean it for you.  
**FREE Estimate**  
For steam cleaning, call 435-5289 or 659-2952.  
Willis Friesen  
34-rtm

Hay Baling and Stacking. 806-669-6610; 806-669-2961.  
35-25p

## MISCELLANEOUS FOR SALE

**FOR SALE:** 1977 T-Bird. Excellent Condition. Call 659-3691 after 5:00 p.m. Weekdays.  
34-rtm

**FOR SALE:** 1970 Delta 88 & 2 mattresses & box springs. Call 659-3993 or come by 726 Steele Drive.  
34-4tp

**FOR SALE:** 1976 Boanza 14 x 70 two bedroom, 1 1/2 baths, all appliances included. 3805 after 2 p.m.  
35-4tc

**FOR SALE:** 1978 Pontiac Bonneville. 14,000 actual miles, power, air, cruise, AM-FM & 8 track. Call 2415.  
35-4tp

**FOR SALE:** 1 used refrigerator, 1 used electric range, \$100.00 each, 1 9' x 12' red rug, all in good condition, call 659-2657.  
36-1tc

**GARAGE SALE:** 403 S. Endcott, Thursday and Friday, 9 to 5.  
36-1tc

**YARD SALE:** Friday, Saturday and Sunday, 10 a.m. to 6 p.m. 421 South Hazelwood.  
36-1tc

**FOR SALE:** 1968 Thunderbird, 2 door hardtop, clean, in good condition. Call 733-5067.  
36-1tc

**SPINET PIANO** - will sacrifice NEW Spinet rather than return. Reliable party may pay \$48.00 monthly. Write Channer Music, Box 1163, Sterling, Colo. (303) 522-4520.  
36-1tp

**ANTIQUES**-Primitives and country furniture. Call Coreata Ralston, 733-2567.  
35S-5tp

**FOR SALE:** '74 Plymouth Scamp, 2 door, real clean, 878-2909.  
35S-4tc

**FOR SALE:** Regular hegarri seed. Ted Godfrey, 2738 or 2229.  
35S-4tc

**FOR SALE:** 1977 Chevy C-20 Window Van, A.M., F.m., 8 track, cruise control, tilt steering wheel, air conditioner, moon roof, mag wheels, radials, 350 V-8, 18 MPG, privacy glass, 4 swivel bucket seats, sofa sleeper, wet bar, icebox, fully carpeted, beautifully customized, inside and out. Reasonably priced. See at Norman's Body Shop in Booker, or call 658-4512 days, or evenings and weekend 658-4710.  
36-rtm

**FOR SALE:** 2 year old dishwasher. Call 2350.  
36-2tc

## REAL ESTATE FOR SALE

**FOR SALE:** 1114 S Haney - 3 bedroom, 1 bath with garage and fenced yard. Priced to sell. 100% financing available to qualified applicant. Call

**Century 21 GOLDEN SPREAD REALTY**  
436-6444  
Perryton, Texas.

**FOR SALE BY OWNER**  
spacious, 3 year old home, 3 bedroom, 2 baths, double car garage, fully carpeted, central heat, refrigerated air, garbage disposal, dishwasher, built in range and oven. Generous closets and storage. Very clean.  
716 Steele Drive  
659-3622 or 659-3317  
33S-rtm

**FOR SALE:** Two bedroom home wood burner, fenced-in Back Yard; New front lawn, half furnished. 706 Cotter Drive. Call 659-2132.  
27-rtm

**Mayfield Real Estate**  
1012 Linn Dr 3 bedroom, 1 1/2 baths fenced yard.  
John Mayfield - Broker  
435-6528. Salesperson Ruby Lair 659-3436 or 659-2188.  
34S-rtm

**FOR SALE:** 3 bedroom, 1 bath, 2 car garage, central heating and cooling, patio, nice fenced yard. Excellent location for school age children. Priced in the 20's. Call 659-3328.  
36-rtm

**FOR SALE BY OWNER:** 3600 sq. ft home with 4 bedrooms, (isolated master), 3 baths, 2 woodburners, 2 living areas. Also has large storage building, garden area, many trees and shrubs. Many other interesting features. 714 Gibner Drive, phone 659-2429.  
35-rtm

**FOR SALE BY OWNER:** 3 Bedroom home, living room, kitchen, 1 bath, one car garage, patio, storage building, fenced yard, fruit trees. Call 659-2518 or 3506.  
32-rtm

**FOR SALE:** 2 Bdrm house carpeted, fenced built in range, dishwasher disposal, Call 3521 or 3502  
34S-4tc

**FOR SALE by Owner** Clean 3-bedroom home, 1 1/2 baths, living-room, large kitchen, single car garage, fenced back yard with nice lawn. 727 Cotter Drive, 659-2620.  
33-rtm

**FOR SALE:** 3 bedroom, 2 bath, stucco house, 523 W 3rd. Chuck Steele. 659-3510.  
32-rtm

**FOR SALE BY OWNER:** Nice brick home, 3 bedrooms, 2 baths, large living area with fireplace and oak parquet floor. 659-3659.  
35-rtm

## HELP WANTED

**RN experienced** in labor and delivery for 11 to 7 shifts. Good salary and benefits. Contact personnel office, North Plains Hospital, 200 S. McGee, Borger, Tex., 806-273-2851.  
35S-4tc

**RN'S & LVN'S** for all areas or 3 to 11 and 11 to 7 shifts. Good salary, shift differential and benefits, plus an opportunity to genuinely help people. Contact personnel office, North Plains Hospital, 200 S. McGee, Borger Tex. 806-273-2851.  
35S-4tc

**HELP WANTED:** One elevator superintendent. House and utilities furnished. Call 733-5067.  
36-rtm

**HELP WANTED:** Three elevator men. Call 733-5067.  
36-rtm

## WANTED

**Will do hay hauling,** Contact Phil Paul, 659-3592, or Carey Bridges, 659-2065  
28S-rtm

**YARD MOWING,** contact Jamie Heinrich- phone 659-3848 or 3839.  
32-8tc

**WILL DO lawn mowing** and edging Darren or Damon Goodheart. 659-2121 or 659-2871.  
24S-rtm

**WANTED TO BUY:** Light Ranch Oak full size headboard with cactus scene carving. Call Peggy Bartley, 806-753-4443.  
35S-6tp

**WANT TO PURCHASE:** 500 gallon over-head gasoline tank, Phone 659-2336.

**Addressers Wanted Immediately!** Work at home--no experience necessary--excellent pay. Write American Serviced, 8350 Park Lane, Suite 127, Dallas, TX 75231  
36-8tp

## FOR RENT

**FOR RENT:** Trailer Space for Mobile Home 659-2591 during day, after 5 2274.  
35S-4tc

**FOR RENT:** Furnished garage apartment. Call 2746, or 504 S. Evans.  
36-rtm

**FOR RENT:** Partially furnished apartment. Inquire at 721 S. Bernice or call 2742.  
36-1tc

## TO GIVE AWAY

**TO GIVE AWAY:** 3 puppies, 1 female, 2 males. Will be medium sized when grown. Call 733-2555.  
36-1tp

**Word Picture**  
Student in Art Class: "That, sir, is a cow grazing."  
Puzzled Art Teacher: "Indeed? Where is the grass?"  
Student: "The cow has eaten it."  
Art Teacher: "But where is the cow?"  
Student: "You don't think she'd be silly enough to stay there after she'd eaten all the grass, do you?"

## ★ Carports

## ★ Patio Covers

## ★ Awnings

WRITE OR CALL  
Only Aluminum Industries  
114 West 1st  
Guyton, Okla., 73942  
Phone 338-6966

After 6:00 p.m., phone  
Howard Moyer  
338-6170



T. M. Pryor (GEORGE PEP-PARD) removes his clothes to foil bloodhounds as he escapes from prison, in "Five Days From Home."

## Texas Wins First In Homemaker Recruitment

Texas has captured a first-place award from the National Extension Home-makers Council--for recruiting the most new members of any state to Extension Homemakers Clubs during 1979.

Texas also took top place last year.

Mrs. Charles Warminski of White Deer, Texas, president of the Texas Extension Home-makers Association, will accept the award during the national council's annual meeting, July 23-27, in Albuquerque, N.M.

Texas Extension Home-makers Clubs enrollment increased 25.7 percent during 1979. Hawaii placed second with an eight-percent increase, and North Dakota placed third with a 3.8 percent increase.

Texas club members have made a special effort to reach young homemakers this year, with local clubs playing a major role in this.

Clubs involve members in informal education about the family and the home--with topics such as housing and furnishings, clothing and textiles, foods and nutrition, family stability and family resource management as just part of their program.

Other topics include health, safety, citizenship, family life, recreation, cultural arts and youth.

Pezullo, new U.S. ambassador sent to Nicaragua.

Trade deficit widens to \$2.48 billion in May.

AT&T 1978 assets reportedly exceeds \$100 billion.

Several coffee roaster announce price hike.

**VIRGINIA WHITE REALTOR**  
659-3841

**EASY GOING ELEGANCE** - Townsend St. - A BEAUTIFUL HOME IN EVERY RESPECT! 3 bedrooms, 2 baths, fireplace, built-ins, covered patio. W/central air, NEXT SCHOOL. CALL NOW! In 50's.

**INVEST!** Invest! in this CLEAN 2 bdrm. home located on 3 lots W/3 trailer hook-ups, 2 rental trailer houses. Large storage bldg. NICELY LANDSCAPED. Low 20's. By appointment only. CALL TODAY.

EXCLUSIVELY WITH VIRGINIA WHITE REALTOR 659-3841

**For The Ultimate In STORM DOORS**  
Custom Built, Designed, And In Colors To Fit Your Home....  
Contact Howard Moyer at  
**Only Aluminum Industries**  
Guyton, Okla. 114 W. 1st 405-338-6966 or 73942 338-6170

**INSULATION**  
Blown in Cellulose  
**INSULATION---& FREE ESTIMATE**  
S.B. SHEETS  
Phone 659-2316  
Spearman, Texas

Officials: oil imports can be held under quota.

**THE AVERAGE STICK OF GUM 8 CALORIES**  
The average stick of gum contains eight calories.

**TEXAS PRESS**  
MEMBER 1977 ASSOCIATION  
PUBLICATION (USPS 509-660)  
SPEARMAN, TEXAS 79081  
213 Main Box 458 659-3434  
Published Weekly at 213 Main Street  
Spearman, Texas 79081  
Owner-Publisher.....William M. Miller  
Second Class postage paid at Spearman, Texas  
ANY ERRONEOUS REFLECTION UPON THE CHARACTER OF ANY PERSON OR FIRM APPEARING ON THESE COLUMNS WILL BE GLADLY AND PROMPTLY CORRECTED UPON BEING BROUGHT TO THE ATTENTION OF THE MANAGEMENT.  
SUBSCRIPTION RATE: Hansford, adjoining counties, combination with the Hansford Plainsman, \$10.40.  
Other points, \$14.40.

**Dr. T.G. Truitt**  
announces the reopening of his Chiropractic Practice formerly at 516 East 12th now at  
**108 Northwest 9th**  
Guyton, Okla.  
Monday, Tuesday, Wednesday & Friday  
Hours 8 to 12, 1:30 to 5:30  
OFFICE NO. **405-338-5758**

**SPECIALS GOOD WHILE SUPPLY LAST! LIMITED SUPPLY!!**

**SHOP ALLSUP'S AND SAVE MORE!**

**ALLSUP'S CONVENIENCE STORES**

**BONUS BUYS**

**PRICES EFFECTIVE JULY 19-21, 1979**

**WE RESERVE THE RIGHT TO LIMIT!!**

|  |   |  |
|--|---|--|
| BORDEN'S ASSTD. FRUIT DRINK GAL. <b>79¢</b>                            | BORDEN'S FUDGE OR FROSTY POPS 24 CT. PKG. <b>\$1.19</b> | DELMONTE CUT GREEN BEANS 2 16 OZ. CANS <b>79¢</b>  |
| <b>THIRST BREAKER!</b><br>BUY 24 oz Cup of Coke 45¢ and Get One FREE!! |   |  |
| DELMONTE WK OR CS GOLDEN CORN 2 17 OZ. CANS <b>79¢</b>                 | GRANULATED SHURFINE SUGAR 5 LB. BAG <b>\$1.29</b>       | KRAFT MIRACLE WHIP qt. <b>\$1.49</b>               |
| <b>FRESH COOKED BAR-B-QUE SANDWICHS 89¢</b>                            |   |  |
| ALL PURPOSE GOLD MEDAL FLOUR 5 LB. BAG <b>89¢</b>                      | DELICIOUS SHURFINE TUNA 8 1/2 OZ. CAN <b>75¢</b>        | COLORTEK BATHROOM TISSUE 8 ROLL PKG. <b>\$1.39</b> |

**EMMETT R. SANDERS REALTOR**  
659-2516  
659-2601 (nights)  
34S-rtm

You are cordially invited  
to a bridal shower  
honoring Teresa Booth  
bride-elect of Mickey McCurdy  
Saturday, July 21  
2:30 to 4 p.m.  
First Christian Church  
Hostesses:  
Pat Hamilton  
Mary Brown  
Beverly Boone  
Betty Jean Davis  
Gwen Smith  
Johnette Caldwell  
Glenna McMullan  
Joann Lee  
Martha Boyd  
Faye Wirsdorfer  
Mary Schumann  
355-2tc

**Peggy's Pointers**

Peggy Winegarner  
Co. Extension Agent (H.E.)

Sealing failures in home canning can result from some common mistakes. Avoid making mistakes in home canning by following these suggestions:

1. Read and follow package instructions for using caps and lids. Don't take it for granted that all home canning caps are alike and are used exactly the same way.

2. Leave correct amount of head space when filling jars.

3. Take time to "knife out" air bubbles before sealing the jar.

4. Remove particles of food, seeds or seasonings from jar top or threads with damp cloth before putting on lid.

5. Particles left on jar rim can cause lid to seal, then, loosen.

6. Screwing band too tight can cause lid to buckle. A band must be tight enough to hold the rubber sealing compound closely against the jar top.

7. However, if the band is forced as far as it can be turned with a strong hand, the jar cannot vent. When the jar cannot vent, pressure within the jar causes the lid to buckle.

8. Therefore, tighten bands only comfortably tight to prevent buckled lids.

9. Screw bands tight enough. Heat sufficiently to seal the lid. Follow recommended processing time and method.

10. Exhaust (vent) steam-pressure canner for a full 10 minutes, or until a stream of "blue steam" is visible, before closing petcock.

11. If steam is not exhausted, there is an uneven amount of steam pressure in the canner. As a result, some lids may seal while others in the same canner load may not.

12. Don't let pressure in canner fluctuate. This can cause food particles to be forced between jar and lid which will

cause sealing failure.

The same thing may happen if steam is released too quickly after processing. Let pressure in canner reach zero degrees naturally before removing cover. Do not run cold water over canner to reduce pressure.

10. Don't reuse jars in which commercial foods are sold. These jars are designed for use on high speed packing machines and with caps developed especially for that product, but not for home canning.

11. Don't use warped, rusty, worn bands, or old commercial caps.

12. Don't reuse lids. The lid of a two-piece metal cap should not be used more than once. This applies to all brands.

The compound is not guaranteed to seal a second time and the lid itself is often bent or warped when removed the first time.

13. Don't use old jar lids. If jar lids are old, the sealing compound may harden and not soften sufficiently to obtain a good seal.

As long as the sealing compound is resilient when mashed with the fingernail, the lid will probably seal. It is preferable to use jar lids the same year as purchased.

When kept longer, they often stick together and must be heated in boiling water to separate them.

If jars do not seal, you may reheat and process over again. However, the product will be over-cooked and lose food value, flavor and texture.

You may keep a few jars in the refrigerator and use them within a short time instead of reprocessing.

"What the donkeys says, he believes." Persian Proverb

"Rare are they who prefer virtue to the pleasures of sex." Confucius

**Spearman Swim Team News**

The Spearman Swim team traveled to Cimarron, Kansas for a meet with other members of the West Kansas Swim League, on July 14. There were a total of ten teams at the meet.

The individual results are as follows:

Carly Shieldknight 8 and under girls 25 Free 3rd  
Kim Elbert 11-12 girls 50 Free 6th  
Gary Thomas 13-14 boys 50 Free 2nd  
Carly Shieldknight 8 and under girls Backstroke 4th tie  
Curt Davis 13-14 boys Backstroke 4th  
Gary Thomas 13-14 boys Backstroke 5th  
Carly Shieldknight 8 and under girls Breaststroke 2nd  
Kim Elbert 11-12 girls 200 Free 5th  
Gary Thomas 13-14 boys 200 Free 2nd  
Stacey Thomas 15-18 girls 200 Free 1st

This was the best overall performance of the team this season, not only for those who placed but overall individuals on the team. As coach, I was very proud of this group of young people for what they did Saturday. Those who made the trip were: Carly Shieldknight, Jane Wirsdorfer, Marri Schaffer, Genne Womble, Kim Elbert, Teresa Miesner, Robbie Heinrich, Marietta Davis, Stacey Thomas, Jim Everson, Kyle Kirk, Nick Wirsdorfer, Curt Davis, Gary Thomas and Tracey Vernon.

The final meet for the team

will be this Friday and Saturday in Guymon. The Friday starting time is 1:30 p.m. and Saturday is 9:00 a.m. We invite anyone to come and watch the action.

**Presbyterian Church News**

There is an advanced Change The World School of Prayer July 20-21 at the South Lawn Baptist Church in Amarillo. This is open to anyone who has had the basic course.

Sunday Church School at the First Presbyterian Church is a fun time. It is also a time of spiritual growth. There is a class for you every Sunday at 9:45 a.m.

The Rev. Carter McKemy will be preaching at the service for the public worship of God on Sunday, July 22 at 11:00 a.m. Max Baggerly will be the lay person assisting in the worship service.

Come and celebrate God's love with us!

**Charter Bus To "TEXAS" Planned**

Mrs. Sam Graves of Continental Bus Lines in Spearman announced this week that a charter bus is available to

"TEXAS" in the Palo Duro Canyon on July 27.

The cost is \$20.55 for adults and \$18.05 for children under 12. This includes the bus fare and ticket to the drama.

Anyone wishing to make the trip is urged to call Mrs. Graves at 659-3446 as soon as possible for reservations. She will need a certain number of people to sign up in order to have the bus reserved. Departure time is usually around 4 p.m.

**Robert Janzen Family Moving**

The Robert Janzen family will be moving soon to Stonington, Colo. Robert, who works for Panhandle Eastern Pipeline, and is also a barber here, has been transferred.

He will be open for business at the Spearman Barber Shop on Saturday's for awhile.

After the family gets settled they will be pioneering a church in Stonington, Colo.

**Arts & Crafts Guild News**

The Arts & Crafts Guild met Friday, July 13 in the home of Mrs. Pope Gibner.

Attending were Mmes. Guy Fuller, Joe Trayler, Clay Gibner and P.A. Lyon, Sr., and the hostess.

The meeting on July 20 will be in the home of Mrs. Nolan Holt.

**Miss Mills Is Shower Honoree**

Miss Denise Mills of Fritch, bride-elect of Steve Donnell of Spearman, was honored recently with a bridal shower in the home of Mrs. Tom Etter.

The serving table was laid with a beige cutwork cloth, and centered with a straw hat holding sonia roses, baby's breath, gladioli and snapdragons. The bride's chosen color of apricot was carried out in the decorations. The napkins were apricot color engraved with Denise & Steve. An antique brass coffee service and an antique crystal punch bowl and cups were used. Cookies, coffee and punch were served to guests by the hostesses.

The registry table was adorned with a straw basket holding sonia roses, baby breath's and fern.

The honoree was presented a corsage of sonia roses and baby breath, decorated with apricot ribbon through a gold ring.

Hostesses were Mmes. Max Baggerly, Garland Head, Henry Cornelius, Woodrow Gibner, Travis Davis, Ned Davis, Ed Dear, Ora Lee Blackburn and Tom Etter.

Special guests included, the honoree's mother, Mrs. Jean Mills, her sister, Miss Janice Mills, her grandmother, Mrs. O. C. Lallimont, and a niece Miss Damaris Lallimont, all of Fritch, and her aunt, Mrs. Dana Nimmo of Amarillo, the prospective groom's mother, Mrs. Oscar Donnell, and his grandmother, Mrs. Bill Hutton, both

You are cordially invited to

a bridal shower honoring

Ann Ward

bride-elect of Russell McClure

Saturday, July 21

from 3 to 5 p.m.

George C. Lowe home

907 Cluck

Gruver, Texas

of Spearman, aunts, Mrs. Jo Riley and Mrs. Sarah Wiggins of Canadian, and his cousin, Mrs. Helen Ann Barton of Midland.

Other out of town guests included Mrs. G. D. Davis of Borger, Mrs. P. C. Lackey and Mrs. Donnie Davis and daughter Jamie of Amarillo.

Medicare cost up. Social Security checks up July 1.

Administration reaffirms costs of giving up canal.

Muhammad Ali retires as boxing champion.

Detroit: small car share of market 57 percent.

High court approves job preference for minorities.

Some oil companies to boost July shipments.

Turks reassure U.S. on spy plane overflights.

AFL-CIO wants ruling on Carter's guidelines.

**HIKE COFFEE PRICE**  
NEW YORK -- General Foods, the nation's largest coffee roaster, and third-ranked Hills Brothers have joined second-ranked Procter & Gamble and others in boosting the wholesale price of ground coffee by 25 cents a pound.

Poll: working women face inadequate pay.



PRICES EFFECTIVE THRU JULY 25, 1979. QUANTITY RIGHTS RESERVED. NO SALES TO DEALERS.

MON.-SAT. 8a.m. - 9a.m.  
SUN. 10a.m. - 7p.m.

**SIX FLAGS OVER TEXAS**



And Ideal Announce...  
**\$200 "FunTastic" DISCOUNT CARDS**

WITH EACH \$10\* PURCHASE, YOU WILL RECEIVE A SIX FLAG'S "FUNTASTIC" CARD.

**KUNER TOMATOES**  
KUNER WHOLE  
**Tomatoes 32¢**  
16-OZ. CAN  
LIMIT 4

**MANAGER'S CHOICE**  
**Coca Cola \$1.69**  
LIMIT 2  
32 OZ.

**KUNER GREEN BEANS**  
KUNER CUT  
**Green Beans 26¢**  
16-OZ. CAN  
LIMIT 4

**KUNER Stewed Tomatoes 35¢**  
16-OZ. CAN

**MILE-HIGH HAMBURGER SLICED Dill Pickles 72¢**  
32-OZ. JAR

**JENO'S DOUBLE CHEESE Pizza Mix \$1.39**  
29 1/2-OZ. BOX

**LIQUID CLEANER Pine Sol \$1.38**  
28-OZ. BTL.

**GLAD HEAVY DUTY LARGE Garbage Bags 98¢**  
16-CT. BOX

**PURE VEGETABLE Wesson Oil \$1.09**  
24-OZ. BTL.

**DUNCAN HINES LAYER Cake Mix 73¢**  
18 1/2-OZ. BOX

**MEADOWDALE Laundry Bleach 44¢**  
1/2-GAL. BTL.

**FRESH Pork Steak 98¢**  
ARM SLICES  
LB.



**FRESH PORK SHOULDER PICNIC Pork Roast 78¢**  
6 TO 8 LBS. WHOLE  
LB.

**FRESH Pork Roast 94¢**  
ARM CUT  
LB.

**BLUE RIBBON Turkey Hams \$1.59**  
FULLY COOKED  
3 TO 4 LBS. AVERAGE  
LB.

**FRESH FAMILY PACK Ground Beef \$1.39**  
3 LBS. OR MORE  
LB.

**WILSON'S CERTIFIED Sliced Bacon \$1.49**  
1 LB.

**WILSON'S CERTIFIED Sliced Bacon \$2.97**  
5 LB.

**WILSON'S WESTERN STYLE Sausage \$1.98**  
1 LB.

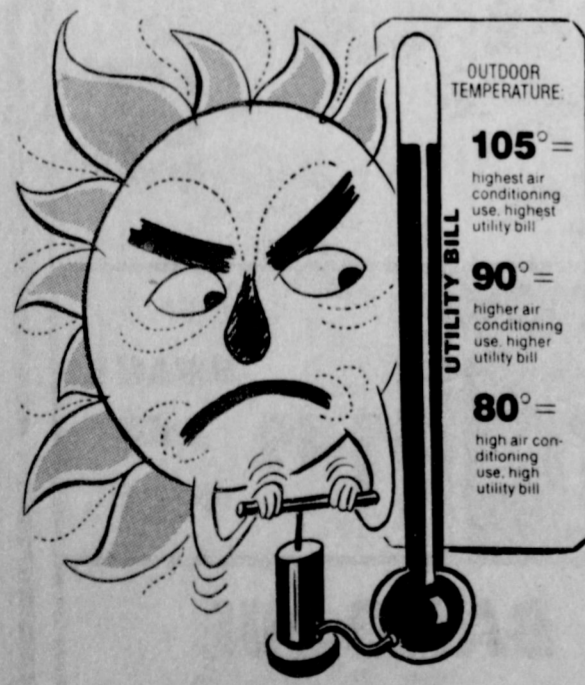
**SMOKED CENTER CUTS Ham Slices \$1.98**  
1 LB.

**GORTON'S PRE-COOKED Fish Sticks \$2.49**  
2 LB.

**FRESH SLICED Pork Liver 59¢**  
1 LB.

**FRESH FRYER THIGHS OR Drumsticks 98¢**  
1 LB.

**FRESH FRYER Breast \$1.09**  
1 LB.



Cool it... with wise air conditioning management.

Higher temperatures can cause your air conditioner to work harder, which means a higher utility bill. You can have a comfortable home, and a reasonable cooling bill, by using your air conditioner wisely. First, keep your thermostat setting at 78 to 80 degrees. Just five degrees of increase in your thermostat setting can mean a 15% savings in energy. Vacuum or replace air conditioner filter once a month. Don't block indoor vents with furniture or drapes, and clear away all shrubbery or tall grass too close to the outside compressor. Keep out heat by closing drapes on sunny windows, and make sure windows and doors are tightly shut. Keep your cooling bill under control, by following these tips for wise energy management.



**SHOP IDEAL... WHERE THERE'S MORE VALUE IN**



Boys and girls who have been in the summer reading program at Hansford County Library enjoyed an outing in Womble Park

Tuesday morning. They enjoyed games and refreshments. Certificates were awarded to those who have read at least ten books this summer.

## Wheat Fertilizer Considerations For 1980

Wheat yield throughout the Rolling and High Plains of Texas for 1979 were generally above average. The wheat market helped make some producers a line money.

Again, the wolf appears to be knocking at the door of the 1980 wheat crop. With next year's crop, the Texas farmer has a new set of problems. Now is the time to begin to plan next year's crop and side-step some of these problems. Every step must be taken to save energy.

The recent diesel shortage will probably reduce the profit picture for 1980. According to County Extension Agent Layton Barton, producers should use the fertilizer rates that would eliminate soil deficiencies, in line with the producers yield goal. Their wheat yield goal should be consistent with the soil moisture situation, irrigation and management practices. While fertilizer costs may increase for next year, they remain a real bargain when applied at optimum rate. Soil testing is still the key to determining optimum application rates.

Barton says that nitrogen is the most important plant nutrient in the production of both forage and grains. Since nitrogen is required in larger amounts, this nutrient is commonly the most deficient nutrient in your soil. Wheat yields over 40 bushels per acre have removed 80 lbs/acre of nitrogen. If one intends to produce a comparable yield level in 1980,

then some nitrogen should be applied.

Nitrate nitrogen testing in the Extension Soil Testing Laboratory in Lubbock has proven very helpful over the past 10 years for determining nitrogen needs for wheat.

"It is important that samples be properly collected to represent your soil fertility situation. Information on soil sampling can be obtained from my office," Barton said.

### ONE MINUTE SPORTS QUIZ

1. Who won the Danny Thomas Memphis Golf Classic?
2. Who won the 1978 women's singles Wimbledon tennis championship?
3. Larry Bowa plays pro baseball for what team?
4. Darrell Waltrip is known in what sport?
5. Who won the 1968 Olympic Decathlon?

### Answers To Sports Quiz

1. Gil Morgan.
2. Martina Navratilova.
3. Philadelphia Phillies.
4. Stock car racing.
5. Bill Toomey, U.S.

### MINORITIES GET NOD

The Supreme Court, in a ruling that could affect millions of working Americans, said that employers voluntarily may give minority workers special treatment in hiring, training and promotion.

## Warren Beatty Quarterbacks L. A. Rams In Romantic Fantasy "Heaven Can Wait"

Warren Beatty was no stranger to football when he ran confidently out on the field at the Los Angeles Coliseum to quarterback the L.A. Rams for Paramount's "Heaven Can Wait" film.

At Washington Lee High School in Arlington, Virginia, Beatty was an All-Star center. Upon graduation, he was offered athletic scholarships by ten major colleges before rejecting them in favor of the drama department at Northwestern University.

The "movie team" included former Rams stars Deacon Jones, Les Josephson, Jack Snow, Charles Cowan, Jim Boeke and Joe Corolla. Beatty took part in all the football sequences, doing all his own stunts including the "sacks" which the players insisted on repeating several times.

Paramount Pictures Presents Warren Beatty, Julie Christie, James Mason, Charles Grodin, Dyan Cannon, Buck Henry, Vincent Gardenia and Jack Warden in "Heaven Can Wait." Screenplay by Elaine May and Warren Beatty. Produced by Warren Beatty. Directed by Warren Beatty and Buck Henry.



Still # HCW-5335-21A Scene 1A Warren Beatty stars as Joe Pendleton, a professional athlete who is summoned to Heaven before his time in Paramount Pictures' romantic fantasy "Heaven Can Wait."

## Carter's SALT

President Jimmy Carter's current campaign to obtain Senate ratification of the SALT II treaty unchanged may not succeed in barring amendments from the Senate but the fight gives every indication of helping the President in the polls.

Media treatment of the issue is strongly favorable to the President's position. Television discussions and documentaries have already swayed most of the public-in favor of the treaty.

Mr. Carter's address to a joint session, upon his return from Vienna, was the best speech he has made since being inaugurated. It was well written, convincing in logic, and Mr. Carter's delivery, notoriously poor, was improved.

It is with an issue such as SALT II that a presidential image can best be enhanced. The struggle for this treaty will be long, lasting until at least Thanksgiving. During that time Mr. Carter will be cast in a role of foreign policy leadership-fighting for what most Americans favor.

FDA bans chemical DES as livestock fattener.

Auto rental business doing great despite oil situation.

Welcome home Judge Max Boyer, who is conducting court at the Hansford County Courthouse this week.

### NEW AMBASSADOR

The Carter administration has dispatched a new ambassador to Nicaragua with instructions not to present his diplomatic credentials to President Anastasio Somoza for the time being.

### BAKER AND SALT


Senate Republican Leader Howard H. Baker Jr. has demanded that President Carter and Soviet leaders accept significant changes in the SALT II treaty or face its rejection in the Senate.

### TURKS REASSURE U.S.

ANKARA, TURKEY -- Turkey has reassured the United States it still may allow American U-2 spy planes to fly over Turkey to monitor Soviet compliance with the SALT II treaty, diplomatic sources said.

### ON NEUTRON BOMB

Army Chief of Staff Gen. Bernard Rogers, the new commander of NATO, said he is in favor of deploying the neutron bomb in Europe.

**PLAY**  **Gunn Bros. Stamp** **AND GET** **1,000** **EXTRA GUNN BROS. STAMPS**

JIFF CREAMY OR CRUNCHY  
**Peanut Butter ... 96¢**  
LIMIT 2  
18-OZ. JAR

MEADOWDALE  
**Flour 55¢**  
LB. BAG  
LIMIT 1

KRAFT DINNERS  
**Mac. & Cheese 25¢**  
7 1/4-OZ. BOX  
LIMIT 4

CANNED DRINKS — ALL FLAVORS  
Welchade..... 46-OZ. CAN 58¢  
DOUBLE STUFF  
Oreo Cookies..... 15-OZ. PKG. 93¢  
NABISCO COOKIES  
Nutter-Butter..... 13 1/2-OZ. PKG. 79¢  
LAUNDRY DETERGENT  
Cheer..... 49-OZ. BOX \$1.49

BORDEN  
**Ice Cream \$1.59**  
1/2-GAL. CTN. ALL FLAVORS  
FAIRMONT  
Ice Cream Bars..... 24 CT. PKG. \$1.69

HEALTH & BEAUTY AIDS  
Aim Toothpaste \$1.19  
Signal Mouthwash \$1.29  
Anacin \$1.89

FRESH DAIRY!  
PARKAY Light Spread \$1.19  
Margarine..... 2-LB. TUB  
FAIRMONT — ALL FLAVORS  
Fruit Drinks..... 1-GAL. PLASTIC 79¢  
FRESH Camelot Buttermilk... 1/2-GAL. CTN. 78¢

KRAFT  
**American Singles \$1.48**  
1-LB. PKG. LIMIT 1

FROZEN FOODS!  
ALL VARIETIES MEXICAN  
Patio Dinners..... 12-OZ. BOX 74¢  
MEADOWDALE  
Crinkle Cut Potatoes..... 1-LB. BAG 59¢  
CAMELOT  
Whole Kernel Corn..... 16-OZ. BAG 49¢

MEADOWDALE  
**Orange Juice 36¢**  
LIMIT 3

**Plum Sale!**  
**Craze Plums 43¢**  
ALL VARIETIES MIX OR MATCH


CALIFORNIA LARGE SLICING Tomatoes..... 1-LB. 49¢  
ALL PURPOSE WHITE Potatoes..... 10-LB. BAG 99¢  
CALIFORNIA RED Onions..... 3 SLICERS 3 \$1

**Public Notice**

Notice is hereby given that a public hearing will begin at 9 a.m. on July 24, 1979, in the offices of the Texas Public Utility Commission in Austin, Texas, on a proposal by Southwestern Bell Telephone Co. to make certain changes in the format of selected Texas telephone directories.

The principal proposed changes are: (1) to separate business and residential listings in the white pages, with residential surnames listed once in boldface type followed by the alphabetical listing of the individuals' given names in regular type; and (2) to add, in addition to the "white pages" business and residential listings and the Yellow Pages business listings, a third set of "blue pages" listing the numbers of selected governmental and public service agencies.

Inquiries may be addressed to the Texas Public Utility Commission, 7800 Shoal Creek Blvd., Austin, Texas 78757.

 Southwestern Bell

**JULY SELL-A-BRATION**

**BUY IT RIGHT:**  
Behlen, a Division of the Wickes Corporation, is celebrating Wickes' 125th anniversary with factory authorized discounts on popular Behlen quality, all-steel farm buildings. Save on the half-round Curvet, a rugged, frameless, all-purpose structure that's designed for more space per dollar.

**BUILD IT RIGHT:**  
We've made our name doing just that. With a commitment to quality—from initial planning through final erection and follow-up service.

**NOW:**  
Inflation beating discounts good for the month of July only.

**HALLMARK BUILDERS, INC.**  
904-365-9222  
AMARILLO, TEXAS

**Behlen builders do it right.**

**STORE FOR YOU!...**

**Ideal Food Stores**

**Food Stamps Buy More At Ideal...**

### Yuca Girl Scout Council Camp Held

The Yuca Girl Scout Council held its annual established camp at Bowling Springs State Park, June 2nd through June 14th. The Yuca Council provided an opportunity for the Girl Scouts to practice democratic living and provided experiences which will lead to develop a sense of responsibility, qualities of leadership and awareness of the capacities of all people. The application of the Girl Scout Promise and Law encourages the development of resourcefulness, initiative and self-reliance and recognition of the worth of each individual.

Senior High age girls served as program aides while at camp. They shared their skills with campers and assisted the camp staff in many ways. The Program Aides were, Meg Duckworth, Melinda Smith and Lori Smith, Elkhart, Rhonda Slaughter, Perryton, Carrie Riffe, Straford, Regina Newton and Shelby Hamilton, Goodwell.

During Established Camp two girls were elected from each unit to represent them at the Camp Council. Staff from each unit was also represented. The Camp Council planned the recreation for each evening. Some of the activities for the evening were: Disco-50's Dance, Pajama Party, Mexican Fiesta, Hillbilly Night, Disneyland Dress Up, Talent Night, Scavenger Hunt, Skit Night, Games Party and the closing campfire with a Scout's Own. Camp Council also planned Church Service for Sunday morning. A Backwards Supper, Monks Meal, Mystery Supper, Breakfast in Bed and Come as You Are Breakfast were also included.

A special time at camp was for those girls selling 200 or more boxes of cookies to receive their Cookie Bear. There were 25 Cookie Bears earned by girls in the council and 20 were presented to the girls attending camp. The girls also helped pay their way to camp by selling cookies, earning camperships.

Program Activities available to campers were, Swimming, Hiking, Archery, Volleyball, Crafts, Nature Study, Dramatics, First-Aid, Cooking, Canoeing and Campfires. A trip to Alabaster Caverns were also enjoyed by the girls. Several proficiency badges were earned by the girls, including, Small Craft, Water Fun, Backyard Fun, Gypsy and Outdoor Cook. The Bike Unit was also presented buttons for setting the new mileage record.

Camp ended with a closing campfire and water carnival planned by the girls. Those earning their challenge were, Barbara Good, Lisa Foss, Connie Bolton and Julia Foss, Liberal, Tina Behne, Hooker and Kathy Welling, Perryton.

"Half a truth is a whole lie." Yiddish Proverb



**FAMILY HONORED** - Day, Luante and Burt McClellan were honored July 4 by the Bicentennial Committee of Granbury for their civic work. The family was named Mr. and Mrs. Granbury. The McClellan's publish a newspaper in Granbury.

bury, The Village Weekly, and are former residents of Spearman. They were driving a used convertible they owned for 12 years before trading it to a Granbury Ford dealer, who restored it.

## Soil Sampling For 1980 Wheat

Two major reasons suggest the need for good soil sampling to have soil analyzed. County Extension Agent Layton Barton said. A primary reason is so the producer can apply the proper amounts and grades of fertilizer to his cropland. The second major reason is that following a good production season, previously applied or accumulated fertilizer nutrients may have been utilized. A good soil sample and a soil test will then help maintain yield.

PROPER TOOLS  
"As with all things, proper tools to accomplish the task are required," the county agent said. "Suitable tools include the soil sample probe, the auger, and sharp shovels should. Also, a two-gallon plastic bucket is needed for mixing the sample to prevent contamination of the soil sample and therefore, erroneous soil analysis."

FIELD INSPECTION AND CONSIDERATIONS ON FIELD SOILS  
Prior to going into the field, the overall appearance of the land should be inspected and if several traps are available, empty them. This procedure provides the producer an opportunity to sample problem areas separately or problems associated with depression areas, soil erosion, sand holes, deep areas, and gullies can be identified.

PROPER SAMPLING  
Normally, a soil sample at 6-8 inch depth is adequate which is about six inches deep. If a soil sample has never been taken, then six samples from several sites to look at nutrient status below the surface. General fertility status is very important in deep-rooted crops such as cotton.

diseases. These sites should be sampled separately as the cause can be identified. Sample weak areas the first time the spots are noticed. Historically, the trend is that next year, the spots become bigger and the cause of the problem is even more puzzling to the producer, the Extension Agent said.

County Extension Agent Barton says to consider these points prior to sampling. How is the land plowed and fertilized? If the land is bedded, the best sample site is about half way down the bed. The sample on the bed prevents one from getting into high salt levels that form on the tops of the beds during dry spells. If stand problems due to salt have occurred, one should be sampling the top of the bed to determine salt levels and intensity of the problem.

THE PRESENCE OF LEAD  
"Sampling time is a good time to take notes on soil composition and plow pass. If the soil prevents the probe from penetrating the soil, it is usually a sign of lead contamination. A good figure to keep in mind is a lead test probe will exert about 12,000 pounds per square inch of pressure into the soil by an individual weighing 200 pounds. If the probe does not penetrate, it is comparable to the penetration of a growing root in a very 'flood' soil," Barton said.

good soil analysis. Fewer subsamples and a larger area are possible if the field has never been fertilized, Barton said.

Prior to taking small samples scrape the litter from the surface, then use a spade, soil auger or soil sampling tube. To use a sharpshooter, dig a V-shaped hole and take a 1/2-inch slice of soil from the smooth side of the hole. Repeat in 10 to 15 different places.

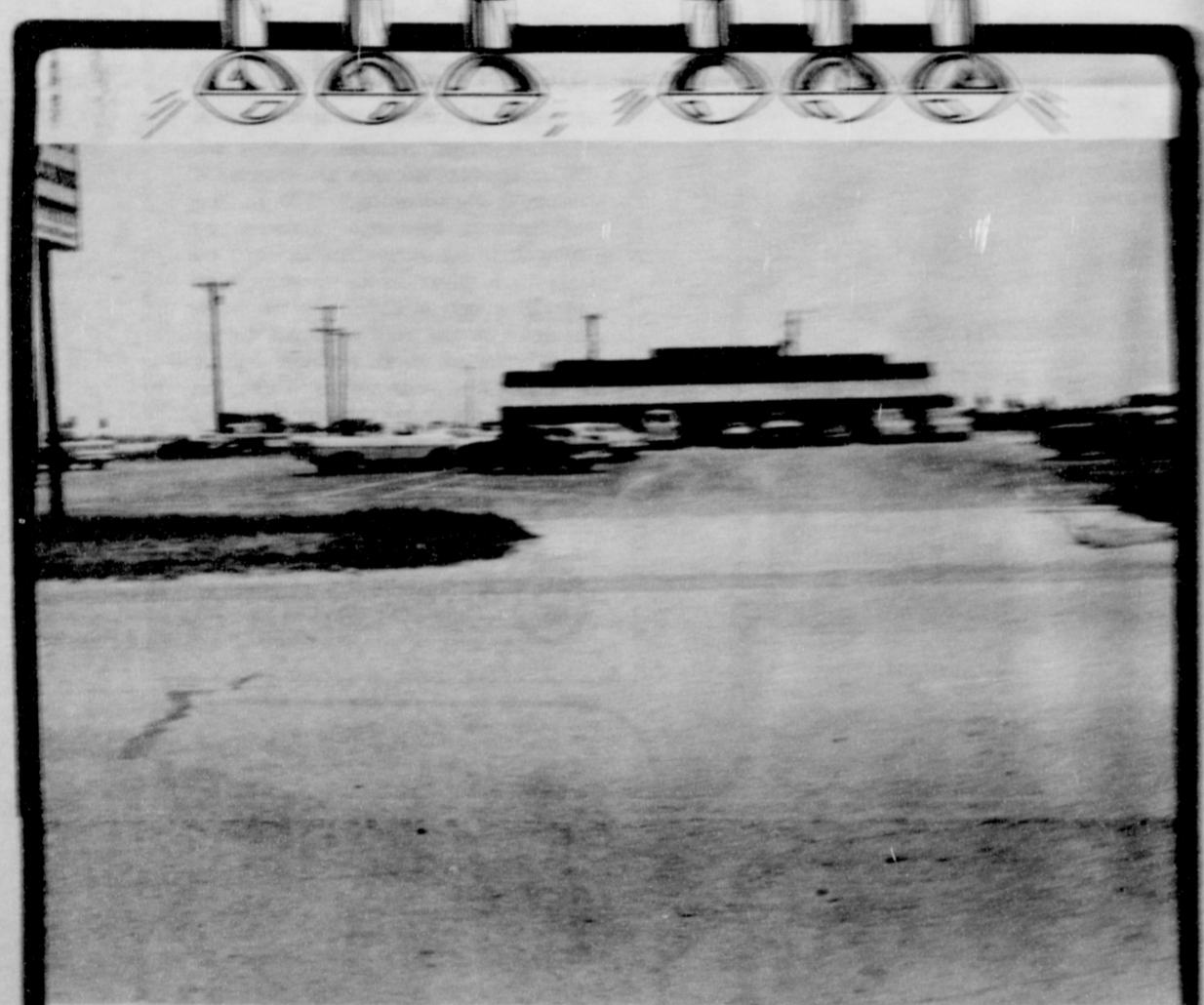
Place subsamples in a clean container (plastic bucket, paper sacks, etc.) mix thoroughly, and take out approximately 1 pint for the composite sample. Barton suggests. "To aid in the interpretation of the soil test and in making recommendations, fill in Form D-575, 'Soil Sample Information Sheet for Field Crops', as completely as possible and submit with your samples," Barton emphasized. "Each Soil sample should be marked with your name and sample number, which should correspond with the information furnished on the information sheet. Mark the analysis desired and include the proper fee. The information sheets are at my office or the Soil Testing Laboratory in Lubbock," Barton said.

### Home Weatherization

DALLAS—The State of Texas has been awarded a grant of \$2,722,500 to continue implementation of a Home Weatherization Program for low-income citizens throughout the State. It was announced today by G. Dan Rambo, Regional Representative of the Secretary, U.S. Department of Energy (DOE).

The grant will allow the State to weatherize an estimated additional 4000 homes of low-income persons under a plan developed by the Texas Department of Community Affairs. This will be the third year that weatherization assistance has been provided to low-income Texans under the DOE Weatherization Program.

The Texas program is part of a nationwide effort to reduce energy consumption and improve the dwelling unit environment of the low-income persons in the Nation.



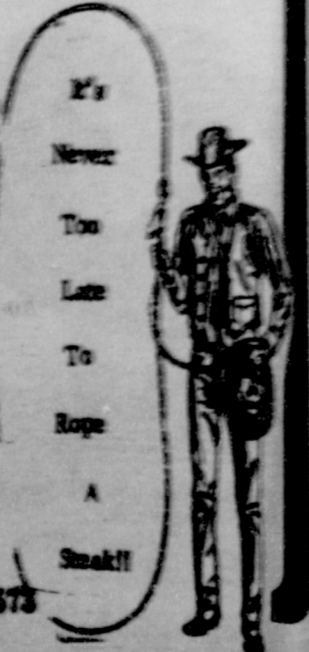
**We have our New Parking Lot Completed... Come over and eat with us...**

**Plenty of PARKING SPACE**

**...We enjoyed serving you this harvest. K-Bob's**

**Steak House**

Evry. 63 and Loop Road PERRYTON 435-5573



### MR. FARMER...

*We know you get top yields and top prices for your wheat!*

*We have one of the best inventories of new Pontiacs, Buicks, & GMCs that we have ever had.*



**30 PONTIACS & BUICKS**

**40 GMC PICKUPS**

**Jeeps, Heavy 1/2 & 3/4 tons, 4 wheel drives, Suburbans & Rally Vans**

**7 BOBTAILS & TANDEMS**

**Rugged & ready to go. PLUS more are coming in everyday!!!**

*When you are ready to buy, give us a chance! You'll see why we are one of the best trading dealerships in the Panhandle.*

## HERGERT

**Pontiac, Buick, GMC**

*"The Best For Sales, Service & Body Shop"*  
**WE APPRECIATE YOUR PATRONAGE!!!**

S. Hwy. 287

806-658-3721

Spearman, TX

**Guest Editorial**

Harold Hudson in the Perryton Herald

**Farmer Windfall**

For perhaps the first time in history, the wheat farmers of this country, particularly in this area, are basking in the twin delights of a bumper crop and strong prices.

Despite heavy wheat harvests this year, the price of wheat has not only remained firm, but has kept rising. There are a number of reasons for this, mainly because the Russians have bought up a lot of U.S. wheat to ship to their country suffering from poor crops this year.

Because the price of wheat has risen, a lot of so-called experts are worrying because they fear that this will mean a rise in the cost of food and thus add another load on the back of the consumer.

Well, the facts dispute this contention. Back in 1972 when the Russians bought up a lot of wheat and boosted the price to \$5 a bushel, there were cries demanding price control or else bread would go to \$1 a loaf.

Bread prices did rise dramatically and in fact did reach the magic figure of \$1 per loaf.

But when the price of wheat dropped from \$5 back to \$4 and then dipped below \$3 a bushel, the price of bread remained where it was.

Farm organization spokesmen kept pointing out that in a \$1 loaf of bread the cost of the wheat used to produce it accounted for only 5 cents. The rest of the price went to everybody else but the fellow who took the risk and invested the capital and labor into producing it.

Thus even though the price of wheat is now \$4 a bushel, it should not really push the price of bread and other wheat products up at all.

This increase in the price of a bushel of wheat actually amounts to less upward pressure on bread prices than an increase in the hourly wage of union bakers or the labor of the truck drivers who deliver the product.

And an increase in the market price of wheat amounts to less in the cost of the finished bakery products than do the layers of taxes, state, federal and local that are into every batch of dough produced.

The wheat farmer has had a tough time trying to produce wheat for a depressed market, using tools and machinery that has kept going up in price because of economic forces far beyond his control.

Last year the cattlemen finally got some relief in the form of higher prices for cattle on the hoof. This year it is the wheat farmer's turn and surely the nation can let him enjoy the delights of making a decent return on his investment and labor.

If there has to be a villain in the matter of rising food prices, let the spotlight be turned on other links in the food distribution chain, rather than the fellow who has to contend with insects, drought, hail, and market manipulators in order to make a living.

**Junior Shorthorn Show Planned**

The Five State Shorthorn Association is sponsoring a Junior Shorthorn Show to be held August 17-18, 1979 at the Texas County Fairgrounds, Guyton, Oklahoma.

There will be divisions for Registered Shorthorn heifers; purebred Shorthorn steers; and crossbred steers that are 50% or more Shorthorn.

Exhibitors must not have passed their 19th birthday before January 1, 1979 and must live in one of the following states: Colorado, Kansas, Oklahoma, Texas or New Mexico.

A \$15.00 entry fee must accompany each entry. All entry monies will be returned in premiums to the exhibitors. Deadline for entries is August 14, 1979.

The Grand Champion and Reserve Grand Champion steers and heifers will receive trophies and \$100 and \$50 certificates respectively, towards the purchase of an animal in the 1980 Five State Shorthorn Sale.

There will be a judging contest open to all 4-H and FFA judging teams on Friday, August 17 beginning at 6:00 p.m.

For additional information and entry forms contact Mrs.

Robert Dahl, Star Rt., Gruver, Texas 79040, phone 806-733-2612; or contact Ronald Gooch, Box D, Clarendon, Texas 79226, phone 806-874-2141 or 874-3619.

**Hot Weather Tips**

As the expression goes, cool it—especially in the summer—it's better for your health. Here are some hot tips on keeping cool: Drink an ample amount of water, about 8 glasses a day if you work or play in a high temperature. A cool summer diet: fruits, juices, vegetables, only a limited amount of fatty foods, or iced beverages.

Most men like to look cool, but shaving's an unpleasant task when you've got to work up a steam to lather your face. One answer is an electric razor. The Rotary Razor line by Norelco provides a close, comfortable shave that leaves your face cool in the summer sun. Because one model has a charger it lets you shave for up to three weeks on one charge. That's a wireless boon to outdoorsmen and campers.

**Gruver Open Jr. Tennis Tourney Set**

The Gruver Open Jr. Tennis Tourney will be held July 21-22 at the Gruver High School Courts.

The tourney will be for singles and doubles. Entries for all events will close Thursday, night, July 19.

Fees are \$5.00 for singles and \$10.00 for doubles. You may call or mail entries to Fran Duncan, Box 635, Gruver, Texas 79040. Phone number 733-2866. Fees must be paid before playing Saturday.

Singles play will begin at 8 a.m. Saturday, doubles will begin at 1 p.m. Saturday, and matches will begin at 1 p.m. Sunday.

All matches will be 2 out of 3 sets with 9 point tie breaker at six all. The vass no add system will be used.

Individual trophies will be given to 1st, 2nd, and 3rd place.

Events with insufficient entries may be dropped. A thirty minute default rule will be in effect at the decision of the tournament director.

Please give any rankings, titles, or championships you have won when entering to assist in seeding.

You are also asked to list your partner in doubles event. The division are Boys 18 and under, Boys 15 and under, and

Boys 12 and under, Girls 18 and under, Girls 15 and under and Girls 12 and under.

**Want To Be An Exchange Student?**

Choose three countries you might like to visit. Apply to International Fellowship's Western office, and chances are you will go to one of those countries. That's the word from IFI.

International Fellowship, Inc. offers students 14-18 the opportunity to live with a family abroad and attend school for 3, 6 or 9 months, or for the summer. Foreign language is not required in Latin America or the Orient, but is in Europe. Now is the time to apply for the summer or next school year. The cost is as little as \$800 for close-by countries.

If you have the maturity and spirit of adventure to meet the challenge of a new culture write to Wm. R. Smith, Western Director, IFI, Box 1212, Sedona, Arizona 86336. Or ask the principal, a counselor or language teacher or phone him collect at 602-282-7353 for details and an application.

IFI also needs local homes to host foreign students. Interested families should contact Ms. Smith by calling collect.

**Gruver Open Entry Blank**  
July 21-22, 1979

NAME \_\_\_\_\_ ADDRESS \_\_\_\_\_ CITY \_\_\_\_\_  
 PHONE \_\_\_\_\_ DIVISIONS ENTERED \_\_\_\_\_  
 DIVISION \_\_\_\_\_ PARTNER \_\_\_\_\_  
 DIVISION \_\_\_\_\_ PARTNER \_\_\_\_\_  
 DIVISION \_\_\_\_\_ PARTNER \_\_\_\_\_  
 ENTRY FEE ENCLOSE \$ \_\_\_\_\_ AGE \_\_\_\_\_ YEAR & DAY \_\_\_\_\_

MAIL TO: Fran Duncan, Box 635, Gruver, Tex. 79040,  
Make Checks to: Alpha Mu Psi



The lead pencil has changed little in form since the 17th century.

8040/31 (3-79) STATE

**CONSOLIDATED REPORT OF CONDITION**  
(Including Domestic Subsidiaries)

| LEGAL TITLE OF BANK  |                              |                        |                  |
|--|------------------------------|------------------------|------------------|
| FIRST STATE BANK   |                              |                        |                  |
| CITY   | COUNTY                       | STATE                  | ZIP CODE         |
| Spearman   | Hansford                     | Texas                  | 79081            |
| STATE BANK NO.   | FEDERAL RESERVE DISTRICT NO. | CLOSE OF BUSINESS DATE |                  |
| 1107   | 11                           | June 29, 1979          |                  |
| ASSETS   |                              |                        |                  |
| 1. Cash and due from depository institutions (From Schedule C, Item 6)   |                              | Mil.                   | Thou.            |
| 2. U.S. Treasury securities  |                              | 3                      | 104              |
| 3. Obligations of other U.S. Government agencies and corporations  |                              | 1                      | 298              |
| 4. Obligations of States and political subdivisions in the United States (From Schedule B, Item 2, Column E)           |                              | 2                      | 611              |
| 5. All other securities  |                              | 6                      | 143              |
| 6. Federal funds sold and securities purchased under agreements to resell  |                              | NONE                   |                  |
| 7. a. Loans, Total (excluding unearned income) (From Schedule A, Item 10)  | 13                           | 266                    |                  |
| b. Less: allowance for possible loan losses  |                              | 235                    |                  |
| c. Loans, Net  |                              | 13                     | 031              |
| 8. Lease financing receivables   |                              | NONE                   |                  |
| 9. Bank premises, furniture and fixtures, and other assets representing bank premises                                  |                              |                        | 230              |
| 10. Real estate owned other than bank premises   |                              | NONE                   |                  |
| 11. All other assets (From Schedule G, Item 3)   |                              |                        | 092              |
| 12. TOTAL ASSETS (sum of items 1 thru 11)  |                              | 31                     | 039              |
| LIABILITIES  |                              |                        |                  |
| 13. Demand deposits of individuals, partnerships, and corporations (From Schedule F, Item 1, Column A)                 |                              | 11                     | 422              |
| 14. Time and savings deposits of individuals, partnerships, and corporations (From Schedule F, Item 1, Columns B & C)  |                              | 13                     | 729              |
| 15. Deposits of United States Government (From Schedule F, Item 2, Columns A, B & C)                                   |                              |                        | 002              |
| 16. Deposits of States and political subdivisions in the United States (From Schedule F, Item 3, Columns A, B & C)     |                              | 1                      | 812              |
| 17. All other deposits (From Schedule F, Item 4, Columns A, B & C)   |                              | NONE                   |                  |
| 18. Certified and officers' checks (From Schedule F, Item 5, Column A)   |                              |                        | 208              |
| 19. Total Deposits (sum of items 13 thru 18)   |                              | 27                     | 173              |
| a. Total demand deposits (From Schedule F, Item 6, Column A)   | 12                           | 388                    |                  |
| b. Total time and savings deposits (From Schedule F, Item 6, Columns B & C)  | 14                           | 785                    |                  |
| 20. Federal funds purchased and securities sold under agreements to repurchase   |                              | NONE                   |                  |
| 21. Interest-bearing demand notes (note balances) issued in the U.S. Treasury and other liabilities for borrowed money |                              |                        | 012              |
| 22. Mortgage indebtedness and liability for capitalized leases   |                              | NONE                   |                  |
| 23. All other liabilities (From Schedule H, Item 3)  |                              |                        | 050              |
| 24. TOTAL LIABILITIES (excluding subordinated notes and debentures) (sum of items 19 thru 23)                          |                              | 27                     | 235              |
| 25. Subordinated notes and debentures  |                              | NONE                   |                  |
| EQUITY CAPITAL   |                              |                        |                  |
| 26. Preferred stock  | a. No shares outstanding     | NONE                   | (par value) NONE |
| 27. Common Stock   | a. No shares authorized      | 100,000                |                  |
|  | b. No shares outstanding     | 100,000                | (par value) 500  |
| 28. Surplus  |                              |                        | 500              |
| 29. Undivided profits and reserve for contingencies and other capital reserves   |                              | 2                      | 804              |
| 30. TOTAL EQUITY CAPITAL (sum of items 26 thru 30)   |                              | 3                      | 804              |
| 31. TOTAL LIABILITIES AND EQUITY CAPITAL (sum of items 24, 25 and 30)  |                              | 31                     | 039              |
| MEMORANDA  |                              |                        |                  |
| 1. Amounts outstanding as of report date   |                              |                        |                  |
| a. Standby letters of credit, total  |                              | NONE                   |                  |
| b. Time certificates of deposit in denominations of \$100,000 or more  |                              | 3                      | 753              |
| c. Other time deposits in amounts of \$100,000 or more   |                              |                        | 468              |
| 2. Average for 30 calendar days (or calendar month) ending with report date  |                              |                        |                  |
| a. Total deposits (corresponds to item 19 above)   |                              | 28                     | 129              |

NOTE: This report must be signed by an authorized officer and attested by not less than two directors other than the officer signing the report.

I/We, the undersigned officer(s), do hereby declare that this Report of Condition (including the supporting schedules) has been prepared in conformance with the instructions and is true to the best of my knowledge and belief.

SIGNATURE OF OFFICER(S) AUTHORIZED TO SIGN REPORT: Felma B. Evans, AREA CODE/TELEPHONE NO: 806-659-2526, DATE SIGNED: July 10, 1979

NAME AND TITLE OF OFFICER(S) AUTHORIZED TO SIGN REPORT: Felma B. Evans, Cashier. We, the undersigned directors, attest the correctness of this Report of Condition (including the supporting schedules) and declare that it has been examined by us and to the best of our knowledge and belief has been prepared in conformance with the instructions and is true and correct.

SIGNATURE OF DIRECTOR: Gene Cudd, R. M. Crawford, C. A. Gibner

State of Texas, County of Hansford, Sworn to and subscribed before me this 10th day of July, 1979. My commission expires 1-31-81. Arbeta Nobles, Notary Public.

**JERRY KERN**  
**HAIR CUTTING**  
**SPECIALIST**

coming to Spearman,  
Monday, July 9  
and every Monday thereafter.

Jerry's basic study was in Amarillo and then in Houston to study with advanced cutters from Houston and New York.

For the latest in high fashion cuts and perms visit Jerry at Bull's Inn The "N" Place

Call 659-2695 for your appointment now.

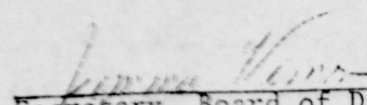
## NOTICE OF TAX AND BOND ELECTION

THE STATE OF TEXAS                   §  
  § HANSFORD COUNTY HOSPITAL DISTRICT  
COUNTY OF HANSFORD                 §

TO THE RESIDENT QUALIFIED ELECTORS OF THE  
HANSFORD COUNTY HOSPITAL DISTRICT:

TAKE NOTICE that an election will be held in the Hansford County Hospital District on the 11th day of August, 1979, in obedience to an order duly entered by the Board of Directors of said Hospital District, which is attached hereto and made a part of this Notice for all intents and purposes.

WITNESS MY HAND AND THE SEAL OF SAID DISTRICT, this the 12th day of July, 1979.

  
Secretary, Board of Directors  
Hansford County Hospital District

(District Seal)

AN ORDER by the Board of Directors of the Hansford County Hospital District calling a special election for the purpose of increasing the maximum tax rate for hospital district purposes and authority for the issuance of bonds.

WHEREAS, the Board of Directors of the Hansford County Hospital District has determined that an election should be held to determine whether (i) the maximum rate of tax levied for hospital district purposes should be increased from 50 cents to 75 cents per \$100 valuation and (ii) bonds of the District should be issued for the purpose and in the amount hereinafter provided; now, therefore,

BE IT ORDERED BY THE BOARD OF DIRECTORS OF THE HANSFORD COUNTY HOSPITAL DISTRICT:

SECTION 1: That an election shall be held on the 11th day of August, 1979, in the Hansford County Hospital District for the purpose of submitting the following propositions to the resident qualified voters of said District, to wit:

## PROPOSITION NUMBER 1

"SHALL the Board of Directors of the Hansford County Hospital District be authorized and empowered to levy, assess and collect an annual ad valorem tax at a maximum rate not to exceed 75 cents on the \$100 valuation of taxable property situated within the District subject to hospital district taxation for hospital district purposes, including the payment of all indebtedness assumed, incurred or issued by the District, as provided by law?

## PROPOSITION NUMBER 2

"SHALL the Board of Directors of the Hansford County Hospital District be authorized and empowered to issue bonds upon the faith and credit of the District in the total amount of \$1,400,000 for the purchase, construction, acquisition, repair or renovation of buildings and improvements and equipping the same for hospital purposes (a domiciliary care facility), such bonds to be payable from ad valorem taxes levied, assessed and collected on all taxable property in the District subject to hospital district taxation, and issued in one or more installments or series, mature serially or otherwise not more than FORTY (40) years from their date and bear interest at such rate or rates (not to exceed the maximum rate prescribed by law) as the Board of Directors shall determine?

SECTION 2: That the polling places for this election and persons hereby appointed to serve as Presiding Judge and Alternate Presiding Judge for each polling place shall be as follows:

| ELECTION PRECINCT  | POLLING PLACE   | ELECTION OFFICERS   |
|--|---|---|
| No. 1 (consisting of Hansford County Voting Precincts No. 1, 2, 5 and 6) | County Agr. Barn<br>Ave. D at Rodeo<br>Grounds<br>Spearman, Texas | J. L. Brock<br>Presiding Judge<br>Mrs. Helen Etter<br>Alternate<br>Presiding Judge    |
| No. 2 (consisting of Hansford County Voting Precincts No. 3, 4 and 7)    | County Agr. Barn<br>Gruber School Campus<br>Gruber, Texas         | Merle Delano<br>Presiding Judge<br>Mrs. Lola Reynolds<br>Alternate<br>Presiding Judge |
| No. 3 (consisting of Hansford County Voting Precinct No. 9)              | Community Building<br>Morse, Texas                                | Willard McCloy<br>Presiding Judge<br>Roy Harris<br>Alternate<br>Presiding Judge       |

Each Presiding Judge shall appoint not less than two (2) nor more than eight (8) qualified clerks to serve and assist in holding said election; provided that if the respective Presiding Judge herein appointed actually serves, the Alternate Presiding Judge of his polling place shall be one of the clerks.

On election day the polls shall be open from 7:00 A.M. to 7:00 P.M.

Lanelle Cummings is hereby appointed as the Clerk and Debra Jones as the Assistant Clerk for absentee voting for said election and the Administrator's Office, Hansford Hospital, 707 S. Roland, Spearman, Texas 79081 in said District, is hereby designated as the place at which absentee voting shall be conducted for said election. For the period absentee voting is permitted by law, the hours designated for absentee voting shall be from 8:30 A.M. to 5:00 P.M. on each day except Saturdays, Sundays and official State holidays.

SECTION 3: That paper ballots shall be used for said election, which ballots shall be prepared in accordance with the V.A.T.S. Election Code so as to permit the electors to vote "FOR" or "AGAINST" each of the aforesaid propositions which shall be set forth in substantially the following form:

## PROPOSITION NUMBER 1

"THE AUTHORITY TO LEVY A TAX AT THE MAXIMUM RATE NOT TO EXCEED 75 CENTS ON EACH \$100 VALUATION OF TAXABLE PROPERTY SUBJECT TO HOSPITAL DISTRICT TAXATION FOR ALL HOSPITAL PURPOSES"

## PROPOSITION NUMBER 2


"THE ISSUANCE OF \$1,400,000 BONDS UPON THE FAITH AND CREDIT OF THE HOSPITAL DISTRICT FOR HOSPITAL PURPOSES (A DOMICILIARY CARE FACILITY)"

The word "FOR" and beneath it the word "AGAINST" shall be made to appear on the left of each of the propositions. A square shall be printed on the left of each of the words "FOR" and "AGAINST", and each elector shall place an "X" in the square beside the statement indicating the way he wishes to vote.

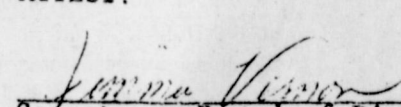
SECTION 4: All resident qualified electors of the District shall be permitted to vote at said election. In addition, this election shall be conducted and held in accordance with the provisions of the Texas Election Code except as modified by the provisions of Chapter 872, Acts of the 62nd Legislature, Regular Session, 1971, and as may be required by law, election materials and proceedings for this election shall be printed in both English and Spanish.

SECTION 5: That a substantial copy of this order shall serve as proper notice of said election. Said notice, including the Spanish translation thereof, shall be posted at each election precinct, at the County Courthouse and at the District's hospital not less than fourteen (14) full days prior to the date on which said election is to be held and said notice, including the Spanish translation thereof, shall also be published on the same day in each of two successive weeks in a newspaper of general circulation in said District, the first of said publications to be made not less than fourteen (14) full days prior to the date set for said election.

PASSED AND APPROVED, this the 12th day of July, 1979.

  
President, Board of Directors  
Hansford County Hospital District

ATTEST:

  
Secretary, Board of Directors  
Hansford County Hospital District

(District Seal)

## AVISO DE ELECCION PARA IMPUESTOS Y PARA BONOS

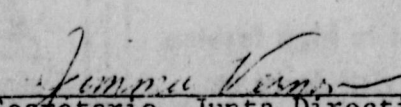
EL ESTADO DE TEXAS                   §  
  § DISTRITO DE HOSPITAL DEL CONDADO  
CONDADO DE HANSFORD                 § DE HANSFORD

## A LOS RESIDENTES CON DERECHO DE VOTAR DEL

## DISTRITO DE HOSPITAL DEL CONDADO DE HANSFORD:

AVISO de que una elección tendrá lugar en EL DISTRITO DE HOSPITAL DEL CONDADO DE HANSFORD el día 11 de agosto de 1979 en cumplimiento de un decreto debidamente presentado por la Junta Directiva de dicho Distrito de Hospital, el cual se acompaña y se hace parte de este Aviso para todo objeto práctico.

Doy testimonio de mi firma y del sello de dicho Distrito, este día 12 de julio de 1979.

  
Secretario, Junta Directiva  
Distrito de Hospital Del Condado  
de Hansford

(Sello del Distrito)



UN DECRETO presentado por la Junta Directiva del Distrito de Hospital del Condado de Hansford declarando una elección especial con el fin de aumentar el porcentaje de impuestos máximos para el Distrito de hospital y la autoridad para la emisión de bonos.

VISTO QUE, la Junta Directiva del Distrito de Hospital del Condado de Hansford ha determinado que se debe llevar a cabo una elección para determinar si (i) se debe aumentar el porcentaje máximo de impuestos gravados para el Distrito de hospital de 50 centavos a 75 centavos por cada valuación de \$100 y si (ii) bonos del distrito deberán ser emitidos con el fin y por el total mas adelante mencionado; por consiguiente ahora,

SE DECRETA POR LA JUNTA DIRECTIVA DEL DISTRITO DE HOSPITAL DEL CONDADO DE HANSFORD:

SECCION 1: Que una elección se lleva a cabo en el Distrito de Hospital del Condado de Hansford el día 11 de agosto de 1979, con el fin de presentar a todos los residentes con derecho de votar del Distrito las siguientes proposiciones:

PROPOSICION NUMERO UNO

"¿DEBERÁ la Junta Directiva del Distrito de Hospital del Condado de Hansford ser autorizada y otorgada a gravar, tasar y anualmente cobrar impuestos ad valorem al porcentaje máximo no sobrepasando 75 centavos por cada valuación de \$100 de propiedad imponible situada dentro del Distrito sujeta a impuestos en el distrito de hospital para el Distrito de hospital, incluyendo el pago de deudas recibidas contraídas o emitidas por el distrito, como estipulado por la ley?"

PROPOSICION NUMERO DOS

"¿DEBERÁ la Junta Directiva del Distrito de Hospital del Condado de Hansford ser autorizada y otorgada el poder de emitir bonos en verdad y crédito del distrito, por un total de \$1,400,000 para la compra, construcción, adquisición, reparación o renovación de edificios y el mejorar y el equipar de lo mismo para el hospital (facilidad domiciliaria de cargo), dichos bonos a ser pagados por medio de impuestos ad valorem gravados, tasados y anualmente cobrados según el valor de todas las propiedades imponibles en el distrito sujetas a impuestos en el distrito de hospital, y emitidos en una o mas entregas o series, a madurar en forma escalonada o de otra manera por un período no mayor de CUARENTA (40) años a partir de la fecha de emisión y a devengar interés al porcentaje o porcentajes (no sobrepasando el porcentaje máximo prescrito por la ley) a ser determinado a voluntad de la Junta Directiva?"

SECCION 2: Que los lugares para votar para esta elección y las personas por este acto nombradas como juez actuante y juez actuante suplente de cada lugar para votar sean los siguientes:

| RECINTO ELECTORAL  | LUGAR PARA VOTAR   | AUTORIDADES ELECTORALES   |
|--|--|---|
| No. 1 (constado de los Recintos de votar nos. 1, 2, 5 y 6 del Condado de Hansford) | establo de agr. del Condado avenida D campo de Rodeo Spearman, Texas | J. L. Brock<br>Juez Actuante<br>Mrs. Helen Etter<br>Juez Actuante Suplente    |
| No. 2 (constado de los Recintos de votar nos. 3, 4 y 7 del Condado de Hansford)    | establo de agr. del Condado campo de escuela de Gruver Gruver, Texas | Merle Delano<br>Juez Actuante<br>Mrs. Lola Reynolds<br>Juez Actuante Suplente |
| No. 3 (constado del Recinto de votar no. 9 del Condado de Hansford)                | el edificio de centro social Morse, Texas                            | Willard McCloy<br>Juez Actuante<br>Roy Harris<br>Juez Actuante Suplente       |

Cada juez actuante nombrará no menos que dos(2) ni más que ocho (8) oficiales calificados para trabajar y ayudar en dicha elección; con tal que si el juez actuante particular aquí dentro nombrado desempeña sus funciones, el juez actuante suplente de su lugar para votar será uno de los oficiales.

Durante el día de elección, los lugares para votar estarán abiertos desde las 7:00 de la mañana hasta las 7:00 de la noche.

Se nombra por este medio a Lanelle Cummings como oficial principal y a Debra Jones como oficial menor de los votos absentistas para dicha elección, la Oficina del Administrador, Hospital de Hansford, 707 S. Roland, Spearman, Texas 79081, en dicho Distrito se designa por este medio como el lugar para registrar los votos absentistas en dicha elección. De acuerdo al período del voto en ausencia permitido por la ley, las horas nombradas para registrar los votos absentistas serán desde las 8:30 de la mañana hasta las 5:00 de la tarde todos los días con la excepción de los sábados, domingos y los días de fiesta oficial del Estado.

SECCION 3: Que se usen balotas electorales de papel en dicha elección, se prepararán las cuales balotas de acuerdo con el Código Electoral, V.A.T.S. de manera de permitir a los electores votar "EN PRO" o "EN CONTRA" a dichas proposiciones que se presentarán de la siguiente manera:

PROPOSICION NUMERO UNO

"AUTORIDAD PARA GRAVAR IMPUESTOS AL PORCENTAJE NO SOBREPASANDO 75 CENTAVOS POR CADA VALUACION DE \$100 DE PROPIEDAD IMPONIBLE SUJETA A IMPUESTOS EN EL DISTRITO DE HOSPITAL PARA EL HOSPITAL"

PROPOSICION NUMERO DOS

"LA EMISION DE BONOS POR UN TOTAL DE \$1,400,000 EN VERDAD Y CREDITO EN EL DISTRITO DE HOSPITAL PARA EL HOSPITAL (FACILIDAD DOMICILIARIA DE CARGO)"

Se pondrán las palabras "EN PRO" y bajo ellas las palabras "EN CONTRA" a la izquierda de cada proposición. Se dibujará un cuadrado a la izquierda de las palabras "EN PRO" y "EN CONTRA", y cada votador pondrá una "X" en el cuadro al lado de la proposición indicando como desea votar.

SECCION 4: A todos los residentes con derecho a votar del Distrito se les permitirá votar en dicha elección. Además, esta elección se dirigirá y tendrá lugar de acuerdo con las estipulaciones del Código Electoral de Texas fuera de las modificaciones hechas por las estipulaciones en el Capítulo 872, Actas de la Legislatura 62, Sesión Regular de 1971; y como pueda ser requerido por la ley, se imprimirán los materiales de la elección y los procedimientos para esta elección en inglés y en español.

SECCION 5: Que una copia fidedigna de este decreto sirva como aviso adecuado de dicha elección. Se fijará dicho aviso, incluyendo una traducción al español de esto, en el recinto electoral, en el Palacio de Justicia Condal y en el distrito de hospital no menos que catorce (14) días antes de la fecha establecida para dicha elección, y también se publicará dicho aviso, incluyendo una traducción al español, el mismo día de dos semanas sucesivas, en un periódico de circulación general en dicho Distrito, la primera de dichas publicaciones a ser hecha no menos de catorce (14) días antes de la fecha establecida para dicha elección.

PASADO Y APROBADO, este día 12 de julio de 1979.

*Mr. Beatty*  
Presidente, Junta Directiva  
Distrito de Hospital del Condado de  
Hansford

ATESTIGUA:

*Summa King*  
Secretario, Junta Directiva  
Distrito de Hospital del Condado de  
Hansford

(Sello del Distrito)

# We're Here On Your Account

# 43rd Annual XIT Rodeo and Reunion

Your account is our most valuable asset. For you are the reason why we have been able to offer continuous banking services since 1920.

We strive to offer you personal, and the most complete banking services available...

- Personal Loans
- Master Charge & Visa
- Trust Services
- Commercial Loans
- Safe Deposit Boxes
- Bank-By-Mail
- ... and many more!

**Thursday  
Friday, and  
Saturday**

**August 2, 3, 4,  
1979**

**Dalhart,  
Texas**

**XIT** Drop In At Your Convenience And Visit With Us About Your Banking Needs, Because We're Here On Your Account.

We Invite You To Stop By Our Guest Gallery July 6-27 And View The '76 Arts & Crafts Association Display.

# Citizens State Bank

MEMBER FDIC

**Dalhart,  
Texas**

Serving this area since 1920

**Thanks to You**

## Futurity Horse Sale To Highlight Texas 4-H Horse Show

July 24-29 the State 4-H Horse Show will be held in the Ector County Coliseum in Odessa, Texas. In addition to the regular show classes, this year's State Show will include futurities for yearling fillies, yearling geldings and 1-year-old western pleasure horses. Horses entered in these futurities are projects of 4-H members from throughout the state. To culminate futurity activities, a Futurity Horse Sale will be held at 1:00 p.m. on July 26 states Layton Barton, County Extension Agent for the Texas Agricultural Extension Service.

Fifty-three (53) lots of horses will be sold in the Futurity Horse Sale. These horses represent some of the top bloodlines in the Quarter Horse breed. Some have aqha Champion and/or halter and performance point earning sires and/or dams. Many of the consigned horses have outstanding halter and/or western pleasure performance records coming into the State Show futurities. A few entries are nominated to halter and western pleasure futurities subsequent to the State Show, according to Barton.

Each futurity will consist of three go rounds where potential buyers may look at sale horses under competitive conditions. The State 4-H Horse Show Futurity Horse Sale would be an excellent opportunity to purchase a young horse fit and ready to advance in further training for ranch, pleasure or show purposes, says Barton. For additional information and/or SALE CATALOGS\* CONTACT THE County Extension office of Horse Specialists, Texas Agricultural Extension Service, Kleberg Center, Texas A&M University, College Station, Texas. (713) 845-1562 or 845-1927.

## Day Care Licensing Representative Visits Here

Kate Gamblin, of Amarillo, Day Care Licensing Representative from the Texas Department of Human Resources, is visiting Hansford County on a regular basis, to provide information about licensing standards and procedures. Appointments with Mrs. Gamblin may be made at the office of the Department of Human Resources in Amarillo, telephone 353-7451, P.O. Box 3700, Amarillo, Texas 79106.

A state law was passed in 1975, called the "Child Care Licensing Act of 1975", and put into effect in 1976, requiring licensing of all homes or facilities providing regular day care for seven or more children. Persons who offer care regularly to even one unrelated child must register, under provisions of the law.

Standards vary according to the kind of program offered by the facility and the number of children served. Registration of homes is a self-certification program for child care facilities which provide regular care in the caretaker's own home, for not more than 6 children under 14 years of age, excluding the caregiver's own children. The Department that they meet and will maintain the "Minimum standards for Registered Family Homes". Copies of the standards are available to parents. If you feel the care in a Registered Family Home does not meet these standards, call Mrs. Gamblin at the telephone number above. Persons who do this type of babysitting are to contact Mrs. Gamblin who will provide registration papers and information about rules for providing child care.

State law requires licensing of all facilities or homes providing regular day care for seven or more children. When a facility is licensed, parents can be assured it meets at least the minimum requirements to protect the health, safety, and well-being of their children. The standards concern educational levels of child care staff, nutrition, children's activities, discipline, sanitation and health, safety, grounds and equipment, and the amount of space required for each child.

This law was brought about due to the fact that the United States is undergoing a fundamental revolution in the job market, primarily related to the changing roles of women and the large influx of young working mothers.

Certainly Texas is caught up in this trend. The number of women employed outside their homes more than doubled in the 20 years prior to 1970, and increased again by more than 20% during the next five years. It is presently estimated that four out of every 10 Texas women pass the age of 14 are in the labor force. This social phenomenon makes child care of tremendous importance to all of us, whether we are working parents or simply concerned citizens. Satisfactory care for the children of working parents is important to the entire community. It is a major means of preventing the social problems that develop when neglected children fail to learn useful habits and constructive attitudes during the "growing up" years. The Texas Department of Human Resources is the agency designated by the legislature to monitor child care facilities.

Mrs. Gamblin is one of four day care licensing representatives who work out of the Amarillo DHR office. She has observed the facilities here, concluding there is need for more licensed and registered child care facilities in Hansford County. Her regular visits to Spearman will make it more convenient for prospective day care providers to contact the Department for licensing or registration.

Persons not already licensed or registered who are interested in caring for children are invited to call or write the Department of Human Resources in Amarillo to make an appointment with Mrs. Gamblin.

## Judges Selected For Livestock Shows

Final selection of judges for the various livestock shows scheduled for the 1979 Tri State Fair has been completed. Lynn Griffin, Manager of the Tri State Fair, has released names of qualified judges representing seven different states. Bill Rishel, North Platt, Nebraska will judge the Open Angus and the Open Shorthorn Cattle Show. Open Hereford Cattle will be judged by Herman Purdy, Alexandria, Pennsylvania. The cattle in the first time Open Simmental Cattle Show will be placed by Dr. Bob Long, Lubbock, Texas. The services of Dr. William O. Cawley, Texas A & M University, have been secured to judge the Capon Show. The Lamb Show will be judged by Ed Garnett, Vernon, Texas, and the Barrow Show by Lanny Tucker, Hart, Texas. The Open Rabbit Show judge will be Eabert McGehee. In the horse department, the Appaloosa Show will be judged by Ward Fenton, Hysham, Montana. Dr. Alverda McDannald, Sarcozie, Missouri will place the Arabian Horse Show. Paint Horses will be judged by Larry Ellis, Loveland, Colorado. Robert B. St. Clair, Falls of Rough, Kentucky will be on hand to handle the Quarter Horse judging and will assist Tom Hastings, Denton, Texas in judging The Open and Non-Pro Cutting Horses.

**BANS CHEMICAL DES**  
WASHINGTON -- The Food and Drug Administration has ordered a ban on use of the cancer-causing chemical DES to fatten livestock. The action comes nearly seven years after FDA first tried to ban DES in animal feed, but was thwarted by court challenges from the cattle industry.

**DAYAN HAS CANCER**  
TEL AVIV, ISRAEL -- Foreign Minister Moshe Dayan, Israel's long-time military hero, recently had surgery for cancer. A hospital spokesman reported a cancerous growth was removed from the 64-year-old cabinet minister's intestinal tract and doctors were satisfied the disease had not spread to any other organs.

**A HOUSING UNIT**  
SAN CLEMENTE, CALIF -- Most of the property surrounding the home in which Richard Nixon secluded himself after resigning the presidency will be used for single-family homes, say the three men who bought the 28-acre estate. Donald Koll, George Argyros and Gavin Herbert said, however, that "La Casa Pacifica," known as the Western White House during Nixon's 5 1/2 years as president, would be kept intact.

## Police Report

Listed below are the figures for the 1977 - 1978 fiscal year of the Spearman Police Department.

186 Criminal Offenses reported  
105 Criminal Offenses cleared  
Offense clearance rate of 56.5% well above the national average.  
530 Incidents, complaints, and calls for assistance.  
116 Traffic accidents investigated.  
1,010 Traffic accidents investigated.  
1,010 Traffic citations issued.  
463 Warning citations issued.

79 Persons were arrested by the department for various crimes and incidents.

A total of 432 overtime hours were worked by the police officers.

In Animal Control Matters for the 1977 - 1978 fiscal year for the figures were as follows:

641 Animals were picked up.  
188 Animals were paged out or purchased.

353 Animals were destroyed.  
100 Animals were picked up dead, were illegally removed from the pound, etc.

This concludes the report for the fiscal year 1977 - 1978.

President: OPEC decisions make recession more likely.

Astronomer: Uranus' rings may be gaseous.

European DC-10s back in air; but banned from U.S.

Harold Stassen endorses SALT II pact.

Blumenthal: oil prices may cause world recession.

## CORPORATION COURT

### SCHEDULE OF FINES

These suggested fines plus, 3.50 state charge, can be collected by the Corporation Court Clerk after a plea of guilty by the violator. These are not for repeat offenders.

| GENERAL GROUP  | TYPE                                   | FINE   |       |
|--|--|--|-------|
| Speeding   | Speeding                               | 15.00 plus 1.00 per mile for every mile over the limit |       |
|  | Failed to Control speed                | 15.00  |       |
|  | Unsafe Speed                           | 15.00  |       |
|  | Impeding Traffic                       | 15.00  |       |
|  | Racing, Drag Racing, Contest of Speed  | 25.00  |       |
|  | Exhibition of Acceleration             | 25.00  |       |
|  | Right of Way                           | Failure to yield ROW at stop intersection              | 15.00 |
|  |  | Failure to yield at yield intersection                 | 15.00 |
|  |  | Failure to yield ROW at open intersection              | 15.00 |
|  |  | Failure to yield ROW, turning                          | 15.00 |
| Traffic Signs, Signals and Road Markings   | Failure to yield ROW to Emergency Veh. | 20.00  |       |
|  | Ran stop sign                          | 15.00  |       |
|  | Ran red light                          | 15.00  |       |
|  | Failure to stop at designated point    | 15.00  |       |
|  | Disregarded flashing red light         | 15.00  |       |
|  | Unsafe lane change                     | 15.00  |       |
|  | Failure to drive in single lane        | 15.00  |       |
|  | Disregarded signal at RR Crossing      | 15.00  |       |
|  | Bus failed to stop at RR crossing      | 25.00  |       |
|  | Turning Movements                      | Turned right too wide.                                 | 15.00 |
| Turned from wrong lane   |  | 15.00  |       |
| Cut across driveway (sidewalk, parking lot, business or Residential) to make turn. |  | 15.00  |       |
| Wrong side or wrong  | Drove on Wrong side of road            | 15.00  |       |
|  | Drove wrong way on oneway road         | 15.00  |       |
| Following  | Following to close                     | 15.00  |       |

**GUYMON, OKLAHOMA-CATTLE AUCTION MARKET - NEWS - LETTER**

GREETINGS TO ALL FRIENDS AND CATTLE PRODUCERS

FRIDAY, JULY 13TH, WAS THE REGULAR AUCTION DAY IN GUYMON, OKLA. A GOOD ATTENDANCE OF BUYERS AND SELLERS WERE ON HAND FOR THE AUCTION. MOST ALL CLASSES OF CATTLE SOLD ON AN ACTIVE TO HIGHER MARKET.

**MARKET BRIEFS**

PACKER COWS SOLD STEADY, SELLING FROM \$46.00 TO \$53.00 PER CWT. COW AND CALF PAIRS SOLD STEADY. STEER CALVES SOLD ACTIVE, SELLING IN A PRICE RANGE OF \$90.00 ON THE PLAIN KIND AND UP TO \$125.00 PER CWT ON THE BETTER KIND. HEIFER CALVES SOLD VERY ACTIVE, SELLING FROM \$85.00 TO \$108.00 PER CWT. FEEDER STEERS AND HEIFERS SOLD VERY ACTIVE, SELLING \$2.00 PER CWT HIGHER THAN THE PREVIOUS WEEK.

OUR NEXT AUCTION WILL BE NEXT FRIDAY, JULY 20TH, STARTING AT 11:00 a.m., BE WITH US FOR THIS EVENT. WE ARE EXPECTING SEVERAL GROUPS OF STOCKER STEER AND HEIFER CALVES, SOME OF THESE WILL BE NATIVES OF OUR TRADE AREA. SEVERAL CONSIGNMENTS OF FEEDER STEERS AND HEIFERS. FOR ANY INFORMATION OR DETAILS ON OUR NEXT AUCTION GIVE US A CALL IN GUYMON AT THE PANHANDLE LIVESTOCK COMM. CO. THAT NUMBER IS: (409) 338-3378 AND ASK FOR BILL BLACKMORE, OR GIVE ME A CALL AT MY RESIDENCE AT NIGHT. THAT NUMBER IS: (409) 349-2254.

THE PANHANDLES LEADING CATTLE AUCTION WITH ACTION

**PANHANDLE LIVESTOCK COMMISSION CO.**  
Guyton, Okla., 73042 • 409-338-3378 • P.O. Box 879

**PRICES GOOD THRU JULY 21**

**UNITED Supermarkets** Perryton, Texas

**WIN UP TO \$2000 CASH!**

**\$200,000 IN CASH PRIZES**

**ALL QUANTITY RIGHTS RESERVED**

**KLEENEX TOWELS** JUMBO ROLL **59¢**

**KAL KAN DOG FOOD** 3 14 OZ. CANS **\$1**

**DAYTIME PAMPERS** EXTRA ABSORBENT 24 CT. **\$2.79**

**GIANT TIDE** 10' OFF 49 OZ. BOX **\$1.39**

**30¢ COUPON** 5 LB. BAG FINE FARE **SUGAR** WITH COUPON **89¢** WITHOUT... \$1.19 EXPIRES 7-21-79

**WHITE SWAN INSTANT TEA** 3 OZ. JAR **\$1.39**

**KRAFT GRAPE JELLY** 2 LB. JAR **79¢**

**MANAGER'S SPECIAL** Swift Vienna Sausage 5 oz **39¢**

**FINE FARE SALAD DRESSING** 10 OZ. JAR **89¢**

**FINE FARE CREAMY OR CRUNCHY PEANUT BUTTER** 18 OZ. JAR **89¢**

**FINE FARE SALTINE CRACKERS** 1 LB. BOX **49¢**

**UNITED POTATO CHIPS** 8 OZ. BAG **59¢**

**VINE RIPE CANTALOUPE** LB. **29¢**

**NO. 1 RUSSET POTATOES** 5 LB. BAG **79¢**

**CREAMY HASS AVOCADOS** 3 FOR \$1

**GREEN PASCAL CELERY** STALK **49¢**

**CELLO CARROTS** 2 16 OZ. BAGS **49¢**

|                                   |  |       |
|-----------------------------------|--|-------|
| Overtaking                        | Cut in after passing   | 15.00 |
| Vehicle lights, lamps signals     | Defective head lamps   | 15.00 |
|                                   | Defective Tail Lamps   | 15.00 |
|                                   | Defective Stop lamps   | 15.00 |
| Parking Violations                | Stop, Stand or Park on Main Roadway blocking traffic               | 15.00 |
|                                   | Double Parked  | 15.00 |
|                                   | Parked where Prohibited  | 15.00 |
|                                   | Illegal Parking  | 15.00 |
| Miscellaneous traffic violations  | Defective Muffler (loud, none, etc.)                               | 15.00 |
|                                   | Disregarded Police Officer   | 15.00 |
|                                   | Fleeing from Police Officer  | 35.00 |
|                                   | Failed to comply with requirements on striking unattended vehicle  | 20.00 |
|                                   | Failed to comply with requirements on striking fixtures on roadway | 20.00 |
|                                   | Failed to report accident- non injury                              | 15.00 |
|                                   | Failed to report Accident with injuries                            | 25.00 |
|                                   | Following fire apparatus   | 25.00 |
|                                   | Following ambulance  | 25.00 |
|                                   | Crossed fire hose without permission                               | 25.00 |
|                                   | Driver opened door in moving lane of traffic                       | 15.00 |
|                                   | Unsafe backing   | 15.00 |
|                                   | Failed to Dim Headlights   | 15.00 |
|                                   | Improper use of Spotlights   | 15.00 |
|                                   | Drove without lights when required                                 | 15.00 |
|                                   | Left refuse on roadway or street                                   | 25.00 |
| Signal Intention                  | Failed to signal for turn  | 15.00 |
| Pulling Away                      | Unsafe start from Parked Position                                  | 15.00 |
| Motorcycle Violations             | Too many riders  | 15.00 |
| Violations Against Pedestrians    | Failed to Yield ROW to Pedestrian                                  | 20.00 |
| Drivers License Violations        | No drivers license-unlicensed                                      | 20.00 |
|                                   | No DL on person  | 15.00 |
|                                   | Violation of DL Restriction  | 15.00 |
|                                   | Driving on Suspended license                                       | 25.00 |
| Registration and title violations | Operating unregistered vehicle                                     | 20.00 |
|                                   | Operating vehicle without license plates                           | 15.00 |
|                                   | No valid MVI Sticker   | 10.00 |

### Grasshoppers Plaguing Western Texas

College Station--Hordes of grasshoppers are stripping rangelands in the Texas Panhandle and have their sights on pastures, ranges and crops to the south and east.

Some 1.5 million acres of rangeland have already been treated or will be treated shortly in the Texas Panhandle, report Dr. Mike McWhorter and Dr. Phil Hamman, entomologists with the Texas Agricultural Extension Service, Texas A&M University System. Counties in the spray area have a grasshopper count ranging from 32 to 54 per square yard. A count of eight adult grasshoppers per square yard is considered serious enough for control measures.

According to McWhorter and Hamman, the spray program for rangeland involves use of the insecticide malathion and is being conducted on a cost-share basis with ranchers, the Texas Department of Agriculture, and the Animal and Plant Health Inspection Service of the U. S. Department of Agriculture. Spray applications are made after grasshoppers hatch and before females start laying eggs.

The entomologists encourage farmers and ranchers as well as homeowners to check for grasshopper infestations along roadsides, fence rows or idle, undisturbed ground where the pests may be hatching. A key to effectively suppressing grasshopper numbers is to treat these hatching areas early before young hoppers begin to migrate.

A bait mixture using toxaphene has been effective in controlling grasshoppers along field margins and roadsides, point out McWhorter and Hamman. The formulation calls for 100 pounds of mill-run bran, 1 1/2 pints of Toxaphene 6E, 7 to 8 gallons of water, and 2 gallons of blackstrap molasses. Sawdust may be substituted for up to 1/3 of the amount of bran.

Distribute the bait while still moist at 10 to 20 pounds per acre.

Another product, Hi-Plains Border Bait, is a ready-to-use formulation that is registered in Texas but currently has no distributorship.

To prevent extensive grasshopper damage to crops and home gardens, McWhorter and Hamman recommend the following insecticides:

- Cotton--Malathion EC or ULV and Sevin 80S;
- Corn--Alfator EC, Diazinon AG 500, Malathion EC or ULV, Sevinol 4, Sevin 80S, Sevin 50 WP and Sevin 4 Oil;
- Sorghum--Malathion ULV, Sevinol 4, Sevin 80S and Sevin 50 WP;

Wheat and Other Small Grains--Malathion EC or ULV, Penncap-M, Sevinol 4 and Sevin 4 Oil;

Home Gardens--Diazinon 25 EC, Malathion EC and Sevin 50 WP.

Consult respective insecticide labels for specific rates of application and use precautions, advise the entomologists.

McWhorter and Hamman emphasize that the above insecticides will kill only those grasshoppers present at spraying time or a short time thereafter. Followup applications will be needed, particularly in areas of high infestations, to control migrating grasshoppers.

### Oil & Natural Gas Add To State Economy

DALLAS--Increased values for Texas oil and natural gas last year resulted in a substantial boost to the state's economy, but a sharp drop in Texas reserves marks a disturbing trend, according to report published by Texas Mid-Continent Oil & Gas Association.

In the new edition of its annual facts series, 79 Facts About Texas Oil and Gas, which is distributed free to the public, the Association points out that Texas oil and gas reserves dropped significantly in one year. The 1977-78 decline for natural gas was 12.3 per cent; for crude oil, 9.2 per cent.

Reversal of this trend would require additional drilling, application of sophisticated and expensive recovery techniques to older fields, economic incentive, and the productive forces of free enterprise, the report says.

According to 79 Facts, all Texas last year shared in rising values for Texas crude oil and natural gas, which pumped \$1 billion in tax revenues into

the state's treasury, provided more income for royalty owners -- including state government -- and resulted in additional jobs and \$5.2 billion in wages for industry employees.

Spotlighting key elements of Texas oil and gas industry operations, 79 Facts covers several performance categories, including production, refining, offshore, drilling, employment, economics, and taxation.

79 Facts may be obtained free on request to the Association, 1341 W. Mockingbird Lane, Dallas 75247.

### SAVINGS AND INTEREST

Starting July 1, millions of Americans will be able to get higher interest rates on savings accounts, but financial experts say this won't necessarily insulate a family's savings from inflation. Liberalized interest rates also were approved for some credit union accounts.

### WTCF Creates Pediatric Visiting Professorship

Nationally known figures in health care will become visiting professors at Texas Tech University School of Medicine beginning this fall through the efforts of the West Texas Children's Foundation (WTCF).

The WTCF has created an annual visiting professorship program in the medical school Department of Pediatrics to provide additional opportunities for the sharing of expertise and experiences.

Visiting professors will spend one week at TTUSM providing lectures and consultation with students, resident physicians, faculty and community physicians. The opportunity for direct contact and professional interchange with experts from various parts of the country is an invaluable enrichment to departmental programs, said Robert Moore, M.D., clinical professor of pediatrics and past president of the WTCF.

The WTCF is a non-profit corporation created in 1975 to support medical research, education and clinical activities for the benefit of children. Foundation activities are supported through donations, gifts and memorial contributions, said Larry Ackers, president. Inquiries may be addressed to West Texas Children's Foundation, Box 10212, Lubbock, Texas 79408.

### Workshop Planned

The annual Crop Insurance Grain Sorghum Workshop and Field Tour will be held at Panhandle State University August 20, 21, and 22. The Crop Insurance research is under the direction of Mr. Raymond Peck, Professor and Head of Agronomy at PSU. Mr. Peck is completing his 25th year with the National Crop Insurance Association.

The programs start on a Monday at 1:00 p.m. with a briefing with the Grain Sorghum Research Committee and a tour of the research station. Registration will be at 5:00 p.m. in the PSU student union followed by a sandwich buffet. Basics for new adjusters on grain sorghum procedure will be held at 7:00 p.m. in the student union ballroom.

The Tuesday session will start at 7:45 a.m. at the PSU research station with a tour for the adjusters of the research facility and plot by Mr. Jack Alexander, Director of the Research Station. At 9:00 a.m., a demonstration of the hall machines used on grain sorghum will be held. The remainder of the morning sessions will be the procedure for grain sorghum adjusting by Growth Stage Identification, Stand Reduction, Determinative of Ultimate Leaf, and Determinative of Leaf Area Destroyed.

The afternoon session will start at 1:00 p.m. with introductions by Raymond Peck; a welcome by Dr. Thomas Palmer, President at Panhandle State; a Crop Insurance Association report by Mr. John Ames; and a Grain Sorghum Research Committee report by Mr. J. R. McMillian, chairman. Lecture sessions will start with Mr. Raymond Peck on "The Grain Sorghum Plant," "Sorghum Insects," by Dr. Bill Massey, Area Entomologist from Guyton; "Rapid Farming System" by John Patten from J. I. Case Tractor Co.; "Weeds and Weed Control in Grain Sorghum" by Eugene Reeves, Professor of Agronomy at PSU; and "Metrics in Agriculture" by Mr. Vernon Hopson, Associate Professor of Mathematics at PSU.

BINGO

**WIN UP TO 5 BOOKS & S&H STAMPS**

40,000,000

S&H GREEN STAMPS PRIZES

**ODDS CHART**

Effective July 1, 1979

|       |        |         |          |
|-------|--------|---------|----------|
| 1-10  | 1-100  | 1-1000  | 1-10000  |
| 1-20  | 1-200  | 1-2000  | 1-20000  |
| 1-30  | 1-300  | 1-3000  | 1-30000  |
| 1-40  | 1-400  | 1-4000  | 1-40000  |
| 1-50  | 1-500  | 1-5000  | 1-50000  |
| 1-60  | 1-600  | 1-6000  | 1-60000  |
| 1-70  | 1-700  | 1-7000  | 1-70000  |
| 1-80  | 1-800  | 1-8000  | 1-80000  |
| 1-90  | 1-900  | 1-9000  | 1-90000  |
| 1-100 | 1-1000 | 1-10000 | 1-100000 |

**WHOLE WHITING FISH**

69¢

LB.

**SPARE RIBS** UNDER 3 LB. AVG. LB. \$1.39

**BEEF RIBS** UNITED TROTENDR BEEF NAVAL CUTS LB. 89¢

**RIB STEAKS** UNITED TROTENDR BEEF LB. \$1.89

**GROUND BEEF** FRESH FAMILY PACK LB. \$1.49

**CHEESE** 12 OZ. PKG. \$1.29

**BONELESS HAM** WILSONS CERTIFIED FULLY COOKED HALVES LB. \$1.79

**MELLORINE** ASST. FLAVORS GAL. 69¢

**BACON** FINE FARE REG. OR THICK SLICED LB. \$1.29

**WILSONS CERTIFIED**

**POTTED MEAT** 4 3 OZ. CANS 89¢

**RICE** LONG GRAIN 42 OZ. BOX 89¢

**VIENNA SAUSAGE** 4 5 OZ. CANS \$1

**DINNER** 4 7 1/2 OZ. BOXES \$1

**HEALTH & BEAUTY**

**GILLET TRAC N BLADES** 9'S PKG. \$2.49

**BULBS** 4 PACK 99¢

**TOOTH PASTE** 4.6 OZ. TUBE 89¢

**BELL BUTTER** 1/2 GAL. 89¢

**BELL SOUR CREAM** 16 OZ. 79¢

**UNITED LOWFAT MILK** 1/2 GAL. \$1.39

**FROZEN FOOD**

**ORANGE JUICE** 3 6 OZ. CANS \$1

**BROCCOLI** 16 OZ. 79¢

**COB CORN** 6 EARS 79¢

**UNITED Supermarkets**

Perryton, Texas

QUANTITY RIGHTS RESERVED

PRICES GOOD THRU JULY 21

Announcing

opening of offices for general practice

DR. ZAE Y. ZEON M.D.

Gruver Clinic, Gruver, Texas

**ALLSUP'S**  
CONVENIENCE STORES  
Gruver, Texas

Now Taking Application's Interviewing For Manager Asst. Manager & Clerk's At Gruver State Bank

Friday, July 20 9 a.m. and 3 p.m.

Allsup's Conv. Store's  
Gruver, Texas



### Kirby Hargis Receives Scholarship

LUBBOCK--Kirby Dean Hargis, a veteran Spearman FFA member, today received a four-year, \$6,000 college scholarship from the Houston Livestock Show and Rodeo. Kirby, son of Mr. and Mrs. James Hargis (1106 Wilmeth, Spearman), is a recent honor graduate of Spearman High School. An FFA member for the past four years, Kirby has served as chapter president and vice president. He has won many awards for his judging and showing of livestock on the area, district, county and local levels. A Chapter Farmer Degree recipient, Kirby has been active

on the parliamentary procedure, meat judging and chapter conducting teams. He also has served on his chapter's recreation and parent-member banquet committees.

While in high school, Kirby was vice president of the Fellowship of Christian Athletes, vice president of his church youth group, a two-year winner of the Farm Bureau Husbandry Award and won the Howard Alfred Memorial Scholarship.

Kirby, who plans to major in agriculture at Texas Tech University, was one of 50 recipients of Houston Livestock Show and Rodeo scholarships presented at the State FFA Convention.

The Show, which also presented 50 four-year, \$6,000 scholarships to 4-H members during their State Roundup in June, is the largest donor of agricultural scholarships in the United States. During the coming school year, the Show will have 339 students on scholarship in Texas colleges and universities; this represents a commitment of \$1.9 million.

The winners, carefully selected from hundreds of applicants, are the best in the state from the standpoints of academics and leadership. The only requirements made of the students are that they major in some form of agriculture at a college or university within the confines of the state.

The monies used to fund the scholarship program are derived directly from proceeds generated by spectators at the Houston Livestock Show and Rodeo, a civic, charitable organization whose efforts, actions and revenues are used directly to benefit youth and to support education.

**That's Telling 'Em**  
Question -- Did you know that the King of England touched my great-great-grandfather on the head with a sword and made him a Duke?  
Answer -- That's nothing. And Indian Chief tapped my great-great-grandfather on the head with a tomahawk and made him an Angel.

**Amateurish**  
Employer (interviewing applicant for job): "Know anything about electricity?"  
"Yessir."  
"What's an armature?"  
"A chap who boxes for nothin'!"

**So Sudden**  
Officer -- "You've been doing sixty miles an hour. Don't you care anything about the law?"  
Lady -- "Why, officer, how can I tell yet, I've only just met you."

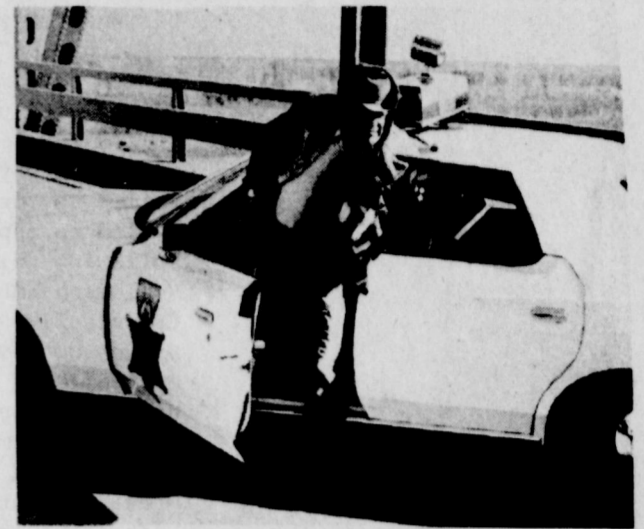
**Entertaining**  
Pat -- When I sat down to play the piano they laughed.  
Ed -- Why?  
Pat -- There was no piano stool there.

**In the Past**  
She: "What tense is 'I am beautiful?'"  
He: "Past."

**Good Question**  
Father -- When I was a young man girls knew how to blush.  
Daughter -- Why, father, whatever did you say to them?

**Atomic Reaction?**  
"What caused the explosion at your house?"  
"Powder on my coat sleeve."

**Derangement By The Dozen**  
Judge -- What possible excuse did you have for acquitting that murderer?  
Foreman of the Jury -- Insanity.  
Judge -- What, all twelve of you?



Escaped convict T. M. Pryor (GEORGE PEPPARD) pauses in his frenzied flight to befriend a homeless beagle puppy, in "Five Days From Home."

# Annual SUMMER SALE ENDS

## FINAL Sale ends

Sat. July 28

# WHITE ELEPHANTS

|   | REG.     | SALE     |
|---|----------|----------|
| Beige & blue traditional sofa.....                        | \$649.50 | \$250.00 |
| 1-P.R. chrome base modern print swivel chairs - Each..... | \$309.50 | \$150.00 |
| Brown velvet occasional chair.....                        | \$298.50 | \$100.00 |
| Square curio table.....                                   | \$84.50  | \$45.00  |
| Oak end table.....  | \$149.50 | \$80.00  |
| Brass top bontek table.....                               | \$279.50 | \$150.00 |
| 1-P.R. cranberry table lamps - Each.....                  | \$159.50 | \$60.00  |
| Paul Bunyon bed (4 poster, queen).....                    | \$569.50 | \$298.50 |
| Console & mirror.....                                     | \$498.50 | \$298.50 |

### BEDDING

|  | REG.      | SALE      |
|--|-----------|-----------|
| Queen size Slumberking by Simmons - SET..... | \$ 239.50 | \$ 199.95 |
| King size Deepsleep by Simmons - SET.....    | \$ 349.50 | \$ 298.50 |

### BEDROOM FURNITURE

|  | REG.      | SALE        |
|--|-----------|-------------|
| Light oak double dresser, mirror, queen size bed & 2 nite stands by Thomasville..... | \$ 927.00 | \$ 688.50   |
| White & brass queen size bed by Pulaski.....   | \$ 739.00 | \$ 488.50   |
| All bedroom pieces in Apothecary by Pulaski CLOSING OUT AT.....                      |           | 33 1/2% OFF |
| Double dresser with hutch mirror by Harrison (a real steal).....                     | \$ 519.95 | \$ 275.00   |
| All maple bedroom pieces by Tell City.....   |           | 25% OFF     |

### HIDE-A-BEDS BY SIMMONS

|   | REG.      | SALE      |
|---|-----------|-----------|
| Sculptured gold velvet.....                             | \$ 799.50 | \$ 598.50 |
| Brown print hide-a-bed sofa with matching loveseat..... | \$1195.00 | \$ 899.50 |
| Ribbed brown velvet.....                                | \$ 698.50 | \$ 539.50 |
| Beige print loveseat hide-a-bed.....                    | \$ 399.50 | \$ 299.50 |
| Quilted blue print traditional.....                     | \$ 749.50 | \$ 569.50 |
| Beige/green/rust stripe (tufted back).....              | \$ 719.50 | \$ 569.50 |
| Beige/brown/rust plaid.....                             | \$ 549.50 | \$ 439.50 |

### CLEARANCE LIVING ROOMS

### LIVING ROOM FURNITURE

|   | REG.      | SALE      |
|---|-----------|-----------|
| Brown & blue print sofa & loveseat by Brookwood.....      | \$ 849.50 | \$ 598.50 |
| Beige & brown print sofa & loveseat by Stratford.....     | \$ 759.50 | \$ 559.50 |
| Beige & blue print sofa by Highland House.....            | \$ 698.50 | \$ 498.50 |
| Haitian cotton loose pillow sofa by Brookwood.....        | \$ 598.50 | \$ 449.50 |
| Blue & brown print, cane panel sofa by Ayers.....         | \$ 798.50 | \$ 598.50 |
| Brown velvet, cane panel chair & ottoman by Ayers.....    | \$ 559.50 | \$ 398.50 |
| Beige stripe velvet sofa by International.....            | \$ 795.00 | \$ 599.95 |
| 8-pc. beige velvet circular pit group.....                | \$1695.00 | \$1350.00 |
| Beige & brown pheasant pattern sofa by Maxwell Royal..... | \$ 798.50 | \$ 598.50 |
| Brown vinyl tufted sofa by Stylehome (Slight damage)..... | \$ 498.50 | \$ 298.50 |

ALL BEDSPREADS SALE PRICED

ALL ROLLS OF CARPET & REMNANTS ON SALE ALL

## All Patio Furniture 30% Off

### LA-Z-BOY RECLINERS

|   | REG.      | SALE      |
|---|-----------|-----------|
| 1-P.R. beige herculon - EACH.....       | \$ 279.50 | \$ 199.50 |
| 1 Dark brown velvet wing.....           | \$ 429.50 | \$ 299.95 |
| 1 Rust velvet.....                      | \$ 379.50 | \$ 269.50 |
| 1 Ribbed gold velvet.....               | \$ 399.50 | \$ 279.50 |
| 1 Brown tweed pine arm.....             | \$ 379.50 | \$ 269.50 |
| 1 Orange velvet wall recliner.....      | \$ 339.50 | \$ 259.50 |
| 1 P.R. dark brown naugahyde - EACH..... | \$ 239.50 | \$ 179.50 |
| 1 P.R. rust naugahyde - EACH.....       | \$ 239.50 | \$ 179.50 |
| 1 Gold herculon tweed.....              | \$ 259.50 | \$ 198.50 |

### DINING ROOM FURNITURE

|   | REG.      | SALE      |
|---|-----------|-----------|
| 42" round table & 4 chairs (Apothecary) by Pulaski.....   | \$ 777.50 | \$ 529.50 |
| 48" Octagon table & 6 chairs (Apothecary) by Pulaski..... | \$1164.00 | \$ 789.50 |
| 48" round table & 6 chairs (Keepsakes) by Pulaski.....    | \$1287.00 | \$ 859.50 |
| Oak sideboard (Keepsakes) by Pulaski.....                 | \$ 539.50 | \$ 369.50 |
| 48" round pedestal table by Tell City.....                | \$ 498.50 | \$ 379.50 |

|   | REG.      | SALE      |
|---|-----------|-----------|
| Maple buffet & china top by Tell City.....                          | \$ 995.00 | \$ 798.50 |
| 42" round table & 4 chairs on casters by Blacksmith Shop - SET..... | \$ 898.50 | \$ 675.00 |
| 42" round table & 4 chairs on casters by Blacksmith Shop - SET..... | \$1069.50 | \$ 799.50 |
| Rattan table & 4 chairs by Artisan - SET.....                       | \$ 639.50 | \$ 398.00 |
| Rect. table & 6 chairs on casters by Cal-Style.....                 | \$ 979.50 | \$ 759.50 |

PLEASE ... NO APPROVALS!

# BEEDEY FURNITURE CO.

723 W. 7th

Spearman, Texas

Phone 806-659-3701

### TERMS:

Nothing down, 36 months to pay.  
90-Day charge - no finance charge  
30-Day open account - no finance charge