

WHEAT	\$4.16
MILO	4.70
CORN	3.18
SOYBEANS	7.27

New Sports Tally



THE SPORTS TALLY will open for business July 2 at 717 W. 7th street in Plains Shopping Center. Owners of the new store are Mr. and Mrs. L.C.

Owens and managers are Mr. and Mrs. Ricky Howard. See their ad inside for opening specials.

TG&Y Celebrating 43rd Birthday



Tony Salazar, on the left, is the new assistant manager at TG&Y. Tony comes to Spearman from Clovis. He and his wife Phyllis have two children; Randy age 11, and Melissa age 7. Jerry

Brock pictured on the right, the local TG&Y manager, invites you to drop by and meet Tony, and be sure and register for the 1330 anniversary sale prizes that TG&Y is giving away this year.

The local TG&Y store is joining with other TG&Y stores in celebrating its 43rd birthday with a birthday sale.

During this sale customers may register for the TG&Y GE Sweepstakes for a chance to win one of the 1,330 prizes worth more than \$24,000 being given away.

No purchase is necessary to

register. All prizes will be awarded. Registrants must be 18 years of age or older. Winner is liable for all taxes incurred.

Registration closes June 30, 1979.

Complete rules and details available at any participating TG&Y store.

The Spearman Reporter

VOLUME 70, NO. 33

THE SPEARMAN REPORTER, SPEARMAN, TEXAS 79081

SUNDAY, JUNE 28, 1979

Halee Reed Crowned Rodeo Queen



Halee Reed

Halee Reed, daughter of Mr. and Mrs. A. D. Reed, Jr. of Spearman, was crowned Miss Texas High School Rodeo Queen at the finals of the state meet in Sequin Saturday night. She also took first place in horsemanship in the finals. She was 4th in the first go round of breakaway roping. These performances earn her a trip to Fargo,

North Dakota, for the national championships July 30-Aug. 5.

At Fargo she will compete in the queen's contest and in breakaway roping.

Others from the area who will be competing in the national championships are Jed Garrison of Channing and Marty Devers of Booker, who will compete in steer wrestling.

Fireworks Display Planned For July 4

The Spearman Chamber of Commerce will host the Fireworks display on the 4th of July. There have been numerous requests to have a display again. It will be held at the Lynx Stadium beginning at 9:45 p.m. or when it is dark enough for fireworks. The Fireworks Spectacular is designed by Western Enterprises of Enid, Oklahoma, who will also be in charge of firing the display.

The show will begin with two 3-inch Aerial Flash Salutes to announce the opening of the display. There will be a beautiful aerial display and the grand finale will be the American Flag-Old Glory in all her beauty and color, gently waving in the evening breeze and eighteen shells high in the sky to break in a salvo of brilliant colors and effects.

The Chamber of Commerce invites everyone to attend this beautiful Fireworks display and hopes that each of you will have an enjoyable evening.



GUESS WHO - You name it (IS SHE MRS. FIRECRACKER FOR 1979?)



Guess what-See You Name It

4-H Horse Show Winners Named

The Hansford County 4-H Horse Show was held Saturday, June 16 at the Oscar Archer Arena in Spearman. The show was held to qualify 4-H'ers for the District Horse Show June 27-28 in Amarillo. A total of 14 4-H'ers participated in the show.

At the show, Hadley Reed, son of Mr. and Mrs. A.D. Reed, was named the high point boy and Andrea Archer, daughter of Mr. and Mrs. Bobby Archer was named high point girl.

The Grand Champion mare was shown by Tonia Vernon and Reserve Champion by Travis Patterson.

Grand Champion Gelding was shown by Jon Garnett and Reserve Champion by Hadley Reed.

Jon Garnett took first place honors in the showmanship class and first place in Western Pleasure went to Hadley Reed.

In Western Horsemanship and Reining Hadley Reed also took first places, while in the Barrel Racing and Pole Bending first place went to Tiki Jackson.

Competing at the show also were: Will Jarvis, Anne Marie Jarvis, Mark Garnett, Jennifer Umphress, Cole Umphress, Dirk Umphress, Carlee Dixon, and Shannon Vernon.

The 4-H'ers would like to thank Dick Elbert of North Plains International for donating the tractor and disc to work the Arena and everyone who helped make the show a success.

Weather Slows Harvest Here

Farmers in Hansford County and in the area are waiting for fields to dry since the rains and damp weather over the weekend hoping to get in the fields and harvest what looks like a bumper crop of wheat. Very little wheat has been cut here, and harvest would probably have been in full swing this week if it had not been for the damp weather.

Heavy rains were reported in the Morse area over the weekend and the Palo Duro Creek was running about 3/4 full Tuesday. No reports of damaging storms have been received.

Hansford County agent Layton Barton said "We've got a potential for as good a crop as we've had in several years." He said he had heard reports of dryland making 54 bushels an acre.

There are about 80,000 acres of wheat that will be harvested in the county this year and with the prices up about \$1.50 over this time last year, this year's crop will aid the economy here.

So Hansford County farmers will continue to cool their heels, eye the clouds, and watch the market to see just what wheat harvest 1979 holds for them.

Hospital News

Patients in Hansford Hospital are Ophelia Vela, Jim Ivey, Will Douglas, Edna Briley, Angela Lomeli and daughter, Ida Wilmeth, Mary Arnold, Agnes Windom, Ernestine Gray, Jose Armendariz, Lewis Frantz, Glen Mackie and Vernell Byrd. Dismissed were Nancy Ingie, Billy Close, Odis Kizziar, Kelly Shieldknight, Carlos Arona, Patricia Redding and Bertha Espinosa.

Dr. Zeon To Arrive Soon

Dr. Zae Zeon is scheduled to arrive in Hansford County the first week of July and will open up the Gruver Clinic on his arrival.

Dr. Zeon of Jersey City, N. J. completed his residency at Brooklyn Cumberland Medical Center this month. Mrs. Zeon is a registered nurse.

They are the parents of a baby girl born June 11. This is their first child.

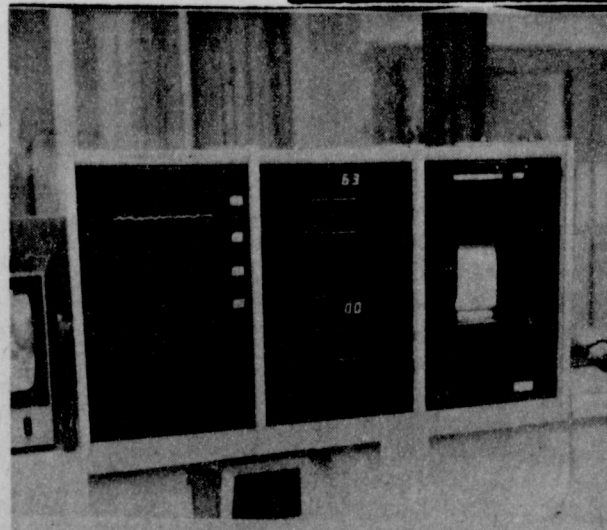
Dr. David McClellan, son of Mr. and Mrs. Roy L. McClellan of Spearman, is scheduled to open his practice Sept. 5, the day after Labor Day. His offices will be located in the building which formerly housed Dr. Hackley's offices.

We are indeed fortunate to have these two doctors coming to augment our medical facilities in the county. They will join two other doctors practicing

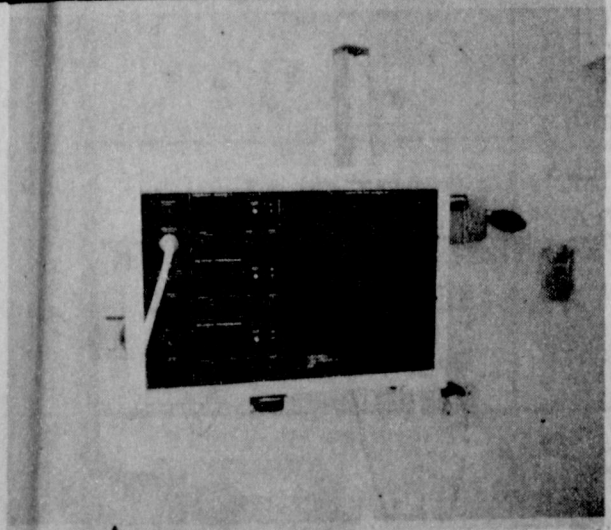
medicine here, Dr. R. L. Kleiberger, who has practiced her for many years, and Dr. Mario Manese, who has been in Spearman for over a year.

Other medical news in the county this week concerns a new \$30,000 heart monitoring equipment for Hansford Hospital. This equipment is the very latest and monitors blood pressure is up to 3 areas of the body, monitors heart rate, high and low alarms, has digital read outs for heart beat, heart rate, automatic tracing, can freeze heartbeat or screen anything abnormal.

Mrs. Effie Hackley of Spearman died Tuesday evening in Hansford Hospital after a lengthy illness. Services are pending as we go to press.



This is the nurses station. New Heart Monitoring system.



The room monitoring heart system

Commissioners Meet

Commissioner's Court of Hansford County met in regular session Monday, June 25 at the court house. Minutes were read and approved.

They budgeted \$3,360 for the Stationmaster's Museum and agreed to replace air conditioners in the Home Demonstration Building. They received an order ap-

pointing Mr. Donald M. Farry, Jr. as probation officer for the 84th Judicial District.

The sheriff was authorized to attend the State Sheriffs Convention at Corpus Christi, July 22 thru July 25.

Commissioners authorized salaries of employees of sheriff, tax assessor-collector and clerk's offices.

BILLY HAYES RE-LIVES A NIGHTMARE DURING PRODUCTION OF "MIDNIGHT EXPRESS"

Exactly two years to the day after breaking out of Turkey's notorious Sagmalcilar Prison, Billy Hayes walked onto a movie set which duplicated his cell. "It was a strange, scary feeling," said Hayes. "I was shivering and sweating at the same time."

Seven years earlier, Hayes had been arrested at the airport in Istanbul, charged with trying to smuggle a small quantity of hashish out of the country. He was sentenced to four-and-a-half years in prison, but less than two months before his scheduled release, the Turkish high court "reviewed" his sentence — and resented him to another thirty years.

He later described his prison experiences and his daring escape in the best seller, "Midnight Express," written with William Hofer. That book has now become a major motion picture, produced by Casablanca Record and FilmWorks and released by Columbia Pictures, which opens June 28 at the Holiday Theatre. Since there was obviously no way the Turkish government would allow the movie to be made within its borders, director Alan Parker and production designer Geoffrey Kirkland took over the stark, stonewalled barracks of Fort St. Elmo on the tip of Malta, and created a precise replica of Sagmalcilar Prison. It was here that Hayes experienced a jittery sense of deja vu. "There were a few small differences between the set and the real prison, but the resemblance was uncanny," said Hayes. "The production people and the costume designer did a fabulous job."

"When I arrived, I walked past a group of Turkish kids and started to speak to them in Turkish. But they were Maltese extras and didn't understand me! I passed two Turkish policemen and that really shook me — I drew back! They looked so real. It took a while before I could put my arms around their shoulders to pose for a publicity picture."

When Hayes came to the set, director Parker was shooting a scene on a high balcony, overlooking the prison courtyard. Brad Davis was portraying Hayes with British award-winner John Hurt as the frail, eccentric English prisoner, Max, and Randy Quaid as the explo-

sive American, Jimmy. "Again, there was this odd, awful sense of being whirled back in time," continued Hayes. "I felt an immediate affinity for Brad Davis. He was so completely involved in the character, my character. He didn't even come out of it when shooting stopped. He wasn't trying to look like me. Although we're about the same size, he's dark and I'm fair."

"Randy is a lot taller than the real Jimmy Booth," but watching him I knew he had an emotional grip on the character. "John Hurt really amazed me. He looked so much like Max that I was stunned. The hair had been shaved from his forehead, and the rest looked wispy, as if it was falling out, just like Max. With his cracked glasses and the caftan that Max picked up in India, the likeness was incredible."

"I talked with him later and he told me he hadn't read the book but has assimilated Max's character from the script. I was impressed with that."

Hayes' most unsettling experience was entering the huge "kogos" — Turkish for prison cell — which matched the one he'd shared with Max, Jimmy, and a snoothing trusty named Rifki.

"The filmmakers had everything right, down to the smallest detail. There were Turkish profanities scribbled on the walls and pictures of girls, cut out of newspapers, just as I remembered them. When I sat down on the bed and looked up at the bedsprings above me, I couldn't breathe, it was so real."

Later, the producers showed Hayes a few key scenes which had just been edited. "One scene comes just after I've been beaten by Hamidou, the head guard," Hayes recalled. "Brad Davis gets off the bed — he's in terrible shape — and Jimmy and Max help him walk down into the courtyard. I went into the theatre as an objective observer, but the reality was so strong it overwhelmed me."

"The other scene was in the Turkish court when I thought I was about to be released — and instead my sentence was changed to 30 years."

"It's a pivotal scene in the picture, as it was a pivotal moment in my life," Hayes went on. "Thanks to a close friend in prison (called 'Erich' in the movie), I had gained a new insight into Christianity. I was



ME-38 The real Billy Hayes (l.), an American college student who was sentenced to thirty years in Turkey's most notorious jail, meets his screen counterpart, actor Brad Davis, "Midnight Express," a Columbia Pictures release based on Hayes' nightmarish experiences and daring escape.

Mistakes — 'OK'

COLLEGE STATION—Accept humans as mistake-makers and you do a mentally healthy thing, says Jenny Reinhardt, a family life education specialist. "People who accept mistakes as a fact of life are freer to

brainstorm, dream up new ideas and try a new way," the specialist says.

Ms. Reinhardt is with the Texas Agricultural Extension Service, The Texas A&M University System. **SELF-TEST** How do you feel about mistakes? Take a self-test, she says. Have you ever stopped to ask

yourself if it's "ok" to make mistakes? How do you feel when you goof? Is it "ok" to "miss you mark" and try again? Or do you feel guilty if you goof?

"Unfortunately, there are many who have been taught that it's very bad to fall short of perfection," Ms. Reinhardt says. "This belief can lead to much stress and frustration. It also stifles creativity."

ACCEPT, BE FREE When we accept mistakes, we free ourselves of the "have-to-be-perfect" burden. We allow for imperfection in other-in children, adults and older adults.

We no longer have to use energy and time worrying about being a super person, because if we believe humans are mistake-makers, we are included. **STAMP OUT MYTHS** Stamping out myths about mistakes makes it easier to accept them, Ms. Reinhardt says.

One myth says if it's "ok" to make mistakes, then people won't carefully consider their choices. "Not true," the specialist says. "Those who accept humans as mistake-makers still weight the pros and cons of different choices when they make decisions."

Another myth says that if we believe mistakes will happen, we won't strive toward goals.

That isn't true either, Ms. Reinhardt insists. "Instead, those who know mistakes will happen are freer to work toward goals. "Rather than spinning our wheels worrying about making everything perfect the first time, we can relax and get to creating," she stresses.

TIPS FOR ACCEPTING Ms. Reinhardt suggests five tips to help accept ourselves and others as mistake-makers: **MAKE ALLOWANCES AND EXCUSES**—It's mentally healthy to say, "It took several tries before I succeeded, but the results were worth it."

Also, about another person's mistake, even when we can see the error clearly, it's mentally healthy to say, "Maybe she did not think of that idea."

REALIZE MISTAKES ARE PART OF LEARNING—We learn from watching others, and we learn from our mistakes. **DISCOVER THAT MISTAKES DON'T WRECK SELF-IMAGE**—A mistake is negative only if we choose to view it that way.

DO AWAY WITH 'SHOULD'S—Accept what did happen and to look for options. Feeling badly about what "Should" have happened is a "go-nowhere" approach.

WALK IN OTHERS' SHOES AWHILE—Taking time to understand another person often can bring us feelings of acceptance and comfort. It can help us understand and accept ourselves better, too, Ms. Reinhardt says.

Ag News

Hansford County range owners have signed up approximately 57,000 acres for the grasshopper control program. Hopefully, the Texas Department of Agriculture will approve the program and the ranchers will get some relief from the hoppers.

A large number of grasshoppers are showing up in town lawns and gardens. Grasshoppers in the garden and around homes can be controlled with liquid Sevin or Malathion.

For cropland, producers can spray along face rows, roadsides, or idle ground where young grasshoppers are. Early treatment of these areas will greatly reduce the acreage that might otherwise require treatment. These areas can be sprayed with Malathion or Toxaphene.

Border baits to field margins have long been a means of grasshopper control. Currently, two bait formulations are available. Tide Products, Inc. received approval from TDA for incorporating toxaphene into a bait mixture. Directions for use of this product E.P.A. Reg. No. 6735-190, EPA SLNTX-780028 include the following: **BAIT PREPARATION**

To prepare a wet bait, mix the following ingredients in the correct proportions. Stir Toxaphene 6E into the amount of water and molasses specified and mix with mill-run bait to make a crumbly mash. The finished bait should be uniformly moist and yet will scatter into small flakes when broadcast.

Mill-run bait	100 lb.*
Toxaphene 6E	1 1/2 pt.
Water	7-8 gal.
Blackstrap molasses	2 gal.

*Sawdust may be substituted for up to 1/4 the mixture, i.e. 75 lbs. sawdust plus 25 lbs. bran. Spread the bait uniformly, by hand or with a broadcast machine, at the rate of 10 to 20 lbs. per acre. The most effective applications are made in the morning hours and when the bait is still moist.

Hi-Plains Border Bait which comes ready-to-use has recently received a 24 (c) registration in Texas. Currently, no distributors have been established in Texas. Inquiries regarding this bait can be made to: Robert D. Schmitt, High Plains Sprayers, Inc., P.O. Box 153, Wakeeney, Kansas. When using any chemicals be sure to read and follow all label directions.

WHEAT DEMONSTRATIONS Dr. Dale Pennington, Area Soil Chemist, was in Spearman Monday to take aerial infra-red photography of a wheat demonstration on Fred Groves. We are hoping to see some interesting differences on Fred Groves. We are hoping to see some interesting differences from the photos. We certainly want to thank Buster Hendrickson for flying Dr. Pennington and enabling us to get the aerial photography.

Several producers have been wondering about the availability of the new TAM 105 wheat. Very little 105 will be available this coming year. Hopefully, we will be able to get enough for some small demonstration plots. Dwight Hutchison and Mike Garnett have signed up for demonstration plots already. If anyone else is interested we will see what we can do. This will have to be done on a first-come-first-served basis, however.

Information mentioned in this news article is for educational purposes only. References made to commercial products or trade names is made with the understanding that no discrimination is intended and no endorsement by the Texas Agricultural Extension Service is implied. Educational programs conducted by the Texas Agricultural Extension Service serve people of all ages, regardless of socio economic level, race, color, sex, religion, or national origin.

4-H News

Texas 4-H youth invite others to help them tackle more than 70 different projects this year—at home and abroad.

At-home projects have a "today feeling" as more than 137,500 youth in 4-H clubs and special-interest groups "learn by doing," points out Peggy Winegarner, County Agent with the Texas Agricultural Extension Service, The Texas A&M University System.

Projects include foods and nutrition, electricity, photography and shooting sports. Clothing and textiles enrollment is 11,208 while, 11,514 4-H'ers are in horse projects. Well over 36,000 have undertaken foods and nutrition projects.

While these traditional projects, attract large numbers of 4-H youth, many new projects add another dimension to their range of learning opportunities, notes Mrs. Winegarner.

On the road, citizenship projects take some 4-H members to Washington, D.C., for the annual National 4-H Citizenship Short Course and Heritage Tour while other Texas 4-H'ers visit Japan as part of the U. S.-Japanese Labo Exchange Programs.

Today's 4-H theme, "Freedom To Be," reflects a constant effort to help youth find new experiences that offer interest and challenge, points out Mrs. Winegarner. This, in turn, helps them develop an enriched lifestyle—for life.

4-H leaders, in both urban and rural settings, number 22, 552—of which 6,377 are 4-H aged youngsters. Leaders are older youth and adults who volunteer their time and talents to help youth expand their horizons.

Regardless of the project each youth selects, leaders are a key factor in making that project work toward the youth's self-development—physically, socially, mentally and spiritually, says Winegarner.

Jimmy Carter, President: "I am entrusted with the security of the United States of America. I would never take any action that would jeopardize that trust."

Social Security News

Persons eligible for Medicare Health Insurance benefits who seek to supplement their coverage by purchasing additional private insurance should be sure that they are not buying coverage already provided by Medicare, warns Howard L. Weatherly, manager of the Pampa Social Security Office.

Weatherly says that Dallas regional officials of HEW's Health Care Financing Administration (HCFA), the federal agency that administers the Medicare and Medicaid programs, are concerned that many elderly medicare beneficiaries are being sold duplicate or overpriced supplementary insurance policies.

According to Jerry Sconce, HCFA's Regional Administrator, some medicare beneficiaries are being taken advantage of by a few unscrupulous insurance agents, often posing as representatives of medicare or the Social Security Administration. Sconce has recently contacted State Insurance Commissioners asking their cooperation in identifying and controlling such sales practices.

The problem is a costly one, said Sconce, citing a recent report by the U. S. House Select Committee on Aging which estimated that Senior Citizens are "being taken" for \$1 billion a year by a few insurance companies and their agents. The committee report also noted that some companies which specialize in selling this type of insurance return an average of 50 cents on the premium dollar while others return as much as 90 cents for similar coverage.

Sconce urges Senior Citizens considering buying a supplemental plan to be sure that they are not duplicating existing medicare coverage and to seek out policies that pay a high return in benefits. He further warned that any insurance salesman representing himself as connected with Medicare or Social Security should be viewed with suspicion since no federal employee is authorized to engage in this activity. Sconce urged the public to report any such misrepresentation to the local Social Security Office and to the State Insurance Commissioner.

Sizzling Special's Offered Through July 4th. Announcing The Opening Of The Sports Tally July 2nd

SPECIAL ATHLETIC TUBE SOCKS Reg. 1.29 99¢	SPECIAL MEN'S TENNIS SHOES Reg. 12.99 \$4.99	SPECIAL LEATHER SOCCER SHOES Reg. 21.99 \$17.99
SPECIAL SLAZENGER RAQUET BALLS Reg. 2.29 a can \$2.29 a can	SPECIAL RUBBER COVERED BASE BALLS Reg. 99¢ 69¢	SPECIAL 100% ACRYLIC WARM UP SUITS Reg. 29.99 \$19.99
SPECIAL RUNNING SHOES Reg. 19.99 \$16.99	SPECIAL MEN'S CROSS COUNTRY JOGGING SHOES Reg. 17.99 \$14.99	

9 AM to 6 PM
717 W. 7th Street 659-3878
Owner's Mr. & Mrs. L.C. Owens
Managers Mr. & Mrs. Ricky Howard

NOTICE OF HOMESTEAD EXEMPTIONS FOR 1979

The SPEARMAN INDEPENDENT SCHOOL DISTRICT hereby announces that all persons are entitled to receive an exemption of \$5,000 from the market value of their residence homestead for the purpose of school taxes. In addition, all persons who are 65 or older or under a disability for purposes of payment of disability benefits under Federal Old-Age, Survivors, and Disability Insurance are also entitled to an additional exemption of \$10,000 from the market value of their residence homesteads for the purpose of school taxes.

To qualify for these exemptions, an application must be filed with the school district tax office by July 16, 1979. Application forms are available at the school tax office located at: 403 E. 11th Street, Spearman, Texas.

WANTED ADS

CAPROCK MONUMENT CO.
Dealers of Georgia Granite, Georgia Marble, Colored Granite, & Bronze.

represented by
BOXWELL BROS. FUNERAL HOME
519 S. EVANS
659-3802

Hansford County
Planned Parenthood
265. Haney
659-2483
Spearman
Mon.-Fri.
8 a.m. to 12 noon
30S-rtm

SERVICES

SERVICE: Pits cleaned, wet or dry. Dragline or loader. Also, dozer, grader, carry-all service. Lee Roy Mitchell, 806-733-2384, Gruver, Texas 79040.

Pee Wee's Plumbing Service
Roto-rooter, Acoustical Ceilings. Blown Insulation in walls and ceilings. Appliance Service, used appliances for sale. 659-2811 or 659-3781.
20-rtm

NEW STEAM SHAMPOOER
with brushes
Rental \$8.95 per day. Available at 716 Cotter Drive after 4:00 p.m. and Saturdays and Sundays. Call 659-3437. Regular Steam Rinse & Vac Shampooer, \$5.95 per day at Gordon's Drug and after 4:00 p.m. and Saturdays and Sundays at 716 Cotter Drive.

NOTICE
Wallace Monument Co. Monuments, Curbing, Grave Covers
Local Representative
LEONARD JAMESON
659-3406
20-rtm

Alcoholic Anonymous meeting 8 p.m. Friday, Home Demonstration Club building. 305 N. Bernice. Phone 659-3181 for information.

Al-Anon meetings 8 p.m. Friday, Home Demonstration Club building. 305 N. Bernice in back room. Phone 659-3181 for information. Ask for Al-Anon.

KIRBY SALES & SERVICE*
New & reconditioned vacuum cleaners. 912 S. Bernice. 659-2797.

CUSTOM HAY BALING-16 x 18 bale. Jerry D. Virden, Box 595, Gruver, Texas. 733-2236.

COMPLETE LAWN SERVICE-Adult will do tree trimming, shrubs, edging, mowing or fertilizing. Call 659-2361. 33-2tc

MISCELLANEOUS FOR SALE

FOR SALE: 1967 Oldsmobile in good condition, has new starter, will make a good working car. Call 659-3051 or can be seen at 30 S. Drexler after 5 p.m.

WE BUY AND SELL good used furniture. **THE DEN.** 17 S.E. 3rd Ave. Perryton. 435-4883. 32-8tc

FOR SALE 14 X 84 Solitaire mobil home, 3 bedroom, 2 bath, fenced yard, storage building. 812 Garrett. 733-2874 25Srtm

FOR SALE: 1973 Pontiac automobile and hardtop fold-down tent trailer. Call 659-2126 or 659-3703 31-rtm

FOR SALE: 3 bedroom 12 x 60 Trailer House with refrigerated air conditioning. Can stay on lot. Call after 6:00 p.m. 2355. 32-rtm

FOR SALE: Purebred Rat Terrier puppies. Registered Brittany puppies. Phone 435-2341. 33-2tp

FOR SALE: Dishwasher, Trash compactor and Bar with stereo & 8-track player Call 3404. or 2614. 31-rtm

FOR SALE: Limited amount of Vona, Rocky, Caprock, TAM 101 Seed Wheat. Call 733-2612. 33-4tc

FOR SALE - 1978 Idletime topper Call 659-2437. 33-rtm

FOR SALE-9 inch radial arm saw. Call 659-3526. 32S-rtm

FOR SALE: One 95 John Deere Combine 20 ft. cut with Cab. One 24 ft. rotary hoe. 2-16 ft. home Chisels and sweeps. 2 1610 International drill, with Rotary hitch. Phone 733-2027, or see Roy Walker in Gruver. 32-4tc

GARAGE SALE: Sat., June 30 from 9 to 7; Sunday, July 1, 1 to 5. 903 Cluck. 33-1tc

FOR SALE: 3 bedroom, 2 bath, stucco house, 523 W 3rd. Chuck Steele. 659-3510. 32-rtm

FOR SALE: 1- 4 hp snapper mower
1 3 1/2 hp mower
1 Gas edger
1 Gas trimmer
1 Electric trimmer
1 Electric Edger
2 old mowers
659-3510
33-rtm

FOR SALE: 1967 Ford Pickup, short wide bed, low mileage and good condition for this model at a firm price of \$750.
H. K. Miller,
1115 S. Townsend. 28-2tp

REAL ESTATE FOR SALE

FOR SALE by Owner: Clean 3-bedroom home, 1 1/2 baths, living-room, large kitchen, single car garage, fenced back yard with nice lawn. 727 Cotter Drive. 659-2620. 33-rtm

FOR SALE: 1114 S Haney - 3 bedroom, 1 bath with garage and fenced yard. Priced to sell. 100% financing available to qualified applicant. Call

Century 21 GOLDEN SPREAD REALTY
436-8444
Perryton, Texas.

FOR SALE BY OWNER 716 Steele Drive. 1407 Sq. feet. Double Car Garage. 3 Bedrooms - 2 baths. Energy Efficient. Call 659-3622 - 659-3317 or 659-2058. 29-rtm

FOR SALE: Two bedroom home wood burner, fenced-in Back Yard; New front lawn, half furnished. 706 Cotter Drive. Call 659-2132. 27-rtm

Completely carpeted three bedroom house, 1 1/2 baths, living room, combination den, dining area, and kitchen with fireplace, and built-ins in kitchen, utility room with lots of storage, double car garage with electric door, fenced back yard with patio and attached store room. House is located at 1112 Wilmeth, across from high school. Call 659-3637, 659-3968 or 806-826-5714. 28S-rtm

FOR SALE: Nice 3 bedroom home, storm cellar, fenced yard, carpeted, central heat and air plus humidifier, shown by appointment only, Emmett R. Sanders, Realtor, 659-2516, nights 659-2601. 31-rtm

FOR SALE BY OWNER: One of Spearman's most comfortable homes, with these features:
4 Bedrooms (master is 16' x 20')
3 Bathrooms
Large Den (24'x30')
Kitchen
Dining Room
2 Fireplaces
Study/Formal Living Room
Large Utility Room
Dressing Room
Walk-in Pantry
Wet Bar
Large Storage Building
2 car garage
Garden area & hothouse (with garden already planted!)
Many trees & Shrubs
Approximately 3600 square feet

FOR SALE: 714 Gibner Drive
Phone 659-2429
31-rtm

FOR SALE BY OWNER: 3 Bedroom home, living room, kitchen, 1 bath, one car garage, patio, storage building, fenced yard, fruit trees. Call 659-2518 or 3506. 32-rtm

FOR SALE-Large 2 story energy efficient home. 2 living areas, woodburner, 3 bedroom, 2 bath, finished basement, storm cellar, fenced yard. Call 659-3692. 32S-rtm

NOTICE

SPEARMAN BARBER SHOP HOURS
June 6- June 9 4:30 to 6:30
June 13- June 16 4:30 to 6:30
June 20- June 22 4:30 to 6:30
Set June 23 8 a.m. to 5 p.m.
June 27 - June 30 9:30 a.m. to 1

LOST

STRAYED: 550 to 600 lb. Charolais steer from D. L. Schumann farm. Branded CV on left hip. Call 659-2178. 32-3tc

WANTED

YARD MOWING, contact Jamie Heinrich- phone 659-3848 or 3839. 32-8tc

WILL DO lawn mowing and edging Darren or Damon Goodheart. 659-2121 or 659-2871. 24S-rtm

Will do hay hauling, Contact Phil Paul, 659-3592. or Carey Bridges, 659-2065-28S-rtm

HELP WANTED

SELL AVON-Have Fun While You Earn and Learn. Territories available in Spearman and Gruver. Call collect after 6 p.m., 274-3606. 32S-2tp

OUTSIDE WORKERS NEEDED
The City of Spearman is accepting applications. Apply at City Hall. 24S-rtm

RESPONSIBLE PERSON

Wanted to own and operate candy of Confection vending route. Spearman and surrounding area. Pleasant business. High profit items. Can start part time. Age or experience not important. Requires car and \$1495 to \$4995 cash investment. For details write and include your phone number: Eagle Industries 7515 Wayzata Blvd., Minneapolis, Minn. 55426 33-1tp

★ Carports
★ Patio Covers
★ Awnings
WRITE OR CALL:
Only Aluminum Industries
114 West 1st
Guyton, Okla. 73942
Phone 338-6966
After 6:00 p.m. phone Howard Moyer 338-6170

VIRGINIA WHITE REALTOR

NEED TO SELL: Excellent Linn Dr. location, 3 bedrooms, 2 baths, all the amenities including fireplace. Price has been reduced.

EASY GOING ELEGANCE-on Townsend St.-A BEAUTIFUL HOME IN EVERY RESPECT! 3 bedrooms, 2 baths, fireplace W/built-ins, covered patio. W/pretty yard, NEAR SCHOOL. CALL NOW! In 50's.

INVEST! Invest! in this CLEAN 2 bdrm. home, located on 3 lots W/3 trailer hook-ups, 2 rental-trailer houses. Large storage bldg. NICELY LANDSCAPED. Low 20's. By appointment only. CALL TODAY.

EXCLUSIVELY WITH VIRGINIA WHITE REALTOR 659-8841

HELP WANTED: 3 to 11 shift, 40 hour week, starting pay \$3.00 an hour. Allsup. 33-3tc

CARD OF THANKS

We wish to thank our friends and relatives for their prayers, visits, cards and concern while Dee was in the hospital. We would also like to thank the doctor and hospital staff for their care.
Dee & Melba Jackson

John Connally, GOP presidential candidate: "Every government and every Society in the free world is dangerously exposed by the (oil supply) conditions."

Edward Kennedy, Senator (D-Mass): "The bottom line on the president's (health) program is that we can't afford it."

Texas Tech July 4 Celebration

LUBBOCK--A flag-waving, Whizz-bang 1979 Fourth of July, with singing, games and oratory in the best American tradition, will take Ranching Heritage Center visitors back to Independence Day celebrations of yesteryear.

As many as 3,000 are expected to participate this July 4. Before the celebration, which lasts from 5-9 p.m., there will be dedications marking progress in the development of the Ranching Heritage Center of The Museum of Texas Tech University. Dedication ceremonies, for which there is no charge, will last from 4-5 p.m.

The Ranching Heritage Association will dedicate the Jewell House, a mid-nineteenth century limestone ranch house which stood roofless at the center until research could determine the roof contours. Once the design satisfied architectural historians, a stonemason had to complete restoration of the house, its cistern and meat and milk house.

Also scheduled for dedication is the Robert L. Snyder Memorial Drive and Portico honoring a past director of the center and linking a new parking lot with The Museum entrance. Also to be dedicated are a bronze plaque commemorating the Diamond M Foundation's contribution to The Museum operation and a photographic plaque commemorating the association's efforts in making the memorial drive and parking area possible.

A special time is reserved for nostalgia in the dedication of a live oak tree to the memory of the late Mayor Ray Bass, whose earlier Fourth of July oratories endeared him to Ranching Heritage Center audiences. His law partner for more than 19 years, Kennett Hobbs, will speak at the dedication of the Roy Bass tree.

Dr. Leslie C. Drew, director of The Museum, said that guests will be invited to join the dedication procession which precedes the festivities. Following the dedications the site will be closed briefly and then reopened for the fun and games.

The celebration is sponsored by the Docent-Volunteer Guild of The Museum. Cost is \$2 per family and first and second place ribbons will be presented for all contests: watermelon-eating, seed-spitting, washer-pitching, horseshoe-pitching, three-legged and sack races. Competition will be divided by ages.

There will be patriotic singing by Dr. Moses Turner, director of the Lubbock Civic Choral. Eddie Nelson, the rocking chair philosopher, will perform as will the barbershop quartet, Music West, and the Lubbock Municipal Band.

Lemonade and popcorn, small flags and balloons will be available for purchase on the site, with all proceeds benefitting the Docent-Volunteer Guild and the Ranching Heritage Association. Buildings on the site will be closed with all activities in the open area.

WHO KNOWS?

1. When did Leonid Brezhnev become president of Russia?
2. When did the Senate ratify the SALT 1 treaty?
3. Which state celebrates Independence Day July 3?
4. When is Bastille Day observed in France?
5. When did the first astronauts land on the moon?
6. Name these astronauts.
7. What relation was Franklin Roosevelt to Theodore Roosevelt?
8. Who was the 22nd and 24th U.S. president?
9. Who was the Defense Secretary under Hoover?
10. What is a collection of mules called?

Answers To Who Knows

1. June 16, 1977.
2. August 3, 1972.
3. Vermont.
4. July 14.
5. July 20, 1969.

TEXAS PRESS
1977 ASSOCIATION
PUBLICATION (USPS 509-660)
SPEARMAN, TEXAS 79061
213 Main Box 458 659-3434
Published Weekly at 213 Main Street
Spearman, Texas 79061
Owner-Publisher.....William M. Miller
Second Class postage paid at Spearman, Texas
ANY ERRONEOUS REFLECTION UPON THE CHARACTER OF ANY PERSON OR FIRM APPEARING ON THESE COLUMNS WILL BE GLADLY AND PROMPTLY CORRECTED UPON BEING BROUGHT TO THE ATTENTION OF THE MANAGEMENT.
SUBSCRIPTION RATE: Hansford, adjoining counties, combination with the Hansford Plainsman, \$10.40.
Other points, \$14.40.

ROGERS STEAM WAY
Carpet & Upholstery Cleaning

M. L. ROGERS 405-338-7926
616 N. CRUMLEY GUYMON, OKLA. 73942

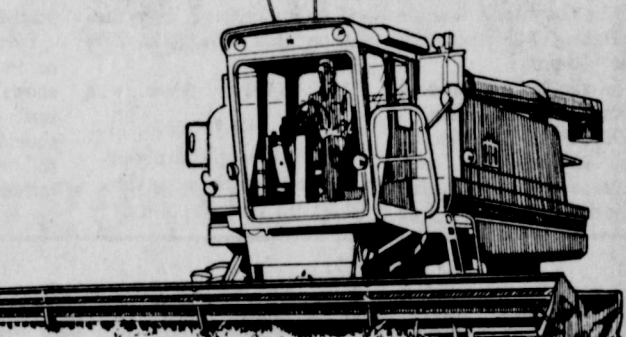
For The Ultimate In
STORM DOORS
Custom Built, Designed, And In
Colors To Fit Your Home....
Contact Howard Moyer at
Only Aluminum Industries
Guyton, Okla. 114 W. 1st 405-338-6966 or 73942 338-6170

6. Neil A. Armstrong.
Edwin E. Aldrin, Jr.
7. Fifth cousin.
8. Grover Cleveland.
9. There was no Department of Defense until Sept. 18, 1947.
10. A span of mules.
Bob Bergland, Agriculture Secretary: "The uncertain economy makes it impossible to predict how much the \$7 billion food-stamp program will cost next year."

Get ready for harvest at HERGERTS.

The Perfect Combination

A good Harvest, and a pickup or truck from Hergert's!

Yes, the perfect combination is hard to come by...but, we think we have it here at Hergerts...A good Harvest and a Hergert truck or pickup, or both! See us today...

Get ready for summer with a new Stationwagon! We have the best supply of new wagons in our history!

HERGERT

Pontiac, Buick, GMC

"WE APPRECIATE YOUR PATRONAGE!!!"

Phone 806-659-3721
"The Best For Sales, So. Hwy. 207
Service & Body Shop Spearman, Texas

CONWAY, KNOTTS TEAM UP AGAIN FOR DISNEY'S "APPLE" SEQUEL

History has made many famous pairs, but in the field of movie comedy, the number shrinks dramatically.

Stan Laurel and Oliver Hardy made their way from silent films to talkies and became deans-emeritus of duo comedy. Bud Abbott and Lou Costello delighted millions of fans during the 1940s and, until the late 1950s, Dean Martin and Jerry Lewis ran lickety-split over audiences.

Then came Tim Conway and Don Knotts in one of the happiest casting accidents in filmdom. The two star in Walt Disney Productions' "The Apple Dumpling Gang Rides Again," a comedy set in the Old West about a pair of bumbling outlaws who keep trying to go straight. Also starring are Tim Matheson, Kenneth Mars, Elyssa Davalos and Jack Elam.

The pair was first teamed in 1975 for Disney's "The Apple

Dumpling Gang," in which they created the roles—only then they played good guys who kept trying to break the law.

"When we first worked together," Conway recalls, "it seemed as if they had cast Stan Laurel and Stan Laurel. I remember the director telling us what he wanted. I looked at Don and said, 'Okay, I'll use Look B and you use Walk Three,' and we did."

Though the two men approach comedy from the same back door, the difference between them is not timing as much as delivery. Conway uses a shoot-from-the-hip method while Knotts takes a beat on his target.

How do you develop timing? Conway says, "You don't. You either have it or you don't. Anyone can learn a string of jokes and have enough funny material to get a laugh. Beyond that, I think

you're born with timing. It's different each time you say something. You practice to get the lines down and adjust them each time you say them, depending on the audience."

Offstage, the differences between the men are clearer. While changing into and out of Disney's dance hall girl costumes in a restored period train near Sonora, California, Conway would unabashedly remove the satin dress and sit in the sun in gym shorts. Knotts, who always kept both straps up, wanted privacy to pull on black cotton stockings and slip into his pumps.

At dinner in a restored stage-coach way station in Kanab, Utah, Conway told one-liners to the delight and fascination of local patrons while Knotts' quiet laughter was constant until he found just the right spot to insert a droll comment, down-home style.

Knotts, who was born and raised in Morgantown, W. Va., made his start as an adolescent ventriloquist whose voice changed even as he threw it. He has been known as The Skinny Man and The Nervous Person. His characters have had names like Figg, Peacock, Limpet. Even though his characters demand no special physical characteristics, he still hunches over and teeters in the breeze, a mannerism strikingly absent from his offstage demeanor.

Conway and Knotts have also appeared together on Conway's television special, "The Tim Conway Show" and made a film, "The Prize Fighter" for Tri-Star Productions, due for release this year.

In color by Technicolor, "The Apple Dumpling Gang Rides Again" was directed by Vincent McEveety for producer Ron Miller and co-producer Tom Leetch. Don Tait wrote the screenplay based on characters created by Jack M. Bickham. Buena Vista releases.



MAT ADGRA 2-C © Walt Disney Productions
LOVE MESSAGE?—Amos (TIM CONWAY), right, holds a twisted iron bar from the chief prison honcho while Theodore (DON KNOTTS) says it spells trouble in this scene from Walt Disney Productions' "The Apple Dumpling Gang Rides Again" which also stars Tim Matheson, Elyssa Davalos and Jack Elam. In color by Technicolor, the film was directed by Vincent McEveety for producer Ron Miller and co-producer Tom Leetch. Don Tait wrote the screenplay. Buena Vista releases.

Rodeo Time In Pampa

Plans are complete for the 33rd Annual Top O' Texas Rodeo to be held in Pampa, July 12 - 14 with performances at 8:00 p.m.

Beutler and Son of Elk City, Oklahoma, are returning to Pampa to produce this year's rodeo. Jay Harwood from Albuquerque, New Mexico will be at the microphone describing the action.

Red Steagall and the Coleman County Cowboys will be playing in the Clyde Carruth Pavilion on Saturday night, July 14 on the all new dance floor. Also playing on Thursday and Friday nights, July 12 and 13, will be Gary Dean and his band. Dances will start each night at 9:00 p.m.

Two of the Nation's leading bullfighters and funneymen, Quail Dobbs and Ted Kimzey, will be on hand for each performance, with some of the top specialty acts for your

entertainment.

Entries for PRCA and GRA members will open July 6, at 11:00 a.m. and close July 9 at 12:00 noon. To enter call the Central Entry Office. Local entries will be taken at the Rodeo Office in the Chamber of Commerce from June 25 until July 5, 12:00 noon.

Two free pancake breakfasts will be held for the public. One on Thursday morning, July 12 and the other on Friday morning, July 14, beginning at 6:30 a.m.; locations to be announced.

The rodeo parade will be held Saturday, July 14 at 10:30 a.m. featuring the Amarillo Gunfighters, staging realistic gun battles of the Old West.

An Amateur Jackpot Double Muggin event will be offered, with an entry fee of \$30.00 plus a \$5.00 stock charge. Entry fees will be split 40%, 30%, 20% and 10%.

The Kid Pony Show, with

Most people are optimistic when they consider their own good points.

Summer Means Lawn Problems

COLLEGE STATION--Summer means hot weather in Texas along with outdoor sports and long lazy days. It also means lawn problems--drouth, weeds, insects and diseases.

"Lawn problems can cause headaches for homeowners unless the problems are accurately diagnosed and properly treated before they become severe," points out Dr. Richard L. Duble, turfgrass specialist for the Texas Agricultural Extension Service.

"Dry spots, thin turf and weeds can result from improper watering, fertilizing and mowing practices," notes Duble.

"Before applying a chemical to correct lawn problems, be sure that recommended cultural practices are followed."

Drouth stress most often occurs in mid-summer and shows up as wilted, discolored turf. Watering schedules should be adjusted to wet the soil to a depth of four to six inches, and only when the grass shows symptoms of moisture

stress. Mowing heights might also be raised one-half inch to improve drouth tolerance in mid-summer.

"Lack of nitrogen or iron often creates a lawn problem. Grass with a nitrogen deficiency may have a pale color and be heavily infested with weeds," explains the Texas A&M University System specialist. "Abundant seedheads are another symptom of nitrogen deficiency. A light application of a nitrogen fertilizer will improve the lawn's appearance."

Grass leaves that have yellow stripes parallel to the leaf margins may be deficient in iron. An application of iron sulfate or iron chelate at six ounces per 1,000 square feet will usually solve this problem, say Duble.

If a St. Augustine lawn has symptoms similar to nitrogen or iron deficiency but does not respond to applications of either material, St. Augustine Decline (S.A.D.) should be suspected. Close examination of turf infected with S.A.D. shows green and yellow blotches on the leaves. Good maintenance practices should be continued where S.A.D. is a problem. Also, Floratam, a new St. Augustine grass variety which is resistant to S.A.D., may be sprigged into the infected area.

"Leaf spot diseases are generally a problem when lawns are under stress and increase with high temperatures, drouth, heavy shade and close mowing," points out Duble. "Proper mowing and watering will reduce these problems, but fungicides may be required to prevent serious damage."

Chinch bugs and white grubs can be effectively controlled with applications of insecticides. Water the lawn thoroughly prior to applying the insecticide for chinch bug control. A light watering after the insecticide application also increases its effectiveness. Duble advises drenching the lawn after the insecticide is applied for grub control since the grubs feed in the soil.

"The best way to keep a healthy, attractive lawn," advises Duble, "is through proper mowing, watering and fertilization. These regular maintenance practices allow you to keep a check on lawn conditions so that you'll be able to detect a problem early should one develop."

How True!

Too many people itch for what they want without scratching for it. -Spotlight, San Diego.

Definition

Gossip--The art of saying nothing in a way that leaves practically nothing unsaid.

Doe Regulations

DALLAS - Retail gasoline dealers offering special treatment to preferred customers or requiring the purchase of a product or service in order to buy gasoline may be violating federal pricing regulations, it was announced today by G. Dan Rambo, Dallas, Regional Representative for the U. S. Department of Energy.

DoE regulations prohibit changes in business practices which give special treatment to preferred classes of customers, such as credit card holders, cash-paying motorists, or regular customers.

Also prohibited are tie-in sales that require a motorist to purchase products or services such as a car wash, food, or auto accessories and repairs as a condition to buy gasoline. Rambo pointed out that these practices occur more frequently during times of gasoline supply shortages and long service station lines. "Any new tie-in sale, business practice or credit arrangement may be a violation of the regulations," Rambo said.

Rambo emphasized the DoE Office of Enforcement currently is investigating service stations which are reported to be using these sales practices. "We want dealers and motorists to be aware that these practices, as well as requirements for appointments, purchase of membership cards, reservation fees, and advance payments for gasoline or services, all may be violations of the regulations," he said.

Failure to comply with the regulations can result in civil penalties of up to \$2,500 per violation for each day the violation occurs. In the case of willful violations, the penalty is up to \$10,000 per day for each violation.

Speaking Frankly
For some strange reason Americans tend to confuse frankness with rudeness.
-Herald, Anthon, Ia.

Boss Lion Dick Elbert held his last official meeting at noon Tuesday, as Boss

Lion of the Spearman Lions Club. He

announced that the Spearman Float (Lions club float) will enter the Darrouzette parade, and several others, ... It

is hoped that Curly Hall will be back from the VA hospital and

be ready to take the float to several parades this summer!

Doug Connelly, Lion of the Year, is in South Dakota with a group of young people from the First Baptist Church, in Spearman,

Sidewalk Sale

Saturday June 30

Also The First Day Of Summer Clearance

Bakers Dept. Store

216 Main Spearman

Durane Castleberry reported that the new Nursanickel Motel was full Monday night! And, the new swimming pool at the Motel is coming along great!



Of course We are here To serve you this harvest To The Best Of Our Ability.

We will remain open on Sundays If The Combines Are Running!

We will do our best to keep ample Farm Fuel in stock. We do not know what effect the New Truck - Fuel Priorities will have on Fuel For The Farmers. THANKS FOR THE MANY PAST YEARS OF PATRONAGE...

FUEL PRICES WILL VARY, ACCORDING TO OUR COSTS... WE ARE BUYING FUEL FROM OUTSIDE SOURCES, AND THEY WILL FLUCTUATE.

CONSUMERS SALES CO.

Phone 659-2012 - Spearman - 421 Kenneth

PANELING SALE

3 sheets of

Natural Birch Paneling

DARK - MEDIUM - LIGHT

Reg. \$12.95 per sheet

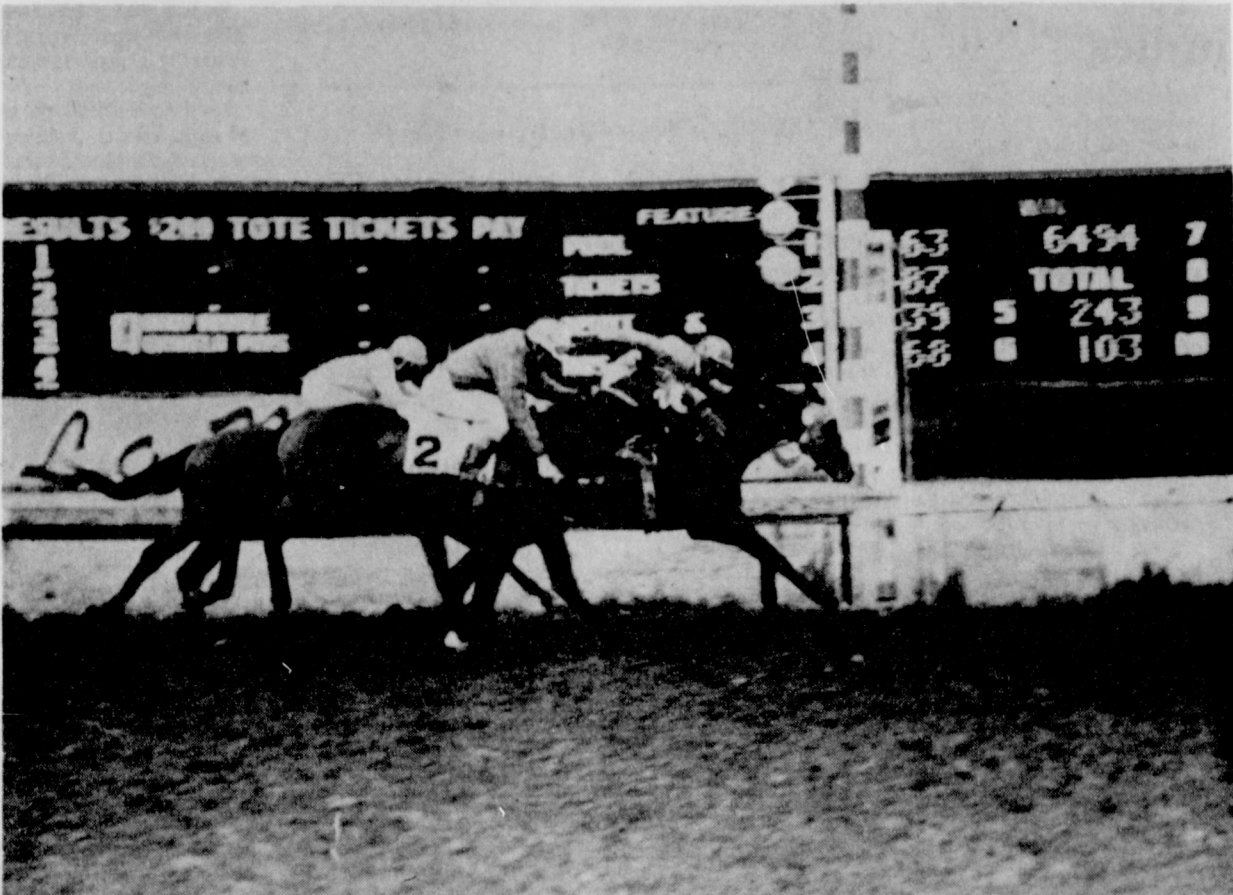
Sale Price \$8.49

Pre finished molding -Colored Nails etc for all paneling

GRUVER LUMBER CO.

Phone 2404 or 2405 - Gruver, Tx.

Last Canoe-Winner At LaMesa Park



LAST CANOE-winner of 1979 Scotch Foursome Laddie Futurity at LaMesa Park, Raton, N.M. Saturday, June 24. Owner is Jim Tiner and Circle Five Syndicate of Gruver, Texas. Last Canoe is a 2 year old colt by Last Dance and out of Canoe Brook.

In the Laddie running, Kenneth Parker's pupil Last Canoe moved up fast in the stretch to win by a neck and pay his owner, Jim Tiner, & Circle Five Syndicate of Gruver, Texas, first place money of \$4,955.

Ridden by Carl Woods, the bay colt was running second to Li'l Loom at the final turn. But

in the last seconds of the stretch the 2-year old pulled up fast to hit the wire first, and reward his backers \$6.40 to win; \$3.60 to place; and \$2.40 to show.

Robert Cappellucci's student Clan Royal collected second place money of \$2,337 for his owner Carter McGregor, Jr. Tommy Fields was aboard the colt who paid \$3.80 to place and \$2.40 to show.

Berwin Hanna's trainee Li'l Loom with Howard Simon up, settled for third after leading the field most of the way. The Hugh Preston, Jr. property paid \$2.40 to show.



IN WINNER'S CIRCLE June 24 at LaMesa Park for Last Canoe, are left to right, Gary Wilson, Clay Barkley, Jim Tiner, Mr. and Mrs. A.J. Fires, Mr. and Mrs. J.A. Osborne, Jockey, Carl Woods and daughter Brandy, Mr. and Mrs. Rod

Barkley, Jackie Tiner, Trainer, Kenneth Parker, Hootie Cline, Red Davis, Mrs. Hootie Cline and grandson, Toni Atwood, Dale Inman and Leon Bagwell.

Perryton Open Tennis Tournament Slated

Entry deadline is quickly approaching for the 5th annual Perryton Tennis Tournament, slated for Friday, Saturday, and Sunday July 6, 7, & 8th. Entries must be in no later than midnight Wednesday, July 4th. Close to 250 players from the tri state area are expected to compete in the three day event. Play begins at 8:00 a.m. Friday,

July 6, with the 14 and under and 18 and under boys and girls junior activities. Adult play begins at 8:00 a.m. Saturday. Adult finals are tentatively set to begin around 2 p.m. Sunday for most adult events. Junior divisional play (14 and under and 18 and under) includes singles and doubles for girls and boys. Adult events

include Championship, B, and C divisions, singles and doubles for men and women. Championship division is for championship caliber players; B division for average players and better over 35, while C division is solely for those weak young players and average to below over 35 players. There will be an A and B mixed doubles

division. Entry is limited to four events for any one player. Entry fee is \$4.50 per singles and \$9.00 per doubles team. Any night matches are solely up to the tournament directors discretion. Courts to be used include the new and old high school courts, the new junior high courts, and courts at the Perry-

ton Club. Trophies will be awarded to first and second place finishers in each event. For additional information as well as entry blanks cibtact NUJE CIG

For additional information as well as entry blanks contact MIKE COGGINS, 3222 South Ash, Perryton, Texas 79070, or call 806 435-3263 or 435-5458.

an entry fee of \$15 per team. Other events include pole bending, barrel racing and goat tying for all ages of girls. In addition, the older age girls, ages 15-18, will have Breakaway Roping. The boys events include: (age 9-11) breakaway roping, barrel racing and calf riding; (ages 12-14) ribbon roping, steer riding, and breakaway roping; (ages 15-18) bareback bronc riding, bull riding, calf roping and ribbon roping.

County Extension Office or you may call 669-7429.

In Fashion

If one wears hair in a pony tail, don't pull it too tightly. Experts tell us that that causes the hair to fall out.

Lacy scarfs continue to be very popular and they are quite expensive. The thrifty Miss can crochet scarfs in many colors to match outfits. Pattern directions are available.

Gray County 4-H Rodeo Planned

The Gray County 4-H Youth Rodeo will be held August 17 & 18 at the Top of Texas Rodeo Arena in Pampa at 7:30 p.m. each evening. The rodeo is for all youth ages 9-18.

Stock producer for the rodeo is James Martin, Spearman. B-Bar-K belt buckles will be awarded the top three winners

in each event. Boys and girls All Around buckles will be awarded in each age group. Entries are due in the Gray County Extension Office, Star Route 2, Box 33, Pampa, Texas, 79065, by 5 p.m. on August 9th. The events include a heading and heeling to be held Saturday, August 18th at 2 p.m. with

SPECIALS GOOD WHILE SUPPLY LAST'S! LIMITED SUPPLY!!

WE RESERVE THE RIGHT TO LIMIT!!

ALLSUP'S
CONVENIENCE STORES

PRICES EFFECTIVE JUNE 28-30, 1979

SHOP ALLSUP'S ON THE 4TH OF JULY!!

*** OPEN ALL DAY ON THE 4TH OF JULY ***

1 LB. RATH

BACON \$1.19

ALLSUP'S ASSTD. ICE CREAM

\$1.29

1/2 GAL. RD. CTN.

BORDEN'S COTTAGE CHEESE

69¢

12 OZ. CTN.

JUNE IS DAIRY MONTH!

BORDEN'S FRUIT DRINK

79¢

GAL.

SHOP ALLSUP'S FOR ICE, PICNIC SUPPLIES, COOLERS, POP, ICE CREAM, MILK, BREAD, FRESH PRODUCE, HOT DOG BUNS, HAMBURGER BUNS, CHIPS AND DIPI!

BLACK HAWK RATH'S FRANKS

89¢

12 OZ. PKG.

JUNE IS DAIRY MONTH!

TEXAS WATER MELON

\$1.99

10-22 LBS.

REFRESHING PEPSI COLA

99¢

2 LITER

Help Keep Our City Weed-Free

We urge you to join with your city officials in keeping the weeds on your property mowed and, or sprayed. Each land-owner is responsible for the control of weeds on his or her property.

The City of Spearman

PLEASE MOW YOUR ALLEYS!

You Name it

From the den of the poison pen

The fuel shortage is hitting every area in the U. S., but we are better off in Spearman than any other place. I was in Oklahoma on business Saturday and stopped at Seiling, Okla. to fill up my trusty car, and sure enough for the first time in history, they were out of unleaded fuel. However, the truck soon filled the tanks, and we were able to proceed on our trip. The station operator said this was the first time in history that he had run out of unleaded gas. The Seiling area is having a hard time getting their harvesting done because of the weather. We hit a rain storm Saturday, and it rained terribly hard on us!

Have you seen the official motion posted at the Post-Office in Spearman? It reads as follows: Official Notice, FOREIGNERS MUST REPORT FARMLAND OWNERSHIP. Farmers who own or have a financial interest in more than 1 acre of U. S. farmland, or who gross more than \$1,000 in cash sales from any plot of U. S. farmland must report their holdings to the federal government. Foreign interests, such as foreign based corporations, U. S. corporations headquartered outside the U. S., organizations whose ownership is 5% of more foreign, and foreign governments, must also report. FAILURE TO REPORT COULD RESULT IN A FINE OF TO 25% OF THE PROPERTY'S VALUE. Agricultural Land: Any tract of more than 1 acre now in agricultural, forestry or timber production, or one that has been in such production within the past 5 years.

Make reports at the county office of the ASCS in which the land is located. REAL ESTATE

DEALERS, FARM MANAGERS, BANKS, AND HOLDING COMPANIES can report on behalf of foreign clients. For details and reporting forms, individuals and institutions that specialize in land holdings, transfer or management should contact the Hansford County ASCS, 223 Main, Box 98, in Spearman.

We were not too surprised to learn that foreigners must report farmland ownership. This could be a wonderful thing for Americans. Lets sell our land to the foreigners, and then after we have all of their money, we will nationalize and take the land back! Don't get excited about such a statement! Foreigners have been doing this to us for quite some time! However, I am only kidding! About the worst thing that could happen to any country would be to "Nationalize!" At least our government lets us keep some of our money! And, they are paying some 80% of their income to taxes in Great Britain now!

Before we all get too mad at the oil companies, let's think back a few years ago when they couldn't pay their bills but kept on drilling and hitting oil wells, borrowing money and expanding on the credit! Our oil industry, as well as our truckers and farmers, must be able to make a profit to stay in business!

Several beef packing places in the area are closing, truck loads of bananas are being dumped in the ocean, and the fruit in the state of California is being plowed under! Get ready for some higher food prices!

The picture of the girl in the cover-alls and cap, is Nan Jean Hulsey. She is the sister of our own Bob Borwell, and is the director of activities (Social Service Director) at the Senior Village in Perryton.

The other mystery picture is a picture of a banana tree growing out of the top of Robert Novak's green house. Robert is going to add on an 8 foot upper story (gondola) to the green-house to let the bananas go ahead and grow to full size. Banana trees grow rapidly, several inches per week!

I was fishing recently at Canton Lake, in Oklahoma, and was catching some pretty good fish. Several of the local Arapahoe Cheyenne Indians were peering at me and wondering who, and how I was catching fish, as the wind was blowing about 40 knots. I was using worms for bait, and I had E. Malone Newcomb along to spit on the hooks. The secret of the success, was that he was dipping snuff and particular day, and when he would spit snuff on m hooks, the worms would go into a minor "fit" and wiggle so much, they attracted several large fish! Snuff (I presume it was SKOAL) is about as good as Brown Mule chewing tobacco!

Harvest is trying to get going here! I talked with Everett Vanderburg and he said he received two rains over the week, one rain 1.30 and another .30 on Saturday and over the week-end! I also talked with some of the men in Gruver, and they said it rained up to 3.10 down towards Morse, and over 2 inches at Palo Duro Feeders, I noticed the creek was about bank full Tuesday morning, and we sure do need to keep that water in the area. I understand that the men are corps-testing at the dam site now, and I am glad that we have had a minor head-rise for them to see! I can remember when the water was over the bridge at Old Hansford!

PLEASE MOW YOUR ALLEYS!

SPONSORED BY PERRYTON MINISTERIAL ALLIANCE



SCHOOL OF PRAYER
TRAINING CHRISTIANS IN THE HOLY ART OF INTERCESSION!

ALL PARTICIPANTS RECEIVE THE MOST COMPREHENSIVE MANUAL ON PRAYER EVER WRITTEN!

CHURCH OF THE NAZARENE
JUNE 29, 30

FRIDAY NIGHT • 7 PM - 10 PM — SATURDAY • 9 AM - 5 PM
School tuition, including manual and nine hours of lecture, is \$20
To pre-register come 30 minutes early Friday.
PHONE 680-425-8084 FOR REGISTRATION OR INFORMATION

Notaries Could Be The Key To Preventing Swindles

For someone swindled out of his home, how a document was notarized may provide the key to getting his property back, reports the National Notary Association.

In a scandal that rocked the nation's real estate industry, hundreds of Southern California families lost their homes in recent months because of fraudulent home-improvement lien contracts or "professional foreclosers" who exploited homeowners delinquent in their house or property tax payments.

Some victimized owners claimed they were tricked into signing over their homes to a person who assured them they were only applying for a new loan. Others claimed they never signed the disputed papers at all, according to press reports.

"Property generally cannot be transferred without notarization," says Milton G. Valera, NNA executive director. "Thus,

the Notary can play a pivotal role in either helping or hindering a swindler.

"Normally, for a document to be notarized, the signer must appear before the Notary, identify himself and acknowledge that he willingly signed the document. A conscientious Notary would not notarize the deed if the homeowner appeared to be under duress or misunderstood the significance of the document. He can also take precautions to ensure that any changes made in the document after it is notarized will stand out conspicuously.

"However, a fast-talking broker may enlist the aid of an uninformed or unethical Notary. In some of the publicized foreclosure cases the deeds or changes in deeds were allegedly notarized in the absence of the signer."

Fortunately, most states anticipated problems of this nature and passed laws requiring No-

taries to keep a public record of each notarial act. Typically, this record must note the type of document being notarized, when the notarization was performed, and, most importantly, included the signature of the persons who signed the document.

"A person who obtains a copy of the Notary record could thus tell whether his signature was omitted or forged and if other information was falsified," said Valera. "Armed with such evidence, the former owner would be in a much better legal position to get his home back."

It was incidents like the home foreclosure schemes that prompted the National Notary Association is recently institute "Notary-Consumer Watch" to assist members of the public in reporting Notaries whom they suspect of illegal or unethical practices. Persons may contact "Notary-Consumer Watch" by writing the NNA at 23012

Ventura Blvd., Woodland Hills, CA 91364 or calling (213) 347-2035.

In its 22nd year with more than 30,000 members, the Na-

tional Notary Association is the oldest and largest professional, educational organization serving the nation's Notaries Public.

Water Everywhere, But Do We Drink Enough?

COLLEGE STATION—Water, water everywhere—but do Texans drink enough?

Adults need a little more than two quarts a day, says Marilyn Haggard, a foods and nutrition specialist with the Texas Agricultural Extension Service, The Texas A&M University System. "Water is an often neglected nutrient," she says. Still, it's critical to human survival—and good health.

It transports nutrients that nourish cells, and it helps the body get rid of waste products.

DRINK, DRINK, DRINK
Every day, it's important to replace water that is lost through urine, pores, skin and lungs.

Adults can get most of their two quarts of fluid from bever-

ages and a little from solid foods.

Infants use more than twice as much water as adults, so they need more water for each pound they weigh than adults do for each pound of weight. Ask your doctor about the needed amount.

SPECIAL SUMMER NEEDS
During summer months, the body loses larger amounts of water through perspiration. It's important to replace that water, too.

Let your natural thirst be your guide. Miss Haggard stresses. Also, sodium (salt) is lost through perspiration—and it must be replaced.

If not, the sodium level in the cells is diluted and too much fluid collects there. This can

cause a drop in blood pressure weakness and muscle cramps.

EXERCISE 'N WATER
During strenuous exercise drink water often. Again, this is usually a good indicator of how much you need.

On the other hand, the intake of extra salt is probably not necessary, since the usual salt level in the American diet is already high.

BIBLE VERSE

"Stand thou still a while that I may show thee the word of God."

1. Who made the above request?
2. To whom was he speaking?
3. On what occasion?
4. Where may this verse be found?

Answers To Bible Verse

1. The Prophet Samuel.
2. To Saul.
3. Just prior to his anointment by Samuel and his proclamation as first King of the children of Israel.
4. 1 Samuel 9:27-b.

UNITED Supermarkets

PRICES GOOD THRU JUNE 30TH
QUANTITY RIGHTS RESERVED

BUDGET

MAURINE SIMS WON \$25

EDITH DODSON WON \$10

PLAYING UNITED'S STA-BINGO

<p>UNITED CORN CHIPS 6 1/2 OZ. BAG 49¢</p>	<p>RAID AEROSOL OFF! 16 OZ. CAN \$1.59</p>	<p>RAID HOUSE & GARDEN SPRAY 16 1/2 OZ. CAN \$2.49</p>
<p>BARBECUE SAUCE 18 OZ. 49¢</p>	<p>RAID TOWELETTES OFF! 10 CT. \$1.39</p>	<p>RAID DEEP WOODS AEROSOL OFF! 7 OZ. CAN \$1.98</p>
<p>MARYLAND CLUB COFFEE 1 LB. CAN \$2.29 2 LB. CAN \$4.57</p>	<p>PINE-SOL LIQUID CLEANER 15 OZ. BTL. 89¢</p>	<p>REYNOLDS ALUMINUM FOIL 25 FT. ROLL 45¢</p>
<p>32 OZ. BOTTLE COKES 6 BTL. CRTN. \$1.69 PLUS DEPOSIT</p>	<p>GLAD TRASH BAGS 3 MIL. 2 PLY 15 CT. \$1.98</p>	<p>KLEENEX EXTRA ABSORBENT DISPOSABLE DIAPERS 24 CT. \$2.69</p>
<p>MANAGER'S SPECIAL CONTADINA TOMATOES 14 1/2-OZ. CANS 2/79¢</p>	<p>UNITED GRADE A EGGS EXTRA LARGE 69¢ DOZ.</p>	<p>WYLER'S LEMONADE MIX 24-OZ. 98¢</p>
<p>KLEENEX JUMBO PAPER TOWELS ROLL 49¢</p>	<p>CHARLESTON GRAY WATER-MELONS 20-22 LB. AVG. \$1.69 EACH</p>	<p>NABISCO COOKIES *CHIPS AHoy *COCONUT CHOC. CHIP 13 OZ. PKG. 99¢</p>
<p>FRIDAY NIGHT • 7 PM - 10 PM — SATURDAY • 9 AM - 5 PM</p>	<p>SANTA ROSA PLUMS SUN GRANDE NECTARINES LARGE PODS BELL PEPPERS 3 FOR 49¢</p>	<p>HI-C POWDERED DRINK MIX ALL FLAVORS 8 QT. \$1.09</p>
<p>FRIDAY NIGHT • 7 PM - 10 PM — SATURDAY • 9 AM - 5 PM</p>	<p>CRISP GREEN CABBAGE LB. 15¢</p>	<p>KRAFT JET-PUFFED MARSHMALLOWS 10 OZ. 3 FOR \$1</p>
<p>FRIDAY NIGHT • 7 PM - 10 PM — SATURDAY • 9 AM - 5 PM</p>	<p>NO. 1 RUSSET BAKER SIZE POTATOES LB. 19¢</p>	<p>FINE FARE LEMON JUICE 32 OZ. 79¢</p>
<p>FRIDAY NIGHT • 7 PM - 10 PM — SATURDAY • 9 AM - 5 PM</p>	<p>PLANTERS SNACKS *CHEESE CURLS *TORTILLA CHIPS *CORN CHIPS *CHEESE BALLS 59¢</p>	<p>ATKINS HAMBURGER SLICED DILL PICKLES 32 OZ. JAR 89¢</p>



It is not an airplane wreck, but a banana tree pushing through the roof of the greenhouse at Robert Novaks in Spearman area!



DOUBLE PLEASURE: A real his and hers for harvest. These two beautiful Riverias are on display at Hergerts in Spearman!

Despite your fears, the world can get along as usual without you, and will.

A question which defies an intelligent answer is: How are things in Washington?

The man who knows it all is as dangerous to society as the man who knows nothing.

In the history of officeholders few have ever tried to save their country by resigning.

CITY MEETING

Mayor Blodgett and all of the councilmen but one were present for the city meeting Tuesday night. The pledge and invocation was given, and the minutes of the last meeting were approved. A discussion of insurance policy for the Natural Gas system was held, and it is almost impossible to find any company that will insure against gas explosions now. In other insurance discussions, the city will stay with their Travelers insurance, as they have a local man to work with. The city agreed to put the resurfacing of the tennis courts in their budget for the coming year. They will share

some of the costs with the school. The six courts will cost about \$20,000 to re-plane and resurface. A new salary schedule for the coming year was discussed by the council. In other action, Mayor Blodgett informed those present, that dirt work should begin on the new airport for Spearman, as soon as Jr. Lusby can get his equipment "on the job." City Attorney Chunky Blackburn shook hands with all present, as this was his last meeting with the council as City Attorney. He has represented them for the last 10 years. He will be sworn-in as the new 84th District Judge at 3:30 p. m., in Spearman, Monday by Judge Countiss. You are invited to attend the swearing in ceremonies of course!

Horse Show

Hansford County 4-H members are busy making final preparations for the District I 4-H Horse Show June 27-28 in Amarillo. Some twelve 4-H'ers from Hansford County are expected to participate in the event with hopes of qualifying for the State Horse Show later this summer.

The event brings together 4-H club members from throughout the 20-county district to participate in halter, showmanship and performance classes. Each contestant is eligible to enter one halter class and not more than three performance classes. Trophies and ribbons will be presented to top exhibitors.

The annual event will be held at the Bill Cody Arena at the Tri-State Fairgrounds in Amarillo. Registration is Wednesday morning, June 27. Judging begins at 2:30 p.m. Wednesday, June 27 and at 8:30 a.m. on Tuesday, June 28.

Twenty horses and exhibitors will be qualified to participate in the State 4-H Horse Show, July 25-27 at Odessa.

Darrouzett Plans German Festival

A schedule of events for the 7th annual Deutsches Fest was arranged by members of the Village Improvement Program in Darrouzett. A fun filled, exciting day is planned for July 7th.

The German Festival was founded in 1971 as a celebration honoring the heritage and ancestry of Lipscomb County. The proceeds are used toward various projects of community improvement.

The day will begin with a Saddle Horse Pull at 9:00 a.m. A post hole digging contest will be held at 9:30 a.m.

Also at 9:30, the Pretty Fraulein contest will be held under the big tent featuring over a dozen Darrouzett beauties.

The parade will begin on Main Street at 11:00 a.m. under the direction of Mrs. Floyd Born.

Delicious German food will be served following the parade, including berex, butterballs and noodles, German sausage, and kuchen.

Continually, throughout the day, the Polka Dots from Conway Springs, Kansas will play under the tent. A flea market will be held in the Senior Citizens Center.

The German costume contest will begin at 1:00 p.m. under the big tent. Games for adults will begin at the east end of the football field at 1:30 including tug-of war, sack relays, three legged race, and a raw egg throw.

Children's games will be held at 3:00 p.m. also at the east end of the football field.

The Liar's contest will be under the big tent at 3:30 p.m. and the Moustache contest will be at 4:00 p.m.

A new event, the Chicken Fly Contest, will be at 4:30 p.m. in the alley behind the Deutches Gardens on Main Street.

Horseshoe pitching will begin at 5:00 p.m. behind the Beauty Shop. At 6:00 p.m. a pie eating contest will be held under the tent.

Cornellson Rides Carnival will be open on the west end of the football field all day.

At 7:00 p.m. a Talent Show will be held under the tent under the direction of m Vesta Newman. "Jan and Debbie" singing duo from Altus, Oklahoma will entertain and M.C. the talent show.

The day will close with an adult dance on the tennis courts featuring Aubrey Caldwell Band from Perryton. The dance will be from 9:00 p.m. to 1:00 a.m.

Several members of Darrouzett's V.I.P. will be featured on the coffee break show on KEYE Radio on July 3rd.

EASERS!

CARMEN SEVALL WON \$10 IN UNITED'S PHASE II STA-BINGO

THELMA NEWTON IS ANOTHER \$10 LUCKY STA-BINGO WINNER

WIN WITH STA-BINGO!

LEFT TO RIGHT

- KATHERINE HOLT WON \$10.00
- DEBBIE HESLET WON \$10.00
- MRS. C.A. BATES WON \$50.00
- EARL NICKLAS WON \$50.00

UNITED TRUTENDR BEEF 7 CUTS		
SHOULDER ROAST	LB.	\$1.59
BLADE CUTS OF BEEF		
CHUCK ROAST	LB.	98c
ROUND BONE ARM CUTS		
SWISS STEAKS	LB.	\$1.98
EXTRA LEAN CUBES OF BEEF		
BONELESS STEW	LB.	\$1.89
UNITED TRUTENDR BEEF		
RIB STEAKS	LB.	\$1.98
FARMLAND		
HAM	BONELESS FULLY COOKED 3 LB. CAN	\$5.98

GROUND BEEF
FRESH FAMILY PACK LB.
\$1.49

RUMP ROAST
UNITED TRUTENDR BEEF LB.
\$1.79

<p>CATFISH STEAKS</p> <p>FRESH WATER LB.</p> <p>\$1.59</p>	<p>JIMMY DEAN SAUSAGE</p> <p>2 LB. PKG. \$2.69</p> <p>1 LB. PKG. \$1.35</p>	<p>SWIFT SIZZLEAN</p> <p>BREAKFAST STRIPS 50% LEANER</p> <p>12 OZ. PKG. \$1.49</p>
--	--	--

<p>LEA & PERRINS</p> <p>WORCESTERSHIRE SAUCE 5 OZ. BTL. 59c</p> <p>BIG JOHN</p> <p>BEANS-N-FIXING 20 1/2 OZ. CAN 69c</p> <p>FINE FARE</p> <p>MUSHROOMS STEMS & PIECES 4 OZ. CANS \$1</p> <p>FINE FARE</p> <p>MUSTARD 24 OZ. JAR 49c</p> <p>RANCH STYLE BEANS 15 OZ. CANS \$1</p> <p>FINE FARE</p> <p>KETCHUP 32 OZ. BTL. 79c</p>	<p>"HEALTH & BEAUTY"</p> <p>COTTON BALLS 65 CT. 79c</p> <p>FABERGE</p> <p>CONDITIONER 15 OZ. \$1.19</p> <p>FABERGE</p> <p>SHAMPOO 15 OZ. \$1.19</p>
--	---

<p>"FROZEN FOODS"</p> <p>JENO'S FLAT TOP PIZZA *CAN. BACON *HAMB. *PEPPERONI *CHEESE *SAUSAGE 89c</p> <p>CARNATION POTATOES 2-LB. PKG. 69c</p> <p>COUNTRY TIME REG. OR PINK LEMONADE 6 OZ. 5 FOR \$1</p> <p>BIRDSEYE BROCCOLI CHOPPED OR SPEARS 10 OZ. 49c</p> <p>BABY LIMAS 10 OZ. 59c</p>	<p>"DAIRY"</p> <p>PILLSBURY BIG COUNTRY BISCUITS 12 OZ. CAN 3 FOR \$1</p> <p>BELL HALF & HALF 16 OZ. CRTN. 45c</p> <p>FINE FARE SOFT 1 LB. TUB OLEO 49c</p>
---	---

UNITED Supermarkets

Perryton, Texas

QUANTITY RIGHTS RESERVED

PRICES GOOD THRU JUNE 30TH

INSULATION

Blown in Cellulose

INSULATION---

& FREE ESTIMATE

S.B. Sheets

Phone **659-2316**

Spearman, Texas

Pfizer Genetics

Forrest Soybeans

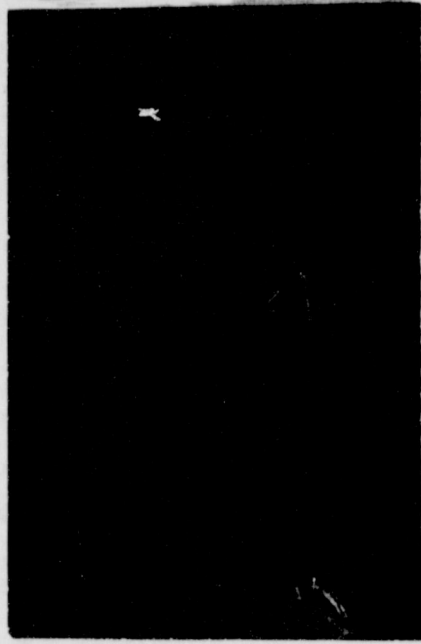
88% Germ.

\$11.00 BU.

Call: 806-435-4921

Perryton, TX.

Bishops To Celebrate 50th Anniversary



Mr. and Mrs. John Bishop will be honored with a reception on their fiftieth wedding anniversary Sunday, July 1 in the fellowship Hall of the First United Methodist Church, Spearman, from 2 to 5 p.m. by their families. You are cordially invited to attend. No gifts, please.

1929 1979
 In honor of their
 Fiftieth Wedding Anniversary
 the families of
 John and Sammie Bishop
 cordially invite you to a reception in their honor
 2:00 to 5:00 p.m. Sunday, July 1
 First United Methodist Church
 Fellowship Hall
 Spearman, Texas
 Please, no gifts

Mr. and Mrs. Gordon R. Sledge
 request the honour of your presence
 at the marriage of their daughter
 Barbara
 to
 Mr. Mark Evan Wise
 on Saturday, the thirtieth of June
 nineteen hundred and seventy-nine
 at seven o'clock in the evening
 Oslo Lutheran Church
 Guwa, Texas
 and afterwards at the reception

You are cordially invited to
 a bridal shower honoring
 Denise Mills
 Bride-elect of Stephen Donnell
 Friday, June 29th
 3:00 to 4:30 p.m.
 Thomas H. Eitter home
 711 Gibner Drive
 Hostesses

Pat Dear
 Lois Gibner
 Stephanie Davis
 Dorothy Baggerly
 Ora Lee Blackburn
 El Vonna Davis
 Virginia Head
 Mary Cornelius
 Helen Etter

32-3tc

Kansas Church To Present Program Here

The Apostolic Faith Bible College of Baxter Springs, Kan. will present a program at the Apostolic Faith Church, 9th and Drensen Thursday, June 28 at 7:30 p.m. The public is invited.

BUTCH BAKER is staying home this harvest for the first time in his life... To celebrate, he is having a side-walk sale this Sat, June 30th, downtown Spearman...

Dad Knows
 Son: "What is executive ability, Father?"
 Father: "Executive ability, my son, is the art of getting credit for all the hard work somebody else does."

Probably Baa Baa
 "What's the idea of the Greens having French lessons?"
 "They have adopted a French baby, and want to understand what she says when she begins to talk."

Modern Spouse
 A--Do you know your wife is telling it around that you can't keep her in clothes?
 B--That's nothing. I bought her a home and I can't keep her in that, either.

No Difference
 Gal--Would you come to my aid in distress?
 Gob--My dear, it wouldn't make any difference to me what you were wearing.

Not So Funny
 "You say your sister makes up jokes, then she's a humorist isn't she?"
 "No, she works in a beauty parlor."

Change The World School Of Prayer Set

World Literature Crusade is developing their now famous Change the World School of Prayer into an in-depth, three-year course on teaching and inspiring people to pray. Dick Eastman has just finished developing the all-new second prayer.

There will be a first year school of prayer on June 29-30 at the Church of the Nazarene in Perryton, sponsored by the Perryton Ministerial Alliance.

The school starts on Friday, June 29 from 7:00 to 10:00 p.m. and continues on Saturday, June 30 from 9:00 a.m. to 3:30 p.m. Advanced registrations are \$20. Registration is \$30 at the door. Alumni may register for \$5.

There will be a second year school on July 20-21 at the South Lawn Baptist Church, 4306 S. Washington, Amarillo. This is open to only people who have attended a first year course. The school starts on Friday, July 20, from 7:00 to 10:00 p.m. Saturday's session is from 9:00 a.m. to 5:00 p.m. with a lunch break from 12:30 to 1:30 p.m. Advanced registrations are \$20. Registration is \$30 at the door.

Presbyterian Church News

Presbyterian Men will have their monthly prayer breakfast on Thursday, June 28 at 6:30 a.m. Max Baggerly is in charge of the breakfast. Carter McKemy will lead devotions.

You will enjoy an inspiring Bible study at the Wylie Bible class on Sunday, July 1 at 9:45 a.m. Children will enjoy a good Bible lesson with Martha Batton.

The Rev. Carter McKemy will be preaching at the service for the public worship of God on

Arts & Crafts Guild News

The Arts & Crafts Guild met Friday, June 22 in the home of Mrs. Guy Fuller, with Mrs. Deta Blodgett as hostess.

Attending were Mmes. Bill Russell, Joe Trayler, P. A. Lyon, Sr., Bruce Sheets, Ned Turner, C. A. Gibner, Pope Gibner, Bill Gandy and Nolan Holt.

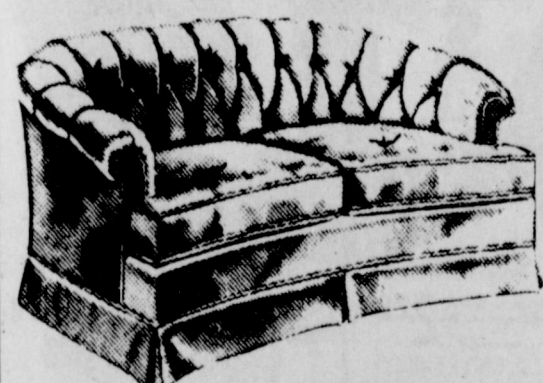
The next meeting will be Friday, June 29 at the Cattleman's Restaurant with Mrs. Bill Gandy as hostess.



40th Anniversary Sale

15 to 50% off

Storewide



Perryton Furniture

206 S. Main

435-5131

Perryton, Texas

TG&Y FABRIC SHOPS

THIS WEEK'S Fabric SPECIALS!

Remnant Day Sale

Assorted remnants of various lengths and widths made from better quality fabrics.

Shop Early For Best Selection

10% to 50% Off Regular Price

save 15% Assorted Polyester Doubleknits

D/R - 58/60" Wide
 100% Polyester

Reg. 1.97 **1.57** Yd.

Sheermist Sheath Lining

D/R - 44/45" Wide - 65 Kodel Polyester - 35% Combed Cotton

Reg. 1.29 **1.17**

Angelica Crepe Solids

D/R - 58/60" Wide
 100% Arnel Triacetate

Reg. 3.49 **2.97**

Weavers Cloth Plains

D/R - 44/45" Wide - 50% Fortrel Polyester - 50% Cotton

Reg. 1.98 **1.77**

Eyolet Embroidered Batiste

D/R - 44/45" Wide - 65% Kodel Polyester 35% Cotton

Reg. 3.49 **1.97**

TG&Y'S ADVERTISED MERCHANDISE POLICY-TG&Y's policy is to always have advertised merchandise in adequate supply in our stores. In the event the advertised merchandise is not available due to unforeseen reasons, TG&Y will provide a Rain Check, upon request, in order that the merchandise may be purchased at the sale price when it becomes available, or you may purchase similar quality merchandise at a similar price reduction. We will be happy to refund your money if you are not satisfied with your purchase. It is the policy of TG&Y to see that you are happy with your purchases. It is TG&Y's policy to be priced competitively in the market. Regular Sale Prices may vary market by market, but the sale price will always be as advertised.



Your best buy is at TG&Y!

PRICES GOOD ONLY AT T.G.&Y. FAMILY CENTER
 521 HWY. 207 SOUTH SPEARMAN, TEXAS 689-3743

Peggy's Pointers

Peggy Winegarner
Co. Extension Agent (H.E.)

Termites cause wood decay and damage that threaten home upkeep.

TERMITE VARIETIES
"Subterranean" or "ground-nesting" termites are a serious problem in Texas. Subterranean termites live in colonies in the ground and require moisture to survive. The worker termites attack damp wood which is in contact with the ground.

They may build earthen tunnels from the ground up to the wood. They will sometimes completely eat away the inside of a piece of wood while leaving the outside surface intact.

HOW TO CHECK FOR TERMITES
Homeowners can follow these steps to check for termites:

- 1) Check for termites at least twice a year.
- 2) During the spring and summer (termite mating season), call an exterminator to identify large numbers of flying insects that you cannot identify.
- 3) Look for earthen tunnels in the following locations:
- along masonry foundation and basement walls,
- along openings where pipes enter walls, and
- along the surface of metal pipes.
- 4) Examine all cracks in slabs and loose mortar in masonry walls. Check all joints where wood meets with concrete or masonry, at walls, slabs, piers.
- 5) Inspect all wood and wood structures that are near the ground.

Pay special attention to any that touch the house, such as fences, wood trellises, carpents.

Examine crawl spaces that provide moist conditions.

- 6) Check windowsills, door thresholds, porches and the underside of stairs.
- Be on the lookout for peeling and blistering paint.
- 7) Where termite damage to wood is suspected, probe with a sharp point, such as an icepick or penknife.

If the point penetrates the wood to a depth of one-half inch, when using only hand pressure, wood damage by termites is likely indicated.

HOW TO PROTECT AGAINST TERMITES
Chemicals needed to control termites are toxic to animals and plant life.

There is also danger of contaminating the water supply.

Therefore, the chemicals should be applied with extreme caution and preferably by an experienced person.

Follow this procedure when chemical treatments are necessary for an existing building:

- 1) Dig a trench, approximately one foot wide and three feet deep, adjacent to the foundation wall.
- 2) Prepare a solution of the insecticide. Consult your county Extension office or local exterminator regarding the recommended type and mixing instructions.
- 3) Pour the insecticide against the exposed wall surface and into the trench as it is backfilled.

Apply the solution to all other locations where wood and masonry meet at a joint. It should also be applied to other areas that have earth floors.

- 4) Use extreme caution with these chemicals since they will also be poisonous to humans and pets.

If a chemical is used inside the house, the room or space must be well ventilated and vacated for a period of time.

Other considerations should include:

All surface water should be directed away from the building, allowing no water to accumulate at the foundations.

Cover the earth of unpaved basements with plastic film four millimeters or heavier.

Keep crawl spaces well ventilated. A house of 1,000 square feet should have at least eight vents, 16 by eight inches, open at all times.

Crawl spaces should be at least two feet in height. Keep space clear of wood scraps.

Untreated wood should not come closer than six inches to the ground.

DRUGS AND PREGNANCY
Taking some drugs during pregnancy can adversely affect the mother and the baby. To avoid drug-related problems during pregnancy, take drugs only when necessary and only on the advice of your doctor.

Also, avoid tobacco and alcohol.

Furthermore, discuss any questions you may have about drugs, either prescription or over-the-counter, thoroughly with your doctor before taking them.

EFFECTS OF DRUGS
When an expectant mother takes a drug, in most cases it will pass through the placenta to the fetus.

Whether or not the fetus is harmed will depend on the type of drug, the stage of pregnancy, and the amount and strength of the drug.

The fetus is probably most prone to harmful effects during the early stages of pregnancy when the cells are growing rapidly and organ systems are developing.

DRUGS TO AVOID
Taking the hormones estrogen and progestin (both are ingredients in oral contraceptives) during the first three or four months of pregnancy can increase the risk of birth defects.

Therefore, a woman who is on the pill and thinks she may be pregnant should consult her doctor immediately.

Also avoid tetracycline during pregnancy because it can cause discoloration of the child's teeth.

ALCOHOL, TOBACCO
Two other potential threats are alcohol and smoking.

If a pregnant woman drinks three ounces or more of alcohol a day, there is a definite risk of birth defect.

In fact, drinking one to three ounces may also be risky.

Heavy smoking will increase a woman's chances of giving birth to a child of less than normal birth weight.

POTENTIALLY HARMFUL DRUGS
Other drugs may also cause harm to the fetus—through no firm evidence has proven a cause-and-effect relationship.

These drugs are very suspect, however, and pregnant women should take them with caution. They include:

- 1) Barbiturates—If taken in large doses throughout the pregnancy and especially during the last three months, these may be harmful.
- 2) Amphetamines—Often taken to aid in weight loss, these also may cause birth defects.
- 3) Tranquilizers—Taken early in pregnancy may increase the risk of the baby being born with a cleft lip or palate.
- 4) Aspirin—Taken during the last three months of pregnancy, aspirin may prolong the pregnancy and labor and cause excessive bleeding before and after delivery.

Therefore, take aspirin only under a doctor's supervision.

5) Live vaccines—such as rubella, measles, mumps, smallpox, yellow fever and the live oral polio vaccine.

These are not generally recommended for pregnant women because the effects on the fetus are not known.

Spearman School system.

There will be a break in festivities from 5:30 to 7:30 P.M. We will reconvene at the home of Loyall and Ginger Turner, 8 miles west of Spearman on the Gruver Highway. The class members plan to have an evening of various activities: volleyball, birthday celebration, and a sumptuous cookout under the supervision of Spearman's famed chef, Jim McLain. Also there will be "music in the air" played by Rick Kirk and Jerry Sparks.

Graduates in 1959 were:

- Bobby Archer
- Jim Archer
- Dee Blevins
- Steve Cates
- Ann (Toni) Chevalier
- Carolyn Collard
- Sharon Craig
- Elaine Crawford
- Gerald Davis
- Leslie Dial
- Karen Floyd
- Orlene Fullbright
- Trulene Garrison
- Gerald Hanners
- Bob Hartman

- Barbara Jackson
- Carol Ann Jarvis
- Neal Jameson
- Carol Sue Keith
- Danny Kingsley
- Richard Kirk
- Nedra Kirkland
- Robert Long
- *Larry Maddox
- Jerry Mitts
- Doug Moore
- Jim McLain
- Judy Owens
- Yvonda Pipkin
- Donald Pool
- Betty Riley
- Jerry Sparks
- Eldon Stephens
- Jo Sutherland
- Anna Tedford
- Ivan Thompson
- Charles Trayler
- Guffy Thorpe
- Linda Vanderburg
- Mary Vernon
- Bill Wilmett
- *Arnold Winfield

Anyone with information concerning persons with asterisk before their name please contact Jim McLain, 659-3514.

Other invited guests include Robbie (Giblin) Reid, Morse,

Texas; Elaine (Blackburn) Cessnun, Kenia, Alaska; Cathy (Brillhart) Fuson, Canadian, Texas; Bill and Jim Moorhouse, Prescott, Arizona; *Jay Lee Reinhardt; Edith Entrekis; Sue (Archer) Venters, Lubbock, Texas; *Connie (Day) Vardell; Pat (Pingleton) Morley, Gruver, Texas; *Linda (Barnes) Stenson, Amarillo, Texas; Phyllis (Spiller) Mead, Woodside, California; Janice Jones, Spearman.

We may have overlooked some unintentionally.

Many hours of enjoyment while planning this reunion have been spent by Loyall Turner, Jim McLain, Rick Kirk, Elaine (Crawford) Odagaard, Linda (Vanderburg) Davis, Carol Ann (Jarvis) Pack, Carolyn (Collard) Long, Yvonda (Pipkin) Stokes and Mary (Vernon) Stevens.

Our special "Thanks" go to Roger Odagaard, Ginger Turner and Gina Gordon, secretary at A-1 Automotive for their gracious assistance.

4-H Electric

Camp July

23 - 27

The District 4-H Electric Camp will be held July 23-27 at Camp Scott Able near Cloudcroft, New Mexico. To attend Electric Camp, members must be at least thirteen years of age by camp time.

Hansford County is eligible to send 4 boys, 4 girls, 2 adults, and our two district council members. Cost of the camp will be between \$32 - \$40 which is for the bus fare.

Any Hansford County 4-H'er interested in attending Electric Camp, should notify the Extension office by Friday, June 22.

For more information or any questions contact the Extension office at 659-2136 or 733-2901.

Progress would be faster if people could go forward on excuses.

Class of '59 Plans 20th Reunion

The Spearman High School Class of 1959 is having their 20th. year class Reunion, Saturday, June 30, 1979. Activities will begin at 12:30 P.M. at the Swimming Pool Park - 7th & Hazelwood St., Spearman, Texas. There will be swimming for the children, lots of reminiscing with old classmates and plenty of food for everyone. We extend a heartfelt invitation to all who would like to come and

visit with us. We would love to see parents, teachers, friends from other classes, neighbors, or anyone else whose paths we crossed down through the years.

A tour of the Spearman Schools will be held that afternoon guided by G. W. Robinson, the current Jr. High Principal. The class of 1959 was the first class he taught in the

Ideal
FOOD STORES

PRICES EFFECTIVE THRU JULY 4, 1979. QUANTITY RIGHTS RESERVED. NO SALES TO DEALERS.

(STORE HOURS)



SIX FLAGS' Now...Get
DISCOUNT CARDS

These are the different Six Flags cards... (Small text describing the cards and their use at Six Flags amusement parks.)

Fritos
CORN CHIPS
LAY'S POTATO CHIPS
REGULAR OR SEASONED
REG. 8 1/2" SIZE
LIMIT 2
64¢

YOUR CHOICE
Coke, Dr. Pepper
6-PK. 12-OZ. CAN
\$1.29

HOT DOG OR HAMBURGER
Camelot Buns
PKG. OF 8
LIMIT 3
32¢

FAST STARTING
Kingsford Charcoal
20-LB. BAG
LIMIT 1
\$2.78

CAMELOT HAMBURGER
Sliced Dills
32-OZ. JAR
78¢

WHITE 9-INCH
Paper Plates
100-CT. PKG.
83¢

SWEET HEART
Cold Cups
14 oz. 24 ct. PKG.
53¢

PLAY Gunn Bros. Stamp
Gunn-Ho

RODEO BUCKBOARD FULLY COOKED
Boneless Ham
WHOLE 7 TO 9-LBS. AVERAGE
\$1.59

U.S.D.A. CHOICE BUTCHER BLOCK BEEF
Chuck Steak
BLADE CUTS BEEF CHUCK
\$1.29

FRESH EXTRA LEAN
Ground Chuck .LB.
3 TO 5-LBS. AVERAGE
\$1.79

HUDSON'S THRIFTY PACK
Fryer
3 TO 5-LBS. AVERAGE
53¢

FRESH FRYER THIGHS OR DRUMSTICKS
CASE 12
98¢

FRESH RIB ATTACHED
Fryer Breasts
CASE 12
\$1.09

U.S.D.A. CHOICE BUTCHER BLOCK BEEF
Sirloin Steak.....**\$2.29**
U.S.D.A. CHOICE BUTCHER BLOCK BEEF
Rib Steak.....**\$2.29**
U.S.D.A. CHOICE BUTCHER BLOCK BEEF
T-Bone Steak.....**\$2.98**

BAR-S
Sliced Bacon
HICKORY SMOKED
1-LB. PKG.
\$1.19

FRESH PORK
Spare Ribs
LEAN MEAT
1-LB.
\$1.39

RODEO SLICED MEAT
Bologna.....12-OZ. PRE.
\$1.29

RODEO BY THE PIECE
Braunschweiger.....**89¢**

RODEO BY THE PIECE
Jumbo Bologna.....**\$1.29**

SLICES CENTER CUT BONELESS
Smoked Ham.....**\$1.98**

BUDDI ASSORTED VARIETIES
Sliced Meats.....2 1/2-OZ. PRE.
49¢

WISCONSIN RANDOM WEIGHT
Longhorn Cheese.....**\$1.98**

U.S.D.A. GRADE "A"
Cornish Hens.....20-CT. EACH
\$1.59

BAR-S MEAT
Skinless Franks
12-OZ. PKG.
89¢

Tired Of Leaking Roof & High Energy Costs

TRY RAPID ROOF

Acrylic Latex Roof Coating

Fully insured-5 year guarantee on product. All weather resistant.

This roof coating is energy efficient, and will go on any kind of roof surface.

B & B Roofing
802 S. Colgate
Perryton, Texas
Ph. 435-3549

SHOP IDEAL...WHERE THERE'S MORE VALUE IN

UIL Ruling on Summer Camps

To camp. Or not to camp. This question, involving the University Interscholastic League's sanction on specialized summer football, basketball and volleyball camps, is suddenly a hot item of discussion among high school athletic officials and enthusiasts.

The rule states that students attending specialized camps will lose one year's eligibility in the sport or sports in which he or she attended the camp. Despite a setback in court last August and Legislative attempts to circumvent the rule -- not to mention probability of further litigation -- Texas school administrators voted 670-259 last April to retain the ban on camps.

"The basic question is: Does the member school have a vested interest in the activities of students during summer months?" said Bill Farney, UIL athletic director. "The answer is 'yes.'"

"The UIL is one of the few

remaining amateur organizations in the nation," Farney said. "In order to retain this amateur status, some rules must be enforced throughout the year. For example, the League has restrictions on gaining college instruction in all activities: Music, literary and academic, as well as athletic.

"There are varying degrees of restriction from event to event, and these degrees of restrictions arise from the pressure on students inflicted by members of the community, coaches and other peer groups."

This explains in part why camp participation is allowed in tennis and golf, band and one-act play, but not football or basketball. Community pressure has not come to the point where golfers and thespians are pressured to attend summer camps. In basketball and football, this is not the case. Prior to the rule, students were "indirectly coerced" to attend camps, whether they wished to

or not.

League officials contend that already, junior high students (who are not bound by camp prohibitions) are pressured into camps against their will, being told by coaches and others, "You cannot plan on the high school team unless you attend a camp this summer."

Farney said, "It is the feelings of the school people that there are a lot more would be forced into going to camps than there are those who want to go but cannot. In other states, we find this happening."

In addition, sports such as golf and tennis are individual sports, considered lifetime avocations. Football, basketball and volleyball are team oriented sports and, except for a small fraction, most do not participate regularly past the high school level.

Furthermore, golf and tennis as well as baseball are traditional summer sports. Football and

basketball are not.

The rules do not prohibit students from attending these camps but state that a student who attended a specialized camp cannot represent the school on the varsity squad. He may play for the junior varsity. The rules do not prohibit summer workouts. An athlete may practice the entire summer, so long as the practices are not organized. Most high schools open gymnasiums in order to allow students workout time of their own.

Rules governing out-of-season participation are not unique to the UIL. The NCAA and other sports organizations, including the professionals, have rules governing organized practices outside the regular season.

"These rules are not adopted by irascible school administrators for no good reason," Farney said. "These people are not given to capricious or arbitrary behavior and the actions they take are given grave consideration. One thing to keep in mind is that every rule

in the League Constitution was placed there in order to relieve some abuse of educational competition."

"The League program is structured so that each program is in coordination and perspective with the other," he said. "While some states may allow some activities Texas does not, we here allow quite a bit they may not."

For example, Minnesota allows it schools to play only 19 basketball games per year, in contrast to Texas schools, which can play as many as 35-40.

"We allow more games than most states," Farney said. "We allow schools to conduct a year-long off-season program whereas many states do not the one-hour practice period during the school day."

"This is a master plan by the school people to keep our program educational by not allowing one program to infringe upon another school program, and not allowing any of these programs to infringe upon the educational process," Farney said.

Farney said contentions that the camp ban has hurt basketball in Texas are absurd.

"In the first place, just because other states have camps does not mean they don't have problems with them," he said. "We attend national meetings and one of the major concerns in summer camps."

"As for the idea that no camps has hurt Texas, consider that there are no football camps and football in Texas doesn't seem to be suffering. In addition to that, we have the same rules for girls and the overwhelming majority of girls playing for Texas colleges last year were from six-player game up to this year. And three Texas collegiate teams were ranked in the top ten nationally."

The question is one of interest. Better athletes in Texas traditionally went the football route, not only in high school but in college. Today, more interest is building in basketball and the sport is stronger today than ever and will continue to grow.

Consider the adverse effects

of camps: Minority students or those from poorer school districts are at a disadvantage because they cannot afford the high costs of camps. Outstanding players from poor districts could face disqualification in violation of amateur rules if it is found he allowed a coach or other person to pay his way to a camp.

The camps, more often than not, are showcases for college recruiters. The basic activities are fundamentals and playing time. In some cases, the players are taught different fundamentals than the high school coach would teach and problems can arise when the coach attempts to correct or change what the player was taught.

The exceptional athlete will win the college scholarship. The rules affect not only the outstanding few but also the 96-97 percent who'll never participate in college football, basketball or volleyball.

These rules are necessary in order to protect that 97 percent, to make certain they can go out on their own during the summer months rather than being pressured by coaches and other parties to attend an expensive camp.

IMPORTANT NOTICE

The authorization has been announced by the State Office that all surplus in the Grain Reserve could be released without a penalty, if the following conditions are met:

1. Principal repaid plus interest for regular loan period plus interest for first year of reserve period.
2. Unearned storage refunded.

You have until July 31, 1979, to release the surplus that is in the Reserve Program. At this time, there will be a meeting to determine if the release will remain open. If so, the storage payments will stop being made by C.C.C. If the release is closed the storage payments will be continued.

Sincerely,
Martin L. Chandler
County Executive Director

Lycan Services Held Saturday

Funeral services were held at 11 a.m. Saturday in the First Baptist Church of Puryman for W.A. (Bill) Lycan 86, who died Thursday in Southwest Medical Center in Liberal, Kans. following an extended illness. The Rev. Jack Corneil and Rev. Elzie Teague officiated. Burial was in Pleasant Hill Cemetery in Balke, Okla. by Clark Funeral Service in Beaver.

He was born October 11, 1892 in Napa, Calif., and came to Beaver County as a child.

Mr. Lycan married Lottie McCurdy August 12, 1925 in Liberal, Kans. and the couple lived and farmed in the Balke Community before moving to Liberal some 19 or 20 years ago.

Mr. Lycan is survived by his wife, a brother, John Lycan of Spearman, and several nieces and nephews.

Rare, old printing now at Texas A&M

COLLEGE STATION — The oldest examples of printing known to exist are among 85 rare books and pieces donated to Texas A&M University by Lorán L. Laughlin, Salt Lake City businessman and antiques dealer.

One of the books is the world's only known copy of "Jun Mun Gyo," a Korean book reportedly printed with moveable metal type in 1438, almost 20 years before the famed Gutenberg Bible.

The claim has sparked discussion among rare book scholars and enthusiasts because the Gutenberg date of 1455 is generally regarded as the beginning of moveable type printing. The Salt Lake City collector remains convinced that the work is authentic, however.

Barley Loans Can Be Extended

Washington--Farmers with 1978-crop barley are being given the opportunity to extend their loans for six months, Ray Fitzgerald, administrator of the Department of Agriculture's Agricultural Stabilization and Conservation Service, said today.

Fitzgerald said the extension would help alleviate transportation and storage problems that many producers are now facing and give producers another marketing option.

Recently, grain prices--including barley--have been steadily increasing. However, while barley prices are still at or only a little above loan levels in some states, department projections indicate that barley prices should continue to increase. The six-month extension will allow farmers to market their barley over a longer period.

This action comes after Secretary of Agriculture Bob Bergland said last March corn and barley loans might be extended if the maturing of a large number of loans at the same time posed "A threat to orderly marketing."

However, the farmer-owned reserve will not be open to 1978-crop barley, Fitzgerald said.

Producers who wish to extend their loans should contact the ASCS office where they obtained them.

4TH OF JULY SALE

HOLIDAY HOURS
IDEAL STORES WILL BE
OPEN
JULY 4TH
9 A.M. 'til 8 P.M.
FOR YOUR SHOPPING CONVENIENCE

<p>THICK, RICH Hunt's Ketchup 32-OZ. BTL. LIMIT 1 73¢</p>	<p>KRAFT Miracle Whip 32-OZ. JAR LIMIT 1 \$1.08</p>	<p>KRAFT B-B-Q Sauce ALL FLAVORS — 18-OZ. BTL. LIMIT 2 58¢</p>
<p>UNDERWOOD Devil Ham 4 1/2-OZ. CAN 67¢</p>	<p>LIPTON Instant Tea 3-OZ. JAR \$1.78</p>	<p>MARZO LARGE PITTED Ripe Olives 6 OZ. CAN 63¢</p>



VAN CAMP'S Pork & Beans
16-OZ. CANS
26¢ (LIMIT 3)

And \$1,000 Get EXTRA GUNN BROS. STAMPS. FOR DETAILS SHOP YOUR NEAREST IDEAL FOOD STORE.

<p>HUNT'S HALVES OR YELLOW CLING Sliced Peaches 29-OZ. CAN 62¢</p>	<p>CORONET Bathroom Tissue 8 ROLL PAGES \$1.69</p>
--	--



VINE RIPENED
Cantaloupe
LB. **29¢**

<p>ALL PURPOSE White Potatoes 10-LB. BAG 99¢</p>	<p>RED RIPE Strawberries ... QT. 98¢</p>	<p>FRESH PICKED Nectarines LB. 69¢</p>
<p>RED RIPE Watermelon LB. 10¢</p>	<p>RED Onions 3 LBS. \$1</p>	

<p>KRAFT PHILADELPHIA Cream Cheese 8-OZ. BOX 58¢</p>	<p>CAMELOT — LIMIT 4 Lemonade 6-OZ. CAN 17¢</p>
<p>KRAFT Cheez Whiz 16-OZ. JAR \$1.73</p>	<p>MEADOWDALE French Fries 5 LB. \$1.33</p>
<p>FAIRMONT Sour Cream 16-OZ. CTR. 79¢</p>	<p>CAMELOT Corn on the Cob 4-EAR PKG. 88¢</p>

<p>COUNTRY SIDE OR MEADOWDALE Ice Cream 1/2-GALLON \$1.08</p>	<p>HEALTH & BEAUTY AIDS AQUA FRESH Toothpaste 4.6-OZ. TUBE 83¢</p>
<p>FAIRMONT Ice Cream Mini-Sandwich 14-CZ. PKG. \$1.79</p>	<p>C-126 Film \$1.68</p> <p>C-110 Film \$1.59</p>

IDEAL FOOD STORES

Food Stamps Buy More At Ideal...

BASEBALL SCOREBOARD

Boys T Ball
6/21 Dodgers 18 vs Gruver Mets 16
6/25 Dodgers 6 vs Gruver Cardinals 18

Girls T Ball
6/22 Astros 21 vs Gruver Angels 27
6/23 Astros 13 vs Gruver Angels 17
Girls Soft Ball
6/22 Spearman Blue Jays 9 vs Gruver Bees 12

Major League
6/21 Indians 9 vs Gruver A's 8
6/25 Indians 4 vs Gruver Cubs 7
6/25 Astros 4 vs Gruver Giants 16

Ladies slow Pitch
6/24 Odds & Ends 16 vs Red Hot's 6
6/24 Just Us 31 vs Firettes 0

Correction from last week 6/18 should have been Jets 11 vs Indians 6.

Dr. T.G. Truitt

announces the reopening of his Chiropractic Practice formerly at 516 East 12th

now at
108 Northwest 9th
Guymon, Okla.

Monday, Tuesday,
Wednesday & Friday

Hours 8 to 12, 1:30 to 5:30

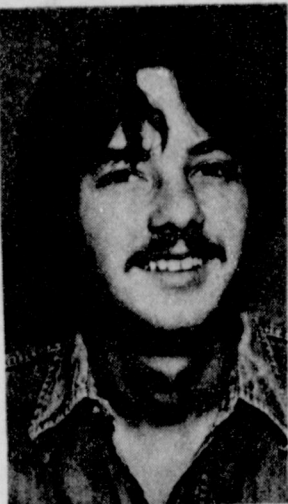
OFFICE NO. 405-338-5758

Brock Insurance Agency

Fire Ins. on Wheat 29c per \$100.00

Phone: 659-2514

Attends Telephone Training



Dan Owen of Spearman, installer/repairman with General Telephone in Perryton, recently attended a 3-week training school at the company's training center in San Angelo. The course, Station Practices, is designed to give employees up-to-date training in installation, repairing and replacing the more common types of residential telephones.

Our advice to you this week is to take care of your heart, and live a while.

Spearman Swim Team News

The Spearman Swim Team traveled to Ulysses, Kansas this past weekend for a meet with nine other teams of the West Kansas Swim League. Much improvement was shown in the over all placing of the team. The individual results are as follows:
Carly Shieldknight 8 and under Girls 33 Free - 3rd
Tuwana Byrd 15-18 Girls 100 Free - 2nd
Curt Davis 13-14 Boys Backstroke - 2nd
Greg Farr 13-14 Boys Breast

stroke - 4th
Curt Davis 13-14 Boys 200 Free - 6th
Tuwana Byrd 15-18 Girls 200 Free - 1st

This group of young people are working very hard and results does not always show in the placing. Each one should be given credit for their hard work. The next swim meet is in Perryton this Saturday all day, beginning at 9:00 a.m. We would encourage you to come and watch.

Technology, Meat Processing and Marketing, Professional Truck Operations, Printing Technology, Saddle and Tack Making, Technical Office Training and Welding and Fabrication.

For more information contact TSTI Amarillo, Department of Admissions, 335-2316, Ext. 217.

fyng of any brands or other marks on the steer. For any questions concerning the validation call 659-2136 or 733-2901.

Farmer's stock tanks currently under study

COLLEGE STATION — People don't normally expect to find Ph.D.s out digging post-holes and stock tanks. But that's exactly what Texas A&M University biologist Norman Dronen has done, and

it's all part of an unusual study of lifeforms.

Dronen is conducting what is probably the most detailed examination ever of the small aquatic universe most ranchers and farmers in Texas have come to depend on — the stock tank. In time, the information gained may help producers, even shrimp and fish farmers, manage their herds and watering holes more efficiently.

Blumenthal: months ahead difficult; recession unlikely.

1. Who won the U.S. Open Golf Tournament?
2. Billy Martin now manages what team?
3. Who won the women's singles Chichester Grass Courts Tennis Tournament?
4. Lydell Mitchell plays pro football for what team?
5. Jane Blalock is known in what sport?

Answers to Sports Quiz

1. Hale Irwin.
2. New York Yankees.
3. Evonne Googalong.
4. San Diego Chargers.
5. Ladies Golf.

Show Steers Must Be Validated

All Hansford County 4-H members, Spearman and Gruber FFA members who will be showing steers at any major show in Texas or the County Show next year need to have their steers validated, weighed, and tagged during June, according to Layton Barton, County Extension Agent and secretary of the Hansford County Stock Show Board.

The Show Board has set the date for validation for June 30, from 8:00 a.m. until 12 noon at Glen Ray Mackie's (Barnes Feedlot) 1 mile east of Spearman on the Perryton Highway.

All steers which will be shown next year must be validated in order to compete even at the County emphasizes Barton.

The validation consists of weighing, ear tagging, taking a picture of the steer, and identi-

Rho Rho Fireworks Stand

Ring 4th in with a BANG!
All Kinds of Fireworks

Located

Hiway 207 Front of Horizon Oil & Gas

Hours Open

Wed. June 27th - 11:30 AM - 8:00 PM

Thurs. June 28th - 11:30 AM - 8:00 PM

Fri. June 29th - 11:30 AM - 10:30 PM

Sat. June 30th - 11:30 AM - 11:00 PM

Let the Colonel do the cooking during ...

HARVEST

"Finger lickin' good"

Kentucky Fried Chicken and all the fixings by the box or bucket



- Cole Slaw
- Baked Beans
- Fried Pies
- Sandwiches

Call: 435-3811

OPEN: Every Day
11 a.m. - 9 p.m.

Eat Out

It's nice to feel so good about a meal.
Kentucky Fried Chicken

1222 S. Main

Perryton, Texas

TSTI Registration July 5

AMARILLO---Registration for the Summer Quarter at Texas State Technical Institute is Thursday, July 5, 1979. Registration will take place at the Campus Activity Center for 9:00 am until 3:00 pm.

The following programs will be taking applications for admission: Auto Body Repair, Auto Mechanics Technology, Boot and Shoe Operations, Construction Technology, Cosmetology, Diesel Mechanics Technology, Drafting and Design Technology, Interior Design

3rd Big Year — 30 Booths

Perryton, Texas

GIBSON'S

PLEASE CALL & RE-RENT YOUR SPACE

GARAGE SALE

and

FLEA MARKET

SATURDAY, JUNE 30

We Welcome All Businesses, Individuals, Churches, and Clubs.

We have had many people already calling complimenting last year's and are ready again for this year's flea market.

So clean out your garage or attic of unneeded merchandise and sell it at

GIBSON'S DISCOUNT CENTER PARKING LOT

NO CHARGE FOR SPACE

The Parking Lot will be marked off in Booths — Reserve a Booth now! This is your chance to make money as well as have fun.

RESERVE A SPACE NOW BY CALLING:

• DEBI KENNEDY • NANCY PLETCHER • AYVIS JULIAN

AT GIBSON'S ... 435-5763

Gibson's Will Also Have Space Reserved For The Store with the FANTASTIC BARGAINS

"I WANT TO DOUBLE MY MONEY IN LESS THAN TEN YEARS!"

A.

"I WANT TO HAVE A SECOND INCOME THAT GOES ON FOREVER!"

B.

"I WANT A COLLEGE SAVINGS PLAN THAT CAN BE TAX-FREE!"

C.

"I WANT TO DIRECTLY DEPOSIT MY SOCIAL SECURITY CHECK."

D.

"I WANT A RETIREMENT SAVINGS PLAN THAT'S TAX-DEFERRED!"

E.

We'd like you to tell us what you want to do with your money. If one or more of these savings plans interest you, stop by and talk to us or just fill out this coupon and mail it to us. We'll send you all the information. I want more information about:

A B C D E

Name _____
Address _____
City _____ State _____ Zip _____

OUR INTEREST IS MORE INTERESTING

MEMBER ASSOCIATION NAME AND ADDRESS
Member Federal Savings and Loan Insurance Corporation
Member Savings and Loan Foundation, Inc.

Interstate Savings & Loan Association

Member Federal Savings and Loan Insurance Corporation
Member Savings and Loan Foundation, Inc.

322 SOUTH MAIN ... SPEARMAN, TEXAS