

# Cat fight here Friday nite!



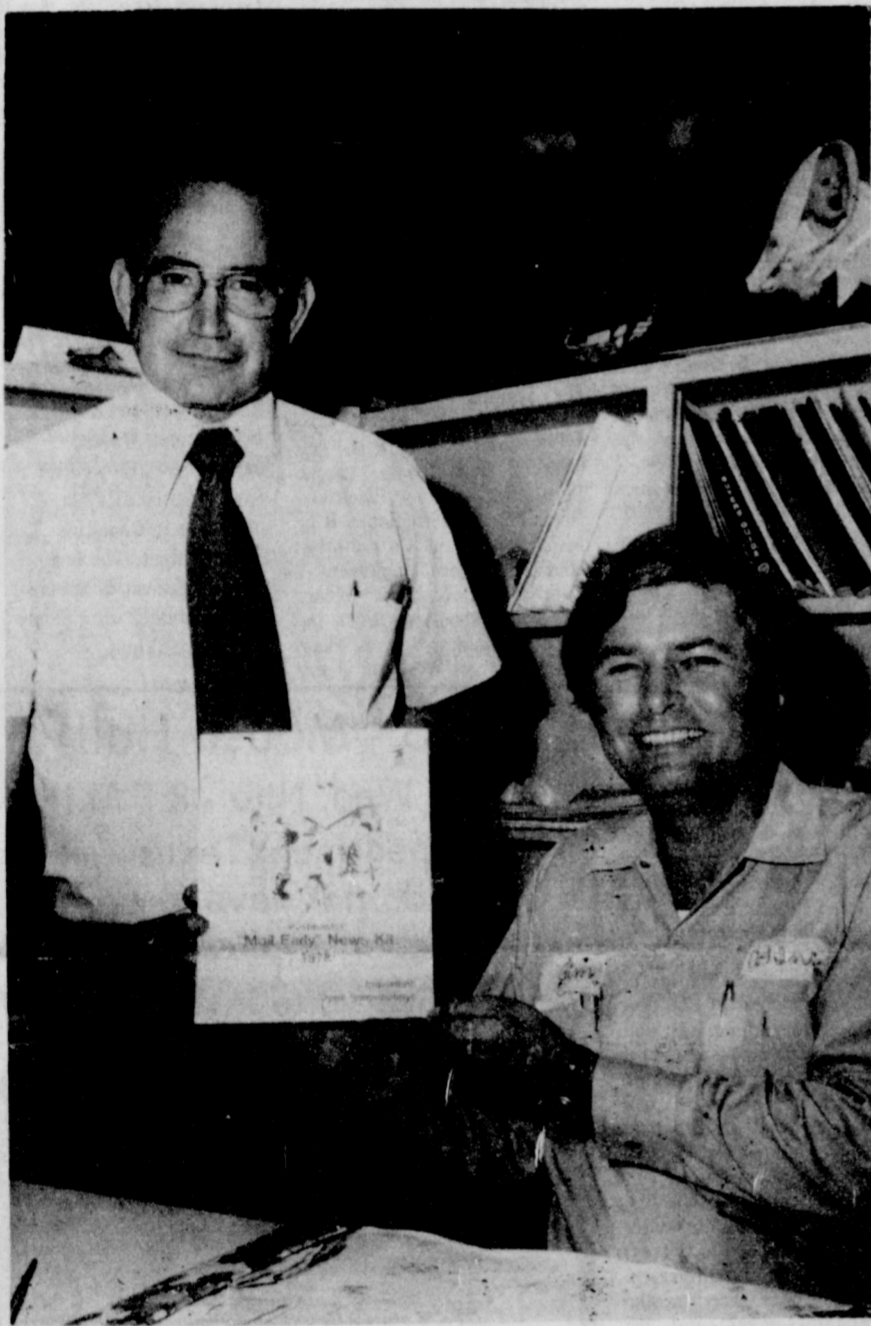
## The Spearman Reporter

Vol. 70 No. 4

THE SPEARMAN REPORTER, SPEARMAN, TEXAS 79081

THURSDAY, NOVEMBER 2, 1978

### Shop Early-Mail Early



In a brief ceremony held at the Chamber of Commerce office, Jim McLain, President of the Chamber of Commerce and Postmaster Ray Robertson declared the official opening of the Christmas shopping season for Spearman.

This year the Chamber of Commerce is cooperating with the Postal Service in a combined effort to encourage the public to shop in Spearman, shop early

and mail early for Christmas. "By shopping early and mailing early, the public can be better assured their cards and parcels will reach their destinations in plenty of time for Christmas," said President McLain.

"With the Christmas shopping season now officially open, we wish to further emphasize that many suggested overseas mailing dates, including the U.S. Armed Forces, fall due

before the end of this month. These dates, as in past years, vary according to different parts of the world. Specific information can be obtained by calling the Spearman Post Office," Postmaster Robertson said.

The important thing to remember is to shop in Spearman, do your shopping early and mail your cards and parcels early.

### Turkey Trot, Sun

Jim McLain, president of the Spearman Chamber of Commerce and Gina McLain, president of the Women's Division of the Chamber of Commerce, will share the responsibilities of Master of Ceremonies for the American Heart Association "Turkey Walk" on Sunday, Nov. 5th.

Russell Pogue, pastor of the First Baptist Church, will give the invocation at 1:50 p.m. with recognition of out of town guests following.

Lynx head coach Preston Smith, will fire the starting pistol promptly at 2 p.m.

The line-up will follow the fire trucks, manned by Chief Ronnie Antalek and his volunteer firemen.

The Fire-Ettes will hold Division signs, and entrants will line up parade style, with the bikes

first, followed by the joggers and runners, then the walkers and little people on their riding toys accompanied by an adult. So watch for the Division sign in your category. The bikes will be on their way first to leave plenty of room for the joggers and walkers.

The Heart Association Committee has been notified that there will be several out of town guests present.

The donations to the Heart Association may be dropped off at Mrs. F.B. Schubert's residence at 1007 S. Archer not later than 5 p.m. on November 7. She will give out Turkey Certificates for those with donations of \$50.00 or more beginning right after the "Turkey Walk" on Sunday. Everyone should be through turning in their monies by 5 p.m. on Nov. 7.

The following clubs and organizations have volunteered to man the pit stops:

1. Twentieth Century Club at Cates Car Wash .04 mile;
2. Xi Zeta, Depot parking lot .08 mile;
3. Spearman Study Club, Courthouse parking lot, 1 mile;
4. Epsilon Zeta, driveway at 619 S. Bernice, 1.5 mile;
5. Servitor Club, Lutheran Church parking lot, 1.8 mile;
6. Rho Rho, parking lot, Pittman-Shield-Knight building, 2.3 mile;
7. Gladiola Flower Club, Mall, 2.8 mile.

The pit stops will not be needed for everyone but will be there so that if you feel the need to stop and not continue someone will be available to take you back to the mall. The pit stops will also have drinks available.

### Election set for Tuesday

Absentee voting for the Nov. 7 state election will continue through Nov. 3 at the County Clerk's office at Hansford County Courthouse. A check with the office Tuesday revealed that 34 persons had voted absentee.

The five state-wide races are hotly contested. Congressman Bob Krueger, Democrat, is opposing incumbent U. S. Senator John Tower, Republican. According to the "Texas Monthly" poll Krueger holds a slight statewide lead—42.7 to 38.9 percent—over Tower.

In the race for Governor of Texas Democrat John Hill, 55, holds a solid lead over his Republican challenger, Bill Clements, according to the poll. Texas Attorney General Hill won the Democratic nomination from incumbent Governor Dolph Briscoe without a runoff in a lively primary battle last spring.

In the race for Lieutenant Governor, incumbent Bill Hobby, 46, enjoys a decisive 50.8 to 14.4 percent lead over his Republican challenger, 43-year old Dallas commodities broker Gaylord Marshall.

The campaign for Attorney General pits two Houston lawyers, Democrat Mark White and Republican Jim Baker, against each other. White, 38 year old former Texas Secretary of State fought an uphill battle last spring to win the Democratic nomination from former Texas House Speaker Price Daniel, Jr. White is currently leading in the poll by a wide 38.6 to 22.5 percent margin.

In the Railroad Commissioner race, indecision was a significant finding in the "Texas Monthly" poll, with over 45 percent of those surveyed preferring neither Democrat John Poerner, 46, nor his Republican opponent Jim Lacy. Nevertheless, three-term state representative Poerner, who was appointed to the Commission earlier this year, leads, 54-year old Midland oilman Lacy by 36.5 to 18.2 percent statewide.

The "Texas Monthly" poll was conducted between Sept. 29 and Oct. 7, and indicated which candidates were leading in the races as of the time the Poll was conducted, and does not predict the outcome of the elections. In each race the undecided vote can play a significant role in the final outcome on Nov. 7. Campaign spending has been accelerated in October and voters may be swayed from their original positions. This year's campaigns are projected to be the most costly in Texas history.

U. S. Representative Jack Hightower, 13th District, is being opposed in his bid for

re-election by Republican Clifford Jones of Perryton. The only contested county race is for County Commissioner Prec. 4 with Val Winger, Republican, running against incumbent George C. Lowe.

There are nine constitutional amendments on the ballot: "The Tax Relief Amendment" proposing a constitutional amendment to provide tax relief for residential homeowners, elderly persons, disabled persons, and agricultural land; personal property exemptions; truth in taxation procedures, including citizen involvement; a redefinition of the tax base; limitations on state spending; and property tax administration.

Amendment No. 1 - proposing an amendment to Article XVI, Section 21, of the Texas Constitution to exempt certain products manufactured by handicapped persons from the requirement that purchasing by state agencies be done by competitive bidding.

Amendment No. 2 - propos-

ing a constitutional amendment to allow the legislature to authorize political subdivisions to issue revenue bonds "to develop employment opportunities.

Amendment No. 3 - Granting the legislature the power to authorize cities and towns to issue tax increment bonds to finance redevelopment of blighted areas.

Amendment No. 4 - proposing an amendment to Article VII, Section 2, Subsection (a), of the Texas Constitution to authorize the legislature to exempt from taxation solar or wind-powered energy devices.

Amendment No. 5 - proposing amendments to Article V, Section 16 and 19, of the Texas Constitution to expand the jurisdiction of justices of the peace in civil cases.

Amendment No. 6 - proposing an amendment to Article V, Section 6, of the Texas Constitution to authorize the legislature to increase the number of associate justices on a court of civil appeals and permit a court

Possibly the strangest district 1-AA race in the history of 1-AA is coming to the surface this week. Canadian, a team that has been "stall-feeding" their opponents this year, has suddenly jumped into a 2-0 district 1-AA lead. And, the Wildcats have already beaten Boys Ranch to almost completely wreck their conference hopes for a 1-AA sweep to the playoffs. So, to make a long story short, the Lynx will have their hands full at home this Friday night, when they host the undefeated 1-AA conference standing Wildcats.

Fans in Spearman and Perryton are still in a "state of shock" over the game of the "century" last Friday night, when 5,000 limp fans waited after the game was over to see if it was a tie game, or if the Lynx had won on a field goal on the last play of the game. The field goal missed by inches, and the game ended in a 13-13 tie. Both the Lynx and the Ranger have their hands full this week and both could be defeated, as the Rangers travel to Boys Ranch, and the Ranchers defeated Dalhart 15-0 last Friday at the Ranch.

In the meantime, Coach Hagar's "Ranger Killers" will be in action this Thursday at 5 p.m. when the 7th grade entertains the Canadian 7th grade at Lynx stadium at 5 p.m. Also, on the agenda for Thursday at Lynx stadium is the terrific 8th graders matching talent with the Canadian Tom Cats!

The varsity game against Canadian should be one of the finest games of the year for local fans. As we said before the Wildcats are undefeated in conference 1-AA play and have a tremendous rebuilding program underway. The "Kuwait" Wildcats will come in here Friday night and could easily be the team to upset the Lynx, after their big game at Perryton Friday night.

The half-time show by the bands this Friday night will also be entertaining. The bands will feature some of the finest marching music and twirling in the entire Panhandle area. Come out and watch these "fabulous" teams in action this Thursday and Friday at Lynx stadium.

of civil appeals to sit in sections.

Amendment No. 7 - Amending the Texas Constitution to abolish the State Building Commission and the State Building Fund.

Amendment No. 8 - Amending Article III, Section 52, and Article XVI, Section 59, of the Texas Constitution to authorize water districts to engage in fire-fighting activities and to issue bonds and lend their credit for fire-fighting purposes.

According to Secretary of State, Stephen Oaks, the voter turnout for this election is expected to be about 39% of the eligible voters registered in the state. Polling places will be open

from 7 a.m. until 7 p.m. Tuesday, Nov. 7, 1978.

Location of polling places in the county are: Precinct #1, County Courthouse; Precinct #2, Renner Ranch; Precinct #3, Gruver Elevator; Precinct #4, Gruver County Agricultural Building; Precinct #5, Spearman County Agriculture Building; Precinct #6, Spearman High School; Precinct #7, Oslo Church; Precinct #8, Absentee Voting Place, Courthouse; and Precinct #9, Morse Community Building.

#### MARKETS

WHEAT	\$3.08
MILO	\$3.75
CORN	\$2.42
SOYBEANS	\$6.31



TG&Y manager Jerry Brock is pictured above. He played host to all of the little Goblins Tuesday evening at 5 p. m., to see who won the Halloween masquerade contest. First place went to Sonya Tindell, and John Kelly won 2nd place. In the over 6 contest, Lynette Williams won first, and John Kelly 2nd.



This car, driven by Mr. Bagwell, of Dimmitt, Texas, was involved in a crash with a gasoline truck, at the corner of the highway, and farm road, in front of the John Deere Center. The accident happened Monday at 10 a. m. Mr. and Mrs. Bagwell were both injured, but not believed to be very serious.



# WANT ADS

**CAPROCK MONUMENT CO.**  
Dealers of Georgia Granite, Georgia Marble, Colored Granite, & Brown.  
represented by  
**BOXWELL BROS. FUNERAL HOME**  
519 S. EVANS  
659-3802

Hansford County Planned Parenthood  
265. Haney  
659-2483  
Spearman Mon.-Fri.  
8 a.m. to 12 noon  
30S-rtm

**SERVICES**  
SERVICE: Pits cleaned, wet or dry. Dragline or loader. Also, dozer, grader, carry-all service. LeeRoy Mitchell, 806-733-2384, Gruver, Texas, 79040.

**PEE WEE'S PLUMBING & Appliance Service.** Roto-roooter. 659-2811 or 659-3781.  
26-rtm

**KIRBY SALES & SERVICE** of Spearman, 912 S. Bernice. 659-2797.  
30-rtm

**SPECIAL FOR OCT. AND NOV. ONLY 5.95 PER DAY PER HOUSEHOLD STEAM RINSEYAC RUG SHAMPOOER**  
Call Gordon's Drug 659-2141 or after 7 p.m. & Sundays call **FREDDIE LARGENT:** 659-3437

**NOTICE**  
Wallace Monument Co. Monuments, Curbing, Grave Covers  
Local Representative **LEONARD JAMESON**  
659-3406  
20-rtm

Alcoholic Anonymous meeting 8 p.m. Friday, Home Demonstration Club building. 305 N. Bernice. Phone 659-3181 for information.

Al-Anon meetings 8 p.m. Friday, Home Demonstration Club building. 305 N. Bernice in back room. Phone 659-3181 for information. Ask for Al-Anon.

**CUSTOM HAY BALING.** Jerry D. Virden, Gruver, Texas. Call 733-2236.  
29-rtm

Be sure and attend the Annual Arts and Crafts Show at the Hansford County Library November 4th and 5th.

**REAL ESTATE FOR SALE**  
FOR SALE: Residential Lots, 115 ft. wide. Extra deep. Excellent neighborhood. 1100 Block S. Archer. All utilities available. Too good to pass up. Call 659-3021 or write Box 522, Spearman.  
50-rtm

FOR SALE approximately 1 1/2 acres on corner of Kenneth & FM 760. Property has partially framed 25 x 30 shop, now has sewer, and is reduced in price. Call 659-3867 or 659-3880.  
49S-rtm

**MISCELLANEOUS FOR SALE**  
FOR SALE-1976 Chevette, low mileage, deluxe interior, op rack, Michelin tires, CB radio, good mileage. Call 806-733-2384.  
51-rtm

Shade & fruit trees. Evergreens, junipers and pines. Plant this fall for early spring growth. Ochiltree growers, 8 miles south of Perryton on Hwy. 70.  
51-8tc  
FOR SALE: Guineas and pea fowls. Call 2801.  
50S-2tp

FOR SALE: Ornamental Gourds. Call 3403 or see Mabel Edwards at 709 S. Archer.  
50-rtm

FOR SALE: 14 x 65 Mobile Home. 3 Bedroom, 1 1/2 bath, central air, dishwasher. Small equity and take up \$105 payments. 659-3487.  
50S2tp

I Need to sell one Ford diesel tractor and a pick-up camper frame made of steel tubing. Will sell both very reasonable. Come by 706 Steele or call 659-3867.  
49S-rtm

FOR SALE-Priced to sell, 2 beds, 2 springs and 2 coffee tables, can be seen at 30 S. Dressen or call 659-3051.

JR SALE-1977 Toyota Station Wagon, \$3000. Call 659-3633 after 4 p.m.  
47S-rtm

FOR SALE- Pickup camper, paneled, nice small cabinets, in very good condition. Can be seen at 30 S. Dressen. or ph. 659-3051.

FOR SALE-Nice doublewide mobilhome, \$15,000. Call 659-3292 for appointment.  
47-rtm

FOR SALE: 1977 Bonanza Mobile Home - 14 x 70; 2 Bedroom - 2 Bath.  
1975 Hillcrest - 12, x 54 2 Bedroom. 659-2201.  
41S-rtm

**SPECIAL SALE:** Turquoise jewelry. Lay away now for Christmas. Call 659-2317.  
4S-T only

FOR SALE-Firewood, Burton Schubert 659-2667.  
47S-rtm

FOR SALE: Used carpet. Call 3203.  
50S-2tc

**GARAGE SALE:** 3 family garage sale-Baby clothes, and miscellaneous, 219 North Brandt, 8 til 5, on Saturday, November 4th, 1 to 6 p. m., on Sunday November 5th.

**HELP WANTED**  
**NEWS REPORTER NEEDED:** Gruver and Spearman area. Apply in person at Spearman Reporter, 213 Main, Spearman, Texas.

**HELP WANTED:** Apply in person, Rogers, Sales & Service, Waka, Texas. Inside shop, manufacturing work.  
25S-rtm

**Truck Driver Needed** must have commercial License call on see Clois (Billy) Baker. 659-3642  
50-rtm

**HELP WANTED:** 3-11 Shift. Allsups. Startin pay \$3.00 per hr. 40 hr. week.  
51-3tp

**WANTED**  
WANTED-Milo or corn to harvest, with 2 or 4 new 7700 JD Combines with row harvester, grain cart and trucks. Can start within one day's notice. Adam Nusz, 316-326-7808.  
50-3-rtm

Water Hauling Wanted, Jack Kemper, 612 S. Evans, Call 659-3475 after 5.  
48S-rtm

**FOR RENT**  
Furnished apartments for rent. Handyman could work out part rent. 303 Davis St.  
49S-rtm

**FOR RENT:** LBL Trailer Space. 659-3627.  
39S-rtm

**LOST**  
LOST: Small 6 month old Poodle and Chihuahua silver and white puppy, wearing a red collar. Answers to the name of Tootsie. Call 3312.  
50-rtm

I MAY FORGET YOUR NAME BUT I NEVER FORGET A FEZ  
JAIL  
In 1925, it was against the law in Turkey to wear a fez.

## NOTICE

**\$50.00 reward** for information leading to the arrest and conviction of person or persons who stole Longhorn and Texan Saddles and blankets from Melvin Hamilton farm north of Spearman within the last two weeks. Call 659-2466.  
50S-2tc



**ENIGMA** WAS THE NAME GIVEN BY BRITISH INTELLIGENCE TO THE GERMAN SECRET CODING MACHINE. **BREAKING** THAT CODE WAS DECISIVE IN THE ALLIED VICTORY OF WORLD WAR II.  
**TRAINING** IN CODING AND DECRYPTING CODES IS AVAILABLE IN THE U.S. ARMY FOR THOSE WHO QUALIFY AS **SIGNAL INTELLIGENCE SPECIALISTS!**

**OFFERED BY:**  
**Emmett R. Sanders**  
Realtor  
**R**  
REALTOR  
†††

Dwelling and store building, small detached apartment, on wide lot, ideal for professional office-dwelling combined.

2 1/2 section ranch-farm, 400 acres cultivated, 1200 acres grass, 2 irrigation wells, 3 bedroom ranch house; owner will carry paper.

150' x 140' commercial, zoned heavy retail, with 2 bedroom home and detached garage, terms available.

308 S. Hoskins, 5 room house, carpet, fenced yard.

Lovely brick home on 11 acres only 5 minutes from Spearman shown by appointment only.

Two new homes, each with 3 bedrooms, 2 baths, carpets, nice kitchens, utility rooms, central heat & air, yards will be fenced.

240 acre farm, one 6" well, on pavement 15 miles south-west of town, one-fourth minerals, owner will carry paper.

**EMMETT R. SANDERS**  
REALTOR  
659-2516  
659-2601 (nights)  
34S-rtm



Mrs. W. J. Miller, visits with Lee McClellan at his 90th birthday party held here last Saturday.

## Gigantic Flea Market Planned

### Bruce Stinson Fund To Benefit

A Gigantic Flea Market will be held On Nov. 18 with all proceeds going to the Bruce Stinson Fund to help with his hospital expenses. All clubs and organizations in the community are asked to help with this project.

Bob Skinner has given permission for the use of the old Beedy Furniture building in Plains Shopping Center for the event.

Georgia Holt and Linda Jarvis will be in charge of the Flea Market. Each club is asked to either be in charge of a booth or assist another organization.

Booths so far are: Bingo, Xi Zeta; Baked Goods, 20th Century Club and Rho Rho; Homemade Candies, Home Demonstration Clubs; Snack Shop, Servitors and Spearman Study Clubs.

The W.I.F.E. Organization will collect scrap iron and batteries. If you have old batteries or scrap iron call Molly

Turner, 659-2276. Trucks are needed for the scrap iron which is to be collected on November 18, also there is a need for someone with a cutting torch to prepare the scrap iron. If you have a truck that could be available on Nov. 18 call Mary Lou Wysong at 3330 or 2879.

Claude Sheets, Jr. has offered to unload scrap iron and cut it at his residence, 610 E. Kenneth.

The story in Sunday's paper that stated that the W.I.F.E. organization is sponsoring this event was in error. This is a community project, with all clubs and organizations being asked to help.

Anyone wishing to donate baked goods, iron, used clothing, junk, candy or their time may contact the Chamber of Commerce.

"Never cut what you can untie." Joseph Joubert

**Attention: Derrick Hands**  
Will pay 10¢ for clean cottonseed hull sacks in good condition, wrapped in bundles of 25.  
Call Rex Hoover, Booker, Texas 658-4868 or 658-4883.  
Save Those Sacks

**Get Ready For Winter**  
Use storm windows to insulate your windows. Double glass resists heat loss almost twice as well as single glass. By doing this, you keep warm air in, & cold air out. When buying new storm windows or doors, buy the best that you can buy in order to get the best savings on your fuel bills. For the ultimate in quality storm windows & doors,  
Contact Howard Moyer at  
**ONLY ALUMINUM INDUSTRIES**  
114 W. 1st Guymon, Okla.  
338-6966 or 338-6170

Smokey Bear, who in 1950 was rescued from a New Mexico forest fire, is probably America's most famous mammal. But who is the nation's most famous bird?  
A bald eagle named Old Abe who served as a mascot for Union troops in the Civil War is a likely candidate, according to Wildlife's Holiday Album, a new book published by the National Wildlife Federation.

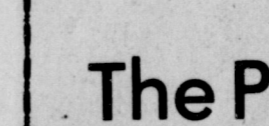
Stolen from his nest as a chick by a Chippewa Indian in 1861, Old Abe was first traded for a bushel of corn, then sold to a Chippewa Falls, Wis., merchant for \$2.50. The merchant donated him a troop of Wisconsin volunteers, the Eau Claire Badgers, as they headed south to fight the Civil War.

The Badgers named their new mascot in honor of President Lincoln and from then on, wherever the Badgers went, Old Abe went, too, riding atop a small platform mounted on a pole at the head of his company with the color guard.

In 1864, Old Abe came home to Wisconsin with full honors, having survived the battles of Vicksburg and Corinth and performed acts of "intelligence and bravery." The handsome bird was given a home in the basement of the state capitol and represented Wisconsin at the 1876 Philadelphia Exposition.

Unlike Smokey Bear, Old Abe was not to survive his encounter with fire. At the age of twenty, the eagle died of suffocation during a brief fire in the capitol's basement. But his fame lives on, for after death, says Wildlife's Holiday Album, "the honor accorded Old Abe was unique among the military figures to have served Wisconsin. He was mounted and displayed prominently in the state capitol."

Wildlife's Holiday Album, an anthology of art and writing about nature and the outdoors, is available for \$9.95 per copy, plus 85 cents in handling charges, from the National Wildlife Federation, 1412 16th Street, N.W., Washington, D.C. 20036. The price will increase to \$11.95 after January 1, 1979.



Some say sneezing on Saturday means you'll see your sweetheart on Sunday.

**TEXAS PRESS**  
MEMBER 1977 ASSOCIATION  
PUBLICATION NO. 509660  
SPEARMAN, TEXAS 79081  
213 Main Box 458 659-3434  
Published Weekly at 213 Main Street  
Spearman, Texas 79081  
Owner-Publisher..... William M. Miller  
Second Class postage paid at Spearman, Texas  
ANY ERRONEOUS REFLECTION UPON THE CHARACTER OF ANY PERSON OR FIRM APPEARING ON THESE COLUMNS WILL BE GLADLY AND PROMPTLY CORRECTED UPON BEING BROUGHT TO THE ATTENTION OF THE MANAGEMENT.  
SUBSCRIPTION RATE: Hansford, adjoining counties, combination with the Hansford Plainsman, \$10.40.  
Other points, \$14.40.

## Contributors To Turkey Walk

Prize chairman for the "Turkey Walk", Mrs. Grady McCormack has announced the following business and individuals have donated money for the turkeys. She also said there would be plenty of turkeys available so come out and get your sponsors.

Everett Tracy, Callaway Lumber, Safety Glass Co., First State Bank, JG's, John Hutchison, Teresa's Dance Studio, Dr. R.L. Kleeberger, Nelson's Builders, C & B Studio, Sacks Third Ave., Berry Cleaners, Hi-Plains Auto, Massad's and White House Lumber.  
Auto, Massad's, White House Lumber, J. E. Blackburn, Attorney, and Spearman Auto Supply.

Contributors are Mason & Henton, Bull's Inn, Earl's TV, Interstate Savings and Loan, Consumers Sales Co., Speartex Grain Co., Carl & Peggy Archer, Spearman Rexall Drug, John R. Collard, Jr., Gordon's Drug, A-1 Automotive, B & B Farm Industries, Spearman Super Service, Martin's Steak Garden, Hergert Motor Co., 4-Tex Grain, Mrs. R.D. O'Loughlin, Butch Lasater, Beedy Furniture, Anthony Electric, North Plains International, R.L. McClellan Grain Co., Jimmy Hicks, Hansford Implement, Cate's Men & Boys Wear, Spearman Reporter, Brock Insurance Agency, J.L. & Mary Brock, A & W Root Beer.

MRS. ROY SHEETS PASSES A WAY  
Word was received in Spearman Wednesday that Mrs. Roy (Ella) Sheets passed away at her home in Canadian Tuesday night. She is a former resident of Spearman. Services were pending at press time.

**Bingo - Moose Hall**  
Every Wed. Nite - 8 P.M.  
Spearman, Texas  
You do not have to be a member to play Bingo!  
Everyone invited.

**ED WHEELER REAL ESTATE**  
HOMES-FARM COMMERCIAL  
900 Honey, 3 bedrooms, single bath, fenced, storage shed for car, extra nice.  
905 Haney St. 2 bedroom, 1 bath, attached garage, fenced backyard.  
906 King, Gruver, 3 bedroom, 1 bath, detached garage, fenced yard.  
1121 S. Lressen, 3 bedroom, 2 bath, corner lot, fenced backyard.  
706 Steele Drive. 3 bedroom, den, 1 1/2 baths, fenced backyard.  
1114 S. Haney - 3 bedroom, 1 bath with garage and fenced yard. Priced to sell.  
Jerry Gee 659-3664  
Doris Beck 659-2618 659-2074

Permanent full time employee needed  
Call Holt Elevator  
659-2390

**The Permian Corp.**  
HAS OPENINGS FOR DISTRICT CLERK-SECRETARY. Excellent pay, 40 hour work-week.  
FRINGE BENEFITS INCLUDE:  
Paid vacation  
Paid holidays  
Free retirement plan  
Thrift plan  
Free hospitalization plan  
Apply in Person - AT HWY. 207, SPEARMAN, TEXAS PERMIAN CORP.  
Equal opportunity Employer, male or female





Jamie's Jabber

by Jamie Morley  
75 students are estimated to attend and compete in the Spearman Speech tournament. The Tournament begins at 7:30 for registration. Assembly is at 8:30. The estimated time for the tournament to be over is about 5:00.

Six towns are to compete: Dalhart, Panhandle, Canadian, Phillips, Fritch, and Dumas. The tournament will have all sorts of competition for the competitive members: Prose, Poetry reading, debate, etc. This tournament is to take place November 4th, this Saturday. **GOOD LUCK, MRS. BOOTH AND TEAM MEMBERS!!** I'm with you though I am not competing!

Pep Club made their debut Friday at the Perryton game. Pep club is a newly started organization, but is already showing signs of advancement.

Pep Club members held signs along the way to Perryton. They helped the cheerleaders to make the purple hand rattlers for the ball game. They sell money making projects for the cheerleaders. They also work with the cheerleaders on new chants and new pom-pom routines. You will be able to tell the pep club members from other students by the purple jerseys they wear. The members will also sell programs at the ball games. Pep Club members are: Sherry Johnson, senior; Kelly Davis, senior; Ginny Morris, sophomore; Michele Graham, sophomore; Shelly Strawn, sophomore; Terry Bynum, sophomore; Bonnie McCloy, sophomore; Cammye Gee, sophomore; Tina Baker, freshman; Deann Green, freshman; Orflinda Vela, junior; Criselda Vela, Senior; Jackie Reed, sophomore; Mary Ann Martin, freshman; Louis Cook, freshman; Cheryl Melton, freshman; Ivonne Sullivan, junior; Linda Rodriguez, junior; Lila Vela, freshman; Darla Moyer, freshman; Debbie Padilla, junior; Angela Lesly, sophomore; Kathy Hagerman, sophomore; Cathy West, sophomore; and Sharon Sheets, sophomore.

The Junior class wishes to express our appreciation to the following businesses that donated prizes for our Bingo Booths. **THANK YOU!** A & W Root Beer, A-1 Automotive, All-sup's; B & B Sales Co., Baker's Dept. Store, Beedy Furniture Co., Blackburn's Flowers, Boyd's Beauty Shop, Bull's Inn, The Country Store, The Bunkhouse, Callaway Lumber Co., Consumer Sales Co., Corner Service Station, Dairy Queen, Dew Drop Inn, Ellsworth's Gulf Wholesale, Equity Elevator (Spearman), Evelyn's Beauty Salon, Fina Station, First State Bank, Gift Box, Golden Spread Sales Co., Gordon's Drug, Gulf Service Station, Hansford Implement Co., Hi-Plains Auto Supply, J. G.'s, Lady Fair, Lil' Lynx Shop, M & M Grocery, Massads, McClellan Grain Co., Inc., Miss Texas Beauty Shop, Nelson Builders Supply, North Plains Truck & Implement, Reed's Family Shoes, Sacks Third Avenue, Shamrock Service Station, Schnell Electric, Spearman Auto Supply, Spearman Rexall Drug, 9y, Thriftway Grocery, Wardrobe Cleaners, White's Auto, White House Lumber Co., Texaco Service Station and Charlotte's Trucks.

The Student Council wishes to say "THANK YOU" to the members of the community, clubs who sponsored booths, and people who worked at the various booths. Due to all the above the '78 Carnival was a success!

**THANK YOU, THE STUDENT COUNCIL.**

**AFTER GAME FELLOW SHIP IS TO BE AT THE UNION CHURCH THIS WEEK.**

**CHARISMATIC TESTIMONY**  
There will be a charismatic testimony by Catholic Nuns from Channing at the Believers Cottage, Friday, Nov. 3 at 7:30 p.m. and Saturday, Nov. 4 at 10:30 p.m. You are invited to attend.

## Pioneer Seeds Honors County Dealers

Pioneer brand seeds honored B & B Farm Industries, Inc. of Spearman and Earl Henderson of Morse recently.

The Spearman company was honored for 15 years of service as a dealer for Pioneer seeds, and to mark the occasion, the company received a plaque bearing its name and years of association with Pioneer Hi-Bred International, Inc.

"B & B Farm Industries, Inc., joined Pioneer as a dealer in 1963 and has represented Pioneer well in their area," Jim Lindsey, president of the Plainview, Texas company, said in noting the anniversary. "Our most vital ingredient for success is people. And it's people like those at B & B Farm Industries, Inc., who have enabled us to better serve farmers in the Southwest.

"We appreciate the time and effort they have given to serving the needs of Spearman area farmers. And we hope that they have realized a certain amount of gratification from their efforts."

Earl Henderson of Morse was honored for outstanding sales achievement in 1978 as a dealer for Pioneer brand seeds. And to mark the occasion, he received a specially designed Silver Dollar Award from Pioneer Hi-Bred International, Inc.

"Only 15 to 16 percent of the approximate 800 Pioneer dealers eligible for this award will qualify each year," Jim Lindsey, president of the company, noted in announcing this year's honorees. "And we're particularly proud of Earl Henderson because he has qualified in three of the past five years."

To make this kind of achievement requires considerable individual effort, Lindsey continued. And he noted that the most vital ingredient for the success of Pioneer is people like Earl Henderson and the approximate 100 other 1978 winners.

Pioneer markets planting seed in the Southwest for sorghum, corn, cotton, wheat and alfalfa through dealers in Texas, Oklahoma and New Mexico. The Plainview based firm is a division of Pioneer Hi-Bred International, Inc., Des Moines, Iowa.

## Canadian Senator To Address Wheat Producers

The Honorable Hazen Argue, Members of the Canadian Parliament, only hours after being reelected Chairman of the Senate Agriculture Committee yesterday in Ottawa, notified the Texas Wheat Producers Association that he is accepting the wheat farmers invitation to address their annual meeting and to jointly explore ways to strengthen world wheat prices to profitable levels in both countries, according to Bill Nelson, TWPA Executive Vice President. The session is scheduled November 30 in the auditorium of the Vernon Regional Junior College.

Senator Argue, a wheat farmer himself, like the other 102 members of the Canadian Senate, is appointed to his seat in Parliament for life by the Governor-General with advice of the Prime Minister but is subject to election to his Ag. Committee post each legislative session. "This session with Senate Argue of Canada is part of our already established and continuing dialogue with producers and government officials in other wheat producing countries which hopefully will lead to a 'coalition of efforts' to adopt and administer similar wheat policy objectives in the produc-

ing countries," according to Otis Harman, Tulsa, President of the Amarillo based Texas Wheat Producers Association. "By this we hope to prevent one country from expanding acres while another is cutting them; one country from having high producer price supports and another low; or one country from reducing reserve stocks while another is building them. Senator Argue led a Canadian delegation of legislators recently to Washington for joint meetings of leaders for the U.S. Senate and House Ag Committees and producers exploring similar objectives", Harman said.

Despite "spotty" early prospects for the newly planted 1979 wheat crop in various areas of the state, producers, spurred by recent three year highs in wheat prices, are expected to turn out in record number for the Canadian's address and others dealing with production and marketing research, market development and legislation as well as to set producer policies for the coming year.

Argue will address the annual convention of the Oklahoma Wheat Growers Association meeting in Oklahoma City December 1 after his Texas session.

## FFA Judging contest set

The annual High School FFA Judging contest will be held on the Panhandle State University on Saturday, November 18. High School FFA chapters from the five-state area are invited to attend. Teams will be entering in Crops, Pasture and Range, Livestock, Meat, Shops, and Public Speaking.

Registration will be held from 7-8:30 a.m. in room 203 of the Administration Building. The public speaking contest will start immediately following registration in the Hughes-Strong Auditorium. The pre-contest assembly will be held in McKee Library Auditorium at 8:30 a.m. and the contest starts at 9 a.m. A coaches meeting will be held at 9:30 a.m. in the Student Union. Livestock sessions will start at 1 p.m. and presentation of awards will start at 3:30 p.m. at McKee Auditorium.

Four members per team are allowed with the three high scorers counting. Three members will make up a shop team. Only when a chapter has no team entered may an individual compete for individual awards. Speech is on an individual basis only.

Team plaques will be awarded in each contest and individual awards will be given to the first and second place winners.

The sweepstakes plaque will go to the team that accumulates the most points. A team that the plaque three times in a row gets permanent possession.

Scholarships will be awarded to each high individual in each contest in the amount of \$150 divided in to \$75 per semester. A room scholarship will be presented to a member from the high team in each contest. The FFA chapter will select the member for the team to receive this scholarship. Individual scholarships can be won regardless of classification and can be used when the individual is ready to attend college. The team scholarship must be presented to a graduating senior.

Teams and individuals must be entered by November 13. For a schedule of events and rules, contact M.W. England, Professor and Head of Animal Science or Raymond Pack, Professors and Head of Agronomy, Panhandle State University, Goodwell, Ok 73939 or call 405-349-2811 or ext. 229.

Be sure and attend the Annual Arts and Crafts Show at the Hansford County Library Nov. 4th & 5th.

## National Cutting Horse Finals Set

Over 100 top cutting horses from across the country will be at the Amarillo Tri-State Fairgrounds Coliseum November 2-4 for the National Cutting Horse Association (NCHA) World Championship Finals.

The Finals is sponsored by The Outfit Club of Amarillo; and Diagnostic Data, Inc. through their Equine Pharmaceutical Division-Thoroughbred Remedy Corporation, with each sponsor contributing \$10,000 prize money. Coupled with the \$200 entry fee per horse, nearly \$40,000 total money is up for grabs, making the Finals one of the richest cutting events in the history of the NCHA, according to Rusty Tinnin, chairman of the Finals.

Often described as "poetry in motion," cutting horses attempt to cut out a cow from a herd of cattle and keep the cow from returning to the herd. Quickness, agility and "cow sense" are needed by the horse to successfully compete in the fast-paced action.

Two division will be held at the Finals, the "open" division for any competitor and the "non-pro" division restricted to riders who do not train or show cutting horses for pay, other than premium money.

"The system of judging the contestants will be 'olympic style'" said Zack Wood, NCHA Executive Secretary. "Five judges, each working independently, will score each contestant between 60 and 80 points with 70 denoting an average score."

Currently, Sonita's Last, a sorrel stallion, owned by Gary Moore, Ponder, Texas is leading in the open standings.

However, Peponita, the 1977 World Champion Cutting Horse will be defending his title at this year's show. Valued at over \$500,000, Peponita will be a top contender although he has been lightly campaigned this year by his owners, Matlock and Carol Rose of Gainesville, Texas.

"In the non-pro division, it's 'too close to call' at this point," Wood said, "as less than \$2,000 separates Dick Gaines, Byers, Texas and his horse Sally Doc; and Sheila Welch, Kingsville, Texas who rides Peppy San Badger."

Go-rounds begin Thursday, November 2, at 10:00 a.m. Admission is \$3 per person for each day. Children twelve and under will be admitted free. Tickets will be available at the Tri-State Fairgrounds Coliseum.

## Eyes May Reveal Early Diabetes Signs

In a message issued for the November observance of National Diabetes Month, Dr. Jose San Martin III, president of the Texas Optometric Association, said diabetes is one of several general health problems that often can be detected during a vision examination long before signs appear elsewhere. Others include high blood pressure and hardening of the arteries.

"By directing light through the pupil and inside the eye, we can see the head of the optic nerve and the eye's blood vessels in their natural state," Dr. San Martin said. "It's through skilled observation of the blood vessels that some general health problems can be detected."

Doctors of optometry and ophthalmologists use this same examination procedure to aid in the detection of the symptoms of glaucoma; cataract; degeneration of the optic nerve; degeneration of the retina, the part of the eye that is receptive to light; other retinal diseases, such as diabetic retinopathy; and other eye diseases or conditions. Optometrists refer patients with the signs or symptoms of eye or other diseases to the proper health professional for further diagnostic tests and treatment.

"The vision examination report of disease signs is not conclusive. Other tests must be run," Dr. San Martin said, "but it is an important part of preventive health care."

Keep an outstanding person in this important job.

JOHN POERNER has demonstrated his integrity and ability in more than 10 years of dedicated public service.

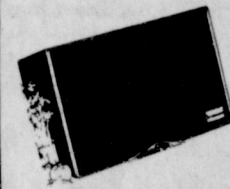


**JOHN POERNER**  
Railroad Commissioner of Texas

Pd. Pol. Ad. to elect John H. Poerner - Railroad Commission, Ed Ingram, treas. 1037 Brown Bldg. Austin, Texas 78701

**A BIG FRAME-UP!**  
Van load of frames--all sizes, reasonably priced  
November 4th at the Gruver County Barn from noon on

## Microwave Cooking School



Nov. 9  
7 til 9 P.M.  
County Barn

Sponsored By Spearman Electronics

The receipts at the Texhoma Livestock Comm., Co. this week was 4533 cattle and calves, A dull and lower market on all classes, Stocker calves \$2.00 lower, Feeder steers about steady, Feeder heifers \$3.00 to \$4.00 lower, Packer cows \$2.00 to \$3.00 lower, selling mostly from \$36.00 to \$39.00, a top of \$43.25, Bolona Bulls \$44.00 to \$48.00.

Steer calves 300# to 550# @ \$64.00 to \$79.50  
Hoifer calves 300# to 525# @ \$58.00 to \$63.60  
Feeder steers 600# to 800# @ \$59.70 to \$62.75  
Feeder heifers 600# to 750# @ \$53.00 to \$56.25

For next Thursday, November 2, we are expecting 3000 cattle of all classes.

YOUR DEPENDABLE LIVESTOCK  
TEXHOMA LIVESTOCK COMM., CO. INC.  
P. O. BOX 70 TEXHOMA, OKLA. 73949  
PHONE 405-423-7511 & 423-7512

CATTLE DEPARTMENT --LLOYD GOODNER & RAYMOND CHOATE  
GOODNER RESIDENT PHONE -- 405-423-7427

## Frank Allen Rites Held

Memorial services for Frank L. Allen, 82, were held at 2 p.m. Monday in the Church of Christ. Bill Osborne, minister, officiated. Burial was in Hansford Cemetery by Boxwell Brothers Funeral Directors.

Mr. Allen died Friday at his home. He was born in Kansas and had been a resident of Hansford County since 1923. He was a veteran of World War I and a farmer. He married Winnie Dacus in 1959 in Dalhart.

Survivors include his wife; two brothers, John of Spearman and Ed of Frederick, Okla.; and three sisters, Mrs. Bessie Smith of Vernon, Mrs. Ethel Grant of Arapahoe, Okla., and Mrs. Nell McClellan of Norman, Okla.

## BULLETIN

from the Buzzard Training Camp  
Lloyd has stepped up his campaign this last week after reading about everyone that's entered. He's even working on a secret potion.

from the Sparks Training Camp  
Aubie's worried this week after hearing some of the Lynx team and their coaches are entering the Turkey Walk. The Lynx team doesn't worry him but he's afraid one of the coaches will talk him into playing on the team. It will be tough taking all that reading, righting and arithmetic over again.

## Hospital Gets Respiratory Therapy Dept.

A department of respiratory therapy will be set up at the Hansford Hospital in Spearman under the direction of a former Amarillo man.

Billy Jack Cox, 25, who formerly was assistant technical director of medical physiology and respiratory therapy at High Plains Baptist Hospital, Ama-

rillo, will begin work at the Spearman hospital on Oct. 30.

Cox was employed 4 1/2 years at High Plains Baptist Hospital. He graduated from Amarillo High School in 1971 and received an associate degree in applied arts and sciences at Amarillo College in 1975. He also attended West Texas State University from 1971 to 1973.

Cox has been a registered respiratory therapist since June, 1977, and a certified respiratory therapy technician since December 1974.

## Tickets Available For Raffle

The Spearman volunteer fire department now have their raffle tickets available for their "Little House Out Back".

The tickets are \$3.00 from any of the members. This unique gift will conserve water and electricity. It is constructed of cured oak with a one piece slanted roof, the advantage of this style over the pointed two piece roof is that it gives wasps only four corners in which to build their nests instead of six. The house is 80" high, 39" wide and weighs approximately 700 lbs.

Some of the features include: wall to wall carpeting, clear lucite seat embedded with barbed wire, reprint of the 1908 Sears roebuck catalog, lighting rod, fan, fly swatter, personalized name plate, security latch for privacy, sony TV (Battery Operated), CB Radio to keep in touch with good buddies and the home base, spittoon, clock kerosene stove, seat belt in case of hurricane, ash tray, smoke detector, pocket knife, and whitening stick, burgular alarm, calendar, thermometer, fire extinguisher, and a farmer's almanac. The drawing for the "Little House Out Back" will be held January 1. You do not need to be present to win. Proceeds will go to the equipment fund.

**ANTIQUUE SALE**  
NOVEMBER 8, 5 P. M. TIL  
NOVEMBER 9, 9 A. M. TIL  
HD Club Room, No. Bernice St  
Spearman, Tex  
Lots of lovely old glass, china, Imari Tea Set. (This is lithophane) Decorated trunk.  
Few pieces furniture. Primitives. Many antique items too numerous to mention - also  
**HAND PAINTED TOLE**  
by  
Sybil Miller & Coreata Ralston



# 1978 Suggested Mailing Dates

The Christmas 1978 "Shop Early-Mail Early" drive is now getting underway. No suggested mail early dates have been made this year for domestic surface parcels, let's and priority mail within the contiguous United States, but other suggested mailing dates are listed below.

**DOMESTIC MAIL**  
 December 1, Surface parcels to Alaska and Hawaii.  
 December 16, First-class and Priority mail to Alaska and Hawaii.  
**MILITARY MAIL**  
 November 1, Space Available Mail (SAM) and regular surface parcels to the Mid East.  
 November 8, Parcel Airlift (PAL) mail to the Mid East.  
 November 10, Space Available Mail (SAM) to Southeast Asia. Surface parcels to Central & South America, Europe and Africa.  
 November 11, Space Available Mail (SAM) to Africa, Australia and Central & South America.  
 November 13, Surface parcels to the Caribbean/West Indies.  
 November 18, Parcel Airlift (PAL) mail to Africa, Australia, Central & South America and South Asia.  
 November 21, Space Available Mail (SAM) to Europe & the Far East.  
 November 22, Space Available Mail (SAM) to Caribbean/West Indies and Iceland. Surface parcels to Iceland.  
 November 25, Space Available Mail (SAM) to Greenland. Surface parcels to Greenland.  
 November 28, Parcel Airlift (PAL) mail to Europe & Far East.  
 November 30, Parcel Airlift (PAL) mail to Iceland and the Caribbean/West Indies.  
 December 1, Surface parcels to Alaska and Hawaii. Parcel Airlift (PAL) mail to Greenland. **MILITARY MAIL (CONTINUED)**

December 2, Space Available Mail (SAM) to Alaska. First-class and priority mail to Australia, Central & South America and Southeast Asia.  
 December 5, First-class and Priority mail to the Mid East.  
 December 9, First-class and Priority mail to Africa & Greenland. Parcel Airlift (PAL) mail to Alaska.  
 December 12, First-class and Priority mail to Europe & the Far East.  
 December 14, First-class and Priority mail to the Caribbean/West Indies and Iceland.  
 December 16, First-class and Priority mail to Alaska and Hawaii.

**INTERNATIONAL (CIVIL) MAIL**  
 November 1, Surface mail to the Mid East.  
 November 10, Surface mail to North & Northwest Africa, Central & South America and Europe.  
 November 13, Surface mail to the Caribbean/West Indies.  
 November 28, Air parcels to North & Northwest Africa, Australia, the Mid East and Southeast & West Africa.  
 November 30, Air parcels to Central & South America and SE Asia.  
 December 1, Surface mail to Canada and Mexico.  
 December 2, Airmail letters and cards to Australia, Central & South America and Southeast Asia.  
 December 5, Airmail letter and cards to the Mid East.  
 December 9, Air parcels to Europe and the Far East. Airmail letter and card to North & Northwest Africa, Southeast & West Africa.  
 December 12, Airmail letter/cards to the Europe and the Far East.  
 December 14, Airmail letters cards to the Caribbean/West Indies. Air letters/cards and parcels to Canada and Mexico.

WED, MORNING GLORY 10-28-78

TEAM	WON	LOST
1st State Bank 24	8	
Bunkhouse	24	8
J. G. 's	19	13
Gordon	18	14
The "N" Place	15	17
Bakers Inc.	10	22
York Elect.	10	22
Dew Drop Inn	8	24

HIGH INDV. GAME  
 Sheryl Meek 200  
 Diane Elliot 188  
 Kate Farris 186

HIGH INDV. SERIES  
 Sheryl Meek 516  
 Kate Farris 513  
 Diane Elliot 506

HIGH TEAM GAME  
 1st State Bank 517  
 York Elect. 504  
 1st State Bank 493

**UPW Hosts Area Luncheon**  
 The Spearman United Presbyterian Women entertained the women of the Perryton, Canadian and Guymon churches on Wednesday, Oct. 25. Karen Countiss, accompanied by Eddie Gail Martin on the piano, presented three lovely vocal numbers. Judy Nelson gave an interesting and touching review of the book "Lovey" by Mary Mc Cracken. The program was followed by a luncheon and fellowship. The Canadian UPW will host the Spring Cluster meeting on the second Wednesday in May, 1979.

## Arts & Crafts Guild News

The Arts & Craft Guild met Oct. 27 in the home of Mrs. Deta Blodgett. Attending were Mmes. F.J. Hoskins, Ned Turner, C.A. Gibner, W.L. Russell, Nolan Holt, W.H. Gandy, F.J. Daily, Garrett Allen, Guy Fuller and Joe Trayer. Mrs. F.J. Daily will be the hostess for the November 3 meeting.

Be sure and attend the Annual Arts and Crafts Show at the Hansford County Library November 4th & 5th.

## Water district annual essay contest to start

"Why the Importance of Water Conservation" is the subject for the annual essay contest sponsored by the North Plains Water Conservation District. Any high school student living in the boundaries of the district is eligible to submit an essay. First prize is a \$250 scholarship going to second place and \$50 to the third place entry. Essays must be at least 1,000 words in length, but no more than 2,000, typed and double spaced. Neatness, arrangement and subject matter are bases for judging winning essays. Deadline for submitting entries is March 1, 1979.

## Fire Dept. training school hold

The Spearman Fire Department held their training school Thursday evening, October 27. At the training field on 11th street. They had a pretty good turnout of onlookers, and they had a good turnout of fire fighters participating. Fire fighters from Dalhart, Guymon, Gruver and Shamrock participated in the training school. The men extinguished pit fires, oil fires, and butane fires. The Fire-Ettes served the men sandwiches, cokes and coffee. The training session took about two hours but all of the men learned a great deal, and the out of towners appreciated the training and the refreshments served by the Fire-Ettes.

## Students Have Holiday Friday

Spearman students will take a holiday from classes this Friday. There is no school in the district so that teachers, administrators and other employees may attend professional meetings in Amarillo. The district Texas State Teachers Association convention and regional meeting of Texas Professional Educators both will be held in Amarillo. The day counts as one of the regular holidays during the school year.

## Bowling News

TUESDAY NIGHT MIXED 10-24-78	WON	LOST
A-1 Aut.	29	3
Schn Weld.	21	11
Hans. Imp.	18	14
B & T	17	15
Channel 6	15	17
Ideal	14	18
Groves Wid.	8	24
North Plains	6	26

HIGH TEAM SERIES	WON	LOST
A-1 Automotive	1891	
Hansford Imp.	1823	
Baker & Taylor	1802	

HIGH TEAM GAME	WON	LOST
Ideal	678	
A-1 Automotive	659	
Hansford Imp.	648	

HIGH MEN'S SERIES	WON	LOST
Charles Elliott	541	
Lee Shaver	460	
Millard Tucker	450	

HIGH WOMEN'S SERIES	WON	LOST
Joyce Keetch	513	
Shirley Greenwood	497	
Diane Elliott	475	

HIGH MEN'S GAME	WON	LOST
Charles Elliott	189	
Rick Reger (Sub)	188	
Tommy Reger, Jr.	186	

HIGH WOMEN'S GAME	WON	LOST
Joyce Keetch	216	
Shirley Greenwood	188	
Marsha Shaver	184	

WED, MORNING GLORIES 10-18-78	TEAM	WON	LOST
1st State Bank	21	7	
Bunkhouse	21	7	
J. G. 's	18	10	
Gordons Drug	15	13	
The "N" Place	12	16	
Bakers Inc.	9	19	
York Electric	9	19	
Dew Drop Inn	7	21	

IND. GAME	WON	LOST
Diane Elliot	202	
Millie Craig	183	
Judy Everson	165	

TEAM GAME	WON	LOST
J. G. 's	1368	
Bunkhouse	1325	
1st State Bank	1310	

IND. SERIES	WON	LOST
Diane Elliot	576	
Millie Craig	509	
Judy Everson	448	

TEAM SERIES	WON	LOST
J. G. 's	480	
Bunkhouse	465	
1st State Bank	453	

QUANTITY RIGHTS RESERVED

PRICES GOOD THRU NOV. 4TH

# UNITED SUPER MARKETS

Perryton, Texas

# FINE FARE

YOUR RECIPE FOR SAVINGS!

<p><b>PEAR HALVES</b> 16 OZ. CAN</p> <p><b>CAKE MIX</b> ASS'TD FLAVOR 18 1/2 OZ.</p> <p><b>SAUCE</b> CRANBERRY JELLY 16 OZ. CAN</p> <p><b>BEETS</b> WHOLE OR SLICED 16 OZ. CAN</p> <p><b>CARROTS</b> SLICED 16 OZ. CAN</p> <p><b>SAUERKRAUT</b> 16 OZ. CAN</p> <p><b>TOMATOES</b> WHOLE 16 OZ. CAN</p>	<p><b>2 FOR \$1</b></p> <p><b>3 FOR \$1</b></p>
<p><b>CORN</b> WHOLE KERNEL OR CREAM STYLE 17 OZ. CAN</p> <p><b>3 FOR 89¢</b></p>	<p><b>FRUIT COCKTAIL</b> OR SLICED OR HALVES PEACHES 16 OZ. CAN</p> <p><b>39¢</b></p>
<p><b>SUGAR</b> FINE FARE PURE CANE 5 LB. BAG</p> <p><b>99¢</b></p>	<p><b>PEPSI</b> 6 32-OZ. BTL. PLUS DEPOSIT</p> <p><b>\$1.29</b></p>
<p><b>BEANS</b> FINE FARE CUT GREEN 16 OZ. CAN</p> <p><b>3 FOR 89¢</b></p>	<p><b>PORK 'N BEANS</b> 15 OZ. CAN</p> <p><b>HOMINY</b> WHITE OR GOLDEN 14 1/2 OZ.</p> <p><b>DINNERS</b> MACARONI AND CHEESE 7 1/2 OZ. BOX</p> <p><b>SOUP</b> CREAM OF MUSHROOM 10 1/2 OZ. CAN</p> <p><b>SOUP</b> CREAM OF CHICKEN 10 1/2 OZ. CAN</p>
<p><b>SPINACH</b> 15 OZ. CAN</p> <p><b>VEGETABLE</b> MIXED 16 OZ. CAN</p> <p><b>POTATOES</b> WHOLE OR SLICED 16 OZ. CAN</p> <p><b>3 FOR 89¢</b></p>	<p><b>PEAS</b> SWEET FINE FARE 16 OZ. CANS</p> <p><b>3 FOR \$1</b></p>
<p><b>APPLES</b> EXTRA FANCY WASH. DELICIOUS RED OR GOLDEN 3 LBS.</p> <p><b>POTATOES</b> ALL PURPOSE RUSSET 10 LB. BAG</p> <p><b>89¢</b></p>	<p><b>AVOCADOS</b> CALIF. 3 FOR \$1</p> <p><b>TOMATOES</b> RED RIPE 4 PACK CRTN. 39¢</p> <p><b>CARROTS</b> 16 OZ. CELLO 2 FOR 39¢</p>



### YMCA Selling Tickets On Afghan



The YMCA has a new project that they need your help with. They are in the process of doing some remodeling on the YMCA building (the old community building), and are also getting some equipment. Everyone knows that remodeling and equipment takes a lot of money and they can do this with your help.

They have a fund raising project. Recently, Bob and Janie Simpson were visiting their daughter and son-in-law, Carolyn and Wayne Cummings, and while they were here Janie donated a hand crocheted reversible afghan to the YMCA. The afghan is orange and brown and the pattern comes from the Scandinavian countries and was

given to Janie by a friend. The afghan is approximately 5 ft. 2 in. by 5 ft. 4 in. It will be displayed by various local merchants during the weeks to come. Tickets on the afghan will be available from any of the Board of Directors of the YMCA at \$1.00 each. The drawing will be at an open house on Dec. 17 at the YMCA building at 3 p.m. Free coffee, cokes and donuts will be furnished.

The Board of Directors of the YMCA include Jim McLain, Charles Shieldknight, Carolyn Cummings, Pat Trout, Grady McCormack, Tommy Russell, Allen Alford, Rondal Schell, Timm Woodington, Don Wirsdorfer, Bob Farr, Kim Brock, Lucille Moreno, Rick Kirk, Carl

Reed, Jim Ivey, Dee Allen, Buck Tucker and David Floyd of Spearman, and from the Graver Morse area, Lynn Davis, Gene Duncan, Carl Cooper, Ferrell Johnson and Bob Womble.

### HD Club News

The Spearman Home Demonstration Club met Friday, October 27 in the home of Altha Groves. The meeting was opened with the T.H.D.A. prayer. The devotional was given by Altha Groves entitled "My Hand In God". Roll call was answered to "How I Handle Worry". Mrs. Ethel Byers gave the program on her trip to the State Convention. Altha Groves served delicious refreshments to the following members: Mmes. B.J. Garnett, Colleen Shedeck, Ethel Cookson, W.H. Tarbox, and Ethel Byers.

The next meeting will be in the home of Mrs. Colleen Shedeck.

### Mittie Green To Compete For State Crown



MITTIE GREEN

Miss Mittie Green of Graver will represent 20 counties in this area at the Texas Farm Bureau Queen Contest November 27 at the Convention Center Theater in Dallas.

The daughter of Mr. and Mrs. Weldon Green, Mittie will compete with nine other district winners for the state crown. She is the reigning Hansford County and District 1 Farm Bureau Queen.

Selection of the 1978 queen is one of the activities scheduled for Texas Farm Bureau's 45th annual state convention. The state winner will receive an expense paid trip to Washington, D.C. and Williamsburg, Virginia, in April, 1979. Texas Farm Bureau will then pay expenses for the State Queen to

attend the TFB Citizenship Seminar in July.

Mittie is an 18-year-old freshman at Abilene Christian University.

In high school, she was president of Future Homemakers of America, president of student council, treasurer of her senior class, and salutatorian. Mittie was also the Farm Bureau's Outstanding Future Homemaker of America, was on her high school yearbook staff, regional band and went to regionals in track for four years.

Pastime enjoyments include jogging, all sports, and making friends.

The 5'6" brown hair, hazel-eyed Miss Green plans to major in business and someday be an accountant.

# DOLLAR DAYS

YOUR RECIPE FOR SUPER SAVINGS!!

<b>FINE FARE</b>	<b>FINE FARE</b>	<b>89¢</b>
<b>CRACKERS</b> SALTINE 2 1 LB. BOXES		
<b>BUTTER</b> PEANUT CREAMY OR CRUNCHY 18 OZ. JAR		
<b>TOWELS</b> JUMBO ROLLS 2 FOR		
<b>TISSUE</b> FACIAL 200 CT. BOXES 2 FOR		
<b>BLEACH</b> GALLON JUG 59¢		
<b>FABRIC SOFTENER</b> GAL. JUG 79¢		
<b>BATH TISSUE</b> WHITE AND ASST. COLORS 4 ROLL PKG. 79¢		

**SAVE 50¢** Charmcraft **SAVE 50¢**  
**Stoneware**  
**SAVE 50¢ ON BUTTER DISH**  
 WITH THIS COUPON **SAVE 50¢**  
 EXPIRES NOV. 4TH

**PLAY BLACKOUT BINGO AND RECEIVE 1000 STAMPS**

<b>KRAFT AMERICAN SINGLES CHEESE</b> SLICES 12 OZ. PKG. \$1.39	<b>FRESH FARM RAISED CATFISH</b> LB. \$1.98	<b>SWIFT TENDER LEAN PORK RIBS</b> UNDER 3 LB. AVG. LB. \$1.29
--	---	--

<b>PORK ROAST</b> BONELESS SHOULDER \$1.19	<b>CHUCK ROAST</b> BLADE CUTS 88¢
<b>ROAST</b> BONELESS STEW \$1.39	
<b>STEW</b> TURKEY DRUMSTICKS \$1.39	
<b>TYSON'S CORNISH GAME HENS</b> 22 OZ. EACH \$1.59	
<b>BEEF RIBS</b> \$1.59	

<b>"DAIRY"</b>	<b>"FROZEN"</b>
<b>BELL DIPS</b> 8 OZ. CRTN. 39¢	<b>BELL ICE CREAM SANDWICHES</b> PACK 79¢
<b>BELL SOUR CREAM</b> 8 OZ. CRTN. 39¢	<b>FINE FARE ORANGE JUICE</b> 12 OZ. CAN 69¢
<b>FINE FARE SWEET OR BUTTER MILK BISCUITS</b> 8 OZ. \$1.39	<b>FINE FARE WHIP TOPPING</b> 9 OZ. CRTN. 39¢
<b>FINE FARE OLEO</b> QTR'S LB. 39¢	<b>FINE FARE CORN ON THE COB</b> 8 CT. PKG. 89¢

### Our Heritage of Faith

notes from Faith Lutheran Church

We read in the Book of Hebrews that "Jesus Christ is the same yesterday and today and forever." Many people take this verse and try to make it say that the Church should never change, after all, Jesus Christ is the same.

Where the statement is true that Jesus will never change, that same statement cannot be spoken about us and still be true. We as people are always in a time of change. We are never the same person from day to day. Because we are never the same our relationships are always in the midst of change. Not only our relationships with other people are changing, but so is our relationship with God. Hopefully our relationships are changing for the good. Relationships never stay the

same. They either grow and improve or they fall apart and we are led away from each other. Our relationship with God is the same. Seek to have your relationship with God one that is growing and drawing you closer to each other. As God seeks fellowship with you do not run away, or even worse, ignore Him. He loves you and wants to be your best friend.

The Faith Lutheran Church Council will meet Thursday the 2nd of November at 8:00 p.m. The members of Faith will gather at 9:30 on Sunday morning for Worship and Holy Communion. The Christian Education hour will follow at 10:30. If you have no church home you are invited to come worship with us at 11th and Bernice.

### Choir Selling Magazines

The Spearman High School Choir is having a magazine sale in order to raise money for the activities throughout the year. This sale also consists of tapes, records, and cassettes of various types. The magazines may be ones you have never had and wish to have, or they may be ones you need to renew, but the subscription doesn't run out for a few months - that's fine - your renewal through the choir will not go into effect until your old subscription runs out. The magazines are offered at low price, but if you should happen to have an advertisement of a magazine of ours at a lower price, we will match that same price. Stand behind the Spearman High Choir by purchasing magazines, records, and tapes. The sale runs through Wed., October 25 to November 8. Contact any Choir member!

### CONCERT ASSOCIATION TICKETS

Mrs. Hillman Owen, publicity chairman for the Tri-City community Concert Association announces that tickets to the four concerts of the 1978-1979 season will be mailed soon. The tickets will arrive before the first concert by C. C. Ryder, folk singer at 8 p.m., November 21 in the Borger High School Auditorium.

Any member who fails to get a ticket before the concert should call Mrs. Joe Traylor, at 659-2432.

### Birth's

Mr. and Mrs. Shane Tarter of Borger (the former Rosemary Burkhardt) are the proud parents of a new baby boy, born Oct. 24 at 5:34 p.m. He has been named Jeremy Clay and weighed in at 5 lbs. 8 oz.

Maternal grandparents are Mr. and Mrs. Lewis Burkhardt of Spearman, and paternal grandparents are Mr. and Mrs. O. Wayne Tarter of Amarillo.

### Fire-Ettes Meet Held

The Spearman Fire Ettes met for a very brief meeting Monday night in the home of Beverly Antalek. The meeting was called to order by President Vicky Bullard. A report was given on the halloween carnival. The Fire Ettes made a little money but they all agreed that they had a good time. Kim Williamson, the treasurer, gave a financial report.

The final count was taken on the family portraits sold, and so far the girls have sold 74 family portraits. A total of 80 can be sold. A time schedule was set up for each of the Fire Ettes to work at the fire department this Saturday for the family portraits.

Those present at the meeting were Vicky Bullard, Kim Williamson, Jo Dell Tigrett, Kathy Slater, Glenda Baker, Sherry Brand, Beverly Antalek, and new members Joan Hill.

The next meeting will be in two weeks in the home of Glenda Baker.

### Xi Zeta Upsilon Meets

Xi Zeta Upsilon met October 26, in the home of Mrs. Irvin Davis with Mrs. Phyllis Collins as hostess. President Sharon Cook called the meeting to order with 17 present and 1 absent. The exemplar luncheon was discussed and the after-game social.

They are going to have a sandwich booth for Bruce Stinson Fund.

Verna Strawn presented the program on the Tri Lateral Commission. Linda Venneman won the raffie.

Refreshments were served to the following members: Linda But, Phyllis Collins, Sharon Cook, Cynthia DeArmond, Mary Dixon, Charlotte Jackson, Mary Ann Lasater, Linda Latta, Mary Lou Matthews, Sheryl Meek, Eulalia Mires, Judy Nelson, Lynna Renner, Cindy Scheider, Verna Strawn, Linda Venneman, and Joan Vernon.

WE RESERVE THE RIGHT TO LIMIT QUANTITIES

**U** PRICES GOOD THRU NOV. 4TH

**UNITED SUPER MARKETS**  
 Perryton, Texas





### Fall Choir Concert Planned

The Spearman High School Choir is presenting a fall concert Tuesday, November 7th at 7:30 P.M. in the High School Auditorium. The concert is free of charge. This will be the choir's first performance this year. However,

many members of the cast of "Hello Dolly" and those who tried out for the all-region choir are in the chorale. Last year's choir won sweepstakes and many other outstanding awards. Please support these young singers and come to the FREE concert, November 7th.



The Servitors had their bicycle inspection and identification Monday, October 30th from 4 to 6 p. m. at the Jr. High in Spearman. Chief Steve, and his Servitors are pictured above!

### Seventh-day Adventist News

Washington, D.C.—Neal C. Wilson, currently vice president of the General Conference of Seventh-day Adventists, has been elected president of the world church. He succeeds President Robert H. Pierson, who announced his retirement for health reasons Monday (Oct. 16).

The 58-year-old Wilson was named to the church's highest post October 17 by the Annual

Council, a gathering of top administrators in Washington. After his nomination by a select 66-member committee, he was chosen unanimously by the council.

Wilson has served as vice president of the church for North America since 1966, a post that brought him wide administrative experience. He is chairman of the board of Loma Linda University, a major medical-educational complex

near San Bernardino, California.

Wilson has extensive overseas experience having served as president of the Adventist church in Egypt and other Arab lands from 1950 to 1958. While there he negotiated the opening of the church's work in Libya, the Sudan and Aden. He was also advisor to the governor of Cairo for religious liberty affairs.

In his acceptance speech to

the delegates, Wilson said God had allowed him to have a "varied world experience" in preparation for his duties as head of the 3-million-member church. He said he had spent half his life outside the United States, as the son of missionaries and as one himself.

"I am very conscious of deficiencies, very conscious of limitations," he told his listeners, and then asked for their prayers for his leadership.

The retirement date announ-

ced by President Pierson is January 3, 1979. Wilson is set to take office at that time.

The special nominating committee set up to fill the vacant presidential office was chaired by Cree Sandefur, president of the Pacific Union Conference, one of 10 such districts in North America. Sandefur reported that nine names were considered. Wilson was then nominated, "nearly unanimously," ac-

ced by President Pierson is January 3, 1979. Wilson is set to take office at that time.

Wilson was born in Lodi, California, on July 5, 1920. He and his wife, Elinor, have two children. Norman C. ("Ted") is director of the Adventist church's Metro Ministry in New York City, and a daughter, Shirley J. Anderson, is a nurse in Birmingham, Alabama.

### Services Held For Andy Gorman

Services were held at 11 a.m. Monday at the First Baptist Church here for Andy Gorman, 69, who died Friday afternoon in Amarillo.

The Rev. R. B. Mathis, pastor of the First Baptist Church of Boise City, Okla. officiated. Burial was in Hansford Cemetery under the direction of Boxwell Brothers Funeral Home.

Mr. Gorman was born in Fredericksburg, Ind. He moved to Spearman in 1937 and had moved to Boise City in 1962. He married Catholene Mackie in 1936 in Pampa and was a retired rancher and farmer.

Survivors include his wife; one brother, Jim of Stratford and two sisters, Mrs. Anna Rosenbaum of Spearman and Mrs. Beatrice Jones of Texhoma.

### Hospital News

Patients in Hansford Hospital are Donna Thomas, Orville Walker, Jerry Russelburn and Bill Hopper.

Patients dismissed were C. T. West, Ruth Skinner, Allen Wagner, Ben Wheeler and Jewel Ward.

# ALLSUP'S

CONVENIENCE STORES

## SALE

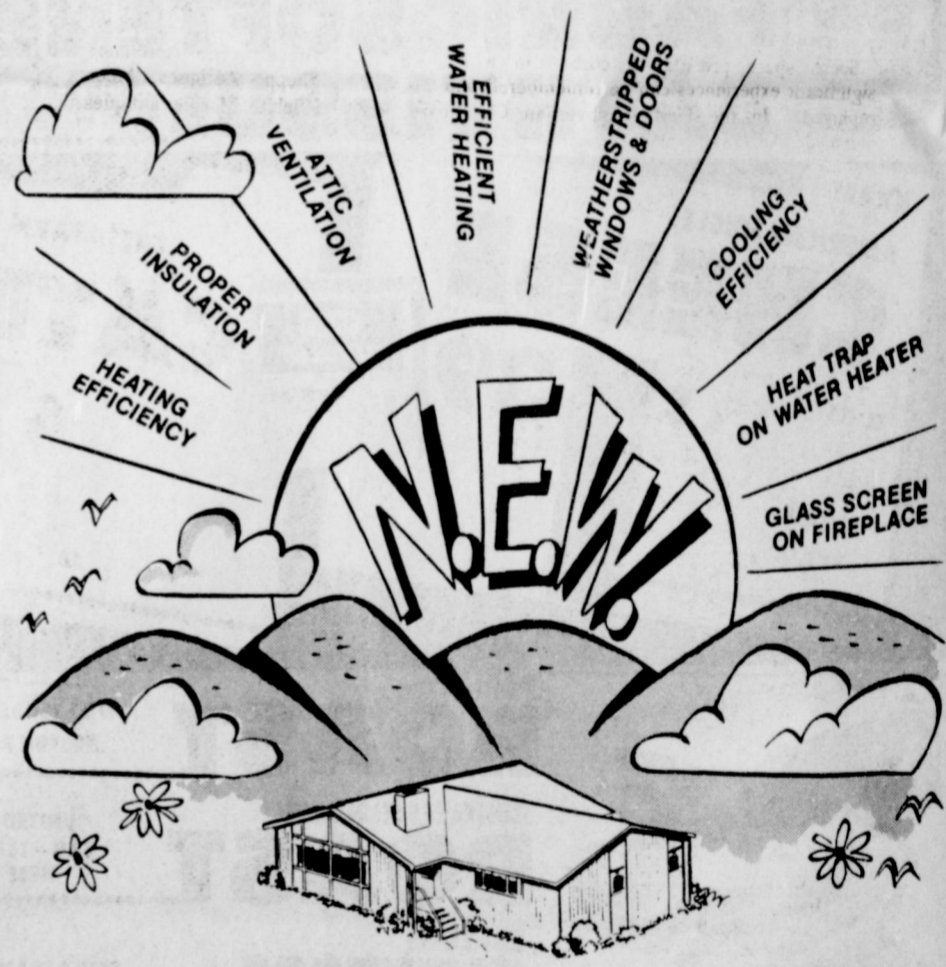
WELCOME TO HOME TOWN AMERICA

...come back to GOODNESS

PRICES GOOD NOV 2 - 4 1978

...come back to SAVINGS

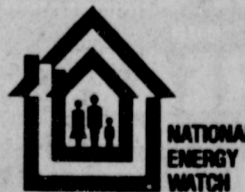
SHURFRESH BM/SM BISCUITS 8 OZ. CANS \$1	SHURFRESH HALFMOON CHEESE 10 OZ. PKG. \$1.05	SHURFINE GRANULATED SUGAR 5 LB. BAG 89¢
SHURFINE WAFFLE SYRUP 32 OZ. BTL. 79¢	SHURFRESH SLICED AMER. CHEESE 12 OZ. PKG. \$1.09	SHURFINE EARLY HARVEST SWEET PEAS 17 OZ. CANS 3 FOR \$1
SHURFINE CATSUP 32 OZ. BTL. 79¢	SHURFINE FROZEN ORANGE JUICE 6 OZ. CANS 3 FOR \$1	SHURFINE WHOLE PEELLED TOMATOES 16 OZ. CANS 2 FOR 69¢
SHURFINE SALAD DRESSING 32 OZ. JAR 79¢	SHURFINE VAC PAK COFFEE 1 LB. CAN \$2.19	SHURFINE TOMATO SAUCE 8 OZ. CANS 6 FOR \$1
SHURFRESH SALTINE CRACKERS 16 OZ. BOX 2 FOR \$1	SHURFINE FRUIT COCKTAIL 16 OZ. CANS 2 FOR 89¢	SHURFINE PINK SALMON 15 OZ. CAN \$1.49
ROKEY RATION DOG FOOD 15 OZ. CAN 7 FOR \$1	SHURFINE YC PEACHES 16 OZ. CANS 2 FOR 89¢	SHURFINE ENRICHED FLOUR 5 LB. BAG 69¢
SHURFINE CUT GREEN BEANS 16 OZ. CANS 4 FOR \$1	SHURFINE BARTLETT PEARS 16 OZ. CANS 2 FOR 89¢	SHURFINE GOLDEN CRM STYLE/WK CORN 17 OZ. CANS 4 FOR \$1
SHURFINE SPINACH 15 OZ. CANS 3 FOR \$1	SHURFINE SHELLED BLACKKEYS 15 OZ. CANS 4 FOR \$1	SHURFINE VANILLA WAFERS 10 OZ. PKGS. 2 FOR 69¢
SLICED OR CRUSHED Pineapple 2 FOR 69¢	SHURFINE PAPER ASST'D NAPKINS 2 JMBO \$1	SHURFRESH VANILLA WAFERS 10 OZ. PKGS. 2 FOR 69¢
NICE N SOFT BATHROOM TISSUE 4 ROLL PAK \$1.19	10 LB. BAG RUSSETT POTATOES.....69¢	GIANT TIDE \$1.39
STORE SPECIAL REFRESHING COCA COLA \$1.49 PLUS BOTTLES	BORDEN'S ORANGE JUICE QT. SIZE 69¢	OSCAR MAYER JUMBO FRANKS REG. 1" 99¢
BORDEN'S FUDGE/REG. FROSTY POPS 24 CT. BOX 99¢	NUTRITIOUS BORDEN'S BUTTERMILK 1/2 GAL. 79¢	
FOR GOOD TREATS BORDEN'S NOVELTIES 2 ALL SIZES 25¢	BORDEN'S MILK LOW FAT PLASTIC GAL. \$1.59	
	BORDEN'S PREM RD. CTN. ICE CREAM 1/2 GAL. CTN. \$1.39	



## National Energy Watch... A new day for saving energy and money!

The old days of cheap and plentiful energy are gone. But, a new, more comfortable day is here with a home that qualifies under the National Energy Watch (N.E.W.) Program. Homes that conform to N.E.W. standards have many features that add up to savings and comfort such as: proper insulation, weatherstripping and caulking, attic ventilation, efficient water heating and a correctly sized heating and cooling system. N.E.W. was developed as a guideline for you to follow in order to choose a home that uses energy efficiently. So, when you build or buy a new home or update an older home, make sure it qualifies under the National Energy Watch Program.

Community Public Service Company would like for you to benefit from the National Energy Watch Program. So, if you have questions or need information call or come by the Community Public Service Company office.



COMMUNITY PUBLIC SERVICE Your Electric Light & Power Company





Mr. and Mrs. Charles Stowell observed their 55 wedding anniversary, Oct. 21 in Pampa. Stowell was working on the Coble-Heywood wild cat well in 1922, when he met Faye Kirk, who was teaching in Spearman. One year later, they were married in Holt Community Church. Their son, Col. Dibrell Stowell came for the occasion. He has been in the Air Force for twenty years. He is presently serving as Chief Civil Engineer of the Davis-Monthan Air Force Base, Tucson, Ariz.

tiques of Guymon, Oklahoma and Rocky's Antiques of Chickasha, Oklahoma.

These are all nationally known dealers and many are members of the NADA. This shows is coordinated by TNT Shows and the show manager for TNT is Mrs. Beth Binford of Liberal, Kansas who also owns the Gossip Shop in Liberal.

Advance tickets for the Antique Show and Sale are now on sale from many members of the Liberal Soroptimist Club for \$1.25 per ticket. Each ticket will get you in the Ag Building all three days of the Show and Sale. If you do not know any of the members of the Soroptimist Club in Liberal you may contact Karen Scruggs at the Chamber of Commerce or Charlene Scheller of Tom Boles Financial Services, Inc. You may pick up your tickets at either of these central locations or call and we will deliver them to you.

If you are unable to purchase your tickets for this exciting show and Sale from a member of the Soroptimist Club, you may obtain them at the door on November 3, 4 and 5 for \$1.50 each. Food will be available at the Ag Building so bring your family and plan to spend the day at the Antiques Show and Sale.

Ring, Pam Dean, Lori Bynum, Joy Kizziar, Cindy Elliott, Lisa Love, Lacy Morris and Tiffany Womble. The leader is Mrs. Johnny Ring.

## Arts, Craft & Antique Show This Weekend

The Dahlia Flower Clubs Art, Craft and Antique Show will be held this weekend, Saturday and Sunday, November 4 & 5 from 1 to 5 p.m.

Works will be accepted by the committees at the Library building Friday, Nov. 3 from 2 to 5 and Saturday morning, November 4 until 11 a.m. All exhibits are to be picked up by 6 p.m. Sunday, Nov. 5.

There is no admission charge and door prizes will be given each hour. Also refreshments will be served upstairs. A silver offering is acceptable and will be used by the club for worthy causes in the community.

Mrs. Earl Riley is president of the club and Mrs. Virgil Floyd has been chosen as "Woman of the Year." Mrs. Floyd will be honored at 3 p.m. on Sunday in a special ceremony at the Library.

You are invited to come to Senior Village, Perryton, Sunday Nov. 5 from 2 to 4 p.m. for cake and punch with Grandma Hettie Davis who is celebrating her 102 birthday.

50S-2tc

### Presbyterian Church News

Friday, November 3 is World Community Day and a National Day of Prayer and Fasting.

There will be an adjourned meeting of Palo Duro Union Presbytery on Saturday, November 4 at 10:30 a.m. at the Covenant Presbyterian Church in Lubbock. The main business of the meeting will be study in depth the plan of union of the Presbyterian Church in the U. S. and the United Presbyterian Church in the U. S. A.

There is a Sunday Church School class for everyone every Sunday at 9:45 a.m. with a well prepared teacher with an interesting Bible lesson.

"Keep Awake" will be the subject of Pastor Edward D. Freeman's sermon at the service for the public worship of God on Sunday, November 5 at 11:00 a.m. The sacrament of the Lord's Supper will be celebrated.

Tuesday, November 7 is Election Day. Responsible Christian citizens vote on this day.

Presbyterian Women's Association will meet Wednesday, November 8 at 9:30 a.m. at the church. Mary Frances McKemy is the hostess and will lead devotions. Patty Sponeamore will lead the Bible study, "Beneath the Cross."

Social space provides a cocoon in which significant experiences can be remembered and replayed. In the First Presbyterian Church personal relationships are primary. There is a stabilizing sense of timing, noticeable in the rhythm of the worship hymns and the cyclical events of the changing seasons. This caring community measures time in terms of significant experiences, and space in terms of the people who share it. This is a relational theology where God makes Himself known in people-places, and people-times.

Remember the Art Show, Nov. 4 & 5, Hansford Library.

Arts and Crafts Show Hansford County Library Nov. 4 & 5

### Liberal Antique Show & Sale Set

The twelfth (12th) Annual Antique Show and Sale will be sponsored by the Liberal Soroptimist Club. The Antique Show and Sale will be held at the Fairgrounds in Liberal at the AG Building on November 3, 4, and 5 with Antique dealers from Kansas, Colorado, Oklahoma and Texas participating.

Several members of the National Association of Dealers in Antiques (NADA) including the past president, Margie Baum of Midwest City, Oklahoma will set up displays of antiques for who and sale. All things antique will be offered at this show and sale, from furniture to the very small items.

Antique Dealers who will have display booths at the Ag Building in Liberal on November 3, 4 and 5 are: Bendeau Antiques, Faye's Antiques, Grace Colvin Antiques, Mini Shoppe Antiques, Moores of Wichita, Margies antiques all of Wichita, Kansas; Betty Jeans Antiques of Kansas City; Beverly's Antiques of Atwood, Kansas; Depotique Antiques of Pampa, Texas; Toby's Antiques of Odessa, Texas; Jettie's Antiques of Spearman, Texas; Edna Patrick of Cisco, Texas; Curiosity Antique Shop of Amarillo, Texas Little Red Wagon Antiques of Denver, Colorado; Jo Swenson Antiques of Lamar, Colorado; Shulls Antiques of Arriba, Colorado; Margies Antiques of Midwest City, Oklahoma; Meyer Antiques of Alva, Oklahoma; Spinning Wheel An-

tiques of Guymon, Oklahoma and Rocky's Antiques of Chickasha, Oklahoma.

### Girl Scout News

The Second Grade Brownies met Monday afternoon at the Brownie Hut. The brownies all formed a horseshoe and each one of those present approached the brownie leader, Janie Flores, and said her brownie pledge "On My Honor I Will try to serve God, my Country and mankind, and to live by the Girl Scout Law". After each individual girl said her pledge and gave the brownie handshake she was presented a brownie pin. Janie announced the new troop number which is 99.

Following the ceremony, the girls were served punch and halloween cookies by Misha Lesly. Those receiving their brownie pins were: Melissa Bullard, Julie Courtiss, Melissa Beck, Beatrice Lozano, Misha Lesly, Jan Crawford, Anita Flores, Sherry Hall, Patty Younger, Colleen McCormack, Jennifer Reimer.

The next meeting will be next Monday at the Brownie Hut.

Troop #42 met Friday, October 27 in the Brownie Hut. The girls looked at money from different countries and made a friendship book. Mary Ann Evans served refreshments to those present. Attending were Angelia Gaither, Mary Ann Evans, Sheila Brand, and Kathy Love. Mrs. Georgia Gaither is the leader for this group.

The First Grade Brownies met Thursday, October 26 in the Brownie Hut. The girls made Halloween sacks. Refreshments were served by Lisa Love. Members present were: Pam

### Rho Rho Sorority Meets

Rho Rho met Thursday, October 26 in the home of Mrs. Ginger Pittman.

The ladies decided to help with the Bake Sale for the Bruce Stinson Day. They will also have a rest stop for the Turkey Walk.

They have started to sell raffle tickets for a trip for two to Las Vegas, Nevada, on Nov. 9. The tickets are \$5.00 per ticket and can be bought from any Rho Rho member.

Mrs. Hazel Shieldknight gave the program entitled "Use of Leisure".

Members present were Mmes. Jackie Pearson, Penny Raiston, Karen Blodgett, Marilyn Cline, Linda Blackman, Susan Pearson, Candy Boxwell, Janie Henton, Joan Hill, Milly Lesley, Donita Lubsy, Delinda McLaughlin, Lisa Pipkin, Marsha Pipkin, Ginger Pittman, Jody Rex, Kari Lou Schuman and Hazel Shieldknight.

Following the meeting a Preferential Tea was held for new members: Mmes. Gayle Smith, Linda Brown, Lnda Sanders, Joan Brown, Dixie Smith, Karen Schnell and Brenda Shieldknight.

The next meeting will be in the home of Mrs. Lisa Pipkin.

### Bridge Club

The Blue Monday Bridge Club met Monday, October 30 in the home of Mrs. Bill Gandy. High score was won by Mrs. Major Lackey and second high was won by Mrs. Verster Hill.

Members present were Mmes. Deta Blodgett, Mildred Daily, Kubah Gandy, Vester

Hill, Gwenfred Lackey and Major Lackey.

The next meeting will be November 13 in the home of Mrs. Pope Gibner.

Silver for the first dimes minted was provided by George Washington from his own household silverware.

# Z 93

## TEEN DANCE

### 8 To Midnight

### November 11th

### Sacred Heart Parish Hall

### Spearman

**\$2.50 Single      \$4.00 Couple**

## Most newspapers pick Hill over Clements

"John Hill may be the best candidate for governor in decades. Judging from his record, he should win easily over his Republican opponent, whose chief qualification is money. Unlike his opponent, Hill is not given to outrageous promises, intemperate personal attack or underhanded tactics. He will work hard for the best interests of the state and its people."

— Austin American Statesman

"The more Mr. Clements has explained his blunt viewpoints — even those views we could agree with — the more he has raised doubt as to how effective a bulldozer could be in Texas government. Conversely, John Hill has grown in our evaluation as a man who not only is the best state attorney general in recent history, but also is a man with the intelligence, savvy and ability to serve Texas well as governor."

— Abilene Reporter-News

"We believe Hill will bring vitality and leadership to state government. Hill is not an advocate of big government. Nor is he a free spender. He has pledged that no new taxes will be levied if he is elected. His anti-inflation program is the kind of fiscal conservatism Texans can accept gleefully."

— Corpus Christi Caller

**JOHN HILL**  
GOVERNOR

PAID FOR BY JOHN HILL, CAMPAIGN FUND, JOHNSON LUBBERSMAN, TREASURER, 1000 BROWN BLDG., AUSTIN, TEXAS 78701, TELEPHONE 512-476-3488

## CRUM REAL ESTATE

1105 S. BARKLEY

WE NEED LISTINGS! Want to Sell your Home? We have BUYERS.

**WE NEED LISTINGS**

**NADINE CRUM**  
BROKER

**CALL ANYTIME**

**WE NEED LISTINGS**

**VIRGINIA WHITE**  
SALESPERSON

659-2053

**SUPER FAMILY LIVING**  
Spacious 5 BEDROOMS, formal living room, 1 1/2 baths, LARGE FAMILY ROOM in basement with floor to ceiling BRICK FIREPLACE. Fenced, UNDERGROUND SPRINKLER SYSTEM, NEAR SCHOOL. too many features to list all. Call today!

**THOSE WHO PREFER**  
THE best will love this spacious 3 bedroom home's PRESTIGIOUS location. Massive SUN-KEN LIVING ROOM with wall to wall fireplace. Huge master bedroom with dressing area, double walk-in closets and private bath. Beautiful ashwood cabinets and all the built-ins featured in kitchen. Large patio and much more. Want the best? Call for an appointment.

**HOME OF DISTINCTION**  
Wouldn't it be lovely to have a really DISTINCTIVE HOME. This beautiful, spacious, older home has all the amenities for comfortable living including living room, dining room, den, four bedrooms, 3 baths, built-in ovens and cooktop in sunny kitchen, double car attached garage with electric door opener, and detached single car garage, fenced, and much more. Call for an appointment.

**WHY RENT**  
This three bedroom, 1 bath is a dandy buy for a starter home. Nice carpet, clean, NEAR SCHOOL, fenced, See it Today.

**SPRUCED ME UP!**  
and you will have two value packed houses on 6 lots near Elementary School, Each with 3 bedrooms and two baths, Will sell separately, Good RENTAL PROPERTY or GOOD FAMILY HOMES, Call for an appointment.

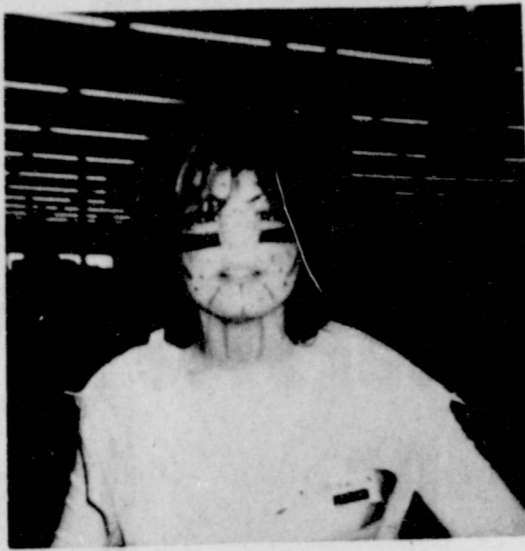








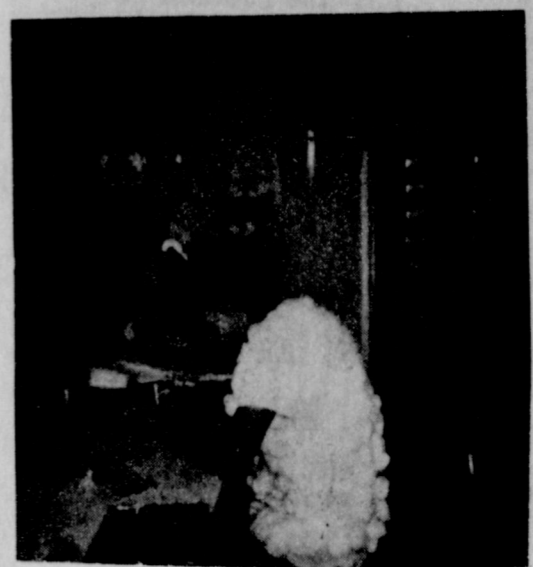
KYLE PEARSON won second with his clown suit at TG&Y costume contest.



GOODNESS: A Spook with Freckles!



SWING YOUR PARDNER, RIGHT AND LEFT AT TG&Y! Spooky ain't they?



THIS PRETTY SPOOK WAS ACTUALLY WORKING ON HALLOWEEN!

### CETA Youth Employment & Training Program

The CTA Youth Employment and Training Program will be offered to fifty Independent School Districts in the nineteen-county Balance of State area of the Panhandle for school year 1978-79. Spearman High School will be participating in the following programs: Career Work Experience; working with the school counselor, certain financially eligible youth will be screened and assessed concerning their "career job interest" and the CETA career component will attempt to place that youth into that career-related job; Youth Employment service for All youth in the school; Labor Market Orientation: Consists of a two-hour presentation by David Duncan, State Certified Vocational Counselor. Mr. Duncan has over five years experience working with youth in public and private schools as well as over five years with CETA. This unique orientation is done in an informal and entertaining manner, focusing on the key elements of training and skill development in preparing for the labor market; Alcohol and Drug Abuse: Consists of an orientation presented by Bill Cooke, Director of Alcohol and Drug Abuse Programs for the Texas Panhandle Community Action Corporation. Mr. Cooke has worked with youth for four years and not only presents his orientation in a professional manner, but also gives examples of tragic personal experiences he has endured because of alcohol abuse. Mr. Cooke was once an exceptional athlete and relates extremely well to young people.

This program, funded by the Department of Labor and the Texas Department of Community Affairs, is designed to help students make the transition easier from school to the labor market. "By working with the local schools, we hope to better prepare students for their entry into the labor market by creating awareness in the areas of employment techniques and preventive health and alcohol and drug abuse," stated Johnny Raymond, Director of Employment and Training for the Texas Panhandle Community Action Corporation in Amarillo. Raymond added, "this program was presented as a pilot project in the Spring of 1978 in four schools of the Panhandle, and proved so successful that the Texas Department of Community Affairs officials stated, 'we plan to use this project format as a model for other program operators in the state'." The Department of Labor has also responded that "this unique program is most interesting and innovative, and we plan to share this delightful approach with other deliverers of youth programs at our next youth conference."

# of Saving At Ideal FOOD STORES

<p><b>Miracle Whip</b> 32-OZ. JAR <b>98¢</b></p>	<p><b>Tomato Catsup</b> 32-OZ. BTL. <b>68¢</b></p>	<p><b>Golden Corn</b> 17-OZ. CANS <b>3 \$1.00</b></p>	<p>4 SALAD PLATES THIS WEEK'S FEATURED ITEM <b>\$2.00 off</b> WITH COUPON</p> <p>VALUABLE COUPON WORTH \$2.00 TOWARD THE PURCHASE OF THIS WEEK'S FEATURED ITEM SET OF 4 SALAD PLATES Original Suggested Price \$4.99 Your Price with coupon \$2.99 In the pattern of your choice COUPON GOOD THRU 11/14/78</p>
<p><b>Spinach</b> OR WHOLE POTATOES 15-OZ. CANS 3 \$1.00</p>	<p><b>Pineapple</b> SLICED IN JUICE 15 1/4-OZ. CAN <b>48¢</b></p>	<p><b>Green Beans</b> 16-OZ. CANS 3 \$1.00</p>	<p><b>ICE CREAM</b> ASSORTED FLAVORS 1/2-GAL. CTN. <b>98¢</b></p>
<p><b>Brown Sugar</b> 32-OZ. BAG <b>69¢</b></p>	<p><b>Fruit Cocktail</b> 17-OZ. CAN <b>48¢</b></p>	<p><b>Pear Halves</b> 16-OZ. CAN <b>48¢</b></p>	

## MEAT TO BUY FROM IDEAL...

<p><b>Smoked Picnics</b> WHOLE 6 TO 8 LBS. AVG. <b>89¢ LB.</b></p>	<p><b>Round Steak</b> BONELESS \$1.79 LB.</p>	<p><b>Beef Brisket Roast</b> BONELESS 7 TO 10 LBS. AVG. <b>99¢ LB.</b></p>
<p><b>Sliced Bacon</b> RATH BLACKHAWK HICKORY SMOKED OR SMOOTHER MAPLE 1-LB. PKG. <b>\$1.59</b></p>	<p><b>Slab Bacon</b> HICKORY SMOKED HICKORY SMOKED HALF OR WHOLE BY THE PIECE 1-LB. <b>99¢</b></p>	<p><b>Sliced Picnics</b> HICKORY SMOKED 1-LB. <b>99¢</b></p>
<p><b>Sliced Slab Bacon</b> HICKORY SMOKED BULK PACK <b>\$1.19</b></p>		

**Russet Potatoes**  
20 LB. BAG **\$1.99**

U.S. #1 EXTRA FANCY RED OR GOLDEN	<b>Delicious Apples ... LB.</b>	<b>39¢</b>
GREEN STALK	<b>Crisp Celery .....</b>	<b>29¢ LB.</b>
ROASTED OR SALTED	<b>Fresh Peanuts .....</b>	<b>\$1.19</b>
NEW CROP	<b>Apple Cider .....</b>	<b>\$1.88</b>
OCEAN SPRAY FRESH	<b>Cranberries .....</b>	<b>59¢</b>

## Peach Tree Borer Most Destructive

The peach tree borer is the most destructive pest of peach trees in Hansford County. The borers feed near the soil line between the bark and wood often girdling the cambium layer of the tree. When this occurs, the tree soon dies because all water and nutrients are transferred from the roots to the leaves through the cambium layer.

The best way to determine if a peach tree is infested by these borers is to inspect the trunk of the tree at the soil line. When large masses of gum which contains a brown sawdust like material is found at the base of the tree, peach tree borers are present. Peach trees should be inspected several times each year to determine if control measures are needed for this pest.

These borers can be controlled by an application of paradichlorobenzene crystals applied around the base of the tree during the period of October 20 to November 15. The use of these crystals in the proper manner will, in most cases, eliminate the infestations. The crystals should be applied when the soil is dry and the temperature is 55 F. or above. Weeds should be removed from around the base of the tree and the soil leveled one foot from the tree trunk. Place the crystals in a narrow groove encircling the tree about two inches from the tree trunk. Care should be taken to keep any of the crystals from coming in direct contact with the tree. Clean soil should be placed over the crystals so as to form a cone-shaped pile about six inches high around the base of the tree, care should be taken not to put any of the crystals against the tree. During the winter, the peach tree borers that are at the base of the tree will be killed. In late March or early April, the cone-shaped pile of dirt should be removed from the base of the tree.

The amount of paradichlorobenzene crystals to be used is determined by the age and size of the tree. In general, one half (1/2) ounce or crystals should be used for two to three year old trees, three fourths (3/4) ounce for four to five year old trees and one (1) ounce for mature trees.

Where peach tree borers are a problem, the use of this control measure for this pest will greatly lengthen the life of the peach tree. Further information on control of the peach tree borer is contained in MP-999, "Texas Guide for Controlling Insects for Commercial Fruits and Nuts." This publication is available through Your County Extension Agent's office.

Now is a good time and opportunity to expand your cultural and social awareness! The Hansford County Historical Commission, in association with the Stationmaster's House Museum, is welcoming all clubs, organizations, business, industries, and individuals in the area to join in the community activities of the newly formed (and in the process of being organized) Hansford County Historical Commission.

Our main project is the Stationmaster's House Museum, of course, but in addition, we are starting a county history book and are taking oral histories. We also need to designate Historical Markers in significant places, such as Oslo. We can not get started too soon on these and other projects, we need a county wide effort to make these plans successful, we need the support of each club and individual in these endeavors.



Pal meaning friend is from the gypsy word for brother.

## STAMPS ...

**Food Stamps Buy More At Ideal...**



Main Office  
514 Collard  
Phone 659-3711

**Speartex  
Grain  
Co.**



**KRDF**

**Stereo 98**

**H & H  
Water  
Well Service  
Inc.**

Gruver Hwy.

Phone 659-2242

Clothes  
for the  
family at the  
Family Store!

Full line of Boys clothes by Donmore

**BAKERS'**

**Dept. Store**

Phone 3213 Spearman, Texas

**Consumers  
Sales Co.**



421 W Kenneth Ave  
Phone 659-2021

**Hansford  
Impl. Co.**

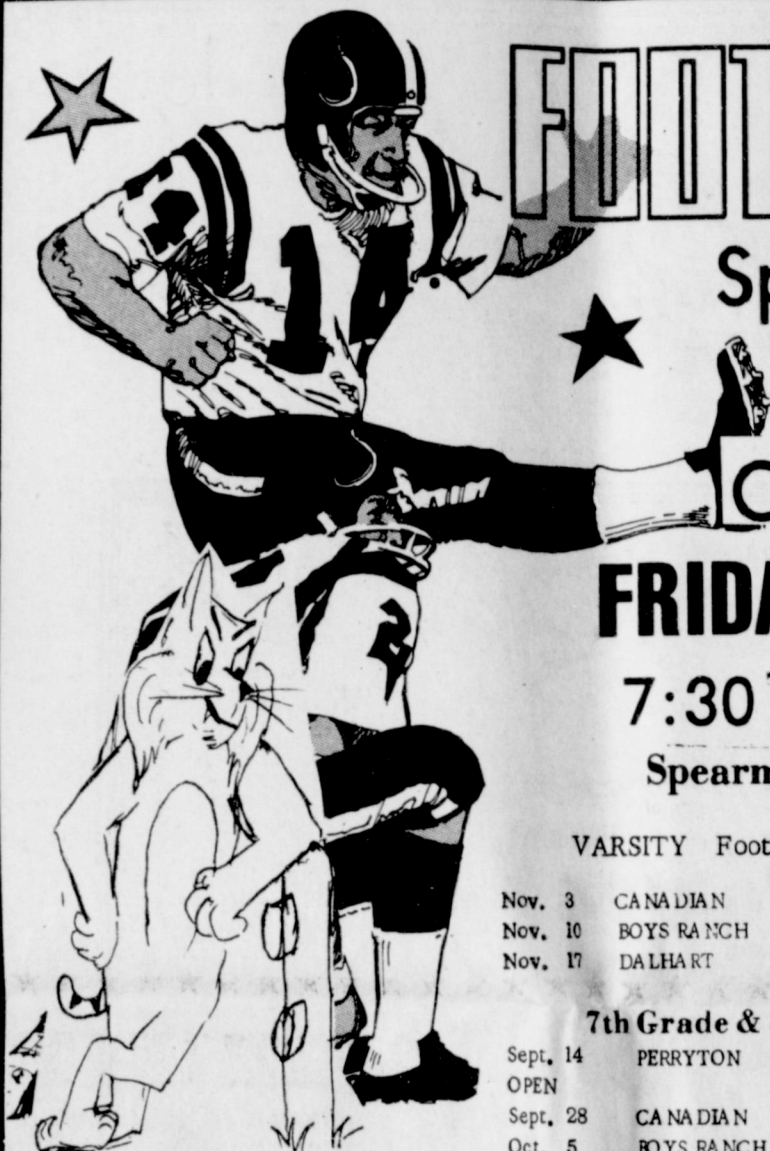


SALES & SERVICE  
Hwy. 207 Spearman  
Phone 659-2712

**Dairy  
Queen**

BE WITH THE  
"IN" CROWD  
&  
"LIVE A LITTLE"

700  
Stinnott Hwy  
Phone 3324



**FOOTBALL**

**Spearman**

VS.

**Canadian**

**FRIDAY NIGHT**

**7:30 O'CLOCK**

**Spearman Lynx**

Varsity Football Schedule 1978

Nov. 3	CANADIAN	7:30	HOME
Nov. 10	BOYS RANCH	7:30	AT BOYS RANCH
Nov. 17	DALHART	7:30	HOME

7th Grade & 8th Grade Lynx

Sept. 14	PERRYTON	5:00	HOME
Sept. 28	CANADIAN	5:00	AT CANADIAN
Oct. 5	BOYS RANCH	5:00	HOME
Oct. 12	DALHART	5:00	AT DALHART
Oct. 19	RIVER ROAD	5:00	HOME
Oct. 26	PERRYTON	5:00	AT PERRYTON
Nov. 2	CANADIAN	5:00	HOME
Nov. 9	BOYS RANCH	5:00	AT BOYS RANCH
Nov. 16	DALHART	5:00	HOME

9th Grade

Sept. 14	PERRYTON	5:00	AT PERRYTON
Sept. 21	STRATFORD	5:00	HOME
Sept. 28	BOOKER	5:00	HOME
Oct. 5	GUYMON	7:00	AT GUYMON
Oct. 12	DALHART	5:00	HOME
Oct. 19	RIVER ROAD	5:00	AT RIVER ROAD
Oct. 26	PERRYTON	5:00	HOME
Nov. 2	BOOKER	5:00	AT BOOKER
Nov. 9	BOYS RANCH	5:00	HOME
Nov. 16	DALHART	5:00	AT DALHART

Lynx B Team

Sept. 14	PERRYTON	7:00	AT PERRYTON
Sept. 28	CANADIAN	7:00	HOME
Oct. 5	BOYS RANCH	7:00	AT BOYS RANCH
Oct. 12	DALHART	7:00	HOME
Oct. 19	RIVER ROAD	7:00	AT RIVER ROAD
Oct. 26	PERRYTON	7:00	HOME
Nov. 2	CANADIAN	7:00	AT CANADIAN
Nov. 9	BOYS RANCH	7:00	HOME
Nov. 16	DALHART	7:00	AT DALHART

Here  
Support  
The  
Advertisers  
Who  
Support  
The

**LYNX**

**White House**

**Lumber Co.**

FOR ALL OF YOUR  
BUILDING NEEDS

306 Davis  
Phone 659-2818

**Brock  
Insurance  
Agency**

Phone 659-2514  
206 Main

**TG&Y**

Your best buy is at TG&Y!

521 Hwy 207 S.  
Phone 659-3741

**Hi Plains Auto  
& Conoco**

CONOCO

118 N. Main  
Phone 659-2506  
415 Collard  
Phone 659-3558



Spearman 7th graders - The team that beat the Rangers 26-0 last week!

**Jr. Lusby  
Cats**

W. Gruver Hwy  
Phone 659-3766





Wilson McClellan, R. L. McClellan, and Vera Beth Hicks stand with their father, Lee McClellan (seated) at his 90th birthday party held here last Saturday.



Mrs. E. A. Greever, is pictured above with her grand children at her 90th birthday party held in the Tom Sutton home recently. Mrs. Greever is known and loved by everyone in the area.

### Come, Grow With Us

The Hansford County Historical Commission is branching out. We are organizing a sub division to the commission, called the Hansford County Historical Society. We realize that there are many people in this area that wish to be involved, historically speaking, and we are now offering the opportunity for you to join with us in our endeavors, which include: collecting artifacts for the museum, museum upkeep,

oral histories, a history book, designating historical markers throughout the county, educational programs, field work and tours of the county. We have many other projects in mind, such as oral histories, the opportunities are limitless, both for the indivised ual and the entire population. We invite clubs and businesses, families or individuals to join with us to expand our cultural and social awareness.

Membership is open to all who are interested and feel that they have something to offer the community and have something to gain by the experiences whether it be a new cultural and social awareness or simply for posterity. Enthusiasm is your best asset by far. The Hansford County Historical Society is a sub-division of the Hansford County Commission who are appointed by the Hansford County Commissioner's Court and is the governing body, they are to set policy, make decisions and function as

usual. The contributing members are welcome to all meetings (which are open to the public) will be entitled to a bi-monthly news-letter, be eligible for volunteer work in all projects and you will also have the satisfaction of having done something for future generations. History is not a passive experience, we are forever growing and changing. **BENEFACTORS**--Those persons who make donations of money or materials or provide endowments of \$5,000.00. **FOUNDER MEMBERS**--Those persons who contribute money or materials or endowments of \$1,000.00 or more. **PERMANENT MEMBERS**--- Those persons who contribute money or material or endowments of \$500.00 or more.

**CONTRIBUTING MEMBERS**-- Those persons contributing money or materials or endowments of \$250.00 or more. **LIFE MEMBERS**---Those persons who contribute \$100.00 **ANNUAL SUSTAINING MEMBERS**---Those persons who contribute \$5.00 annually toward a LIFE membership. **ANNUAL MEMBERS**---Those persons who pay the annual contributing dues of \$10.00 a year. **THIS SCHEDULE WAS PATTERNED AFTER THE PANHANDLE PLAINS HISTORICAL SOCIETY IN CANYON, CLUB, SOCIETIES, CORPORATIONS, ASSOCIATIONS AND LIBRARIES MAY HOLD MEMBERSHIP UNDER ANY OF THE ABOVE CLASSES.**

### History Book Being Planned

Does writing a County History Book and having it published sound like a big project? Yes! But, when you get a group of interested people full of energy, all working together, that puts job effort to a minimum, with the end results and irreplaceable keepsake, something to be proud to have. We are interested in every family living in the county, whether you are part of the homesteading families or if you moved her the day before yesterday. Maybe your grandpa was crossing the plains on

the way to California and his wagon broke down out-side Hansford and the family has lived here ever since. Or did you move here because of job opportunity!! Every one has a store to tell, and we are interested in it. Be thinking about what you will put in your family biography. You can start by checking on dates and places, digging out old photos, reminiscing with family, then getting some notes on paper. A fully informative letter will

be mailed to all families in the county in the near future. The book will also include items about communities, churches, organizations, agriculture, industry, medicine, business, local government, education, schools, historical landmarks, libraries and the museum. All book sales will be in advance at \$35.00 a copy. All money will be kept in escrow until the book is assembled. The money and the book will be sent to the publisher at the same time. The publisher is the Craftsman Printer's in Lubbock, in association with the Taylor Publishing Co. in Dallas. They also publish the school annuals.

"What nobody seeks is rarely found." Pestalozzi

### JACK HIGHTOWER

An independent Congressman in the tradition of Texas leadership



Jack Hightower promised the voters of the 13th District when they sent him to Congress four years ago that he would represent all of them fairly and honestly. He promised to provide an independent voice in Washington. He promised to work full-time at the job. HE HAS KEPT THOSE PROMISES.

Here is what those who know Jack Hightower's record say about his effectiveness:

"... in two terms Hightower has established himself as a member of the Agriculture Committee and the Government Operations Committee whose voice must be reckoned with in arriving at solutions to two of the nation's most pressing domestic issues -- problems confronting today's farmer, and inflation..." *Amarillo Daily News, May 1, 1978*

"... Jack Hightower from Texas is one of the newer class and, in fact, Bob Poague and I like to think he's the kind of refreshing leader of the newer members coming to Washington in a recent session or so, and Jack is a former state senator and has been a tremendously effective lawmaker..." *Congressman Charles Thone of Nebraska*

"... Hightower is serious about his business in Washington. He is just as serious about trying to maintain a normal lifestyle in a city where normal is often viewed as abnormal..." *Jim Craig, Houston Post, October 8, 1978*

"... I want you to know that we as farmers are truly grateful to have a representative in Washington who does such a fine job of telling our story... thank you for all that you have done for America's farmers..." *Mrs. Georgia Holt, Spearman, Texas*

"... I want to express our thanks for your hard work to benefit Texas wheat farmers in the House Committee on agriculture... I know that some of your votes and stands on the issues took real courage for a Democrat, and I want you to know how much I personally appreciate them..." *Winston Wilson, Farmer, Quanah, Texas*

"... Hightower has shown a willingness to listen to the needs of his constituents and the ability to legislate on their behalf..." *Amarillo Daily News, May 1, 1978*

"... Almost everyone on the Hill knows about Jack Hightower... the Congressman who votes his conscience, represents his district by organic instinct, but is capable of rising above parochial considerations when national interests are at stake. The same qualities that made him an influential state senator for 10 years -- scrupulous honesty and an appetite for hard work -- have served him well in Washington, but these alone do not explain the high regard in which he is held. In a town overpopulated by small people with large egos, it is a relief to find one for whom the reverse is true..." *Texas Monthly, May, 1976*

That's the kind of Congressman Jack Hightower has been since he took his oath in January, 1975. It's why he has earned the respect of his colleagues and the confidence of people throughout this district... from both political parties. Jack Hightower, Democrat, has earned another term. Vote November 7.

Paid Pol. Adv. by Hightower for Congress Committee, Wilson Friberg, Treasurer, Box 1973, Vernon, Texas 76364.

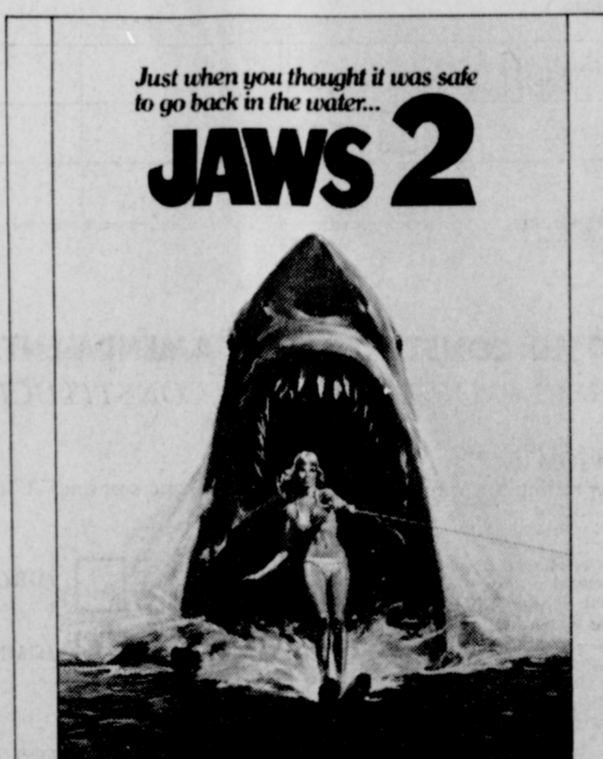
### LYRIC THEATRE

PHONE 806-659-2812

ONE SHOW AT 7:30 P.M.  
SUNDAY, MONDAY, TUESDAY,  
WEDNESDAY, AND THURSDAY

TWO SHOWS AT 7:00 P.M.  
AND 9:00  
FRIDAY AND SATURDAY

### NOW SHOWING



ROY SCHEIDER  
LORRAINE GARY MURRAY HAMILTON  
JAWS 2

A ZANUCK/BROWN PRODUCTION  
Written by CARL GOTTLIEB and HOWARD SACKLER - Directed by JEANNOI SZWARC  
Based on characters created by PETER BENCHLEY - Music by JOHN WILLIAMS  
Produced by RICHARD D. ZANUCK and DAVID BROWN - Associate Producer JOE ALVES  
...MAY BE TOO INTENSE FOR YOUNGER CHILDREN

NOV. 1 THRU NOV. 7

### NEXT ATTRACTION



NOV. 8 THRU NOV. 14

### PELICULAS MEXICANAS



SUNDAY NOV. 5 - 2 P.M.



VOTE as you please, but please VOTE.

Sample Ballot Compliments of...

First National Bank Perryton, Texas

GENERAL ELECTION (ELECCION GENERAL)

(Condado de) Hansford County, Texas

November 7, 1978 (7 de noviembre de 1978)

OFFICIAL BALLOT (BOLETA OFICIAL)

INSTRUCTION NOTE: (NOTA DE INSTRUCCION:)

Vote for the candidate of your choice in each race by placing an "X" in the square beside the candidate's name. You may vote a straight ticket by placing an "X" in the square beside the name of the party of your choice at the head of the party column.

Table with columns for Candidates for, Democratic Party, Republican Party, Raza Unida Party, Socialist Workers Party, and Write-In. Rows list various offices and candidates such as United States Senator, Governor, and various judges.

NATIONAL BANK OF PERRYTON, TEXAS logo with 'SAMPLE BALLOT' text and 'Drop by and visit with us!' slogan.

PROPOSED CONSTITUTIONAL AMENDMENTS (ENMIENDAS PROPUESTAS A LA CONSTITUCION)

THE TAX RELIEF AMENDMENT (LA ENMIENDA PARA ALIVIO DE IMPUESTOS)

INSTRUCTION NOTE: (NOTA DE INSTRUCCION:)

Place an "X" in the square beside the statement indicating the way you wish to vote. (Marque con una "X" el cuadro al lado de la frase que indica la manera en que quiere usted votar.)

- List of 8 proposed constitutional amendments (No. 1-8) with 'FOR' and 'AGAINST' options and explanatory text for each.