

# Chamber banquet Saturday

The Spearman Chamber of Commerce Annual Banquet will be held Saturday, January 27, at 7:30 p.m. in the High School Cafeteria. The Celebrate Singers, under the direction of Travis Angel, will start the evening off with some toe tapping music.

The Ambassadors and Kelly Harper, Miss Hansford County, will be on hand to help welcome our guests. Reverend Russell Pogue is the Master of Ceremonies with Reverend Ed Freeman bringing us the Invocation.

Award will be presented for: Employee of the Year, by Rotary, Ed Garner, President; Women of the Year, by Women's Division of the Chamber of Commerce, Emma Collins, President; Citizen of the Year, by the Spearman Chamber of Commerce, Francis Loftin. Recipient of last year's award.

The delicious steak will be cooked by volunteers, the rest of the meal by the cafeteria staff. The Spearman FHA girls will serve. The 1978 Officers and Directors were: Jim A. McLain, President, Gerald Heinrich, First Vice Pres., Jim Shirley, Second Vice pres.,

Mike Garnett, Treasurer, Jerry Gee, Immediate Past Pres., Eddie Martin, Director, Dick Hudson, Director, Grady McCormick, Director, L.E. Thomas, Jr., Director, Kent Guthrie, Director, J.L. Brock, Director, George Young, Director, Pat Dear, Director, Mary Lou Wysong, Manager, Gih McLain, President WCCC. The 1979 Officers and Directors are: Gerald Heinrich, President, Jim Shirley, First Vice Pres., Dick Elbert, Second Vice Pres., Bobbie Novak, Treasurer, Jim A. McLain, Immediate Past Pres., L.E.L. Thomas, Jr. Director, Kim Brock, Director, Eddie Martin, Director, Dick Hudson, Director, Grady McCormick, Director, Mike Garnett, Director, Robert Elliott, Director, Mary Lou Wysong, Manager, Emma Collins, President WCCC.

The main feature of the evening will be the guest speaker, Edward O. Daniel, a humorist with a message, from Arlington, Texas. There is a very entertaining evening lined up for you on Saturday January 27 and we sincerely hope you will join in the festivities with us.

## Outgoing Chamber Prexy Reflects

Jim McLain

After completing a year as President of the Spearman Chamber of Commerce, I am reviewing the year to see what has been accomplished. In February of 1978 we had a goal setting seminar. Top priority of the goals was to seek a new motel. This, we achieved and will be completed in April 1979.

An agriculture committee was formed which decided to continue working with the Hansford County Jr. Livestock Show helping the young men and women of Hansford County that did not have an animal in the sale. This committee raised \$4,330.00 at the stock show by selling shares in a goat for \$10.00 each.

An airport committee was formed and now our new airport is started and will be completed in 1981. The Senior Citizens committee formed in 1978 raised over \$17,000.00 for the senior citizens, who now have a newly acquired building which is running in full swing. Our

YMCA acquired the Veterans Building for the use of the new YMCA. The "Y" will be open for use in the spring of 1979. Our committee framework has involved more people than ever before. The chamber has been directly involved in bringing in several new businesses and helping form new business in Spearman. The Ambassadors Club was formed in 1978 for the purpose of helping existing businesses, recruiting new business and industry, and promoting goodwill for our chamber and community.

When I took office as President, I made the statement "This will be an eventful year," and that it has been. I am proud to say that I was a part of a very successful year for our chamber and community.

There are many things that need to be done in our community. These projects take money to develop. I know you will continue to support the chamber as you have in the past.

## Chamber President's Message

Gerald Heinrich

I look forward to serving as President of the Spearman Chamber of Commerce for the year of 1979. I accept this position with both pride and humility. Pride, because I am proud of this community in which we live and will be proud to work towards making it an even better place in which to live. Humility, because of the realization that the chamber members had enough confidence in me, a relative new-

comer, to elect me to this important position.

It is my hope that during this year we can equal or exceed the fantastic improvements that we made last year and keep that momentum going.

The requirements to making things happen is work and I hope that we can all work together and make this great town, "Spearman", an even better place for all of us. Gerald Heinrich, President 1979

## From Your Chamber Manager

Mary Lou Wysong

Last year, immediately following our annual banquet, we invited the members and non-members to a meeting to find out what were the most important projects that the Chamber of Commerce could do to make Spearman a better place in which to live and do business. Without good leadership and dedicated people, willing to work and achieve what was set before them, these goals could not have been accomplished.

I was asked to write a positive new article about the chamber by a representative from the Spearman Reporter. I do not believe I could write a negative article this year, because the chamber has achieved more of its goals than I can remember.

I look back and think, "Is this

for real"? It makes you proud to live in a community where people care about people. Think for a minute about all the things that have been started, the new motel, the radio-thon that raised the money for the down payment on the Golden Spread Center, the agriculture committee that sold over \$4,000.00 in shares in a goat for the young people that did not have an animal to sell in the show, the land acquired for the new airport, and the largest grant the Texas Aviation Commission has ever given. These are only a few of the goals that have been reached by many people doing things for people so that Spearman might be a better place to live and do business. This is your Chamber of Commerce at work. Making things happen.

Mary Lou Wysong, Manager

## Dinner To Honor O.C. Holt

The Holt Home Demonstration Club is having a Pot Luck Dinner and "42" party at the Holt School House Friday, January 26 at 6:30. Everyone is

invited to attend. O.C. Holt will be honored for his many years of service as Hutchinson County Commissioner at the party.

The Spearman FFA will have a chili supper, at the Jr. Hi Cafeteria, Tuesday night, February 6, 5:00 to 7:00 p. m. The public is invited to attend the pre-game chili supper, and tickets are available from FFA members.

## Woodrow Gibner Honored

Thirty two years ago Woody Gibner took on a voluntary assignment as treasurer of the local Hansford County Salvation Army Service Unit Fund Drive. Now, more than a quarter of a century later he has retired from the post. He was honored in special ceremonies held at First State Bank in Spearman on Monday. Mr. Gibner was presented with a plaque commemorating him for his long years of service. The plaque was presented by Dale Maret, Amarillo based Salvation Army Fund leader.

Mrs. Jo Ann Hawkins was named by the committee to replace Mr. Gibner as Fund Treasurer.



WOODROW GIBNER, receives plaque from DALE MARET.



# The Spearman Reporter

VOLUME 70, NO. 11

THE SPEARMAN REPORTER, SPEARMAN, TEXAS 79081

THURSDAY, JANUARY 25, 1979

## Rotarians Hear Kidney Foundation Rep Record Amount



J. W. WAINWRIGHT, ESCHOL BLANKENSHIP, AND BILL JACKSON, gave the program at the regular Rotary meeting last Monday. Mr. Wainwright has a kidney transplant, Mr. Eschol Blankenship is chairman of the Kidney foundation drive for this area, and the program is headed up by Mr. Jackson.

A total of \$1,794.65 has been reached for the Hansford County Salvation Army Service Unit Fund Drive, a record, as announced by Johnny Lee, Service Unit Committee Chairman.

Funds collected in the drive will be used to pay for the Salvation Army's service to the underprivileged in Hansford County through the current fiscal year.

The committee, composed of business and civic leaders, car-

ries out a year-around program to help people with emergency needs. In the name of The Salvation Army whom it represents, the committee pays for food, lodgings, utilities and such basic necessities that families or individuals may require in a temporary crisis.

Members of the committee are: J.C. Lee, A. Alford, J.W. Gibner, C.A. Gibner, E.R. Sanders, Mrs. Dickie Allen, Mrs. Esie Matthews, R.L. McFarlin, A. Ellsworth, R.L. McClellan, Jo Ann Hawkins.

# Lions pancake supper

Lion Ray Ingle will be the General Director for the Spearman Lions Club Pancake Supper, which will be held January 26th, between 5 and 7 p.m., at the high school cafeteria, in Spearman. This is the night of the Spearman B team tournament, and the night that Perryton will come to Spearman to watch the lynx- and Ranger teams in action. It should be the largest basketball crowd of the year, and the Lions Club is preparing the biggest pancake supper in the history of the club, under the direction of banker Ingle!

Dick Elbert Boss Lion, will act as greeter for the pancake supper, and he has been instructed to be especially nice to all of the Ranger Fans who eat supper with the Lions Friday night, January 26th. Lions members plan to contact Bones Simpson, and see if we could feed the Rangers plenty of pancakes just before the game, and possibly these tall boys couldn't jump quite so high.

Lion James Cunningham will secure sausage, pancake mix, syrup and butter for the supper. Doug Connelly will secure plates, cups and napkins. Sausage cooks for the evening, will be Oscar Donnell, and J.W. Gibner both professional sausage cooks. Pancake cooks include Lions Clay Gibner, Earl Good-

heart, Everett Tracy, and Dick Hudson. In charge of the batter mix, will be Lion Pogue, known as the pancake and biscuit "King of Texas!" One of the most personable and attractive members of the club will serve as "head waiter" and he is known as Lion Claude Newell. Serving along with head waiter Newell, will be Doug Steger, who will be in charge of testing pancakes. Lion Martin Chandler, will make the coffee and prepare the drinks for the evening. Lion Chandler is known as one of the best drink mixers in the state! Drinks will consist of milk, water and coffee. Serving the drinks will be Lion Dr. R.L. Kleeberger. Lions Jack Oakes, Frosty Hickerson, and Gerald Heinrich will see that butter and syrup is supplied to all customers during the big Lions Club supper. They have both had plenty of experience at this type of thing, and your tables should be extra clean. In charge of washing the silverware will be Doug McLaughlin and Troy Sloan. On the clean-up detail in the kitchen will be three outstanding Lions; Lion Burl Buchanan, John Davey and Billy Miller.

For information concerning tickets, contact Lions Eugene Yarbrough or S.J. Hall! Make plans now to attend the Lions Club pancake supper, January 26th, 1979, 5 to 7 p.m.

Bill Jackson of the Kidney Foundation of the Texas Panhandle spoke at the Spearman Rotary Club on Monday noon at Martin's Steak Garden. It is one of 52 affiliates of the National Kidney Foundation. It is a volunteer health organization representing 44 countries in Texas. Through research, public information, public education, professional education, organ donor program, community service and patient service, it is working to find the answer to kidney disease.

The ultimate goal and mission of the National Kidney Foundation is the eradication of diseases of the kidney and urinary tract. Lay volunteers working in tandem with health professionals are seeking the answers to the prevention of kidney disease while at the same time ensuring that those who are now suffering from kidney disease are receiving the finest possible care.

Diseases of the kidneys remain a major cause of illness and death in the United States. As in the instance of other major diseases, a concerted effort by the government, the private sector, and lay medical volunteers is needed to ease its toll on society.

More than 13 million Americans suffer from diseases of the

kidney and urinary tract. About 54,000 die each year because of kidney disease. More than 42 Americans suffer from chronic renal disease and need an artificial kidney machine to stay alive. More than 14,000 patients are waiting for a kidney transplant-but only 4,000 will receive one this year because of a shortage of suitable organ donors.

Kidney and urinary tract diseases continue to be one of the major causes of work loss among men and women. Approximately 10% of American out-patient visits result from kidney and urinary tract problems.

The statistics are dramatic, but not nearly as dramatic as watching someone being dialyzed on an artificial kidney machine or knowing someone who has literally been given the "Gift of Life" by receiving a transplant.

J.C. Wainwright of Amarillo was introduced. Mr. Wainwright had received a kidney transplant in April 1978 after being on an artificial kidney machine for one year. He explained that he began having kidney trouble in 1965. There is a computer list of people needing a kidney in Dallas, and when a kidney is donated, the computer picks the best match of blood and tissue

type. Transplantation is the accepted therapy for kidney failure. Over 500 patients would benefit from a kidney transplant in Texas now. More than 100 persons in the West Texas area are in need of a kidney transplant. Uniform Donor cards were passed out, and most of the Rotary Club members signed up as donors. Anyone eighteen years of age or older can donate their kidneys by filling out a donor card.

Every dialysis treatment cost \$150 each. Some people receive three such treatments a week. It costs people on an artificial kidney machine about \$150,000 a year.

There are two sources of kidneys for transplants-living relatives and cadaveric non-relatives. With many advances that science has made in blood testing, tissue typing, and organ preservation, kidneys can be successfully transplanted from non-relatives.

Eschol Blankenship will be the chairman of "Gift of Life" campaign in Spearman during the month of March.

Ed Garner showed a banner sent from the Pattaya, Thailand Rotary Club and a certificate of appreciation reading in deep appreciation to the Rotary Club of Spearman, Texas for your

generous assistance to the Pattaya Orphanage. God bless you for your help. It was dated December 23, 1978 and signed by Father R. Brennan, C.S.S.R.

Guests Monday noon were Bill Jackson and J.C. Wainwright of Amarillo, Terry Pittman of Canadian, and Mike Schnell of Spearman.

Members present were Carrie Marie Berry, Eschol Blankenship, J.L. Brock, Roy Bulls, John R. Collard, Jr., Robert Elliott, Pete Fisher, Ed Freeman, Ed Garner, Kerry Henton, John Hutchison, Ed Limbocker, Jim McLain, Jack McWhirter, Larry Murphy, Coy Palmer, Jim Shirley, Len Simpson, Gary Sims, Vance Snider, Jerry Taylor, Don Wirsdorfer and Tim Woodington.

Members absent were Kim Brock, Archie Burress, E.J. Copeland, Junior Lusby, and Frank Oglesby.

Spearman Rotary Club has adopted a 100% goal of attendance for the month of February. Members were cautioned not, under any circumstance to be the one to spoil the reaching of that goal. Members who must be away on a Monday noon, have abundant opportunities to make up their attendance at another Rotary Club meeting in a neighboring town the same week that they have to miss at home.

# Commissioners To Save \$2400.00 Annually!

*Fashion*  
Cotton material will be used in many spring and summer outfits. An attractive two-piece costume is shown in cotton poplin with a full, putty-colored blouse cinched with a wide, stitched belt over a pencil slim black skirt.

You are invited to a baby shower for Debbie Thomas Sunday, January 28, 1979 from 2 to 3:30 p. m. in the Red Room of the First Baptist Church  
Hostesses: Ramona Sims, Linda Hiller, Evelyn Hiller, Barbara Sharp, Eva Reger, Cindy Reger, Peggy Newsom, Faye Wirsdorfer  
9S-2tp

Timely action this past Monday by Hansford County Commissioners Court will probably save County taxpayers around \$2400.00 annually.

Acting on a recommendation the Commissioners voted to instruct the County and District Court to present a lease agreement for reproduction equipment in the County clerk's Office.

Hansford County Judge R.L. McClellan said that the lease agreement will save the county approximately \$200.00, monthly in terms of expenses for the equipment. The current equipment in use was purchased in 1957 and according to the County Official in a costly and expensive item to maintain.

## GMAC To Celebrate 60th Anniversary

AMARILLO, TEXAS General Motors Acceptance Corporation will celebrate its 60th Anniversary on January 24, 1979. A pioneer in the field of financing cars and trucks "on time," GMAC conducts its operations from over 390 branch offices in the United States, Canada and

in 18 foreign countries. A wholly-owned subsidiary of General Motors Corporation, the company employs more than 11,600 men and women who service nearly 18,000 General Motors automotive, TEREX, Diesel Allison and Frigidaire dealers. GMAC pre-

sently has over 5 1/2 million retail, lease financing and wholesale accounts outstanding totaling almost \$23 billion. Mr. James W. Gidcumb, manager of the Amarillo, Texas GMAC office at 3501 So. Georgia stated that since its inception in 1919, GMAC has finan-

ced over 80 million cars and trucks for customers of General Motors dealers and over 130 million cars held by franchised GM dealers in inventory. The Amarillo, Texas branch has been a member of the business community here for more than 49 years and currently has 18 employees on its payroll.

It services 37 GM dealers and is responsible for over \$39 million of retail and wholesale receivables outstanding.

**H & H Heating Service Co.**  
Back In Business To Serve You Even Better!  
Heating-Air Conditioning Installation...Service...Sales.  
Guaranteed Work  
659-3579

## Plainview Firm

AMARILLO- A Plainview firm, High Plains Pavers Inc., has been awarded the contract by the State Highway and Public Transportation Commission to perform the work of the Amarillo District 1979 Seal Coat Program.

High Plain's bid of \$1,440,530, was the lowest of five received by the Commission, including Interstate, U.S. highways, and Farm and Ranch to Market Roads.

McKee said the seal coat-an additional asphalt surfacing material-improves riding comfort and safety and assists in guarding the road bed from moisture. The seal coats will be applied during the summer months of 1979, or weather permitting, some time between April 15 and September 1, 1979.

Henry L. "Lou" Gallegly, SDHPT Supervising Resident Engineer in Dalhart, will direct the seal coat work.

Gallegly said the Program includes the following work: SDHPT 1979 Seal Coat Program-2

Hansford-FM 760, from SH 51 to FM 759, 7.9 miles, \$40,660.

Hansford-FM 520, from SH 207 to SH 136, 10.9 miles, \$55,075.

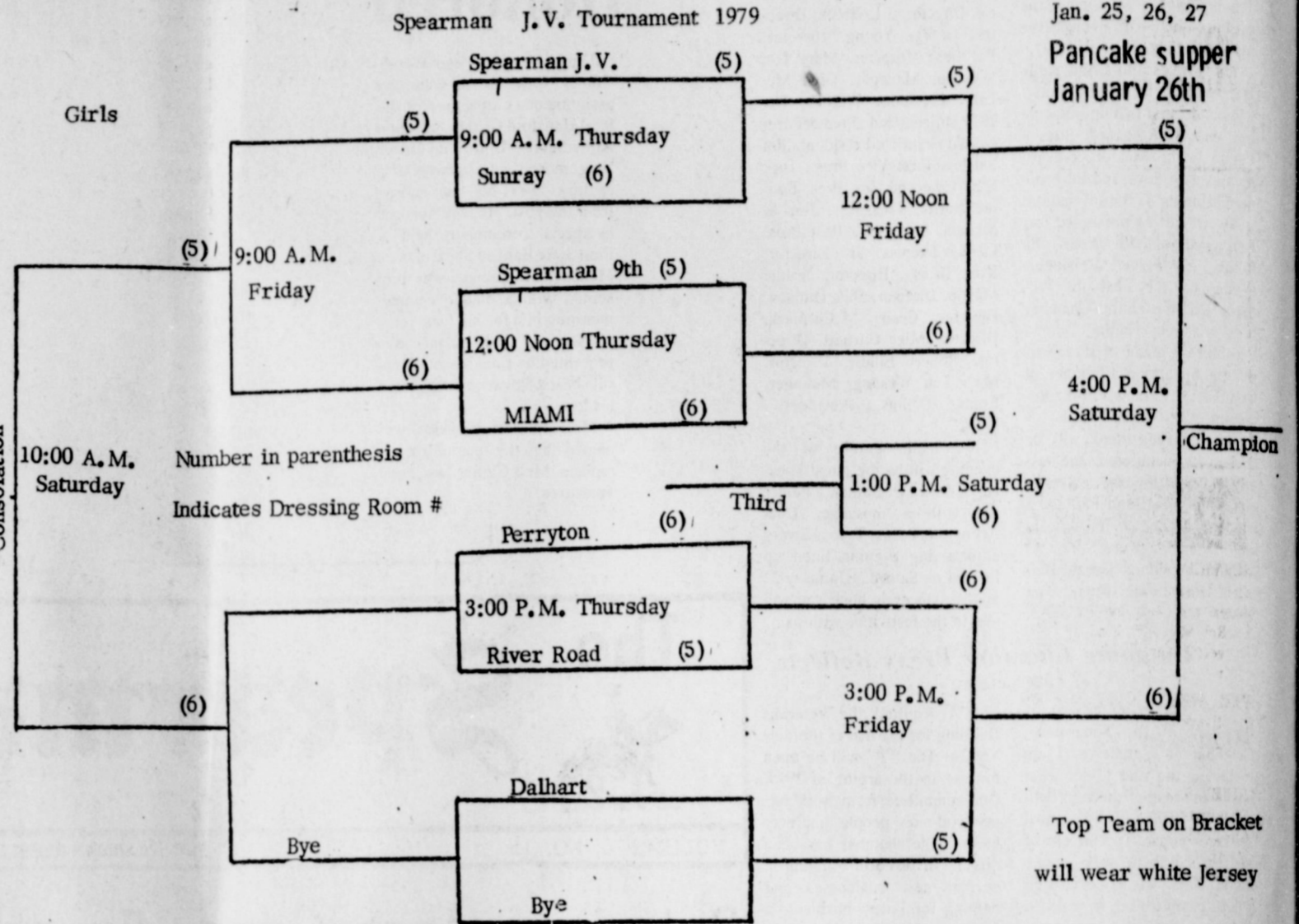
Hansford-FM 2349, from the Sherman County line 6.9 miles to FM 1262, \$37,065.

Hansford-FM 759, from the east city limits of Spearman 5.3 miles to the Ochiltree County line, \$39,080.

Hansford-FM 278, from Main Street in Gruver, 2.9 miles to SH 207, \$14,690.

Lynx vs. Pangars at Lynx gym on Friday nite....

Pancake supper Friday night...



The annual Spearman J. V. basketball tournament will get under way this Thursday, and the tourney will feature some of the top basketball teams in the Panhandle area. Both boys and girls team in the above bracket will be here for the week-end tournament, which will begin on Thursday. A special feature of the tournament, will be the Lions Club pancake supper, Friday night, January 26th!

### Sale

From January 15 through February 15

# Gold Lance Class Rings

of Precium (a sterling-palladium alloy)

Now \$64.95

Bring this ad with you to **Hickerson Jewelers** Spearman, Texas 2-4 WEEK DELIVERY

\*\*\*\*\*

**ONE SHOW** SUNDAY, MONDAY, TUESDAY, WEDNESDAY, AND THURSDAY AT 7:30 P.M.

# LYRIC THEATRE

PHONE 806-659-2812

**TWO SHOWS** FRIDAY AND SATURDAY AT 7:00 P.M. AND 9:00

\*\*\*\*\*

**NOW SHOWING**

Is this any way to begin a love affair?

FARRAH FAWCETT-MAJORS JEFF BRIDGES

## SOMEBODY KILLED HER HUSBAND

MELVIN SIMON Presents A MARTIN POLL PRODUCTION FARRAH FAWCETT-MAJORS, JEFF BRIDGES "SOMEBODY KILLED HER HUSBAND" Co-starring JOHN WOOD, TAMMY GRIMES, JOHN GLOVER Music Composed and Adapted by ALEX NORTH - Written by REGINALD ROSE Produced by MARTIN POLL - Directed by LAMONT JOHNSON Now a Jove/MBJ book - "Love Keeps Getting Stronger Every Day" Song by Neil Sedaka A COLUMBIA PICTURES RELEASE

**JAN. 24 THRU FEB. 1**

**NEXT ATTRACTION**

America's favorite family is back!

ALL NEW **WILDERNESS FAMILY PART 2**

They left civilization... never to return.

Starring ROBERT F. LOGAN - SUSAN DAMANTE SHAW HEATHER RATTRAY - HAM LARSEN A PACIFIC INTERNATIONAL ENTERPRISES INC. RELEASE - Color by CFI

COMING SOON - 2 DAYS ONLY FRI. - SAT. FEBRUARY 2-3

LYRIC SHOWTIMES 7:00 P.M. and 9:00 P.M. Sorry No Passes

**PELICULAS MEXICANAS**

MANOLO ESCOBAR ENBARASA AL SEÑOR SOCIAL FRANCÉS, FALSIFICANDO DOCUMENTOS QUE LO CONVIRTIERON EN FIANDE DE MAS DE 3000 MUJERES

REGIA FILM y ARTURO GONZALEZ, S.A. presentan a **MANOLO ESCOBAR**

En **Quando los Niños Vienen de Marsella**

Con SARA LEZANA y THIA SANEZ I GILLES ANTONIO BARISA FLORENIA CHICO

COLUMBIA PICTURES

SUNDAY JAN. 28 AT 2 P.M.

\*\*\*\*\*

These are signs to investigate before you excavate.

They're all signs of an underground pipeline. If any of these signs are near where you're planning to dig, probe or blast, call the pipeline safety line.

**1-800-821-5486**

It's a toll-free number that will get you exact information about our pipeline's location. And that could help you avoid a dangerous situation.

Pipeline markers locate the buried pipeline *only* in the immediate vicinity of the marker. Any type of ditching, boring, drilling, blasting, deep plowing, excavating, earth moving, mining or seismic work *in the vicinity* of a pipeline is potentially dangerous. That's why it's important to seek our help *before* you undertake any of these activities near a pipeline.

You'll get help fast by calling the pipeline safety line, toll-free.

**1-800-821-5486**

**Panhandle Eastern**  
PIPE LINE COMPANY  
3444 Broadway  
Kansas City, Missouri 64111

# WANT ADS

**CAPROCK MONUMENT CO.**  
Dealers of Georgia Granite, Georgia Marble, Colored Granite, & Bronze.  
represented by  
**BOXWELL BROS. FUNERAL HOME**  
519 S. EVANS  
659-3802

Hansford County Planned Parenthood  
265. Haney  
659-2483  
Spearman  
Mon.-Fri.  
8 a.m. to 12 noon  
305-rtn

## SERVICES

**SERVICE:** Pits cleaned, wet or dry. Dragline or loader. Also, dozer, grader, carry-all service. Lee Roy Mitchell, 806-733-2384, Grover, Texas, 79040.

**PEE WEE'S PLUMBING & Appliance Service.** Roto-roooter. 659-2811 or 659-3781.  
26-rtn

**KIRBY SALES & SERVICE** of Spearman, 912 S. Bernice. 659-2797.  
30-rtn

**WINTER RATES**  
Jan. thru March  
Steam Rinsevac Shampooer  
\$4.95 per day  
Call Gordon's Drug, 2141.  
After 7 p.m. & Sunday  
call 3437, 716 Cotter Drive

**NOTICE**  
**Wallace Monument Co.**  
Monuments, Curbings,  
Grave Covers  
Local Representative  
**LEONARD JAMESON**  
659-3406  
20-rtn

Alcoholic Anonymous meeting 8 p.m. Friday, Home Demonstration Club building, 305 N. Bernice. Phone 659-3181 for information.

Al-Anon meetings 8 p.m. Friday, Home Demonstration Club building, 305 N. Bernice in back room. Phone 659-3181 for information. Ask for Al-Anon.

Now Hauling Manure from Caprock Pens #1 & 2. Check my low Prices before you trade with anyone.

Call or see Clois (Billy) Baker. 659-3642.  
515-rtn

**CARPET SHAMPOOING:** Dry foam method. Vinyl Repairs. Free estimates. Call 435-4305 after 5 p.m.  
**LESTER LEATHERMAN**  
Perryton, Texas 52-rtn

**CATTLE HAULING**  
Call Fred Van Buskirk - 2680 or Willis Randall - 2041.

**WE SELL** new Lubbock built irrigation pumps. Want a good irrigation pump at a reasonable price? Have 4", 5", 6" and 8" pumps. Can drill irrigation and domestic wells (when we have help). Call Bill Block at night 935-4088, Dumas.  
10-rtn

**PIANO TUNING,** minor repair Local technician. No waiting 659-3021.  
10-5tp

## MISCELLANEOUS FOR SALE

**FOR SALE:** 1972 Chrysler 4 door. Loaded. Also 1965 Ford Falcon 2 Door. Call 659-3684 after 5:00 P.M.  
8-rtn

**FOR SALE:** Stand By Electric Generators. Call Charles D. Smith, Perryton. 435-3781. 95-rtn

**FOR SALE-** going out of business all tennis rackets and equipment on sale, big savings, call Sheila Watley 659-3970 or come by 727 Wilbanks after 5. 10-trn

Reposessed Baldwin Funmachine, new model: : Used Baldwin Hamilton Piano. Overhauled. \$595.00: : Used Gulbransen Spinnet Piano. \$395.00: : Baldwin Organ. with Funmachine, two manual. **SAVE \$300.00**: : Used Thomas Fun Organ. \$495.00: : **SAVE \$200.00** and up on ew Baldwin Pianos!!! Will show locally. Brier & Hale Music, 424 N. Kansas. Liberal. Kansas. 67901.  
11-2tp

**FOR SALE:** 3 Bed Room Double Wide Mobile Home. 1 1/2 Bath. Utility Room. Call 659-3292.  
85-rtn

We have several used Color T.V.'s reconditioned. **Earl's T.V.'s** These T.V.'s are reconditioned and ready to go.

**MOBILHOMES FOR SALE-** 2 late model 14 wide homes, 1 2 bedroom, 1 3 bedroom model. Priced to move. B & C Homes, Guymon, Okla. 405-338-8613. 10-4tc

**FOR SALE** Outgrown Western Boots. Like new. 9 A; Black Bull Hide. \$40.00. Claude Sheets, Jr. 659-2085.  
105-rtn

**FOR SALE:** Small dining table & 4 chairs, small desk & chair. Call 3791 days, after 6, 2862.  
11-2tc

**AKC Tiny Toy Poodles FOR SALE** 659-3904.  
11-2tp

**FOR SALE:** 1975 Mazda Pickup, rotary, mag wheels, air, roll bar, stereo. Phone 733-2330.  
11-8tp

**FOR SALE-** 44 square yards of gold shag carpeting. Good condition. \$2.00 square yard. Call 659-3972.

## FOR RENT

**FOR RENT-** 2 bedroom trailer. Call 659-2658 after 6 p.m.  
11-2tp

## WANTED

High School Graduate or equivalent receive pay training in one of over 60 technical fields. Benefits include free medical, paid vacation, travel and continuing education. For more information call collect, Navy Information Center, 316-624-2956.  
10-6tc

## FORD TOOL COMPANY DRILLING DEPT.

**WE ARE TAKING APPLICATIONS FOR EXPERIENCED**  
**•DRILLERS •DERRICKMEN •FLOORHANDS**  
**WAGES PER HOUR:**  
DRILLER.....\$8.50  
DRILLER TRAINEE.....\$7.85  
DERRICKMAN.....\$7.25  
FLOORHAND.....\$7.00  
**TIME AND A HALF IS PAID OVER 40 HOURS**  
**BENEFITS:**  
• Profit Sharing Plan • Group Insurance Plan  
• Relocation Expense  
• Vacation • Bonus  
**CALL COLLECT AT 806-435-5494**  
Ford Tool Company  
Is An Equal Opportunity Employer - M/F/H

**For The Ultimate In STORM DOORS**  
Custom Built, Designed, And In Colors To Fit Your Home....  
Contact Howard Moyer at  
**Only Aluminum Industries**  
Guymon, Okla. 73942 114 W. 1st 405-338-6966 or 338-6170

## LEGAL NOTICE

**NOTICE TO ALL PERSONS HAVING CLAIMS AGAINST THE ESTATE OF W.C. SPEARMAN, DECEASED**

Notice is hereby given that original Letters Testamentary were issued on the Estate of W.C. SPEARMAN, Deceased, Cause No. 1571, now pending in the County Court of Hansford County, Texas on January 22, 1979, to WILMA SPEARMAN FRANCIS, whose residence is Spearman, Hansford County, Texas.  
All persons having claims against said estate now being administered are hereby required to present them within the time and in the manner prescribed by law.  
DATED January 22, 1979.

WILMA SPEARMAN FRANCIS, Executrix  
J.E. BLACKBURN  
P.O. BOX 38  
Spearman, Texas 79081  
ATTORNEY FOR ESTATE

**OFFERED BY:**  
Emmett R. Sanders  
Realtor  
**R**  
REALTOR®  
†††

Dwelling and store building, small detached apartment, on wide lot, ideal for professional office-dwelling combined.  
\*\*\*\*\*

150' x 140' commercial, zoned heavy retail, with 2 bedroom home and detached garage, terms available.  
\*\*\*\*\*

308 S. Hoskins, 5 room house, carpet, fenced yard.  
\*\*\*\*\*

Lovely brick home on 11 acres only 5 minutes from Spearman shown by appointment only.  
\*\*\*\*\*

240 acre farm, one 6' well on pavement 15 miles south west of town, one-fourth minerals, owner will carry paper.  
\*\*\*\*\*

**EMMETT R. SANDERS**  
REALTOR  
659-2516  
659-2601 (nights)  
345-rtn

## NOTICE

Jan. 24th thru Jan. 27th I will be open 4:30 P.M. to 6:30 P.M.  
**SPEARMAN BARBER SHOP**  
95-rtn

**NEEDED--** applicants for LVN course Call Hansford Hospital, 659-2538 for application. Deadline extended to January 29th!  
10-4tc

If you have been unable to sell your house why not rent it to a reliable tenant? One who will improve your property, pay an agreeable price, excellent local references, deposit, for a 4 bedroom house. Three adults and one child, must be nice. Call 3829.  
105-4tc

## REAL ESTATE FOR SALE

**FOR SALE:** Brick 3 bedroom house with garage, central heat & air & storage, 1010 S. Barkley, call 659-2740 or 659-2390.

**FOR SALE** approximately 1 1/2 acres on corner of Kenneth & FM 760. Property has partially framed 25 x 30 shop, now has sewer, and is reduced in price and ready to go.  
Call 659-3867 or 659-3880.  
495-rtn

**FOR SALE:** Residential Lots, 115 ft. wide. Extra deep. Excellent neighborhood. 1100 Block S. Archer. All utilities available. Too good to pass up. Call 659-3021 or write Box 522, Spearman.  
50-rtn

**FOR SALE-** Small tract just west of Spearman, surface only, contains 31.7 acres. Call for details. Emmett R. Sanders, Realtor. 659-2516, night 659-2601.  
11-rtn

**FOR SALE:** 3 bedroom, 2 bath home, at 902 Dressen. Call 659-2099.  
11-2tp

**FOR SALE-** 6 lots zoned for mobilhomes, on paved streets, good location, south of Kenneth Street. Emmett R. Sanders, Realtor. 659-2516, night 659-2601.  
11-rtn

## LOST

**LOST** Black Steer calf with white stripe around its nose. Weight 400-450 # Branded with ♡ on left shoulder. Call 806-733-2583 Bobby Thompson.  
11-rtn

## CARD OF THANKS

Thank you for the cards, flowers, gifts, food and prayers during the illness and death of our Mother, Mrs. N.W. Cayton. May God bless each of you. James Cayton & Family  
Wallie Cayton & Family  
Martha Haden & Family  
Mary Jane DeArmond & Family

## Price Sponsors Tax Relief Fund

AUSTIN... Senator Bob Price, Republican from Pampa, announced today that he has cosponsored Senate Bill 1 with Senator Bill Meier of Euless. The bill creates a school property tax relief fund that would consist of one-quarter of the revenue from the state sales tax, excise tax, and use tax. It is expected that five hundred million dollars a year would be available to reduce school property taxes. Senator Price believes that the bill will provide significant ad valorem property tax relief to the citizens of the Panhandle and the state of Texas.

## REAL ESTATE ED WHEELER

**HOMES-FARM COMMERCIAL**  
906 King, Gruver, 3 bedroom, 1 bath, detached garage, fenced yard.  
1006 S. Evans, 3 bedroom, 1 bath, new insulation and steel siding.  
706 Steele Drive, 3 bedroom, den, 1 1/2 baths, fenced backyard.  
1114 S. Haney - 3 bedroom, 1 bath with garage and fenced yard. Priced to sell.  
Jerry Gee 659-3664  
Doris Beck 659-2618 659-2074

## TEXAS PRESS

**MEMBER 1977 ASSOCIATION**  
PUBLICATION NO. 509660  
SPEARMAN, TEXAS 79081  
Box 458 659-3434  
Published Weekly at 213 Main Street  
Spearman, Texas 79081  
Owner-Publisher.....William M. Miller  
Second Class postage paid at Spearman, Texas  
ANY ERRONEOUS REFLECTION UPON THE CHARACTER OF ANY PERSON OR FIRM APPEARING ON THESE COLUMNS WILL BE GLADLY AND PROMPTLY CORRECTED UPON BEING BROUGHT TO THE ATTENTION OF THE MANAGEMENT.  
SUBSCRIPTION RATE: Hansford, adjoining counties, combination with the Hansford Plainsman, \$10.40.  
Other points, \$14.40.

**CRUM REAL ESTATE**

1105 S. BARKLEY

**NADINE CRUM**  
BROKER  
We Need Listings! Want to Sell your Home? We have BUYERS.

**ROOM TO ROOM**

You'll enjoy the comfortable lifestyle offered by this LARGE older home on a tree-lined street. NEAR SCHOOL, 3 bedrooms, living room, family room. Kitchen has beautiful copper-tone built-ins including side-by-side refrigerator. Lots of cabinets. Carpeted, 2 baths, 2 water heaters. CENTRAL HEAT AND AIR, extra detached double garage with room and bath in back, fenced beautifully landscaped yard. CALL TODAY.



**NEW HOME**

2 Types Financing. G.I.-100% loan available for qualified, or Conventional (90% Financing). WHERE CAN YOU FIND the maximum for the minimum? In this 3 bdrm. home with 1 1/2 baths, kitchen has RANGE, DISHWASHER, & DISPOSAL UTILITY ROOM, CARPETED THROUGHOUT, CENTRAL HEAT AND AIR, FENCED YARD, FRONT LAWN SEEDED. Call today - YOU'LL BE GLAD YOU DID.



**GOOD LOCATION- 706 COLLIER**

This 3 bdrm. BRICK home is in excellent condition. Has 1 1/2 baths, carpet, central heat, utility room, FENCED YARD. Call today for an appointment.



**LOVE QUALITY? NEED SPACE?**

Like your money's worth? It's all included in this beautiful, spacious, older home with 4 bedrooms, 3 baths, kitchen built-ins, formal living, dining, den, large basement, storage galore, 2-car attached garage and a 1-car detached garage, sprinkler system front and back, fence, and much more. Call for an appointment.



Just what Cupid ordered!

our GRANDPARENTS' PRIDE PAGE

...coming to you Valentine's Day...

The Reporter, Plainsman & Statesman will publish a page of darlings, with your own grandchild's picture, as illustrated.

*Grandparents - please send a picture of grandchild (or grandchildren) name, age, parent's name & address & your own name & address, along with \$7.50 per picture to The Spearman Reporter, Box 458, Spearman, Tex.*

Deadline February 9th




# \$100,000.00 Addition Almost Ready!

The new Music and Art facilities at the Spearman Senior High School are just about complete. A tour of the \$100,000.00 addition this week by the Reporter staff and comments by School Superintendent James Cunningham suggests that students and faculty will be utilizing the additional quarters within several weeks.

The new rooms will provide approximately 4200 square feet of additional space for the choir and for art students.

The choir facilities are treated with functional acoustical materials providing the local Senior High School with one of the finest choir practice rooms available anywhere. A new Baby Grand Baldwin piano and a new upright Baldwin will serve as a complement to the new addition.

The new art facilities will be put into complete use hopefully when a new art teacher is secured possibly for the last quarter of the school year.

The school Board and administration can be justifiably proud as they provide such outstanding facilities keeping pace with progress and growth.

### BOND DISCONTINUED

The Treasury has announced plans to replace the Series E bond, first issued in 1941 and sold to the smallest investors, with a Series EE bond in denominations ranging from \$50 to \$10,000. The face amounts of Series E bonds range between \$25 and \$100,000.

### ONE MINUTE SPORTS QUIZ

1. Who won the Bob Hope Classic?
2. Who won the Grand Prix Masters tennis tournament?
3. Roger Stauback quarterback for what team?
4. Who quarterbacked for the Pittsburgh Steelers?
5. Dave Cowens is player-coach for what pro basketball team?

### Answers to Sports Quiz

1. John Mahaffey.
2. John McEnroe over Arthur Ashe.
3. Dallas Cowboys.
4. Terry Bradshaw.
5. Boston Celtics.

## Farm Bureau Conference Planned

AUSTIN -- Governor William P. Clements and California-based tax reformer, Howard Jarvis, are among speakers scheduled for the Texas Farm Bureau's state-wide leadership conference Jan. 31-Feb. 2 at the Austin Hilton.

Invited to attend are county Farm Bureau presidents, and members of Young Farmer & Rancher, Commodity, and State Affairs committees. About 600 persons are expected.

Other speakers include TFB President Carrol Chaloupka, House Speaker Bill Clayton, TFB Executive Director Warren Newberry, and E.B. Harris, president emeritus of the Chicago Mercantile Exchange, as well as commodity experts in agriculture, government and private business.

The conference begins at 1 p.m., Jan. 31. County presidents, young farmers and ranchers, and commodity leaders will meet in separate and joint sessions on the first day of the conference. The State Affairs, or legislative, conference will be held on the afternoon and evening of Feb. 1, and will conclude at noon on Feb. 2.

Chaloupka will open the conference with a talk on Jan. 31. Harris will be dinner speaker that evening. Jarvis will address the group luncheon on Feb. 1. Governor Clements will speak at the legislative dinner that evening. House Speaker Clayton will speak on the final morning of the conference. Newberry will give the conference wrap-up just prior to adjournment at noon that day.

County commodity committees represented at the conference will hold separate meetings for the seven commodity divisions in the TFB: beef, cotton, dairy, citrus, rice, peanuts, and wheat.

Commodity conference speakers include Hollis Hatfield, John Hoseman, Bruce Hawley, all of the American Farm Bureau Federation staff; Mike Wallace, McAllen, executive vice president, Texas Citrus Mutual; Wilbert H. Walther, Austin, statistician in charge of the Texas Crop and Livestock

Reporting Service; Dr. Wilson Boaz, Laredo, U.S. Department of Agriculture; Dr. Sam Winkelman, Austin, staff veterinarian of the Texas Animal Health Commission; and Don Watson, College Station, Agricultural Stabilization and Conservation Service.

County Farm Bureau State Affairs Committee members will go to the Capitol on the afternoon of Feb. 1 to meet with their respective legislators. The legislators have been invited to the legislative dinner Feb. 1.

Background on key legislative issues will be covered at the conference by Pat Smith, director of TFB's State Affairs; and Bill Bownds, assistant director.

The top legislative goal for the TFB this year is passage of enabling legislation for imple-

menting agricultural land tax relief.

The \$25 series E bond to be discontinued.

Iran's prime minister reportedly fears coup danger.

F-15 jet "fly-in" to show U.S. Saudi support.

Oil workers reject pact offer, postpone strike.

Roth, Kemp plan new tax cut push.

U.S. ships enter Black Sea to "show the flag."

German research links some beer to cancer.

## Texas Leads Nation In Revenue From Leases

State Land Commissioner Bob Armstrong said today a survey of states which receive income from lease of state lands shows Texas led the nation last year with almost \$400 million in oil and gas royalties, bonuses and rentals.

Armstrong, as chairman of a Western States Land Commissioners committee on fair return for use of public lands, prepared the survey for presentation at a meeting of the commissioners tomorrow in Reno, Nev.

Texas received \$261 million in oil and gas royalties from production on state-owned lands last year, \$6 million in other mineral royalties, \$93 million in bonuses paid by oil and gas

companies to obtain leases on state lands, and \$8 million for oil and gas rentals of state lands.

Other states with major revenues from oil and gas production on state lands were Alaska, with \$180 million in royalty, rental and bonus income; California, with \$97 million; and Louisiana, \$201 million.

"Our royalty income in Texas has more than quadrupled in the last five years, while royalty income in California and Louisiana is at about the same figure as 1973," Armstrong said.

"This is a reflection not only of the increased oil and natural gas exploration in Texas and increasing gas prices, but also

of our decision to raise our state royalty from 16 2/3 per cent to 20 per cent to make certain our state education system benefited fully from the increased industry profits.

"These 1978 revenues to the Permanent School Fund boosted the total for the endowment to \$1.9 billion, and we expect to hit the \$2 billion mark next month. Income from the Fund, which last fiscal year totaled \$109 million, accounts for about 4 per cent of the state's cost of the public school system."

### No Rain

An Indian had attended services one Sunday morning. The sermon had been very loud in spots and the Indian, though a good Christian, was not greatly impressed.

Later, when asked how he had liked the sermon, he said: "High wind, Big thunder. No rain!"

Retail sales show slight December gain.

### ON FACTORY ORDERS

New orders received by the nation's factories rose a weak 0.3 percent in November, the government reported. It is an indication that business confidence in the economy's ability to expand may be eroding.

### SCHLESINGER ON OIL

Energy Secretary James R. Schlesinger has urged Americans to head off the threat of shortages by reducing oil consumption until production in Iran resumes. He said there is no immediate supply problem.

### BILINGUAL EDUCATION

The Department of Health, Education and Welfare's Office of Education has announced 149 awards totaling \$16 million to colleges and universities for the support of two types of bilingual education training programs.

Committee women resign over Abzug firing.

U.S. approves sale of lower-priced drugs.

# Now...7-Days

**Ideal**  
FOOD STORES

PRICES EFFECTIVE THRU JAN. 31, 1979. QUANTITY RIGHTS RESERVED. NO SALES TO DEALERS.

MON. - SAT.  
8a. m. - 9p. m.  
SUNDAY  
10a. m. - 7p. m.

PLAYING  
**Card #2**  
AVAILABLE  
NOW!  
AT YOUR IDEAL FOOD STORE

PLAY TRIPLE PLAY  
**WIN UP TO**  
NOW PLAY WITH 2 CARDS!

U.S.D.A. CHOICE BUTCHER BLOCK BEEF

**Round Steaks**  
\$2.18  
LB.

CENTER SLICES SIRLOIN STEAKS \$2.48 LB.

CENTER SLICES BEEF ROUND

BEEF LOIN - U.S.D.A. CHOICE BUTCHER BLOCK BEEF \$2.98

**T-Bone Steaks**..... LB. \$2.98

SLAB  
**Sliced Bacon**  
99¢  
LB.

HICKORY SMOKED BULK PACK

NOOD RANCH 'N' MAIL  
**Sliced Bacon**  
\$1.38  
1 LB. PKG. \$2.75

CHUCK WAGON OR ROUND-UP  
**Boneless Hams**  
3 TO 5-LBS. HALVES  
\$1.99  
LB. FULLY COOKED

WILSON'S CERTIFIED  
**Canned Hams**  
3649  
15-LB. CAN \$10.79

THRIF-T-PACK  
**Hudson's Fryers**.. LB. 55¢

ASSORTED PORK LOIN \$1.69

RODEO SKINLESS MEAT OR BEEF 99¢

HEREFORD CORN (40-CT. PKG. 75¢) 19¢

RODEO SLICED MEAT OR BEEF \$1.19

HEREFORD FLOUR 89¢

RODEO MEAT BY THE PIECE \$1.19

**MAGIC 8 SALE!**

MEADOWDALE CUT  
**Green Beans**.... 15 1/2-OZ. CANS 498¢

TIDE'S IN - DIRT'S OUT  
**Tide Detergent**.. 84-OZ. BOX \$2.58

MEADOWDALE GOLDEN CORN 16-OZ. CANS 398¢

CAMELOT INSTANT MASHED POTATOES 15-OZ. BOX 68¢

MEADOWDALE SWEET PEAS 17-OZ. CANS 398¢

MEADOWDALE WHOLE TOMATOES 16-OZ. CAN 38¢

**SUPER COUPON**

**FREE** 1-DOZEN CAMELOT LARGE EGGS WITH PURCHASE OF 4 G.E. OR WESTINGHOUSE 60-75-100 WATT LIGHT BULBS WITH THIS COUPON

COUPON GOOD THRU JAN. 27, 1979. LIMIT ONE COUPON PER CUSTOMER.

**75¢ OFF COUPON**

**75¢ OFF** WITH THIS COUPON AND PURCHASE OF A 2-LB. CAN Folger's Coffee

COUPON GOOD THRU JAN. 27, 1979. LIMIT ONE COUPON PER CUSTOMER.

CORN BREAKFAST CEREAL  
**Post Toasties**.. 18-OZ. BOX 78¢

CAMELOT  
**Pinto Beans**.. 2-LB. BAG 58¢

**PLAY Gunn Bros. Gunn-Ho**

## Clip Me! Bring Me In!



Portraits Back in Time For VALENTINE'S DAY

1/2 PRICE 44¢ with this ad (Regularly 88¢)  
**For an 8x10 color portrait**

Choose from our selection of 8 scenic and color backgrounds. You may select additional portraits offered at reasonable prices, with no obligation. See our large Decorator Portrait. Satisfaction always, or your money cheerfully refunded.

**TG&Y**

One sitting per subject - \$1 per subject for additional subjects, groups, or individuals in the same family. Persons under 18 must be accompanied by parent or guardian.

SHOP IDEAL...WHERE THERE'S MORE VALUE IN

### Hightower Chairman Of Texas Democrats

(Washington, D.C.) Congressman Jack Hightower of the 13th Congressional District has been elected the Chairman of the Texas Democratic Delegation for the 96th Congress.

"Although Texas has lost a sizeable amount of seniority with the retiring of George Mahon, Bob Poage, Olin Teague, Omar Burleson, and others, we have gained new members who are aggressive and innovative in their ways, and they too are dedicated to serving the best interests of Texas. We will be a force to be reckoned with," Hightower said after this election.

"The stronghold of Texans, with its 20 Democratic members, meets weekly in a regular forum to discuss pending legislation that is of importance to each member's district and to the state as a whole. Collectively members of the Texas delegation serve on every major committee in the U.S. Congress and are considered to be one of

the most effective and cohesive delegations in the Congress. I am gratified to have been chosen to lead them," Congressman Hightower said.

Hightower, who serves a 33 county area of Texas, is fresh from another major appointment, being named to fill the traditionally Texas seat on the House Appropriations Committee vacated by retiring Congressman George Mahon of Lubbock.

#### JOBLESS RATE UP

The jobless rate edged up for the first time in five months in December, but 1978 showed strong employment gains, the Labor Department said.

#### INFLATION FIGHTER

Urban leaders were displeased when inflation fighter Alfred E. Kahn told them the country cannot afford now to reduce unemployment and rebuild the cities.

### Rep. Close Receives Appointments

AUSTIN--State Rep. Bob Close (R) of Perryton has been named as Vice-Chairman of the Constitutional Amendments Committee and has also been appointed to serve on the Local and Consent Calendars and Natural Resources committees by House Speaker Bill Clayton.

Clayton said Rep. Close would serve in these capacities during the next two year of the 66th Legislature.

Rep. Close, an attorney by profession, is serving his 3rd term in the House. Last session, he served on the Natural Resources and Constitutional Amendments committees.

The nine-member Constitutional Amendments Committee has jurisdiction over all measures proposing amendments to or

revisions of the Texas Constitution and ratification of pending amendments of the Constitution of the United States. This committee also has jurisdiction over measures proposing to establish the organization, structure and procedures of a convention for the revision of the Texas Constitution.

The nine-member Local and Consent Calendars Committee has jurisdiction in determining whether or not bills are in fact local or, in the opinion of the committee, will be uncontested. This committee shall make up the calendar for periods designated by the house for the consideration of local and uncontested bills, placing bills on second and third reading on this calendar in accordance with

their readings and numbers.

The eleven-member Natural Resources Committee has jurisdiction over all matters pertaining to the conservation of the natural resources in Texas, irrigation, the development and preservation of forests, and the regulation of the lumber industry. The committee has jurisdiction over the Department of Water Resources and the creation, modification and regulation of water supply district.

#### ON WAGE INCREASES

President Carter has decided not to ask Congress to postpone scheduled increases in the minimum wage in 1980 and 1981, administration officials said.

#### CONSUMERS BORROWING

Consumers borrowed money at near-record levels in November as they used credit cards instead of cash for pre-Christmas purchases, the Federal Reserve reports.



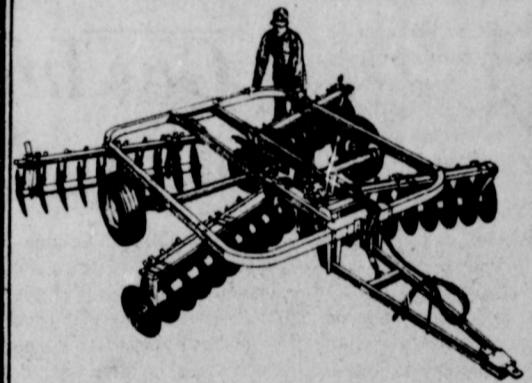
WELCOME - ROBERT QUEENER I

INTERSTATE SAVINGS



JOHN DEERE COMPANY

### GET OUR DOLLAR-SAVING DEAL ON A DISK OR CHISEL PLOW BEFORE JAN. 31...



#### PLUS \$75 TO \$900 MORE IN JOHN DEERE DOLLAR PURCHASING POWER

We'll give you our best deal, top trade-in value and more if you'll order any John Deere Disk or Chisel Plow listed below before the end of January. Your added bonus is from \$75 to \$900 in John Deere money you can exchange for goods or services at our store. Don't miss this valuable offer... stop in soon and ask about this program.

#### BUYER BONUS IN JOHN DEERE DOLLARS FOR ORDERS SIGNED THROUGH

EQUIPMENT JAN. 31, 1979

EQUIPMENT	JAN. 31, 1979
DISKS:	
100 Integral	\$75
110 and 111	\$125
210	\$200
310, 340, and 1630	\$275
220, 230, 350, 440, and 1640	\$350
330, 331, and 360	\$500
370	\$900

#### CHISEL PLOWS:

1608M Integral; 1608R Drawn Rigid; 1610 Integral Rigid; 1610 Drawn Rigid (11-foot); 1611R Drawn Rigid	\$100
1620 Drawn Flexible; 1623 Drawn Flexible (23- to 27-foot)	\$200
1610 Drawn Flexible (23-foot); 1610 Drawn Rigid Folding (19-foot); 1623 Drawn Flexible (29- to 41-foot)	\$300
1610 Drawn Flexible (29- to 37-foot)	\$400
1650 Folding	\$900

This offer is subject to equipment availability.



Hansford Implement  
Phone 806-659-2712  
Hwy 207  
Spearman, Texas

# of Saving

## At Ideal

FOOD STORES

### DOUBLE PAY AND

# \$2,000

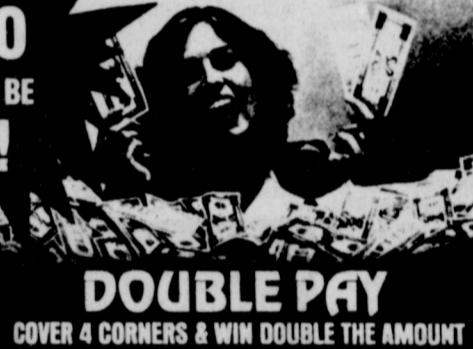
## BINGO

### 80,000 IN CASH TO BE WON!

ODDS CHART... Effective January 1, 1979

1	2	3	4	5	6	7	8	9	10	11	12	13	14	15	16	17	18	19	20	21	22	23	24	25	26	27	28	29	30	31	32	33	34	35	36	37	38	39	40	41	42	43	44	45	46	47	48	49	50
---	---	---	---	---	---	---	---	---	----	----	----	----	----	----	----	----	----	----	----	----	----	----	----	----	----	----	----	----	----	----	----	----	----	----	----	----	----	----	----	----	----	----	----	----	----	----	----	----	----

Scheduled Termination Date: Saturday, March 31, 1979. This game may be repeated.



### DOUBLE PAY

COVER 4 CORNERS & WIN DOUBLE THE AMOUNT



ALL PURPOSE  
**Snow Drift Shortening** 3 **\$1.38**  
LB. CAN

SHOWBOAT  
**Pork & Beans**..... 4 **98¢**  
14 1/2-OZ. CANS

CAMELOT SMOOTH OR CRUNCHY  
**Peanut Butter**..... 18-OZ. JAR **88¢** CAMELOT COFFEE  
**Creamer**..... 16-OZ. JAR **98¢**

DRINK MIX POWDER - HAWAIIAN  
**Punch**..... 28 1/2-OZ. CAN **\$1.58** CAMELOT  
**Flour**..... 25-LB. BAG **\$2.98**

FAIRMONT  
**Ice Cream Sandwich** 7 **8¢**  
6-PC. BOX  
FAIRMONT - ALL FLAVORS  
**Ice Cream**... **\$1.38**  
1/2-GAL. ROUND CARTON

#### GIANT DAIRY SAVINGS

CHEESE FOOD  
**Kraft Velveeta** **\$2.28**  
2-LB. LOAF

FAIRMONT 1%  
**Low Fat Milk**..... 1-GAL. PLASTIC **\$1.38**  
CAMELOT  
**Buttermilk**..... 1/2-GAL. CTR. **58¢**  
PARKAY SOFT  
**Corn Oil Margarine**..... 16-OZ. PKG. **88¢**

#### GIANT FROZEN FOOD SAVINGS

MINUTE MAID  
**Orange Juice** **78¢**  
12-OZ. CAN

MEAT POT PIES KITCHEN TREAT ASSORTED 5 **88¢**  
EVER-FRESH 18-OZ. PKG. **58¢**  
CAMELOT SLICED 16-OZ. CTR. **98¢**  
MEADOWDALE 74-OZ. PKG. **48¢**



CALIFORNIA  
**NAVEL**  
**Oranges** 3 **\$1**  
LBS. FOR

GOLDEN  
**Delicious Apples** **39¢**  
EXTRA FANCY WASHINGTON LB.  
CALIFORNIA  
**Crisp Carrots**..... 1-LB. BAG **25¢**  
CRISP GREEN STALKS  
**California Celery**..... LB. **39¢**  
U.S. #1 SWEET SPANISH  
**Yellow Onions**..... LB. **19¢**

COLORADO ALL PURPOSE RUSSET  
**Potatoes** 20 **\$1.48**  
LB. BAG

#### HEALTH & BEAUTY AID SPECIAL...

FAST RELIEF  
**Tylenol** **\$3.38**  
200-CT. BTL.  
MOUTHWASH  
**Scope**..... 24-oz. BTL. **\$1.88**  
SPRAY DEODORANT  
**Secret**..... 2.78-oz. BTL. **\$1.78**  
PANTY SHIELDS  
**Carefree**..... 24-oz. PKG. **\$1.48**

AND GET

1000 EXTRA STAMPS

GUNN BROS. STAMPS AT IDEAL...

STORE FOR YOU!...

# At Ideal

FOOD STORES

### Food Stamps Buy More At Ideal...





Scenes like this may become somewhat numerous in the next several weeks as Spearman City work crews repair broken water mains. The mains, in many cases have frozen as a result of the protracted cold spell. The thawing process sometimes results in a break.

### Committee Members Named

Hansford County Commissioners have named a County Historical Survey Committee. Those renamed as well as the new members are as follows. Helen Boyd, Nell Evans, Fred Groves, Clemantine Renner, Ruth Shaver, S.J. Hall, Juanita Pierce, Johnnie Lee, John Hutchison.  
NEW:  
Frances Kilgore, Lois Shield-knight, Dixie Tracey, Helen Etter, Jack Oakes, Joyce Lackey, Jenny Blankenship, Ruth Gumfory, Melba Rasor, Mrs. Tom Dorth, Mrs. H.B. Parks, Christine Brandvik, Eva Lee Barkley, Freeman Barkley.  
Honorary Members: Gertie Archer Gid Nobles.

#### Positive Proof

The most impressive testimony for tolerance is a golden wedding anniversary.  
-Times, Marshalltown, Ia.



Leave it to the boys! Little 6 pound two and one half ounce Jerry Rincon captured the Hansford Hospital "First Baby of the Year" honors! The infant son of Fredda and Rosalinda Rincon of Morse saw the light of day at 3:35 P.M. January 17. Dr. Mario Manese was the attending obstetrician.

## Local Tractors In Carter County!

Local units of the National American Agricultural Movement tractorcade are in Carter County and have joined forces with members of the Georgia State Contingent in Atlanta Georgia.

The "Route 2" group which "tractorbarked" from Amarillo January 15th have been joined by numerous American Agriculture Supporters from S.E. Missouri. The two groups from the Midwest hooked up at Memphis Monday night and then set off for Atlanta on Tuesday.

Reports from Jerry Gee, Ted Godfrey, Chalmers Porter and the other members of the Hansford County group say all is well and that part from weather problems no serious impediments have occurred. The group says it is looking forward eagerly to a Grand March on Washington the weekend of the Second of February.

Some 175 Tractors are in the group representing Texas and Missouri... part of the 450 vehicle brigade from the Midwest area.

## History Book Meeting Well Attended

The History Book meeting was held at B & B Farm Industries' Hospitality Room, in Spearman, Friday. A committee was gathered to copy addresses at the Court House. If you are interested in helping, please call 3358.

A Logo, drawn by Mrs. Nolan Holt, was chosen by the committee. The logo will be on the outside of the envelopes and on the letterhead. A letter will be sent out inviting anyone who has ever lived in Hansford County to submit a story. There will also be a description of how the stories should be written and each household will be allowed 500 free words. A complete description of the

book was given by Fred Groves.

A large turnout was gladly received by the committee. Those attending were Mmes. Irvin Boyd, Harry Stumpf, Dee Allen, Dick Kilgore, Bruce Reardon, Tom Sutton, Fred Hoskins, H.M. Shedeck, Gary Evans, W.L. Maupin, Ed Vernon, H.L. Boyd, Ray Brandvik, N.F. Renner, Nolan Holt, Willis Randall, J.L. Pierce, Ray Robertson, Mr. and Mrs. J.L.

Denman, Mr. and Mrs. Ben Harris, Ruby Saltness, Allen Pierce, S.J. Hall, Jennie Blankenship and Fred Groves.

The next meeting will be held Friday, Jan. 26 in Gruver at the Golden Age Center (the old Veteran building), at 2:00 p.m. All interested persons are urged to attend. The committee is eager to get the Book started and needs plenty of support and assistance of the community.

## Water Mains React To Weather

Spearman City Manager Len Simpson commented today that a number of streets would require permanent repair following the recent surge of broken water mains.

An unusually large number of water mains have broken due to the persistent below freezing weather sustained in Spearman in January. As quick as City crews are able to repair one broken main caused by the thawing of the pipes, another seems to give way. The City Official noted that he anticipated a considerable amount more to break... but did not contemplate any serious water problem for any customer. He added that the mains were constructed in such a way that water could be diverted into other pipes to fulfill city water needs. The main concern said Simpson was the damage that occurred to streets as a result of the digging required to reach the damaged areas.

## Gas Increase Ruling Delayed

The Texas Railroad Commission had advised Spearman city manager Len Simpson that the ruling concerning a petition from High Plains Natural Gas asking for an increase in rates amounting to around 26% has been delayed.

Earlier, Simpson and City officials had been advised that the ruling would be made by January 18th. No apparent reason was given for the delay but apparently there is still a glimmer of hope for Spearman Gas customers that the rate increase requested will be somewhat modified downwards.

The Commission told the City official locally "to expect a decision in the near future."

In the meantime Spearman Gas customers will see a 5 cent per thousand cubic foot increase tacked on to their next gas bills. City council members approved the hike in a December meeting anticipating some upward increase early in January.

**Favorite "Hymn"**  
Teacher asked all the children to write down the name of their favorite hymn. Everyone wrote except little Mary. "Come on, Mary, write it down," coaxed the teacher. So little Mary blushing wrote, "Johnny Brown."

**QUANTITY RIGHTS RESERVED**

**\$135,554 IN CASH PRIZES** **WIN YOUR SHARE OF 25 MILLION** **S&H GREEN STAMPS**

**UNITED Supermarkets** Perryton, Texas

**PRICES GOOD THRU' JAN. 27TH**

**KOUNTY KIST**

**GOLDEN CORN / BEANS** **GREEN REG. CUT 16 OZ. CAN**

**WHOLE KERNEL 12 OZ. CAN** **YOUR CHOICE**

**4 FOR \$1**

**Manager's Special** **3 lb. can CRISCO \$1.79**

**EDGE SHAVE CREAM** \*SPEC. LIME \*MENTHOL REG. \*MEDICATED 7 OZ. **\$1.09**

**GILLETTE 555 BLADES** 15 CT. **\$1.99**

**TEGRIN LOTION SHAMPOO** 3 1/2 OZ. **\$1.39** MEDICATED OR HERBAL

**Maryland Club Extra Measure**

**COFFEE** 12 oz. **\$1.79**

**KRAFT SPAGHETTI DINNER** TANGY ITALIAN 8 OZ. **49c**

**CARNATION LIGHT TUNA** CHUNK 6 1/4 OZ. CAN **69c**

**GOLD MEDAL FLOUR** 5 LB. BAG **89c** 25 LB. BAG **\$3.29**

**DELTA BATHROOM TISSUE** 4 ROLL PACK **69c**

**DELTA PAPER TOWELS** JUMBO ROLL **39c**

**HUNT'S WHOLE PEELLED TOMATOES** 14 1/2 OZ. **39c**

**HUNT'S TOMATO SAUCE** 8 OZ. **5 FOR \$1**

**HUNT'S KETCHUP** 32 OZ. BTL. **69c**

**WESSON OIL** 38 OZ. BTL. **\$1.59**

**LONG GREEN SLICERS CUCUMBERS** 2 FOR **39c**

**BELL LG. CRISP PODS PEPPERS** 2 FOR **39c**

**ALL PURPOSE RUSSET POTATOES** 10 LB. BAG **89c**

**SUNKIST LARGE LEMONS** LB. **39c**

**CALIF. FUERTE AVOCADOES** 4 LG. SIZE **\$1**

### Complete Farm & Ranch

### Irrigation Center

Sales and Service on ALL Brands

- \* Grain Bins
- \* Steel Bldgs
- \* Steel Bldgs
- \* Aeration Systems
- \* Grain Augers
- \* Dryers
- \* Underground pipe
- \* Underground Leaks
- \* Repaired - Maintenance
- \* Sprinklers
- \* Tail Water Systems
- \* Brock Feed & wet holding Tanks
- \* Work on Aluminium Pipe
- \* Lay underground pipe

**Western - Ag. Sales Co., Inc.**  
**Gruver Hwy**

phone 659-2596

Spearman, Texas

# North Plains Electric plans major construction program

North Plains Electric Cooperative, Inc. Friday announced its intentions to undertake a major construction program which carries a price tag of \$5.97 million. The project includes some 26 miles of transmission line in Ochiltree County and another 57 miles in adjoining Hansford County.

Vesta Orr, manager of North Plains Electric, explained that the purpose of the project is three-fold. First, the associated distribution line will provide service for anticipated growth in the area. Secondly, it will provide for existing service and the increased usage that customers demand. Thirdly, the new project will improve service reliability.

Friday, the nine-member North Plains Electric board of directors approved to submit a loan application to the REA. Initially, the cooperative will use its own general funds to launch the project.

Construction is covered in a two-year work plan that begins this year and runs through 1980. First work to be done, while the cooperative waits on REA approval of the loan, will be engineering surveys and line routing.

Twelve miles of 115 kv transmission line and 14 miles of 69 kv line is in the offering in Ochiltree County. Another 29 miles of 69 kv and 28 miles of 115 kv transmission line will be laid in the Hansford County.

A new transmission substation and a new distribution substation are planned in Ochiltree County near Buler and Farnsworth, respectively. Another substation is planned for relocation near Spearman.

North Plains Electric anticipates that the 191 miles of associated distribution line will provide service to an additional 512 new consumers. Presently, the cooperative serves from 4,200 to 4,500 customers systemwide. Of the 512 new customers, Orr said that 15 to 18 percent will be in Ochiltree County.

The transmission line will conform to REA specifications and will consist of single pole structures carrying three energized wires and one grounded static and is similar to existing

facilities owned by the cooperative.

Once the REA loan funding is approved and preliminary work is complete, the cooperative will be taking bids from general contractors.



SK-1 FAMOUS SMILE... Farrah Fawcett-Majors displays her dazzling good looks in "Somebody Killed Her Husband." The Columbia Pictures release, which co-stars Jeff Bridges and marks Farrah's starring motion picture debut, opens 7:24 at the Lyric Theatre.



SK-11 BEARDED BRIDGES... Jeff Bridges is a toy salesman who falls head-over-heels for Farrah Fawcett-Majors in the entertaining mystery "Somebody Killed Her Husband." Set in midtown New York, where a cunning killer is on the loose, the Columbia Pictures release opens 7:24 at the Lyric Theatre.

# Editor Blasts American Ag.

Calls Members "Lunatic Fringe"

In an editorial in the Canadian Record January 18th, The newspaper refers to members of the American Agriculture movement and participants in the Washington Tractorcade as being on the "Lunatic Fringe".

Members of the Hansford County group told the Reporter, Plainsman and Statesman that they were sending the editor in Canadian a reply citing the accomplishments on the part of American Agriculture during its first year of operation. Here is their reply!

1. The American Agriculture Movement has wholly or in part been responsible for these changes in agriculture:

2. Raised the price of wheat from approximately \$1.90 to \$3.00 per bushel.

3. Brought to the attention of the USDA the fact that imported meat was being used in the school lunch program; subsequently it has been withdrawn.

4. The change in the target price on wheat from \$2.90 to \$3.40 is a direct result of A.A.M. action (\$50 x 117,500,000 bushels equals \$58,750,000 in Texas alone). The change in target price on wheat (.50 cents per bushel) yielded each Hansford County farm an average of \$2292.00.

5. Is making the consumer realize the gravity of the situation in agriculture.

6. A.A.M. by educating the consumer on the financial situation of the American rancher and drawing attention to beef imports at both national borders, has prevented a boycott on meat by the American consumers.

7. Has exposed the fact that chemically contaminated produce is imported with misleading labeling, indicating it could have been grown domestically.

8. Is involved in exposing President Carter and his Administration as promoting a Cheap Food Policy. Example - the grain reserve will be used to lower grain prices as he has used the meat imports to lower livestock prices.

9. Caused the investigation by government and other officials into foreign purchase of American farm land.

10. Caused Secretary of Agriculture Bergland to reconsider and make milo deficiency payments; increase farm storage payments from twenty cents to twenty-five per bushel; and to extend haying and grazing to June 1.

11. Emergency farm credit bill

12. Politicians taking stands on agriculture

Caused existing farm groups to be more responsive, demonstrated that an individual still has a voice in government, increased awareness by everyone

SUPPORT THE AMERICAN AGRICULTURE MOVEMENT - It's working to support you!!! Think what we could do if you'd help too!!!

**Pungent!**  
Asked for a one-word definition of Edgar Allen Poe, a student promptly volunteered: "Dead."  
-Tri Supply, Philadelphia.

**Bang!**  
Reputation is a large bubble which bursts when you try to blow it up yourself.  
-Globe, Atchison, Kan.

# Annual Chamber Banquet

The Spearman Chamber of Commerce annual banquet will be held, Saturday, January 27, Banquet of the Spearman School Cafeteria at 7:30 P.M. The Speaker for the evening is Mr. Edward O. Daniel of Arlington, Texas. Mr. Daniel is Director of Community Relations for the Fort Worth office of Bache, Halsey, Stewart, Inc., a brokerage firm. Mr. Daniel is a former Professor of History at Texas A & M and Howard Payne. He is a feature speaker for Associated Clubs of America and comes to us highly recommended. He is a humorist with a message, but you will have to sift around to find it while laughing.

The tickets will go on sale next week for \$7.50 each so call the chamber office and make your reservation today.

Spearman's Citizen of the year will be named and the Chamber award goes back to 1961 when the award that year was won by Mrs. R.B. Archer Jr.. Last year's award was won by Spearman Alderperson Frances Loftin. The Chamber said that individuals who are nominated should have displayed involvement in activities outside of their particular employment. One criterion would be unselfish sharing of one's time and capabilities for the betterment of the community. Other criteria include "friend to those in need...concern for one's fellow persons,

# Beware Of Ice Ponds

As winter's cold forms a layer of ice on ponds and lakes, children are filled with visions of their northern and western neighbors enjoying winter sports. The novelty of ice, however, lures many youngsters to their death.

"Ponds around here seldom freeze thick enough to support the weight of even small children," Warren Proctor, district conservationist with the USDA Soil Conservation Service (SCS) in Spearman, said.

The most dangerous ponds, he stressed, are those that freeze fairly thick in areas around the edges.

"Usually the down-wind edge of the pond will freeze first, and the ice may support a large person for several feet from the edge in that area. But, over deeper water and on the up-wind side of the pond, the ice is

usually very thin," Proctor continued.

There is no really safe ice thickness for skating, according to the National Safety Council, because ice conditions are always changing. For example, four inches of new ice can support more weight than four inches of "old ice" that had been subjected to the effects of the sun, refreezing after thawing wind, and changing water levels under the ice.

Realizing how hard it is to curb the natural curiosity in children, Proctor suggested that children be made aware of the dangers of thin ice. He has warning posters available free of charge for this purpose.

Also, children should be taught rescue techniques. "Some pond owners keep a life ring or other flotation device attached to a long rope

handy at the pond. A long pole can also be used to rescue victims of broken ice," Proctor said. "If you must go onto the ice to help a drowning person, be sure to use a large board, ladder, or pole, or sheet of plywood to distribute your weight. If none is available, lie prone on the ice and slide gently." There are numerous tailwater pits in Hansford County located near roads that could be hazardous if frozen over.

MARKETS

Wheat	\$3.06
Milo	3.65
Corn	2.45
Soybeans	6.38

WIN UP TO \$2000 CASH!

# BINGO

YOU COULD BE AN INSTANT WINNER OF 5 BOOKS OF STAMPS!

STA-BINGO WINNERS!  
Mrs. Floyd Veatch  
5 Books

WIN YOUR SHARE OF 25 MILLION S&H GREEN STAMPS

**\$135,554** in cash prizes

BONELESS SHOULDER ROAST	WASTE FREE BEEF	\$1.79
BONELESS STEW	"EXTRA LEAN" CUBES OF BEEF	\$1.79
CUBED STEAK	WASTE FREE BEEF	\$2.39
BONELESS FAMILY STEAK	WASTE FREE BEEF	\$1.89

CASSEROLE PINTO BEANS 4 LB. BAG **99¢**

HEINZ WHOLE PROCESS PICKLES 32 OZ. BTL. **79¢**

SCHILLING BLACK PEPPER 4 OZ. CAN **89¢**

SCHILLING SEASONING 3 BEEF STEW 1 1/2 OZ. SLOPPY JOE 1.3 OZ. **3 FOR 89¢**

LONGHORN CHILL WITH BEANS 15 OZ. CAN **49¢**

CLOVER CLUB VARIETY PACK CHIPS 13 CT. 7 1/2 OZ. **89¢**

REG. OR B-B-Q POTATO CHIPS TACO FLAVOR TORTILLA CHIPS CORN CHIPS CHEESE CRISPS **89¢**

WILSON'S CERTIFIED BOLOGNA MEAT OR BEEF **\$1.59**

WILSON'S CERTIFIED FRANKS MEAT OR BEEF 12 OZ. PKG. **98¢**

FINE FARE THICK OR THIN BACON SLICED **\$1.59**

NORMEL'S LITTLE SIZZLERS 12 OZ. PKG. **\$1.19**

BORDEN BUTTERMILK 1/2 GAL. **79¢**

WHITE SWAN TEXAS STYLE BISCUITS SWEET OR BUTTER MILK 12 OZ. **3 FOR \$1**

UNITED LOW FAT MILK GAL. **\$1.49**

ORE-IDA CRINKLE CUT POTATOES 2 LB. BAG **79¢**

JENO'S FLAT PIZZA **89¢**

MORTON DINNERS **55¢**

PRICES GOOD THRU JAN. 27TH

# UNITED Supermarkets

Perryton, Texas

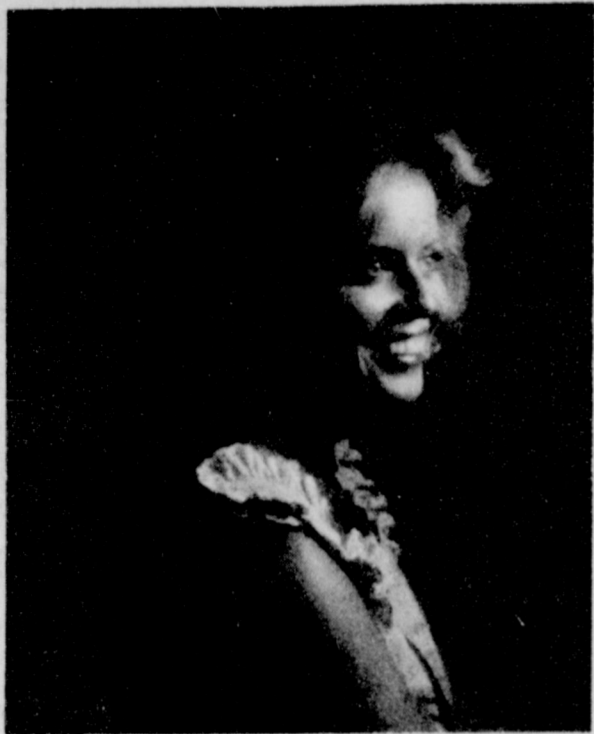
QUANTITY RIGHTS RESERVED

# Add a few more daylight hours

Wishing the sun came up a little earlier or set a little later won't help you get your chores finished. But the mercury vapor Nite-Liter can help, by providing those extra hours of light needed to start or finish your workday right. No more stumbling around in the dark. The Nite-Liter can spread light over an area 100 yards in diameter, and it costs only pennies a night. There's no investment. And the automatic on-at-dusk, off-at-dawn feature gives you efficient wide area outdoor lighting without wasting energy. Get the safety, security, and economy you need with the Nite-Liter. Call for your Nite-Liter today!

**COMMUNITY PUBLIC SERVICE**  
Your Electric Light & Power Company

# Engagement Announced Chairpersons For Mental Health Needed



Mr. and Mrs. Jack Hamelton of Spearman announce the engagement of their daughter Cynthia La Vonne to Ronny Burrell, son of Mr. and Mrs. G.W. Burrell of Canadian. The couple plan a March 17th wedding in the First Christian Church of Spearman.

Chairpersons for the May drive for mental health will be recruited around the state during the next two months. The drive will benefit the programs of the Mental Health Association.

The Mental Health Association in Texas is a voluntary citizens' organization dedicated to promoting mental health while working on behalf of the mentally ill and their families.

Because emotionally distressed persons cannot speak for

themselves, the Association serves as their advocate. Members monitor existing mental health services and seek needed services. Children's and community services are the Association's highest priorities.

Since the organization is non-governmental, its entire support must come from contributions, such as those collected in the May drive.

## Arts & Crafts Guild News

The Arts and Crafts Guild met in the home of Mrs. W.L. Russell, Friday, January 19. Those attending were Mrs. Nolan Holt, Mrs. Guy Fuller, Mrs. P.A. Lyon, Sr., Mrs. W.H. Gandy, Mrs. Ned Turner, Deta Blodgett, Mrs. F.J. Hoskins, Mrs. Joe Trayler, and Mrs. Garrett Allen, and hostess Mrs. W.L. Russell. The next meeting will be in the home of Mrs. Joe Trayler, Friday January 26th.

## Square Dance Club News

The Spearman Spinners Square Dance Club met Thursday, January 18th at the county barn. They had two square for dancing with Paul Lopez calling. Hosts and hostesses were Mr. and Mrs. Billy Nollner and Mr. and Mrs. Paul Lopez. The next dance will be Thursday, February 1st at the county barn at 8:00 p.m.

Spearman Spinners are beginning square dance lessons Fri. Jan. 26th at 8:00 P.M. at the County Barn. Paul Lopez will be the instructor. Anyone interested in taking lessons is urged to be present. For more information call 659-3526 or 659-2840.

church and to elect a nominating committee.

There will be a family covered-dish dinner following the congregational meeting.

Belonging to the First Presbyterian Church of Spearman is a feeling. It is based on being among people who know you and among whom you feel at home. Members live their faith together. They celebrate their separate victories and share their individual losses together in the same place and before the same Father, God. Our members have learned what to expect from one another, and when to expect it. God and members of the church love each one just as they are.

Spearman vs. Perryton Fri.

## Presbyterian Church News

Presbyterian Men will have their monthly prayer breakfast on Thursday, January 25 at 6:30 a.m.

There is a Sunday Church School class for everyone every Sunday at 9:45 a.m. How much do you understand of the Bible? Our Sunday Church School classes are a golden opportunity to really get a good understanding of God's Word.

"Jesus Heals" is the subject of Pastor Edward D. Freeman's sermon at the service for the public worship of God on Sunday, January 28 at 11:00 a.m.

Following the morning church worship service there will be a congregational meeting to receive the reports of the officers and organizations of the



## Jamie's Jabber

by Jamie Casdorff  
I bet you all have been wondering where my column has been here lately. Well, you know how once a year you have to take this thing called Inventory? I bet you have guessed it now; I've been busy for the past week taking Inventory here at the Reporter. I never knew or guessed it would take so long! At least I'm finished for a year! Not much has happened during the week I didn't write, so maybe you didn't miss too much! (I think I'm the only one who missed it).

I went browsing in Beedy's the other day with my mother. I think I should have stayed in the car I found too many things that I wanted! They have some of

the prettiest furniture. They had a bedroom set that I wanted so bad! It's the antique style with the crystal glass pulls on the drawers and the big round mirror on the dresser! They also had matching marble top night stands it was really nice! I wish I was rich and had a nice house to put that furniture in. They had some gorgeous living room sets, also. My taste is too expensive for my budget so I'm not going to try to describe anymore furniture (makes me want it worse).

The next meeting will be at the Girl Scout Hut Friday, January 26. The Troop has invited the 3rd grade Girl Scouts to the meeting which will be an International Tasting Tea including foods from different countries and a skit performance. Mary Evans will furnish refreshments.

guest Bill Whitson. Ms. Major Lackey won high 1 second high was won by Mr. Gwenfred Lackey.

The next meeting will be hosted by Mrs. Bil Seitz, Monday, February 5th.

## Bridge Clubs

The Grand Slam Bridge Club met Thursday, January 18th in the home of Linda Blackman for lunch and their monthly bridge game. Those attending were Joy McCormack, Ann Flowers, Linda Blackman, Mary Ann Lasater, Linda Venneman and guests Gwen McLain, Gwen Smith, Lorene Kunselman and Karen Reimer. High was won by Ann Flowers, second high by Linda Venneman. The next meeting will be Thursday, February 15th in the home of Irene Baker.

The Blue Monday Bridge Club met Monday January 22. The meeting, hosted by Gwenfred Lackey, included a luncheon at Martin's Steak Garden and bridge in her home. Those attending were Mmes. Bill Gandy, Bill Sietz, Deta Blodgett, Vester Hill, Sam Graves, Major Lackey, Gwenfred Lackey and

## Kizziar Infants

## Services Held

Graveside services for Laura May and Michelle Lynn Kizziar, twin daughters of Mr. and Mrs. Mike Kizziar of Spearman were held at 3 p.m. Monday at Hansford Cemetery with the Rev. Archie Burress, pastor of Union Church officiating.

The infants were stillborn Saturday at Highland General Hospital in Pampa.

They are survived by their parents, their grandparents, Mr. and Mrs. Carl Kizziar, Jr. of Spearman and Mr. and Mrs. Larry Fonner of Mattoon, Ill.; three great-grandmothers, Mrs. Alma Kizziar and Mrs. Cora Nichols, both of Spearman, and Mrs. Velma Fonner of Villa Grover, Ill.; and great-grandparents, Mr. and Mrs. Joe O'Dell of Mattoon, Ill.

# PANCAKE

# Friday

# Sponsored By

# LIONS



Dear Contributor:

We, of the American Agriculture Movement, would like to express our appreciation to you for making the contribution to the Tractorcade Fund, so our men can represent us in the Tractorcade to Washington, D.C. We are hopeful that we will be able to tell the nation our story of concern for its survival as well as the farmer's situation, and that our Representatives in Washington, D.C. will see fit to make it possible for the agricultural man to realize a margin for his commodity (at the market place, not by government subsidies) large enough so he may operate as any other business.

Without your support and contributions, these Hansford County farmers might not have been able to participate in this Tractorcade.

Thank you,  
American Agriculture Movement  
Hansford County

Ray Friedman  
Commodities  
Pittman Shieldknight  
Building  
Spearman 659-3726  
Doug McClellan Local Manager

Alton's Gulf Service  
503 Collard 659-2422  
Alton and Peggy Ellsworth  
Newly Remodelled!

First State Bank  
Spearman 659-2526  
Serving you for 62 Years!

North Plains  
International  
Hiway 207 Spearman 659-2421  
Dick Elbert  
Sales ..... Service



## Getting Ready For "TEXAS" SAC Bombers To Fly New Route

Canyon, Texas...January 19, 1979...In the land of the high sky, the staff of "Texas" is getting ready for the summer. Auditions, printing, ordering and repairing are under way, in preparation for the 1979 season: June 20 through August 25, nightly except Sundays.

Work for the season has started at the Pioneer Amphitheatre in the Palo Duro Canyon State Park where "Texas" plays. This goes on all winter since these buildings are high up on the side of the canyon where the creek never rises.

The last stage of the recent building program has begun: enlargement of the men's rest room and dressing room and new housing for the electrical system. These are projects of the Texas Parks & Wildlife Department. Bradley Builders of Amarillo are the contractors. This new construction supplements the privately funded improvements of the past three years: a new entrance to the theatre, additional permanent seats, a new exit from the seating area, permanent side stage buildings and new sets and scenery, and backstage quarters for the cast. Over a million people have

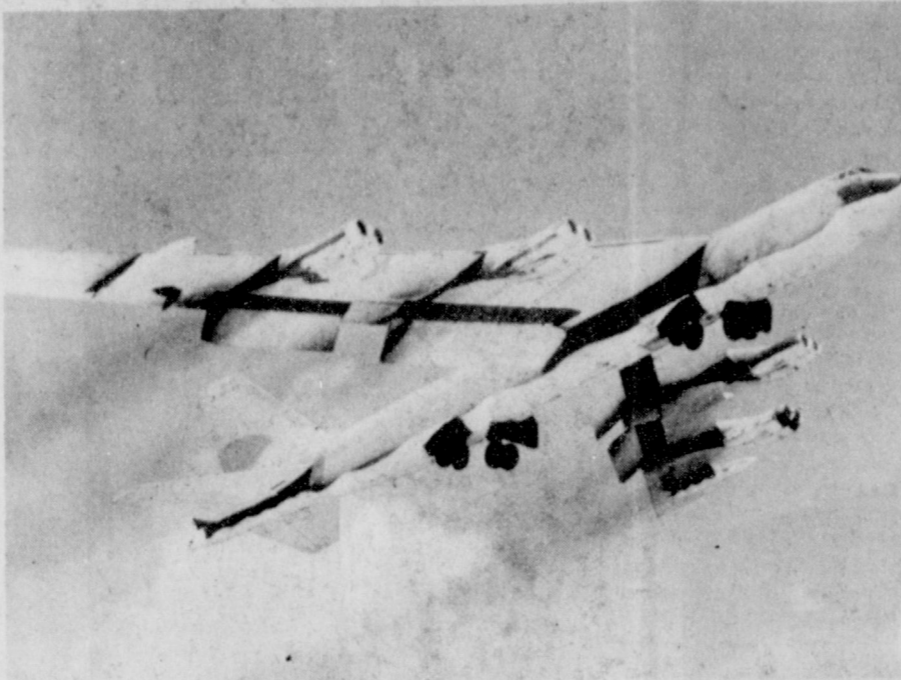
seen "TEXAS". They were stirred by the story - excited by the movement - surrounded by the music echoing from the cliffs which form a sound chamber in the clear air. They have felt the refreshing breeze of the caprock - the same altitude as the plains of Colorado - and basked in the sunshine which shines here as frequently as it does in Arizona and colors the canyon with thousands of hues as the shadows lengthen.

For tickets and information about the show in the grandeur of the canyon cliffs, write "Texas", Box 268, Canyon, Texas 79015 or call 806-655-2181.

### Explorers Going To Florida

There will be an organizational meeting of Explorer Post 502 Thursday, Jan. 25 at 7 p.m. at the County Barn in Spearman. All current Explorer members are urged to attend and all young persons 14 to 21 are invited to come and join.

Various trips, i.e. Florida, Bahamas, Philmont, and the Canada canoe trip will be presented in slide form. Parents are invited.



HQ SAC, Offutt AFB, Neb., January 15, 1979 - Strategic Air Command (SAC) bombers will fly a new low level training route in Kansas, Colorado,

Oklahoma and Texas, beginning January 20. The route will be used until January 10, 1980. The giant eight-engine B-52 Stratofortresses and swingwing

FB-111 fighter-bombers will fly the training route at subsonic speeds along a center line of an eight mile wide corridor at altitudes ranging from 600 to 1,500 feet above the ground. The route will be used to measure precision bombing, navigation training and electronic countermeasure activity. Aircraft do not carry bombs

on these training flights. All bombing is simulated and radar scored by ground based scoring sites. Radar bomb scoring (RBS) equipment will be located near Minneola and Plainville, Kan., and La Junta, Colo. These sites, using radio and radar signals, measure the accuracy of simulated bomb releases and simulated launching of short range attack missiles (SRAMS).

The Strategic Air Command conducts low-level bombing and navigation training to assure bomber crews are kept combat ready at all times. The routes are changed periodically to provide unfamiliar targets and radar returns. Populated areas are avoided as much as possible and all routes are coordinated with the Federal Aviation Administration.

Aircrews flying this training route, designated Military Training Route IR-526, will begin descending from high altitude near Bird City, Kans. They will begin the low level portion of the route south of Yuma, Colo., and proceed on a simulated bomb run towards La Junta, Colo. The aircraft will turn southeast and cross the Oklahoma panhandle into Texas south of Guymon, Okla. West of Higgins, Tex., the aircraft will turn north and fly to a point east of Liberal, Kans., and turn northeast and begin another simulated bomb run near Minneola, Kans. After this simulated bomb run the aircraft will turn northwest, fly to a point east of Shields, Kans., turn

north, fly to a point east of Leoville, Kans., and make a sharp turn to the southeast. At this point the aircraft will begin its final simulated bomb near Plainville, Kans., turning southwest near Lucas, Kans. Near Russell, Kans. the aircraft will start to climb to higher altitude and exit the route northeast of Jetmore, Kans.

### Stowell Services held Monday

Services were held Monday at First Christian Church in Pampa for Charles W. Stowell, 86, who died Friday. He was the husband of the former Faye Kirk of the Holt Community.

Dr. Bill Boxwell, pastor, officiated at the 10:30 a.m. services. Burial was in Holt Cemetery with Masonic graveside services conducted by Lodge 966.

Mr. Stowell was born in Wilmore, Kan. and moved to Pampa in 1924. He married Faye Kirk in 1923.

He was a driller and tool pusher in oil fields of Oklahoma, Kansas and Texas. He was employed on the Colbe-Heywood in Hutchinson County and was on the first two wells which eventually supplied Pampa with gas.

From oilfield operations, Mr. Stowell moved to a position as a postal employee and served 26 years in the Pampa post office. Stowell was a member of the

Canadian Mineral Gem and Mineral Club, a member of the First Christian Church and a veteran of World War I. He was also a member of the Masonic Lodge 966.

Survivors include his wife; one son, Charles of Tucson; two brothers, W.H. of Nashville, Tenn. and E.L. of Tahlequah, Okla., and two grandchildren.

### BIBLE VERSE

"God is our refuge and strength, a very present help in trouble."

1. Where is this verse found?
2. By whom was it believed to have been written?
3. Where may it be found?
4. How many Psalms are there?

### Answers To Bible Verse

1. The Psalms.
2. By King David and directed to his Chief Musician.
3. Psalm 46:1.
4. 150.

### Golden Gleams

A man that studieth revenge keeps his own wounds green.

-Francis Bacon.

Neglect will kill an injury sooner than revenge. -Owne.

# SUPPER

# January 26th

# The Spearman

# CLUB

**Basketball Schedule**

AB Jan. 19-Dalhart, T AB Jan. 23-Canadian, T B Jan. 25-27-SPEARMAN TOURN. A Jan. 26-Perryton, H AB Feb. 2-River Road, T AB Feb. 6-Dalhart, H AB Feb. 9-Canadian, H AB Feb. 13-Perryton, T	
--	--

### PUBLIC NOTICE

North Plains Electric Cooperative, Inc., P.O. Box 1008, Perryton, Texas 79070, announces its intent to construct 14 miles of 69KV and 12 miles of 115KV transmission line in Ochiltree County and 29 miles of 69KV and 28 miles of 115KV transmission line in Hansford County. One new transmission substation, one new distribution substation is planned in Ochiltree County near Buler and Farnsworth respectively. Another substation is planned for relocation near Spearman, Hansford County.

These facilities along with 191 miles of associated distribution line is required for the Cooperative to provide service to an additional 512 new consumers that it will be serving and to improve service conditions and reliability of service to the existing consumers. The transmission line will conform to R.E.A. specifications and will consist of single pole structures carrying three energized wires and one grounded static and is similar to existing facilities owned by the Cooperative.

Any person having questions regarding these proposed facilities should Contact North Plains Electric Cooperative before February 21, 1979.

### Legal Notice

In accordance with Article 2544, Texas Revised Civil Statutes, the Commissioners Court of Hansford County will select an official depository for both County funds and certain School funds handled by the County for the biennium 1979-1981 at their regular meeting on February 12, 1979, 10:00 A.M. in the Deliberation Room in the Hansford County Courthouse, Spearman, Texas.

Roy/L. McClellan      Hansford County Judge

## K-Bob's

### OF PERRYTON

**"Best steaks in the southwest" plus full line salad bar.**

**BANQUET FACILITIES - CARRY-OUTS CATERING SERVICE**

**11:00 a.m to 10:00 p.m.**

**PLEASURES IN LIFE ARE FEW ... SOME OF OURS ARE SERVING YOU!**

HWY. 83 & LOOP RD.
435-5573

Perryton-Spearman <b>Redi Mix</b> 659-2323 All of Your Concrete Needs	Consumer's Sales Co-op 421 W. Kenneth Spearman 659-2012 Tires      Oil      Batteries
Speartex Grain Office 514 Collard 659-3711 Elevator 659-2540	Hansford County Farm Bureau 307 W Davis Spearman 659-3133 Is Your Fire Insurance Adequate? Call Us Today!

# Knox Pipkin is honored on his 86th birthday with reception

Knox Pipkin was honored with a reception on his 86th birthday in the fellowship hall of the Union Church in Spearman. Held on January 14, friends and relatives called between 2 and 4 o'clock.

The register table was covered with a white antique cloth, and was centered with a yellow arrangement of baby mums. A portrait of Knox when he was 16 years old was displayed on the table, and copies of his favorite sugar cookie recipe were handed out. Presiding over the table were his granddaughters, Oriene Martin of Spearman and Yvonda Stokes of Amarillo.

The serving table was laid with an ecru linen cloth, and an arrangement of yellow and bronze mums served as centerpiece. The cake was decorated with yellow flowers and brown leaves, and was served to guests, along with punch, nuts and minis.

Sugar cookies, made by Knox, and coffee poured from a silver coffee service, were also served. Assisting at the table were his granddaughters, Velrick Wilson, Joan Graves, Dorothy Cator, Valinda Dodson, and Gaye Pipkin.

His other granddaughters, Anita Rolston of Fairwell, Betty Clifford of Canada, Pauline Mays of Boston, Massachusetts, and Colette Shotts of Lubbock were unable to attend.

Floral arrangements, gifts, and cards from friends decorated the room. On display were early pictures and snapshots of the family from 1910 until the present day.

Knox came to the Panhandle at the age of six, along with five sisters, a brother, and his parents, from Tennessee. The family brought with them 50 head of cattle. Knox's father had made a trip to the Panhandle earlier, and purchased two sections of land on Tolleshome, where they lived a short time.

When Knox was 15 years old, his family moved to Pampa,

and he stayed behind. Working on ranches along the Canadian River, when he was 16 he began putting up hay at the J. A. King ranch.

In 1915, he married Ocie King at her family's home, the King ranch, on the Canadian River. Their first home was five miles northwest of Pampa. In 1919, Knox and Ocie and their family moved to their present location in the southwest part of Ochiltree County.

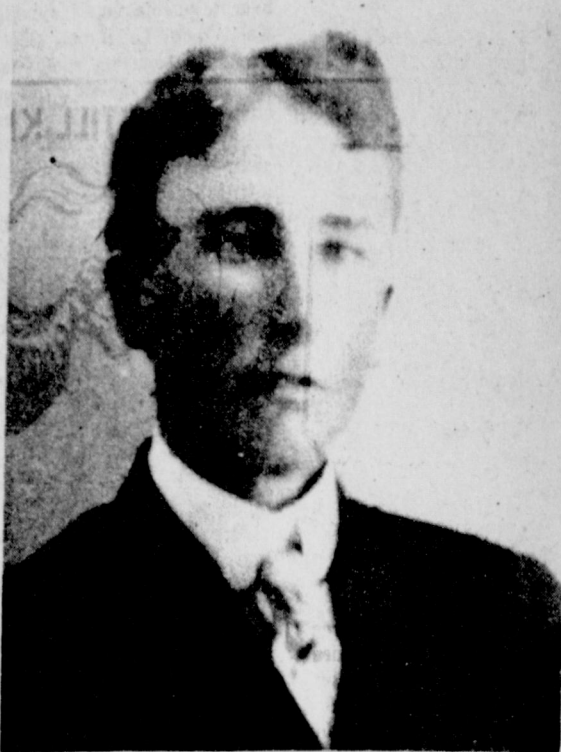
This spring he will have lived in the home 60 years. It was originally a one room school house purchased from Cedar Bluff school district for \$100, and moved to its present location. Several additions have been made since that time.

Knox and Ocie celebrated their 50th anniversary on September 5, 1965. In 1972, Ocie died of cancer. Since that time he busies himself making his sugar cookies, pecan or apple pies, and he has become known as the "Cookie Man."

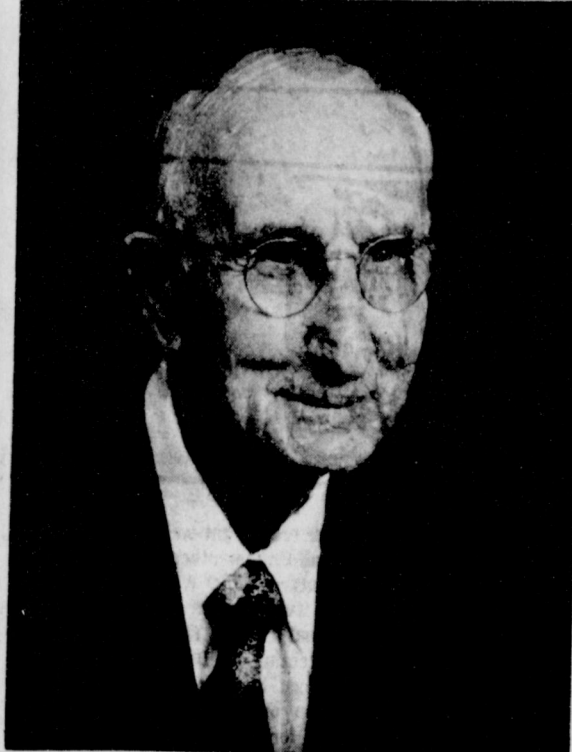
Knox drives his own car, and attends church regularly. He gives the Lord credit for a good life and all the blessings he has enjoyed during his 86 years.

Approximately 124 friends and relatives attended the reception. Hosting the occasion were his children and spouses, Mr. and Mrs. John Pipkin, Mr. and Mrs. J. W. Pipkin, Mr. and Mrs. Preston Smith, all of Spearman; Mr. and Mrs. Orville Fullbright of Amarillo, Mr. and Mrs. Gale Miller of Woodward, Okla., Mr. and Mrs. Floyd Burrow, Mr. and Mrs. Robert Graves, and Mr. and Mrs. Elrick Wilson, all of Perryton.

Attending from Spearman were Rev. and Mrs. E. W. Dickson, Mr. and Mrs. J. T. Pond, Mr. and Mrs. E. J. Copeland, Mr. and Mrs. John Wilde, Mrs. Helen Dry, Mrs. Aloka Bentley, Mrs. Darlene Pierce, Rev. and Mrs. Archie Burrows, Mrs. Mary Schumann, Mr. and Mrs. James Martin, Donna, Diana, and Shawn, Adelyn Barnes, Joyce Lamb



Knox Pipkin 16 yrs. old



Knox Pipkin 86 years old

Jennings, Mae Floyd, Mr. and Mrs. Major Locky, Mr. and Mrs. L. B. Readon, Ray Phelps, Mr. and Mrs. Wilson McCellan, Mr. and Mrs. Eck Lee, Mr. and Mrs. Orvil Brummett.

Also, Mr. and Mrs. Roy Flowers, Mr. and Mrs. Richard Pipkin, Mrs. E. A. Greener, Mrs. Opal Scroggs, Mr. and Mrs. Vernon Pipkin, Coty and Mikka, Mr. and Mrs. Archie Smith, Mr. and Mrs. Roy Pipkin, and Elizabeth, Mrs.

Vera Beth Hicks, Lee McCellan, Nora Hicks, Eddie Martin, Mr. and Mrs. James Riley, Francis Newell, Mr. and Mrs. Alton Ellsworth, Mr. and Mrs. Bernard Byers, and Mrs. Ora Lee Blackburn.

Present from Perryton were Johnie Luthie, Donald W. Flowers, Mr. and Mrs. Jona Jazen, Rev. and Mrs. Steve Smart, Rev. and Mrs. Jacob Regier, Walter LaMaster, Mrs. Spencer Whippo, Mrs. Sam

Judice, Rev. and Mrs. Harrol Waterbury and Michael, Mr. and Mrs. V. R. Coon, and Mr. and Mrs. Jack Wooster.

Other out-of-town guests were Mr. and Mrs. Larry Stokes, Chris and Krystal, Amarillo; Mr. and Mrs. Bill Cator, Loyd Lee and DeVonna, Mr. and Mrs. Ernest Sluder, Mrs. Randy Dodson, all of Gruver; Mr. and Mrs. Carl Scroggs, Jean Scroggs, all of Waka; Mr. and Mrs. Benny Buschman, Mr. and

Mrs. Wally Berner and Ed, all of Stinnett.

Also, Mr. and Mrs. Gale Miller, Woodward, Oklahoma; Mr. and Mrs. Edwin Simmons, Mr. and Mrs. J. P. Gilliam, all of Pampa; Heath and Britton Shotts, Velrick Wilson, Joan Graves, and Rev. Walter Axtell, all of Lubbock.

**Definition**  
Experience: knowing a lot of things you shouldn't do.

-Gazette, Sabula, Ia.



Clay Gibner received his 50 year Scottish Right award in Spearman, Monday night.



Jimmy Davis received his 50 year Blue Lodge Masonic pin in services here Monday night. Both awards were made by John R. Collard, Jr.

## Damage Heavy

Early estimates place damage at approximately \$30,000 or even higher at God's Corner on Davis street in Spearman following a second fire within 72 Hours at the local business. Damage could have gone much higher however except for the alert response of the Spearman Volunteer Fire Department. A Spearman patrol officer observed the blaze at 7:09 Sunday evening and within two minutes of the Spearman Volunteer Fire Department were on the scene.

Fire chief Ron Antalek reports that the cause of the second blaze was probably due to faulty heater controls on a gas heater. An earlier fire and explosion had apparently been caused by a gas leak in an overhead heater.

God's Corner owner George Collard was reportedly in Borger attending a Church service at the time of the second fire and had to be summoned by phone to advise him of the fire.

Firemen had the second blaze under control by 7:24 P.M., and total extinguishment was posted at 9:26 P.M.



SK-26  
MITTEN KITTEN. Farrah Fawcett-Majors, as an amateur artist, shows her sketchpad style to Jeff Bridges, as an amateur writer of children's stories. That's just before they turn amateur sleuths in "Somebody Killed Her Husband," Columbia Pictures' entertaining mystery which opens Feb. 2 at the Lyric Theatre.

## VALENTINE LOVE LINES

We'll remind you early—so you'll have time to forget—and then we can remind you again! Tell your Valentine that you love her/him/or them—so all of Hansford County will know it! Tell them in the REPORTER, PLAINSMAN, STATESMAN SPECIAL VALENTINE GREETINGS PAGE 2 for 15 words or fraction thereof—no extra charge for poetry.

Send your Valentine Greeting plus check or cash to us to appear in our Valentine issue no later than Friday

Feb. 9, Box 458, Spearman, Texas

# ALLSUP'S

CONVENIENCE STORES

SHOP AND SAVE AT ALLSUP'S

PRICES EFFECTIVE JANUARY 25-27, 1979

---

**BRIGHT & EARLY IMITATION FROZEN ORANGE Juice**  
6 FOR \$1

HUNT'S HALVES/SLIC. PEACHES 2 CANS 89¢

HUNT'S STEWED TOMATOES 2 CANS 89¢

**Hunt-Wesson's TOMATO-RAMA Margarine**  
1 LB. QUARTERS 39¢

SHURFINE CREAM OF CHICKEN Soup 10¢

SHURFINE SLICED Cheese \$1.09 PKG.

HUNT'S SPINACH 3 CANS 89¢

HUNT'S KETCHUP 32 OZ. BTL. 89¢

---

HUNT'S MANWICH SANDWICH SAUCE 15 1/2 OZ. CAN 59¢

Bordens Yogurt 2 ct. 69

PURE WESSON OIL 48 OZ. BTL. \$1.89

---

HUNT'S HALVES/SLIC. PEARS 2 CANS 89¢

SHURFINE Pineapple 5 FOR \$1

DEL MONTE TOMATO JUICE 48 OZ. CAN 59¢

---

SNOWDRIFT SHORTENING 48 OZ. CAN \$1.49

Bordens Buttermilk 49

ALLSUP'S ICE CREAM 1/2 GAL. RD. CTN. \$1.19

---

HUNT'S WHOLE TOMATOES 2 CANS 89¢

SHURFINE SALAD DRESSING 39¢

HUNT'S FRUIT COCKTAIL 2 CANS 89¢

---

HUNT'S WHOLE NEW POTATOES 3 CANS 89¢

WHITE KARO SYRUP 59¢

HUNT'S TOMATO SAUCE 5 OZ. CANS 99¢

# HOLLYWOOD "TAPS" FARRAH FAWCETT-MAJORS FOR BIG SCREEN STARDOM

Why is it that one beautiful girl will become a symbol of her time while scores of others pass by unnoticed? What did Garbo, Harlow, Lombard and Monroe have that other pretty faces and head-swiveling figures didn't? The contemporary answer to that question will flash on screen on 1/24 at the LYRIC Theatre, when Farrah Fawcett-Majors plays her first motion picture starring role in "Somebody Killed Her Husband." The Martin Poll Production, presented by Melvin Simon, for Columbia Pictures release teams Farrah with Jeff Bridges as a pair of romantic New Yorkers, who, in search of an unknown killer, are plunged into a dangerous labyrinth in midtown Manhattan.

On the strength of a succession of TV commercials, magazine covers, a popular TV series, a poster everyone wanted, a distinctive hairdo and a 24 karat smile, Farrah Fawcett-Majors has become the reigning "golden girl" of the seventies. The next logical step was screen stardom, but she admits, she took her time to find a vehicle which genuinely excited her.

The blend of laughter and suspense in Reginald Rose's screen-play — and the role of Jenny Moore whose priggish husband is done in just as she's about to file for a divorce — ended that search.

"I like Jenny," says Farrah, describing the role. "She's smart, she's spunky and even when she's trapped with a homicidal maniac in a department store after closing time, she keeps her sense of humor."

Farrah Leni was born in Corpus Christi, Texas, the daughter of James Fawcett, an oil field contractor, and wife Polly. She went to W.B. Ray High School in that city and a picture of her now remains posted on the school's main bulletin board. Since her spectacular rise to popularity and fame, the school yearbooks with her picture are kept under lock and key in the library because all but a few have vanished as collectors' items.

Upon graduation from high school, Farrah enrolled at the University of Texas in Austin. During her freshman year, she was chosen as one of the ten most beautiful girls among the more than 12,000 women on campus. The winners' pictures were sent to a Los Angeles agent and Farrah began receiving offers to come to Hollywood. For three years she turned down the bids to concentrate on her studies in art and physical education at Texas U. Particularly absorbed in abstract painting and sculpture, Farrah says, "I was rewarded to discover what I could create from a piece of clay with my hands and my imagination."

The offers from Hollywood finally proved too enticing and Farrah determined to try for a film career. On the West Coast, she began as a model, but film companies were quick to spot her potential and she made a brief appearance in Claude Lelouch's "Love is a Funny Thing." She made a series of guest appearances on Screen Gems productions, including the television film, "The Feminist and the Fuzz," and had a featured role in "Logan's Run," which starred Michael York and Jenny Agutter.

Shortly after arriving in Los Angeles, Farrah had met actor Lee Majors. They were married five years later to the day of their second date. She has appeared with her husband in "Owen Marshall, Counselor at Law" and his "The Six Million Dollar Man." After making her initial impact on scores of television commercials, Farrah then won national popularity as Jill Munroe, "a California girl with covergirl looks" on ABC-TV's "Charlie's Angels." That series established her as a superstar. (Her face adorned 48 magazine covers in one year.) In a Ladies Home Journal magazine survey 1,000 girl students from the first grade through the twelfth grade were asked who they would most like to be. The overwhelming choice was Farrah Fawcett-Majors.

Just prior to starring in "Somebody Killed Her Husband," Farrah became a top-flight business executive. In the Spring of 1978, the Farrah Fawcett division of Faberge, Inc. launched a complete line of her hairdressing and cosmetic products.



SK-52 FLOORED... The search for an elusive killer challenges Jeff Bridges and Farrah Fawcett-Majors in "Somebody Killed Her Husband." Columbia Pictures' entertaining mystery, which marks Farrah's first starring movie role, opens 1/24 at the LYRIC Theatre.

## The Races Begin

The presidential nomination campaigns begin this month. There will be more activity in the Republican Party (the outs, with many scrambling for the nomination) than in the Democratic. But the Democratic Party may soon be the scene of a challenge to an incumbent chief executive.

Senator Bob Dole (R-Kan) is one of the most interesting Republicans to watch. He has been campaigning a year already, has thus far been in New Hampshire eight times, already has a political action committee functioning and believes he can win.

Ronald Reagan is the accepted leader in delegate votes committed. Other possible candidates include former president Gerald Ford, George Bush of Texas, John Connally of Texas, Senator Howard Baker of Tennessee, Governor James Thompson of Illinois and others. Jack Kemp of New York and Philip Crane of Illinois, both congressmen, and Senator Lowell Weicker (Conn.) are considered long-shot hopefuls.

On the Democratic front, the possibility exists that Senator Ted Kennedy will vie with President Carter but an increasing number of pros doubt this. More likely to challenge is another Catholic candidate—Governor George Brown of California. Kennedy and Carter have no personal animosity and Kennedy knows well that Carter, if elected again, might be able to nix his chances in 1984. Brown has less to lose—though he also has little chance to win the nomination in 1980.

The first presidential primary is only a year away—in New Hampshire. The biggest question to be answered in this time is the identity of the G.O.P. nominee. The biggest news event in the period would be replacement of Carter by another Democrat on that party's ticket, which seems highly unlikely.



The year of the snowdrift! 1979 will long be remembered in years to come with perhaps many a tall tale being told Grandchildren about "way back in '79 I Frank Massad won't soon forget his snow shovelling chores! Looks mighty lonely behind the white stuff!

### CONSOLIDATED REPORT OF CONDITION (Including Domestic Subsidiaries)

LEGAL TITLE OF BANK			
FIRST STATE BANK			
CITY	COUNTY	STATE	ZIP CODE
Spearman	Hansford	Texas	79081
STATE BANK NO.	FEDERAL RESERVE DISTRICT NO.	CLOSE OF BUSINESS DATE	
1107	11	12-29-79	
ASSETS			
		Mil.	Thou.
1. Cash and due from depository institutions (From Schedule C, Item 6)		3	677
2. U.S. Treasury securities		1	498
3. Obligations of other U.S. Government agencies and corporations		2	841
4. Obligations of States and political subdivisions in the United States (From Schedule B, Item 2, Column E)		6	048
5. All other securities		NONE	
6. Federal funds sold and securities purchased under agreements to resell			500
7. a. Loans, Total (excluding unearned income) (From Schedule A, Item 10)	16	487	
b. Less: allowance for possible loan losses		297	
c. Loans, Net		16	190
8. Lease financing receivables		NONE	
9. Bank premises, furniture and fixtures, and other assets representing bank premises			215
10. Real estate owned other than bank premises		NONE	
11. All other assets (From Schedule G, Item 3)			075
12. TOTAL ASSETS (sum of items 1 thru 11)		31	044
LIABILITIES			
13. Demand deposits of individuals, partnerships, and corporations (From Schedule F, Item 1, Column A)		13	084
14. Time and savings deposits of individuals, partnerships, and corporations (From Schedule F, Item 1, Columns B & C)		11	887
15. Deposits of United States Government (From Schedule F, Item 2, Columns A, B & C)			028
16. Deposits of States and political subdivisions in the United States (From Schedule F, Item 3, Columns A, B & C)		2	307
17. All other deposits (From Schedule F, Item 4, Columns A, B & C)		NONE	
18. Certified and officers' checks (From Schedule F, Item 5, Column A)			265
19. Total Deposits		27	571
a. Total demand deposits (From Schedule F, Item 6, Column A)		14	705
b. Total time and savings deposits (From Schedule F, Item 6, Columns B & C)		12	866
20. Federal funds purchased and securities sold under agreements to repurchase			NONE
21. Interest-bearing demand notes (note balances) issued to the U.S. Treasury and other liabilities for borrowed money			010
22. Mortgage indebtedness and liability for capitalized leases			NONE
23. All other liabilities (From Schedule H, Item 3)			050
24. TOTAL LIABILITIES (excluding subordinated notes and debentures) (sum of items 19 thru 23)		27	631
25. Subordinated notes and debentures			NONE
EQUITY CAPITAL			
26. Preferred stock	No. shares outstanding	NONE	(par value) NONE
27. Common Stock	a. No. shares authorized	100,000	
	b. No. shares outstanding	100,000	(par value) 500
28. Surplus			500
29. Undivided profits and reserve for contingencies and other capital reserves		2	413
30. TOTAL EQUITY CAPITAL (sum of items 26 thru 30)		3	413
31. TOTAL LIABILITIES AND EQUITY CAPITAL (sum of items 24, 25 and 30)		31	044
MEMORANDA			
1. Amounts outstanding as of report date			
a. Standby letters of credit, total			NONE
b. Time certificates of deposit in denominations of \$100,000 or more		3	080
c. Other time deposits in amounts of \$100,000 or more			294
2. Average for 30 calendar days (or calendar month) ending with report date			
a. Total deposits (corresponds to item 19 above)		26	640

NOTE: This report must be signed by an authorized officer and attested by not less than three directors other than the officer signing the report. I/We, the undersigned officer(s), do hereby declare that this Report of Condition (including the supporting schedules) is true to the best of my knowledge and belief.

SIGNATURE OF OFFICER(S) AUTHORIZED TO SIGN REPORT: Felma B. Evans, AREA CODE/TELEPHONE NO.: 806-659-2526, DATE SIGNED: January 23, 1979

NAME AND TITLE OF OFFICER(S) AUTHORIZED TO SIGN REPORT: Felma B. Evans, Assistant Cashier

SIGNATURE OF DIRECTOR: Erlis Pittman, Rex Sanders, Jr., C. A. Gibner

State of Texas, County of Hansford, Sworn to and subscribed before me this 23rd day of January, 1979, and I hereby certify that I am not an officer or director of this bank. My commission expires 1-31, 1979. Arbeta Nobles, Notary Public.

### ABOUT YOUR HOME

By April Rhodes

If rock salt is used to safeguard walks, don't rake the salt and snow near plants or shrubs. Sand is much safer to use.

Plant seeds in egg cartons and place in a sunny window for early garden or flower plants. Use good, sterilized potting soil.

Baby oil works wonders for adults who have dry skin and for chapped or windburned skin.

Select a well budded branch, peel back some of the bark or crush stem with a hammer before placing in a vase of cool water.

## Sale

From January 15 through February 15

# Gold Lance Class Rings

of Precium (a sterling-palladium alloy)

Now \$64<sup>95</sup>

Bring this ad with you to Hickerson Jewelers Spearman, Texas 2-4 WEEK DELIVERY

# on the MOVE...

## ENERGY,

## DRIVE,

### toward greater progress

## VISION,

## FORESIGHT



*An Exciting Future—  
Is Born from  
the Vitality of  
our Community!*

### *Progress*

Let's Enlarge Our Future  
Accomplishments . . . Today!

Partners In Progress . . .

### Your CHAMBER And YOU!

Through the years, YOUR Chamber of Commerce has been in the forefront of all progressive steps taken . . . and looks to the community's future with a great deal of confidence. Will you help? If you are not a Chamber member, join the team . . . get in on the action . . .

*We can do it! Through hard work and dedication we can make progress towards an even brighter and more promising tomorrow. Let's meet the challenge together . . . starting today.*

## SUPPORT YOUR CHAMBER OF COMMERCE

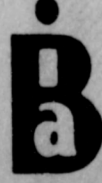
**A-1 Automotive**  
Gruver Hiway  
Jim McLain President  
Supporting The Progress Of  
An Enterprising City

**Hansford County  
Farm Bureau**  
307 Davis Spearman  
"With Confidence We Face  
The Future !" Melvin Bradley, Agent



**Hansford  
Implement Co.**  
Box 518  
Spearman, Tex. 79081  
Ph: (806) 659-2712

**Speartex Grain No. 1  
Speartex Grain No. 2**  
Phone 806/659-3711 - P.O. Box 666  
Spearman, Texas 79081

**J.L. Brock  
Insurance**  
 Keeping  
Pace With Progress

**The Hansford  
Agency**  
"Service Because We Care"  
Zack Fisher Burl Buchanan  
Partners in Spearman's Progress

**Gordon's Drug**  
314 Main  
Spearman, Texas  
Phone 659-2141 "Reliable  
Prescription Service"

**LUSBY "CATS"**  
W. Gruver Hwy.  
Spearman, Texas 659-3766

**Hickerson  
Jewelers**  
Keeping Time With Spearman's  
Growth "We Believe In Progress"

**EQUITY**  
Serving A Great Agricultural  
Community  
Supporting The Chamber  
Of Commerce

**BARBARA SCHNELL  
DRAPERIES**  
FULL WINDOW TREATMENTS  
208 Hancock 659-3433  
In Step With Progress

**SPEARMAN  
BI-PRODUCTS**  
Your Local Used Cow Dealer  
"We Support Our Chamber"  
Hwy. 15 Spearman 659-3544



# Homecoming Basketball Game Friday Nite Spearman Vs Perryton



Beth Ann Flowers



Scott Martin



Tracie Keetch



Chuck Eaton



Debbie Greene



Connie Vernon



James Whitaker



Zane Newton



Jo Nell Comegys

*The King  
And Queen For  
1978-79 will be  
Crowned Friday  
Nite*



David Ortega



Paige Mitchell  
Manager



Christie Collier

*1978-79  
Basketball  
King & Queen  
Candidates Are  
Pictured On  
This Page*

*This Homecoming Page Sponsored By:*

### Nelson's Builders Supply

309 S. Main Spearman  
659-3668  
Water Damaged Carpet Sale In Progress!  
Plasters 50% Off  
Hobbies 25% off

Best Wishes To The Candidates

### Hansford Feedyard Inc.

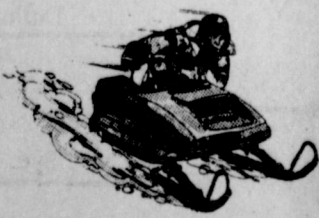
2 Miles N.E. Spearman  
659-2577  
Commercial Feeders.. Custom Feeding  
Growing & Preconditioning  
Go Lynx Go!!

### Cinderella Beauty Salon

Plains Shopping Center  
Proudly Announces The Association Of  
Betty Nolder  
Providing Complete Beauty Salon Services  
Including Sculptured Nails  
Helen Whitaker...Certified "New Man Stylist"  
For Bald Or Thinning Hair  
659-3413 Lynx: You've Got It!

### Wolff's Sporting Goods

102 S. Main, Perryton  
435-3909  
Going Skiing?  
Then See Us!  
Watch For Our Annual Ski Wear Sale!  
Best Wishes To The Teams



John Deere is the official  
supplier of snowmobiles to  
the 1980 Olympic Winter  
Games. We are your  
official dealer for these  
dependable products. See  
us now.



### Hansford Implement Co.

Box 518  
Hiway 207 S. Spearman  
659-2712  
Watch Our Lynx Go!

### Shieldknights Sport Shoppe

Pepper Tree Square  
Amarillo  
359-8597  
Featuring Tennis Raquets...warmups  
Jogging Shorts...Spring Sportswear  
Swim Suits  
Long Time Lynx Supporters