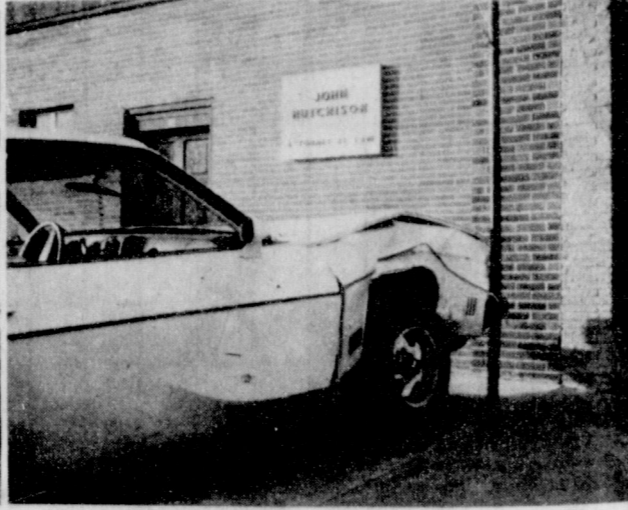
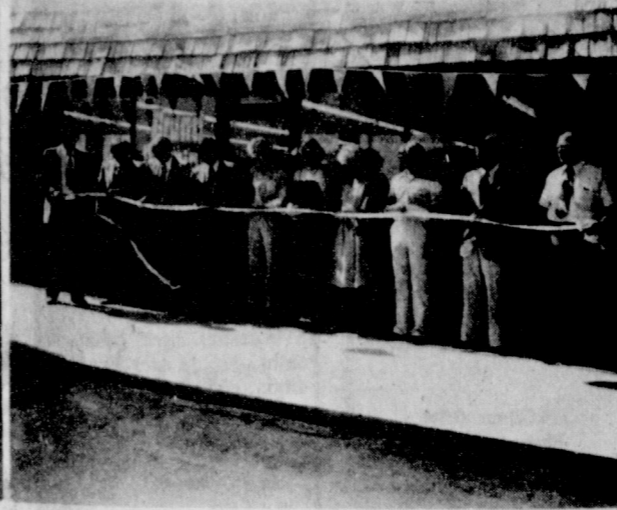




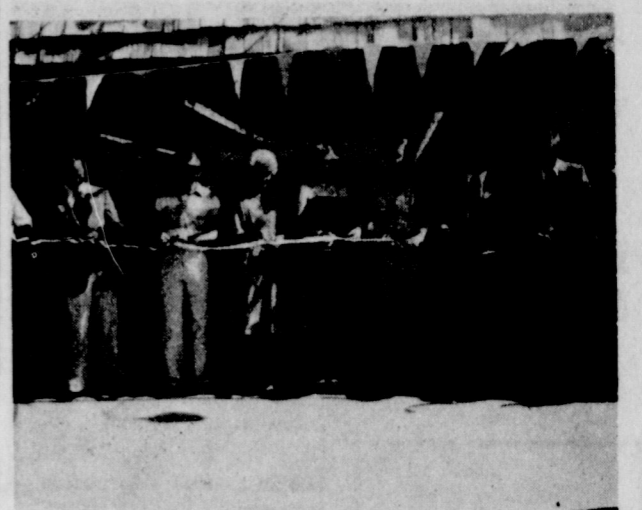
THIS CAR WAS INVOLVED IN A "HEAD-ON" CRASH SATURDAY EVENING, ON MAIN-STREET IN SPEARMAN. It ended up in front of Gordon's Drug. The driver was injured, but is fine at this time.



THIS IS THE OTHER CAR involved in the "HEAD-ON" crash, down-town Spearman Saturday evening. The driver was injured and taken to the hospital. She is doing fine as we go to press!



AN ACTION SHOT OF THE ACTUAL RIBBON CUTTING, at the SPORTS TALLY STORE in Spearman Monday of this week! The new store is located in the shopping center.



WITH HEADS BOWED, this group of Chamber officials is lead in prayer by the Rev. Pogue, at the Grand Opening of the "SPORTS TALLY" store in Spearman.

# The Spearman Reporter

VOLUME 70, NO. 33

THE SPEARMAN REPORTER, SPEARMAN, TEXAS 79081

THURSDAY, JULY 5, 1979

## First State Bank To Celebrate Anniversary

On July 10, the First State Bank of Spearman will celebrate its 62nd anniversary.

The bank had its beginning at Hansford, Texas July 10, 1917 when the Guaranty State Bank opened its doors for business. The board of directors were W.S. McNabb, B.V. Andrews, L.G. Blackmer, L.R. McComas and Walter C. Sikes, cashier. The Guaranty had purchased the assets of Hansford County Bank, an unincorporated bank, which had been organized in 1917. Total assets in 1917 were \$47,698.30 and deposits were \$15,326.63, loans \$18,782.89.

Mr. McNabb resigned as president in 1918 and Mrs. L.G. Blackmer was elected president. H.E. James was cashier from October 1919 until October 1925. In Nov., 1919, Mr. I.E. Cameron of Guymon, Okla. purchased the bank and owned it until 1930 when the bank was purchased by J.R. Collard, P.B. Higgs, W.ter Wilmeth, and H.B. Hart.

The bank had rough going in its early years. It went through the first World War, low farm and livestock prices, continued droughts, and crop failures and then the depression. Growth of the bank was slow until the 1940's.

During World War II the county had good crops at good prices and the bank began to make a substantial growth which has continued through the years.

The name of the bank was changed in Nov. 1926 to Fidelity Bank of Commerce and operated under that name until 1930 when it was changed to First State Bank, which is its present title.

Walter Wilmeth and P.B. Higgs were presidents during

1930. J.R. was elected president in 1931 and continued as the president until his death in 1952.

C.A. Gibner came to the bank as vice president in Sept., 1930. He had been cashier of First National Bank of Spearman before coming to the First State Bank.

During the ownership of H.B. Hart, P.B. Higgs, J.R. Collard and C.A. Gibner the bank showed a wonderful growth. After the death of J.R. Collard, C.A. Gibner was elected president a position which he still holds.

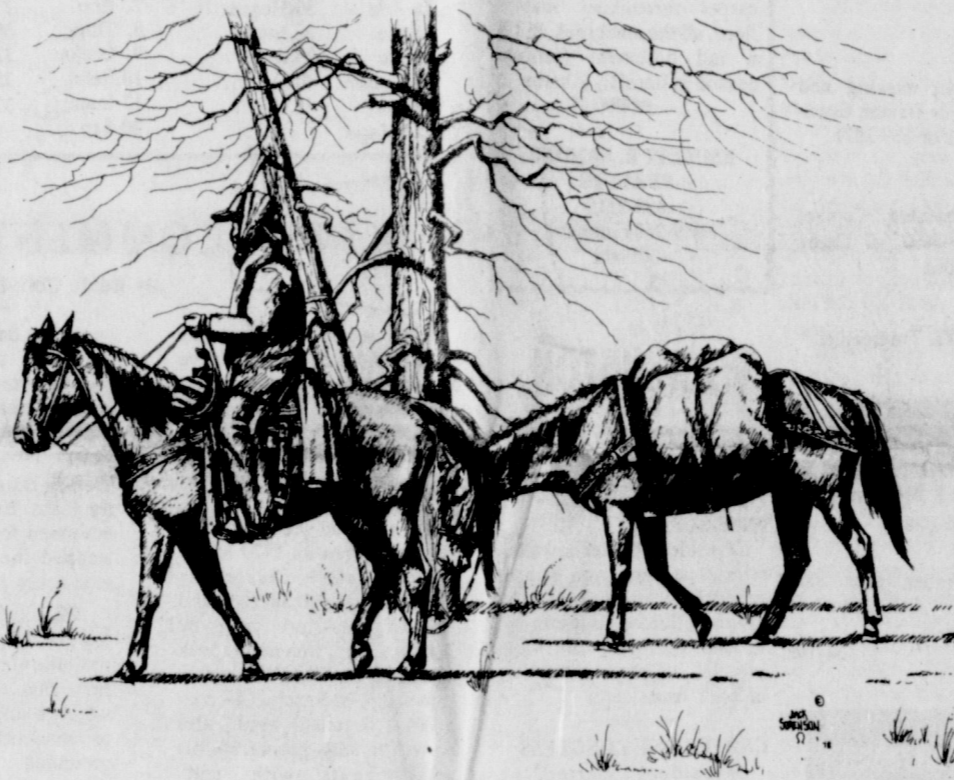
Deposits at the First State Bank at the close of business on March 30, 1979 were \$27,185,000, loans were \$15,838,000. Total assets of the bank were listed at \$30,808,000.

Officers of First State Bank are president, C.A. Gibner, executive vice president, Ray Ingle, senior vice president, J.W. Gibner and Jim Shirley, vice president and trust officer, Verna Lee Shirley; assistant vice president, Michael L. Schnell, cashier, Felma B. Evans, and assistant cashiers, Lynanne Maize and Eschol Blankenship.

Directors are C.A. Gibner, Hazel Lowe Gibner, J.W. Gibner, Lynn Hart, Verna Lee Shirley, Eris Pittman, Gene Cudd, R.E. Sanders, Jr., and R.M. Crawford.

To celebrate its 62nd anniversary, the bank will present an art show of the works of Jack Sorenson of Amarillo, from July 10 through July 20. Sorenson is a western painter, already enjoying national acclaim.

Personnel of the First State Bank cordially extend an invitation to each of you to come in and view the paintings.



JACK SORENSON

This very gifted young man who has already enjoyed national acclaim, has refined his technique and perfected his skill to a new high and is producing truly amazing paintings with a sensitivity to color, light and space which is refreshing and enriching. Using a very limited palette of black, brown, yellow and white, Sorenson captures the mountains and the plains, hot and cold, day and night through the four

seasons. "This young man is destined to be one of the greatest western painters of our time." - Dord Fitz, owner and director of the Fitz Gallery, Amarillo, Texas. "A hard working artist who lives what he paints." - Kenneth Smith of Ole Town Art Gallery, Irving, Texas. Sorenson paintings have recently been added to the permanent collection of the Santa Fe Railroad in Chicago, Illinois, and the historic Harmsen Collection in Denver, Colorado.

The All-Star Teams are Gruber: Gruber Cubs: Marvin Sparks, Kip Pittman, Chad Logsdon, Wes Wood; Gruber A's: Mark Johnson, Shawn Ammons, Scott Duncan, Greg Haight, Bart Shapley; Gruber Giants: Louie Gallegos, Rod Been, Jack Rodman, Trevor Williams, Scott Tout, Brett Hobbs. Spearman-Spearman Jets: Bob Cook, Coby Gamblin, Cole Ivey, Brent Depee; Spearman Indians, Ross Donohue, Mike Ross, Timmy Willis, Ernie Bowarn, Brian Williams, Spearman Astros, Mark Pearson, Damon Goodheart, Steve Burke and Justin Ooley.

WOMEN'S SLOW PITCH SOFTBALL

There are now six teams playing softball each Monday and Friday evening. Sponsors and teams are: 1. Red Hots by First State Bank; 2. John Deere Does, 3. Odds & Ends by the Sports Tally, 4. Bottom Up by Spartex Grain; 5. Firettes by the Spearman Volunteer Fire Department, 6. Junior Lusby "Cats".

Game will be at 6:45, 8:00 and 9:15 each Monday and Friday evenings at the small ballfield.

men's SOFTBALL LEAGUE

A new schedule of the Men's League was developed as the 8th team was added to the league. Teams and sponsors are: 1. Excell Chev-Olds, 2. H & H Water Well Service, 3. Hi Plains Auto Supply, 4. Northern Natural Gas, 5. North Plains International, 6. Spearman Super Service, 7. Gordon's Drug, 8. Panhandle Eastern Pipeline.

HIGH SCHOOL BABE RUTH LEAGUE

The last game of the season for the Babe Ruth League will be in Spearman on Thursday, July 5. This fine team was coached this summer by Charles Eaton. The league included teams from Perryton, Canadian, Follett, Booker and Spearman. Sunday's game was between Spearman and Perryton, with Spearman the victor.

boys 9 girls t-BALL-SOFTBALL

Standings and other information on this fine program of girls and younger boys will be in the next edition of the paper.

### Clinic Planned

The La Casita Room of the Gruber State Bank will be the sight for a similar session on home food preservation, Thursday, July 19 at 2:00 p.m.

Extension programs are open to all people regardless of race, color, national origin, sex or religion. For more information, contact Peggy Winegarner, county extension office (659-2030 or 733-2901).

## Hutchison Named County Attorney

Hansford County Commissioners Court appointed John Hutchison to be the new county attorney in a special session held early Monday morning. J. E. Blackburn tendered his formal resignation to the commission Saturday.

Hutchison, 32, is a native of Spearman. He graduated from Spearman High School and received his Bachelor of Arts and law degree from Texas Tech University.

He formerly was city attorney in Lamesa and moved back to Spearman in 1973 to resume private practice.

Hutchison and his wife, Jo Linda have two sons, Jeffrey and Alan. He is the son of Mrs. Louene Hutchison and the late Wayne Hutchison.

The new county attorney said he was "real pleased" about his appointment and probably will seek election to a full four-year term next year in the Democratic primary.

### Services Held

Services were held Saturday at 3 p.m. in the Kingdom Hall of Jehovah Witnesses for Mrs. Helen Condo, 69, who died Wednesday. She was a former resident of Spearman. Bill Reynolds and Peter Butrus officiated. Burial was in Ochiltree Cemetery by Boxwell Brothers Funeral Directors.

Mrs. Condo, born in Kansas, moved to Perryton about 5 years ago from Spearman. She was a member of Perryton Congregation of Jehovah's Witnesses. She and her husband, Sam, were married in 1928 in Canadian. He died in 1976.

Survivors include a daughter, Mrs. Alice Geske of Houma, La.; a son Joe of Grand Prairie; a brother, Ted Castle of Sayre, Okla.; two sisters, Mrs. Leona Wilson of Elk City, Okla. and Mrs. Oril McLain of Alaska; seven grandchildren and four great-grandchildren.

### HANSFORD HOSPITAL NEWS

Patients in Hansford Hospital are; Janet Scarboro, of Guymon; Nicki Jones, Will Douglas, Ida Wilmeth, Agnes Windom, Ethel Cookston, Louis Frantz. One other patient, name withheld!

### MARKETS

CORN..... 3, 21  
WHEA T..... 3, 89  
MILO..... 4, 85

## Fashion Revue

The annual Hansford County 4-H Fashion Revue is planned for Tuesday, July 10, 1979 at 2:00 p.m. in the First Baptist Church auditorium in Spearman.

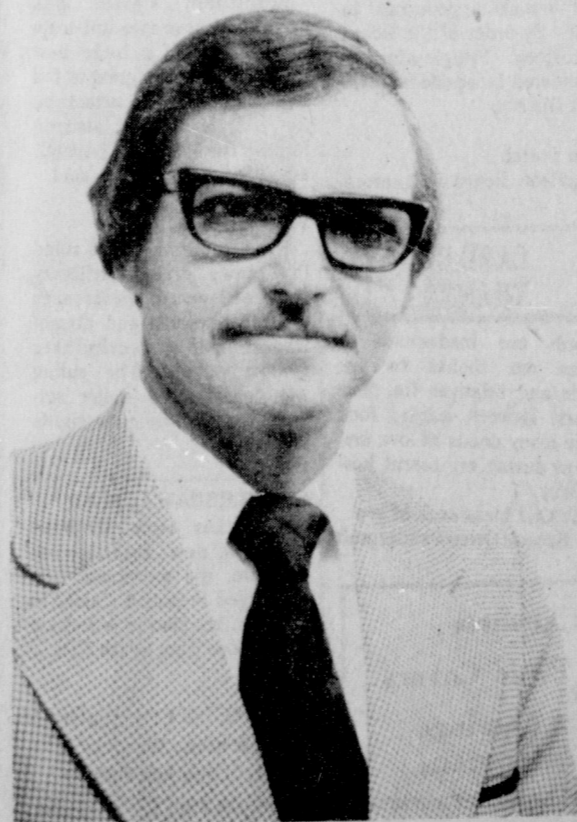
This year's fashion Revue promises to be a very fine exhibition of sewing skills, modeling ability and fashion ideas for youth age 9 to 19, according to Peggy Winegarner, County Extension Agent for Home Economics.

The 4-H youth participating cordially invite all parents and friends to attend the fashion revue and awards presentation, July 10, 2:00 p.m. in the First Baptist Church, 123 S. Bernice, Spearman.

### NOTICE TO THE PUBLIC:

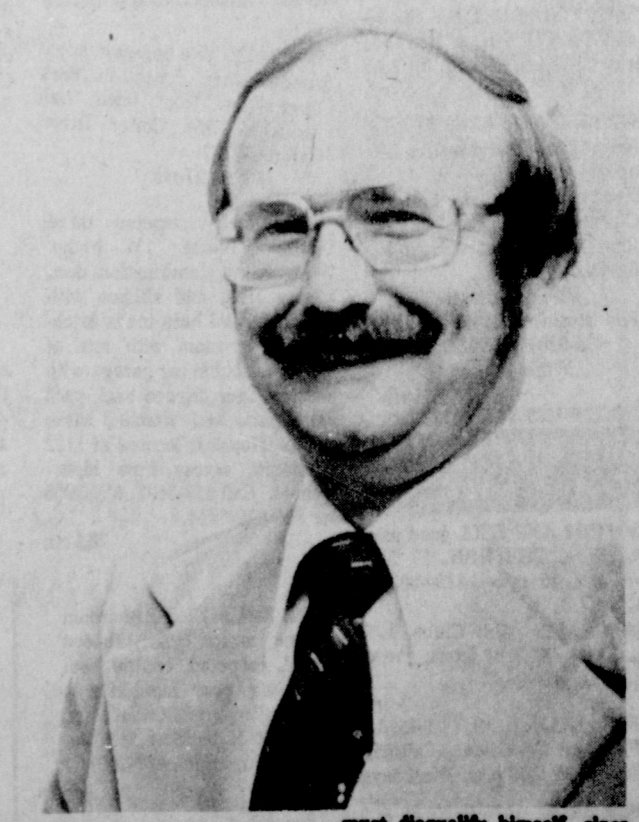
The field-house at the high school will be open, Monday through Friday, 8 p. m. to 10 p. m. for public use. Anyone, including the football boys may use the weight lifting equipment.

## Blackburn Takes Judge's Oath



J. E. Blackburn was sworn in Monday as 84th District Court Judge by Richard Countiss, who formerly held the office. About 100 persons attended the swearing-in ceremony in 84th District Courtroom at Hansford County Court House. Blackburn was

appointed last month by Gov. Bill Clements to replace Countiss, who was appointed associate justice of the 7th Court of Civil Appeals in Amarillo. The new judge said he would "work very hard" to meet the responsibilities of his new position.



Chief Justice Charles Reynolds and Associate Justice Carlton Dodson of the 7th Court were in the audience to witness the swearing-in of the area's newest district judge.

## YMCA NEWS

### YMCA HAS A TELEPHONE

Listed in the new phone book and recently installed is a phone number for the Hansford County YMCA. It is 659-2591. Also, the YMCA office, located in the building, is now open from 8 a.m. until 5 p.m., Monday through Friday. Peggy McLain began working as office secretary on Monday, June 25. The YMCA is located in the old "Community Building" at 501 South Hazelwood.

### SWIMMING NOTES

The third and last session of swim lessons will begin on Monday, July 9. The two-week program will end on July 20. Instruction for beginners from 4 years old and up, advanced beginners, intermediate and advanced swimmers will be offered. Cost for the ten lessons is \$8.00. Call the YMCA office for enrolling your child. You will be contacted Friday through Saturday as to times of the classes.

### GRUBER & SPEARMAN ALL-STARS ANNOUNCED

Regular season games have finished for the major league teams in the Hansford County YMCA baseball programs. Teams from Gruber and Spearman participated in the 6 team league of boys ages 9-12.

### The league was so close that there was a three-way tie for first place among the six teams.

A mini-tournament was held last Saturday evening in Gruber to determine the final standings. One team, the Astros, met with vacation problems among its players and played one game with only 7 players and had to forfeit two additional games before the season ended last week. The final standings were: 1. Gruber Cubs, 2. Gruber Giants, 3. Spearman Jets, 4. Spearman Indians, 4. Gruber A's, 5. Spearman Astros. The Cubs won the playoff, the Giants were in 2nd place in playoff and the Jets were 3rd place in playoff.

An all star team from Gruber and Spearman was chosen for post season competition by each community. The tentative schedule will be three double header games one against the Spearman All-Stars and the Gruber All-Stars, then tonight (Thursday) and tomorrow night double headers in Gruber and Spearman against two All-Star teams from Guymon, Okla. the week of the 9th of July both the Spearman and Gruber All-Star teams will compete in the annual Guymon Kids, Inc. invitational tournament.

# WANTED ADS

## CAPROCK MONUMENT CO.

Dealers of Georgia Granite, Georgia Marble, Colored Granite, & Brown.

represented by

## BOXWELL BROS. FUNERAL HOME

519 S. EVANS  
659-3802

Hansford County Planned Parenthood  
26S. Haney  
659-2483  
Spearman Mon.-Fri.  
8 a.m. to 12 noon  
30S-rtm

## SERVICES

SERVICE: Pits cleaned, wet or dry. Dragline or loader. Also, dozer, grader, carry-all service. Lee Roy Mitchell, 806-733-2384, Gruver, Texas 79040.

Fee Wee's Plumbing Service  
Roto-rooter, Acoustical Ceilings, Blown Insulation in walls and ceilings. Appliance Service, used appliances for sale. 659-2811 or 659-3781.  
20-rtm

NEW STEAM SHAMPOOER with brushes  
Rental \$8.95 per day. Available at 716 Cotter Drive after 4:00 p.m. and Saturdays and Sundays. Call 659-3437. Regular Steam Rinse & Vac Shampooer, \$5.95 per day at Gordon's Drug and after 4:00 p.m. and Saturdays and Sundays at 716 Cotter Drive.

NOTICE  
Wallace Monument Co., Monuments, Curbing, Grave Covers  
Local Representative  
LEONARD JAMESON  
659-3406  
20-rtm

Alcoholic Anonymous meeting 8 p.m. Friday, Home Demonstration Club building. 305 N. Bernice. Phone 659-3181 for information.

Al-Anon meetings 8 p.m. Friday, Home Demonstration Club building. 305 N. Bernice in back room. Phone 659-3181 for information. Ask for Al-Anon.

KIRBY SALES & SERVICE\*  
New & reconditioned vacuum cleaners. 912 S. Bernice. 659-2797.  
19-rtm

CUSTOM HAY BALING-16 x 18 bale. Jerry D. Virden, Box 595, Gruver, Texas. 733-2236.  
27-rtm

Need After Harvest Clean-up?  
Need Your Office Carpet Cleaned?  
Rent the pro or let us clean it for you.  
FREE Estimate  
For steam cleaning, call 435-5289 or 659-2952.  
Willis Friesen  
34-rtm

## MISCELLANEOUS FOR SALE

WE BUY AND SELL good used furniture. THE DEN. 17 S.E. 3rd Ave. Perryton. 435-4883.  
32-8tc

FOR SALE: Golf Clubs, 1, 3 woods 3, 5, 7, 9 Irons, Putter \$45.00. 659-2657.  
34-rtm

FOR SALE: 1977 T-Bird. Excellent Condition. Call 659-3691 after 5:00 p.m. Weekdays.  
34-rtm

FOR SALE: 1970 Delta 88 & 2 mattresses & box springs. Call 659-3993 or come by 726 Steele Drive.  
34-4tp

FOR SALE- 10 inch radial arm saw. Call 659-3526.  
32S-rtm

FOR SALE: 1973 Chevrolet 1/2 ton pickup. 454 engine, recently rebuilt. \$1400 firm. Call 659-2883 after 5.  
34-2tc

FOR SALE: Dishwasher, Trash compactor and Bar with stereo & 8-track player Call 3404. or 2614.  
31-rtm

FOR SALE: Limited amount of Vona, Rocky, Caprock, TAM 101 Seed Wheat. Call 733-2612.  
33-4tc

FOR SALE: 20 ft. 1974 Panhandler self contained Travel Trailer. Used very little. Robert Stayton, 733-2441.  
34-2tc

FOR SALE: 1967 oldsmobile in good condition, has new starter, will make a good working car. Call 659-3051 or can be seen at 30 S. Dessen after 5 p.m.  
rtm

FOR SALE: 1- 4 hp snapper mower  
1 3 1/2 hp mower  
1 Gas edger  
1 Gas trimmer  
1 Electric trimmer  
1 Electric Edger  
2 old mowers  
659-3510  
33-rtm

## REAL ESTATE FOR SALE

FOR SALE, 3 bedroom, nice southwest location, 2 baths, refrigerated air, fireplace, den, utility room, built-in dishwasher and disposal, covered patio, fenced yard, toolhouse and shop building. Shown by appointment only, Emmett R. Sanders, Real Estate Broker, 659-2516, nights 659-2601.  
34-rtmTonly

FOR SALE-Large 2 story energy efficient home. 2 living areas, woodburner, 3 bedroom, 2 bath, finished basement, storm cellar, fenced yard. Call 659-3692.  
32S-rtm

FOR SALE: 3 bedroom, 2 bath, stucco house, 523 W 3rd. Chuck Steele. 659-3510.  
32-rtm

FOR SALE by Owner Clean 3-bedroom home, 1 1/2 baths, living-room, large kitchen, single car garage, fenced back yard with nice lawn. 727 Cotter Drive, 659-2620.  
33-rtm

FOR SALE: 1114 S Haney - 3 bedroom, 1 bath with garage and fenced yard. Priced to sell. 100% financing available to qualified applicant. Call  
Century 21  
GOLDEN SPREAD REALTY  
435-4444  
Perryton, Texas.

FOR SALE BY OWNER  
spacious, 3 year old home, 3 bedroom, 2 baths, double car garage, fully carpeted, central heat, refrigerated air, garbage disposal, dishwasher, built in range and oven. Generous closets and storage. Very clean.  
716 Steele Drive  
659-3622 or 659-3317  
33S-rtm

FOR SALE: Two bedroom home wood burner, fenced-in Back Yard; New front lawn, half furnished. 706 Cotter Drive. Call 659-2132.  
27-rtm

Completely carpeted three bedroom house, 1 1/2 baths, living room, combination den, dining area, and kitchen with fireplace, and built-ins in kitchen, utility room with lots of storage, double car garage with electric door, fenced back yard with patio and attached store room. House is located at 1112 Wilmeth, across from high school. Call 659-3637, 659-3968 or 806-826-5714.  
28S-rtm

FOR SALE: Nice 3 bedroom home, storm cellar, fenced yard, carpeted, central heat and air plus humidifier, shown by appointment only, Emmett R. Sanders, Realtor, 659-2516, nights 659-2601.  
31-rtm

FOR SALE BY OWNER: 3 Bedroom home, living room, kitchen, 1 bath, one car garage, patio, storage building, fenced yard, fruit trees. Call 659-2518 or 3506.  
32-rtm

FOR SALE BY OWNER: One of Spearman's most comfortable homes, with these features:  
4 Bedrooms (master is 16' x 20')  
3 Bathrooms  
Large Den (24'x30')  
Kitchen  
Dining Room  
2 Fireplaces  
Study/Formal Living Room  
Large Utility Room  
Dressing Room  
Walk-in Pantry  
Wet Bar  
Large Storage Building  
2 car garage  
Garden area & hothouse (with garden already planted!)  
Many trees & Shrubs  
Approximately 3600 square feet  
714 Gibner Drive  
Phone 659-2429  
31-rtm

## HELP WANTED

HELP WANTED: Part time secretary and bookkeeper. Call McKibben Equity. 659-2194.  
34-rtm

HELP WANTED: 3 to 11 shift, 40 hour week, starting pay \$3.00 an hour. Allsup.  
33-3tc

SELL AVON-Have Fun While You Earn and Learn. Territories available in Spearman and Gruver. Call collect after 6 p.m., 273-2368.  
33-2tp

## WANTED

YARD MOWING, contact Jamie Heinrich- phone 659-3848 or 3839.  
32-8tc

WILL DO lawn mowing and edging Darren or Damon Goodheart. 659-2121 or 659-2871.  
24S-rtm

Will do hay hauling. Contact Phil Paul, 659-3592, or Carey Bridges, 659-2065  
28S-rtm

WANT TO BUY: Trampoline. Call 659-2853.  
34-2tm

## FOR RENT

FOR RENT: 1 Bedroom house, Call 3893, rtm-c

FOR RENT: Trailer Space. 319 S. Endicott. Call after 5 659-3636.  
34-4tc

## LEGAL NOTICE

NOTICE OF BOARD OF EQUALIZATION  
Notice is hereby given that the Board of Equalization of the Pringle-Morse Consolidated Independent School District will meet July 25, 1979, at 10:00 a.m. at the School Cafeteria, Morse, Texas, and will meet from time to time thereafter for the purpose of determining, fixing and equalizing the value of all taxable property in Pringle-Morse Consolidated Independent School District for the year beginning January 1, 1979. All persons having business with the board are invited to make appointment to appear. By order of the Board of Trustees, Pringle-Morse Consolidated Independent School District.  
Tom Dortch  
President, Board of Trustees  
34-1tc

## CARD OF THANKS

Words are inadequate to express our thanks to our friends and relatives for their prayers, flowers, cards, food and so many deeds of love and concern during my recent hospital stay.  
May God bless each of you.  
Babe & Owen Pendergraft

## ★ Carpets

## ★ Patio Covers

## ★ Awnings

WRITE OR CALL:  
Only Aluminum industries  
114 West 1st  
Guymon, Okla, 73942  
Phone 338-6966  
After 6:00 p.m. phone  
Howard Moyer  
338-6170

PERRY COURSEY will give a tennis clinic the week of July 9 thru July 13th at Spearman high school tennis courts, 9 a. m. to 12 noon for kids -- 7 to 10 p. m. for adults. Part of the summer recreation program  
CLINIC IS FREE---

Offered Exclusively By  
EMMETT R. SANDERS,  
REALTOR

Brick apartment house in top condition; 100% occupancy with waiting list; has four furnished units; great investment. Shown by appointment only, do not disturb occupants.  
\*\*\*\*\*

3 bedroom brick home, 2 baths, den in excellent condition, choice southwest location, nice carpets and drapes, refrigerated air, fenced yard.  
\*\*\*\*\*

3 Residential Lots, choice southwest location, each 115 ft. wide.  
\*\*\*\*\*

Small tract just west of Spearman, surface only, contains 31.7 acres. Call for details.  
\*\*\*\*\*

Reduced in Price, Dwelling and store building small detached apartment on wide lot, ideal for professional office-dwelling combined.  
\*\*\*\*\*

Custom-built brick home south of junior high and elementary school, 100 foot corner lot, impressive concrete block yard fence, huge patio, covered pool, double carport and toolhouse, refrigerated air of course, country kitchen with all the built-ins carpet throughout main floor, all the amenities, PLUS a full basement (tornado season is here!), 2 baths.  
\*\*\*\*\*

EMMETT R. SANDERS  
REALTOR  
659-2516  
659-2601 (nights)  
34S-rtm

## WASHINGTON NOTES

### WINS SUPPORT

President Carter's welfare reform package won support recently from a bipartisan group of Senate sponsors who termed the plan the "best vehicle" to improve the lives of poor Americans.

### CARTER AND CONGRESS

President Carter has pledged to join forces with Congress in assembling a major new energy package aimed at boosting U.S. fuel production, congressional leaders reported.

### GOVERNOR'S AND GAS

President Carter said recently he has signed an executive order giving the nation's governors authority to require that some gasoline stations remain open on weekends, to set minimum purchases to avoid topping off tanks, and to institute an odd-even selling system to avoid long lines.

### MX MISSILE APPROVED

President Carter has decided to move into full-scale development of a huge new mobile missile designed to foil any Soviet surprise attack on the U.S. land-based striking force in the 1980s and beyond, administration officials said.

### VETERAN PRIORITY

The Supreme Court ruled that laws giving military veterans special preferences are constitutional and do not impermissibly discriminate against women. The ruling was considered a major setback to the women's rights movement.

### ON WITHDRAWAL PLAN

Rep. Les Aspin, (D-Wis.) citing a new intelligence estimate, did an about face and urged President Carter to abandon his plan to withdraw U.S. troops from South Korea.

## CROSSWORD

1	2	3	4	5	6	7	8	9	10
11						12			
13						14			
15			16	17			18		
19		20					21		
				22		23			
24	25	26			27		28	29	30
31				32				33	
34		35				36	37		
38							39		
40							41		

### ACROSS

- 1. .... bear
- 6. Florida U student
- 11. Banish
- 12. Maltreat
- 13. .... Square, N.Y. City
- 14. Kind of institution
- 15. Fruit drink
- 16. Fasten
- 18. White House man
- 19. Diminish
- 21. Go away!
- 22. Proverb
- 24. Pack down
- 27. Observant ones
- 31. Best boxer

### ANSWERS ACROSS

- 1. Polar
- 6. Gator
- 11. Exile
- 12. Abuse
- 13. Times
- 14. Penal
- 15. Ade
- 16. Tie
- 18. Ike
- 19. Lessen
- 21. Scat
- 22. Adage

### DOWN

- 32. Wager
- 33. Be situated
- 34. Gold .....
- 36. Lift with effort
- 38. Call forth
- 39. Garden bloom
- 40. Hinder
- 41. Track .....

### ANSWERS DOWN

- 1. Petal
- 2. Oxide
- 3. Limes
- 4. Ale
- 5. Rested
- 6. Gape
- 7. Abe
- 8. Tunic
- 9. Osaka
- 10. Relet
- 17. Inane
- 21. Set
- 23. Gotham
- 24. Tamed
- 25. Alive
- 26. Minot
- 28. Elate
- 29. Rivet
- 30. Seers
- 32. Brer
- 35. Eke
- 37. ESE

## TV COMMENTARY

By Bente Christensen

CBS' recent Red Alert was the second network bullseye drama centered on the timely nuclear reactor danger. Well done. Such fictional, but realistic telecasts, alert the public to what could happen in America and are, therefore, partly a public service.

ABC began its 1979 Major League baseball coverage only this month. Keith Jackson and Howard Cosell are aided by Don Drysdale, who must speak out more and use his inside knowledge of baseball to contribute. Drysdale would also do well to stop minimizing his achievements with self-effacing jokes, and talk baseball as the players see it. JOHNNY Carson, who will continue NBC's Tonight show for at least another year, isn't making things easier for Ed McMahon. Ed has become a TV star of his own, but still plays the straight man to Carson, who is often testy in his replies to McMahon's effort.

ABC is in trouble for

snooping out Supreme Court decisions and airing them before the court has announced them. Traditionally, the court's deliberations are in secret and Chief Justice Warren Burger is furious over the leaks. Even some network newsmen feel ABC has overstepped the bounds of common-sense behavior.

CBS twice interrupted a feature film recently, within ten minutes, to announce, first, that all DC-10 airliners were grounded, and, second, to announce they were not grounded. Two unnecessary interruptions. The story was not that vitally important anyhow.

TV industry sources say there will be more and more feature films on commercial television in the future. And made-for-TV movies are not getting ratings as high or higher than theatrical films. Only a few years ago TV-made films were often woefully inadequate as entertainment.

## RECIPE

By Sarah Anne Sheridan

With today's prices of beef, many homemakers seek a variety of ways to prepare chicken.

- Stuffed Eryers  
6 slices bacon, chopped  
1 medium onion, chopped  
1 c white rice  
2 t seasoned salt  
2 1/2-lb. fryers  
2 T margarine, melted  
1/4 c chili sauce  
pepper  
paprika

Prepare stuffing in early morning for an evening meal. In a large skillet over low heat, fry bacon until almost crisp. Discard all but 3 tablespoons drippings. To the remaining drippings and bacon, add onion and rice and fry until both are slightly browned. Stir in 2 cups water and 1 teaspoon seasoned salt. Simmer, covered, about 15 minutes or until rice is tender and liquid absorbed. Cool, cover and refrigerate.

About 1 hour and 10 minutes before serving: Pre-heat oven to 375 degrees F. Sprinkle each fryer-half with 1/4 teaspoon seasoned salt, a little pepper and paprika. skin side down in shallow roasting pan. Heap rice and bacon stuffing into the hollow of each fryer half. Combine margarine and chili sauce and spoon over stuffing. Bake 1 hour or until chicken is fork-tender.



Most people know that the shortest day of the year occurs in December and the longest in June. If the sun shines the least in December, why isn't that month the bitterest of winter months?

And, if the sun shines longest in June than any other time, why isn't June the most oppressive of the summer months? As the reader knows, December is seldom the coldest winter month and July and August are often hotter than June. What's the answer?

The answer lies in the fact that the earth stores up the heat during the summer and loses it slowly. When the shortest day of the year arrives, usually December 21st, the earth still retains some of its stored up heat from the summer.

Likewise, when the longest day of the year arrives, the summer solstice (June 21st this year), the earth has not stored up the amount of heat it will contain by July and August, after additional long days and short nights.

"The price we have to pay for money is paid in liberty."  
Robert Louis Stevenson

## TEXAS PRESS MEMBER 1977 ASSOCIATION

PUBLICATION (USPS 509-660)

SPEARMAN, TEXAS 79081  
213 Main Box 458 659-3434  
Published Weekly at 213 Main Street  
Spearman, Texas 79081  
Owner-Publisher.....William M. Miller  
Second Class postage paid at Spearman, Texas

ANY ERRONEOUS REFLECTION UPON THE CHARACTER OF ANY PERSON OR FIRM APPEARING ON THESE COLUMNS WILL BE GLADLY AND PROMPTLY CORRECTED UPON BEING BROUGHT TO THE ATTENTION OF THE MANAGEMENT.

SUBSCRIPTION RATE: Hansford, adjoining counties, combination with the Hansford Plainsman, \$10.40.  
Other points, \$14.40.

## For The Ultimate In STORM DOORS

Custom Built, Designed, And In Colors To Fit Your Home....

Contact Howard Moyer at  
**Only Aluminum Industries**

Guymon, Okla. 73942 114 W. 1st 405-338-6966 or 338-6170

## ROGERS STEAMWAY

Carpet & Upholstery Cleaning

M. L. ROGERS  
616 N. CRUMLEY  
405-338-7926  
GUYMON, OKLA. 73942

## INSULATION

Blown in Cellulose  
INSULATION---& FREE ESTIMATE

S.B. SHEETS  
Phone 659-2316  
Spearman, Texas

## VIRGINIA WHITE REALTOR

659-3841

NEED TO SELL? Excellent Linn Dr. location, 3 bedrooms, 2 baths, all the amenities including fireplace. EGAL PRICE HAS BEEN REDUCED.

EASY GOING ELEGANCE--Townsend Dr. A BEAUTIFUL HOME IN EVERY RESPECT! 3 bedroom, 2 bath, 6 place W built-ins, covered patio. W/ large yard, NEAR SCHOOL. CALL NOW! In 50's.

INVEST! Invest! In this CLEAN 2 bdrm. home. located on 3 lots W/3 trailer hook-ups, 2 rental trailer houses. Large storage bldg. NICELY LANDSCAPED. Low 20's. By appointment only. CALL TODAY.

EXCLUSIVELY WITH VIRGINIA WHITE REALTOR 659-3841

## BASEBALL

By Pete Fritchie

WASHINGTON, D.C. -- This year the races in both divisions of both major leagues are so close, and involve so many teams, attendance is likely to set new records.

The reputed-to-be toughest division in both leagues, the eastern in the American, is typical of 1979, thus far. Baltimore has led much of the way, with fine pitching (even without George Bamberger), and, of course, Boston and New York are very much in the picture.

Milwaukee can't be counted out as a contender and even Detroit has seemed a potential contender this year, under Les Moss. As June began the Tigers were within 4 1/2 games of the leader, and had knocked off Baltimore in a double bill and taken two out of three from the Yankees in one run of eight out of nine. Cleveland is no patsy, either, this year. The western American division is also a scramble. Minnesota, California, Kansas City and Texas are all in it. The Twins are the big surprise.

In the National League, Montreal has been the eye-opener, along with St. Louis, in the eastern division. Philadelphia, Pittsburgh and Chicago are all in the pennant chase here-five of the six teams.

And in the National west, Houston has been a surprise, with the Dodgers a disappointment, thus far. But four teams here, also, are possible winners. The Big Red Machine looks good, and San Francisco's Giants could come through.

**Brock  
Insurance  
Agency**

**Fire Ins. on Wheat**

**29c per \$100.00**

Phone:  
**659-2514**



**NOW THAT'S TALENT!**-- National Watermelon Queen Kim Tomlinson of Georgia, right, and Texas queen Bambi Lynne Hamm of San Marcos, show contestants how the pros spit watermelon seeds. The two showed their skill at "spitting," one of the requirements of the talent portion of their selection, during a recent promotion of Texas watermelons in Austin. The watermelon seed spitting contest, was sponsored by the Texas Watermelon Assn. and the Texas Department of Agriculture.

**TDA Inspectors Monitoring  
Fields for Herbicide Misuse**

AUSTIN--Texas Department of Agriculture (TDA) inspectors continue to monitor fields in several parts of the state where residents have complained of drift from aerial pesticide applicators.

Agriculture Commissioner Reagan V. Brown said aerial applicators have been spraying cotton and other field crops in several areas. He said laboratory testing of soil, vegetation and other products

is continuing and that TDA inspectors are keeping watch to make sure that aerial applicators are following proper safety precautions.

"We had one complaint from a commercial honey packer in an area allegedly exposed to pesticide drift," said Brown. "No residues have been found in the samples of honey we tested." Some complaints have

come from residential areas that have sprung up on land that until recently was devoted entirely to agriculture. Fields being sprayed are often near single family dwellings.

"Seeing a low-flying aircraft does not necessarily mean the pilot is spraying," Brown said. "Pilots are trained to turn off the pesticide before they reach the end of the field they are spraying, so that the chemical is not carried out of the field as a turn is made. Valves are shut off outside the spraying area and are periodically checked for leaks."

Brown said investigations so far have not indicated any illegal action by the applicators involved. "Investigations will continue and if violations are documented appropriate action will be taken," he said.

TDA is responsible for enforcing the Texas Pesticide Control Act. Under an agreement with the Environmental Protection Agency it is also the primary enforcement agency for the Federal Insecticide, Fungicide and Rodenticide Act. Provisions of these laws require that applicators of restricted-use pesticides be tested and certified before they can use the chemicals. Anyone convicted of violating the laws is subject to fines or license suspensions.

**Pepper is the world's most popular spice.**

**Cattle Moved Off Wheat Pastures Into Feedlots**

AUSTIN--The Texas Department of Agriculture has reported a 32 percent increase in cattle and calves being placed into Texas feedlots as of June 1.

A large number of livestock being taken off of wheat pastures and marketed probably accounts for the sizable increase, Department marketing specialists explained.

"This increase, 450,000 head entering the lots, will probably not have too much effect at the supermarket," commented Agriculture Commissioner Reagan V. Brown. "Marketings will probably be spaced out, due to varying weights of the cattle placed, over a period of time. We would have to see a sustained increase in numbers before any substantial price relief was noticable."

The Texas Crop and Livestock Reporting Service, a joint venture between TDA and U. S. Department of Agriculture, showed 1,680,000 head of cattle and calves on feed for the slaughter market in the state as of June 1. The current estimate is 3 percent below a year ago, but 3 percent above last month.

There were 370,000 head of fed cattle marketed during the month of May, 15 percent below May, 1978 and 8 percent below last month's

marketings.

The report for the seven states preparing monthly estimates on cattle on feed showed current feeder numbers down 4 percent from a year ago; marketings, at 1.6 million, down 4 percent; and placements down 9 percent.

**PARENTHOOD  
GUIDEBOOK**

By Nancy Moore Thurmond (author, *Mother's Medicine*, Pub. by Wm. Morrow, N.Y.)

Mothers with babies often don't realize they can prepare their own baby food. It takes time but saves money. If you decide to go the homemade route, to good infant nutrition, prepare only enough baby food for one or two days at a time and store it in the refrigerator.

If you must prepare in quantity, freeze the baby food in cupcake liners or ice cube trays. When the food freezes, pop out the cubes and store in a moisture proof bag in the freezer until ready to use. One cube equals approximately one serving. To thaw, put the cube of baby food in a small bowl placed in hot water or in an electric heating dish.

When cooking vegetables or fruits for your baby, use only a small amount of water, to preserve the nutrients. Seasoning with salt, pepper, or sugar isn't necessary. If cooking for the family, remove the baby's food before you season.

Until your baby is six months old, food should be pureed (add some of the cooking liquid or formula) in a blender. Or one can strain it through a sieve.

Bland vegetables are best for your baby. These include carrots, potatoes, beets, sweet potatoes, green beans and any dark green leafy vegetable such as spinach (some babies have trouble with spinach) and turnip greens. Nothing beats apple sauce. The only fruit advisable for a baby under six months is mashed bananas. Drain the syrup from cooked, frozen or canned fruits.



**CLASSY DISH**--This sweet-sour chicken dish, the recent winning entry at the Texas Chicken Cooking Contest, would be a welcome main dish at any meal. The dish recently won Richard W. Kraetke of Dallas a trip to the National Chicken Cooking Finals.

**From the  
TAP Kitchen**

Texas Department of Agriculture Reagan V. Brown, Commissioner

**CHICKEN DALLAS**

- |   |                             |
|---|-----------------------------|
| 1 broiler-fryer chicken, cut in parts, with giblets | 3/4 C. cream sherry wine    |
| 3 T. butter   | 1/2 C. orange juice         |
| 1 C. chopped onion                                  | 1/4 C. catsup               |
| 1 C. diced celery                                   | 1 T. vinegar                |
| 1/2 C. chopped green pepper                         | 1 T. Worcestershire sauce   |
| 1 large clove garlic, finely chopped                | 1 T. prepared Dijon mustard |
| 3/4 C. brown sugar                                  | 1 tsp. salt                 |
|   | 1/2 C. Parmesan cheese      |
|   | 1 T. flour                  |

Melt butter in large shallow baking pan over medium heat. Add onion, celery, green pepper and garlic, distributing evenly in bottom of pan. Arrange chicken and giblets on top of ingredients. In bowl, mix together brown sugar, wine, orange juice, catsup, vinegar, Worcestershire, mustard and salt. Pour on chicken. Sprinkle with cheese. Bake, uncovered, in 350 degree F. oven about 1 1/2 hours or until tender. Remove chicken from baking pan and place on warm serving platter. Remove excess grease from liquid in pan. In small bowl place flour; add 1/4 cup liquid from baking pan; stir until smooth. Add flour mixture to contents of baking pan; cook, stirring, over medium heat about 5 minutes or until thick; pour over chicken when serving. Yield: 4 servings.

For additional recipes, write: Commissioner Reagan V. Brown, Texas Department of Agriculture, P.O. Box 12847, Austin, Texas 78711.

**On Our 62nd  
ANNIVERSARY**

We are proud to present the

**Western Art  
OF JACK SORENSON,  
AMARILLO, TEXAS.  
JULY 10 - JULY 20th**



**JACK SORENSON**

This very gifted young man who has already enjoyed national acclaim, has refined his technique and perfected his skill to a new high and is producing truly amazing paintings with a sensitivity to color, light and space which is refreshing and enriching. Using a very limited palette of black, brown, yellow and white, Sorenson captures the mountains and the plains, hot and cold, day and night through the four seasons. "This young man is destined to be one of the greatest western painters of our time." - Dord Fitz, owner and director of the Fitz Gallery, Amarillo, Texas. "A hard working artist who lives what he paints." - Kenneth Smith of Ole Town Art Gallery, Irving, Texas. Sorenson paintings have recently been added to the permanent collection of the Santa Fe Railroad in Chicago, Illinois, and the historic Harmson Collection in Denver, Colorado.



**Great Selections of  
CARS and PICKUPS...  
Will Make  
SUPER DEALS  
ON CARS**

**C&T Automotive**

209 E. Brillhart Ave. 435-3904 Perryton

## Double Ring Ceremony Unites Couple



In a candlelight ceremony, Barbara Stedje, daughter of Mr. and Mrs. Gordon R. Stedje, Gruver, became the bride of Mark Evan Wise of Lincoln, Nebraska. Parents of the bridegroom are Mr. and Mrs. Joe W. Wise of Rockwood, Texas.

Pastor Jeffrey Jahn officiated at the double ring ceremony which took place in the Oslo Lutheran Church at 7 o'clock Saturday, June 30.

The chancel was softly illuminated with tapers in spiral candelabras entwined with greenery. On either side were basket arrangements of white gladioli, mums, and greenery. Pew ends were marked by clusters of white miniature dahlias and baby's breath tied with white satin ribbon.

Mrs. Fred Meyer presented a lovely program of organ music preceding the wedding. Miss Sharon Lockhart of Lubbock sang "And I Love You So" and "The Wedding Prayer" during the ceremony. At the conclusion of the service Miss Lockhart sang "Climb Every Mountain". Mrs. Bo Kizlar accompanied the soloist.

Presented in marriage by her father, the bride wore a beautiful gown of candlelight organza and Venise lace. A Queen Anne neckline and sheer bishop sleeves accented the empire bodice. The full skirt drifting into a chapel train featured a window-pane effect with sheer insets and lace appliques.

Her two-tiered veil of candlelight illusion cascaded from a lace headpiece scattered with pearls. The cascade bridal bouquet featured white roses, stephanotis, and baby's breath. The bride carried out the tradition of something old and borrowed, a ring belonging to her grandmother, Mrs. J.H. Spivey of Guymon, something new, her wedding attire, something blue, her garter, gift of Mrs. T.S. Christofferson and carried a sixpence in each shoe, gifts of Mrs. George Enloe and Mrs. Bill Logsdon.

Mrs. Rod Battles of Duncan, Okla. and Mrs. Jackson Doege of Dallas were bridal attendants. They wore identical sea green organza dresses that featured a ruffled flounce hem that picked up and attached to the center back giving a bustle back effect. A separate two tiered capelet tied at the back neckline was worn over the fitted halter bodice. They carried a single long-stemmed white rose.

Henry Wise, brother of the groom, was best man. Mike

Martin of Lubbock, served as groomsman. Ushers for the ceremony were Dennis Stedje, Gruver, Joe Ed Wise, Lamesa, and Korky Wise, Vernon. The men wore candlelight tuxedos accented with chocolate brown piping.

For her daughter's wedding, Mrs. Stedje chose a coral chiffon floor length gown with matching chiffon capelet. Mrs. Wise wore a floor length gown of light blue chiffon and an attached capelet. Both mothers had corsages of white orchids.

Mrs. Dennis Stedje of Gruver presided over the guest book.

Following the ceremony, a reception was hosted by the bride's parents in the fellowship hall of the church.

The serving table was covered in white, sheer overlay and held the five tiered wedding cake which featured a green bubbling fountain and fresh flowers.

Servers were Darla Riley, Gruver, Mrs. J.P. TeBeest, Lubbock, Mrs. Ed Pier, Austin and Mrs. Clay Kidd, Austin.

For the wedding trip to Nevada the bride chose a champagne linen suit with a beige print blouse.

The bride is a graduate of Gruver High School and holds a degree in Business Administration from Texas Tech University.

The bridegroom, a graduate of Santa Anna High School, also attended Texas Tech where he received his bachelor's and master's degrees.

Upon return from their trip to Las Vegas, the couple will reside in Lincoln, Nebraska, where the bridegroom is completing his doctoral degree at the University of Nebraska.

### Senior Babe Ruth Defeats Perryton

The Senior Babe Ruth League defeated the Perryton team 14-4 Saturday evening.

On June 21 they won a double header from Follett by default. They will play Canadian here Thursday, July 5 at 7:30 p.m.

Ramon Vela, Sr., of Rio Grande City and Mr. and Mrs. Jesus DelaRosa and Jesus Jr. of McAllen are visiting in the Guillermo Vela, Ramon Vela, Jr., Eusebio Vela and Calisto Vela homes this week.

### NOTICE OF HOMESTEAD EXEMPTIONS FOR 1979

The SPEARMAN INDEPENDENT SCHOOL DISTRICT hereby announces that all persons are entitled to receive an exemption of \$5,000 from the market value of their residence homestead for the purpose of school taxes. In addition, all persons who are 65 or older or under a disability for purposes of payment of disability benefits under Federal Old-Age, Survivors, and Disability Insurance are also entitled to an additional exemption of \$10,000 from the market value of their residence homesteads for the purpose of school taxes.

To qualify for these exemptions, an application must be filed with the school district tax office by July 16, 1979. Application forms are available at the school tax office located at: 403 E. 11th Street, Spearman, Texas.

### Peggy's Pointers

Juicy and succulent, cantaloupe is a great summertime cooler.

In addition, half of one cantaloupe contains only 60 calories yet furnishes the entire day's supply of vitamins A and C for healthy gums, tissues and skin, and normal growth and vision.

**SELECTION**  
Try the five-point test for good cantaloupe eating--which means, examining the netting, slip, color, firmness and aroma.

**NETTING**

For peak flavor, the cantaloupe should be well netted. The netting is the raised, grey-brown pattern over the surface that stands out above the green or yellow skin color. The best-eating melons have high, raised netting over some part of the surface. And, it will not have large areas that are "slick" without any netting--except for the side that lay on the ground.

You may also see "stripes" of green or yellow--or in riper melons, even stripes of a brownish color.

**SLIP**  
Look for a "full slip." This is a circular scar where the stem was detached when the ripe melon was picked. A stem scar that retains part of the stem or has been gouged out of the melon indicates that the melon was not ripe when picked from the vine.

**COLOR**  
A cantaloupe is usually at its tastiest when the skin color is yellow or turning yellow. Green color on a well-netted melon with full slip indicates that the melon is not ready to eat.

**FIRMNESS**  
To check for firmness, squeeze the melon gently. You may need to use both hands to keep from bruising it. If it yields a little, it is ripe. But avoid a really soft melon or one with large, soft bruises.

**AROMA**  
Aroma may or may not be present. If it is present, and in combination with the other points for good cantaloupe eating, you can expect a tasty melon.

**STORAGE**  
Store cantaloupes in the refrigerator in a closed bag or container. The melon's odor is taken up by other foods if not stored in a closed container during refrigeration storage.

**FREEZING**  
You may wish to freeze a few melon balls for later use while they are in peak season and at their lowest price. Use

only top-quality fruit.

Cut into cubes or melon balls. Cover with a cold sugar syrup using two cups sugar to four cups water or pack in bags with no sugar. Expel as much air as possible from the bag, seal and freeze immediately.

When using frozen melon balls, serve them partially thawed, especially those frozen without sugar. Melon frozen in sugar syrup will maintain texture better and stay firmer after thawing.

### Presbyterian Church News

Hope you had a great 4th of July celebration!

Presbyterians send their greetings to our brothers and sisters in Christ in the 7th Day Adventist Church in the dedication of their new Church building.

Carter McKemy and Martha Batton are the dedicated Sunday Church School teachers every Sunday this summer at 9:45 a.m. Come and get inspired from God's Word.

The Rev. Carter McKemy will be preaching at the service for the public worship of God on Sunday, July 8 at 11:00 a.m. Patty Spoonemore will be the lay person assisting in the worship service.

Warm, caring people inhabit the First Presbyterian Church. Come and join with them in their expressions of praise!

### Arts & Crafts Guild News

The Arts & Craft Guild met at the Cattleman's Friday, June 29 with Mrs. Bill Gandy as hostess.

Those attending were Mme: P. A. Lyon, Sr., Guy Fuller, C. A. Gibner, Pope Gibner, Joe Trayler and Ned Turner.

The next meeting will be Friday, July 6 at the Cattleman's with Mrs. C. A. Gibner as hostess.



On Mindoro, Philippine Islands, it is believed that if you laugh while planting corn, there will be space between the kernels.

## Couple Wed In Texhoma



Maura Aileen Cole and Stanley David Gruver recited nuptial vows on June 22 in the First Baptist Church of Texhoma, Oklahoma with Rev. Harold James officiating.

Mr. and Mrs. John O. Cole of Texhoma and Mrs. J.S. Gruver of Gruver are parents of the couple.

Shirley Cole, sister of the bride, of Texhoma was maid of honor. The bridesmaids were Shannon Berry and Marie Pool,

sister of the groom, both of Texhoma. The flower girl was Tammy Shores of Texhoma.

Randy Lowe of Gruver was the best man. The groomsmen were Jimmie Gruver, brother of the groom, of Groten, Conn. and Winston Pool of Texhoma. The ring bearer was Craig Floyd of Amarillo.

The couple are residing in Gruver. Stanley is employed as a welder by the Pool Drilling Co. of Texhoma.

## Engagement Announced



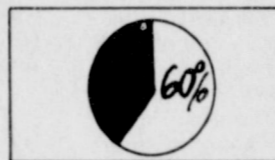
Mr. and Mrs. Jewel Ward of Gruver, Texas are announcing the engagement and approaching marriage of their daughter, Ann, to Russell McClure of Austin, Texas. He is the son of Mr. and Mrs. Billy McClure of Austin, Texas. An August 25th wedding is planned at Faith Lutheran Church, Spearman, Texas.

The bride-elect is presently attending Texas Tech University. She is employed at Lubbock Memorial Hospital.

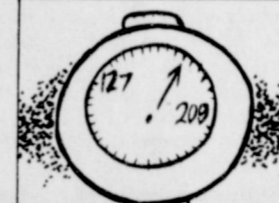
The prospective bridegroom is also attending Texas Tech University, and is presently employed by Lubbock Avalanche Journal.



The first Congresswoman was elected in 1917, three years before women could vote throughout the United States.



Parents now contribute, on average about 60 percent of the cost of their children's college education, compared with about 40 percent two decades ago.



Ninety-five out of every 100 men weigh between 127 and 209 pounds.



An old remedy for corns was to rub a kernel of corn on the toe corn, then feed the kernel to a rooster.

**SPECIALS GOOD WHILE SUPPLY LAST'S! LIMITED SUPPLY!!**

**WE RESERVE THE RIGHT TO LIMIT!!**

**ALLSUP'S**  
CONVENIENCE STORES

**PRICES EFFECTIVE JULY 5-7, 1979**

**QUALITY AND SAVINGS IN EVERY BUY!**

## ENJOY THESE WARM WEATHER TREATS!

<p><b>BORDEN'S FRUIT DRINK</b> 69¢ GAL.</p>	<p><b>BORDEN'S PREMIUM ICE CREAM</b> \$1.29 1/2 GAL. RD. CTN.</p>
<p><b>Shurfine Whole Sweet PICKLES</b> 22 oz. jar 79¢</p>	<p><b>Shurfine 7 oz. DINNER TUNA Macaroni and Cheese</b> 4 for \$1.69</p>
<p><b>GREEN BEANS SHURFINE cut</b> 3 for 89¢</p>	<p><b>SMOKY MAPLE RATH'S BACON</b> 1 LB. PKG. \$1.29</p>
<p><b>Shurfine CORN</b> CREAM STYLE OR WHOLE KERNEL 59¢ 4 for \$1</p>	<p><b>DELICIOUS RATH'S FRANKS</b> 12 OZ. PKG. 89¢</p>
<p><b>RATH SAUSAGE</b> 1 lb. pkg. 89¢</p>	<p><b>TEXAS WATER MELON</b> 10-24 LB. AVG. \$1.89</p>

### Keeping Cool Today Is A Snap

How to keep cool in the summer has been of burning interest to man since time began. Not too long ago man had to work hard to beat the heat; today it's a snap, the snap of a switch on a central or room air conditioner.

Five thousand years ago, for example, a rich Assyrian merchant cooled his courtyard by having servants spray water into a room below it, taking advantage of the cooling effect of evaporating water. A simpler method was employed by King Xerxes of Persia; he kept dozens of slaves around waving fans.

from mountaintops by Roman slaves to cool their masters. The Caliph of Baghdad, around 775 A.D., built a summer house with hollow walls that were packed with imported snows.

"Around the 16th century some improvements were made," says John P. Farrell of York Heating and Air Conditioning. "A hand-operated bellows was rigged to blow air through a cave and into a home. Use was limited to the very rich... or very energetic."

A lazy man's means of cooling turned up in an "improved" rocking chair, patented in 1869. As a

person rocked, a bellows was activated beneath the chair, forcing air out of a pipe over the person's head. Pneumatic ventilating systems were used in offices in the 1890's, and while it was not cool air, it was welcome relief.

Mechanical refrigeration, the forerunner of air conditioning, was developed for ice-making machinery, not comfort cooling. In 1885 York began producing ice-



making machines, and by 1903 the firm had learned to transfer the principle of mechanical cooling to industrial processes.

In 1914 it unveiled the first combination of mechanical refrigeration with "air washing" and ventilation—air conditioning—at the Empire Theater in Montgomery, Ala. The San Joaquin Power and Light Company's office building

was air conditioned in 1923, marking what is believed to be the first completely air conditioned office building in the world.

The nation's first successful room air conditioner was offered by York in 1935. Although the unit weighed 600 pounds, it was considered portable because it could be moved on casters. Regardless of its weight, it did provide homeowners with welcome relief from heat and humidity.

"Today it seems that everything is air conditioned," Farrell says. "It is hard to find a store, office or other public building that is not air conditioned. And that trend is spilling over into the home: Last year more than 50 percent of the houses built in the nation had central air conditioning."

Air conditioning at home is no longer a luxury, but a necessity for most people. Improved engineering has made whole-house air conditioners economical to install and operate, in spite of increasing utility rates.

### QUICK QUIZ

1. You can recognize a real diamond by (a) its pure white color, (b) its unequalled hardness, (c) its multi-faceted cut.



2. You can recognize natural vitamin E by (a) a little "d" preceding its name, (b) its sunny yellow color, (c) the designation "derived from natural vegetable oils."



ANSWERS: 1. (a) A diamond is the hardest substance known. Registering 10 on the Mohs scale of hardness, it is 90 times harder than the next hardest mineral, corundum. Thus, a diamond will scratch virtually any other material, even other precious gems. The way to be sure you're getting naturally derived vitamin E is to look for a little "d" on the label. In nature, vitamin E occurs only in the "d" form, so d-alpha-tocopherol or d-alpha-tocopherol acetate (Synthetic) is called preceding its name.

### What's In It For You???

Lower prices and a better environment can come from avoiding some legislation. Many have discovered that the much-touted "bottle-bill" requiring beverages to come in deposit cans and bottles can have an effect opposite to what its proponents claim.

In Michigan, the most heavily populated state to implement the controversial law, consumers pay an average of 36 cents more per six pack for soft drinks and 30 cents more per six pack for beer than consumers in Wisconsin, Indiana and Ohio. About 300 good jobs have been lost so far and many community recycling centers closed as a direct result of the bill.

Since people create litter, and only people can solve it, many suggest alternatives to forced deposits. One is the program in the State of Washington which attacks all litter, not just bottles and cans. It requires litter bags in all cars and boats at



You may be able to save when you shop if the country is saved from some laws.

all times. Violators face a \$10 fine. The law also requires all public places to provide litter receptacles that meet specifications making them uniform and easy to identify. Widespread signs on the highways reinforce an anti-litter ethic. This "people program" can pay off. The State has reported growth of a 27 million recycling industry and 1,000 new jobs.

What's in it for you? A better looking neighborhood, rather than higher prices at the neighborhood store.

### Could your business benefit from the added security and safety of leased floodlighting?



- YES NO
- Do you or any of your employees ever have to return to your business after closing?
  - Has your business, or those near you, ever been vandalized or broken into?
  - Have any accidents occurred, such as falling or stumbling, due to poor lighting?
  - Are any customers or employees still on your business property after dark?

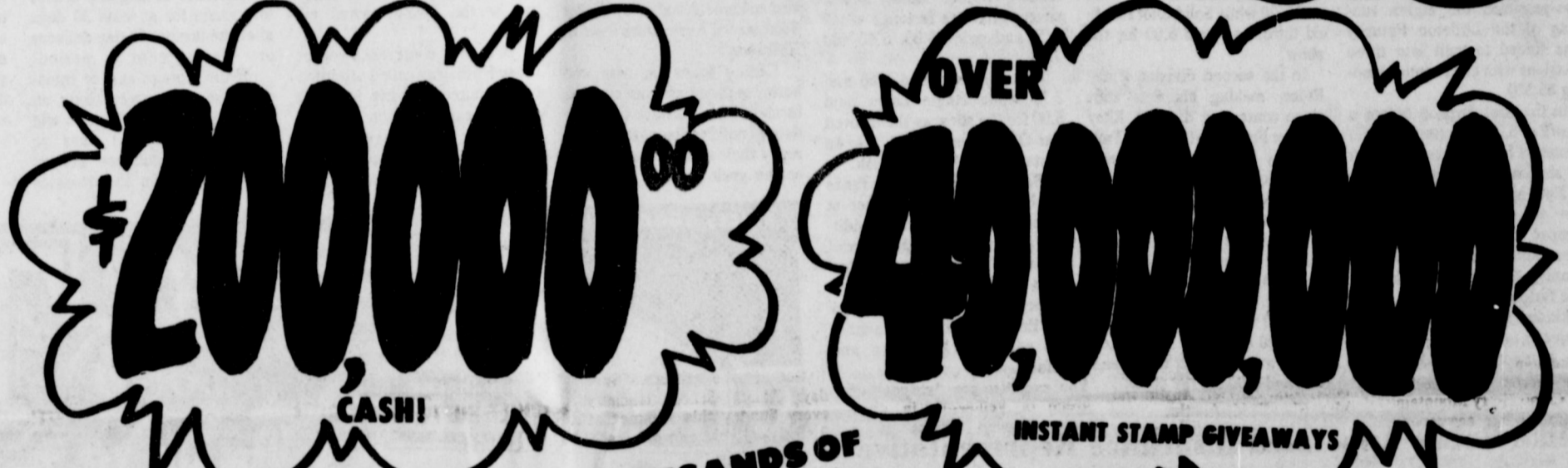
If the answer to any of these questions is yes, then leased floodlighting can help solve some of your business problems. For just pennies per night, you can have automatic on-at-dusk, off-at-dawn floodlighting, all night, every night. For the added safety and security of mercury vapor or metal halide floodlighting, just give us a call.

COMMUNITY PUBLIC SERVICE  
Your Electric Light & Power Company

## IT'S BIGGER!! IT'S BETTER!!

More Stamps!!! More Cash!!!

# STA-BINGO



MORE CASH! MORE STAMPS! THOUSANDS OF INSTANT WINNERS

**UNITED Supermarkets** PERRYTON, TEXAS

Play 4 games at the same time... 52 WAYS TO WIN!

WIN \$5  
WIN \$25  
WIN \$100  
WIN \$1,000

45,004 POTENTIAL WINNERS

DOUBLE CASH BINGO \$25 GAME SERIES 317  
4 corners covered pays \$50

DOUBLE CASH BINGO \$100 GAME SERIES 317  
4 corners covered pays \$200

DOUBLE CASH BINGO \$1000 GAME SERIES 317  
4 corners covered pays \$2,000

375 371 211 289 272 272 272 272 272 272

No purchase necessary get 4 FREE BINGO DISCS on each store visit (Adults only)



It's a fact! Thousands of our shoppers have become cash winners. And there are cash prizes just waiting to be awarded to thousands more. Why should you be left out? Join your neighbors in this easy to play, exciting, fun way to win dollars—Double Cash Bingo!! Just match the number on your Bingo disc to the number on your die-cut card and slip it into the correct position. And when you fill an entire row horizontally, vertically, diagonally—or fill all 4 corners—you win! So get in the running by picking up your free Bingo card and Bingo disc today when you shop. And be sure to get free Bingo discs at the checkout lane or service desk each time you come into the store. The more discs you get, the better your chances to win!

FILL 4 CORNERS AND WIN UP TO \$2000 CASH

**JERRY KERN HAIR CUTTING SPECIALIST**

coming to Spearman, Monday, July 9 and every Monday thereafter.

Jerry's basid study was in Amarillo and then in Houston to study with advanced cutters from Houston and New York.

For the latest in high fashion cuts and perms visit Jerry at Bull's Inn The "N" Place

Call 659-2695 for your appointment now.

**Dr. T.G. Truitt** announces the reopening of his Chiropractic Practice formerly at 516 East 12th now at 108 Northwest 9th Guymon, Okla.

Monday, Tuesday, Wednesday & Friday

Hours 8 to 12, 1:30 to 5:30

OFFICE NO. 405-338-5758

★ 40,000,800 S&H GREEN STAMPS!

★ \$200,000<sup>00</sup> IN CASH PRIZES!

Available to be won by our lucky shoppers!

THOUSANDS OF INSTANT WINNERS, TOO! INSTANT STAMP & CASH WINNERS!

52 WAYS TO WIN

The Double Cash Bingo game is available only at 34 participating United Super Markets, Inc. stores located in West Texas. This promotion is scheduled to end September 29, 1979. Double Cash Bingo will officially end when all game tickets are distributed. Tickets and prize monies will be distributed and paid in strict adherence to F.T.C. Regulations.

**ODDS CHART**

Odds stated are good for thirty days after promotion begins. Odds will be revised weekly thereafter to indicate prizes still available and will be posted in participating stores.

Odds Effective July 1, 1979

Prize	Number of Prizes	Odds for 1 Store Visit	Odds for 13 Store Visits	Odds for 26 Store Visits
\$2,000	16	184,688 to 1	14,207 to 1	7,103 to 1
1,000	32	92,344 to 1	7,103 to 1	3,552 to 1
200	96	30,781 to 1	2,368 to 1	1,184 to 1
100	192	15,391 to 1	1,184 to 1	592 to 1
50	296	9,983 to 1	768 to 1	384 to 1
25	592	4,992 to 1	384 to 1	192 to 1
10	1,024	2,866 to 1	222 to 1	111 to 1
5	2,048	1,443 to 1	111 to 1	55 to 1
2	23,760	124 to 1	10 to 1	5 to 1
5 Stamp Bk	1,666	1,774 to 1	136 to 1	68 to 1
3 Stamp Bk	2,778	1,064 to 1	82 to 1	41 to 1
2 Stamp Bk	4,166	709 to 1	55 to 1	27 to 1
1 Stamp Bk	8,338	354 to 1	27 to 1	14 to 1
Total	45,004	66 to 1	5 to 1	3 to 1

# Gruver Bank Names New Directors

Gruver, Texas - Kenneth Irwin, President and Chief Executive Officer of the Gruver State Bank has announced that the Board of Directors appointed four local men as new Advisory Directors of the Bank.

Those named to the new positions are Zay W. Gilbreath, Vice President in charge of the Commodity Department of Caprock Industries; Billy Logsdon, Jr., farmer and rancher; Rick Barkley, farmer and rancher; and Wayne Garrett, farmer and rancher.

Gilbreath is a native of Dimmitt, Texas, and a graduate of Dimmitt High School. He received a B.S. degree in Agricultural Economics from Texas A & M University in 1962 and a M.S. degree in Agricultural Economics from the Kansas State University in 1963. For 13 years prior to joining Caprock Industries, he was with Cargill, Inc. in the soybean processing division. He also serves as a

director of The Texas Cattle Feeders Association and is a trustee of the Gruver Schools. He is married to the former Charlotte Mears and they have three children.

Logsdon, a Hansford County native, is a graduate of Gruver High School. He received a business degree from Texas Tech University in 1966. Since that time, he has been associated with his father in extensive farm and cattle operations in Texas, Oklahoma and Kansas. Logsdon also serves as a trustee of the Gruver School System. He is married to the former Kathy Harbour and they three children.

Garrett is a native of Rosebud in Falls County, Texas, and a graduate of Rosebud High School. He received a B.S. degree in Agricultural Economics from Texas Tech University in 1965. Prior to moving to the Hanford County area in 1971, he was engaged in a

farming and livestock operation in Falls County. He presently has extensive farming and cattle operations in Hansford and Sherman Counties, and serves as a director of the local Farm Bureau organization. He is married to the former Lou Lierman and they have two children.

Barkley is a Gruver native and a graduate of Gruver High School. He received a B.S. degree in Agriculture from Texas Tech University in 1972. Since that time, he has been engaged in the operation of extensive farm and cattle operations with his father. Barkley served as a member of the Citizens Advisory Committee to the Secretary of Agriculture under former Secretary Earl Butz. He is married to the former Peggy White and they have two children.

Irwin stated he felt the Bank could benefit greatly from the expertise and experience these men possess in agriculture and related fields.

## PUT A LEASH ON RABIES VACCINATE ALL CATS AND DOGS



Texas is faced with a new outbreak of Rabies this year. Texas has an abundance of beautiful wildlife — but this wildlife is spreading Rabies to our pets at an alarming rate. Protect your pet, yourself, and your neighbor. Be sure your cat and dog has its yearly vaccination.

Rabies is up 100% in Texas in 1979. Stop the spread of rabies to humans and pets by having your pet vaccinated. Do it today — tomorrow could be too late. Consult your veterinarian about any illness or death of your pet. Protect your pet from contact with wildlife, if possible. Consult your physician or local health department in case of an animal bite to you or your family.

(A message from the Texas Veterinary Medical Association and the Texas Department of Health)

WOMEN'S SLOW PITCH SOFTBALL LEAGUE  
Games will be played at 6:46, 8:00 and 9:15 p.m. on Monday's and Fridays. There is a 1 hour and 15 minute time limit.

		TEAMS		
		1, Red Hots	4, Bottoms Up	
		2, John Deere Does	5, Firettes	
		3, Odds & Ends	6, Jr. Lusby "Cats"	
Day	Date	6:45 Game	8:00 Game	9:15 Game
M	7/9	1 vs 2	4 vs 3	5 vs 6
F	7/13	6 vs 4	2 vs 5	3 vs 1
M	7/16	5 vs 3	4 vs 1	2 vs 6
F	7/20	4 vs 5	3 vs 2	1 vs 6
M	7/23	5 vs 1	6 vs 3	2 vs 4
F	7/27	4 vs 3	1 vs 2	5 vs 6
M	7/30	2 vs 5	3 vs 1	6 vs 4
F	8/3	4 vs 1	5 vs 3	2 vs 6
M	8/6	3 vs 2	1 vs 6	4 vs 5
F	8/10	2 vs 4	5 vs 1	6 vs 3
M	8/13	5 vs 1	5 vs 6	6 vs 4
F	8/17	4 vs 5	6 vs 3	6 vs 2

		MEN'S SOFTBALL LEAGUE			
Day	Date	7:15 Game	UMPIRES	8:45 Game	UMPIRES
T	7/10	2 vs 6	1-5	1 vs 5	2-6
Th	7/12	3 vs 6	7-2	7 vs 2	3-6
T	7/17	4 vs 8	7-1	7 vs 1	4-8
Th	7/19	6 vs 4	5-2	5 vs 2	6-4
T	7/24	2 vs 3	6-8	6 vs 8	3-2
Th	7/26	8 vs 5	4-1	4 vs 1	8-5
T	7/31	6 vs 7	2-8	2 vs 8	7-6
Th	8/2	7 vs 4	3-5	3 vs 5	7-4

## Mister Majestic Romps In Futurity

Mister Majestic, a royally bred son of former Kentucky Derby winner Majestic Prince, easily accounted for one of three divisions of the \$30,167 Littleton Futurity Sunday, June 24 at Centennial Racetrack at Denver which helped launch off the lucrative juvenile summer stakes schedule.

Due to the entry of 31 two-year-olds the eighth running of the Littleton Futurity was forced to split into three divisions with each winner landing \$5,530.

In the first division before a crowd of 5,346 Mister Majestic, winner of his only previous start by six lengths at LaMesa Park in New Mexico, made his local bow a successful one as he romped to a four-length victory over Run Dear Run with a winning time of :58 4/5 for the five furlongs.

Ridden by Carl Woods Mister Majestic, who was purchased for a reported \$50,000 as a weanling in Keeneland, Ky.,

took the lead from the Run Dear Run approaching the stretch turn, and was never threatened thereafter.

Trained by Kenneth Parker Mister Majestic, who is owned by Jim Tiner, Leon Bagwell, and Rod Barkley of Gruver, Texas, paid \$3.40, 2.80 and 2.60.

Run Dear Run returned 3.20 and 3.20 while Solid Shot finished third, and paid 6.00 for the show.

In the second division Brave Ruler, making his first start since contesting the rich Riley Allison Futurity at Sunland Park in early May, led all the way under jockey John Cushing to defeat Admiral Nygeia by three-quarters of a length with a time of :58 2/5 for the five panels.

Brave Ruler, a Texas-bred roan colt who is trained by J. J. Fletcher, returned 4.80, 3.40 and 3.00 while Admiral Nygeia paid 3.40 and 3.00. Bold Good Times was a distant third, and returned 2.80 for the show.

In the third division the Oregon-bred filly Connie Coco remained undefeated, scoring her second victory by defeating Refactory by a half-length as Angle Loom was another half-length back in third.

Connie Coco, who is owned by Littleton auto dealer Tom Roberts and conditioned by leading trainer Lanny Sharp, covered the five furlongs in :59 3/5, and paid \$8.00, 3.40 and 3.00.

Refactory returned 3.80 and 3.20 while Angle Loom paid 5.00 for the show as the favored Bar Of Wishes showed little en route to a sixth-place finish.

Pletcher, who currently ranks as the third leading trainer at Omaha's Ak-Sar-Ben in addition to running a stable here, had a remarkable Sunday afternoon as he won the second heat of the futurity with Brave Ruler and finished second in the other two with Run Dear Run and Refactory.

## Oats & Barley Called From Grain Reserve

WASHINGTON, JUNE 26-National average prices have reached \$1.44 per bushel for oats and \$2.31 per bushel for barley, levels requiring the U.S. Department of Agriculture to call these commodities from the farmer-owned reserve, according to an announcement today by Under Secretary of Agriculture Dale E. Hathaway.

Calling loans on oats and barley in the reserve means that farmers have 30 days from the date of notification of the call to repay their reserve loans. Under the grain reserve program,

farmers own the commodities and are not required to sell their grain. If they do not repay the loan, however, they must forfeit the grain to the Commodity Credit Corporation (CCC). About 38 million bushels of oats and 40 million bushels of barley are in the farmer-owned reserve.

In a news conference earlier today Hathaway called attention to the current snarl in truck and rail transportation and said that prior to the repayment deadline on a call, an assessment would be made on a

county-by-county basis to determine if it is physically possible for a farmer to deliver the commodity. In areas where there is no commercial storage or adequate transportation, Hathaway said CCC would delay issuance of delivery orders to farmers for at least 30 days after the normal 30 day delivery or repayment period.

If the storage and or transportation problems continue, an assessment of the situation will be made every 30 days to determine if delivery notices can be issued in the counties

involved. These delays in delivery or repayment will apply to farm-stored loans only; warehouse-stored loans will be forfeited after 30 days unless they are repaid before the cut-off date. County offices of the ASCS will make the assessment, Hathaway said. ASCS county offices will officially notify producers when their grain has been called and the date by which the loan must be redeemed.

### ONE MINUTE SPORTS QUIZ

- Who won the men's singles French Open tennis tournament?
- Who won the Atlanta Golf Classic?
- Willie Stargell plays pro baseball for what team?
- Who was named NBA Most Valuable Player of 1979 by Sport magazines?
- Who won the Belmont Stakes?

### Answers to Sports Quiz

- Bjorn Borg.
- Andy Bean.
- Pittsburgh Pirates.
- Dennis Johnson, Seattle Supersonics.
- Coastal.

## Mike Babbs Appointed Insurance Representative

Mike Babbs has been appointed a representative of Southwestern Life Insurance Company in Gruver.

Born in Borger, Babbs formerly served as an agent for Texas Farm Bureau Insurance in Gruver. The former Marine is a member of the Gruver Lions Club.

Headquartered in Dallas, Southwestern Life is one of the nation's leading life insurance companies with assets of near-

ly \$2 billion and insurance in force totaling more than 9 billion.

"The man who escapes with clean hands from the management of the world's affairs escapes by a miracle." Plato

### MAKING FAMILY LIFE MORE FUN

Try It  
A second honeymoon? Why not! You and your spouse may enjoy it so much, you'll take a third, fourth and fifth honeymoon.



A new idea: Many women who don't wish to take birth control pills are urging men to use condoms, such as Excitar NuForm and Fiesta, which can contribute to a shared responsibility for birth control. In addition, a number of couples like using them.

Back to school! An increasing number of adults are going to school, picking up their education where they left off years ago to pursue a career or raise a family. Many people are finding this new schooling can help make them more interesting.

**JOIN FOR \$1500.**  
Did you know that many Army Reserve units now offer you \$1500 to join? Or, if you'd rather, up to \$2000 toward college? After initial training with pay, you'll serve 16 hours a month and two weeks active duty training a year. You'll learn a valuable job skill and earn an extra income of over \$1000 a year. Call your local Army Reserve Recruiter to find out if you qualify.



PRICES GOOD THRU JULY 7TH

QUANTITY RIGHTS RESERVED

# UNITED SUPERMARKETS

WIN UP TO \$2000 CASH!

IN CASH GIVE AWAY

**\$200,000.00**

<b>DR. PEPPER</b> OR <b>7-UP</b> 6 BTL. CRTN. 32 OZ. PLUS DEP. <b>\$1.79</b>	<b>IVORY LIQUID SOAP</b> PUREX HEAVY DUTY <b>DETERGENT</b> ALPO BEEF FLAVORED <b>DOG FOOD</b> KLEEMEX <b>FACIAL TISSUE</b>	13' OFF LABEL 22 OZ. <b>89¢</b>	42 OZ. <b>99¢</b>	15' OFF LABEL 5 LB. BAG <b>\$1.19</b>	280 CT. BOX <b>79¢</b>
<b>BELL ICE CREAM</b> HALF GAL. <b>\$1.29</b>	<b>CASSEROLE PINTO BEANS</b> 4 LB. BAG <b>\$1.09</b>	<b>UNITED EGGS</b> GRADE A MEDIUM <b>59¢</b>	<b>GLADIOLA FLOUR</b> 25 LB. BAG <b>\$3.69</b>	10 LB. BAG <b>\$1.69</b>	<b>OCEAN SPRAY REG. CRANBERRY COCKTAIL JUICE</b> 48 OZ. <b>\$1.29</b>
<b>Manager's Special ...</b> <b>BORDEN'S FROZEN TWIN POPS</b> ASST. FLAVORS 12-COUNT <b>\$1.19</b> REG. \$1.83	<b>LEMON TREE LEMONADE MIX</b> FINE FARE 32 OZ. <b>\$1.89</b>	<b>FINE FARE SPINACH</b> 15 OZ. CANS <b>\$1.00</b>	<b>"PRODUCE"</b> <b>LARGE SIZE CANTALOUPE</b> LB. <b>29¢</b>	<b>GOLDEN SWEET CORN</b> 6 EARS <b>\$1.00</b>	<b>GREEN PENCIL SIZE ONIONS</b> BUNCH <b>19¢</b>
<b>MEET TODAY'S ARMY RESERVE.</b>	<b>NEW RED POTATOES</b> LB. <b>19¢</b>				

**PAMPA**

**Y'ALL COME TO THE**

**TOPO' TEXAS RODEO**

**JULY 12-13-14**

**6:00 P.M.**

**FEATURING ...**

Red Steagall & the Coleman County Cowboys on Saturday Night, July 14 ... and ... Gary Dean with his Western Swing Band on Thursday & Friday Nights, July 12 & 13.

Dances will be held in the Clyde Carruth Pavilion on a NEW & LARGER dance floor. Plenty of seats are available.

STOCK FURNISHED BY Bautler & Sons

**FOR RESERVED SEATS**  
Call 669-3241 or Write  
Box 1942, Pampa, Texas 79065



### Spearman Swim Team News

The Spearman Swim team traveled to Perryton this past Saturday for a meet with teams from the West Kansas Swim League. The individual results are as follows:

Carly Shieldknight - 8 and under Girls 50 Free, 3rd tie; Tuwana Byrd - 15-18 Girls 100 Free, 1st and a pool record; Curt Davis - 13-14 Boys Backstroke, 2nd; Greg Farr - 13-14 Boys Backstroke, 2nd; Kim Elbert - 11-12 Girls 200 Free, 6th;

Tuwana Byrd - 15-18 Girls 200 Free, 1st; Jackie Reed - 15-18 Girls 200 Free, 5th.

The team will not have a meet this coming week-end but will be hard at practice this week. The over-all improvement could be seen in strokes and time this meet. These young people are swimming between 2,500 and 3,000 meters each morning. This is showing as they all begin to place higher in the individual standing.

### USDA Defines Farmer-Owned Grain Reserve Call Policy

Under Secretary of Agriculture, Dale E. Hathaway, noting that several commodities in the farmer-owned grain reserve are near the call levels, today outlined details of Commodity Credit Corporation (CCC) call procedure.

The call level is reached when the national average market price is 140 percent of the current national average loan rate for feed grains and 175 percent for wheat.

When a commodity is called from the reserve, the producer must repay the CCC loan within 30 days or forfeit the grain to CCC.

In making the announcement June 26, Under Secretary Hathaway called attention to the current snarls in truck and rail transportation and said that prior to the repayment deadline, an assessment would be made on a county-by-county basis to determine if it is physically possible for a farmer to deliver the commodity. In areas where there is no commercial storage or adequate transportation, Hathaway said CCC would delay issuance of delivery orders to farmers for at least 30 days after the normal 30 day delivery or repayment period.

If the storage and/or transportation problems continue, an assessment of the situation will be made every 30 days to determine notices can be issued in the counties involved. These delays in delivery or repayment will apply to farm-stored loans only; warehouse-stored loans will be forfeited after 30 days unless they are repaid before the cut-off date. County offices of the Agricultural Stabilization and Conservation Service (ASCS) WILL MAKE THE ASSESSMENT, Hathaway said. ASCS County offices will officially notify producers when their grain has been called and the date by which the loan must be redeemed.

### Baptist Evangelism Teams Return

June 26, 1979 nine evangelistic teams of lay people and their pastors from the USA returned from Peru. At the same time fifteen teams will be returning from Chile where both groups of USA Baptists are now involved in PERU-CHILE-USA Evangelism Foundation of Dallas to whom the invitations were extended by fifteen Baptist churches of Northern Chile and nine Baptist churches in Southern Peru.

Rev. Lucio Moreno of Spearman was a member of the team. Partnership churches involved in Peru are Bethel Baptist Church, Aztec, New Mexico; First Baptist Church, Paoli, Oklahoma; Calvary Baptist Church, Lindsay, Oklahoma;

Belmont Baptist Church, Odessa, Texas; Calvary Baptist Church, Lubbock, Texas, and the Francisco Rodriguez Evangelistic Team of Harlingen, Texas. Partnership churches involved in Chile are First Baptist, Newkirk, Oklahoma; Case View Baptist, Dallas, Texas; Southside Baptist, Ponca City, Oklahoma; Highland Baptist, Lubbock, Texas; First Baptist, Gruver, Texas; First Baptist-Lamont, Deer Creek, Oklahoma; First Baptist, Dallas, Texas; Primera Iglesia Baptist Church, Big Spring, Texas; the Pennington Evangelistic Team, Dimmitt, Texas, and the Esqueda Evangelistic Association, Ralls, Texas.

While in Peru the teams have

joined teams there from local churches to do evangelistic work in specific Peruvian Baptist churches from Sunday to Sunday. They are conducting services each night and are visiting in the homes, on the streets and in the markets each day.

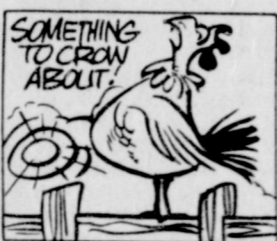
In Chile the teams are involved in similar activity. Past partnership missions have proved that thousands of Chileans are spiritually thirsty and are receptive of the Gospel. Just as parts of the desert of northern Chile have never recorded any precipitation, many people of northern Chile have never heard the Gospel. The Chilean Baptists extended the invitation to the USA Baptist groups to come and work with them as they attempt to end this spiritual drought.

Dr. W.H. Jackson, Jr., President of WEF, advised that H. Hardy, Southern Baptist missionary to Chile, had been in communication with WEF. He (Hardy) has been working with the Chilean churches as they prepare and reports "They have

been preparing around the clock. The churches here are very enthusiastic and excited about American Christians coming to join them in a week of evangelistic work." Dr. Jackson added, "We anticipate the same type of friendly welcome and willingness to work that we experienced in Santiago in the Fall of 1977. The Chileans are a very warm and hospitable people."

"As for Peru", Dr. Jackson said, "Two years ago we prepared for the first partnership in Peru we received word from one of the missionary pastors. He said 'Come prepared to work because you will be surrounded by lost people.' Even as we go to another part of Peru, this statement still rings loud and clear. Arequipa, a city of 500,000 has only four Baptist churches. Taona, a city of 100,000 people, has only two Baptist churches. The situation is the same in other communities. Those now in Peru on this partnership mission surely will be surrounded by lost people. Our people on the teams are happy for the opportunity to share Christ with as many of these people as time will permit."

Preliminary reports from team leaders in both Chile and Peru advise that many decisions have already been made in each of the churches there. The teams will return to the states on June 26, 1979.



An old remedy for corns was to rub a kernel of corn on the toe corn, then feed the kernel to a rooster.

### Hightower Touring American Broadcasting Facilities In Europe

The possibility of saving as much as \$85 million in tax spending will be investigated by Congressman Jack Hightower during a whirlwind inspection tour of some of the American broadcasting facilities in Europe next week.

Mr. Hightower, a member of the Appropriations Subcommittee on the Departments of State and Agriculture, was asked to make the inspection firsthand by Congressman Jamie Whitten (D-Miss.), Chairman of the full Appropriations Committee.

"We believe there may be a chance to make a substantial savings to the taxpayers if Radio Free Europe and Radio Liberty Headquarter can be

moved back to the United States," Hightower said. This possibility was explored during hearings of the committee earlier this spring and feasibility studies are now in progress.

During the week-long trip he will visit Embassies and State Department installations in five countries and will also check on the Foreign Agricultural Service and Food and Agriculture Organization operations.

Hightower arranged his schedule so that he could make the inspection tour during the July 4 recess and will not miss sessions of the Congress. He will be accompanied by one staff member from the Appropriations Committee and a representative from the State Department.

### Propane Engine Fuel Offers Motorists Advantages

Austin -- High prices and gasoline shortages are causing record numbers of motorists to consider converting their automobiles to operate on propane (liquefied petroleum gas) engine fuel, according to Lowry M. Carpenter, Executive Director of the Texas LP-Gas Association.

Propane has many distinct advantages over gasoline as engine fuel, the expert explained. It is an unleaded fuel with a naturally high octane rating of 110 - 120 -- which is considerably higher than most unleaded gasoline.

LP-Gas has a lower cost per gallon, a cleaner burning engine, and lower exhaust emissions than gasoline, he continued. The fact that it contains no lead, carbon or other sludge-creating properties means fewer oil filters are used, fewer oil changes are required, carburetor expense is reduced, engines require less downtime and less money is spent on overhauls. Carpenter said propane also extends spark plug life, and eliminates pilferage and spillage.

Conversion costs, he said, are quickly reclaimed; and with a short period of time motorists begin saving money on the operation of converted automobiles.

Carpenter emphasized safe and efficient operation of a propane-fueled vehicle depends in large part on proper installation of the entire fuel system. The Association Executive stressed that conversions should be done by qualified firms employing experienced personnel. In addition to the installation of the propane fuel system, the vehicle's engine may require internal modification for efficient operation. Such modifications require considerable expertise, in addition to special parts and equipment.

LP-Gas engine conversion, Carpenter said, is "not a do-it-yourself" project.

### Wheat Comments Due Aug. 6

Plans are being formulated for the 1980 wheat, barley and oats programs, according to Gene Fletcher, chairperson of the Agricultural Stabilization and Conservation (ASC) committee. Farmers and other interested persons have until Aug. 6 to comment on proposals for the wheat program.

"Comments should also contain opinions regarding whether barley and oats should be included in the 1980 feed grain program," Fletcher said, "and whether program decisions on these crops should be announced the same time as the wheat program." Normally a decision on the inclusion of barley and oats in the feed grain program is made at the same time the corn and sorghum program decision is made, prior to Nov. 15. Since some barley is planted in the fall and does compete with wheat for the same acreage, Secretary of Agriculture Bob Bergland is considering announcing the barley and oats program along with the wheat program.

Before reaching his decision, the secretary will consider any recommendations and views regarding the amount of the national program acreages; the reduction from the previous year's harvested acreage required to guarantee target price protection on the total 1980 planted acreage; whether there should be a set-aside program and, if so, whether a limitation should be placed on planted acreage; whether there should be a land diversion program and, if so, the extent of such diversion and the level of payment.

Other program determinations include loan and purchase levels for 1980 wheat, barley, oats and rye crops; the target price for wheat, barley and oats; and whether the special wheat acreage grazing and hay program should be implemented.

Comments should be mailed to the director, production adjustment division, ASCS\* USDA, Room 3630-S, P.O. Box 2415, Washington, D.C. 20013.

### YOUR LIFE INSURANCE

Q. I'm the beneficiary of a great-aunt's \$60,000 life insurance policy and have been told I have my choice of settlements options. Can you explain them?

A. The most commonly used options are:

(1) Interest Income—The company holds the proceeds and pays you interest for life or for a specified time.

(2) Fixed Amount Benefits—The company holds the money and pays you in equal installments until it's all gone (interest is added to the unpaid balance at guaranteed rates).

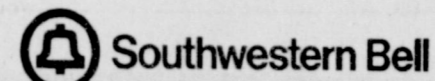
(3) Life-Income Option—The proceeds are paid in equal installments during your lifetime (this may include a guaranteed payment period of ten or twenty years). The amount of each installment depends on the age and sex of the person being paid.

### Public Notice

Southwestern Bell, in accordance with the rules of the Public Utility Commission of Texas, hereby gives notice of the company's intent to implement a new schedule of telephone rates in Texas effective August 3, 1979.

It is expected that the requested rate schedule will furnish a 6.09 percent increase in the company's intrastate revenues.

A complete copy of the new rate schedule is on file with the Public Utility Commission at Austin, Texas, and with each affected municipality, and is available for inspection in each of the company's public business offices in Texas.



### LYRIC THEATRE

Phone 806-659-2812

ONE SHOW AT 7:30 P.M. SUNDAY, MONDAY, TUESDAY, WEDNESDAY, AND THURSDAY

TWO SHOWS AT 7:00 P.M. AND 9:00 P.M. FRIDAY & SATURDAY

### NOW SHOWING

3 ACADEMY AWARD NOMINATIONS

BEST SUPPORTING ACTRESS MAGGIE SMITH

BEST SCREENPLAY (ADAPTATION) NEIL SIMON

BEST ART DIRECTION / SET DECORATION ALBERT BRENNER / MARVIN MARCH



NEIL SIMON'S CALIFORNIA SUITE

ALAN ALDA · MICHAEL CAINE · BILL COSBY · JANE FONDA · WALTER MATTHAU · ELAINE MAY · RICHARD PRYOR · MAGGIE SMITH

JULY 4 THROUGH JULY 10

### HOLIDAY DRIVE-IN

PHONE 806-659-3922

ONE SHOW ONLY EACH EVENING

SHOW STARTS AT DUSK

### NOW SHOWING

THANK GOD IT'S FRIDAY.



COLUMBIA PICTURES PRESENTS A MOTOWN-CASABLANCA PRODUCTION OF

THANK GOD IT'S FRIDAY

Special Guest Stars SONIA SUMNER and THE COMMODORES

Executive Producer NEIL BOGART Written by BARRY ARMYAN BERNSTEIN

Produced by ROB COHEN Directed by ROBERT ALANE

ORIGINAL SOUNDTRACK ALBUM AVAILABLE ON CASABLANCA RECORDS AND TAPES

PG PARENTAL STRONG LANGUAGE

© 1979 Columbia Pictures Industries, Inc.

JULY 4 THROUGH JULY 10

PELICULAS MEXICANAS

ANTONIO AGUILAR · ELSA AGUIRRE

A COLORES

LA MUERTE DE UN GALLERO



SUNDAY JULY 8 AT 2 PM

## SECRETARY WANTED

To work Directly for Vice President

Apply at

Baker & Taylor Drlg Co.

Office on

Gruver highway

659-2503

An Equal Opportunity Employer



## WALTER MATTHAU TAKES COMEDY LUMPS IN NEIL SIMON'S "CALIFORNIA SUITE"

Walter Matthau, never what one could call predictable, enjoys throwing down conversational challenges.

"Westerns or heavy dramas are duck soup compared to bedroom comedies," he remarks with drollery.

Okay, Gambit acknowledged. How could he possibly defend such a position?

"Listen, this isn't just my idea," he responds. "For instance, the French have known for a long time that comedy is the most difficult theatrical expression. An actor who is a comedian is held in the highest honor over there. Their national theatre is even called the Comedie Francaise. And bedroom comedy is the most taxing type of all. I am a living example. Every time I turn a certain way, I get this terrible pain. It's the result of physical exertion from my performance in 'California Suite.'"

A hasty explanation is in order. Matthau bruised his ribs while appearing in Neil Simon's "California Suite," which opens at the

Theatre. Produced by Ray Stark, the comedy spotlights an all-star cast headed by Alan Alda, Michael Caine, Bill Cosby, Jane Fonda, Elaine May, Richard Pryor and Maggie Smith.

Matthau plays a Philadelphia who flies to California for his nephew's Bar Mitzvah, checks into the Beverly Hills Hotel and finds a gift from his brother tucked in his bed — a tipsy blonde. In a frantic effort to hide the unconscious lady in a closet or dump her in the hallway before his wife, played by Ms. May, arrives on the scene, Matthau lugs the blonde about, muttering comic Simon comments.

"I had the girl in this fireman's carry," Matthau explains, "and had to dump her on the bed. After a couple of times, the effort got to be too much, and I fell over and hit her knee. My ribs, that is, hit her knee."

"It's getting to be an occupational hazard with me. The same

thing happened when I was doing Neil's 'The Sunshine Boys.' I was kidding around with this voluptuous nurse. I grabbed her, and her knee automatically hit me in self-defense and broke three of my ribs."

It is difficult not to take him seriously. For Matthau, comedy does seem to have physical danger outranking westerns or dramas. Nevertheless, the actor's stint in "California Suite," the Rastar film version of the Broadway hit for Columbia Pictures, was a highly enjoyable one. It reunited him with three of his favorite creative colleagues: Simon ("The Odd Couple" and "The Sunshine Boys"), who adapted his own stageplay for the screen, director Herbert Ross ("The Sunshine Boys") and Ms. May ("A New Leaf").

"It's always a pleasure to do Neil's material," Matthau elaborates, "but there is no room for ad-libbing or changing lines. He is like Shakespeare. You don't mess around with his words. Another thing, Neil never repeats his characters. And I try never to repeat characters, either. That's very important."

Matthau's jovial demeanor brings immediate recognition. On the street, when passers-by spot him they quickly break into smiles. He beams back. In his Pacific Palisades neighborhood, he is a familiar sight. Casually outfitted in shorts, baseball cap and T-shirt, he takes his English sheepdog, Puffy, on long strolls. He chats with kids, animals and on occasion has been observed complimenting a flourishing peach tree.

"My life started out rotten, but now it's absolutely wonderful," he says, referring to his impoverished childhood and his present success. "My family is fine, there's no mortgage on the house, and I have a job I like. Now, if I could only find a Neil Simon comedy which didn't put me in stitches — or at least in traction — life would be perfect."

## DISCO SCENE IN MOVIE DEBUT EVOKES MEMORIES FOR THE COMMODORES

In the midst of their record-breaking national tour in the summer of 1977, Motown recording stars The Commodores stopped off to play a disco nightclub in Hollywood. The club was a fabulous movie set called The Zoo and the location site for the popular group's feature film debut in "Thank God It's Friday," a Columbia Pictures release opening at the

Theatre. The bizarre, intimate setting for the film hotspot reminded the popular sextet from Alabama of their struggles to the top among performing and recording artists.

"We used to play clubs like this," reminisced lead singer Lionel Richie. The group's progress from their first nervous show at Alabama's Tuskegee Institute to New York City are now being chronicled by the group's trumpeter William King as the basis for a future movie.

Of that first public engagement in the fall of '67, member Ronald La Pread recalls, "We were scared to death."

And Richie adds: "We had no uniforms, no records, no contracts, no nothing — just big hearts."

But by the time The Commodores filmed "Thank God It's Friday," they had amassed three Gold Albums, three Platinum records, and richly-fashioned uniforms of magenta

and black with mirrored epaulets. They had sold out the L.A. Forum twice, played San Francisco on their days off, and jetted to Las Vegas for a record-breaking concert.

"We rehearsed our material for the movie on the road," said King. The song "Too Hot To Trot," which they perform in the movie's climactic dance contest scene was written — they admit — in planes, hotel rooms and restaurants.

In the movie, they are invited to the disco by outlandish, hyper-kinetic disc jockey Ray Vitte. Their appearance means radio time and a big boost to his career. Meanwhile, Donna Summer, as a fledgling singer who's looking for a break, jostles her way into the club by pretending to be a member of The Commodores entourage.

Other characters, from the chic and freak to the "square," come to the movie disco to hear The Commodores. That diverse crowd is indicative of the broad following The Commodores have attracted.

"Our music is not pie in the sky, butterflies, or make-believe," says Lionel Richie. "We are interpreters of the real world. There may be no such thing as true happiness but everyone is searching for it. That's why people go to discos and maybe they dig us."

The Commodores, platinum record artists on the Motown label, are featured in "Thank God It's Friday," a contemporary comedy with music set in a far-out Los Angeles disco. The Motown-Casablanca Production, opening at the Theatre, is a Columbia Pictures release.



The Grand Banks of Newfoundland, Canada, average one foggy day out of three.

# 55 ON THE 4TH

AND 5th, AND 6th, etc. . .

The average car will give you 20 percent more miles to the gallon at the 55 mph speed limit compared to speeding at 65 to 70 mph. Think about it. You save money, and we'll have more gasoline to go around.

The 55 mph limit saves lives, too. At 70 mph, your chances of surviving an automobile accident are only fifty-fifty. But at 55 mph, the odds are 31 to 1 in your favor. Saving lives. Conserving gasoline. That's what the 55 mph limit is all about. On the 4th of July, and every day.

Published as a public service by this newspaper.



Bogor, Indonesia, averages 332 days with thunder each year.

BOSS LION Ray Lingle held his first meeting as official Boss Lion Tuesday noon, in Spearman! The new appointments for committees for the coming year were announced and are as follows!

### COMMITTEE APPOINTMENTS

- Attendance \_\_\_\_\_ Ben Woodington
- Bulletin & Information \_\_\_\_\_ Billy Miller
- Constitution & By-Laws \_\_\_\_\_ Oscar Donnell  
Dick Elbert
- Convention Committee \_\_\_\_\_ Dick Hudson
- Finance Committee \_\_\_\_\_ Jack Oakes  
Claude Newell  
J.W. Gibner
- Greeter Committee \_\_\_\_\_ Earl Goodheart
- Membership \_\_\_\_\_ Everett Tracy
- Program \_\_\_\_\_ James Cunningham  
Russell Pogue  
Warren Proctor
- Public Relations \_\_\_\_\_ Doug Connelly  
E.C. Abston
- Citizenship \_\_\_\_\_ Cecil Biggers  
Jimmy Jackson  
Bob Boxwell
- Educational \_\_\_\_\_ Gerald Heinrich  
Steve Krug
- Environmental & Agricultural \_\_\_\_\_ Ray Robertson  
Troy Sloan  
Johnnie Lee
- Health \_\_\_\_\_ R.L. Kleeberger
- Hearing & Speech \_\_\_\_\_ Martin Chandler
- International Services \_\_\_\_\_ Layton Barton
- Public & Recreational Services \_\_\_\_\_ John Trimmell  
Layton Barton
- Sight Conservation \_\_\_\_\_ Doug Steger  
R.L. Kleeberger
- Social Services \_\_\_\_\_ Melvin Bradley  
Butch Baker
- Broom Sales \_\_\_\_\_ Alton Ellsworth  
Doug McClellan
- Miss Hansford & Girlstown \_\_\_\_\_ Dick Elbert
- Do Nothing Committee \_\_\_\_\_ Clay Gibner  
Roy Jones

# Massad's Summer SALE

STARTS THURSDAY, JULY 8

LADIES

## BLOUSES

CHOICE OF DOUBLE KNITS & BLENDS

**1/3 OFF**

TO CLEAR

PURSES

CHOICE OF ANY

**1/3 OFF**

TO CLEAR

LADIES SPRING & SUMMER

## DRESSES

MISSES & JUNIORS

**1/3 TO 1/2 OFF**

ALL TO CLEAR

Many Bargains Not Listed

Bathing Suits

ALL GOOD BRANDS

TO CLEAR **1/3 OFF**

JEANS

1 GROUP

**1/3 OFF**

TO CLEAR

SPORTSWEAR

ALL MISSES & JUNIORS

**1/3 OFF**

TO CLEAR

Long Dresses

TO CLEAR **1/3 OFF**

STRAW HATS

LADIES **1/3 OFF**

CLEAR **1/3 OFF**

SHORTS

CHOICE OF ANY **1/3 OFF**

T-SHIRTS

TO CLEAR **1/3 OFF**

# MASSAD'S

DOWNTOWN SPEARMAN

# County Officials Shocked By Governor's Veto

Today the presidents of the Texas Association of Counties and the County Judges and Commissioners Association of Texas expressed their profound shock and dismay over Governor William P. Clements' veto of state assistance for county roads for the state fiscal year 1981. Derwood Wimpee, Rockwall County Judge and president of the Texas Association of Counties stated that he was extremely surprised by Governor Clements' action and expressed the belief the governor may have been seriously misinformed about the operation of the sunset law. "Based on the text of the Governor's veto message, it appears the governor thought the Board of County and Road District Indebtedness could not operate after September 1, 1979," Judge Wimpee said. "Unfortunately, the veto wiped out the 1981 appropriation to the counties of Texas for road maintenance and construction even though the sunset Act makes provision for the distribution of an appropriation to an agency being abolished." Judge Jerome Decker of Medina County and president of the County Judges and Commissioners Association of Texas also expressed his surprise over the veto and gave his support to Judge Wimpee's Comments. "I cannot believe that a program as vital as this one is, could be intentionally vetoed by any governor of Texas," Judge Decker stated. "The County Judges and Commissioners of Texas have always strongly supported a modern and efficient highway system composed of State Highways supported by an extensive framework of county roads," he added. Both Judge Decker and Judge Wimpee expressed the belief that governor Clements also supported the county foundation which our state highway system was built. On behalf of their respective associations, the two presidents released the following statement:

In 1951 the Legislature provided that \$7.3 million of the state's motor fuel taxes would be annually allocated to the county and road district highway fund. This fund would be distributed every year to all 254 counties on a formula basis to provide some state support to the counties in recognition of the essential role county roads and highways play in the overall state transportation system. In 1951 the Legislature acknowledged that an efficient state system depended heavily upon the network of local roads maintained by the counties of Texas. From 1951 to 1979 every legislature has appropriated these important funds to the counties. The Texas Sunset Act which passed in 1977, provides for the phased abolition of the Board of County and Road District Indebtedness. From 1951 to 1978 every governor of Texas has approved that part of the general appropriation act that made the \$7.3 million appropriation. Now for the first time in history a governor of Texas has vetoed this appropriation.

Under the Constitution of Texas the only local tax source a county has is the property tax. Governor Clements veto will force all 254 counties to choose between: 1) A tax increase to make up for this unexpected early loss of state assistance; or 2) A reduction of local road and bridge maintenance and construction expenditures. With legislation enacted this year, it has become far more difficult to raise property taxes for almost all purposes. With the required implementation of a number of new and larger tax exemptions, the early loss of state support for county roads could not have come at a worse time. It appears that this loss will result in a reduction in preventive maintenance and repairs to county roads and bridges. It may mean a much greater cost to the local taxpayer when

major repairs are required. Today, more than half of all the roads in unincorporated areas of Texas are county maintained. With inflation and rising costs, the \$7.3 million originally provided in 1951 has less buying power, however, it has been an important source of support for hard-pressed county budgets. On behalf of the county taxpayers of Texas, we respectfully petition governor Clements to examine closely the effects of his veto. We feel that after serious consideration, this assistance to county roads will continue to be justified and desirable. Finally, we ask governor Clements to include the restoration of the 1981 appropriation for county road aid in any call for a special Legislative Session.



ONE OF THE EARLIEST COMMUNICATIONS SYSTEMS INCLUDED THE USE OF CARRIER PIGEONS. DURING THE ANCIENT OLYMPIC GAMES (776 BC-393 AD) CARRIER PIGEONS WERE USED TO CARRY THE RESULTS OF THE GAMES TO OUTLYING AREAS!

# Hightower Highlights

"WE SHOULD NEVER BE AFRAID TO NEGOTIATE FOR PEACE." With these words President Carter reported to a joint session of Congress on Monday evening, June 18, the signing of the Salt II agreement earlier in the day in Vienna. President Carter reviewed the history of our relationship with the Soviet Union since World War II and the seven years of direct negotiation which has produced this agreement. I believe, as President Carter expressed, that "The ultimate future of the human race...lies with peace." There is no more important issue.

The ratification of the treaty is now before the Senate. The question of verification of the Russian promises will probably be the largest issue in the debate. The Senate and the American people must be convinced that our security will not be placed in jeopardy by the treaty.

HOUSE MEMBERS HAVE REJECTED A PAY raise for themselves and other high ranking federal employees by a vote of 232 to 186. The vote was tied to the legislative appropriations bill which will now return to the legislative appropriations committee where the language must be rewritten prohibiting any pay increase. At a time when we need to reduce the federal budget Congress should be the example. I have opposed all salary increases for members of Congress.

THE GASOLINE LINES ARE LONGER as gasoline supplies are becoming more difficult to obtain and the OPEC nations that supply almost 50% of our country's needs have us over a barrel and that barrel contains a very expensive commodity--oil.

Americans must have as a major priority self-sufficiency in the energy field. Production must be increased by oil companies in this country and there must be incentives for them to develop our own resources. I am

receiving calls almost daily from different parts of the district asking help in getting fuel. We are certainly going to continue to do all we can. Decontrol should help if Congress will leave it alone.

THE IDEA OF MOVING INTO THE SYN-FUELS AREA IS ONE way to help end America's dangerous dependence on foreign oil. Our offense against our dependence of foreign oil may well be outlined in HR 3930 which has been approved by the House Committee on Banking, Finance and Urban Affairs.

This piece of legislation contains a logical approach to being to bring synthetic fuels from such things as oil shale, coal gas, and coal liquids into commercial production as soon as possible.

Our country could create a synthetic oil industry capable of producing 5 million barrels per day--over 20% of our current needs, within the next ten years from sources such as shale, tar sands, heavy oils, coal, and farm crops. The Synthetic fuels program would draw upon the proven experience of the innovative government-industry programs developed to meet other material shortages in World War II and the Korean War.

By the most conservative projections, world oil prices--at today's dollar value--will reach at least \$25 per barrel by 1985. If we allow for a modest inflation-adjusted dollar (5.5 percent) with which to purchase that oil, the price has been projected to

be in the range of \$35 per barrel.

BELT-TIGHTENING IS THE CALL OF THE HOUR in the U.S. Congress. Budgetary cuts and restraints on percentage requests to meet the inflation level have been met with critical analysis by the Appropriations Committee.

The work that continues weekly as Congress works through the appropriations process is a never-ending task of trying to cut expenditures. The over-all effect of reducing appropriations at the agency level continues to have added impact in reducing the federal deficit.

HR 1 HAS BEEN SHELVED FOR THIS CONGRESS. The piece of legislation that would have provided for the funding of Congressional elections through an optional check-off box on the Income Tax Form, (similar to the presidential check-off) has been defeated in the House Administration Committee. It is doubtful that it will be heard from again this session.

As you know, if you were one of the many who wrote concerning this piece of legislation when it was first introduced, I oppose the idea of federal financing of campaigns and continue to believe that private citizens should individually support those candidates who best express their views.

OUR OFFICE HAS RECEIVED A NUMBER OF cards and letters concerning the possible merger of the Social Security and Civil Service Retirement Systems. No action is anticipated on this issue until the outcome of the universal Social Security coverage study that is to be submitted to Congress in December is known.

Any serious consideration, coordination, or merger of social security with civil service retirement is at least two years or more away. The past Congress--in setting up the universal Social Security coverage study emphasized the principle that the present level of employee retirement benefits not be reduced. At the present time I am opposed to the possible merger, but I plan to carefully study the recommendations of the report to be issued by a panel set up in 1977 that will make the study of the possible merger available to the Congress this December.



A. Annual percentage rates vary. State regulations are the first major influence; the second is the condition of the nation's economy. The Federal Reserve Board, an independent government agency, increases or decreases the amount of money available according to what is best for overall prosperity. The relationship between the amount of money available and the borrowing needs of the individual partly determine the annual percentage rate you pay for a loan.

The third factor is the terms of the loan. Repaying the loan to the bank in large monthly installments over a shorter time may result in a different rate than you would pay if you repaid over a longer time.

Also the kind of loan you want may have a bearing on its cost. A loan secured by your savings passbook may have a lower rate than an unsecured loan.



The first Congresswoman was elected in 1917, three years before women could vote throughout the United States.

# ANSWERS about your finances

Prepared by the Chemical Bank of New York, a financial institution offering a variety of services and made up of skilled, knowledgeable people, dedicated to being a part of the community they serve.

Q. I took out a loan two years ago at an annual percentage rate of 10 percent. My neighbor just got a similar loan at the same bank for 12 percent. Why is that?

**from your neighborhood ASSOCIATED DRUGGISTS**

## RED HOT SPECIALS

July 4 - 10, 1979

<b>SEA &amp; SKI</b> Suntan Lotion 4 oz. Mfg. List \$2.60 <b>\$1.49</b>	<b>MAALOX</b> ANTACID 12 oz. Liquid or Tablets 100's. Mfg. List \$2.79 <b>\$1.49</b> each	<b>FOILLE</b> First Aid Spray 3 oz. Mfg. List \$2.39 <b>\$1.37</b>	<b>TROPICAL BLEND</b> Oil of Lemon 8 oz. Mfg. List \$3.50 <b>\$1.88</b>
<b>STING KILL</b> SWABS 2's Mfg. List \$1.49 <b>\$0.79</b>	<b>ATRA RAZOR</b> Mfg. List \$5.35 <b>\$2.99</b>	<b>DIXIE PAPER PLATES</b> 9" 24 ct. pkg. or DIXIE COLD CUPS 7 oz. 30 ct. pkg. Mfg. List \$5.69 ea. <b>2/\$1.09</b> Mix or Match	<b>DEXATRIM</b> DIET CAPSULES 28's Mfg. List \$3.95 <b>\$2.39</b>
<b>TRAC II</b> CARTRIDGE 9's Mfg. List \$3.45 <b>\$1.88</b>	<b>LEMON TREE</b> LEMONADE MIX By Lemon Makes 10 Quarts Mfg. List \$2.09 <b>\$1.67</b>	<b>TYLENOL</b> Extra Strength Capsules 100's Mfg. List \$5.19 <b>\$2.99</b>	<b>BLISTEX</b> BLISTIK Lip Ointment or Lip Balm Mfg. List \$7.75 <b>2/\$7.99</b> Your Choice
<b>NOXZEMA</b> SHAVE CREAM Regular or Menthol 11 oz. Mfg. List \$1.72 <b>\$0.99</b>	<b>2 1/2 QT.</b> PLASTIC PITCHER Adjustable Spout Any Color Mfg. List \$2.29 <b>\$1.09</b>	<b>ICE</b> CUBE TRAYS Mfg. List \$1.59 <b>\$0.88</b> Twin Pack - Sky Blue Unbreakable Plastic	<b>CORRECTOL</b> Laxative 30's Mfg. List \$2.19 <b>\$1.37</b>
<b>BUF</b> ACNE KIT Mfg. List \$3.95 <b>\$2.09</b>	<b>JOHNSON'S</b> BABY POWDER Purest Protection 14 oz. Mfg. List \$2.59 <b>\$1.49</b>	<b>TRASH AND</b> LAWN BAGS 23 Gallon - 5 Bushel 90's Mfg. List \$1.79 <b>\$1.19</b>	<b>BAN ROLL ON</b> Regular-Unscented-Fresh 1.5 oz. Mfg. List \$1.89 <b>\$1.09</b>
<b>SUMMERS</b> EVE Douche Regular or Herbal Twin Mfg. List \$1.99 - Pack <b>\$0.69</b>	<b>ULTRA BRITE</b> TOOTHPASTE Super Size 7.6 oz. 22' Off Label Mfg. List \$2.09 <b>\$1.09</b>	<b>CRACKER JACKS</b> Snack Pack - 6 Boxes Mfg. List \$1.19 <b>\$0.77</b>	

THESE ARE SUGGESTED A.D. PRICES. OPTIONAL WITH PARTICIPATING STORES.

WE RESERVE THE RIGHT TO LIMIT QUANTITIES AT SALE PRICES

## GORDON DRUG

314 Main      659-2141      Spearman

A.D. IS A REGISTERED TRADEMARK OF ASSOCIATED DRUGGISTS, INC.

**30 New Cars!!      3 GMC Tandems!!      30 GMC's!!**

## Harvest SALE at Hergerts

We hope every Farmer gets top yields and top Prices for their WHEAT!!!

We have got quite a crop of New Pontiacs, Buicks, & GMC's! While the Farmer is cutting wheat we are cutting PRICES!!

30 New Cars - Pontiacs & Buicks In all Sizes and Colors.  
30 GMC's - Jimmy's, 2 Suburbans 4 Rally Vans, Heavy 1/2's, 3/4 Tons, 8-4x4's  
3 GMC Tandems - We just had them rigged, & they are ready to go!

Get ready for summer w/ a new Station Wagon!  
We have the best supply of new wagons in our history!

Drop on over! We are ready to Trade!

# HERGERT

## Pontiac, Buick, GMC

"WE APPRECIATE YOUR PATRONAGE!!!"

Phone 806-659-3721      So. Hwy. 207      Spearman, Texas

The Best For Sales      Service & Body Shop