

Dr. Kleeberger Re-Elected To Membership In A.A.F.P.

The Spearman Reporter

VOLUME 70, NO. 18

THE SPEARMAN REPORTER, SPEARMAN, TEXAS 79081

THURSDAY, MARCH 15, 1979

Junior Livestock Show

Spearman and Gruver FFA and county 4-H members have been busy adding final touches to their livestock in preparation for the Annual Hansford County Junior Livestock Show which is scheduled to get underway Friday, March 16 at the County Barn, Spearman.

The show will begin at 8 a.m. with the weighing in of swine and sheep. Weighing in of steers is scheduled for 10 a.m. until noon.

The grand opening of the show will be at 1:45 p.m. Friday with all directors, Ag teachers, Extension Agent, FFA Chapter presidents, 4-H Club chairman, and FFA Sweethearts reporting to arena.

The lamb show will begin at 2 p.m. followed by the swine show.

On Saturday judging of steers will begin at 10 a.m. and Registration of Livestock Judging Contest is set for 1 to 1:30 p.m. with the Contest set for 1:30 p.m.

The auction will begin at 6 p.m. with the presentation of Livestock Judging awards, Showmanship Trophies and Top Gaining Award. Immediately following the awards presentations the auction sale of lambs, swine and steers will begin.

The board of directors for the show are Chairman, Lynn Davis, Secretary, Layton Barton; Treasurer, Carl Kunselman; Assistant Treasurer, Norma Jean Mackie.

Directors of the show are John Armes, D.A. Cator, Carl Cooper, J.C. Harris, George C. Lowe, Jr., Buddy Murrell, Raymond Walker, and Jerry Williams of Gruver; Charles Eaton, Jimmy Greene, Carl Kunselman, Dr. Tom Latta, Glen Ray Mackie, Bobby Nollner, and Bill Strawn of Spearman; and Lynn Davis and Charles Reid of Morse.

Vocational Agriculture Teachers are Herman Boone and Burt Williams of Spearman and Oran Burton of Gruver. Extension Agent is Layton Barton.

1979 Department Superintendents, are Steers: John Armes, Carl Kunselman, and Glen Ray Mackie; Sheep: Carl Cooper, Bill Strawn, and Charles Reid; Swine: Buddy Lowe, Jr., Jerry Williams and Jimmy Greene.

Judges for the show will be Dr. John McNeill of Amarillo for sheep; Bob Skaggs, Pampa, Swine; and Ronald Gooch, Clarendon, steers.

From Spearman FFA exhibitors showing steers are Shawn Swann, Sam Boone, Tracy Vernon, Rex Reid, Clay Reid, Carl Smith and Ron Clark. Sam Boone will be showing heifers. In the Lamb division, exhibitors are Wayne Meek, Kirby Hargis, Jeff Gatlin, Tal Jackson, Kermit Mahanay, Cole Umphress, Greg Odegaard, Kevin Kirk, Roger Close, Anselmo Vela, Daniel Ochoa, John Weakley, Danny Jones and Pat Steele.

Swine exhibitors from Spearman FFA include in Market Hog Division, Steve Tindell, Greg Meisner, Jimmy Snider, Van Hamilton, Mike Cudd, Kurt Spoonmore, Greg Odegaard, Scott Martin, Mary Ann Martin, Hank Sutterfield, Jerry Laird, James Farmer, Tracy Vernon, Jim Nicholson, Roger Buchanan, David Pearson, Mike Blanton, Charles Ross, Rocky Randall, James Scroggs, Pat Steele, Kirby Hargis, Ricky Dowdy, John Kenney, Clay Reid, Ed Whitfield, David Hager, Mike Owens, Scott Davis, Andy Francis, Alvin Byers, Ron Clark, Todd Ware, Jerry Ross, Danny Dear, Florencio Martinez, Clifton Morrison, Rhonda Morrison, Steve Widener, Rory Sheppard, Dayton Edwards and Richard Teale.

Dear, Andy Francis, Ron Clark and Roger Buchanan.

Gruver FFA members exhibiting steers are Quentin Hart, Larry Joe Lackey, Shelly Lackey, Chris Cooper, Kelly Mills and Scott Dahl.

Exhibiting breeding heifer will be Scott Dahl.

Breeding Gilt exhibitors include James Heddins, Sammy McLain, Ty Williams, Kenny Gammon, Roy Don Gammon, Jody Bradford, and Darin Winger.

Lamb exhibitors are Scott Atwood, Jimmy Womack, Russell Tiner, James Heddins, Ricky Renteria, Roy Don Gammon and Scott Dahl.

Gruver FFA members exhibiting barrows are Barry Barkley, Mike Barber, Darin Winger, Scott Dahl, Kelly Mills, Todd Williams, Wayne Davis, Jody Bradford, Charlie Dahl, Mike Grotgert, Roy Don Gammon, Shelly Lackey, Larry Lackey, Kenny Gammon, Sammy McLain, Alan Gilbreath, Todd Winders, Rex Shook, Brian Sparks, Don Hartranft, Ricky

Renteria, James Heddins, Phillip Fry, Scott Henderson, Tom Brandvik and Ty Williams.

Hansford County 4-H members showing steers will be Durward Cator, Marshall Cator, Rex Shook, Mickey Scarborough, Donnie Hartranft, Ty Williams, Trevor Williams, Todd Williams, Shonna Thompson, Debbie Burton, Kenny Gammon, Roy Don Gammon, Phil Ormon, Chad Logsdon, Shelly Logsdon, Scott Henderson, Rodney Dale Clawson, Scott Strawn, Chad Clawson, Doug Hohertz, and Kim Scroggs.

4-H members exhibiting lambs will be Dirk Umphress, Brian DeCamp, Tracy Logsdon, Shonna Thompson, Gregg Haight, Brad Guthrie, Marshall Cator, Curward Cator, Monte Beck, Edward Beck, Chad Guthrie, Holly Holt, Sally Holt, Debbie Burton, Mendy Gammon, Suzy Steele, Will Jarvis, Anne Marie Jarvis, Ken Prachar, Tiki Jackson, Dee Dee Womack, Scott Henderson, Suzanne Hart, Lynette Wil-

liams, Jeff Nicholson, Shelly Strawn, Dale Red, Shelli Babbs, Jo Anne Odegaard, Loyd Cator, Greg Meek, Karla Latta and Julie Latta.

4-H members exhibiting girls will be Marshall Cator, Kristi Holt, Rhonda Boone, Jackie Sparks and Rodney Dale Clawson.

Barrows will be exhibited by 4-H members, Marshall Cator, Eldon Sparks, Bret Hobbs, Melanie Morris, Doug Hohertz, Brad Guthrie, Lori White, Connie Vernon, Monte Beck, Edward Beck, Jackie Sparks, Rhonda Jo Boone, Craig Cooper, Curt Porter, Kristi Holt, Debbie Burton, Suzy Steele, Rodney Dale Clawson, Cayla Eaton, Susan Davis, Durward Cator, Trevor Williams, Marva Winger, Doug Garrett, Mendy Gammon, Clay Smith, Dee Virden, Chris Morris.

Bookkeepers and auctioneers for the 1979 show are Jimmy Greene and Orville Latham of Spearman; Weldon Green, Mack Hoel, Carol Bostick and Melvin Bradley of Gruver; and W.B. Dickenson of Olton.

Junior Livestock Auction 1978 Buyers

First State Bank, Spearman
Hansford Implement, Spearman
H & H Water Well Serv., Inc., Spearman
B & B Farm Industries, Spearman
Nelson Builders Supply, Spearman
E. A. Williams, Gruver
Sparks Bros., Gruver & Spearman
Gruver Farm Supply, Gruver
H & H Livestock, Gruver
Vance Morris, Gruver
Buddy Lowe, Gruver
Gruver State Bank, Gruver
Panhandle Training Center, Spearman & Gruver
Baker & Taylor, Spearman
Nolan Holt, Spearman
June Barkley, Gruver
Jane Meek, Spearman
Gruver Farm Supply, Gruver
Willard McCloy, Morse
Caprock Ind., Gruver
Hansford County Parts & Supply, Gruver
Continental Grain, Gruver
Bunkhouse, Spearman
Van Roach, Gruver
Bobby Thompson, Gruver

D.G.C. Feeders, Gruver
Val Winger, Gruver
Palo Duro Grain, Gruver
Billy Logsdon, Gruver
Pat Holt, Gruver
Rick Barkley, Gruver
Britt Jarvis, Spearman
Double D Ag, Gruver
Excel Chevrolet, Spearman
Lazy J Cattle, Gruver
Palo Duro Feeders, Gruver
Farmers Ag Supply, Gruver
Clifford George, Gruver
El Vaquero, Gruver
Beedy Furniture, Spearman
Preston Smith, Spearman
Spearman Super Service, Spearman
Golden Spread Sales, Spearman
Tommy Gumfory, Gruver
Interstate Savings & Loan, Spearman
Equity Elevator, Spearman
Gruver Insurance, Gruver
Batman Grain, Farnsworth
L. L. Anthony, Spearman
First National Bank, Perryton
Mrs. J. M. Hart, Gruver
Jon Hart, Gruver
C. H. Clawson, Gruver
Spearman Bi-Products, Spearman
Bill Pool, Morse

Crawford Imp., Spearman
Bernice Brown, Spearman
Jerry Williams, Gruver
Shapley Bros., Gruver
Daco Well, Spearman
Spearman Auto Supply, Spearman
Logsdon Farms, Gruver
Ralston Purina
Cooper Feed, Gruver
Roy Nollner, Spearman
Hi Plains Auto, Spearman
Nollner Bros., Spearman
Glen Mackie, Spearman
KBMF-FM, Spearman
Dan Ralston, Spearman
4-Tex Grain, Spearman
Rex Shapley, Gruver
Archie Nelson, Gruver
David Boyd, Morse

1978 Non-Sale Supporters

Billy Miller, Spearman
Johnny P. Vernon, Spearman
Verlin Beck, Spearman
Nolan Holt, Spearman
Allen Cattle Co., Spearman
T.I.C.O. Inspection, Spearman
First National Bank, Perryton
Berry Grain, Waka
North Plains Imp., Spearman
John Sutterfield, Spearman
H & H Water Well Serv., Inc., Spearman
Jim Nicholson, Spearman
Ed Wheeler, Spearman
Tammy Nollner, Spearman
First State Bank, Spearman
Roy Nollner, Sr., Spearman
James Cunningham, Spearman
Hansford Implement, Spearman
Excel Chev.-Olds, Spearman
Equity, Spearman
B & B Farm Ind., Spearman
Roy Bulls, Spearman
Golden Spread Sales, Spearman
Glen Mackie, Spearman
Flying M Farms, Gruver
Morris Cattle Co., Gruver
Sparks Bros., Gruver & Spearman
Leon Hobbs, Gruver
Dayton Barkley, Gruver
Larry Lackey, Gruver
Farmers Agri., Gruver
Shelton's Gulf, Gruver
Aline Henderson, Gruver
Blanche Tabor, Gruver
Val Winger, Gruver
Van Bradford, Gruver
Ronnie Williams, Gruver
C. H. Clawson, Gruver
D & D Dueros, Gruver
Alma Gruver, Gruver
Britt Jarvis, Spearman
W. A. Spoonmore, Spearman
Ray Prachar, Spearman
Charmain Lyle, Gruver
Pauline Winger, Gruver
Ila Jo Hart, Gruver
A. R. Bort, Gruver
Leon Bagwell, Gruver
Clifford George, Gruver
Leon Red, Gruver
Farmers & Ranchers, Gruver
Jerry Mills, Spearman
Morris Bros., Gruver
T. J. Bergin, Gruver

History Book Workshop March 23

A History Book workshop will be held March 23 at 2 p.m. at Hansford Library. Anyone having trouble with their story or anyone having questions are urged to attend. Please plan to attend.

If you did not receive a letter or have addresses of persons who should receive a letter please call the museum at 3008 Tuesday through Saturday from 1 to 5 p.m. or call Juanita Pierce at 659-3358 or Christine Brandvik in Gruver at 733-2691.

Judge Johnnie Lee is visiting in Austin today, to discuss the size of the Palo Duro Dam with the Texas Water Resources board.

Commissioners Have Short Session

Hansford County Commissioners met Monday, March 12 for a short session.

They received the treasurer's report for the month and order payment of claims.

They purchased a mowing machine from Hansford Implement at a cost of \$5250 for Precinct 3.

Master Hypnotist



The Great Dr. Kit, black-bearded hypnotist of international fame, will appear at SPEARMAN HIGH SCHOOL auditorium for one night only THURSDAY MARCH 22 show time 7:30 p.m. This great showman is being brought here by the SPEARMAN BAND.

Dr. Kit is one of the few Master Hypnotists and showman, who in the past twenty years has continuously broken box office records in City after City throughout Europe, Canada, and Hawaii and Alaska. This Great Entertainer and showman has been acclaimed as one of the greatest attractions on tour today, and he has hypnotized over eighty thousand people in the past. "Professional researchers have been able to achieve remarkable results in correcting such habits as stuttering, stammering, smoking, biting of finger nails, weight reduction, plus others through Hypnosis, says Dr. Kit". During the show the Great Dr. Kit will demonstrate the Phenomenon of mass hypnosis and will actually hypnotize 15 to 20 local volunteers from the audience at one time.

The Great Dr. Kit Show has been described as the most amazing and funniest entertainment sensation to be seen in many years. It is a clean, wholesome show for the entire family, and without a doubt a night you will always remember. Advance tickets are now on sale by the members of the sponsor. Tickets can also be bought at the door on night of show.



Notification has been received that a local physician, Dr. R.L. Kleeberger, has been re-elected to membership in the American Academy of Family Physicians by virtue of having successfully completed again, the continuing education requirements necessary to retain active membership.

Dr. Kleeberger, first was elected to membership in the (then) American Academy of General Practice in 1949, at which time the American Academy of General Practice was only 2 years old. To maintain membership and to be eligible

for re-election a physician in general/family practice must complete 150 hours of formal and elective study in the field of family practice subjects every three years. These study hours must be certified by the sponsoring medical association or medical schools which offer these courses of study. Completing this post-graduate medical study also qualifies the physician for the American Medical Association's Physicians Recognition Award, based on the same requirements.

The American Academy of Family Physicians has been a pioneer in the field of continuing education and has served as the model for continuing education programs established recently by many other organizations in medicine. Membership in this organization indicates to the individual physician's patients and fellow citizens that he takes his responsibility to them and to his profession very seriously. Dr. Kleeberger, in his 31 years in Spearman, has practiced with this responsibility as an obligation to his patients.

North Plains International To Have Open House

North Plains International, Inc. invites everyone to their open house on Thursday, March 22. The open house will begin from 7 a.m. to 5 p.m. with a pancake and sausage meal served for breakfast and lunch. Donuts and refreshments will be served all day.

The latest in farm equipment will be on display for the open house. The abundance and technology of agriculture today overshadows the basics of man's oldest yet most modern occupation according to Dick Elbert North Plains International Inc. "AG Day (Agriculture Day) will be observed on March 22 this year. It highlights American agriculture, the most productive food factory in the world", Elbert said.

Hospital News

Patients in Hansford Hospital are Emma Lopez, Mildred Chamberlain, Blanche Tabor, Mary Hanson, Essie Burkhardt, Shirley Buzzard, Bruce Bruning, Margie Barkley, Josephine Doores, Lois Miller, Floye Largent, Virginia Sparks, Velma Shoemaker, August Lesterance and Leslie Scott.

Dismissed were Maria Avila, A.F. Holland, Mamie Dry, Etta Van Der Straeten, Claude Owens, Patty McGurie, Judy Reed, Bryan Dillow, DeNetta Booth, Lydia Spardlin, Misty Price, Velma Showmake, and A.F. Cook was transferred.

sors, all those in the food and fiber chain of agribusiness. Its primary purpose is to make non-farming consumers more aware of American agriculture, its achievements, and even more importantly, the challenges it faces in continuing to meet the world's food and fiber requirements," he said.

"Since only 4% of the American population now farm (the number was 85% in colonial days), it's easy to see why farm problems or issues generate little consumer interest. Food is simply taken for granted, and the farmer is not visible in the market."

"However, while only 4% of Americans are still farming, 4 out of every 10 non-farmer workers in the U.S. are employed by agribusiness. Agriculture, the total industry of food and fiber, involves millions, and is the nation's largest single employer," said Elbert.

"That's why," he said, "consumers must be made aware of such pressing farm issues as the shortage of capital, over-regulation, marketing restrictions, environmental pressures, misplaced blame for the inflationary food prices, shrinking farm land, and consumer groups running around with signs declaring... food is for people not for profit."

"We must get across that the farmer, to stay in business, must see the potential for profit. This gives him incentive to produce more. More production acts to drive prices down at the retail level. If there is no profit potential at forecasted prices, production will be reduced. This creates a shortage which drives prices up, then both the farmer and the consumer lose." the IH dealer said.

Frances Schmehr Services Friday

Memorial services for Mrs. Frances Schmehr, 70, who died Monday, will be held at 10 a.m. Friday at the Sacred Heart Catholic Church here with Father Ray Crosier officiating.

Graveside services will be at 3 p.m. Friday at the St. John's Cemetery in Spearville, Kansas. Mrs. Schmehr was born in Hanston, Kansas. She and her husband, Joseph, were married in Kansas Nov. 3, 1931. He died in 1973. She had lived in Spearman for two and a half years. She was a

member of Sacred Heart Catholic Church and Altar Society and the Ladies Auxiliary of Moose Lodge in Dodge City, Kansas.

Survivors include two sons, Don of Spearman and Kenneth of Sylmar, Calif.; two sisters, Mrs. Helen Kien of Riverside, Calif., and Mrs. Mary Hubbell of Omaha, Neb.; three brothers, Harold Stegman of Pico Rivera, Calif., Ted of Hemet, Calif., and George of Peoria, Ill.; four grandchildren and two great-grandchildren.



Candy Boxwell, Donna Thomas, and Laura Mackie are pictured above as they practice saving the life of a small baby, and a grown person. This is part of the American Heart Association program, given at the Hansford Library each week. If you suffer a heart attack, there is a good chance one of these cpr (CPR) students can save your life.

Including the following include Kirby Hargis, Pat Steele, Mike Owens, Clay Reid, Danny



Members of the "Animal House" fraternity (BRUCE MCGILL, TIM MATHESON, PETER RIEGERT, JOHN BELUSHI, THOMAS HULCE, STEVEN FURST and JAMES WIDDOES, (l to r) proudly display their fraternity "House," in this scene from "National Lampoon's Animal House," a Universal Release.



JOHN BELUSHI stars in "National Lampoon's Animal House," an outrageous new comedy about fraternity life, from Universal.

Greyhound Relays Results

GREYHOUND RELAYS 1979
TOTAL POINTS
HIGH SCHOOL

SPEARMAN - 59 Pts. - 5th Place

Mile Relay - Francis, Martin, Whitaker, Goff	3:45.9
440 Relay - Francis, Edward, Swenn, Goff	49.0
800 Run - Goff	2:08.1
120 HH - Martin	15.5
Brack	16.9
Whitaker	17.0
330 Int. H - Martin	41.5
Pole Vault - Hargis 9-6, 10-0, 10-6, 3rd	
Hager 9-6, 10-0, 10-6, Tie 5th	
Discus - Bridges 122*10** 3rd	
Ware	
Hargis 112** 6th	
Long Jump - Martin 19-1 5th	
High Jump - Martin 5'8** 6th	
Shot Put - Bridges 46-6 3rd	

GRUVER GREYHOUND RELAYS FINAL RESULTS 8th GRADE

440 Relay - Francis, Randal', Queen, Goodheart	50.5
880 Run - Cantu	2:32.8
Sandoval	2:34.2
440 Dash - Weakley	64.9
60 HH - Underwood	10.1
100 Dash - Randal	11.0
100 LH - Francis	13.4
Goodheart	13.9
220 Dash - Randal	26.1
Queen	27.7
1320 Run - Sheets	4:16.8
Pearcy	4:33.5
Long Jump - Francis	15-2 1/2
Queen	14-7
Garnett	14-0
High Jump - Queen	4-6**
Francis	4-6**
Discus - Tucker	22-1 48-5 48-10
Taylor	87-3 88-7 70-3
Millee	60-0 49-10 53-5
Shot Put - Taylor	29-11 29-10 28-2

GREYHOUND RELAYS FINAL RESULTS 7TH GRADE

440 Relay - Reed, Sutterfield, Nava, Pearson	52.4
880 Run - Nava	2:25
440 Dash - Lopez	68.5
Reed	71.0
60 HH - Sutterfield	9.85
Lopez	10.2
100 Dash - Pearson	11.6
Reed	13.3
100 LH - Sutterfield	13.8
Mile Relay - Laird, Smith, Moek, Gamblin 4th	4.47
220 Dash - Pearson	26.0
Nava	27.9
1320 - Flores	4:35.4
Renteria	4:42.2
McBroom	5:12.9
Discus - Guthrie 90-7 1st	
Hadan 66-8 5th	
Umphress	
Shot Put - Hanson 31-1 2nd	
Farris 26-5 5th	
Gomez	
Long Jump - Pearson 17-5 1st	
Turner	
Bulls	
High Jump - Pearson 4-2 2 5-0	
Sutterfield 4-2, 4-4, 4-8, 4-10 3 4-10	

#

"National Lampoon's Animal House," a Matty Simmons-Ivan Reitman Production for Universal release, opening at the Theatre, marks the entry into films of the National Lampoon - the most widely-read adult humor magazine in the world and consistently among the top three magazines read on college campuses in the U.S. and Canada.

The Lampoon has also received more than 900 art and editorial awards, including Columbia University's prestigious National Magazine Award in 1975. In 1975, the magazine also received the annual European Cartoonists Annual Award. Last year, the Art Director's League of America named a Lampoon cover as the best magazine cover of all time! The winning cover was a picture of a dog with a gun at his head. The legend underneath the picture read: "If you don't buy this magazine, we'll shoot this dog!"

The Lampoon's three successful forays into the world of the theatre include "Lemmings," which opened off-Broadway in 1973; "The National

Lampoon Show," which opened off-Broadway in 1976 and toured nationally for a year, and "That's Not Funny, That's Sick!," which toured in 1977.

On another front, The National Lampoon has earned Grammy nominations for three of its five record albums. Its latest album, "That's Not Funny, That's Sick!," was released in October 1977.

"The National Lampoon Radio Hour" was the most listened-to radio show in America until it was discontinued in 1975 only because of the energy drain on the writers. A new show, "The National Lampoon True Facts Hour," a news feature inspired by the magazine's "True Facts" column, started in October, 1977, on over 250 stations.

"National Lampoon's Animal House," a Matty Simmons-Ivan Reitman Production for Universal, stars John Belushi, Tim Matheson, John Vernon, Verna Bloom, Thomas Hulce and Donald Sutherland. Produced by Matty Simmons and Ivan Reitman, it was directed by John Landis from a screenplay by Harold Ramis, Douglas Kenney & Chris Miller.

"National Lampoon's Animal House," a Matty Simmons-Ivan Reitman Production for Universal release - despite a large cast, many locations, and dozens of period costume changes - was filmed in just 36 days, on location in Eugene and Cottage Grove, Oregon. The filmmakers achieved an amazing average of over 30 camera setups per day.

After a nationwide search for locations, the Eugene area was chosen because it had a beautiful college whose architecture could double for that of a northeastern U.S. campus where the outrageous comedy capers take place - but without the hazard of snow. Nearby was a fraternity row where adjacent Delta and Omega Houses could be established, and the town of Cottage Grove, whose main street provided the quaint setting for the climactic Homecoming Parade.

The exterior of a State Corrections Division's "halfway house" was given a dilapidated look by art director John Lloyd to turn its front into that of the Delta Tau Chi fraternity, the "animal house."

A real fraternity house next door was given expensive-looking furniture, a cocktail piano and a large dog, so it could become the affluent Omega Theta Pi House, the home of Delta's patronizing neighbors.

"National Lampoon's Animal House," a Matty Simmons-Ivan Reitman Production for Universal, stars John Belushi, Tim Matheson, John Vernon, Verna Bloom, Thomas Hulce and Donald Sutherland. Produced by Matty Simmons and Ivan Reitman, it was directed by John Landis from a screenplay by Harold Ramis, Douglas Kenney & Chris Miller.



DONALD SUTHERLAND plays a hip teacher and something of a guru, in Universal's hilarious new comedy, "National Lampoon's Animal House."

\$37.50 LABOR SPECIAL

JOHN DEERE LAWN & GARDEN MOWERS



HANSFORD IMPLEMENT COMPANY
P.O. BOX 518
SPEARMAN, TEXAS 79081
PHONE (806) 659-2712 or 659-2311

John Deere design, dependability, and dealers make the difference

- Change Oil
- Clean Air Cleaner
- Inspect Plugs
- Compression Test
- Inspect Points & Set
- Inspect Battery & Charge
- Inspect Starter
- Inspect Neutral Start Switch
- Inspect Throttle & Set R. P. M.
- Inspect P.T.O. Clutch
- Inspect Engine Clutch
- Inspect Transmission Shifting
- Inspect Brake & Lock
- Inspect Mower Belt
- Sharpen Blade
- Grease Machine
- Change Oil in Trans Axle

The Future of This Nation Rests on ... Youth in Agriculture

We Salute Today's Youth ... Tomorrow's 'Agri-Leaders'!

THE 4H CLUBS AND FUTURE FARMERS OF AMERICA NEED YOUR SUPPORT!

ATTEND...

The Hansford County Junior Livestock Show and Sale

Friday & Saturday March 16 - 17
Spearman, Texas

The Spotlight Is On The Annual

Junior Livestock Show & Sale



First National Bank

Perryton, Texas

WANT ADS

CAPROCK MONUMENT CO.
 Dealers of Georgia Granite, Georgia Marble, Colored Granite, & more.
 represented by
BOXWELL BROS. FUNERAL HOME
 519 S. EVANS
 659-3802

Hansford County Planned Parenthood
 265. Hauey
 659-2483
 Spearman
 Mon.-Fri.
 8 a.m. to 12 noon
 305-rtm

SERVICES

SERVICE: Pits cleaned, wet or dry. Dragline or loader. Also, dozer, grader, carry-all service. Les Roy Mitchell, 806-733-2384, Archer, Texas, 79040.

WILL DO ALL TYPES OF CARPENTRY WORK: Repairs, Remodels, Additions, Floors, Ceilings, Walls & Roofs Satisfaction Guaranteed.
 Call Tommy Reger
 659-3425
 659-2174

WINTER RATES
 Jan. thru March
 Steam Rinsevac Shampooer
 \$4.95 per day
 Call Gordon's Drug, 2141.
 After 7 p.m. & Sunday
 call 3437. 716 Cotter Drive

NOTICE
 Wallace Monument Co.
 Monuments, Curbings,
 Grave Covers
 Local Representative
LEONARD JAMESON
 659-3406
 20-rtm

Alcoholic Anonymous meeting 8 p.m. Friday, Home Demonstration Club building, 305 N. Bernice. Phone 659-3181 for information.

Al-Anon meetings 8 p.m. Friday, Home Demonstration Club building, 305 N. Bernice in back room. Phone 659-3181 for information. Ask for Al-Anon.

For Special Tours & Charters on Continental Trailways, check with Viola Graves at Bus Station 659-3446. Brochures, tickets available.
 17rtm-Tonly

Pee Wee's Plumbing Service Roto-rotoer, Acoustical Ceilings, Blown Insulation in walls and ceilings. 659-2811 or 659-3781.
 18-rtm

KIRBY SALES & SERVICE of Spearman, 912 S. Bernice. 659-2797.
 30-rtm

MISCELLANEOUS FOR SALE

FOR SALE: 1973 Ford LTD 2-door. Loaded. Call 659-2162 after 6 p.m.
 15-rtm

FOR SALE: 1972 Chrysler 4 door. Loaded. Also 1965 Ford Falcon 2 Door. Call 659-3684 after 5:00 P.M.
 18-rtm

FOR SALE: Stand By Electric Generators. Call Charles D. Smith, Perryton. 435-3781.
 95-rtm

FOR SALE: 3 Bed Room Double Wide Mobile Home. 1 1/2 Bath. Utility Room. Call 659-3292.
 85-rtm

STEEL BUILDING must be sold. Never erected. 50' x 70' \$7345. F.O.B. Fac. Call L.C. 806-622-0450.
 17-3tc

FOR SALE: 1968-95 John Deere Combine in good condition. Nearly new 357 New Holland Bale and Grain Grinder. Contact James Martin. 659-2716.
 16-rtm

FOR SALE: 1976 Suzuki GT500, excellent condition. Call Mark Sheets, 659-2085.
 17-8tc

FOR SALE: 1976 Buick Riviera, red with white landau roof. Fully loaded. Call 659-2678.
 17-4tc

FOR SALE: 1968, 2-door GranPrix Pontiac, Loaded, Call 659-2712. Also CJ-5 4 cylinder jeep engine complete.
 6t-c

FOR SALE: Wurlitzer Spinnet Piano, one 18,500 BTU Refrigerated Air Conditioner, one 10,000BTU Refrigerated Air Conditioner. Call 3283.
 16-rtm

YOURS FREE: 20 or more trees to be sawed down. Clean up and haul away. Call 2082.
 175-rtm

FOR SALE: 1975 Buick Regal. In good condition. Call 3648.
 175-2tc

FOR SALE: 1974 Vega, good condition. Call 659-2024
 175-4tp

XTRA NICE: 19 in. ChromaColor II Zenith Solid State T. V. on Pedestal Type Stand. \$160.00. Also new Colt Python 357 Magnum 6 in. Barrell. Best offer over \$400.00. After 5. 204 S. Archer.
 18-1tp

FOR SALE: 1976 NuWay Chateau Mobilhome, 14' x 76', 3 bedroom, 2 baths, lots of storage, central heat and refrigerated air. Masonite siding. Call 733-2872.
 18-2tc

FOR SALE: '78 Custom Ford Van with 8400 miles. Call after 6, 3982.
 18-2tc

FOR SALE: green gold velvet chair, \$100, king size bedspread, earth tones, like new \$75. Call after 6, 3384.
 18-3tc

FOR SALE: GE electric stove, self cleaning oven, in good condition. \$75. Call 3269.
 18-4tc

FOR SALE
 Extra Special 74
 Kawasaki 400; Good condition; sacrifice.
 Call 2924:3995

GARAGE SALE

GARAGE SALE: 1118 Linn Dr. Moving Sale Sat. & Sun. 17 & 18 - Sat. 9th 5 p.m. - Sunday 12 to 5 p.m. Sazuke-250 Console color TV. Carpet samples - Clothing-furniture & miscellaneous items.
 18-2tc

GARAGE SALE: Saturday, March 17, 2 matching twin beds, posturpedic Mattress & boxsprings, \$200.00; three drawer chest, \$25.00; four drawer chest \$30; 14 x 11 nylon carpet and pad \$25.00; 30 ft. of book shelves with standards and adjustable brackets, \$30.00. Set of Men's RAM Golf Club, other miscellaneous items. 1118 S. Barkley. Phone 2268.
 18-1tc

REAL ESTATE FOR SALE

Three bedroom, 1 bath home **FOR SALE.** Family room, patio, fruit trees, horse pen or large lot edge of town. Call 659-3027.
 17-rtm

FOR SALE: Brick and hollow tile building, 1500 square feet, on Main Street Corner. Central heat and refrigerated air. High traffic count, ideal for office, retail, or financial operations. Emmett R. Sanders Realtor. 659-2516, nights 659-2601.
 165-rtm

FOR SALE: Nice 3 BR home new central air & heat extra large corner lot. Fenced backyard. Reasonable. 301 Hazelwood. 659-2800.
 175-rtm

FOR SALE: 90 ft. by 140 ft. corner location across from Junior High School. Here is a combined dwelling, "ye olde shoppe", and rental investment good for tax shelter and as hedge against inflation.
 There is over 1600 square feet enclosed, 3 bedroom living quarters plus store-shop on south side, and there is a one room with kitchenette and bath rental in the yard.
 Must sell to settle estate; inquire today; exclusively with Emmett R. Sanders, Realtor, 659-2516, nights 659-2601.
 175-rtm

FOR SALE: Brick 3 bedroom house with garage, central heat & air & storage, 1010 S. Barkley, call 659-2390.

FOR SALE: 3 bedroom home on 100 ft. lot, nice southwest location, new quality throughout, neat and clean, central heat and refrigerated air. Look this one over, attractive price, and ready for you to move in. Exclusively with Emmett R. Sanders, Realtor, 659-2516, nights 659-2601.
 175-rtm

FOR SALE: Small tract just west of Spearman, surface only, contains 31.7 acres. Call for details, Emmett R. Sanders, Realtor, 659-2516, night 659-2601.
 11-rtm

FOR SALE: Best Commercial location in town, 150 ft. by 140 ft., at Kenneth and Barkley Streets. Included is immaculate two bedroom home with detached single garage and store-room. (Home and garage could be moved.)
 This corner location just across from Ideal and City Hall has high traffic count well suited for fast food franchise, retail merchandising, or office-financial location. Good investment for tax shelter and inflation hedge. Terms available if desired.
 Call today for appointment; exclusively with Emmett R. Sanders, Realtor, 659-2516, nights 659-2601.
 175-rtm

FOR SALE: Three bedroom home near high school, features central heat and refrigerated air, carpet throughout, tasteful interior decor with nice curtains and drapes that stay, ideal for the young family or retired couple. Just paint the exterior trim and have an attractive and charming home at a most reasonable price. Shown by appointment only. Exclusively with Emmett R. Sanders, Realtor 659-2516, nights 659-2601.
 175-rtm

FOR SALE: Nicely decorated 2 bedroom, 1 bath home, corner lot. Fenced backyard. Quiet neighborhood. Appliances optional. Call 3802.
 16-rtm

FOR SALE: 1976 NuWay Chateau Mobilhome, 14' x 76', 3 bedroom, 2 baths, lots of storage, central heat and refrigerated air. Masonite siding. Call 733-2872.
 18-2tc

FOR SALE: green gold velvet chair, \$100, king size bedspread, earth tones, like new \$75. Call after 6, 3384.
 18-3tc

FOR SALE: GE electric stove, self cleaning oven, in good condition. \$75. Call 3269.
 18-4tc

FOR SALE
 Extra Special 74
 Kawasaki 400; Good condition; sacrifice.
 Call 2924:3995

NOVICE

March 14th thru March 17th I will be open 4:30 p.m. to 6:30 p.m. **SPEARMAN BARBER SHOP**

HELP WANTED

LVN's needed, opportunity for advancement. Apply in person between 9 to 5, Senior Village Nursing Home, Hwy 83 South, Perryton, 435-5403.
 145-8tc

WANTED: Full time farm help. Experience in irrigation farming and cattle operation. Must be self-starter, drinkers need not apply. Call 806-733-2203 in Gruver for appointment.

HELP WANTED: Grain elevator superintendent and one general elevator employee. Two bedroom house and utilities furnished, group insurance. Start immediately. Call day or night 806-733-5067.
 16-rtm

The City of Spearman is taking applications for a dog-catcher. 40 hour week. Apply at Police Department.
 165-rtm

CUSTOMER SERVICES REPRESENTATIVE
 Seeking applicants with college degree experienced in customer contract. Should be able to work with construction and air conditioning contractors. Call Community Public Service Company at 435-4055.
 An Equal Opportunity Employer
 18-2tc

WANTED

I would like to do house-cleaning. Call 659-2150.
 17-rtm

LOST

LOST DOG: Part Dachsund and Chihuahua, light brown. Call 659-3938.
 18-2tc

TOOLKIT TO CLASSIFY

FOR SALE: 2-way Mobile Radio, MOTOROLA MOTRAC, 37.180 MHZ. All transistorized. Very little time on transmitter-used mostly on stand-by receiver. Ph: 659-2804
 18-2tc

CARD OF THANKS

Words cannot express my appreciation for the prayers, flowers, cards, phone calls and visits while I was in North West Texas Hospital in Amarillo. Everyone was so attentive while I was in the hospital and since returning home. May the Lord bless each of you.
 Mr. and Mrs. S. E. Ferrell

Lee and I would like to thank everyone for the beautiful cards, their prayers, phone calls, and many thoughtful things that were done for us, while I was in the hospital, and after I returned home. Words cannot express our appreciation.
 Mrs. Dortha Keys

LEGAL NOTICE

THE STATE OF TEXAS
 TO: The unknown Heirs, Legatees and Devisees of J.D. Hester, Deceased, Defendant, Greeting:

YOU (AND EACH OF YOU) ARE HEREBY COMMANDED to appear before the District Court 84th Judicial District of Hansford County at the Court-house thereof, in Spearman, Texas, by filing a written answer at or before 10 o'clock A.M. of the first Monday next after the expiration of forty-two days from the date of the issuance of this citation, same being the 2nd day of April, A.D. 1979, to Plaintiff's Petition filed in said court, on the 14th day of February A.D. 1979, in this cause, numbered 2619 on the docket of said court and styled J.D. Hester, Plaintiff, vs. Doris Marie Hester Beck et al. Defendant.

A brief statement of the nature of this suit is as follows, to wit:

A petition for declaratory judgment wherein the Plaintiff requests a declaratory judgment decreeing that certain property passing under Paragraph VIII of the Last Will and Testament of J.D. Hester, Deceased, said will being admitted to probate in Cause No. 957, in the County Court of Hansford County, Texas, is not subject to a limitation on alienation imposed in Paragraph IX of said will, and for other relief as set forth in said petition on file herein.

If this citation is not served within ninety days after the date of its issuance, it shall be returned unserved.

The officer executing this writ shall promptly serve the same according to requirements of law, and the mandates hereof, and make due return as the law directs.

Witness, Marie H. Gould, Clerk of the District Court (s) of Hansford County, Texas.

Issued and given under my hand and the seal of said court at Spearman, Texas, this 14th day of February A.D. 1979.

Marie H. Gould Clerk, District Court Hansford County, Texas.

"West Texas Home Health Agency d/b/a Panhandle Home Health Agency, 613 East First Street, Dumas, Texas 79029, Represented by Marciano Morales, #3 Briercroft, Lubbock, Texas 79412 (THFC File #AS78-0703-036) is scheduled to appear at a hearing at 9:00 a.m. on May 11, 1979, in the offices of the Texas Health Facilities Commission, 1600 West 38th Street, Suite 305, Jefferson Building, Austin, Texas, to present evidence in support of the application for a Certificate of Need to provide the new services of medical social services, home health aide, speech therapy and occupational therapy to residents of Armstrong, Carson, Collingsworth, Dallam, Deaf Smith, Donley, Gray, Hansford, Hartley, Hemphill, Hutchinson, Lipscomb, Moore, Ochiltree, Oldham, Potter, Randall, Roberts, Sherman, and Wheeler Counties presently served by the Agency. The Commission proposes to render a decision on the application on May 31, 1979.

A request to become a party to the application may be made by filing a sworn affidavit with the Commission using the format prescribed forwarding a copy by certified mail, return receipt requested, to the applicant and all other parties." Note: If no request to become a party or petition for hearing is timely filed with the Commission, the Commission may proceed without a hearing on the application for a Certificate of Need at any time after April 20, 1979, upon written request by the applicant.
 18-1tc

LEGAL NOTICE

Hansford County offers for sale by sealed bid, one used Model 170 Allis Chalmers Tractor, purchased in 1971. Bids will be received until 10:00 A.M., Monday, March 26, 1979.

The Court reserves the right to accept or reject any or all bids.

The tractor may be seen at Gruver, Texas by contacting B. J. Renner, Phone # 733-2695, Gruver, Texas.

ON CANCER RISK

BOSTON -- A study, conducted at the Veterans Administration Medical Center in East Orange, N.J., and published in the New England Journal of Medicine says safer, cleaner cigarettes developed by the tobacco industry mean today's smokers run less risk of lung cancer than those who lit up 15 years ago.
 18-2tc

VOLCANO ERUPTS

JAKARTA, INDONESIA -- Rescue teams battled poisonous gas and lava spewing from a volcano in central Java recently, trying to rescue bodies left by an eruption that officials said killed 175 persons and injured 1,000. More than 17,000 persons were evacuated from six villages.

REAL ESTATE

ED WHEELER

HOMES-FARM COMMERCIAL

906 King, Gruver, 3 bedroom, 1 bath, detached garage, fenced yard.

1006 S. Evans, 3 bedroom, 1 bath, new insulation and steel siding.

706 Steele Drive, 3 bedroom, den, 1 1/2 baths, fenced backyard.

1114 S. Haney - 3 bedroom, 1 bath with garage and fenced yard. Priced to sell.

Jerry Gee 659-3664
 Doris Beck 659-2618
 659-2074

OFFERED BY
 Emmett R. Sanders
 REALTOR

Dwelling and store building, small detached apartment, on wide lot, ideal for professional office-dwelling combined.

150' x 140' commercial, zoned heavy retail, with 2 bedroom home and detached garage, terms available.

Half section 11 miles west and 2 miles south of Gruver; about 240 acres irrigated, 80 acres grass. Custom built three bedroom brick home with 2500 square feet enclosed and amenities galore, free gas for household use. Supporting corrals, loading chute, outbuilding, eight inch irrigation well, half mile underground pipe, and tailwater pit.
 Farm lease on good adjacent irrigated section negotiable for purchaser of this property.
 Owner will carry paper on the 240 acres farm land with low down payment; purchaser is to obtain his own loan on the 80 acres grass, dwelling and appurtenances.
 EMMETT R. SANDERS
 REALTOR
 659-2516
 659-2601 (nights)
 345-rtm

WATERFOWL KILLED

PIERRE, S.D. -- Federal wildlife officials have recovered more than 1,000 dead mallard ducks and two dozen Canadian geese from the Missouri River in recent days. U.S. Fish and Wildlife specialists, said that most of the mallards suffered aspergillosis, a waterfowl disease caused by feeding on mouldy grain, usually corn.

BATAAN HEROINE DIES

ST. PETERSBURG, FLA. -- Lt. Col. Juanita Redmond Higgs, a Swansea, S.C. native and former Army nurse who served on Bataan and Corregidor in the early months of World War II, is dead. She was one of eight nurses to escape just before the surrender of the Philippine Islands.

TEXAS PRESS
 1977 ASSOCIATION
 PUBLICATION (USPS 509-660)
 SPEARMAN, TEXAS 79081
 213 Main Box 458 659-3434
 Published Weekly at 213 Main Street
 Spearman, Texas 79081
 Owner-Publisher.....William M. Miller
 Second Class postage paid at Spearman, Texas
 ANY ERRONEOUS REFLECTION UPON THE CHARACTER OF ANY PERSON OR FIRM APPEARING ON THESE COLUMNS WILL BE GLADLY AND PROMPTLY CORRECTED UPON BEING BROUGHT TO THE ATTENTION OF THE MANAGEMENT.
 SUBSCRIPTION RATE: Hansford, adjoining counties, combination with the Hansford Plainsman, \$16.40.
 Other parts, \$14.40.

For The Ultimate In STORM DOORS
 Custom Built, Designed, And In Colors To Fit Your Home....
 Contact Howard Moyer at
Only Aluminum Industries
 Gaymon, Okla. 114 W. 1st 405-338-6966 or 73942 338-6170

FOR SALE
 FOR SALE-Brick and hollow tile building, 1500 square feet, on Main Street Corner. Central heat and refrigerated air. High traffic count, ideal for office, retail, or financial operations. Emmett R. Sanders Realtor. 659-2516, nights 659-2601.
 165-rtm

SPRING IS RIGHT AROUND THE CORNER!

And we have got quite an inventory of new Pontiacs, Buicks, & GMC's coming in!

We have got to make room for them! The easiest way we know is to make some **SUPER DEALS** on the inventory on hand.

And, because of the demand for used cars this month we are really needing to trade for some more. We have got one of the best selections of new cars & trucks in the Panhandle.

Come On Out Today!
 We Need Your Business!!

HERGERT
 Pontiac, Buick, GMC

"The Best For Sales, Service & Body Shop"
 WE APPRECIATE YOUR PATRONAGE!!!
 Phone 806 659-3721 So. Hwy. 207 Spearman, Texas

Our Heritage of Faith

notes from Faith Lutheran Church

Often times I hear a person described as one who has no faith. After learning more about this person I discover that the original description of him is incorrect. The person is a man of faith, the problem is just where that faith is placed.

Each of us lives a life of faith. Every day we display our faith for all to see. As we drive through a green traffic light we have faith that the light going to other direction is red. When we sit down to eat we have faith that the food we eat will not poison us. Each day we display such faith.

The question is "Do we trust Jesus as much as we trust the traffic lights we use? Do we trust Jesus when he says that no one can come to the Father except through him? The writer

of the letter to the Hebrews tells us "Now faith means putting our full confidence in the things we hope for; it means being certain of things we cannot see. (11:1,2). May your life of faith be lived with faith in the living God who loved us enough to die for us.

Faith Lutheran Church worships at 9:00 Sunday mornings and has Sunday School for everyone at 10:00. All without a church home are invited to come worship with us at 11th and Bernice. The Church Council will meet Thursday evening after the Lenten service.

The Lenten Service will be at 7:30 Thursday and we will be looking at the life of Abraham and how "Abraham Gave Up A Lot."

Annual Mexican Dinner Planned

The annual Mexican Dinner, prepared by the Sacred Heart Altar Society of Sacred Heart Church, will be held Sunday, March 18 from 11:30 to 2:30 at the Parish Hall.

The menu will consist of

enchiladas, beans, Spanish rice, sopapillas, tostados, hot sauce, salad, dessert and tea or coffee. Prices for the meal are \$3.50 for adults, \$2.00 for children, age 6 under free.

Presbyterian Church News

Spearman Chapter O.E.S. Met

Bob Felder will be the speaker at the mid-week Lenten service on Thursday, March 15 at 7:30 p.m.

Area 1 of Palo Duro Union Presbytery will have a meeting on Saturday, March 17 from 9:30 a.m. to 2:00 p.m. at the First Presbyterian Church of Canyon.

There is a Sunday Church School class for everyone every Sunday at 9:45 a.m. with practical lessons for living in today's world form God's Word.

"Jesus in the Temple" will be the subject of Pastor Edward D. Freeman's sermon at the service for the public worship of God on Sunday, March 18 at 11:00 a.m. It is also Gideon Sunday and the work of the Gideons will be presented by a speaker from the Borger camp.

There is a warm Christian welcome awaiting anyone who attends any of the services and activities of the First Presbyterian Church.

Spearman Chapter 721 O.E.S. held a stated meeting Monday March 5 with March Arnold, Worthy Matron and Don Hendricks, Worthy Patron presiding. There were a total of 19 members being present.

Eight get well cards and one sympathy card sent. Chapter voted to have the concession March 24 when the Square Dance Jamboree will be held in Spearman.

Annie Allen received her 50 year pin. Betty Uptergrove and Francis and Dick Hudson received their 25 year pins.

The Altar was draped for J. Victor Jones of Amarillo, Worthy Grand Patron 1970-71. Refreshments could not be served at O.E.S. meetings so the ladies could help provide refreshments for the Texas Public School Open House March 5.

The next meeting will be April 2 at the Hansford Lodge Hall.

Hansford County Historical Commission Meet Held

The Hansford County Historical Commission met in regular session at the Hansford Library March 9 at 2 p.m. Fred Groves, president, called the meeting to order. After the minutes were read and approved, the treasurer's report was given and accepted.

The Commission is sponsoring an old car show for Hansford Roundup. Each old car entry will receive a small plaque with Hansford County and the Logo imprinted on it.

John Hutchison gave a report

on a grant the commission has applied for to help run the museum. The commission is now gathering information and county history to be published in the History Book.

Fred Groves suggested that the commission order an educational film from Heritage Council to be shown to groups who request it. He will order it and report when it is available.

Ruby Saltness gave the report on Station Master's Museum for the month of February. She reported 56 persons toured the

museum during February. She gave a speech to the Twentieth Century Club March 8 on the museum and the Hansford History Book. She stated she would be available to other clubs and organizations to speak about the museum and History Book.

Work has begun on listing names and dates on the cemeteries. Several persons were appointed to work on different cemetery records around the county and surrounding area.

A report on letters mailed

was given by Juanita Pierce with 3059 having been mailed and 200 yet to be mailed.

The next meeting of the commission will be April 13.

Attending were Mr. and Mrs. L. B. Reardon, Melba Rasor, Mrs. Earl Riley, Mrs. Opal Hedgecock, Helen Boyd, John Hutchison, Freeman Barkley, Cleo Denman, Laverne Parks, Dixie Tracy, Ruby Saltness, Christine Brandvik, Rosalee Cator, Nell Evans, Roy McClellan, Jane Stedje, Clementine Renner, Fred Groves, Juanita Pierce and Grace Lyon.

Extension Clubs

The Spearman Home Extension met at the home of Altha Groves Friday, March 9 with president, Mrs. B. J. Garnett calling the meeting to order. The minutes of the last meeting were read and approved and Mrs. Reed gave the treasury report.

All members read the THDA prayer and the devotional was given by Altha Groves, "He Walks With Me and Talks With Me." Roll call was answered with "An Accident I'll Never Forget."

The Stock Show was discussed.

Those attending were Mrs. A. D. Reed, Mrs. B. D. Vaughn, Mrs. B. J. Garnett, Viola Hutton, Mrs. W. V. Hull, Bertha Tarbox, Colleen Shedeck, hostess Altha Groves, and guest Peggy Winegarner.

The next meeting will be Friday, March 23 in the home of Viola Hutton.

The Holt Home Extension Club met March 6 in the home of Mrs. Phil Jenkins.

The group planned a '42 and Potluck Party' for March 23 at the Holt School House.

Roll call was answered with "Something I Learned New This Year"

June Jackson presented the program on "Making Tote Bags '9 Purses'" from purchased place mats.

Present were Audeen Beck, Myra Berner, Trish Cook, Wren Holt, Louise Holt, Sue Holt, Georgia Holt, June Jackson, Mary Jo Jackson, Ruth Ann Jones, Grace Kirk and Jo Ella Jones.

The next meeting will be in the home of Mrs. Rex McCloy on March 20.

Bridge Club

Friday Night Bridge Club met Friday, March 9 in the home of Roy Flowers. Those attending were Messrs. & Mmes. Ted Godfrey, Albert Clark, Jimmy Greene and the hosts. High was won by the Clark's, second high was won by the Godfrey's and Traveling was won by Donetta Green. The next meeting will be Friday, April 13 in the home of Ted Godfrey.

Sacred Heart

Altar Society Meeting

The ladies of the Sacred Heart Altar Society held their monthly meeting Thursday, March 1 with Anita Sumner president, presiding.

Under old business, the plans for the Mexican Dinner, being held March 18, were finalized. Dinner will be served from 11:30 to 2:30. A pinata for the children will be broken at 2:00. We would like to invite all the children to stay and take part. For the adults there will be a fancy work booth.

The finishing touches were made on the World Day of Prayer program to be held at the Sacred Heart Catholic Church this year.

A thank you note from the Panhandle Children's Home was read, thanking the Altar Society for a donation given to them last month.

Proceeds from the tamale sale were announced. A word of appreciation was given by Father Ray to the ladies who worked so hard to make the sale a great success.

An announcement was made that the Sping Pampa Deanery meeting will be held March 19 in Borger. The theme being "Today's Child - Our Hope"

Four delegates - Anita Sumner, Mary Allan, Clementine Renner and Petra Lozano were selected to represent our parish. All the ladies of the parish are invited to attend this meeting. For more information please call Joan Far at 3589 or 3650.

A knitting demonstration was given by Joan Farr.

The meeting was closed with prayer led by Father Ray Croser.

Refreshments were served. Next month the hostesses are Selina Sintas and Pam Stork.

The good old days were rare in the good old days.

Collections are never as good as they should be.

Rho Rho Sorority Meets

Rho Rho Sorority met Thursday, March 8 in the home of Mrs. Sonny Windom with Jodie Rex acting as hostess.

They discussed the couples party set for Friday, March 16. The members decided to have a Fireworks stand again this year. They also discussed Founder's Day which will be held in April.

The program on "Art" was given by Janie Henton.

Those attending were Jackie Pearson, Karen Blodgett, Marilyn Cline, Susan Pearson, Candy Boxwell, Linda Brown, Debbie Clements, Janie Henton, Delinda McLaughlin, Sherry Moore, Lisa Pipkin, Linda Sanders, Karen Schnell, Dixie Smith and hostess, Jodie Rex.

The next meeting will be Thursday, March 22 in the home of Susan Pearson.

Tammy Janelle Receives Degree

Tammy (Mundy) Janelle graduated from WTSU in December.

She was one of forty-nine students picked for the Who's Who from over two thousand colleges by professors which include the students scholastic ability and campus activity with a 4.0 point average out of a 4.0 point average.

A short biography of these students will be listed in the 1979 Who's Who.

Tammy was listed on the President's Honor Roll with a 4.0 point average during her entire college semesters.

Tammy is the daughter of Mr. and Mrs. Lester Mundy of Victor, Colo. also the granddaughter of Mrs. Lucy Mundy of Radford, Va. and Mr. and Mrs. A. D. Sparks of Spearman.

Girl Scout

Girl Scout Troop #42 met Friday, March 9 at the Girl Scout Hut for their weekly meeting. The girls made hand puppets toward earning their Dabbler's Badge. Their projects are on display at Cumming's Refrigeration as the Girl Scout Display for Girl Scout Week which is March 12-17.

Refreshments were served by Mary Ann Evans to Shelia Brand, Angela Gaither and leader Georgie Gaither. The next meeting will be Friday, March 16 at the Girl Scout Hut with Angela Gaither serving refreshments.

Arts & Crafts Guild News

The Arts and Crafts Guild met Friday, March 6 at Martin's Steak Garden with Mrs. Garrett Allen as hostess. Those attending were Mmes. Deta Blodgett, Fred Daily, Guy Fuller, F. J. Hoskins, P. A. Lyon, Sr., Joe Traylor, Ned Turner and hostess, Mrs. Garrett Allen. The next meeting will be Friday, March 16 in the home of Mrs. Pope Gibner.

Attention Shriners

Hansford Shriners will have a free steak dinner for their monthly meeting at Bull's Inn at 7:00 p.m. Thursday, March 15th.

Xi Zeta Upsilon Meets

Xi Zeta Sorority met Thursday, March 8 in the home of Linda Butt with president Sharon Cook calling the meeting to order.

The club received a Thank You Note from Eulalia Blankenship.

They discussed Founder's Day. The committee will meet to make further plans.

Donita Lusby gave a report on the Celebration. The club will have the Beauty Pageant.

They voted on a name for West Texas Distinguished Women Award, and discussed having an activity for the Muscular Dystrophy Drive.

They nominated a woman for the Beta Sigma Phi Woman of the Year Award.

Marsha Pipkin was in charge of the program "Expanding Community" and Jim Benson, YMCA Director, was guest speaker. He gave a talk on the YMCA.

Those attending were Linda Latta, Mary Dixon, Mary Lou Mathews, Charlotte Jackson, Sharon Cook, Judy Nelson, Linda Venneman, Phyllis Collins, Lynna Renner, Mary Ann Lasater, Joan Vernon, Cindy Schneider, Linda Butt, Marsha Pipkin, Donita Lusby and Kari Lou Schuman.

The next meeting will be Thursday, March 22 in the home of Donita Lusby.

Never argue with friends over a nonessential.

LYRIC THEATRE

ONE SHOW
SUNDAY, MONDAY, TUESDAY,
WEDNESDAY, AND THURSDAY
AT 7:30 P.M.

TWO SHOWS
FRIDAY AND SATURDAY
AT 7:00 P.M.
AND 9:00 P.M.

PHONE 806-659-2812

NOW SHOWING

It was the Deltas against the rules... the rules lost!

NATIONAL LAMPOON'S ANIMAL HOUSE
A comedy from Universal Pictures
THE MATTY SIMMONS - IVAN REITMAN PRODUCTION
NATIONAL LAMPOON'S ANIMAL HOUSE. Story by JOHN DELUSHI. TIM MATHESON. JOHN VERNON. VERA BLOOM. THOMAS HULCE and DONALD SUTHERLAND. A comedy. Produced by MATTY SIMMONS and IVAN REITMAN. Music by ELMER BERNSTEIN. Written by HAROLD RAMIS, DOUGLAS KENNEDY & CHRIS MILLER. Directed by JOHN LANDIS. Song ANIMAL HOUSE. Composed and Performed by STEPHEN BISHOP.

NEXT ATTRACTION

The most Magical one of all

You'll be WITCHED... you'll be DAZZLED!

ANGELA LANSBURY DAVID TOMLINSON
WALT DISNEY PRODUCTIONS
Bedknobs and Broomsticks

MARCH 23 THROUGH MARCH 27

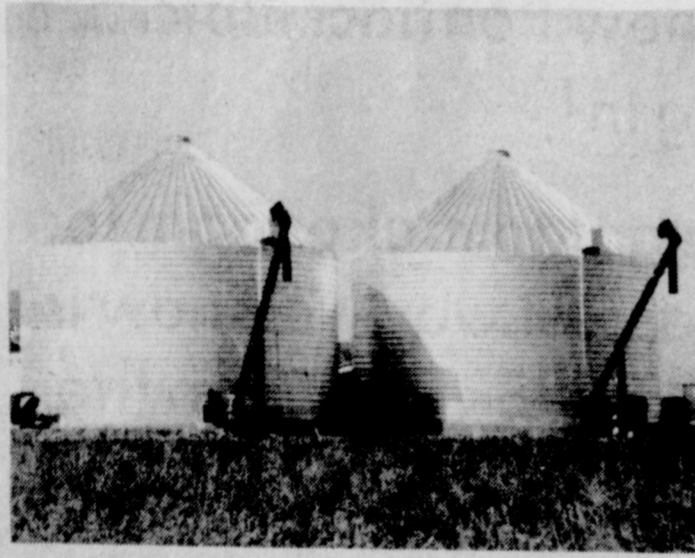
PELICULAS MEXICANAS

"NINOS MARCELLA"

MARCH 16 THROUGH
MARCH 22

SUNDAY MARCH 18 AT 2 P.M.

A system to grow with.



Whatever your present needs or future plans, we'll build you the system to start with and stay with. Behlen.

And we can show you how to take advantage of 7% simple interest, low down payment, investment credit, 8 year payback and 1 year's grace period to give you increased market flexibility.

See us for professional design and construction services. We wouldn't stake our reputation on any other system.

Do it right. Call Hallmark Builders collect at 806-355-9223.

HALLMARK BUILDERS, INC.

8222 CANYON DRIVE AMARILLO, TEXAS

Behlen builders do it right.



20 FHA Members Attend Area Meet

by Criselda Vela

Twenty members of FHA, both chapters, were eligible to go to the Area Meeting at Lubbock. The members were: Kathy Hagerman, Stacey Thomas, Karen Kenney, Janet Oltman, Sandra Lozano, Shelley Friemel, Melissa Davis, Shelley Mitchell, Adelaide Vela, Becky Byees, Hope Barnes, Joyce Cummings, Judy Farmer, Orfelinda Vela, Cathy West, Angela Lesly, Rhonda Morrison, Sharon Bowling, Barbara Oltman, and me, Criselda Vela.

The choir members; Cathy West, Angela Lesly and Hope Barnes, left at 8:30 in the morning with Mrs. King. Getting a blow-out is scary isn't it? Well, the choir girls will agree that it is real scary! The rest of us left at 2:30 P.M. and got in Lubbock at 6:30 p.m. We left on the Lynx bus with Mr. Cunningham driving and Mrs. Cunningham keeping tab on how many girls were on the bus.

We stayed at La Quinta arriving there at 6:30 and got settled in and got ready to go to South Plains Mall to shop and eat. We went back to the hotel at 9:00 and went to Mrs. King's room to get a ticket because if we didn't have tickets we couldn't enter in any workshops. Everyone went to two workshops; one at 8:00 and the other at 9:00 a.m. on Saturday.

The workshops that I went to were: 1. The Handicapped Child and 2. "Nobody Like a Put Down." The first workshop

was real neat. First of all we met Dr. Mary Tom Riley from Texas Tech University who showed us three movies about Laton, a Handicapped child from Lubbock. She told us that she had to choose from five states; Louisiana, Arkansas, Texas, Oklahoma and New Mexico, one child to make a documentary. Well Laton just shined through all the rest of the kids and they chose him. Like Dr. Riley said, "You'll fall in love with him the moment you see him."

She was right. He was an adopted little child who had been thrown in the trashcan which, supposedly, hurt his spine and he now uses leg-braces. The three movie reels, showed me a lot about Handicapped children that they are like everyone else except for that one little handicap that makes him different. Laton, the Projects name, also is a beautiful little boy who is so special to anyone that sees his courage shine through his loveable smile. The five states were (L)ouisiana, (A)rkansas, (T)exas, (O)klahoma and (N)ew Mexico, where Head Start is. Have you noticed anything? The first letter of those five states spell LATON! Isn't that neat! Laton was going to come and meet us Saturday, when we were at the workshop, but he had to be operated on his head to remove the fluid. Laton still told Dr. Riley to tell us "Hi" from him. I would love to have met him in person.

The second workshop that Shannon, Judy and I went to was called "Nobody Likes a Put Down." Mrs. Judith Haubrick was the speaker. She told us to get a partner and then we bragged about ourselves to each other. After this we again got partners but this time, we got strangers as partners and still bragged about ourselves again. She gave us these questions to ask people who put us down. They were: What did you say? Could you say that differently? And Can I help you? She told us that we would get smart alecs but we'd also make them feel foolish because of what they said.

After our workshops, we, all of the FHA members, went to the Lubbock Municipal Auditorium for the General Session. 1,800 members were in the auditorium. That meeting lasted from 10:30 to 12:30. After the installation of the new Area officers we left for the South Plains Mall to do last minute shopping and to eat dinner also.

By the way, Cathy West, Spearman; and Karrie Ramsey, Perryton; made All-State Choir and Gammin, Gruver; is now our Area I Vice-President of Recreation. Congratulations to these area girls.

We were supposed to have been home in Spearman at 6:00 p.m., but one of the girls got lost in either J. C. Penney store or Sears, and we finally found her forty minutes later. We arrived in Spearman at 6:45. All in all we had a great time.

WE URGE YOU TO SHOW YOUR SUPPORT OF OUR YOUTH

By Attending The Junior Livestock Show & Sale

the Date March 16-17, 1979

FIRST STATE BANK
SPEARMAN, TEXAS 79081

St. Patrick's Day

St. Patrick, the patron saint of Ireland, died on March 17, 493. The anniversary of his death has been celebrated regularly in recent times, not only by Irishmen but by those of other races, and not only by Catholics but by those of other faiths.

In fact, the New York organization in memory of St. Patrick, the Friendly Sons of St. Patrick, was organized by both Irish Catholics and Presbyterians, its first president was a Presbyterian.

The most famous tale about St. Patrick is the one of his banishment of snakes from Ireland. Yet Cardinal Moran, who some years ago wrote an article on St. Patrick for the Catholic Encyclopedia, fails to mention it. He does mention the ordeal of St. Patrick when surrounded by demons and tells of the drowning of the demons in answer to his prayers.

Whatever one's favorite tale, and there are many, people enjoy celebrating the anniversary of the death of St. Patrick this month. Irishmen, particularly, take pride in the occasion, and in the past have sometimes brought pieces of the "ould sod" from Ireland to observe the day.

Let the child's first lesson be obedience, and the second will be what thou wilt.
-Benjamin Franklin.

SHOP NOW WHILE SUPPLY LASTS!!

ALLSUP'S CONVENIENCE STORES

PRICES EFFECTIVE MARCH 15-18, 1979

FOOD FESTIVAL

ALLSUP'S ICE CREAM 1/2 GAL. RD. CTN. \$1.29	BORDEN'S DIPS AND SOUR CREAM 2 8 OZ. CTNS. 89¢	BORDEN'S CHOCOLATE MILK QT. 59¢
CRISCO SHORTENING 3 LB. CAN \$1.69	PILLSBURY SWEETMILK BUTTERMILK BISCUITS 10 7 1/2 OZ. CAN \$1.00	KRAFT AMERICAN PIMENTO CHEESE 8 OZ. PKG. 79¢
SHURFINE MEAT OR BEEF FRANKS 12 OZ. PKG. 89¢	SHURFINE MEAT OR BEEF BOLOGNA 12 OZ. PKG. 89¢	SHURFINE BACON 1 LB. PKG. \$1.39
SHURFINE 2 PLY ASST. BATHROOM TISSUE 8 BOLL. PKG. \$1.39	SHURFINE BLEACH GAL. JUG 69¢	SHURFINE CANNED STYLE TUNA 5 1/2 OZ. CAN 69¢
SHURFINE STRAWBERRY PEACH OR PLUM PRESERVES 16 OZ. JAR 79¢	SHURFINE YELLOW GLOBE HAL./SLIC. PEACHES 2 16 OZ. CANS 99¢	SHURFINE CO./WK. GOLDEN CORN 3 17 OZ. CANS 99¢
SHURFINE WHOLE IRISH POTATOES 3 16 OZ. CANS 88¢	SHURFINE WHOLE PEELED TOMATOES 3 16 OZ. CANS 99¢	SHURFINE PINK SALMON 16 OZ. CAN \$1.49
SHURFINE MACARONI & CHEESE DINNERS 5 7 1/2 OZ. BOXES 99¢	SHURFINE PORK AND BEANS 4 16 OZ. CANS 99¢	SHURFINE FLOUR 5 LB. BAG 55¢
SHURFINE EARLY HARVEST SWEET PEAS 2 17 OZ. CANS 99¢	SHURFINE BLACK PEPPER 4 OZ. CAN 69¢	SHURFINE LIGHT CORN SYRUP 49¢
SHURFINE NAPKINS 160 CT. 19¢	SHURFINE MACHINEMALLOW PEANUTS 2 7 1/2 OZ. BAGS 89¢	SHURFINE FRUIT COCKTAIL 2 10 OZ. CANS 99¢
SHURFINE SALTINE CRACKERS 2 16 OZ. BOXES 99¢	SHURFINE VANILLA WAFERS 10 OZ. BAG 35¢	SHURFINE COUNTRY/CREAMY PEANUT BUTTER 12 OZ. JAR 69¢
SHURFINE ORANGE JUICE 5 CANS 99¢	STORE SPECIAL	
KRAFT REG. TOFFEE FUDGIES CARAMELS 14 OZ. BAG 49¢	PARKAY OLEO 1 LB. QTRS. 4 FOR \$1	BORDEN'S COTTAGE CHEESE 24 OZ. CTN. \$1.19
FOLGER'S ALL BRINDS COFFEE 1 LB. CAN \$2.19	RATH'S PURE PORK SAUSAGE 1 LB. ROLL 89¢	SHURFINE CATSUP 32 OZ. BTL 59¢

While you are in town for the Junior Livestock Show come in and see the St. Patrick's Day Specials.

9:00 to 5:30

JG's

300 Main Spearman

Thousands of Chimney Fires Annually Due To Dirty Flues.

"Make Your Home Safer From Fire....

Call Ron, The Chimney Sweep

Tues.-Fri. 405-338-3023

Sat.-Mon. 806-733-2040

Meeting scheduled Mon. for Operation Peace of Mind

The Perryton Jaycee-Ettes will launch a Perryton stop for a nation-wide program for runaways, Operation Peace of Mind, with a community meeting to be held at 7:30 p.m. Monday in the Community Room of the First National Bank. There will be a panel discussion and a film will be shown.

Operation Peace of Mind is a national runaway hotline operated out of Houston and designed to act as a liaison between runaways and their anxious parents. A runaway can call Peace of Mind toll-free and have a message relayed to his family.

Peaches Goldsberry, Jaycee-Ette chairperson for the program, said that Operation Peace of Mind will stay in the community as long as there is interest and support. The Jaycee-Ettes are encouraging businessmen, civic groups, members of Perryton churches and other interested persons to

attend the Monday night meeting. Serving on the panel discussion at the meeting will be Howard Stone, Joe Hannon, Jimmie Rhoades, Mrs. Bob Bond and Jim Morris. Peace of Mind is operated by the First Lady's Volunteer Program, a division of the governor's office. The telephones are answered seven days a week, 24 hours a day by volunteers from the Houston area. Volunteers donate thousands of hours yearly to help runaways who use this free service. According to Mrs. Goldsberry, the idea of Operation

Peace of Mind might really be meaningful in Perryton. Because of the close proximity to Colorado we enjoy in Perryton, there is a real possibility that a good number of runaways pass through here from the South.



Junior Livestock Show & Sale

COUNTY BARN, SPEARMAN

Program

FRIDAY

March 16, 1979

Weighing will begin on the following schedule
8:00 a.m. - 10:00 a.m. Swine & Sheep
10:00 a.m. - 12:00 Noon Steers

Show Schedule - Friday, March 16, 1979
1:45 p.m. Grand Opening of Show



PRICES EFFECTIVE THRU MARCH 21, 1979. QUANTITY RIGHTS RESERVED. NO SALES TO DEALERS.

PRICES GOOD 7-DAYS

The special prices in our major food ad are good for 7 full days... so you save, no matter when you shop!

DOUBLE TRIPLE PLAY - DOUBLE PAY TICKETS THRU MARCH 20TH 1979

FRESH DRESSED Fryers



HUDSON'S HIGH GRADE

59¢ LB.

HUDSON'S U.S.D.A. GRADE "A" **Cut-Up Fryer** .LB. **69¢**

FRESH GRADE "A" FRYER **Breasts** RIBS ATTACHED **\$1.09** LB.

FRESH FRYER THIGHS OR **Drumsticks** GRADE "A" **99¢** LB.

FRESH FOR ST. PATRICKS DAY **Corned Beef**

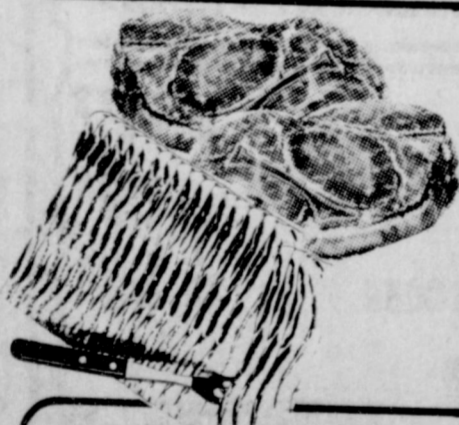
\$1.99

LB. 1/2 TO 3-LBS. AVERAGE

FRESH **Ground Chuck**

\$1.79

EXTRA LEAN 3 TO 5-LB. PACKAGE



FRESH PORK SHOULDER **Pork Boston Slices** **\$1.59** LB.

HICKORY SMOKED SLAB **Sliced Bacon** RANDOM WEIGHTS **\$1.19** LB.

WILSON'S CERTIFIED **Canned Hams**

3 \$5.98

LB. CAN

FULLY COOKED

EMPIRE OR RED DIAMOND **Young Turkeys**

69¢

LB.

RODEO MEAT BY THE PIECE **Bologna** **\$1.39** LB.

RODEO SKINLESS **Franks** MEAT OR BEEF 12-OZ. PKG. **\$1.09**

RODEO RANCH 'N' RAIL **Sliced Bacon** 1-LB. PKG. **\$1.49**

RODEO SLICED **Bologna** MEAT OR BEEF 12-OZ. PKG. **\$1.29**

RODEO RANCH 'N' RAIL SLICED **Bacon** 2-LB. PKG. **\$2.97**

PRE-COOKED RANDOM WEIGHT **Fish Sticks** LB. **79¢**



ALL-FLAVORS

Jell-o

GELATIN

593¢

3-OZ. BOXES



SOFT 'N' PRETTY BATH

Tissue

488¢

ROLL PKG.

LIMIT 2

KRAFT JET PUFF **Marshmallows** 10-OZ. BAGS **2 73¢**

KRAFT MILD AMERICAN **Spaghetti Dinner** 8-OZ. BOX **41¢**

HUNT'S **Tomato Sauce** 8-OZ. CANS **5 93¢**

HUNT'S **Tomato Paste** 8-OZ. CANS **3 93¢**



LIMIT 3



CHICKEN OF THE SEA

Tuna

68¢

OIL OR WATER

6 1/2-OZ. CAN



KRAFT MAC & CHEESE

Dinner

3 87¢

7 1/4-OZ. BOXES

LIMIT 3 BOXES

DURKEE IMPORTED **Oregano** GLASS JAR 1/2-OZ. **59¢**

DURKEE CRUSHED **Red Pepper** 1 1/4-OZ. CAN **73¢**

DURKEE STUFFED MANZANILLA **Olives** 5 1/4-OZ. JAR **89¢**

SHOP IDEAL WHERE YOU GET GUNN BROS.

Blalock to head women's team at team at Kilgore College

Evelyn Blalock, who coached basketball in Perryton in 1961-62, has been chosen to organize the new women's basketball program at Kilgore College, Longview, and will coach the team.

The KC women's team will participate in the Texas Eastern Athletic Conference, competing against Paris, Tyler, Panola County, Henderson

County, Angelina County and Navarro Junior colleges. Their schedules will parallel the men's schedules and the women will play the first game of the double header schedule. Miss Blalock is the daughter of Mr. and Mrs. Hulon Blalock of Hallsville, Texas, and is a graduate of Hallsville high school. She attended Kilgore College and earned the B.S. and

M. Ed degrees at East Texas State University. She taught education, physical education and health at Foster junior high in Longview and then went to Perryton where she coached basketball and tennis, earning regional honors for the latter. She left Perryton for White Oak where her basketball, volleyball and tennis teams won

district, regional and state honors. She has been a Kilgore College instructor for 14 years and has been the tennis coach. She has never had a losing tennis team, and at Kilgore has always won first or second in the conference.

Miss Blalock will have 12 basketball scholarships to offer women players in the first year of organizational effort to establish a women's basketball program at the junior college.

Penn State football coach Joe Paterno originally planned a career in law or politics.

Kraft new Postmaster at Lipscomb

Sectional Center Manager-Postmaster C.T. Davis of Amarillo, Texas today announced the appointment of A. La Vaun Kraft as the new Postmaster at Lipscomb, Texas effective Saturday, March 10, 1979.

Postmaster Kraft, age 35, is a native Texan. She and her

husband are long-time residents of the Lipscomb community. Postmaster selections for offices of this size are made on the basis of merit from a list of qualified candidates submitted to the Sectional Center Manager at Amarillo. He selects and recommends to the Postmaster General the best qualified person for appointment to each vacancy.

Postmaster Kraft entered the postal service at Lipscomb in 1974 and has served as a postal employee in Lipscomb and Higgins since that time.

Dean Bouldin is appointed at McMurry

Dean Bouldin has been appointed Director of the Office of Admissions at McMurry College by Dr. Thomas K. Kim, McMurry president.

He succeeds David Dillman who resigned in February after serving in admissions since 1972.

Bouldin joined that office in the McMurry administration in

1976 after earning his bachelor of arts degree in sociology with a minor in psychology with McMurry in August.

Bouldin is a member of St. James United Methodist Church where he is serving as coordinator of youth activities. The new director is a 1973 graduate of Borger High, where he played football and baseball as well as making the National Honor Society. His parents are Mr. and Mrs. Clyde Bouldin of Perryton.

Ivan VI, Czar of Russia who ruled only as a baby, was murdered in 1764.

WIN UP TO 2,000.

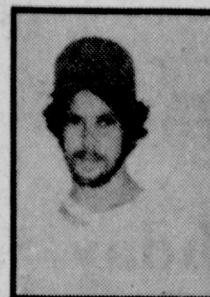
ODDS AS OF—February 24, 1979

10,000**	8	357,717	228,848	11,824
11,000**	13	185,100	11,507	5,503
1100**	70	30,861	2,044	1,022
100**	144	14,905	984	487
10**	229	9,372	625	312
1000*	451	4,759	317	159
100*	886	2,177	145	73
10*	2,040	1,052	70	36
1*	17,295	524	32	16
TOTAL NO. OF PRIZES	21,234	101	6,76	3,24

PLAYING TRIPLE PLAY-DOUBLE PAY BINGO



ANN LEWIS \$1,000



MIKE ADAMS \$100



VIRGINIA MARTIN \$100

PERRYTON WINNER RAYE TRAPP \$100

CARDS #1, #2, #3 NOW AVAILABLE TO PLAY!



HUNT'S STEWED OR WHOLE

Tomatoes 279¢

15-OZ. CANS



HUNT'S

Ketchup 82¢

32-OZ. BTL.



FRESH Pineapple 59¢

SWEET JUICY MEXICAN EACH

FRESH CALIFORNIA Avocados 3\$1 FOR

PURE VEGETABLE Wesson Oil 219¢

48-OZ. BTL.

FOR SPAGHETTI Ragu Sauce 73¢

15 1/2-OZ. CAN

AMERICAN BEAUTY LONG Spaghetti 73¢

24-OZ. PKG.

CRYSTAL WHITE OR LEMON Dish Detergent 89¢

48-OZ. BTL.

FRESH DAIRY

KRAFT Parkay Margarine 53¢

1-LB. QTRS. LIMIT 3

FROZEN FOOD

FROZEN ALL FLAVORS Jeno's Pizza 88¢

LIMIT 3 13 1/2-OZ. PKG.

KRAFT GRATED Parmesan 158¢

8-OZ. CAN

BIRDSEYE Cool Whip 58¢

8-OZ. CTR.

KRAFT CASINO MONTEREY JACK OR CARAWAY Cheese 98¢

8-OZ. PKG.

TREE TOP Apple Juice 79¢

12-OZ. CAN

CAMELOT Cottage Cheese 98¢

24-OZ. CTR.

SARA LEE GERMAN Chocolate Cake 143¢

14-OZ. BOX

MEADOWDALE — ALL FLAVORS Ice Cream 98¢

1/2-GAL. CTR.

GREENHEADS Fresh Cabbage 29¢

FOR ST. PATRICK'S DAY LB.

FRESH CALIFORNIA Crisp Carrots 259¢

LB. BAG

RED RADISHES OR FRESH SPRING GREEN Onions 39¢

BUN. FOR

FLORIDA VALENCIAS Oranges 5169¢

LB. BAG

HEALTH & BEAUTY AID SPECIAL

STAYFREE REGULAR Maxi Pads 89¢

12-CT. PKG.

J & J PLASTIC STRIPS Band-Aids 69¢

50-CT. PKG.

JOHNSON & JOHNSON COSMETIC Puffs 89¢

260-CT. BAG

STAMPS DOUBLE ON WED. & SAT.

Ideal FOOD STORES

Food Stamps Buy More At Ideal...





To Rube Faus

Happy Birthday, Daddy on your 75th Birthday

GUYMON, OKLAHOMA - CATTLE AUCTION MARKET - NEWS - LETTER

FRIENDS AND CATTLEMEN:

Friday, March 9th, was a very good day for the cattle auction in Guymon. A good attendance of buyers and sellers were on hand to take in the action. The auction started at 11:00 a.m., and was over by 5:30 p.m. A total of 1907 cattle and calves changed ownership through the arena.

Approx. 150 cows were in the numbers offered, with packer cows selling for a top of \$60.50 per cwt, preg. and blood tested cows were in good demand with not too many outstanding cows offered.

Approx. 1,000 light weight replacement cattle were in the numbers offered, with a steady to stronger market on all classes offered. Some representative sales are as follows:

- 4 W.F. STEER CALVES - WT. 357# - PRICE \$128.00 PER CWT
- 3 W.F. STEER CALVES - 420# - \$115.00 PER CWT
- 12 W.F. STEER CALVES - 428# - \$108.00 PER CWT
- 11 MIXED STEER CALVES - 325# - \$110.50 PER CWT
- 23 MIXED HEIFER CALVES - 402# - \$91.50 PER CWT.
- 16 W.F. HEIFERS - 393# - \$99.00 PER CWT.
- 6 W.F. HEIFERS - 285# - \$107.50 PER CWT.
- 43 W.F. & BLK. W.F. CALVES - 511# - \$101.20 PER CWT.
- 7 W.F. STEER CALVES - 468# - \$104.50 PER CWT.

The balance of our cattle at last Friday's auction were feeder steers and feeder heifers. A steady to strong market prevailed through out. Some representative sales are as follows:

- 75 W.F. HEIFERS - WEIGHT 598# - PRICE \$81.90 PER CWT.
- 86 CHAR. CROSS HEIFERS - 582# - \$82.40 PER CWT.
- 25 W.F. HEIFERS - 524# - \$81.70 PER CWT.
- 39 BLK. & BLK. W.F. HEIFERS - 656# - \$80.00 PER CWT.
- 15 BLK. & BLK. W.F. STEERS - 596# - \$94.75 PER CWT.
- 13 CHAR. & CROSS STEERS - 719# - \$87.60 PER CWT.

For Friday, March 16th, we are expecting a nice run of cattle of all classes. If you have cattle you need to sell, be sure and give us a call here at the Panhandle Livestock Commission Company and ask for Bill Blackmore. The auction next Friday will start at 11:00. If you need Preg. & Blood Tested Cows, cow and calf pairs or light weight grass cattle, be sure and be here for this auction. Make the Guymon cattle auction your cattle headquarters.

SINCERELY,
BILL BLACKMORE

PANHANDLE LIVESTOCK COMMISSION CO.
Guymon, Okla. 73942 • 405-338-3378 • P. O. Box 879

W.I.F.E. Meeting Held

W.I.F.E. met Tuesday, March 6 at 10:00 a.m. at Martin's Steak Garden with Barbara McClellan presiding. Minutes of the last meeting were read and approved and treasury report was given.

Bills for stamps, and material run off at the library and the salad luncheon were presented. Georgia Holt made a motion to pay bills, Helen Boyd seconded and it passed.

Helen Boyd was asked to be Prayer Chairman and accepted. Barbara McClellan reported on the new magazine "Today's Women in Agriculture" and announced to subscribers that they will be receiving their issues soon. The first issue contains an article about Georgia Holt.

Discussion was held on collecting \$50.00 worth of household items to be sold in a \$500.00 Raffle. Each chapter will be donating to this. This will be the March money making project for the State wide expanded. Ginger Turner read the motion for Chapter to donate to this. Molly Turner seconded and it passed. Tickets will be available for this in the near future. Dodie Beedy and Molly Turner were appointed to decide what items this chapter will send.

Georgia Holt reported on a meeting about Gas Priorities at the Hilton Inn in Amarillo March 9.

Members were reminded about the State Steering committee Meeting March 10 in Plainview.

It was reported that Agriculture Secretary Bob Bergland will be in Lubbock where water will be discussed.

The ladies discussed having one night and one morning meeting each month. Georgia Holt made motion and Dodie Beedy seconded. Helen Boyd amended it to have the next two meetings in the evening (March 20 and April 3) to get on original schedule of first meeting of the month at night and second meeting in the morning. Evening meeting will possibly be at the County Barn. Sonya Godfrey seconded amended motion and it passed.

Discussion was held of loading Scrap iron and taking it to Amarillo.

Meeting was adjourned. Those attending were: Barbara McClellan, Dodie Beedy, Georgia Holt, Molly Turner, Clementine Renner, Patty Spoonmore, Helen Boyd, Ginger Turner, Sonya Godfrey, and Jean West.

The next meeting will be Thursday, March 20 at 7:30.

COFFEE PRICES DOWN

NEW YORK -- The nation's three largest coffee companies have cut wholesale prices on ground coffee by a nickel a pound, continuing an 18-month-long decline due in large part to increasing production in Brazil and other countries.



NOW AVAILABLE FROM North Plains International at Hwy. 207 are International Harvester's new Series 88 "2+2" tractors, which the company terms "a breakthrough in row-crop tractor design." The two models are articulated, four-wheel drive tractors with operator's Control Center mounted rear of the articulation joint, unique to the North American Ag equipment industry. The 3588 features 150 pto horsepower, while the 3388 has 130 pto hp.

ON SALT TREATY

President Carter said that the turmoil in Iran and Southeast Asia demonstrates dramatically the need for a new U.S.-Soviet arms treaty, and vowed he will not let peripheral issues stand in the way of agreement on the pact.

Ebrahim Yazdi, Iranian Deputy Prime Minister: "Iran will resume oil exports very soon."

TIM MATHESON AS OTTER LEADS "ANIMAL HOUSE"

"We're college students - we can do anything," Tim Matheson proudly boasts in the outrageous campus comedy, "National Lampoon's Animal House," a Matty Simmons-Ivan Reitman Production for Universal release. As Otter, the cool, hedonistic leader of a rowdy fraternity, circa 1962, Matheson leads his "animal house" brothers in a series of wild adventures reminiscent of the highly-popular "screwball" comedies of the Thirties.

This cool, wry and unflappable character provides the charming, talented Matheson with a star-making variety of attitudes and activities - from motel trysts and tongue-in-cheek speeches to sophisticated bedroom farce and colorful slapstick action.

In the course of the lively story, the "animals" sabotage the ROTC, fraternize with the dean's wife and the mayor's daughter, throw a wild toga party, put a horse in the dean's office and demolish the gala annual homecoming parade.

Kenney describes Otter as a classical "make-out" artist with "a strange gentleman's streak."

He speaks up for the "losers" in the house, talks back to the tyrannical dean, lobs golf balls off a bully's ROTC helmet and defends the frat when it goes on trial as the result of the outrageous behavior of its members.

"He's not the chapter president, but he's the group's real leader," says Matheson, a young veteran of stage, films and TV. "He's not ambitious. He only steps in when things go too far."

When the frat has its charter revoked, Otter takes three pals on a "road trip" to a nearby girls' college. Posing as a bereaved fiancé, he cons his way into dates for all, ending up at a black cafe, where they find they are less than welcome.

"If he weren't a Delta," says Matheson, "Otter wouldn't be in a collegiate leader of the 'animals' fraternity at all. The only group he looks like the kind of rich, winning characterization that will help him graduate to movie stardom."

"National Lampoon's Animal House," a Matty Simmons-Ivan Reitman Production for Universal, semester in college "and hated it," stars John Belushi, Tim Matheson, John Vernon, Verna Bloom, Thomas Hulle and Donald Sutherland. Promoted from the classes, especially duced by Matty Simmons and Ivan Reitman, it was directed by John Landis from a screenplay by Harold Ramis, Douglas Kenney & Chris Miller.

Now he's one of those young veterans who developed his talent early on, in dozens of vehicles like Clint Eastwood's "Magnum Force" and Universal's high school comedy, "Almost Summer."

Governors asked to press trade agreements plan.

Gov. Brown takes budget crusade to Washington.

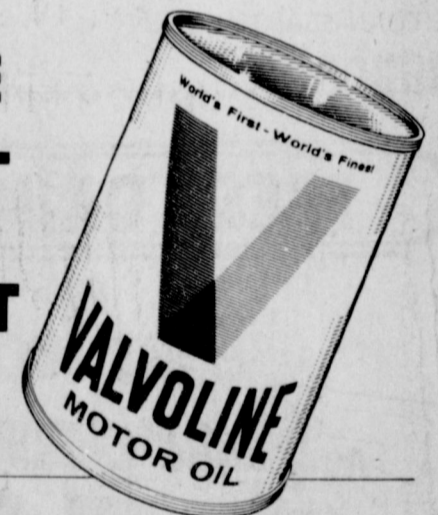
CARQUEST AUTO PARTS STORES

1¢ OIL SALE

VALVOLINE MOTOR OIL

Buy 4 quarts #153 or #159 and get the

5th QUART FOR 1¢



AC OIL FILTERS

Popular spin-ons #PF2, 20, 24, 25, 30 for most U.S. cars.



2.99

SPARK YOUR LAWN-MOWER FREE



Buy a set of CHAMPION PLUGS and get your lawnmower plug FREE.

Good at all participating CARQUEST Auto Parts Stores thru March 25, 1979.



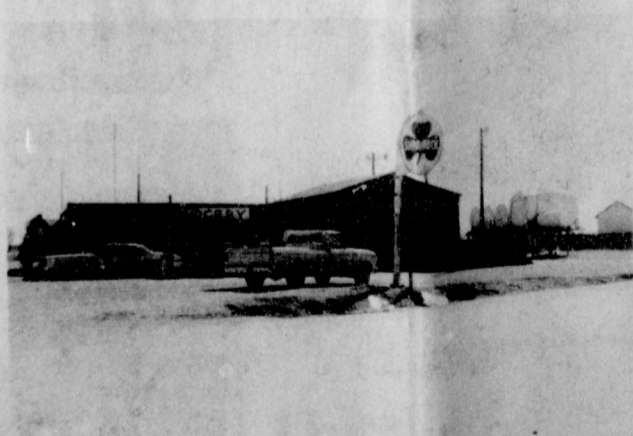
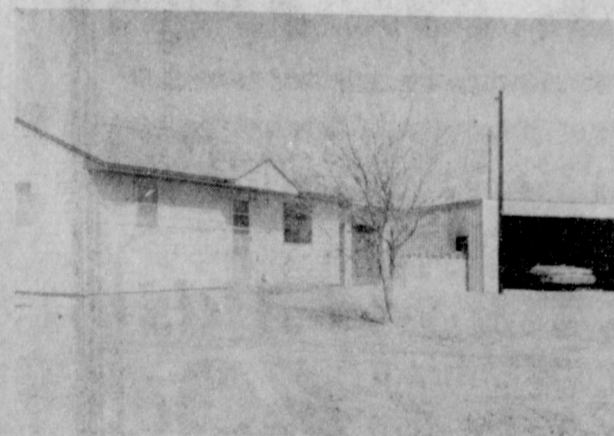
Hi-Plains Auto Supply, Inc. 118 N. Main 659-2506

118 N. Main 659-2506

"Prices may vary from store to store"

WE KNOW WHAT YOU MEAN WHEN YOU'RE TALKING PARTS

Terrific Buy In WAKA A great Opportunity



Nice Family Business

Must see to appreciate. Gas Station--Grocery store, Warner seed business -- 2 bedroom home-- 2 car attached garage -- plus detached 2 car garage -- 20 x 40 ft. shop -- 2 car carport.

Ready To Go

Bud Aylett - 435-2109
Christine Aylett - 435-2109



GOLDEN SPREAD REALTY

(806) 435-5444 - 401 S. Main - Perryton

WE'RE THE NEIGHBORHOOD PROFESSIONALS.

© 1978 Century 21 Real Estate Corporation. Licensed Trademark of Century 21 Real Estate Corporation. Printed USA. Each office is independently owned and operated. Equal Housing Opportunity.

If you would like to join us as one of our salespersons in Spearman, call or see us.

Bowling News

THURSDAY NIGHT MIXED
3-8-79

Anthony Electric	29	15
Golden Spread	26	18
York Electric	25	19
Cliffhangers	25	19

B & J	21	23
Elliott Const.	19	25
Moose	18	26
Daco	13	31

**MONDAY NITE
SCATTER PIN 3-5-79**

TEAM HIGH SERIES

Anthony Electric	1916
York Elect.	1896
Daco	1895

TEAM HIGH GAME

York Electric	678
Anthony Elect.	663
Daco	659

MEN'S HIGH SERIES

Tommy Reger	569
Charlie Greenwood	555
Charles Elliott	538

MEN'S HIGH GAME

Charlie Greenwood	217
Tommy Reger	201
Charles Elliott	197

WOMEN'S SERIES

Shirley Greenwood	519
Joyce Keetch	473
Pat Hamilton	439

WOMEN'S HIGH GAME

Shirley Greenwood	201
Shirley Greenwood	179
Pat Hamilton	169

Spring Gardening Special



HANSFORD IMPLEMENT COMPANY
P.O. BOX 518
SPEARMAN, TEXAS 79081
PHONE (806) 659-2712 or 659-2311

**John Deere design,
dependability,
and dealers
make the difference**



For the month of March, Hansford Imp. Co. is offering a limited supply of the Model 624 John Deere Rotary Tiller at a super 20% savings. The 624 features a 6 H.P. engine a reverse gear and a 24 inch tilling width. Get a John Deere Tiller and make this spring a pleasure instead of a chore.

Hwy 207 S. **Hansford Imp. Co.** Spearman

PIN BENDERS 3-2-79

Millie Craig Seciz

4-Tex-Grain	63 1/2	32 1/2	32302
Cinderella	58 1/2	37 1/2	34845
Super Service	55 1/2	40 1/2	33454
Brock Ins.	53	43	31650
Bowl Mor	46	50	31213
McClellan Grain	43	53	30323
Vernon's	37 1/2	58 1/2	29422
L.M.W.	25	71	30334

IND. HI GAME

Helen Boyd	225
Sheryl Meek	214
Sheryl Meek	213

HI TEAM GAME

Super Service	545
Cinderella	495
Cinderella	482



Todd Brock At Red River

Todd Brock of Spearman, TX. participated in a NASTAR event at Red River Ski Area during a recent winter vacation in the resort town located in Northern New Mexico. NASTAR events are held three times weekly at the area and offers skiers a unique opportunity to match their abilities through a nationwide handicapped system.

Doug Hohertz At Red River

Doug Hohertz of Spearman, TX. participated in a NASTAR event at Red River Ski Area during a recent winter vacation in the resort town located in Northern New Mexico. NASTAR events are held three times weekly at the area and offers skiers a unique opportunity to match their abilities through a nationwide handicapped system.

**MONDAY NIGHT
SCATTER PINS 2-26-79**

Equity	76	16
Harry's Angels	52 1/2	39 1/2
CO - OP	50 1/2	41 1/2
Anthony	50 1/2	41 1/2
Baker's Batter	43 1/2	48 1/2
Excel	33	59
Dairy Queen	32	60
Gordon Girls	30	62

TEAM HIGH SERIES

Equity	1993
CO - OP	1934
Harry's Angels	1917

TEAM HIGH GAME

Equity	716
Baker's Batter	699
Harry's Angels	697

IND. HIGH SERIES

Patty Spoonmore	556
Jewel McCalman	547
Hazel Stumpf	535

Equity	17 1/2	78 1/2
Harrys Angel	41 1/2	54 1/2
CO - OP	42 1/2	53 1/2
Anthony Electric	44	52
Baker Batter	48 1/2	47 1/2
Excel	61	35
Dairy Queen	63	33
Gordon Girls	66	30

HIGH TEAM SERIES

Equity	1926
Anthony Electric	1895
CO - OP	1883

HIGH TEAM GAME

CO-OP	676
CO - OP	669
Equity & Anthony Ele.	668

HIGH IND. SERIES

Patty Spoonmore	562
Teresslee Manese	533
Shiryl Meek	514

HIGH IND. GAME

Patty Spoonmore	286
Sandee Helmech	210
Marion Nollner	201

HANSFORD COUNTY

Our Congratulations To
Those Participating
in the 4-H and FFA
Junior Livestock Show

March 16 - 17, 1979

Welcome
to the Biggest &
Best Junior Live-
stock Show in the
Panhandle!



Clubs and Chapters Participating in the Show

- Gruver FFA Morse 4-H
- Gruver 4-H Spearman FFA
- Spearman 4-H

Annual Junior Livestock Show and Sale

To be held in Spearman, Friday & Saturday

We Salute
Today's Youth
...Tomorrow's
'Agri-Leaders!'

**Gruver
Farm Supply**
Roy Byrd

515 Main

733-2427



Supt. Recommends Teacher's Contracts

The entire coaching staff, recommended by athletic director and head football coach, Preston Smith, was re-hired by the Spearman School Board Monday evening. The staff includes Preston Smith, James Collingsworth, Terry Crocker, Kenneth Friemel, Bill Hamilton, Herb Hager, Jim Hester, Larry Morris, Ralph Newton and Charles Steele.

Board policy 5-10 (as amended 6-11-73) reads in part as follows: The teacher of the Spearman Schools shall be elected according to law for a period of one year at the first regular meeting in March of the year in which his contract expires. On the first in-service day of August thereafter, the contract shall begin, continuing for the time elected.

The staff that I feel will be adequate for the 1979-80 school year will consist of fifteen classroom teachers, a music teacher, a speech teacher, Title

I reading teacher, migrant teacher, and four teacher aides. To make the library more effective, I would like to recommend a certified librarian for the 1979-80 school year. If there is a resignation before the school year starts, I will look very carefully at the enrollment and make adjustments where they are needed.

I feel we have had an excellent school year up to this date. I would like to give each teacher credit for doing an outstanding job and in a professional manner. With the above policy in mind, I recommend the following personnel for a one year contract for the 1979-80 school year.

Pat Harris, Cindy Sweeney, Nell Benton, Judy Friemel, Donna Depee, Fern Robinson, Jackie Graham, Waurayne Cope, Patsy Malone, Terri Orr, Stephanie Brock, Lillian Turner, Martha Steele, Zetha Blackburn, Joan Collingsworth, Wy-

nell Hager, Linda Smith, Evelyn Nunn, Susan Pearson, Mary Ann Lasater, Wilma Clark, Billie Allen, Betty Uptergrove, Hollis Brack, Barbara Patterson and Jeanie Pearcy.

ELEMENTARY

JUNIOR HIGH
Margie Alford, Charlotte Angel, James Collingsworth, Terry Crocker, Earlyne Gee, Mary Alice Gibner, Ellen Graham, Herb Hager, Mollie Holton, Georgianne Hutchison, Frank Lewis, Blant McGee, Pauline McGee, Miriam Mercer, Mike Newsom, Jerry Orr, Edwin Pearcy, Carolyn Savage, Velma Shoemaker, Charles Steele, Athalie Traylor, Juanita Tucker and Sheila Watley.

HIGH SCHOOL STAFF
Travis Angel, Choir; Marshal Benton, Eng.; Herman Boone, Vo.-Ag.; Rebecca Booth, Speech; Stanley Freniks, Science; Kenneth Friemel, Health-

PE; Bill Hamilton, Biology; Jim Hester, Health-PE; Frances Hudson, Home Ec.; Wanda Jones, Business; Jan King, Home Ec.; Glenna McMullan, Eng.-Spanish; Donnie Mitchell, Eng.; Dwayne Mitchell, Eng.; Larry Morris, W. History; Susan Morris, A. Hist.-Gov't.; Claude Newell, Counselor; Ralph Newton, Math; Demetra Prather, P.E.-Bio.-A. Hist.; Larry Prather, Band; Dorothy Roden, Librarian; Terry Schneider, Math; Worley Smith, D.E.; Minnie Weaver, Math; Burton Williams, Vo. Ag.; Wanda Archer, Secretary; Fern Newton, Teacher Aide.

Door closed on American combat in another country.

Alcoholic Content

With all the billions so many federal regulators are spending, it would seem someone in the bureaucracy—or in Congress—could devise a way to require beer manufacturers to reveal alcoholic content on cans or bottles.

This newspaper has called for such information, in the public interest, and especially in the interest of younger consumers, for some time. The excuse for inaction is always unimpressive. The alcoholic content varies, or people know the approximate level, etc., etc. But because contents may vary from time should not prevent labeling approximate content, or average content. That's better than nothing. And young people ought to know what they're drinking—and how much alcohol is in the various malt liquors, beers, light beers, etc.

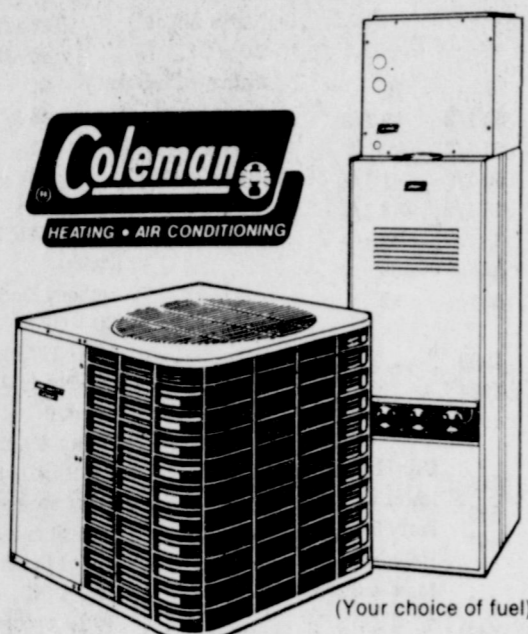
The Carter Administration would long be remembered for it if the White House moved (through the Food and Drug Administration, or another agency) to require such information in the public interest.



Pictured with Governor William P. Clements of Texas is the State Easter Seal Child, Wylie Barrington, of Waco and standing left to right: Kent McIlyar, Jr., President of the Easter Seal Society of Texas, and Walt Garrison, 1979 State Easter Seal Appeal Chairman.

Woe to him that claims obedience when it is not due; woe to him that refuses when it is! -Thomas Carlyle.

Buy the Number 1 name in air conditioning quality and efficiency...



and get a Coleman Furnace... FREE!

Purchase Coleman's Deluxe Energy Saver (DES) Air Conditioner during our limited-time offer and we'll give you a Coleman Furnace (your choice of fuel).

The DES is the most efficient line of air conditioners you can buy... and that means you get the lowest possible summer cooling bills.

Coleman, providing unmatched reliability year-after-year.

(offer does not include dealer installation)

H & H Heating Service

GRUVER HIWAY 659-3577

Here in Spearman, & Hansford County We represent Allstate, the "Good Hands" companies.



For years, you've seen and heard about Allstate through their advertising. Now, "Good Hands" insurance and financial services are available right here at our agency. We can offer Allstate's full line of top quality protection for your home, your life, your car, and business, too.

Call or come in; let's compare. Whatever your needs, chances are we can work out a plan for you.

Allstate Insurance Company
Allstate Life Insurance Company
Allstate Enterprises, Inc. and Subsidiaries
Northbrook, Ill.

The Hansford Agency

Burl Buchanan 806-659-3914

Zack Fisher 806-259-2839

806-659-3888

18 S.W. Court

Spearman, Texas

SAVE \$40⁹⁵ Mobile Transceiver Channel 9 and 19 priority



\$79

Reg. \$119.95

- 3-Way PA/Monitor/CB Switch
- Large Back-Lighted S/RF Meter

Realistic TRC-422. Save 34% and give your family the convenience and protection of 40-channel CB! Just flip a switch for instant access to Emergency Channel 9 or Highway Information Channel 19. Features S/RF meter, LED channel readout and modulation indicator, squelch, switchable ANL, locking plug-in dynamic mike, external speaker and PA jacks, crystal and ceramic filters for freedom from adjacent channel interference. With universal mounting bracket. Buy now and really save!



Prices Effective thru March

Check the Red Tags 20% - 30% - 40% Off Many Items - GREAT BUYS -

PORTER BAKER ENTERPRISES, INC. Radio Shack

DEALER

701 S. ASH

PERRYTON, TEXAS

You get more than phones when you order a phone system from us.

You get us.



Any shrewd business person—you, for example—knows that value is measured by what you get for your money.

That being the case, the service you get from General Telephone is one of the best values around.

For instance, we don't vanish the minute your phone system is installed. Our communications service advisors help to train you to operate your equipment. And they don't leave until you're as good at it as they are.

We provide maintenance and repair technicians who really know their stuff. And we make

sure we have enough of them to give you fast, efficient service.

If your system is ever damaged by circumstances beyond your control, we get it working again faster than you'd think possible.

And, of course, our Communications Consultants are always available to analyze and meet your changing communications needs.

You don't pay a penny extra for any of this. When you think about it, you get a lot more than just phones from the phone company.

That's value.



GENERAL TELEPHONE The complete communications company

FOR SALE 402 Haney, 3 Br., 2 bath home. Call for details.

CRUM REAL ESTATE CALL ANYTIME 659-2053 1105 S. BARKLEY

NADINE CRUM BROKER We Need Listings! Want to Sell your Home? We have BUYERS.

NEW HOME #18 James - 2 types available for qualified financing. G.I.-100% loan Conventional (90% Financing.)

VIRGINIA WHITE BROKER

SNUG AS A BUG IN A RUG When you move into this almost new 3 bedroom, 1 1/2 bath home at 1118 Linn Drive. FIREPLACE in large FAMILY ROOM; SEPARATE FORMAL LIVING-DINING ROOM and great built-in kitchen and double car attached garage. DELIGHTFUL PATIO AREA & much more. By appointment only. Offered EXCLUSIVELY by Crum Real Estate.

QUALITY PLUS This lovely Ranch style home is located in excellent location on large corner. The home features 4 bdms., 1 1/2 baths, large living room with woodburning fireplace, lots of cabinets and all the kitchen builtins. This is truly a fine home value and one that will offer years of enjoyment. Shown only by appointment. EXCLUSIVELY with Crum Real Estate.

START HERE-706 COLLIER With this 3 bdrm., 1 1/2 BATHS at a very reasonable price. Perfect for the young family just starting out. GOOD LOCATION, FENCED. CALL TODAY for an appointment. EXCLUSIVELY with Crum Real Estate.

LOVE QUALITY? NEED SPACE? Like your money's worth? It's all included in this spacious, older home with 4 bdms., 3 baths, kitchen built-ins, formal living, dining, den, basement, storage galore, sprinkler system front and back, fence, and much more. Call for an appointment. EXCLUSIVELY with Crum Real Estate.

A LITTLE BIT COUNTRY Superb Quality was built into this picturesque home in edge of Farnsworth. LARGE LIVING ROOM with FIREPLACE, BIG BEDROOMS, 1 1/2 baths, a perfect dream of a kitchen and much more. By appointment only; EXCLUSIVELY with Crum Real Estate.

David Miller To Liberal Community Concert
Teach At Tickets Available

Believer's Cottage

David Miller, pastor of the Berger Christian Center, will be teaching at the Believer's Cottage on Friday, March 16 at 8:00 p.m.

In Fashion

Many thrifty shoppers are undating their favorite skirt, jacket or pants this spring with well chosen match mates. Keep small snips of material from seams of these garments in your purse for a quick match.

Sandals are quite fashionable this spring. Heels are slim and high. Straps vary in width.

Lipsticks blend with today's clothes. Most lipstick shades are loaded with moisturizers.

Dresses for day and evening are quite full and gathered from the shoulder or high waist. An attractive garment features dolman sleeves with a tie belt at the waist.

A shirtdress of crepe looks cool and crisp at any occasion. One attractive garment has a body-hugging skirt with a modest slit and sash belt.

The Community Concert of the Liberal Drive will be from March 18 thru the 24 according to Janie Kunselman, who is selling tickets. There will be four concerts this year. Tickets are \$12.00 for adults, \$6.00 for students and families \$30.

If you wish tickets you may call Janie Kunselman at 2631.

One of the concerts will be the "Laureate Ensemble" which consists of 5 woodwind instruments, flute, clarinet, oboe, bassoon, french horn and a pianist.

Another on the program list is the Harvey Pittle Trio. Pittle is a world wide known virtuoso on

the saxophone, along with a pianist and cellist.

Eight vocal artists called "Serenade," accompanied by a piano, harp and viola will be on the world of operetta. There are vivid costumes in this performance.

The Cloudgate Dance Theatre of Taiwan will also perform.

This is their first American tour. This is a modern dance company from the Republic of China, and was founded in 1973 and is devoted to creating a new dance style which combines Western technique with Chinese themes and costumes, and the result is sensational.

IRS NEWS

Dallas, Texas--A relatively new tax law allows taxpayers who have sold property after October 31, 1978 to keep an extra ten percent of the gain. The Revenue Act of 1978 has increased the exclusion for long term capital gains to 60 percent on all sales or exchanges after October 31, 1978. Sales and exchanges on or before this date still get the old 50 percent exclusion. The 60 percent deduction also applies to installment payments received on or after

November 1, 1978, no matter when the actual sale took place.

Taxpayers who had taxable transactions both before and after the cutoff date must combine all transactions to find their actual, reportable capital gains. Part III, Schedule D (1040) should be used to figure capital gains.

The new rates of exclusion for capital gains and other recent changes in the tax law are covered in IRS Publication 553, "Highlights of 1978 Changes in the Tax Law," available from most IRS offices.

TV's "Sesame Street" Knock-out Brings Black-out Plans

In an effort to call attention to the recent elimination of the well-liked "Sesame Street, an educational and entertaining program for children of all ages, a move is being launched to petition area TV stations and their advertisers to return "Sesame Street" to weekly morning programming.

A TV black-out is scheduled from 9:00 A.M. to 10:00 A.M., Monday, April 9th through Friday, April 13th of all TV viewing in the Panhandle area affected by the recent program revision.

If you are concerned about (1) your child's or grandchild's education and entertainment and or (2) you love children of all ages and are concerned about their welfare, grab an opportunity to make your feelings known by signing a petition to this effect. Contact in this area

Mrs. William L. (rr) Maupin for further information concerning this matter.

Golden Gleams

The woman who obeys her husband rules him.

-Spanish Proverb.

You cannot be a true man until you learn to obey.

-Robert E. Lee.

Obedience is in a way the mother of all virtues.

-St. Augustine.

Obedience is much more seen in little things than in great.

-Thomas Fuller.

Texas Panhandle Heritage Foundation Annual Meet Held

The members of the Texas Panhandle Heritage Foundation held their annual meeting on Friday, March 9, 1979 at a luncheon at the Country Squire dinner theatre.

The business included a report on the auditions and the state of the show itself from director William A. Moore; a report on the finances and the attendance and plans for 1979 from executive vice-president Raymond Raillard; a report on the recent meeting of the Texas Commission on the arts from Commission member Pete Gilvin; the approval of the minutes and the election of new board members and new officers; a report from Pat Jarrett on the new construction in the Theatre complex which the state is building - men's rest room extension etc.

President George Lokey - who was reelected today - distributed copies of his annual report. In addition he thanked Peter Fox for the use of the theatre building and gave a tribute to Marion Higdon, former Canyon postmaster and bookkeeper for Texas who died on New Year's day.

Mrs. Ples Harper introduced the choreographer for "TEXAS" who conducted an example of an audition and told what he would be looking for as he tested dancers. After the demonstration, the dancers changed from rehearsal clothes into costumes and presented a short program.

Two women from Gruver are Board Members. They are Mrs. Elmo M. McClellan, Sr. and Mrs. A. Ralph Bort.

Federal Commercials

One way the federal government could economize is to end the growing practice of various departments buying television time (commercials) to expand their services to the people.

Understandably, each bureaucratic group wants to enlarge its empire and serve more Americans. That expands the advertising bureaucracy and produces jobs, promotions and higher pay.

So we see agency after agency advertising its services, even social security advertising to persuade more people to apply for supplementary income. In former times, citizens wrote their elected representatives, to find where and what help was available. They can still do that, and legislators today have a very adequate office budget and staff with which to help constituents.

BEST OF PRESS

Hard Work
How well you like hard work often depends on whether you are doing it or paying for it.
-Times, Los Angeles.

Poor Sailing
The behavior of some children suggests that their parents embraced on the sea of matrimony without a paddle.
-Grit.



Thanking the people of Gruver & Spearman for supporting the trip to Washington!

Joe & Nancy Morris
Hansford County

Hansford County Livestock Show & Sale



Friday, March 16 & Saturday March 17

Best wishes to all participants...
From Melvin Bradley, Agency Manager
Mike Babbs, Gruver Agent
And All The Staff!

Farm Bureau

307 W. Davis

659-3133

Performance proves...

The top 8 corn hybrids on the Irrigated Plains are all from Pioneer.

That's a pretty bold claim, we admit. But in farmer's fields, county agent test plots, wherever they're grown, these Pioneer brand corn hybrids consistently out-perform competitive hybrids year after year. Each hybrid has its own particular strong points that make it especially well suited for certain environmental and management conditions. When thoughtfully selected and properly managed to meet the conditions, each of these

hybrids delivers top performance... winning performance that's head and shoulders above the competition.

Don't take our word for it. Ask your Pioneer dealer about yield data in your area for the last several years and see for yourself. The consistent performers... the top 8 performers are all from Pioneer!

Short Supply!
3195

High-yielding, full-season powerhouse! 3195 gets off to a good start with high seedling vigor, then makes the most of High Plains growing conditions. High test weight grain is hard textured and dries down fast. Ideal for grain or silage.

NEW
3183

Contest winning yield potential with excellent disease tolerance makes 3183 an ideal companion for 3184. It also has excellent seedling vigor plus good standability and stay-green qualities.

3305

A silage grower's dream come true (even if your plans change mid-season)! Tall with good standability and a high grain-to-stover ratio. Adapts well to the high plant populations required for top silage yields. And if your plans change, excellent grain yields make it a profitable grain crop, too.

Short Supply!
3184

Steady corn maker, popular for excellent yields and consistent performance. Strong stalks, good roots provide outstanding standability.

3780

The corn you can manage almost like sorghum. Total fertilizer, water and insecticide requirements similar to sorghum. Maximum water use period makes it an ideal companion crop to cotton. Yield average of more than 7,800 lbs./A in four years of High Plains production at 96 locations.

NEW
3311

A new hybrid you can trust like an old friend! It delivers top yields and is an outstanding companion for 3195. It silks earlier than 3195 and performs better under stress.

3541

Very early silking, a long kernel fill period, and fast drydown help 3541 produce extremely high yields for its maturity. Give 3541 the management it needs, and it could easily be your top income producer. Excellent standability, ear retention and head smut tolerance.

3360

Plant this one for your banker! It has the consistency to be the high-yielding workhorse hybrid you can rely on. Outstanding early season vigor. Excellent for silage on the Irrigated Plains.

Ask your Pioneer dealer about them **NOW.**



PIONEER
BRAND SEEDS

PIONEER HI-BRED INTERNATIONAL, INC.
Southwestern Division
Plainview, Texas

The limitation of warranty and remedy attached to each bag of Pioneer brand seed is part of the terms and conditions of the sale thereof.

Registered trademark of Pioneer Hi-Bred International, Inc. Pioneer is a brand name, number identify varieties. PHV 79



THE FANTASTIC Dr. Kit Show
Magician & Hypnotist

The show that has broken records all over Europe, Hawaii, Alaska, Canada and the U.S.A.

A truly fascinating show for the entire family
DON'T MISS IT!

IH's New Series 88 Available

International Harvester dealer Dick Elbert now has available IH's new Series 88 articulated, four-wheel drive tractors that will fit virtually any farming or ranching operation.

Named the "2+2" tractors because they offer farmers the advantage of conventional two-wheel drive models plus provide two wheels more drive, they are considered "a breakthrough in row-crop tractor design," the dealer said.

He noted that their dramatic appearance highlights an operator's Control Center rear of the articulation joint, which is unique to four-wheel drive tractors in the North American ag equipment industry and significantly improves handling of both tractor and trailing equipment.

Also significant to the Series 88 models are: An engine forward concept-engine mounted forward of the front axle—providing outstanding traction and weight distribution.

Advanced styling, including a fully-enclosed engine to deaden the sound; and PTO horsepower choices more common to two-wheel drive tractors.

"In brief, the farmer receives the best of two worlds with a new 2 + 2 tractor," the dealer said. "He receives the versatility, adaptability and maneuverability of a two-wheel drive, and the stability, performance and traction of a four-wheel drive model."

By utilizing many two-wheel drive features such as IPTO, Category III, 3-point hitch and full span of wheel tread adjustments, the Series 88 models allow the farmer to use all his existing equipment—mounted, semi-mounted or pull-type implements—in the rows, open

fields or feedlot.

"And with four-wheel drive, the tractor can work in conditions, that would be off limits to a conventional tractor," he added. "Thus, the farmer can get the jump on spring plowing and disking. He can plant at optimum time for better yields, even pull a spreader in snow too deep for other tractors."

Because the Control Center is positioned behind the articulation joint, the farmer is afforded excellent visibility of rear-mounted equipment, as well as to the front, left and right, according to the dealer.

Besides assuring balanced weight distribution and traction with the engine forward concept, front axle oscillation permits full ground contact of all four wheels over rough, uneven ground.

To maintain proper in varying soil conditions, the tractors come standard-equipped with a "Power Shift Torque Amplifier" transmission. And of 16 forward and 8 reverse speeds, a 3 mph ground speed gear is ideal for proper use with trailing equipment such as forage harvester, and square and round balers.

Also new with the Series 88 models are:

*Pressure-flow compensation hydraulic system operating the 3-point hitch and as many as four auxiliary valves with minimum drain on engine power. Each valve's flow can be adjusted individually within the Control Center, and control levers and outlets are color-coded to assure proper hookup of remote cylinders.

*IH 400 Series "B" engine with new "balanced-pressure" piston design, resulting in longer life and improved oil control, according to the dealer. An oil change is needed only after

200 hours rather than the usual 100 hours with other tractors. The dealer invites area farmers to visit his dealership and learn more about the new "2+2" tractors.

MARKETS	
Wheat	\$3.08
Milo	3.65
Corn	2.45
Soybeans	6.64

Kidney Fund Drive To Begin Sunday

Today is K-Day. "Kidney Day" Someone will be knocking on your door Sunday, March 18 through March 31 to ask you to assist in providing funds for research to eradicate kidney disease.

The someone knocking will distribute information on the warning signs of kidney disease and provide organ donor cards. The volunteers who will be calling on homes will give their time and energy to invite you to

help in a project that can give life to over 13 million Americans affected by kidney disease. The Gift of Life Campaign will help the 42,000 Americans who sustain life on the artificial kidney machine and for the 14,000 patients who are awaiting a kidney transplant. In our area, over 200 people are on dialysis and are awaiting kidney transplants. You contribution, no matter how large or small, can give life to someone today.

34 students in

EMT

Some 34 men and women are taking the EMT course (Emergency Medical Technician) at Spearman High School, under the auspices of Frank Phillips College. The instructor for the course is Harry Vermillion of Fritch. When the students complete the course, a total of 130 class room hours, they will be qualified to assist heart attack victims and all types of sickness and injuries.

Those enrolled in the course, which will be completed on April 10th are: Charlotte Bergrin, Terry Etling, LaNetta Shapley, Rita William, Floyd Shook, all of Gruver. Jimmy Graham, Walter Percell, Donald Schmidt and Frank Willmon, Perryton; John Hens, Fritch; Nola Bruns, Phillips; John and Sylvia Schaffer, Vicky Bullard, Nina Hendricks, Ronnie Hutton, Ed Williamson, Mike

The act would allow the holder of a permit to:

- 1) Manufacture, rectify, and refine alcohol;
- 2) Denature, rectify, and refine alcohol;
- 3) Sell denatured alcohol produced under the permit;
- 4) Blend alcohol produced under the permit with petroleum distillates and sell the resulting product as a motor fuel.

The annual fee for an alcohol manufacturer permit would be \$25.

"Corporations would also be able to hold an alcohol manufacturer's permit. Also, wet or dry counties or precincts would not affect the eligibility of an applicant to hold a permit," said Senator Price.

The Pampa Senator went on to say that S.B. 988 completes his comprehensive gasohol project. Along with S.B. 643, S.B. 644, and S.B. 645, all of which deal with gasohol development and taxation, committee hearings on the package should begin with ten days.

Price Completes Package on Gasohol

AUSTIN... Senator Bob Price, R-Pampa, has completed his comprehensive package on Gasohol with a fourth bill relating to the manufacture of alcohol.

The bill, S.B. 988, would authorize alcohol manufacturer permits to those involved in the production of gasohol.

BIBLE VERSE

"Except a man be born of water and of the Spirit he cannot enter into the kingdom of God."

1. Who made the above statement?
2. To whom was it made?
3. What was this man's standing in the community?
4. Where may this statement be found?

Answers To Bible Verse

1. Jesus, as recorded by John.
2. Nicodemus.
3. A ruler of the Jews.
4. John 3:5.

It's easy to make promises. ****

UNITED
Supermarkets
Perryton, Texas

MRS. JOHN DOWDLE LUBBOCK WON \$1000

S&H
GREEN STAMPS

PRICES GOOD THRU MARCH 17th

\$135,554 IN CASH

WIN UP TO \$2000 CASH

RAMONA GONZALEZ LUBBOCK WON \$500

WIN YOUR SHARE OF 25 MILLION S&H GREEN STAMPS

ENERGY CHECK NOW

ENERGY CHECKED

COMMUNITY PUBLIC SERVICE CO.

WRITE SMALLER CHECKS LATER.

WATER HEATING . . . About 20% of the energy you use goes toward heating water. That's why a hot water system that qualifies under the Energy Checked Efficiency program can add up to savings in utility bills. When building or remodeling, locate the water heater close to points of use, such as the kitchen and utility area. If water pipes must run more than a few feet, wrap pipes in insulating material. When kitchens and bathrooms are far apart, install an additional water heater. Make sure the water heater has thick tank insulation, and a high heating efficiency. Energy efficient hot water systems are only one check point in qualifying a home under the Energy Checked Efficiency program. For more information on energy checked homes, just give us a call.

COMMUNITY PUBLIC SERVICE

DR. PEPPER

32 OZ. BTL. \$1.59
6 BTL. CRTN. PLUS DEPOSIT

DELTA BATHROOM TISSUE

6 ROLL PKG. **99¢**

KLEENEX DISPOSABLE DIAPERS EXTRA ABSORBENT 24 CT.	\$2.69
FINE FARE BLEACH GALLON JUG	59¢
FINE FARE FABRIC SOFTENER GALLON JUG	79¢
CAMPFIRE MARSH-MALLOWES 10 OZ.	2 FOR 39¢
TEXSUN GRAPEFRUIT JUICE PINK UNSWEETENED 46 OZ.	59¢

RICH N' READY ORANGE DRINK	UNITED GRADE 'A' EGGS
79¢	75¢

PLASTIC GALLON EXTRA LARGE

MANAGER'S SPECIAL

JERGEN'S **HAND LOTION**

20-OZ. **\$1.99**

HEALTH & BEAUTY AIDS

THE TOOTH BRUSHES..... 5 FOR \$1

FINE FARE 5 GRAIN ASPIRIN..... 100 CT. 59¢

FINE FARE LIGHTBULBS..... 4PK. 99¢

KOUNTY KIST CORN WHOLE KERNEL GOLDEN	4	12 OZ. FOR \$1
KOUNTY KIST MEDIUM PEAS	3	17 OZ. FOR 89¢
KOUNTY KIST CUT GREEN BEANS	3	16 OZ. FOR 89¢
LONGHORN CHILI WITH BEANS	2	15 OZ. FOR 89¢
GEBHARDT'S REFRIED BEANS	3	15 OZ. CAN FOR \$1

David K. Hadley

Painting Contractor

No Job Too Small or Too Big

Call us Collect in Amarillo, Tx.

353-6553

<p>MRS. TUCKER'S SHORTENING</p> <p>42 OZ. CAN \$1.19</p>	<p>PRODUCE</p> <p>CALIF. NAVAL LARGE ORANGES..... 3 LBS. \$1</p> <p>ALL PURPOSE RUSSET POTATOES..... 10 LBS. 89¢</p> <p>RUBY RED GRAPEFRUIT..... 5 FOR \$1</p> <p>LONG GREEN SLICERS CUCUMBERS..... 2 FOR 33¢</p>	<p>GREEN ONIONS</p> <p>2 BUNCHES 33¢</p> <p>RADISHES</p> <p>2 CELLO BAGS 33¢</p>
--	--	--

Methodist Eighth Missionary Conference Set



Members of the First United Methodist Church will hold their eighth annual missionary conference March 16-18, 1979. The goal for this year is \$25,000 for the period April 1, 1979 to

March 31, 1980. The missionary conference is a Faith Promise. Members are asked to make a promise, not on the basis of what they now have to give, but on the basis of what they

believe God will enable them to give.

The schedule on the opening day Friday, begins at 6 a.m. with a Prayer Vigil that continues until 6 p.m. A church wide supper will be held at 6 p.m. with the main service in the Sanctuary at 7:30 p.m. At 9 p.m. there will be displays open and fellowship.

On Saturday the conference will begin at 7 a.m. with a breakfast prepared by the men. There are coffees in homes at 10 a.m. and a coffee in Fellowship Hall at 3. At 6 p.m. there will be a Youth Supper, with the main service at 7:30 p.m. followed by displays and Fellowship.

On Sunday, March 18, Altar Prayer time in the Sanctuary will begin at 9:15 a.m. The youth will meet in Fellowship Hall at 9:45 a.m., adults in the Sanctuary and children in the Music Room. At 10:50 a.m. the main service will be in the Sanctuary followed with a church wide dinner at noon.

Dr. Anthony B. Fadely and Vera K. Hughlett will be the missionaries present at the conference.

Dr. Fadely served as a mis-

sionary of the United Methodist Board of Global Ministries in Liberia, West Africa from February 1965 until June, 1978. He has served for five years as Director of the Annual Conference Department of Christian Education, which included pioneering new work in Youth Work, Women's Work, Literacy Work, Theological Education, and Ecumenical Work, including a bookstore, television program, and film library; two and one half years as Dean of the Gbarnga School of Theology; and two years as Director of the Liberia/Sierra Leone Curriculum Project, as ecumenical Sunday School curriculum development program for the United Methodist Churches of Liberia and Sierra Leone and the Lutheran Church of Liberia which features stories and art work done entirely by West Africans. In addition Dr. Fadely was the founding pastor of the S. Trowen Nagbe United Methodist Church in Monrovia, the capital city. Presently Tony is working at Perkins School of Theology as Missionary in residence which includes teaching, research and writing, and speaking in local

churches and district and Annual Conference events about the total mission of the Church in today's world.

Vera K. Hughlett is the daughter of Dr. and Mrs. W.S. Hughlett who were missionaries in Zaire (formerly Belgium Congo) for 40 years. She received her B.A. degree from Asbury College and her nurses' training at Henry Ford Community College in Dearborn, Mich.

Vera went to Liberia with the United Methodist Church in late 1961 and since then has served as a full time nursing school instructor, teaching young Liberian men and women to serve their people through Christ in the nursing profession.

Extra-Pink Slip

"We're giving you a raise, Smithers," said the boss. "Because we want your last week here to be a happy one."

-Tribune, Des Moines.

A Thought

You may be able to read your wife like a book, but can you shut her up?

-Gazette, Mason City, Ia.

SS Representative Schedule

A representative of the Pampa Social Security Office will be in Spearman on Thursday, April 12, 26, May 10, 24 and June 14 and 28 from 10 to 11:30 a.m. at the Courthouse.

The representative will be glad to assist you in filing an application for Social Security Retirement, Survivors, Disability, Medicare or Supplemental Security Income benefits. If you are unable to visit personally, you may call 806-669-3381 to conduct any social security business.

The Pampa office is open every weekday, Monday through Friday, except National holidays.

A representative is available to meet with your club or group for a talk or to answer questions. If desired, write or phone the Pampa Social Security Office, 1541 North Hobart Street, Pampa, Texas.

Rotary Club News

Orville Latham spoke to the Spearman Rotary Club Monday noon at Martin's Steak Garden about the changes taking place in the tax laws.

He said there were three mandated changes: (1) the exemption of household property; (2) the appraisal of agricultural land on productivity; (3) \$5000 exemption off of every home.

There are lots of bills in the hopper at the legislature and there undoubtedly will be more changes, but no one knows yet exactly what changes will take place. Some of the things covered by bills introduced are the exemption of intangibles, exemption of those over 65, exemption of personal property and two automobiles. The legislature will reimburse all or part of loss in tax revenue for school districts. Personal homestead exemption must be filed for by April 30.

None of the changes already voted and those proposed are true tax relief. The money will be taken from the taxpayers one way or another. The bad part of most of the changes is that money taken from smaller school districts will be given to the larger ones.

Visitors Monday noon were Rotarian Jack Riley of Perryton, Robert Schurr of Roscoe, South Dakota; Orville Latham, Brice Palmer, and Tim Fisher of Spearman.

Members present were Jim Benson, Carrie Marie Berry, Eschol Blankenship, Kim Brock, Roy Bulls, John R. Collard, Jr., Robert Elliott, Pete Fisher, Ed Freeman, Ed Garner, Kerry Henton, John Hutchison, Eddy Limbocker, Junior Lusby, Jack McWhirter, Frank Oglesby, Coy Palmer, Michael Schnell, Jim Shirley, Lenis Simpson, Gary Sims, Jerry Taylor, and Tim Woodington.

Members absent were J.L. Brock, Archie Burress, Jim McLain, Larry Murphy, Vance Snider, and Don Wirsdorfer.

Warren Proctor will speak on Monday, March 19 on "Soil and Water Conservation."

Monday's meeting was the membership meal. The winners of the membership contest. Lenis Simpson, Jerry Taylor, and Robert Elliott, ate steak, while the rest of the club had corn dogs and tate tots.

Skirts & Kites

March is traditionally the windy month, with flying skirts and kites, which old and young notice in their respective leagues.

Kite flying has been a popular sport in many countries longer than flying skirts. Youngsters should be cautioned to avoid electric power lines, especially against using wire or cord with tinsel wound into it; each year accidents occur because of carelessness on this score.

Oldsters ought, by now, to know the dangers of flying skirts.

The Red Cross

During the month of March, the American Red Cross makes its annual appeal to the American people for funds to serve the nation and its citizens in time of emergency.

Everyone is familiar with the many services of the Red Cross during war and with the assistance it promptly renders when disaster strikes.

Emergency medical and nursing care is annually provided thousands of victims and, in many instances, financial assistance is a part of the relief extended to the unfortunate.

We should also remember the important contribution made by volunteer Red Cross workers, serving in communities from coast to coast.

If your local chapter's funds are provided by a united effort, be reminded that March is traditional American Red Cross month—a time for recruiting workers.

BINGO

THOUSANDS OF INSTANT WINNERS!

52 WAYS TO WIN
Play 4 games at the same time!
WIN \$1000, \$100, \$25, \$5, \$2!

\$135,554

in cash prizes

WIN UP TO 5 BOOKS STAMPS

ODDS CHART

Odds Effective March 4, 1979

1-2-3-4-5	1:100	1:100	1:100	1:100	1:100
1-2-3-4-5-6	1:1000	1:1000	1:1000	1:1000	1:1000
1-2-3-4-5-6-7	1:10000	1:10000	1:10000	1:10000	1:10000
1-2-3-4-5-6-7-8	1:100000	1:100000	1:100000	1:100000	1:100000
1-2-3-4-5-6-7-8-9	1:1000000	1:1000000	1:1000000	1:1000000	1:1000000
1-2-3-4-5-6-7-8-9-10	1:10000000	1:10000000	1:10000000	1:10000000	1:10000000
1-2-3-4-5-6-7-8-9-10-11	1:100000000	1:100000000	1:100000000	1:100000000	1:100000000
1-2-3-4-5-6-7-8-9-10-11-12	1:1000000000	1:1000000000	1:1000000000	1:1000000000	1:1000000000

DEBBIE COOM
WON \$500

RENAE RUIZ
LUBBOCK WON \$1000

<p>CHUCK ROAST BLADE CUTS \$1.19 LB.</p> <p>RANCH STEAK CENTER CUT 7-BONE \$1.59 LB.</p> <p>RIB STEAK UNITED TRU-TENDR BEEF \$1.79 LB.</p> <p>BONELESS STEW EXTRA LEAN "CUBES OF BEEF" \$1.79 LB.</p>	<p>UNITED TRU-TENDR BEEF \$1.19 LB.</p> <p>CENTER CUT 7-BONE \$1.59 LB.</p> <p>UNITED TRU-TENDR BEEF \$1.79 LB.</p> <p>EXTRA LEAN "CUBES OF BEEF" \$1.79 LB.</p>
---	--

TOM BAILEY AMARILLO WON \$2000.00

STA-BINGO WINNERS

PAULA KING WON \$100

<p>FINE FARE FRANKS 12 OZ. PKG. MEAT 98¢</p> <p>JIMMIE DEAN SAUSAGE ROLL \$1.49 LB.</p> <p>WILSON'S CERTIFIED BACON \$1.59 LB.</p>	<p>BOLOGNA FINE FARE MEAT \$1.09 12 OZ. PKG.</p>
--	--

<p>GLEN PARK CHARCOAL BRIQUETS 20-LB. BAG \$2.69</p> <p>GULF LITE CHARCOAL STARTER 32 OZ. 79¢</p> <p>KRAFT BARBECUE SAUCE ALL FLAVORS 18 OZ. JAR 69¢</p> <p>OCEAN SPRAY CRANAPPLE JUICE 42-OZ. BOTTLE \$1.29</p> <p>KRAFT GRAPE JELLY 2 LB. JAR 89¢</p>	<p>ADMIRATION COFFEE ALL GRINDS \$1.98 LB.</p>
---	--

<p>DAIRY</p> <p>BELL CHOCOLATE MILK QT. 59¢</p> <p>BELL COTTAGE CHEESE 24 OZ. \$1.19</p> <p>FINE FARE OLEO QTRS. LB. 39¢</p>	<p>FROZEN FOODS</p> <p>BELL ICE CREAM 1/2 GAL. \$1.39</p> <p>MORTON POT PIES 8 OZ. 3 FOR 89¢ *BEEF *CHICKEN *TURKEY</p> <p>MORTON DINNERS *BEEF *CHICKEN *TURKEY *SAL. STEAK *MEAT LOAF 49¢</p>
---	--

PRICES GOOD THRU MARCH 17th

U

UNITED

Supermarkets

Perryton, Texas

QUANTITY RIGHTS RESERVED

Karl Johnson "Distinguished Student"

Karl E. Johnson of Morse, a Spearman High School graduate has earned the "Distinguished Student" ranking at Texas A&M University. He is the son of Mr. and Mrs. Charles Johnson of Morse.

The undergraduate honor is awarded to students who excel academically at Texas A&M, the state's land-grant and sea-grant academic programs but extension and research in agriculture, engineering and other practical needs throughout the state.

Recipients of the Distinguished Student honor must earn at least a 3.25 grade point ratio, out of a possible 4.0, during the most recent grading period.

For The Wise
Wise people believe half of what they hear; wiser ones know which half to believe.
-Press, Denmark, Wis.

V. B. Morris likes 3183

"I think 3183 is the best corn hybrid Pioneer has for our farming conditions. It seems to be more drought tolerant than many hybrids. When we use Eradicane to control Johnsongrass, it doesn't seem to experience the damage I've seen in some other hybrids. 3183 was the top yielder in our test plot last year."

V. B. Morris
Gruver, Tx.

PIONEER SEEDS

Registered trademark of Pioneer Hi-Bred International, Inc. Pioneer is a brand name, numbers identify varieties.

Party Supplies

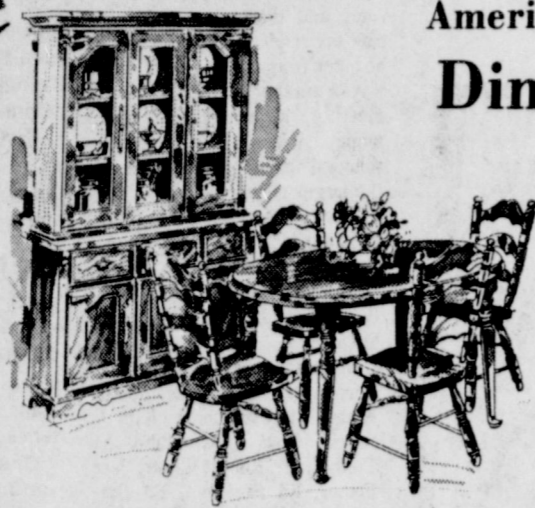
Plastic coated paper plates
hot & cold cups.
Napkins & tallies all to match in
different designs & colors.
Also paper guest towels.
May be Momogrammed.

Scented Candles
& Unusual Gifts

Chambers Home
Accessories

Bulls Inn's 502 Davis

Annual march furniture



American Drew and Keller
Dining Room
Furniture

\$100 to \$300

off Regular Price

Sofa Sleepers

from **\$229**

to **\$899**

SAVE \$100 TO \$200



DO COME IN AND BROWSE
OUR ENTIRE STOCK IS
SALE PRICED!

SALE



•Stratalounger •Lane
•Kroehler

Recliners

from

\$199 to \$399



SAVE \$40. TO \$100.



Bedroom Suites

\$100 to \$400

Off Regular Price

ALL
Lamps & Pictures

20%
Off

CARPET



100% Heat Set
Nylon Sculptured

Save from \$2⁰⁰
to \$3⁰⁰ per yd.

- One Group..... **\$13⁹⁵** Installed
- One Group..... **\$12⁹⁵** Installed
- One Group..... **\$11²⁹** Installed

Kitchen
CARPET \$895
per sq. yd.
installed

SPECIAL PURCHASE ... MATTRESSES



SERTA

15 Year Guarantee

- King Size..... **\$304** Set
- Queen Size..... **\$218** Set
- Regular Size..... **\$163** Set
- Twin Size..... **\$132** Set

- SOME MAY BE MISMATCHED -

To Announce Our New Line of

**BABY
FURNITURE**

20%
OFF

ONE WEEK
ONLY

FINANCING
AVAILABLE

FREE DELIVERY!

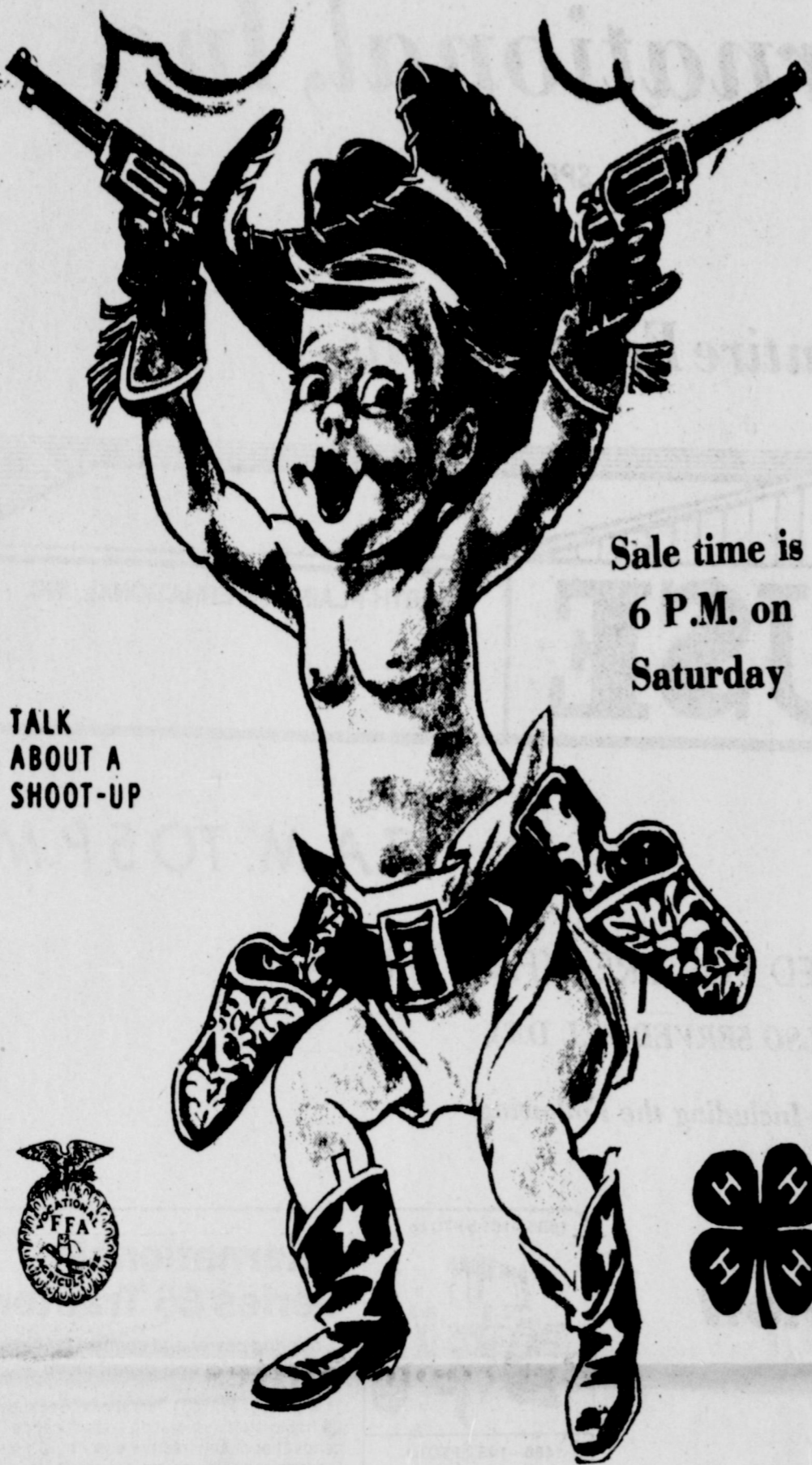
CHARLODAN'S



Furniture and Carpets

Corner 3rd & Main
Perryton, Texas

435-4808



TALK ABOUT A SHOOT-UP

Sale time is 6 P.M. on Saturday



Methodist Eighth Missionary Conference Set



Members of the First United Methodist Church will hold their eighth annual missionary conference March 16-18, 1979. The goal for this year is \$25,000 for the period April 1, 1979 to March 31, 1980. The missionary conference is a Faith Promise. Members are asked to make a promise, not on the basis of what they now have to give, but on the basis of what they believe God will enable them to give.

The schedule on the opening day Friday, begins at 6 a.m. with a Prayer Vigil that continues until 6 p.m. A church wide supper will be held at 6 p.m. with the main service in the Sanctuary at 7:30 p.m. At 9 p.m. there will be displays open and fellowship.

On Saturday the conference will begin at 7 a.m. with a breakfast prepared by the men. There are coffees in homes at 10 a.m. and a coffee in Fellowship Hall at 3. At 6 p.m. there will be a Youth Supper, with the main service at 7:30 p.m. followed by displays and Fellowship.

On Sunday, March 18, Altar Prayer time in the Sanctuary will begin at 9:15 a.m. The youth will meet in Fellowship Hall at 9:45 a.m., adults in the Sanctuary and children in the Music Room. At 10:50 a.m. the main service will be in the Sanctuary followed with a church wide dinner at noon.

Dr. Anthony B. Fadely and Vera K. Hughlett will be the missionaries present at the conference.

Dr. Fadely served as a missionary of the United Methodist Board of Global Ministries in Liberia, West Africa from February 1965 until June, 1978. He has served for five years as Director of the Annual Conference Department of Christian Education, which included pioneering new work in Youth Work, Women's Work, Literacy Work, Theological Education, and Ecumenical Work, including a bookstore, television program, and film library; two and one half years as Dean of the Gbarnga School of Theology; and two years as Director of the Liberia/Sierra Leone Curriculum Project, as ecumenical Sunday School curriculum development program for the United Methodist Churches of Liberia and Sierra Leone and the Lutheran Church of Liberia which features stories and art work done entirely by West Africans. In addition Dr. Fadely was the founding pastor of the S. Troven Nagbe United Methodist Church in Monrovia, the capital city. Presently Tony is working at Perkins School of Theology as Missionary in residence which includes teaching, research and writing, and speaking in local churches and district and Annual Conference events about



Insurance Corner

IRA/KEOGH—THE DIFFERENCE

While both the Keogh plan and the Individual Retirement Annuity (IRA) are similar in that they both involve retirement plans for individuals, there are some significant differences. These differences are important.

The IRA is for an EMPLOYED person who is not covered by a plan at the place he works. The Keogh plan is for a SELF-EMPLOYED individual, who either works for himself or owns a business or part of a business. The contribution setup is also different. Under IRA, an employed person can contribute up to 15% or \$1,500, whichever is less, from his earnings. With Keogh, the self-employed person can contribute up to a maximum of \$7,500 or 15%, whichever is less. (This was recently raised from \$2,500/10-15%.)

The Keogh plan is somewhat more liberal than the IRA. For example, a person could have a company pension plan where he works, but he may also be self-employed. He might do part-time carpentry work, for example, or run his own TV repair business. He can, if he wants to, establish a Keogh plan for the income from the part-time job or his repair business.

This information has been brought to you as a public service by John E. Colford, Jr., your one stop answer to complete business and personal insurance protection. Life, home, auto, group insurance, and profit-sharing plans. See John E. Colford, Jr., 408 Davis St., Telephone: 659-2391.

the total mission of the Church in today's world.

Vera K. Hughlett is the daughter of Dr. and Mrs. W.S. Hughlett who were missionaries in Zaire (formerly Belgium Congo) for 40 years. She received her B.A. degree from Asbury College and her nurses' training at Henry Ford Community

College in Dearborn, Mich.

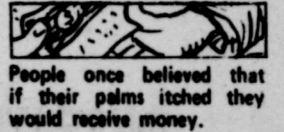
Vera went to Liberia with the United Methodist Church in late 1961 and since then has served as a full time nursing school instructor, teaching young Liberian men and women to serve their people through Christ in the nursing profession.

Stan Hudson To Be Guest Speaker

Stan Hudson will be the guest speaker at Full Gospel Business Men's Fellowship International local chapter regular meeting March 12, with the evening meal which free and catered by Sutphens of Berger at 6:30 with the speaker to follow the meal. The meeting will be held at the Home Demonstration Building, 305 N. Bernice. A nursery will be provided.

Stan Hudson would like to share with you what the Lord has done in his life and how his guidance and grace have shown him how to be a better witness for Jesus Christ on his job and where it seems to be hardest of all Spearman, Texas where he

grew up. Stan is a Mud Engineer for General Supply Mud Co. in Pampa. He is youth coordinator for First Methodist Church in Spearman and is married and has two lovely children. He is the son of Mr. and Mrs. Dick Hudson of Spearman.



People once believed that if their palms itched they would receive money.

Hansford County Livestock Show

Friday, March 16 & Saturday, March 17

at the COUNTY SHOW BARN

in Spearman



Frontier Feedyards, Inc.
Rt. 1 Hardesty, Oklahoma



To The

Hansford County Livestock Show



Congratulations

To Our Young Exhibitors

LET'S ALL ATTEND!

To Be Held In Spearman

Friday, March 16 & Saturday, March 17

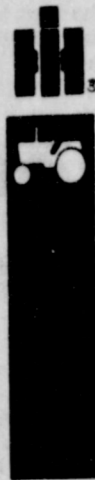


refco DOUG McCLELLAN
Pittman-Shielknight Bldg.
Phone 659-3786

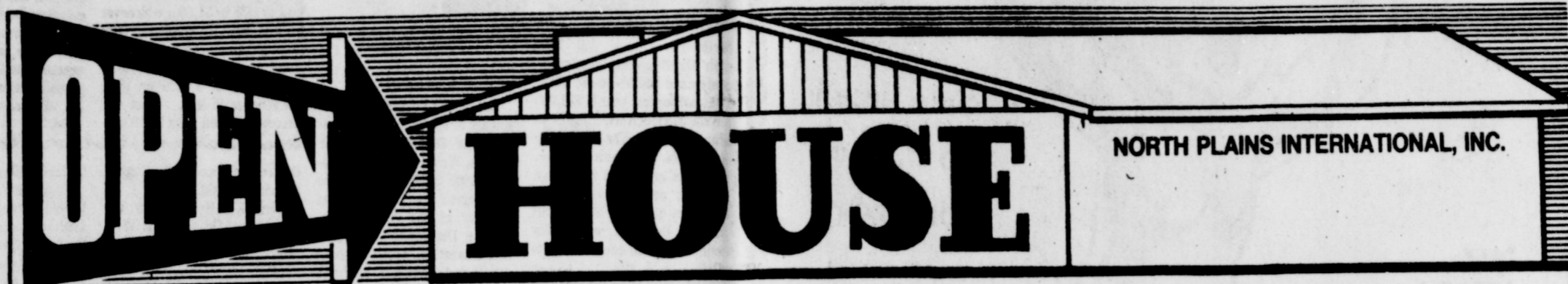
North Plains International, Inc.

HWY. 207 SOUTH

SPEARMAN



Cordially Invites Your Entire Family To Its



Thursday, March 22

7 A.M. TO 5 P.M.

★ PANCAKE & SAUSAGE MEAL SERVED FOR BREAKFAST & LUNCH

★ DONUTS & REFRESHMENTS ALSO SERVED ALL DAY

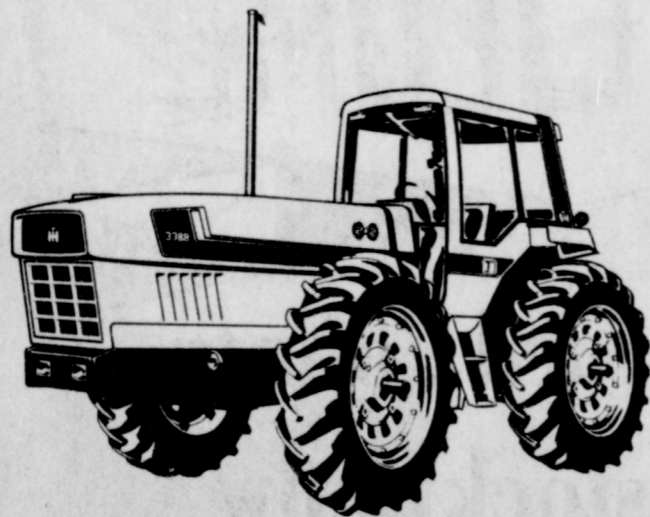
Farm Equipment Displays Available Including the Following

Introducing the newest concept in row crop farming.

It's the all new International 2+2, delivering unmatched field ability and traction in the 130 or 150 hp range—with design features like:

- + rear-mounted Control Center
- + new engine-forward concept
- + four equal-sized drive wheels
- + 15'9" turning radius
- + Pressure-Flow Compensating Hydraulics
- + more!

Stop in today and find out what the 2+2 can mean for you.



INTERNATIONAL 2+2

2 WHEEL PERFORMANCE + 2 WHEELS MORE DRIVE

IH is proud to announce a totally new concept in row crop farming—the International 2+2. The first real field tractor ever to give you the benefits of 2-Wheel Drive performance and mobility... plus the stability and traction of 2 additional drive wheels. The 2+2 has got what it takes to handle field work of any variety. Row crops. Specialty crops. Grains. Dairy farms. Plus more!

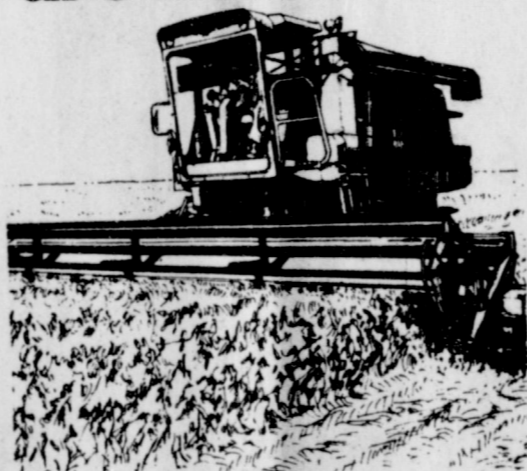
The 2+2 is big on progressive features, too. Like four drive wheels for flotation without compaction. A unique engine-forward design for even weight distribution. And a tight 15'9" turning radius for a whole new dimension in maneuverability. All of this and more is waiting for you when you experience the 2+2!

Never before has a field tractor offered you better command of your work.

Behind you—you're right on top of your work
You simply can't ask for any better implement control. A glance over your shoulder lets you monitor implement response for a straight-tow everytime. The convertible 3-point hitch and hydraulically controlled independent PTO gives you additional control over any tools—including your 2-Wheel Drive equipment.

Up front—it's clear sailing through your crops
Once aboard a 2+2, the rear-mounted Control Center gives you an entirely new perspective on your field work... for easier operation and total tractor control. The turbocharged, B Series engine delivers all the lugging ability you need to take on any soil conditions. And the 15'9" turning radius makes turning and tight maneuvering a breeze. Field work was just never meant to be as easy as this!

The new IH Axial-Flow combines are here!



Harvest more of what you grow.

These International Axial-Flow combines really are a revolution in combining reliability and productivity. Tests on more than a million acres of crops prove the Axial-Flow harvests more crop than conventional combines.

An IH Axial-Flow combine will also give you better quality crop—with less crackage and dockage. You can even harvest faster with an Axial-Flow, and still miss less grain. And the simple, rugged new Axial-Flow design will mean far less down-time and easier maintenance. In fact, straw walkers are completely eliminated! Stop in soon and see the revolution in combining—the new International Axial-Flow combine.

Get great deals
—and big cash rebates—
on IH crop harvesting
equipment

Look at the cash savings waiting for you if you make your deal today:

- A cash rebate worth 10% per annum on invested cash until the Waiver of Finance date

Your savings are determined from the equipment you specify. So see your dealer for full details and expiration dates... but hurry! The earlier you buy, the more you'll save.

1586—161.5 PTO hp



1486—145.7 PTO hp



1086—131.4 PTO hp



986—105.6 PTO hp



International® Series 86 Tractors

... offering power and comfort far beyond anything you've ever experienced

This is the year to go international. Because Series 86 tractors offer operating sophistication that exceeds that of any tractors every built. Plus maintenance and service ease not previously achieved in farm tractors. Add in many other design advancements that sweep away preconceived ideas about tractors, and you're left with only one decision: What size International to settle on!

- **Mid-mount Control Center.** Puts you far forward, so your ride is better, handling is easier, visibility is unexcelled.
- **Clear-view Design.** You look out through large expanses of tinted safety glass. Lighting patterns, front and rear, are unequalled.
- **Control System.** Armchair consoles... extra-convenient throttle... power-assisted brakes and clutch... modular instrument cluster.
- **World of Quiet.** Interior sound levels are reduced dramatically... as low as 78.5 dB(A) on some models.

886—86.1 PTO hp



Hydro 186—105 PTO hp



OPEN HOUSE

THURSDAY

MARCH 22

7 A.M. TO 5 P.M.