

Cheerleaders have outstanding banquet!



Jerry Larned, head football coach at Monahans high school was guest speaker at the athletic banquet held Monday evening. Worley Smith, on the right, was "Master of Ceremonies" for the big event.



Coach and Mrs. Sherwood are shown above with one of their star football players, Benny Rodriguez, at the Athletic Banquet Monday night. All of the outstanding athletes of the school were honored at the banquet.

The Spearman High School cheerleaders can "jump for joy" this week as they put on the "best" athletic program in the school's history Monday evening in Spearman. It was almost like a "homecoming" for many of the students and fans, who gathered at the spectacular event. The 1977-78 banquet honored all phases of sports in the Spearman High School, and on hand to help celebrate, was former Athletic Director Greg Sherwood, who has meant so much to our school, and our new Athletic Director Preston Smith. But we must mention the cheerleaders who made it all possible: Robin Denham and Karen Dennis, Senior Cheerleaders; Christy Collier and Shari Fox, Junior Cheerleaders; Valerie Hagerman and Kindra Ivey, Sophomore Cheerleaders; and Shelly Strawn, Freshman Cheerleader; and Dalen Godfrey (Mascot), Senior.

Cheerleader sponsors are Jan King and Becky Booth!

The menu included beef, cole slaw, potato salad, french bread, beans, ice tea and coffee. Dinner music was by Charlotte Angel. The meal was excellent.

Master of Ceremonies for the event was our own Worley Smith, who almost stole the show with his humor and finesse. The invocation was given by Rev. Oglesby of the United Methodist Church. A poem "WIN" was read by Karen Dennis, which featured the topic of the banquet—"A Star Is Born".

The first award for the evening was the Lynxette Basketball Award. It was presented to Jo Nell Comegys, 2-time all-stater, who is only a Junior this year. She made all-state as a sophomore and a junior. The fighting heart award was presented to Carrie Clark; both of these awards were made by Basketball Coach Ralph Newton.

In Boys' Basketball, the most valuable player award went to Randy Reid, better known as the "water bug in tennis shoes"! The Lynx boys' basketball award known as the "Fighting Heart" award went to Scott Sherwood. These awards were presented by Basketball Coach Ed Moore.

The girls' golf award went to Carrie Clark and was presented by Coach Hamilton.

The boys' golf award went to Greg Hazelwood and was presented by Coach Brown.

The girls' tennis award went to two girls, Cindy Gressett and Lori McAdams, and was presented by Coach Steele.

The rodeo award went to Halee Reed and was presented by Coach Friemel.

The girls' track award went to Debbie Greene and was presented by Coach Franklin.

The boys' track award was presented to J. J. Jones by Coach Tomlin.

The football awards were presented by Coach Sherwood. High grade offensive players were John Reneau and Zane Newton. High grade defensive player went to Jed Meisner. Most Improved Player was David Ortega. Fighting Heart award went to Benny Rodriguez. Purple Pride award went to Billy Haden. The Roger Jones "Iron Man Award" went to Jim Jones and Randy Reid.

After the awards were given, new Athletic Director Preston Smith introduced the speaker, Jerry Larned, head football coach at Monahans High School. Jerry delivered the finest address we have ever been privileged to hear at an athletic banquet. He emphasized the importance of "prayer" in young people's lives. Also, the importance of being proud of being an American and holding on to the old-fashioned principles that have made America what it is!

On behalf of the entire community, this newspaper would like to thank our school faculty for such a fine speaker and a fine program. But, most of all, our student body, which is so near perfect, in representing our schools. We have a great student body at Spearman, both in high schools, elementary, and junior high!

The Spearman Reporter

VOLUME 69, NO. 24 THE SPEARMAN REPORTER, SPEARMAN, TEXAS 79081 THURSDAY, APRIL 27, 1978

Neff speaks at Lions Club!

City Manager Mark Neff brought the noon program Tuesday at Lions Club. Mark discussed the many ways that a city serves the community. Gas, water, ambulance, trash service, police and park are only a few of the many functions of the city government. He stated that the gas in the city is probably the cheapest rate of any city in the area, because of the city owned gas system. Also, ambulance service by the volunteer drivers in Spearman, is much cheaper than a private owned service; for instance, a trip to Amarillo in the Spearman ambulance is \$130.00, compared to a private charge of \$250.00 for the same trip. Neff went ahead to state that recreation is becoming one of the needs that all cities are beginning to provide for the public. An example, is the golf course, library, swimming pool, and of

course the city also helps with the Family Planning Center in Spearman.

Recreation club dues in Amarillo for some swimming clubs are as high as \$35.00 per month for 12 months, and they only use the pools about 6 months out of the year. In Spearman, city not only provides an outstanding pool for the community, but boosts the fine Spearman swim team, which is headed by Rev. Don Wirsdorfer, who devotes his time and money to the worthy program.

One of the highlights of Neff's speech, was "bragging" a bit on Spearman. According to comparative towns in the area, Spearman is the fastest growing town in the Panhandle, with a 1.4 million growth in building industry the past year.

New projects that the city is working on include the Airport, Senior Citizens Home, and be-

autifying projects for the town.

Neff stated that the present dump ground should be good thru September of 1978, when we will have to probably go to a burn-type disposal for the city dump.

In discussing street repairs, Neff stated that they are continuing to patch the holes in the pavement, and plan to get back to re-topping streets on a regular schedule this summer, probably in August when the weather permits.

Neff informed those present that the gas losses for the city were 56 percent in 1974, 48 percent in 1975, and 24 percent in 1976. This last year, the losses have been 14.5 percent but most of this was due to "blowing" the new lines, and losses in laying the new lines. Neff hopes to get the gas losses to 5 percent for the city after the new lines are finished.

Rotary Auction Date Set

Smith Family In Concert

Volleyball Tourney Set

The Fellowship of Christian Athletes will be hosting a Invitational Volleyball Tournament April 27th, 28th and 29th at 5:30 p.m. Both men and women's teams will be participating.

The Fellowship of Christian Athletes will have the concession stand.

Come out and support our F.C.A. and be entertained with good volleyball games.

There will be a small admission charge.

The Gary Jan Smith Family from Pampa, Texas will be in concert at the First Assembly of God Church, on April 30th in both the morning and evening service. The times are 11:00 A.M. and 7:00 P.M.

The Smith Family consists of Mr. Gary Jan and his wife Edna, and their four beautiful daughters, who sing with Mom and Dad in beautiful harmony. Janet the eldest plays the bass guitar in back-up to Mr. and Mrs. Smith on the electric guitar and piano. Mr. Smith will also be playing his gospel Banjo.

Pastor Nuckels invites everyone that can to attend these special services.

The Spearman Rotary Club will conduct its annual "White Elephant" auction May 7, 1978 at 2:00 P.M., on the parking lot at Plains Shopping Center, Spearman, Texas. This auction has become an annual event, the purpose of which is to raise money for local youth activities.

By way of example, the Rotary Club has made the following donations in the preceding year:

Girl Scouts	\$500.00
Boy Scouts	\$100.00
Cub Scouts - cake sale	\$710.00
Hansford County 4-H	\$105.00
YMCA	\$3,800.00
Larry Jones Crusade (youth materials)	\$80.00
Spearman Swim Team	248.00 (travel bags)
Senior Citizens	50.00
Golden Spread Center	
Hansford County Library (memorial-Peyton Gibner)	275.00

TOTAL \$5,868.00

Local citizens may be called upon in the next couple of weeks to donate items for this auction. In previous years, the items to be auctioned have been either new or slightly used items. The Rotarians are looking forward to another successful auction this year. Anyone who would like to make a donation of a new or slightly used item may do so by calling the office of John Hutchison, 659-3703.

Holiday Season Opener Friday

The Holiday Drive-In in Spearman is re-opening for the season Friday with the featured film being The Island of Dr. Moreau with Burt Lancaster playing the title role of a dedicated scientist searching to isolate the chromosomes which determine the shape of all living things. Michael York is cast as an unfortunate seaman who unwillingly becomes involved in Dr. Moreau's experiments.

The action was filmed entirely on St. Croix in the U. S. Virgin Islands.

For the next two weeks the drive-in will feature one film on Friday, Saturday and Sunday only with the first full week starting May 17.

The operating policy this summer is to have one show only each evening with the film starting at dusk. There will be a concession stand operating this

year as in the former seasons. Admission prices this year have been set at \$2.25 for adults, \$1 for children 6 to 12 and children under 6 will be admitted free.

Lynxettes Listed

In the Amarillo Daily News for April 25, three Spearman Lynxettes were listed in the Panhandle area girls track and field honor roll.

They are Debbie and Sherry Greene.

Debbie Greene was listed in the Triple Jump with a distance of 36 feet, and in the Long Jump a distance of 17'6 1/4".

Sherry Greene was listed in the Triple Jump with a distance of 35'4".



SPORTS ROYALTY -- Kings and queens of football and basketball were introduced to students at Spearman High School April 5 during the Student's Choice presentations. Jim Jones and Lori McAdams, left and second from left, were Basketball King and Queen and Elaine Reimer and Gary McCalmion, second from right and right, were Football Queen and King. They presided over the Homecoming Festivities during the past year for each of the two sports.



TOP LYNX -- Football captains were introduced to students at Spearman High School April 5 during the Student's Choice presentations and football captains, left to right, of District Champion Lynx were Jed Meisner, Randy Reid, Twane Friemel and Jim Jones were center staged.



A special session for John Deere tractor owners-operators will be held THURSDAY, APRIL 27, at 8 p. m., Hansford Implement Co., in Spearman. Mr. Meisner, pictured above, will be on hand, along with Deere and Co. personnel during the session.

Farm Value Emphasized During Soil Stewardship Week

The United States' annual loss of five million acres of rural land to nonagricultural use is a special concern during this year's celebration of Soil Stewardship Week April 30 - May 7. Charles Brillhart, chairman of the Hansford Soil & Water Conservation District announced today.

This year's Soil Stewardship Week theme, "Compelling Ventures," also stresses the importance of controlling water pollution caused by run-off from unprotected farms, ranches, roadsides, and construction sites Brillhart added.

Soil Stewardship Week is a nationwide observance which emphasizes man's responsibility to protect and conserve soil, water, and other natural resources. Traditionally, churches and local citizen's groups participate.

"Nearly 3,000 conservation districts throughout the U. S. will focus their attention upon conserving and preserving America's best farmlands during this 21st annual observance of Soil Stewardship Week," Brillhart said. "The U. S.

Department of Agriculture estimates that of the five million acres annually lost to agriculture, nearly one million acres are classed as 'prime' land -- the best and most productive land we have. We are encouraging the preservation of these top-quality farmlands for farming rather than their indiscriminate use for housing developments, highways, shopping centers, and the like."

All the district churches that are scheduling special Soil Stewardship services.

The 1978 Soil Stewardship Week reference booklet, "Compelling Ventures," and related materials are available to local churches and community groups through the Hansford Conservation District. The publications were prepared by the National Association of Conservation Districts.

Lew Wallace, author of Ben Hur, was a Union General.

Beethoven wrote some of his greatest music after becoming deaf.

A trundle bed is one which rolls out from under a larger bed.

Tennessee is bounded by eight states.

PROCLAMATION

WHEREAS, the well-being of our people depends upon the production of ample supplies of food, fiber and other products of the soil; and

WHEREAS, the quality and quantity of these products depend upon the conservation, wise and proper management of the soil and water resources; and

WHEREAS, our people have a mutual interest in the land and share the responsibility of preserving its productivity; and

WHEREAS, conservation districts provide a practical and democratic organization through which landowners are taking the initiative to conserve and make proper use of these resources; and

WHEREAS, the conservation districts are carrying forward a program of soil and water conservation in cooperation with numerous agencies and countless individuals;

NOW, THEREFORE, I, in full appreciation of the value of the soil to the public welfare, and desiring to honor those who protect it, do hereby proclaim April 30 - May 7, 1978.

SOIL STEWARDSHIP WEEK

In witness Whereof, I have hereunto set my hand and caused the Great Seal to be affixed.

Done at the Courthouse in the County of Hansford this 21 day of April, in the Year of Our Lord one thousand nine hundred and seventy-eight.

Johnnie C. Lee, County Judge

First MV Registration Deadline Approaching

The first deadline under the state's new "staggered" motor vehicle registration system is April 30. But the last day motorists can obtain stickers at one of the 254 county tax assessor-collector's offices is April 28.

Hansford County Tax Assessor/Collector Helen Dry noted that very few motor vehicle registrations of such short-term duration were issued in Hansford County but those that were issued have to be in compliance with the deadline, she mentioned in commenting on the release from the State Department of Highways and Public Transportation (SDHPT) concerning the April sticker expiration.

No county tax offices are expected to be open on Saturday, April 29, or Sunday, April 30.

However, the short-term, one-month license plate validation stickers obtained before the recent April 1 deadline must be replaced by midnight April 30. Motorists driving their vehicles after that date with plates bearing the April stickers may be subject to fine up to \$200.

And since motorists exercised the one-month option to renew their registrations they must replace them with full 12-month stickers.

Actually, it is believed that the few motorists who selected the shorter registration period did so because they expected to buy new vehicles within the 30-day period.

Motorists who elected to take short-term registration -- one to six months -- will receive no notice of registration deadlines. They must take their last vehicle registration receipt and current auto title to the county tax office to receive the new sticker.

According to fees paid, short-term stickers will expire on the last day of the appropriate month through this September. Beginning with October, renewal notices will be mailed -- about September 1 for October

stickers and about 60 days prior to the deadline for all subsequent months.

Bob Townsley, director of the Motor Vehicle Division of the SDHPT estimates that about 800,000 vehicles will be registered each month under the new system.

Although this is expected to relieve the crushing burden of trying to register 10 million vehicles within a 60-day period, procrastinators may find themselves waiting in line again if they delay until the last minute to obtain their new registration stickers.

Stamp Tax Collections Increase

AUSTIN, Texas--The latest figures released by the State Treasury Department indicate a continuing increase in stamp tax collections.

According to State Treasurer Warren G. Harding, state cigarette stamp collections for March was \$24,272,679--\$4 million more than during February. Total stamps issued in March were 158,575,710--up 43 million from February.

Liquor stamp tax collections for March also showed an increase, \$212,208 last month compared to \$146,340 in February.

Wine tax collections were up \$1,290 and beer stamp tax collections were up \$2,190 from the previous month.

A comparison of the first seven months of this fiscal year and the first seven months of last year show that cigarette tax collections increased by \$6.2 million, liquor taxes by \$118,359, wine taxes by \$2,064 and beer taxes by \$4,455.

Flying a national flag upside down at sea is a signal of distress.

BILLY DAVE HAND RECEIVES AWARD

Billy Dave Hand formerly of Spearman, Texas and now of Harrah, Okla., was awarded the Horse Proficiency Award at the annual F. F. A. Awards banquet April 11, 1978 in Harrah, Okla.

This outstanding award was donated by the American Morgan Horse Foundation as a Special Project of the National F. F. A. Foundation.

Billy Dave and his family are in the Quarter Horse business in Harrah.

You save here

...because we check it here

An Energy Checked Efficiency Home is one that has been constructed with economy of operation in mind. Caulking and weatherstripping around doors and windows is one way a home can qualify under this program. Storm doors and windows can also be a part of an Energy Checked Efficiency Home. If the total glass area is 10% or less of the floor area, the home earns even more points toward qualifying as Energy Checked Efficient. When you see this sign in front of or throughout a home, you can be assured that we have inspected the home carefully and it has passed the test that can mean savings to you through years of lower operating costs.

ENERGY CHECKED

COMMUNITY PUBLIC SERVICE
Your Electric Light & Power Company

ATTENTION - OVER AGE 65 RESIDENCE HOMESTEAD OWNERS

Hansford County is, for the first time, allowing a Homestead Exemption for persons age 65 or over on January 1, 1978.

To be eligible for this exemption a person must sign a form, designated for this purpose, at the Hansford County Tax Office in the courthouse at Spearman, Texas.

This must be done in person and before April 30 of each year. THIS IS NOT THE STATE HOMESTEAD ALLOWANCE AND IS NOT AUTOMATIC. YOU MUST SIGN UP YEARLY.

Helen Dry, Hansford County Tax Assessor-Collector

Take advantage of local health services.

Free or low-cost community services may include immunization clinics and screening tests offered by health organizations, says Carla Shearer, health education specialist with the Texas Agricultural Extension Service, The Texas A&M University System.

The dahlia is named for the Swedish botanist Dahl.

P.T. Burnum sponsored Jenny Lind in her American debut.

Delaware is the second smallest state in the Union.

The colors in the American flag stand for courage (red), Liberty (white), and loyalty (blue).

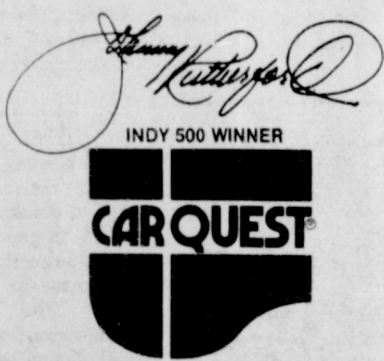
A CARQUEST SAVINGS WITH REAL SHOCK VALUE.

MONROE GRIPPERS \$5.55 EACH

THIS SPECIAL LOW PRICE, PLUS INSTALLATION, ALSO AVAILABLE AT PARTICIPATING CARQUEST SERVICE STATIONS AND GARAGES. LOOK FOR THE CARQUEST BANNER.



The full size shock that equals or exceeds original equipment specifications. Fits most U.S. cars and pickups and many imports. A terrific value at a shockingly low price.



Good at CARQUEST Auto Parts Stores and participating dealers thru April 30, 1978.

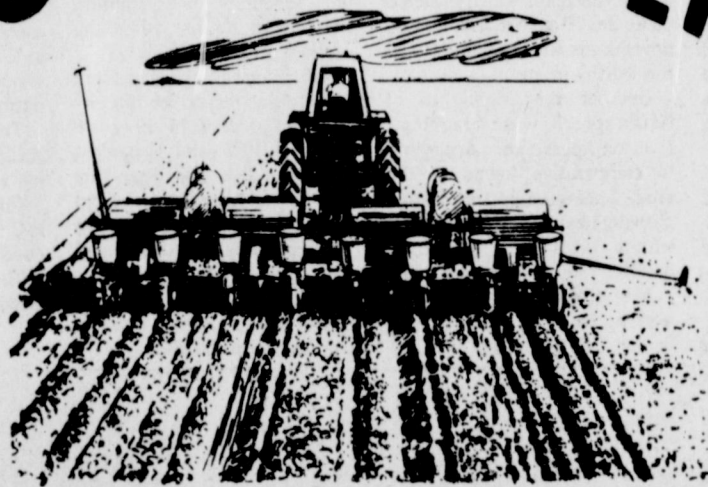
HI-PLAINS AUTO SUPPLY, INC.

118 N. MAIN SPEARMAN PHONE 659-2506 AT MOST LOCATIONS

WE KNOW WHAT YOU MEAN WHEN YOU'RE TALKING PARTS.



YOUR PLANTER



USE IT WISELY

Don't let your planter be your worst enemy.

IF YOU ARE THE ONLY ONE IN TEXAS THAT CUTS BACK ON YOUR ACREAGE, YOU WILL BE BETTER OFF NEXT FALL!!



American Agriculture Movement

PAID FOR BY CONTRIBUTIONS TO AMERICAN AGRICULTURE

WANT

ADS

Boxwell Bros. Funeral Home and Flower Shop

REAL ESTATE FOR SALE

RESTAURANT FOR SALE: 659-3648 between 8 to 5. 235-4tc

FOR SALE: Immediate possession. 1013 S. Bernice, 3 bedroom, 1 Bath, extra built-ins and storage, carpeted, storm windows and doors, fenced-in back yard. After 5:00 for appointment 659-2872, during day call 2311, ask for William. 225-rtn

Pens For Sale: Crawford Addition, 659-3510. 165-rtn

FOR SALE: Large office building in good location near downtown. Use as Store, Offices, Storage etc. Central heat, air conditioned, carpeted. 14 S. Haney. Harold Groves. 659-2647. 125-rtn

LOTS FOR SALE: 82' X 160' located at 319 S. Endicott. Call 658-4890. 8-rtn

FOR SALE: 722 Collier 3 bedroom, 1 3/4 baths, garage, fenced yard, corner lot. CALL 659-3885 weekdays after 5:30. 22-8tp

Mayfield Real Estate John Mayfield - Broker 435-6528 Ruby Lair - Salesperson 659-2188 1109 Townsend, 3 bedroom, 1 1/4 baths, new appliances, single car garage, fenced yard. Land For Sale: 160 acres, 11 miles northeast of Follett, windmill water, some machinery, immediate possession, no minerals. 2 Lots in the Shaull Addition zoned trailer houses. 175-rtn

FOR SALE: Approximately 2 acres on corner of Kenneth Ave. & F.M.760. 284 ft. frontage on Kenneth, zoned commercial. Call 3867. 23-rtn

House For Sale: 3 Bedroom Brick, 2 Baths, 659-3460. 23-rtn

FOR SALE BY OWNER: Two, 3 bedroom homes, 2 baths, good location, reasonably priced. Call 659-2283. 195-rtn

MISCELLANEOUS FOR SALE

FOR SALE: 1970 Grand Prix. Good condition. \$700.00. 733-2607, Gruver. 205-rtn

FOR SALE: Firewood. Burton Schubert. Call 659-2667. 5-rtn

FOR SALE-Hog supplies, hog scales by Paul, portable like new. Also have 2 feed tanks, one ton each. Have 2 lots in Crawford addition, one 50 ft., one 60 ft. lot with lots of improvements. Call Dean Groves, 659-2647. 225-3tc

FOR SALE: German Millet Seed, makes hay in 45 days. Farmers & Ranchers Supply, 733-2931, Gruver, Texas. 215-rtn

FOR SALE-VW Fastback '69. \$500. Harold Groves, 659-2647. 225-3tc

FOR SALE-4 high wooden bar stools. \$25 each. Harold Groves, 659-2647. 225-3tc

Reduce safe and fast with GoBee capsules and E-Vap "water pills", Spearman Drug. 24-8tp

FOR SALE: 44 sq. yd. of extra good, used carpet and pad. O. K. Pendergraft, 659-2623; or 659-3993. 24-2tp

GARAGE SALE: 4-Family Garage. Friday and Saturday, April 28-29. 701 Cotter Drive. Children's clothes, misc. items. 24-1tp

FOR SALE: Refrigerated Air Conditioner. 8000 BTU. Like new. Used Gas Oven and Range with Griddle and Rotisserie. 659-3962. 225-4tc

FOR SALE: Increase your safety on the highways with a slightly used radar detector-excellent condition. 733-2564. 23-2tc

FOR SALE: Motorcycle. 1976 Kawasaki 500. Call 659-3332. 205-rtn

FOR SALE: Stewing Size Chickens. \$1.50. 659-3460. 235-rtn

JEWELRY FROM PRIVATE ESTATES: 7.03 ct. Diamond and 14 K. handmade white gold ring containing 28 marquise diamonds, 16 round diamonds and .72 ct. round center diamond-\$4950.00; 5.65 ct. t.w. diamond and 14 K. white gold Ballarina Ring containing 32 tapered baquette diamonds, 12 round diamonds and a 2.22 ct. natural coffee colored pear shape diamond - \$5190.00; 2.24 ct. t.w. diamond and 14 K. white gold ring containing .60 ct. t.w. baquette diamonds and 1.64 ct. VVS1 grade European Cut Diamond - \$4200.00; 1.85 ct. t.w. Ruby and Diamond Platinum Ring containing 2 round diamonds, 4 baquette diamonds and 1.75 ct. Oriental Ruby of superb color and clarity - \$1450.00; .75 ct. flawless natural Canary European Cut Diamond Solitaire on 18 K. wide yellow gold band - \$785.00; 2.28 ct. t.w. excellent quality Diamond and platinum dinner Ring containing 6 baquette diamonds, 12 round diamonds and two .81 ct. round diamonds - \$2750.00; 13.54 ct. Aquamarine and Diamond Ring in fine handmade 18 K. white gold mounting containing 6 round diamonds and 13.27 ct. fine quality Aquamarine - \$1550.00; 3.58 ct. Diamond and 14 K. white gold handmade fillagree Pendant containing 91 flawless round diamonds - \$3590.00; 1.92 ct. t.w. Diamond and 14 K. yellow gold handmade fillagree Bracelet containing 84 fine quality diamonds - \$1450.00; Opals, Sapphires, Rubies, Diamonds and Burma Jade Jewelry too numerous to mention. Also very fine collection of Antique Chinese Jade Carvings consisting of bowls, cups, ink stand, jade screen and personal adornment items. Also, Sung miniature pottery vase and Kang Hsi miniature porcelain vase. For Further Information Call: 806-826-5748 Day or Night. 24-2tp

Each U.S. Congressman represents approximately 280,674 people.

PBX, referring to small switchboards, means Private Branch Exchange.

PEE WEE'S PLUMBING & Appliance Service. Roto-roooter. 659-2811 or 659-2781. 24-rtn

LEGAL NOTICE

BIDS FOR HOSPITALIZATION INSURANCE Bids or quotes should be made to Hansford Hospital by May 1, 1978. Information on group composition available during normal office hours at the business office at Hansford Hospital 707 South Roland, Spearman, Texas 79081. Telephone 659-2535. 235-2tc

ORDINANCE NO. 428

An ordinance regulating Charitable Solicitation within the City of Spearman, Texas; providing definitions; establishing a Fund Solicitation Board; requiring a Permit for Solicitation; prohibiting Solicitation without a Permit and providing a penalty therefor and defenses thereto; providing procedures and requirements for application for, issuance of, and revocation of a Solicitation Permit; providing for appealing the revocation of a Permit; and providing for publication and severability. Any person convicted of violating a Provision of this Ordinance is punishable by fine not to exceed two hundred dollars (\$200.00). 24-1tc

PEE WEE'S PLUMBING & Appliance Service. Roto-roooter. 659-2811 or 659-2781. 24-rtn

FOUND

HELP - MAYDAY - SOS, etc... Somebody's pretty brown & tan female dog has established residence in my back yard under my storage shed where she has found 7 of the cutest puppies you ever saw! She is gentle, kind, smart, beautiful and well cared for. PLEASE - come and take this family home with you. Sybil Miller 810 Bernice Spearman. ***** If you want to drink, that's your business. If you want to stop, that's ours. ALCOHOLICS ANONYMOUS Phone 659-3181 or 659-3998, or in Gruver 733-2170 *****

TOO EARLY TO CLASSIFY

MOVING SALE: Orange tweed sofa \$100. Three-piece olive gold sofa includes recliner and chair and ottoman \$225. Parheon exerciser table \$30. Call Dorothy Groves at 659-2647. 24-3tc

POLITICAL ANNOUNCEMENTS

The Hansford Plainsman is authorized to announce the candidacy of the following candidates for public office, subject to the action of the voters in the 1978 primary elections.

FOR COUNTY JUDGE R. L. McClellan Francis Biles FOR COUNTY TREASURER Verna Gail Keim FOR COUNTY & DISTRICT CLERK Marie Gould FOR COMMISSIONER PREC. 2 Joe T. Venneman FOR COMMISSIONER PREC. 4 Alvin (Bill) Cator, Jr. George C. (Bud) Lowe Val Winger FOR STATE REPRESENTATIVE 64th LEGISLATIVE DISTRICT Bob Close

TEXAS PRESS ASSOCIATION 1977

SPEARMAN, TEXAS 79081 213 Main Box 458 659-3434

Published Weekly at 213 Main Street Spearman, Texas 79081 Owner-Publisher.....William M. Miller Second Class postage paid at Spearman, Texas

ANY ERRONEOUS REFLECTION UPON THE CHARACTER OF ANY PERSON OR FIRM APPEARING ON THESE COLUMNS WILL BE GLADLY AND PROMPTLY CORRECTED UPON BEING BROUGHT TO THE ATTENTION OF THE MANAGEMENT.

SUBSCRIPTION RATE: Hansford, adjoining counties, combination with the Hansford Plainsman, \$10.40.

Other points, \$14.40.

FOR THE ULTIMATE IN STORM DOORS

CUSTOM BUILT, DESIGNED, AND IN COLORS TO FIT YOUR HOME..... CONTACT HOWARD MOYER at ONLY ALUMINUM INDUSTRIES 405-338-6966 or 338-6170 P. O. BOX 471 GUYMON, OKLAHOMA 73942

Hightower Comments

Congressman Jack Hightower stated today he was very gratified that the Small Business Administration has opened an office in Amarillo to handle disaster agricultural loan requests. "The need for a full-time Small Business Administration office in Amarillo has been apparent for some time," Hightower stated. "The number of farmers affected by last year's drought and needing financial aid for the coming year is overwhelming."

Most all of the counties in the Texas Panhandle have been declared a disaster or are in the process of being declared a disaster by the Governor's Office. To be eligible for the low interest loans a producer will have to have certification by the Agricultural Stabilization and Conservation personnel that the producer did in fact have decreased yield from natural causes such as drought, hail or wind to one or all of his 1977 crops. A producer would be able to place as much as 50 percent of the emergency loan against existing debt. The rest would be operating funds for this crop year.

Hightower was instrumental in 1975 when he was a member of the Small Business Committee in pushing through legislation that put the Small Business Administration into the farm loan business. Hightower commented, "We have been disappointed in the way the Small Business Administration has handled much of the area of agricultural credit. The emergency and disaster loan area has been of some aid. The problems for the most part have been in Washington rather than in the regional offices. I hope these disaster relief loans will provide some real help to producers. The moving of personnel into Amarillo is a big step in the right direction."

The office is in the Federal Building in Amarillo, 205 East Fifth, Room 326. The phone number is Area Code 806-376-2208. Producers suffering yield reductions during 1977 should contact this office. The Amarillo office will have jurisdiction over this program in 49 counties in the Panhandle.

AUSTIN-The fast and furious pace at Texas livestock auctions slackened during February, but all sales remained above year-ago levels, Agriculture Commissioner Reagan V. Brown has said. "There were some 446,000 head of cattle and calves marketed through auctions during February, down from the 554,000 head auctioned the preceding month," Brown said. "However, this total remains 3 percent above February, 1977 levels."

Brown noted that auction sales of hogs (50,000 head), sheep and lambs (55,000 head) and goats (11,000 head) followed the same pattern.

Iceland is ruled by the King of Denmark. ***** May 4, 1607 was the date of the first permanent English settlement in North America. ***** Christmas cards were first used in the U.S. in 1874. ***** The American Flag was first used at Cooth's Bridge during the Revolutionary War. ***** Delaware was the first state to ratify the U.S. Constitution. ***** The discovery of dynamite enabled Nobel to endow the famous Nobel prize. *****

CARDINAL CHEMICAL, INC.

NEEDS ONE OR TWO GOOD MECHANICS Must have own tools and diesel experience. Group insurance, paid vacation, retirement plan, advancement. Age 21 years or over. APPLY IN PERSON - 435-6588 PERRYTON, TEXAS

ED WHEELER REAL ESTATE HOMES - FARM - COMMERCIAL -

Brick 3 bedroom, 1 1/2 baths, built-ins, new carpet, nice drapes, attached single garage, fenced, storage house. 3064 under roof, 3 bedroom, 1 1/2 baths, central heat and air, ash paneling and woodwork, extra large double garage, automatic underground lawn sprinkler, large storage building, concrete pad for boat, etc. Cinder block fence, nice patio. Appointment only. 3 bedroom brick, 2 full baths, recently redecorated, fenced, central heat and refrigerated air, large double garage detached with finished room & bath, can be used for bedroom or office. Must see to appreciate. 416 S. Haney, 2 bedroom, 1 bath, built-in appliances, washer & dryer, completely remodeled, new carpet, drapes, custom made, new roof, freshly painted, storm windows, detached garage made into bedroom. Must see to appreciate. 821 S. Barkley, 2 bedroom, 1 1/2 bath, new tile in kitchen, dining area, new carpet in den, storm windows, large lot, fenced storage building, single garage, large trees, sprinkling system. Extra nice home -- can be made into a three bedroom. 211 Lonita, 3 bedroom, single attached garage, single bath. Extra nice. Priced to sell. Ed Wheeler 659-2613, Office or 659-2951, Home Jerry Gee 659-3664 225-rtn

SECRETARY WANTED

The Permian Corp., Hiway 207, Spearman, Texas, has openings immediately for a secretary. Filing, typing, telephone and radio. excellent pay and benefits. Call 806-659-2571, or come by the office in Spearman, Texas. AN EQUAL OPPORTUNITY EMPLOYER, MALE OR FEMALE.

CARDINAL CHEMICAL, INC.

NEEDS EQUIPMENT OPERATORS Must have commercial license and telephone. \$975 monthly guaranteed pay. Group insurance, paid vacation, retirement plan, advancement. Experience helpful, but not required. PERRYTON, TEXAS APPLY IN PERSON - 435-6588. MUST BE AGES 21 AND OVER

Home Available For Sale. We offer one of the largest and finest homes in Southeast Spearman across from the high school. Five bedrooms, formal living room, den in basement with built-in fireplace. Approximately 4000 square feet with many extras. Includes 12'x20' storage building, fence, sprinkler system, TV and CB towers and antennas, many more features. Call for appointment, 659-2647, Mr. and Mrs. Harold Groves. 125-rtn

OFFERED BY: EMMETT R. SANDERS, REALTOR



GROWING WITH SPEARMAN, now under construction in The Dejon Kirk Addition, on South Brandt. This one is sold. Construction underway on another one. Why not enjoy a brand new 3 bedroom home, prices starting at \$27,500. Today's best housing buy for quality building. Low move-in cost--sure beats paying rent. Act now for choice of colors, floor plans, etc.



This 2 bedroom stucco home is in excellent condition. New carpets throughout. Formal dining room. Detached double garage; located near school on 75 ft. lot. See it now.

Older 3 bedroom house on 2 lots, large basement. 308 S. Hoskins -- 5 room house, carport, fenced yard, priced to sell.

Small 3 room stucco house on corner lot, near downtown, some used furniture included, ideal for single person.

EMMETT R. SANDERS, REALTOR. 659-2516 NIGHTS 659-2601

WANTED

WANTED: House to be moved. Steve Mathews, 806-659-2808. 225-4tc

Will Do Good Mowing, etc. Call 659-3839 or 659-2541. 225-rtn

BUSINESS OPPORTUNITIES

DEALERS WANTED: To handle a major line of pre-engineered steel bins and buildings. Lucrative opportunity for the right person. Aggressive farm operator considered. Call 800-835-2246. 23-6tp

HELP WANTED

WANTED: Clerk for 3 to 11 shift and 3 to 9 shift starting \$2.65 hr. Apply at Allsup's. 24-3tp

HELP WANTED: No experience necessary. Apply in person. Berry Cleaners. 235-rtn

HELP WANTED: From 1 to 6, Monday through Friday, and 9 to 12 on Saturday. Apply at Earl's T.V., phone 659-2121. 22-rtn

NOTICE

Recycle your aluminum at - Bruce Motors at ten cents a pound. 215-rtn

Yellowstone is the largest National Park in the United States. *****

JIMMY GREENE 659-3196 BOX 5 SPEARMAN The Licensed, protecting her own. KANSAS CITY LIFE INSURANCE COMPANY SINCE 1866

STEAM RINSEVAC RUG SHAMPOOER \$6.95 PER DAY with Upholstery Attachment \$8.95 PER DAY Call Gordon's Drug 659-2141 or after 7 p.m. & Sundays call FREDDIE LARGENT: 659-3437 24-rtn

YOUR LOCAL USED COW DEALER: SPEARMAN BI-PRODUCTS. Seven days a week dead stock removal. Please call as soon as possible. 659-3544. 8-rtn

SERVICE: Pits cleaned, wet or dry. Dragline or loader. Also, dozer, grader, carry-all service. LeeRoy Mitchell, 806-733-2384, Gruver, Texas, 79040. 9-rtn

Alcoholic Anonymous Meeting 8 p.m. Friday, Home Demonstration Club building. 305 N. Bernice. Phone 659-3181 for information. ***

Al-Anon meetings 8 p.m. Friday Home Demonstration Club building. 305 N. Bernice in back room. Phone 659-3181 for information. Ask for Al-Anon.

NOTICE Wallace Monument Co. Monuments, Curbing, Grave Covers Local Representative LEONARD JAMESON 659-3406 20-rtn

Can Drill Domestic or Irrigation Wells. Deepen domestic and gravel pack. Sell new domestic or irrigation pumps. Call at night, Bill Block, 935-4088. 215-rtn

SAVE MONEY INSULATION DOESN'T COST...IT PAYS! CELLULOSE INSULATION Blow On *Walls *Mobile Homes *Attics *Steel Buildings Free Estimates ALL SEASONS INSULATION Phone 806-249-2922 22-8tc

For Moving Mobile Homes, Skirting and Leveling. Call Charlie Cook in Canadian. 806-323-5238. 22-rtn

B SPEARMAN
659-2514
GRUVER
733-2981

**BROCK
AGENCY**

It's
**HAIL
INSURANCE
TIME**

Water Management Study In Progress

The Bureau of Reclamation of the U. S. Department of the Interior is currently involved in the Llano Estacado Total Water Management Study and representatives from the Southwest Region in Amarillo were in Spearman Tuesday, April 25, in connection with the project.

Also participating in the special investigation are the Texas Department of Water Resources, the Texas Tech University Water Resources Center and the Texas Natural Resources Information System.

The main objectives of the study will be to:

1. Identify water supply problems and needs.
2. Determine the quantity and quality of water resources, placing special emphasis on the plays.
3. Evaluate alternative sub-appraisal or appraisal-level plans for the most economical and beneficial use of play water supplies.
4. Present and evaluate related water supply concepts applicable to the area, considering engineering, legal, social, institutional, environmental, and economic constraints.
5. Evaluate regional and national economic impacts due to the declining ground water supplies in the study.
6. Make recommendations.

The High Plains region that includes the study area is one of the leading producers of agricultural goods in the nation. The economy of the study area relies heavily on agriculture and related industries. Because most crops of the study area are irrigated with water pumped from the Ogallala ground water

aquifer, the aquifer is an extremely important water supply. The Ogallala is rapidly being depleted because pumping exceeds recharge. Therefore, a comprehensive investigation of the study area's water resources is needed. Accordingly, the BR will study how to best conserve and augment the study area's present water supplies, placing special emphasis on quantifying water supplies that may be available from the playa lakes of the area.

The study officially began in fiscal year 1977 and is scheduled for completion in FY 1981. The study area encompasses the High Plains of eastern New Mexico and northwest Texas and those High Plains of Colorado, Kansas, and Oklahoma lying south of the Arkansas River. Most of the study area (85,000 square miles) is in Texas and New Mexico and overlies the Ogallala ground water aquifer.

Project coordinator is Nicolas Palacios with the BR Division of Planning, Southwest Region, in Amarillo.

Hospital News

Patients in Hansford Hospital are Dorothy Wyatt, Ana Vela and daughter, Sue Woolley and daughter, R. E. Lee, Faye Schmeier and Mattie Grigsby.

Dismissed were Jeff Gilbreath, Amanda Bryant, Randall Arnold, Caroline Harnden, Verla Corryell, Jo Haley, Helen Etter, and Chris Woodington was transferred.

Annual CowBelle Beef Tour Held

The third annual CowBelle Beef Tour was held on Tuesday, April 18th. The fourth grade students of Spearman Elementary School participated in the field trip sponsored by the local Calico CowBelles, who were represented by Bernice Brown and Karen Schnell.

The purpose of the tour was to give the youngsters an insight on how beef comes from the rancher, to the butcher and then to the dinner table. The day started with a film entitled "Microscopic Middleman," presented by Mr. Kent Depee, a local cattleman and nutritionist. The film explained how micro-organisms in feed supplements help cattle better utilize the nutrients they receive.

The group then went by bus to the Mac-Dye Packing Plant of Booker to get a first hand look at how meat is processed and readied for the grocer's counter. Next came a special treat, a picnic lunch in Perryton provided by the CowBelles. Then it was on to Perryton Feeders, Inc. to see the operation of a

feedlot. The tour was conducted by Chick Burney, feedlot manager. First came a tour around the pens and then through the mill to see how the feed ration is mixed and prepared. The children were given a sample of the "popped" maize used in the feed.

The last stop was to see Mr. Depee's cows and baby calves and a special demonstration by his cowdogs.

The Calico CowBelles would like to thank everyone who made this trip a success, with special thanks to Mr. Depee for accompanying the group and to the teachers; Zetha Blackburn, Martha Steele and Ruth Whitson and principal Allen Alford for their co-operation and enthusiasm.

The CowBelles would like to remind everyone that the "Brand" napkins are on sale once again. For information contact any member.

31% Bond Sales Goal Reached

March sales of Series E and H United States Savings Bonds in Hansford County were reported today by County Bond Chairman C. A. Gibner. Sales for the third-month period totaled \$28,130.00 for 31% of the 1978 sales goal of \$90,000.00.

Texas sales during the month amounted to \$26,644,081, while sales for the first three months of 1978 totaled \$77,564,628 with 25% of the yearly sales goal of 306.6 million achieved.

Renovation

Renovation work on the old Spearman Hotel is in progress. As of April 25, the front veranda has been removed and, from the building material at the site, interior work is in progress. However, no announcement has been made at this time as to what such renovation work will lead to.

The avocado has more protein than any other fruit.

Mother Of Local Woman Dies

Funeral services were held at 10 a.m. Tuesday at Boxwell Brothers Funeral Home Chapel in Perryton for Mrs. Savilla Jane Smith, 89, who died Sunday. Dr. David Darnell, pastor of the First Christian Church, officiated. Burial was in Hansford Cemetery.

Mrs. Smith had been a resident of Perryton for 18 months. She belonged to First Assembly of God Church in Liberal, Kans.

Survivors include three daughters, Mrs. Ola Hergert of Perryton, Mrs. Marva Hanners of Spearman and Mrs. Mae Caldwell of Sonora; two sons, Leo of Austin, Eugene of Santa Sussana, Calif.; two brothers; two sisters; eight grandchildren; 20 great-grandchildren; and four great-great-grandchildren.

DST Begins Sunday

It's that time again. Daylight Saving Time begins (like it or not) Sunday morning, April 30, at 2 a.m.

So you will be in tune with the time Sunday and for the next six months, set your clocks up one hour before retiring Saturday night.

Markets

WHEAT	\$2.67
CORN	\$2.33
MILO	\$3.70
SOYBEANS	\$9.95

Fellowship Rally Set

Janie White and the Sonlights of Dallas will be appearing in person with their songs and music in a Fellowship Rally April 28 at 7:00 p.m. in the Perryton High School Auditorium. This meeting will be for the fellowship of people who live in Ochiltree, Hansford and Lipscomb counties. People from other places are also welcome. School teachers, school officials, school board members, city officials, county officials, state officials, U. S. government officials, church officials, law enforcement officers and others who are in authority will be honored at this meeting.

Janie White is a former professional night club singer. She has changed from night clubs to auditoriums. She and the Sonlights have been playing and singing together in auditorium engagements for about two years. They record on the Sword & Shield record label.

T. M. Cole of Amarillo will speak at the Fellowship Rally. He has filled speaking engagements in Texas, New Mexico, Oklahoma and Kansas. He made a trip around the world and filled speaking engagements in Manila and Tagbilaran City, Philippines; in Shillong, Madras and Mallappally, India and in Oron, Nigeria, West Africa.

Jackpot Roping

The Adobe Walls Independent Roping Club will have a jackpot roping Saturday, April 29 at 7 p.m. at the Oscar Archer Arena. Cost is \$40.00 for 5 head, progressive after 3. Everyone is invited to attend the roping.

Spring Job Fair Set

AMARILLO--A Spring Job Matching Fair, Saturday, May 20, will be sponsored for the area by the Amarillo Chamber of Commerce through its Local Industry Committee. The Chamber will work in cooperation with the Amarillo Board of City Development and the District Office of the Texas Employment Commission.

A planning session for firms wishing to participate as employers in the Job Fair will be held at 2 p.m. Wednesday, April 19, in the Blue Flame Room of the Pioneer Natural Gas Building, 3rd and Taylor, in Amarillo.

About 40 firms are expected to take part in the one-day fair to be held in the Red Carpet Area of the Amarillo Civic Center. A firm from Dumas and one from Pampa have signed for the fair. The fair will run 9:00 a.m. - 3:30 p.m., May 20.

"This is the third Job Matching Fair the Chamber of Commerce, BCD and employment commission have sponsored for Amarillo and the area," according to Dan Neely, Chamber of Commerce Local Industry Chairman.

"Amarillo is one of the only, if not the only, city in Texas which gears its Job Matching Fairs to finding employees for not only city industries but also area industry," Neely continued.

Firms who have reserved a spot at the fair include the Celeanese Plant, Cabot Industries, Iowa Beef Processors, Owens-Corning Fiberglass, Northwest Texas Hospital, Dowell Division of Dow Chemical, Amarillo College, and Swift & Company. Skilled and unskilled positions will be available. Summer jobs will also be listed.

"This is an area-wide effort

to attract labor into the Panhandle work force," Neely said.

Sam Stennis, President of the Amarillo Board of City Development said, "The BCD will be advertising in all surrounding states with residential areas within a one-day driving distance of Amarillo."

"The reputation of Amarillo's Job Fairs is attracting interest from potential employees at this early date," Brooks Carroll, TEC Employee Supervisor said. Inquiries concerning the date of the next fair may be made at the TEC and Chamber offices.

Any firm wishing to participate in the Jobs Matching Fair should contact the Amarillo Chamber of Commerce, 301 S. Polk, or call 374-5238.

Happy Anniversary

Best wishes are extended to those celebrating their anniversaries during the month of May are Mr. and Mrs. George Franklin, Mr. and Mrs. R. L. Easley, Mr. and Mrs. Tim Fisher, Raymond and Judy Jenkins, Donnie & Debbie Davis, Vernon and Marsha Pipkin, Dan and Patti Pogue, Mr. and Mrs. Steven Slater, Tom and Linda Latta, Wilton and Betty Green, Earl and Trudy Goodheart, Sammie Don and Edrie Jones, Junior and Nita Barnes, DeAnn and Johnny Dunning and Mike and Michelle Davis.

IT'S A FACT Medical science is benefiting from Air Force research: Many electrical and mechanical components required for artificial heart and kidney machines were made possible by Air Force projects, including miniaturization or parts to reduce the machines to practical size.

Sacks Third Ave.

Classes in beginning and advanced tole and decorative painting, canvas painting, water color, Rosemaling, basic drawing and needlepoint.

Classes starting soon. Limited enrollment, deposit required. Write or call Sacks Third Ave. for further information.

1-806-659-3350

Box 402

Spearman, Texas 79081

SUNFLOWERS

THE "NET PROFIT" CROP

- NEW MARKETS THAT CONTINUE EXPANDING.
- EARLY CROP, FAST MATURING, FIRST ANNUAL INCOME
- TOTAL WATER REQUIREMENTS 60% OF OTHER CROPS
- PRODUCERS PROCLAIM THE EASIEST CROP GROWN
- RESPONDS WELL TO FERTILIZER (WITH OR WITHOUT)
- OFF SEASON HARVEST (SPREADS WORKLOAD)
- FREEZE TOLERANCE, SAND RESISTANT, CONTROLS WEEDS
- IS ADAPTABLE TO ALL TYPES OF SOIL
- TOTAL CASH INPUT FOR CROP MUCH LESS
- "PLANT SUNFLOWERS FOR MORE NET PROFIT"
- "THE SUNFLOWER PEOPLE OF WEST TEXAS"
- JOHN F. HERZER & ASSOCIATES 806-792-4418



IF YOU ARE INTERESTED

IN SUNFLOWER

Growing under contract, with John F. Herzer and associates, contact

J. W. WHITAKER

or KENT REMMEL

733-2620

SUNFLOWERS

THE "NET PROFIT" CROP

WE NOW HAVE AVAILABLE GROWER CONTRACTS FOR THE 1978 CROP. WE CAN SUPPLY TOP QUALITY HYBRID PLANTING SEED AT REDUCED CASH PRICES. WE ALSO HAVE PLANTING SEED FOR CONTRACTS THAT ALLOW YOU TO PLANT NOW AND PAY LATER PLAN AHEAD, PLAN NOW TO PLANT IN APRIL, TAKE ADVANTAGE OF MOISTURE, FERTILIZE WELL, AND HARVEST IN AUGUST FOR EARLY CASH WHEN ITS NEEDED.

"THE SUNFLOWER PEOPLE OF WEST TEXAS" PANHANDLE SPRAYING SERVICE 733-2002

R & W GRAIN

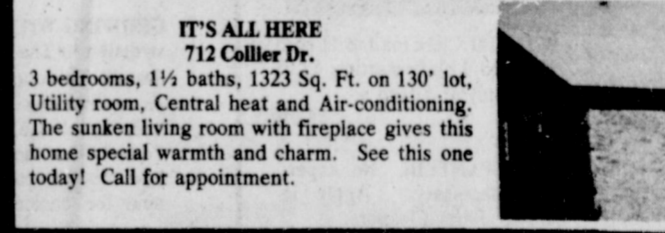
AGENT FOR JOHN F. HERZNER AND ASSOCIATES

Our "Joint Venture Contracts" guarantees the grower \$10.00 per 100 wt. for his total sunflower crop and we share a 50% profit to the grower on a joint venture market price at harvest time above the \$10.00 guarantee, based on J.F.H. contracts. Good dry land crops yielding from 900 to 1500 pounds per acre. Good irrigated crops yielding from 1800 to 3000 pounds per acre. We have receiving points at Claude, Groom, Pampa, Perryton, Spearman, Vega, Gruver, Etter and Happy.

WE NEED LISTINGS
NADINE CRUM BROKER
We Need Listings! Want to Sell your Home? We have BUYERS.
CRUM REAL ESTATE
1105 S. BARKLEY
CALL ANYTIME
NEED LISTINGS
WE NEED LISTINGS
VIRGINIA WHITE SALESPERSON
659-2053



AFFORDABLE AND CLEAN
814 HANEY
LARGE living room, lots of pretty KITCHEN CABINETS, utility room you will love with plenty of STORAGE and room for washer, dryer, and deep freeze. Also, has TWO hot water heaters—one for kitchen and washing machine and one for bath. There are two bedrooms, one bath, 1080 sq. ft. living area, two refrigerated air-conditioners and tower and UHF antenna are yours with this home. Call us, we'll be glad to visit about this or any of our other listings.

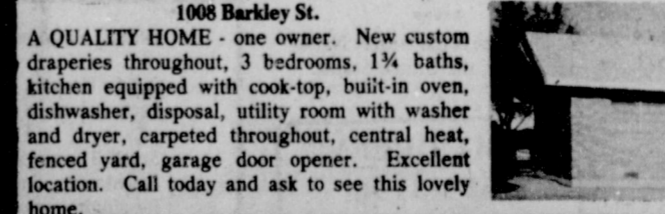


IT'S ALL HERE
712 Collier Dr.
3 bedrooms, 1 1/2 baths, 1323 Sq. Ft. on 130' lot. Utility room. Central heat and Air-conditioning. The sunken living room with fireplace gives this home special warmth and charm. See this one today! Call for appointment.



WHAT A HOUSE!
Nestled on a cul-de-sac, this beautiful home offers 3 large bedrooms, 2 baths, sunken living room with fireplace, utility room, lots of storage, double garage, & large patio. Step-saving kitchen arrangement has continuous cleaning double ovens, cook-top, dishwasher, & disposal. Warm, rich ashwood cabinets complete this 'cook's' dream of a kitchen. From the beautiful double doors that grace the entrance, the woodwork and doors throughout are the same rich ashwood. Large master bedroom features

two huge walk-in closets and unusually large luxurious ceramic tiled bath. THIS IS THE OPPORTUNITY OF A LIFE-TIME TO HAVE THE HOME YOU DIDN'T THINK YOU COULD FIND. Quality throughout. By appointment only.



1008 Barkley St.
A QUALITY HOME - one owner. New custom draperies throughout, 3 bedrooms, 1 1/2 baths, kitchen equipped with cook-top, built-in oven, dishwasher, disposal, utility room with washer and dryer, carpeted throughout, central heat, fenced yard, garage door opener. Excellent location. Call today and ask to see this lovely home.

112 ENDCOTT STARTING OUT
Or, slowing down. This 2 bedroom is for you. One bath, fenced, detached garage. Just needs some clean-up and decorating touches. This home is priced to sell. Owner has retired to N. Mex. Immediate occupancy. MAKE AN OFFER!

911 HANEY
GET A CORNER ON LIFE with this 2 bedroom, 1 bath, garage converted to bedroom, LARGE CORNER LOT, fenced. Needs some painting and fixin' up but has GREAT POTENTIAL, EXCELLENT LOCATION.

1978 Pioneer Queen Named



MRS. HAROLD GIBSON

By: Ed Slater
 Guymon - A Texas County native, Mrs. Harold L. Gibson of Hardesty has been honored to reign as 1978 Pioneer Queen over the 48th Pioneer Days Celebration of No Man's Land in Guymon May 5, 6, & 7, according to Preston Calvert, Old Timers Chairman.
 Mrs. Gibson probably holds the record for traveling the most miles of any woman and probably any man in participating in Pioneer Days activities over the years serving as "Queen of the Day," official hostess for the Ideal Sunrise Chuckwagon Breakfast for nearly 40 years. The Gibson family has cooked and served this annual breakfast for these many years.
 Our Queen was born Opal

Gilbert on July 16, 1902 to George Scott and Barbara Jane Gilbert on the homestead in extreme eastern Texas County on the bank of the Beaver River settled by Mr. Gilbert in 1890.
 Her father George Gilbert was the first Justice of the Peace of Beaver County. Then the three Panhandle Counties were one and named Beaver County.
 "I remember in the early 1900's there were still a few bands of Indians that camped along the river," stated Mrs. Gibson, "once my brother Mir-on went down to investigate their camp and found they were making soup with turtles and grasshoppers."
 Most of her teenage days were spent astride a horse.

Even though she was known for her hospitality and good cooking, her work included harnessing and saddling horses, riding fences, bailing hay, gathering plums and picking up cow chips for fuel.
 Through the sixth grade our Queen attended school at Grand Valley where she either rode a mule or horse the three miles to school. After the sixth grade she transferred to Appleton School in the Dombey Community, which was four miles up the sand hills and on the flat.
 The family attended church at the Grand Valley Schoolhouse and in the sod church in the George Long grove near Pleasant Valley.
 She met in the early '20's a young cowboy named Harold

Gibson and they were married on April 27, 1921 at Beaver. For the first few years of their married life they lived with Opal's parents.

To this union was born five children. They are Arlo Gibson, Vernon Gibson, Mrs. James (Darlene) Breen and Dr. Noel Eugene (Bonnie) Miller. Leon Gibson, their eldest son, died unexpectedly on March 9, 1973. They have 20 grandchildren and 12 great grandchildren.

The first Gibson home was located on the west bank of Chiquita (Skeeter) Creek, about 38 miles east of Guymon on SH 3, this location was the Pymell homestead at that time. The Gibson's renamed their place Paradise Valley. They built their new home in 1962, just next door to their first home.

This new home was struck by lightning on July 7, 1977 and was completely destroyed. This was almost two months after Harold died which was on May 5, 1977.

As stated in Hardesty History, published by the Hardesty Homemakers, Harold and Opal lived with a "peace that passes understanding."

Harold and Opal celebrated their 50th anniversary in 1971. All of their children, grandchildren were hosts and hostesses.

They lived life and enjoyed every minute to the fullest participating in most every community function in church, school, city and county.

Harold enthusiastically portrayed Abraham Lincoln during the World War II years. Following this for many years Harold portrayed Santa Claus in the Guymon area and our Queen portrayed Mrs. Claus.

The Gibson family has cooked the Chuck Wagon Breakfast sponsored by the Ideal Food Stores for almost 40 years. All of the family members in the area and those that travel in participate.

In 1952 another Gibson dream came true when Assembly Grounds was built just west of the home place. Harold and Opal always wanted to provide recreation for young people in a Christian atmosphere. The beautiful wooded area of 15 acres was leased to the Panhandle Baptist Association for 99 years, subject to a following 99 year lease.

"I sincerely appreciate the honor of being selected 1978 Pioneer Queen," stated Opal Gibson.

Work Directed Toward Cancer Detecting Blood Test

In an article appearing from the "Chicago Tribune" in the March issue of "Texas Objective," the Texas Division of the American Cancer Society, some encouragement is being given toward a positive view of a blood test to detect cancer.

"An extremely sensitive blood test that may detect cancer when the first few malignant cells appear is being developed by a team of researchers at Columbia University's College of Physicians and Surgeons.

"The goal of the test is to detect cancer when the tumor is still in the microscopic stage and to pinpoint the site of the tumor," said Dr. Sol Spiegelman, director of Columbia's Institute for Cancer Research.

"Such a test would enable doctors to detect cancers long before they can be found by X-rays or other diagnostic procedures.

"By catching cancers when the first seeds appear, physicians would be able to use anti-cancer drugs to destroy the tiny malignancies thereby making cancer surgery obsolete for most patients. Patients would be cured of their cancers before any symptoms appeared.

"I think this is among the most important things being done in cancer research," said Dr. Frank Raucher, medical director for the American Cancer Society.

"This test has the potential for not only determining if a patient has cancer and where it is, but it also may be able to determine the treatments he is getting are curing him," said Raucher, former director of the National Cancer Institute.

"The test is based on the recent discovery that human breast cancer has a special chemical marker called an antigen that can be used to identify the tumor like a fingerprint.

"An antigen is a glycoprotein that sits on the surface of a cell. Every cell in the body is studded with antigens and scientists believe that they play a role in the body's ability to recognize itself.

"The immunological defense system constantly surveys the antigen and when a foreign one is found, such as virus, bacteria, or other invader the immune system builds chemical weapons called antibodies to destroy them.

"This is why organs from unrelated donors often are rejected. The defense system sees the antigens on the graft as foreign and attempts to destroy the graft. Doctors use special drugs to subdue the antibody response so the graft will take.

"But cancer cells somehow are able to confound the immune system and proliferate. Their antigens do not trigger a search-and-destroy response from the immune system.

"Using highly sensitive equipment, Spiegelman's group

has been able to identify an antigen called GP 62 in human breast cancer cells.

"Experiments with breast cancers in mice show that they also have a similar antigen and that the antigen is shed into the blood.

"When the levels of the animal antigen rises, it invariably means that a cancer is developing even though the

tumor is too small to be detected," said Spiegelman.

"When high levels of the antigen are found, it means that the tumor is growing rapidly," Spiegelman explained.

Check the Gruver Public Library for more articles concerning cancer and the fight to discover the cause as well as treatments for this dreaded disease.



Some say it's bad luck to burn sassafras wood.

"Total abstinence is easier than perfect moderation." - St. Augustine

Art For Arthritis Auction Planned

The top herd of Panhandle artists is being rounded up for the Third Annual Art for Arthritis Auction May 5 at the Will Rogers Range Riders Clubhouse. The benefit will be expanded to cover two days this year. The auction will begin at 7:30 p.m. May 5 following "Barbecue and Suds" at 6:30 p.m. A show and sale will be conducted from 10 a.m. to 6 p.m. Saturday May 6. More than 100 paintings and sculptures will be sold with the proceeds going to the Arthritis Foundation.

Mr. and Mrs. Tabor Scott are chairmen for the event. Mary Moody and Mrs. Charles Seward are co-chairmen.

Cost of the barbecue and auction will be a donation of \$10 per person. No admission price will be charged for the show and sale.

Artists from Amarillo contributing to the benefit include Joe Mercer, Jake Holster, Gary Fogelson, Marilyn Castleberry, Lee Vandiver, Justin Wells, Peaches Stevens, Mary Selfridge, Marvin Chamberlin, Charles Seward, Mike McCullough, Jim Thomas, Mary Hamilton Mitchell, Effie Moore, Nig and Gayle Clark, Marsh'l Benjamin, Jean Marlow, Joan City Taylor, Johnnie Lowrance, Jackie Tidmore, Bob Marrs, Sherry Beadle and Mildred Prince. Others from Amarillo are Don Parker, Elaine Maples, Laurese Stapleton, Effie Burkhalter and Carol Berry.

Area artists donating include Verda Harper of Lipscomb, Bob Hunnicutt and Don Ray of Channing, Marion George, Jim Ward, Randall Sherrod, Margaret Campbell, James Ivey Edwards and Garland Weeks, all of Canyon, Katy Kay Bonner of Garber, Okla., Margaret Smith of Clarendon, G. L.

Sanders of Pampa, Peggy McCubbin, Wayne Smith, Alma Anderson, all of Lake Tanglewood, Malalia Low of Phillips, Lincoln Fox of Alto, N. M., Carolyn Stallwitz of Dumas and Emily Upshaw of Claude. Also, Steve Trower of Richardson, Shirley Cauffield of Borger, Paul Wylie of Lubbock, Alton Goodin of Claude, Rheata White of Muleshoe, Eunice Marshall, Betty Rusk, both of Fritch, Sue Terry of San Jon, N. M., Marge Toft of Childress, Gary Myers of Ruidosa, N. M., Peggy Lange of Hereford and Diana Lathem of Dalhart.

C of C Women's Division

The Women's Division of the Chamber of Commerce met Wednesday, April 19 at Martin's Steak Garden for a noon luncheon. The meeting was called to order by President Mrs. Gina McLain.

A report was given on the Newcomers Club by Mrs. Gerald Heinrich.

A discussion was held on the Hansford County Round-Up Celebration and members voted to have a float in the parade.

An announcement was made of the Chamber Breakfast to be held Thursday, April 27 at 6:30. Old and new business were concluded.

The business meeting then adjourned.

A majority of members were present for the delicious refreshments. The next meeting will be May 17 at Martin's Steak Garden.

The first admiral of the U.S. Navy was David S. Farragut, who was appointed in 1866.

DEKALB F-67



Great Yields Under Irrigation

Get the sorghum hybrid bred for irrigation. Yield results prove F-67 is a performance champion. Order F-67 with greenbug resistance today and prove it to yourself.

MILFORD LAMBRIGHT STINNETT 878-2765



DEPEND ON DEKALB GREENBUG RESISTANCE

FACTS & FIGURES

Experts estimate that fully 50 percent of all blindness can be prevented, and that 90 percent of eye injuries are avoidable.

Wearing effective safety eye wear in school and on the job has saved the sight of over 63,000 people.



You can get a free booklet about preventing blindness from your state Prevention of Blindness Society or the National Society for the Prevention of Blindness, 79 Madison Avenue, N.Y., N.Y. 10016.

This is the Society's 70th year of saving sight.

START LOSING WEIGHT TODAY

The hardest part of losing weight is getting started. Super DORINEX will give you the power that extra push it needs to start losing weight today.

Begin with this amazing tiny tablet. You'll eat less—turn food and excess fat into burned-up energy instead of extra weight as you follow the Plan.

Simple and effective, the Super DORINEX Reducing Plan will enable you to lose pounds and inches without getting nervous. To lose water bloat and puffiness during the pre-menstrual cycle try DORINEX "A Natural Water Pill". Both sold with money back guarantee.

Gordon's Drug 314 MAIN ST. MAIL ORDERS FILLED

\$300,000 INVENTORY REDUCTION SALE!!

OFFICE FURNITURE, MACHINES, SUPPLIES...THOUSANDS OF ITEMS!

4 DRAWER FULL SUSPENSION FILE CABINETS LETTER SIZE \$54.78 LEGAL SIZE \$68.52

STENO SWIVEL CHAIRS LIST \$72.25 NOW \$37.50 FOLDING CHAIRS FROM \$5.05

SALE ENDS SATURDAY, APRIL 29 OPEN DAILY 9AM TO 6PM CASH MASTERCHARGE OR VISA

RUSSELL STATIONERY COMPANY 409 SOUTH JOHNSON WAREHOUSE ONLY

The Land Bank

Long-term financing to help you reach your long-term goals.



Spearman-Pampa Federal Land Bank Association 307 West Davis Spearman, Texas 659-2340

Harry Ledbetter's Money Management Program

As a fiscal conservative, I have developed a comprehensive program to effectively manage the \$2 Billion dollars on deposit in the State Treasury. Here are aspects of it:

Rate of Return: The State Treasurer should not play politics with our tax money. I pledge to put the taxpayer's money to work earning the highest interest available.

Cash Flow Forecasting: Using modern management techniques, we can accurately determine how much money the state needs in liquid funds. The state's obligations must be paid on a timely basis at minimum administrative cost.

People all over Texas are responding enthusiastically to my campaign. I appreciate your support. I know that the public trust must be earned, and it is a responsibility I accept. I ask for your vote on May 6th. If you share my concerns, encourage your friends and neighbors to vote for Harry Ledbetter for State Treasurer in the Democratic primary election May 6th.

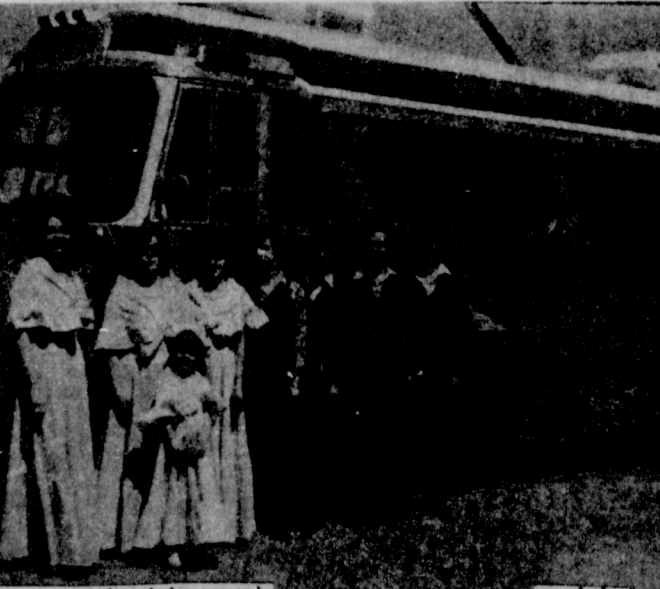
HARRY LEDBETTER

for State Treasurer

You don't have to have a famous name to be State Treasurer.

Pl. Pol. Ads. paid for by Ledbetter for State Treasurer Committee. Bill Echols, Campaign Treasurer. P.O. Box 13524, Capitol Station, Austin, Texas 78711. Telephone (512) 476-6973.

APPEARING IN PERSON

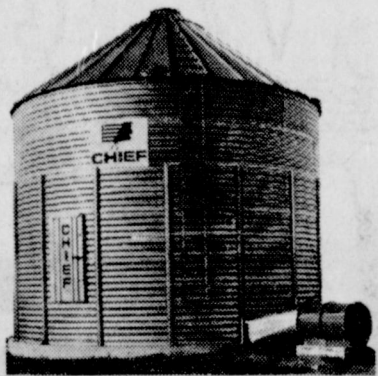


(former night club singer) and the SONLIGHTS

JANIE WHITE

7:00 p.m. - Friday, April 28 Perryton High School Auditorium (no admission charge)

Western Ag Sales Co.



CHIEF INDUSTRIES, INC.

Waiting for a good financing package? With government loan programs or a lease purchase, we can wrap it up for you!

Western Ag... You've known us for a long time.

- Center Pivot Systems
- Metal Farm Buildings
- Underground Plastic Pipe
- Grain Storage Bins

★ call us 659-2596

Wilton Green • P.O. Box 67 • Spearman, Texas 79018

Receipts at the Texhoma Livestock Commission Company this week were 3547 cattle & calves. A good active to stronger market, 80% of the run was feeder cattle off wheat pasture. Stocker calves \$1.00 higher. Feeder steers 50¢ to \$1.00 higher. Feeder heifers 50¢ to \$1.00 higher. Bulk of the feeder heifers selling above the \$50.00 figure. Pakcer cows steady to strong, selling \$36.00 to \$38.50. Canners & cutters \$33.00 to \$35.00. Bologna bulls \$40.00 to \$43.70. Pairs selling \$400.00 to \$440.00.

Steer calves - 300# to 550# - \$58.00 to \$70.00

Heifer calves - 300# to 450# - \$50.00 to \$56.80

Feeder steers - 600# to 900# - \$52.00 to \$58.60

Feeder heifers - 600# to 750# - \$49.00 to \$50.75

For next Thurs., April 27, we are expecting 2500 cattle of all classes.

YOUR DEPENDABLE LIVESTOCK AUCTION TEXHOMA LIVESTOCK COMMISSION CO., INC. P. O. BOX 70 TEXHOMA, OKLA. 73949

PHONE 405-423-7511 & 423-7512

CATTLE DEPARTMENT - LLOYD GOODNER & RAYMOND CHOATE

GOODNER RESIDENT PHONE - 405-423-7427

Eta Alpha Chapter Has Guest Speaker



At right Frances Hudson of Spearman, who introduced Frances Watkins of Levelland, Area XI coordinator who spoke to Delta Kappa Gamma.

Frances Watkins of Levelland, Area XI coordinator, was the distinguished guest and speaker for the April meeting of Eta Alpha Chapter of Delta Kappa Gamma International - Society for women educators at Perry Memorial Library in Perryton (April 15).

Frances Hudson of Spearman introduced Mrs. Watkins, who spoke on the theme "I'd Like to Teach the World to Sing." Mrs. Hudson is chairman of the professional affairs committee which were leaders for the program.

Dorothy Roden of Spearman,

first vice president, presided in the absence of the president.

Mrs. Watkins, chairman of Communications and Philosophy department at South Plains College at Levelland, is supervisor of programs of Spanish, journalism, philosophy and English in the school. She is doing graduate work in the University of Texas at Austin and Texas Tech University at Lubbock and holds her bachelors and masters of art degrees from Texas Tech University.

Mrs. Watkins gave as three ingredients for happiness, faith,

love and hope in that order. She stressed the need for faith in ourselves, in our fellowman and God, faith in what we cannot see, faith that builds courage. Much happiness is overlooked, she said, because it does not cost. Happiness is a station we arrive at while seeking other goals, she pointed out, not a goal in itself.

Closing her talk, Jean Robinson played the piano while the group sang "I'd Like to Teach the World to Sing."

Nadine Crum gave the devotional.

HD Club News

New officers of Eta Alpha Chapter of Delta Kappa Gamma International Society of women educators will be installed in a formal ceremonial at The Perryton Club on Saturday, May 6.

Dorothy Roden of Spearman will give the invocation and devotional and Wilma Clark of Spearman will lead the group in singing the Delta Kappa Gamma Song.

The ceremonial committee is composed of Alice Anne Knowl, chairman, Flora Champion, Druscilla Fleming, Ruth Hannan, Alice Ann Knox and Cula Nowlin, all of Perryton.

Hostesses will be Barbara Bain, chairman, Darlene Day, Druscilla Fleming, Ruth Hannan, Alice Ann Knox and Cula Nowlin, all of Perryton.

New officers include Anna Belle Love of Perryton, president; Florence Lee Hance of Booker, first vice president; Barbara Burrus of Higgins, second vice president; Vireta Knight of Gruver, recording secretary; Flora Champion of Perryton, corresponding secretary; and Maurine Flathers of Perryton, parliamentarian.

Mrs. Love succeeds Wanda Scott of Perryton, who has been serving for the past two years.

The new officers were elected at the March meeting held at the home of Bernice Beck at Darrouzett when the devotional was given by Frances Hudson of Spearman and Charlene Robertson of Darrouzett introduced George Sturtz of Larrouzett, who gave the background for building their solar home about two miles from Darrouzett which was visited by the group at the close of the meeting.

Town and Country Home Demonstration Club met Tuesday, April 18 at the home of Mrs. Judy Hergert. President Mrs. Sherlene Hayes presided over the business meeting.

Members answered Roll Call by an "April Fool's Joke". Minutes of the previous meeting were read and approved.

The devotional was given by Mrs. Lynna Renner.

Members discussed the salad luncheon to be held May 16 at the home of Mrs. Connie Steger at 12:00 noon. Mrs. Delinda McLaughlin and Mrs. Connie Steger will be the hostesses.

Town and Country donated money to the cancer society.

Mrs. Penny Ralston, the T.H.D.A. representative, will attend the state convention in Dallas.

Mrs. Peggy Woodington gave the program on gift ideas. She is from Sacks Third Avenue.

4-H member, Julie Farr, gave her presentation on "Give Your Home a Housewarming". She is going to a District 4-H program presentation contest in Canyon on April 29.

Members are to help sell tickets for the barbecue for the Hansford County Round-Up Celebration.

Refreshments were enjoyed by members, Mesdames: Cindy Holton, Judy Everson, Linda Close, Lynna Renner, Sherlene Hayes, Penny Ralston, Janie Kunselman, Delinda McLaughlin, guest Mrs. Diane Phillips and hostess Mrs. Judy Hergert.

The next meeting will be May 2 in the home of Mrs. Janie Henton. The program will be

given by Mrs. Connie Steger and Mrs. Janie Henton on "First Aid".

Meeting Thursday, April 20 in the Home Demonstration Club Room with Mrs. Adalyn Barnes as hostess was the Happy Homes Home Demonstration Club.

The meeting was called to order by the President.

Mrs. Adalyn Barnes gave the devotional entitled "The Kind That Is Kind".

The Safety Program for May 18 will be given by Mrs. Nan Nicholson on traffic signs and signals.

Happy Homes will clean the club room in May and June.

4-H members, Julie Farr, gave the program on "Housewarming".

Refreshments were served to members present and guests, Julie Farr and D'Ann Cummings.

The next meeting will be May 4th at the home of Mrs. Nan Nicholson.

Serendipity Home Demonstration Club met Thursday, April 20 in the home of Mrs. Bobby Brown. Vice President Mrs. Linda Brown presided over the business meeting.

Mrs. Bobby Brown gave the devotional. Roll Call was answered to an "April Fool's Joke".

Minutes of the previous meeting were read and approved.

Members selected a T.H.D.A. state delegate nominee who is Mrs. Gayle Smith.

They finalized plans for their luncheon to be held Thursday, April 27.

It was decided by the members to donate to the cancer

drive.

The program was given by Mrs. Peggy Winegarner, County Agent, on "Slow Cookery".

Members present were Mesdames: Tim Assiter, Ladd Gafford, Duane Loomis, Norlin Winegarner, Bobby Brown, Steve Benton, George Rex, and Buford Baker.

The next meeting will be May 4 in the home of Mrs. Cathy Gafford.

Gladiola Flower Club To Meet

Gladiola Flower Club met Thursday, April 20 in the home of Mrs. Ray Moore. President Mrs. Margaret Evans called the meeting to order with the roll call and minutes of the previous meeting were read and corrected.

Mrs. Jo Larson, float chairman, gave a report on the float committee.

Mrs. Margaret Evans appointed Mrs. Frances Newell to check with the school about their student scholarship which they sponsor each year.

Mrs. Rose Cummings gave the treasurer's report of \$258.08.

A motion was made by Mrs. Virginia Head, seconded by Mrs. Judy Martin that they give \$25 to the Golden Spread Center.

Mrs. Betty Davis won with her borrowed arrangement of purple lilacs. Mrs. Judy Martin won with her pot plant of Boston Fern.

After the meeting they went to the park and worked on their project—watered, raked, fertilized, etc.

Those present were members, Mesdames: Tom Sutton,

Gordon Cummings, Irvin Davis, Marcus Larson, Claude Newell, Garland Head, Ed Haner, Wallace Berner, Ray Moore, Don Kunselman, Doyle Jackson, and Kenneth Evans. Guest was Mrs. Denise Kellum.

The next meeting will be May 4 in the home of Mrs. Roy Flowers.

Servitors Club Meets

Servitors Club met Thursday, April 20 in the Hansford Library at 7:30 p.m. Hostesses were Mrs. Janie Assiter, Mrs. Linda Butt, and Mrs. Cindy Schneider.

The program was given by Mrs. Jackie Pearson on "Water Safety With Children".

President Mrs. Candy Delozier presided over the business meeting.

Members made a motion to donate \$100 to the Senior Citizens' Fund Drive and to donate \$25 to the Cancer Drive.

They will have a float for the Hansford County Round-Up Celebration. The Servitors Club is in charge of the entire parade.

The members are trying to promote a CPR clinic this summer.

Those present were members, Mesdames: Janie Assiter, Becky Booth, Becky Kelp, Wanda Lyon, Marsha Murphy, Jackie Pearson, Candl Boxwell, Linda Butt, Michelle Davis, Cindy Delozier, Patty Harris, Billie Hutchison, Susan Pearson, Linda Winegarner, Renee Wisniewski, Cindy Schneider, and Terry Thompson.

The next meeting will be May 18 at the B & B Friendship Room. They will install officers for the coming year at 7:30 p.m.

Giblin's Celebrate 40th Anniversary

On April 15th, 1938, Robin Giblin and Leota Harbour were united in marriage in the study of the Amarillo First Baptist Church. Reading the ceremony was Dr. J. Howard Williams.

O. Roy Stevenson and Kathryn Ann Womble were the couple's attendants. To this union three children were born. Mrs. David (Robbie) Reid, Morse, Texas; Jack Giblin, Morse, Texas; Mrs. Charlie (Peggy) Mayes, Prescott, Arizona.

Sunday, April 16th, 1978, Robin and Leota were honored with a 40th wedding anniversary reception at the Morse Community Building. Miss Cassandra Papay, their granddaughter, registered the seventy-five guests who called during the afternoon. Mrs. Larry Smith of Perryton and Miss LaVon Kunselman of Spearman served at the reception table. The serving table was laid with a red cloth with an overlay of a white cut-lace cloth. The four-tiered white cake was decorated with red roses and topped with a "40" bell. Mrs. Monny Harbour created the cake for the occasion. White roses and baby's breath were arranged for the centerpiece with appointments of silver and crystal completed the setting.

Out of town guests included: Mr. and Mrs. Leroy Smith, Mr. and Mrs. Larry Smith, Misty and Brenna of Perryton; Mrs. Charlie Mayes, Cassandra and

Leslie Papay of Prescott, Arizona; Winfred Walker, Cordia Lanners, Sunray, Texas; T. I. Harbour, Mr. and Mrs. L. C. Harbour, Mr. and Mrs. John Harris, Monty Harbour, Mr. and Mrs. Ira Harbour, Litch Sparks, Mr. and Mrs. Bill Jarvis, Mrs. Dale Womble of Stinnett; Miss LaVon Kunselman, Mr. and Mrs. L. M. Womble, Mr. and Mrs. E. J. Copeland, of Spearman; Mr. and Mrs. Horace Tompkins, Mrs. Kathleen Rickles and David, Cindy Like, Mrs. Irene Parks, Mr. and Mrs. Don Markham and David of Amarillo; Mr. and Mrs. R. L. Thom, Mr. and Mrs. Dorsey Schad, Mrs. Pauline Winger and Mrs. Aline Henderson of Gruver; Mr. and Mrs. Tom Sterrett and Trisha of Phillips; Mr. and Mrs. Lex Board of Borger; Mrs. Joyce Cambern, C. A. Scott of Pampa; Mr. and Mrs. Ralph Forester, Mrs. Ruby Womble of Dalhart.



Some people have thought that seeing a wolf before the wolf saw them would render them speechless.



PRICES EFFECTIVE THRU APRIL 29, 1978. QUANTITY RIGHTS RESERVED. NO SALES TO DEALERS.

MON.-SAT. 8 a.m. - 9 p.m.
SUN. 10 a.m. - 7 p.m.

FRESH U.S.D.A. GRADE "A"

Dressed Fryers

57¢

LB.

FRESH GRADE "A" Fryer Breasts \$1.09 (RIBS ATTACHED)

FRESH GRADE "A" FRYER Thighs or Drumsticks 99¢

BLUE RIBBON FULLY COOKED 3 TO 5 LB. AVG.

Turkey Hams \$1.69 LB.

RODEO MEAT OR BEEF

Skinless Franks 89¢ (12-OZ. PKG.)

ALL MEAT

Rodeo Bologna \$1.09 (BY THE PIECE)

MEET JUST A FEW HAPPY WINNERS

MARSHA FRENCH \$1,000.00 WINNER

DON BENNETT \$1,000.00 WINNER

'10000 WINNERS

Z. B. Anderson of Dalhart
Mrs. Keith Young of Alva
Susan Carlile of Elkhart
Mrs. V. C. Harless of Dumas
Mary Ann Lewis of Meade
Sara Martin of Beaver
Edie Hays of Guymon

PLAY CASHING

HAWAIIAN PUNCH ALL FLAVORS

Fruit Drinks 58¢ (46-OZ. CAR)

HEINZ STRAINED Baby Food 7 \$1.00 (4 1/2-OZ. JARS)

HUNT'S Tomato Juice 4 \$1.00 (13 1/2-OZ. CANS)

PURE Wesson Oil 88¢ (24-OZ. JAR)

MAXWELL HOUSE Instant Coffee \$4.98 (19-OZ. JAR)

HALVES OR SLICES

Hunt's Peaches

29-OZ. CAN

48¢

CAROLINA OR CREAMY CUCUMBER Kriff Dressing 58¢ (16-OZ. BOTTLE)

ALL GRINDS

Hills Bros. Coffee

16-OZ. CAN

2.79

LEMON MIX Lipton Tea \$1.79 (24-OZ. JAR)

TASTY

Hunt's Catsup

32-OZ. JAR

68¢

HUNTS Tomato Paste 56¢ (12-OZ. CAN)

FAIRMONT ICE CREAM 98¢ (1/2-GAL. SQUARE CARTON)

FAIRMONT ICE MILK TWIN POPS FUDGE BARS 88¢ (12-CT. BOX)

PILLSBURY SWEET OR Buttermilk Biscuits 2.29 (7 1/2-OZ. CANS)

FRESH DAIRY FOODS

Margarine

MEADOWDALE QUARTERS 3 \$1.00 (16-OZ. PKG.)

CAMELOT Half & Half 33¢ (PT. CTN.)

KRAFT Jalapeno Loaf \$1.29 (16-OZ. PKG.)

FROZEN FOODS

Orange Juice

MEADOWDALE 3 \$1.00 (6-OZ. CANS)

BARQUET Buffet Suppers \$1.39 (ALL VARIETIES 32-OZ. CTN.)

BARQUET Man Pleaser Dinner 99¢ (ALL VARIETIES 19-OZ. CTN.)

PET PRIZ Pie Shells \$1.19 (PET PRIZ)

BIRDSEYE LITTLE EARS Corn the Cob 89¢ (1 1/2-GAL. PKG.)

A dollar earned is a dollar saved...

As State Treasurer, Warren G. Harding has increased earnings from the investment of state funds. These earnings represent savings to Texans by reducing the need for tax increases.

- \$1.8 billion in state funds invested in interest bearing accounts in over 1,300 Texas banks
- 90.4 percent of available funds invested at the end of March—the highest monthly average in Texas history
- 24 percent increase in earnings from October through March compared to same period in the previous year
- \$126 million estimated interest earnings for Texas this year—highest in history of state.
- More than 25 years experience as Dallas County Treasurer. Past President, National Association of County Treasurers & Finance Officers. Recipient of Outstanding Treasurer's Award of the United States.

KEEP Warren G. Harding State Treasurer QUALIFIED BY EXPERIENCE

Paid for by the Warren G. Harding Campaign. Warren G. Harding, Treasurer, 2101 Cimarron Trail, Austin, Texas 78748

SHOP IDEAL WHERE YOU GET GUNN BROS.

Canadian River history comes alive in book by Perryton native

An autograph party will be held Saturday, April 29 at Bell's Books, 400 S. Main, Perryton for John Erickson and Bill Ellzey, author and photographer of "Through Time And The Valley". The book is a record of their 15 day and 140 mile trip down the Canadian River by horseback and much research into the history and lore of the people of the 19th and 20th centuries. You will enjoy meeting them and reading their book.

In June of 1972, John Erickson and Bill Ellzey left the ghost town of Plemons to ride horseback along the banks of the Canadian River through the Panhandle to Canadian, making photos and interviewing people along their route. The story of that trip in pose and pictures has been published this month by Shoal Creek Publishers of Austin.

"Through Time And The Valley" is a saga of the North Canadian River, its turbulent past and placid present, and the people who live and have lived along its banks, as recorded by John Erickson, the writer, and Bill Ellzey, the photographer.

Erickson, 34, grew up in Perryton and now manages a ranch in the Oklahoma Panhandle. He graduated from the University of Texas in 1966 and attended Harvard Divinity School. He's been a working writer for 10 years, first as a novelist and most recently as a humor columnist and contributor of feature articles on western life to newspapers and magazines.

Ellzey, 30, is a free-lance

photographer and works out of the LZ Ranch, 20 miles southeast of Perryton. He became a full-time professional photographer in 1973 and since then has been elected president of the Panhandle Professional Photographers Association and has won numerous awards. His work also has appeared in various magazines and newspapers.

"The North Canadian had been a part of my life as a youngster," said Erickson. "There are certain places that get into your blood, you drive away, but you can't forget them. The fascination, the mystery keep coming back to you in odd moments," he writes. "That's the way it was with me and the Canadian River."

Becoming interested in learning more about it, Erickson set out in 1971 to real all he could on the subject but found that history of the area was practically nil. The literature of the Texas Panhandle only has scattered and minimal accounts of Canadian River history, he discovered, so he decided that he would have to collect the information first hand. He invited Ellzey along and set out on the adventure with another companion, pack mule Dobbin.

"The people along the Canadian River Valley were most friendly," Erickson said. "They insisted that we spend the nights with them and as a result we hardly pitched our tent at all. The opportunity to talk to these people about the Canadian River happenings proved to be a rich source of informa-

tion."

At the trip's end, Erickson had 15 formal journal entries and numerous notes. Ellzey had collected over 1,000 color transparencies. After the river trek, the author conducted 100 personal interviews with old-timers and people in the area who knew the history of the North Canadian River. The results of his efforts culminated into a manuscript over 400 typed pages. Getting it published took time.

Major east coast publishers complained that the material was too regional. Shoal Creek Publishers finally accepted it and a contract was negotiated in December 1977.

The book contains colorful stories about famous and not-so famous people. There's a story about Kit Carson, who marched into the Canadian River Valley in 1864 and left his name with Carson Creek in Hutchinson County. Billy Dixon, Indian scout and buffalo hunter, is also recalled. He fought beside Bat Masterson at the Battle of Adobe Walls, where he shot an Indian off his horse at a distance of 1,500 yards.

"History remembers Kit Carson and Billy Dixon but there are many other characters who lived along the river who have been forgotten over the years... not because they are not memorable characters," Erickson writes, "but because the isolated stretch of country along the Canadian River has not spawned a historian, and because the people who know the tales are seldom the people who write them down."

Hansford Shrine Club Meets

The Hansford Shrine Club met Thursday, April 20 at 7:30 p.m. at Martin's Steak Garden. A medium crowd was present for the delicious refreshments and good fellowship.

The Hansford Shrine Club has been given an invitation from the Perryton Wheatheart Shrine Club for May 9. It will be a Ladies Night. Spearman will return the hospitality with the date to be set later.

A good report was received from Khiva Temple in Amarillo for their work schedule for the year. Hansford Shrine Club anticipates a large increase in membership.

All shriners' wives are to be on the look-out for invitations from the Wheatheart Shrine Club for the Ladies Night on May 9. There is to be a head count for this night.

The next regular meeting will be May 18 which will close out the club for the summer. It will be held at C. A. Gibner's Ranch at 7:30 p.m.

Mr. and Mrs. Kim E. Smith from Skellyville, Ind.
Mr. and Mrs. Elroy Wisian from Springlake.
Mr. and Mrs. Lenis Simpson, Jr. from Lubbock.
Mr. and Mrs. Howard D. Yeager from Borger.

Bridge Club

The Grand Slam Bridge Club met in the home of Mrs. Roy Flowers on Thursday, April 20. High score was won by Mrs. Betty Porter; low, Mrs. Eulalia Mires; and traveling, Mrs. Sonja Godfrey.

Those present were members, Mesdames: Bob Boxwell, Albert Baker, Jack Lasater, Clark Mires, Joe T. Venneman, Brad Beedy, Ted Godfrey, Roy Flowers, Mack McCormack, Monty Blackman, Wilton Green and guests Mrs. R. C. Porter and Mrs. Don Smith.

The next meeting will be May 18 in the home of Mrs. Bob Boxwell.

United Presbyterian Church News

Presbyterian Men will have their monthly prayer breakfast on Thursday, April 27 at 6:30 a.m.

There is a Sunday Church School class for everyone every Sunday at 9:45 a.m. with a Bible lesson that is stimulating, practical, and thorough.

"Those Who Feel the Gale of the Holy Spirit" will be the subject of Pastor Edward D. Freeman's sermon at the service for the public worship of God at 11:00 a.m. on Sunday, April 30. In preparation read John 14:15-21; Acts 8:4-8; 1 Peter 3:13-18.

Newcomers to Spearman and/or those who have no church home are encouraged and cordially invited to try the warm, Christian fellowship at the First Presbyterian Church, 11th and Cotter Dr.

Arts and Crafts Engagement Announced

Arts and Crafts Guild met Friday, April 21 in the home of Mrs. Clay Gibner.

Refreshments were enjoyed by members, Mesdames: Kiff White, Sr., Joe Trayler, Bill Gandy, Sada Hoskins, P. A. Lyon, Sr., F. J. Daily, Bill Russell, Ned Turner, and Pope Gibner.

The next meeting will be April 28 in the home of Mrs. Pope Gibner.



Mr. and Mrs. Steve Glassey of Perryton are announcing the engagement and approaching marriage of their daughter, Sarah Kay, to Bobby Neal Snider of Spearman, son of Mr. and Mrs. Vance Snider of Spearman. Vows will be exchanged Saturday, May 27 at 3:00 at the People's Chapel in Perryton.

Chamber Breakfast

The April Chamber Breakfast will be held Thursday, April 27th at 6:30 a.m. at the County Barn in Spearman. The First State Bank will sponsor this month's breakfast. Games, cash drawings, and fun for everyone.

Our Heritage of Faith

notes from Faith Lutheran Church

Christian Education is very important in the Lutheran Church. In fact it is seen as being a never ending experience. The purpose of such education is to instruct individuals in what God has done for them as proclaimed in His Word and also to guide them in living their lives in response to God's saving activity.

Thus Christian Education in the Lutheran Church is not for the purpose of fulfilling basic requirements or for learning how to put the pieces of the Bible together. We do not earn acceptance into the church or before God through Christian Education. Rather Christian Education is for the purpose of instructing us in the relationship into which God has brought us through His actions. The intent of such education being that we trust in God and what He has done and so live as His children and no longer trust in ourselves and our own works, goodness, or understanding.

In the Lutheran Church such training continues throughout one's lifetime. It should be an ongoing event in the home with personal and family study and devotions. In the church it happens in Sunday School, which at Faith is an opportunity for people of all ages. It also happens each year at Vacation Bible School for children. For those in the 7th and 8th grades Faith has instructions in the basic teachings of the Christian church. The women of Faith meet the second Wednesday of each month at 7:30 to study certain topics (this year's being "Worship"). During various times through the course of each year Faith also offers different studies on a variety of subjects as the interest and concern of the church may indicate. Thus Faith offers a number of opportunities for learning and growing in Faith.

If you have no regular church home Faith invites you to come and learn and worship with them. Faith Lutheran is located on the corner of 11th and Bernice. Sunday Morning Worship is at 9:30 with Sunday School following at 10:30. A study on the Gospel of Matthew meets Wednesday nights at 7:30.

Boneless Chuck Roast

U.S.D.A. CHOICE BUTCHER BLOCK BEEF

\$1.29 LB.

BONELESS EXTRA LEAN Beef Stew **\$1.39** LB.

ALL MEAT SLICED Rodeo Bologna **\$1.19** LB.

WISCONSIN BULK PACK Longhorn Cheese **\$1.69** LB.

RODEO Braunschweiger **79c** LB.

RODEO MEAT OR BEEF Sliced Bologna **\$1.29** 12-oz. PKG.

OSCAR MAYER MEAT OR BEEF Sliced Bologna **\$1.49** 12-oz. PKG.

OSCAR MAYER MEAT OR BEEF Sliced Bologna **\$1.99** 16-oz. PKG.

OSCAR MAYER PORK BULK PACK Link Sausage **\$1.89** LB.

OSCAR MAYER REGULAR OR BEEF Variety Pack **\$1.99** 12-oz. PKG.

Pork Steak

FRESH PORK SHOULDER SLICES

\$1.19 LB.

FRESH MARKET MADE BULK PACK Pork Sausage **99c** LB.

Slab Bacon

HICKORY SMOKED BULK PACK

\$1.29 LB.

KITTS OF ENGLAND

DINNERWARE

This Week's Feature

Dessert Dish

EACH WITH \$3.00 GROCERY PURCHASE

69c

GET THIS COMPLETE SET

BONUS VALUE THIS WEEK

Creamer **\$4.99**

SAVE \$1.00 NO PURCHASE NECESSARY NO LIMIT

50% OFF LABEL

Signal Mouthwash **\$1.49** 24-oz. BTL.

CLOSE-UP Toothpaste **88c**

REG. OR MINT 4.8-oz. TUBE

STICK DEODORANT Right Guard **89c**

2.5-oz. BTL.

FAST PAIN RELIEF Excedrin **\$1.29** 60-ct. BTL.

MINI PADS Stay Free **58c** 16-ct. PKG.

WIN UP TO \$1,000.00

ODDS CHART as of April 15, 1978

Scheduled Termination Date of this Promotion is June 17, 1978

PRIZE VALUE	NO. OF PRIZES	ODDS FOR ONE \$1000 PRIZE	ODDS FOR ONE \$100 PRIZE	ODDS FOR ONE \$10 PRIZE	ODDS FOR ONE \$5 PRIZE
\$1,000.00	17	87,907 to 1	17,981 to 1	4,395 to 1	599 to 1
100.00	122	11,747 to 1	2,381 to 1	599 to 1	599 to 1
10.00	238	5,278 to 1	1,054 to 1	374 to 1	374 to 1
5.00	668	2,243 to 1	449 to 1	172 to 1	172 to 1
2.00	2,128	702 to 1	140 to 1	35 to 1	35 to 1
1.00	14,124	106 to 1	21 to 1	5 to 1	5 to 1
TOTAL NO. OF PRIZES	17,298	88 to 1	17 to 1	4 to 1	4 to 1

DOLLY MADISON

Bathroom Tissue

WHITE

458c

ROLL PKG.

HI-DRI

Paper Towels

JUMBO ROLL

39c

HI-DRI Towels

KRAFT HOT, ONION, SMOKEY, OR PLAIN

BBQ Sauce

18-oz. JAR

54c

HUNTS Tomato Sauce **3** 15-oz. CANS **\$1.00**

AMERICAN BEAUTY Elbro Roni **69c** 24-oz. PKG.

LIQUID Shout Pre-Wash **\$1.39** 18-oz. CAN

RED RIPE CALIFORNIA Strawberries

2 FOR \$1

PT. CTN.

CALIFORNIA NAVEL LARGE Oranges **3** LBS. FOR **89c**

TEXAS GREEN Cabbage **2** LBS. **29c**

WASHINGTON RED OR GOLDEN DELICIOUS Apples **39c** LB.

FRESH CRISP Carrots **2** 1-LB. BAGS **29c**

NORTHERN Peat **40** LB. **\$1.59**

STAMPS ...

Ideal FOOD STORES

Food Stamps Buy More At Ideal...

Golden Acres BRAND

HYBRID GRAIN SORGHUM

UNIVERSALLY POPULAR YELLOW ENDOSPERM GREENBUG RESISTANT

TE Y-101-R

- Easily Threshed
- Drouth Resistant
- Heavy Yield Potential
- Semi-Open Uniform Well Exserted Heads
- Thick, Short, Heavy Stalk, Excellent Standability
- Extensive Root System, Adapts to Varying Soils
- Excellent Greenbug Resistance

WE RECOMMEND TE-Y-101-R

SAM PATTERSON SEED

COME IN NOW FOR YOUR SEED NEEDS

ACT Against legalized pari-mutuel gambling

DALLAS - The Anti-Crime Council of Texas (ACT) is working as statewide coordinator in the campaign against voter approval of the May 6, 1978 referendum on legalized pari-mutuel gambling.

This information was released today (April 14, 1978) by ACT co-chairmen Dr. Abner V. McCall of Waco, president of Baylor University, and Frank Tejeda, State Representative from Bexar County.

"Pari-mutuel gambling is not the only concern of the Anti-Crime Council," said Dr. McCall. "But we did not believe that we could shirk our responsibility in this campaign."

"Organized crime is already a billion-dollar-a-year business in Texas and its single biggest money-maker is illegal gambling."

"It is our position we will never control organized crime if we feed, nurture and publicly promote or condone its major source of income. That is exactly what we would be doing in legalizing racetrack gambling - indirectly - but certainly financing organized crime."

ACT, said Dr. McCall, is offering the support of its officers and members throughout Texas to assist "any and all organizations opposed to pari-mutuel gambling for whatever reason."

Specifically, he said that the five-year old Council has prepared and is distributing materials and research data, providing speakers and speech materials for meetings around the state and is seeking to coordinate the efforts of other groups "so the facts on this issue will reach the most voters with the greatest impact."

Mr. Tejeda added that ACT is accepting financial contributions toward the campaign.

"But," he noted, "We are relying on people more than money."

"We do not have and we do not expect to have the hundreds

of thousands of dollars that the gambling interests say they will spend on a massive advertising campaign.

"But perhaps the most powerful tool we could have is people who recognize the dangers inherent in pari-mutuel wagering and who are speaking to their neighbors on a 1-to-1 basis."

"The danger that concerns me the most is that legal gambling simply takes money from the pockets of the many and puts it into the pockets of a few, with criminal elements

profiting the most.

"We do not need to have our poor and minority citizens lured into spending their money on horserace bets in hopes of hitting the jackpot and striking it rich."

"We are convinced the great majority of Texans remain committed in their opposition to pari-mutuel gambling. But, they must, first, know their votes are urgently needed on May 6."

The pari-mutuel referendum will be held in conjunction with both the Democratic and Re-

publican primaries on May 6. That day voters will be asked if the legislature should enact a law to allow pari-mutuel gambling on horse races by local option. Pari-mutuel gambling has been turned down in eight previous elections in the last 25 years, most recently in 1974.

"The gambling promoters," said Mr. Tejeda, "would like for us to believe that a vote against this referendum is a vote against horseracing. They know better. Horseracing is already legal in Texas. The issue on the ballot is horserace gambling,

not horseracing. "We have found people across the political spectrum joining in this opposition," Dr. McCall said. "And their reasons span the spectrum of public interests."

"Some are against pari-mutuel gambling because they believe it is a form of regressive taxation that is especially damaging to the interest of low-income and minority citizens."

"Some are opposed because of the documented damage gambling does to consumer markets and its depressing effects on most all legitimate business enterprises."

"Some are consumer advocates

who oppose mass media promotion of legal betting as misleading and unfair in that it hides the fact that almost all bettors must ultimately lose.

"Law enforcement officials are speaking out on the contribution of legal gambling to crime, and church leaders are focusing on the threat of individual degradation and family destruction."

"While the concern of ACT is the fight against crime, we feel all valid arguments should be presented to voters so they may make an informed choice on May 6."

"Self-control is at the root of all virtues." Samuel Smiles

NEWS FOR YOUTH

GETTING A JOB IN PUBLIC RELATIONS



One of the best times to

ask a PR executive for a job is right after he is appointed, while he is still building staff. More than a dozen such appointments are listed almost every week in Jack O'Dwyer's Newsletter on public relations. It is available in some libraries, as are directories that list the addresses of large companies. The newsletter is published at 271 Madison Ave., New York, N.Y. 10016.

SQUEAK SQUEAK
Fresh peas should squeak when the pods are rubbed together. Store them unshelled in your refrigerator.

TG&Y



family centers

GOOD APRIL 28th & 29th **TRUE TEMPER**

savings for your lawn needs

Lawn Tools GARDEN HOE & BOW RAKE

Garden hoe has a 6 1/4"x4 1/4" blade. The rake has a 14" head with 14 teeth. Both have hardwood handles.

3.47



Economy Grass SHEARS

11 1/2" Long with a 5 1/2" blade; has floating blade action and vertical action handle.

1.17

 ISOTOX INSECT SPRAY Continues to kill for 2 to 3 weeks. 8 oz. bottle	 MALATHION 50 INSECT SPRAY Controls insects on fruit trees, vegetables, ornamentals. 8 oz.	 DIAZION INSECT SPRAY 8 oz. liquid can.
 TOMATO VEGETABLE DUST Insecticide, fungicide combination. 10 oz.	 ROSE & FLORAL DUST Insecticide, fungicide combination. 10 oz.	 SPRAYETTE LAWN SPRAYER APPLICATOR 4-gallon Sprayer.

ORTHOPRODUCTS YOUR CHOICE
2.98 EACH

ORTHOPRODUCTS


LIQUID SEVIN INSECT SPRAY
8 oz. bottle.
3.98


SPRAYETTE LAWN SPRAYER APPLICATOR
4-gallon Sprayer.
5.97

Lawn FURNITURE

Folding web chair with non-tilt frame. Folding web chaise lounge with 3 position tilt frame. Both available in multi-colors with plastic arms.



Chaise... **9.99**
Chair... **4.99**

Lawn SPRINKLER


Revolving 2 arm aluminum sprinkler with plastic base. Waters up to 30' diameter.
1.33



#170

T.G.&Y. Garden HOSES

Both are 100% virgin vinyl and nylon reinforced for durability. Quality at a savings.



#8501/5150 **50 Feet x 5/8" Diameter** **4.98**
#7501/5050 **50 Feet x 1/2" Diameter** **2.99**

H. D. Club sponsoring lunch

The Serendipity Home Demonstration Club is sponsoring a noon lunch, Thursday, April 27, 11:30 - 2:00 at the Home Demonstration Club Room. The public is invited and urged to attend.

Advanced tickets may be purchased from all members of the club. Tickets will also be sold at the door. Prices are \$2.50 for adults, 1.25 for children 6 - 12 and under 5 free.

The meal will consist of roast beef, turkey, vegetables and dessert.

Proceeds will be used to build the club float for the Hansford County Celebration.

Come out and enjoy a great "home-cooked" meal.

Square Dance Club Meets

Spearman Spinners Square Dance Club met Thursday, April 20 at the County Barn with Paul Lopez calling for the three squares dancing.

Visitors were from Gruver and Perryton.

Hosts were Mr. and Mrs. Bob Hohertz and Mr. and Mrs. Jack Kemper.

The next dance will be held May 4 at 8:00 p.m. with Paul Lopez calling. Everyone is invited to square and/or watch. Hosts will be Mr. and Mrs. Pat Jackson and Mr. and Mrs. Eugene Yarbrough.

Experienced Leadership For Our Most Vital Industry

Keep★ REAGAN V. BROWN



Texas Commissioner of AGRICULTURE
Important to ALL Texans!

P.O. Box 12475, Austin, Texas 78711

TG&Y'S ADVERTISED MERCHANDISE POLICY-TG&Y's policy is to always have advertised merchandise in adequate supply in our stores. In the event the advertised merchandise is not available due to unforeseen reasons, TG&Y will provide a Rain Check, upon request, in order that the merchandise may be purchased at the sale price when it becomes available, or you may purchase similar quality merchandise at a similar price reduction. We will be happy to refund your money if you are not satisfied with your purchase. It is the policy of TG&Y to see that you are happy with your purchases.



OPEN 9 A.M. to 9 P.M. MON. THRU SAT.

Your best buy is at TG&Y!

659-3741

521 HWY. 207 SOUTH SPEARMAN, TEXAS

659-3741

Lancaster As Dr. Moreau Demonstrates Versatility

In portraying the title role in American International's film adaptation of the H. G. Wells classic, "The Island of Dr. Moreau," showing Friday, Saturday and Sunday, April 28, 29 and 30, at the Holiday Drive-In Theatre in Spearman, veteran star Burt Lancaster is demonstrating the amazing versatility which made him a star in his first film more than 30 years ago and which has maintained his "super-star" status throughout those years. In accomplishing this feat, he has outlasted some of the biggest who moved into television to survive or who accepted lesser roles or retired from acting altogether.

Why has he enjoyed such longevity? "I'm not sure," says the straight-talking actor, "but it might be my adaptability to diversification. Except for the very beginning, with these gangster melodramas in which I was pointed toward variety." In the earlier films like "The Killers" and "Kiss the Blood off My Hands," the title tells it all. But then, he started adding classic character portrayals as in "Sorry, Wrong Number" and Arthur Miller's "All My Sons," after which he rarely became entangled with gangsters, except the political kind. He went on to demonstrate his versatility in such diverse roles as in the whimsical comedy hit "Mister 880" and the classic sports biography, "Jim Thorpe—All American."

"Such a potpourri of parts over the years has given me the constant opportunity to keep my acting abilities and techniques honed," Lancaster concludes. In "The Island of Dr. Moreau," the scientist he portrays is a dedicated man despite his constant attempts to alter natural laws. "I took the role," the star muses, "because H.G. Wells had a moral point to make. He was an ardent antivivisectionist and the film attempts intelligently to explain both sides of the never-ending war between the scientist who must experiment and the moralist repelled by such experiments."

Although Lancaster has received much critical acclaim as an actor, receiving the coveted "Oscar" for his role as a brimstone, hell-fire preaching evangelist in "Elmer Gantry," the fact still remains that he never formally studied drama. The couple of years he spent at New York University was as a

physical education major which certainly served him well in some of his later derring-do screen exploits such as "The Crimson Pirate" and "Trapeze." His abilities as an actor have been all self taught and developed through experience. And, despite his early demonstrated abilities to diversify, the muscular image of Lancaster became so popular that he had to battle to win certain roles.

Although Lancaster has deluged in mixing and maneuvering his roles, the public has generally preferred him in the more romantic tales such as his "Sweet Smell of Success," or "Separate Tables." His critically acclaimed "Elmer Gantry," for instance, even with his award-winning performance as Sinclair Lewis' fiery preacher, just about broke even at the boxoffice.

Notwithstanding, he has refused to play it safe. Admitting to the age of 63, although he looks at least ten years younger, he states frankly, "I have to play character roles. In fact, I must play romantic ones unless it logically suits my real age."

Now, essaying the title role in "The Island of Dr. Moreau," as a scientist who almost successfully alters four-footed beasts into thinking men, Burt Lancaster is doing another character first for him. "It's another step," according to the star, "towards the dehumanization of people. It's fanciful way, it's something like the splitting of the atom or the DNA process so much in today's news. Where, indeed, are we headed? And, as he is quick to point out, "the film is not played as a horror piece" and it is certainly a dramatically new outlet for his talents, "the kind of role I've never played before."

Co-starring with Lancaster in "The Island of Dr. Moreau" are Michael York, Nigel Davenport, Barbara Carrera and Richard Basehart. The film was directed by Don Taylor and produced by John Temple-Smith and Skip Steloff from a screenplay by John Herman Shaner and Al Ramrus. Samuel Z. Arkoff and Sandy Howard served as executive producers.

Rosin is made from the distillation of turpentine.

Panama is the smallest country in North America.

Happy Birthday

Those celebrating their birthdays for the month of May are April Collins, Carolyn Gressett, Kiff Eugene White, Dalene Godfrey, Ruth Garrard, Bryan Jenkins, Noe Nickolas Renteria, Carl Robinson, Kindra Ivey, Patty Sheppard, Rita Reed, Dwayne Jenkins, Jim Shields, Debbie Evans, Gary Pool, Raymond Archer, Helen Eitter, Richard Pipkin, Judy Friemel, Denise Blackburn, Teresa Barkley, Tommy Gambin, Donnie Moyer, Mike Asbil, Adrian Garza, Don Schumann, Alva Garner, Brenda Shieldknight, Diana Donahue, Kevin Bellows, Bo Bo Bellows, Billie Haden, Diane McLain, Hazel Shieldknight, Betty S. Freeman, Colleen McCormack, and Anissa Castillo.

Best wishes are also extended to Tom Jones, Jami Maize, Tommy Russell, Wayne Cook, Charles Eaton, Linda Latta, Kurt Spoonemore, Gayle Smith, Cinda Turner, Matthew Lair,

Alma Ricketts, Ruth Shaver, Joy Gafford, Bryon Kenney, Monte Lusby, Debbie Greene, Mary Elizabeth Bulls, Bettie Davis, Fred Shieldknight, Lori Short, Neta Burger, Earl Archer, Ronny Smith, April Graham, Emma Seitz, Barbara Kenney, Jose Lus Garza, Roy Collins, Slim Osborne, Loye Randall, and Alan Shields.

Best wishes are extended to David Collins, Scott Alford, Ada Ruth Diggs, Bernardo Vela, Bob Skinner, Gladys Mitchum, Francis Loftin, Kimberly Gross, Patti Bellows, Mrs. Wanda Jones, Terry Burke, Waurayne Cope, Becky Brown, Peggy Franklin, Bart Baker, Mark Cunningham, Ethel Cookston, Tommie White, Annette Faulkner, Mike Owens, Allen Alford, Debbie Cook, Richard Castillo, Cindy Hendrick, Doug Steger, Julie Latta, Lee Schubert, Nita Barnes, Danny Dry, Wilma Francis, Dennis Wayne Groves, Lynanne Lauby, Terrie Bowen, Ronnie Lusby, Gerri Maize, Carl Cook, and Brent Connelly.



TEXAS BOUNTY DISPLAYED—Texas Agriculture Commissioner Reagan V. Brown, left, points out the advantages of quality Texas citrus fruit to Japanese consumer industry representatives during a Dallas food show. Texas agricultural products on display, both raw and processed, ranged from pork sausage to hot sauce, Brown noted.

Texas Food and Fiber

by Reagan V. Brown, Commissioner
Texas Department of Agriculture

LIVESTOCK RECEIPTS nationwide are predicted to increase \$5 billion for the first half of 1978, but unfortunately this will not mean a big jump in profits for our producers.

Even though prices have shown definite improvement, notably for cattle and lambs, inflation continues to push production costs higher and higher. In fact, preliminary indications show costs to farmers and ranchers may be up 4 to 5 percent in the first 6 months of this year.

Higher interest charges, increased feeding and rising costs on everything from

machinery to veterinary services mean that adequate profits for our farmers and ranchers may remain out of reach for awhile.

IT'S A FACT
The American consumer benefits from Air Force research and development projects: An Air Force requirement for ultra-compact electronics has mushroomed from a \$2 million contract to the billion dollar electronic calculator and digital watch industry.

It was against the law to observe Christmas in the U.S. in 1659.

Broadway Avenue in New York City is the longest street in the world.

Dallas Food Show Attracts Eager Buyers from Japan

AUSTIN—Japanese consumer industry representatives flocked to Dallas recently to see, and buy, a tantalizing array of Texas agricultural products. Agriculture Commissioner Reagan V. Brown has said.

The food show, held at the Dallas Garden Center, featured raw and processed agricultural goods ranging from pork sausage to hot sauce, Brown noted.

The exhibition was coordinated by the U.S. Department of Commerce and the Texas Department of Agriculture. Agreements to increase Japanese purchases of American goods were reached during negotiations

between Ambassador Robert Strauss, U.S. Special Trade Representative, and officials of the Japanese trade ministry.

Dallas was the first of six cities which will host trade events in the U.S.

Brown said that the Japanese buyers were mainly interested in processed foods. Commodities being displayed in various forms were beef, pork, citrus juice, canned vegetables, peanut butter, pecans, flour mixes, turkeys, broilers, powdered milk, and specialty items.

"These businessmen were here to make orders," Brown said. Fifteen attended the food exhibits while thirty others traded in apparel and housewares.

Japan is the largest export market for U.S. farm products, spending a record \$3.9 billion for U.S. agriculture imports in calendar 1977. The U.S. provides about one-third of Japan's food imports.

"This type of reciprocal trading should enhance the balance of payments which lately has been tipped by the millions we spend each month for foreign oil," Brown said.

Peggy's Pointers

4-H youth are busily preparing method demonstration, illustrated talks, and entertainment for the District 1 4-H Round-Up which will be held Saturday, April 29 on the WTSU Campus in Canyon. Good luck to Jon Garnett, Julie Farr, Chad Guthrie, Anne Marie Jarvis, Kerri Ann Holt, Sara Avila, Denise Rojas, Elisa Brandvik, Radney Dale Clawson, and Mindy Gammon as they prepare to represent Hansford County at District 1 4-H Round-Up!

As the weather warms, you may have furniture refinishing projects in mind. To strip paint from open-grained woods like oak and mahogany, apply a mixture of half shellac and half alcohol to the painted surface—allow to dry.

Next, apply a semi-paste paint remover. The shellac should bond to the paint in the pores—much of the paint will come off with the shellac.

Moving Tip—If you'll be moving soon, this consumer tip may help your packing go easier. About one month before you move, set aside a special area for a packing center. It will include table, scissors, twine, tape, marker and other supplies. And don't forget, before packing a box, secure the bottom with heavy duty tape.

ACCENT ON ANNUALS—Flowering annuals or bedding plants outshine all other landscape plants in easy and fast culture, variety and color. April is annual time...time to prepare soils, plant seed, or select young bedding plants.

Annuals, referred to as "children of the sun" prefer a sunny, well-drained soil, however, some will brighten shaded pockets in the garden as well.

Ageratum, begonia, alyssum, vinca, impatiens, caladium and geraniums grow in a light or filtered shade. Other annuals such as cockscomb, portulaca, salvia and verbena delight in

sunny, hot locations in the landscape.

The fun and success with annuals are achieved through careful preplanning of the annual bed prior to planting. The wise gardener will use large areas of the same color or the same plant for unity and a dominance of color, to be accented with smaller proportions of a contrasting color for interest.

We could go on and on with information on annuals. If you would like to know more concerning preferred exposure to sun or shade, spacing requirements, soil preparation, fertilizers, etc. come by the Extension office in the Courthouse basement and we'll be glad to provide it for you.

United States consumption of tea—the world's most popular beverage, next to water—is second only to Great Britain, says Mary K. Sweeten, foods and nutrition specialist with the Texas Agricultural Extension Service, the Texas A&M University System.

Wear a sweater around the house—lower the thermostat three degrees F. (two degrees C.) and save as much as 10 percent on fuel bill, suggests Claudia Kerbel, consumer information specialist with the Texas Agricultural Extension Service, the Texas A&M University System.

Best areas for insulation in existing or new structures are: unfinished attics, finished attics between ceiling joists, exterior walls, floors above crawl spaces, the perimeter of slab-on-grade, basement walls and duct work, and plumbing in uninsulated areas, says Pat Seaman, housing and home furnishings specialist with the Texas Agricultural Extension Service, the Texas A&M University System.

TDA Asks Texas Homemakers To Share Favorite Recipes

AUSTIN—Agriculture Commissioner Reagan V. Brown invites homemakers with favorite recipes using Texas agricultural products to share them with others throughout the state.

"Anyone having recipes utilizing quality Texas farm products may submit them to the Texas Department of Agriculture for publication in the TDA Quarterly, a magazine devoted to the agricultural producers and

consumers of the state," Brown said. "For the upcoming issue we are particularly interested in recipes using peanuts, turkey, strawberries and melons."

Recipes for the Summer, 1978 Quarterly must be received by May 15. Send to: Commissioner Reagan V. Brown, Texas Department of Agriculture, P.O. Box 12847, Austin, Texas 78711.

LYRIC THEATRE

SPEARMAN, TEXAS
Phone 806-659-2812
ONE SHOW AT 7:30 P.M.
SUNDAY, MONDAY, TUESDAY,
WEDNESDAY, AND THURSDAY
TWO SHOWS AT
7:00 P.M. AND 9:00 P.M.
FRIDAY & SATURDAY

HANSFORD
COUNTY'S
ENTERTAINMENT
CENTERS

HOLIDAY DRIVE-IN

SPEARMAN, TEXAS
PHONE 806-659-3922
One Show Only Each Evening
Show Starts At Dusk

BRUNO KERBY
A COMEDY ABOUT HIGH SCHOOL KIDS!

LEE PURCELL
JOHN FRIEDRICK
DIDI CONN PETROVIA PALEY
"ALMOST SUMMER" Color

A TROPICAL PARADISE, UNTOUCHED BY MAN... WHERE A BIZARRE CIVILIZATION EXISTS.

THE ISLAND OF DR. MOREAU

BURT LANCASTER **MICHAEL YORK**

Starring in "THE ISLAND OF DR. MOREAU" Released by American International Pictures also starring NIGEL DAVENPORT • BARBARA CARRERA • RICHARD BASEHART as "Some of the Few"

Executive Producers SAMUEL Z. ARKOFF and SANDY HOWARD • Based on the novel by H.G. Wells
Screenplay by JOHN HERMAN SHANER and AL RAMRUS • Music by LAURENCE ROSENTHAL
Produced by JOHN TEMPLE SMITH and SKIP STELOFF • Directed by DON TAYLOR
Classic Edition by TEMPO BOOKS, Paperback by ACE BOOKS
Color by Movelab • A Cinema 77 Film

PG PARENTAL GUIDANCE SUGGESTED
Some material may be objectionable to children under 10.

APRIL 26 THROUGH MAY 2
PELICULAS MEXICANAS

ORNELLA MUTI
ALESSIO ORANO
EXPERIENCIA PREMATRIMONIAL

ALBERTO CLOSAS Dirección de JULIA S. CARA PEDRO MASO ISMAEL NERLO FOTOGRAFIA COLOR

HEROES
A UNIVERSAL PICTURE TECHNICOLOR

SUNDAY MAT. 2 P.M. APRIL 30 **MAY 3 - MAY 9**

Sears **SAVE**
on power lawn care equipment!

Lawn mowers...

\$19 OFF Craftsman 3.5-RP rotary mower
Was \$119.00 Catcher extra **\$99.99**

3.5-reserve power Eager-1 engine with single constant speed. No-adjust carburetor. Pressurized lubrication system. Blade cuts 20 in. wide in 5 heights.

Lawn tractors...

\$100 OFF 10-HP tractor with mower
Was \$839.00 3 forward speeds **\$739.00**

Mower deck adjusts to 5 heights with a single lever. Electric-start with alternator. 3 speeds forward, 1 reverse. Handles optional snow blade, thrower, lots more!

\$20 OFF rear bagger mower with catcher WAS \$249.00

\$229.00

4.0-reserve power Eager-1 engine with dual torque selections. Snap-in catcher. 21-in. blade.

\$150 OFF 16-HP tractor with mower WAS \$1,429.00

\$1279.00

Our most powerful lawn tractor! Twin-cylinder engine. 5 speeds. Electric-start. 42-in. mower.

• Shipping extra • Sears has a credit plan to suit most every need • Prices are catalog prices • Now on sale in our "T" and "B" catalog supplements
Satisfaction Guaranteed or Your Money Back

Sears
BEANS, ROBBUCE AND CO.
9 A.M. - 5:30 P.M.
PLAINS SHOPPING CENTER SPEARMAN, TEXAS
Phone 659-2573



City To Apply For Funds

Authorization to make application for a Texas Aeronautics Commission grant for the proposed enlargement of the local airport and a pre-application grant for Community Development Block Grant Program funding were two of the top items acted on by Spearman City Council in regular session April 25 in City Hall.

After an update report on the planning progress for the airport, council approved the resolution authorizing application for a TAC grant for the project.

Based on preliminary planning at this time for the work to be undertaken in such a program, council moved to submit a pre-application to HUD for CD Block Grant Program funding, the amount of such funding to be \$200,000 or more at this time.

Council also heard the presentation of the municipal audit for the fiscal year 1976-1977 and accepted it as presented along

with some suggestions for improving auditing procedures. Bids were open on miscellaneous city equipment which was for sale and highest bids were accepted.

News For Veterans

The Veterans Administration today reminded former servicemen and women it's smart to ask for VA counseling when considering educational and vocational training benefits.

Jack Coker, Director of the VA Regional Office in Waco, said veterans short-change themselves when they fail to take advantage of the agency's free counseling service.

"It can make a big difference in whether you have the future you want or no future at all," Coker said.

"The fact is, it makes good sense to use counseling resources if you need help in achieving training and employment goals. Coker pointed out that veterans entitled to VA schooling benefits also are eligible for the counseling service and may request it.

VA vocational counselors are professionals who have in-depth knowledge of job markets, occupations, schools, VA benefits also are eligible for the counseling service and may request it.

VA vocational counselors are professionals who have in-depth knowledge of job markets, occupations, schools, VA benefits and the problems people face from money to marriage.

The counselor and the veteran sit down together and go over the veteran's education, training, employment and career desires.

and are interested only in what will most help the veteran," Coker said.

"They will help the veteran identify his or her interests and abilities, assist in the selection of a suitable career goal, and will be specific in recommending programs or other assistance on the basis of their knowledge of available training, unemployment opportunities and other circumstances," Coker said.

While there is no charge for VA counseling, the veteran must pay his or her own transportation costs, if any. Coker said the agency "will do our best to minimize that cost by scheduling an appointment as near the veteran's home as possible."

Full information on VA's vocational-educational counseling program can be obtained from the nearest VA office, Veterans County Service Officer or from national veterans organization service officers.

Massachusetts is the only state governed under its original constitution.

DO YOU KNOW THIS ABOUT TEXAS AGRICULTURE?

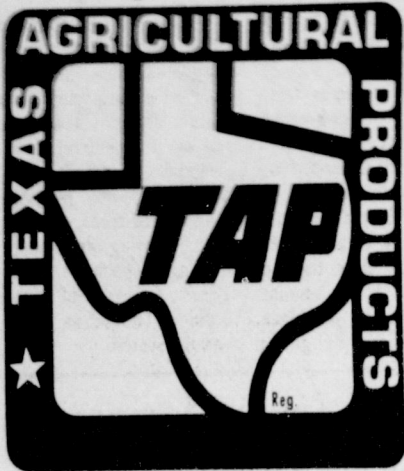
- * Texas is number one in: Sorghum, Natural Fibers, Cattle and Calves, Cattle on feed, Sheep and Lambs
- * Around \$6 billion in total cash receipts annually means that Texas is the third largest producer in the nation.
- * Texas also ranks in the top five in fresh market vegetables, fruits, and nuts.
- * Texas loses an estimated 2,000 farms annually but still produces more crops and livestock each year from fewer and larger farms.
- * Texas has 205,000 farms and ranches covering 141.8 million acres. (1975)

Rodeo Banquet Held At PSU

Larry Dawson, championship RCA bulldoggers from Gruver, Texas, was the featured speaker at the Panhandle State University Rodeo banquet. David Armes from Gruver and a member of the rodeo team introduced Mr. Dawson.

Members of the men's and women's rodeo team were honored and Miss Diana Luthi was crowned the rodeo queen. The men's rodeo team are presently leading the Central Plains Division and the girls team are ranked third.

When you buy



You're making Texas Dollars Work for You

Enjoy Texas Agricultural Products ...They're Miles Fresher

Why Should Dolph Briscoe Be Governor for 10 Years?

There is no good reason!

No other Texas Governor has ever asked for 10 years, much less been elected for 10 years. Dolph Briscoe's record does not merit 10 years in office.

* Yet Briscoe has spent more than \$2 million in this campaign — including \$900,000 his supporters borrowed from 13 banks — to get 10 years in office.

* Property taxes have increased by 1 BILLION DOLLARS since Briscoe was elected; so far, he has done nothing to provide property tax relief.

* Welfare costs have more than doubled under Briscoe, without a fair increase in benefits for those people who really deserve them. The reason is waste. The worst example is Briscoe's own Office of Migrant Affairs, which spends \$9,000 for each person it helps find a new job.

* Utility rates have skyrocketed while Briscoe has been governor, without a single sign of concern by the Governor.

Elect a New Governor

Endorsing John Hill, the Kilgore News Herald said: "He fought Southwestern Bell all the way to the Supreme Court to stop an unfair rate increase. He appears to have beat the Howard Hughes empire over millions in inheritance taxes. And he cleaned up Duval County."

Endorsing John Hill, Fort Worth Star-Telegram said: "In two terms as state attorney general, Hill has shown himself to be energetic, articulate and assertive. He can make firm decisions and work persuasively to see them carried out. As governor, he would be an active, accessible chief executive projecting a strong leadership image."

Endorsing John Hill, the Dallas Times-Herald said: "John Hill has been an outstanding attorney general. He has made impressive progress in making the office what he has always said it should be—the people's law office."

JOHN HILL GOVERNOR

Paid by John Hill Campaign, Lowell Liberman, Treasurer, 1005 Brown Bldg., Austin, TX 78701. Telephone (512) 478-6400

PLAY **DOUBLE CASH BINGO** SERIES II Our first game was such a hit, we decided to do it again! **WIN UP TO \$2000 CASH** MORE MONEY MORE FUN You'll Be Delighted When You Shop UNITED!

BUSH'S SHOW BOAT PORK & BEANS •BLACKEYES •PINTO BEANS •MIX GREENS •SPAGHETTI •CHILI HOT BEANS **5 FOR \$1**

ELLIS VIENNA SAUSAGE 4 5 OZ. CANS **\$1**

FINE FARE SALAD DRESSING QUART **69**

JOHN HILL'S BABY POWDER 4 OZ. **59c** **JOHN HILL'S BABY OIL** 4 OZ. **99c** **JOHN HILL'S BABY SHAMPOO** **\$1.79**

COUNTRY TIME LEMONADE 5 8 OZ. CANS **\$1**

JENO FLAT PIZZA CHEESE •HAMB. •PEP. •SAUSAGE **79c**

UNITED MELLORINE ASS'T. FLAVORS 1/2 GAL. **69c**

FINE FARE QTRS. MARGARINE 3 LB. **\$1**

BALLARD BISCUITS SWEETMILK BUTTERMILK 2 8 OZ. CANS **29c**

BELL LOW FAT CHOC. MILK QT. **49c**

Magnificent! any regular size mug **99c** compares to \$1.99 value any jumbo size mug only **\$1.49** compares to \$1.49 value

FINE FARE MILK EVAPORATED 3 TALL CANS **\$1**

FINE FARE SAUCE 7 8 OZ. CANS **\$1**

FINE FARE CORN WHOLE KERNEL OR CREAM STYLE 4 17 OZ. CANS **\$1**

FINE FARE TOMATOES 3 16 OZ. CANS **\$1**

CASSEROLE PINTO BEANS 2 LB. BAG **49c**

LIGHT CRUST FLOUR 5 LB. BAG **49c**

HEINZ STRAINED BABY FOOD 6 JARS **\$1**

COMET RICE LONG GRAIN 42 OZ. **98c** **SHOP IN SAVE!**

SWISS STEAK ROUND BONE ARM CUTS **\$1.49**

BONELESS FAMILY STEAK WASTE FREE BEEF **\$1.49**

CUBED STEAK WASTE FREE BEEF **\$1.98**

GROUND BEEF FRESH FAMILY PACK **98c**

CHUCK STEAK BLADE CUTS **98c**

BEEF LIVER SLICED SKINNED & DEVEINED **59c**

PLANTATION BEAUTY BONELESS TURKEY HAM FULLY COOKED LOW IN FAT & CHOLESTEROL **\$1.89**

BONELESS SHOULDER ROAST WASTE FREE BEEF **\$1.39**

HEINZ HOT DOG RELISH OLD EL PASO TACO **39c**

***HAMBURGER** SWEET 9 3/4 OZ. **39c**

MORTON CORN SHELLS 18 CT. **59c**

FINE FARE CHIPS 9 OZ. BAG REG. 69c **59c**

FINE FARE APPLESAUCE 16 OZ. **3/\$1.00**

FULL-O-JUICE ORANGES 5 LB. BAG **89c**

RED DELICIOUS APPLES WASH. FANCY **39c**

RUSSET ALL PURPOSE POTATOES 10 LB. BAG **89c**

CELERY GREEN PASCAL STALK **39c**

PINEAPPLE HAWAIIAN JUICY RIFE EACH **79c**

ODDS CHART Odds stated are for thirty days after promotion begins. Odds will be revised weekly thereafter to reflect prices still available and will be posted in participating stores.

INSTANT TEA LIPTON 3 OZ. JAR **\$1.59**

MARTHA WHITE CORN MUFFIN MIX 6 7 1/2 OZ. PKGS. **\$1**

FINE FARE FRANKS MEAT OR BEEF 12 OZ. PKG. **79c**

UNITED SUPER MARKETS PERRYTON, TEXAS

Accent On Health

Texas Department of Health
Frais L. Duff, M.D., Commissioner

Americans do lots of things to avoid heart attacks. Many take up jogging. Some eat less, especially less saturated fats. A few even quit smoking. But one factor often goes unnoticed—high blood pressure. The disease can be controlled in virtually all cases so that the person can lead a full, active life. But often persons with high blood pressure do not get proper treatment, because they do not follow their doctor's instructions or because they do not realize they have high blood pressure in the first place.

Let's get right to the point. What's your blood pressure? If you don't know, or haven't known for several months, you may be taking unnecessary chances with your health.

Everybody has blood pressure. It's the force which the blood exerts on your blood vessels as it flows through them. But when the force becomes too great, the person has high blood pressure or hypertension. Since too much pressure is being put on the person's arteries by the

blood which must flow through them, the circulatory system, heart, and other organs may be damaged by having to work harder for extended periods of time. So, high blood pressure is not something to be ignored.

High blood pressure is a major public health problem. About 35 million Americans have high blood pressure—that's one in six. But only 20 percent have their hypertension adequately controlled. The remainder are unaware of their hypertension or are aware but under no treatment or inadequate treatment.

There are four common misconceptions about hypertension or high blood pressure:

1. Patients confuse controlling high blood pressure with curing it. After they reach their goal blood pressure reading, they stop taking their medicine. There is no cure for this disease. Often, a pill a day will enable the person to lead a normal life.
2. Many people don't think they have a problem because they don't have any

symptoms. Often hypertension has no symptoms. But since the patients don't feel sick, they don't treat the disease. The fact is that a person cannot guess his blood pressure by how he feels. Hypertension is usually a lifelong thing and the patient must treat it everyday for life.

3. Some people confuse hypertension, the medical term for high blood pressure, with tension. Patients who believe this take their medicine only when they feel tense or nervous, or dizzy or have a headache. Blood pressure medication is meant to be taken regularly—not just when the person feels nervous.
4. Often patients believe they can choose a treatment plan. Sometimes the doctor will prescribe that the patient lose weight, restrict salt, stop smoking, and get more exercise, in addition to medication. This program is not meant to be a choice. Each part of the plan is important and must be followed for the treatment to be successful.

Uncontrolled hypertension can lead to very serious

problems. High blood pressure can make your heart pump harder than normal, and the arteries become less elastic. The heart may become larger, then weaken and stop pumping effectively. Hypertension can also speed the process of atherosclerosis, a hardening of the arteries in which the inner layer of the artery walls thickens and deposits of fatty substances build up. Blood vessels in the retina of the eye may be affected, eventually impairing vision. A stroke, the hemorrhaging of a blood vessel in the brain, is another possible complication. But hardest hit are often the vessels in the kidney, which may become so impaired as to be unable to function at all. Hypertension is nothing to ignore.

The best precaution is to get your blood pressure checked regularly. It's quick and painless. If your blood pressure is high, your physician will tell you how it can be controlled. If drugs are needed, there is a wide variety of effective drugs at his/her disposal. On occasion, changing your diet, getting regular exercise, quitting smoking and losing weight are enough to control hypertension. But if drugs are part of the therapy, they should be taken continually, as instructed, regardless of how good you feel or what your blood pressure is. Don't take chances. Get your blood pressure checked.

Grasshoppers cannot jump unless the temperature is at least 62 degrees Fahrenheit.

East is west and west is east on the 180th meridian.

According to Einstein, time is the fourth dimension.

Chamber Spring Breakfast Is Thurs.

The Chamber Spring Breakfast will be Thursday, April 27th. Breakfast will be served from 6:30 - 7:00 a.m. with the fun program beginning at 7:00. Brenda Bowling will sing and Mary Lou's tap dance students will make their debut. There will be a drawing for \$25.00

from those present and a drawing for \$75.00 from the membership and you must be present to win. The sponsor is the First State Bank. Kent Guthrie and Eddie Martin will be the co-masters of ceremonies. Marilyn Groves will be the pianist. Lots of fun, entertainment and

food. Tickets are \$2.25 per person. Call the Chamber today and make your reservations. The Pogues will make the gravy and the directors will cook the rest of the breakfast. We will be looking forward to seeing you there.

This is how the food-buying situation will look across Texas this week:

FRESH VEGETABLES -- Although weather has disturbed the market, items to consider for economy are cabbage, turnips, rutabagas, hard-shell squash, carrots, broccoli, dry yellow onions and potatoes.

FRESH FRUITS -- Besides grapefruit and oranges, other fruits offering budget-buy values are apples, avocados and bananas.

BEEF -- Prices are about the same as last week or a bit higher. Look for specials on chuck cuts, a variety of steaks, ground beef and liver.

POULTRY -- Ten-pound turkeys and even larger sizes are features in some markets, and eggs offer economical protein buys.

DAIRY -- Good values appear on sour cream, cottage cheese, yogurt and a wide selection of cheddar cheeses.

CONSUMER WATCHWORDS: Dry beans are one of the best buys in protein foods pricewise.

Consumer Food News

COLLEGE STATION -- Grapefruit, oranges, fryer chickens, turkey and some pork specials are among this week's most economical buys at Texas grocery markets, according to Mrs. Gwendolyn Clyatt, consumer marketing information specialist.

However, weather is affecting the grocery picture -- especially the fresh vegetable market, she reports.

Mrs. Clyatt is with the Texas Agricultural Extension Service, The Texas A&M University System.

Letter To The Editor

Dear Mr. Miller:
Thank you for your recent correspondence.

It is important that the American people realize that vastly higher costs, coupled with low prices for farm products, have placed the American farmer in his most serious financial predicament in decades.

The American agriculture producer has taken great initiatives in making this country the most food-abundant in the world. The government must recognize its responsibility to assist in furthering this endeavor. For this reason, I fought for legislation in 1977 to assure a fair return to farmers.

Recently, as you probably know, the Senate passed the Talmadge farm bill. I am pleased to tell you that the Dole-Bentsen proposal was added to this measure. This proposal provides wheat, feed grain and cotton producers the opportunity to receive parity prices for their 1978 crops depending on how much of their land is held out of production.

In addition, I sponsored an amendment to this bill which would increase the loan rate for cotton to \$50 per pound and I co-sponsored other amendments to raise the target price for wheat, feed grains and cotton.

Also, I feel the influx of imports has had a substantial impact on our cattle producers who are faced with severe market depression at this time. In the past, I have taken steps to curb meat imports by co-sponsoring legislation to reduce the base import level for beef and to reconstruct the formula for set-

ting the meat import quotas. You will be interested to know that I have recently chaired hearings of the Senate Finance Committee on these and other proposed amendments to the Meat Import Act. The testimony from those hearings clearly supports the need for critical changes in the 1964 Meat Import Act. Therefore, I have introduced the Beef Import and Labeling Act of 1978. This bill would limit imports to two percent of domestic commercial production until the average price for domestic beef rises above 80 percent of parity. It would also close a loophole which allows imported live cattle to be counted as domestic production if they are slaughtered in this country. It also requires the labeling of all imported beef at every step of the food chain, up to the consumer. Imported beef at present, for example, can be ground and sold without any label as to its origin.

I assure you that I will be working to see that our farm producers receive a reasonable return on their crops. Knowing I have your support is most helpful to me in this important matter.

Again, I appreciate your taking the time to contact me.

Sincerely,
Lloyd Bentsen

New York City was the first capital of the United States.

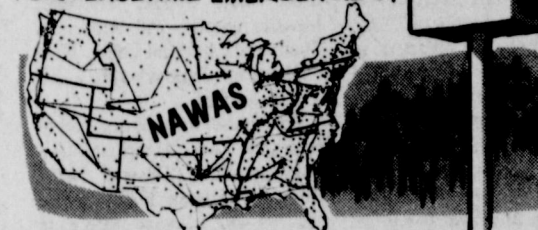
New Mexico was the last state admitted to the Union.

The English Crown Jewels are kept in the Tower of London.

Montgomery, Alabama was the first capital of the Southern Confederacy.

DID YOU KNOW - ?

THAT "DUAL CAPABILITY" THE WATCHWORD FOR CIVIL PREPAREDNESS, MEANS THAT SYSTEMS BUILT TO PROTECT PEOPLE IN THE EVENT OF NUCLEAR ATTACK ARE BEING USED WHENEVER POSSIBLE FOR PEACETIME EMERGENCIES?



... THE CIVIL DEFENSE NATIONAL WARNING SYSTEM (NAWAS) IS PARTICULARLY ADAPTABLE AS A DUAL-USE SYSTEM.

MORE FACTS? CONTACT YOUR LOCAL CIVIL DEFENSE.

JOHN POERNER

Railroad Commissioner of Texas

Keep an outstanding man in this important job. John Poerner's ability and integrity are proven in a decade of public service.

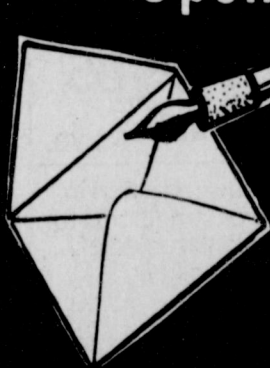


Pd. Pol. Ad. to elect John H. Poerner, Railroad Commission, Ed Ingram, Treas., 1037 Brown Bldg, Austin, Texas 78701

Something Else

A New Gift Shop for Perryton

Opening Tuesday, April 25



You're invited to come in anytime and browse through.

We have a large selection of unique gifts for every member of the family —

And at prices you'll be pleasantly surprised at!

Open 9 a.m. - 5 p.m.

Deeda Ford and Doris Hickey, Owners

406 S. Main - 435-2490

Kitchen Corner

There's Always Room For Something Else

Children's Corner

Farm equipment Service Clinic



A special session for John Deere tractor

owners - operators

Thursday, April 27

SESSIONS START AT 8 P.M.

Come on in and learn more about

adjusting, operating, and servicing

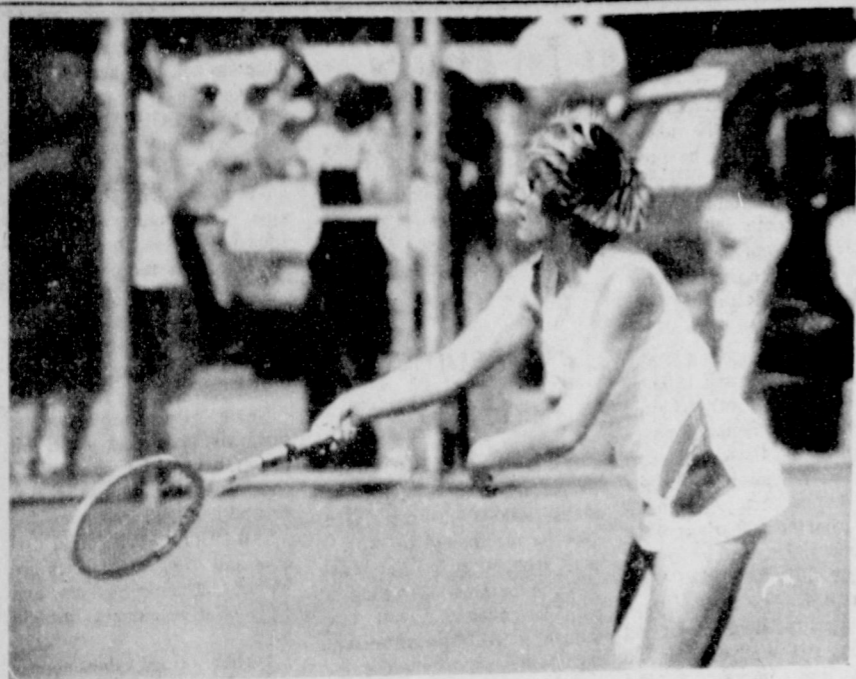
your John Deere equipment.

Deere and Co. personnel

will be on hand.



Hansford Implement Co.
Box 518
Spearman, Tex. 79081
Ph: (806) 659-2712



Connie Vernon, district singles champion, is pictured above in action at the recent tennis tourney held in Spearman. She placed well in regional tennis last week at Lubbock.
foto by E. Newcomb

Hearing On Auto Repair Problems Set

AUSTIN...State Senator Ron Clower (D-Garland), announced today, that the Senate Subcommittee on Consumer Affairs will be in Houston, on Friday, April 28th, to obtain testimony on automobile repair problems.

"Automobile repair problems continue to lead the list of all consumer complaints, not only in Texas, but throughout the United States," Clower noted.

"Our interest in coming to Houston is to meet with consumers and representatives of the automobile repair industry in an effort to hear all perspectives on this important issue."

Clower, Chairman of the Consumer Affairs Subcommittee, indicated that the Houston hearing will be the second auto repair hearing for the Subcommittee this year. In March,

the Subcommittee was in Dallas to review the impact of an ordinance in that city, which is the only example of regulation of the automobile repair industry in Texas.

Senator Clower also mentioned recent figures announced by the director of the National Highway Traffic Safety Administration. The figures reportedly show that \$20 billion annually in the United States is wasted because of fraudulent, incompetent or unnecessary automobile repairs and that 40 cents of every dollar spent on car repairs is wasted because of faulty and fraudulent repair work, poor owner maintenance, and new car design. "I do not want to comment on these figures because I understand that some in the automobile industry have questioned these exact amounts," Clower said. "But I do know that, whether these figures are entirely accurate or not, the automobile repair problem is very serious to consumers and one that should be addressed."

growing number of citizens, is that federal controls are often applied without adequately considering regional peculiarities and local needs," Clower remarked.

Clower concluded by stating, "Consumers will benefit most if a solution to the automobile repair problem is worked out locally. This will occur after careful study of the situation has been conducted, which is precisely what this subcommittee is attempting to do."

Anyone who might be interested in testifying about their problems with this issue at the April 28th subcommittee hearing is asked to contact Senator Clower at P.O. Box 12068, Capitol Station, Austin, Texas 78711, AC 512/475-3758.

Charity Begins At Home

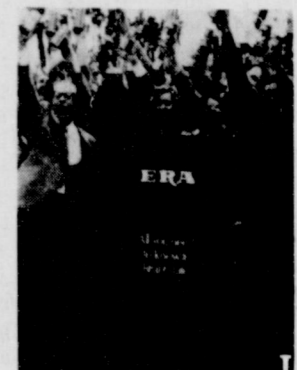
It's going to be easier than ever to help in the fight against a killer disease.

More than 30,000 real estate brokers across the country are joining a massive home-to-home fund raising campaign—"A Day in May for MDA," for the "Fight Against Muscular Dystrophy" on Sunday, May 7th from 1 to 5 p.m. This gives you a chance to join the fight right at your door.

These brokers are all with ERA (Electronic Realty Associates, Inc.), the only national corporate sponsor of the Jerry Lewis Labor Day Telethon representing the real estate industry.

In addition to their home-to-home push, the company sponsors Jerry Lewis "Open Home" days, when brokers contribute \$1 for every fam-

ily that tours a specially designated house; "Listing for Lewis," during which ERA brokers donate \$10 for every home submitted for listing; and "Garage Sales," in which ERA provides helpful kits to people running garage sales in return for a percentage of the proceeds for Jerry Lewis and "his kids" in this all-out effort to help find a cure for muscular dystrophy.



PUTTING MUSCLE INTO THE FIGHT AGAINST MUSCULAR DYSTROPHY are fund raisers Jim Jackson (left), ERA President, and Jerry Lewis (right).



Some people believed that wearing blue quartz stones protected them from shipwreck.

Arthritis Dance-A-Thon Set

Door prizes, disc jockeys, live bands, sore feet and other surprises will be featured Friday and Saturday, April 28th and 29th at the Arthritis Foundation's Dance-A-Thon. The 24 hour gala begins at 7:30 pm on April 28th at the Commercial Exhibits building of the Tri-State Fairgrounds. Invitations have been sent to all of the music participants of the festival in the Texas panhandle.

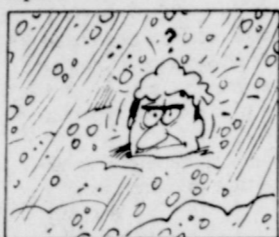
Alpha Phi Alpha, a new social service organization of Amarillo College, is sponsoring the fund raising event for the Arthritis Foundation in honor of the Greater Southwest Music Festival. Marathon dancers will raise money by gaining pledges from area individuals for each hour of participation.

Disc jockeys will come from KPUR, KZIP, Z-93 and Jerry Webb from Amarillo College. Bands from the Panhandle will be donating their time. There will be a \$2.00 admission charge

for those who wish to dance but did not get pledges.

Prizes for the dance are donated by Western Merchandising, Alexander's, Penny's, Klein's, Southwest High Fidelity, Audio Outlet, Wilson's Magnavox, Hollywood, Bank of the Southwest, Truck City-Plains Chevrolet, General Office Supply, Bill Day Flowerland, Pier 1, Tri-State Radio, Myer's Drumstick, Pioneer Gas, Country Squire Dinner Theater, Zales, Sakowitz, Firestone, Texas Apparel, Inc., T.S.T.I., Technical Office Training, Frenchy McCormick Dinner Theater, Miller National, Joe Siegal Pipe and Steel, Connell Stationery, Reitman Lumber and Hardware, Russell Stationery, Coca Cola, Mead's Bread, Pizza Planet, Pittman Beef, Dunkin Donuts.

Pledge forms can be obtained from The Arthritis Foundation in Amarillo or from Alpha Phi Alpha at Amarillo College.



With the proper clothing, a man can stand the extreme cold as low as 50 degrees below zero Fahrenheit.

"He who serves his country well has no need of ancestors." Voltaire

All American Pageant Seeks Statewide Entries

Officials of the Texas All American Girl Pageant are inviting participants from throughout the state to compete in the Second Annual Pageant to be held in Dallas, June 13-15, at the Downtown Holiday Inn. The age groups include: All American Tot, ages 3-6, All American Little Miss, ages 7-9, All American Miss, ages 10-12, All American Teen, ages not less than 13 or older than 17 as of Labor Day of 1978, All American Girl, ages 17-26, 17 year old contestants must be high school graduates of 1978. The winner will compete in the All American Girl National Pageant to be held in Peoria, Illinois on August 9-13, Tots, Little Miss, and Miss; and August 16-20, Teens and Girls. At that time, over \$5,000 in scholarships and awards will be

presented. In addition to the winner and alternates, trophies will be presented to the talent winner in each age group and for the best performance in dance, drama, baton, gymnastics, voice, and instrumental music.

The current reigning National Winners are: Airika Swan, Anaconda, Montana - All American Tot; Melissa Lowe, Carthage, Illinois - All American Little Miss; Dawn Japuncha, Warren, Ohio - All American Miss; Lori Sypek, Holyoke, Massachusetts - All American Teen; and Charlene Colon, Nesquehoning, Pennsylvania - All American Girl.

For further information, write or call: All American Girl Pageant, P.O. Drawer 1630, Dothan, Alabama 36302, Phone 205-792-4907. Please state your

age on inquiry.

PTA's, band boosters, dance schools, civic clubs, and other organizations interested in sponsoring a local pageant as a fund-raising project may also inquire.

When it comes to saving money on Bigelow carpet, the Tough Shopper comes to Beedy Furniture.



There's nobody tougher than the Tough Shopper. When it comes to prices. Styles. Colors. And wearability. But there's nobody as tough as Bigelow, either. Bigelow carpets have features even the Toughest Shopper could want. Like the Mark of Performance® that lets you choose the carpet that's right for the traffic level in each room of your home. And a wide variety of styles and colors to make sure your new Bigelow carpet fits your decor. And every Bigelow carpet is treated with Scotchgard®. So you can count on your carpet staying clean long after you've taken it home. Our prices on Bigelow carpet are another thing you can count on.

The Tough Shopper may be tough. But we've got some pretty tough stuff, too.



Ask about Bigelow's Guide to The MARK OF PERFORMANCE™

BEEDY FURNITURE CO.

SPEARMAN, TEXAS

659-3044

Bigelow makes it easy for the Tough Shopper.

ALLSUP'S
CONVENIENCE STORES

APR. 27, 28, 29

SAVINGS

<p style="text-align: center;">BORDEN'S</p> <p style="text-align: center;">ICE CREAM OR SHERBET</p> <p style="text-align: center;">\$1.29</p> <p style="text-align: center;">1/2 GAL. NO. CTN.</p>	<p style="text-align: center;">SHURFINE</p> <p style="text-align: center;">Tomato Sauce</p> <p style="text-align: center;">8 OZ. CAN</p> <p style="text-align: center;">13¢</p> <p style="text-align: center;">EACH</p>
<p style="text-align: center;">SHURFINE</p> <p style="text-align: center;">SAUERKRAUT</p> <p style="text-align: center;">NO. 303 CAN</p> <p style="text-align: center;">23¢</p>	<p style="text-align: center;">FOLGER'S</p> <p style="text-align: center;">COFFEE</p> <p style="text-align: center;">\$3.19</p> <p style="text-align: center;">LB. ALL GRINDS</p>
<p style="text-align: center;">BORDEN'S</p> <p style="text-align: center;">YOGURT</p> <p style="text-align: center;">4 \$1.00</p> <p style="text-align: center;">ASSY'D FLAVORS</p>	<p style="text-align: center;">ARMOUR STAR</p> <p style="text-align: center;">FRANKS</p> <p style="text-align: center;">12 OZ. PKG.</p> <p style="text-align: center;">69¢</p>
<p style="text-align: center;">GIANT SIZE</p> <p style="text-align: center;">TIDE</p> <p style="text-align: center;">\$1.29</p>	<p style="text-align: center;">BORDEN'S HI PROTEIN</p> <p style="text-align: center;">MILK</p> <p style="text-align: center;">79¢</p> <p style="text-align: center;">1/2 GAL.</p>

HOT COOKED FOODS

- BBQ CHICKEN
- HOT LINKS
- DORRITOS
- GERMAN SAUSAGE
- BBQ RIBS
- WORLD LINKS
- CORN DOGS
- BULK BBQ BEEF
- BBQ BEEF SANDWICHES

SHOP THE FRIENDLY, CONVENIENT ALLSUP'S STORE NEAR YOU

305 W. KENNETH