

THURSDAY, JAN. 14, 1954

AL HAND SUIT PRICE .98

4 to 12 Value

CATER

OFF

And Wh SHIP

R \$2

R \$1

R \$1

R \$1

WRAE

ual Chamber of

ing and Banquet

ing begin-

m. (Thursday)

annual meeting

the Community

adies of the

paring and serv-

ing will include

ent; Dr. R. L.

President; Joe

s, Jimmie Hesse

are Directors

and directors

President;

View, Presid-

Virgil Mathews,

Carl Hutch-

L. Kleeberger.

has served as

ember of Com-

1953 and to

serve again

by the evening

James P.

"America"

son, Inoyation

wart.

at James P.

L. Gross Club

roduction of

Joe Traylor

an opportuni-

for the com-

Car

Pont

World's Fin-

of Luxury

Committee

and members

here is the real

completely new

the real reason

that you see an

car soon.

lowest, you can

post and most

built. And

size and

distinction

rior riches

Star Chari-

it for lea-

in for

Pontiac

finest

low cost.

BOOK AT PONTIAC'S

Biggest Pontiac

Magnificent New

Star

Most Powerful

New Roadability

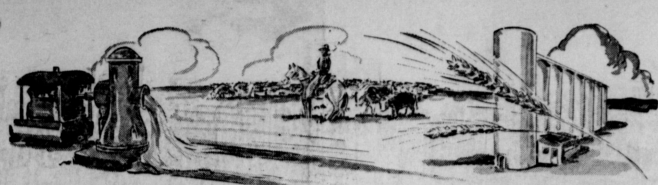
Increased Cross-

Dollar for

you get

PONTIAC

Texan



The Spearman Reporter

THE SPEARMAN REPORTER, SPEARMAN, TEXAS

NOTICE

Announcement of a special film showing the Juliette Fowler Orphan Home and operations there, is made this week. The film will be shown at the Fellowship Hall at the First Christian Church Monday evening January 18th at 7:00 p. m. The public is invited to attend.

HANSFORD COUNTY

75 Irrigation wells within boundary line, Approx. 100 in territory

THURSDAY, JAN. 14, 1954

Commerce Annual

And Banquet Tonight

Farm Bureau Meeting is January 14th.

All members of the Hansford county Farm Bureau organization are urged to attend a CBB and Tamale supper and meeting to be held at the Home Demonstration club rooms in Spearman this evening (Thursday January 14). The meeting begins at 7:00 p. m.

Announce Change Of Elevators At Gruver

Dan Shradar, manager of the Gruver Elevators Inc. announced this morning that a contract has been let to enlarge the storage capacity of the company. The new construction will add 620,000 bushels bringing the total storage to 1,989,000 bushels. The new construction will consist of concrete tanks, and the Mayer-Oshorne Co. of Denver have the contract. Jim Edleman, manager of the Kimball Milling Co. announced the addition of 250,000 storage bushels bringing their total to 329,000. The new construction will consist of steel tanks, and the addition of a new fifty foot scale. The feed store and office have been moved to a new location.

Oil News Is Getting Hot!

N. D. Bartlett, oil editor for the Amarillo News Globe, says "Watch Hansford County development this year. One of the strongest drilling campaigns the Panhandle has enjoyed for years will take place there. It has been labeled the Panhandle hot spot for 1954.

We hope Mr. Bartlett is in the know on this, and here is the information on the drilling in this county as of Sunday: Hamble Oil and Refining No. 1, Wilbanks, sec. 121, blk. 45, H&TC survey, present total depth 562, conditioning mud.

Humble Oil and Refining No. 1, Collier-B, sec. 35, blk. 1, W&CR survey, drilling below 4200.

Humble Oil and Refining No. 1, Collier, Sec. 41, blk. 1, W&CR survey, present total depth 7078, conditioning mud.

Baker-Taylor Drilling No. 1, A. V. Evans, sec. 28, blk. 45, H&TC survey, location, (6 miles east Gruver, 21 miles NE Humble discovery well).

Phillips Petroleum No. 1, Phillips Petroleum No. 1, H&TC survey, flowed 2,923,000 cubic feet gas, perforations 3044-3145, shut in.

GIRLS "A" GAME

SPEARMAN 10

CHANNING 18

GIRLS "B" GAME

SPEARMAN "B" 22

CHANNING "B" 23

Fair:

Bill Goldston

J. D. Wilbanks

Bob Vaughn

H. H. Crooks

Industrial:

L. S. McLean

Dude Hart

John R. Colard

P. A. Lyon

Goodwill and Reception:

Jim Newby

W. J. Miller

C. A. Giber

J. B. Cooke

Jay Turner

Housing:

M. S. Chambers

W. E. Bratton

E. C. Greene

Memorial Building Representative:

M. S. Chambers

Lions Miss Out On Farley Visit

Members of the Spearman Lion club were prepared to hear an interesting talk from Cal Farley on Boys Ranch Tuesday of this week. Due to the unexpected contingencies, Mr. Farley was unable to meet with the club. All Lions who did not spend a dollar would likely be fined a dollar anyway, as the money will go to the March of Dimes campaign.

Lion A. E. Coary was appointed a Director from the Lion club to serve with the Youth group of Spearman.

Coury Motor Company Will Show New Oldsmobile Wednesday

The new 1954 Oldsmobile will be on display at the Coury Motor Company in Spearman, Wednesday, January 20th. This beautiful new 1954 Oldsmobile is one of the most beautiful cars ever exhibited before the American public. The new design is very appealing and features entirely new body lines, with an outstanding power plant under the hood.

The public of Hansford county is urged to attend the showing of this beautiful new car. Wednesday, January 20th. Dough-nuts and coffee will be served all day. Door prizes for the ladies.

Weather

5	52	20	0.00
6	45	21	0.00
7	47	24	0.00
8	78	32	0.00
9	65	30	0.00
10	43	27	0.00
11	30	5	0.00
12	30	5	0.00
13th			0.19
TOTAL			
0.47			

Hansford county moisture reading for the week amounts to .47 of an inch. All the moisture is represented in snow. Snowfall began Sunday January 19th amounting to .37 of an inch.

Snow that began at about 2:00 p. m. Tuesday afternoon brought an additional .10 inch of moisture.

Funeral Rites Held For Walter Scott Thomas Tues. January 12th

Walter Scott Thomas, who would have reached the age of 80 years if he had lived until April 11th of this year, died at 1:50 p. m. Sunday, January 10th at his home at 210 Bernice Street in Spearman, Mr. Thomas a well loved and respected citizen of our county, had suffered a stroke in January of last year. His activities has been limited but he has been accustomed to help around the house and even drove his car Saturday morning January 9th. Always an ardent church goer, Mr. and Mrs. Thomas had remained at home Sunday because of the snow. During the late morning Mr. Thomas stepped out on the front porch to sweep off the snow. When he returned into the house he suffered another stroke and died in a short time.

Funeral rites were held at the Church of Christ in Spearman Tuesday at 2:30 p. m. M. W. Graves, former Superintendent of Spearman grade schools and well loved citizen of the entire North Plains, read the message at the Memorial Services. He was assisted by Pastor Paul Smith of the local Church of Christ. Interment was at the Hansford Cemetery under direction of Dowell Brothers Funeral Home. Pallbearers were: Olin Sheets, W. C. Davis, J. W. Buchanan, C. U. Pope, L. L. Rawls, R. Y. Jones, Elroy Vanderburg.

Honorary Pallbearers were: Claude Sheets, A. C. Green, George Stewart, T. C. Harvey, A. H. Frasier, R. C. Chase, R. L. McCallan, R. D. Tomlinson, J. B. Cooke, C. A. Giber, J. E. Gunn.

Scout Leaders Club Met Jan. 6.

The Girl Scout leader's club met at the home of Mrs. Woodville Jarvis Jan. 6th.

Five members were present and the guest was Miss Jan Bails. Those present included Mesdames John B. Colard, J. B. Hedgecock, Carl Archer, Oscar Archer and the hostess Mrs. Jarvis.

No officers were elected. President, Mrs. Ray Phelps, Vice president, Mrs. John R. Colard, Secretary-Mrs. Wade Tacksett.

Coffee and cookies were served during the meeting.

Rev. and Mrs. Bryant Out of City Past Week

Rev. and Mrs. O. L. Bryant had been out of the city for the past few days. Rev. and Mrs. Bryant accompanied their son Carroll to Baylor University at Waco, Texas last week end. They then made a trip to Austin to make arrangements for the schooling of their son Timothy. While in Austin the Bryants learned that his father would undergo surgery, and they traveled to Iran, Texas to be at his bedside. We learn that the elder Bryant is doing well at this time. Rev. and Mrs. Bryant will be at home this week end and he will return to the regular meeting this Sunday.

Mrs. Hedgecock Is Hostess

The Happy Homes Club met in the home of Mrs. Marcella Hedgecock, January 10th. June Gibbs gave demonstration on broiler meals. Those present were Mrs. Ada Linn Barnes Bea Gilliam, Lois Guenter, Nordia Hart, Evelyn Haley, and the hostess.

Grand Master To Address Master Mason Of Southeast Texas

Several thousand Master Masons from Southeast Texas will gather in Houston, in the Scottish Rite Cathedral, Polk and Caroline streets, Friday, January 29.

Walter Scott Thomas was a faithful member of the Church of Christ having been baptized in 1925 at Hollie, Oklahoma. He was active in all phases of the church work for more than 50 years.

Spearman Club Met January 8th.

Mrs. H. H. Sloan was hostess to the Spearman Home demonstration club when they met January 8.

Miss June Gibbs gave a demonstration on Broiler cooking. Refreshments were served to Mesdames Finis Matos, B. J. Gurnett, B. C. Birdwell, Leo Campbell, A. F. Barkley, J. L. Bryan, T. D. Sansing, Miss Gibbs, one visitor Mrs. Ed Hutton and the hostess.

LOST—Red Velvet Purse containing pair of Blue Glasses. Reward offered. Phone 5711.

No. 2-4

Canadian Associational Meeting Of Baptist Church Here Jan. 18th

Members of baptist churches in five churches additional towns of this area will be guests at the Associational meeting to be held in the Baptist church here Monday January 18th.

The program is featured on the subject "Personal Soul Winning". Services begin with a song service led by Winford Walker at 5:00 p. m. E. J. Yates will speak on the subject "The Need" at 5:15 p. m. Special music arranged by Winford Walker will be on the program at 5:30 p. m. C. H. Crouch will speak on "The Preparation" at 5:25 p. m. and the announcement will be made by the Moderator at 5:55 p. m. followed by the supper given by the host church.

The personnel will be divided into groups for three meetings at 7:00 p. m. The adults will hold a board meeting in the basement of the church; the W. M. U. members will hold a meeting in the main auditorium; and the youth meeting will be held in the intermediate department at the church.

At 8:30 p. m. song services and prayer; followed by awarding of the Banner to groups making the best records. Keith McCormick will speak on "The Procedure" at 8:15 and another song service will be held at 8:35 p. m. Wayne Sybert will speak on "The Reward" from 8:10 p. m. until adjournment at 9:10 p. m.

CARD OF THANKS

We take this means of expressing our sincere appreciation to our many friends who were so helpful to us in our hour of grief. Your many acts of kindness, all helped us greatly, and your flowers, your Family of Ira Pearson.

Having had a taste of cold center, we are now ready to welcome spring weather.

James Wolfe Concert At Perryton Soon



(JAMES WOLFE)

The North Plains Mutual Concert Association will present James Wolfe, pianist, Thursday evening, January 14, at 8:00 in the Perryton High School Auditorium. The concert is the second in a series of four sponsored by the association this year.

James Wolfe is an American pianist of growing international reputation. Now occupied with concert country tours here during which he will play more than 25 concerts, Mr. Wolfe sails for Europe in early spring. He is scheduled for three orchestral appearances in Paris alone as part of the extensive tour of France he will make. For this tour Mr. Wolfe is American artist abroad in the third season of an international artist exchange between our country and France.

YOU CANNOT

Socialism is something like toothache. You cannot depend on having just a little of it after one's teeth started.—Memphis Commercial Appeal.

Five Children Stricken

In St. Louis, polio struck the family of Clarence Eckert with a vengeance. First Eckert's two sons, Robert and Erwin, came down with the disease. Then his daughters, Judy and Donna, contracted it. And finally, the third daughter, 6-year-old Jane, suffered a serious polio attack.

Five of the eight children in the John Carroll family in Allegan, Mich. were stricken with polio. The afflicted were Jim, 15, Margaret, 11, Patricia, 14, Michael, 12, and Judith, 6. The three other children had received gamma globulin shots and did not come down with the disease.

Four in Family Hit

Four members of the McCarty family suffered attacks of polio in Elmira, N. Y. during the 1953 outbreak and one of them 10-year-old Gary, died of the disease. The boy's mother, Mrs. Marilyn McCarty and two daughters, aged five and eight, also were hospitalized.

Polio also hit four members of one family in Lenoir, N. C. Beth Hartley, 5, Mary Anne, 7, Doris, 10, and Peggy Ann, 12, were stricken over a 10-day period. Peggy Ann received a gamma globulin injection but was stricken before the injection could become effective.

Doctor and Wife in 'Lungs'

Dr. Thomas Mielcis and his wife, Beatrice, suffered a simultaneous polio attack in Chicago last year and won the title of Chicago's "Mr. and Mrs. Iron Lung" of 1953.

There were several other multiple cases around the country last year, but polio stayed away from the door of Mr. and Mrs. Leo B. Linemanstone, who suffered 1953's worst polio tragedy when four of their eight children died of the disease.

In 1953 the Linemanstones, who live in Milwaukee, contributed \$500 to the March of Dimes.



All American Red Heads To Play In Gruver Jan. 19th

The World's Champions, All American Red Heads Girls basketball team will play in Gruver January 19. The Gruver Men's team will play their first game in the new gym at 8:00 o'clock in the new gym.

This is sponsored by the Gruver Parent, Teachers Association for their only fund raising campaign. This association will have a concession stand in the gym, where the crowd will have an opportunity to buy all sorts of baked goods, coffee, and etc.

This part of the country is familiar with these Red Heads. They have played here before, and have always drawn a huge crowd. They feature Esther Taylor, a 6 footer, Shirley Howard, 5 ft. 8; Red Mason, 5 ft. 7; Hatch Moore, 5 ft. 6; and Patsy Barton, 5 ft. 9. The team features Butch Moore as the World's trick pivot ball handler, and she will give trick shot exhibitions between halves. Red Mason throws them with her feet. They are undoubtedly the Female Wizards of the Court. The team has often been featured in Life, Pic, and Collier's magazines.

The Gruver PTA invites you and all out for an evening's fun and entertainment, as I. T. Spivy, tries his best to referee this game between the men's town team and the All Americans.

Admission is \$1.00; and 50 cents, and remember all proceeds go for a good cause.

Players for the Gruver team are as follows: Annette Burr Barroutha, Dilly Meetea McClellan, Sherry Stager, Natty Shradar, Dayton Ski-Hi Barkley, Don Lover-Voy Peddy, Joe Ogden, Ray Ector, Dwayne Shapley, Al Tucker, Neil Huxson, Hootie Cline. The team will be coached by Marvin Shapley, and the referee for the game is I. T. Spivy.

Shrine Club Meeting

SHRINE STAG MEETING AT SPEARMAN FRIDAY

A stag meeting of the Hansford County Shrine club will be held at the H. D. Club rooms in Spearman beginning at 7:00 p. m. Friday evening January 15th. All members are urged to attend.

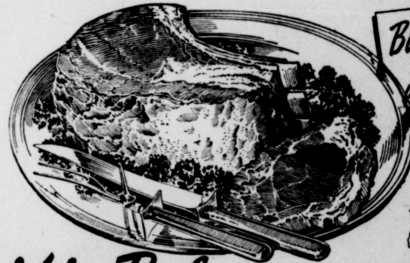
Hansford Falling Behind In Payment Of Poll Tax

Hansford county citizens are falling behind the average of the state of Texas in a very important program, namely the payment of Poll Taxes. Although Hansford county only collects \$1.75 per citizen in poll tax whereas most counties assess a rate of \$1.75, the records show that only 600 citizens have paid their poll tax out of a population of 1800 certificates being issued. Certainly with some 13 amendments coming up to vote on this year, besides the county officers, district officers and state officers, every citizen of this county should protect his or her right to participate in formulating the policy of the future. You need your poll tax. You should take advantage of the fact that you can pay this tax on or before January 31st, and take the normal obligations of an aggressive citizen. You need your vote—your county needs the vote—so start now for the Tax office and pay that poll tax TODAY.

Good News for Everyone!

LOW COST TEXAS BEEF

IS PLENTIFUL RIGHT NOW!



Build Your Meals with These Cuts



Nourishing Beef... The Complete Protein

You'll save money by buying LOW-COST TEXAS BEEF, Now!

It's plentiful, protein-packed, and priced low!



Prepared by Southwestern Ass'n. of Advertising Agencies in cooperation with Texas Press Association

SAVE MONEY NOW on LOWER CUTS of BEEF!

Continued
FATION, Ja
squeezed
d to con
says John
extension
ated red
farm com
the or se
production
up the
r 1954, B
appears
ne circu
grams m
ages sh
e of 1951
ent prod
rately be
ces in 19
lightly
Concess
ces may
are larg
whole de
uths may
t below
12 period
ary by
cent more
r will be
1953-54
ly minor
Sheep, th
aterials, a
probably
year than
ability pr
be slight
1953, price
expected
the 1953
go
...
FATION, Ja
nning is
livable fa
Dr. W. S.
Texas Ag
Service,
include not
struction
in addition
sing effici
operations.
ed farm or
to live and
least, heal
Start with
is, find the
e house an
to the farm
is easy ste
ing are sh
first on p
heavy, show
winds come
nd slopes, l
hills, and
to place the
Reserve Dis
of Graver,
December
operating u
the Federal
made by the
Bank of th
Cash, balanc
balance an
United State
guarante
Obligations
Corporation
Federal B
Loans and
Bank Premi
flat
TOT
Demand dep
Corporat
Deposits of
postal sav
Deposits of S
Other deposit
TOT
Total Liabil
obligations
Capital
Surplus
Undivided pr
TOTAL
TOTAL
COUNTS
This bank
Common stock
Assets pledged
for other
I. Kenneth
that the above
holder.
Correct—Attes
State of Texas
Sworn to
1954.

Continues . . .
FATION, January assesses on farm-
 to combine in
 says John G. Mc-
 extension econ-
 ometed reduction in
 farm commodities
 title or to change
 production items.
 up the agricul-
 or 1954, McHaney
 appears adequate,
 as circumstances
 grams must con-
 ceages should ap-
 e of 1953.
 and production in-
 rately below 1952
 ceas in 1954 will
 ightly from last
 Concessions and
 ces may be more
 are large. Costs
 shade during the
 nths may average
 t below the cor-
 13 period. This,
 ary by areas, he
 cent more com-
 will be avail-
 1953-54, growing
 ly minor changes
 change, the cost
 ertainly, supplies
 probably will be
 year than last.
 ility prices for
 be slightly low-
 us, prices for in-
 expected to re-
 e the 1953 level.
 ge

and locate the house.
 In addition, information
 given in B-171 Easy steps to
 farmhouse house planning, county
 Extension agents have avail-
 able copies of cut outs to help
 in planning, insulation and wea-
 ther proofing, planning the bath-
 room, farmhouse plans, modern-
 izing farmhouses, plans for farm
 and ranch homes in Texas, farm-
 stand arrangement, and farm-
 house construction details for
 Texas.

Trees For Shade . . .
COLLEGE STATION, January
 -Every house needs to be fram-
 ed by at least two shade trees
 at the front, with one at the rear
 for back-ground. However,
 Sadie Hatfield, homestead im-
 provement specialist for the Tex-
 as Agricultural Extension Service,
 Two most frequently made
 mistakes in home grounds im-
 provement are overplanting and
 crowding of shade trees. The
 distance apart depends on the
 size of trees when full grown.
 An apricot tree for instance may
 be planted from 8 to 12 feet
 from the house, but a pecan tree
 should be 40 or 50 feet away.
 When selecting trees, remem-
 ber the evergreens like cedar,
 magnolia or live oak are excel-
 lent for background and fram-
 ing, but should be planted for
 enough from the house to allow

plenty of sunshine during the
 winter. Pines planted 50 feet
 away make a good background
 and interesting framing for a
 north front. "Ordinarily houses
 which face the north rarely need
 shade trees at the front," Miss
 Hatfield comments. "Here is a
 good opportunity to plant some
 beautiful trees like the mimba
 or silk tree which do not make
 a dense shade," she adds.

Adapt the size of the trees
 to the house. Many smaller trees
 such as apricot, pear, plum, red-
 bud, dogwood go well with mod-
 ern houses.
 Ask for C-156 Fruit varieties
 of Texas at your county exten-
 sion agents' office, or order Fore-
 st trees of Texas and how to
 know them from the Texas Entom-
 ology Association, College Station,
 Texas for 25 cents.

Money is important only in
 that it buys things we want,
 which is enough.

Old fools are not more foolish
 than young ones; they just look
 sillier.

A lot of football players will
 flunk out of college in the next
 twenty days.

The ten best-dressed men and
 women of the year is our idea
 of the bunk.

"HIGHER" MATHEMATICS

"OF A TRUTH, GOD IS NO RESPECTER
 OF PERSONS" — ACTS 10:34

TYKE EQUALS TYCOON
 (IN THE SIGHT OF GOD)

Reserve District No. 11. State No. 1763

Report of Condition of The
 GRUVER STATE BANK
 of Gruver, Hansford County, Texas, at the Close of business
 December 31, 1953, a State banking institution organized and
 operating under the banking laws of this State and a member of
 the Federal Reserve System. Published in accordance with a call
 made by the State Banking Authorities and by the Federal Reserve
 Bank of this District.

ASSETS	Dollars Cents
Cash, balance with other banks, including reserve balance and cash items in process of collection §	535,799.72
United States Government obligations, direct and guaranteed	249,791.39
Obligations of State and political subdivisions	2,000.00
Corporation stocks (including \$4,500.00 stock of Federal Reserve bank)	4,500.00
Loans and discounts (including \$4,767.56 over drafts)	968,984.76
Bank Premises owned \$32,200.00 furniture and fixtures	44,350.00
TOTAL ASSETS	1,805,455.87
LIABILITIES	
Demand deposits of individuals, partnerships and Corporations	1,414,557.83
Deposits of United States Government (including postal savings)	9,630.06
Deposits of States and political subdivisions	207,896.64
Other deposits (certified and officers' checks, etc.)	2,876.54
TOTAL DEPOSITS	\$1,634,961.07
Total Liabilities (not including subordinated obligations shown below)	1,634,961.07
CAPITAL ACCOUNTS	
Capital	50,000.00
Surplus	100,000.00
Undivided profits	20,494.80
TOTAL CAPITAL ACCOUNTS	170,494.80
TOTAL LIABILITIES AND CAPITAL AC- COUNTS	1,805,455.87

This bank's capital consists of
 Common stock with total par value of \$50,000.00

MEMORANDA

Assets pledged or assigned to secure liabilities and
 for other purposes 200,000.00

I, Kenneth Irwin, Cashier, of above named bank, hereby certify
 that the above statement is true to the best of my knowledge and
 belief.

Kenneth Irwin

Correct—Attest: A. R. Dorr, R. L. Thom, Wm. F. D. Etling Directors,
 State of Texas, County of Hansford ss.

Spurns to and subscribed before me this 5th day of January
 1954.

JOE S. GRUVER, Notary Public

SHOP and SAVE
 where it's
THRIFT WEEK
 All Year Long!

SHURFINE 46 OZ. CAN
GRAPEFRUIT JUICE 25¢

SHURFINE 303 CAN
SPINACH 2 For 23¢

SHURFINE GOLDEN 303 CAN
CREAM CORN 2 Cans 29¢

SHURFINE CHUNK STYLE
TUNA FISH Can 27¢

MIRACLE WHIP Pint **29¢**

KRAFT DINNERS Pkg. **10¢**

VELVEETA CHEESE 2 lbs. **85¢**

FLOUR

SHURFINE 5 lb **33c**

SUREFRESH
OLEO
 2 LBS.
39¢

PINTO BEANS
 2 LBS.
23¢

MAPLE SYRUP
 QUART
37¢

300 COUNT
KLEENEX 3 for 67¢

SUNSHINE KRISPY
CRACKERS lb. 24¢

SUNSHINE CRACKER
HI-HO'S lb. 29¢

WESSON OIL Pint 33¢

Longhorn Cheese
 Full Cream **45c**

SUGAR
10 lbs. 59
 With \$5.00 Purchase and over

PINKNEYS PURE PORK
SAUSAGE 2 lb. Roll 75c

ARMOURS STAR ALL MEAT
FRANKS lb. 49c

WATKINS RANCHO
BRICK CHILI lb. 39c

ROME BEAUTY
APPLES 2 lbs. 27¢

TEXAS
CABBAGE 3 lbs. 19¢

MARYLAND SWEET
POTATOES 2 lbs. 29¢

YELLOW
ONIONS 3 lbs. 21¢

FRESH FRYERS & HENS

WHITE KING Large Pkg. 29¢

WHITE KING Giant Size 55¢

BABO 10c

RED
POTATOES 10 lbs. 39

Cut Rate Grocery & Market
 SPEARMAN, TEXAS

365 Day Grazing . . .

COLLEGE STATION, January—Seasonal pastures 60 far toward answering the livestock man's prayer for green grazing 12 months a year.

like Bermuda or Dallgrass. Here in Texas the cool season plant usually is killed during its dormant period.

Plan different summer and winter pastures, he advises. Small grasses alone or with an adapted legume will furnish winter and early spring forage while permanent pastures with Sudangrass will provide summer and early fall grazing.

Generally there will be periods when green grass is not available even with irrigation, he says. Wise producers tide over these times with hay or silage stored during periods of excess production. He also adds a planned forage program includes a plan to utilize soil improving crops and rod residues.

A knowledge of adapted summer and winter grasses is the initial step in establishing a seasonal program.

Proper grazing management is the next consideration. Trew continues. Commence grazing at the proper time, graze the plants to the proper height and rotate pastures to assure top production and efficient use from grasses produced. Be careful to avoid overgrazing.

Adequate fertilization pays, too, seasonal pastures. Proper management also calls for good fencing, whether permanent, temporary or both.

County agricultural agent are familiar with crops adapted in their areas. Trew says, and can assist livestock operations in planning such a program. They also have seasonal pasture leaflets which list suitable plants for

particular area showing the length of grazing period to be expected from each.

WANTED—One person to work part time contacting local business men and making appointments for Neon sign and outdoor advertising firms. In setting up Spearman, Texas. No. 6 1-tp

SPINET AND—Upright piano. Also 1933 Wurlitzer Spinet Electric Organ. Will sacrifice to responsible parties on terms. Co. Credit Dept. 217 W. 6th St. Amarillo, Texas. No. 6 3-4c

FOR RENT—Unfurnished 2 bedroom house on pavement. Contact Craig Hutchison, Phone No. 6, rtn. 4441.

FOR RENT—Furnished 4-room house, two blocks from school house, for other business. See Craig Hutchison, or call Phone 4441. No. 6, rtn.

CURVED WINDSHIELDS for auto glass is a big business with us. We stock all types and make our own installation for perfect fit & satisfaction. Let us help you to handle your next glass insurance claim. Also Furniture tops, blown windows, mirrors. DALRYMPH IN PERRYTON

FOR SALE—Large upright piano, No. 125-00. Phone 6141, or see Mrs. Pat Gates. No. 6 2to

CONTRACTOR'S NOTICE OF TEXAS HIGHWAY CONSTRUCTION. Sealed proposals for constructing 6.001 miles of Gr. Str., Base & Surf. from FM 278, 4 mi. S. of Gruver, west 6 mi. to road end, on Highway No. FM 2018 covered by S 1664 (1) in Hansford County, will be received at the Highway Department, Austin, until 9:00 A. M. Jan. 21, 1954, and then publicly opened and read.

This is a "Public Works" Project, as defined in House Bill No. 34 of the 47th Legislature of the State of Texas and House Bill No. 115 of the 44th Legislature of the State of Texas, and as such is subject to the provisions of said House Bills. No provisions herein are intended to be in conflict with the provisions of said acts. In accordance with the provisions of said House Bills, the State Highway Commission has ascertained and set forth in the proposal the wage rates for each craft or type of workmen or mechanic needed to execute the work on above named project, now prevailing in the locality in which the work is to be performed, and the Contractor shall pay not less than these wage rates as shown in the proposal for each craft or type of laborer, workman or mechanic employed on this project.

Legal holiday work shall be paid for at the regular governing rates.

Plans and specifications available at the office of V. J. McGee, Resident Engineer, Highway, Texas, and Texas Highway Department, Austin. Utah rights reserved.

BY "Gene & Sparky" Irrigation motors - wiring - a specialty. ANTHONY ELECTRIC. L. L. ANTHONY. PHONE 3261. Box 727. SPEARMAN, TEXAS.

Getting down to "bare facts", we'll hunt down the trouble and make you pleased at your choice of service.

Spearman Super Service. Hwy. 117 Ph. 4061

Classified

HOUSEWIVES: Address advertising postcards. Must have good handwriting. LINDO, Watertown, Mass. No. 5-1tp

FOR SALE—2 battery brooders. See G. C. MITS, Spearman, No. 5 r-tn

FOR SALE—Three bedroom house, 2 baths, Bill Russell Jr. No. 43 r-tn

Symptoms of Distress Arising from STOMACH ULCERS DUE TO EXCESS ACID. QUICK RELIEF OR NO COST. "All About It" by Dr. Williams' Pink Pills.

SPEARMAN DRUG CO. GRUVER DRUG CO.

For the life of your car GO GULF!

FARM & RANCH LOANS. E. C. GREENE, Box 145

MCCARTNEY'S LAUNDRY and CLEANERS are in SPEARMAN and GRUVER every MONDAY, WEDNESDAY, and FRIDAY.

DAIRY KREEM in SPEARMAN IS AGENCY. WE ALSO DELIVER.

FOR SALE—Well located house, six lots. Furniture included. Best buy in town. Also, five cabins with furniture to be moved. To make room for other business. R. C. Stewart. No. 4 3-4p

HOUSE FOR RENT—Phone No. 2246 or 3781. No. 45, rtn.

FOR SALE—2-bedroom, house 2 car garage, 1 block from school, 511, Barkley, \$5,000. See L. M. Womble, Morse, Tex. No. 48-rtn

FOR RENT—Furnished Duplex, 3-rooms and bath. Bills paid. L. W. Mathews, Phone 2971. No. 49 r-tn

FOR SALE—Lester Piano, 2 years old, excellent condition. Very reasonable. Call 6156, or 3071, or See Dub Davis. No. 1-rtn

LOST—One pair of Seates at the 7th grade reading party. If found please return to Roxie Leigh Neely. No. 4, 4-4p

NOTICE. If you want to drink that your business. But if you want to stop drinking that your business. Alcoholic Anonymous, Box 251, Spearman, Texas. No. 2, rtn

FOR SALE—Piano Reasonable. Rev. Ellis J. Vaele, corner of Barkley and 5th st. No. 5 2-4p

FOR SALE—Buffalo Alfaalfa seed. See or Phone M. D. McLaughlin, 5553, Spearman, Texas. No. 5 v.v.

BY "Gene & Sparky" Irrigation motors - wiring - a specialty. ANTHONY ELECTRIC. L. L. ANTHONY. PHONE 3261. Box 727. SPEARMAN, TEXAS.

Getting down to "bare facts", we'll hunt down the trouble and make you pleased at your choice of service.

Spearman Super Service. Hwy. 117 Ph. 4061

Classified

HOUSEWIVES: Address advertising postcards. Must have good handwriting. LINDO, Watertown, Mass. No. 5-1tp

FOR SALE—2 battery brooders. See G. C. MITS, Spearman, No. 5 r-tn

FOR SALE—Three bedroom house, 2 baths, Bill Russell Jr. No. 43 r-tn

Symptoms of Distress Arising from STOMACH ULCERS DUE TO EXCESS ACID. QUICK RELIEF OR NO COST. "All About It" by Dr. Williams' Pink Pills.

SPEARMAN DRUG CO. GRUVER DRUG CO.

For the life of your car GO GULF!

FARM & RANCH LOANS. E. C. GREENE, Box 145

MCCARTNEY'S LAUNDRY and CLEANERS are in SPEARMAN and GRUVER every MONDAY, WEDNESDAY, and FRIDAY.

FOR SALE—Well located house, six lots. Furniture included. Best buy in town. Also, five cabins with furniture to be moved. To make room for other business. R. C. Stewart. No. 4 3-4p

HOUSE FOR RENT—Phone No. 2246 or 3781. No. 45, rtn.

FOR SALE—2-bedroom, house 2 car garage, 1 block from school, 511, Barkley, \$5,000. See L. M. Womble, Morse, Tex. No. 48-rtn

FOR RENT—Furnished Duplex, 3-rooms and bath. Bills paid. L. W. Mathews, Phone 2971. No. 49 r-tn

FOR SALE—Lester Piano, 2 years old, excellent condition. Very reasonable. Call 6156, or 3071, or See Dub Davis. No. 1-rtn

LOST—One pair of Seates at the 7th grade reading party. If found please return to Roxie Leigh Neely. No. 4, 4-4p

NOTICE. If you want to drink that your business. But if you want to stop drinking that your business. Alcoholic Anonymous, Box 251, Spearman, Texas. No. 2, rtn

FOR SALE—Piano Reasonable. Rev. Ellis J. Vaele, corner of Barkley and 5th st. No. 5 2-4p

FOR SALE—Buffalo Alfaalfa seed. See or Phone M. D. McLaughlin, 5553, Spearman, Texas. No. 5 v.v.

BY "Gene & Sparky" Irrigation motors - wiring - a specialty. ANTHONY ELECTRIC. L. L. ANTHONY. PHONE 3261. Box 727. SPEARMAN, TEXAS.

Getting down to "bare facts", we'll hunt down the trouble and make you pleased at your choice of service.

Spearman Super Service. Hwy. 117 Ph. 4061

Classified

HOUSEWIVES: Address advertising postcards. Must have good handwriting. LINDO, Watertown, Mass. No. 5-1tp

FOR SALE—2 battery brooders. See G. C. MITS, Spearman, No. 5 r-tn

FOR SALE—Three bedroom house, 2 baths, Bill Russell Jr. No. 43 r-tn

Symptoms of Distress Arising from STOMACH ULCERS DUE TO EXCESS ACID. QUICK RELIEF OR NO COST. "All About It" by Dr. Williams' Pink Pills.

SPEARMAN DRUG CO. GRUVER DRUG CO.

For the life of your car GO GULF!

FARM & RANCH LOANS. E. C. GREENE, Box 145

MCCARTNEY'S LAUNDRY and CLEANERS are in SPEARMAN and GRUVER every MONDAY, WEDNESDAY, and FRIDAY.

WASHINGTON AND SMALL BUSINESS

Many in Washington feel unless tariffs are boosted immediately, a depression can strike the nation with explosive speed.

Cited as example is fact in five years U. S. metal mines employment has dropped 35%, still plummeting.

Hard hit are nation's lead and zinc operations protected from foreign imports by a tariff of less than cent per pound. Mines are closing as low priced foreign metal floods market.

Naturally interest lags in finding new domestic ore reserves despite belief mineral resources are still largely unknown.

Paradoxically the government would use flood of cheap foreign metal with purposeful plan. At home outbreak to obtain more zinc and lead, government gave foreign producers long term contracts. In addition, foreign nations owning metal producing colonies in North Africa received millions through Marshall Plan to develop mineral resources.

Situation poses problem at base of forthcoming debate. The hard core of the "free trade" group, those with foreign investments, aided by mushy-headed sentimentalists, plus those espousing world socialism, raise cry that to sell abroad America must take foreign goods on free basis. And thereby is the crux.

As any reader knows, people cannot buy, unless they have means with which to buy. Zinc and lead pouring into nation is being mined with labor paid from \$3 cents to \$2 per day.

This into the rosy dreams of a socialist world by the impractical plus rapacious desires of those with foreign holdings who wish to flood U. S. market to knock out competitors, could be injected a realistic appraisal.

A bank, or a credit company, will accept a contract from employed American miners to buy homes, cars, appliances, other goods that in turn produce employment. But there is an understandable reluctance to accept a contract from an unemployed American miner. And now comes the 7th question. Who will accept contracts from African miners making 80 cents per day to buy U. S. products that unemployed Americans cannot buy.

Faustically, it has been suggested that before free trade John L. Lewis should be shared with the world.

Seriously some assert U. S. wages are too high, foreign competition would be rejudging force.

There is need for readjustment. But majority view is that readjustment has to start from way back of home plate. Employment of Americans must not only be able to consume U. S. farm & industrial production but must also bear huge tax burden, much of it caused by foreign aid and relief appropriations.

The saying on this point is "you may pluck a goose, even skin him a little, but when you start digging into the meat you're going to have a dead bird."

Thus many see and drive to destroy U. S. tariff protection emergence of same old unholy trite domestic business interests with world wide cartel understandings aided by world socialists and by mushy-headed sentimentalists.

Fruit of Good Will

JOHNNY APPELSEED made the apple the universal American fruit when, around 1800, he wandered throughout the midwest, sowing the seeds that became great apple orchards. All Americans, including this pretty young miss picking apples at Wunatchee, Wash., share the heritage.



APPLE BUTTER spread on bread, and sometimes the face, left, is a popular treat. It's part of Johnny Appleseed's legacy of good will.

BIG BUSINESS now, apple products are eaten in all 48 states. U.S. inspector, right, checks sample at J. M. Smucker Co. in Ohio.

CARGO OF APPLE butter and other fruit products rolls along Ohio road past blossoming apple tree, en route to Southwest. International truck is pulling enough fruit products to spread 750,000 slices of bread. Johnny Appleseed's dream came true!

Four great NEW "Firsts" in Chevrolet for '54!

Count on Chevrolet to bring you the newest features first. Once again Chevrolet is first in its field with these four great advances for '54!

Advertisement for Chevrolet '54 featuring four key features: 1. NEW HIGH-COMPRESSION POWER, 2. NEW POWER BRAKES, 3. NEW AUTOMATIC SEAT CONTROL, 4. NEW AUTOMATIC WINDOW CONTROL. Includes images of the car and a driver.

Advertisement for McClellan Chevrolet Co. and Gruver Motor Co. in Spearman, Texas. Includes contact information and a list of services.

Vertical sidebar of various small advertisements including real estate, medical services, and local businesses.

Spearman Reporter

Published Thursday of each week except the last of March 3, 1879.

Editor and Publisher

Subscription rates: Single copy 10¢, 12 issues \$1.00, 24 issues \$2.00, 52 issues \$4.00.

Advertising rates: 10¢ per line per week, 25¢ per line per month.

Selection at Burger's... 1954 to 1955...

Selection at Burger's... 1954 to 1955...

Selection at Burger's... 1954 to 1955...

Selection at Burger's... 1954 to 1955...

Selection at Burger's... 1954 to 1955...

Selection at Burger's... 1954 to 1955...

Selection at Burger's... 1954 to 1955...

Selection at Burger's... 1954 to 1955...

Selection at Burger's... 1954 to 1955...

Selection at Burger's... 1954 to 1955...

Selection at Burger's... 1954 to 1955...

Selection at Burger's... 1954 to 1955...

Selection at Burger's... 1954 to 1955...

Selection at Burger's... 1954 to 1955...

Selection at Burger's... 1954 to 1955...

Selection at Burger's... 1954 to 1955...

Selection at Burger's... 1954 to 1955...

Selection at Burger's... 1954 to 1955...

Selection at Burger's... 1954 to 1955...

Selection at Burger's... 1954 to 1955...

Selection at Burger's... 1954 to 1955...

Selection at Burger's... 1954 to 1955...

Selection at Burger's... 1954 to 1955...

Selection at Burger's... 1954 to 1955...

Selection at Burger's... 1954 to 1955...

Selection at Burger's... 1954 to 1955...

specialized, needs a business-like approach and requires a man with special talents, skills and understanding.

Financing is the biggest problem, says the co-authors. Over \$1,000 for each cow in the herd, they say.

It's doubtful whether 12 or 20 cows can be efficiently managed. At least 20 cows usually are 40 or more if additional labor handled by a single family and is employed. Land and equipment needed to produce pasture, hay, silage and herd replacements are other important considerations, the bulletin points out.

Then, what can be expected from your investment? The dairy specialists say a production of 5,000 pounds of milk per cow is not out of reach. The state average is 3,300 pounds and the Dairy Herd Improvement Association (DHIA) average is 600.

Feed costs represent 50 to 60 percent of the total operating expenses and labor is next.

In addition to listing 22 other extension publications related to dairying, the bulletin, Want To Be A Dairyman, B-217, points out the major considerations of a dairy operation. It is a good guide to the prospective dairy farmer. The bulletin is available from county agricultural agents or from the Agricultural Information Office, College Station, Texas. Ask for the bulletin by name and number.

For new business, Mrs. R. C. Birdwell was appointed chairman of benevolence. There were reports and recommendations from the following chairmen: Exhibit committee, Mrs. Kenneth Bailey.

School teachers are now reaping the reward of the new no-discipline theories about children.

Mrs. Mary Brandvik returned to her home on Thursday after having spent the Christmas holidays at Center, Colorado, with her daughter and family. Mr. and Mrs. Gordon Stedje visited Friday evening with Mr. and Mrs. Clarence Johnson.

The Reuben Teibest family had Sunday dinner with the Harry Moens in Guyton.

Our Young Peoples' Luther League will sponsor the showing of two movies in our parish hall next Sunday evening beginning at 7:30 o'clock. The films to be shown are: "The Flickering Flame" and "Fruit of the Living Word." Refreshments will be served after the show. No admission charge. Everyone is welcome!

What do you plan to do in 1954 to help your church? Newspaper advertising is still the finest way to set goals.

We are still waiting for someone to produce a flying automobile.

Our idea of a one movie stars writing about successful married life.

The average young man today thinks a dollar isn't worth a dollar.

When it comes to dogs and people, the human race comes in second.

was approved. Old business was then disposed of. Bills left from the Christmas party and in connection with the dress revue at Morse were paid.

The subject of money was discussed as to what we would do with any we had left in the Treasurer. After this year's business was completed, there was some money left. This will be used only in an emergency and as the council deems it necessary.

For new business, Mrs. R. C. Birdwell was appointed chairman of benevolence. There were reports and recommendations from the following chairmen: Exhibit committee, Mrs. Kenneth Bailey.

School teachers are now reaping the reward of the new no-discipline theories about children.

Mrs. Mary Brandvik returned to her home on Thursday after having spent the Christmas holidays at Center, Colorado, with her daughter and family. Mr. and Mrs. Gordon Stedje visited Friday evening with Mr. and Mrs. Clarence Johnson.

The Reuben Teibest family had Sunday dinner with the Harry Moens in Guyton.

Our Young Peoples' Luther League will sponsor the showing of two movies in our parish hall next Sunday evening beginning at 7:30 o'clock. The films to be shown are: "The Flickering Flame" and "Fruit of the Living Word." Refreshments will be served after the show. No admission charge. Everyone is welcome!

What do you plan to do in 1954 to help your church? Newspaper advertising is still the finest way to set goals.

We are still waiting for someone to produce a flying automobile.

Our idea of a one movie stars writing about successful married life.

The average young man today thinks a dollar isn't worth a dollar.

When it comes to dogs and people, the human race comes in second.

Expansion and education, Mrs. Frank Davis. Marketing, Mrs. Homer Hart. Year Books, Mrs. Novak. Recreation, Mrs. Sparks. Reporter, Mrs. Roseco Howard.

Miss Gibbs renewed the work we had done in 1953, giving an outline in brief of the things we would do in 1954. Also announced a trailer meeting to be held January 15, at 10:00 a. m. for the presidents, Vice Presidents, Sec. and Treas. and the Parliamentarians.

School teachers are now reaping the reward of the new no-discipline theories about children.

Mrs. Mary Brandvik returned to her home on Thursday after having spent the Christmas holidays at Center, Colorado, with her daughter and family. Mr. and Mrs. Gordon Stedje visited Friday evening with Mr. and Mrs. Clarence Johnson.

The Reuben Teibest family had Sunday dinner with the Harry Moens in Guyton.

Our Young Peoples' Luther League will sponsor the showing of two movies in our parish hall next Sunday evening beginning at 7:30 o'clock. The films to be shown are: "The Flickering Flame" and "Fruit of the Living Word." Refreshments will be served after the show. No admission charge. Everyone is welcome!

What do you plan to do in 1954 to help your church? Newspaper advertising is still the finest way to set goals.

We are still waiting for someone to produce a flying automobile.

Our idea of a one movie stars writing about successful married life.

The average young man today thinks a dollar isn't worth a dollar.

When it comes to dogs and people, the human race comes in second.

Oslo News

Joel Stavlo is recovering satisfactorily from a recent appendectomy.

Mr. and Mrs. T. S. Christofferson have as house guests Mr. and Mrs. H. E. Roy and son of Wichita, Kansas, and Chris Bredeson and son, Clemens, of Leland, Iowa. Chris Bredeson is the father of Mrs. Christofferson, Mrs. Roy a sister. Her brother, Clemens, is home from Korea and will soon receive his discharge.

Mr. and Mrs. Albert Moen, who have lived in South Dakota for a couple of years, have returned to Guyton for the winter months.

Mrs. Mary Brandvik returned to her home on Thursday after having spent the Christmas holidays at Center, Colorado, with her daughter and family. Mr. and Mrs. Gordon Stedje visited Friday evening with Mr. and Mrs. Clarence Johnson.

The Reuben Teibest family had Sunday dinner with the Harry Moens in Guyton.

Our Young Peoples' Luther League will sponsor the showing of two movies in our parish hall next Sunday evening beginning at 7:30 o'clock. The films to be shown are: "The Flickering Flame" and "Fruit of the Living Word." Refreshments will be served after the show. No admission charge. Everyone is welcome!

What do you plan to do in 1954 to help your church? Newspaper advertising is still the finest way to set goals.

We are still waiting for someone to produce a flying automobile.

Our idea of a one movie stars writing about successful married life.

The average young man today thinks a dollar isn't worth a dollar.

When it comes to dogs and people, the human race comes in second.

her daughter and family. Mr. and Mrs. Harvey Shapley.

Mr. and Mrs. Gordon Stedje visited Friday evening with Mr. and Mrs. Clarence Johnson.

The Reuben Teibest family had Sunday dinner with the Harry Moens in Guyton.

Our Young Peoples' Luther League will sponsor the showing of two movies in our parish hall next Sunday evening beginning at 7:30 o'clock. The films to be shown are: "The Flickering Flame" and "Fruit of the Living Word." Refreshments will be served after the show. No admission charge. Everyone is welcome!

What do you plan to do in 1954 to help your church? Newspaper advertising is still the finest way to set goals.

We are still waiting for someone to produce a flying automobile.

Our idea of a one movie stars writing about successful married life.

The average young man today thinks a dollar isn't worth a dollar.

When it comes to dogs and people, the human race comes in second.

When it comes to dogs and people, the human race comes in second.

When it comes to dogs and people, the human race comes in second.

When it comes to dogs and people, the human race comes in second.

When it comes to dogs and people, the human race comes in second.

When it comes to dogs and people, the human race comes in second.

When it comes to dogs and people, the human race comes in second.

When it comes to dogs and people, the human race comes in second.

When it comes to dogs and people, the human race comes in second.

When it comes to dogs and people, the human race comes in second.

When it comes to dogs and people, the human race comes in second.

When it comes to dogs and people, the human race comes in second.

When it comes to dogs and people, the human race comes in second.

When it comes to dogs and people, the human race comes in second.

When it comes to dogs and people, the human race comes in second.

When it comes to dogs and people, the human race comes in second.

When it comes to dogs and people, the human race comes in second.

When it comes to dogs and people, the human race comes in second.

When it comes to dogs and people, the human race comes in second.

When it comes to dogs and people, the human race comes in second.

When it comes to dogs and people, the human race comes in second.

When it comes to dogs and people, the human race comes in second.



Distinctive Trim '54 Car Feature



Fresh, bright color harmonies and a liberal use of newly developed fabrics add the distinction of 1954 Chevrolet passenger cars. Luxurious trim is especially true of the Hot Air (shown) which this year adds an eight-passenger station wagon to the four-door, two-door, convertible and sport coupe models previously available.

NEW POWER BRAKES* now available on F-100 Ford Pickup (shown) and all 1 1/2-ton models! Your stopping is up to one-fourth easier!

NEW POWER STEERING* available on most Big Job models! Works full time, cuts steering effort as much as 75%. F-900 (shown), GVW 27,000 lbs., GCW 55,000 lbs.

NEW FACTORY-BUILT 4 WHEELERS, up to 40,000 lbs. GVW! To haul BIG loads up to legal limit in all States! Priced with the lowest! T-800, convertible.

Highest concentration of power per cubic inch 222 in any truck engine line!

NEW Overhead Valve!

NEW High Compression!

NEW Low Friction!

NEW Deep-Block Design!

NEW FORD C18 FORWARD model! New C-900 (shown), New C-900, 55,000 lbs. GCW, hauls 35-ft. legal-limit trailers in every state! New Driverized Cab, full-width seat.

Available at low extra cost.

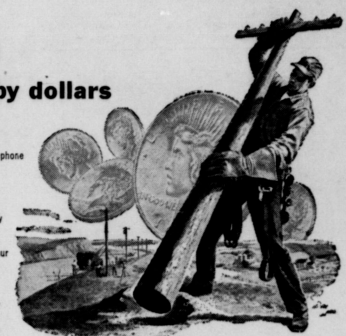
Come in! See them!

JOE TRAYLER

YOUR FRIENDLY FORD DEALER 321 Main -- Phone 2451 Spearman, Texas

FAITH ...backed by dollars

When you see telephone lines going up, you see proof your telephone company believes in the future of your community. Your company backs that faith by investing millions of dollars to improve your service. Many of your neighbors share its faith, too. Some show it by investing their savings; others by investing their careers; some by doing both. It's faith... and partnership like this... that keeps America great.



General Telephone Company of the Southwest A Member of One of the Great Telephone Systems Serving America.

General Telephone System is backed by resources of over 400 millions of dollars

Table with financial data: Reserve District No. 11, Report of Condition of FIRST STATE BANK, State No. 1107, of Spearman, Texas, at the close of business December 31, 1953. Assets: Cash, balances with other banks, 1,168,779.67; United States Government obligations, 3,124,571.59; Obligations of State and political subdivisions, 52,150.00; Other Bonds Notes and debentures, 339,937.50; Corporate stocks, 6,000.00; Loans and discounts, 1,112,330.59; Bank premises owned, 23,500.00; TOTAL ASSETS, 5,857,569.95. Liabilities: Demand deposits, 4,916,335.33; Time deposits, 2,369.00; Deposits of United States Government, 9,664.61; Deposits of States and political subdivisions, 527,811.04; Other deposits, 18,583.07; TOTAL DEPOSITS, 8,474,763.05; TOTAL LIABILITIES, 5,474,763.05. CAPITAL ACCOUNTS: Capital, 100,000.00; Surplus, 100,000.00; Undivided profits, 182,806.90; TOTAL CAPITAL ACCOUNTS, 382,806.90. TOTAL LIABILITIES AND CAPITAL ACCOUNTS, 5,857,569.95.

Best Price 5 years! FORD TRUCKS More Truck For Your Money! No other truck line has the mighty concentration of power you get in new FORD TRUCKS. Features include: NEW POWER BRAKES, NEW POWER STEERING, NEW FACTORY-BUILT 4 WHEELERS, and NEW FORD C18 FORWARD model. Price \$47.95.

DISTRICT TEAMS IN 3-WAY TIE; Gruver Tourney Begins

District Teams In A Dither

District 1-B, the district that has furnished more class B state champions than any other district in Texas, is going to have quite a time getting the first four teams seeded for their District tournament February 11, at Texline.

Here is the deal. Stinnett has lost three and Morse three. Or, rather, the record is something like this, possibly by the time you get your paper, one of these first three teams may have lost four games, but here is the rub. Seeded team No. 1, will play seeded team No. 3, in the district tournament, while Seeded team No. 2 will play seeded team No. 4. This is most important. For instance, Morse has beaten

Stinnett. Stinnett has beaten Spearman, but last week Spearman beat Morse. And Stinnett also has a win over Morse, and to complicate things even more, Spearman will have a good chance of beating Stinnett when they play in Spearman on February 5. But in any event, the coaches in the District will have to make up the district tournament bracket during the Gruver tournament and we will have this information as soon as it is available.

The Gruver tournament is coming up January 21st, and it will be a real tournament. Understand that the AA Runner-up Dumas, Deamons will be at this tournament, and coach Garland Head will be playing in the county for the first time this year when he goes to the Gruver tournament. This will be an outstanding tournament for Hansford county, as I am sure Spearman, Morse and Spearman boys are attending, along with Gruver and Dumas, and this

will be a real bunch of basketball teams. This will probably give the county fans a preview of the District 1-B basketball champion also, as I predict the team that wins the Gruver tournament, to win the district championship in 1-B.

SPEARMAN GIRLS

NAME	FG	FT	F	Pts
Martin, C.	3	1	1	7
Cates, S.	1	0	3	7
Ooley, E.	6	3	0	15
George, P.	1	1	1	3
Total	11	5	5	27

MORSE

NAME	FG	FT	F	Pts
Coffee, J.	2	4	3	8
Richardson, S.	2	1	2	8
Copeland, J.	0	1	1	1
Balentine, B.	1	0	2	2
Brubardt, D.	2	0	4	4
Total	7	6	11	29

SPEARMAN BOYS

NAME	FG	FT	F	Pts
Vernon,	0	0	1	0
Gilmer,	6	0	1	6
Pool, Elvis	5	1	2	11
Pool, Elbert	6	0	1	6
Summersville	3	0	0	6
Total	14	3	4	21

MORSE BOYS

NAME	FG	FT	F	Pts
Balentine,	4	0	1	2
Blankenship,	1	0	0	2
Reid, D.	1	1	1	3
Swink,	6	0	0	6
Reid, C.	5	1	0	11
Richardson,	3	2	1	8
Total	26	4	3	32



Available at Floyd's Grocery and Market and Cates Grocery and Market in Spearman.

Lumber

PONDEROSA PINE & FIR

Number 2 and Better

1 x 4-8' through 16'	\$65.00	per M.
1 x 6-8' through 16'	\$65.00	per M.
1 x 8-8' through 16'	\$75.00	per M.
1 x 10-8' through 16'	\$75.00	per M.
1 x 12-8' through 16'	\$75.00	per M.
2 x 4-8' through 16'	\$70.00	per M.
2 x 6-8' through 16'	\$70.00	per M.
2 x 8-8' through 16'	\$70.00	per M.

NAILS

8 Common, 10, 16, 20	per keg.	\$9.50
Fence Staples 1 1/4"	per keg.	\$9.50
8 Box, 10	per keg.	\$9.75

PIPE

3/4" galvanized 21' joint	per ft.	14c
2" galvanized 21' joint	per ft.	47c
BARB WIRE, Regular 12 1/2 gauge galvanized rod spool		\$7.29

CORRUGATED IRON

29 gauge galvanized	per sq.	\$9.49
---------------------	---------	--------

SHINGLES

Red Cedar No. 2 Grade	per sq.	\$7.39
-----------------------	---------	--------

PLYWOOD

1 1/4" thick, 4 x 8 sheets	per ft.	11c
1 1/2" thick, 4 x 8 sheets	per ft.	19c
3 1/4" thick, 4 x 8 sheets	per ft.	25c

SHOLLENBARGER & CAZZOLA

Springer, New Mexico

This 'N That



Around Gruver

Have you made your contribution to the March of Dimes? If not, why not do it now? This year may mean victory over this disease, but there must be enough money on hand to finish the necessary research. So make your contribution now. You can make your check payable to "The March of Dimes", and hand it to Mrs. Helen Shapley, or to Mrs. Gertrude Ogle, or just mail it to The March of Dimes, Later in the month we will have "The Mothers March". Mrs. Shapley will make the announcement in January of time. The thing is, to make this the best year in the fight against polio.

We dropped by the post office this morning expecting to talk to Mrs. Taber. But she is still very much under the weather, but she is improving.

Mr. and Mrs. Jack Thomas and their little daughter Sadie Lois, left here Saturday for Oklahoma City. Sadie underwent major heart surgery Monday morning, and we are glad to tell you that she is doing fine. Mr. and Mrs. Robert Staving and Lonnie Thomas accompanied them. Mr. Thomas is Sadie's grandfather. Her other grandparents are Mr. and Mrs. Horace Hays. All of whom are most concerned about the little girl, and all happy that she is doing o.k. She is in the Wesley Hospital.

Mr. and Mrs. H. M. Frazier, are happy over the arrival of a little daughter. The young lady arrived a day or two ahead of schedule, but she weighed in at 5 lbs. 9 ozs. When we asked H. M. he did not know what the young lady would be named.

We have another young lady to welcome to our midst. Mr. and Mrs. Corky Chapman are the proud parents of little Miss Cynthia Ann, who weighed in at 7 lbs. and 4 ozs. Mrs. Chapman is the former Lou McClellan, and that makes Randolph and Jewel grandparents again. Mrs. M. Dyer of Olney, who is Mrs. McClellan's mother came up to see her first grandchild. Happy bunch all round.

We understand that both Mr. Haden Hart and Mr. Coy Holt are home from the hospital. Both have been seriously ill but are now improving. Coy has been in the hospital for quite a long time, and we know he is happy to be home.

We are glad to report that Judge Beck is improving. He is back at home, and his friends think he is getting along real well. He is to go back to the hospital later for a check up, but that will be all. We are all glad to know he is doing so well.

In another place you will find a story concerning Gruver Elevators Inc., and the Kimball Milling Co. Both Dan Streder and Jim Eddleman are proud of the new construction.

Would you like to have some copies of the National Geographic Magazine? I have a great many on hand and will be glad to give you a complete issue for one year. If you would like to have them, please let me

Stop Taking Harsh Drugs for Constipation

Avoid Intestinal Upset! Get Relief This Gentle Vegetable Laxative Way!

For constipation, never take harsh drugs. They cause brutal cramps and griping. Instead, get normal bowel action, make repeated doses seem needless.

When you are temporarily constipated, get rare but gentle relief—without pills, without harsh drugs. Take Dr. Caldwell's Senna Laxative contained in Syrup Pepsin. The extract of Senna in Dr. Caldwell's is one of the finest natural laxatives known to medicine.

Dr. Caldwell's Senna Laxative tastes good, gives gentle, comfortable, satisfying relief of temporary constipation for every member of the family. Helps you get "on schedule" without repeated doses. Even relieves stomach fullness that constipation often brings.

Buy Dr. Caldwell's Senna Laxative if not secured. Mail bottle to Box 260, New York 18, N. Y.

know. They are your for the asking. Mr. and Mrs. Gene Fletcher and grandmother, Mrs. May Fletcher left here Sunday for Deatur and Fort Worth. Mrs. Fletcher will attend to business in Deatur. Mr. and Mrs. Gene will visit the Richard Cutters and attend the big Evangelistic Conference.

IT WON'T

If we sit back and let the other fellow do it, it won't be long before he is doing us.—Norfolk, Virginia-Pilot.

We have these OUTING PALS Advertised in



Floodlight LANTERN Folding CAMP STOVE

They go together—everywhere outdoors! Used and endorsed by leading outdoorsmen! Instant lighting—make and burn own gas from gasoline. Camp Stove cooks like a city gas range; folds up and carries like a suitcase! Lantern Floodlights 100-ft. area. Both are windproof, safe. Come in. See them demonstrated.

Spearman Hardware

JOHN BISHOP

UNUSUALLY The meek-looking man is usually the one who signs the checks for the more important looking members of the family.—Christian Science Monitor.

OLD ENOUGH

A biologist says an egg can remember, if so, a restaurant served

as a government eye the other morning that was old enough to reminisce.—Cincinnati Enquirer.

The average newspaper editor sees a lot of pictures of pretty girls playing on the beaches this time of the year and never gets to the beaches.

Just Wait!... FOR THAT NEW 88!



"It's Longer and It's Lower and It's Lovelier And A Real Thrill to Olds Dealers!" CHICAGO wonder! For this car is absolutely new... utterly different in every way with a brand-new Body by Fisher! With a new slant in windshield powered "Rocket" Engine that outperforms, out-economizes any other new motor! See the new Super "88" on January 20! See the "dream car" ... both on display at your Oldsmobile dealer's!

FREE

20 LBS.

Equity ALL PURPOSE

CHICK MASH

(Or Crumbles)

With Every Order Of 100 Baby Chicks

Chicks are ordered from the world-famous STILL-WATER Hatchery, Stillwater, Okla. Order today for best delivery date. All chicks guaranteed. Unproved, Pullorum passed. Compare EQUITY on any breed. Get the best PLUS 20-lbs. of FREE Equity ALL PURPOSE Chick Mash!

Little chicks into Big Profits Grow

On Equity All-Purpose chick mash

EQUITY

Don't Delay - Book Chicks For Delivery Date You Want