

# Hansford 4-H Club State Winner And County Agent Back From Houston Trip

Mr. and Mrs. A. H. G...  
Miss Mary Morrison...

Hansford, Texas. The state 4-H club winners and eleven adult members...  
The club was represented by...

They were the first of 15 club winners...  
The club was represented by...

When the visitors had traced the wheat from the car to the packaging flour...  
The boys were shown color pictures...

cred battleground at San Jacinto...  
The boys were served a cracker and "Minnor" small fish...

## Community Calendar

Thursday, November 17  
Do-Do Club meet at Community Building...  
Friday, November 18  
Shrine Club, 8:00 P.M. Gruber Music Club...  
Saturday, November 19  
Boy Scouts at Community Building, 7:30 P.M.

## Grand Jury Returns Ten Indictments

Ten indictments were returned by the Grand Jury of the 34th district court...  
Two on charges of passing forged instruments...  
One on charge of forgery...  
One on charge of theft...  
One on charge of embezzlement...

## Funeral Services For M. E. Hapley Held At Gruber Monday Nov. 17th

Funeral services for Melvin McElroy Hapley were held Monday evening at the Gruber Methodist church...  
Pastor, officiated. Mr. Hapley was a brother of Frank Shapley of the Methodist church...

## New Ford Cars On Display Friday Nov. 18th

Hansford County folks will get their first "new look" at the 1950 Ford early Friday morning, Nov. 18...  
At that time the Ford dealer, Bill Reynolds, will have two new models of the car on display...  
The Ford dealership in Spearman several months ago, has not yet held a formal opening...

## Phillips' Camp Reporter

Phillips' Camp Reporter  
Funeral services for Melvin McElroy Hapley were held Monday evening at the Gruber Methodist church...  
Pastor, officiated. Mr. Hapley was a brother of Frank Shapley of the Methodist church...

## Walter Good Re-opens Cafe

Mr. and Mrs. Walter Good announced the opening of the new Told-Inn Cafe, just across the street from the Russell Grocery...  
The former Told-Inn Cafe, they are famous for their special Pecke sandwiches, the recipe for which is known only to the Goods...

## Gruber C. of C. Meeting For Nov. 18th

Tod McEllen announced this week that the regular scheduled meeting of the Gruber Chapter of the Commercial Club of Commerce, which should be held on the last Thursday of the month, Thanksgiving day, would be held tonight, All members of the organization are urged to attend the meeting tonight...  
Matters of importance to Gruber businessmen will be discussed, Remember, the meeting for November is tonight, Thursday, Nov. 17.

## Good-Will Scout Trip Enjoyed By Spearman And Gruber Scouts

A group of 20 scouts, accompanied by Scout Leader Phillips of Bonaville and Field Executive Tom Cochran of Gruber, made a good-will trip to Gruber and Spearman Tuesday of this week...  
The scouts from Bonaville, Phillips and Berger featured every department of scouting in talks made at the two meetings...  
The entire school body of the Gruber and Spearman schools were present for the interesting and entertaining program, which was primarily aimed at encouraging the growth and spreading the information relative to Senior Scout Week...

## Weather and Market

Weather this week was dry and cool. The report of F. W. Brandt follows:

DATE	HIGH	LOW
8	77	35
9	80	40
10	80	45
11	76	44
12	70	35
13	60	30
14	44	40

MARKET

What. Bu.	1.05
Milo, Cent.	1.85
Oats, Bu.	1.00
Hay, Bu.	1.00

## Civil Cases Settled In District Court

Civil cases settled in the 34th district court at the present term...  
H. C. Brillhart vs. Leo Brooks, suit note. Judgement awarded plaintiff in the amount of \$372.64 and interest at rate of 6 percent from Sept. 25, 1949.  
Orin Ralston vs. Vernae Jean Ralston, divorce. Divorce decreed granted. No children or property involved in suit. Defendant restored her maiden name, Vernae 'ean Thomas. Cost assessed plaintiff.

## Homecoming Day At Gruber Celebrated Friday

Homecoming Day November 11 was well attended by a large crowd and the basketball game between Sunray girls and Gruber girls and the football game between Morse and Boys Ranch was enjoyed by all at half of the city. Vottie C. Hall vs. Gene Cluck and Vivian Cluck. Suit on account. Dismissed on motion and cost of plaintiff.  
Bert O. Cator, Jr. vs. Edward Arnold. Suit to try title as well as for damages. Judgement granted in favor of plaintiff.

## Shrine Club Meeting To Be Nov. 18th

Members of the Hansford County Shrine Club are notified that the November stag meeting of the organization will be held at the Memorial Home in Gruber Friday evening, Nov. 18. This will be the last meeting before the fall ceremonial in Amarillo and plans for the Shrine Club participating in the ceremonial will be completed at the Friday night meeting.  
Blanche Lamb, Spearman; Clark Wilbanks, Spearman; Jna Mae Gillespie, Spearman; Virgil Ray Gillespie, Spearman. Dismissed.

SOCIETY NEWS

CLUBS ★ PARTIES ★ SOCIALS



Wedding picture of the recent marriage of Mrs. and Mrs. Gordon Cross of Gruver. From left to right, are Keith Cross, best man; Mr. and Mrs. Gordon Cross; Miss...

Johnson - Sheets

The First Methodist Church of Terryton was the scene of the marriage of Nelda Johnson, daughter of Mrs. Alice Johnson of Spearman, and Willis Sheets, son of Mr. and Mrs. Claude Sheets of Spearman.

The double ring ceremony was read before the altar Saturday, Nov. 12. The Reverend Lloyd H. Jones officiated. The bride wore a dressmaker's suit of winter pink with white accessories, with a white carnation corsage.

The bride is a graduate of Sayre High School, Sayre, Okla. Mr. Sheets is a graduate of Spearman High School. He is employed at McClellan Chevrolet. The young couple left immediately after the ceremony for a short wedding trip.

Local Girl To Appear With TSCW Modern Choir

DENTON, TEXAS, Nov. 14.—Miss Johns Rafferty of Gruver will appear with the Texas State College for Women Choir at the first concert Nov. 14 in the TSCW auditorium.

Marriage Unites Anna Pope And Jim VanSant, Nov. 3

Miss Anna Louise Pope and Jim Van Sant were united in marriage Nov. 3 at Clayton, N.M. Rev. Herbert Brown, pastor of the First Baptist Church, read the vows in the church parlor.

4-H Girls Start Style Show With New York Wardrobe

An unusually large and appreciative crowd attended the combined programs of the Spearman P.T.A. and the 4-H girls style show Tuesday the 5th of November at 4:00 P.M. in the school auditorium.

Members Of Gruver Music Club Entertain W. T. Andrews, Pres.

Members of the Gruver Music Club entertained Mrs. W. T. Andrews, president of the seventh district of the music club of the State of Texas, at an informal musicale in the home of Mrs. Dan Shrader, Wednesday, Nov. 16. A pot-luck dinner was served and the informal meeting included a welcome to the distinguished visitor and her remarks.

Recent Bride Honored With Shower Here

Mrs. A. L. Wilson, Jr., recent bride, was honored with a wedding shower at the home of Mrs. W. B. Lackey, Mrs. Sam Graves and Mrs. Earl Reagan of Borger, were assistant hostesses.

Mrs. Hix Wilbanks Leads Lesson At Christian Fellowship

The Christian Womens Fellowship met at the church on Thursday, November 10 at 2:30. The meeting was opened with the singing of a hymn and prayer by Mrs. Alice Lackey.

Lt. Charley Cox Now Stationed in New Mexico

First Lieutenant Charles L. Cox son of Mr. and Mrs. E. W. Cox of 1467 Austin Street, San Angelo, is now serving with the Armed Forces Special Weapons Project at Sandia Base, Albuquerque, New Mexico.

Texhoma Boy To Receive Certificate

Competing with outstanding 4-H club boys and girls all over the state, three Panhandle-Plains area girls and boys will receive next week educational awards from the Santa Fe Railway which present them to attend the National 4-H Club Congress in Chicago, November 27 through December 1, with all expenses paid.

Announce Marriage

Mrs. Leon Bowling announces the marriage of her daughter, Dorothy Lynn Standridge, to J. B. Pool on November 5 in Clayton, New Mexico.

Do-Si-Do Club Meets Tonight

Members of the Do-Si-Do dance club of Spearman are urged to attend the regular third Thursday night meeting to be held at the Spearman Memorial Hall tonight, Secretary Zack Jagers wants full attendance and the October and November dues of members. Two new couples are on the waiting list and will likely be invited into the club at the Thursday meeting.

Reserve District No. 11 Report Of Condition Of

Table with financial data for the First State Bank of Spearman, Texas, including assets, liabilities, and capital accounts.

Assets pledged or assigned to secure liabilities and for other purposes 203,718.75. J. W. Gibner, Cashier, of the above named bank, hereby certifies that the above statement is true to the best of my knowledge and belief.

Sixth Grade Program To Be Held At Gruver

Gruver people will have the opportunity to see and hear a real interesting program beginning at 7:30 P.M. tonight (Thursday, Nov. 17) when the sixth grade pupils will be presented by Mrs. Howard Moore in an Indian program. The Indian songs and legends of early Panhandle pioneer days will be portrayed. The program will be held at the Gruver High School Auditorium.

Thirteen From This Area Enrolled at WTSC, Canyon

CANYON, TEXAS, Nov. 4 (WTNS)—Thirteen students from the Spearman area are included in the record enrollment of 204 students attending school at West Texas State.

Burch Tyson Installed As Pres. Of Baptist Fellowship

Installation services for officers of the Baptist Brotherhood were held Tuesday night, Nov. 18 in the Fellowship Hall of the First Baptist Church. Brother Stephens, pastor, officiated and as organizer of the local brotherhood said, "The Brotherhood is primarily a service agency in the church, and for the men, but it must be understood that the purpose of the Brotherhood is to work for the whole of the church."

therhood meetings; Curtis Jones, educational committee chairman in charge of study courses and information; E. E. (Dutch) Preston, boys committee chairman in charge of needs and equipment for the boys department; J. M. Wilson, evangelistic committee chairman in charge of soul winning and revivals; G. H. Vester, executive committee chairman in charge of new brotherhoods and special requests; Fred Hoskins, finance committee chairman in charge of budget and stewardship. The next brotherhood meeting will be Tuesday night, Dec. 13. It meets monthly.



Enjoy NIGHT-LONG EVEN WARM UNDER ONE FEATHER-LIGHT COVER Electrically! Imagine the joy of sleeping under one feather-light blanket that keeps you as warm as you choose night long, regardless of weather changes. That's the kind of automatic sleeping comfort you get with an ELECTRIC BLANKET. It automatically adjusts itself to changes in room temperature... it pre-warms your bed... warms your bed over... lets you sleep in sunny comfort without being weighed down under mountains of cover.



Look at the Record! CHEVROLET ADVANCE-DESIGN TRUCKS PREFERRED OVER NEXT MAKE BY MORE THAN 2 TO 1\* Here is clear-cut endorsement by truck buyers users as revealed by official registration figures and what's more, Chevrolet trucks outsell the two makes combined. That's the record—now the reasons. Look at Chevrolet's sturdy construction, rugged power with economy, handling convenience. Look at all the extra advantages Chevrolet trucks and then add the lowest list price in the industry. Now you know why Chevrolet leads them all! Come in and let us show you the full story of Chevrolet truck value!

McClellan Chevrolet Co. Spearman, Texas Gruver Motor Company Gruver, Texas



# Dairy Foods

Cottage Cheese	24
<small>Adult Colored Qtrs. 1 lb. Dorel's Pasteurized</small>	
Oleo 35 Milk	23
Velveeta Cheese	79
Ballard Biscuits	24
<small>PHILADELPHIA</small>	
Cream Cheese	15

Fresh ADMIRATION Coffee will be served in our store



both Friday and Saturday.

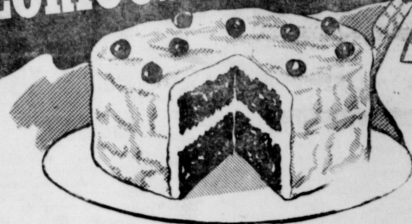
<small>CHOCOLATE COVERED</small>	
CHERRIES	48c
WALNUTS—New Crop	39c
<small>NEW CROP</small>	
BRAZIL NUTS	37c
ALMONDS—New Crop	35c
<small>WHITE HOUSE</small>	
APPLE JELLY	25c
<small>HUNTS</small>	
PEACHES	23c
<small>SHURFINE</small>	
CHERRIES	27c
<small>Skin and Boneless</small>	
SAMOLETS	35c
CATSUP—Hunts	16c
<small>CRYSTAL—STRAWBERRY</small>	
PRESERVES	69c

Betty Crocker's representative will serve Betty Crocker Split Pea and Vegetable Noodle soup piping hot at the CUT RATE Grocery Friday and Saturday.

**Cut Rate Grocery & Market**  
SPEARMAN, TEXAS



All the Makings  
for GLORIOUS BAKINGS



Flour	<small>GOLD MEDAL</small>	25 lb.	\$1.89
SUGAR	<small>Pure Cane</small>	10 lbs.	93c
Waffle Syrup	<small>VERMONT MAID</small>	12 oz. Bottle	29c

What for Thanksgiving dessert? Why, a home course. Even a beginner can bake a winner by ingredients and following recipes exactly. Check Crocker Lady Friday and Saturday for special suggestions.

- LARGE PKG. SOTASILK
- LARGE PKG. BISQUICK
- 3 PKG. CRUSTQUICK
- CALUMET
- BIRDSEYE'S COCOA



<i>Farm-Fresh Produce</i>	
CELERY	Green Pascal
APPLES	Red Delicious
CABBAGE	Extra Fancy
ORANGES	Texas
CRANBERRIES	EATMOR Pkg.
GREEN ONIONS	Fresh

CAMAY 3 Bars ..... 25c

Dreft large pkg. 26c

O large

# Your THANKSGIVING MENU at these BIG FOOD VALUES



## GARDEN FRESH FROZEN FOODS

Factory Packed ICE CREAM — Blue Bonnet	Pint	23c
Fresh STRAWBERRIES	lb.	45c
Concentrated ORANGE JUICE	Can	32c
Fresh Green LIMA BEANS	Pkg.	43c
Fresh Golden CUT CORN	Pkg.	29c

## Bakery Treats



# Mince Pies

each . . . 48c

CHOCOLATE BROWNIES	DOZ.	60c
FRUIT FILLED SWEET ROLLS	DOZ.	50c
PECAN PIES	EACH	60c
FRESH DONUTS	DOZ.	45c
BROWN-SERVE DINNER ROLLS	PKG.	15c

For a best ever Thanksgiving Dinner, get all the traditional foods at CUT RATE where traditionally lower prices enable you to fill your entire menu without emptying your purse. It's the quick . . . the easy . . . the economical way to get your turkey and all the fixin's for the feast, so shop here today for these BIG Thanksgiving values that lower the cost of the complete dinner.

Pumpkin	Scott Company 3 can	25c
Olives	Mission Ripe Tall Can	29c
Peas	Lakeside Tiny Tall Can	25c
Beets	Shurfine-Sliced No. 2 Can	15c

OCEAN SPRAY  
Cranberry Sauce Tall Can 19c

## Quality Meats

BANNER BACON	lb.	52c
SAUSAGE	Pinkney Country Style Cloth Bag lb.	29c
PORK ROAST	lb.	45c
PORK CHOPS	lb.	52c
PICNIC HAMS	Nice and Lean lb.	39c
SIRLOIN STEAK	Cut From Grade A Beef lb.	69c

MEXICORN	Can	21c
SHURFINE TOMATOB JUICE	46 oz. Can	25c
WELCH'S GRAPE JUICE	Qt.	49c
TREE-SWEET ORANGE JUICE	46 oz. Can	47c
AWYON GREEN BEANS	2 Cans	27c

SEE US FOR SPECIAL  
ORDERS FOR FRUIT CAKES  
AND HOLIDAY SPECIALTIES.



CUT RATE . . . and only CUT RATE . . . brings you the prize of all Thanksgiving buys . . . young, tender turkeys personally SEAL-ected by us for their plumper, deeper-meat breasts and heavier drumsticks—for their finer quality that means finer flavor. Order yours today. And while you're here, fill your entire Thanksgiving menu with the super values featured in every department.

## See our prices Before Buying

ic-N-Span Pkg. . . . 25c

Tide large pkg. 26c

# Friday & Saturday Specials

# Cut Rate Grocery and Market

PLENTY  
of FREE  
PARKING



# The Lynx Claw

Hillbilly Hall of Fame  
Favorite Male Movie James Cagney  
Favorite Female Movie Doris Day

Name Doris McKay  
Age 16  
Height 5 ft. 7 in.  
Favorite Food Chicken  
Ambition To be a housewife  
Color Hair Brown  
Color Eyes Blue  
Pet Peeve Don't have one  
Favorite Radio Program Murder Mysteries  
Favorite Male Movie Star John Derek  
Favorite Female Movie Star Elizabeth Scott

Name Paula Bennett  
Age 15  
Height 5 ft. 4 in.  
Favorite Food Chicken  
Ambition To be a bookkeeper  
Color Hair Auburn  
Color Eyes Brown  
Pet Peeve People who use big words  
Favorite Radio Program People are Funny  
Favorite Male Movie Star Leo Jourdán  
Favorite Female Movie Star Elizabeth Scott

IDEAL BOY  
Personality Lester Mundy  
Athletic Bobby Sparks  
Manners Leon Morehead  
Interest Harry Jackson  
Humor Ernest Markle  
Grooming Joe Lee Lacey  
Hair Dan Deuce  
Build Barry Faust  
Hands Kenneth Wilson  
Teeth Don Floyd  
Phisique Leo Faulkner  
Fridge Roy Kollner  
Voice Don Cate  
Smile Milton Tyson  
Height Johnny Tappan  
Weight Harry Faust  
Complexion Leslie Reynolds

IDEAL GIRL  
Personality Martha Clayton  
Athletic Fynelle Sasing  
Manners June Crane  
Intellect Betty Tilley  
Humor Gladys Haden  
Grooming Louise Walker  
Hair Claudia Brown  
Eyes Peggy Pierce  
Hands Hecky Atkinson  
Teeth Gladys Haden  
Figure Mona Beth Hester  
Profile Ginnita Peter  
Voice Paula Bennett  
Smile Margaret Wilbanks  
Height Frankie White  
Weight Mary Faith Oaks  
Complexion Jane Martin

CHORUS NEWS  
The Spearman Chorus helped the fifth grade in a P. W. song on Tuesday, November 13th. The chorus sang some songs which represented the different wars that America fought for their freedom. The chorus sang "The Battle Hymn of the Republic," this stood for the Civil war, "The Star Spangled Banner," this stood for the first world war, the chorus then came back with the "Marseilles Hymn" which stood for the second world war. The chorus ended this part of the program by singing "The Star Spangled Banner."

CLASS NEWS  
Our new pupils are Ray Hendrix from Oklahoma and Wilma Arnold from Seattle, Washington; President, Billy Turner; Treasurer, Sherry Lee Cates. We elected class officers who are Mrs. Slim Cates and Mrs. Leon Easley and Mrs. Turner.

STYLES FOR A WINKLE  
The sweaters which the PHA girls were wearing showing their colors and emblems are very attractive. Bobby Sparks and Wayman Edwards each have a copper-brown corduroy shirt which is very attractive. Gary Raymonds has a very pretty gray corduroy shirt. Tynele Sasing and Wanda Nell Wilson both looked very attractive in their pretty checked skirts. Bob Durham really looked handsome in his red corduroy shirt

which he wore last week. Jeanne Graves's Gray skirt with the small hip pocket was very stylish. Frankie White and Glady's Haden wore cute red and tan shoes. Louise Walker looked very nice in her brown skirt and dark brown blouse. Iola Sloan has a bright green blouse with a quilted yolk and color it is very attractive.

HAPPY BIRTHDAY  
November 1st, Leslie Gilliam, Neda June Peterson  
November 3rd, November 9th, November 10th, November 11th, November 12th, November 13th, November 14th, November 15th, November 16th, November 17th, November 18th, November 19th, November 20th, November 21st, November 22nd, November 23rd, November 24th, November 25th, November 26th, November 27th, November 28th, November 29th, November 30th

SOUTHERN ASSEMBLY PROGRAM  
On Tuesday, Nov. 8, a Southern Assembly Program was observed by the entire student body of High School and Grade School. The program was enjoyed very much by all. It was a magnificent part of it on. He did all sorts of magic tricks. Last of all, he did a ventriloquist act with his dummy, which was very funny.

HAPPY BIRTHDAY, High School  
November 1st, Don DeArmond, Peggy Pierce, Bob Durham  
November 3rd, Ginger Atkinson  
November 12th, Louise Walker  
November 13th, Elmer Johnson  
November 14th, Ray Martin  
November 15th, Kenneth Wilson  
November 23rd, Jerry Bowling  
November 27th, Darrell Close  
November 29th, Marshall Walker  
FACULTY BIRTHDAYS  
Mrs. Carruth, November 5th, Mr. M. L. Gunter, November 9th, Mrs. Fred Godfrey, November 11th, Mrs. Jess White, November 16th.

READING CAN BE FUN  
Winged Horse Anthology by Joe Axlander and P. E. Hill  
This book contains selections of the world's finest poetry. You will find some of your favorite poems here and also some new poems from familiar authors, Home and the Romans.

Restlessness Sleep Sore  
It is interesting to note that conservative Boston has already begun to switch over to twin beds. In a recent survey 47 per cent of those questioned said they preferred single beds, while only 43 per cent were conservative, but apparently they can also be very modern when it comes to comfort.

Pitcher's Box  
The pitcher's box of American baseball in 1887 was a 4 by 8 foot square in which he could move about, but batmen could demand a choice of high or low ball. The box area was abolished in 1893 and today consists of a 24 by six inches slab on which the pitcher must keep one foot.

Canned Vegetables  
Food value is wasted when the liquid from canned vegetables or the cooking liquid from fresh vegetables is poured away.

Nickel-Plating  
Nickel-plating was first developed on a commercial basis about 1870 in England.

Equine Sleeping Sickness  
Young horses appear to be more susceptible to equine encephalomyelitis (sleeping sickness) than older ones.

Planes for Seeding  
Airlines are being used to reseed vast areas in the United States, including rice fields in the South and Southwestern parts of the country.

Weed Killer  
The new weed killer, 2,4-D, is death to broad-leaved plants of all kinds, whether weeds or flowers or ornamental shrubs.

Northwest Passage  
Kenneth Roberts' novels are among the best of our present day. They recreate the bitter struggles with the French and the Indians, the stirring days of the American Revolution and the later sea warfare between American privateers and the English warships.

NOTICE  
Anyone interested in purchasing outstanding toy and electrical equipment to give their children for Christmas is invited to get in touch with County Agent Zack Jagers. The Hansford Fair Association plans to sell all the trains and trucks used by the association two years ago in the Dallas Fair exhibit. The equipment is outstanding and will provide some Hansford child with play equipment far above the average.

Golden Eagle  
The high-flying North American golden eagle like manton-size living quarters. One golden eagle's nest consisted of two wagonloads of bird reports. The World Book encyclopedia. It was seven feet high and six feet wide on top.

Baseball Pitching  
American baseball pitchers once stood only 45 feet from home plate and only underhand pitching was permitted, according to the Encyclopedia Americana. Today the distance is 60 feet six inches and the pitcher delivers as he pleases, but the tricky "spit" "bittered" and "sawtooth" balls were banned in the 1920's.

flowers, birds, songs and descriptive comment on the capitol buildings and on some of the leading state histories, with facilities of the state flags and seals.

Northwest Passage  
Kenneth Roberts' novels are among the best of our present day. They recreate the bitter struggles with the French and the Indians, the stirring days of the American Revolution and the later sea warfare between American privateers and the English warships.

## Certified Lamps

help make a house a HOME!

Give your home a soft glow of lovely lighting with Certified Lamps... the new, modern approach to more eye comfort with 50% to 100% more light from the same size bulb... but without glare.

Certified Lamps are on display at your dealer's in a wonderful selection of many smart styles... and you'll love the way they'll bring out the delicate shades of your furniture and decorative theme. Ask your Public Service representative to tell you about new, modern home lighting with Certified Lamps... for better living and seeing ease.

## SOUTHWESTERN PUBLIC SERVICE COMPANY

25 YEARS OF GOOD CITIZENSHIP AND PUBLIC SERVICE

## TIP-TOP VALUES

We have a Complete Seat Cover Department - Any Color - Any Pattern

### NEW 1949 MODELS

1949 PLYMOUTH 4-Door Special Deluxe, heater \$1650  
1949 CHEVROLET DeLuxe 2-door, loaded \$1650  
1949 DODGE - one-half ton pickup, list, latest type, 4-speed  
1949 PLYMOUTH Convertible, list, loaded, a beauty  
1949 DODGE WAYFARER Tudor, list, tan color, loaded

### Four Factory Trained Mechanics - Let Us Finance That Overhaul Job!

1937 CHEVROLET Coupe	1938 FORD TRUCK	\$250
1935 CHEVROLET 2-door	1939 LANSALLE 4-Door	\$395
1936 CHEVROLETS 2-door	1939 FORD Tudor - fair	\$250
1942 PLYMOUTH 4-door Town Sedan - New paint	1937 FORD Tudor - fair	\$150
1941 PLYMOUTH 4-door - New Engine	1946 PLYMOUTH 2-door - blue - nice	\$1050
1941 OLDSMOBILE 4-door - nice car	1941 HUDSON Tudor - fair	\$350
1948 FORD Pickup, Half-Ton Nice	1946 GMC 2-Ton Pickup	\$595
1941 OLDSMOBILE CLUB COUPE New Motor - Rough body	1948 PLYMOUTH 2-Door Extra Nice	\$1195
1941 HUDSON 2-door - fair		\$395

Plenty More Bargains

## COLLINGSWORTH MOTOR COMPANY

DODGE - PLYMOUTH DEALER

"The Working Man's Auto Exchange"

### TIP COLLINGSWORTH, Owner

206 E. Brilliant PERRYTON, TEXAS Phone 499 - W

## Start Your "SIGNATURE" Silverware Service

Start Your "Signature" Silverware Service with 4 teaspoons FOR ONLY 15¢ and end with White Star from Kellogg's Variety Package

Old Common Plate made and guaranteed by Wm. Rogers Mfg. Co., Meriden, Connecticut.  
\* Beautiful Styling, Stunning Value.  
\* Feel the Weight, Prior Includes Your Initial.

Illustrated folder with order describes complete line of "Signature" pattern silverware.

KELOGG'S, DEPT. V, Meriden, Connecticut  
Enclosed find \$1.00 in cash (no stamps, coins) and 4 spoons with White Star from Kellogg's VARIETY PACKAGE. Please send me, postpaid, "Signature" pattern teaspoons. Mark each with your initial circled on this coupon.

NOTE: For each spoon I will include with White Star from Kellogg's VARIETY PACKAGE and 75¢ in cash.

MY NAME (Please Print) \_\_\_\_\_  
MY ADDRESS \_\_\_\_\_  
CITY \_\_\_\_\_ STATE \_\_\_\_\_

★ All made by Kellogg's, all Kellogg's fresh  
★ Kellogg's Choice of 7 cereal favorites  
★ Nothing but Kellogg's VARIETY food variety  
★ Delicious for breakfast, lunch or supper

## School News

ARMISTICE DAY PROGRAM  
Friday, Nov. 11, Armistice Day program was held in the school auditorium. The 6th Grade gave a play entitled "Buildings of America." After the play, the "Star Spangled Banner" was done in motions. Then, one minute of silence was observed at 11:00 A.M.

MEMBER OF THE WEEK  
Margaret Wilbanks  
Miss Peters, our very well liked Principal at High School, has been chosen "Member of the Week." A few things learned recently of his past and his favorites.

NUZZ NEZ  
Since I began school here this fall I have noticed many outstanding traits among student of SHS. I have also noticed some students here have faults that offset many of their virtues. It is lack of courtesy, students push and shove their way up and down stairs, down halls, out of the classrooms and hit each other. They do not mind if they miss and hit someone else. It is not anyone who might happen to be in their path. The other day I was leisurely walking down the stairway when suddenly I was almost knocked off my feet. I thought perhaps from the force of it, that it was a cyclone or at least a small twister, but it was only one of our high school boys. There was only one person on the stairs by him, yet he was in too big a mood to slow down a moment to avoid hitting me.

WHO'S WHO AMONG THE JUNIORS  
Name GIBBER Atkinson  
Age 14  
Height 5 ft. 10 in.  
Favorite Food Watermelon  
Ambition To go to college.  
Color Hair Brown  
Color Eyes Green  
Pet Peeve Being called Mary Virginia.

SCOUT COOK-OUT  
Girl Scouts had a tea Saturday at the First Baptist Church. The girls had a very successful time. The girls had a very successful time. The girls had a very successful time.

7A NEWS  
There were two parties in two weeks. One was a party given by Judy Meyer. Several of the pupils invited. They were Jack Smith, Jimmy Ooley, Jack James Walker, Anna Helen Taylor, Lanelle Georgia, Judy Meek, Georgia and Sheila Sparks. All were invited except James Walker. Georgia Jackson, Judith Wilson Jagers and our 7th Masters.

7B NEWS  
Name Jerry Cate  
Age 17  
Height 5 ft. 9 in.  
Favorite Food Anything  
Ambition Don't have one.  
Color Hair Brown  
Color Eyes Green  
Pet Peeve People eating popcorn at the movies.  
Favorite Radio Program Hit Parade  
Favorite Male Movie Star John Wayne  
Favorite Female Movie Star Jane Allison

Name Eddie Blackburn  
Age 15  
Height 5 ft. 9 in.  
Favorite Food Chicken  
Ambition To get rich.  
Color Hair Blond  
Color Eyes Green  
Pet Peeve Teachers pacing the floor in S.H.  
Favorite Radio Program Hayride Hit Parade  
Favorite Male Movie Star Abbott and Costello  
Favorite Female Movie Star Virginia Mayo

Name Don DeArmond  
Age 15  
Height 5 ft. 10 in.  
Favorite Food Turkey  
Ambition To be a diesel mechanic.  
Color Hair Brown  
Color Eyes Brown  
Pet Peeve Sophomore Girls in the Radio Program

Morse News

Mrs. and Mrs. Charles Thompson spent the week end in Amarillo with relatives. Leonard Roberts was a dinner guest of Mr. and Mrs. Billy Jarvis and sons Sunday. Mrs. A. E. Henderson, Mrs. M. W. McCloy, and Mrs. Jack Hatch...

home coming at Morse Friday

Mrs. and Mrs. Frank Jones and Judy, Mr. and Mrs. R. D. Selig and Nancy visited in the John Trindle home Wednesday evening. Mr. and Mrs. J. M. Watson of Friona visited Mrs. Mary Gillispie over the weekend. They are cousins of Mrs. Gillispie.

SOCIETY NEWS

At a Thanksgiving dinner of turkey, cranberries, sweet potatoes, pumpkin pie and all the trimmings, fifteen members of the Better Homes Club, two visitors, the agent and a special guest enjoyed the day of Wednesday, Nov. 15 in the home of Mrs. Robert Novak.

CLUBS \* PARTIES \* SOCIALS

W.R.C.S. Circle No. 2 met at the Methodist Church with Ann Knoch, hostess. The meeting was called to order by the president, Mrs. Altha Townsend.

NOTICE TO THE PUBLIC

The Ice Plant at Spearman has been sold to Dumas firm and is being moved. I have arranged to supply ice to Spearman customers at my Gulf Station.

Advertisement for Gulf Service Station and Sid Beck, featuring a large 'Announcing' graphic and text about the formal opening of the Ford dealership.

PALACE

Thurs., Nov. 17. Will James' story of— Fri. and Sat., Nov. 18 and 19. Gene Autry. THE BIG SMITHIERO. Sun. and Mon., Nov. 20 and 21. Van Johnson, Gloria DeHaven. SCENE OF THE CRIME.

LYRIC Theater

Thurs. and Fri., Nov. 17 and 18. William Holden, William Bendis. STREETS OF LAREDO. Color by Technicolor. Saturday, Nov. 19. Alexis Smith, Zachary Scott. ONE LAST FLING. Sun. and Mon., Nov. 20 and 21. Ingrid Bergman, Joseph Cotten. UNDER CAPRICOON. Tues. and Wed., Nov. 22 and 23. Van Johnson, Gloria DeHaven. SCENE OF THE CRIME.

Its Not "Hot" News

But ITS A FACT--Less than 6 weeks until CHRISTMAS.

Shop Home Markets First We think you will be surprised and pleased at QUALITY AND PRICES FOR INSTANCE

Table with 3 columns: Item, WAS, NOW. Items include Boys Gabardine Pants, Boys Gabardine Suits, Boys Boxer Corduroy Pants, Boys Sanfordized Flannel Shirts, Boys Sanfordized Flannel Shirts, Warm Up All Wool Jackets.

Jim Neely's Men's Wear

Large advertisement for Bill Reynolds Ford Dealer, featuring the text 'The Formal Opening of BILL REYNOLDS FORD DEALER And The 1950 FORD CARS To be held at our Display Room IN SPEARMAN, TEXAS Friday November 18th. BILL REYNOLDS FORD DEALER'.



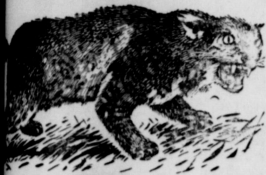
# The Spearman Reporter

VOLUME 42 — NUMBER 50

THE SPEARMAN REPORTER, SPEARMAN, HANSFORD COUNTY, TEXAS

THURSDAY, NOVEMBER 17, 1943

## The Lynx Claw



Age 16  
Height 5 ft. 9 in.  
Favorite Food Hamburgers  
Ambition To be a professional wrestler.  
Color Hair Brown  
Color Eyes Grey  
Pet Peeve Teasing people who can't take it.  
Favorite Radio Program People Are Funny  
Favorite Male Movie Star Robert Mitchum  
Favorite Female Movie Star All of them.  
Name Sybil Dillow  
Age 16  
Height 5 ft. 8 in.  
Favorite Food Chocolate Cake  
Ambition To get married when I finish high school.  
Color Hair Brown  
Color Eyes Green  
Pet Peeve People who grit their teeth.  
Favorite Radio Program Arthur Godfrey  
Favorite Male Movie Star Montgomery CLIFT  
Favorite Female Movie Star Esther Williams

body as he is quiet, restrained and a pal to all.  
Mr. Lovelady was born Jan. 11, 1909 at Nashville, Tenn.  
Mr. Lovelady received his grade and high school education in Nashville. He attended West Texas State Teachers College at Canyon, where he received his B.S. degree. He plans to receive his masters degree this summer.  
Before teaching in Spearman, Mr. Lovelady was grade school principal at Bovina and Olton. During the war, he taught four years in the Aircraft Mechanics School of the Air Force at Biloxi, Miss. and Amarillo.  
Mr. Lovelady's favorite food is fried chicken. His favorite pastime is duck hunting his favorite hobby is craft-work and his favorite sport is golf.  
Mr. Lovelady seems to have no pet peeve.  
Before becoming grade school principal, Mr. Lovelady taught two years in commercial training in S.H.S.  
We in high school were very sorry to lose him, but we know grade school is happy to have him.

## Spearman Jr. Vs. Stratford B

by Larry Reed  
There was a little mix-up as to where the game was to be played. The Spearman team loaded on the bus and had gone about 15 miles from Stratford where they were met by the Stratford team on their way to Spearman. So we turned around and came back to Spearman.  
The Lynx played first with the final score, 52-29 in favor of Stratford in spite of the score, we didn't feel bad because you should have seen the Stratford team. Jimmy DeArmond was high point man with 11 points. Leland Hammond was next with 8 points.  
Before this, we played the Stratford Jr. High, winning 20 to 19.

## Ideal Girl

by Leslie Reynolds  
Voice Jeanene Graves  
Hair Frankie White  
Eyes Mary Faith Oakes  
Figure Louise Walker  
Profile Gladys Haden  
Teeth Junitta Beck  
Hands Martha Cayton  
Athletic Billy JoAnne Greeyer  
Smile Ginger Atkinson  
Weight Tynelle Sansing  
Height Marsha Cayton  
Personality Sylvia Bryan  
Complexion Becky Atkinson  
Grooming Margaret Wilbanks  
Humor Peggy Pierce  
Nose Nada Hutton  
Manners Jerry Beth Harbour

Although Spearman had beat them in their last play-off last year, they knew they were up against tough competition. Stratford was shooting from all parts of the court and making them. While Spearman was not playing as hard as they were capable of. The half time score was 10-10. The half time score was Stratford 10, Spearman 7. After many unsuccessful efforts of the Spearman team, the final score was 21-23 in favor of Stratford.  
The following Wednesday afternoon, our old rival, Gruver, came over for a practice game. Spearman played much better ball in this game. Holding them to a half time score of 10-7. The game ended with Spearman on top for the fourth time in the season, 25 to 8.  
On our team this year are our old standbys:  
Forwards Frankie White, Mary Oakes and Tynelle Sansing  
Guards Pat Howell, Mona Beth Hester, Jeanene Graves, Gladys Haden and Joan Mackie.  
The new and coming standbys are:  
Forwards Billy JoAnne Greeyer, Ginger Atkinson, Joan Latham, Nadine Sparks and DeAnna Johnson.  
Guards June Crane, Joy Blandford, Claudine Jackson and Nada Hutton.

variations printed, but also the music accompanies the songs. **Mice, Men and Elephants: A Book About the Mammals** by Herbert Zim  
This book was written by a science teacher who was encouraged by students telling him what interested them most and the things they wondered about. With this viewpoint in mind, Mr. Zim has written a fascinating scientific book about mammals which clearly describes their characteristics, similarities and differences. A book of this kind is well illustrated. **Microbe Hunters** by Paul DeKruiff  
This is a collection of biographies of scientists who have done much to improve our living conditions. Some of the scientists you know and others you have heard about, but each biography is short and well written. If you have any curiosity at all about why we do certain things, how vaccines came to be or are interested in science or doctors, I feel this will be enjoyable reading. **China, Country of Contrasts** by Mary A. Norour  
A book on travel in China which describes the people in the cities and homes along the rivers telling of their customs and their history. This is the same sort of picture you would get if you took this trip and visited with the people. Because of our former relationship with China and our efforts for world peace, it would be well for all of us to read this book for a better understanding of the Chinese people. This book is also well illustrated.

## School News

**Claw Staff**  
Color Hair Blond  
Color Eyes Blue  
Pet Peeve Snooty People  
Favorite Radio Program Hit Parade  
Favorite Male Movie Star I don't know  
Favorite Female Movie Star Clark Gable  
Name Gladys Haden  
Age 17  
Height 5 ft. 4 in.  
Favorite Food Fried Chicken  
Ambition To be happy.  
Color Hair Auburn  
Color Eyes Green  
Pet Peeve People who try to show their authority.  
Favorite Radio Program Hit Parade  
Favorite Male Movie Star Clark Gable  
Favorite Female Movie Star Rita Hayworth  
Name Alice Hacker  
Age 16  
Height 5 ft. 4 1/2 in.  
Favorite Food Olives  
Ambition To be a nurse.  
Color Hair Blond  
Color Eyes Blue-Green  
Pet Peeve Conceited People  
Favorite Radio Program Hit Parade  
Favorite Male Movie Star Jimmy Steward  
Favorite Female Movie Star Esther Williams  
Name Leo Faulkner

**Exchanges**  
The Lynx Claw Exchange Editor reported that the paper is now exchanging with the following schools:  
Dahart Graver  
Canadian Stinnett  
Perryton White Deer  
Dumas Phillips  
Stratford Panhandle  
Hartley Sunray  
Booker WTSC, Canyon  
We at the Lynx staff are glad to receive the exchanges among the schools. We enjoy all of the papers and hope they enjoy ours equally well.

**"Suzy Sez"**  
Some kids in our school seem to have the idea that to be disrespectful to teachers is outstanding and that they should be admired for their bravery. It makes them outstanding all right, but not in a way in which I would like to be known. I think kids like this should be patted for their laziness, rather than admired for their bravery.  
I know teachers are not always right, it is impossible for them to be, as they are only human. They do try and if they make a mistake, it is not made on purpose.  
Our teachers put up with a lot from us. I sometimes wonder if they had the "patience of Job" and the "wisdom of Solomon," that still some kids would find fault with them.  
Let us all resolve to stop disrespecting teachers and get behind them and work.

## Football Players Get Sweaters

The Spearman Grade School Football Team was called down to the office to measure for their sweaters. Receiving sweaters this year are:  
Peyton Gibber, Larry Reed, Carl Tucker, Paul Crawford, Jimmy Guley, Billy Nollner, Billy Lackey, Mark Crawford, Carl Archer, Myrl Jones, Homer Hart, Dwain Summerville, Allen Winkler, Jerry Floyd and David Crawford.  
Chuck Edwards was not here long enough to letter, but he will receive an award.

## Ideal Boy

by Sylvia Bryan  
Hair Joe Lee Lackey  
Eyes Frank Buzzard  
Nose Eddie Blackburn  
Profile Leon Morehead  
Teeth Claude Sheets  
Smile Dew Allen  
Voice Andy Darleson  
Hands Don DeArmond  
Physique Dan Dacus  
Complexion Roy Nollner  
Height Leslie Reynolds  
Weight Leo Faulkner  
Grooming Don Floyd  
Manners Kenneth Wilson  
Humor Bill Hull  
Athletic Don Cates  
Personality Bobby Sparks

**Our Girls Win 2 of 3 Games**  
The Spearman Girls Basketball Team journeyed to Sunray for their third game of the season, having already downed Perryton twice. This was a practice game for the two teams. After many tangles and some real play on both sides, the Spearman girls finally came out on top with a 24 to 21 score.  
Tuesday evening to show our hospitality, the Spearman girls team met Stratford half-way and escorted them back. The girls were tense as they warmed up to play.

**Books In The Library**  
Home Life in Colonial Days by Mrs. Alice M. Karp  
This book reconstructs for us life in the U.S. during the Colonial period. The home, occupations, food, travel, manners and customs are discussed in great detail. The illustrations for this book are from real articles and scenes—rare relics of past days.  
Cowboy Songs and Other Frontier Ballads by John and Alan Lomax  
This is a collection of ballads and cowboy songs which were heard in mining camps and ranches. Not only are different

## Teacher Of The Week

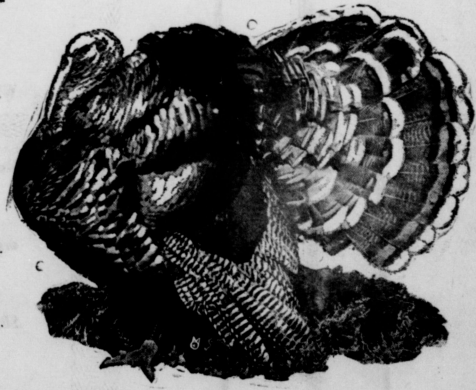
by Margaret Wilbanks  
Grade School Principal Mr. C. R. Lovelady has been chosen the "Teacher of the Week." He is one of the most well-liked teachers by the entire student

**Man's Waistline**  
Since 1920 the average man's waistline has increased from 31 inches to 34 inches.

## 4th Grade News

Mary Richardson, Reporter  
The Fourth Grade is studying old Mexico in reading. It is very interesting. We are bringing a collection of Mexican articles.  
In our arithmetic class, we are having matches. The boys against the girls. This creates a lot of interest.  
Mrs. Sheets is our new teacher and we like her very much.

# THANKSGIVING DAY



## WE TRUST

That you will enjoy the

THANKSGIVING HOLIDAY

And we add our appreciation of your friendly relationship to the Thanksgiving greetings of the other business firms of Hansford Co

# FIRST STATE BANK

The bank will be closed Thursday, November 24, THANKSGIVING DAY.

- Officers, Directors and Employees  
J. R. Collard  
C. A. Gibner  
J. W. Gibner  
Freeman Barkley  
Hazel Lowe Gibner  
H. B. Hart  
P. B. Higgs  
R. W. Harbour  
Virgin'a Head  
Verna Lee Schnell  
Maurine Heard  
Jack Oakes

MEMBER  
GENERAL DEPOSIT  
INSURANCE  
CORPORATION  
Reserve System

**Fruit of Cashew**

Cashew nut, so popular in this country, is actually the poisonous fruit of the cashew tree of Brazil and Central America, says The World Book encyclopedia. The tree is closely related to the American poison ivy and people are often painfully poisoned by allowing their skin to come in contact with some of its parts. This toxic ingredient is entirely removed from the kernels by roasting before they are shipped to this country.

**Glass-Making**

Evidence that glass-making was the first industry established by the English colonists in America has been brought to light in excavations on Jamestown Island, Va., the Department of Interior announced recently. The first permanent English settlement, Jamestown got its first industry 27 months after its establishment in 1607 when the Virginia Co. of London sent workmen to make glass, records show. Uncovered in the digging were four furnaces, crucible pots and pieces of glass.

**Play on Grasshoppers**

Grasshoppers three feet long with legs strong enough to use as saws were reported to Rome by Pliny on a visit to India 1,900 years ago. They set the pattern for 20-foot specimens covering a modern railroad flatcar, as proved by postcards issued from America's Midwest.

**Telltale Sign**

If a horse stops sweating, or its muscles begin to tremble, while working in the field, it indicates approaching heat-stroke. Prompt treatment is essential in such cases.

**Washed Eggs**

It is harmful to wash eggs, says O. C. Ufford, poultry specialist for the Colorado A. & M. college extension service, because the shell of an egg is porous or full of tiny holes. These are filled with a gelatinous covering that keeps out bacteria. When eggs are washed it dissolves the protective covering and not only removes the dirt but may force some bacteria through the shell where they proceed to spoil the eggs.

**DDT for Arctic Mosquitoes**

Sprinkling DDT on snow and ice in Arctic areas is a newly discovered way of killing the first mosquitoes that hatch in the spring, entomologists of the U. S. department of agriculture report. As little as a tenth of a pound to the acre does the work, and airplane distribution of the DDT over broad areas makes for economy in the cost of treatment. Federal entomologists are continuing their wartime research for protection of military forces in Alaska from the teeming hordes of insects that are a torture some feature of the short arctic summer. Cooperating with the U. S. army in Alaska and with Canadian scientists, they have been experimenting in the vicinity of Churchill, on the west shore of Hudson Bay in northern Manitoba.

**Penicillin as Syphilis Cure**

Penicillin is being widely used by Minnesota physicians to treat both syphilis and gonorrhea. However, the warning that a "quick cure" with penicillin may not constitute a "sure cure" is voiced by Dr. H. G. Irvine, acting director of the division of venereal diseases of the Minnesota health department. "Although penicillin cures many cases of syphilis in a short time, it does not cure all cases quickly, and additional treatment with other drugs is often necessary," says Dr. Irvine. He adds the advice that penicillin must be given early to be of real value.

**Washes His Eggs**

Colorado A. and M. college student working his way through college while helping develop a five-acre farm near Fort Collins, sells some \$400 worth of eggs a year. In order to have a better product, the student washes the eggs in his wife's combination dish and clothes washer and customers on his route are well satisfied with the result.

**The Much Game**

Too much game in an agricultural country can be as troublesome to the sportsman's permanent interest as too little game. Too many grazing-browsing game animals such as deer or elk, can not only cause conflict with other interests but destroy their own food plants and make it impossible to rebuild the herds for years following an eat-out and a starvation reduction of the herd.

**First Bootleggers**

The Tuscarora Indians of North Carolina were among the first bootleggers, carrying forbidden rum to tribes of the interior, and selling it by the month. The purchaser hired the tribesman with the biggest mouth as his scale, the mouth-man spewing the rum into a bowl brought along as a receptacle.

**Wind Pressure**

A 40-mile wind exerts a pressure of approximately seven pounds per square foot on the side of an automobile. An automobile might have an area on the side of about 30 square feet, so the total pressure of such a wind would be about 210 pounds.

**Virginia Tobacco**

North Carolinians can't do anything about it, but most so-called "Virginia" tobacco is raised in their state, and they also raise more "Virginia" peanuts than Virginia does.

**Wet Time**

In the major portion of Illinois, May is usually the wettest month of the year.

**Midwife Tool**

Two members of the central and southern rope are called obstetric rope because the bear the young. According to World Book encyclopedia, the rope carries the eggs of grapes attached to the vine.

**Right Garnish**

A clever garnish for platter: Cut a cucumber half inch slices. Again slice, but not quite the slip a thin slice of red pepper over the cucumber.

**Woodchuck Nibbles**

Woodchucks are raising farm or pasture. Many livestock has broken its piping into one of these mounds of dirt around the hole. The woodchuck animals destroy a great deal of grain but their nests are done in their burrows.

**Swain First**

Never swim alone. A help at hand, prefer guard with the knowledge of the water. After dark for the same is too hard for even an assist you in the dark.

**Footwear**

At one time or another, men have made shoes of wood, ivory, metal, straw, paper, rubber, usually when there was genuine leather for sale.

**Human Brain**

The human brain, at its peak, is six years old. It acquires more than its adult size. By the age child is six years old, the brain is nine-tenths the fully-developed adult brain.

# Thanksgiving

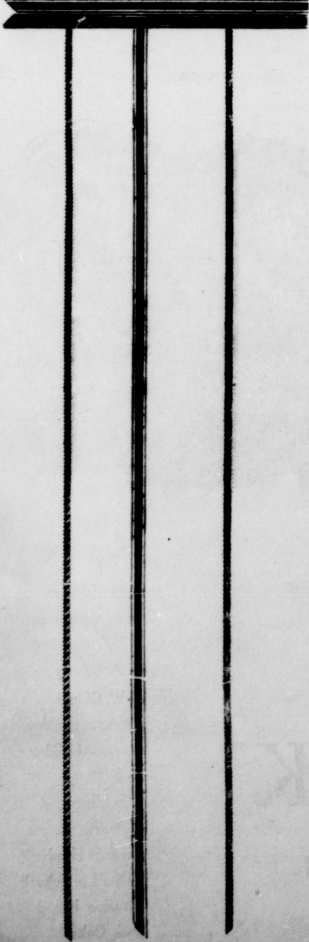


—To those readers of this paper who are geographically located near enough Berger to become customers of the PANHANDLE STATE BANK, we are extending greetings and accept this season of the year as an appropriate time to express our appreciation for your account and friendly business relationship.

While this bank makes no bid for business that could logically be handled by Hansford County banks, we do appreciate the fact that many of our customers in the outlying area find it more convenient to bank and do their business in Berger. We will continue to offer such customers an efficient and capable banking service.

## Panhandle State

—FREEDOM OF ENTERPRISE



We are indeed thankful  
customers and friends . . .

Who have enabled us to grow from a modest

Home COOPERATIVE business into the well

organized business you own, which provides

SERVICE and supplies to great number of

farm families of this area.

## Thanksgiving

THANKS FOR YOU

It is thankful for your appreciation of our honest effort to SERVE you and advance the ideals of COOPERATION.

We take this opportunity to thank our friends for their patronage in the past and pledge anew our desire to serve faithfully with . . .

## COOPERATION

Not only with the dividends we return to your pockets—but with quality service and merchandise at lowest possible prices.

# EQUITY

# The Spearman Reporter.

Published weekly for the Hansford Herald Published Thursday of each week in HANSFORD COUNTY at SPEARMAN, TEXAS

WILL J. MILLER, EDITOR AND PUBLISHER  
Second class matter on November 21, 1919, at the post office at Spearman, Texas, under the Act of March 3, 1879.

Subscription rates: Annual, \$2.50; Six Months, \$1.50; Three Months, \$1.00. Single Copies, 10c. Advance payment in full required.

**CLASSIFIED ADVERTISING**  
10 lines, 4c per word. 2c a word for every line thereafter. Display rates on request.

**NOTICE TO THE PUBLIC**—Any erroneous reflection upon any person or corporation in any column of The Spearman Reporter will be corrected to the attention of the management.

## Don't Name It!

By "Honest" Bill Miller

Football season is over and this is the time to write the season's success. A tie with a second team all the defeats this year... and a look at the close scores of the games, we realize a second Texas U. team... Spearman. Over at Grimes yet has two games left. That's the game of every editor as we think they will win at Bovina... it sure would be heart of this country... to have the trophy to go to the trophy case at the High School... and I'm betting on the Hounds to lack from Bovina.

... people who plan to attend the Bovina game... and a great deal more to the game... and I know they will average two dollars and fifty cents each, making the trip... You can get some small bets if you are a gambler. Understand that a few bets are being made around Spearman to the effect that the Collard well, which I thought was plugged and sealed so deep with concrete that it would take a blast of dynamite to open up a small hole, will be pumping oil within 12 months.

... the boys entering this year... far, including... Russell Conrad... one or two from the... names will be under... Monday each... school gym... Golden Gloves... scheduled for Jan. 24... for the Borner... Phillips, Bunn, Vist... Spearman, Ferryton, Fol... ment.

... Archer and two... and Patton Ann... with Mrs. Johnnie Huff... Mrs. Freeman Barkley... and Mary Ellen are... with Mrs. ... Mr. and Mrs. ... law, Okla.

**CHURCH**  
L-Line division heavy-duty features load dist offers great ness, com- duced will plants, tran.

**Maybe the best** mean that the well will be drilled... and maybe I don't know my stuff and the well was just capped, nor plugged. Anyway, the new activity in the horse area has opened up a lot of wild rumors, and some one can make some coffee money. I'm betting coffee to the people that the Collard well will never be a commercial producer... and dad-burned if I lost... a be tempted to buy coffee for 1,000 people.

**The country editor** wants to thank the advertisers of this area for their liberal patronage for this Thanksgiving issue. It's a pretty good issue, but as in a little short on local news. This is due to the fact that most activities have slowed up for the holiday... and due to the fact that we printed this paper a full day ahead of our normal schedule.

**LEXINGTON, MO., Nov. 14.**—Cadet C. J. Richards, son of Mr. and Mrs. J. W. Jenkins, Spearman, a student at Wentworth Military Academy here, has been promoted to the grade of cadet staff sergeant. Lt. Col. James B. Wells, professor of military science and tactics at the academy, said today: "This promotion is based upon superior performance in military work at Wentworth. The special order announcing this promotion was read before the entire cadet corps at an impressive retreat formation today."

**Disease Transmission**  
Fears that dust particles in the air might spread the foot-and-mouth disease virus from Mexico to the United States seem to be unfounded, in the light of recent veterinary medical research in Switzerland. Failure to transmit the disease to experimental calves through dust and air from infected quarters led to this conclusion.

**66-Pound Brain**  
Electro, a seven-foot-tall mechanical man, "thinks" with a 66-pound brain made up of a photo-cell, 82 electrical relays and a signal light. He can smoke cigarettes, count up to ten on his fingers and even recite a speech.

**Douglas Fir Region**  
Lumber from the Douglas fir region of Oregon and Washington is produced in approximately the following ratio: Douglas fir 85 per cent, West coast hemlock 10 per cent, western red cedar 3 per cent, Sitka spruce 1 per cent, all others 1 per cent.

**Wood is a plant** believed to have originated in southern Europe, but cultivated elsewhere in Europe, in China and in Egypt. Dye is extracted from the leaves which produce a blue color.

**Blonde Woods**  
The term, "blonde" is applied to bleached or light colored woods, which vary from white to light brown in tone. They are of two types—bleached, consisting of normally darker woods which have been artificially lightened, and the unbleached woods, which have a naturally light color.

**\$40,000 Duck**  
In 1904 two men were arrested at Jackson, Minn., and charged with having nearly 3,000 ducks in their kitchen door. An entrance facing the driveway, a parking area for cars near the entrance will make this possible.

**China Plates Handles**  
The hazards of china faucet and valve handles are stressed by the Plumbing and Heating Industries bureau. China handles are likely to break and cut the hand or arm of the user. The replacement of all china handles with metal handles is advocated by the bureau.

**Origin of "Bible"**  
from the ancient Phoenician port of Byblos on the Lebanon coast, which exported papyrus, the Greeks derived their word bible, meaning papyrus scroll. And from bible came the word Bible.

**Foot Defects**  
Recent physical examinations of students at Santa Barbara college, University of California, showed that 12 per cent of the men had foot defects, compared with 28 per cent of the women students.

**"Silent Poetry"**  
In ancient Greece painting was termed "silent poetry."

**Bronze Age Pins**  
Back in the Bronze Age, more than 2,000 years before Christ, pins strikingly like the safety pins of today were in wide use. Museums contain numerous examples of these relics, made with typical spring and catch, with plain or fancy points.

**Hypocrite**  
The praying mantis has hooks on its front legs which close on its prey like the jaws of a trap. Despite the praying position it takes while at rest, the mantis is among the most vicious and greediest of all insects.

**Farm Entrance**  
Most farm families prefer to have visitors use any door but the kitchen door. An entrance facing the driveway, a parking area for cars near the entrance will make this possible.

**Shade for Farm Animals**  
Provide plenty of shade and cool, clean water for animals at all times. Pigs cannot perspire, so a cool spot for them is especially important. Salt should also be available to the animals all the time.

**Old Hens**  
Old hens are 42 times more likely to have tuberculosis than pullets, an official avian tuberculosis survey has revealed.

**Wallpaper**  
Remove wallpaper before trying to dry mold. Remember that plaster under wallpaper should dry slowly to prevent cracking. When paper and plaster are dry, brush off loose mold.

**Bloodhounds**  
The uninitiated may call the bloodhound's expression mournful. Actually, say fanciers of the breed, this canine aristocrat wears a "noble look of solemnity, dignity and power."

**Spearman Islands' People**  
**Make Rope, Catch Turtles**  
Catching 200-pound sea turtles is big business on the Cayman Islands, south of Cuba. So is making rope of that-palm straw and building boats of native hardwoods. In the Caribbean port for south of Grand Cayman, largest of this group of three, the hurricane that lashed southern Florida hard—had its birth. On a reef of Little Cayman, the storm-tranced a Cuba-bound freighter.

**Little Cayman's rocky 10 square miles, the revenue officer doubles as school teacher and has time for fishing, too, since less than 10 people inhabit the isle. It is 700 miles north of the Panama Canal, and 350 miles south of Key West.**

**Churchill as Painter**  
Experts say that the best painting by Winston Churchill is the one of a bottle of brandy and a bottle of Scotch with two glasses along side.

**Sir Henry Stanley**  
Sir Henry M. Stanley was not only an explorer, like Mr. Keen of the radio series, he was a "Tracer of Lost Persons." According to Childcraft books, Sir Stanley found David Livingstone, the explorer, when he was lost in Africa.

**Arrival of U.S. Mail**  
First airmail from the U. S. made on November 22, 1915. The flight required 16 hours. Now the 7,400 mile flight is made under 10 hours, and Hawaii is daily mail service from California.

**THANKS TO SUBSCRIBERS**  
Our thanks of the month go to the following renewers:

- Jess White, Spearman
- Jack Allen, Ferryton
- Herbert Kirk, Lubbock
- C. V. Lowe, Graver
- Mrs. Eldon Bayless, Graver
- D. V. Bayless, Graver
- Dan Strider, Graver
- J. M. Ballentine, Morse
- Georgia Arbost, Westergrove, Mo.
- Orville Crain, Waka
- C. U. Pope, Spearman
- Clyde Miller, Burbank, Calif.
- J. M. Miller, Morse
- A. L. Eastley, Sunray
- A. L. Jacobs, Spearman
- Paul Roach, Spearman
- Marcus Larson, Spearman
- Ed Updegrave, Spearman
- M. D. Jackson, Scottsville, Ark.
- Charles Brillhart, Spearman
- Mrs. L. B. Lackey, Okaloosa, Ia.
- Graver Lammert Co., Graver
- Carl Owens, Beaver, Okla.
- Nolan Holt, 5 yrs. sub., Spearman
- W. S. Jones, Spearman
- P. H. Jameson, Amarillo
- Willis B. Lacey, Spearman
- R. R. Fullbright, Spearman
- F. K. Bannister, Spearman
- C. A. Batten, Spearman
- Grace Main, Spearman
- Willis Lackey, Silmet



**THANKFUL** — That we are part and parcel of the great American system of free enterprise. It is pleasant and practical for the personal of this business to be thankful for the privilege of our immediate association with our customers. Thankful for their cooperation. Thankful for the healthy business they have seen fit to give this firm. Thankful for the opportunity to serve our friends with a line of power farming machinery and household refinements that have gained a nation-wide reputation for leadership in efficiency and economy. Thankful for home and friends, for aggressive business methods, for fair and friendly competition, for ambitious and progressive neighbors and citizens.

**THANKFUL** — For the modern equipment and skilled, loyal help which enables this business to aid you in maintaining your power farming equipment at a high degree of efficiency and usefulness.

**THANKFUL** — For the fine citizenship that has labored under a handicap during the past few years to increase farming production so that the world will not starve.

Truly, we all have much for which to be thankful this 1949 season.

SLIM CATES

# B. & C. Equipment Company

RLJA

in No  
Role I  
us rece  
ating l  
and co  
extra

ny and  
r unde  
making  
ny cav  
e 40 s  
howev  
ies of  
roctic  
logical  
pessim  
y map  
res th  
eyed h  
uitable  
remot  
ous for  
their f  
had a r  
he Far  
en use  
ndustria  
ntial sit  
wartime  
oted for  
old tum  
lation  
kept c  
rs of rei  
Two of  
nbed sp  
l of Do  
ranean  
avers of  
pricles  
is in n  
he "Pri  
it and e  
nd Austr  
ctions o  
looted f  
or remo  
n muse  
ping.

of Afric  
y spread  
still a s  
Go it de  
fly need  
land ar  
sternmi  
ke regio  
ca, has l  
by man  
low Owe  
es in t  
the Nik  
reas of  
nyika su  
e among  
in Afr  
000 pers

s Plant  
young pl  
rithin es  
Soil imp  
the es  
roots a  
j to thre  
or nutrie  
soil is h  
high in c  
ill later  
alk" as f  
is to fee  
is why it  
soil well  
and to  
vin goo  
at build  
e farm.



below name of SEE...  
The body is built up from 4...  
Cut blocks...  
the top indicated on the drawing...  
and then enlarge the side and

ow of it  
water Ma  
be ledres.  
e a prese  
of th Shr  
cared they  
candle. Pe  
members c  
rest at the

back  
Horn

Steph  
Forc

er  
1100