

The Spearman Reporter

THE SPEARMAN REPORTER, HANSFORD COUNTY, THURSDAY JULY 28, 1955

Retail Merchants News

A review of bills passed at the recent session of the 54 Texas Legislature, compiled by the Retail Merchants Association of Texas, shows that more than a score of measures affecting retailers of the state have been signed into law. Olen Chambers, Manager of the Spearman Retail Credit Association said he had been advised by the State RMA office in Austin that bills relating to wage assignments, collections-sale prices (grocery items), and taxes were among the more important enacted.

A breakdown by subjects of the laws passed follows:
Unfair Sales—Effective September 6, a new prohibits grocers from limiting purchases on merchandise offered for sale below cost.

Collections—The Small Courts Act has been amended to provide for a fee of \$1 to the citation serving officer and authorizes the usual court fees for levying executions to enforce judgments.

Holidays—November 11 has been officially designated Veterans' Day. Banks and trust companies are given permission to close on Saturdays.

State taxes—A one-cent a gallon additional tax on gasoline. A one-cent a package additional tax on cigarettes. A \$230 per barrel increase in the tax on beer. A 25-cent additional levy per \$1,000 corporation capitalization.

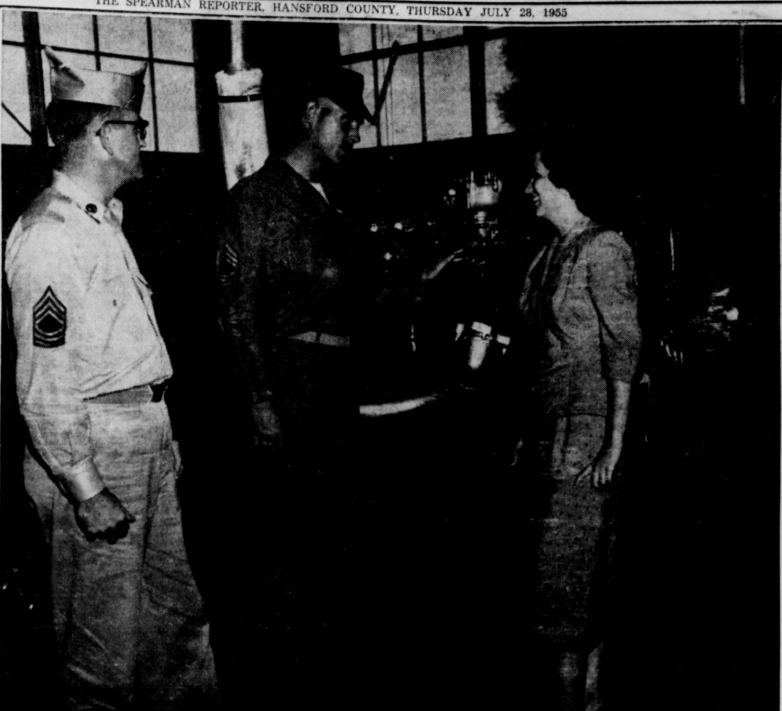
Collection of State taxes—The method of collecting a 2.2 percent tax on radio and TV sales has been amended in a measure that will become effective September 1. The tax remains on the seller making the final sale and requires wholesalers to pay the tax on sales to institutions, hotels, and others. The retailer is required to file a quarterly report showing a starting and ending inventory on both TV and radio. The bill further requires TV and radio dealers to be bonded to guarantee payment of the tax and requires retailers to secure a permit and authorize the State Comptroller to collect audit fees from the dealers.

Assignment of wages—Employees, under terms of a new law, are exempt from legal action in cases where an employee's wages are pledged to a creditor, if the employer can prove that he was not notified in writing of such an assignment and not assent to such an assignment in writing.

Assignment of accounts receivable—Regardless of whether such accounts are in existence at the time of notice of assignment was filed, provided, however, that the recording of such notices constitute constructive notice and regardless of whether the contract out of which the account arose was in the contemplation of the assignor and assignee when the notice of assignment was executed.

Wilmeth At Hospital
 Mr. Wilmeth, who entered hospital with a back last week was Perryton Hospital. Since treatment of the services of a technician and organization was a member of a new team, Mr. Wilmeth is well this week.

CALDWELLS VISIT IN COLORADO
 Mr. and Mrs. Simon Caldwell, accompanied by Mrs. Adrain Moore spent the past week on a vacation trip to the Mountains of Colorado. They visited Mrs. Caldwell's daughter, Mrs. Jay Herd, who also accompanied them on their remaining tour, including Colorado Springs.



Miss Gayle Moore Visits Air Force Base Mechanics School

Walters Air Force Base, Texas, July 27.—Miss Gayle Moore of Route A, Spearman, Texas, visited the Aviation Engineer Force Mechanics School at Walters Air Force Base, Texas, the Home of the Aviation Engineers.

13 Spearman & Gruber Students Attend W. T. Band C.

CANYON, July. (Special) Seven high school musicians from Spearman and six from Gruber are among the more than 300 who have already made reservations for the third annual West Texas Music Camp, to be held July 31-Aug. 12 at West Texas State College, Students from all over the Panhandle and West Texas region will attend.

Proud Parents

Mr. and Mrs. Clarence Pettit have a son born Friday, July 22nd at 5 a. m. He weighed 8 pounds and 12 oz.

Mr. and Mrs. Marvin Kunkle have a son born Sunday July 24th at 3 p. m. He weighed 7 pounds.

Mr. and Mrs. Glenn Mackie have a son, Glenn Ray, born Sunday morning July 24 at 5 a. m. He weighed 7 pounds and 8 oz.

Week End Youth Revival

There will be a youth led week end revival July 30-31 at the First Baptist Church, Spearman.

The Saturday evening service will begin at 8:00 o'clock with a youth fellowship following. The young people will also be in charge of the entire Sunday services.

Clyde Gain of Canadian, a student of Wayland College will do the preaching.

The public is cordially invited to attend these services.

Burglars Knock Off Two Gruber Firms

Two Gruber firms were burglarized sometime Wednesday night July 13, by the same yeggs that broke into a service station about three weeks ago.

The safe at the Evans Gas Co. and the Westfield Dry Goods Store were the two stores which were broken into. Simitime after 11 p. m. burglars broke down the rear door and pilfered the safe.

As near as could be determined, a total of \$15 was missing.

Officers also were investigating the break-in of the Westfield Dry Goods Store, the rear door of the firm was also broken down leading officers to believe that the same men were involved as in the Evans burglary.

A considerable amount of cash was removed from the store, Sheriff Cooke said.

The Sheriff reported that as in the Evans break-in, the burglars apparently knew where to look for the money and the same methods were used in both incidents.

He also said that the same methods were used in burglarizing the Peddy Service station about three weeks ago when \$25 in cash and merchandise was taken.

Bud King and Pete Fisher met a business trip to Dallas this week.

LOST—Siamese female cat. Sybil Miller. Phone 5591

Mr. and Mrs. J. D. Hester and children from Texline visited Irvin Hesters and Fred Hoskins camp, and the public is invited.

The program this year will be held in Buffalo Stadium, and all will be at 8:00 p. m. except the final show.

On Scout Trip To Creed, Colorado

Charles Traylor, Don Dillow, Neal Jameson and Danny Kingsley, accompanied by Boy Scout Leader Joe Traylor are at Creed, Colorado attending a Boy Scout encampment this week.

The Mackie families of the Spearman area met with relatives from Pampa Sunday at Borger for a family reunion.

Margaret Kirk attended a writer's work shop, Monday night in Amarillo, also the regular Panhandle Pen Women's meeting Tuesday at the Country Club.

Tigers Present Woodie Beck With Watch

The Corner Drug Tigers presented their manager Woodie Beck, with a watch at the local ball park Tuesday night of this week.

The Beck's are leaving for Houston, and will be missed by their many friends in Spearman.

A feature game will be held tonight Thursday 7 P. M. between the Corner Drug and Guyton. The public is urged to attend this contest.

Scores for the week:
 Eagles 12 Cats 14
 Lions 8 Girls 7
 Eagles 14 Cats 9
 Eagles 3 Lions 8
 Corner Drug 7 Cut Rate 6
 Corner Drug 5 Cut Rate 16

TOTAL STANDING:
 Won Lost
 EAGLES 2 8
 CATS 6 5
 OWLS 2 4
 LIONS 4 4
 BEARS 4 4
 TIGERS 3 4

Dr. Bright's camp choir, will present a concert, assisted by Bob Roberts in a twirling exhibition.

On Aug. 8, a group of WT faculty and students will present a program; Aug. 9, the camp choir will appear at 7 p. m. over KGNC-TV; Aug. 10, the Symonic Band and a group of twirlers will appear over KFDA-TV at 10:30 p. m.; Aug. 11, a dance is slated for camp members; and Aug. 12, a "Grand Finale" concert by all camp groups and twirlers will be held.

Freddie Hoskins Advances To Eagle Scout

Freddie Hoskins was presented the Eagle award recently at a special service, in the County Court Room, by his scout leader, John R. Collard.

Eagle Scout, Zack B. Fisher, led the salute to the flag.

Howell Ray Phelps gave the invocation.

Rev. C. N. Van Dyke, pastor of the First Christian Church addressed the Assembly.

John R. Collard presented Mrs. Freddie Hoskins with a mother's Eagle Scout pen.

Scout Leader John R. Collard took Eagle Scout Freddie Hoskins and Howell Ray Phelps to Camp Philmont, New Mexico Tuesday morning July 25th.

The scouts and leader will attend the National Boy Scout Encampment there, lasting until August 4th.

Mr. and Mrs. Woodie Gibner and children left Sunday for a vacation at Red Rover and backward.

They will meet Mr. and Mrs. Bob Skinner later in the week for a fishing session. Pat and Oscar Donnell plan to join the crowd about mid week.

knows every facet of the water business, forward and backward.

His hours? Well, they vary some and always with the tendency to stretch them longer. An average just runs from 8 a. m. to 10:00 p. m. When trouble crops up so does Dacus and his city crew and the work considerably earlier and later hours until some kind of a repair is made. Then they keep on working until they get it all done correctly. He says nothing can be as aggravating as being out of water and when the new well is finished there won't be much danger of Spearman running out.

City Expansion Program

Spearman has just completed an expansion program of water mains and sewer lines that will insure the citizens all the water they need.

According to Leo Dacus, City Manager, since 1942, 26,000 feet of new water mains have been laid.

The 70,000 gallon tank installed and 19,000 feet of sewer pipes put in since March 1st, 1955.

A new water storage tank of 250,000 gallon capacity, erected recently will be serviced by a new well 400 feet deep, pumped by 160 horse power motor. The government permit has been granted to drill this well in the near future.

The 19,000 gallon tank given the city by the Santa Fe Railroad will be installed at the new well site for ground storage.

None of the old water mains were worth salvage; so Dacus had them tied into the new mains, where they crossed.

The original overhead water tank held 7,000 gallons.

All of the city wells are pumped with natural gas motors. One new motor is held in reserve at all times to expedite matters in case of motor trouble.

To date, Spearman has 650 water meters in the city limits, and has hooked orders to install 18 meters this month.

Dacus has been city manager since 1942 and has worked with the city water department since 1932. He has five men working with him and Mrs. Floyd Close is his bookkeeper.

Spearman got pretty short on water in 1947. Once since then a breakdown caused a temporary shortage and people were asked to cut down.

New Location's In Hansford Field Are Made

Two new locations in the Hansford field are recorded in the regional newspaper.

More detailed information relative to the Hix Wilbanks Humble No. 3, indicate this well will be as good or better than the thirty two million producer on the Wilbanks land. Official test have been released.

Locations in Hansford
 Oil Development Co. of Texas —Free Land No. 1-48-2360" from W. 1900' from S lines of sec. 48, blk. 45, H&TC sur.—11 mi. N from Spearman, TPD 5590.

The Sharples Oil Corp. et al.—Ned Turner No. 1—330' from S and W lines of NE¼ of sec. 122, blk. 45, H&TC sur.—4 mi. SE from Gruber—PD 7500 (formerly Humble Oil & Refg. Co.'s Gruber Gas unit No. 3 dry hol, 5182').

Hansford County: Sharples Oil & Baker-Taylor No. 1, Betty, sec. 24, blk. 1, CIF Co. Sur., completed for 9,500 MCF gas, 4 barrels distillate per million, perforation 5870-90.

Oil Development Co. of Texas No. 1-48 Fee land, sec. 48, blk. 45, H&TC sur., location 11 mi. N Spearman, TPD 5590.

Shamrock Oil & Gas et al. No. 1 Steele, sec. 78, blk. 45, H&TC sur., moving in cable tools, present TD 7500.

Standand Oil & Gas No. 1 Jackson, sec. 52, blk. 1, WCRB, flowed test, perforation 6620-34, shut in.

Gulf Oil No. 1, Ogle Gas Unit, sec. 11, blk. 2, SA&MG sur., flowed 823,000 feet gas, cleaned out to 7634, testing.

City Service No. 1-A Vernon, sec. 7, blk. 2, SA&MG sur., set 51 casing 5380, moving in cable tools, flowed 1,250 MCF gas.

Oil Hunt, Trust No. 1, O' Loughlin, sec. 59, blk. 45, H&TC sur., flowed 1,400 MCF gas, blow-down test, perforations 7094-7106, shut in.

Sharples Oil et al. No. 1 Ned Turner, sec. 122, blk. 45, H&TC sur., 4 mi. SE Gruber, (formerly Humble Oil & Refining No. 3 Gas Unit, plugged at 5,218' drilling plugs, deepen to 7500'.

Sharples Oil & Baker-Taylor No. 1, Henderson, sec. 82, blk. 45, H&TC sur., completed for 6,500 MCF gas, perforations 7222-38.

R. H. Howell No. 3-Laster-72 sec. 72, blk. 45, H&TC sur., moving in rotary.

Gospel Meeting In Gruber Church



James R. Wilburn, Minister

Beginning next Thursday night August 4th, the Church of Christ in Gruber is to conduct a series of gospel meetings. Services will be at 10:00 in the morning and 8:00 at night during the week with regular hours on Sundays.

Bible school at 10:00 A. M., worship at 10:30, and worship again at seven at night. James R. Wilburn, son of the local preacher is to do the preaching in the meeting. He is a 1953 graduate of Abilene Christian College and has been preaching at Appleton, Wisconsin, for two years. While in college at Abilene, he sang for all four years in the tenor section of the a cappella chorus of the school and also sang on a college quartette for one year.

As well as the men's glee club. In his senior year he was assistant preacher at Winters, Texas. He is well known in Gruber, having preached for the Gruber church and having worked during the summer of 1952 at the Shamrock Station for Tillie Poston. Song director for the meeting will be Tony McMillan a 1952 graduate of Gruber high school.

Songs at the day services will be directed by Eugene Green and Bobby Wilburn, the latter a brother of the visiting evangelist. The meetings will continue until an including Sunday, August 14th.

J. L. Pierce gets Years Subscription

J. L. Pierce won the one year subscription to the Reporter this week by correctly identifying the Guy Cooper Mystery Farm of the week. Vir Neil Sluder and Janet Hawkins also correctly identified the farm.

Since there was an error and the Guy Cooper farm was published for the second time, it accounts for incorrect identification made by several readers. Rev. Nichols identified the home as that of Don Hart, so did Clarence Pettit. Mrs. Hattie Mackie identified the home as that of James Stedje. Myrl Guy Jones identified the home as that of Frank Novak. Mrs. Cecil Crawford identified the home as that of Sam Cluck.

Freddie Hoskins Advances To Eagle Scout

Freddie Hoskins was presented the Eagle award recently at a special service, in the County Court Room, by his scout leader, John R. Collard.

Eagle Scout, Zack B. Fisher, led the salute to the flag.

Howell Ray Phelps gave the invocation.

Rev. C. N. Van Dyke, pastor of the First Christian Church addressed the Assembly.

John R. Collard presented Mrs. Freddie Hoskins with a mother's Eagle Scout pen.

Scout Leader John R. Collard took Eagle Scout Freddie Hoskins and Howell Ray Phelps to Camp Philmont, New Mexico Tuesday morning July 25th.

The scouts and leader will attend the National Boy Scout Encampment there, lasting until August 4th.

Mr. and Mrs. Woodie Gibner and children left Sunday for a vacation at Red Rover and backward.

They will meet Mr. and Mrs. Bob Skinner later in the week for a fishing session. Pat and Oscar Donnell plan to join the crowd about mid week.

knows every facet of the water business, forward and backward.

His hours? Well, they vary some and always with the tendency to stretch them longer. An average just runs from 8 a. m. to 10:00 p. m. When trouble crops up so does Dacus and his city crew and the work considerably earlier and later hours until some kind of a repair is made. Then they keep on working until they get it all done correctly. He says nothing can be as aggravating as being out of water and when the new well is finished there won't be much danger of Spearman running out.

One improvement calls for another. So the city has purchased a new fire truck.

Mystery Farm of County



THE MYSTERY OF THIS WEEK. We are urged to phone or write up to appear in next week's Spearman Reporter.

the owner of this farm to the Reporter. The owner of this farm is requested to get in touch with the Reporter office

at his earliest convenience, so we may get information for a write up to appear in next week's Spearman Reporter.

deal
 Oldsmobile '48
 KEY FOR EVERY POOR
 you'll find one priced
 you Choose from the
 vigorous models in Old
 a three thrilling and
 luxurious Ninety-Eight
 Super '48, Low-Drive
 Oldsmobile '48. This
 is illustrated above.
 LER'S!
 5621
 A "ROCKET 8"
 key in
 Hospital
 Wilmeth At
 Hospital
 Mystery Farm of County
 "uck"
 ride for you

MAKE THE

WANT ADS

YOUR AGENT TO...BUY...SELL...RENT...HIRE...

Don't Name It

It is strictly against the policy of this column to write anything very serious... and we are not writing such at this time. However, we are impressed with the fact that the agricultural surplus situation is getting SERIOUS. We therefore print for your consideration some facts as outlined by State Agricultural Commissioner John White.

A YEAR OF CROP SURPLUSES

Prospects for the fall of 1955 foretell another bumper farm crop year despite the ravages of drought in mid-western states.

That is the prediction of the National Agricultural Research bureau in Washington. Not only will it be a "bumper" year, but perhaps the biggest production year since 1920, if the experts are correct.

It is a paradox that increased production in 1955 will spell trouble ahead for Texas and the nation's farmers in the form of prices, mounting surpluses and critical storage problems. And no relief from the farm cost-income pinch is in sight. As a result, the "farm problem" is certain to become more and more of an issue in 1956 politics.

Washington apparently is uncertain as to what—if anything—to do next. It is not likely that Congress will act to ease the price squeeze before adjournment around the first of August.

Farm officials in Washington show no sign of easing their determination to block a return to 90 per cent mandatory supports for basic crops. Large supplies of most farm products now indicate supports will be lowered to the 75 per cent of parity minimum for basic—cotton and tobacco expected—next January.

Wheat already has been announced at 76 per cent.

Crop reports indicate SURPLUSES—in capital letters. Storage space, especially for feed grains, is at a premium. The Community Credit Corporation announced this month plans to build up to 100 million bushels of new space. Need for storage will be even greater than that if crop prospects hold up. And the farmer must have his goods stored to get supports.

Nation-wide it looks like record production on barley, soybeans, grain sorghums, hay—and record for corn, oats and dry beans. Compared with last year, production may fall on wheat, cotton, rice, sugar, tobacco, apples and peaches.

Trouble looms for potato growers. Irish potato production is forecast at 44.3 million bushels over last year and the sweet potato crop looks 15 per cent larger.

There is new talk about a demand for potato price support program—an unpopular notion with those who remember the disastrous program of the 1940's.

The 1955 crop report points out the false idea of selective acreage controls. Acreage forced out of one crop pops up in another to create a new surplus.

Cotton and wheat cuts have gone into soybeans, grain sorghums, hay and other products. Neither does lower price supports discourage planting. The farmer plants more to make up his losses in price.

Here are the details of the bumper 1955 harvest expected in the nation:

FEED RAIN SUPPLY will be the highest in history.

CORN crop forecast is almost 3.5 billion bushels—16 per cent over 1954—coming from a new record yield of 42.7 bu. per acre despite acreage cuts.

OATS supply looks like a record 1.8 billion bu.—slightly higher than last year. Carryover is about 325 million bu.—also the highest.

BARLEY will be about 524 million bu., about 5 million more than last year. Carryover is estimated at a record 140 million bu. GRAIN SORGHUM in Texas will approach and probably break records but production is not yet estimated. The same should hold true for the nation. Acreage is about 23 million, putting production estimates unofficially above the record 233 million.

WHEAT supply is estimated at 1.890 billion bu., about 30 million more than last year's record. Carryover next July may be around 955 million bushels with no break in sight on the surplus supply situation.

SOYBEAN crop is forecast at 27.2 million bu., 15 percent more than last year.

FLAXSEED is estimated at 43.4 million bu., up 4 percent from a year ago.

PEANUTS are planted on 3 million acres, 5 percent above 1954's 1.9 million.

HAY is forecast at a record 109 million tons. Alfalfa and its mixtures also is at an all-time high of 53 million tons.

RICE crop of 42.2 million 100 lb. bags is expected; 12 million less than 1954. In Texas, however, a record crop is anticipated but a breakdown is unavailable. The increase in production comes in spite of acreage cutbacks.

FOR SALE
Movable Building
And Furniture
Cash or Monthly
Terms
SEE C. D. WORKS 516 NO.
WEATHERLY STREET
Berger, Texas

SPECIAL FOR IRRIGATION ENGINES—Ask us for a price on the new L. P. G. lube oil, especially refined for natural gas and butane engines. You will be surprised at the low price we are offering. Try a can of our turbine drip oil—the kind which drips as evenly at night as through the warm part of the day. See our Quaker ad in this issue.

R. L. Porter Grain and Seed Co.
Phone 3751. No. 32 3-4

LEND-LEASE CRAFT.
The Soviet Government recently returned 1 lend-lease crafts to the United States. They were infantry landing craft (LCI) which were loaned to Russia during World War II.

The Philippines were ceded to the United States in 1899, by the Treaty of Paris.

The farthest points in Great Britain are from Land's End, England, to John O'Croats, Scotland.

Hollywood heads into a musical film cycle.

Steel output in May set 2-year high record.

A wide variety of car colors is expected next year.

Oil research this year will cost about \$81,000,000,000.

College graduates of recent years are having more children, but, as a group, a study shows they still have to produce more to replace themselves.

Work on the Great Wall of China began in 255 B. C.

The Empire State Building is 102 stories (1,250 ft) high.

DO IT NOW—You can Kill Goat-weeds and young thistles in your beautiful milt at the rate of 80 acres an hour with our dipunt spray, Aldrin, the grass-hopper spray, will mix with it if required for your fence rows. See us also for 95% germination Early Bezari, 7078 Milo, Norghum, regular Sudan, Red Top cane, and baling wire.

R. L. Porter Grain & Seed Co.
Phone 3751

FOR SALE—Maytag ringer type washing machine \$25.00 111 S. Bernice home 2221 No. 31 3-4

SIAMSE KITTENS FOR SALE—See Mrs. W. M. Miller at Spearman Reporter or at home after 5:00. 810 Bernice St. South Phone 5591.

FOR SALE—Nursery Stock, Evergreens, Shade Trees, Saraliss Grasses, African and U3 Bermuda Sod. First Quality, Prices Reasonable. Perryton Nursery, 610 SE First Avenue. 24-rtn

WANTED—New Laundry and Dry Cleaning customers. Satisfaction Guaranteed. We make Spearman Mondays, Wednesdays and Fridays. Write or phone Roy McCartney, Perryton. Phone 5591.

DITCHING SERVICE
McLary, Perryton

FOR SALE—Ice Refrigerator, reasonable. Phone 5591. Widdams, Spearman

FOR SALE
ADD MANY MORE
OLD TIME
COMPLETE TIRE
Months.
We Buy Capable
ORANGE 200
STATION

FOR SALE
Real Estate - Loans - Insurance
Low interest real estate loans
for irrigation, improvements,
or expansion
John R. Collard Jr. — **Billy C. Ray**
Phone 5281 — 407 Davis

SALT FOR SALE
Cattle salt — \$6.00 per ton
Binowed salt — \$5.00 per ton
\$1.00 per ton extra for sack salt
Power loader to load salt.
Salt sold every day except Sunday.
Location 2 1/2 miles South of intersection of U. S. Highway, Oklahoma State Highway 50, and Okla. State Highway 34. Phone 902K22 Freedom, Oklahoma. Blackmon Salt Co. No. 31 3-4

FOR SALE—Property at 22 South Barkley. See F. W. Maize, Phone 5306.

RANCH LOANS, to irrigate, purchase or refinance. Call 4261 or write Box 145, E. C. Greene, Spearman, Texas. No. 23 r-tn

WE ARE—Experts in installing linoleums. Let us figure your next job. Free estimates. We do cabinet tops, floor linoleums, congo walls. We stock linoleums up to 12" wide, sink frames, metal trims and etc. frames.

DALEY'S IN PERRYTON
No. 27 rtn

FOR RENT—Air conditioned, 4 room furnished apartment. \$15.00 per week. All bills paid. Phone 5441. No. 31 r-tn

FOR RENT—Two room furnished apartment. Call Carl Hutchinson Phone 3211. No. 31 r-tn

FOR SALE—Outboard motor 3-horse Johnson twin. C. V. Van Dyke. No. 33

Gulf All Weather SERVICE
Featuring High Test Gulf Gas & Oil
Complete Servicing & Steam Cleaning
WASH & GREASE
Any Kind of Weather
ALLAN BEASLEY
LONE STAR SUPER SERVICE
Gruver, Texas

Boxwell
Funeral Home
Flowers
Day — Night
SPEARMAN

Mr. Farmer
FOR
MOWING
WITH
NEW HO
WIRE-T
SEE
Claude Sha
Phone 4421 —
Spearman

DR. FRANK BROWN
OPTOMETRIST
THURSDAYS
Room — 216 M-Lain Bldg
FOR APPOINTMENT
Call Dr. D. E. Hackley
Phone 4851
Phone 4851 — Spearman, Texas

DALEY'S IN PERRYTON
No. 27 rtn

FOR RENT—Air conditioned, 4 room furnished apartment. \$15.00 per week. All bills paid. Phone 5441. No. 31 r-tn

FOR RENT—Two room furnished apartment. Call Carl Hutchinson Phone 3211. No. 31 r-tn


FOR SALE—Outboard motor 3-horse Johnson twin. C. V. Van Dyke. No. 33

ALCOHOLIC—If liquor is your problem and you sincerely want help to quit write Alcoholic Anonymous, Box 251, Spearman. No fees, no pledges, no pills.
No. 36 r-tn

Mr. Farmer
FOR
MOWING
WITH
NEW HO
WIRE-T
SEE
Claude Sha
Phone 4421 —
Spearman

Mr. Farmer
FOR
MOWING
WITH
NEW HO
WIRE-T
SEE
Claude Sha
Phone 4421 —
Spearman

FLOYD'S LOCKER



SEE US FOR YOUR BEEF NEEDS
We handle a complete stock of frozen food containers
HOME CURED
1/2 or Whole Beef lb. 39¢

FLOYD'S GROCERY

Cut those Food Bills down!

LETTUCE	2 Heads	25¢	1/4 lb. Liptons Tea	36¢
Cold Watermelon	lb.	3c	Sturgeon Bay Cherries	4 For \$1.00
BORDEN BISCUIT	2 Cans For	17¢	Long Horn Cheese	lb. 39¢
APPLE JELLY	12 oz. Jar	24¢	Bacon lb.	49¢
DIAMOND TOMATOES	2 Cans	29¢		

V. V. Floyd & Sons

... pound for pound

Chevrolet's got more GO!



Chevrolet's "Turbo-Fire V8" pours out more horsepower per pound than any other engine in its field. That's one of the things that make Chevrolet the new winner in stock car competition. It's one reason young-minded, on-the-go people take to the new Chevrolet like trout take to water. And it's one reason you really ought to try this new Chevrolet yourself. Soon, we hope... if only to see why Chevrolet's causing such a commotion!

FEATURE FOR FEATURE ... CHEVROLETS GOT MORE FOR YOU

9 engine-drive choices on all models

Two great 8's—the 162-hp "Turbo-Fire" or, optional at extra cost, 180-hp "9-cylinder Turbo-Fire" Two great "Blue-Flame" 6's—most powerful in their field. All three modern drives to suit your driving!

Best known, best liked body in the business

You'll find Fisher Body on some of America's highest priced cars and on Chevrolet. But not on any other car in Chevrolet's field!

12-volts for twice the punch

Chevrolet has the only 12-volt electrical system in the low-price field. You get quicker starting in all weather, plus finer performance and a greater reserve of electrical power.

Something new in steering and suspension

With Ball-Race Steering and Glide-Ride Front Suspension, this new Chevrolet rides, handles and corners like a sports car!

CHEVROLET

MCCLELLAN CHEVROLET CO.
Spearman, Texas

GRUVER MOTOR
Gruver, Texas

Summer Training
 colleges and universities out the United States are attending training camps installations in

where 1,183 ROTC five-state Fourth receiving instruction in Military Science. is the first of its kind in the area. Last year area General students encampment Hood encampment is being placed and the student's function efficiently combat operations as of an officer branch Graduation scheduled for July

er Aircraft Artillery en- Fort Bliss has drawn 20 different col- geries throughout ates. The corpsmen on 90-mm guns, on 40-min self pro- form also are perform- ing in map reading, aerological and radi- and physical com- out the summer ation exercises will 4.

Medical Service en- being held at Brooke al Center at Fort Sam ending the encamp- ing of veterinary students, students and 37 stu- medical fields. 21 colleges and uni- throughout the United phases of the Army program including field and logistics. The will hold its gradua- August 5.

Samuel T. Williams, commander, estimat- 65 students who have received their college de- commissioned at the encampment. The remainder students, upon satisfactory of six-week camp, will their schools next fall fourth and final year and will be commis- sioning of their college

qualifying for a Reserve it is mandatory that ROTC students attend one summer encampment. commanding generals of Fort Bliss and Brooke al Center are serving commanders and three of military science and serving as deputy commanders.

camp commanders are: Grimes, Fort Hood, Alabama A&M College, Fort C. Conner, Fort Bliss, University of Minnesota and F. Snyder, Fort Sam commander of the Medical Service School, Brooke al Center.

transcontinental air- between New York San Francisco was start- 1955.



Come On In

Open everyday from 2 until 5.
 Sundays 2 Until 5:30

Open on Monday, Tuesday, Thursday, Friday nights 7 until 9

Spearman Pool

The Pool will not be open to the public Friday night July 29, because of a private party.

HEAR T. L. OSBORN

Managing director of World Missions Crusade

August 2, 8:00 P. M.

August 3 2:30 & 8:00 P. M.

AT FULL GOSPEL CAMP MEETING MEADE, KANSAS

See Film — "The Java Harvest" 8:00 P. M. August 3

Get on the FORD Bandwagon

Now's the time to join the swing to FORD—the car that sells more because it's worth more
 Ford's Thunderbird beauty will give you extra pride of ownership. Its Angle-Poised Ride will bring you extra-smooth comfort. Trigger-Torque power will give you extra GO far more driving fun at all speeds. And you can count on your Ford to hold onto its extra worth . . . thanks to Ford's traditionally high resale value.



Get our Leadership Deal today!
 Right now, during our Summer Bandwagon SELL-a-bration, we can make you a Leadership Deal—a money-saving deal—on a beautiful new Ford. Our trade-in allowance is way up . . . down payment is easy to handle . . . terms are long-low-n-easy. Drive your car in for a free appraisal. When you hear the extra-good deal we can make you, we believe you're going to say "That's for me!"

Your Friendly Ford Dealer,
UNIVERSAL MOTORS JOE TRAYLER
 Gruver, Texas Spearman, Texas

Through Our Checkouts Pass the THRIFTIEST SHOPPERS in TOWN



Specials for Thurs. P. M., Friday & Sat.

Farm-Fresh Produce
 PICK-O-MORN — PACKAGE
TOMATOES 2 for 29¢
 LARGE · GREEN · FIRM · HEADS
CABBAGE lb. 5¢
 FRESH · NO. 1 · ARIZONA
CANTALOUPE lb 10¢

Shortening
 LARGE SIZE **43¢**
BISQUICK 10 LB. **89¢**

Cherries SHURFINE TALL CAN RSP **5 for \$1.00**

Charlotte Freeze BORDENS 1/2 GALLON **49¢**

FRUIT PIES LIBBYS FROZEN **27¢**

GRAPE JUICE WELCH 6 OZ. FROZEN **19¢**

CREAM CHEESE each KRAFT PYREX CUPS **33¢**

CHEESE KRAFT ASSORT. LINK 6 OZ. **29¢**

COFFEE CHASE & SANBORN lb. **83¢**

DOG FOOD GAINES TALL CAN **2 For 25¢**

TUNA 29¢ SHURFINE

CLOROX 1/2 GALLON **29¢**

SKINNERS 10 OZ. RAISIN BRAN **15¢**

Thrifty gets its biggest lift at YOUR CUT RATE GROCERY AND MARKET where every price is a low price every day! And it stands to reason—low prices all along your food list means a much lower cost for your basketful of food! Shop here today—and you'll know for sure that the thriftest shoppers in town pass through our checkouts. The thriftest—and the happiest . . . because our clean, bright market with its attractive displays and fast, accurate checkout makes shopping here a real pleasure.

GERBERS STRAINED BABY FOOD 3 For 23¢
 HI — C — 46 OZ. CAN
ORANGE ADE 25¢
 DAVY CROCKETT **PEANUT BUTTER 29¢**

Shurfine 3 lb. Tin 75¢

GLADIOLA FLOUR 89¢

Self-Service Meats

BACON Swift Premium Tray Pack lb. **59¢**

LUNCH MEAT 25¢ Armours Star Asst. 6 oz. package

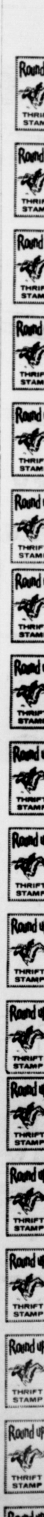
PORK SAUSAGE 49¢ Pinkney's 2 pound Bag

SIRLOIN STEAK 69¢ Cut From Grain Fed Beef

SAVE time steps money!

CUT-RATE GROCERY MARKET SPEARMAN TEXAS

FRIENDLIEST STORE IN THE PANHANDLE MAIN STREET



GIANT

STOREWIDE CLEARANCE

The Spearman Reporter

Successor to the Hansford Headlight, Published Thursday of each week in Hansford County, at Spearman, Texas

WILL J. MILLER, Editor and Publisher

Entered as second class matter Nov. 21, 1919 at the Post Office at Spearman, Texas, under the Act of March 3, 1879.

In Hansford and adjoining counties, One Year \$2.50
Out of Hansford and adjoining counties, One Year \$3.00

CLASSIFIED ADVERTISING

First insertion, 4c per word; 2c a word for every issue thereafter. Card of Thanks, 4c per word

Display Rates on Request
NOTICE TO THE PUBLIC: Any erroneous reflection upon the reputation or standing of any individual, firm or corporation that may appear in the columns of The Spearman Reporter will be corrected when called to the attention of the management.

Plans Are Rearing For 19th Annual XIT Rodeo, Reunion

DALHART, TEXAS—Plans are rearing final completion for the 19th annual XIT Rodeo and Reunion, scheduled August 8 and 9th in Dalhart. Three amateur rodeo performances, a big downtown parade, free barbecue with rodeo ticket purchase, three dances, and the annual reunion for former XIT cowhands are on the busy two-day schedule.

The largest rodeo in the West based on the history of a ranch, the XIT rodeo is expected to be larger than ever this year. Rodeo performances are scheduled at 7:30 p. m. on August 8 and 9, and at 2 p. m. on August 9. The afternoon show will feature the free barbecue for those holding rodeo tickets with the meal slated to start at 12 noon.

Questions & Answers

Q—Does time spent as a cadet at the U. S. Military Academy at West Point count, in computing my entitlement for Korean GI Bill training?
A—No. Time spent attending any of the U. S. Service academies including West Point—may not be included, in figuring your GI training entitlement.

Q—About a year ago I was seriously injured while traveling under orders, to report for induction into military service. Of course, I never was inducted. My disability is acting up, and I need hospital care. Would I be eligible to go to a VA hospital?
A—You may be eligible for VA hospital care, on the same basis as a veteran with a service connected disability, providing your disability was not the result of your own misconduct.

Q—I am planning to get a BI business loan to be insured, rather than guaranteed, by the VA. What is the maximum rate of interest on insured non-realty loans?
A—The interest may not exceed a three percent discount rate, or an equivalent simple interest rate of 5.7 a year.

Q—I have a Korean GI term insurance policy. At the end of the five-year term period, what will I have to do to renew it for another five years?
A—You need not do anything—except make certain your premiums are paid on time. So long as your policy is in force at the end of the term period, it will be renewed automatically.

The \$21 million Shamrock Hotel in Houston, Texas, contains 66 shades of green.

ALL SUMMER GOODS MUST COME IN CHECK PRICES SEEING IS BELIEVING

IT'S QUALITY GOODS TOO

JIM NEELY'S

You'll be a **COOLER** cook in a **CLEANER** kitchen with this



NEW RB-64 SPECIAL
Hotpoint
FULLY AUTOMATIC
ELECTRIC RANGE

Only **\$199.95** AND YOUR OLD RANGE WITH FREE INSTALLATION

Gives you electric cooking's well-known advantages of neatness and cleanliness plus all these Hotpoint extra-features: Oven timer clock • Oven signal light • Fast speed Calrod surface units

- All-Calrod Super Oven
- Fluorescent top light
- Reversible Roto-Switches
- Three storage drawers on nylon rollers • Convenience outlet • Porcelain broiler pan. See this great Hotpoint value today!

EASY TERMS
Only \$8.95 down and \$8.95 per month for 24 months

COMMUNITY PUBLIC SERVICE POWER

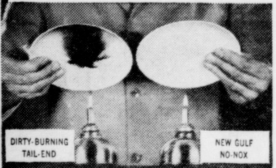


Important thought to keep in mind:

There are times when it can be awfully embarrassing to stall. There's no need to worry about stalling in hot-weather traffic; no need to worry about balky hot-engine starting! Just fill up at your Gulf station with New Super-Refined Gulf No-NOX—the gasoline that's made with evaporation control to prevent vapor-lock. And always protect your engine with New Gulfpride H.D. Select, the motor oil that controls carbon.

New Gulf No-Nox Gasoline

delivers not just the highest octane but full working octane because it's super-refined to burn clean



NO GASOLINE, no matter how high the octane, will let your engine deliver full power performance—mile after mile—until it burns clean. That's why it pays to always use new NO-NOX, Gulf No-NOX is the clean-burning fuel that gives you full working octane day in, day out. In addition, you get . . .


- more complete engine protection
- extra gas mileage in short-trip, stop-and-go driving
- freedom from vapor-lock and engine stalling
- no knock, no pre-ignition—even in today's high-compression engines

Now! For the ultimate in working octane performance, always use Gulf's super-refined gas oil team...New Gulf No-Nox Gasoline and New Gulfpride H.D. Select Motor Oil

The only motor oil super-refined by the Alchior Process for modern high-compression engines.

- Controls carbon
- Combats corrosive acids, rust and deposits
- Assures lower oil consumption
- Provides the toughest protective film ever developed in a motor oil

Available in 3 grades—SAE 10W, SAE 20/20W, SAE 30



WHEN YOU GO ORANGE DISC SERVICE

Spearman, Texas PHONE 2301

ALTON WAYNE We Give Round-Up Thrift Stamps

W. A. ELLSWORTH GULF WHOLESALE Phone 3741 Spearman, Texas

S. L. BECK, SERVICE Phone 5771 Spearman, Texas

LONE STAR SUPER SERVICE Phone 9504 Gruver, Texas

Never easier than now to STEP UP TO OLDS!



Super "88" Holiday Sedan

All this week is "Best-Deal Week"—to make it easier than ever for you to step up to a "Rocket" Oldsmobile.

But our generous appraisal policy isn't all. Look what we're talking about! The revolutionary new 4-Door Holiday Sedan! This scene-stealing beauty puts you ahead of the crowd in style and comfort—with its hardtop design and 4-door convenience! And this Holiday Sedan is powered by those two famous running mates . . . the "Rocket" 202 Engine and Hydra-Matic Super Drive!

So stop in this week. Get our deal! Get out of the ordinary and into an Olds!

A "ROCKET" FOR EVERY POCKET!
And you'll find one priced just right for you! Choose from thirteen gorgeous models in Oldsmobile's three thrilling series . . . a luxurious Ninety-Eight, the brilliant Super "88" and the budget-priced "88" Oldsmobile "88" 2-Door Sedan illustrated.

OLDSMOBILE

FOR COOL DRIVING COMFORT... Get an AIR-CONDITIONED "ROCKET" OLDSMOBILE! See us for details—and a demonstration!

VISIT THE "ROCKET ROOM" . . . AT YOUR OLDSMOBILE DEALER'S

Coury Motor Co. Hwy. 117 Spearman Phone 5621

Don't miss Oldsmobile's star-studded "Spectacular," "Svenhali and the Blondie" - Saturday, July 30 - 1955

Mrs. Clarence Pettitt Honored

Mrs. Clarence Pettitt was honored at an anticipation shower at the home of Mrs. Carl Hutscher, Tuesday July 19 from 2:30 to 5:30 p. m.

Co-hostesses were Mesdames Ed Hutto, Mable Edwards, Homer Allen, and Fred Hoskins. They alternated at the punch bowl and serving cake.

The entertaining rooms were decorated with summer garden flowers and red roses. Mrs. Hutto or Allen made the various floral arrangements.

The guests presented their gifts to Mrs. Pettitt as they arrived. She received many lovely gifts.

Spearman Chamber Of Commerce

There are more than one hundred children participating in the Youth Program this summer. This summer includes both boys and girls in the reading room, tennis, baseball and softball.

There have been some really good ball games and they are getting better as they go along. If you haven't attended one of these ball games drive out some evening and see these youngsters in action. You will be surprised at how much the younger ones have learned in such a short time.

There was a general meeting of the Youth Council Thursday morning, July 21 at 10 A. M. in the Dining Room of the Spearman Steak House. The purpose of this meeting was to discuss ways and means of raising the necessary funds for next year's activities and to elect a chairman for the Youth Program Council.

HOUSING - Mundy - Cooper or Pan-Ama Homes started construction on their housing project Monday, July 11. As these homes are finished and sold it will create some vacancies and enable some more families to move in who have been waiting on two and three bedroom houses.

The Amarillo News-Globe called us this week and asked for an estimate on the amount of construction we have had since January 1, 1954. Since no building permits are required here in Spearman for construction this is a summary of what we were able to find out after confering with several local citizens. This is strictly an estimate.

Commercial Building \$88,000.00
1951, 1952 and 1953 \$220,000.00
City Expansion of Sewer System \$150,000.00
All construction for 1951, 1952 and 1953 \$175,000.00

MEMBERSHIP - We are really pleased at the response shown our invitation to several citizens to become members of the Spearman Chamber of Commerce. Listed below are the names of those who are new members and also those who have renewed their membership: Dr. D. H. Hackley, Joe Day, F. E. Schubert, E. A. Grever, Mrs. Debra Blodgett, W. R. Grever, Robert Schnell, J. K. Hicks, W. W. Smith, Joe D. Burge, Taystee Burge.

This gives us a total membership of one hundred fifty nine members.

OIL AND GAS NEWS - Several people have inquired about some of the oil drilling rigs moving out of the county. We have done considerable checking on this and most information points to the fact that they will be back, in fact one of the rigs that left will return to drill the Sec. 22 Blk. 45 I&T.C. It is believed that others will return as soon as they are complete the wells they are on now.

Since so many leases expire in '56, '57 and '58 the general opinion is that we see an increase in drilling activities in the future.

According to a recent news release the Air Force is looking over Texas and New Mexico for the site of a Western Division of the Tactical Air Command.

If you ever have any news you would like to have put in this bulletin we would appreciate a call or a letter telling us about it.

We have a directors meeting every first and third Wednesday at 12 o'clock noon in the Dining Room of the Spearman Steak House. Any member, citizen or non-member with anything to bring before the directors is welcome to attend.

Jonquil Flower Club Holds Meeting - The Jonquil Flower Club met in the home of Mrs. Pete Fisher, with Mrs. Dolly McWhirter, the president presiding. Dolly gave a report on the installation of officers of the Spearman Garden Center.

Frances Kilgore was appointed as chairman of a committee to plan a swimming party. Estelle Chambers and Anne Sanders are the rest of the committee. Barbara McClellan gave "Now is the Time To".

Estelle Chambers gave a very interesting program on Gray's Eyes. Both vases were won by Mrs. Alta Fisher.

Delicious refreshments were served to Mesdames Betty Porter, Frances Kilgore, Barbara McClellan, Estelle Chambers, Dolly McWhirter, Anna Sanders, and the

Misses Mrs. Fisher. Church. His wife is the former Carolyn Cator, daughter of Mr. and Mrs. Jim Cator.

Norma Sue Griffen, Peggy Martin of Fort Worth and Joy Nowlin of De Leon, Texas, were week end guests in the Winkler home. They are class mates of Janelle Winkler. The girls had a fine time together.

The club voted to have the civic committee recommend to the Garden Center that we add rest rooms to the park, pick up stray dogs, and prohibit burning of garbage.

Present were Mesdames: Chambers, McWhirter, Kilgore, Harbours, Slaughter, Miller, Lyon, Sanders, Archer, Cates, Wilbanks, Fisher, and the hostess Mrs. Ralph Blodgett.

Art Lynch of Almodora, New Mexico, drove over Friday for his wife and children who have been visiting her mother, Mrs. E. C. Womble. They returned home Sunday.

Texline in the northern part of Texas is closer to the capitals of Colorado, New Mexico, Oklahoma, Kansas, and Wyoming, than to Austin, the Texas capitol.

It is so far from El Paso to Austin, Texas, that an early-day senator, traveling with a wagon train for safety against the Indians, did not reach Austin until the legislature, had met, transacted all its business and adjourned.

THIS and THAT Around Gruver

We want to remind you again to trade at home. This is your town, and you should support it. You appreciate all that your city commission is doing we are sure.

But they are dependant upon tax money to make improvements. Then why should we give our business to those who take our money out of town, pay no taxes, do not support our schools and churches. There is a city ordinance against peddling and soliciting in Gruver. We do not know much about its provisions, but we intend to find out. It is a funny thing but we have one or two of our own merchants who are guilty of patronizing out of towners, yet they want your business. Of course it is all your own business, and no one can tell you about it. But it is still more sensible to support our own town, rather than some other.

Mrs. Henry Lowery entered the Perryton Hospital last week where she underwent major surgery. We are glad to report that she came through the operation in good shape, and is doing just fine.

Aubrey Raser entered the Guymon Hospital for an emergency appendectomy. He was in serious condition at the time. But he is now making a good recovery.

Mr. and Mrs. Tom Utley's son and his family from Indiana are spending their vacation here with his parents.

Mr. and Mrs. Mike Flemming are spending their vacation with their daughter and family in Meragor, Texas.

Mrs. Don Hart's parents Mr. and Mrs. S. C. Wilcoxen of Fort Worth are visiting in the home of Mr. and Mrs. Don Hart. They are having a good time with their grandchildren.

Mrs. A. V. Brewer of College Station and her daughter, Mrs. Jack Black of Breckenridge, Texas, are visiting in the home of the Ed Rafferty. Mrs. Brewer is Marjorie's mother and Mrs. Black her sister.

Mrs. Harvey Holt took her mother to San Antonio this week. They were called there on account of the death of her uncle.

Miss Judy McClellan is having a nice vacation She is in California. Her grandparents from Olney took her with them. Hope she has a nice time.

Mrs. Florence Gammill has returned from Amarillo. She has spent the last week there taking advanced studies in hair styling. She is with Rosalie Hughes in the Reubad Beauty Shop.

The Bernsteins had a family reunion last week, out at the old home place. Mr. and Mrs. Theodore Bernsteins are living out there. They were joined by their parents, Mr. and Mrs. Art Bernstein who now live in Amarillo. Lieut. and Mrs. Allen J. Stearnes and baby, Mary Allen, of Tucson, Ariz. Mrs. Stearnes is the former Vera Bernstein. Grandma Mary Brandvick was on hand to visit. Then Dotie Gibner arrived. He had come to visit the Bayless's and was happily surprised to find the whole family there.

Mr. and Mrs. John Heger and daughter Ethel visited at the Doctor Jones ranch last week. They are a very very old timer you might remember John. He worked for Dr. Jones father fifty years ago. This was his first visit back in many years. Visited also with the Tom Jones, and E. H. Taber's

A large crowd attended the ordination service for Charles Wayne Broadhurst last Sunday, in the Baptist Church. Charles is the son of Mr. and Mrs. Walter Broadhurst. They are now living in New Mexico, but were here for the event. Charles is pastor of the Valley View Baptist

FIRST METHODIST CHURCH

Spearman, Texas
Sunday: 9:45 A. M. Church School There Is A Class For You. Bring The Family.

11:00 A. M. Morning Worship Service - Sermon: "God Our Rock" 6:30 P. M. Methodist Youth Fellowship Services.

7:30 P. M. Evening Worship Service - Sermon: "Playing The Fool" 6:30 P. M. The Senior M. Y. F.

Worship Service. Wednesday: 7:30 P. M. Mid-Week Service - Prayer Meeting.

Don't make excuses attend Sunday School and the Worship Services. God needs you and each of us need God and the Church. Come, worship God with us.

CARD OF THANKS

The families of L. S. and Gus McLean wish to thank their many friends for the help and consolation and floral arrangements during the illness and loss of their father, T. P. McLean, of Perryton. May God bless each and everyone for their kindness.

Mrs. Betty Rutledge and children of Houston are visiting her mother, Mrs. R. W. Morton.



Calvin COOLIDGE

"The foundations of our society and of our government rest so much on the teachings of the Bible, that it would be difficult to support them, if faith in these teachings should cease to be practically universal in our country."

Faith in the Bible's Teachings Essential to Our National Welfare

A choice selection of the best bibles may be found at The Spearman Reporter Office



How to make them HAPPY!

Take them out to the MOVIES!

Take them out to the MOVIES!

Take them out to the MOVIES!

Take them out to the MOVIES!

Take them out to the MOVIES!

Take them out to the MOVIES!

Take them out to the MOVIES!

Wagon Wheel DRIVE IN-FLY IN THEATRE

PAN-AMA HOMES, INC.

Invites You To Inspect The Progress Of The 14 New And Exciting

Suburban HOMES

Now Under Construction

The foundations of our society and of our government rest so much on the teachings of the Bible, that it would be difficult to support them, if faith in these teachings should cease to be practically universal in our country."

Faith in the Bible's Teachings Essential to Our National Welfare

A choice selection of the best bibles may be found at The Spearman Reporter Office

The Munday - Cooper Suburban is the home for you!

See why it is for Yourself

Visit the Suburbans under Construction at DRESSEN & TOWNSEND in the 900 block... See the hidden qualities, of a suburban... note the Steel Construction foundation... in other words, you can have an x-ray view of the beautiful suburban

YOU CAN Buy Now!

HOWEVER Supply Is Limited So You'll Have To Act Fast

CONTACT JOHN LACKEY Sales Representative For PAN-AMA Homes PHONE 4531

COOK IN WITH THIS

SPECIAL POINT

ATMATIC RANGE

9995

COMMUNITY PUBLIC SERVICE

POWER

INSTALLATION

known advantages of Hotpoint extra-tube signal light • For

known advantages of Hotpoint extra-tube signal light • For

known advantages of Hotpoint extra-tube signal light • For

known advantages of Hotpoint extra-tube signal light • For

known advantages of Hotpoint extra-tube signal light • For

known advantages of Hotpoint extra-tube signal light • For

known advantages of Hotpoint extra-tube signal light • For

known advantages of Hotpoint extra-tube signal light • For

known advantages of Hotpoint extra-tube signal light • For

known advantages of Hotpoint extra-tube signal light • For

known advantages of Hotpoint extra-tube signal light • For

known advantages of Hotpoint extra-tube signal light • For

known advantages of Hotpoint extra-tube signal light • For

known advantages of Hotpoint extra-tube signal light • For

known advantages of Hotpoint extra-tube signal light • For

known advantages of Hotpoint extra-tube signal light • For

known advantages of Hotpoint extra-tube signal light • For

known advantages of Hotpoint extra-tube signal light • For

known advantages of Hotpoint extra-tube signal light • For

known advantages of Hotpoint extra-tube signal light • For

known advantages of Hotpoint extra-tube signal light • For

known advantages of Hotpoint extra-tube signal light • For

Round-Up Time At Top O' Texas Pampa

It will be "Round-Up Time" at the Top o' Texas in Pampa, August 14, when cowboys and cowgirls from five to sixty-five will converge on Pampa for the Eleventh Annual Top o' Texas Rodeo and Kids' Pony Show.

The first two days, August 1 and 2, will be devoted to the Kids' Show, which is a big-time

rodeo in miniature. Four age groups for boys and girls will be competing for appropriate prizes—1 ages 5, 6, 7; Group 2, ages 8, 9, 10; Group 3, ages 11, 12, 13; Group 4, ages 14, 15, 16. All boys and girls in the Southwest are extended an invitation to participate. Entries must be made by 2:00 p. m., Monday, August 1. The Top o' Texas World's Championship Amateur Rodeo will swing into action Wednesday night, August 3, at 8:00 p. m.

when Goat Mayo will open the gate for his eleventh straight production in Pampa. The show will again feature the "Wild Brahma Gold Rush", an act originating and made popular by the Top o' Texas Show. A fiery, snorting Brahma bull is turned loose in the arena carrying a bag of gold around his neck, and all cowboys entered in the show are invited to help themselves to the loot. This event always brings the audience to

their feet. . . sometimes the cowboys get the money . . . generally they don't. The Amarillo Air Force Band will return for the fourth consecutive year to provide music for the entire show and to lead the downtown street parade at 4:00 p. m. on Wednesday August 3. The band will be under the direction of Lt. Milton Stern. Hollywood's popular TV, radio,

movie, and recording star, Jimmy Wakely, will be the rodeo dances. Background music for the Wakely act will be held in the new National Guard Armory on the Rodeo Grounds, Wednesday through Saturday nights. "The Henry's Specialty Dog Act", which has played practically all the big time circuits of the nation, has been booked for appearances on each night of the show. The act consists of twenty highly trained dogs—big dogs,

little dogs, middle sized dogs—doing everything in the books. The "Cutting Horse Contest", which has been so popular at the Top o' Texas Show since its beginning in 1945, is expected to attract an all-time record number of contestants since the purse money has been increased to \$500.00 plus all entry fees of \$50.00 per horse. Judges for this contest will be Sig Faircloth of Eastland and J. D. Craft of Jacksboro, Texas. Both the Cutting

Horse Judges will also judge all other contests of the show. Jake Mitchell, popular bull-fighting clown for the home of the XIT in Dalhart, will clown the show. All the regular rodeo events will be included—self roping, bareback bronc riding, saddle-bone riding, bull-doggin', bull riding, double muggin', and the Cutting Horse Contest. The Cowgirls' Contest will again provide glamor for the show.

as usual to compete for a stack of cash prizes and a pair of books. The cash prize of \$750.00 will be awarded to the winner. Special prizes will be given to the big show winners. Headquarters at 25. Arrivals may write Headquarters.

Frozen Foods

ORANGE JUICE	DONALD DUCK 6 OZ.	2 For 27¢
PINK LEMONADE	MINUTE MAID 6 OZ.	2 For 27¢
STRAWBERRIES	STOCKLEY'S 10 OZ. PKG.	pkg. 29¢

Because you like the very best...

WHITE SWAN



Coffee White Swan all grinds 79¢ Pound

FREE \$25.00

In groceries to the person returning cash register for largest purchase made Thurs., Friday, or during this White Swan Sale. Cash register received by 12: o'clock Monday.

GRAPEFRUIT JUICE	WHITE SWAN	46 OZ. CAN	19¢
PINEAPPLE JUICE	WHITE SWAN	46 OZ. CAN	25¢
FRUIT COCKTAIL	WHITE SWAN	303 CAN	19¢
PEARS WHITE SWAN		21 SIZE	3 For \$1.
Tomato Juice White Swan		46 OZZ.	4 For 99¢
Canned Milk White Swan	TALL CANS		10¢
Asparagus White Swan	FANCY CUT ALL GREEN	101 OZ. CAN	19¢
Pork And Beans White Swan	300 SIZE CAN		10¢
Turnip Greens White Swan	303 CAN		10¢
Mustard Greens White Swan	303 CAN		10¢
CORN White Swan	GOLDEN C. S.	303 CAN	2 For 29¢

CORN White Swan	WHITE C. S.	303 CAN	2 For
Potatoes White Swan	SHOESTRING	300 CAN	2 For
Tomato Sauce White Swan		8 OZ. CAN	3 For
Spanish Rice White Swan		300 SIZE	
Spinach White Swan		303 CAN	2 For
TUNA White Swan	FLAT CAN		
Stewed Touatoes		WHITE SWAN 303 Can	
Blackeyed Peas	WITH BACON	300 SIZE	2 For
Shortening	BAKE RITE		3 lb. Can
Cottage Cheese	PLAINS 12 OZ.		
Rolls Taystee	BROWN N. SERVE	PKG. OF 12	



Fresh From The Fields of California Direct To You

With Our Own Refrigerated Truck. Big Variety Every Day At These Low Low Prices

Extra Fancy Calif. PEACHES	2 lbs.	29¢
WATERMELLONS	Each	59¢
CORN Fresh Calif. Extra Fancy Large Full Ears	4 For	19¢
POTATOES Hereford Reds 10 lb. Cello Bag		19¢
CABBAGE Firm Heads	lb.	3¢
AVACADOS Perfect Salad Makers	Each	10¢

PRODUCE

HIGH QUALITY MEATS LOW PRICES

BUDDY'S EXTRA SPECIAL FAT CALF SALE!

CLUB STEAK	lb.	43¢
ROUND STEAK It's Tender	lb.	59¢
CHUCK ROAST Choice Cut	lb.	29¢
LOIN STEAK	lb.	49¢
T-BONE STEAK	lb.	49¢
Fresh Ground BEEF	3 lbs.	73¢
ARM ROAST	lb.	35¢

BUDDY'S

WE ALSO THAT WE RED F Check the s and sma The new emergible Designed ars experi mps. Offers th h larger s Pumps 3¢ Simple. i pit 15 month Silent of rged in v

A
READER
IDENTIFYING
THE OWNER
OR OPERATOR
OF THE FARM
ON PAGE 1

WILL RECEIVE
ONE YEAR'S
SUBSCRIPTION
TO THE
REPORTER
FREE



THE OWNER
OR OPERATOR
OF THE FARM
ON PAGE 1
IS ASKED TO
CALL AT THE
REPORTER
AND RECEIVE

Aerial Photographers Pitched Us A Curve On Mystery Farm Last Week.

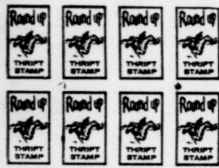
The Big Aerial Photographer company pitched us a curve last week when they evidently took a second picture of the Guy Cooper lovely Farm home just East of the Gruver school plant.

We published virtually this same picture several weeks ago, and carried a complete write-up about the Guy Cooper family, home and farming operations.

There is just a possibility that the error occurred at the Reporter office. When we first received the shipment of 52 pictures from the National Company,

we discovered that they only made engravings of 3 of the pictures. We wired the company and they suggested that we send the pictures back for engravings. In-the-mean time we had to have an engraving made of one of the pictures at Perryton. Since the charges for the engravings at Perryton was the same as the charges at the Ohio firm, we asked for permission to have all the rest of the photos engraved here in Texas. We received permission, and immediately sent the remainder of the pictures to Perryton and have had the pictures back for several weeks.

The only way we could have made the mistake have been for us to fail to mail the pictures to Cooper after it was published, and thus the original photo in the shipment to Perryton was unable to confirm this situation, since the family are away from home on vacation. We have awarded the subscription just as we had not already published this picture. We had three people correctly identified as the Guy Cooper home. Others identified as Don Hart, Boyd Womble, Frank Norton



**SHOP HERE
FOR BETTER FOOD BUYS**

CUT RATE GROCERY & MARKET

FOR YOUR CONVENIENCE
Air conditioned
BANKING HOURS
9 A. M. - 3 P. M.

FIRST STATE BANK
SPEARMAN, TEXAS

FARM MACHINERY repaired
Genuine JOHN DEERE equipment, sales and service!

HANSFORD IMPLEMENT CO.

**Everman MODERN RUBBER TIBED
FLOATING-HITCH DITCHER**

With the new and modern EVERSMAN Ditcher you can start and dig new ditches or clean old ones all by yourself. The EVERSMAN digs narrow, wide, shallow or deep ditches with a minimum of time and effort. Mounted on rubber tires, it is easy to handle or transport on the highway. Made with mechanical or hydraulic control for any standard farm tractor. Comes in two sizes. Special Pan Breaker attachment available. Under favorable conditions, your farm tractor will pull the Pan Breaker at a depth of from 14" to 20".

Come in Today for a Free Demonstration!

B. AND C. EQUIPMENT CO.
Spearman, Texas

SAVE ON ALL
DRUGS
NOW

PRECISION . . .
That safeguards your health

When you leave your doctor's prescription in the skilled hands of our registered pharmacists, you can be sure that it will be filled with professional precision from fresh supplies of top-quality, potent drugs.

SPEARMAN DRUG STORE
Your Rexall Store
We're in Business For Your Health!

J. I. Case Farm Machinery
Completely New
CASE 40
... A BEAUTY TO BEHOLD

- :: Demster Drills - Farm Machinery
- :: Peerless Pumps
- :: Expert farm machinery repairs

R. L. MCLELLAN & SONS

We have a fresh shipment
of sodium Chlorate, for
Johnson grass and weeds.

OPEN FOR BUSINESS AT 7:00 A. M. DAILY

Plenty of storage space for your
wheat!
EQUITY

FISHING EQUIPMENT!

LAWN CHAIRS
GARDEN HOSE
END TABLES
LAMP TABLES
STEP TABLES

SMALL ELECTRIC Appliances
A special price on above items
for this week-end . . .

SPEARMAN HARDWARE
Mr. and Mrs. John Bishop

Shoppers' check list for
Vacation needs

Whether you are going to the cool, high Colorado mountains of hot humid Arkansas, we can furnish pleasant driving and riding tires, that can beat the heat, or stand the cold! See us today for your vacation car needs. Our tires are the best! Remember to drive safely on your trip!

CONSUMER SALES CO.

ASK ABOUT OUR
PANHANDLE
FOOD PLAN!

**Round up
THRIFT
STAMP**

Panhandle Furniture Ma