

The Spearman Reporter

HANSFORD COUNTY
147 producing gas wells
producing world's best
gas for U. S.
THURSDAY, MAY 27, 1954

THE SPEARMAN REPORTER, SPEARMAN, TEXAS

The Finest Rainfall Is Saver To Hansford Co

Flower Show Winners

The following is a list of winners in the Delphinium Flower show held last week in the First Methodist Church.

Morse Graduates

Mr. and Mrs. Russell Visiting

Music Scholarship Auditions

Revival Services To Begin At Gruver Church June 2

Attends Sister's Funeral

Attend Fashion Show At Dallas

Hitchland News

Gruver Amateur Rodeo Will Begin At 7:00 P. M.

Christian Science Lesson-Sermon

Betty Whitson To Be Honored For Work

Robt. Wright Of Gruver Finishes Air Corp Training

Flower Arrangement School

Korea GI Bill Cut-Off Date

Summer Youth Program

Attend Fashion Show At Dallas

Hitchland News

Hansford county will join Gruver on Friday and Saturday nights, and Saturday afternoon, for one of the gayest rodeo celebrations ever held in Texas.

The stock for the rodeo is furnished by Claude Hays of Weatherford, Okla.

Robt. Wright Of Gruver Finishes Air Corp Training

Flower Arrangement School

Korea GI Bill Cut-Off Date

Summer Youth Program

Attend Fashion Show At Dallas

Hitchland News

Population In City Grows

The Seismograph Service Corporation, with headquarters in Tulsa, Oklahoma, along with 13 families, and three single men, have settled in Spearman, and their headquarters are set up in the Burran Building.

Miss Coon's son Bob Jam-boree is the name of the Dress review. It will be Miss Personality and will be elaborately done in red and white. Thursday May 27, at 8:00 in Gruver 25 and 50 cents all proceeds go to the Park Fund. Every one is invited to come.

Korean veterans separated from service before August 29, 1954 have only until August 29, 1954 to enroll for education or training under Public Law 559 Korean Veterans who were separated from service after August 29, 1954 have two (2) years from the date of their separation in which to enroll and begin training. This deadline will effect a good number of veterans in Hansford County who were separated prior to August 29, 1954. For further information please contact A. L. Wilson, Jr. Veterans Court Service Officer.

Summer Youth Program

Attend Fashion Show At Dallas

Hitchland News

Hitchland News

Hitchland News

MIN.	RAIN
55	0.00
57	0.07
57	0.00
61	0.00
62	0.00
53	0.50
47	0.75
47	0.05
47	1.70

istion services

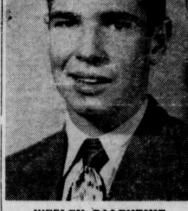
For Vacation Bible

Charges

Charges



J. W. SWINK



WESLEY BALENTINE

Morse Graduates

Mr. and Mrs. Russell Visiting

Music Scholarship Auditions

Revival Services To Begin At Gruver Church June 2

Attends Sister's Funeral

Attend Fashion Show At Dallas

Hitchland News

Christian Science Lesson-Sermon

Betty Whitson To Be Honored For Work

Robt. Wright Of Gruver Finishes Air Corp Training

Flower Arrangement School

Korea GI Bill Cut-Off Date

Summer Youth Program

Attend Fashion Show At Dallas

Hitchland News

Population In City Grows

The Seismograph Service Corporation, with headquarters in Tulsa, Oklahoma, along with 13 families, and three single men, have settled in Spearman, and their headquarters are set up in the Burran Building.

Miss Coon's son Bob Jam-boree is the name of the Dress review. It will be Miss Personality and will be elaborately done in red and white. Thursday May 27, at 8:00 in Gruver 25 and 50 cents all proceeds go to the Park Fund. Every one is invited to come.

Korean veterans separated from service before August 29, 1954 have only until August 29, 1954 to enroll for education or training under Public Law 559 Korean Veterans who were separated from service after August 29, 1954 have two (2) years from the date of their separation in which to enroll and begin training. This deadline will effect a good number of veterans in Hansford County who were separated prior to August 29, 1954. For further information please contact A. L. Wilson, Jr. Veterans Court Service Officer.

Summer Youth Program

Attend Fashion Show At Dallas

Hitchland News

Hitchland News

Hitchland News

SPEARMAN YOUTH PROGRAM

Dear Parents:

The Youth Program will get under way this THURSDAY AFTERNOON at 3:00 P. M.

Your children are urged to meet with us according to the following schedule:

ALL BASEBALL PLAYERS
Will meet at the High School ball diamond

ALL TENNIS PLAYERS
(Grades 6 - 7 - 8) will meet at the High School tennis courts.

ALL READING ROOM PARTICIPANTS
Will meet at the City Park.
(This is a follow-up of the questionnaire that you received just before school was out.)

Paul Smith, Chairman



"SASKATCHEWAN" (2-C)



Engagement Is Announced

Mr. and Mrs. D. A. Robason of Siloam Springs, Ark. announce the engagement and approaching marriage of their daughter Wanda, to Hershel Lee Jones, son of Mrs. Mac Leverton of McNary, Arizona.

Mrs. Close Shower Guest

Mrs. Vance Close was given a surprise tea-shower at the Methodist fellowship hall recently as a going away surprise.

The hostesses were Mesdames: James Sparks, Cecil Crawford, Ernest Archer, Johnnie Close and David Alexander. She received many useful and beautiful gifts.

Bridal Shower

Mrs. Bob Ratliff was honored with a bridal shower Friday, May 21, in the fellowship hall at the Methodist Church.

Nolmer, J. D. Floyd and Ernest Archer. Miss Belva Sparks played wedding music while the guests assembled. The serving table was laid with a lace cloth and centered with an arrangement of white and yellow carnations, tied with satin streamers bearing the name Bob and Carol.

Movie advertisement for 'The Great Adventure... The Mighty Conquest of Canada's Savage Mountain Empire!' featuring Alan Ladd, Shelley Winters, and Saskatchewan. Directed by Raoul Walsh.

LYRIC May 30 - 31 : June 1 Sunday, Monday and Tuesday

MOST for your money

new FORD Triple Economy Pickup!

NEW FORD 61 1/2-ft. F-100 Pickup. GVW 4,800 lbs. Big 46-cubic-foot box. Only Ford has toggle-type tailgate latches with rubber anti-rattle cushions.



MOST POWER

With new 130-h.p. Power King V-8 engine, the new Ford F-100 Pickup is the most powerful ever built! Or, choose the 115-h.p. Coat Clipper Six—the most efficient 6-cylinder engine in its class!

MOST COMFORT

ONLY FORD offers so much to help the driver do a better day's work—faster and easier! The new Ford Truck Driverized Cab gives you more glass area, wider seat, and wider opening doors than any of the other big leading truck makes!

MOST ECONOMY

ONLY FORD Trucks for '54 give you Triple Economy! 1. New gas-saving Low-FRICTION engines increase power up to 23%, cut wasteful internal engine friction as much as 33%.

Why drive a "down payment"? Come in today and trade for one of the new...

FORD TRIPLE ECONOMY TRUCKS

Joe Trayler Your Friendly Ford Dealer

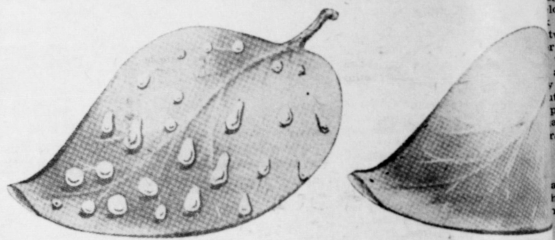
321 Main — Phone 2451

Spearman, Texas

FERTILENE

Complete Liquid FERTILIZER

Amazing New Discovery That Doubles Absorption Foliage Feeding



Here is a leaf sprayed with Liquid Fertilizer NOT containing Sorbaphyll. Notice how the surface tension of the liquid holds it in tiny droplets covering only a small area of the leaf.

Here is a leaf sprayed with Liquid Fertilizer containing Sorbaphyll. Notice how the surface tension of the liquid breaks the surface tension of the leaf. Reaches the plant completely. Only Fertylene.

Fertylene Leaf-Feeding Increases Yields, Promotes Faster Vigorous Growth... Science Proves!

Fertylene concentrate can be profitably used for leaf-feeding on all Sorghum crops, pasture crops, Fertylene feeds your plants immediately... faster! more vigorous growth which results in increased yields. May be used with water or without. Your regular spraying equipment will do the job simply adjust the nozzle to spray the leaves. Add Fertylene in place of water to your spray and fertilizer as you use.

New Improved Formula. Fertylene Liquid Fertilizer is a concentrated compound made of the finest elements needed for growth. It is a super-charged solution containing 10% Nitrogen, 5% Phosphorus, 5% Potash plus trace elements of Boron, Manganese, Zinc, Calcium, Iron and Molybdenum.

Fertylene Offers You The Benefits Of Scientific Seed Treatment For Small Grain.

Fertylene adds nourishment to seed-grain and these nutrients are used by the seed germination. Root structure and top growth are improved in early stages and are considerably increased. Results with Fertylene have been particularly outstanding where soil is deficient.

Less than 60¢ an acre One gallon of Fertylene diluted with a half-gallon of water treats 10-12 bushels of wheat, oats, rye, barley seed, alfalfa, clover or timothy. Costs less than 60¢ an acre!

We are equipped to treat through our Slurry wet treater, you will plant. We are using Fertylene (10-15-5, plus trace elements) as a base, with wettable Lindane and wettable Arasan, which protect from worms, smut, blight and other seed-borne diseases. We can furnish you with the Fertylene if you prefer to treat your own seed. Bring containers for a bulk price. Let us how you can stock of Blue Tag Certified seeds.

R. L. Porter Grain & Seed Company

Phone 3751

SPEARMAN

Spearman Reporter
and Headlight, Published Thursday of each
week in Hansford County, by Spearman, Texas.

Editor and Publisher
matter Nov. 21, 1919, at the postoffice at
Spearman, Texas, under the Act of March 3, 1879.
Subscription Rates: One Year \$2.50
Six Months \$1.50
Single Copies 5c
SPECIAL ADVERTISING
word; 20 a word for every issue thereafter.
Display Rates on Request.
No responsibility is assumed for the return of
any individual, firm or corporation, but
the attention of the Spearman Reporter will be
given to the management.

proverbial eight ball.
We witnessed a program over
TV in which our President pre-
dicted considerable disaster for
the Western World if Indo China
should fall to the hands of the
Communists. The world read
what the Vice President had
to say relative to sending troops
to help the French if it was
necessary to keep the vast trea-
sure of war materials in Indo
China within the grasp of the
Western world. The world also
read the contradiction issued by
the President relative to sending
USA troops to fight Communists
in Indo China.

As it has been interpreted the
threats and boasts of the USA
were BLUFFS and they have
been called. It places the Repub-
lican Administration in a bad
light. We have either got to
make good on some of our
threats or surrender the rich
war prizes to the Communists.
Present talk indicates that some
troops may be sent to some
parts of Asia. Nothing authentic
Nothing to be relied upon.

As we see the matter, the
USA is in a bad spot. We ap-
parently do not have the whole-
hearted support of the British.
We seem to be very critical a-
bout the British—but let us
place ourselves in the shoes of
the British. Those people have
suffered the devastation of war.
Their property has been ruined—
their country has been wiped
out—and they sit at the de-
serts of Russia. Should a general
war become a fact, the Russians
with their H bomb would start
destruction of the British Islands.
Just imagine yourself located
where the British find them-
selves, and think if you would
not want to try some sort of

to begin
we are we
the storage
over a
these ele-
where we
action have
was shipped
s. Perhaps
st situated
the ad-
s being
take care
ms for that
outlook for
do not feel
the national
like the
highlight the
eeded in
pping, and
Nitrogen
behind the
n. Map

MILK SEED
Martin Milo Raised on dry land
CLEANED TREATED
BILL ETLING, Gruver

appensement to Russia before
you endured another POSITIVE
devastating round of WAR.

From this seat it looks to this
writer that the Republicans as a
party have been trying to insure
re-election at the polls, and have
not given the foreign policy their
careful attention. We have the
greatest admiration of Presi-
dent EISENHOWER as a wonderful in-
dividual, but he has had some
pretty unreliable advice—apparent-
ly—and he is trying manfully to
pull out of the hole his
advisors have managed to create.
To send troops to Indo China
at this time would insure the
election of a Democratic adminis-
tration comes the November
election. To back down on our
threats and pacify the Communists
and allow them the rich
reward of victory in Indo China
will certainly not make many
additional Republican votes in
November.

It's a hard row of stumps.
Ike, is pestered with some of the
most weighty questions any
president has ever faced. It cer-
tainly was a big mistake to al-
low McCarthy investigation. It
has become an evident fact that
nothing will be gained by the
lengthy and unhealthy hearing
that are gradually reducing the
confidence of the outside world
in the leadership of America.
On the other hand it would be
a severe mistake to shut the
investigation off at this time,
and leave the world in the
dark as to the purpose and ul-
timate outcome.

Unless there is a lot of changes
made during the next few weeks,
we believe that the people of
this country will place the reins
of the government back into
the hands of the Democrats—
come the November election.

**FARM AND RANCH
INCOME TAX RECORD**
Requires no bookkeeping experience
FOR FARMERS AND RANCHERS OF ALL SIZES
Price \$2.50 • \$3.85 • \$5.85 EACH
(Insert your name and address here)

**SIMPLIFIED BOOKKEEPING
TAX RECORD BOOKS**
For All Types of Business
EASY TO KEEP—LOOSE-LEAF BOOKS
Price \$2.50 • \$3.85 • \$5.85 • \$7.50
Household & Personal Budget Books 75c, \$1.25
(Insert your name and address here)

THE SPEARMAN REPORTER

**FOR SALE - 200 U 69 propane
tank. Best made. Priced for
\$200.00. J. R. Collard
Estate, Spearman
No. 24 31c**
And then there was a time
when people were glad to have
a job.



You can't scare me with that
Newcastle talk. I know it's
contagious and that some of
the neighbors have it. But
so what, I'm protected. The
boss vaccinated me with
intranasal Newcastle vac-
cine. I haven't thought about
it since. You other birds
can still be vaccinated. In-
fact I expect to be re-vac-
cinated later on. There's no-
thing to it. It doesn't even
slow down birds in produc-
tion. Intranasal Newcastle
vaccine is made by...
Dr. Salisbury's

**V. A. INSURANCE OFFICE
WILL MOVE TO DENVER**
The insurance activities of
the Veterans Administration
District Office in Dallas, Texas,
are being transferred to the Vet-
erans Administration District
Office located in Denver, Colo-
rado. This change will affect all
veterans of Hansford county
who now hold their national ser-
vice life insurance, in that their
future premiums will be mailed
the new address which is: Vet-
erans Administration District Of-
fice, Denver Federal Building,
Denver, Colorado. For further
information on this change, please
contact A. L. Wilson, Jr.,
Veterans County Service Officer,
Courthouse, Spearman.

ROUTE TO CAVERN
Dallas
New Mexico
San Antonio
Texas Longhorn Cavern, third
largest in the world, and the
beautiful hill country which
surrounds it, can be reached
over excellent paved highways
from every section of Texas.
The huge cavern is one of the
state's great scenic wonders.

Mrs. Ora Tyra of Willow, Ok.
visited last week with her sister
Mr. and Mrs. Carl Hutchison.
She also visited a sister and other
relatives in Perryton.

**Why Pay
MORE?**



**THE NEW
REMINGTON
Office siter**

Handles your correspondence
and reports. Full 10 3/10 inch
writing line. Handles paper up
to 11 inches wide! Compact
Full Featured! Budget term!
Try it, today!

THE SPEARMAN REPORTER

ATTENTION

FARMERS
**SPECIAL PRICE ON
Oklahoma Certified
Martin-westland Sor-
gum seed through
month of May. Come
and get it at \$4.75 in
lots of 20 bags or more**

Also have Norghum. Grown from
Foundation Stock. Farmers may
pool their orders, 5 Miles North-
west of Hardesty Route 3.

**Henry Werner & Son
Guymon, Oklahoma.**

Meals for months at your fingertips

WITH THIS NEW 17 CU. FT.

**Hotpoint
FOOD
FREEZER**

Model EK172
\$484.80

Stores up to 602 lbs. of frozen
foods... gives you bigger
capacity in less space.

You can cook whole meals weeks in advance
— have a plentiful supply of meats, fruits,
vegetables and pastries always at your fingertips
with this roomy 17 cu. ft. Hotpoint Food
Freezer.

Most important, you can trust your Hotpoint
to keep your foods safe — fresh, appetizing,
delicious. And frozen-stored so conveniently
you never have to hunt for your choice. Come
in and see — soon!

• quick-freezes 75 lbs. • 3 removable
sliding baskets • cake and pie rack
• interior color styling • alarm signal
light • safety lock-handle • smooth alu-
minum lining • automatic interior light

A Sensation TO SEE!



Super "38" Holiday Coupe. A General Motors Value.

...AN EVEN BIGGER SENSATION TO DRIVE!

Get the behind-the-wheel story on Oldsmobile... in a flashing
new Super "38" Holiday! Discover the reasons for each
breath-taking new style feature. The long, low-level silhouette
means solid, road-hugging comfort... a level, more
comfortable ride. The graceful sweep of the panoramic
windshield is lovely to look at. More important, it's safer to
look through—with 179 square inches more glass area.
Sweep-out doors add a sports-car flair to the exterior. And
they open up the interior, for a free, spacious feeling.
Here, too, you'll find surging new "Rocket" power...
and every major power feature you want. Come in soon.
Learn firsthand why Oldsmobile is out ahead... to stay!

TO STEER!
Instant response! Take command of the 185 hp. "Rocket" engine for smooth, safe action!

TO PARK!
Safety Power Steering* makes you master of rough roads, curves, soft shoulders.

EVEN TO RIDE IN!
Ease into a tight space with a gentle gesture of your finger... with Power Steering*.

**ROCKET ENGINE
OLDSMOBILE**

SEE AND DRIVE IT AT YOUR NEAREST OLDSMOBILE DEALER'S

Coury Motor Co.

Hwy. 117 Spearman, Texas Phone 5621

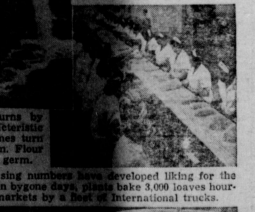
CHECK YOUR CAR - CHECK ACCIDENTS - MAY IS SAFEST MONTH!

Matter of Taste

WHOLE WHEAT flour, stone-ground at a century old New England
of a forgotten age, is prime ingredient in a
making recipe used by bakeries of Pepperidge
famous version of Grandma's methods.



LIKE MEDIEVAL bake shops
where whole wheat doughs
were hand-kneaded, women
seated at sloping table skill-
fully slap and bang loaves.

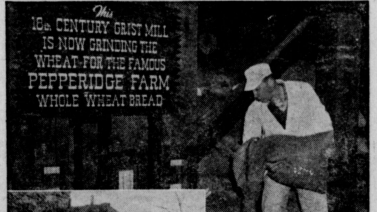


OLD WHEEL that turns by
water power is characteristic
of mill where bushstons turn
slowly and crush grain. Flour
retains the live wheat germ.

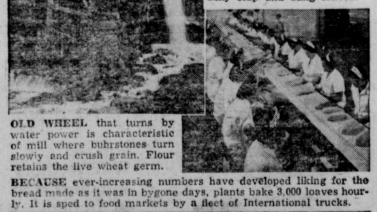
BECAUSE ever-increasing numbers have developed liking for the
was in bygone days, plants bake 3,000 loaves hour-
ly. It is sped to food markets by a fleet of International trucks.

A Matter of Taste

WHOLE WHEAT flour, stone-ground at a century old New England
of a forgotten age, is prime ingredient in a
making recipe used by bakeries of Pepperidge
famous version of Grandma's methods.



LIKE MEDIEVAL bake shops
where whole wheat doughs
were hand-kneaded, women
seated at sloping table skill-
fully slap and bang loaves.



OLD WHEEL that turns by
water power is characteristic
of mill where bushstons turn
slowly and crush grain. Flour
retains the live wheat germ.

BECAUSE ever-increasing numbers have developed liking for the
was in bygone days, plants bake 3,000 loaves hour-
ly. It is sped to food markets by a fleet of International trucks.

...GULF...
 ...ng for Serv...
 ...Orange Disc...
 ...Service!
 ...hone 2391
 ...one Star
 ...ler Camp
 ...ndra Convent...
 ...in Highway Le...
 ...R. C. Chas...
 ...Reasonable
 ...ord VFW
 ...st 6207
 ...2nd 4th
 ...sdays
 ...Each Meetin...
 ...J. P. Varne...
 ...Warren Acton...
 ...Joe B. John...
 ...Johnnie Le...
 ...Dick Kilgus...
 ...Cleaning
 ...Repairs
 ...PLACEMENT
 ...nd Painting
 ...okly) Hous...
 ...n, Texas
 ...DONAL
 ...SSOCIATION
 ...BANK LOAN
 ...hardison
 ...Street
 ...TEXAS
 ...ND STORE
 ...enced meet...
 ...your furnit...
 ...apine
 ...D SON
 ...orning Serv...
 ...ethodist You...
 ...vening Serv...
 ...ednesday Pr...
 ...ednesday Ch...
 ...ursday W. S...
 ...ealey Circle...
 ...uckey
 ...ATE
 ...HO LOANS
 ...501
 ...TEXAS
 ...IN
 ...ON
 ...Thres
 ...le
 ...an By
 ...ES CO.
 ...XAS
 ...rger
 ...n
 ...1
 ...ry
 ...S - E - P
 ...AYS
 ...Office 2751
 ...rman
 ...ng
 ...CW
 ...51
 ...1951
 ...T
 ...AS
 ...ers
 ...e

CHURCH CALENDAR

FIRST BAPTIST CHURCH — GRUVER	
Bro. Geo. W. Massingale, Pastor	
Sunday School	9:45 a. m.
Morning Service	11:00 a. m.
Evening Union	6:30 p. m.
Morning Service	7:30 p. m.
Friday Prayer Service	7:30 p. m.

FIRST CHRISTIAN CHURCH — SPEARMAN	
Rev. C. N. Van Dyke, Pastor	
Sunday School	9:45 a. m.
Morning Service	11:00 a. m.
Evening Service	6:00 p. m.
Morning Service	7:30 p. m.
Friday: Ladies Prayer Service	5:00 p. m.
Friday: Womens Circle Meeting	2:30 p. m.
Friday: Choir Practice	7:00 p. m.
Friday: Prayer Meeting	8:00 p. m.

MORSE METHODIST CHURCH — MORSE	
Rev. O. C. Evans, Pastor	
Sunday School	10:00 a. m.
Morning Services	11:00 a. m.
Evening Services	6:30 p. m.
Mid Week Services	7:00 p. m.

ASSEMBLY OF GOD — SPEARMAN	
John K. Pratt, Pastor	
Sunday School	10:00 a. m.
Morning Worship	11:00 a. m.
Evening Worship	7:45 p. m.
Week Services, Friday	7:45 p. m.

FIRST CHRISTIAN CHURCH — GRUVER	
Bro. Frank Reese, Pastor	
Sunday School	9:45 a. m.
Morning Worship	11:00 a. m.
Evening Worship	7:00 p. m.
Wed. Monthly Fellowship	7:30 p. m.

FIRST METHODIST CHURCH — SPEARMAN	
Bro. J. B. Stewart, Pastor	
Sunday School	9:45 a. m.
Morning Worship	11:00 a. m.
Methodist Youth Fellowship	6:00 p. m.
Morning Worship	9:00 a. m.
Bible Study, Tuesday	9:00 a. m.
Week Services, Wed.	7:00 p. m.

CHURCH OF CHRIST — SPEARMAN	
R. Paul Smith, Preacher	
Bible Class	10:00 a. m.
Morning Service	11:00 a. m.
Communion	11:45 a. m.
Morning Peoples Classes	7:00 p. m.
Morning Worship	8:00 p. m.
Sunday, Mens Training Class	8:00 p. m.
Sunday, Ladies Bible Class	9:30 a. m.
Sunday, Mid Week Service	8:00 p. m.

MORSE BAPTIST CHURCH — MORSE	
Bro. Ralph Renfro, Pastor	
Sunday School	9:45 a. m.
Morning Service	11:00 a. m.
Evening Union	7:00 p. m.
Morning Service	8:00 p. m.
Mid Week Service Wednesday	7:00 p. m.

CHURCH OF CHRIST — GRUVER	
James O. Wilburn, Minister	
Sunday School	10:00 a. m.
Morning Worship	11:00 a. m.
Communion	11:45 a. m.
Morning Drill	6:30 p. m.
Morning Worship	7:30 p. m.
Mid Week Services, Wed.	7:30 p. m.
Men Bible Study Thursday	2:30 p. m.

GRUVER METHODIST CHURCH — GRUVER	
Rev. Cecil Ottinger, Pastor	
Sunday School	9:45 a. m.
Morning Services	11:00 a. m.
Methodist Youth Fellowship	6:45 p. m.
Morning Services	7:30 p. m.
Wednesday Prayer Service	7:30 p. m.
Wednesday Choir Practice	8:30 p. m.
Thursday W. S. C. S.	2:30 p. m.
Wesley Circle, Thursday	10:00 a. m.

SACRED HEART CATHOLIC CHURCH — SPEARMAN	
Father Bernard J. Bivarsie, Pastor	
Mass (1st and 2nd Sundays)	9:00 a. m.
Mass, 4th and 5th Sundays	11:00 a. m.
All other Services announced at Masses.	

UNION CHURCH — SPEARMAN	
Rev. Calvin Springer, Pastor	
Sunday School	10:00 a. m.
Morning Worship	11:00 a. m.
Bible Classes, Sunday	6:30 p. m.
Evening Worship	7:30 p. m.
Wednesday Bible Study	7:30 p. m.

FIRST BAPTIST CHURCH — SPEARMAN	
Bro. O. L. Bryant, Pastor	
Sunday School	9:45 a. m.
Morning Worship	10:55 a. m.
Youth Training Services	6:30 p. m.
Evening Worship	7:30 p. m.
Wednesday Teachers and Officers Meeting	7:00 p. m.
Wednesday Mid-Week Services	7:45 p. m.

OSLO LUTHERAN CHURCH	
J. P. Knudson, Pastor	
Sunday Worship at 11:00 a. m.	
Ladies Aid every 1st Thursday afternoon of each month	
Luther League on Sunday evening every three weeks.	

Presenting **Churches & Ministers** of HANSFORD COUNTY



BRO. J. B. STEWART
 Pastor, FIRST METHODIST CHURCH—
SPEARMAN, TEXAS

ONLY TWO ANGELS ARE SPECIFICALLY MENTIONED in THE BIBLE by NAME—
 GABRIEL in DANIEL 8:16 and
 MICHAEL in JUDE 1:9—SOME
 AUTHORITIES GIVE LUCIFER as a THIRD,
 as a POPULARLY REGARDED FALLEN
 ANGEL and MENTIONED in ISAIAH 14:12.

JOHN—AM I WORKING FOR YOU—OR
 YOU WORKING FOR ME— I EAT HALF
 THE FEED WE RAISE and YOU HAVE
 TO DIVIDE YOUR HALF WITH YOUR
 WIFE and KIDS???

FARMED 12 YEARS BEFORE ENTERING THE
 McMURRY COLLEGE at ABILENE and GRADUATED
 in 1942— FIRST PASTORATE at BLAIR CREDIT,
 Texas ABILENE— HE GRADUATED from THE
 BOSWELL, OKLAHOMA HIGH SCHOOL in 1926—
 HE IS A MEMBER of SPEARMAN LIONS
 CLUB and MASONIC LODGE— HIS FARM
 EXPERIENCES WERE at BOSWELL, OKLA.
 and HASKELL, TEXAS—
 MEET and KNOW YOUR MINISTERS BETTER.

Go to the church of
 your choice this Sunday.



YOUR PASTOR

This advertisement made possible by the following

- | | | | |
|-------------------------------------|----------------------------|----------------------------------|--------------------------------|
| Orange Disc Service Station | R. L. McClellan Grain Co. | Western Auto Associate Store | Coury Motor Company |
| Consumers Sales Co. | Campbell Tailor Shop | Foxworth-Galbraith Lumber Co. | Wardrobe Cleaners |
| Berry's Cleaners | Spearman Hardware | B. and C. Equipment Co. | Corner Drug Store |
| Crawford Implement Co. | Dr. R. L. Kleeberger | Chambers Dry Goods and Groceries | Spearman Super Service Station |
| McClellan Krause Company | Floyd's Grocery and Market | Ed Mundy, Contractor | Equity |
| R. L. McClellan Sons - Case Dealers | Hansford Implement Co. | Cates Grocery and Market | E. C. Greene and Sons Agency |
| White House Properties | White Auto Store | McClellan Chevrolet Co. | B. and B. Grain Co. |
| First State Bank | Owens Sales Co. | Stanley Garnett Implement Co. | Lyons Insurance Agency |
| Spearman Steak House | | Spearman Drug | Bill's Radio and Television |

All Day Meeting At Holt Cemetery

There will be an all day meeting for anyone interested in cleaning and working in the Holt Cemetery on May 29. Dinner will be at noon in the school house. Everyone is asked to bring a basket lunch. Also, bring any tools you may need to work with during the day.

OSLO NEWS

Mr. and Mrs. Wendell Reneau of Boone, Colo., have a new daughter born, May 15. The ma-

terial grandparents are Mr. and Mrs. John O. Dahl. Congratulations.

Mr. and Mrs. Joe Walker and children visited his mother Mrs. Laura Walker at Loveland, Texas, recently.

The Henry Moon family are visiting relatives and friends in South Dakota.

The Gordon Stedje family enjoyed an ice cream party with the Bobby Alexanders Sunday evening.

Mrs. Clarence Johnson, Mrs. Bill Johnson and Eloise, Mrs. Clifford Stedje and Nancy and Mrs. Archie Nelson helped Julia, little daughter of Mr. and Mrs. Archie Nelson, celebrate her birthday on Tuesday.

Our congregation will have a picnic in the Stedje park after service next Sunday, May 30. Everyone is welcome.

Dr. G. E. Spiller of Thermopolis, Wyo., was home over the week end to move his family to their new home. Dr. Spiller has been in Thermopolis since April. Mrs. Spiller remained in Spearman until Phyllis completed her year's school work.

FOR RENT - Small furnished house Mrs. A. E. Townsend, 122 S. Endicot.

THIS and THAT



Around Gruver

We have not yet completed our clean-up, although most of it is done. There are still a few cypress trees that need to be taken care of. There some nice people living on our street. But it is not very pretty. There is an old shack that needs to disappear.

It might make a good storage place for someone if they moved in on to their own lot, and fixed it up. But it is not very nice in your front yard. There is a lot of old junk that could be gotten rid of some of it is valuable, but it could be straightened up, so as to look a little nicer. One thing that has more or less hindered us, is the rain. But we like to be hindered by rain. We hope it keeps on raining for the clean-up. We can finish the clean-up, when the rain quits. But we're in no hurry.

Frank Fleck is back home, and is looking a little better. His arthritis still bothers him a lot, but he is improving right along. Let's hope he stays that way for a while.

Mr. and Mrs. Tom Dozier have left for an extended vacation in California. We hope they have a nice time, and know that we are having nice rains.

Mr. and Mrs. Arnold McMillan left last week for a vacation in Alabama. They will visit their old home and home folk. Guess Arnold will get in some fishing somewhere.

Harvest must be beginning somewhere. Several crews have left here, or are planning to leave right away. Herbert McClellan is down near Olton. Another caravan left here this morning for Burkburnett. Harold Boyd, Irvin Boyd, Sharty Watson, and Bill Chandler, hauling trucks, combines and trailer houses. L. W. Ayres Jr. and George Odum will leave early this week for Crossville. We hope they all make some money, and then come back and find plenty to harvest here.

M-G-M's spectacle of sweeping emotions and sumptuous magnificence such as has never been beheld on the screen!

The Burning Of Rome By Command Of The Emperor!

Abandoned Pleasures In A Palace Of Pagan Delights!

The Martyrdom Of Christians In The Gigantic Arena!

Sacrifice Of The Beautiful Slave Girl To A Wild Bull!

Filed In Rome By M-G-M With A Cast Of Thousands!



The cruel passions and mad deeds of the tyrant Nero...

M-G-M PRESENTS QUO VADIS

The picture that is taking America by storm! Seen and acclaimed by millions of movie-goers!

COLOR BY TECHNICOLOR STARRING ROBERT TAYLOR • DEBORAH KERR LEO GENN, and PETER USTINOV Screen Play by JOHN LEE MAHIN and E. N. BEHRMAN • SONYA LEVINE Based on the Novel by Henryk Sienkiewicz Directed by MERVYN LEROY Produced by SAM ZIMBALIST An M-G-M Picture

LYRIC FRIDAY & SATURDAY 28 & 29 Greater Than Ever. In Wide Screen

Regular Admission This Time (You Paid 1.20 First Time Shows At 6: and 9: P. M. Saturday Shows at 3:00, 6:00 and 9:00 P. M.

We attended the various graduation exercises here this week. The seniors had a fine program. Mrs. Nell Thoreson and Don Morton both made fine speeches. We enjoyed the eighth grade graduation. We got quite a kick out of these boys and girls all dressed up in their finery, as good. Mr. Dooley presided in a gracious way.

WANTED - Plain and fancy sewing Mrs. A. E. Townsend, Phone 2271.

FOR RENT - 4 room house with garage attached, Mrs. H. A. Sloan, or Troy Sloan.

WOMAN WANTED - Chance make money every week mailing postcards. Week home spare time. Box 9 Watertown, Mass.

BUSINESS OPPORTUNITY - \$400 monthly possible, we will select a reliable person from this area to refill and collect money from our new automatic vending machines. No Selling. To qualify applicant must have car, good references, and \$600 working capital which is secured by inventory. Devoting 8 to 10 hours per week may net up to \$400 monthly, with an excellent opportunity of taking over full time. We will allow the person we select liberal financial assistance for expansion. For interview write giving full particulars, name address, age, and phone number to National Sales and Service Co. 3406 Ft. Wayne Indiana. No. 25 1-tc.

USED SPINET PIANO ORGAN COMBINATION FOR SALE: Instrument ideal for small church, mortuary, or home. Unit in excellent condition. For details, write Clark-Shaw Music Store, 317 No. 3th, Garden City, Kansas.

WANTED TO BUY - Three, eight hole old style feed, Dempster Drills. See or Phone George Collard, 2331, Spearman, Texas. No. 25 rth

FOR SALE G. E. Automatic washer, and one blonde bed room suite, complete. See or Phone George Collard, Phone 2331, Spearman, Texas. NNo. 25rth

FOR SALE - 500 gallon u-69 propane tank. Best made. Priced for \$200.00. R. Collard Estate, Spearman. No. 25 31-c

CATES \$ HOMINY To Be 11th PINTO BEANS B J PEAS ENGLISH PEAS PORK & BEANS BEETS SPINACH APPLE JELLY DILL PICKLES CATSUP Schillings or NYLON HOSE ARMOUR 2 lb. Store Closed Sunday May 7

Revival At First Christian Church Gruver, Texas



Beginning Tuesday June 1 - Continuing Through June 13 Services conducted by Evangelist Rev. J. Reece, who has had 3 years experience in the National Field, plus many years as a pastor. He is a very forceful speaker.

The public is cordially invited to attend. Services beginning at 8:00 p. m.

Pastor, Frank L. Reece

Club To Be 11th... the Hansford club announced its annual Family Reunion... to be held at the ranch west of South west of location that for the Shrine two years... and their families attend, and urged us for attending the annual entertainment... Ralph Blodgett, Dan and Perry charge of arrangements for the picnic... Baptist Begin June 7... and boys Vank will begin at Church Monday, nt teachers are ig and making rounded pro-days of school- URE of the life shown each day, in the ages of ally invited to... will be held 3:30 A. M. Comar school, and PARADE which directly after the... is a list of the host: are: Principal, Secretary, Mrs. F. J. Bryant, Mrs. Rex Sandton, Mrs. Andy Fred Holt and... pt Supt and ilgore Rev. O. s. J. R. Stump... 14 Boglist Church hood will close... ad friends are "The Sharing" all start at 9:00... refreshments... m. After re- ildren will pre- and certificates... have had a action Church want to take o thank all the served refresh- e leaders who worked each... showed a slight return in five merce Depart-... VERITIES AND Y... AVENUE