



Sunday Service

Rev. William J. Moore, OMI, pastor of St. Thomas Catholic Church, is pictured as he appears each Sunday at mass. He holds services daily at 7 a.m. and two on Sunday. His other duties include supervision of administrative work, confessions, church functions, and hospital visits.



Home Visitation

Rev. John E. Kolar, pastor of the First Church of God in Big Spring, is shown above as he makes the rounds visiting members of his congregation. Visiting church prospects and new arrivals in the city takes up quite a lot of his time.



Hospital Tour

Dr. R. Gage Lloyd, pastor of the First Presbyterian Church, spends a few minutes with Mrs. James T. Brooks at the Big Spring Hospital. Dr. Lloyd has visited Mrs. Brooks practically every day since she was hospitalized Oct. 23, 1952.

ON CALL 24 HOURS DAILY

Big Spring Pastors Are Busy Each Day

By CLIFTON LAWHORNE
Though Big Spring pastors might differ on Biblical interpretation, they all have one thing in common. They have little time they can call their own.

At least this is the experience of three local pastors from different denominations.

They are the Rev. William J. Moore, OMI, pastor of the St. Thomas Catholic Church; Rev. John E. Kolar, pastor of the First Church of God; and Dr. R. Gage Lloyd, pastor of the First Presbyterian Church.

Although pastoring different size congregations, all three agree they have enough duties to keep them on call constantly.

As Dr. Lloyd said, "To be all things to all men it is necessary to be on call 24 hours a day and attend everything possible."

In addition to preparation for Sunday sermons, such things as visitations, marriages, funerals, civic functions, and conferences take up a lot of their time.

Father Moore, who originally came from Ireland, begins each day at 7 a.m. with morning mass. After that he has all kinds of duties to perform in his 35-mile area of responsibility.

He works at the Veterans Hospital about eight hours each week and spends a lot of time at the State Hospital. Although he has no set time to visit the sick, he goes whenever called or when someone is dangerously ill.

Although there are only around 100 families in St. Thomas Church, there are about 2,000 Latin-American members in the church mission. Father Moore is in charge of both, and administrative paper work for both takes some time.

Father Moore also spends quite a lot of time at Webb Air Force Base, where some 400 Catholics are stationed.

His nights are always full, as he must meet with the Altar society on Monday, high school students on Tuesday, Knights of Columbus on Wednesday and social functions on Thursday and Friday.

Confessions take up a large percentage of his time on Saturday. Baptism services are held every Sunday at 3 p.m. in addition to the two Sunday masses—7 a.m. and 9:30 a.m.

Instructions for converts are held in the mornings. Father Moore says marriages take little time, as there are only one or two per month. In his spare moments—which are few—Father Moore continues his studies.

The elderly priest studied for 12 years at St. Anthony's College at San Antonio to enter the priesthood. He was ordained at the age of 37. His first assignment was at St. Louis Cathedral at New Orleans.

After seven years in New Orleans, he was transferred to Brownsville for 15 years. He came to Big Spring about a year and a half ago.

He likes Big Spring, and says the weather here enables him to do all his tasks. "I feel good here and can wake up early, put in a full day's work, and go to bed happy."

West Texas is a little different from most places, he says. "The people here are easy to get along with—even those that aren't Catholics," he said. "They are open and say what they think."

Father Moore came to the United States in 1916 at the age of 25. He was born in 1890 in Dublin, Ireland. Before entering the priesthood, he worked in Austin and Tulsa, Okla.

Rev. Kolar, a native of Chicago, finds his schedule so heavy that his sermon preparation sometimes lags. His average day ranges from 14 to 16 hours, he says.

"We were told in school to spend about 52 hours on our two Sunday sermons," he said, "but I find myself where not restricted by a solid rock barrier, this vigorous root development improves soils so that they will take the rainfall more readily."

self depending much on the Lord." However, Rev. Kolar pointed out that events of his working days lead to unconscious preparation for the Sunday services.

An average day starts at 7 a.m. for Rev. Kolar. A daily prayer meeting is held in his own church at 9 a.m. daily.

Between the hours of 10 and 12, Rev. Kolar takes care of his administrative work. In the afternoons he has a large visitation program. Organized visitation is held on Tuesday, Thursday and Friday afternoons of each week.

Other afternoons are spent in hospitals visiting the sick and in sermon study. Nights are filled with brotherhood meetings, church board meetings, children's education meets, and social events. Prayer meeting comes on Wednesdays.

Rev. Kolar says that funerals take a lot of a pastor's time, but he doesn't have many funerals. Marriage services, he says, are a pleasure.

"I like to play golf and ball, but seldom get to do either," he said. "My wife threatens to sell my golf clubs because they are unused."

Rev. Kolar has been pastor of the local Church of God on two different occasions. Before his present

(See PASTORS, Pg. 8, Col. 2)

the New LIFEWALL U.S. ROYAL MASTER



Now-All in One!

Blowout Prevention
Skid Protection
Life Protection

Now in addition to all the superb qualities of the U.S. Royal Master you get blowout prevention. The sensational new Nylon LIFEWALL—the finest air-container ever developed—doubles the strength of tires and banishes blowout possibilities.

See the Proof of LIFEWALL Safety!

Now—at your U. S. Royal Dealer's—see how the new LIFEWALL U. S. Royal Master comes safely through destruction tests that ruin other tires! See spectacular action-photos of LIFEWALL Tires preserving all their safety as they speed over steel spikes, into concrete blocks, through jagged chuck-holes!

Act now on SPECIAL Introductory Offer

Now get every benefit of the Special Introductory Purchase Plan—including special allowances for every mile in your present tires, old or new...special credit terms arranged for your convenience. Come in today!

with the Only

EVERLASTING WHITEWALLS

to keep the spotless beauty of your tires!

CURB GUARD* PROTECTIVE RIB

to end curb-scuff nuisance and expense!

ROYALTEX TREAD and TRACTION

—world's utmost non-skid stopping power!

with up to TWICE THE SAFE MILES

—your one tire investment for years!

*Trademark of UNITED STATES RUBBER COMPANY

UNITED STATES RUBBER COMPANY

PHILLIPS TIRE COMPANY

311 Johnson

Phone 472

'KR' Grass Is Well Adapted To Texas

By FRANKLIN REYNOLDS

King Ranch Bluestem now appears to be the most widely adapted introduced grass that can be planted in Texas, according to Painter Wylie, SCS work unit conservationist at Colorado City, who has made a special study of grasses better adapted to West Texas planting and growing problems.

A native of India and parts of Asia it was first introduced into this country about 1910; was first grown on the King Ranch, and has been called "King Ranch Bluestem" since about 1940. One story is that it was originally brought into the United States in the bedding of some Brahma cattle imported by the King Ranch. However that may be it has been successfully planted throughout the Southwest and has proven itself suitable to thrive throughout a wide variation of climatic and soil conditions.

"It has been successfully grown as far north as Woodward, Oklahoma," Wylie points out, "and as far west as the Pecos River. It has withstood below-zero temperatures whenever the plants have been well established. I think it can be classified as a cold-resistant grass as well as a drought-resistant grass."

The Colorado City conservationist says it is generally adapted to light and heavy soils, acid soils, and calcic soils. He doesn't think, however, that it is as well suited to light sands as to heavy clays, but says he has been grown on both. He also explains that it appears to be well adapted to conditions which support a heavy growth of brush except shiny.

"KR" as this grass is commonly known in a perennial summer-growing bunch grass which forms good sized leafy bunches the first year. It grows throughout the frost-free season, remaining green during periods of small during such dry periods, Wylie explains. The first year the plants have a tendency of growing close to the ground until well established. The second and succeeding years the plants grow more upright, with the leaf mass up to 18 inches tall and seed stems three feet or more in height. Under close grazing the plants remain close to the ground and resemble a complete turf if closely planted.

Wylie says he has learned that KR should be planted early enough in the spring to escape weed competition but also late enough for the young plants to escape freezing temperatures. In the area he says this usually means from March 15 through the month of April. He is willing, from his experience, to recommend planting with a grass seed drill in rows 36 inches apart. He says this permits cultivation to remove weed competition where the seedlings are young. He says such plantings should be on a clean, firm seedbed. He warns that the seedling plants are very sensitive to over-sitting or to being planted too deep, and that, therefore, the seed should be covered only enough to keep them from being blown out of the row. There are about 777,000 (three-quarters of a million) filled seed units in a pound of pure seed, he says. The planting rate varies with the type and quality of seed. Usually from two to five pounds per acre of good quality unhusked seed is required where the planting is in three-foot rows, whereas from seven to 10 pounds is needed in drill or broadcast plantings. The quality of planting seed varies considerably, Wylie says, and it is usually most economical to buy the seed with the highest purity and germination tests.

KR Bluestem is a strong aggressive type of grass, well suited for pastures, hay, vegetative waterways, bank and dam protection, seed production, soil improvement and for over-seeding thin and eroded soils for erosion control. Wylie says it is very palatable and that livestock graze it quite readily. It produces well under irrigation, and is considered a heavy forage producer depending upon the fertility of the soil and the amount of rainfall received. The forage yields will run from 3,000 to 6,000 pounds per acre in good soil under favorable conditions. It is also a prolific seed producer and will produce from two to three seed crops per year with yields of from 50 to 400 pounds of seed per acre.

"It is a valuable grass to improve or condition cropland when grown in a long-time crop rotation program," Wylie says, "and since the roots have been known to penetrate the soil to a depth of nine

30% more get up and go



with New Twin-Turbine DYNAFLOW

This you will discover:

No other car gets away from a standing start with the combined quickness, quiet and smoothness of a 1953 Buick with Twin-Turbine Dynaflow Drive.*

With two turbines instead of one—and with engineering advances all through this miracle automatic transmission—you can get from zero to 30 mph before you take two breaths—and with more silence and efficiency than ever before.

Beyond this, there's new power that makes the entire range of performance more electrifying.

In every 1953 Buick SUPER and ROADMASTER you'll find the world's most advanced V8 Engine—the first Fireball V8. In every 1953 Buick

SPECIAL you'll find the famed F-263 Fireball 8 Engine redesigned to provide record horsepower and compression for this budget-priced Buick Series.

But all this flash-fast getaway, this new quiet, this stepped-up efficiency, this more spirited performance, can be judged only at the wheel of a Golden Anniversary Buick with Twin-Turbine Dynaflow.

Will you stop by and try one—with our compliments?

*Standard on Roadmaster, optional at extra cost on other Series.

Television treat—the BUICK CIRCUS HOUR—every fourth Tuesday

Enter GENERAL MOTORS \$194,000 BETTER HIGHWAYS CONTEST See Your Buick Dealer for contest blanks and full information

WHEN BETTER AUTOMOBILES ARE BUILT BUICK WILL BUILD THEM

McEWEN MOTOR COMPANY

403 SCURRY

PHONE 2800

Riding

THE GRUB LINE

With Franklin Reynolds

There will be some busy men around Gail on Saturday, Feb. 21, for that is the date set by the directors of the Borden County Junior Livestock Exposition for the parents of the boys to gather at the show barn in Gail to paint and repair it in preparation for their annual show which will be held Saturday, March 7.

Since 90 per cent of the eligible boys in Borden are enrolled in 4-H Club work there should be plenty of help at hand when the painting-repairing day rolls around.

Those attending the show will be expected to bring basket dinners to be spread at noon. There will most likely not be any sale in connection with the show.

Several of the steers, lambs and barrows being fed out by Borden County boys, but not all of them, will be exhibited at the Dawson-Borden County Junior Boys' Livestock Association Sale at Lamesa this coming Saturday, Feb. 14.

At the show at Gail, however, the classes will include some dairy animals, some sows and gilts, and poultry, as well as the steers, lambs and barrows. A number of the Borden County animals will also be shown at Lubbock later.

George A. Sealy is county agricultural agent at Gail but the show, he points out, is in complete charge of the directors of the sponsoring association. They set up all

the policies and conduct all the business.

How deep will the roots of a mesquite go, and what will they go through?

We don't have the answer, but in the construction of a stock tank on the Borden County place of T. A. Bado, about six miles northwest of Vincent, roots were found 18 feet below the surface and in Permian redbed shale.

Marion Everhart of the SCS said the roots when discovered were well filled with moisture.

"The roots find the cracks in the shale," he explained, "and then work down into those cracks which serve as small water basins, as the roots grow they make the cracks larger causing them to hold still more water that seeps through from the surface which in turn provides more nourishment for the mesquite."

Right now Everhart is wondering if he can produce a crossbred plant—a good palatable, nourishing grass with the root system of the mesquite.

If you see him walking around talking to himself, that's what he's working on.

K. L. Taylor of Loraine, banker and farmer, has recently constructed two miles of new level terraces on his farm north of Loraine. These terraces were built with a belt-type terracing machine. With an-

other two miles he will have his terrace system completed.

The supervisors of the Mitchell County SCD will go to Sweetwater, Feb. 19, where they will attend a conference between the supervisors of four other SCD's and representatives of the West Texas Chamber of Commerce and other Chambers of Commerce in the same area.

The Mitchell County SCD has approved its 1953 plans of operation.

Big Spring's oldest fish is dead, a victim of the cannibalism of a coon.

The fish was a gold one, a resident of Postmaster Nat Shick's fish pond for the last 17 years. Moreover, the fish had made his own living all these years from the moss in the pond.

"I hadn't fed him (how does Nat know it was a "him") a bite in all that time," says the Postmaster.

The fish was about nine inches long. He was in the pond with four others, these others being descendants of other fish that were placed in the pond 17 years ago.

One night recently a marauding coon (Nat found his tracks) came upon the pond and ate the fish. A few nights later the coon returned and ate about 500 snails that were also in the pond.

The fish and snails are all gone now, but Col. Shick is standing a 16-gauge alert, anyway.

A little more than a year ago we reported the organization of the Sirloin Club of Oklahoma at Oklahoma City. Now we can report that club has been thoroughly successful in achieving its goal which was to provide financial support for the annual 4-H and FFA show at Oklahoma City.

Not only has the Sirloin Club been successful in this endeavor,

which was its original aim, but it has been equally as successful in going beyond this limited field of activity.

Money to carry out its programs comes from annual dues paid by the members and all funds are handled by a committee of the club with the books open to any member at any time. By using this means of raising the money to support the 4-H and FFA activities it was not necessary for a few persons to go out into the community and make a canvass for funds as has been done in the past.

The Sirloin Club paid the top price for the grand champion steer at the 1952 Oklahoma City 4-H and FFA show, and also bid in and bought most of the other animals auctioned. In addition the Club was able to pay liberal bonuses to the boys and girls who exhibited but whose livestock did not qualify for the auction sale. The Club also

awarded trophies for showmanship. The group also bought animals at other shows throughout the state, heavily supporting the Negro 4-H and NFA Show held at Guthrie.

Smaller communities could work out a similar program equally as successful through an appropriate Chamber of Commerce committee, with the handling of all funds to be vested in that committee of ranchers and farmers to be spent by them in their discretion. This would enable the merchants and other business people to make one contribution a year to the support of the Junior Livestock program, and the committee would have the advantage of knowing just how much money they could devote to each separate program, thus assuring a more equitable distribution of the money to all 4-H and FFA exhibitors in prizes and prices paid at the auctions.

FEBRUARY SAVINGS!

Regular 25c bag — fresh Merton's POTATO CHIPS **21¢**

Pint Merton's SALAD DRESSING **21¢**

Regular 15c bag Merton's CORN CHIPS **10¢**

LET US THANK YOU FOR 21 YEARS OF PROGRESS

Merton Foods' 21st ANNIVERSARY SALE!

These Valentine Buys are Real Sweethearts

ROUND STEAK CHOICE LB. 69¢

EVERY TIME YOU SPEND A DIME... ASK FOR S&H GREEN STAMPS!

DOUBLE S&H GREEN STAMPS WED.

PETER PAN Peanut Butter 12 Oz. 33c

LARGE FRESH EGGS Dozen 49c

SNYDER'S PRESERVES 2 Lb. Jar 39¢ APRICOT — PEACH

Use the Coupon below and...

SAVE 15¢

on a 3 lb. can of the **NEW and CREAMIER Mrs. Tucker's**




64 out of 64 Expert Home Cake Bakers say Mrs. Tucker's is CREAMIER!

Recently 64 well-known Home Cake Baking Experts chosen by newspapers in 28 cities tested Mrs. Tucker's pure, all-vegetable Shortening in making cakes. Voluntarily, and without remuneration, ALL 64 said "Mrs. Tucker's is the CREAMIEST, BEST Cake-Making Shortening I have ever used!"

The ONLY shortening that gives you **GUARANTEED CAKE INSURANCE!**

Write Mrs. Tucker's Homemakers Dept., Sherman, Texas, for this and Two Other Mrs. Tucker's 40th Anniversary Cake Recipes FREE!

Write Mrs. Tucker's Homemakers Dept., Sherman, Texas, for this Yellow Layer Cake and two other 40th Anniversary Cake Recipes free... If you don't make these and other cakes BETTER with Mrs. Tucker's than with ANY other Shortening—if ANY cake is not LIGHTER, RICHER, MORE MOIST and TENDER—send the recipe to Mrs. Tucker, telling what you don't like about the cake and she will pay you for ALL ingredients used plus a dollar for your baking time.

CLIP and USE THIS COUPON NOW!

This Coupon is Worth... **15¢**

Mr. Dealer: Mrs. Tucker will redeem this Coupon for 15¢, plus 2¢ for handling, on the purchase of a 3-lb. can of Mrs. Tucker's. Payment to be made by our salesman or by mailing to Mrs. Tucker's Foods, Inc., Sherman, Texas. Void where taxed, restricted or prohibited. Offer expires March 31, 1953.

MEADOLAKE MARGARINE is BETTER than BETTER!

Sun Valley OLEO	Lb.	23c
Dog Food KIM	1 Lb. Can	7 1/2c
Kimbell's SYRUP	12 Oz.	19c
Pillsbury Pancake FLOUR	Lge. Size	33c
Campbell's Tomato SOUP	Can	10c
Pillsbury FLOUR	10 Lb. Bag	79c
Our Value SALMON	1 Lb. Can	39c

SWIFT'S PARK LANE ICE CREAM	Pint Carton	15c
LIBBY'S CHILI	Plain 1 Lb. Can	39c
SUPREME CRACKERS	1 LB. BOX	19c

FRYERS 53¢

ROAST BEEF	U. S. Choice Beef Chuck, Lb.	39c
BACON	Fresh Ground, Lb.	39c
RADISHES	Tall Korn, Lb.	49c
ONIONS	Fresh Crisp 3 Bunches	10c
	Fresh Green Bunch	5c

Northern Tissue	3 For	25c
Supreme PICKLES	Quart	25c
Hunt's Potatoes	300 Can	10c
Diamond SPINACH	No. 2 Can	10c
Del Monte CATSUP	14 Oz.	18c
Del Monte KRAUT	303 Can	15c
Gerber's Baby FOOD	3 Cans	25c

MESH BAG POTATOES	10 LB. BAG	49c
FRESH Cauliflower	NOW LB.	10c

LARGE SIZE AVOCADOES	NOW EACH	10c
FRESH TOMATOES	LARGE CARTON	17c

Remember... You Can Shop Till 10 P.M. At

Newsom's FOOD CENTERS

SERVING BIG SPRING

LIBBY'S VALUES



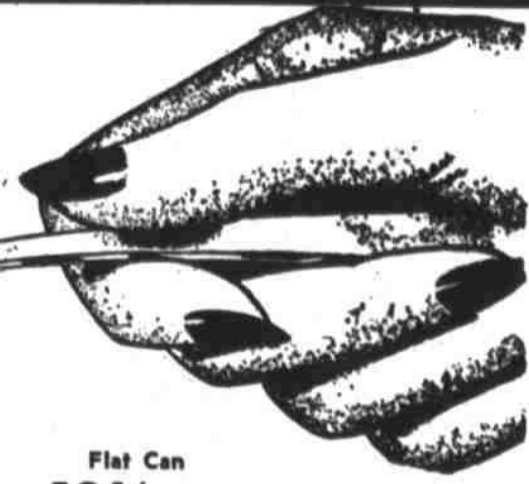
Libby's
KRAUT
No. 303 Can
15c
Libby's
DEVILED
HAM
1/2 Can
18c



Libby's Sliced or Halves No. 303 Can
PEACHES 15c

Libby's Crushed or Sliced
PINEAPPLE Flat Can
12 1/2c

Top Spread
OLEO 19c
Colored-In Quarters



**BO-PEEP
TOILET
TISSUES**
4 Roll Pkg.
39c

FRUIT COCKTAIL Libby's No. 303 Can **22c**

SWEET PEAS, Libby Garden, No. 303 Can **21c**
GREEN BEANS, Libby Whole, No. 303 Can **25c**
PINEAPPLE, Libby Sliced, No. 2 Can **29c**
TOMATO JUICE, Libby, No. 300 Can **11c**

**Armour's Pure
LARD . . . 39c**
3 Lb. Carton

SUGAR Pure Cane 10 Lb. Bag **89c**

Maryland Club, Reg. or Drip Lb. **COFFEE . . . 75c**
Morton Corn Reg. 15c **CHIPS 10c**
GOLDEN CORN, Libby Cream Style, No. 303 Can **19c**
Morton's SALAD DRESSING . . . Pint **21c**
Morton Potato Reg. 25c **CHIPS . . . 21c**
SPAGHETTI & MEAT Libby, 16 Oz. Can **26c**
**HOUSEHOLD INSTITUTE
10-INCH
Handled Griddle**

LOOK AT THESE BEEF PRICES!

U.S. GOV'T. GRADED COMMERCIAL
BABY BEEF

U.S. GOV'T. GRADED
CHOICE BEEF



Com. Baby Beef, Loin or Club Lb.
Steak 49c

Choice Pen-Fed Loin or Club Lb.
Steak 69c

Commercial Baby Beef Lb.
SHORT RIBS . . 25c

Choice Pen-Fed Cntr. Cut Chuck Lb.
Roast 49c

Commercial Baby Beef, Round, Lb.
Steak 55c

Choice Pen-Fed Rib Chops Lb.
Steak 63c

Commercial Baby Beef Lb.
HAMBURGER . . 29c

Choice Pen-Fed T-Bone Lb.
STEAK 75c

Com. Baby Beef, T-Bone Lb.
Steak 55c

Sweet Clover Lb.
BACON 59c

Roast Center Cut Chuck Lb. **39c** Arm Lb. **49c**

Farm Pac 1 Lb. Roll
SAUSAGE 39c

BISCUITS Ballard Canned 2 For **25c**

Baby Beef Lb.
LIVER 49c

FROZEN FOODS
BROCCOLI Hampshire Chopped 10 Oz. Pkg. **15c**
LEMONADE, Food Club 6 Oz. Can **17c**
CAULIFLOWER, Food Club, 10 Oz. Pkg. **23c**
ORANGE JUICE, Food Club, 6 Oz. Can **15c**
GRAPEFRUIT JUICE, Florida Gold 6 Oz. Can **12 1/2c**

**SAVE OVER 40%
WITH OUR CARD PLAN**
1.89 WITH CARD 3.50 WITHOUT CARD
30 DAYS TRIAL, SATISFACTION GUARANTEED

Ben Gay Rub 75c Size **69c**
KLEENEX 300 Count Box **17c**
COLGATE Toothpaste 50c Size **30c**
Phillips Milk Of **MAGNESIA**, 75c Size **59c** Bubble Bath **JOY SUDS**, Lb. **25c** Wildroot Cream **OIL**, \$1 Size **79c**
FOR VALENTINE
CHOCOLATES Martha Washington From **30c to \$6.00** OLD FASHIONED **POUND CAKES** Regular 45c **39c**

Golden Fruit **BANANAS** Lb. **12 1/2c**
California Salad King **AVOCADOES** Each **12 1/2c**
California Iceberg **LETTUCE** Lb. **10c**
Fresh and Crisp **RADISHES** Lb. **7 1/2c**
Nice and Fresh **GREEN ONIONS** Bunch **7 1/2c**
Leafy, Salad Vegetable **ESCAROLE** Bunch **12 1/2c**

FURY'S



King-Size Or Regular?

1st Lt. R. I. Ware, M-Sgt. P. Palatucci and S-Sgt. R.L. Brady fill their tobacco needs at the BX counter. Clerk Agnes Spencer of the Webb AFB Exchange brings out the selection.

SNACK BAR, SHOPPING CENTER OPEN

Webb Base Exchange Grows; One Of Top Morale Boosters

Next to the mess hall, the BX is probably the biggest morale factor in the Air Force. To the airman away from home, it is the corner drugstore, the town department store and the neighborhood juke joint all rolled into one.

Here he gets his cigarettes, toilet articles, magazines, hot dogs, cokes, civilian clothing, buys radios, jewelry, gifts for Mother and girl friend, or just about anything you could name.

In the morning he stops in for a fast cup of coffee. After duty hours will usually find him here enjoying a cold drink, playing the juke box and shooting the breeze with the guys.

The idea of catering to the needs of the troops dates back to the days of Caesar's legions. The term "canteen" is believed to have come from the Roman word "cantina." In Caesar's time, the Via Quintana was a street where shops catered specifically to soldiers.

In America, sales to troops to satisfy their common wants began with the organization of the Continental Army in 1776. For over a hundred years, itinerant merchants, known as sutlers piled their trade on military reservations.

The corrupt and dishonest practices of the majority of these men led to their abolishment by Congress in 1866.

In 1876, Congress authorized a group known as "post traders" to supply the non-issued needs of the men. This system, because of lack of proper control and questionable quality of its personnel, soon went the way of the sutlers.

In 1882, the first organized post canteens were seen. The modern

exchange began in World War I. In World War II it came into its own. Today the service exchange is spread throughout the world, and supplies the needs of millions of American military personnel and their families.

The Army and Air Force Exchange of today consists of civilian employees with Army and Air Force officers in executive control. The exchanges are self supporting and receive no appropriated funds. The profits are returned directly to the soldiers and airmen supporting them in form of support of his recreation programs.

Libraries, movies, day rooms and other recreational features are largely supported by exchange profits.

The Base Exchange at Webb is, as most of the activities of the latter part of 1951 it was a branch of the Reese Air Force Base Exchange at Lubbock.

In April, 1952, it became independent of the Reese exchange. It was then a pretty small affair.

The present "snack bar" housed its entire facilities.

However, as Webb grew, so did its BX. Today, in addition to the snack bar, the BX building includes a complete shopping center handling hundreds of items.

In addition to this, the Base Exchange operates the base laundry, dry cleaners, shoe repair shop, photography shop and various vending machines located throughout the base.

Already underway are plans for expansion of the Base Exchange facilities at Webb. A new Exchange building, with approximately 9,000 square feet of floor space, is to be located directly south of Wing Headquarters. Construction of a service station near the east gate is expected to begin within thirty days. The present BX is to be converted into a cafeteria.

With increased BX services being offered to him, the individual airman should remember that privileges of BX purchasing are to be used only by him or his bona fide dependents. Purchasing items for ineligible persons is a serious infraction of regulations.

The BX at Webb functions under Captain William H. Rosser, base exchange officer. A. A. Walker is general manager, Robert Hickson acts as merchandising manager and O. Thurman is chief clerk.

Jap Labor Group Is Seeking War's End

TOKYO (AP)—Kyodo news service said today the three million member General Council of Japan Labor Unions (Sohyo) has decided to appeal to labor unions in foreign countries to launch nationwide movements to halt the Korean War.

Sohyo, one of the two largest labor organizations in Japan, is considered to be left wing politically but not controlled by Communists.

DIDN'T BETTY EXPECT HIM TO RECIPROCATE?

SAN FRANCISCO (AP)—Sgt. John J. Colletti, 24, thought he was just one of 1,824 Korean War veterans arriving on the transport Gen. W. F. Hase Monday until...

Up rushed actress Betty Hutton and planted a kiss on his lips. Colletti, a San Franciscan, was the 300,000th vet returned by ship.

He was surprised... but not too surprised to cling to Betty, who found her intended ceremonial kiss turned into a production.

Not for 90 seconds, and after repeated frantic signals from Miss Hutton for a break, did the sergeant let go.

"This has me worked up more than combat," he confided.

"Lordy!" exclaimed Betty.

1/2 PRICE SALE!

Pint or quart Duchess Salad Dressing 1/2 price when you buy Lunch Box Sandwich Spread

Details On Both Products

Dressing Duchess 16-Oz. 35¢ 32-Oz. 52¢
Spread Lunch Box 16-Oz. 35¢ 32-Oz. 61¢

MACARONI SPAGHETTI PURE EGG NOODLES

Buy Skinner's Macaroni... It's enriched with health-giving vitamins that help build strong bodies and prevent fatigue.

Children Get Air Education Tour At Webb

Pioneer Air Lines, cooperating with Webb Air Force Base, has inaugurated a program of air education for school children that may well set a pattern for similar industries throughout the country.

On its regular 7:20 a.m. flight into Big Spring each morning recently, for example, anywhere from nine to 15 children from Midland schools arrive at Webb Air Force Base. Before they return to Midland on the 9:20 flight, they are given a special tour of the base facilities.

By the time the kids re-enter their classrooms many of them have had their first trip in an airplane and their first look at Air Force planes and training equipment.

Pioneer has carried 4,300 school children on these flights over all its routes to date, most of them in Texas.

Webb Air Force Base, during the past two weeks, has been host to 123 of the children and their teachers from Midland.

The visitors are delivered by

Pioneer's Martin 202 airliners to the Webb base operations office. From there they are picked up by an Air Force bus and toured over much of the base.

First stop is the base's brand-new physiological training center, which is just a scientific name for a high-altitude indoctrination building.

Here the children are given thorough explanations of how the high-altitude pressure chambers are used to show cadets how they will feel and react when they take their first flights to 30 or 40 thousand feet. The cadets sit in the compression chambers in complete flight outfits, including oxygen masks, while air is sucked from the room by high-capacity pumps. Observers, including the children and teachers, can watch the cadets' reactions from peep-windows in the side of the air-tight room.

The visitors tour an Air Force Mess Hall, are taken out to the mobile control tower at the flight runway to watch the jets and propeller-driven airplanes land and take off, and finally they are taken to maintenance hangers and given real close-ups of jet planes in various stages of repair.

Alrman Lynn Merritt, of the Webb office of information services, arranges and conducts the tours. He has had to re-arrange his working day in order to get to work at 7:15 a.m. to meet the kids.

Billy R. Watson, Pioneer station manager at Webb, said that probably several hundred Midland school kids would tour Webb before the local program is complete.

NOW ALL WE DO IS WAIT UNTIL HE GROWS UP

CLEVELAND (AP)—The Christopher Columbus of space travel already has been born.

That's the word from astronomer John Stegig of Northwestern University's Dearborn Observatory. He says the person destined to make the first trip to another planet or the moon is about two years old, still in rompers, but perhaps right now casting speculative eyes on big brother's television-style space helmet.

Stegig made his predictions in an interview last night. He said educators should start immediately to prepare children for an age of interplanetary travel.

New Dividend Checks For Vet Insurance To Be Mailed Shortly

WASHINGTON (AP)—The Veterans Administration in the next few days will be mailing out 1953 dividend checks to National Service Life Insurance policy holders in all but three states, an Associated Press survey showed today.

For policy holders in Texas, Louisiana and Mississippi, the dividend payments will begin in the next 30 to 60 days.

The annual dividend will be paid to about five million veterans, with the vast majority getting a flat \$60.

Applications Due

WASHINGTON (AP)—The Civil Service Commission announced today it will receive applications for the postmastership at Victoria, Tex.

The deadline for applications is March 3. Names of the applicants will be announced March 5.

Burnett Is Ill

GLADEWATER (AP)—R. W. Burnett, Gladewater oil man and owner of the Dallas Eagles of the Texas Baseball League, is expected to be up and about within a week. He is recovering from an attack of pneumonia.



There are over 3000 low-priced items at Safeway . . . NOW!

THE sure way to learn the facts about food savings is to compare ALL prices. Comparison of just a few advertised prices will not give you a true picture of total food costs because — you can't feed your family on weekend "specials" alone. We invite you to check each of our prices against what you pay if you shop elsewhere. Then compare the total. See how you can save on food when every price is low. Here are a few of the more than 3,000 items on which you can save at Safeway now:

- Check these canned food values...*
- Mexicorn Whole Kernel 12-Oz. 21¢
 - Tomato Soup 16-Oz. 10¢
 - Plain Chili 16-Oz. 63¢
 - Chili with Beans 16-Oz. 35¢
 - Hornel Tamales 15-Oz. 29¢
 - Luncheon Meat 12-Oz. 47¢
 - Tuna Fish 5-Oz. 33¢
 - Shrimp 5-Oz. 37¢
 - Gulf Oysters 4 1/2-Oz. 39¢
 - Vienna Sausage 1-Lb. 20¢
 - Orange Juice 6-Oz. 29¢
 - Orange Sticks 8-Oz. 21¢
 - Choc. Cov. Caramels 9-Oz. 21¢
 - Choc. Cov. Mints 8-Oz. 21¢
 - Almond Clusters 8-Oz. 29¢
 - Tomato Juice Sunny Dawn 46-Oz. 25¢
 - V-8 Cocktail 8 Vegetable Juices 3 46-Oz. \$1.00
 - Asparagus Winslow Fancy Cut Allgreen No. 1 Can 19¢
 - Banjo Hominy Old Fashion Type No. 300 Can 5¢
 - Whole Potatoes Alma No. 303 Can 10¢
 - Tomatoes Miss Texas Standard 3 No. 1 Cans 25¢
 - Tuna Fish Torpedo Grated 5 No. 1/2 Cans \$1.00
 - Chum Salmon Sea Swell 3 1-Lb. Cans \$1.00
 - Mrs. Wright's Bread 24-Oz. 22c
 - Skylerk Bread 24-Oz. 24c
 - Soda Crackers 1-Lb. 25¢
 - Sugar Cookies 13 Oz. Arden Pkg. 35c
 - Blackeye Peas 1-Lb. Pkg. 23¢
 - Large Lima Beans 2-Lb. Pkg. 39¢

- Fine canned fruits*
- Cling Peaches Castle Crest No. 315 32¢
 - Cling Peaches Del Monte No. 315 33¢
 - Fruit Cocktail Del Monte No. 303 25¢

- Fresh PRODUCE**
- Oranges Texas Sweet, Juicy Lb. 5¢
 - Potatoes Red McClures 10-Lb. Economy Pack Bag 55¢
 - Cabbage Crisp, Green Solid Heads Lb. 2¢
 - Grapefruit Florida Marsh Seedless 5-Lb. Bag 55¢
 - Winesap Apples Wash. 12 1/2 17¢
 - Calavos California 34-Size 12 1/2 19c
 - Head Lettuce Chip, Tender 12 1/2 12¢
 - Rutabagas Yellow Tender 12 1/2 7 1/2¢
 - Pascal Celery Wash, Tender 12 1/2 10¢
 - Snap-Top Carrots Chip 12 1/2 10¢
 - New Potatoes Texas 12 1/2 10¢

Fancy Face Cherry Pie

with these fine ingredients...

- KITCHEN CRAFT FLOUR 10-Lb. Bag 87¢
- ROYAL SATIN SHORTENING 1-Lb. Can 73¢
- HONEY BIRD CHERRIES 1-Lb. Can 19¢

Smoked Picnics

- Short Shanks Lb. 33¢
- Beef Rib Roast Stouffer's 7" Cut U.S. Choice Heavy Lb. 65c
- Chuck Blade Roast U.S. Choice Heavy Beef Lb. 43c
- Ground Beef Freshly Ground Lb. 43c

Prices Effective Thursday, Friday and Saturday in Big Spring

Store Hours—Monday through Friday 8:00 to 6:30

Saturday 8:00 to 8:00

209 Runnels

SAFEWAY

Fresh, fresh coffee

- Airway Freshly Roasted Mild, Mellow 1-Lb. Pkg. 75¢
- Airway Freshly Roasted Mild, Mellow 3-Lb. Pkg. \$2.22
- Nob Hill Freshly Roasted Rich, Robust 1-Lb. Pkg. 77¢
- Nob Hill Freshly Roasted Rich, Robust 3-Lb. Pkg. \$1.53
- Edwards Top Quality Vacuum Pack 1-Lb. Can 83¢
- Edwards Top Quality Vacuum Pack 3-Lb. Can \$1.63

SPEED SHAKER

only 50¢ with purchase of Lac-Mix nonfat Milk

Liquefies LAC-MIX nonfat dry milk in seconds! TO ORDER, SEE FOLDER IN PACKAGE

3 1-Lb. Pkgs. \$1.00

- Finest dairy products**
- Sweet Milk Lucerne Home Pasteurized 1-Gal. 24c
 - Sweet Milk Lucerne Home Pasteurized 1/2-Gal. 47c
 - Lucerne Buttermilk 1-Gal. 20c
 - Coffee Cream Lucerne 1/2-Pt. 21c
- LENTEN MEAL IDEAS**
- Lent begins Wed., Feb. 18...
- Long Macaroni 7-Oz. Pkg. 11¢
 - Long Macaroni 16-Oz. Pkg. 19¢
 - Cheese Food 2-Lb. Pkg. 97c
 - American Cheese Dutch Milk 1-Lb. Pkg. 59¢
 - American Cheese Kraft Sliced 1/2-Lb. Pkg. 36¢
 - Swiss Cheese Kraft Sliced 1/2-Lb. Pkg. 39¢
 - Fresh Eggs Breakfast Eggs Grade A Large White Box 65¢
 - Fresh Eggs Oak Glen, Grade A Large Mixed Colors Box 59¢
 - Ocean Perch Captain's Choice Frozen 16-Oz. Pkg. 43¢
 - Cod Fillets Waste Free Frozen 16-Oz. Pkg. 43¢
 - Shrimp Captain's Choice Frozen 10-Oz. Pkg. 79¢

ARRIVING DAILY!

THE FINEST QUALITY SEA FOODS

FISH

PRE-LENTEN SUGGESTIONS

THURSDAY, FRIDAY AND SATURDAY

Fresh Water CATFISH 75¢

Aristocrat of the Sea Red Lb. Snapper . 69c

Gulf Flounder . 69c

Speckled TROUT . . 69c

Spiced OLIVES No. 2 Jar 69c

Tartar SAUCE 6 Oz. 23c

Mixed BREADING 10 Oz. Box 29c

Hot RELISH 8 Oz. 29c

Hot CATSUP 12 Oz. 31c

Baltimore Select Oysters . \$1.15

Maine, Whole Lobsters \$1.95

Denmark Rainbow Trout . \$1.10

Louisiana Fancy Jumbo SHELL OYSTERS . 75¢

Handling The Greatest Variety Of Sea Foods In West Texas

Louisiana Fish & Oyster Market

1009 West Third Phone 1621

LIBBY'S, NO. 2 1/2 CAN

PEACHES 27c

LIBBY'S, CRUSHED NO. 2 CAN **PINEAPPLE . . 28c**
 LIBBY'S, SLICED NO. 1/2 CAN **PINEAPPLE . . 15c**
 LIBBY'S, PURPLE, 303 CAN **PLUMS . . 20c**
 LIBBY'S, whole, unpeeled, 303 CAN **APRICOTS . 23c**
 LIBBY'S, NO. 303 CAN **Fruits for Salad 34c**
 LIBBY'S, NO. 303 CAN **PEARS . . . 29c**

LIBBY'S, FRUIT NO. 303 CAN **COCKTAIL 23c**

LIBBY'S, NO. 2 CAN **TOMATO JUICE . . 15c**

LIBBY'S PINEAPPLE 46 OZ. CAN **JUICE 31c**

LIBBY'S, 46 OZ. CAN **APRICOT NECTAR . . 39c**
 OCEAN SPRAY, 300 CAN **CRANBERRY SAUCE . . 23c**

MARYLAND CLUB, POUND CAN **COFFEE 75c**

LIBBY'S, Whole 303 Glass, 25 Ct. **BEETS . . . 22c**

LIBBY'S, No. 303 Can **KRAUT . . . 16c**

LIBBY'S Deep Brown, 14 Oz. Can **BEANS . . . 14c**

LIBBY'S, Golden Cream, 303 Can **CORN . . . 19c**

LIBBY'S, No. 2 CAN **SPAGHETTI and MEAT . . 27c**

LIBBY'S, 8 OZ. SWEET **PICKLES . . 27c**

CRACKERS
 SUNSHINE
 1 POUND
 KRISPY . . . **23c**

SKINNER'S NOODLES 5 OZ. **13c**
 SKINNER'S CUT MACARONI 7 OZ. BOX **12c**
 SKINNER'S CUT SPAGHETTI 14 OZ. CELLO **24c**
 PIMENTOS BLUE PLATE 4 OZ. CAN **17c**



LIBBY'S VIENNA, NO. 1/2 CAN **SAUSAGE . . . 19c**
 LIBBY'S, NO. 1/4 CAN **Potted Meat . . 9c**
 LIBBY'S, 7 OZ. CAN **VEAL LOAF . 35c**

LOTION

JERGEN'S **33c**
 50c SIZE . . .

7 OZ. BOTTLE **LISTERINE . . . 39c**

RITZ CRACKERS
 with TOMATO SOUP IS SUPPER
 POUND BOX **29c**

CAMPBELL'S, TALL CAN **Tomato Soup 12c**

SNOW CROP, 14 OZ. PKG. **Green Beans 24c**

SNOW CROP, 14 OZ. PKG. **SQUASH . . . 18c**

SNOW CROP, WHOLE **OKRA . . . 27c**

CORN
 SNOW CROP CUT
 8 OZ. PKG. . . **15c**

AJAX
 Regular Can . . . 2 FOR **25c**
 QUART BOTTLE **CLOROX . . . 17c**

CAMPFIRE, NO. 300 CAN **BLACKKEYED PEAS 12c**

MORTON'S, PINT **SALAD DRESSING 21c**

LETTUCE 12 1/2c
 CRISP, POUND
 BUNCH Green Onions 7 1/2c
 POUND Cauliflower . 12 1/2c

LARGE BUNCH **TURNIPS AND TOPS . . . 10c**

ORANGES 10c
 SUNKIST POUND



HOME BAKED CAKE SALE, SAT., 14th
BENEFIT -- GIRLS TOWN

U. S. GRADED - CHOICE - BEEF **STEAK 69c LB.**
 SIRLOIN CLUB T-BONE

U. S. GOVERNMENT - GRADED - COMMERCIAL - BEEF **STEAK 49c LB.**
 SIRLOIN CLUB T-BONE



PEACH SALAD with Miracle Whip

1. Dissolve 1/2 package strawberry-flavored gelatin in 1/2 cup boiling water. Add 1/2 cup syrup from canned cling peaches and 2 chopped peach halves. Turn into small shallow pan. Chill. Cut into diamonds. Place 2 drained cling peach halves and 2 gelatin diamonds on each garnished salad plate. Top with Miracle Whip. Serves 7.

U. S. GRADED - CHOICE - BEEF
CHUCK ROAST . . . LB. 49c
 U.S. CHOICE, GRADED, LB. **ARM ROAST . . . LB. 53c**
Ground Beef 49c
 U.S. CHOICE, GRADED, LB. **Pork Chops 40c**
Short Ribs . . 25c
 HALF OR WHOLE, LB. **Pork Roasts 43c**
HAMS 57c
 CHEE-ZEE, 2 LBS. **BACON . . . 47c**
CHEESE . . . 96c
 NU-TASTE, 2 LBS. **CHEESE . . . 85c**

U. S. COMMERCIAL, LB.
CHUCK ROAST . . 39c
 POUND ROLL **SAUSAGE 29c**
 FRESHLY SLICED, LB. **BEEF LIVER . . . 49c**
HAMBURGER
 LEAN, MEATY, LB. **SHORT RIBS . . . 25c**
 FANCY YOUNG, LB. **HENS 43c**
 HEART OF TEXAS, WHOLE, LB. **FRYERS 55c**

U. S. COMMERCIAL, LB.
ARM ROAST . . . 49c
 SKINLESS, POUND **WIENERS 45c**
 FRESHLY SLICED, LB. **PORK LIVER . . . 25c**
FRESHLY GROUND, LB. 29c
 FRESH FROZEN, LB. **SPARE RIBS . . . 39c**
 FRESH FROZEN, LB. **PERCH 39c**
 LONG HORN, LB. **CHEESE 59c**

PUFFIN - BALLARD - BORDEN, EACH **BISCUITS . . . 10c**



BUZ SAWYER

REBELS! DROP TO THE GROUND! PLAY DEAD!

THE TRUCKS ROAR BY. BANG, BANG! POW! KA-POW! POW!

THEN THEY GO. ARE WE ALL RIGHT?

CONFOUND IT! THIS IS THE SECOND TIME I'VE HAD ON THE WRONG WIRELESS FROM NOW ON I'M A NEUTRAL!

DICKIE DARE

HER BALANCE DESTROYED, SKIPPER DROPS SUDDENLY IN A NOSE DIVE. CAUTION WAUCH!

THIS TIME NO ROCKET BLAST SHOOTS HER UP AGAIN... SHE WALLOWS HELPLESSLY.

A DOOR OPENS... A LITTLE FIGURE STAGGERS OUT...

NANCY

STICK 'EM UP

HEY... I WASN'T TALKING TO YOU

LIL' ABNER

NO ONE ON EARTH KNOWS WHAT AM BURIED TH' ONLY PITCHER O' D' YOHUM ON EARTH--??

THOUGHT AH HEARD A NOISE--

OH--SOB!--AH MAFFES MAHSELF FO' DOIN' THIS-- BUT AH JUST HAIN'T GOT TH' WILL POWER SHE GOT IT-- AH GOTTA KNOW WHAT SHE LOOKS LIKE??

WE NEED 15 GOOD USED REFRIGERATORS
 Top Trade-In Allowance For Your Old Box!
 Trade Now For A New Kelvinator or Philco Refrigerator
 NAME YOUR OWN TERMS! FREE APPRAISAL
BIG SPRING HARDWARE CO APPLIANCE CENTER
 115 MAIN Phone 14, 668 Or 2931

BLONDIE

IT SAYS HERE YOU CAN CURE A COLD BY STANDING ON YOUR HEAD. WHY DON'T YOU TRY IT?

I'VE NOTHING TO LOSE -- I'VE HAD THIS COLD FOR A WEEK.

OH GOODIE! TWO DOLLARS NINETY-FIVE CENTS.

I COULD'VE GONE TO A DOCTOR FOR THREE DOLLARS.

ANNIE ROONEY

GOLLY--AINT FEBRUARY A SWELL LITTLE MONTH? IT AINT GOT AS MANY COMMON DAYS AS OTHER MONTHS HAS, BUT IT SURE HAS GOT ONE REAL HAPPY DAY IN IT--

A HAPPY DAY?

YES! I MEAN ST. VALENTINE'S DAY. IT'S ONE OF THE GRANDEST DAYS OF THE WHOLE YEAR!

ST. VALENTINE'S DAY IS JUST CHOCK FULL OF LOVE AND LAUGHTER--

GEE WOULDN'T IT BE WONDERFUL IF THERE WAS A ST. VALENTINE'S DAY IN EVERY MONTH? THEN FOLK MIGHT REMEMBER THAT LOVE AND LAUGHTER ARE BETTER'N ANGER AN' GLOOM!

SNUFFY SMITH

ZEE BEAUTIFUL STONE ZAT I BRING ALL ZEE WAY FROM NEW YORK-- SHE--UH--MAMZELL SMEETH!! WATCH OUT!!

BALLS O' FIRE!! IS SHE HURT BAD?

NO--SHE IS IN ZEE FINE SHAP!! NOT EVEN ONE LITTLE CHEEP

GRANDMA

GEE, OL' MR. GROUCH JUST GAVE ME HECK? SAID US KIDS BROKE A PICKET OFF HIS FENCE--

HE THINKS ALL KIDS ARE MEAN AN' JUST NO GOOD!

WELL, HE CAN'T SAY THAT ABOUT OUR WHOLE GANG!! MAYBE MOST O' US ARE NOT ANGELS, BUT--

GRANDMA IS SURE A GOOD KID!!

SCORCHY SMITH

IF KREEG CAPTURES THE SERPENT SATELLITE AND PLANTS A SPACE BASE THERE...

...HE CAN CHOKE ASTAR WITH THE ORBIT OF HER OWN BIGGEST MOON!

KREEG HAS STIRRED UP STIRRE ON THE SATELLITE! NEXT HELL ISOLATE HER FROM ASTAR...

UH-HUH... BY WHAWING REINFORCEMENT EXPEDITIONS LIKE... LIKE OLIVES!

OAKY DOAKS

WE WON'T LET HIM KNOW WE KNOW WHO HE IS! GOOD IDEE!

HEY! WAKE UP!! G'WAY! I WANTA SLEEP!

KINGS SHOULDN'T SLEEP OUT O' DOORS! SOMETIMES SOMETHIN' HAPPENS TO 'EM!

PLenty HAS HAPPENED ALREADY!--

--I'VE LOST MY KINGDOM AND I CAN'T FIND IT!

DON'T LET THAT WORRY YE, YER MAJESTY-- WE KIN GIT YE ANOTHER KINGDOM!

G. BLAIN LUSE **VACUUM CLEANER SALES AND SERVICE**
 New Eureka, Premier, GE and Kirby. Bargains in latest model used cleaners. Parts for all makes--Cleaners for rent.
 W. 15th And Lancaster Phone 16

POGO

HOW CAN YOU SAY THE SECRET INGREDIENT IS DIRT? PREE--PSTERPIAS! AD-SHURBED! BAN! BALDER DASH! BOOP! COOK!

YOU'RE A GOOD GUY... BASICALLY-- ADMIT-- CONGRESS YOU'VE WRONG.

TO BE TRUTHFUL, NON-- CAN YOU SAY THE SECRET INGREDIENT WAS DIRT? TO BE TRUTHFUL, I CAN'T-- I REALLY CAN'T.

NOT AGAIN, I CAN'T.

HE'S TRUE BLUE, OW! A LOYAL CITIZEN.

AN' BUT! HE CAN OWN UP WHEN HE'S WRONG.

HOW'D YOU KNOW ANYTHIN' ABOUT THIS?

DONALD DUCK

DONALD I'VE HAD A LITTLE CAR ACCIDENT... WILL YOU AND THE BOYS COME OVER?

HMM... WELL, YES, WE'LL BE OVER, DAISY!

BETTER BE CAREFUL... SHE'S ALWAYS TRICKING US INTO WORK!

WE'RE SAFE! SHE KNOWS WE CAN'T FIX HER CAR!

MY, YOU HAD AN ACCIDENT! (A TOW TRUCK AND A BODY SHOP!)

WELL, I HAD TO!

SMART SERVICEABLE Samsonite Luggage

Sturdy "strong enough to stand on" construction. Amazingly durable mar and scuff-resistant covering which wipes clean with damp cloth. Luxurious, long-wearing linings. Life-time handles. Handsome shades.

A. 21" Ladies O'Nite \$19.50
 B. 26" Pullman \$37.50
 Plus Federal Tax

Anthony's THE C. R. ANTHONY CO.

MISTER BREGER

"We finally got around to cleaning out our attic..."

Crossword Puzzle

ACROSS

- Incline
- June bug
- Soft murmur
- Kind of jewelry
- Country in th: British Isles
- Lesson
- Extended
- Number
- Feline
- Night before
- Pronoun
- Shake
- Round flat plate
- Sour
- Bustle
- Discover

DOWN

- Command to a cat
- Part of the car
- Algerian city
- Stroke lightly
- Choose by vole
- Filth
- Native metal
- Turn back
- Bombproof shelter
- Four quarters
- Strange
- Reside
- Wise
- Cold
- Soprano
- Scorn
- Twine
- Costly
- Small island
- Sample
- Wing
- That girl
- Annoying noise in a radio
- Press
- Church official
- Margin
- Bullet of irregular shape
- Minute orifice
- God of war
- Small mark
- Final
- Compass point
- Insult of Fuego del Fuego

Solution of Yesterday's Puzzle

DOWN

- Command to a cat
- Part of the car
- Algerian city
- Stroke lightly
- Choose by vole
- Filth
- Native metal
- Turn back
- Bombproof shelter
- Four quarters
- Strange
- Reside
- Wise
- Cold
- Soprano
- Scorn
- Twine
- Costly
- Small island
- Sample
- Wing
- That girl
- Annoying noise in a radio
- Press
- Church official
- Margin
- Bullet of irregular shape
- Minute orifice
- God of war
- Small mark
- Final
- Compass point
- Insult of Fuego del Fuego

AP Newsfeatures 2-12

GRIN AND BEAR IT

"...Don't know why they emphasize fast reading in school these days... keeps me broke buying comic books, as it is..."



It's Almost Too Tempting

... Arthur Dehlinger is cautioned by his mother, Mrs. Martin Dehlinger, not to take a bit of the ham that she has prepared for a church supper.

Mrs. Dehlinger Gives Sugar Cooky Recipe Good For Valentine Party

For the past 23 years Mr. and Mrs. Martin Dehlinger have had either a son or daughter enrolled in the Big Spring public schools. That's a long time and they don't have many children. So Mrs. Dehlinger explains it like this: There is 10 years difference in the ages of the oldest child, Martin, now a geologist, and Barbara, now a student nurse. Baby Arthur, now 7, is 12 years younger than his sister. Only one year, when Martin was a high school senior and Barbara was in the first grade, have the Dehlingers had two children in

public school at the same time. During the past 23 years, Mrs. Dehlinger has been concerned with an endless round of P-TA activities and they are continuing. At the moment, she is planning to bake heart-shaped cookies for the Valentine party the first grade students at South Ward School will have Friday. As president of St. Thomas Altar Society of St. Thomas Catholic Church, the graying mother of three is busy now with plans to swell the coffers of the building fund. Married 30 years ago, the Deh-

lingers came here from Los Angeles, Calif. Mr. Dehlinger is employed by the T&P Railroad. Since Mrs. Dehlinger is preparing for a Valentine party this week and looking ahead to the beginning of the Lenten season Wednesday, she offers a recipe for sugar cookies and one for salmon roll.

WHITE SUGAR COOKIES
INGREDIENTS:
 4 cups all-purpose flour
 1 teaspoon baking soda
 1/2 teaspoon salt
 1 1/2 cups sugar
 1 1/2 cups margarine or other shortening
 1/2 cup sour milk or butter milk
 2 eggs
 1 teaspoon vanilla
METHOD:
 Sift, then measure flour. Sift again with soda, salt and sugar. Cut shortening into dry ingredients until it is as fine as corn meal. Combine milk, slightly beaten eggs and vanilla. Add the dry ingredients, beating until smooth. Cover dough closely with wax paper and chill over night or several hours. Then turn dough on to lightly floured board and roll thin. Cut with floured heart-shaped cookie cutter. Sprinkle with red sugar. Bake on ungreased baking sheet in hot oven (425 degrees) 8-10 minutes. Makes four dozen.

Valentine Dessert As Frilly As Old-Fashioned Nosegay

Here's a delicious molded Valentine dessert with a delicate pink color and fluted ribbons of whipped cream to give it all the frilliness of an old-fashioned nosegay. First there's a layer of bite-size pieces of tender angel food cake held together by a mixture of cherry-flavored gelatin and ice cream. Golden pineapple tidbits are added to lend a fruity flavor and a slightly chewy, texture accent. The dessert unmolds to resemble a cake and when it is sliced, each piece has a jeweled look with the plump

pieces of fragrant pineapple scattered throughout. You'll notice the recipe calls for a tube pan, but if one is not available, use a large loaf pan. This is a convenient party refreshment, too, because it can be made the day before and the dessert stored in the refrigerator until ready to serve. Then add the whipped cream trimming and serve with coffee or marshmallow-topped hot chocolate for the youngsters.

PINEAPPLE VALENTINE ICE-BOX CAKE
 1 pkg. cherry-flavored gelatin
 1 cup boiling water
 1 pt. vanilla ice cream
 1 can (No. 1 flat) crushed pineapple
 1 small angel food cake
 1/2 pt. heavy cream, whipped
 Dissolve gelatin in boiling water. Add ice cream a spoonful at a time and stir until melted and smooth. Add undrained pineapple. Line the bottom of a tube pan or loaf pan with waxed paper. Tear angel food cake into small pieces and arrange in an even layer about 1-inch thick in the bottom of pan. Pour in gelatin mixture and chill until firm. Unmold on serving plate. With a pastry tube, decorate top and sides with ribbons of whipped cream or frost entire surface evenly. Slice to serve. Serves 8.

Here're Hints For Cooking Round Steak

Someone once said, "We may live without friends, we may live without books, but civilized man cannot live without cooks." If it were true! Yet how little does the non-cook realize what goes into the presentation of a good meal—the careful planning, comparative shopping and imaginative preparation required. To ease your thrice-daily task of feeding a hungry family, it's a good idea to include a variety of beef cuts in your menus these days. The currently plentiful supply of beef means that beef cuts are wearing attractive price tags. One of the most popular of beef dishes is the Swiss steak. If you're a Swiss steak fan, here's an interestingly seasoned dish especially for you. You can use either round or chuck steak.

Savory Swiss Steak
 1 1/2 to 2 pounds round or chuck steak
 Flour, salt, pepper
 2 tablespoons fat
 2 cups canned tomatoes
 2 to 3 medium onions
 1 teaspoon dry mustard
 1 teaspoon chili powder
 1 bay leaf
 2 teaspoons Worcestershire sauce
 Combine 2 tablespoons flour, 1 teaspoon salt and 1/2 teaspoon pepper; pound into meat, using a meat pounder or the edge of a heavy saucer. Heat fat in a heavy skillet or Dutch oven and brown meat thoroughly on both sides. Top steak with sliced onions. Combine seasonings with tomatoes and pour over and around steak. Cover and cook slowly over low heat until tender, 1 1/2 to 2 hours, depending on thickness of meat. Add more tomatoes or a little water, if needed, during cooking. Skim off excess fat and serve steak topped with sauce. 4-6 servings.
"Roll-em-over," roll-em-over, put 'em in the pan. That's the way to prepare these good tasting beef roll-ups. They're made by wrapping round steak around a cleverly seasoned bread dressing, then braising to succulent tenderness in mushroom soup.
Steak Roll-Ups with Mushroom Sauce
 1 1/2 pounds round steak, cut 1/2 inch thick
 3 tablespoons butter or margarine
 1/2 cup finely chopped onion
 2 cups day-old bread crumbs
 1/2 cup chopped celery
 1/2 teaspoon salt
 1/2 teaspoon sage
 Dash of pepper and poultry seasoning
 1 tablespoon water
 1 can mushroom soup

Shortening Firm To Celebrate Birthday

In 5 minutes you can whip up this fortieth anniversary cake developed by Mrs. Tucker's Homemakers Department to celebrate the business birthday of the firm. But back on Feb. 13, 1913, when the Mrs. Tucker's Company was founded, it would have taken many times 5 minutes to mix such a cake because there were no mechanical mixers, and the processing of shortening had not approached the perfection of today. This fortieth anniversary yellow layer cake is an example of what the modern homemaker can do with modern ingredients and methods.

Sift Together:
 2 cups sifted cake flour
 1 1/3 cups sugar
 2 teaspoons baking powder
 1 teaspoon salt
Add:
 1/2 cup Mrs. Tucker's shortening
 2 eggs plus milk to make 2-3 cup
 Mix two minutes on medium speed of mixer or by hand, counting 150 beating strokes a minute. Scrape sides and bottom of bowl frequently.

Molasses Makes Lunch Box Dessert
 Here's an ideal sweet to pack in the lunch box. They're Molasses Discs, and besides being nutritious, they will satisfy even the sweetest sweet-tooth in the family. Make this confection in any size; for smaller patties, you'll have to use extra speed, after the hot syrup is poured over the cereal and peanut mixture, shape the discs in an easy-to-eat size. Use either crisp corn puffs or ready-to-eat oat cereal; each gives the crunchiness you want, each cereal contributes its own mellow grain flavor.

MOLASSES DISCS
 4 cups ready-to-eat oat cereal or crisp corn puffs
 1 1/2 cups salted peanuts
 1 1/2 cups brown sugar
 1/2 cup light molasses
 1/2 cup water
 4 teaspoons vinegar
 1/2 teaspoon cream of tartar
 1 1/2 teaspoons soda
 Place cereal and salted peanuts into large greased bowl. Mix brown sugar, molasses, water, vinegar, and cream of tartar together in saucepan and cook over low heat, stirring occasionally, until a little dropped into cold water forms a hard ball (250F.). Blend in soda. (Mixture becomes fluffy and porous). Pour syrup over peanut mixture. Mix with greased spoon. Cool slightly to thicken. With greased hands, form into patties. Cool on greased baking sheet. Yield: 3 dozen patties, 2 inches in diameter.

Teen-Ager Snack
 The teen-age crowd will cheer these easy to make snacks. Arrange graham crackers on a cookie sheet and top each with a spoonful of drained golden pineapple tidbits. Place a marshmallow in the center of each, broil just long enough to melt and lightly brown the marshmallow.

SALMON LOAF
INGREDIENTS:
 1 No. 2 can red salmon
 1 egg (beaten)
 2 tablespoons lemon juice
 2 tablespoons flour
 1/2 stick margarine
 1 cup milk
 Salt and pepper to taste
 1 regular size can English peas (drained)
 Pimientos for garnish
 1 recipe of biscuit dough
METHOD:
 Combine salmon, egg and lemon juice. Spread salmon mixture on rolled-out biscuit dough. Make a white sauce of flour, margarine, milk and salt and pepper. Roll up and brush with melted butter. Bake 25 minutes in a 350-degree oven. When done add peas and pimientos to white sauce. Pour over loaf and serve while hot.

Cooking Reminders For Round Steak

Here are some important reminders for cooking round steak: As round steak is one of the less-tender cuts of meat, it requires moist heat cookery. Cooking slowly with added moisture softens the connective tissue which holds together the meat fibers. Round steak should not be broiled or fried. To braise round steak, coat with seasoned flour, if desired. Brown well in a little hot fat, add a small amount of liquid and any additional seasonings desired. Cover and cook over low heat until very tender, adding a little more liquid as needed.



a Smart shopper

Every smart shopper knows that MARYLAND CLUB is her best buy in coffee... because with MARYLAND CLUB she can get 10 to 15 more delicious cups out of every pound... thus she can actually save up to 25c per pound and still enjoy the very best! No wonder smart shoppers everywhere are switching from less flavorful coffees to MARYLAND CLUB, the world's richest coffee! Buy MARYLAND CLUB the next time you shop... enjoy its richer flavor and the economy bonus it gives you in every pound. Remember... MARYLAND CLUB is the coffee you'd drink if you owned all the coffee in the world!

*As certified by Southwestern Laboratories

Best Dressed in the West



Now... a flavor family...
 all cellophane-dressed in
 2-Pack, 4-Pack and 6-Pack
 Just right for YOUR family, large
 or small. Supreme Flavor is baked into
 these thin saltine crackers...
 ...then kept in by the Flav'r Sav'r wrap!
 Buy the Supreme flavor family
 at your grocer!

Supreme Bakers
 BOWMAN BISCUIT COMPANY
 OF TEXAS



The Flav'r-Sav'r package of Supreme Salad Wafers is available in 3 sizes: 7 oz. (2-Pack); 1 lb. (4-Pack); 2 lb. (6-Pack). Now at your grocers.

Canada To Aid With Mexico Development Of West Coast Ports

MEXICO CITY (AP)—Informed sources said today that Canada will help develop four of Mexico's Pacific ports in order to boost trade between the two nations. The ports are Mazatlan, Manzanillo, Acapulco and Salina Cruz. Included in the planned projects

which result from the visit here of a Canadian good will mission will be dredging of some ports and construction of silos and warehouses in others. Canadian capital will augment Mexican financing. Canadian wheat, machinery and other products will be shipped direct to the newly modernized ports, and in return Mexico hopes to sell Canada more of its own products.

PASTORS

(Continued From Page 1)

stay, he was here for three years. He came here from Rockford, Ill., where he was pastor for 18 months. He has also held pastorates in Chicago; Toledo, Ohio; and Alpena, Mich. Rev. Kolar attended school at the Moody Bible Institute and the Chicago Evangelistic Institute.

Civic affairs take up a great deal of Dr. Lloyd's time. He is a member of the board of trustees for the YMCA and Community Chest, a member of the Lions Club, and an original director of the Knife and Fork Club.

But civic participation does not interfere with his church duties. He can be found in his office practically any morning between 8 a. m. and noon.

"I spend at least 25 hours in preparations for sermons during the week," he said. "That includes study, digging and actual polishing."

Morning office hours are taken up with administrative work and conferences in addition to study. "Answering the phone is a full time job," Dr. Lloyd said.

Afternoons see Dr. Lloyd visiting newcomers to the city, church prospects, and the sick. Nearly all of his nights are taken up with some sort of church activity.

Each Wednesday night a Bible study of 10 chapters is carried on which calls for a good deal of the pastor's study time. He said the complete Bible will be reviewed in a two year period.

"My loafing time is also valuable," Dr. Lloyd said. "Although it appears useless, it is the profitable time a preacher has in making contacts."

He pointed out that when he is just talking to individuals, he can hear problems and maybe do something about them. Taking care of people's problems is a full time job, he explained.

Dr. Lloyd's time is also called for in Presbyterian organizational work. He is a member of the board of trustees for Austin College and on several Synod committees.

In a few more months, Dr. Lloyd will have held the pastor's job at the First Presbyterian Church here longer than any other man. He has been here now for six and a half years.

Before coming to Big Spring Dr. Lloyd was pastor at Crockett for 11 years. His first pulpit was at Calvert, where he stayed 7 years.

Dr. Lloyd graduated from Austin College, received his Master's Degree at the University of Texas, and his Bachelor of Divinity at Presbyterian Theological Seminary at Austin. He was presented the Doctor of Divinity degree in 1950 at Austin College.

Dr. Lloyd was born in West Texas between Pecos and Fort Stockton. He has two children.

Gordon Dean Planning To Leave Atom Post

WASHINGTON (AP)—The civilian high command of the U. S. atomic program will have a new head by June.

Chairman Gordon Dean of the Atomic Energy Commission said yesterday he would return to private life when his three-year term expires in four months. Dean has been a commissioner since May, 1949, chairman since June, 1950. He is a lawyer who calls Vista, Calif., his home.

THE SPRINGBOARD

News From Webb Air Force Base By A-2C FERD J. BORSCH

BOOTSTRAP

It was back to school for 97 officers and airmen at Webb last week.

The 97 part-time students are now taking a total of 138 courses at Howard County Junior College under "Operation Bootstrap", an Air Force education program now in full swing at the base.

Air Force personnel are attending night classes at the school, either Monday and Wednesday or Tuesday and Thursday. Transportation is provided for those needing it.

The spring semester closes in late May at which time AF personnel will receive full credits if courses are completed satisfactorily.

English and mathematics proved to be the big-drawing cards for the spring term. English held a slight edge with 30 students while math closely followed with 28. Russian, a newly introduced course on the school calendar, drew eight students from the base.

The second section of cadet class S3-A, designated S3-A-2, is scheduled to receive pilot wings and diplomas next Monday.

Under the new staggered graduation policy, this matriculation follows by two weeks that of section one.

Having received their commissions and taken the oath of office February 2, members of "A-2" will receive wings and diplomas indicating completion of flying training.

AWARD

A-2C Donald G. Hillman was named the outstanding Air Policeman for the last two weeks of January.

A native of Detroit, Mich., the 20-year-old AP enlisted in the Air Force in April of 1951. He has been stationed at Webb for one year as a base patrolman.

Hillman was the second AP to receive the award based on a point system by a special board. Appearance, job knowledge and courtesy are important factors considered before the award is made.

Paint crews began work on two dining halls this week according to Air Installation officials. It is estimated that the two projects will take 30 days to complete.

Webb's Dusters broke even in two Southwestern Air Force Conference basketball games last week. The Dusters trimmed Goodfellow by an 81-71 margin and then bowed to Sheppard, 70-56. Bill Heaster was Webb's top point producer in each game with 23 and their last home game against Carrwell tonight at 8 o'clock.

China Legislators Hear US Lawmaker Speak In Chinese

By ED CREAUGH

WASHINGTON (AP)—Some congressmen are noted for some things and other congressmen are noted for other things. Today's example: New Jersey's Alfred D. Sieminski.

He is, by his own documented account, "the only foreigner ever to have addressed a full quorum of the Chinese Legislative Yuan, in Formosa or on the mainland, prior to April 25, 1952."

Sieminski, a Democrat from Jersey City, told his fellow lawmakers about this through the columns of the Congressional Record. But he left out one fascinating fact:

He delivered part of his speech in Chinese.

It seems Sieminski, a Princeton graduate and 41-year-old war veteran, was in Formosa early last year with a House appropriations subcommittee. He dropped in on a session of the Legislature and was invited to make a speech.

Members of Congress are often receptive to such invitations. Sieminski promptly accepted. Then, he said, he had a second thought: "Wouldn't be a nice gesture if I addressed them in their own language? Wouldn't it be the quickest way to reach the Oriental heart?"

It was a challenge, Sieminski admitted in an interview, but: "What the hell, a Jersey City boy can do anything, I figured if Johnny Kenny could beat Mayor

Hague, I could speak some Chinese."

Jersey City's Mayor John V. Kenny won his office by upsetting the organization of long-time Mayor Frank Hague, a power in Democratic national politics.

Now Sieminski speaks Polish fluently, being of Polish descent. He gets along fine in German and French too, and is willing to make a stab at Italian. But he never mastered Chinese. So he had a Formosan acquaintance put his opening words into the Chinese tongue and bravely launched forth:

"Mr. President, friends, and fighters under the banner of freedom, it gives me great pleasure to visit you today on behalf of the United States Congress..."

If there were any complaints about Chinese spoken with a New Jersey accent, Sieminski didn't hear them. In fact the pleased Chinese invited Sieminski and his non-Chinese-speaking fellow congressmen to a tea party.

West Texas Crude Due To Reach Gulf Via New Pipeline

HOUSTON (AP)—The first flow of West Texas crude oil through a new 470-mile pipe line is expected to reach Port Arthur next week.

The West Texas-Gulf Pipe Line Co. announced yesterday that Permian crude was being pumped into the line at Colorado City. The line runs to Wortham, Freestone County. At Wortham, a 24-inch line continues to Longview and a 26-inch line continues to Port Arthur. Connections are made at Longview with lines to the mid-Mississippi Valley area.

At \$6.19, the index compared with \$6.13 last week (the 1953 low to date) and was 5.8 per cent below the year-ago week's \$6.57.

Wholesale Prices Of Food Show Increase

NEW YORK (AP)—Wholesale food prices turned higher this week for the first time in four weeks according to the Dun & Bradstreet food index.

At \$6.19, the index compared with \$6.13 last week (the 1953 low to date) and was 5.8 per cent below the year-ago week's \$6.57.

Ritz THURSDAY THRU SATURDAY

A MAN WITH A GUN... and a Score to Settle

SCOTT MAN BEHIND THE GUN

with **PATRICE WYMORE**

PLUS: NEWS AND CARTOON

State THURSDAY ONLY

JOHN FORD'S
(3 TIME ACADEMY AWARD DIRECTOR)

THIS IS KOREA

A THRILLING FEATURE PICTURE IN NEW TRUCOLOR

...the most human and dramatic story of our time!

Photographed and Presented by U. S. NAVY • MARINE CORPS • ARMY • AIR CORPS and SANCTIONED by the U. S. DEPARTMENT OF DEFENSE.

Distributed by REPUBLIC PICTURE CORP. Herbert J. Yates, President

FRIDAY AND SATURDAY

JOHNNY WEISSMULLER
in "JUNGLE JIM"

WOODOO TIGER

PLUS: Chap. 8—Zombies Of The Stratosphere

Lyric THURSDAY THRU SATURDAY

"HANDS UP... OR YE'LL TURN YOUR TOES UP TO THE SKY!"

NO OUTLAW'S HIDE WAS SAFE WITHIN RANGE OF HIS GUN!
NO COW-GAL'S HEART WAS SAFE WITHIN SOUND OF HIS VOICE!

CHARLES STARRETT

SPOILERS OF THE RANGE

IRIS MEREDITH
and the **SONS OF THE PIONEERS**

Screen play by Paul Franks
Directed by C.C. Coleman, Jr. • A Columbia Reprint

PLUS: CHAPTER 10—BLACK WIDOW

JET
SAN ANGELO THEATRE

OPENS — 6:15 P. M.
SHOW STARTS — 7:15 P. M.
THURSDAY-FRIDAY

UNTAMED AS THE LAWLESS ARGENTINE PAMPASI

WAY OF A GAUCHO

Gene TIERNEY
Rory CALHOUN
Hugh Marlowe

PLUS: COLOR CARTOON

TERRACE
DRIVE IN THEATRE

CLOSED
For Remodeling

for Valentine's Day

Your party guests will welcome Coke

Your guests—young or not—are sure to enjoy ice-cold Coke. Its matchless flavor sparks the party... keeps the fun going. Remember, too, it's easy to serve Coke—ice cold, in the bottle.

Buy it by the case or carton for Valentine's Day

BOTTLED UNDER AUTHORITY OF THE COCA-COLA COMPANY BY

TEXAS COCA-COLA BOTTLING COMPANY
BIG SPRING, TEXAS

*Coke is a registered trademark.

© 1953, THE COCA-COLA COMPANY