





SEE US FOR YOUR Lincoln Grease Gun Equipment Also complete line wrenches and farm repair accessories

Phillips Retail Station Leon Chesser

SEASONABLE PRODUCTS FOR SALE.

- Grain Conditioner and Fumigants Household and Cattle Sprays Weed Sprays Copper Carb., Cerasan and Arsan for treating seed.

Gruver Elevators, Incorporated



Texaco Wholesale Products Have Made An Envidable Reputation In West Hansford COUNTY

We service these products anywhere in the county and Gruver trade territory.

ANXIOUS to PLEASE YOU.

Texaco Wholesale - Jim Eddleman



BUILDERS MATERIAL from A to IZZARD Complete line Shelf Hardware and Garden tools.

GRUVER LUMBER CO.



Wholesale & Retail GAS and OILS Everready service IN Butane and Propane

ANXIOUS TO SERVE--"U"

Peddy's Butane And Oil Company



AUTHORIZED Sales And Service FOR Motorola Television

Gruver Motor Company

YOUR NEIGHBORS on their JOBS

CARICATURES by HUT HUTSON COPYRIGHT H. H. HUTSON

SERVING THIS COMMUNITY With The Finest Food, Meats and Locker Service . . . .

This store was established in the early days of Gruver, and has continued to serve the customers of the store with the—

FINEST AVAILABLE MERCHANDISE

PLUS PROMPT AND COURTEOUS SERVICE IN ANY AND ALL DEPARTMENTS OF THE STORE

FEATURING . . . .

Full line of shelf goods of nationally known canned foods.

A complete service of Fresh Vegetable and perishable foods available for your eating comfort.

A FULLY STOCKED MARKET WITH BEST IN MEATS AT POPULAR PRICES.

A complete frozen food locker service for the convenience of our customers.

LET US SERVE YOU NOW AND IN THE FUTURE

CUTTER FOOD MARKET

Charles R. Cutter II

Charles R. Cutter III

Cartoon titled 'KNOW Your NEIGHBORS Better' with text: 'THE CARICATURES of YOUR NEIGHBORS ARE MERELY for YOUR ENTERTAINMENT and TO INTRODUCE THEM TO YOU in CARTOON FORM in the act of EXPRESSING AN IDEA IN AS FEW LINES AS POSSIBLE - INTENDED TO BRING A SMILE TO YOU YOU RECOGNIZE SOME CHARACTERISTICS EXPRESSED BY A BRUSH (THIS IS COMPLETELY BRUSH TECHNIQUE)'



Cutter Food Market Is Outstanding

Your neighbor on the job this week is really two neighbors, one at home running the store while his father and partner, Charles R. Cutter II is away on vacation.

When the store was sold, Richard Cutter made many advantageous changes in the store, fixtures and building and limited the business to a Food Market, featuring the best of merchandise available for the grocery and meat department, and added a frozen food locker to the local business.

Richard ran the business for several years, and when he was called to the ministry, he was very fortunate that his father and partner was in a position to come take over the business and allow Richard to complete his education.

Richard has completed his work at Baylor University as a student, graduating with a B. A. Degree and has taken two semesters of graduate work that will help prepare him for his chosen work, the ministry of the gospel.

Needless to say, Richard and his family are Baptist. The two children are Eric, Marcia 4 years of age and Cindy 7 years of age. The family have been away from Gruver except for summer work and visits for the past few years.

Charles Cutter III who is now actively in charge of the store is well trained and well qualified to operate the fine food store that serves countless citizens of the Gruver area. Much of his life has been devoted to the grocery and meat business. At the time he assumed the management of the Gruver store, Mr. Cutter was Meat Executive for the Ideal Food stores, with his headquarters at Liberal, Kansas. He is a very courteous, kindly gentleman, and has won many friends for the store since he has lived in Gruver.

Mr. Cutter is a deacon in the Baptist church at Gruver and has served as Treasurer for the organization for the past year. He is a member of the Gideon organization. At Gruver he is an active member of the Chamber of Commerce. He is a veteran of World War I and a member of the Hansford county American Legion.

Mr. and Mrs. Cutter Sr. have another son William L. Cutter who is a Lieutenant in Infantry serving at Camp Pike, La. They have one daughter, Charlene Brannon.

NOBLE CULTIVATOR THE UNIQUE BLADE Heralded as the finest machine used for protection and enriching land and preventing blowing



All our name implies-Complete service for farm machinery in the Gruver area.

Farm Machine Service

GOOD YEAR TIRES The Best Of Gasoline



Electric Magic Chef Cook Stoves Duomatic Bendix combination Lincoln Grease Gun Equipment Washer and Dryer

Universal Oil Company

Authorized Inspection Station



The new law requires your car be inspected on and after September 15. Come in to this authorized inspection station for this service.

CHASE MOTOR COMPANY

RELIABLE BANKING

Your home bank is equipped and anxious to serve you in all your Banking needs.

GRUVER STATE BANK

YOUR KIMBELL MILLING COMPANY OF Gruver Giving You The Service You Desire With Efficiency And Cheerfulness.



Jim Eddleman, Mgr.

Kimbell Milling Company



Texaco Products Dependable Service Byrd And Shook Service Station



## North Plains Fair In August

Perryton, August 7, 1952—Several nationally known attractions have been booked for the three day entertainment program of the second annual North Plains Fair, to be held in Perryton August 20-22.

The Joe Chitwood Thrill show featuring daredevil automobile drivers, will be presented Saturday night, August 22, in the mammoth fairgrounds rodeo arena. This show, largest of its type in the nation, ordinarily appears in the larger cities of the nation and was secured by special arrangements with the west coast branch of the troupe.

Another nationally known attraction is the Grand Ole Opry of Nashville, Tenn., a radio feature for many years. The Grand Ole Opry will feature Ray Price leading the original Hank Williams band and the C. Cedric Rainwater comedy show. It will be presented Saturday night at the Veterans Memorial Building.

Of course, the seventh annual Wheatheart of the Nation contest, with beautiful young ladies from a tri-state area, will be one of the highlights of the North Plains Fair and the 1953 Wheatheart will be crowned Saturday night at the Veterans Memorial Building.

Other attractions during the fair include a horse show, baseball games, parade, midwest auto races, a square dance and kiddie contests.

The fair opens Thursday, August 20, at 8 a. m. Exhibits will be displayed in the Veterans Memorial Building and at the county livestock building during the three days of the fair. Livestock, field crops, culinary

fine arts and miscellaneous entries have been received from the North Plains area.

The schedule of events for the fair is:

**THURSDAY AUGUST 20**  
 8:00 a. m. Fair opens  
 9 a. m. Judging of Exhibits  
 1 p. m. Midwest Auto Races  
 2 p. m. Baseball game  
 8 p. m. Horse show  
**FRIDAY, AUGUST 21**  
 8 a. m. Fair Opens  
 9 a. m. Judging of Exhibits  
 2 p. m. Baseball game  
 9 p. m. Square dance  
**9 p. m. Miss Perryton Beauty Contest.**

**SATURDAY, AUGUST 22**  
 9 a. m. Fair Opens  
 9 a. m. Old Timers reunion  
 10 a. m. Downtown Parade  
 11 a. m. Kiddie Contest  
 2 p. m. Baseball Game  
 3 p. m. Air show  
 7 p. m. Joe Chitwood Daredevil Auto Show  
 9 p. m. Grand Ole Opry.  
 10:30 p. m. Crowning of Nation's Wheatheart.  
 10:30 p. m. Dance with Ray Price band.

## Old Timers

Perryton, August 7, 1952—Residents of Ochiltree and adjoining counties who have lived in the highlights of the North Plains Fair and the 1953 Wheatheart will be honored guests at the Old Timers Reunion being held on August 22 in connection with the second annual North Plains Fair at Perryton, August 20-21-22.

Those who have lived in Ochiltree, Lipscomb, Hemphill, Roberts, Hansford, Beaver or Cimarron counties since 1900 will be given a special badge.

Last year over 400 old timers registered for the reunion.

Headquarters for the Old-Timers Reunion will be at the Ochiltree Courthouse. Registration will begin at 9 o'clock Saturday morning, August 22. Festivities on the North Plains Fair Program Saturday include a parade, baseball game, kid contests, the famous Joe Chitwood daredevil auto show, the Grand Ole Opry from Nashville, Tenn., crowning of 1953 Wheatheart of the Nation and a dance to the music of Ray Price and the original Hank Williams band.

**FOR SALE OR TRADE**  
 Beautiful Palomino Quarter horse five years old, broke to ride. This is a large horse. I will trade him for a young horse that is gentle for children to ride, or will sell him. May be seen at James Sparks farm. Write Mrs. L. M. Bucher, Box 46, Follett, Texas or phone 87 Follett, No. 25 rth

**FURNITURE UPHOLSTERY SEAT COVERS**

**MATERIALS**—by the yard or piece. Ray Lawrence upholsterer.

Western Chevrolet Co. Guyton Oklahoma Box 140 Phone 161

24 4-tc

# ROW on TOP of ROW of LOW PRICES

## Give You SAVINGS on TOP of SAVINGS



### FRIDAY AND SATURDAY AUGUST 14 & 15

Every stack from front to back... every shelf... every table offers on top of row of low prices! They're everywhere you look... on every item you pick up...

- Quality Meats**
- SUNRAY ALL MEAT FRANKS . . . . . lb. **39¢**
  - ARMOUR'S BANNER SLICED BACON . . . . . lb **69¢**
  - FRESH LEAN GROUND BEEF lb. **33¢**
  - PINKNEY PURE PORK SAUSAGE . . . . . lb. **39¢**
  - FULL CREAM LONGHORN CHEESE . . . . . lb. **59¢**
- Fresh Fryers and Hens

- 1 Pint Bordens COFFEE NUT Ice Cream 1c With each purchase of Lady Bordens LADY BORDENS
- ICE CREAM pint 35¢**
- NORDIC FILLET PERCH . . . . . lb. **36¢**
- SHURFINE FROZEN ORANGE JUICE . . 2 Cans **29¢**
- LIBBY'S FROZEN GARDEN PEAS . . . . . Pkg. **18¢**
- MORTONS CHICKEN POT PIE . . . . . Pkg. **33¢**
- SWANSON BONED CHICKEN . . . . . Can **45¢**

- Household Supplies**
- GOLDEN SHORE SALMON . . . . . Tail Can 37c
  - CAMPBELLS TOMATOSOUF. 2 cans 25c
  - PATIO MEXICAN BEANS . . . . . 2 Cans 23c
  - SCHILLINGS COFFEE . . . . . lb. 87c
  - CARNATIONS OR PET MILK . . . . . 2 Cans 27c

- Fruits & Vegetables**
- RED MALAGA GRAPES . . . . . lb. **23¢**
  - GRAVESTON COOKING APPLES . . . . . 2 lbs. **37¢**
  - LONG GREEN SLICING CUCUMBERS . . . . . 2 lbs. **19¢**
  - CALIFORNIA CELLO CARROTS . . . . . Bag **17¢**
  - TEXAS YELLOW SQUASH . . . . . lb. **10¢**

- PEACHES VAL VITA NO. 2 1/2 CAN 2 cans 49c**
- OLD MANSE ASSORTED JELLY . . . . . 5 For \$1.00
- BORDENS STARLAC . . . . . lb. 38c
- SHURFINE NO. 2 CAN RSP CHERRIES . . . . . Can 25c
- GERBERS STRAINED BABY FOOD . . . . . 3 Cans 25c
- SPRY . . . . . 3 lbs. 85c
- BREEZE—GIANT 65c
- SURE—GIANT 63c
- LUX 3 Reg. Bars 23c
- RINSO—LARGE 27c
- TISSUE Scott 2 For 23c
- PINESOL—QUART 76c
- Wax Paper Cut Rite 29c
- GEM—3 PKG. 40c
- CANDY—6 Bars 25c
- MIRACLE WHIP . . . . . Quart **39¢**
- SHURFINE FLOUR 25 lbs **1.59**

**Cut Rate Grocery & Market SPEARMAN, TEXAS**



We've tried something new in our kitchen the last few weeks—of India, which are as spicy as the climate. We've discovered that curried dishes are as good hot weather fare here as in India and easy to make with some American short cuts as described in LOOK.

Speediest short-cut of all, even if it isn't orthodox, is to warm canned boned chicken in canned tomato soup diluted with 1/2 can consommé and seasoned with curry, paprika, ginger, thyme and salt. Serve this with rice (pre-cooked variety) for a quick and different dinner.

Most fascinating dish we tested must have come from a Maharaja's palace: you might want to try it for a picnic sometime. First, we pierced holes at top and bottom of raw eggs and blew the insides out. Then we beat these with salt, pepper, ginger, curry, mustard, a little butter—and poured them back into the shells. Yes, it's possible—and LOOK's recipe folder on Indian foods tells how. After the eggs were replaced we set them to cook for twenty minutes and poached them when done. Like any good hard-cooked eggs— for a deviled egg with the "devil" built in, and unusual new test-ture.

Your family will probably want to top off each spicy fare with a tall cool drink. At our home, we like to vary the cold drink menu by diluting frozen concentrated juices with carbonated drinks. Try pineapple juice with ginger ale, grape concentrate with lemon-lime.

**CANADA DRY GINGER ALE 2 qts 39¢**

Talking about mornings, try for the coolest breakfast in town: half a chilled cantaloupe, the lower filled with ready-to-eat cereal (take your pick from an assortment of small packages) and top with floating milk-cream.

**POST-TENS 7 Different Post Cereals In 10 Individual No-Waste Packages 34¢**

There never was a month like this for salads. We've been experimenting with new salad dressings to add fun to our favorite vegetables and greens. Successes you ought to sample: French dressing with a ripe avocado mashed and beaten into it; French dressing with leftover pickled beets cut in.

**KRAFT FRENCH DRESSING A Delicious Tang 8 oz 23¢**

For our summer picnic outings, the children choose "rocky sandwiches" for dessert: Graham with peanut butter and honey spread between or cookies made with packaged cake mixes—and extra dried fruits cut into the batter.

**SUNSHINE KRISPY CRACKERS lb. 24¢**

Speaking of cake mixes, have you ever seen anything as pleased as the smile on unexpected guests' faces when you pop a cake (from packaged mix) into the oven to serve warm and fragrant before they leave?

Betty Crocker

- GOLDEN—pkg. 37c
- HONEY SPIGE—pkg. 38c
- WHITE—pkg. 39c
- GINGER—pkg. 39c
- DEVIL FOOD—pkg. 37c
- SOFTSHAK 20 oz.—pkg. 42c
- BISQUICK 20 oz.—pkg. 27c

**The Alert Barberman ANSWERS YOUR QUESTIONS**

Q. I'm having a hard time getting a hair cut. How can I stop this?

A. I recommend using Dr. Salsbury's Ar-Sulfa in the drinking water. Ar-Sulfa controls infectious organisms (commonly called "colds") within 48 hours. It's easy to use. Saves you egg loss. When birds start to snuffle or sneeze, use Ar-Sulfa. And use Dr. Salsbury's Can-Pho-Sal to aid breathing. Knock out flock colds with a one-two punch: Ar-Sulfa—Can-Pho-Sal

**BE ON THE ALERT! DR. SALS'BURY'S**

**SHAMELESS, SEDUCTIVE PARIS!**

BOMULUS presents **JOSE FERRER** in **John Huston's MOULIN ROUGE**

20th Century Fox

**SKY FULL OF MOON**

Flaming Feather

Thur. & Fri. 9 Saturday 11

**JOSE FERRER** in **John Huston's MOULIN ROUGE**

Wagon Wheel DRIVE-IN-FLY-IN THEATRE

**The Spearman Reporter**

Successor to the Hansford Headlight, Published Thursday of each week in Hansford County, at Spearman, Texas.

**WILL J. MILLER, Editor and Publisher**

Entered as second class matter Nov. 21, 1919, at the postoffice at Spearman, Texas, under the Act of March 3, 1879.  
In Hansford and adjoining counties, One Year \$2.50  
Out of Hansford and adjoining counties, One Year \$9.00

**CLASSIFIED ADVERTISING**

First insertion, 4c per word; 2c a word for every issue thereafter. Card of Thanks, 4c per word.  
Display Rates on Request.  
**NOTICE TO THE PUBLIC:** Any erroneous reflection upon the reputation or standing of any individual, firm or corporation that may appear in the columns of The Spearman Reporter will be corrected when called to the attention of the management.

**Washington News Letter by  
Congressman Walter Rogers**

Washington, D. C., July 21, 1953

**The President's Hat:** On July 30 I presented a West Texas hat to the President. The hat came from an anonymous donor on behalf of the people of Pampa, Texas, and was handled by the Chamber of Commerce there. When I took it out of the box, the famous Eisenhower smile came out in full bloom. He said, "That's just the kind I like. It is what I call a five-gallon hat. This is one that will sure get some wear." He expressed deep appreciation for the hat and his admiration for West Texas.

**The UN and RED CHINA:**

pressure will begin to mount for recognition of the Mao Chinese government to replace the Chiang government in the UN as representing China. Many here fear that some secret agreement was entered into binding the U. S. to not vigorously oppose such recognition. China is a UN member. The question is—"Which is the true government of China?" If this question is treated as procedural matter, recognition of Mao government would not be subject to veto. U. S. Congress unanimously adopted resolution opposing recognition of Red Chinese government. England and other European countries appear to favor recognition of Mao. Basic reason behind this is that those countries need a market for their goods. China is the largest market in the world and has natural resources with which to pay for goods.

Satellite Communism is undoubtedly beginning to crumble in the satellite countries. Unless Russia can stop this decay and strengthen these under pinnings, the house will fall down on her. This will be the result of free world stopping the spread of communism. Unless communism can spread, it can not live. Had China been saved from communism, Russia would already be on the ropes. Recognition of Red China and trading with her will give communism the help it needs. We must continue to keep it confined until it is completely dead.

**Closing Days of Congress:** For the past few weeks Congress has been working at a killing speed. This pace has been detrimental to the health of many of the Members. The recent deaths of Senator Tobey and Senator Willis Smith were no doubt precipitated by this pace. It is impossible to cut regularly or properly. Most of the members begin their work-day before eight and continue far into the night. This procedure has been more or less traditional with Congress during the past two decades. It is foolish and should be changed. The work can be

done in an orderly and proper manner during normal work days.

Business is transacted so fast during the last weeks before adjournment, that it is almost impossible to keep up with the bills that are voted upon. This accounts for many amendments that are slipped into bills that later cause trouble. Even the Speaker's tongue gets twisted. Yesterday one of the Members asked for unanimous consent to speak out of order. (This means that he wanted to speak on a subject not then under discussion. The Speaker is recognizing him, said, "The Gentleman is recognized for five minutes to speak without order." The members always get a laugh out of this thing because the tension is so great that any momentary relief from it, is welcome.

Many of the members felt that our speed-up for adjournment was in vain when the President asked for an increase in the debt limit. This is causing great concern in Congress. It simply means that the debt will go to 290 billion dollars, which is pretty far above the national income.

What we need is the courage to cut back the spending and keep the debt limit where it is, at 275 billion dollars. If this course is taken, as it should be, Congress will be in session for several months.

**Dale Davidson  
Receives Award**

Dale Davidson of Spearman, Texas, who is enrolled in radio and television at Oklahoma A & M Tech received his 3rd Class commercial radio-telephone license from the Federal Communication Commission this week. Twenty boys from Oklahoma A&M Tech took the FCC test in Tulsa July 20-21. Of those who took the test, 17 got their first license, 2nd class, or else got a higher license than they already held.

Kenneth Polmann, rehabilitation expert "Rehabilitation is positive social welfare."

William A. Green, advertising expert: "It is no secret that the day of hard sell has arrived in full force."  
Ernest Weider, Boston music teacher: "Music is for fun. It isn't medicine to be taken in awful tasting doses."  
Walter F. Reuther, President, U. O. of July: "A free labor movement is the chief bulwark against Communism."

**Announcement**

This will inform the public that I have opened a grocery store and market in the building formerly occupied by Mussett Grocery and Market.

While we have not completed stocking our store as fully as we plan, merchandise are arriving every day and in the immediate future we feel sure that you can secure any and all foods needed by the citizens of this area.

We will endeavor to give the customers of this store, prompt, courteous and efficient service at all times, with the best merchandise available.

YOURS FOR THE FINEST FOODS

**Heath Food Market**

C. C. Heath, Gruver, Texas.

**END-OF-SUMMER  
TIRE CLEARANCE!**

10-DAY SPECIAL! 10-DAY SPECIAL!

FIRST LINE - FIRST QUALITY

**PENNSYLVANIA**

*Aerolux* TIRES

WITH EXCLUSIVE FLEXOMATIC ACTION

AT THESE AMAZINGLY LOW CLEARANCE PRICES



SIZE*	REGULAR PRICE	CLEARANCE PRICE (Plus Tax)
6.00 x 16	\$20.10	\$ 13.95
6.50 x 16	\$24.80	\$ 15.85
5.90 x 15	\$18.80	\$ 12.95
6.40 x 15	\$21.00	\$ 14.85
6.70 x 15	\$22.05	\$ 15.45
7.10 x 15	\$24.45	\$ 16.95
7.60 x 15	\$26.75	\$ 18.95
8.00 x 15	\$29.35	\$ 19.95
8.20 x 15	\$30.65	\$ 20.95

\* ALL SIZES LISTED ARE 4-PLY

DAVIS SERVICE STATION

Phone 3071

"Some men earn large income by writing original stories for the screen," says a film critic. The time may come when some of these stories will be used.—The Humorist.

They say that man is not adapted for living in large cities. We were doing all right, though, until our draft board decided the same thing.—Fort Sheridan (Ill)

Never Just before election the poor man has lots of friends, but he never seems to be any richer after that.—Ryan in Boston Jer-

**AUSTRIAN WINTER PEAS**

To build the land and for winter pasture. Balbo pasture rye, and Tenkow Winter Barley for pasture. Mix African Millet with any of these for quick growth.

**R. L. PORTER GRAIN AND SEED CO.**

Giant Savings on these food



FRESH GROUND **HAMBURGER** lb. **35¢**

Buy your week's groceries from us this Friday and Saturday and set your own price on Hamburger.

FRESH **FRYERS** lb. **55¢**

CHUCK **ROAST** lb. **39¢**

SIRLOIN **STEAK** lb. **59¢**

AMERICAN OR ROUND **CHEESE** lb. **49¢**

**COKES** Carton **20¢**

PAPER MATE PEN REG. \$1.60 **PEN** Now **1.45**

PETMAN **DYE** 2 For **27¢**

**CHARLOTT FREEZE** 1/2 Gal. **49¢**

DELSEY **TOILET TISSUE** 2 For **27¢**

FRESH **TOMATOES** lb. **22¢**

SUNKIST **ORANGES** lb. **10¢**

**CUCUMBERS** 2 For **19¢**

**CABBAGE** lb. **7¢**

**BANANAS** 2 lbs. **27¢**

**CANTALOUPE** lb. **8¢**

**Weston**

Grocery & Market

For Back To School Hair Styles

CALL

**DeanaMay's Beauty Shop**

HELEN CURTIS Products THEO BENDER Cosmetics

**BEAUTICIANS**

Deana May Douglas Elnora Batson  
Phone 6301 Fri. & Sat.



Available at Weston Grocery and Market, and Cates Grocery and Market in Spearman.



# FRIDAY AUG. 14

Dear Producer:  
**Wheat Quota Referendum**

— This month on the 14th you will vote to settle the Wheat Marketing Referendum. Quotas will apply to all farms on which the 1954 acreage of wheat is more than 15 acres, and all wheat producers who will have 15 acres or more will be eligible to vote in the August 14th Wheat Quota Referendum.

Voting places are as follows:  
A Community - Gruver Elevator; B community, T. C. Harvey, Sr. home; C community - Spearman High school; D community - Gruver High school.

These voting places will be open from 7:00 a. m. to 7:00 p. m. on August 14th.

If two thirds of the voters vote in favor of the Wheat Marketing Quotas, here is what takes place.

1. Marketing quotas will be in effect for all farms planting more than 15 acres of wheat.
  2. Marketing penalties will apply on all wheat produced on acres in the excess of the farm's allotment. This means that the non-cooperator would have to pay a fine or penalty on his excess wheat before he could be issued a marketing card. Then he could sell all of his wheat on the open market with no price support. The penalty on this excess wheat is set at 45 per cent of the Parity price for wheat as computed on May 1 of each year (About \$1.10 per bushel figured on May 1, 1953 Parity price.)
  3. Price support at 90 per cent of Parity will be available for those who stay within their acreage allotment
  4. Quotas can be expected to hold down production, helping to bring supplies more nearly in line with the effective market demand.
- If more than one third of the people vote no, this is the situation.**

1. There will be no marketing quotas with their penalty controls.
2. Acreage allotments, however, will continue in effect because controlling legislation provides that wheat acreage allotments are to be established every year unless suspended because of emergency situations.
3. Price supports will drop to 50 per cent of Parity for Cooperators. Non cooperators, any who exceed their acreage allotments, will not be entitled to price supports even at the 50 per cent level. However, these non cooperators will not have to pay the penalty on their excess wheat.
4. In the absence of quota controls, production can be expected to continue at high levels, possibly adding to the wheat surplus and in turn causing wheat prices to go even lower.

If you are undecided on which community you will vote in, contact the Hansford county PMA office by phoning 2591, or in person, or by letter.

**The above information was prepared by the Hansford County Agent. This newspaper publishes these facts as a duty to subscribers to this newspaper.**



Mr. and Mrs. E. N. Richardson of Colorado Springs announced the engagement of their daughter, Patricia Ann, to Robert Lee...

Happy Homes H. D. Club Meeting

The Happy Home H. D. Club met Thursday, August 6, with Mrs. J. P. Gilliam at 2:30. Mrs. James Sparks and Mrs. Jeholia Cline...

Medlin H. D. Club

A most enjoyable and informative meeting was held in the lovely country home of Mrs. Jack Whitson...

New Hope 4-H Club Meets

The New Hope 4-H Club met on August 4, at Mrs. J. T. Craig's. There were 5 members present...

4-H Encampment

The 4-H girls held their encampment and tour on Wednesday and Thursday August 5 and 6. They met at the court house...

Mrs. Garrett Allen Hostess To Dohlia Flower Club

The Dohlia Flower club met with Mrs. Garrett Allen, Monday, August 10, at 3:00 P. M. The president, Mrs. Bagley, presided over the meeting...

gerly, Jess Womble, A. F. Loftin, J. L. Bryan, Fred Hoskins, and the hostess. Roll call was answered by "A Vacation."

Sherry Cates, Helen Taylor, Georgia Buzzard, and Judy Messel attended a style show in Amarillo last week. Nancy Overton has gone to Eldorado Springs, Mo. to visit her grandmother, Mrs. Will Huff...

Visitors in the Ralph Blodgett home a few days last week were Rev. and Mrs. Harry E. Wilbanks and their two children, of Dallas. Jerry Bennett, of Alhambra, California, spent six weeks visiting in Texas recently...

Mr. and Mrs. Carl Archer and daughter returned last week and from a visit in Denver with relatives. Mr. and Mrs. Bill Martin returned last week from San Diego...

Mr. and Mrs. Don Cuce announce the birth of a daughter, Judy Marie, weight 6 lbs. 11 ozs. on July 17, at North Plains Hospital in Borger...

Mr. and Mrs. Harley Alexander and Mr. and Mrs. David Alexander are vacationing in Canada and the Great Lakes region. Mrs. W. A. Ellsworth returned home Sunday after spending two weeks with her daughter and son-in-law...

Richard Smith, son of Mr. L. W. Mathews is to enroll in the Oklahoma A & M College. Richard's main subject will be Pipeline drafting, for a course of three semesters...

Mr. and Mrs. Ella Barleson of Amarillo is a visitor in the home of her sister Mrs. F. O. Crawford. Mr. and Mrs. Bill Martin returned last week from San Diego...

A "Sweetheart of the Soil" will be crowned in a queen contest Friday and Saturday, September 11 and 12, at Paa Tech Farms during the second annual Southwestern Soil Management Field Day and Ploving Contest...

Nichols said entry forms may be obtained from the Chamber of Commerce at Borger, from county agricultural agents and other members of the council in Hansford, Hutchinson, Carson, and Armstrong Counties. Mrs. Eunice Bentley, Stinson, won a \$50.00 award in a contest sponsored by the council...

Most people like to hear about a good buy; that's what advertising is for.

Every Fri. Morning will be ladies morning from 10:00 to 12:00.



Swimming Pool Now Open. HOURS ARE: Week days from 2:00 to 5:00 P. M. Evenings from 7:00 to 9:00 P. M. Sundays From 2:00 to 6:00 P. M. PRICES - Adults - 50c - Children - 25c Sam Watson, Manager - Larry Reed Life-guard.



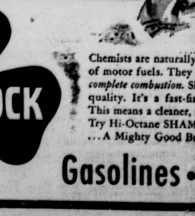
It's excitingly different! The new American car with the European look! You get this advanced styling only in a Studebaker

At surprisingly small cost, you can become the proud owner of a strikingly original new Studebaker—a brilliantly powered Commander V-8—or a sleek-lined Champion that's one of America's lowest price cars. Order yours now—a sedan, coupe or hard-top—a gas economy team-mate of the Studebakers that starred in this year's great Mobilgas Economy Run.

WOMBLE IMPLEMENT CO.

102 W. KENNETH PHONE 2441 SPEARMAN, TEXAS

"Mile After Mile You'll Prefer Shamrock"



Chemists are naturally interested in the makeup of motor fuels. They realize the importance of complete combustion. Shamrock gasoline has this quality. It's a fast-burning, clean-burning fuel. This means a cleaner, smoother-running engine. Try Hi-Octane SHAMROCK IN YOUR CAR... A Mighty Good Brand.

Some of us who have a very high standard of living have a regrettably low standard of life. Alfred M. Gruenther, U. S. General, Supreme Allied Commander in Europe: "I do not think war (in Europe) is ever going to come." Charles E. Wilson, Secretary of Defense:

Senator Joseph McCarthy is the most dangerous menace to America.

McCartney's Laundry and Cleaners are in Spearman and Gruver every Monday, Wednesday, and Friday. Dairy Kream in Spearman is agency. We also deliver

New FOR PAYLOAD OR PASSENGERS... THE INTERNATIONAL TRAVELLER utility vehicle



NEW LOW PRICES on light, medium, and light-heavy duty models!

You're looking at one of the most useful vehicles you ever saw—International's new TRAVELLER! It seats eight people in comfort. With the two rear seats removed, it gives you all the load capacity of a sturdy light-duty truck.

So you'll find the TRAVELLER equally at ease on farm or ranch, in the city—at work or at play. And you'll discover uses for the International TRAVELLER that we haven't even thought of! Time payments arranged. Ask us to demonstrate. Today!

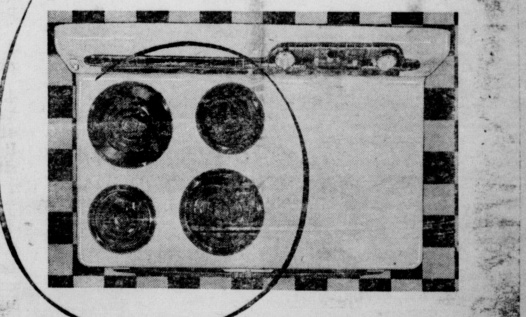


With rear and center seats removed, payload space is approximately 7 feet long and 5 feet wide.

B. AND C. EQUIPMENT CO. 200 Main — Phone 2351 — Spearman, Texas

INTERNATIONAL TRUCKS Standard of the Highway

ELEMENTS for COOL Cooking!

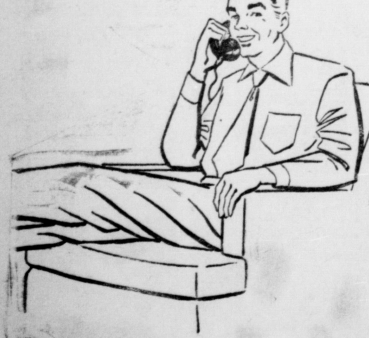


of course—they're ELECTRIC! You can cook an entire meal in an electric range and not raise the temperature in your kitchen more than one degree. Keep cool—cook electrically for just 7 cents a day.

SEE YOUR REDDY KILOWATT APPLIANCE DEALER



EASY DOES IT!



Take less time when you call long distance. Call the easy way... call by number! Keep a list of out-of-town numbers nearby. When you call long distance by number, you cut calling time in half!

