

1978 Stock Show & Sale Beats 1977!

The Spearman Reporter

VOLUME 69, NO. 23

THE SPEARMAN REPORTER, SPEARMAN, TEXAS 79081

THURSDAY, MARCH 23, 1978

To Market! To Market! went a total of 120 prize winning animals following the record auction concluding the 1978 Hansford County Junior Stock Show, adding up to a record gross of \$86,442.20 rung up at the conclusion of the bidding at the highly successful Saturday night sale of the animals shown by Hansford County 4-H members, Spearman FFA members, and Gruver FFA members.

This a happy ending for a story book tale of the two-day 1978 Hansford Show with its kaleidoscope of eager young showmen, proud parents, Hansford County Show auctions was the 1978 total which surpassed last year's previous auction record of \$79,784.60 by \$6,657.60. Prior to last year's return, the record year for the auction sales at the Hansford Show was the 1974 total of \$73,334.96.

The total for all sales including the auction animals; those sold at floor price following the auction; and the sale of shares in the goat was just a shade under \$100,000.00 according to Show Director Carl Cooper who quoted Tuesday morning a total of \$86,442.20 return on the Auction; \$4,173.00 for the floor sale of nine steers; \$2,571.00 for the floor sale of swine following the auction; \$1,572.00 for the floor sale of lambs; and a \$4,310.00 total for the shares in the goat (to be divided among those showmen who did not make the sale) for an approximate total of \$99,669.20.

Floor prices set at the beginning of the 6:00 P.M. Saturday evening Sale at the Gruver County Barn included \$57.40 for the Lambs set by DGC; \$46.10 for the Swine set by Thompson and Williams; and \$47.25 for the Steers by Van Roach and Company. These compare to the 1977 floors of \$40.00 for the Lambs; \$39.80 for the Swine; and \$37.10 for the Steers.

Chad Clawson, Hansford County 4-H member from Gruver, earned the coveted High Gain Steer Award presented by the Federal Land Bank of Spearman for a gain of 545 pounds by Clawson's steer which placed 3rd in the Heavy Weight Class.

Showmanship trophies, which mean so much to the youthful exhibitors, included the 1st place trophy in the Lamb Division awarded by Double D Ag of Gruver, donated by Roy Don Gammon of Gruver; in the Swine Division, donated by Gruver Lumber Company, to Ron Clark of the Spearman FFA; and in the Steer division, the trophy donated by the First State Bank of Spearman, went to Chris Cooper of the Gruver FFA.

Others placing in the Showmanship Awards included in the Lamb Division, 2nd place to Greg Meek, Hansford County 4-H from Spearman; 3rd place, Lamb Division, Mike Barber, Gruver FFA. In the Swine Division, 2nd place award went to Larry Lackey, Gruver FFA; and 3rd place to Kenny Gammon, Gruver FFA. In the Steer Division, Showmanship Awards also went to Sam Boone, Spearman FFA, 2nd place; and Roy Don Gammon, Gruver FFA, 3rd place.

In the special judging of Breeding Heifers, not included in the sale, Mike Grotgeat of the Gruver FFA earned the 1st place Championship title in the Reserve Championship going to Wayne Davis, Gruver FFA. In the Breeding Gilt Division of the Show (also not included in the Sale), Kenny Gammon, Gruver FFA, earned the Championship award and Tracy Vernon, Spearman 4-H, Reserve.

In the 1978 Team Judging Contest which took place Saturday afternoon at the Gruver County Barn, the Hansford County 4-H Team from Gruver including Scott Henderson, Judy Bradford, Ty Williams, and Bobba Gammon were adjudged 1st; the Mobeetie #2 Team of Mark Hamilton, Kevin Boyd, Dennis Hillburn, and Cindy Harrison took 2nd place; the Gruver FFA team of Eva Holt, Todd Williams, Kenny Gammon, and Quentin Hart earned 3rd place; the Deaf Smith 4-H team of Randy Vogel, Rudy Coleman, Phyllis Rowland and Max Middleton, 4th

place; and the 5th place position by the Hansford 4-H team of Kyle Nollner, Ricky Alexander, Marshall Cator, and Durward Cator.

Team placing in the Lamb Division for the 1978 Show included the Hansford 4-H #1 team, 1st; the Spearman 4-H #3 team of Kurt Spoonmore, Pat Steele, Frank Lozano; Mobeetie FFA #2 of Mark Hamilton, Kevin Boyd, Dennis Hillburn, and Cindy Harris, 3rd place; the Gruver FFA, 4th place; and the Deaf Smith 4-H, 5th place.

Team placing in the Swine Division included the Hansford 4-H #1 Team, 1st place; the Gruver FFA, 2nd place; Deaf Smith 4-H, 3rd place; the Mobeetie #2, 4th place; and Spearman #3, 5th place.

Team placing in the Steer Division included the Hansford 4-H #2, 1st place; Mobeetie FFA #2, 2nd place; Hansford County 4-H #2 team of Trevor Williams, Chad Logsdon, Craig Cooper, and Bret Hobbs, all of Gruver, 3rd place; Canadian FFA, 4th place; and Hansford 4-H #1 team, 5th place.

Ty Williams of the Hansford 4-H from Gruver earned top honors in the Individual Judging Contest with 296 points followed by L. H. Webb, Canadian FFA, 2nd high individual; Davin Winger, Gruver FFA, 3rd; Bobba Gammon, Hansford County 4-H from Gruver; 4th; Mark Hamilton, Mobeetie FFA, 5th; Kenny Gammon, Gruver FFA, 6th; Kevin Boyd, Mobeetie FFA, 7th place; Randy Vogel, Deaf Smith 4-H, 8th; Ismael Vela, Spearman FFA, 9th place and Kurt Spoonmore, Spearman FFA, 10th place.

In the Sheep Division for Individual Judging, Ty Williams, of the Hansford 4-H from Gruver, 1st place; Florencio Martinez, Spearman FFA, 2nd place; L. H. Webb, Canadian FFA, 3rd place; Judy Bradford, Hansford 4-H from Gruver, 4th; Greg Odegaard, Spearman FFA, 5th; Frank Lozano, Spearman FFA, 6th; Durward Cator, Hansford 4-H from Gruver, 7th; Dennis Hillburn, Mobeetie FFA, 8th; Alvin Byers, Spearman FFA, 9th; and Davin Winger, Gruver FFA, 10th.

In the Individual Swine Judging, Phyllis Rowland, Deaf Smith 4-H earned 1st place; Bevin Avent of the Sherman County 4-H, 2nd place; Dean Hathaway, Mobeetie FFA, 3rd place; Bobba Gammon, Hansford 4-H from Gruver, 4th; Ricky Alexander, Hansford 4-H from Spearman, 5th; Davin Winger, Gruver FFA, 6th; Judy Bradford, Hansford 4-H, from Gruver, 7th; Jerry Ross, Spearman FFA, 8th; Ty Williams, Hansford 4-H from Gruver, 9th; and L. H. Webb, Canadian FFA, 10th.

In the Individual Beef Judging Contest Ty Williams of the Hansford 4-H from Gruver earned 1st place; L. H. Webb, Canadian FFA, 2nd place; Davin Winger, Gruver FFA, 3rd; Mark Hamilton, Mobeetie FFA, 4th; Randy Vogel, Deaf Smith 4-H, 5th; Eva Holt, Gruver FFA, 6th; Kyle Nollner, Hansford 4-H from Spearman, 7th; Greg Odegaard, Spearman FFA, 8th; Florencio Martinez, Spearman FFA, 9th; with Brenda Dahl, Hansford 4-H from Gruver and Quentin Hart from the Gruver FFA coming 10th, and 11th place scores with 95 points each.

Awarding the trophies, ribbons, and awards during the entire two-day show and sale were Spearman FFA Sweetheart Christ Collier and the Gruver FFA Chapter Sweetheart Kelly Hart.

was purchased by H & H Water Well at \$3.10 per lb. for a total of \$3,534.00.

The Reserve Champion Lamb, shown by JoAnne Odegaard, Hansford County 4-H from Spearman, weighed 111 lbs. and was purchased by the B & B Farm Supply at \$3.85 for a total of \$427.35.

The Reserve Champion Steer, shown by Ty Williams, Hansford County 4-H from Gruver, weighing 1213 lbs. was purchased by Boots Williams of Gruver at \$1.30 per lb. for a total of \$1576.90.

Breed Champion Dorset Class, shown by Scott Dahl of the Hansford 4-H from Gruver weighed 97 lbs. and was purchased by Sparks Brothers at \$2.25 per lb. for a total of \$218.25.

Bret Hobbs, Hansford County 4-H from Gruver, showed the 250 pound Breed Champion Yorkshire which was purchased by the Gruver Farm Supply at \$4.00 per lb. for \$1,000.00. Vana Bradford, 4-H, Gruver, showed the 241 lb. Breed Champion Chester which was purchased by George C. Lowe at \$2.00 per lb. for a total of \$482.00.

Roy Don Gammon, Gruver

Jim Davis Announces

Jim Davis has authorized this newspaper to announce his candidacy for the Board of Education for the Spearman Independent School District. Davis ran unopposed for a one-year term in 1977 and has filed for a three-year term.

Before moving to Spearman in 1959 he served in the Marine Corp and attended the University of Arizona and North Texas State University.

During the past nineteen years he has been active in

numerous civic, service, church and farm organizations.

He resides on Cotter Drive with his wife, Linda, and their three children, Jean, Jan and James, and farms east of the city.

Davis believes in the necessity of quality education for our children and asks for your continued support of his efforts to serve in the betterment of our local educational system in the coming election.

(continued on Ideal Page)

pd, pol, adv

County to be declared disaster RODEO

The Hansford County Commissioners Court voted unanimously to declare the county a disaster area and have sent two of its members to Austin to deliver the message personally to the governor. In a rather lengthy meeting held at the county courthouse Monday morning, the court heard the mayors and bankers of both banks in the county testify that the county should be declared a disaster and meet federal disaster relief. By declaring the county a disaster, as a result of some 3 years of drought, farmers will be eligible for money to pay back debts, thus not only helping the farmers but also the businesses of the county. This will make emergency money available to those who qualify at a low rate of interest.

Judge Johnnie Lee and Bud Lowe left for Austin immediately after the meeting to visit with the governor and also the FHA officials who service this area.

Don't miss Sac's 3rd avenue Easter Egg Hunt - See details in advertisement in this paper-----



Grand Champion Steer shown by Sam Boone, Spearman FFA, was purchased at the Saturday night Stock Auction by Richard Holton for the H & H Water Well Service following a bid of \$3.10 per lb. for a total of \$3,534.00.



Gene Cudd bidding for the Hansford Implement Company of Spearman was the successful buyer of the Grand Champion swine shown by Kurt Spoonmore of the Spearman FFA, bidding \$4.50 per lb. for the 250 pound animal for a total of \$1,125.00.



Pictured above are saddles and belt buckles for the Hat-4 Rodeo, to be held in the Rodeo Arena, Southwest of Gruver, this week-end!

WANTED ADS

Boxwell Bros. Funeral Home and Crematory

FUNERAL HOME - 659-3802
FLOWER SHOP - 659-2212

Hansford County Planned Parenthood
265 S. Haase
659-2483
Spearman, Mon. - Fri.
8 a.m. to 12 noon
305-rtn

SERVICES

HANSFORD LODGE
No. 1040
A.F. & A.M.



State Communication
Monday, March 27, 1978
7:30 p.m.

Visitors Welcome
Cecil Batton, W.M.
Jerry E. Gos, Sec'y.

KIRBY SALES & SERVICE of
Spearman, 912 S. Bernice.
659-2797.
30-rtn

NEW LOW RATES \$6.95
PER DAY

For Steam Rinsenevac
Rug Shampooer
Call Gordon's Drug
659-2141 or
after 7 p.m. & Sundays
call FREDDIE LARGENT:
659-3437
17-rtn

YOUR LOCAL USED
COW DEALER: SPEAR-
MAN HI-PRODUCTS.
Seven days a week door
stock removal. Please call
as soon as possible.
659-3544.
8-rtn

SERVICES: Pits cleaned, wet or
dry. Dragline or loader. Also,
dozer, grader, carry-all service.
LeeRoy Mitchell, 806-733-2384,
Gruver, Texas, 79040.
9-rtn

Alcoholic Anonymous Meeting
8 p.m. Friday, Home
Demonstration Club build-
ing, 305 N. Bernice. Phone
659-3181 for information.

AI-Anon meetings 8 p.m.
Friday Home Demonstration
Club building, 305 N. Ber-
nice in back room. Phone
659-3181 for information.
Ask for AI-Anon.

Fence chargers repaired. Con-
tact Lynn Sheets, 659-3513, 209
S. Hazelwood. All work fully
guaranteed for thirty days.
135-8tc

Plumbing, heating & appliance
repair. Call 659-2811.
165-8tc

REAL ESTATE FOR SALE

FOR SALE: 1013 S. Bernice, 3
Bedroom, 1 Bath, extra built-ins
and storage, carpeted, storm
windows and doors, fenced-in
back yard. After 5:00 for
appointment, 659-2872.
155-rtn

FOR SALE: 3 Lots 150 x 140 ft.
2 Mobile Home Hook-ups.
Harris Addition. Call Collect
665-5330 Pampa.
18-4tc

LOTS FOR SALE: 82' X 160'
located at 319 S. Endicott. Call
658-4890.
8-rtn

Pans For Sale: Crawford Addi-
tion, 659-3510.
165-rtn

GUILD WOMEN'S
BAKE SALE
MARCH 22
THIRTIETHWAY

OFFERED BY:

Emmett R. Sanders
Realtor

Older 3 bedroom home, car
pets, fenced yard, carpet,
tiled, hued.

111
120 ft. lot on County Road
(13th St.) zoned residential.

3 Bedroom house with large
basement, on 100 ft. lot.

111
Mobile home park, 6 spaces
good location.

111
2 bedroom stucco home, plus
large storage room, living
room, dining room, kitchen
with extra space, detached
double garage, quiet location
on 110 ft. lot, owner will
carry loan.

111
Lovely 3 bedroom brick
home, fenced yard, double
garage, choice lot 104 ft.
wide, cozy fireplace, carpets
throughout, insulated win-
dows and doors, central heat
and air, built-in kitchen with
dishwasher, disposal, cook-
top and oven. Shown by
appointment only.

EMMETT R. SANDERS
REALTOR
659-2516
659-2661 (nights)
125-rtn

Manure Fertilizer
From Caprock Pens
\$1.60 per ton plus \$7 a mile
Call or see Billy Baker
659-3642
45-rtn

FOR SALE: 1974 Monte Carlo,
Type Flyer, Cruise Control,
New Radials, Sharp, \$2800.00.
Call 659-3806 after 5:00.
185-rtn

HELP WANTED

HELP WANTED: Apply in
person, Rogers, Sales &
Service - Wata, Texas. Inside
shop, manufacturing work.
17-rtn

DRIVERS WANTED: Apply at
Heinrich's Excel Chevrolet-
Olds, or contact Frank Hefer at
659-2541 in Spearman, or
733-2113, in Gruver, Texas.
17-rtn

Gruver Texas Station needs
two station attendants to pump
gas, wash cars. Applications
will be accepted from women.
Also need a retired man to open
station for approximately 4
hours a day. Apply in person or
call 733-2511.
17-rtn

Help wanted-Lady full time, 5
days a week, 9 to 5:30. Apply at
Spearman Jewelry.
19-rtn

NOTICE

I will not be responsible for
any debts not made by me.
Jerry Etherege.
185-4tp

WANTED

WANTED TO BUY: Old, old
magazines and catalogues.
Dorothy Mae Groves, 659-2647.
185-3tc

FOR RENT

FOR RENT: One & Two
bedroom apartments, 303 Davis
St.
165-rtn

TO GIVE AWAY

To Give Away: Puppies.
659-3558.
19-2tp

LEGAL NOTICE

The Texas Department of
Health has established, in ac-
cordance with the Federal Pu-
blic Health Act, the current an-
nual level of uncompensated
services for Hansford County
Hospital, Spearman, Texas, to
be that the facility does not
intend to deny anyone admis-
sion to the facility or any of its
services because of an inability
to pay. The documents upon
which the determination was
based are available for public
inspection at the Texas Depart-
ment of Health, 1100 West 49th
Street, Austin, Texas from 9:00
a.m. to 4:30 p.m. on regular
business days. The level of
services set out meets the pre-
sumptive compliance guidelines
of the Federal regulation.

TOO LATE TO CLASSIFY

FOR SALE: 1977 Wilderness 5
wheel trailer. Small
equity and take up payments.
1975 250 Yamaha dirt bike. Call
659-3636 after 5 p.m.
19-4tc

MOBILE HOME FOR SALE

FOR SALE: Double-wide mobile
home. 659-2621.
105-rtn

MISCELLANEOUS FOR SALE

FOR SALE: 1967 Chevrolet
Van, 68 Buick Wildcat, 63
Cadillac. 303 Davis St.
175-rtn

FOR SALE: Firewood. Burton
Schubert. Call 659-2667.
5-rtn

FOR SALE: Antique Kitchen
Cupboard with sliding louvered
front. 659-2716.
18-rtn

FOR SALE: Nine foot cab over
camper, nice, self-contained.
Phone 2829 day, 2842 night.
1852tp

FOR SALE: Soybean seed, 49
bags of Williams and 15 bags of
Cutler 71. Call Harold Groves
of Spearman, 659-2647.
185-3tc

FOR SALE: 1976 AMC Pacer.
Power Steering; Air Condition-
ing. New tires. \$3300.00.
Phone 659-2268.
181-4tp

CITATION BY PUBLICATION

TO:
C. B. Davis, J. P. Burgess,
H. S. Durham, R. R. Sherwood,
H. C. Coffey, J. R. Collard, D.
E. Holt, Rachel Burgess, A. B.
Hansley, Mary J. Rucker, A. B.
James Boardman, Alta Bur-
gess, G. D. Landis, Sidney
Board, L. M. Womble, Their
Known or Unknown Heirs, Suc-
cessors and Assigns, Defend-
ants.

YOU AND EACH OF YOU ARE HEREBY COMMANDED to appear before the 84th Judicial Court of Hansford County at the Courthouse thereof, in Spearman, Texas, by filing a written answer on or before 10 o'clock A.M. of the first Monday next after the expiration of forty-two days from the date of issuance of this citation, same being the 8th day of May A.D. 1978, to Plaintiff's Petition filed in said court, on the 20th day of March A.D. 1978, in this cause, numbered 2501 on the docket of said court and styled Robert Lee Womble and Margaret S. Womble, Plaintiffs, vs. C. B. Davis, et al. Defendants.

A brief statement of the nature of this suit is as follows, to-wit:

Trussop to Try Title-per-
taining to the following describ-
ed property, to-wit: All of Lots
Nos. 4, 5, 6, 7, 8 and 9, in Block
No. 9 Original Town of Morse,
Hansford County, Texas.

If this citation is not served
within ninety days after the date
of its issuance, it shall be
returned unserved.

The officer executing this writ
shall promptly serve the same
according to requirements of
law, and the mandates hereof,
and make due return as the law
directs.

Witness, Marie H. Gould,
Clerk of the District Court(s) of
Hansford County, Texas.

Issued and given under my
hand and the seal of said court
at Spearman, Texas, this the
20th day of March, A.D. 1978.
Marie H. Gould, Clerk, District
Court Hansford County, Texas.
19-4Tonly

CARD OF THANKS

Words cannot express the
gratitude in my heart to all my
friends who visited me, sent
flowers, cards, and telephone
calls while I was in the Ochitree
General Hospital and since I
have been home.

May God bless and repay
each and everyone of you.
Ethel Smith

Public Notice

Southwestern Bell, in accordance
with the rules of the Public Utility
Commission of Texas, hereby gives
notice of the company's intent to im-
plement a new schedule of telephone
rates in Texas effective April 14, 1978.

It is expected that the requested
rate schedule will furnish an increase
of 11.4 percent in the company's in-
trastate revenues.

A complete copy of the new rate
schedule is on file with the Public
Utility Commission at Austin, Texas,
and is available for inspection in each
of the Company's public business
offices.



ED WHEELER REAL ESTATE HOMES-FARM - COMMERCIAL -

Brick 3 bedroom, 1 1/2 baths, built-ins,
new carpet, nice drapes, attached single garage,
fenced, storage house.

3064 under roof, 3 bedroom, 1 1/2 baths, central
heat and air, ash paneling and woodwork, extra
large double garage, automatic underground
lawn sprinkler, large storage building, concrete
pad for boat, etc. Cinder block fence nice patio.
Appointment only.

3 bedroom brick, 2 full baths, recently redecor-
ated, fenced, central heat and refrigerated air,
double car garage. Must see to appreciate.

416 S. Haney, 2 bedroom, 1 bath, built-in
appliances, washer & dryer, completely remodel-
ed, new carpet, drapes, custom made, new roof
freshly painted, storm windows, detached garage
made into bedroom. Must see to appreciate.

821 S. Barkley, 2 bedroom, 1 1/2 bath, new tile in
kitchen, dining area, new carpet in den, storm
windows, large lot, fenced storage building,
single garage, large tree, sprinkling system.
Extra nice home -- can be made into a three
bedroom.

Ed Wheeler 659-2613, Office
or 659-2951, Home
145-rtn

CARDINAL CHEMICAL, INC.

NEEDS EQUIPMENT OPERATORS
Must have commercial license and telephone.
\$975 monthly guaranteed pay. Group insurance,
paid vacation, retirement plan, advancement.

Experience helpful, but not required.
PERRYTON, TEXAS
APPLY IN PERSON - 435-0580.
MUST BE AGES 21 AND OVER

CARDINAL CHEMICAL, INC.

NEEDS ONE OR TWO GOOD MECHANICS
Must have own tools and diesel experience.
Group insurance, paid vacation, retirement plan,
advancement. Age 21 years or over.

APPLY IN PERSON - 435-6580

We wish to express a special
thank you to all our friends and
neighbors for the prayers,
Cards, flowers and memorials
made in memory of Bob's
mother, Mrs. A. P. Hohertz.

Your expressions gave us
strength in our time of sorrow.
The Bob Hohertz Family

FOR SALE:

1" used steel pipe, 10 & 20
ft.; 1 1/2" used pipe, 30 ft.;
2" used pipe, 35, 40 ft.;
2 1/2" used pipe, 50 & 55 ft.;
3" used pipe, 67 & 78 ft.;
4" used pipe, 65 & 85 ft.;
6" used pipe, 85 & 95 ft.;
8" used pipe, 51, 25, 34";
used sucker rod, 16 ft.; 1 1/2"
plastic pipe, 10 ft.

CENTRAL SUPPLY
COMPANY
806-273-3777
Borger, Texas
16-8tc

LEGAL NOTICE

General Telephone Com-
pany of the Southwest
has filed tariffs with the
Public Utility Commis-
sion of Texas to imple-
ment the Federal
Communications Com-
mission telephone
equipment registration
program (FCC Docket
1952B). The tariffs have
an effective date of
April 15, 1978. The
proposed changes will
reduce rates for exten-
sion telephones and 25
foot long cords; will
restructure one-time
charges for service con-
nection, moves and
changes, increasing
some and reducing
others; and will offer
reduced monthly rates
for one-party business
and residence customers
who provide their own
primary telephone in-
strument. The proposed
changes in rates, with
some increasing and
others decreasing, will
reduce General's gross
revenues from its Texas
operations by \$2,565,000.

GENERAL TELEPHONE

TEXAS PRESS
1977 ASSOCIATION
PUBLICATION NO. 509640
SPEARMAN, TEXAS 79061
213 Main Street Box 459 659-3434
Published Weekly at 213 Main Street
Spearman, Texas 79061
Owner-Publisher: William M. Miller
Second Class postage paid at Spearman, Texas

ANY ERRONEOUS REFLECTION UPON
THE CHARACTER OF ANY PERSON OR FIRM
APPEARING ON THESE COLUMNS WILL BE
GLADLY AND PROMPTLY CORRECTED UPON
BEING BROUGHT TO THE ATTENTION OF
THE MANAGEMENT.

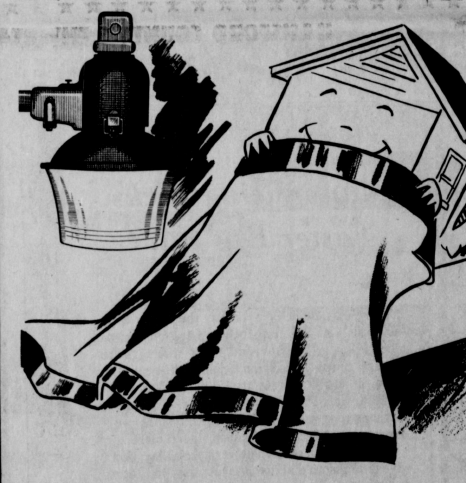
SUBSCRIPTION RATE: Hansford, adjoining
counties, combination with the Hansford Plain-
man, \$16.40.
Other points, \$14.40.

FOR THE ULTIMATE IN
STORM DOORS,
CUSTOM BUILT, DESIGNED, AND IN COLORS
TO FIT YOUR HOME.....
CONTACT:
HOWARD MOYER at
ONLY ALUMINUM INDUSTRIES
405-338-6969 or 338-6170
P. O. BOX 471
GUTMOM, OKLAHOMA 73942

RELIGIOUS ART SHOW COMING MARCH 28-29
HANSFORD LIBRARY
RELIGIOUS ART SHOW COMING MARCH 28-29
HANSFORD LIBRARY

RELIGIOUS ART SHOW COMING MARCH 28-29
HANSFORD LIBRARY

Home For Sale
We offer one of the largest and finest homes in
Southeast Spearman across from the high school.
Five bedrooms, formal living room, den in
basement with built-in fireplace. Approximate-
ly 4000 square feet with many extras. Includes
12' x 20' storage building, fence, sprinkler system,
TV and CB towers and antennas, many more
features. Call for appointment, 659-2647, Mr.
and Mrs. Harold Groves.
125-rtn



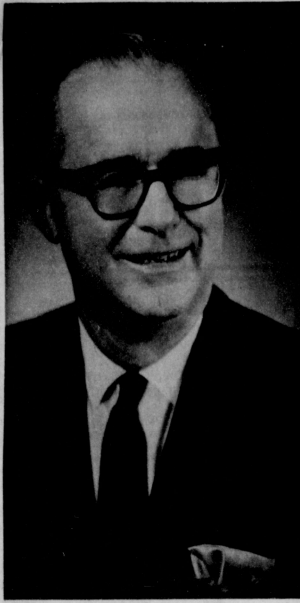
The Security Blanket for Your Home... Nite-Liter.

When darkness comes, is your home as safe and secure as it
could be? With the mercury vapor Nite-Liter, you can have
safety and security lighting spread up to 100 yards in diameter.
The Nite-Liter can be installed on a tall pole, maintained and
the electricity furnished for just a few cents per night... and
no investment is required. The Nite-Liter can help prevent
nighttime accidents from happening to friends or family...
discourage prowlers... and provide light for nighttime outdoor
enjoyment or work. For details on the Nite-Liter, give us a call.

COMMUNITY PUBLIC SERVICE
Your Electric Lights & Power Company

Calico CowBelles Plan Program

Kuykendall To Speak



DAN KUYKENDALL

Dan Kuykendall, a former member of Congress from Memphis, Tennessee, will speak at the County Barn in Spearman, on Thursday, March 30, at 7:30. A report will be given on happenings in Washington, D. C., prior to the Easter Congressional recess. While a member of the U. S. House of Representatives, the committee on which Mr. Kuykendall served had jurisdiction over virtually every major federal regulatory agency, including the Federal Trade Commission, Food and Drug Administration, Environmental Protection Agency, and the Interstate Commerce Commission. In 1975, after serving eight years in Congress, he returned to the private sector and founded his own firm, DK Consultants, which provides Washington representation for professional groups and associations. He is a well-known spokesman for the free enterprise system and is a champion of small business. He has lobbied for the National Association of Property Owners, and on occasion has promoted the interest of Texas and Southwestern Cattle Raisers Association.

A barbeque meal will be catered by Louis Andrews at the Hansford County Barn in Spearman. Tickets are available from the following CowBelle's: Louise Timmons, phone 435-3774, Perryton and Barbara Collier, phone 659-2400, Spearman. Admission will be by advance ticket only and the cost for the buffet meal ticket is \$2.50 each. This program is a part of Calico CowBelle's continuing effort to present informational and educational material to the public. It is not only for members of the agricultural community, but for all those wishing to have a more effective voice in legislation in our nation's capital.

HELLO WORLD



Mr. and Mrs. Bill Watson, formerly of Spearman, announce the birth of their daughter, Joy Lynn. She was born February 28 and weighed six pounds, 3 1/2 ounces. Jill is the proud big sister.

Grandparents are Rev. and Mrs. Jacob Regier of Spearman and Mrs. Ruby Watson of Amarillo.

Mr. and Mrs. Watson and daughters reside in Follett where Bill is District Conservator for Lipscomb County.

Mr. and Mrs. Terry Slaughter, formerly of Spearman, now living in Perryton are the proud parents of a baby girl born March 16 at Ochiltree General Hospital in Perryton. She weighed 7 lbs. 4 oz. at birth and has been named Jill L'nae.

'42 Party

Planned
The Holt Home Demonstration Club is sponsoring a '42 party for March 31, 1978 at 7:30. It will be held at the Holt School House.

Everyone in the Holt Community is cordially invited to attend this event.

Mrs. Ruth Ann Brillhart of Canyon visited in the home of Mrs. Eileen Sutherland on Sunday, March 19. Mrs. Brillhart was a former resident of Spearman.



Doctors honored at a reception Sunday included, left to right; Dr. Latta, Stieger, Baker, Kleiberger, Philips, and Novak. This is the group that makes up our medical and professional doctors in Hansford county. Some of the local doctors were unable to attend the Sunday reception.

Doctors Honored With Reception

Eight Hansford County doctors were honored at a Sunday afternoon reception at the Hansford County Library in Spearman with members of the Women's Division of the Spearman Chamber of Commerce serving as hostesses for the delightful Spring event.

Six of the eight doctors practicing in the County were able to present including Dr. and Mrs. Earl Novak; Dr. and

Mrs. Doug Steger; Dr. R. L. Kleiberger and his mother, Mrs. C. A. Kleiberger; Dr. and Mrs. Tom Latta; and Dr. and Mrs. Bill Baker; and Dr. and Mrs. Bob Philips. Not able to be present for the occasion were Dr. and Mrs. The Le of Graver and Dr. and Mrs. Glen Blodgett of Old Hansford.

Tea cookies, punch and coffee were served by various members of the hostess group during

the 2:00 to 4:00 P.M. calling hours from a spring-accented table laid with a white lace cloth over yellow and centered by yellow mums in a basket vase beribboned in spring accent.

The golden coffee service and punch service completed the table decor.

Greeting and registering the guests as they arrived was Mrs. Belle Crawford with the register area marked by an arrangement

of white mums. Others assisting with the afternoon soiree included the Club president Mrs. Jim McLain and the program committee members, Mesdames: E. L. Collins, Jerry Pat Davis, and E. J. Callaway. Mrs. Mary Lou Wysong, Chamber Secretary, was one of those assisting during the calling hours.

Bridge Clubs

The Saturday Night Bridge Club met Saturday, March 18 in the country home of Mr. and Mrs. Garland Head.

Mrs. Virginia Head won high score for the women and Troy Sloan won high score for the men.

Members present were Messrs and Mesdames: Billy Miller, Troy Sloan, Pat Cates, Garland Head, R. L. McClellan, and Joel Lackey.

The next meeting will be in the home of Mr. and Mrs. Billy Miller with the time to be announced at a later date.

Meeting Monday, March 20 in the home of Mrs. Viola Graves was the Blue Monday Bridge Club.

Mrs. Ruth Hill won high score and Mrs. Vi Whitson won second high.

Refreshments were enjoyed by members, Mesdames: Deta Blodgett, Pope Gibner, Viola Graves, Fred Daily, Vester Hill, Bill Gandy, and guests Mrs. Vi Whitson and Mrs. Leonard Jameson.

The next meeting will be April 3 in the home of Mrs. Vester Hill.

Refreshments were enjoyed by members, Mesdames: Deta Blodgett, Pope Gibner, Viola Graves, Fred Daily, Vester Hill, Bill Gandy, and guests Mrs. Vi Whitson and Mrs. Leonard Jameson.

Good Friday Services Planned

The Rev. David Stauffer, pastor of the Church of the Brethren at Waka, will deliver the sermon at the Union Good Friday Service, sponsored by the Spearman Ministerial Alliance, on Friday, March 24 at 1:00 p.m. at the First Christian Church.

Most downtown businesses will be closed from 1:00 to 2:00 p.m. to allow their employees to attend the service in commemoration of the death of Jesus Christ upon the cross for the

sins and diseases of all mankind.

Special music will be given by the choir of the First Christian Church under the direction of Mary Brock. The ministerial members of the Alliance will each have the various parts of the service.

Mrs. Lucille Clifton of Clayton, New Mexico, visited with her aunt, Mrs. Jessie Tompkins, Sunday afternoon.

Arts and Crafts Guild News

Arts and Crafts Guild met Friday, March 17 in the home of Mrs. Ned Turner.

Refreshments were enjoyed by members, Mesdames: P. A. Lyon, Sr., Sada Hoskins, Joe Trayler, Pope Gibner, Deta Blodgett, Garrett Allen, and F. J. Daily.

The next meeting will be March 24 in the home of Mrs. Garrett Allen.

Announcing Sacks Easter Egg Hunt

There's a new hatch at Sacks - the bunny is on the loose. He has hidden brass eggs in places most reclusive. The hunt is on paper - the eggs are for real - Sacks the location to join in the deal. The eggs will be given at 10:00 - 12:00 - 2:00 and 4:00 Saturday the 25th only four times - no more. Register your guess, look around the store, we'll serve you some cake and much, much more.

If you'll be out of town on our special day, don't give in to gloom and dismay, just sign your name to drop in the hat, starting March 20th, from this day to that. We have a magician, McLain is his name, who will announce the winner of this little game.

Bobbie, Kay, and Peggy

Receipts at the Texhoma Livestock Commission Company this week were 7021 cattle & calves. Steers 650¢ and down steady to strong, 700¢ and up, 50¢ to \$1.00 lower. Feeder heifers 50¢ to \$1.00 lower. Stocker steers 350¢ to 650¢, \$3.00 to \$5.00 higher. Stocker heifers steady to \$1.00 higher. Packer cows steady, \$33.00 to \$35.00. High yielding cows up to \$37.80. Packer bulls \$38.00 to \$42.80.

Steer calves 400¢ to 500¢ - \$57.50 to \$66.80
Heifer calves 400¢ to 540¢ - \$48.00 to \$54.00
Feeder steers 600¢ to 800¢ - \$52.00 to \$55.90
Feeder heifers 600¢ to 750¢ - \$47.00 to \$48.10

For next Thurs., March 23, we are expecting 4000 cattle of all classes. Plan to be with us on Thursdays.

WE ARE NOW TAKING CONSIGNMENTS THROUGH THE MONTH OF APRIL.

YOUR DEPENDABLE LIVESTOCK AUCTION
TEXHOMA LIVESTOCK COMMISSION CO., INC.
P. O. BOX 70 TEXHOMA, OKLA. 73849
PHONE 408-423-7511 & 423-7512
CATTLE DEPARTMENT - LLOYD GOODNER & RAYMOND CHATE
GOODNER RESIDENT PHONE - 408-423-7427

T.G. & Y.

MERCHANDISE ON THIS PAGE GOOD IN ALL T.G. & Y. VARIETY STORES & T.G. & Y. FAMILY CENTERS

Easter Specials

BUNTE JELLY BIRD EGGS
Frankford 3 1/2 oz. milk chocolate. **.33 BAG**

PETER RABBIT MILK CHOCOLATE HOLLOW RABBIT
Frankford 13 oz. milk chocolate. **2.99**

FANCY FILLED EASTER BASKETS
Filled with candy and surprises. **2.99**

POILED HOLLOW BUNNY
10 oz. package of assorted flavors. **1.07**

PAAS EGG COLOR KIT
Color tablets, egg dipper and transfer sheet. **.27**

EASTER GRASS
Non-flammable, 2 1/4 oz. bag. Green color. **.27**

BRACH'S FRUIT & NUT EGG
6 oz. chocolate covered egg. **.99**

MARSHMALLOW PIGEON EGGS
Ass'd. flavors and colors. 10 oz. bag. **.57**

Reese's 6 CT. PEANUT BUTTER EGGS
Chocolate covered peanut butter eggs. **1.37**

INFLATABLE EASTER BUNNY
Whimsical 30" Tall Rabbit carries his own carrot. Pastel colors. **1.99**

WE WILL BE HAPPY TO REFUND YOUR MONEY IF YOU ARE NOT COMPLETELY SATISFIED WITH YOUR PURCHASE.

PRICES GOOD MARCH 23 THRU MARCH 28

PRICES GOOD ONLY AT T.G. & Y. FAMILY CENTER SPEARMAN 659-3741 521 HWY. 207 SOUTH

T.G. & Y. ADVERTISED MERCHANDISE POLICY
Our company's policy is to always have advertised merchandise in adequate supply. In rare instances, a product may be advertised but not available due to unexpected circumstances. T.G. & Y. will promptly advise you of such. Upon receipt, to verify that the merchandise was as advertised at the time you placed your order, we will, at your request, provide you with a receipt. To ensure that you are getting the quality merchandise advertised, we will, at your request, provide you with a receipt. To ensure that you are getting the quality merchandise advertised, we will, at your request, provide you with a receipt.



Baker-Burch Vows Exchanged

The sanctuary of the First Baptist Church of Spearman was the setting for the marriage of Tammie Gail Baker, daughter of Mr. and Mrs. Closs (Billy) L. Baker and Terry Keith Burch, son of Mr. and Mrs. Kenneth E. Burch, all of Spearman. The double ring service was read Tuesday, February 14 at 6:30 p.m. with John Denton, minister of the First Baptist Church of Gruver, officiating. The ceremony was performed before two large bouquets of pink carnations and white spider mums and an arch of pink candles. Janie Kunselman played traditional wedding selections. Given in marriage by her father, the bride wore a formal gown of white polyester tulle, a cape trimmed with re-embroidered lace that graced the V-shaped neckline, with long tapered sleeves with circular cuffs trimmed with lace. The

Martin. Groomsman was Billy Martin. Both are cousins of the groom. The ushers were John Pearson and Robert Hagerman, both of Spearman. The reception was held in the Fellowship Hall of the church. The serving table was covered with a white cloth and was highlighted with a three-tiered wedding cake of white with pink flowers and hearts on the sides. Also served was a pink punch, mints and nuts. Delinda Scroggs and Treva Cook served. The young couple are at home at 510 Hazelwood, Spearman. Out-of-town guests were Mrs. O. O. Baker, grandmother of the bride; Mrs. Steve Edwards, Monty and Kyle, Mrs. Pete Lance and Mr. Mrs. Calvin Baker, all of Sudan.

HD Club News

Serenidipity Home Demonstration Club met Thursday, March 16 in the home of Mrs. Ricky Biggins, President Mrs. Gayle Smith presided over the business meeting.

Minutes of the previous meeting were read and approved. The bridge tournament was cancelled due to little response and the Club will have a luncheon which will be open to the public on April 27 at the Home Demonstration Club Room with the time and place to be announced at a later date. The members will sell tickets in advance.

The members were reminded by Mrs. Peggy Winegarner, County Agent, of the Pre-Natal Seminar to be held at 7:30 March 27 at the Home Demonstration Club Room.

Mrs. Winegarner gave the program entitled "Cleaning On A Shoestring". Members present were Mesdames: Duane Loomis, Ladd Gafford, Bobby Brown, Archie Smith, Buford Baker, Tim Assiter, Steve Benton and guest Mrs. Thomas.

The next meeting will be April 6 in the home of Mrs. Steve Benton.

Station Master Museum News

The Station Master's House Museum is a community project maintained by donations and gifts. It is governed by the Hansford County Historical Survey Commission Inc. who are appointed by the Hansford County Commissioners' Court.

This Museum is an ongoing project of the whole community and county. All citizens are welcome to volunteer or to help with the new plans of growth and expansion. Presently the Museum is comprised of four display rooms and front and back porches. The main room gives a general overview of Hansford County History. The Home-Life Room houses domestic artifacts. The Industry Room shows a cable tool drilling rig replica; farming and ranching tools and pictures, an egg incubator, and druggist's supplies. The kitchen, still in preparation at present, shows wood cook stove, "ice box", home canner, butter churn, old wringer, washboard and wash board. Back porch is not developed yet but has a kitchen "safe" and was stand. The front porch contains the office. A cash register from the Ward's store in Gruver and a surveyor's desk used in the court house at "Old" Hansford.

We hope you enjoy your visit to the Museum and will visit it regularly.

We hope you enjoy your visit to the Museum and will visit it regularly. The reasons for having a Museum are storage, collection, education, and preservation. The Museum is an idea center, a thought provoker and stimulates originality in the individual. It helps the visitors to develop original thoughts.

Union Church Missionary Meet

Union Church Missionary Ladies met Tuesday, March 14 in the church annex of the Union Church. President Mrs. Adalyn Barnes opened the meeting by taking prayer requests.

Guest speaker Mrs. Gary Martin gave the lesson on "Virtuous Woman" from Proverbs 31.

The members were dismissed in prayer by Mrs. Willetta Martin.

Those present were members, Mesdames: Harold Bowen, Janice Riley, Vida Jones, Bernard Barnes, Archie Burrows, J. T. Pond, J. W. Figgins, Burke, Myrtle Fullbright, Smith, J. H. Martin and guest Mrs. Gary Martin.

The next meeting will be March 28.

Museum has a responsibility to help people learn from the past and adapt it to the present. We deal with ideas relating to the dates. We, the Museum, house, collect, and care for social and cultural heritage. It is a place of research and learning, and dissemination of that research.

Our plan for growth include developing the grounds surrounding the Museum; developing a Texas Historical Library containing local works as well as Texas History, to be housed at the County Library; writing a county history with wide coverage of the citizens; collecting oral histories of our "Old Timers". The members of the commission plan to take a tour of County Historical Markers and sites early next month, this will bring us closer to our aims and goals as well as build enthusiasm. Ours is a great county and ours, we have a good heritage here and we want to share it with future generations and preserve relics of the past for future ideas.

Linoleum was patented 1863 by Frederick Walton, an English rubber manufacturer.



Meals On Wheels To Begin Here

Meals on Wheels of Spearman will begin delivering hot, well-balanced meals to registered participants Monday, April 3. This service is offered to anyone within the city limits who has need of a hot noon meal on weekdays, Monday through Friday. The cost is \$1.50 per meal and participants may

all of any part of this fee. If well-balanced meals are not needed, recipients may order meals only for the days needed. Special diets can and will be accommodated. Meals must be ordered the Friday before the participant wishes to receive them. To register to receive this service or for additional information, call or write coordinator Candy Boswell at 3450, 603 Evans, or assistant coordinator Marsha Murphy at 3972. Delivery will be from 11:30 to 12:30, weekdays only, by members of various churches and service organizations in the community.

Hansford Shrine Club Meet

The Hansford Shrine Club met Thursday, March 16 for Ladies Night at Martin's Steak Garden and good fellowship.

Approximately twelve couples were in attendance for the very nice evening and good food.

Members and their wives viewed two films about Burns Hospital entitled "The Red Feet of Hope-The Other Side of The Shrine" and "A Child Is Burned."

Visitors for this occasion were Steve McElroy, S. E. and Mrs. Hudson and granddaughter Carrie. The next meeting will be April 20.

Canadian Residents Visit Here

Visiting in Spearman in the home of Mrs. Helen Fisher during a tour of the States were cousins from Canada. They were Duane Buchanan, Thameville, Ontario, and Mrs. Bernice Gall, Chatham, Ontario.

Those coming to visit with those from Canada were Mr. and Mrs. Wilson Buchanan, Dumas; Mr. and Mrs. David Wilson & Family, Waka; Conch and Mrs. Willis Friesen, Perryton; Tom and Bob Jarvis, Pittsburg; and Mr. and Mrs. Pat Cates, Mr. and Mrs. Burt Buchanan, Mr. and Mrs. John Allen, and Mr. and Mrs. J. B. Buchanan, all from Spearman.

Sorority Members Attend Clubn Concert

Members of the Precpector Epilion Chapter of Beta Sigma Phi met Sunday, March 19 to attend the Van Clubn Concert in Amarillo at the Civic Center.

Those making the concert were Mr. and Mrs. Russell Townsend and Mesdames: Sonny Windom, Perry Dixon, Bobby Archer, Oscar Donnell, R. L. McClellan, T. H. Davis, and J. W. Gibson. The next meeting will be April 13.

The medical term for the fear of work is Ergophobia.

ALLSUP'S

CONVENIENCE STORES

PRICES GOOD MARCH 23-25, 1978

OPEN EASTER

ALLSUP'S IS OPEN ALL DAY EASTER FOR YOUR SHOPPING CONVENIENCE

WE WISH YOU A HAPPY EASTER

SPEARMAN INSULATION

is now in operation

IF YOU WANT THE BEST IN INSULATION CALL

Fred Mayfield 659-3342 or S.B. Sheets 659-3022

Square Dance Club News

The Spearman Spinners Square Dance Club met Thursday, March 16 with Roger Thompson from Amarillo as guest caller at the County Bar.

Three squares were dancing with guests from Dumas, Perryton and Gruver.

The next dance will be announced at a later date.

WHAT A HOUSE!

Nestled on a cul-de-sac, this beautiful home offers 3 large bedrooms, 2 baths, sunken living room with fireplace, utility room, lots of storage, double garage, & large patio. Step-saving kitchen arrangement has continuous cleaning double ovens, cook-top, dishwasher, & disposal. Warm, rich ashwood cabinets complete this 'cook's' dream of a kitchen. From the beautiful double doors that grace the entrance, the woodwork and doors throughout are the same rich ashwood. Large master bedroom features

CALL ANYTIME 659-2053

CRUM REAL ESTATE VIRGINIA WHITE

1165 S. BARKLEY

WE NEED LISTINGS

NADINE CRUM BROKER

NEED WE LISTINGS

CALL ANYTIME 659-2053

SALESPERSON

Two huge walk-in closets and unusually large luxurious ceramic tiled bath. THIS IS THE OPPORTUNITY OF A LIFETIME TO HAVE THE HOME YOU DIDN'T THINK YOU COULD FIND. Quality throughout. By appointment only.

QUICK ELEGANCE

In this home with all the extras on 5 ac in HANFORD HILLS, 3 bdrm 1 1/2 baths, walk-in closets, fireplace, a dream of a kitchen & much more. AND... the best of all... this all electric home, unusually low due to hermetic windows throughout, 11" insulation in attic & spec. insulation in outside walls. Priced to sell.

NEW LISTING, 3 bedroom, macco, 20' by 20' storage building, over cellar. GOOD BUY, 405 S. HANLEY. CALL US!

SOLD

NEW LISTING, ENTIRE SEARCH! Buy this 2 bedroom, 1647 sq. ft., 1 1/2 bath family room, carpet, kitchen built in, macco. Owner transferred. Call today, by appointment.

814 HANEY BARGAINS DON'T EXIST

Or Do They? Neat 2 bedroom, 1 bath, carpeted, nice kitchen with lots of cabinets. Utility room with storage. This home has been well maintained. Two refrigerated air-conditioners and UHF tower and antenna are part of sale. MAKE US AN OFFER!

112 ENDICOTT STARTING OUT

Or, slowing down. This 2 bedroom is for you. One bath, fenced, detached garage. Just needs some clean-up and decorating touches. This home is priced to sell. Owner has retired to N. Mex. Immediate occupancy. MAKE AN OFFER!

911 HANEY

GET A CORNER ON LIFE with this 2 bedroom, 1 bath, garage converted to bedroom. LARGE CORNER LOT, fenced. Needs some painting and fix'n' up but has GREAT POTENTIAL. EXCELLENT LOCATION.

<p style="font-weight: bold; font-size: 0.8em;">BORDEN'S</p> <p style="font-weight: bold; font-size: 1.2em;">CHOC-O-LADE</p> <p>\$1.29 GAL. PLASTIC CTR.</p>	<p style="font-weight: bold; font-size: 0.8em;">SHURFINE</p> <p style="font-weight: bold; font-size: 1.2em;">BACON</p> <p>1 LB. PKG. \$1.29</p>	<p style="font-weight: bold; font-size: 0.8em;">BORDEN'S PREMIUM</p> <p style="font-weight: bold; font-size: 1.2em;">ICE CREAM</p> <p>\$1.29 RD. CTR.</p>	<p style="font-weight: bold; font-size: 0.8em;">SHURFINE</p> <p style="font-weight: bold; font-size: 1.2em;">BLEACH</p> <p>1/2 GAL. 49¢</p>
<p style="font-weight: bold; font-size: 0.8em;">SHURFINE BUTTERMILK ONLY</p> <p style="font-weight: bold; font-size: 1.2em;">BISCUITS</p> <p>9 FOR \$1</p>	<p style="font-weight: bold; font-size: 0.8em;">BORDEN'S</p> <p style="font-weight: bold; font-size: 1.2em;">COTTAGE CHEESE</p> <p>98¢ 24 OZ. CTR.</p>	<p style="font-weight: bold; font-size: 0.8em;">RATH PURE</p> <p style="font-weight: bold; font-size: 1.2em;">PORK SAUSAGE</p> <p>69¢ 1 LB. PKG.</p>	
<p style="font-weight: bold; font-size: 0.8em;">SAVE-SAVE</p> <p style="font-weight: bold; font-size: 1.2em;">MONEY ORDERS</p> <p>00 - \$200.00 FOR ONLY 09¢</p>	<p style="font-weight: bold; font-size: 0.8em;">SHURFINE</p> <p style="font-weight: bold; font-size: 1.2em;">FLOUR</p> <p>5 LB. BAG 69¢</p>	<p style="font-weight: bold; font-size: 0.8em;">SHURFINE</p> <p style="font-weight: bold; font-size: 1.2em;">CRISCO</p> <p>3 OZ. CAN \$1.49</p>	
<p style="font-weight: bold; font-size: 0.8em;">SHURFINE</p> <p style="font-weight: bold; font-size: 1.2em;">HAMBURGER</p> <p>16 OZ. JAR 49¢</p>	<p style="font-weight: bold; font-size: 0.8em;">SHURFINE</p> <p style="font-weight: bold; font-size: 1.2em;">NAPKINS</p> <p>50 CT. PKG. 99¢</p>	<p style="font-weight: bold; font-size: 0.8em;">SHURFINE FROZEN CRINKLE CUT</p> <p style="font-weight: bold; font-size: 1.2em;">POTATOES</p> <p>\$1.39 5 LB. BAG</p>	
<p style="font-weight: bold; font-size: 0.8em;">SHURFRESH</p> <p style="font-weight: bold; font-size: 1.2em;">MARGARINE</p> <p>1 LB. 39¢</p>	<p style="font-weight: bold; font-size: 0.8em;">SHURFINE</p> <p style="font-weight: bold; font-size: 1.2em;">VEGETABLE OIL</p> <p>30 OZ. 99¢</p>	<p style="font-weight: bold; font-size: 0.8em;">SHURFINE</p> <p style="font-weight: bold; font-size: 1.2em;">TOMATO SAUCE</p> <p>6 FOR \$1</p>	
<p style="font-weight: bold; font-size: 0.8em;">FRONTIER</p> <p style="font-weight: bold; font-size: 1.2em;">Paper Towels</p> <p>29¢</p>	<p style="font-weight: bold; font-size: 0.8em;">SHURFINE</p> <p style="font-weight: bold; font-size: 1.2em;">FISH STICKS</p> <p>2 8 OZ. PKG. 89¢</p>	<p style="font-weight: bold; font-size: 0.8em;">SHURFINE BARTLETT</p> <p style="font-weight: bold; font-size: 1.2em;">PEARS</p> <p>2 JUMBO 29 OZ. CAN 99¢</p>	
<p style="font-weight: bold; font-size: 0.8em;">SHURFINE</p> <p style="font-weight: bold; font-size: 1.2em;">COCKTAIL</p> <p>2 JUMBO 30 OZ. SIZE 89¢</p>	<p style="font-weight: bold; font-size: 0.8em;">SHURFINE</p> <p style="font-weight: bold; font-size: 1.2em;">PINEAPPLE</p> <p>2 LG. 79¢ 15 OZ. CAN</p>	<p style="font-weight: bold; font-size: 0.8em;">SHURFINE</p> <p style="font-weight: bold; font-size: 1.2em;">CRACKERS</p> <p>1 LB. BOX 45¢</p>	
<p style="font-weight: bold; font-size: 0.8em;">SHURFINE</p> <p style="font-weight: bold; font-size: 1.2em;">Aluminum Foil</p> <p>37.5 SQ. FT. 59¢</p>	<p style="font-weight: bold; font-size: 0.8em;">SHURFINE GOLDEN</p> <p style="font-weight: bold; font-size: 1.2em;">CORN</p> <p>5 1/2 CUP 12 OZ. CAN \$1</p>	<p style="font-weight: bold; font-size: 0.8em;">SHURFINE</p> <p style="font-weight: bold; font-size: 1.2em;">TUNA</p> <p>2 3 OZ. CAN 39¢</p>	
<p style="font-weight: bold; font-size: 0.8em;">SHURFINE</p> <p style="font-weight: bold; font-size: 1.2em;">PEAS</p> <p>5 FOR \$1</p>	<p style="font-weight: bold; font-size: 0.8em;">SHURFINE</p> <p style="font-weight: bold; font-size: 1.2em;">SAUERKRAUT</p> <p>4 16 OZ. CAN 99¢</p>	<p style="font-weight: bold; font-size: 0.8em;">SHURFINE</p> <p style="font-weight: bold; font-size: 1.2em;">TOMATOES</p> <p>5 FOR \$1</p>	

305 W. KENNETH

Livestock Show

2nd place mediumweight medium wool lamb which weighed 106 lbs. was purchased by Palo Duro Grain at \$3.00 per lb. For a total of \$318.00.

Chad Guthrie, Spearman 4-H, showed the 87 pound 3rd place lightweight Dorset which was purchased by Baker and Taylor at \$3.75 for a total of \$324.75.

Roy Dale, Gruver 4-H, showed the 111 lb. 3rd place heavyweight Dorset Lamb, purchased by Billy Logsdon, Jr. at \$4.50 per lb. for a total of \$499.50.

Roy Dale, Gruver 4-H, showed the 120 lb. 2nd place heavyweight medium wool lamb which was purchased by Continental Grain at \$2.75 per lb. for a total of \$330.00.

The 99 lb. 3rd place lightweight medium wool lamb was shown by Jimmy Womack, Gruver FFA, purchased by Continental Grain at \$2.90 for a total of \$287.10; 3rd place mediumweight, medium wool lamb was shown by Ty Williams, Gruver 4-H, purchased by Double D Ag at \$5.00 per lb. for a total of \$520.00.

Caprock Industries brought the 3rd place medium heavy, medium wool, shown by Darrell Measer, Gruver FFA, at \$4.75 per lb. totaling \$524.00.

Jody Bradford, Gruver 4-H, showed the 117 lb. 3rd place heavyweight, medium wool lamb which was purchased by Farmer's Agri. Supply at \$3.25 for a total of \$380.25.

Scott Atwood, Gruver FFA, showed 85 lb. 4th place, lightweight Dorset lamb, purchased by El Vazquez at \$3.25 per lb. for a total of \$446.25; Loyd Cator, Gruver 4-H showed the 98 pound 4th place lightweight, medium wool lamb which was purchased by Preston Smith, Gruver FFA, at \$3.00 per lb. for a total of \$490.00; Greg Thiele, Gruver 4-H, showed the 102 lb. 4th place medium weight, medium wool lamb which was purchased by Golden Spread Sales at \$3.50 per lb. for a total of \$306.00; Greg Odegaard, Spearman FFA, showed the 4th place 109 lb. medium heavyweight, medium wool lamb, purchased by Beady Furniture at \$4.00 per lb. for a total of \$436.00.

Kirby Hargis, Spearman FFA, showed the 120 lb. 4th place heavyweight, medium wool lamb which was purchased by Equity Elevator at \$4.50 for a total of \$540.00.

The 5th place 96 lb. lightweight, medium wool lamb was shown by Danny Jones, Spearman FFA, purchased by Gruver State Bank at \$6.25 for a total of \$600.00; Ismael Yela, Spearman FFA, showed the 100 lb. 5th place medium weight medium wool lamb purchased by Farworth at \$3.50 per lb. for a total of \$350.00; Pat Steele, Spearman FFA, exhibited the 107 lb. 5th place medium heavyweight medium wool lamb which was purchased by Baker and Taylor at \$3.60 per lb. for a total of \$385.00; Kevin Kirk, Spearman FFA, showed the 117 lb. 5th place heavyweight medium wool lamb purchased by Golden Spread Sales at \$3.75 per lb. for a total of \$438.75.

Showing the 98 lb. 6th place lightweight medium wool lamb was Debbie Burton, Gruver 4-H, which was purchased by Jon Hart at \$3.25 per lb. for a total of \$318.50; Suzy Steele, Spearman 4-H, showed the 100 lb. 6th place medium weight medium wool lamb which was purchased by Tom Latta and Garth Merrick at \$3.60 for a total of \$360.00; Edward Beck, Spearman 4-H, showed the 109 lb. 6th place medium heavyweight, medium wool lamb purchased by Crawford Implement at \$3.75 per lb. for a total of \$408.75; Shelly Strawn, Spearman 4-H, showed the 117 lb. 6th place heavyweight medium wool lamb which was purchased by Spearman Super Service at \$3.75 per lb. for a total of \$438.75.

The 93 lb. 7th place lightweight, medium wool lamb shown by Danny Gray, Spearman FFA, was purchased by the Spearman Auto Supply at \$5.50 for a total of \$514.25; The 105 lb. 7th place medium weight, medium wool lamb, shown by Dee Ann Womack, Gruver 4-H, was purchased by Cooper Feed at \$3.25 per lb. totaling \$341.25; Ken Frasier, Spearman FFA, showed the 116 lb. 7th place heavyweight, medium wool lamb purchased by Equity Elevator at \$3.50 per lb. totaling \$406.00.

Randy Washburn, Gruver FFA, showed the 85 lb. 8th place lightweight medium wool lamb purchased by Price Grain at \$3.50 per lb. for a total of

the 225 lb. 3rd place lightweight Cross, sold to Golden Spread Sales at \$2.50/lb., totaling \$562.50. Steve Shields, Spearman FFA, showed the 246 lb. 3rd place heavyweight, medium wool sold to Pringle-Morse National Bank at \$2.00, totaling \$492.00.

The 4th place lightweight Duroc weighing 228 lbs. was shown by Connie Vernon, Spearman 4-H, sold to Bernice Brown at \$3.00/lb., totaling \$684.00. Rex Casador, Gruver FFA, showed the 221 lb. 4th place lightweight Duroc, sold to Shapley Bros. at \$2.25/lb., total \$497.25. Carroll Cooper, Gruver 4-H, showed the 243 lb. 4th place heavyweight Duroc, sold to Logsdon Farms at \$3.00/lb., totaling \$729.00.

Frank Lozano, Spearman FFA, showed the 234 lb. 4th place lightweight Hampshire, sold to Roy Nollner at \$2.00, totaling \$468.00, sent to the Children's Home. Marshall Cator, Gruver 4-H, showed the 200 lb. lightweight Cross, sold to Nollner Bros. at \$2.75/lb., totaling \$550.00. Danny Dear,

Spearman FFA, showed the 249 lb. 4th place heavyweight Cross, sold to Glen Mackie at \$3.50/lb., totaling \$871.50. Hank Sutherland, Spearman FFA, showed the 248 lb. 5th place heavyweight Duroc, sold to Hansford Implement at \$4.00, total \$992.00. David Pearson, Spearman FFA, showed the 239 lb. 5th place lightweight Hampshire, sold to Dan Ralston at \$2.50 per lb., totaling \$597.50. Andy Francis, Spearman FFA, showed the 250 lb. 5th place heavyweight Hampshire, sold to 4-Tex Grain at \$2.30/lb., totaling \$575.00. Chris Dorman, Gruver FFA, showed the 244 lb. 5th place lightweight Cross, sold to Archie Nelson at \$2.75/lb., totaling \$671.00.

The 250 lb. 6th place heavyweight Cross was shown by Steele, Spearman FFA, who sold to H & H Water Well at \$2.50/lb., totaling \$625.00. Dean Groves, Spearman FFA, showed the 250 lb. 6th place heavyweight Duroc, sold to Equity Elevators at \$3.25/lb., totaling \$812.50. Johnnie Ear, Spearman 4-H, showed the

the 1038 lb. 2nd place mediumweight steer purchased by June Barkley at \$1.00/lb., totaling \$1,038.00, sent to the Children's Home.

Scott Strawn, Spearman 4-H, showed the 1118 lb. 2nd place medium heavyweight Steer sold to H & H Water Well at \$1.00/lb., totaling \$1,118.00; Chris Cooper, Gruver FFA, showed the 2nd place heavyweight Steer weighing 1,264 bought by Hansford Parts and Supply at \$1.20/lb. and totaling \$1,516.80.

Kenny Gammong, Gruver FFA, showed the 900 lb. 3rd place heavyweight Angus, sold to DGC Feeders at 85 cents/lb., totaling \$765.00. Kyle Nollner, Spearman 4-H, showed the 1055 lb. 3rd place mediumweight Steer, sold to B & B Farm Supply at \$1.25/lb., totaling \$1,318.75.

Shelly Strawn, Spearman 4-H, showed the 1,111 lb. 3rd place medium heavy steer, sold to Hansford Implement at \$1.00 per lb., total \$1,111.00. Chad Clawson, Gruver 4-H, showed the 1,245 lb. 3rd place heavyweight steer sold to Palo Duro Grain at \$1.10, total \$1,369.50. Gruver 4-Her Debbie Burton showed the 935 lb. 4th place lightweight Steer, sold to Pat Holt at \$1.20 per lb., total \$1,122.00. Todd Williams, Gruver FFA, showed the 1,091 4th place medium weight Steer, sold to Palo Duro Grain at \$1.20/lb., total \$1,309.20. Rex Shook Gruver 4-H, showed the 1,113 lb. 4th place medium heavy Steer, sold to Caprock Industries at \$1.10 per lb., total \$1,224.30.

Doug Hohertz, Spearman FFA, showed the 1,180 lb. 4th place heavyweight Steer, sold to Excel Chevrolet for \$1.00/lb. for a total of \$1,180.00. Don Hartman, Gruver 4-H, showed the 1,005 lb. 5th place lightweight Steer, sold to Palo Duro Feeders, at 90 cents per pound, totaling \$904.50. Shonna Thompson, Gruver 4-H, showed the 1,040 5th place medium weight Steer, sold to Clifford Feeders at \$1.00/lb. for a total of \$1,040.00. Marshall Cator, Gruver 4-H, showed the 1,155 lb. medium heavy steer earning



IDEAL FOOD STORES

PRICES EFFECTIVE THRU SATURDAY, MARCH 25, 1978. QUANTITIES LIMITED. RESERVES NOT GUARANTEED. MON.-SAT. 8 a.m.-9 p.m. SUN. 10 a.m.-7 p.m.

THIS COUPON IS GOOD FOR 100 FREE GUNN BROS. STAMPS AT YOUR IDEAL FOOD STORE. No Purchase Required.

PLEASE BRING IN YOUR NAME AND CITY. Only One Coupon Per Customer-Expires 3-31-78.

THIS COUPON IS GOOD FOR 100 EXTRA GUNN BROS. STAMPS AT YOUR IDEAL FOOD STORE WITH MIN. PURCHASE.

PLEASE BRING IN YOUR NAME AND CITY. Only One Coupon Per Customer-Expires 3-31-78.



CHUCK WAGON **SHANK PORTION**

Boneless Smoked Hams

3 TO 5 LBS. AVERAGE FULLY COOKED HALVES WATER ADDED

\$2.69 **\$2.39**

3 TO 5 LBS. AVERAGE FULLY COOKED WHOLE WATER ADDED

\$2.89 **\$2.49**

CURE #1 FULLY COOKED BONELESS HAM WHOLE WATER ADDED

\$2.89 **\$2.49**

CURE #1 FULLY COOKED BONELESS HAM HALVES WATER ADDED

\$2.89 **\$2.49**

Easter Food

DEL MONTE SWEET PEAS OR CUT

Green Beans

3 16-oz. CANS **\$3.88**

DEL MONTE Pear Halves **2 88¢**

AMERICAN BEAUTY Spaghetti Sauce Mix **5 1.00**

BROWN & SERVE

Camelot Rolls

3 16-oz. PKGS. OF 12 **\$3.10**

DEL MONTE YELLOW Cling Peaches **2 1.00**

KEEbler Fig Bar Cookies **1 73¢**

ENRICHED

Camelot Flour

5 48-oz. LB. BAG **\$5.48**

KRAFT NOODLE WITH Chicken Dinner **7 54¢**

KEEbler Fruit Creme Cookies **1 73¢**

PURE VEGETABLE

Crisco Shortening

3 1 1/2 lb. CAN **\$3.148**

KRAFT FRENCH OR 1000 Island Dressing **2 1.00**

POST Bran Flakes **1 73¢**

IMPERIAL Sugar

64¢

EXTRA DRY ANTIPERSPIRANT Arrid Deodorant **1 28**

JOHNSON DAYTIME Diapers **2 39**

SPLASH-ON Baby Lotion **1 29**

CAMPBELL'S Pasty Shells **1 29**

CAMELOT GRADE "A" Medium Eggs DOZ.

Whipping Cream **36¢**

KRAFT MADE WITH Miracle Margarine **68¢**

FRESH Camelot Buttermilk **69¢**

FARMFROST - ALL VARIETIES Fresh Mils **1.00**

KRAFT SHREDDED SHARP Cheddar Cheese **63¢**

FRESH BLEND NATURAL Swiss Cheese **84¢**

FRESH DAIRY

Cool Whip ... 54¢

WHOLE Dinner Rolls **49¢**

CAMELOT WHOLE Strawberries **99¢**

WHOLE KERNEL Camelot Corn **2 1.00**

BANQUET FROZEN Pie Shells **2 89¢**

FROZEN FOODS

BIRDSEYE

9-oz. TUB **54¢**

SHOP IDEAL...WHERE THERE'S MORE VALUE IN STORE

Trevor Williams, Gruver 4-H, showed the 1,082 lb. 7th place medium weight steer, bought by Gruver Farm Supply at \$1.20/lb., total \$1,296.40. Suzanne Hart, Gruver 4-H, showed the 1,113 lb. 7th place medium heavy steer bought by Mrs. J. M. Hart at \$1.65 per lb., total \$1,168.65. Phil Orman, Gruver 4-H, showed the 1,185 lb. 7th place heavyweight steer, bought by Mrs. C. H. Clawson at \$1.10, total \$1,303.50. Chad Logsdon, Gruver 4-H, showed the \$1.10 place medium weight steer weighing 1,038 lbs., sold to Van Roach Cattle at \$1.00 per lb., total \$1,038.00. Eva Holt, Gruver FFA, showed the 1,155 lb. 8th place medium heavy steer sold to Jerry Williams at 75 cents per lb., total \$866.25. Kelly Mills, Gruver FFA, showed the 8th place heavyweight steer weighing 1,205 lbs., sold to Daco Well Service at 90 cents per lb., total \$1,084.50. Quentin Hart, Gruver FFA, showed the 1,070 lb. 9th place medium weight steer sold to Ralston-Purina at \$1.20 per lb., \$1,284.00 total.

Helping financially for those exhibitors who did not place animals for sale at the 1978 auction was the sale of shares on a going which, as of Tuesday morning, amounted to \$4,173, to be distributed equally among the youthful showmen when a complete a final total has been reached. Until then, a big thank you from each of us to each of you for 'caring'!

Hats off to the 1978 Directors of the Hansford County Junior Livestock Show and Sale with Carl Cooper of Gruver serving as major domo for the hard-working group including John Armes, D. A. Cator, J. C. Harris, George C. Lowe, Jr., Buddy Murrell, Raymond Walker, and Jerry Williams of Gruver; Mike Garnett, Jimmy Greene, Dr. Tom Latta, Sonny Patterson, Otis Ray Mackie, and Troy Sloan, all of Spearman; Lynn Davis, Frank Pittman, and Charles Reid, Morse.

Advisors to the Stock Show and those in whose hands rest the responsibilities of helping the youth with their animals include Vocational Ag teachers Herman Boone and Bert Wil-

liams of Spearman, Oran Burton of Gruver, and County Agent Garland Stewart.

The official Stock Show programs were furnished by Loomis, Inc. of Arroyo, California and local Loomis dealer, the Cooper Feed Company of Gruver.

The success of the 1978 Show was due in large measure to the "going, going, gone" encouragement of the auctioneers Card Bostick, Gruver, and W. B. Dickenson of Olton along with the 1978 Bookkeepers Jimmy Greene and Orville Latham of Spearman, Mack Hoel and Weldon Green of Gruver, and Lynn Davis, Morse.

Tremendously popular was the sale of goodies provided by the Hansford County 4-H Clubs and the Hansford County Home Demonstration Clubs—the only means of fund-raising during the year.

Appreciation also goes to the stock judges, Kenneth Woodward, Goodwell, Oklahoma, for the Lambs; Robert Skaggs, Pampa, for the Swine; and Ronald Gooch, Clarendon, for

the Steers. And the Department Superintendents deserve a share of the appreciation for a job well done including for the Steers, Troy Sloan, Dr. Tom Latta, D. A. Cator; for the Lambs, Frank Pittman, Buddy Murrell, Charles Reid; and for the Swine, George C. Lowe, Jr., Jerry Williams and John Armes.

The distinctive caps which were presented to the buyers were donated by John Armes and Jerry Williams.

So, the curtain descends on a most successful 1978 Hansford County Junior Livestock Show and Sale and many, many thanks to each of the buyers; to each of those who came and cheered these young showmen; to those both behind and in front of the scenes a big, big THANK YOU for a job very well done!

(Editors note: this is the longest story ever set in the Spearman or Gruver papers, A total of 12 feet long -- a new record for the livestock show and a new record for the local newspapers).

Post Office Asks For Correct Addresses

Due to the enormous amount of local mail, either incorrectly addressed, or no address except Spearman, Texas, the Post Office is soliciting the aid of all our customers to help correct this situation.

If you receive a piece of mail with a label attached advising you to notify your correspondent of your correct MAILING ADDRESS. Please do so. If your correspondent advises you of their correct mailing address, please make this change on your mailing records.

Incorrectly addressed mail not only involves additional handling and expense for each local post office, but quite often causes delay in, and/or wrong delivery of your mail.

We of the Spearman Post Office do not wish to work a hardship, delay your mail or cause any customer additional expense. Please help us provide you with the very best mail service possible.

Thank you very much,
T. Ray Robertson, Postmaster

Worth winning were the trophies, ribbons, and awards at the Hansford County 1978 Junior Stock Show for they were each presented by Gruver FFA Sweetheart Kelly Hart and Spearman FFA Sweetheart Christi Collier.

U.S.D.A. CHOICE BUTCHER BLOOD BEEF

Rib Roast

BEEF RIB \$1.79 LB.

BONELESS U.S.D.A. CHOICE RIB ROAST \$1.39 LB.

CHUCK ALL MEAT OR BEEF \$1.99 LB.

SKINLESS FRANKS... \$1.99 LB.

RODED SLICED -- ASST. VARIETIES 12-18 PZ \$1.29

LUNCHEON MEATS... \$1.19

DANOLA SLICED HAM... \$1.19

SWIFT EMPIRE BRAND

Young Turkeys

16 TO 20 LBS AVERAGE \$5.99 LB.

FRESH PORK LOIN CENTER CUT \$1.59 LB.

FRESH MARKET MADE PORK SAUSAGE... 99¢

LITTLE SIZZLERS... 99¢

PLAY CASH KING

WIN UP TO \$1,000 CASH

ODDS CHART as of March 11, 1978

WINS	AMOUNT	ODDS	WINS	AMOUNT	ODDS
100,000	10	100,000:1	2,500,000	10	2,500,000:1
100,000	100	10,000:1	2,500,000	100	2,500,000:1
100,000	1,000	1,000:1	2,500,000	1,000	2,500,000:1
100,000	10,000	100:1	2,500,000	10,000	2,500,000:1
100,000	100,000	10:1	2,500,000	100,000	2,500,000:1
100,000	1,000,000	1:1	2,500,000	1,000,000	2,500,000:1

Elizabeth Beck Rites Held

Funeral services were held Monday, March 20 at the First Baptist Church for Mrs. Elizabeth Beck, 82, who died Saturday, The Rev. Russell Pogue, pastor, officiated at the 2:30 p.m. service. Burial was in Hansford Cemetery by Snowwell Brothers Funeral Home of Spearman.

Mrs. Beck had been a Spearman resident since 1938. She was a native of Hopkins County and a member of the First Baptist Church here. She was preceded in death by her husband who died in 1955 and a son, Woodie.

Surviving are three daughters, Mrs. Marieta Huse and Mrs. Juanita Tucker, both of Spearman, and Mrs. Jeanette Kiker of Albuquerque; four sons, Sid J. of Spearman, Harold of Dayton, Ohio, Billy Joe of Balco, Okla., and Don of Amarillo; 27 grandchildren; 20 great-grandchildren and two brothers, Will Dixon of Garland and Bud Dixon of Sulphur Springs.

Casket bearers were Jerry Don Beck, Gerald David Beck, Ronnie Beck, Douglas Beck, Steve Beck, and John Crawford.

FRESH Roasting Chickens

69¢ LB.

HICKORY SMOKED SLAB Sliced Bacon

\$1.19 LB.

FAIRMONT ICE CREAM

1.09 GAL. ROUND CARTON

CYCLONE ICE CREAM BARS

4 for 89¢

Jell-O Gelatin

588¢ 3-OZ. PKGS. FOR

Miracle Whip

88¢ 32-OZ. JAR

Long Spaghetti

68¢ 24-1/2 OZ. PZ.

Brown Sugar

89¢ 14-1/2 OZ. PZ.

Northern Tissue

469¢ ROLL PKG.

Saltines

59¢ 10-OZ. PZ.

Stove Top Stuffing Mix

77¢ 4-1/2 OZ. PZ.

Reynolds Wrap Foil

69¢ 14-1/2 OZ. PZ.

WIN UP TO \$1,000 CASH

ODDS CHART as of March 11, 1978

WINS	AMOUNT	ODDS	WINS	AMOUNT	ODDS
100,000	10	100,000:1	2,500,000	10	2,500,000:1
100,000	100	10,000:1	2,500,000	100	2,500,000:1
100,000	1,000	1,000:1	2,500,000	1,000	2,500,000:1
100,000	10,000	100:1	2,500,000	10,000	2,500,000:1
100,000	100,000	10:1	2,500,000	100,000	2,500,000:1
100,000	1,000,000	1:1	2,500,000	1,000,000	2,500,000:1

***1,000⁰⁰ WINNERS**

Charles Miles, Liberal
George Dickinson Jr., Laverne

***100⁰⁰ WINNERS**

Joan Sutterfield, Pampa
Florence Shrader, Spearman
Neta Cochran, Liberal
Louise King, Pampa
Alan Mills, Pampa
Viola Shipman, Dumas

CALIFORNIA Navel Oranges

389¢ LB.

WASHINGTON GOLDEN Delicious Apples

3\$1.00 LB.

GREEN TOP Radishes or Onions

229¢ BUNCHES FOR

LARGE California Avocados

279¢ LB.

Easter Flowers

YOUR CHOICE Lilies • Mums or Tulips

\$3.98 6" POT EACH

FRESH ORCHID Corsage

\$1.98 EA.

Green Market Street Easter Values...

California Strawberries

58¢ PINT CARTON

Ideal FOOD STORES

Food Stamps Buy More At Ideal...

Our Heritage of Faith

notes from Faith Lutheran Church

We are now in the middle of Holy Week. This is a time when we remember the sufferings and death of Christ. This is a somber time as we think about all which Jesus suffered for us. It was because of us and our sin that Jesus died. So at this time we are made aware of the seriousness of our sin and the price that God paid to free us from our sin. But behind the somberness and our dwelling on the sufferings and death of Christ lies a note of celebration. Celebrating that this suffering and death was for us, that we might be a new people, God's forgiven children.

Forgiveness is a hard concept to understand and even harder to enact in ones life. What so often is called forgiveness is not really but only rationalizing. We simply try to find excuses or explanations for what we or someone else may have done. It is also hard to forget what someone may have done to us. We may say we forgive them, but we don't forget. We may say that we understand why they did what they did and we may say that it is okay, but we still expect them to try to make it up.

But real forgiveness is different. Real forgiveness takes what has been done seriously. It does not try to find excuses or an explanation. Real forgiveness states that the wrong that has been done is inexcusable and is not okay. The wronged one has no reason to remain in fellowship or in a relationship with the one who has done the wrong. The wrong is too terrible, too destructive, that it cannot be overlooked, nor can the wrong be righted. The one who has done the wrong cannot do enough to make up for what he has done.

But the one who has done the wrong is forgiven. He remains in a relationship, in fellowship, with the one that he wronged. What he did is forgotten. It is as though he never committed the wrong. For the one who forgives him does not expect him to make up for what he has done. Rather the one who forgives him takes on himself the destruction which the one who has committed the wrong has caused. The one who forgives suffers with the one who has committed the wrong as though the wrong and the destruction it has caused is his own.

True forgiveness means that the one who forgives establishes himself on the same place as the one who did the wrong. There is nothing to make up. There is no guilt or expectations left. But all are free to live anew. This is the forgiveness which God gives us in Jesus Christ.

Faith Lutheran will have Maundy Thursday Services at 7:30 on Thursday evening. Easter Sunday Worship Services will be at the usual time, 9:30, and Sunday School follows at 10:30.

STEEL BUILDINGS

AGRA STEEL CORP., A LEADER IN FARM BUILDINGS, WILL APPOINT A LEADER FOR THIS AREA. BIG EARNINGS POSSIBLE COMPANY TRAINING. FOR INFORMATION CALL MR. FRANK 890-821-7318 OR WRITE, AGRA STEEL, BOX 16310, KANSAS CITY, MO. 64111

Peggy's Pointers

The Nutribird says "Eat a balanced diet every day" and help celebrate March Nutrition Month, according to Mrs. Peggy Winegarner, Hansford County Extension agent. The Nutribird emphasizes the need for good nutrition and weight control obtained from eating a balanced diet according to individual food needs. This knowledge of the balanced diet will help you to fight food fads and "wonder" foods.

"Faddism and nutrition nonsense have created a major public health problem, with Americans squandering \$2 billion on food fads," the agent reported.

"These people are fooled, because they don't know or won't accept scientific facts about foods and nutrition," she challenged.

She cited "ignorance, indifference and fear" as the major factors that contribute to the situation.

"Victims are persuaded that 'health foods, wonder diets, or super pills' can produce magical results," she continued.

"These people accept false promises of the quick and believe they can regain 'youth, vigor and charm'—or 'lose ugly fat, no counting of calories, no exercise'."

"And they believe claims, such as those for having 'nerves soothed while miraculously being cured of whatever ails' them," the agent added.

Mrs. Winegarner termed food fads dangerous for several reasons.

"Food fads and nutrition quackery are dangerous because essential nutrients may be lacking from the fad diet—malnutrition could result."

"Instead, a variety of foods will produce a wholesome diet."

"Also, children following a fad diet may not get the nutrients they need for growth and development."

"In addition, attention to a serious ailment may be delayed while a food faddist or quack attempts to treat the condition. And faddish foods and treatments are always expensive," she added.

"You can learn to separate fact from fiction by learning the basics of good nutrition. Read materials about nutrition obtained from the government, universities, Extension services and accepted nutrition organizations," she concluded.

The Home Fashion Fair was much fun as well as informative. If you were unable to attend and would like some of the handouts on "luxury low cost decorating" or on "insulation for your home," please call or come by the Extension office.

Perhaps you're wondering if your home needs more insulation. Pat Seaman says the best areas for insulating include: unfinished attics, finished attics between ceiling joists, exterior walls, floors above crawl spaces, the perimeter of slab-on-grade, basement walls and duct work, and plumbing in uninsulated areas.

In the term R-value, R-stands for the resistance of heat moving to cold. In our area, choose insulation with R-22 to R-25 value.

PRENATAL SEMINAR re-scheduled for Monday, March 27 at 7:30 p.m. in the Spearman Home Demonstration Clubroom. Hopefully the ground blizzard and other adverse weather conditions have subsided and we can proceed with the program on schedule!

Mrs. Sherry Carter from Perryton and Mrs. Bessie Huntsman from Spearman will show films and discuss the Lamaze method of prepared childbirth.

Our panel of young mothers will also be on hand to discuss preparing for infancy and dealing with the high cost of childhood.

ENERGY WISE LIVING means different things to different people, but there is no doubt, you will continue to hear more and more about it. You read and hear—change the filter on your heating and cooling system; why not make a point to change the filter, summer and winter, each month when you pay your bill. You've purchased all of those portable appliances—now pull them out of their hiding places and use them! Canning is the most profitable method of food preservation while freezing is the most expensive, and—the cost continues to rise the longer you leave food in the freezer.

The energy crisis is real, according to Miss Sherman, and this summer we stop thinking of it as a short term problem and start doing what we can to alleviate it, the better off we will be!

For spring and summer children's clothes, look for practical and fashionable fabrics such as duck, poplin, baby cord, broadcloth, seersucker, sailcloth, terrycloth and lightweight knits.

Popular trims for girl's clothes include embroidery, eyelet and lace appliques, ruffles and edging.

New vest designs for adults are boxy, loose fitting and have deep armholes to wear over full-cut tops and dresses.

Local Teen-Agers Big Spenders

Financially, Hansford County's teenagers seem to be making out very well.

They have affluence such as their parents never dreamed of at their age. As a result, with their spending clout, they have become an economic group to be reckoned with.

The unprecedented amount of money at their command, estimated at no less than \$979,

000 in the past year, went for the whole gamut of personal items and leisure-time activities that are so important to them. And it went fast.

In addition to what they spent on themselves, they exerted a strong influence on family purchases—from food to furniture and from carpets to cars.

All of which enhances the stature of the teen-agers in the

eyes of designers and retail merchants, who court them as never before through frequent changes of fashions and styles.

The overall spending figures are based upon surveys and studies made by the Rand Youth Poll, a market research organization, by the Family Economist and others.

The findings are that the 30 million teen-agers in the United

States had an income of \$28.7 billion last year, a \$2.6 billion increase over 1976.

It was the largest annual rise in the past 25 years and is attributed to inflationary pressures and to the greater number of possessions that have become "musts" for young people.

For Hansford County's teenage population, which now

numbers close to 950, the outlay came to approximately \$979,000, based upon local income and spending figures. Per capita, it averaged \$1,030 in the year.

Part of this money was earned by doing odd jobs after school and during summer vacations. The rest came from weekly allowances.

Girls, it is found, outspend boys. Personal vanity is given as the main reason for the difference. Among boys, dating and entertainment are in the

number one spot, with cars in second place.

Of even greater importance to local merchants is the general family spending over which the teen-agers have an influence. This is placed at about \$60 billion a year nationally. In Hansford County, in line with the findings, it affects an estimated \$2,046,000 of the spending done per year in local stores.

Anytime and anyplace, always wear a happy face!



If fuel costs are squeezing the profit out of your corn crop, plant

Cost The Cutter



Less Irrigation Cost — Lower Harvest Costs Because of Lower Moisture — Less Drying Cost

Pioneer® brand 3780 can cut your costs to improve corn profits in four ways —

- ★ **Less Irrigation Cost** — 3780 needs less total water than commonly grown corns because it grows off-fast. And because of its early water use, 3780 uses early-season rainfall more efficiently than other corns or crops.
- ★ **Less Harvest & Hauling Cost** — Fast drydown with good standability and ear retention lets 3780 dry in the field — you harvest and haul less moisture from the field.
- ★ **Less Dockage** — Less water hauled from the field means less dockage or drying expense.
- ★ **Lower Potential Weather and Insect Loss** — Because of its rapid growth feature and fast drydown, 3780 is ready for harvest well ahead of commonly grown corns. Fewer days in the field mean less exposure to potential bad weather and late-season insect problems.

MORE NET INCOME PER ACRE

High Plains farmers have consistently found 3780 producing more net income per acre than competitive corns of later maturity . . . even though the green weight of later maturing corns may have been more.

With 3780, you don't take big cuts in yield like you might expect. In fact, in 96 tests under many conditions in the past four years, 3780 has averaged 7,817 pounds per acre. Few farmers will boast of a higher four-year-average, dry-corn yield than this.

Yields like you'd expect from corn with input costs similar to grain sorghum . . . that adds up to more net income per acre.

3780 — 96 High Plains tests — 4-year average — 7,817 lbs./A.
Here's How 3780 Performed For 5 Area Farmers in 1977

Helmuth Quebe — Plainview
Planting date: April 11
Harvest date: August 20
Results: 8,200 lbs./A. at 15.0% moisture; pre-water plus three waterings; outyielded later maturing competitive corn by 600 lbs./A.
His comment: "I like 3780 because of its early maturity."

Vernon Jackson — Stratford
Planting date: April 7
Harvest date: August 5
Results: 8,680 lbs./A. at 16.5% moisture; watered 5 times. Popular competitive variety in same field planted earlier, received 1 additional watering, yielded less, and was harvested 12 days later at 24.5% moisture.

R. E. Lance — Hereford
Planting date: April 20
Harvest date: September 25
Results: 6,500 lbs./A. at 19% moisture; watered 3 times.
His comment: "3780 did as good as I thought it would."

Don Ott — Dimmitt
Planting date: April 27
Harvest date: September 10
Results: 8,590 lbs./A. at 19% moisture; watered 5 times.
His comment: "3780 had a very good yield for a fast maturing variety."

J. L. Francis — Kress
Planting date: June 2
Harvest date: October 20
Results: 7,100 lbs./A. at 14% moisture; watered 5 times.
His comment: "My 3780 was planted after a hail and I was really satisfied with the results."



Sorghum Farmer's Corn

3780 yields well with management similar to sorghum. And since it reaches peak water demand 4 to 6 weeks earlier than sorghum and up to 2 weeks earlier than later maturing corn hybrids, it can take advantage of early-season rainfall and avoid later-season water shortages. Your Pioneer seed dealer has a brochure that tells the whole story. See him soon!

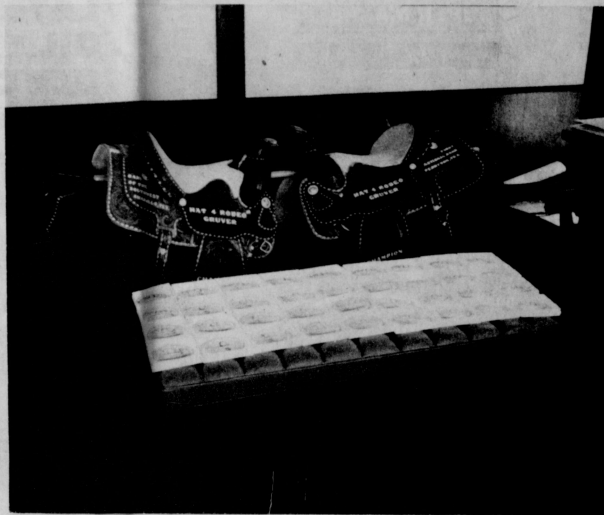
PIONEER HI-BRED INTERNATIONAL, INC., Southwestern Division, Plainview, Texas

5th ANNUAL HAT-4 RODEO

TRI-STATE HIGH SCHOOL

MARCH 24, 7:30 P.M.
MARCH 25, 2:00 P.M.
AND 7:30 P.M.

**INDOOR ARENA
D. G. C. FEEDERS
15 MILES
SOUTHWEST OF GRUVER**



SADDLES AND BELT BUCKLES FOR HAT-4 RODEO

**THESE BUSINESS FIRMS ARE PROVING THEIR COMMITMENT
TO AREA YOUTH BY SPONSORING THE FOLLOWING EVENTS:**

BOYS ALL AROUND SADDLE..... First National Bank, Perryton, Texas
GIRLS ALL AROUND SADDLE.... Bank of the Southwest, Amarillo, Texas
BOYS TEAM TROPHY..... Eddie's Cowboy Store, Levelland, Texas
GIRLS TEAM TROPHY..... Eddie's Cowboy Store, Levelland, Texas
CALF ROPING..... Spearman Vet Clinic, Spearman, Texas
RIBBON ROPING..... Sunray Co-op, Sunray, Texas
TEAM ROPING, HEADER David Hayes, Stratford, Texas
TEAM ROPING, HEELERS..... Palo Duro Feeders, Gruver, Texas
STEER WRESTLING..... Sam Cluck, Gruver, Texas
BULL RIDING..... Gruver Farm Supply, Gruver, Texas
BRONC RIDING..... Palo Duro Grain, Gruver, Texas
BARRELL RACING..... Gruver Elevators, Gruver, Texas
BREAK AWAY ROPING..... Laurent Pump Co., Sunray, Texas
GOAT TYING..... Hansford Implement Co., Spearman, Texas
POLE BENDING..... Vance Morris & Sons, Gruver, Texas
STEER RIDING..... Hi-Pro Feeds, Friona, Texas
Perryton Equity, Perryton, Texas



THE CONCESSION STAND BE OPEN FOR ALL PERFORMANCES

Modern Equipment On Display At Farm Show

Labcock - The most modern farm implements and equipment in the world will go on display here March 30-April 1 at the South Plains Farm Show in the Labcock Memorial Civic Center. Sponsor of the Farm Show is the Southwest Hardware and Implement Association.

The free three-day exhibition, bringing exhibitors from across the country, also will feature a public forum on the economic plight of the farmer, a Natural Fibers Fashion Revue, a special day for members of the Future Farmers of America, and a championship micro-mini tractor pulling contest.

The fashion revue and forum are being sponsored by the implement dealers' association. The Texas Agricultural Extension Service, Texas Tech and the Labcock Chamber of Commerce.

"Farmers like to see what's new in farm equipment" and several million dollars worth of farm machinery will be on display in the largest such show ever assembled on the South Plains of Texas, Gene Cudd, President of Hansford Implement in Spearman and President of SWHIA, said.

Most farm machinery is getting more refined, Cudd said, requiring less labor to farm acreage than ever before. Before mechanization, he noted, one man and a team of horses could plow about three acres a day. That meant the farmer might be able to grow about 80 acres of crops annually.

Today, one American farmer feeds more than 50 people a day.

"We've got to operate more efficiently today than we did yesterday, especially in the face of the economic pinch being felt by farmers across the land," said Dale Elms, President of Elms Equipment of Lubbock and a Past-President of the Association.

The trends in farm equipment are efficient and "as opposed to other nations of the world, driver comfort," Elms said.

Not only farmers, but city dwellers unfamiliar with farming will find the free show informative and entertaining, Elms said. Hundreds of dollars worth of door prizes will be given away each day.

The displays of equipment will be open in the Civic Center from 10 a.m. to 6 p.m. Thursday, March 30, and Saturday, April 1, and from 10 a.m. to 9 p.m. Friday, March 31.

March 30, spokesman for the American Agriculture Movement, the National Farmers Union and an agricultural economist from Texas A&M University will discuss "The Agricultural Dilemma: To Farm or Not To Farm," in the Banquet Hall at the Civic Center.

The panelists then will face questions from a reaction panel of farm writers and broadcasters.

At 2 p.m. the same day, sewing enthusiasts from throughout the South Plains will display their handwork in the Natural Fibers Fashion Revue. Television personality Jane Prince will provide commentary for the show, with hundreds of dollars in prizes being awarded to the winning entries.

Friday, March 31, has been designated "FFA Day" and will feature two micro-mini tractor pulls, at 2 and 6 p.m. The competitions are sanctioned by the National Micro-Mini Tractor Pullers Association. One of the fastest-growing competitive hobbies in the nation, the micro-mini pulls duplicate the contests of the full-size tractors, but use scale models powered by model airplane engines.

A final micro-mini pull will be held at 11 a.m. Saturday, April 1.

Cudd stressed that all events at the farm show are free and there will be ample free parking around the Civic Center.

Batson Infant Services Pending

Thomas James Batson, nine-month old son of Mr. and Mrs. Tommy Batson of Borger, died Monday.

Services are pending with Minton Mortuary.

Surviving are the parents; a sister, Kimberly of the home; grandparents, Mr. and Mrs. James E. Baldwin of Pampa and Mr. and Mrs. J. E. Batson of Slaton; and great-grandmothers, Mrs. James Batson of Blagden, Okla., and Mrs. Frances Cline of Spearman.

SS Rep Visits Scheduled

A field representative of the Social Security Administration will be at the Courthouse in Spearman on Thursday, from 10 to 11:30 a.m. on April 13, 27, May 11, 25 and June 8 and 22 to help anyone with matters relating to social security, supplemental security income or Medicare.

You may also obtain service to go to the Social Security Office at 1541 North Hobart Street, Pampa, or by telephone, 806-669-3381 between the hours of 9 a.m. and 4:30 p.m. Monday thru Friday (except national holidays).

A representative is available to explain the provisions of the Social Security Act and answer questions at meetings of farm groups, unions, and other interested organizations. There are no charges for any of these services of the Social Security Administration.



A South American bird called the hoatzin has claws on its wings when young—which helps it climb about in the trees.

Deadline For Vehicle Registration

Austin - Don't plan to wait until April 1 to obtain your 1978-79 motor vehicle registration validation sticker. If you do, you may wind up paying a fine for driving with an expired license.

Bob Townsley, director of the Motor Vehicle Division of the State Department of Highways and Public Transportation, pointed out today that many county tax offices will be closed on April 1 since that day falls on

Saturday this year. In some counties registrations will not be obtainable from Friday, March 31, to Monday, April 3. Townsley has advised all county tax assessors-collectors that "there is no authority in law for anyone to grant extensions." Whether or not they keep their offices open on Saturday, April 1, is up to them, Townsley said.

The deadline for having validation stickers on vehicle li-

cence plates is midnight, falling between April 1 and 2. Local peace officers may arrest any motorist driving with an expired validation sticker on April 2.

The state receives no revenue from penalties invoked for driving without a proper license registration.

"A mountain and a river are good neighbors," George Herbert

QUANTITY RIGHTS RESERVED

PRICES GOOD THRU MARCH 25TH

UNITED SUPER MARKETS

WE GIVE GREEN STAMPS

PERRYTON, TEXAS

EGGS

GRADE "A" **63¢**

MEDIUM

DOZ.

ROLLS

BROWN 'N SERVE

12 CT. PKG. **3**

FOR

WIN up to 2,000 CASH

DOUBLE CASH BINGO

...All New Cards
...All New Bingo Discs.

ODDS CHART

Odds stated are good for thirty days after promotion begins. Odds will be revised weekly thereafter to indicate prizes still available and will be posted in participating stores.

Prize	Worth	1st	2nd	3rd	4th
\$2000	1	343,801	28,446	12,223	6,612
1000	14	171,601	12,223	2,952	1,644
500	64	31,603	2,952	778	441
200	119	20,224	1,564	411	244
100	198	13,185	833	244	148
50	376	6,350	391	128	76
25	752	3,200	200	103	61
10	1,504	2,471	200	103	61
5	3,008	1,644	11	6	
2	16,040	187			

16,544

EASTER

CHINA FOAM DIVIDED PLATES 12 CT. **39¢**

FOIL ALUMINUM 37 1/2 FT. ROLL **79¢**

COLD CUPS 18 CT. PKG. 16 OZ. SIZE **59¢**

COCKTAIL SAUCE FINE FARE FRUIT 16 OZ. **39¢**

SAUCE FINE FARE CRANBERRY 16 OZ. **39¢**

SAUCE FINE FARE APPLE 16 OZ. **39¢**

INSTANT TEA MIX 3-OZ. **\$1.58**

PIONEER BISCUIT REG. OR BUTTERMILK 2 LB. **89¢**

PARTY PLATTERS 8 CT. **39¢**

FINE FARE HEAVY DUTY 37 1/2 FT. ROLL **79¢**

DIXIE EASY DAY 16 OZ. SIZE **59¢**

FINE FARE FRUIT 16 OZ. **39¢**

FINE FARE CRANBERRY 16 OZ. **39¢**

FINE FARE APPLE 16 OZ. **39¢**

3-OZ. INSTANT TEA MIX **\$1.58**

REG. OR BUTTERMILK 2 LB. **89¢**

HI AND DRY PAPER TOWELS

37¢

MRS. TUCKER'S PRE-CREAMED SHORTENING

42 OZ. CAN **99¢**

LIGHT CRUST FLOUR

5 LB. BAG **49¢**

PRUNE JUICE SUNSWEET 32 OZ. BTL. **79¢**

FILTERS MR. COFFEE 50 CT. **39¢**

CREAMER FINE FARE MON-DAIRY 11 OZ. JAR **69¢**

HEINZ DILL PICKLES 46 OZ. **\$1.29**

VEGETABLES FINE FARE MIXED 16 OZ. CANS **89¢**

POTATOES FINE FARE WHOLE OR SLICED 16 OZ. CANS **89¢**

TRAPPY BEANS JALAPENO • LIMA BEANS W/BAON • PINTOS • BLACKEYED PEAS W/JAL. 15 OZ. CANS **\$1**

TOMATOES CONTADINA WHOLE 14 OZ. CANS **89¢**

CRACKERS NABISCO 1-LB. **65¢**

FRISKIES MEAT • CHICKEN • LIVER 3 25 OZ. CANS **\$1**

DOG FOOD FLAVOR **3 25 OZ. CANS \$1**

FINE FARE TOMATO JUICE 46 OZ. **49¢**

FRENCH'S MUSTARD 24 OZ. **59¢**

FINE FARE GOLDEN CORN WHOLE KERNEL OR CREAM STYLE 17 OZ. CANS **89¢**

FINE FARE GARDEN SWEET PEAS 17 OZ. CANS **\$1**

FINE FARE CUT GREEN BEANS 16 OZ. CANS **\$1**

CALIF. CHOICE NAVEL ORANGES 4 LBS. **4**

ZIPPERSKIN

TANGERINES 3 LBS. **3**

CALIF. CELLO

CARROTS 1 LB. BAG **4** FOR

ACORN SQUASH LB. **39¢**

CALIF. EXTRA FANCY EGG PLANT LB. **39**

Karen Kirk Testifies Before Ag Committee

Karen Kirk, Georgia Holt of Spearman, and Darlene Born and Alice Trenfield of Pollett were in Washington recently where Mrs. Kirk testified before the Senate Agriculture Committee on March 9, with Senator McGovern presiding. The women, members of W.I.F.E., also met with Howard Hjort, Economics Advisor to President Carter from the

U.S.D.A. They discussed the farm economy, low prices of grain, high cost of production, FHA loans, natural gas for irrigation and grain drying and the international wheat agreements. The following is the speech that Karen Kirk presented to the Senate Agriculture Committee: My name is Karen Kirk

and it is my privilege to speak to you on behalf of the Texas Association of W.I.F.E. representing one of the 86 chapters in ten states. Never before in history have farmers and their wives banded together in such large numbers for a common cause—that of trying to save the family farm as an alternative to government-operated corporate farms with resulting high prices

for all. Many of the farms in our area of the Texas Panhandle represent a way of life that has been passed down from generation to generation. My husband's grandfather brought his bride from Erath County in 1900 in a covered wagon to establish a homestead for himself and his family. Three of their children remained to work the land with the ultimate hope of passing

this rich heritage on to their children. But the third generation is finding it increasingly difficult to justify putting into the land the toil and sweat, not to mention the money that their forebears did, chiefly because of tight "cheap food" policy which prevails in this country today. If the present trend continues with low prices for food and fiber—in most cases below the

cost of production, sky-rocketing costs, as well as the astronomical amount of capital required to get into farming today, very few of our young men and their families will be able to stay on the farm. This leaves one place for these young men to go—the crowded polluted cities. How many jobs will be lost to farm families? Where will the cheap food come from then? Even a modest investment in machinery and equipment with only the bare essentials involved can run \$50,000 and

more. With \$2.00-\$2.25 wheat, for example, the expected return on this amount of investment, how many bankers can justify the loans, especially if there is no improvement in the foreseeable future? One of the highest costs facing irrigation farmers today is the ever-increasing cost of natural gas to run the irrigation engines. There is no alternative fuel that is feasible to use. We feel that a special rate should be afforded the users of natural gas for irrigation purposes, as well as for crop drying.

There is need also for assurance that the priority will not be reduced so that our natural gas will not be cut off at a critical stage in the watering process, with the disastrous loss of a complete crop. There has been an emphasis placed on farmers taking advantage of the increased loan limits available through construction of on-farm storage. In our area this is not necessary as we have ample commercial warehouse space. The availability of credit without a raise in income with which to repay the loan is of no value whatsoever. Exports of American agricultural products amount to one million jobs in the United States. Approximately one of every three harvested acres is exported. Vigorous farm export promotion is needed during this period of tremendous supply and low farm income. Not only does the American farmer benefit, but our national balance of trade benefits to a large extent from farm exports. Agriculture has contributed a surplus to the United States trade account every year since 1968. This has become of extreme importance since the U.S. petroleum import bill increased drastically after the oil embargo of 1973. Yet if the American farmer has no incentive to produce and \$2.00 wheat, 35cents cattle and 44 cents cotton certainly do not qualify, then the importance of agriculture to the economy of this country will become increasingly evident. With no products to sell overseas, where will the trade deficit end? What effect will this have on the national economy? With all the problems facing us there is however, a glimmer of hope. We are encouraged by the introduction of two particular pieces of legislation: Senator Dole's bill and Representative Hightower's bill. We very much appreciate Senator Dole's efforts on our behalf and feel that we have a valuable and muchneeded friend. These bills will provide prices for wheat, feed grain, and cotton producers in relation to the percentage of set-aside acres employed. Each farmer will be able to determine the level of production and the corresponding payment on an individual basis. Senator Dole's bill provides only for the 1978 crops, whereas Representative Hightower's bill includes the crop years 1978 through 1981. To obtain the maximum benefits from the changes, we feel that it is necessary for Senator Dole's bill to be extended to also include the 1978-1981 crop years. Many of the farmers who are now in trouble were not in business when the set-aside with resulting lower production and higher prices affect the markets. Therefore, we also ask that Senator Dole's bill be amended to correspond with Representative Hightower's, providing for the increased loan rate of \$3.00 bushel on wheat, \$2.25 bushel on corn and 52 cents per pound on cotton. Raising the loan rate will enable the market price to rise which should help to save many farmers from ruin. Gentlemen, the action you take on this bill may be the most important of the year. Please consider it carefully, as the future of our family farms and ultimately the welfare of the nation is at stake!

FAST!

ASSY. FLAVORS
JELLO
30Z. PKG.
5\$1
FOR

SUGAR
5AM
YAMS
CUT 24 OZ. CANS
69c

BETTY CROCKER
CAKE MIX... PINEAPPLE UPSIDE DOWN... 89c
CHOC. CHIPS BAKER'S 12OZ. PKG. 89c
BROWN SUGAR DOMINO LIQUID 16 OZ. BTL. 79c
COLORING SCHILLING'S RED • GREEN 1OZ. • YELLOW 33c
MARYLAND CLUB COFFEE 1-LB. ALL GRINDS 2\$58
NAPKINS LINEN SOFT 3PLY 50 CT. 69c
GRAVY HINZ • BROWN • ONION 12 OZ. HOMESTYLE • MUSHROOM • CHICKEN 45c

UNITED WILL BE CLOSED EASTER SUNDAY

PEPSI COLA
32 OZ. \$1.65
6 PAK (CRIN) PLUS DEPOSIT

FINE FARE
BACON
THICK OR THIN SLICED
LB. \$1.49

BONELESS HAMS
ARMOUR'S STAR FULLY COOKED
LB. \$1.98

BONELESS SHOULDER ROAST
WASTE FREE BEEF
LB. \$1.19

HORMEL'S LINK SAUSAGE
FRESH MIDGET LB. \$1.69
WE GIVE

STEW BONELESS "EXTRA LEAN" CUBES OF BEEF LB. \$1.39
STEAK BONELESS UNITED'S TRU-TENDER BEEF LB. \$1.89
STEAK CUBES WASTE FREE BEEF LB. \$1.98
STEAK BONELESS WASTE FREE BEEF LB. \$1.39
STEAK FAMILY BEEF LB. \$1.29
STEAK SWISS ROUND BONE ARM CUTS LB. \$1.29
BEEF RIBS ROUND BONE NAVEL CUTS LB. 59c
BEEF GROUND FRESH FAMILY PACK LB. 98c
STEAK ROUND LB. \$1.49
STEAK RIB LB. \$1.49

KRAFT PHILADELPHIA CREAM CHEESE
8 OZ. PKG. **59c**

FRYER DRUM-STICKS 89c
WILSON'S CERTIFIED BOLOGNA MEAT OR BEEF \$1.29
WILSON'S CERTIFIED FRANKS MEAT OR BEEF 12 OZ. PKG. 89c

ORGANIC HAIR SPRAY 10 OZ. 99c
FABERGE ORGANIC SHAMPOO 16 OZ. \$1.29
FABERGE ORGANIC COND. 16 OZ. \$1.29

BELL SOUR CREAM OR WHIPPING CREAM 8 OZ. CRTN 39c
BELL BUTTER HALF GAL. 79c
BELL COTTAGE CHEESE 24 OZ. 98c
FINE FARE BUTTER 1 LB. \$1.19
BELL ICE CREAM ROUND 1/2 GAL. \$1.19
SUNSHINE FROZEN STRAW BERRIES SLICED 10 OZ. PKG. \$1.39
SARA LEE POUND HOME STYLE CAKE 9 1/2 OZ. 89c
PARKER HOUSE ROLLS 24 CT. 49c

CORNING SMOKED PORK CHOPS LEAN CENTER CUTS LB. \$1.98
MEDALLION BAKING HENS 5-7 LB. AVG. 69c

WE RESERVE THE RIGHT TO LIMIT QUANTITIES

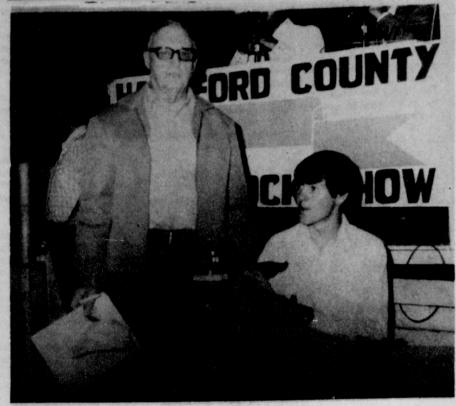
UNITED SUPER MARKETS
PERRYTON, TEXAS

KL-81

Plant A Proven Performer

DEPEND ON DEKALB

Milford Lambright
878-2765



Clay Giber, president of the First State Bank of Spearman led off the buying at the Stock Show Auction Saturday night by bidding \$5.75 per lb, for the 112 lb, Grand Champion Lamb, shown by Scott Henderson of the Gruver 4-H paying a total of \$644.00.

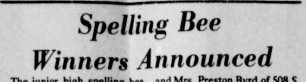
Matt Sheets Enlists In Marines

Matthew (Matt) Clark Sheets enlisted in the United States Marine Corp and reported for basic training on March 14 in San Diego, California.

Matt is a 1977 graduate of Caprock High School in Amarillo where he was the student athletic trainer.

Matt is the son of Mr. and Mrs. Preston Treadwell of Amarillo and Durland Sheets of Spearman.

He is the grandson of Mrs. Cloie Walker and Mrs. Elva Lee Barkley, both of Spearman.



Spelling Bee Winners Announced

The junior high spelling bee was held Monday morning with Edward Cook, 6th grader winning the junior division, and Christy Black, also a 6th grader, as alternate. The winning word was errand.

Parents of Edward are Mr. and Mrs. Leland Cook of 102 S. Hazelwood, and Christy's parents are Mr. and Mrs. Monty Black of 905 S. Dressen.

Winner of the junior division was Tuwana Byrd, 8th grader, and the alternate is Oralia Ochoa, a 7th grader. The winning word was usher.

Parents of Tuwana are Mr. and Mrs. Preston Byrd of 508 S. Bernice, and parents of Oralia are Mr. and Mrs. David Ochoa, Rt. 1, Spearman.

Mrs. McGee was the pro-nouncer for the bee.

These winners will be in contest with the Morse Junior High Wednesday, March 29 in the junior high auditorium here. The junior division bee will be at 1 p.m. and the senior division will be at 2 p.m.

The winners of the Spearman-Morse contest will be the Hansford County Champions and will be in competition in Amarillo at a later date.

Miss Cinderella Pageant Scheduled

The Miss Cinderella Pageant will be held April 15 at the Perryton High School. Girls interested in competing in the pageant should contact Teresa Hargis for application.

Jill McLean, Christi Sims of Spearman and Suzanne Hart of Grover will be entertaining at the pageant. They will also be crowning this year's winners.

United Presbyterian Church News

Presbyterian Men will have their prayer breakfast on Maundy Thursday, March 23 at 6:30 a.m.

"The Sacrament of the Communion" will be the subject of Pastor Edward D. Freeman's communion meditation at the Maundy Thursday communion service March 23 at 7:30 p.m.

Presbyterians will join with other Christians in the Union Good Friday Service March 24 at 1:00 p.m. at the First Christian Church.

There is a Sunday Church School class for everyone every Sunday at 9:45 a.m. with an interesting, well prepared Bible lesson that is practical and down to earth in applying Christian principles to every day living.

"The Empty Tomb" will be the subject of Pastor Edward D. Freeman's sermon at the service for the public worship of God on Easter Sunday, March 26 at 11:00 a.m.

Religious Art Show Set

Spearman's first religious arts show will be conducted at the Hansford County Library all of Holy Week, March 20-25 at the regular hours of the library. There is no admission charge or entry fee. All types of arts and crafts with a religious theme are encouraged. It is hoped that everyone who has done anything in any art form with a religious theme will enter it.

Those who have their art for sale are required to give 10 percent of their profits to the library.

Blue ribbons, with best in the show on them, will be on sale and anyone may purchase as many of the ribbons as they want and place them on the works of art that they feel deserve them. Russell Pogue is in charge of this department.

Franklin Horne is in charge of publicity and Mark Zener will head a committee to receive and set-up the art as it arrives on Monday, March 20. David Nickles has arranged for boats and hostesses to serve refreshments to all who attend. The whole show is being sponsored by the Spearman Ministerial Alliance.

Boston was once known as Beantown because it was famous for its baked beans.

SHS Students Participate In Tennis Tourney

Spearman High School tennis players competed in the Perryton Tennis Tournament Saturday, March 18. The Spearman Girls placed second, with Pampa being named the first place winner.

In the "A" Boys Singles, Kavey Bodey beat Fossand of Booker 6-2, 6-4 in the 1st round and then lost to Hall of Perryton in the 2nd round, 0-6, 2-6.

In the "B" Boys Singles, Kevin Russell lost to Gilbert of Pampa, 5-7, 1-6.

In the "A" Boys Doubles, Kyle Beedy and Todd Brock, beat Beehfield and Scott of Perryton in the 1st round, 6-4, 6-0 and then lost to Krause & Grady of Pampa, 2-6, 4-6, in the 2nd round.

In the "B" Boys Doubles, James Pierce and Jimmy Ladd lost to Snel and Reynolds of Perryton, 2-6 and 3-6.

In the "A" Girls Singles, Connie Vernon beat Albin of Canadian, 6-2, 6-4 in the 1st round, and beat McAtee of Panhandle, 6-2, 6-3 in the 2nd round, and in the finals she lost to Douglas of Pampa, 1-6, 2-6.

In the "B" Girls Singles, Christy Collier, beat Kennedy of Pampa in the 1st round 6-4, 6-1, and beat Laurie of Booker, 6-0, 6-4 in the 2nd round. In the finals Christy lost to Lewis of Panhandle, 2-6 and 3-6.

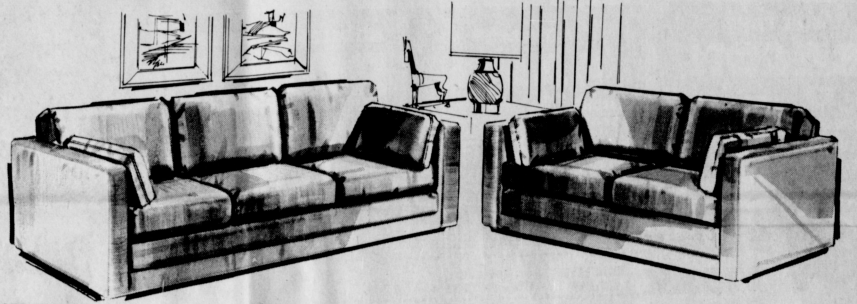
In the 1st Round of the "A" Girls Doubles, Cindy Grubert and Pam Largent lost to Bruce, Waterfield of Canadian, 2-6, 7-5, and 4-6.

In the "B" Girls Doubles, Tina Cochran and Beth Ann Flowers beat Horrruff and Kuper of Dalhart, 6-2, 6-4 in the 1st round, and Rogers and Pickens of Canadian, 2-6, 6-2, and 7-5 in the 2nd round. They lost to Van Klive and Kessel of Pampa in the finals, 6-4, 4-6, 6-3.

Mrs. Sue Morman and children of Lubbock are visiting in the home of Mrs. Jessie Tompkins and Mrs. Eileen Sutherland. Mrs. Morman is the daughter of Mrs. Eileen Sutherland and the granddaughter of Mrs. Tompkins.

Lovely Easter Fashions at J.G.'s

Your Place or Ours...?

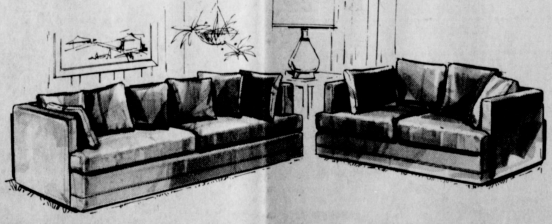


SOFA \$355.00
LOVESEAT \$295.00
SLUMBER SOFA \$459.50

Striking contemporary design features loose back and arm pillows... goes with most decorative treatments

Select one of these handsome ensembles for your home in just the perfect version to suit your life style... Choose a sofa, or Slumber Sofa with hidden QUEEN size double bed... with optional loveseat if your space permits... in three delightful design treatments by famous International Furniture.

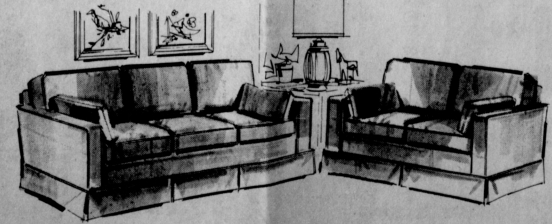
We can deliver immediately in selected fabrics shown on our floor, while supplies last... or you can custom order from a vast array of striking fabric samples in solids, stripes, patterns, velvets, Herculons, nylons... many with SCOTCHGARD extra fabric protection. Come browse... and enjoy.



SOFA \$355.00
LOVESEAT \$295.00
SLUMBER SOFA \$459.50

Arrange and rearrange this delightful multi-pillow design treatment to suit your mood of the moment... for casually elegant living

international!



SOFA \$355.00
LOVESEAT \$295.00
SLUMBER SOFA \$459.50

Classically skirted design with loose back and arm pillows



QUEEN size double bed is optional in all three collections

Jumping Jack Jones shines in Perryton sports festival!

Spearman's own J. J. (Jumping Jack) Jones was a double winner in the Perryton sports festival held over the weekend. Team totals in the festival were: Caprock, 101; Liberal, 89; Woodward, 76; Perryton, 69; Spearman, 45; Pampa, 42; Dumas, 39; and Borger, 33. The Spearman track team outscored Pampa, Dumas and Borger, and the local team should be congratulated for making such a fine showing among such a classy festival.

Jumping Jack Jones won the long jump at 21 feet and pole vaulted 14 feet. Other Spearman winners were Chris Trout who vaulted 12-6; 440 relay; Spearman came in 5th place; 120 high hurdles, Scot Martin, 6th place; 330 Intermediate Hurdles; Scot Martin, 3rd place; Mile Relay, Spearman, 4th place.

Garnett Attends Little League Registration

Mike Garnett of Spearman, has just returned from Houston where he represented the Spearman-Pampa Federal Land Bank Association of Pampa at the annual stockholders meeting of the Federal Land Bank of Houston. The meeting was attended by members of 65 Federal Land Bank Associations in Texas. There were about 550 persons in attendance.

George W. Cunningham, President, in his report to the stockholders, stated that there was an increasing demand for new loans in 1977 and four of the last five years' loan closing have exceeded \$200 million.

Speakers for the meeting included Donald E. Wilkinson, Governor of the Farm Credit Administration, Washington, D. C., and Dr. Carl G. Anderson, Extension Economist in Marketing, Texas A&M University.

The Federal Land Bank of Houston makes long-term loans on farms and ranches throughout Texas and currently has \$1.3 billion outstanding.

The Spearman-Pampa Federal Land Bank Association of Pampa makes and services loans in this area. Members of the Board of Directors are: W. B. Jackson, O. C. Holt, Wayne Maddox, Carl Jahnle, Lynn Davis and Mike Garnett.

Others attending the meeting from this area were O. C. Holt, Wayne Maddox, Lynn Davis, and Bob Williams.

Hospital News

Patients in Hansford Hospital are Lindsey Sheets, Teresa Russell, Jessie Bratton, Pearl Cluck, Gary Davis, Arthur Wear, Thelma Blevins, Joyce Limbocker, Irene Janzen, and Duane Fuller.

Dismissed were Sue Lackey, Lori Perez, Angie Hamilton, Wilma Tindell, Lawrence Gruver, Rex Sanders, DeWitt Shoets and son, Jerry Wilson, Robert Cassa, Elsie Mathews, John Antalke and Tim Woodington.

Markets

WHEAT 82.65
MILK 83.35
CORN 82.32

BEEDY FURNITURE CO.

723 WEST 7th - Phone 659-3044 - Spearman, Texas