



# The Spearman Reporter

VOLUME 69, NO. 17

THE SPEARMAN REPORTER, SPEARMAN, TEXAS 79081

THURSDAY, MARCH 9, 1978



## And everyone's invited! . . . Open houses public school week feature



### Judge Lee Proclaims Public School Week

The focus of Hansford County this week is on its public schools, with a special invitation to all residents to visit school open houses and other programs in the annual observance of Texas Public Schools Week.

This week's program will include the big open house Thursday night beginning at 7 p.m., and lasting until 9 p.m. This Thursday night event will include open house at all Spearman schools. Parents are also invited to have lunch with their children at the luncheon sometime during the week.

All residents are invited to visit in any school that they wish to get a firsthand look at the education program available to Spearman students," stated James Cunningham, Superintendent of schools of the Spearman system.

A visitor need not have a son or daughter in school to visit a classroom, or attend open house Thursday night. Anyone is welcome. School officials went ahead to state that visitors are welcome in the public schools throughout the year. They note, however, that emphasis is placed on class room visits during Texas Public Schools week, and especially is everyone invited out Thursday night.

School officials, and board members extend a special invitation to you to attend the Thursday night "Back to School Night" so make plans today to be on hand at 7 p.m. til 9 p.m. Thursday night.

#### RESOLUTION

**WHEREAS:** The Governor of Texas, in January, 1978, officially designated the first week in March, 1978, as Public Schools Week in Texas, and asked that citizens throughout the state visit their public schools, learn more about their organization and operation, and get better acquainted with their school administrators and teachers, and

**WHEREAS:** Public Schools Week in Hansford County has become an

outstanding annual event, having been observed during the past twenty-seven years with ever-increasing interest and participation of school patrons and parents throughout Hansford County, and with tangible evidence that the people are whole-heartedly taking advantage of this special opportunity to see for themselves that Hansford County Public Schools are Democracy in Action, and

**WHEREAS:** We the officials of the County of Hansford are grateful for this continued interest of the people of Hansford County in their public schools, for we believe that the active support and encouragement of all people is essential to the maintenance of a sound public educational system.

**BE IT THEREFORE RESOLVED:** That the officials of the County of Hansford hereby designate the week of March 6-10, 1978, as the twenty-eighth annual Public School Week in Hansford County, and urge all citizens in the County to visit a public school during that week in order that they may get first-hand impressions of what and how the public schools are teaching their children, and

That the officials of the County of Hansford encourage public school administrators and teachers to work hand-in-hand with the people of the local community, parent-teacher association, and other agencies and organizations interested in the improvement of public education, and

That Hansford County School administrators and teachers be encouraged to invite their people to visit the schools, and to plan school events and public relations programs which will give both pupils and parents a better understanding of the vitally important role of the Hansford County public school in our Democracy.

In official recognition whereof, I hereby affix my signature this day of February 24, 1978  
Johnnie C. Lee  
Judge of Hansford County

### Masons To Serve Coffee & Doughnuts

Hansford Lodge No. 1040, A.F. & A.M., continuing the tradition of Masons in Texas remaining participants in the observance of Public Schools Week in the state as well as supporting the continuing educational process through the observance of Public Schools Week, is hosting coffee and doughnuts from 7 to 9 p.m. Thursday, March 9, at the Spearman Junior High School in connection with the open house

at that facility, Ceril Barton, Worshipful Master of Hansford Lodge No. 1040, has announced.

All Masons in Spearman and vicinity are invited to participate in this open house and should be at the school by 7 p.m., he added.

Those Masons who are Shriner are requested to wear the Fez.

### Easter Bake Sale Planned

The public is cordially invited to partake of the Easter Bake Sale put on by the ladies of the Sacred Heart Women's Guild on Wednesday, March 22. It will be held at Cutrate Grocery Store from 8:30 and last until all goodies are sold. Come one, come all!

### Thank You

The Baker and Taylor Women want to thank everyone that helped make their bake sale a success. Those who donated baked goods and those that bought at the bake sale. We appreciated your help. A special thank you to Pete Fisher for the use of his store. The money from the sale will be donated to the Good Spread Center and YMCA.



Front row: l to r - T. O. Lesly, Jerry Gee, Omar Sutton, Burton Schubert, Don Allen - Back row, Ted Godfrey, Roy Dale Underwood.

Eight Hansford County farmers, jailed on Wednesday, some roughed up by arresting officers, were out of Hidalgo County jail Saturday, and were again blockading a bridge between Mexico and Texas. The eight farmers were given a "Heroes Welcome" by local farmers and businessmen as they arrived in Spearman, late Sunday evening.

The Saturday blockade was to be for a limited time, and no arrests were made. This was according to an agreement between McAllen officials and the farmers. But the mood of the 4,000 farmers at McAllen which owns half of the blockaded bridge, almost got out of hand. At one time, a group of Georgia farmers drove their tractors up on the steps of the jail and warned the officers, that they were "going through" and release the prisoners. However, the group of prisoners, decided that it would be best for everyone concerned if they paid their \$28.50 bail, and "got out" before some serious injuries occurred to both sides.

McAllen Mayor Othal Brand apologized to the farmers after their release, but his apolo-

gy drew boos and hisses from the AA group.

The release was made after farmers agreed to pay fines of \$28.50 each on a charge of attempting to block a public passageway, a misdemeanor.

Spearman farmers jailed were; Burton Schubert, Ted Godfrey, Jerry Gee, Don Allen, Omar Sutton, T. O. Lesly, Glen Lesly, and Roy Dale Underwood. They all stated that the jailer was very "good" to them, and they took up money to buy him a new pair of boots for helping them out of so many unusual situations while in jail. Some of the situations were not so funny. There was not ample places for any of the farmers to sleep, and after a couple of days of standing in the jail arena, their spirits became a bit "weak!" But, after many friends arrived in McAllen to help, they managed to endure the suffering, for their cause.

Several local farmers from Hansford Co. flew to Hidalgo, and this week, the group is in another phase, of national "food stoppages" including rail and truck facilities.

## Spearman Coach Named



Preston Smith

The coach of the Wheeler High School 1977 Class B Football Championship team, Preston Smith, 34, has been hired as the new football coach and athletic director at Spearman High School. It was announced Monday, March 6, by Spearman School Supt. James Cunningham.

In making the announcement, Cunningham noted that Smith had been released by Wheeler as of April 1 and would report for duty in Spearman at that time.

In addition to his championship eleven in 1977, Smith has a head coaching record for two years of 22 wins and 1 loss. His total coaching record of nine

years is one of 76 wins, 2 ties and 19 losses and includes five district championships, three regional championships and the state title.

A native of Craig, Colo., Smith is an excellent health and stands 6 feet, 3 inches tall and weighs in at 235 pounds. Married, he and his wife have three sons, 9, 7 and 4 years of age.

A graduate of Grapevine, Tex., High School, Smith obtained his bachelor of arts degree in 1968 from Sul Ross State University in Alpine, Tex. and continued his education there to obtain his Master of Education Degree in 1971.

He is experienced as a graduate assistant football coach at Sul Ross in 1969-1970 and upon his move to Crane he became an assistant football coach and American History teacher for the one year he stayed there. In 1971 he moved to Monahans where, until 1975, he was a physical education for five years as well as defensive coordinator for the football teams.

He moved to Wheeler as athletic director and head football coach in 1976.

Smith succeeds Greg Sherwood who resigned to take the head football and athletic director's jobs at Plainview High School.

In two seasons at Wheeler, Smith guided the Mustangs to a

22-1 record, helped by last season's 13-0 mark that netted the Texas Panhandle its first 11-man state football championship since 1962.

Wheeler's only loss during Smith's two-year stay was a 12-9 decision to Groom, a team that reached the playoff semifinals in 1976 before bowing.

"He is a tremendous young man, and he comes with the highest recommendations both from the people he's worked with and for I've had the privilege of interviewing," said Cunningham.

"We feel extremely fortunate to have him as a member of our staff. We were looking for someone with interest in a strong overall program, and I think we'll be able to continue that type of program with him."

"He has a reputation of being an outstanding track coach, they've won the district championship in boys' basketball the last two years, and they've been competitive in girls' basketball."

Smith is expected to begin work here shortly after April 1. "Spearman's an impressive place, they do a lot of things right," said Smith. "I like their philosophy. They want their kids to be successful in athletics and they give them the things it takes to do that."

"I'll have the chance to bring in three assistants, but first, I'll meet with the assistants still

there. I know they have some good people on the staff there."

"Wheeler's been a tremendous place for us. The town and the kids of Wheeler gave me the opportunity to get a job like this one."

Smith, who played football at Sul Ross University in Alpine, formerly was an assistant football coach at Monahans. He and his wife, Linda, have 3 sons-Richard, 9, Harrison, 7, and Preston III, 4.

Applications for the Wheeler positions are being accepted by Wheeler superintendent of schools, Dyrum Smith, according to Smith.

### Hospital News

Patients in Hansford Hospital are Eldon Southerland, Rebecca Westerfield, Juanita Jackson, Ellen Vaughn, Bessie Swan, Thelma Blevins, and Leslie Barnes.

Dismissed were Vicki Crawford, Pat Mendeshall, Rita Archer, Lucio Rivera, Antonio Barrios, Dyrum Smith, and son.

### Markets

WHEAT	\$2.54
NELO	\$2.38
COYEN	\$2.18
SOYBEANS	\$2.09

## Georgia Holt Elected Water, Inc. Director

For the first time in the 11-year history of Water, Inc., women have been elected to the corporation's board of directors.

Mrs. Tom (Argen) Draper of Route 3, Hereford, and Mrs. Nolan (Georgia) Holt of Route 1, Spearman, were elected at the recent corporation meeting.

Both women and their husbands are original members of Water, Inc., and fully realize the value of an adequate water source for the High Plains. The women's agricultural backgrounds have emphasized to them the need for a supplemental water supply on the High Plains.

"I probably realize the need for water more than many people," Mrs. Holt said. "When my parents first moved to the Panhandle during the Depression, I was a child. We lived on a farm and it was about a year before we were able to afford to have a well drilled. During that time we had to haul all our water even to drink and wash our clothes. There are a lot of things you can live without, but water just isn't one of them."

Mrs. Draper indicated, "My husband and I have strong feelings about agriculture so we are concerned about the declining water level on the High Plains and about getting water to West Texas. If the farmers in West Texas are given the necessary water, they will have the opportunity to feed the whole world."

In 1968 Mrs. Draper testified on water importation from a woman's perspective in hearing before the House Interim Water Committee. She was the only woman in Texas to testify before the committee.

Both women are active in their communities and in the farming and ranching operations of their husbands.

Mrs. Holt keeps the books on the Holt farm of more than 1,800 acres. She also assists in a variety of chores around the farm.

Recently, she has become quite active in the newly formed organization Women Involved in Farm Economics (WIFE). She is president of the Spearman WIFE chapter and 4th vice president of the national organization. The more than 5,000 WIFE members are trying to

create a better relationship between the consumer and the producer and to help the farmer get his message across, she said. She has made three trips to Washington on WIFE business.

Mrs. Holt has done volunteer work in the Home Demonstration Club. She is a member of the Spearman Arts and Crafts Club and a former member of the Spearman 20th Century Club. She attended West Texas State before marrying her husband. They have a son, a daughter and five grandchildren.

Mrs. Draper is a retired home demonstration agent. She worked 31 years with the extension service, receiving superior ratings during that time for her work throughout the Panhandle, and she worked four years with the Farm's Home Administration. She taught rural school for seven years.

She has been a leader in 4-H activities. She was named the Hereford Lions Club Citizen of the Year for 1959-60. She and her husband attended the organizational meeting of Water, Inc. in 1967 and also participated in a Water, Inc. sponsored

tour of the California Water Project.

The new director earned her bachelor's degree from Texas Tech in 1940 with a major in home economics management. She received her master's degree in the same field from Texas Woman's University in 1964.

As Water, Inc. directors, Mrs. Draper and Mrs. Holt will participate in the operation of the non-profit organization as it seeks to assure a supplemental water supply for the High Plains.

## Ballot Positions Set

Positions on the ballot for the five candidates contesting the two positions on the Spearman Independent School District Board of Trustees in the April 1 election were determined Monday, March 6, in the business office at Spearman High School during the drawing for places on the ballot conducted by Orville Latham, business manager.

Larry Porter won the first listing, followed in order by Tommie White, incumbent Jim O. Davis, Dr. Bob Phillips and

Mrs. Linda Holt Jarvis.

The two successful candidates will serve three-year terms. Absentee voting begins March 13 and March 28 is the last day to vote absentee in person at the office in the high school. March 28, a Tuesday, also is the last day for making applications at the office to vote by mail. The business office can receive absentee ballots through the mail up to 10 a.m. March 30, according to election procedures.

Voting on Saturday, April 1,

in person will be from 7 a.m. to 7 p.m. at the high school. J. L. Brock has been named election judge.



There once was an English duke who was so proud he would never allow his children to sit in his presence and only spoke to his servants by signs.

"Tenderness is passion in repose." — Joseph Joubert

### A Rhodes Scholar

AUSTIN, Texas (Sp.) — The University of Texas' newest Rhodes Scholar is a woman.

A Meredith John, a senior organic chemistry student from Austin, is the first UT female to receive one of the coveted scholarships for study at Oxford University, where she will enroll next fall. The honor student has a 3.9 grade-point average (4.0 is all-A).

The University of Texas has produced 21 Rhodes Scholars over the past 73 years, more than any other university in the state.



If fuel costs are squeezing the profit out of your corn crop, plant

# The Cost Cutter



Less Irrigation Cost — Lower Harvest Costs Because of Lower Moisture — Less Drying Cost

Pioneer® brand 3780 can cut your costs to improve corn profits in four ways —

- ★ **Less Irrigation Cost** — 3780 needs less total water than commonly grown corns because it grows off fast. And because of its early water use, 3780 uses early-season rainfall more efficiently than other corns or crops.
- ★ **Less Harvest & Hauling Cost** — Fast drydown with good standability and ear retention lets 3780 dry in the field — you harvest and haul less moisture from the field.
- ★ **Less Dockage** — Less water hauled from the field means less dockage or drying expense.
- ★ **Lower Potential Weather and Insect Loss** — Because of its rapid growth feature and fast drydown, 3780 is ready for harvest well ahead of commonly grown corns. Fewer days in the field mean less exposure to potential bad weather and late-season insect problems.

3780 — 96 High Plains tests — 4-year average — 7,817 lbs./A.  
Here's How 3780 Performed For 5 Area Farmers in 1977

**Helmuth Quebe — Plainview**  
Planting date: April 11  
Harvest date: August 20  
Results: 8,200 lbs./A. at 15.0% moisture; pre-water plus three waterings; outyielded later maturing competitive corn by 800 lbs./A.  
His comment: "I like 3780 because of its early maturity."

**Vernon Jackson — Stratford**  
Planting time: April 7  
Harvest date: August 5  
Results: 8,680 lbs./A. at 16.5% moisture; watered 5 times. Popular competitive variety in same field planted earlier, received 1 additional watering, yielded less, and was harvested 12 days later at 24.5% moisture.

**R. E. Lance — Hereford**  
Planting date: April 20  
Harvest date: September 25  
Results: 6,500 lbs./A. at 19% moisture; watered 3 times.  
His comment: "3780 did as good as I thought it would."

**Don Ott — Dimmitt**  
Planting date: April 27  
Harvest date: September 10  
Results: 8,590 lbs./A. at 19% moisture; watered 5 times.  
His comment: "3780 had a very good yield for a fast maturing variety."

**J. L. Francis — Kress**  
Planting date: June 2  
Harvest date: October 20  
Results: 7,100 lbs./A. at 14% moisture; watered 5 times.  
His comment: "My 3780 was planted after a hail and I was really satisfied with the results."



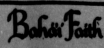
### Sorghum Farmer's Corn

3780 yields well with management similar to sorghum. And since it reaches peak water demand 4 to 6 weeks earlier than sorghum and up to 2 weeks earlier than later maturing corn hybrids, it can take advantage of early-season rainfall and avoid later-season water shortages. Your Pioneer seed dealer has a brochure that tells the whole story. See him soon!

## Randy Reid Named To All Regional

RANDY REID, one of the finest students ever to grace the halls of Spearman high school, was named all-regional basketball player at the recent tournament in Lubbock. Although the Lynx lost a one-point heartbreaker to Denver City, it was the class game of the tournament. Besides being picked all regional, Randy as a freshman, was a student council member, participated in football, basketball and track. As a Sophomore, he played football, basketball, and track, and made all district in basketball. As a Junior, he was class president, played football and track, was all district defensive back in football and honorable mention all district in basketball. As a senior, he was president of the student council, FFA president, attended Boys State, played both football and basketball, all district defensive back and honorable mention all district Quarterback in football and all tournament on regional team.

He was in Who's Who in American High Schools. He is a member of the First Baptist Church in Moore, Texas. His parents are David and Robbie Reid.



For information:  
Box 1556  
Bogert, Tx. 79007

PIONEER HI-BRED INTERNATIONAL, INC., Southwestern Division, Plainview, Texas



olar  
(Sp.) -  
of Texas'  
olar is a  
a senior  
student  
first UT  
one of the  
for study  
ly, where  
fall. The  
3.9 grade-  
all-A).  
Texas has  
Scholars  
ars, more  
eracity in

# WANTED ADS

**Boxwell Bros. Funeral Home and Flower Shop**

FUNERAL HOME - 659-3802  
FLOWER SHOP - 659-2212

**Hansford County Planned Parenthood**

26 S. Haney  
659-2483  
Spearman  
Mon. - Fri.  
8 a.m. to 11 noon  
305-rt

**SERVICES**

**HANSFORD LODGE**  
No. 1049  
A.F. & A.M.

Stated Communication  
Monday, March 13, 1978  
7:30 p.m.  
Visitors Welcome  
Cecil Batton, W.M.  
Jerry E. Gee, Sec'y.

**KIRBY SALES & SERVICE**  
Spearman, 912 S. Bernice.  
659-2797.

**NEW LOW RATES \$6.95 PER DAY**

For Steam Rinsavac  
Rug Shampooer  
Call Gordon's Drug  
659-2141 or  
after 7 p.m. & Sundays  
call FREDDIE LARGENT  
659-3437  
17-rt

**YOUR LOCAL USED COW DEALER: SPEARMAN BI-PRODUCTS.**  
Seven days a week stock removal. Please call us as soon as possible.  
659-3544.  
8-rt

**SERVICE:** Pits cleaned, wet or dry. Dragline or loader. Also, duster, grader, carry all service.  
LeRoy Mitchell, 806-733-2394, Gruver, Texas, 79040.  
9-rt

Alcoholic Anonymous Meeting 8 p.m. Friday, Home Demonstration Club building, 305 N. Bernice. Phone 659-3181 for information.

Al-Anon meetings 8 p.m. Friday Home Demonstration Club building, 305 N. Bernice in back room. Phone 659-3181 for information. Ask for Al-Anon.

Fence charges repaired. Contact Lynn Sheets, 659-3513, 209 S. Hazewood. All work fully guaranteed for thirty days.  
135-8c

Plumbing, heating & appliance repair. Call 659-2811.  
165-8c

## REAL ESTATE FOR SALE

FOR SALE: 1013 S. Bernice, 3 Bedroom, 1 Bath, extra built-ins and storage, carpeted, storm windows and doors, fenced-in back yard. After 5:00 for appointment, 659-2872.  
155-rt

FOR SALE BY OWNER: 3 bedroom brick home, 1 1/2 bath, with burning fireplace. 130 ft. lot. 659-2675.  
165-rt

FOR SALE: 3 Bedroo, 2 bath Older Home. New USS Steel Siding, Storm Cellar, Carpeted, New Linoleum Kitchen & Dining Room, \$20,000.00. 216 N. Hopkins. Call 659-3812 for appointment.  
165-2tp

For Sale: Crawford Addition, 659-3510.  
165-rt

**OFFERED BY:**  
Emmett R. Sanders  
Realtor

Older 3 bedroom home, carpets, fenced yard, carport, pool house.

120 ft. lot on County Road (13th St.) zoned residential.

3 Bedroom house with large basement, on 100 ft. lot.

Mobile home park, 6 spaces, good location.

2 bedroom stucco home, plus large storage room, living room, dining room, kitchen with extra space, detached double garage, quiet location on 110 ft. lot, owner will carry loan.

Lovely 3 bedroom brick home, fenced yard, double garage, choy fireplace 104 ft. wide, coy fireplace, carpets throughout, insulated windows and doors, central heat and air, built-in kitchen with dishwasher, disposal, cook top and oven. Shown by appointment only.

**EMMETT R. SANDERS**  
REALTOR  
659-2516  
659-2601 (night)  
125-rt

**LOTS FOR SALE:** 82 X 160' located at 3119 S. Endicot. Call 658-4890.  
8-rt

FOR SALE: Large office building in good location near downtown. Use as Store, Offices, Storage etc. Central heat, air conditioned, carpeted. 14 S. Haney. Harold Groves. 659-2647.  
125-rt

FOR SALE: Two bedroom house with large workshop on three lots. House is newly carpeted and painted. Fenced, with large shade trees. 905 S. Main, Gruver, 806-733-2464.  
165-rt

**Mayfield Real Estate**  
John Mayfield - Broker  
435-6528  
Ruby Lair - Salesperson  
659-2188

1109 Townsend, 3 bedroom, 1 1/2 baths, new appliances, single car garage, fenced yard.

3 bedroom, 5 acres, 1 1/2 baths, double car garage in landscaped hills.

Land For Sale: 160 acres, 11 miles northeast of Folsom. Windmill water, some machinery, immediate possession, no minerals.  
165-rt

**FOR RENT**

FOR RENT: Furnished nice 4 room house, newly decorated, carpeted, plumbed for washer and dryer. For nice singles or couple, will accept 1 or 2 children. Call 659-2082.  
16-rt

FOR RENT: Furnished apartment for singles or couple. Call 659-2082.  
16-rt

Trailer Home For Rent! Call after 3:00. 659-3444.  
16-4tp

FOR RENT: Nice large furnished or unfurnished three bedroom house, closets galore. See Mr. Womble, 303 Davis.  
165-rt

FOR RENT: One & two bedroom apartments, 303 Davis St.  
165-rt

**FOR RENT**

FOR RENT: Double-wide mobile home. 659-2621.  
105-rt

**MOBILE HOME FOR SALE**

FOR SALE: Double-wide mobile home. 659-2621.  
105-rt

**MISCELLANEOUS FOR SALE**

FOR SALE: Firewood, Burton Schubert. Call 659-2667.  
5-rt

FOR SALE: 1975 Monte Carlo, Silver and Marpat seat and half vinyl top, cruise, stereo, chrome wheels, nice car. Call 659-3906 after 6:00, weekends all day.  
17-2tc

FOR SALE: 1976 Chevy Custom 10 1/2 ton pickup. Fully equipped. Less than 30,000 miles - one owner. Call 659-2382.  
nc

**PINON FIREWOOD.** Season cured. Will deliver. Call 405-338-2130.  
15-4tc

**TRUCKLOAD SALE:** By Farm Bureau Ladies, Home Demonstration Club House. March 13 - 9 a.m. - 5:30 p.m.

Manure Fertilizer from Caprock Pens \$1.60 per ton plus .07 a mile Call or see Billy Baker 659-3642  
45-rt

**WANTED**

**DEALERS WANTED:** Earn big money by being a dealer for grain bins and steel buildings. We offer you a territory with established customers. Call collect or write to see if you qualify. Bob Reed, 913-233-5192 or Write Box 4586, Topeka, Kansas 66604.  
165-2tc

**DEALERS WANTED:** If you buy over 100 tons of fertilizer a year, you should be at dealer's cost and sell to other farmers in your area. We offer you a territory with established customers. Call collect or write to see if you qualify. Bob Hess, 913-233-5192 or Write Box 4586, Topeka, Kansas 66604.  
165-2tc

**DEALERS WANTED:** To handle a major line of pre-engineered steel bins and buildings. Lucrative opportunity for the right person. Aggressive farm operator considered. Call 800-835-2246.  
17-2tp

**Steel Building and Sub Dealers and Erectors Wanted:** No capital needed. Send name, address & telephone no. to Tyler Steel Buildings, P. O. Box 893, Cedar Park, TX 78613.  
17-1c

**WANTED TO BUY:** Used circulated air incubator. Call 659-3097 after 6:00 P.M.  
17-2tc

**HELP WANTED**

**HELP WANTED:** Apply in person, Rogers, Sales & Service, Waka, Texas. Inside shop, manufacturing work.  
17-rt

**DRIVERS WANTED:** Apply at Heinrich's Excel Chevrolet-Olds, or contact Frank Heffer at Phone 659-2541 in Spearman, or 733-2113, in Gruver, Texas.  
17-rt

**HELP WANTED:** Petitioner in Gruver is in need of a gas and fuel delivery driver. Contact Richie Fletcher, 733-2511.  
17-rt

Gruver Texaco Station needs two station attendants to pump gas, wash cars. Applications will be accepted from women. Also need a retired man to open station for approximately 4 hours a day. Apply in person or call 733-2511.  
17-rt

**TO GIVE AWAY**

TO GIVE AWAY: Part German Shepherd puppies. 659-3385.  
17-2tc

**NOTICE**

\$50.00 Reward to person identifying driver of a green car colliding with a red and brown Buick. Call 733-2304.  
17-2tc

**JIMMY GREENE**  
659-3196

BOX 5 SPEARMAN  
THE LARGEST INSURANCE COMPANY IN KANSAS CITY LIFE INSURANCE COMPANY  
SINCE 1888

## LEGAL NOTICE

**LEGAL NOTICE**  
Hansford County Precinct #3 will receive bids March 13, 1978, at 10:00 A.M. for a tractor described as follows: 110 H.P., naturally aspirated, diesel Power-Shift transmission Power steering 540-1000 RPM PTO Rack-and-pinion rear axle, 96 inch 18.4 x 38 rear tires Adjustable front axle 58 to 86 inches Hydraulic suspended steel locking differential tilt and telescoping steering wheel 3 hydraulic out-lets, closed center system 3 point hitch, category II Weighted front and rear Engine-cooled radiator Safety lighting, such as warning lamps; etc. Cab must have roll-guard, air conditioning, heater, and radio. Commissioners Court will have the right to reject any or all bids submitted.

Johnnie C. Lee  
Hansford County Judge

**LEGAL NOTICE**  
General Telephone Company of the Southwest has filed tariffs with the Public Utility Commission of Texas to implement the Federal Communications Commission's telephone equipment registration program (FCC Docket 1972B). The tariffs have an effective date of April 15, 1978. The proposed changes will reduce rates for extension telephones and 25 foot long cords; will restructure one-time charges for service connection, moves and changes, increasing some and reducing others; and will offer reduced monthly rates for one-party business and residence customers who provide their own primary telephone instrument. The proposed changes in rates, with some increasing and others decreasing, will reduce General's gross revenues from its Texas operations by \$3,565,000.

**GENERAL TELEPHONE**

**CARDINAL CHEMICAL, INC.**  
NEEDS EQUIPMENT OPERATORS  
Must have commercial license and telephone.  
\$975 monthly guaranteed pay. Group insurance, paid vacation, retirement plan, advancement.  
Experience helpful, but not required.  
APPLY IN PERSON - 439-6686.  
MUST BE AGES 21 AND OVER

## HOME FOR SALE

We offer one of the largest and finest homes in Southeast Spearman across from the high school. Five bedrooms, formal living room, den in basement with built-in fireplace. Approximately 4000 square feet with many extras. Includes 12'x20' storage building, fence, sprinkler system, TV and CB towers and antennas, many more features. Call for appointment, 659-2647, Mr. and Mrs. Harold Groves.  
125-rt

## ED WHEELER REAL ESTATE

**HOMES - FARM - COMMERCIAL -**

3 Bedroom, 2 bath, moken den, full carpet, walk-in closets, 2,700 sq. ft., fireplace, utility room, double garage.

416 S. Haney, 2 bedroom, 1 bath, built-in appliances, washer & dryer, completely remodeled, new carpet, drapes, custom made new roof freshly painted, storm windows, detached garage made into bedroom. Must see to appreciate.

821 S. Barkley, 2 bedroom, 1 1/2 bath, new tile in kitchen, dining area, new carpet in den, storm windows, large lot, fenced storage building, single garage, large trees, sprinkling system. Extra nice home - can be made into a three bedroom.

Ed Wheeler 659-2613, Office or 659-2951, Home  
Jerry Gee 659-3664  
145-rt

## POLITICAL ANNOUNCEMENTS

The Hansford Plainman is authorized to announce the candidacy of the following candidates for public office, subject to the action of voters in the 1978 primary elections.

**FOR COUNTY JUDGE**  
R. L. McClain  
Francis Biles  
**FOR COUNTY TREASURER**  
Verna Gail Keim  
**FOR COUNTY & DISTRICT CLERK**  
Marie Gould  
**FOR COMMISSIONER PREC. 2**  
Joe T. Venneman  
**FOR COMMISSIONER PREC. 4**  
Alvin (Bill) Cator, Jr.  
George C. (Bud) Lowe  
Val Winger  
**FOR STATE REPRESENTATIVE - 64th LEGISLATIVE DISTRICT**  
Bob Close

## CARD OF THANKS

We would like to thank each and everyone of you for your prayers, visits, calls, flowers and food while Buck was in the hospital and after he returned home. Your thoughtfulness is greatly appreciated.

Back & Betty Behne

We wish to express our sincere thanks to each one for your prayers, cards, flowers, and telephone calls while I was in the hospital. Also we say thanks for the visits, food and clean driveway when we arrived home.

Major and Ruth Lackey

The YMCA Planning Committee wishes to thank those who helped make the YMCA Benefit Basketball Game last Thursday night a success. A special thanks to the teams and to Ed Dear and Tommy White, who helped with the auction of the pies and cakes.

The game and concessions brought in approximately \$2650 for our Y. This has taken us a step further toward our goal. However, there's still more needed to make it a reality. Special thanks are also extended to the Baker & Taylor Women's Auxiliary, the Rotary Club, CWL and First Christian Church, and Zeta Upsilon for their donations and help.

"Praying all alike, is praising none."  
John Gay

## LOST

**LOST:** A gold male half-grown kitten who is missed very much if found please call 659-3287.  
17-2tc

## TOO LATE TO CLASSIFY

**HOUSE FOR SALE:** 215 South Dressen, 2 Bedroom, Garage, Fenced Back Yard. Close to school. Call 659-3771 or contact Permian Corp., 659-2571.  
17-1tp

## American Ag. News

It seems as if officials of McAllen, along with the High Sheriff of Hidalgo Co., perpetrated the double cross and set up the farmers in the valley in last week's brutal affair on the Hidalgo Bridge. It was terrible, but it solidified the farmers throughout the nation. We gained a lot of support from Middle Class working people. The request that the local office got from the "MEN" in jail was to get the 50-50 program rolling. They have heroically done their job. It is up to the rest of the farmers now to come forward, stand up and be counted. Sign the pledge and list the acres that are to be tilled. These acres are to be compiled nationwide and presented to the President and Bergland.

Plans are underway to have a nationwide shut down of all transportation. You will have heard of this by the time you read this. If the farmers can stop the food supply to nation's cities, especially to Washington, think just because they might listen.

**REMEMBER-YOUR PLANTER IS THE MOST IMPORTANT TOOL YOU HAVE. USE IT CAREFULLY.**

## BULLETIN

Bumor has it that Georgia farmers have kidnapped Billy, Miss Lillian is distraught, Jimmy is concerned, as the Georgia farmers are telling him that unless he gets acquainted with the farm situation they will turn him loose.

**FOR SALE:**  
1" used steel pipe, .10 & .20 a ft.; 1 1/4" used pipe, .30 ft.; 2" used pipe, .50 & .55 ft.; 3" used pipe, .67 & .78 ft.; 4" used pipe, .65 & .85 ft.; 6" used pipe, .85 & .95 ft.; 8" used pipe, \$1.25 ft.; 10" used sucker rod, 16 ft.; 1 1/4" plastic pipe, .10 ft.  
CENTRAL SUPPLY COMPANY  
806-275-3777  
Borger, Texas 16-8c

**TEXAS PRESS**  
Member 1977 ASSOCIATION  
PUBLICATION NO. 509660

SPEARMAN, TEXAS 79081  
Box 458 659-3434  
Published Weekly at 213 Main Street  
Spearman, Texas 79081  
Owner-Publisher: William M. Miller  
Second Class postage paid at Spearman, Texas.

**ANY ERRONEOUS REFLECTION UPON THE CHARACTER OF ANY PERSON OR FIRM APPEARING ON THESE COLUMNS WILL BE GLADLY AND PROMPTLY CORRECTED UPON BEING BROUGHT TO THE ATTENTION OF THE MANAGEMENT.**

**SUBSCRIPTION RATE:** Hansford, adjoining counties, combination with the Hansford Plainman, \$10.40.  
Other points, \$14.40.

**RELIGIOUS ART SHOW COMING MARCH 20-25 HANSFORD LIBRARY**

**RELIGIOUS ART SHOW COMING MARCH 20-25 HANSFORD LIBRARY**

**FOR THE ULTIMATE IN STORM DOORS**  
CUSTOM BUILT, DESIGNED, AND IN COLORS TO FIT YOUR HOME.....  
CONTACT  
**HOWARD MOYER at ONLY ALUMINUM INDUSTRIES**  
405-338-9666 or 338-6170  
P. O. BOX 471  
GUYTON, OKLAHOMA 73942

**GUILD WOMEN'S BAKE SALE MARCH 22 THRIFTWAY**

**GUILD WOMEN'S BAKE SALE MARCH 22 THRIFTWAY**

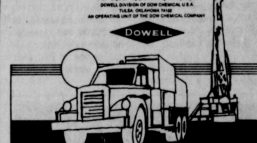
## Oil & Gas Well Service Equipment Operators & Mechanics

With the urgent search for oil and gas, we need career-oriented, promotable people to drive, maintain and operate Dowell cementing and well service equipment. Requires energetic, hard workers.

- Guaranteed Salary plus Overtime
- Insurance, Vacation, and Other Benefits
- Expenses Paid while in the Field
- Outstanding Promotion Potential for Capable Workers

Must be at least 21 years old, should have high school education, and meet Department of Transportation qualifications Monday through Saturday at the Dowell Offices in Perryton, Texas, 79026 or Dallas, TX. Phone 800/452-6436 or 806/453-2192 and ask for Pat Wilson.

An equal opportunity employer  
M-F 8:00 AM - 5:00 PM  
S 9:00 AM - 5:00 PM  
D 9:00 AM - 5:00 PM  
DOWELL



## SUPER SHOPPING 12/12 USED CARS

**Gerald Heinrich's EXCEL CHEVROLET-OLDS, INC.**

"WE'RE IN BUSINESS BECAUSE WE MAKE GOOD DEALS"  
South Highway 287 • Spearman, Texas • Phone (800) 659-2991

Air conditioner-Power steering-Elec. windows-doors-tape deck-automatic T.  
1976 CAPRICE CLASSIC.....\$3975.00

Air conditioner-Power steering-Automatic transmission-4 dr.  
1977 NOVA.....\$3975.00

1976 LOADED SILVERADO 3/4 ton.....\$4450.00

1976 FORD 1/2 ton - ps - pb - 4 speed.....\$2500.00

2-door-Automatic transmission-air conditioner-Elec. windows-doors-Tape  
1975 BUICK RIVERIA.....\$4550.00

1976 CHEVY 1/2 T, PS, PB, AT, AC.....\$3500.00

1972 CHEVY, Impala Cpe. Custom.....CHEAP.....CHEAP

One only - 1/2 ton Chevy - 4WD-Stepside.....\$3100.00

One only - 3/4 ton 4-wheel drive chevy.....\$3500.00

1977 98 Regency, 21,000 miles, loaded.....\$6800.00

1976 FORD, Gran Torino, clean PS, PB, AT, AC.....\$2600.00

## Revival To Begin Sunday



GARY & RENEE MARTIN

Gary Martin, of Bell Gardens, Calif., is a young man of many talents who has a background founded on Christian service. At the age of 17 he was singing with one of the finest gospel quartets in Southern California. Since that time he has worked with choirs and youth groups and has served as associate pastor at First Assembly of God Church in Duncan, Okla. Gary is also a regular soloist on PTL-Christian television, in Los Angeles. Now at the age of 24, he has devoted his life to evangelistic work.

Gary states, "I have a firm conviction that we are living in the last days and God is moving in a mighty way upon all people who will heed his call, according to Joel 2:28. The greatest thing is that he is using men and women who will yield to the direction of the Holy Spirit." Gary is joined by his wife, Renee, who has also worked with choirs and youth groups and accompanies him both vocally and on the piano. You will be moved by the Holy Spirit as they sing and as Gary preaches from the Word of God. Your life will be enriched as you receive and share in the ministry of Gary and Renee Martin.

Pastor Burress and congregation extend a cordial invitation to all to come and worship with us at 7:00 each evening, March 12-19.

## Masons Greet Masonic Dignitary

A large turnout of Master Masons was present at Hansford Lodge No. 1040, A.F.&M. in Spearman Feb. 27 to participate in the official visit of District Deputy Grand Master William R. Knight, Jr. of Dumas. Worshipful Master Cecil Batton of Hansford Lodge has reported.

There were 35 Master Masons present representing Lodges in Dumas, Stinnett, Gruver, two in Berger, one in Gayton, Okla., and one in Denver, Colo., in addition to Hansford Lodge. Batton said that he wanted to extend his thanks and appreciation to all those who participated in making the official visit the success it was.

## Our Heritage of Faith

notes from Faith Lutheran Church

Jesus is the one who has died for us. This is a message we hear again and again. But the significance doesn't always sink in. We may say it and know it, but fail to realize that it was for me, that I might truly live.

Caiphas announced that it was necessary for Jesus to die for the sake of the people. But he understood that in terms of this life. He saw Jesus' death only in terms of offering him political stability and maintaining the power and prestige that Caiphas had as a religious leader. Jesus' death to Caiphas meant that he could live as he pleased in this life.

Barabbas knew that it was him or Jesus. The crowd chose Barabbas. Barabbas was the criminal and deserved to suffer yet it was the innocent Jesus who died in his place and Barabbas went free. Jesus' death to Barabbas meant another chance and extra life in this life.

The Gospel tells us that Jesus' death is to mean much more. We are to be new people knowing that we have forgiveness, a new relationship with God, hope and peace in Jesus' death for us. Jesus' death means that I am now God's child. The Lenten Service on Wednesday, March 15, will focus on the character of Barabbas. Come and hear what we can learn through the character of Barabbas.

Other events coming up at Faith are the Church Council meeting at 8:00 Friday, March 10, the Worship and Evangelism Committee meeting Sunday at 10:30, and the women of Faith's Bible Study on Tuesday, March 14, at 7:30. The Fun and Game Night sponsored by the Luther League has now been set for April 16.

If you have no church which you attend regularly we invite you to join us at Faith. Sunday Morning Worship Services are at 9:30 followed by Sunday School at 10:30 and Wednesday Lenten Services are at 7:30.

SEE THE NEW SPRING KORET

## HD Club Council Meets

The Home Demonstration Council met Tuesday, February 28 in the Home Demonstration Club Room with Vice President Mrs. Pennyne Ralston presiding over the business meeting. Minutes of the previous meeting were read and approved.

Mrs. Delinda McLaughlin gave the devotional. Committee reports were given by educational and 4-H committees.

1978 Committee recommendations were voted on. A

## Bridge Club

Blue Monday Bridge Club met Monday, March 6 in the home of Mrs. Pope Gibner. High score was won by Mrs. Margaret Gibner and second high by Mrs. Mable Jameson. Refreshments were enjoyed by members. Mesdames: Fred Daily, Yester Hill, Gwendred Lackey, Bill Gandy, Viola Graves, Deta Blodgett, Pope Gibner, and guest Mrs. Leonard Jameson.

The next meeting will be March 20 in the home of Mrs. Viola Graves.

## Sacred Heart Women's Guild Meets

Sacred Heart Women's Guild met Thursday, March 2 at the Parish Hall of the Sacred Heart Church. President Mrs. Faye Schmecht presided over the business meeting. Father Ray led the group in the recitation of the rosary.

A representative of the Guild was present at the last Tuesday's meals on wheels' project at the Christian Church. Mrs. Anita Sumner will be the representative from now on. The Guild will be sharing with the work with the First Presbyterian Church for driving through the month of May. They sent Mrs. Adella Lopez as a representative to the World Day of Prayer on Friday at the Presbyterian Church. The members talked about their Easter Bake Sale at the Currate Grocery Store for March 22. It will start at 8:30 a.m. and last until all goodies are sold.

The nominating committee for next year's officers were appointed. They are Mrs. Jeanette Bort, Mrs. Olivia Cazares, Mrs. Mary Sollins, and Mrs. Jerry Davis - alternate. Hostesses Mrs. Olivia Cazares and Mrs. Nancy Garcia served refreshments to members. Mesdames: Petra Lozano, Caroline Murphy, Manuela Nunez, Adella Lopez, Anita Sumner, Olivia Renteria, Clementine Renner, Edith Volden, Jeanette Bort, Maria Pacheco, Joan Farr, Mary Allen, and Lydia Rodriguez.

The next meeting will be April 6 and Mrs. Joan Farr and Mrs. Anita Sumner will be the hostesses.

## Square Dance Lessons To Begin

The Boots & Slippers Square Dance Club will have its regular dance March 9 beginning at 8 p.m. at the Legion Hall in Gruver.

Square dance lessons will be held Tuesday and the first and third Thursday of the month beginning at 7:30 p.m. at the Legion Hall or the La Casita Room of the Gruver State Bank. Dancers should contact Sonny Riley, president of the club, for the place.

Utilizing his experiences prior to the time he dedicated his efforts in life to ministering the Gospel of Jesus of Nazareth, Hugh Smith of Joshua, Texas, in association with Hugh Smith Evangelistic Assn. begins a Christian Teaching Seminar Thursday, March 9, at the Believers' Cottage and everyone is invited to attend the series.

## Christian Seminar Begins Today



HUGH SMITH

The seminar will be in five sessions, at 7:30 p.m. March 9 and 1:30 and 7:30 p.m. on Friday and Saturday, March 10 and 11. There is no charge. The Cottage is 2.7 miles west of Spearman and on the south side of the Gruver Highway.

## Arts and Crafts Guild News

Arts and Crafts Guild met Friday, March 3 in the home of Mrs. Joe Traylor. Refreshments were enjoyed by members. Mesdames: Garrett Allen, F. J. Daly, Pope Gibner, P. A. Lyon, Sr., Clay Gibner, Nolan Holt, Sada Hoskins, and Bill Russell.

The next meeting will be March 10 in the home of Mrs. Bill Russell. In Turkey, the loser of wrestling match kisses the hands of the wrestler who beats him, and the victor takes the loser in his arms and salutes him!

# 800 Extra Gunn Bros. STAMPS

## BY REDEEMING 2 COUPONS EACH WEEK FOR THE NEXT 4 WEEKS...

**IDEAL FOOD STORES**

PRICES EFFECTIVE THRU SATURDAY, MARCH 11, 1978. QUANTITY RIGHTS RESERVED. NO SALES TO DEALERS.

MON.-SAT. 9:00 a.m.-9:00 p.m.  
SUN. 10:00 a.m.-7:00 p.m.

### YOUNG, TENDER, BULK PACK

# Turkey Drumsticks

**29¢** LB.

SLAB HICKORY SMOKED BULK PACK

**\$1.09** LB.

SMOKED SAUSAGE

BATH BLACKHAWK HICKORY SMOKED

**\$1.69** PER LB.

OSCAR MAYER SMOKIE LINK

**\$1.39** PER LB.

MARIOS CHEESE

**79¢** 5-CZ PKG

MARIOS PEPPERONI

**49¢** 5-CZ PKG

# WIN UP TO \$1000.

**60¢**

THIS COUPON WORTH 6¢ TOWARD THE PURCHASE OF...

**Folger's Coffee**

2-LB. CAN...ALL GRINDS

COUPON GOOD THRU MARCH 11, 1978. LIMIT ONE COUPON PER CUSTOMER.

**COLUMBINE**

## Cut Green Beans

**5 \$ 1**

16-OZ. CANS

PLAIN OR IODIZED

**Camelot Salt**..... 2 1/2 LB. **33¢**

AMOUR

**Vienna Sausage**..... 2 1/2 LB. **69¢**

CANNED DRINKS

**Welchade**..... 48.5¢ CAN **58¢**

HALVES OR SLICES

## Hunt's Peaches

**49¢**

29-OZ. CAN

HUNT'S

**Fruit Cocktail**..... 15.5¢ CAN **36¢**

DEL MONTE FRENCH STYLE

**Green Beans**..... 15.5¢ CAN **1.00**

NEADOWTILE

WHOLE OR CREAM STYLE

**Golden Corn**..... 17.5¢ CAN **89¢**

KRAFT

## Miracle Whip

**88¢**

32-OZ. JAR

PURINA

**Dog Chow**..... 25 LB. **5.69**

4-COLOR POLISH & CLEANER - 50% OFF

**Step Saver**..... 32.5¢ BTL **1.69**

CANNED MILK

**Milnot**..... 3 1/2 CAN **89¢**

HERSHEY MILK CHOCOLATE

**Candy Bars**..... 5.9¢ CAN **89¢**

FAIRMONT

## ICE CREAM

**\$1.69**

GAL CAN

BATHROOM

## Charmin Tissue

**47¢**

ROLL PKG.

VIVA DECORATOR

## Paper Towels

**58¢**

JUMBO ROLL

FAMILY SIZE

## Tide Detergent

**\$4.39**

50% OFF LABEL

171-OZ. BOX

### SHOP IDEAL...WHERE THERE'S MORE VALUE IN STORES



### Dahlia Flower Club Meeting Set



Mrs. Hollie Riley

The Dahlia Flower Club will begin the year under the leadership of Mrs. Earl Riley. The first meeting of the new year will be Monday, March 13, 1978 in the home of Mrs. Deta Blodgett. Mrs. Riley served as President in 1977 and was elected to serve again for the 1978 year.

### HD Club News

Serendipity Home Demonstration Club met Thursday, March 2 in the home of Mrs. Norlin Wiegarter. The meeting was called to order by President Mrs. Gayle Smith. Mrs. Norlin Wiegarter gave the devotional.

Minutes of the previous meeting were read and approved. Committee reports: The council report was given by Mrs. Ladd Gafford; she reminded the group about the Home Fashion Fair to be held Monday, March 6. She also told them about a seminar in Amarillo on March 9 entitled Panhan-

dle Economic Program. Any members are invited and should pre-register. A plant and landscape seminar is also planned for March 14 at the County Barn from 10 to 3 p.m. Mrs. Wiegarter informed the members that their club would be responsible for 26 lbs. of sloppy joes for the livestock show on March 17.

They need to fix 5 doz. sandwiches for the Bloodmobile on March 22. Mrs. Peggy Woodington was elected as T.H.D.A. delegate to go to the district meeting in Dalhart on March 30.

The Council money-making projects for the coming year would be the annual bake-off, a tasting tea, and a bake sale and craft sale if necessary. Members were reminded that a charge of 10 cents would be assessed them if they didn't call the hostess in time to let her know that they would be unable to attend that particular meeting.

Mrs. Wiegarter reported back to the club that they had been unable to find a place for their nursery and that they are going to look into the possibility of fixing up a room at the club room for a nursery. There will

be a report on this at their next meeting as to whether or not they will do this.

Mrs. Janie Assiter reported on the bridge club tournament on March 4 at the County Barn and luncheon. Letters have been sent to various bridge clubs in town and posters will be put up at several businesses. Anyone wishing to participate should contact Mrs. Tim Assiter by March 15.

The business meeting was concluded. The program was given by Mrs. Betty Levis of Perryton who is a social worker for the Department of Human Resources (formerly known as the Child Welfare Department).

Members present were Mesdames: Tim Assiter, Ladd Gafford, Jim Kuykendall, Buford Baker, Steve Benton, Bob Brown, Duane Loris, Archie Smith, and Norlin Wiegarter. The next meeting will be March 16 in the home of Mrs. Ricky Riggins.

Mrs. Peggy Woodington reported back to the club that they had been unable to find a place for their nursery and that they are going to look into the possibility of fixing up a room at the club room for a nursery. There will

### CWF Has Meeting

C.W.F. met Wednesday, March 1, 1978 in the First Christian Church at 2:00 p.m. President Mrs. Sandy Russell presided over the business meeting. Minutes of the previous meeting were read and approved; treasurer's report showed a balance of \$1,000.00.

Mrs. Candi Boswell reported on the meals on wheels project which is underway. Mrs. Judy Hergert asked for more winners to work in the Children's Church each Sunday.

Mrs. Betty Jean Davis announced that there will be a workshop for C.W.F. officers on April 2, 1978. There will also be a TWIG workshop to be held on March 11.

A nominating committee of Mrs. Betty Jean Davis, Mrs. Eleanor Reed, and Mrs. Margaret Evans will nominate officers for the new year in order that they will be able to attend the above workshops. 'World Day of Prayer' will be held March 3 at the First Presbyterian Church of Spearman at 9:30 a.m.

### Pletcher Evangelists To Conduct Revival

During the month of April, the CWF will also be an afternoon meeting. Mrs. Candi Boswell moved that they buy Bibles for the senior citizens.

Ken Medema will be at the Christian Church on March 19. He is a pianist. The business meeting was adjourned.

The program was given by Mrs. Marilyn Groves and Mrs. Betty Jean Davis on In Christ we Enter Into Newness of Life entitled "Take a Journey of Love".

Hostess Mrs. Gwen Smith served refreshments to members, Mesdames: Marilyn Groves, Betty Jean Davis, Margaret Evans, Lorene Kunselman, Eleanor Reed, Candi Boswell, Dorothy Haner, Janie Kuzsman, Sandy Russell, and Judy Hergert. The next meeting will be April 5.

THE REV. & MRS. JAKE PLETCHER

The Rev. & Mrs. Pletcher will conduct revival services in Spearman, Texas, from March 12th through 19th.

The revival services will be conducted in the Apostolic Faith Church, 9th and Brown Streets, Jacob C. Reigler, pastor.

The Evangelistic Party consists of the Apostolic Faith Church Reviv and Mrs. Jake H. Pletcher, and their daughters, Mrs. Irma Ulrich and Karen Pletcher. Mrs. Demerits Pletcher will enhance the revival services by illustrating special songs with artistic chalk drawings. Mrs. Pletcher and her daughter will render special songs in each service.

Rev. Jake H. Pletcher, who comes to us from Bartlesville, Texas, has many years experience as pastor, evangelist and teacher. Pastor Reigler and the members of the Apostolic Faith Church invite and urge everyone to attend these revival services. Services will begin each evening at 7:30. Sunday services will convene at 11: a.m. and 6:30 p.m.

## 200 BONUS STAMPS

JUST CLIP AND REDEEM OUR STAMP COUPONS!  
2 COUPONS WILL APPEAR IN OUR AD EACH WEEK FOR 4 WEEKS...  
REDEEM THEM ALL FOR 800 EXTRA STAMPS!

No. 8 THIS COUPON IS GOOD FOR  
**100 FREE GUNN BROS. STAMPS**  
AT YOUR IDEAL FOOD STORE.  
No Purchase Required.  
Please fill in your name and city.  
Only One Coupon Per Customer-Coupon Expires 3-15-78.

No. 8 THIS COUPON IS GOOD FOR  
**100 FREE GUNN BROS. STAMPS**  
AT YOUR IDEAL FOOD STORE.  
With the Purchase of \$5.00 or more in Groceries.  
Please fill in your name and city.  
Only One Coupon Per Customer-Coupon Expires 3-15-78.

OSCAR MAYER MEAT BEEF OR THIN SLICED  
**Sliced Bologna..... 1.19**

BECKER LUNCHEON MEATS  
**49¢**

SMOKEY CANYON Sliced Meats..... **49¢**

RODEO SLICED LUNCHEON MEATS **\$1.29**

**Round Steak \$1.39**

U.S.D.A. CHOICE BUTCHER BUCK BEEF

SWISS STEAKS \$1.19

7-BONE ROAST \$1.09

BEEF LIVER..... **59¢**

FISH CAKES..... **\$1.09**

SKINLESS FRANKS \$1.69

OSCAR MAYER MEAT OR BEEF 1-LB. PKG.

MEET JUST A FEW HAPPY WINNERS

**\$1000 DOLLAR WINNER**

**\$100 DOLLAR WINNER**

These Nonmaker of Houston  
D.J. Gilman  
Margaret Kenney  
of Awa  
Anita Thompson  
of Pompe  
Mrs. Hodge  
of Garden City  
Lena Johnson  
of Enid  
The Coverda  
of Harford

Kathy Hoffman  
Ol Perryton

ODDS CHART

WHEEL	1	2	3	4	5	6	7	8	9	10	11	12	13	14	15	16	17	18	19	20	21	22	23	24	25	26	27	28	29	30	31	32	33	34	35	36	37	38	39	40	41	42	43	44	45	46	47	48	49	50
1	2	3	4	5	6	7	8	9	10	11	12	13	14	15	16	17	18	19	20	21	22	23	24	25	26	27	28	29	30	31	32	33	34	35	36	37	38	39	40	41	42	43	44	45	46	47	48	49	50	

# IN CASH PRIZES!

FRESH DAIRY FROZEN FOODS

**Grade "A" Medium Eggs 62¢ DOZ.**

**Glazed Donuts 64¢ DOZ.**

Margarine **48¢**

FARMONT LOW FAT Cottage Cheese **88¢**

FARMONT LOW FAT Chocolate Milk **\$1.59**

KRAFT American Singles **\$4.49**

SNACK TRAY **98¢**

Jeno's Pizza **\$1.00**

MEADOWDALE Shoestring Potatoes **3¢**

FLEISCHMANN'S Egg Beaters **79¢**

CALIFORNIA NAVEL Oranges..... **89¢**

CALIFORNIA Lemons..... **\$1.00**

FLORIDA Orange Juice **69¢**

NORTHERN Peat..... **\$1.59**

FRESH Green Onions..... **2 bunches 29¢**

HEALTH & BEAUTY AIDS

DEODORANT **Right Guard \$1.88**

EDGE REG. LIME SPECIAL Shaving Cream **98¢**

JOHNSON'S Baby Shampoo **1.00**

GOUGH MEDICINE Vicks Formula 44 **1.30**

SINEX Nasal Spray **1.30**

RED RIPE **Salad Tomatoes... 49¢**

**Ideal Food Stores**

**Food Stamps Buy More At Ideal..**

### HD Clubs Improve Family Living

"Learn by doing, share by showing" describes how six groups of Hansford County homemakers "make friends and influence people" in improving family life, according to Mrs. Peggy Wiegarter, County Extension Agent.

They're all members of Home Demonstration Clubs in different communities throughout the county, the explaining of Mrs. Wiegarter says.

Open to all county residents, the clubs offer educational programs in family living to members and others—along with services to their communities, Mrs. Wiegarter says.

Member study—and practice—proven ideas in family health, family stability, furniture and housing, family clothing and family resource management, also adds.

There are bonus reasons for membership, too, the agent stresses. Members in Hansford County say they also enjoy personal satisfaction, a sense of belonging and a chance to make long-lasting friendships as a result of being in a Home Demonstration club.

Because each club decides its own program areas and projects, the overall success of their efforts is remarkable—in terms of people reached and different subjects taught, Mrs. Wiegarter points out.

In 1977, Hansford County home demonstration clubs sponsored six service projects that reached over 700 county residents. Projects included child Abuse Seminar, Mental Retardation

"He Leadeth Me" To be shown A public screening of HE LEADETH ME, a unique new documentary film featuring Christian concert singer Ken Medema, will be shown at First Christian Church on Sunday, March 12, at 4:00 p.m.

Ken, who will himself be in Spearman March 19 (Palm Sunday), is a dynamic young singer-pianist-composer and recording artist. His music is unique, Biblical, alive, imaginative, and powerfully effective.

HE LEADETH ME, featuring Ken in performance and in intimate moments with his family, is actually a film about handicaps, for Ken Medema has been blind from birth. The film is a testimonial as to how God can use our handicaps as occasions to bless us and to change the world.

Everyone in the community should come get acquainted with our new doctors, and show our appreciation to the established ones. The doctors included: Dr. E. S. Longberg, Dr. & Mrs. Latta, Dr. & Mrs. Blodgett, Dr. & Mrs. Steger, Dr. & Mrs. Novak, Dr. & Mrs. Medema, Dr. & Mrs. Phillips, and Dr. & Mrs. Thu.

Services will begin each evening at 7:30. Sunday services will convene at 11: a.m. and 6:30 p.m.

### United Presbyterian Church News

There is a Sunday Church School class for everyone every Sunday at 9:45 a.m. with a friendly, well-prepared teacher with an interesting, practical Bible lesson. Come and be stimulated.

"Called to New Life" is the subject of Pastor Edward D. Freeman's sermon at the service for the public worship of God on Sunday, March 12 at 11:00 a.m.

Presbyterian Women of the Church will meet Wednesday, March 15 at 9:30 a.m. Betty Freeman will be the hostess. Myrt Bohman will lead the Bible study, "The God of Sarah, Rebekah, Leah and Rachel".

Martha Batton will lead devotions. There is a warm, Christian friendliness at the First Presbyterian Church, and if you are new to Spearman or without a church home, you are invited to come and experience the joy of the Lord.

**Sears**

Only 5 DAYS TO ORDER FROM OUR BIGGEST SALE CATALOG OF THE YEAR!

Shopping from "X" mid-winter sale catalog is EASY! Shopping catalog by phone is so quick... most items are ready for pick-up within 2 days! So call now, or see a copy at your nearest catalog desk. Sale ends March 15!

**CALL 659-2573**

Sears has a credit plan to suit most every need

**Sears**

SEARS ROEBUCK AND CO. Plains Shopping Center Spearman, Texas 9 a.m.-5:30 p.m.

# Methodist Plan Seventh Missionary Conference



THE REV. AND MRS. DICK AMOS

The First United Methodist Church has set their Seventh Annual Missionary Conference for March 10-12.

Thursday, March 9 at 5 p.m. a 24-hour Prayer Vigil will begin.

Events scheduled for Friday, March 10 are a prayer meeting by missionaries and those interested at 5:30 p.m. at 6 p.m. a church-wide supper will be held in Fellowship Hall. At 7:30 p.m. the main service will be held in the Sanctuary with service for children (grades 1-6) in Fellowship Hall. At 9 p.m. displays will be open and Fellowship.

Saturday, March 11 schedule begins at 7 a.m. with a breakfast prepared by the men. At 10 a.m. two coffees in homes are scheduled. At 12 noon a youth dinner with speakers will be held. A coffee in a home is scheduled for 3 p.m. followed by a church-wide supper at 6 p.m. The main service is scheduled for 7:30 p.m. in the Sanctuary with displays open and Fellowship at 9 p.m.

On Sunday, March 12 a prayer time in the Sanctuary at 8:30 a.m. starts off the activities. At 9:45 a.m., all youth (grades 7-12) will meet in Fellowship Hall with others in regular classes. The main service will begin at 10:50 a.m. in the Sanctuary with Faith promises being received. Senior High and Junior High youth will meet at 6 p.m. The main service in the Sanctuary will be at 7 p.m. with Faith Promises being received.

Missionaries that will be present for the conference include Gail Tucker, the Rev. and Mrs. Dick Amos and Mrs. Margaret Brabon.

Mrs. Tucker graduated from Denver City High School in May 1972. She attended Texas Tech University, where she earned a B.S. degree in Home Economics Education in May, 1976. She now is serving as Home Economics and English teacher, and dietitian at Lydia Patterson Institute in El Paso. She serves as a "Home missionary." The local church has supported the Lydia Patterson Institute for many years and Gail will give some first hand information about the school.

The Rev. and Mrs. Dick Amos have returned from Japan, where they were missionaries with OMS International.



GAIL TUCKER



MARGARET BRABON

year for the local church is \$28,000. The theme is "Exercise Your Faith" and "Watch It Grow."

Assigned to teach English as an evangelistic outreach, the Amoses teamed up with a Japanese Pastor or lay worker to teach both conversational English and the Bible. They were active in organizing the English camp in the summer. The Amoses both graduated from Asbury College and Mr. Amos also completed studies at Asbury Theological Seminary. Mr. Amos first went to Japan in 1958 as a crusader in a campaign of scripture distribution. Mrs. Amos grew up in Colombia where her parents were missionaries. Her late father, Dr. William Gilliam, also served as a Vice-President of the mission. Her mother, now on furlough, is a missionary to Spain. The Amoses have two children. They will return to Japan April 1.

Mrs. Margaret Brabon, missionary of 26 years to Colombia International representative on Asbury College campus. An outstanding speaker, Mrs. Brabon vividly portrays the dramatic change in the Colombian church as it has moved from the initial stage of an intensely persecuted minority group to the present period of rapid growth and acceptance within Colombia. Having traveled widely, Mrs. Brabon is well acquainted with the varied ministries of the OMS in Colombia. She eloquently describes the unfolding of new ministries among high school and university youth, high society women she taught in her Bible classes, and culturally deprived teenagers in jungle areas who study at Cristalina Vocational Bible Institute, founded by the OMS.

Mrs. Brabon attended Asbury College and Asbury Theological Seminary, where she earned her AB and BD degrees. She and her late husband first went to Colombia in 1964.

While serving as mission treasurer, field hostess, Bible class teacher, and coordinator of summer volunteer student workers, Mrs. Brabon still found time to rear four Christian children, one of whom is a missionary to Spain.

The goal for the Missionary Faith-Promise for the upcoming

# Sorghum Symposium Set

Amarillo, Texas - Persons interested in learning about economics of growing corn and grain sorghum are invited to a symposium at 9:30 a.m. February 24, at the Texas A&M Research & Extension Center, 6500 Amarillo Blvd. West. The center is located just south of the Veterans Hospital on the West edge of Amarillo.

Dr. G. B. Thompson, Texas Agricultural Experiment Station Director of Research, and Paul Gross, District Agent for Extension District 1, issued the invitation. The meeting is being sponsored by the Texas Agricultural Experiment Station, Texas Agricultural Experiment Station, and USDA, Science and Education Administration.

Starting the program, Dr. Ray Sammons, Texas Agricultural Extension Service Farm Management Specialist, will discuss the farm program and economic outlook for corn and sorghum during 1978. He also will point out cost of production and other economic considerations growers should use to decide their corn and grain sorghum acreage for 1978. He also will point out cost of production and other economic considerations growers should use to decide their corn and grain sorghum acreage for 1978. Target price for milks is higher than for corn in 1978. "With this fact in mind we need to evaluate economics of grow-

ing the two crops on the High Plains," Sammons said. We will present guidelines to help growers plan their acreage for this year, he continued.

Economics of irrigating grain sorghum and corn will be discussed by Dr. John Shipley, Economist with Texas Agricultural Experiment Station. He will present results of research at the North Plains Research Field at Etter. His work shows the most economical number of irrigations for sorghum and corn will be discussed by Dr. John Shipley, Economist with Texas Agricultural Experiment Station. He will present results of research at the North Plains Research Field at Etter. His work shows the most economical number of irrigations for each crop. Dr. Shipley has developed equations that will enable producers to arrive at their most profitable irrigation level for both grain sorghum and corn.

A catered lunch will be available at noon. Immediately after lunch, Leon New, Texas Agricultural Extension Service Irrigation Specialist, will discuss pumping and water use efficiency for corn and grain sorghum. The specialist has conducted many demonstrations on Panhandle farms with different soils showing how the two crops respond to levels of irrigation.

Next, Dr. Frank Petr, Extension Agronomist, will discuss levels of irrigation. In addition, methods of selecting corn and sorghum hybrids for different evaluated corn and sorghum hybrids for resistance to maize dwarf mosaic and head smut.



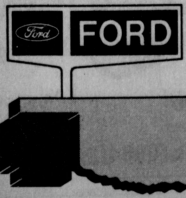
PLACEMENT SERVICE -- Positions on the April 1 ballot in the school board election were drawn Monday, March 6, in the business office at Spearman High School with Business Manager Orville Latham holding the container of names and Mrs. June Day, an employee, doing the drawing. Voters will pick two of the five candidates, Larry Porter, Tommie White, incumbent Jim O. Davis, Dr. Bob Phillips and Linda Holt Jarvis, for the two positions to be filled through the election process.

# ONE OF THE LAST TRADITIONAL FULL-SIZE FAMILY CARS. 1978 FORD LTD.



Buy now! You simply won't find this size car in our showroom next fall!

If you drive a big car, or if you're thinking about buying a big car, this is your year. The last year to own the full-size Ford LTD. The car built for the road, for the way we travel here in Oklahoma and the Texas Panhandle. And right now, we're ready with a bigger selection—and a better



deal—than ever before. More LTDs to choose from... more for your car in trade. More car value than we've ever offered before! But don't wait! This big Ford LTD won't be back next year. Come in today while the selection is at its best!

OKLAHOMA/TEXAS PANHANDLE FORD DEALERS

Joe Trayler Ford

SPEARMAN

# World Day of Prayer Well Attended

"Community Spirit in Modern Living" was the theme of the World Day of Prayer celebration held locally at the First Presbyterian Church on Friday, March 3 at 9:30 a.m. As people gathered in the narthex, they signed a register and then went into the fellowship hall for coffee or wassail and cookies.

As 50 people gathered in the sanctuary for the worship service, Dorothy Baggerly was at the organ. Karen Coontes was the song leader and soloist.

Patty Moore, Presbyterian Women president, welcomed everyone and took roll call of the churches. Fay Palmer read the call to worship. Beth Stauffer led a responsive prayer based on the Lord's Prayer. Lane Knuckles read Philippians 2:1-10. Marie Beck led the congregation in a prayer of confession. Joyce Bayers read John 1:1-10. Fay Palmer led a litany on "God's Action in and Through Us." Betty Freeman gave thoughts on the theme.

She said that before people could be in community, they first had to be obedient Christians in action in their own lives. First of all, Christ had to be the center of that life. Their obedience must be grounded in the Word of God. This would lead them into a life of prayer. When they reached up to God it would mean reaching out to others by witnessing and in fellowship. Then one is ready for community spirit in modern living with Christ at the center of the community's life and His love flowing out from the individual to give light in the

community and outward to bring hope and peace to the community.

Beth Stauffer read a fragment of "Bless My Growing" by Gerhard E. Prost.

Sandy Russell explained about the offering and where it goes and led a blessing on the offering. Ushers who received the offering were Janie Henton and Janie Kunselman. Gwen Smith read 1 Corinthians 12:12-14 and Betty Davis led in the Peace.

The service closed with everyone taking hands and singing a stanza of "Bless Be the Tie that Binds" and the benediction by Ed Freeman.

Next year's celebration will be held at the Sacred Heart Catholic Church.

## Managing money

AUSTIN, Texas (Spl.) — Don't take out a mortgage that's more than two-and-a-half times your annual take-home pay. That advice comes from Dr. Harold Wolf of The University of Texas Finance Department, who is the author of college and high school textbooks on money management. Carelessness is frequently at the root of troubles with personal finances, Dr. Wolf says. Ways to improve those finances, he says, range from setting up a "loose" budget that includes an item for savings to investigating the terms of three or four places before borrowing money or buying insurance.





### "Texas" Board Members Re-elected

Canyon, Texas, March 2, 1978. At the Annual Luncheon of the Texas Panhandle Heritage Foundation, all active members of the Board whose terms were expiring were re-elected, and Michael Campbell of Amarillo and J. Avery Rush, Jr. were added to the number. As before, 39 Panhandle cities are represented on this body and the members from these area cities feed reactions to the directors as their neighbors see the show "Texas" which the TPHF produce, and encourage their friends and neighbors and conventions to attend.

Board members from Hansford County are Mrs. Ralph Bort and Mrs. Elmo M. McClellan, Sr., of Gruver and Guy Fuller of Spearman.

Over a hundred people gathered to hear Dr. Ruth Lewis of Canyon, clad in a girl's basketball uniform of the early 1900's, give some descriptions of the days at West Texas State University when a picnic trip to the Palo Duro Canyon took three hours and when after

lights were turned out at 10:30, studying was often done by lantern shut up in a clothes closet.

There was short discussion of the work of the Texas Tourist Council and the impact it has made.

There was short discussion of the work of the Texas Tourist Council and the impact it has made on tourism in Texas. The Council is the private arm which studies and speaks for the Texas Tourist development agency when private evaluation is needed. Since the advertising which the State Agency prepares and sends out of State has brought in \$125 dollars in taxes and \$1500 in trade for every dollar spent, the money budgeted for this department of the State government is an investment for the State a part of the reason why the tourist business is the second largest in Texas.

Dates for "Texas" in 1978 will be June 14 through August 26. Write for your tickets. Two

lights are already sold out. Box 208, Canyon, Texas 79015 or call 806-655-2182.

**UT researchers study the retarded**

AUSTIN, Texas (Sp.) — A small part of humanity — those with IQ's below 19 who exist at levels just a little above the animals — is the focus of studies by two University of Texas special education researchers.

Drs. Charles Cleland and William Rago are studying the emotional life of the profoundly mentally retarded (PMR) in the hope of discovering ways of relieving the boredom of the victims' existence.

The researchers say they have to remain open to facial expressions, grunts, gestures, tool usage and other types of behavior to try to reach some meaningful interpretation of PMR's needs.

RELIGIOUS ART SHOW COMING MARCH 20-25 HANSFORD LIBRARY

RELIGIOUS ART SHOW COMING MARCH 20-25 HANSFORD LIBRARY

RELIGIOUS ART SHOW COMING MARCH 20-25 HANSFORD LIBRARY

#### ATTENTION - OVER AGE 65 RESIDENCE HOMESTEAD OWNERS

Hansford County is, for the first time, allowing a Homestead Exemption for persons age 65 or over on January 1, 1978.

To be eligible for this exemption a person must sign a form, designated for this purpose, at the Hansford County Tax Office in the courthouse at Spearman, Texas.

This must be done in person and before April 30 of each year. THIS IS NOT THE STATE HOMESTEAD ALLOWANCE AND IS NOT AUTOMATIC. YOU MUST SIGN UP YEARLY.

Helen Dry, Hansford County Tax Assessor-Collector



Manager of the Lynxettes, Paige Mitchell displays the bi-district trophy.

#### Bowling News

##### TUESDAY NIGHT MIXED 2-28-78

A-1 Automotive	42	2
B & B Farm Ind.	25	19
Northern Natural	24	20
Cates Men & Boys	24	20
Berry Grain	21	23
Lyric Theatre	14	30
Spearman Auto	13	31
North Plains	13	31

#### "Greening-Up"

##### City Officials have donned green underwear, the editor of the local newspaper is taking pills to turn his beard green, and the "greening-up" pace quickens in Shamrock as the count-down begins for the 22nd St. Patrick's Celebration, Friday and Saturday, March 17 and 18.

Inclined by the score, most sporting Donnell bears, with Irish colleens on their arms, are bound for Shamrock to join in the shamigans honoring the great St. Patrick and to carry out this year's theme, "An Irish Holiday."

The biggest St. Patrick's party held anywhere outside Ireland is headed up this year by Gary Gandy, general chairman, assisted by committees doing the legwork for the celebration.

Every citizen is thinking "green" as the celebration nears, and kissing the blarney stone in Elmore Park to assure "Luck of the Irish" is the great day is a must for every true Irishman. Even the special celebration edition of "The Shamrock Texan," the local newspaper, will be printed on green newspaper.

##### Wed. Night Mixed Doubles 3-1-78

Panhandle Eastern	56 1/2	35 1/2
Wardrobe	51	41
Doug Outs	48	44
Bowl Mor	47	45
Ideal	47	45
Cates	46 1/2	45 1/2
Electronics Center	36 1/2	55 1/2
Hansford Implement	36 1/2	55 1/2

##### W I

Panhandle Eastern	56 1/2	35 1/2
Wardrobe	51	41
Doug Outs	48	44
Bowl Mor	47	45
Ideal	47	45
Cates	46 1/2	45 1/2
Electronics Center	36 1/2	55 1/2
Hansford Implement	36 1/2	55 1/2

PLAY **DOUBLE CASH BINGO** SERIES II

Our first game was such a hit, we decided to do it again!

**WIN UP TO \$2000**

All New Cards All New Bingo Discs.

TEXAS BUBY RED GRAPEFRUIT 5 LB. BAG	89¢
RUSSET ALL PURPOSE POTATOES 10 LB. BAG	69¢
FARM GREEN HEAD CABBAGE LB.	19¢
U. S. NO. 1 WHITE ONIONS LB.	29¢
CALIF. PURPLE TOP TURNIPS LB.	25¢
TREE TOP APPLE JUICE 1/2-GAL.	\$1.29
FINE FARE KETCHUP 32-OZ.	68¢
MIX CARBONIFER MARSHA WHITE 6 7 1/2 OZ. PKGS.	\$1
KARCH SYLLE BEANS 3 15 OZ. CANS	\$1
FINE FARE BISCUITS 10 CT.	8 CANS \$1
COTTAGE CHEESE BELL 12 OZ.	49¢
DELL HALF & HALF PINT	39¢
JOHNSTON'S YOGURT ASS'T. FLAVORS 4 8 OZ. 5 CRTMS.	\$1

**COKE**

32 OZ. 6 BTL. CRTN.

\$1.68 PLUS DEPOSIT

**SAUCE**

6 8 OZ. CANS \$1

**UNITED SUPER MARKETS**

WE GIVE 3% GREEN STAMPS

SAUERKRAUT 4 16 OZ. CANS	\$1
SAUCE ASS'T. FLAVORS 10 OZ.	69¢
EXTRA ABSORBENT OR NATTIME PAMPERS 30 CT.	\$2.29
NATURE SCENT SOAP 4 5 OZ. BARS	\$1
9-AIVES SQUARE METAL CAT FOOD 12 OZ. CAN	49¢
JOY DETERGENT 22-OZ. BOTTLE	91¢
MORTON POT PIES CHICKEN RELISH 4 8 OZ. PKGS.	\$1
FISHERBOY FISH STICKS 16 OZ.	79¢
BORDEN ICE CREAM 1/2-GAL.	\$1.19
MORTON HONEY BUNS	39¢

**PRINGLES**

9-OZ. 79¢

**UNITED GRADE "A" EGGS**

6 DOZ. 59¢

**UNITED MOUTH WASH**

12 OZ. \$1.19

**SHAVE** 7 OZ. 99¢

**NORTHERN BATHROOM TISSUE**

69¢

**SWIFT PLAIN CHILI**

15-OZ. CAN 2/\$1

**UNITED STEAK**

ROUND - RIB - BILKIN 1 LB. \$1.39

**UNITED STEW**

BONELESS "EXTRA LEAN" CUBES OF BEEF 1 LB. \$1.29

**UNITED ROAST**

BONELESS SHOULDER WASTE FREE BEEF 1 LB. \$1.09

**UNITED SAUSAGE**

GLOVER'S SUMMER 1 LB. \$1.09

**UNITED LIGHT CRUST FLOUR**

5 LB. BAG 49¢

**UNITED BOLOGNA**

FINE FARE MEAT OR BEEF OR COOKED SALAMI 13 OZ. PKG. 98¢

**UNITED TURKEY DRUM-STICKS**

FRESH FROZEN 1 LB. 37¢

**UNITED BEEF LIVER**

FRESH SLICED SKINNED & DEVEINED 1 LB. 59¢

#### PIN BENDERS 3-3-78

Brock Insurance	66	26
Farm Bureau	56	36
Cinderella	52	40
Spearman Super Service	50	42
Bowl Mor	45	47
McClellan Grain	35	57
L.M.W.	32	60
Vernon's	32	60

#### W I

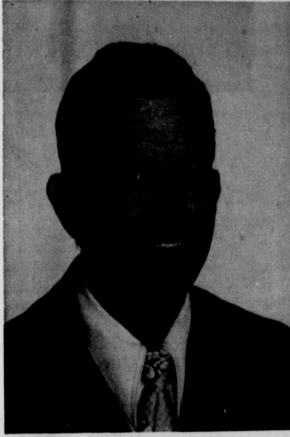
Brock Insurance	66	26
Farm Bureau	56	36
Cinderella	52	40
Spearman Super Service	50	42
Bowl Mor	45	47
McClellan Grain	35	57
L.M.W.	32	60
Vernon's	32	60

#### IT'S A FACT

Communications and Electronics industries are benefiting from Air Force research. Troposcatter communications, a process which increases the range of a radio signal by bouncing it off the troposphere, were developed by the Air Force. This technique has been adopted commercially, and is used as a communications link in the Persian Gulf, and by several oil companies for voice links over vast distances.



### Holman Completes 25 years With Company



CLYDE J. HOLMAN

Clyde J. Holman, 111 N. Hazelwood, Spearman, recently completed 25 years of service with Natural Gas Pipeline Company of America. Holman is on the maintenance staff of Natural's booster station at Spear-

man. Natural Gas Pipeline Company, a subsidiary of Chicago-based Peoples Gas Company, has extensive operating facilities in this state and nine others, supplying 49 utilities in the upper Midwest.

## Free Medical/Dental Clinic

Free medical screening services will be provided in Spearman Thursday from 10 a.m. until 9 p.m. and Friday from 9 a.m. until 12 noon. The free check-ups will be given at the Plains Shopping Center utilizing the Community Services Mobile Medical-Dental Clinic. The tests that will be given are: hypertension (Blood pressure), diabetes, dental examinations, and basic health education. Special tests will be given at specific hours. They are: Glaucoma and vision tests from 5 to 7 p.m. Thursday only; oral cancer and dental exams from 6 to 9 p.m. Thursday only; breast cancer check-ups by appointment, in the van. Acute findings will be referred to the individual's personal doctor. Sponsoring the services in Spearman will be Plains Shopping Center in cooperation with Hansford Hospital, Hansford County Health Officer—Dr. Thu, Dr. Stenger and Dr. Baker. This is a public service of the Spearman Seventh-day Adventist Church and is offered free to the general public. For those needing a ride to the clinic you may call 659-3673. The Community Services Mobile Medical-Dental Clinic is a 38 foot semi-trailer consisting of five rooms: Receptionist room, two dental rooms, a medical examination room and a small kitchenette. The Clinic is completely heated. It holds 130 gallons of water, a disposal system, and a 30,000 watt electrical power plant. The dental unit is well furnished with equipment purchased from the Weber Manufacturing Company. The purpose of the Clinic is to help other agencies in bringing health, healing, and happiness to different areas of the Southwestern States including Texas, Arkansas, Louisiana, Oklahoma and New Mexico. Franklin and Eileen Horne will serve as host and hostess for the operation. Nurses will be Mrs. Aline Childers, Mrs. Eva Lee Hunter, Mrs. Diana Sue Baker, Miss Melanie Yankee, Medical Secretaries and receptionists will be Mrs. Dee Smith, Mrs. Marilyn Yank, Mrs. Marilyn Lincoln.

was assisted by Mrs. Cindy Holton, Mrs. Linda Winegarner, and Mrs. Adalyn Barnes. Coffee was served during the break by Mrs. Lisa Pipkin, chairman of the H. D. Council Recreation Committee. Mrs. Lucille Schadt and Mrs. Virginia Trindle, Family Living Committee members. Providing excitement and fun during the evening was the drawing of door prizes conducted by Mrs. Winegarner. Those who were fortunate in having

their names drawn for prizes from the Gift Box, Nelson's Builders Supply, Callaway Flowers and T.G.&T. included Marsha Pipkin, Selma Reneau, Mary Baker and Celesta Stewart, all of Spearman. Sponsored by the Hansford County Program Building Committee; the Family Living Subcommittee; and the Texas Agricultural Extension Service; the 1978 Home Fashion Fair could be considered a great success.



Jerry Gee, one of the Hidalgo 200, affixes a strike ribbon to a Spearman merchant's window. Members of AA canvassed the entire town on Monday and put window stickers in all of the merchants' windows who were in support of AA movement.

## Plant & Landscape Clinic Planned

Having problems with sick plants? Want to reseed your yard, plant a few trees, raise a garden? Do miss the Plant and Landscape Clinic Tuesday, March 14 from 10:00 a.m. - 3:30 p.m. in the Spearman County Barn, Hoskins and Ave. D. Mr. Everett Janne, State Extension Landscape Horticulturist from Texas A&M, along with a crew of area specialists from Lubbock and Amarillo including Dr. Robert Berry, Dr. Carl Patrick, Leon New and James Valentine, will be on hand the entire day. Each specialist will give presentations and will talk individually with you about landscape care and maintenance, care of houseplants, lawn irrigation and watering, soil cultivation, insect disease and control. Landscaping and watering will be discussed in the morning session, plant care and maintenance in the afternoon session, according to Mrs. Peggy Winegarner, Extension Home Economist and coordinator for the event. Participants may come and go at their discretion, and feel free to bring specimens of sick plants, trees, shrubs, and grasses to be analyzed says Mrs. Winegarner. The March 14 clinic is open to the public. Free of charge.

**RELIGIOUS ART SHOW COMING MARCH 26-25 HANSFORD LIBRARY**

**RELIGIOUS ART SHOW COMING MARCH 26-25 HANSFORD LIBRARY**

## Home Fashion Fair, A Success

More than sixty-five area women are busily figuring how they can revitalize their homes with the latest trends in interior decorating and insulating techniques following a delightful session Monday night at the County Barn in Spearman—the 1978 Home Fashion Fair! Tricks of the trade and fashion hints by area interior designers brought applause and appreciation from the goodly number of women who gathered at 7 p.m. for the event. Coming from Dallas and Amarillo to the Texas Agricultural Extension Service, from Dallas, gave a concise and well presented demonstration on covering walls with fabric, making one's own bedspreads, pillow sham and comforter to match. Roy McGreggor, leading drapery consultant, represented the Sears Decorating Studio in Amarillo and showed beautiful samples of drapery fabrics, shades, woven woods, and shutters—the latest in home window treatments. Participants enjoy-

## 'Only children' are NOT, either!

AUSTIN, Texas (Sp.) — An "only child" is selfish, lonely and maladjusted. Right? Wrong, says a University of Texas social psychologist. Dr. Toni Falbo, who does research on aspects of family life, says no sound evidence supports the stereotype of the only child. Only children "are not isolated," she says, noting that such children have as much interaction with other children as they will need to develop normal personalities. Dr. Falbo's research suggests that only children and first-borns may have much in common as adults. "They may be more achievement oriented and readily take leadership positions," she says.

The receipts at the Texhoma Livestock Commission Company this week was 5,043 cattle and calves. A very active and highest market on all classes except packer cows. Stocker steers \$2.00 to \$3.00 higher, one package up to \$65.00. Heifer calves \$1.00 higher. Feeder steers \$1.00 to \$2.00 higher. Feeder heifers \$1.00 to \$1.50 higher. Packer cows \$2.00 to \$3.00 lower. \$31.00 to \$34.00. Canners and cutters \$29.00 to \$31.00. Steer Calves - 300# to 550# - \$54.00 to \$60.75. Heifer Calves - 300# to 550# - \$45.00 to \$48.75. Feeder Steers - 600# to 800# - \$48.50 to \$52.90. Feeder Heifers - 600# to 750# - \$44.00 to \$46.55.

For next Thursday, March 9, we are expecting 3000 to 3500 cattle of all classes. "Remember" it is a very good market to sell any class of cattle.

YOUR DEPENDABLE LIVESTOCK AUCTION TEXHOMA LIVESTOCK COMMISSION CO., INC. P. O. BOX 70 TEXHOMA, OKLA. 73849 PHONE 405-423-7611 & 423-7612 CATTLE DEPARTMENT - LLOYD GODDNER & RAYMOND CHOATE GODDNER RES. PHONE 405-423-7427

## Letter To The Editor

Dear Editor: Our members are often asked why we in the Spearman Seventh-day Adventist Church worship on Saturday morning instead of Sunday. The answer is that we believe the seventh-day Sabbath, as given in the Ten Commandments, applies to Christians as well as to Jews. Nowhere in the New Testament is there any record of early Christians' worshiping other than on the Sabbath. As Bible-believing Protestants, we take the Scriptures for our sole guide. We think God is just as serious about the fourth commandment, to keep His Sabbath, as He is about the sixth, where He says, "Thou shalt not kill." But our faith involves so much more than this. First and foremost, we believe in Jesus Christ, who died for our sins. We believe He was the Son of

God, that He pre-existed before His incarnation as a human being, and that He is even now sitting beside God the Father, watching over His children on earth. And the second part of our church name, Adventist, tells of our firm belief that Jesus will return to the earth soon to put an end to human history. The "Second Advent" is the focal point of the Bible—even the last verse of the Revelation or Apocalypse, speaks of it. Adventists are not so different from concerned Christians everywhere. We share the same fears and hopes as we see the evils of this earth. And we just thought you'd like to know. Very truly yours, Franklin E. Horne "Work teaches work." Indian proverb

**CRUM**  
REAL ESTATE VIRGINIA WHITE

1105 S. BARKLEY SALESPEOPLESS

CALL ANYTIME 659-2053

BUT BETTER! 2 bdrm., 1 bath, eat. kitchen, fireplace, fenced, good location AT 911. Price by appointment.

**NADINE CRUM** BROKER

**EXCLUSIVE!** Skip Spring Cleaning by moving into this immaculate older 2 bedroom, 1 bath, at 814 Hwy. Lots of cabinets, utility carpet. This home has been cared for. Call for an appointment.

**QUIET ELEGANCE**

In this home with all the extras on 5 ac. in HANSFORD HILLS. 3 bdrm., 1 1/2 baths, walk-in closets, fireplace, a dream of a kitchen & much more. AND - to top that - the cost of electricity on this all electric home is unusually low due to thermopane windows throughout, 11" insulation in attic & spec. insulation in outside walls. Priced to sell. Let Virginia show you this home built for living. By appointment only.

**COUNTRY COUNTRY**

The nicest move you've ever made may well turn out to be a move of this house! 3 bdrm., 2 1/2 baths, Waka, 770 bath, Central heat, Cellar, Fence, 20x40 Garage - 4 bays. This home is in PERFECT condition. Start owning today. By appointment. Call us today.

**NEW LISTING. END THE SEARCH**

Buy this 3 bedroom, 1 1/2 bath, fl., 1 bath, family room, carpeted, kitchen built-ins, fenced. Owner transferred. Call today. By appointment.

**NEW LISTING, 3 bedroom, stucco, 11' x 10', storm cellar, storage building, over cellar. GOOD BUY, 402 S. Hoskins, Call us.**

**HELLO FUTURE, GOODBYE PAST!**

Beginnings Bargain! 2 bdrm., 1 bath built-in oven & stove, top Utility rm., 2 Approx. 1/2 acre w/4 stalls & post-face barn in back for horses. Crawford Addition.

THINKING OF SELLING? NEED AN APPRAISAL?

Let us assist you in determining a fair market value on your home.

**FREE!**

**MEDICAL & DENTAL CHECK-UPS**

**TODAY-10 A.M. TO 9 P.M.**

**HYPERTENSION (Blood Pressure)**

**DIABETES**

**BASIC HEALTH EDUCATION**

**GLAUCOMA/VISION - 5 to 7 p.m. only**

**DENTAL CHECKS - 6 to 9 p.m. only**

**ORAL CANCER - 6 to 9 p.m. only**

**FRIDAY-9 A.M TO 12 NOON**

**HYPERTENSION**

**DIABETES**

**BASIC HEALTH EDUCATION**

**FOR A FREE RIDE CALL 659-3673**

**SPONSORED BY SPEARMAN SEVENTH-DAY ADVENTIST CHURCH IN COOPERATION WITH HANSFORD HOSPITAL**

**PLAINS SHOPPING CENTER**

**HIWAY 207 SPEARMAN**



Twane Friemel, and Jim Jones have signed letters of intent to play football at West Texas State University.

**Girl Scouts To Celebrate 66th Anniversary**

There's a new sense of excitement in the air, a new sense of involvement with tomorrow for some three million Girl Scouts celebrating their 66th anniversary this March 12.

Girl Scouts of the U.S.A., founded in 1912, by the very nature of its program through the years has encouraged girls to be active doers rather than passive observers. But today's Girl Scouts have many more opportunities to broaden their scope of interests. They're into all kinds of undertakings, from career exploration to a heightened awareness of women's roles in a changing society.

A case in point is the new handbook, **WORLDS TO EXPLORE**, where activities for even the youngest girls help them expand their understanding of the world around them—the world of people, the world of natural resources, the world of arts, the world of science. They are doing new things in new ways that reflect the concerns of contemporary life.

Through projects that relate to such vital issues as energy, hunger, nutrition, and conservation, Girl Scouts get a percep-

tion of the global nature of things. Other activities give them a chance to examine the potential impact of women in tomorrow's world and the importance of exercising options. Not to be overlooked, of course, is a whole world of fun and international friendships that's synonymous with Girl Scouting. If all this reads like a Happy Birthday card in praise of Girl Scouts, it is—we love them.

**Big Tractor Pull Planned**

Farm operators from as far north as Nebraska and Illinois who are tractor pullers during the off-season have entered the Southwest Championship Tractor Pull in Fort Worth, according to R. B. Allen, executive Vice President, Southwest Hardware & Implement Association.

"We'll have over 100 pullers from 12 states here in Fort Worth on March 10, 11 and 12 in the Convention Center," Allen said.

The pullers will vie for a purse of \$30,400 and will pull in a total of 10 classes.

Held during the Southwest Farm Show, the pulls begin at 7:00 p.m. on Friday and Saturday nights and at 6:00 p.m. on Sunday.

Stock, modified, and super stock tractors ranging from 5,000 to 15,000 pounds will be featured in the pulls. The pulls are held on an 18-inch thick clay track in the 10,000 seat Convention Center arena.

Other events to take place during the three-day Farm Show include a Natural Fibers Fashion Review, a state-wide "New World of Agriculture" forum which will begin at 10:30 a.m. on Friday, opening day for the show.

All seats for the tractor pulls are reserved and may be secured by writing: Southwest Championship Tractor Pull, P. O. Box 938, Fort Worth, Texas 76101 or calling area code 817/335-5777.

Local farm equipment dealers have ticket order forms available.

Allen pointed out that the Southwest Farm Show is free and open to the general public. Hundreds of dollars of door prizes will be given away each day.



PSU Winter Carnival Queens and Attendants. From the left, Kay Robbins, Queen Tami Miller of Gruver, Queen Debbie Crawford of Stratford, Leilani Curtis and Pam Chubbuck.

**Bowling News**

Thursday Night Mixed 2-23-78

Elliott Construction	28 08
Anthony Electric	25 10 1/2
Dairy Queen	24 12
Hansford Implement	18 1/2 17 1/2
Ruthie's Beauty Bar	16 20
United Grocery	12 24
Excel	12 24
Hi-Plains	08 24
<b>TEAM HIGH SERIES</b>	
Anthony Electric	2402
Excel	2249
Hansford Implement	2232
<b>TEAM HIGH GAME</b>	
Anthony Electric	849
United Grocery	838
Excel	788
<b>MEN'S HIGH SERIES</b>	
Charlie Greenwood	683
Verlin Behne	544
Lewis McClellan	484
<b>MEN'S HIGH GAME</b>	
Charlie Greenwood	263
Verlin Behne	195
Lewis McClellan	190
<b>WOMEN'S HIGH SERIES</b>	
Shirley Greenwood	563
Diane Elliott	519
Joyce Frost	481
<b>WOMEN'S HIGH GAME</b>	
Shirley Greenwood	212
Joyce Frost	191
Pat Hamilton	188

**HIGH INDIVIDUAL GAME:**  
 Millie Craig 231  
 Penny Thomas 206  
 Patty Spoonemore 196

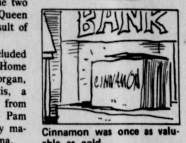
**RELIGIOUS ART SHOW COMING MARCH 20-25 HANSFORD LIBRARY**

**RELIGIOUS ART SHOW COMING MARCH 20-25 HANSFORD LIBRARY**

**PSU Crowns Winter Carnival Queens**

Not one, but two Queens reigned at Panhandle State University Winter Carnival as a result of a tie recorded by the students at PSU—probably a first in the history for such an occasion!

Tami Miller, a graduate of Gruver High School and a sophomore at PSU majoring in speech, was one of those named in the tie and Debbie Crawford, a Stratford High School gradu-



Cinnamon was once as valuable as gold.

**ALLSUP'S**  
CONVENIENCE STORES

OPEN 24 HOURS

DON'T MISS THIS! PRICES GOOD MAR. 6-12, 1978

**BORDEN FAVORITES**  
 YOGURT 3/89¢  
 ICE CREAM 99¢  
 CHOCOLATE MILK 49¢

**MONEY ORDER**  
 MONEY ORDERS FROM .00 - \$200.00 for only **09¢**

TOP QUALITY MEATS

**BACON FRANKS** \$1.29 / 1 lb.  
 \$0.69 / 12 oz.

HOUSEHOLD	FROZEN & DAIRY SPECIALS
SHURFRESH BATHROOM TISSUE \$1.29 / 8 ROLL PAN	SHURFRESH QUARTERS MARGARINE 3/\$1.00
SHURFRESH BLEACH 69¢ GAL.	SHURFRESH HALF MOON LN COLBY CHEESE 89¢ / 10 OZ. PKG.
SHURFRESH JUMBO TOWELS 39¢	SHURFRESH BISCUITS 9/\$1.00 / 8 OZ. CARBS SWEETENED OR BUTTERFLAK

**SHelf SPECIALS**

SUGAR 89¢	SPINACH 4/\$1.00
PEACHES 3/\$1.00	SWEET PEAS 3/89¢
PORK & BEANS 4/\$1.00	TOMATOES 3/\$1.00
CORN 4/\$1.00	SAUCE 6/\$1.00
FLOUR 59¢	Pork 'n Beans 16 OZ. 29¢
DOG FOOD 89¢	CRACKERS 2/89¢
FRUIT COCKTAIL 2/79¢	WAFERS 2/69¢
TOMATO JUICE 59¢	BLACK PEPPER 59¢
GREEN BEANS 3/89¢	PEAS 3/89¢

**Monday Nite Scatter Pins 2-27-78**

Equity	65 1/2 30 1/2
Co-Op	63 33
Anthony Electric	63 33
Martin's	56 40
Baker & Taylor	39 1/2 56 1/2
Excel	39 57
Retall Drug	31 65
Boyd's 66	27 49
<b>HIGH TEAM SERIES</b>	
Martin's	1925
Equity	1869
Co-Op	1888
<b>HIGH TEAM GAME</b>	
Martin's	672
Equity	656
Co-Op	446
<b>HIGH IND. SERIES</b>	
Jewel McCalman	534
Mary Cornelius	493
Brenda Russell	483
<b>HIGH IND. GAME</b>	
Jewel McCalman	207
Sharon Mauk	191
June Kelp	182

**Monday Nite Scatter Pins 3-6-78**

Equity	67 1/2 32 1/2
Co-Op	66 34
Anthony	64 36
Martin's	57 43
Baker & Taylor	42 1/2 57 1/2
Excel	41 39
Retall Drug	32 48
Boyd's 66	30 70
<b>HIGH TEAM SERIES</b>	
Equity-1977	1976
Excel	1908
Co-Op	1908
<b>HIGH TEAM GAME</b>	
Excel	739
Equity	703
Equity	703
<b>HIGH IND. SERIES</b>	
Patty Spoonemore	662
Joyce Frost	547
Marion Nallier	513
<b>HIGH IND. GAME</b>	
Patty Spoonemore	245
Patty Spoonemore	224
Tubby Hays	202
Gloria Kingham	202

**PIN BENDERS 2-24-78**

<b>WON LOST</b>	W L
1. Brock Ins.	63 25
2. Farm Bureau	54 34
3. Cinderella	50 38
4. Spearman Super Serv.	46 42
5. Bowl Mor	45 43
6. McClellan Grain	34 54
7. Vernon's	31 57
8. L. M. W.	29 59
<b>HIGH TEAM SERIES</b>	
Cinderella	1556
Brock Ins.	1466
Farm Bureau	1375
<b>EDGE TEAM GAMES</b>	
Cinderella	509
Cinderella	509
Cinderella	506
<b>HIGH INDIVIDUAL SERIES</b>	
Millie Craig	545
Shirley Greenwood	545
Patty Spoonemore	517

**T.G.&Y. HOURS: 9 A.M. TO 9:00 P.M.**

**FABRIC SHOPS ...where fabric prices are right**

**polyester doubleknit**

The #1 in easy-care fabric is in great demand, so we have a tremendous selection for your shopping pleasure! All first quality 100% Polyester and on full bolts 58/60" Wide. Machine wash, tumble dry.

**REG. '17**

**YARD...only**

**1.27** YD.

<p><b>SABRINA STAPLES</b> 44/45" WIDE 65% POLYESTER 35% COMBED COTTON MACHINE WASH TUMBLE DRY REMOVE PROMPTLY</p> <p style="text-align: center;"><b>1.37</b> YD. REG. '17</p>	<p><b>DRESS PRINTS</b></p> <p style="text-align: center;">REG. '17</p> <p style="text-align: center;"><b>1.37</b> YD.</p>	<p><b>DOTTED SWISS</b></p> <p style="text-align: center;">REG. '17</p> <p style="text-align: center;"><b>1.27</b> YD.</p>
---	---	---

**remnant day sale!**

BIG SAVINGS for BUDGET SEWING! SPECIAL SELECTION of our better quality fabrics in various widths and lengths. Shop early for best selection!

**10% to 50%** regular price

**PRICES GOOD MON.-SAT.**

**PRICES GOOD ONLY AT T.G.&Y. FAMILY CENTER**

**SPEARMAN 659-3741 521 HWY. 207 SOUTH**

**SHOP THE ENTIRE STORE FOR THESE SAVINGS AND MORE**