



The Spearman Reporter

VOLUME 69, NO. 16

THE SPEARMAN REPORTER, SPEARMAN, TEXAS 79081

THURSDAY, MARCH 2, 1978

Brummett On President's List

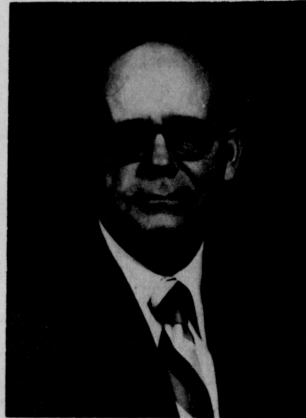
Terril L. Brummett qualified for the President's List of Distinguished Students at Oklahoma State University at Stillwater for the fall semester. He is majoring in Business Administration. Only those students who earn a straight "A" average qualify for this recognition. Terril, along with other out-

standing CBA students, will be recognized for their scholastic achievement and leadership at the college's annual Honors and Awards Banquet on March 9 in the Student Union Ballroom. Terril is the son of Mr. and Mrs. Orville Brummett of Spearman and is a graduate of Spearman High School.

Businessmen return from Washington trip!



Mayor Blodgett



Gene Cudd

Four of Spearman's top businessmen returned this past week from a trip to Washington, on request from the local Chamber of Commerce. The purpose of the visit was to discuss the adverse farm prices on not only the farmers, but also the businessmen in the area.

City Gibner gave a brief summary of the trip at the Lions Club Tuesday. Clay stated they received a great deal of assistance from Claburn Crane, Hightower's assistant. Mr. Crane assisted the local businessmen, and if there is anything that the men learned from the meeting, was that the men in Washington are doing a much better job than anyone in the area was aware of. And, the Washington people stated that they appreciated a group of businessmen who would take time to come to Washington and discuss the problems with them.

The group visited with the FHA, SBA, and also the House Agricultural Economics office. One place that was visited, was the Agricultural Council of America, which is funded by implement dealers and other businesses closely related to Agriculture in America. And it

was learned that they definitely know the situation in the farm belt. In fact, while the group was visiting with this office, the avocado growers in California had called stating that they had lost all of their avocado production to drought this year!

A visit to the Farmers Home Administration in Washington proved very interesting. Jess Joiner, one of the top men in the department stated that they were trying to improve the loan situation to the farmers. In fact, banker Gibner learned that in Hansford County can be declared a disaster area, loans can be made up to \$300,000 instead of the maximum of \$50,000 which is now the maximum in Hansford County.

The group visited with John Tower, and of course John Tower is aware of the situation, and making every effort to help. The local businessmen visited with the American Bankers Association for one hour. This group is very important in the field of finance, and also they meet with the Agriculture De-

Movement in the area.

This newspaper would certainly like to take this opportunity to thank these four businessmen who took their time to travel to Washington on behalf of our community.

GO LADY LYNX - WIN REGIONAL THIS FRIDAY

Hospital News

Patients in Hansford Hospital are Rebecca Westerfield, Pat Mendenhall, Lori Perez, Rose Butler, Joan Coventry, Vickie Crawford, Lee McClellan, and Ray McCannond. Dismissed were Hope Turner, Dorothy White, Mary Arnold, Rex Cook, Judy Morris and son, Hannah Johnson, Scott Barbee, J. W. Brown, Lori Laub and daughter, Debbie Lemons, Jim Snider, Hope Persinger and Ophelia Vela.

HAPPY BIRTHDAY

Mr. and Mrs. Roy Jones! Roy's birthday was Feb. 12th and Minnie's will be March 1st!



J. L. Brock, on the right



Clay Gibner



CHALMERS PORTER

is in Washington today, Wed., to testify before the Senate Agriculture Committee. He will be the last one of a group to testify today, and will be allowed 5 minutes. The Senate Ag. committee is headed by Talmadge, and they are listening to many farmers this week.

American Ag News

TIME FOR REFLECTIONS. This American Agriculture movement has made tremendous strides in the 5 short months since the idea was born with 4 farmers in Springfield, Colo.

It has nationwide attention and it is active in every state where there is any amount of farming. It is becoming International. Canadian farmers are organizing along the same line. There is interest in Australia.

Have you noticed that Russia is openly buying grain for 1978-79 shipment. They are smart. They know they had better get it while it is cheap. Even the "BIG" farm organization has bent a little. They had a state meeting last week of State President and Board of Directors and came out endorsing some handouts from the government. They may eventually come around to American Agriculture movement views of "Just Equality in the Marketplace".

Don't lose sight of the 2 main goals: 1. DON'T BUY. 2. DON'T SELL. Even Bob Bergland endorses this. We have heard him remark on several occasions that he would not buy the expensive tractors and that he would not sell grains at "disastrously low prices". Stick with the Don't Buy-Don't Sell. Results will be slow but sure.

We don't envy Bob Bergland's position. He is trying to do something with NOTHING. He leads people to believe that the USDA is paying the storage on the Strategic Reserve Grain Pile. They just loan the farmer the 25 cents per bu. per year for storage and charge you interest on it. He never bothers to explain the full details. This is a half-truth!

He says that this will create a cash flow. Someone needs to explain to this writer how this works. You get a loan from USDA of 25 cents per bu. and it goes immediately to the elevator for a year's storage in advance. The farmer has the delivery expense. Who benefits? Not the farmer!

A bushel of grain that has already been harvested and is in storage will have the same influence on the market regardless of name—whether it is Strategic Reserve, Commodity Credit Loan or Open Storage—it is still a bushel of grain. Also, they never mention the 2nd and 3rd year's storage. They don't know what they will do on that.

CONTINUED ON PAGE 2

Lynx lose regional game!

The Spearman Lynx lost their bid for a regional championship in Lubbock Friday night, but if ever there was a "great" basketball game, it has to be the heartbreaker Friday night! The Lynx lost to the Denver City team 86-85! It was the best game of the regional tournament. Denver City jumped into an early 14 point lead and led to the end of the first quarter 23-15. At the half they lead 47-37, but the Lynx broke the game wide open in the 3rd quarter to trail by only one point, 67-66, as the 4th period

started. Both teams scored 19 points in the final stanza, with the Lynx jumping into a 4 or 5 point lead late in the 4th! It was such a thriller that both teams received a standing ovation as they left the floor and it was the highlight of the entire regional tournament.

To say that we had some stars is putting it mild. Randy Reid, who made all regional as a result of his excellent play, and Randy Pool almost pulled it out for the Lynx, along with the entire team. Playing before a 4,000 wild fans was quite a thrill

for the Lynx and most fans think that if the Lynx could have had any kind of luck, they would have been ready to Dimmitt in the finals Saturday. Incidentally, Dimmitt went ahead to win the tournament over Denver City by some 15 points.

NAME FG FT FP TP

Scott Martin 3 — 1 6

Randy Reid 7 7 4 21

Zane Newton 4 6 3 14

Jim Jones 1 3 5 5

Tommy Barber 5 2 1 12

Randy Pool 9 2 2 20

Alan Shields 1 1 3 3

Twane Friemel 2 1 4 4

Gibner To Be Honored At Reception

For his more than 50 years of banking service, Spearman banker C. A. Gibner will be honored Saturday (March 11) at a reception given by the First National Bank of Amarillo in the atrium area of its new \$16.5-million banking house. Gibner, president and chairman of the board of the First State Bank in Spearman, will be one of 10 area bankers who will receive special recognition for their half-century banking careers.

The 6 p.m. reception will be attended by members of the Panhandle banking community. Representatives of over 85 banks throughout the area have been invited to attend.

Prior to the reception, the 10 bankers and their wives will be guests at a luncheon in the bank.

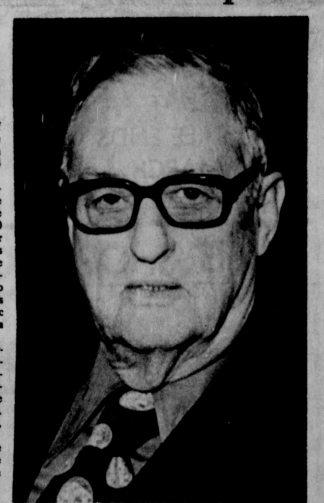
A Panhandle banker for the past 59 years, Gibner began his banking career in 1919 at the Guaranty State Bank in Old Hansford, which was located six miles west of present-day Spearman. As the bank's bookkeeper, Gibner earned \$30 a month. After five months, he obtained a job at the First National Bank of Old Hansford and later moved with that bank to Spearman. For a salary of \$75 a month, Gibner not only kept the books, he cleaned the brass spittoons and swept the floors.

In 1925, Gibner became cashier and managing officer of the bank, and he retained that title

until 1930, when he moved across the street to become vice president of the First State Bank of Spearman. In 1935, the First State Bank purchased the First National Bank, and Gibner remained vice president until 1952, when he was elected president.

Since he joined the staff of the First State Bank in 1930, the bank's deposits have grown from \$154,000 to over \$24 million. Gibner's community activities have been numerous. He has been a member of the Spearman Lions Club for 50 years and is the only charter member still active. He has served as president of the Spearman Chamber of Commerce and as mayor on two different occasions. He has been a member of the Masonic Blue Lodge for 55 years and a Shriner for 50 years.

Active in the banking fraternity, Gibner has served as president of the Panhandle Bankers Association and as a member of the banking section of the Finance Commission of Texas. Gibner and his wife, Hazel, live at 719 S. Barkum. Other area bankers to be honored along with Gibner are F. E. Imel, Pampa; Marvin Cattle, Tulsa; A. R. Bert, Gruber; Raymond L. Thompson, Vega; Ben Parks, Memphis; Orin Stark, Quitaque; C. L. Culver, Groom; C. T. Hubbard, Wellington; and V. P. Patterson, Amarillo.



C. A. Gibner

Spearman outlasts Olney, 56-34!

Of course the Lady Lynx won the bi-district game at Memphis Monday night. And, it was much easier than one year ago when we had to come from behind to beat Olney in the fourth quarter. The Lady Lynx went ahead to win the state AA championship. But, this year's story was different in every way. The Lynxettes started out with a first quarter lead. And, the small Olney girls were just unable to shoot over Comegys and Spearsports other two all-state guards, Gressett and McAdams. Actually, neither team had a good night. The Lynxettes had so many turnovers, they did not count them.

If we had to name a star for the evening, we must mention the defensive antics of Jo Nell Comegys who literally shot the Olney girls from ever getting a good shot. She had plenty of help from all of the

bi-district game Tuesday night to earn their right to play in the regional. WE WILL SEE YOU AT THE REGIONAL TOURNAMENT IN LUBBOCK FRIDAY NIGHT AT 9 P.M.

Illegal Aliens Caught

Two Mexican National, identified as Mario Hernandez and Heracleo Fraire, who gave Guver as their place of residence because they work for a firm in that area, were turned over to U. S. Border Patrol authorities earlier this week as illegal aliens after their arrest in Spearman by officers of the Spearman Police Department. Chief Steve Wianiewski has announced.

The two were arrested for speeding and officers found they had no valid drivers license. They were estimated to be 25 to 30 years of age.

The two were in a 1965 passenger car and were stopped at Crazy Corners in Spearman where State Highway 207 and State Highway 15 intersect about 9:30 p.m. on Saturday, Feb. 25. They work for a feed yard in the Gruber area.

Wianiewski emphasized that it is not the job of Spearman policemen to arrest illegal aliens and they are not out to catch such people but if illegal aliens are caught in violation of any laws in Spearman they will be arrested and processed through U.S.B.P. facilities.

WREAR \$2.45
MEL0 \$3.29
COBN \$2.14
SOYBANS \$6.80

CONTINUED FROM FRONT PAGE

Directives from the USDA are going to the field at full capacity. Even before one set gets to the local offices, another set is already on the way with changes—enough to "blow the minds" of the local people.

USDA is running scared. They are afraid of the 50% Plant - 50% Idle program.

We are convinced that this will get better than the prices AAM is asking for our commodities, but it will take cooperation by everyone and that includes YOU!

Have you noticed that the 1 1/2# loaf of bread (House Brands) have dropped from 61 cents to 59 cents? That's not much—almost 4%—at least in the right direction. Price of wheat hasn't changed recently. Do you suppose the AAM has had any influence in this? Exposing the middleman.

The American Agricultural movement received widespread publicity last week over a few snowballs and eggs. It was regrettable and was not endorsed by AAM.

But did you hear much about the farmers, through each office, throughout the U.S., donated funds to be used for food, ground meat, canned goods, and potatoes for the miners? No you did not!

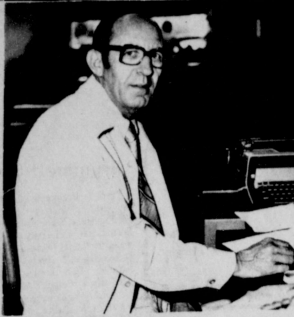
The United Automobile workers have done the same thing. This could be the beginning of a new era in the U.S. whereby the working people of the nation bind together to save the middle class of this nation.

You must might be seeing history being made. This nation can still be turned around. IT IS WORTH IT!!

Is the Tri-Lateral Commission hovering over this entire Agricultural situation? Do you know what it is?

We have some information on it, but need more to start explaining to you. We think that Carter, who is an ex-member of the Tri-Lateral Commission, know that the '77 farm bill will break or weaken the American farmers to the point, that the Commission can accomplish their goals and their goals will scare you, literally, to death!!

THINK POSITIVE—DECIDE TO GO THE 50-50 ROUTE AND LET IT BE KNOWN THIS WILL WORK. INFLUENCE YOUR NEIGHBORS. REMEMBER -- DON'T BUY AND DON'T SELL!!



School board member Paul Hazelwood, who has worked at the bank for several years, began work at the Getty gasoline plant Southeast of Spearman this week.

Comments Sought

Assistant Secretary of Agriculture Carol Tucker Foreman has asked the public to comment on proposed regulations for the summer food program.

"On Jan. 31, we called for comments on interim regulations which would get the program underway," Ms. Foreman said. "We now have proposed final regulations for the program and want the public to comment on these as well."

Ms. Foreman said changes are proposed in the regulations "to achieve stronger administrative direction of the program and at the same time, make the summer food program available to many needy children as possible."

The summer food program provides nutritious meals to children from areas of economic need at public or private non-profit, nonresidential institutions or residential summer camps.

Under the proposed regulations, eligible sponsors must demonstrate themselves capable and not have been deficient in operating the program in previous years.

When two or more sponsor applicants are competing to serve the same sites or same enrolled children, local schools operating a food service and former, successful sponsors will be given first consideration.

Applicants who integrate programs also will receive consideration.

The proposed regulations require sponsors who earn more than \$50,000 in program payments to provide states with a management letter from state or local accountants or certified public accountants who have reviewed sponsors' financial records and recording-keeping systems. Previously, sponsors were only required to submit letters of engagement with these individuals or firms.

Food service management companies will not be allowed to subcontract for the total meal or for the assembly of the meal.

To help small businesses which have been adversely affected by previous bonding requirements, the proposed regulations would drop a required bid bond for food services for less than \$75,000. Successful bidders with bids of \$75,000 or less would not have to obtain a performance bond.

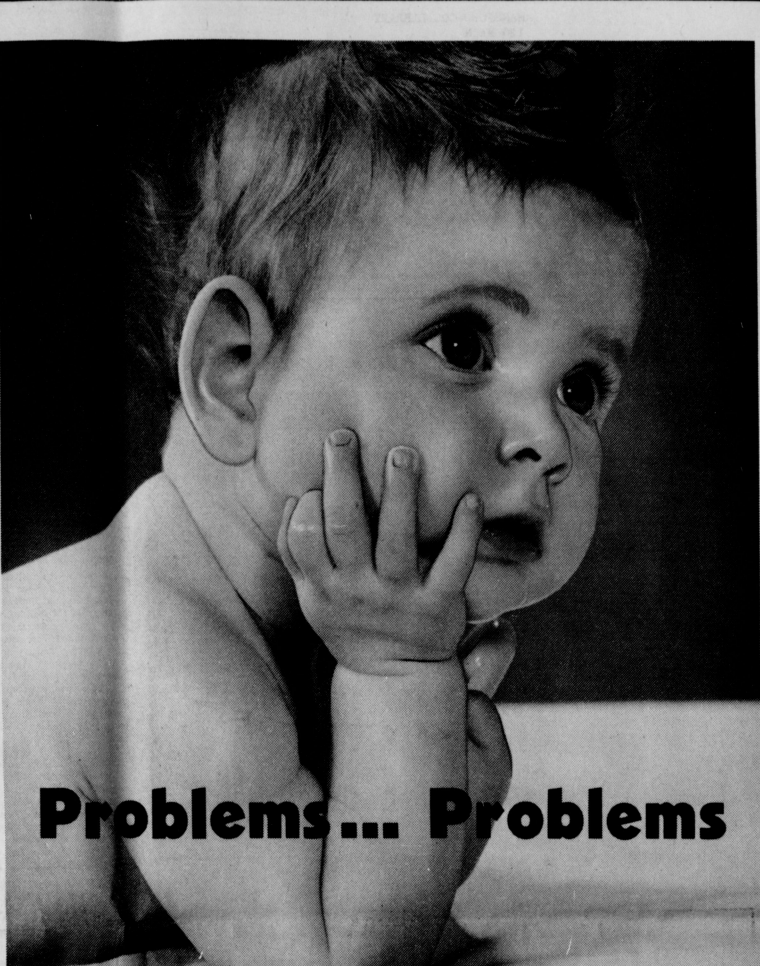
The maximum rates sponsors may be reimbursed for meals served under the summer food program have been increased to reflect changes in Consumer Price Index. These new rates are: 92.75 cents for lunches and suppers, 51.50 cents for breakfasts and 24.25 cents for nutritious snacks.

In 1978, USDA will conduct an evaluation of meal costs, reviewing both food and administrative costs for sponsors.

Written comments should be sent by Feb. 24 to Henry Rodriguez, acting director, Food and Nutrition Service, U.S. Department of Agriculture, Washington, D. C. 20250.

The proposed regulations appeared in the Feb. 3 Federal Register.

RELIGIOUS ART SHOW COMING MARCH 20-25 HANSFORD LIBRARY



Problems... Problems

Sunday John 9:1-38	Monday Ephesians 2:4-10	Tuesday John 3:14-21
Wednesday II Corinthians 5:17-21	Thursday Luke 15:1-7	Friday Ezekiel 37:12-14
Saturday Romans 8:8-11		

People chuckle when they see a baby who seems to have the weight of the world on his shoulders. What can he possibly be thinking about that makes him seem so pensive?

His thoughts probably aren't very serious, for babies often strike delightful and comical poses that enliven the family photo album.

But babies grow up and become adults, with real problems and difficult decisions to make.

Don't forget, as your baby matures, to emphasize those things that will enable him to cope with his future. Don't forget love, discipline, understanding—and especially, don't forget the Church!

Copyright 1974 Keister Advertising Service, Inc., Strasburg, Virginia
Scriptures Selected By The American Bible Society

**SALE ENDS
MARCH 4**

RELIGIOUS ART SHOW
COMING MARCH 20-25
HANSFORD LIBRARY

SUPER SHOPPING 12/12

SAVE

USED
CARS

Air conditioner-Power steering-Elec., windows-doors-tape deck-Automatic T.
1976 CAPRICE CLASSIC.....\$3975, 00

Air conditioner-Power steering-Automatic transmission-4 dr.
1977 NOVA.....\$3975, 00

1976 LOADED SILVERADO 3/4 ton.....\$4450, 00

1976 FORD 1/2 ton - ps - pb - 4 speed.....\$2500, 00

2-door-Automatic transmission-air conditioner-Elec., windows-doors-Tape
1975 BUICK RIVERIA.....\$4550, 00

SILVERADO-automatic transmission-power steering-air conditioner-PB
1976 1/2 TON PICKUP.....\$4000, 00

1972 CHEVY, Impala Cpe., Custom.....CHEAP.... CHEAP

One only - 1/2 ton Chevy - 4WD-Stepside.....\$3100, 00

One only - 3/4 ton 4-wheel drive chevy.....\$3500, 00

4-door, Air conditioner - Power steering - Automatic trans, Power brakes-
1976 IMPALA CREME PUFF.....\$3600, 00

**Gerald Heinrich's
EXCEL CHEVROLET-OLDS, INC.**

"WE'RE IN BUSINESS BECAUSE WE MAKE GOOD DEALS!"
South Highway 287 • Spearman, Texas • Phone (800) 699-3941

The Gruver Statesman

Junior Lusby "Cats"

W. GRUVER HIGHWAY
659-3766

The Hansford Plainsman

Equity Elevators

659-2420
104 Collard
Spearman, Texas

The Spearman Reporter

WANT ADS

Boxwell Bros. Funeral Home and Flower Shop
 FUNERAL HOME - 659-3802
 FLOWER SHOP - 659-2212

Hansford County Planned Parenthood
 26 S. Haney
 659-2483
 Spearman, Texas 79061
 Mon. - Fri.
 8 a.m. to 12 noon
 305-rt

SERVICES

HANSFORD LODGE
 No. 1040
 A.F. & A.M.
 Monday, Feb. 27, 7:30 p.m.
 Stated Communication
 DGM Official Visit
 Members Urged To Attend
 Visitors Welcome
 Cecil Barton, W.M.
 Jerry E. Gee, Sec'y.

KIRBY SALES & SERVICE of Spearman, 912 S. Bernice. 659-2797.

HO NEW RATES \$6.95 PER DAY

For Steam Rinsavac Rag Shampooer
 Call Gordon's Drug
 659-2141 or
 after 7 p.m. & Sundays
 call **FREDDIE LARGENT:**
 659-3437
 51-rt

YOUR LOCAL USED COW DEALER: SPEARMAN BI-PRODUCTS.
 Seven days a week dead stock removal. Please call as soon as possible.
 659-3544.
 8-rt

Alcoholic Anonymous Meetings 8 p.m. Friday. Home Demonstration Club building. 305 N. Bernice. Phone 659-3181 for information.

Al-Anon meetings 8 p.m. Friday Home Demonstration Club building. 305 N. Bernice in back room. Phone 659-3181 for information. Ask for Al-Anon.

All types Building, Remodeling, and Roofing. Call Jerry George, 659-2118. 9S-16p

Fence chargers repaired. Contact Lynn Sheets, 659-3513, 209 S. Hazelwood. All work fully guaranteed for thirty days. 13S-8tc

FOR SALE: 1013 S. Bernice, 3 Bedroom, 1 Bath, extra built-ins and storage, carpeted, storm windows and doors, fenced-in back yard. After 5:00 for appointment, 659-2872. 15S-rt

Hayfield Real Estate
 John Hayfield - Broker
 435-6528
 Ruby Lutz - Salesperson
 659-2188

11109 Townsend, 3 bedroom, 1 1/2 baths, new appliances, single car garage, fenced yard. ***

3 bedroom, 5 acres, 1 1/2 baths, double car garage in Hansford Hills. 9S-rt

Help Wanted

OFFERED BY:
 Emmett R. Sanders
 Realtor

Older 3 bedroom home, carport, fenced yard, carport, pool house.

120 ft. lot on County Road (13th St.) zoned residential.

3 Bedroom house with large basement, on 100 ft. lot.

Mobile home park, 6 spaces, good location.

2 bedroom stucco home, plus large storage room, living room, dining room, kitchen with extra space, detached double garage, quiet location on 110 ft. lot, owner will carry loan.

Lovely 3 bedroom brick home, fenced yard, double garage, chiseled lot 104 ft. wide, cozy fireplace, carpets throughout, insulated windows and doors, central heat and air, built-in kitchen with dishwasher, disposal, cook top and oven. Shown by appointment only.

EMMETT R. SANDERS
 REALTOR
 659-2516
 659-2601 (nights)
 12S-rt

LOTS FOR SALE: 82 X 160 located at 319 S. Endicott. Call 658-4890.

FOR SALE: Large office building in good location near downtown. Use as Store, Offices, Storage of etc. Central heat, air conditioned, carpeted. 14 S. Haney. Harold Groves. 659-2647. 12S-rt

Miscellaneous FOR SALE

GARAGE SALE: 5 Family Boy Scout Hall Sat. March 4th 9:00 to 12:00. 15S-2ip

FOR SALE: 1973 Yamaha 80 Motorcycle, in good condition. 659-2764. 15S-2tc

FOR SALE: Firewood. Burton Schubert. Call 659-2667. 5-rt

FOR SALE: An American 40-foot cattle trailer. 659-3417. 14S-4tc

FOR SALE: 1976 Chevy Custom 10 1/2 ton pickup. Fully equipped. Less than 30,000 miles - one owner. Call 659-2382. nc

Manure Fertilizer from Captack Pens \$1.60 per ton plus 7 cents a mile Call or see Billy Baker 659-3642 4S-rt

PINON FIREWOOD. Season cured. Will deliver. Call 405-338-2130. 15-4tc

FOR RENT

FOR RENT: Furnished nice 4 room house, newly decorated, carpeted, plumbed for washer and dryer. For nice singles or couple, will accept 1 or 2 children. Call 659-2082. 16-rt

FOR RENT: Furnished apartment for singles or couple. Call 659-2082. 16-rt

Trailer Home For Rent: Call after 3:00. 659-3444. 16-4tp

MOBILE HOME FOR SALE

FOR SALE: Double-wide mobile home. 659-2621. 10S-rt

WANTED

Will do Babysitting. Drop-ins welcome except on Saturday. Call 659-2780. 15S-2tc

Call 3434 for classified ads.

Help Wanted

WANTED: INSURANCE SECRETARY. For Physician's office. Basic knowledge essential, some experience necessary. Includes Blue Shield, Medicare, Medicaid, Industrial, and Commercial Health & Accident Claims as well as Hospitalization claims. Will provide on-the-job training. You provide qualifications and references in own handwriting. Apply in person to R. L. Kleiberger, M. D., 16-16 Court St., Spearman, Texas during regular office hours. 15S-2tc

Card of Thanks

We want to thank each of you for your cards, calls, visits, and other acts of kindness shown to us during the illness and death of our husband, father and brother. Each of these kind deeds is appreciated by all of us.

The Family of Gordon Parrish Anna Belle Parrish Mrs. & Mrs. Jerry Parrish & family Mr. & Mrs. Jim Maxwell & family Mrs. Mary Dell Dickinson

Thank you for the prayers, gifts, cards, telephone calls, visits, and a special thanks to Dr. Phillips and the hospital staff and everyone's thoughtfulness in general during our recent stay in the hospital. **Mary Hutton Arnold**

POLITICAL ANNOUNCEMENTS

The Hansford Plainman is authorized to announce the candidacy of the following candidates for public office, subject to the action of the voters in the 1978 primary elections.

FOR COUNTY JUDGE
 R. L. McClellan
Francis Biles

FOR COUNTY TREASURER
 Verna Gail Keim

FOR COUNTY & DISTRICT CLERK
 Marie Gould

FOR COMMISSIONER PREC. 2
 Joe T. Venneman

FOR COMMISSIONER PREC. 4
 Alvin (Bill) Cator, Jr.
 George C. (Bud) Lowe
 Val Winger

FOR STATE REPRESENTATIVE 64th LEGISLATIVE DISTRICT
 Bob Close

RELIGIOUS ART SHOW
 COMING MARCH 20-25
 HANSFORD LIBRARY

Home For Sale

We offer one of the largest and finest homes in Southeast Spearman across from the high school. Five bedrooms, formal living rooms, den in basement with built-in fireplace. Approximately 4000 square feet with many extras. Includes 12'x20' storage building, fence, sprinkler system, TV and CB towers and antennas, many more features. Call for appointment, 659-2647, Mr. and Mrs. Harold Groves. 12S-rt

ED WHEELER REAL ESTATE

HOMES FARM - COMMERCIAL
 3 Bedroom, 2 bath, sunken den, full carpet, walk-in closets, 2,700 sq. ft., fireplace, utility room, double garage. ***

416 S. Haney, 2 bedroom, 1 bath, built-in appliances, washer & dryer, completely remodeled, new carpet, drapes, custom made, new roof freshly painted, storm windows, detached garage made into bedroom. Must see to appreciate. ***

821 S. Barkley, 2 bedroom, 1 1/2 bath, new tile in kitchen, dining area, new carpet in den, storm windows, large lot, fenced storage building, single garage, large trees, sprinkling system. Extra nice home -- can be made into a three bedroom. ***

Ed Wheeler
 659-2613, Office
 or 659-2951, Home
 Jerry Gee 659-3664
 14S-rt



PLANNING SECTION -- These representatives of the several churches in Spearman program World Day of Prayer activities during a meeting at First Presbyterian Church. Seated are, left to right, Betty Davis of First Christian Church, Judy Martin of First United Methodist Church, Mary Allen and Faye Schmehr of Sacred Heart Catholic Church and Anita Anthony of First Baptist Church. Standing are Myrna Biggers and daughter, Regina, of Faith Lutheran Church and Betty Freeman of First Presbyterian Church.

LEGAL NOTICE

NOTICE

An ordinance, repealing Ordinance No. 353, defining a public nuisance, providing a fine and penalty, providing for disposal of junked vehicles, and granting authority to enforce this ordinance. If a person is found guilty of maintaining a public nuisance as defined by this ordinance, the person shall be punished by a fine not to exceed two hundred dollars (\$200.00) and the court shall order removal and abatement of the nuisance pursuant to the provisions of this ordinance. Posted this the 1st day of March, 1978. C. Ralph Blodgett, Mayor ATTEST: Lenis R. Simpson, Jr., City Secretary

To Give Away
 Puppies. 659-2947. 16-2tc

JIMMY GREENE
 659-3196

BOX 5 SPEARMAN
 THE LARGEST INSURANCE COMPANY

RELIGIOUS ART SHOW
 COMING MARCH 20-25
 HANSFORD LIBRARY

JIMMY GREENE
 659-3196

BOX 5 SPEARMAN
 THE LARGEST INSURANCE COMPANY

RELIGIOUS ART SHOW
 COMING MARCH 20-25
 HANSFORD LIBRARY

Candidates File For Election

With the deadline for filing for inclusion on the ballot in the April 1 city and school board election, two candidates had filed in the school board election and two in the city election as of 2 a.m. Wednesday, March 1. Filing deadline is 5 p.m. Wednesday. Dr. Bob Phillips was the other candidate for office in that election.

Mayor C. Ralph Blodgett has filed for re-election. Edwin (Eddie) Limbocker had filed for one of the two aldermanic slots which will be filled through

FOR SALE:
 1" used steel pipe, .10 & .20 a ft.; 1 1/2" used pipe, .30 ft.; 2" used pipe, .35 & .40 ft.; 2 1/2" used pipe, .50 & .55 ft.; 3" used pipe, .67 & .78 ft.; 4" used pipe, .65 & .85 ft.; 6" used pipe, .85 & .95 ft.; used sucker rod, .16 ft.; 1 1/2" plastic pipe, .10 ft.
CENTRAL SUPPLY COMPANY
 806-273-3777
 Berger, Texas 16-8tc

CARDINAL CHEMICAL, INC.

NEEDS EQUIPMENT OPERATORS
 Must have commercial license and telephone. \$975 monthly guaranteed pay. Group insurance, paid vacation, retirement plan, advancement. Experience helpful, but not required. PERRYTON, TEXAS
APPLY IN PERSON - 435-6588.
 MUST BE AGES 21 AND OVER

HERE'S ONE YOU CAN AFFORD TO BUY!
 112 Endicott, 2 1/2 bdrm., 2 bath, utility room, garage, price fence, garage, price is right.

NADINE CRUM
 BROKER

EXCLUSIVE! Skip Spring Cleaning by moving into this immaculate older 2 bedroom, 1 bath, at 814 Haney. Lots of cabinets, utility carpet. This home has been cared for. Call for an appointment.

CRUM REAL ESTATE
 1105 S. BARKLEY
 SALESPERSON

QUET ELEGANCE
 In this home with all the extras on 5 ac. in HANSFORD HILLS. 3 bdrm. 1 1/2 baths, walk-in closets, fireplace, a dream of a kitchen & much more. AND - to top that - the cost of electricity on this all electric home is unusually low due to thermopane windows throughout, 11" insulation in attic & spec. insulation in outside walls. Priced to sell. Let Virginia show you this home built for living. By appointment only.

COUNTRY ATMOSPHERE
 The wisest move you've ever made may well turn out to be a move to this house! 3 bdrm. Brick, in Waka. 1 1/2 baths, Central heat, Cellar, Fence, 20x40 Garage - shop. This home is in PERFECT condition. Start owning today. By appointment. Call us today.

LOOKING FOR A GOOD BUY?
 It's money outside but warm & rooey inside this 5 bedroom, 1 1/2 bath, built-in oven, stove top, dishwasher, central heat & air conditioning, 1965 1/2 ft. living area. Good location, see today appointment.

HELLO FUTURE, GOODBYE RENT!
 Beginners Bargain! 2 bdrm., 1 bath, built-in oven & stove top, Utility rm., on Approx. 1 acre w/4 stalls & open-face barn in back for horses. Crawford Addition.

APPRASALS
 Let us assist you in determining a fair market value on your home.

TEXAS PRESS

MEMBER 1977 ASSOCIATION
 PUBLICATION NO. 509660

SPEARMAN, TEXAS 79061 659-3434
 213 Main Street, Box 458
 Published Weekly at 213 Main Street
 Spearman, Texas 79061
 Owner-Publisher.....William M. Miller
 Second Class postage paid at Spearman, Texas

ANY ERRONEOUS REFLECTION UPON THE CHARACTER OF ANY PERSON OR FIRM APPEARING ON THESE COLUMNS WILL BE GLADLY AND PROMPTLY CORRECTED UPON BEING BROUGHT TO THE ATTENTION OF THE MANAGEMENT.

SUBSCRIPTION RATE: Hansford, adjoining counties, combination with the Hansford Plainman, \$10.40.
 Other points, \$14.40.

FOR THE ULTIMATE IN STORM DOORS
 CUSTOM BUILT, DESIGNED, AND IN COLORS TO FIT YOUR HOME,.....
 CONTACT

HOWARD MOYER at
ONLY ALUMINUM INDUSTRIES
 405-638-0986 or 333-4370
 P. O. BOX 471
 GUYMON, OKLAHOMA 73942

RELIGIOUS ART SHOW
 COMING MARCH 20-25
 HANSFORD LIBRARY

RELIGIOUS ART SHOW
 COMING MARCH 20-25
 HANSFORD LIBRARY

Oil & Gas Well Service Equipment

Operators & Mechanics

With the urgent search for oil and gas, we need career-oriented, promotable people to drive, maintain and operate Dowell cementing and well service equipment. Requires energetic, hard workers.

- Guaranteed Salary plus Overtime
- Insurance, Vacation, and Other Benefits
- Expenses Paid while in the Field
- Outstanding Promotion Potential for Capable Workers

Must be at least 21 years old, should have high school education, and meet Department of Transportation qualifications.

Interviews Monday through Saturday at the Dowell Office in Perryton, Texas, 702 East Billiard St., Phone 866/425-6346 or 866/425-2192 and ask for Pat Wilson.



CRUM REAL ESTATE
 1105 S. BARKLEY
 SALESPERSON

CALL ANYTIME 659-2053

OLDER BUT BETTER!
 2 bdrm., 1 bath, full kitchen, good location at 911 Haney, by appointment.

EXCLUSIVE! Skip Spring Cleaning by moving into this immaculate older 2 bedroom, 1 bath, at 814 Haney. Lots of cabinets, utility carpet. This home has been cared for. Call for an appointment.

QUET ELEGANCE
 In this home with all the extras on 5 ac. in HANSFORD HILLS. 3 bdrm. 1 1/2 baths, walk-in closets, fireplace, a dream of a kitchen & much more. AND - to top that - the cost of electricity on this all electric home is unusually low due to thermopane windows throughout, 11" insulation in attic & spec. insulation in outside walls. Priced to sell. Let Virginia show you this home built for living. By appointment only.

COUNTRY ATMOSPHERE
 The wisest move you've ever made may well turn out to be a move to this house! 3 bdrm. Brick, in Waka. 1 1/2 baths, Central heat, Cellar, Fence, 20x40 Garage - shop. This home is in PERFECT condition. Start owning today. By appointment. Call us today.

LOOKING FOR A GOOD BUY?
 It's money outside but warm & rooey inside this 5 bedroom, 1 1/2 bath, built-in oven, stove top, dishwasher, central heat & air conditioning, 1965 1/2 ft. living area. Good location, see today appointment.

HELLO FUTURE, GOODBYE RENT!
 Beginners Bargain! 2 bdrm., 1 bath, built-in oven & stove top, Utility rm., on Approx. 1 acre w/4 stalls & open-face barn in back for horses. Crawford Addition.

APPRASALS
 Let us assist you in determining a fair market value on your home.



Buzzard-Cummings Wedding Performed

Wedding vows were exchanged on December 30, 1977 for Linda Buzzard and Douglas Cummings in the First United Methodist Church here with the Rev. Frank Oegsby officiating at the 6:30 p.m. double ring ceremony.

Parents of the couple are Mr. and Mrs. Frank Buzzard of Perryton and Mr. and Mrs. Gordon Cummings of Spearman.

The ceremony was performed before an altar decorated with blue carnations and daisies, and a 15 spiral candelabra holding light blue candles.

Traditional wedding music was played before the ceremony. The memory candle was used as a part of the ceremony.

"Evergreen" was sung by Sue Brooks of Perryton as candles were lit by Penny Cummings of Spearman, sister of the groom, and Jeanie Laird of Spearman, cousin of the bride.

She was accompanied by Eddie Gail Martin of Spearman, pianist, as she sang "Evergreen" and later as she sang "More."

The bride, given in marriage by her father, was attended by her sister, Pamela Buzzard, as

with the bride's bouquet. Chocolate cake and coffee were served.

Cindy Lesley of Perryton and D'Ann Cummings of Spearman served at the bride's table and Jana Buchanan and Brenda Boyd, both of Spearman, at the groom's table.

Among those from out of town for the wedding and reception were Mrs. George Barnett and Mrs. Hatti Huff of Dumas; Mrs. Ruth Baker of Guyton; Jean Wright, Georgia Holt, Beth Holt, Eva Holt and Kevin Holt of Gruber.

Others included Mr. and Mrs. Leroy Smith, Loraine Dorman, Mr. and Mrs. Larry Don Smith and girls, Cindy Lesly, and Kande Reid of Perryton; Joan Costner of Guyton, Dorothy Evans, Sharon, Shannon and Robert Laird of Fort Worth.

The couple went to Amarillo for a brief wedding trip.

The groom is a 1975 graduate of Spearman High School and is associated with Cummings Refrigeration here.

The bride is attending Perryton High School and will graduate in May.

Faith For Today On TV



TODAY says, "What a thrill and a challenge it has been to help spread the news of God's love to millions through the avenue of TV during the past 27 years!"

Now entering its third decade, FAITH FOR TODAY, is the oldest religious telecast to be sponsored by a denomination in the United States. Often billed as the "family program with a difference," FAITH FOR TODAY's current Westbrook Hospital series presents dramatic, Christ-centered stories in a media setting and can be seen in Spearman on Cable channel 6 at 9:30 p.m. Monday nights. The telecast reaches an audience of close to a million persons and can be viewed in such foreign countries as Canada, Trinidad, Rhodesia, Zambia, and Sierra Leone.

The telecast can be viewed in Spearman at 9:30 beginning the local news on Cable-6. This week's show is entitled, "Shaping Up The Temple," an unhappy marriage, due to an

obese wife, undergoes a rebirth at Westbrook Hospital.

20th Century Club Meets

Twentieth Century Club met Thursday, February 23 at the home of Mrs. John Brown. President Mrs. Brown presided over the business meeting.

The members elected officers for the coming two years. They are: President, Mrs. Tommy Russell; Vice President, Mrs. Michael Holt; Secretary, Mrs. Wilton Green; Treasurer, Mrs. K. C. Loftin; Parliamentarian, Mrs. D. E. Sponeomere; and Historian, Mrs. Woodville Jarvis.

It was announced that the Top 'o Texas District Federation Convention is to be held April 7 & 8 at Pampa. They elected Mrs. John Brown and Mrs. Cecil Biggers to be their club delegates to the convention. Members were encouraged to send their entries to the District Arts and Crafts Show during the convention.

Program under the title of Hands Up "Freedom From

Crime" was given.

The club collect was led by Mrs. John Bishop.

Mrs. Cecil Biggers gave a very informative talk on the "Cost of Crime in Our Own Community". Mrs. D. E. Sponeomere gave a topic under the title "Use and Abuse of Non-Prescription Drugs". The need to be informed of the use and abuse of non-prescription drugs such as aspirins, nose drops and sprays, reducing pills, birth control pills, alcohol, tobacco, etc. has become a stress.

The meeting was concluded with Roll Call being answered to "What I Can Do To Prevent Crime and Drug Abuse".

Refreshments were enjoyed by members. Medaques: John Brown, Russell Pogue, D. E. Sponeomere, Cecil Biggers, Ed Freeman, Wilton Green, John Bishop, C. A. Kleberger, Deta Blodgett, John Trindle, K. C. Loftin, E. L. Garner, Michael Holt, L. L. Anthony, P. A. Lyon, Woodville Jarvis, Gary Evans, Coy Palmer, and O. C. Holt.

The next meeting will be March 9 at the First Baptist Church for a "guest day tea".

1000 Extra Stamps
BY REDEEMING 2 COUPONS EACH WEEK FOR THE NEXT 5 WEEKS...

Ideal FOOD AND PHARMACY

PRICES EFFECTIVE THRU SATURDAY MARCH 4, 1978. QUANTITY RIGHTS RESERVED. NO SALES TO DEALERS. MON.-SAT. 8:00 a.m.-9:00 p.m. SUN. 10:00 a.m.-7:00 p.m.

Smoked Picnics 79¢ LB. (HICKORY, WATER ADDED, WHOLE 6 TO 8 LBS. AVERAGE)

Pork Chops \$1.39 LB. (ASSORTED, PORK LOIN)

Ribs \$1.29 LB. (COUNTRY STYLE, PORK LOIN)

Pork Steaks \$1.79 LB. (CUBED - FAMILY PACKS 2-3 LBS. AVERAGE)

PLAY CAST WINNERS YOU, TOO COULD BE A HAPPY WINNER...

Over 25,500 NEW PRIZES TO BE WON!



For stalk clean-up and top feeding value:

CLS® Controlled Release

The safe liquid

Nutrena CLS Controlled Release meters out protein-building nitrogen so cattle can use it effectively and safely to supplement forage.

Efficient

CLS Controlled Release helps keep cows in good condition, helps put gains on growing cattle efficiently.

Good stalk clean-up

Protein, vitamin and mineral sources plus rich cane molasses in Nutrena CLS Controlled Release helps you get good clean-up of stalks and maximum feed value.

We'll do your feeding chores

We'll deliver Nutrena CLS Controlled Release Liquid Supplement right to your lickwheel feeder. Cattle feed themselves.

Nutrena CLS Controlled Release Liquid Supplement-32 oz only \$1.30, a ton.

DEL MONTE ROUND-UP

6-OZ. FREE LABEL

Tomato Juice 49¢ (46-OZ. CAN)

Del Monte Catsup 69¢ (32-OZ. BTL)

Green Beans 389¢ (16-OZ. CANS)

DEL MONTE GOLDEN CORN 3 79¢ (17-OZ. CANS)

DEL MONTE SWEET PEAS 3 89¢ (17-OZ. CANS)

DEL MONTE SAUERKRAUT 3 89¢ (16-OZ. CANS)

DEL MONTE SPINACH 3 89¢ (16-OZ. CANS)

DEL MONTE PEAR HALVES 2 89¢ (16-OZ. CANS)

DEL MONTE YELLOW CLING PEACHES 49¢ (29-OZ. CAN)

DEL MONTE FRUIT COCKTAIL 2 79¢ (17-OZ. CANS)

FRESH DAIRY

Medium Eggs 69¢ (DOZ.)

CAMELOT COTTAGE CHEESE 88¢ (24-OZ. CTR)

KRAFT MAXI CUP MARGARINE 59¢ (16-OZ. TUB)

KRAFT 1/4-MOON CHEDDAR CHEESE 99¢ (10-OZ. Pkg)

KRAFT VELVEETA 188¢ (2-LB. BOX)

FROZEN FOODS

Whipped Topping 39¢ (9-OZ. TUB)

CAMELOT Orange Juice 3 \$1.00 (6-OZ. CANS)

MEADOWDALE SHEDDING Potatoes 3 \$1.00 (29-OZ. BAGS)

CAMELOT WHOLE KERNEL CORN 2 1.00 (16-OZ. BAGS)

PATIO BEEF - 6-CT. Enchiladas 69¢ (16-OZ. Pkg)

QUALITY FEEDS

806-733-2532

nights - 733-2974

BOX 189 GRUVER

Nutrena Feeds

SHOP IDEAL...WHERE THERE'S MORE VALUE IN STORE



ONE YEAR LATER -- This time in 1977, formation of a Moose Lodge in Spearman was in progress and as shown here work is now in progress on a permanent building. At the job site are, left to right, Harry Stumpf, Moose Governor, and Cliff McDaniel and Nelson Medley of Pam-Tex Co. in Pampa, the firm constructing the building. The building permit with a \$32,000 valuation was issued by the City last October. The Lodge is located on East D Avenue.

Seventh-day Adventist News

As Christians worldwide prepare to observe Holy Week, Spearman Seventh-day Adventists will take part in one of the rites established by Christ just before His death, reports Franklin Horne, pastor.

"Before Jesus and His disciples ate the Last Supper the day before His crucifixion," Horne says, "Jesus washed their feet, in the manner of a servant of that era. He told them that as He had done to them, so they should do to one another."

"This beautifully symbolic act, which we call the ordinance of humility, prepares us to humble ourselves before we take the bread and the cup of the Lord's communion. All members of the church, insofar as they are physically able, observe the rite. Men and women occupy different rooms of the church." This rite will be observed March 4.

Horne notes that Pope Paul VI will practice footwashing on Maundy Thursday (March 23) at an annual observance in the Vatican. "Other Christian de-

nominations have also adopted this act in keeping with Christ's command," he says.

Adventists practice footwashing and take communion quarterly, according to Horne. He says there is no theological significance to the timing of the observance. The public is welcome to the services beginning at 10 a.m. with Bible school and the Communion service at 11:15. The address is 11th and Cotter, temporarily meeting in the First Presbyterian Church.

Xi Zeta Upsilon Meets

Xi Zeta Upsilon Chapter of Beta Sigma Phi met Thursday, February 23 at the B & B Farm Industries. President Mrs. Tom Latta presided over the business meeting.

The business meeting was held.

The members voted to send gifts to the YMCA and the Senior Citizens.

The program was given by Deputy Sheriff Shirley Pate on

"Rape Prevention"

Members present were Mesdames: Jim Evans, Bill Strawn, Joe T. Veneman, Medlin Patterson, Collins, Phillip Renner, Tom Latta, James Umphress, Perry Dixon, and Steve Matthews.

The next meeting will be March 9 with Mrs. Steve Matthews giving the program at the home of Mrs. Lynna Renner.



Many experts on child behavior say that young people are more likely to grow up self-reliant if they spend more time with peers than with parents. Many parents find that sending their children to full-time, private, sleep-away camps is a good way to ensure this.



Double Ring Ceremony Unites Couple

Tammy Leigh Mundy and Richard Wayne Janelle were united in marriage December 29, 1977 in the Chapel of University Church of Christ, Canyon, Texas.

Tammy is the daughter of Mr. and Mrs. Lester Mundy of Victor, Colorado, and the granddaughter of Mr. and Mrs. A. D. Sparks of Spearman and Mrs. Lucy Mundy of Radford, Virginia. The groom is the son of Mr. and Mrs. William Janelle of Corpus Christi, Texas.

The double ring ceremony was conducted by Kirk Willis, Associate Director of West Texas Church of Christ Bible Chair. Mrs. Kirk Willis presided at the guest register in the foyer.

Presented for marriage by her parents and escorted to the altar by her father, the bride wore a full length gown of English ivory lace over satin. The yoke was English net and inset with lace. The softly fitted A-line skirt fell to the lace hem which swept to back fullness and cascaded into a full chapel train. Her illusion veil, attached to a Juliet cap bound in satin, was hand made by her Aunt, Beverly Sparks.

Song selections included "Lady" and "For Baby for Bobby" by John Denver, "If" by David Gates, "We Were in His Mind" and "There is Love". They were sung by members of the New Life Quartet.

A Candelabra on each side of a bouquet of apricot roses and daisies decorated the front of the Chapel.

Chris Mundy, brother of the bride and Terri Janelle, sister of the groom, served as candlelighters.

Becky Crooks, the Maid of Honor, wore a formal length solid apricot color dress and carried a bouquet of white carnations with a white Bible. Mark Janelle, the groom's brother, was ring bearer. The best man was William Janelle, father of the groom.

For something old, the bride wore a Cameo brooch belonging to her great aunt, Ruth Caro. The bride carried a single

apricot rose and a small white Bible which her mother had also used at her marriage ceremony. A reception followed in the fellowship hall.

The table was laid with a white linen cloth. Crystal, silver and a center piece of apricot roses and daisies, the bride's chosen colors.

The bride and groom cut the beautiful three tiered wedding cake decorated with apricot roses and topped with white satin bells and exchanged cake and punch in the traditional manner. Servers for the reception were Christie Sparks, Roxana Ward, Denise Milligan, cousins of the bride; Karen Janelle, sister of the groom, and Anita Bagwell.

They traveled to San Antonio for their wedding trip and now reside at Varsity Apts., Canyon, Texas. Both are attending WTSU.

Arts & Crafts Guild News

Arts and Crafts Guild met Friday, February 24 in the home of Mrs. P. A. Lyon, Sr.

Refreshments were enjoyed by members, Mesdames: Garrett Allen, Guy Falter, Sada Hoskins, Clay Gibner, Dena Blodgett, Bill Gandy, Pope Gibner, Bill Russell, Joe Trayler, and Ned Turner.

The next meeting will be March 3 in the home of Mrs. Joe Trayler.

Henry Reid Celebrates Birthday

Henry Reid of Morse was honored on his 78th birthday when a host of friends and relatives helped him celebrate Sunday, Feb. 26 at his home.

Guests were present from Berger, Sanford, Clayton, N.M., Dumas, Spearman, Morse and Fort Worth.

A special guest was Mrs. Daphne Wumble of Fort Worth.

200 BONUS STAMPS

JUST CLIP AND REDEEM OUR STAMP COUPONS!
2 COUPONS WILL APPEAR IN OUR AD EACH WEEK FOR 5 WEEKS...
REDEEM THEM ALL FOR 1000 EXTRA STAMPS!

No. 7 THIS COUPON IS GOOD FOR
100 FREE GUNN BROS. STAMPS

AT YOUR IDEAL FOOD STORE.
With No Purchase Required

Please fill in your name and city.
Only One Coupon Per Customer-Coupon Expires 3-8-78.

No. 7 THIS COUPON IS GOOD FOR
100 FREE GUNN BROS. STAMPS

AT YOUR IDEAL FOOD STORE.
With the Purchase of \$5.00 or more in Groceries.

Please fill in your name and city.
Only One Coupon Per Customer-Coupon Expires 3-8-78.

BLUE RIBBON
Turkey Hams
FULLY COOKED
2 1/2-LBS. AVERAGE LB. **\$1.49**

BLUE RIBBON TURKEY
Salami 12.92 PKG. **89¢**
BLUE RIBBON TURKEY
Bologna 12.92 PKG. **69¢**

BLUE RIBBON
Turkey Franks
12-OZ. PKG. **59¢**

DECKER - ASSORTED VARIETIES
Luncheon Meats 6.92 PKG. **49¢**
ROCKE MEAT OR BEEF
Skinless Franks 12.92 PKG. **89¢**
MRS. PAULS
Fish Sticks 14.92 PKG. **\$1.59**

BONELESS
Round Steaks
BOTTOM ROUND U.S.D.A. CHOICE BUTCHER BLOCK BEEF LB. **\$1.49**

U.S.D.A. CHOICE BUTCHER BLOCK BEEF
Boneless Rump Roast LB. **\$1.49**
U.S.D.A. CHOICE BUTCHER BLOCK BEEF
Boneless Round Roast LB. **\$1.49**
EXCELLENT FOR QUICK MEALS
Beef Cube Steak LB. **\$1.99**

Cash King WINNERS!

100 WINNERS

Lena McClain OF ENID
Robert Thiessen OF ENID
Guy Hardwick OF DUMAS
Don Fries OF BEAVER
Mrs. Don Eudy OF PERRYUD

ODDS CHART as of 2-18-78

NUMBER	WHEEL	WHEEL	WHEEL	WHEEL
WHEEL	WHEEL	WHEEL	WHEEL	WHEEL
1-1000-00	100	100	100	100
100-000	100	100	100	100
10-000	100	100	100	100
1-000	100	100	100	100
100-00	100	100	100	100
10-000	100	100	100	100
1-000	100	100	100	100
100-00	100	100	100	100
10-000	100	100	100	100
1-000	100	100	100	100
100-00	100	100	100	100
10-000	100	100	100	100
1-000	100	100	100	100
100-00	100	100	100	100
10-000	100	100	100	100
1-000	100	100	100	100

WIN UP TO \$1000.00

DETERGENT...
Tide 49-OZ. BOX **\$1.29**

DELTA BATHROOM
Tissue ROLL PKG. **468¢**

PURE VEGETABLE SHORTENING
Crisco 3-LB. CAN **148**

MEADOWDALE... ALL FLAVORS
Ice Cream... 1/2-GAL. CTN. **86¢**

\$100 THIS COUPON WORTH \$100
\$1.00 TOWARD THE PURCHASE OF 3-LB. CAN

Folger's COFFEE

COUPON GOOD ONLY AT YOUR IDEAL FOOD STORE.
LIMIT ONE COUPON PER CUSTOMER.

COUPON GOOD THRU MARCH 4, 1978.

VALUABLE COUPON

CANE SUGAR

5-LB. BAG **78¢**

LIMIT ONE COUPON PER CUSTOMER.
COUPON GOOD THRU MARCH 4, 1978.

WASHINGTON STATE
Apples
EXTRA FANCY RED OR GOLDEN DELICIOUS
3 \$1.00 LBS. FOR

CALIFORNIA LARGE
Oranges
SWEET NAVELS
3 89¢ LBS. FOR

RUBY RED
Grapefruit 4 LBS. \$1.00

U.S. NO. 1
Yellow Onions .. 2 LBS. 29¢

ALL PURPOSE
Russet Potatoes
10 LB. BAG **64¢**

CALIFORNIA
Crisp Celery LARGE STALK **39¢**

WYOMING WHITE
Rock 1 \$1.98

NORTHERN
Peat 40 LB. \$1.59

HEALTH & BEAUTY AIDS

BRONZE DEODORANT
Right Guard
3.5Z. CAN **88¢**

COLD CAPSULES
 Contac for Colds 12.92 **\$1.19**

MOUTHWASH
 Scope 12.92 **98¢**

TAMPONS
 Tampax 42.92 **\$1.79**

Kite flying is fun!

(The safe kite is the one flown right!)

Teach these important kite-flying safety rules to your children so that kite-flying can be a more enjoyable and safe experience for them.

1. Use dry string... never use wire or metal.
2. Use wood and paper in your kite... not wire or metal.
3. Find an open field in which to fly kites... well away from power lines, radio or TV antennas.
4. Don't fly a kite during rain or thunderstorms.
5. Stay out of streets and away from busy highways when kite-flying.
6. Call us if your kite gets snagged in a power line... do not attempt to retrieve it yourself.

**I-AA
District
Champs**

**S
P
E
A
R
M
A
N**
**L
Y
N
X**

Lady

Regional tournament BASKETBALL



SPEARMAN LYNX AND LYNXETTES

I-AA bi-district champions

Prep cage playoffs

**Girls' Basketball Pairings
Region 1-AAA Finals**
Canyon (34-0) vs. Stephenville (26-4)

**Region 1-AA Tournament
in Lubbock
Friday**
Dimmitt (25-8) vs. Crane (21-4) at 7:30 p.m.
Spearman (18-10) vs. Slaton at 9 p.m.

Saturday
Finals: Winners of first two games meet at noon, Saturday, Lubbock.

**Region 1-A Tournament
in Lubbock
Friday**
Vege (23-11) vs. Hawley, 4:30 p.m.
Phillips 23-7 vs. Shallowater (23-10), 4 p.m.

Saturday
Finals at 10:30 a.m.

**Region 1-B Tournament
in Lovelland
Friday**
San Elizerio vs. Follett (24-8), 2:30 p.m.
Eola vs. Nazareth (35-4), 4 p.m.
Anton vs. Sands (29-3), 7 p.m.
Groom (29-4) vs. Jayton (32-1), 8:30 p.m.

Saturday
First two winners play at 9:30 a.m.
Second two winners play at 11 a.m.
Finals at 7 p.m.

Lynxettes vs. Slaton

9 p. m. Friday at Lubbock, Texas

This advertisement sponsored by the following:

<p>Cates Men & Boys 221 MAIN 659-3426</p>	<p>Hi-Plains Conoco 415 Collard Phone 659-3555</p>	<p>Hansford Implement Co. Hwy. 207 Phone 659-2712</p>	<p>Lil' Lynx Shoppe 312 Main Phone 659-2608</p>
<p>Speartex Grain Co. 514 Collard Phone 659-3711</p>	<p>Anthony Electric Plains Shopping Center 659-2441</p>	<p>B B Farm Industries, C. Spearman, Texas Phone 659-2551 Seed Cleaning & Treating Plastic Pipe for Gas & Water Lines</p>	<p>Boxwell Bros. Flower Shop 519 Evans Phone 659-2212</p>
<p>Junior Lusby Cats W. Gruver Hwy. Phone 659-3766</p>	<p>Hergert Pontiac Buick & GMC Hwy 207 S Phone 659-3721</p>	<p>Berry's Cleaners Dan Desimone - Owner Phone 659-3181 207 Main Street Spearman, Tex. 79081</p>	<p>Gerald Heinrich's Excel Chevrolet- Olds Inc. Hwy 207 659-2541</p>

AG boys head for Houston



Ag boys head for Houston

It was very dark at 5:00 a.m., Monday morning, but it wasn't anything unusual for our Future Farmers of America, as they prepared to load their stock on their new FFA trailer, and head for Houston. Boys from Spearman going to Houston with their livestock included the following: Rex Reid, Kirby Harris, Ken Pracher, Doug

Hohertz, Alvin Byers, Andy Francis, Sam Boone, Danny Dear, Chuck Eaton, Dayton Edwards, Clay Reid, Ronnie Clark, Dean Groves, Karl Smith and Tom Spoonmore. T.H. members going on the trip included Kyle Nollner and Ricky Alexander. The boys took their stock in the new 20 foot covered trailer,

which the club recently purchased. Herman Boone, FFA Dept. head, drove the pickup with the livestock trailer, and Coach Friemel followed in his bus with the boys. They estimated that they would arrive in Houston at about 10 p.m. Monday evening. The group will show their two steers, and pigs in the Houston show this week-end.

Benefits Available To Eligible Veterans

Another benefit provided by State law is a property tax exemption for veterans with service-connected disabilities of 10 percent or more and for widows and widowers of veterans whose disability ratings of 10 percent or more were in existence at the time of their deaths. Also eligible for a property tax exemption is the spouse of a person who died or was killed during military service, and the minor children of such active duty deceased persons. The tax exemption runs from the first \$1,500 of the assessed value for a 10 percent rating, to a maximum of the first \$3,000 of assessed value for the 100 percent rating. The exemption for the spouses of deceased servicemen is the first \$2,500 of the assessed value. Another benefit is free admission to all State Parks in Texas for veterans with service-connected disabilities rated 60 percent or more or suffered the loss of a lower extremity. All of these benefits are

provided through laws passed by the State Legislature, and additional information on them, and others, can be obtained from your local Veterans Service Officer. Many eligible veterans residing in Texas are failing to apply for State benefits to which they might be entitled. According to Johnny P. Vernon, Veterans Service Officer for Hansford County, many veterans are still unaware of their possible entitlement to certain benefits provided through the State government of Texas. A veteran residing in Texas is entitled to free Disabled Veterans license plates for his personal automobile if he has service-connected disabilities which are rated 70 percent or more by either the U. S. Veterans Administration or a branch of the Armed Forces of the United States. A veteran who has service-connected disabilities of 60 percent or more is entitled to free Texas drivers license.



CITY RECOGNITION -- Spearman Mayor C. Ralph Blodgett and Ceril Batton, standing, participate in the signing of the resolution designating observance of Public Schools Week. Hansford Lodge No. 1040, A.F. & A.M., in Spearman, of which Batton is Worshipful Master will be active during the open house on March 9.

Open House March 9

A week from today Spearman Public Schools will hold an open house in connection with the observance March 6-10 of Public Schools Week in Texas and as is customary locally Masons from Hansford Lodge No. 1040, A.F. & A.M., will join with Shriners from this community in serving coffee and doughnuts starting at 7 p.m. in the cafeteria at Spearman Junior High School. Shriners are requested to wear the Fez for this occasion. Open house in the schools here will begin at 7 p.m. and wind up at 9 p.m., it has been announced by Superintendent James Cunningham. Everyone is urged to visit either the junior high, high or elementary school in the city and get an insight into current educational procedures.

Public Schools Week has been declared by the Governor of Texas and local support has been evidenced by resolutions from Spearman Mayor C. Ralph Blodgett and Hansford County Judge Johnnie C. Lee. The observance also has the full support of the State School Board. Texas Public Schools were created in 1854 and Public Schools Week was founded in 1950 and launched for the single purpose of advancing the general interest of the public schools. In the ensuing years, Public Schools Week has fast become a tradition in Texas and has won the wholehearted support of the school authorities and the cooperation of countless individuals and organizations. Texas Public Schools -- Democracy in Action is the slogan

for the week and underlines the basic concept of the observance giving parents, organizations and interested individuals is an opportunity to evidence more community interest in the needs, the achievements and the future course of education in Spearman.

Groves Speaks In Lubbock

Harold Groves spoke Saturday morning, Feb. 25 in Lubbock at the Regional Convention of the Full Gospel Businessmen's Fellowship International.

RELIGIOUS ART SHOW COMING MARCH 20-25 HANSFORD LIBRARY

Energy Seminar Is Planned

AMARILLO--Ways that Panhandle residents can make wise use of precious energy from cooking, heating and lighting homes to the use of landscaping to conserve fuel supplies--will be explored Thursday, March 9, in a one-day seminar at the Hilton Inn here. The free seminar, "Living In an Energy-Conscious World," begins at 9 a.m. and concludes at 3:30 p.m. It is sponsored by the Panhandle Economic Program (PEP) of the Texas Agricultural Extension Service. PEP is a citizen self-help organization designed to assist families in 20 Panhandle counties to have a better way of life in all phases of economics, explained Paul Gross, Extension district agent for agriculture, who is PEP coordinator. The background for the day-long program will be set by Max Sherman, president of West Texas State University, and Mrs. Sue Farris, Extension district agent for home economics, who is advisor to the PEP task force on energy.

Sherman will review the energy situation and recent state legislation on energy. Mrs. Farris will review the task force activities. The effects of insulation as a practical energy- and money-saving method will be explained by Jim Simms and Jerry Martindale, electrical and insulation contractors. The proper use of caulking, weather stripping and window treatments will be discussed by Mrs. Patricia Seaman, Extension housing specialist at Texas A&M University. Living in an energy-conscious world will be discussed by a panel composed of Mrs. Lynn (Bourland) White, Extension home economics specialist, Texas A&M; county Extension home economics agents Mrs. Alby Peters of Moore and Mrs. Elaine Houston of Gray; Becky Culp, Extension clothing specialist, Amarillo; and Mrs. Seaman. After lunch, Mrs. White will discuss wise use of energy in our everyday life. Edictive use of energy in

heating, cooling and lighting our homes--including fireplaces--will be the topics of Ronnie Edwards and Jim Martin of Southwestern Public Service Co. and Bob Brewer of Pioneer Natural Gas Co. The role of landscaping in conservation of energy will be explained by John Brazzil, retired county Extension agent, Canyon. Possibilities and progress in tapping alternative energy sources will be explained by Dr. Earl H. Gilmore, research associate with the Alternative Energy Institute, WTSU. A question-and-answer period will conclude the program. The chairman of PEP is Edd McLeroy of Dimmitt. Energy task force members are: Mrs. Charles W. Warminski, White Deer, chairman; Leo Forrest, Lake Tanglewood; Mrs. Cula Nowlin and Mrs. Mary Barnett, Oilwell County; Mrs. Becky Hall and Mrs. Jim Irbeck, Randall County; Miss Cheryl Brewer and Mrs. Ennis Clayton, Hartley County. Also

Randy Fewell Wins Scholarship

Randy Fewell was awarded the Borden Price Scholarship Thurs. Feb. 16 during halftime ceremonies at the Southern Illinois University-WT basketball game. Mrs. Borden Price and her daughter, Patty Gilbert, presented the scholarship award in the sum of \$125.00. The scholarship, in memory of WT basketball coach Borden Price, who died of cancer at a young age, is a permanent fund given each year by the physical education department. The physical education faculty nominates and votes for the recipients of the scholarship on the basis of scholarship, leadership and promise to future contributions of physical education. Randy is a Senior Physical Education Major and is the son of Mr. and Mrs. Clay Fewell, Spearman. Actor Boris Karloff was once a real estate salesman.

Daniel Rojas To Undergo Surgery



Daniel Rojas, son of Mr. and Mrs. Oscar Rojas, Sr., will report to St. Anthony's Hospital to have bone surgery for the seventh time on March 3rd. Daniel is an 8th grade student at Spearman Jr. High. We all wish Daniel good luck and a speedy recovery.

VOS HAIRSPRAY \$1.53

STAYFEE MAXI PADS \$2.23

VISINE EYE DROPS 99¢

TONI HOME WAVE \$1.63

PROLAMINE DIET CAPSULES \$1.71

HEFTY TRASH BAGS \$1.69

WATER WOODGRAIN TV TRAY TABLES \$1.99

BUFFERIN TABLETS \$1.65

DATRIAL 500 \$1.25

4-WAY NASAL SPRAY 89¢

ULTRA BAN II 96¢

VITALIS LIQUID \$1.37

BAN BASIC \$1.47

EXCEDRIN TABLETS \$1.67

Intensive Care Bath Beads 95¢

Q-TIP COTTON SWABS 69¢

WASHELINE PETROLEUM JELLY 72¢

CUTEX POLISH REMOVER 79¢

WASHELINE INTENSIVE CARE LOTION 99¢

PHILLIPS MILK OF MAGNESIA 89¢

NOVAHISTINE ELIXIR \$1.32

NOVAHISTINE DMX \$1.62

BAN ROLL-ON DEODORANT 99¢

THESE ARE SUGGESTED A.D. PRICES. OFFICIALS WITH PARTICIPATING STORES

Spearman Rexall Drug

220 MAIN SPEARMAN

WE RESERVE THE RIGHT TO LIMIT QUANTITIES AT SALE PRICES

STATEMENT OF FINANCIAL CONDITION OF HANSFORD COUNTY

1. RECONCILIATION WITH DEPOSITORY BANK AS OF FEBRUARY 1, 1978

Funds	Book Balance	Outstanding Checks	Bank Balance
Jury	5,950.03	382.87	6,342.90
General	57,407.55	13,360.52	70,768.07
Cemetery	1,205.96		1,205.96
Road & Bridge, General			
Precinct No. 1	57,721.28	2,029.38	59,750.66
Precinct No. 2	55,566.65	2,191.89	57,758.54
Precinct No. 3	46,475.44	1,899.73	48,375.17
Precinct No. 4	55,762.76	1,880.78	57,643.54
Road & Bridge, Sinking			
Precinct No. 1	19,235.86		19,235.86
Precinct No. 2	15,709.80		15,709.80
Precinct No. 3	12,751.61		12,751.61
Precinct No. 4	13,110.01		13,110.01
Social Security	22.33		22.33
Revenue Sharing	18,468.81	750.00	19,218.81

2. SUMMARY OF RECEIPTS AND DISBURSEMENTS

Funds	Balance Nov. 1, 1977	Receipts	Disbursements	Balance Feb. 1, 1978
Jury	316.94	19,581.82	13,938.73	5,960.03
General	6,978.59	350,093.62	299,664.66	57,407.55
Cemetery	1,952.43	10,253.53	11,000.00	1,205.96
Road & Bridge, General				
Precinct No. 1	4,584.77	73,767.82	20,591.31	57,721.28
Precinct No. 2	3,485.30	70,239.44	18,158.09	55,566.65
Precinct No. 3	3,218.29	61,071.25	17,814.10	46,475.44
Precinct No. 4	4,912.57	70,388.27	19,538.08	55,762.76
Road & Bridge, Sinking				
Precinct No. 1	16,735.97	13,899.89	11,400.00	19,235.86
Precinct No. 2	5,006.82	12,448.06	1,745.08	15,709.80
Precinct No. 3	5,146.74	8,072.94	968.07	12,751.61
Precinct No. 4	6,355.31	12,568.69	5,813.99	13,110.01
Social Security	22.02	10,286.34	10,286.03	22.33
Revenue Sharing	53,405.64	21,048.50	55,985.33	18,468.81

3. INVESTMENTS

Hansford County Jury Fund 1	\$ 10,000.00
Hansford County General Fund 2	180,000.00
Hansford County Precinct 4, Fund 11	25,000.00
Hansford County Precinct 2, Fund 13	12,000.00
Hansford County Precinct 4, Fund 15	25,000.00
Hansford County Revenue Sharing Fund 25	75,000.00



Don Platt's beautiful model airplane, was snow-bound this week end, but Don says it will be ready as soon as the thaw hits! Don informed us this week, that Don Rice of Borger has mounted a camera in his model airplane to make aerial fotos! We hope to have Don Rice and his foto plane in Spearman making pictures of our city soon!

County To Acquire Tractor

Commissioners Court of Hansford County met in regular session Monday, Feb. 27, at the Courthouse in Spearman and in addition to other agenda action authorized advertising for a tractor for Precinct 3. It was announced at the conclusion of the meeting.

Commissioners also authorized the purchase of a typewriter for the office of the County clerk.

Participation in an interlocal

agreement for Texas Association of Counties Unemployment Compensation Group account Fund was authorized.

No action was taken on the matter of rodeo grounds which had been placed on the agenda by members of the rodeo club.

Commissioners read and accepted minutes of the last meeting, read and received the treasurer's report for the month and authorized payment of bills as presented.

Bowling News

Monday Nite Scatter Plus
2-20-78

	W	L
Equity	63 1/2	28 1/2
Co-Op	59	33
Anthony Electric	59	33
Martin's	54	38
Baker & Taylor	39 1/2	52 1/2
Excel	35	57

Resall Drug	31	61
Boyd's 66	27	65
HIGH TEAM SERIES		
Equity	1967	1832
Co-Op	1829	
HIGH TEAM GAME		
Equity	693	
Co-Op	677	
Equity	659	
HIGH IND. SERIES		
Tubby Hays	518	
Millie Craig	513	
Mary Cornelius	498	
HIGH IND. GAME		
Patty Sponomore	213	
Mary Cornelius	200	
Jewel McCalman	194	

Wed. Morning Glorios

	W	L
White's Auto	59	37
JGs	57 1/2	38 1/2
First State Bank	53	43
York Electric	53	43
Gordon's Drug	46	50
McClellan Welding	44	52
Bunkhouse	36	60
Thriftyway	35 1/2	60 1/2
HIGH IND. GAME		
Gloria Kingham	188	
Georgann Washington	188	
Joyce Frost	163	
HIGH IND. SERIES		
Georgann Washington	504	
Joyce Frost	482	
Gloria Kingham	459	
HIGH TEAM GAME		
White's	496	
McClellan Welding	490	
McClellan Welding	479	
HIGH TEAM SERIES		
McClellan Welding	1447	
White's	1370	
JGs	1343	

County Farmers Part Of Expenditures Survey

Production expenditures nationwide averaged just over \$32,000 per farm in 1976, according to a survey conducted by the U. S. Department of Agriculture and the Texas Crop and Livestock Reporting Service. The total outlay to raise crops, livestock, and poultry ran up a bill of \$89 billion.

The major expenditure was for feed, which accounted for over \$14 billion. Next came rent of \$8 billion; interest and taxes of \$7.9 billion; wages at \$7.4 billion; and purchases of fertilizer, lime, and soil con-

ditioners at a cost of \$7.2 billion.

The Texas Crop and Livestock Reporting Service, with help from producers, participated in developing this information.

Production expenditure information is a major ingredient in determining net farm income and is used as a guide in computing the parity index and other factors about the farmer's position in the national economy.

In order to update these expenditure figures, Marsha Pickens of the Texas Crop and

Livestock Reporting Service will be contacting several farmers in Hansford County during February and March in an effort to establish expenditure levels for 1977. Some producers will be asked a series of questions about their marketing practices for livestock, field crops, fruits, and vegetables.

All answers secured during the interviews will be confidential and used only in state and national summaries.

The ancient Hindu considered the date tree intelligent.



ANYONE CAN GROW common house plants, such as (clockwise from top left) begonia, African violet, papaveria and philodendron, with just a little know-ho-w.

OPEN 24 HOURS

ALLSUP'S
CONVENIENCE STORES

PRICES GOOD FEB. 27-MAR. 5, '78

OPEN 24 HOURS



Bloomin' Specials

FROZEN & DAIRY SPECIALS	HOUSEHOLD
SHURFRESH QUARTERS MARGARINE 3/\$1.00	SHURFINE BATHROOM TISSUE \$1.29
SHURFRESH HALF MOON LIX COLBY CHEESE 89¢	SHURFINE BLEACH 69¢
SHURFRESH BISCUITS 9/\$1.00	SHURFINE JUMBO TOWELS 39¢

SHELF SPECIALS	
SHURFINE SUGAR 5 LB. 89¢	SHURFINE SPINACH 1 1/2 CTN. 4/\$1.00
SHURFINE PEACHES 1 1/2 CTN. 3/\$1.00	SHURFINE SWEET PEAS 1 1/2 CTN. 3/89¢
SHURFINE PORK&BEANS 1 1/2 CTN. 4/\$1.00	SHURFINE TOMATOES 1 1/2 CTN. 3/\$1.00
SHURFINE CORN 1 1/2 CTN. 4/\$1.00	SHURFINE SAUCE 24x18x25 6/\$1.00
SHURFINE FLOUR 5 LB. 59¢	SHURFINE ALUMINUM FOIL 59¢
SHURFINE DOG FOOD 1 1/2 CTN. 89¢	SHURFINE CRACKERS 1 1/2 CTN. 2/89¢
SHURFINE FRUIT COCKTAIL 1 1/2 CTN. 2/79¢	SHURFINE WAFERS 1 1/2 CTN. 2/69¢
SHURFINE TOMATO JUICE 1 1/2 CTN. 59¢	SHURFINE BLACK PEPPER 1 1/2 CTN. 59¢
SHURFINE GREEN BEANS 1 1/2 CTN. 3/89¢	SHURFINE PEAS 1 1/2 CTN. 3/89¢

BORDEN FAVORITES	
BORDEN'S BUTTERMILK 1/2 GAL. CTR.	89¢
BORDEN'S COTTAGE CHEESE 12 OZ. CTR.	59¢
BORDEN'S PREMIUM ICE CREAM 10 CTN.	\$1.19

Vehicle Returned

Hansford County Sheriff R. L. McFarlin Monday, Feb. 27, announced that a late model pickup truck stolen in Spearman on Feb. 21 has been returned from California where the vehicle was located by authorities there after being abandoned near Riverside.

The vehicle was the property of Gus McLain of Spearman who used it as a fuel truck.

The sheriff reported the vehicle was virtually undamaged.

United Presbyterian Church News

Presbyterian Women will be hostesses to the World Day of Prayer celebration on Friday, March 3 at 9:30 a.m. Coffee will be served and then a worship service in the sanctuary. A nursery will be held at the First United Methodist Church. Women from eleven local churches will be leading the service. Dorothy Baggett is the general chairperson.

While this is led by women of the churches, it is open to everyone regardless of denomination, age, or sex.

The Spring Area 1 meeting will be on Stewardship and will be held at the First Presbyterian Church at Borger on Saturday, March 4 from 9:30 a.m. to 1:30 p.m.

"How Were Your Eyes Opened?" would be the subject of Pastor Edward J. Freeman's sermon at the service for the public worship of God on Sunday, March 5 at 11: a.m. The sacrament of the Lord's Supper will also be celebrated.

There is a Sunday Church School class for everyone every Sunday at 9:45 a.m.

A warm Christian welcome awaits anyone who attends any of the services or activities at the First Presbyterian Church.

Spring Fabrics

Spring fabrics will offer a wide variety of colors and textures to every taste, says Margret Ann Vanderpoort, clothing specialist with the Texas Agricultural Extension Service, The Texas A&M University System.

Fresh and exciting textures range from suedes to linen gauze, from swelling to seersucker, and from satin to silk tweed, she continues.

Damask and shot taffets are the newest look for day wear, with silk jersey seen at night.

Combine fabrics and textures surprise combos are the newest, such as velvet with cotton knit, silk with leather, or cotton tweed worn with linen gauze and silk clip-dot shirting.

Try unusual color combinations for fun and fantasy, the specialist suggests.

True blue, white-white, and many shades of brick, rust, wheat, mushroom, and ginger provide an interesting contrast for plum, tea rose, bluish, saffron, and willow.

Use one color from head to toe or layer several. For example, pink, blue, violet and blue-green over bronze are a color-clashing bid for attention.

NEW
3541
PIONEER
More Income Per Acre

In 61 field comparisons during 1977, 3541 recorded an average income advantage of more than \$25* an acre over competitive hybrids ... and averaged 2.7 points drier at harvest. This new medium-maturity hybrid dries faster and stands better than competitive full-season corns. But 3541 yields more than others of a similar maturity, so it gives you a greater potential for profit. 3541 has the performance characteristics you need. . . .

*Based on corn price of \$3.70/100 lbs.

- Excellent head smut tolerance
- Excellent standability
- Outstanding yields
- Good ear retention
- Fast drydown

THE SORGHUM FARMER'S CORN 3780

- Harvests earlier than sorghum
- Yields more than sorghum for greater income potential under similar field management
- Excellent standability

Pioneer brand 3780 is like no other corn hybrid you've ever planted. It yields well on land where other corns can't. How is this possible? 3780 has a water use pattern that reaches peak demand very early ... long before sorghum needs its water. Also 3780 grows and matures much faster than sorghum or other corns, so it's ready for harvest earlier. Its fertilizer requirements are lower than most full-season corns, and it won't normally need the insecticide treatments most full season crops require late in the growing season.

If you're looking for a good-yielding corn hybrid that performs well under management similar to sorghum's, consider "the other crop" ... Pioneer brand 3780. The sorghum farmer's corn.



PIONEER
BRAND SEEDS

See your Pioneer dealer today.

Pioneer Hi-Bred International, Inc.
Southwestern Division
Plainview, Texas

The limitation of warranty and remedy attached to each bag of Pioneer brand seed is part of the terms and conditions of the sale thereof.

Missionary Cultivates Spiritual, Physical Development

A former farmer from Nebraska, Ronald Preston, has turned his knowledge of agriculture gained through experience on the family farm plus work at the University of Nebraska into missionary work for the Presbyterian Church in an undeveloped and partially isolated region of Honduras and is currently on a speaking tour, relating his experiences during his work in that area of Central America and pointing out the things which will be needed in the future in helping the natives of that region. He is cultivating the spiritual as well as the physical environment where he is working.

A very attentive audience attended his presentation Monday night, Feb. 27, at the First Presbyterian Church in Spearman during which he utilized passages from the Scriptures and slides to illustrate the existing conditions in the region of Honduras where he works. Access to the area where he has spent the last four years,

with his wife and their four adopted children equally active in the mission work, is strictly by air, there are no roads as such leading to the village where he is headquartered and the only vehicle is a Jeep used by the airline representative to haul passengers and freight and baggage to and from the community's airport.

It is a basic way of life. The farming areas are hacked with machetes from the jungle as they have been done for hundreds of years. And the machete is also handy in cultivating, utilized in punching holes in the soil for the planting.

During his work in agricultural community development in La Mosquitia, the most isolated, and under-developed part of Honduras, he has introduced such new ideas as storage bins for corn so the farmer doesn't have to sell at harvest time as in the past but can store the grain for future use or sale and in the latter case for prices sometimes higher than those at

harvest time. Craft work is beginning to be handed down for generations in utilizing the bark of a native tree which, when dried, resembles leather in looks and texture.

As he noted in his presentation, there are those in his mission work area who are hearing God's Word for the first time and the work is difficult and sometimes discouraging but as he pointed out the Lord never gives one a load more than one can bear.

Having spent 12 years in Ethiopia, where the Presbyterian missionaries combined their efforts with the Lutheran representatives, Preston devoted some background remarks to the situation in the Middle East area, noting the proximity of Ethiopia and Somalia to the strategic transportation route through the Red Sea and the Suez Canal. But the Presbyterians in that area are almost all gone now, he noted.

In Honduras, the Presbyterian effort is combined with earlier efforts by the Moravian Church which has been active, having been brought to that region by the Germans many years ago, in this Central American county approximately the size of Tennessee.

During his four years in Honduras, Preston has successfully obtained funds for school construction, has overseen the installation of wells and pumps in villages where none such existed previously, has initiated the grain storage program and seen to the distribution of insecticides, herbicides and animal medicines. Along with this has been the acquisition of tools and motor parts for people in remote villages and distribution of seeds and better varieties of food sources such as papaya, cassava and sweet potatoes.

It is his opinion that the proposed Panama Canal Treaty program should be encouraged. He also brought out that Honduras, long since identified as a

banana republic because of the principal export, should begin to develop an export capability and rely less on importing food and other supplies from neighboring countries.

With his wife, Lula Mae, the Prestons cooperate in a literacy and evangelism program, in village craft work and in the distribution of Bibles, song books and Christian literature. But his area is off the beaten path and there is really not much at the present time to lure tourists or others to the area but

Miss PSU Pageant Scheduled

The Miss Panhandle State University Pageant will be held April 5, in Hughes-Strong Auditorium at 7:30 p.m. The winner of the pageant will represent PSU in the Miss Oklahoma pageant in Tulsa, June 1, 2, and 3. Miss Kim Trujillo is the 1977 Miss Panhandle State.

Contestants in the pageants are sponsored by clubs, or-

Home Fashion Fair Is March 6



Extension Housing Specialist Patricia Seaman of Dallas will be demonstrating selection and installing insulation at the Home Fashion Fair March 6 at 7 p.m. in the Recreation Room of the County Barn here. Registration begins at 7 and all homemakers in the area are invited to attend the Fair.

All homemakers in the surrounding area are invited to attend the Home Fashion Fair Monday evening, March 6, 1978 to be held in the Recreation Room of the County Barn in Spearman, Hoskins Street and Avenue D. Registration for the event begins at 7:00 p.m.

An exciting evening full of the latest information on home decorating techniques is in store for you according to Hansford County Extension Home Economist, Mrs. Peggy Winegarner.

Door prizes, exhibits and information about the Hansford County Home Fashion Fair. No admission will be charged. Extension program are open to persons of all ages regardless of socio-economic level, race, color, sex, religion or national origin.

This program is sponsored by the Hansford County Family Living Committee in cooperation with the Texas Agricultural Extension Service. Make plans now to come and bring your friends to Monday evening, 7:00 p.m., March 6 at the Recreation Room of the County Barn in Spearman!

Those present were members, Mesdames: H. M. Shedd, Leonard Jameson, Claude Smith, Jerry Davis, Russell Townsend, J. B. Buchanan, Bert Sheppard, Ed Garner, Roy Jones, J. D. Sanning, Doug Steger, P. A. Lyon, Gary Woodley, Jim Eakin, and hostess Mrs. Jimmy Shiedknight. The next general meeting will be March 22. The two separate circles, Mary Martha and Susannah Wesley, will meet in their own circles on March 1.

Our Heritage of Faith

notes from Faith Lutheran Church

The main teaching in the Lutheran Church is that we come into a close relationship with God as our Father (or are saved) because of what God has done. Salvation is based on God's action and His coming to us. There is nothing we do. We simply trust and believe in what He has done for us.

This sounds simple, but unfortunately churches and Christians often begin to lose this Christ-centered meaning of the Gospel. We so easily succumb to our human nature and again focus on ourself and what we do. Initiation into the church and our becoming children of God, we begin to think, is based on our feelings or our testimony of faith. Our Christian life and our activity in the church, we begin to think, puts us above others and is a way of gaining favor in God's sight.

But we are not to be above others. Rather we are to be servants to one another and to love them as we have been loved by Christ. Likewise we are made God's own by Christ's death on the cross for us and our trusting in that alone and not because of a testimony we once made, because we know the Bible better than others, or because we belong to the right church. It is God's love for us in Jesus Christ which makes us new people.

If you desire to learn more about this, come to Faith this Sunday, March 5, at 7:30. Faith will be having an Adult Information Class on the teachings of Christianity from this last cross perspective Sunday nights at 7:30. Anyone is welcome.

The Worship and Evangelism Committee will have their monthly meeting Sunday after the Worship Service, Thursday, March 9, the Church Council meets. If you read this on time we also urge everyone to attend the World Day of Prayer at the Presbyterian Church Friday morning at 9:30.

PLAY DOUBLE CASH BINGO SERIES II

Our first game was such a hit, we decided to do it again!

WIN UP TO \$2000

All New Cards
All New Bingo Discs.

CORN MUFFIN MIX 7 1/2 OZ. BOXES \$1	AMERICAN BEAUTY 12 OZ. PKG. 49¢	WIDELAKE NOODLES 49¢	NABISCO 19 OZ. PKG. \$1.19
MIRACLE WHIP 32 OZ. 97¢	FLAKES INSTANT 15 OZ. BOX 59¢	CAKE MIX 18 1/2 OZ. BOX 49¢	

MRS. TUCKER'S PRE-CREAMED SHORTENING 42 OZ. CAN 99¢	CONTADINA TOMATOES WHOLE 14 1/2 OZ. CANS 89¢	LIGHT CRUST FLOUR 5 LB. BAG 39¢	YOGURT 4 8 OZ. CRTNS \$1
MILK 1/2 GAL. 69¢	BISCUITS 12 OZ. CANS \$1	ROLLS 10 OZ. 49¢	

SMOKED HAMS 89¢ LB.	SHANK PORTION 89¢ LB.	BUTT PORTION 98¢ LB.	
----------------------------	------------------------------	-----------------------------	--

PORK & BEANS 5 16 OZ. CANS \$1	BEANS SAUCE 3 16 OZ. CANS \$1	SHELLS 4 15 1/2 OZ. CANS \$1	TAMALES 3 10 OZ. CANS \$1
---	--------------------------------------	-------------------------------------	----------------------------------

PARTS 49¢	BOLOGNA 49¢	CATFISH \$1.39	
------------------	--------------------	-----------------------	--

STEAK \$1.39	STEAK \$1.39	STEW \$1.29	STEAK \$1.79
---------------------	---------------------	--------------------	---------------------

STEW \$1.29	STEAK \$1.79	SHAMPOO \$1.29	COND. \$1.29
--------------------	---------------------	-----------------------	---------------------

POTATOES 69¢	APPLES 39¢	TANGERINES 39¢	ONIONS 12¢
---------------------	-------------------	-----------------------	-------------------

POTATOES 69¢	APPLES 39¢	TANGERINES 39¢	ONIONS 12¢
---------------------	-------------------	-----------------------	-------------------

POTATOES 69¢	APPLES 39¢	TANGERINES 39¢	ONIONS 12¢
---------------------	-------------------	-----------------------	-------------------

POTATOES 69¢	APPLES 39¢	TANGERINES 39¢	ONIONS 12¢
---------------------	-------------------	-----------------------	-------------------

POTATOES 69¢	APPLES 39¢	TANGERINES 39¢	ONIONS 12¢
---------------------	-------------------	-----------------------	-------------------

POTATOES 69¢	APPLES 39¢	TANGERINES 39¢	ONIONS 12¢
---------------------	-------------------	-----------------------	-------------------

POTATOES 69¢	APPLES 39¢	TANGERINES 39¢	ONIONS 12¢
---------------------	-------------------	-----------------------	-------------------

POTATOES 69¢	APPLES 39¢	TANGERINES 39¢	ONIONS 12¢
---------------------	-------------------	-----------------------	-------------------

POTATOES 69¢	APPLES 39¢	TANGERINES 39¢	ONIONS 12¢
---------------------	-------------------	-----------------------	-------------------

POTATOES 69¢	APPLES 39¢	TANGERINES 39¢	ONIONS 12¢
---------------------	-------------------	-----------------------	-------------------

POTATOES 69¢	APPLES 39¢	TANGERINES 39¢	ONIONS 12¢
---------------------	-------------------	-----------------------	-------------------

POTATOES 69¢	APPLES 39¢	TANGERINES 39¢	ONIONS 12¢
---------------------	-------------------	-----------------------	-------------------

POTATOES 69¢	APPLES 39¢	TANGERINES 39¢	ONIONS 12¢
---------------------	-------------------	-----------------------	-------------------

POTATOES 69¢	APPLES 39¢	TANGERINES 39¢	ONIONS 12¢
---------------------	-------------------	-----------------------	-------------------

POTATOES 69¢	APPLES 39¢	TANGERINES 39¢	ONIONS 12¢
---------------------	-------------------	-----------------------	-------------------

POTATOES 69¢	APPLES 39¢	TANGERINES 39¢	ONIONS 12¢
---------------------	-------------------	-----------------------	-------------------

POTATOES 69¢	APPLES 39¢	TANGERINES 39¢	ONIONS 12¢
---------------------	-------------------	-----------------------	-------------------

POTATOES 69¢	APPLES 39¢	TANGERINES 39¢	ONIONS 12¢
---------------------	-------------------	-----------------------	-------------------

POTATOES 69¢	APPLES 39¢	TANGERINES 39¢	ONIONS 12¢
---------------------	-------------------	-----------------------	-------------------

POTATOES 69¢	APPLES 39¢	TANGERINES 39¢	ONIONS 12¢
---------------------	-------------------	-----------------------	-------------------

POTATOES 69¢	APPLES 39¢	TANGERINES 39¢	ONIONS 12¢
---------------------	-------------------	-----------------------	-------------------

POTATOES 69¢	APPLES 39¢	TANGERINES 39¢	ONIONS 12¢
---------------------	-------------------	-----------------------	-------------------

POTATOES 69¢	APPLES 39¢	TANGERINES 39¢	ONIONS 12¢
---------------------	-------------------	-----------------------	-------------------

POTATOES 69¢	APPLES 39¢	TANGERINES 39¢	ONIONS 12¢
---------------------	-------------------	-----------------------	-------------------

POTATOES 69¢	APPLES 39¢	TANGERINES 39¢	ONIONS 12¢
---------------------	-------------------	-----------------------	-------------------

POTATOES 69¢	APPLES 39¢	TANGERINES 39¢	ONIONS 12¢
---------------------	-------------------	-----------------------	-------------------

POTATOES 69¢	APPLES 39¢	TANGERINES 39¢	ONIONS 12¢
---------------------	-------------------	-----------------------	-------------------

POTATOES 69¢	APPLES 39¢	TANGERINES 39¢	ONIONS 12¢
---------------------	-------------------	-----------------------	-------------------

POTATOES 69¢	APPLES 39¢	TANGERINES 39¢	ONIONS 12¢
---------------------	-------------------	-----------------------	-------------------

POTATOES 69¢	APPLES 39¢	TANGERINES 39¢	ONIONS 12¢
---------------------	-------------------	-----------------------	-------------------

POTATOES 69¢	APPLES 39¢	TANGERINES 39¢	ONIONS 12¢
---------------------	-------------------	-----------------------	-------------------

POTATOES 69¢	APPLES 39¢	TANGERINES 39¢	ONIONS 12¢
---------------------	-------------------	-----------------------	-------------------

POTATOES 69¢	APPLES 39¢	TANGERINES 39¢	ONIONS 12¢
---------------------	-------------------	-----------------------	-------------------

POTATOES 69¢	APPLES 39¢	TANGERINES 39¢	ONIONS 12¢
---------------------	-------------------	-----------------------	-------------------

POTATOES 69¢	APPLES 39¢	TANGERINES 39¢	ONIONS 12¢
---------------------	-------------------	-----------------------	-------------------

POTATOES 69¢	APPLES 39¢	TANGERINES 39¢	ONIONS 12¢
---------------------	-------------------	-----------------------	-------------------

POTATOES 69¢	APPLES 39¢	TANGERINES 39¢	ONIONS 12¢
---------------------	-------------------	-----------------------	-------------------

POTATOES 69¢	APPLES 39¢	TANGERINES 39¢	ONIONS 12¢
---------------------	-------------------	-----------------------	-------------------

POTATOES 69¢	APPLES 39¢	TANGERINES 39¢	ONIONS 12¢
---------------------	-------------------	-----------------------	-------------------

POTATOES 69¢	APPLES 39¢	TANGERINES 39¢	ONIONS 12¢
---------------------	-------------------	-----------------------	-------------------

POTATOES 69¢	APPLES 39¢	TANGERINES 39¢	ONIONS 12¢
---------------------	-------------------	-----------------------	-------------------

POTATOES 69¢	APPLES 39¢	TANGERINES 39¢	ONIONS 12¢
---------------------	-------------------	-----------------------	-------------------

POTATOES 69¢	APPLES 39¢	TANGERINES 39¢	ONIONS 12¢
---------------------	-------------------	-----------------------	-------------------

POTATOES 69¢	APPLES 39¢	TANGERINES 39¢	ONIONS 12¢
---------------------	-------------------	-----------------------	-------------------

POTATOES 69¢	APPLES 39¢	TANGERINES 39¢	ONIONS 12¢
---------------------	-------------------	-----------------------	-------------------

POTATOES 69¢	APPLES 39¢	TANGERINES 39¢	ONIONS 12¢
---------------------	-------------------	-----------------------	-------------------

POTATOES 69¢	APPLES 39¢	TANGERINES 39¢	ONIONS 12¢
---------------------	-------------------	-----------------------	-------------------

POTATOES 69¢	APPLES 39¢	TANGERINES 39¢	ONIONS 12¢
---------------------	-------------------	-----------------------	-------------------

POTATOES 69¢	APPLES 39¢	TANGERINES 39¢	ONIONS 12¢
---------------------	-------------------	-----------------------	-------------------

POTATOES 69¢	APPLES 39¢	TANGERINES 39¢	ONIONS 12¢
---------------------	-------------------	-----------------------	-------------------

POTATOES 69¢	APPLES 39¢	TANGERINES 39¢	ONIONS 12¢
---------------------	-------------------	-----------------------	-------------------

POTATOES 69¢	APPLES 39¢	TANGERINES 39¢	ONIONS 12¢
---------------------	-------------------	-----------------------	-------------------

POTATOES 69¢	APPLES 39¢	TANGERINES 39¢	ONIONS 12¢
---------------------	-------------------	-----------------------	-------------------

POTATOES 69¢	APPLES 39¢	TANGERINES 39¢	ONIONS 12¢
---------------------	-------------------	-----------------------	-------------------

POTATOES 69¢	APPLES 39¢	TANGERINES 39¢	ONIONS 12¢
---------------------	-------------------	-----------------------	-------------------

POTATOES 69¢	APPLES 39¢	TANGERINES 39¢	ONIONS 12¢
---------------------	-------------------	-----------------------	-------------------

POTATOES 69¢	APPLES 39¢	TANGERINES 39¢	ONIONS 12¢
---------------------	-------------------	-----------------------	-------------------

POTATOES 69¢	APPLES 39¢	TANGERINES 39¢	ONIONS 12¢
---------------------	-------------------	-----------------------	-------------------

POTATOES 69¢	APPLES 39¢	TANGERINES 39¢	ONIONS 12¢
---------------------	-------------------	-----------------------	-------------------

POTATOES 69¢	APPLES 39¢	TANGERINES 39¢
---------------------	-------------------	-----------------------