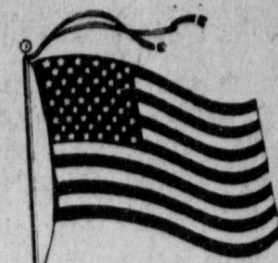




# BAILEY COUNTY JOURNAL

'The Community of Opportunity-Where Water Makes the Difference'



20¢

Volume 19, No. 3

16 Page Today

Published Every Sunday at Muleshoe, Bailey County, Texas 79347

Sunday, January 18, 1981

## Robertson, Gleason, Harrison Winners

### \*\*\* Banks Show Growth In Deposits, Loans \*\*\*

Despite drought, heat and extreme weather conditions, bank deposits in the eight area banks and the savings and loan association headquartered in

Muleshoe showed a \$13 million increase in deposits during the past year.

On December 31, 1979, deposits at the banks were a total of \$183,867,055, up by \$13,716,119 to the \$197,583,174 reported on the last day of December, 1980.

However, loans at the banks increased less than \$1 million during the same period of time. Loans at the eight banks and the savings and loan totaled \$110,056,351, only an increase of \$619,875 over the \$109,436,476 on loan closing out 1979.

For the two banks in Muleshoe, and the savings and loan association deposits increased by \$9,605,834 during the past year. Deposits at the three facilities were \$82,100,630 on the last day of December, 1979, and on the last day of December, 1980, had increased to \$91,706,464.

Loans at the same facilities decreased by more than \$1 million during the same period of time. Loans on December 31, 1980

were \$62,985,950, down \$1,071,970 from the figures of \$64,057,920 on the final date of the previous year.

Deposits at Tri County Savings and Loan Association, with branch offices in Friona and Farwell, showed an increase in deposits of \$2,856,369 during the past year with deposits of \$32,382,958 on the last of December this year, compared to \$29,526,589 at the same time last year.

At Tri County, loans, however, showed a decrease. Loans on December 31 of 1980 were \$31,320,864, down \$2,291,396 from the \$33,612,260 closing out 1979.

At Muleshoe State Bank, deposits increased \$4,832,000 during the past year. Deposits closing out 1979 were \$27,193,000.

Cont. Page 6, Col. 4

### Around Muleshoe

The Muleshoe Ladies Golf Association's 1981 season will begin with a luncheon, Wednesday, January 21, at 12 (noon). Every Wednesday afternoon is ladies day with cards and golf. Each third Wednesday of the month is luncheon day, with cards and golf following.

All Rainbow Girls, Masons and Eastern Stars are urged to attend a joint meeting Wednesday, January 21, at 5:30 p.m. in the Muleshoe Masonic Lodge. Initiation will be held for Deborah Nieman.

Listed on the Dean's Honor Roll at Eastern New Mexico University where she is listed as having cum laude honors is Diane Skipworth, of Muleshoe.

She is an elementary education major at the University in Portales.

### SBA Disaster Loan Program Deadline Near

"During the months of December and January the U.S. Small Business Administration (SBA) made arrangements for representatives from the Lubbock Disaster Office to meet with Texas agriculture producers and related businesses at various locations to provide information about the SBA disaster program and make applications available for persons to apply for low-interest recovery loans," said John H. Fall, Branch Manager of the SBA Lubbock Disaster Office.

Fall continued, "The farm disaster loan program is designed to provide low interest recovery loans for losses sustained during the 1980 production year as declared by SBA's declaration #1900."

Declaration #1900 expires February 12, 1981, and physical loss applications must be received by the SBA Lubbock Disaster Office by the close of business or postmarked by midnight. The deadline for economic injury disaster loan applications is May 12, 1981.

For more information, interested persons may contact the SBA Lubbock Disaster Office.

### Light Snow Falls Short On Moisture

Area residents woke up Saturday morning with a definite reminder, winter is still with us. A light snow left a white scattering of powdery dust over all exposed surfaces.

Little moisture was expected to be left behind the arctic cold front that slammed into the area Friday with cold wind.

Although Muleshoe area people had enjoyed balmy weather and bright sunshine since around the last week of November, winter was still ever present.

On Friday, the wind, accompanied by temperature which failed to reach the freezing mark, left the chill index around the zero point for the afternoon. However the wind failed to dampen the spirit of the several hundred persons who were attending the annual Bailey County Junior Livestock Show. At the conclusion of the swine judging Friday afternoon, the show barn was being rapidly being cleared of animals in anticipation of the predicted colder weather and snow.

During mid-afternoon, a few snowflakes promised more to come, however, very light accumulations were expected.

Light snow was again predicted for Saturday, but the National Weather Service said very little accumulations were expected.

Only a gradual warming

### Philadelphia Phillies Draft Billy Vinson

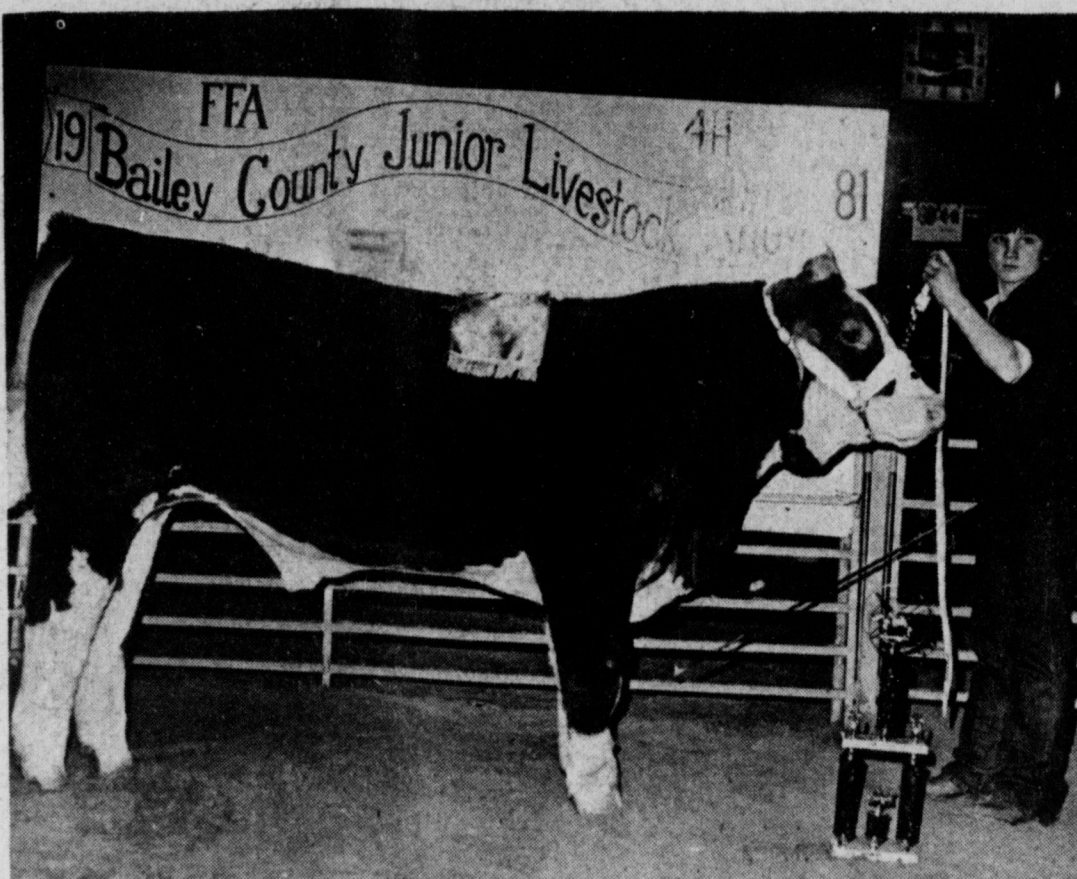
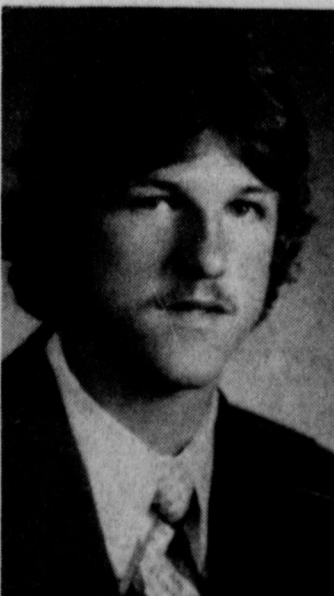
Billy Vinson, son of Mr. and Mrs. Dan C. Vinson, and a graduate of Muleshoe, was notified on January 14 that he had been drafted by the Philadelphia Phillies in the 14th round of the 1981 winter draft.

He currently attends Ranger Junior College in Ranger where he has played baseball for the past two years.

The Phillies will be contacting Vinson at school to talk to him about a professional career in baseball. Following the regular season, he will be able to accept any offer from the Phillies. They can contact him during the season, he explained, but they may not offer a contract until the conclusion of the season.

Bill said, "It is a great honor and a dream come true. Ever since I can remember, I have wanted to play pro ball and now I have a shot at it if I work hard."

He also said that he credits a great deal of his success to his parents' support. "Without them, I could never have done it," he remarked.



STEER WINS SHOW HONORS.....Jerry Gleason, son of Dr. and Mrs. Jerry Gleason, had the grand champion steer in the Bailey County Junior Livestock Show this year. He and his brothers and sister, also won several other honors in the show.



GREG HARRISON SHOWS TOP SWINE.....Greg Harrison, son of Mr. and Mrs. Don Harrison showed both the grand champion of show and the reserve grand champion in the swine division. He is shown here with his grand champion pig at the Bailey County Junior Livestock Show.



GRAND CHAMPION LAMB.....Mitzi Robertson, daughter of Mr. and Mrs. Darwin

### '81 Livestock Show Fades Into History

As the 1981 Bailey County Junior Livestock Show fades into history, the names of Harrison, Gleason and Robertson will be remembered. Youngsters with those names walked off with the top honors in the three divisions of the annual show.

Winner of the grand champion lamb and reserve grand champion lamb was Mitzi Robertson, daughter of Mr. and Mrs. Darwin Robertson of Three Way.

Top honors in the cattle went to Jerry Gleason, son of Dr. and Mrs. Jerry Gleason with the grand champion of the show and Kelly Harrison, son of Mr. and Mrs. Ted Harrison had the reserve grand champion.

Greg Harrison, son of Mr. and Mrs. Don Harrison showed both the grand champion of show and the reserve champion of show in the swine division.

Kelly won showmanship for beef and was presented the Jimmy Dale Black Memorial Award. Greg was named for showmanship in swine and Starla Black won the lamb showmanship award.

Thursday night, judging in the lamb and cattle division got underway at 6:00 p.m. and did not conclude until after 11 p.m., and the swine judging got started at 8:30 a.m. Friday and concluded shortly after 1:30 p.m. Friday afternoon.

The show results are below:

#### SWINE BERKSHIRE LIGHTWEIGHT

Steve Bradshaw, first and reserve breed champion; Bill Eubanks, second; Michael Dunham, third; Jim Overman, fourth; Scott Bickel, fifth; Cheyenne Bickel, sixth; Lee Free, seventh; David Pruitt, eighth and Lynn Copley, ninth.

#### HEAVYWEIGHT

Kay Lynn Prather, first and breed champion; Earl

Parish, second; Curby Brantley, third; Brad Stegall, fourth; Kim Farmer, fifth; Lee Free, sixth; Lee Free, seventh and Preston Langford, eighth.

#### CHESTER LIGHTWEIGHT

Sharla Morrison, first and breed champion; Rhonda Dunham, second and reserve breed champion; Kevin Atwood, third; Polly Harrison, fourth; Shawn Cooley, fifth; Berry Bass, sixth and Jason Scoggin, seventh.

#### DUROC LIGHTWEIGHT

Jodie Wheeler, first, Edwin Reeves, second; Edwin Reeves, third; Kevin Reeves, fourth, Curtis Wheeler, fifth; Lewis Peacock, sixth; Kevin Reeves, seventh; Kevin Reeves, eighth; Lewis Peacock, ninth; Amy Harrison, tenth and Pat Lefore eleventh.

#### LIGHT-MEDIUMWEIGHT

Todd Bessire, first; Wesley Rasco, second; Jerry Bob Graves, third; Keith Layton, fourth; Russell Brown, fifth; Edwin Reeves, sixth; Polly Harrison, seventh; Devin Sismore, eighth; Heath Burleson, ninth; Dane Dubree, tenth and Alan Beasley, eleventh.

#### MEDIUM HEAVYWEIGHT

Greg Harrison, first, breed champion and grand champion of show; Sharla Morrison, second and reserve breed champion; Chris Young, third; Sherri Bessire, fourth; Rhonda Dunham, fifth; Danny Seales, sixth; Jodie Wheeler, seventh; Keith Layton, eighth; Alan Beasley, ninth; Amy Harrison, tenth and Jim Overman, eleventh.

#### HAMPSHIRE LIGHTWEIGHT

Preston Scoggin, first and reserve breed champion; Tracy Tunnell, second; Mike Holt, third; Heath Burleson, fourth; Kevin Atwood, fifth; Keith Layton, sixth; Starla Black, seventh; Michael Barrett, eighth.

### Former Miss Tri-County Wins Another Pageant

Last weekend, Laura Ellis, daughter of Mr. and Mrs. Bill Ellis of Friona, was crowned Miss Hurst-Euleus-Bedford in the pageant conducted at the Trinity High School auditorium at Euleus. Laura is recently retired Miss tri County, encompassing Bailey, Parmer, and Lamb counties, having served in 1979-80, and is the former Friona Maize Days Queen, 1978-79.

The pageant, which provided \$4,000 in scholarships and wardrobe, also qualified the winner for the 1981 Miss Texas Pageant, to be held this summer.

Laura performed a classical ballet dance for the talent portion of the pageant. The entrants were also judged in formal wear

Judges scores indicated that Laura had the most points of any of the 22 contestants in the interview portion of the contest, and she was judged second highest in the talent competition.

Her sponsor in the pageant was the Forest Hill State Bank of Fort Worth. Several of the contestants had previous experience in a Miss Texas preliminary pageant, and officials of the Miss H-E-B pageant said they considered it an accomplishment for Laura to win in her first attempt. Three of the top five finalists in the competition were former pageant winners with Miss Texas Pageant experience, according to officials of the pageant.



### W.L. Key Services Held Monday

Funeral services for W. L. Key were held Monday, January 12 at the First Baptist Church with Rev. Glen Wilson officiating. Burial was in Fair Lawn Cemetery at Amherst.

### Altman Services Held In Enochs

Funeral services for Alma Altman, 71, were held Monday, January 12 at the First Baptist Church of Enochs at 2 p.m. with Rev. Charlie Shaw of Seminole and Rev. Mike Heady pastor of the church, officiating. Burial was in the Enochs Cemetery.

Mrs. Altman died Friday, January 9 following a lengthy illness. She had been a resident of Enochs since 1936. She was also a member of the First Baptist Church at Enochs.

### Eula Noble

#### Services Held Friday

Funeral services for Eula Noble, 92, were held at 2 p.m. Friday in the Ellis Chapel of the Chimes with Rev. Louis Crenshaw, pastor of the Lazbuddie United Methodist Church and Rev. Frank Matthews, officiating.

Burial was in the Castro Memorial Cemetery at Dimmitt under the direction of Ellis Funeral Home of Muleshoe. She died January 15 at 5:55 a.m. in the Muleshoe Nursing Home.

Mrs. Noble was born August 19, 1888 in Cisco, Texas. She had been a resident of Roswell, N.M. since 1968. She lived in the Lazbuddie Community from 1921-1942. She was a member of the Lazbuddie United Methodist Church.

Survivors include two daughters, Mary Hennington of Roswell and Loraine Gallman of Lazbuddie; one son, Eldred of Big Spring; three sisters, Flossie Hunt of Florence, Oregon; Docia Manning of Floydada; Dera Jones of Amarillo; one brother, Kenneth Cone of Amarillo; 10 grandchildren; 26 great grandchildren and four great great grandchildren.

### Lovie Benson Services Held In Tennessee

Lovie Benson, 87, a former Muleshoe resident passed away January 14 in Elizabethtown, Tennessee.

Survivors include Bernice Pearson of Canyon Virgie Peason and Lila Payne of Elizabeth, Tennessee.

Mr. Key died Saturday, January 10 following a lengthy illness.

Mr. Key was born March 3, 1886. He had been a deacon in the church since 1927.

Survivors include five daughters, Lola Gammons and Mildred Butler, both of Wetherford; Lucille Butler and Juanita Howard both of Littlefield; Janell Estep of Belen, N.M.; and one son, Bill Key of Enochs.



**W.L. KEY**  
For unto you is born this day in the city of David a Savior, which is Christ the Lord.  
-Luke 2:11.

### Courthouse News

**Marriage License**  
Charles Robert Canfield and Diana Christene Robinson, both of Muleshoe Charles Dewayne Chapman, Jr. and Whittie Joy Davis, both of Muleshoe

**Warranty Deeds**  
George R. Nichols and wife, Janis C. Nichols to Marvin F. Nieman and wife, Mable N. Nieman---All of Lot Number (12), and the (W'yly 1/2) of Lot Number (13), Country Club Addition to the Town of Muleshoe, Bailey County, Texas.

Clyde Holt and wife, Mary Frances Holt and Ida Ruth Holt to George E. Nieman and wife, Dianne M. Nieman---All of Lot Number (1), in Block (8), Country Club Addition to the Town of Muleshoe, Bailey County, Texas.

Pauline Guinn to Walter R. White and wife, Pamela Jean White---All of Lot Number (12), in Block Number (5), Lenau Sub-

division to the City of Muleshoe, Bailey County, Texas.

Marguerite Modene (Altman) Coats, Agnes Alene (Altman) Byrum, Nadene Faye (Altman) Baker, Wesley Wayland Altman and Gracie Lou (Altman) Millsap to Pedro Alvarez and wife, Elena Alvarez---All of those certain tracts or parcels of land situated in Bailey County, Texas, and being lots Numbered (7), (8), (9), (10), (11), and (12), all in Block (13) in the townsite of Enochs.

Jesse L. Click and wife, Wanda L. Click to Herbert N. Miller and wife, Gloria Jean Miller---The (NW'yly30) of Lot Number (60) and the (SE'yly 30') of Lot Number (61), Richland Hills Addition to the Town of Muleshoe, Bailey County, Texas.

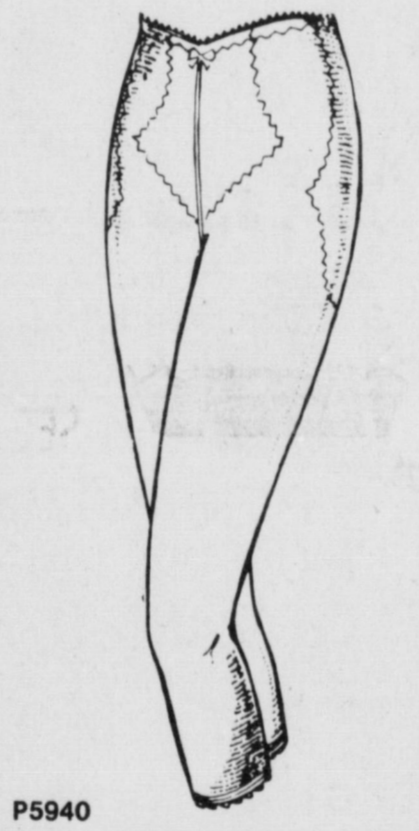
'Twas the night before Christmas, when all through the house, Not a creature was stirring, not even a mouse.  
-C.C. Moore.



6806



6809



P5940



P5805


## All Bestform Basics<sup>®</sup>

# 25% OFF

Put you and your budget in Bestform<sup>®</sup>! There's a Bestform<sup>®</sup> bra, panty girdle or pantliner for every figure need - and now, they're all 25% off! All styles in White, some in White or Beige. Styles illustrated: #6806-Criss Cross bra in sizes 32-36 A, 32-38 B, 34-38 C; #6809-Seamless bra in sizes 32-36 A, 32-38 B, 34-38 C; #P5940-Pant Liner in sizes S,M,L,X,XX,XXX; and #P5805-Lite Brief in sizes S,M,L. Many other styles not illustrated to choose from.

## Anthony's

C. R. ANTHONY CO. 321 Main Muleshoe



# SHOP RITE


Prices Good Thru Jan. 21, 1981

**PLAY**  
Game Tickets & Collector Cards available at the checkout counter. No purchase necessary.

**WISPIRING DEAL**

**IT COULD BE A BIG DEAL FOR YOU!**

Each of these advertised items is required to be readily available for sale at or below the advertised price in each store, except as specifically noted in this ad. We reserve the right to limit quantities. None sold to dealers.



## BONELESS BEEF ROASTS

Rump, Round or Sirloin Tip Roasts.

\$2.69

lb.


## SIRLOIN TIP STEAKS

Cut from Tender Beef Rounds

\$2.79



lb.



## ROUND STEAK

U.S.D.A. Tender Select Beef.


\$1.88


lb.

## FRIED CHICKEN

Banquet 32-oz. pkg.

\$2.19





## GREEN GIANT CORN

Whole Kernel or Cream Style.


3 \$1

16 or 17-oz. cans


## GREEN BEANS

Green Giant, Cut.

3 \$1



16-oz. cans



## PAPER TOWELS

Hi-Dri


2 99¢

jumbo rolls

## BATH TISSUE

Hi-Dri

79¢



4 roll pkg.

## LARGE EGGS

71¢

one doz. ctn.

## IVORY LIQUID

Dish Detergent

\$2.39



48-oz. btl.



## RUBY RED GRAPEFRUIT

5 \$1

N.O.W.

We're The One For Your Money

In More Ways Than One

People in Muleshoe have always depended on us for full service banking — checking, savings, loans. But, when we introduced our new N.O.W. Account, the checking account which pays maximum interest, we became THE bank for this area, this decade. It's no longer wise for you to maintain a separate checking and savings account. In more ways than one, Muleshoe State can show you how to put them both together to earn interest. Come on in. Find out about this revolutionary new N.O.W. checking account.

**MULESHOE STATE BANK**



101 American Blvd. • 272-4561 • Member FDIC





**CHECK PRESENTATION.....**Members of Alpha Zeta Phi presented a check to the First United Methodist Church Day Care Center recently. The check was the proceeds from the Money Doll, given away at the Bingo Carnival. The check was used to purchase carpet for the play room of the nursery. Making the presentation is Pam Shipman on the right to Frankie Carpenter.



Latest Arrivals

**Bruce Jose Dominguez**  
Mr. and Mrs. Loy Dominguez are the proud parents of a new son born January 13 at 11:35 a.m. The young man weighed 8 lbs. and 2 oz. and has been

named Bruce Jese Dominguez. They have two other children, Christopher, 7

years of age and Kit, three years of age.

Grandparents are Mr. and Mrs. Andrew Gonzales and Mr. and Mrs. Julian Dominguez, all of Muleshoe.

Great grandparents are Mr. and Mrs. Fred Trujillo of Muleshoe.

**Kari LeAnn Heady**

Mr. and Mrs. Michael Heady of Enochs are the proud parents of a new daughter, born January 13 at 2:36 a.m. in the West Plains Medical Center.

The young lady weighed 7 lbs. and 8 oz. and has been named Kari LeAnn. She has a brother, Travis, six years of age.

Grandparents are Mr. and Mrs. Phillip Cardwell and Mr. and Mrs. Loyse Heady, all of Aledo, Texas.

Great grandparents are Mr. and Mrs. Leslie McDonald of Weatherford

Mrs. Pauline King and Mrs. Bertha Riddle, both of Aledo.

\*\*\*\*  
Wisdom comes to individuals in broken doses and few human beings

**Bailey County Journal**

USPS 040-200  
Established March 21, 1963. Published by Muleshoe Publishing Co., Inc. Every Sunday at 304 W. Second, Box 499, Muleshoe, Texas, 79247. Second class postage paid at Muleshoe, Texas, 79247.

MEMBER 1981  
**TA**  
TEXAS PRESS ASSOCIATION

L.B. Hall - President  
James Woods - Vice President  
Cina Williams - News  
Evelene Harris - Society  
Holly Millap - Advertising  
Dorinda Crumley - Bookkeeper

**SUBSCRIPTIONS:**  
Muleshoe Journal and Bailey County Journal  
Bailey and surrounding counties.....\$10.50  
Muleshoe Journal and Bailey County Journal  
Elsewhere in Texas.....\$13.95  
Muleshoe Journal and Bailey County Journal  
Outside of Texas.....\$12.95  
Yearly by Carrier.....\$11.50  
Monthly by Carrier.....\$9.50  
Advertising rate card on application

**Singleton-Ellis Funeral Home**  
24 Hour Ambulance Service  
Ph. 272-4574 Muleshoe

**STARTING JANUARY 19**  
*Womens Basic Self Defense Course*  
Enrollment Starts Jan. 5  
Call 272-5190  
Limited Enrollment



**ARTIST OF THE MONTH.....**Velma Davis has been selected as January Artist of the Month at the Muleshoe Public Library. She has been a Muleshoe resident for 30 years. Mrs. Davis is a self taught artist, who likes to paint from memory. She has been painting 20 years and lists her hobbies as painting and reading. At the present time she has paintings hanging at the Art Loft. Her paintings will also be on display, for a month, at the Library.

**Hobby Club**

The Muleshoe Hobby Club met Thursday, January 15 in the Community Room of the Muleshoe State Bank with 21 members and two visitors present.

Ruth Williams was the hostess. Ruth Bass, president, conducted the business meeting. Levina Pitts drew the hostess gift.

Names were drawn for secret pals. The next meeting will be an all day meeting, February 29.

Articles displayed were a crochet pot holder, double ring quilt, knitted lipstick holder, dried flower plaque, dust cloth and glove, Kleenex box cover, afghan, stained glass candle holder, refrigerator plaques, painted beer mug, spice bag, bear puppets, shadow box, antique glass car and a miniature picture frame.

Those present were Ger-tie Kirk, Hallie Briscoe, Myrtle Wells, Joe Wilson, Ola Epperly, Vickie Henderson, Fiddle Shafer, Mae Lloyd, Ruth Williams, Ruth Bass, Mable Caldwell, Myrtle Chambless, Jessie Mae Sherwood, Marie Col-um, Sammie Ethridge.

Veta Self, Bernice Amer-son, Allie Barbour, Levina Pitts, Verna Dement, Opal Robinson, also visitors Florene Mills and Midget Sells.



By **Bill Wooley**

**TUNE-UPS AND GOOD MAINTENANCE COUNT** toward fuel savings and, in many cases, increased performance. Research by agricultural engineers at a leading midwestern university has shown that the fuel consumption of 50 randomly selected tractors was reduced by 14.5 percent simply by tuning the engines and keeping them in tune. As an added bonus, the tractors yielded an 11 percent increase in horsepower. Diesel engines should get a dynamometer check at least annually and fuel injection systems checked by the dealer if horsepower is down. But, don't stop there. Fuel savings can also be realized by maintaining sharp cutting edges on tillage and harvesting equipment, by avoiding excessive depth when tilling, by making sure equipment is hitched properly, by checking tire inflation often. Next week, some fuel saving tips from the driver's seat.

**Wooley International, Inc.**  
Hwy. 84 Muleshoe

OPEN 9 TO 6  
**Anthony's**  
C. R. ANTHONY CO.  
321 MAIN MULESHOE

# Clearance

**MEN AND Ladies' Warm Robes 1/2 Price**

Cuddle up in beautiful warm robes! This great selection features favorite styles in cozy, easy care fabrics. Assorted colors in sizes S, M, L.

**Men's Western Shirts \$8.97 2 FOR \$17**

SEE THESE AND MANY MORE PRE-INVENTORY CLEARANCE ITEMS!

LOOK FOR CLEARANCE ITEMS THROUGHOUT THE STORE.....  
LADIES SPORTSWEAR  
LADIES & JR. COATS  
MENS VELOUR SHIRTS  
MENS DRESS SHIRTS  
GIRLS SPORTSWEAR & JEAN FASHION & WINTER BOOTS  
CASUAL & DRESS SHOES  
THERMAL TOPS & BOTTOMS  
AND MUCH MORE!

**Utility Jacket 11.88**

Men who work outdoors need Big Smith's® utility jacket! Filled with 100% polyester, it features a quilted shell and snap front for good looks. In assorted colors, sizes S,M,L,XL. Reg. 14.99.

**SUPER LIGHT WEIGHT WORK JACKET!**

**Style Spun® Sheer-to-Waist PANTY HOSE 59¢ pr 6 pr \$3**

Love your legs in Style Spun® sheer-to-waist pantyhose! Found only at Anthony's, Style Spun® are sheer, smooth nylon with a cool cotton inset. Sizes A,B,C in Tan, Beige and Taupe. Reg. 99¢ pr.

**Style Spun Flat Fold Velour 1.37 yd. 3 FOR \$4**

Velour... it's a natural for beautiful fashion! Ours is easy care polyester-cotton velour in flat-fold designer lengths. In many rich colors, it's perfect for dresses, tops and sportswear!

**Men's Western Boots 39.88**

The look of the West isn't complete without a great pair of boots! Acme® makes some of the best in all leather construction. Three handsome styles to choose from in sizes 6 1/2 - 12, D width.

**RED WING WORK BOOTS ENTIRE STOCK ON HAND 20% Off**

**Softee Oxford**  
The most comfortable shoes you'll ever wear! Ladies' Softee Oxfords have a cushioned insole and come in a rainbow of colors for every outfit. Sizes 5-10, reg. 5.99.

**Ladies' Fashion Shoes "BEEP-BEEPS" By GARFIELD & ROSEN \$10**

Step into style and save! These favorite women's shoes will accent any fashion look. Choose from fashion styles or casual styles in assorted colors, sizes 5-10.

**Reid Real Estate**  
**Do You Want To Buy A New Home?**  
If You Qualify, We Now Have 100% Financing With Closing Cost Not Included  
**Call Today!**  
Thursie Reid 272-3142  
George Nieman 272-3142 or 965-2488



### Rainbow Girls Presented Certificates

Muleshoe Rainbow Assembly met Monday, January 12, in the Masonic Hall. Presiding over the meeting was Tori Hunt, Worthy Advisor.

Other officers present were Kristi Henry, Tammy Nowell, Twila Downing, and Julia Shain. Past Worthy Advisors present were Kanetha Foster, and Sheila Black and Debra Stevens.

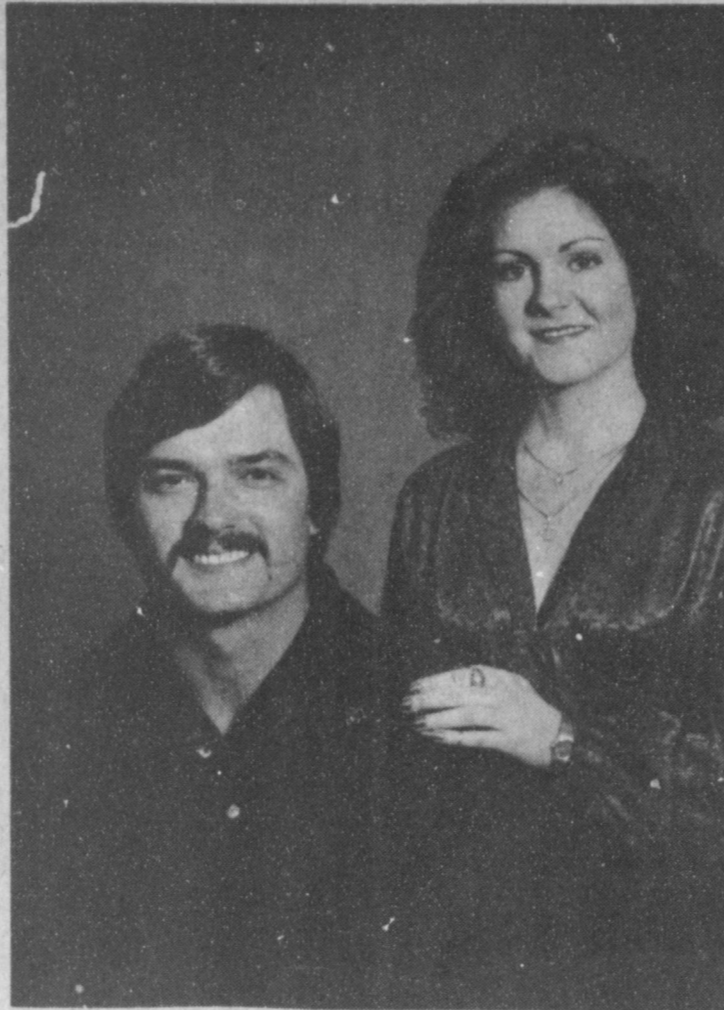
Majority certificates were presented to Kanetha (Hysinger) Foster and Sheila (Hunt) Black. Debra Stevens, Grand Musician, Grand Assembly of Texas was introduced.

Charlene Apple, who is to be the new mother advisor, effective February 1, was introduced also.

The next Rainbow meeting will be Wednesday January 21, at 5:30 p.m. in the Masonic Lodge. The Rainbow girls from Earth and Plainview will meet with the Muleshoe Assembly for initiation of Deborah Nieman.

### Obesity In Infants

Obesity in infants seems to lead to a greater possibility of obesity or overweight later in life. As a baby gains weight, fat cells divide and therefore increase in number. Studies have shown that overweight babies have more fat cells than other infants and that adults who were fat as infants have a greater number of fat cells than adults who were not overweight as infants. In adults excess energy (calories) is stored in already existing fat cells.



**ENGAGEMENT ANNOUNCED.....**Mr. and Mrs. Billy Pittman wish to announce the engagement of their daughter, Lisa, to Tony Barton, son of Mr. and Mrs. Ardis Barton. The couple plan to be married January 24th in a double ring ceremony in the home of the bride. Lisa is a graduate of Springlake-Earth High School and is presently employed at Pat Walkers Figure Salon in Muleshoe. Barton is a graduate of Springlake-Earth High School and of Texas Tech and is a farmer in the Earth area.

### Valentine Social Planned

The Christian Women's Fellowship of the First Christian Church met in the pastor's study of the church, Tuesday, January 13, at 4 p.m., with Mrs. Wesley Glover as hostess.

After the business meeting Mrs. Glover presented the program "The Life and Lot of Bible Women" from Herbert Lockyer's book, "All The Women of the Bible".

Then plans were made for the Valentine Social

meeting, those present were Mrs. Wesley Glover, Mrs. Walter Bartholf, Jr. and Mrs. Joe Costen.

### BIBLE VERSE

"A new commandment give I unto you, That ye love one another; as I have loved you, that ye also love one another."

1. Who gave the above commandment?
2. To whom was he speaking?
3. Upon what occasion?

### Answers to Bible Verse

1. Jesus Christ.
2. To his disciples.
3. Upon the occasion of the Last Supper, after Judas had left the Upper Room.

### Muleshoe Young Homemakers Meeting

The Muleshoe Young Homemakers held their first meeting of the new

year January 13. After the meeting was called to order, Elaine Stout gave the treasurer's report.

Story hour will be January 21. Area activity day, which is February 21 was discussed.

A program was presented by Danny Kelly, who holds a second degree

black belt. He and his wife, Ricki, demonstrated several examples of basic self defense particularly useful for a woman.

Two new members attending were Dana Duncan and Jo Radney. Refreshments of hot spiced punch and cake were served by Debbie Green and Pam White.

### WOTS Weekly Meeting

The W.O.T.S. organization met Thursday, January 15, in the meeting room of the Tri County Savings and Loan, for a covered dish luncheon. Hostesses for the week were Mildred Williams and Kay Madry. Members present were Donita Crowder, Zellma Toler, Faye Wellborn, Deloris Gibbons, Lois Martinec, Tammy Fletcher, Theresa Todd, Kay Madry, Mildred Williams and Betty Barker. Also new members Hilda Wright of Earth and Jane Todd of Lubbock.

Hostesses for the January 22 meeting will be Hilda Wright and Delores Gibbons. \*\*\*\*

Even a good thing has a tendency to come to an end.

## January Sale

Mon - Fri Jan 19-24

10% off

On Oil & Acrylic Paints

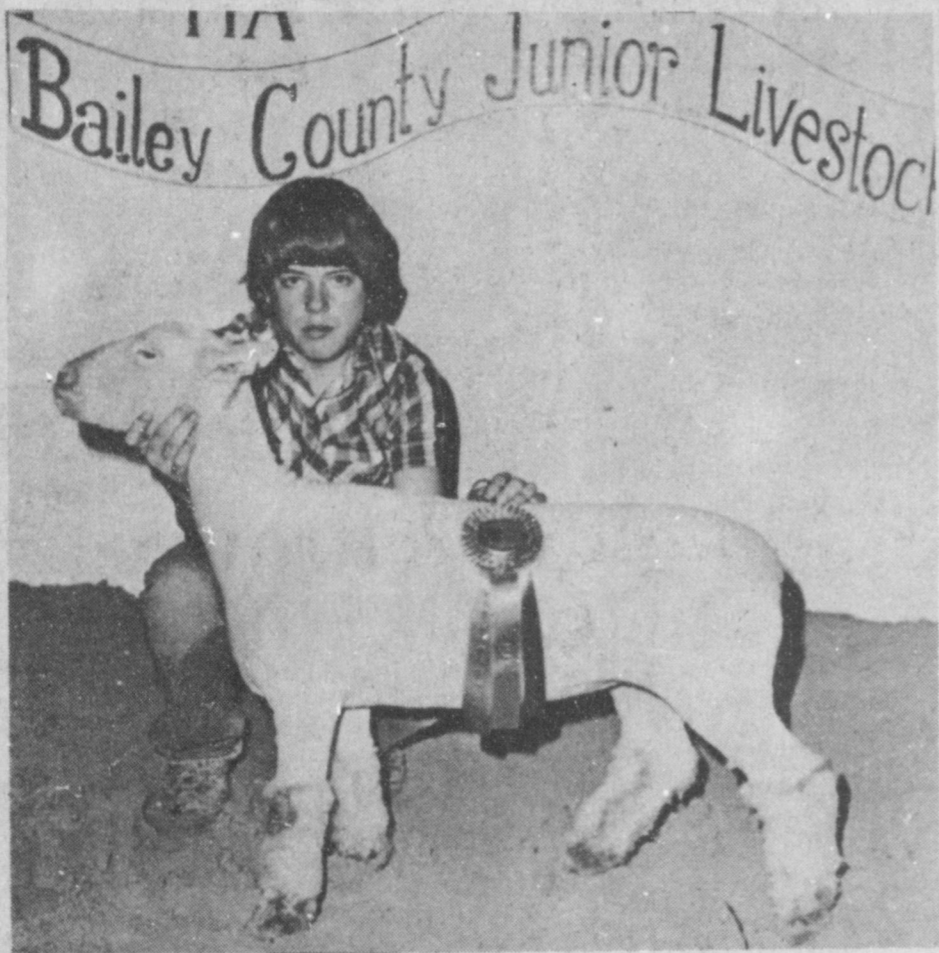
Studio & Large Sizes

Sherry's Art Shack

Open Mon-Fri 10 am - 6 pm

Tradewinds Plaza

## Congratulations



**BREED CHAMPION**--Shawn Cooley is shown here with his Southdown Lamb which won Breed Champion at the Bailey County Livestock Show. Shawn is the son of Mr. and Mrs. Burl Cooley of Threeway.

Nickels & Nickels Gin of Goodland  
And Nickels Gin of Baileyboro

## Congratulations

to All the  
**FFA & 4-H**  
members

who won at the 1981  
**Bailey County Junior Livestock Show**

**Bailey County Electric  
Cooperative Association**

## We Are Happy To Extend Our CONGRATULATIONS



**BREED CHAMPION**--Mitzi Robertson is shown here with her Pure Bred Steer which won Breed Champion at the Bailey County Livestock show. Mitzi is the daughter of Mr. and Mrs. Darwin Robertson of Three Way.

**FIRST PLACE WINNER**--Wade Wheeler, son of Mr. and Mrs. Joe Wheeler of Goodland, is shown here with his Light Weight Cross Bred Steer which won First Place at the Bailey County Livestock Show.



"WHERE YOU ALWAYS BUY THE BEST FOR LESS"

# GIBSON'S DISCOUNT CENTERS

Sale Sale Sale

Store Hours: Mon-Sat. 9-7 Sun. 1-6

Prices Effective Jan. 18-21

<p><b>No Exchanges</b></p> <p><b>All Coats</b> Men's, Boys, Toddlers, Ladies &amp; Girls</p> <p><b>1/2 Price</b></p>	<p><b>All Sales Final</b></p> <p><b>One Selection of Ladies Pants</b> Valued from \$4<sup>99</sup> to \$12<sup>99</sup></p> <p><b>1/2 Price</b></p>	<p><b>No Refunds</b></p> <p><b>Boy's Flannel Shirts</b></p> <p><b>35% Off</b></p>
<p><b>All Pequot Bed Sheets</b></p> <p><b>30% OFF</b></p>	<p><b>All Electric Blankets</b></p> <p><b>25% OFF</b></p>	<p><b>All Childrens Winter Sleepware</b></p> <p><b>1/2 Price</b></p>
<p><b>Plastic Drop Cloths</b> .3 mil. Thick 9' x 12'</p> <p><b>3/\$1</b></p>	<p><b>Gran Prix Pocket Radio</b> No. AM5</p> <p><b>\$4<sup>00</sup></b></p>	<p><b>Texas Instruments TI-30 Student Math Kit</b></p> <p><b>\$10<sup>00</sup></b></p>
<p><b>Chattan Themat Blankets</b> 70 x 90</p> <p><b>\$1<sup>99</sup></b></p>	<p><b>Hirsh Portable Folding Sawhorse</b></p> <p><b>\$1<sup>99</sup></b></p>	<p><b>ATF Flintstones Toy Chest</b></p> <p><b>\$1<sup>99</sup></b></p>
		<p><b>Regal Poly Hot Pot</b> 5 cup</p> <p><b>\$7<sup>00</sup></b></p>

Keep That Great GM Feeling With Genuine GM Parts

ROBERT D. GREEN, INC.

2400 West American Blvd.  
MULESHOE, TEXAS 79347





## Mrs. Ellis Honored With Bridal Tea

Mrs. Dan Ellis, nee Tera Hamilton, was honored with a bridal tea Monday, January 12 from 4:30 to 6:00 p.m. in the home of Mrs. Don Harmon.

Greeting the guest were: Mrs. Dan Ellis; her mother, Mrs. Gene Hamilton and Mrs. Harmon. Mrs. Ernest Ramm registered guest upon their arrival.

Donann Smith, of Lubbock, served hot punch and coffee from a table covered with a yellow cloth overlaid with white lace.

Assorted cookies, nuts and mints were served from silver and crystal appointments. A silver candelabra filled with flowers and candles in the honoree's chosen color of yellow, complimented the serving table.

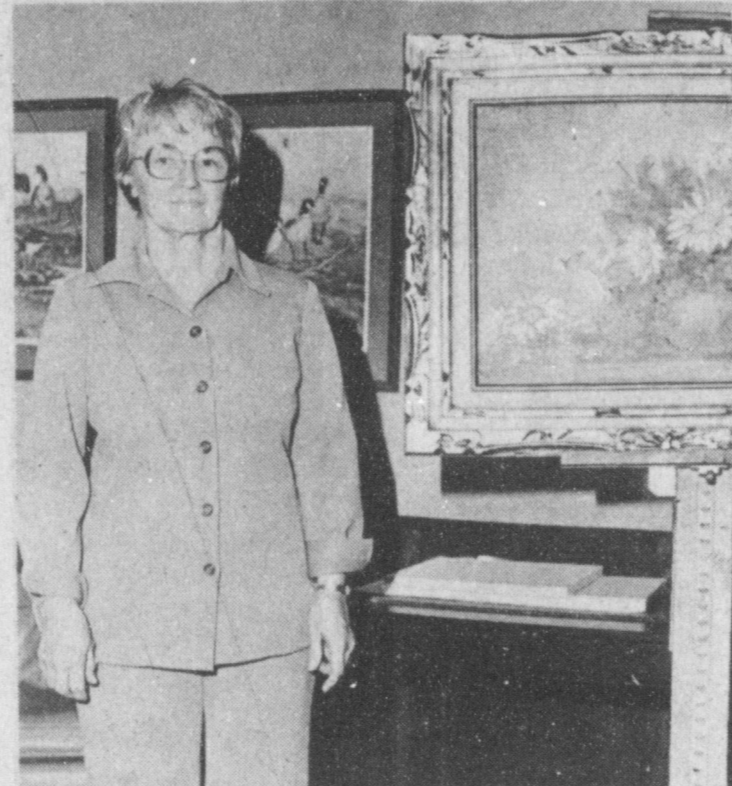
The hostess gift was a

vacuum cleaner. Special guest were: Mrs. Gene Hamilton, mother of the bride; Mrs. Frank Ellis, mother of the groom; and Mrs. Martha Schueler of Friona.

Hostesses for the occasion were Marlene St. Clair, Joy Whitt, Maurine Hooten, Delores Garrett, Betty Bruns, Wanda Shaffer, Frances Bland, Betty Hopper, Vivian White, Dean Gunstream, Chris Ford, Pat Nickels, Jennie McVickers, Sue Bessire, Wanda Harmon, Janet Burden, Alice Ramm, Hazel Gilbreath, Marjorie Precure, Mary Crane, Nelda Loyd, and Coraly Jarman.



MRS. DAN ELLIS



Maire Tidwell.

### ONE MINUTE SPORTS QUIZ

1. Who won the 1980 Heisman Award?
2. Oklahoma is playing in which bowl?
3. Who won the Duran, Leonard rematch?
4. Vince Ferragamo quarterback for what pro team?

5. Wilt Chamberlain was in what sport?

### Answers To Sport Quiz

1. George Rogers, University of South Carolina.
2. The Orange Bowl.
3. Sugar Ray Leonard.
4. Los Angeles Rams.
5. Pro basketball.

Ronald Reagan, President-elect, on hostages: "I don't think you pay ransom for people that have been kidnapped by barbarians."

## Pep Annual Homecoming January 31st

The Pep Ex-Student Association urges former students, teachers, patrons and friends of Pep to attend their 22nd annual Homecoming, Saturday, January 31. All activities are to be held in the Pep Parish Hall.

Registration will begin at 5:00 p.m. Your registration name card will also serve as your banquet ticket, and the price will be \$2.50.

Classes of 1944, 1954, 1964 and 1974 will hold their class reunions beginning at 2:30 p.m.

The banquet will begin at 6:30 p.m. followed by a meeting of the Ex-Student Association with president, Marcy Demel presiding.

Master of Ceremonies will be Alvin Walker, a Pep High School Graduate, and Sister Hilary Decker OSB, a former Pep student, now teaching in the Nazareth, Texas school will be guest speaker.

Recognitions will be made and the Homecoming Queen will be crowned. The queen will be elected from the Seniors of 1981 that formerly attende Pep School, regardless of where they now attend school. Persons will receive a ballot when they register.

Pep Ex-Student Association will again give a \$100 scholarship to a High School graduating boy and girl, to be given to the College of their choice. To be eligible, the Senior or their parent must be an ex-student of Pep, and must attend Homecoming

to register for the scholarship. Pep Ex-Student Association awarded the first \$100 scholarships in 1980 at their annual meeting to John Gumpster and Grata Albus.



Broadcasters are subject to the Fairness Doctrine that in essence states they are obligated to provide for airing controversial issues of public importance with reasonable opportunity for the presentation of all points of view.

### TOPS Weekly Meeting

The T.O.P.S. Club met Thursday, January 15, in the meeting room of the Bailey County Electric.

Carlene Stroud, leader, called the meeting to order. The T.O.P.S. pledge was recited and the fellow-ship song sung.

Roll call was by Linda Vinson, weight recorder, 31 members were present. A new member, Laverne James, was welcomed to the club. Vickie Garner secretary, read the minutes of the previous meeting. A treasurer report was given by the treasurer, Ruth Clements.

Best loser for the week was Theresa Davis, Libby Black was first runner up, second runner up was Vickie Garner.

Wanda Kemp and Evelyne Harris received material for three weeks consecutive weight loss. They also received a hair set for six weeks consecutive weight loss.

Rose Sain and Aurora Mata celebrated their birthdays and received a gift from the birthday box.

The meeting was dismissed with the singing of the goodnight song.

## Muleshoe Art Association Meeting

The Muleshoe Art Association met January 13 in the Community Room of the Muleshoe State Bank. Betty Barker read the minutes of the previous meeting and they were approved.

Cara Juan Schuster, exhibit chairperson on the lease program, said 35 paintings have been leased. The date for the spring art show has not been set yet.

Hostesses were Carrie Lee Bishop, Theresa Feagly and Marilyn Young. Marie Tidwell of Clovis was the guest artist. She has been painting about 12 years. She has studied with Marie Lee Garrett, Chris Tikan, LaWanda Calton, Jim Hall and others. She does mostly land-

scapes and likes to try every subject. the program was a floral painting of bronze mums in a china vase using earth colors.

Those present were Theresa Feagly, Carrie Lee Bishop, Laura Kersey, Betty Embry, Hazel Nowell, Betty Barker, June Gore, Barbara Carpenter, Dana Arnold, Cara Juan Schuster, Velma Davis, Jaura Smallwood and Myrtle Steinbock.



The Brazilian palm species *Raphia taedigera* has leaves 70 feet long and 19 feet wide - the largest in the plant kingdom.

# JANUARY CLEARANCE SALE

## Final Reductions

Mens	Ladies
Big Bell, Sedgefield & Wrangler <b>Jeans</b> .....\$5 <sup>97</sup>	One Group <b>Handbags</b> .....\$4 <sup>97</sup>
Corduroy <b>Jeans</b> .....\$9 <sup>97</sup>	<b>Blouses</b> Values To 28.00.....\$9 <sup>97</sup>
Cotton & Poly-Cotton <b>Shirts</b> Values To 18.00.....\$4 <sup>97</sup>	<b>Dresses</b> Values To 68.00.....\$19 <sup>97</sup> Values To 45.00.....\$14 <sup>97</sup> Values To 35.00.....\$12 <sup>97</sup>
<b>Sweater</b> <b>Shirts</b> Values To 18.00.....\$7 <sup>97</sup>	Pant Suits, Coats & Large Sizes <b>50% To 75% off</b>
<b>Velour</b> <b>Shirts</b> Values To 40.00.....\$14 <sup>97</sup>	<b>Junior</b>
<b>Pants</b> Values To 37.50.....\$12 <sup>97</sup>	<b>Sweaters</b> Values To \$36.....\$9 <sup>97</sup>
One Group <b>Suits &amp; Sport</b> <b>Coats</b> Values To 155.00.....\$39 <sup>97</sup>	<b>Jeans</b> <b>&amp; Pants</b> Values To 32.00.....\$9 <sup>97</sup>
<b>Boys</b>	<b>Ladies Shoes</b>
Rob Roy <b>Shirts</b> .....\$3 <sup>97</sup>	Entire Stock <b>Boots</b> Values To \$85.....\$19 <sup>97</sup>
<b>Muleshirts</b> .....\$1 <sup>97</sup>	<b>Shoes:</b> Values To \$54.....\$19 <sup>97</sup> Values To \$36.....\$14 <sup>97</sup> Values To \$28.....\$9 <sup>97</sup>
Long Sleeve Terry & Velour <b>Shirts</b> Values To 19.00.....\$4 <sup>97</sup>	<b>Mens:</b> Values To \$36.....\$19 <sup>97</sup>
<b>Childrens</b>	
One Group <b>Lingerie</b> Values To 16.00.....\$4 <sup>97</sup>	
One Group Danskins Values to 24.00 <b>Leotards &amp; Skirts</b> .....\$4 <sup>97</sup>	
<b>Dresses</b> Martha Miniatures & Joni J's Values To \$50.....\$19 <sup>97</sup> Values To \$36.....\$14 <sup>97</sup>	

## Our January Clearance Sale

Is Still In Progress

We still have a great selection to choose from!

### Albertson's Shop For Men

228 Main 272-3000

## Luncheon Menu

Starts Tuesday, Jan. 20

<p><b>Sandwiches</b> French Dip Aujus Hot Steak Steak On Bun Bacon, Lettuce, Tomatoe Ham &amp; Cheese KL's Club KL's Burger W/Chips &amp; Pickles</p>	<p><b>Steaks</b> Chopped Sirloin Chicken Fried Steak, Small Rib Eye Dinner Steaks</p>
<p><b>Fish</b> W/Choice Of Potatoo &amp; Vegetable Of Day</p>	<p><b>Salad Bar With Above Menu \$1<sup>35</sup></b> Create Your Own Lunch At Salad Bar (Big Platter) <b>\$3<sup>25</sup></b></p>

## KL's Steakhouse

St. Clair's





FORMER MISS TRI COUNTY WINS CROWN..... Laura Ellis, center, a native of Friona and daughter of Mr. and Mrs. Bill Ellis, was crowned Miss Hurst-Euleess-Bedford last Saturday in a pageant at Euleess. Other finalists were, lower left, Gina Pounders; upper right, Lisa Skiba; upper right, Jo Shannon Baldwin and lower right, Missy Day.

TEXAS FORAGE PICTURE MIXED

Forage quality and quantity are mixed over Texas, but for the most part, quantity is down while quality is better than last year, says a range specialist with the Texas Agricultural Extension

Service, Texas A&M University System. This situation has been brought a-

Unbearable

A lot of people who want to carry the world on their shoulders can't even support themselves.

-Telescope, Belleville.

bout by drought conditions in late 1979 and through most of this year followed by September rains. These rains brought a lot of drought-stresses grasses back to life and caused an upsurge in quality, with protein content doubling and tripling in some cases.

Banks...

Cont. From Page 1

and at the end of December, 1980 were \$32,025,000. Loans at the bank decreased, however, and the December 1980 total was \$13,512,000 down \$657,000 from the \$14,160,000 on loan closing out 1979.

First National Bank reports total deposits on December 31, 1980 of \$27,298,506, up, \$1,917,465 from the

Pageant...

Cont. From Page 1

First runner up in the pageant was Lisa Skiba. Second runner up was Gina Pounders. Jo Shannon Baldwin was third runner up and Missy Day was fourth runner up. All of the other four finalists were vocalists.

In six pageant appearances, Laura's record shows three crowns, a second runner up (in the 1979 Miss Irish Rose Pageant at Shamrock) and top ten selection (Miss Wheatheart of the Nation, 1979). She also was in the top ten of the Maize Queen pageant during her junior year, the year prior to winning the pageant in her hometown, Friona.

A graduate of Friona High School, Laura spent a summer as a dancer in the "Texas" production at Palo Duro Canyon; and worked last fall as a dancer in the Southern Palace Show at Six Flags Over Texas.

Her other credits include "The Nutcracker" and "Stars Over Palo Duro Canyon" as a member of the Lone Star Ballet Troupe.

She is currently studying ballet with the Dallas Ballet Center.

\$25,381,041 reported at the same time in 1979. Loans at the bank also showed an increase of nearly \$2 million. Loans for First National Bank were \$16,276,660 closing out 1979, and on the last day of 1980 were \$18,153,086.

Figures from Sudan show the First National Bank there had a hefty increase in deposits. Deposits jumped by nearly one half during the year. Deposits at the bank in Sudan were \$6,212,910 on the final day of 1979, and by December 31, 1980, had increased to \$10,868,099, for an increase of \$4,655,189.

At the same time, loans increased by only \$137,374. Loans on December 31, 1979 were a total of \$1,476,768.

Friona State Bank reported an increase in deposits during the past year of \$1,193,793. Deposits at the bank in Friona on December 31, 1979 were \$35,181,298 and a year later on the last day of December, 1980, had increased to \$36,375,001. At the same time, loans increased over \$3 million with loans of \$19,662,748 to close out 1980 and at the end of 1979, the loans were \$16,368,736.

Citizens Bank of Earth show deposits of \$10,535,138 at the end of December, 1980 and closing out 1979, the deposits totaled \$8,580,315 for an increase of \$1,954,825.

Loans however, decreased almost a million at the bank in Earth, with loans of \$5,643,606 on December 31, 1980, compared to the \$5,838,041 at the end of 1979.

First State Bank in Bovina has a loss in deposits of \$3,764,310 during the past year, with deposits of \$6,771,690 closing out 1980, compared to the \$10,536,000 at the end of 1979. Loans at the bank increased by \$328,000 during the same period of

time, with loans of \$5,568,000 at the end of 1980, compared to the final 1979 figures of \$5,240,000.

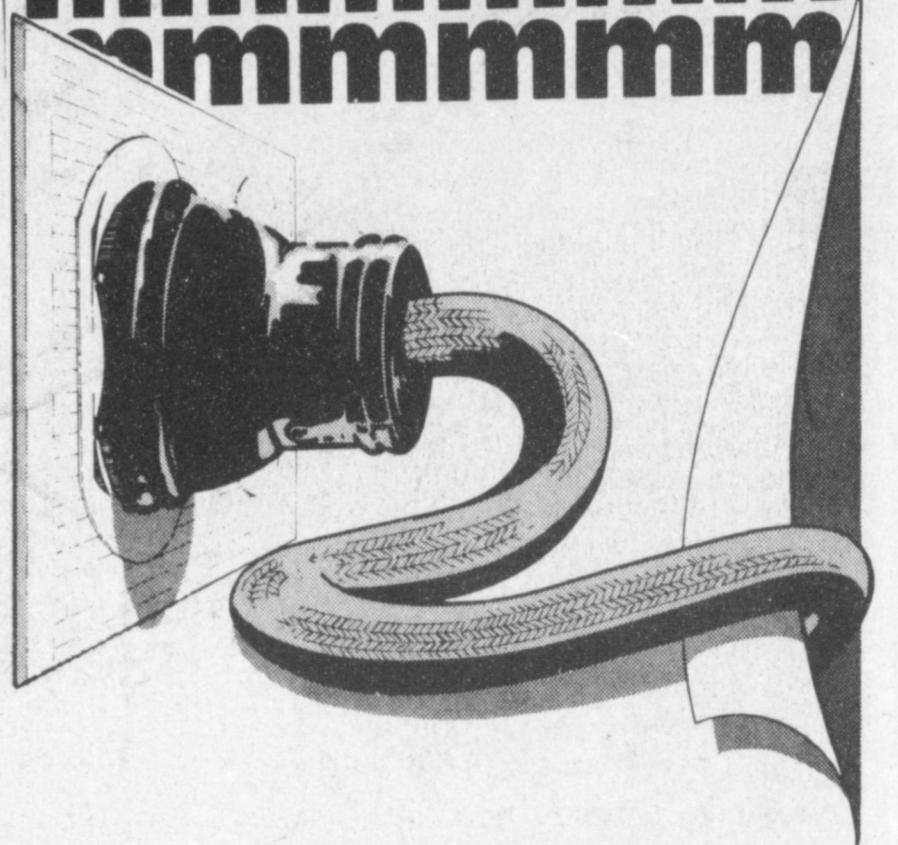
At Farwell, Security State Bank shows deposits of \$18,602,807 to close out 1980 and 1979 final figures of \$19,297,831, for a decrease of 695,024 in deposits during the past year. The drastic reduction in

Farwell, was in loans by the bank. Loans at the end of December, 1980 were down \$1,038,759 from the previous year. Loans on the final day of December 1980 were \$8,791,254 and on the last day of December, 1979 were a total of \$9,830,013.

Morton's First State Bank recorded a slight increase of \$765,814 in de-

posits during the year, with deposits shown on December 31, 1980 of \$22,723,885 and on December 31, 1979, deposits were \$21,958,071. Loans at the bank decreased during the year, with loans of \$5,790,651 at the end of December 1980 and \$6,624,998 at the end of 1979.

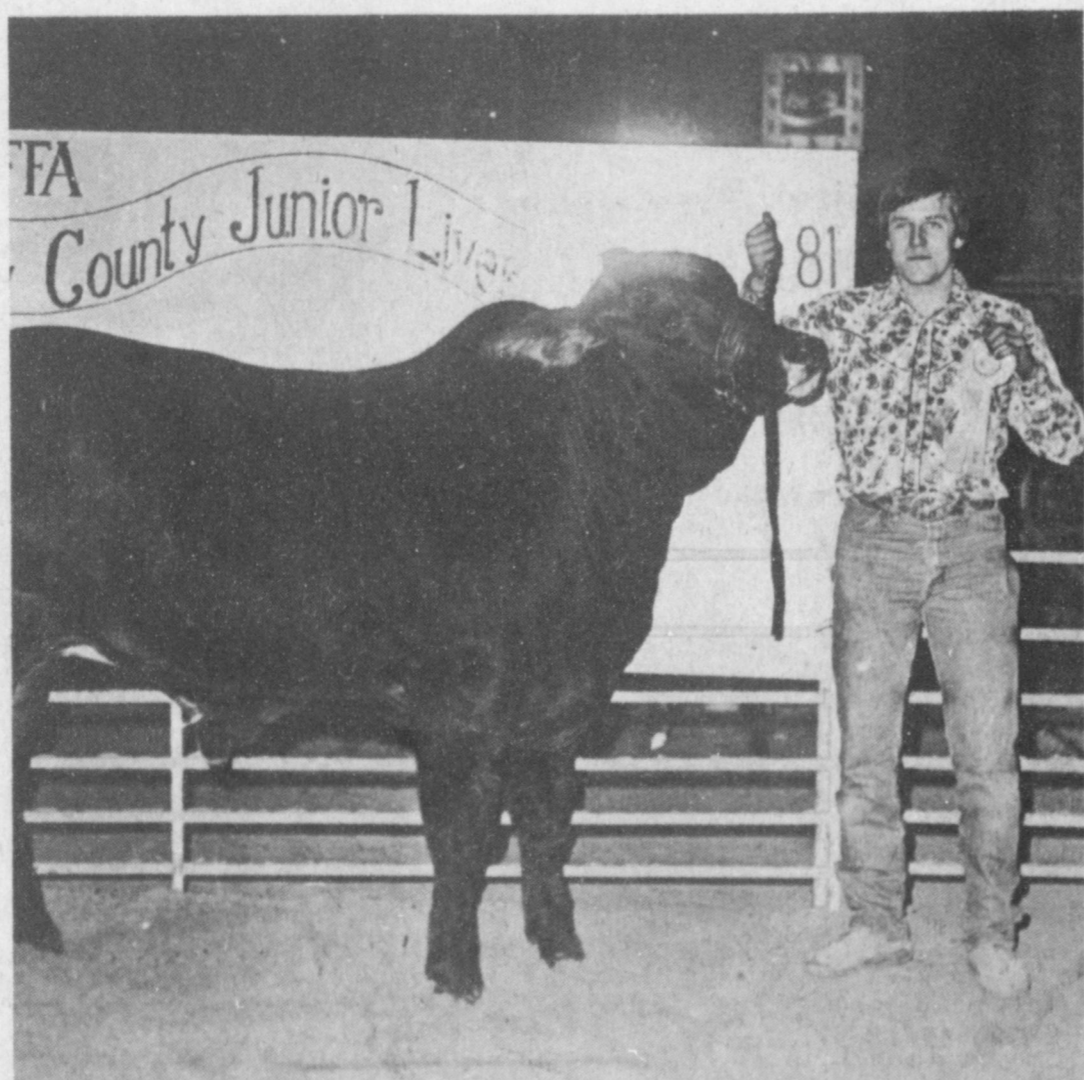
Listen To The Hum mmmmmmm mmmmmmm mmmmmmm



It's the sound of growth, prosperity and progress in the Southwest. It's the sound of the Southwest making a bigger and bigger contribution to our nation's economy. It's the sound of electricity. Electricity that surrounds us with opportunities and jobs, pride and security. And with proper use of our resources, and new power plants using efficient, reliable fuels like coal, that sound is going to keep right on humming.



Congratulations



RESERVED BREED CHAMPION--Greg Harrison is shown here with his American Cross Steer which won Reserve Breed Champion at the Bailey County Livestock Show. Greg is the son of Mr. and Mrs. Donald Harrison of Muleshoe.

John's Custom

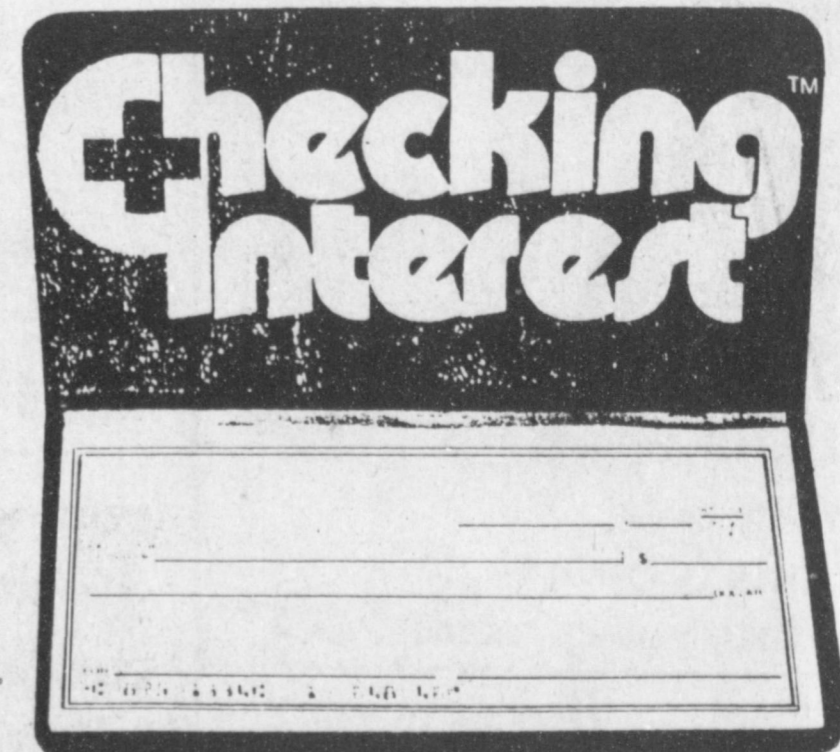
Earn 5 1/4% Interest on All Your Money.

Now you can earn 5 1/4% interest on all your money and get free checking with our new Checking Plus Interest account. So you get a checking account just like you're used to and you earn interest besides.

If you save one place and bank at another, combine all your money into our new Checking Plus Interest account. Your money earns more. And you never need another account anywhere else.

To earn interest on all your money and get free checking, just keep a \$500 balance in your Checking Plus Interest account. If your balance falls below \$500 there is a monthly service charge.

We're helping you build a better tomorrow. With Checking Plus Interest that's best for your money today.



We still pay 5 1/2% regular savings!

Tri-County SAVINGS AND LOAN ASSOCIATION

MULESHOE 806/272-5527 FRIONA 806/247-3984 LITTLEFIELD 806/385-5149 FARWELL 806/481-2727



**Nursing Home News**  
By Joy Stancell

Friday afternoon Mr. Gilliland took the resident for a ride on the Sr. Citizen's bus. They went by Alma Henley's house, the Gasahol Plant at Progress and looked at the wheat fields, cattle, homes in the country northwest of Muleshoe. They stopped by the Dairy Queen for an ice cream cone. Residents going on the ride were Annie Brown, Rosemary

Pool, Ora Roberts, Charlie Garth, Russ Duncan, Marie Patton, Alma Henley, Chellie Bradley, W. W. Parker, Lura Northcutt, Marie Engram, Jose Garcia.

Friday morning in crafts the residents made a snow scene in a jar. Residents participating were, Ora Roberts, Grace Kemp, Rosemary Pool, Charlie GARTH\* Marie Engram, Edith Bruns, Maggie London, Alma Henley.

Sunday morning E. B.

Wilson came to have Bible Study with the residents. Residents attending were W. W. Parker, Lura Northcutt, Dottie Wilterding, Maggie London, Ora Roberts, Marie Patton, Russ Duncan, Edith Bruns, Archie Scarlett, Lottie Hall, Charlie Garth, Marie Engram.

Sunday afternoon the Circle Back and Needmore Singers came to sing to the residents. Residents attending were, Alma Shofner, Dottie Wilterding, Edith Bruns, Grace Kemp, Ora Roberts, Alma Henley.

Bulah Connell, Lottie Hall, Annie Brown, Maggie London, Bertie Hendrix, Archie Scarlett, Marie Patton, Russ Duncan, Charlie Garth, Marie Engram.

Thursday afternoon Mrs. Connell's daughters brought a birthday cake and ice cream in honor of Mrs. Connell's 91st birthday. They served it to the residents and visitors playing dominoes in the day room. The visitors were, C.W. Wilhite, Maud Kersey and Wayne Marlow. Residents were Ora Roberts, Charlie Garth, Marie Engram, Bertie Hendrix, Alma Henley, Russ Duncan. Other residents that were served were Annie Brown, Marie Patton, Lura Northcutt, Emmitt Dean, Archie Scarlett and Lottie Hall.

Tuesday the nursing home and hospital Auxiliary came to shampoo and set the residents' hair. About 22 ladies had their hair done.

Friday afternoon Mr. J. C. Shanks came to give the men hair cuts.

Friday the Spudnut Shop brought Spudnuts to the nursing home for the residents. We really do thank them for the delicious Spudnuts.

Lela Ann Smith fixed the January birthday bulletin board for the nursing home.

January 22 will be our monthly birthday party hosted by the Needmore Community Club. We have one resident having a birthday. She is Bulah Connell. She was 91 on the 8th of January.

We have a new resident.

She is Lena Noble. She was born in Texas August 19, 1888. She is a Methodist.

Alma Henley, Ora Roberts, and Russ Duncan are members of our Welcoming Committee. They welcome new residents to the nursing home.

Alma Henley and Ora Roberts take walks together. They get a lot of exercise.

Tuesday Rex and Betty came to visit Willie Steinbock.

Mrs. Shofner is visited several times a week by her family.

Rosemary Pool and her mother went shopping Tuesday afternoon.

Sena Buhrman was visited by Melba Kline and Margaret Buhrman, and Bill and Gladys Maddox.

Dottie Wilterding was visited by Mildred Head and JoAnn Head.

Lula Embry was up walking Tuesday morning with her son, Joe, and her husband.

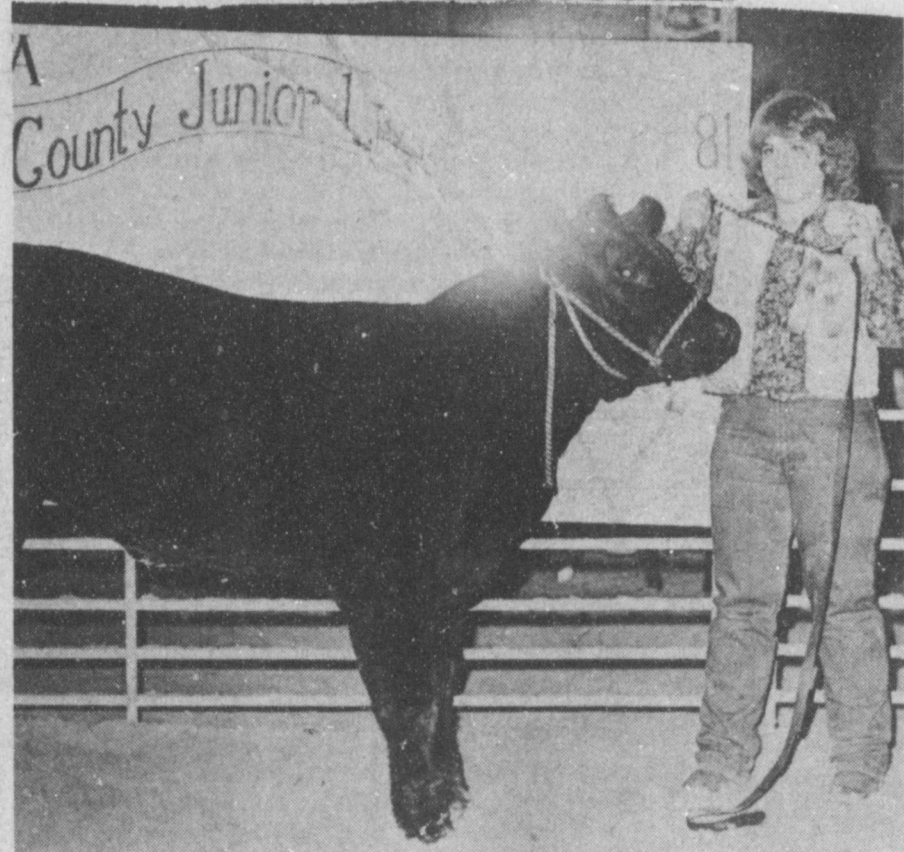
**Congratulations**



BREED CHAMPION---Jay Gleason is shown here with his American Cross Steer which won Breed Champion at the Bailey County Livestock Show. Jay is the son of Dr. and Mrs. Jerry Gleason of Muleshoe.

**Watson Alfalfa Inc.**

**Congratulations**



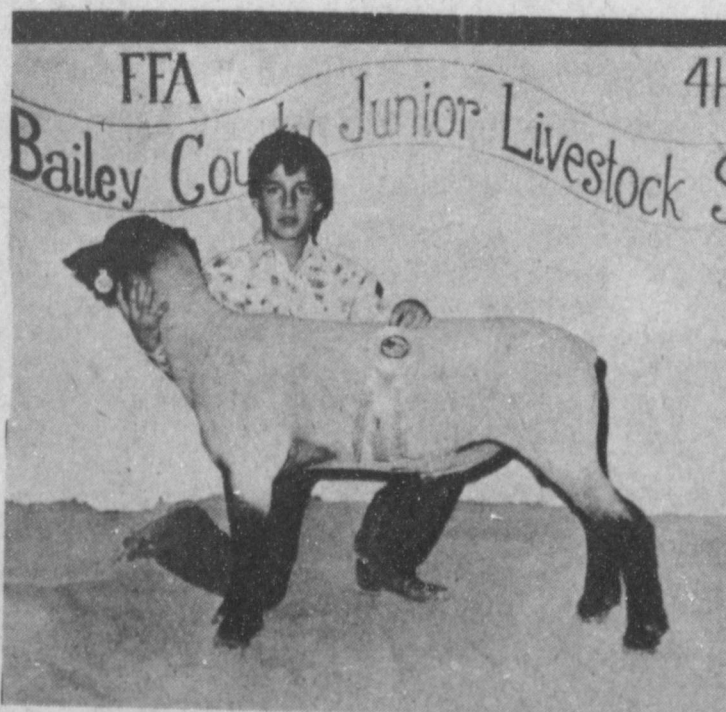
BREED CHAMPION---Staci Kirby is shown here with her Heifer which won Breed Champion at the Bailey County Livestock show this past week. She also won Reserve Breed Champion with her Pure Bred Steer. Staci is the daughter of Mr. and Mrs. Reuel Kirby of Three Way.

**ee's WESTERN WEAR**

**Congratulations**



GRAND CHAMPION---Mitzi Robertson is shown here with her Heavy Weight Fine Wool Cross Lamb which won Breed Champion and Grand Champion at the Bailey County Livestock Show. Mitzi also won Breed and Grand Champion with her Medium Wool Lamb. Mitzi is the daughter of Mr. and Mrs. Darwin Robertson of Three Way.



FIRST PLACE WINNER---Kelly Overman is shown here with his Lightweight Fine Wool Cross Lamb which won First Place at the Bailey County Livestock Show. Kelly is the son of Mr. and Mrs. Berle Overman of Muleshoe.

**Claunch Gin**

**Report Of Condition**

**Muleshoe State Bank**

LEGAL TITLE OF BANK

MULESHOE STATE BANK

CITY	COUNTY	STATE	ZIP CODE
MULESHOE	BAILEY	TEXAS	79347
STATE BANK NO.	FEDERAL RESERVE DIST. NO.	CLOSE OF BUSINESS DATE	
1631	11	December 31, 1980	

ASSETS

	Mil.	Thou.
1. Cash and due from banks	4	496
2. Due from other depositories and all cash items in the process of collection		546
3. U.S. Treasury securities	3	803
4. Obligations of other U.S. Government agencies and corporations		3 010
5. Obligations of States and political subdivisions in the United States	4	179
6. All other securities		None
7. Federal funds sold and securities purchased under agreements to resell	5	550
8. Total loans (including overdrafts totaling \$ 99m) (From Schedule A, Item 8)	13	512
9. Lease financing receivables		None
10. Bank premises, furniture and fixtures, and other assets representing bank premises		488
11. Real estate owned other than bank premises		72
12. Letters of credit and customers' liability on acceptances outstanding		43
13. All other assets		984
14. TOTAL ASSETS (sum of items 1 thru 13)	36	683

LIABILITIES

15. Demand deposits of individuals, partnerships, and corporations	10	410
16. Time and savings deposits of individuals, partnerships, and corporations	18	912
17. Deposits of United States Government		699
18. Deposits of States and political subdivisions in the United States	1	409
19. Due to banks		None
20. All other deposits		None
21. Certified and officers' checks		595
22. Total Deposits (sum of items 15 thru 21)	32	025
a. Total demand deposits	11	637
b. Total time and savings deposits	20	388
23. Federal funds purchased and securities sold under agreements to repurchase		None
24. Interest-bearing demand notes issued to the U.S. Treasury and other liabilities for borrowed money		209
25. Mortgage indebtedness for which the bank is directly liable		45
26. Unearned discount on loans		88
27. Letters of credit and acceptances outstanding		43
28. All other liabilities		878
29. TOTAL LIABILITIES (excluding subordinated notes and debentures) (sum of items 22 thru 28)	33	288
30. Subordinated notes and debentures		None
31. Allowance for possible loan and investment losses		502

EQUITY CAPITAL

32. Common stock (No. of shares outstanding 50,000)	1	000
33. Certified surplus	1	000
34. Undivided profits		893
35. Uncertified surplus, reserve for contingencies, and other capital reserves		None
36. TOTAL EQUITY CAPITAL (sum of items 32 thru 35)	2	893
37. TOTAL LIABILITIES AND EQUITY CAPITAL (sum of items 29, 30, 31 and 36)	36	683

NOTE: This report must be signed by an authorized officer and attested by not less than three directors other than the officer signing the report.

I, the undersigned officer, do hereby declare that this Report of Condition (including the supporting schedules) has been prepared in conformance with the instructions and is true to the best of my knowledge and belief.

SIGNATURE OF OFFICER AUTHORIZED TO SIGN REPORT: Robert Montgomery, AREA CODE/TELEPHONE NO. 806 272-4561, DATE SIGNED 1-9-81

NAME AND TITLE OF OFFICER AUTHORIZED TO SIGN REPORT: Robert Montgomery, Vice Pres. & Cashier

We the undersigned directors, attest the correctness of this Report of Condition (including the supporting schedules) and declare that it has been examined by us and to the best of our knowledge and belief has been prepared in conformance with the instructions and is true and correct.

SIGNATURE OF DIRECTOR: [Signatures]



State of Texas, County of Bailey, Sworn to and subscribed before me this 9th day of January, 1981. My commission expires January 31, 1985. Notary Public.



## EDITORIAL

### The 97th

The 97th Congress, split-control legislative branch for the first time in many decades, has an awesome responsibility to the American people. Whether it can meet that responsibility is a critical question, and the better-educated public will be watching events on Capitol Hill closely in the first months of 1981.

Americans elected a more conservative membership to Congress in November because they saw that economic conditions in the U.S. were chaotic and, to many, ruinous. They were dissatisfied with President Carter and with Democrat congresses over the past twenty-odd years, which almost invariably spent more than the nation could afford.

A Republican president and administration, plus a Republican Senate, now must do what it can about that. With a Democrat-controlled House, it may be difficult. The first few months will be decisive.

President Reagan, who takes office on the 20th, fifteen days after the opening of the 97th Congress, deserves the cooperation of all Americans, Republican and Democrat alike, in getting the economy righted, the dollar strengthened and inflation curbed.

Whether or not one agrees totally with all his approaches, and this applies more to Democrats than to Republicans, in the interests of the nation, his programs deserve a trial.

Surely we have failed long enough with the old programs and policies—and something must now be done. Mr. Reagan is president and leader of all the people, for better or worse, and his leadership must now have a chance to succeed.

The 97th Congress will make or break the Reagan presidency. The American electorate, as frequent polls show, have less respect for Congress than for the executive branch. Therefore, it behooves members of the 97th Congress to responsibly cooperate in a joint effort to give the nation a new direction and a chance to restore itself, economically and militarily.

### Drive Defensively

Recent studies indicate there is more reason to cultivate the art of driving defensively than has been realized. These studies indicate some alcoholics and drug addicts are bent on self destruction, and are inclined to destroy others in the process.

There are other indications some seek sympathy and attention in automobile accidents. Another large percentage of accidents is caused, of course, by stupid or careless driving. Whatever the cause or motivation of the driver at fault, it is becoming clear that drivers who wish to avoid accidents must practice the art of defensive driving—seeking to avoid situations in which another driver can involve them in an accident.

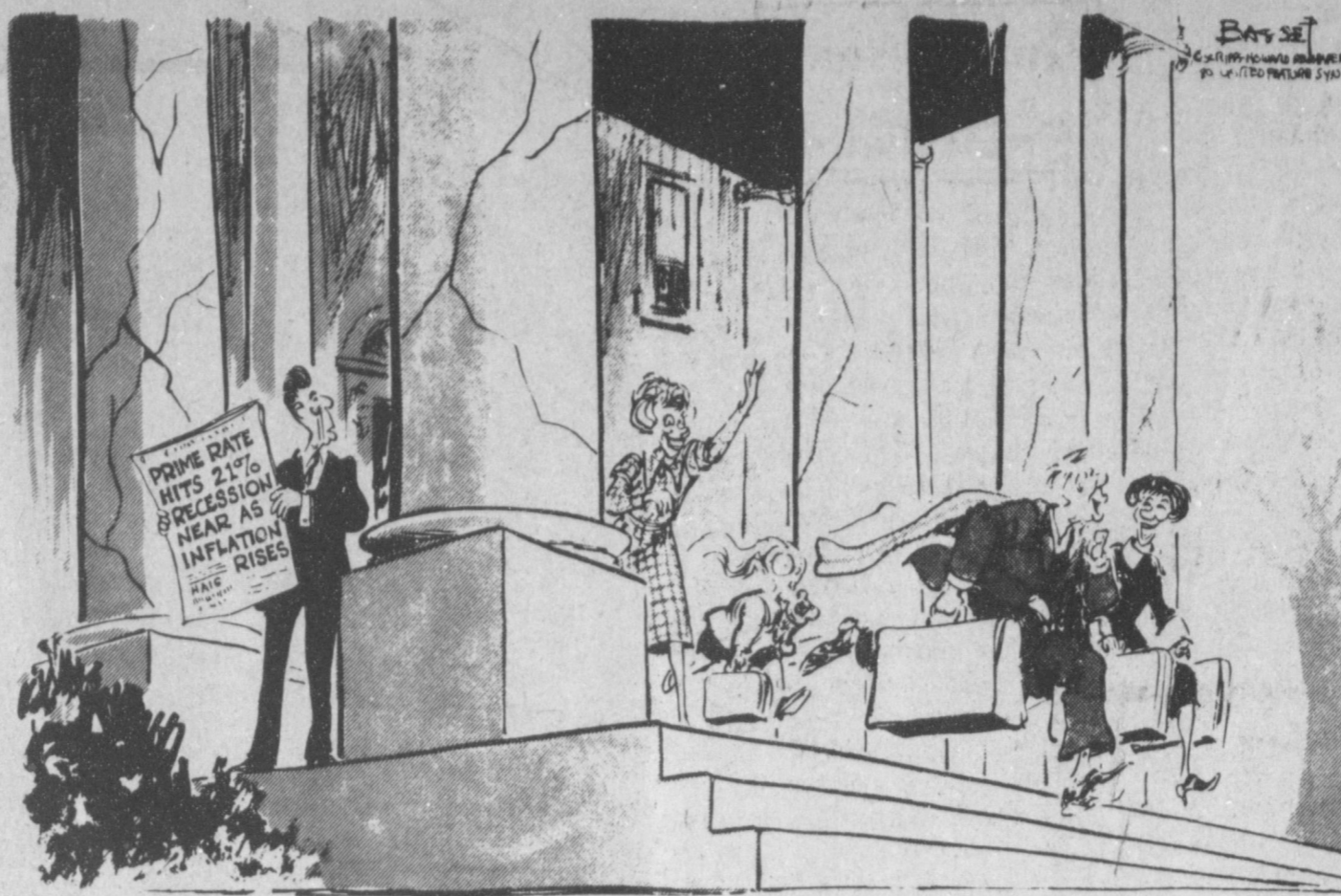
It's not possible to avoid all such situations. But an alert defensive attitude, foresight, and precaution can avoid a good percentage of these situations—and perhaps save your life.

### NINE-DIGIT ZIP CODE

The Postal Service said recently it will delay until June plans to begin implementing a controversial nine-digit zip code so that people can learn how to use it.

### GREECE JOINS

LONDON -- Greece joins the European Economic Community recently, becoming the Common Market's 10th member and spearheading a new phase of expansion toward the south.



"ACTUALLY, MOVING OUT EARLY ISNT SUCH A BAD IDEA"



## The Speaker Reports



by Bill Clayton

AUSTIN—Services for the deaf, for the physically handicapped, and for senior citizens will be among the topics of legislation in the area of Human Services to be considered by members of the 67th Legislature.

Several bills concerning services to the deaf have been pre-filed for this upcoming session. One of these deals with the placement of telecommunications devices in state agencies and institutions. These devices would provide for an efficient and effective means of communication with the deaf citizens of Texas. According to the provisions of another piece of legislation, direct services to the deaf would be provided, including interpreter services, information and referral services, and advocacy services. A third pre-filed bill concerning

deaf Texans provides for the attendance of deaf students at outdoor recreational programs.

Parking spaces for the physically handicapped is the subject of other legislation. A bill has been filed that would allow the issuance of parking permits for permanently disabled persons. The permit would provide for them to park on public property for unlimited periods in a parking space designated specifically for the physically handicapped.

The needs of elderly Texans are considered in legislation providing that senior citizens be able to purchase lunch in a school cafeteria for the same price as that charged a school employee. This legislation is designed to offer elderly men and women a well-balanced hot lunch for a reasonable price.

The described pieces of legislation plus many more will be considered during the legislative session that begins on January 13. I will

appreciate your input on this proposed legislation or on any other topics of concern to you.

## WASHINGTON NOTES

### VETERANS & DIVIDEND

Nearly 4 million veterans of the two world wars and Korea who have kept their GI life insurance in force will automatically share in a record \$619 million dividend next year. Veterans Affairs Administrator Max Cleland announced recently.

### BURGER & WORKLOAD

Chief Justice Warren E. Burger is calling on Congress to change "the haphazard way" it creates federal judgeships, arguing that the present method only adds to the problem of too great a workload for each judge.

### REAGAN'S 1ST VISITORS

British Prime Minister Margaret Thatcher and King Juan Carlos and Queen Sophia of Spain will be Ronald Reagan's first official foreign visitors in the White House, it was announced recently.

### ON ECONOMIC INDEX

The government's index of leading indicators recently forecast a brighter new year for the economy than many experts have been expecting. The index, which is supposed to be a barometer of future economic activity, rose 1.2 percent in November, the sixth consecutive monthly increase, the Commerce Department announced.

### AIRLINES & SAFETY

The nation's scheduled trunk and local-service airlines in 1980 posted the lowest number of fatal accidents and deaths in the modern aviation era—a single crash that killed 13 people, the government reported.

### ON CRIME

New York City, Los Angeles and Miami posted a record number of murders in 1980, leading more than a dozen major American cities where violent death was on the upswing.

## CAPITOL UPDATE

John Tower  
U.S. SENATOR for TEXAS  
142 RUSSELL OFFICE BUILDING  
WASHINGTON, D.C. 20510



Although the twin problems of inflation and unemployment loom large before us, the minimum wage rose from \$3.10 to \$3.35 an hour Jan. 1.

That increase, though nobly intended, will only make both problems worse.

The latest of the increases mandated by legislation passed in 1977 means that the minimum wage has increased by 46 percent since that year. A U.S. Chamber of Commerce study concluded that for every 20 percent increase in the minimum wage, 880,000 job opportunities are lost — either existing jobs abolished or the failure of new job opportunities to present themselves.

Common sense tells us that if business costs increase, only two things can happen: Ways can be sought to cut those costs, or prices must be increased to compensate. Either way, Americans on the lower end of the income spectrum lose. They lose job opportunities, and they feel more keenly the ravages of inflation than people who have more discretionary income.

Especially hard hit are teenagers. With the unemployment rate in the 16-to-19-year-old age bracket running between 15 and 20 percent — and over 50 percent among minority youths in some cities — we must find a way to put these willing workers into jobs.

Yet, it is unrealistic to expect businesses to hire untrained, even immature, workers if we require them to pay wages at a higher level than their productivity justifies. Young people find themselves in the treadmill of not being able to find work because they have no experience, and not being able to gain experience because they can't find jobs.

The best way out of this quagmire is to institute a "Youth Opportunity Wage." This youth differential in the minimum wage would allow businesses to pay teenage workers a slightly lower amount, making it economically possible to create new jobs or place these less productive workers into existing jobs.

When they have gained maturity and skills, they will be able to work at the higher adult minimum wage, or, more likely, move above that level.

Would the youth differential throw older workers out of jobs? No. Mature workers are more productive and well worth the difference in pay. Further, most of the jobs in our economy require some measure of skill or experience and thus could not be filled by the young workers who would be covered by the differential. In fact, the number of workers above the age of 20 employed in minimum wage jobs is a minimal percentage of the workforce.

If we are serious about helping our fellow citizens, we must look for workable solutions. Is it better to be unemployed, or to have the satisfaction, and income, that comes from working? The question before us is that simple. Congress must realize it does not work in a vacuum. Every action we take affects the lives of every American and the economic well-being of our nation. We have a sacred obligation to remember that and act accordingly, rather than to legislate through wishful thinking.

# SAVE YOUR SHOES ....



*Let Our Classified Pages  
Do The Walking For You.*

Take off your shoes and relax while you look through the classified pages of our newspaper. If you want a job, or someone to fill that job, or want to buy, rent or sell anything from aardvarks to zeppelins, chances are that you'll find whatever you're looking for in our classified pages. Our classified pages do the walking for you—and get results — for those who are looking as well as those who advertise.

**272-4536**

*Deadline: Tuesday & Friday 11:00 a.m.*

# Muleshoe & Bailey County Journals



### Three-Way Menu

January 19-23  
MONDAY  
BREAKFAST

Cereal, Juice, Milk  
LUNCH

Chicken Enchiladas  
Corn  
Tossed Salad  
Milk  
Peaches

TUESDAY  
BREAKFAST

Cinnamon Toast, Juice,  
Milk

LUNCH

Pig in the Blanket  
Green Beans  
Mashed Potatoes  
Milk

WEDNESDAY  
BREAKFAST

French Toast, Milk, Juice  
LUNCH

Fish with Tarter Sauce  
Green Peas  
Mashed Potatoes  
Hot rolls

Milk  
Honey

THURSDAY  
BREAKFAST

Bacon & Eggs, Biscuits,

Milk, Juice

LUNCH

Pinto Beans  
Macaroni & Cheese  
Spinach  
Cornbread  
Milk  
Cake

FRIDAY  
BREAKFAST

Pancakes, Syrup, Milk,  
Juice

LUNCH

Hamburgers with Cheese  
French Fries  
Onions, Tomatoes, Pickles  
Milk  
Cookies

### Enochs News By Mrs. J.D. Bayless

The Baptist Women met for their Mission program with Mrs. Buford Peterson leading the opening prayer, Mrs. J.W. Layton was in charge of the program, "Black and White Relationship, the Tie That Binds" taken from the Royal Service with Mrs. Mike Heady, Mrs. Dale Nichols, Mrs. J.E. Layton, and Mrs. E.N. McCall taking parts on the program. Mrs. Peterson gave the call prayer, read Gen. 2:1-17 and Mrs. J.D. Bayless led in prayer for the missionaries and benediction.

Mrs. Mammie Adams visited Mrs. L.L. Roundtree of Rt. 2 Morton Sunday afternoon.

### West Plains Medical Center Report

ADMITTED  
January 12, Virgie Harding  
January 13, Connie Heady, Alice Dominguez, Willie Burford, Ann Dollar, Fred Horn  
January 14, Gary Garrett, Wayne Spears  
January 15, Cynthia Tuiroga

DISMISSED  
January 12, Nita Love and baby boy, Kami Powers, A.G. Taylor, Hilda Wright  
January 13, Gloria Olivarez and baby boy, Sallie Schuster, Aline Locke, Mariana Murillo, Charla Cooper and baby boy, Cammie Blain, Maria Bautista  
January 14, Elvia Luga, Minnie Kimbrough, Irene Hutton, Connie Heady and baby girl

Rev. and Mrs. Mike Heady of Enochs are the proud parents of a daughter, Kari Leann, born Tuesday Jan. 13 at 2:30 a.m. in the West Plains Medical Center in Muleshoe. She weighed 7 lbs. 8 ozs., and was 18 inches long. She has a brother Travis, who is 6 years old. Grandparents are Mr. and Mrs. L.P. Heady and Mr. and Mrs. T.M. Cardwell Jr. all of Aledo, Texas.

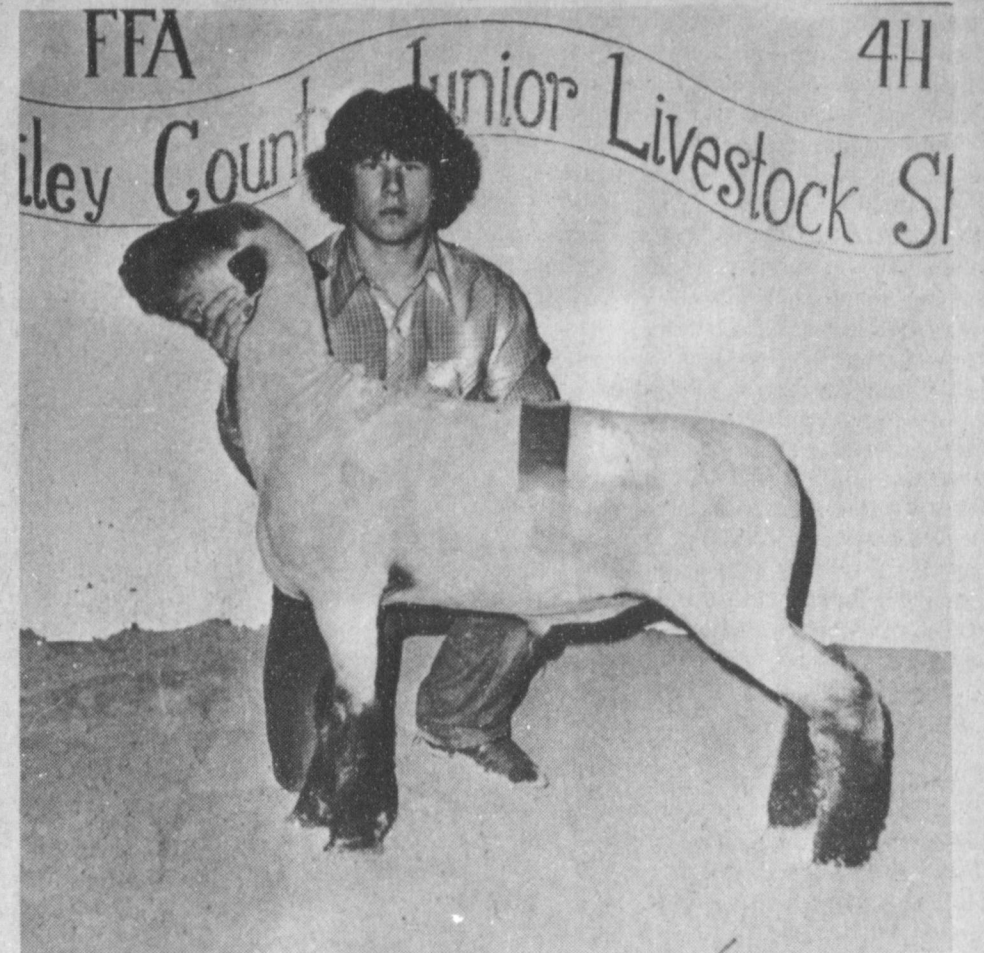
Mrs. T.M. Cardwell of Aledo came Tuesday evening at 7:00 p.m. to care for her new granddaughter, Kari Leann.

Bobbie Adams and Mrs. H.O. Huff from our area attended Mr. W.L. Key's funeral.

Mrs. Winnie Byars returned home last Saturday p.m. after spending a week at the home of her son, Tom Byars to care for the grandchildren while their mother, went to an aunts funeral.

L. G. Fred of Morton a former resident of Enochs underwent surgery in Lubbock, Monday.

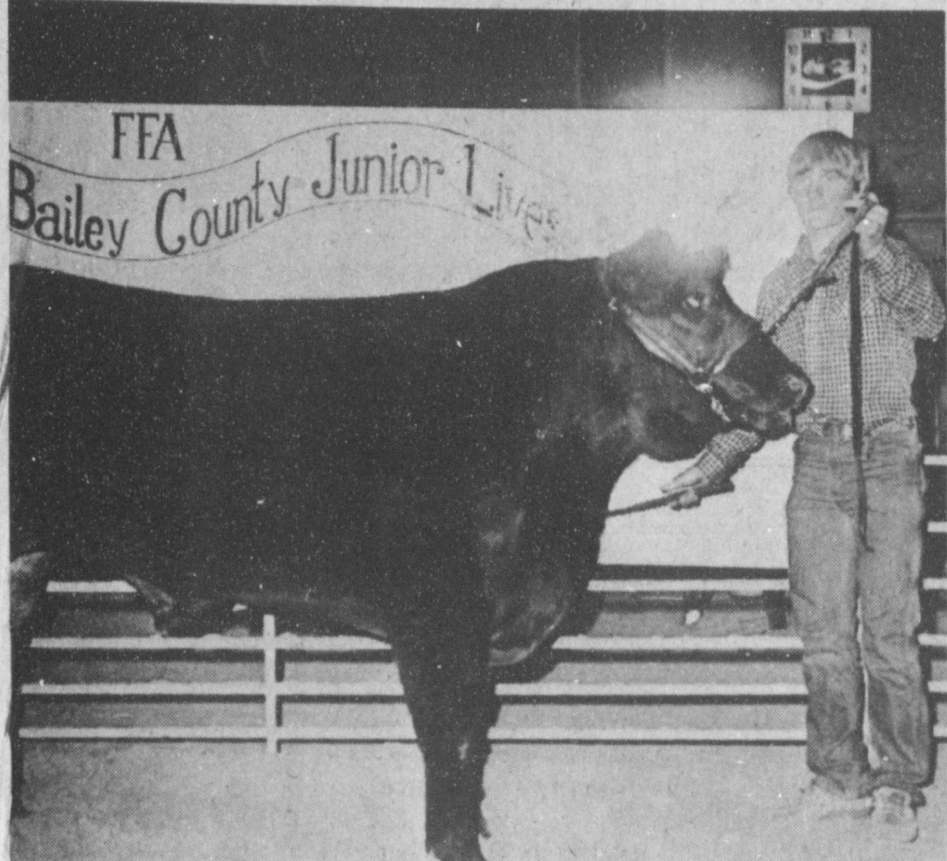
## BEST WISHES



FRIST PLACE WINNER--Steve Roberts is shown here with his Light Middle Weight Medium Wool Lamb which won First Place at the Bailey County Livestock Show. Steve is the son of Mr. and Mrs. Burley Roberts of Enochs.

## Production Credit Assn.

## Congratulations



FIRST PLACE WINNER--Jimmy Gleason is shown here with his Heavy Weight Cross Breed Steer which won First Place at the Bailey County Livestock Show. Jimmy is the son of Dr. and Mrs. Jerry Gleason of Muleshoe.

## Muleshoe Livestock Auction

## Congratulations



RESERVE GRAND CHAMPION--Alan Harrison is shown here with his light weight Cross Breed Steer which won Reserve Grand Champion of its class and Reserve Grand Champion at the Bailey County Livestock show. Alan is the son of Mr. and Mrs. Ted Harrison of Muleshoe.

## Muleshoe Co-op Gins

## First National Bank Report of Condition

### REPORT OF CONDITION

Consolidating domestic subsidiaries of the

First National Bank of Muleshoe, Texas, at the close of business on 12-31, 1980  
published in response to call made by Comptroller of the Currency, under title 12, United States Code, Section 161.

Charter number 14745 National Bank Region Number 11

Statement of Resources and Liabilities		Thousands of dollars	
<b>ASSETS</b>			
Cash and due from depository institutions		4,482,463.17	
U.S. Treasury securities		None	
Obligations of other U.S. Government agencies and corporations		400,000.00	
Obligations of States and political subdivisions in the United States		4,593,767.94	
All other securities		39,000.00	
Federal funds sold and securities purchased under agreements to resell		1,100,000.00	
Loans, Total (excluding unearned income)	18,331,932.56		
Less: Allowance for possible loan losses	178,845.96		
Loans, Net		18,153,086.60	
Lease financing receivables		None	
Bank premises, furniture and fixtures, and other assets representing bank premises		1,178,406.87	
Real estate owned other than bank premises		None	
All other assets		1,072,045.53	
<b>TOTAL ASSETS</b>		<b>31,018,770.11</b>	
<b>LIABILITIES</b>			
Demand deposits of individuals, partnerships, and corporations		10,228,607.74	
Time and savings deposits of individuals, partnerships, and corporations		15,303,251.04	
Deposits of United States Government		39,861.63	
Deposits of States and political subdivisions in the United States		1,309,728.20	
All other deposits		25,000.00	
Certified and officers' checks		392,058.31	
Total Deposits		27,298,506.92	
Total demand deposits		11,042,977.33	
Total time and savings deposits		16,255,529.61	
Federal funds purchased and securities sold under agreements to repurchase		None	
Interest-bearing demand notes (note balances) issued to the U.S. Treasury and other liabilities for borrowed money		None	
Mortgage indebtedness and liability for capitalized leases		None	
All other liabilities		623,172.88	
<b>TOTAL LIABILITIES (excluding subordinated notes and debentures)</b>		<b>27,921,679.81</b>	
Subordinated notes and debentures		None	
<b>MEMORANDA EQUITY CAPITAL</b>			
Preferred stock	No. shares outstanding	None	(par value) None
Common stock	No. shares authorized	50,000.00	
	No. shares outstanding	50,000.00	(par value) 500,000.00
Surplus		800,000.00	
Undivided profits and reserve for contingencies and other capital reserves		1,797,090.29	
<b>TOTAL EQUITY CAPITAL</b>		<b>3,097,090.29</b>	
<b>TOTAL LIABILITIES AND EQUITY CAPITAL</b>		<b>31,018,770.11</b>	
<b>MEMORANDA</b>			
Amounts outstanding as of report date:			
Standby letters of credit, total		None	
Time certificates of deposit in denominations of \$100,000 or more		3,151,000.00	
Other time deposits in amounts of \$100,000 or more		None	
Average for 30 calendar days (or calendar month) ending with report date:			
Total deposits		25,700,169.92	

We, the undersigned directors attest the correctness of this statement of resources and liabilities. We declare that it has been examined by us, and to the best of our knowledge and belief is true and correct.

Ted Barnhill  
Vice President & Cashier

/s/ M. D. Gunstream  
/s/ Tommy Gunstream  
/s/ Frank H. Ellis, Jr.

Directors

of the above-named bank do hereby declare that this Report of Condition is true and correct to the best of my knowledge and belief.

January 15, 1980





# MULE'S TALE

Editor: Michelle Agee

Official Publication of Muleshoe High School Written and Edited by Students of the Muleshoe Schools



Sunday, January, 18, 1981

Volume 16, No. 16

## Calendar Of Events

Monday, January 19 -- Freshman Basketball with Friona 5:00 Boys here, Girls there  
 Tuesday, January 20 -- J.V. and Varsity Girls' basketball - Olton - here - 6:30  
 Friday, January 23 -- J.V. and Varsity Girls Basketball - Littlefield - there - 6:30; J.V. and Varsity Boys basketball - Channing - there - 6:30  
 Saturday, January 24 -- Floydada Speech Tournament

## Annual Sales

The 1981 yearbook is now on sale. A yearbook can be purchased from any member of the Muletrain Staff. Regular yearbooks sell for \$13.65, and a personalized copy with a plastic cover sells for \$15.75. The last day for purchasing a yearbook is February 13. Anyone desiring a yearbook should purchase it before the deadline because no extras will be ordered.

Members of the Muletrain Staff are Michelle Agee, Lavon Rhodes, Susie Pierce, Jan Whitt, Trinidad Lopez, Brad Poyner, Curtis Wheeler, Lynnette Shafer, and Keva Roming.

## Muleshoe School Lunch

January 19-23  
**MONDAY BREAKFAST**  
 Milk, Cereal, Fruit  
**LUNCH**  
 Milk  
 Steaks & Gravy  
 Creamed Potatoes  
 Green Beans  
 Hot Rolls  
 Fruit  
**TUESDAY BREAKFAST**  
 Milk, Honey Buns, Juice  
**LUNCH**  
 Milk  
 Hamburgers  
 Lettuce & Tomatoes  
 Pickles & Onions  
 Tater Tots  
 Fruit Cobbler  
**WEDNESDAY BREAKFAST**  
 Milk, Toast, Jelly, Fruit  
**LUNCH**  
 Milk  
 Hot Dogs  
 Vegetable Soup  
 Crackers  
 Fruit Jello  
**THURSDAY BREAKFAST**  
 Milk, Honey Buns, Juice  
**LUNCH**  
 Milk  
 Hot Dogs  
 Vegetable Soup  
 Crackers  
 Fruit Jello  
**FRIDAY BREAKFAST**  
 Milk, Oatmeal, Toast, Fruit  
**LUNCH**  
 Milk  
 Turkey & Dressing  
 Griblet Gravy  
 Creamed Potatoes  
 English Peas  
 Hot Rolls

# Freshman Boys Basketball Highlights

## Employee - Employer Of The Month

For the month of January, HERO has selected Lori Butler and Lonnie Gibson as employee-employer of the month. Lori is an interp captain for speech and is active in drama. She is in the top ten high pointers in HECE. Lori participated in a recent bake sale, turning in the most profits for the sale. She is active and willing in all the chapter's functions.

Lonnie has been a professional photographer for the past seven years. He has now started a business of his own. He has been in business for himself for the past one and a half years. Lonnie is also president of the Optimist Club. HERO says thanks to Lonnie for the support he has shown our chapter.

## Senior Activities

Wednesday, January 14, the Senior Class Officers met in Mr. Johnson's room. They selected a Senior Invitations Committee to meet with Mr. Roger Pamprin Monday during second period. The committee will select the graduation invitations which will be ordered by the seniors sometime this month.

Members of the committee are Carroll Precure, Clifford Watson, Keva Roming, Carla Shafer, Diana Saldana, Mary Mata, Shelli Hawkins, Tammy Buckner, Felix Norman, and Johnny Puckett.

Thursday, January 15, the seniors measured for their graduation caps and gowns during their Civics classes. A \$10.00 deposit was required. A make-up day will be scheduled to measure those seniors who participated in the livestock show.

## Little Mules Whip Springlake-Earth 61-43

Monday night, January 12, the Mules whipped the Wolverines 61-43 in the Muleshoe High School Gym.

The first quarter action saw the Mules jump ahead 19-4.

Darin Shaw got seven points in the second quarter to pull the Mules further ahead 35-17.

The key shots by Preston Langford widened the lead in the third quarter 46-27.

The Little Mules did not slow up in the fourth quarter as they rang up 14 points to end the game 61-43.

John David Agee was named player of the week by Coach Duncan as he made 7 out of 8 free throws. Top scorers were Richie Richards and Darin Shaw with 15 points. Pres-

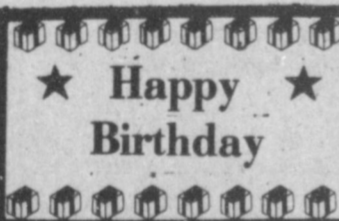


LONNIE GIBSON AND LORI BUTLER

## Seniors Struggling With Research Papers

English literature is studied throughout the year in English IV. The students now taking English IV, taught by Mrs. Johanna Wrinkle, are involved in writing a research paper which is one of the major emphasis of the class.

The students select a topic relating to English literature or English history. They then learn how to research the topic using both the high school and public libraries. They accumulate significant and varied material, then must limit the subject. This information is recorded on note cards to be used later



January 19 -- Rene Garcia, Renny Cox, Joe Bara, Kenny Chancey  
 January 20 -- Sharla Hawkins  
 January 22 -- Nora Rojas  
 January 23 -- Sharon Carpenter  
 January 25 -- Joe Lopez, Dana Smith, Thomas Sliger

to write the rough draft. This rough draft is refined, with careful attention to mechanics, into the final form. With it the students put footnote entries and an outline and bibliography.

A unique feeling of accomplishment is felt when this assignment is completed. Not only have the students been exposed to a vast number of new ideas through the process of writing the research paper that will aid the student in higher education.

## Bailey County Livestock Show Entries In

The annual Bailey County Livestock Show was held Thursday and Friday, January 15 and 16. Students were excused from classes Thursday and Friday to exhibit animals. Those FFA members who entered the County Show were Curby Brantley, Kellie Overman, Lynn Copley, Preston Langford, Darin Shaw, Casey Stewart, Michael Barrett, Mark Bell, Cheyenne Bickel, Joey Bruton, Lance Free, Craig Hunt, Pat Lefebre, Jack Martin, Rodney Mil-sap, Jeff Sisneros, Randall Stevens, Kay Lynn Prather, Devin Sisemore, Kim Farmer, Lee Free, Danny Seales, Tamara Gilliland, Todd Holt, Earl Parish, David Pruitt, Tyri Vandiver, Starla Black, Lynn Moore, Jim Overman, Brian Powell, and Johnny Puckett. The 4-H members who entered were Sherri Bessire, Alan Harrison, Kelly Harrison, Greg Harrison, Jimmy Gleason, Jay Gleason, Jacinda Gleason, Sharla Morrison, Delia Shaw, Jason Scoggin, Rhonda Dunham, Brenda Flowers and Wesley Rasco.

These students put in a lot of hard work feeding and preparing these animals for show. We would like to recognize all of these students for the several months of sacrifice in trying to produce a winning show animal.

## SMILES

**The Attraction**  
 Floorwalker: That customer was hanging around for a long time. What did he want to see?  
 Pretty clerk (coyly): "Me, sir."

**Word Picture**  
 Student in art class: "That, sir, is a cow grazing."

**Puzzled art teacher:** "Indeed, Whose is the present?"

\*\*\*\*

This week, the Mule's Tale Staff would like to highlight the Freshman Boys' basketball team. They are coached by Tom Duncan and have a record of 6 wins and 3 losses.

John David Agee is the son of John Neil and Sharon Agee. He is 14 years old and plays forward. His activities include FFA and athletics. He commented, "We have a great team with a lot of soul and rhythm. We have a great chance of winning district. Just call me Bubba J.!!!"

Mark Bell is the 15 year old son of Don and Barbara Bell. He plays post and is active in FFA and FFA. He commented, "We've got a great team!"

Cheyenne Bickel is the 14 year old son of Bennie and Helen Bickel. He plays forward and is active in FFA and FFA. He commented, "I think we have a good team this year."

## All-Region Band

On Saturday, January 10 band students tried out for All-Region Band. Sixteen students and one alternate were selected.

Seven out of 28 members of the clarinet section from Muleshoe. They are Tena Landers - 1st chair, Michelle Berry - 8th chair, Diana Saldana - 12th chair, Stacie Vandiver - 17th chair, Abby Soto - 20th chair, Frances Garza - 24th chair, and Diana Ramos - 28th chair.

Two out of six Alto Saxophones are from Muleshoe. They are Adam Laredo - 1st chair and Minerva Martinez - 3rd chair.

Other students making All-Region Band are Tenor Saxophone, Tracie Webb - 2nd chair; Cornet, Perry Flowers - 6th chair; French Horn, Dana Brewer - 2nd chair; Trombone - Laura Leal - 4th chair; Baritone, Eric Allison - 6th chair; Tuba, Tommy Carlson - 2nd chair; Timpani, Robert Nowlin - 1st chair; and Alternate Donna Horn - flute.

Congratulations to these students and to Mr. Charles Faulkner, Band Director, and to Miss Martha Anthis, Assistant Band Director.

## SEE UNCLE SAM FOR A PART-TIME JOB.

If you're in high school and at least 17, you can earn money for a part-time job in the Army Reserve. All it takes is one weekend a month and some summer training. You learn a valuable skill in fields such as auto mechanics or electronics. And the skill training and pay come in handy after graduation. For more information, call your Army Reserve representative, in the Yellow Pages under "Recruiting."



Preston Langford is the son of Robert and Patricia Johnson. He is 15 years old and plays forward. He enjoys agriculture and wood-working. He commented, "I believe that our team has good spirit and intentions. I think that even if we lose, we still win!"

Dennis Ruthardt is the 16 year old son of Mr. and Mrs. Ray Ruthardt. He plays forward.

Randall Stevens is the 15 year old son of Mr. and Mrs. John Stevens. He plays post and is active in FFA and sports. He commented, "We have a real good team this year and if we continue working hard, we have a good chance of winning district."

Jeff Bussey is the son of Leon and Judy Logsdon. He is 15 years old and plays wing and forward. He is active in the Mighty 'M' Band and enjoys sports and woodworking. He commented, "I think we have a good team, and I think we can do just as good as we did in football. I think we have a lot of work to do, but I think we can do it!"

## One-Act Play Began Monday

Rehearsals for Muleshoe High's One Act Contest Play began Monday, January 12. This year's play, "Oedipus the King" by Sophocles, will be presented Tuesday, March 31 for District Contest.

Cast members are Carla Shafer, Lori Butler, Sandra Graves, Michael Isaac, George Vela, Freddie Vela, Julius Briscoe, Jeff Combs, and Marlin Bynum.

Alternate cast and stage crew members are Dale Hughes, Danny Seales, Scott Ellard, and David Pruitt.

Student director is Lynnette Shafer; lighting director is Kevin Robinson; and Marvin Lewis will be stage manager.

## Varsity Mulettes

The Varsity Mulettes played in the Abernathy Tournament January 8-10. The Mulettes were defeated in their first game by Springlake-Earth, 57-38. High scorer in the game was Kathleen Patterson with 14 followed by Lupe Pacheco with 10.

In the second game, the Mulettes played Olton. They were defeated, 38-35. High scorer was Kathleen Patterson with 11 and Michelle Agee with 8.

The Varsity Mulettes lost to Levelland Tuesday, January 13. The Mulettes played a real close game and were defeated 43-39. High scorer in the game was Kathleen Patterson with 17 points. Their next game was against River Road, Friday, January 16.

Jason Scoggin is the 15 year old son of Mr. and Mrs. Kearney Scoggin. He plays guard and is active in FFA and 4-H. He commented, "We will do good this year!"

Lynn Copley is the 15 year old son of Don and Diane Copley. He is the Freshmen Boys' Basketball Manager.

Trent Hysinger is the son of Mr. and Mrs. Jack Hysinger. He is 14 years old and plays post and wing. He commented, "We have a great team, and I think we can go all the way!"

Richie Richards is the 15 year old son of Mr. and Mrs. Johnny F. Richards. He plays forward and guard and is a member of Student Council.

## Speech Held Tournaments

This past weekend Muleshoe's Speech Department entered twenty-seven students in the Friona Speech Tournament. Students performing in the finals were Jimmy Lee, Julius Briscoe, Sandra Graves, and Cristal Taylor. Sandra won third place in poetry interpretation.

Over four hundred students representing twenty-five schools were entered in the UIL events tournament. Lubbock Coronado won sweepstakes with Amarillo High and Amarillo Tascosa as runner ups.

Muleshoe's Speech Squad was entered in the Tahoka tournament January 17.



Jeff Hamilton is the 15 year old son of Kenny and Sharon Hamilton. He is active in FFA and FFA. He plays forward and had this to say, "We have a good team and are getting better every week. Our record is not very good right now but we plan to improve it in the next couple of weeks."

Darin Shaw is the 14 year old son of Donna and Eugene Shaw. He plays top and is active in 4-H and FFA. He commented, "We need a lot of work but maybe we can do good this year and go all the way."

Chad Williams is the son of Carter and LaJean Williams. He is 15 year old and plays top. He is active in FFA and had this to say, "We need more work, but we're doing better this year than ever before."

Michael Barrett, the 14 year old son of Mr. and Mrs. Ricky Barrett, is manager for the team. He is active in FFA and FFA.

## CROSSWORD

1	2	3	4	5	6	7	8	9
10			11		12			
13			14				15	
16			17			18		
			19			20		
21	22	23		24				
25				26				
27			28			29	30	31
32			33			34		
35		36				37		
38						39		

- ACROSS**
- 1-Position
  - 4..... number
  - 10-Touch on
  - 12-Work out
  - 13-Grow tire-some
  - 14-Letter
  - 15-Set .. (attack)
  - 16-Legislator
  - 18-Verbal contraction
  - 19-Criticize
  - 20-Hand over
  - 21-Of inferior quality
  - 25-Came to rest
  - 26-Sticky stuff
  - 27-Chinese bigwig
  - 28-Times of day
  - 32... and doing
  - 33-Charge
  - 34-Blue-pencil
  - 35-Catches sight of
  - 37-Domesticated
  - 38-Absorbs knowledge
  - 39-Feline sound
  - 8-Shuns
  - 9-Watch parts
  - 11-Beverage holder
  - 17-Make leather
  - 18-Iced ...
  - 20-Storage place
  - 21-Old Testament book
  - 22-Slip away
  - 23-Labor group
  - 24-Pore over
  - 28-Witnessed
  - 29-Cheese variety
  - 30-Kind of clock
  - 31-Meat dish
  - 33-Northern tree
  - 36-Broadwinner

Answers to CROSSWORD in next week's paper

- ONE MINUTE SPORTS QUIZ**
- Who was named NASCAR Driver of the Year?
  - Moses Malone plays for what pro basketball team?
  - How many times was Phil Esposito the NHL scoring leader?
  - Reggie Jackson won the AL Most Valuable Player in what year?
- Answers to Sport Quiz**
- Johnny Rutherford.
  - Houston Rockets.



## Natural Gas Receives Plaque

The National Safety Council has recognized the fleet safety record of Pioneer Natural Gas Company as tops in the gas utility industry among companies with over one million miles driven in 1979.

Pioneer Natural Gas Company is the utility of Amarillo-based Pioneer Corporation. It serves almost 270,000 customers in over 65 cities and communities of West Texas.

Pioneer Natural Gas Company employees drove 714 service vehicles a total of 11,970,417 miles during 1979 according to Derrell Havins, safety director of Pioneer Corporation, and reported the fewest number of accidents—a total of 50—among the 31 gas utility companies competing in

the million miles and over division of the National Fleet Safety Contest.

In recognition of that achievement, a plaque representing the first place award has been presented to the company by the National Safety Council and the American Gas Association, co-sponsors of the safe driving competition.

### Migration brings reduced fertility

AUSTIN, Texas (Spl.) — When Mexican women migrate to the U.S. and become exposed to the lower fertility patterns of this society, they begin having fewer children.

That is a finding of a study made by Dr. Frank D. Bean, University of Texas sociologist. His study also found that the tendency for Mexican immigrants to decrease fertility (depending on length of time spent in the U.S.) is more pronounced among couples of higher socioeconomic status.

## Not To Late To Give To Christmas Seals

It's not too late to give to Christmas Seals. Although the Christmas Season is a pleasant memory for many people, it isn't over for the Christmas Seal People -- the American Lung Association of Texas.

Although most contributions are received in December, additional donations are needed to enable the work of Christmas Seals to continue all year round. With the support of Christmas Seals, the Lung Association sponsors programs so that individuals with emphysema, chronic bronchitis and asthma can learn to understand their disease and to live as comfortably as possible with it. It seeks to educate the public about the dangers of smoking and to reach children in their ear-

liest grades in order to create a generation of non-smokers. It offers professional education programs to health professionals to assure the best possible for lung disease patients. And the Lung Association continues to work for tuberculosis control.

Persons interested in sending contributions or arranging for a memorial gift may contact the American Lung Association of Texas, 7701 North Lamar, Suite 104, in Austin 78752, 512/458-2206, or call toll free by dialing the operator for Enterprise #86761. Lung Disease is a matter of life and breath.



There are more than 56 million families in America; 53 percent of them include children under 18.

## CALENDAR OF EVENTS

**MONDAY**  
 12 p.m. Jaycees, XIT Restaurant (every)  
 3:45 p.m. P.T.A., Mary DeShazo or Richland Hills School Cafeteria (second)  
 7:30 p.m. Rainbows, Masonic Hall (second & fourth)  
 8 p.m. Fine Arts Boosters Band Hall

**TUESDAY**  
 12 p.m. Rotary Club, Civic Center (every)  
 2 p.m. Art Association, Muleshoe State Bank (second)  
 4 p.m. Christian Women Fellowship, First Christian Church (second)  
 7:30 p.m. Progress 4-H West Camp Community Center (third)  
 7:30 p.m. Llano Estacado (second)  
 8 p.m. Athletic Boosters, Muleshoe High School Cafeteria

**WEDNESDAY**  
 12 p.m. Lions, Civic Center (every)

**THURSDAY**  
 11:30 a.m. W. O. T. S. (every)  
 12 p.m. Optimist Corral Restaurant (every)  
 2 p.m. Hobby Club, Muleshoe State Bank (first & third)  
 6:30 p.m. T.O.P.S. Bailey County Electric Community Room (every)  
 7:30 p.m. Odd Fellows, Odd Fellows Hall (every)

**FRIDAY**  
 11:30 a.m. A.A.R.P., Civic Center (fourth)  
 6:30 p.m. Kiwanis, Corral Restaurant (every)

**SATURDAY**  
 7 p.m. Muleshoe Singing Group Trinity Baptist Church (every)

If you would like your club or organization listed on the calendar of events, please furnish the information in with your report.

# PIONEER DECISION DAYS

January 12-17

Be sure to get your free white cap during Pioneer Decision Days.

Come on over!  
 We're ready to help you make one of your toughest farming decisions.

That's right. We saw a dramatic story unfold in fields around here last fall. And we're eager to tell you about it. From what we saw, Pioneer brand hybrids and varieties were clear-cut leaders across the board. And, it proved what we've been saying all along. "In a good year, they're as good as you'll find; in a tough year, no one else even comes close."

Come see us during Pioneer Decision Days. We'll show you yield and performance records from this year and several years back, and help you select the right combination of Pioneer® brand seeds to be your money-makers. And during Pioneer Decision Days, we'll give you a free white cap just for taking time to think seriously about your seed needs.



**Lazbuddie Farmers Supply Inc.**  
 965-2949

# Tri-County SAVINGS AND LOAN ASSOCIATION

## Statement Of Condition

City Muleshoe  
 Ass'n Name Tri-County Savings & Loan Association Charter Date 3-10-64  
 Street Address 304 Main Street Date Insured 2-17-65  
 City Muleshoe State Texas Zip 79347 No. Authorized Branches 3  
 County Bailey No. Operating Branches 3  
 Area Code & Phone No. 806 272-5527 No. Operating Agencies 0  
 President Donald W. Harmon Executive Vice President Gordon H. Green  
 Vice President Secretary Wanda Harmon  
 (Managing Officer designated by asterisk)

### STATEMENT OF CONDITION — DECEMBER 31, 1980

#### ASSETS

First mortgage loans	015	32,382,958
All other loans	02	3,778,862
Real estate owned	03	-0-
Loans and contracts made to facilitate sale of real estate	04	-0-
Stock in Federal Home Loan Bank	05	443,500
Cash on hand and in banks	06	642,515
Investments and securities	07	2,147,316
Office building, less depreciation	08	460,073
Furniture, fixtures, equipment and leasehold improvements, less depreciation	09	54,577
Land purchased for development	10	604,392
Investment in subsidiaries	11	110,000
Deferred charges and other assets	12	1,155,691
<b>TOTAL ASSETS</b>	<b>135</b>	<b>41,779,884</b>

#### CAPITAL AND LIABILITIES

Savings Accounts	145	31,320,864
Advances from Federal Home Loan Bank of Little Rock	15	7,675,000
Other borrowed money	16	282,250
Loans in process	17	391,852
Other liabilities	18	949,824
Specific reserves	19	83,627
Capital stock	20	350,925
Paid-in surplus	21	222,540
General reserves:		
Legal reserve and/or Federal Insurance Reserve		566,053
Reserve for contingencies		-0-
Other reserves	22	45,000
Undivided Profits	23	(108,101)
<b>TOTAL CAPITAL AND LIABILITIES</b>	<b>245</b>	<b>41,779,884</b>

Board of Directors (Chairman designated by asterisk)

\*Don Harmon                      Lindal Murray  
 Gordon Green                      Wanda Harmon  
 Alex Williams  
 Frank H. Ellis

# CONGRATULATIONS AND OUR BEST WISHES



GRAND CHAMPION—Jerry Gleason is shown here with his Heavy Middle Weight Cross Breed Steer which won Breed Champion and Grand Champion of the Bailey County Livestock Show. Jerry is the son of Dr. and Mrs. Jerry Gleason of Muleshoe.

**Western "66" Co.**



**Winners...**

Cont. From Page 1

eighth; J.K. Harris, ninth; Earl Parish, tenth and Ricky Rasco, eleventh.

Brian Powell, seventh; Chris Hopkins, eighth; Jocy Bruton, ninth; Todd Holt, tenth and Mike Holt, eleventh.

**MEDIUMWEIGHT**

Greg Harrison, reserve grand champion, breed champion and first; Russell Brown, second; Michael Dunham, third; Danny Seales, fourth; Chris Young, fifth; Kevin Atwood, sixth; Lesa Black, seventh; Lynn Moore, eighth; Latrece Barrett, ninth and Berry Bass, tenth.

**MEDIUMWEIGHT**

Greg Young, first, Sherri Bessire, second; Darin Shaw, third; Tracy Tunnell, fourth; Polly Harrison, fifth; Curby Brantley, sixth; Michael Barrett, seventh; Latrece Barrett, eighth; Jerry Bob Graves, ninth and Earl Parish, tenth.

**HEAVYWEIGHT**

Greg Harrison, first and breed champion; Delia Shaw, second; Brad Stegall, third; Dusty Rhodes, fourth; Wade Wheeler, fifth; Michelle Stevenson, sixth; Dusty Rhodes, seventh; Tyree Vandiver, eighth; Latrece Barrett, ninth and Bobby Grumbles tenth.

**SPOTS**

Sherri Bessire, first and breed champion; Michelle Stevenson, second and reserve champion; Lynn Copley, third.

**LIGHT**

David Pruitt, first; Brad Stegall, second; Amy Harrison, third; Ricky Rasco, fourth; Steve Bradshaw, fifth; Heath Burleson, sixth; and Rhonda Dunham, seventh.

**HEAVYWEIGHT**

Bill Eubanks, first and breed champion; Michelle Stevenson, second and reserve breed champion; Michael Dunham, third; Bill Eubanks, fourth; Beth Harmon, fifth; Kay Lynn Prather, sixth; and Jack Morton, seventh.

**YORKSHIRE**

**LIGHTWEIGHT**

Jerry Bob Graves, first; Todd Bessire, second; Jeff Sisemore, third; Robin Moore, fourth; Jack Martin fifth; Starla Black, sixth; Wesley Rasco, seventh; Dusty Rhodes, eighth; Todd Holt, ninth and Todd Holt, tenth.

**YORKSHIRE**

**LIGHTWEIGHT**

Craig Hunt, first and breed champion; Robin Moore, second and reserve breed champion; Tracy Tunnell, third; Johnny Puckett, fourth; Russell Brown, fifth; Lynn Moore, sixth; Beth Harmon, seventh and Nichole Overman, eighth.

**CROSS**

**LIGHTWEIGHT**

Todd Bessire, first; Jason Scoggin, second; Glen Flowers, third; Scott Denny, fourth; Beth Harmon, fifth; Barry Bass, sixth;

**CROSS BREEDS LIGHTWEIGHT**

Wade Wheeler, first; Greg Harrison, second; Tracy Tunnell, third; Jason Scoggin, fourth; Tracy Tunnell, fifth; Sharla Morrison, sixth; Chad Roberson, seventh and Preston Scoggin, eighth.

**LIGHT-MIDDLEWEIGHT**

Alan Harrison, first, reserve grand champion, and reserve breed champion; Shane Claunch, second; Sherri Bessire, third; Belinda Wheeler, fourth; Delia Shaw, fifth; Delia Shaw, sixth; Jeanine Robertson, seventh and Todd Bessire, eighth.

**HEAVY-MIDDLEWEIGHT**

Jerry Gleason, first and grand champion and breed champion; Jay Gleason, second; Jacinda Gleason, third; Alan Harrison, fourth; Darin Shaw, fifth; Belinda Wheeler, sixth; Jodi Wheeler, seventh and Jodi Wheeler, eighth.

**HEAVYWEIGHT**

Jimmy Gleason, first; Kelly Harrison, second; Staci Kirby, third; Shane Claunch, fourth; Kelly Harrison, fifth; Mitzi Robertson, sixth; Jimmy Gleason, seventh and Jacinda Gleason, eighth.

bertson, sixth; Jimmy Gleason, seventh and Jacinda Gleason, eighth.

**LAMBS**

**SOUTHDOWN CROSS**  
Donae Parker, first and breed champion; Tracy Elder, second and reserve breed champion.

**SOUTHDOWN**

Shawn Cooley, first and breed champion; Brenda Cooley, second and reserve breed champion; Wade Wheeler, third and Pam Plank, fourth.

**FINE WOOL**

Jeanine Robertson, first and breed champion; Starla Black, second and reserve breed champion; Pam Plank, third; Shawn Cooley, fourth and Brenda Cooley, fifth.

**FINE WOOL CROSS LIGHTWEIGHT**

Kelly Overman, first; Lesa Black, second; Tamara Gilliland, third; Dondie Stewart, fourth; Mark Bell, fifth; Donae Parker, sixth; John Snitker, seventh; Tracy Elderege, eighth; Mandy Plank, ninth and Jamie Robberson, tenth.

**HEAVYWEIGHT**

Mitzi Robertson, grand

champion, breed champion and first; Rodney Millsap, second and reserve breed champion; Michelle Lane, third; Lance Free, fourth; Mandy Plank, fifth; Brad Alexander, sixth and Brad Alexander, seventh.

**MEDIUM WOOL LIGHTWEIGHT**

Brenda Cooley, first; Wade Wheeler, second; Lesa Black, third; Tracey Elderege, fourth; Donae Parker, fifth; Tamara Gilliland, sixth; Lance Free, seventh; Casey Stewart, eighth and Jamie Robertson, ninth.

**MEDIUM WOOL**

**LIGHT-MIDDLEWEIGHT**  
Steve Roberts, first; Casey Stewart, second; Michelle Lane, third; Jody Wheeler, fourth; Casey Stewart, fifth; Shawn Cooley, sixth; Beth Harmon, seventh; Randall Stevens, eighth; Randall Stevens, ninth and Tamara Gilliland, tenth.

**MIDDLE-HEAVYWEIGHT**

Blinda Wheeler, first; Jody Wheeler, second; Jeanine Robertson, third; Beth Harmon, fourth; Starla Black, fifth; Jamie

Wheeler, sixth; Dondie Stewart, seventh; Kelly Overman, eighth; Beth Harmon, ninth; Rodney Millsap, tenth; Pam Plank, eleventh and Lance Free, twelfth.

**HEAVYWEIGHT**

Mitzi Robertson, first and breed champion; Michael Angeley, second and reserve breed champion;

Jody Wheeler, third; Lesa Black, fourth; Michael Angeley, fifth; Belinda Wheeler, sixth; Belinda Wheeler, seventh; Starla Black, eighth; Mandy Plank, ninth and John Snitker, tenth.

\*\*\*\*  
Most adults forget that boys and girls look at things with juvenile minds.



Enemies rarely attack the male gorilla, who rises up on his feet, beats his breast with clenched fists and lets loose a series of barks that increase to a terrifying roar.

**EXTRA SPECIAL, SPECIAL**  
Five Point  
**DOG FOOD**

50 LB BAG **9<sup>16</sup>** 25 LB BAG **5<sup>15</sup>**

**Alert Cat Food 3<sup>45</sup>**  
10 LB. Bag

**A&M FARM AND RANCH SUPPLY**

**ATTEND THE CHURCH OF YOUR CHOICE**

**MULESHOE ASSEMBLY OF GOD**  
517 S. First  
Rev. Joe Stone

**EMMANUEL BAPTIST CHURCH**  
Iglesia Bautista Emmanuel  
107 E. Third  
Isaias Cardenas, Pastor

**RICHLAND HILLS BAPTIST CHURCH**  
17th and West Ave. D  
Roy L. Sikes, Pastor

**SPANISH BAPTIST MISSION**  
East Third and Ave. E  
Rev. Aradio Gonzalez

**TRINITY BAPTIST CHURCH**  
314 Ave. B  
Don Knight, Pastor

**LONGVIEW BAPTIST CHURCH**  
Phone 946-3413  
B.C. Stonecipher, Pastor

**SIXTEENTH AND AVE. D CHURCH OF CHRIST**  
James Johnson, Pastor

Sunday - 10:30 a.m.  
Evening - 6 p.m.  
Wednesday - 8 p.m.

**PROGRESS BAPTIST CHURCH**  
Brock Sanders  
Progress, Texas

**NORTHSIDE CHURCH OF CHRIST**  
117 E. Birch Street

**SPANISH ASSEMBLY OF GOD**  
East 6th and Ave. F  
Rev. Hipolito Pecina

**UNITED PENTECOSTAL GOSPEL LIGHTHOUSE CHURCH**  
207 E. Ave. G  
George Green, Pastor

**MULESHOE BAPTIST CHURCH**  
8th Street and Ave. G  
Bob Dodd, Pastor

**FIRST BAPTIST CHURCH**  
220 West Ave. E  
Rev. J.E. Mecks

**CHURCH OF THE NAZARENE**  
Ninth and Ave. C  
Dana Shunko, Pastor

**FIRST CHRISTIAN CHURCH**  
130 W. Ave. G  
Rev. Walter Bartholf  
Sunday School 10:00 a.m.  
Worship 11:00 a.m.

**LATIN AMERICAN METHODIST MISSION**  
Ave. D and Fifth Street  
R.O. Chavez, Pastor

**THE COMMUNITY CHURCH**  
Morton Highway  
H.D. Hunter, Pastor

**CALVARY BAPTIST CHURCH**  
James Williams, Pastor  
1733 W. Ave. C

**PROGRESS SECOND BAPTIST CHURCH**  
Clifford Slay, Pastor  
1st and 3rd Sundays

**FIRST UNITED METHODIST CHURCH**  
Rev. Bill Kent  
507 West 2nd, Muleshoe

**ST. JOHN LUTHERAN**  
Lariat, Texas  
Herman J. Schelter, Pastor  
Sunday School - 10 a.m.  
Worship Service - 11 a.m.

**PRIMITIVE BAPTIST CHURCH**  
621 South First  
Elder Bernard Gowens

**MULESHOE CHURCH OF CHRIST**  
David Cox, Minister  
Clovis Highway

**JEHOVAH WITNESS**  
Friona Highway  
Boyd Lowery, Minister

**IMMACULATE CONCEPTION CATHOLIC CHURCH**  
Father Patrick Mahar  
Northeast of City in Morrison Edition

**ST. MATTHEW BAPTIST CHURCH**  
Corner of West Boston and West Birch  
Rev. M.S. Brown, Pastor

**THE PROFESSIONAL PHOTOGRAPHER**  
gives careful thought and study to lighting his subject. Contrasts must be right and reflections must be right to achieve the best effects.

Individuals' lives reflect how they think and what they believe. Our lives count most, when we attend church regularly and walk in the light of the Lord.

**EVERYONE IN THE CHURCH**  
THE CHURCH IN EVERYONE

The Church is God's appointed agency in this world for spreading the knowledge of His love for man and of His demand for man to respond to that love by loving his neighbor. Without this grounding in the love of God, no government or society or way of life will long persevere and the freedoms which we hold so dear will inevitably perish. Therefore, even from a selfish point of view, one should support the Church for the sake of the welfare of himself and his family. Beyond that, however, every person should uphold and participate in the Church because it tells the truth about man's life, death and destiny; the truth which alone will set him free to live as a child of God.

**True Value**  
TOOL VALUE OF THE MONTH

Master MECHANIC®

now **675** While Supplies Last

25-Ft. x 1-Inch POWER TAPE RULE

Positive toggle locks epoxy-coated "write-on" blade in place to let you measure longer distances single-handedly. MMP4425

QUANTITIES LIMITED

401 S. 1st.  
Muleshoe  
272-4511

**Gary**

**A Better Way To Keep "Warm" This Winter.**

**FUEL BILL**

**Add blown insulation now.**  
Don't get steamed this winter because of heating bills going through the roof. Add pink Fiberglas® blown insulation instead. It's easy.

Your independent Owens-Corning contractor will help you determine how much insulation you need to add. And before you know it, he'll have it installed. With no mess, no bother.

Pink Fiberglas blown insulation can help you save on your fuel bills, and make your home more comfortable, too.

Call your independent Owens-Corning contractor now... before your winter heating bills have a chance to make you "warm" again.

Savings vary. Find out why in the seller's facts sheet on R-values. Higher R-values mean greater insulating power.

**OWENS-CORNING FIBERGLAS**

Distributed By:  
**E.T. Ford Construction Co.**

<b>Bratcher Motor Supply</b> 107 E. Ave. B 272-4288	<b>Muleshoe Publishing Co.</b> Muleshoe 272-4536	<b>White's Cashway Grocery</b> Where Friends Meet & Prices Talk	<b>Bailey County Memorial Park</b> "Every Service A Sacred Trust" 272-4383
<b>Dairy Queen</b> Margie Hawkins, Manager 272-3412	<b>James Roy Meat Market Co.</b> 506 W. Amer. Blvd. 272-4361	<b>Dent-Rempe Implement Co.</b> John Deere Dealer 272-4297	<b>Dari-Delite Drive In</b> Take Out Orders 210 N. First 272-4482
<b>Western Drug</b> 114 Main 272-3106	<b>Roy Whitt</b>	<b>Muleshoe Co-op Gins</b>	<b>First National Bank</b> "Home Owned" 202 S. 1st 272-4515
<b>Baker Farm</b>	<b>Western Sprinklers</b>	<b>Lambert Cleaners</b>	



**Winners...**

Cont. From Page 1

eighth; J.K. Harris, ninth; Earl Parish, tenth and Ricky Rasco, eleventh.

**MEDIUMWEIGHT**

Greg Young, first, Sherri Bessire, second; Darin Shaw, third; Tracy Tunnell, fourth; Polly Harrison, fifth; Curby Brantley, sixth; Michael Barrett, seventh; Latrece Barrett, eighth; Jerry Bob Graves, ninth and Earl Parish, tenth.

**HEAVYWEIGHT**

Greg Harrison, first and breed champion; Delia Shaw, second; Brad Stegall, third; Dusty Rhodes, fourth; Wade Wheeler, fifth; Michelle Stevenson, sixth; Dusty Rhodes, seventh; Tyree Vandiver, eighth; Latrece Barrett, ninth and Bobby Grumbles, tenth.

**SPOTS**

Sherri Bessire, first and breed champion; Michelle Stevenson, second and reserve champion; Lynn Copley, third.

**LIGHT**

David Pruitt, first; Brad Stegall, second; Amy Harrison, third; Ricky Rasco, fourth; Steve Bradshaw, fifth; Heath Burleson, sixth; and Rhonda Dunham, seventh.

**HEAVYWEIGHT**

Bill Eubanks, first and breed champion; Michelle Stevenson, second and reserve breed champion; Michael Dunham, third; Bill Eubanks, fourth; Beth Harmon, fifth; Kay Lynn Prather, sixth; and Jack Morton, seventh.

**YORKSHIRE**

**LIGHTWEIGHT**

Jerry Bob Graves, first; Todd Bessire, second; Jeff Sisemore, third; Robin Moore, fourth; Jack Martin fifth; Starla Black, sixth; Wesley Rasco, seventh; Dusty Rhodes, eighth; Todd Holt, ninth and Todd Holt, tenth.

**YORKSHIRE**

**LIGHTWEIGHT**

Craig Hunt, first and breed champion; Robin Moore, second and reserve breed champion; Tracy Tunnell, third; Johnny Puckett, fourth; Russell Brown, fifth; Lynn Moore, sixth; Beth Harmon, seventh and Nichole Overman, eighth.

**CROSS**

**LIGHTWEIGHT**

Todd Bessire, first; Jason Scoggin, second; Glen Flowers, third; Scott Denny, fourth; Beth Harmon, fifth; Barry Bass, sixth;

Brian Powell, seventh; Chris Hopkins, eighth; Joey Bruton, ninth; Todd Holt, tenth and Mike Holt, eleventh.

**MEDIUMWEIGHT**

Greg Harrison, reserve grand champion, breed champion and first; Russell Brown, second; Michael Dunham, third; Danny Seales, fourth; Chris Young, fifth; Kevin Atwood, sixth; Lesa Black, seventh; Lynn Moore, eighth; Latrece Barrett, ninth and Berry Bass, tenth.

**HEAVYWEIGHT**

Curtis Wheeler, first and reserve breed champion; Starla Morrison, second; Greg Young, third; Mike Holt, fourth; Brenda Flowers, fifth; Brenda Cooley, sixth; Randell Stevens, seventh; Lance Free, eighth; Chris Hopkins, ninth; Chris Hopkins, tenth; and Brian Powell, eleventh.

**DUROC**

Wade Wheeler, first; Delia Shaw, second; Darin Shaw, third; Preston Scoggin, fourth; Jason Scoggin, fifth; Curtis Wheeler, sixth; Curby Brantley, seventh; Craig Hunt, eighth; Michael Barrett, ninth; Lyn Moore, tenth and Nichole Overman, eleventh.

**STEERS**

**FEEDER STEERS**

Jacinda Gleason, first and Jerry Gleason, second.

**HEIFERS**

Staci Kirby, first and breed champion; Shane Claunch, second and reserve breed champion; Jay Gleason, third.

**AMERICAN**

**CROSS STEERS**

Jay Gleason, first and breed champion; Greg Harrison, second and breed champion; Greg Young, third and Darin Shaw, fourth.

**PURE BRED**

**HEAVYWEIGHT**

Mitzi Robertson, first and breed champion; Staci Kirby, second and reserve breed champion; Greg Young, third; Jerry Gleason, fourth; Chris Young, fifth and Chad Robberson, sixth.

**LIGHTWEIGHT**

Jamie Wheeler, first; Sharla Morrison, second; Todd Bessire, third; Jeanine Robertson, fourth; Chris Young, fifth; and Preston Scoggin, sixth.

**CROSS BREEDS**

**LIGHTWEIGHT**

Wade Wheeler, first; Greg Harrison, second; Tracy Tunnell, third; Jason Scoggin, fourth; Tracy Tunnell, fifth; Sharla Morrison, sixth; Chad Robberson, seventh and Preston Scoggin, eighth.

**LIGHT-MIDDLEWEIGHT**

Alan Harrison, first, reserve grand champion, and reserve breed champion; Shane Claunch, second; Sherri Bessire, third; Belinda Wheeler, fourth; Delia Shaw, fifth; Delia Shaw, sixth; Jeanine Robertson, seventh and Todd Bessire, eighth.

**HEAVY-MIDDLEWEIGHT**

Jerry Gleason, first and grand champion and breed champion; Jay Gleason, second; Jacinda Gleason, third; Alan Harrison, fourth; Darin Shaw, fifth; Belinda Wheeler, sixth; Jodi Wheeler, seventh and Jodi Wheeler, eighth.

**HEAVYWEIGHT**

Jimmy Gleason, first; Kelly Harrison, second; Staci Kirby, third; Shane Claunch, fourth; Kelly Harrison, fifth; Mitzi Robertson, sixth; Jimmy Gleason, seventh and Jacinda Gleason, eighth.

**LAMBS**

**SOUTHDOWN CROSS**

Donae Parker, first and breed champion; Tracy Elder, second and reserve breed champion.

**SOUTHDOWN**

Shawn Cooley, first and breed champion; Brenda Cooley, second and reserve breed champion; Wade Wheeler, third and Pam Plank, fourth.

**FINE WOOL**

Jeanine Robertson, first and breed champion; Starla Black, second and reserve breed champion; Pam Plank, third; Shawn Cooley, fourth and Brenda Cooley, fifth.

**FINE WOOL CROSS**

**LIGHTWEIGHT**

Kelly Overman, first; Lesa Black, second; Tamara Gilliland, third; Dondie Stewart, fourth; Mark Bell, fifth; Donae Parker, sixth; John Snitker, seventh; Tracey Elderege, eighth; Mandy Plank, ninth and Jamie Robberson, tenth.

**HEAVYWEIGHT**

Mitzi Robertson, grand

champion, breed champion and first; Rodney Millsap, second and reserve breed champion; Michelle Lane, third; Lance Free, fourth; Mandy Plank, fifth; Brad Alexander, sixth and Brad Alexander, seventh.

**MEDIUM WOOL**

**LIGHTWEIGHT**

Brenda Cooley, first; Wade Wheeler, second; Lesa Black, third; Tracey Elderege, fourth; Donae Parker, fifth; Tamara Gilliland, sixth; Lance Free, seventh; Casey Stewart, eighth and Jamie Robertson, ninth.

**MEDIUM WOOL**

**LIGHT-MIDDLEWEIGHT**

Steve Roberts, first; Casey Stewart, second; Michelle Lane, third; Jody Wheeler, fourth; Casey Stewart, fifth; Shawn Cooley, sixth; Beth Harmon, seventh; Randall Stevens, eighth; Randell Stevens, ninth and Tamara Gilliland, tenth.

**MIDDLE-HEAVYWEIGHT**

Belinda Wheeler, first; Jody Wheeler, second; Jeanine Robertson, third; Beth Harmon, fourth; Starla Black, fifth; Jamie

Wheeler, sixth; Dondie Stewart, seventh; Kelly Overman, eighth; Beth Harmon, ninth; Rodney Millsap, tenth; Pam Plank, eleventh and Lance Free, twelfth.

**HEAVYWEIGHT**

Mitzi Robertson, first and breed champion; Michael Angeley, second and reserve breed champion;

Jody Wheeler, third; Lesa Black, fourth; Michael Angeley, fifth; Belinda Wheeler, sixth; Belinda Wheeler, seventh; Starla Black, eighth; Mandy Plank, ninth and John Snitker, tenth.

\*\*\*\*

Most adults forget that boys and girls look at things with juvenile minds.



Enemies rarely attack the male gorilla, who rises up on his feet, beats his breast with clenched fists and lets loose a series of barks that increase to a terrifying roar.

**EXTRA SPECIAL, SPECIAL**  
Five Point  
**DOG FOOD**  
50 LB BAG 25 LB BAG  
**9 16 5 15**

**Alert Cat Food**  
3 45  
10 LB. Bag

**A&M**  
FARM AND RANCH SUPPLY

**ATTEND THE CHURCH OF YOUR CHOICE**

**MULESHOE ASSEMBLY OF GOD**  
517 S. First  
Rev. Joe Stone

**EMMANUEL BAPTIST CHURCH**  
Iglesia Bautista Emmanuel  
107 E. Third  
Isaias Cardenas, Pastor

**RICHLAND HILLS BAPTIST CHURCH**  
17th and West Ave. D  
Roy L. Sikes, Pastor

**SPANISH BAPTIST MISSION**  
East Third and Ave. E  
Rev. Aradio Gonzalez

**TRINITY BAPTIST CHURCH**  
314 Ave. B  
Don Knight, Pastor

**LONGVIEW BAPTIST CHURCH**  
Phone 946-3413  
B.C. Stonecipher, Pastor

**SIXTEENTH AND AVE. D CHURCH OF CHRIST**  
James Johnson, Pastor

Sunday - 10:30 a.m.  
Evening - 6 p.m.  
Wednesday - 8 p.m.

**PROGRESS BAPTIST CHURCH**  
Brock Sanders  
Progress, Texas

**NORTHSIDE CHURCH OF CHRIST**  
117 E. Birch Street

**SPANISH ASSEMBLY OF GOD**  
East 6th and Ave. F  
Rev. Hipolito Pecina

**UNITED PENTECOSTAL GOSPEL LIGHTHOUSE CHURCH**  
207 E. Ave. G  
George Green, Pastor

**MULESHOE BAPTIST CHURCH**  
8th Street and Ave. G  
Bob Dodd, Pastor

**FIRST BAPTIST CHURCH**  
220 West Ave. E  
Rev. J.E. Meeks

**CHURCH OF THE NAZARENE**  
Ninth and Ave. C  
Dana Shunko, Pastor

**FIRST CHRISTIAN CHURCH**  
130 W. Ave. G  
Rev. Walter Bartholf  
Sunday School 10:00 a.m.  
Worship 11:00 a.m.

**LATIN AMERICAN METHODIST MISSION**  
Ave. D and Fifth Street  
R.Q. Chavez, Pastor

**THE COMMUNITY CHURCH**  
Morton Highway  
H.D. Hunter, Pastor

**CALVARY BAPTIST CHURCH**  
James Williams, Pastor  
1733 W. Ave. C

**PROGRESS SECOND BAPTIST CHURCH**  
Clifford Slay, Pastor  
1st and 3rd Sundays

**FIRST UNITED METHODIST CHURCH**  
Rev. Bill Kent  
507 West 2nd, Muleshoe

**ST. JOHN LUTHERAN**  
Lariat, Texas  
Herman J. Schelter, Pastor  
Sunday School - 10 a.m.  
Worship Service - 11 a.m.

**PRIMITIVE BAPTIST CHURCH**  
621 South First  
Elder Bernard Gowens

**MULESHOE CHURCH OF CHRIST**  
David Cox, Minister  
Clovis Highway

**JEHOVAH WITNESS**  
Friona Highway  
Boyd Lowery, Minister

**IMMACULATE CONCEPTION CATHOLIC CHURCH**  
Father Patrick Mahar  
Northeast of City in Morrison Edition

**ST. MATTHEW BAPTIST CHURCH**  
Corner of West Boston and West Birch  
Rev. M.S. Brown, Pastor

**the RIGHT LIGHT**

THE PROFESSIONAL PHOTOGRAPHER gives careful thought and study to lighting his subject. Contrasts must be right and reflections must be right to achieve the best effects.

Individuals' lives reflect how they think and what they believe. Our lives count most, when we attend church regularly and walk in the light of the Lord.

EVERYONE IN THE CHURCH THE CHURCH IN EVERYONE

The Church is God's appointed agency in this world for spreading the knowledge of His love for man and of His demand for man to respond to that love by loving his neighbor. Without this grounding in the love of God, no government or society or way of life will long persevere and the freedoms which we hold so dear will inevitably perish. Therefore, even from a selfish point of view, one should support the Church for the sake of the welfare of himself and his family. Beyond that, however, every person should uphold and participate in the Church because it tells the truth about man's life, death and destiny; the truth which alone will set him free to live as a child of God.

**True Value**  
TOOL VALUE OF THE MONTH

Master MECHANIC®

now **675** While Supplies Last

25-Ft. x 1-Inch POWER TAPE RULE

Positive toggle locks epoxy-coated "write-on" blade in place to let you measure longer distances single-handedly. MMP4425

QUANTITIES LIMITED

401 S. 1st.  
Muleshoe  
272-4511

**Copy**

**A Better Way To Keep "Warm" This Winter.**

**FUEL BILL**

Add blown insulation now. Don't get steamed this winter because of heating bills going through the roof. Add pink Fiberglas® blown insulation instead. It's easy.

Your independent Owens-Corning contractor will help you determine how much insulation you need to add. And before you know it, he'll have it installed. With no mess, no bother.

Pink Fiberglass blown insulation can help you save on your fuel bills, and make your home more comfortable, too.

Call your independent Owens-Corning contractor now... before your winter heating bills have a chance to make you "warm" again.

Savings vary. Find out why in the seller's facts sheet on R-values. Higher R-values mean greater insulating power.

**OWENS-CORNING FIBERGLAS**

Distributed By:  
**E.T. Ford Construction Co.**

<b>Bratcher Motor Supply</b> 107 E. Ave. B 272-4288	<b>Muleshoe Publishing Co.</b> Muleshoe 272-4536	<b>White's Cashway Grocery</b> Where Friends Meet & Prices Talk	<b>Bailey County Memorial Park</b> "Every Service A Sacred Trust" 272-4383
<b>Dairy Queen</b> Margie Hawkins, Manager 272-3412	<b>James Roy Meat Market Co.</b> 506 W. Amer. Blvd. 272-4361	<b>Dent-Rempe Implement Co.</b> John Deere Dealer 272-4297	<b>Dari-Delite Drive In</b> Take Out Orders 210 N. First 272-4482
<b>Western Drug</b> 114 Main 272-3106	<b>Roy Whitt</b>	<b>Muleshoe Co-op Gins</b>	<b>First National Bank</b> "Home Owned" 202 S. 1st 272-4515
<b>Baker Farm</b>	<b>Western Sprinklers</b>	<b>Lambert Cleaners</b>	



### Telephone Customers Get Reduction

The nation's telephone customers will not get a one percent federal excise tax reduction on telephone service during 1981 as expected.

President Jimmy Carter signed the Fiscal Year 1981 Budget-Reconciliation Bill December 5 which contained a provision maintaining the excise tax on telephone and teletypewriter service at the two percent level in effect during 1980.

The tax, originally 10 percent, was enacted as a "temporary" measure during World War II. Congress voted in 1970 to gradually eliminate the tax reducing it one percent per year beginning in 1973 until completely eliminated in 1982.

The continuation of the 1980 two percent tax level during 1981 delays elimination of the tax, and is the first time the reduction has not been made on an annual basis since 1972.

General Telephone Company of the Southwest estimates continuation of the two percent level means its customers will pay \$4.5 million more in excise taxes during 1981 than if the one percent reduction had occurred.

Ideal weight loss should be no more than 3 pounds per week. From the age of 25 years, your calorie needs decrease by about 10 percent each decade. Diet foods can be a help, but their use alone will not result in loss of weight. All foods provide calories and should be counted when trying to lose a few pounds. Differences of 15 to 20 calories between foods are insignificant when the daily reduction should be as much as 1,000 calories for some of us. Learn which foods are concentrated sources of calories and, depending upon the food, eliminate them altogether or use them only in smaller amounts.

### Alsup's Stores Sponsoring Drive

Allsup's Convenience Stores, Inc. will be sponsoring a neighborhood drive in support of United Cerebral Palsy. All area youngsters are encouraged to visit their local Allsup's store Saturday, January 17 and Sunday, January 18 to pick up a collection envelope. After collecting donations for Cerebral Palsy and turning it back into the store, Allsup's will give them a free fountain drink of their choice.

"We hope all the children of the area will help us make this telethon more successful than ever before," said Kurt Verlei, Director of Public Relations for Allsup's Convenience Stores. "Cerebral Palsy is an injury to the brain that can never be cured. We feel that money raised will go a long way in helping the Cerebral Palsied lead a more normal life."

Two East German sailors seek political asylum.

### Texas Food and Fiber

Texas Department of Agriculture  
Reagan V. Brown, Commissioner



AUSTIN—In retrospect, 1980 is a year many Texas farmers and ranchers would like to forget. But most cannot help but remember the devastating drought and killer heat wave which dominated the farm news in Texas and other states during the summer.

According to Agriculture Commissioner Reagan V. Brown, weather problems cost Texas agricultural producers over \$1.5 billion in lost production, or about 15 percent of the previous year's total cash receipts for crops and livestock. The latest production report reveals that: Cotton production is down 38 percent; grain sorghum, down 28 percent; peanuts, down 48 percent; corn, down 18 percent, to name a few of the major Texas crops damaged by drought and heat. When livestock and poultry losses are included, as well as damage to pasture and rangeland, it becomes obvious that 1980 was not the best of years for Texas agriculture.

Further bad news for Texas producers came in the form of extremely high interest rates at spring planting time, which contributed to the cost-price squeeze that is a persistent problem of agriculture. Overall farm and ranch production costs increased an average of 10 to 12 percent in 1980, led by 40 percent higher fuel costs, fertilizer costs which were up 25 percent, and an 18-percent increase in other farm chemical costs.

Brown noted that despite a good Texas wheat crop and a few other bright spots, high costs and low prices should drop 1980 net farm income 20 percent below last year.

"That," Brown said, "is the bad news. But there is also some good news to report."

Due to decreased production and continued strong domestic and export demand, Brown said, farm prices have strengthened in recent months, and the outlook is that they will continue to do so. "Certainly, the economic impact of a bad year such as 1980 does not disappear overnight, and many producers will enter 1981 deeply in debt," he said. "But a good production year in 1981, coupled with stronger crop and livestock prices and only moderate increases in production costs, could allow net farm income to rebound substantially."

Brown added that 1981 is shaping up as a good year for consumers, also. "Unlike many countries, we are blessed with plentiful, safe, wholesome food supplies, and this will continue to be the case," he said. "Consumers will find that food may cost more in 1981, but since 60 cents out of every food dollar goes for marketing costs, it would be unreasonable to expect otherwise. Retail food costs should rise only moderately, and there should be few unexpected surprises."

### BIBLE VERSE

1. Who wrote the above words?
2. Of whom was he speaking?
3. How long before the birth of Christ were these words spoken?
4. Where may this verse be found?

### Answers to Bible Verse

1. Isaiah the prophet.
2. Jesus Christ, the long promised Messiah.
3. More than four hundred years B.C.
4. Isaiah 9:6.

### From Journal Files

#### 30 Years Ago

1951  
A miscellaneous shower was given January 9, at the First Baptist Church annex from 3:30 to 5:00 honoring Mrs. Richard Puckett, the former Barbara Barnett.

Jerry Don Gleason entered two hogs in the Southwest Exposition and Fat Stock Show in Ft. Worth.

#### 10 Years Ago

The Fancy Teens of the YL 4-H Club met for their third meeting in the home of Mrs. Lloyd Throckmorton.

Mrs. Mervin Wilterding was named club woman of the year for 1970-71 by the Muleshoe Study Club.

#### 20 Years Ago

The W.S.C.S. met Thursday January 19, at the church to begin new study of "Heritage and Horizons". The study is being conducted by Mrs. Fern Davis.

Mrs. Mary Raney and children spent the holidays visiting relatives in Melrose, N.M. and Brownfield.



The AMA points out that contrary to popular belief, shaving does not affect the texture, color or rate of hair growth.

**Congratulations**  
FFA  
Bailey County

BREED CHAMPION—Jeanine Robertson is shown here with her Fine Wool Lamb which won Breed Champion at the Bailey County Livestock Show. Jeanine is the daughter of Mr. and Mrs. Darwin Robertson of ThreeWay.

**Turney Pump Service**  
Enochs

### Enochs News By Mrs. J.D. Bayless

Mrs. Reet Dick of Portales, N.M. visited friends, Mr. and Mrs. J. D. Bayless, Mr. and Mrs. J. W. Layton and Mrs. and Mrs. E. N. McCall, Monday afternoon till Thursday afternoon.

Mr. and Mrs. Glenn Green of Muleshoe were supper guests in the home of her grandmother, Mrs. Mammie Adams Sunday night.

Mr. and Mrs. Norvil Roberts and son Randy of Jacksonville visited his aunt and uncle Mr. and Mrs. Arnold Archer, recently also Cheryl Waltrip of Three Way all visited with them.

Mr. and Mrs. Bud Huff had all of their children home recently. Mr. and

Mrs. Buzz Heneison and son Christopher of Universal City, Texas. Mr. and Mrs. Chester Huff, of Lamesa, Mr. and Mrs. Steven Huff and Chad, also, Mr. and Mrs. Paul Huff, Aron and Crystal all of Lubbock, Mr. and Mrs. Bo Batteas, Donald and Janet of Brownwood, Jason and Marcus of the home.

Mr. and Mrs. Bill Key visited old friends Mr. and Mrs. W.L. Berry at littlefield Thursday.

H.O. Huff Sr. of Midland who was Muleshoe Rest Home 200 a.m. Sunday. Funeral services were Tuesday at the Church of Christ Midland, he is survived 8 children and 26 grandchildren, one is B. Huff of our area.

Mrs. Naomia Jull underwent surgery on her leg at Saint Marys Hospital in Lubbock.

### Society Deadlines Set

Weddings must be in the office by Monday noon for Thursday paper and by Thursday noon for the Sunday paper. Any wedding more than two weeks old must be edited and only the basic information included.

No shower picture will be taken without a 24 hour notice and copy must be in the office by Monday at 5 p.m. for Thursday paper and by Thursday at 5 p.m. for the Sunday paper. An honoree's picture will be taken at only a shower.

All club stories for following edition of paper must be in the office by 10 a.m. on Tuesday and Friday preceding the next issue of the paper.

**Congratulations**  
FFA  
Bailey County

FIRST PALCE WINNER—Jamie Wheeler is shown here with her Pure Breed Steer which won First Place at the Bailey County Livestock Show. Jamie is the daughter of Mr. and Mrs. Joe Wheel of Goodland.

**McCormick Seeds Inc.**

### The NOW Account

"Interest On Checking Accounts"

#### QUESTIONS & ANSWERS

1. Since when are you offering a checking account that earns interest?  
We offer this new account beginning January 1, 1981 which pays maximum interest allowable by law; 5 1/4 percent.
2. Why first on that date?  
A Federal law called the "Consumer Checking Account Equity Act of 1980" takes effect on that date.
3. Is this a NEW account?  
Yes it is. However, by offering this account we do not want to discourage you from establishing or maintaining a separate savings program using our existing accounts.
4. Is this a NOW account?  
You could call it that because the checks written on this account are sometimes referred to as Negotiable Orders of Withdrawal.
5. Are there many new rules we will have to learn?  
Not really. The laws and rules which apply to this account are little more than a combination of the laws and rules which now apply to separate savings and checking accounts. The checks for this account will look and operate the same and like a savings account, the deposit balances will earn interest.
6. What advantages does this account have over separate checking and savings account?  
Quite a few actually:  
\*Earn interest on your combined checking and savings account balance, instead of just savings, while keeping the total balance as near as your checkbook if you really need it.  
\*Keep only one account book, your checkbook.  
\*Balance one less statement, remember one less account number, keep one less set of records.  
\*Make one less deposit and minimize transfers between accounts.  
\*Make all your deposits into this one account, including funds destined for longer term investments. Transfer the funds by check when you want to, and, without ever having to lose interest for even a few days, be able to trace all your assets through just one account.
7. Who can open such an account?  
Individuals, and certain non-profit organizations.
8. What do I have to do?  
Come and in and open one of these accounts with us. You may be required to maintain a qualifying balance in the account during the statement cycle to earn interest, but you may already be keeping that same balance in your checking account, without the benefit of interest.  
Call, write or stop in and visit us if you would like more information.

Each depositor insured to \$100,000

### Winter Specials

IH Hy Transmission Oil  
IH No.1 Engine Oil  
Air Filters  
Oil Filters  
Super Cheif Plow Points (For Breaking Plow)  
Chisel Points For John Deere, Landall, Big Ox, & Hamby (For Deep Ripper Plows)  
4" Sweeps For Stubble Mulchers  
10% Off On Parts For Combine Off Season Repair On Combine & Engine & Corn Head Or Platform  
Some In Store Specials  
Tools, Log Chains, Tool Boxes

### H&R BLOCK TAX TEST

Question No. 4

Medicare 'B' payments made by persons receiving Social Security benefits are deductible.

True  False

For older persons on a fixed income, H&R Block has the right answer to this and other questions regarding special tax credits and deductions for those taxpayers.

If you itemize, the answer is TRUE. Because these payments are simply withheld from benefit checks during the year, they are often overlooked at tax time.

WE'LL MAKE THE TAX LAWS WORK FOR YOU

**H&R BLOCK**  
THE INCOME TAX PEOPLE

224 W. 2nd  
272-3332

True Value HARDWARE STORE

### BARGAIN OF THE MONTH

QUANTITIES LIMITED

Taylor now **468** While Supplies Last

Indoor/Outdoor THERMOMETER  
Twin 9 3/4 x 2 1/4 in. tubes give readings of indoor and outdoor temperatures, so there's no need to go outside to find out how cold it is. Black case. 5377

401 S. 1st.  
Muleshoe  
272-4511



## The Texas A&M University System Primary care is the focus

COLLEGE STATION — While mainstream medical education generally continues to be associated with large urban areas and hundreds of specialties, an unusual program in Texas is geared to provide rural areas and enhance minority representation in the medical profession.

The Texas A&M University System — with Texas A&M's medical school operated at College Station and Temple, Prairie View A&M's nursing school at Houston and nursing and medical technologist programs conducted at various

West Texas sites by Tarleton State — is changing the face of medical care in Texas.

Texas A&M, the system's flagship, is training nearly 130 primary care physicians, such as pediatricians, obstetricians, gynecologists and internists. Over the duration of the program, about two-thirds of those graduated are expected to remain in primary care and locate permanently in communities of less than 25,000 people.

At Prairie View A&M, one of the oldest minority nurse programs continues to be a leading source of black R.N.'s.

Attempting to dent the

shortage of front-line nurses in rural areas, Tarleton State has embarked on a program of training nurses for small-town hospitals based on the theory that a nursing student reared in a rural community would stay to practice in a small-town if the education, too, had taken place in a rural atmosphere.

Of the 36 students who have completed the Tarleton training and went on to become registered nurses, 31 are now working in small hospitals around the Cross Timbers region served by the university.

Tarleton State's biological sciences department has also

entered another field of health care training for which there is a desperate shortage in the Dallas-Fort Worth megalopolis, the state's most populous urban center.

A one-year program leading to certification as a medical technologist — the individuals who draw blood and perform other laboratory and chemical tests for doctors — has begun at All Saint's Episcopal Hospital in Fort Worth.

Thirty-three students have

completed the 40-hour-a-week classroom and laboratory work and 17 more are either midway through the program or have just started.

The year in Fort Worth is the culmination of an additional 90 hours of classroom credits required to enter the med-tech program.

The program is on the threshold of serving a critical need in the Fort Worth-Dallas metropolis as well as rural areas west of the urban center.

### Three Way News By Mrs. H.W. Garvin

Mrs. Bulah Toombs, Mrs. S.G. Long and Mrs. H.W. Garvin attended Senior Citizens luncheon at the center in Morton Thursday night.

The Ruel Kerby home was the scene of a bridal shower Sunday afternoon honoring Shannon Powder bride elect of Lt. Pat Calhoun.

Mr. and Mrs. S.G. Long visited Mrs. H.W. Garvin Sunday afternoon.

Mr. and Mrs. George Tyson were in Lubbock Thursday on business.

Mr. and Mrs. Leon Dupler and girls moved Monday to Andrews after living in Maple for many years.



### WHO NEEDS YOUR OIL!

GET YOUR ENERGY WITH HEAT RECOVERY FROM WELL WATER

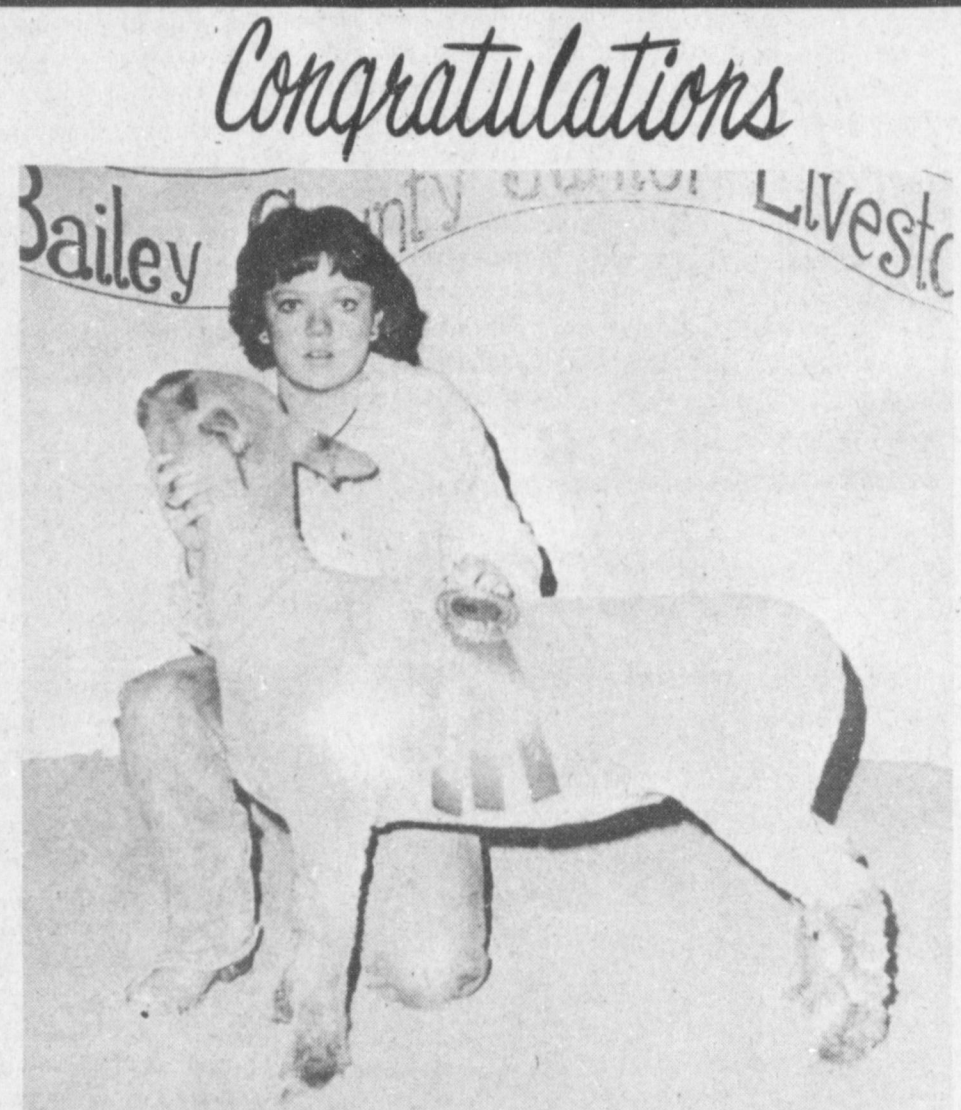
RESIDENTIAL HEATING AND COOLING!

SAVE TWO-THIRDS OVER THE COST OF OIL, GAS OR ELECTRICITY!

Wilson Drilling Co.

W. Hwy 84

272-5521



RESERVE BREED CHAMPION—Brenda Cooley is shown here with her Southdown Lamb which won Reserve Breed Champion at the Bailey County Livestock Show. Brenda also won First Place with her Medium Wool-Light Weight Lamb, she is the daughter of Mrs. and Mrs. Burl Cooley of Threeway.

Wooley International Inc.

## Congratulations ---



FIRST PLACE WINNER—Belinda Wheeler is shown here with her Middle Heavy Weight Medium Wool Lamb which won First Place at the Bailey County Livestock Show. Belinda is the daughter of Mr. and Mrs. Joe Wheeler of Threeway.



RESERVE BREED CHAMPION—Rodney Millsap is shown here with his Heavy Weight Fine Wool Cross Lamb which won Reserve Breed Champion at the Bailey County Livestock Show. He is the son of Beverly Capps of Muleshoe.

### TDA Livestock Pens Export Over \$20 Million in 1980

AUSTIN—When the final tallies are in, the Texas Department of Agriculture's export pens are expected to have processed over \$20 million worth of livestock, Commissioner Reagan V. Brown has reported.

"As of November, \$18.6 million worth of stock had been processed through Department export facilities on their way to international markets," said Brown. "We are expecting December to be at least a \$2 million month, and this will put the total figure for the year at well over \$20 million."

Brown noted that the number of cattle, horses, swine, sheep, goats and even giraffes handled by TDA export pens exceeded 55,000 head in 1980. Mexico, traditionally our largest customer, again held that distinction this year. Major shipments also were destined for a number of other countries around the world, including South Africa, Switzerland, Costa Rica, Guatemala, Belgium, West Germany, Colombia, Spain and Argentina.

"There is a tremendous demand worldwide for American breeding stock, especially in many southern hemisphere countries," said Brown. "Many ranchers in these countries are involved in all-out efforts to improve their herds, and Texas is one of the first places they come for choice breeding animals."

Brown added that through November, 1980, over \$9.6 million worth of Holstein dairy stock had been shipped through TDA facilities, making this the largest exported breed based on dollar value. Next were Suffolk sheep, Brahman cattle and Thoroughbred horses. Major shipments of slaughter sheep and slaughter

Spanish goats also were recorded. Brown added that the Texas Department of Agriculture's International Trade Division has played a major role in developing and expanding convenient.

# WHAT A SALE

## Cordovan

### MAINTENANCE FREE BATTERIES

GROUP	APPLICATION	WARRANTY	PRICE
1	IHC-GM-FORD	18 Mos.	26.35
1	IHC-GM-FORD	24 Mos.	37.89
2	AC-CAT-IHC OLIVER TRACTORS	24 Mos.	41.79
3	CASE-IHC-MF TRACTORS	24 Mos.	53.10
4	MOST DIESEL TRUCKS	24 Mos.	64.59
5D	JD-MF-MM-OLIVER WHITE TRACTORS	24 Mos.	68.30
7D	JD-FORD TRACTORS	24 Mos.	82.75
8D	CAT.-JD-IHC TRACTORS	24 Mos.	147.20
22F	FORD-GM-CHRYSLER	36 Mos.	36.70
24	GM-AMC-DODGE-CHRYSLER	24 Mos.	31.35
24	GM-AMC-DODGE-CHRYSLER	36 Mos.	40.70
24	GM-AMC-DODGE	60 Mos.	57.95
24F	FORD MOTOR	36 Mos.	40.70
24F	FORD MOTOR	60 Mos.	57.95
27	GM	36 Mos.	49.79
27	GM	60 Mos.	63.95
27F	FORD MOTOR	36 Mos.	49.79
27F	FORD MOTOR	60 Mos.	63.95
29F	FORD MOTOR	36 Mos.	40.79
30H	AC-CASE-JD-IHC-MASSEY-MM TRACTORS	24 Mos.	68.10
3EH	JD-IHC TRACTORS	24 Mos.	54.25
3ET	JD TRACTORS	24 Mos.	59.69
4EH	IHC TRACTORS	24 Mos.	66.49
4DLT	FORD TRACTORS	24 Mos.	91.79
42	VOLKSWAGEN	36 Mos.	42.89
53	INDUSTRIAL	36 Mos.	35.79
60	GM	36 Mos.	44.85
U1L	Garden Tractor	12 Mos.	32.30
72	GM	36 Mos.	40.35
74	GM	36 Mos.	54.95
74	GM	60 Mos.	61.95
1-8V	Replaces 6 V APP.	24 Mos.	35.85
2-8V	Replaces 6V APP.	24 Mos.	45.39
4-8V	Replaces 6V APP.	24 Mos.	62.25

CORDOVAN

A&M

FARM & RANCH SUPPLY

3 CONVENIENT LOCATIONS  
300 S. Ave. C Portales, 2400 E. Mabey Drive



**BUY  
SELL  
AND  
TRADE  
WITH...**

# Classified Ads

**Deadline For Classified Ads is 11:00  
Tuesdays And Fridays**

**CLASSIFIED RATES**  
1st Insertion,  
Per Word--\$.15  
Minimum Charge--  
\$2.00  
2nd Insertion,  
Per word--\$.13  
3rd Insertion,  
Per Word--\$.10  
Minimum Charge  
\$1.80  
1/3 Cheaper to run  
Classifieds 3 times or more  
**CARD OF THANKS**  
25 words--\$3  
Over 25 words  
charged at regular  
classified rates.  
Classified Display--  
\$1.55 per column inch  
Double Rate for  
Blind Ads  
**DEADLINE FOR  
-INSERTION**  
11 a.m. Tues. for Thurs.  
11 a.m. Fri. for Sun.  
**WE RESERVE THE  
RIGHT TO CLASSIFY  
REVISE OR REJECT  
ANY AD.  
NOT RESPONSIBLE  
FOR ANY ERROR  
AFTER AD HAS RUN  
ONCE.**

**1. PERSONALS**  
**WE BUY  
USED FURNITURE AND  
APPLIANCES  
CALL 272-3030  
HARVEY BASS  
APPLIANCE**  
1-18s-tfc

For carpentry and home  
repair, specializing in  
small jobs. Quality work-  
manship, reasonable prices -  
free estimates - Call  
Roger Radney at 272-5395  
after 5 on week days.  
1-1s-9tc

**SQARE DANCE LESSONS**  
Full session, 20 lessons,  
\$25 per person. Lessons  
begin first week in Febru-  
ary. 272-4457 - 322 West  
9th.  
1-3t-5tc

**ADULT'S BEGINNING  
DRAWING CLASSES**  
19th-22nd and 26th-29th at  
9:30 a.m. to 2:30 p.m.  
**CHILDREN'S AND  
TEENAGE CLASSES**  
On Tuesdays - 4:30-6:30  
**ADULT WATER COLOR  
CLASS**  
February 2nd - 5 - 9:30  
a.m. to 2:30 p.m.  
Call 272-3889 after 6 p.m.  
or 272-5424. Rheata White  
Studio, 800 American Blvd.  
1-3s-5tc

**Card of Thanks**  
We want to express our  
sincere thanks and appreci-  
ation to our friends and  
neighbors who offered  
prayers, gave of their time  
in acts of kindness, for the  
beautiful cards, flowers,  
comforting words and food  
during the sickness and  
loss of my wife, Melva. At  
a time like this, friends and  
neighbors are precious.  
May God's richest Bless-  
ings be returned to each  
ten-fold daily is our prayer.  
Cecil Davis  
Austin Guess (brother)  
And All Other Relatives  
3s 1tp

**3. HELP WANTED**  
The Texas Migrant Council  
is accepting applications for  
Crew Director

**AIRLINES**  
Major airlines are now ac-  
cepting applications for the  
following opportunities:  
FLIGHT ATTENDANTS  
RAMP & BAGGAGE  
PERSONNEL  
TICKET AGENTS  
CLERICAL POSITIONS  
CUSTOMER SERVICE  
FOOD SERVICE  
AIRCRAFT CLEANING  
BOOKKEEPING  
AIRCRAFT  
MAINTENANCE  
Individuals interested in  
applying with these air-  
lines companies must be  
career oriented, have a  
public relations personality  
be willing to travel if re-  
quired, and be in good  
health. Major airlines will  
provide training for many  
of the positions listed  
above. For further infor-  
mation on how to immedi-  
ately apply directly with  
these major airlines com-  
panies, write to:  
TRAVELEX, INC.  
ATTEN: AIRLINES  
APPLICATION  
INFORMATION  
3865 South Wasatch Blvd.  
Suite 101  
Salt Lake City, Utah 84109  
Please indicate briefly your  
background, what airlines  
position (s) you are inter-  
ested in applying for and  
enclose a stamped, self-  
addressed, letter size en-  
velope so that you may  
receive further information  
as to what steps to take so  
that possible interviews  
might be arranged by  
these airlines. All major  
airlines companies are  
EQUAL OPPORTUNITY  
EMPLOYERS.  
3-2t-4tc

Open territories available  
for Avon representatives.  
Person must be neat and  
energetic, willing to work  
15 to 20 hours per week.  
For details call Nettie at  
272-3208 or Oneida at  
272-3346.  
3-3s-4tc

**HELP WANTED!!**  
Kitchen help - part time  
and full time. Apply in  
person at *KL's Steakhouse*,  
West Hwy. 84.  
3-3s-stfc

**HELP WANTED- Meter  
Reader** for Bailey County  
Electric Cooperative Associ-  
ation. 40 hour week Apply  
at 305 E. Avenue B,  
Muleshoe, Texas. Excellent  
fringe benefits. An Equal  
Opportunity Employer.  
Closing Date, January 30,  
1981.  
3-3s-4tc

**7. WANTED TO RENT**  
**WANT TO RENT:** Dryland  
farm around Baileyboro  
and Stegall area. Call  
Aubrey Heathington at  
272-4766 or Don Heathington  
at 272-4351.  
7-50s-tfc

**8. REAL ESTATE**  
Farm House for Sale: To  
be moved - 5 rooms, 1  
bath. Contact 272-3402 For  
more information  
8-2s-3tc

**FOR SALE:** 2 bedroom, 2  
bath, den, fenced, garage,  
ref. air, central heat, gar-  
bage disposal and dish-  
washer. Convenient to  
schools. Call 272-4496 or

**SMALLWOOD  
REAL ESTATE**  
232 Main 272-4838  
Joe and Ricky  
Smallwood  
96 acres, 3 miles north-  
west of Muleshoe, elec-  
tric circular sprinkler.  
Will take house in trade  
160 acre farm, 5 miles  
from Muleshoe on 1760.  
2 wells, water drive  
Valley Sprinkler.  
We need listings.  
See or call Joe or Ricky.  
8-51t-tfc

**TOWN and  
COUNTRY  
REAL ESTATE**  
3 bedroom, brick,  
double garage, 2 bath.  
1916 West Ave. H.  
\$55,000.  
3 bedroom, 2 bath, car-  
pet, central heat and  
refrigerated air. 1733  
W. Ave. B. \$44,000.  
Modern home with 3  
bedrooms and a lot of  
improvements. Four  
miles west of Muleshoe  
\$40,000.  
2 bedrooms, 1 bath,  
stucco. Good location.  
\$21,500.  
Richland Hills Lot. 103  
foot front on West Ave.  
H.  
John W. Smith, Broker  
806-272-4678  
806-272-3725  
8-47s-tfc

**FOR SALE: Lot #6 Block #8  
Pool Addition, replat. 125 X  
75, 600 block facing Ave. K  
Call 272-4536.**  
**FOR SALE BY OWNER: 3  
bedroom brick - 904 W. 7th  
272-4448 or 272-5483.  
8-2t-6tp**

**For all your real estate  
needs call:  
GLAZE & GOFORTH  
112 Ave. C  
272-4288  
8-11-tfc**

**KREBB'S  
REAL ESTATE**  
201 W. Avenue C  
272-3191  
Nice 3 1/2 brick near  
Muleshoe. **SOLD**  
26 A close in on pave-  
ment.  
Well located - 2 br  
home - beautiful.  
30 A on pavement.  
Good 1/2 section - dry  
land.  
35 A, irrigation - nice  
home.  
240 A - alfalfa - Circle  
S.  
Excellent business pro-  
perty - Hwy. 84.  
8-3s-tfc

**HOUSE FOR SALE-**Two  
bedroom home, small but  
adorable, fully carpeted.  
Owner financing possible  
w/reasonable down pay-  
ment. Call 272-4941  
8-2s-tfc

Lady Bee at Earth is  
now carrying

**J.B. SUDDERTH  
REALTY INC.**  
Box 627  
109 Fifth St.  
Farwell, Texas 79325  
Phone (806) 481-3288  
or 481-9149

148 Acres irrigated on  
highway. Lays good  
with super nice, extra  
large 4 bedroom, 3  
bath brick home. 2  
miles south of Bovina.

320 Acres irrigated, 2  
wells. Priced right. 5  
miles southeast of  
Farwell.

60 Acres west of Mule-  
shoe on highway. One 6  
inch well, side roll  
sprinkler. Steel build-  
ing, 2 sets of nice  
improvements.

160 acres northwest of  
Muleshoe, 2 wells, lays  
good on FM highway.

320 acres irrigated with  
2 electric wells and  
circles all wheat, fenced  
excellent water area.  
Near Bovina Feeders.

1285 acres, circle  
sprinklers, 7-8 inch  
wells, corrals and feed  
pens, trailer house.  
Priced to sell. Owner  
will finance. 29 percent  
down or will take cash.  
8-49s-tfc

**We want your business  
"remember"  
REID REAL ESTATE  
THURSIE REID  
272-3142  
George Nieman  
965-2488  
Dianne Nieman  
965-2488  
Lucille Harp  
272-4693**

**Extra nice brick home in  
Richland Hills Addition  
-3-2-2 with fireplace.  
2-2 bedroom houses on  
same lot. Excellent rental  
property.**

We've just listed this  
brick home in a nice  
neighborhood. 3-1-1  
LOT- 60X140- plumbed  
for trailer. Sidewalk and  
some shrubs.

Large 3 bedroom home  
with 1 1/2 baths has lots  
of closet space.

Completely remodeled 2  
bedroom, 2 bath home -  
close to schools.

Our goal in the Real  
Estate business is to  
serve our neighbors. So  
if you are considering  
selling or buying, please  
let us help you.

**FARMS**  
Parmer Co. -- 216 acres,  
good productive land  
and water area, with 3  
bedroom house, 10%  
owner financing.

Lamb Co. -- 160 acres,  
Pleasant Valley area, 1 -  
10" well & 1 - 6" well.

Bailey Co. -- 200 acres,  
good level farm, 500-600  
GP.M. water, 3 bedrm.  
home. 10% owner finan-  
cing.  
8-2s-tfc

**9. AUTOMOBILES  
FOR SALE**  
1976 Toyota Celica GT, 5  
speed, AC, AM/FM Stereo

**FOR SALE:** 1969 Ford  
F-100 Pickup. Short narrow  
box, 6 cylinder, 3 speed,  
new tires, good shape,  
very clean. 272-5395 after 5  
p.m.  
9-3t-4tc

**10. FARM EQUIP.  
FOR SALE**  
Farm Equipment For Sale:  
1 ERCO side-roll, 1280 ft.  
length, self-leveling noz-  
zles, 6 ft. wheels and wind  
tie downs. \$3000. Call  
946-3471.  
10-50t-tfc

**11. FOR SALE  
OR TRADE**  
**FOR SALE BY OWNER:**  
Used 14X75 Astro Mobile  
Home to be moved. 2  
bedroom, 1 3/4 bath and  
fireplace. Call 806-825-2618  
11-38s-tfc

**FOR SALE:** 160 acres, 4  
miles north of Muleshoe, 2  
wells. Phone 965-2200 after  
7 p.m.  
11-48t-tfc

New 1981 18 ft. and 19 ft.  
Sea Arrows. See at Friona  
Boat Company at Reeves  
Chevrolet, Olds in Friona.  
806-247-2774.  
11-3s-tfc

**Treflan, Proul,  
Atrazine, etc.**  
**Save At  
Watson Chemical  
272-4737**  
11-15-tfc

Renewed couch and mat-  
ching club chair - bronze  
and olive tones. Excep-  
tionally well built and bar-  
gain price.  
*Burrows Upholstery Shop*  
118 W. Avenue C  
12-3s-5tc

**BURROWS  
UPHOLSTERY AND  
FURNITURE REPAIR**  
118 W. Ave. C  
In the rear  
Phone 272-4255  
12-39s-tfc

**TRADEWINDS PLAZA**  
A few custom designed  
retail or office space  
left. Now's the time to  
put in that shop you  
always dreamed of (re-  
gardless of size). Come  
down to 800 W. Ameri-  
can Blvd. and let us  
show you around and  
acquaint you with our  
growing family of  
friendly shop owners.  
We believe you will like  
what you see and agree  
that this is the place to  
start a business. Call  
272-5180 or 965-2471.  
13-3s-tfc

**15. MISCELLANEOUS**  
**FRANK'S  
REFRIGERATION  
APPLIANCE & SERVICE  
PARTS & REPAIR**  
315 West Third  
Phone 272-3822  
15-2t-7tp

35 square yards of used  
carpet. \$4 a yard. 925-6766.  
15-1s-6tc

Want a propane system?  
Check with **SMITH LP GAS,  
MULESHOE.**  
15-30s-tfc

**Public Notice**  
NOTICE OF SALE OF  
REAL ESTATE UNDER  
EXECUTION  
THE STATE OF TEXAS  
COUNTY OF LAMB

By virtue of an execution  
issued out of the District  
Court of Lamb County,  
Texas, on a judgment ren-  
dered in said Court on the  
22nd day of August, 1980,  
in favor of the Defendant,  
BILL BRADLEY and  
against the Plaintiff, IRRIG-  
IGATION, INC., in the  
case of IRRIGATION,  
INC., against  
GATION, INC.,  
BILL BRADLEY, No. 8965  
in such Court, I did on the  
8 day of January, A.D.,  
1981 at 9:30 o'clock a.m.,  
levy upon the following  
described tract and parcel  
of land situated in the  
County of Bailey, State of  
Texas, as the property of  
said IRRIGATION, INC.,  
to-wit:

A 3.0 acre tract of land  
out of the Northwest  
one-fourth of Section 21,  
Block Y, W.D. & F.W.  
Johnson Subdivision, Bai-  
ley County, Texas, and  
being more particularly de-  
scribed by metes and  
bounds as follows:

BEGINNING at a 3/8"  
rebar set in the Northernly  
R.O.W. line of U.S. High-  
way 70 & 84, for the  
Southeast corner of this  
Survey, from whence the  
Southeast corner of the  
Northwest 1/4 of Section  
21 bears South 41 deg. 29'  
30" East, 555.83 ft. and  
South 0 deg. 42' West,  
136.0 feet;

THENCE North 41 deg.  
29' 30" West, 237.73 ft. to  
a 3/8" rebar set for the  
Southwest corner of this  
Survey;

THENCE North 48  
deg. 31' East, 534.22 ft. to  
a 3/8" rebar set in the  
Southernly R.O.W. of rail-  
road for the Northwest  
corner of this survey;

THENCE South 54 deg.  
54' 30" East, 168.26 ft. to

**HERE'S A  
UNIQUE  
OPPOR-  
TUNITY  
IN  
MULESHOE, TEXAS**  
Start your own business  
as owner/operator of a  
Montgomery Ward Catalog  
Sales Agency, and have a  
trusted 107 year reputation  
the first day.  
We're looking for Sales  
Agents - ambitious hus-  
band/wife teams with an  
urge to break out on their  
own. And, we may have  
just what you're looking  
for.  
Our unique Sales Agency  
Store program offers an  
exciting opportunity to op-  
erate a business of your  
own with a small invest-  
ment, and also gives you  
the opportunity to take  
advantage of the invest-  
ment we've already made,  
as well as over a century of  
Catalog business ex-  
perience. Once you become  
a Sales Agent, you can use  
Ward's name, catalogs and  
credit. Sell our branded  
merchandise with over  
100,000 items, and have  
access to the same sys-  
tems, concepts and materi-  
als we use to operate our  
company owned stores.  
Best of all, your invest-  
ment will probably be con-  
siderably less than would  
be required for a regular  
retail business, with similar  
sales volume.  
If you are willing to  
accept responsibility in re-  
turn for a future in your  
own business, we'd like to  
talk to you about your  
personal qualifications,  
and give you more details  
about our plan. Write or  
phone today.  
**Joe Belden,**  
1902 W. Michigan,  
Midland, Tex. 79701  
pho-915-683-1595

Dealer Inquiries Welcome!  
10 percent over cost. Pre-  
fab ready to erect custom  
steel buildings for com-  
mercial, farm or homes!  
MONTGOMERY

a found 3/8" rebar for a  
corner of this survey;  
THENCE South 0 deg.  
42' West, 99.20 ft. to a  
3/8" rebar set for a corner  
of this survey;

THENCE South 48 deg.  
31' West, 504.23 ft. to the  
PLACE OF BEGINNING\*  
and containing 3.0 acres of  
land.

and on the 3rd day of  
February, A.D., 1981, be-  
ing the first Tuesday of  
said month, between the  
hours of 10 o'clock a.m.  
and 4 o'clock p.m. on said  
day, at the courthouse  
door of said county, I will  
offer for sale and sell at  
public auction, for cash, all  
the right, title and interest  
of the said IRRIGATION,  
INC., in and to said above  
described property.

Dated at Muleshoe, Bai-  
ley County, Texas, on this  
8 day of January, A.D.,  
1981.  
s/Bobby Henderson  
Sheriff of Bailey County,  
Texas  
1-2s-3tsc



Even though cooler weather  
may dent the supplies of  
reasonably priced produce,  
it's no reason to give up on  
salads. There's a lot you can  
do to make them sparkling or  
zesty.  
Yogurt adds a tangy note  
for dressing salads. If you  
feel it's too thin, add one-  
third to one-half cup of well-  
beaten cottage cheese to each  
cup of plain yogurt with  
whatever herb seasonings you  
wish. A blender makes quick  
work of beating the mixture.  
Try a combination of  
greens for simple salads: two  
kinds of lettuce with fresh  
spinach leaves, for example.  
These could be sprinkled with  
grated Parmesan cheese before  
serving with a dairy sour  
cream-herb dressing.  
Even winter fruit salads  
will take on sparkle if you  
cap them with a scoop of fruit  
or berry sherbet. Try citrus  
fruits with lemon sherbet, for  
example, or pineapple-grape  
salad with lime or raspberry  
sherbet.

**Drinking Age  
Legislation  
Is Proposed**

Senator Walter Meng-  
den, Republican from Har-  
ris County, has pre-filed  
Senate Bill (SB) 130 to  
increase the alcoholic bever-  
age drinking age in Tex-  
as from 18 to 19 in order to  
get alcohol problems out of  
the high schools.

Senator Mengden's bill  
on this subject in the last  
legislative session, SB 474,  
passed the Senate 25 to 5  
but was killed in the House  
Liquor Regulation Commi-  
ttee.

This legislation was en-  
dorsed by every major edu-  
cational organization in  
the state including the  
Texas Association of Sec-  
ondary School Principals,  
the Texas Association of  
School Administrators, the  
Texas Elementary Principals  
and Supervisors As-  
sociation, the Texas As-  
sociation of Supervision  
and Curriculum Develop-  
ment, the Texas Associa-  
tion of School Business  
Officials and others.

Only seven other states,  
Louisiana, Wisconsin, West  
Virginia, New York, Ver-  
mont, Connecticut, and  
Hawaii permit drinking of  
alcohol beverages at age  
18. By contrast, 12 states  
permit drinking at age 19,  
six states permit drinking  
at age 20, and 24 states  
permit drinking at age 21.

A September 1979 na-  
tional Gallup Poll of teen-  
agers in states with 20 or  
21 year old drinking laws  
showed only 37 percent of  
the teens wanted the drink-  
ing age lowered.

Children we think of af-  
fectionately, as di-  
vided pieces of our  
own bodies.  
-Joseph Hall.

**Rent-to-Own  
Color TV**  
Washers Dryers Refrigerators  
*No Service Expense No Interest To Pay*  
**Wilson**  
Appliance 272-6681  
117 MAIN MULESHOE

**Ron Kidd  
Custom Application**  
*Treflan, Atrazine, Milogard, other Chemicals*  
Call or come by 1904 W. Am. Blvd.  
**Ron Kidd**  
965-2262 Mobile 272-5200 Office  
272-3705 Home after 7:00 p.m. TFC

**Did You Know .....**  
*For 10% down you can purchase the  
lot you want in the Parkridge Addition  
NOW, while there is a large selection to  
choose from. Have your lot paid for when  
you are ready to build. (It's An Excellent  
Investment Too!)*  
*Lots are priced from \$4,700.00 to  
\$10,000.00. Pay the balance of the purchase  
price in monthly installments over 10  
years with 8% interest.*  
*No tricks, it's really 8% interest  
on the unpaid balance.*  
*For more information contact*  
**Darrell Turner**