



**WEATHER**

Jan. 25 -- 50 12  
Jan. 26 -- 57 27  
Jan. 27 -- 35 15  
.35 moisture on the 26th  
and .03 on the 27th.  
Total for the year is .96.

# BAILEY COUNTY JOURNAL

*'The Community of Opportunity-Where Water Makes the Difference'*

20¢

Volume 17, No. 4

12 Pages

Published Every Sunday at Muleshoe, Bailey County, Texas 79347

Sunday, January 28, 1979

## Gleason And Black Show Top Animals

### Police Crack Down On Check Violators

Muleshoe City Police Chief Johnny Richards announced, Friday morning, a major crackdown by the city police on check violators within the city of Muleshoe.



Members of the Muleshoe Youth Activities Committee are scheduled to meet at 7:30 p.m. on Monday, January 29, at the Bailey County Exhibition Center and Coliseum.

The Muleshoe City Council will meet in special session at 8:30 a.m. on Tuesday January 30, at the city hall.

Items on the agenda include ordinances relating to the request of Pioneer Gas Company for a rate increase; discussion of matters relating to Edward Warren Airfield; discussion of the 1979 Community Development Block Grant program and transfer of city accounts to bad debts.

Attending the Nutrition Throughout the Life Cycle conference January 30 - February 1 in Austin will be Sue Nesbitt, LVN at the Texas Department of Health and Texas Public Health Association.

Inadvertently omitted from the Mary DeShazo Honor List was the name of third grade student, Van Gregory.

During the 1979 National Western feeder calf show in Denver last week, last year's consignor of the champion Hereford pen, J.E. Birdwell Ranches, Muleshoe, returned to win the top award in the heavyweight class with a

Cont. page 6, Col. 2

He said their department has been busy this week as they started serving 17 arrest warrants for check violators. The warrants, issued by Municipal Judge Linda Huckaby, were for persons wanted by the police for writing 'bad checks.'

Chief Richards commented, "We are just starting to work on a backlog of bad checks merchants have received. Some of them are pretty old. We want to try to help the merchants as much as we can."

He reminded that information about persons convicted on check charges become public information, and names of all persons convicted on check violations will be published in the newspaper.

### Local Doctors Plan To Staff Farwell Clinic

According to the Friday, January 26, issue of the State Line Tribune at Farwell, "physicians from Muleshoe will take turns staffing the Farwell Medical Clinic after Dr. Robert Silva vacates the facility February 15."

The paper said Pudge Rose told the Farwell Chamber of Commerce during its Tuesday meeting of the new plan.

Cont. page 8, Col. 1



**GRAND CHAMPION STEER...** Jimmy Gleason, son of Dr. and Mrs. Jerry Gleason, exhibited the top steer in the Bailey County Junior Livestock Show Thursday night. His steer, a heavyweight, was adjudged the top steer in a field of numerous 'top' animals. He also showed a reserve champion at the Amarillo Livestock Show last week.

### Mules Take Wildcats

Muleshoe Head Basketball Coach Mike Mayberry said that in order for a team to win a game, at least three players must score in double figures, and that's just what happened when the Littlefield Wildcats came to town Friday night.

Charles Briscoe led the scoring with 17 points; Dickey Sudduth shot 16 and Mike Northcutt, 12 points to lead the Mules to a thriller 55-52 win over the 'Cats.'

Terry Shafer hit on eight; and Jeep Shanks and Sam Whalin each had two points.

It was a back and forth second quarter, with the teams switching the lead just as soon as both teams could make it back down the court. At half time, the score was all tied up in a neat package at 28-28. By the end of the third stanza, the Mules had edged out to a slim two point lead, 38-36 and with 28 seconds left in the game had a two point, 52-50 lead. At 11 seconds on the clock the Mules were leading by one, 53-52, before an over-eager 'Cat fouled Dickey

Sudduth. He went to the free throw line with four seconds left in the game, and made both points to end the game on 55-52.

It was the Mullettes all the way when they met the Lady 'Cats, and the straight shooting Mullettes hit on 100 percent of their free throws in the first quarter. They had a wide 27-13 lead at halftime and waltzed to a 37-21 lead at the end of the third before taking the final win at 48-35.

Hitting for the Mules Sweetheart Is Honored On Birthday

Kiwanis Sweetheart Frantonya Berryhill, who said she was 12 years of age on her birthday, was awarded dual honors by the Kiwanians Friday morning. They sang 'Happy Birthday' for her, and praised her accomplishments at the Friona Speech Tournament last weekend.

She won first in Persuasive Speaking at the tournament. Kiwanis members spoke of their pride in their club sweetheart, and added that they are also proud of the other speech and drama students who brought home sweepstakes honors from the tournament.

### Appliance Store Adds Another New Employee

With the addition of Bob Anson as a service technician, Wilson Appliance continues a growth pattern since starting with one employee in November, 1967.

Anson formerly operated Bob's TV Service in Farwell, owning the store for six of the seven years he was there. He will be servicing radios, TVs and appliances.

Anson and his wife, Betty are the parents of two sons, Tommy and Terry. He said the family will possibly move to Muleshoe in the near future.

When Gordon Wilson opened his store at 202 Main Street in 1967, he operated with one service man. He now has four television and appliance servicemen, three full time employees in the front of

Cont. page 6, Col. 3

## BAILEY COUNTY 19 JUNIOR, 79 LIVESTOCK SHOW



**TOP PIG IN LIVESTOCK SHOW...** Making it an almost clean sweep of the annual Bailey County Junior Livestock Show, Jimmy Gleason showed the grand champion of the Swine Division Friday morning. His heavyweight Hampshire was considered to be the best after a full morning of showing the various breeds during the annual show.

### Gleason Wins Swine, Steer; Black Wins Lamb

#### Tractorcade Will 'Weekend' In Tennessee

Kem Bales reported late Friday afternoon that the tractorcade was pulling off the highway to spend the night approximately 10 miles outside Morristown, Tenn. after spending Thursday night at Crossville, Tenn.

He said the weather is clear and beautiful as the tractorcade, now estimated to contain more than 500 vehicles is about 20 miles east of Knoxville, Tenn.

He said that everything is progressing well, as people along the way continue to show remarkable support of the American Agriculture Movement.

Bales told of a program Cont. page 6, Col. 1

#### Corn Meeting Set Monday In Dimmitt

According to Carl King, president of the Texas Corn Growers, the sixth annual meeting of the association will begin with a 9:30 a.m. registration on Monday, January 29, at the County Exposition building at the fair grounds in Dimmitt.

President King said special guest speaker will be Texas Agriculture Commissioner Reagan Brown.

At noon, a free barbecue will be served by Supt. phen's of Amarillo. Lunch will follow a 10 a.m. business meeting.

Other speakers will include Dr. Leon New, Dr. Robert Berry and Dale Pennington, all of the Texas Agriculture Extension Service.

Main topics of discussion will be President Carter's proposed farm plan and research and development reports on corn hybrids.

Also to be discussed will be the bargaining board program and gasohol, with the possibility of constructing pilot plants in this area.

The Corn Grower President reminded that in the event the pilot plants for gasohol are constructed in this area, it would increase the demand for corn by-products.

He urged all corn producers to plan to attend the Dimmitt meeting.

The weather alternated between 'spring-like,' rainy, then cold and windy with sleet and snow, but a highly successful Bailey County Junior Livestock Show was completed Friday afternoon in Muleshoe.

For the first time, the show was conducted in the arena at the all-new Bailey County Exhibition Center and Coliseum. New pens were installed and a new show arena temporarily constructed on six inches of sand leveled out by a bulldozer on the concrete floor of the arena.

Sweeping the show was Jimmy Gleason, who showed the Grand Champion Steer, a 1,139 lb. heavyweight and also won the swine division with his heavyweight Hampshire Barrow.

Starla Black exhibited both the grand champion of the lamb division, as well as the reserve champion of the show. Her champion was a heavyweight fine wool cross and the reserve champion was a heavyweight medium wool.

Reserve champion of the steer show was a 1,310 lb. heavyweight steer exhibited by Kelly Harrison.

[Pictures of the Swine Division of the Bailey County Junior Livestock Show will be in the Thursday issue of the Muleshoe Journal.]

Todd Bessire showed a heavyweight cross barrow to the reserve champion of the show.

Hundreds of people packed the all new show facility and the women running the concession stand were amazed at the large amount of food sold during the show. They reported that people were coming from town to eat at the concession stand during the show, some of them watching a part of the judging while they were at the Exhibition Center.

Sinner of the Jimmy Dale Black Memorial Award was Greg Harrison, who also won the showmanship award in the steer division; Wesley Rasco won the showmanship award in the lamb division and Jimmy Gleason was presented showmanship award for the swine division.

Results of the show and placings, in order, included:

**CATTLE LIGHTWEIGHT STEERS**  
Jay Gleason, Jacinda Gleason, Jerry Gleason, Jay Gleason, Greg Young, Staci Kirby, Mike Davenport, Shawn Cooley and Mike Davenport.

**MIDDLEWEIGHT STEERS**  
Alan Harrison, Belinda Wheeler, Kelly Harrison, Mitzi Robertson, Jacinda Gleason, Shane Claunch, Brian Kirby, Greg Young, Tracy Tunnell and Greg Harrison.

**HEAVYWEIGHT STEERS**  
Jimmy Gleason, Kelly Harrison, Shane Claunch, Alan Harrison, Belinda Wheeler, Jimmy Gleason, Jodie Wheeler, Greg Harrison, Staci Kirby and Jerry Gleason.

**FEEDEE STEERS HEIFERS**  
Brian Kirby, Jimmy Gleason, Kelly Harrison and Greg Harrison.

**LAMB DIVISION SOUTHDOWN CROSS**  
Beth Harmon.

**HEAVYWEIGHT SOUTHDOWN**  
Ricky Rasco, breed champion; Glenda Rasco, reserve breed champion; Brenda Cooley and Mandy Plank.

**LIGHTWEIGHT SOUTHDOWN**  
Shawn Cooley, Richard Nichols, Tommy Tucek, Richard Nichols and Mandy Plank.

**HEAVYWEIGHT MEDIUM WOOL**  
Starla Black, breed champion; Wayne Parkman; Lyndal Stovall, Glenda Rasco, Ben Harmon, Mike Nichols, Wayne Parkman, Lisa Black, Renee Cooley, Renee Cooley and Lisa Black.

**LIGHTWEIGHT MEDIUM WOOL**  
Beth Harmon, reserve breed champion; Ricky Rasco, Shawn Cooley, Ben Harmon, Wesley Rasco, Glenda Rasco, Ricky Rasco, Mitzi Robertson, Wayne Parkman, Mandy Plank and Beth Harmon.

**HEAVYWEIGHT FINE WOOL CROSS**  
Starla Black, breed champion; Lisa Black, reserve breed champion; Mitzi Robertson, Michael Angeley, Delia Shaw, Delia Shaw, Robby Clark, Michael Angeley and Brenda Cooley.

**LIGHTWEIGHT FINE WOOL CROSS**  
Lyndal Stovall, Robby Clark, Robby Clark, Gina

Cont. page 6, Col. 4

### Tri-County Names Two New Officers



GORDON H. GREEN



BRUCE WOODS

During the fourteenth annual stockholders' meeting of Tri-County Savings and Loan Association Thursday night, a new vice president and new director were named.

New vice president is Bruce Woods, who has been employed by Tri-County Savings and Loan Association for the past 14 years. He makes his home in Muleshoe.

Chosen as a new director was an attorney from Muleshoe, Gordon H. Green.

Tri-County Savings and Loan Association has its headquarters office in Muleshoe, with branch offices at Littlefield, Friona and Farwell. Don Harmon is president and Chairman of the Board.



**TOP LAMB OF THE SHOW...** With a heavy showing of lambs, this fine wool cross, exhibited by Starla Black by her sister, Lisa, was judged the grand champion of the lamb division Thursday night. Both are the daughters of Mr. and Mrs. Ronnie Black. Starla also had the reserve champion of the entire lamb show.



STORE HOURS:  
OPEN 8:00 - 9:00  
MONDAY - SATURDAY  
SUNDAY - 9:00-8:00

# MID WINTER FOOD SAVINGS

QUARTER PORK LOIN OR FAMILY PACK



## Pork Chops

8-11 CHOPS  
**\$1.49**  
LB.

EXTRA LEAN TRIM  
CENTER CUT RIB  
**Pork Chops**  
LB. \$1.89

EXTRA LEAN TRIM  
CENTER CUT LOIN  
**Pork Chops**  
LB. \$1.99

COUNTRY STYLE  
**Spare Ribs**  
LB. \$1.59

FRESH LOIN END  
**Pork Roast**  
LB. \$1.69



HORMEL  
Little  
Sizzlers  
12 OZ. \$1.09  
PKG.

1 LB.  
PKG.

DELICIOUS  
**Chili Bowl Chili** LB. \$1.59  
FRESH PORK MED. SIZE  
**Spare Ribs** LB. \$1.29

BLACK LABEL

## Hormel Bacon

# \$1.49

WISCONSIN LONGHORN  
**Colby Cheese** LB. \$1.89

YOU SAVE MORE

### Grocery Specials

HORMEL VIENNA  
**Sausage** 2 5 OZ. CANS **79¢**

DINTY MOORE  
**Beef Stew** 24 OZ. CAN **\$1.19**

SKINNER SHORT CUT  
**Elbo Macaroni** 12 OZ. PKG. **43¢**

ALL VEGETABLE  
**Crisco Oil** 48 OZ. BTL. **\$2.29**

CAMPFIRE  
**Marshmallows** 3 10 OZ. PKGS. **59¢**

WELCH'S GRAPE  
**Jam or Jelly** 20 OZ. JAR **59¢**



VAN CAMP'S

## Pork & Beans

4 300 CANS **\$1**



BATHROOM

## Delsey Tissue

4 ROLL PKG. **83¢**



ASSORTED

## Jeno's Pizza

13 1/2 OZ. PKG. **79¢**



## SHOP AND COMPARE OUR PRICES

### Health And Beauty Aids



RELIEF OF ACES AND PAINS

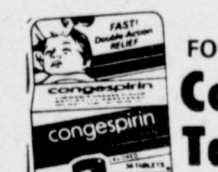
**Bufferin**  
100 CT. BTL. **\$1.69**



Arthritis  
Bufferin

40 CT. BTL. **\$1.19**

ROLL-ON  
REG./UNSC. QUICK DRY  
**Ban Deodorant** 1.5 OZ. BTL. **\$1.19**



FOR COLDS  
**Congespirin Tablets** 36 CT. BTL. **79¢**



FOR MEN  
**Hair Vitalis Tonic** 7 OZ. BTL. **\$1.59**



FOR PAIN RELIEF  
**Excedrin Tablets** 36 CT. BTL. **99¢**

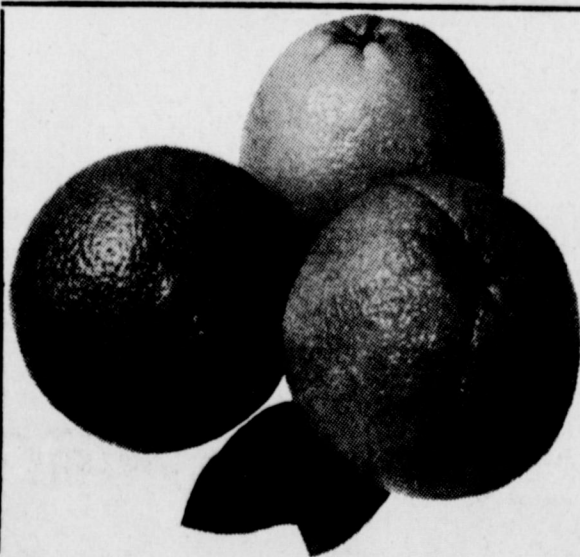
### QUALITY FOODS NAME BRANDS

WHOLE KERNEL GOLD  
**Niblets Corn**  
3 12 OZ. CANS **\$1**

### SPRING COLLECTION STONWARE

**Dessert Dish**  
PER PIECE WITH EACH \$3.00 PURCHASE **69¢**

### Produce Specials



CALIFORNIA SUNKIST  
**Oranges**  
3 **\$1**  
LBS.

WASHINGTON D'ANJOU  
**Pears** 3 LBS. **\$1**

CALIFORNIA LARGE  
**Avocados** 5 FOR **\$1**

PORTALES MARYLAND  
**Sweet Yams** LB. **29¢**

CALIFORNIA PURPLE TOP  
**Turnips** LB. **29¢**

WE RESERVE THE RIGHT TO LIMIT  
PRICES EFFECTIVE JANUARY 28- FEBRUARY 3, 1979

### Shelf Specials

20% OFF LABEL  
**Palmolive Liquid** 32 OZ. BTL. **\$1.19**

AIR FRESHENER ASSTD.  
**Glade Solid** 6 OZ. PKG. **49¢**

JOHNSON'S WAX  
**Lemon Favor** 7 OZ. CAN **99¢**

7% OFF LABEL  
**Caresse Soap** BATH BARS **2 89¢**



ASSORTED SHURFINE

**Canned Pop**  
6 12 OZ. CANS **\$1**

### Dairy And Frozen Food

MORTON BEEF/CHICKEN TURKEY  
**Pot Pies** 3 8 OZ. PKGS. **89¢**

SHURFRESH BM/SM  
**Biscuits** 6 8 OZ. CANS **89¢**

SHURFRESH HALFMOON LONGHORN  
**Colby Cheese** 10 OZ. PKG. **\$1.19**

SHURFINE  
**Orange Juice** 2 6 OZ. CANS **79¢**

COME TO PAY 'N' SAVE  
FOR YOUR W I C  
CARD PURCHASES

We Welcome  
USDA FOOD  
STAMP COUPONS



DETERGENT

**Super Suds**  
GIANT BOX **79¢**



MCMURRY COLLEGE VOCALISTS...Members of Phoenix are: Lynn Malson, Lafayette, La.; Dianna Hokanson, Dumas, Tx.; Mark Horner, Phoenix, Ariz.; Celta Wofford, Albuquerque, N.M.; Cindy Holden, Abilene, Tx.; and Steve Davenport, Uvalde, Tx.

### Textbook Hearings Scheduled

Texans will have an opportunity next month to make their views known concerning the proposed proclamation calling for textbooks before the annual process begins this year.

A committee of the State Board of Education has scheduled a public hearing

**Bookmobile News**  
By Lorene Sooter

Wednesday, January 31 --  
Needmore -- 9 - 10  
Stegall -- 10:30 - 11:30  
Three Way -- 12 - 2  
Thursday, February 1 --  
Oklahoma Lane -- 9 - 10  
Rhea Com. -- 10:45 - 11:45  
Friona #1 -- 1 - 1:15  
Hub -- 1:30 - 2:30  
Friday, February 2 --  
White's Ele. -- 10 - 11  
Lazbuddie -- 12 - 1:30  
Clays Corner -- 1:45 - 2:30  
Saturday, February 3 --  
Farwell -- 9:00 - 11:45  
Friona #2 -- 1 - 3:30

Life's hardest task: living each day by the Golden Rule

on the textbook proclamation in Austin on Feb. 8. Although public hearings have long been provided for in the Texas textbook selection process, according to J. Henry Perry, Texas Education Agency textbook division director, this is the first time that one has been held in connection with the proclamation. The proclamation calling for new materials to be

considered for adoption for the 1980 - 81 school year will be issued by the Board at its March meeting. The hearing will begin at 1 p.m. in the Board Room, Riverside North building of the office complex occupied by the Texas Education Agency at 150 E. Riverside Drive. Members of the Committee on Programs and Personnel Development and other members of the Board will

be present. Persons wishing to speak are asked to notify Dr. M.L. Brockette, Commissioner of Education, no later than Feb. 2. Time allocations will be determined at the hearing.

**Positive Proof**  
The most impressive testimony for tolerance is a golden wedding anniversary.  
-Times, Marshalltown, Ia.

**Have You Heard?**  
The **Honey Comb Beauty Shop**  
Is Open For Business!  
120 W. Ave. C.  
Nancy Barnhill, Jake Black & Tammy Black  
Invites All Their Friends & Customers To Come By Or Call 272-5108.  
"Featuring Redkin Products For Men & Women."

### Three Way News

By Mrs. H.W. Garvin

The Three Way basketball team played Bledsoe, Tuesday night, on the home court with Three Way winning both games.

Mrs. Bulah Toombs was in Lubbock Thursday on business.

Mr. and Mrs. George Tyson spent Thursday night in Lubbock with their daughter, the Tommy Durham's.

Mrs. Darrell Robertson from Haskell spent the weekend visiting her father, John Tyson.

Mr. and Mrs. Joe Sower spent Sunday in Muleshoe visiting her parents, the A.G. Taylors.

Mrs. L.W. Chapman is a medical patient in Cochran Memorial Hospital.

Chuck and Dug Dupler were medical patients in the Cochran Memorial Hospital the past week.

Mrs. Jack Furgeson spent Tuesday night in Lubbock with her daughter, Mr. and Mrs. Jim Green.

Mrs. Rayford Masten and Mrs. Addie Masten were in Lubbock Tuesday on business.

Rev. Marvin Gregory brought the Sunday afternoon message at the Enoch's Methodist Church. Other guests from Morton were Mr. and Mrs. Johnny Love, Ruby and Pat Howard and Bonnie Long.

The farmers in the community are about finished with the cotton harvest.

Clarence Benton from Littlefield spent Sunday with his daughter, the Rayford Mastens. Brian Pollard from Whitharral is spending this week with his grandparents, the Rayford Mastens.

The Three Way basketball teams played Bledsoe at Bledsoe Friday night with Three Way winning both games.

### Library News

By Anne Camp

We were happy to have a group of Three Way High School students come to do research in the library. We hope we were a help to them on material for their term themes. We welcome groups any time, but arrangements need to be made in advance.

Story hours for pre-school age children continue every first and third Wednesday morning at 10 a.m., and on the alternate Wednesday mornings we have the Goodwill Center Kindergarten and the Muleshoe Methodist Day Care Center. In spite of bad weather we have had good attendance.

"Picture - Pages" are still available, and have had such good reception, and favorable comments from both children and parents. We are happy to have been able, with a lot of help, to give children of the area this learning experience. Captain Kangaroo will continue with picture - pages, in February, starting another 20 weeks, but it would be necessary to order again to have

them available. We, at the library, would like some input on this, as it will be repeating the present picture - pages, starting over again with A. Unless we hear from a number of you wanting this service. We will not send an order off to continue.



## ATTEND THE CHURCH OF YOUR CHOICE



**CHURCH OF THE NAZARENE**  
Ninth and Ave. C  
Pat Ridley Pastor

**FIRST CHRISTIAN CHURCH**  
130 W. Ave. G.  
Rev. Walter Bartholf  
Sunday School 10:00 a.m.  
Worship 11:00 a.m.

**LATIN AMERICAN METHODIST MISSION**  
Ave. D and Fifth Street  
R.Q. Chavez, Pastor

**THE COMMUNITY CHURCH**  
H.D. Hunter, Pastor  
Morton Highway

**CALVARY BAPTIST CHURCH**  
James Williams, Pastor  
1733 W. Ave. C

**PROGRESS SECOND BAPTIST CHURCH**  
Clifford Slay, Pastor  
1st and 3rd Sundays

**FIRST UNITED METHODIST CHURCH**  
Rev. David Hamblin  
507 West Second, Muleshoe

**ST. JOHN LUTHERAN**  
Lariat, Texas  
Herman J. Schelter-Pastor  
Sunday School Classes 9:30 a.m.  
Worship Services 10:30 a.m.

**PRIMITIVE BAPTIST CHURCH**  
621 South First  
Elder Bernard Gowens

**MULESHOE CHURCH OF CHRIST**  
David Cox, minister  
Clovis Highway

**JEHOVAH WITNESS**  
Friona Highway  
Boyd Lowery, Minister

**IMMACULATE CONCEPTION CATHOLIC CHURCH**  
Father Timothy Schwertner  
Northeast of City in Morrison Edition

**MULESHOE ASSEMBLY OF GOD**  
517 S. First  
Rev. Joe Stone

### a little BIG NOW

We all get a thrill out of seeing our children put on our hats or shoes. Obviously they don't fit now, but some day he, or she will grow to fit them. At the same time imagine that they are trying on our lives. Would they fit? ... or do you live the type of life that you would want them to grow to. Live a life of worship of the Lord.

"Thou wilt shew me the path of life: in thy presence is fulness of joy; at thy right hand there are pleasures for evermore."

The Church is God's appointed agency in this world for spreading the knowledge of His love for man and of His demand for man to respond to that love by loving his neighbor. Without this grounding in the love of God, no government or society or way of life will long persevere and the freedoms which we hold so dear will inevitably perish. Therefore, even from a selfish point of view, one should support the Church for the sake of the welfare of himself and his family. Beyond that, however, every person should uphold and participate in the Church because it tells the truth about man's life, death and destiny; the truth which alone will set him free to live as a child of God.



**The BACK FORTY** by Lex Drake

"The least I can do is go below and move some of the rocks."

**CHECK OUR BOOT Bargain Rack \$29<sup>95</sup>-\$89<sup>95</sup>**

VALUES TO \$119.95

Open Mon.-Sat. 9 a.m.-6 p.m.

**ee's WESTERN WEAR**

1910 W. Amer. Blvd Muleshoe 272-4663

<b>BEAVERS FLOWERLAND</b> "Flowers For All Occasions" 272-3024 Or 272-3116	<b>ROBERT GREEN INC.</b> Your Oldsmobile, GMC, Pontiac, Buick Dealer W. Hwy. 84 272-4588	<b>ATTEND THE CHURCH OF YOUR CHOICE</b>	<b>WESTERN DRUG</b> 114 Main
<b>WATSON ALFALFA</b> 272-3552 272-4038	<b>MULESHOE CO-OP GINS</b>	<b>WHITES CASHWAY GROCERY</b> 402 Main "Where Friends Meet and Prices Talk"	<b>WESTERN SPRINKLERS INC.</b> W. Hwy. 84 272-4544
<b>BRATCHER MOTOR SUPPLY</b> 107 E. Ave. B 272-4288	<b>ST. CLAIRS</b> 110 Main	<b>DENT-REMPE IMPLEMENT CO.</b> John Deere Dealer 272-4297	<b>Dairy Queen</b> Margie Hawkins, Manager 272 3412
<b>MAIN STREET BEAUTY SALON</b> 115 Main 272-3448	Compliments of <b>STATE LINE IRRIGATION</b> Littlefield-Muleshoe-Levelland	<b>MULESHOE PUBLISHING CO.</b> Muleshoe 272-4536	<b>MULESHOE BODY SHOP</b> 402 N. 1st 272- 4246



**HAPPY BIRTHDAY...** Mattie Glasscock, left and E.L. Clark, right celebrated their birthdays on January 25 at the Muleshoe Nursing Home. Docia Parish, not pictured, celebrated her 88th birthday. Mrs. Glasscock is 90 years of age and Clark is 92.

**Nursing Home Residents Feted On Birthdays**

Mattie Glasscock, 90; E.L. Clark, 92 and Docia Parish, 88 celebrated their birthdays at the Muleshoe Nursing Home on Thursday afternoon at 2:30 p.m. Mrs. Glasscock was born January 29, 1889. She has been a resident of the Nursing Home since Sept. 10, 1977. Her previous residence was Earth. Clark came to the Nursing Home in Jan., 1978. He was born January 10, 1887 and came to Muleshoe from Friona. Mrs. Parish has been a

resident at the Nursing Home since May of 1978 and was born January 30, 1891. The monthly birthday party was sponsored by the Needmore Community Club in the Nursing Home day room. Mrs. Odessa Shanks entertained the guests and residents on the piano. Cake and punch were served. Beaver's Flowerland made corsages of yellow carnations and bows for Mrs. Glasscock and Mrs. Parish and a red carnation boutonniere for Clark.

**Study Club Held International Affairs Program**

Mrs. Charles Shain presented a program on International Affairs at the Muleshoe Study Club meeting. She brought information from the Federation Women's Club on ways and means of helping in International affairs, one of these being the Senate bill no. 2727 on the Amateur Acts of 1978. Mrs. Shain also showed films on Thailand and discussed this country while showing the film.

The club's business was discussed and the meeting adjourned.

The group met January 25 in the home of Mrs. Ed Johnson. Members present were Mrs. Walter Bartholf, Sr., Mrs. Luther Pitts, Mrs. Doyle Turner, Mrs. A.C. Neely, Mrs. Charles Shain, Mrs. Mervin Wilterding, Mrs. Thurman White, Mrs. T.L. Kent, Mrs. W. Wither- spoon, Mrs. Wilma Thompson, Mrs. Betty Carpenter and the hostess, Mrs. Johnson. Three guests were present, Miss Mary Lamb, Mrs. Jack Rennels and Mrs. George Johnson.

Before buying firewood, know the type of wood and price per cord, advises Claudia Kerbel, consumer information specialist with the Texas Agricultural Extension Service, The Texas A&M University System.

Several sewing machine companies have conversion kits or other model features specifically designed for the visually and/or physically handicapped home sewers, reports Becky Culp, clothing specialist with the Texas Agricultural Extension Service, The Texas A&M University System.

**Xi Omicron Xi Made Plans For Valentine Ball**

The Xi Omicron Xi chapter of Beta Sigma Phi announced that their Valentine Ball will be held February 9 at the Muleshoe Country Club. Happy hour will be from 7 to 7:30 p.m. with dinner at 7:30 to 8:30 p.m. A dance will follow from 8:30 to 12:30 with the queen coronation at 9 p.m. Members voted by secret ballot for the chapter sweetheart. She will be revealed and crowned at the ball.

The chapter voted to make a donation to the Muleshoe Nursing Home's "Rock and Roll Jamboree" to help raise funds for the local American Heart Association. The donation is in honor of Mrs. Onnie McDaniel, a resident of the home and grandmother of a chapter member, Judy Wilbanks.

The Amarillo Children's Psychiatric Pavilion was voted the nominee for the Beta Sigma Phi State project. The meeting was held in the home of Mrs. Spencer Tanksley with Mrs. Mike Miller presiding over the business.

Refreshments were served by Mrs. Tanksley and co-hostess, Mrs. Gary Shipman.

Members attending were Mrs. Dick Chitwood, Mrs. Charles Pummill, Mrs. Don Peterson, Mrs. Tom Merritt, Mrs. Paul Wilbanks, Mrs. Jerry Wenmohs, Mrs. Corkey Green, Mrs. Mike Miller, Mrs. Tom Black, Mrs. Skip Magby, Mrs. Bob Finney, Mrs. Tom Jinks, Mrs. Ronnie Kidd, Mrs. Don Rempe, Mrs. Clifford Black, Mrs. John Neil Agee, Mrs. Max King, Mrs. Paul Poyner and Mrs. Spencer Tanksley.



MISS MARIET LAMB

**Miss Mariet Lamb Honored With 80th Birthday Dinner**

Miss Mariet Lamb of Los Angeles, Calif., sister of Gil Lamb of Muleshoe, was honored with a family birthday dinner Wednesday night in the home of her niece and family, the Jack Rennels. Miss Lamb was celebrating her 80th birthday. "Mariet's Many Hats" was the theme used for the birthday dinner. A straw hat held a bouquet of yellow daisies and carnations and orchids in the center of the table. Place cards were tiny top hats with each dinner guest's initials on the hat. The yellow birthday cake was shaped like a picture hat with a blue ribbon tied around it.

During the evening, a tape was played from three of Miss Lamb's friends sending birthday greetings from London, England. She also received several telegrams, among them, one from friends from South Africa.

She was the recipient of over 75 birthday cards from friends around the world. Most of the cards carried out the hat theme depicting the many hats the honoree has worn, including a mortar board of a scholar, teacher's dunce cap, chef's hat of a gourmet cook, Sunday hat of church leader, world traveler's hat and nurses' cap of Florence Nightgale.

Mariet Lamb was born January 24, 1899 in Hazel, Ky. to Mr. and Mrs. Tom Lamb. She came with her family to Alamagordo,

N.M. in 1910 and graduated from Roswell High School in 1917. She attended the University of New Mexico and received her bachelors degree from the University of Wisconsin. Miss Lamb started her teaching career in 1920 in Pearl, N.M. She also taught in Dexter, N.M. before going to California. She received her masters degree from Stanford University.

Before retiring in 1964, she had taught 41 and one half years, most of those years in the high schools of Los Angeles. When she retired, she was chairman of the English Department of Taft High School in Woodland Hills, Calif.

Miss Lamb has lived in Los Angeles for 50 years, but has been a frequent visitor in Muleshoe over the past 25 years.

Jeremy James Whitson

Mr. and Mrs. James Whitson of Muleshoe are the proud parents of a new baby boy born January 24 at 5:13 p.m. in the West Plains Medical center. He was named Jeremy James and weighed nine pounds and four ounces. He has one brother, Jimmy, 17 and one sister, Angela, 12. Mrs. Mary Whitson and Mrs. Margie Hawkins, both of Muleshoe are his grandmothers.



Be an expert about home fire extinguishers -- for real safety.

A home fire extinguisher is valuable only when fires probably won't spread -- and only in the hands of an experienced user.

Fire fighting by inexperienced persons may endanger lives.

Practice using a fire extinguisher in a controlled situation on a real fire, so that you will have experience in their use on real unexpected fires.

**WHERE TO USE**  
An extinguisher is useful in the workshop, garage, or kitchen for small fires which can be extinguished without endangering lives.

Hang it near the door through which you would escape.

**CLASSES OF FIRES**  
Extinguishers have the letters A, B, or C to classify three different types of fires most likely to occur in a home.

According to the National Fire Protection Association, Class A fires are fires in ordinary combustible materials, such as paper, wood, cloth, rubber and plastics.

Class B fires are fires in flammable liquids, gasses and greases -- including oil, gasoline, solvents, paint, cooking oil and grease.

Class C fires involve electrical equipment, including electrical wiring and appliances.

For each type of fire, a fire extinguisher suited to that particular type must be used.

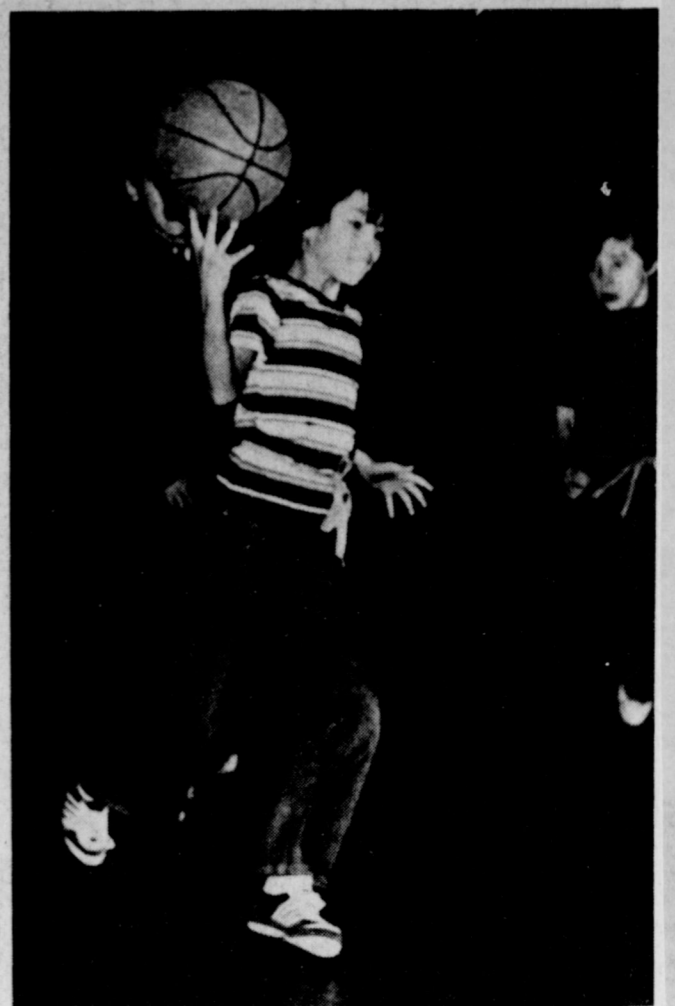
Many fire extinguishers are available that are suitable for all three classes of fires.

Labels on multi-purpose extinguishers will show all three letters -- A, B, and C.

**SIZE**  
For home use, consider fire extinguishers with capacities ranging from one to five pounds. The most popular size contains two and one half pounds of ammonium phosphate, a multi-purpose agent.

**CONSIDER USER**  
When you buy a fire extinguisher, be sure to consider the strength of the person who will use it. It will do little good if the person cannot lift, hold or easily control it.

**CHECK WARRANTY**  
Be sure the extinguisher



**MAINTAINING A DELICATE BALANCE...** This young athlete seems to be carrying the ball on the tips of his fingers. This was just some of the action that was seen at the Mary DeShazo inter-school basketball tournaments held this week.

has a warranty and a marking or seal by Underwriters Laboratories or the United States Coast Guard.

When politicians forget principles of government in order to gain votes, representative government inevitably loses ground.

**LOOKING FOR A JOB? LOOKING FOR HELP?**

**Look To The Classifieds**

You are invited to share in this day of happy beginnings for Debra Kay and Stephen Paul With love and respect for the completeness we shall gain as a couple, and with the blessings of our parents Mr. and Mrs. Ted R. Millsap and Dr. and Mrs. William M. Hart We will be united in marriage at The First Baptist Church 2201 Broadway Lubbock, Texas on Friday, February second nineteen hundred and seventy-nine at eight o'clock

Reception following at Ford Chapel

**Calendar For The Week**

**MONDAY...**

The Jaycees will have their weekly luncheon at noon in the Bailey County Civic Center.

GRIP will have their weekly meeting at 4 p.m. in the Tri-County Savings and Loan Reception Room.

**TUESDAY...**

The breakfast meeting of the Optimist Club will be at 6:30 a.m. in the Corral Restaurant. The Muleshoe Rebekahs will meet at 7:30 p.m. in Odd Fellows Hall for their weekly meeting.

At 7:30 p.m. in Masonic Hall, the Order of the Eastern Stars will meet.

The Progress 4-H Club will have their weekly meeting at 7:30 p.m. in the West Camp Community Center.

At noon in the Bailey County Civic Center, the Rotary Club will hold their weekly meeting.

**WEDNESDAY...**

The luncheon meeting of the Lion's Club will be at noon in the Civic Center.

**THURSDAY...**

The TOPS Club will have a weekly get-together at the Bailey County Electric Meeting Room at 6 p.m.

The weekly meeting of the Odd Fellows will be at 7:30 p.m. in Odd Fellows Hall.

**FRIDAY...**

The Kiwanis Club morning meeting will be held at 6:30 a.m. in the Corral Restaurant.

**SATURDAY...**

The Muleshoe Singing Group will meet at the Nazarene Church at 6:30 p.m.

**TOPS Has Weekly Meeting**

Mrs. Clara Crain was crowned the weekly TOPS queen with Mrs. J.C. Murphy and Mrs. Lewis Shafer tying for second runner up.

Mrs. Harold De Loach drew the can can and she could accept it.

A new contest was presented and accepted. All members are urged to attend with a loss.

One new member, Mrs. Billy Wayne Murphy, was welcomed to the club.

Mrs. Owen Jones, leader, called the meeting to order on January 25 at 6 p.m. in the Bailey County Electric meeting room. Mrs. J.O. Parker, assistant weight recorder, weighed in 28 members. The meeting was dismissed with the Goodnight Song.

There is not much difference in all people but that little difference makes all the difference.

**Congratulations**

**Champion-Fine Wool Division**  
Mitzi Robertson shows her Champion Lamb in the Fine Wool Division. She is the daughter of Mr. and Mrs. Darwin Robertson.

**ee's WESTERN WEAR** 1910 W. Amer. Blvd 272-4663

**YOU DESERVE SOFT SKIN**

...and that's what you get when you use our wide range of effective moisturizers. Try before you buy, and see which moisturizers are best for you...from \$3.50 to \$27.50

**MERLE NORMAN**  
The Place for the Custom Face™

213 E. Ave. B Ph. 272-5141

Where Fashions Live

**Queens n' Teens**

LADIES 6-18 JUNIORS 1-15

500 Main - Clovis

**ALL Fall & Winter Merchandise**

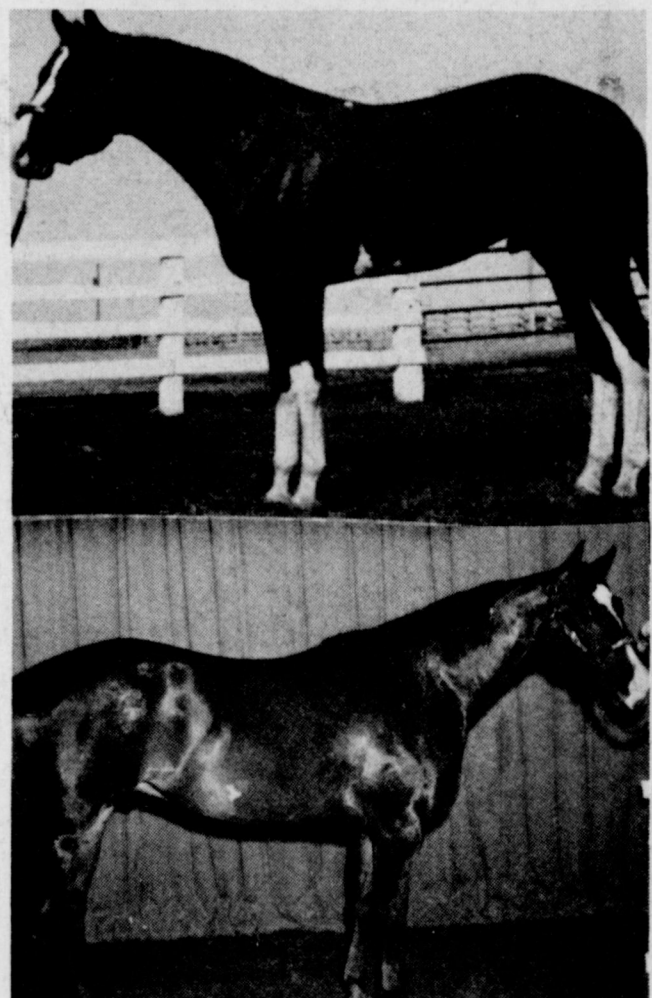
**75% off**



**NEW OFFICERS...**The first meeting of the Clovis Gem and Mineral Club was held January 22 at the Youth Center in Clovis. The new officers for 1979 are, front row, left to right, Jerrell Otwell, President; Mrs. Clarence Kube, secretary and Clarence Kube, vice-president, all of Muleshoe; back row, Mrs. Paul Rigley and Jim Henry, directors; Paul Rigley, Chaplain; Mrs. Pat Brady, historian and Ralph Essex, director, all of Clovis.



**IN MEMORY OF O'NEILL ROCKY...**The Clovis Gem and Mineral Club purchased a book for the club in memory of O'Neill Rocky. Jerrell Otwell, of Muleshoe, left, president of the club, presented the book to Paul Rigley, Clovis, librarian.



**STOCK SHOW WINNERS...**At the Amarillo Stock Show on January 22, Denise Hunter and her two horses, Shaft and Bar Patches Reed took three first place wins, Youth Western Pleasure, Youth English Pleasure, and Youth Trail. She brought in second place ribbons on Youth Showmanship and Youth Halter Geldings. She received a third place win in Open English Pleasure. She will exhibit in Houston at the Livestock Show on February 20.

\*\*\*\* The development of printing is the cause of much wasted paper. \*\*\*\* You can very often see farther ahead by looking behind you.

**FURTHER REDUCTION SALE IS STILL IN PROGRESS**

**ALBERTSON'S SHOP FOR MEN**

228 MAIN STREET 272-3000

**Lazbuddie Young Homemakers Held Arts, Crafts Program**

Mrs. Clay Mimms and Mrs. Jim Collum, members of the Lazbuddie Young Homemakers attended the Area I Activity Day held in Dimmitt during the month of December. Mrs. Collum was the winner of one of the door prizes. The program was given by "Something Special" of Dimmitt on homemade gifts and ideas. A covered dish luncheon was served.

A bake sale will be held by the Lazbuddie Young Homemakers sometime during the month of February. The money made from this sale will go to the Cystic Fibrosis Foundation.

The program was given by the members on various crafts and hobbies. Mrs. Kirby Burch showed Artex painting and decoupage plaques. Mrs. Roy Don Rector and Mrs. Lloyd Bradshaw showed latch hook rugs and pictures.

Mrs. Dave Engleking showed her oil paintings and Mrs. Bill Morris showed her acrylic paintings. Mrs. Rick Seaton demonstrated embroidery on shirts and Mrs. Clay Mimms showed needlepoint and cross-stitch needlework pictures.

The door prize was won by Mrs. Mike Blackburn. It was a silk flower arrangement donated by Mrs. Mimms. Mrs. Lloyd Bradshaw reported that she has order forms and brochures for the Young Homemakers' jewelry.

Thank you notes were read from Loy Dale, Debbie and Cody Clark, Johnna and Shane Blackburn, Mrs. Vivian Ham and Mrs. Effie Jennings. Mrs. Jennings sent a donation to the club.

Mrs. Mimms reminded members of the State Young Homemakers Convention to be held in Waco, January 26 and 27.

Mrs. Jimmy Dale Seaton, Socials Chairman reported that the baked goods gathered at Christmas time had been delivered to the Muleshoe Nursing Home. Cards were signed and sent to the "Special Senior Citizens" wishing them a pleasant day.

Mrs. Kirby Burch reported and delivered the Christmas gifts from the club for the "Special Senior Citizens."

The Young Homemakers met Thursday in the Lazbuddie High School Home-making Department. Mrs. Mimms, president, conducted the business meeting. The financial report was given by secretary-treasurer, Mrs. Roy Don Rector.

Members attending were Mrs. Mike Blackburn, Mrs. Lloyd Bradshaw, Mrs. Kirby Burch, Mrs. Dave Engleking, Mrs. Robert Gallman, Mrs. Clay Mimms, Mrs. Bill Morris, Mrs. Roy Don Rector, Mrs. Harrol Redwine, Mrs. Jimmie Dale Seaton, Mrs. Rick Seaton, Mrs.

Mrs. Dorine Harbin presented slides of her recent trip to the "Holy Land". Reports were given on recent money making projects and what was done by the club around Christmas. It will be decided at the next meeting, how money raised this year will be spent. The next meeting will be held Tuesday, February 13 in the home of Mrs. Rich Magby. It will be a birthday anniversary party. Everyone is asked to bring a Mexican dish and secret pal gift.

The president, Mrs. Brian Noble, was in charge of the business meeting which was held recently in the Home Economics Department of Muleshoe High School.

Refreshments were served by Mrs. Mike Richardson and Mrs. Lanny Trussell to Mrs. Galen Bock, Mrs. Rich Magby, Mrs. Raymond Davenport, Mrs. Gary Elliott, Mrs. John Jones, Mrs. Lanny Knowles, Mrs. Terry Kemp, Mrs. Lionel Lane, Mrs. Brian Noble, Mrs. Dorine Harbin and guests, Mrs. Barney Fozzard and Mrs. Randall Copley.

\*\*\*\* It's all right to make up your mind if you know why it's made up. \*\*\*\*

\*\*\*\*

\*\*\*\*

\*\*\*\*

\*\*\*\*

\*\*\*\*

\*\*\*\*

\*\*\*\*

\*\*\*\*

\*\*\*\*

\*\*\*\*

\*\*\*\*

\*\*\*\*

\*\*\*\*

**Consumer Food News**

Poultry, root vegetables and some processed foods are among budget buys at Texas grocery markets this week, according to Gwendolyne Clyatt.

Mrs. Clyatt is a consumer marketing information specialist with the Texas Agricultural Extension Service, The Texas A&M University System.

Current price and quality trends are the following: **POULTRY** ... Attractive prices appear on fryer chickens and chicken frankfurters. Turkeys, 10 pounds and up are available.

**FRESH VEGETABLES...** Best values include carrots, turnips, rutabagas, dry onions, potatoes, cabbage and broccoli. All stocks of sweet potatoes now are kiln dried, making them better keepers.

**FRESH FRUITS...** For economy, fruits by the bag are usually the best values. Consider apples, oranges and tangelos -- along with grapefruit. Check for values on bananas, pears and pineapples.

**FROZEN FOODS...** Corn may be a feature.

**RED MEAT OUTLOOK...** Cattle and hog prices will stay at current high levels at least through the first half of 1979, according to most predictions. This forecast is based on smaller supplies of red meat, less hog production than expected and continued strong consumer demand for beef and pork.

**BEEF...** Chuck cuts are in the spotlight -- and there are some features on ground beef with soy protein, sirloin steak, round and rib steaks and liver.

**PORK...** Best buys are Boston butt roasts, end chops, liver, rib and loin end roasts, bacon and frankfurters.

**CONSUMER WATCHWORDS** Canned mushrooms add economical nutrition to menus.

**Cancer Society Will Sponsor '42' Tournament**

"You can help fight America's most dreaded disease while enjoying yourself playing '42'", said Terry Bouchelle. Next Saturday afternoon, Feb. 3rd, from 1 - 4 p.m., the Cancer Society is sponsoring a "42" Tournament at the Civic Center. Prizes of \$50 cash, donated by the 1st National Bank, and \$36 cash, donated by Watson Alfalfa and Shipman Body Shop, will be awarded the two best teams.

According to Bouchelle, Bailey County Unit President, last year's players had a wonderful time. "This year's tournament is expected to be even better than the last one," he said. The entry fee is \$15 per couple and may be paid at the door. To enter or for additional information call Terry Bouchelle at 272-4664.

**Introducing**

**Lockwoods Model 2265 the Total Irrigation System**

Mr. Farmer:

Are you in the market for a Center Pivot? We want your business and to prove it, we will pay you \$50.00 if we can't meet or beat your lowest offer on a comparable machine!

Get the best written offer that you can find, then come to Campbell Irr. Systems and let us show you that we can give you more system for less money. If we can't figure you a deal as good or better than competition then we will pay you \$50.00 for your time and trouble.



**Campbell IRRIGATION SYSTEMS**

of Muleshoe



604 N. 1st

272-5536

Tim Smith and the hostesses, Mrs. Robert Gallman and Mrs. Wesley Putnum.

The next scheduled meeting will be Friday, February 2. The members will meet at the school building at 3:15 p.m. and travel to Muleshoe to tour the Art Loft and dine out at Leal's Restaurant.

**Sgt. Holmes Showed Bicycle Protection Film**

Sgt. Wayne Holmes of the Muleshoe Police Department showed a film on Bicycle Protection at the Muleshoe 4-H Club meeting.

The club has started a String Art project, which meets each Thursday at the 16th and Ave. D. Church of Christ. There are 30 members enrolled in the project where they will learn the steps in making a picture of string.

Mandy Plank gave the treasurers report and Zanna Huckaby reported on the 4-H County Council meeting.

President, Tim Said called the meeting to order. The pledge of allegiance was led by Terry Baker. Kim Merritt led the 4-H motto and pledge. Secretary, Shelley Sain called the roll and read the minutes of the previous meeting.

Following the program, members played games and enjoyed refreshments. Those attending were Heather Baker, Terry Baker, Marlin Bynum, Justin Helton, Zanna Huckaby, Ronnie Logsdon, Michelle Logsdon, Heather Merritt, Kim Merritt, Mandy Plank, Pam Plank, Shelley Sain, Tim Sain and Sonya Walton.

\*\*\*\*

\*\*\*\*

\*\*\*\*

\*\*\*\*

\*\*\*\*

\*\*\*\*

\*\*\*\*

\*\*\*\*

\*\*\*\*

\*\*\*\*

\*\*\*\*

**Nursing Home Rock'N Roll Planned**

The residents of the Muleshoe Nursing Home are joining with other Nursing Homes throughout the United States to raise needed dollars to combat diseases.

On Valentines Day, Feb. 14, from 9 to 11 a.m. and 2 to 5 p.m., the residents will be holding a "Rock 'N Roll Jamboree." The residents will be rocking in rocking chairs and rolling

in wheel chairs as a part of a fund raising drive for the benefit of the local American Heart Association. They hope to reach a goal of \$250.

The Nursing Home would like to extend an invitation to everyone to come out and help them in this cause and join in on the fun. Refreshments will be served and a bake sale will be held.

**Lawanda Calton**

Oil Workshops Landscape 6 Weeks: Feb. 6 thru Mar. 13

**Richard V. Goetz**

Oil Oklahoma City & New York Still Life Oil Workshop Feb. 15-16-17

**Mac Carow**

Oil Portrait Workshop March 26-27-28

**Jon Birdsong**

Watercolor Workshop April 9-10-11

Dates for the following classes to be announced:

Tom & Dorothy Bell Knapp of Ruidoso

Drawing-special techniques & mediums Luphelia Middlebrook

Oil & Watercolor Floral Workshop In June

**Paint 'N Place GALLERY**

900 Pile Clovis N.M. Ph. 763-7749

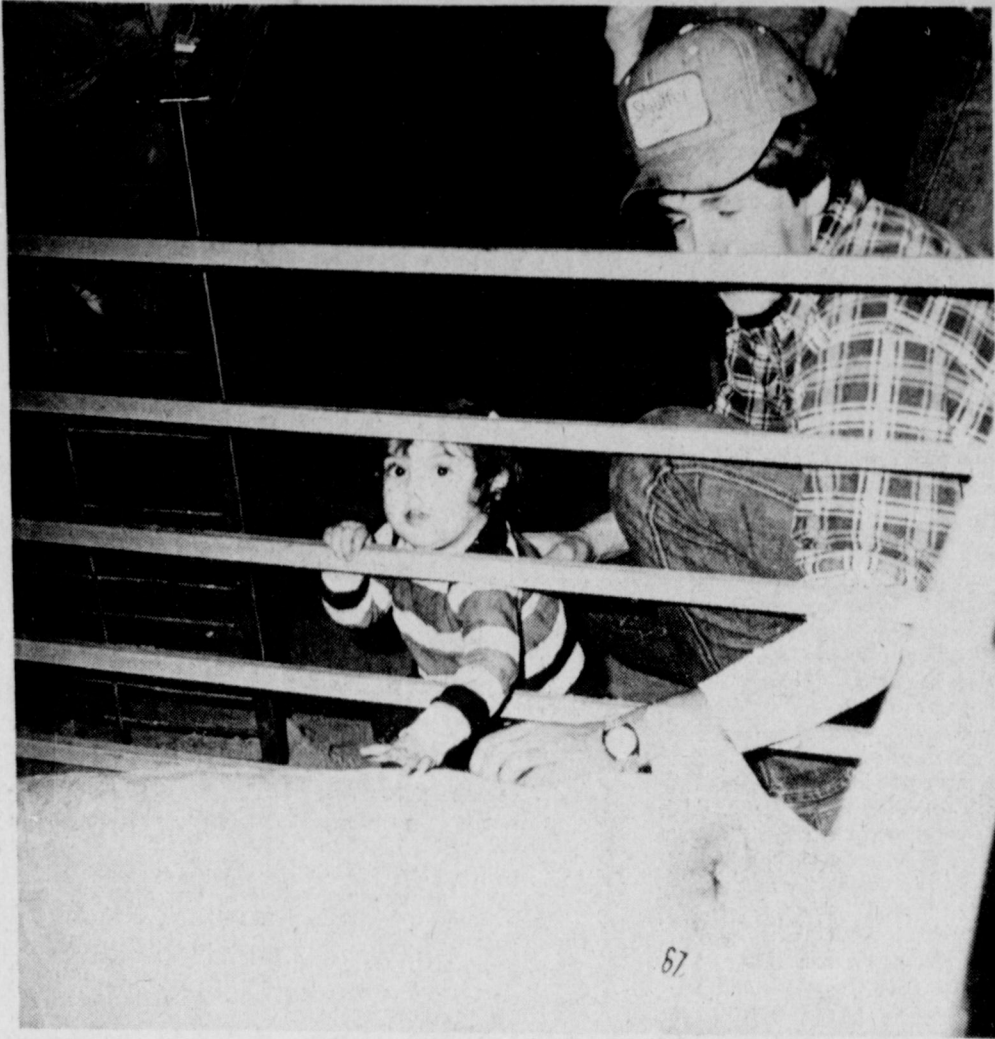
**what you should know about...**

Here's everything you wanted to know about wise energy use... but didn't know where to ask. Your SPS manager has a wealth of information on how you can get every penny's worth out of your energy dollar. He has booklets on managing your electric bill, portable appliances, electric water heater, reading your meter, lighting and much, much more. You'll find helpful suggestions on everything from replacing washers on leaky hot water faucets to making major improvements that will make your home as energy efficient as possible. Come in for your booklets now. The sooner you get started... the sooner you save.

call or come by for your FREE booklets today!



SOUTHWESTERN PUBLIC SERVICE



**SOOTHING THE ANIMALS...** Tiny Brandt Carpenter, daughter of Jole Carpenter, was assisted by Joe Don Prather Thursday night as she leaned into one of the pig pens to stroke the snow white pig at the Bailey County Junior Livestock Show. The tiny little miss is just beginning to get a taste of what is probably in her future in the animal world, as her mother formerly showed animals in local and area stock shows.

**Tractor...**

Cont. from page 1  
presented in Nashville Wednesday night. Included at the rally were Gerald McCathern, National AAM wagonmaster, from Hereford; Keith Crawford, wagonmaster of his group, along with personalities. Included were Mel Kilgore, the Jones Boys from George Jones band, who performed and accompanied Herschel Wilson of Dimmitt as he sang; Charlie Thompson, formerly with Red Foley; Bob McClelland, an Elvis Presley impersonator; Penny DeHaven from the television show "Hee Haw"; and Tim Whitaker, who has cut an album dedicated to the American Agriculture Movement. Bales said approximately 1,000 persons attended the Wednesday night rally and program.

Marvin Meeks addressed the entire Mississippi legislature Tuesday, and was reported to have been well-received.

**Muleshoe...**

Cont. from page 1  
group of 629 pounders and sold them for an average of \$890 each in the auction.  
Included in the 1978-79 edition of Who's Who Among Students in American Junior Colleges is Randy R. Whalin, a graduate of Muleshoe High School and a Commercial Art in Advertising major at Texas State Technical Institute in Amarillo.  
He is the son of Mr. and Mrs. Herbert Whalin, Rt. Three, Muleshoe.  
Ray Terrill received word that his brother, Ralph Terrill, 53, of Phoenix, Ariz., died January 20 in a California hospital. Services were held earlier this week.

the store, and three part-time employees. His employees have more than 30 years combined with the store. Wilson became a Radio Shack dealer in November, 1973, adding to his Zenith, Whirlpool, Maytag, Tappan, Litton and Magnavox '78 lines he also carries.

**Store...**

Cont. from Page 1  
the store, and three part-time employees. His employees have more than 30 years combined with the store. Wilson became a Radio Shack dealer in November, 1973, adding to his Zenith, Whirlpool, Maytag, Tappan, Litton and Magnavox '78 lines he also carries.

**Show...**

Cont. from Page 1

Angeley, Renee Cooley, Tommy Tucek, Wesley Rasco, Gina Angeley and Wesley Rasco.

**FINE WOOL**

Mitzi Robertson, Brenda Cooley, Ben Harmon, Starla Black and Shawn Cooley.

**SWINE DIVISION**

**BERKSHIRE GILTS**  
Jimmy Gleason, breed champion; Bruce Crabtree, reserve breed champion and Annette Crabtree.

**CHESTER GILT**

Shawn Cooley, breed champion.

**CROSS GILTS**

Jerry Gleason, breed champion; Tracy Tunnell, reserve breed champion and Bryce Holmes.

**HAMPSHIRE GILTS**

Jacinda Gleason, breed champion; Casey Farmer, reserve breed champion; Derek Prater and Ronnie Angeley.

**DUROC GILTS**

Robert Layton, breed champion; Keith Layton, reserve breed champion; Gerald Layton and Chris Hopkins.

**GILT CHAMPIONS**

Robert Layton, grand champion and Jacinda Gleason, reserve champion.

**BARROW DIVISION**

**HEAVYWEIGHT BERKSHIRE**  
Therman Meyers, breed champion; Curby Brantley Jr., Todd Holt and Kim Gatewood.

**LIGHTWEIGHT BERKSHIRE**

Curtis Hunt, reserve breed champion; Kay Lynn Prather; Bruce Crabtree, Jerry Gleason and Bruce Crabtree.

**CHESTER**

Jason Scoggin, breed champion; Todd Bessire, reserve breed champion; Gred Harrison and Gary Cox.

**LIGHTWEIGHT DUROC**

Robert Layton, Ken Eubanks, Robert Layton, Gerald Layton, Brian Roberts, Steve Shephard, Sharla Morrison, Bryce Holmes, Michelle Stevenson, Sharla Morrison and Gary Cox.

**MIDDLEWEIGHT DUROC**

Ricky Rasco, reserve

breed champion; Danny Seales, Jimmy Gleason, Tori Hunt, Darin Shaw, Larry Nowell, Johnny Puckett, Dale Simpson, Kent Eubanks, Gerald Layton, Todd Holt, Brian Kirby and Keith Layton.

**HEAVYWEIGHT DUROC**

Preston Scoggin, breed champion; Clayton Ramm, Tracy Tunnell, Greg Harrison, Greg Young, Tori Hunt, Curtis Hunt, Keith Layton, Clayton Ramm, Todd Bessire, Shonnee Hodnett and Curtis Wheeler.

**LIGHTWEIGHT HAMPSHIRE**

Curtis Hunt, Jimmie Ware, Todd Ellis, Larry Nowell, Dondi Gage, Lynn Moore, Jackie Burris, Ron Angeley, Todd Ellis and Shonnee Hodnett.

**MEDIUM LIGHTWEIGHT HAMPSHIRE**

Curtis Wheeler, Greg Williams, Clayton Ramm, Tommy Wheeler, Therman Meyers, Sheila Hunt, Starla Black and Darin Shaw.

**MEDIUM HEAVYWEIGHT HAMPSHIRE**

Jay Gleason, Wesley Rasco, Jason Scoggin, Preston Scoggin, Blake Stevens, Curtis Wheeler, Delia Shaw, Danny Seales, Todd Holt and Benton Glaze.

**HEAVYWEIGHT HAMPSHIRE**

Jimmy Gleason, breed champion; Tracy Tunnell, reserve breed champion; Sherri Bessire, Derek Prater, Jacinda Gleason, Greg Harrison, Mike Holt, Tom Wheeler and Derek Prater.

**SPOTTED**

Benton Glaze, champion of breed; Jerry Gleason, reserve champion of breed; Clifford Watson and Mike Holt.

**POLANDS**

Jacinda Gleason, breed champion.

**LIGHTWEIGHT YORKSHIRE**

Preston Scoggin, breed champion; Sherri Bessire, reserve breed champion; Blake Stevens, Greg Young, Brenda Cooley, Lisa Boack, Curby Brant-

ley Jr., and Sharla Morrison.

**LIGHTWEIGHT CROSS**

Glenda Rasco, Kay Lynn Prather, Steve Shephard, Curby Brantley Jr., Jay Gleason, Marty Livingston, Brian Powell, Brian Powell, Brian Powell and Clifford Watson.

**MEDIUMWEIGHT CROSS**

Shawn Cooley, Brenda Cooley, Brenda Cooley, Sheila Hunt, Delia Shaw, Renee Cooley, Johnny Puckett, Tommy Edmund-

son, Gary Cox and Mike Holt.

**HEAVYWEIGHT CROSS**

Todd Bessire, champion of breed; Sherri Bessire, reserve champion of breed; Gred Young, Jay Gleason, Darin Shaw, Jason Scoggin, Delia Shaw, Casey Farmer and Therman Meyers.

\*\*\*\*

It isn't necessary to prime an alert mind with alcohol.

**Congratulations**



**Reserve Champion**

in the Fine Wool Competition:

Brenda Cooley shows her Lamb which won the Reserve Champion Award.

Brenda is the daughter of Mr. & Mrs. Burl Cooley.

**Wooley - Hurst, Inc.**

272-5514

**Bailey County Journal**  
Established March 17, 1961. Published by Wooley Publishing Co., Inc. 1205 S. 4th St., P.O. Box 486, Muleshoe, Texas 79447. Second class postage paid at Muleshoe, Texas. Postmaster: Send address changes to Bailey County Journal, P.O. Box 486, Muleshoe, Texas 79447.

**TEXAS PRESS ASSOCIATION**  
MEMBER 1979

L.R. Hall, President  
James E. Hall, Vice-President  
Clyde Williams, News Editor  
Beverly Weaver, Secretary  
Polly Givens, Office Manager  
Helen M. Adams, Advertising Editor  
Elnor Parker, Subscription Manager

Subscription Rates: Bailey County Journal, \$10.00 per year; Muleshoe Journal and Bailey County Journal, \$11.95 per year; Muleshoe Journal and Bailey County Journal, \$12.95 per year; Outside of Texas, \$13.95 per year; Single copies, 50¢; Monthly by carrier, \$1.85. Advertising rates upon application.

**AUCTION**

Tuesday, January 30, 1979

Farm Equipment Sale - 11:00 a.m. CST  
Land Sale - 3:30 p.m. CST

(Bad Weather Date - Friday, February 9, 1979)

LOCATED: From Muleshoe, Texas, 11 miles North on Highway 214 to Clays Corner then 5 miles East on Highway 145, then 1 mile South on dirt road. From Lazbuddie, Texas, 1 mile West on Highway 145, then 1 mile South.

OWNER: JIMMY BRIGGS

Due to poor health, I am quitting farming and will offer at public auction my land and equipment.

180 ACRES PARMER COUNTY, TEXAS LAND

Land location is 11 miles North of Muleshoe, Texas on Highway 214 to Clays Corner, then 5 miles East on Highway 145, then 1 mile South on dirt road. Land will be sold at site of Equipment Auction 1/2 mile North of land at approximately 3:30 P. M. CST.

LEGAL DESCRIPTION: SE 1/6 of Section 86 Subdivision Block H, SW 1/6 Section 86 Kelly Subdivision Block H, 180 Acres Irrigated Land. Land lays good for irrigation, excellent soil and water. Farm has 1 1/2" well with Western pump and 70 H.P. Amalillo Gearhead. Farm supplied by Pioneer Natural Gas Co. Approximately 1/2 mile underground irrigation system. Normal crop acres are 198.4.

POSSESSION: Immediate possession of 100 acres not now in crops. Remaining 80 acres receive possession July 1, 1979 or sooner. (When existing crops are harvested).

TERMS: 10% in escrow, remainder upon closing. Closing in 30 to 60 days upon examination of abstract.

AGENT: Ted Walling Broker & Auctioneer, Hereford Texas, Associated with Pro Auction Service, Friona, Texas

- |                 |   |   |  |
|-----------------|---|---|--|
| <b>TRACTORS</b> | 1 Johnson hyd V-ditcher   | (Approx) 12 7"x12" hydrants   | 1 Lot used barb wire                                       |
|                 | 1 Eversman 10' land plane   | 1 Lot Ls. Ts. Caps. Spacers   | 1 PTO 3 pt. wire roller                                    |
|                 | 1 JD 3x16" spinner plow   | 1 Lot 2" tubes  | 3 Rolls towline cable                                      |
|                 | 1 Towner 3x16" spinner plow   |   |  |
|                 | 1 Dempster flex planters with tall boxes (have been changed for corn) fit 4"x4" bar | 7 Well motor covers   |  |
|                 | 1 4 Row bed knifer  | 1 Lot drive shafts  |  |
|                 | 1 JD 15' lever type oneway  | 1 Lot aluminum for salvage  |  |
|                 | 1 GB 900 Hi Master front end loader (came off of 970 case)                          |   |  |
|                 | 1 Servis 7 blade  | <b>TRACTOR &amp; TOOL MAKEUPS</b>   | 1 Lincoln portable welder & power plant on 2 wheel trailer |
|                 | 1 4 row Go Devil  | 7 JD Orchard shanks   | 1 Butane shop heater                                       |
|                 | 1 Krause 14' tandem disc  | 1 Set JD front weights with cast mounting bracket   | 1 Shop creeper   |
|                 | 1 8' drag type tandem disc  | 1 Set 18.5x34 tires on snap on rims   | 1 1 ton Cyclone chain hoist                                |
|                 | 1 Continental 3 pt post hole digger   | 1 Front mount spray tank & bracket  | 1 Marquette 180 amp welder                                 |
|                 | 1 Servis 3 pt post hole digger  | 1 Hamby 21' double 4"x4" bar tool carrier   | 1 Craftsman double arbour bench grinder                    |
|                 | 1 2 row 3 pt lister   | 1 Lot hyd cylinders   | 1 Shop table   |
|                 | 1 Big 12 6-40" rod weeder, PTO type   | 1 Lot shanks, sweeps, lister bottoms, etc   | <b>MISCELLANEOUS</b>                                       |
|                 | 1 4 row stalk cutter  |   | 6 30' joints 2" upset tubing                               |
|                 | 1 JD 7-40" row water furrowing rig with double 2 1/2" bars                          | <b>LIVESTOCK EQUIPMENT</b>  | 15 30' poles   |
|                 | 1 Hamby 6 row bed roller  | 1 Powder river working chute (reversible)   | 2 Land measuring wheels                                    |
|                 | 1 20' drag  | 1 Working chute (left hand)   | 1 500 Gal. 250# pressure LP tank                           |
|                 | 2 Lazbuddie pump & machine  | 1 4 barrel hay feeder with 3 pt hitch   | 1 Barrel Essentiallube                                     |
|                 | 1 JD 62 flex rotary hoe   | 1 Show box  | 1 Case Heptador  |
|                 | 1 4 Row scraper   | 1 Branding pot  | 1 Lot Redi-mix concrete                                    |
|                 |   | 1 Lot Moo/Mans protein blocks   | 1 Admiral refrigerator (works)                             |
|                 |   | 1 Set branding irons No. 1 thru No. 9 3" tall   | 1 Lot forks, hoes, brooms, shovels, picks                  |
|                 |   | 1 Lot misc. branding irons  | 5 Gal. concrete repair material                            |
|                 |   | 1 Wood saddle rack  | 1 Weed burner  |
|                 |   | 1 4 saddle metal saddle rack  | 2 Portable air tanks                                       |
|                 |   | 4 Stock saddles (1 is a Saddle King of Texas, 1 is a Big Horn, 2 are Texas Saddles. All have quick change stirrups & 2 are buck stitched) | 1 Trailer house steps                                      |
|                 |   |   | 1 Antique flat top trunk                                   |
|                 |   |   | 1 Roll-Away Trundle bed                                    |
|                 |   |   | 1 Show box   |
|                 |   |   | 1 100# butane bottle                                       |
|                 |   |   | 1 Wheel barrow   |
|                 |   |   | 1 Lot tires & rims   |
|                 |   |   | 1 10'x12' tent with aluminum poles                         |
|                 |   |   | 1 Lot garden hoses   |
|                 |   |   | 3 Bicycles   |
|                 |   |   | 1 Lot oil  |
|                 |   |   | 1 Back pack  |
|                 |   |   | 1 RCA Victor B/W TV (good)                                 |
|                 |   |   | 1 RCA Victor record player                                 |
|                 |   |   | 1 Roll-Away Trundle bed                                    |
|                 |   |   | 1 100# butane bottle                                       |
|                 |   |   | 1 53.5 gal. pickup butane bottle                           |
|                 |   |   | 1 Lot pipe & iron for salvage                              |
|                 |   |   | Many other items too numerous to mention                   |

Big or Small - We Work Them All  
License # TXGS-019-0477  
Call Us For Any Type Liquidation or Auction  
And All Your Real Estate Needs  
- Free Appraisals -

**PRO AUCTION SERVICE**

**AUCTIONEER**  
LARRY POTTS  
Friona, Texas  
[806] 295-6633  
Mobile Phone: 265-3665

**CLERK**  
LELAND GUSTIN  
901 Jackson St  
Friona, Texas  
[806] 247-2146  
Mobile Phone: 265-3648

<p><b>STORE HOURS:</b> MON-SAT. 9-7 SUN. 1-6</p> <p>PRICES EFFECTIVE Jan. 28-31</p>		<p><b>WRANGLER JEANS</b> Reg. \$11.97 <b>\$9.88</b></p>
<p><b>White Rain HAIR SPRAY</b> <b>\$1.09</b></p>	<p><b>Dishwashing Liquid JOY</b> Reg. 97¢ <b>83¢</b></p>	<p><b>Sunbeam Hand MIXER</b> Reg. \$19.97 <b>\$16.66</b></p>
<p><b>CLOSE-UP Toothpaste</b> 6.4 Oz. <b>99¢</b> Reg. \$1.19</p>	<p><b>SPONGES</b> Reg. \$1.19 <b>89¢</b></p>	<p><b>Colgate SHAVE CREAM</b> Reg. 83¢ <b>66¢</b></p>
<p><b>Head &amp; Shoulders SHAMPOO</b> 11 Oz. Reg. \$1.92 <b>\$1.69</b></p>	<p><b>LISTERINE</b> Reg. \$1.59 <b>\$1.33</b></p>	<p><b>Bounty Paper TOWELS</b> Reg. 81¢ <b>59¢</b></p>
<p><b>Clairel QUIET TOUCH</b> Reg. \$3.49 <b>\$2.79</b></p>	<p><b>Ladies One Size PANTYHOSE</b> <b>2/\$1</b></p>	<p><b>LIQUID COMET</b> Reg. 42¢ <b>3/99¢</b></p>
<p><b>EVERY DAY LOW PRICES</b></p> <p>GAL. HOMO MILK.....2.09 1/2 GAL. HOMO MILK.....1.05 GAL., LOWFAT MILK.....1.89¢ 1/2 GAL. LOWFAT.....95¢ 1/2 GAL. BUTTERMILK.....97¢ 1 LB. COTTAGE CHEESE.....87¢ 2 LB. COTTAGE CHEESE.....1.63 WHIPPING CREAM.....49¢</p>	<p><b>Quik</b> Nestle's 2 Lb. Reg. \$2.89 <b>\$2.49</b></p>	<p><b>ALL COATS &amp; SWEATERS</b> <b>1/2 price</b></p>



# MULE'S TALE

Karen Stovall And JoRonda Rhodes

Official Publication of Muleshoe High School Written and Edited by Students of the Muleshoe Schools



Volume 14, Number 3

Sunday, January 28, 1979

## Speech Department Sweepstake At Friona

### DECA In Preparation For Area Contests

Seven members of Muleshoe High School Distributive Education Clubs of America have been selected to compete at the Area VI Career Development Conference to be held February 2-3 at Amarillo College.

The following students are local winners and will compete in series events: Steven Sheppard in Advertising Services; Jerry Puente in Apparel and Accessories; Sandra Hughes in Finance and Credit; Debbie Hall in Food Marketing; Yolanda Hernandez in Food Service; Ray Castorena in Petroleum; and Jim Ellis in General Merchandising. Manuel

Garcia, Jr. entered the conference Cover Design Contest last month. These students are working very hard in hopes of winning at area which will qualify them for State competition to be held in Ft. Worth, March 15-18. DECA -- Developing Future Leaders in Marketing and Distribution.

### Coachs

Comment



### JV Mules '79 Record Now 8-4

The Muleshoe boys J.V. basketball team has had some rough going winning only one of its last three outings to bring its record to 8 wins, 4 losses. The one win, however, was good enough to give the Mules the consolation trophy in the earlier postponed Littlefield tournament.

The Mules lost last Friday to Morton in sudden death 43-42, with Cody Crittendon scoring 12 pts. and Terry Burton bringing down 10 rebounds and having 5 assists to lead the Mules. The Mules then won the next morning in Littlefield, defeating Frenship 59-34 with Wesley Rasco scoring 14 pts. Cody Crittendon had 10 and Carroll Precure and David Patterson both had 8 as the Mules got back on the scoring track.

The Mules then had a rematch with Dimmitt who earlier gave the Mules their first loss. The Mules played hard, with Wesley Rasco bringing down 17 rebounds, and led most of the game by 2 pts. Finally toward the end of the game the Mules got cold and fell behind, losing 46-36. Felix Norman had 10 pts. and Charles Walker and Carroll Precure had 8 pts. each.

### Little Mules Even Record In Area Action

Last Thurs., Fri., and Saturday, January 18 - 20, the Freshmen Mules participated in the Dimmitt tournament. The first day they played district rival Olton. The Mules won the contest by a score of 48-24. Monty Hysinger and Trent Kirven were the high scorers with 14 points apiece. Ronnie Angeley had 10 and George Vela had 6 pts. The next day they went back to Dimmitt to play Morton. The Indians defeated the Little Mules by a score of 52-32. Monty Hysinger had 15 points for the Mules. Saturday the Mules played Dimmitt for the third place trophy. Dimmitt narrowly defeated the Mules by a score of 34-29. Ronnie Angeley and Monty Hysinger shared the high point honors at 8 points apiece. Jeff Meeks had 7 in the loss.

The Little Mules then traveled to Olton to tame the Mustangs by a score of 38-16. Trent Kirven turned in a very good effort scoring 15 pts. Ronnie Angeley followed Trent having 6 pts. Keep it up Little Mules!!!

### HERO Hoopla

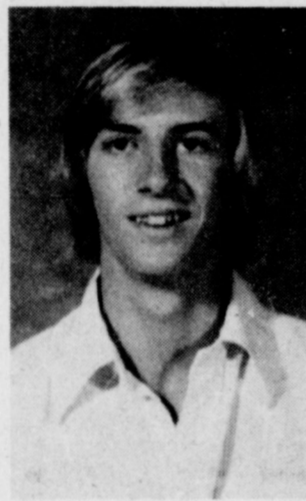
This week, HERO again recognizes two HECE students who have contributed much of their time and energy to the organization. Jonette Richards is the seventeen year old daughter of Mr. and Mrs. John Richards. She is a junior and is active in HECE I. She is also involved in FTA. Jonette is employed at the Dairy Queen. She enjoys HERO and thinks it is a great organization.

Donald Jones is a seventeen year old junior and the son of Mr. and Mrs. L.W. Jones. He is currently employed at Bob Stovall Printing. Donald says that HECE is a great work program. Congratulations to these two students for their leadership and dedication. Keep up the good work!!!

\*\*\*\* Most people are a little smarter than they seem.



JO RONDA RHODES



TODD ELLIS

### Juniors Name Rhodes, Ellis As Favorites

The Junior class met Monday, January 22 in the cafeteria. Class Favorites were chosen. They are Jo Ronda Rhodes and Todd Ellis. The planning committee for the Junior-Senior Banquet will be all the officers - Jo Ronda Rhodes, Lauri Burgess, Mark Northcutt, Shelly Splawn, Thurman Myers, Fran Berryhill and Manuel Garcia. Others elected to the committee were Shelly Dunham, Larry Parker, Curtis Elder, Melissa Biggerstaff, Linda Shafer, Becky Turner, Brenda Dodd, Cody Crittendon, Sam Whalin, Mike Northcutt, Cindy Hamblen, Shari Henry, Terry Burton, James Atwood and Christine Isaac. These people will meet each week during orientation to decide the theme and make plans for the Banquet.

### Shane, Lloyd Nominated For Awards

Members of the National Honor Society and their sponsor met Wednesday, January 17, at 6 p.m. at Leal's Restaurant for dinner.

In the business meeting, members nominate candidates to represent the National Honor Society in the National Honor Society Scholarship Awards Program. This program, now in its thirty-third year, will provide 225 scholarships of \$1,000 each. Each NHS chapter that wishes to participate in the Scholarship Program is asked to nominate two chapter members who, in its opinion, have demonstrated outstanding leadership, scholarship, character and service. The scholarship winners will be selected from among the nominees, all of whom are considered semi-finalists. The two Muleshoe high school seniors who will be competing in the Scholarship Awards Program are Julia Shane and Lavayne Lloyd.

\*\*\*\* Memory is the product of intelligence and work.



HOMECOMING QUEEN AND KING...Becky Turner and Terry Shafer, center, were crowned Homecoming queen and king Tuesday night at the basketball game against Dimmitt. Other contestants were Dickey Sudduth and Jo Ronda Rhodes, left and Jeep Shanks and Shelley Dunham, right.

### Shafer, Turner Named Royalty At Homecoming

Miss Becky Turner was crowned Homecoming Basketball Queen, Tuesday, January 23, during the Muleshoe - Dimmitt game. Becky is the 16 year old daughter of Mr. and Mrs. Doyce Turner. She is active in FTA, athletics and is a member of the Muletrain - Mule's Tale Staff.

### College Jazz, 'Pop' Group To Perform

The McMurry College Jazz Ensemble and Phoenix, a pop vocal group, will join together to appear in concert at Muleshoe High School on February 1, at 10:30 a.m. The public is cordially invited to attend. The Jazz Ensemble will perform a varied program from nostalgia to rock, and the program will cover a wide range of light music. The group is under the new leadership of Mr. Tommy J. Fry, Director of Bands and Assistant Prof. of Music at McMurry College. The jazz ensemble is a select group of musicians from the McMurry College Concert Band, who train in the performance of popular dance music, jazz, rock and other contemporary forms.

Phoenix, directed by Mr. James Pearce, Director of Choir and Assistant Prof. of Music at McMurry, will be singing a wide range of tunes, concentrating on some country and western. The two groups will do several compositions together, and their program will be an hour in length.

### Happy Birthday

The Mule's Tale Staff at MHS would like to wish the following students a very Happy Birthday for the week of January 29 - February 4.

Monday January 29 -- Donnie Gage  
Tuesday, January 30 -- Walter Bartholf, Debra Pecina, Orpha Pecina  
Wednesday, January 31 -- Eugene Porras, Sylvia Quintana  
Thursday, February 1 -- Tammy Whitaker, Victor Gardea  
Friday, February 2 -- Rachel Rodriguez  
Saturday, February 3 -- Jimmy Gleason, Billy Ray Wade, Monty Hysinger  
Sunday, February 4 -- Duane Franklin, Andy Snell.

### Crowned as Homecoming King was Terry Shafer.

Terry is the 18 year old son of Mr. and Mrs. Jim Shafer. He is active in FTA and all sports. Miss Turner and Shafer were attended by Jo Ronda Rhodes and Shelly Dunham, Juniors and Dickey Sudduth and Jeep Shanks, Seniors. The winner of the Student Council autographed basketball was Mike Dunham, and the Freshman Class was the winner of the coke party with 41% attendance.

### Muleshoe School Lunch

- JAN. 29 - FEB. 2 MONDAY...  
BREAKFAST MILK CEREAL FRUIT  
LUNCH MILK TAMALES BEANS SPINACH CORN BREAD PUDDING
- TUESDAY...  
BREAKFAST MILK HONEY BUN APPLESAUCE  
LUNCH MILK JUICY BURGERS LETTUCE TOMATOES PICKLES ONION TATER TOTS COBBLER
- WEDNESDAY...  
BREAKFAST MILK TOAST JELLY SAUSAGE JUICE  
LUNCH MILK BAR B QUE FRANKS POTATO SALAD BLACK EYED PEAS CORN BREAD PUDDING
- THURSDAY...  
BREAKFAST MILK CEREAL BANANAS  
LUNCH MILK FRIED CHICKEN GRAVY CREAMED POTATOES BUTTERED CORN HOT ROLLS COBBLER
- FRIDAY...  
BREAKFAST MILK OATMEAL CINNAMON TOAST FRUIT  
LUNCH MILK CORN DOGS VEG. BEEF SOUP CRACKERS CINNAMON ROLLS

### Muletrain On Sale, Reserve Copy Now

The 1979 Muletrain Annual, to be distributed in late August, is on sale at MHS. The regular yearbook sells for \$10.50. For \$12.60, students may buy a personalized annual. This annual will have the student's name on it and will have a plastic cover to protect it.

Students are encouraged to order their annuals now because there will be no extras ordered for distribution later on. A yearbook is an important keepsake of the high school years -- so the Muletrain staff hopes no one will be disappointed because they didn't receive one. Also parents or friends

### Post Lectures To Students On Problems

Wednesday, January 24, at 8:30 in the morning, the high school students were privileged to have as a guest speaker, Mr. Jim Post.

He is the former Chaplain at Kansas State Prison, and lectured on the problems of today's youth, the rise of juvenile delinquency, drug abuse, and the need for more prison reform. His speech was entitled, "Is Your Head On Straight?"

Prior to his job as Chaplain at Kansas State Prison, Jim Post had experience as Minister, Educator, Lecturer, Police Officer and Army Chaplain. He spoke from knowledge experienced first hand and held the students' full attention for over an hour. Mr. Post never lectures full time.

The MHS Speech team traveled to Friona January 20 to compete in the 11th Annual Friona Forensic Tournament. Those students breaking to the Semifinals were Scott Baker, Debra Stevens, Dana Brewer and Stacey Campbell in Debate; Fran Berryhill, Brent Burrows, Linda Nowlin, Manuel Garcia, Marlin Bynum. Debra Bouchelle, Wayne Precure, Dusty Puckett, Stacey Barnhill, Tim Sain, Joe Neel and Diane Gonzales in extemp; Vivian Briscoe, Jesse Silguero, Carla Shafer and Lori Buler in Prose and Christine Vela, Julius Briscoe, Tyree

Wagon, George Vela, Sandra Graves, Janet Shain, Denese Peterson, Judy Biggerstaff and Kristi Henry in Poetry. Breaking to finals, Dana Brewer and Stacey Campbell won 1st in Debate and Scott Baker and Debra Stevens 3rd in Debate. Fran Berryhill and Debra Bouchelle won 1st in Persuasive; and Brent Burrows and Joe Neel won 3rd in Persuasive. Vivian Briscoe won 3rd in Prose, Julius Briscoe 1st in Poetry. Muleshoe had twenty six students in all going to the finals. We would like to congratulate the Speech team and wish them luck in the tournaments to come.

### Honor Students

SENIORS	
Mark Harmon	96
Lavayne Lloyd	95
Debbie Miller	95
Stephanie Bell	94
Christine Vela	94
Shannon Kennedy	93
Lary Hooten	92
Donnie Long	91
Dana Holmes	91
Nina Pitcock	90
JUNIORS	
Mark Northcutt	99
Cindy Hamblen	97
Shelly Splawn	97
Lauri Burgess	96
Manuel Garcia	95
Scott Baker	95
Curtis Elder	94
Jesse Lackey	94
Joel Bratcher	93
JoRonda Rhodes	93
Debra Stevens	93
Brenda Dodd	93
Becky Turner	92
Shari Henry	91
Kim Williams	90
Dennie Watson	90

### Mulette Maneuvers

The Mullettes have suffered some very crucial losses this past week in District play. The Mullettes traveled to Morton to lose to one of the best Squaw teams in years by a slim margin of 35-34. Shelly Dunham bammed in 16 points for the female team. Karen Stovall had 10 points to be second high pointer.

The Dimmitt Bobbies traveled to Muleshoe to dominate the 1979 homecoming game by narrowly beating the Mullettes, 38 - 37. Cindy Hamblen played an extremely good game both defensively and shooting wise. She had 15 points to be high pointer. Coach Brandon commented, "Luck was a big factor in the past two games; the round ball just didn't seem to want to go in for us at times. We just have to turn things around and start winning again."

The Mullettes would also like to send congratulations to Coach Brandon who became a "Pop" this past week!

\*\*\*\* No man is free unless he knows the truth.



MCMURRY COLLEGE JAZZ ENSEMBLE...Pictured, standing left to right, Hill Johnson, Liberty, Texas; Tim Crane, Canadian, Tx.; Jimmy Haddox, Wichita Falls, Tx.; Lynn Lawrence, La Mesa, N.M.; Karen Leonard, Childress, Tx.; Bruce Unrue, Abilene, Tx.; Karla Lee, Dumas, Tx.; Dentice Waltrip, Roswell, N.M.; Darrell Wofford, Las Cruces, N.M.; Mark Wolfe, Amarillo, Tx. Seated, left to right are Kathy Widmer, Rangely, Colo.; Jill Waggoner, Stamford, Tx.; Dale Evers, Waco, Tx.; Steve Stamets, Santa Fe, N.M.; Maribeth Dillman, Muleshoe, Tx.; Not pictured are Kirk Thaxton, Abilene, Tx. and Chuck McMichael, Abilene, Tx.

## More County Budget Figures Are Studied

Another facet of county salaries as approved in the 1979 budget by Bailey County commissioners is the obvious discrepancy in two salaries. Each is paid \$10,146.60 and both carry responsibilities as elected officials.

Edith Wilt is a longtime Bailey County Treasurer. She pays all warrants, and is responsible for keeping up with the cash flow of the county's financial system.

Also, during the past year, the longest trials in Bailey County history were conducted. One was a civil case and the other was a criminal trial. In the trials, many, many hours of un-

paid overtime were chalked up by District Clerk Nelda Merriott.

She explained that anytime a jury session is called, and there were 10 of them in 1978, it always involves long hours, as she stays with the court until a jury is dismissed, or completes a case.

During the drug conspiracy case last fall, almost a full week of unpaid overtime was spent by Mrs. Merriott, and more than 60 extra hours on the long civil case.

She said that when the district clerk's office was separated from the county clerk's office, her office did not handle child sup-

port. Now, her figures show some \$8,000 each month is paid through her office in varying amounts from \$25 per week to \$600 per month, to be disbursed to parents of minor children. Child support is paid until the youngest child reaches the age of 18. She also handles restitution funds, which is generally paid in \$10 amounts. She said she has handled \$430 to date in January.

Mrs. Merriott said that although she is very happy with her work, she could use more than the half time office worker she is allowed at this time. She said they usually work for a month or two, then

before they are adequately trained, go on to a full-time job.

Both the treasurer's office and the district clerk's office have consistently remained below the approved \$10,729.80 for the county clerk, tax collector/assessor and county attorney.

It was noted in the budget, that the valuation has risen from a total of \$37,000,000 in 1976 to \$42,000,000 in 1977 and \$45,000,000 in 1978.

The budgeted amount for welfare was increased by \$1,000. Budgeted in 1977 was \$2,000, and this was raised to \$3,000 for the new budget.

One of the most drastic increases was in transportation of prisoners and travel for the Bailey County Sheriff's office. The 1978 budget showed \$500 and the 1979 budget showed a figure of \$8,000.

Feeding county prisoners remained the same, at \$15,000 and jail expense was budgeted at \$2,000.

The ambulance service subsidy stayed the same, \$12,600.

During the year of 1978, it was noted that \$63,733 in Revenue Sharing funds were received and the budget showed that \$37,417.93 was spent on the coliseum; \$25,000 used for operating expense (not further designated) and \$1,315.07 was spent in interest on borrowed money.

### Police...

Cont. from Page 1

Seven out of town persons have been arrested on the check charges this week and restitution has been made on bad checks totaling \$731.46, with a total of \$271.50 in fines also being collected, according to the chief's records.

Meanwhile, Irene Splawn, office deputy at the Bailey County Sheriff's office said "nothing much is going on in our office, except they are serving a few papers."

Mrs. Splawn said nothing was found to substantiate a report of an explosion Wednesday afternoon approximately two and a half miles southeast of Muleshoe.

## Kenya Missionary Scheduled Today At Local Church

Reverend Jimmy L. Beggs, an Assemblies of God missionary to Kenya, will be guest speaker at 11 a.m. and 6:30 p.m. today (Sunday) at First Assembly of God Church in Muleshoe, the Reverend Joe Stone, pastor, has announced.

During their last term of

## Methodists Will Host Jazz Group

The McMurry College Jazz Ensemble and Phoenix, a pop vocal group, will join together to appear in concert at First United Methodist Church Fellowship Hall in Muleshoe at 8 p.m. on Wednesday, January 31.

Rev. David Hamblin, pastor of the church said he would like to issue a cordial invitation for all interested persons to attend.

The Jazz Ensemble will perform a varied program from nostalgia to rock, and the program will cover a wide range of light music. The group is under the new leadership of Tommy J. Fry, Director of Bands and Assistant Professor of Music at McMurry College. The jazz ensemble is said to be a select group of musicians from the McMurry College Concert Band, who train in the performance of popular dance music, jazz, rock and other contemporary forms.

A member of the Jazz Ensemble is Maribeth Dillman, daughter of Mr. and Mrs. Neal B. Dillman of Muleshoe, and a MHS graduate.

Phoenix, directed by James Pearce, Director of Choir and Assistant Professor of Music at McMurry, will be singing a wide range of tunes, concentrating on some country and western. The two groups will do several compositions together, and their program will be an hour in length.

missionary service, the Rev. Beggs and his wife, Mary, were active in Bible school teaching and in the Theological Education by Extension (TEE) program. TEE provides training by mail for pastors and Christian workers, explained the minister. He also served as the general superintendent of the Assemblies of God in Kenya. Mrs. Beggs was the national director of the women's auxiliary groups. Before their ministry in Kenya, the Beggs' ministered for seven years in evangelism and teaching in Tanzania. He is a former pastor at Morton. To prepare for their ministerial careers, the Beggs attended Southwestern Assemblies of God College in Waxahachie where he

earned a B.A. degree. About their work in Kenya, the minister says, "Kenya is the calm eye of the hurricane of war and trouble that is sweeping Africa. God is allowing Kenya's churches to experience growth. Their stability and maturity will be a basis for African missionary activities in the future."

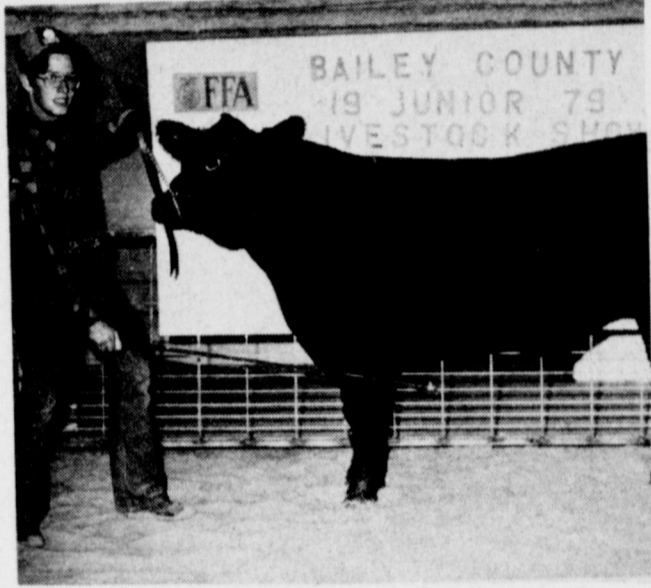
-----

Alfred E. Kahn, Chairman, Council of Price and Wage Stability: "We cannot hope to devote the additional resources you and I would like to rebuilding our cities, to resuming our progress to 4 percent unemployment. . ."

**Bang!**  
Reputation is a large bubble which burst when you try to blow it up yourself.  
-Globe, Atchison, Kan.



## Congratulations



**First Place Middle Weight...**

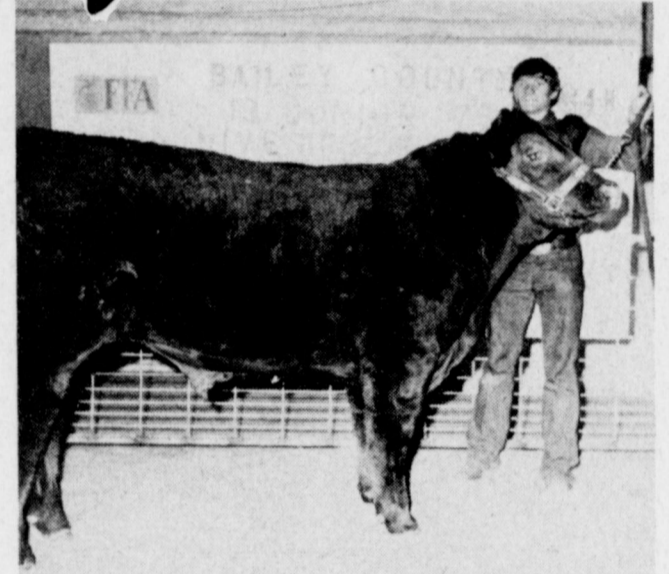
Alan Harrison, son of Mr. and Mrs. Ted Harrison, showed the first place steer in competition at the Bailey County Junior Livestock Show

**SONIC**

1633 W. Amer. Blvd.

Ph. 272-3998

## Congratulations



**First Place in the Heavyweight Steer Division**

Jimmy Gleason Takes First Place in the Steer Competition. Jimmy is the son of Dr. & Mrs. Jerry Gleason

**James Crane Tire Co.**

## We Are Happy To Extend Our CONGRATULATIONS



**Grand Champion Fine Wool Cross Division**

Starla Black's lamb is a Fine Wool Cross and was shown by her sister, Lisa. Starla & Lisa are daughters of Mr. & Mrs. Ronnie Black.

**Robert Green Inc.**

## Congratulations



**Grand Champion Steer**

Jimmy Gleason is showing his Grand Champion of the Bailey County Livestock Show. Jimmy is the son of Dr. & Mrs. Jerry Gleason.

**John's Custom Mill**

272-4373



**Sudan News**

By Evelyn Ritchie

Pat Minyard is a patient in the Methodist Hospital in Lubbock.

Mr. and Mrs. Mark Rice of Denver spent the weekend with Mr. and Mrs. Roby Lyy. They also visited Mr. and Mrs. J.W. Olds and Mr. and Mrs. Byron Lynn.

Mr. and Mrs. Elgan Baccus have returned to their home at Lake Brownwood after spending some time in Sudan.

Bobby Boulding of

Plainview and Marta Mays of Earth visited Mrs. J.W. Olds, Sunday.

Rev. Scott Andress, associate pastor of the First United Methodist Church in Hereford was the guest speaker at the local Methodist Church, Sunday morning.

Mr. and Mrs. J.V. Bouldin of Friona spent Sunday with Mrs. Jinks Dent.

Mrs. Joe Rone is a medical patient in the Muleshoe Hospital.

Mr. and Mrs. Marvin Tollett were in Shamrock during the weekend. Her brother, Mr. and Mrs. W.J. Burck of Oklahoma City joined them.

Mr. and Mrs. B.M. Wilson returned recently from a trip to San Antonio.

Rhoda Minyard has returned home from Houston where she visited her daughter, Kathy and her sister, Mr. and Mrs. Jim Anslow.

Five members of the Hornet Band made All-Region, Saturday. Those members are Shelley Gore, Laura Powell, Missy Fisher, Perry Kent and Robbie Kent.

Mrs. Mary Beth Williford, Rita and Rose of Abernathy were weekend visitors with their parents and grandparents. Mr. and Mrs. J.C. Wells, and



**SHOWMANSHIP HONORS...** Wesley Rasco, left, and Greg Harrison, were presented showmanship plaques at the Bailey County Junior Livestock Show Thursday night. Rasco received his plaque for the lamb division and Harrison was considered the best showman in the steer division.

other relatives.

Mr. and Mrs. Glenn Cardwell have recently been in Brownfield to visit her father, L.H. Hobbs who is a medical patient in the hospital there.

Mrs. Jessie Kelley returned home Monday from the Amherst Hospital where she was a medical patient.

Mrs. Gladys Phillips of Muleshoe visited Sunday with her daughter - in-law, Mrs. Debbie Phillips, Christie and Michael.

Weekend visitors in the home of Mr. and Mrs. Claud Kropp were their children and grandchildren, Mr. and Mrs. Butch Waller and family of Olton and Mr. and Mrs. John Kropp and Sonny and Mr. and Mrs. Charles Minchew and boys of Hereford.

Mrs. Pam Bruton and Natasha returned home from the Amherst Hospital and will be staying a few days with her parents, Mr. and Mrs. Bob Nelson.

Mr. and Mrs. Cary Anderson of Liano were holi-

day visitors in the home of Mr. and Mrs. Bob Edwards and Pete and her sister, Mr. and Mrs. Eugene Lopez.

Eugene Lopez is in Dallas this week to attend a John Deere service school. His wife, has been staying with her parents, Mr. and Mrs. Bob Edwards and her grandmother, Mrs. Hardy Bolton, has been staying with her.

Keevan Masten returned home Sunday from the Amherst Hospital where he was a medical patient.

Don Haper has been released from the Amherst Hospital where he was a medical patient.

James Beckett of Midland visited during the weekend with his parents, Mr. and Mrs. Arnold Beckett.

Jim Bob Hargrove was released Saturday from the Littlefield Hospital where he was a medical patient.

Mr. and Mrs. Ralph Bellamy and children of Hurst spent the weekend with his mother, Mrs. Gus Bellamy and with her sis-

ter and family, Mr. and Mrs. Harley Fields who have been recently to Okinawa.

Mr. and Mrs. Jerry Ethridge and children of Dim-

mitt and Mr. and Mrs. Larry Schweppe and Larry Dean of Lubbock spent the weekend with her parents, Mr. and Mrs. G. C. Churchman and Scott.

Mr. and Mrs. Acie Daniell were in Clovis Friday night to have dinner. Accompanying them were Mr. and Mrs. Herbert Welch of Levelland.

LaRue Hasley of Dimmitt visited Sunday with her parents, Mr. and Mrs. Roy Day.

Mr. and Mrs. Horace Knox of Amarillo spent the weekend with his cousin, Mr. and Mrs. Joe Dorsey.

Sometimes it seems Congressmen should have their pay docked for absenteeism, and at other times it seems they should be encouraged to keep away from Washington.

-Globe, Boston.



**Singleton-Ellis Funeral Home**  
24 Hour Ambulance Service  
Ph. 272-4574 Muleshoe

**Congratulations**



Brian Kirby, son of Mr. and Mrs. Rural Kirby, is pictured with his heifer that won Grand Champion of the Bailey County Junior Livestock Show

**Central Compress & Warehouse**  
Sudan Texas

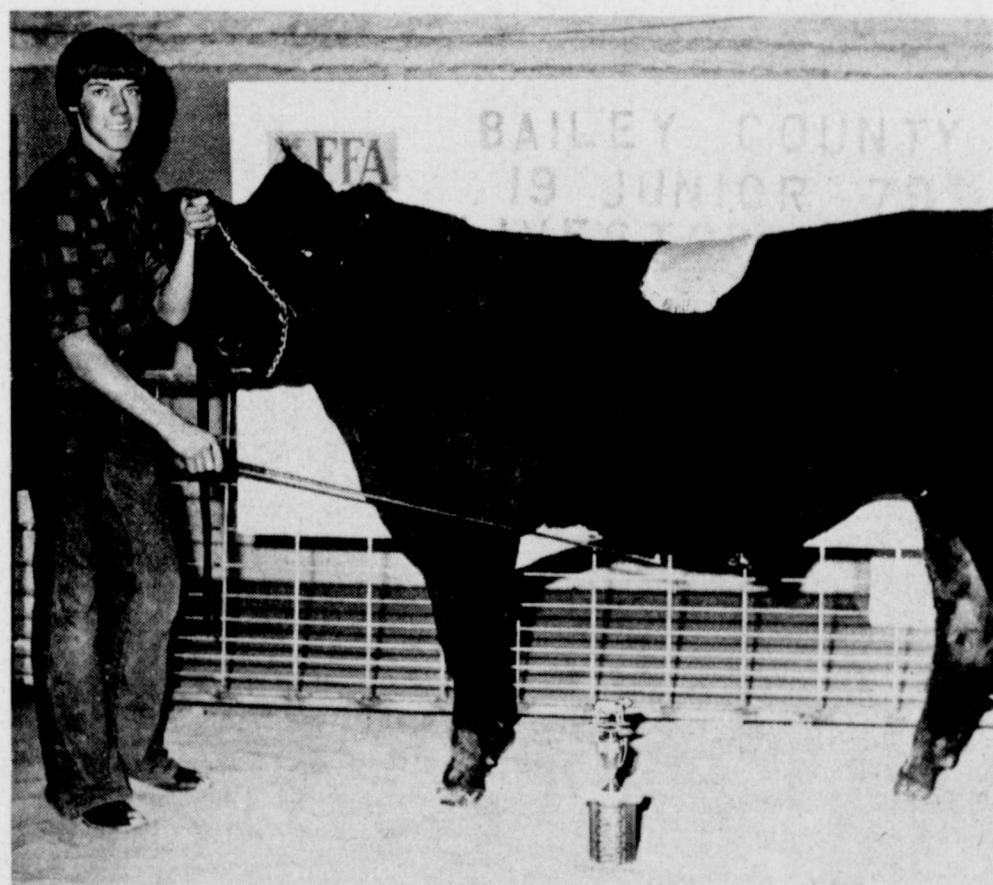
**Congratulations**



**First Place Light Weight Southdown**  
Shawn Cooley show off his first place winner of the the light weight Southdown Division. Shawn is the son of Mr. and Mrs. Burl Cooley

**Bailey County Farm Bureau**

**Congratulations ..... ARE IN ORDER**



**Reserve Champion of the Heavyweight Steer Division**

Kelly Harrison is shown with the Reserve Champion in Heavy Weight Steer Competition. Kelly is the son of Mr. & Mrs. Ted Harrison.

**Muleshoe Co-op Gin**

**Congratulations**

**Reserve Champion Lamb of the Bailey County Junior Livestock Show.**

Starla Black shows her Reserve Champion Starla is the daughter of Mr. & Mrs. Ronnie Black



**Reserve Breed Champion**

Ben Harmon shows this Reserve Breed Champion in the Lamb Medium wool division for his sister, Beth. They are the children of Mr. & Mrs. Bill Harmon.



**WESTERN SPRINKLERS INC.**

P.O. Box 546 -

MULESHOE, TEXAS 79347

Phone 806/272-4544

We Are Happy To Extend Our  
**CONGRATULATIONS**



*Reserve Breed  
Champion-Southdown*

*Glenda Rasco Shows her lamb winning the Southdown Reserve Champion Award. Glenda is the daughter of Mr. & Mrs. Odell Rasco.*

**Ray Griffiths  
& Sons**

**Nursing Home  
News**  
By Joy Stancoll

The Ladies' Fellowship met in the Assembly of God Church to give a devotional to the residents, Friday. Dana Burris sang a solo for the residents. The women served ice cream and cup cakes to all the residents. Those attending were Marie Engram, Lottie Hall, Maggie London, Marie Patton, Effie Splawn, Rose Sebring, Hattie Bennett, Will Steinbock, Ed Clark, Abe Mallouf, Annie Brown, W. W. Parker, Archie Scarlett, Arthur and Chellie Bradley, Onnie McDaniel and Margaret Jones.

E.B. Wilson came Sunday to have a Bible study with the residents. Attending were Marie Engram, Clara Angeley, Maggie London, Carrie Boydston, Marie Patton, Lottie Hall, Onnie McDaniel, Dottie Wilterding, W.W. Parker, Archie Scarlett, Rose Sebring and Chellie Bradley.

The Assembly of God Church members came Sunday afternoon to sing to the residents. Those attending were Abe Mallouf, Chellie Bradley, Clara Angeley, Lottie Hall, Rose Sebring, Dottie Wilterding, Archie Scarlett, Ed Clark, W.W. Parker, Maggie London, Lucy Cantrell, Annie Brown and Marie Engram.

The Nursing Home and Hospital Auxiliary came to shampoo and set the women's hair. Those having their hair done were Clara Angeley, Onnie McDaniel, Rose Sebring, Lottie Hall, Berdie Phelps, Chellie Bradley, Annie Brown, Marie Patton, Maggie London and Marie Engram.

Tuesday afternoon, the residents made bulletin boards for their rooms. Mrs. Afton Stancell, Mrs. Walter Sebring, Mrs. Elmer Cornelison and Mrs. Dawson helped with the crafts. Residents attending were Lucy Cantrell, Carrie Boydston, Effie Splawn, Marie Patton, Arthur and Chellie Brad-

ley, Lottie Hall, Abe Mallouf, Archie Scarlett, Onnie McDaniel, Maggie London, and Marie Engram.

Newspapers, Bible verses, poems and short stories were read during the Wednesday and Thursday morning group session. It was also exercise time.

Wednesday afternoon, Janis Matthews and Sandy Gregory came to have music therapy with the residents.

The January birthday party was given by the Needmore Community Club in honor of E.L. Clark, Mattie Glasscock and Docia Parish.

Visiting with Onnie McDaniel was her brothers, Alton Garth and Mr. and Mrs. Royce Garth, all of Muleshoe. Also visiting were Janie Moraw, Anita Allgood and Judy Wilbanks.

Marie Patton is busy embroidering in her room. Her daughter, Mrs. June Gore, visited with her.

Pearl Brown visited her mother, Effie Splawn.

Visiting with Rose Sebring was her sister - in-law, Mrs. Walter Sebring.

Lucy Cantrell received a visit from her daughter, Roxie Hoover.

Visiting with Carrie Boydston was her son, Willie Boydston and her granddaughter, Barbara Ruth. Mrs. Poynor also visited with her.

Janie Townsend, Tripp and Candy visited with Mattie Glasscock.

Mrs. Wayne Simpson of Clovis visited her mother, Annie Brown.

Visiting with Ella Chambers was her granddaughter, Dana Blue and her children, Jason and Jana. Mrs. Chambers son, Elmer Chambers from Portales visited also.

Margaret Jones received a visit Sunday from Daisy Polk, Mrs. Hensley, Shorty Wade, Suzie Hudson, Jo Waters, Bessie Walden and Joyce Richardson from Whitharral.

Mrs. P.D. Arnold and Agnes Chatman visited their mother, Hattie Bennett.

Willie Steinbock's wife visited with him.

Dottie Wilterding's niece, Mildred Head had surgery this week. Marshal Head visited with Mrs. Wilterding.

Dora Slaughter was visited by her daughters this week.

Mrs. Stevenson visited her mother, Annie Nickleson.

Jack Harper visited his mother, Mrs. Harper.

Virgil Sweat has been taking care of the Amaryllis plants. One of the plants has been blooming.

Chellie Bradley played the piano in the new day room, Tuesday.

Melissa Beddingfield came this week to visit with the residents and give the ladies a manicure.

K.K. Flowers and Kelly Hamblen came to visit the residents.

Buck Wood is improving in the hospital, according to his wife.

Bertha Kaltwasser is a new resident. She was born May 18, 1887 and is 91 years of age. She has two sons, Gilbert, of Farwell and Walter, also of Farwell; 12 grandchildren and 9 great-grandchildren.

Walter Underdown is up walking around with assistance and sitting in the hall. He was visited by his daughter.

Lena Steinbock received a visit from two daughters and two granddaughters.

Ed Clark received a visit from his great-grandson.

Docia Parish is in the hospital.

Clara Weaver will put a smile on your face when you drop by to see her.

**Congratulations**



*Breed Champion - Southdown  
Ricky Rasco, son of Mr. and Mrs. Odell Rasco  
is pictured with his Lamb,  
winning the Breed Championship.*

**Johnnie's  
Safety Center**

**Congratulations**



*Champion - Southdown Cross  
Beth Harmon is pictured with her Champion Lamb  
of the Southdown Cross division. Beth is the daughter  
of Mr. and Mrs. Bill Harmon*

**Texas Sesame**

We Extend Our  
**Congratulations**



*Breed Champion-Fine Wool Cross  
Lisa Black shows her winning lamb in the  
fine wool division. Lisa is the daughter of  
Mr. and Mrs. Ronnie Black*

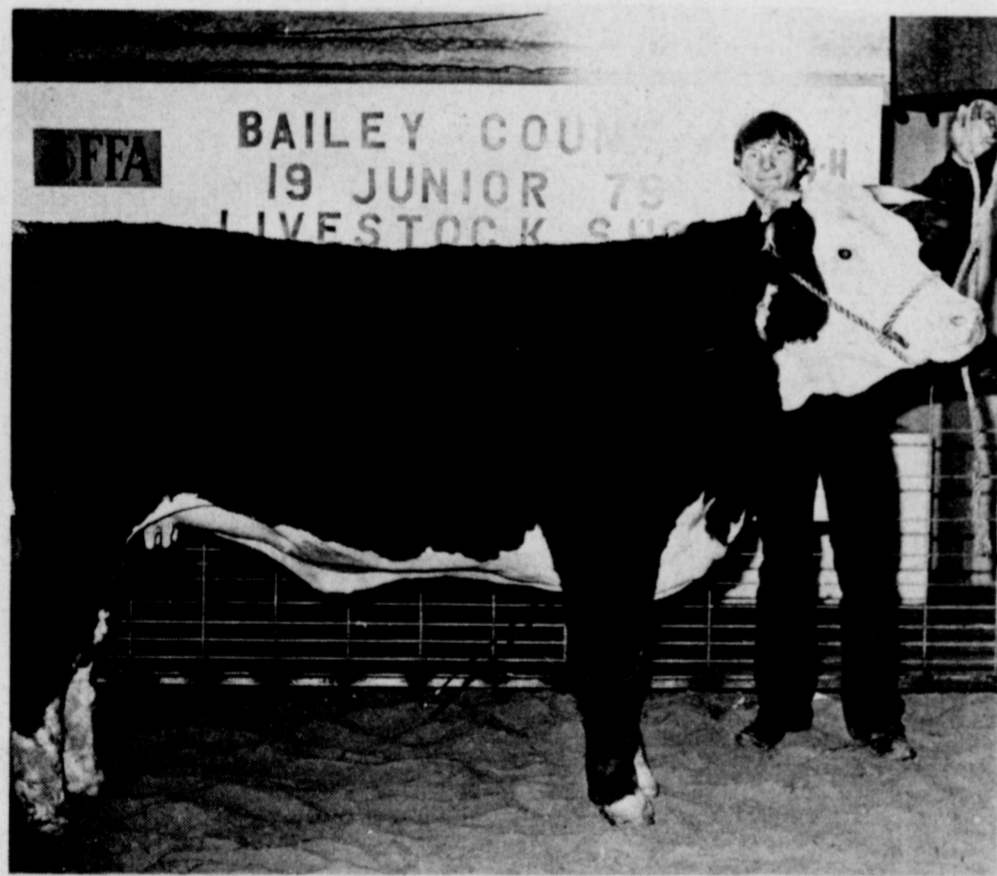


**Campbell**  
IRRIGATION SYSTEMS  
of Muleshoe

604 N. 1st

272-5536

**Congratulations**



**Reserve Champion Heifer**

*Jimmy Gleason*

*Jimmy is pictured with the Reserve Champion Heifer  
at the Bailey County Junior Livestock Show, Jan. 25 and 26  
at the Bailey County Civic Center*

*Jimmy is the son of Dr. & Mrs. Jerry Gleason*

**Farmers Co-op  
Elevator**



# CLASSIFIED ADS THE PLACE TO LOOK



**Deadline For Classified Ads Is At 11:00  
Tuesdays And Fridays**

**OPEN RATES**

1st insertion, per word - \$1.11  
2nd and add., per word - \$0.95  
**NATIONAL RATES**  
1st insertion, per word - \$1.11  
2nd and add., per word - \$0.70  
Minimum Charge:  
1st insertion - \$1.65  
2nd insertion - \$1.35  
**CARD OF THANKS**  
30 words - \$3.00  
Over 30 words charged at regular classified rates.  
Classified Display \$1.55 per column inch.  
Double Rate for Blind Ads.

**DEADLINE FOR INSERTION**  
11:00 Tuesday for Thursday  
11:00 Friday for Sunday  
WE RESERVE THE RIGHT TO CLASSIFY, REVISE OR REJECT ANY AD.

NOT RESPONSIBLE FOR ANY ERROR AFTER AD HAS RUN ONCE.  
Effective May 1, 1978.

**1. PERSONALS**

Are you allergic to most skin preparations? Try Aloe Vera Products. See Doris Wedel, 224 W. 2nd. Phone 272-3283. 1-46s-tfc

**3. HELP WANTED**

**HELP WANTED:** Cocktail waitress, food waitress and kitchen help. Call 965-2666 or apply in person, Dodd Community. 3-2t-8tc

**MOTHERS** Do you want to stay home with your children while you earn extra money? 8 - 12 hours a week. You can, We Train. Call 257-3723 after 6 p.m. Monday thru Friday. 3-3t-6tc

**SALESMAN WANTED**  
Aerial Photographs Local Area Excellent Commission Contact Anytime  
**THUNDERHEAD AERIAL PHOTO**  
Charles C. Wright  
806-537-5122  
Box 894  
Panhandle, Texas  
79068  
3-4s-3tp

**SALESMAN OPENING**  
Salesman needed for large international chain of agricultural farm stores in fertilizer and pesticides. Good salary - vehicle - exceptional benefits.  
**MULESHOE AREA**  
Agricultural degree helpful or equivalent of selling experience. Must have sales ability. Exposure to product knowledge and agronomy helpful. Send resume to Box 449, Muleshoe, Tx. 79347.  
An equal opportunity employer.  
3-4t-6tc

**KFDW - TV** in Clovis needs full or part time control room operator with FCC first class license. \$3.50 per hour - up. Full time receives free insurance and benefits. Call manager 505-276-8266, weekdays, 9 a.m. to 5 p.m. 3-5s-5tc

**4. HOUSES FOR RENT**  
**FOR RENT:** 2 bedroom, 1 1/2 bath. Fenced backyard, no pets. Close to Richland Hills Elementary. Unfurnished with built-ins. Call 933-4386 or 946-3681. 4-3s-tfc

**8. REAL ESTATE**  
**IF YOU MAKE \$16,000** or less a year and have a good credit rating you can qualify for a new FmHa home. Contact J&R Construction about their FmHa approved homes. Call 272-3758 or 272-4347. 8-50s-tfc

**FOR SALE:** Large corner lot, 150' x 140' at 7th and K. Call 272-5074 after 4 p.m. on weekdays. 8-4t-2tc

HIGHWAY 214 NORTH  
MULESHOE, TEXAS

**TOWN and COUNTRY REAL ESTATE**

3 bedroom, 2 bath, 2 garage brick, in Country Club Addition. Good fence and yard.

New 3 bedroom, 2 bath, 1 car garage, Muleshoe Park Addition.

We have 11 one acre tracts left in restricted rural subdivision. Three miles East of town on F.M. pavement.

Mobile home lots for sale, either in City or Rural.

**FARMS HOMES RANCHES**  
**JOHN W. SMITH**  
272-4678  
broker  
8-49s-tfc

**TWO BEDROOM HOUSE FOR SALE:** Carpet, paneling, 6 ft. cedar fence. Priced under appraised value. Call 272-4347 or 272-8938. 8-4s-tfc

**HOMES FOR SALE**  
4 bedroom with built-ins good location. FHA loan, excellent condition, garage, only \$29,700.

Large 2 bedroom with duplex, close to school.

Nice 3 bedroom house, ready to move into.

5 bedroom, 3 bath, under \$25,000.00.

Two bedroom, under \$10,000

2 bedroom, fenced backyard, small house in back.

Brick 3 bedroom, 13/4 bath, good location.

We want your business "REMEMBER" REID REAL ESTATE THURSIE REID 272-3142 8-3s-stfc

**HOUSE FOR SALE:** Richland Hills, 3 bedroom, 2 bath, fire place, electric double car garage door opener, storage building, 1,800 sq. ft. Corner lot. Call 272-4617. 8-46t-tfc

**FOR SALE:** Three bedroom, remodeled, 1 3/4 bath, kitchen built - ins, central heat, large family room, draped, storm windows, repainted inside and out. Call 272-4754. 8-4t-tfc

160 Acres irrigated with circle sprinkler, good water.  
CALL  
**J.B. SUDDUTH REALTY, INC.**  
806-481-3288  
FARWELL, TEXAS  
8-51s-tfc

**HOUSE FOR SALE:** 2150 sq. ft. brick, large covered patio, 2-car garage, storage house, concrete tile fence, excellent location, near High School. Call 272-3839 after 6p.m. 8-48s-tfc

**LOT FOR SALE:** 114' x 140' near school, corner lot, house can be moved in. 801 W. 8th. Call 806-965-2351. 8-53s-tfc

**HOUSE FOR SALE:** 3 bedroom, 1 bath, fenced back yard, 1208 W. Ave. B. Call 272-3908. 8-1t-8tc

**E.E. HOLLAND REAL ESTATE**  
113 W. Ave. D  
Ph. 272-3293  
**DAY OR NIGHT**

**ROBIN DAVIS SALESMAN**  
156 Acres, 3 bedroom home domestic well, 2 wells 30 and 50 hp. motors, underground pipe for sprinkling, on Friona Highway close in. Exclusive.

Need dry land, have buyer.  
8-51t-tfc

**FOR SALE OR TRADE:** Dinner Bell Cafe. Price includes business, fixtures, building and lots. Call 505-546-6233 or write P.O. Box 1279, Deming, N.M. 88030. 8-44s-tfc

For all your real estate needs Call:  
**GLAZE & GOFORTH**  
112 Ave. C  
272-4208  
8-11s-tfc

**FOR SALE:** New 3 bedroom energy efficient brick home, 1 car garage, 1 3/4 baths, wood fence, by J&R Construction. 707 Ave. J. 8-50s-tfc

**SMALLWOOD REAL ESTATE**  
272 4838  
232 Main  
New 3 bedroom, 2 bath, brick home.  
New 3 bedroom, 2 bath, 2 car garage, fenced back yard.

Three bedroom, two bath, brick home, two car garage, 2,000 sq. ft.

Three bedroom, bath and half, in Lenau Addition. Approved for FHA loan.  
8-2t-tfc

**HOUSE FOR SALE BY OWNER:** 2400 sq. ft. - livingroom, den, 2 large bedrooms, 2 baths, utility room, dining room. All carpeted, 2 cedar closets, 2 car garage, fenced in yard, corner lot, underground sprinkler system. Call 272-3483 after 6 p.m. 8-47s-tfc

**FOR SALE**  
**BEAVERS FLOWERLAND**  
CALL  
272-3024.  
8-42s-tfc

**KREBBS REAL ESTATE**  
122 W. Ave. C  
Phone 272-3191  
13 acre tract - terms  
One 3 bedroom home - lease or trade.  
One 3 bedroom home - lease purchase.  
Two bedroom, 2 lots - reasonable.  
8-2t-tfc

**FOR SALE:** 3 bedroom house, 1 bath, 1340 sq. ft. Redecorated inside. Owner will finance to responsible family. Call 272-4488 after 5:30 p.m. 8-2s-8tp

**LUCILLE HARP**  
272-3761 or 4693  
A good buy - 120 acres with 8" well into brick house at \$800 an acre.  
A good 8 acre with grazing grass with 2 wells. Close-in, \$20,000. 8-2s-stfc

**RICHLAND HILLS HOME FOR SALE:** 3 bedroom, 2 bath, single garage, carpet and drapes. Fenced backyard with storage house. Call after 5 p.m., 272-3041. 8-43t-tfc

**JUSTICE REAL ESTATE**  
115 W. Bedford  
Dimmitt, Tx. 79027  
CALL:  
Office--647-4101  
Night--644-5512  
or  
647-2159

**FOR SALE:** 320 Acres near Pleasant Valley, has 5 wells and lays beautifully.  
900 Acres near Dodd, 5 wells, 4 circles and 3 bedroom house.  
649 acres - 472 acres east of Muleshoe, 4 - 8" wells, 2 sprinklers, 4 side row systems, small house.  
177 acres dry land east of Needmore.  
8-4s-stfc

**RICHLAND HILLS HOME FOR SALE:** 3 bedroom brick, 2 bath, double garage, covered patio, landscaped. Call 272-3019. 8-4s-tfc

**HOUSE FOR SALE:** Choice location, 3 bedroom, brick, fireplace, at 314 Ave. J. Call 272-4772 or 272-3100. 8-3t-tfc

**9. AUTOMOBILES FOR SALE**

**AUTO MECHANICS CLASS**  
has 1973 Chevrolet Impala, 4 door for sale or trade, above average condition, \$1250.00. See at Auto Mechanics, Muleshoe High School or Call 272-4753 after 6 p.m. 9-5s-2tc

**FOR SALE:** Good 1974 Ford pickup. Call 272-4941. 9-5s-stfc

**FOR SALE:** 1969 Thunderbird, 4 door, new tires, excellent condition. Call 272-4753 after 6 p.m. 9-5s-2tc

**FOR SALE:** 1972 Monte Carlo, priced reasonably. Call 272-4270 after 5 p.m. 9-5s-4tc

**10. FARM EQUIP. FOR SALE**

**LOOK AT STATELINE IRRIGATION WE HAVE PVC PIPE FOR ALL YOUR NEEDS**  
1800 PSI 2" 10 2" 11 1" 13 1" 15 1" 17 1" 19 1" 21 1" 23 1" 25 1" 27 1" 29 1" 31 1" 33 1" 35 1" 37 1" 39 1" 41 1" 43 1" 45 1" 47 1" 49 1" 51 1" 53 1" 55 1" 57 1" 59 1" 61 1" 63 1" 65 1" 67 1" 69 1" 71 1" 73 1" 75 1" 77 1" 79 1" 81 1" 83 1" 85 1" 87 1" 89 1" 91 1" 93 1" 95 1" 97 1" 99 1" 101 1" 103 1" 105 1" 107 1" 109 1" 111 1" 113 1" 115 1" 117 1" 119 1" 121 1" 123 1" 125 1" 127 1" 129 1" 131 1" 133 1" 135 1" 137 1" 139 1" 141 1" 143 1" 145 1" 147 1" 149 1" 151 1" 153 1" 155 1" 157 1" 159 1" 161 1" 163 1" 165 1" 167 1" 169 1" 171 1" 173 1" 175 1" 177 1" 179 1" 181 1" 183 1" 185 1" 187 1" 189 1" 191 1" 193 1" 195 1" 197 1" 199 1" 201 1" 203 1" 205 1" 207 1" 209 1" 211 1" 213 1" 215 1" 217 1" 219 1" 221 1" 223 1" 225 1" 227 1" 229 1" 231 1" 233 1" 235 1" 237 1" 239 1" 241 1" 243 1" 245 1" 247 1" 249 1" 251 1" 253 1" 255 1" 257 1" 259 1" 261 1" 263 1" 265 1" 267 1" 269 1" 271 1" 273 1" 275 1" 277 1" 279 1" 281 1" 283 1" 285 1" 287 1" 289 1" 291 1" 293 1" 295 1" 297 1" 299 1" 301 1" 303 1" 305 1" 307 1" 309 1" 311 1" 313 1" 315 1" 317 1" 319 1" 321 1" 323 1" 325 1" 327 1" 329 1" 331 1" 333 1" 335 1" 337 1" 339 1" 341 1" 343 1" 345 1" 347 1" 349 1" 351 1" 353 1" 355 1" 357 1" 359 1" 361 1" 363 1" 365 1" 367 1" 369 1" 371 1" 373 1" 375 1" 377 1" 379 1" 381 1" 383 1" 385 1" 387 1" 389 1" 391 1" 393 1" 395 1" 397 1" 399 1" 401 1" 403 1" 405 1" 407 1" 409 1" 411 1" 413 1" 415 1" 417 1" 419 1" 421 1" 423 1" 425 1" 427 1" 429 1" 431 1" 433 1" 435 1" 437 1" 439 1" 441 1" 443 1" 445 1" 447 1" 449 1" 451 1" 453 1" 455 1" 457 1" 459 1" 461 1" 463 1" 465 1" 467 1" 469 1" 471 1" 473 1" 475 1" 477 1" 479 1" 481 1" 483 1" 485 1" 487 1" 489 1" 491 1" 493 1" 495 1" 497 1" 499 1" 501 1" 503 1" 505 1" 507 1" 509 1" 511 1" 513 1" 515 1" 517 1" 519 1" 521 1" 523 1" 525 1" 527 1" 529 1" 531 1" 533 1" 535 1" 537 1" 539 1" 541 1" 543 1" 545 1" 547 1" 549 1" 551 1" 553 1" 555 1" 557 1" 559 1" 561 1" 563 1" 565 1" 567 1" 569 1" 571 1" 573 1" 575 1" 577 1" 579 1" 581 1" 583 1" 585 1" 587 1" 589 1" 591 1" 593 1" 595 1" 597 1" 599 1" 601 1" 603 1" 605 1" 607 1" 609 1" 611 1" 613 1" 615 1" 617 1" 619 1" 621 1" 623 1" 625 1" 627 1" 629 1" 631 1" 633 1" 635 1" 637 1" 639 1" 641 1" 643 1" 645 1" 647 1" 649 1" 651 1" 653 1" 655 1" 657 1" 659 1" 661 1" 663 1" 665 1" 667 1" 669 1" 671 1" 673 1" 675 1" 677 1" 679 1" 681 1" 683 1" 685 1" 687 1" 689 1" 691 1" 693 1" 695 1" 697 1" 699 1" 701 1" 703 1" 705 1" 707 1" 709 1" 711 1" 713 1" 715 1" 717 1" 719 1" 721 1" 723 1" 725 1" 727 1" 729 1" 731 1" 733 1" 735 1" 737 1" 739 1" 741 1" 743 1" 745 1" 747 1" 749 1" 751 1" 753 1" 755 1" 757 1" 759 1" 761 1" 763 1" 765 1" 767 1" 769 1" 771 1" 773 1" 775 1" 777 1" 779 1" 781 1" 783 1" 785 1" 787 1" 789 1" 791 1" 793 1" 795 1" 797 1" 799 1" 801 1" 803 1" 805 1" 807 1" 809 1" 811 1" 813 1" 815 1" 817 1" 819 1" 821 1" 823 1" 825 1" 827 1" 829 1" 831 1" 833 1" 835 1" 837 1" 839 1" 841 1" 843 1" 845 1" 847 1" 849 1" 851 1" 853 1" 855 1" 857 1" 859 1" 861 1" 863 1" 865 1" 867 1" 869 1" 871 1" 873 1" 875 1" 877 1" 879 1" 881 1" 883 1" 885 1" 887 1" 889 1" 891 1" 893 1" 895 1" 897 1" 899 1" 901 1" 903 1" 905 1" 907 1" 909 1" 911 1" 913 1" 915 1" 917 1" 919 1" 921 1" 923 1" 925 1" 927 1" 929 1" 931 1" 933 1" 935 1" 937 1" 939 1" 941 1" 943 1" 945 1" 947 1" 949 1" 951 1" 953 1" 955 1" 957 1" 959 1" 961 1" 963 1" 965 1" 967 1" 969 1" 971 1" 973 1" 975 1" 977 1" 979 1" 981 1" 983 1" 985 1" 987 1" 989 1" 991 1" 993 1" 995 1" 997 1" 999 1" 1001 1" 1003 1" 1005 1" 1007 1" 1009 1" 1011 1" 1013 1" 1015 1" 1017 1" 1019 1" 1021 1" 1023 1" 1025 1" 1027 1" 1029 1" 1031 1" 1033 1" 1035 1" 1037 1" 1039 1" 1041 1" 1043 1" 1045 1" 1047 1" 1049 1" 1051 1" 1053 1" 1055 1" 1057 1" 1059 1" 1061 1" 1063 1" 1065 1" 1067 1" 1069 1" 1071 1" 1073 1" 1075 1" 1077 1" 1079 1" 1081 1" 1083 1" 1085 1" 1087 1" 1089 1" 1091 1" 1093 1" 1095 1" 1097 1" 1099 1" 1101 1" 1103 1" 1105 1" 1107 1" 1109 1" 1111 1" 1113 1" 1115 1" 1117 1" 1119 1" 1121 1" 1123 1" 1125 1" 1127 1" 1129 1" 1131 1" 1133 1" 1135 1" 1137 1" 1139 1" 1141 1" 1143 1" 1145 1" 1147 1" 1149 1" 1151 1" 1153 1" 1155 1" 1157 1" 1159 1" 1161 1" 1163 1" 1165 1" 1167 1" 1169 1" 1171 1" 1173 1" 1175 1" 1177 1" 1179 1" 1181 1" 1183 1" 1185 1" 1187 1" 1189 1" 1191 1" 1193 1" 1195 1" 1197 1" 1199 1" 1201 1" 1203 1" 1205 1" 1207 1" 1209 1" 1211 1" 1213 1" 1215 1" 1217 1" 1219 1" 1221 1" 1223 1" 1225 1" 1227 1" 1229 1" 1231 1" 1233 1" 1235 1" 1237 1" 1239 1" 1241 1" 1243 1" 1245 1" 1247 1" 1249 1" 1251 1" 1253 1" 1255 1" 1257 1" 1259 1" 1261 1" 1263 1" 1265 1" 1267 1" 1269 1" 1271 1" 1273 1" 1275 1" 1277 1" 1279 1" 1281 1" 1283 1" 1285 1" 1287 1" 1289 1" 1291 1" 1293 1" 1295 1" 1297 1" 1299 1" 1301 1" 1303 1" 1305 1" 1307 1" 1309 1" 1311 1" 1313 1" 1315 1" 1317 1" 1319 1" 1321 1" 1323 1" 1325 1" 1327 1" 1329 1" 1331 1" 1333 1" 1335 1" 1337 1" 1339 1" 1341 1" 1343 1" 1345 1" 1347 1" 1349 1" 1351 1" 1353 1" 1355 1" 1357 1" 1359 1" 1361 1" 1363 1" 1365 1" 1367 1" 1369 1" 1371 1" 1373 1" 1375 1" 1377 1" 1379 1" 1381 1" 1383 1" 1385 1" 1387 1" 1389 1" 1391 1" 1393 1" 1395 1" 1397 1" 1399 1" 1401 1" 1403 1" 1405 1" 1407 1" 1409 1" 1411 1" 1413 1" 1415 1" 1417 1" 1419 1" 1421 1" 1423 1" 1425 1" 1427 1" 1429 1" 1431 1" 1433 1" 1435 1" 1437 1" 1439 1" 1441 1" 1443 1" 1445 1" 1447 1" 1449 1" 1451 1" 1453 1" 1455 1" 1457 1" 1459 1" 1461 1" 1463 1" 1465 1" 1467 1" 1469 1" 1471 1" 1473 1" 1475 1" 1477 1" 1479 1" 1481 1" 1483 1" 1485 1" 1487 1" 1489 1" 1491 1" 1493 1" 1495 1" 1497 1" 1499 1" 1501 1" 1503 1" 1505 1" 1507 1" 1509 1" 1511 1" 1513 1" 1515 1" 1517 1" 1519 1" 1521 1" 1523 1" 1525 1" 1527 1" 1529 1" 1531 1" 1533 1" 1535 1" 1537 1" 1539 1" 1541 1" 1543 1" 1545 1" 1547 1" 1549 1" 1551 1" 1553 1" 1555 1" 1557 1" 1559 1" 1561 1" 1563 1" 1565 1" 1567 1" 1569 1" 1571 1" 1573 1" 1575 1" 1577 1" 1579 1" 1581 1" 1583 1" 1585 1" 1587 1" 1589 1" 1591 1" 1593 1" 1595 1" 1597 1" 1599 1" 1601 1" 1603 1" 1605 1" 1607 1" 1609 1" 1611 1" 1613 1" 1615 1" 1617 1" 1619 1" 1621 1" 1623 1" 1625 1" 1627 1" 1629 1" 1631 1" 1633 1" 1635 1" 1637 1" 1639 1" 1641 1" 1643 1" 1645 1" 1647 1" 1649 1" 1651 1" 1653 1" 1655 1" 1657 1" 1659 1" 1661 1" 1663 1" 1665 1" 1667 1" 1669 1" 1671 1" 1673 1" 1675 1" 1677 1" 1679 1" 1681 1" 1683 1" 1685 1" 1687 1" 1689 1" 1691 1" 1693 1" 1695 1" 1697 1" 1699 1" 1701 1" 1703 1" 1705 1" 1707 1" 1709 1" 1711 1" 1713 1" 1715 1" 1717 1" 1719 1" 1721 1" 1723 1" 1725 1" 1727 1" 1729 1" 1731 1" 1733 1" 1735 1" 1737 1" 1739 1" 1741 1" 1743 1" 1745 1" 1747 1" 1749 1" 1751 1" 1753 1" 1755 1" 1757 1" 1759 1" 1761 1" 1763 1" 1765 1" 1767 1" 1769 1" 1771 1" 1773 1" 1775 1" 1777 1" 1779 1" 1781 1" 1783 1" 1785 1" 1787 1" 1789 1" 1791 1" 1793 1" 1795 1" 1797 1" 1799 1" 1801 1" 1803 1" 1805 1" 1807 1" 1809 1" 1811 1" 1813 1" 1815 1" 1817 1" 1819 1" 1821 1" 1823 1" 1825 1" 1827 1" 1829 1" 1831 1" 1833 1" 1835 1" 1837 1" 1839 1" 1841 1" 1843

**Mary Vaughn  
Funeral  
Held Friday**

Mary Ellen Vaughn, 80, a pioneer resident of Bailey County, died at 1:30 p.m. Wednesday in Methodist Hospital in Lubbock.

Funeral services for Mrs. Vaughn were at 2:30 p.m. Friday in the First Baptist Church in Muleshoe with the pastor, Rev. J.E. Meeks, assisted by Elder Glen Williams, a Primitive Baptist Pastor of Muleshoe, officiating. Burial was in Bailey County Memorial Park under direction of Singleton - Ellis Funeral Home.

Mrs. Vaughn was born May 17, 1898 in Earlsboro, Okla. and had moved to Lubbock in 1970 from Muleshoe where she had resided since 1929. Her husband, Joe, a former

longtime Bailey County Justice of the Peace, preceded her in death on January 7, 1970. She was a member of the First Baptist Church of Muleshoe. Survivors include on son, Louis D., Chicago, Ill.; two daughters, Mrs. Goldie Roberts and Mrs. Dale Murphy, both of Lubbock; one sister, Mrs. Mabel Aday, Friona; nine grandchildren and 13 great-grandchildren.

**West Plains  
Medical Center  
Report**

**ADMISSIONS...**  
January 22 -- W.F. Creamer, Elvina Trevino, Margaret Tuarles, Le Ann Gallman, Fred Horn, Pam Haseloff, Scott Branscum, Virginia Rone, Christival Triana  
January 23 -- T.J. Brantley, Estella Simpson, Gilda Flores, III, Annette Ramon, Jose Trevino, Linda Whitson.  
January 24 -- Robert O'Hair, Jaime Lynn Haber, Minnie R. Roebuck, Alfonso Mendoza, Jr.  
January 25 -- Linda Nowell

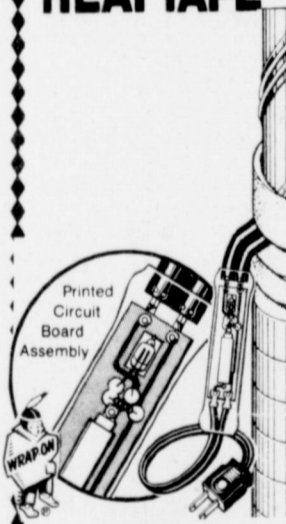
**DISMISSALS...**  
January 22 -- Todd Glasscock, Olga Reyes, Veronica Bennett and baby girl, Bertha Kaltwasser, Clara M. Smith, Howard Manasco, Robert Alanis  
January 23 -- Pattie McNeil  
January 24 -- W.F. Creamer, L.E. Testerman, Christoval Trevino, Elizabeth Osborne, Estella Simpson  
January 25 -- Fred Horn.

**Courthouse  
News**

**MARRIAGE LICENSES...**  
Clyde Irvin McMahan, 39 and Delours Jean Walraven, 34.

**WARRANTY DEEDS...**  
Roy Dominguez, Jr. and Carmen Dominguez to Barrett Produce Company, Section 54, Block Y, W.D. & F.W. Johnson's Sub-division No. 2

**PREVENT  
FROZEN PIPES  
WRAP-ON  
SOLID-CIRCUIT  
HEATTAPE**



**Easy  
Box**

401 South First  
MULESHOE, TEXAS 79347

**Justin Ethridge  
Funeral Rites  
Conducted Here**

Funeral services were conducted at 2 p.m. Tuesday in the Singleton - Ellis Chapel of the Chimes for Justin Dean Ethridge, 5, son of Mr. and Mrs. Dean Ethridge. Montevideo, Uruguay, S.A. Officiating was Frank Vessels, pastor of a Seventh Day Adventist Church from Los Angeles, California. Interment was in Littlefield Cemetery under direction of Singleton - Ellis Funeral Home.

Justin Dean Ethridge was born October 15, 1973 in Athens, GA. and moved to South America with his family from Bryan, Tx. in 1978. He died January 19 around 6 p.m. in Montevideo.

Survivors include his parents, Mr. and Mrs. Dean Ethridge; one sister, Lisa, of the home; grandparents, Mr. and Mrs. Rufus Gilbreath and Mr. and Mrs. S.M. Ethridge, all of Muleshoe; Mrs. Ona Cunningham, Plainview; Mrs. Effie Houston, Bowie and Mr. and Mrs. Dee Lafon, Slaton.



JUSTIN ETHRIDGE

**Enochs News  
By  
Mrs. J.D. Bayless**

Mrs. J.E. Layton drove to Lubbock Wednesday and visited in the home of her niece, Mr. and Mrs. Ken Cheatham. Other guests were Mrs. Bill Burris of Wellman and Carl Hall. Mrs. Layton brought her father, Carl Hall, home. He has been visiting his daughter in Wellman; Mr. and Mrs. J.F. McGennis; Mr. and Mrs. J.T. Burns and the Cheathams at

Lubbock while recuperating since he was dismissed from the Littlefield Hospital.

Mr. and Mrs. J.D. Bayless drove to Slide Monday afternoon and spent the night with Mr. and Mrs. Ray Cunningham. Tuesday morning, her sister, Mrs. Gracy Swanner of Lubbock suffered a heart attack and was admitted to the Highland Hospital in Lubbock.

Paula Nichols was a patient in the Methodist Hospital Monday til Friday for tests and x-rays.

Lee Olan Chick of

Borger spend Tuesday til Thursday with Mr. and Mrs. J.W. Layton.

Harold Dean Nichols of Idalou, Jerry Nichols and Gary Nichols drove to Dell City and El Paso, Sunday.

Guests in the home of Mr. and Mrs. Guy Sanders last weekend were Mr. and Mrs. Peter Flagin of Lubbock.

Mr. and Mrs. Chester Petree visited their son, Mr. and Mrs. Kenneth Petree and family at Clovis, N.M., Sunday afternoon.

**DOLLAR DAYS ARE BACK**



"Each of these advertised items is required to be readily available for sale at or below the advertised price in each store, except as specifically noted in this ad. We reserve the right to limit quantities. None sold to dealers." Prices good January 28 thru February 3, 1979.

Hi! I'm Penny the Pricewatcher ... keeping an eye on other stores' prices for you to make sure that Piggly Wiggly's prices stay competitive.



**Barney's Butcher Shop Sale**

"BE SATISFIED WITH PIGGLY WIGGLY MEAT OR DOUBLE YOUR MONEY BACK!"

USDA GRADE 'A' **SPLIT FRYERS** **57¢** LB. WITH BACKS & GIBLETS



OLD FASHIONED, THICK, MARKET STYLE **SLICED BACON** **\$1.29** LB.

FARMER JONES OR GLOVER ALL MEAT **FRANKS** 12-OZ. PKG. **99¢**

SMALL LEAN PORK **SPARERIBS** **\$1.49** LB.

USDA HEAVY WESTERN BEEF, CRY-O-VAC, PACKER TRIMMED, WHOLE BEEF **BRISKET** **\$1.69** LB.

FARMER JONES, PURE PORK **SAUSAGE** 1-LB. PKG. **\$1.09** 2-LB. PKG. **\$2.15**

PIGGLY WIGGLY **LOW FAT MILK** **\$1.59** GAL. **SAVE 54¢**



CUT GREEN BEANS, CREAM STYLE CORN, WHOLE KERNEL CORN **DEL MONTE VEGETABLES** **\$1** 3 16 TO 17-OZ. CANS **SAVE 27¢ ON 3 CANS**



**DEL MONTE TOMATO SAUCE** **\$1** 5 8-OZ. CANS **SAVE 15¢ ON 5 CANS**



WHITE SWAN TEXAS STYLE **BISCUITS** **\$1** 4 12-OZ. CANS **SAVE 64¢ ON 4 CANS**



**BANQUET TV DINNERS** **\$1** 2 10 1/4 TO 12-OZ. PKGS. **SAVE 58¢ ON 2 CANS**



WHITE SWAN **MACARONI & CHEESE DINNER** **\$1** 5 7-OZ. BOXES **SAVE 45¢ ON 2 BOXES**



SWEET & JUICY **CALIFORNIA RED GRAPES** **59¢** LB.  
MEDIUM LARGE BULK **YELLOW ONIONS** **15¢** LB.  
EXCELLENT WITH CHEESE SAUCE **FRESH BROCCOLI** **49¢** LB.  
BULK **TANGY LIMES** **49¢** LB.



**Stan's Produce Sale!**

"BE SATISFIED WITH PIGGLY WIGGLY PRODUCE OR DOUBLE YOUR MONEY BACK!"

**DOUBLE STAMPS EVERY TUES.-WED.**



We give Double S&H Green Stamps every Tuesday - Wednesday with any purchase of \$3.00 or more

**Ruth (Street) Locker**

has returned to Ana's She invites all her old friends and customers

to come by on Wednesday or Friday

**Ana's House Of Beauty**

109 E Ave B

272-4152

