

# Matador Tribune

81st Year

Tribune, Matador, Motley County, Tex., Thursday, April 20, 1978

Issue No. 57

## TRAIL DUST

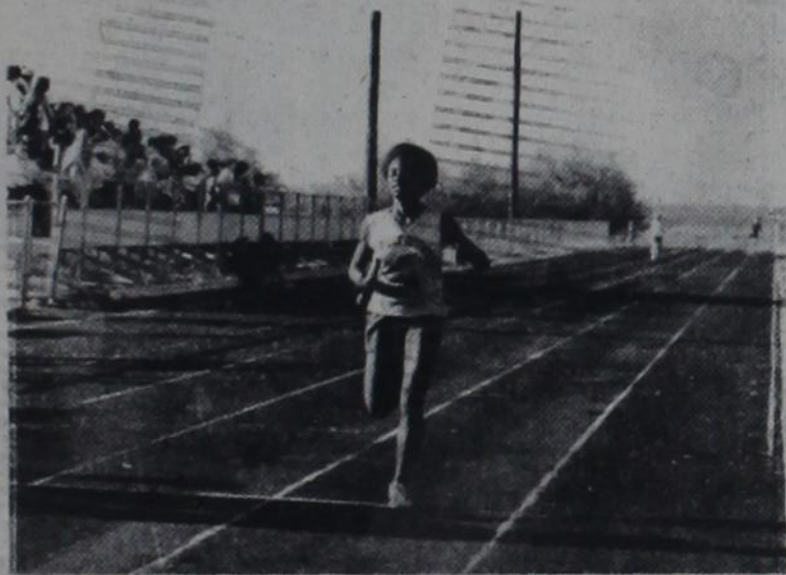
by DOUGLAS MEADOR

History may perhaps be writing its most grotesque chapter in which a nation of free men sell themselves into bondage under mass hypnosis produced by the mollifying voice of a welfare state. An even more pathetic aspect of the blundering leadership is left in a field of complacency harvested by the satisfaction that security may be obtained in some manner other than working for it.

Heat of the tropics was oppressive that night in Merida on Mexico's Yucatan peninsula, but the metal of the great plane was still cool from the high sky road over the Gulf. Weary custom officers watched the passengers file into the airport cafe and the small, crowded bar upstairs. A handsome young man smiled and spoke. I nodded and shook hands with him and he spoke in Spanish to the bartender. He was an extremely wealthy young man running away from an unhappy love affair in Kentucky. Later, when we were back on the plane he handed me a picture from his billfold, and the girl was not very pretty. She did not look unfaithful; at least not unfaithful enough to cause a handsome and wealthy young man to bury himself in the jungles of South America. Exercising more than usual restraint, I refrained from giving him any advice and we parted within a few hours. I have thought of him at intervals through the years and wondered if he were still running away from unpleasant situations. Perhaps he has learned that our problems pack up and go with us when we go away.

Some people are so critical of society that they would refuse a portion of milk of human kindness unless it was identified as Grade A.

(Tribune files 4-24-58)



The final lap of the District Champs 440 Relay Team is shown above. Team members in the 440 Relay team were Ann Moore, Sharlene Smith, Gwen Calvert and Glouris Sims.



Shelly Jackson, daughter of Mr. and Mrs. Kelly Jackson, is shown in the High Jump event at the Junior High District meet in Jayton. Shelly placed 2nd in the high jump at District.

### Babe Zaharis Golf Tourney Sunday

A Babe Zaharis benefit Cancer Tournament will be played Sunday, April 23 at the Airport golf course. All money will be donated to the cancer fund. Everyone is invited to play and donate to this cause. Tee-off time is 1:15 p.m.

### IN DALLAS

Mr. and Mrs. Scott Robbins are in Dallas, where he is receiving treatments in Methodist Hospital.

## All Sports Banquet To Be Held Monday

The Annual All-Sports Banquet will be held Monday, April 24 at 7:30 in the school cafeteria.

Tickets for the banquet are on sale through today, April 20, in the high school lobby. Tickets are \$4.00 per person.

The program will be presented by Curly Hays, a former Southwest Conference Official. The awards for Miss Spirit, Dayton Graham, and Track and Basketball Fighting Heart Awards will be given.

The banquet honoring all high school athletes is sponsored by the Motley County High School Pep Club.

## Lions Elect Officers

After opening ceremonies, Boss Lion Emilio Aguilar invited the Lions to sit down and enjoy their lunch prepared by Lion Walter Jones. The meal consisted of Bar-B-Q and the trimmings.

After the lunch, business of the club was discussed, including the announcement that the volleyball tourney was a success, netting the club a sizable profit. A new member, Ray Freedman, was initiated into the club.

Lion Aguilar gave a report of the Board of Directors Meeting and a slate of officers was presented by the nominating committee. Those nominated and subsequently elected, included President, Frank Price, First Vice President Phillip Hilton, Second Vice President Jerry Golden, Third Vice President Ronnie Vandiver, Directors, L. B. Campbell, Walter Jones, Kirby Campbell and J. B. Cooper, Permanent Director, J. R. Whitworth, Lion Tamer R. M. Stanley, Recorder, W. F. McCaghren, Tail Twister Raby Webb, Secretary Forrest Campbell, Lions Sweetheart, Rachel Patton.

The program for the meeting was presented by Arnold Parker. He presented a film that was produced by the Shell Oil Company, in the interest of water conservation. The film went extensively into the solution to the problem of water pollution and means of conserving water, by reusing the water after several means of purification.

Meeting was adjourned.

## Ten Girls Qualify For Regional

Ten Motley County High School track girls will be going to Levelland this Friday and Saturday for the Regional Track Meet.

In order to qualify for Regional a girl must finish first or second place in the District meet. These girls are Bunni Zabielski, Triple Jump; Linda Palmer, Mile Relay; Cindy Johnson, 880 Dash and Mile Relay; Sharlene Smith, 100 Dash, Long Jump, 440 and 880 Relay; Pamela Pitts, 440 Dash and Mile Relay; Gina Long, Discus; Gwen Calvert, 220 Dash, 440 Relay and 880 Relay; Glouris Sims, 220 Dash, 440 Relay and 880 Relay, Long Jump; Ann Moore, 440 Relay, 880 Relay, and Mile Relay; Brenda Campbell, 880 Relay.

Girls track and field events will include finals at 3 p.m. Friday, April 21, in discus and long jump and finals at 10:00 a.m. Saturday, April 22, in high jump, shot put and triple jump.

Preliminary in running events begins at 4:30 p.m. Friday and finals are scheduled at 12:30 p.m. Saturday. Events will include 400 meter relay, 800 meter dash, 400 meter dash, 200 meter dash, 80 yard hurdles, 800 meter relay, 100 yard dash and 1600 meter relay.

### "Self Defense For Women" Program Is Tonight

The Predicta Study Club will present a program on "Self Defense for Women" tonight, April 20 at 7:30 p.m. in the Roaring Springs Depot.

Charles A. (Tony) Guess, Safety Education Officer of the Texas Department of Public Safety in Amarillo, will be the speaker.

The meeting will be open to the public and all interested persons, men or women, are invited to attend.

### Bob Wills Day Queen Contest, April 22

The annual Bob Wills Queen Contest will be held April 22 at 8:00 p.m. in the Bob Wills Auditorium in Turkey.

The contest is sponsored by the Beta Sigma Phi of Turkey. Local and area town girls as well as several entries from Motley County will be entered.

The Beta Sigma Phi would like to invite all area residents to come and support the girls.

### Farmers Reminded of May 1 Deadline

The Motley County Agricultural Stabilization and Conservation Service would like to remind all area farmers of the May 1 deadline to sign their intentions to participate in the 1978 program and to report all small grains, (wheat, barley, oats and rye). All other crops and set-aside acres must be reported by August 1.

## Fate Of Building To Be Determined By 'Straw Vote'

Public opinion of and reaction to the proposal to demolish the old Matador High School building is being sought by two local factors.

The Motley County School Board this week is mailing a questionnaire to qualified voters of the school district seeking information relative to the attitude of voters toward involvement, should the building be retained and maintained for civic organizations.

Proponents of the project to "save the building" were given the opportunity to sign a petition Saturday night at a barbecue supper, which was staged to raise money specifically for the cause. Copies of the petition are being circulated locally, and are located in several places of business for the convenience of others wishing to sign. Qualified voters in the school district are also specifically being sought for this side of the issue.

The questionnaire which the school board is mailing states, "The Motley County School Board has been approached by a Motley County group who would like to see the old Matador High School Building retained, repaired, and maintained for use by Motley County civic organizations.

"If the Board should take this course, repair, maintenance, and control would be passed on to the supporting group. Your answers and comments to the following would be helpful:

"Are you in favor of the above? Yes No

"If yes, will you personally help finance this year after year? Yes No

"If you will help finance this project, how much money would you pledge?

"Number of registered voters in your family?

"Please sign and return within seven days.

"If your questionnaire is not returned, your opinion will be considered negative."

The citizens' petition in support of retaining the building, is as follows:

"We, the undersigned registered voters of Motley County hereby petition the School Board of the Motley County Independent School District to postpone the demolition of the old Matador High School building so as to allow ample time of at least six months, to permit the exploration of all possibilities for the renovation, future use, and maintenance of the building.

"We feel that the building has possibilities for such future uses which will be beneficial to the community, and to the entire county."

(Continued On Page Two)

## Funds Needed For Boll Weevil Control Program

Cotton producers voted at the boll weevil meetings at Matador, Quitaque and Valley School on March 21, 31 & April 13 to assess themselves 20c per cotton acre to support a boll weevil management program. The funds will be used to hire a minimum of 4 scout teams to inspect fields in Briscoe, Crosby, Dickens, Floyd, Garza, Hall, Kent and Motley Counties from mid June until August 31, 1978.

These scouts will report daily to the County Extension Agent in whose counties they worked that day, and producers will be notified as soon as possible when boll weevil populations are near a damaging level. Emphasis will be placed on fields that are near favorable overwintering habitat and that support the heaviest weevil populations each year.

Funds for the support of the scouts must be collected by May 5, 1978, and producers are requested to go by Lee's Feed & Seed, Roaring Springs; The First State Bank, Matador; the Caprock or Flomot gins in Flomot; or the First National Bank or the Co-op Gin in Quitaque and leave their checks for their cotton acreage.

Plains Cotton Growers, Inc. will handle the funds, and the funds will be used exclusively to pay the scout's salary, travel and related expenses.

The scouts will begin to check fields in mid June but they must be trained first, therefore funds to hire the scouts must be in the hands of Plains Cotton Growers, Inc. by May 5. The survey scouts must be hired during the first week in June.

A uniform planting date of May 20 or later coupled with effective early season control, if needed, throughout the control zone will greatly reduce boll weevil populations and their damage, thereby resulting in reduced losses for local producers.

Farmers with questions about the program should contact their local county agent.

## Hospital May Close

Motley County General Hospital is reported in severe financial difficulty and may be forced to close its doors within the month. A solution to the situation is being sought by the Hospital Board, through letters to registered voters in the county.

According to the information provided in the letter, the hospital cannot operate past the end of this month without additional financial support from the public.

"The only feasible alternative that has not been exhausted is to raise the (property) evaluation to approximately double the present rate for the county," the board states in the letter.

"Please indicate the action you wish the Hospital Board to take.

"1. Continue operation of the hospital by whatever means necessary. (i.e. increase taxes).

"2. Close the hospital with the possibility of losing our Physician and Clinic.

"IT IS URGENT THAT THESE BE RETURNED WITHIN THE WEEK IN ORDER FOR THE BOARD TO MAKE ITS DECISION BASED ON THE RESPONSE TO THIS LETTER BY THE PEOPLE OF MOTLEY COUNTY.

Thank you,

Motley County Hospital Board."

According to a spokesman for the hospital board, there is only enough operating capital to run the facility approximately 30 more days, but a return of the questionnaire is requested by Tuesday, April 25, when the board will decide whether to raise taxes or close the doors. The hospital has been in operation for the past year.

## Bulletins

### Cancer Crusade Underway

The annual Cancer Crusade is underway in Matador this month. The Eternas Junior Study Club will be conducting a door-to-door drive this Saturday, April 22. All donations will be sent to the American Cancer Society for research against cancer.

### Jaycee Meeting Tonight

The Matador Jaycees will be holding a meeting tonight, April 20 at 8:00 p.m. All Jaycees are urged to attend.

### Hospital Patients

Patients in the Motley General Hospital include Winnie Long of Matador, Viola Marshall of Roaring Springs, Wade Martin of Flomot, and Lillie Clark of Matador.

### Boys District Track Meet Today

The Motley County Junior and Senior High boys track teams will be entering the District track meet today, April 20. Preliminaries of running events, 10:00 a.m.; Preliminaries of field events, 1:00 p.m.; and Finals for running events, 3:30 p.m.

### Matador Garden Club To Present Floral Display

The Matador Garden Club is progressing on plans to present an Artistic Flower Arrangement Display to the public Saturday, April 29, from 3:00 to 5:00 p.m. in the Woodruff building. There will be no charge and refreshments will be served. Mrs. Eldred Seigler will serve as flower show chairman.

### Immunization Clinic Scheduled

The Texas Department of Health will hold an Immunization Clinic in Matador on April 25 from 10:00 a.m. to 4:00 p.m. The clinic will be held in the basement of the Motley County Courthouse.

Immunizations will be available without charge to all ages. Persons under 18 years of age must be accompanied by a parent or guardian and all persons should bring records of past immunizations if possible.

### Gov. Briscoe To Be In Floydada Monday

Governor and Mrs. Dolph Briscoe will be in Floydada on Monday, April 24, at 10:30 a.m. The meeting will be held on the Courthouse square and all residents of Motley County are invited to attend.

### Sophomore Class Sponsoring Car Wash

The Motley County Sophomore Class of 1978 will hold a "car wash" April 25 and 26, from 4:00 to 7:00 p.m. in front of the High School Building.

The charge will be \$5.00 per car for washing and vacuuming. The Sophomore Class invites all area residents to come and support their project.



FATE OF BUILDING

(From Page One)

IN A RECENT appraisal of the local situation, Dr. James Kitchen of Texas Tech University offered his help in obtaining government money to save the structure, however, not just as a single project, but as a "kick-off" for the restoration of projects county-wide.

Dr. Kitchens is head of the Department of Parks Administration and Landscape architecture at Tech, and was instrumental in assisting Turkey in retaining its school building, which is used for all community affairs. The professor's class receives scholastic credit for the work the students do in such renovating projects.

Former residents of Matador, representing a large segment of students who attended high school here are supporting the movement to retain the building and have contributed large sums of money for a maintenance fund. Individual contributions have ranged from \$5. to \$100.

The fund was amply augmented Saturday night at a Walter Jones barbecue supper, when approximately 300 plates were served. Several former residents were here for the occasion and included Mr. and Mrs. Don Wason and friends from Plainview; Mr. and Mrs. Robert Birchfield and Mr. and Mrs. Albert Rattan of Midland; Mrs. Mike Richardson and daughter, Charise Cullin of Dallas; Mrs. Jim Allison of McLean; Mr. and Mrs. Claud Stearns of Temple; Mrs. Bill Harrison of Brownfield; and Pat Groves of Saratoga, California.

TYPICAL of the many letters sent with contributions to the Ex-Students and Teachers Association, are the following: "I was extremely upset when I heard about the plans to demolish the old high school. Here is a check to help toward keeping our school - I only wish it could be more. I am sure that there are many, many graduates scattered around the country who feel, as I do, that it is an atrocity to tear down such a structurally sound, grand old building as Matador High School. I would like to urge everyone to support our school in every way possible - through donations, letters, petitions - anything you can think of! Remember, there is only one Matador High School. If the building is razed, both the school and the name will be gone! Think about it. Mrs. Robert E. Barrow (Nancy E. (Traweek) Barrow, M.D.) Class of '65."

THE EXES WRITE

"Those of us who have wonderful nostalgic memories of that building (Matador High) appreciate the efforts that those of you who are there are putting out to save it. We always appreciate you - but in times like these - especially. Marjorie Moore Harper."

+++

"Enclosed is our check to help in the 'Save Our School' endeavor. We wish to go on record as being very opposed to the destruction of the high school building. The building can be used for a very good cause and to the many of us who received our basic education there it holds many fond memories. Those of us who graduated from that school came away with far better basics than many who are graduating from the fancy new schools being built today. Our foundations in English, History, Math as well as other subjects are still serving us all well, and we had excellent teachers who were silling and able to help us at all times. "We were in Matador this past week end and observed a number (not a few) eye sores that need to be torn down and done away with far more than the beautiful high school building. If those back of the destruction of the high school are in such a tearing-down mood why don't they start on the falling-down buildings, trash, etc., that are fire hazards, safety hazards and eyesores to the residents (ex-students included) and tourists passing through?"

Bless all of the ex-students and interested residents giving of their time, efforts and money to Save Our School. Mr. and Mrs. Mose Damron - (L.V. New, class of 1936; Mose Damron, class of 1932)"

+++

"I hope this contribution will help. I have no idea how much is needed. I will contribute more to help save that building. It seems to me that there could be many good uses for the building besides my being able to see it when I come to my class's 40th reunion this fall. Sincerely, Jack Robinson."

+++

"Here's a small amount to add to the Save-the-School fund. I wish I could send more... from reading the Tribune, I have been so concerned about our old school building. I certainly hope it can be saved... Tell Dr. Kitchen 'hello' for us. He was one of Carson's profs at Tech, and we usually see him several times a year at conferences. He is very enthusiastic about his work and will give his best. Sincerely, Vada Nichols Watt."

+++

LOCALS

Week end visitors of Mr. and Mrs. R. E. Campbell Jr., were their daughters, Mrs. Mike Richardson of Dallas and Mrs. Jim Allison of McLean, and Miss Charise Cullin, student at North Texas State University, Denton, who accompanied her mother, Mrs. Richardson.

Dr. Pat Groves of Saratoga, Calif., visited during the week end with his parents, Mr. and Mrs. Algie Groves.



In 1925 it was possible to buy an automobile for as little as \$260!

Sunshine Club Meets

The Sunshine Club met Tuesday, April 11, in the Senior Citizens room in the Grade School Building. There were 17 members present at the monthly luncheon. The prayer was given by Gerri Hearn.

Following the meal, Genie Bethard called the meeting to order for a short business session. Stella Tilson read the minutes of the last meeting and they were approved as read. Stella Tilson gave the Treasurer's report of \$233.28 balance.

The group discussed a trip for the club this summer and money making projects. Both items were held over as old business until the meeting in May.

The monthly luncheon was voted to continue with the club room open for groups that wish to play games such as "42", "84", bridge, etc. Draperies for the windows were discussed and Mrs. Genie Bethard was authorized to purchase them.

Those present were Naomi Tilson, guest, Kate Henderson, Ruth Stafford, Sallie McBride, Iris Blevens, Zelma Crump, Artie Wason, Rev. and Mrs. Lloyd Hearn, Mary Slover, Arrie Aulick, Grace and Ray Zabielski, Wallace Bethard, guest, Genie Bethard, and Stella Tilson.

The next meeting of the Sunshine Club will be May 9 (2nd Tuesday) for their monthly luncheon. Mrs. Jennie Ferebee of Lubbock will be the guest speaker.

Walter T. Ross just returned from El Paso after spending a week with his youngest daughter and son-in-law, Mr. and Mrs. John L. Andestad. While in El Paso, his son Jim Ross, and niece Ruth Williams from Dallas, flew to El Paso for the week end.

Duke Lipscomb drove Mr. Ross to the airport in Lubbock to catch his plane, and also met him when he returned on Wednesday.

Recent visitors in the home of Mrs. Kim Wilkinson were her daughter and husband, Mr. and Mrs. C. O. Strickland from Abilene. Also, visiting with them were Mr. Strickland's sister, Mrs. Ada Eade of Lubbock and his niece and husband, Mr. and Mrs. Ed Lester of White Sands, New Mexico.

CARD OF THANKS  
I would like to thank all of my many friends for their concern and acts of kindness during my recent surgery. For the beautiful flowers, cards, visits, food, phone calls and prayers. May God bless each of you in my prayer.  
Ouida McCandless (2)

Roaring Springs News

BY GESSA MULLINS

Mr. and Mrs. L. A. Mullins accompanied by Mr. and Mrs. Robert Miller attended the Rural Letter Carriers meeting at the Holiday Inn in Plainview, Saturday night.

Mrs. J. N. Fletcher was honored Saturday morning with a "Get Acquainted Coffee" in the home of Miss Lula Swim. Mr. and Mrs. Fletcher, Martie and Kim have recently bought the Bell Seale farm and will be making their home here. We are glad to have them home again. Mrs. Billy Peacock and Mrs. L. A. Mullins assisted Miss Swim with the coffee.

Mrs. W. C. Youngblood spent Tuesday through Sunday in Midland with her daughter, Mrs. Lon Bennett and Timmy. Mrs. Bennett had an accident and spent several days in the hospital for tests.

Mr. and Mrs. J. D. Mitchell visited her brother, Bob Jameson in St. Mary's hospital in Lubbock Sunday afternoon.

+

Affend Rites For Relative

Mr. and Mrs. Mike Hoyle and her brother and wife, Mr. and Mrs. Julian Edmondson of Phillips spent Sunday night and Monday in Brady, where they attended the funeral of James Feazelle, 60, the husband of their cousin, and son-in-law of Mrs. Orwin Roy. Also attending the services from Matador were other cousins, Mrs. Nelson McMahan, Clarence Jenkins and E. B. Jenkins. Mr. Feazelle died Friday night following a heart attack at his home. He had resided in Brady about 24 years and served as City Manager for over 20 years. Serving as a pallbearer was C. B. Groves, retired Brady City Secretary, formerly of Matador.

Services were held Monday afternoon at the First United Methodist Church. Burial was in the Brady Cemetery.

Survivors include a daughter, Karen Brown of Brady and a son, Paul Feazelle of Big Spring.

+

Courthouse Records

J.P. Records

SPEEDING -- Dianne White Litz, Kenneth Ray Stratton, Freddie Joe Wright, Charles Stanley Stafford, Emil Alex Rozycski, Charles Eddie Holmes, and Darwin Lendell Reagen.

OTHERS ++ Wallace Warren Bethard, Display Expired Registration; Donnie Ray Doran, Unsafe Start From Parked Position; Donald Rhea Chesshir, No Valid Driver License; Dood Damron, No Valid MVI Sticker; and Bryan Reese Timmons, No Valid MVI Sticker.

Courthouse Records

Divorces Granted: D. Likes vs. P. Likes; George H. Baldwin alias Joe Scott, Obtained Property by Bogus Check.

Employer's Deadline is May 1

Employers must report on Form 941 Social Security and withheld Federal income taxes for the first quarter of 1978 by Monday, May 1. If the quarterly liability (reduced by any deposit during the quarter) is \$200 or more, the unpaid balance must be deposited. Persons who have deposited the entire quarterly tax liability in a Federal Reserve Bank or approved commercial bank have until May 10 to file Form 941, "Employer's Quarterly Federal Tax Return," the Internal Revenue Service said.

Announcement

Dog Vaccination Date Announced

The annual dog vaccination sponsored by the Motley County 4-H Clubs will be held at the City Hall in Matador, Friday April 21st from 1 to 5 p.m.

Those with dogs or cats to be vaccinated are requested to bring their animals to the City Hall during the hours announced by Dr. J. T. Westbrook, Paducah, who annually makes a donation to the sponsoring agency.

If You're Paying More Than \$140 ton For 16--20--0 Fertilizer You're Paying Too Much Thats our every day price Delivered and Spreader Furnished

We still have Liquid Sol-U-Phos To put in with your treflan For That One Trip Over HAVE TREFLAN TOO

LEE'S FEED & SEED Roaring Springs, Texas

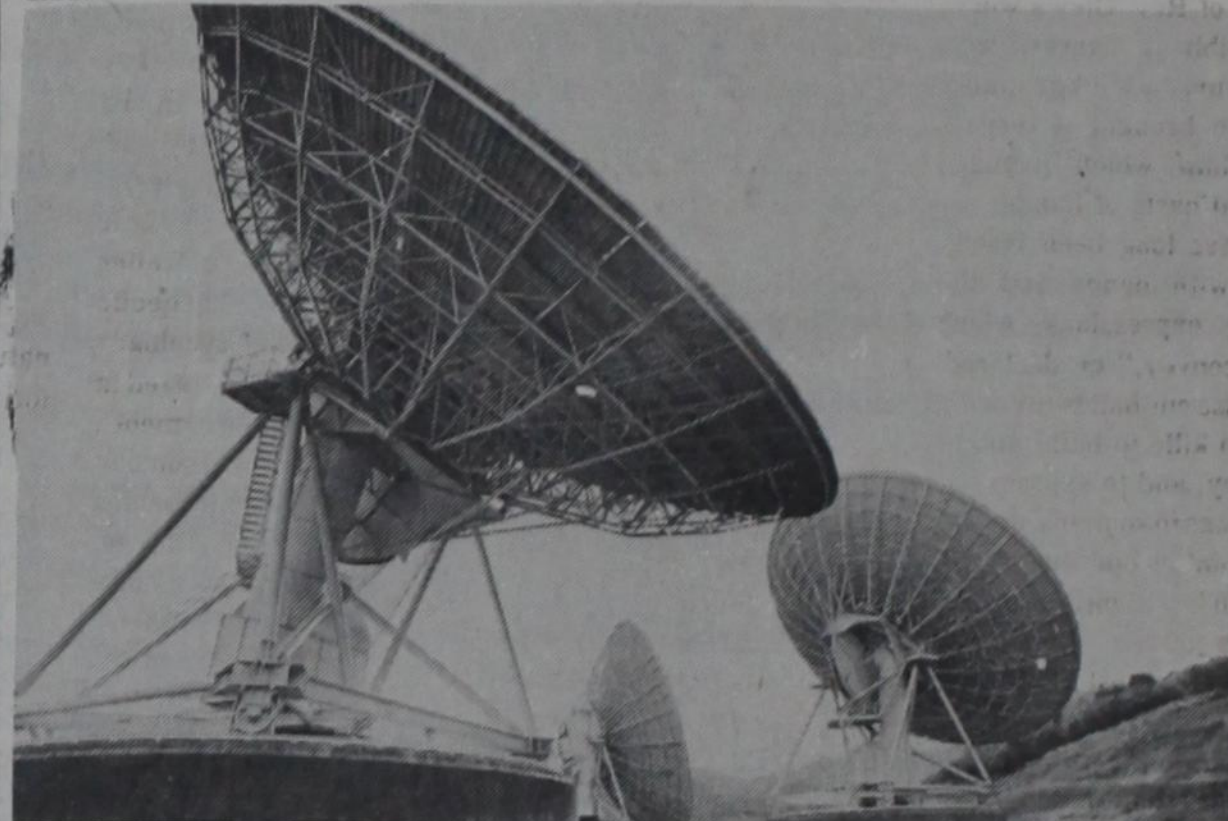


Moose antlers are shed in December, sprout again in April and reach their full size in June!

Employers should use the preaddressed Forms 941 mailed to them by the IRS or obtain copies of the form from the nearest IRS office. IRS Publication 15, "Circular E - Employer's Tax Guide," provides more information and is available free from local IRS offices.

For any of your Cottonseed needs Contact  
**CAPROCK GIN CO.**  
Flomot, Texas

Most all varieties are available, but supplies are short this year, so call or come by and see  
**Rex Johnson and Ronnie Carpenter**  
469-5297  
If no answer call: 455-1201 or 455-1347  
Your business and friendship is appreciated



Who goes out of this world for you?  
It's an earth station talking to outer space, or a cute little phone built like Mickey Mouse. Because we realize how important it is to keep you in touch with your world.  
We spend hundreds of millions of dollars every year, making sure that when you pick up your phone... It works.  
We do... General Telephone. This is one of our earth stations. It beams 18,000 phone calls at a clip to a satellite hovering more than 20,000 miles above the equator. It gathers in the same number of calls, and sends them out over our regular telephone network. It's part of the incredibly complex system that's just about the world's most efficient communications system. And it has reliability built in, whether

We keep you talking. **GTE**

**PET VACCINATION CLINIC**  
APRIL 27, 1978  
4:00 to 5:30 p.m.  
West Side of Square  
Dr. C. H. Overstreet  
Matador, Texas

SPRING HOME VALUE DAYS!  
**SALE**  
Continues Through Saturday, April 29  
**THACKER SUPPLY COMPANY**  
HARDWARE — FURNITURE — FARM MACHINERY  
ROARING SPRINGS, TEXAS 79256 PH. 348-2161



Church and Society

Program Features Metal Sculpture

Metal sculpturing was the program presented for El Progresso Study Club, Tuesday, April 13 when the organization met at the home of Mrs. W. F. McCaghen. Speaker was John Otey of Lubbock. Mrs. E. A. Day was program leader and introduced Rev. Otey, a Presbyterian minister and marriage counselor. He is a graduate of the University of Texas and Austin Presbyterian Seminary.

Rev. Otey's bronzes have been featured in Presbyterian, Lutheran, Methodist and Catholic magazines. His most recent exhibit was an 8-week show at the American Bible Society's gallery display in New York City. He and his wife have four children, ranging in age from 22 to 11. The oldest three are attending Trinity University in San Antonio. The youngest is a 4th grader.

An early interest in art was encouraged by Rev. Otey's parents and from modeling clay he progressed to casting wax. He passed around samples of wax as he talked and described the process of casting in bronze.

Most of Rev. Otey's works are biblical figures, with scriptural backgrounds, and he brought a display with him which included several casts of hands.

"I have long been fascinated with hands and the many expressions which they convey," he declared. "We use our hands to caress and to kill; to build and to destroy, and to express our emotions in so many ways." He pointed out that "only human hands have a rolling thumb joint."

One of his most impressive casts was a hand holding a plumbline illustrating the passage from the book of Amos 7:7-8, visionary of God's condemnation of the nation Israel to the prophet. The first death as recorded in the Bible -- the murder of Abel by his brother Cain, was another bronze which illustrated an event. "You can not destroy a person without also destroying yourself," Rev. Otey observed. "Cain became the first paranoiac character we have recorded."

Also outstanding was a triad of outstretched hands depicting Great Judgement, in the words of Jesus Christ. "I was hungry ... in prison ... athirst." One outstretched hand held a tiny cup, east of sterling silver, and chains were attached to another hand. Silver for the cup alone cost the artist \$15.00.

Noah and the Grapevine, (with the theme of appeal to yesterday, but dare to live for tomorrow); Abraham and Isaac (revealing assur-

ance); Blind Bartimaeus (a cry of faith); a nursing Madonna and child (revealing a new concept); A nail-scarred hand and other hands displaying the crucifixion and resurrection of Christ -- these and other figures were in the collection, which, Rev. Otey said were limited editions and were already sold.

Mrs. Franklin Price, president, opened the meeting and conducted a business session. At the conclusion of the program, she read the yearbook quotation for the day, for the Inspirational Thought: "Art is really doing in a beautiful way of simple things, the putting of wisdom into work, and when wisdom has been expressed in labor, the result is beauty." -- Elbert Hubbard.

Several guests were present and included Mesdames Clay Gilbert, Ted Elliott, J. P. Neighbors, Algie Groves, Bennie Keltz, J. D. Craven and Howard Traweck, and Mrs. Vance Campbell and Miss Ann Sweptson of Dougherty. Members present were Miss Mary Keith and Mesdames Robert Darsey, Furman Vinson, Harold Campbell, John Hamilton, Bill Palmeyer, J. E. Edwards, D. E. Pitts, Ralph Stapleton, J. L. Woodruff, E. A. Day, C. D. Garrison and Douglas Meador.

W.M.U. MEETS

The Baptist W.M.U. met Tuesday, April 19, in the Church parlor. Program topic was "The Bible Study" and was presented by Mrs. Ed Lee.

Those present were Mesdames: Stuart Dixon, Edd Lee, Bill Dunning, Audrey Price, Jimmy Woodruff, Willie Russell, Bill McCaghen, and Verlin Reeves.

Calendar of prayer was given by Mrs. Russell and the classe was also dismissed by Mrs. Russell.

LOCAL

Mrs. Tom Moore spent several days last week at Northfield, visiting Mrs. Delmont Hays and other friends. While there she attended a bridal shower for Mrs. John Thomas at the home of Mrs. Allan Thomas. Mrs. Moore also visited in Childress with relatives and friends.

Mr. and Mrs. Bill McCaghen visited in Amarillo during the week end with their son and wife, Mr. and Mrs. W. F. McCaghen Jr., and attended a Country Music Concert Saturday night in the Civic Center.



IN THE ROUGH by hazel

SIXTEEN PLAYERS REPORT THURSDAY

Sixteen players reported for Thursday's round, resulting in a 6-way tie for most bogeys (4) -- Frances, Rita, Mary, Dorothy D., Mickey and Hazel ... with Dorothy winning the draw. Others playing: Lucretia, Geneva, Leona, Laverna, Tommy, Francine, Loys, Louise, Dorothy R., and Winifred.

There were lots of problems ... out of bounds, too many putts, in the tank ... really could have been "Alibi" day.

Those enjoying lunch at El Matador -- Leona, Lucretia, Mickey, Geneva, Laverna, Francine, Winifred, Frances, Mary, and Hazel.

MEN'S INVITATIONAL HELD AT FLOYDADA

Alfred Barton, Van Francis, Roy Gene Stephens, Pat Green, Robia Darsey, Matador, and Bud Francis and Jimmie Tate of Wichita Falls were among those entered in a 2-day men's invitational tournament at the Floydada Country Club. Alfred and Vann tied for second place in first flight (71-69). Pat and Robin won first in 3rd flight (70-71). They all received gift certificates.

All players and their families enjoyed a Walter Jones famous barbecue supper Saturday evening. Francine Green assisted in managing the tournament ... and also watched some of the play -- along with Sondra Francis, Beverly Darsey, Winifred Darsey, Louise Barton and Joanie Stephens.

Many compliments to the Pro and his wife (Richard and Teresa Hale) for a most successful and enjoyable tournament.

HIGH SCHOOL BOYS WIN TOURNAMENT

The Motley High School boys golf team played in an Invitational Tournament at Jayton recently, and won first place ... and had a second and third win in medalist play. Those on the A team -- Ricky Turner, Mark Wason, James Hollis Stephens, David Moore and Mike Green. Congratulations!

On Wednesday, April 19, there will be district play at Jayton. Both A and B teams will enter. Boys playing on

Garden Club Has Meeting

The Matador Garden Club met in the home of Mrs. Edgar Lee Monday, April 17, with Mrs. W. W. Clements, president, presiding at the business session. A report of the District Garden Club Convention, which met at the Koko Palace in Lubbock on March 29, was given by Mrs. Lee. The Matador Club received second place for the 1975-1977 Scrapbook. Mrs. J. D. Craven, who had prepared the book, accepted the award. Others attending the convention and luncheon were Mrs. W. F. Jacobs and Mrs. W. N. Pipkin. A display of beautiful floral arrangements was shown at the luncheon.

Mrs. Eldred Seigler, flower show chairman, presented plans for an Artistic flower arrangement display to be presented to the public on Saturday, April 29, from 3:00 until 5:00 p.m. in the Woodruff building. There will be no charge and refreshments will be served.

LOCAL

Mr. and Mrs. James Thomas of Garland spent the week end with Mrs. Ernest Fisher.

the B team are Douglas Campbell, Bryan Timmons, Kyle Moore, Jeff Braselton, Joe Don Warren and Kelly Wilson. Good Luck to these teams! Hope they are winners.

BABE ZAHARIS CANCER TOURNAY

Sunday, April 23 is the date for the annual Cancer Benefit Tournament. Tee-off time is 1:15 p.m. ALL MONEY WILL BE DONATED to the cancer fund. Everyone is invited to play and donate to a most worthy cause. So all come!!

UMW Meets

The United Methodist Women met April 12, in the church parlor. Program topic for the meeting was "The On Going Journey: Women and The Bible." Program leader was Mrs. John Hamilton.

The slides depicted the lush grasses, trees and wildflowers native to this acreage. Visitors are welcome and a guided tour can be arranged for individuals or groups.

Mrs. Craven also showed slides that she and Mr. Craven made on their visits to Alaska. Pictures included those taken at a golf tournament played on a "snow" course, oil drilling and refining installations, and many beautiful scenes of mountains, water and flowers. Their son-in-law, Richard Hamilton, works with the Alaska Oil Project. Patty, their daughter, teaches in a modern new school building of which slides were also shown.

Garden hint for the month was "Divide and reset Chrysanthemums". Present, other than those above were Mesdames Ted Elliott, C. D. Garrison, and Mrs. Douglas Meador.

Mrs. Hamilton read the 2nd Chapter of Genesis which summarized the creation of the earth and events leading to the creation of man and his mate, the woman. The early women of faith discussed at the session were Eve, Sarah and Rebecca.

A business meeting was conducted by Mrs. Mary McMahan. Minutes were read by Mrs. Charlie Keith and Treasurer's report was given by Mrs. McMahan. Others attending were Mesdames: Marvin Brotherton, Henry Ford, Lloyd Hearn, Olive Russell and Mary Slover.

**Tom's Tree Place**  
5104 34th St. Lubbock 799-3677

**Bedding Plants** **Roses**  
(Over 70 Varieties)

**Windbreak Junipers** **Shade Trees**  
(Live Oak, Red Oak Pinon)

**Fruit Trees** **Shade Trees**  
(Live Oak, Red Oak Pinon)

**Just Arrived Large Magnolias and Cherry Laurel**

**Complete Landscaping Services Design Installation & Consultation**

**Hours Open Monday-Saturday 8-6**  
**Closed Sunday**

Form F.R. 105e (Rev. 12/76) This report is required by law (12 USC 324) District No. 11 State No. 219

PUBLISHER'S COPY Item numbers and blank items need not be published, but every line beginning with the words "Report of Condition" must be published. For further instructions see reverse side and instructions for preparation of this report.

CONSOLIDATED REPORT OF CONDITION of The First State Bank

of Matador, Motley Co., Texas 79244

at the close of business December 31, 1978

And Foreign Domestic Subsidiaries, a state banking institution organized and operating under the banking laws of this State and a member of the Federal Reserve System. Published in accordance with a call made by the State Banking Authorities and by the Federal Reserve Bank of this District.

| ASSETS   | Dollar Amounts in Thousands | Bil. | Mil. | Thou. |
|--|-----------------------------|------|------|-------|
| 1. Cash and due from banks   |                             |      | 1    | 315   |
| 2. U.S. Treasury securities  |                             |      |      | 333   |
| 3. Obligations of other U.S. Government agencies and corporations                                  |                             |      |      | -0-   |
| 4. Obligations of States and political subdivisions  |                             |      |      | 838   |
| 5. Other bonds, notes, and debentures  |                             |      |      | -0-   |
| 6. Federal Reserve stock and corporate stock   |                             |      |      | 12    |
| 7. Trading account securities  |                             |      |      | -0-   |
| 8. Federal funds sold and securities purchased under agreements to resell in domestic offices      |                             |      | 2    | 300   |
| 9. a. Loans, Total (excluding unearned income)   | 3                           | 762  | XXX  | XXX   |
| b. Less: Reserve for possible loan losses  |                             | 131  | XXX  | XXX   |
| c. Loans, net  |                             |      |      | 631   |
| 10. Direct lease financing   |                             |      |      | -0-   |
| 11. Bank premises, furniture and fixtures, and other assets representing bank premises             |                             |      |      | 57    |
| 12. Real estate owned other than bank premises   |                             |      |      | -0-   |
| 13. Investments in unconsolidated subsidiaries and associated companies                            |                             |      |      | -0-   |
| 14. Customers' liability to this bank on acceptance of outstanding                                 |                             |      |      | -0-   |
| 15. Other assets   |                             |      |      | -0-   |
| 16. TOTAL ASSETS (sum of items 1 thru 15)  |                             |      | 8    | 486   |
| 17. Demand deposits of individuals, partnerships, and corporations                                 |                             |      | 6    | 979   |
| 18. Time and savings deposits of individuals, partnerships, and corporations                       |                             |      |      | -0-   |
| 19. Deposits of United States Government   |                             |      |      | 29    |
| 20. Deposits of States and political subdivisions  |                             |      |      | 558   |
| 21. Deposits of foreign governments and official institutions                                      |                             |      |      | -0-   |
| 22. Deposits of commercial banks   |                             |      |      | -0-   |
| 23. Certified and officers' checks   |                             |      |      | -0-   |
| 24. TOTAL DEPOSITS IN DOMESTIC OFFICES   | 7                           | 566  | XXX  | XXX   |
| a. Total demand deposits   |                             | 7    | 566  | XXX   |
| b. Total time and savings deposits   |                             |      |      | -0-   |
| TOTAL DEPOSITS IN FOREIGN OFFICES  |                             |      |      | 7     |
| TOTAL DEPOSITS IN DOMESTIC AND FOREIGN OFFICES   |                             |      |      | 7     |
| 25. Federal funds purchased and securities sold under agreements to repurchase in domestic offices |                             |      |      | -0-   |
| 26. Other liabilities for borrowed money   |                             |      |      | -0-   |
| 27. Mortgage indebtedness and liability for capitalized leases                                     |                             |      |      | -0-   |
| 28. Acceptances executed by or for account of this bank and outstanding                            |                             |      |      | 22    |
| 29. Other liabilities  |                             |      |      | -0-   |
| 30. TOTAL LIABILITIES (excluding subordinated notes and debentures)                                |                             |      | 7    | 588   |
| 31. Subordinated notes and debentures  |                             |      |      | -0-   |
| EQUITY CAPITAL   |                             |      |      |       |
| 32. Preferred stock, No. shares outstanding  | -0-                         |      |      | -0-   |
| 33. Common stock, No. shares authorized  | 2,000                       |      | XXX  | XXX   |
| b. No. shares outstanding  | 2,000                       |      |      | 200   |
| 34. Surplus  |                             |      |      | 200   |
| 35. Undivided profits  |                             |      |      | 498   |
| 36. Reserve for contingencies and other capital reserves   |                             |      |      | -0-   |
| 37. TOTAL EQUITY CAPITAL (sum of items 32 thru 36)   |                             |      |      | 898   |
| 38. TOTAL LIABILITIES AND EQUITY CAPITAL (sum of items 30, 31, and 37)                             |                             |      | 8    | 486   |

MEMORANDA

|  |     |     |     |
|--|-----|-----|-----|
| 1. Average for 30 calendar days ending with report date:   | XXX | XXX | XXX |
| a. Cash and due from banks (corresponds to item 1 above)   |     | 1   | 324 |
| b. Federal funds sold and securities purchased under agreements to resell (corresponds to item 8 above)      |     | 2   | 300 |
| c. Total loans (corresponds to item 9a above)  |     | 3   | 697 |
| d. Time deposits of \$100,000 or more in domestic offices (corresponds to Memoranda items 3a plus 3b below)  |     |     | -0- |
| e. Total deposits in domestic and foreign offices (corresponds to item 24 above)                             |     | 7   | 943 |
| f. Federal funds purchased and securities sold under agreements to repurchase (corresponds to item 25 above) |     |     | -0- |
| g. Other liabilities for borrowed money (corresponds to item 26 above)                                       |     |     | -0- |
| 2. Standby letters of credit outstanding as of report date   |     |     | -0- |
| 3. Time deposits of \$100,000 or more in domestic offices outstanding as of report date:                     | XXX | XXX | XXX |
| a. Time certificates of deposit in denominations of \$100,000 or more  |     |     | -0- |
| b. Other time deposits in amounts of \$100,000 or more   |     |     | -0- |

Frank Price - Vice President & Cashier

Name and title of officer authorized to sign report

is true to the best of my knowledge and belief.

We, the undersigned, attest the correctness of this report of condition and declare that it has been examined by us and to the best of our knowledge and belief is true and correct.

Signature of officer authorized to sign report

Directors

State of Texas County of Motley

Sworn to and subscribed before me this

day of April 19 78

Notary Public

A copy of the bank's statement, clipped from the newspaper, should be attached to a copy of this form and sent to the FEDERAL RESERVE BANK

**WANTED**

Responsible person for ad sales. Would like someone with sales experience, but not necessary. Must have own transportation.

salary plus commission

Contact

**MATADOR TRIBUNE**

347-2400

**American**  
EQUIPMENT & TRAILER, Inc.

610 N. Grand Amarillo, Texas 806-383-8831

3707 Quirt Lubbock, Texas 806-747-2991

Truck Equipment  
Dump Bodies  
Utility Bodies  
Grain Bodies  
Van Bodies  
Stake Bodies  
Tailgate Loaders  
Cranes  
Winches  
Much More

Trailers  
Wilson Cattle  
Wilson Grain  
Ashdown Platforms  
Ashdown Lowboys  
Clement Dump  
Flowboy Asphalt  
Grain Hopper Doubles  
Special Semi Trailers

For 25 Years

"Service Is Our Business"



## Whiteflat News

Mrs. H. R. Jameson  
Pho (806) 468-5274

## CowBelles Hold Meeting

The Foothill CowBelles met Monday night, April 10 at Mrs. Bennie Keltz's home.

The different officers presented their business of legislation news stock show results, 4-H Cook off and Beef place mats to be placed in the restaurants of Roaring Springs and Matador.

New Business was discussed about a Workshop for CowBelles in Oklahoma City, April 24, 1978; a scholarship fund being set up for CowBelles interested in attending college; and placing stickers for Beef promotion of American Produced Beef in the Motley County area supermarkets and restaurants.

For the program a surprise baby shower was held for the President, Allison Richards.

Those in attendance were Mesdames Richards, Johnny Palmer, James Palmer, D. Woolsey, L. Angell, D. Bumgardner, D. Garrison, H. Parks, C. Luckett and B. Keltz.

The next meeting will be May 8th at 7:30 p.m. at the Roaring Springs Depot.

### ATTEND SEMINAR

Billie and JoAnn Durham attended a Hairstyling Seminar presented by L'oreal and Professional Beauty Products, showing the latest in styling, coloring, and permanent waving by Mr. Kenneth of New Orleans. Afterwards, the Durhams attended the Country Squire Dinner Theatre. The show was held at the Villa Inn, Sunday, April 9 at Amarillo, Texas.

Visitors of Mr. and Mrs. Ralph Stapleton, Sunday were Mr. and Mrs. Joe Thomas of Amarillo who were en route home after visiting relatives in Snyder.

Other visitors were Richard Turner of Matador and Mr. and Mrs. John Barton, local residents.

Mrs. Jan Keltz and friend, Weaver McClure of Plainview visited her parents, Mr. and Mrs. Vernon Higginbotham, Sunday.

Mr. and Mrs. Johnny Turner and daughter, Heather Ann attended the concert services of renowned Evangelist, Johnny Ray Watson at the United Methodist Church in Silverton, Sunday. They were guests of her parents, Mr. and Mrs. Marvin Montague of Silverton.

Ray Zabielski of Roaring Springs accompanied Mrs. W. R. Tilson to Lubbock, Wednesday to attend to business.

### IN HOSPITAL

The Rev. W. E. Higginbotham of Lubbock is a patient in the Methodist Hospital in Lubbock. His son and wife, Mr. and Mrs. Vernon Higginbotham, visited during the week end with him and Mrs. Higginbotham. They also visited their daughter and family Mr. and Mrs. Tommy Palmer and Jenny Louise who returned home with her grandparents, Sunday and visited until Tuesday.

FROM KANSAS  
Mr. and Mrs. Governor Stuckey of Hutchinson Kansas arrived Saturday to visit their daughters and families, Mr. and Mrs. Jim Owens and Mr. and Mrs. Morris Stephens.

## Flomot News

Mrs. C. C. Jones, Mary Ellen Barton and Viola Stinson visited in Wellington, Sunday with Mr. and Mrs. Richard Nall. They also visited in Shamrock with Mr. and Mrs. Danny Vaughn and son Pike.

Mr. and Mrs. Leldon Bynum of Lubbock visited Mr. and Mrs. Larry Bynum, Kani and Bart, Sunday.

Mr. and Mrs. Morris Degan and children of Quanah visited Friday with his parents, Mr. and Mrs. Joe Degan and brother and family, Mr. and Mrs. Stanley Degan, Shawna and Shea.

Visiting Mr. and Mrs. Art Green and Steve, Sunday were Mr. and Mrs. Danny Green, Dena and Shea of Silverton and Mr. and Mrs. Billy Green of Plainview.

Guests of Mr. and Mrs. James Monk, Sunday were Mrs. Raz Ware of Cedar Hill, Mr. and Mrs. Lewis Cannon of Tulia and Mr. and Mrs. Joe Farley, Eric and Mandi, local residents.

Viola Stinson and Mary Ellen Barton attended to business in Sudan, Friday. Salina Shorter, daughter of Mr. and Mrs. Louis Shorter of Matador, visited Saturday and Sunday with her grandparents, Mr. and Mrs. L. E. Shorter.

Kayla and Lucretia Johnson, daughters of Mr. and Mrs. Arnold Johnson, were accompanied to Amarillo, Sunday by their grandmother, Mrs. James May of Quitaque, where they attended a Western and Country concert.

Mr. and Mrs. John Jones visited in Floydada, Sunday with Mr. and Mrs. Bob Hambricht, Alissa and Jim Bob.

Mrs. Doyle Calvert and Mrs. Ray Cruse attended

the Girls' District 9B track meet in Jayton, Friday.

Mrs. Larry Bynum and Kani attended to business in Plainview, Wednesday.

Week end guests of Mr. and Mrs. Dan Kingston were Mr. and Mrs. James Thomas of Garland.

Mrs. Diane Rogers and son, Jason of Bovina and friend, Pam of Muleshoe visited overnight Saturday and Sunday with Mrs. Viola Calvert.

Visitors of Mr. and Mrs. Ronald Clay, Saturday and Sunday were Mr. and Mrs. Troy Bynum of Kress, Mr. and Mrs. Travis Bynum of Dumas, Tommy Merritt of Morton, Kelly Youngblood of Lamesa and Debbie Clay, students at Texas Tech in Lubbock.

Marilee Martin, student at Texas Tech in Lubbock, visited during the week end with her parents, Mr. and Mrs. Eilburn Martin.

Mrs. Butch Hughes was in Washington, D.C. from Monday until Friday with the American Agriculture Movement.

Mrs. Bob Lane of Lockney and Mrs. Wilburn Martin attended to business in Hereford and also in Dimmitt where they visited Mr. and Mrs. David Martin, Thursday.

Mr. and Mrs. John Barton visited last week end in Breckenridge with Mr. and Mrs. Jess Patrick. Mesdames Barton and Patrick attended the annual Star Route Postal meeting in Brownwood, Saturday and Sunday, April 8-9. Mrs. Barton won a ladies' wrist watch and Mrs. Patrick won six gallons of anti-freeze during the activities. Mr. and Mrs. Barton returned home, Monday.

Mrs. Doyle Calvert and Mrs. Ray Cruse attended

### NEW ARRIVAL

Mr. and Mrs. D. G. Rains of Snyder are parents of a baby daughter, Any Donelle, who was born Thursday, April 6 in the Cogdill Hospital, Snyder. She weighed six pounds and seven ounces. Grandparents of the new arrival are Mr. and Mrs. Gene Richardson of Snyder. Great-grandparents are Mr. and Mrs. L. D. Bilberry of Flomot and Mrs. Odie Richardson of Brownfield.

### HOSPITAL NEWS

Mrs. Harrison George returned home Wednesday from Bovina where she visited her daughter and family, Mr. and Mrs. J. B. Barrett following her recent surgery at the High Plains Baptist Hospital in Amarillo. She is reported to be doing fine.

Wade Martin is a patient in the Motley General Hospital in Matador.

Mrs. Joe Degan was a patient in the Central Plains Hospital in Plainview from Tuesday until Thursday of last week.

### CAPROCK GIN HOLDS COURTESY

Mr. and Mrs. Rex Johnson and Mr. and Mrs. Ronnie Carpenter, owners of the Caprock Gin in Flomot, entertained their friends and patrons with an outdoor fish fry supper, Saturday night, April 15 in Flomot.

The tables were laid with red and white cloths centered with colorful bowls of gum and individually wrapped candy. The supper menu included fried fish, baked ham, french fries, hush puppies, salad, pinto beans, doughnuts and coffee and iced tea.

Featured musicians were Lewis Stapp and Dal

Brewer of Lockney, Morris Stephens of Whiteflat, Dr. Charles Overstreet of Dougherty, and Wayne Hunter and Billy Roys, local residents. Mrs. Rex Johnson and daughter, Janie sang vocal selections accompanied by Mrs. Dan Kingston at the piano.

More than 350 persons were registered from the surrounding area, Amarillo, Quanah, Lubbock, Dallas and New Mexico.

### 4-H Contests To Be Held Tuesday

The Motley County 4-H Demonstration Contests in Public Speaking and Share the Fun (talent) will be held next Tuesday, April 25 at 7:30 p.m. in the Motley County School Cafeteria.

### ARRIVES HOME

Mrs. Eldred Seigler arrived home Wednesday last week, from England where she has been visiting relatives following the recent death of her father.

### 4-H Schedules Pet Vaccination

The annual dog and cat vaccination sponsored by the Motley County 4-H Clubs will be held at City Hall in Matador, Friday April 21 from 1:00 to 5:00 p.m.



**Coachman Fifth Wheel**  
No. 1 Selling 5th Wheel In America Today

**Better Buy Pharr Apollo Motor Homes**  
Silver Streak, Travel Trailers  
We Service What Sell  
**Pharr Trailer Sales**  
1702 Clovis Road 765-6088 or 765-6412 Lubbock

**"We need more BOOTS on the floor of the Statehouse"**



Those are the exact words a high state official recently said to Glenn Conrad in Austin.

We certainly don't need any more bureaucrats in the state legislature, that's for sure. What we do need is a down-to-earth man who'll listen when we, the people, talk. Someone who understands our problems in the 66th district and who will stand up for our rights.

We need Glenn Conrad who believes that action on the state level can help develop profitable markets for our farm products . . . who advocates improvement of our educational system and an equitable plan for financing it . . . who has a deep concern for such important issues as taxes, water, energy, roads and especially for the health care of our people and the welfare of our senior citizens.

Like the man said, we need more boots and less bureaucracy in our state government. We need Glenn Conrad!

**Glenn CONRAD**  
DEMOCRAT FOR STATE REPRESENTATIVE

**Common Sense in the Statehouse**

Pol. Adv., Bob Byrd, Box 365, Claude, Texas

**CONSIDER THIS!**  
18 FT.  
Casual Self-Contained  
**\$8995<sup>00</sup>**

**YOUR CHOICE \$14,900<sup>00</sup>**

**1978 - 24 FT.**  
Class A Fully Equipped Dodge 440  
Complete Service & Repair On All Makes of Motor Homes  
ONAN DEALERSHIP  
7 To 8 Year Financing With Approved Credit!

**D & L RV CENTER**  
2300 Ama. Blvd. W. Mon-Sat 9-7 Amarillo 372-2396

Prices Good One Week Only April 20-26



## Girls High School Team Wins District

The Motley County girls high school track team went to Jayton last Friday, April 14, for the District 9 B Track Meet and defeated Jayton for the District Championship by scoring 192 points to Jayton's 169 points. Other schools team standings were Patton Springs, 69 points, Guthrie 47 points, and McAdoo 8 points.

The Motley County girls placing in the District meet were: **High Jump**, 6th, Laura Grundy; **Long Jump**, 1st Sharlene Smith, 2nd Glouris Sims, and 3rd Gwen Calvert; **Shot Put**, 4th Ann Moore, 5th, Pam Francis; **Triple Jump**, 1st Bunni Zabielski, 5th Ann Moore, and 6th Linda Palmer; **Discus**, 2nd, Gina Long and 4th Pam Francis.

All three relay teams placed first at the meet. Relay members and times were: **440 Relay**, 51.5 (A. Moore, S. Smith, G. Calvert, G. Sims); **880 Relay**, 1.51.4, (Campbell, A. Moore, G. Calvert, S. Smith); and the **Mile Relay**, 4.34.0 (C. Johnson, A. Moore, L. Palmer, P. Pitts).

Individual winners in the running events were: **880 Dash**, 1st Place, Cindy Johnson, 2:44.9; **440 Dash**, 1st Place, Pamela Pitts, 1:36.2, and 6th Place, Linda Palmer, 72.0; **220 Dash**, 1st Place, Glouris Sims, 26.8, 2nd Place, Gwen Calvert, 27.6, and 3rd Place, Cindy Johnson, 29.9; **80 Hurdles**, 4th Place Laura Grundy, 13.1 and 5th Place Pamela Pitts, 13.6; **100 Dash**, 1st Place, Sharlene Smith, 11.4 and 2nd Place Glouris Sims, 11.6; **Mile Run**, 3rd Place Mary Lou Zarate 7:15.8 and 6th Place LaVerne Keele, 8:00.0.

## Jr. High Girls District Champs

The Motley County Jr. High School girls track team defeated Jayton, Patton Springs, Guthrie and McAdoo to win the District 9-B Junior High District Championship by scoring 209 points last Friday at Jayton.

The Motley County Junior High girls who placed in the District meet were: **100 Dash**, 1st Place, Jeanette Moore and 2nd Place, Darla Dempsey; **80 Hurdles**, 1st Place, Shelly Jackson and 2nd Place Kim Campbell; **220 Dash**, 1st Place, Jeanette Moore, 5th Place Rhonda Stephens and 6th Place Vivian Lee; **330 Dash**, 2nd Place Rhonda Stephens, and 5th Place Alecia Zarate, 660 Dash, 2nd Place Terresa Fore and 3rd Place Reneigh Gwinn; and **1320 Run**, Katy Kirkpatrick, 3rd Place Sherry Doran, and 5th Nancy Cooper.

Placing in the field events were: **Long Jump** 1st Place Jeanette Moore and 3rd Place Kim Campbell; **High Jump**, 2nd Place Shelly Jackson and 5th Place Jeanette Moore; **Pull Ups**, 2nd Place Derinda Cruse; **Discus**, 3rd Place Carlene Luckett, 5th Place Brenda Renfro and 6th Place Colleen Rose; **Shot Put**, 3rd Place, Jan Hart, and 4th Place Susannah Woodruff; **Triple Jump**, 4th Place Derinda Cruse, 5th Place Terresa Fore, and 6th Place Shelly Jackson.

All three relay teams won first place honors. Relay team members and times are as follows: **440 Relay**, 56.8 (K. Campbell, D. Dempsey, D. Cruse, J. Moore); **880 Relay**, 2:03.0 (D. Dempsey, R. Stephens, S. Jackson, D. Cruse); and **1320 Relay**, (A. Zarate, K. Campbell, D. Cruse, S. Jackson).

Coach Larry Dearen was real pleased with the Junior High girls efforts, especially in last Friday's meet and stated, "These girls have worked hard all season and it paid off at District, where it really counted."

## UIL Literary Events At Motley County

The Motley County School hosted the District UIL Literary Events Tuesday, April 11. District entries came from Jayton, Guthrie, Patton Springs, McAdoo, and Motley County.

Motley County students placing in their events were as follows:

**GRADE SCHOOL & JR. HIGH - Story Telling**, 4th Place, Jade Jones; **Picture Memory**, 2nd Place, Team Members (Jelene Long, Kimberly Hand, Donna Sue Mangram and Ester Zarate); **Number Sense**, 2nd Place, Dixie Nimmo and 5th Place, Jan Hart; **Spelling & Plain Writing** (5th & 6th grade) 4th Place, Wade Vandiver and 6th Place, Bridgette Kirkpatrick; and **Oral Reading**, 2nd Place, Derinda Cruse, "Jeanne's Story," and 5th Place Delynn Timmons, "Windsong."

**HIGH SCHOOL - Ready Writers Contest**, 2nd Place, Carla Hart and 5th Place, Bill Palmer; **Number Sense Contest**, 4th Place, Ricky Turner; **Typing**, 3rd Place, Kelli Taylor and 4th Place, Linda Palmer; **Spelling**, 5th Place, Sharla Green and 6th Place, Dennis Gwinn; **Slide Rule**, 1st Place, Ricky Turner, 3rd Place, Robert Parker, and 6th Place, Bryan Timmons; **Shorthand**, 2nd Place, LaVerne Keele; **Science Contest**, 4th Place, Shannon Jameson, 5th Place David Moore and 7th Place, Mark Wason; **Headline Writing**, 2nd Place, Tanya Simpson and 4th Place, Sharla Green.

### WILL ADVANCE TO REGIONAL

The following high school students will advance to the Regional Competition Friday, April 21 at 9:30 a.m. on the campus of South Plains College, Levelland. **Ready Writing**, Carla Hart; **Typing**, Kelli Taylor; **Slide Rule**, Ricky Turner and Robert Parker; and **Shorthand**, LaVerne Keele.

Directors of the above literary contests will be Ron Carden, associate professor of history, ready writing; Lunette Dickson, chairperson of the SPC business administration department, shorthand; Robert Pearce, slide rule; and Mrs. Dickson, typewriting. About 80 schools in the Region I, Conference B UIL spring meet will be represented.

## Boys In Track

The boys high school team placed 6th with a time track team entered the of 3:38.1. Members of the Sundown Track Meet this Relay team were Preston past week end. Robert Pitts, Bezell Moore, Todd Parker placed 2nd in the 120 McCandless and Robert Hurdles and 3rd in the 330 Shannon. The team will travel to 2nd in the Broadjump with Jayton today (Thursday) 19'9"; and the Mile Relay for the District meet.

## FHA Representatives To Attend Convention

Representatives of the Motley County Future Homemakers of America Chapter will be attending the 1978 state meeting of the Texas Association of FHA, along with over 6,000 members and advisors from across the state. "The New Dimensions of FHA-HERO" is the theme of the 1978 meeting, to be held at the Convention Center, Dallas, April 20 and 21.

Attending from Matador will be Kay Phillips, Barbara Durham, Linda Nimmo, Tanya Simpson and sponsor, Mrs. Randy Hicks. The group is scheduled to depart from Lubbock Airport Thursday and return Saturday. Miss Simpson has reached Third Level Encounter Recipient. Lewis Timberlake, bright and sparkling member of Help Inspire Someone will challenge the delegates to grow and develop in leadership and "living" skills. Workshops on topics of concern to young people such as careers, assertiveness, communications, and issues such as abuse of children and the elderly will

involve all members. The business of the Texas Association will be conducted at the House of Delegates session Thursday evening, followed by a talent show featuring representatives from Areas I-V. The theme of the show is "Roots Dimensions of Texas." A state choir, composed of 130 Future Homemakers, will be featured. Clay Pope, music director of Nueces Canyon Schools, will direct the group. Installation of the 1978-79 state officers will climax the Friday evening session. At this time, eleven officers elected through chapter participation throughout the state will be placed in office. A newly elected president will receive the gavel from Lee Stevenson, Grand Saline, Texas, outgoing president. The FHA is a vocational student organization sponsored by Homemaking Education, Texas Education Agency, with Mrs. Elizabeth F. Smith, director, and Mrs. Betty Romans, state advisor.

## All District Basketball Team

The All District Teams for District 12-B were chosen in a meeting held at the Motley County School.

Girls District Teams are as follows: **Forwards, 1st Team** . . . Bridgett Hamilton, senior, Jayton; Melody Keith, freshman, Guthrie; Danella Sartain, senior, Jayton.

**Forwards, 2nd Team** . . . Sally Pullen, senior, McAdoo; Laura Grundy, senior, Motley County; Glouris Sims, junior, Motley County.

**Guards, 1st Team** . . . Gina Long, sophomore, Motley County; Melody SoRelle, senior, Jayton; Lisa Pickens, senior, Jayton.

**Guards 2nd Team** . . . Ann Moore, junior, Motley County; Brenda Campbell, senior, Motley County; Laura Hughes, senior, Patton Springs; Linda Chiders, sophomore, McAdoo.

Boys District Teams are as follows:

**1st Team** . . . Ricky Turner, senior, 6-5, Motley County; Harold Dempsey, senior, 6-0, Motley County; Ricky Tillman, senior, 6-0, McAdoo; Harold Parker, senior, 6-5, Jayton; Gene Cleveland, senior, 6-2, Jayton.

**2nd Team** . . . Jerry Lee, senior, 5-11, Motley County; Robert Parker, junior, 6-0, Motley County; Sammy Cole, senior, 5-11, Patton Springs; David Noles, senior, 6-3, Jayton, and Mike Gibson, junior, 6-3, Guthrie.

## 4-H Teams Win In Dist. Competition

Three Motley County 4-H teams entered district competition in Roby Monday April 10th, and all three placed 5th in the 21 county district.

The Sr. Livestock Judging team consisting of Aletha Bumpus, Northfield; Jack Bivens and Dennis Gwinn, Matador; and Bill Palmer, Roaring Springs did well in placings, but reasons were their downfall.

The Jr. Livestock Judging team consisted of Darla Dempsey, Flomot; Nancy Cooper, Alex Guerrero and Jan Hart, Matador. Hart had the 7th highest individual score, and Dempsey was 10th.

The Jr. Soil Judging team was composed of Kyle Hardin, Karl Pallmeyer, Chad Stephens and Jimmy Wallingsford, all of Matador.

Transportation was provided by Mrs. Janie Hardin and County Agent Bill Pallmeyer.

### Homecoming Date Set

The officers and directors of the Motley County Homecoming Association have set October 20 and 21 for the 1978 Motley County School Homecoming. The Friday night football game on October 20 will be against the Happy Cowboys.

## Menu

- Monday, April 24,**  
Burrito with Mustard, Potatoes, English Peas, Cobbler, 1/2 Pt. Milk.
- Tuesday, April 25,**  
Beef Taco, Tossed Salad, Tater Tots, Cake, 1/2 pt. Milk.
- Wednesday, April 26**  
Hamburger with Lettuce, Tomato, Pickles & Onions, Potato Chips, Jello, 1/2 pt. Milk
- Thursday, April 27**  
Barbeque Turkey, Ranch Style Beans, Potato Salad, Hot Roll, Butter, Apple-sauce, 1/2 pt. Milk
- Friday, April 28**  
Steakettes with Cream Gravy, Creamed Potatoes, Green Beans, Hot Roll, Butter, Syrup, 1/2 pt. Milk

## School News

The High School boys District tennis matches were played at the Motley County courts this past Tuesday.

The FHA and FFA organizations met last Wednesday during second period.

The high school boys golf team played last Wednesday at the District meet in Jayton.

Today (Thursday) the boys District track meet will be at Jayton.

The FHA representatives will attend the Future Homemakers of America convention in Dallas Friday and Saturday.

The Regional meet for U.I.L. Literary events will be at Levelland, along with the girls athletic competition.

Next Monday will be the Annual Sports Banquet and the cheerleader tryouts.

The seniors are rehearsing for their Senior play which is tentatively set for the early part of May.

Don Dickson  
Announces The Opening  
of  
Don's Photography Studio  
Now Open For Business  
Specializing in Studio  
& Outdoor Portraits

Hours 9:00 to 6:00  
Tuesday thru Saturday



(By Appointment Please)

Don's Photography Studio

1501 West 5th Phone 296-2276  
(East of Anthony's in the Gabriel-Wayland Shopping Center)  
Plainview

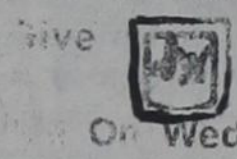
**IF YOU BUY!**  
**At John Deere House  
in Spur, Texas**  
**You Can Give Twice At**

**The Office**

**TRI COUNTY  
FARM SUPPLY, INC.**  
Spur, Texas  
Phone 806-271-3322

## Sut's Spot Cash Gro.

Home of Courteous Service - Tastiest Meats



Values good thru Fri.-Sat.  
We reserve the right to limit  
Shop for our Specials

Hours:  
Daily: 7:30 - 5:30  
Sat. 7:30 - 6:00

|  |  |
|--|--|
| <p>WRIGHTS SLICED SLAB</p> <p><b>Bacon</b></p> <p>\$1.39</p> <p>POUND</p>      | <p>FARM FRESH WHOLE</p> <p><b>Catfish</b></p> <p>\$1.59</p> <p>POUND</p> |
| <p>BOUNTY</p> <p><b>Paper Towels</b></p> <p>DESIGNER JUMBO ROLL</p> <p>59c</p> |  |
| <p><b>Mrs. Good Cookie</b></p> <p>16 OZ. BOX</p> <p>89c</p>                    |  |
| <p>HUNT'S</p> <p><b>Ketchup</b></p> <p>32 OZ. JUG</p> <p>69c</p>               | <p>HUNT'S</p> <p><b>Wesson Oil</b></p> <p>24 OZ. BOTTLE</p> <p>89c</p>   |
| <p>KING DISHWASH</p> <p><b>Cascade</b></p> <p>50 OZ. BOI</p> <p>\$1.49</p>     |  |

|  |  |   |  |
|--|--|---|--|
| <p>FOOD KING</p> <p><b>Tomatoes</b></p> <p>16 OZ. CAN</p> <p>89c</p> | <p>TAB OR</p> <p><b>Coca-Cola</b></p> <p>32 OZ. 6 PACK, PLUS DEPOSIT</p> <p>\$1.49</p> | <p>GARY'S SUPER</p> <p><b>Corn Dogs</b></p> <p>12 OZ. PKG.</p> <p>89c</p>                           | <p>NABISCO</p> <p><b>Ritz Crackers</b></p> <p>8 OZ. BOX</p> <p>69c</p>         |
| <p>VAN CAMP GRATED</p> <p><b>Tuna</b></p> <p>FLAT CAN</p> <p>59c</p> | <p>VAN CAMP</p> <p><b>Pork &amp; Beans</b></p> <p>NO.2 CAN</p> <p>39c</p>              | <p>AMERICAN BEAUTY</p> <p><b>ELBO RONI</b></p> <p><b>Macaroni</b></p> <p>24 OZ. PKG.</p> <p>69c</p> | <p>KEITH'S FROZEN</p> <p><b>Lemonade</b></p> <p>6 OZ. CAN</p> <p>4 FOI 89c</p> |
| <p>GOLDEN DELICIOUS</p> <p><b>Apples</b></p> <p>37C</p> <p>POUND</p> | <p>SUNKIST</p> <p><b>Lemons</b></p> <p>33c</p> <p>POUND</p>                            | <p>NO. 1 TEXAS YELLOW</p> <p><b>Onions</b></p> <p>19c</p> <p>POUND</p>                              |  |



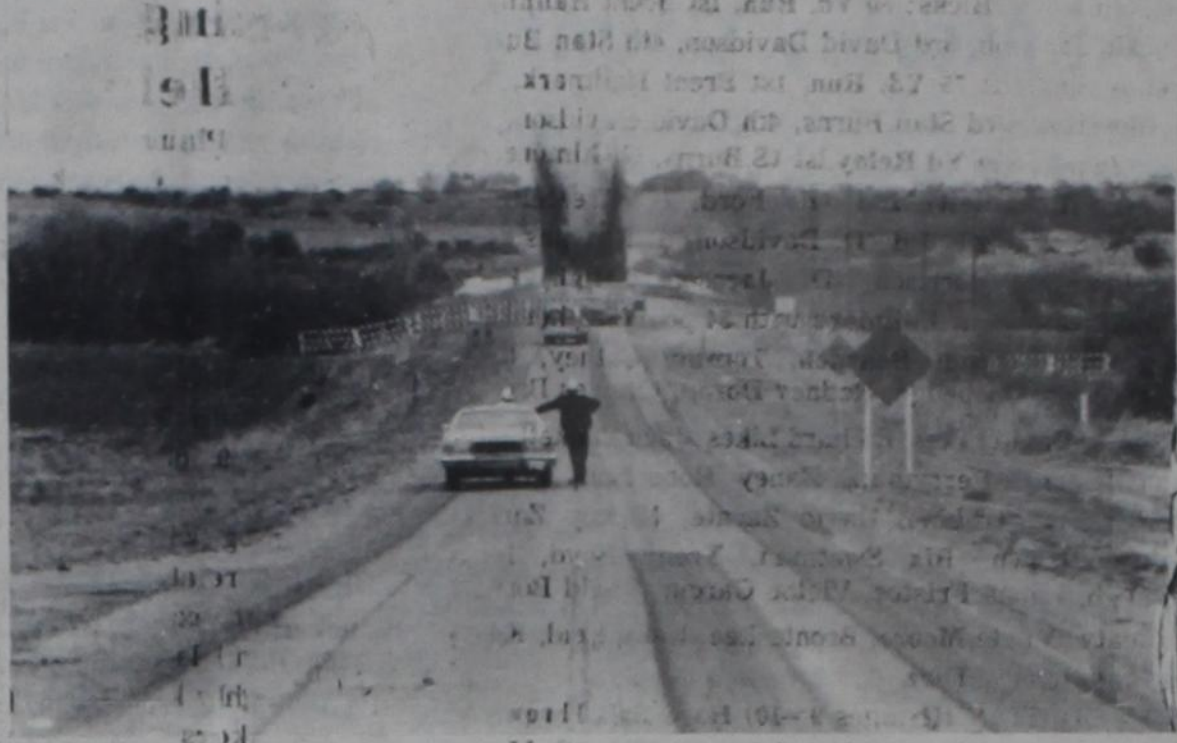
# Bridge Demolished Near Flomot

Farm to Market Road 599 in Motley County, 4 miles North of Flomot is closed to all traffic while the Quitaque Creek Bridge is being replaced.

State Department of Highways and Transportation awarded the contract to Gilvin and Terrell, Inc. of Amarillo. The new bridge will be 26 feet wide, which is six feet wider than the demolished bridge. The overall length of the bridge will be increased by ten feet. The bridge is being replaced due to deterioration of the sub-structures and the super-structures.



1. Demolition crew is shown above setting the charges for the blasting of the Quitaque Creek bridge.



2. The actual blast is shown in the above picture.



3. George Wall, Assistant District Engineer, at left, and Everett H. Monroe, Project Engineer with the State Department of Highways and Public Transportation, at right, discuss the project.



4. The results of the aftermath of the blast is shown in the above picture.

Photos made by Floyd Houdashell

## WILSON ELECTRIC

of Floydada  
Residential, Commercial and  
Electrical Pump Installation.  
Serving the area since 1946  
Phone [806] 983-2402  
Night:  
[806] 983-3589  
[806] 983-5314

Yard and Garden Fertilizer  
All farm fertilizer needs  
30 Years Experience  
Service and quality guaranteed

MATADOR NURSERY

## Matador Tribune

THURSDAY, APRIL 20, 1978  
Published weekly except first Thursday after Christmas by  
Tribune Publishing Co., 1001 Main Street, Matador, Texas,  
79244.  
ISSUE NO. 57  
Subscription Price:  
Motley County, One Year: \$5.00  
Elsewhere, One Year: \$6.00  
2nd Class Postage Paid at Matador, Texas 79244.  
Ray Freedman - Publisher  
Business Manager: Diana Freedman  
Associate Editor: Glenda Williams  
Production Manager: Marv Renfro

## County Agent Pallmeyer Says

### Tips On Cut Flowers

Warm weather will bring on spring flowers, and the following tips will give longer life to cut flowers.

Make sure that containers are washed with soap and water before using. Cut stems at a slant, using a sharp knife or shears. Before cutting, select flowers that are not fully open. Remove foliage from the lower third of the stem, and remove all broken and bruised parts of the stem. Cut flowers in the early morning or late afternoon. Wash flowers and foliage to remove dirt, sprays or dusts. Store cut flowers in a cool area or refrigerate until arranged. On receiving bulk flowers from the florist, recut the ends of the stems about one inch. Do not place the arrangement in direct sunlight, near fires or in a draft.

Recutting stems of flowers and changing the water gives longer life to cut flowers. Warm but not hot water is recommended. This should be done every other day for most species. If a chemical flower preservative is used, recutting the stems and changing the water is not necessary. A very weak lemonade solution (lemon juice, sugar & water) has also helped to extend the life of cut flowers. Experts tell us that aspirin and copper pennies are useless as flower preservatives.

Proper care of roses during the summer will insure attractive plants and abundant flowers this fall.

When hot weather arrives, many lose interest in the roses because the flowers are small and have poor color and quality.

As the flowers fade and petals fall, remove all flowers, otherwise food and energy will go into useless seed production rather than plant growth and continued flower production. When removing spent flowers, make cuts just above the second five-leaflet leaf above the main cane or branch. Cuts made higher will usually result in blind shoots or deformed flowers.

Roses require regular applications of fertilizer for optimum growth. Use a complete fertilizer every four to six weeks, and do not fertilize after mid-August so plants will mature and be more winter hardy. In our area it is a good idea to also place sulfur around the plants in the early spring, as roses are an acid loving plant and our soils are alkaline.

If yellowing of plants occur, iron may be needed. I have a bulletin on Iron Chlorosis, which you may want to help solve this problem.

During hot dry weather, rose beds need watering every week, soaking the soil to a depth of 8 to 10 inches. Maintain a preventive spray program for black spot and mildew control. Dusting is fairly effective, however more effective control can be obtained by spraying. Be sure to use recommended control measures. With most rose varieties, preventive sprays should be applied every week to 10 days from the time growth starts in the spring until the first killing frost. During periods of high temperature and dry weather the interval may be

extended to two weeks until mid-August, then return to the regular schedule.

### Brucellosis Vaccine Program

Approval has been made to initiate a Fee-Basis Vaccination Program in the State of Texas. This is a voluntary program and means that a livestock producer can request to have his heifer calves vaccinated with Strain-19 brucellosis vaccine free of charge. This program does not include vaccinating of calves at livestock markets.

For those interested, call your veterinarian. Heifer calves 2 through 10 months of age are eligible. The quicker a person acts, the better chance for obtaining the vaccine, as funds allocated for this program are limited.

### Data Collected For Pesticide Uses

Cotton producers may be receiving a call from the Chilton Research Services relative to uses of pesticides, and of alternative

practices for controlling insects, weeds and diseases.

The USDA needs data on pesticide use as it is concerned that the safe and effective pesticides continue to be available for the production of cotton and other crops. Data received will be used to respond to proposed regulatory actions by the Environmental Protection Agency against a pesticide banning. The USDA is initiating a boll weevil eradication trial in North Carolina and an optimum pest management demonstration in Mississippi. Data obtained will help in the evaluation of these programs.

The cooperation of producers will insure that government decision-makers are provided with correct data and information required to make sound decisions affecting pesticide availability and use, therefore producers will be helping themselves by providing complete accurate information.

## USE YOUR REFRIGERATOR WISELY... and SAVE



### Reddy's Energy Saving Tips

- ★ Opening your Refrigerator Door as few times as possible keeps Heated Air from getting inside. So Saves Energy.
- ★ Condenser Coils in Refrigerators, like in Air Conditioners, tend to collect Dust and Dirt (especially in Carpeted Kitchens), when they are Dirty, they use more Energy, so your Refrigerator Coils Should Be Cleaned Once a Year.
- ★ Choose a Refrigerator/Freezer based on the real Capacity needs of your family. A Refrigerator or Freezer Operates at Peak Efficiency when Filled to Capacity but not overfilled.
- ★ Insulation Gaskets sometimes Leak and Cost Much Wasted Energy. Check your Refrigerator Gaskets for Wear and Replace if Necessary.

Pick up your FREE copy of  
"ENERGY CONSERVATION"  
Booklet Form

**Frigidaire**  
Home Environment Division of General Motors.

WEST TEXAS UTILITIES COMPANY

**WTU**

A Member of The Central and South West System

# HAWBAKERS AUCTION & FURNITURE

132 Hamlet Shopping Center

383-7061  
Amarillo

Large Selection Of Wrought Iron Just Arrived!!

Plant Stands  
\$6<sup>00</sup>

5 Pot  
Plant Holders  
\$14<sup>50</sup>

Other  
Plant Stands  
\$12<sup>50</sup>

Corner Stands  
\$40<sup>00</sup> - \$50<sup>00</sup>

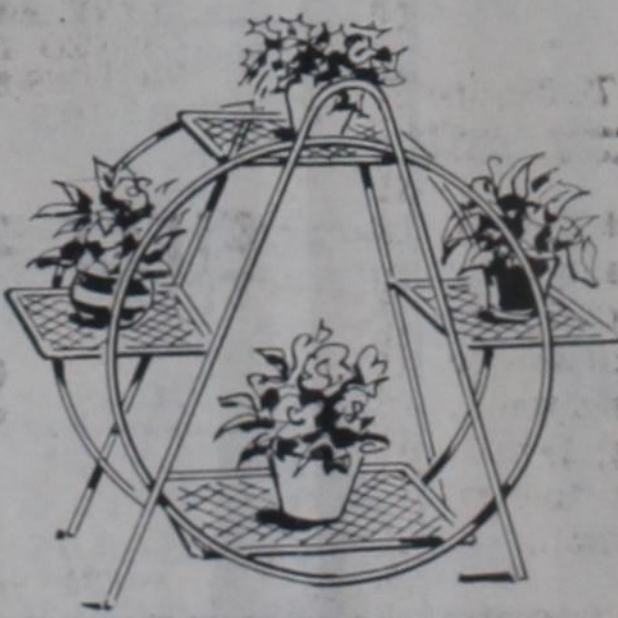
10% Discount With This Ad

Wine  
Racks  
\$95<sup>00</sup>

Four Season  
Iron Benches  
\$65<sup>00</sup>

Iron Chairs  
\$22<sup>00</sup>

Umbrella Stands  
\$20<sup>00</sup>



Open Daily 10 AM to 5:00 PM

Mexican Imports  
Discos

Wrought Iron  
Tapes

PARA MUSICA A SU GUSTO  
VAYA AL

El Valle Record Shop

Mr. and Mrs. Ruben DeLeon

1614 California St.

Floydada, Texas  
79235



# Junior Olympic Results

Over 250 youngsters met at the Motley County High School football field this past Saturday to compete in the first annual Junior Olympics sponsored by the Eternas Junior Study Club. The event attracted boys and girls from as far away as Lorenzo, Estelline, Petersburg, Lockney, Floydada, Paducah, Guthrie, Idalou, as well as an overwhelming number of Motley County entries.

Division winners are listed below.

**BOYS DIVISION I (Ages 3, 4, 5)** Bean Bag Throw, 1st Sid Estep, 2nd Toby Oliver, 3rd Jason Hicks, 4th Dale Doran, 5th Jason Bryant; Standing Long Jump, 1st Sloan Davidson, 2nd Trent Willmon, 3rd Kip Holt, 4th Brink Lee, 5th Jason Hicks; 25 Yd. Run, 1st Sloan Davidson, 2nd Jason Hicks, 3rd Kip Holt, 4th Sid Estep, 5th Dale Doran; 40 Yd. Run, 1st Sloan Davidson, 2nd Jason Hicks, 3rd Kip Holt, 4th Dale Doran, 5th Sid Estep; High Jump, 1st Kip Holt, 2nd Sloan Davidson, 3rd Sid Estep, 4th Jason Hicks, 5th Brink Lee. High Point Individual was Sloan Davidson with 38 points. Other boys entering were Brae Barton, Burr Barton, Paul Barton, Bradley Jameson, Coty Kendall, Andy Renfro, and Robert Van Story.

**GIRLS DIVISION I (Ages 3, 4, 5)** Bean Bag Throw, 1st Demetrell Field, 2nd Jennifer Palmer, 3rd Melanie Fuller, 4th Jenny Swetman, 5th Teresa Zarate; Standing Long Jump, 1st Demetrell Field, 2nd Natalie Burkes, 3rd Melanie Fuller, 4th Jennifer Palmer, 5th Teresa Zarate; 25 Yd. Run, 1st Demetrell Field, 2nd Jenny Swetman, 3rd Melanie Fuller, 4th Jennifer Palmer, 5th Teresa Zarate; 40 Yd. Run, 1st Melanie Fuller, 2nd Demetrell Field, 3rd Jenny Swetman, 4th Teresa Zarate, 5th Jennifer Palmer; High Jump, 1st Dani Beadle, 2nd Demetrell Field, 3rd Melanie Fuller, 4th Stephanie Wallace, 5th Natalie Burkes. High Point Individual was Demetrell Field with 36 points. Other girls entered were Amber Brandon, Tyra Burk, Cary Cox, Cory Cox, Shawn Cox, Renee Davis, Donna Golden, Heather Hobbs, Tonya Hoyle, Lisa Jones, Cindy Long Cam McDowell, Ginger Martin, Kami Pitts, Emily Roy and Lightner.

**BOYS DIVISION II (ages 6, 7, 8)** Standing Long Jump, 1st Todd Hallmark, 2nd Shannon Vinson, 3rd Kenneth Garst, 4th Santos Costillio, 5th Guy Fustoe; Soft Ball Throw, 1st Heath Robertson, 2nd Santos Costillio, 3rd Shad Pernell, 4th Tye Walker, 5th Harold Costillio; 35 Yd. Run, 1st Jase Estep, 2nd Guy Fustoe, 3rd Shad Pernell, 4th Shannon Vinson, 5th Harold Costillio; 50 Yd. Run, 1st Todd Hallmark, 2nd Jase Estep, 3rd Shad Pernell, 4th Chris Andrews, 5th Shannon Vinson; 100 Yd. Relay 1st (S. Costillio, G. Fustoe, J. Estep, Andrews), 2nd (K. Garst, S. Pernell, H. Robertson, S. Vinson) 3rd (M. Beadle, J. McDonald, S. Wallace, J. Lightner) High Jump, 1st Chris Andrews, 2nd Tye Walker, 3rd Santos Costillio, 4th Kyle Eddins, 5th Brian Marshall. High Point Individual was Santos Costillio. Other boys entered were Heath Campbell, Adam Cope, Ron Cox, Body Barnes, Tim Kendall, Alton Likes, Laurence Long, Brent Marshall, Kenneth Jackson, Jason Jameson, Cody Oliver, David Stafford, Joel Tayton, Kelly Walker, Rusty Willmon, Roger Kimbell, Timmy Roberts, Diego Mendez, Jimmy Mendez, Gregg Jackson, Stephen Boyd and Jay Jackson.

**GIRLS DIVISION II (ages 6, 7, 8)** Standing Long Jump, 1st Robbie Marlor, 2nd Janelle Long, 3rd Mona Long, 4th Leigh Barton, 5th D'Lisa Jones; Soft Ball Throw, 1st Shannon Campbell, 2nd Robbie Marlor, 3rd Tammy Taylor, 4th Leigh Barton, 5th Mona Long; 35 Yd. Run, 1st Alisa Collins, 2nd Robbie Marlor, 3rd Mona Long, 4th Leigh Barton, 5th Yolanda Campbell; 50 Yd. Run, 1st Alisa Collins, 2nd Robbie Marlor, 3rd Yolanda Campbell, 4th Pamela Gibbs, 5th Leigh Barton; 100 Yd. Relay, 1st (R. Anderson, D. Guerra, D. Jones, R. Marlor), 2nd (L. Martin, A. Nimmo, A. Vandiver, Y. Campbell) 3rd (B. Barton, L. Barton, J. Long M. Long); High Jump, 1st Leigh Barton, 2nd Mona Long, 3rd Robbie Marlor, 4th Janelle Long, 5th Paka Barton. High Point Individual was Robbie Marlor with 45 points. Others entering were Shan Brown, Mary Zarate, Krys Andrews, Sherri Reid, Jennifer Simmons, Sheila Story, and Rene Villegars.

**BOYS DIVISION III (ages 9 - 10)** Hard Ball Throw, 1st Bobby Shelton, 2nd Dickie Jackson, 3rd Leigh Zachary, 4th Gary Gilmore, 5th Jeff Burkes; Running Long Jump, 1st Brent Hallmark, 2nd Bobby Shelton, 3rd Leigh Zachary, 4th Stan Burns, 5th Ronnie Ford; High Jump, 1st Dickie Jackson, 2nd Bobby Shelton, 3rd Gary Gilmore, 4th Mark Willett, 5th Kevin Hicks; 50 Yd. Run, 1st Brent Hallmark, 2nd Dickie Jackson, 3rd David Davidson, 4th Stan Burns, 5th Bobby Shelton; 75 Yd. Run, 1st Brent Hallmark, 2nd Jerry Morrison, 3rd Stan Burns, 4th David Davidson, 5th Stanley Young; 400 Yd. Relay, 1st (S. Burns, G. Gilmore, R. Tranthan, M. Willett) 2nd (R. Ford, C. Frezzell, B. Hallmark, S. Poble), 3rd (D. Davidson, S. Elmquist, K. Huddleston, J. Morrison, D. Jacoson), High Point Individual was Brent Hallmark with 34 points. Other boys entered were Brandt Bearden, Tommy Cathey, Cody Christian, Cory Coopedge, Rodney Doran, Charles Brown, Jade Jones, David Likes, Richard Likes, Jack Luckett, Jeff Matsler, Darryl Perryman, Haney Robertson, Phillips Sanders, Jesse Trebino, David Zarate, Mickey Zarate, Waymond Brown, Rik Swetman, Gregg Boyd, Mike Scarbrough, Lance Fristoe, Victor Garcia, David Boring, Jerel Beaty, Moate Moore, Bronte Lee, Kelly Reid, Kevin Gibbs, and Johnny Diaz.

**GIRLS DIVISION III (ages 9 - 10)** Hard Ball Throw, 1st Ruby Harris, 2nd Kim Hand, 3rd Ingrid Clift, 4th Margo Corley, 5th Kim Phillips; Running Long Jump, 1st Ruby Harris, 2nd Paige Cannon, 3rd Ingrid Clift, 4th Holly Wilson, 5th Diane Miller; High Jump, 1st Diane Miller, 2nd Donna Mangram, 3rd Kim Phillips, 4th Shawna Campbell, 5th Pam Marlor; 50 Yd. Run, 1st Tammy Brown, 2nd Ingrid Clift, 3rd Pam Marlor, 4th Kim Phillips, 5th Paige Cannon; 400 Yd. Relay 1st (R. Harris, I. Clift, D. Miller, P. Marlor) 2nd (D. Mangram, A. Ogden, K. Phillips, E. Zarate) 3rd (T. Brown, K. Campbell, S. Campbell, K. Hand). High Point Individuals were Ruby Harris and Ingrid Clift from Lorenzo. Ingrid Clift won the flip of a coin for the trophy. Others entered were Heather Holt, Darla Jameson Amy Long, Diana Marchman, Cheryl Jones, Macy Corley, Deloris Fedellin, Yolanda Garza, Rosa Garcia, Lucia Garcia, and Donna Robertson.

**BOYS DIVISION IV (ages 11 - 12)** High Jump, 1st Jimmy Wall, 2nd Max Bearden, 3rd Royce Harris, 4th Doug Warren, 5th Stacy Phillips; Hard Ball Throw, 1st Gilbert Carrillo, 2nd Max Bearden, 3rd Ricky Miller, 4th Cris Edwards, 5th Charlie Brown; Long Jump, 1st Stacy Phillips, 2nd Max Bearden, 3rd Gilbert Carrillo, 4th Doug Warren, 5th Cris Edwards; 50 Yd. Run, 1st Cris Edwards, 2nd Issac Jackson, 3rd Doug Warren, 4th Max Bearden; 75 Yd. Run, 1st Cris Edwards, 2nd Issac Jackson, 3rd Gilbert Carrillo, 4th Ricky Miller, 5th Stacy Phillips; 400 Yd. Relay, 1st (G. Carrillo, C. Edwards, J. Gonzales, I. Jackson), 2nd (K. Hayes, D. Warren) 3rd (R. Miller, J. Beaty, R. Young). Individual High Point winner was Cris Edwards with 31 points.

**GIRLS DIVISION IV (ages 11 - 12)** High Jump, 1st Kay Nimmo, 2nd Vivian Sims, 3rd Melea Taylor, 4th Renee Renfro, 5th DeAnn Phillips; Hard Ball Throw, 1st Kay Nimmo, 2nd Sandi Gonzales, 3rd Juanna Pepper, 4th Vivian Sims, 5th DeAnn Phillips; Long Jump, 1st Kay Nimmo, 2nd Carolyn Roberts, 3rd Sandi Gonzales, 4th Juanna Pepper, 5th Vivian Sims; 50 Yd. Run, 1st Vivian Sims, 2nd Kay Nimmo, 3rd Carolyn Roberts, 4th Midky Miller, 5th Shelly Jenkins; 75 Yd. Run, 1st Vivian Sims, 2nd Carolyn Roberts, 3rd Kay Nimmo, 4th Micky Miller, 5th Pearl MacBruse; 400 Yd. Relay 1st (S. Jenkins, P. MacBruse, M. Miller, C. Roberts), 2nd (K. Nimmo, V. Sims, M. Taylor, H. Hobbs), 3rd (Y. Zarate, R. Renfro, D. Phillips, B. Kirkpatrick). Individual High Point winner was Kay Nimmo from Motley County with 47 points. Other girls entered were Virginia Costillio, Kelli Walker, Janice Brown, Sherserse Cannon, Leah Jovett, Danna Davidson, Jelene Long, Traci Jackson, Carla Christian, Donna Warren and Kim Moore.

The Eternas Junior Study Club would like to thank all those who participated and helped to make the first Junior Olympics a success.



## Meeting To Be Held

Officials of Plains Cotton Growers, Inc., Lubbock, have announced that the organization's 1978 annual membership meeting will be held at 2:00 p.m. on Wednesday, May 3. It will be in the South Park Inn, South Loop 289 and Indiana, Lubbock.

The meeting will key on information related to the all-important export markets for High Plains cotton, with two highly knowledgeable speakers on the subject, including one from the largest open-end spinning operation in continental Europe. All "cotton people" on the High Plains are invited.

## Farm Bill Voted Down

What was most likely the last reasonable chance for major changes in the 1978 government cotton program went by the board April 12 when the House in Washington voted down by 268 to 150 a Senate-passed farm bill. The bill would have raised basic support prices for cotton, wheat and feed grains and allowed producers to qualify for higher target prices by idling up to one-half of their acreage.

Other efforts no doubt will be made, but the heavy "NO" vote in the House, plus President Carter's promise of a veto, indicate heavy odds against success.

The option to set aside 10 percent of planted cotton acreage and receive a payment, as announced by USDA March 29, remains

open to producers. But Department officials are emphasizing that it is strictly voluntary.

Producers who do not want to participate in the 10 percent set-aside arrangement, unless they violate other program regulations, will qualify for all program benefits except the set-aside payment without restricting the acreage planted to cotton.

For example a farmer who has a Normal Cropland Acreage (NCA) of 100 acres and plants 150 acres to cotton, if he plants no crop for which there is a set-aside requirement, will still be in compliance. However if he plants feed grains or wheat, both of which have a required set-aside, total cotton, feed grains, wheat and set-aside acreage must not exceed his 100 acre NCA. Otherwise he would lose eligibility for program benefits on all crops.

The payment to producers voluntarily going the 10 percent set-aside route will

be two cents per pound times the farm's established cotton yield times planted acres.

The payment will be made in return for the producer (1) idling, or setting aside, an acreage equal to 10 percent of planted acreage, (2) complying with his farm's assigned NCA, and (3) restricting acreage planted to cotton plus acreage set aside to a total no greater than his cotton acreage in 1977.

This latter requirement is a change from the original announcement that 1978 planted acreage alone could equal 1977 acres.

**We Have Good Prices On A Large Variety Of SORGHUM SUDAN GRASS SEED**

**See Us Before You Buy! CALL COLLECT Area Code 806--271--4532**

**We Have Hegari Seed and Red Top Cane Seed Caught Out Of The Field Cleaned and Sacked**

**We Have Good Prices On Khline Grass Seed and Alfalfa Seed**

**STAR FEED AND SEED STORE**

211 W. Harris

Spur, Texas

## Motley County Eligible

The Administrator of the Small Business Administration yesterday declared the farmers in 97 counties of the State of Texas eligible for low interest loans primarily due to drought which occurred over the past several months. Motley County has been named as one of the 97 eligible counties.

Loan applications and additional information may be obtained from the following District SBA Offices:

Dallas, 1100 Commerce Street, 214-749-3961.

Lubbock, 1205 Texas Avenue, Rm. 712, 806-762-7466

Houston, One Allen Center, Suite 705, 713-226-4341

San Antonio, 727 E. Durango, Rm A-513, 512-229-6250

Applications will be accepted immediately through October 11, 1978, from residents of the counties listed and adjacent counties. Repayment terms will be set so that no hardship is created in meeting the monthly payments, while assuring that the loan is repaid as quickly as possible.

Additional information and service locations will be forthcoming.

## First Rate Carpeting



\$6<sup>95</sup> Yd. And Up

## Formica

## Remodels Formica Tops

## Vinyl Floors



## Wayne Kemp's Carpets & Counters, Inc.

5601-H Aberdeen

Bus. 793-0639

Lubbock

Res. 792-5063

KFLP Radio of Floydada is happy to be part of Motley County and strives in helping Motley County in any way possible. KFLP backs the Motley County Matadors year after year. For good up town Country Music Listen to KFLP, 900 on your dial. Request lines are always open... Give Ken Sams a call from 7 a.m. to 12 noon. Big Sam is on the air from 12 noon to 5 p.m. and from 5 p.m. to sign off is lovely Adena Morris. KFLP is the Love Station.

# FOSTER WHALEY'S RECORD OF ACCOMPLISHMENTS



Maturity of Judgment  
A Proven Record of Accomplishments

\*RURAL RESIDENTS SERVED BY THE GOODNIGHT TELEPHONE EXCHANGE [Mid Plains Telephone Co-op] in Armstrong County give former County Extension Agent Foster Whaley credit for bringing dial telephone to that area in the mid 1950s.

\*LEADERS OF THE FAIRVIEW COMMUNITY give former County Extension Agent FOSTER WHALEY much of the credit for that community's being named "The Most Outstanding Community" in the state of Texas in 1955.

\*4-H LEADERS OF GRAY COUNTY give full credit to former County Agent FOSTER WHALEY for that county's being first in the state to raise and deposit their \$5,500 quota in the state 4-H Fund that built the state 4-H center at Brownwood.

\*FOSTER WHALEY was a key person in helping organize the Texas Cattle Feeder's Association.

\*FOSTER WHALEY hedged one of the first pens of cattle ever hedged south of the Canadian River. He has given hundreds of programs on this marketing technique all across Texas.

\*MANY FORMER 4-H MEMBERS FINISHED COLLEGE ON FUNDS EARNED THROUGH USE OF THE MARKETING TECHNIQUE WITH FOSTER'S HELP.

## ELECT FOSTER WHALEY AS YOUR NEXT STATE REPRESENTATIVE!

Democrat

(Pd. Pol. Adv., by Foster Whaley, Rt. 1, Box 70, Pampa, Tex.)



**COW POKES**

By Ace Reid



"Now, I ain't bought this bank, I jist borrowed it."

THIS FEATURE SPONSORED BY  
FIRST STATE BANK

★ **ATTENTION** ★  
CUSTOM SLAUGHTERING  
AND PROCESSING  
- LOCALLY FED BEEF -  
1/2 BEEF  
HIND QUARTERS  
FRONT QUARTERS  
ALL MEAT  
GUARANTEED  
**THOMASON  
MEAT CO.**

114 N.E. 8th, Lockney Texas  
(806) 652-3446

Represents  
for  
**MONUMENTS  
and  
CURNING**

**Seigler**  
Funeral Home  
Telephone 34-342

**BUYING or SELLING  
SEE THE...**

\$25 REWARD For the Name of the Person who poisoned our dog. Bill & Sherrie Graham. 347-2848 56-p2t

WELL SERVICE - Windmill & Irrigation... Contact Ronny Bradford at Spur, 271-4483 or 271-4282. 56-c2t

FOR SALE - Bolin Mobile Home, 14' Wide & 70' Long, 3 Bedrooms, 1 1/2 Baths, Call 347-2257. 57-clfn

FOR SALE - Two bedroom home. Combination kitchen. 1 1/2 bath, storm cellar, large fenced back yard, car port. Call 347-2460, Mrs. Ivy Cooper. 56-clfn

FOR SALE - 3 air conditioner panels to fit 4000 air conditioner. \$10 each. Carl Tardy, Roaring Springs. 57-c2t

FARMERS - RANCHERS. If you have a foaming problem when spraying, you need some of our Defoamer. Three table-spoons Defoam to 500 gallons of solution. Call Ray 348-2081. 56-c3t

FOR SALE - Frigidaire dish washer. Call Pat Warren 347-2418. 57-clt

**WANT ADS**

FOR SALE - Blue and White Pickup Camper. Call 348-3032 or 348-3881. 55-3t

FOR SALE ++ Nice three bedroom house, utility room, large fenced backyard, basement. Don Cox, 347-2885. 45-clfn

4 ROOM SHINGLED House for Sale. Tacked on bath and back porch. Must be moved. \$1500.00. Mrs. Charles Long, Roaring Springs, Tex. 50-c8t

WANTED - Man or couple to live in jail living quarters. Rent and utilities furnished. See Sheriff Alton Marshall. 34-clfn

TREFLAN - \$115.00 per can. PROWN - \$105.00 per can. Delivery with 2 days notice. Terms - Cash. Call Nimmo Spraying Service, 817-585-4467 54-clfn

WANTED (Dead or Alive) Junk Batteries. \$1.50 Cash each. White's Auto. Spur, Texas 302 Burlington. 36-clfn

BULLDOZING and grubbing. Contact D. A. Smith Matador. Phone 347-2832. 2-clfn

SALE - West Texas biggest selection of Tony Lama and Red Wing boots at reduced prices you can afford. Hurst Dept. Store, Spur, Texas 79370. 32-clfn

BRING YOUR Dry Cleaning and laundry where business is appreciated and your money stays at home. City Cleaners and Laundry, Roaring Springs and Matador. 34-clfn

GERMANIA Farm Mutual Aid Association: Reasonable sound property insurance. If you want to say contact Mrs. Orville Lee, Flomot, 806-469-5370. 18-clfn

GARAGE SALE - April 15, 9:00 to 7:00 p.m. Wayne Hunter Residence, Flomot. 3-clfn

HORSE SHOEING AND Trimming, call Larry Hanna 347-2462 56-c4t

THREE BEDROOM HOME with two baths. Partially remodeled. Separate dining and living area. Den-kitchen with freestanding fireplace. Storage house in backyard. For more information call Randy Hicks at 347-2470. 53-clfn

LOOKING for farm and ranch land for sale. Call A. G. (Jimmie) Irwin, collect. 806-799-3073 (home) or 792-6373 (office) in Lubbock. 47-clfn

GENERAL Construction Building and remodeling new homes, room additions, painting and cabinets. Dennis Jones. 689-2901. Afton. 30-clfn

FOR SALE - Good used color TV sets. Some with new picture tubes and new guarantees. Thacker Supply Co. Roaring Springs. 3-clfn

FOR SALE - 1974 Malibu 4 dr., standard transmission 347-2755. 32-clfn

BAILEY Paint and Repair for Interior House Painting. 347-2851. Wood For Sale, \$80.00 per chord. cfn

REMEMBER Mother's Day Beautiful Silk Flower Arrangements - a lasting memory. The Dugout. 57-c4t

FOR SALE - G.E. Room Size Refrigerated Air Conditioner, \$60.00. 347-2416.

FOR SALE - 1971 4 door Ford Galaxie, 5 new tires, air-conditioner, heater, registered, uses no oil, ready to go. Call 348-2811. 57-clt

FOR SALE - Business - Home For Sale... A home that pays for itself. On commercial lot with certified water system, 3 bedroom home, interior is new paneling, carpet. Frigidaire Stove with self-cleaning oven. Two bedroom furnished Mobile Home - Rented. Three chair Beauty Shop, 3 operators renting booths. ALSO Two Chair Barber Shop, perfect downtown location. Large business. Will sell with above property. Moving down state. Call after 7:00 p.m. 806-983-3125. 56-c2t

FOR SALE - Tomato Plants, Fishing Worms and Rabbits. Call Jack Green 347-2377. 57-p1t

**POLITICAL ANNOUNCEMENTS**  
The Tribune has been authorized to present the names of the following candidates for office, subject to the Democratic Primary Election, May 6, 1978.

For Texas Senate  
36th District  
**Ray Farabee**

For State Representative  
60th Legislative District  
**Glenn Conrad  
Foster Whaley**

For State Representative  
60th Legislative District  
Republican Primary  
**Bill Hale**

U.S. Representative  
**Jack Hightower**

For County Judge  
**Forrest Campbell  
Billy Joe Whitaker**  
For County Treasurer  
**Wilna Hobbs**

For County & District Clerk  
**Lucretia Campbell**

For County Commissioner  
Precinct 2  
**Malcolm Turner**

For County Commissioner  
Precinct 3  
**John Briscoe  
Bill Jameson**

For County Commissioner  
Precinct 4  
**Milton Brooks  
W. F. McFatridge**

**IN APPRECIATION**

We sincerely thank you for your many acts of love and concern during the illness and loss of our loved one. The beautiful floral offerings, food, cards, visits, telephone calls, memorials, prayers, family meals and memorial services at the United Methodist Church will always be remembered with loving gratitude. May God bless you for your kindness in our time of sorrow.

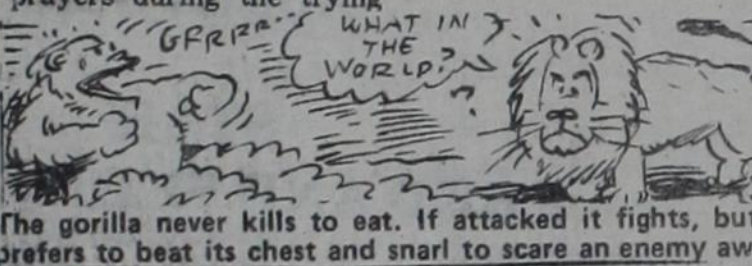
Mrs. Malcolm (Verna) Jameson, Miss Melba Jameson, Mr. and Mrs. Dan Bevers and Len, Mr. and Mrs. Tom Wardell (1)

**INSULATION**  
Fire-Resistant, Installed and Guaranteed  
**MARR INSULATION CO.**  
Tom Marr Owner 652-3593

**DR. O. R. MCINTOSH**  
Optometrist  
316 South Main Street Telephone 983-3460  
Floydada, Texas

Words cannot express the time. We appreciated so appreciation we have for all much the lovely dinner that our friends in Roaring was prepared for our Springs and Matador for all families at the Matador the flowers, cards, and food Methodist Church. brought to our home when We are so grateful for such we lost our brother, Mal- wonderful friends. colm and our niece, Oneita Eva and J. D. Mitchell (Smith) Neighbors.

Thanks especially for your + prayers during the trying



The gorilla never kills to eat. If attacked it fights, but it prefers to beat its chest and snarl to scare an enemy away

TREFLAN \$114.00  
TOLBAN \$116.50  
PROWL \$110.00

Buy your chemicals wholesale  
No Dealers Please!  
**PRODUCERS COOPERATIVE  
ELEVATOR**  
Floydada, Texas  
983-2821  
(Call Collect)

Can now re-dye vinyl tops  
**Tony's Custom Shop**  
Top Quality Paint and  
Body Work  
Business Matador Home Phone  
347-2346 347-2452

**Levi's**  
Regular, Pro-Shrunk, Sta-Prest,  
Flares, Saddleman, Bell Bottom  
Complete line in stock at  
**Rannie's**

**Floydada Livestock Sales**  
John McCandless, Owner  
Home Phone 806-347-7845  
Don McCandless, Manager  
Phone 806-983-2153

**SALE EVERY WEDNESDAY**  
10:00 a.m.

We Appreciate  
Your Business

**Greener Specials**  
PURINA Dog Chow 5 LB BAG \$1.29  
Shurfine Vegetable Oil 38 Oz. Bottle \$1.09  
Van Camp Pork & Beans 3 For 89c  
TEXSUN PINK GRAPEFRUIT Juice 46 OZ CAN 49c

**DESIGNER TOWELS**  
Bounty 59c  
JUMBO ROLL

**LAUNDRY DETERGENT**  
Super Suds 69c  
GIANT SIZE BOX

**CRISCO** SHORTENING  
3 POUND CAN \$1.59

**BETTY CROCKER**  
Cake Mixes 59c  
18 OZ. BOX

**HEINZ**  
Keg-O Ketchup 79c  
32 OZ. BTL.

**BEEF UP YOUR MEALS!**  
U.S.D.A. CHOICE BEEF  
Round Steak \$1.69  
LB.

**DISH DETERGENT**  
Ivory Liquid 69c  
22 OZ. BTL.

**CRACKERS**  
Cheez-Its 10 OZ BOX 49c  
KRAFT 1000 ISLAND Dressing 16 OZ. BTL. 89c  
FAULTLESS SPRAY-ON Starch 16 OZ CAN 59c

**Dairy And Frozen Food**  
KRAFT AMERICAN/PIMENTO DELUXE Cheese Slices 12 OZ. PKG. \$1.19  
ORE IDA Onion Rings 12 OZ. PKG. 59c

**SHURFINE SLICED**  
Strawberries 10 OZ. PKG. 49c  
SHURFINE NON-DAIRY WHIPPED Topping 9 OZ. TUB 49c

**Health And Beauty Aids**  
DISPOSABLE BUTANE Bic Lighter 49c  
EACH

25% OFF LABEL LOTION SHAMPOO  
Head & Shoulders \$1.89  
11 OZ. BTL.

**TOOTH PASTE**  
Gloom 5 OZ. TUBE 89c

**MOUTH WASH**  
Listermint 12 OZ. BTL. \$1.29

**SCHICK PLATINUM PLUS**  
DOUBLE EDGE Blades 5 CT. PKG. 59c

**Specials for Coffee Lovers**  
NON-DAIRY CREAMER Coffee-Mate \$1.29  
16 OZ. JAR

**HILLS BROS.**  
Coffee \$2.89  
1 LB. CAN

**THE EVERYTHING JAR**  
FINAL WEEK!  
ALL JARS ON SALE  
AT SPECIAL COUPON PRICES!  
NO COUPON NECESSARY!

**Produce Specials**  
TEXAS RUBY RED Grapefruit 5 LB BAG 69c  
TEXAS GREEN Cabbage LB. 10c  
SUGAR LOAF Pineapple EACH 69c

**CALIFORNIA LARGE**  
**Avocados**  
4 FOR \$1

**BILLY'S GROCERY**  
We Give Circle W Blue Stamps  
Double On Wednesday  
We Accept Federal Food Stamps

**venture FOODS**