



Voice of the Foothill Country

Motley Co. Tribune

35¢
PER COPY

96TH YEAR

THURSDAY, MARCH 16, 1989

ISSUE NO. 11



Pat Palmer and her daughter, Tricia Palmer, were named 1989 Mother & Daughter of the Year at Tuesday night's 51st Annual Mother-Daughter Banquet.

Motley County Commissioners Attend To Business In Regular Monthly Meeting

The Motley County Commissioners attended to a long day of business on Monday, March 13 in the Courtroom.

After the Court was called to order by Judge Billy J. Whitaker and the invocation was given, the Commissioners, J.M. Russell, Bill D. Washington, Fraiser Watson and Franklin Jameson heard Ed Garnett of the Vernon Extension Office. Garnett stated that Rocky Vinson wanted to come to this area of Texas. Rocky and his wife Lavelle came to the February meeting to be interviewed. The Court elected to accept Vinson with their budget

guidelines.

Lucretia Campbell, County Clerk, read the minutes, which were approved and the Court reviewed the bills. They were approved to be paid.

The Court discussed the fact that they spent over \$5,000 on fuel last year. The Court elected to take bids on all fuel for county vehicles. Russell stated that the bridge was completed, he will have the total cost at a later date. Russell informed the court that a bill had been introduced last week to the State Legislature that

stated the state could not introduce programs without providing state funds.

Marisue Potts and the Motley County Historical Commission and Museum Board members were present in a pre-Court meeting to ask the Court to approve the Historical Commission By-laws and to explain projects and plans being made for the 1891-1991 Centennial Celebration for Motley County.

Potts also asked the Judge to appoint a committee for the Centennial plan making. Judge Whitaker appointed an officer from each civic organization in Motley County (Roaring Springs, Flomot, Northfield and Matador), and Marisue Potts, the Historical Commission.

L.J. Barlkey and Joe P. Smith, representing the Matador City Council asked the Court for their support and input in looking into getting a penal facility in Motley County and any other entity to Motley County to help the growth. Smith stated that in a SPAG survey in 1980 they predicted the loss of 300 citizens in Motley County and according to a recent study this had happened, besides us being the third most depressed county in the state of Texas.

Barlkey stated they needed to know if the Court and the Roaring Springs City Council and citizens of Flomot and Northfield would also be in favor of this project and help. They proposed the need for a consultant (hopefully free) to look into grants or other funding and possibly a section of land, with water available.

Smith asked if the Court would be in favor of forming a Motley County Development Association, the Court agreed they would. They were as interested in saving the county (business, school, etc) as anyone.

Judge Billy J. Whitaker asked the Court to designate April as "Fair Housing Month" This passed.

The Court reviewed the reports with the J.P. office collecting \$5,287.50.

The Court discussed the fact that they had spent money on the basement offices remodeling them for the SCS Office three months ago and now they were moving out before the year was up.

Russell stated he wanted to go on record that he had told the SCS office that he disapproved of their design for erosion in fields in his precinct, because he foresees water being diverted down the roadways, thus a possible cost of \$7,000 to the county to put in low water crossings.

Shalane Wesley and Reggie Gross of the Texas Department of Human Services continued on page 2

Historical Commission Outlines Goals

In an open meeting before the March 13 session of the County Commissioner's court, the Motley County Historical Commission set forth 1989 goals and plans for preservation of county history.

The dedication of a State Historical Marker for the Matador Ranch and the replacement of the H.H. Campbell marker are scheduled for the near future. The April 30 date has been canceled since the Texas Wagon Train is now planning to depart from Turkey instead of Matador. The new date is likely to be during the Old Settlers celebration in August when many former Matador cowboys are already in town. Plans include a reception at the library and a tour of the Jail.

Suggestions for future historical markers include the first grave at East Mound Cemetery, Russellville, Dripping Springs, Folley, Miller Stage, Old Lyman, and line camps of the Matador Ranch.

A historical tour of the county for the Friends of the Southwest Collection of Texas Tech is tentatively scheduled for May 5. The commission hopes to have a brochure and map of historical points ready at that time. Input from the community is invited.

An Oral History project is projected, to collect information on the distant and near history of the county. Also planned is a Historic Photograph workshop whereby photos may be brought to the library and copied for future historical purposes. Other possibilities include publishing a comprehensive county history and documentation of an ethnic group and/or a historic cemetery.

Plans for a Centennial Celebration in 1991, commemorating 100 years since the establishment of the county, are to be made in the near future with Judge B.J. Whitaker appointing a member from each of the various civic and social organizations to serve on that committee. County Clerk, Mrs. R.E. Campbell, is in charge of notifying the groups and calling a meeting.

A report on the visit of Texas Historical Commission field representative, Dennis Chapman of Bonham, was given by chairman Marisue Potts. Chapman suggested in his report that an architect from THC check the soundness of the proposed museum building. If feasible he suggested the removal of some of the walls to create more space and the enlarg-

ing of the back doors to allow entry of large items. Chapman strongly urged that the county officials be contacted about helping with the cost of utilities. Citing the Hale County Museum in Hale Center as an example to follow, he urged museum committee members to meet with curator Louise Rieff.

To make the building more secure and alleviate the problem of sunlight deteriorating artifacts and exhibits, the THC consultant recommended the use of plexiglass with ultraviolet light filtered out or building interior walls in front of the windows. Included with his letter were examples of by-laws, gift deeds, loan agreements, and collection forms which will be necessary when the museum is established.

Chapman's and the state architect's services are provided free of charge to county historical commissions upon request. The county commission reports to the county commissioners but operates with volunteers and no budget support. Historical markers are funded by interested individuals, families, or companies.

School Board Meeting Report

The Motley County ISD Board of Trustees met March 13, 7:30 to take care of regular business with all Board members present, also Principals Ewing and Hamilton, and Ron Cummings Superintendent.

Randy Barton read the minutes after Guy Campbell called the meeting to order, these were accepted as read, the bills were approved.

The textbook committee had turned in their report and request for their choice of textbooks, the Board accepted the list presented.

Election Judges were chosen for the May 6 election, Matador Precinct 1, Hazel Donovan; Roaring Springs Precinct 4 Mary Webb; Northfield, Precinct 3, Betty Simpson; Flomot, Precinct 2, Ruth Lee.

Cummings explained two resolutions that have been introduced to be passed in the State Senate; HJR 2: Any new programs introduced by the State, the State will also provide funds for these programs. HB 571: Schools can begin class on the Monday before September 1. These bills are at the sub-committees at this time according to a letter from Steve Carrier's office.

Reports were given by Hamilton on the current update of the schools computer service now being used and the new software need to be purchased. Hamilton also reported on the computer classes he is working on for the teachers this summer, to familiarize them with the new software and other programs to be used in classroom work and for bookkeeping.

Board went into closed session at this time to discuss personnel issues.

March 22 Filing Deadline

The last filing date for the May 6 election is March 22 at 5:00 p.m.

For the Motley County I.S.D. Board there are two 3-year terms; Roaring Springs City Council, three 2-year terms, Matador City Council, three 2-year terms and Motley County Hospital Board has 2-two year terms.

As of presstime the following have filed for these places: Motley County ISD, two incumbents Randy Barton, Guy Campbell; Matador City Council, two incumbents, L.B. Campbell, Joe R. Smith and Sonny Jackson; Roaring Springs City Council, none; Motley County Hospital Board, none.

County Agent Assumes Position Today

Rocky Vinson, County Extension Agent - Agriculture for Webb County, will transfer to Motley County, Texas, as County Extension Agent - Agriculture Program Leader effective March 16, 1989, according to District Extension Director, Ed Garnett, and the Motley County Commissioners Court.

Vinson graduated from Angelo State University in 1986, receiving his Bachelor of Science Degree in Animal Science with supporting concentration in chemistry and biology.

As County Extension Agent - Agriculture in Motley County, Vinson will direct the agricultural phase of the Motley County Extension Program, both

youth and adult, serving as agriculture program leader. He will work with the County Extension Agent, Home Economics to develop the total Extension program for Motley County. He comes to Motley County well versed in the total agricultural program and in all areas of the 4-H program.

A native of Hawley, Texas, he is the son of Billy and Alma Vinson of Hawley. He is married to the former Lavelle Bradford, daughter of Bill and Avril Bradford, of Big Spring, Texas. Lavelle is a kindergarten teacher.

Motley County Stock Show to be Held Monday



Young people from Motley County preparing for County Livestock Show. Practice Show was held on Sunday afternoon March 12th. Pictured with steers (l-r) are Cathey Perryman, Stesha Daniel, Josh Palmer, Lacey Parks, Heath Campbell. This week will be filled with many hours of washing, grooming, clipping and shearing animals. The stock

show kicks off next Monday, March 20 at 10:00 a.m. with the Swine judging, followed by sheep, heifers, and rabbits. The steer show will begin at about 1:30 p.m. followed by the premium sale. This year's judge will be Sam Jackson from Texas Tech University in Lubbock. Dr. Nelson Adams, Beef Specialist from Vernon will judge the heifers.

Fire Rages Through Dickens County



Mr. and Mrs. Clifford Mayo and the remains of their house. They lost their house and all their belongings in the fire that swept through Dickens County Sunday.

Fires engulfed Dickens County this weekend, beginning on Friday afternoon on the Gentry Brothers and Buddy Davidson land burning an area 1 mile x 6 miles. This fire started with a lovegrass controlled burning.

Saturday, 2 sections of land burned east of East Afton and Sunday, 36 sections burned in Dickens County northeast of Dickens. This fire started with a trash and tumbleweed burning. The Pitch-

fork Ranch had pasture land burned and the Mayo family of East Afton lost their home and much of their pasture land was burned.

The Spur Fire Department lost a fire truck in Sunday's fire.

Fire departments responding to these fires were from Motley, Crosby, Stone-wall, Kent, King, Cottle and Dickens Counties. The Texas State Highway Department sent men as part of the 18 maintainers used to control the fire.

Motley Co. Tribune

ISSN: 0897-4322



Barbara B. Jameson, Publisher/Editor
 Carla Jones, Asst. Editor, Advertising, Typesetting
 Michelle Bearden, Correspondent, Reporter
 Tricia Palmer, Proof Reading, Composition
 Mary Renfro, Photo Developing
 Sherry Paschal, Mailing Clerk

The Motley County Tribune, purchased on Feb. 1, 1986 is the successor to the Matador Tribune and is published weekly each Thursday at Matador, Motley County, Texas. The office is located on Highway 70 East (1/2 block east of Main Street). Telephone number 806/347-2400. Second-class postage paid at Matador, Texas. Postmaster: Send address changes to Motley County Tribune, Box 490, Matador, Texas 79244-0490.

NOTICE: Any erroneous reflection upon the character, firm or corporation, which may appear in the columns of the Motley County Tribune, will gladly be corrected upon being brought to the attention of the publisher. Only signed letters to the editor will be considered for publication and should not exceed 250 words in length. Letters may be subject to editing.
 PUBLICATION NO. 333700

SUBSCRIPTION RATES: Motley and Adjoining Counties: \$12.00 All Others \$15.00
 Persons over 60 years of age may take a \$1.00 discount

P.O. Box 490 Matador, Texas

"If all printers were determined not to print anything 'till they were sure it would offend nobody, there would be very little printed."

Benjamin Franklin

Senior Citizens Report

by Iris Blevins

The Mini Bus went to Lubbock Monday with several people riding. There were several Doctor's appointments and others enjoyed a day of shopping. Thursday was a beautiful day and the bus went to Plainview with six people riding. We always enjoy going to Plainview and eating out. Our president opened the doors to the Senior citizens Building at 2:00

p.m. Friday for games and visiting. We had ten people come and that was enough for one table of 84 and one table of 42. It was very enjoyable to be there.

Don't forget our luncheon day. They are every second and fourth Tuesdays of each month and you are invited to come and have fellowship with us. The doors are opened at 10:00 a.m.

Poetry Contest

The best 152 poets will win over \$11,000 worth of prizes in the American Poetry Association's new contest. The contest is open to the public now, and entry is free.

The Grand Prize is \$1,000, and the First Prize \$500. Other prizes include cash, and book awards. All 152 winners will be published.

"Originality, sincerity, and feeling are what the judges look for," said Robert Nelson, publisher for the Association. "Many unknown poets have those talents in abundance. We want to encourage those poets to keep on writing."

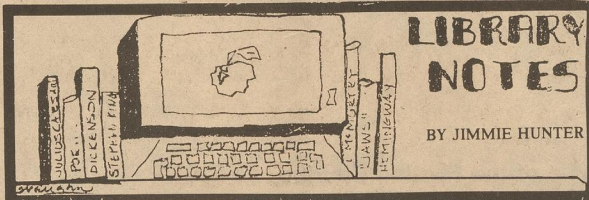
Poets may send up to six poems, no more than 20 lines each, name and address on each page, to American Poetry

Association, Dept. CT-30, 250 A Potrero St., P.O. Box 1803, Santa Cruz, CA 95061-1803. Entries should be mailed by June 30.

Each poem is also considered for publication in the American Poetry Anthology, a leading collection of today's poetry.

Every poet who enters the contest receives a free copy of the "Poet's Guide to Getting Published", a four-page booklet full of helpful advice and information.

During seven years of sponsorship, the American Poetry Association has run 30 contests and awarded \$120,000 in prizes to 2,900 winning poets.



LIBRARY NOTES

BY JIMMIE HUNTER

Recent out of town guests at the Library were Bill and Linda Hussy from Sequim; WA, Don P. Keith from Katy, TX; Bodie Keith of Albuquerque, N.M.; Ruth and Loyd Latimer of Lubbock, TX; Mark and Debbie Seigler of Northfield; and John and Kim Hunt from Dodson.

John Hunt is a representative of Library Bureau, the company from which we bought the two new shelf units that were recently installed in our Library. John delivered the shelves, installed them, moved the units about two inches to the south, because Earline had noticed that they were not in line with the others, and didn't go home until we had replaced the shelves, and he had stored the extra ones on the top shelf in the storage room for me. He and his wife, Ke, had been to Lubbock Christian College Friday, March 3, visiting with the College President. The College had recently received a grant to build a new library, and John would like to furnish it for them. He said they noticed the lights on and he wanted to show his wife our "unique" library. He liked it's down-town location, it's historical old building with the high, pressed-tin ceiling. "It really is a unique library," he said. John sees a lot of libraries and I believe him.

Members of the Library Board and Staff had the pleasure of the company of Judge Whitaker, Commissioners Fraser Watson, Franklin Jameson, Sonny Russell, Bill Dean Washington and their girl Friday, Lucretia Campbell for a Mexican Dinner in the Community Room at Motley County Library on Monday, March 13. One of the commissioners laughingly told me that they had come for lunch last month and found the door locked. They decided they must have read the invitation wrong, but they were just sure that it had been for the thirteenth. When they returned to the Courthouse, they discovered the day was right but they had come in the wrong month! The meeting day for Commissioners had been on the 13th in both February and

Commissioners continued from page 1

ices came before the court to ask the County to give \$300 to organize a Child Welfare Board. Wesley stated that she had eight citizens definitely interested in serving on this board, four from Matador, three from Roaring Springs, and one from Flomot. They also have four children at this time in foster homes from Motley County.

Wesley and Gross explained the State pays \$11.00 per day to the foster home with this money closely monitored. The Board serve as fundraisers, get the community involved and advisors to the Child Welfare Office. Floyd County organized in 1980 and had never held a fundraiser. Donations from the Civic Clubs and individuals had always been more than they needed. They stated they need a contract between the County and the state before they can form the board.

After discussion the Court said they would agree to this if they would re-word

March! I think waiting a month for the Mexican Food had not diminished their appetites. We were sorry that new Board members Larry Crouch and Forest Campbell were unable to be with us. We really appreciated their finishing the chips, picante sauce and ice for the tea even though they did not get to enjoy the enchiladas, beans, Spanish rice, Mexican salad, sopapillas, and jello dessert with our new Board President, Darla Gwinn and her young son, Fannin, Devonne Dillard, Wilda Dixon and Lay Representative Joan Patton, and Staff members Earlene Vaughn, Bessie Hibbets and Jimmie Hunter.

New and ready for reading at the Motley County Library are: Star, by Danielle Steel, and three mysteries, The Edge, by Dick Francis, Death In A Distant Land, by Nancy Livingston, and the Father Dowling Mystery, Abra Cadaver, by Ralph McInerney.

Among the books left at Lee's and Turner's Gins at Flomot are three or four books written in Spanish. We would appreciate your help in letting the spanishspeaking people know that there are books to read to their children, and both fiction and non-fiction for adults available, there, and about 40 or more Spanish language books at the Library, if they would like to check them out.

Please remember to sign your name to the checkout card in the back of each book you read. That is the only way we have of knowing whether this service is being used or not. Again, we want to thank the Lee's and Turner's for letting us use space at the Gins to make books available to you Flomot residents without driving 84 miles, 42 to pick up a book and 42 to return it. I have not been prompt to pick up the books lately, but will try to do better. If any of you Flomot residents would like to volunteer to help with this program, I would appreciate hearing from you. Call 469-5240 or 347-2717 and leave that message and I will gladly contact you to explain what will be needed to keep the program going.

the contract saying that the \$300 a year is all the county is liable for. Reggie Gross said they would ask the state for this and let them know.

The Court discussed the financial report and noted that expenses had been out \$2,000 a month from last year, this is due to the fact that they have new maintainers, so they don't have the large repair bills.

Jameson stated that according to the Commissioners Manual the Commissioners should look into what the bank has as collateral for the County securities and what the bank is paying for interest. Also that they should advertise for bids every other year. After conference and discussion with Joe Campbell, County Treasurer, the Court elected to advertise for bids for the depository funds.

Washington said he had been asked to assign a Commissioner to the Economic Development Board, which is a branch of SPAG. Jameson agreed to be on this Board. Meeting adjourned.

How About A Push?



This Kitty seems to be enjoying this tricycle, although he needs a little push. This kitty belongs to the Gerald Pipkin family. Janie Campbell snapped this picture when she noticed the kitty on her daughter, Cassie's tricycle, in the Campbell yard recently.

Plans Being Made for Bob Wills Day

Plans are now being made for the 18th annual Bob Wills Day to be held Saturday, April 29, 1989 in Turkey.

Featuring the 9th Annual Reunion of former Texas Playboys, at least 25 to 30 of the most famous and talented musicians in the country will be present this year.

There will be an Old Fiddlers Contest at 12:00 p.m. at the Auditorium Center and Gym.

There will be a dance Friday night, April 28, 9:00 p.m. - 12:00 midnight at the Bob Wills Center. Ten to fourteen former Texas Playboys will be featured for this dance.

The Saturday night dance will begin at 7:00 p.m., featuring Jody Nix and the Texas Cowboys. Breakfast will begin at 11:00 p.m. at the Bob Wills Cafeteria.

There will be a parade Saturday, April 29 at 10:30 a.m., in downtown Turkey. Barbecue will be served Saturday at

11:00 a.m. at the Bob Wills Center. Special entertainment featuring all the former Texas Playboys present. This will be one of the largest groups of Texas Playboys ever assembled at one place!

Emcee will be Dr. Charles R. Townsend, Grammy Award winner and Author of San Antonio Rose, The Life and Music of Bob Wills and Texas Playboys.

All day events will consist of Concession stands and booths selling souvenirs including: Playboys Cassettes and Albums, Caps, Totebags, Ashtrays and coins. The stands are located at the east end of the Center; Bob Wills Museum; Arts and Crafts, located at the Bob Wills Center; Movies, special movies of Bob Wills. Both motion picture and T.V. specials featuring Bob Wills, upstairs in Arts & Crafts Building of Bob Wills Center.

D.P.S. will be on duty for your safety.

SOUTHLAND SEED CO.

SPECIALIZING IN HIGH STRENGTH-HIGH YIELD COTTON SEED VARIETIES

VARIETY	Strength	Staple	Area of Adaption
Deltapine SR-383	27-31	33-34	North, South, East West of Lubock
Terra SR-10	26-28	33-34	Will Plant Further North Than SR-383
ACALA 1517-SR-2	27-31	35-38	An Early Season STORM RESISTANT ACALA
LAMBRIGHT X-15-4	27-31	33-35	Lubbock and South
Deltapine SR-482	24-27	32-33	High Gin Turnout-Extreme Drought Tolerance

806-828-6932
N. F.M. 400
Slaton, Tx.

CALL YOUR LOCAL DEALER SOON!

Best Wishes for the Stock Show

Flomot Gin

Good Luck Stock Show Participants

Higginbotham Bartlett

Matador

Good Luck!

Cooper Oil Co.

Good Luck At the 1989 Motley County Stock Show

Pay-N-Save Grocery

Matador

Motley County School News

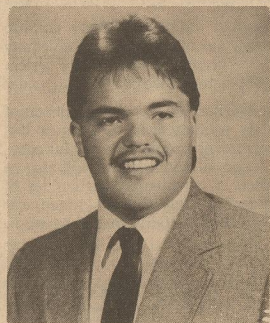
Seniors Shine in '89

Senior Profile

by Tricia Palmer



Joely Beth Ewing



Gilbert Guadalupe Guerrero

Full Name: Joely Beth Ewing
Birth Date: January 16, 1971
Birth Place: Amarillo, Texas
Parents Names: Don and Carolyn Ewing
Sisters and Brothers: Donna and Clay
The best advice I ever received: Be yourself
The worst advice I ever received: You can't change the way things are
If I could change anything: my mistakes
My most valued possession: my friends and family
If I were president: I would remember all of my friends
After high school: I plan to attend college at Vernon
My favorite memory: none
My worst habit: rolling my eyes
Favorite music: Soft rock
My nickname is: J.B.
In my spare time: I like to be with my friends
What I like about high school: having fun with friends
Activities: Basketball, Track, FHA, NHS, Student Council

Full Name: Gilbert Guadalupe Guerrero
Birth Date: January 6, 1971
Birth Place: Floydada, Texas
Parents Names: Alex and Frances Guerrero
Sisters and Brothers: Mark, Alex, Christine, and Margie
The best advice I ever received: Go for it!
The worst advice I ever received: Don't go to college
If I could change anything: I would be smarter
My most valued possession: My family
If I were president: the poor would be rich
After high school: I plan to attend South Plains College
My favorite memory: will be the day I graduate
My Worst Habit: speaking too fast.
Favorite music: Pop-Rock
My nickname is: Beto
In my spare time: I like to fish and hunt
What I like about high school: I get a chance to learn and be with my friends.
Activities: Football, and riding horses

School Newsletter

Thursday, March 16: HAT Period - One Act Play Rehearsal, Study Hall and Tutorials; UIL Literary Practice.
Monday, March 20: County Fat Stock Show, Teachers' Work Day, School Holiday.
Friday, March 17: HAT Period, Study Hall and Tutorials, UIL Literary Practice, One Act Play Contest continued, results late p.m.
Wednesday, March 22: UIL Literary Contest (Here), 3:30 p.m. Debate.
Thursday, March 23: Early Out Schedule, (1:26 p.m.); All other UIL Literary Contest (Here).
Friday, March 24: Lions Club Play school auditorium.
Tuesday, March 21: UIL Literary Contest (Here) 3:00 p.m., Readywriting and Journalism.
Thursday, March 18: Varsity Boys and Girls Track, Jayton.

Topics from Tricia



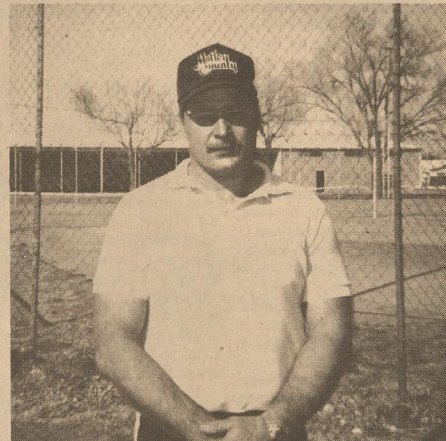
Leigh Barton & Brent Marshall

The 1988-89 Mr. and Miss M.C.H.S. is Crista Leigh Barton and Lee Brent Marshall. They were elected to this honor by the student body at Motley County High School. Both students are athletic, outgoing, and extremely competitive. Leigh is the daughter of Ms. Donna Barton. She is an 18 year old senior and M.C. Brent is the 17 year old son of Mr. and Mrs. Kenneth Marshall; Brent is also a senior at M.C. The student body elected two of the best students to represent Motley County as being Mr. and Miss M.C.H.S.
 Monday when school took up after Spring Break the students all were tired and burned from their vacation. Those who went skiing came back with severe sun burns and many stories to tell. Others that traveled to various places had their turns to tell their adventures over the past five days, also.
 School will not be in session Monday, March 20, because of the Annual Stock Show. Everyone is invited and welcomed to attend the livestock show and visit with the owners of the animals.
 U.I.L. events will take place next Tuesday, Wednesday, and Thursday. Students involved in these I wish you good luck.

Our Teachers Are Totally Terrific!!

Teacher Profile

by Tricia Palmer



Cecil Marks

Mr. Cecil Marks, the Athletic Director at Motley County ISD, is a graduate of Lovington High School in Lovington, N.M. He continued his education at New Mexico Military Institute and Louisiana Tech University.
 Coach Marks and his wife, Melissa have two daughters, Megan, 1 and Devny, three months old. The Marks family moved to Matador two years ago.
 He has taught for twelve years. Subjects he has instructed are: Health, Drivers Education, Economics, American History, World History, Government, and Texas History.
 Coach Marks stated, "It has been great working here at Motley County. The people in the community has been good to me and my family. School Board, administration, and faculty, have been 100% supportive of the Athletic programs at Motley County High School." "To instill a competitive spirit among the students; which I feel will give us more confidence in athletics and life as well," is the main goal Coach Marks has.

TEAMS Registration for Out-of-School Examinees

Individuals who are no longer enrolled in a Texas public school and wish to register to take the Exit Level Mathematics and/or English Language Arts test(s) may pick up a packet at Motley County High School. Registraton forms must be completed and returned in the pre-addressed envelope and must be received in Iowa City, Iowa, no later than 5:00 p.m. April 7, 1989. The Texas Education Agency and National Computer Systems will not be responsible for registration forms that are lost in the mail. It is suggested that individuals registering for the test make arrangements with the appropriate postal agent for proof of delivery notice.
 Individuals who are no longer enrolled in school and have not previously passed both sections of the TEAMS test but have met all other graduation requirements may retake the section (5) not passed. During the May administration, the English Language Arts test will be administered on Tuesday, May 2, 1989, and the Mathematics test will be administered on Wednesday, May 3, 1989.
 Questions concerning out-of-school exam testing should be directed to Don Ewing or Oran Hamilton at the Motley County High School.



Hey Kids!

The Easter Bunny is coming Friday, March 24



1-800-235-3535

To report a missing child or to give information about a missing child, please call the special hot-line number above.

Good Luck!

In The 1989 Motley County Livestock Show



West Texas Gin

Matador

Texas T's & T's

Movie Rentals
 New Releases Each Week

Die Hard Superman
 Short Circuit II

Caps: Special design for your business

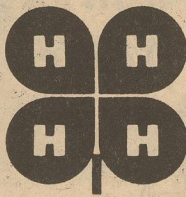
Hours: Monday - Thursday, 10:00 a.m. - 6:00 p.m., Friday, 10:00-8:00
 Saturday, 10:00 a.m. - 9:00 p.m., Sunday, 2:00 p.m. - 4:00 p.m.

1989 Motley County Livestock Show
 Good Luck!



Caprock Meat

Floydada



Good Luck in the 1989 Motley County Livestock Show

Paducah Motor & Implement

Paducah



Good Luck!
 To All The Stock Show Participants

Production Credit Assn.

Alan Bingham
 Matador, Texas



Good Luck
 In the Stock Show!



Matador Hardware

READER'S COLUMN

The Way It Was

by Emmett Jenkins

In April 1917, Dad and I were farming at the Boss Edmondson place, east of town, when Walter Ford came by, horseback, and said, "Have you heard about our new war?"

Being a young teenager, I did not realize the enormity of that statement. Many young men volunteered at once.

The train was still in operation at that time. The boys who were going into the service were lined up, along side of the train. There were twenty boys or more. Their families and friends were there to see them off. There was weeping and sad goodbyes. Our brother, Clarence was in the lineup.

By April 1918, a "Bridge of Ships" was transporting American soldiers to France at the rate of one hundred to two hundred thousand a month.

The Military dress was much different to that of World War II. The enlisted men wore wrapped leggings and a straight brim hat. The officers wore leather leggings.

That mode of dress was adapted by Civilians, mostly teenagers.

Our only source of information was the Fort Worth Star Telegram, as that was before the radio was invented.

It was not long until the United States was the deciding factor, as to the outcome of the war.

November 11, 1918 we were in the field, southeast of town. It was a clear day, no wind. We heard the Gin Whistle. They always blew the whistle at noon, so we did not think much about it, until it continued to blow. It blew for an hour or so. We presumed something momentous had happened. After the days work was done and we got home, we heard the news over our party line telephone. World War I was over.

Dr. Albert Traweck and Clarence are the only World War I veterans in the county, to the best of my knowledge.

December 7, 1941, we had gone for a Sunday afternoon drive. Howard Traweck stopped and told us about the Bombing of Pearl Harbor. It is hard to describe the impact that it had on us and on our nation. The almost unbelievable had happened.

I will never forget President Roosevelt denouncing the dastardly crime perpetrated by the Japanese and later the Declaration of War on Japan.

It was said that World War I was a war to end all wars, and yet just twenty-three years later, we were at war again.

Our means of communication was much better. We had the radio. We listened religiously to Walter Cronkite, H.B. Kaltenborn and William L. Shirer.

The selective service system had replaced the old draft board. Dramatic changes were taking place in our country.

The production of automobiles, as well as most peace time non-essential products were eliminated. Practically every item that we used was rationed, including food, clothes and shoes.

New automobiles and tires were non-existent unless they were used for the war effort.

The last new automobile was made in 1942.

The automobile factories were converted to making tanks, guns, ammunition and whatever was necessary for the war effort.

The farmers were allowed all the gasoline they needed for farming.

T Stamps were issued for agriculture. If a farmer had more T Stamps than he needed, he would give some stamps to a good friend. Some gas stations would accept the stamps and fill the car with gasoline.

After the war was in progress for a year or more. I was feeling badly because

I had not bought any war bonds. I did not have any money.

I owned a 1940 Ford, which was almost new. I sold it to a car dealer at Childress and used most of the money to buy war bonds.

I had planned to buy a cheaper car. That turned out to be a lot easier said, then done, as there were no cars available.

There was a man by the name of John Turner, who lived east of Roaring Springs. I was telling him my problem. He had an old '36 Ford, two door, that was parked in the chicken yard. It had not been driven in a long time. The chickens had been roosting on it. Fortunately the glasses were rolled up. There was nothing inside except sand.

That seemed to be my last chance for a car, so I bought it. It would not run. I towed it to Matador.

Paul Patton and Richard Berryman were the mechanics at the Ford place. After cleaning it on the inside with an air hose, they performed a miracle and got it in good running shape. After a wash job, it wasn't so bad. It was better than having to walk.

If I had known what a dilemma it was going to be, I probably wouldn't have been so patriotic.

Sometime about the middle of the war, a tornado almost wiped Crowell out. Many of us that had cars that would run and tires that would hold up, made a trip to Crowell to see how much damage the tornado did.

The federal speed limit was 40 miles per hour. The idea was to save tires and gasoline.

On the way to Crowell, there was a Black Ford ahead of us. I could hardly believe what I was seeing. The car had truck wheels and tires on the rear, a foot or two taller than the wheels on the front. The rear of the car was elevated. As we drove past them, we were surprised to see Tom and Myra Spears, and they were smiling.

The boys who were going into the service, left from the Bus Station. It was located at the Magnolia Cafe.

Many of the people went to the Bus Station to see the boys off.

James (Tootie) Meador was a boy that always had a smile and a friendly personality. I never knew anyone who did not like him. He was lined up with several others at the Bus stop. He was going into the service. Someone found out that Tootie did not have any "pocket money." The word got around and people began to chip in, sorta private like. Before time to go, they gave it to him. I have never seen anyone more appreciative.

Tootie does not live here now, but when he comes home he always gets a warm welcome. His popularity still holds. He was elected Homecoming King, one year and he was protesting that someone else deserved it more than he.

The first service man that came home on furlough from the Battlefield was Clyde Duncan. He had seen severe fighting on Guadal Canal, the largest Island on the Solomon group, in the South Pacific. It took the combined efforts of the Navy, Marines, and Army to finally overcome the Japs, who as a whole fought to death, rather than surrender.

The survivors were given a leave, to rest from Combat fatigue.

Clyde received a Hero's Welcome. Everyone was so proud of him. I could hardly wait to talk with him. He attracted a crowd wherever he went.

Bob Robertson of Bob's Oil Well, gave him the use of a car, with gasoline furnished, for the duration of his leave.

After the surrender of Japan, the lights came on, all over the world.

That's the way it was.

Rural Hospitals Fighting for Survival

by Lloyd Bentsen
United States Senator

Our rural hospitals are fighting for their survival and need help desperately.

Forty three rural hospitals closed in the United States last year - 19 of them in Texas. A recent survey of rural hospital administrators suggests that as many as 600 hospitals could close their doors in the next five years.

We cannot afford to let these hospitals go under. People residing in small, often isolated areas need these hospitals to provide them with vital health care services.

It is especially true for older Americans on Medicare. The elderly comprise 25 percent of our nation's rural population and many turn to rural hospitals for their care.

Much of the problem that rural hospitals face comes from the way Medicare

reimburses our nation's hospitals for the care they distribute. Under the system used by Medicare, hospitals are no longer reimbursed on the individual costs, but on an average of those costs.

In 1987, half the rural hospitals lost money on their Medicare patients because of this reimbursement system. Historically, rural hospitals for their care.

Much of the problem that rural hospitals face comes from the way Medicare reimburses our nation's hospitals for the care they distribute. Under the system used by Medicare, hospitals are no longer reimbursed on the individual costs, but on an average of those costs.

In 1987, half the rural hospitals lost money on their Medicare patients because of this reimbursement system. Historically, rural hospitals have lower average costs than their bigger city neigh-

bors, and their Medicare payment rates are currently 12-13 percent lower than their urban counterparts.

Recognizing the inequity of this repayment system, I have introduced the Equity for Rural Hospitals Act of 1989 to provide urgently needed short-term relief and long-term structural reform for rural hospitals.

My bill will phase in a new uniform reimbursement system to ensure equity for rural hospitals. Until the new system is in operation, Medicare will guarantee

that rural hospitals with large numbers of elderly patients and 100 beds or less receive reimbursement for their full costs.

A special review board will also be created to examine the difficulties of "border" hospitals that are located near cities but are unfairly treated by medi-

care. In addition, my legislation increases grants so hospitals can expand the types

of medical services they offer and better tailor their current services to the needs

of the community. It also expands a program urging teaching hospitals to train resident physicians in rural areas, and opens a new program to encourage students into the nursing profession.

Rural hospitals are the most vital source of health care to their communities, and should not be forced to close their doors. The Equity for Rural Hospitals bill will revive that vital link between the rural hospitals and the people they serve.

South Plains EMS Lifts Regional Antenna

Emergency Medical Services on the South Plains have experienced inadequate radio reception/transmission on ambulance runs. As a result, South Plains EMS, Inc. (SPEMS) a non-profit EMS support organization, doubled the height of the regional radio antenna February 26.

This antenna is part of the regional radio system used by all EMS services and providers across the South Plains. It was designed and put in place with federal grant money by SPEMS, Inc., so that South Plains ambulances can communicate with hospitals when treating and transporting patients.

The regional antenna is accessed for radio contact with critical care facilities in Lubbock from any location in the region. Additional repeaters and antennas are placed in strategic locations across the region. The regional antenna is the tallest at 620 feet and transmits to and receives from the rural repeaters to provide rural hospitals and ambulances radio contact with Lubbock hospitals.

SPEMS, Inc. is financially supported by the following hospitals and counties: Crosby, Dickens, Garza, Hale, Hockley, Lamb, Motley and Yoakum; Garza County Memorial, Lubbock General, Lynn County Hospital, Methodist-Lubbock, St Mary of the Plains and South Plains Hospital-Amherst. All South Plains county governments and hospitals are asked to contribute to the non-profit organization which supports volunteer Emergency Medical Services.

Rolling Plains Farmers, Ranchers Ponder Surplus of Wild Hogs

GUTHRIE -- Two approaches to controlling the increasing numbers of wild hogs in King, Cottle and adjacent counties will be explored in a workshop here March 21.

"The population is expanding every year," said Mike Gruber, Cottle County extension agent. "We want to look at the factors involved in eradicating the beasts or in marketing them as a wild game."

The program will begin at 10 a.m. at the King County community building,

half a mile north of the courthouse on U.S. Hwy. 83. Dr. Dale Rollins, wildlife specialist with the Texas Agricultural Extension Service, San Angelo, and Hoppe Turman, district supervisor with the Texas

Animal Damage Control Service, Uvalde, will explain options for controlling the hogs.

After lunch, participants will tour area ranches to examine habitat and conditions and see different traps for the wild

hogs.

The population of wild hogs is expanding all across the state, Rollins noted.

In farmland, the beasts can do considerable damage to crops, especially such things as sprouting corn or peanuts, he

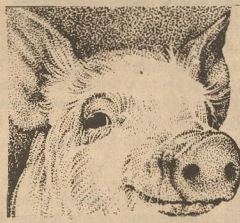
said. Ranchers have a negative view of the animals because they can be a carrier

for diseases and in some counties have killed cattle.

Wait on the Lord: be of good courage, and he shall strengthen thine heart: wait, I say, on the Lord.

Psalm 27:14

Good Luck in the Stock Show!



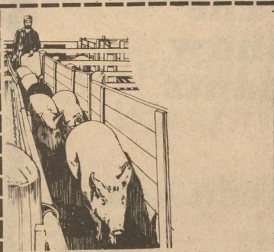
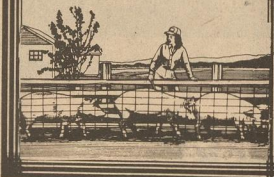
RED BALL GIN

Roaring Springs

Good Luck!



Allsup's



Stafford Farm Store
Roaring Springs

Good Luck!

Briscoe Implement

Silverton 823-2486

Tulla 995-4065



JOHN DEERE

SALE OF THE WEEK

1989 Chevrolet Caprice Classic
4 door

List Price: \$15,934.00

Sell for: \$14,000

Less Wind Damage: \$650.00

Sale Price: \$13,350.00

Matador Motor & Implement

Matador

347-2422

Good Luck! in the 1989 Motley County Stock Show

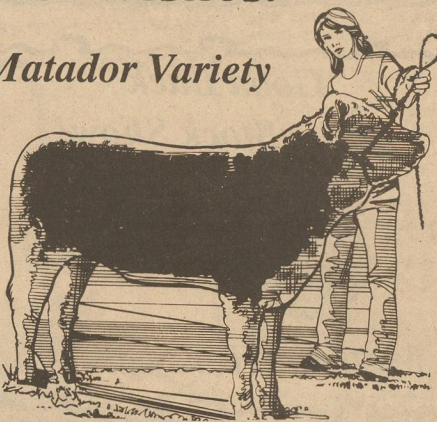
Motley County Tribune

Matador

Best Wishes!

4-H & FFA

Matador Variety



Social Security Tips

By Terry J. Clements

A long illness is a misfortune that anybody can face, but those most vulnerable are aged people whose health is beginning to fail. They not only have to endure the sorrows and pains of being sick, but also the financial burden that long hospitalization and expensive treatments can place on them and their families. Such lengthy illness is considered "catastrophic" and has been a matter of concern for many years.

To place a cap on the beneficiary out-of-pocket expenses for medical care as a result of catastrophic injury or illness, the congress passed legislation on June 8, 1988, and President Reagan signed the Medicare Catastrophic Coverage Act into law on July 1, 1988.

Beginning January 1989, the catastrophic health insurance coverage provides unlimited hospital coverage for a medicare beneficiary after he or she has paid a deductible once a year. The deductible for 1989 is \$560, but it changes each year.

Before the catastrophic legislation became law, a medicare patient admitted to a hospital had to pay a deductible in every "benefit period," and then medicare paid the balance of all allowable charges during the first 60 days of hospitalization. After 60 days in the hospital, the patient had to pay a certain amount each day; after 90 days all costs were paid by the patient unless reserve days were used.

If the patient was readmitted to the

hospital within 60 days of being released, he or she didn't have to pay a new deductible. If the patient was readmitted to the hospital within 60 days of being released, he or she didn't have to pay a new deductible. If the patient was readmitted after more than 60 days had elapsed since the last hospital release, a new benefit period began and a new deductible was required.

Under the catastrophic legislation, there are no "benefit periods," coinsurance payments, or "reserve days." The patient pays an annual deductible and medicare pays the balance of covered costs regardless of how many times the patient is readmitted to the hospital, or the days of hospitalization.

To finance the new benefits, any person eligible for medicare who is 65 years old, or anyone who is disabled at any age and receiving medicare, will pay a premium based on their Federal income tax liability.

For 1989, the surtax is \$22.50 for each \$150 of Federal income tax. The maximum is \$800 for a single person and \$1,600 for certain married individuals.

Medicare medical insurance remains almost the same in 1989, but the premium is raised to \$31.90 this year including \$4 per month for catastrophic coverage. In Puerto Rico this additional premium will be \$1.30; in the U.S. Trust Territories, it will be \$2.10. The \$75 deductible remains the same in 1989.

For more information or to file a claim call 1-800-2345-SSA.



Six "do's" and one "don't" were presented in Lubbock March 7 by Lubbock-based Plains Cotton Growers, Inc. as its recommendations for enhancing producer acceptability of multi-peril crop insurance.

The occasion was a field hearing held in Lubbock at PCG's request by The Commission for the Improvement of the Federal Crop Insurance Program. PCG's written statement was filed with the Commission in advance and oral testimony was given by Steve Verett of Ralls, PCG President.

The Commission was created by the 100th Congress to review the program and recommend ways in which to increase producer participation. Its 21 members include 10 producers, 10 representatives of the insurance industry and John Marshall, General Manager of the Federal Crop Insurance Corporation (FCIC). Three producers represent general farm organizations, three speak for "general crops" and one each represents corn, wheat, soybeans and cotton. Cotton's spokesman on the Commission is farmer and ginner Myrl D. Mitchell of Lenroah in Martin County, who is also Board Chairman and immediate past president PCG.

Verett's testimony, developed by the 50-member PCG Board in a meeting January 11 and in a meeting of the organization's Executive Committee February 28, suggested that future crop insurance policies provide:

More adequate coverage through higher guaranteed yields and effective unit division;

Premiums more commensurate with coverage;

Improved quality loss protection;

Faster adjustments;

Producer control of decisions after adjustments are made, with no adverse effect on previously agreed loss indemnity, and

More knowledgeable agents and adjusters.

On the "don't" side of the issue, Verett turned thumbs down on the Commission's consideration of any suggestion that the purchase of crop insurance be required as a condition of farm program participation. Buying crop insurance of any kind, he said, "is a farm management decision every farmer has the right to make for himself without coercion."

Emphasizing producer objections to the way FCIC determines yield guarantees, Verett told Commission members "We invest money in a crop based on our potential yield, and we need to insure the crop for that same potential - not for the low average yields that result from FCIC yield-setting formulas."

Explaining its call for "effective unit division" PCG's prepared statement said producers are "really turned off" when they lose a crop on one unit of a farm operation and can't collect on the loss because of production on another unit or units. Until that situation is corrected, Verett added, "a lot of us aren't going to be interested in federal crop insurance."

Also scheduled in the Cotton Belt are hearings in Georgia, Tennessee, Louisiana, North Carolina and California.

Letter To The Editor

Dear Barbara,

I enjoy receiving your paper every week, and was especially happy to see your reprint of the letter "Small Towns are Worth Saving" in your March 9, 1989 edition. I plan to use the letter also.

I was sad, however, to see you did not give credit to the man who wrote it. His name is Roy Harris and he is the superintendent of Pringle-Morse CISD, located about 18 miles northwest in Stinnett in the Texas Panhandle.

Mr. Harris devotes much time to fighting for the rights of small, rural schools and the small communities. I believe his

name is well-known in Austin for this reason. The Pringle-Morse CISD is a strong little school district and the residents are actively involved in the cause. They have a school district to be proud of and should be commended for their effort.

I hope you'll consider giving Mr. Harris credit for the letter. He certainly deserves it! Hope to see you at the Panhandle Press Convention in April.

Sincerely,
Leslie Monden
Publisher, Adobe Press



State Department of Highways and Public Transportation employees of the Motley County Maintenance Office were recently honored during the Sixth Annual Service and Safe driving Awards Assembly. The prestigious event was held at the Fair Park Auditorium in Childress. Employees receiving awards from Matador were Clay Jameson, Douglas Campbell, Garland Cartwright, Vaden Hays, and H.A. Stephens.

Obituaries

Theresa Sheffield Smith

Theresa Sheffield Smith, 28, of Amarillo, died Thursday, March 9, 1989 at MD Anderson Hospital in Houston.

Services were conducted with Schooler-Gordon Bell Avenue Chapel.

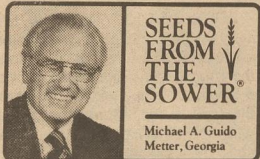
Mrs. Smith, born in Waco, had lived in Amarillo most of her life. She was a housewife. She was a 1978 graduate of Tascosa High School and a member of Olsen Park Church of Christ. She married Kenny D. Smith in 1978 at Amarillo.

Survivors include her husband; a son,

Ryne Todd Smith of the home; her parents, Mr. and Mrs. Wendell Sheffield of Amarillo; a sister, Lisa Adlong of Amarillo; two brothers, Bryan Sheffield and Billy Sheffield, both of Amarillo; and grandparents, Mr. and Mrs. P.B. Welborn and Mr. and Mrs. Herman Thiele, all of Waco.

She was the granddaughter-in-law of Mrs. Paul (Beatrice) Smith of Matador.

The family requests memorials to be to the Leukemia Society of America.



which will live forever.

You were made for fellowship with God. Life begins with Christ. Eat God's Word, read it, think about it, grow strong in the Lord. Don't neglect your soul.

Praise The Lord!

A tramp asked a heavily-built woman, "Will you give me fifty cents? I haven't eaten in three days."

"I wish I had your will power," she said longingly.

How long has it been since you've fed your soul? You eat three meals a day. But what about your soul? Bodily health is important, but soul health is more important.

Too many stuff their bodies, but starve their souls. They put everything on that which will rot in the grave, but nothing on that

Thank You

Thank you for remembering me with your flowers, cards, calls, visits, and the kind words during my illness. The people in our area are the greatest. Thanks again.

Dean Turner

Praise The Lord!

Good Luck Stock Show Participants



Thacker Supply

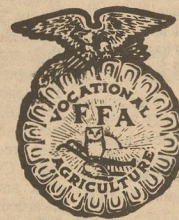
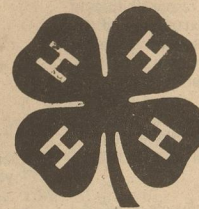
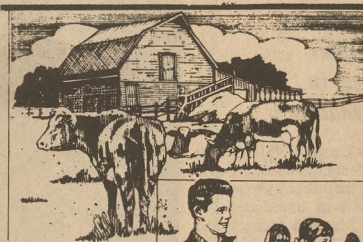
Roaring Springs

Good Luck!



Paducah Meat Co.

Good Luck! Motley County FFA & 4-H Livestock Show Participants



Good Luck

Motley County

FFA & 4-H

Livestock Show

Participants

Stanley Pharmacy

First State Bank

Matador, Texas

347-2661

Society News

McKelvey and Cox Exchange Wedding Vows in Lubbock



Mrs. Bobby McKelvey

Debra Gale Cox and Bobby Ray McKelvey were united in matrimony Saturday March 4, 1989 at 6:00 p.m. in the Terrace Suite of the Lubbock Memorial Civic Center. Delbert Bradley of Sunset Church of Christ officiated. Honor attendants were Donna Berryhill of Woodforth and Billy McKelvey, brother of the groom. Other attendants were Elizabeth Daniels and Craig Forbis. Kellen McKelvey, son of the groom and Michael

Daniels, nephew of the bride, were ring bearers. Mr. and Mrs. Gary D. Cox of Duncan, Oklahoma and Mr. and Mrs. Bill McKelvey are parents of the couple. The bride is a graduate of Barnsdale High School in Oklahoma. The groom is a graduate of Motley County High School and Texas Tech University. He is employed by Modern Chevrolet. The couple will reside in Lubbock.

County, District Clerks Attend Seminar at A&M

Lucretia Campbell, County Clerk and District Clerk, Motley County, joined about 550 other officials for the 17th Annual County and District Clerks' Seminar here Feb. 27, 28 and March 1. As an enrollee in the continuing education seminar, Lucretia participated in the three-day training effort which focused on the theme, "Yearning to Learn...Learning to Serve."

Lucretia said, "The responsibilities of our office are quite extensive, and this was reflected in the seminar program. Some 35 sessions involving about 50 speakers or panel members made up the seminar."

Separate sessions were held for district clerks and county clerks in a number of instances, with joint sessions following.

Major discussion subjects included a preview of the 71st regular legislative session, tips on making an effective budget presentation, registry of court and fees of court, fundamentals of legal research, management of personnel and administration, and open records in the clerk's office.

The seminar for clerks is an annual education program of the V.G. Young Institute of County Government, a part of the Texas Agricultural Extension Service. It is conducted in cooperation with the County and District Clerks' Association of Texas.

Clerks who took part in all sessions of the seminar were awarded 1.2 continuing education units (CEUs) or 12 credit hours by the office of Continuing Education at Texas A&M. The clerks are required to earn 20 hours of continuing education every two years.

Buffalo Grass Chapter Meets in Floydada

Buffalo Grass Chapter NSDAR met February 28, 1989 at Lighthouse Electric in Floydada. After the meeting was opened Mrs. Jeanette Wilson introduced our guests: Mr. and Mrs. Ed Merrick and Cindy of Ralls; Mrs. Dorothy Armstrong and Scott of Lockney; and Mr. and Mrs. Kendis Julian and Tim of Floydada. Cindy, Scott and Tim were the recipients of the DAR Good Citizen's Awards from their respective high schools. They had each prepared an essay: "Our American Heritage and My Responsibility to Preserve It." Each of these young people read their essay to the group. Mrs. Wilson then presented each of them with a DAR Good Citizens pin and certificate. She then announced that the judges had awarded first place to Scott Armstrong of Lockney, second place to Tim Julian of Floydada and third place to Cindy Merrick of Ralls.

The hostesses, Vera Jo Bybee and Edna Workman served refreshments following the program.

During the business session, officers reports were given. Mrs. Eugenia Be-thard announced that she, Mrs. Bybee and Mrs. Bollman plan to attend the state conference in El Paso in March.

Mrs. Nancy Marble presented Mrs. Bethard a gift from the chapter.

Members present were: Eugenia Be-thard, Ona Ruth Neff, Jeanette Wilson, Gene Reed, June Sherman, Nancy Marble, Mary Lou Bollman, Margaret Wheeler, Grace Zablowski, Sherry Colston, Susan Dunavanti, Janis Julian, Vera Jo Bybee, Edna Workman, and Loretta Denning. The next meeting will be March 18.

Motley County Arts & Crafts Club Meets in Louder Home

A program on quilting was held in the home of Mrs. Mary Louder, when the Motley County Arts and Crafts Club met, Monday March 6 at 1:30 p.m.

Mrs. Elsie Thacker was in charge of the program. Several hand made quilts were on display furnished by Mrs. June Keltz, Mary Louder, Mrs. Elsie Thacker and a candlewick, embroidery and lace, white quilt made by Mrs. Lorene Lancaster.

Those in attendance made a quilt block, chosen from several different patterns. Mrs. Winifred Lee, president, was in charge of the business portion of the meeting. At this time Mrs. Una Simpson

reported on the project for the May meeting. The colors of apricot, green and blue were voted on, to be used in this project. Mrs. Lee displayed several types of wreaths that may be created during the April meeting, which will be a study of various types of wreaths.

The refreshment table, covered with a bright green cloth featured the St. Patrick's Day theme. Enjoyable refreshments were served by the hostesses to: Mesdames Bonnie Edmondson, Rhea Lawrence, Bertha Stearns, Una Simpson, Lorene Lancaster, Winifred Lee, Elsie Thacker, Dora Watson and Mary Louder.

The next meeting will be in the home of Mrs. Winifred Darsey on April 3.

El Progresso Club Meets For Quilting Demonstration

The March 9, 1989 meeting of El Progresso Club met in the parsonage home of Mrs. Gene (Mary) Louder for a program on quilting given by Mrs. Bill (Peggy) Wright of Floydada.

President, Mrs. Joe (Loys) Campbell presided over the business session reminding members of the Santa Rosa District Convention in Seymour on March 17 and 18. All were encouraged to attend to learn what TFWC and Santa Rosa District are doing. Members were asked to contribute articles for the Country Store, Arts and Crafts and bring clothes to model in Fashion for Fun. Mrs. Campbell asked Mary Louder to preside as leader for the afternoon.

Mrs. Louder read the caption that introduced the program in the yearbook, "Beauty means this to person, perhaps, and that to the other and yet when anyone of us has seen or heard or read that which to him is beautiful, he has known an emotion which is in every case the same in kind, if not, in degree; an emotion precious and uplifting." She presented Mrs. Petty Wright, wife of the Methodist pastor in Floydada who demonstrated "The Art of Quilting." The Wrights have 9 grandchildren and it was about the time the first was born she began creating quilts, giving one to each of the. She had always loved quilts and married into a family of quilters - seven sister-in-laws. Mrs. Wright told of the history of quilts stating in the "early" days quilting-bees were held where the women worked all day long at quilting frames, the men would come in for supper, then they would have a dance or entertainment to round out a full day of enjoying one another's company.

When the Wrights married they were given a number of quilts but after raising four children with them, they were beginning to show wear. Peggy had always

sewn for her children and herself so decided she would tackle the quilting hobby. She took quilting lessons in Lubbock and just this past Fall took advanced quilting. She had the pieces she made in those classes and they were most interesting.

Peggy designs her own quilts, first using graph paper, then, when the colors have been selected she colors the squares on the graph paper to see if they harmonize. She has a scrapbook with the graph of the quilt, pieces of material it was made from, for whom it was made and maybe a little something of how she felt when making it, giving something of herself in each stitch for that person. As the group could imagine when hearing Peggy talk about this hobby she does put something very personal in each quilt for that certain grandchild.

Members and guests brought quilts to "show" with each one having a "personality" all its own. Mrs. Louder led the club in the Club Collect for the Inspirational Thought. Peggy Wright concluded with the thought that when you see all of God's creativity you can try to show a little bit of your own quilts you design as a "little bit of you" goes with each stitch into the quilt you make and give.

Refreshments were served by Mrs. Furman (Beverly) Vinson and Mary Louder to members Mrs. Dale (JoEita) Bumgardner, Mrs. Douglas (Lila) Meador, Mrs. E.A. (Dorothy) Day, Mrs. Frank (Lola) Pohl, Mrs. Ted (Bailey) Elliott, Mrs. John (Josephine) Hamilton, Mr. W.D. (Vena) Lipscomb, Mrs. Harold (Grace) Campbell, Mrs. J.E. (Marge) Edwards, Mrs. R.E. (Lucretia) Campbell, those previously mentioned and guests Mrs. Roy (Opal) Bradford, Mrs. Luther (Lorene) Lancaster and Mrs. Bill (June) Moss.

Brent Hamilton Receives Nomination to Attend U.S. Naval Academy



Brent Hamilton

Brent Hamilton of Plainview, Texas, has received the nomination of Congressman Larry Combest to attend the U.S.

Naval Academy, Annapolis, Maryland. He recently attended a Young Leaders

Conference at the Capitol in Washing-

ton, D.C. and was elected by his peers as House Majority Leader in mock sessions

of the Congress. He debated a bill and

gave a 6-minute speech on the floor of the House of Representatives. He is the 18-

year-old son of Mr. and Mrs. Tom Hamilton, Plainview and the grandson of Mrs.

Josephine Hamilton and Mrs. Dan Barton of Matador.

Matador Garden Club Wins District Awards

Two first place awards and an honorary mention certificate were received by Matador Garden Club at a district meeting of District I Texas Garden Clubs, Inc., March 6-7, in Lubbock. The two-day meeting was held at the Holiday Inn Civic Center, and attended by four members of the local club, on Tuesday.

The Matador Club's scrap book and brochure on the "Living Legacy" tree commemorating the bicentennial of the United States Constitution, each earned a

first place award, and the scrap book was eligible for state competition. The club's yearbook received the honorary certificate.

District I Texas Garden Clubs, Inc., extends from the top of the Panhandle of Texas, south to include the Permian Basin.

Attending the meeting from Matador were Mrs. Edgar Lee, president, Mrs. Ted Elliott, Mrs. W.D. Lipscomb and Mrs. Douglas Meador.

Engagement Announced



Tammi Edwards & Wesley Stafford

Mr. and Mrs. Fred Edwards of Silverton announce the engagement of their daughter, Tammi Carol, to Mr. Wesley Anderson Stafford, son of Mr. and Mrs. Gale Stafford of Matador. The wedding will take place June 3.

Miss Edwards is a 1984 graduate of Silverton High School. She attended West Texas State University where she was a member of the Student Foundation and Zeta Tau Alpha Women's Fraternity in which she served as President. She also attended Texas Tech.

Mr. Stafford is a 1982 graduate of Motley County High School in Matador. He was graduated from Texas Tech in the spring of 1988 with a Bachelor of Science Degree in Landscape Architecture.

He is manager of Beethoven's Restaurant in the Lubbock Plaza Hotel. The bride-elect is the granddaughter of Mr. and Mrs. H.A. Cagle of Silverton, Mr. and Mrs. Curtis McNeill of Tulia, Mr. and Mrs. R.A. Edwards of Weatherford and the late Varah Cagle.

The prospective bridegroom is the grandson of Mr. and Mrs. Lewis Armstrong of Dallas, Mr. Loyd Stafford of Amarillo and the late Tommie Stafford.

Slide Presentation Highlights Program for Garden Club

A slide presentation of a flower show held by the Fort Worth Garden Club was the highlight of the February 20 meeting of Matador Garden Club. Mrs. Edgar Lee, president, was hostess. Mrs. Ted Elliott was leader of the Artistic program, "This World of Creativity," which was given by Mrs. J.D. Craven.

The president disposed of business, including reading of the minutes by the secretary, Mrs. W.N. Pipkin; discussion of an appropriate date, weather-wise, for planting an Arbor Day tree, and the District I Spring Convention of Garden Clubs in Lubbock, March 6-7. Several members indicated that they would like to attend.

A description of the arrangements and classifications shown on 51 slides was narrated by Mrs. Craven as she presented the program. According to the slide commentary, "The Special Achievement of Fort Worth Garden Club's 1979 Flower Show, 'Spring Song' was the staging of the flower show in an original garden setting, expressing the attributes of good garden design."

Displays were arranged in divisions including Design, Horticulture, Youth Gardeners, and Educational. Design division included groups of invitational tables, and six foot arrangements in the Japanese manner. Flowering pot plants, Bonsai and foliage pot plants were features of the horticulture division. Individual photographs of the Master Class

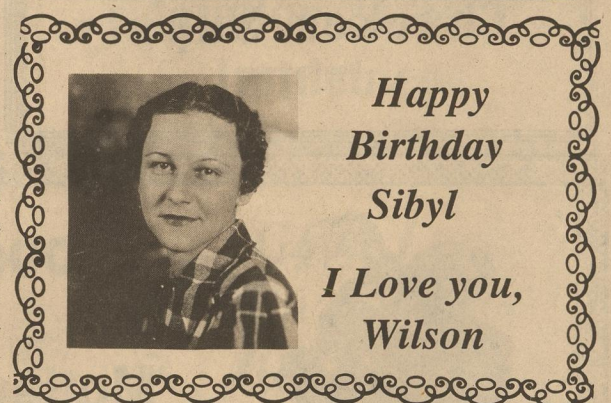
Designs were shown. Staged in niches were award winners. These included Tri-Color Award, "Awake! It is spring;" "Explosions of Color," and "Dance of the Nymphs," Tri-Color Blue Ribbon winners; and "Birds in Flight," Creativity Blue Ribbon winner. Quiet Elegance, a Creativity Blue Ribbon winner was staged on a pedestal, and Creativity Award Winner, "Shibui Serenity" was staged in an alcove. All featured perfect floral arrangements.

Novice Class Blue Ribbon winners also were shown in the slides, and other slides were of the Orchid Society exhibit of rare specimen plants, and Camelia Society display with award-winning quality blooms.

Mrs. Craven concluded her presentation with slides which she had made in Alaska, showing exotic wild flowers and also home grown flowers and vegetables, including the huge green and rose cabbage plants, and flowers of every variety and color grown by the extension agent. Other scenes were of the Columbia Glacier, and the Army base which was used during World War II with the largest building of any of the army bases.

Refreshments of cream pie with cherry topping, snacks, nuts, coffee and hot punch were served to Mesdames W.N. Pipkin, W.D. Lipscomb, J.D. Craven, Douglas Meador, Ted Elliott, Artie Watson, and Robert Darsey.

Good News!
God Loves You



Happy
Birthday
Sibyl
I Love you,
Wilson

The
Windmill



Attic Sale
NOW - MARCH 25
Savings for all Seasons
50% - 75% Off
Upstairs at Kristi's
Plainview, Texas 296-7254

Reese AFB Hosts Thunderbirds

Reese Air Force Base, Texas -- Reese AFB will host the U.S. Air Force Thunderbirds, Aerial Demonstration Team, early in the 1989 show season according to the Demonstration Team schedule announced by the Secretary of Defense.

Reese will host the third show of the season on Saturday, March 25, 1989. Nine other locations within "a day or so's drive" of Lubbock will also host the Thunderbirds. Those locations and the dates early in the show season are: April 2, Hull Airport, Houston, Texas; May 21, Randolph AFB, San Antonio, Texas; May 31, The U.S. Air Force Academy, Colo., and June 10, Peterson AFB near Colorado Springs, Colo.

After avoiding flying in this area during the intense summer heat, the Thunderbirds will return to West Texas at Goodfellow AFB, San Angelo, Texas on Sept. 30th. They hope to Vance AFB, Enid, Okla, on Oct. 1, then travel to Cannon AFB, Clovis, N.M. Oct. 8th. The flying in Texas finishes up at Bergstrom

AFB, Austin, Texas on Oct. 15th and Laughlin AFB, Del Rio, Texas on Oct. 18th.

The U.S. Navy Blue Angels Flight Demonstration team, that thrilled more than 100,000 spectators at Reese on Oct. 16, 1988, will fly eight shows at four locations within a day's drive of Lubbock. Those shows are at Corpus Christi

Naval Air Station, Corpus Christi, Texas May 13 and 14; Oklahoma City, Okla., June 17-18; Biggs Field, El Paso, Texas Oct. 14-15; and Dallas NAS, Dallas, Texas Oct. 21-22.

The schedule of the U.S. Army's popular Golden Knights Parachute Demonstration Team is not yet available for public announcement.

Person interested in attending any of the announced flying shows, should contact the publicity director at the site to confirm dates and times and avoid problems associated with last minute schedule changes or cancellations.

Render Property Now

March 31. That's the deadline for local property owners to complete, sign and submit rendition forms to the Motley county Appraisal District.

A rendition form is a document on which a property owner lists taxable property. The owner can also estimate the property's value on the form. It's filed at the appraisal district office at P.O. Box 779, Matador, TX. Property owners who ask in writing for an extension before the deadline have 30 extra days to file the rendition.

Property owners who own or manage income-producing tangible personal property must file renditions. Examples of such property are business inventory, office furniture and fixtures, and business vehicles.

Filing a rendition is optional for other property owners unless the chief appraiser requires them to render their property. If so, the property owner will receive an explanation from the chief appraiser along with a rendition form.

Why file a rendition? "There are several good reasons," Mrs. Betty Luckett, chief appraiser said. The first, she said, is that rendering is a means for a property owner to record an opinion of the prop-

erty's value, any changes in ownership or address changes.

Then, if the chief appraiser proposes a higher value for the property, state law requires the chief appraiser to notify the property owner. With this information, the property owner can decide whether to protest the appraisal district's value to the Appraisal Review Board.

Also, the property owner ensures that the appraisal district has the correct mailing address and property description.

Property owners who want to file a report of decreased value must do so by the March 31 deadline. Property owners who believe their property's value has decreased during the previous tax year for reasons other than normal depreciation should contact the appraisal district for a report.

Renditions, as well as reports of decreased value, are confidential. For more information, a property owner may contact the Motley Appraisal District at the courthouse or P.O. Box 779, Matador, Texas 79244 or call at 806-347-2334.

TAXPAYER RIGHTS PAMPHLET AVAILABLE

Local property owners can learn about

State Ag Official Says Texas Must Not Let Budget Problems Block Ag Recovery

(Lubbock) -- "During the next 100 days, the Texas Legislature will have to reach a consensus on a long list of issues of importance to the future of Texas. Several of those legislative items will have a direct impact on thousands of Texas farmers and ranchers," Deputy State Agriculture Commissioner Mike Moeller said today.

Moeller made the statement during a meeting of the Texas Agricultural Forum. The major topics at the one-day meeting were the 1990 Farm Bill and priorities for the state's major agricultural agencies.

"The most publicized ag-related legislation now before state lawmakers concerns the continued existence of the Texas Department of Agriculture, the Texas Animal Health Commission and the Natural Fibers and Food Protein Commission. As part of the Sunset review process, a 10-member Sunset Advisory Commission has already urged the Legislature to continue those agencies in their present form. It is now up to the 71st session of the Texas Legislature to act on

the Commission's recommendations," Moeller said.

"These three agencies play some role in almost every aspect of Texas agriculture. The continued existence of TDA, the Texas Animal Health Commission and the Natural Fibers and Food Protein Commission is crucial to our state's ability to combat major livestock diseases, promote Texas agricultural products and support programs to diversify the farm economy.

"During the past few years, most Texas leaders have realized that agriculture must adapt to rapidly changing market conditions, and state government has a role in assisting producers to grow new cash crops, market crops directly to consumers and process more of the food and fiber we grow," Moeller said.

"State lawmakers took a giant step in the right direction two years ago with passage of the Texas Agricultural Diversification Act. That legislation, which was approved by voters in November 1987 as part of Proposition Four, created a matching grant program for non-profit

organizations which assist Texans in opening new profitable markets for Texas agriculture. The six-member Texas Agricultural Diversification Board has awarded grants totaling \$200,000 to 14 recipients around the state during the past four months.

State lawmakers also created the \$5-million Linked Deposit Program to use state deposits in state accredited depository banks to leverage private capital for new food and fiber processing facilities, direct marketing ventures and alternative crop production. Already, this program has been used to provide more than \$2 million to enterprising Texas farmers, ranchers and agribusiness operators," Moeller said.

"Texas can take another step towards diversification of agriculture with passage of House Bill 1111 by State Representative Dudley Harrison of Sanderson, chair of the House Agriculture and Livestock Committee. This measure would authorize a Texas Agricultural Finance Authority to sell \$25 million in general obligation bonds to provide assistance to agricultural businesses.

"State lawmakers have already helped every farmer and rancher in Texas with approval of emergency funding for the Texas Agricultural Statistics Service. Legislation sponsored by State Senator Bill Sims of San Angelo and State Representative Dick Waterfield of Canadian provided \$60,000 to allow state officials to obtain agricultural production statistics on a county-by-county basis. The

State Legislature and the Governor's Office are to be commended for recognizing the importance of the information provided by the Texas Agricultural Statistics Service, which is joint venture of the Texas Department of Agriculture and the U.S. Department of Agriculture.

"A still sluggish state economy and major budget obligations will make every decision by state lawmakers difficult this year. But, agriculture remains one of

the best hopes for the Texas economy, and our leaders cannot afford to turn their backs on an industry which generates \$33 billion in economic activity for the people of Texas," Moeller said.

the Texas property tax system through a pamphlet available at the Motley County Appraisal District office. Produced by the State Property Tax Board, "Taxpayers' Rights, Remedies, Responsibilities" is printed in both English and Spanish.

The pamphlet explains the property tax system and offers suggestions for possible tax savings. For example, it lists the various homestead exemptions taxing units in the appraisal district may offer and explains how to apply for them.

Rendering property and applying for agricultural land appraisal are other subjects covered. "Appraisal district personnel can offer more information about special land appraisal, tax renditions and exemptions," Betty Luckett said.

She said the pamphlet also contains information about preparing and presenting an appeal to the appraisal district's Appraisal Review Board (ARB). The ARB is a group of local citizens the appraisal district board of directors appoints to examine appraisal records and hear taxpayer appeals. They ensure that property values are equal and uniform.

Another section deals with the procedures voters must follow to petition for an election to limit the amount of tax increase a taxing unit adopts.

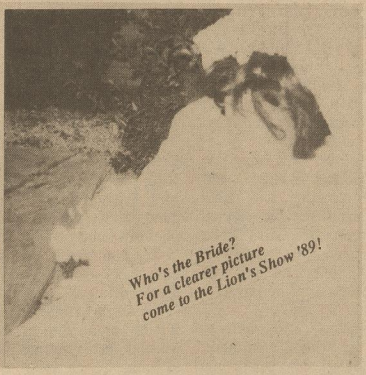
"Any property owner who wants to learn about the property tax system should read this publication," Mrs. Luckett said. "It explains in clear language the ad valorem tax process and the citizen's responsibilities as a property owner. Important deadlines for filing exemption, rendition and special appraisal forms are all noted, as well as tax payment deadlines."

The Motley County Appraisal District at Motley County Courthouse has a supply of the pamphlets, both English and Spanish versions. The pamphlets are free.

God Loves You!

And now abide faith, hope and love. These three, but the greatest of these is love.

1 Cor. 13:13

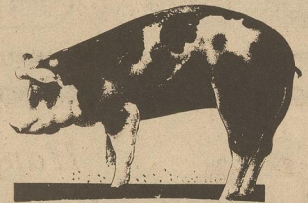


Who's the Bride? For a clearer picture come to the Lion's Show '89!

Mr. and Mrs. Knowzis Oats announce the engagement and approaching marriage of their daughter, Tiny Oats to J. Filvverton Barley. The couple will exchange vows March 24, 1989 at 7:30 p.m. at the Matador Lions Show, to be held in the Motley County High School.

Best Wishes At the Stock Show!

Dickens Electric



Entertainment Center

Pool Tables

Video Games

Movies

\$1.87 plus tax



Hours:
Monday - Friday
4:00 p.m. - 8:00 p.m.
Saturday
2:00 p.m. - 9:00 p.m.

In front of Tony's Custom Shop

MATADOR


Good Luck!

1989 Motley County Livestock Show

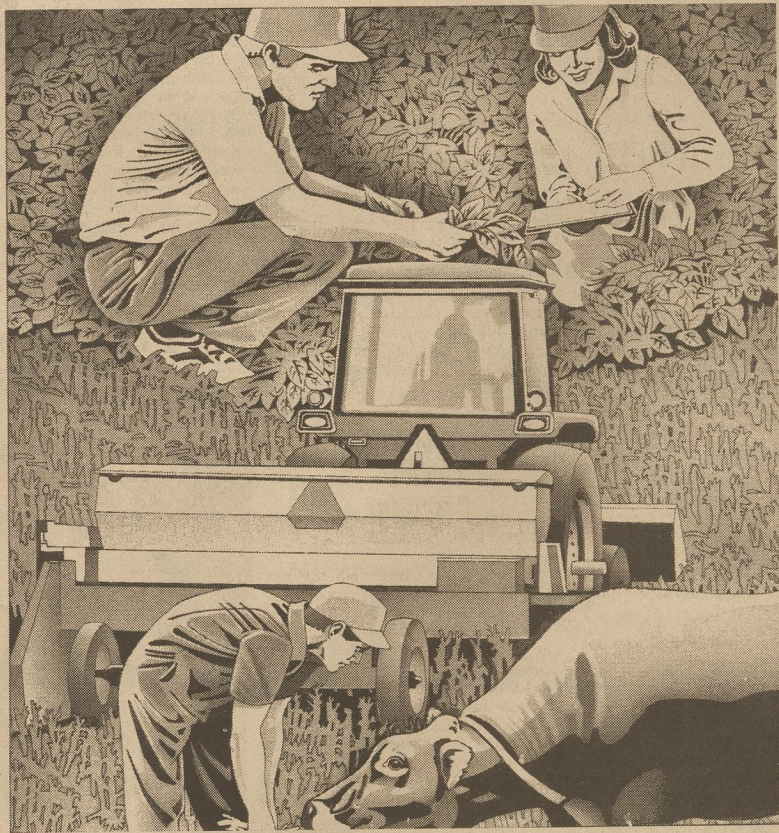



Billie Dean's

Good Luck In The Stock Show!



Don's Conoco & Texas T's & T's

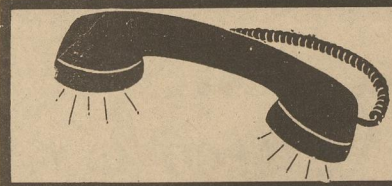


AG WEEK

MARCH 19-25



Wishing you the Luck of the Irish on St. Patrick's Day, March 17



County Chit-Chat

Roaring Springs News

By Odessa Mullins

Miss Lula Swim, accompanied by her sister-in-law, Mrs. J.T. Swim, kept a medical appointment in Plainview, Tuesday of last week. The ladies also visited an uncle and aunt Rev. and Mrs. W.B. Swim, residents in a Care Center there.

Visitors with Mrs. Minnie Dye Saturday were her son, Chester and his son Cody from Crosbyton, down to play golf on the Springs Ranch Golf Course, and her daughter and family, Mr. and Mrs. Rollie McNutt and son, Ben from Spade.

Standing out among the many nice remembrances Mrs. J.D. Mitchell received on her recent birthday was a dozen red roses from her grandson, Gary Williams.

Saturday visitors with Mrs. Vera Mitchell were her daughter and husband, Rev. and Mrs. Bennie Goss and three grandchildren, Allen, Becky, and Michelle Goss, all of Littlefield.

Mr. and Mrs. Raymond Kingery of Corpus Christi are visiting his mother, Mrs. Eliza Kingery.

Miss Lula Swim and Mrs. J.T. Swim left Friday afternoon to join a bus tour group sponsored by the Hockley County Senior Citizens, which left Levelland Saturday morning and returned there Monday afternoon, and drove home. In San Antonio they spent Sunday enjoying the sights of Sea World, one of San Antonio's most popular attractions.

Mrs. Ora Stonecipher kept a medical appointment in Lubbock Thursday and remained to visit her sister, Mrs. Leta Foust over the weekend. They were joined on Friday by another sister, Mrs. Thella Jarrett and her daughter, Essie Mae Scott of Levelland. Mrs. Stonecipher also participated in the celebration of the 19th birthday of her sister's grandson.

Mr. and Mrs. Gary Caffey went to Lubbock Friday to bring her mother, Mrs. Clara Youngblood, who has been a resident of Quaker Villa there, since August, home for the weekend. A number of friends visited Mrs. Youngblood Friday evening and Saturday. Gary and Lou took her back to the home Sunday, and she was glad it seemed to be back there although she said it was good to have had the weekend here.

Mr. and Mrs. W.H. Marshall drove to Plainview Saturday to join his sister and

husband, Mr. and Mrs. Sam Bannister for the drive to Lubbock to visit their aunt, Mrs. Hattie Marshall, on the occasion of her 90th birthday. They also called on Mrs. Lola Dawson, also a resident of Lutheran Home of West Texas, where Mrs. Marshall resides.

Miss Lula Swim and Mrs. J.T. Swim went to Floydada Tuesday for Miss Swim to keep a dental appointment.

Lorine Osborn spent several days in Lubbock the past weekend visiting her sister and husband, Mr. and Mrs. Jack Jones, also visiting other friends.

Ted and Venita Sedgwick spent several days visiting their daughter and family, Mr. and Mrs. Gordon McGee and doing a lot of fishing.

Mr. and Mrs. Harry Patten spent Sunday in Pampa visiting her son and family, the Buddy Allens.

Mr. and Mrs. J.D. Palmer had lunch Sunday with their son and family, Mr. and Mrs. Johnny Palmer, Scotty and Meranda of Paducah. They celebrated Johnny's birthday.

Pearl Patten, Dorothy Watson and JoEta Bumgardner shopped in Plainview Thursday.

Grace Zabielski shopped in Lubbock Thursday afternoon.

Mr. and Mrs. J.D. Palmer visited in Lubbock Thursday with his brother and wife, Mr. and Mrs. Howard Palmer and Mrs. Palmer kept a Doctor's appointment. They also visited Mitzi Christopher in Methodist hospital.

Mr. and Mrs. Todd Mullins and Josh of Lubbock visited Sunday afternoon with Odessa Mullins.

Lester Mullins of Hereford spent Sunday night with his mother, Odessa Mullins, on his way to a business meeting in Dallas.

Mr. and Mrs. Brown Hinson went to Lubbock Monday for Mrs. Hinson to keep an appointment with her eye doctor. Vera Mitchell accompanied them to see her doctor.

Odessa Mullins visited Mr. and Mrs. Raydell Mullins Saturday in Afton.

Mitzi Christopher was released from the Methodist Hospital Monday and is recuperating at home after surgery.

Matador News

CELEBRATES 90TH BIRTHDAY

Mrs. Lee (Alice) Nelson celebrated her 90th birthday Sunday, March 12 in the home of Earl and Wanda Vaughn in Lubbock.

Hostesses for the occasion were Bernadina Hawkins, Glenda Brock, and Wanda Vaughn.

Out of town guests were Mrs. Kenneth Gregory, Abernathy; Amy, Jay and Ann Nelson, Levelland; Bobbie Hill, Tulia; Neal and Ryan Nelson, Amarillo; Gertrude Smith and Kate Stanley, Matador; Henry and Delna Gregory, Comanche; Clifford and Billie Kimbrough, California; Hub and Lola Swearingen, Amarillo.

Lunch, birthday cake, coffee and tea was served to about 100 guests, children, grandchildren and great-grandchildren.

Laynce Nix and children, and also with another granddaughter and her husband, Mr. and Mrs. Stephen Chittenden of Dallas.

Visiting here Saturday with their children, Rev. and Mrs. Stacy Conner and children Charissa and Timothy, were Mr. and Mrs. Roger Malone of Dimmitt, parents of Mrs. Conner (Debbie), and Mr. and Mrs. Don Conner of Slaton, Rev. Conner's parents. Stacy Conner is the new pastor of First Baptist Church here.

Mrs. Douglas Meador visited in Lubbock, Sunday with her sister and brother-in-law, Mr. and Mrs. Nolan Fulkerson.

Verdie Neighbors had eye surgery in Amarillo February 27 and spent several days recuperating in Hereford with Betty Milton. She returned home last Thursday. Jud is visiting in Grandbury with Mr. and Mrs. Bill Neighbors and family.

Mrs. Bill Pipkin returned home Friday from Rowlett, where she had visited her granddaughter and family, Mr. and Mrs.

Flomot News

By Earlyne Jameson

SKIING VACATION IN COLORADO

Mr. and Mrs. Kenneth Marshall and Mr. and Mrs. Bobby Simpson of Matador accompanied Motley County youth to Crested Butte, Colorado where they enjoyed a ski vacation from Wednesday until Sunday, March 8-12. Mr. Simpson suffered a leg injury, so a snowmobile was his mode of transportation on the ski slopes.

Those reporting a fun filled vacation were Regina Cruse, Lance Barclay, Cory and Cary Franks of Flomot, Leigh Barton, Paka Ann Barton, Tricia Palmer, Tim Terrell, Brent and Brian Marshall, Gary and Terry Simpson, Brandt Bearden, Craig Turner of Matador and Neal Edwards of Silvertown.

ATTEND CONFERENCE

Mr. and Mrs. Clayton Bond, Rev. and Mrs. Nathan Mulder and Wayne Hunter attended a Baptist Caprock Association Conference held at the First Baptist Mission Church in Floydada, Tuesday, March 7.

The featured speaker was Dr. Ciro Garcia of Plainview, assistant area missionary. The Rev. Lupe Rando, pastor, showed films and related the history of the mission Church.

GRASS FIRE

Mr. and Mrs. Bill D. Washington were thankful to report that there was no damage to their home or near by structures following a pasture fire on their ranchland, Friday afternoon. They had the fire under control by the time the Matador Volunteer Fire Dept. arrived.

Mrs. Darrell Cruse and sons, Derrick and Keane and Mrs. Larry Clifton and children, Skyler and Monica of Matador, attended the Walt Disney's Magic Kingdom On Ice at Lubbock Coliseum, Saturday.

Mrs. Butch Hughes and son, Rickey visited in Lubbock, Saturday with her sister-in-law, Mrs. Rebecca Rogers, a patient in the Methodist Hospital following a heart attack. She is reported to be recovering just fine. Mrs. Hughes attended to business in Amarillo, Thursday.

Katie Hamilton of Amarillo visited from Friday until Sunday with her grandparents, Mr. and Mrs. Joe Edd Helms.

Mr. and Mrs. Bill Shannon and her parents, Mr. and Mrs. Earl Lewis of Quitaque visited the weekend at Possum Kingdom. Joining them there were: Mr. and Mrs. Carl Lewis of Lubbock, Clarence Leis of Abilene and Shirley Lewis of Vernon.

Visiting last Saturday and Sunday with Mr. and Mrs. Clayton bond were his son and wife, Mr. and Mrs. Victor Bond of Tulsa, Oklahoma.



A MESSAGE FROM THIS NEWSPAPER AND THE OPS TROOPERS

Recent guest of Mr. and Mrs. Butch Hughes and sons was Austin Hughes of Lubbock. Their sons, Billy Don and Roger, students at Clarendon Junior College, are visiting this week during their spring break.

Mrs. Clois Shorter, Cindy and Christi visited Friday and Saturday in Amarillo with Mr. and Mrs. Richard Rhodes and sons.

Mrs. Oliver Clark and daughter, Kelli of South Plains and Mrs. Coy Franks and daughter, Cara and friends, Leah Cruse and Lacey Washington attended the Walt Disney's Magic Kingdom On Ice in Lubbock, Saturday.

Mrs. Dodie Morris visited in Plainview, Saturday with Mrs. Naomi Morris and guests, Mr. and Mrs. Roy Quillin of Hereford.

Mrs. Mike Arrington and son, Wade, Daggett and Clay of Canadian visited during the weekend with her parents, Mr. and Mrs. Ronald Clay. The boys remained to visit. The family visited in Lubbock, Saturday with Mrs. Clay's mother, Mrs. Opal Martin, a patient in Methodist Hospital.

Mr. Randy Hunter returned to Denton, Monday after visiting his parents, Mr. and Mrs. Wayne Hunter. En route to Denton, he visited in Midland with his brother and family, Mr. and Mrs. David Hunter, Greg and Ross.

Dustin and Shae Lynn Reed visited from Thursday until Sunday with Mr. and Mrs. Doyle Calvert and Glen. They accompanied them home and visited their mother, Mrs. Gwen Reed and Mr. and Mrs. Dan Foster and Keith before returning home.

L.T. Starkey of Ralls visited Wednesday with his parents, Mr. and Mrs. C.W. Starkey.

Weekend guests of Mr. and Mrs. Wilburn Martin were Dr. and Mrs. David Martin, Lindsay and Cole of Denton and Marilee Pilcher of Fritch. They visited in Lockney, Saturday with Mrs. Lennie Gilbert and in Lubbock with Mrs. Opal Martin, a patient in Methodist Hospital.

Art Green visited in Plainview, Tuesday with his children and families, Mr. and Mrs. Billy Green and Mr. and Mrs. Tommy Rice.

Don Monk, a patient in Central Plains Hospital in Plainview following a pickup accident, was accompanied home Saturday by his sister and husband, Mr. and Mrs. Jean Pope of Tulia. Mr. and Mrs. Pope visited Mrs. James Monk before returning home.

Mr. and Mrs. Clayton Bond and Wayne Hunter presented a religious service at the Lockney Care Center, Friday.

Mr. and Mrs. Wendell Morris visited in Plainview, Saturday with Mr. and Mrs. Tim Lane and daughters and attended a gymnastic meet in which granddaughter, Rebecca Morris of Flomot competed.

Whiteflat News

By Earlyne Jameson

SURPRISING WEATHER IN MOTLEY COUNTY

Nothing like having extreme temperature changes within a week's time! Icy 12 degree temperatures were recorded last weekend and then this weekend thermometers topped out at 100 degree readings in Whiteflat and Flomot.

It was announced on Lubbock T.V. channels, Saturday that Childress with 99 degrees had the highest recorded temperature in the nation. However, Flomot residents said they didn't contact the right source, because their thermometers registered a record high of 100 degrees.

HONORED ON 86TH BIRTHDAY

Mrs. Beulah Jameson of Plainview, former resident of Whiteflat, was honored Sunday with a family luncheon on the occasion of her 86th birthday in the home of her granddaughter and family, Mr. and Mrs. Fritz Struve and son, Matthew of Lubbock. She was presented a beautifully decorated cake, gifts and cards.

Those attending the celebration were Mrs. JoAnn Penneck and daughter, Holly of Midland, Jodie Jameson of Plainview, R.R. Struve of Abernathy and Mr. and Mrs. H.R. "Skeet" Jameson, local residents.

Mr. and Mrs. Stuart Dixon enplaned to Austin, Wednesday where they attended the annual Federal Land Bank Stockholders' Convention. They returned home Saturday.

Visitors of Mrs. Jack Spray, Thursday were Mrs. Gladys Russell, Mrs. Ailene

Briscoe and Mrs. Bobbie Florida of Plainview and Mrs. Earline Barr of Lubbock. They also visited in Matador with Mr. and Mrs. John Briscoe.

Mr. and Mrs. Spencer Dixon, Mrs. Janice Dixon and their houseguest, David Dixon of Lubbock visited in Afton, Sunday with Mr. and Mrs. Henry Hibbets.

Heather Turner visited Saturday and Sunday at Lake MacKenzie with her grandparents, Mr. and Mrs. Joe Luckenbach. Her mother and brother, Mrs. Johnney Turner and Cobey visited Sunday and accompanied her home.

Mrs. Jack Spray and her weekend houseguest, Mrs. Wilma Hare of Clovis, N.M. and Mrs. Kathryn Martin visited in Roaring Springs, Sunday afternoon with Mrs. Ray Martin.

Visiting from Friday until Sunday with Mrs. Jaunita Cooper were Mr. and Mrs. Harold Gordon of Post.

Mr. and Mrs. T.W. Jennings attended the Church of Christ luncheon held at the Senior Citizens building in Matador, Sunday given for guest speaker, John Connel and fiancée, Susanna, students at Abilene Christian University in Abilene.

Mrs. Terry Boedecker, Hannah, Luke and Will visited from Friday until Monday in Baird with her sister and family, Mr. and Mrs. Judd Gilliland, Annie and Laura.

Jess Patrick of Turkey and John Barton enjoyed fishing at Caprock Canyon State Park, Sunday.

Mr. and Mrs. H.R. "Skeet" Jameson visited Sunday with Mrs. Opal Martin, a patient in Methodist Hospital in Lubbock. Other visitors were Mr. and Mrs. France Barton of Matador.

God Loves You!

Don't miss the classifieds..... You may miss a bargain!

Good Luck! In The Stock Show

Thacker Jewelry

Roaring Springs



God Bless You!

Who said salt-free has to be bland?

Add NoSalt to your life.



For recipe booklet send 25c to NoSalt, P.O. Box 3870 Stamford, CT 06905 © 1987 NoSalt Thayer Inc.

Regular & Seasoned Instead of salt.



Good Luck Motley County FFA & 4-H Stock Show Participants



Turner Gin

Flomot



Kathy's Flomot



Matador Motor & Imp.

THE CLASSIFIEDS

COW POKES By Ace Reid



"Naw they ain't doin' nothin' this morning and sometime they don't til noon!"

This Feature Sponsored By
First State Bank

Matador

Your "Hometown" Bank Member FDIC

COUPON

\$50 Off Installation

(May Be used On Insurance Deductible)
Of Car & Pickup Windshields Guaranteed Not to Leak!
Installed Anytime!

For appointment or estimate, Call 347-2412

Tony's Custom Shop



**T.W. Kirkpatrick
KIRK'S DIRT WORK**

SEPTIC SYSTEMS

General Backhoe Service, Basements, Sand, Grease Trap Tanks
Septic Systems County and State Approved for FmHA, and VA loans

806-794-4638

LUBBOCK, TX

LONG REAL ESTATE

Roaring Springs, Texas

1. - 67 Ac W/60 Cult. 7 Mi. NE Dickens
2. - 82 Ac W/76 Cult. 1 MI. SW Dickens
3. - 520 Ac W/140 Cult. 10 MI. Spur
4. - 168 Ac W/168 Cult. 3 MI. NW Spur, 2-4" Irr. Wells
5. - 324 Ac W/280 Cult. 7 MI. NE Spur, 4 Irr. Wells - 1350 C.P.M.
6. - 476 Ac W/147 Cult. W/3 Bdrm. Dwg. Cross Fenced W/M Pens
7. - FK 2 Bdrm. Dwg. Roaring Springs
8. - BR 2 Bdrm. Dwg. Roaring Springs

Call 806-348-7531 Night 348-7510 Or Night 348-7284

First Assembly Of God Church

REV. EDNA DILLARD

Roaring Springs, Texas 348-7943

Jesus Christ is the same yesterday, today, and forever

(Hebrews 13:8)

Church, 11:00 a.m. Sunday School, 10:00 a.m. Sunday Night, 6:00 p.m.

Wednesday Prayer Meeting - 7:00 p.m.

Missionettes for girls Royal Rangers for boys

Germania Insurance

Homeowners, Auto, Personal and Farm
Liability and Life

Lee's Insurance Agency

Flomot, Texas 79234 (806) 469-5370

Specialities

CHECK OUT our 1/2 price items. New items added each week. Thacker Supply 348-7216.

ctfn

ALL TYPES OF EXHAUST WORK

DON'S MUFFLER SHOP
210 W. Calif.
Floydada, Texas
983-2273

ctfn

Carpet Cleaning Machine
Available from
STANLEY PHARMACY
347-2603

Now Available at
**MATADOR MOTOR
AND IMPLEMENT**

Professional Windshield installers are at Matador Motor & Implement every two weeks. Guaranteed not to leak. Call 347-2422.

CESSPOOL PUMPING AND PLUMBING: Bennie Meredith, 348-7932 or 348-7516.

2tp-12

SHAKLEE PRODUCTS

983-5246

Help Wanted

NEEDED: LVN's, part and full time plus PRN shifts, competitive salary, and benefits. Contact Donna or Steve, Floydada Nursing Home, 983-3704 or 983-3426.

4tc-13

Lost And Found

LOST: Missing from Bird Ranch; 4 year old, solid red Limousin Bull, Branded-L left rear thigh and T+ on left side also swallow fork in right ear. If seen please notify Lois Bird 347-2386, James Bearden 689-2296 or Ros Bearden 347-2461.

3tc-12

Farmers & Ranchers

BEEFMASTER BULLS: age 20-24 months. Inquire at Stafford Farm Store, Roaring Springs, day - 348-7271 or night - 347-2804.

ctfn

REGISTERED HEREFORD BULLS FOR SALE: 12-15 months old. 806-347-2855, Sonny Russell.

4tc-13

CRH SYSTEMS 122 West California

983-2445
983-3151

Computers
And Computer Stuff

For we are God's workmanship, created in Christ Jesus to do good works, which God prepared in advance for us to do.

Ephesians 2:10

CLASSIFIED RATES

10¢ Per Word
\$3.50 Minimum
Card of Thanks
up to 55 words - \$5.00
55-100 words - \$10.00

Pictures

Wedding, Engagement, Anniversary, Brag Corner, Birthdays - \$5.00
DEADLINE NOON TUESDAY

For Sale

FOR SALE used Maytag washers and dryers rebuilt and guaranteed. Thacker Supply 348-7216.

ctfn

"PRECIOUS MOMENTS" Bibles.
MOTLEY COUNTY TRIBUNE

FOR SALE: Business or Building for sale, Pennie's Country Bouquet. Call 347-2871.

ctfn

MESQUITE FIREWOOD, cut and stacked, \$85.00 a cord, \$45.00 a ric. Call Jason Jameson, 347-2774.

FOR SALE: Electric Cook Stove and Frigidare Washing Machine. First house south of car wash in Matador. Thursday only 12:00 - 3:00 p.m.

1tc-11

FOR SALE: Frigidare Skinny-Minnie Washer/Dryer. See Zona Ruth Cammack.

1tp-11

Real Estate

HOME FOR SALE: 3 bedroom, 2 bath, fenced back yard. Call 347-2855.

4tc-13

PRICE REDUCED on 3 bedroom, 2 bath home in Matador. Completely remodeled. Includes house, garage, store-room, carport, storm cellar, fenced lots and many unique extras inside. Refrigerated air and electric heat throughout. Call 915-524-3399.

ctfn

FOR SALE: Harry Duval home in Matador. Harry Hamilton Realtors, 745-4474.

5tc-13

HOUSE FOR RENT: Southeast of Roaring Springs. 3 bedroom, 2 bath. Call 348-7243.

5tc-15

"All that is necessary for the forces of evil to win in this world is for enough 'Good People' to do nothing..."

Beer Drinkers Have More Fun

...Do They?



TEXAS DEPARTMENT OF PUBLIC SAFETY
STATE DEPARTMENT OF HIGHWAYS & PUBLIC TRANSPORTATION

Caprock-Plains Federal Land Bank Association



7th - Baltimore
Plainview, TX

P.O. Box 579
295-5579

Help Wanted

\$60.00 PER HUNDRED remailing letters from home! Details, send self-addressed, stamped envelope. Associates, Box 309-T, Colonia, NJ 07067.

8tc-11

Legal Notices

LEGAL NOTICE NOTICE OF TRUSTEE ELECTION (Aviso De Eleccion Trustee)

To the registered Voters of Motley County I.S.D., Texas:

(A los votantes registrados del Condado Motley, Texas).

Notice is hereby given that the polling places listed below will be open from 7:00 a.m. to 7:00 p.m. on May 6, 1989, for voting in a Trustee election, to elect Two (2) Trustees for three (3) year terms.

Notifiquese, por los presente, que las casillas electorales sitados abajo se abriran desde las 7:00 a.m. hasta las 7:00 p.m. el 6 de Mayo, 1989 para votar en la Eleccion para elegir dos miembros para el termino de tres anos.)

LOCATIONS OF POLLING PLACES:

(Direcciones De Las Casillas Electorales):

- 1, 5, 6 - Motley County Courthouse, Matador, Texas.
- 2 - School Building in Flomot, Texas.
- 3 - Northfield Cemetery Building, Northfield, Texas.
- 4 - Depot Building in Roaring Springs, Texas.

Absentee voting by personal. (La votacion en ausencia en persona se llevara a cabo de lunes a viernes en) appearance will be conducted each week-day at the Office of the County Clerk of Motley County between the hours of 9:00 a.m. - 5:00 p.m. beginning on April 17, 1989.

(entre las 9:00 de la manana y las 5:00 de la tarde empezando el 17 de Abril, 1989) and ending on May 2, 1989. (y terminado el 2 de Mayo, 1989).

Additional absentee voting will be held at the same location as follows:

NONE

Applications for ballot by mail shall be mailed to:

Oas solicitudes para boletas que se votaran por correo deberan enviarse antes del termino del dia negocio del 28 de Abril, 1989 a:)

Lucretia Campbell
Motley County Courthouse
Matador, Texas 79244

Applications for ballots by mail must be received no later than the close of business on April 28, 1989.

Issued this the 14th day of February, 1989.

3tc-11

God Bless You!



SEEDS FROM THE SOWER

Michael A. Guido
Metter, Georgia

One day a parakeet came to the arm of my chair and said like a person, "I'm a Christian. Are you?"

Suddenly a cat came into the room and it hurried to its cage. Then it acted like a bird because it was a bird.

Have you wondered why, after people have been taught hymns and prayers, and acting like Christians, when a temptation comes, they revert to their old ways? They've been taught the mannerisms of religion without having experienced the miracle of regeneration. They've been charmed, but not changed.

Wouldn't you like a new heart, and a new power to overcome your old habits? Then turn from your sins to the Saviour, and you'll become a brand new person!

Announcements

COUNTY-WIDE EASTER EGG HUNT

The Annual County-Wide Easter Egg Hunt, sponsored by the Eternas Jr. Study Club will be held Saturday, March 25 at the City Park in Matador, beginning at 2:00 p.m.

Donations of cash or eggs are now being accepted and are very much appreciated.

There will be a box at Pay-N-Save for real colored eggs or candy egg donations. Cash donations may be made to Terry Donaldson or Sarah Hurt.

No chocolate or marshmallow eggs, please.

WHITEFLAT REUNION

Hello! Whiteflat Exes and home folks. It's nearly time again for our April 1st Saturday reunion. We need your old pictures to go in the Motley County Tribune. Your family or old school pictures.

If you need to know anything about the reunion, call Nora Belle Dunning, 806-347-2722 or write P.O. box 152, Matador, TX 79244.

We will be looking for you to meet us at Matador Senior Citizens Center from 8:00 a.m. til ? All friends are welcome. We will have a basket lunch.

PARKS ARENA TEAM ROPINGS:

Roaring Springs, Saturday March 25. Books open at 1:00 p.m. Rope at 2:00 #4 Novice Roping, 3 for \$14, Pre Roping.; #2 Roping, 3 for \$14, Trophy buckle to high money roper; #6 Roping, 3 for \$16, trophy buckles to high money roper. For more information contact: Harold Parks, 806-348-7524 or Elmer Parks, 806-348-7243.

3tp-12

JEWELRY BY PREMIERE DESIGNS will be shown at The Windmill on Monday, March 20 at 4:30 p.m. If you are interested in owning your own Jewelry Business, call 817-694-2011 for more information.

1tc-11

LEGAL NOTICES

The Commissioners Court will be accepting bids for application for Depository of Public Funds. The application forms should be picked up in the Motley County Courthouse in the Judges office or County Treasurer's office and returned by April 10.

4tc-14

The Commissioners Court of Motley County is accepting bids for fuel for the county vehicles. All bids should be turned in by April 10 to the Motley County Judges office in the Courthouse.

4tc-14

All Sizes
Lightweight

Sweat
Separates

\$6.99

Matador
V&S Variety

NEWS & ADVERTISING

DEADLINE

NOON TUESDAY

Thank you for cooperating!

347-2234

Crime-Line

347-2417

CHECK OUT THESE WEEKLY BIG BLUE BONUS SPECIALS

BIG BLUE BONUS SPECIALS

16 ounce 6 pack
DR. PEPPER \$1.51
WITH ONE FILLED **BIG BLUE BONUS BOOKLET**
WITHOUT BIG BLUE BONUS BOOKLET \$1.99

BIG BLUE BONUS SPECIALS

WITH ONE FILLED SAVER CARD 11 OZ. FRITO LAY **SALSA 71¢**
WITHOUT SAVER CARD \$1.19
REG. \$2.39
FRITO LAY **DORITOS \$1.11**
WITH ONE FILLED **BIG BLUE BONUS BOOKLET**
WITHOUT BIG BLUE BONUS BOOKLET \$1.59

BIG BLUE BONUS SPECIALS

PKG. TENDER CRUST BROWN 'N' SERVE **ROLLS 1.49**
WITH ONE FILLED **BIG BLUE BONUS BOOKLET**
WITHOUT BIG BLUE BONUS BOOKLET 49¢

BIG BLUE BONUS SPECIALS

66 SM/48 MED/32 LGE SUPER TRIM DIAPERS **HUGGIES \$9.51**
WITH ONE FILLED **BIG BLUE BONUS BOOKLET**
WITHOUT BIG BLUE BONUS BOOKLET \$9.99

BIG BLUE BONUS SPECIALS

4 ROLL PKG. ASSORTED BATHROOM TISSUE **CHARMIN 61¢**
WITH ONE FILLED **BIG BLUE BONUS BOOKLET**
WITHOUT BIG BLUE BONUS BOOKLET \$1.09

BIG BLUE BONUS SPECIALS

JUMBO ROLL ASSORTED PAPER TOWELS **BOUNTY 31¢**
WITH ONE FILLED **BIG BLUE BONUS BOOKLET**
WITHOUT BIG BLUE BONUS BOOKLET 79¢

BIG BLUE BONUS SPECIALS

36 CT. BOX 35" OFF LABEL FAB. SOFTENER SHEETS **DOWNY \$1.51**
WITH ONE FILLED **BIG BLUE BONUS BOOKLET**
WITHOUT BIG BLUE BONUS BOOKLET \$1.99

BIG BLUE BONUS SPECIALS

20 LB. BAG PURINA DRY DOG FOOD **MAINSTAY \$5.01**
WITH ONE FILLED **BIG BLUE BONUS BOOKLET**
WITHOUT BIG BLUE BONUS BOOKLET \$5.49

GROCERY SPECIALS

- DEL MONTE ASSORTED **YOGURT CUPS \$1.59** 4 CT. PKG.
- DEL MONTE APPLE-CHERRY, PINEAPPLE-ORANGE **FRUIT BLENDS \$1.59** 48 OZ. BTL.
- DEL MONTE ASSORTED **FRUIT CUPS \$1.49** 4 CT. PKG.
- DEL MONTE ASSORTED **PUDDING CUPS \$1.09** 4 CT. PKG.
- DEL MONTE CHUNK, CRUSHED, SLICED **PINEAPPLE IN JUICE 39¢** 8 OZ. CAN
- DEL MONTE **FRUIT COCKTAIL 49¢** 8 OZ. CAN
- DEL MONTE **PEAR HALVES 49¢** 8 OZ. CAN
- CAMPBELL'S DRY **ONION SOUP MIX 79¢** PKG.
- CAMPBELL'S DRY **SOUP MIX CHICKEN NOODLE 89¢** PKG.
- CAMPBELL'S CHICKEN NOODLE OR VEGETABLE BEEF **INSTANT SOUP MIX 69¢** PKG.
- CAMPBELL'S NOODLE WITH BROTH **INSTANT SOUP MIX 59¢** PKG.
- LIPTON ASSORTED **RICE & SAUCE 79¢** PKG.
- WOLF BRAND **CHILI 79¢** 15 OZ. CAN

DOUBLE COUPONS ON MONDAY
Every Monday your manufacturers "cents off" coupons are worth double at Pay-N-Save No. 21. Limit one coupon for any particular item. No cigarette coupons. Offer limited to manufacturers coupons of \$1.00 value or less. Coupons over \$1.00 will be redeemed at face value. Amount cannot exceed retail of the item. Subject to certain In-Store Policies concerning coupons. Not doubled on advertised specials.



CLEANER
LIME-A-WAY
16 OZ. BTL. **\$1.79**



BATHROOM CLEANER
SCRUB FREE
16 OZ. BTL. **\$1.79**

NON-FOOD SPECIAL

- 40" OFF LABEL ASSORTED **TIDE DETERGENT \$2.09** 42 OZ. BOX
- ASSORTED AIRWICK CRYSTALAIR **AIR FRESHENER \$1.89** 3 OZ. PKG.
- CLEAN & SMOOTH 89¢** 7.5 OZ. SIZE

SHELF SPECIALS

- NABISCO **HONEY GRAHAMS \$1.69** 16 OZ. BOX
- NABISCO DOUBLE STUFF **OREO COOKIES \$2.29** 20 OZ. PKG.
- FREE MILK** when you buy OREO® Chocolate Sandwich Cookies and HONEY MAID® Graham Crackers. MAIL-IN OFFER. SEE NABISCO DISPLAY FOR DETAILS.

FROZEN FOODS & DAIRY

- ORE-IDA REG/BACON/ONION **TATER TOTS \$1.37** 2 LB. PKG.
- CRUNCHY FILLETS OR STICKS **GORTON FISH \$1.99** 12 OZ. PKG.
- ASSORTED **BANQUET DINNERS \$1.19** 10% TO 12 OZ.
- DOWNY FLAKE **WAFFLES 89¢** 12 OZ. PKG.
- BANQUET ORIGINAL MICROWAVE **BREAST NUGGETS 89¢** 4.5 OZ. PKG.
- BORDENS **FRUIT DRINK 99¢** GAL. JUG
- SHURFINE **CHOCOLATE MILK 69¢** QT. CTN.
- PAY-N-SAVE **HOMO MILK 99¢** 1/2 GAL. CTN.
- BORDENS ASSORTED **ICE CREAM \$1.79** 1/2 GAL. RND. CTN.

HEALTH & BEAUTY

- NIGHTTIME **ALKA-SELTZER \$3.19** 20 CT. PKG.
- MURINE/MURINE PLUS/CLEAR EYES **EYE DROPS \$2.19** 5 OZ. BTL.



WE WILL NOT INTENTIONALLY SELL ANY GROUND BEEF UNDER 80% LEAN AND WE PLEDGE TO MAKE OUR GROUND BEEF AT LEAST TWICE A DAY.



HEAVY GRAIN FED BEEF BONELESS
Round Steak \$1.99 LB.



HEAVY GRAIN FED BEEF-8 TO 12 LBS. AVG. WHOLE IN THE BAG-PACKER TRIM
WHOLE BRISKETS \$1.19 LB.

OVEN READY MARKET TRIM

- REUBEN BRAND FRESH 2 TO 4 LBS. **CORNED BEEF \$1.69** LB.
- LOUIS RICH FULLY COOKED 2 TO 4 LBS. **TURKEY HALF HAMS \$1.59** LB.
- OSCAR MAYER SLICED MEAT **BOLOGNA \$1.59** 12 OZ. PKG.
- WILSON'S SLICED **BACON \$1.39** 1 LB. PKG.

- OSCAR MAYER SLICED BEEF **BOLOGNA \$1.69** 12 OZ. PKG.
- COUNTRY SKILLET FROZEN FRESH **CHANNEL CATFISH \$2.99** FARM GROWN LB.
- SELECT SLICED YOUNG **BEEF LIVER 89¢** LB.
- WILSON'S REG/HONEY CURED 96% FAT FREE **JUST FOR US HAMS \$5.99** 2 LB. PORTION

RED RIPE SALAD
Tomatoes 39¢ LB.



CALIFORNIA NAVEL
ORANGES 3 \$1 LBS.



PRODUCE SPECIALS

- TEXAS RUBY RED **GRAPEFRUIT \$1.39** 5 LB. BAG
- FRESH **YELLOW SQUASH 59¢** LB.
- FRESH **WHITE ONIONS 99¢** 4 LBS.



QUALITY AND SERVICE

PRICES EFFECTIVE MARCH 16-18, 1989

EASTER CIRCULAR WILL START MARCH 20 AND RUN THROUGH MARCH 25.

DOUBLE STAMPS ON WEDNESDAY

WE RESERVE THE RIGHT TO LIMIT QUANTITIES