

See Page 10 For Gas Rationing Details

# BAILEY COUNTY JOURNAL

The Community of Opportunity-Where Water Makes the Difference



## Weather

	HIGH	LOW	PREC.
January 12	52	21	
January 11	51	23	
January 10	35	18	.48
January 9	67	8	
Rainfall to Date:			.48

Vol. 11 No. 2

2 PAGES

Published Every Sunday at Muleshoe, Bailey County, Texas 79347

10 CENTS

Sunday, January 13, 1974

# Local Bank Deposits Top \$40 Million

★ ★ ★ ————— ★ ★ ★

## Candidates File For May 4 Primary

### Three Additional Candidates File

Three additional people have filed for county offices in Bailey County this week. Edith Wilt filed last week for re-election as Bailey County Treasurer. Filing this week were Hazel Gilbreath for re-election as County Clerk; Pauletta Crawford for election to the District Clerk's office; and Nelda Merriott for re-election as District Clerk.

Offices up for election this year include the County Judge and Ex-officio County School Superintendent; County Treasurer; County Clerk; District Clerk; Commissioner, Precinct Number Two; Commissioner, Precinct Number Four; and Justice of the Peace, Precinct One.

At this time Glen Williams is serving as Judge; Edith Wilt as County Treasurer; Hazel Gilbreath as County Clerk; Nelda Merriott as District Clerk; Loyd Stephens as Commissioner.

Precinct Number Two; Rudolph Moraw as Commissioner, Precinct Four; and Morris Nowlin as Justice of the Peace.

To date the only office with competition is the office of District Clerk where two are now in the race.

The Democratic Primary is scheduled for May 4 in Muleshoe and it will decide who will be on the November ballot for the Democrats.

Additional filings are expected next week.



PAULETTA CRAWFORD

### Mrs. Crawford Announces For District Clerk

Pauletta Crawford announces her intention to seek the nomination for the office of District Clerk of Bailey County in the May 4 Democratic Primary in the following statement:

"I have been employed as a deputy to Mrs. Hazel Gilbreath, County Clerk, for the past ten years. Three of those years when the offices were combined, I did both County and District Court work. I am experienced, qualified and dependable, and I shall strive to be an efficient clerk, being available when needed."

Mrs. Crawford is a member

Cont. on Page 3, col. 2

### Nelda Merriott Files For Re-election

Nelda Merriott, present District Clerk, has announced for re-election.

"I am announcing my candidacy for re-election to the office of District Court Clerk. It has been a privilege to serve the people of Bailey County in this capacity. I have tried to give honest, friendly and efficient service to everyone."

"Many changes have occurred



NELDA MERRIOTT

Cont. on Page 3, col. 1



HAZEL GILBREATH

### Mrs. Gilbreath Announces For Re-election

Announcing for re-election as County Clerk Hazel Gilbreath has issued the following statement:

"I should like to take this means of announcing my candidacy for re-election to the office of County Clerk of Bailey County, subject to Democratic Primary, May 4, 1974."

"I have served in this capacity for 15 years, and feel that the experience and knowledge I have obtained enables me to better serve the citizens of this county as the clerk of the records office."

"I would like to thank the Commissioner's Court, officials and employees, and the capable and dependable deputies in my offices, for the splendid cooperation and assistance given me, and which has made the job much easier in performing the duties of this

Cont. on Page 3, col. 3

### Trap Shoot Scheduled In Bovina Sunday

The Bovina-Friona Knights of Columbus will sponsor a Trap Shoot on Sunday, January 13.

The variety of shoots will begin at 2 p.m. and continue until dark. Cash prizes will be awarded and ammunition will be available.

The shoot will be located three miles east of Bovina south of U.S. 60. Signs will be posted along the route.



BOXING ACTION . . . Shown are two of the boxers who participated in the Boxing Tournament held in Muleshoe Friday and Saturday, January 11 and 12. The two nights of boxing action were hosted by the Muleshoe Golden Gloves at the Mary DeShazo

Gym. Boxers from Amarillo, Lubbock, Levelland and Muleshoe were matched for fights. The Golden Gloves is sponsored in Muleshoe by the Rotary and Kiwanis Clubs.

## New Federal Business Loans Attract Attention

The following release is from John C. Kennedy, FHA County Supervisor, Muleshoe:

A new federal program to finance local businesses or industrial development will help improve the economic climate in rural areas of Texas, according to Mr. J. Lynn Futch, State Director of Farmers Home Administration, Temple.

Already letters of pre-application are being received, Mr. Futch said, requesting financial assistance to develop businesses under provisions of the 1972 Rural Development Act. The Farmers Home Administration, a rural credit service of the U.S. Department of Agriculture, oversees the program.

"Submitting a letter of pre-application is the first step in this program," Mr. Futch explained. "Any individual or group that needs financing for industry or business in Texas should summarize his ideas in

a proposal and submit it to the FHA county office in the area, or to a private lender. Priority will be given to projects that strengthen rural communities by improving economic and employment conditions as outlined in the Rural Development Act."

If the prospective business meets eligibility requirements, Mr. Futch said, the applicant will be requested to submit a formal application. Major projects will be cleared with appropriate local and state officials to assure compliance with development plans for the area.

In addition to individuals, eligible applicants may include partnerships, cooperatives, and corporations.

Most borrowers will receive loans advanced by private lenders guaranteed up to 90 percent by FHA in rural areas and cities not over 50,000 population. Loan funds may be used to purchase machinery and equipment, to buy land, buildings and permanent fixtures, and for working capital.

Public bodies also are eligible for grants to finance industrial sites that will result in development of private business enterprises.

## Black Named As Chamber Manager

Tommy Black has been named as the new manager of the Muleshoe Chamber of Commerce and Agriculture.

Black has been chairman of the BAC Committee for the past year and has worked closely with the Chamber for several years.

Black will assume duties at the Chamber office on Friday, February 1.

Black has worked at Cobb's Department Store for the past four years. He is a graduate of Muleshoe High School and is married to the former Karleen Burdsmith of Muleshoe. They have two sons, Chad, three, and Chris, one year old.

## USDA Increases Assistance Rates For School Lunches

The U.S. Department of Agriculture (USDA) has retroactively increased its payment rates to state educational agencies to help school pay for school lunches and school breakfasts they have served during the past six months.

The increased rates cover meals served under the national school and school breakfast programs between July 1 and December 31, 1973. They were announced by USDA's Food and Nutrition Service (FNS) as another step in implementing the child nutrition law passed last month.

The national average payment to help defray food costs of each lunch served to participating school children was increased from eight to 10 cents. Within that average, states were authorized to vary the rate of reimbursement to individual schools up to a maximum 16 cents a lunch. Previously the ceiling was 14 cents.

For the first time, states will receive a guaranteed additional payment to assist in the services of lunches to needy children of 35 cents for each reduced-price lunch and 45 cents for each free lunch. Any

state where payments averaged higher than this rate last year will be paid at that higher level through December 31, 1973. In cases of severe need, the federal per lunch reimbursement to individual schools can range as high as 70 cents for each lunch served free, 10 cents above the previous maximum. Payment rates for each reduced-price lunch in these circumstances may vary up to a high of 60 cents, the same level previously allowed.

The new regulations also give the states the responsibility for determining relative need among schools and for setting variable rates of cash reimbursement within federally-allowed maximums.

The national average payment for each paid breakfast served to eligible children, which has been five cents, will be increased to eight cents. The payment for each reduced-price breakfast, which has been 15 cents, will be increased to 23 cents. And the payment for each free breakfast, which has been 20 cents, will be increased to 28 cents.

For cases of severe need, maximum rates of reimbursement

for especially needy schools have also been increased. The maximum rate for free breakfasts, which has been 30 cents, has been increased to 45 cents. A school is considered especially needy if it served a high percentage of free and reduced-price breakfasts.

## Savings Bond Rates Increase

Dean Spraberry, Bailey County Chairman for U.S. Savings Bonds, reports that now more than ever before, it pays to hold onto your Savings Bonds.

"The new six percent rate applies both at bonds purchased on and after December 1, 1973, and to those bought before that date and still outstanding. So, there's no reason to redeem any Bonds to benefit from the rate increase."

The higher rate is extremely timely," Mrs. Spraberry said. "These days, more and more Americans are finding it prudent to put extra dollars aside

Cont. on Page 3, col. 2

## Deposits Rise 44% Over Last Bank Call

A record crop and high prices for these crops contributed to a 44 percent increase in bank deposits and savings in Muleshoe this year.

Local and area banks received their bank calls on December 31 and were released this week. They all showed a tremendous increase in deposits.

In Muleshoe alone, the total deposits and savings were \$40,003,815.66. This is \$12,260,038.87 more than the \$27,743,776.79 recorded at this time one year ago. This is a 44 per cent increase making 1973 a record year for deposits in Muleshoe.

Higher prices for cotton and a greater volume of it in the county accounted for some of the increase in deposits. Other reasons stated include inflation, normal growth, good grain crops and the fact that the cotton crop this year was almost completely out of the field by the first of the year. This was a tremendous year for agriculture in Bailey County.

At Muleshoe State Bank, Bob Finney, cashier, reported that they used their deposits \$5,322,230.13. The December 31, 1973 bank call showed the bank with total deposits of \$10,415,849.53 compared to the December 31, 1973 call of \$15,738,079.66 in deposits. Assets at the bank also increased from \$11,725,227.85 in December of 1972 to \$17,244,251.65 at the close of business on December 31, 1973 for a total increase of \$5,519,023.80.

Loans at the bank increased \$1,042,262.32 over a year's period from \$6,253,673.57 at the end of 1972 to \$7,295,935.89 at the end of 1973.

At First National Bank in Muleshoe Cashier Ted Barnhill reports that deposits were up \$5,814,027.28. At the end

of 1972 deposits totaled \$10,765,127.72 as compared to \$16,569,155.00 at the end of 1973.

Assets were up \$5,930,652.25 at this bank this year. At the end of 1972, assets were \$11,835,851.04 as compared to \$17,766,503.29 at the end of 1973.

Loans increased from \$4,795,566.50 in 1972 to \$5,165,236.80 at the end of 1973 for an increase of \$369,670.30.

At Tri-County Savings and Loan Association in Muleshoe, Savings Accounts increased \$1,123,781.46 from \$6,572,799.54 to \$7,696,581.00.

Assets at Tri-County at the

Cont. on Page 3, col. 1

## Registration Applications Now In Mail

Owners of some 8.4 million motor vehicles in Texas will have some important mail coming their way early in January. Registration renewal applications will be put in the mail shortly after the holiday season by the Motor Vehicle Division of the Texas Highway Department.

The same quick and easy method made possible by modern computer technology will be in effect this year as it has been in the last few years. Vehicle owners can save time that used to be spent waiting in long lines at county tax offices throughout the state by ordering their 1974 license plates by mail.

All that must be done is to send the entire three-part ap-

Cont. on Page 3, col. 3

## 55 mph Speed Limit In Effect Jan. 20

The Texas Highway Commission this week set a statewide maximum speed limit of 55 miles per hour, effective at 12:01 a.m., Sunday, January 20.

The action was taken in keeping with the law passed by the Texas Legislature, empowering the Commission to set lower speed limits to comply with federal energy saving actions.

Under the terms of the Emergency Highway Energy Conservation Act signed by the President January 2, a state not establishing a 55 m.p.h. maximum speed limit would not receive its share of federal highway construction funds.

Federal taxes on items related to the operation of motor vehicles -- notably a four-cents-per-gallon levy on gasoline -- go into the Federal Highway Trust Fund. These funds are apportioned back to the state for the federal government's share of highway construction.

Texas' share amounts to some \$240 million annually which would be withheld if the lower speed limit were not set by early March.

Today's action is subject to review within eight days by Governor Dolph Briscoe. The lower speed limits will apply to all highways in the state, including highways under the control of the Texas Turnpike Authority, cities and counties.

New speed limit signs replacing the old 70-m.p.h. maximum speed limit on the State's major highways, will be in place by the effective date. The Highway Department will begin immediately the task of making and posting the new signs.

The Commission also directed the Highway Department to monitor and document circumstances "which might relate to the establishment of speed limits and to report to the Commission on a monthly basis." This is in order that the Commission may make findings as to whether the 55 m.p.h. limit should continue in effect.

Many motorists in Texas already have voluntarily reduced their driving speeds to below 55. Highway Department spokesmen said,

Cont. on Page 3, col. 4

## around muleshoe

With The Journal Staff

Guests at Rotary this week were Bob Harris of Clovis, Bennie Pickler of Littlefield and Louis Stallings, the Bailey County Farm Bureau manager. Richard Myers and Steve Block gave the program this week. They are both students at Muleshoe High School and members of the debate team. The two discussed the team's topic for 1974, "Resolved: That the Federal Government should provide a program for the employment of all employable U.S. citizens living in poverty."

They then showed Rotary members how it might be presented for debate, discussing both sides of the question.

Two Oklahoma State Tech students from Muleshoe are among a 316-member graduating class scheduled to receive diplomas Thursday, January 24.

**Anthony's**  
C. R. ANTHONY CO.

**SUPER SAVINGS  
IN EVERY  
DEPARTMENT**

# SALE WAREHOUSE

**WE'VE BOUGHT 1,000'S OF DOLLARS WORTH OF NEW MERCHANDISE FROM OUR OKLAHOMA CITY WAREHOUSE FOR THIS SENSATIONAL SALES EVENT WE HAVE BARGAIN BUYS IN ALL DEPARTMENTS FOR THE FAMILY AND HOME**

100% COTTON  
**BLUE DENIM  
CUFFED JEAN**  
Reg. \$8.  
**6.67**  
Sizes 28-38 - S-M-L

**MEN'S  
Long Sleeve  
Dress and  
Sport Shirts**  
**\$3**  
VALUES TO  
\$5.99

SPECIAL PURCHASE  
FAMOUS BRANDS  
**DENIM  
FLARES**  
**\$4.77** PR.

SPECIAL PURCHASE  
**PANTY HOSE  
OR ORLON  
KNEE HI  
SOCKS** REG. \$1.25  
**2 For 88¢**  
VALUE

**BIG  
BARGAINS!**

JUST ARRIVED  
SPECIAL PURCHASE  
POLYESTER  
**DOUBLE KNIT  
2 for \$5**  
50"-60" WIDTHS  
NEW SPRING  
PATTERNS  
**DACRON &  
COTTON  
FABRICS**  
REG. VALUES TO \$1.49  
**57¢**

**LET'S PUT  
IT ALL  
TOGETHER  
FOR  
SPRING!**



**Ladies' Shells**

Easy to wear season after season... ladies' random rib sleeveless shells to match and layer up with all your favorite outfits. Made of easy care, no ironing, 100% polyester. In white, black, red, navy, pink, light blue. Sizes S-M-L. Regular \$4.

2.88  
**2 FOR \$5.**

**Ladies' Pants**

Ladies' 100% polyester, stitch crease center, flare leg, pull-on pant. Available in black, navy, red, brown, white, light blue, and pink. Sizes 10-20. Buy several and coordinate them with the shells to make a lovely wardrobe and at a big savings too!

**\$5.50**

**BIG  
BUYS**

**OPEN 10AM-9PM  
MONDAY ONLY**

Reg. 3.49  
**\$3.**  
**Men's Long Sleeve Cotton  
Flannel Shirts**

**RECEIVING  
BLANKETS**  
First Quality  
Reg. 1.49  
**\$1.**  
2 PER BAG

**3 PC.  
BATH SETS**  
50% DACRON 50% NYLON  
REG. \$6.99  
**\$4.44**  
2 PC SET  
**\$2.66**

**SUPER  
SAVINGS**

**LADIES NYLON NEW SPRING  
SLEEPWEAR**

VALUES TO \$4.49  
WALTZ GOWNS  
OR BABY DOLLS  
**2 FOR \$3**



**BOYS'  
CUFFED  
JEANS**  
Reg. 7.50  
**\$4.97**

Select group of boys' cuffed chambray or cuffed denim jeans. In solid colors or plaids. Sizes 6-18 slim and regular.

**SELECT GROUP OF  
CHILDRENS' SHOES**

Values To 8.99  
**\$2.97** ASSORTED STYLES, SIZES AND COLORS.

**SHOP  
NOW  
AND  
SAVE  
BIG  
VALUES**

**SPECIAL PURCHASE LADIES  
NYLON BRIEFS-BIKINS**

VALUES TO 99¢ **59¢** VALUES TO \$1.19 **69¢**  
**BEAUTIFUL STYLES COLORS**

**SAVE  
NOW**

**MEN'S  
THERMAL  
DRAWERS**

Reg. 2.99  
**\$2. ea.**

A must for the cold days ahead. Long sleeve Raschel thermal shirt and elastic-waist ankle-length drawers. Sizes S-M-L-XL.

**Bula News**  
By  
**Mrs. John Blackman**

Bula girls won over Lazbudie 60-33 for first place in the Amherst basketball tournament Saturday evening. Lisa Risinger making 23 points and Gwen Pollard 22 points.

Second school semester ended Tuesday. Wednesday was a holiday for the school children as the teachers spent the day attending the in-service training classes. A covered dish luncheon was enjoyed at the noon hour by the teachers.

Both boys and girls in junior high played Pep, Monday evening at Pep, girls won their game with boys losing theirs.

Mr. and Mrs. P.R. Pierce spent Sunday in Lubbock, they visited in the home of their daughter Mrs. Clifton Baker. Their other daughters, Mrs. Jean Jackson and children and Miss Alma Lou Pierce also visited with them in the Baker home.

Mrs. Rowena Richardson and Miss Vina Tagman enjoyed having their niece and husband, Mr. and Mrs. J.T. Coody, of Cache, Okla. spend Saturday night with them. Sunday they all were dinner guests with Mr. and Mrs. Robert Claunch.

Weekend company for the W.C. Risingers were their son Mike and wife Rosa, from Lubbock. Mike is a Tech student working on his Masters in Agronomy.

Ennis Scifers of Whittier, Calif. visited with the John Blackmans Saturday evening and ate supper with them. He was here due to the death of his mother, Mrs. Rosie Scifers, of Littlefield.

Mrs. Robin Taylor of Muleshoe was a guest in the W.R. Adams home Tuesday morning.

Mrs. Lorila Jones enjoyed having all of her children home for the weekend. They were Mr. and Mrs. Leon Jones and children Monty and Mickie of Wilcox, Arizona, Sarah Ann Jones and children, Brit and Leslie, from Montgomery, Alabama, Mrs. Earl Shields and

children, Roslyn, Kendon and Patrice from Lella Lake, Roger Jones, Pep and Wendell of the home. Sarah and children will be staying with her mother for several days.

Mr. and Mrs. W.T. Thomas returned home Monday from spending the holidays with their daughter and family the Leon Kesslers in Fort Worth. They had the pleasure of seeing their grandson David Kessler married to Miss Emily Snellings in the home of David's parents, with brother Brannon, minister of the Church of Christ, at Irving officiating, at 2:00 p.m. Saturday afternoon. The bride was attired in a long white gown with long feathered sleeves and a train falling from the waist of the dress, and was given away by her father. Approximately 50 close friends and relatives attended. Among those were her parents, Mr. and Mrs. Snellings from Corpus Christi and her grandparents, Mr. and Mrs. Wade from Weatherford. The couple returned to Amarillo where both are employed at Levi Strouco Co. and attend Amarillo Bible School.

A friend, Steve Asher, from Oklahoma City, spent a few days the past week in the J.C. Withrow home.

Miss Vina Tagman is in the charge of the study Tuesday when the WMU met for their weekly study. Lessons was taken from their Royal Service magazine with topic New Conventions merge in Pennsylvania and New Jersey. Writ scripture reading taken from John 10:1-10 and Phil 1: 9-11. Mrs. Richardson read the prayer calendar with Mrs. P.R. Pierce giving the opening prayer and Mrs. Hogue offering the benediction. In attendance were Mrs. P.R. Pierce, Mrs. E.W. Black, Mrs. C.A. Williams, Mrs. E.O. Battles, Mrs. Rowena Richardson, Mrs. Clyde Hogue and Miss Vina Tagman.

Wednesday evening Jan. 9 brother Eddie Riley starts teaching a series of lessons from the books of Colossians and Ephesians to the adult class who gather each Wednesday evening for prayer meeting services.

Schedules are made to remind you how far behind you are in your work.

**People, Spots In The News**



**FURS, WOOLS** are back in all fashions for keeping warm.



**NEW DESIGNS** in architecture outside for esthetics and inside for saving fuel with automatic clock-thermostats at Denver, Colo.



**FOOT PJ's** and cuddly animals make sleeping in cooler temperatures fun and fashionable.

**Clinical Masseuse**  
Theresa Davis, Owner  
109 SOUTH FIRST PHONE 272-3877  
MULESHOE, TEXAS 79347  
**DO YOU WANT RELAXATION FROM TENSION, STRAIN, AND NAGGING HEADACHES?**  
Then visit Theresa Davis, your Clinical Masseuse for Complete Body Massage, Massages for sore muscles, and all around better relaxation. The clinic also offers steam and whirlpool baths, steam packs, and paraffin treatments. So fight fatigue and lead a happier healthier life by visiting Theresa at 109 South Main.

**Bank...**

Cont. from Page 1  
 end of 1972 were \$7,905,323.55 as compared to \$10,026,600.15 for an increase of \$2,121,276.55.  
 Total loans at Tri-County were \$9,136,235.76. This is an increase of \$2,233,181.86 over last year's figure of \$6,903,053.90.  
 A check with area banks showed that their deposits were also up this call.  
 At the First State Bank in Morton, deposits were up \$5,330,229.05. The December 31, 1972 bank call showed \$10,061,335.96 as compared to

\$15,391,565.01 in 1973.  
 Loans at the bank totaled \$5,348,079.31 at the end of 1972 as compared to \$4,528,065.43 in 1973. This is a decrease of \$820,013.88.  
 Cashier at the Morton Bank, Daryl Bennett, stated that there was only one good reason for the large increase and that was the price of farm products. He also stated that this was the best year the bank has ever recorded.  
 Deposits in the Friona State Bank were \$22,266,824.26 this call as compared to \$17,203,829.46 in 1972 for an

increase of \$5,062,994.80.  
 Loans at the bank were up \$3,455,359.36 this year. Totals in 1972 were \$11,606,541.53 and were \$15,061,900.89 in 1973.  
 The First National Bank of Sudan showed an increase of \$1,971,698.64 in deposits this year. Deposits in 1972 at this same time were \$4,878,115.39 as compared to \$6,832,729.31

**Savings...**

Cont. from Page 1  
 into savings. There is no surer, safer, easier way than by buying U.S. Savings Bonds. And the new rate makes them better than ever.  
 "We in Bailey County look upon Savings Bonds as old and staunch friends of the family. They've helped us weather many a storm. And through the Payroll Savings and Bond-A-Month Plans, they're building nest eggs for future demands -- weddings, new homes, education, autos, vacations, retirement.  
 Dean Spraberry pointed out that Savings Bonds are the least inflationary means the government has for financing the national debt. Dollars derived from Savings Bonds sales also help pay for ways of protecting our environment; improving our standard of living.

"I know of no better way," Chairman Dean Spraberry stated, "for most of us to help our country, our neighbors and ourselves -- at one and the same time. Today's higher interest rate should encourage more people to buy bonds, thereby bolstering their individual financial security."  
 "The improved rate," she continued, "should also stimulate our 4-H Clubbers, Future Farmers and other young folks, who haven't started saving for their futures, to begin setting dollars aside through U.S. Savings Bonds."

"I pledge my full time and best efforts in fulfilling the duties of the office of District Clerk of our County."

**Crawford...**

Cont. from Page 1  
 of the First Baptist Church, and she and her husband, Jimmie, have two children, Diane, who is married, and Douglas who is a junior in Muleshoe High School. They have lived in Muleshoe since 1955, except for four years, when her husband was employed in Gaines County.  
 "May I solicit your support and influence in the coming election,"

**Hazardous Duty**  
 Teachers in some lower grades feel that they are at least entitled to as much pay as other wild animal trainers.  
 -Herald, Miami.

**Gilbreath...**

Cont. from Page 1  
 important office.  
 "I have resided in Bailey County since 1922. Francis and I have raised two sons here. I am a member of the First United Methodist Church, and it is my earnest desire to devote my very best efforts to serving the people of Bailey County as your County Clerk.  
 "Your vote and influence in the May Primary will be most sincerely appreciated."

**Tags...**

Cont. from Page 1  
 plication by mail to the county tax assessor collector in the owner's home county, enclosing the registration fee plus \$1 for each vehicle to cover handling and mailing.  
 There are three things to remember: Leave the three-part form intact. Don't separate the three parts. Mail it to the county tax office in your home county. (Mailing it to the Highway Department will only delay getting your 1974 license plates). Be sure to include the registration fee, plus \$1 for each vehicle for postage and handling.  
 You may apply for license plates by mail after January 1. However, county tax offices won't mail plates until after February 1. Owners should allow at least 30 days from the time they apply for the license plates to be returned.  
 In-person registrations will begin at county tax offices and, in some counties, at substations on February 1. Even though the automated registration application have speeded up the process, waiting lines will grow progressively longer as the April 1 deadline approaches.

**Muleshoe...**

Cont. from Page 1  
 the nation. Total diplomas awarded since Tech was founded in 1946 number more than 15,000.  
 Muleshoe graduates and their course of study, include Karen K. Bomer, legal secretarial, and Richard L. Bomer, industrial electronics.  
 \*\*\*\*\*

Saturday, February 9, will mark Homecoming '74 at Lubbock Christian College.  
 This is the biggest day of the year for the college as its ex-students return for their class reunions and future students turn out for Master Folies, the crowning of a queen and the exciting play of the Fightin' Chaparrals as they fast Eastern New Mexico University.

E. T. Klassen, Postmaster General:  
 "Either the taxpayer pays, the man who uses the mail pays or a decline in service will result."

**Water...**

Cont. from Page 1  
 that has been selected for inclusion in the annual water-level measuring program. All wells are privately-owned -- the District does not own any wells -- and are measured with the permission of the well owners.  
 District personnel will be measuring wells in Armstrong, Lamb, Hale, Floyd, Lubbock, Crosby, Lynn and Hockley Counties. Wells located in Cochran, Bailey, Farmer, Daaf Smith, Castro, Randall and Potter Counties will be measured by the TWDB crew.

Maurice F. Strong, Executive director of the U.N. Environmental Program:  
 "Two hundred million Americans use more energy for air-conditioning alone than China's seven hundred million for all purposes."

**Comet Stuff**

It now turns out that the much ballyhooed Kohoutek comet didn't live up to grand predictions of the astronomers. Only the astronauts, it seems, got a suitable bang out of the display.  
 For the astronauts, things have been rather dull lately, comparatively speaking. Whereas every squeak or step was once followed by millions, nowadays the space agency often struggles in vain for headlines; the public has lost interest after too much overexposure and glamorizing of the space program.  
 So it's nice the astronauts found Kohoutek interesting, and managed a little publicity therefrom, especially since the general public must wait 75,000 years for Kohoutek's next return to the earth's vicinity.

**NEWS VIEWS**

Richard Nixon, President:  
 "We must all sacrifice a little so no one will endure hardship."

Russell W. Peterson, the President's nominee to head the Council on Environmental Quality:  
 "The U.S. should lead a worldwide drive to reach zero population growth as quickly as possible."

George Shultz, Treasury Secretary, on energy:  
 "I think we have the ability to manage the problem without undue disruption of our economy."

John A. Love, Energy Adviser:  
 "The current oil shortage is the worst problem we've faced other than wartime."

**Definition**  
 Wife: The little woman who'd rather mend your ways than your socks.  
 -Flashes, Louisville, Ky.

**Timely Warning**  
 You can't change the past, but you can ruin the present by worrying about the future.  
 -Sun, Sac City, Ia.

**MULESHOE JOURNAL**  
 Established February 23, 1924  
 Published by Muleshoe Publishing Co., Inc.  
 Every Thursday at 304 W. Second, Box 449  
 Muleshoe, Texas, 79347  
 Second-class postage paid at Muleshoe, Texas 79347  
 POSTMASTER: Send address changes to Muleshoe Journal, P.O. Box 449, Muleshoe, Texas 79347  
 MEMBER: TEXAS PRESS ASSOCIATION  
 1974  
 J.B. Hill, President  
 William J. Hill, Secretary  
 J.B. Hill - Managing Editor  
 Billie Hill - News Reporter  
 Tom Bach - Sports Reporter  
 Cally McCombs, Advertising  
 Public Reading Office  
 SUBSCRIPTIONS:  
 Zone 1 - Bailey - Farmer - Cochran - Lamb counties: \$4.00 per year, \$8.00 per year by carrier. All Bailey County Journal, 1974 papers: \$1.00 per year, \$2.00 per year by carrier.  
 Zone 2 - Lubbock - Terrell: \$4.00 per year, \$8.00 per year by carrier. All Bailey County Journal, 1974 papers: \$1.00 per year, \$2.00 per year by carrier.  
 Monthly, by carrier - \$5.00, single copies - 10¢  
 Advertising rates - on application

**Lunch...**

Cont. from Page 1  
 fasts to children who meet the school's eligibility standards, has unusually high costs in providing breakfast, or has other unusual factors indicating special financial need.  
 The regulations formerly provided that for schools other than those deemed especially needy, the assistance payments would be limited to the cost of obtaining food. That limit has now been expanded to include labor and other costs.  
 The Department will shortly announce its rates of payment for both programs for the six-month period, Jan. 1 to June 30, 1974.

**Merriott...**

Cont. from Page 1  
 in the duties of the office of District Clerk and I have kept abreast of these changes. Juvenile Court is now part of the District Court and there have been changes in the Family Code. I am now serving in office and I believe this prior service will be of vital benefit to the people of this county and enable me to better serve you in the forthcoming term.  
 "I have been a resident of Bailey County since 1948 and was a 1953 graduate of Muleshoe High School. I am married to Lonnie Merriott and we have two sons. Gary is a freshman student at West Texas State University in Canyon and Mickey is a freshman student at Muleshoe High School. Our children were born in Muleshoe and I have the best interests of our country at heart.  
 "Thank you for your kind support in the past and I will sincerely appreciate your consideration in my behalf in the upcoming election.  
 "I pledge my full time and best efforts in fulfilling the duties of the office of District Clerk of our County."

**Welcome to Muleshoe**





MR. and MRS. J.B. SMITH

We would like to welcome Mr. and Mrs. J.B. Smith who are now at home on the Plainview Highway. They have recently moved to Muleshoe from Andrews.

Mr. Smith is a former field superintendent with the Exxon Oil Company. He took an early retirement after working for Exxon 38 years and is now engaged in farming. Mrs. Smith (Susie) enjoys playing bridge and visiting with her two sisters, Lena Bell Thomas and Fern Warren, both of Muleshoe. Mr. Smith's brother, Irvin Smith, also lives in Muleshoe and operates the Smith farm.

The Smiths have one son, Shelton, who is presently a senior at the University of Texas. They are members of the Methodist Church.

THE FOLLOWING FIRMS WELCOME THE SMITHS TO MULESHOE:

<p><b>James Crane Tire Co.</b>  </p>	<p><b>MULESHOE STATE BANK</b>                  MEMBER FDIC</p>
<p><b>DAMRON DRUG CO.</b>                  REXALL                  308 MAIN</p>	<p><b>James Glaze Co.</b>                  INSURANCE                  REAL ESTATE                  LOANS  </p>

**CART OFF FOOD SAVINGS**

**CHUCK WAGON BACON** 89¢ LB

**ORCHARD 64 oz. BTL. ORANGE DRINK** 49¢

**FOOD KING FLOUR** 25 Lb. Bag \$3.59

**DOUBLE GUNN BROS. STAMPS ON WED. WITH \$2.50 PURCHASE CALIFORNIA RED GRAPES** 29¢ LB

**WASHINGTON RED DELICIOUS APPLES** 19¢ LB

**TEXAS RUBY RED LARGE SIZE GRAPEFRUIT** 10¢ EACH

**RED RIPE TOMATOES** 39¢ LB

**KING SIZE 6 Btl. Carton COCA-COLA** 39¢

**YELLOW ONIONS** 10¢ LB

**IMPERIAL PURE CANE SUGAR** 5 LB. BAG 69¢

**FRESH FIRM GREEN CABBAGE** 6¢ LB

**TEXAS CELLO PAK CARROTS** 2 FOR 25¢

**ICEBERG LETTUCE** 15¢ LB

**WHITE POTATOES** 10 LB. Bag 79¢

Carnation 6 1/2 oz. Can TUNA 39¢  
 MC-2 Gallon BLEACH 49¢  
 Mrs Breck 13 oz Can HAIR SPRAY 69¢  
 Roxey 1 Lb. Can DOG FOOD 10 for \$1  
 Pops Rite 4 Lb. Bag POPCORN 69¢  
 Shurfine 14 oz Bottle CATSUP 4 for 99¢

**QUALITY MERCHANDISE AT LOWEST PRICES**

**Jim's Pay N' Save**  
 FRIENDLIEST STORE IN TOWN  
 8 AM TO 10 PM 7 DAYS A WEEK  
 PRICES GOOD JAN. 13 THRU JAN 19  
 201 S. 1st. Street



MRS. FRANK HARRISON ELLIS III  
nee MISS TRACY ANGELA COWAN

# Miss Cowan Weds Ellis

Miss Tracy Angela Cowan became the bride of Frank Harrison Ellis III Saturday, January 5, 1974 at 7:00 p.m. in the First United Methodist Church of Muleshoe. Reverend C.B. Melton officiated in the double ring ceremony.

The bride is the daughter of Mr. and Mrs. Harold Cowan, Ellis is the son of Mr. and Mrs. Frank Ellis all of Muleshoe.

The church was centered with a large altar bouquet of red and white gladiolus and white mums. Spirals of red candles were entwined with garlands of plumosis and leather fern. Seven branched candelabra flanked these to the side. Musical selections were "The Greatest of These is Love" and the "Wedding Song." Miss Debbie Kerr and Miss Christy Ford attended as soloists while being accompanied by Mrs. W.T. Watson.

Given in marriage by her father, the bride wore a formal length gown with a Venise lace bodice fashioned with a V-neck and long sleeves. The skirt was of silk organza accented with a wide band of Venise lace. Her chapel length veil of illusion edged with Venise lace fell from a monks cap. Her bouquet was a romance of red and white carnations; red silk snapdragons; camelia and trailing English ivy. It was accented with green velvet streamers and love knots.

As something old the bride wore a gold wedding band belonging to her maternal grandmother; something new was her wedding gown; something borrowed was a Bible belonging to the groom's mother; something blue was a garter and she wore the traditional pennies minted the couple's birth dates in her shoes.

Miss Kim Cowan served her sister as maid of honor. Bridesmaid was Miss Kathy Pena with the bride's sister, Miss Leslie Cowan serving as Jr. Bridesmaid.

Flower girls were Kristi Spies and Melanie Blackwell of Muleshoe.

All female attendants wore red velvet empire waisted dresses with long sleeves and stand up collar. The back was accented by a large red velvet bow at the waist-line. They wore white fur head pieces and carried white fur muffs. The flower girls carried baskets with red love knots.

Candlelighters were Tod Ellis, brother of the groom and Doug Cowan, brother of the

bride. Scotty Spies served as ring bearer.

Dan Ellis served his brother as best man with Matt Street and Sparks Redinger of Lubbock as groomsmen.

Ushers were John Street, Gary Hooten, Donald Glen Harrison and John Blackwell all of Muleshoe and Gred Molyneux, cousin of the groom, of Roswell, N.M.

A reception followed the ceremony in the Fellowship Hall of the church. Timmye Weyer of Lubbock registered guests. The bride's table held a four tiered cake decorated with Cherubs and iridescent bells and columns. Red punch was served from a crystal and red punch bowl. The centerpiece was a candelabra holding red candles with camelia tiki fern and leather leaf with red bows. Serving at the bride's table were Miss Donna Grimsley of Hereford and Miss Tani Murrah of Muleshoe.

The groom's cake, a double ring chocolate cake, and coffee was served from a silver service. The centerpiece was a black wrought iron candelabra holding five red daisy cup candles with camelia and leather leaf. Miss Pat Murray and Miss Gayla Hooten served at the groom's table. Miss Maribeth Dillman provided the music at the reception. Members of the house party were Mrs. Robert Hooten, Mrs. Bobby G. Free, Mrs. John Watson, Mrs. David Weyer, Mrs. Jimmy Skipworth, Mrs. Ronald Spies, Mrs. Mervin Wilterding, Mrs. Gordon Murrah and Mrs. Benny Pena.

For the wedding trip the bride chose a three piece suit of red and white checked double knit skirt and jacket with a red knit blouse. She wore a corsage of red and white carnations lifted from the bridal bouquet.

The couple will make their home at 2707 5th Avenue, Apt. 27, Canyon, Texas.

The bride is a graduate of Muleshoe High School and is a second semester freshman at West Texas State University. The groom is a graduate of Muleshoe High School. He is a Junior at West Texas State University.

Out-of-town guests were Mr. and Mrs. Earl Lee of Hobbs, N.M.; Mrs. Hellen Ellis, Berna Ruth Ellis, Mrs. Fred Myers, Mr. and Mrs. Steve Black and Mr. and Mrs. H.D. White all of Amarillo; Mrs. Gordon Molyneux of Roswell, N.M.; Mrs. Pauline Todd and Mr. and Mrs. Wayne Hughes, of Brownfield;

Mr. and Mrs. Mark Grimsley, Richard and Jana, and Mr. L.H. Lane of Hereford; Mr. and Mrs. C.V. Singleton, Mr. and Mrs. Rank Wilson and girls, Mr. and Mrs. David Weyer, Mr. and Mrs. Ralph Douglas, and Mr. and Mrs. Horace Edwards, of Lubbock; and Mr. and Mrs. Duane Boize and Mr. and Mrs. Percy Parsons, of Friona.

The rehearsal party was hosted by parents of the groom at the Fellowship Hall of the First United Methodist Church Friday night.

## Alpha Zeta Pi Elects Queen

Alpha Zeta Pi, chapter of Beta Sigma Phi met January 8, 1974 in the home of Mrs. Bob Finney with Mrs. Spencer Tanksley serving as co-hostess with Mrs. Finney.

President, Mrs. Reagan Cox read thank you notes from Jo Jinks's class at Richland Hills thanking us for helping with their Christmas party at school.

Social chairman, Mrs. Bill Russell reported on the Valentine Ball which will be held February 9 or February 16 and will be announced next week. The ball will be held at the Catholic Center and the Valentine Queen from each chapter will be revealed.

Mrs. Eugene Howard reported for Service Committee on the needy family we helped for Christmas and thanked everyone for their special concern and interest.

The president explained how we accumulate points on the yardstick and how we get the three star award.

The election of the Valentine Queen was held by secret ballot and the president explained that this was a beauty contest and pictures will be sent to a selected movie star of our winner to be entered in an international contest by all Beta Sigma Phi's.

The program on "Understanding Love" was presented by Mrs. Curtis Walker and Mrs. Tommy Black and they gave their personal interpretation on different kinds of love.

Hostesses, Mrs. Bob Finney and Mrs. Spencer Tanksley served refreshments to the following members: Mrs. Hugh Collis, Mrs. Eugene Howard, Mrs. Ted Barnhill, Mrs. Tommy Black, Mrs. Curtis Walker, Mrs. Paul Poyner, Mrs. Charles Pummill, Mrs. Buck Campbell, Mrs. Don Citak, Mrs. Monty Dollar, Mrs. Danny Noble, Mrs. Mike Miller, Mrs. Kearney Scoggin, Mrs. Jerry Gleason, Mrs. Ken Cox, Mrs. Bill Russell, Mrs. Reagan Cox, and Mrs. Travis Bessire.

## Mrs. Hammock Exhibits Work

Two South Plains artists share the spotlight in an exhibition now through March 5 at Lubbock's Methodist Hospital, sponsored by the hospital Auxiliary.

The featured artists are Ruth Hammock of Muleshoe and Johnny Branum of Lubbock. The Auxiliary sponsors numerous shows of this type, with works on display in the hospital cafeteria and elsewhere.

Both painters are members of the Lubbock Art Association, Texas Fine Arts Association and West Texas Watercolor Association. Branum recently was accepted as a member of the Texas Watercolor Society. Ruth Hammock is first vice president of the Muleshoe Art Association and a member of several New Mexico art organizations, including the New Mexico Watercolor Society.

Branum won the John Roger Gilmore Purchase Prize in the 1973 Texas Watercolor Society exhibition in Austin. A painting by him is now on display in the West Texas Watercolor Association show at the Museum of Texas Tech.

Ruth Hammock has been accorded several honors in 1973, including participation in three-man show at Methodist Hospital and Municipal Garden & Arts

## Beta Sigma Phi Receives Notes

Xi Omicron Xi met Tuesday, January 8 in the home of Mrs. Doyce Turner for a regular business meeting. The president, Mrs. Joe King, presided over the business meeting. The chapter received thank you notes from each girl at Girlstown thanking them for the wall plaques made for each girl for Christmas.

The students of Mrs. Guy Kendall's second grade class each wrote thank you notes for the Christmas party given them. Reports were given by Mrs. Marcia Henry and Mrs. Joe King on the delivery of gifts for Santas Helpers.

Plans were begun on the Annual Beta Sigma Phi Valentine Ball to be held in February. Alpha Zeta Pi Chapter and Xi Omicron Xi Chapter will each reveal and honor their Valentine Queens at this ball.

The next meeting will be a spaghetti supper in the home of Mrs. Tom Jinks.

Members present for the meeting were: Mrs. Marcia Henry, Mrs. Tom Jinks, Mrs. Joe King, Mrs. Max King, Mrs. Eric Smith and the hostess Mrs. Doyce Turner.

Center, paintings accepted for showing in the Texas Fine Arts Association Regional Circuit Show, the Spring Lubbock City Circuit, and the West Texas Watercolor Association Show now at the Tech museum, and paintings exhibited at shows and fairs in Portales, Ruidoso and elsewhere. She also has a painting at Hemphill-Wells which will show thru January.

## Joe Harbin Gives Electric Program

The Muleshoe Young Homemakers met Tuesday, January 8 at the Muleshoe High School Homemaking Department. The meeting was called to order by the president, Mrs. Jim Parrish, Mrs. Carroll Kelton gave the devotional on "Unselfishness."

Joe Harbin of the Bailey County Electric Cooperative gave a program on "Use, Care, and Repair of Small Appliances." He gave each member present literature on "What Every Woman Should Know about Electricity."

Refreshments were served by hostesses, Mrs. Randal Copley and Mrs. Kenneth Pal.

Members present were Mrs. Richard Warren, Mrs. John Mann, Mrs. Gary Elliott, Mrs. Carroll Kelton, Mrs. Mike Richardson, Mrs. Terry Kemp, Mrs. Nicky Nichols, Mrs. Randal Copley, Mrs. Doyle Eubanks, Mrs. Jim Parrish, Mrs. Jerry Lee, Mrs. Jay Harbin and guest, Joe Harbin.

## Red Cross Course Offered Jan. 24

The Progress Home Demonstration Club met Tuesday, January 8, in the home of Fern Davis at 2:00 p.m.

Roll call was answered by "How I Exercise While I Work." After the business was discussed, Mrs. Joe Shipman presented a program on "Personal Improvements."

The Red Cross Home Nursing Course will be held January 24 at the Muleshoe Nursing Home. Anyone wishing to attend is to please notify Mrs. Robin Taylor.

Those attending the meeting were Mrs. Gordon Murrah, Mrs. Albert Davis, Mrs. George Gross, Mrs. Gary Murrah, Mrs. Eunice Crane, Mrs. Albert Davis, Mrs. Robin Taylor, Mrs. W.E. Myers and guest, Mrs. Joe Shipman.

## Xi Omicron Xi Hosts Mrs. Hunt

Xi Omicron Xi met November 20 in the home of Mrs. Eric Smith.

Plans were discussed for the Christmas float, helping a school class with their Christmas party and helping Santa's helpers.

Mrs. Max King presented Mrs. Doyce Turner a silver baby spoon given to her by Alpha Zeta Pi.

Mrs. Max King then introduced Mrs. Robert Hunt, who presented several ideas of gifts to make the girls at Girlstown for Christmas. The rest of the evening was spent making curtain ring plaques for each of the girls.

Mrs. Smith served refreshments to Mrs. Doyce Turner, Mrs. Joe King, Mrs. Max King, Mrs. Tom Jinks, Mrs. Marcia Henry and the guest, Mrs. Robert Hunt.

## C.W.F. Members Study Beatitude

The Christian Women's Fellowship of the First Christian Church met Tuesday, January 8, 1974, in the home of Mrs. Walter Bartholf, Sr.

Mrs. Charles Long presided as president. After the business meeting Mrs. R.F. Wright presented the program which was the second Beatitude: Blessed are they that mourn; for they shall be comforted. The second key to the Kingdom of God is mourning. That is even less attractive to us than poverty, yet only those who can feel can mourn. If you have committed a certain wrong and it hurts, then be glad. You

become hopeless only when your soul becomes past feeling. This beatitude tells us we should be so grieved over our moral and spiritual shortcomings that we cannot rest until we have found God, and our souls are satisfied.

As you look at your life you may see your own broken heart. Be glad that it is broken. Take it to Calvary. There, under the warm glow of His love, your broken heart can be welded together again, and your sorrow be turned into rejoicing. Be thankful for your broken heart, if by becoming broken we are led to Christ for the mending.

Mrs. Bobby McGee gave the worship. She read the first four verses of Psalm 51 and

discussed being merciful. The meeting ended with the members saying the Fellowship Benediction in unison.

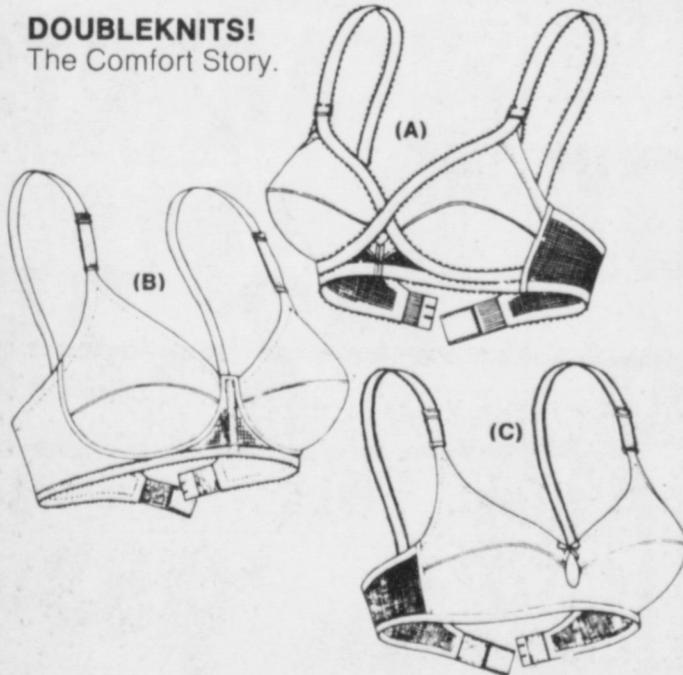
Members present were Mrs. Charles Long, Mrs. Bobby McGee, Mrs. R.F. Wright, Mrs. LeVina Pitts, Mrs. Sena Stevens, Mrs. Joe Costen and Mrs. Walter Bartholf, Sr.

## Dance Scheduled

The Brownlow Brothers will be playing for a western dance Friday, January 18 at the Muleshoe American Legion Hall from 9:00 till 12:30 for the surrounding area youth. Admission is \$1.75 per person or \$3.00 a couple. The dance will be sponsored by parents.

*Exquisite Form*  
FIRST TIME  
**SALE**  
Doubleknit Bras! Antron III® Girdles!  
The great new fabric stories on sale for the first time.

### DOUBLEKNITS! The Comfort Story.

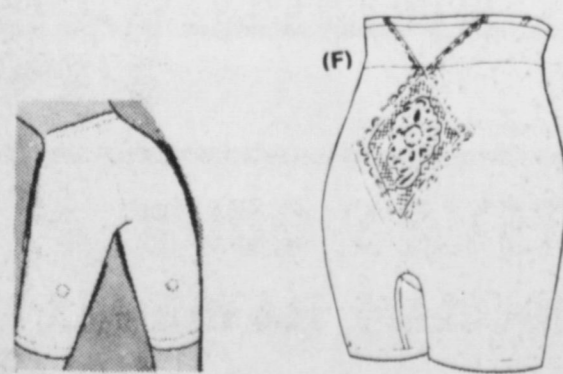


(A) "X-tra Comfort" Contour #3609 soft fiberfill with criss-cross stretch sides and straps. White A, B, C. Reg. \$4.00. **NOW \$3.49.**

(B) #579 Same with remarkable plastic "floating underwire" for added support with complete comfort B, C. Reg. \$4.00. **NOW \$3.49.** D Reg. \$5.00. **NOW \$4.49.**

(C) "Separate Freedom" #3054 buoyant fiberfill bra with delightful "key-hole" that separates sexy bust. White, A, B, C. Reg. \$4.00. **NOW \$3.49.** #4054 Same in full padded version, A, B. Reg. \$4.50. **NOW \$3.99.**

### MAGIC LADY undies that slim you by *Exquisite Form*



LONGLEG  
Regular from \$5.00  
**NOW FROM \$3.99**

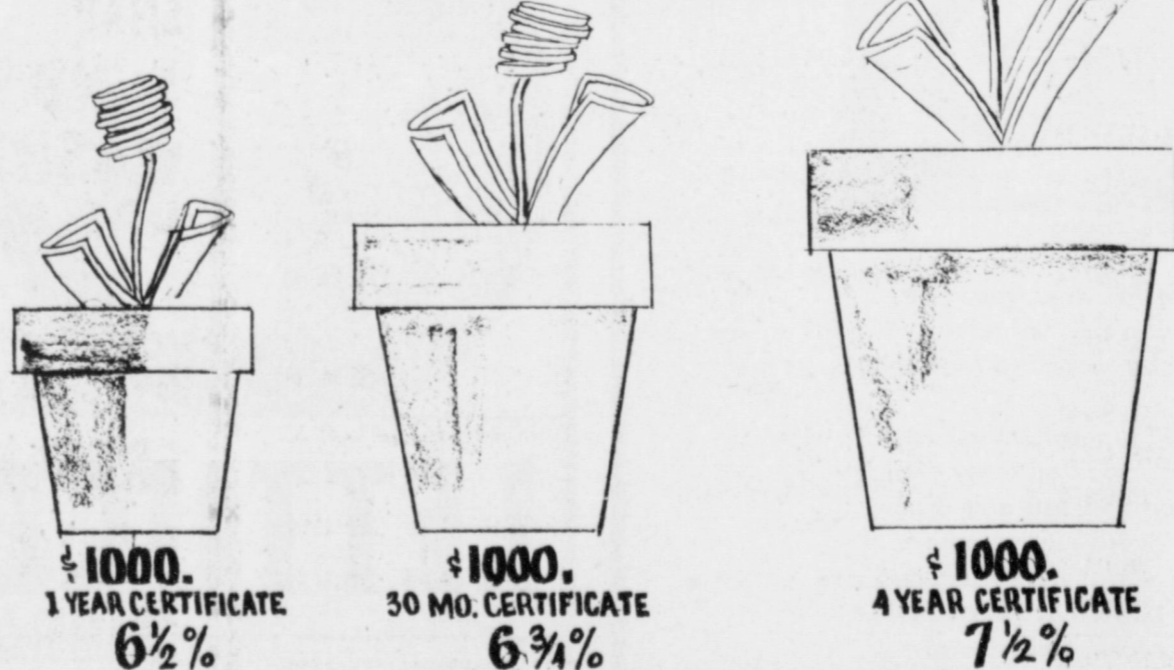
(F) #1994 Same in regular length, S, M, L, XL.  
Reg. \$8.50. **NOW \$6.99.**



PANTS SLIMMER  
Regular from \$8.00  
**NOW FROM \$6.39**

**Cobb's**

## For a bigger yield Plant Now



Federal law and regulation prohibits the payment of a time deposit prior to maturity, unless three months of the interest there on is forfeited and interest on the amount withdrawn is reduced to the passbook rate.

MONEY IS NOT A SEASONAL CROP. YOU CAN BEGIN RAISING YOUR OWN PERSONAL MONEY TREE AT ANY TIME. THAT'S WHY THERE'S NO BETTER TIME THAN NOW TO START YOUR SAVINGS ACCOUNT WITH US. THERE'S A LOT YOU CAN DO WITH A MINIMUM DEPOSIT OF \$1000.00. SO GET YOUR MONEY-GROWING SEASON STARTED NOW. IT'LL MEAN A BIGGER, EARLIER HARVEST.

**Tri-County**  
SAVINGS AND LOAN ASSOCIATION  
Muleshoe, Texas

Because of you... today a man is on a dusty road leading south from Rawalpindi...

reporting, analyzing, probing — to send you an eye-witness story. Other Christian Science Monitor reporters are gathering facts for you in Moscow, Nairobi, Beirut, London, Tokyo, San Francisco, and Washington.

Because you need to understand what's happening in order to change what's wrong and to support what's right.

The Christian Science Monitor gives you the facts, and reports how problems are being solved. It keeps you informed but not depressed — the Monitor has a uniquely hopeful outlook.

News, commentary, art, entertainment, fashion, sports, business, family: a lively daily newspaper (Monday - Friday) with something for everyone. For 13¢ a day — less than two postage stamps.

Yes, I want this unique daily newspaper for 4 months — over 80 issues for only \$11.

Payment enclosed  Bill me later

Name (Please print) \_\_\_\_\_  
Street \_\_\_\_\_ Apt. \_\_\_\_\_  
City \_\_\_\_\_  
State \_\_\_\_\_ ZIP \_\_\_\_\_  
The Christian Science Monitor®  
Box 125, Astor Station  
Boston, Massachusetts 02123



PAINTING IS FASCINATING . . . Mrs. La Wanda Murfee was guest artist Tuesday, January 8, at 10:00 a.m. at the Muleshoe Art Association meeting which was held at the Muleshoe State Bank. Mrs. Murfee, of Lubbock, stated, "Painting is a fascinating pursuit for everyone." She has a one person show hanging at the Lubbock Art and Garden Center of Lubbock during the month of January.

## Mrs. Murfee Visits Art Association

The first meeting of the New Year of the Muleshoe Art Association was held January 8, at 10 a.m. in the usual meeting place. The President expressed the desire that in the coming year we would paint more and paint better. Barbara Carpenter read the minutes of the last meeting. Blanch Lenderson made a motion that we have the meeting time of the association on the second Tuesday of each month, but that the time be changed to 2 p.m. The group approved of the change in time. Twenty nine members were present to see the oil demonstration presented by La Wanda Murfee of Lubbock, Texas. Mrs. Murfee has a one person show hanging at the Lubbock Art and Garden Center of Lubbock during the month of January.

She does not stick with one style or one plan in her painting. She teaches color theory and works with a limited palette. "Anyone who has a desire to paint can learn to paint," said La Wanda Murfee, Artist-Instructor, who teaches workshops on oil, pastels, watercolor and mixed media. "Painting is a fascinating pursuit for everyone," she stated. With some instructions and experience in painting, a student or person can become started to

ward a whole new interest. Whether the individual wants painting as a career, a hobby, or a Sunday afternoon activity, or as a therapy. Learning a few of the basic ideas can start them on the way to gratifying experience.

Mrs. Murfee pointed out the importance of working with a limited palette in order to become familiar with a few basic colors. "It can be quiet revealing to see what colors are achieved with the use of one red, one yellow, one blue, together with white. The study of color can be as exciting as drawing, sculpture, music, dancing, literature or history. She likes to paint happy things, things the way God made them, this gives her a happy feeling. The world around us was created in beauty and she wants to capture the magic she feels when light bathes a commonplace subject. "Through color she can create some of the joy and excitement of a fleeting moment. This is her expression of life-a record of a response she might pass on to others.

Members attending were, Gladys Dorsey, Vere Fox, Blanche Lenderson, Marie Lamb, Erald Gross, Velma Davis, Brenda Balleu, Margaretta Wright, Louise Roark, Ruth Hammock, Rheta White, Marie Lenau, Jackie Smith, Mattie Hicks, Elfreda McGeehee, Barbara Hugg, Jo McRay, Pauline Jamison, Bertha Beene, Juaree Smallwood, Dana Arnold, Clare Mounts, J.W. Chapman, Mildred Williams, Barbara Carpenter, Katherine Rogers, Beth Watson, Dorothy Bowers, and Lillian Smith.

The Artist of the Month is Marie Lenau, who had a picture hanging at the Public Library. Hostesses for the January meeting were Dorothy Bowers and Kathryn Rogers.

Careful drivers never know when they save their own lives.

## Nursing Home News

by Myrtle Guinn

Mrs. Sybil Simpson of Clovis, N.M. came a few days ago to visit her mother, Mrs. Brown.

Mr. and Mrs. John Blackman came Friday to see his mother, Mrs. Blackman.

Mrs. Jeanne McVickers and Mrs. Vivian White came to see me on Friday. My son and his wife, Mr. and Mrs. Jim Guinn from Friona came on Saturday.

Mr. and Mrs. T.L. Glasscock visited her brother, Mrs. Gilbreath Saturday afternoon.

Mrs. Sullivan visited her husband, who is ill here, Sunday morning.

Mr. and Mrs. Murry Hall came to see his mother, Mrs. Hall, Sunday. They live in Dimmitt, Texas.

Mrs. Jessie Lewis went home with her son, Mr. and Mrs. Leon Lewis and son, Sunday for the day.

Mrs. Lassiter of Whiteface came Monday to see her mother, Mrs. Newton.

Mr. Wilman is ill and was taken to the hospital Tuesday night. We hope a quick recovery is in store for him.

Among Mrs. Perry's visitors Monday was her daughter, Mrs. Ora Martin of Littlefield and Mrs. Edwards also of Littlefield. Mrs. Edwards also visited Mrs. Emmanuel on Friday. She is her sister-in-law.

Mrs. Merle Stevens visited her mother, Mrs. Nicholson on Sunday and she and her husband came again on Tuesday to see her.

Miss Murrah came into the home today. She shares room 81. We hope she will be happy here.

Mr. Burford and Mr. St. Clair came in on Tuesday to play "42" with us. We say "welcome" to them and hope they come often.

Mrs. Veach a friend of Mrs. Hall's came Monday and took Mrs. Hall and Mrs. Guinn down town shopping.

Mrs. Lewis son, Leon, and Mr. Edwards, Mrs. Jackson and Mrs. Murrah came to see her the last few days.

Mr. Dixon Ray visited his grandmother, Mrs. Duke on Wednesday afternoon.

The following is a new year's wish that I read recently and thought you might like to read it too. I hope it will help us all to be better Christians and friends. It is titled "A New Years Wish" by Gordon H. Taggart. "I wish I were: big enough to honestly admit all my shortcomings, brilliant enough to accept flattery without it making me arrogant, tall enough to tower above deceit, strong enough to treasure love, brave enough to welcome criticism, compassionate enough to understand human frailties, wise enough to recognize my mistakes, humble enough to be thoughtful of my neighbors and righteous enough to be devoted to the love of God." This might help in making our new years resolution, which I make each year and fail in keeping them all, so I'll try to do my best each day.

## RECIPE

By Sarah Anne Sheridan

### Creamed Chicken

- 2 c cold chicken cut in small pieces
- 1 c cold cooked peas
- 1 c sliced cooked carrots
- rots
- 1 can cream of mushroom soup
- Salt and pepper
- 1 loaf unsliced stale white bread
- Stuffed celery
- Radishes
- Stuffed olives

Mix chicken, peas, carrots and mushroom soup. Season to taste with salt and pepper. With a sharp knife, remove crusts from loaf of bread so that you have an even box shape. Hollow out the center of the box leaving a wall at least 1/2 inch thick. Dry the box in a moderate oven, remove and brush inside and outside with melted butter. Return to oven and toast until a golden brown. When ready to serve, place the box on a platter and fill with hot chicken mixture. Surround with stuffed celery, radishes, stuffed olives and small peeled tomatoes.

Patients and doctors seldom agree on the treatment of any ailment.

## NEW ARRIVALS



William Corley Hutton

Mr. and Mrs. William Terry Hutton of the Goodland community are the proud parents of a new baby boy born December 12 at 5:30 p.m. in the Methodist Hospital of Lubbock. The baby weighed five pounds and eight ounces and was named William Corley. He is the couple's second child. Corley has one sister, Heather who is 17 months old. Grandparents are Mr. and Mrs. Horace Hutton and Mr. and Mrs. Sam Dameron of Muleshoe and Mrs. Iona Hutton of Shallowater.

## LOUISA'S LETTER



## HOME

By April Rhodes

Dear Louisa. A few weeks ago I decided to have a dinner party for four couples I was obligated to. I went to a great deal of trouble to have everything just right. My table seats eight people and I had fixed casseroles and desserts ahead of time so that I could enjoy my guests. What was my surprise when one of the couples came bringing their two little boys four and six years old. I had to put up a card table for the children to eat on in the living room and gave them my and my husband's deserts. The evening was ruined for me and some of my guest. What should I have done about this? Bewildered-Del.

not been invited is inexcusable. If your friend was unable to make arrangements to have the children cared for in her absence she should have called you, explained the situation and offered to stay home and let you invite another couple in her place. Then it would be up to the hostess to decide whether to have the children or not. If she decided to let them come she could suggest that they have their supper before they came and let them play with toys in another room while your supper was in progress. If you invite her again I suggest that you tell her when you call that you are not having children this time as this is a party for adults.

Bring out those good woolen garments you stored thinking wool was not in vogue. You'll find they're warm and still fashionable.

If you need to patch a piece in your wallpaper, age the new piece by exposing it to the sun until it blends with the old. Tear the edges for a smoother patch.

It's not too early to search the seed catalogs for new flowers and vegetables for spring planting.

Another use for a shoe bag is to tie it to the outside of baby's playpen to store small toys.

A metal soft drink carton under the sink is handy to stand boxes of waxpaper, plastic wrap and foil.

## Black Reunion

The children of the late Mr. and Mrs. C.M. Black had a reunion and dinner at the XIT Steak House, Friday night, January 4, 1974.

Children present were Mrs. Edgar Raymond, Carona, Calif., Edgar Raymond, Carona, Calif., Mr. Ralph Black, Mr. Ray Black, Mr. Eugene Black, Mr. Pete Black, and Mr. B.H. Black, all of Muleshoe.

One sister, Mrs. Lawrence Perry of Ripley, Calif. was not present.

Others present were Mrs. Frankie Black, sixteen grandchildren, and 26 great grandchildren. Four visitors also attended, Pat Murray, Jole Carpenter, Laverne Carpenter and Bobby Angeley. For a total of 71 present.

The meal was prepared by Stan and Clifford Black. Everyone seemed to have a very enjoyable evening.

Answer: Bringing children to a dinner party when they have

Louisa. Address letters: Louisa, Box 532, Orangeburg, S.C. 29115

## 79th Semi-Annual Financial Statement

# FIRST FEDERAL SAVINGS & LOAN ASSOCIATION of CLOVIS

DECEMBER 31, 1973

ASSETS	1973	1972	LIABILITIES	1973	1972
First Mortgage Real Estate			Capital (Savings Deposits)	\$56,241,406.70	\$51,192,608.48
Loans	\$57,869,716.86	\$49,580,896.24	Advances, Federal Home		
Home Improvement Loans	83,444.26	61,847.52	Loan Bank	1,300,000.00	NONE
Loans to Members, Secured by Their Savings Deposits	424,733.75	328,787.42	Loans in Process	316,236.91	780,240.36
Cash and U. S. Government Bonds	3,240,862.43	5,191,752.75	Payments by Borrowers for Taxes, Insurance, etc.	415,538.11	351,112.29
Stock in Federal Home Loan Bank	435,900.00	435,900.00	Other Liabilities	221,187.76	128,201.55
Office Sites and Buildings	767,936.19	777,118.64	Reserve for Unearned Discount	279,021.40	225,819.09
Furniture and Fixtures	168,943.25	179,309.73	Reserves and Surplus	4,873,685.58	4,587,011.95
Prepaid Federal Insurance Premium	447,303.99	399,314.29			
Other Assets	208,235.73	310,067.13			
<b>TOTAL</b>	<b>\$63,647,076.46</b>	<b>\$57,264,993.72</b>	<b>TOTAL</b>	<b>\$63,647,076.46</b>	<b>\$57,264,993.72</b>

SECOND LARGEST & ONE OF THE OLDEST FEDERALLY CHARTERED SAVINGS & LOANS IN NEW MEXICO SINCE 1934

### DIRECTORS

ERNEST WHEELER, Jr., Chairman  
DONALD R. BONNER, Vice-Chairman  
ROY KEETER  
SCOTT McGEHEE  
E. C. KELSO  
ARMAND SMITH

K. BARNETT, Jr.  
DON WILLIAMS  
REESE CAGLE  
LYNN L. MARTIN  
CLYDE RAYL

ATTORNEY  
ESTHER SMITH VAN SOELLEN

### OFFICERS

CLYDE RAYL, President  
LYNN L. MARTIN, Exec. Vice President  
CHARLES RUTLEDGE, Sr. Vice President  
BILL BOONE, V. P. (Branch Manager)  
RUFUS FREEMAN, Vice President  
DWAYNE R. YOUNG, Controller  
DIXIE HOGG, Sec. - Ass't V. P.  
FAYE FARROW, Treas. - Ass't Sec.  
HAZEL B. TRAUGHBER, Ass't Sec. (Branch)  
PEARL GLIDEWELL, Ass't Sec.  
PAUL HUMBERT, Ass't Vice President  
DON RINGROSE, Ass't Vice President  
DOYLE HARMON, Ass't Vice President

WHERE YOU ALWAYS BUY THE BEST FOR LESS

## GIBSON'S DISCOUNT CENTER

1723 W. AMERICAN BLVD. MULESHOE, TEXAS OPEN 9AM-6PM WEEKDAYS

## DISCOUNTS

PRICES GOOD JAN. 13 THRU JAN. 16

## GALORE!

CLOSED SUNDAYS

**BLACK SHEEP BRAND COVERALLS**

PRE-SHRUNK WATER REPELLENT 2 WAY ZIPPER FRONT ADJUSTABLE COLLAR TOP CARGO & ACCESSORY POCKETS ADJUSTABLE CUFF FOR SNUG FIT

REG. \$24.95  
**\$19.95**

**LADIES PANTIES**

REGULAR & BIKINI STYLES

OUR REG. 59¢ OUR REG. 69¢

NOW **39¢** NOW **49¢**

**SNAP WINDSHIELD WASHER PRE-MIX 1 GAL**

READY TO USE REG. \$1.29

**99¢**

**TUF-COTE BY DUPONT FOR WOOD OR MASONRY**

REG. \$5.49

**\$3.99**

**DECORATOR HIGH STYLE FRAMED DOOR MIRRORS**

WHITE OR WALNUT REG. \$4.89

**\$4.29**

**DECORATOR SERIES OF ROYAL CHEF 7 PIECE COOKWARE**

REG. \$12.97

**\$9.88**

**WOODCRAFTER FURNITURE POLISH**

HAND RUBBED BEAUTY IN A SPRAY 14 OZ.

**\$1.19**

**REALTONE CLOCK RADIO**

AM ONLY REG. \$14.97

**\$11.88**

**AJAX WINDOW CLEANER and DEFOGGER REFILL 20 OZ.**

**47¢**

**NESTLE'S QUICK CHOCOLATE FLAVOR MIX 2 LB. BOX**

NOW AT GIBSONS **89¢**

## Lt. Governor's Report

By Bill Hobby

AUSTIN—On the heels of a brief special session to deal with reducing speed limits, the 181 men and women of the Texas Legislature return to Austin on January 8 for what may well be a historic convocation.

They will consider revising our state Constitution, a lengthy, detailed, and often-amended document.

While no one favors change simply for change's sake, many citizens realize that our present Constitution occasionally prevents government from dealing efficiently with the problems of our contemporary, complex society.

The constitutional convention can sit through May 31, and even have its session extended for 60 days. I join many others in the hope that the delegates will set promptly about the serious work and complete it within the shortest possible time.

Any recommendations made by the convention, whether a draft of a new Constitution or a revision of the existing one, will be submitted to the people.

The delegates will decide the date of the election, form of the ballot, and the method of publicizing the proposals.

I feel it is important to note that the people have been directly represented in the revision process from the first step. And they will pass final judgment.

The questions to be debated by the delegates—and ultimately decided by the voters—are many and complex.

They will consider restructuring of the executive branch, and whether major department heads should be constituted as a cabinet similar to the federal system.

The delegates will look at the advisability of making such officials as the land commissioner, comptroller, and railroad commissioners appointive rather than elective positions.

They will study several recommended changes for the legislative branch, including possible annual sessions and legislative salaries.

The delegates also will consider combining our present dual system of appellate courts, and the idea of making district

and appellate judgeships appointive rather than elective. Many other substantive issues must be dealt with, too. Should deficit spending continue to be prohibited? Should a right-to-work guarantee be included? Should county governments be given home rule?

These are but a few of the varied, complex topics which will confront the delegates. Perhaps the greatest quality

of the 181 delegates can bring to this convention is a high degree of integrity. Those with special interests will clamor for their attention.

The delegates must not be unduly swayed by those who would shape a new Constitution to their narrow personal interest.

They must draft a document that will serve all the people well for today and tomorrow.

## District Agent Recognized With Award

LUBBOCK -- Billy C. Gunter, district Extension agent with the Texas Agricultural Extension Service at Lubbock, was recognized by the county agents of District 2 Tuesday at noon in a special award presentation.

District 2 County Agent Director, Buddy Logsdon conducted the presentation on behalf of the agents. The award was a plaque which read "in appreciation for his guidance, counseling and help in promoting a more prosperous agriculture and well-being of mankind."

Gunter has served as District Agent since September of 1964. Previously he served as a soil scientist with the Conservation Service, as an Extension agronomist, area manager for Baker Caster Oil Company and as associate county agricultural agent in Hale

County. Gunter attended Tarleton State College and received a B.S. in agronomy from Texas A&M University in 1951. He received the M.S. in agronomy from Texas Tech University in 1966.

He served two years active duty with the U.S. Army Transportation Corps, including Command of the 512th Transportation Port Company.

He is commanding officer of the 413th Civil Affairs Company, USAR, Lubbock, holding the rank of Lieutenant Colonel. Gunter has attended the U.S. Army Reserve Civil Affairs Advanced Career Course, U.S. Army Reserve Latin Seminar, School of Latin American Affairs and European Affairs.

Gunter is a native of Lynn County. He is married to the former Carolyn Boyie of Paducah. They have two sons, Bill and Wylie.

## Butz Will Speak In Lubbock On Jan. 15

It has been learned from the U.S. Department of Agriculture that Secretary of Agriculture Earl Butz will be in Lubbock Tuesday, January 15 to deliver a major address pertaining to the cotton industry.

The Secretary has scheduled a speech at the Lubbock Municipal Auditorium for Tuesday (January 15) at 1:00 p.m. It is not known at this time what announcement or announcements the Secretary might make.

The event is open to the public and interested parties are urged to attend. It is expected that cotton producers from Texas and Oklahoma will be on hand for the address along with other dignitaries from throughout the Cotton Belt.

Accompanying the Secretary will be Mrs. Butz and Congressman George Mahon of the 19th Congressional District. Congressman Mahon has been in Lubbock for the past several weeks due to the recess of Congress for the holidays.

Following his speech Secretary Butz will meet with newsmen and then will tour the new American Cotton Growers gin facility in Crosbyton.

The ACG gin, which began production recently, is described as the "world's largest and most modern" cotton gin.

Following the tour the Secretary and Mrs. Butz will be honored at a reception in Crosbyton hosted by American Cot-

ton Growers. Immediately following the reception the Secretary will depart from Lubbock

Regional Airport by commercial jet for the West Coast, where he is scheduled to deliver a

speech in Los Angeles on Wednesday.

## FFA Tractor Contest Set In Fort Worth

Paul R. Chilen, Department of Agricultural Engineering, Texas A&M University, met with service representatives of leading farm machinery manufacturers last week in Fort Worth to confirm the rules for the 1974 FFA State Tractor Mechanics Contest. This contest, with over \$2,000 worth of mechanics' tools as prizes, is held each year at the Southwest Farm Show in March. Ten

FFA districts from throughout Texas hold elimination contests to determine which chapter will go to Fort Worth for this most competitive final event.

This year the competition will get underway Saturday morning, March 9, in Tarrant County Convention Center with preliminary judging and finals being held in the Tractor Pull Arena at 5:30 p.m. the same day. Winning teams will be

announced and awards presented to the winning team prior to the Tractor Pull at 8 p.m.

"We are proud of the job the State is doing in training young farm boys to work on equipment," said Red Ewald, of Red Ewald, Inc., Karnes City, Committee Chairman. "I am impressed with the ability shown by these young men after this training."

## THE FAMILY LAWYER

Mail That Offends

Three years ago, Congress offered a new kind of protection to people who wanted to stop "sexually oriented" advertisements from arriving in their mail. Anyone so inclined could place his or her name on a special list to be kept by the Post Office. Sending such ads to those on the list was made a crime.

By now, with thousands of names on the list, enough time has gone by for this law to be tested and clarified in the courts.

To begin with, the basic idea has been held constitutional, even though it involves some limitation on the freedom of the press. The Supreme Court has ruled that, just as a householder can bar unwanted salesmen from



his doorway, so he can bar unwanted ads from his mailbox. The Court said the advertiser's right to communicate does not outrank the right of the householder to be let alone.

To hold otherwise, added the Court, "would make hardly more sense than to say that a television viewer may not twist the dial to cut off an offensive or boring communication."

Publishers also complained of the expense of having periodically to "cleanse" their mailing lists. But a federal court decided, in another ruling, that this was a burden the law could legitimately impose.

"(The) cost of complying with the statute," said the court, "is less than one cent per name, a fraction of the cost of postage, and is not unduly burdensome."

What about the risk that penalties will be imposed on the innocent, for mailings sent by mistake? One worried printer raised that point in court, saying that computer errors might subject him to punishment unfairly.

However, the court said the statute would simply not apply in those circumstances. There would be no criminal offense, the court observed, when there was no criminal intent.

A public service feature of the American Bar Association and the State Bar of Texas. Written by Will Bernard.

© 1973 American Bar Association

## SCHEDULE OF EVENTS

MONDAY, JAN. 14  
10:00 - Commissioner's Court  
7:30 - Rainbow - Masonic Hall  
School Board Meeting  
WEDNESDAY, JAN. 16  
7:30 - Demolay - Masonic Hall  
THURSDAY, JAN. 17  
Noon - Ladies Golf Assn. Country Club  
5:30 - Weight Watchers - First Presbyterian Church  
6:30 - TOPS - REA Meeting Room  
FRIDAY, JAN. 18  
5:00 - Varsity Boys & Girls Basketball - Canyon - There

Any upcoming community event for Schedule of Events please report it to the Journal office.

Compliments of:  
**MULESHOE STATE BANK**  
MEMBER FDIC

## PIGGLY WIGGLY

STORE HOURS  
8AM-10PM DAILY  
9AM-9PM SUNDAYS

All Purpose  
**Potatoes**  
10 Lb. Bag **88¢**

Collard or Mustard Greens 2 for 39¢

Delicious Turnips lb 29¢

Delicious Green Onions 2 for 33¢

Delicious Fresh Avocados 3 For \$1

Fresh Grape-Fruit 5 Lb. Bag **59¢**

Collard or Mustard Greens 2 for 39¢

Delicious Turnips lb 29¢

Delicious Green Onions 2 for 33¢

Delicious Fresh Avocados 3 For \$1

Fresh Grape-Fruit 5 Lb. Bag **59¢**

Collard or Mustard Greens 2 for 39¢

Delicious Turnips lb 29¢

Delicious Green Onions 2 for 33¢

Delicious Fresh Avocados 3 For \$1

Fresh Grape-Fruit 5 Lb. Bag **59¢**

Collard or Mustard Greens 2 for 39¢

Delicious Turnips lb 29¢

Delicious Green Onions 2 for 33¢

Delicious Fresh Avocados 3 For \$1

Fresh Grape-Fruit 5 Lb. Bag **59¢**

Collard or Mustard Greens 2 for 39¢

Delicious Turnips lb 29¢

Delicious Green Onions 2 for 33¢

Delicious Fresh Avocados 3 For \$1

Fresh Grape-Fruit 5 Lb. Bag **59¢**

Collard or Mustard Greens 2 for 39¢

Delicious Turnips lb 29¢

Delicious Green Onions 2 for 33¢

Delicious Fresh Avocados 3 For \$1

Fresh Grape-Fruit 5 Lb. Bag **59¢**

Collard or Mustard Greens 2 for 39¢

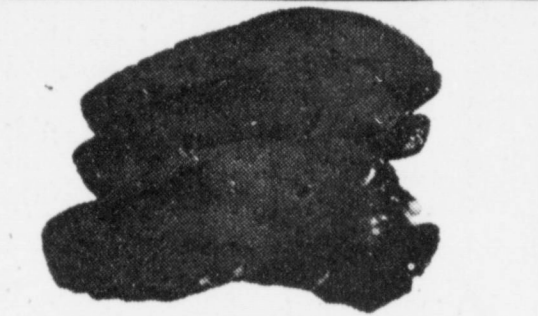
Delicious Turnips lb 29¢

Delicious Green Onions 2 for 33¢

Delicious Fresh Avocados 3 For \$1

Fresh Grape-Fruit 5 Lb. Bag **59¢**

## EVERYDAY VALU-PRICES



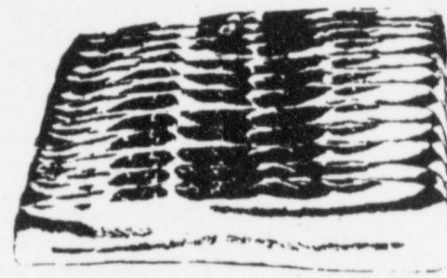
Sliced  
**Beef Liver**  
Lb. **98¢**

Glover Hot Link Sausage LB 98¢

TUB OF CHICKEN lb. 53¢

Fully Cooked, Canned Ham 3-Lb. Can **\$4.99**

Piggly Wiggly Mild Cheddar Cheese 8 Oz. Pkg. **79¢**



Ranch Style  
**Sliced Bacon**  
Lb. **\$1.19**

Red Snapper \$1.29

Frozen Perch Fillets \$1.19

Farmer Jones Bacon \$1.19

USDA Inspected, Split with Ribs Fryer Breasts Lb. 98¢

Country Style Farmer Jones Bologna 12-oz. Pkg **89¢**



Patio Ench., Comb., Cheese/Ench., Mexican, Frozen  
**Patio Mexican Dinners**  
12-oz. Pkgs. **2.89¢**

Beef, Chicken, Turkey

Morton's Pot Pies 4 8-oz. Pkgs. **\$1**

25 LB. BUNDLE

**FIRE WOOD \$1.19**

LIABLE COUPON  
Save 25¢  
With this coupon at Piggly Wiggly when you buy one (1) Detergent  
**Tide**  
49-oz. Box **69¢**  
Without Coupon 94¢.  
Offer good thru Jan. 19, 1974.  
00506

Piggly Wiggly Liquid Bleach Gal. Jug **49¢**

Piggly Wiggly Fabric Softener Gal. Jug **79¢**

Pre-cooked, Regular Minute Rice 7-oz. Box **41¢**

Nabisco Asst'd. Flavors Toastettes 6 1/2-oz. Box **35¢**

Piggly Wiggly, Non-Dairy Coffee Lightener 11-oz. Jar **55¢**

Piggly Wiggly Tomato Soup 11 Oz. Can **12¢**

**PigglyWiggly Coffee** Lb. Can **89¢**



Piggly Wiggly, Pink Grapefruit Juice

**35¢**

46-oz. Can

Piggly Wiggly Plain or Iodized Salt 26-oz. Box **11¢**

All Purpose Gold Medal Flour 5-Lb. Bag **96¢**

Piggly Wiggly Buttermilk Pancake Mix 2-Lb. Box **53¢**

Whitehouse Apple Sauce 16-oz. Can **35¢**

Piggly Wiggly, In Juice, Hawaiian Pineapple 15-oz. Can **31¢**

Carol Ann Saltine Crackers 1 Lb. Box **37¢**

Piggly Wiggly Golden Corn 4 16-oz. Cans **88¢**



Piggly Wiggly, Asst'd. Colors Paper Towels

**29¢**

147 Sheet 1 Ply Rolls

Piggly Wiggly, Asst'd. Colors Facial Tissue 200-Ct. Box **27¢**

Piggly Wiggly, 30 Gal. with ties Trash Bags 10-Ct. Pkg. **55¢**

Chicken Chunks Alpo Dog Food 14 1/2-oz. Can **34¢**

Piggly Wiggly Stewed Tomatoes 16-oz. Can **31¢**

Piggly Wiggly Instant Potatoes 15-oz. Box **55¢**

**WHOLE TOMATOES** 4 16-oz. Cans **\$1**

Piggly Wiggly POTATO CHIPS 11 Oz. Bag **53¢**

Plus Deposit  
6 BOTTLE KING SIZE

**COCA COLA**  
**49¢**

Piggly Wiggly, Tortilla Chips 8-oz. Pkg. **39¢**

Van Camp's Pork & Beans 21-oz. Can **32¢**

Kobey's Shoestring Potatoes 1 1/2-oz. Cans **13¢**

Piggly Wiggly Vegetable Soup 10 1/2-oz. Can **16¢**

Carol Ann, Pure Red Plum Jam 2-Lb. Jar **63¢**

Piggly Wiggly Corn Chips 11 Oz. Bag **39¢**

Piggly Wiggly, Cut Green Beans 4 16-oz. Cans **88¢**



# MULE'S TALE



Official Publication of Muleshoe High School Written and Edited by Students of the Muleshoe Schools

VOL 12 NO 13

EDITED BY GENE ROGERS

JANUARY 13, 1974

## District Basketball Action Begins

### Choir News

Even though the Christmas program is over, the Choir still has work to do. Right now the choir is practicing for the Choir Contest and the Spring Concert.

During Orientation, some of the Choir students are working on their music for Solo and Ensemble Contest to be held in Lubbock in February. The Choir students who are planning to enter the Solo Division in Lubbock are Terina Whalin, Paula Bickel, Debbie Carlson, Gayla Hooten, Barbara Glass, Debbi Mills, Cindy Hall, and Sherrell Rasco. Some of these girls will receive private voice lessons at Tech on their solo selections on Saturday, January 19.

### Attention SC Members!

This is just a reminder to the officers and the Senators of the Student Council that the regular Monday morning meeting will be held at 8:00 a.m. in Room 14. The officers urge you to attend. The more prompt you are the quicker the meeting can get underway. Many events and money-making projects are being planned, so be at the meeting and let your voice be heard.

### Calendar Of Events

MONDAY, JAN. 9  
7:30 -Girls, Friona-Here  
7:30 -Boys, Friona, There  
TUESDAY, JAN. 10  
6:15-Varsity A&B Boys -  
Levelland, There  
THURSDAY, JAN. 12  
7:30-9:30 -Band Practice  
FRIDAY, JAN. 13  
Midland Speech Tournament  
5:00 -Varsity A&B Girls  
Canyon, There  
SATURDAY, JAN. 14  
Midland Speech Tournament

### NOTES, COMMENTS

Thinking usually means less talking.

Good music often achieves surprising results.

We agree nothing is as bad as active ignorance.

Is anyone keeping up with the cost of living?

The trouble with taxes is that you have to pay them.

An individual is only as intelligent as he is curious.

There's usually a brighter side to any bleak situation.

It's getting late to begin your Christmas shopping.

Too much flattery is like too much sugar. Both are artificial.

Independence is something that the married man brags about.

### Two FHA Chapters Discuss Business

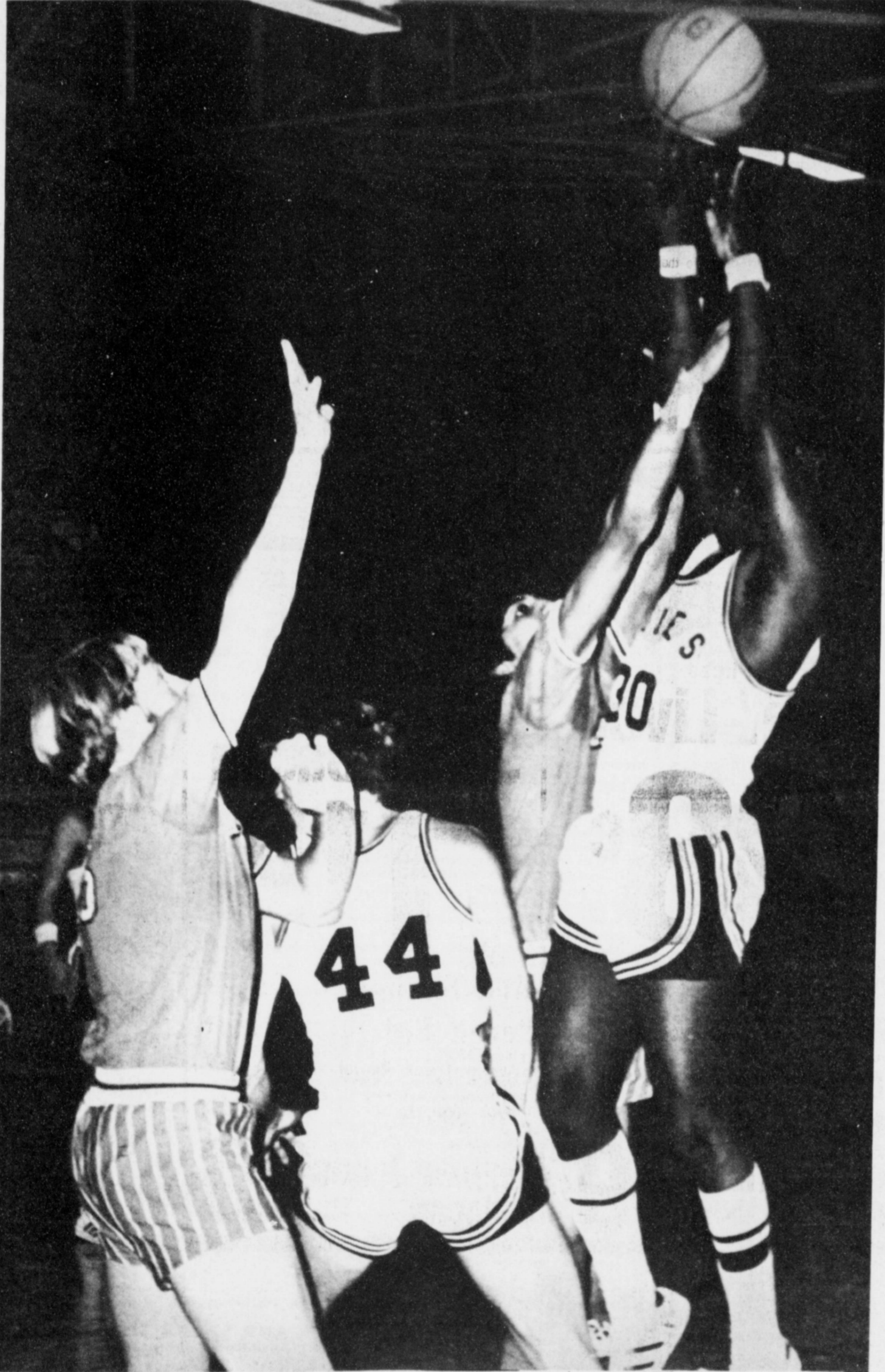
Rose and Rosebud Chapters of Future Homemakers of America met in the Homemaking Department Thursday, January 10, at 7:00 p.m.

Each chapter discussed business pertaining to their own chapter and heard reports from the various committee chairmen.

The two groups then joined for a meeting to discuss future projects and activities that they will carry out together.

Plans for a project in school improvement were made--redecorating the girls' restrooms and yard beautification in the spring.

Other plans made included services at the Nursing Home and choosing secret grand-



DISTRICT BASKETBALL BEGINS....George Mitchell demonstrates some of the exciting basketball action which can be seen in the future district games.

### Senior Order Caps, Gowns

The Seniors will be measured for caps and gowns Monday, January 21. They are scheduled to meet in the library at 10:00 a.m. A \$6.00 rental fee will be required at the time of measuring.

The names of the Seniors will be taken as they will appear on their diplomas.

Parents, Girls will send cards, gifts, and do good deeds for these senior citizens during the remainder of the year. A party will be planned at which time the grandparents will see the secret granddaughter.

Nancy and Alta Ramm and Cindy Chandler gave information they had gathered for the project.

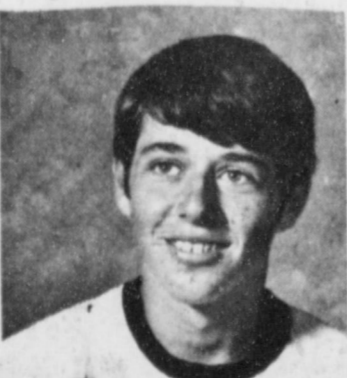
Plans for the annual Sweetheart Banquet to be held February 16 in the high school cafeteria were discussed. The presidents Laura Beene, Alta Ramm, and Cindy Chandler, along with the advisors, Miss Sue Smith and Mrs. Dorene Harbin, will appoint committee members and chairmen to carry out the proposed plans.

### Thespian Of The Week

Congratulations are in store for Fred Locker this week. He was chosen Best of M.H.S. by Thespian Troupe 714.

Fred is the 18 year old son of Mr. and Mrs. M.D. Locker. He is classified at M.H.S. as a Senior. Fred is very active in athletics. When asked to comment on Basketball he stated, "I believe that if we can improve just a little more that we will be in strong contention for District title."

Congratulations Fred!



FRED LOCKER

### DECA Has Meeting To Discuss Business

DECA met on Wednesday, January 9, in Room 14 to discuss several items of business.

To start the meeting, the roll was called. President Beverly McCamish reminded all those DECA members who plan to attend Area contest to start making preparations. This year, the Area Contest is to be held in Wichita Falls around February 8. There will be a local run-off to determine who will be eligible to attend Area. The DECA Christmas movie brought in \$317, which will send about ten people to Area and State Contest.

A committee was appointed to be in charge of the DECA banquet to be held in April. Members of the committee are Jim Ella Norman, Anna Castorena, Pauline Torres, and

Beware of the man who tells you what a Christian life he leads.

Too much time is wasted in trying to get something for nothing.

### College Days

Many Seniors have taken advantage of their college days. Each Senior is excused from school for two days to visit prospective colleges.

West Texas State University at Canyon has been visited by Susan Head, Donna Lambert, Billy Gage, Lequice Herman, Regina Poteet, Terri Bryant, Charles Madrid, Phillip Yruegas, Tim Black, Benny Floyd, and Keith Harp.

Cynthia Chandler, Bonnie Sain, and Roxanne Street went to Texas Tech at Lubbock.

Those visiting South Plains College at Levelland are Nick Black, Lynial Ashford, Anna Castorena, Pauline Torres, Brenda Lee, Debra Glass and Janie Perez.

Tim Black, Keith Harp and Benny Floyd went to TSTI in Amarillo.

U.S. Army at Amarillo was visited by Maria Gomez.

All Seniors who haven't taken their college day need to sign up with Mr. Grambling. Each student must have a note from his parents and a make-up sheet. The deadline for taking college days is April 5.

### MHS Girl's Basketball Schedule

January 18, Friday, Canyon, There, A&B, 5:00.  
January 29, Tuesday, Frenshp, Here, A&B, 5:00.  
February 1, Friday, Olton, There, A, 6:30.  
February 5, Tuesday, Canyon, Here, A&B, 5:00.

### MHS Boy's Basketball Schedule

January 15, Tuesday, Levelland, There, A&B, 6:15.  
January 18, Friday, Canyon, There, A&B.  
January 25, Friday, Dumas, Here, A&B, 6:15.  
January 29, Tuesday, Levelland, Here, A&B, 6:15.  
February 1, Friday, Perryton, There, A&B, 6:15.  
February 5, Tuesday, Ropes, There, A&B, 6:15.  
February 8, Friday, Canyon, Here, A&B, 6:15.  
February 12, Tuesday, Dumas, There, A&B, 6:15.

### Mulette Maneuvers

The Mullettes placed second in the Farwell tournament during the Christmas Holidays. Making the All-Tournament team were Belinda Throckmorton and Sarah Patterson. The Mullettes also lost to Olton and Friona in their last two games.

The B team lost a close game to Friona 32-34. The Freshmen girls also lost to Dimmitt Monday night at Dimmitt 25-27.

The Varsity girls played the Queen Bees from Wayland Friday night in Muleshoe.

The Mullettes first district game will be January 18 at Canyon. The Freshmen girls will play in the Dimmitt tournament January 23, 24, and 25.

### Speech Department Wins Sweepstakes

Muleshoe High's Speech Contest Team was in competition with twenty other schools this past weekend at the Seventh Annual Friona Forensic Tournament. Four hundred students participated in the ten-event meet for top honors.

For the fifth consecutive year, Muleshoe won the team Sweepstakes Championship by compiling 278 points as compared to 115 for the runner-up school.

Results are as follows: Lauren Hall and Jana Oyler, first place in girl's debate; Steve Block and Richard Meyers, first place in boy's debate; La'helle

### MHS Basketball Coaches Featured

Muleshoe is fortunate to have two fine gentlemen, Coach Raymond Schroeder and Coach Bob Graves, as leaders of our young men and women.

This is the eighth year that Coach Raymond Schroeder has been the boys' basketball coach in Muleshoe High School. Coach Schroeder is dedicated to his basketball team and works very hard for improvement of all the team members. The Mules appreciate the patience and inspiration that Coach Schroeder has shown. This appreciation is visible by the improvement that they have made from the beginning of the season.

When asked about district play, Coach Schroeder commented: "I feel that we have a very good chance to win in the District games. The boys have worked very hard in getting ready for district play. Out of the 3 A District teams, I feel that Canyon is probably one of the strongest we will play. In order to win district we will have to play well at

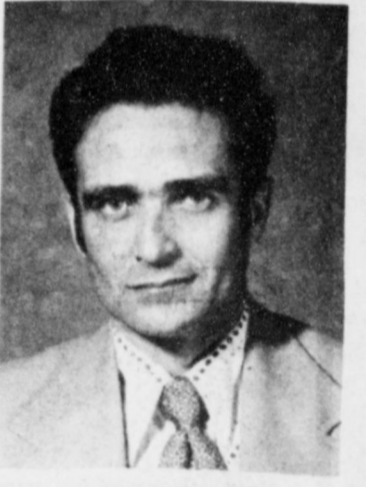
home and win our games, as well as the road games. The boys have worked very hard and they have improved a great deal from the first of the season."

Coach Bob Graves is the Mullettes coach for the third year. He is a coach we are all proud of and in spite of a 6-12 season, he has never given up. He has never failed to encourage the team, and his enthusiasm is never daunted. One can never underestimate the influence of a coach upon his players. Each of the girls are very proud to have Bob Graves as their coach.

Coach Graves commented, "The girls are still improving and working hard. Although the season is nearly over the toughest games are yet to come." The Mullettes appreciate Coach Graves effort and loyalty. A special thanks goes to Coach Schroeder and Coach Graves from the Mule's Tale and the students of M.H.S.



RAYMOND SCHROEDER



BOB GRAVES



Muleshoe ended its non-conference schedule with an 8-10 mark. Included is a group of games played during the holiday season. In those games the Mules beat Floydada (65-42), Lockney (51-49), and Olton (52-43). The Muleshoe team also garnered third place in the Muleshoe tournament. During this time Muleshoe lost to Hereford, Lockney and Artesia, New Mexico.

Though the Mules won only 50% of those games, they look as if they will be able to contend for the district championship.

Muleshoe will open its district season against Perryton. The game will be played Friday night at 6:30 p.m. in the Muleshoe Junior High Gym.

### Golden Gleams

That name, that idle name of wind, that empty sound called honor.

-Samuel Daniel.

He who has lost honor can lose nothing more.

-Publilius Syrus.

If it be a sin to covet honor, I am the most offending soul alive.

-Shakespeare.

An ill deed cannot bring honor.

-George Herbert.

No man can justly aspire to honor but at the hazard of disgrace.

-Samuel Johnson.

It is gone, that sensibility of principle, that chastity of honor, which felt a stain like a wound.

-Edmund Bruke.

### School Menu

January 14 -- 18 -- 1974

MONDAY  
Milk  
Macaroni Cheese (count 1 1/2 oz cheese to each child)  
Green Beans  
Cabbage and Apple Salad  
Hot Rolls  
Peanut Butter (1 Tbsp)  
Orange Juice

TUESDAY  
Milk  
Hamburger  
Lettuce and Tomato Salad  
French Fries  
Pickles Onions  
Buns  
Jello

WEDNESDAY  
Milk  
Chicken Enchilladas Serve 2  
Pinto Beans  
Lettuce and Tomato Salad  
Grapefruit Juice  
California Sunshine Cookies  
Corn Bread

THURSDAY  
Milk  
Meat Potato Burger  
Mixed greens (mix 1/2 spinach)  
Whole Kernel Corn  
Orange Juice  
Banana Pudding  
Rolls

FRIDAY  
Milk  
Fried Chicken Gravy  
Macaroni and Tomatoes  
Blackeyed Peas  
Rolls  
Stewed Apricots

### JCL Holds Meeting

by Prisca Young  
A meeting of the Latin Club was called to order by President Steve Van Zandt on Thursday, January 10. The minutes were read by Secretary Vicky Griffin.

On the agenda was a discussion of attending the state meeting. It was discussed to either fly or ride a bus. People were assigned to check on prices and schedule. The discussion was tabled until more facts were known.

The meeting was adjourned by Steve Van Zandt after Johnny Dean, protem Parliamentarian, picked up the coke bottles.

Don't be critical of errors in this newspaper unless you don't make any.

# Farmers Need To Do Careful Planning

LUBBOCK -- Because of the mandatory fuel allocation regulations that went into effect Dec. 27, agriculture production enterprises will have to do some extra careful planning this year if they want to make it through the barn door, says an agricultural engineer.

Roy Childers, area specialist with the Texas Agricultural Extension Service, says that according to allocations, agricultural producers may be able to get by on propane, butane, motor gasoline, and aviation fuels. But they could be in for a squeeze on middle distillate allocations, which include diesel.

The engineer explains that according to the Federal Register published Dec. 13, agricultural production activities will be allocated up to 90 percent of current requirements for butane and propane, and up to 100 percent of motor gasoline used in 1972. Aviation fuels used in agriculture will be allocated up to 90 percent of the base period fuel consumption in 1972. And middle distillates will be al-

located to agricultural production uses up to 110 percent of the 1972 consumption, but only after "Category I" needs are met. This priority category includes such purposes as energy production, transportation services, emergency and medical services and heating.

This means, Childers says, that the best farmers can hope for in 1974 is to equal their 1972 consumption, as far as fuel use is concerned. Any expansion in agricultural production enterprises will have to come with increased efficiency or with a cutback in areas within the operation.

Middle distillates, primarily diesel fuels, are especially important to farming operations, Childers explains. Many of the farm implements used to prepare, maintain and harvest crops burn diesel fuel. Yet it is at this point that agricultural production is listed as a second priority user.

First priority, he adds, goes to energy production, transportation services, emergency services, telecommunications and sanitation, medical and nurs-

ing buildings, and residential, commercial, educational and other space-heating facilities which will be governed by special provisions.

Category II, which includes agricultural production, industrial and manufacturing, and cargo, freight and mail hauling, will be allocated 110 percent of the base period volume. "Other uses" falling in the Category II will get 100 percent of the base period volume.

According to the Federal Register, Category II users will be allocated an equitable share of the fuel remaining after the Category I needs are met. The distribution rules will insure that all Category I needs are met before allocations are made to Category II users.

In all cases, Category II users will be allocated supplies based on their base period volumes or adjusted base period volumes.

For a purchaser, the Register explains, the base period volume means those purchases of each middle distillate product during the corresponding

month of 1972. The adjusted base period volume means the amount which is assigned by the Federal Energy Office to a wholesale purchaser of greater than 84,000 gallons annual volume or by the State office to other wholesale or end-use purchasers for Category II uses.

The federal Register also says that "upon restoring Category I uses to 100 percent of current requirements, any additional supplies will be offered for sale to Category II users with first right of refusal on a pro-rata basis up to 100 percent of current requirements. The excess and unsold remainder may be sold on the open market."

To provide for seasonal fluctuations, the regulations state that "agriculture and construction, suppliers and purchasers should agree among themselves either to borrow on future allocations or defer current allocations within the level of the total allocations for the year, as long as such arrangements do not result in an involuntary reduction in alloca-

tions to other purchasers. Similarly, suppliers may borrow or exchange products among themselves."

The allocation of middle distillates, Childers explains, is of course meaningless of Category I users consume all available fuels. The likelihood of this probably is unpredictable, he adds.

As for motor gasoline, agricultural producers also will get 100 percent of the 1972 base period volume. Each supplier is required to provide supplies of motor gasoline to those purchasers he has supplied since Jan. 1, 1973.

Each wholesale purchaser who was not in business during the entire year of the base period, the Register explains, or who has had substantial expansion in fuel requirements since that time, may apply to the Federal Energy Office and be assigned an adjusted non-priority base period supply volume and an adjusted priority base period supply volume.

There is an important requirement in motor gasoline allocations. Each wholesale purchaser must inform his supplier on a monthly basis of his allocation level for motor gasoline for priority-end uses.

To accomplish this, the supplier may require submission of data from his purchasers on volumes needed for priority uses. Such reports must be certified by the purchaser for accuracy and that the quantities will be sold for non-priority uses.

This means that wholesale purchasers will adjust their future requests for priority allocations to reflect their previous month's underage or overage and actual usage for priority purposes.

Finally, Childers concludes, hardships, inequities, and new user requirements will be met

through the reclaims procedures established in the state, regional and national administrative machinery.

The program, he says, boils down to a fairly heavily regulated allocation of fuels. Just how flexible it will remain to be seen.

In view of a growing economy and expansion in most areas of agriculture during this time of energy limitations, farmers and agribusinessmen will have to plan more carefully than ever before to meet consumer demands and make a profit.

Alcatraz, now empty and silent, open to public.

# House Speaker Price Daniel Elected Convention President

House Speaker Price Daniel, Jr., was elected Tuesday as President of the Texas Constitutional Convention.

Daniel, 32, received an overwhelming majority of the votes from his fellow delegates for president of the Convention. The final vote was 146 to 26.

The Liberty County lawmaker announced on July 18, 1973, that he would be available for the Presidency of the Convention.

Daniel was nominated by Delegate Nelson Wolff of San Antonio. The nomination was seconded by Delegates Craig Washington of Houston, Walt Parker of Denton, and Tati Santiesteban of El Paso.

In his acceptance speech, Daniel told his fellow delegates that their "concern should be for principles involved in the most fundamental compact between the people and their government, not for specifics which tie the hands of both government and people.

"Let us aspire to draft a document for the people's approval which finds and establishes no conflict between idealism and reality -- one which learns from the past, understands the present and provides for the future," Daniel said.

The new Convention President praised the work done by the Constitutional Revision Commission, a 37-member citizens group which formulated a set of recommendations for a new Constitution. He also commended efforts of the Joint Constitutional Convention Planning Committee, "as well as the advice and counsel of thousands of citizens of our State.

"We have the benefit of 181 minds, with that many differing opinions and ideas, accumulated experiences and talents," Daniel noted. "We are replete with resources."

Daniel noted in his speech that, "There has been much talk recently about persistent and perhaps ever-growing lack of public confidence in govern-

ment. What we must do, as we begin this effort, is to assure the people of our State that our confidence in them is unswerving. We must continue to trust the intelligence, the insights, the instincts and the ultimate judgments of the people we serve.

"There are dangers inherent in our efforts. We could be discouraged by cynicism, by cries of futility, by timidity and by indifference. We could be distracted by praise or criticism. We could be dissuaded by the pressures of expedience or personal advantage.

"Yet we have the opportunity to serve as never before -- to reshape in peaceful fashion the basic fabric of our government; to rise above considerations of politics and self; above narrow advocacy and partisanship; above the best that we have ever been and the best that we have ever given."

Daniel was sworn in by his father, Judge Price Daniel, Sr., of the Texas Supreme Court,

a former United States Senator, Governor and Attorney General of Texas. The younger Daniel is also the great-grandson of Governor Sam Houston.

The President is married to the former Diane Ford Womack of Austin, the great-granddaughter of Texas Governor Thomas M. Campbell, who served from 1907 to 1911.

The Daniels have one son, Thomas Houston Daniel, 3, who is named for the three Texas Governors from whom he is descended.

Daniel follows E.B. Pickett, also of Liberty, the President of the last Texas Constitutional Convention, held in 1875.

Faith Baldwin still at work after 80 books.

Mideast seen cutting U.S. oil supply 10%.

U.N. truce forces have generally done well.

## Report of Condition of the FIRST NATIONAL BANK

Call No. 488 Charter No. 14745 National Bank Region No. 11

### REPORT OF CONDITION, CONSOLIDATING DOMESTIC SUBSIDIARIES, OF THE

The First National Bank of Muleshoe, Texas

IN THE STATE OF Texas AT THE CLOSE OF BUSINESS ON 12-31, 1973 PUBLISHED IN RESPONSE TO CALL MADE BY COMPTROLLER OF THE CURRENCY, UNDER TITLE 12, UNITED STATES CODE, SECTION 161.

ASSETS	Dollars	Cts.
Cash and due from banks (including \$ 840.67 unposted debits)	3,905	202.41
U.S. Treasury securities	200	135.00
Obligations of other U.S. Government agencies and corporations	597	093.75
Obligations of States and political subdivisions	3,859	388.23
Other securities (including \$ NONE corporate stock)	21	000.00
Trading account securities	NONE	NONE
Federal funds sold and securities purchased under agreements to resell	3,850	000.00
Loans	5,165	236.80
Bank premises, furniture and fixtures, and other assets representing bank premises	103	933.61
Real estate owned other than bank premises	63	245.85
Investments in unconsolidated subsidiaries and "associated companies"	NONE	NONE
Customers' liability to this bank on acceptances outstanding	NONE	NONE
Other assets (including \$ NONE direct lease financing)	1	267.64
<b>TOTAL ASSETS</b>	<b>17,766</b>	<b>503.29</b>
<b>LIABILITIES</b>		
Demand deposits of individuals, partnerships, and corporations	9,589	003.21
Time and savings deposits of individuals, partnerships, and corporations	5,534	718.00
Deposits of United States Government	60	862.53
Deposits of States and political subdivisions	998	105.54
Deposits of foreign governments and official institutions	NONE	NONE
Deposits of commercial banks	17	000.00
Certified and officers' checks, etc.	369	465.72
<b>TOTAL DEPOSITS</b>	<b>16,569</b>	<b>155.00</b>
(a) Total demand deposits	\$ 10,635	218.60
(b) Total time and savings deposits	\$ 5,933	936.40
Federal funds purchased and securities sold under agreements to repurchase	NONE	NONE
Liabilities for borrowed money	NONE	NONE
Mortgage indebtedness	NONE	NONE
Acceptances executed by or for account of this bank and outstanding	NONE	NONE
Other liabilities	92	647.68
<b>TOTAL LIABILITIES</b>	<b>16,661</b>	<b>802.68</b>
<b>MINORITY INTEREST IN CONSOLIDATED SUBSIDIARIES</b>	<b>NONE</b>	<b>NONE</b>
<b>RESERVES ON LOANS AND SECURITIES</b>		
Reserve for bad debt losses on loans (set up pursuant to IRS rulings)	149	636.97
Other reserves on loans	NONE	NONE
Reserves on securities	NONE	NONE
<b>TOTAL RESERVES ON LOANS AND SECURITIES</b>	<b>149</b>	<b>636.97</b>
<b>CAPITAL ACCOUNTS</b>		
Capital notes and debentures	NONE	NONE
NA % Due NA \$ NONE		
NA % Due NA \$ NONE		
Equity capital-total	955	063.64
Preferred stock-total par value	NONE	NONE
No. shares outstanding	NONE	NONE
Common Stock-total par value	300	000.00
No. shares authorized	15,000	
No. shares outstanding	15,000	
Surplus	400	000.00
Undivided profits	209	949.68
Reserve for contingencies and other capital reserves	45	113.96
<b>TOTAL CAPITAL ACCOUNTS</b>	<b>955</b>	<b>063.64</b>
<b>TOTAL LIABILITIES, RESERVES, AND CAPITAL ACCOUNTS</b>	<b>17,766</b>	<b>503.29</b>
<b>MEMORANDA</b>		
Average of total deposits for the 15 calendar days ending with call date	14,297	133.86
Average of total loans for the 15 calendar days ending with call date	5,092	702.73
Interest collected not earned on installment loans included in total capital accounts	NONE	NONE
Standby letters of credit	NONE	NONE

I, Ted Barnhill, Cashier, of the above-named bank do hereby declare that this report of condition is true and correct to the best of my knowledge and belief.

We, the undersigned directors attest the correctness of this report of condition and declare that it has been examined by us and to the best of our knowledge and belief is true and correct.

/s/ M. D. Gunstream  
/s/ Harmon Elliott  
/s/ L. I. St. Clair

## REPORT of CONDITION of MULESHOE STATE BANK

Consolidated Report of Condition of Muleshoe State Bank of Muleshoe in the State of Texas and Domestic Subsidiaries at the close of business on December 31, 1973. State Bank No. 1631

ASSETS	DOLLARS	Cts.
1. Cash and due from banks (including \$ 22,902.24 unposted debits)	4,448	127.20
2. U.S. Treasury securities	894	244.35
3. Obligations of other U.S. Government agencies and corporations	200	000.00
4. Obligations of States and political subdivisions	2,431	475.83
5. Other securities (including \$ NONE corporate stocks)	1	00.00
6. Trading account securities	NONE	NONE
7. Federal funds sold and securities purchased under agreements to resell	1,200	000.00
8. Other loans	7,295	935.89
9. Bank premises, furniture and fixtures, and other assets representing bank premises	577	412.41
10. Real estate owned other than bank premises	NONE	00.00
11. Investments in subsidiaries not consolidated	NONE	NONE
12. Customer's liability to this bank on acceptances outstanding	197	053.97
13. Other assets	17	244.25
14. <b>TOTAL ASSETS</b>	<b>17,244</b>	<b>251.65</b>
<b>LIABILITIES</b>		
15. Demand deposits of individuals, partnerships, and corporations	9	246.88
16. Time and savings deposits of individuals, partnerships, and corporations	5	548.88
17. Deposits of United States Government	63	704.38
18. Deposits of States and political subdivisions	756	197.88
19. Deposits of foreign governments and official institutions	NONE	NONE
20. Deposits of commercial banks	NONE	NONE
21. Certified and officers' checks, etc.	124	608.70
22. <b>TOTAL DEPOSITS</b>	<b>15,738</b>	<b>079.66</b>
(a) Total demand deposits	\$ 9,678	546.00
(b) Total time and savings deposits	\$ 6,059	533.66
23. Federal funds purchased and securities sold under agreements to repurchase	NONE	NONE
24. Other liabilities for borrowed money	NONE	NONE
25. Mortgage indebtedness	NONE	NONE
26. Acceptances executed by or for account of this bank and outstanding	203	674.31
27. Other liabilities	15	941.79
28. <b>TOTAL LIABILITIES</b>	<b>17,244</b>	<b>251.65</b>
29. <b>MINORITY INTEREST IN CONSOLIDATED SUBSIDIARIES</b>	<b>NONE</b>	<b>NONE</b>
<b>RESERVES ON LOANS AND SECURITIES</b>		
30. Reserve for bad debt losses on loans (set up pursuant to Internal Revenue Service rulings)	207	577.11
31. Other reserves on loans	NONE	NONE
32. Reserves on securities	207	577.11
33. <b>TOTAL RESERVES ON LOANS AND SECURITIES</b>	<b>414</b>	<b>1,154.22</b>
<b>CAPITAL ACCOUNTS</b>		
34. Capital notes and debentures (specify interest rate and maturity of each issue outstanding)	NONE	NONE
35. Equity capital, total	1,094	920.50
36. Preferred stock-total par value (No. shares outstanding None)	NONE	NONE
37. Common stock-total par value (No. shares authorized 20,000) (No. shares outstanding 20,000)	400	000.00
38. Surplus	294	920.57
39. Undivided profits	NONE	NONE
40. Reserve for contingencies and other capital reserves	1	094.92
41. <b>TOTAL CAPITAL ACCOUNTS</b>	<b>1,799</b>	<b>920.50</b>
42. <b>TOTAL LIABILITIES, RESERVES, AND CAPITAL ACCOUNTS</b>	<b>17,244</b>	<b>251.65</b>
<b>MEMORANDA</b>		
1. Average of total deposits for the 15 calendar days ending with call date	14,698	507.00
2. Average of total loans for the 15 calendar days ending with call date	7,429	147.50
3. Unearned discount on installment loans included in total capital accounts	NONE	NONE

I, Robert E. Finney, Cashier, of the above-named bank, do solemnly swear that this report of condition is true and correct, to the best of my knowledge and belief.

Correct-Attest: Robert E. Finney  
James A. Cox  
B. E. Loyd  
Sam Damon

State of Texas, County of Bailey, Sworn to and subscribed before me this 10th day of January, 1974, and I hereby certify that I am not an officer or director of this bank. My commission expires June 1, 1975.



# Att. Gen. John Hill Announces Candidacy

When I took office as Attorney General of Texas one year ago, I was convinced that the job as lawyer for the people of Texas held the greatest possible potential for public service.

I still am. A year ago, I believed that the Attorney General of Texas could--by working to strengthen consumer laws, and by firmly enforcing environmental laws--afford the citizens of this State meaningful protection in the market place and a safeguard of our quality of life.

I still do. In the past year, I fulfilled campaign promises for consumer protection, environmental protection . . . to beef up law enforcement . . . to fight organized crime . . . to reinforce the State sales tax collection program . . . to establish regional offices, and to help with the program of juvenile justice.

When I took office as Attorney General of Texas one year ago, I was convinced that the job as lawyer for the people of Texas held the greatest possible potential for public service.

I still do. In the past year, I fulfilled campaign promises for consumer protection, environmental protection . . . to beef up law enforcement . . . to fight organized crime . . . to reinforce the State sales tax collection program . . . to establish regional offices, and to help with the program of juvenile justice.

When I took office as Attorney General of Texas one year ago, I was convinced that the job as lawyer for the people of Texas held the greatest possible potential for public service.

I still do. In the past year, I fulfilled campaign promises for consumer protection, environmental protection . . . to beef up law enforcement . . . to fight organized crime . . . to reinforce the State sales tax collection program . . . to establish regional offices, and to help with the program of juvenile justice.

I still do. In the past year, I fulfilled campaign promises for consumer protection, environmental protection . . . to beef up law enforcement . . . to fight organized crime . . . to reinforce the State sales tax collection program . . . to establish regional offices, and to help with the program of juvenile justice.

When I took office as Attorney General of Texas one year ago, I was convinced that the job as lawyer for the people of Texas held the greatest possible potential for public service.

I still do. In the past year, I fulfilled campaign promises for consumer protection, environmental protection . . . to beef up law enforcement . . . to fight organized crime . . . to reinforce the State sales tax collection program . . . to establish regional offices, and to help with the program of juvenile justice.

I still do. In the past year, I fulfilled campaign promises for consumer protection, environmental protection . . . to beef up law enforcement . . . to fight organized crime . . . to reinforce the State sales tax collection program . . . to establish regional offices, and to help with the program of juvenile justice.

When I took office as Attorney General of Texas one year ago, I was convinced that the job as lawyer for the people of Texas held the greatest possible potential for public service.

I still do. In the past year, I fulfilled campaign promises for consumer protection, environmental protection . . . to beef up law enforcement . . . to fight organized crime . . . to reinforce the State sales tax collection program . . . to establish regional offices, and to help with the program of juvenile justice.

I still do. In the past year, I fulfilled campaign promises for consumer protection, environmental protection . . . to beef up law enforcement . . . to fight organized crime . . . to reinforce the State sales tax collection program . . . to establish regional offices, and to help with the program of juvenile justice.

I still do. In the past year, I fulfilled campaign promises for consumer protection, environmental protection . . . to beef up law enforcement . . . to fight organized crime . . . to reinforce the State sales tax collection program . . . to establish regional offices, and to help with the program of juvenile justice.

I still do. In the past year, I fulfilled campaign promises for consumer protection, environmental protection . . . to beef up law enforcement . . . to fight organized crime . . . to reinforce the State sales tax collection program . . . to establish regional offices, and to help with the program of juvenile justice.

When I took office as Attorney General of Texas one year ago, I was convinced that the job as lawyer for the people of Texas held the greatest possible potential for public service.

I still do. In the past year, I fulfilled campaign promises for consumer protection, environmental protection . . . to beef up law enforcement . . . to fight organized crime . . . to reinforce the State sales tax collection program . . . to establish regional offices, and to help with the program of juvenile justice.

I still do. In the past year, I fulfilled campaign promises for consumer protection, environmental protection . . . to beef up law enforcement . . . to fight organized crime . . . to reinforce the State sales tax collection program . . . to establish regional offices, and to help with the program of juvenile justice.

I still do. In the past year, I fulfilled campaign promises for consumer protection, environmental protection . . . to beef up law enforcement . . . to fight organized crime . . . to reinforce the State sales tax collection program . . . to establish regional offices, and to help with the program of juvenile justice.

I still do. In the past year, I fulfilled campaign promises for consumer protection, environmental protection . . . to beef up law enforcement . . . to fight organized crime . . . to reinforce the State sales tax collection program . . . to establish regional offices, and to help with the program of juvenile justice.

I still do. In the past year, I fulfilled campaign promises for consumer protection, environmental protection . . . to beef up law enforcement . . . to fight organized crime . . . to reinforce the State sales tax collection program . . . to establish regional offices, and to help with the program of juvenile justice.

When I took office as Attorney General of Texas one year ago, I was convinced that the job as lawyer for the people of Texas held the greatest possible potential for public service.

I still do. In the past year, I fulfilled campaign promises for consumer protection, environmental protection . . . to beef up law enforcement . . . to fight organized crime . . . to reinforce the State sales tax collection program . . . to establish regional offices, and to help with the program of juvenile justice.

I still do. In the past year, I fulfilled campaign promises for consumer protection, environmental protection . . . to beef up law enforcement . . . to fight organized crime . . . to reinforce the State sales tax collection program . . . to establish regional offices, and to help with the program of juvenile justice.

I still do. In the past year, I fulfilled campaign promises for consumer protection, environmental protection . . . to beef up law enforcement . . . to fight organized crime . . . to reinforce the State sales tax collection program . . . to establish regional offices, and to help with the program of juvenile justice.

I still do. In the past year, I fulfilled campaign promises for consumer protection, environmental protection . . . to beef up law enforcement . . . to fight organized crime . . . to reinforce the State sales tax collection program . . . to establish regional offices, and to help with the program of juvenile justice.

I still do. In the past year, I fulfilled campaign promises for consumer protection, environmental protection . . . to beef up law enforcement . . . to fight organized crime . . . to reinforce the State sales tax collection program . . . to establish regional offices, and to help with the program of juvenile justice.

I still do. In the past year, I fulfilled campaign promises for consumer protection, environmental protection . . . to beef up law enforcement . . . to fight organized crime . . . to reinforce the State sales tax collection program . . . to establish regional offices, and to help with the program of juvenile justice.

I still do. In the past year, I fulfilled campaign promises for consumer protection, environmental protection . . . to beef up law enforcement . . . to fight organized crime . . . to reinforce the State sales tax collection program . . . to establish regional offices, and to help with the program of juvenile justice.

When I took office as Attorney General of Texas one year ago, I was convinced that the job as lawyer for the people of Texas held the greatest possible potential for public service.

I still do. In the past year, I fulfilled campaign promises for consumer protection, environmental protection . . . to beef up law enforcement . . . to fight organized crime . . . to reinforce the State sales tax collection program . . . to establish regional offices, and to help with the program of juvenile justice.

I still do. In the past year, I fulfilled campaign promises for consumer protection, environmental protection . . . to beef up law enforcement . . . to fight organized crime . . . to reinforce the State sales tax collection program . . . to establish regional offices, and to help with the program of juvenile justice.

I still do. In the past year, I fulfilled campaign promises for consumer protection, environmental protection . . . to beef up law enforcement . . . to fight organized crime . . . to reinforce the State sales tax collection program . . . to establish regional offices, and to help with the program of juvenile justice.

I still do. In the past year, I fulfilled campaign promises for consumer protection, environmental protection . . . to beef up law enforcement . . . to fight organized crime . . . to reinforce the State sales tax collection program . . . to establish regional offices, and to help with the program of juvenile justice.

I still do. In the past year, I fulfilled campaign promises for consumer protection, environmental protection . . . to beef up law enforcement . . . to fight organized crime . . . to reinforce the State sales tax collection program . . . to establish regional offices, and to help with the program of juvenile justice.

I still do. In the past year, I fulfilled campaign promises for consumer protection, environmental protection . . . to beef up law enforcement . . . to fight organized crime . . . to reinforce the State sales tax collection program . . . to establish regional offices, and to help with the program of juvenile justice.



## HANES PANTYHOSE & STOCKINGS

For one week only, it'll be a lot easier to make your legs a little softer and silkier. Because you can save on Hanes stockings. Hanes Sheer Pantyhose, and Hanes Alive Support Pantyhose and Stockings. (See table below.) It's happening now, January 12-19 during Hanes Soft and Silky Sale. So if you miss this sale, you've only got another year to wait.

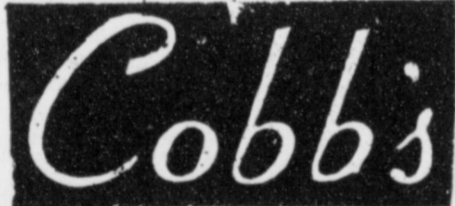
ULTRA SHEER PANTYHOSE	REGULAR	SALE
950 Nude heel, reinforced toe	3.00	2.50
885 Sheer from toe to waist	3.00	2.50
709 Top control (Spandex panty)	3.00	2.50

HANES ALIVE SHEER SUPPORT	REGULAR	SALE
809 Reinforced heel & toe pantyhose	5.95	4.95
811 All-sheer pantyhose	5.95	4.95
805 Sheer support stockings	3.95	3.25

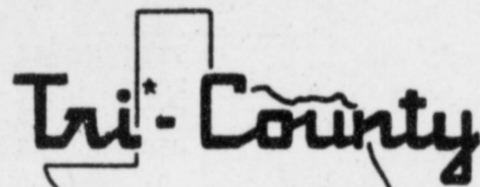
  

SHEER STOCKINGS	REGULAR	SALE
210 Cantreace reinforced heel & toe	1.75	1.50
220 Cantreace sandalfoot	1.75	1.50
415 Sheer non-stretch	1.65	1.40
H865 Replacement Cantreace	2.00	1.65



## Lazbuddie School Menu

- January 14 -- 18 -- 1974
- MONDAY  
Milk  
Western Burger  
Buttered Corn  
Shredded Lettuce  
Pickle Relish  
Chocolate Cookies
- TUESDAY  
Milk  
Enchilidas  
Pinto Beans  
Shredded Lettuce  
Cornbread - Butter  
Jello with Topping
- WEDNESDAY  
Milk  
Turkey & Dressing  
Giblet Gravy  
Green Beans  
Cranberry Sauce  
Rolls  
Butter - Jelly
- THURSDAY  
Hamburger Patties & Sloppy Joes on Buns  
French Fries  
Lettuce  
Pickles & Relishes  
Applesauce Cake  
Milk
- FRIDAY  
Vegetable Beef Stew  
Buttered Rice  
Cheese Sticks  
Crackers  
Cinnamon rolls  
Milk  
1/2 oz. peanut butter with each serving



## SAVINGS AND LOAN ASSOCIATION

MULESHOE

232 Main --- Phone 272-4521

City . . . Muleshoe . . . . .

Ass'n Name Tri-County Savings & Loan Association Charter Date 12-14-64

Street Address 232 Main Street Date Insured 2-17-65

City Muleshoe State Texas Zip 79347 No. Approved Branches . . . . .

County Bailey No. Operating Branches . . . . .

Area Code & Phone No. 806-272-4521 No. Operating Agencies . . . . .

President Donald W. Harmon \* Exec. Vice President . . . . .

Vice President Clem H. Peden Secretary Clem H. Peden  
(Managing Officer designated by asterisk)

### STATEMENT OF CONDITION—DECEMBER 31, 1973

ASSETS	
First mortgage loans outstanding	01\$ 4,568,296.25
Loans on savings accounts	02 242,618.64
FHA Title I loans	03 -0-
Property Improvement Loans	04 382,213.42
Personal Loans	05 3,684,127.17
Real estate sold on contract	06 -0-
Real estate owned	07 5,070.27
Land purchased for development	08 -0-
Stock in Federal Home Loan Bank	09 54,209.00
U.S. Government obligations	10 529,417.69
Other investment securities	11 183,519.17
Cash on hand and in banks	12 58,821.85
Office building, less depreciation	13 99,947.90
Leasehold improvements less amortization	14 475.43
Furniture, fixtures and equipment, less depreciation	15 18,264.48
Prepayment to Secondary Reserve, FSLIC	16 77,742.03
Deferred Charges	17 12,990.62
Investment in Subsidiaries	18 -0-
Other Assets	19 84,895.23
<b>TOTAL ASSETS</b>	<b>20\$ 10,002,600.15</b>

### CAPITAL AND LIABILITIES

Savings Accounts	21\$ 7,696,581.99
Advances from Federal Home Loan Bank of Little Rock	22 650,000.00
Other borrowed money	23 450,000.00
Dividends declared and unpaid	24 -0-
Accounts payable	25 -0-
Loans in process	26 111,740.21
Advance payments by borrower for taxes and insurance	27 31,025.72
Income tax liability	28 6,823.97
Other liabilities	29 52,927.97
Deferred credits to future operations	30 438,465.79
Specific reserves	31 19,066.03
Permanent Reserve fund stock	32 200,000.00
General reserves:	
Legal reserve and/or Federal Insurance Reserve	129,540.08
Reserve for contingencies Paid in Surplus	29,271.05
Other reserves	45,000.00
Surplus or Undivided Profits	33 203,811.13
	34 142,157.34
<b>TOTAL CAPITAL AND LIABILITIES</b>	<b>35\$ 10,002,600.15</b>

### PERFECT CIRCLE



The Perfect Circle Speedostat is a precision engineered and manufactured accessory capable of controlling an automobile's speed for thousands of carefree miles.

COME BY AND LET US DEMONSTRATE CRUISE CONTROL.

# HOMER REDWINE PHILLIPS 66

715 W.Am. Blvd.

Phone 272-4424

## Henry Block has 17 reasons why you should come to us for income tax help.

Reason 14. We're human, and once in a great while we make a mistake. But if our error means you must pay additional tax, you pay only the tax. We pay any interest or penalty. We stand behind our work.



**HENRY BLOCK**  
THE INCOME TAX PEOPLE  
306 WEST SECOND  
COME IN SOON PH. 3283

# Regulations For Standby Rationing

Regulations for a proposed standby gasoline rationing program will be published for comment Thursday, January 10, 1974, in the Federal Register, according to Delbert M. Fowler, Dallas, southwest regional director for the Federal Energy Office (FEO).

If rationing is necessary, the program will be ready to implement by March 1, 1974.

Individuals may obtain copies of the January 10, 1974, Federal Register by writing to the Superintendent of Documents, Government Printing Office, Washington, D.C., 20402. Cost is 75¢.

The FEO overall action plan calls for allocating 900,000 barrels per day less gasoline in

the first quarter of 1974, as well as drawing down gasoline inventories by 346,000 barrels per day to meet an estimated shortfall of 1.2 million barrels per day.

FEO has proposed conservation steps to manage this shortfall of gasoline: Voluntary 10 gallon per week consumption target, 55 mile-per-hour speed limit, Ban on Sunday gasoline sales, and Encouraging car pools.

If the American public continues to cooperate, more stringent measures can be avoided, such as: Further restriction on gasoline sales, Two days per week service station closings, A ban on individual auto driving one day per week, and

Rationing.

But given the uncertainties both in supply of gasoline and effectiveness of conservation measures, the standby rationing plan was developed.

Advance planning will offer a more fair and orderly distribution of gasoline to the public.

As a preliminary step, the Bureau of Engraving and Printing has been ordered to print a three-month supply of rationing coupons, while FEO continues to carefully monitor the gasoline situation.

If rationing is necessary, the program will be ready to implement by March 1, 1974.

Major aspects of the plan are: Each licensed driver age

18 or over will receive a supply of coupons each month (118 million licensed drivers).

The number of coupons received by each individual depends on such things as (1) population density and (2) availability of alternative modes of transportation.

The rationing program will only apply to gasoline sales at retail outlets. Bulk users will receive their gasoline allotments through the mandatory allocation program, which goes into effect January 15, 1974.

The coupons will be freely transferable on the open market. Those wanting more gasoline than their monthly ration will be able to buy additional coupons from those using less

than their basic allotment.

Exceptions and hardship cases will be handled by state and local gasoline rationing boards. The federal government will pay the cost of one local five-member board in each of the 3,000 counties in the United States. States may establish additional boards, if they wish.

Each driver receiving coupons will pay \$1 per month for the coupon packets. This will fully offset the estimated \$1.5 billion cost of the plan, FACT SHEET

The system described in this fact sheet is a summation of planning done to date for the rationing contingency. A full description of the system will

be published for comment in the Federal Register, January 10, 1974.

### GASOLINE CONSUMPTION AND DISTRIBUTION

Sixty-seven percent of the gasoline in this country is sold for use in private vehicles; 30 percent of its goes for business and commercial use; with the remaining three percent sold to state, local and federal government units.

Gasoline is distributed in two ways: bulk and retail. The bulk market serves those who buy gasoline in large quantities and have their own storage tanks. This includes agricultural and industrial users, commercial vehicle fleets, etc. The supplier provides the gas-

oline on a contract basis and maintains sales records for each bulk customer. Commercial bulk sales are approximately 16 percent of total sales with bulk sales to federal, state and local government units estimated at an additional three percent.

Gasoline is also sold in bulk to retail outlets, which in turn, serve individual customers, primarily personal cars and some commercial operations. Records of sales to individual customers are not generally kept by retailers on any systematic basis. Retail sales of gasoline for commercial use are about 14 percent of total sales; retail sales for private use are 67 percent of the total.

All purchases of gasoline at retail outlets will be made through the rationing system. All those who purchase gasoline in bulk, as defined in the proposed mandatory allocation regulations, will obtain their supplies according to priorities set in the allocation system. No coupons will be required for such bulk purchases.

### COUPON PRODUCTION

Gasoline coupons will be printed by the Bureau of Engraving and Printing; they will be monochromatic, with the color changing every 30 days. They will be about a third the size of a dollar bill, and printed from line engraved plates using the intaglio process. These features are currently used in the production of paper currency to limit counterfeiting. Space will be provided on each coupon for the user's signature and a license plate number.

Each coupon will be worth a certain number of gallons of gasoline. The gallons per coupon allowed for any month will be the same across the nation; however, the amount may be changed from month to month, depending on the availability of gasoline.

### COUPON DISTRIBUTION

Coupons will be distributed to all Americans 18 years or older who hold valid drivers licenses. The number of coupons which each person receives each month will vary according to the population density of the area where he lives, a surrogate measure for average current needs. The average distribution will amount to 32 to 35 gallons per month per person. The distribution formula will be weighted to take into account such factors as the availability of mass transit facilities, the concentration of places of employment, and urban vs rural differences in essential personal automobile usage.

Each person will be mailed an authorization card by the motor vehicle department within the State; this card will indicate driver's license number and current address, including zip code. It will also bear the name of the State in which it is issued, and may only be used within that State to pick up coupons. To receive his issue of gasoline coupons for the month, each person will present his authorization card and his driver's license at the distribution point; he will be charged \$1.00 for his packet of coupons. Negotiations are under way to determine these points; banks and post offices are likely candidates. When the monthly coupons are picked up, the authorization card will be punched to indicate this. A record of the receipt of coupons will be kept. Military personnel may use an out-of-state authorization card, with evidence of local residence and a military identification card, to obtain coupons in their State of residence.

Since all gasoline sold at retail outlets must be accounted for by coupons, special arrangements will be made for commercial and other priority users who need additional coupons as part of normal business in order to bring them to parity with their counterparts who buy in bulk. Certification and validation procedures will be used for distributing the correct number of ration coupons to commercial and other priority users.

### USE OF COUPONS

The coupon is an entitlement to buy gasoline, and gasoline cannot be sold unless the purchaser has valid coupons to give to the retail outlet. The station operator may only pump the quantity of gasoline fixed for each coupon, although several coupons may be used for one purchase. At the time of

purchase, each driver will sign his name and license plate number on the coupon, thus preventing its reuse.

The coupons will be freely exchanged on the open market. A coupon will be good for 60 days. The market value of a coupon will depend on local supply and demand. The out-of-pocket cost for gasoline for individual purchasers will depend on the number of coupons used.

-- consumers who limit their driving to the rationed amount will simply pay the gasoline price at the pump.

-- those consumers buying less gasoline than their rationed amount will be paying the pump price. They will receive income from the sale of unused coupons.

-- those consumers buying more gasoline than their rationed amount will be paying an extra amount for this consumption. The out-of-pocket cost for gasoline in excess of their ration will be the pump price plus the cost of the additional coupons bought on the local exchanges.

### COUPON EXCHANGE

The buying and selling of coupons provides the means for determining priorities and needs in this system. Trading will be informal and market roles will quickly develop, with trading points determined by local custom and the volume of gasoline business in the area.

The exchange of coupons introduces a limited free-market approach to rationing. This contrasts with the World War II system in which a large public bureaucracy was used to decide hundreds of thousands of questions about individual need for gasoline.

### COLLECTION OF COUPONS

Negotiations are being held with banking institutions to provide accounting and supporting services. As currently envisioned, each retail outlet operator will collect the coupons for the quantity of gasoline sold and turn them in to his bank. Coupon receipts will be forwarded to the wholesale supplier to validate claims for specific quantities of gasoline. Banks will safeguard used coupons, store them for a certain period of time, and eventually dispose of them.

### EXCEPTIONS

Each State will hold coupons representing up to three percent of the quantity of gasoline available in the State for each month. These coupons will be used by the State to provide relief in cases of exceptional hardship. Each State will decide whether to handle exceptions through a system of local boards or on a centralized basis.

### ADMINISTRATIVE REQUIREMENTS

A transferable coupon system may have an administrative structure at three levels: Local - Local boards may be set up by the States to adjudicate appeals for variances to the Federal guidelines governing individual ration allotments. The local boards will have an emergency supply of coupons to meet special cases of unusual need, such as jurors required to appear in a court several hundred miles from their homes. Their size, composition and location will be determined by the Governor, acting in accordance with Federal guidelines. The Federal government will finance one board per county or equivalent, although more may be set up by the State at its discretion.

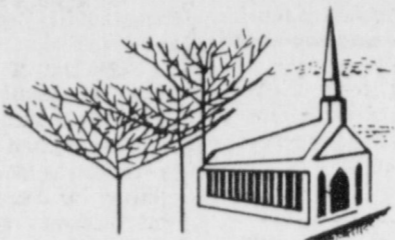
State - Overall management of the State allocation of gasoline will be the responsibility of the States. State boards will also be responsible for the management and control of local boards and for adjudicating appeals from local board decisions.

Federal - Functions at the Federal level include setting guidelines for ration allotments, monitoring the enforcement system, producing coupons, and auditing and accounting for coupons. Gallonage valuation of coupons each month will also be Federally determined.

Annual cost estimates for such a system are: Printing, \$32 million; Distribution, \$975 million; Collection, \$75 million; Administration includes Federal (500 employees), \$10 million; State (50 employees/state), \$53 million; and Local (5 employees/boards, 3000 boards), \$270 million, for a total of \$1,412 million.

These costs will be fully offset by charging \$1.00 per coupon packet at the point of issue.

## An investment in Your Future ATTEND CHURCH



"For where your treasure is, there will your heart be also"

### Attitude... OF PRAYER

"Give ear to my words, O Lord, consider my meditation. Harken unto the voice of my cry, my King, and my God: for unto thee will I pray."

Psalms 5:1-2

God hears and answers prayers, but not everyone knows how to pray. Even the Lord's disciples asked that he teach them how to pray.

Attitude of the individual is important in prayer. Prayer is the opportunity that we have to tell God of our blessings and give thanks. It is an opportunity to petition for help, but above all, our hearts should be willing that God's will be done.

Prayer should be offered individually and in groups.

ATTEND CHURCH  
AND  
PRAY WITH OTHERS



The Church is God's appointed agency in this world for spreading the knowledge of His love for man and of His demand for man to respond to that love by loving his neighbor. Without this grounding in the love of God, no government or society or way of life will long persevere and the freedoms which we hold so dear will inevitably perish. Therefore, even from a selfish point of view, one should support the Church for the sake of the welfare of himself and his family. Beyond that, however, every person should uphold and participate in the Church because it tells the truth about man's life, death and destiny; the truth which alone will set him free to live as a child of God.

Coleman Adv. Ser.



- FIRST UNITED METHODIST CHURCH  
MULESHOE-YL PAKISH  
C.B. Melton - Pastor  
Kussel Byard - Minister & Training  
YL, Route 1, Muleshoe  
507 West Second, Muleshoe
- ZION REST  
PRIMITIVE BAPTIST CHURCH  
207 E. Ave. G  
Glen Williams, Elder
- PRIMITIVE BAPTIST CHURCH  
621 S. First  
Afton Richards, Elder
- FIRST CHRISTIAN CHURCH  
130 W. Ave. G  
Rev. Walter Bartolf  
Sunday School 9:45  
Worship 11:00
- LATIN AMERICAN  
METHODIST MISSION  
Ave. D & 5th Street  
Esteban Lara, Pastor
- FIRST PRESBYTERIAN  
Morton Highway  
Edwin L. Manning, Pastor  
Sunday Morning Service
- CHURCH OF  
THE NAZARENE  
Ninth & Ave. C
- CALVARY BAPTIST CHURCH  
1733 W. Ave. C  
Charles Kenneth Harvey, Pastor
- TRINITY BAPTIST CHURCH  
314 E. Ave. B  
V.L. Huggins, Pastor
- MULESHOE  
ASSEMBLY OF GOD  
517 S. First  
H.D. Hunter, Pastor
- JEHOVAH'S WITNESS  
Friona Highway  
Boyd Lowery, Minister
- RICHLAND HILLS  
BAPTIST CHURCH  
17th & West Ave. D  
Gerald Pepper, Pastor

- SPANISH BAPTIST MISSION  
E. 3rd and Ave. E  
John Jaquez, Pastor
- PROGRESS SECOND  
BAPTIST CHURCH  
Arthur Hayes, Pastor  
1st and 3rd Sundays
- MULESHOE  
BAPTIST CHURCH  
8th Street & Ave. G
- ST. JOHN LUTHERAN  
Lariat, Texas  
Rev. Martin M. Flatzner, Pastor
- FIRST MARTIN M. FLATZNER  
220 W. Ave. E  
Douglas DuBose, Pastor
- SPANISH  
ASSEMBLY OF GOD  
East 6th and Ave. F  
Rev. Hipolito Pecina
- ST. MATTHEW  
BAPTIST CHURCH  
W. Third  
E. McFrazier, Pastor
- NORTHSIDE  
CHURCH OF CHRIST  
117 E. Birch Street
- PROGRESS  
BAPTIST CHURCH  
Progress, Texas  
Murrell Johns, Pastor
- SIXTEENTH & D  
CHURCH OF CHRIST  
Sunday - 10:30 a.m.  
Evening - 6 p.m.  
Wednesday - 8 p.m.  
Ivan Woodard, Minister
- IMMACULATE  
CONCEPTION  
CATHOLIC CHURCH  
Father Timothy Schwertner  
Northeast of City in  
Morrison Edition
- MULESHOE  
CHURCH OF CHRIST  
Clovis Highway  
Royce Clay, Minister

**City Cleaners**  
Quality & Fast Service  
119 Ave. C  
272-3248

**Dairy Queen**  
1201 West American  
272-3412

**Western Drug**  
114 Main

**Gibson's  
Discount Center**  
1723 West American Blvd  
272-4306

**Muleshoe  
State Bank**  
304 W. Second

**White's  
Cashway Grocery**  
"Where Friends Meet and  
Prices Talk"  
402 Main

**Spudnut Shop**

**A&B Plumbing,  
Heating & Air  
Conditioning**  
We Sell the Best and  
Service the Rest  
272-3734

**Fry & Cox**  
401 S. First

**Whitt, Watts  
& Rempe  
Implement Co.**  
"John Deere Dealers"  
Muleshoe, Texas 272-4297

Dial 272-3737 for better turnouts,  
better samples with  
**Progress Gin**  
7 1/2 miles west of Muleshoe on  
Clovis Highway

**James Glaze Co.**  
Insurance, Real Estate  
& Farm Loans  
215 S. First  
272-4549

**Muleshoe Motor Co.**  
West American Blvd.

**First Street Conoco**  
"Best Service in Town"  
106 American Blvd.  
272-4792

**First National Bank**  
"Home Owned"  
224 South First

**Lambert Cleaners**  
Steam Carpet Cleaning  
Draperies Cleaning  
123 Main St. 272-4726

**St. Clairs**  
110 Main

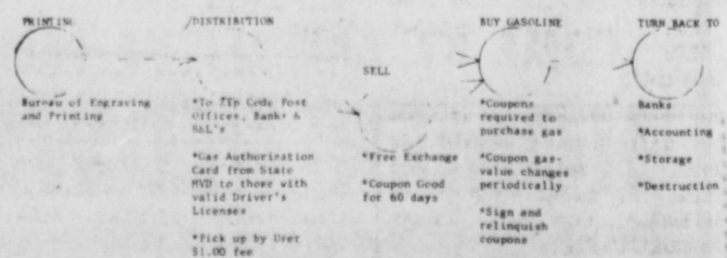
**Art Craft  
Printing Co.**  
105 E. Ave. "D"

**Chow-Tex  
Feed Lot**  
"Complete Feed Program"  
Route 1, Box 134  
Muleshoe 965-2900

**Bratcher  
Motor Supply**  
107 E. Ave. B  
272-4288

**San Francisco  
Cafe**  
"Tortilla Factory"  
121 Main St. 272-3502

**Homer Redwine  
Phillips 66**  
715 West American 272-4424



# CLASSIFIED ADS

## THE PLACE TO LOOK



**OPEN RATES**  
1st insertion, per word-9¢  
2nd and add., per word-6¢  
**NATIONAL RATES**  
1st insertion, per word-11¢  
2nd and add., per word-7¢  
Minimum Charge-50¢  
CARD OF THANKS - \$2.00  
Classified Display-\$1.12 per column inch  
Double Rate for Blind Ads--\$1.15 per col inch for Rev. DEADLINE FOR INSERTION Noon Tuesday for Thursday Noon Friday for Sunday

**WE RESERVE**  
Right to classify, revise or reject any ad.  
**NOT RESPONSIBLE**  
For any error after ad has run once.

**3.HELP WANTED**

**WANTED:** Typist & assistant bookkeeper. Must type 60 accurate words per minute. Please call Wooley-Hurst for appointment. 272-5514. 3-51-tfc

**WANTED:** Experienced mechanic. Good pay scale. Good hours. Good working conditions. Apply in person, Town & Country Olds-Bulck. 3-47s-tfc

**WANTED:** Beautician needed at once. Call 272-3448. Main Street Beauty Shop. 3-40t-tfc

**WANTED:** Housekeeper and baby sitter for Wednesdays and Fridays. Call 965-2622. -2s-tfc

**WANTED:** Farm hand for irrigated farm. House and utilities furnished. Top wages for top man. Phone 385-5816 or 385-3620, Littlefield, Tex. 3-2s-tfc

**WANTED:** Sales Representative for this area. Age 21-30. Salary open. All company benefits offered. Call collect 806-374-0389 8:30 a.m. to 4 p.m. 3-2s-tfc

**WANTED:** Domestic help. Contact Mrs. B.O. McDaniel at Muleshoe Nursing Home, Room 60. 3-2s-tfc

**WANTED:** Experienced welder and shop hand. Call 272-3145 or 272-4878 after 7. 3-2s-8tc

**5.APTS. FOR RENT**

**FOR RENT:** Furnished apartment. Bills paid. Call 272-3465. 3-51t-tfc

**FOR RENT:** 2 bedroom unfurnished apartment. Phone 272-4838. Smallwood Real Estate. 5-47s-tfc

**FRIONA APTS.** now have available 1, 2, & 3 bedrooms. Call 247-3666 or come by 1300 Walnut Street Friona. 5-29s-tfc

**6.ROOMS FOR RENT**

**FOR RENT:** Bedroom. Phone 272-4181. 6-2s-2tp

**7.WANTED TO RENT**

Want to rent or lease irrigated land. Contact John Mitchell, 965-2160. 7-37t-tfc

**8.REAL ESTATE FOR SALE**

**FOR SALE:** 174 acres southwest of Muleshoe. Contact Mrs. Horace Byerley, Box 203, Pettsburg, Texas. 8-51t-8tp

**FOR SALE:** -67 acre with good 8" well high pressure pipe line and side-roll sprinkler system. \$575 per acre with terms or will trade. call 272-3819. 8-40t-tfc

**FOR SALE by owner:** Call Joan Gaston, 272-3232 or Evelyn Riley, 272-4775 or Bertie Nickels, 272-4669 for appointment to see house at 307 W. 6th. Guy Nickels residence. 8-42s-tfc

**FOR SALE:** 40 a. of land 4 1/2 miles on 1760 joining highway with 1/4 mile side roll. Call 272-4515 or 272-4709. 8-45s-tfc

164 acre dryland \$150.00 per acre. 324 acres \$125.00 per acre. 22 miles southwest of Muleshoe. See Curtis Walker or call 272-3162. 8-38t-tfc

Nice three bedroom brick, well located 1 1/2 bath see Lee Pool Woody Goforth Pool Real Estate. 8-46s-tfc

**KREBBS REAL ESTATE**  
THIRTY YEARS  
IN BAILEY COUNTY  
2105.1st PH272-3191

**JAMES GLAZE COMPANY**  
REAL ESTATE AND  
FARM & RANCH  
LOANS  
Phone 272-4549 219 S. 1st. 42t-tfc

**FOR SALE BY OWNER:** 160 irrigated acres. 3 1/2 miles N.E. of Muleshoe. Call 946-2415, Needmore. 8-21-tfc

**FOR SALE:** 160 acres irrigated land. 5 miles east of Lazbuddie on 145. Call 806-965-2270. 8-21-tfc

**FOR SALE:** 640 acres, Section 7, Block C Melvin Blum & Blum Survey, Bailey County. 500 in cultivation. Balance native grass. 1-4" well. Call Lubbock, 792-7444 -night 885-2108 in Herliwood. 8-49t-tfc

**FOR SALE:** 1250 a, \$450.00 per acre, 10% down, 9 full 8" wells, 500 A alfalfa hay, 1800 head feed lot, tremendous depreciation, 7 sprinkler, 2 Butler buildings, 4 nice houses, excellent improvements, 2 miles west of Muleshoe on Highway 1790. Dial 806-763-5323 or 797-1716. 8-49s-tfc

**9.AUTOMOBILES FOR SALE**

**FOR SALE:** 73 LTD Braugham 2 door hardtop, beautiful blue metallic with vinyl top; loaded with optional equipment, Michelin Radial tires. Call 272-4203 or 272-4928. 9-41t-tfc

**10.FARM EQUIP. FOR SALE**

**VALLEY. SELF-PROPELLED SPRINKLER SYSTEMS** standard and reversing. Let us talk with you about our new 6-8-10 year lease. Programs which now include PVC plastic pipe. A.V.I. Inc. 1534 W. American Blvd. Muleshoe, Tex. Phone 806-272-3565. 26-43-tfc

**WE PAY CASH** for tractor and equipment of all kinds. Tom Flowers Auction, Inc. Day 272-4154 Night 10-2s-tfc

**PVC plastic underground pipe.** A.V.I. Inc. Phone 272-3565. 10-48s-tfc

**11.FOR SALE OR TRADE**

**FOR SALE:** 1971 350 Honda XL. Call 272-3138 or see at 117 Main. Wilson Appliance 11-36t-tfc

**12.HOUSEHOLD GOODS**

**Kirby Sales & Service NEW & REBUILT** 220 W.10th Phone 4182

**For Sale:** Round Dinette Table farmica top, 4 chairs. Good Condition. \$45.00. Call 825-2658 at Lariat. 12-21-tfc

**SUPER stuff, sure nuff!** That's Blue Lustre for cleaning rugs, and upholstery. Rent our Blue Lustre electric shampoo machine. Higginbotham-Bartlett 215 Main

**13.PROPERTY FOR LEASE**

**FOR LEASE:** 1500 head feed lot. 2 miles west of Muleshoe. \$150.00 per month. Phone 806-763-5323. 13-21-tfc

**14.FARM PROPERTY TO RENT**

**FOR RENT:** 80 acres dry land. 2 miles east of Stegall. Call 765-9798, Lubbock, Juanel Strickland. 14-21-6tp

**15.MISCELLANEOUS**

Experienced painting and building repair. Residence and commercial. Howard and Curtis Griffin. Call 225-4177 Bovina. 15-52t-6tc

**FOR SALE:** 1971 Festival 14 X 64 mobile home. 2 bedroom, fully carpeted. Unfurnished. Call 806-965-2133. 15-21-ttp

**GENERAL CONSTRUCTION:** Cabinet making and remodeling. Reasonable rates. Phone 763-9966 or 763-9457. 906 W. 7th, Valley Cabinet Shop. Clovis, New Mexico. 15-52s-6tp

Now available at Homer Redwine Phillips 66 Service Station. Perfect Circle Speedostat. Phone 272-4424. 15-21-tfc

**FOR SALE:** 8 foot Cabover Camper. Call 272-4485. 15-44s-tfc

**REAGAN ELECTRIC:** Commercial, residential, industrial wiring and maintenance. Reagan Cox, Call 965-2781, Lazbuddie. 15-52t-8tc

**\*Expert and Colorful Weddings**  
**\*Family Groups**  
**Anywhere, Anytime**

**PHOTOGRAPHY by Oecia**  
CALL 385-6083  
Littlefield 409 W. 2nd

**Cess Pool Cleaning**

Cesspools pumped with a MUD-PUMP & treated with bacteria & enzymes to liquify solids & loosen sides for better drainage. Dipping vats drained and liquids hauled to your disposal pit. Grease pits drained & treated. Mollasses pits drained. Phone 272-3677 or 272-3467 ELMER DAVIS

**The Lonely Heart**



**A WINNER!**

**The Muleshoe & Bailey County Journal**

Rate for listings in The Journals Political Column is \$35 for state, district, county and precinct offices and \$25 for city offices and school board positions. This fee includes a front page announcement article and a one-column photograph at the time the announcement is made, in addition to the listing in the Political Column from date of the announcement until the final election.

Charges for announcements are cash in advance, and this same policy applies to all political advertising carried in the columns of this newspaper.

Names for each office will be listed in the Political Column in the order they are received at the newspaper office. The Journal has been authorized to announce the following candidates for public office:

**FOR COUNTY TREASURER**  
**EDITH WILT (Re-election)**

**FOR COUNTY CLERK**  
**HAZEL GILBREATH (Re-election)**

**FOR DISTRICT CLERK**  
**PAULETTA CRAWFORD**  
**NELDA MERRIOTT (Re-election)**

**COUNTY JUDGE & EX-OFFICIO COUNTY SCHOOL SUPERINTENDENT**  
**ELMER DAVIS**

**COMMISSIONER, Precinct No. 2**  
**ELMER DAVIS**

**COMMISSIONER, Precinct No. 4**  
**ELMER DAVIS**

**JUSTICE OF THE PEACE, Precinct No. 1**  
**ELMER DAVIS**

**New Breeds Will Be Showed At Ft. Worth**

**FORT WORTH --** Combining scattered increases from livestock breeds which showed last year and a good representation from exhibitors of first-time breeds, plus an anticipated good entry among rabbits, pigeons and poultry, predictions are for another outstanding 10-day run for the Southwestern Exposition and Fat Stock Show.

The 78th edition of the Stock Show is scheduled Jan. 25 through Feb. 3. Entry deadlines for rabbits, pigeons and poultry are Jan. 15. Other livestock entries have closed and are being processed and counted.

"We are encouraged, with an anticipated good showing in the small stock division, that entries this year could exceed the record-breaking 13,000 head catalogued during our 1973 show," said W.R. Watt Jr., Stock Show general manager. The Brown Swiss breed, new this year in the dairy division, will be well represented, Watt commented. "Adding these

**Card of Thanks**

We want to express our gratitude and thanks to all of you who were so nice to us during the loss of our Mother. For the food, flowers and cards that we received. A special thanks to Frank Ellis, Bro. Royce Clay, our police escort and for the music. May God's richest blessing be yours always.

Mr. & Mrs. Raymond McNabb & Family  
Mr. & Mrs. Frank McNabb  
Mr. & Mrs. Grady McNabb & Family  
Mr. & Mrs. Tommie McNabb & Family  
Mr. James H. McNabb  
Mr. & Mrs. Louie McNabb & Family  
Mr. & Mrs. Karl Lovelady & Family  
15-2s-1tp

We wish to thank and express our appreciation to all who came, sent food, flowers during the illness and death of our father, G.L. Dale. Especially to the staff at the Nursing Home and Hospital. R.D. Dale family  
Oather Dale family  
Lewis Dale family  
Gene Davis family  
D.A. Bass family  
Jodie Barrett family  
15-2s-1tp

cattle to other dairy breed increases, in both junior and open classes, this division is showing quality and strength."

Gains in junior beef breeding heifers entries have expanded judging in this division to two days each. A strong showing also is indicated in junior steers, barrows, breeding sheep and lambs. "Having so many young people exhibiting their animals is an encouragement to what the future holds," Watt said. "We are glad to provide a competitive showcase for these farmers and ranchers of tomorrow."

Strong showings are apparent for Brangus breeding cattle,

**Public Notice**

**CITATION BY PUBLICATION**

**THE STATE OF TEXAS**  
TO: Israel Infante, Defendant, Greeting:

**YOU ARE HEREBY COMMANDED** to appear before the Honorable District Court of Bailey County at the Court-house thereof, in Muleshoe, Texas, by filing a written answer at or before 10 o'clock A.M. of the first Monday next after the expiration of forty-two days from the date of the issuance of this citation, same being the 4th day of February A.D. 1974, to Plaintiff's First Amended Original Petition filed in said court, on the 18th day of December A.D. 1973, in this cause, numbered 3347 on the docket of said court and styled Alicia Infante, Plaintiff, vs. Israel Infante, Defendant.

A brief statement of the nature of this suit is as follows, to-wit: Divorce as is more fully shown by Plaintiff's Petition on file in this suit. If this citation is not served within ninety days after the date of its issuance, it shall be returned unserved.

The officer executing this writ shall promptly serve the same according to requirements of law, and the mandates hereof, and make due return as the law directs.

Issued and given under my hand and the seal of said court at Muleshoe, Texas, this the 18th day of December A.D. 1973.  
Attest: Nelda Merriott Clerk, District Court Bailey County, Texas.  
15-51s-4stc

returning to the Stock Show after several years of absence; and for the National Centennial Angus Show, noting the 100th year since the black English breed's introduction into North America. Turnout among returning beef breeds appears mixed, Watt said.

Morgan Horses, making their Fort Worth Horse Show debut, will offer a strong show according to Douglas B. Mitchell, horse show manager. "Overall, horses will present a good turnout, with several new classes scheduled," he said.

Rodeo tickets are available by mail at P.O. Box 150, Fort Worth, Texas 76101, or from 9 a.m. until 6 p.m. daily, including Sundays, at the Rodeo Box Office in the lobby of Will Rogers Coliseum.

**NOTES, COMMENTS**

Most people know little about real work. \*\*\*\*  
When you go hunting, don't move the bushes. \*\*\*\*  
A pretty girl makes most men feel younger. \*\*\*\*  
If you're satisfied with yourself, take another look. \*\*\*\*  
Class hatred makes the student stay away from school. \*\*\*\*  
A little authority affects some men more than strong drink. \*\*\*\*  
Occasionally one learns that it's smart not to talk so much. \*\*\*\*  
A fanatic is simply an individual who knows that he's right. \*\*\*\*  
Sincerity is a great virtue, rarely exhibited and seldom appreciated. \*\*\*\*

**HELP WANTED**

Missouri Beef Packers, Inc. is now accepting applications for female production workers. No experience necessary, but must be willing to learn and work. This is year around employment, not seasonal work. We offer paid vacation, paid holidays, company paid group hospitalization insurance, and good wages. Apply at personell office, Missouri Beef Packers, Inc., Friona, Texas. 4 miles west of Friona on highway 60. EQUAL OPPORTUNITY EMPLOYMENT

**Singleton-Ellis Funeral Home**  
**24 Hour Ambulance Service**  
**Ph. 272-4574 Muleshoe**

**We've Got The Only WATER HEATER In Town That's Insulated On All Sides**

It's always cool to the touch . . . you can store anything you want right next to or on top of an electric water heater . . . and there's space available, too, because electric water heaters require no flue or vent . . . all they need are water pipes and an electrical outlet . . . so you can install an electric water heater almost anywhere. Get all the facts on an electric water heater!

**ELECTRICITY - IT DOES SO MUCH GOOD**

**Modern ELECTRIC Water Heating**

**FOR SO MANY PEOPLE**

**WE SELL 'EM - Call Us!**

Equal Opportunity Employer

ALL THE  
WISE BIRDS  
WILL FLY  
DOWN  
TO  
St. CLAIRS DEPT. STORE

Tuesday Jan. 15th for their  
annual January Clearance Sale.

Many Items Marked Down As Much As 33 1/3% And 50%

We Will Be Closed Monday January 14th

Sorry, No Layaways, Refunds Or Exchanges

ALL SALES FINAL PLEASE



**St. Clair's**  
**Department Store**

YOUR ONE STOP SHOPPING CENTER

PHONE 272-4453

MULESHOE, TEXAS 79347

STORE HOURS ARE 9:30AM TO 6:00PM 6 DAYS A WEEK

