

NC  
SYLVAN DIRECTOR SW DUNN  
COLLECTION TEXAS TECH  
BOX 4090 LUBBOCK TX  
79409+



Voice of the Foothill Country

# Motley Co. Tribune

35¢  
PER COPY

98TH YEAR

THURSDAY, FEBRUARY 28, 1991

ISSUE NO. 9

## Matador Besieged With Weekend Theft, Arson

According to Sheriff Alton Marshall, four suspects are jailed for criminal trespassing and theft after a Sunday evening break-in at Stockman's, Inc. in Matador.

On Sunday, February 24, at approximately 8:30 p.m., four suspects were seen leaving the fenced yard around Stockman's Supply Inc., west of Matador on

U.S. Hwy. 70. The license plate numbers were called in to the local officials, and to Floyd County officials.

The suspects were apprehended in the Providence Community in northwest Floyd County at approximately 10:30 p.m.

The lock on the yard gate was cut and copper pipe and other metal was missing.

Early Monday morning at approximately 3:30 a.m., the Matador Volunteer Fire Department was called to a fire on Campbell Street, one block east of the Courthouse. The metal barn on the Jess Couch property was already consumed by fire. The Fire Department kept the house, just north of the barn, from burning.

Sheriff Alton Marshall stated the fire appeared to have been arson. The State Fire Marshall has been called in to investigate the fire.

### EARLY DEADLINE FOR NEXT WEEK'S PAPER

The Motley County Tribune will have an early deadline for next week's paper, March 7 issue. Please bring all news and ad copy no later than this Friday, noon, March 1.

The paper will be published on its regular day, but we will be working on it early, so we can be closed the week of March 4-8, for Spring Break.

Thank you for your cooperation, which allows us to take this much needed vacation.

### El Progreso Invites Public To Special Program Tonight

The Community is cordially invited to the Senior Citizens building tonight (Thursday, February 28) to attend a program sponsored by the El Progreso Club. A video and comments will be presented by Mrs. Harold (Grace) Campbell.

This program is a part of the Conservation and Environmental Education of the club and should prove most interesting to all who attend.

Bring as many with you as you wish, for it is of vital importance to the county. The meeting will begin at 7:00 p.m. and refreshments will be served.

### Pictures, Stories Sought for Special Centennial Paper

The Motley County Tribune is seeking old pictures and/or special stories for the Centennial Paper, which will be published May 23. We hope to make this special edition something to be remembered.

If you have old pictures of early day Motley County pioneers, buildings, happenings, etc., or would like to share a special story with us, please contact our office at 806-347-2400 or 347-2774 or mail them to Motley County Tribune, P.O. Box 490, Matador, Texas 79244.

Our deadline for this paper will be Monday, May 13 for all special pictures or stories.

We assure you that we will take very good care of these pictures and will return them to you as soon as possible.

Thank you very much for your cooperation.

### PTO To Sponsor One-Act Play

Motley County PTO will sponsor the One-Act Play on March 12, 1991 at 7:00 p.m. in the gym.

After the play there will be a pie and cake auction and all proceeds will be given to the drama department for expenses.

Please come support our drama kids in the play and the auction. Auctioneer will be Boyce Hart.

If you would like to donate a pie or cake it will be greatly appreciated. If you need to have it picked up, please call Bunni Speed, 347-2457 or Terri Donaldson, 347-2851.

Admission to the play will be \$1.00 for adults and 50¢ for students.

The play will be "The Whiz Bang Cafe" by Corben Barry Dramatists Play Service.



PATRIOTISM SHOWN: These flags are flying in the yard of Mr. and Mrs. Ellis Terry. This is a familiar view all over Motley County, in support of our American troops, at this time our country is in war.

## Academic, Athletic Spirit Rally Tonight

The Motley County P.T.O. and the Booster Club invite you to attend the Spring Spirit Rally tonight (Thursday) February 28, at 7:00 p.m. in the school gymnasium.

Jr. High and High School participants in golf, tennis, track, literary and science events will be individually introduced to the public. Elementary students enrolled in the "Little Dribblers" basketball program will be recognized.

Cast members of the U.I.L. One Act

Play will present you with a glimpse of the characters from their play, "The Whiz Bang Cafe," which will be presented at district competition in March.

All veterans of our armed forces are invited to be our special guests for the evening, as the rally will conclude with a short patriotic program paying tribute to the United States of America.

Refreshments will be served by the P.T.O. following the program.

## Suspects Arrested In Ranch-Related Thefts

FORT WORTH - A string of ranch-related thefts and burglaries committed over the last two years in Oklahoma and Texas has been unraveled with the arrest of two suspects in Oklahoma City by field inspectors of the Texas and Southwestern Cattle Raisers Association, working in close cooperation with law enforcement agencies in the two states. The couple is suspected of stealing 200 to 300 saddles and other ranch supplies valued at more than \$250,000, says Don C. King, TSCRA secretary-general manager.

"The breakup of this major interstate theft ring is good news to farmers and ranchers in these two states. Any way you look at it, this is a big, big case; one of the biggest in years," King said. "The success of this extensive, six-month long investigation would not have been possible without the cooperation provided by all agencies."

TSCRA, a 114-year-old cattlemen's organization, employs 33 field inspectors, all certified peace officers carrying Special Ranger commissions, to assist cattlemen and conduct livestock theft investigations in Texas and Oklahoma.

## Centennial Committee Seeking 'Home-Grown' Entertainment

Centennial Celebration plans are being made for May 25.

The entertainment committee is looking for 'home-grown' style talent, young and old.

Anyone interested may contact Barbara Jameson or Carla Jones at the Motley County Tribune, 347-2400 or 347-2774.



This sign, designed by Joe Campbell, County Treasurer, was made by the Texas Highway Department and placed at the four main highway entrances to Motley County and at the Motley County Courthouse in Matador. These signs were made in honor of Motley County's Centennial Celebration, which will be held in May.

## Local Cowboy Featured In Southern Living Magazine

Dennis Gaines, Matador Ranch cowboy and poet is featured in the March 1991 Southern Living magazine.

The article, "Voices of the South" by Dianne Young, features storyteller Augusta Baker, "official storyteller-in-residence" at the University of South Caro-

lina, and Dennis Gaines, Cowboy Poet.

Ms. Young writes in her article how Gaines began his poetry writing and reciting career, combined with his day-to-day career as a Matador Ranch Cowboy.

Gaines recently attended the Cowboy Poetry Gathering in Elko, Nevada for the

second year. He has also appeared in Lubbock, Amarillo, the Texas Folklife Festival in San Antonio, Oklahoma and has performed for many area events.

His book *New Tradition: Western Verse*, published last year, is available at the Motley County Tribune.

## New Club Formed In Roaring Springs

An organization of interested persons was formed in Roaring Springs on February 25 and named Roaring Springs Parks and Recreation Club.

Monday night's meeting was spent in organizing, setting goals and planning fund raising activities. Pauline Hand was elected to serve as president, Darlene Fletcher to serve as secretary and Venita Sedgwick to serve as treasurer.

The goals of this organization were set as follows: Participation in Motley County Centennial; Roaring Springs School Homecoming; purchase of street banners for decorations during Old Settlers; and in helping raise funds needed to finish the gazebo for the Frank Mitchell Park.

Future fund raising activities were set as follows: Chances are to be sold on a quilt, which will be given away during homecoming; a garage sale to be held on May 4; and an ice cream supper to be held on July 4 in the park.

Lee Peacock and Venita Sedgwick head the committee for participation in the Motley County Centennial; Lou Bennett and Nona Long are in charge of letters to exes for homecoming and their request help from the public for current addresses. Betty Kemp and Betty Bearden are in charge of decorations for homecoming. It was decided to request donations from all citizens of Roaring Springs of items to be sold in the garage sale. Items such as crocheted items, old dishes, cookware, pictures, tins, purses, books embroidered items, old blue jeans or jackets, costume jewelry, hankies, hats, scarves, chenille bedspreads or old worn out lawn chairs, since people who do crafts are always looking for these things. Anyone wishing to donate any items

should contact Lee Peacock, Pauline Hand or Betty Bearden for pick-up.

Pearl Patten, Betty Kemp and Darlene Fletcher were appointed to meet with the Old Settlers board of directors Thursday night, regarding the repair of the pavilion and the Old Settlers parade.

Purchase of banners was tabled until the next meeting when the cost of the banners will be determined. An immediate donation of \$200.00 was made to the gazebo fund with more donations to come as fund raising activities are completed, and other activities are funded.

A quilting bee is to be scheduled about

the middle of March to finish the quilt to be given away. The quilt top, completed by Pearl Patten and Venita Sedgwick is the pattern Sailboat and is trimmed in two colors of blue. Anyone wishing to help quilt will be welcomed to this quilting bee. Bring your own needle.

The next meeting was set for Monday night, March 11, 1991 at 7:00 p.m. at the Cafe. This is an open meeting and all who are interested in the improvement of the City of Roaring Springs Parks and the homecoming activities and other scheduled activities are urged to attend and participate.

## Balloon Lands In Afton Field

by Janey Carothers

There was a stir of excitement in the Afton community last Wednesday when a balloon carrying two passengers landed in the field of Emma Jenny and Dempsey Sims on highway 193 east of Afton at approximately 12 noon.

Bubbles Beard of Baton Rouge, La. and Harold "Bubba" Clive of Bryan College Station left Amarillo at 7:15 a.m. trying for a long distance flight they had never attempted before, hoping to reach Waco, but ran out of fuel and had to land at approximately 12 noon. They had used 90 gallons of propane.

Bubbles and Bubba met at the National Balloon Championship in Baton Rouge where he was competitor and finished in the 19th place. He is Bubbles'

instructor. She flew solo on December 9 and has been up in the balloon 10 times.

Both are adventurous and wanted to do something different. He is a Texas Aggie and she is a LSU Tiger.

They had wanted to go up 18,000 feet but only reached 13,800 feet. It was 25 degrees up there, but she stated that with going with the wind, the wind was not in their face and it was not bad. Wind was 47 miles per hour up there.

They were picked up by Alvin Carothers, Michael Dunham and Bessie Hibbits. The balloon was put in the Carothers pickup and retrieved later in the afternoon by their pickup men. The couple were shown some good old fashion hospitality from the Dunhams who took them home with them for lunch.



# Motley Co. Tribune

Barbara B. Jameson, Publisher/Editor  
 Carla M. Jones, Associate Editor, Adv. Mgr., Typesetting  
 Amy Woolley, Proof Reading, School Reporter, Composition  
 Sherry Rose, Mailing Clerk  
 Jan Jones and Mary Renfro, Photo Developing



The Motley County Tribune, (ISSN: 0897-4322), purchased on Feb. 1, 1986, is the successor to the Matador Tribune, and is published weekly each Thursday, except Christmas week, at Matador, Texas. The office is located on Highway 70 East (1/2 block east of Main Street). Telephone number 806/347-2400. Second-class postage paid at Matador, Texas. Postmaster: Send address changes to Motley County Tribune, Box 490, Matador, Texas 79244-0090.

NOTICE: Any erroneous reflection upon the character, firm or corporation, which may appear in the columns of the Motley County Tribune, will gladly be corrected upon being brought to the attention of the publisher. Only signed letters to the editor will be considered for publication and should not exceed 250 words in length. (Letters may be subject to editing). PUBLICATION NO. 333700

SUBSCRIPTION RATES: Motley \$13.00; All others, \$15.00  
 Students, 9 months, \$12.00

P.O. Box 490 Persons over 60 years of age may take a \$1.00 discount Matador, Texas

## Local Justices of the Peace Attend 40-Hour School



**JUDGES ATTEND SCHOOL** — A total of 104 newly elected justices of the peace from across the state attended a 40-hour basic school Jan. 27 - Feb. 1 in Austin conducted by the Texas Justice Court Training Center headquartered at Southwest Texas State University in San Marcos. The school is held in compliance with Supreme Court Rule and Statute (Art. 27.005) Texas Government Code with requires newly elected or appointed justices of the peace to attend a 40-hour course within one year of taking office. Topics covered included court management, setting-up court, liabilities, judicial ethics, financial management, court security, criminal jurisdiction and venue, parks and wildlife laws, traffic laws, alcoholic beverage laws, civil jurisdiction and venue, forcible entry and detainer statutes, basic civil procedure, peace bonds, emergency commitments, duties of a magistrate, trunancy, administrative hearings, rules of evidence, search warrants, vital statistics, and inquests. Attending were left to right, Lynn Frizzell of Briscoe County, Precinct 1, J.T. Swim of Motley County, Precinct 4, John Byron Young of Hall County, Precinct 4, James T. Mackoy, Hardeman County, Precinct 1, and Richard D. Winters of Foard County, Precinct 1.

## Tax Tips

### Farm Employers Must Withhold

Agricultural employers are required to withhold federal income taxes from most of their employees' cash wages.

Farmers and crew leaders now report both the federal income taxes withheld and the social security taxes paid and withheld on employees' cash wages paid after 1989. Requirements for depositing these taxes may be found in Publication 51 (Circular A), *Agricultural Employer's Tax Guide*.

Farmers and ranchers should keep in mind the following:

Each employee should be given a Form W-2, "Wage and Tax Statement," showing all wages, tips and withholding amounts for the year.

Obtain and keep on file a completed Form W-4, "Employee's Withholding Allowance Certificate," from each employee.

Farm workers that need a social security number may complete Form SS-5, "Application For A Social Security Card," available at Social Security Administration offices.

A record must be kept of the crew leader's name, address and employer identification number (EIN). Crew leaders may apply for an employer identification number by filing Form SS-4, "Application For Employer's Identification Number," with IRS.

More information on agricultural workers' withholding and which forms to file may be found in free Publication 225, *Farmer's Tax Guide*, and Publication 51 (Circular A), *Agricultural Employer's Tax Guide*. Call IRS at 1-800-TAX-FORM (1-800-829-3676) to request any of the above forms and publications.

### Farmers Given Choice When to Pay

Qualifying farmers have an option on when to make estimated tax payments.

Estimated tax payments are generally made if the total estimated income tax and self-employment tax is \$500 or more.

If you qualify as a farmer, you may:

Pay all of your estimated tax by January 15 and file your Form 1040 by April 15.

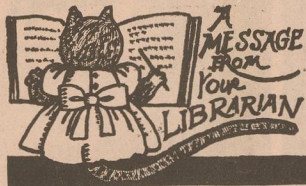
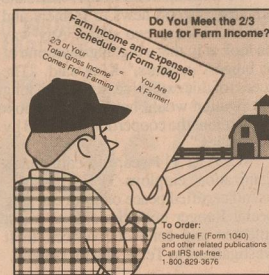
File your Form 1040 by March 1 and pay all the tax that is due, or

Pay your estimated tax quarterly and then file your income tax return and pay any balance due by April 15.

In order to qualify as a farmer, at least two-thirds of your total gross income, including non-farm income, for the last tax year must be from farming, or you must expect that two-thirds of your total gross income for the current tax year will be from farming.

On a joint return, a spouse's gross income must also be included in to determine if at least two-thirds of the total gross income is from farming.

Call 1-800-TAX-FORM (1-800-829-3676) to order IRS Publication 225, *Farmer's Tax Guide*, which has details on estimated tax payments for farmers.



By Wilda Dixon

Tuesday, February 26, was the first day for our new Green Thumb worker to be in the Library and her name is Tressie Warren. Everyone come in and welcome Tressie to the staff. We are very happy to have her working at the Library. WELCOME, TRESSIE!!

Another event that took place Tuesday was Library School. There were thirteen children present and they were: Derrick Griggs, Michael Grant, Brittany A. Moore, Timothy and Charissa Conner, Timmy Bowman, Cody and Clay Cooper, Shelby Stokes, Amanda Hurt, Emily Hurt, John Wesley Stevens and Dakota Meyer. The children enjoyed singing, watching a video, reading a story, playing games and making a souvenirs hat. Again, I would like to thank Sonja Bowman, Jeannie Moore, Edna Ruth Green, Sarah Hurt and Winifred Lee for working with and helping with the Library School. Without these ladies' help and the other mothers bringing their children, we would not be able to have our Library School.

We just received a cassette and a video, both entitled "Preparing Your 1990 Tax Forms." The cassette has two parts and the video has three parts. These items will be available for check-out; however, they

will only have a three-day loan period. Remember, we also have many of the forms at the Library as well as a loose leaf notebook with reproducible copies of nearly every form from the Internal Revenue Service. The only charge is for those forms we have to copy from the book and that is 15¢ per page.

1991 Dues for the Friends of the Library are now due and may be paid at the Library.

Centennial Planning Meeting, March 11, 1991 at 6:00 p.m. Everyone come help plan and/or volunteer to work during the celebration.

March 7, 1991 at 9:30 a.m. there will be a workshop for Library Volunteers. The workshop topics will include shelving books (where and why they are shelved like they are) and filing catalog cards in the card catalog. There will also be a section that afternoon on book repair. ALL VOLUNTEERS ARE URGED TO ATTEND!!

## Brazos Electric Cooperative to Celebrate Golden Anniversary

Brazos Electric Cooperative on Wednesday celebrated the 50th anniversary of its incorporation with reception for directors, employees and special guests at the utility's Waco headquarters. Brazos Electric was the first generation and transmission electric cooperative formed in Texas and today is the largest of nine that exist in the state.

Brazos Electric's articles of incorporation were approved by Texas Secretary of State William J. Lawson on February 27, 1941. The cooperative was the brainchild of leaders of eleven central Texas electric cooperatives which at the time were struggling to survive against poor service and high wholesale power costs. The cooperatives banded together to form their own power supplier, Brazos Electric, from which they could buy wholesale power and more importantly, gain strength through organization. They hoped eventually to build their own transmission lines and power plants to avoid relying on other power companies for their wholesale service.

"On our fiftieth anniversary, Brazos Electric is celebrating the realization of

these goals," said Richard E. McCaskill, Brazos Electric's executive vice president and general manager. "Our mission has always been to provide reliable wholesale power to our members at the most reasonable cost possible. As we embark on our second fifty years, Brazos Electric and its employees remain true to our heritage of service and committed to improving the quality of life in the areas we serve."

Brazos Electric today employs about 280 people based in eight locations in Texas. The cooperative provides wholesale electric power to 20 member cooperatives, six municipal electric systems and Texas A&M University. It owns all or part of three power plants and operates more than 2,500 miles of transmission line. Power provided by Brazos Electric serves 245,000 consumers in a 66-county area of north and central Texas.

Brazos Electric has published a 168-page illustrated history book, *Currents of the Brazos*, that details the varied and colorful first fifty years of the cooperative. It will be available through the cooperative in March.

WE SPECIALIZE IN TRACTOR AND TRUCK FLATS

WE SELL TIRES

24 HOUR ROAD SERVICE

Fast Efficient Service

PROPANE, GASOLINE, DIESEL AND OIL

7:00 a.m. - 6:00 p.m., Monday - Saturday

We Appreciate Your Business

Phillips 66 Station

COOPER OIL

Matador, Texas

Day, 347-2346 or Night, 347-2411

## TOP GRADE TRACTOR LUBRICANTS

2 gal. - JD & IH/Case Hydraulic Oil \$8.50

1 gal. - 30 wt. Engine Oil \$4.10

1 gal. - 15w-40 Engine Oil \$4.20

Matador Motor & Implement 347-2422

## Obituaries

### Jodie Jameson

Services for Jodie Malcolm Jameson, 68, of Plainview were held at 10:30 a.m. Saturday, February 23, in Ninth and Columbia Church of Christ in Plainview with Dean Brookshire, associate minister, officiating.

John Peck, an elder at Garland Street Church of Christ, assisted, and burial at 2 p.m. in Garden of Memories Cemetery in Paducah was directed by Wood-Dunning Funeral Home.

Jameson died at 2 a.m. Thursday, February 21, 1991 in Methodist Hospital in Lubbock after a lengthy illness.

He was born in Whiteflat and moved from Floydada to Plainview in 1974. He married Ruth Stinson in 1944. She died in 1967. He married Vernie Martin in 1968. He was a U.S. Navy Veteran of

World War II. He worked in the automobile industry from 1950 until retiring in 1986. He was shop supervisor for Central Plains Mental Health-Mental Retardation and was a member of the Church of Christ.

Survivors include his wife; two daughters, Judy Struve of Lubbock and Joann Pennock of Midland; a stepdaughter, Donna Patton of Abertamy; two stepsons, Danny Martin of Farwell and Dale Martin of Plainview; his father, Robert L. of Matador; two brothers, H.R. "Skeet" and Clay, both of Matador; and seven grandchildren.

The family suggests memorials to the American Cancer Society and Central Plains MHMR.

### Nanny Masey

Graveside services for Nannie E. Masey, 85, of Roaring Springs were held at 2 p.m. Thursday, February 21 in Roaring Springs Cemetery with the Rev. Charles Fisk, pastor of First Baptist Church, officiating.

Burial is under direction of Seigler Funeral Home of Matador.

Mrs. Masey died at 4:06 a.m. Wednesday in St. Mary of Plains Hospital in Lubbock after a lengthy illness.

She was born in Uvalde County and

married Charley Ben Masey in 1923 in Roaring Springs. He died in 1982. She was a homemaker and member of First Baptist Church. A son, George, died in 1942.

Survivors include a son, Walter T. of Lubbock; a daughter, Louise Hollingsworth of Pueblo, Colo.; a sister, Ruby Holcomb of Floydada; three grandchildren; several great-grandchildren; and a great-great-grandchild.

### Billie G. (Bill) Smith

Billie G. (Bill) Smith, 64, of Corpus Christi, died Saturday February 23 in a Corpus Christi Hospital.

Services were Tuesday, February 26, 2p.m., in Clements-Wilcox Chapel in Burnet with Bro. Willis G. Jernigan officiating, burial was in Bethel Cemetery.

Smith was a veteran of WW II, and a auto salesman. He was preceded in death by his father Harley D. Smith, and two sons Dolen and George.

Survivors include his wife Dorothy of Corpus Christi, his mother Jewel Smith of Corpus Christi, a daughter Patsy Johnson of Rogers, Arkansas, two sons

Billie G. Jr of Three Rivers, Allen of California, a stepdaughter Sandra Lewis of Houston and stepson S. J. (Sut) Braselton of Burnet, a brother Harley D. Smith of San Antonio, three sisters Nelda Simpson of Corpus Christi, Glenyca Dawson of Tomball, La Rue Ganem of Victoria eight grandchildren, seven great-grandchildren, many nephews, nieces and friends.

The family requests memorials be made to your favorite charity.

Pallbearers were; Jim Lewis, Jack Fields, Vernon Williams, Leroy Schooly, Calvin Smith and Bill Parrott.

### CORRECTION

In the Charles Rankin obituary printed in last week's paper, it should have stated

Rankin was a teacher and superintendent of schools in Whiteflat during the 1930's.



Flomot Do Gooders fed approximately 100 people from Flomot, Turkey, Silverton and Matador at their fundraiser on Saturday, February 23.



Mexican food being served to Lavelle Vinson and Debbie Conner by Mrs. Jr. (Barbara) Payne, a Flomot Do-Gooder member.

## NOTICE

All Farm Bureau Members Who Have The Travelers Insurance (Hospital)

Need to come by the office and obtain the new policy books for 1991

This needs to be done as soon as possible.

Motley County Farm Bureau

And, behold, an hand touched me, which set me upon my knees and upon the palms of my hands.  
 Daniel 10:10



# Motley County School News



**MONDAY, MARCH 11:**

**Breakfast:** Biscuits, Sausage, Gravy, Juice.  
**Lunch:** Lasagna, Whole Kernel Corn, Tossed Salad, Whole Wheat Rolls, Pudding.

**TUESDAY, MARCH 12:**

**Breakfast:** Cereal, Buttered Toast, Fruit.  
**Lunch:** Baked Ham, Blackeyed Peas, Cantaloupe, Fried Squash, Cornbread, Orange Date Cake.

**WEDNESDAY, MARCH 13:**

**Breakfast:** Biscuits, Bacon, Scrambled Eggs, Juice.  
**Lunch:** Hamburgers, Lettuce, Tomatoes, Pickle, Onions, French Fries, Chocolate Brownie.

**THURSDAY, MARCH 14:**

**PUBLIC SCHOOL DAY, GRADES K-6**

**Breakfast:** Buttered Toast, Hot Cereal, Fruit.  
**Lunch:** Tostados, Meat, Cheese, Lettuce, Tomato, Beans, Hot Sauce, Apple Cobbler.

**FRIDAY, MARCH 15:**

**PUBLIC SCHOOL DAY, GRADES 7-12**

**Breakfast:** Sausage, Pancakes, Syrup, Fruit.  
**Lunch:** Steak, Gravy, Green Beans, Creamed Potatoes, Hot Rolls, Fruit Salad, Topping.

## Special lunch days for parents visitation week

Texas Public School Week coincides with Motley County ISD Spring Break. We encourage the parents to come and enjoy lunch with your student. Parents K-6 are invited for March 14, 1991. We will have Tostados, Beans and Apple Cobbler. March 15, 1991 will be the day for parents, 7-12 to be with us. Menu for that day includes Steak, Gravy and Hot Rolls. The price of a meal will be \$3.00. We encourage you to attend but request you send word by your child that you are

eating. We have new serving hours in the cafeteria for Breakfast. They begin serving at 10 til 8:00. This makes it easier for the child to eat and yet go to tutoring at 8:15.

**Lunchtimes:**  
 K-3: 11:00 - 11:35  
 4-6: 11:35 - 12:05  
 7-8: 12:07 - 12:47  
 9-12: 12:12 - 12:47

Seek ye the Lord while he may be found, call ye upon him while he is near: Let the wicked forsake his way, and the unrighteous man his thoughts: and let him return unto the Lord, and he will have mercy upon him; and to our God, for he will abundantly pardon.

## Teacher Profile

by Amy Woolsey

Mrs. Sis Stephens is the sixth grade teacher for Motley County Elementary School.

She has taught sixth grade four years and taught third grade six years. She also taught in Crosbyton for 3 1/2 years.

She is originally from Hays, Kansas and attended school there. She attended college at Phillips University in Enid, Oklahoma and West Texas State University.

Her hobbies include reading, crocheting, traveling and riding horses.

Mrs. Stephens and her husband, Morris, have six grandchildren and seventeen grandchildren.

When asked what she thinks of Motley County as a community, Mrs. Stephens stated, "It's more home than Kansas is, I can see where southern hospitality originated."



Mrs. Sis Stephens

When asked what she thinks of Motley County students, Mrs. Stephens stated, "Fabulous, so much potential in all of them, I haven't had a class that hasn't amazed me."

Mrs. Stephens stated that she would like to have all of her class at level or above, as her goals for the 1991 school year.

Mrs. Stephens is the PTO Teacher of the Week.

## SCHOOL CALENDAR

**Friday, March 1:** Houston Stock Show; Boys Golf. Floydada; early release.

**Saturday, March 2:** High School Track Meet at Floydada.

**March 4-8:** SPRING BREAK!!!

**Monday, March 11:** School resumes.

**March 11-15:** Open House Week

**March 11:** One Act Play Festival, Lockney High School.

**March 12:** One Act Play performance, Motley County High School.

**Wednesday, March 13:** 7:30 p.m. School Board.

**March 14:** One Act Play District Rehearsal, Guthrie.

**Thursday, March 14:** Golf - girls at Wellington.

**March 15:** One Act Play District Zone Meet at Guthrie.

**Friday, March 15:** Golf - boys at Wellington.

**Saturday, March 16:** High School Track Meet at Jayton.

**Sunday, March 17:** St. Patrick's Day.

**Monday, March 18:** Stock Show; Teacher Work Day; Golf - girls, at Memphis.

**Tuesday, March 19:** Golf - boys, at Memphis; High School UIL Journalism and Writing; FFA Judging at Snyder.

**Friday, March 22:** Junior High Track Meet at Aspermont.

**Saturday, March 23:** FHA to Plainview; High School District UIL at Vernon; High School Track Meet, here; Beefmaster Conf.

**Monday, March 25:** PTO meeting; Golf - girls at Quanah.

**Tuesday, March 25:** OAP District at Armon; Golf - boys at Quanah.

**Wednesday, March 27:** FFA Judging at Stephenville.

**Friday, March 29:** Easter Holiday.

**Saturday, March 30:** High School Track at Shallowater; Centennial Band Program

**Sunday, March 31:** Easter.

## Amy's Anecdotes

by Amy Woolsey

Often people don't realize it, but they can't have everything they want in life. We all want a lot of things, but sometimes God has his reasons why we can't have them.

There is a lot of pain and heartache when you try to get something you can't have. If you think you're going to go after

something you can't have, reconsider, it can save a lot of pain. It may hurt by giving it up, but the pain is not quite as bad. Wouldn't you rather go through the pain now, than to have it hurt worse later?

Be happy with what you have. Things will be a little easier and your life will be a little better.

## Local Gymnasts participate in Tumbling for the Troops



Brandi Jameson and Dodie Morris

Tumbling for the Troops was the theme of the recent STTA-ATTA Division II Tumbling Meet held in Snyder on February 16, 1991.

There was 32 teams entered from Texas, New Mexico and Oklahoma.

Dodie Morris and Brandi Jameson competed in the meet tumbling with the High Rollers Team of Spur and Post.

Dodie tumbling in the advanced division placed 5th. Her 5th place score was high enough to qualify her for the Nationals to be held in July in Baton Rouge, Louisiana.

Brandi, tumbling in the Intermediate Advanced division, placed third.

Both girls competed in trampoline in the Intermediate division. Brandi placed 5th and Dodie placed 6th.

The girls will be competing in Lewisville, Texas in April.

## Congressman Announces Congressional Arts Competition For High School Students

WICHITA FALLS -- Congressman Bill Sarpalius recently announced a Congressional Arts competition for High School students in the 13th Congressional District.

The winning entry will be displayed in the U.S. Capitol, along with other winning entries from congressional districts across the country, for one year. The theme for this year's competition is TEXAS HISTORY.

"There are many talented young people in the 13th District, and this competition affords them the opportunity to gain regional and national recognition," Sarpalius said. "This competition will give high school students a vehicle to demonstrate their artistic talents."

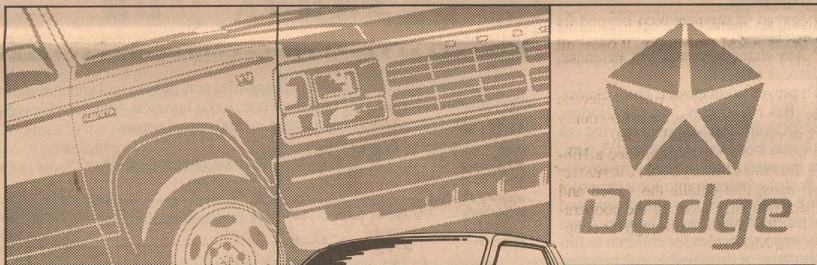
According to Sarpalius, the contest is part of An Artistic Discovery. The annual competitions conducted by Members of

the U.S. House of Representatives to recognize the creativity of young Americans.

The competition is conducted at no expense to the federal government and is open to any high school student in the 13th District. Artwork must be two-dimensional and no larger than 32 inches by 32 inches framed. Eligible categories are paintings, drawings, collages and prints.

Entries for the contest must be submitted to the designated office by April 17. Interested students should contact their school's art department, or counselor, as soon as possible for additional contest information and guidelines.

Or contestants may contact Rosa Bragg at 806-371-8844, in Amarillo or Aaron Alejandro at 817-767-0541, in Wichita Falls.



## Welcome Home To Power

The mid-size Dodge Dakota V-8 - more power and available payload than a Ford Ranger 4 liter V-6.

PLUS, YOU CAN GET \$2995 IN TOTAL SAVINGS WHEN YOU COMBINE \$300 CASH BACK WITH UP TO \$2695 IN PACKAGE SAVINGS!\*

	MAXIMUM AVAILABLE HORSEPOWER (RPM)	MAXIMUM AVAILABLE TOWING (LBS.)	MAXIMUM AVAILABLE PAYLOAD (LBS.)	MAXIMUM AVAILABLE TORQUE (RPM)
DAKOTA V-8	170 @ 4000	6500	2550	262 @ 2400
CHEVY S-10	160 @ 4200	6000	2000	230 @ 2800
FORD RANGER	160 @ 4000	6300	1700	225 @ 2500
NISSAN	153 @ 4800	5000	2000	180 @ 4000

\*\$300 cash back on models in stock; \$2695 26F package savings based on list prices of items if sold separately.

Come See Your Dodge Dealer. Come See What We're Made Of.

770

Advantage: Dodge

BUCKLE UP... AND PLEASE DRIVE SAFELY.



FLOYDADA

FORD MERCURY CHRYSLER Dodge FLOYDADA, TEXAS

☆☆☆☆☆☆☆☆☆☆☆☆☆☆☆☆☆☆☆☆☆☆☆☆☆☆☆☆☆☆☆☆

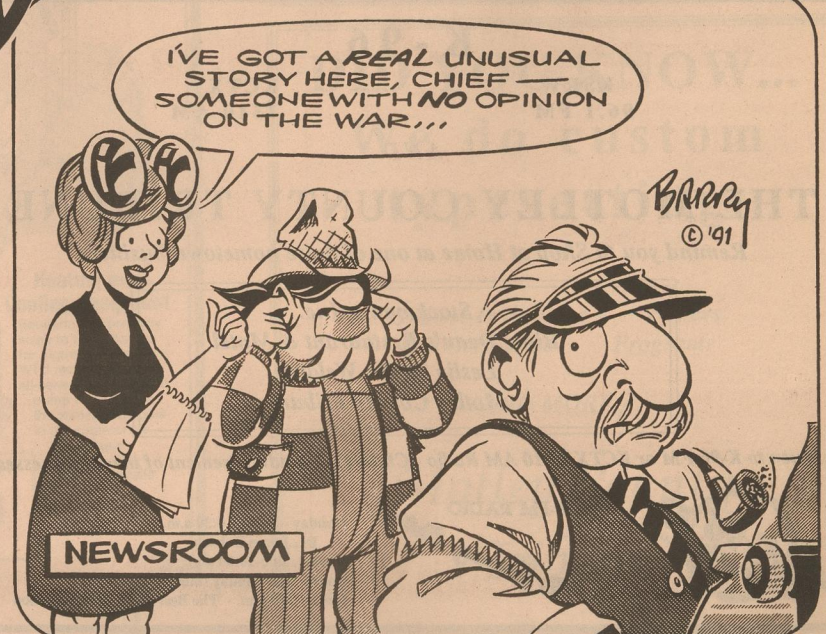
### I Am The Flag

My red stripes are symbols of the blood spilled in defense of this glorious Nation.  
 My white stripes signify the tears shed by Americans who lost their sons.  
 My stars clustered together unify 50 states as one for God and country.  
 My blue field stand for God's heaven, of which I fly under.  
 "Old Glory" is my nickname and proudly I wave on high!

Please display this flag in your window or on your door to show your support for our fighting men and women in Saudi Arabia and the nation for which they, and so many others before, have fought to defend.

☆☆☆☆☆☆☆☆☆☆☆☆☆☆☆☆☆☆☆☆☆☆☆☆☆☆☆☆☆☆☆☆

## J.P. Doodles





# Society News

## Roaring Springs First Baptist Church Hosts Caprock WMU Home Mission Study

Thirty-two WMU ladies met Monday morning at the First Baptist Church in Roaring Springs for their Home Mission Study on "What is a Missionary." The Pastor Rev. Charles Fisk welcomed the ladies and prayed for the Womens Missions work. Caprock Associational Director, Lotie Garrison, was in charge of the meet-

ing. After announcements, she turned the program over to Jean Trull who led the study, which was very interesting with a video tape and posters of the three Home Missionaries who were the topic of the study. Jannie Rondo closed in prayer. The group then adjourned to the fellowship hall and enjoyed a delicious covered dish lunch which each lady had

brought a dish. Eleven churches were represented from Silvertown First Baptist, Floydada First Baptist, Floydada Calvary Baptist, South Plains First Baptist, Pansey First Baptist, Matador First Baptist, Spur First Baptist, Floydada Primera Bautista Mission, Crosbyton First Baptist, Flomot and Roaring Springs.

## El Progreso Club Hears Prison Woes

El Progreso Club met February 14, 1991 in the Senior Citizens center for their Public Affairs: Crime Division program, presented by Mrs. Furman (Beverly) Vinson.

The meeting was called to order by club president, Mrs. Joe (Loys) Campbell. Various topics of new business were discussed, several pertaining to Motley County Centennial Celebration, May 25, 1991. The design for the Centennial road sign was displayed and it was noted the Jail-Museum will be open as a booth, selling Centennial memorabilia and tours will be conducted for the visitors. The club will sponsor a girl in the Queen's contest for the Centennial. It was noted the Santa Rosa District Convention will be in Iowa Park at the First Methodist Church March 16, 1991.

Mrs. Robert (Winifred) Darsey was program leader for the day, reading the caption from the yearbook, "Better build school rooms for the boys than prison cells for the men." - Eliza Cook. She then introduced Mrs. Vinson who began her topic with a history of the Texas prison system.

The system was begun when, in 1839, Senator Moore introduced a bill authorizing a joint committee from both houses of Congress to select a site near the Capitol suitable for penitentiary buildings, proposing to use convict labor in the construction. Not until 1948 did the Texas Legislature pass an act authorizing the governor to establish a commission of three members that would select a site for a prison. Huntsville was selected. By June 1856 a two-story cotton and wool cloth factory was in operation. During the Civil War these facilities proved a great asset to Texas as it was used as a prison camp for many Yankee prisoners of war and the factories produced clothing for Texas soldiers or the needy left at home. The prison was leased for the next 15 years and they, in turn, subleased the convicts to plantation owners, railroad construction companies and others. After much investigation where the convicts were mistreated a bill was introduced they would make it unlawful to sub-lease convicts.

In 1885 Gov. Ireland was able to lease convicts to the contractors to build the state capitol where nearly 400 were employed quarrying and dressing the limestone and granite used to build the capitol's walls.

Prison population kept increasing, the cost kept rising and the guards paid less with the system going further and further in debt. On March 3, 1930 the doors were closed. They remained that way for five weeks when the system turned around dramatically. Lee Simmons became the Texas Prison Manager. Things improved instantly. He instituted a "live-at-home" policy to make the prison self-supporting.

With the outbreak of WWII the prison farms became completely forgotten. The farm prison management was non-existent. In 1944 Gov. Jester pressed strongly for reform and received it with full back-

ing. After announcements, she turned the program over to Jean Trull who led the study, which was very interesting with a video tape and posters of the three Home Missionaries who were the topic of the study. Jannie Rondo closed in prayer.

The group then adjourned to the fellowship hall and enjoyed a delicious covered dish lunch which each lady had

is contracting with two private companies to operate four private 500 bed facilities. When the current construction is completed, the system will have built nearly 50,000 beds since 1980.

County jails are suffering for they have to hold prisoners in the local facility until room is made for them in the Texas system causing an added expense for the local jails - anywhere from \$35.00 to \$45.00 per day.

The numbers show that Texas has greatly increased its financial commitment to the criminal justice system. Corrections spending has soared in recent years, and tens of thousands of new prison bed spaces have been built, but the inmate population has grown even faster, defying the states attempt to meet the need for new facilities.

Mrs. Darsey closed the program with the inspiration thought, the "Peace" - author unknown.

Delicious Valentine refreshments were served from a gaily decorated table with the traditional hearts and cupid, lace doilies, etc. Strawberry punch, coffee, various tea sandwiches, nuts, candy and delicious cherry dessert were served to those mentioned and Mrs. Ted Bailey Elliott, Mrs. Dale (Joetta) Bumgardner, Mrs. J.E. (Marge) Edwards, Miss Rachel Patton, Mrs. Douglas (Lila) Meador, Mrs. W.D. (Vena) Lipscomb, Mrs. Harold (Grace) Campbell, Mrs. R.C. (Callie) Giesecke, Mrs. Frank (Lola) Pohl and Mrs. W.N. (Opal) Pipkin. Hostesses were Mrs. L.B. (Lucretia) Campbell, Mrs. Bob (Nell) Clem and Mrs. Harry (Pearl) Pat-



VALENTINE ROYALTY — Edward (Knox) Jameson (left) and Lennie Willis were named Valentine King and Queen at Floydada Nursing Home. They received long stem red carnations and a box of candy. Jameson and Willis were elected for the honors by other residents and staff. — Photo by Floyd County Hesperian

With God all things are possible! Mark 10:27

K-96

KSRW  
96.1 FM

KCTX  
1510 AM

AND

THE MOTLEY COUNTY TRIBUNE

Remind you to Shop at Home at one of these hometown business

Stockman's, Inc.  
Billie Dean's Restaurant & Motel  
Leslie Taylor Welding  
Motley County Tribune

Listen to K-96 FM or KCTX 15.10 AM Radio - Childress for advertisement of these businesses



KSRW-FM RADIO  
The Gateway Station!

Monday - Friday, 6:30 a.m.  
Dr. James Dobson  
Sunday, 8:00-10:00 a.m.  
One on One Sunday (music & teaching)  
10:00-11:00 a.m. - The Best of Dr. James Dobson

## Foard County to Sponsor Centennial Arts & Crafts Bazaar

The Foard County Centennial Arts Committee announces it is seeking artists and craft persons for its Bazaar on the square in Crowell Saturday, April 27, from 8 a.m. to 5 p.m.

The booth areas are about 10' x 12' in size, and the artists will be responsible for their own set-up. The cost will be \$15.00 per booth, and early registration is urged as very large crowds are expected in Crowell during the Centennial Celebration.

Other events planned include a big parade, antique car show, reunions, catered meals, music, and fun, fun, fun!

It is mostly outside, so come prepared for the weather.

Anyone interested should contact Kathy Whitley at 817/684-1618 or Pat Wishon at 817/684-1819.

## HEALTH NEWS

### NOW IS THE TIME TO START THINKING ABOUT SKIN CANCER

More than 600,000 cases of skin cancer are diagnosed each year, and most of these are highly curable.

The most serious skin cancer is melanoma, which is increasing at the rate of four percent per year. There will be an estimated 8,800 deaths this year with 6,300 from malignant melanoma and 2,500 due to other skin cancers.

The American Cancer Society urges you to watch out for:

- \* Any unusual skin condition, especially a change in the size or color of a mole or other darkly pigmented growth or spot;
- \* Scaliness, oozing or bleeding;
- \* Any change in the appearance of a bump or nodule;
- \* Spread of pigmentation beyond its border; and
- \* Any change in sensation, itchiness, tenderness or pain.

To prevent skin cancer, Doris Scales, R.N., B.S.N., O.C.N., at the Hodges Cancer Center, recommends staying out of the sun between 10 a.m. and 3 p.m., when the sun's ultraviolet rays are strongest. Scales advises you to limit exposure during these times, use sunscreens and wear protective clothing. These are especially important rules for children to follow because of the possible link between sunburn in childhood and greatly increased risk of melanoma in later life.

Early detection is important. A simple ABCD rule can help detect warning signals for melanoma.

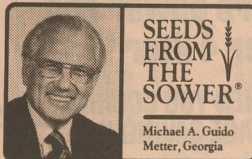
A = Asymmetry. One half does not match the other half.

B = Border Irregularity. The edges are ragged and blurred.

C = Color. The pigmentation is not uniform.

D = Diameter greater than 6 millimeters. Any sudden or progressive increase in size should be investigated by a physician.

For more information on cancer and its warning signs, contact your physician or the Hodges Cancer Center at 793-4214.



A teacher asked her first graders, "What do you do at home?"

"I dry the dishes," answered one. "I feed the dog," said another.

"Johnny," she asked, "what do you do?"

He hesitated a moment, and then said, "I stay out of the way."

Do you know why many won't become Christians? Because of the Christians who aren't Christlike. They're standing in the way of sinners.

You're either a brick wall or a bridge between God and the ungodly. You either draw them to the Saviour, or you drive them away.

The Bible says, "Blessed is the man who walketh not in the counsel of the ungodly, nor standeth in the way of sinners."

Don't stand in the way. Like the boy, "stay out of the way."



## Home Economically Speaking

by Beverly Thomas,  
Home Extension Agent - Home Economics

### DOES A SECOND JOB PAY OFF?

Making ends meet is getting harder, it seems. That's why so many families depend on income from a second or even a third job.

Taking another job to make ends meet is a realistic solution for many people. But it is also important to recognize that every job has a "cost of earning" factor - what it actually costs the worker to earn a living. A close look at employment-related income and expenses can give a realistic view of what to expect.

On the income side, consider how many hours and days a week you will work and what your total income will be. Compare your present expenses for fringe benefits such as insurance and pension plans and how much is being contributed toward Social Security. What will be the costs and advantage of these benefits with the new job? Some people, particularly those who have not had any health insurance coverage, find a second job that offers insurance benefits worthwhile even if the wages are relatively low. That's because the cost of health care would be even greater.

Work-related expenses to consider include special work clothes or uniforms that must be purchased; dues, fees and licenses; job-related publications; business meetings and conferences; and tools, equipment and supplies.

If an additional vehicle must be purchased to get to work, figure in the extra costs of transportation (work-related share of vehicle purchase cost, car loan, licenses, taxes, fees, insurance, gas oil, maintenance, parking and tolls). If other forms of transportation are required, calculate those costs.

If a family member who has stayed at home returns to the job environment, there may be extra family expenses that are incurred that will reduce the amount of total family income available. Child care, hired household help, additional laundry/dry cleaning, more family meals out, changes in home food preparation, and household repair/maintenance needs

may all contribute to increased family expenses.

Child care is a major expense for families needing such care. The average weekly child care cost for families paying for such services was \$49 in 1987 (latest data). When total income is less than \$1250 per month, families spend almost 21 percent on child care services.

The worker may also encounter added expenses for personal care, clothing, and work place related situations such as coffee breaks, gifts and parties.

Another cost of employment relates to the tax angle. Additional earnings can raise the tax bill because more income may push the earners into a different tax bracket. Some work-related expenses may be deductible as itemized expenses, but with a larger adjusted gross income, they may not qualify for deduction within those limits.

Clearly, having a job may have more than just economic meaning for the worker and for the family. New jobs always hold special personal meaning. Several non-economic issues should also be discussed

with other household members, such as sharing of the household workload, child care responsibilities, sharing of farm production activities for farm families, season variation in workloads, and time commitments for a volunteer, religion-related, school activities, and/or social organizations.

The Texas Agricultural Extension Service has a computer software program available, "Does a Second Job Pay Off?" that computes the costs and benefits of earning a second income.

Educational programs conducted by the Texas Agricultural Extension Service are for people of all ages regardless of socioeconomic level, race, color, sex, religion, handicap or national origin.

Thought for the Day:

Your own soul is nourished when you are kind; it is destroyed when you are cruel.

## Thank You

Thank you for your many thoughtful acts of love and concern during the hospitalization and death of our loved one, Jodie Jameson. May God bless each of you for your expressions of sympathy in our time of sorrow.

The Jodie Jameson family  
Bob Jameson  
H.R. "Skeet" Jameson family  
Clay Jameson family

I would like to thank all my friends for their concern, prayers, food, cards, and telephone calls, also, our friends that assisted Bill in so many ways. I especially want to thank the good Lord for his healing hand.

Judine McCaghren

Words fail us when we try to express our appreciation for your many acts of kindness during our sorrow. Thank you for your love, prayers, visits, calls, food, flowers and memorials. May God richly bless each and everyone of you in our sincere prayer.

The family of Eugene Watson

Through the laughter and the tears,  
Look who's been married forty years!  
The children and grandchildren  
of

Doris & Gerald Piper

invite you to celebrate with them  
Sunday, March 3, 1991

2 - 4 p.m.  
First Christian Church  
Fellowship Hall  
Paducah, Texas

No gifts please

Want to keep up with  
whats going on?

Subscribe to the  
Motley County Tribune

Motley County - \$14.00

Out of County - \$16.00

If you are over 60, you may deduct \$1.00



## Social Security Tips

by Mary Jane Shanes

### START PREPARING NOW FOR FILING THIS YEAR'S TAX RETURN

It's never too early to begin preparing for filing your 1990 tax return. You need time to dig out your records and be sure they are in order, and time to be sure your withholdings or estimated tax payments are sufficient to cover your tax liability.

Time is also needed to get a Social Security number for your children over age 2.

Since 1989 tax returns, each dependent child older than 2 years must have a Social Security number to be claimed as a dependent. The number must be listed on the parent's or guardian's tax return.

And, starting with tax returns for 1991 (due in 1992) Social Security numbers will be required for all dependents age one or older.

To obtain an application (Form SS-5)

and instructions, call 1-800-234-SSA (1-800-234-5772) 7 a.m. to 7 p.m. weekdays. Parents can mail the completed form and required documents to Social Security in the pre-addressed envelope that will be provided with the form. The documents will be returned promptly, and a Social Security card will usually be issued within 2 weeks. People age 18 and over must apply for an initial or replacement Social Security card in person at a Social Security office. They may call first to obtain the free application and instructions.

Evidence of the person's age, U.S. citizenship (or lawful alien status), and identity are needed.

The application and card are provided free of charge by Social Security. We also provide free help in completing the form for those who need it. There is no need to pay anyone for this service.



## TEXAS SENATE WEEK IN REVIEW

AUSTIN -- On Wednesday, February 20, the Texas Senate passed landmark legislation relating to the public school finance crisis. With the Supreme Court's April 1 deadline looming over the legislature, Senate Bill 351, sponsored by Senator Carl Parker of Port Arthur, was passed by a vote of 20-7 after over two hours of debate on the Senate floor. The bill restructures the public school finance system to equalize access to both state and local funds for all districts. Revenue will be drawn from all property wealth in the state at similar tax rates, with school districts maintaining local control of fund expenditures and educational policies. Senate Bill 351 divides the state into twenty regions in which the Comptroller will redistribute the funds according to the needs of each school district within these regions. Lieutenant Governor Bob Bullock thanked and congratulated the Senate upon completion of its task. Senate Bill 351 now goes onto the Texas House for deliberation. In related business, on Tuesday, February 19, the Senate passed Senate Joint Resolutions 19 and 20 proposing constitutional amendments to alleviate funding discrepancies relating to public school finance. Senate Joint Resolution 19 proposes a constitutional amendment to authorize the Legislature to allocate that portion of the Available School Fund that is currently distributed to high wealth districts to all other districts. Senate Joint Resolution 20 proposes a constitutional amendment

authorizing the equitable distribution among school districts of ad valorem taxes assessed and collected for the support of public free schools. The school finance plan established in Senate Bill 351 will still function in the event the voters or the Texas House do not approve Senate Joint Resolutions 19 and 20. However, if Senate Joint Resolution 20 is approved by the voters, the regional education districts will be eliminated and redistribution of excess revenues will occur at the state level.

On Thursday, February 21, legislation relating to comprehensive insurance reform was filed by Senators John Montford of Lubbock and Carl Parker of Port Arthur. Governor Ann Richards has given insurance reform a top priority in her administration. Announced today at a press conference in her office, the legislation will attempt to stabilize insurance rates, prevent fraud in the industry, decrease industry insolvency and protect consumers. Senate Bill 2 repeals the insurance industry's exemption from the state's anti-trust act, and requires the State Board of Insurance to collect and compile independent data rather than relying on the industry for rate making information. Senate Bill 4 is concerned primarily with fraud in the insurance industry.

Other news this week included an address by EPA Director William Reilly to a Joint Session of the Legislature in the House Chamber on Tuesday, February 19.

## Texas Children Biting Off More Than They Can Chew

Health officials warn that a rising popularity of smokeless tobacco among the youth may lead to a growing incidence of oral cancer at the end of the decade. Currently, oral cancer strikes 11 per 100,000 Americans.

A 1989 Texas Department of Health (TDH) survey of about 4,400 Texas students in grades 7, 8, 10 and 12 reveals that more than 49 percent of the male respondents had tried smokeless tobacco at least once.

Some 31 percent of the 7th grade boys and nearly 70 percent of male seniors had tried snuff or chewing tobacco at least once. Most (about 62 percent) male students who had tried smokeless tobacco did so before age 13.

Ron Todd, coordinator of the TDH Office of Smoking and Health, said, "A lot of younger kids start with snuff, the kind sold in convenient packets. And the risk of oral cancer may be 50 times higher for long-term snuff users than for tobacco non-users." He added that boys in Texas begin using smokeless tobacco earlier than do boys of other states.

He said that the percentage of 8th grade students who reported using smokeless tobacco in the previous 30 days was close to that found in a nationwide survey (8.8 percent Texas vs. 9.8 percent nationally). However, Texas 10th graders were more than twice as likely to be heavy users (20 times in the previous 30 days) than 10th graders nationally.

"We have the same problem with snuff

and chewing tobacco that we have with cigarettes -- children start using it, and by the time they realize their mistake, they are addicted to nicotine," Todd said.

"Tobacco use is not adult behaviour -- it is juvenile behavior. If children want to act like adults, then they should stop using tobacco. That's what most adults are doing," Todd added.

Dr. Robert Bernstein, Commissioner of Health, said that smokeless tobacco was advertised in the 1970s as an alternative to cigarettes, with slogans like "take a pinch, instead of a puff."

"Since both forms of tobacco use can result in nicotine addiction and cause cancer, the only real choice offered by such slogans is between the risks of lung cancer and oral cancer," Dr. Bernstein said.

He added that survival rates for persons with either lung cancer or oral cancer are two of the lowest among the major cancers.

Todd attributes increased teen tobacco use to advertising. "The overwhelming majority (84 percent) of students surveyed in Texas knew that tobacco use was very harmful, yet more than half had tried tobacco in some form. Knowledge of the harmful effects of tobacco seems to be quickly eroded by slick ads associating tobacco use with success, confidence and adventure," he said.

For more information on tobacco use, contact the Texas Office of Smoking and Health, toll free at 1-800-345-8647.

When words are many, sin is not absent, but he who holds his tongue is wise. Proverbs 10:19

## DPS 1990 Accident Report

Capt. Bob Russell, District Supervisor of the Amarillo Highway Patrol District comprising of 31 counties said, "For the year of 1990, our troopers investigated 64 fatal accidents, 803 personal injury accidents, and 1145 property damage accidents. There were 74 persons killed and 1353 persons injured in

these accidents." Sgt. Robert Gribble of Clarendon stated, "In Motley County, our troopers investigated 0 fatal accidents, 8 personal injury accidents, and 15 property damage accidents in the year of 1990. 0 persons were killed and 9 persons were injured in these accidents."

### Soothing Medicine For Sore Throat Pain.

MAXIMUM STRENGTH  
**SUCRET'S**

SORE THROAT LOZENGES

MAXIMUM STRENGTH SUCRET'S

The only major brand with Dyclonine Hydrochloride for soothing anesthetic relief.

© 1990 SmithKline Beecham



"Investing in the future of High Plains cotton" is a phrase that could easily be adopted as the rallying cry of the Plains Cotton Improvement Committee (PCIC).

The committee came together in 1983 to work towards the goal of putting High Plains Cotton Producers in a dominant position within the cotton industry.

The committee is made up of Plains producers selected by Lubbock-based Plains Cotton Growers, Inc. (PCG). It works in conjunction with an advisory committee made up of representatives from the areas of research and business.

Since 1983 the committee has funded the work of Dr. John Gannaway, a cotton breeder at the Texas Agricultural Experiment Station, and his associate Dr. Jane Dever. Their goal is to develop a cotton plant that will perform well on the High Plains of Texas, producing both a high quality fiber and high yields. In addition they are trying to enhance the cold tolerance of High Plains cotton varieties.

PCIC recently voted to provide Dr. Gannaway \$145,000 to continue his research during 1991-92.

In addition to the ongoing breeding research of Dr. Gannaway, PCIC has embarked on a project to determine the effects of bark content in cotton. The study will try to determine whether or not justification exists for the discounts being placed on producers by the current grading system.

During the past year the PCIC funded a study of this problem at the International Center for Textile Research and Development. John Price conducted the study and believes that the results have made it possible to demonstrate that producers are "taking a beating" on the bark content of their cotton.

Results of the study show: 1) that there is a need to question the practice of separating bark from the trash content of the

cotton, 2) that the non-lint content of a bale of cotton is a fairly good measure of the usability of the cotton, and 3) that non-lint content has a small effect on the spinability of cotton.

Through research the PCIC is working to enhance the quality of cotton produced on the High Plains.

\*\*\*\*\*

The upcoming "CottonDay 1991" festivities at the Capitol in Austin will bring all segments of the cotton industry together for a celebration of the important role cotton plays in the Texas economy.

Representatives from virtually every cotton related organization in Texas will meet at the event to discuss the roll cotton will play in the future. Plains Cotton Growers (PCG) is no exception.

PCG will have nine representatives at the event. They will meet with Texas legislators representing the High Plains area to discuss the concerns of producers in this area.

The event will run from Monday, March 4 through Wednesday, March 6. Highlights will include exhibits displayed in the Capitol rotunda, time for visiting various legislators, a "Cotton Day 1991" reception for legislators and state officials Tuesday evening and a "Beans-n-Cornbread" luncheon at noon on Wednesday.

The names of the PCG representatives making the trip to Austin are: PCG President J. Larry Nelson of Tulia; Wayne Huffaker of Tahoka; Frank B. Jones, Jr. of Lubbock; PCG Chairman of the Board Steve Verett of Ralls; Myrl D. Mitchell of Lenora; Jackie Burris of Wellman; Don Langston of Lubbock; Wesley Butcher of Seagraves; and PCG Executive Vice President Donald Johnson of Lubbock.

## FISH

Now is the time for Spring Stocking Hybrid Bluegill, Florida Hybrid Bass, Channel Catfish, Fathead Minnows, Black Crappie. The Hybrid Bluegill will REACH the weight of 2 1/2 to 3 lbs. We furnish your Hauling Containers. We guarantee live delivery. Supplies - Fish Feeders, Turtle Traps, Liquid Fertilizer, Commercial Fish Cages, Bug-Light Feeders.

Delivery will be Wednesday, March 13, at the times listed for the following towns and locations.

Ralls - Crosby County Fuel Assoc. 8:00 - 9:00 a.m. 253-2518  
Roaring Springs - Lawrence Farm Store 10:00 - 11:00 a.m. 348-7271  
Spur - Farmers Coop Gin & Supply 12:00 - 1:00 p.m. 271-3391  
Jayton - Farmers Society #1 2:00 - 3:00 p.m. 237-9922  
Roby - Farmers Union Coop Gin 4:30 - 5:30 776-2237

Call your local Feed Store to place your order or call: 405-777-2202 or 1-800-433-2950

Fishery consultant available.

Special Deliveries on large ponds and lake orders.

Dunn's Fish Farm

P.O. Box 85

Fittstown, OK 74842

## What's an Energy Saving Plan Home?

It's a home that gives you extra comfort plus lower energy bills. So check out the features an ESP home can offer.

### Attic Ventilation

Proper ventilation controls summer heat build up and moisture accumulation in winter. This adds life to the building and its components.

### Air Distribution System

Correctly sized air ducts and proper placement of supply and return air are important considerations for an ESP home.

### Insulation

Insulation in the ceiling and walls in the amount appropriate for this area and climate keeps ESP homes cooler in summer and warmer in winter.

### Heating and Cooling Equipment

Equipment is properly sized to the structure for highest efficiency. WTU recommends the all-season electric heat pump that heats in the winter and cools in the summer for year-round savings. Call WTU for details.

### Air Infiltration Control

Air infiltration control helps stop uncomfortable drafts with weatherstripping, caulking, and insulation.

### Windows and Doors

Insulated or storm doors and windows greatly improve both efficiency and comfort by reducing heat gain and loss in both summer and winter.

WEST TEXAS UTILITIES COMPANY



A Member of The Central and South West System

Remember REDDY Supplies the energy - but only YOU can use it wisely!

## NEED MOBILE COMMUNICATIONS?

Mobile Phone & Two-Way Radio  
Local Number and Private Line

Call: Craig Turner  
347-2309

— AVAILABLE NOW —

## DID YOU KNOW...

We do custom typesetting

Shower Invitations Posters  
Gift Certificate Programs

AND MORE!!

Motley County Tribune



# News Around Motley County

## Flomot News

by Earlyne Jameson

### FUNERAL SERVICES HELD FOR MOTHER

Services for Rosa Paschal, 95, of Olton, mother of Mrs. Tom (Aleda) Ross, were held at 3:00 p.m., Sunday, Feb. 24 in the Main Street Church of Christ with Shawn Williams officiating. Burial was in the Riverside Garden Cemetery in Woodbury, Tennessee under direction of Foskey Funeral Home.

Mrs. Paschal died at 4:00 p.m., Friday in Central Plains Hospital in Plainview after an illness.

She was born in Woodbury, Tenn. and moved from Nashville to Olton in 1957. She married Hoyt Paschal, Dec. 4, 1910. He died in 1969. She was a homemaker, member of the Church of Christ and Ladies' Bible Class.

Survivors include a daughter, Aleda Ross of Flomot, two grandchildren and three great-grandchildren.

The family suggests memorials to the heart or Lung Association.

Local residents attending the services were Mrs. Joe Degan, Mrs. Howard Rogers, Mr. and Mrs. Doyle Calvert, Mr. and Mrs. Wayne Hunter, Mr. and Mrs. Ray Cruse and E.J. Browning.

### DODIE MORRIS QUALIFIES FOR NATIONAL GYMNASTICS MEET

Dodie Morris, daughter of Mr. and Mrs. Billy Morris of Flomot, competed in the Advanced Tumbling and Intermediate Trampoline events at the Division II Gymnastics Meet in Snyder, Saturday, Feb. 16. She qualified for the National Finals to be held in Baton Rouge, Louisiana in July. To qualify, you must have a score of 37 and Dodie earned a 38.3 with her gymnastic feats. Over 800 competed in the events.

### DIANNE WASHINGTON IS LICENSED CERTIFIED PUBLIC ACCOUNTANT

Dianne Washington has recently completed the certified public accountant's examination. She will be fully licensed in May and we congratulate her on this accomplishment.

Dianne and husband, Seab Washington are residents of Flomot. She earned her bachelor's degree in 1987 at West Texas State University in Canyon. She has been on the Fred Thayer CPA Staff in Floydada since January 1988.

### ATTEND WEDDING

Mr. and Mrs. Billy Morris and daughters, Dodie and Rebecca attended the wedding ceremony of her mother, Mrs. Nell Edwards of Afton and Glenn Martin of Spur at the First Baptist Church in Afton, Thursday, February 14. A reception was held in the church fellowship hall following the ceremony. The couple will live in Spur.

Mrs. Morris (Pam) was her mother's matron of honor. Her brother, Rick Edwards of Arlington escorted his mother to the altar. Dodie and Rebecca were bridesmaids.

Mrs. Leland (Judy) Heiskell and son, Lance of Dalhart and daughter, Christi, student at Texas Tech in Lubbock, visited from Friday until Sunday of last week with her parents, Mr. and Mrs. D.M. "Ikie" Gilbert. Mr. and Mrs. Gilbert visited in Floydada last Thursday with Mrs. Harvey Marler.

Ernie and Jason, sons of Mr. and Mrs. Joey Lee of Clarendon, visited the weekend with their grandparents, Mr. and Mrs. Orville Lee.

Mr. and Mrs. Wilburn Martin accompanied Mrs. Bessie Martin of Floydada and Mrs. Lennie Gilbert of Lockney to Plainview, Friday for a birthday luncheon honoring Mrs. Bessie Martin.

Mr. and Mrs. Wayne Hunter attended a Pastor and Layman's Conference, Tuesday at Wayland Baptist University in Plainview. Mrs. Hunter visited in Lubbock, Wednesday with daughter, Anita Hunter and attended to business. Thursday, she attended a Historical Commission meeting at the M.C. Library in Matador.

Mr. and Mrs. Howard Rogers and son, Donnie Rogers attended the regional semi-final girls' basketball game, Crosbyton vs Walls, in Moody Coliseum at Abilene Christian University, Friday. Granddaughter, Shawna Degan and Crosbyton teammates had a heart-breaking defeat.

Mary Ellen Barton and Viola Stinson attended the graveside services of Jodie Jameson in Paducah, Saturday afternoon.

Monty George of Lubbock visited the weekend with his grandmother, Mrs. C.W. Starkey.

Wayne Hunter and daughter, Anita Hunter and friends of Lubbock enjoyed the performance of "Porgy and Bess", Friday night at the Civic Center in Lubbock.

Mrs. A.D. Moseley has been in Dimmitt with her sister and husband, Mr. and Mrs. Coy Dunn. Mrs. Dunn has been hospitalized with pneumonia.

Ronnie Rogers of Lubbock visited the weekend with his family, Mr. and Mrs. Howard Rogers and Donnie Rogers.

Mrs. V.D. Tiffin has been under medical care following an accident when the wind caught a pickup door and knocked her to the ground. She escaped broken bones, but has extensive bruises and soreness. Mrs. Mona Brown of Seymour returned home, Tuesday, Feb. 26 after visiting Mr. and Mrs. Tiffin the past two weeks. The Tiffin's daughter, Mrs. Joyce Jeffers of San Diego, California arrived Tuesday to visit during her mother's recuperation. Another daughter, Mrs. Lura McDonald of Lubbock has also visited the Tiffin family.

## Whiteflat News

by Earlyne Jameson

### OVERHEARD

The presence of death makes more meaningful all the values of life.

Davis Harvey was hospitalized the past week at High Plains Baptist Hospital in Amarillo. Visiting in the Harvey home the past three weeks was their daughter, Mrs. LaRhonda Hamilton of Tulsa, Oklahoma, who returned home, Monday.

Mrs. Juanita Cooper visited from Friday until Monday of last week in Lewisville with her daughter and family, Mr. and Mrs. Lynn (Pat) Minton and daughter, Carol. She was accompanied to Lewisville by Lula Swim and Cecil Swim of Roaring Springs who continued to McKinney to visit relatives.

Mr. and Mrs. Morris Stephens attended the funeral services of Jodie Jameson in Plainview, Saturday morning. Before returning home, they visited in Lockney with Mr. and Mrs. Dal Brewer and Mr. and Mrs. Ray Ford.

Mrs. Nathan (Carol) Gilbreth of Sundown met her mother, Mrs. Kathryn Martin and aunt, Mrs. Wendell (Raynite) Newman of Spur in Lubbock, Monday. Mrs. Martin had medical treatment at the Methodist Hospital. She is suffering a severe case of shingles.

Jonah Stan, student at Texas Tech in Lubbock, visited his grandmother, Mrs. Jack Spray, Sunday.

Mrs. Bill Bradford of Big Spring visited Saturday and Sunday with her daughter and family, Mr. and Mrs. Rocky Vinson and baby daughter, Amanda Rockelle. Mrs. Bradford was an honored guest at the baby shower given for Mrs. Vinson (Lavelle) and Amanda, Saturday afternoon in Matador. Bro. and Mrs. Stacy Conner of Matador and Mr. and Mrs. Vinson enjoyed the Mexican Supper in Flomot, Saturday night.

Mrs. Jeff (Pam) Thacker of Roaring Springs, Mrs. Larry (Donna) Hoyle of Matador and Mrs. Johnny (Carol Ann) Turner, teachers in the Motley County Elementary Schools, attended a Language Workshop at the Service Center in Lubbock, Saturday.

Mr. and Mrs. Tommy Buckner of Dalhart visited recently with Mr. and Mrs. T.W. Jennings. Visiting them Thursday, was Jeff Flowers of Aspermont.

Mrs. Juanita Cooper visited in Amarillo from Friday until Monday with daughter and family, Mr. and Mrs. Ken (Kay) Dunnam and Kourtney.

Mr. and Mrs. H.R. "Skeet" Jameson attended the funeral services of his brother, Jodie Jameson in Plainview and graveside services in Paducah, Saturday. Mr. and Mrs. Stuart Dixon attended the graveside services in Paducah.

## Matador News

Les Jameson of Goree visited Saturday with his brother and family, Bob Jameson and Mr. and Mrs. Clay Jameson. They attended the graveside services of Jodie Jameson in Paducah, Saturday afternoon.

Other local residents attending the funeral services in Plainview and graveside services in Paducah were Mr. and Mrs. C.D. Garrison, Mr. and Mrs. H.A. Stephens, Mr. and Mrs. Bill Dun-

ning, Mrs. Barbara Jameson, Jason Jameson, Mr. and Mrs. Franklin Jameson, Mr. and Mrs. Foy Nichols, Mrs. Norma Nell Marrs and Mrs. Dorothy Knight.

Mrs. Jack Crider of Odessa is visiting this week with her sister, Mrs. Douglas Meador.

# Roaring Springs News

by Odessa Mullins

### LULA SWIM HOSTS GUILD MEETING

Miss Lula Swim was hostess to the Guild in her home Wednesday evening of last week with Mrs. Chelsea Read, president, in charge of the meeting. Mrs. Imogene Swim said the opening prayer. The Devotional was from Billy Graham's message, "Unto the Hills".

Mrs. Mary Lumsden brought the lesson using the 13th verse of the 13th chapter of I Corinthians, on the values that last. Mrs. Lumsden also said the closing prayer.

Present were the hostess and Eugenia Bethard, Opal Bradford, Freda Keahey, Mary Lumsden, Lee Peacock, Chelsea Read, Imogene Swim and Grace Zabielski.

### LONGTIME RESIDENT DIES

Last respects were paid to Mrs. Nanie Hall Masey in graveside services Thursday of last week. Mrs. Masey had lived most of her 85 years in this community.

Friends of Mrs. Eva Mitchell will be glad to hear she is much improved and enjoys mail. Her 90th birthday is March 10 and her address is Granbury Nursing Home, Room 77, H. Hall, Granbury, Texas 76048.

Billy Joe Cooper chauffeured his

neighbor Mrs. Minnie Dye to Crosbyton for a medical check-up Monday. Good neighbors enable "elderly" people to remain in their Roaring Springs homes.

Odessa Mullins spent Friday night with her nephew Kelly Odell and family in Lubbock. While in Lubbock she visited with Mrs. Ruby Holcomb in Methodist Hospital and her sister-in-law, Elsie Roller in St. Mary's Hospital.

Mr. and Mrs. Raydell Mullins of Afton visited Odessa Mullins Sunday afternoon.

Mr. and Mrs. Jernigan and Mrs. Ola Mae Thomas of Shallowater and Mr. and Mrs. Jim Wade of Sunset were visitors of the Clyde Clifton's last week.

Minister and Mrs. Harold Thomas of Conway, Arkansas, were guests of her sister, Mrs. Minnie Dye from Thursday afternoon until Saturday morning of last week. They were joined by another sister, Mrs. Margie Oldham and her daughter Mrs. Jo Cotton of Lufkin, Texas, Friday afternoon. Mesdames Oldham and Cotton went to Homecoming at Lubbock Christian University, Saturday, returning here to spend Saturday night and Sunday with Mrs. Dye.

Mr. and Mrs. Waybourn (Pug) Mitchell arrived here Friday night to visit his mother, Mrs. Vera Mitchell. They drove her to Lubbock Monday to keep her appointment for her medical check-up.

Mr. and Mrs. S.A. Swim of Bella Vista, Arkansas, were houseguests of his sister, Miss Lula Swim, the past weekend.

He that is not with me is against me; and he that gathereth not with me scattereth abroad.

Matthew 12:30

PRAY FOR PEACE

### ALL THE ROADS OF TEXAS AND MORE.....

A 172 page full-color atlas based on the county maps of the Texas Department of Highways and Public Transportation. Large scale, detailed maps (1 in.=3.6 mi.). Great details - county and local roads, lakes, reservoirs, streams, dams, historic sites, pumping stations, golf courses, cemeteries, mines and many other features too numerous to list.

Information on the people, places, road-side attractions, weather, ghost towns and much more.

The Roads of Texas \$12.95

### ALL THE ROADS OF NEW MEXICO AND MORE.....

A 128 page full-color atlas with all the new highway numbers based on the county maps of the New Mexico State Highway and Transportation Department.

Large scale, detailed maps (1 in.=2.9 mi.) 13 pages of annotated lists making it a sourcebook for information about places, films, weather and events in New Mexico. Newest, most complete state atlas available - detailed mapping of watersheds plus parks, railroads, churches, cemeteries and other facilities. Color illustrations of the state's flora and fauna.

The Roads of New Mexico \$12.95

Size: 11-1/4" x 15-1/2"

Available at:

Motley County Tribune  
Hwy. 70 E Matador  
347-2400 or 347-2774



**SHOP OUR EVERYDAY LOW PRICES..... WE APPRECIATE YOU!**

FEBRUARY 24 - MARCH 2

Store #242 - Matador

6 PK. CANS

**\$1.99** 

**ALLSUP'S BREAD**  
1 1/2 lb. LOAF  
**2/99¢**

**ALLSUP'S CORN DOGS**  
**2/99¢**

**GOLD MEDAL FLOUR**  
5 lb. BAG  
**69¢**

**HAM, EGG & BISCUIT**  
**79¢**

COOKED FRESH 24 HRS. A DAY	HOT FOODS MENU	AVAILABLE AT ALL ALLSUP'S LOCATIONS
BARBECUE BEEF SANDWICH	99¢	9 PIECE BOX CHICKEN \$4.99
BARBECUE PORK RIBS (L.B.)	\$3.99	BEEF & CHEESE CHIMCHANGA \$1.19
BARBECUE WHOLE CHICKEN	\$3.99	(MEAD) CORN DOG 69¢
ALLSUP'S BURRITO	79¢	DELICIOUS HAMBURGER 59¢
BREAKFAST BURRITO	99¢	WILSON HOT LINKS 99¢
BURRITO BEEF & SALSA	\$1.19	SAUSAGE ON A STICK \$1.59
DELICIOUS CHEESEBURGER	79¢	SAUSAGE & BISCUIT 79¢
CHICKEN FRIED STEAK	\$1.59	SAUSAGE, EGG & BISCUIT \$1.09
3 COUNT CHICKEN STRIPS	\$1.49	SAUTEYIA SAUSAGE \$1.09
WIPOTATO WEDGES/ CHICKEN (2 PCS) BISCUIT	\$1.99	4 COUNT STEAK FINGERS \$1.00

CALL-IN ORDERS WELCOME CHECK OUR WEEKLY SPECIALS

## Put your throat on N'ICE



- Cooling
- Sugarless
- Tastes Great

### Peace in Spite of War



"Glory to God in the Highest, and on earth peace, good will toward men." This is the song that angels sang the night the Christ child was born. (Luke 2:14).

In beautiful words, Jesus told his disciples they would have peace which the world could not give: "Peace, I leave with you; my peace I give unto you; not as the world giveth, I give unto you. Let not your heart be troubled, neither let it be afraid." (John 14:27)

The Apostle Paul refers to this tranquil joy as "the peace that passeth all understanding" (Philippians 4:7). I believe it's significant that he wrote these words from a Roman prison. Truly "stone walls do not a prison make." Not for the Christian.

Today we live in one of the most troubled times which the world has ever known. We realize there are weapons capable of destroying millions in minutes. We as Christians are concerned and rightly so, but not frustrated. Since we believe that our God still "rules in the affairs of men," and that the whole universe is subject to Him, we continue to do what we can and trust. God's peace guards our hearts. "...Being justified by faith we have peace with God..." (Romans 5:1 and 6:17, 18).

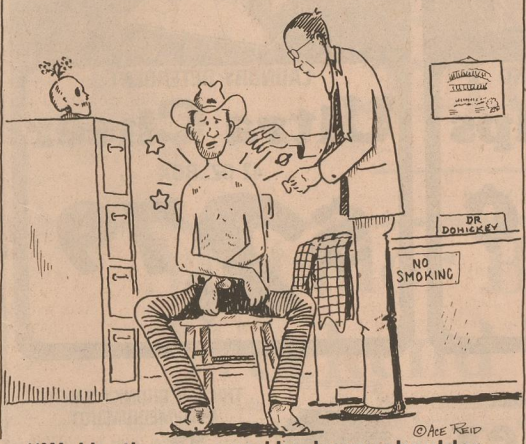
MATADOR CHURCH OF CHRIST Michael G. Crowley, Sr.



# THE CLASSIFIEDS

## COWPOKES

By Ace Reid



"Wul he threw me and broke my shoulder, I got right back on im, he threw me again and broke my other shoulder!"

This Feature Sponsored By  
**First State Bank**

Matador  
Your "Hometown" Bank Member FDIC

### Real Estate

**OFFICE SPACE FOR RENT:** Call James Stanley, 347-2603 or 347-2403.

ctfn

**HOUSE FOR SALE:** Harry Duval home in Matador. 3 bedrooms, living room, family room, two baths, utility room. Central heating and cooling, fenced in back yard. Near School. Call 347-2605.

ctfn

**MOBILE HOME:** 16' x 80', 3 bedroom, 2 bath, central heat and air. For sale to move or with 16 lots; all fenced with 2 3/8" tubing with 2 barns in Matador. Call Taylor Martin, 915-762-3875.

2tc-9

### Work Specialities

**BRENT AND BRIAN MARSHALL** will be available to do electrical work; VCR and TV work; Cable and Phone outlets; and tree-trimming on Saturdays. Contact Ken or Mary Marshall, 347-2455.

ctfn

**FOR ALL YOUR PLUMBING NEEDS,** call Bennie Meredith, 348-7932.

1tp-1

**ALUMINUM WELDING** and repairs of all kinds. Golden Truck and Tire Co., Hwy. 287 East, Quanah. 817-663-5672.

4tp-12

**CESSPOOL PUMPING:** 348-7516

1tc-9

### Pets

**FOR SALE:** Shih-Tzu puppies. Call Pat Brantley in Roaring Springs, 348-7256.

2tc-9

### Help Wanted

**EXCELLENT INCOME!** Easy Work! Assemble products at home, Call now! 1-601-388-8242 Ext. H4038 24 hours.

6tp-13

**ASSEMBLERS:** Excellent income, easy work assembling products at home. 7-day 24-hr. service. Info 504-646-1700. Dept. P6350.

1tp-7 1tp-9

### CLASSIFIED RATES

10¢ per word  
\$3.50 Minimum  
**CARD OF THANKS**  
up to 55 words - \$5.00  
55-100 words - \$10.00  
**PICTURES**  
Wedding, Engagement, Anniversary  
Brag Corner, Birthdays - \$5.00  
**DEADLINE NOON TUESDAY**

### For Sale

**PIANO FOR SALE:** Wanted responsible party to take on small monthly payments. See locally. Trade-ins accepted. Credit manager 1-800-233-8663.

2tp-10

**MESQUITE FIREWOOD FOR SALE:** Cut and delivered by cord or ric. Specify dry, green or mixed. Call Jason Jameson, Matador, 347-2774.

**FOR SALE:** 16 ft. Ski Boat with Trailer. Has 70 h.p. Evinrude motor. Excellent condition. Contact 347-2250 after 6:00 p.m.

ctfn

**FOR SALE:** 14 ft. Fiberglass Boat. 5 hp motor and trolling motor. \$250.00 Call 347-2331 or 347-2851. Ask for Billy.

4tc-10

**FOR SALE:** T.V., big cabinet, all new tubes. \$50.00. Dorothy Day, 347-2724.

1tc-9

### Specialities

**ALL THE ROADS OF TEXAS:** A 172 page full color atlas based on the county maps of the Texas Department of Highways and Public Transportation. Large scale, detailed maps; great details, county and local roads, lakes, reservoirs, streams, dams, historic sites, pumping stations, golf courses, and more! \$12.95. Available at the MOTLEY COUNTY TRIBUNE.

**NOW AVAILABLE AT MATADOR MOTOR AND IMPLEMENT:** Professional Windshield Installers are at Matador Motor & Implement every two weeks. Guaranteed not to leak. Call 347-2422.

**FOR SALE:** Used Maytag washers and dryers, rebuilt and guaranteed. THACKER SUPPLY, 348-7216.

### Shaklee Products

Peggy Probasco  
983-5246

**WELDING, SANDBLASTING & PAINTING** for all types of Farm and Ranch equipment. JAYTON FEED & SEED, Ross Hudson, 806-237-3604.

ctfn

**ALL TYPES OF EXHAUST WORK**

**DON'S MUFFLER SHOP**  
210 W. Calif.  
Floydada, Texas 983-2273

ctfn

**NEW TRADITION:** Western Verse, by Dennis Gaines. \$9.95 + tax. Add \$1.00 if mailed. Motley County Tribune, P.O. Box 490, Matador, TX 79244, 347-2400.

Praise the Lord!

### Farmers & Ranchers

**VET SUPPLY SALE**

50 dose Blackleg  
\$5.60

**STOCKMAN'S, INC.**  
347-2845  
Matador

**BEEFMASTER BULLS** come in 2 year olds. STAFFORD'S, 347-2804 or 689-2290.

ctfn

### Lost and Found

**FOUND:** Limousin - Hereford mix, whiteface horned bull, approximately 950 pounds. Found in the northwest part of Motley County. Contact Alton Marshall, Sheriff, Motley County, 806-347-2234. Owner pays for ad.

1tc-9

### Announcements

**MUSICAL JAMBOREE TO KICK-OFF MOTLEY COUNTY CENTENNIAL CELEBRATION**

A "kick-off" Motley County Centennial Celebration will be Saturdaynight, March 30 with a Musical Jamboree at the Motley County School auditorium.

Bands from Levelland South Plains College, Plainview, Brownfield, Silverton, Spur and Lockney will begin the entertainment at 7:00 p.m. The Motley County 4-H Clubs will have a concession stand in the school cafeteria.

Mark this on your calendar and plan to attend this Centennial Jamboree!!

**MOTHER-DAUGHTER BANQUET**

GFWC Eternas Study Club will sponsor the annual Mother-Daughter Banquet on March 21, 1991 at 7 p.m. More details will be announced later and tickets will go on sale March 1. For more information contact Bobbie Brown or Wilda Dixon.

**Centennial Committee looking for "Home-Grown" Entertainment**

Centennial Celebration plans are being made for May 25.

The entertainment committee is looking for 'home-grown' style talent, young and old.

Anyone interested may contact Barbara Jameson or Carla Jones at the Motley County Tribune, 347-2400 or 347-2774.

**RED CROSS HOME SERVICE CHAIRMEN**

Billy and Mary Helen Wason are Home Service Chairmen of the American Red Cross. If a need should arise to contact any service man or woman, you may call Mr. or Mrs. Wason and they will be happy to process the message.

You may also contact, Lois Campbell, Secretary.

**ROARING SPRINGS TO HOST SCHOOL REUNION**

Roaring Springs will host a school reunion for all Roaring Springs students, teachers and anyone ever associated with Roaring Springs ISD, Saturday, June 15, beginning at 10:00 a.m. For more information contact Nona Winegar Long, Rt. 1, Box 42, Roaring Springs, Texas 79256 or Lou Vaughn Bennett, Box 16, Roaring Springs, Texas 79256.

**PTO TO SPONSOR PROJECT GRADUATION PARTY**

The Motley County PTO will sponsor a 'Project Graduation Party' May 24 for grades 9-12. It is hoped to plan a successful and memorable event to kick-off the first annual graduation party.

The PTO is asking any interested adult (parent, grandparent, aunt, uncle or if you just enjoy teenagers) to help plan and run the party. Please contact any of the PTO officers, Terri Donaldson, Bunny Speed, Jeanie Moore, Rene Meyer or Dick VanHoose.

\*\*\*\*\*  
"The only lost cause is the one you give up."  
Ernst von Feuchterleben

Check Our Prices On  
Fertilizer Treflan Application

ALSO HAVE CHISELS, SWEEPS & PLOW BOLTS



**Stockman's, Inc.**

Matador 347-2845

**First Assembly of God Church**

Rev. Roy Eason, Pastor

Matador, Texas 347-2771

SUNDAY SCHOOL - 10:00 A.M. CHURCH - 11:00 A.M.  
SUNDAY NIGHT - 6:00 P.M.  
WEDNESDAY NIGHT - 6:30 P.M.  
PRAYER AND BIBLE STUDY

Therefore with joy shall ye draw water out of the wells of Salvation.

**First Assembly of God Church**

REV. ERNIE BROWN

Roaring Springs, Texas

Jesus Christ is the same yesterday, today and forever

Church - 11:00 a.m., Sunday School - 10:00 a.m., Sunday Night - 6:00 p.m.

Wednesday Prayer Meeting - 7:00 p.m.

Missionettes for girls

Royal Rangers for boys

**Germania Insurance**

Homeowners, Auto, Personal and Farm  
Liability and Life



**Lee's Insurance Agency**

Flomot, TX 79234

(806) 469-5370

### LONG REAL ESTATE

Roaring Springs, Texas

- 1,2 Bdrm. Stucco Dwg. in Matador
- 2,82 Ac W/76 Cult. 1 MI SW Dickens
- 3,520 Ac W/40 Cult. 10 MI Spur
- 4,476 Ac W/147 Cult. W/3 Bdrm. Dwg. Cross Fenced W/M Pens
- 5, FK 2 Bdrm. Dwg. Roaring Springs
- 6, AB 2 Bdrm. Dwg. Roaring Springs
- 7, FR 1 Bdrm. Dwg. Roaring Springs
- 8, 2 Bdrm. Ash. Bd Dwg. in Roaring Springs
- 9, 2 Bdrm. Stucco Dwg. in Matador
- 10, 4 Bdrm. Bnly Sliding Dwg. in Matador
- 11, 2 Bdrm. Stucco Dwg. in Matador
- 12, 3 Bdrm., 2 Bath, Fr. Dwg., Roaring Springs
- 13, 3 Bdrm., 1 Bath, Fr. Dwg., Roaring Springs
- 14, 2 Bdrm., 1 Bath, Fr. Dwg., Roaring Springs
- 15, 2 Bdrm., 1 Bath, Ash. Bd Dwg., Roaring Springs
- 16, 2 Bdrm., 1 Bath, Ash. Bd Dwg., Roaring Springs

CALL  
806-348-7531  
Night 348-7510  
or Night  
348-7284

**Sharon Sutton Pigg**

ATTORNEY AT LAW

Will be in Matador every Wednesday, 10 a.m. - 4 p.m.  
in the Motley County Courthouse  
(Also available for Private Practice during this time)

(806) 823-2520

415 Main Street

Matador - 347-2334

P.O. Box 651

Silverton, Texas 79257

God Bless You

**Sidewalk Sale**

Thursday  
Friday  
& Saturday

Weather Permitting

**Matador  
V&S  
Variety**

### GOVERNOR

Ann Richards  
Room 100 State Capitol  
Austin, Texas 78711

512-463-2000

### SENATORS

Honorable Phil Gramm  
370 Russell, Senate Office Building  
Washington, D.C. 20510

202-224-2934

Honorable Lloyd M. Bentsen  
703 Hart, Senate Office Building  
Washington, D.C. 20510

202-224-5922

CONGRESSMAN  
Bill Sarpalius  
U.S. House of Representatives  
1223 Longworth House Office Bldg.  
Washington, D.C. 20515

202-225-3706

STATE SENATOR  
Steve Carriker  
Box 12068, Capitol Station  
Austin, Texas 78711-2068

512-463-0130

REPRESENTATIVE  
Warren Chisum  
P.O. Box 2910  
Austin, Texas 78769

1-800-692-1389

This space  
available for  
\$30 per month

Mr. Farmer.....

It's time to start thinking about your Fertilizer and Chemical needs for the coming year. See us for prices on:

Fertilizer - (Dry or liquid) — Chemicals  
We also do custom application.

CHECK OUR PRICES BEFORE YOU BUY!

**LAWRENCE FARM STORE**

Roaring Springs, Texas

806-348-7271

**First United Methodist Church**

Rev. Mary Helen Cross

Matador and Roaring Springs

Sunday School, 10:00 a.m. and Church, 11:00 a.m. in Matador  
Church services at 9:30 a.m. in Roaring Springs  
Sunday night services at 5:00 p.m. in Matador

"Let us go into the house of the Lord"





**Coca-Cola  
Dr. Pepper**  
6 PACK 12 OZ. CANS  
**\$1.59**



POTATO CHIPS  
**Lay's®**  
REGULAR \$1.59  
**89¢**



DEL MONTE ASST. PUDDING  
**Snack Cups**  
4 CT. PACK  
**99¢**



LAUNDRY DETERGENT  
**Ultra Cheer**  
42 OZ. BOX  
**\$2.79**



WHITE BATHROOM TISSUE  
**Delsey**  
4 ROLL PKG.  
**\$1.09**



SUPER TRIM DIAPERS  
**Huggies**  
44 MED/32 LGE  
**\$9.99**



GRAPEFRUIT JUICE  
**Big Tex**  
46 OZ. CAN  
**99¢**



THICK & CHUNKY SALSA  
MILD/MEDIUM/HOT  
**Pace**  
8 OZ. JAR  
**99¢**

**GROCERY SPECIALS**

<b>BigTex</b> APPLE JUICE 46 OZ. CAN	<b>\$1.19</b>
ARM & HAMMER FLORAL/POTPOURRI CARPET DEODORIZER 21 OZ. CAN	<b>\$1.69</b>
KUDOS NUTTY FUDGE/PNT. BTR/CHOC. CHIP SNACK BARS 6 CT. PKG.	<b>\$1.69</b>
COUNTRY KITCHEN REG/LIGHT LOG CABIN SYRUP 24 OZ. BTL.	<b>\$1.59</b>
POST REG/ALMOND HONEY BUNCHES OF OATS 16 OZ. BOX	<b>\$2.69</b>
NIAGARA SIZING 20 OZ. CAN	<b>99¢</b>
REGULAR OR HEAVY NIAGARA STARCH 22 OZ. CAN	<b>87¢</b>
REGULAR OR SCENT FREE CHEER LIQUID 64 OZ. BTL.	<b>\$3.69</b>
ASSORTED REG/SOFTIQUE KLEENEX TISSUE 175 CT. BOX	<b>99¢</b>
QUAKER MASA TRIGO 8 LB. BAG	<b>\$2.89</b>
QUAKER MASA HARINA 10 LB. BAG	<b>\$3.59</b>
ORIGINAL CAP'N CRUNCH 12 OZ. BOX	<b>\$1.89</b>
BAMA GRAPE JAM/APPLE JELLY GRAPE JELLY 16 OZ. JAR	<b>99¢</b>

**MARCH into SPRING**

**THE GOLDEN BOOK ENCYCLOPEDIA**  
Volume 7 FOR ONLY **\$1.99**  
Start your child's set Today! WITH COUPON

**WE SUPPORT OUR MEN AND WOMEN IN THE MIDDLE EAST**

**SUPER SAVINGS**

DEL MONTE SLI. YC PEACHES/PEAR HALVES FRUIT COCKTAIL/MIXED FRUIT NATURAL FRUITS 16 OZ. CAN	<b>89¢</b>
DEL MONTE CLASSIC MICROWAVE CORN-CARROTS OR CUT GREEN BEANS 9.5 OZ. PKG.	<b>99¢</b>
DEL MONTE CLASSIC MICROWAVE MIXED VEGETABLE DIJON/ PEAS & MUSHROOMS 9.5 OZ. PKG.	<b>99¢</b>
DEL MONTE CLASSIC MICROWAVE SCALLOPPED POTATOES OR AU GRATIN POTATOES 10 OZ. PKG.	<b>99¢</b>
DEL MONTE PITTED PRUNES 24 OZ. CAN	<b>\$1.99</b>
DEL MONTE SEEDLESS RAISINS 9 OZ. BOX	<b>79¢</b>
DEL MONTE ASSORTED FRUIT CUPS 4 CT. PACK	<b>\$1.59</b>

**SMALL PACK \$2.19 LB.**

U.S.A. CHOICE HEAVY GRAIN FED BEEF FAMILY PACK

**Charcoal Steak \$1.99 LB.**

**SMALL PACK \$3.99 LB.**

FRESH FRYER LEG QUARTERS **29¢ LB.** (LIMIT 2 BAGS, PLEASE) 10 LB. BAGS

U.S.A. CHOICE GRAIN FED BEEF BNLS. ARM ROAST	1 LB.	<b>\$1.99</b>
LEAN BEEF CUBES-BONELESS STEW MEAT	1 LB.	<b>\$2.29</b>
ADVANCE BREADED PRE-COOKED BEEF PATTIES	1 LB.	<b>\$1.39</b>
OSCAR MAYER SLICED MEAT BOLOGNA	1 LB. PKG.	<b>\$1.89</b>
OSCAR MAYER COTTO SALAMI	8 OZ. PKG.	<b>\$1.09</b>
MARKET SELECT CATFISH STEAKS	1 LB.	<b>\$1.69</b>

**FROZEN FOOD & DAIRY**

VAN DE KAMP MINCED FISH STICKS 26 OZ. PKG.	<b>\$2.99</b>
ASSORTED JENO'S PIZZA 8.1 OZ. PKG.	<b>99¢</b>
STILWELL ASSORTED FRUIT COBBLERS 2 LB. PKG.	<b>\$1.99</b>
SHURFINE HALF & HALF PINT CTN.	<b>59¢</b>

CELLO WRAPPED DOLE LARGE HEAD

**Lettuce 49¢ HEAD**



EXTRA LARGE SIZE-RED RIPE

**TOMATOES 49¢ LB.**



**PRODUCE SPECIALS**

RED SEEDLESS GRAPES	1 LB.	<b>99¢</b>
RED DELICIOUS APPLES	3 LB. BAG	<b>\$1.19</b>
GARDEN FRESH GREEN ONIONS	4 BUNCHES	<b>\$1.00</b>

**HEALTH & BEAUTY**

GENUINE BAYER TABLETS/CAPLETS BAYER ASPIRIN 100 CT. BTL.	<b>\$4.59</b>
ASSORTED CLOSE-UP TOOTH PASTE 4.6 OZ. TUBE	<b>\$1.49</b>
ASSORTED GILLETTE FOAMY 11 OZ. CAN	<b>\$1.19</b>
DAISY & GOOD NEWS ASSORTED DISPOSABLE RAZORS 5 CT. PKG.	<b>\$1.79</b>
KOTEX UNSCENTED LIGHTDAYS PANTILINERS 24 CT. PKG.	<b>99¢</b>

Prices effective Monday - Saturday, March 4-9, 1991

**DOUBLE COUPONS ON MONDAY AND WEDNESDAY**  
Every Monday and Wednesday your manufacturers "cents off" coupons are worth double at Pay-N-Save No. 21. Limit one coupon per any particular item. No cigarette coupons. Offer limited to manufacturers coupons of \$1.00 value or less. Coupons over \$1.00 will be redeemed at face value. Amount cannot exceed retail of the item. Subject to certain In-Store Policies concerning coupons. Not doubled on advertised specials.

**Pay-n-Save**  
QUALITY AND SERVICE

**WE RESERVE THE RIGHT TO LIMIT QUANTITIES**

**Money Orders Safeguard**  
Available At Our Service Counter