

Matadors Win District

MC Overpowers KC In Final Home Victory

The Motley County Matadors captured their second straight district championship Friday night when they upended powerful Knox City 28-0.

The win moves the Matadors into a Bi-District slot this Friday night against the Godley Wildcats. Godley is located in Johnson County, southwest of Fort Worth. The game will be played at Albany at 7:30 p.m.

Knox City will now play Meridian (second in state) this Friday at Graham. Both Godley and Meridian are from District 4-1A.

"Knox City was a good team," Coach Danny Williams said. "But we were ready to play. Our offense did a good job, but our defense did even a better job of shutting out KC's potent offense."

The game was closer than the score indicated. Both teams shut each other down in the first quarter. But with 7:38 left in the second quarter Motley County struck. With MC facing second and 14 at their own 16, quarterback Shawn Bearden dropped back in pass formation. He handed the ball to Tim Shannon on a draw play and he went over the left side, broke a tackle at the line and then outran the KC Greyhound defense 84 yards for a touchdown. The PAT failed and MC led 6-0.

With only 42 seconds remaining in the first half MC was on their own 7 yard line. Knox City called timeout to kill the clock. Bearden took the snap, rolled left, tossed the ball to Shannon, who again broke through the line and this time raced 93 yards to

paydirt. Bearden ran over for a two point PAT and MC led 14-0 as the half ended.

"We got stronger in the second half, like we have been doing all year," Williams said.

A blocked punt by the Matadors set up the next MC touchdown. The Matadors moved to the Knox City 19 yard line on a 32 yard pass from Shawn to Max Bearden, then Shannon went over right tackle, broke two tackles and scored. His extra point made it 21-0 with 7:83 left in the third quarter.

Darrell Moore recovered a fumble for the Matadors at the Greyhound 34 and then, on the next play, Shannon went off left tackle, broke down the right sideline and scored with 7:55 left in the game. He kicked the PAT to make the score 28-0.

"Offensive players of the game were Tim Shannon, Roy Thompson, John Russell and Darrell Moore and Max Bearden," Williams said. "The defensive players of the game were Brent Campbell, Shawn Bearden, Alex Guerrero, Bill Luckett and Coke Barton."

Williams said the Godley Wildcats are similar to Knox City in some ways. "They are about the same size and are real quick. They are a good 'team' ball club. The game at Albany should be an exciting one."

MC picked up 335 yards rushing and 32 yards passing during the Knox City game. Shannon carried 27 times for 290 yards, Bill Luckett carried five times for 36 yards.

Shawn Bearden and Brent Campbell each

intercepted a pass. Max Bearden completed one pass for 32 yards.

MC total offense was 367 yards to KC's 137.

The Matador Tribune

Voice of the Foothill Country

86th Year

Thursday, November 18, 1982

Issue Number 46



25¢
Per Copy

Nice Letter From Albany

The people of Albany and the Chamber of Commerce welcomes all Motley County coaches, players, pep club and fans to Albany for their first game in the state playoff series. The Chamber of Commerce will present

a trophy to the winning team immediately following the game.

There will be restaurants and gas stations open before and after the game for the convenience of the fans!

Good luck!

Blood Drive Set For Today

There will be a Blood Drive at the American Legion Hall, Thursday, (today) November 18 beginning at 4:30 p.m. and lasting until 7:00 p.m. To be eligible to give blood you must be between 17 and 65 and must weigh a minimum of 110 pounds. You will be asked for your Social Security number for identification purposes, and a written consent of parents or guardian will be needed for those 17 years of age wishing to donate blood.

It is estimated that six out of every ten people will need blood or blood

derivatives during their lives.

Giving blood doesn't hurt as much as football practice; actually, no more than a pin prick in your finger.

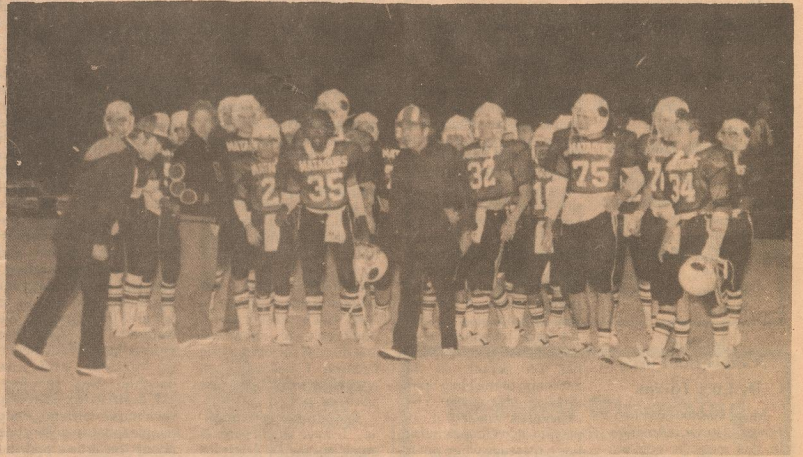
The entire process takes about 30 to 35 minutes, and the actual blood drawing usually takes less than 10 minutes. You will only be able to give one pint. That's not much when you consider that you have 10 to 12 pints in your body.

It is estimated that only five percent of the eligible people give blood. Please give, you might need it someday.

Early Issue Next Week

The Matador Tribune will be out a day early next week due to the Thanksgiving Holidays. News and advertising deadline will be noon

Monday. Please make arrangements now to get all ads, announcements and columns in Monday morning.



DISTRICT CHAMPS -- Where's the trophy? After an exciting 28-0 victory over a good Knox City team, the Motley County Matadors gathered with their coaches on the field. They waited for the trophy to be presented but it was not available. Nevertheless, the championship stands. They did it again!!! (Photo by Mary Renfro)

Stores To Close Early For Ballgame Friday

Several local businesses will close at 3:30 p.m. Friday in order to attend the football game at Albany, when the Motley County Matadors face Godley. The stores are

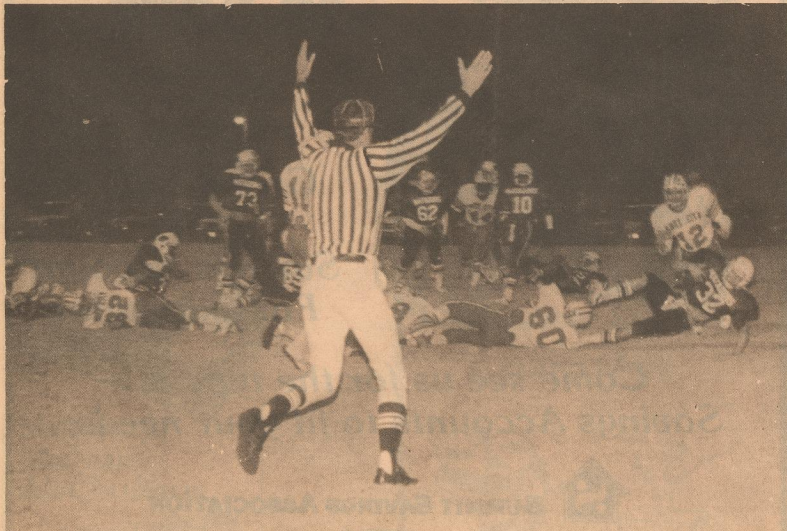
Matador Motor & Implement, Billy's Grocery, Anderson's Dept. Store, Bob Stanely Pharmacy, Matador Hardware & Supply and Matador Variety.



CLOSE COVERAGE -- Clayton Sims leaps just high enough to bat away a pass intended for a Knox City player Friday. MC won the game 28-0.

(photo by Mary Renfro)

**Good Luck
MATS
Do Your Best
You Play Hard
We'll Do The Rest**



ICING ON THE CAKE -- Dark shirted Matadors put KC Greyhounds on the ground to clear the way for Tim Shannon to score a TD. Motley County won the game 28-0 to capture the District Crown. (Photo by Mary Renfro)



PICTURE PERFECT -- Cody Meredith rides shotgun for the Tim Shannon express as the two Matadors race 93 yards for a touchdown early in the second half. Motley County upset favored Knox City 28-0 in the District Championship Friday night. (Photo by Mary Renfro)

Matador Tribune

Publication Number 333700
Phone Number 806/347-2400

Published weekly by Tribune Publishing Company, 1001 Main, Matador, Texas 79244. Second Class Postage paid at Matador, Texas 79244.

Perspective

Guest Columns
And Opinions

Same Song Second Verse

Dear Mr. Watson,
I just wanted to write you and tell you how much we appreciate your stand for God and for Good and Right. Too many times bad and wrong come out the winners and it's only because we don't take our stand for God and the things we know are right. And so many times being uninformed about things, we allow ourselves to back bad and wrong.

The information your putting out is good and I like it and it may keep many from going down the wrong path. Keep it up.

I also wanted to share this article I have with you. It really enlightened us.

Remember no matter how many people put you down there are many behind you all the way. God Bless you.

Thanks,
Pennie & Kelly Keltz

**MUSIC:
A Powerful Force**
By Luis Torres

Music has always been a powerful force in America. In this message concerning music, some of the things I will say and discuss will open some eyes and ears to things that are

happening in music that many Christians are unaware of.

First of all, I must begin by telling you what the scripture says, "Beloved, believe not every spirit, but try the spirits whether they are of God: Because many false prophets are gone out into this world" I John 4:1. Now the apostle of love, John, tells us plainly many false prophets are gone out into the world. That is the world we live in, and these prophets are using many tools to deceive the world. One of the tools is music. As I have already said, music is a powerful force whether it is secular music or "religious" or sacred music. As a born-again Christian for almost twelve years, gospel music has been a tremendous blessing and uplift in my life. This is so for several reasons; one, because I sing it as praise unto the Lord and for the edifying of the Body of Christ. Singing with me of course, is my wife Gail, and my cousin Randy, and a very talented team on the road year around.

I have personally seen the impact gospel music has on people as the anointing of the Holy Spirit flows through the individuals singing it, or playing it. Gospel music has a message when put to rhythm and a melody, it tells a beautiful story. That story is of a Man that saves a lost and fallen humanity,

and gives them a new beginning in life. The message of Christ not only saves, but fills that believer with the mighty infilling of the Holy Ghost and fire with evidence of speaking in new tongues as the Spirit gives the utterance. Then, if that believer faces sickness in his or her life, this same Man Jesus says, "RISE AND BE HEALED!"

That is the title of a beautiful song that was written by the inspiration of God. God's Word says, "Who His own self bare our sins in His own body, where? On the tree (cross), that we being dead to sins, should live unto righteousness." Are you ready for this? "by whose stripes we were healed!" I Peter 2:24. So no wonder we can sing RISE AND BE HEALED. He has already paid the price. You can see why gospel music has such power when inspired by the Holy Spirit of God.

Now, we are going to talk about another kind of music and this music is rock music. In today's rock music, there are several kinds. There is hard rock, disco rock, punk rock, etc., but we will just discuss rock in general because I believe it all emanates from the same spirit.

As a traveling evangelist, I have had parents come to me in crusades and say, "Brother Torres, we can't get any peace around the house with my kids and their stereos. The

music and its loudness nearly makes the walls come down!" Does that sound familiar? My advice to parents like this has always been simple. Fill your home with music full of the Word of God, music that glorifies God.

Love your children during these times of correction and chastisement. I believe the music of God and its anointing will settle in their subconscious mind and plant a seed. Your love and understanding during a trial or correction time for your child will water it and God will bring a victory in their life.

In Washington, D.C. several months ago a lady said to me after our service revealing Satan in rock music, "My daughter has gotten rid of all of her rock albums and now all you hear coming from her room are songs about Jesus." You see, this mother had seen the power rock music had on her daughter's life and knew she was in bondage. She had been praying for years and God sent us to her area for a crusade. We watered the seed her mother had already begun by prayer and the daughter was set free.

I want to explain why rock music can bind young people today by telling you about the artists and the songs themselves. Just as gospel music has a message, so does rock music. Let me go into

some of the popular songs and the messages that they have hidden in them. First of all, many of the artists back mask their songs. Backmasking means playing the songs backwards and hearing an occultic message that has been hidden somewhere in the song.

Some artists have gone as far as to say they have intentionally placed the messages there because Satan will reward them for it in the end. What a lie from hell many are believing today!

One popular rock group recently in Toronto, Canada gave a concert to a total of one hundred thousand young people and at the close of the concert gave an altar call for those who wanted to follow Satan. Little Richard who is now saved and filled with the Holy Ghost and in the ministry said, "Some rock and roll groups stand around in a circle and drink cups of blood. Some get on their knees and pray to the devil. Rock and roll music hypnotizes us and controls our senses. I was making \$10,000 an hour but God saved me."

Paul McCartney from the Beatles said, "We probably seem to be anti-religious because of the fact that none of us believe in God." John Lennon from the Beatles also shocked the world when he said, "Christianity will go, it will vanish and shrink and we'll not argue anymore about it. We are more popular than Jesus now." It is sad, but Mr. Lennon is dead.

Black Sabbath singer Bill Ward said, "Satan could be God." Their album SABBATH BLOODY SABBATH portrays the antichrist symbol and head board 666. Another album is WE SOLD OUR SOUL FOR ROCK AND ROLL. Queen: All of these guys claim to be homosexual, their name gives them away. Their song, WE ARE THE CHAMPIONS, is said to be the national anthem of the Gay Liberation. Another song, ANOTHER ONE BITES THE DUST says when

played backwards, "Satan's number one, he's the one."

We as Christians thank God that Jesus is King of kings and Lord of lords and He's number ONE! Kiss: Some have said their name stands for Knights in Satan's service. Peter Criss from Kiss said, "I find myself evil. I believe in the devil as much as God. You can use either one to get things done." But we know according to the Word we don't use God, but He uses us to win the lost (John 9:4).

Eagles: Their album HOTEL CALIFORNIA describes Anton Lavey's

church of Satan in San Francisco. One segment of the song says, "I had to find a passage back to the place I was before. Relax said the night man, we are programmed to receive, you can check in any time you like but you can never leave." But thank God there is a way out of the occult and of Satan, and that is through the blood and forgiveness and the power of Jesus Christ.

Led Zeppelin: In the popular song STAIRWAY TO HEAVEN, a rock classic that was on the charts 157 weeks, said backwards, "I will sing because I live with Satan."

Another part of it says, "My sweet Satan the one will be the path who makes me sad, whose power is Satan."

Yes friend, these are just a few of the many artists and songs that are filled with satanic worship and occultism. These things are incredible, but thanks to God who had Jesus come and defeat Satan and has given to you and I the power and victory to stand in these last days and unmask Satan and his cohorts. I trust that you have been enlightened by this message on rock music, for when it is all said and done, God said, "I AM THAT I AM." Amen.

Letter To The Editor

Dear Leon,

My husband and I are very proud of our Editor for being bold and devoted enough to take a stand for good in times when evil is trying to take over our Country. We have boasted, in the past, that the evils of the Metropolis have not reached our little towns, but this is no longer true.

May God bless Joe Taylor, whoever he is, for exposing these so-called "harmless-cute" movies which are nothing but a trick of Satan to steal, kill and destroy our souls.

We attended a Rock music Seminar in Floydada last month that opened our eyes and ears to the Satanic origin of this music our children are listening to. Actual tapes were played backwards of some of the groups mentioned by Mr. Taylor and we were shocked as we heard them say, "Satan is number one - We worship Satan - Satan is the Christ - We love the anti-Christ."

becoming apathetic and allowing drugs, alcohol, x-rated movies, (many of T.V.) rock music and pornography to destroy our generation.

We who take a stand must know that we will be persecuted. Not by those who are involved (they know it is evil) but by the Religious people who are trying to walk with one foot in church and the other in the world. They will call us "fanatics," saying we have gone too far, stepped out of our boundaries, etc., but these very people are the ones who crucified our Saviour. His "fanatical" teaching was a threat to their

superficial religious ways and all they knew to do was kill Him.

Mr. Allsup has been with us in Lay Witness Missions in the past and I do not believe he knows about the trash being sold in his store. I have written to him and I believe he will put a stop to it.

Remember, "the weapons of our warfare are not of the flesh, but divinely powerful for the destruction of fortresses." We are behind you 100% and will do what we can to keep our home and town a place to honor God, our Father.

Sincerely,
Bennie & June Keltz

Early Bird Savings



Riopan or Riopan Plus Suspension
12 oz. your choice
\$1.98

Percogesic Tablets
24's
\$1.39

Allbee with C 100's or Z-Bec 60's
your choice
\$4.98

Chloraseptic Lozenges
18's
\$1.39

Northern Redline Heat Pad #514
\$6.99

Binaca Spray .2 oz., Assorted
\$1.29

Chloraseptic Liquid
6 oz. Cherry or Menthol your choice
2.09

Benlyn or Benlyn DM Cough Syrup
4 oz. your choice
\$1.69

PiPeer Quality Blood Pressure Kits
Economy Monitor Kit #200
\$14.88

Hand-Held Electronic Kit #250 (Cardio-Sphyg)
\$39.99

NORTHERN QUARTZ HEATER
MODEL 4408 -- 1200 WATT
REGULAR \$39.95
SALE - \$29.95

NOTICE TO MEMBERS OF MOTLEY COUNTY TOWER T.V. ASSOCIATION

Your MEMBERSHIP DUES ARE NOW DUE FOR 1983.

One Year Paid In Advance \$100.00
Payment By the Month \$10.00

If we have been drawing on your bank account for your dues, we will continue to do so.

Sincerely,
Mottley County
Tower T.V. Association

Start Young to Save

Give Your Children Or Grandchildren A Savings Account For Christmas

Come see us for the type of Savings Accounts to fit your needs.

SUMMIT SAVINGS ASSOCIATION

OFFICES IN
PLAINVIEW, FLOYDADA, MATADOR, HALE CENTER, MULESHOE, LITTLEFIELD, FRIONA, FARWELL PLANO and ALLEN

MEMBER FDIC

Bob Stanley Pharmacy

Church & Society

Shower Is Courtesy For Recent Bride

A miscellaneous shower Saturday, November 13 from 2:30 to 4:30 p.m. in the home of Mrs. John Hamilton was a courtesy for Mrs. Billy Douglas McKelvey, the former Teresa Marie Baggerman of Groom.

Hostesses in addition to Mrs. Hamilton were Mesdames Frank Pohl, Henry L. Martin, Carl King, John M. Russell, Pete Williams, Clinton Hobbs, Bennie Keltz, Buford Hobbs, Luther Lancaster and H. R. Jameson.

A beautiful floral array of marigold chrysanthemums, daisies and baby breath in a silver Paul Revere bowl centered the table which was laid with a white linen cloth. White napkins with silver wedding bells completed the lovely decor. Mesdames Martin and Hamilton presided at the silver coffee and tea

service. Assorted cookies, candy, date nut bread, canapes, mints and nuts were served with coffee and tea. The hostess gift was a German Quartz clock.

Out of town guests were the honoree's grandmothers, Mrs. Odell Baggerman of Groom and Mrs. Johnnie Alexander of Pampa, her mother, Mrs. Rueben Baggerman of Groom and Mr. McKelvey's grandmother, Mrs. D. E. Allen of McAdoo.

Miss Teresa Marie Baggerman and Billy Douglas McKelvey exchanged marriage vows Saturday, October 17 at 7:30 p.m. in the First United Methodist Church in Groom. They are residing in Lubbock. Mr. McKelvey works with the Texas Tech Agricultural Research Department.

Thanksgiving Services Set For November 21st

There will be a Community Thanksgiving Service, Sunday, November 21 at the Assembly of God Church in Matador beginning at 6:00 p.m. Rev. Eddie Marcum, pastor of the First United Methodist

Church will bring the message.

Everyone in the community is invited to attend.

There will be a fellowship following the service at the First United Methodist Church in the Fellow-

ship Hall. Members of the First Baptist Church and the Assembly of God Church are to furnish the cookies and cakes for the fellowship, and the Methodists will provide the coffee and tea.

Lubbock J'Cettes Sponsoring Art Sale

The works of local artists, as well as artists throughout Texas and Oklahoma, will be featured at a Starving Artist Sale November 20 and 21. Sponsored by the Lubbock Jayceettes, the exposition will be held at the National Guard Armory, 2901 4th Street in Lubbock. Leigh Sims, chairman of the sale, said "many kinds of art, such as jewelry, oil paintings, ceramics, macrame, and wire sculpture will be featured."

The sale will be open Saturday, November 20 from 9:30 a.m. until 8:00 p.m. and Sunday, November 21 from 1:00 p.m. until 6:00 p.m. Proceeds from the sale will go to charities.

In past years, proceeds from the sale

went to the March of Dimes, Multiple Sclerosis Society, Family Services of Lubbock, Lubbock Area Foster Parents Association, Lubbock Area Child-

ren's Shelter, Lubbock Jaycees' Children's Shopping Tour and the Texas Jaycee Campus. This will be the tenth annual sale the Jayceettes have sponsored.

Senior Citizens News

By Liller Garrison

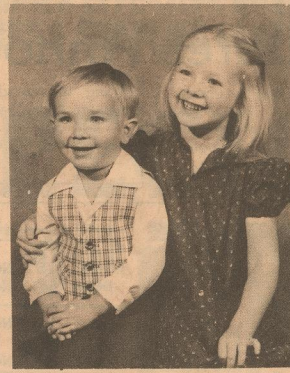
The Senior Citizen's met for their monthly luncheon, November 9th with 38 present. Three of these were guests, Bessie Saulcy of Hereford and Allie Lawrence of Roaring Springs, mother and aunt respectively of Odessa Mullins and Bertha McCleskey of Roaring Springs, sister of Daisy Smith.

Those recognized for November birthdays were Rosa Spray and Nell Lipham. After lunch, games of 88, 42,

and dominoes were played.

Everyone is invited to join the Senior Citizen's, Friday, November 19th in the Baptist Church basement for Thanksgiving dinner at 12 noon. Bring a covered dish and come eat and visit with us. The program has not been scheduled yet, but I'm sure you will enjoy it.

Grandparents Brag Corner



Jason & Lanie Barton

Children of Mr. and Mrs. Randy Barton of Matador.

Grandparents are Mr. and Mrs. Billy Hand of Roaring Springs and Mr. and Mrs. Bill Barton of Baton Rouge, La.



Union Thanksgiving

There will be a Union Thanksgiving Service at the Assembly of God Church in Roaring Springs, Sunday, November 21 at 6:30

p.m.

There will be special music and congregational singing and the message will be by Bro.

Eddie Marcum.

Pastor Edna Dillard welcomes everyone to this special service, and wishes everyone a Happy Thanksgiving.

Rites Held Recently For Ora Faye Patton

Funeral services for Ora Faye Patton, 71, were held at Coker Funeral Home Chapel in Decatur on Wednesday, November 3 at 10:00 a.m. with Rev.

Sam Rector officiating. Burial was in East Mound Cemetery in Matador with graveside rites held at 4:00 p.m.

Rev. Gary Hillyard, pastor of First Baptist Church, Matador, officiated at the graveside rites.

Mrs. Patton died November 2 in a Decatur Hospital following a lengthy illness.

The former Ora Faye Brandon was born July 29, 1911 in Wise County, Texas. She

married Paul Patton on June 1, 1940 in Matador. He preceded her in death on December 1, 1960. She was a Baptist.

Survivors include two sisters, Ann White and Pauline Mathers; two brothers, Clayton Brandon and Dave Brandon Jr.; and several nieces and nephews.



LIBRARY NOTES

By Beverly Darsey Librarian

Circulation Report

During the month of October, Motley County Library checked out 388 books (173 to adults, 18 to young adults, and 197 to children). Sixty films were shown to 221 viewers. Three filmstrips were shown to 10 viewers. Fifty-one reference questions were answered by local staff. Twelve interlibrary loan requests were called in to Mahon Library in Lubbock.

We thank Luther Green, Lillie Barkley, Carlene Luckett, Jo Ann Durham, Mrs. W. N. Pipkin, and Mrs. Roy Lipham for recent donations of books and cash.

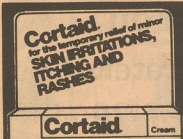
The library will be closed on Thanksgiving Day, November 25, but

will be open during regular hours on Tuesday, Wednesday, Friday, and Saturday of the same week. The phone number is 347-2717.

Please Donate Gifts

Anyone wishing to donate gifts for the Veteran's Christmas Gift Shop in Amarillo may bring them by Giesecke Butane in Matador.

These gifts may be for men, women or children as the Veteran's select these to give to their families and friends.



ALL YOU NEED FOR MINOR ITCHES AND RASHES.



There are three stages in the useful life of a coconut. Young sprouts provide salad, green nuts yield coconut milk and the mature ones offer solid "meat."

BOOKS

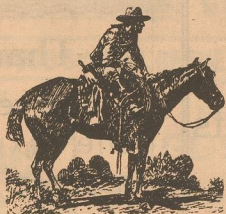
For Christmas

Matador Land and Cattle Company \$19.95
Tax \$1.00 Total \$20.95

OTHER BOOKS

George Humphreys \$6.95
Big Ranch Country \$10.95
Indian Exodus \$7.95
Trail Dust \$7.95
Dickens County History ... \$19.95

Plus Tax



(Add \$4.00 Postage &

Handling on All

Mail Orders)

Matador Tribune

Box 490

347-2400

Matador, Texas

(ALLOW TWO WEEKS FOR DELIVERY)

ANDERSON'S DEPARTMENT STORE

Telephone 347-2711

Layaway Now For Christmas

PRE-CHRISTMAS SALE!

For November 18, 19 and 20

SPECIAL Men's and Boys Winter Jackets 20% Off

Reg. Price Thursday, Friday & Saturday Nice Selection, Assorted Styles

SPECIAL Fine Selection Of Men's Sport Coats Solids, Checks, Plaids Corduroy and Polyester - Suedes 20% Off

Reg. Price Sizes - 36 Through 46 Regulars and Longs

SPECIAL All Men's Suits Dress and Western Styles Sizes 36 Through 46 Regulars and Longs 20% Off

SPECIAL Men's Sports Shirts Van Heusen, Campus and Block Regulars and Talls Assorted Styles 20% Off

Reg. Price BIG SELECTION

SPECIAL Ladies Blouses Sizes 6 Through 20

Now 20% Off

SPECIAL Ladies Pants Assorted Styles Sizes 4's through 20 20% Off

SPECIAL Ladies and Junior Size Coats Assorted Styles 20% Off

Reg. Price NICE SELECTION

SPECIAL One Group

Sportswear

Reduced 20% Off

Also One Group SPORTSWEAR 1/2 PRICE

SPECIAL Ladies & Junior Jeans Assorted Sizes and Styles Regular \$26.00 Value

Now \$12.88

Regular \$26.00 Value

Now \$15.88

Congratulations Motley County Matadors District Champs Best Of Luck Friday Against Godley

1982 International Christmas Mailing Dates Announced

For those with relatives in the armed services stationed overseas, or who wish to mail holiday greetings and packages to others living in foreign countries, now is the time to be making your holiday mailings, according to Matador Postmaster Nell Clem. Here are three important "calendars" for assuring that parcels and greetings will arrive on time:

OUTBOUND MILITARY MAIL CUTOFF DATES

Destination	Priority	Letters	(PAL)	(SAM)	Surface
Africa	Dec. 6	Dec. 6	Nov. 15	Nov. 8	Nov. 8
Alaska	Dec. 13	Dec. 13	Dec. 6	Nov. 29	Nov. 29
Hawaii	Dec. 13	Dec. 13	--	--	Nov. 29
Australia	Nov. 29	Nov. 29	Nov. 15	Nov. 8	Oct. 25
Caribbean/W. Indies	Dec. 13	Dec. 13	Nov. 29	Nov. 22	Nov. 12
Central/So. America	Nov. 29	Nov. 29	Nov. 15	Nov. 8	Nov. 8
Europe	Dec. 10	Dec. 10	Nov. 29	Nov. 19	Nov. 8
Far East	Dec. 10	Dec. 10	Nov. 29	Nov. 19	Oct. 25
Greenland	Dec. 6	Dec. 6	Nov. 29	Nov. 22	Nov. 22
Iceland	Dec. 13	Dec. 13	Nov. 29	Nov. 22	Nov. 22
Mid East	Dec. 3	Dec. 3	Nov. 8	Nov. 1	Nov. 1
South East Asia	Nov. 29	Nov. 29	Nov. 12	Nov. 8	Oct. 25

INBOUND MILITARY MAIL CUTOFF DATES

Destination	Priority	Letters	(PAL)	(SAM)	Surface
Gateway Pts.	Dec. 17	Dec. 17	Dec. 13	Dec. 3	Dec. 3

INTERNATIONAL MAIL - OUTBOUND

Destination	Air Parcels	Airmail Letters/Cards	Surface
No. & NW Africa	Nov. 29	Dec. 6	Nov. 8
Australia	Nov. 29	Nov. 29	Oct. 25
Caribbean/W. Indies	Dec. 11	Dec. 13	Nov. 12
Central/So. America	Nov. 29	Nov. 29	Nov. 8
Europe	Dec. 6	Dec. 10	Nov. 8
Far East	Dec. 6	Dec. 10	Oct. 25
Mid East	Nov. 29	Dec. 3	Nov. 1
Southeast Asia	Nov. 29	Nov. 29	Oct. 25
Southeast Africa	Nov. 29	Dec. 6	Oct. 25
West Africa	Nov. 29	Dec. 6	Oct. 25

Driving Precautions Urged

Major C. W. Bell, Commander of the Texas Department of Public Safety, Region 5, said, "As we approach Thanksgiving Day weekend, all of us are making plans of one kind or another for observance of this traditional season of the year. Many DPS officers will make plans for a different kind. They will be on duty to stimulate safety-consciousness throughout this festive holiday." During the last Thanksgiving holiday weekend, Texas experienced 53 fatal accidents and 57 traffic fatalities. Major Bell said, "Speed and alcohol are the main contributing factors in the majority of traffic deaths in Texas." A total of 4,701 fatalities was recorded on our streets and highways for 1981 and statistics show 923 fatal accidents caused 1,082 deaths and 17,343 injured accidents that caused 27,907 injuries in Texas that involved a drunk driver, according to Major Bell.

"Many drivers are not tested," Bell said, "because Texas has no law requiring chemical test on drivers in fatal accidents and it is probable that more than 50% of the deceased drivers in Texas were driving while intoxicated and were not reported as DWI."

The Texas Department of Public Safety urges all motorists to avoid the use of alcohol when driving. Let's all slow down a little and live a lot.

IT WILL SAVE YOU MONEY....



The Heat Pump the most efficient system for heating and cooling.

A heat pump can actually produce more than 2 units of heat for every unit of electricity used, in a properly insulated home.

Unlike a conventional furnace, the heat pump doesn't make heat. It transfers or "pumps" heat. Even on cold days, there is some warmth in the air. The heat pump transfers this heat into your home to warm you and your family.

THE ELECTRIC HEAT PUMP WILL SAVE YOU MONEY! If you have plans to buy, build or remodel, or need a new heating and cooling system for your home, call a local factory trained HEAT PUMP DEALER or talk with WTU. We will arrange for a WTU heating and cooling specialist to contact you.



Energy savings may vary according to home construction, family size, or energy usage habits.

Motley Memos

By Nancy Cooper

The Motley County Student Council in conjunction with United Blood Services will sponsor a blood drive on Thursday, November 18, from 4:30 p.m. to 7:00 p.m. at the American Legion Hall. All adults are urged to donate a pint of blood and to urge others to also donate. A goal of 30 donations has been set. Please give. *****

The Pep Club is still selling T-Shirts. Prices are \$6.00 for children's sizes and \$7.00 for adult sizes. *****

DISTRICT CHAMPIONS Congratulations to Bus Leaves

BASKETBALL GAMES SET

Thursday, November 18 - High School girls basketball scrimmage vs Crosbyton. Here at 5:30 p.m.

Monday, November 22 - Junior High Basketball at Valley. 4:00 p.m. Four games.

Friday, Nov. 19 - 9:00 a.m. - All School Assembly. 12:35 p.m. - Pep Rally (Gym)

2:00 p.m. School Dismissed. 3:15 p.m. - Pep Club Bus Leaves

7:30 p.m. - Bi District Football vs Godley at Albany. See you there. *****

Motto for this week -

"Everybody's a Matador at Heart. Wear a heart or 'Everybody's a Matador at heart' t-shirt.

Lunchroom Menu

Mon., Nov. 22
Breakfast - Apple Juice, Bacon, Toast, 1/2 pt. Milk.
Lunch - Frito Pie w/Lettuce, Tomatoes, & Cheese, Hash Brown Potatoes, Peaches, 1/2 pt. Milk.

Tues., Nov. 23
Breakfast - Grape Juice, Cereal, Toast, 1/2 pt. Milk.
Lunch - Cod Krispies w/Tarter Sauce,

Wed., Nov. 24
Breakfast - Orange Juice, Sausage, Waffle, Syrup, 1/2 pt. Milk.
Lunch - Ham & Cheese Sandwich w/Lettuce, Tomatoes & Pickles, Chips, Pineapple, 1/2 pt. Milk.

Thurs., Nov. 25 & Fri., Nov. 26 - Thanksgiving Holidays.

Schoolboy Playoff Pairings

Here are Texas playoff pairings of winners and runners-up, with districts in parentheses, for bi-district and second-round area schoolboy football play:

Class 5A
 EP Irvin (1) vs. Odessa Permian (4), 7:30 p.m. Friday, Sun Bowl, El Paso. EP Bel Air (2) vs. San Angelo Central (4), 8 p.m. Friday, San Angelo. Fort Worth Western Hills (6) vs. Hurst Bell (7), 7:30 p.m. (tentative) Saturday, University of Texas at Arlington. Denton (5) vs. Eules Trinity (7), 8 p.m. Friday, Maverick Stadium, Arlington. Dallas South Oak Cliff (10) vs. Plano (12), 7:30 p.m. Friday, Cotton Bowl, Dallas. Nazareth (13) vs. McCullough (16), 9 p.m. Saturday, Astrodome. Highland Park (9) vs. Dallas Carter (11), 7:30 p.m. Friday, Texas Stadium. Bryan (14) vs. Conroe (16), 7:30 p.m. Friday, Tully Stadium, Houston. Memorial (17) vs. Houston Jones (20), 8 p.m. Friday, Astrodome. Houston Stratford (17) or Alief Elsie (17) (depending on court ruling) vs. Houston Yates (20), 8:30 p.m. Friday, Astrodome. Beaumont West Brook (22) vs. Baytown Sterling (22), 5 p.m. Saturday, Astrodome. Port Arthur Jefferson (22) vs. Dickinson (24), 1 p.m. Saturday, Astrodome. Austin Reagan (26) vs. San Antonio Churchill (27), 7:30 p.m. Friday, Austin. Austin LBJ (26) vs. Converse Judson (27), 2 p.m. Saturday, Memorial Stadium, Austin. San Antonio Fox Tech (28) vs. Edinburg (32), 7:30 p.m. Friday, McAllen. SA East Central (20) vs. Carroll (31), 7:30 p.m. Friday, Buccaneer Stadium, Corpus Christi.

Class 4A
 Lubbock Dunbar (1) vs. San Angelo Lake View (2), 8 p.m. Thursday, Lowery Field, Lubbock. Lubbock Estacado (1) vs. Andrews (2), 8 p.m. Friday, Lowery Field, Lubbock. Wichita Falls Hirsch (3) vs. Cleburne (4), 7:30 p.m. Friday, Denton. Gainesville (3) vs. Brownwood (4), 7:30 p.m. Friday, Fort Worth. Dallas Madison (5) vs. Corsicana (6), 7:30 p.m. Friday, Garland Memorial Stadium, McKinney (5) vs. Terrell (6), 8 p.m. Friday, Mesquite Stadium, Paris (7) vs. Henderson (8), 7 p.m. Saturday, Mesquite Memorial Stadium, Atlanta (7) vs. Carthage (8), 7 p.m. Friday, Longview. Jasper (9) vs. West Columbia (10), 7:30 p.m. Friday, Thorne Stadium, Houston. Fort Arthur Lincoln (9) vs. Bay City (10), 8 p.m. Friday, Katy Stadium, Fort Bend Willowridge (11) vs. Austin Westlake (12), 8 p.m. Friday, Austin. Houston O.E. King (11) vs. Belton (12), 8 p.m. Friday, Kyle Field, College Station. Hayes Consolidated (13) vs. SA South West (14), 7:30 p.m. Friday, Southwest Texas State, San Marcos. New Braunfels (13) vs. Carrio Springs (14), 7:30 p.m. Friday, San Antonio Northside Flour Bluff (15) vs. Donna (16), 8 p.m. Friday, Flour Bluff. Sinton (15) vs. Rio Grande City (16), 7:30 p.m. Friday, Brownsville.

Class 2A
 Amarillo River Road (1) vs. Post (3), 7:30 p.m. Friday, Plainview Littlefield (2) vs. Friendship (4), 7:30 p.m. Friday, Abilene. Ozone (6) vs. Stamford (7), 2 p.m. Saturday, San Angelo Ballinger (6) vs. Breckenridge (7), 7:30 p.m. Friday, Abilene. Estland (9) vs. Holiday (11), 8 p.m. Friday, Wichita Falls Memorial Stadium, Commerce (10) vs. Van (12), 7:30 p.m. Friday, Mesquite, Bonham (10) vs. Kaufman (12), 8 p.m. Friday, Garland. Daingerfield (14) vs. McGregor (16), 8 p.m. Friday, Fortson Field, Dallas. Pittsburg (15) vs. Waco Robinson (16), 8 p.m. Friday, Rockwall. Crockett (17) vs. Anahuac (20), 7:30 p.m. Friday, Conroe. McCall (18) vs. East Central (20) vs. Carroll (31), 7:30 p.m. Friday, Silsbee. Navasota (21) vs. Bellville (24), date and site to be determined. Cameron Zoe (22) vs. Waller (24), time and site to be determined. Van Vleet (25) vs. Medina Valley (27), 8 p.m. Friday, Cuero. Sweeny (25) vs. Hondo (27), 7:30 p.m. Saturday, Memorial Stadium, Austin. Tatt (28) vs. Port Isabel (32), 8 p.m. Friday, Falfurrias. Redigo (29) vs. Hebronville (31), Friday, Alice, time to be determined.

Class 2A Panhandle (2) vs. Hale Center (3), 7:30

vs. Terrell (6), 8 p.m. Friday, Mesquite Stadium, Paris (7) vs. Henderson (8), 7 p.m. Saturday, Mesquite Memorial Stadium, Atlanta (7) vs. Carthage (8), 7 p.m. Friday, Longview. Jasper (9) vs. West Columbia (10), 7:30 p.m. Friday, Thorne Stadium, Houston. Fort Arthur Lincoln (9) vs. Bay City (10), 8 p.m. Friday, Katy Stadium, Fort Bend Willowridge (11) vs. Austin Westlake (12), 8 p.m. Friday, Austin. Houston O.E. King (11) vs. Belton (12), 8 p.m. Friday, Kyle Field, College Station. Hayes Consolidated (13) vs. SA South West (14), 7:30 p.m. Friday, Southwest Texas State, San Marcos. New Braunfels (13) vs. Carrio Springs (14), 7:30 p.m. Friday, San Antonio Northside Flour Bluff (15) vs. Donna (16), 8 p.m. Friday, Flour Bluff. Sinton (15) vs. Rio Grande City (16), 7:30 p.m. Friday, Brownsville.

Booker (15) vs. Vega (2), 7:30 p.m. Friday, Pampa. Pollett (1) vs. Anton (5), 7:30 p.m. Friday, Clarendon. Knox City (3) vs. Meridian (4), 7:30 p.m. Friday, Graham. Motley County (3) vs. Godley (4), 7:30 p.m. Friday, Albany. Anthony (5) vs. Wink (6), 8 p.m. Friday, Pecos. Fort Hancock (5) vs. Irwin (6), 7:30 p.m. Friday, Alpine. Eden (7) vs. Goldswite (8), 7:30 p.m. Friday, Brady. Boscoe (7) vs. German (8), 7:30 p.m. Friday, Clyde. Valley View (9) vs. Union Hill (10), 8 p.m. Friday, Terrell. Lindsay (9) vs. Tenaha (10), 8 p.m. Friday, Tatum or Beckville. Italy (11) vs. Colmesneil (12), 7:30 p.m. Friday. Pampa Pollett (1) vs. Anton (5), 7:30 p.m. Friday, Clarendon. Knox City (3) vs. Meridian (4), 7:30 p.m. Friday, Graham. Motley County (3) vs. Godley (4), 7:30 p.m. Friday, Albany. Anthony (5) vs. Wink (6), 8 p.m. Friday, Pecos. Fort Hancock (5) vs. Irwin (6), 7:30 p.m. Friday, Alpine. Eden (7) vs. Goldswite (8), 7:30 p.m. Friday, Brady. Boscoe (7) vs. German (8), 7:30 p.m. Friday, Clyde. Valley View (9) vs. Union Hill (10), 8 p.m. Friday, Terrell. Lindsay (9) vs. Tenaha (10), 8 p.m. Friday, Tatum or Beckville. Italy (11) vs. Colmesneil (12), 7:30 p.m. Friday. Pampa Pollett (1) vs. Anton (5), 7:30 p.m. Friday, Clarendon. Knox City (3) vs. Meridian (4), 7:30 p.m. Friday, Graham. Motley County (3) vs. Godley (4), 7:30 p.m. Friday, Albany. Anthony (5) vs. Wink (6), 8 p.m. Friday, Pecos. Fort Hancock (5) vs. Irwin (6), 7:30 p.m. Friday, Alpine. Eden (7) vs. Goldswite (8), 7:30 p.m. Friday, Brady. Boscoe (7) vs. German (8), 7:30 p.m. Friday, Clyde. Valley View (9) vs. Union Hill (10), 8 p.m. Friday, Terrell. Lindsay (9) vs. Tenaha (10), 8 p.m. Friday, Tatum or Beckville. Italy (11) vs. Colmesneil (12), 7:30 p.m. Friday. Pampa Pollett (1) vs. Anton (5), 7:30 p.m. Friday, Clarendon. Knox City (3) vs. Meridian (4), 7:30 p.m. Friday, Graham. Motley County (3) vs. Godley (4), 7:30 p.m. Friday, Albany. Anthony (5) vs. Wink (6), 8 p.m. Friday, Pecos. Fort Hancock (5) vs. Irwin (6), 7:30 p.m. Friday, Alpine. Eden (7) vs. Goldswite (8), 7:30 p.m. Friday, Brady. Boscoe (7) vs. German (8), 7:30 p.m. Friday, Clyde. Valley View (9) vs. Union Hill (10), 8 p.m. Friday, Terrell. Lindsay (9) vs. Tenaha (10), 8 p.m. Friday, Tatum or Beckville. Italy (11) vs. Colmesneil (12), 7:30 p.m. Friday. Pampa Pollett (1) vs. Anton (5), 7:30 p.m. Friday, Clarendon. Knox City (3) vs. Meridian (4), 7:30 p.m. Friday, Graham. Motley County (3) vs. Godley (4), 7:30 p.m. Friday, Albany. Anthony (5) vs. Wink (6), 8 p.m. Friday, Pecos. Fort Hancock (5) vs. Irwin (6), 7:30 p.m. Friday, Alpine. Eden (7) vs. Goldswite (8), 7:30 p.m. Friday, Brady. Boscoe (7) vs. German (8), 7:30 p.m. Friday, Clyde. Valley View (9) vs. Union Hill (10), 8 p.m. Friday, Terrell. Lindsay (9) vs. Tenaha (10), 8 p.m. Friday, Tatum or Beckville. Italy (11) vs. Colmesneil (12), 7:30 p.m. Friday. Pampa Pollett (1) vs. Anton (5), 7:30 p.m. Friday, Clarendon. Knox City (3) vs. Meridian (4), 7:30 p.m. Friday, Graham. Motley County (3) vs. Godley (4), 7:30 p.m. Friday, Albany. Anthony (5) vs. Wink (6), 8 p.m. Friday, Pecos. Fort Hancock (5) vs. Irwin (6), 7:30 p.m. Friday, Alpine. Eden (7) vs. Goldswite (8), 7:30 p.m. Friday, Brady. Boscoe (7) vs. German (8), 7:30 p.m. Friday, Clyde. Valley View (9) vs. Union Hill (10), 8 p.m. Friday, Terrell. Lindsay (9) vs. Tenaha (10), 8 p.m. Friday, Tatum or Beckville. Italy (11) vs. Colmesneil (12), 7:30 p.m. Friday. Pampa Pollett (1) vs. Anton (5), 7:30 p.m. Friday, Clarendon. Knox City (3) vs. Meridian (4), 7:30 p.m. Friday, Graham. Motley County (3) vs. Godley (4), 7:30 p.m. Friday, Albany. Anthony (5) vs. Wink (6), 8 p.m. Friday, Pecos. Fort Hancock (5) vs. Irwin (6), 7:30 p.m. Friday, Alpine. Eden (7) vs. Goldswite (8), 7:30 p.m. Friday, Brady. Boscoe (7) vs. German (8), 7:30 p.m. Friday, Clyde. Valley View (9) vs. Union Hill (10), 8 p.m. Friday, Terrell. Lindsay (9) vs. Tenaha (10), 8 p.m. Friday, Tatum or Beckville. Italy (11) vs. Colmesneil (12), 7:30 p.m. Friday. Pampa Pollett (1) vs. Anton (5), 7:30 p.m. Friday, Clarendon. Knox City (3) vs. Meridian (4), 7:30 p.m. Friday, Graham. Motley County (3) vs. Godley (4), 7:30 p.m. Friday, Albany. Anthony (5) vs. Wink (6), 8 p.m. Friday, Pecos. Fort Hancock (5) vs. Irwin (6), 7:30 p.m. Friday, Alpine. Eden (7) vs. Goldswite (8), 7:30 p.m. Friday, Brady. Boscoe (7) vs. German (8), 7:30 p.m. Friday, Clyde. Valley View (9) vs. Union Hill (10), 8 p.m. Friday, Terrell. Lindsay (9) vs. Tenaha (10), 8 p.m. Friday, Tatum or Beckville. Italy (11) vs. Colmesneil (12), 7:30 p.m. Friday. Pampa Pollett (1) vs. Anton (5), 7:30 p.m. Friday, Clarendon. Knox City (3) vs. Meridian (4), 7:30 p.m. Friday, Graham. Motley County (3) vs. Godley (4), 7:30 p.m. Friday, Albany. Anthony (5) vs. Wink (6), 8 p.m. Friday, Pecos. Fort Hancock (5) vs. Irwin (6), 7:30 p.m. Friday, Alpine. Eden (7) vs. Goldswite (8), 7:30 p.m. Friday, Brady. Boscoe (7) vs. German (8), 7:30 p.m. Friday, Clyde. Valley View (9) vs. Union Hill (10), 8 p.m. Friday, Terrell. Lindsay (9) vs. Tenaha (10), 8 p.m. Friday, Tatum or Beckville. Italy (11) vs. Colmesneil (12), 7:30 p.m. Friday. Pampa Pollett (1) vs. Anton (5), 7:30 p.m. Friday, Clarendon. Knox City (3) vs. Meridian (4), 7:30 p.m. Friday, Graham. Motley County (3) vs. Godley (4), 7:30 p.m. Friday, Albany. Anthony (5) vs. Wink (6), 8 p.m. Friday, Pecos. Fort Hancock (5) vs. Irwin (6), 7:30 p.m. Friday, Alpine. Eden (7) vs. Goldswite (8), 7:30 p.m. Friday, Brady. Boscoe (7) vs. German (8), 7:30 p.m. Friday, Clyde. Valley View (9) vs. Union Hill (10), 8 p.m. Friday, Terrell. Lindsay (9) vs. Tenaha (10), 8 p.m. Friday, Tatum or Beckville. Italy (11) vs. Colmesneil (12), 7:30 p.m. Friday. Pampa Pollett (1) vs. Anton (5), 7:30 p.m. Friday, Clarendon. Knox City (3) vs. Meridian (4), 7:30 p.m. Friday, Graham. Motley County (3) vs. Godley (4), 7:30 p.m. Friday, Albany. Anthony (5) vs. Wink (6), 8 p.m. Friday, Pecos. Fort Hancock (5) vs. Irwin (6), 7:30 p.m. Friday, Alpine. Eden (7) vs. Goldswite (8), 7:30 p.m. Friday, Brady. Boscoe (7) vs. German (8), 7:30 p.m. Friday, Clyde. Valley View (9) vs. Union Hill (10), 8 p.m. Friday, Terrell. Lindsay (9) vs. Tenaha (10), 8 p.m. Friday, Tatum or Beckville. Italy (11) vs. Colmesneil (12), 7:30 p.m. Friday. Pampa Pollett (1) vs. Anton (5), 7:30 p.m. Friday, Clarendon. Knox City (3) vs. Meridian (4), 7:30 p.m. Friday, Graham. Motley County (3) vs. Godley (4), 7:30 p.m. Friday, Albany. Anthony (5) vs. Wink (6), 8 p.m. Friday, Pecos. Fort Hancock (5) vs. Irwin (6), 7:30 p.m. Friday, Alpine. Eden (7) vs. Goldswite (8), 7:30 p.m. Friday, Brady. Boscoe (7) vs. German (8), 7:30 p.m. Friday, Clyde. Valley View (9) vs. Union Hill (10), 8 p.m. Friday, Terrell. Lindsay (9) vs. Tenaha (10), 8 p.m. Friday, Tatum or Beckville. Italy (11) vs. Colmesneil (12), 7:30 p.m. Friday. Pampa Pollett (1) vs. Anton (5), 7:30 p.m. Friday, Clarendon. Knox City (3) vs. Meridian (4), 7:30 p.m. Friday, Graham. Motley County (3) vs. Godley (4), 7:30 p.m. Friday, Albany. Anthony (5) vs. Wink (6), 8 p.m. Friday, Pecos. Fort Hancock (5) vs. Irwin (6), 7:30 p.m. Friday, Alpine. Eden (7) vs. Goldswite (8), 7:30 p.m. Friday, Brady. Boscoe (7) vs. German (8), 7:30 p.m. Friday, Clyde. Valley View (9) vs. Union Hill (10), 8 p.m. Friday, Terrell. Lindsay (9) vs. Tenaha (10), 8 p.m. Friday, Tatum or Beckville. Italy (11) vs. Colmesneil (12), 7:30 p.m. Friday. Pampa Pollett (1) vs. Anton (5), 7:30 p.m. Friday, Clarendon. Knox City (3) vs. Meridian (4), 7:30 p.m. Friday, Graham. Motley County (3) vs. Godley (4), 7:30 p.m. Friday, Albany. Anthony (5) vs. Wink (6), 8 p.m. Friday, Pecos. Fort Hancock (5) vs. Irwin (6), 7:30 p.m. Friday, Alpine. Eden (7) vs. Goldswite (8), 7:30 p.m. Friday, Brady. Boscoe (7) vs. German (8), 7:30 p.m. Friday, Clyde. Valley View (9) vs. Union Hill (10), 8 p.m. Friday, Terrell. Lindsay (9) vs. Tenaha (10), 8 p.m. Friday, Tatum or Beckville. Italy (11) vs. Colmesneil (12), 7:30 p.m. Friday. Pampa Pollett (1) vs. Anton (5), 7:30 p.m. Friday, Clarendon. Knox City (3) vs. Meridian (4), 7:30 p.m. Friday, Graham. Motley County (3) vs. Godley (4), 7:30 p.m. Friday, Albany. Anthony (5) vs. Wink (6), 8 p.m. Friday, Pecos. Fort Hancock (5) vs. Irwin (6), 7:30 p.m. Friday, Alpine. Eden (7) vs. Goldswite (8), 7:30 p.m. Friday, Brady. Boscoe (7) vs. German (8), 7:30 p.m. Friday, Clyde. Valley View (9) vs. Union Hill (10), 8 p.m. Friday, Terrell. Lindsay (9) vs. Tenaha (10), 8 p.m. Friday, Tatum or Beckville. Italy (11) vs. Colmesneil (12), 7:30 p.m. Friday. Pampa Pollett (1) vs. Anton (5), 7:30 p.m. Friday, Clarendon. Knox City (3) vs. Meridian (4), 7:30 p.m. Friday, Graham. Motley County (3) vs. Godley (4), 7:30 p.m. Friday, Albany. Anthony (5) vs. Wink (6), 8 p.m. Friday, Pecos. Fort Hancock (5) vs. Irwin (6), 7:30 p.m. Friday, Alpine. Eden (7) vs. Goldswite (8), 7:30 p.m. Friday, Brady. Boscoe (7) vs. German (8), 7:30 p.m. Friday, Clyde. Valley View (9) vs. Union Hill (10), 8 p.m. Friday, Terrell. Lindsay (9) vs. Tenaha (10), 8 p.m. Friday, Tatum or Beckville. Italy (11) vs. Colmesneil (12), 7:30 p.m. Friday. Pampa Pollett (1) vs. Anton (5), 7:30 p.m. Friday, Clarendon. Knox City (3) vs. Meridian (4), 7:30 p.m. Friday, Graham. Motley County (3) vs. Godley (4), 7:30 p.m. Friday, Albany. Anthony (5) vs. Wink (6), 8 p.m. Friday, Pecos. Fort Hancock (5) vs. Irwin (6), 7:30 p.m. Friday, Alpine. Eden (7) vs. Goldswite (8), 7:30 p.m. Friday, Brady. Boscoe (7) vs. German (8), 7:30 p.m. Friday, Clyde. Valley View (9) vs. Union Hill (10), 8 p.m. Friday, Terrell. Lindsay (9) vs. Tenaha (10), 8 p.m. Friday, Tatum or Beckville. Italy (11) vs. Colmesneil (12), 7:30 p.m. Friday. Pampa Pollett (1) vs. Anton (5), 7:30 p.m. Friday, Clarendon. Knox City (3) vs. Meridian (4), 7:30 p.m. Friday, Graham. Motley County (3) vs. Godley (4), 7:30 p.m. Friday, Albany. Anthony (5) vs. Wink (6), 8 p.m. Friday, Pecos. Fort Hancock (5) vs. Irwin (6), 7:30 p.m. Friday, Alpine. Eden (7) vs. Goldswite (8), 7:30 p.m. Friday, Brady. Boscoe (7) vs. German (8), 7:30 p.m. Friday, Clyde. Valley View (9) vs. Union Hill (10), 8 p.m. Friday, Terrell. Lindsay (9) vs. Tenaha (10), 8 p.m. Friday, Tatum or Beckville. Italy (11) vs. Colmesneil (12), 7:30 p.m. Friday. Pampa Pollett (1) vs. Anton (5), 7:30 p.m. Friday, Clarendon. Knox City (3) vs. Meridian (4), 7:30 p.m. Friday, Graham. Motley County (3) vs. Godley (4), 7:30 p.m. Friday, Albany. Anthony (5) vs. Wink (6), 8 p.m. Friday, Pecos. Fort Hancock (5) vs. Irwin (6), 7:30 p.m. Friday, Alpine. Eden (7) vs. Goldswite (8), 7:30 p.m. Friday, Brady. Boscoe (7) vs. German (8), 7:30 p.m. Friday, Clyde. Valley View (9) vs. Union Hill (10), 8 p.m. Friday, Terrell. Lindsay (9) vs. Tenaha (10), 8 p.m. Friday, Tatum or Beckville. Italy (11) vs. Colmesneil (12), 7:30 p.m. Friday. Pampa Pollett (1) vs. Anton (5), 7:30 p.m. Friday, Clarendon. Knox City (3) vs. Meridian (4), 7:30 p.m. Friday, Graham. Motley County (3) vs. Godley (4), 7:30 p.m. Friday, Albany. Anthony (5) vs. Wink (6), 8 p.m. Friday, Pecos. Fort Hancock (5) vs. Irwin (6), 7:30 p.m. Friday, Alpine. Eden (7) vs. Goldswite (8), 7:30 p.m. Friday, Brady. Boscoe (7) vs. German (8), 7:30 p.m. Friday, Clyde. Valley View (9) vs. Union Hill (10), 8 p.m. Friday, Terrell. Lindsay (9) vs. Tenaha (10), 8 p.m. Friday, Tatum or Beckville. Italy (11) vs. Colmesneil (12), 7:30 p.m. Friday. Pampa Pollett (1) vs. Anton (5), 7:30 p.m. Friday, Clarendon. Knox City (3) vs. Meridian (4), 7:30 p.m. Friday, Graham. Motley County (3) vs. Godley (4), 7:30 p.m. Friday, Albany. Anthony (5) vs. Wink (6), 8 p.m. Friday, Pecos. Fort Hancock (5) vs. Irwin (6), 7:30 p.m. Friday, Alpine. Eden (7) vs. Goldswite (8), 7:30 p.m. Friday, Brady. Boscoe (7) vs. German (8), 7:30 p.m. Friday, Clyde. Valley View (9) vs. Union Hill (10), 8 p.m. Friday, Terrell. Lindsay (9) vs. Tenaha (10), 8 p.m. Friday, Tatum or Beckville. Italy (11) vs. Colmesneil (12), 7:30 p.m. Friday. Pampa Pollett (1) vs. Anton (5), 7:30 p.m. Friday, Clarendon. Knox City (3) vs. Meridian (4), 7:30 p.m. Friday, Graham. Motley County (3) vs. Godley (4), 7:30 p.m. Friday, Albany. Anthony (5) vs. Wink (6), 8 p.m. Friday, Pecos. Fort Hancock (5) vs. Irwin (6), 7:30 p.m. Friday, Alpine. Eden (7) vs. Goldswite (8), 7:30 p.m. Friday, Brady. Boscoe (7) vs. German (8), 7:30 p.m. Friday, Clyde. Valley View (9) vs. Union Hill (10), 8 p.m. Friday, Terrell. Lindsay (9) vs. Tenaha (10), 8 p.m. Friday, Tatum or Beckville. Italy (11) vs. Colmesneil (12), 7:30 p.m. Friday. Pampa Pollett (1) vs. Anton (5), 7:30 p.m. Friday, Clarendon. Knox City (3) vs. Meridian (4), 7:30 p.m. Friday, Graham. Motley County (3) vs. Godley (4), 7:30 p.m. Friday, Albany. Anthony (5) vs. Wink (6), 8 p.m. Friday, Pecos. Fort Hancock (5) vs. Irwin (6), 7:30 p.m. Friday, Alpine. Eden (7) vs. Goldswite (8), 7:30 p.m. Friday, Brady. Boscoe (7) vs. German (8), 7:30 p.m. Friday, Clyde. Valley View (9) vs. Union Hill (10), 8 p.m. Friday, Terrell. Lindsay (9) vs. Tenaha (10), 8 p.m. Friday, Tatum or Beckville. Italy (11) vs. Colmesneil (12), 7:30 p.m. Friday. Pampa Pollett (1) vs. Anton (5), 7:30 p.m. Friday, Clarendon. Knox City (3) vs. Meridian (4), 7:30 p.m. Friday, Graham. Motley County (3) vs. Godley (4), 7:30 p.m. Friday, Albany. Anthony (5) vs. Wink (6), 8 p.m. Friday, Pecos. Fort Hancock (5) vs. Irwin (6), 7:30 p.m. Friday, Alpine. Eden (7) vs. Goldswite (8), 7:30 p.m. Friday, Brady. Boscoe (7) vs. German (8), 7:30 p.m. Friday, Clyde. Valley View (9) vs. Union Hill (10), 8 p.m. Friday, Terrell. Lindsay (9) vs. Tenaha (10), 8 p.m. Friday, Tatum or Beckville. Italy (11) vs. Colmesneil (12), 7:30 p.m. Friday. Pampa Pollett (1) vs. Anton (5), 7:30 p.m. Friday, Clarendon. Knox City (3) vs. Meridian (4), 7:30 p.m. Friday, Graham. Motley County (3) vs. Godley (4), 7:30 p.m. Friday, Albany. Anthony (5) vs. Wink (6), 8 p.m. Friday, Pecos. Fort Hancock (5) vs. Irwin (6), 7:30 p.m. Friday, Alpine. Eden (7) vs. Goldswite (8), 7:30 p.m. Friday, Brady. Boscoe (7) vs. German (8), 7:30 p.m. Friday, Clyde. Valley View (9) vs. Union Hill (10), 8 p.m. Friday, Terrell. Lindsay (9) vs. Tenaha (10), 8 p.m. Friday, Tatum or Beckville. Italy (11) vs. Colmesneil (12), 7:30 p.m. Friday. Pampa Pollett (1) vs. Anton (5), 7:30 p.m. Friday, Clarendon. Knox City (3) vs. Meridian (4), 7:30 p.m. Friday, Graham. Motley County (3) vs. Godley (4), 7:30 p.m. Friday, Albany. Anthony (5) vs. Wink (6), 8 p.m. Friday, Pecos. Fort Hancock (5) vs. Irwin (6), 7:30 p.m. Friday, Alpine. Eden (7) vs. Goldswite (8), 7:30 p.m. Friday, Brady. Boscoe (7) vs. German (8), 7:30 p.m. Friday, Clyde. Valley View (9) vs. Union Hill (10), 8 p.m. Friday, Terrell. Lindsay (9) vs. Tenaha (10), 8 p.m. Friday, Tatum or Beckville. Italy (11) vs. Colmesneil (12), 7:30 p.m. Friday. Pampa Pollett (1) vs. Anton (5), 7:30 p.m. Friday, Clarendon. Knox City (3) vs. Meridian (4), 7:30 p.m. Friday, Graham. Motley County (3) vs. Godley (4), 7:30 p.m. Friday, Albany. Anthony (5) vs. Wink (6), 8 p.m. Friday, Pecos. Fort Hancock (5) vs. Irwin (6), 7:30 p.m. Friday, Alpine. Eden (7) vs. Goldswite (8), 7:30

COMPARE OUR SPECIALS!

Matador Tribune, Thursday, November 18, 1982, Page 5

PRICES EFFECTIVE NOVEMBER 18-20, 1982
WHILE SUPPLIES LAST - LIMITED SUPPLY!



KRAFT MIRACLE WHIP 32 OZ. JAR

99¢

A GREAT BUY!
ALL BRANDS OF CIGARETTES CTN.

FOLGER'S COFFEE
ALL GRINDS
1 LB. CAN **\$1.99**

KRAFT CARAMELS 14 1/2 OZ. BAG **69¢**

ASSORTED FLAVORS

JELLO 39¢

ENERGY CHARCOAL
BRIQUETS 99¢

BORDEN'S BUTTERMILK 1/2 GAL. CTN. **99¢**

ENERGY CHARCOAL

Lighter Fluid \$1.69

AFFILIATED FILLER 200 SHEETS
PAPER \$1.49

SHURFINE WHOLE KERNEL/CREAM STYLE GOLDEN CORN
3 17 OZ. CANS **99¢**

WASHINGTON DELICIOUS **5 FOR \$1**
APPLES
SHURFINE ASSORTED **79¢**
PIZZA 12 OZ. PKG.
SHURFRESH SLICED AMERICAN **\$1.19**
CHEESE 12 OZ. PKG.
SHURFINE KRINKLE CUT **99¢**
POTATOES 32 OZ. BAG
BORDEN'S ASSORTED **10¢**
POPSICLES EACH
SHURFRESH SOFT **63¢**
MARGARINE TUBS
SHURFRESH BM/CS **10¢**
BISCUITS 4 OZ. CAN

BORDEN'S ASSTD. PREMIUM ICE CREAM
1/2 GAL. RD. CTN. **\$1.59**

QUARTERS PARKAY MARGARINE
1 LB. PKGS. **2.69¢**

SHURFINE FRESH SHELL **4.99¢**
BLACKEYES 15 OZ. CANS
SHURFINE EARLY HARVEST **3.99¢**
PEAS 17 OZ. CANS
SHURFINE WHOLE SWEET **2.99¢**
POTATOES 16 OZ. CANS
SHURFINE STRAWBERRY **99¢**
PRESERVES 16 OZ. JAR
SHURFINE GRAPE **69¢**
JELLY 16 OZ. JAR
SHURFINE CRUNCHY/SMOOTH **95¢**
PEANUT BUTTER 18 OZ. JAR
SHURFINE WAFFLE **89¢**
SYRUP 32 OZ. BTL.

ALLSUP'S FRESH MILK
GAL. **\$1.99**

DELICIOUS BORDEN'S EGG NOG
QT. **99¢**

ALLSUP'S FRESH BREAD
1 LB. LOAF **59¢**

DECKER'S RANCH STYLE BONELESS **\$1.99**
HALF HAMS 2 TO 4 LB. AVERAGE LB.

SHURFRESH SLICED **\$1.59**
BACON 1 LB. PKG.

SHURFRESH PORK **99¢**
SAUSAGE 1 LB. ROLL

SHURFRESH **89¢**
BOLOGNA 12 OZ. PKG.

SHURFRESH **89¢**
FRANKS 12 OZ. PKG.

SHURFRESH HALFMOON LONGHORN **\$1.19**
CHEESE COLBY/CHEDDAR 10 OZ. PKG.

REFRESHING PEPSI-COLA
2 LITER BTL. **\$1.29**

SHURFINE WATER/OIL PAK **69¢**
CHUNK TUNA 6 1/2 OZ. CAN
SHURFINE TOMATO **23¢**
SAUCE 8 OZ. CAN
SHURFINE **89¢**
CATSUP 32 OZ. BTL.
SHURFINE MAC. & CHEESE **\$1**
DINNERS 4 7 1/2 OZ. BOXES
SHURFINE CRUSHED/SLICED **99¢**
PINEAPPLE 15 1/2 OZ. CANS
SHURFINE CUT **\$1**
GREEN BEANS 4 16 OZ. CANS
SHURFINE FANCY **79¢**
TOMATO JUICE 46 OZ. CAN

GRADE "A" SELF-BASTING 10 TO 18 LB. AVG.
SHURFRESH TURKEYS
LB. **79¢**

CANNED **SHURFRESH HAMS**
3 LB. CAN **\$6.39**

VAN CAMP **29¢**
PORK & BEANS 303 CAN
SHURFINE PURE VEGETABLE **\$1.29**
SHORTENING 48 OZ. CAN
SHURFINE ALL GRINDS **\$1.69**
COFFEE 16 OZ. CAN
SHURFINE ALL PURPOSE **59¢**
FLOUR 5 LB. BAG
SHURFINE SALTINE **49¢**
CRACKERS 16 OZ. BOX
SHURFINE LITE YELLOW **2.99¢**
PEACHES 16 OZ. CANS
SHURFINE LITE BARTLETT **2.99¢**
PEARS 16 OZ. CANS

SHURFINE STRAINED **2.99¢**
CRANBERRY SAUCE 16 OZ. CAN

SHURFINE DEEP DISH **69¢**
PIE SHELLS 12 CT. PKGS.

DETERGENT GIANT TIDE
BOX **\$1.79**

PRESTONE OR CONOCO **\$3.29**
ANTI-FREEZE GAL.

SHURFINE LIQUID **69¢**
BLEACH GAL.

SHURFINE LITE FRUIT **2.99¢**
COCKTAIL 16 OZ. CANS

SHURFINE DRY MAKES GRAVY **\$3.99**
DOG FOOD 25 LB. BAG

SHURFINE TALL KITCHEN **79¢**
BAGS 15 CT. BOX

SHURFINE ALUMINUM **49¢**
FOIL 12 X 25' ROLL

ALLSUP'S UP TO \$199.99 MONEY ORDERS
EACH **19¢**

COOKED FOOD SPECIAL OF THE WEEK FROM OUR DELI

ALLSUP'S FRESH HAM SANDWICHES EACH 99¢ "FROM QUALITY BONELESS HAM"	GRADE A MEDIUM EGGS DOZEN 49¢	BURRITOS 2 FOR 99¢
---	--	-------------------------------------

ASSORTED 10.3 OZ. BAG **\$1.25**
Sweet Tarts

HEATH ENGLISH 6 PK. **\$1.39**
TOFFEE

DAVID, SUNFLOWER 2 FOR **99¢**
Seeds

HEATH PECAN 6 PK. **\$1.39**
CLUSTERS

ALLSUP'S CONVENIENCE STORES

OPEN 24 HOURS EVERYDAY!

County Agent's Corral

By Jerry Cummins

Anaplasmosis Still Major Cattle Disease

Anaplasmosis continues to inflict heavy losses in cattle herds each year. The disease, which causes the destruction of red blood cells, cost Texas beef cattle producers some \$9 million in 1980.

Anaplasmosis is most often found in warm, humid areas and is spread by a small parasite found in the red blood cells of infected cattle. It can be spread by insects, particularly biting flies, and instruments contaminated with infected blood.

Once healthy animals become infected, the parasites in the blood multiply and begin destroying red blood cells. Cattle weaken, may go off feed and may refuse to drink water. Later they may show constipation, stay away from the herd or become unduly excited. In advanced cases of

infection, skin around the eyes, muzzle or teats becomes pale or yellowish-tinged. Seriously infected cattle either die or begin to recover in two to four days after the first signs appear. Anaplasmosis usually affects older cattle more severely than younger ones, and calves under six months of age generally do not show recognizable symptoms.

Animals that recover are carriers of the disease and can be a source of infection in the herd.

To prevent cattle losses due to anaplasmosis you may follow these suggestions:

1. Vaccinate the herd. This may be the most economical method to prevent losses and should be done under a veterinarian's advice. Vaccinate cows while open shortly following calving. Give two doses of vaccine not less than four weeks apart followed by a booster after calving and another booster after two years.

2. Test the herd and remove carriers. Isolate herds so the disease is not reintroduced by insect vectors from surrounding infected cattle.

3. Feed low levels or tetracycline antibiotics during the tick and insect season. Chlortetracycline can be fed free-choice in a salt inhibitor so that each animal consumes a daily dose of 1/2 milligram of the antibiotic per pound of body weight. Formulated or medicated feeds are also available.

4. Control insect vectors with dust bags, back rubbers, impregnated ear tags or regular spraying or dipping when pests are prevalent.

Once animals are infected, tetracycline drugs given intravenously during the early stages can cause a dramatic response.

Cattlemen should contact their local veterinarian regarding any treatment and handling of animals infected with anaplasmosis.

Panel To Discuss "Financing Future Water For Texas"

Financing future water development in Texas is sure to be a top agenda item when the Texas legislature convenes in January 1983.

Federal funding for new reservoirs, for wastewater treatment plants and for flood control projects has been greatly reduced in recent years. As a result of this situation, future water development in the state must more than likely be financed within the state.

Experts of water financing will be at the 1982 Water for Texas Conference at Texas A&M University, Nov. 18 and 19, to present current financing delimitations and future financing alternatives for meeting water demands.

The Water for Texas Conference, in the Rudder Theatre, will key on the theme "Water Issues for Today, for Tomorrow." Besides financing, the conference will also address three other vital water issues: planning, understanding, and managing water resources in Texas.

A panel will address "Financing Future Water" at the 1 p.m. session Nov. 18. Moderator will be Catherine Perrine of Dallas, state water director, League of Women Voters.

Donald L. Howell, a partner with the law firm of Vinson & Elkins in Houston, and president of the National Association of Bond Lawyers, will discuss, "Perspective on Water Financing."

Josiah Wheat, secretary of the Governor's Water Task Force on Water Resource Use and Conservation, and past president of the State Bar of Texas, will discuss "Alternatives Means of State Financing."

State Senator Ed Howard, chairman of the Sunset Advisory Commission and a member of the Senate Committee on Finance, is scheduled to speak on "Past and Present State Financing."

Alan Henry, currently president of the Texas Municipal League, is to discuss "Financing Future Municipal Water." He is a city councilman in Lubbock and was named in 1980 by Gov. Bill Clements as "Texas Volunteer of the Year."

Keynote for the opening session of the conference will be State Senator Grant Jones of Abilene, chairman of the Senate Finance Committee. Dr. Perry L. Adkisson, Deputy Chancellor for Agriculture with the Texas A&M University System, will welcome participants.

More details about registration and the Water for Texas Conference are available from the Texas Water Resource Institute, College Station, TX. 77843.

Roaring Springs News

By Odessa Mullins

Miss Lula Swim left Thursday morning to visit relatives in Plano and in Fort Worth with her brother and wife, Mr. and Mrs. S. A. Swim.

Mr. and Mrs. L. M. Miller accompanied Miss Swim as far as Whitesboro where they stopped to visit her sister and husband, Mr. and Mrs. G. C. Baum, her sister-in-law, Mrs. Homer Sanford, and nieces and nephews there.

Mr. and Mrs. J. M. Carpenter and son Randall of Stephenville and Mr. and Mrs. Jesse Smallwood and Nissa of Plainview were visitors last weekend in the home of Mrs. Edith Brooks. J. M., Jesse and Randall enjoyed quail hunting at the season's opening.

Mr. and Mrs. W. H. Marshall attended to business in Lubbock Friday and visited with their daughter and family, Mr. and Mrs. Rick Futrell and daughters, Tara and Tamara.

Miss Laura Sedgewick of Lubbock was a recent weekend visitor with her grandmother, Mrs. Vera Mitchell. Mrs. Mitchell's brother, Ray Webb of Matador spent an afternoon this week with her.

Mr. and Mrs. Elmer Osborn attended to business in Lubbock, Friday.

M. D. Freeman's sisters and brother-in-law, Mr. and Mrs. Clarence Muce of Oklahoma and Mrs. Dorothy Eudy of California visited him the past weekend. They also visited Mrs. Freeman in the Floydada Nursing Home.

M. D. Freeman spent the night Wednesday with his sister, Mrs. Amy Havis in Slaton. Mr. and Mrs. Earl Freeman of Odessa came by there Thursday night and took him for a checkup with his eye surgeon, who recently operated on his eye, which is in good condition.

Mr. and Mrs. James Price of Lubbock spent the weekend with her mother, Mrs. Edith Brooks. Mrs. Brooks' brother and wife, Mr. and Mrs. Jim Sampson of Clyde and Mrs. Brooks' granddaughter, the former Christy Price and children also visited her.

Mr. and Mrs. B. L. Peacock left Thursday afternoon for a weekend visit with their son Pat, his wife and two sons, Justin and Billy Dale in Louisiana.

Mr. and Mrs. Billy Joe Dillard who visited his mother for several days following his recent surgery and hospitalization have returned to their home in Oklahoma. The Rev. Mrs. Edna Dillard's daughter, Mrs. M. D. Gunstream of Muleshoe injured her hip after news time last week and underwent surgery soon afterwards. She is

recuperating satisfactorily in Methodist Hospital. Mrs. Dillard went to Lubbock for the surgery and visited her daughter several times this week.

Mrs. Dye, taken to Crosbyton Hospital early Monday of last week, suffered a more serious heart attack there Wednesday and was taken to Methodist Hospital in Lubbock where she was kept in intensive care unit for several days. She was still there at news time.

Mr. and Mrs. Eddie Osborn and Amy visited the Elmer Osborns and Kay Michelle the past weekend.

Visitors over the weekend in the home of Mr. and Mrs. J. D. Mitchell were Mr. and Mrs. John Sands of Plainview, Mrs. Lila Montgomery of Memphis, Tenn., and Mr. and Mrs. Orland Mitchell of Denver, Colo. Mr. and Mrs. Mitchell attended the funeral services of Mrs. Dora Starkey in Quitaque, Sunday.

Russell and Shawn Gidewell of Lubbock are making their home with their foster parents, Mr. and Mrs. Ray Zabielski. C. W. (Pops) Davis entered Methodist Hospital in Lubbock last Thursday for tests. Monday he underwent lung surgery removing a malignant tumor. He will be in intensive care for several days. His sisters, Mrs. Jim McCleskey, Mrs. James Smith of Matador and Mrs. Lester Smith of Amarillo were at the hospital Monday for his surgery. Mrs. Lester Smith remained with him.

Mrs. Bonita Barton of Matador visited her parents, Mr. and Mrs. Billy Hand, Thursday night while her husband Randy was on a trip and her children are visiting their grandparents in Louisiana. Bonita and her family have recently moved to Matador from Baton Rouge, La.

Billy Hand made a business trip to Lubbock, Friday.

Guild Meets

The Roaring Springs Guild met in the home of Miss Freda Keahey on Wednesday night, Nov. 4. Mrs. Truitt Read was in charge. Mrs. Alta Duval presented the devotional and Mrs. Read gave the opening prayer.

Mrs. Agnes Aaron presented the study on "Our Identity of Jesus and His Identity With Us." Mrs. Clyde Clifton gave the closing prayer.

A refreshment plate was served to the following: Mrs. Clyde Clifton, Mrs. Agnes Aaron, Mrs. B. L. Peacock, Mrs. Opal Bradford, Mrs. Ruby Burt, Mrs. J. T. Swim, Miss Freda Keahey, Miss Lula Swim, Mrs. Truitt Read, and Mrs. Harry Duval.

Flomot News

By Earlyne Jameson

Has Heart Surgery

M. C. "Salty" Jones of Quitaque has successful heart surgery, Wednesday, November 10 at the Methodist Hospital in Lubbock. He had a by pass and an aorta valve replaced.

His son, Danny Jones of Taiwan (or Formosa) was with him during his surgery and hospitalization. Other family members with him were his wife, Ann, children, Pepper and Candy of Quitaque and sister and husband, Mr. and Mrs. Richard Nall of Wellington.

They also visited in the home of their mother and grandmother, Mrs. C. C. (Liza) Jones.

ATTEND FUNERAL OF GRANDFATHER

Rex and Arnold Johnson attended the funeral services of their grandfather, Doc Johnson, 96, held Thursday, November 11 in Alvord.

HOSPITAL PATIENTS

Mrs. Wilburn (Trula) Martin is a patient in the Central Plains Hospital in Plainview.

Herb Martin was conveyed by ambulance Monday night from General Hospital in Lockney to Methodist Hospital in Lubbock. His wife, Geneva and daughter and husband, Mr. and Mrs. Clois Shorter are with him.

Karen Burgess Guest Speaker

Miss Karen Burgess, Home Economist at West Texas Utilities in Childress, presented a program, "Christmas Food and Recipes For Holidays," Wednesday, November 10 at the Community Center in Flomot.

Following a covered dish luncheon, Miss Burgess gave demonstrations how to make Holiday Delights and original ideas for gift wrapping packaged foods. She gave recipe booklets to those attending.

Mrs. Seab Washington presided at a business

meeting and plans for a community Christmas party were discussed.

Others attending the community meeting were Mesdames Viola Calvert, James Monk, George Pope, Bill D. Washington, L. E. Shorter, Billy Roys, Wilson Barton and D. M. Gilbert.

Visitors in the home of Mr. and Mrs. C. W. Starkey and Mr. and Mrs. Jack Starkey this week were Mr. and Mrs. Royce Hanna, Diane, Debra and David, Mr. and Mrs. Delbert Hanna and Mr. and Mrs. Mike Whitlow of Wichita, Kansas. The Hanna family attended the funeral services of their father and grandfather, M. M. Hanna that were held in Turkey, Thursday, Nov. 11. They also visited in Turkey with Mrs. Opal Hanna.

Visiting Mrs. Viola Calvert last weekend were Mr. and Mrs. Max Bush and son, Brian of Muleshoe.

Mr. and Mrs. Wendell Morris and Mrs. Doris Morris and her houseguests, Mr. and Mrs. Leigh Laughlin of Stockton, California visited from Thursday until Tuesday in Grandbury with Mr. and Mrs. Walter Burns and family. Arriving here last Tuesday for an indefinite visit were Mr. and Mrs. Al Garrett of Burney, Calif. Mr. and Mrs. Laughlin returned to their home in California, Thursday.

Ray Cruse visited in Amarillo, Sunday with his father, Elmer Cruse of Turkey, a patient in St. Anthony's Hospital. Mr. and Mrs. Darrell Cruse, Leah and Kane visited in Lockney, Thursday with her father, Billy Wason of Matador, who had emergency appendectomy Wednesday night at Lockney General Hospital.

Mrs. Tom Ross returned home this week after spending the past two months in Dallas with her children, Lisa and Tommy Ross.

Whiteflat News

By Earlyne Jameson

Mrs. Fred Risser and daughter, Kobby of Matador and her mother, Mrs. Stuart Dixon attended the dual piano concert of Rostal and Schaefer at the Harrall Auditorium at Wayland Baptist College in Plainview, Monday night, November 8.

Mrs. Maxine Shipley of Turkey and Mrs. John Barton visited in Amarillo Wednesday and Thursday with Mr. and Mrs. Jerrell Jones and Ted Jones. They enjoyed a pre-Thanksgiving family

dinner, Wednesday night in the home of Mr. and Mrs. Jerrell Jones.

Mr. and Mrs. L. D. Bilberry and Mrs. Ralph Stapleton visited in Florida, Friday with Mrs. D.I.W. (Ollie) Birnie at the Nursing Home. They continued to Lockney where Mrs. Stapleton had the stitches removed from her arm that she injured in a recent accident at her home.

Mr. and Mrs. Stuart Dixon visited in Paducah, Sunday with his sister, Mrs. Grace Stephens, a patient in the Richards Memorial Hospital. Mrs. Stephens moved into the Cottle County Nursing Home, Monday. Also visiting Mrs. Stephens, Sunday was her sister, Mrs. Liller Garrison of Matador.

Mrs. Janice Dixon received word that Mrs. Nona Looke returned to her home in Hedley, Friday after recuperating from surgery in the home of her daughter and husband, Mr. and Mrs. Lonnie Harmon of Borger.

Mark Hill of Amarillo and friends from Lubbock, Houston and Amarillo visited during the week end with Mr. and Mrs. T. W. Jennings.

Mr. and Mrs. Alfred Cooper visited during the weekend in Amarillo with their daughter, Kay Cooper and her brother, Arthur Harmon.

Morris Stephens accompanied his mother, Mrs. Joe Stephens of Matador, to Lubbock, Monday for a medical check-up. She is reported to be doing fine since her pace maker heart surgery.

NOTICE!

Due to High Taxes, Utilities and the Sluggish Economy

TIFFIN'S DRY GOODS

Silverton, Texas is forced to have a complete

LIQUIDATION SALE

Now to December 24th - Monday - Saturday - 9:00 a.m. - 6:00 p.m.

Open Later by Appointment 823-2134 Large Stock of Brand Name Merchandise

- Men's and Boy's:
- Wranglers 11 MWZ 925 or 938 -- \$10.50
- Levi 501's -- \$10.50
- Boots: Sanders, Cowltown, Tom Dallas
- Bullhide, Calf, Shark -- \$78.00
- African Antelope -- \$98.00
- Whale, Eel, Elephant -- \$148.00

- IRRIGATION BOOTS - OVERSHOES
- COVERALLS - OVERALLS
- COATS AND JACKETS
- SHIRTS - WESTERN - WORK SHIRTS - SWEATSHIRTS
- HANES BRIEFS AND INSULATED UNDERWEAR
- BELTS - SOX - WATCHES - GLOVES
- MISCELLANEOUS ITEMS

Girl's and Ladies:

- BOOTS - JEANS - NAME BRANDS
- SHIRTS - BLOUSES - DRESSES
- SUITS - GOWNS - ROBES
- SLIPS AND PANTIES
- LARGE SUPPLY OF BABY ITEMS, TOYS, ETC.
- WHITE GOODS - TOWELS - BEDSPREADS
- PIECE GOODS - SHEETS - PILLOWS, ETC.

Layaways at 20% Down - Must be picked up by December 24th

NO RETURNS-NO REFUNDS-NO CREDIT ALL SALES FINAL

Remember, Christmas is just around the corner. Will gift wrap for 50c per package as time permits.

Our 20th Year In Business

Roddy Klinnert - State & City Licensed - Larry Helms
806-874-2642 Plumbing & Electrical 806-856-4401
Heating & Air Conditioning
806-874-3293

Tri-State Ag Consultants Inc. and Farmers Welding & Supply Company

P.O. Box 966 -- Highway 287 East -- Clarendon, Tx. 79226
MECHANICAL CONTRACTORS

Serving the Tri-State Area
INDUSTRIAL & COMMERCIAL INSTALLATIONS
Plumbing, Wiring, Heating & Air Conditioning
Residential -- New Construction Installations Only
GINS -- MILLS -- ELEVATORS

Electric Motor Repair & Control Work
24 Hour Emergency Service
3-2 Way Radio Equipped Service Trucks
CONSUMER WHOLESALE BUYING SERVICE
We buy for our members at dealer cost
EARTH STOVE AND ACCESSORIES DEALER
Ceiling Fans and Light Fixtures
AGRICULTURAL APPARISALS
On Cattle & Farm Equipment for Banks and Lending Institutions
COMPUTERIZED BOOKKEEPING & FINANCIAL RECORDS
HELICOPTER SALES -- TRAINING
Lease Flying -- Cattle Gathering
COMPLETE LINE OF BUSINESS FORMS
Large Line of Lathes - Milling Machines & Tooling



you want it... you've got it... IN THE CLASSIFIED

Issue Number 46

COW POKES

By Ace Reid



"Jake, you're the one always harpin' about the shortage of water!"

This Feature Sponsored By
First State Bank

Card Of Thanks

The family of Ora Faye Patton would like to thank all of her friends for their prayers and cards in their time of sorrow, and also for the food served to the family after the services.

Mr. & Mrs. Lory D. White
Mr. & Mrs. Shorty Brandon
Mr. & Mrs. Marshall Mathers
Mr. & Mrs. Dave Brandon Jr.

CONTRACTORS' NOTICE OF TEXAS HIGHWAY CONSTRUCTION

Sealed proposals for constructing 105,269 miles of Seal Coat. Various Limits in District 25 in King, Donley, Hall, Foard, Knox, Childress, Cottle & Motley Counties covered by CSB 32-6-20, CSB 42-8-33, CSB 42-9-75, CSB 42-14-2, CSB 98-2-19, CSB 98-5-22, CSB 132-3-21, CSB 133-1-29, CSB 704-1-9, CSB 704-3-8, CSB 704-4-7, CSB 704-5-11, CSB 1053-1-12, CSB 1771-1-8, CSB 1914-1-7, CSB 2253-1-9 & CSB 3183-1-2 on highway US 83, US 287, FM 2361, SH 6, US 82, FM 94, FM 658, FM 1168, & Fm 3103, will be received at the State Department of Highways and Public Transportation, Austin, until 9:00 a.m., December 7, 1982, and then publicly opened and read.

Plans and specifications including minimum wage rates as provided by Law are available for inspection at the office of Vance L. Castleberry, Resident Engineer, Childress, Texas, and at the State Department of Highways and Public Transportation, Austin, Texas.

Bidding proposals are to be requested from the Construction Division, D. C. Green State Highway Building, 11th and Brazos Streets, Austin, Texas 78701. Plans are available through commercial printers in Austin, Texas, at the expense of the bidder.

Usual rights reserved.
(Published in the Matador Tribune, November 18 and 25, 1982)

HELP WANTED

WAITRESSES NEED-ED. BILLIE DEAN'S. Call 347-2310. 31 43-c4t 46

HOME FOR SALE

FOR SALE: Nice two bedroom house with carport. 822 Lariat. Price \$7,500. Call 257-3741 or 347-2230. 45-c3t-47

Inflation - Fighting IDEAS

Q. Motor oil cans bear inscriptions such as SAE 10W, 20W/20, 30, 10W/40. What do these terms mean? How do I know what to buy?

A. Numbers such as SAE 10W, 20W/20, 30 or 10W/40 are Society of Automotive Engineers designations directly relating to the viscosity of a particular lubricant. The lower the viscosity, the easier the oil will flow, so you'll want, generally, a low number for cold operation, higher for warm. A "W" simply means, say experts at Gulf Oil, that the product has been tested at low temperature and is a "winter grade". A product with two designations such as 10W/40 indicates that the product is multi-viscosity. That means that when cold, the product performs like a 10W fluid, and when warmed as the engine operating temperature increases, performs like an SAE 40 product.

Representatives For

MONUMENTS AND CURBING
Seigler Funeral Home
Phone 347-2626

BUSINESS SERVICES

GERMANIA FARM Mutual Aid Association. Reasonable sound Property Insurance. If you want to save, Contact Mrs. Orville Lee, Flomot, 806-469-5370. 25-ptfn

CANCER INSURANCE: Call Mrs. Orville Lee, Flomot, 806-469-5370. 25-ptfn

NOW AVAILABLE At Matador Motor & Impl. Professional windshield installers are at Matador Motor & Implement every two weeks. Guaranteed not to leak. Call 347-2422. 11-ctfn

NEW LOCKNEY Meat Co. USDA Inspected. Kill Days, Monday through Friday. Custom Processing, Wholesale and Retail Meat. One half and quarters, cut, wrapped, frozen and fully guaranteed. Located on corner of U.S. 70 and FM 378 South. 652-3305. Sam and Kelly Fortenberry. 22-ctfn

NEW Carpet Cleaning Machine now available for rent at Bob Stanley Pharmacy. 56 37-ctfn

THE DUGOUT invites you to come in and register for the **November 30th Drawing.** Shop early for Christmas ornaments and all other gifts at The Dugout. Phone 347-2774. Barbara Jameson. 50 45-c2t-45

Flats Fixed

Oil and Filters Changed
Doran's Conoco
347-2805

Make An Impression!

USE PERSONALIZED BUSINESS STATIONERY.



from **Matador Tribune**

FOR SALE

LAND FOR SALE: 80 acres, 3 1/2 miles south west of Dickens, Texas, and 68 acres, 7 miles north east of Dickens, Texas. 689-2351. 34 44-4tp-47

FOR SALE: Good used color TV Sets. Some with new picture tubes and new guarantees. Thacker Supply Company, Roaring Springs. 3-ctfn

FOR SALE: 1976 Case 970 D Tractor, 1968 IHC 756 LP Tractor and IHC Model 22 Cotton Stripper. Call Aaron Timmons at 806-655-0197 anytime after 7:30 p.m. week days. Other equipment available. 46-c1t-46

LOT FOR SALE: 150'x200'. Located Southeast part of Matador. Call 347-2205. 40 44-c4t-47

EXPERIENCED Professional Carpet Cleaning. Same reasonable rates for five years. Residential and Commercial. Special rates for commercial. Call Pat Smith for Free Estimates. 347-2815 or 347-2310. Also ask about special rates for cleaning cars. 33 43-ctfn

MISCELLANEOUS

CARS \$100! Trucks \$75. Available at local government sales. Call (refundable) 1-714-569-0241 ext. 7898 for your directory on how to purchase. 24 hrs. 45-c3t-47

ANTIQUAUC-TION: Nov. 20, 10:30 a.m. 3/4 mile south of Dumont. Furniture, dishes and farm tools. 53 46-c1t-46

CARPET SALE: Thursday, Friday and Saturday. Queen size sheets, quilts, dishes, coats, clothes and miscellaneous. Mrs. Doc Cook. 46-p1t-46

COME IN and shop now while the selection is good. Lay away now for Christmas. Matador Hardware and Supply. 54 46-c2t-47

WE NOW HAVE bats, brushes, belts, bearings and other items for strippers. Matador Hardware & Supply. 55 46-c2t-47

THE DUGOUT Now has a cap and T-Shirt machine to put transferees on shirts and caps. Will put names on Motley County shirts. 25¢ small letters; 35¢ large letters in black or red. Phone 347-2772. Barbara Jameson. 51 45-c2t-46



FOR ANNOYING COUGH AND STUFFY NOSE TRY TRIAMINIC-DM COUGH FORMULA

© 1982 Dorsey Laboratories, Division of Sandox, Inc., Lincoln, Nebraska 68501

CORNS?

Soft pads protect from pain, while medicated disks work to remove corns

Dr. Scholl's Zino-pads



A watermelon is about 92 percent water.

INTERIOR and EXTERIOR HOUSEPAINTING

Bailey's Paint & Repair
Equipped with Binks Airless Spraying Seal Brick -- Spray Roofs -- Fences -- Barns
PH. 347-2851 MATADOR, TEXAS 79244

D & D Auto Repair

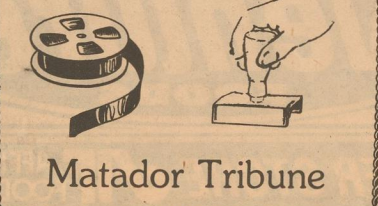
We Repair All Makes Cars and Pickups
Located In Old Laundry Mat
Telephone 347-2330 or 347-2735
Dave London and Doug Block

Davis Oil Company
Matador & Roaring Springs

Conoco Anti-Freeze \$20.40 CASE

OFFICE SUPPLIES

- * Typewriter Ribbons
- * Adding Machine Tape
- * Posterboard
- * Rubber Stamps
- * And More



Matador Tribune

Wheat Cleaning
* Bulk
* Bagged
* Double Treated
Call For Appointment
Producers Coop Elevator
Floydada 983-2821

"The New Sound of the 80's"
Helms and Johnson Auctioneers
Quitaque, Texas
Kenneth Helms 806/469-5387
Derrel Johnson 806/469-1201
TXS-023-0762 TXS-112-0938
Your Business & Friendship Are Appreciated

Paschal Plumbing
JOURNEYMAN PLUMBER'S LICENSE NO. J 18005
For All Your Plumbing Needs Call Day or Night
Phone 347-2261 or 347-2741
Matador, Texas

FREE ESTIMATES WORK GUARANTEED
Gibbs Roofing & Siding Co.
Storm Windows
Steel Vinyl Aluminum Siding
All Types Roofing and Home Remodeling
Phone 806-294-5268
Benny Gibbs Owner P.O. Box 678 Dickens, Texas

CAGLE PLUMBING & REPAIR
for all your plumbing needs
24 Hour Service
Phone 348-3251 Roaring Springs, TX

Motley County Clinic
347-2641
Charles H. Hudson, III, D.O.
At Motley Clinic Tuesday And Thursday
Robert M. Brodtkin, D.P.M.
Podiatric Medicine & Surgery
Next Office Day November 17
Roy Tippin, Jr., R.N.
Family Nurse Practitioner
In Motley Clinic Daily
Clinic Hours: Monday thru
Wednesday 8:00 a.m. to 5:00 p.m.
Thursday: 8:00 a.m. to 8:00 p.m.
Friday: 8:00 a.m. to 1:00 p.m.

News?
Call 347-2400
Matador Tribune

Now is the time to remember old friends.

Shop early. Mail early this Christmas. Don't miss the joy.
Please use the correct ZIP Code.

GROCERY SPECIALS

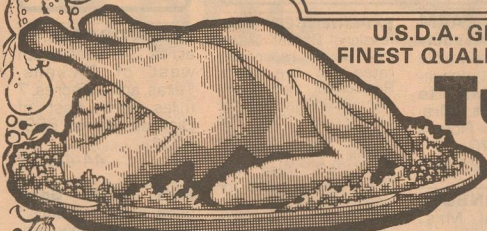
- SWANSON'S **Chicken Broth** 3 14 OZ. CANS **\$1.00**
- KRAFT MACARONI & CHEESE **Dinners** 7 1/2 OZ. BOX **39¢**
- SUGARY SAM **Cut Yams** 23 OZ. CAN **79¢**
- ATKINS HAMBURGER **DILL SLICES** 16 OZ. JAR **89¢**
- MOUNTAIN GROWN COFFEE **Folger's** 1 LB. CAN **\$2.19**
- DUNCAN HINES ASSTD **Cake Mix** 19 OZ. BOX **88¢**

FROZEN FOOD SPECIALS

- GREEN GIANT SPEARS **Broccoli** IN BUTTER SAUCE 10 OZ. PKG. **99¢**
- GREEN GIANT NIBBLERS-6 CT. **Corn ON THE Cob** PKG. **\$1.29**
- PET RITZ **Pie** Pumpkin Custard 26 OZ. BOX **\$1.19**
- PET RITZ DEEP DISH **Pie Shell** 2 CT. PAK **79¢**
- PET RITZ LARGE 9-5/8" **Pie Shell** 2 CT. PAK **99¢**
- BIRDSEYE REG. & EX. CREAMY **Cool Whip** 8 OZ. BOWL **69¢**

HOLIDAY FOOD FESTIVAL

Thanksgiving Day Savings



U.S.D.A. GRADE 'A' SHURFRESH
FINEST QUALITY WITH TENDER TIMER

Turkeys

69¢

SELF BASTING
18-22 LBS. AVG. LB.

DECKER'S RANCH STYLE
BONELESS FULLY COOKED

Half Hams **\$1.99**

Thanksgiving Sale

2-4 LBS. AVG.

- WRIGHT'S HICKORY SMOKED **Bacon** SLICED SLAB LB. **\$1.69**
- SUPER SELECT **Roast** LEAN TRIM FRESH PORK BUTT LB. **\$1.59**
- COUNTRY PRIDE **Turkey** HICKORY SMOKED 8-12 LBS. AVG. LB. **\$1.39**
- U.S.D.A. SHURFRESH **Hens** GRADE 'A' BAKING 4-6 LBS. AVG. LB. **69¢**

- LOUIS RICH BONELESS FULLY COOKED **Hams** TURKEY 3-4 LBS. AVG. LB. **\$1.79**
- LOUIS RICH **Bologna** SLICED TURKEY 1 LB. PKG. **\$1.19**
- HORMEL'S LIL' SIZZLERS **Sausage** PORK LINK 12 OZ. PKG. **\$1.29**

PRICE FIGHTER VALUES

- 15° OFF LABEL CHEER **Detergent** 49 OZ. BOX **\$1.99**
- UNCLE BEN'S **Wild Rice** 6 OZ. BOX **\$1.19**
- BAKER'S ANGEL FLAKE 36° OFF LABEL **Coconut** 14 OZ. PKG. **\$1.19**
- KRAFT BONUS PAK **Marshmallows** 19 OZ. PKG. **79¢**
- PURE VEGETABLE **Crisco Oil** 32 OZ. BTL. **\$1.59**
- SCHILLING PURE **Vanilla** 2 OZ. BTL. **\$1.99**

DAIRY SPECIALS

- PILLSBURY ALL READY 2 CT. **Pie Crust** 15 OZ. BOX **\$1.29**
- SHURFRESH WHIPPING **Cream** 2 1/2 PT. CTNS. **89¢**
- SHURFRESH SOUR **Cream** 2 1/2 PT. CTNS. **89¢**

FOR PIES LIBBY'S

- Pumpkin** 59¢
- Sauce** 59¢

VEGETABLE SHORTENING

Crisco Pure Crisco

\$2.09

3 LB. CAN

Coca Cola DIET COKE

DIET COKE
6-32 OZ. BOTTLES

\$1.99 PLUS DEPOSIT

6-12 OZ. CANS

SHURFINE GRANULATED

Pure Sugar

\$1.49

5 LB. BAG

MARGARINE QUARTERS

Kraft Parkay 2 69¢

16 OZ. BOXES

SHURFINE REAL CHOCOLATE

Chips

99¢

12 OZ. PKG.

IMPERIAL POWD.-BROWN

Sugar

99¢

2 LB. BAG

WASHINGTON RED OR GOLDEN DELICIOUS

MIX OR MATCH **Apples**

39¢

LB.

EAST TEXAS **Yams** 3 1.00

- CALIFORNIA GREEN PASCAL **Celery** LB. **19¢**
- TEXAS FULL OF JUICE **Oranges** 5 LB. BAG **\$1.39**
- CALIFORNIA ZIPPER SKINS **Tangerines** LB. **39¢**

PRODUCE SPECIALS

- BELL LGE. THICK WALLS **Peppers** LB. **49¢**
- YELLOW SWEETS **Onions** LB. **19¢**

FOR DRY SKIN

Pond's Cream 3.9 OZ. JAR **\$2.49**

VASELINE PETROLEUM 1-3/4 OZ. **Jelly** JAR **89¢**

LOTION REG.-EX. DRY **Jergen's** 6 OZ. BTL. **\$1.49**

CHEESE SPREAD

Kraft Velveeta 2 LB. BOX **\$2.99**

KRAFT PHILADELPHIA **Cream Cheese** 8 OZ. PKG. **79¢**

ON SALE NOW!
Beautiful, Fine Porcelain China



THIS WEEK'S FEATURE ITEM: BREAD & BUTTER **99¢** EACH



Billy's Grocery

the price fighter

Venture FOODS



Prices Effective Thurs., Fri., Sat. WE RESERVE THE RIGHT TO LIMIT QUANTITIES.

WE ACCEPT FOOD STAMPS WE ACCEPT MANUFACTURER'S COUPONS

MEMBER STORE AFFILIATED FOODS, INC.