



3/2



Motley County Tribune

"VOICE OF THE FOOTHILLS"

50¢

ESTABLISHED 1891

THURSDAY, MARCH 2, 2000

ISSUE NO. 9



A Look Back Call

MARCH 4, 1976

Dry Year

"1976 has been a dry year -- almost. But this isn't "new" news for West Texas.

It may come as a surprise to a few to know that Motley County received .02 moisture in the form of light snow which fell January 2. This time last year Bob Stanley's weather record showed 3.66 moisture, with 1.08 falling in January and 2.58 in February."

Motley Captures Bi-district;
Plays for Regional Friday

"The Motley County Matadors, coached by Danny James captured the bi-district championship from Westbrook in a game played at Post Tuesday night, to the score of 67-54."

The win gave Motley the right to advance to the Class B Region I tournament to be played in Levelland this week end."

Trail Dust
by Douglas Meador

"If it requires a poor sport to champion decency then the shields of sportsmanship have become tarnished."

Around Town

News Briefs of Area Events

Men's Monthly Breakfast set for Saturday

The Monthly Men's Breakfast will be held Saturday, March 4, at the First United Methodist Church in Matador at 7:00 a.m.

The breakfast is for all men of the county, of every denomination.

MCYO Meeting

There will be a MCYO (Motley County Youth Organization) meeting Monday, March 6, at 6:00 p.m. at the School Cafeteria, to elect officers and begin planning for the upcoming Summer Baseball program.

All interested parents and anyone wanting to participate or help with the program are urged to attend.

Lions set annual show for April 25

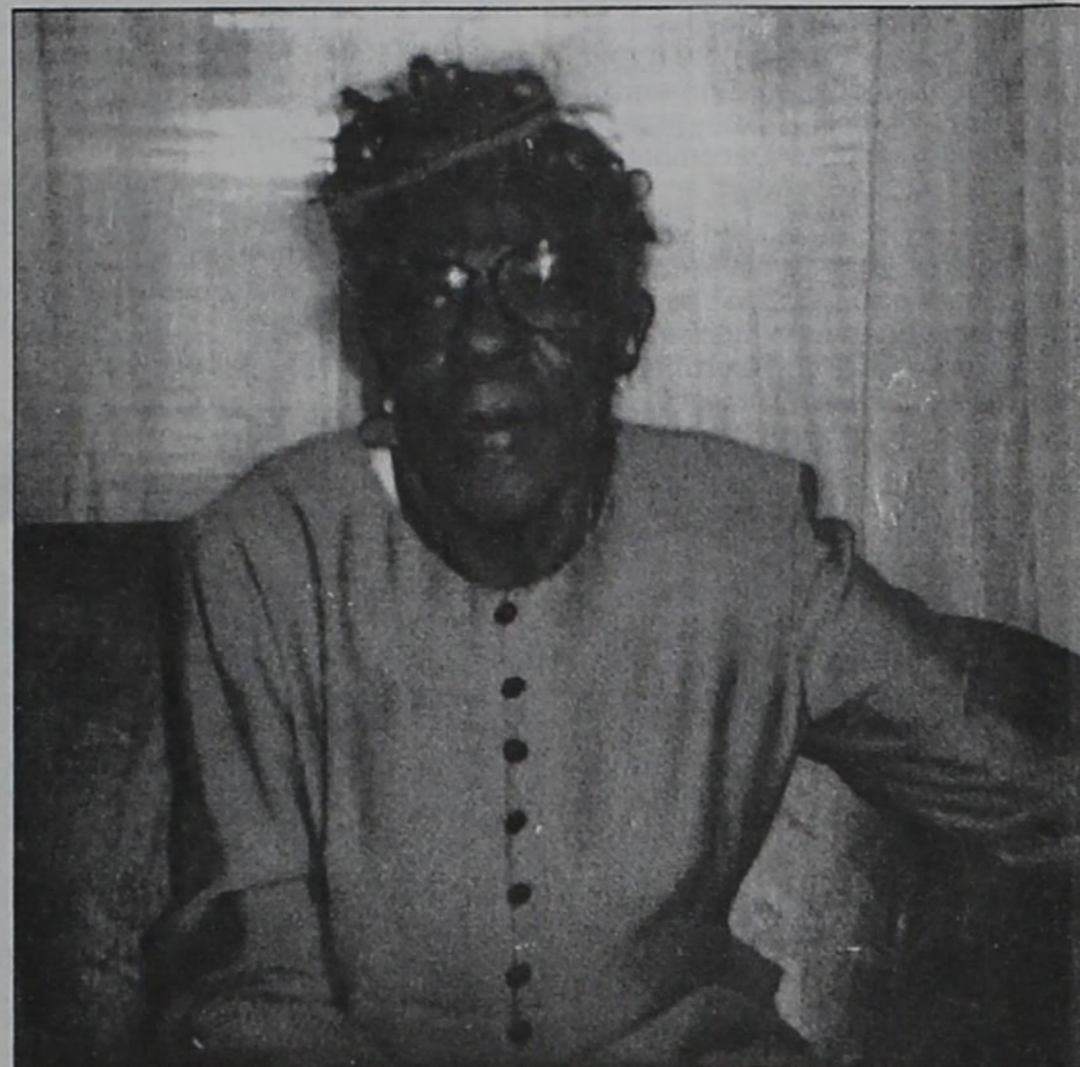
The Matador Lions Club Board of Directors have set the date for the Annual Lions Show for April 25, 2000.

Admission to the Show will be \$3.00 for adults, \$1.00 for students and no charge for kids under school age.

Lions Club members have begun a fund raising campaign with the sale of tickets for \$25 each. The grand prize will be \$2,000, 2nd prize is \$1,000, 3rd prize is \$500, 4th prize is \$100 with three other prizes of \$50 each. And only 300 tickets will be sold. The ticket is also good for a one-person entry to the show and you need not be present to win.

Please contact a Lions Club member if you would like to purchase a ticket.

Admission to the Show need not be purchased in advance.



LEAP YEAR LADY — Mrs. Pauline Smith celebrated her birthday, Tuesday, February 29, 2000. She's not saying what birthday, but evidently she is still a young lady, only celebrating her birthday every four years. Mrs. Smith has lived in Matador since 1945. She and her husband, Roscoe, have six children, fourteen grandchildren, and seven great-grandchildren. Her children and grandchildren hosted a birthday party and fish fry for her the past weekend and presented her with three birthday cakes.

South Plains, Panhandle in extreme fire danger

The South Plains and the Panhandle are under an EXTREME FIRE DANGER warning, according to the region's Texas Forest Service Regional Fire Coordinator Les Rogers. Current high winds, low humidity and a heavy fuel load have created the potential for wind-driven fires. This week, Rogers asks that residents postpone all outdoor burning. The South Plains and the Panhandle will not be out of extreme danger until significant rainfall and

spring green-up has occurred.

Rogers suggests that smoking materials be distinguished in vehicle ashtrays rather than out of a window or on the ground. He warns that hot catalytic converters also can ignite dry vegetation whether in a field or on the side of the road. And if welding out-of-doors, Rogers says to be sure to water down the surrounding work area and have a fire extinguisher nearby.

Fire prevention...it's up to you!

Motley County Powerlifters advance to Regional competition

Four Motley County Powerlifters have advanced to Regional competition. Ashley Stevens, Rebecca Morris and Brenda Gillespie will compete at the Girls' Regional Meet Saturday, March 4, in Colorado City.

Brandon Lee will compete at the Boys' Regional Meet Saturday, March 11 at Levelland.

The top ten girls and boys in each weight class in Region I qualify for the regional meet. Region I is the largest region in the state of Texas as it encompasses 124 counties. Two alternates are also named in case a girl or boy cannot attend.

Qualifying in the 97 pound weight class is Brenda Gillespie. She is currently ranked third in the region at this time.

Rebecca Morris and Ashley Stevens have both qualified in the 132 pound weight class. They are ranked fourth and fifth, respectively, in this class.

Brandon Lee is ranked fourth in his weight class.

Each powerlifter has worked hard to qualify for the honor of competing at the Regional Meet and deserves everyone's congratulations and best wishes for successful meets.

Motley County student chosen to participate in sports ambassador program

Sean Rose, Motley County High School Senior, has been notified that he has been chosen to participate in the People to People Sports Ambassador Program this summer. High standards are required for this selection, and Sean's acceptance reflects confidence in his ability to contribute to the success of this team and to meet the challenge of serving as a representative of his country, community, and school.

The People to People program was initiated by President Dwight Eisenhower in 1956. He believed that if people from different cultures could come together in peace and friendship, so eventually would countries. People to People has grown dramatically since its inception and has sent thousands of United States students overseas to achieve an international experience.

Sports Ambassadors are care-

fully interviewed and evaluated before their acceptance. Because of the program's balanced athletic and educational value, it will offer Sean the opportunity to gain college credit.

Sean will be given the opportunity to compete in a basketball tournament, interact with foreign students the same age, and visit the historical monuments of the host country, which may include Australia, Ireland, Spain, Switzerland, Dominican Republic, Italy or Holland. Sean's first choice is Ireland.

The program tuition will vary from \$2,590 to \$3,590, including transportation, accommodations, and most associated costs. In order to participate in this once-in-a-lifetime opportunity, Sean will need help from sponsors, individuals and businesses to help alleviate the financial cost. Sean plans to host a thank-you reception upon his return for all contribu-

60th Annual Motley County Junior Livestock Show set for March 11

The 50th annual Motley County Junior Livestock Show will be held on Saturday, March 11, 2000 at the Motley County Livestock Show Barn. The Livestock Show is sponsored each year by local volunteers to provide an opportunity for 4-H and FFA members to exhibit their livestock projects. By caring and feeding their livestock throughout the feeding period, youth have the opportunity to learn responsibilities and increase their knowledge of the livestock industry.

During this year's show, there will be 9 steers, 50 hogs, 11 lambs, and 22 rabbits exhibited. In addition, a Pee Wee Swine Showmanship Show will be held for youth under the age of 9 years and not in the third grade.

Anyone living in Motley County, owning land in Motley County, or youth eligible for the Junior Livestock Show may show heifers. Anyone planning to show a pen of heif-

ers must notify the Junior Livestock Show Association by Friday, March 3. Heifers must be 12 to 18 months of age at show time. Heifers will be shown in a pen of three (3) format. Animals will be identified by number and placed in a pen. They will not be shown at halter or weighed. There will be a \$10.00 entry fee per pen of heifers. All heifers must be in place by 10:00 a.m. Heifer classes will include English, Exotic, and Crossbred.

Pay-N-Save Grocery in Matador will be serving breakfast to exhibitors, donors, and local residents from 6:30 a.m. to 8:30 a.m. at the Livestock Show Barn. The breakfast will be prepared by local volunteers.

County Agent, Lonnie Jenschke, expressed thanks to Lowe's Pay-N-Save in Matador, all the volunteers and donors for their continued support and dedication to the Motley County Junior Livestock Show.

There will be a concession stand open throughout the Stock Show.

Donations of \$1.00 are being accepted for a \$500.00 gift certificate from Thacker Jewelry in Roaring Springs. Anyone interested in the gift certificates may contact a Motley County 4-H or FFA member and/or a director of the Motley County Junior

Livestock Show Association. Anyone interested in making donations to the Motley County Junior Livestock Show Association should contact one of the directors of the Motley County

Extension office by calling (806) 347-2733. Directors for this year's show are Craig Turner, Bruce Lefevre, Tommy Gleghorn, J.D. Russell, Mark Seigler and David Stafford.

Everyone is invited to attend the Show and Youth Premium Auction to help support the youth of Motley County.

Library program prompts donation of Goodnight chair to Museum

When Carolyn Ewing read in the *Tribune* that Molly Goodnight would be the focus of a program at the county library on March 5, she was reminded of the Goodnight connection to her family's wicker rocker and couch.

The antique wicker set came from the Charlie Goodnight suite at the Claude Hotel, and, according to tradition, was used by the Goodnight family when in town for business or social reasons.

Charlie Goodnight is remembered as the first rancher of the Panhandle, and his name is found on many early deeds of Motley County holdings. But, it is Mollie Goodnight who is remembered as "Darling of the Open Range" for her kindness to lonely cowboys who worked for them on the JA's, the F Ranch, and the T Anchor. She patched, sewed, doctored, and endured a solitude that was often broken only by three chickens she befriended.

Because she experienced the constant wind, the dangers of Indian raids, the threat of buffalo stampedes, and the constant threat of rattlesnakes and other varmints, she probably looked forward to their visits to the county seat of Armstrong county and their stays in The Goodnight Suite at the hotel.

The old wicker rocking chair will become a prop when Lorealee Cooley presents Mollie's story at the library next Sunday afternoon. After the program the furniture with the interesting past will be presented to the Motley County Museum by Mrs. Ewing.

Carolyn related that in 1966 the family lived in Claude where Don was coach at Claude High School. At that time the old hotel was being turned into a youth center to give the kids something to do in the small Panhandle town.

"The new owners of the hotel al-



Carolyn Ewing sits in an antique wicker chair, once belonging to Charles Goodnight. Mrs. Ewing is donating the chair to the Motley County Museum.

lowed the furnishings to be auctioned off as a fund raiser for the youth center. The wicker rocking chair that Colonel Goodnight had used was a selling point, and the price quickly went up out of our reach. So Don and I quit the auction and took home the couch we had purchased for \$50," Carolyn said.

It wasn't long before a knock on their door came. Coach Ewing's students had taken up a collection and purchased the rocker to go with the couch as a gesture of their esteem for the coach. From that time until their

kids took the furniture off to college and back, the wicker set has been part of the family.

Now it will serve the museum as a constant reminder of the crusty old Colonel and his compassionate wife.

Come to the library and museum's program on Sunday, March 5, 2-3:30, and hear Lorealee Cooley tell more about the fascinating Mollie Goodnight in "My Molly." Music will be provided by Cowboy guitarist Don Minkley. Also joining the pair will be the script writer, Montie Goodin, who just happens to be the daughter of the Goodnight's foster son.

Comptroller Rylander delivers February sales tax rebates Motley County totals down

(AUSTIN) -- Texas Comptroller Carole Keeton Rylander delivered last week \$316.7 million in monthly sales tax payments to 1,105 Texas cities and 119 counties, a 0.4 percent decrease compared to the \$318.2 million allocated to cities and counties in February 1999. So far this year, sales tax rebates to cities and counties are up 6.6 percent compared to the first two months of 1999.

"The new year is off to a good start, as Texas' steady economic growth generates new jobs, high consumer confidence, and strong retail sales," Comptroller Rylander said.

This month's payments to cities and counties include sales taxes collected by monthly filers in December, and reported to the Comptroller in January, plus quarterly returns for sales in October, November, and December, and returns from annual filers for the entire year of 1999.

Rylander delivered monthly

sales tax rebates totaling \$293.6 million to Texas cities, virtually identical to last February's payments. Rebates of \$23 million to Texas counties are down 6.2 percent compared to those paid in February 1999.

Matador, with a current rate of 1.000%, received a net payment this period of \$3,253.66, compared to \$4,280.87 last year, a -23.99% change. 2000 payments to date are \$4,975.04, compared to 1999 payments of \$5,311.90 at this time, a -6.34% change.

Roaring Springs, also with a 1.000% current rate, received \$304.34, compared to \$2,471.74 last year, a -87.68% change. 2000 payments to date are \$1,137.18, compared to 1999 payments of \$2,956.58, a -61.53% change.

The Comptroller's next sales tax allocation is scheduled to be delivered on Friday, March 10, 2000.

continued on page 5



She was a tiny little lady, probably about 90 pounds, if that. She was the fifth child in a family of 10 siblings, so I guess you could say she was truly the middle child. She endured a hard life, suffered her share of heartaches and hard times. She was a quiet woman, didn't get involved with community activities, didn't mingle with the coffee crowd, but remained close to home near her family and her small circle of friends.

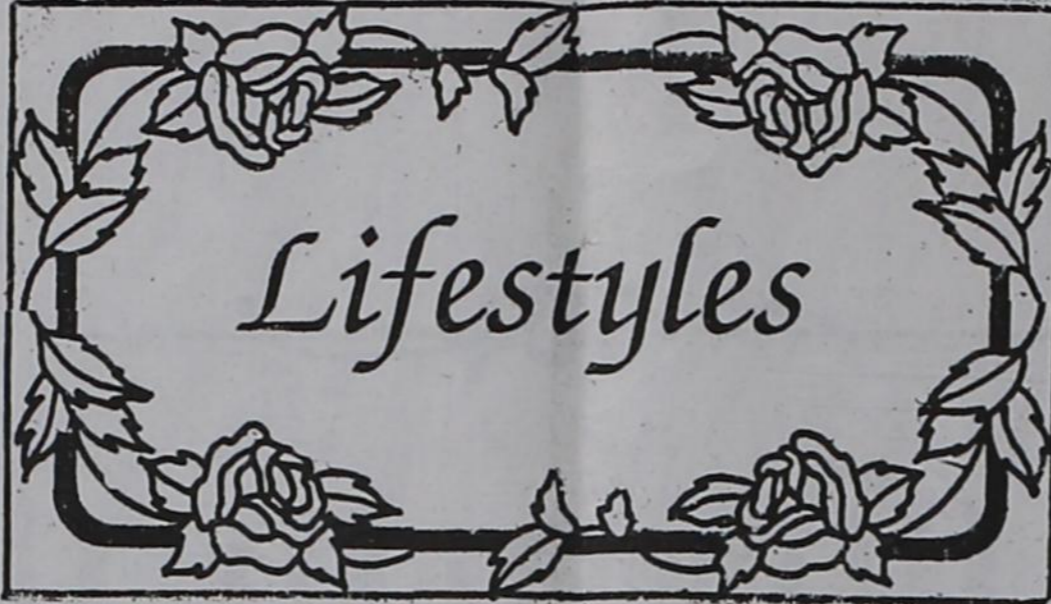
As we look over old family pictures, you could always spot her - the little one with the big eyes. She still had those big blue eyes, which were clear and strong, and shined against the backdrop of her porcelain skin and black hair.

She was my aunt, my daddy's little sister, and only 58 years old when she lost her battle to cancer Monday evening. During the short time of her knowledge of that terrible illness, her hope never wavered. She never felt defeated and made known her faith that she would kick that sickness. She really thought she was going to be okay. And I guess, be-

cause she did, we, her family, believed that also. The illness took every ounce of her energy and strength very fast, and she became so tired. Her little, frail body just couldn't take the dramatic toll it took on her system. She was so tired.

My little aunt had a big heart. She was a wife and the mother of five children, losing one little daughter after only two days of life. She was the grandmother of five, a sister to eight remaining siblings, and an aunt to so many nieces and nephews that we just can't count them all.

As we say our good-byes to my little aunt this week, her memory will remain in our hearts. She will forever be a stability in the hearts of her children and grandchildren. And I know they will always remember the love she gave them and the smile in her big eyes. My prayer is that God will touch the hearts of her husband, children and her grandchildren and comfort them at the loss of this precious one. And I know God will comfort all of her family as we remember our tiny little aunt, with the big blue eyes.



Judge Price speaks to Predicta Study Club

by L.V. Damron

Predicta Study Club of Roaring Springs met Thursday evening, Feb. 17, with Motley County Judge Laverna Price as guest speaker. Mrs. Price is the first woman judge in the history of Motley County. She presented a very interesting history of the judges who have served in this capacity for Motley County since its organization.

In the early days of Motley County history, A.B. Cooper was a pioneer merchant of Tee Pee City. He was also Postmaster and the first Commissioner of Precinct 3. He established the first homestead in Motley County, served as Clerk for early day courts in Motley County, as well as Crosby, Garza, Foard and Baylor counties.

This first Motley County Judge was H.H. Campbell who served from 1891 to 1895. The second judge was W.B. Gilpin, serving from 1895 to 1897. Judge Price indicated that the records did not show who served as judge for the period 1898 through 1900.

T.T. Bouldin served from 1901 to 1909. While he was in office he accomplished the building of a new courthouse, improved roads and bridges, improved the county schools, raised teaching standards and equalized taxes. From 1909 to 1911 Horace Thomas served as Motley County Judge, W.T. Patton was Judge from 1911 to 1913, followed by C.B. Whitten in 1913 to 1917. A.B. Crane was elected for the 1917-1919 term but resigned to serve in military service during World War I. J.B. Foster was appointed to serve out his term and served through 1920.

C.L. Glenn was County Judge from 1921 through 1927 and was remembered by many accomplishments, i.e. road building, being director of National Highway Organization, getting the Lee Highway through Matador, promoting tax adjustment, employing the first Motley County Agricultural Agent and Home Demonstration Agent and improving schools.

J.F. Jordon served as judge from 1927 through 1934, when W.R. Cammack was elected and served from 1931 through 1949, the longest term served by any Motley County Judge - 18 years. He died in January, 1949. C.W. Giesecke served as judge from 1949 to 1953 when Vance H. Gilbreath was elected and served from 1953 to 1959. Elbert Reeves

served from 1959 to 1966, and Forest Campbell from 1967 to 1978.

Billy J. Whitaker was Motley County Judge from 1979 through 1990 when Boyce Hart was elected. He served from 1991 through March 31, 1993, at which time he resigned. Laverna M. Price was appointed judge May 23, 1993. Her present term of office expires December 31, 2002.

Judge Price discussed some of the complex issues that she encounters in her work. She said she would never forget her first hearing. She took office on Monday morning and the hearing was scheduled for Friday. She managed to make it through that first one and has not had any trouble since. She appreciates the help and support she receives from everyone.

She stated that the duties of Motley County are numerous and varied. They include criminal matters, Juvenile Court, including misdemeanor and felony matters, mental health cases, probate court and civil cases. The administrative duties and responsibilities are many, including all elections, many financial matters such as preparing the yearly budget, approving disbursement of funds, etc. Other duties include presiding officer of Commissioners' Court and Judge of the County Court. Judge Price also serves on the 110th District Juvenile Board and Caprock Community Action Board.

Following the program delicious refreshments were served by the hostesses, Grace Zabielski and Odessa Mullins, to guest Laverna Price, Club President LaVoe Thacker, Ossia Lee Brown, L.V. Damron, Callie Giesecke, Nona Long, Lula Swim, and Pam Thacker.

Following the social time together a short business meeting was held. Devotional was read by President Thacker entitled "Do Not Blame The Children." The Nominations Committee gave their report nominating the following as officers for the 2000-2002 year: President, LaVoe Thacker; Vice President, Odessa Mullins; Recording Secretary, Pam Thacker; Corresponding Secretary, Callie Giesecke; and Treasurer, L.V. Damron. Members discussed participation in an accelerated reading program involving Kindergarten through 6th grade students. A discussion followed regarding new membership. The Spring Convention to be held March 15, 2000 was also discussed.



Kobbi Risser and Brian Blair

Engagement Announced

Fred and Elaine Risser of Matador announce the engagement of their daughter, Kobbi Kai, to Brian Eugene Blair, son of Larry Blair of Latrobe, PA and Donna Graham of Liberty City.

The couple plans to marry May 20 at University Baptist Church in Arlington.

The bride-elect, a graduate of Motley County High School, South Plains College and University of Texas at Arlington, is a free-lance photographer for the Fort Worth Star-Telegram.

The future bridegroom, a graduate of Sabine High School and Kilgore College also attended University of Texas at Arlington, and is a store manager for Warehouse Music.

Jewel Landrum celebrates 94th birthday



Mrs. Netta J. Landrum with her birthday cake at her 94th birthday celebration.

Mrs. Netta Jewell Landrum was honored Saturday, February 12, with a celebration of her 94th birthday hosted by her children and grandchildren. She has been a resident of Matador since 1962.

In attendance were her children, Sidney Landrum of Matador; John and Mary Landrum of Red Oak; Bert and Terry Landrum of Wichita Falls; and Pat Landrum of Odessa.

Grandchildren present were George Landrum of Mabank; John Landrum, Jr. and John III of Mabank; Greg Landrum, Greg Jr., Christina, and Misty of Mabank; Leslie and Mark Jacobs, Mark Jr. and Lacey of Red Oak; Netta and Mitch Hurt, Tamara, Alisha and Andrew of Mabank; Fran and Charles Usery and Rachel of Mabank; Matthew and Joy Usery of Mabank; Robert Landrum, Tasha and Bobby of Odessa; Mark Landrum, Mark Jr.,

Tanner, and James Wright of Odessa; Kyle Fowler of Odessa; Michelle and Tim Brown, Brandon Landrum and Braydan Brown of Odessa; and Charles Florey of Matador.

Other family members attending were Jim Jackson of Amarillo; Johnny Jackson and son of Amarillo; Jimmi Jo and Al Rodriguez of Amarillo; Johnny and Evelyn Jackson of Matador; John and Jill Jackson of Wichita Falls; Kelly and Wilberta Jackson of Levelland; Kevin and Tracey Colburn of Ropesville; Roger Evans of Matador; and Roger Florey; of Matador. Also joining the festivities were many friends from Matador as well as other areas.

Mrs. Landrum is the proud grandmother of 25 grandchildren, 35 great-grandchildren, and 3 great-great-grandchildren, the most recent is Lane Allen, born to Charles Usery Jr. and Audrey on February 15.

Cobey Turner named to Tarleton's distinguished list

Cobey Turner has been named to Tarleton State University's Distinguished List for the Fall 1999 semester.

Students listed on the Distinguished list include freshman and sophomore students who have a minimum GPR of 3.25 with no grade

lower than C, and juniors and seniors who have a minimum GPR of 3.50 with no grade lower than C and are in good standing.

Cobey, a 1998 graduate of Motley County High School, is the son of Johnny and Carol Ann Turner of Flomot.

Vote for
FRED PARSON
Matador City Council
May 6 Election
Your Vote and Support Appreciated!

Pol. Ad Paid For By Fred Parson

FEATURING

MARY ENGELBREIT

Need the perfect gift?
 Mary Engelbreit books
 make perfect gifts for
 any age.

Available at
The
Motley County Tribune

"Assemble for Worship?"

A compelling gratitude for salvation provided in Jesus brings God's people together on the Lord's Day for worship. When we assemble together there is encouragement and a building up of the body. Those who embrace the "give me" mentality may have difficulty understanding the real purpose for "assembling ourselves together."

For those who love the Lord, a ball game, a car race, shopping, fishing or golfing cannot compare to worship service. The attitude of being with others "of like precious faith" to worship God is expressed in the beautiful hymn:

"Welcome, delightful morn, thou day of sacred rest,
 I hail thy kind return, Lord make these moments blessed...
 from the low train of mortal toys,
 I soar to reach immortal joys."

In the assembly those in whose hearts the love of God dwells find great joy and fulfillment in worship to God. The strength of faithfulness and the virtue of regularity come together to give purpose and meaning to worship assemblies for God's people.

Roaring Springs
Church of Christ
 Michael G. Crowley, Sr.
 Radio Programs K-96 FM
 Bible Study - 10 a.m. Worship - 9 a.m.

LIBRARY NOTES
 by
Suzanne Abbott

We appreciate the donation to the Library from Key Vaughn in memory of Margaret Stephens. We also thank Dude Barton for her donations in memory of Margaret Stephens and Ruth Stafford. Thank you, too, to Judy and Butch Renfro for their donations in memory of Margaret Stephens and Boyce Hart. Donations such as these are very helpful to the Library.

A new book in the Library is the newest "cat who" book by Lillian Jackson Braun. This one is **The Cat Who Robbed a Bank**.

Joan Lawrence has presented the Library a list of the Confederate Veterans of Motley County and Dickens County. Joan has put in a great deal of work on this 65 page list and it makes a welcome addition to the Library's genealogical files. The men are listed in alphabetical order. The information included on each one is his birth, death, where buried,

who married, in which company he served and a reference to Texas Pension numbers for the man and/or his widow. For most men, there are remarks such as when they came to Texas, and how they came, for example, "in a wagon."

We thank Joan for her hard work and for donating it to the Library. Joan is also placing a copy in the Museum here in Matador and one in Dickens County.

This coming Sunday, March 5, at 2:30 p.m. everyone is invited to the Library to hear the story of Molly Goodnight. Loreale Cooley of Pampa and Don Minkley of Claude will present "My Molly." The Friends of the Library and the Motley County Historical Museum are sponsoring this event. Refreshments will be served. There is no charge for this program.

Brewster's Cafe

Dumont, Texas - 596-4524

★ **Friday Special** ★
 Chicken Fried Steak, Fries, Gravy, Toast, Salad
 Dessert & Drink
 13 & up, \$7.50; 7-12, \$3.50; 6 & under eat free!

★ **Saturday Special** ★
 FISH FRY, Fries, Coleslaw, Hushpuppies,
 Dessert & Drink
 13 & up, \$8.50; 7-12, \$3.50; 6 & under eat free!

ALL-YOU-CAN-EAT!

Enter the Anti-Aging Program Designed for the Astronauts!

NUTRITIONAL BIOMEDICINE, INC.
 Jan B. Hamilton, Ph.D., R.D./L.D.

Specializing in Early Intervention of Disease States:

Osteoporosis, Diabetes, Mellitus, Cardiovascular Disease
 Eating Disorders, Hypertension, Cancer, Arthritis
 Through • Nutritional Intervention • Preventive Medicine
 Longevity Research
 (806) 296-WELL (9355) 1-888-425-WELL
 (806) 291-WELL (9355)
 e-mail: jhamilton@texasonline.net - web site: www.nutritionalbiomedicine.com
 1000 Jefferson Dr. Plainview, TX 79072

HONOR ROLL

DISTINGUISHED LIST
(all grades 90 or above)

Kindergarten: Christian Brooks, Reagan Elliott, Danielle Gwinn, Keyan Kautz, Pablo Martinez, Braden Mason, Alexis Osborn, Bernardo Santos, Alexandria Mathis.

First Grade: Leanne Jameson, Colby McCleskey, Kyla Simpson, Adriann Walker.

Second Grade: Gavin Luckett, Eric Simpson, Hunter Smith.

Third Grade: Tamra Ashley, Cade Luckett, Laura Martinez.

Fourth Grade: Savannah Rose.

Fifth Grade: None.

Sixth Grade: Ashlee Green.

Seventh Grade: Clay Cooper, Cody Cooper.

Eighth Grade: Dumont Darsey, Susana Mendoza.

Ninth Grade: Clint Cooper, Brenda Gillespie, Chantry Meyer.

Tenth Grade: Kayla Copp.

Eleventh Grade: Brooke Decker, Ashley Stevens.

Twelfth Grade: Llan Barkley, Vanessa Easter, Kember Everett.

Second Grade: Sam Fletcher, Melissa Flores, Andrew Martin, Courtney Moctezuma.

Third Grade: Andrew Davila, Kayla Hollinsworth, Shane Marks, Shane'a Russell, Justin Todd.

Fourth Grade: Magdiel Alvarado, Bradley Brown, Danielle Ho-Gland, Blake McPherson, Malcomb O'Daniel, Mylissa Gilmore, Christina Smith.

Fifth Grade: Fannin Gwinn, Marc Henzler, Cameron Jeffcoat, Angelica Mendoza.

Sixth Grade: Chance Bingham, Matthew Martin, Jose Martinez, Colton Russell, Chris McCarty.

Seventh Grade: Kittie Campbell, Annie Green, Emily Hurt, Veronica Mendoza, John Stevens.

Eighth Grade: Stachia Baxter, Amanda Hurt, Angela Marvel, Mandi Ream, Joel Rieger.

Ninth Grade: Cassie Campbell, Brittany Donaldson, Chasity Holman.

Tenth Grade: Andy Anson, Skylar Clifton, Courtney Hays, Justin Jameson, Shandra Jones, Brandon Moore.

Eleventh Grade: Charity Bartlett, Leigha Burns, Scott Jones, Rachelle Renfro, Benjamin Ridgely, Denise Shannon, LeAnnra Wallace.

Twelfth Grade: Quinn Hays, Kalli Hopper, Dusty Jackson, Andy Jones, Janell Kilmer, Candace Rieger, Ryan Moore, Todd Thomas.

HONOR ROLL
(all grades 80 or above)

Kindergarten: Brett Fletcher, Cody Martin, Mark Quintero, Marti Walker, Garrett Jenschke.

First Grade: Leslie Alvarado, Colton Ashley, Hailey Blanco, Sarah Ferguson, Jay Potts, Dillon Walker.

Motley County School News

What's to Eat?



MONDAY, MARCH 6

Breakfast: Biscuits, Bacon, Eggs, Juice, Milk.
Lunch: Combination Pizza (Pepperoni, Cheese), Garden Salad, Pineapple Chunks, Vanilla Wafers, Milk.

TUESDAY, MARCH 7

Breakfast: Cereal, Blueberry Muffins, Juice, Milk.
Lunch: Nacho Grande, Lettuce, Tomato, Picante Sauce, Ranch Beans, Jello, Fruit, Milk.

WEDNESDAY, MARCH 8

Breakfast: Biscuit, Sausage, Gravy, Juice, Milk.
Lunch: Corn Dogs, Potato Rounds, Pickles, Orange, Candy Treat, Milk.

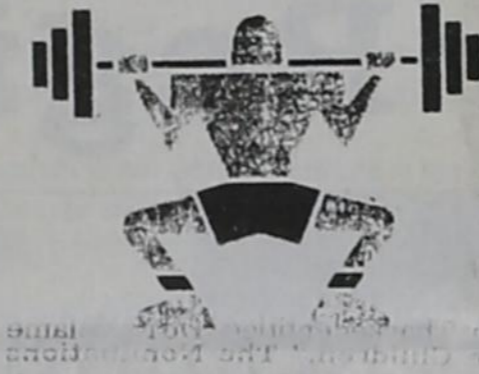
THURSDAY, MARCH 9

Breakfast: Breakfast Pizza, Fruit, Milk.
Lunch: PARENT VISITATION DAY (PK - 6TH) - Chicken Nuggets, Potatoes, Gravy, Tossed Salad, Hot Rolls, Honey, Frozen Yogurt, Milk.

FRIDAY, MARCH 10

Breakfast: Cereal, Buttered Toast, Juice, Milk.
Lunch: PARENT VISITATION DAY (7 - 12) - Submarine Sandwiches, Lettuce, Tomato, Pickle, Potato Chips, Apple Cobbler, Milk.

Congratulations Powerlifters!



WHAT'S HAPPENING



Thursday, March 2: Houston Stock Show.

Friday, March 3: Houston Stock Show.

Jr. High Track at Spur.

Saturday, March 4: Houston Stock Show.

Girls' Regional Powerlifting at Colorado City.

Monday, March 6: Boys' Golf at Memphis.

Census Testing.

Tuesday, March 7: Girls' Golf at Memphis.

Thursday, March 9: Elementary and Jr. High UIL at Silverton.

Board Meeting at 7:30 p.m.

Friday, March 10: Varsity Track at Spur.

Saturday, March 11: Motley County Stock Show.

Boys' Regional Powerlifting at Levelland.

Monday, March 13 - Friday, March 17: SPRING BREAK!

Monday, March 20: Child Nutrition Audit.

Census Testing

One Act Play performance, 7:30 p.m.

Tuesday, March 21: Tennis vs. Paducah, here.

Wednesday, March 22: Blood Drive in Multi-purpose room, 2-6 p.m.

Last day to sign up for school board position.

Thursday, March 23: Zone One Act Play at Paducah.

FFA at Tariaton.

Friday, March 24: Girls' State Powerlifting at Killeen.

Varsity Track at Jayton

Saturday, March 25: Boys' State Powerlifting at Killeen.

Jr. High Track at Quanah

Sunday, March 26: Youth Banquet at First Baptist Church, Matador, 7-12 grade, 12:30 p.m.

Monday, March 27: District One Act Play at Smver

SPORTS



Matadors lose bi-district try

The Motley County Matadors lost their try at the Bi-District title last Tuesday night when they were defeated by the Jayton Jaybirds, 73-61.

Brant Donaldson put in 18 points, followed by Ben Ridgely and Sean Rose with 9 each; Ryan Moore, 7; Clint Cooper, Chris Paul and Casey Lawrence, 6 each.

Donaldson led in rebounds, grabbing 11. Chris Paul had 6; Clint Cooper and Sean Rose, 5 each.

Ridgely had 4 steals and Lawrence had 3. Ridgely and

Donaldson were 75% with freethrows. Cooper was 100% and Ridgely 50%, with fieldgoals

Coach Ridgely stated, "The team would like to thank all our great fans who supported us this year. And a special thanks to Ryan, Sean and Brant. These are three special young men who have shown a lot of class and dignity representing Motley County basketball these last four years. Good luck men. You will be missed and not forgotten."

Powerlifters compete at Colorado City

Ten members of the Motley County Powerlifting team went to Colorado City on Saturday, February 26, to participate in the last regular powerlifting meet of the season. Saturday was the last day that a lifter could qualify for the Regional Powerlifting Meet.

Consequently, each lifter tried to lift more than ever before. Each lifter tried to attain new maximum lifts in each category. Each lifter exhibited tremendous concentration and effort.

The team left at 5:00 a.m. and returned at midnight. This was a very large meet with 68 girls and 135 boys competing. Each Motley County lifter did a good job not only at competing, but also at supporting each other.

Brandon Lee won the first place medal for the 114 pound weight class in the boys' division. Brenda Gillespie was second in the 97 pound weight class and Rabeca Morris was fifth

in the 132 pound weight class. Neither girl received a medal but were recognized at the awards presentation.

Coach Copeland and Coach Bowles accompanied the lifters to Colorado City. They were pleased with the effort of each lifter. They were also pleased with the exhibition of team work by the lifters. Because of the way the meet was divided, the girls were all on one platform and the boys were on the other two platforms. Despite this split and the division of the lifters into flights, everybody at the meet tried to help as much as they could.

Coach Copeland added that almost not all of the lifters will advance to regionals. He feels that each lifter improved throughout the course of the season and that each lifter should be congratulated on their hard work.

The lifting totals for each lifter are listed below.

Name	Wt. Class	Squat	Bench	Deadlift	Total
Brandon Lee	114	225	155	305	685
Tony Salazar	132	230	135	275	640
Bo Long	132	230	135	355	880
Casey Lawrence	132	310	150	310	770
Chooch Meyer	181	350	225	350	925
Brenda Gillespie	97	180	75	205	460
Kember Everett	132	160	85	195	440
Rabeca Morris	132	210	110	235	555
Ashley Stevens	132	220	80	235	535
Courtney Hays	148	175	90	235	500

Tobacco?

American Heart Association
Fighting Heart Disease and Stroke

Don't get me started...

©1997, American Heart Association

Summer Clothes have arrived!

75% off all remaining Winter Items!

Matador New to You 347-2388

ALLSUP'S

Store 242
Hwy. 70 & 62
Matador, TX
806-347-2373

ALLWAYS

LOW PRICES!

6 PACK

\$1.69

3 LITER

\$1.89

CHOCOLATE the WILDER SIDE of MILK

Available At **ALLSUP'S**

1/2 GALLON \$1.99
1 QUART \$1.29
1 PINT 79¢
1/2 PINT 49¢

ALL VARIETIES **FRITOS OR CHEETOS** REG. 75¢ **49¢**

FRITOS **BEAN DIP** 3 OZ. CAN **49¢**

ALL VARIETIES TOM'S **HOT FRIES OR CORN CHIPS** REG. 99¢ **79¢**

BLUE BUNNY ALL AMERICAN **CHILLER OR CRUNCH BARS** **3 \$1** FOR

INTRODUCING

Eight New

COMBO MEALS

Including A Take Home Pack

ALL YOUR FAVORITES PLUS OTHER GREAT COMBINATIONS

PRICES EFFECTIVE FEB. 27-MARCH 11, 2000 WHILE SUPPLIES LAST

Family and Community Education Organization offers source of research

by Mozelle Montano
Extension Agent
Family & Consumer Sciences

New discoveries and changes are plummeting this generation into the new millennium with a sense of anticipation and hope. As a result, many people seek reliable sources of research based information to keep them up to date with trends.

The Texas Agricultural Extension Service, Family & Consumer Science Agents are one of those sources in your area. Our programs strengthen individuals and families by teaching communication skills, methods for coping with life's changes, ways to reduce and manage stress, and practical parenting skills, health and nutrition issues, and by developing creativity and leadership.

We further expand our communication and education outreach by our direct association with many of your local citizens. They serve as volunteers in either the 4-H program or by belonging to Family and Community Education Clubs of Study Groups. Families are changing and

we're changing families with this outreach by the volunteers who participate.

This spring meeting of the Family and Community Education (FCE) organization will be held in Parker County (Weatherford) on Friday, March 3, at the DOSS Center of Weatherford College. The meeting starts at 10:00 a.m. Lunch will be served.

Program speakers include Keitha Story-Stephenson, a motivational speaker on Stress Management, Gwenna Lee Evans and Virginia Helton will present "Who's Character Is It Anyway?"

Family and Community Education organizations are part of a national organization whose purpose is to strengthen family and community life through education, community service, and volunteer development.

For information on being a part of this community service organization, contact your local county extension office, or call Mozelle Montano at the District Extension Office in Vernon at 940-552-9941.

Motley County Tribune announces scholarship

The *Motley County Tribune* and publisher, Carla Meador, are pleased to announce applications are currently being accepted for two \$2,000 scholarships awarded through the West Texas Press Association and Texas Press Association.

The contest is open to applicants in the area served by WTPA member newspapers and whose career goals include working with a community newspaper. Motley County students are eligible to apply for the scholarships through the Motley County Tribune membership in WTPA.

The scholarships are named in honor of the late West Texas publisher Bob Craig of Hamlin, and will be awarded to a graduating high school senior and a college junior or senior pursuing journalism careers. Craig, who died in 1981, was the long-time publisher of the *Hamlin Herald* and member of West Texas Press board of directors. He served 18 years on the board in all capacities, including president in 1967 and secretary/treasurer from 1969.

Each scholarship will be divided into two payments of \$1,000 for two semesters. The winners must be enrolled in at least three hours of college or university journalism courses each semester that the scholarship is awarded.

Each applicant must fill out an application form and write an essay based on the theme "My Future and Career Plans in Community Journalism."

One scholarship will be presented to a graduating high school

senior and the other to a student already attending a college or university as a print journalism or advertising major.

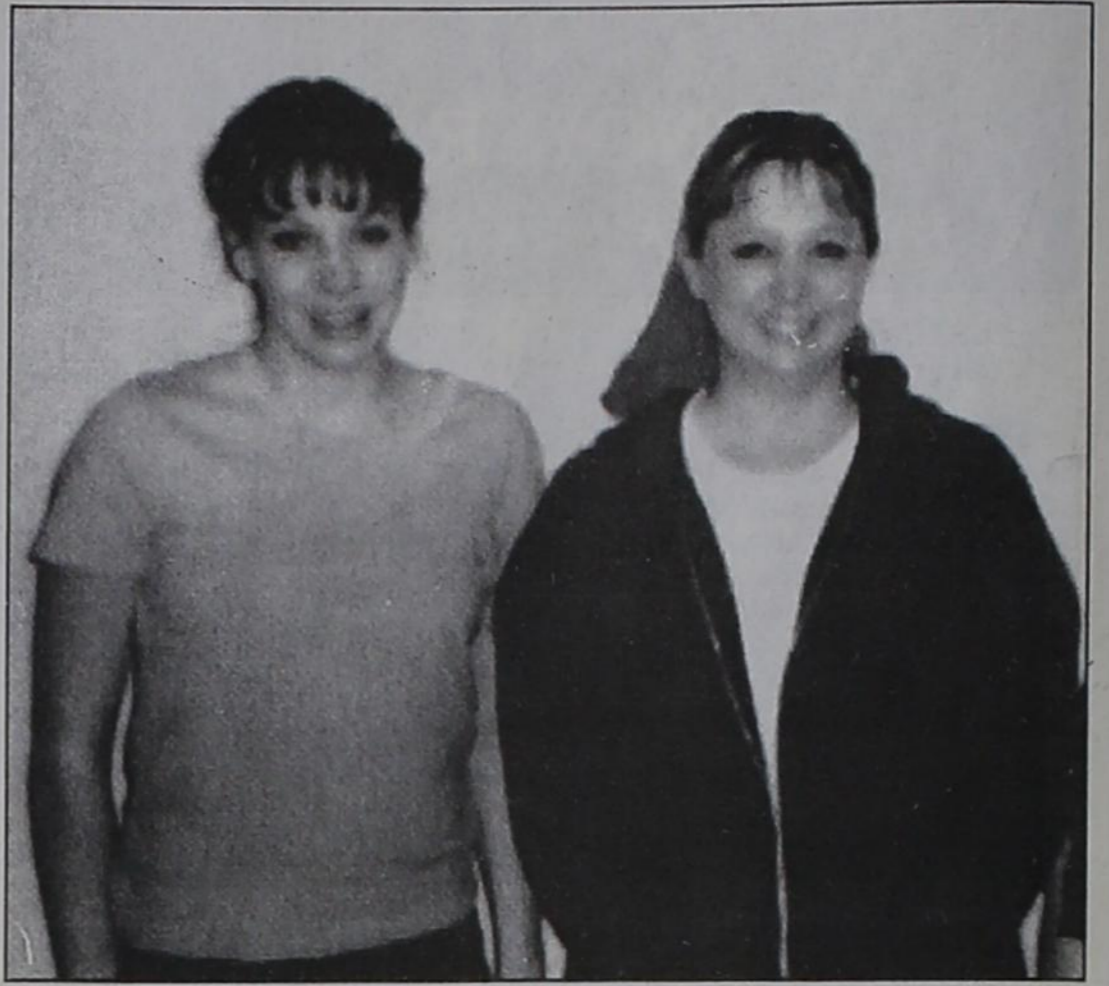
Application forms have been sent to member newspapers and high schools in the areas served by West Texas Press Association members and to college journalism departments. Prospective applicants may secure a form from the high school journalism department or counselor or their local newspaper office. Applicants must be from the area served by the WTPA membership.

Applications and essays should be sent to Mark A. Jordan, WTPA Scholarship Chairman, P.O. Box 149, Decatur, Texas 76234, and be postmarked no later than June 15, 2000.

Brian Brisendine of Brownfield, a journalism major at Texas A&M University at Canyon, was recipient of the \$2,000 scholarship and Mindi Ratliff, a graduating senior at Breckenridge High School, was chosen to receive the other \$2,000 scholarship at the WTPA convention held last July in Abilene.

Winners will be chosen by the West Texas Press Association board of directors and will be announced at the Association's 70th Annual Summer Convention, July 20-22, 2000 at the Inn of the Mountain Gods, Ruidoso, New Mexico.

West Texas Press Association is the world's largest press organization by virtue of the vast geographic area it encompasses throughout West Texas and Eastern New Mexico.



MOTHER AND DAUGHTER OF THE YEAR — Tammy Palmer, right, and daughter, Miranda, were named Mother and Daughter of the Year at the annual Mother-Daughter Banquet held Monday night. Miranda is a Senior at Motley County High School.

Re-elect
John M. "Sonny" Russell
Commissioner, Precinct I
Your Support & Vote Appreciated

Pol. Ad Paid for by John M. Russell

Vote for
FRANKLIN JAMESON
Commissioner, Precinct III
Your Vote & Support Appreciated!

Pol. Ad Paid for by Franklin Jameson

Good Luck at Regional!

Brenda Gillespie

Rabeca Morris

Ashley Stevens

Girls' Regional Powerlifting Meet Saturday, Mar. 4 at Colorado City

Gillespie Communications

Rose Garden Floral

Pay-N-Save Grocery

Matador Variety

The Windmill

Ag Credit of Texas, PCA

New To You

Meredith Construction Gas & Supply

Matador Motor & Implement

Cap Rock Telephone

Kathy's

First State Bank

CSR PolyPipe

Flomot Gin

Motley County Tribune

Alexander Fuel

Feed Trough Steakhouse

Thacker Jewelry

Thacker Supply

Nelda Laney accepts \$25,000 donation for Capitol art collection

(AUSTIN) -- Nelda Laney, the wife of House Speaker Pete Laney, announced today that Union Pacific Railroad Co. has donated \$25,000 to the Texas Capitol Historical Art Collection project.

Mrs. Laney accepted the donation from the Union Pacific Foundation on behalf of the Historic Art Committee of the State Preservation Board, which is overseeing a campaign to acquire at least 30 paintings and raise funds for the preservation and enhancement of the art collection.

The project's goal is to increase the size of the Capitol's existing art

collection, which currently has about 250 paintings, mostly portraiture.

The committee is expanding the collection by acquiring early Texas paintings that reflect the rich, broad and diverse artistic talents of artists prior to 1920.

To date, the Art Committee has raised more than \$465,000 and received direct donations of several paintings, increasing the Texas Capitol Historical Art Collection by 24 paintings.

"Paintings from the restoration period will add to the rich historical legacy of art that is already on display and enhance the viewing experience of the more than 1 million people who visit the Texas Capitol Complex each year," Mrs. Laney said. "We deeply appreciate Union Pacific's contribution to this cause."

The \$25,000 donation is part of just over \$1 million in grants that the Union Pacific Foundation will distribute to 94 nonprofit organizations in Texas this year.

"Union Pacific Foundation is very pleased to be in partnership with the Texas Capitol Historical Art Collection project," said UP spokesman Ron Olson. "It has been a real pleasure working with the members of the State Preservation Board in preserving Texas' heritage."

WTU announces changes in operations

Abilene, Texas -- West Texas Utilities Company is announcing operational changes to position the company for the start of retail competition in Texas.

"We will be discontinuing our merchandise program by the end of September," said WTU President and General Manager Paul Brower. "Additionally, our area offices will be used more exclusively for operational purposes."

Brower said that after September, WTU local offices will no longer provide traditional customer transactions, including bill payments. He noted that customers will continue to have company access through its Customer Service Center, which provides service 24-hours a day, 7 days a week via a toll-free telephone number.

"A changing business environment and changing customer needs are reshaping our business," Brower said. "WTU will continue to work in partnership with communities through its economic development activities, volunteerism, contributions and customer service. The company is following an industry trend in making use of new technologies to provide more options in customer service."

Brower said that to promote fair competition, utilities must separate their operations. This requires a re-evaluation of the services offered by WTU. As a result, WTU's merchandise program no longer fits with its business priorities.

He added that now WTU customers have more options in paying their bills, including:

- Mail
 - Automatic bank drafting using the Direct Advantage Plan
 - The Internet (www.csw.com), which provides a full range of customer services, including bill payment, connect/disconnect requests and program information.
 - Pay Stations in many communities
 - Credit card or ATM card via the telephone using the ChoicePay Plan.
- "If you have a question regarding bill payment or want to know the location of the nearest pay station, you should contact our toll-free Customer Service Center at 1-888-216-3490," said Brower. "There are many changes on the horizon that will give customers choices in how they conduct business with us. The one thing that will never change is our commitment to customer service."

CAPITOL COMMENT



U.S. SENATOR
KAY BAILEY HUTCHISON

TEXANS ENDORSE NATIONAL MISSILE DEFENSE

In December and January, this column included a list of questions seeking readers' opinions about issues currently in the forefront of public debate. As has been the case in previous years, your answers were very informative, and I would like to thank this newspaper for allowing me to communicate with you this way.

Over the next several weeks this column will address the responses you provided, beginning with the column regarding our national security and foreign policy.

The first question asked about your opinion on the need to proceed with the development and construction of a missile defense system capable of shooting down enemy ballistic missiles. By a significant majority, 73 percent, Texans said it is very important that we build such a system. You also said you would not feel differently about building a missile defense system if it means withdrawing from the decades-old Anti Ballistic Missile Treaty (ABM) that restricts us from building such a system. Here are some of your comments on this issue:

From Levelland -- "That China and countries such as Iran, Libya and Russia have missiles is a great threat to U.S. national security."

Magnolia -- "Our security problems have worsened with the current administration's transfer of nuclear technology and missile guidance systems to avowed enemies such as China."

Carrizo Springs -- "There is no doubt in my mind that we need a missile defense system and the sooner the better. It should be at the top of the list."

Kirbyville -- "A missile defense system should be a major part of a greater effort to rebuild our national defenses after Clinton leaves the White House. We have been left vulnerable and the next administration will have to fix that."

La Marque -- "It seems to me we have no alternative but to take steps to defend ourselves against missile attack."

Adkins -- "Communism is not dead. There are at least a half-dozen countries, maybe more, that hate America and that have or will have the bomb, and are dumb enough to use it."

Hondo -- "Once we get a missile defense, we need to figure out how to defend ourselves against international terrorism, or at least a way to keep terrorists out of our country."

Dripping Springs -- "It is most important for us to precede with building a missile defense system and with funding other new technology for our Army, Navy and Air Force."

Orange -- "Our best missile defense system is for other countries to know that if they attack the United States, they will be destroyed by all means at hand."

Texas City -- "Build a missile defense. We must not let ourselves believe that there is nothing out in the world that can harm us. Just because the Cold War is over does not mean we should let down our guard."

Lampasas -- "Thumbs down on the ABM Treaty. It has outlived its purpose."

Seguin -- "The ABM Treaty is out of date, and it seriously affects our national security."

Congress realizes the gravity of this situation and is pursuing the creation of a missile defense. After many years of trying, Congress has finally forced the administration to move forward with developing this technology. There will be successes and failures along the way as we test and perfect it, but a missile defense for America is no longer a question of whether but when. The answer: The sooner the better.

Traffic sign vandalism increasing



This STOP sign is an example of the vandalism that cost taxpayers thousands of dollars and endangers the lives of the traveling public of Texas.

Childress -- Texas Department of Transportation (TxDOT) has noted an increase in traffic sign theft and vandalism in Childress District's 13 counties. Although the signs are quickly replaced when stolen or vandalized, it becomes a safety concern. Carolyn Carrick, District Safety Officer, reports that, "Missing signs can endanger travelers. The vandalizing of certain signs can risk a person's safety."

The costs associated with this crime are high. Damaged signs pose a danger to the traveling public, and the funds spent to replace them could be spent elsewhere. Taxpayers in the Childress District TxDOT spent more than \$28,000 last year to replace stolen and vandalized signs along state roadways. Statewide, taxpayers spent more than \$8 million replacing signs damaged by natural disasters, accidents, and vandals. Wood and metal signs cost approximately \$10 per square foot to produce. The costs to install replacement signs vary depending on the amount of time and equipment needed.

The cost can get much higher. People are reminded that in Texas it is against the law to possess a sign without a permit, and the state does not sell signs or issue permits to possess them. In addition, if the loss to TxDOT is more than \$1,500 the person or persons responsible can be charged with a felony offense.

Motorists are encouraged to write down the license plate number and contact their local law enforcement official if they see anyone tampering with a traffic sign.

Sports Ambassador Program

from page 1

25 at the Recreation and Convocation Center on the campus of St. Edward's University in Austin.

Sean is the son of Tony and Sherry Rose of Matador. He is the grandson of Doyle and Carolyn Rose of Matador and Joe and Joyce Meredith of Roaring Springs.

Re-Elect Elaine Hart
Motley County Tax Assessor/Collector
Your Support is Appreciated!

Pol. Ad Paid for by Elaine Hart

Savin' O' The Green SALE

2000 Tahoe - Limited Edition
 Stock #3047, Black w/ Gray Leather Smartbuy-36@\$412.69, 1@22130.56, WAC Interest Rate 10.6%, 12,000 miles per year; or with \$2,000 down or Trade Equity, 36@\$345.91, 1@22130.56

\$34,579
 - 3,579 discount
 - 2,500 rebate
\$28,500 Sale Price

All New!
2000 Suburban LS
 Stock #3237, 2 wheel drive, Light Pewter w/ Gray Cloth, Power Seats, Running Boards, Tow & Convenience Package, Premium Ride Suspension

\$36,142
 - 3,217 discount
\$32,925 Sale Price

1/2 Ton Short Bed Ext. Cab
 Stock #3153, White w/ Tan Cloth, Silverado, 4800 V/8, Auto, 3 dr. Smartbuy-WAC 9.25%, 35@325.56, 1@15223.04, 12,000 miles yearly; or \$2,000 down or Trade Equity, 35@260.14, 1@15223.04

\$23,786
 - 2,286 discount
\$21,500 Sale Price

Used Vehicles

'97 Chevy 3/4 Ton Ext. Cab, one owner, 350 Auto, Silverado, 44,000 miles.....	\$17,950
'98 Chevy Blazer LS, 4 dr., factory warranty, one owner, 31,000 miles.....	\$15,900
'97 Chevy 3/4 Ton Reg. Cab, 2 wheel drive, 350 Auto, AC, 53,000 miles.....	\$12,900
'99 Z71 Ext. Cab 4x4, 3 dr., factory warranty, 327 V/8 Auto, 21,000 miles.....	\$22,950
'97 Camaro Convertible, white w/ tan top, V/6 Auto, PW&PL, extra clean.....	\$12,500
'99 Olds Intrigue, 4 dr., factory warranty, "GM Satisfaction Plus Used Car".....	\$14,700
'96 Chevrolet Caprice, 4 dr., like new, one owner, 13,000 miles.....	\$12,500
'97 Ford Expedition, Eddie Bauer Pkg., one owner, 3 seats.....	\$20,500
'98 Chevrolet Short Wide-Bed Pickup, darkblue, 350 Auto, AC, leather.....	\$ 9,250
'95 Chevy 1/2 Ton Reg. Cab 4x4, 350 Auto, one owner, 52,000 miles.....	\$10,900
'97 Chevy 1/2 Ton Ext. Cab, short bed, one owner, nice.....	\$14,250
'97 Chevy Suburban, demo, 2 wheel drive, LT pkg., beige w/ tan leather.....	\$22,900
'94 Buick Skylark, 4 dr.....	\$ 4,750
'90 Ford 1 Ton w/ Fiat Bed, 4x4, Reg. Cab.....	\$ 4,500
'98 Chevy Short Wide-Bed, V/6 Auto, A/C, tilt & cruise, one owner.....	\$12,900
'96 Chevy Short Bed Ext. Cab, V/6 Auto, one owner.....	\$ 9,750
'98 3/4 Ton Reg. Cab 4x4 Pickup, 350, 5 speed, new tires, one owner.....	\$15,500
'99 Chevy Venture Van, 4 dr., Red w/ Gray Cloth, factory warranty.....	\$17,600

All New!
2000 Tahoe LS, 4 door
 Stock #3240, Red w/ Charcoal 2 tone, Gray Cloth, 3rd Seat Option, Power Seats, Bucket Front Seats, Rear Seat Audio

\$33,918
 - 2,918 discount
\$31,000 Sale Price

2000 Short, Wide-Bed Pickup
 Stock #3176, Indigo Blue w/ Oak Cloth, V/6 Auto, A/C, Cassette Smartbuy-WAC 8.75%, 35@251.36, 1@12028.00, 12,000 miles yearly; or \$2,000 down or Trade Equity, 35@186.14, 1@12028.00

\$18,400
 - 1,400 discount
\$17,000 Sale Price

3/4 Ton Ext. Cab 4x4 Long Bed
 Stock #3238, 350 Auto, Tilt Wheel & Cruise, Cassette, A/C, Positrac

\$27,435
 - 2,535 discount
\$24,900 Sale Price

"Some rebates apply, be sure to ask"

We have 65 new units in stock & 40 more in production!

Hard to Find! We have 8 of these in different colors!

If we don't have what you want, we will try to locate it; however, there are a few models that are hard to find.

ELECT CARTER LUCKETT
County Commissioner Precinct III

Early Voting, Feb. 28 - Mar. 10

Thank you for your Support.
Your Vote and Influence are greatly appreciated

Democratic Primary March 14th

Pol. Ad Paid for by friends of Carter Lockett

New Shipment of Spring Flowers
25% off



All Baskets, Grapevine Wreaths, paper craft boxes
25% off

Matador Variety

Need a gift that keeps on giving every week?

How about a subscription to the Motley County Tribune

Only \$20 per year
 Receive a \$1.00 discount if over 60

Thank you for reading The Motley County Tribune

Robert Hall

Chevrolet/Oldsmobile

501 N. Main St. Jayton, Texas (806) 237-2182 www.roberthall.com

News around the County

Roaring Springs News

by Odessa Mullins

Those enjoying coffee and hummingbird cake in the home of Lula Swim on Monday, Feb. 28 were Buzz and LaVoe Thacker, Mr. Jeff Thacker, Mrs. Mary Lumsden, Mrs. Billie Clifton, Mrs. Jeanne Adams, Mrs. Grace Zabielski, Mrs. Lea Peacock, Mrs. Venita Sedgwick, Mrs. Callie Giesecke, Mrs. Pearl Patten, Mrs. Rita Groves and the hostess, Lula Swim.

Visitors attending services at the Roaring Springs Methodist Church Sunday morning were Mr. and Mrs. Gale Stafford, Mr. and Mrs. Charlie Johnson, Mr. and Mrs. Gerald Pipkin, and Cynthia Stafford's aunt, Martha, Cynthia Stafford gave a report on her trip to Russia.

Mr. and Mrs. Bernie Alsup of Roby visited Odessa Mullins Thursday. They enjoyed lunch at LaNita's Cafe. Bernie was working on genealogy and needed some information on our grandparents.

Mr. and Mrs. Tommy Largent of Lubbock visited his mother, Mrs. Mary Lumsden, on Thursday.

Kenneth Ashley left Wednesday morning for California to spend a month visiting his children and grandchildren and other family and friends.

Mary Lumsden, Pearl Patten and Zella Palmer shopped in Plainview Monday.

Pearl Patten was in Pampa from Wednesday until Friday to take care of a grandson while his dad, Buddy Allen, was out of town on business.

Vera Mitchell, Pearl Patten, and Willeta Burkes of Afton went to Midland Saturday to attend the wedding of Clell McCauley, great-grandson of Mrs. Mitchell, grandson of Mrs. Patten, and nephew of Mrs. Burkes. They returned home Sunday afternoon.

Mrs. Juanita Cooper of Matador and Miss Lula Swim left on Friday morning for Whitesboro where they had lunch with Mr. and Mrs. Sonny Harris and Mrs. Opal Baum. They then went on to McKinney to visit a cousin of Lula's, Bob and Wilma Alderson. Bob's sister, Mrs. Mary McCallom and husband of Bella Vista, Ark., Mr. and Mrs. John Everett of St. Louis and Mrs. Elmire Haile of Bella Vista, Ark., also visited. A sister of Bob's, Ruby Miller of Celeste, another sister, Chris McCallom and husband of Farmersville, another sister, Lula Mae Wheeler of Plano, sister Emma Harris and daughter Brenda of Cleburne and some friends from McKinney also visited with the group. On Monday, Juanita and Lula had lunch with J.R. Swim.

Neighborhood News

by Rita Groves

THINGS TO KEEP IN MIND
Senior Citizens pot-luck First Thursday - TODAY - noon!

VOLUNTEERS meet Second Tuesday evening, 7:30 p.m., at the Community Center.

A **WONDERFUL** free program at the Library, 2:30 Sunday, March 5.

Watch for a notice of Men's First Saturday Breakfast.

We're sorry not to have gotten to this inquiry which has been on the desk for sometime. Faye Hall who lives near Austin, Texas, is the wife of Toots Hall, a son of the former Callie Clifton. There are two unmarked graves in the Roaring Springs Cemetery where Irvin and Callie are buried. Does anyone know whether one is the grave of the Grandmother Charlotte Hall?

If so, will you please call Faye Hall at (512) 756-9271. She would like to place a marker at Charlotte Hall's grave.

Have you heard the ABC's for living well?

"ACT assertively, BE brave, CLEAR clutter, DELIGHT in daisies, EXPLORE everything, FEED Friendship, GROW gracefully, HARVEST happiness, INVEST in ice cream, JUMP for joy, KEEP kissing, LAUGH lots, MAKE miracles, NURTURE nature, OPT for optimism, PRAISE people, QUIT quibbling, RELAX regularly, SEEK simplicity, TAKE time, USE an umbrella, VALUE veggies, WELCOME wisdom, XCEED xpectations, Yell YES, ZZZZZ's get plenty of it!"

This is on a birthday card hung by my easy chair almost a year ago, and I read it when in need of a lift out of that chair!

Flomot News

by Earlyne Jameson

CPR SCHOOL

Despite the storm alerts issued for Flomot Thursday night, Feb. 24, sixteen attended the CPR Training Session held at the Community Center in Flomot. Paramedic, Paul Moore of Floydada conducted the classes.

Mrs. Sandra Barclay, EMT, who makes the arrangements for these classes, stressed how important it is to be able to give emergency live saving treatment before an ambulance is able to arrive in the rural area.

She expressed her appreciation to Ruth and Orville Lee for their donation to help with the purchase of face masks for Flomot CPR members. They are needed to protect an individual when performing CPR procedures.

ATTEND REGIONAL BASKETBALL GAMES

Mr. and Mrs. Wilburn Martin were guests Friday and Saturday in Anson of Mr. and Mrs. J.C. Moss and Mrs. LaRay Gilbert. They attended the Regional Girls Basketball games held in Abilene at McMurry University and Abilene Christian University during the weekend.

They visited at the games with the Martin's grandson, Cole Martin, a student at A&M University at College Station and Mr. and Mrs. M.C. Jones of Santa Anna.

BIRTHDAY CELEBRATION

Arnold and Carolyn Johnson, and his brother and wife, Rex and Dorothy Johnson of Silverton, and his sister, Mrs. Mary Johnson Scott of Amarillo, celebrated the birthday of their uncle, Bob True of Amarillo, Saturday, Feb. 26. They honored Mr. True with a luncheon and all the trimmings at the Legend's Steakhouse in Amarillo.

Mrs. Janice Hughes visited last Sunday in Lubbock with her father, Clyde Rogers and his sister, Mrs. Marsha Blake.

Brenda and Darrell Cruse enjoyed the boys basketball game, Motley County vs. Jayton in Idalou Tuesday night. They visited overnight in Lubbock with children, Leah and Keane Cruse, as Darrell had an optical appointment in Lubbock Wednesday morning.

Mr. and Mrs. Lee J. Browning, Chasity, Malcomb and Jessica visited in Childress, Sunday with her mother, Mrs. Virgie O'Daniel.

Mr. and Mrs. Orville Lee visited in Amarillo, Sunday with daughter and family, Teresa and Lewis Willey, Kellan, Kacee and Micah. Kellan, Kacee and friend, Coby, returned home with them to visit.

Seab Washington accompanied his mother, Mrs. Edith Washington, to Lockney, Wednesday for a medical appointment.

Mr. and Mrs. Tom Ross were in Plainview, Saturday attending to business.

Emily Milam of Petersburg visited overnight Friday with her grandparents, Kathy and Clois Shorter. Saturday, Kathy, Emily and Mrs. Geneva Martin attended the Gem Show held at the Ollie Liner Center in Plainview. Emily's mother, Mrs. Christi Milam met them there for the Show, and Emily returned to Petersburg with her.

Mr. and Mrs. Jack Starkey visited Thursday and Friday in Fritch with Mrs. Jackie Lynn Davis and Michael. They were luncheon guests Thursday of Mrs. Velma Moon. Other guests were Mr. and Mrs. Jack Moon, Mrs. Cindy Moon and daughter, Sarah.

Mandy, Ashton and Lane Barclay of Borger and Sherryll and Kayla Barclay of Lubbock visited the weekend with Mr. and Mrs. Jerry Barclay.

Mrs. Ersie VanCleve of Dougherty is visiting this week with her mother, Mrs. C.W. Starkey.

Gary and Bonaciel Chandler and children, Vance and Cory of Quitaque, and Brenda and Darrell Cruse and son, Derrick were in Plainview, Saturday, to attend the boys basketball games including Paducah vs. Whiteface.

Whiteflat News

OVERHEARD

Talelites Income Tax: The fine we pay for reckless thriving.

Mrs. Juanita Cooper and friend, Ms. Lula Swim of Roaring Springs, visited from Friday until Monday of last week in McKinney in the home of Mr. and Mrs. Bob Alderson and their guests.

Cobey Turner, student at Tarleton University in Stephenville, visited the weekend with his parents, Carol Ann and Johnny Turner. When Carol Ann was re-

turning home Thursday night from CPR training in Flomot, she drove a short distance through sheets of hail and rain before reaching home.

Mrs. Vee Gordon of Matador, Ms. Lula Swim of Roaring Springs and Mrs. Juanita Cooper were in Lockney, Wednesday and Thursday for therapy treatments.

H.R. "Skeet" Jameson attended to business in Childress, Wednesday. He and Mrs. Jameson were in Paducah, Tuesday for dental appointments.

Obituaries

Wesley Hall

Graveside rites for Wesley Hall, 84, of Bosque Farms, New Mexico, formerly of Matador, Texas, were held at 2:00 p.m. Wednesday, March 1, 2000, at East Mound Cemetery of Matador. Officiating was Michael G. Crowley, minister of the Matador Church of Christ. Interment was under the direction of Seigler Funeral Home, Matador.

Mr. Hall died February 24, 2000, at his home in Bosque Farms, N.M., following a lengthy illness.

He was born January 2, 1916, in Davidson, Oklahoma. Prior to 1976 he worked as a cowboy for the Matador Ranch, drove trucks and farmed. He was employed for 17 years for the Texas Fish

and Wildlife Service in Predatory Animal Control department and was employed in Albuquerque by Allstate Ready Mix prior to retirement.

Mr. Hall married Susie Meador of Matador in 1936. She died in 1976. He was later married to Elizabeth S. Alsup. They have made their home in Bosque Farms, near Albuquerque, for a number of years.

He is survived by his wife, Elizabeth Hall of the home; a stepson and his wife, Jerry and Linda Alsup of Albuquerque, five grandchildren and a sister-in-law, Cora Hall of Matador.

The family suggests donations to the East Mound Cemetery.

Note of Thanks

Thank you for the flowers, food, memorials, calls, cards and letters, your words of comfort and prayers during the loss of our loved one. To the Methodist Church, thanks for providing a place for lunch and for our family to gather. Special thanks to each of you who served lunch for our family.

Bud Barton and family
Betty Jo Aldridge and family

Thank you for reading THE MOTLEY COUNTY TRIBUNE

Dinah Elliott-Young

Massage and Reflexology

Licensed and Certified
14 Years Experience
Gift Certificates Available

Call for Appointment

806-348-7330

RE-ELECT

JIM MEADOR MOTLEY COUNTY SHERIFF

Your Support and Vote Appreciated

Pol. Ad paid for by Jim Meador

Elections #80041
Prescribed by Secretary of State
Sections 4.004, 83.010, 85.004, 85.007, 172.1112, V.T.C.A., Election Code
9/91

NOTICE OF GENERAL PRIMARY ELECTION, REPUBLICAN PARTY (AVISO DE ELECCION PRIMARIA GENERAL, PARTIDO REPUBLICAN)

To the Registered Voters of the County of Motley, Texas:
(A los votantes registrados del Condado de Motley, Texas)

Notice is hereby given that the polling places listed below will be open from 7:00 a.m. to 7:00 p.m., March 14, 2000, for voting in a general primary election for the Republican Party to nominate Members of Congress, Members of the Legislature, and state, district, county and precinct officers; and for the purpose of electing county and precinct chairman.

(Por lo presente se da aviso que los sitios de votación designados abajo estarán abiertos de las 7 de la mañana a las 7 de la noche el día 14 de marzo de 2000, para poder votar en una elección primaria general del partido Republican para nombrar a los miembros del Congreso, los miembros de la Legislatura, y los oficiales del estado, distrito, condado y del precinto; y con el propósito de elegir al presidente del condado y del precinto.)

LOCATIONS OF POLLING PLACES (UBICACION(ES) DE LOS SITIOS DE VOTACION)

*Precinct No.(s) Location
(Núm. de Precinto) (Ubicación)
Voting Precincts #1, #3, #4, Luther Green's Residence
#5, & #6

Voting Precinct #2 Flomot Community Center
*If precincts have been combined to form one consolidated precinct, list all precinct numbers that will be voting at the consolidated location. (Si se han combinado precintos para establecer un precinto consolidado, incluye todos los números de precinto cuyos votantes estarán votando en el sitio del precinto consolidado.)

Early voting by personal appearance will be conducted each weekday at: Motley County Courthouse
(La votación adelantada en persona se llevará a cabo de lunes a viernes en:)

Motley County Courthouse
(location) (sitio)

Recommended but not required

between the hours of 9:00 a.m. and 5:00 p.m. beginning on February 28, 2000
(date) (fecha)

(entre las 9:00 de la mañana y las 5:00 de la tarde empezando el February 28, 2000)
(fecha) (fecha)

and ending on March 10, 2000 (y terminando el March 10, 2000)
(date) (fecha)

Applications for ballot by mail shall be mailed to:

(Las solicitudes para boletas que se votarán adelantada por correo deberán enviarse a:)
Lucretia Campbell, County Clerk
(Name of Early Voting Clerk)
(Nombre del Secretario de la Votación Adelantada)
P.O. Box 66
(Address) (Dirección)
Matador, TX 79244
(City) (Ciudad) (Zip Code) (Zona Postal)

Applications for ballots by mail must be received no later than the close of business on:

(Las solicitudes para boletas que se votarán adelantada por correo deberán recibirse para el fin de las horas de negocio el:)
March 10, 2000
(date) (fecha)

Issued this the 28th day of February, 2000.

Emitido este día 28th de February, 2000.

Wilburn Martin
Signature of County Chair (Firma del Presidente del Condado)

Elections #80041
Prescribed by Secretary of State
Sections 4.004, 83.010, 85.004, 85.007, 172.1112, V.T.C.A., Election Code
9/91

NOTICE OF GENERAL PRIMARY ELECTION, DEMOCRATIC PARTY (AVISO DE ELECCION PRIMARIA GENERAL, PARTIDO DEMOCRATIC)

To the Registered Voters of the County of Motley, Texas:
(A los votantes registrados del Condado de Motley, Texas)

Notice is hereby given that the polling places listed below will be open from 7:00 a.m. to 7:00 p.m., March 14, 2000, for voting in a general primary election for the Democratic Party to nominate Members of Congress, Members of the Legislature, and state, district, county and precinct officers; and for the purpose of electing county and precinct chairman.

(Por lo presente se da aviso que los sitios de votación designados abajo estarán abiertos de las 7 de la mañana a las 7 de la noche el día 14 de marzo de 2000, para poder votar en una elección primaria general del partido Democratic para nombrar a los miembros del Congreso, los miembros de la Legislatura, y los oficiales del estado, distrito, condado y del precinto; y con el propósito de elegir al presidente del condado y del precinto.)

LOCATIONS OF POLLING PLACES (UBICACION(ES) DE LOS SITIOS DE VOTACION)

*Precinct No.(s) Location
(Núm. de Precinto) (Ubicación)
Voting Precinct #1 American Legion Bldg. (Enter north side door)
Voting Precinct #2 Flomot Community Center
Voting Precinct #3 Northfield Community Center
Voting Precinct #4 Roaring Springs Depot
Voting Precinct #5 4H Building
Voting Precinct #6 Motley County Courthouse

Early voting by personal appearance will be conducted each weekday at:

Motley County Courthouse
(location) (sitio)

Recommended but not required

between the hours of 9:00 a.m. and 5:00 p.m. beginning on February 28, 2000
(date) (fecha)

(entre las 9:00 de la mañana y las 5:00 de la tarde empezando el February 28, 2000)
(fecha) (fecha)

and ending on March 10, 2000 (y terminando el March 10, 2000)
(date) (fecha)

Applications for ballot by mail shall be mailed to:

(Las solicitudes para boletas que se votarán adelantada por correo deberán enviarse a:)
Lucretia Campbell
(Name of Early Voting Clerk)
(Nombre del Secretario de la Votación Adelantada)
P.O. Box 66
(Address) (Dirección)
Matador, TX 79244
(City) (Ciudad) (Zip Code) (Zona Postal)

Applications for ballots by mail must be received no later than the close of business on:

(Las solicitudes para boletas que se votarán adelantada por correo deberán recibirse para el fin de las horas de negocio el:)
March 10, 2000
(date) (fecha)

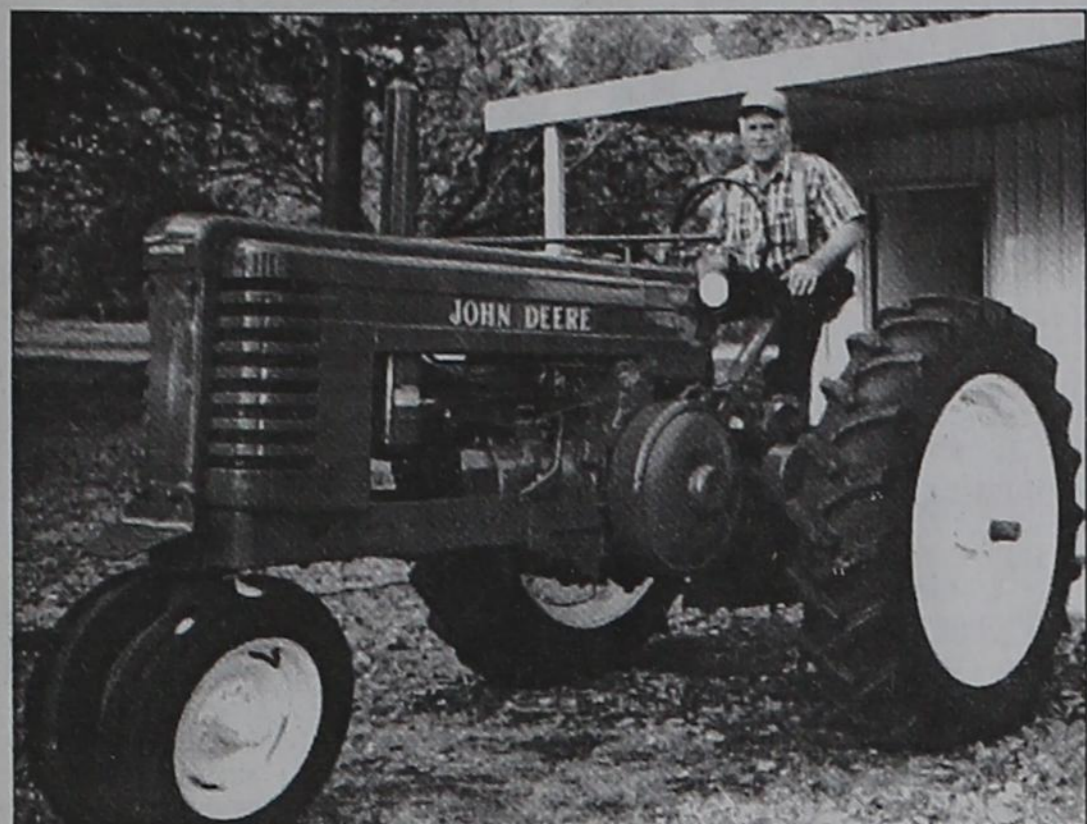
Issued this the 28th day of February, 2000.

Emitido este día 28th de February, 2000.

Ruth Lee
Signature of County Chair (Firma del Presidente del Condado)



Farm and Ranch news



NEW LIFE FOR OLD TRACTOR — Norman Beauchamp, former Matador resident, has given new life to his old tractor, after it sat in a pasture for 42 years on the family farm in Motley County. The tractor was a big pile of rust and had to be picked up with a crane to load for the trip back to Mr. Beauchamp's home in Joshua, Texas. He was surprised to find out that parts for the old tractor are still obtainable. Mr. Beauchamp is the son of the late Price and Ruby Beauchamp, one-time Motley County farmers, and the grandson of the late Dud Beauchamp. He was raised in Matador and graduated from Matador High School in 1957.

Cotton News

from Plains Cotton Growers, Inc.

PCG RENEWS EFFORTS FOR CHANGES TO CROP INSURANCE

Plains Cotton Growers, a long-time supporter of affordable risk management solutions for producers, recently revisited the issue of crop insurance premiums and offered USDA Risk Management representatives a two-day refresher course on High Plains cotton production.

That was back in October and preliminary results from the get-together are encouraging. PCG representatives met again this past week with RMA and economists from Montana State University who were contracted to provide rating recommendations to the agency using a statistical model to determine applicable rates.

The MSU model is called the Indexed Income Protection (IIP) model which was first used to derive rates for the Income Protection policies piloted by RMA over the past few years. In the case of cotton premium rating, the IIP rating process uses the same methodology but limits it to only the yield component.

Given the input from PCG, and subsequent discussions with PCG staff, early indications are that some relief may be in the offing as early as 2001 for Texas cotton producers.

RMA will now analyze the data and begin the process of determining whether or not the revised rates should be adopted for Texas. Rates derived from the same process were used to make significant changes to rates in the Delta and Mid-South region in 2000.

Texas is seen as a critical test for the rating methodology employed by the Montana State University economists overseeing the project.

PCG and the National Cotton Council are in the process of formulating comments urging RMA to fully consider the MSU studies results and to adopt the revised structure.

lating comments urging RMA to fully consider the MSU studies results and to adopt the revised structure.

HOUSE AG FINALIZES LUBBOCK HEARING LOCATION

The House Agriculture Committee has finalized the time and location for the first of ten Field Hearings to be held around the United States.

The Lubbock Hearing will be held in the Banquet Hall of the Lubbock Memorial Civic Center on Monday, March 6. The hearing will begin at 9:00 a.m. The hearing is open to the public and all interested parties are encouraged to attend.

Members of the House Agriculture Committee, led by Chairman Larry Combest of Lubbock, will hear testimony from producers during the hearing. The primary focus for the event will be the identification of possible solutions to the current ag crisis.

It appears that there will be significant level of participation from among members of the House Agriculture Committee since this will be the first hearing in the series.

Most members have indicated that they are well aware of the scope and type of problems facing agriculture and are most interested in hearing ideas for solutions instead of recitations of the problems.

SCHEDULE OF EVENTS

March 6: House Agriculture Committee Field Hearing, 9:00 a.m., Lubbock Memorial Civic Center Banquet Hall, Lubbock.

April 6: PCG 43rd Annual Meeting, Lubbock Memorial Civic Center, Rm. 107, Lubbock.

April 6-7: TCGA Convention & Trade Show, Lubbock Memorial Civic Center, Lubbock.

Letter to the Editor

An open letter to Motley County Cattle Raisers:

I would like to take this opportunity to share some information with other cattle raisers in Motley County. Your cattle could be infected with the reproductive disease, Neosporosis. If your herd is infected, chances are you are seeing production losses in your calf crop. In the feed lots, decreased weights and lower feed efficiency are being noted. What was thought of as a disease affecting dairy herds is now being diagnosed in many beef herds.

Among 1,000 calves in the Texas Ranch to Rail program last year, 13% TESTED POSITIVE to carrying the Neospora infection. 60% OF CONSIGNMENTS had at least one animal that tested positive. One source of transmission to a cow herd can be STRAY DOGS, FOX, AND COYOTES.

Stop by or give us a call
Panhandle-Plains FLBA
629 Baltimore Plainview, TX
(806) 296-5579



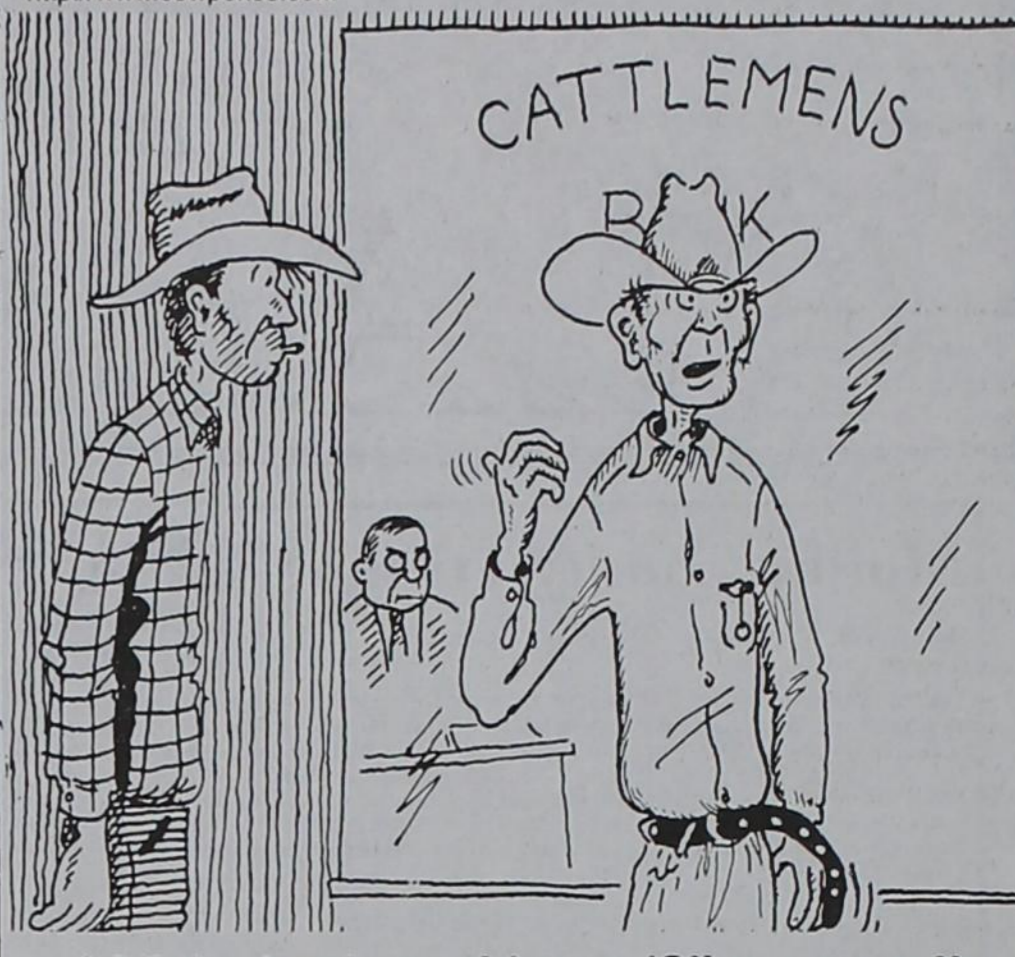
Part of the fabric of rural life.

To reduce the risks of outside sources, COYOTES, DOGS, FOX, AND WILD ANIMALS must be restricted access to feed and water supplies. The CANINE NUMBERS AROUND A HERD MUST BE KEPT TO A MINIMUM. Culling replacement heifers and cows that test positive can not work if you have a continual source of exposure bringing Neospora into the herd.

This information is taken from an article in "Beef" magazine. The need for control of the COYOTE is of great concern to me and other ranchers in Motley County.

Thank you,
Gale Stafford

COW POKES By Ace Reid



"All the banker said wuz, 'Slim, you gotta tighten yore belt!'"

This Feature Sponsored By First State Bank

Matador
Your "Hometown" Bank Member FDIC

Commodity Certificates available through FSA

Commodity certificates, which will allow users to avoid the payment limitation, were made available for farmers starting Feb. 22, according to USDA. Commodity certificates will be made available to producers, or their agents, to use in acquiring 1998-2002 crop collateral pledged to CCC for a commodity loan. The premise of using commodity certificates is to encourage producers to repay their loans rather than forfeit the loan collateral to CCC at loan maturity.

Commodity certificate exchanges will be available for sale at Farm Service Agency (FSA) offices to producers with outstanding nonrecourse marketing assistance loans for wheat, rice, feed grains, upland cotton, soybeans, and designated

minor oilseeds. Only producers, or their agents, may purchase the commodity certificates. Certificates may be utilized only in connection with the repayment of marketing assistance loans when producers cannot exercise their full opportunity to repay their loans and may have to forfeit some or all of the collateral to CCC at loan maturity.

Commodity certificates are also available to participants in the CCC Step 2 cotton program. Certificates issued under Step 2 may only be used by producers or their agents to acquire commodities pledged as collateral for these same loans.

Details of the program may be obtained at county FSA offices.

News from the County Agent

by Lonnie Jenschke, Motley County Agent



DRY WEATHER COULD SLOW MOSQUITO ACTIVITY

The current dry spell in Texas could spell relief from one pesky critter - mosquitoes. However, any appreciable rain could bring hordes of mosquitoes back again. Experiment Station entomologist Jim Olson says the state's mild winter has allowed more mosquito eggs to overwinter, which could allow for population explosions as the weather warms. The mild winter has allowed mosquitos in tidal areas and coastal regions to begin their life cycles earlier than normal. Also, some species of mosquitos that overwinter as adults are active now, when they should be "hibernating" in storm sewers and septic tanks. The Texas Department of Public Health is currently expanding its mosquito-borne disease surveillance program. However, Olson says prevention of mosquito-borne disease starts with avoiding mosquito bites. Any kind of container that holds water for up to three days is a potential breeding

ground for mosquitos. This can include flower pots, bird baths, dog dishes, old tires, or rain gutters. Olson says if you don't need the container, get rid of it. And if you can't throw it away but don't need it now, turn it over so it won't collect rain.

Reduced Stocking Rates Key To Pasture Survival and Drought Recovery

With Texas ranchers enduring a third drought season in four years, Extension Range Specialist Larry White says it's a critical time for evaluating pasture management practices. He says the current dry cycle may last for up to 10 years, so protecting forage resources through reduced stocking rates is essential. However, the amount of reduction necessary depends on the producer's current situation. A healthy pasture may have some bare ground. But the majority should have stubble three to six inches high. White says there should be even more if producers are continuing to graze livestock, because pasture growth is not expected until April or May. Producers who have already made stocking rate adjustments may be able to maintain the reduced herd size, if they receive rainfall soon. However, White says even reduced stocking rates may be too high for producers they are already in trouble. He says those producers should eliminate their entire herd. The danger of overgrazing is losing important resources like rainfall and soil. A higher percentage of rainfall runs off over-grazed pastures, and with excess run-off comes excess soil erosion. White says pasture management decisions should always take drought into account. He recommends a regular forage monitoring system, where forage supply is evaluated three times a year.

Burndowns Offer Superior Weed Control in a Wide Variety of Crops

Waiting for weeds to die is the last thing you need during spring, the busiest time of the year. A burndown herbicide makes perfect economical sense, but with so many weed control options available, making the right choice is difficult.

Here are two burndown herbicides that offer fast, reliable weed desiccation for a variety of crops, including cotton, corn and soybeans.

TOUCHDOWN® herbicide, sulfosate (glyphosate-trimesium), delivers better early preplant performance than ever on tough annual and perennial grasses and broadleaf weeds. Touchdown translocates through plants from leaves and stems all the way down to the roots for a more powerful burndown. You'll see leaves turning yellow in just four to seven days. Touchdown has also been approved for over-the-top use on Roundup Ready® soybeans, which means you can get the same powerful weed control from your post herbicide application.

GRAMOXONE® EXTRA herbicide offers fast, effective weed control in corn, soybeans and cotton as well as peanuts and rice. When it comes time to plant, the field is clean and the crop has a head start on weeds. Gramoxone Extra is rainfast in just minutes and works in just 24 to 48 hours in controlling a broad spectrum of weeds and grasses.

Gramoxone also works well ahead of herbicide-tolerant crops. Applied as a preplant burndown before Roundup Ready soybean or cotton acres have emerged, Gramoxone Extra helps control glyphosate-tolerant weeds like morningglory and hemp sesbania. Using Gramoxone Extra also reduces the risk of developing tolerance, which may occur when using only one product for both burndown and postemergence weed control.

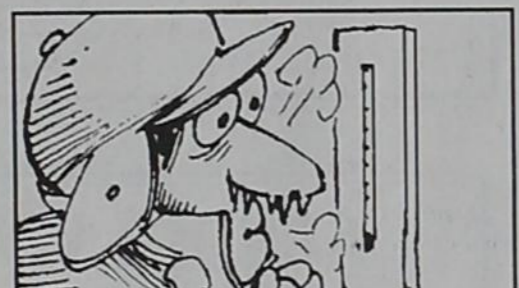
Rely on Touchdown and Gramoxone Extra to burn down all your crop acres. For more information about Touchdown and Gramoxone Extra, contact your local ag chem dealer.



ZENECA Ag Products

©2000 Zeneca Ag Products Inc. TOUCHDOWN® and GRAMOXONE® are registered trademarks of a Zeneca company. Roundup Ready is a trademark of Monsanto company. Gramoxone Extra is a restricted use pesticide. Farm Safety: Always read and follow label directions.

zenecaagproducts.com



-40 Fahrenheit is the same temperature as -40 Celsius.

Prepare and file your income taxes FREE on

www.hdvest.com



Watch for the H.D. Vest Tax Van in Texas February 29-March 8

Attention

Young Artists

Enter the 2000 U.S. Savings Bonds National Student Poster Contest.

- ★ Students - grades 4-6 eligible
- ★ Theme: "U.S. Savings Bonds - Making Dreams a Reality"
- ★ Deadline: February 11, 2000

- ★ U.S. Savings Bonds \$200 - \$5,000
- ★ School Prizes
- ★ National recognition for winning schools
- ★ An all-expense-paid trip to Washington, DC

For More Information

- ★ Visit www.savingsbonds.gov
- ★ Contact your school or National Student Poster Contest Savings Bond Marketing Office, Room 309 Department of the Treasury Washington, D.C. 20226

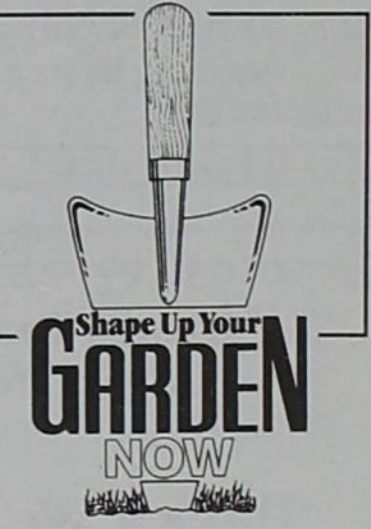
A public service of this publication.



* Upon issuance, Series EE Savings Bonds are valued at half the face amount.

Higginbotham-Bartlett

Trees & Shrubs
Have Arrived!



Hunting & Fishing License
Ammunition
Deer Corn

Exide Batteries
— Appliances —

Washers & Dryers, Stoves, Freezers, Microwaves
TV's, VCR's, & Stereos

BULK - RANGE PRO 20

FARM & RANCH SUPPLIES •
PURINA FEEDS • HI-PRO VET SUPPLIES



PORT-A-HUT HOG RAISING SYSTEMS
STORAGE BUILDINGS

RENTALS:

Chop Saw • Roto-Rooter • Ditch Witch • Roto Tiller
Tandem Trailer • Welder • Steam Cleaner

STORE HOURS: 7:00 A.M. - 5:00 P.M. MONDAY - FRIDAY & 7-12 SATURDAY
FREE LOCAL DELIVERY
FOR YOUR CONVENIENCE AFTER HOURS CALL
DONNIE, 347-2889 OR FRED, 347-2304

THE CLASSIFIEDS

Motley County Tribune

Carla M. Meador - Publisher & Editor



The Motley County Tribune, (ISSN: 0897-4322), purchased on September 3, 1996, is published weekly each Thursday, except Christmas week, at Matador, Texas. The office is located at 724 Dundee, telephone number, 806/347-2400. Periodical-class postage paid at Matador, Texas. Postmaster: Send address changes to Motley County Tribune, P.O. box 490, Matador, TX 79244.
 NOTICE: Any erroneous reflection upon the character, firm, or corporation, which may appear in the columns of the Motley County Tribune will gladly be corrected upon being brought to the attention of the publisher. Only signed letters to the Editor will be considered for publication and should not exceed 250 words in length.
 PUBLICATION NO: 333700
 SUBSCRIPTION RATES: \$20.00 per Year. Over 60 may deduct \$1.00
 P.O. Box 490, Matador, TX 79244

Work Wanted

NEED TO RAISE MONEY for Summer College Course in Italy. Will do any kind of job I am capable of, such as washing cars, babysitting, walking dogs, painting, lawn mowing or gardening, spring cleaning, etc. Contact Sherri Thomas at 347-2695 after 4:00 or leave message.

Estate Sale

ESTATE SALE: To settle the estate of our aunt, Ruth Stafford, we will sell her personal and household items, Saturday, March 4, 10:00 a.m., 902 Walton Road. Possible Sunday afternoon, March 5.

1tc-9

There's something for everyone in the newspaper...

Something interesting. Fun. Informative. Insightful. Challenging. Exciting. Educational. Inspiring. Noteworthy. and newsworthy.

CALL 347-2400 TO SUBSCRIBE

MOTLEY COUNTY TRIBUNE

It's worth checking out.

SPECIALITIES

FOR ALL YOUR CRP NEEDS: Fireguards, Burning, Plowing, Sowing, Spraying, Shredding, Conventional and No Till Seeding. Call for Free Estimates, Jeremy Jameson, 347-2930 or 347-2931.

COMMERCIAL, RESIDENTIAL, FARM AND RANCH REPAIR, Remodeling and Construction. General Finish Carpentry, Custom Cabinets, Custom Furniture, Electrical, Ceramic Tile, Decks, Roofing, Metal Buildings. Free Estimates. Call B.H. Smith Contracting (806) 492-2339 at Paducah.

CRUSE SPRAYING: For all your Ag Spraying needs. 469-5395.

ctfn

ALL CUSTOM CRP WORK, also Grass Seed for sale. Call 469-5246 or 347-2834.

PETS

AKC CHIHUAHUAS: One 4-month-old tiny male; one 4-month-old female; one 6-month-old female. 347-2032.

1tc-9

.....
 • Have a great week! •

HELP WANTED

THE CITY OF MATADOR is accepting applications for City Secretary. Applications may be picked up until March 8th at the Matador City Hall. Bookkeeping and Computer experience required. The City of Matador is an equal opportunity employer.

CROSBYTON NURSING AND REHAB is now accepting applications for LVN, sign on bonus available with competitive wages and benefits. Call Sean or Laura at 806-675-2342, or come by 222 N. Farmer.

ctfn

CROSBYTON NURSING AND REHAB is now accepting applications for CNA's or will train. Call Sean or Laura at 806-675-2342 or come by 222 N. Farmer.

FOR SALE

ROARING SPRINGS RANCH CLUB membership for sale. Contact Jean Westfall at 806-799-6852.

FOR SALE: Used Maytag Washers and Dryers, rebuilt and guaranteed. THACKER SUPPLY, 348-7216.

DSS 18" DIGITAL SATELLITE SYSTEMS: \$79.95. THACKER SUPPLY CO., INC., Roaring Springs, TX, 1-800-481-2828.

CATTLE PANELS - 5 1/2 x 16'; 5 1/2 x 12'; or 5 x 12'. Gates. Call 348-7243.

ctfn

BUNK BEDS FOR SALE: Excellent condition. Dark wood frame. Call Betty Stevens at 347-2809.

VEHICLES

SHARP '89 CHEVY SILVERADO, 4x4 SWB 350. Excellent Condition. \$7,700. 806-469-5339.

4tp-11

ATTENTION MELON HAULERS; 1997 Dodge 1 ton dually Cummins, 5 speed, low miles, Ext. Cab. SLT. 877-606-0492.

1tc-9

.....
 • God Bless You! •

REAL ESTATE

FOR SALE: Prime Residential lots, across from First Baptist Church, Matador, 347-2747.

ctfn

FOR SALE: 2 BR Mobile Home with Lots. \$10,500. 831-637-8465.

6tp-11

FOR SALE: 16 x 80 Mobile Home in Quitaque, 3 bedroom, 2 bath. 4 years old. All new plumbing, must be moved. Assumable loan. 806-269-1768 or 806-423-1097 evenings.

4tc-10

FOR SALE: To settle the estate of Ruth Stafford - 140 acre farm, Whiteflat. Call Gale Stafford, 348-7325.

2tc-10

FOR SALE: 4 bedroom house, 2 bath, 2 acres in Matador. 806-347-2898.

Public Notice

NOTICE
 The Motley County Tribune needs extra copies of the October 14, 1999 edition of the paper for our records. If you have that week's edition, we would be glad to buy it back from you.
 Thank you.

NEW SHIPMENT

West Texas

A Portrait of Its People and Their Raw and Wondrous Land by Mike Cochran and John Lumpkin

MOTLEY COUNTY TRIBUNE
 806-347-2400

March Subscriptions Due

\$20.00 per year

Those over 60 may deduct \$1.00

MOTLEY COUNTY

Matador:
 Marihelen Wason
 Billy Ray Slover
 Jim Cooper
 Charlie Keith
 Winifred Lee
 Norma Marrs
 Jim Cross
 Leo Archer
 Irene Welling
 Danny Copeland
 Kathryn Martin

Roaring Springs:
 Walter Trammell
 Billy Perryman
 C.W. Moore

FloMot:
 Howard Rogers
 L.E. Shorter

ELSEWHERE

James Thomas, Garland
 Lula Cramer, Arlington
 Don Smith, Corinth
 Grady Phillips, Gainesville
 R.L. Christian, Sanger
 Lee & Misty Jones, Wichita Falls
 H.R. Payne, San Angelo
 Bill Young, Austin
 Virgie Bannister, Plainview
 Bob Stafford, Amarillo
 Susie Sain, Amarillo
 Faye Head, Childress
 Dolores Fox, Afton
 David Campbell, Floydada

Lonnie Harmon, Hedley
 Fern Henderson, Lockney
 Juanita Sharp Jones, Brownfield
 Billy Paul Campbell, Idalou
 Dickens Electric, Coop, Inc., Spur
 Amy McIlroy, Wolforth
 Vernon Higginbotham, Lubbock
 Yellow House Machinery, Lubbock
 Ruby Coke, Abilene
 L.C. Barker, Gardendale
 Grady A. Glenn, Odessa
 James Garth, Albuquerque, NM
 Fay Dirickson, Las Cruces, NM
 Martha Hill, Seattle, WA
 Arieta Meyer, Lithonia, GA
 Michael Parks, E-Town, KY
 Joe D. Moss, Janesville, WI
 W.L. Mantooth, Cape Girardeau, MO
 Christy Fish, Ft. Polk, LA
 Loyd Fulkerson, Paragould, AR
 Loretta Race, Dover, AR
 Glen Moss, Hydro, OK

Political Calendar

March 14, 2000
 Election

Motley County Sheriff
JAMES B. "JIM" MEADOR

Motley County Attorney
TEMPIE HUTTON

Motley County Tax Assessor/Collector
ELAINE HART

Motley County Commissioner, Prec. I
JOHN M. "SONNY" RUSSELL

RONNIE DAVIS

Motley County Commissioner, Prec. III
FRANKLIN JAMESON

CARTER LUCKETT

Floydada Ford-Mercury

We Rent Cars

Spray In Bedliners

Window Chip Repair

Your Accessory Headquarters

Bumpers, grill guards, nerf bars, steps, tool boxes, headache racks, hitches, trailer hook-ups, and much more.

Gooseneck Installation

Floydada Ford-Mercury

983-3761

BUSINESS REVIEW

MEREDITH Gas & Supply

24-Hour Propane Service
 Quick, Reliable Service
 Propane Tanks & Supplies Available
 Roaring Springs (806) 348-7332
 (806) 348-7218 348-7528 348-7516

AUTHORIZED AGENT OF CAPROCK CELLULAR

Caprock Cellular
 The Clear Choice

GILLESPIE COMMUNICATIONS

JAMES GILLESPIE - (806) 347-2208

LAND MOBILE RADIO SALES & SERVICE

CALL DAY OR NIGHT FOR PROPANE & ELECTRICAL SERVICE

MARSHALL BROS.

347-2290

Propane  Electric

Do most types of Welding Jobs, Stock Trailer Repair (lights, brakes, etc.)

Parks Welding Shop

348-7243 - Roaring Springs
 Open 7:00 - 5:30, Monday - Friday
 Saturday, 8:00 - noon

Fred Thayer & Dianne Washington

Certified Public Accountants

710 Bailey - Matador - 347-2636

OPEN MONDAY - FRIDAY, 9:00 - 5:00

GERMANIA INSURANCE

HOMEOWNERS, AUTO, PERSONAL, AND FARM LIABILITY AND LIFE

LEE'S INSURANCE AGENCY

FLOMOT, TEXAS 79234 806-469-5370

THIS SPACE IS AVAILABLE FOR A LOW MONTHLY COST

CALL 347-2400 FOR DETAILS

This space is available for a small monthly cost

Call 347-2400 for information

PAYNE PHARMACY

200 S. MAIN - FLOYDADA, TX 79235
 PH: 983-5111 OR 1-800-345-7961
 DENISE PAYNE, R.Ph.

M-F, 8:30-6:00; Sat., 8:30-2:00
 We will be happy to mail your prescriptions!

For all your Memorial needs in Marble, Granite and Bronze see Betty Bostick

The Windmill

347-2233 or 347-2012 after 5:00 p.m.

LETTER TO THE EDITOR POLICY

The Motley County Tribune reserves the right to edit or refuse any Letter to the Editor Letters to the Editor do not express the opinion of the Motley County Tribune. All letters must be signed. If you do not want your name printed, it will be omitted at your request, but must be on file, before the letter will be printed.

SHAKLEE PRODUCTS
 Peggy Probasco
 983-5246 or 800/536-5246

DON'S MUFFLER SHOP
 210 W. Calif. - Floydada
 FREE ESTIMATES
 1-877-212-8222

MEREDITH CONSTRUCTION

New Construction
 Remodeling, Painting, & Electrical Work
 Complete turn-key work
 Concrete work and all types of Roofing

(806) 348-7218 348-7528 348-7516