

Sylvan Dunn, Director  
Southwest Collection Texas Tech  
Lubbock, TX 79409

# Matley County Tribune

Voice of the Foothill Country

106 YEARS

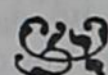
THURSDAY, JANUARY 15, 1998

ISSUE NO. 3

50¢  
per copy



## A Look back in Time



## Commissioners Hear County Reports

The Motley County Commissioners Court met in regular session Monday, January 12, 1998 at 9:30 a.m. Invocation was by Judge Price.

Present were Judge Laverna Price; Commissioners John M. Russell, Don Hughes, Franklin Jameson, and J.N. Fletcher.

Minutes of the December 8, 1997 meeting were approved as read. All bills were approved for payment. Reports approved were Treasurer, Tax Assessor/Collector, Justice of the Peace, County Agents Ag and FCS and Library.

Texas Agricultural Extension Agents, Michael Lee - AG and Arla Felts, FCS, presented results of the 1997 programs and discussed upcoming events for 1998. Michael Lee has worked with a tri-county group of cotton farmers teaching producing methods of growing and marketing their crops. Arla Felts has presented many programs on "Improving Quality of Life - Extending Independent Living". Both Agents Lee and Felts reported an increase in enrollment for the 4-H program. Adult leaders are

very active in the 4-H program. Both agents have interesting plans for 1998 for the citizens of Motley County.

James Timmons, Leymon Ables and Rick L. Gilliland, District Supervisor with Texas Animal Damage Control Program were present. James Timmons gave a quarterly report of activities. 192 coyotes, 135 feral hogs, 15 raccoon, 13 beavers, 10 skunk, 2 opossum and 1 bobcat have been destroyed. There has been an airplane that worked the county 6 days and a helicopter worked 12.8 hours also as many as 9 personnel working Motley County.

The Court voted to have 9 public members on the Salary Grievance Committee. Names were drawn from the current Grand Jury list.

The State's Water Plan was discussed as outlined in Senate Bill #1. A Resolution was adopted by the court supporting Judge Dallas Brewer from Yoakum County to represent the counties in area "O". Motley County is part of area "O".

Court adjourned at 11:50 a.m.

JANUARY 17, 1957

Deposits Show Drouth  
Forcing Sale of Cattle  
Herds Reduced to Eliminate Expenses

"Bank deposits at the First State Bank here were only \$71,000 short of the total a year ago, but the figures have an ominous meaning according to Elmer Stearns, executive vice-president of the pioneer institution."

JANUARY 12, 1950

Two More Are Charged In  
Car Looting

"A man and his wife were arrested earlier this week in Memphis, Tenn. charged in connection with the looting of the F.A. Bird automobile in Matador on the morning of December 27.

Four Californians who are accused in connection with the looting are now in jail here. Most of the merchandise, including a valuable camera has been returned to Mr. Bird."

## School Board Renews Superintendent's Contract

The Motley County School Board met Monday, January 12 at 8:00 p.m. All board members were present. Also present was Superintendent Rick Copp, Principal Wayne Morren, and Betye Stevens, recorder.

Minutes of the last meeting and the list of expenditures were approved. Financial statements were reviewed.

A Renewal Agreement with West Texas Food Service Co-Op was approved. This Co-Op is for purchasing commodities and food for the cafeteria.

Board approved purchase of 1998-99 WADA (Weighted Average Daily Attendance) by Guthrie CSD for technology projects.

Board voted to accept bids for the School Auditor for the 1997-98 School year.

Board approved a Cooperative Purchasing Program Contract with General Services Commission. This service is to purchase maintenance supplies and other school equipment.

Board approved the transfer of

Robert Everett from Floydada. Robert is a Junior.

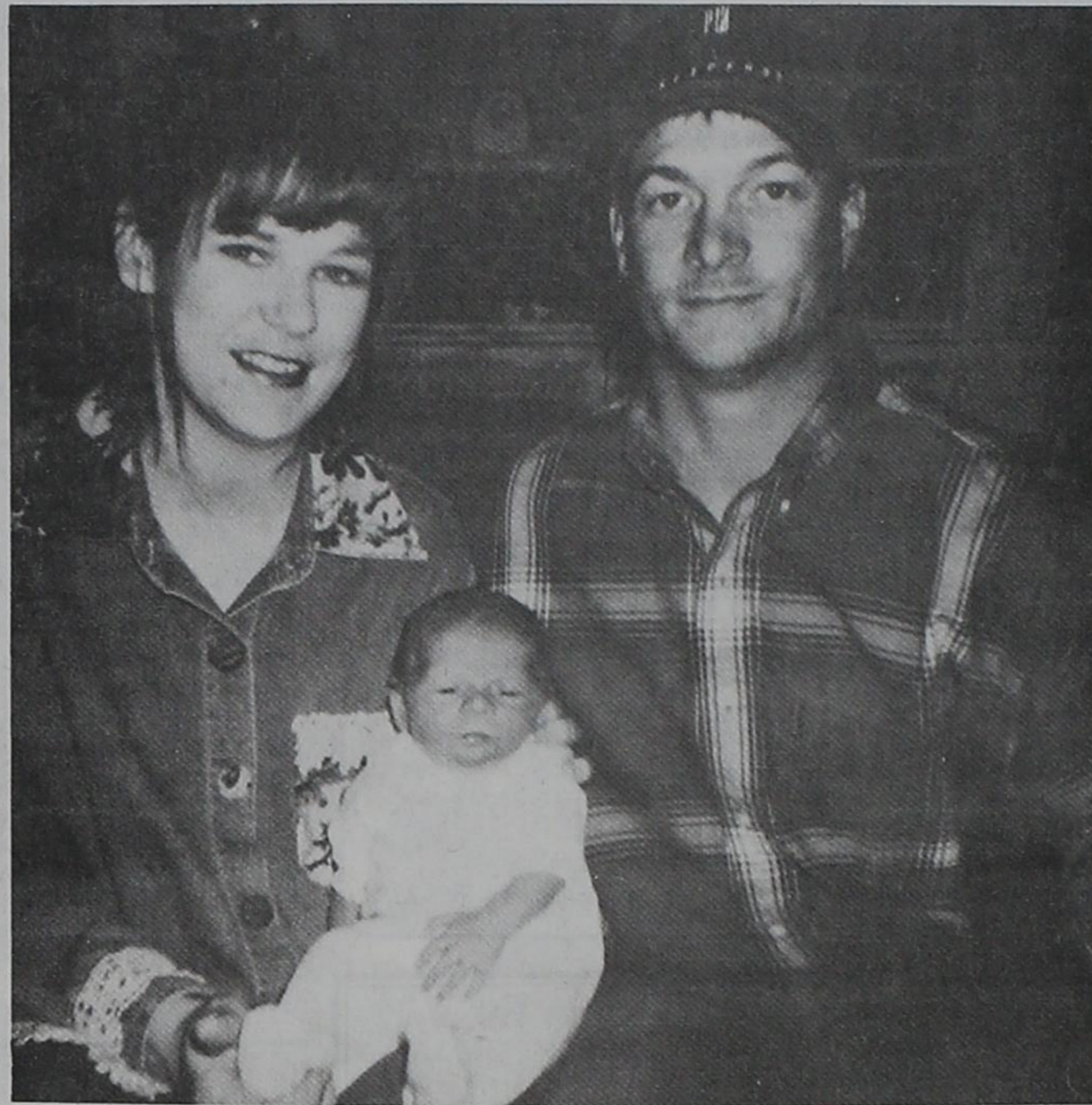
Board members Larry Clifton and Darrell Cruse were appointed to present diplomas at 8th grade and senior graduation.

The board went into executive session at this time. Out of executive session a 2 year contract was given to Mr. Rick Copp, Superintendent.

The Board discussed property which had been offered to the school district for sale by Matador resident Richard Williams.



## First Baby of 1998!



Motley County's newest resident arrived Wednesday, January 7, 1998 at 6:48 a.m. Little Macie Nichole Marshall was born to Brent and Jana Marshall of Matador. She weighed 6 pounds 8 ounces and was 20 inches long at birth.

## TRAIL DUST

By  
DOUGLAS MEADOR



If some of your courtship was spent in a buggy on a balmy summer night, then you are not overly impressed by the speed of the horseless carriage.

Trails are the sizzling water in which our problems are cooled after they have been tempered and hammered by adversity; the only place where character can gather strength.

Memory is a tape recording of the past whereby the heart hears music once made by the flutes of a special moment.

## Matador City Council Still Working To Obtain Additional Landfill Acreage

The Matador City Council met Thursday, January 8, at 7:30 a.m. All Council members were present. Councilman James Meador gave the invocation. The meeting was called to order by Mayor Gary Lancaster.

The minutes of the previous meeting were approved. Bills were approved

and paid.

Glenn Martin of Spur was at the meeting to request to bring additional loads from other towns to the Matador landfill. The Council denied this request. The City will now pick up trash from businesses on Mondays, and Mr. Martin will pick up residential trash on

Thursdays.

The Council is still working with the engineer on the expansion permit to expand the landfill.

Council voted to purchase a used 6 yard dump truck.

Meeting adjourned.

## Northwest Texas Cotton Conference January 22

Cotton producers in Motley County will have an opportunity to get the latest information on cotton production and marketing, the battle against the boll weevil, and new technology in the cotton industry at the North West Texas Cotton Conference on January 22. The conference will be held at the Childress City Auditorium.

Information tailored to the specific concerns of this area will be presented at the conference. Counties included in the conference will be Childress, Collingsworth, Cottle, Hall and Motley. The program will begin with registration at 8:30 a.m. The registration fee of \$5 includes lunch. There will be 4.5 hours of CEU's given to private, non-commercial and commercial applicators.

The status and progress of new technology will be presented by Dr. James Supak, associate department head and Extension Service program leader in the soil and crop sciences department at Texas A&M University. Dr. Todd Baughman, Texas Agricultural Extension Service agronomist at Vernon will discuss old and new techniques and materials for weed control.

Marketing strategies will be explained by Stan Bevers, Extension Service economist and marketing specialist at Vernon. Setting an early crop will be the topic of J.C. Banks, Extension Service cotton specialist at Oklahoma State University.

Insect management will be the focus of presentations after lunch. Basics of boll weevil life cycle and development will be presented by Emory Boring, Extension Service entomologist from Vernon. Noel Long, local producer, will give an update on the 1997 boll weevil diapause program in Childress and Hall counties.

Experience with the diapause pro-

gram in the St. Lawrence area will be reported by Warren Multer, Extension Integrated Pest Management (IPM) agent serving Glasscock, Reagan and Upton counties. An update on the boll weevil eradication program in Texas will be given by Dr. Tom Fuchs, Ex-

tension entomologist and IPM coordinator, from San Angelo. Bonnie will discuss management of cotton insects.

For additional information on the conference call Michael Lee, County Extension Agent for Agriculture in Motley County at 347-2733.

## Benny J. Simpson Scholarship Fund Receiving Donations

Recently there was a drive at the Uvalde Symposium to raise funds for the Benny J. Simpson Memorial Scholarship fund. It was an overwhelming success. The goal was to raise at least \$2000 towards fulfilling our remaining \$5000 commitment to the scholarship fund.

When the contributions were totaled, \$7792 had been raised. Including the matching funds from Texas Tech University, the endowment principal now stands at \$22,792. The endowment will begin to accrue interest, and the first award will be made in

November, 1999. Texas Tech's financial management policy is to hold back a portion of the interest each year and reinvest it into the endowment to allow growth and to cover inflation, so the fund will automatically continue to increase. Additional contributions may also be made to the fund at any time in the future.

Mr. Simpson was a 1945 graduate of Matador High School. His parents were the late Mr. A.B. Simpson, and Una Simpson of Northfield.

He worked as a Horticulturalist with Texas A&M University in Dallas. He passed away December 17, 1996.

## Collector's Corner



**LOTS OF SALT & PEPPER SHAKERS** — Leola McKelvey of Matador has been collecting salt & pepper shakers for about 50 years, receiving her first set when she was 14 years old. She has a set of just about everything you can think of from hamburgers and hotdogs, clowns, toasters, soda bottles, animals of all kinds, gas pumps, tea pots, cactus, boots, fish and houses, to even commodes. When she received the commode set from her dad after he returned from a Wheat Harvest trip, her mother thought they shouldn't be displayed with the others. Leola says she has over 300 sets, from six different countries. She also has a small collection, 40 sets, of mugs. Leola and her husband, Bill, live in Matador. They have two sons and daughters-in-law, 3 granddaughters, and 3 grandsons, all living in Lubbock. The *Motley County Tribune* will begin this new item, "Collector's Corner", this week, and will feature a new collector each month. But, we need to know about all those collector's out there. If you have a collection, or know someone who has, let us know, by calling 347-2400. We hope you enjoy this new feature to the newspaper.

## MC BASKETBALL ACTION

Friday, January 16, Chillicothe, here

Tuesday, January 20, Silvertown, there

Friday, January 23, Paducah, here

Tuesday, January 27, Valley, there

Friday, January 30, Crowell, here

Tuesday, February 3, Chillicothe, there

Tuesday, February 10, Paducah, here

All Games begin at 4:00 p.m.

SUPPORT  
THE  
MATADORS!

SUPPORT  
THE  
MATADORS!



I hope everyone enjoys the new "Collector's Corner". We hope to find out about some collectors with neat and unique collections. Remember, if you or someone you know, here in Motley County, has a collection, let us know.

I have decided with all the packing up I have been doing lately, that I should write a book about how to cram so much stuff into such a small space. I swear I have hauled 150 boxes of stuff out of my house, and I absolutely don't know where it could have possibly been.

I saw a comedian on TV once talk about "stuff". He says we all buy stuff, then more stuff, and eventually we get rid of the old stuff, so we can buy new stuff, and on and on. Of course it was funny when he talked about it. But it's true, where do we get so much stuff? We usually don't even realize what we have until it's time to pack it up. I know I must have boxes that I will probably

not have the desire to look inside again.

I wonder what our inside stuff looks like. I mean all the stuff that's jammed into our thoughts, our personality, our emotions. I wonder if God looks down on us, sometimes, and thinks - where did they get all that stuff crammed into that head? I know it was just yesterday I helped them get it all cleaned out and now look what's back in there!

I know I'm guilty of that. I'm constantly thinking I have let go of some worry, thought, or past guilt trip, only to find out that I really haven't let go of it at all.

I wish it was as easy to get rid of all our mind "stuff" as it is to get rid of stuff in our houses! But usually when we clean out our houses, we try to clear it out and not bring it all back in. Not true with our minds. We usually pack it all back in there, and go right back to God asking for forgiveness again, and He says - for what? Because when He says forgive and forget, He really does!



New books ready to be checked out from the Motley County Library are Jonathan Kellerman's *Survival of the Fittest*, *Dead in the Winter* by Stuart Woods and *The Case Has Altered* by Martha Grimes. These are all three mysteries. For those who like the romance genre we have Janelle Taylor's *Wild Winds*.

If you have trouble helping your child with his homework, the Library has a new series of books that will be just the thing to bail you, and your child, out of trouble. We have five separate books, including *Everything You Need to Know About Science Homework*, *Geography*, *World History*, *English*, and *Math*. These soft cover books mention that they are a "Desk Reference for Students and Parents." These references are illustrated in color and have simple explanations.

Next week, on Tuesday, January 20, the Motley County Genealogical and Historical Society will meet at 10:00 a.m. in the Library. Everyone

interested in family history is invited to attend. We have some exciting projects planned for 1998, including the publication of our own newsletter and some field trips to the Southwest Collection and to the Genealogical section of the Mahon Library in Lubbock. Don't miss out on these fun times -- join us Tuesday at our first meeting of the year.

The Motley County Library has the IRS tax forms for 1997. I know you don't want them, but they are here if you need them. The IRS was a little late in sending them this year. I wonder if that means we can be a little late in sending our taxes? Probably not.

Come by the Library to see the baskets in the display case. We have Shaker baskets, Appalachian baskets, Nantucket baskets, basket-weave baskets, Hope baskets, finished and unfinished, and the tools and materials to make them. All baskets are by Patricia Green. We appreciate her bringing these baskets for us to enjoy.

## Look Who's New



### Macie Nichole Marshall

Brent and Jana Marshall of Matador would like to announce the arrival of their daughter, Macie Nichole. She was born Wednesday, January 7, 1998 at 6:48 a.m. in the Methodist Hospital in Lubbock. She weighed 6 pounds 8 ounces and was 20 inches long.

Grandparents are Kenneth and Mary Marshall of Matador and Scott and

Jane Johnson of Lubbock.

Great grandparents are Corky and Monta Marshall of Lubbock, Mrs. C.D. Baker of Matador, Mary Risinger of Spearsville, Louisiana, and Ollie and Willene Smith of Dumas.

Great-great grandfather is Virgil Scott of Tulia.

## Thank you for reading the Motley County Tribune

### Bridal Shower Selections for Lee & Misty Jones

(nee Misty Easter)

#### January Clearance Sale Extended

through January 22

All Christmas Arrangements & Christmas Items

1/2 Price

Christmas Ornaments, Potpourris, Sprays & Candles

40% off

Poinsettias & Norfolk Pines - 1/2 Price

Take advantage of these great prices and stock up for Christmas next year!

### Rose Garden

Floral & Gifts

347-2711 — downtown Matador



## Family and Consumer Sciences News

by Arla Felts, Extension Agent

### RESOLVING TO EXERCISE

With the start of a new year most of us think about self improvement especially when it comes to our health. One of the first things we think about is increasing our physical activity or exercise. When we resolve to exercise, we are doing one of the best things for our health we can do. Often we are excited about the activity at first, but after a week or two, we begin to come up with all the reasons we can't exercise: *I don't have time. I don't have the equipment. I can't afford the gym membership. I'm too old. I have two left feet. It's too cold. It's too hot. I get bored with an exercise routine. I don't like exercising.*

Here are a few hints to help you avoid the excuses:

**TIME:** Even the busiest person can fit exercise into his/her schedule with a few of these ideas:

- \* when possible, walk to and from work.

- \* park your car or get off the bus farther away from your destination than usual and walk the rest of the way

- \* take a walk at lunch or during daily breaks from work

- \* walk with family or friends to make walking a social event.

**EQUIPMENT AND FEES:** Exercising does not require a lot of equipment or expense. All you need is a good pair of walking shoes and you can get some exercise. Walking is one of the best and least expensive forms of exercise you can do. Other inexpensive forms of exercise include the following:

- \* Weight lifting - Use canned food items for weights instead of buying more expensive 1, 2, and 5 pound weights.

- \* Stretch - you need no special equipment to do stretching activities and it's great for maintaining or increasing your flexibility.

- \* Jogging - If you're looking for a more vigorous form of exercise, jogging only requires a good pair of shoes. Try to run on soft surfaces when possible to reduce impact on your knees.

- \* Community dance and aerobic classes - Many community centers, Senior centers, and churches offer exercise classes for a minimal fee, with no monthly membership or joining fees.

**AGE:** You are never too old to exercise! Studies have shown that even

90 year olds are able to perform and benefit from exercise. Be sure to check with your physician or health care provider about any special health conditions. Your physician can recommend the best form of exercise for you. Swimming is a great exercise for individuals with joint problems. It increases all three aspects of importance: strength, flexibility, and endurance.

**COORDINATION:** You do not need a lot of coordination to exercise. If you are self-conscious about exercise routines, such as dance, aerobics, or step, try something simpler like walking or low-impact aerobics. Remember, exercise is not a performance, its for fun and good health.

**WEATHER:** Weather conditions can be a hindrance to exercising. With the right information, however, we can continue to exercise in most weather conditions. If you are doing outdoor activities, you might consider an indoor activity when the weather changes begin to affect your activity.

**ENJOYMENT:** Exercise does not have to be boring, nor does it have to be something you dislike doing. Do something you enjoy or something you must accomplish and add a little physical activity to it. Try these ideas.

- \* Use a push mower instead of a self-propelled mower.

- \* Be an active gardener-digging, stretching to trim stems and branches, etc.

- \* Try roller blading or roller skating.

- \* Jitterbug, square dance, or do any other type of dancing.

- \* Go for a bicycle ride with the whole family-pack a healthy picnic and make a day of it.

- \* Jump rope with your kids.

Join the health Conscious Group in 1998. Our first meeting of the Lunch & Learn series will be January 21 at 12:10 p.m. in the Senior Citizens Center in Matador. We will be covering several topics concerning better health including lowering cholesterol and dietary fats and exercise.

Educational programs conducted by the Texas Agricultural Extension Service serve people of all ages regardless of socio-economic level, race, color, sex, religion, handicap, or natural origin.

Join the health Conscious Group in 1998. Our first meeting of the Lunch & Learn series will be January 21 at 12:10 p.m. in the Senior Citizens Center in Matador. We will be covering several topics concerning better health including lowering cholesterol and dietary fats and exercise.

Educational programs conducted by the Texas Agricultural Extension Service serve people of all ages regardless of socio-economic level, race, color, sex, religion, handicap, or natural origin.

Educational programs conducted by the Texas Agricultural Extension Service serve people of all ages regardless of socio-economic level, race, color, sex, religion, handicap, or natural origin.

Educational programs conducted by the Texas Agricultural Extension Service serve people of all ages regardless of socio-economic level, race, color, sex, religion, handicap, or natural origin.

Educational programs conducted by the Texas Agricultural Extension Service serve people of all ages regardless of socio-economic level, race, color, sex, religion, handicap, or natural origin.

Educational programs conducted by the Texas Agricultural Extension Service serve people of all ages regardless of socio-economic level, race, color, sex, religion, handicap, or natural origin.

Educational programs conducted by the Texas Agricultural Extension Service serve people of all ages regardless of socio-economic level, race, color, sex, religion, handicap, or natural origin.

Educational programs conducted by the Texas Agricultural Extension Service serve people of all ages regardless of socio-economic level, race, color, sex, religion, handicap, or natural origin.

Educational programs conducted by the Texas Agricultural Extension Service serve people of all ages regardless of socio-economic level, race, color, sex, religion, handicap, or natural origin.

Educational programs conducted by the Texas Agricultural Extension Service serve people of all ages regardless of socio-economic level, race, color, sex, religion, handicap, or natural origin.

Educational programs conducted by the Texas Agricultural Extension Service serve people of all ages regardless of socio-economic level, race, color, sex, religion, handicap, or natural origin.

Educational programs conducted by the Texas Agricultural Extension Service serve people of all ages regardless of socio-economic level, race, color, sex, religion, handicap, or natural origin.

Educational programs conducted by the Texas Agricultural Extension Service serve people of all ages regardless of socio-economic level, race, color, sex, religion, handicap, or natural origin.

Educational programs conducted by the Texas Agricultural Extension Service serve people of all ages regardless of socio-economic level, race, color, sex, religion, handicap, or natural origin.

Educational programs conducted by the Texas Agricultural Extension Service serve people of all ages regardless of socio-economic level, race, color, sex, religion, handicap, or natural origin.

Educational programs conducted by the Texas Agricultural Extension Service serve people of all ages regardless of socio-economic level, race, color, sex, religion, handicap, or natural origin.

Educational programs conducted by the Texas Agricultural Extension Service serve people of all ages regardless of socio-economic level, race, color, sex, religion, handicap, or natural origin.

Educational programs conducted by the Texas Agricultural Extension Service serve people of all ages regardless of socio-economic level, race, color, sex, religion, handicap, or natural origin.

Educational programs conducted by the Texas Agricultural Extension Service serve people of all ages regardless of socio-economic level, race, color, sex, religion, handicap, or natural origin.

Educational programs conducted by the Texas Agricultural Extension Service serve people of all ages regardless of socio-economic level, race, color, sex, religion, handicap, or natural origin.

Educational programs conducted by the Texas Agricultural Extension Service serve people of all ages regardless of socio-economic level, race, color, sex, religion, handicap, or natural origin.

Educational programs conducted by the Texas Agricultural Extension Service serve people of all ages regardless of socio-economic level, race, color, sex, religion, handicap, or natural origin.

Educational programs conducted by the Texas Agricultural Extension Service serve people of all ages regardless of socio-economic level, race, color, sex, religion, handicap, or natural origin.

Educational programs conducted by the Texas Agricultural Extension Service serve people of all ages regardless of socio-economic level, race, color, sex, religion, handicap, or natural origin.

Educational programs conducted by the Texas Agricultural Extension Service serve people of all ages regardless of socio-economic level, race, color, sex, religion, handicap, or natural origin.

Educational programs conducted by the Texas Agricultural Extension Service serve people of all ages regardless of socio-economic level, race, color, sex, religion, handicap, or natural origin.

Educational programs conducted by the Texas Agricultural Extension Service serve people of all ages regardless of socio-economic level, race, color, sex, religion, handicap, or natural origin.

Educational programs conducted by the Texas Agricultural Extension Service serve people of all ages regardless of socio-economic level, race, color, sex, religion, handicap, or natural origin.

Educational programs conducted by the Texas Agricultural Extension Service serve people of all ages regardless of socio-economic level, race, color, sex, religion, handicap, or natural origin.

## Winter Sale Continues

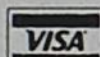
Further Reductions in All Departments!

Infants, Toddler, Girls & Boys, Girls 4-14, Pre-Teen & Ladies

Most Sale Items Now 50% off

Brighton Shoes Reduced!

(Selected Styles)



Kristi's



614 Broadway

Downtown

## "What? Marry a Christian?"



I married a Christian because a godly mate is a blessing to any man or woman. The spirituality of a companion is worth more than money. Truth, mercy, faithfulness and loving kindness are her garments every day.

I married a Christian because of the times of trial on the pathway of the life. Her wise and understanding heart has been my strength in times of discouragement and despair. She knows that victory to overcome, comes from our bond of genuine Christian love.

I married a Christian because I wanted a companion with a Christ-like mind and attitude to be the mother of our children. Our children were blessed with a clean, comfortable home and a mother who listened to their problems with a loving heart.

I married a Christian because her love extends beyond her own family into the lives and needs of others in our community.

I married a Christian because I can love, trust, honor and cherish her until death parts us.

I married a Christian because I want more than anything to go to heaven when this life is done and I believe she does also. We help each other as we are making the journey from our wedding ceremony on and through whatever this life brings. We encourage one another that we both might live in heaven after a while.

Yes, I would advise you to marry a Christian.

## Roaring Springs Church of Christ

Bible Study  
10:00 a.m.

Michael G. Crowley, Sr.

Worship  
9:00 a.m.



Independent Living \$1050 month  
Apartments reduced from \$1250/ month  
2 Weeks FREE  
When you sign up by March 1, 1998

Assisted Living \$1490/ month  
Starts At....



## COTTAGE VILLAGE

204 5TH ST. • CHILDRESS, TX • 940-937-2045

## COTTAGE VILLAGE OFFERS YOU Choice - Independence - Dignity



At Cottage Village we tailor our services to your personal needs, and we always make sure your independence is on the top of our list.

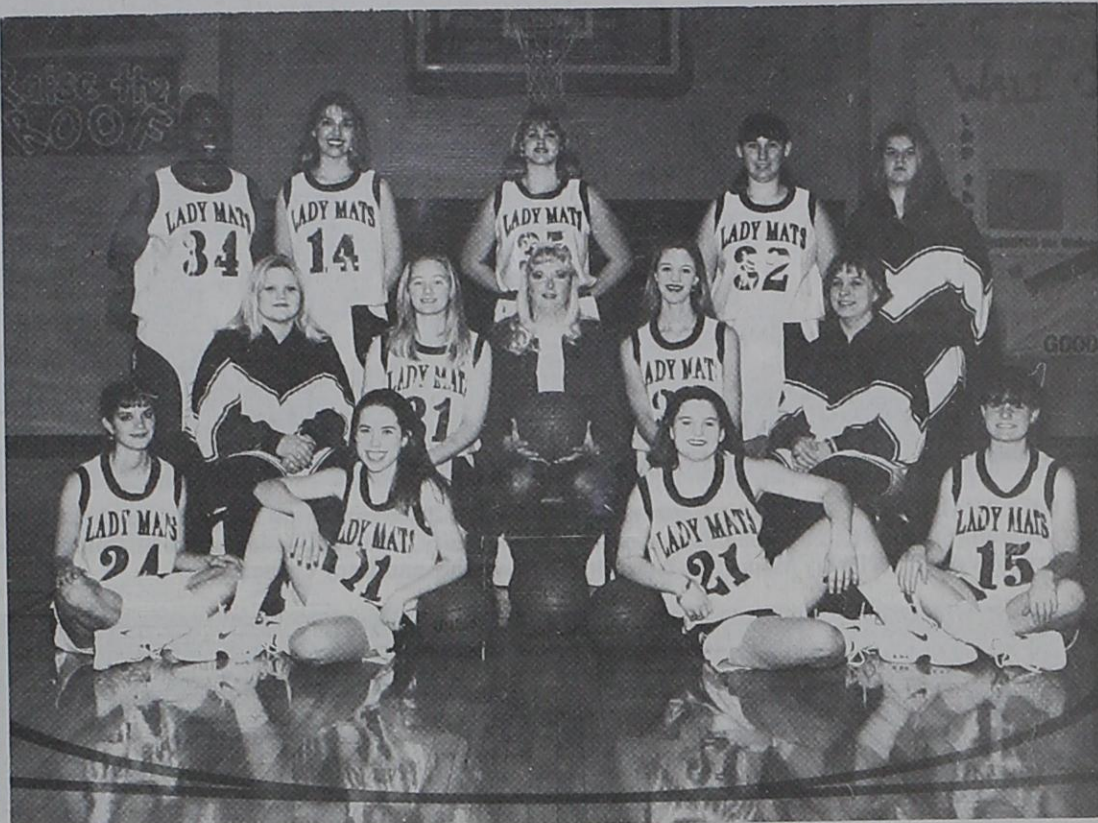
We offer a variety of living arrangements from short-term care after a surgery or illness and providing more detailed care.

One thing we promise...Our care will never be intrusive to your lifestyle. We here to help when you need us!





# WE LOVE THE MATADORS!



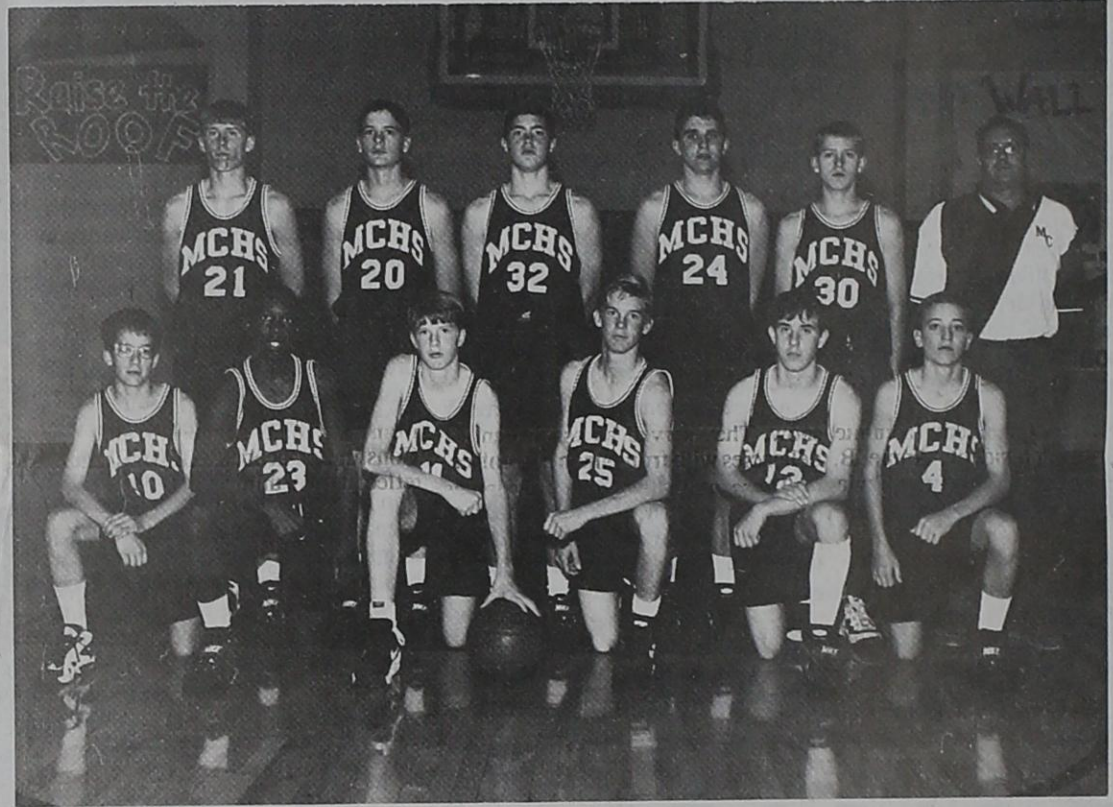
**LADY MATADORS** — Pictured left to right (top) Margaret Mangram, Kandi Keltz, Tonie Bowden, Kim Ashley, Jenny Lewis, Manager; (2nd row) Crystal Christopher, manager, Nesa McFall, Coach Kim Alexander, ShaVonne Taylor, Rebecca Long, manager; (front) Jill Stanley, Blair Thacker, Kristi Williams, and Ashley Stevens.



**J.V. LADYMATADORS** — Crystal Christopher, manager, Rhonda Ashely, Rachelle Renfro, Coach Kim Alexander, LeAnndra Wallace, Miranda Palmer; (middle) Jenny Lewis, manager, Rebecca Morris, Llan Barkley, Candace Marvel, Rebecca Long, manager; (front) Stefanie Lynch, Charity Bartlett, Leigha Burns, and Brooke Decker.



**VARSITY MATADORS** — Back row, Dayton Grundy, Jason Barton, Keane Cruse, Scott Smith, Brad Marvel; (middle) Ryan Martin, Jason Clauser, Aaron Binder, Robert Gillespie, manager; (front) Joe Gonzales, Bobby Fritzer, Aaron Green, Benji Rodriguez.



**J.V. MATADORS** — Pictured left to right (back) Sean Rose, Todd Thomas, Matt Easter, Brant Donaldson, Chase Carson, Coach Ridgley; (front) Ryan Moore, Jermaine Hendrix, Chris Paul, Jerod Rieger, Benjamin Ridley, Casey Lawrence.

## WE SUPPORT THE MATADORS!

- |                                      |   |  |
|--------------------------------------|---|--|
| Motley County Tribune                | Quality Discount Outlet                 | Charley & Opal Johnson                           |
| Matador V&S Variety                  | Matador Implement                       | Darrell, Brenda & Derrick Cruse                  |
| Flomot Gin                           | Cap Rock Telephone                      | James, Margaret & Jason Stanley                  |
| CSR PolyPipe                         | R. S. Cafe                              | Steve, Reneigh & Leigha Burns                    |
| Alexander Fuel                       | Motley County Judge, Laverna Price      | L.J., Eva, & Tanya Barkley                       |
| Vickie's Floral                      | Steve, Bettye & John Stevens            | Tom & Jackie Binder                              |
| Red Ball Gin                         | Charles & Joan Keith                    | Rodney, Glenda, & Lindsey Williams               |
| Production Credit Association        | Billy, Terree & Brittany Donaldson      | Hal & Kellie Martin                              |
| The Windmill                         | Terry & Ronda Miller & Brittany         | Buckey & Debbie Marvel,<br>Kris, Angie, & Amanda |
| Meredith Construction - Gas & Supply | James, Kathy, Robert & Brenda Gillespie | Phillip & Barbara Sharp,<br>Kelsi & Brett        |
| City Grocery                         | Billy, Pam & Dodie Morris               | Butch & Judy Renfro                              |
| Thacker Supply                       | Kelly, Pennie, & Kevin Keltz            | Jim & Carla Meador                               |
| Thacker Jewelry                      | Alan, Kay, & Chance Bingham             | Lee & Misty Jones                                |
| Rose Garden                          | Jeff, Pam, & Brad Thacker               |  |
| Feed Trough Steakhouse               | Tony, Sherry, & Shea Rose               |  |
| ADM Paymaster Gin                    | Randy, Bonita & Lanie Barton            |  |
| Higginbotham-Bartlett                |   |  |



**BASKETBALL**

# Church & Social News

## L.V. Damron Celebrates 80th Birthday With Surprise Party



L.V. Damron

L.V. Damron of Matador celebrated her 80th birthday Saturday, January 10, with a Surprise Party in her home. Many friends and relatives attended and presented Mrs. Damron with a cake, flowers, gifts, well wishes, cards, and telephone calls.

## Do Gooders' Club of Flomot Begins New 1998 Season

The Do Gooders' Club of Flomot began the New Year, Tuesday afternoon, January 6 at the Community Center with the election of officers.

The following elected to serve were Mary Jo Calvert, president; Tommie Jo Cruse, vice president; Annie B. Cloyd, secretary and treasurer; Trula Martin, reporter and Alma Shorter, program chairman. Secret Pal names were drawn for 1998.

During the business session, they made plans for a Shannon Davidson Day quilt. They and the Flomot Homecoming Assn. voted to help with the expense of a new septic system needed at the Community Center. They will accept donations and contributions of any kind for this project.

An entertaining time was had at a White Elephant Swap. Sylvia Lee Martin added to the fun with her remote mechanical gadget.

Hostesses, Annie B. Cloyd and

Tommie Jo Cruse presided at a crystal punch service. The table was laid with an heirloom lace cloth over white. The centerpiece was a scenic winter arrangement of a village on a blanket of snow. They served an assortment of delicacies with fruit punch and coffee. Those attending were Mesdames Sylvia Lee Martin, Barbara Payne, Nada Starkey, Judy True, Mary Jo Calvert, Leona Degan, Trula Martin, B. Rogers, Annie B. Cloyd, Jimmie Hunter, Tommie Jo Cruse, Alma Shorter, Wadetta Clay and Edith Washington.

People may spurn your appeals, reject your messages and oppose your arguments - but they are helpless against your prayers.

— Anonymous

## El Progreso Club learns of the four men in a woman's life

by Beverly Vinson

Thursday afternoon, January 8, 1998, El Progreso Club met in the Senior Citizens building for their monthly meeting. This time they heard about the four men in woman's life.

Before the actual program began the group was called to order by Mrs. JoEtta Bumgardner in the absence of acting president, Mrs. Loys Campbell. The usual business of minutes being read and approved, treasurer's report being given and the election of officers for the forthcoming term, 1998-2000. Those elected were Mrs. Loys Campbell, president; Mrs. Pearl Patten, president-elect; Mrs. Joan Keith, first vice president; Mrs. JoEtta Bumgardner, Secretary-treasurer; Mrs. Winifred Darsey, parliamentarian; Mrs. Beverly Vinson, reporter; and Mrs. Darsey, assistant reporter.

The club was reminded of upcoming club activities, Valentine bingo party with invited guests on Feb. 12 at 11:00 a.m.; guest evening on March 20 at the Methodist church at 7 p.m. with Mark Geesli, former county judge of Kent County bringing the program on the Holocaust; then on April 4, Matador will host the Santa Rosa District convention at the Methodist Church.

Mrs. Bumgardner presented Mrs. Debbie Martin as leader of the day, who, in turn, introduced Mrs. Lucretia Campbell with "everybody knows Lucretia." Mrs. Campbell opened the program with "Other than your husband, there are four other men who at sometime or other will enter into your life and will be very important part. They are your minister, doctor, lawyer, and mortician. Let's take the lawyer! They have been taking you for sometime. Don't get me wrong, I know several young men from our town who have made fine lawyers. So - now 'Court's in Session,'" and the gavel was dropped with a bang!

Lawyer jokes, there are millions of them, even more, possibly, than all the 'Aggie' jokes.

Another part of Mrs. Campbell's talk was The Bill of Rights and Wrongs. The men who put together a new government agreed and adopted our Constitution which has formed the basis of our democracy until this very day. A man named George Mason from Virginia suggested that the Constitution needed a Bill of Rights to reflect those things that were especially precious to the people. The Bill of Rights had a hard time coming to fruition. It took four years for Congress to approve and send to the state for ratification. The Bill of Rights, the instrument that actually contains most of the things that we fought the Revolution for.

The first Amendment prohibits Congress from making any law "respecting the establishment of religion or prohibiting the free exercise thereof. It also protects "free speech and the exercise thereof. The second amendment is controversial in that it is the Bill of the Right of the people to keep and bear arms. The fourth provides protection from unlawful search and seizure; the fifth is the one where we cannot be deprived of "life, liberty or property without due process."

So often these rights conflict with one another, yet it endures as the starting point for justice and our entire system of trying to figure out what's fair.

Mrs. Campbell concluded the program with the Folding Ceremony of the Stars and Stipes, a most interesting explanation of when the flag is folded, each fold has an intense meaning.

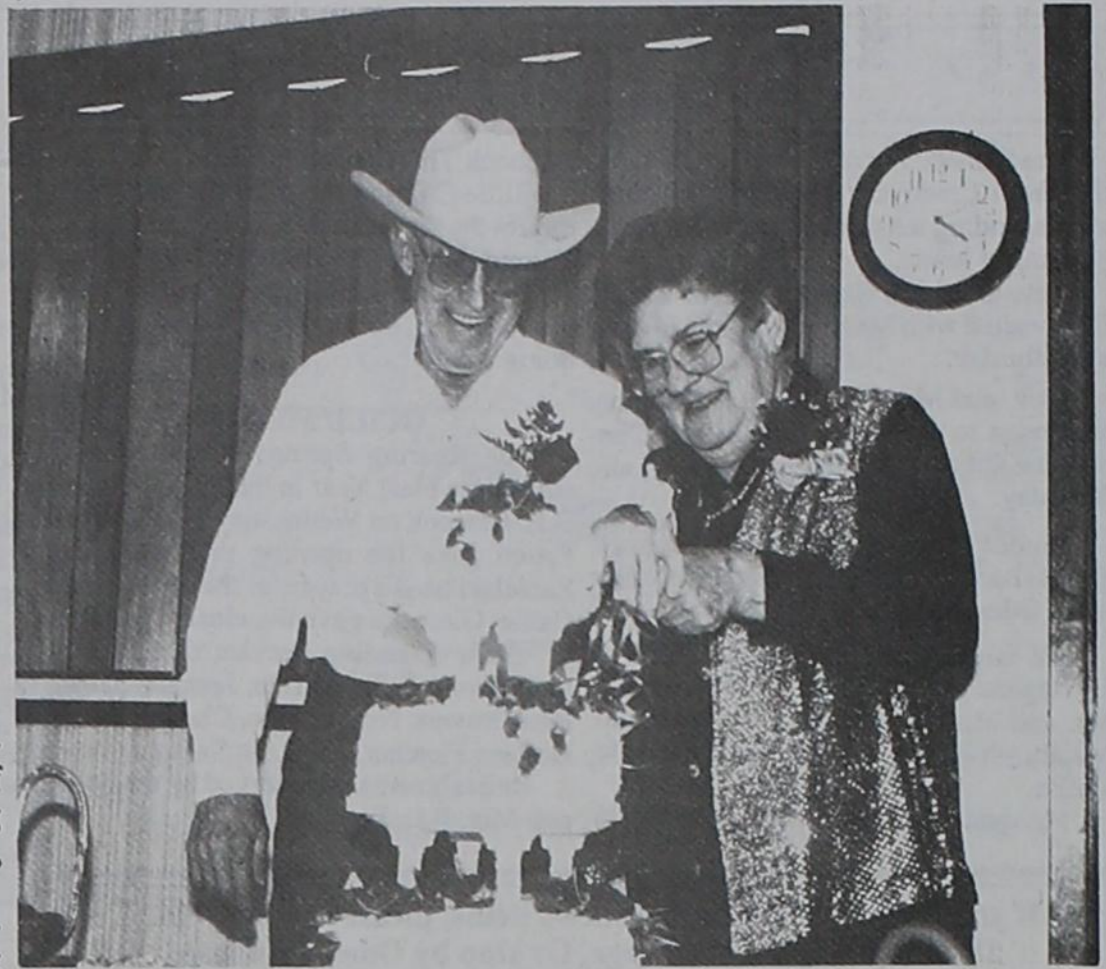
Mrs. Grace Campbell gave the inspirational thought for the day reciting The American's Creed. Then everyone adjourned to the kitchen area where soup was tasted. Each member had brought a container of soup, it was piping hot, there were crackers to go with it and everyone enjoyed a "soup tasting". What a great time we had sitting around the table eating soup and crackers followed by cookies and cake and hot coffee. Those enjoying the afternoon other than previously mentioned were Mrs. Winifred Darsey, Mrs. Patricia Green, Mrs. Beverly Vinson, Mrs. JoAnn Dickson, Mrs. Beverly Vinson, Mrs. JoAnn Dickson, Mrs. Joan Keith, Mrs. Jeanie Adams, and Mrs. Lola Pohl.

\*\*\*

Things are beautiful if you love them.

—Jean Anouilh

## Hemphill's Celebrate 50th Wedding Anniversary



Bill & Florine Hemphill

Many friends and relatives enjoyed a gala event of laughing, snacking and reminiscing Monday afternoon, December 22, 1997 celebrating Bill and Florine Hemphill's 50th Wedding Anniversary.

Bill and Florine were married December 22, 1947 in Matador. They have two sons, one daughter, and three granddaughters.

## Mr. and Mrs. Roy Bradford Observe 65th Anniversary

Mr. and Mrs. Roy Bradford observed their 65th wedding anniversary, Wednesday, December 24, 1997.

Mr. Bradford and the former Opal Newman were married in Lawton, Oklahoma, December 24, 1932.

Mr. Bradford who had agricultural interests, retired in 1982 when they moved from Roaring Springs to Matador.

They have one son, Van Bradford and wife, Lee of Gruver; one granddaughter, Vana Reed, husband, Rex and children, Chase and Chelsea of Gruver; and one grandson, Jody Bradford, wife Eadie and children, Jade and Jaci of Panhandle.

# ALLSUP'S ALWAYS Low Prices

ALLWAYS OPEN • ALLWAYS FAST

The Grocery Store for People on the GO!!!

ALLSUP'S Sandwich Bread 1.5 LB. LOAF

2 FOR \$1.29 OR 79¢ EACH

WHOLE OR 1% LIGHT Allsup's Milk GALLON

\$2.19

NEW Cappuccino Bueno 59¢ 69¢ (12 oz., 16 oz.)

French Onion or Green Chili Shurfine Dips 8 oz. 89¢

ROMA Laundry Detergent 64 oz. \$2.29

Allsup's Motor Oil QUART 99¢

W/SPORT CAP Allsup's Water 1 LITER 69¢

Pepsi-Cola 6 PK. \$1.99 3 LITER \$1.79

COMBO MEAL DEAL

Rib-B-Q Sandwich, Western Style Wedges & Tallsup

\$1.99

BREAKFAST COMBO

Sausage or Canadian Bacon, Egg & Biscuit, Hash Brown & 22 oz., Fountain Drink or 16 oz. Coffee

\$1.89

16 oz. can Shurfine Green Beans .49¢

10 oz. can Campbell's Cream of Mushroom Soup \$1.29

Wisconsin Tradition String Cheese .39¢

13.2 oz. Alpo Dog Food .59¢

CHECK YOUR FRIENDLY ALLSUP'S STORE FOR ADDITIONAL MARKDOWN SPECIALS!

Hwy. 70 — Matador

PRICES EFFECTIVE JAN. 15 - 21, 1998

• OFFER GOOD WHILE SUPPLIES LAST

Bridal Shower Selections for Lee & Misty Jones (nee Misty Easter)

We have lots of Sale Items!

Country Spice

Main Street - Matador

25% off FABRIC



50¢ off per yard

Victorian Lace Matador Variety

## White River Lake Restaurant

Is Now Open!!

Join us Friday nights for our Fish Fry & Sunday for our Noon Buffet.



Hours: Friday & Saturday 5-10 p.m. Sunday 11 a.m. - 2 p.m.

Call 263-4248 or 271-3505

# Motley County Comings & Goings

## Roaring Springs News

by Odessa Mullins

Ora Stonecipher returned home Thursday from Crosbyton St. Mary's hospital after spending ten days there. She is recuperating at home.

Rev. and Mrs. Benny Goss of Littlefield visited with her mother, Vera Mitchell, Saturday.

Rev. and Mrs. Don Jones left Sunday afternoon to attend the Evangelism Conference in Ft. Worth. They returned home Tuesday.

Linda Evans and Kevin Hart of Chickasha, OK spent Friday night with their aunt, Odessa Mullins.

Mr. and Mrs. Harry Patten visited in Lovington, N.M. with her son and family. Mr. and Mrs. William Palmer, Matt and Micah, while Williams and Shelly went to Dallas.

Mr. and Mrs. Tom Jordan were in

Lubbock Thursday on business. Billie Clifton went to Northfield Monday for the graveside service for her cousin, Tommy Moore, who lived in Floydada.

Venus Fairly had surgery at Lubbock last week at Methodist Hospital and is doing well.

### GUILD MEETS

The Roaring Springs Wesley Guild started the New Year in the home of Mrs. B.L. Peacock on Wednesday night. Pearl Patten gave the opening prayer. Grace Zabielski used a prayer for the devotional. Callie Giesecke gave the closing prayer.

Those attending besides those mentioned were Billie Clifton, Jeanie Adams, Rita Grovers, Noma Wike, Chelsea Read, Darleen Fletcher, and Lula Swim.

Refreshments were served by the hosts, Mrs. B.L. Peacock.

## Flomot News

by Earlyne Jameson

Mr. and Mrs. Earl Jones and grandson, Conner of Carlsbad, N.M. visited last weekend with Mr. and Mrs. Orville Lee. J.A. Welch of Cedar Hill visited Mr. and Mrs. Wilburn Martin, Monday.

Visiting from Friday until Tuesday with Mr. and Mrs. Howard Rogers was their great granddaughter, Kaylyn Rogers of Lubbock.

Mrs. Kim Cloyd of Memphis accompanied her mother-in-law, Mrs. Annie B. Cloyd to Hale Center, Friday for a medical appointment.

Mary Ellen Barton and Viola Stinson were in Plainview, Thursday for a medical appointment. En route home, they visited in Floydada with Mrs. Mollie Burleson who is on the sick list.

Mr. and Mrs. Clois Shorter celebrated the 1st wedding anniversary of daughter and husband, Keri and Kevin Schon of Ropesville, with a dinner and entertainment in Lubbock. Visiting Mr. and Mrs. Shorter, Sunday were daughter and husband, Christi and Dwain Milam of Petersburg.

Mr. and Mrs. Wayne Hunter were in Lubbock, Thursday for Wayne a medical appointment and visited H.G. Hunter and Mrs. Anita Carter. They visited in Floydada, Friday with Mr. and Mrs. John Speer.

L.T. Starkey of Ralls visited his mother, Mrs. C.W. Starkey, Saturday.

Aleda Elaine Ross visited from Dec. 30 to Jan. 1 with her aunt and uncle, Elisa and Stan Wigley of Lubbock.

## Whitflat News

by Earlyne Jameson

### OVERHEARD

An artificial hip together with an earlier knee replacement has a friend wondering whether he still has enough original parts to qualify for the senior citizen discount.

Mrs. Juanita Cooper visited in Amarillo from Jan. 1-4 with Mr. and Mrs. Ken Dunnam when she accompanied home granddaughter, Kourtney who visited here during the holidays.

Mrs. Carol Ann Turner joined Mrs. Chelsea Read and Mrs. Joan Keith of Matador to attend a Delta Kappa Gamma meeting held Saturday afternoon in Spur at the First United Methodist Church.

Art Green of Flomot and Mrs. Kathryn Martin were in Lockney, Tuesday for Art a medical appointment and continued to Plainview on business. Mrs. Martin met her daughter, Mrs. Nathan (Carol) Gilbreth of Sundown in Lubbock, Thursday for her

a medical check-up following her foot surgery.

Mr. and Mrs. Tim Jennins of Haskell visited his parents, Mr. and Mrs. T.W. Jennings, Sunday.

Mrs. Juanita Cooper had lunch with Ms. Lula Swim in Roaring Springs, Thursday and they attended the graveside services of Mrs. Clyda Nichols. Mr. and Mrs. Van Bradford of Gruver visited one day last week with Mrs. Cooper and in Matador with his parents, Mr. and Mrs. Roy Bradford.

Mrs. Kathryn Martin visited in Roaring Springs, Saturday with her mother, Mrs. Josie Martin. Other guests were Mr. and Mrs. Charles Martin of Lovington, N.M., and Mrs. Wendell Newman of Spur and Mr. and Mrs. Rex Martin of Lubbock.

Visitors in the home of Mrs. Juanita Cooper, Saturday were Jack Samford of Afton and Mr. and Mrs. Ken Dunnam of Amarillo.

## A Note of Thanks

We, the family of Lillie Sperry, would like to thank everyone who helped us during our time of loss. A special thanks to those who brought and prepared food for the family. We appreciate all you did. God bless each one of you.

The Sperry family

The Motley County Community Chest members want to say "Thank You" to the generous people of Motley County who made contributions for 1998. If we can assist you in any way, please let someone know. A sincere thanks to all of you.

Larry Hoyle, President

Surprises come in all shapes, forms and sizes, but believe me when I tell you I had a surprise on Saturday that exceeded any definition that Webster could come up with. It all began with the arrival of my nieces and nephews from Paducah - June and Bill Cartwright and Ann and Billy Smith - loaded down with all the "goodies" necessary for an 80th birthday party. Soon guests began arriving bearing gifts, flowers, hugs and good wishes! I have never felt so blessed as well as humbled in my entire life just to think so many wonderful family members and friends would come to celebrate my 80th birthday.

There was another added blessing. Just how often in life do you have a favorite grade school teacher attend your 80th birthday party? Not often really, but in this case it happened. Mrs. Viola Keith was a guest at my surprise party, and she was my teacher in grade school. Isn't that great?

I have received so many birthday cards that brought laughs and tears. Even the telephone came near a melt-down.

May God bless each of you for making the Big 8-0 such a happy experience for me and I thank you for starting my 81st year off so beautifully. I love all of you!

L.V. Damron

## SHAKLEE PRODUCTS

Peggy Probasco  
983-5246 or 800/536-5246

## Obituaries

### Thomas Moore

Floydada -- Services for Thomas E. (Tom) Moore, 69, of Floydada were held at 1 p.m. Monday, January 12, 1998 in the First Baptist Church of Floydada, with Rev. Gene Hawkins officiating.

Burial was at 3:30 p.m. in Northfield Cemetery, Northfield, under the direction of Moore-Rose-White Funeral Home of Floydada.

He died Friday, January 9, 1998 in Lockney Care Center, Lockney.

Mr. Moore was born on May 26, 1928 in Quanah, Texas.

He graduated from Matador High School and attended Hardin Simmons University. He moved to Floydada in 1966 from Matador.

He married Billie Anne Bumpus on December 28, 1947, in Northfield, Texas.

Mr. Moore retired in 1986, after 37 years as County Executive Director of United States Department of Agriculture/ Agriculture Stabilization Conservation Service.

He was a member of the Floydada First Baptist Church.

Survivors include his wife, Billie Anne Moore; four sons, Tommy Luis Moore of Dumas, Terry Michael Moore of Plainview, Steve Moore of Anton, and Bill Moore of Lawton, OK; two daughters, Brenda Watson and Cindy Fuller, both of Floydada; one sister, Virginia Nimmo of Matador; fourteen grandchildren and nine great-grandchildren.

The family suggests memorials to Floydada EMS, P.O. Box 373, Floydada, TX 79235-0373, or your favorite charity.

### Earline Whitaker

Quitque -- Services for Earline Whitaker, 85, formerly of Quitque, were held Monday, January 12 at Quitque's First Baptist Church with the Rev. Jess Little, pastor of First Baptist Church of Silvertown, officiating. Stuart Smith assisted.

Burial was in Resthaven Cemetery in Quitque under direction of Myers-Long Funeral Directors.

She died Sunday, Jan. 11, 1998, in Amarillo. She was born Oct. 8, 1912, in

Comanche County. She married George Earl Whitaker on Aug. 20, 1932, in Matador. He died Oct. 19, 1990. She was a homemaker and had been a house parent at Buckner's Children's Home.

Survivors include a daughter, Myra Brown of Amarillo; two sons, Charles Whitaker of Oklahoma City and Jan Whiakor of Lubbock; one brother, Thane Amonett of Lubbock; 10 grandchildren; 16 great-grandchildren; one great-great-grandchild.

### O. Norlan Dudley

Services for O. Norlan Dudley, 70, of Tulia, father of Mrs. Clayton (Donna) Pigg of Flomot, were held at 2 p.m., Monday, January 12, in Wallace Funeral Home Chapel. The Rev. Denzil Leonard, retired Baptist minister of Canadian officiated.

Burial was in the Silvertown Cemetery. Dudley died Friday, Jan. 9, 1998 in the Veterans Administration Medical Center in Amarillo.

He was born October 18, 1927 in Silvertown. He married Doris Fay Holt on April 2, 1948 in Amarillo. He was a member of Methodist Church. He graduated from Silvertown High School and was a U.S. Navy veteran of World War II. He moved

to Tulia in 1982. He was a member of the Silvertown AF&AM Masonic Lodge, Khiva Shrine, El Paso Scottish Rite, American Legion, Veterans of Foreign Wars, Sheriff's Association of Texas and Lions Club.

He was a deputy sheriff for Swisher County until 1988. He was a retired banker, deputy sheriff and bondsman.

Survivors include his wife; three daughters, Joan Vining of Greenville, Laura McNamara of Lubbock and Donna Pigg of Flomot; three sisters, LeJeanne Graham of Lovington, N.M., Mary Davis of Silvertown and Connie Comer of Friona; and nine grandchildren.

## College Classes

from page 1

Floydada High School, with the exception of the accounting class, which will be offered at the Lighthouse Electric Coop in Floydada.

Courses are open both to high school seniors who can apply for early admission and for persons who are high school graduates or possess a GED certificate.

SPC's in-state costs are \$128 for three semester hours, \$236 for six

semester hours and \$344 for nine semester hours.

"South Plains College has offered college courses to Floydada and area residents for a number of years. This is an excellent opportunity to work on a college degree; costs are competitive and courses are offered in a convenient location," said Jim Walker, dean of continuing education and distance learning at SPC.

For more information, contact Angie Lipham, Floydada Chamber of Commerce, at 806-983-3434 or the SPC Office of Continuing Education at 806-894-9611, ext. 2341.

## PUBLIC AUCTION

Saturday, February 7, 1998 - 10 a.m.

Farm Equipment, Vehicles, Shop Equipment, Household Items, Etc.

Owners: Mr. & Mrs. J.C. Martin and Others  
Location: 14 miles East of Floydada on US HWY 70  
Consignments Welcome

For Information Contact:

LARRY OGDEN AUCTIONEERING  
P.O. Box 31, Floydada, Texas 79235

(806) 983-5808 1-800-395-7298 (806) 983-1808 Mobile  
Texas License Number 9240

### CHARLES R. KEITH FOR MOTLEY COUNTY TREASURER

"Dedicated to serving our county as I served our country."

Since returning to Motley County in July, 1993, I have served as a Board Director and officer in the South Plains Health Provider Organization, the Motley County Hospital District, the Motley County Ex-Students Association, and the Motley County Chamber of Commerce. In addition, I have been active in the Matador Lions Club, First United Methodist Church of Matador, American Legion, Roaring Springs Community Volunteers; serve as County Chairman of the Salvation Army and am a member of the Site-Based Management Committee at Motley County Independent School District.

Your Support & Vote in the March 10th Democratic Primary  
Will Be Greatly Appreciated!

Political advertisement paid for by Charles R. Keith

## FLOYDADA • FORD • MERCURY

# OUR BIGGEST USED CAR SALE OF THE YEAR!

We've Special Priced Over 50 Used Cars

any not sold will be offered at wholesale to other dealers - BUT - YOU GET A CHANCE TO BUY THEM FIRST

## HERE THEY ARE!

### TRUCKS

91 Ford F-150, Reg. Cab, Auto.	\$7995
88 Ford F-150 Spercab, 4x4	\$7995
93 Mazda B2600, Auto	\$8995
95 Nissan Reg. Cab, Auto	\$8995
95 Ford F-150 Supercab, 6 cyl.	\$11,995
96 Ford Ranger Splash	\$11,995
94 Ford F-150 Supercab XLT, 6 cyl.	\$11,995
93 Ford F150 Supercab XLT 8 cyl.	\$12,995
96 Chevy S-10, Extended Cab, 6 cyl, Auto	\$13,995
95 Mercury Villager, 25,000 miles	\$14,995
94 Chevy Suburban, Silverado	\$16,995
97 Ford F-150 Supercab XLT	\$19,995
96 Dodge Club Cab, 4x4	\$23,995
97 Ford Explorer, 4 x 4 Eddie Bauer	\$24,995

### CARS

93 Plymouth Sundance	\$5,995
93 Buick Century	\$5,995
96 Ford Aspire	\$6,995
94 Ford Escort, Sunroof	\$7,995
94 Chevy Corsica	\$7,995
93 Ford Probe	\$7,995
93 Ford Probe	\$7,995
95 Ford Contour	\$9,995
96 Chevy Corsica	\$9,995
96 Chevy Cavalier	\$9,995
96 Olds Cutlass Supreme	\$13,995
96 Mercury Cougar, 2 to choose from	\$14,995
97 Ford T-Birds, 2 to choose from	\$14,995

IF YOU'RE GOING TO BUY A USED CAR THIS YEAR

## DON'T MISS THIS ONE!

FLOYDADA FORD  
806-983-3761



FLOYDADA FORD  
806-983-3761

## Peace of mind is only 35 miles away at CROSBYTON NURSING AND REHABILITATION CENTER

Perhaps one of the most difficult decisions you will ever make is placing a love one in a health care facility. At Crosbyton Nursing and Rehabilitation Center we offer:

- 24 hour nursing care
- IV Therapy
- Physical and Occupational Therapy, Speech Therapy, Respiratory Therapy
- Wound Care Management
- Therapeutic recreation
- 5 Star dining
- Transportation to all appointments
- Medicare certified
- Tranquil country atmosphere
- Newly remodeled

We invite you to visit Crosbyton Nursing and Rehabilitation Center to meet our staff and residents and allow us the opportunity to explain the scope of services available.

You'll find that caring and peace of mind can be found at

CROSBYTON NURSING AND REHABILITATION CENTER  
222 N. Farmer  
Crosbyton, Texas 79322  
(806) 675-2342



# Farm & Ranch News



## News from the County Agent

by Motley County Extension Agent - J. Michael Lee

### 4-H CLUB MEETING

The January 4-H Club meeting will be held on Thursday, January 15 at the VFW Memorial 4-H Building, starting at 7 p.m. At the meeting we will discuss upcoming 4-H activities,

changes for the 1998 Junior Livestock Show, project record forms, project requirements, 4-H Roundup and Fashion Show information.

Bring your parents and I hope to see all of you there.

## Texas Forrest Service Sells Windbreak Trees, Offers Tips

A tree standing alone adds a certain aesthetic quality to rural living. But the systematic planting of trees and shrubs in a windbreak becomes a management tool that effects every aspect of a farm or ranch, says a Texas Forest Service official.

Now is the time for Motley County landowners to order windbreak seedlings produced by the Texas Forest Service West Texas Nursery in Lubbock, before preferred stock is sold out, says Robert Fewin, Texas Forest Service forester. The seedlings can be purchased through the Upper Pease Soil and Water Conservation District.

Windbreaks protect the soil, increase land value and crop yields, and reduce livestock weight loss and mortality.

But producing a high performance windbreak requires more than just planting a line of trees, Fewin says.

Prior to planting a windbreak, Fewin states that it is essential to determine: — the area or structure in need of protection;

— tree species adaptable to the planting region;

— and the planting dimensions of the break, be it a homestead, livestock field, wildlife windbreak or a living snow fence.

A planting dimension, such as proper spacing, prevents crowding and reduces tree stress, which also decreases insect and disease susceptibility thus extending the life of the windbreak. Generally, each tree row should be planted 20 feet apart with 1 to 25-foot spacing between each tree within a row, Fewin said.

When designing a windbreak Fewin also recommends planting multiple rows of evergreens and deciduous trees and shrubs. The purpose of the windbreak dictates the number of rows required.

Each row within a multiple row windbreak serves as a backup in case one row is lost to pest damage or other conditions. Generally, insects and diseases are confined to a species. Also, within the multiple row structure a deciduous tree row will provide early protection. Deciduous trees are faster growing than evergreens, which are the backbone of multiple row windbreaks, Fewin states.

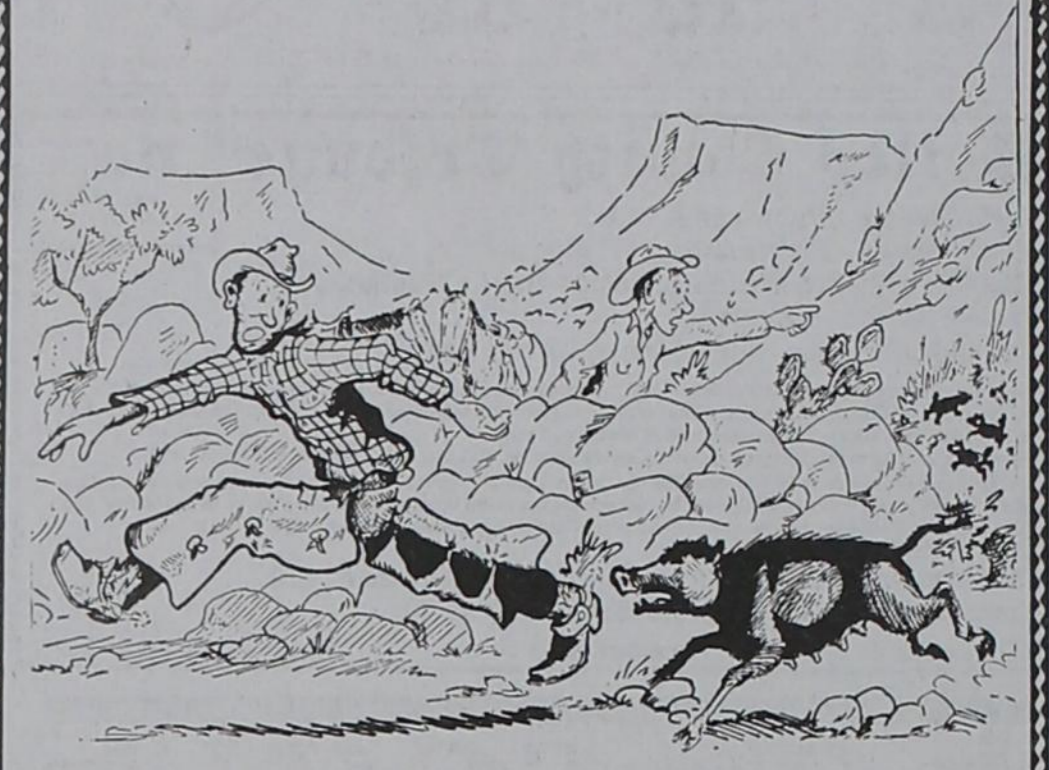
Species diversity in a multiple row windbreak also enhances aesthetics with foliage that changes with the seasons (depending on the species).

A single row of trees may suffice for a period, but a multiple-row windbreak established with the recommended dimensions can serve a lifetime.

To order a windbreak seedlings this winter, contact the Upper Pease SWCD at 806-347-2263. The final date to order is fast approaching.

## COW POKES

By Ace Reid



"Jake, you broke a record. You done run two miles in 45 seconds!"

This Feature Sponsored By

**First State Bank**

Matador

Your "Hometown" Bank

Member FDIC

## COTTON NEWS

FROM PLAINS COTTON GROWERS, INC.

Producers in five Southern High Plains counties have successfully completed all requirements for the creation of the Southern High Plains Boll Weevil Eradication Zone (SHP).

Plains Cotton Growers officials note the impetus for the creation of the SHP zone, which includes areas previously included in the Southern High Plains/Caprock (SHP/C) eradication zone was recognition by growers that the boll weevil would soon eliminate their ability to profitably grow cotton.

Spearheaded by Yoakum County producer Don Parrish, the SHP Zone was officially created by Texas Commission of Agriculture Rick Perry Dec. 23, 1997. The new SHP Zone includes the following counties: Andrews, Gaines, Yoakum, and portions of Lynn and Terry counties.

The announcement included the appointment of Don Parrish as interim member of the Texas Boll Weevil Eradication Foundation Board of Directors representing the SHP Zone.

The next step will be for the Texas Boll Weevil Eradication Foundation Goldman to formulate a plan and a budget for elimination of this pest in the zone. Seed Company that the tolerance would Cotton producers in the SHP Zone will not be extended for the 1998 growing then be called on to indicate their desire season.

to participate in an eradication program through a referendum in the first few months of 1998. Growers and crop-sharing landowners will also vote on a maximum assessment level to fund a spray program.

A similar effort is currently underway to create a Permian Basin Eradication Zone from counties located in the southern portion of the SHP/C Zone. That effort has reached the final stages with the conclusion of the official comment period January 5, 1998.

A final decision on the creation of the Permian Basin Zone is expected very soon. TDA officials have indicated they could make an announcement as soon as January 9.

The Christmas Eve decision NOT to extend the tolerance for broomxnil (Buctril) has cotton growers across the Cotton Belt more than a little upset.

Citing, once again concerns about health risks to children and infants, the Environmental Protection Agency Assistant Administrator Dr. Lynn

Goldman informed Rhone-Poulenc Ag Company and Stoneville Pedigreed that the tolerance would not be extended for the 1998 growing season.

Efforts to reverse the decision continue through the National Cotton Council and other industry groups.

Growers are upset with the decision and the reasons given for it, because of the long history of broomxnil use on corn, and the act that the technology provides a significant opportunity to reduce input costs during the growing season.

EPA officials are expected to release additional data regarding broomxnil in a Re-registration Eligibility Decision (RED) that will explore steps to mitigate risks from broomxnil use on cotton and other crops.

Buctril (broomxnil) is a broad spectrum herbicide which has been in use on other crops for over 30 years. The cotton tolerance was first issued in 1996.

Standing by their figures from December the Texas Agricultural Statistics Service has left crop production estimates for the Texas High Plains unchanged at 3.5 million bales.

Considering the fact that the two USDA Cotton Classing offices that service the area have received and classed only 3.22 million samples the area will have to stretch a little to achieve the 3.5 million bale target. A few gins are still operating, but should be finished within a matter of days.

Adjusting the Classing Office figures to reflect statistical 480-pound bales reported by the TASS means the area needs to produce and class as much as 3.36 million running bales in 1997.

Speculation now should center on whether or not an additional 140,000 bales of cotton are left to gin.



Use Safety While Hunting!

## SPECIAL

**Natural Tub 24%  
for Cattle**

**\$42.00**



**STOCKMAN'S**

Matador 347-2845



## Higginbotham-Bartlett

WE NOW SELL

*Fafnir Stripper Bearings*  
— APPLIANCES —

Washers & Dryers, Stoves, Freezers, Microwaves

"LEON VALLEY"

- 10' Portable Cattle Panels      4' Walk Thru Gates
- 12' Trough Feeder                4' Trough Feeder
- Round Bale Feeder

FARM & RANCH SUPPLIES

PURINA FEEDS

HI-PRO VET SUPPLIES



PORT-A-HUT HOG  
RAISING SYSTEMS

STORAGE BUILDINGS

RENTALS:

- Chop Saw                      Roto-Rooter                      Ditch Witch
- Roto Tiller                    Tandem Trailer                   Welder
- Steam Cleaner

STORE HOURS - 7:00 A.M. - 5:00 P.M. MONDAY - FRIDAY & 7-12 SATURDAY

FREE LOCAL DELIVERY

FOR YOUR CONVENIENCE AFTER HOURS CALL

DONNIE 347-2889 OR FRED 347-2304

Thank-you  
for reading  
The  
MOTLEY  
COUNTY  
TRIBUNE

## Celebrating a Successful Partnership



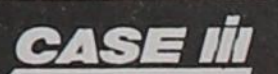
*Customer Appreciation Days*  
**Scott Tractor & Equipment**

Cordially Invites You To Come and See Our  
**New Variable Rate Planter**  
along with

**Our New Series of Tractors**

West Hwy. 82 - Ralls, Texas 806-253-2591 •Donny •Floyd •Jesse

© 1997 CASE CORPORATION  
CASE II is a registered trademark of Case Corporation  
Visit us on the Internet at <http://www.casecorp.com>



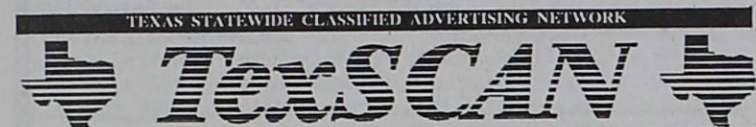
# THE CLASSIFIEDS

## Motley County Tribune

Carla Meador - Publisher & Editor  
 Mary Meason - Proofreading, Writing  
 Misty Easter - Proofreading, Composition, Circulation  
 Brooke Barton - Circulation  
 LeAnnra Wallace - School News, Circulation

The Motley County Tribune, (ISSN: 0897-4322), purchased on September 3, 1996, is published weekly each Thursday, except Christmas week, at Matador, Texas. The office is located at 724 Dundee, Telephone number, 806/347-2400. Periodical-class postage paid at Matador, Texas.  
 Postmaster: Send address changes to Motley County Tribune, P.O. Box 490, Matador, TX 79244-0490.  
 NOTICE: Any erroneous reflection upon the character, firm or corporation, which may appear in the columns of the Motley County Tribune will gladly be corrected upon being brought to the attention of the publisher. Only signed letters to the Editor will be considered for publication and should not exceed 250 words in length.  
 PUBLICATION NO. 333700

Subscription Rates — Motley County, \$19; All others, \$20.  
 9 month student, \$18; over 60 may deduct \$1.00  
 P.O. Box 490 806-347-2400 Matador, TX 79244-0490



**ADOPTION**  
 Note: It is illegal to be paid for anything beyond medical and legal expenses in Texas adoptions.  
 ADOPT YOUR BABY will be surrounded with love, warmth and happiness. Expenses paid. Caroline & Michael 1-800-370-4369.  
 ADOPTION: WE CAN give your baby love, laughter and a secure future. Expenses paid. Please call Mark and Luann 1-800-662-0866.  
**AUCTIONS**  
 AUCTION LIQUIDATION CONSTRUCTION - Ranch equipment - trucks - AAA R4 Action Intl. & Webster - Feb. 28 - 14463 Lube Rd. Houston - consignors accepted - We'll liquidate at your location - #1 money getting team in the world - 1-888-765-3866, 281-350-9111, 970-954-9723.  
**DRIVERS WANTED**  
 \$51,000 SIGN-ON bonus. PFT/Roberson, CX/Roberson's looking for flatbed and van semi-drivers. Up to 30-31¢ / mile to start. Need Class A CDL, 1 year OTR. 1-800-475-5581. EOE/DFW.  
 DRIVER FLATBED TEXAS based Reg. Run. start up to \$48K. More experience = more pay. Great benefits + profit sharing. 3 years OTR. 1-800-637-4407.  
 DRIVER - OTR - GIVE us 5 minutes! We'll give you a reason to quit reading the classifieds. 78-36-cpm, based

Call this newspaper for details on how to advertise statewide.

**Untangle the Web™**  
**prodigyinternet™**  
 • Solid, reliable Internet access • Links to local information  
 • Unique features to help navigate the web • All for just \$19.95/month!

**Get free software and a free one month trial**  
 Call 1-800-PRODIGY or visit [www.prodigy.com](http://www.prodigy.com)  
\*Limit one free trial per individual. Valid credit card required. Additional charges apply for certain features. Phone company charges not included. Supplemental access charges may apply. To avoid being charged your first monthly fee, simply cancel your membership before your free one month trial ends. \*\*For Basic 10 Plan and Unlimited Plan pricing after your one month trial or for complete details, refer to the online Member Services or Help sites. Offer subject to change without notice.  
 The Prodigy Internet logo and Untangle the Web are trademarks of Prodigy Services Corporation. ©1997 Prodigy Services Corporation. All rights reserved.

# BUSINESS REVIEW

**NEED THE PERFECT GIFT?**  
 A Subscription to the **MOTLEY COUNTY TRIBUNE** keeps on giving, every week, all year long!

**THIS SPACE IS AVAILABLE FOR A LOW MONTHLY COST**

**CALL 347-2400 FOR PRICES AND INFORMATION!**

Authorized Agent of Caprock Cellular  
  
**Gillespie Communications**  
 JAMES GILLESPIE - (806) 347-2208  
 Land Mobile Radio Sales & Service

CALL DAY OR NIGHT FOR PROPANE & ELECTRICAL SERVICE  
**MARSHALL BROS.**  
 347-2290

PROPANE ELECTRIC

**Germania Insurance**  
 Homeowners, Auto, Personal, and Farm Liability and Life

**LEE'S INSURANCE AGENCY**  
 Flomot, Texas 79234 806-469-5370

**JANUARY Subscriptions Due**  
 Motley County - \$19  
 All Others - \$20  
 If over 60 you may deduct \$1.00

**MOTLEY COUNTY**  
 Palge Williams Barnes, Matador  
 Harold Campbell, Matador  
 Foy Moore, Matador  
 L.J. Barkley, Jr., Matador  
 Mrs. John Stotts, Matador  
 Bobby Williams, Matador  
 Geneva Wilson, Matador  
 Steve Burns, Matador  
 Luther Green, Matador  
 C.D. Garrison, Matador  
 Mary Webb, Roaring Springs  
 Alvin Durham, Roaring Springs  
 Robert Forbis, Roaring Springs  
 Billy Morris, Turkey

**ELSEWHERE**  
**Ron Cox, Petersburg**  
 VirginiaGreen, Whiteface  
 Caprock Girls Council, Lubbock  
 Mrs. Ethel Hicks, Abilene  
 Ira M. Sullivan, Granbury  
 Jerline Pitts, Fort Worth  
 Shawn Cox, Sanger  
 David Grant, May  
 H.N. Seigler, Kerrville  
 Charles Cammack, San Antonio  
 Dickie Garrison, Red Rock  
 Carolyn S. Henry, Austin  
 Phil & Nita Green, Borger  
 Jerry Swaringen, Canyon  
 Hub Swaringen, Canyon  
 Ruth Smith, Frith  
 Dax Rattan, Amarillo  
 Mrs. Dan Bevers, Amarillo  
 W.L. Rattan, Amarillo  
 Lighthouse Electric Coop, Inc., Floydada  
 Maurice H. Cox, Grain Valley, MO  
 Hazel Soltwisch, Oklahoma City, OK  
 Granite Memorial Co., Granite, OK  
 Mrs. Elvis Lebow, Clovis, N.M.  
 Sue Rochelle, Antioch, CA

**Public Notice**  
**LADY ARTS & CRAFTS GROUP TO MEET**  
 The Ladies Arts & Crafts group will meet at the First Baptist Church basement Thursday, January 15. All the ladies in the community are welcome.

**JANUARY CLEARANCE SALE EXTENDED** through January 22 at ROSE GARDEN. **BRIDAL SHOWER** selections for Lee and Misty Jones (nee Misty Easter) at ROSE GARDEN FLOWER & GIFTS.

**NOTICE**  
 THE MOTLEY COUNTY CLINIC WILL BE CLOSED ON FRIDAYS UNTIL FURTHER NOTICE  
 OPEN MONDAY - THURSDAY

**REAL ESTATE**  
**HOUSE FOR SALE:** 517 North Main, Matador. Call 806-347-2722 or 806-423-1220.  
**MUST SELL:** Wood frame house. 3 bedroom, 1 bath, with Cellar in backyard. Needs painting Abstract current. \$10,000.00. Serious inquiries only. Will finance with 20% down. Call 347-2310.  
**HOUSE FOR SALE OR RENT:** 2 bedroom, fenced backyard, close to school. 1719 Scotch Street, 806-347-2610.  
**HOUSE FOR LEASE IN ROARING SPRINGS:** 3 Bedroom, 2 bath, 2 car garage. In great condition. \$350 deposit, \$395 per month. No smokers please. 806-749-0105.

**Bid Notice**  
**LOCAL LET MAINTENANCE CONTRACT**  
 COUNTY: Motley, Cottle, Dickens, Foard, Hardeman, King, Knox.  
 HIGHWAY: SH0070, ETC.  
 LENGTH: 0.000KM  
 CONTROL NUMBER: RMC - 602523001  
 DBE/HUB GOAL: 0.0%  
 TYPE: Clean and Seal Deck Joints  
 TIME FOR COMPLETION: 25 Working Days.  
 GUARANTY: 1,400.00  
 BIDS RECEIVED UNTIL: 3:00 p.m. January 29, 1998.  
 BIDS WILL BE OPENED: 3:00 p.m. January 29, 1998.  
 EST. COST: 68,229.00  
 MAIL OR DELIVER BIDS TO:  
 Texas Department of Transportation  
 Childress District  
 1700 Ave. F NW  
 Childress, TX 79201-0000  
 (940) 937-7140  
 Contact Person:  
 Gene Garcia  
 P.O. Box 900  
 Childress, TX 79201  
 (940) 937-7156  
 LIMITS FROM: See Limits Sheet  
 LIMITS TO: See Limits Sheet  
 ITEM DES S.P.  
 ALT. NO. CD. NO. ITEM DESCRIPTION  
 APPROXIMATE UNIT QUANTITIES  
 438 5002 Clean and Seal of Exist Joints M 2,274.303

This is a Waived Project - Bidding Proposals Issued to Prequalified Contractors and Bidders Questionnaire Contractors upon request.  
**IMPORTANT NOTICE TO CONTRACTORS NON-MANDATORY PREBID CONFERENCE**  
 The Contractor's attention is directed to the fact that a prebid conference is optional and prospective bidders do not have to attend in order to bid. The prebid conference will be held on Thursday, January 22, 1998 at 3:00 p.m. at the Childress Headquarters at 1700 Avenue F NW (US287).

**DENTURES**  
 \$400 Full Set  
 Satisfaction Guaranteed  
 Closed Fridays  
 1-800-789-5331  
 Mangum, OK

**FOR SALE**  
 FOR SALE: Used Maytag Washers and Dryers, rebuilt and guaranteed. THACKER SUPPLY, 348-7216.  
 ctfm  
 DSS 18" DIGITAL SATELLITE SYSTEMS. \$149.99. THACKER SUPPLY CO., INC. Roaring Springs, Texas, 1-800-481-2828.  
 FOR SALE: 5 piece wood dining set. 10 speed bike. 347-2610.  
 FOR SALE: Mahogany 3 pedestal drop leaf dining table with six chairs. 347-2436.  
 FOR SALE: Refrigerator, Electric Cook Stove, Couch, Full Size Bed, Washer & Dryer, Coffee table with cabinet underneath, 2 infant carriers, play pen, portable crib, baby bathtub, Booster seat. 348-7516.

**Vehicles For Sale**  
 NEED TO SELL: 1984 Yamaha XS 1100 CC Motorcycle. Low mileage and loaded. \$800.00. Call 347-2310.  
 FOR SALE: 1988 Chevy Astro Van. New Paint. 164,000 miles. \$1500.00. Call 347-2310.

**Legal Notice**  
**NOTICE OF APPLICATION FOR FLUID INJECTION WELL PERMIT**  
 S.K. Rogers Oil, Inc., 1001 8th Street, Levelland, Texas 79336 is applying to the Railroad Commission of Texas for a permit to inject fluid into a formation which is productive of oil and gas.  
 The applicant proposes to inject fluid into the PERMO-PENN Formation, MARTHA VAN EMAN Lease, Well Number 2. The proposed injection well is located 6 miles east of Roaring Springs, Texas in the Roaring Springs (Permo-Penn) Field, in Motley County. Fluid will be injected into strata in the subsurface depth interval from 4086 to 5570 feet.  
 LEGAL AUTHORITY: Chapter 27 of the Texas Water Code, as amended, Title 3 of the Texas Natural Resources Code, as amended, and the State Rules of the Oil and Gas Division of the Railroad Commission of Texas.  
 Requests for a public hearing from persons who can show they are adversely affected, or requests for further information concerning any aspect of the application should be submitted in writing, within fifteen days of publication to the Environmental Services Section, Oil, and Gas Division, Railroad Commission of Texas, P.O. Box 12967, Capitol Station, Austin, Texas 78711 (Telephone 512/463-6792).

**Help Wanted**  
 WANTED: PARTS COUNTER PERSON. Parts Experience necessary, light mechanical experience helpful. Send resume to 4216 Ridgeway Dr., Plainview, Texas 79072.

**Work Wanted**  
 WILL DO CONSTRUCTION WELDING: Oil Field Welding. Can also do Cattle Corrals. 469-5480.

**DON'S MUFFLER SHOP**  
 219 W. Calif. - Floydada  
**FREE ESTIMATES**  
 1-800-866-3670

**Political Calendar**

**MOTLEY COUNTY JUDGE**  
 LAVERNA PRICE Democrat  
 JERRY GREEN Republican

**MOTLEY COUNTY JUSTICE OF THE PEACE**  
 CORA SMALLWOOD

**MOTLEY COUNTY TREASURER**  
 JOE CAMPBELL  
 CHARLES KEITH

**MOTLEY COUNTY COUNTY & DISTRICT CLERK**  
 LUCRETIA ESTES CAMPBELL

**COMMISSIONER PRECINCT 2**  
 DONALD "BUTCH" HUGHES  
 DONNIE TURNER

**COMMISSIONER PRECINCT 4**  
 J.N. FLETCHER  
 Each candidate has paid a fee to be included in this Motley County Political Column.

**PALMER SERVICE CENTER**  
 FULL SERVICE FARM DELIVERY  
 WE DO STATE INSPECTIONS!  
 OIL CHANGES  
 CAR WASHES  
 347-2346 NEW & USED TIRES Matador

**INAPA AUTO PARTS**  
 Floydada  
 1-888-658-6272  
 FREE DELIVERY

**Payne Pharmacy**  
 200 S. Main — Floydada, Texas 79235  
 Ph: 983-5111 or 1-800-345-7961  
 Denise Payne, R.Ph.  
 M-F - 8:30 - 6:00 We will be happy to mail your prescription!  
 Sat. - 8:30 - 2:00

**A TASTE OF TEXAS RANCHING**  
 Cooks & Cowboys  
 A book about Texas Ranches with good cowboy recipes, featuring Dale & JoEtta Bumgardner and the Matador Ranch with some of JoEtta's special recipes  
 \$18.95 + tax NOW AVAILABLE AT THE MOTLEY COUNTY TRIBUNE

**MEREDITH CONSTRUCTION & Gas and Supply**  
 New Construction Remodeling, Painting & Electrical Work Complete turnkey work Concrete work and all types of roofing  
 No Minimum Order on Gas We welcome all new customers 24 hour service  
 JOE G. MEREDITH & SONS - ROARING SPRINGS  
 (806) 348-7516 269-0095 (local call) (806) 348-7528

**Stubblefield's Rugs & Remnants**  
 — Professional Installation —  
 — Financing Available —  
 (806) 296-7387 Plainview, TX 79072 2804 West 5th

**Fred Thayer & Dianne Washington Certified Public Accountants**  
 Hwy. 70 - Next to PCA Office  
 OPEN TUESDAY and other times by appointment  
 806-347-2911 or Floydada, 1-800-536-3122

[www.roberthall.com](http://www.roberthall.com)  
 (806) 237-2182  
**ROBERT HALL CHEVROLET / OLDSMOBILE**  
 501 Main Street Jayton, Texas