

\*\*\*\*\*3-DIGIT 794  
 625 01-30-20 28P 5S  
 SW TEXAS TECH  
 PO BOX 41041  
 LUBBOCK TX 79409-1041  
 \*\*B010

# MOTLEY COUNTY TRIBUNE

VOICE OF THE FOOTHILL COUNTRY

Where History is Pride

Flomot Matador Northfield Roaring Springs

**\$.75**



SOUTHWEST COLLECTION  
 Texas Tech University  
 LUBBOCK, TEXAS 79409

Thursday, August 4, 2011

ESTABLISHED 1891

Volume 120 Issue No. 31

## MC Maverick Cheerleaders attend NCA Cheer Camp



The Motley County Maverick Cheerleaders recently attended NCA Cheer Camp at Wayland Baptist University. The NCA Cheerleaders did a great job teaching these young cheerleaders! Each day cheerleaders from around the area learned new cheers, dances, stunts and chants. The Maverick Cheerleaders put in a lot of hard work and learned many new things. Randa Green is the sponsor of this Spirited group of leaders. Pictured, Back Row, Natalie Jameson, Mattie Brooks; Middle Row, Thalia Quilimaco, Kaylee Woolsey Front - Maci Marshall.

## Grants, Loans and Technical Assistance Among Aid Available for Texas Wildfires

COLLEGE STATION, TX), A true team effort exists in response to wildfires in the state of Texas, as numerous state and federal agencies offer help to those responding to and recovering from the fires.

In addition to support from the Texas Division of Emergency Management (TDEM) and the Federal Emergency Management Agency (FEMA), the U.S. Small Business Administration (SBA), the U.S. Department of Agriculture's Farm Service Agency (FSA) and Natural Resources Conservation Service (NRCS) also have assistance programs available.

"Mother Nature has not been kind to Texas farmers and ranchers in 2011," said Juan M. Garcia, State Executive Director for Texas FSA. "Although not a remedy to the extensive hardships and heartbreak experienced by many producers this year, it's my hope that FSA's disaster programs and loans can alleviate some of the financial strain producers have suffered from the devastating impact of the recent natural disasters."

FSA offers disaster assistance and low-interest loan programs to assist agricultural producers statewide in their recovery efforts following wildfires or similar qualifying natural disasters. Visit <http://www.fsa.usda.gov/> for more details. The assistance programs available include:

- Emergency Conservation Program (ECP) which provides emergency funding for farmers and ranchers to rehabilitate land severely damaged by natural disasters; includes fence loss. (Currently, 32 counties have received ECP funding. Additional counties are being reviewed and considered for funding - please contact the local FSA office to determine status of ECP availability).
- Non-Insured Crop Disaster Assistance Program (NAP) which provides financial assistance to producers of non-insurable crops when low yields, loss of inventory, or prevented planting occur due to natural disasters (includes native grass for grazing).
- Livestock Indemnity Program (LIP) which offers payments to eligible producers for

livestock death losses in excess of normal mortality due to adverse weather. Eligible losses may include those determined by FSA to have been caused by hurricanes, floods, blizzards, wildfires, tropical storms, tornados lightening, extreme heat, and extreme cold.

• Livestock Forage Disaster Program (LFP) that includes payments to eligible producers who suffered grazing losses for eligible livestock because of drought or fire.

• Tree Assistance Program (TAP) for eligible orchardists and nursery tree growers for qualifying tree losses due to natural disaster.

• Emergency Assistance for Livestock, Honeybees, and Farm-Raised Fish Program (ELAP) Under the ELAP, FSA may spend up to \$50 million per year to provide emergency relief for losses due to feed or water shortages, disease, adverse weather, or other conditions, such as blizzards and wildfires, which are not adequately addressed by other disaster programs

• Supplemental Revenue Assistance Payment Program (SURE) which offers payments to eligible producers who have incurred crop production losses or crop quality losses, or both.

• Emergency Loan Program - The recent primary or contiguous Secretarial Disaster designation for all counties in Texas which triggered the availability of FSA's low interest (3.75%) Emergency Loans. These loans help producers recover from production and physical losses due to drought, flooding, wildfire and other natural disasters or quarantine.

NRCS State Conservationist Salvador Salinas said, "NRCS in Texas will help landowners to address wind erosion that continues to occur because of the drought and the effects from wildfires. Our assistance will enable landowners and livestock producers to accelerate the recovery of the health and vigor of the affected grazing land."

NRCS is offering technical and financial assistance statewide to landowners through several programs;

• The Environmental Quality

Incentive Program (EQIP) helps with deferred grazing of livestock, to rejuvenate plant health and to prevent soil erosion, and cross fencing assistance.

• The Lesser Prairie Chicken (LPC) initiative is a local and regional working partnership through the NRCS EQIP program focused on assisting producers in conservation plan development to help maintain, establish, improve and manage habitat for the LPC.

• Additional conservation funding through the NRCS may also be used to address plant health needs for rangeland producers that have suffered losses from recent wildfires.

Applicants should visit the local NRCS office to fill out an application for cost-share assistance. Information is also available at [www.tx.nrcs.usda.gov](http://www.tx.nrcs.usda.gov).

There are also SBA and FEMA programs:

• For information on SBA disaster assistance programs, call SBA's Customers Service Center at (800) 659-2955 for more information.

• FEMA is supporting the wildfires with a presidential disaster declaration that will reimburse 45 Texas counties for Emergency Protective Measures, Fire Management Assistance Grant declarations for 43 Texas wildfires, and the availability of Hazard Mitigation funds statewide. Find more information about the recovery operations on the TDEM website at [www.txdps.state.tx.us/dem](http://www.txdps.state.tx.us/dem).

"When everyone works together and the various programs are offered, it helps recovery speed forward that much more," said State Coordinating Officer Shari Ramirez-MacKay.

"Our goal is a unity of effort across the spectrum of government from the local, state and federal level that provides the greatest amount of assistance to those impacted by the wildfires," said FEMA Federal Coordinating Officer Kevin L. Hannes. "There are multiple programs and sources of assistance that are available to increase the speed of recovery and create stronger communities; what one program doesn't cover, another program may be able support."

## Rural Clinics Benefit From Upgrade in Technology

Quanah, Texas - July 28, 2011 - After many months of planning and implementation, four area clinics are now able to better serve patients through an upgrade in technology. Motley County Clinic, Foard County Medical Clinic and Paducah Rural Health Clinic recently joined Hardeman County Clinic in utilizing Electronic Medical Records (EMR). The three clinics completed installation of new computer hardware and software this month, to bring them online with this state-of-the-art records management system.

EMR is a software application and service provided by Allscripts. The system makes it possible for patient information to be recorded in a centralized, secure location. Doctors and other health-

care professionals can then access that information electronically. The information is password-protected and backed-up daily in two separate locations.

Becky Parker, Director of the clinics reports that EMR is especially helpful for rural healthcare systems where healthcare professionals see patients at more than one location.

"This electronic system allows us to provide continuity of care for our patients", she said.

"Rather than having multiple charts and files in multiple clinics, a patient will have only one set of records that the doctors and nurses can access at any time. They are able to see lab results, medication lists and notes quickly and securely".

Hardeman County Memorial Hospital (HCMH) operates all four clinics. The clinic in Quanah has been utilizing EMR for over a year but in October 2010, the Board of Directors for the hospital voted to pay for the upgrade and service for the three additional clinics. Equipment was purchased in March 2011 and installation completed this month. Scott Nail, CEO of the hospital says they are pleased with the decision.

"Electronic Medical Records is one more service that will help in our effort to provide the best healthcare possible for our rural communities. We are happy to provide this service and consider it a worthwhile investment."

For more information, contact Becky Parker at Hardeman County Clinic.

**Everyone is Invited for Ice Cream and Cake**  
 Honoring Volunteers of Motley County Senior Citizens

*Our annual summer fund raiser*

**Saturday, August 6 at 6:00 pm**  
 Senior Citizens Building, Matador

**Entertainment by: Gerald Pipkin & Friends**

Donations Graciouly Accepted

## South Plains Electric Co-op contributes to volunteer Fire Departments

LUBBOCK, Texas - South Plains Electric Cooperative members and employees combined their support to contribute \$30,750 to 41 volunteer fire departments (VFDs) during the great drought of 2011.

The 41 volunteer departments serve and protect 17 counties where Cooperative members live. Each department received a total of \$750 in two checks.

The first check was from the South Plains Electric Cooperative members. The Board of Directors voted to send each department \$500 in appreciation for their efforts to prevent

property damage when wildfires erupt.

The second check for \$250 was from the Cooperative employees through their Operation Round Up Employee-Fund. Cooperative employees make donations to this fund directly from their paychecks and typically use the funds for employee emergency needs and scholarships. Many of the front-line employees have seen the devastation of wildfires first hand, so they voted to join with the Cooperative members in supporting the local VFDs.

"I am proud to deliver this news and these checks on be-

half of South Plains Electric Cooperative members and employees," said James Driver, general manager of South Plains Electric Cooperative in his letter to the VFDs. "Our Cooperative spirit is based on our commitment to our local communities and I think this is one of the best examples of that spirit."

South Plains Electric Cooperative, a Touchstone Energy cooperative, serves more than 48,000 connected meters over 6,600 square miles.

Motley County - Matador VFD and Roaring Springs VFD received donations.



## Foothill Country

### Connections

Community, Diversity, Art  
When you have history, you have pride.



By Laverne Zabielski

There are always bridges to cross on our many journeys. The Mississippi river, as we would come upon it, always presented a striking bridge upon which we would travel across the river from Tennessee into Arkansas on our way out west. For some reason, it was seen as a milestone. We were half way to Texas, or half way home, give or take a hundred miles or so. Frequently we would find a hotel. Not so when I was very young and my parents traveled in the late forties and early fifties. We drove straight through.

I stare at old photographs gleaned from falling apart photo albums pausing on a picture of Mom in shorts and a sleeveless shirt. Standing next to the car pulled off on the side of the road, she is tending a child, me or my brother, sitting on a tiny wooden potty chair. Was that really the solution to such emergencies on those long deserted stretches

of road between towns?

There were other things different about those long trips. We never ate in a restaurant. Dad pulled into a rest stop and Mom carried a basket to a picnic table where she spread out a table cloth. Usually, checked. And we ate our lunch.

We weren't the only ones, either. There were families gathered at many of the picnic tables doing the same. A considerable contrast to rest areas today with picnic tables, empty, as though they are waiting for the extravagance of eating in truck stops or restaurants to pass. The picnic tables are waiting for that time to come again when home made tastes better than anything you could buy.

Just like the home made that Grandmother had waiting for us when we finally arrived, shortly after crossing other bridges that carried us over the Red River, or the many Pease Rivers.

Now there were other bridges to negotiate; getting along with cousins, enduring the heat, watching out for rattle snakes.

Today, I stare at more old photos; a bob cat hanging from a pole, my uncles wrestling with a calf. Each one, striking, representing another bridge between then and now.

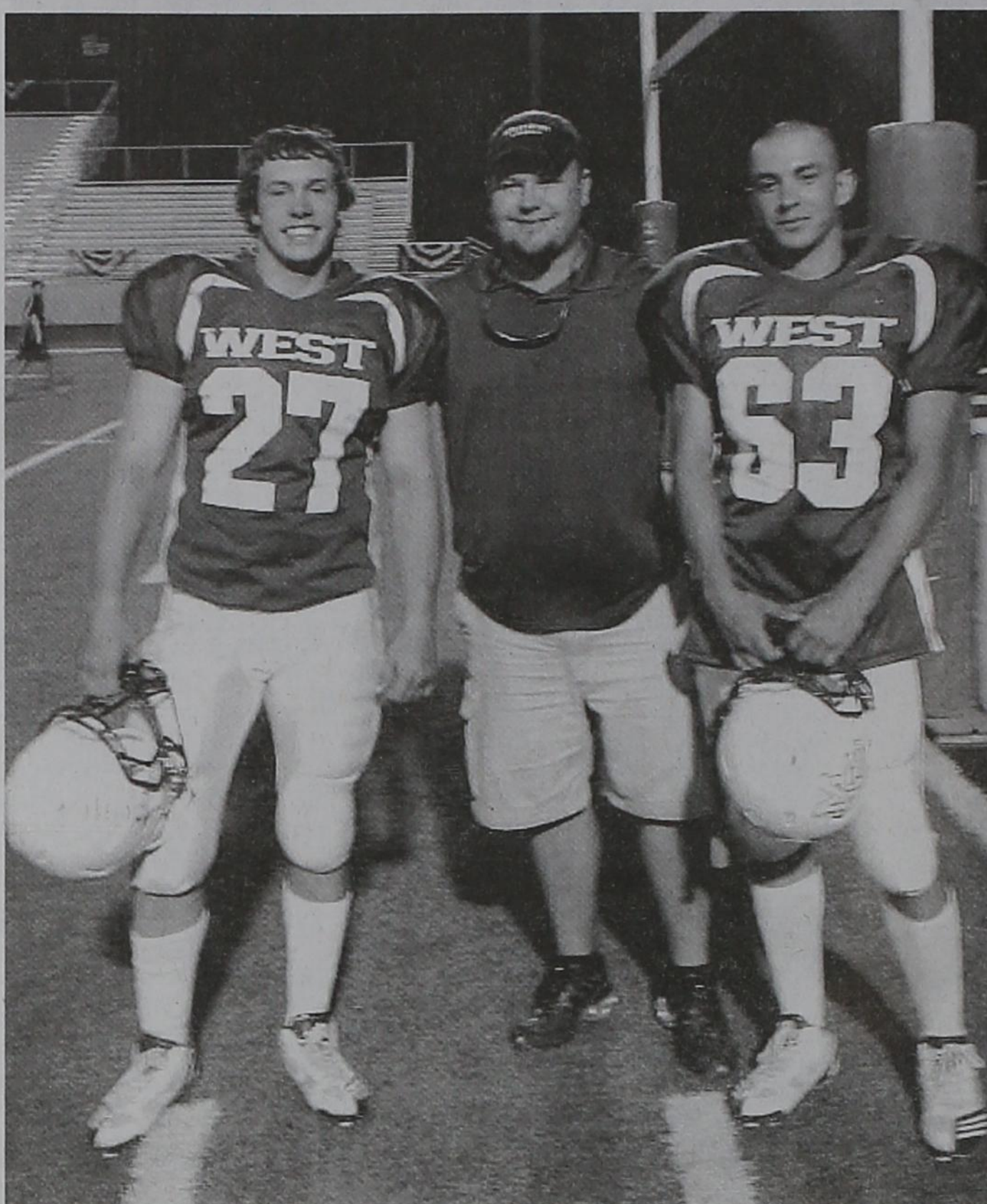
## McCleskey and Martin represent Motley County in Six-Man Football All-Star game

The Texas Six-Man Coaches Association hosted the 2011 Six-Man All Star Week and Coaches Clinic. The event featured top senior basketball and football athletes and coaches as they practiced together July 18-20 and concluded with games July 22 and 23.

Six-man football was created in 1934, as a way for schools in smaller communities to compete in football. Six-man football rules are similar to NCAA football rules only with a few variations, including a smaller field and shorter quarters. For six-man football and Class A UIL basketball districts are divided into separate divisions based on the school's enrollment, with separate playoffs held for each division.

The Six-man All Star Week works by each sport nominating its top athletes for the opportunity to practice and compete in an intensive but valuable week long clinic and All Star game at the end of the week. Athletes were split into teams based on their school's geographical location and division. The athletes were divided by men and women, West and East, and in divisions I and II (only basketball). All practices were held in an intense two-a-day style Tuesday-Friday. Additionally, a Coaches Clinic was hosted by the Texas Six-Man Coaches Association and created a for a chance for coaches to learn techniques from other experienced and knowledgeable coaches.

A portion of the proceeds of the event will go towards college scholarships for participating Six-man athletes. For more information about the tournament contact Scott Harrison by email at [Scott@visitlubbock.org](mailto:Scott@visitlubbock.org) by phone 806-747-5232, or visit Lubbock Sports online at [visitlubbock.org/sports](http://visitlubbock.org/sports). Information for the Texas Six-Man Coaches Association can be found at [TexasSixManCoachesAssociation.com](http://TexasSixManCoachesAssociation.com).



Colby McCleskey, left, and Andrew Martin, right, represented Motley County, Friday, July 22, in the Six-Man Football All-Star game at Friendship. "The boys did a great job. I was proud to watch these two boys that I had coached throughout their entire High School Football years," said Coach Bigham.

#### Thank you

I can't even find the right words to express how we appreciate all of the prayers and what everyone has done for us and helped us with during these long forty five days. As I lay in the hospital, I had never had this much scare for one person or family member in my life.

By the grace of God, family, and friends, my family is doing good. I'm slow but doing good. Thank all of you for helping us with all of the fundraisers. I am so pleased and happy with a county with such a generous heart, and for all of you who helped when we needed help. Someone to cook for us, and to make a good meal when I was not able to cook a meal to feed me or my family. I appreciate everything anybody and everybody did for us.

God Bless you, everybody for the help and prayer that was done for all of us.

Thank You,  
Mason family

#### Thank You

Ken and I would like to thank The Friends of the Library for hosting our Canadian show. Drinks and yummy homemade cookies made it more fun. Ya'll are a great bunch and this community is a better place because of you! Also, a thank you to Carol Campbell for the well written, kind words in her article on our adventures in Canada. Thank all of you for your support and encouragement in Ken's and my businesses. We could not do what we do without you.

Ken and Dinah Young

### Motley County Tribune

Office hours: Mon-Wed 9-4

Jennifer Lawler, Office Manager

817-688-5929

### MOTLEY COUNTY TRIBUNE

Laverne Zabielski & Larry Vogt, Publishers & Editors  
Jennifer Lawler, Office Manager  
Carol Campbell, Feature Writer  
Contributing Writers: Monta Marshall, Earlyne Jameson, Mary Ann Potts, Amy Hackler, Ryan Martin, Marilyn Hicks, Marisue Potts

#### TASB Media Honor Roll

Houston Press Club Editorial Award Winner  
West Texas Press Association Member  
Texas Press Association Member



Award Winner

The MOTLEY COUNTY TRIBUNE, (ISSN: 0897-4322), purchased on November 29, 2007, is published weekly each Thursday, except Christmas week, at Matador, Texas. The office is located at 724 Dundee, 806.347.2400. Periodical-class postage paid at Matador, Texas, Postmaster. Send address changes to Motley county Tribune P.O. Box 490, Matador, TX 79244.

NOTICE: Any erroneous reflection upon the character, firm, or corporation, which may appear in the columns of the MOTLEY COUNTY TRIBUNE will gladly be corrected upon being brought to the attention of the publisher.

PUBLICATION NO. 333700

Subscription Rates: Motley County, \$30  
All others, \$35 Over 60 may deduct \$1.00  
Email \$25

P.O. Box 490, Matador, TX 79244

Advertising Rates: \$3.65 per col inch, in county  
\$3.90 per col inch, in Texas  
\$4.30 per col inch, national

Tear sheet \$2 and publisher's affidavit: additional \$3  
Scanned documents additional \$5  
Obituary: \$25 minimum, with photo, additional \$5  
Thank you notes: \$13 minimum  
Birth and Wedding Announcements:  
\$25 minimum, with photos additional \$5  
Classified: \$6 1st four lines paid in advance, \$7 billed

## Opinion Editorial

### Paying Tribute to Texas' Space Legacy

By U.S. Senator John Cornyn

On July 20th, 1969, the Apollo 11 crew marked an unprecedented journey, inspiring human exploration for generations to come. Astronaut Neil Armstrong reported the landing of the first manned mission on the moon with the assuring words, "Houston, Tranquility Base here. The Eagle has landed."

While the world held its breath watching Armstrong's first steps live on television, engineers and scientists in Houston worked tirelessly from Mission Control on the safety and success of the mission. Communicating constantly with Apollo 11's crew, Houston's NASA facilities ensured that the giant leap for mankind brought pride for Texans and Americans around the world.

July 29th marked the 53rd year since President Eisenhower signed legislation

establishing the National Aeronautics and Space Administration, or NASA. With the goal of pioneering American space exploration and the impetus of the global space race, NASA sought to do as none had done before. It was in 1961 that NASA established the site that would make Texas integral to American spaceflight.

The Manned Spacecraft Center, renamed the Johnson Space Center in 1973 for Texas native President Lyndon B. Johnson, has housed facilities crucial to the nation's space program for five decades. Teams in the Mission Control Center have helped direct every human mission since 1965, including the Apollo missions as well as 135 shuttle flights. The International Space Station Flight Control Room communicates with the space station and coordinates shuttle missions. Various scientific research facilities foster space technol-

ogy innovation and oversee experiments. The Training Flight Control Room prepares astronauts for the demands of space travel with simulations. Without a doubt, the Johnson Space Center has been vital to NASA's vision to "reach for new heights and reveal the unknown so that what we do and learn will benefit all humankind."

The Johnson Space Center has contributed intellectual and cultural vitality to Texas as well. With about 3,000 civilian employees, 110 astronauts, and thousands of contractors, the Space Center community has transformed Houston into a hub of aeronautical innovation and collaboration. United in this presence, space has become integrated into the culture of Houston. Games, tours, and exhibits at the Space Center Houston attract visitors from around the world. Even the city's Major League Baseball

team, the Houston Astros, and their NBA team, the Houston Rockets, are named after the city's unique contribution.

This past month, we were reminded yet again of Texas' significant achievement. Welcomed by cheers and support, the four astronauts who flew space shuttle Atlantis' final mission returned home to Houston on July 22nd. Though this was a bittersweet moment, Texans have much to be proud of in decades of remarkable service, innovation, and exploration for our country. The unprecedented accomplishments of the Johnson Space Center and the men and women hard at work there pushed Texas to the forefront of spaceflight. In spite of the conclusion of the shuttle program, our great state will persist in leading the next generation of human exploration, and will no doubt continue to bring pride and success to Texans and our nation.



# MCISD School Supplies

## Thank You

The Motley County Parents Club would like to "Thank" the following Businesses and Individuals for their support of the 2011 Project Graduation! The night was a success and the students and parents alike enjoyed the evening. Project Graduation could not be possible without the continued support of this worthwhile event!

- |  |   |
|--|---|
| Billie Dean's Restaurant                             | New to You                                      |
| Cinema 6, Plainview                                  | 4 R Trinkets and Treasures                      |
| Crop Production Service, Slaton                      | Ray Lee Equipment, Plainview                    |
| American State Bank, Floydada                        | South Plains Electric Coop/<br>Dickens Electric |
| Arvis Davis Chevrolet, Paducah                       | South Plains Mall, Lubbock                      |
| Caprock Telephone, Spur                              | William Dean, DDS, Floydada                     |
| Church of Christ,<br>Roaring Springs                 | Les and Kim Woolsey                             |
| Red Ball Gin   | Thacker Jewelry                                 |
| Cornelius Oil Co.                                    | Turner and Turner                               |
| Capital Farm Credit, Matador                         | South Pease River and Resort                    |
| First Baptist Church,<br>Roaring Springs             | David and Cynthia Stafford                      |
| Matador Branch of the First<br>State Bank of Seymour | Elaine Hart                                     |
| Hamilton Brothers, Plainview                         | Main Event, Lubbock                             |
| Allsups  | First National Bank, Paducah                    |
| First National Bank of Floydada                      | Singin R Ranch                                  |
| First United Methodist Church,<br>Matador            | Hardeman County Hospital,<br>Quanah             |
| Matador Hotel  | Jameson Mowing                                  |
| Hammond Sheet Metal                                  | South Plains College                            |
| Jones and Renfrow Abstract,<br>Paducah               | Western Equipment, Childress                    |
| Matador Motor and Implement                          | Kalidoscope, Lockney                            |
| Matador V & S Variety                                | Glitter Pig                                     |
| Tom Edwards  | Brush Automotive, Plainview                     |
| Motley County Farm Bureau                            | West Texas A & M University,<br>Canyon          |
| Motley County Tribune                                | Texas Tech University, Lubbock                  |
| Ken's R.V. and Mini Storage                          | Buckle, Lubbock                                 |
| Lighthouse Electric, Floydada                        | Becknell's, Lubbock                             |
| Lowe's Pay-n-Save                                    | Academy, Lubbock                                |
| Matador Lion's Club                                  | Norman Frede Chevrolet,<br>Houston              |
| Matador Ranch/Lodge                                  | Meredith Gas and Supply                         |
| Moore Makers, Inc.                                   | Smith Southern Equipment                        |
| Motley Mill and Cube                                 | Shane Taylor                                    |
| Motley County Hospital District                      | JD and D'anna Russell                           |
| Pat Carson Insurance, Turkey                         | Drum Plumbing                                   |
| Odessa Athletic, Odessa                              | Russell Cattle                                  |
| Payne Pharmacy, Floydada                             | Texas Department of Public<br>Safety, Childress |

Also a Thank you to All the Parents that donated their time!!

- |   |   |   |
|---|---|---|
| <b>Pre-K School Supplies</b><br>3 Glue Sticks<br>16 Count Crayons<br>Package of Dry Erase Markers<br>Scissors<br>2 Pencils<br>Watercolors<br>School Box - Small<br>1 Subject Wide Ruled Notebook<br>Beach Towel - Mat - Small Pillow<br>2 Rolls of Paper Towels<br>2 Boxes of Kleenex<br>Big Backpack (To carry folder, clothes and p a - pers home each day)<br>1 Pocket Folder without Brads<br>1 Box of baggies (sandwich or gallon) | 1 Box of Baggies<br>Watercolors<br>School Box<br>Backpack<br>*Please put names on everything*   | <b>4<sup>th</sup> &amp; 5<sup>th</sup> Grade School Supplies</b><br># 2 Pencils<br>Erasable Pens<br>Red Pens<br>1 Box 16 Count Crayons<br>3 Glue Sticks<br>Elmer's Glue<br>1 Pkg. of Highlighters<br>2-3 Subject <u>OR</u> 6-1 Subject Spirals<br>3 Folders with Pockets<br>Scissors<br>4 Cloth Book Covers<br>2 Pkgs. Of Wide Ruled Notebook Paper<br>1 Box 10 Count Classic Color Markers<br>1 Box of Colored Pencils<br>Pencil Top Erasers<br>Big Eraser<br>Trapper Keeper or Binder to take from class to class<br>3 Boxes Of Kleenex<br>School Box<br>1 Pkg. Of Expo Broad Tip Dry Erase Markers<br>3 Pkgs. Note Cards (3x5)<br>1 Container of Clorox or Ly-sol Wipes<br>Ziplock Baggies<br>Water Bottle |
| <b>Kindergarten School Supplies</b><br>2 Boxes of Crayons - 16 Count<br>Pencils<br>1 Box of Washable Markers<br>2 Bottles of Glue<br>Scissors<br>1 Pkg. of Watercolors<br>Small Pencil Box<br>2 Boxes of Kleenex<br>1 Pkg. Colored Construction Paper<br>1 Pkg. Notebook Paper<br>2 Tubes of Disinfectant Wipes<br>Bath Towel or Small Blanket to be left at School   | <b>2<sup>nd</sup> Grade Supply List</b><br>3-1 Subject Spirals<br>2 Pkg. Wide Ruled Notebook Paper<br>2 Pkg. Multi Colored Construction Paper<br>1 Bottle School Glue<br>2 Glue Sticks<br>1 Box of Crayons<br>2 Pkg. Of #2 Pencils (No mechanical Pencils)<br>3 Big Pink Erasers<br>School Box<br>1 Folder with Brads and Pockets<br>1 Folder with Pockets<br>1 Pkg. Small Dry Erase Markers<br>2 Boxes of Kleenex<br>1 Cloth Book Cover<br>Ziploc Bags | <b>3<sup>rd</sup> Grade School Supplies</b><br>5-1 Subject Spirals<br>5 Folders with brad and pockets<br>Colored Pencils<br>2 Red Pens<br>16 Count Crayons<br>Crayon Box<br>Scissors<br>1 Pkg. Loose-Leaf Notebook Paper<br>2 Pink Erasers<br>Ziploc Bags<br>2 Pkg. Pencils<br>1 Pkg. of Small Dry Erase Markers<br>2 Glue Sticks<br>2 Boxes of Kleenex<br>4 Cloth Book Covers<br>1 Container of Clorox Wipes<br>2 Pkg. of Notecards<br>You may bring a water bottle if you would like to!  |
| <b>1<sup>st</sup> Grade School Supplies</b><br>2 Pkg. Pencils<br>2 Pink Erasers<br>1 Pkg. Manilla Paper<br>Scissors<br>1 Box of Crayons<br>1 Big Bottle of School Glue<br>2 Pocket Folders Without Brads<br>1 First Grade Writing Tablet<br>1 Box of Kleenex<br>2 Pkg. Index Cards (3x5)<br>1 Tube of Clorox Wipes  | <b>Art Supply List</b><br>1. 2 or 3 pencils<br>2. Eraser<br>3. Ruler 12 inch<br>4. Map colors<br>5. Compass<br>6. Protractor<br>7. Scissors<br>8. Crayons [16 or so] and sharpener [this will work better for map colors than the sharpener in the room]<br>9. Notebook with rings [not brads]<br>other useful items<br>Fine line marker<br>Sharpies [maybe]<br>Glue stick<br>*Please put names on everything*  |   |

## On the Facebook Trail

Tag you're it!

## Goin' For the Gold



It seems some of the Motley County Matadors are literally "Goin For The Gold" early in the game. Several members of the Matadors met together last week in efforts to show their "Pre-Season Team Spirit." Good Luck Motley County Matadors, and may the gold follow you throughout the season! Front Row, L - R Reagon Elliott, Jonathon Osborn, Braden Mason. Back Row, Marc Quintero, Augy Chavez, Cody Martin, Aaron Scott Rogers, Lexi Osborn.  
Photo by Wendi Taylor

# First National Bank

## of Floydada

# STRENGTH

5 Star Superior Rating by  
BauerFinancial, Inc.

# STABILITY

Serving this area for over 100 years

# SERVICE

Checking, Savings, CDs, Money-Market Accounts, IRAs, Agricultural, Commercial, Consumer Loans, Home Loans, Real Estate Loans, 24 Hour ATM, 24 Hour Telebanking/TeleWeb

"Helping you change things for the better"



Member F.D.I.C.





# NEWS AROUND MOTLEY COUNTY

## Roaring Springs News By Monta Marshall

### On a personal note

I hope to go with my daughter, Kay Miller and granddaughter Kelsea this week to Galveston so Kelsea can attend a marine engineering camp at Texas A&M Galveston. I am not sure just what that consists of but I am sure by the time we get home again I will have lots of opportunities to hear all about it.

I notice more and more often I have to ask the younger set to explain something to me. Hopefully they will be come by often to keep my phone, computer and any other technical stuff operational for me.

When we had the Marshall reunion at the Roaring Springs Community Center I noticed that there are hardly any cup towels or dish rags left. I would imagine that some have taken them home to wash them after they have used them at the Community Center and forgot to bring them back. If you have some that you haven't returned it would be greatly appreciated if you could bring them back. Almost all of the paring knives and butcher knives were gone too. Trash should be checked to make sure you haven't discarded utensils. You could bring anything you might have carried home to

the Roaring Springs City Hall if the Community Center is locked. The City Hall is open Monday through Friday from 8:00 a.m. until noon. Corky or Robert Osborn would likely be around to take them if the office is closed.

### In the Community

Don and Billie Stuckey returned from a trip to Colorado on Monday. They visited friends at Brighton, Colorado, and went on to Estes Park, Colorado. They also went to the rodeo. They did see some burned grassland areas.

Jen Churette and her children, Sam and Sophia have moved to Georgetown, Texas. Jen finished her beauty school work and will be working in the Austin area.

Last week I mentioned that the Roaring Springs Community Volunteers would meet on the second Tuesday of August. That meeting has been cancelled due to the Gullidges being on vacation that week.

Again, remember the Windmill Café will be closed for two weeks beginning this week.

John and Connie Hindman have bought Jen Churette's home. John and Connie own C. & J. Cattle Company. They are moving here from the Lubbock area. We welcome them to our community.

## Flomot News By Earlyne Jameson

### Overheard

Waiting reminds me that patience is not my virtue, and acceptance is not my strong suit. How nice would it be to be free of my impatience and live in a world of acceptance?!

### Leona Degan Honored on 90<sup>th</sup> Birthday

Mrs. Leona Degan, formerly of Flomot, was honored on her 90<sup>th</sup> birthday Thursday afternoon, July 28 at Hackberry Care Center in Matador where she resides. Hosting the celebration were sons and families, Morris and Lou Morris of Medicine Mound and daughter, Mrs. Nan Melton of Quanah, Stanley Degan of Calgary, daughter and family, Mrs. Shay McDaniel, Luke, Seth and Kolt of Sundown and nephew, Gerald Chandler of Plainview.

Refreshments of birthday cake, cookies, ice cream and punch was served in Cafeteria Center Co-hosting the courtesy were members of the Do Gooders Club of Flomot, Mesdames Mary Jo Calvert, Waydette Clay, Kathy Shorter, Tommie Jo Cruse, Anna Beth Clay, Connie Franks and Erma Washington.

Other guests were Mr. and Mrs. Ernie Seymour of Floydada, Mrs. Joy Lacy of Amarillo, Darrell Cruse of Flomot and friends at the Care Center.

### Reunion of Turner Family

The descendants of Benjamin Franklin and Symantha Emaline ( Fannie) Vaughn Turner who moved to Motley County in 1891, held their 16<sup>th</sup> annual family reunion Saturday, July 30 at the Community Center in Flomot. Those who attended enjoyed meeting family members and reminiscing with those they know. The good food included the savory smoked brisket roasts that is Richard Turner's Project.

Among the 36 attending were the four original cousins who began the reunions, Riley Turner of Lubbock, Mrs. Thelma Brown of Amarillo, Leo Archer and Richard Turner of Matador. Family members registered from Abernathy, Amarillo, Claude, Flomot, Lubbock, Matador, Medina, and Petersburg.

They voted to have the 2012 family reunion the first Saturday in October at the Community Center in Flomot.

Roger Hughes and son, Brody of Floydada visited Saturday with his parents, Janice and Butch Hughes.

Mrs. Lou Bureson of Floydada brought lunch and visited Mary Ellen "Dude" Barton Sunday.

Joey and Brenda Lee of Clar-

endon visited Sunday morning with his parents, Ruth and Orville Lee. Ruth visited Sunday afternoon in Quitaque and enjoyed a family gathering in the home of Mrs. Ellen Skinner.

Mrs. B. Rogers, Donnie Rogers and Natalie Rogers visited Mrs. Leona Degan at the Hackberry Care Center in Matador, Wednesday July 27. Mrs. Donna Sue Degan of Calgary brought lunch and visited her mother B. Rogers Thursday.

Mrs. Jackie Lynn Davis, Michael and Virginia Davis of Fritch and Michael Starkey of Canyon visited the weekend with parents, Nada and Jack Starkey. They were making preparations for Nada's cancer surgery scheduled Wednesday, Aug. 3 at the Northwest Texas Hospital in Amarillo. She plans to recuperate in Fritch.

Kathy and Clois Shorter, Anna Beth and Joe Ike Clay attended the Tanner family reunion held in Tulia Saturday. Other family members attending were Mrs. Carolyn Ewing of Matador, Tina and Pat Carson, Walker, Parker and Ryleigh, Mrs. Julie Edwards, Jaxon and Laney of Turkey.

Kathy and Clois Shorter met daughter and family, Keri and Kevin Sehon and son, Brian of Wolforth at the Speedway in Knox City Sunday. Brian won first place in the Junior Division of the Go-Cart Race.

Visiting this week with Anna Beth and Joe Ike Clay are granddaughters, Karlee Kleibrink of Clifton and Sarah Clay of Panhandle.

### Extended Vacation Trip

Mrs. Sammie Phillips, sister and husband, Sherry and Prentice Fred of Levelland and Tookie Cash of Lubbock returned home recently after an extended 15 day vacation trip through 15 states.

They visited overnight in Nashville, Tennessee and continued to North Carolina and visited Robin Fred and family. They then traveled to New York City and saw major tourist attractions, the Rockefeller Plaza, the Statue of Liberty, Niagara Falls and had tours in Canada. En route home, they enjoyed entertaining shows in Branson, Missouri.

## Matador News

By Marilyn Hicks

Pam and Rick Day from Spring Branch used Matador as a resting place on their way to check land and stock in Clayton, New Mexico. They are, as is most everyone, very concerned about the effects of the drought on their cattle. Their son, Connor, was with them. They try new routes on their travels, but said they would probably use Matador as a permanent stop in the future.

Doug and Natalie Meador from Houston visited his uncle and wife, Jim and Carla Meador. They were continuing on to visit with other family members before returning home.

Ken Monigold from Dallas was researching at the court house on Thursday in order to negotiate some oil and gas leases.

Roddy and Jo Ann Shipman from Guthrie won a stay at the hotel and redeemed the certificate this week. It was also the occasion of their anniversary, and they enjoyed the quiet getaway.

Ronnie and Shelley Cox and their children and grandchildren have been in the cool mountains of Pagosa Springs, Colorado. This has been an annual trip for them since the 70's.

Several guests in Matador this past weekend were here to take part in celebrating the

wedding of Mandi Ream and John Martin. They included Judy and Dave Ehler from Holstein, Iowa, Ray and Rebecca Ream from Tooele, Utah, Janice and Tara Wielenga from Sheldon, Iowa, Daryle, Carol, Josh and Kacy Prittie as well as Lindsey Bazzone from Murrysville, Pennsylvania, and Bill Papenhausen from Elcajon, California.

Linda Roy visited with Matthew and Kelly Roy and her granddaughter Malosi in Fort Worth this weekend.

Bonnie Geer spent last week with her grandchildren, Ashley and Bradley Allred here in Matador. They are the children of Carol Taylor, our postmistress. During the stay they traveled to Lubbock for shopping and movies. This is an annual event for Bonnie.

Charles and Opal Johnson returned home recently from a vacation trip that included visiting overnight in Vernon with daughter and family, Mrs. Cindy Riggins. Cindy accompanied her parents to Taylor, Arkansas and they enjoyed visiting for four days with other daughter and family, Mrs. Charlotte Sweet before returning to their respective homes.

Mr. and Mrs. Rickey Turner and daughter of Medina visited his parents, Dorothy and Richard Turner and attended the Turner family reunion.

## Golf Update by Cynthia Stafford

Tuesday Night Scramble participants were Kenny Barton, Olivia Barton, Mark Brannon, Timmy Brooks, Krystal Degan, Lee Hurt, Brad Jameson, Jeannie Johnson, Jerry Johnson, Lee Jones, Tanner Keith, Kelly Keltz, Corkey Marshall, Eli Marshall, Ken Marshall, Larry McKlenny, Brandon Moore, Debra Scott, Kyla Simpson, and Lanny Zant. The Closest

to the pin winner was Jerry Johnson. The winning team with a score of seven under par was Kenny Barton, Olivia Barton, Kelly Keltz and Larry McKlenny. The second place team with a score of six under par was Jerry Johnson, Jeannie Johnson, Tanner Keith, and Kyla Simpson.

The Thursday Ladies Day participants were Polly Campbell and Glenna Ross.

## Ken's RV Park & Mini Storage Matador and Roaring Springs



806-269-1044 806-347-2455

Full Hook-ups Available  
Mini Storage Rooms for Rent  
Golf Cart Sales and Repairs

### This Week's Local Forecast

Thursday Sunny 102/74	Friday Mostly Sunny 102/75	Saturday Sunny 101/75	Sunday Sunny 101/76	Monday Mostly Sunny 100/76	Tuesday Mostly Sunny 101/79	Wednesday Sunny 99/78

### Weather Trivia

Does the risk of sunburn increase with altitude?  
Answer: Yes. At high altitudes, there is less atmosphere to shield you.

### Weather History

Aug. 4, 1882 - A vivid aurora was visible from Oregon to Maine, down the East Coast as far as Mayport, Fla. and inland as far as Wellington, Kansas. Observers at Saint Vincent, Minn. noted it was probably the most brilliant aurora ever seen at that location.

### Moon Phases

First 8/6 Full 8/13 Last 8/21 New 8/28



www.WhatsOurWeather.com

Matador Motor and Implement  
806-347-2422

Motley County Tribune  
806-347-2400

## MOTLEY COUNTY TRIBUNE HOURS

MON - WED 9-4

EXCEPT WHEN WE HAVE TO LEAVE TO  
RUN ERRANDS. CALL AHEAD IF YOU  
NEED US TO WAIT.

806-347-2400

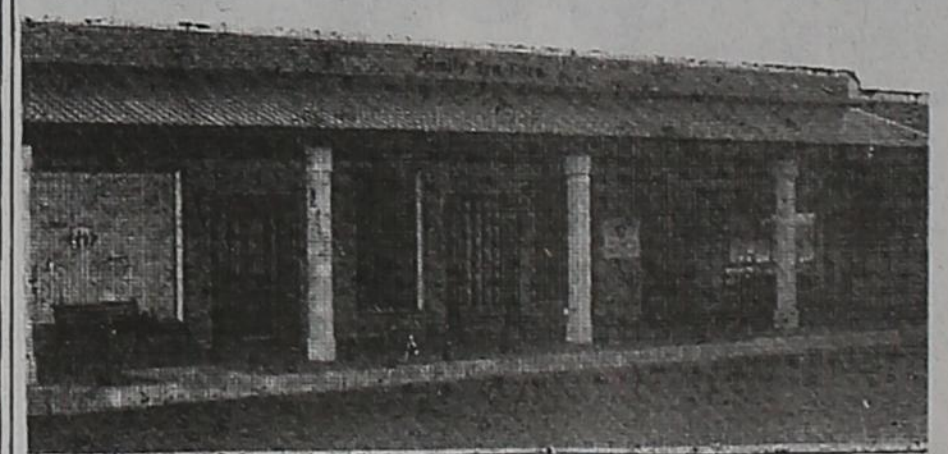
EMAIL US YOUR PHOTOS

## Family Eye Care

Blake Avera, M. D.  
Ophthalmology - Surgery



Amy Bishop, O. D.  
Therapeutic Optometrist



CLINIC

FULL SERVICE OPTICAL

COMPREHENSIVE  
AND CONTACT LENS  
FITTING

LARGE SELECTION WITH OVER  
500 DESIGNER FRAMES

TREATMENT OF EYE DISEASE  
AND SURGERY OF THE EYE

SAME OR NEXT DAY SERVICE  
ON PRESCRIPTION EYEWEAR  
INCLUDING:

LOCAL CATARACT SURGERY

\*SINGLE VISION  
\*BIFOCALS  
\*NO LINE PROGRESSIVE  
TRANSITION LENSES IN  
MOST CASES

AFTER HOURS EMERGENCY CARE

LARGE VALUE COLLECTION  
AVAILABLE WITH MULTIPLE  
PAIR DISCOUNTS

PROVIDING REGIONAL EYE CARE SINCE 1994  
125 AVENUE B NW CHILDRESS TEXAS (940) 937-2015

HOT??  
WE  
STILL  
HAVE  
LOTS  
OF  
FANS  
Matador  
Variety  
347-2820



# Notes from the Library

By Mary Ann Potts

Just in this week, *Texas Lawmen: The Good and the Bad* by Clifford R. Caldwell. These are true to life stories of brave men who should never be forgotten. And two "official know-it-all guides" on *So You Want to be a Nurse?* and, *So You Want to be a Teacher?* by Marianne Pilgrim Calabrese. And for our listening audience there's Diana Palmer's *Merci-less*.

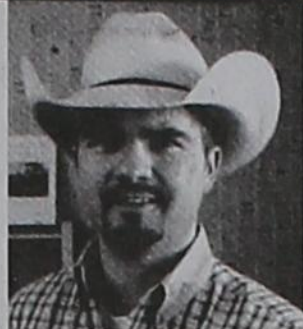
The library also has 3 new DVDs this week: *Arthur*, starring Russell Brand, Helen Mirren, and Jennifer Garner; *Rango* with the voice of Johnny Depp; and the 6 DVD disc series of *The Pacific*.

In addition to our just new

arrivals, we've received a wonderful donation for our Juvenile Fiction section of the Gideon Trilogy by Linda Buckley-Archer: *The Time Travelers-Book 1*, *The Time Thief-Book 2* and, *The Time Quake-Book 3*. If you love Harry Potter, you won't be able to put down these books! Also, more thanks are due to, Virginia Green, another wonderful donor, for her generous gift of books last week.

Mark your calendars once again folks, for the annual "Friends of the Library Beans & Cornbread Lunch" on Fri., August 26<sup>th</sup> 11:00 a.m. - 1:00 p.m. in the Library Annex.

# County Agent's News



by Ryan Martin, Agri LIFE EXTENSION Agent

## TAKE ME OUT TO THE BALL GAME ~

The Texas 4-H Foundation has two (2) exciting opportunities for county/4-H clubs to earn funds for the 2011-2012 Texas 4-H year. What better combination than "America's favorite pass-time" and "Texas 4-H" ....

We are excited to announce the 2nd Annual "Green Out" 4-H Event to kick-off the 2011-12 Texas 4-H year! To view a SPECIAL invite from Nolan Ryan, visit our website <http://texas4hfoundation.org/texas-4-h-alliances/rangers-baseball-green-out-4-h-event/>

The discounted tickets are on sale now for the 2011 Texas 4-H "GREEN OUT" event to kick off the 2011-12 4-H year with Major League Baseball's club the Texas Rangers vs. Los Angeles Angels on August 27, 2011, at the Ballpark in Arlington. There is a Pre-Game Concert by MercyMe, presented by I Am Second. This will be a fun-filled day of family, friends, and fellowship for all to enjoy.

Every ticket holder will receive a FREE one-of-a-kind GREEN OUT t-shirt sponsored by the Texas Farm Bureau Insurance Company which will include the Rangers, 4-H, and Texas Farm Bureau Insurance logos. To receive your green out t-shirts, tickets must be purchased by August 12, 2010. T-shirts will be available in Youth sizes Medium and Large, Adult Sizes S - XXL. If larger than XXL is needed, let us know and we can verify availability.

Every County and 4-H club has the opportunity to sell GREEN OUT tickets as a fundraiser for their County 4-H program. Prizes will be awarded for the member, club or county 4-H that sales the most tickets. The Texas Rangers organization has been gracious enough to not only give us a discounted ticket rate, but are giving \$3.00\* for every ticket purchased to the County 4-H program that sells tickets. The more tickets you sell, the more money you can make for your County 4-H! Attached you will find the order form or you can download more information at the website. <http://texas4hfoundation.org/texas-4-h-alliances/rangers-baseball-green-out-4-h-event/>

Astros fans!!! We have a game night for you as well. The "4-H Night at the Ballpark" is scheduled for Saturday, September 3, 2011. This will be the Astros vs the Milwaukee Brewers game. Arrive early!! Representatives from 4-H will be recognized during a pre-game ceremony. Special pricing is being offered to 4-H.

A portion of the tickets sold will be donated to the county where the tickets were sold. Amount earned\* varies by ticket sold: Field Box - \$10, Bullpen Box - \$6, Terrace Deck - \$5, Mezzanine - \$4, View Deck 1 - \$3, View Deck 2 - \$3.

For group orders, when contacting Brent Broussard designate your county/4-H club. Those tickets purchased online will be sorted by zip code locations and funds generated will be donated to the county that corresponds with that zip code. If you have a group that is not quite 20, you may still contact Brent so that you can provide him with the corresponding county/4-H club

information.

We hope next year the Astros will consider the same ordering process as the Texas Rangers in regards to tracking which county/club sold the tickets. I believe if we have a large turnout this year, that will be possible in 2012.

NO special 4-H/Astros t-shirts are available for this event.

## Tropical Storm Don welcome to Texas but no match for the drought

COLLEGE STATION - Texans are all but standing on the shores to welcome Tropical Storm Don to the drought-stricken state.

But leaders of several state agencies charged with monitoring the impact of the drought believe Don's Texas trip may be too brief to blast the dry spell.

"Texas needs rain with a name," Agriculture Commissioner Todd Staples said. "As Tropical Storm Don heads our way, Texas agriculture will be waiting with more anticipation than we usually have at the beginning of a Friday night football game. Hopefully, this will be just the kickoff of a series of rain events to break the grip of this devastating drought."

From agricultural losses to shortages in community and recreational water, the impact of extended triple-digit temperatures and historically low rainfall amounts over most of the state will not be alleviated by Don, the state officials said.

Texans are all but standing on the shores to welcome Tropical Storm Don to the drought-stricken state. But leaders of several state agencies charged with monitoring the impact of the drought believe Don's Texas trip may be too brief to blast the dry spell.

Tropical Storm Don is expected to make landfall early Saturday morning near Corpus Christi.

Generally, an area is considered in meteorological drought when it has received 75 percent or less than the usual amount of rain over a given period of time, according to Dr. Travis Miller, a member of the Texas Drought Task Force and specialist with the Texas AgriLife Extension Service.

"So if an area normally gets 25 inches of rain a year but has only had 8 inches, that would put it in a drought situation," Miller explained. "To end that, the area would need, say 9 inches of rain to come back to normal."

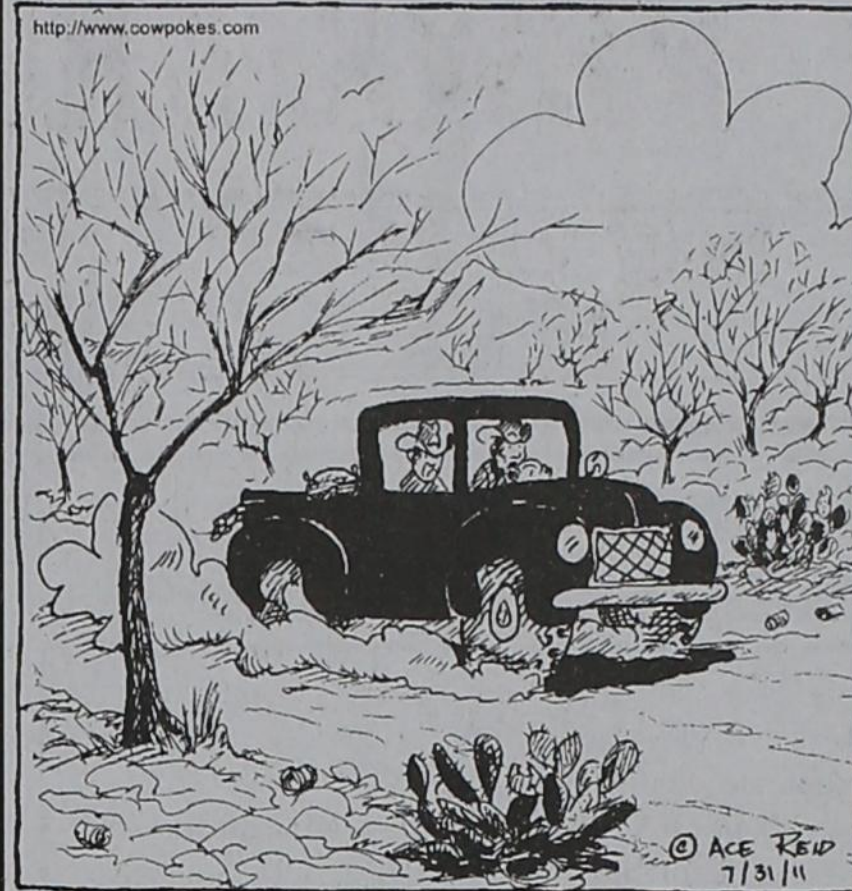
Weather officials are predicting at most up to 4 inches of rain from Don in Texas, and that mostly will be in the southern Coastal Bend area. The rest of the state is expected to receive less than an inch.

"If you do the math, the good rain from this tropical storm will not last long. It could help fill some livestock tanks and help with some of the state's lakes," Miller said, "but the low stream flow is what is impacting so much of the state's water resources now."

Drought is multi-faceted, the experts say, with part of the impact stemming from a lack of moisture in the soil and part from the decrease in surface supplies. The latter impact, called hydrological drought, takes its toll mostly on communities that are dependent on reservoirs and streams to supply water to homes and

# COWPOKES

By Ace Reid



"I'd say we've got a drought on, look at the mesquites and prickly pear reachin' fer them empty beer cans!"

THIS FEATURE IS SPONSORED BY THE

**MATADOR BRANCH**  
FIRST NATIONAL BANK OF SEYMOUR  
MATADOR, TEXAS  
YOUR "HOMETOWN" BANK Member FDIC

businesses.

"The Texas Commission on Environmental Quality is tracking public drinking water supplies and working with communities that are depending on surface water find alternate ways to manage such as conservation, planning, release of stored water or drilling additional wells," said spokesperson Andrea Morrow.

Tropical Storm Don may also give some reprieve to firefighters who have battled blazes on 3.4 million acres in Texas this year, but the welcomed relief likely will be short-lived, according to Texas Forest Service spokesperson Linda Moon.

"There's still a large portion of Texas that isn't expected to get any residual moisture from the tropical storm," she said. "We're grateful for any rain we may see this weekend, but our firefighters throughout the state are prepared to continue this extended attack and see even more hot, dry weather as the summer goes on."

Miller said Tropical Storm Don - and systems that may follow it to bring rain to the state - normally help the countryside green up within a week to 10 days after rainfall.

"But if we get 3 inches from Don and then no more the rest of the summer, we will be back in the stew," Miller said.

While the drought of 2006 was ended by tropical storms and hurricanes, he added, weather experts are predicting a return to the moisture-short La Nina pattern this fall. That would extend the already devastating drought regardless of moisture from the hurricane season.

## Attention Cattlemen: Changes Announced for Adult Cattle being Sold at Texas Markets

AUSTIN - Effective August 1, 2011 the Texas Animal Health Commission (TAHC) will no longer require brucellosis testing of adult cattle for change of ownership. TAHC will also cease to pay the \$2 per head supplement to markets for the testing. Approximately half of the markets have indicated however, that they intend to continue testing all or some of the adult cattle sold through their markets. For markets wishing to test, they will still be able to receive all the supplies currently being provided at no charge, including the brucellosis card test kits. TAHC inspectors will also be able to run the supplemental testing as usual if a card positive animal is disclosed.

TAHC officials strongly encourage voluntary testing of Texas cattle to remain vigilant in keeping Texas Brucellosis free.

It is imperative to remember that Brucellosis was found in two cattle herds in Texas earlier this year. Approximately 25 card positive (usually false positive) animals per month are detected throughout Texas markets. The secondary test run by TAHC inspectors at markets will usually clear those consignments for sale unrestricted, and only require the card positive animal to be held up.

"Even though TAHC is undergoing drastic budget reductions, the agency will continue to provide a market inspector wherever cattle are sold to support all of the cattle programs underway," Dr. Dee Ellis, State Veterinarian, said.

A separate issue regarding the identification of cattle is also under discussion. Historically all Texas cattle leaving a market have had a USDA eartag in place because they were brucellosis tested there. The official identification of cattle (usually with a metal eartag) is not completely linked to brucellosis testing however. TAHC and USDA rules require official identification on all cattle tested, but they also require the market to record existing official Id's on any adult cattle presented for sale, all dairy cattle prior to movement, any bulls involved with the Trichomoniasis program (including virgins) and Mexican origin event cattle.

It is anticipated that the TAHC will consider a rule proposal in September that may require permanent official identification of adult cattle sold at Texas markets. It is further anticipated that USDA will release in the near future a rule for comment that will eventually require cattle moving interstate to have permanent official identification.

"I am asking all markets for voluntary compliance to continue eartagging adult cattle (or reading existing tags) sold through their markets for the next few months, while the rule making process is in progress," Dr. Ellis stated. Local TAHC regional offices and inspectors will work with individual markets on possible exceptions for extremely weak or old cattle presented for sale in the meantime.

Founded in 1893, the Texas Animal Health Commission works to protect the health of all Texas livestock, including: cattle, swine, poultry, sheep, goats, equine animals, and exotic livestock.

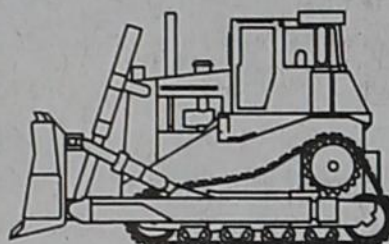
# Dozer & Excavator

## Boedeker, Inc.

Terry Boedeker  
Quitaque, Texas  
hm: (806) 455-1699  
cell: (806) 269-1799

- Brush Grubbing & Raking
- Stock Tanks & Ponds
- Brush Sculpting
- Fence Lines & Ranch Roads
- Demolition
- Equipment Hauling
- Construction Pads
- Laser Leveling

Ask how we can improve wildlife habitat through brush sculpting!



## "SOME THINGS ARE JUST RIGHT!"



In the every day lives that we lead we are faced with decisions that have to be made. These often involve whether or not we should do or not do something. Or should we become involved? Usually a lot of things come into consideration as we

make our decisions. Here are some suggestions based on the "Golden Rule."

- Be what you want others to be.
- Speak the way you want others to speak to you.
- Love like you what to be loved.
- Live like you want those around you to live.
- Be faithful because you want others to be faithful to you.
- Serve like you want others to serve.
- Care for others as you would want others to care for you.
- Smile like you want others to smile at you.
- Encourage others as you'd like them to encourage.

These good suggestions did not originate with me but we can put these suggestions into practice. They are right and they are also Christian.

**Roaring Springs Church of Christ**  
**Michael G. Crowley, Sr.**  
**BIBLE STUDY 10:00 a.m. Worship 9:00 a.m.**

Visit Us On The Web @ [ArvisDavisChevy.com](http://ArvisDavisChevy.com)

# ARVIS DAVIS CHEVROLET Paducah, TX



1999 Ext Cab Chevy 271 Camper topper New tires Local one owner trade	2004 Chevy 1 Ton Cab and Chassis Duramax 4X4 SRW Electric windows and locks
2002 Jeep Wrangler Sport 4.0 liter 5 speed New Soft Top Full Metal Doors	2011 Malibu White with Leather 30+ MPG
2006 Chevy Impala 3.9 liter motor Leather	2005 Colorado Crew Cab 2WD LS Local Trade
2001 Impala LS Sedan Silver color Lots of miles left	2008 Chevy 1500 271 4X4 Taupe grey with cloth One owner

806-492-3663

800-783-3607

Hours: 8:30 am-6:00 pm

MONDAY thru SATURDAY



# CLASSIFIED

email: [mctribune@gmail.com](mailto:mctribune@gmail.com) 806-347-2400

**August**  
**Subscriptions Due**  
 Motley County-\$30  
 Elsewhere-\$35  
 Email \$25  
 PO Box 490  
 Matador, TX 79244

## EVENTS CALENDAR

### August

- 4 Roaring Springs Lions
- 4 Friends of the Library Meeting, 3:00 P. M. at the Library.
- 6 Men's Breakfast, 7 am, Methodist Church, Matador.
- 6 Ice Cream Social fund raiser Senior Citizens Building, 6:00 pm Gerald Pipkin and FRIENDS
- 8 Commissioners' Court
- 8 Roaring Springs City Council
- 8 HCCC Board
- 11 Matador City Council
- 11 Matador Chapter of the Eastern Star, Floydada, Meal at 6:30pm, meeting at 7:30 pm
- 16 Matador Lions
- 20 Foothills Saturday Night, Matador
- 22 First Day of School
- 25 Old Settlers Parade, 10 am
- 25 Old Folks Dance, 4pm & 8 pm
- 25-28 Old Settlers, Roaring Springs
- 26 Old Folks Dance, 5 -8:30 pm
- 26 Kevin Rainwater and the Moonlighters, 9-11pm
- 26 "Friends of the Library Beans & Cornbread Lunch" on Fri., August.26<sup>th</sup> 11:00 a.m. - 1:00 p.m. in the Library Annex.
- 27 Old Folks Dance, 5 -8:30 pm
- 27 Kevin Rainwater and the Moonlighters, 9-11pm
- 31 EMT-Basic-Class orientation and sign up, 6:00 pm at the EMS station.

### September

- 7 EMT-Basic Class Begins

## WANTED

**WANTED:** Swathing, Bailing, and Hauling. Round bails net wrapped twine tie. Square bails wire tie. Quality Work at competitive rates are on shares. Call Crawford Wesley at 806-668-4448 or cell 806-995-5053. David Wesley at 806-296-3255

## HOUSE FOR SALE

**HOUSE FOR SALE:** 3 bedroom, new renovated bath and utility. Located at Third and Maple in Roaring Springs. Sits on an extra large lot. \$39,000. Contact Chet Dye 806-698-6277 ct33

**Everyone is Invited for**

**Ice Cream and Cake**

*Our annual summer fund raiser*

**Honoring Volunteers of Motley County Senior Citizens**

**Saturday, August 6**

**6:00 pm**

Senior Citizens Building, Matador

**Entertainment by:  
 Gerald Pipkin & Friends**

**Doanations Graciouly Accepted**

**Main Street Cafe Friday Night Fish Fry 347-2115**

- MATADOR**  
 Jim Roberts  
 Callie Giesecke  
 Larry Hoyle  
 Arlyce Manney  
 Blake Barton  
 Thanie Smallwood  
 Charles Johnson  
 Lewis Fair  
 June Levell
- ROARING SPRINGS**  
 Jo Scott  
 J N Fletcher  
 Lorine Jordan
- TEXAS**  
 Wanda Davis, Ackerly  
 Paige Barnes, Lubbock  
 Robert Wiley, Lubbock  
 Kelli Stanford, Lubbock  
 C Lucas, Ransom Canyon  
 Orabeth White, Post  
 Dink Wilson, Quanah  
 James Cage, Floydada  
 Louis Pyle, Floydada  
 Paula Welling, Amarillo  
 W F McCaghren, Amarillo  
 Billie Clifton, Amarillo  
 Bob Stafford, Amarillo  
 Jeanette Case, Amarillo  
 R Roberts, Plainview  
 Betty Rudder, Hereford  
 Bob Queen, Kendalia  
 William Mabe, San Angelo  
 Robert Estes, Harker Hts  
 Laylon Peacock, Woodson  
 M N Pipkin, Granbury  
 J E Payne, New Boston  
 David Thompson, Wills Pt
- ELSEWHERE**  
 Barbara Campbell, OR  
 James Queen, CA  
 Albert Ozborn, NM  
 Geney Stan, NM  
 Jon Dewbre, LA  
 Phil Maloley, NE  
 Arleta Meyer, GA

## The Insurance Store

of Paducah wants to be your agent for all types of insurance!

920 Easy St. PO Box 1406  
 Paducah, TX 79248

**Rhonda Richardson, CIC**  
**Vickie Sexton, CIC**

806-492-3848, FAX 806-492-2077  
 Toll Free 866-533-6333

email: [theinsurancestore@caprock-spur.com](mailto:theinsurancestore@caprock-spur.com)  
[theinsstore@caprock-spur.com](mailto:theinsstore@caprock-spur.com)



## Meredith Gas & Supply

348-7332

Your Local Family Owned and Operated  
 Propane Company

### Propane & Service

24 hours-7 days a week!  
 We welcome new customers!

Tanks & Supplies available  
 Propane appliance Services  
 Pressure Tests & Leak Test performed upon request

**WE ACCEPT VISA & MASTERCARD**

## Hotel Matador

... a Bed and Breakfast  
 in downtown  
 Matador, Texas  
[www.hotelmatador.com](http://www.hotelmatador.com)  
 806.347.2939

## Motley County Abstract Company

P.O. Drawer 1  
 Paducah, TX 79248  
 806-492-3573 Fax 806-492-3574  
 Complete Records for Abstracts & Title Insurance in  
 Motley County, Texas  
 Nelda Hightower-Owner  
 Lisa Hightower Wood-Manager

## NEED INSURANCE?

GET GOEN!  
**GOEN & GOEN INSURANCE**  
 CROP-HOME-AUTO-FARM  
 BUSINESS-LIFE-HEALTH  
 114 Main Street Matador Tx  
 800-288-2865 806-347-2644

## Childress Veterinary Hospital

**Dr. David Fuston**

Full Service Veterinary Hospital  
 Large and Small Animal Needs

**940-937-2558**

109 Industrial Circle/287 West, Childress

For all your Ginning, Marketing & Planting needs

## JOHNSON'S GIN

Silverton, Texas

806-823-2224 800-338-3960

Family Owned & Operated

Buy USA Grown & Made - It Matters!

## WYLIE

### LP GAS

"Proud to be a part of Motley County"  
 Residential-Commercial-Parts & Acc.  
 Farm & Highway Diesel CALL 806-347-2290  
 Office still locally operated at 1021 Main-Downtown Matador  
**24 HOUR SERVICE-7 DAYS A WEEK**  
**WE APPRECIATE YOUR BUSINESS! MC & VISA**

## Machines For

Hire or Lease

**D6 Dozer-690 B**

**John Deere excavation**

Call Rodney Green 940-368-1101

## Tom Edwards, Attorney

806-347-2333



## PAYNE PHARMACY

200 S. Main, Floydada, TX 79235  
 806-983-5111 or 800-345-7961

Denise Payne, R.Ph.

M-F, 8:30-6:00 & Sat., 8:30-1:00

We will be happy to mail your prescriptions!

Your Local  
 Leader in  
 Precision Irrigation



**Rhoderick Irrigation**  
 416 Main Street • Silverton, TX  
 806-823-2139  
<http://rhoderick.valleydealers.com>



**Joey & Brenda Lee**  
 Lee's Insurance

P.O. Box 189  
 Clarendon, Texas 79226-0189  
 806/874-2130 phone  
 806/874-9394 fax  
 877/874-2130

HOME • AUTO • LIFE • COMMERCIAL