

*****3-DIGIT 794
 29P 5S **B010
 625 01-30-20
 SW TEXAS TECH
 PO BOX 41041
 LUBBOCK TX 79409-1041

MOTLEY COUNTY TRIBUNE

SOUTHWEST COLLEGE
 Texas Tech University
 LUBBOCK, TEXAS 79409



VOICE OF THE FOOTHILL COUNTRY
 Where History is Pride

Flomot Matador Northfield Roaring Springs

\$.75

Thursday, November 10, 2011

ESTABLISHED 1891

Volume 120 Issue No. 45

Matadors Win District Championship

By Charli Bigham
 Motley County Tribune

The Motley County Matadors beat the Guthrie Jaguars to win the district championship last Friday 52-6. The game was ended in the third quarter due to the 45-point Mercy Rule.

The Matadors dominated both sides of the ball. The offense was led by Aaron Rogers who had a solid game with 10 carries, four touchdowns and 150 yards rushing. Other rushers for the Matadors were Jon Osborn with 11 carries for 107 yards, Austin Taylor and Christian Brooks also had touchdowns to add points for the Matador victory. Braden Mason was three of four for 77

yards and two passing touchdowns.

The Matador defense held the Jaguars to 90 yards of total offense. The defense was led by Juan Flores who had nine tackles; Aaron Rogers who had seven tackles; Britt Simpson with five; Augy Chavez had four; and Jon Osborn had three tackles and an interception in the end zone.

"We are very proud of our boy's offensive and defensive execution of plays and schemes," said Coach Bigham. "We are getting better and starting to gel at the right time of the year."

"The coaching staff is very proud of our boys for winning another District Cham-

continued on page 3

MC Greenhands Receive Jackets

By Jim Cooper
 Motley County Tribune

Greenhand members of the Motley County FFA Chapter received their distinctive Blue and Gold jackets recently. The blue corduroy jacket is the most recognizable symbol of the organization and was established by the delegates at the 1933 National FFA Convention.

Some specific guidelines for proper use of the jacket are: It should be kept clean and neat; the collar should be turned down, the cuffs buttoned, and it should be zipped to the top. The

jacket should only be worn to places that are appropriate for members to visit. A member should act professionally when wearing the official FFA jacket.

Members of the Motley County FFA take pride in their organization and always strive to represent their school and chapter in a worthy manner.

These Greenhand members are off to a great start with their FFA membership. They will be competing at the Greenbelt District Leadership Contests in the Greenhand Chapter Conducting and Creed Speaking competitions.



Pictured are Cassidy Turner, Michael Martin, Gabby Silva, Braden Bigham, Meagan Ford, Seth Baxter, Caleb Clary, Korbyn Simpson, Catherine Ward, and Shelby Elliott.

Do Gooder's Club holds Fall Bazaar

By Carol Campbell
 Motley County Tribune

The Do Gooder's Club of Flomot held their annual Fall Bazaar on Saturday, November 5, 2011, in the Community Center at Flomot.

Fourteen vendors set up booths to sell their wares, including "Harold's Stuff" from Plainview, selling the popular "Lone Star Cut" jewelry. These multifaceted originals are the specialty of this artist, made from glass telephone insulators.

Nathena Brown, Plainview, fashioned one-of-a-kind bracelets and key chains by penning names on a grain of rice that is then encased in a small tube where the rice floats in liquid along with other sentiments, like, "faith, hope, and love." The tube is cleverly attached to a string bracelet or key chain. She sold these unusual gifts for \$12.00 apiece.

Many local crafts were displayed, including Mary Jo Calvert's one-of-a-kind Christmas tree ornaments - crocheted snowflakes. Each snowflake is an original and there were 75 patterns available.

There were tables of aprons, crocheted and fabric-designed pot holders, kitchen towels, and other unusual craft items.

Winning the coveted Butterfly Quilt was Nova Dale Turner of Matador. According to the Do Gooder's President Wadetta Clay, the group sold more than 1,000 tickets for the quilt. While the crowd seemed to be smaller this year, Clay said, the quilt drew a lot of interest. Following a short break for Christmas, the group will begin a new quilt for next year, she said.



Mary Jo Calvert was one of 14 vendors with a booth inside the Flomot Community Center on Saturday, November 5. Mary Jo, a member of the Do-Gooder's Club, sold one-of-a-kind Christmas tree ornaments - crocheted snowflakes. Each snowflake is an original and there were 75 patterns available.



Nathena Brown, Plainview, has a very unusual talent - she pens names on a grain of rice that is then encased in a small tube where the rice floats in liquid along with other sentiments, like, "faith, hope, and love." The tube is cleverly attached to a string bracelet or key chain. She sold these unusual gifts for \$12.00 each.



Harold's Stuff has been displayed every year for five years at the Do Gooder's Club Fall Bazaar. Harold Beary, Plainview, is pictured with his display of Lone Star Cut and Turquoise jewelry. Beary, a retired chemistry professor, designs unique jewelry with wire wrapping, silversmithing, casting, and his specialty - faceting Lone Star Cut stones from insulator glass.

All photos by Carol Campbell

HAPPY

VETERANS

DAY



Caprock Canyon's November Events

Come join in all the fun activities at Caprock Canyons State Park during the month of November.

Join us on the "Canyon Walks & Talks" in which anything from geology, history, flora, and fauna will be discussed as we hike down several trails at Caprock Canyons State Park. These programs will be offered November 5, November 12, and November 26 all at 10:00 a.m.

Also, join us at the interpretive amphitheater to view the various slide-show presentations offered this month including the "Texas State Bison Herd" showing at 7:00 p.m., November 5, "Pioneer Women of the Plains" showing at 6:00 p.m., November 12, and "Traveling Down the Trailway" showing at 6:00 p.m., November 19.

Our monthly geocaching program, "Geocaching 101: Treasure Hunting Made Fun" will be at 10:00 a.m., November 6 and will surely help teach you the basics of geocaching so you and your family can spend the day treasure hunting and spending quality time together as a family.

Spend even more family time together with us during the "Dutch Oven Thanksgiving" program at 1:30 p.m., November 26, where we will demonstrate some Dutch Oven cooking techniques and give thanks to you, the visitor, for supporting our wonderful State Parks.

Park admission: adults, \$3; seniors, \$2; children 12 and under, free. Camping is available, along with hiking, biking, fishing, and many other outdoor and recreational opportunities. All programs are free with paid park entrance fee. For more information, please call 806-455-1492.

MCISD Sponsors Veterans' Day Program

The Motley County ISD Student Council in conjunction with American Legion Fleming Post 337 and American Legion Auxiliary Unit 337 will host the annual Veterans' Day Program on Friday, November 11, 2011.

The program will be held at the Motley County ISD gymnasium and will begin at 10:00 a.m. A hospitality room will be provided after the program.

Ms. Dee Beam, Lubbock, will speak. Born into the German minority group of Transylvanian Saxons in Romania, Dee Beam grew up in one of the harshest Communist regimes behind the Iron Curtain of the Cold War. In 1979, her family was finally allowed to leave Romania and move to Germany. Mrs. Beam spent her adolescent

years in Germany, and enjoyed an excellent education attending the University of Augsburg in American Studies, Canadian Studies and Communications. She was also awarded a full academic scholarship to the State University of New York at Buffalo Graduate School. In 1995, Mrs. Beam moved permanently to Lubbock, TX, and embarked on her career in Telecommunications.

All veterans are urged to attend as well as members of our communities so that we may honor all of those who have served and protected this great country.

Veterans are asked to come early in order to register so that the program may begin promptly at 10:00 a.m.

Matadors Win District continued from page one

championship for Motley County. The Motley County fans once again outnumbered and outcheered our opponent on the road," Coach Bigham said.

The next game will be for the Bi-district Championship against Whitharral in Lockney this Friday, November 11. "Come support our boys as we compete to bring home another trophy," Coach Bigham said.

USDA reminds producers of closing date

Motley County USDA Farm Service Agency (FSA) Executive Director, Amy Hackler urges producers who want to purchase coverage through the Noninsurable Crop Disaster Assistance Program (NAP) to do so before the sales closing date of December 1, 2011.

NAP provides financial assistance to producers of noninsurable crops when low yields/grazing loss, loss of inventory or prevented planting occur due to normal disasters.

The following crops have a NAP application closing date of Dec. 1, 2011: grazing and forage/hay on native and improved grass, honey, potatoes, radishes, grapes and caneberries.

"Purchasing a crop insurance policy is an easy way for producers to practice risk management," said Hackler. "The 2011 crop year has proved that natural disasters can directly affect the profitability and recovery of agricultural operations," she said.

In order to meet eligibility requirements for NAP, crops must be noninsurable, commercially-produced agricultural commodity crops for which the catastrophic risk protection level of crop insurance is not available.

In the event of a natural disaster, NAP covers the amount of loss greater than 50 percent of the expected production based on the approved yield and reported acreage.

Eligible producers can apply for coverage using form CCC-471, "Application for Coverage." Producers must file the application and service fee by the Dec. 1st deadline. The service fee is the lesser of \$250 per crop or \$750 per producer per administrative county, not to exceed a total of \$1,875 for a producer with farming interests in multiple counties.

For more information on sales closing dates and NAP, contact the Motley County FSA office at 806-347-2263.

Fund Raiser Sunday Lunch

The Motley County Senior Citizens site committee will be having a

Pre-Thanksgiving Lunch

November 20, 2011

at the Motley County Senior Center

This will be a fund raiser for the center.

Lunch will consist of Turkey & Dressing with all the trimmings. Serving time will start at 11:00 a.m.

\$ 10.00 for adults

\$6.00 for kids 12 and under.

Come join us for a good time of fellowship.

Roaring Springs Late Night Shopping November 25th



Windmill Café is now taking orders for delicious pies for the Holiday Season.

For more information call
806-348-7256
or
806-269-1262



5E Series Tractor w/ 553 Loader & RB2184

0% FOR 60 MONTHS¹

On 5D & 5E Series Tractors

CHOOSE FROM:

- 45- to 75-hp configurations
- 2- and 4-Wheel Drive options
- 8/4 and 9/3 transmissions
- Hundreds of available implements and attachments to choose from

NO SWEAT. WE'VE GOT WHAT YOU'RE LOOKIN' FOR.

Don't sweat your choice of utility tractors—choose the 5D or 5E Series and get a machine built to take on tough tasks, at a price that makes John Deere reliability and performance easy to own.

So don't sweat your tractor purchase... make the easy choice, and come in today for a test drive!

While you're here, don't forget to check out our award-winning parts and service departments!



5055D Tractor

CERTIFIED GOLD STAR DEALER

JOHN DEERE

WESTERN EQUIPMENT

"Providing proven solutions since 1916."

www.West-Equip.com

Clinton, OK (580)323-1324

Weatherford, OK (580)772-5578

Hobart, OK (580)726-6726

Alva, OK (580)327-0105

Altus, OK (580)482-6666

Woodward, OK (580)254-0080

Childress, TX (940)937-3693

Amarillo, TX (806)622-3990

*Offer ends 1/31/12. Offer valid at participating Western Equipment locations. Some other restrictions may apply, so ask your salesperson for complete details and other financing options. 1. Subject to approved credit on John Deere Financial Installment Plan.

First National Bank

of Floydada STRENGTH

5 Star Superior Rating by BauerFinancial, Inc.

STABILITY

Serving this area for over 100 years

SERVICE

Checking, Savings, CDs, Money-Market Accounts, IRAs, Agricultural, Commercial, Consumer Loans, Home Loans, Real Estate Loans, 24 Hour ATM, 24 Hour Telebanking/TeleWeb

"Helping you change things for the better"

FIRST NATIONAL BANK OF FLOYDADA

Member F.D.I.C.



Bazaar highlights area artists

Motley County Arts and Crafts Club will hold their 45th yearly bazaar at Motley County Senior Citizen Center in Matador, Texas, on Saturday, November 19, 2011, from nine o'clock in the morning until three o'clock in the afternoon. Local artists will craft and present all bazaar items.

Participants will be treated to a matchless shopping experience allowing them to be ready with unique Christmas and hostess gifts. Complimentary refreshments will be available along with hundreds of unique gift items.

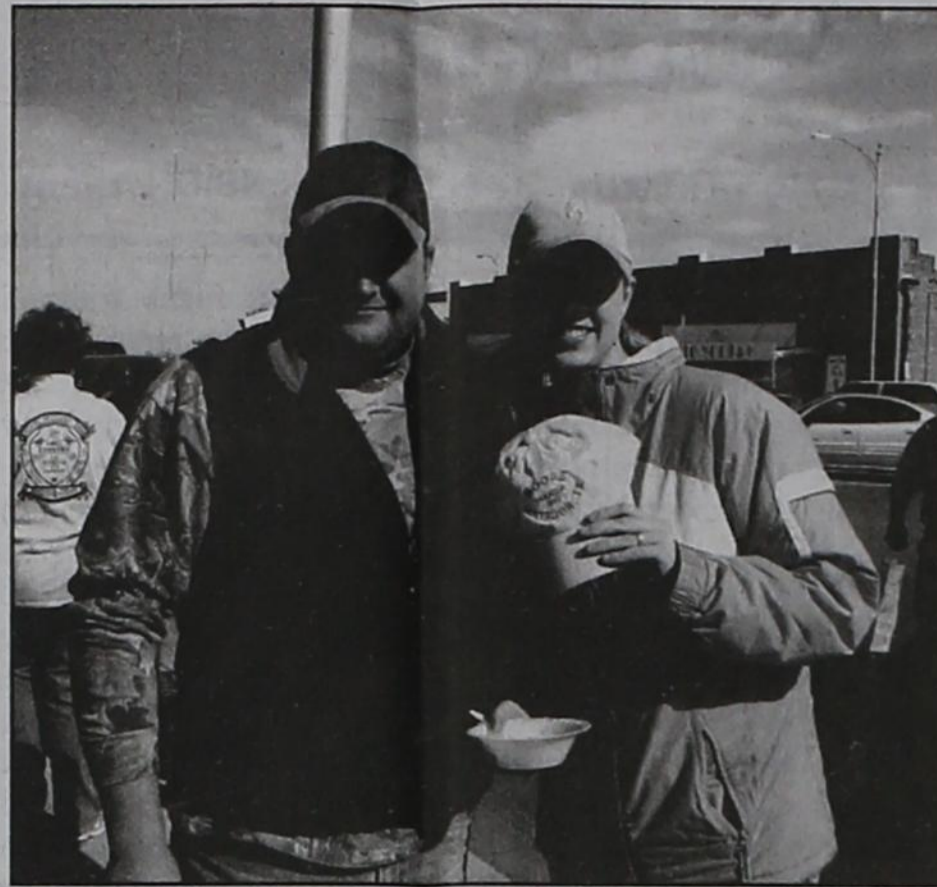
Non-members who wish to sell at this bazaar should contact bazaar chairperson, Nova Turner at (806) 347-2309. Vendors will pay a \$10 fee.

Cottle County Farm Loan Manager retires

Donna K. Drennan, Farm Loan Manager, Farm Service Agency in Cottle County is retiring. Please join us in honoring her with a retirement reception at the Farm Service Agency office in Paducah, Texas on Wednesday November 30, 2011 from 3:00 pm until 5:00 pm.

**Matador
Late
Night
Shopping
December 1**

2nd Annual Hunter's Appreciation Luncheon



Miles and Jennifer Zachary, hunting on the David Stafford Ranch, Roaring Springs, were the lucky winners of two caps, a man's cap from Matador Ranch Hunting Lodge Gift Shop, and a pink cap from Moore Makers Knives in Matador.



On the first day of open deer season in Motley County, more than 30 hunters attended the 2nd Annual Hunter's Appreciation luncheon, sponsored and prepared by the Motley County Chamber of Commerce. Tables were set up in front of Hotel Matador where the group enjoyed bris-ket, beans, scalloped potatoes, hot rolls, topped off with peach cobbler and sweet tea. Overflow groups enjoyed the patio area at Hotel Matador. The hunters registered for give-away items, courtesy of businesses and individuals in Matador.

Childress Gun Show set for November 12-13

The Childress Gun Show will be November 12 & 13 at the City Auditorium. Hours of the Gun Show will be Saturday, 9:00 am - 5:00 pm and Sunday, 9:00 am - 3:00 pm. Admission is \$5.00 for adults and \$3.00 for children 6 - 12 years of age. A great concession stand will be provided by Childress We Can Care with proceeds going to purchase gas cards for local cancer patients.

If you are interested in having a table please contact the Chamber at 940-937-2567. A single 8 foot table is \$40.00 or 2 tables are \$75.00.



Cameramen Ryan Dishongh from Georgia, and Gilbert Herndon from Florida, representing a filming group for Ultimate Outdoors, attended the Hunter's Appreciation Luncheon, Saturday, November 5, 2011. The film group is hunting and filming at Matador Ranch with host Wayne Pearson. The film will air on the Outdoor Channel the third quarter of next year, Dishongh said.

PUBLIC NOTICE FEMA-1999-DR-TX

The Federal Emergency Management Agency (FEMA) hereby gives notice to the public of its intent to reimburse eligible applicants for eligible costs for emergency work and to repair and/or replace facilities damaged by the extreme wildfire threat from April 6 to May 3, 2011. This notice applies to the Public Assistance (PA), Individual Assistance (IA), and Hazard Mitigation Grant (HMGP) programs implemented under the authority of the Robert T. Stafford Disaster Relief and Emergency Assistance Act, 42 U.S.C. §§ 5121-5206.

Under a major disaster declaration (FEMA-1999-DR-TX), signed by the President on July 1, 2011, the following 45 counties have been declared as eligible for PA under Category B (emergency protective measures) for reimbursement of eligible costs (as determined by FEMA) resulting from wildfires that posed a significant threat to life and property: Andrews, Archer, Armstrong, Bailey, Baylor, Brewster, Callahan, Carson, Castro, Clay, Coleman, Concho, Cottle, Crockett, Dawson, Duval, Eastland, Garza, Glasscock, Hall, Hemphill, Hockley, Irion, Kent, King, Lynn, Martin, Mason, Mitchell, Moore, Motley, Pecos, Presidio, Scurry, Stephens, Sterling, Sutton, Terrell, Terry, Throckmorton, Tom Green, Trinity, Tyler, Val Verde, and Young with a 75/25 cost share. All 45 counties have been designated as eligible for HMGP. On August 15, Fisher, Kent and Moore counties and on August 18, Cochran, Hartley, Jeff Davis and Palo Pinto counties were added to the disaster declaration for all categories of work in the Public Assistance program. All declared counties have been designated as eligible for HMGP. Additional counties and categories of work may be designated for assistance at a later date.

This public notice concerns activities that may affect historic properties, activities that are located in or affect wetland areas or the 100-year floodplain, and critical actions within the 500-year floodplain. Such activities may adversely affect the historic property, floodplain or wetland, or may result in continuing vulnerability to flood damage.

Presidential Executive Orders 11988 and 11990 require that all federal actions in or affecting the floodplain or wetlands be reviewed for opportunities to relocate, and evaluated for social, economic, historical, environmental, legal and safety considerations. Where there is no opportunity to relocate, FEMA is required to undertake a detailed review to determine what measures can be taken to minimize future damages. The public is invited to participate in the process of identifying alternatives and analyzing their impacts.

FEMA has determined that for certain types of facilities there are normally no alternatives to restoration in the floodplain/wetland. These are facilities that meet all of the following criteria: 1) FEMA's estimate of the cost of repairs is less than 50% of the cost to replace the entire facility, and is less than \$100,000; 2) the facility is not located in a floodway; 3) the facility has not sustained major structural damage in a previous Presidentially declared flooding disaster or emergency; and 4) the facility is not critical (e.g., the facility is not a hospital, generating plant, emergency operations center, or a facility that contains dangerous materials). FEMA intends to provide assistance for the restoration of these facilities to their pre-disaster condition, except that certain measures to mitigate the effects of future flooding or other hazards may be included in the work. For example, a bridge or culvert restoration may include a larger waterway opening to decrease the risk of future washouts.

For routine activities, this will be the only public notice provided. Other activities and those involving facilities that do not meet the four criteria are required to undergo more detailed review, including study of alternate locations. Subsequent public notices regarding such projects will be published if necessary, as more specific information becomes available.

In many cases, an applicant may have started facility restoration before federal involvement. Even if the facility must undergo detailed review and analysis of alternate locations, FEMA will fund eligible restoration at the original location if the facility is functionally dependent on its floodplain location (e.g., bridges and flood control facilities), or the project facilitates an open space use, or the facility is an integral part of a larger network that is impractical or uneconomical to relocate, such as a road. In such cases, FEMA must also examine the possible effects of not restoring the facility, minimize floodplain/wetland impacts, and determine both that an overriding public need for the facility clearly outweighs the Executive Order requirements to avoid the floodplain/wetland, and that the site is the only practicable alternative. The State of Texas and local officials will confirm to FEMA that proposed actions comply with all applicable State and local floodplain management and wetland protection requirements.

FEMA also intends to provide HMGP funding to the State of Texas to mitigate future disaster damages. These projects may include construction of new facilities, modification of existing, undamaged facilities, relocation of facilities out of floodplains, demolition of structures, or other types of projects to mitigate future disaster damages. In the course of developing project proposals, subsequent public notices will be published if necessary, as more specific information becomes available.

The National Historic Preservation Act requires federal agencies to take into account the effects of their undertakings on historic properties. Those actions or activities affecting buildings, structures, districts or objects 50 years or older or that affect archeological sites or undisturbed ground will require further review to determine if the property is eligible for listing in the National Register of Historic Places (Register). If the property is determined to be eligible for the Register, and FEMA's undertaking will adversely affect it, FEMA will provide additional public notices. For historic properties not adversely affected by FEMA's undertaking, this will be the only public notice.

As noted, this may be the only public notice regarding the above-described actions under the PA and HMGP programs. Interested persons may obtain information about these actions or a specific project, by writing to the Federal Emergency Management Agency, 800 North Loop 288, Denton, Texas 76209 or calling (940) 898-5144. Comments should be sent in writing to Kevin Hannes, Federal Coordinating Officer, at the above address within 15 days of the date of this notice.

**Main
Street Café**
**Order your
Homemade
Cream Pie
Fruit Pie
or
Pumpkin
Pie**
**Now
Serving
Pizza**

Tues and Wed
6am-3pm

Thur Friday
and Saturday
6am - 9pm

Closed Sunday and
Monday



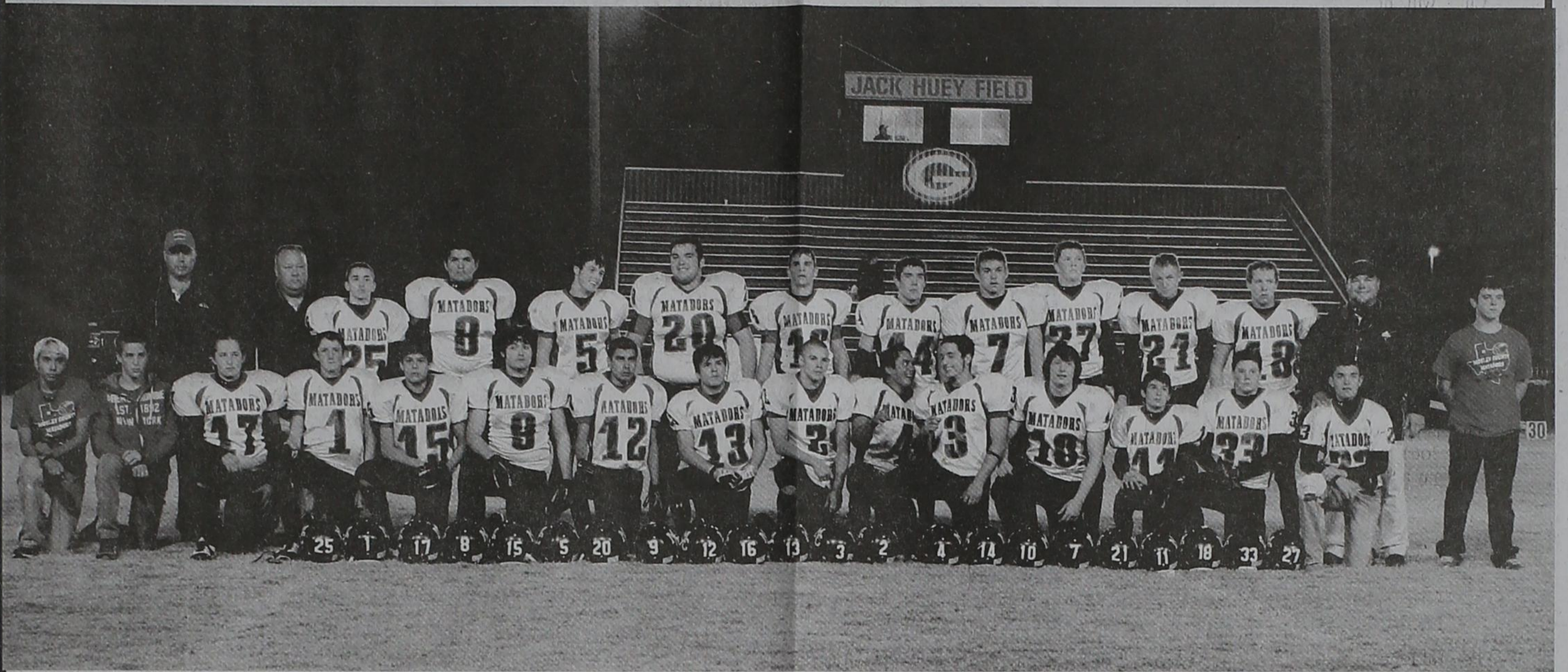
Harrison Bowes, co-owner of the Wild Hog Ranch, 12 miles northeast of Matador, won the Glittered Pig donation, a replica of deer antlers - glittered pink antlers on a black base. Bowes said it would hang in his lodge at the ranch.



Mike Kiemy from Tyler, Texas, was the proud winner of a coveted, pearl-handle Moore Maker Knife. Kiemy is hunting in Flomot on the Salty Jones Place, he said.

All Photos by Carol Campbell

WE SUPPORT THE MOTLEY COUNTY MATADORS



The Motley County Matadors beat the Guthrie Jaguars to win the district championship 52-6

Arvis Davis
Chevrolet

**Matador Motor and
Implement**

**Lucretia and Carol
Campbell**

Billie Deans

Matador Ranch

Motley Mill & Cube

Capital Farm Credit

Matador Variety

New To You

Cap Rock Telephone

**Meredith Gas
& Supply**

Payne Pharmacy

DeBruce Ag Services

Red Ball Gin

**Drum Plumbing
HVAC**

**Motley County
Abstract Company,
Paducah, Texas**

Smith Southern

First National Bank

Banc Equipment

Floydada

**Panhandle Plains
Land Bank**

Thacker Jewelry

Glittered Pig

**Motley County
Tribune**

The Insurance Store

**Goen & Goen
Insurance**

Windmill Cafe

Pinacle Propane

Hotel Matador

Spur Security Bank

Motley County

Farm Bureau

Johnson's Gin Co.

Lex Herrington

**Lighthouse Electric
Coop**

Lowes Pay N Save

Main Street Cafe

**Matador Branch
FNBS**





CLASSIFIED

email: mctribune@gmail.com 806-347-2400

November

Subscriptions Due
 Motley County-\$30
 Elsewhere-\$35
 Email \$25
 PO Box 490
 Matador, TX 79244

EVENTS CALENDAR

- November**
- 10 Friends of the Library Meeting, 3:00 pm at the library.
 - 10 4th & 5th Grade Field Trip to Ag Days @ Memphis
 - 10 Matador City Council
 - 10 Matador Chapter of the Eastern Star, Floy dada, Meal at 6:30pm, meeting at 7:30 pm
 - 11 Veterans Day program in the gym at 10 am
 - 12 Lady Mats vs. Cotton Center - 2 p.m. (home game)
 - 12 Cross Country, State @ Round Rock
 - 14 Commissioners' Court
 - 14 Roaring Springs City Council
 - 15 Matador Lions
 - 17 Matador Masonic Lodge, 6:30 pm
 - 19 Arts & Crafts Bazaar
 - 20 Pre-Thanksgiving Lunch, Motley County Senior Citizens Center, 11 am
 - 21 School Board Meeting
 - 22 EARLY DISMISSAL AT 12:20 P.M.MCISD
- December**
- 5 Motley County Arts and Crafts Club, Motley County Senior Citizen Center in Matador from 10:00 am until 3:00 pm.

FOR SALE

MOTLEY COUNTY TRIBUNE
 Call 859-351-8099
 Training and some financing available
 All offers considered

FOR SALE

1900 sq ft, brick home, 3 bed 2 bath, completely updated 1107 Walton Rd (806)781-0954 ctf

Sweet Potatoes For sale, call Joe Edd Helms at 806-469-5387 6 miles North of Flomot on HWY 599 4 miles South of Valley School ct47

Tamales for Sale \$ 7.00 a dozen Call Aurelia Salazar at 806-317-8300 ct46

SERVICES

Brody Davis Mobile Welding
 - fences- gates - entrances - structures - all types of repair
 Call - cell 806-204-0671 leave message.

- Complete Pump Service
- Center Pivot Sales & Service
- Pipe & Wire Installation

416 Main Street
 Silverton, TX
 806-823-2139 (O)
 806-847-7415 (C)



Rhoderick Irrigation Inc.

MATADOR

- Wayland Moore
- Ben Grundy
- Russ Henzler
- Fred Risser
- Ronald Bailey
- Truit Read
- Roy Stephens
- Nova Dale Turner
- Bill Raetz
- James Raetz
- Jimmie Jameson

ROARING SPRINGS

- Lewis Drum
- Jan Jones
- Penny Kline

FLOMOT

- Arnold Johnson

NORTHFIELD

- James Timmons

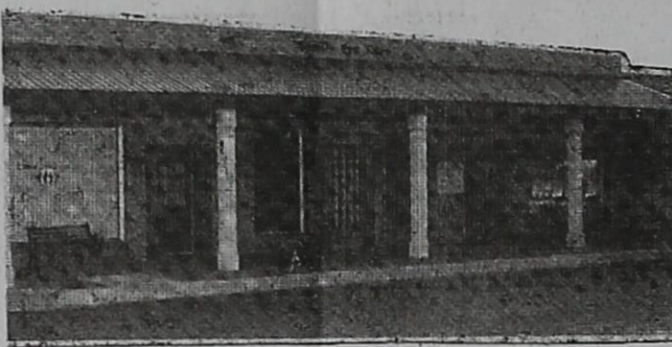
TEXAS

- Johnny Turner, Lubbock
- Sibyl Ward, Lubbock
- Gary McLaren, Lubbock
- Carroll Nichols, Lubbock
- Brandi Edwards, Sudan
- D Martin, Petersburg
- Bobby Simpson, Paducah
- Linda Hotcho, Dickens
- Jackie Christian, Amarillo



Family Eye Care

Blake Avera, M. D. Ophthalmology - Surgery
 Amy Bishop, O. D. Therapeutic Optometrist



CLINIC FULL SERVICE OPTICAL

COMPREHENSIVE AND CONTACT LENS FITTING
 LARGE SELECTION WITH OVER 500 DESIGNER FRAMES

TREATMENT OF EYE DISEASE AND SURGERY OF THE EYE
 SAME OR NEXT DAY SERVICE ON PRESCRIPTION EYEWEAR INCLUDING:

- LOCAL CATARACT SURGERY
- AFTER HOURS EMERGENCY CARE
- *SINGLE VISION
- *BIFOCALS
- *NO LINE PROGRESSIVE TRANSITION LENSES IN MOST CASES
- LARGE VALUE COLLECTION AVAILABLE WITH MULTIPLE PAIR DISCOUNTS

PROVIDING REGIONAL EYE CARE SINCE 1994
 125 AVENUE B NW CHILDRESS TEXAS (940) 937-2015



Residential-Commercial-Parts & Acc.
 Farm & Highway Diesel CALL 806-347-2290
 Office still locally operated at 1021 Main-Downtown Matador
 24 HOUR SERVICE-7 DAYS A WEEK
 WE APPRECIATE YOUR BUSINESS! MC & VISA

NEED INSURANCE?
 GET GOEN!

GOEN & GOEN INSURANCE
 CROP-HOME-AUTO-FARM
 BUSINESS-LIFE-HEALTH
 114 Main Street Matador Tx
 800-288-2865 806-347-2644

PAYNE PHARMACY

200 S. Main, Floydada, TX 79235
 806-983-5111 or 800-345-7961
 Denise Payne, R.Ph.

M-F, 8:30-6:00 & Sat., 8:30-1:00
 We will be happy to mail your prescriptions!

The Insurance Store

of Paducah wants to be your agent for all types of insurance!
 920 Easly St. PO Box 1406
 Paducah, TX 79248

Rhonda Richardson, CIC
 Vickie Sexton, CIC

806-492-3848, FAX 806-492-2077
 Toll Free 866-533-6333

email: theinsurancestore@caprock-spur.com
theinsstore@caprock-spur.com



Hotel Matador

...a Bed and Breakfast
 in downtown Matador, Texas
www.hotelmatador.com
 806.347.2939

Machines For
 Hire or Lease

D6 Dozer-690 B

John Deere Excavator
 Call Rodney Green 940-368-1101

For all your Ginning, Marketing & Planting needs

JOHNSON'S GIN
 Silverton, Texas

806-823-2224 800-338-3960
 Family Owned & Operated

Buy USA Grown & Made - It Matters!

Fidel Rodriguez Fencing
 Agriculture and Game Fences,

Gates, Corals and Pens

Over 30 years experience

Call 806-662-0203

Meredith Gas & Supply

348-7332

Your Local Family Owned and Operated
 Propane Company

Propane & Service

24 hours-7 days a week!
 We welcome new customers!

- Tanks & Supplies available
- Propane appliance Services
- Pressure Tests & Leak Test performed upon request

WE ACCEPT VISA & MASTERCARD

Motley County Abstract Company

P.O. Drawer 1
 Paducah, TX 79248
 806-492-3573 Fax 806-492-3574
 Complete Records for Abstracts & Title Insurance in
 Motley County, Texas
 Nelda Hightower-Owner
 Lisa Hightower Wood-Manager

Childress Veterinary Hospital Dr. David Fuston

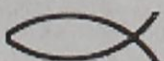
Full Service Veterinary Hospital
 Large and Small Animal Needs

940-937-2558

109 Industrial Circle/287 West, Childress

Tom Edwards, Attorney

806-347-2333



Joey & Brenda Lee
 Lee's Insurance

P.O. Box 189
 Clarendon, Texas 79226-0189
 806/874-2130 phone
 806/874-9394 fax
 877/874-2130

HOME • AUTO • LIFE • COMMERCIAL