

# MOTLEY COUNTY TRIBUNE

VOICE OF THE FOOTHILL COUNTRY

Where History is Pride

Flomot Matador Northfield Roaring Springs



SOUTHWEST COLLECTION  
Texas Tech University  
LUBBOCK, TEXAS 79409

**\$ .75**

Thursday, April 15, 2010

ESTABLISHED 1891

Volume 119 Issue No. 15

## Judge signs Conservation Day Proclamation



In honor of the 75th anniversary of the USDA-Natural Resources Conservation Service (NRCS), Motley County has declared April 27, 2010 as Conservation Day. Born out of the days of anguish and adversity of the Dust Bowl, NRCS, formerly Soil Conservation Service (SCS) has a long and distinguished place in Texas history of helping people help the land. The dust storms, eroded fields and overused rangelands of seven decades ago, have given way to a land of plenty providing benefits enjoyed by all Texans. Representing NRCS, James Gillespie and representing Motley County, County Judge Ed D. Smith signs the proclamation.

Motley County Proclamation # 2010-01

WHEREAS the people across Texas wish to live in harmony with the natural resources and leave a better earth for our children and grandchildren;

WHEREAS conservationists across our beautiful State work hand-in-hand with the citizens of Texas to conserve natural resources and to create a healthy land;

WHEREAS leadership for conservation of natural resources on private lands is provided by a partnership that includes soil conservation districts, State conservation agencies, other Federal agencies, Tribes, and the USDA Natural Resources Conservation Service;

WHEREAS the Natural Resources Conservation Service and its predecessor, the Soil Conservation Service, have been helping agricultural landowners in Texas meet their conservation goals;

WHEREAS the Natural Resources Conservation Service has established an important conservation partnership with farmers and ranchers in Texas;

WHEREAS now is the time to recognize the contributions of the Natural Resources Conservation Service and its partners, and to increase awareness among the State's citizens of the importance of natural resources;

Now, therefore, I Ed D. Smith - County Judge, do proclaim April 27, 2010, as Conservation Day in honor of the 75<sup>th</sup> Anniversary of the Natural Resources Conservation Service in the State of Texas, and urge all citizens to celebrate this special observance, and further, to reflect on ways that together that we can contribute to a healthy environment and make Texas an even greater place to live, work and raise a family.

IN WITNESS WHEREOF, I have hereunto set my hand and cause the seal of Texas to be affixed 5<sup>th</sup> (day) of April (month), 2010.

## Celebrate the Motley County Library

Come and help the Friends of the Motley County Library celebrate the first 'Library Appreciation Day', April 16, 2010, from 10:00 to 12:00. Coffee and cookies will be served.

Our library has become more than just a place to check out a book or read your email. It has become an institution within the community; it is a place to meet and greet friends and make new ones.

If you need a smile and a 'cookie', stop by the Motley County Library on the 16<sup>th</sup>.

## TxDOT to let bids on two off-system bridges

Grant approved to purchase a new vehicle for sheriff

By Carol Campbell

The Motley County Commissioner's Court met on April 12, 2010, with a full court consisting of Judge Ed D. Smith, Commissioners Roy Gene Stephens, Donnie Turner, Franklin Jameson, and Russell Alexander. Also in attendance were Sheriff Chris Spence, County Judge-Elect Jim Meador, and Kate Hurt, County and District Clerk.

In Open Forum, Russell Alexander announced to the court that there was a "renewed interest" in the Quail Pipe Building with recent tours completed.

In the first item of business, Judge Smith reported that following his notification to TxDOT that the County Road Map Jury of View had closed County Road 110, thereby removing the road from the federal off-system bridge program, he was informed that since plans and specifications had already been developed, the county was obligated to pay TxDOT \$20,000.00. In further discussions, TxDOT

agreed to accept structural improvement work on other deficient bridges to cover the cost of developing the plans, acknowledging the fact that the county had saved TxDOT about \$150,000 on repairing the bridge. The judge was advised to write a letter to TxDOT District Engineer Terry Keener informing him that other improvement work on deficient bridges had been completed by Motley County, thereby ending their contractual obligation as detailed in the Advance Funding Agreement between the State of Texas and Motley County.

Further, TxDOT representative Ben Kautz announced to the court that bids on two off-system bridges would be let between now and August, consisting of repair to a bridge at Four-Corners in Precinct 2, located on CR214 and CR205; and a bridge on CR404, located southeast of Rocky Point in Precinct 1.

Judge Smith announced that the Commissioner's Court would be meeting Monday, April 12, at 1:15 p.m. to

adopt the County Road Map. "We will lose about six miles of road; and gain about three miles," Judge Smith said, reporting to the court that he had spotted an error on the TxDOT website where the Tee Pee City Road was listed at 1.5 miles, rather than 8.402 miles.

In other business, the court tabled a motion to increase the librarian salary until further review. Commissioner Franklin Jameson said he would call the Texas Association of Counties to solicit a "good solid opinion" about whether the court could increase a salary during an out-of-budget cycle.

A contract was approved unanimously by the court to contract with the Lubbock County Medical Examiner's Office for forensic pathology services to Motley County; and the court voted unanimously to approve the official bond and oath of Sheriff Chris Spence.

AgriLIFE Extension Agent Ryan Martin submitted the

continuous on page 7

## Matador City Council approves use of 4-B Funds

The Matador City Council met in regular session on April 8, 2010, with a full council consisting of Councilmen Pat Seigler, Alvin Alexander, Chuck Ream, Kay Bailey, and Shane Jones. Also in attendance were Mayor Pat Smith, City Secretary Debra Scott, Water Superintendent Steve Barton, and 4-B President Judy Renfro.

Following unanimous approval of the minutes for March, Judy Renfro, President of the 4-B Board, asked the council

to approve the use of \$15,000 to be used to repair and add new playground equipment to the City Park. She showed the Council pictures of the playground equipment being considered, which would require the installation of a comfort zone of gravel or wood chips to be installed underneath the equipment for the children's protection. Alvin Alexander made a motion to approve the use of 4-B money for the City Park, seconded by Pat Seigler. The motion carried with one ab-

staining vote by Kay Bailey, who also serves on the 4-B Board.

City Secretary Debra Scott informed the Council that the South Plains Association of Governments (SPAG) has asked the city if they would like to apply for a \$250,000 grant to replace water lines and if so, does the city want to advertise for engineers for this grant. A motion was made by Pat Seigler to apply for the grant and solicit new engineers, seconded by Alvin Alexander. The motion carried by unanimous vote.

## Boondockers to host Fifth Annual Grand Prix

By Dianne Washington

The West Texas Boondockers will host the Fifth Annual Grand Prix Sunday, April 25, 2010. The Motley County Chamber of Commerce helps the Boondockers prepare for the race. The staging area for this event is on the east side of the courthouse square.

Over four hundred racers, along with their families and support crews are expected to begin arriving in Matador on Saturday afternoon. Racers will begin signing in at 7:30 a.m. A full day of racing is planned with the first race set

for 9:30 and the last race to begin at 4:30 p.m. There will be six classes of races. This is a family event with race classes for men, women, and children.

Along with the excitement of the various organizations and businesses will have food concessions. Relay for Life will be selling breakfast burritos. Look for the Relay for Life signs around the courthouse square. This year the Motley County Senior Citizens are serving smoked brisket sandwiches, german sausage, and various sweets in the Senior Citizen building. Tommye and David Keith are slow cooking the briskets for the sandwich-

es over mesquite wood. The Catholic Church will be selling turkey legs and other goodies on the north side of New to You. Hackberry Creek Care Center will be selling mesquite grilled hamburgers for the fifth year on the east side of the courthouse square.

If you would like to order food to go, call Dianne at 269-1388 to turn in your food order. If you would like to help with the race contact Shane Jones at 347-2820.

Everyone is encouraged to come out and watch the races. Bring your lawn chairs and sit on the courthouse lawn and enjoy the races, great food and a beautiful day. See you there!



# Foothill Country

## Connections

Community, Diversity, Art  
When you have history, you have pride.

By Larry Vogt

Seeing the proclamation of Conservation Day brings to mind all the dust storm stories I have heard from relatives and various acquaintances. The stories of the terrible black clouds of dust in the Dakotas during the 1930s brought a chill to any conversation. What I didn't realize as a child but learned, as I got older was that those clouds of dust were the topsoil of the farms actually blowing away.

From what I have been told about the dust storms of the West Texas area the storms in this region contained a lot of sand with the dirt and could actually hurt as the mighty winds hurled the dust against your body if you happened to get caught out in the open during a wind/dust storm. The conservation methods that were employed have cut way back on the damage and added an element of natural beauty in the form of windbreaks of trees and shrubs as well as grass

buffers. What a pleasure it is to drive the highways of West Texas and see the fruition of the conservation plans.

In hilly country the soil doesn't blow around as much but it washes away with every rainstorm so the concern is erosion gullies. In these areas the farmers use different methods such as terrace and strip farming along with avoiding growing tillage crops on hillsides that have a higher degree of slope.

Any way you look at it, we need our topsoil to stay put so we can grow our food and other crops. Thanks to all the people who make up the different conservation agencies and thanks to all the farmers who grow our food and textile crops. We appreciate all those long hours you put in during the planting and harvesting seasons. Next time you take a bite of a sweet potato or put on that cotton shirt think about the farmer who put in those work hours to provide us with the tasty morsels and other necessities.

# WRITING COMMUNITY

## April is Poetry Month

### I Got the Money

My Mom got a dime  
She gave me the dime  
So I bought a lime  
The lime was sweet  
So I did my beat  
with my feet  
Then she gave me a penny  
So I could go to Jenny  
Then she brought me a nickel  
So I could get a pickle  
When I got my pickle, it  
turned dark green  
So I got really mean  
When I got really mean  
I turned dark red  
This is what I said  
Hey you Fred  
I like your red head!  
OO AH yeah

By Sophia Charette

### OAHU

There is no camera  
No snap...  
shot  
Flattening image  
in two dimensional form  
The picture lives within my body  
within my soul.  
I become part of the picture  
As the picture becomes part of me...  
A part of who I am and who I'm to become.  
With every face, experience, I am changed.  
Sometimes ever so slightly  
Sometimes profoundly so  
The Living Breathing Walking Camera  
With each breath, each blink, another shot  
is taken.  
Stored in this neuron film called the

mind...  
To be processed in due time.  
Eyer living and breathing, this memory.  
Taken out and visualized at will  
And sometimes shared in moments of  
great glory amidst great story.  
Giving others a glimpse of beauty and  
majesty  
Intertwined with heart ..  
The true things to behold...  
Stirring up within them  
The desire to take their own picture...  
Tell their own story...  
Become their own living lens.

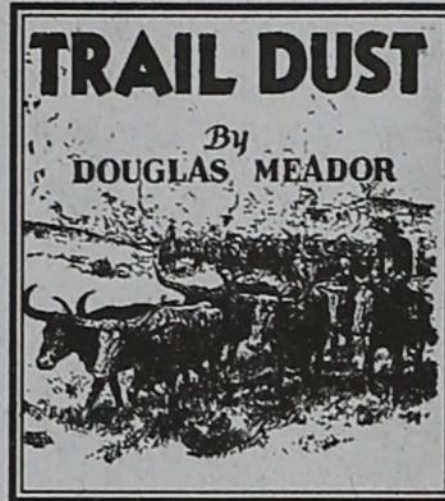
I miss the Island.  
Can I possibly do it justice?

Juliana Sabina

Pity is the soil which nurses suffering until it flowers in the swinging pots  
below the eaves of fear.

There is little fragrance in blossoms forever shaded from the sun, or courage  
in a heart that is afraid of laughter.

Douglas Meador, 1937



Matador Tribune  
May 20, 1037

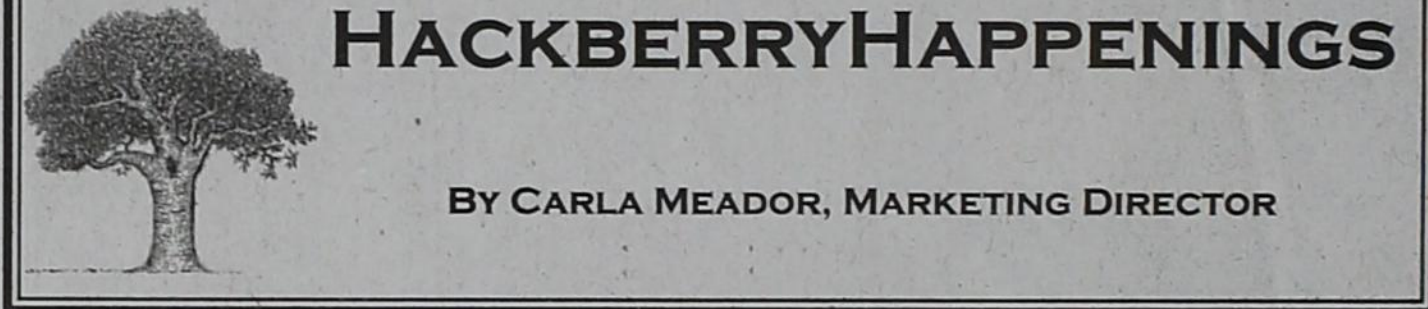
Riding away from silent pens heavy with the stench and echoes of vanished herds, the cowboy went back to his world and found it changed as a traveler returning to a familiar spring only to find it muddied by the backwaters of a restless river. Gleaming plowshares opened the faces of the prairies and bright barbed-wires were stretched across the hills until only the wind and rain and darkness could follow the old trails to distant water holes. Most of the riders who unsaddled their horses beside the sphinx of the future, appraised the chary, sweat-stained pay they earned and spent with the satisfaction of one who has given to a stranger as his brother. All but a few were to lose step in an era of destiny and swell the crowded corrals of the poor or eat the bitter bread of failure often served too late in life.



Matador Tribune  
May 20, 1037

### Oil Interest Converges in Explorations

While shadowed by the usual secrecy which is characteristic of petroleum explorations, the long dormant search for oil in Motley county is again active, and two crews are making tests in this and neighboring counties, with headquarters in Matador. One of the exploration crews is declared to be employed by the greatest petroleum organization in the world. The other, believed to be financed by smaller interest, has kept all operations secret. Naturally, none of the finds of either crew will be made public. However, Motley county, once the location of a number of test wells, may probably be further explored for elusive lakes of black gold far below the surface.



Hackberry Creek Care Center is excited to announce that we are expanding our therapy department. Beginning April 19th we will be equipped to offer more extensive therapy and will have a Rehab Director at the Center five days a week. Therapy services will be dedicated to the needs of persons affected by stroke, arthritis, hip fracture, amputation, cardiac disease, pulmonary disease, hip or knee joint replacements, complicated courses of recovery from surgery or illness, and general debilitation. Occupational Therapy will include safety education, home living skills, hand rehab, activity of daily living, cognitive perceptual retraining, transfer and mobility retraining, utilization of adaptive equipment, and upper extremity therapeutic exercise. Physical therapy will include joint mobilization, therapeutic exercise, orthopedic rehab, home evaluations, transfer and mobility. Speech Language Pathology includes helping improve speech intelligibility, comprehension, cognitive retraining, modifying diets for safe swallowing, reading and writing ability, and safety education. With Speech Language Pathology the therapist will address communication problems, by helping residents improve skills in speaking, thinking, listening, reading, writing, and problem solving, organizing sequencing thoughts and assessing swallowing difficulties. Hackberry also plans to offer outpatient therapy in the future. We are so excited about our extended therapy abilities. If you would like more information please call our administrator, John Vunk at 806-347-2942.

Did you know that Hackberry offers blood pressure checks to the public. If you feel that your blood pressure is a little off balance, just stop by the Center and someone will check it for you.

Hackberry residents are so well cared for, physically, medically and lovingly. The residents also have the opportunity to take advantage of some wonderful entertainment every first Thursday of each month when Mrs. Betty



King, of Calvary Home Health, fills the Center with joyful tunes as she presents a medley of songs. Residents gather in the large TV room as Mrs. King shares her talents with her soul-soothing voice.

Hackberry is going high-tech! We now have satellite TV. Residents will now be able to enjoy many programs on TV that have not been available until now. Don't ever accuse Hackberry residents of being behind times. They even have a Wii! Yes, that's right - the residents have the opportunity to take advantage of many games and exercise activities that are available on this piece of modern gaming equipment. You don't have to be a teenager to enjoy a Wii. Our residents may not be spring chickens anymore, but they're young at heart and have plenty of spunk.

Another new piece of equipment to the Center is a Juice Machine. Our kitchen staff will now prepare some delicious, fresh and healthy juices for the residents.

As you can see, things are really happening at Hackberry. Plans are being made for an Open House which is tentatively set for sometime in June. If you're not a regular visitor at the Center, make plans now to attend our Open House. We know you'll be pleased at what we have to offer.

### SR. HEALTH TIPS PREVENTING FALLS FOR THE ELDERLY

It has been said that up to 1/3 to 1/2 of all home accidents with elderly folks could be avoided with modifications to the home. Having an eagle-eye of possible hazards, a little

bit of work can go a long way in keeping your elder safe in their own home. You can improve the chances of your elder remaining safe in their home by simply completing a troubleshooting survey. Start on the outside and move to the interior of the home. Look at everything from stairways to bathrooms and the kitchen. Look for loose treads, broken or loose handles or bumps in the rugs.

Looking for places to start? Here are 8 tips that will get you headed in the right direction:

1. Raise or lower the height of your elder's bed to make it easier to get in and out of.
2. Install grab bars next to the bed and in other areas such as the bathroom.
3. Improve the lighting in the home to lower the risk of falling.
4. Talk with your elder about the fate of pets. Depending on the pet, they can be the cause of trips and falls if they are at their feet a lot of the time.
5. Remove all obstacles on floors and counters. This includes any bumps in rugs!
6. Buy and have your elder use an automated pill dispenser.
7. Install turntable shelves in the cabinets, or set up plastic turntables on existing shelving.
8. Buy a reaching device. These are great for getting items off - as well as onto - shelves.

These are just few suggestions to help keep your elderly loved one safe. Remember - if something looks like a potential problem, it likely is. Get it fixed and you'll be helping to keep your loved one safe.\*

PUBLIC NOTICE DEADLINE: FRIDAY NOON  
PRIORITY DEADLINE: FRIDAY 5 PM  
FINAL DEADLINE: MONDAY NOON

Wake up Wednesday mornings to the  
**MOTLEY COUNTY TRIBUNE**

Email Subscriptions Now Available \$25  
Send us your email address  
and we'll email you a PDF  
of the Motley County Tribune  
free for three months!

Got Questions? Suggestions? Call us anytime  
Larry 859-351-8099 Laverne 859-576-4625  
Office hours: Mon-wed 9-3  
Charli 806-789-3484

### MOTLEY COUNTY TRIBUNE

Laverne Zabielski & Larry Vogt, Publishers & Editors  
Carol Campbell, Feature Writer  
Charli Bigham, Office Manager

#### TASB Media Honor Roll

Houston Press Club Editorial  
Award Winner  
West Texas Press Association  
Member  
Texas Press Association  
Member



Award Winner

The Motley County Tribune, (ISSN: 0897-4322), purchased on November 29, 2007, is published weekly each Thursday, except Christmas week, at Matador, Texas. The office is located at 724 Dundee, 806.347.2400. Periodical-class postage paid at Matador, Texas, Postmaster. Send address changes to Motley county Tribune P.O. Box 490, Matador, TX 79244.

NOTICE: Any erroneous reflection upon the character, firm, or corporation, which may appear in the columns of the Motley County Tribune will gladly be corrected upon being brought to the attention of the publisher.

PUBLICATION NO. 333700

Subscription Rates: Motley County, \$30  
All others, \$35 Over 60 may deduct \$1.00  
Email \$25

P.O. Box 490, Matador, TX 79244

Advertising Rates: \$3.60 per col inch, in county  
\$3.85 per col inch, in Texas  
\$4.25 per col inch, national

Tear sheet \$2 and publisher's affidavit: additional \$3  
Scanned documents additional \$5  
Obituary: \$25 minimum, with photo, additional \$5  
Thank you notes: \$14 minimum  
Birth and Wedding Announcements:  
\$25 minimum, with photos additional \$5  
Classified: \$6 1st four lines paid in advance, \$7 billed



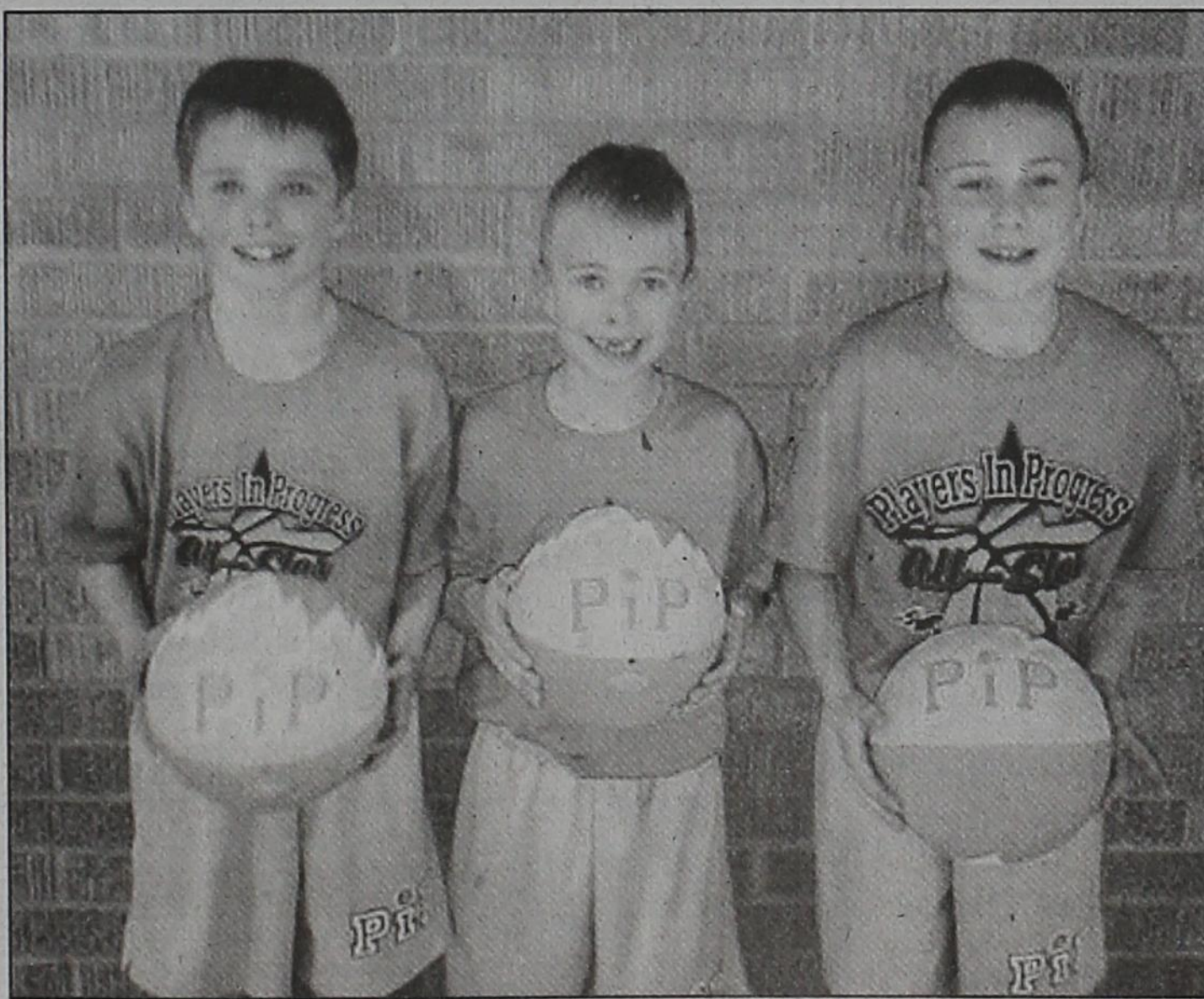
# PIPs compete in national festival



The PIPs attended the PIP Festival on March 20-21 in Abilene, Texas, competing in their age and skill levels against other PIPs from across the nation. Competing and placing in several individual events included the following skills: between leg pass, drops, AWA circles, obstacle speed dribble, PIP shots and layups, spin contest, two-ball dribble, backwards dribble and more. Back Row Left to Right: Cade Drum, McKenna Ford, Natalie Jameson, Mattie Brooks, Emily Jameson and Brody Rankin. Front Row Left to Right: Case Drum and Brogan Rankin. Not Pictured: Cade Wampler, Ethan Mason, Carley Turner, Dawson Baker and Gage Baker.



Fourth year PIPs Back Row Left to Right: Natalie Jameson and Mattie Brooks who also graduated from PIPS this year. Front Row Left to Right: Ethan Mason, Carley Turner, Gage Baker, McKenna Ford, Cade Drum and Brody Rankin.



Cade Drum, Case Drum and Brody Rankin brought home a silver medal in a Trio performance, based on three working together in a time frame of 2-1/2- to 4-minutes in length.

# Jr. High District Track Meet

The Motley County Jr. High Track teams participated in their district zone meet on Friday, April 9<sup>th</sup>, at Silverton. Both the girls and the boys teams finished in 3<sup>rd</sup> place overall. The Jr. High athletes did a great job this year and are to be commended for all of the effort and great performances that they exhibited.

The district results are:

**Girls:**  
 Discus: Shayla Clay—2<sup>nd</sup> place  
 Shot: Shayla Clay—5<sup>th</sup> place  
 2400m run—Catherine Ward—1<sup>st</sup> place  
 800m run—Virginia Gutierrez—3<sup>rd</sup> place  
 800m relay—Cassidy Turner, Meagan Ford, Shelby Elliott, Virginia Gutierrez—3<sup>rd</sup> place  
 200m dash—Shelby Elliott—6<sup>th</sup> place

1200m run—Catherine Ward—1<sup>st</sup> place  
 1600m relay—Cassidy Turner, Meagan Ford, Virginia Gutierrez, Cat Ward—3<sup>rd</sup> place  
 Also competing, but not placing in the top six were: Katie Barton and Gabby Silva.

**Boys:**  
 Long Jump: Conner Mason—4<sup>th</sup> place  
 Triple Jump: Conner Mason—5<sup>th</sup> place  
 Discus: Braden Bigham—5<sup>th</sup> place  
 Seth Baxter—6<sup>th</sup> place  
 Shot: Coby Cochran—3<sup>rd</sup> place  
 2400m run—Dillon McCleskey—2<sup>nd</sup> place  
 800m run—Caleb Clary—1<sup>st</sup> place  
 Michael Martin—

3<sup>rd</sup> place  
 Noah Guerrero—4<sup>th</sup> place  
 100m dash—Jamie Jameson—3<sup>rd</sup> place  
 Conner Mason—6<sup>th</sup> place  
 800m relay—Caleb Clary, Jamie Jameson, Conner Mason, Coby Cochran—3<sup>rd</sup> place  
 400m run—Noah Guerrero—3<sup>rd</sup> place  
 300m hurdles—Dillon McCleskey—4<sup>th</sup> place  
 1200m run: Michael Martin—4<sup>th</sup> place  
 1600m Relay—Jamie Jameson, Conner Mason, Caleb Clary, Dillon McCleskey—1<sup>st</sup> place  
 Also competing, but not placing in the top six were Tanner Bearden, Logan Ferguson, Tallon Pollard, Korbyn Simpson, and Jacob Woolsey.

# Motley County High School District Track Meet

The District 10-1A track meet was held Thursday, April 8<sup>th</sup> at Quanah. The Motley Co. High School teams competed very well with several members advancing to the Area Meet to be held April 15<sup>th</sup> at Munday. Results are:

Discus—Jaci Zingerman—4<sup>th</sup> place  
 3200m run—Lexi Osborn—1<sup>st</sup> place  
 Mark Quintero—3<sup>rd</sup> place  
 Weston Griswold—1<sup>st</sup> place JV  
 800m run—Reagan Elliott—5<sup>th</sup> place  
 110m hurdles—Nayo Santos—4<sup>th</sup> place  
 100m dash—Alyx Smith—6<sup>th</sup>

place  
 400m dash—Jaci Zingerman—3<sup>rd</sup> place  
 Andrew Martin—2<sup>nd</sup> place  
 Colby McCleskey—5<sup>th</sup> place  
 300m hurdles—Nayo Santos—4<sup>th</sup> place  
 200m dash—Jaci Zingerman—4<sup>th</sup> place  
 1600m run—Lexi Osborn—1<sup>st</sup> place  
 Reagan Elliott—5<sup>th</sup> place  
 Weston Griswold—1<sup>st</sup> place, JV  
 \* The girl's 800m relay consisting of Alyx Smith, Sabra Pope, Lexi Osborn, Jaci Zingerman, and Kyla Simpson (alternate)

finished in 2<sup>nd</sup> place.  
 The boy's 800m relay consisting of Britt Simpson, Jonathon Osborn, Austin Taylor, Andrew Martin, and Dayne Butler (alternate) finished 3<sup>rd</sup>.  
 The boy's Mile Relay team consisting of Andrew Martin, Jonathon Osborn, Austin Taylor, Colby McCleskey and Juan Flores (alternate) finished in 2<sup>nd</sup> place.  
 Other team members that competed, but did not place, were Sarah Ferguson, Braden Mason, Christian Brooks, Schyler Tomlinson, and Chase Buckner. The athletes that placed in the top four in each event qualified for the Area Meet.

# Author visits Roaring Springs

By Monta Marshall  
 Mr. Charles C. Britton, author of the book, The Quanah Route A Texas Short Line Railroad, was a guest at the Travelers Inn on Thursday evening, April 8. Mr. Britton was born in Kentucky. When he was about 5-years-old his family moved to Dallas. His father, Charles A. Britton, heard about the railroad (the QA&P) coming to this area and expected Dougherty to become a boom town. The family moved there.

The senior Mr. Britton became the first railway agent in Dougherty. He served as station agent at Acme, Dougherty and later in Roaring Springs. Only three of the QA&P depots are still standing, consisting of depots in Quanah, Paducah and Roaring Springs. The depot in Dougherty was later leased for a hay barn.

During the 1950s Burlington Northern had acquired the depot here in Roaring Springs. Charles A. Guy, editor of the Lubbock Avalanche Journal was on the board; he persuaded the Burlington Northern to sell the Roaring Springs Depot to the City of Roaring Springs for a token amount. (It is believed the token amount was \$1.00!)

Buzz and Tince Thacker, Edith and Glennard Daniell, and Corky and Monta Marshall visited with Mr. Britton. He told how friendly the people in this area were and how the railroad people reciprocated. Once some cotton caught on fire on a truck hauling cotton near Dougherty and the train stopped and put the fire out with steam!

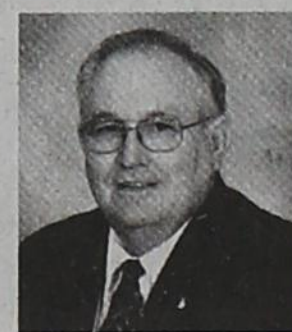
He told about his mother not driving and the train took his father who was ill on a cot in the caboose of the train to the hospital in Quanah. Glennard Daniell told how when he was five or six years old his dad had to have surgery in Quanah. He and his mother rode with his father in the caboose to the hospital. He said that Mr. Stonecipher was a minister here and he came to Quanah and brought them home when his dad was able.

If someone had trouble along the road and if the road ran alongside the railroad tracks, the train would stop and give the folks a ride into the nearest town

for parts or to fix flats.  
 One of his memories was being on the basketball team when they lived in Quanah. They were playing basketball in a tournament in Matador. The team rode the train there and stayed in bunks at Bob's Oil Well in Matador.  
 Mr. Britton resides in Fort Collins, Colorado. He flew to Amarillo from Denver and rented a car and drove to Dougherty to attend a reunion. He recounted that in 1928 there were two lumber yards, a creamery, grocery store, depot, barber shop, and a general mercantile which also housed the post office. The mercantile was owned by Mr. Harvey Powell.  
 The only place in Dougherty large enough to hold the reunion was the gin office. There were 10 people attending the reunion. Among them was Harvey Jo Powell, daughter of the mercantile owner, Harvey Powell. She was the youngest of the Powell children and now she

prefers to be called Jo.  
 He told how people thought spelling Dougherty was too complicated and complained so the cotton gin officially changed its name to Darty Gin which caused a lot of confusion! He said promoters had big plans for Dougherty and laid the townsite out in a hub pattern. Originally there was a circle in the center of town and the streets led out like spokes around the circle.  
 Another interesting subject was brought up how Mr. Ben Meador originally began his paper in Roaring Springs. Later he had a chance to buy out the Matador paper and expand. Corky mentioned when he was a boy one of the things the boys did for entertainment was to go to the newspaper office late at night and watch Mr. Meador's printing press turn out the papers.  
 It was a pleasure to meet Mr. Britton and hear these stories first hand. He graciously autographed several copies of his book for the group.

## A THIRST FOR GOD



"As the deer pants for the water brook, so pants my soul for You, O God. My soul thirst for God, for the Living God"—Psalms 42:1-2. The Psalmist was intent in his longing for God. I wonder if the same might be said of us? Do we find our souls really thirsting for God? We are a people surrounded by the material splendor of our culture.

Is there a danger that we might not be developing a thirst for spiritual things? It has been said that, "in a material world we easily forget that life is lived from within, not from without."

It is easy to take our lives from granted. Yet Solomon reminds us in Ecclesiastes 12 that this life is liken to a silver thread and is very fragile. Then he tells us our "whole duty is to fear God and keep His commandments." That often gets placed on the back burner. The spiritual aspect of life is not always foremost in our minds. We need to ask ourselves, "How is my spiritual development progressing?"

What is more important to us, the spiritual or material? Which do we place the most emphasis on? In helping us answer this we read the words of Jesus in John 10:10: "...I have come that they may have life, and that they may have it more abundantly." Our Lord helps us to understand that the life we have in Him is spiritual and not based on the materials things of this world. All of the pleasure and riches of this world pales into insignificance when compared to the spiritual life that comes through Jesus.

**Roaring Springs Church of Christ**  
**Michael G. Crowley, Sr.**  
**BIBLE STUDY 10:00 a.m. Worship 9:00 a.m.**

## Soccer Anyone??

10-15 year olds are invited to mini soccer camp

April 17, April 24 and May 8

8 am-12pm

on Spur's football practice field

For registration or more information contact

Roberta at 623-5059

or

dickenscosoccerassoc@yahoo.com



# NEWS AROUND MOTLEY COUNTY

## Roaring Springs News

By Monta Marshall

### On a personal note...

It is comforting to know that help is a phone call away. Friday night I needed help badly. Somehow I strained a muscle in my hip area that hurt so severely I thought I must have been one of those persons who break hips just walking or bending. The pain was so intense I couldn't stand and walk without Corky almost carrying all my weight. Ice, heating pads, muscle relaxers and pain medication did not help. Tina Brooks came and accessed the situation and decided I needed to get to the hospital. The EMS crew of Tina, D'anna Russell, Seven Alexander and the skilled ambulance driver, Cindy Johannes were here quickly. The Texas Department of Safety patrolman Chad, and Devin Ballard came along and helped carry me and navigate all the turns to get me from the bedroom and down the steps to the ambulance. Most of them were already in bed or ready for bed, but they graciously came to my aid. Fortunately it was not broken as I feared but just a sprained muscle; I spent the rest of the night at UMC and most of Saturday and was released and able to walk by 5:30 p.m. Saturday evening. I'm sore but on the mend; I shudder to think had we not had the good EMS team and ambulance what the night would have been like. There was no way I could have ridden in the car. Thank you so much.

### In the community...

The Windmill Café has been open a year. Deanette and Perry Gullede plan to have an anniversary party to let their customers know how much they appreciate their patronage. There will be an ad in the paper soon telling more about the event. Live music is planned.

Visiting Harley Alsup on Easter weekend were his daughter Starley Alsup and her boyfriend, Andy Turner and son Caleb. They live in Chickamauga, Georgia.

Sisters celebrating March birthdays were Audrey Jones of Roaring Springs, Dora Hurt of Matador, and Mary Martin of Wellington. Joining the celebration at the Windmill Café was Sara Martin of Wellington, and Tincie Parr and Barbara Marvel of Roaring Springs. Also attending were Joyce Meredith, Mitzi Christopher, and Sara Ross, nieces of the celebrants all of which live in Roaring Springs.

Visiting Joe Glenn and Joyce Meredith for Easter were their children: Jim and Carla Meador, Tony and Sherry, Sean and LaShea Rose, Yancy, Da-

phane and Parker Meredith; Kenneth Ashley, and Jack and Steve Smith. All had fun joining in an Easter egg hunt.

The 74th annual Marshall family reunion took place on Sunday, April 11, at the Roaring Springs Community Center. Coffee was served to the early comers. Family worship services were held at 10:30 a.m. Cody Clower, son of Dwight Clower and grandson of Virgie Bannister brought the lesson. A pot luck lunch was served to 74 family members. Thirty four attended the worship service. A memorial service followed lunch. There were three family members who had died since the last reunion. They were Phyllis Marshall, Frances Marshall Mitchell of Matador and Bobby Jack Snow of Brownwood, Texas. Family members from Oklahoma, New Mexico and Texas were present. Plans were discussed for the 75th Marshall Family Reunion to be held in July next year. I believe that Virgie and Corky have attended all 74 of them! J. N. Fletcher missed when he was in the Navy.

Imogene Swim is a patient at Carillon Skilled Nursing unit in Lubbock. J. T. Swim is staying with his son and daughter-in-law, Sam and Reba Swim of Lubbock.

On May 6, 2010, John H. Levacy, cowboy poet of Lubbock, will be the speaker for the monthly meeting of the Lions Club at the Windmill Café at 11:30 a.m. Mr. Levacy regaled the Lions last spring with humorous poetry and interesting facts about our area. The public is invited to attend.

The Roaring Springs Lions are selling raffle tickets for a diamond ring to raise money for the Relay For Life. Ask a Lion about buying a ticket; they are \$5.00 each. Posters with a picture of the ring are posted in all the businesses. It is a lovely ring to grace some lucky lady's hand. The Lions plan to sell tickets until early December. The drawing will be before Christmas; it would make a wonderful Christmas gift.

The Relay For Life Survivor Breakfast was held for Motley County cancer survivors and their caregivers Saturday morning.

Bill and Mozelle Hand were visited by Hanna Alexander, Bill's granddaughter, Hanna on Sunday. Hanna is 16 years old and has wheels! She came to visit and show them her 'new to her' vehicle. Vernon Nipp visited with Bill and Mozelle on Sunday also. Bill enjoys visits very much and still likes to play dominoes and cards.

## Flomot News

By Earlyne Jameson

### Overheard

Write the bad things that are done to you in sand, but write the good things that happen to you on a piece of marble.

Bill Paschal of Holbrook, Arizona visited with his cousin Mrs. Aleda Ross last week. They went to Lubbock Friday and visited her daughter and husband, Elisa and Stan Wigley. Bill then attended his class reunion held at Reddison Hotel in Lubbock, Saturday and Sunday. He returned to his home Monday.

Guests of Mrs. Erma Washington Easter Sunday were Tim and Deana Washington and grandchildren, Blu and Brazos Washington of Roaring Springs; Lacy and Conway Clary, Kenzie, Mickey and Caleb; Ty and Brittany Barclay, Trent Trevor and Tylee of Matador; Mr. and Mrs. Lance Barclay, Colton and Kayla of Lubbock; Mr. and Mrs. Cody Barclay, Lane and Ashton of Borger; Mr. and Mrs. Cary Franks, Mr. and Mrs. Cory Franks, Madison, Hudson and Heston of Idalou; Mr. and Mrs. Clint Cowart of Big Spring; Mr. and Mrs. Coy Franks and Mr. and Mrs. Jerry Barclay of Flomot.

Mrs. Aleda Ross had a doctors appointment in Lubbock, Tuesday. She visited daughter and husband, Elisa and Stan Wigley. She returned home Tuesday evening.

Mary Ellen "Dude" Barton and Mrs. Lou Burseson of Floy-

dada attended to business in Plainview, Monday. Saturday, Dude attended the U.S. Representative Mac Thornberry Conversation held the M. C. Library Annex in Matador. She visited with Marisue and Ralph Powell of Mott Creek who also attended.

Trent, Trevor and Tylee Barclay of Matador visited the weekend with their grandparents, Sandra and Jerry Barclay.

Rickey Hughes, Kason and Kendall of Floydada visited Saturday with parents, Janice and Butch Hughes. Kendall remained to visit overnight and Rickey accompanied her home Sunday.

L.T. Starkey of Ralls and Johnie Starkey accompanied his sister, Lola Jewel Starkey to Clyde, Tuesday after she visited here the past week.

Visiting Ruth and Orville Lee Saturday were Brenda and Joey Lee of Clarendon and Robert Lee of Amarillo. Joining them to visit Sunday were Teresa and Thomas Heck, Kacee, Micah and Cody of Turkey and Mrs. Shonda Lee of Flomot.

Jack and Nada Starkey were in Amarillo, Monday for her medical tests. Their daughter, Mrs. Bessie Reid of Amarillo accompanied Nada to her medical appointment. En route home, they visited in Canyon with Mr. and Mrs. Michael Starkey.

Anna Beth Clay and Joe Ike Clay were in Childress from Thursday until Sunday with the Kairos Prison Ministry.

## Wedding Announcement



Kayla Deann Simpson and Billy Chance Maynard were married Friday, March 26, 2010 in Judge Smith's office. Grandparents of Kayla are Larry and Annette Hollinsworth of Roaring Springs. Parents of Chance are Danny and Cristy Maynard of Quitaque.

## Embroidery Needles Busy at Do Gooders' Club Meeting

The Do Gooders' Club met Thursday afternoon, April 6 at the Community Center in Flomot. Embroidery needles were busy on quilt blocks depicting a farm boy who is carrying a fishing pole, bucket of water, a hoe, a spade, a bouquet of flowers and etc. When this delightful Bazaar quilt is completed, many chances will be sold with each entry hoping they will be the lucky winner!

Spring pastels brightened the Center. Mrs. Barbara Payne presided at a flower designed service and served assorted

muffins. Vinson's name was drawn for the hostess gift of individually wrapped miscellany items.

Mrs. Waydette Clay conducted the short business session. Mrs. Anna Beth Clay read the minutes of the March meeting that was approved.

Those attending were Mesdames Mary Jo Calvert, B. Rogers, Anna Beth Clay, Waydette Clay, Barbara Payne, Doris Vinson, Tommie Jo Cruse and Erma Washington. Guest was Mrs. Cora Gail Gunn Johnson of Silverton.

## Bandits roam at night



The little bandits came in the dark of night, and they came in twos -- but raccoons can't out-fox the great raccoon trapper, Lucretia (Cretia) Campbell. These two shared a nice peanut butter sandwich, a few bite-sized marshmallows, and one-half banana, right before the door came down on the humane trap. These little bandits were relocated to the Middle Pease River. Cretia is hoping they don't beat it back to the barn before she can call it a day. photo by Carol Campbell

THE 7TH ANNUAL TEXAS HIGHWAY ASSOCIATION HIGHWAY 70 GARAGE SALE MAY 1ST SPUR, DICKENS, ROARING SPRINGS, MATADOR, FLOMOT AND TURKEY. FOR MORE INFORMATION CALL 806-348-7336.

Hackberry Creek Care Center, Inc., in Matador was custom designed to meet the diverse and changing needs of today's senior adults. Each resident is treated with dignity and respect in order to make a difference in the lives of the elderly that have been entrusted to our care.

- Skilled Medical Services
- Rehabilitation Services
- Physical Therapy
- Occupational Therapy
- Speech Therapy
- Hospice Services

And much more!



A PLACE TO CALL HOME



**HACKBERRY CREEK CARE CENTER**

MATADOR, TEXAS • 806-347-2942

## RELAY FOR LIFE APRIL 23

### This Week's Local Forecast

|                                      |                                  |                             |                                  |                                  |                                   |                                    |
|--------------------------------------|----------------------------------|-----------------------------|----------------------------------|----------------------------------|-----------------------------------|------------------------------------|
|                                      |                                  |                             |                                  |                                  |                                   |                                    |
| Thursday<br>Scat'd T-storms<br>70/53 | Friday<br>Mostly Cloudy<br>72/56 | Saturday<br>Cloudy<br>74/55 | Sunday<br>Mostly Cloudy<br>74/54 | Monday<br>Partly Cloudy<br>73/51 | Tuesday<br>Partly Cloudy<br>74/55 | Wednesday<br>Mostly Sunny<br>78/56 |

### Weather Trivia

Do solar eclipses influence the weather?



Answer: Yes, the giant shadow cast on the Earth causes temperatures to fall.

### Weather History

April 15, 1921 - Two-mile high Silver Lake, Colo. received 76 inches of snow in 24 hours, the heaviest 24-hour total of record for North America. The storm left a total of 87 inches in 27 and a half hours.

### Moon Phases

|               |              |             |             |
|---------------|--------------|-------------|-------------|
| First<br>4/21 | Full<br>4/28 | Last<br>5/5 | New<br>5/13 |
|---------------|--------------|-------------|-------------|

© 2010, Accessweather.com, Inc.

Matador Motor and Implement

806-347-2422

Panhandle Plains Land Bank

806-296-5579

Shannon Family Funeral Home

806-347-2626

Alexander Fuel & Service

806-348-7958



# Notes from the Library

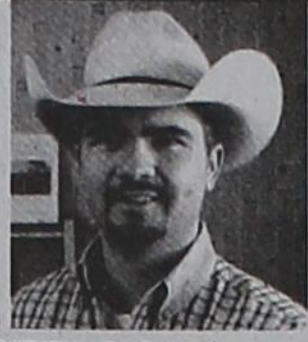
By Mary Ann Potts

Here is the update on new books that arrived this week. For your reading pleasure we have *Deception*, by Jonathan Kellerman, *Killing Edge* by Heather Graham, and a new surprise, *Susan Boyle*, the Unauthorized Biography by Alice Montgomery. These books have scarcely touched the shelves before being checked out. If one of these is your favorite author or curiosity leads you to Susan Boyle's life story, come in and check out the book as soon as you can. If the book or any book is unavailable we will be glad to place a hold on it and call you when it is returned.

I'm also going to remind you once again that Library Appreciation Day is Friday, April 16, 2010 from 10:00 a.m. to 12 noon. The Friends of the Library will be serving cookies and coffee to all who wonder through our doors. You are also welcome to view our Picturing America Exhibit in the Library Annex now on display through April 30, 2010.

Finally, the Motley County Library wants to thank the Motley County Hospital District for their gracious Memorial Donation in honor of Dorothy Ellen Abbott.

# County Agent's News



by Ryan Martin, AgriLIFE EXTENSION Agent

## Grain-grading workshops planned for May in Amarillo

AMARILLO – Two one-day grain-grading workshops will be hosted on May 4 and May 5 at the Texas AgriLife Research and Extension Center at 6500 W. Amarillo Blvd., according to Dr. Steve Amosson, Texas AgriLife Extension Service economist.

Each workshop will begin with registration at 8:30 a.m. followed by the program from 9 a.m.-4:30 p.m. A registration fee of \$45 is required to cover the costs associated with instruction, lunch, materials and equipment, Amosson said. Pre-registration is required, as each workshop is limited to 60 participants.

Registration forms can be found online at <http://amarillo.tamu.edu> and by clicking on the link in the Events and Updates section. These forms should be mailed to: Texas AgriLife Research and Extension Center, attn: Jane Planchon, 6500 W. Amarillo Blvd., Amarillo, Texas 79106.

Amosson said the grain-grading workshop is designed for corn, sorghum and wheat grain handlers and producers. Information from the workshop will help them recognize the different types of damages that occur in these grains and how the damages affect grade.

The grain-grading workshops are co-sponsored by the Panhandle Grain and Feed Association, Texas Cattle Feeders Association and AgriLife Extension.

Course instructors are Amosson; Gale Kalkins, retired from the Federal Grain Inspection Service, Wichita, Kan.; Dr. Ted McCollum, AgriLife Extension beef cattle specialist, Amarillo; and Dr. James Welch, AgriLife Extension economist-grain marketing and policy, College Station.

Topics covered will include: why grade grain, grain quality and the feedlot industry, grain standards and upcoming changes, and hands-on sessions for wheat, sorghum and

corn grading, Amosson said.

For more information, e-mail Amosson at [samosson@ag.tamu.edu](mailto:samosson@ag.tamu.edu) or Planchon at [japlanchon@ag.tamu.edu](mailto:japlanchon@ag.tamu.edu), or call either person at 806-677-5600.

## Texas could see increase in cotton, sorghum acres

COLLEGE STATION – More cotton and sorghum acres than corn could be planted by Texas farmers this year resulting from an upswing in future prices, according to a Texas AgriLife Extension Service economist.

The recent Prospective Plantings report released by the U.S. Department of Agriculture-National Agricultural Statistics Service projects 5.6 million cotton acres will be planted in Texas – up from 5 million acres in 2009. Projected sorghum acres for Texas this year are 2.4 million acres compared to 2.7 million acres in 2009. State corn acres are projected at 2.2 million this year compared to 2.3 million in 2009.

Dr. Mark Welch, AgriLife Extension grain economist, said he attributes the change to pricing.

"The moisture situation is much better across the state compared to last year, which favors all crops, but in the first quarter of the year, cotton prices are relatively high and grains are on a downward slide," he said.

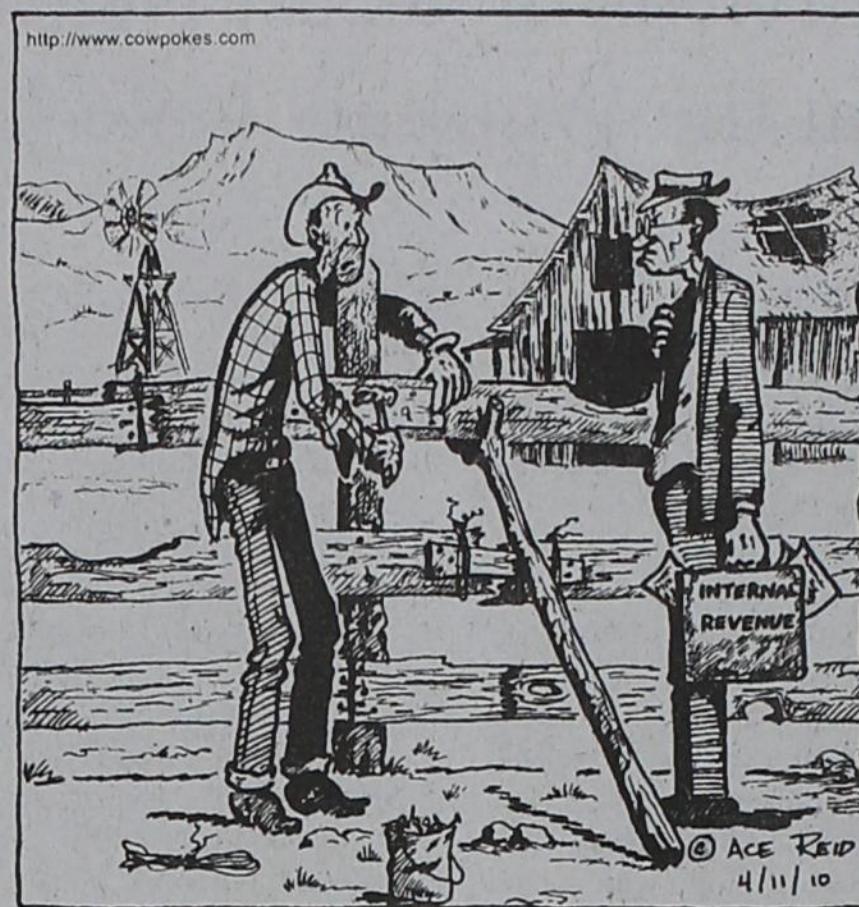
The USDA-Risk Management Agency uses future prices in February to set the base price for Crop Revenue Coverage insurance policies, Welch said.

"The base price for cotton is 72 cents (per pound), corn \$3.99 a bushel and sorghum \$3.90 a bushel," he said. "At these prices, the returns for cotton are higher than either the corn or sorghum in many production areas."

Welch said the planting intentions survey was conducted in February and early March, "so producers in much of the state can still change their minds, but prices since the survey have been high-

# COWPOKES®

By Ace Reid



"Income...what's that?"

THIS FEATURE IS SPONSORED BY THE

**MATADOR BRANCH**  
**FIRST NATIONAL BANK OF SEYMOUR**  
 MATADOR, TEXAS  
 YOUR "HOMETOWN" BANK Member FDIC

er for cotton and lower for grains."

"I think this will confirm this report and possibly add even more cotton to Texas," he said.

Nationally, U.S. farmers plan to plant a record-high 78.1 million acres in soybeans in 2010. According to NAAS, intended soybean acres are expected to increase 1 percent from last year's previous record, while corn planted acres is expected to increase 3 percent, to 88.8 million acres. This would be the second-largest corn crop since 1947, behind 2007.

The largest soybean acreage increases are expected in Kansas, up 400,000 acres, and Iowa, up 300,000. Increases of 100,000 or more acres are also expected in Illinois, Nebraska, North Dakota and South Dakota.

Expected corn acreage is up in many states due to reduced winter wheat acreage and growers expectations of improved net returns. Increases of 300,000 or more corn acres are expected in Illinois, Kansas, Missouri and Ohio. Iowa continues to lead the nation with 13.5 million corn acres, despite an expected drop of 200,000 acres from 2009.

NASS estimates 2010 cotton plantings at 10.5 million

acres, up 15 percent from last year. Wheat acreage is expected to decline 9 percent to 53.8 million acres, the smallest total area since 1970. The area planted to winter wheat is the smallest since 1913.

The Prospective Plantings report as well as grain stocks and other reports are available online at <http://www.nass.usda.gov>.

### Calendar of Events

- April**  
 14 – District 3 4-H Round-up in Vernon  
 16 – State Steer Validation tag orders due  
 17 – District 3 4-H Fashion Show in Jayton  
 22 – District 3 4-H Horse and Livestock Judging in Vernon
- May**  
 1 – State Horse Validation Due  
 1 – District 3 4-H Leaders 4 Life contest  
 8 – 4-H County Camp Carwash and Bake Sale Fund Raiser  
 15 – District 3 4-H Trap Shoot in Iowa Park  
 16 – Motley 4-H Club Meeting  
 28 – 4-H Golf Challenge entries due



# From the Sheriff's Desk

by Chris Spence

## The Makings of a Sheriff

A Sheriff is a composition of what all men are, a mingling of saint and sinner, dust and deity.

He, of all men, is at the same time the most needed and the most unwanted person.

He must be such a diplomat that he can settle differences between individuals so that each will think he won.

But... if a sheriff is pleasing, he's a flirt; if he's not, he's a grouch.

He must be able to start breathing, stop bleeding, tie splints and above all be sure the victim goes home without a limp... or expect to be sued.

He must know every gun, draw on the run, and hit where it doesn't hurt.

He must be able to whip two men twice his size and half his age without damaging

his uniform and without being brutal.

If you hit him, he's a coward; if he hits you, he's a bully.

He must know where all the sin is... and not partake.

The sheriff must chase bum leads to a dead end, stake out 10 nights to find one witness who saw it happen... but refuses to remember.

He must also be a minister, a social worker, and information center, a tough guy and a gentleman.

He must be a ranch cattleman, because he's out all day and night rounding up cattle and fencing them up so the roads can be safe for the citizens.

The sheriff will risk his life to save others, but when they lay him to rest they will say "He's was only doing his job."

What "ARE" sheriff's made of?

Author unknown

# Roaring Springs Full Gospel Youth Bake Sale

Benefiting Relay For Life

April 17th

9:00 a.m. at Lowes in Matador

10:30 a.m. at the Windmill

Roaring Springs

# FAITH FELLOWSHIP

New address

902 Bundy

Matador Tx 79244

Weekly Meetings and Sunday Morning

Sunday School-9:30 a.m.

Worship Service-10:30 a.m.

Sunday Evening-6 p.m.

Tuesday Evening Bible Study-6:30 p.m.

Wednesday Evening-6 p.m. with meal, praise, worship, music (youth & adult)

# Ken's RV Park & Mini Storage

Matador and Roaring Springs



806-347-2290

806-347-2455

Full Hook-ups Available

Mini Storage Rooms for Rent

Golf Cart Sales

# Don's Muffler Shop

210 W. California  
 Floydada  
 806-983-2273  
 FREE ESTIMATES

# Matador Floral

for all your floral needs

75% off storewide on gift items

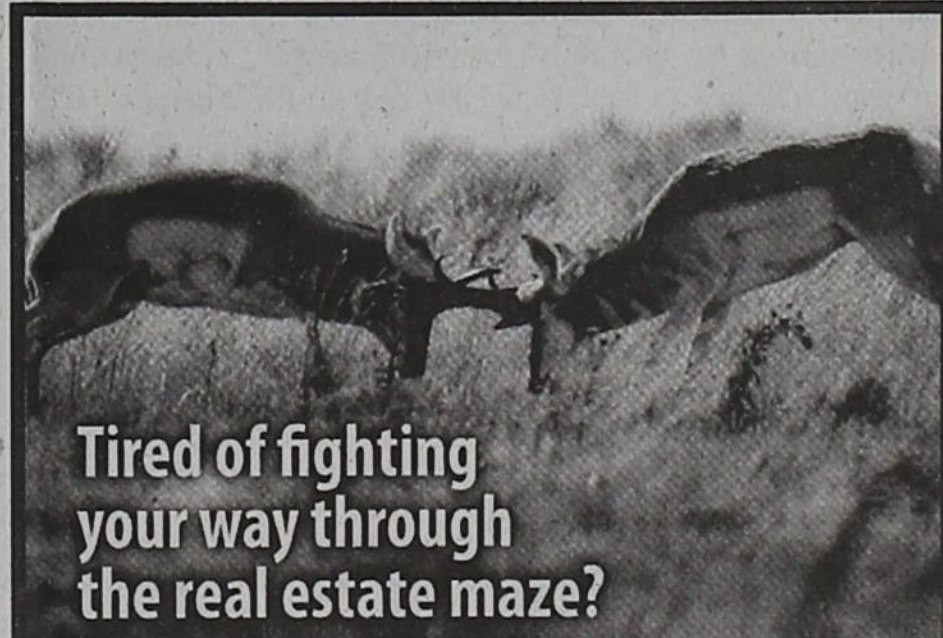
Tues-Fri 9-3  
 Saturday 9-noon  
 unless there is a funeral

806.347.2018  
 800-915-4559  
 Serving Motley County Since 1995

# Hotel Matador

... a Bed and Breakfast in downtown Matador, Texas

[www.hotelmatador.com](http://www.hotelmatador.com)  
 806.347.2939

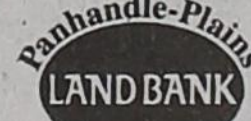


Tired of fighting your way through the real estate maze?

Panhandle-Plains Land Bank can help.

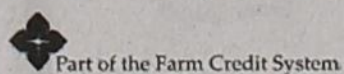
Buying land should not be a fight. As experts who specialize in rural real estate lending, the loan officers at Panhandle-Plains Land Bank can make the process easier. Plus, because we are a cooperative, we share our earnings with our borrowers. We have returned more than \$10 million in cash since 2005.

Find out how our lending and patronage programs can work for you.



Offices in Amarillo, Pampa, Perryton and Plainview  
 806-296-5579

Financing for: Farms & Ranches, Rural Recreation Tracts, Country Homes



● ● ● ● ●  
 ● All Fabric and notions 25% off Closeout on a large group of fabric 2 yards for \$5 ● ● ● ● ●

● Matador Variety ● ● ● ● ●

347-2820



## 2010 Relay For Life Survivor Breakfast Held at the Windmill Café

By Monta Marshall

Saturday morning the annual Cancer Survivor and Caregivers Breakfast was held at the Windmill Café.

Hosts for the event were Rosalee Davis, Survivor Chair for the Relay For Life Committee and the committee members. About 20 survivors and their caregivers attended as well as the committee.

Ann Archer of Lubbock was the Hero of Hope who spoke to the group. Each year a Hero of Hope is the featured speaker to encourage and cheer on those who have or have had cancer. Mrs. Archer will also speak at the Relay For Life Walk on April 23rd. Her speech was interactive. She had her audience involved; she plans to continue that activity at the Relay.

Kyle Shelton, the community manager for the Lubbock Field was also on hand and gave an update on the Hope Lodge. Soon the American Cancer Society offices will

be moved adjacent to Hope Lodge which is located just west of the Ronald McDonald House.

Kyle also delivered patio furniture consisting of a table, umbrella and four chairs and a nice grill. With the help of Academy Sports and Outdoor Equipment some donors the committee was able to purchase these items to sell tickets for the raffle. The tickets will be \$5.00 each or five for \$20.00 on these items. There are also tickets left to purchase on the Nintendo Wii.

The patio set and grill will be on display at New To You.

The Windmill Café graciously donated the delicious breakfast of eggs, bacon, sausage, biscuits, coffee and orange juice and fruit. Rosalee Davis and the Relay For Life Committee wish to thank Perry and Deanne Gullledge and their staff for this lovely meal and fellowship.

Door prizes were given out and it was a fun celebration.

## COTTLE COUNTY 4-H Announces Horse Show Dates

By Dana Wright

The Cottle County 4-H Horse Club will host a series of four horse shows this year at the Paducah Rodeo Arena. There will be three age divisions: Pee Wee - 8 & under, Juniors 9-13 and Seniors 14-19 years of age. Pee Wee judged events are Halter and Pee Wee Walk-Trot, speed events are Poles, Barrels, Stakes and Flag Race. Junior and Senior judged events are Halter, Showmanship at Halter, Western Pleasure and Western Horsemanship, speed events are Poles, Barrels, Stakes and Flag Race. Entry fees for Pee Wee's are \$3 per event or \$15 for everything, Junior and Seniors are \$4 per event or \$25 for everything, there will also be a one-time electricity fee of \$10 per family. The horse shows will follow State 4-H Horse Show Rules available at the following website <http://texas4-h.tamu.edu/> and western attire is required in

order to compete (hat, long sleeve shirt, long pants and boots). Points will be taken from each of the horse shows and awards will be given at the end of the series in each age division. You must attend 3 of the 4 shows in order to be eligible for awards at the end of the series. For more information or rules contact County Extension Agent Justin Nash (806)492-3151 or Dana Wright (806)596-4322 or [dwright@lyntegar.com](mailto:dwright@lyntegar.com).

### Horse Show Schedule:

Friday, April 23 - Books open at 5:00 p.m. start at 6:00 p.m.

Saturday, May 1 - Books open at 8:00 a.m. start at 9:00 a.m.

Saturday, June 12 - Books open at 8:00 a.m. start at 9:00 a.m.

Friday, July 9 - Books open at 5:00 p.m. start at 6:00 p.m.

In the event that a playday is rained out or cancelled, we will make that date up on: Friday, July 16 - Books open at 5:00 p.m. start at 6:00 p.m.

## County Road Map adopted by Commissioner's Court

By Carol Campbell

The Commissioner's Court met in special session on April 12, 2010, at 1:15 p.m. to adopt a County Road Map.

Following a process that included appointing a Jury of View, County Roads 411 and 415 east of Roaring Springs were declared private roads, consisting of 1,589 miles.

In addition, a portion of County Road 110 was declared a private road by the Jury of View, located 50 yards from Tom Handle Bridge, approximately 1.65 miles.

On County Road 247, located on U.S. 70 to Tee Pee City, about 3.5 miles were declared a private road. Judge Smith asked James Gillespie to map this road using a GPS

system because he noticed on the state website that the mileage was published at 1.845 miles instead of 8.402 miles from U.S. 70 to Tee Pee City.

"When you take off what we lost and add what we gained, we netted a loss of 3.75 miles of road," Judge Smith said.

A motion was made by Commissioner Russell Alexander to adopt the proposed County Road Map, seconded by Commissioner Franklin Jameson. The motion carried by unanimous vote.

Motley County now joins the majority of Texas counties that have a county road map, Judge Smith said, adding, "The Commissioner's Court sincerely hopes that this will prevent any road disputes in the future."

## EarthTalk®

### From the Editors of E/ The Environmental

Dear EarthTalk: I've often cooked canned foods in their own can, things like condensed milk and mushroom soup. I put the can without opening in the pressure cooker, cover it with water and let it cook for 30 minutes. The results are amazing. Is it safe to do that? Can metals leach into my food? -- Mercedes Kupres, via e-mail

For starters, can makers don't recommend using their products for anything but storing food unopened until it's ready to eat. "Cans are reliable, recyclable, durable packages that keep beverages and foods fresh and allow them to be transported safely for thousands of miles, even into remote regions—but they were not made to be used as cooking containers," says Scott McCarty of Colorado-based Ball Corporation, a leading U.S. food and beverage packaging maker.

Proponents of can-cooking cite the fact that many canned goods are already heated up in their cans to kill bacteria during the canning process, so what harm could a little more heating do? McCarty concedes that some cans are indeed heated during the packing process. "But that isn't all cans or all foods, and it is a carefully controlled and monitored process done in an environment that is made to do it."

As for what metals may be

leaching into your canned food, it depends. In the U.S., most food cans are made of steel while beverage cans are usually made out of aluminum. Chromium and nickel can find their way out of steel, but the amounts would be minuscule to nil. Slightly more troubling is the fact that aluminum—large amounts of which have been linked to nervous system disorders and other health problems—could in theory leach out of cans into their food or drink contents.

In order to prevent any such leaching—which is bad for the food and eater but also for the can (as it can cause corrosion)—the insides of most cans on grocery shelves today are coated with food-grade epoxy. But these liners have been shown to contain Bisphenol-A (BPA) and other potentially harmful chemicals. BPA is a synthetic plastic hardener that has been linked to human reproductive problems and an increased risk of cancer and diabetes. A 2009 analysis of common canned foods by the non-profit Consumers Union found measurable levels of BPA in a wide range of items including some bearing a "BPA Free" label.

The U.S. Food and Drug Administration is currently reviewing whether or not to allow BPA to come into contact with food items at all. In the meantime, some forward-thinking companies aren't waiting around for an FDA ruling. Eden Foods, which

prides itself on the wholesomeness of its products, worked with its packaging manufacturer, Ball Corporation, back in 1999 to switch out traditional epoxy-based liners with a baked-on, BPA-free enamel lining derived from plant oils and resins.

This technology is nothing new; in fact, Eden stumbled upon it by asking Ball what it used before epoxy liners became standard some three decades earlier. While the custom-made cans cost 14 percent more than industry-standard cans would, Eden maintains it's worth the extra expense (which amounts to some \$300,000 extra per year). "It was the right thing to do," says Michael Potter, Eden's president. "I didn't want BPA in food I was serving to my kids, my grandkids or my customers."

CONTACTS: Ball Corporation, [www.ball.com](http://www.ball.com); Consumers Union, [www.consumersunion.org](http://www.consumersunion.org); U.S. Food and Drug Administration, [www.fda.gov](http://www.fda.gov); Eden Foods, [www.edenfoods.com](http://www.edenfoods.com).

SEND YOUR ENVIRONMENTAL QUESTIONS TO: EarthTalk®, c/o E - The Environmental Magazine, P.O. Box 5098, Westport, CT 06881; [earthtalk@emagazine.com](mailto:earthtalk@emagazine.com). E is a nonprofit publication. Subscribe: [www.emagazine.com/subscribe](http://www.emagazine.com/subscribe); Request a Free Trial Issue: [www.emagazine.com/trial](http://www.emagazine.com/trial).

## Diálogo Ecológico De los Redactores de El La Revista Ecológica

Querido Diálogo Ecológico: A menudo he cocinado alimentos en su propia lata, cosas como leche condensada y sopa de hongos. Pongo la lata sin abrir en la olla a presión, la cubro con agua y la dejo cocinar durante 30 minutos. Los resultados asombran. ¿Presenta esto algún riesgo? ¿Pueden filtrarse los metales en mi alimento? -- Mercedes Kupres, via email

Para empezar, los fabricantes de latas y tarros no recomiendan utilizar sus productos para nada excepto almacenar alimentos sin abrir hasta que estén listos para servir. "Las latas son envases seguros, reciclables, y durables que mantienen bebidas y alimentos frescos y que permiten que sean transportados sin peligro miles de millas, aún a regiones remotas—pero ellos no fueron diseñados para ser utilizados útiles de cocina," dice Scott McCarty de la Corporación Ball, basada en Colorado, un fabricante prominente de envases de comidas y bebidas.

Los defensores de la cocina en lata citan el hecho que muchos productos enlatados ya fueron calentados en sus latas para matar bacterias durante el proceso de enlatado, así que ¿qué daño podría hacer un poco más de calor? McCarty concede que algunas latas son calentadas durante el proceso de envasado. "Pero eso no cubre todas las latas ni todos los alimentos, y es un proceso muy delicado, controlado y vigilado y llevado a cabo en un ambiente que está expresamente diseñado para

este fin".

En cuanto a qué metales pueden estar lixiviando en su alimento envasado, la cosa depende. En EEUU, la mayoría de las latas de alimento están hechas de acero mientras que las latas de bebidas son hechas generalmente de aluminio. El cromo y el níquel pueden escaparse del acero, pero las cantidades serían minúsculas o cuasi inexistentes. Un poco más serio es el hecho que el aluminio—del que cantidades grandes han sido ligadas a desórdenes del sistema nervioso y otros problemas de salud—puede lixiviarse teóricamente de las latas y pasar al contenido de alimento o bebida.

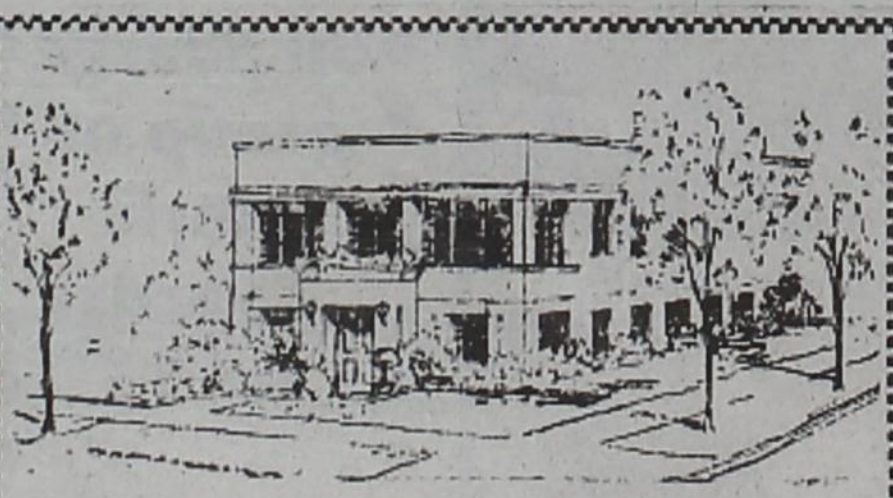
Para prevenir cualquier incidente de lixiviación—que es malo para el alimento y el consumidor y también para la lata misma (ya que puede causar corrosión)—el interior de la mayoría de las latas en los supermercados está revestido con resina epóxica para alimentos. Pero se ha demostrado que estos revestimientos contienen Bisfenol-A (BPA) y otras sustancias químicas potencialmente perjudiciales. El BPA es un endurecedor plástico sintético que ha sido vinculado con problemas del sistema reproductivo humano y un riesgo aumentado de cáncer y diabetes. Un análisis en 2009 de alimentos comunes envasados por la organización no comercial Consumers Union encontró niveles mensurables de BPA en una gran variedad de artículos, inclusive algunos

que proclamaban en su etiqueta no tener BPA en absoluto.

La Dirección de Alimentos y Drogas de EEUU está en estos momentos evaluando si o no se puede permitir al BPA que entre en contacto con artículos de alimento. Mientras tanto, algunas compañías innovadoras no están esperando una decisión de la FDA. Eden Foods, que se enorgullece de la calidad de sus productos, trabajó ya en 1999 con su fabricante de envases, la Ball Corporation, para reemplazar los revestimientos tradicionales basados en sustancias epóxicas con un esmalte pegado al horno, carente de BPA, y derivado de aceites y resinas vegetales.

Esta tecnología no es nada nuevo; de hecho, Eden se tropezó con ella al preguntar a Ball qué es lo que usaba antes de que los revestimientos de epoxi llegaran a ser la norma unas tres décadas atrás. Aunque las latas especiales cuestan 14 por ciento más que los tarritos estándar usados en la industria, Eden mantiene que vale el gasto extra (que asciende a unos \$300,000 adicionales por año). "Se trataba de hacer lo correcto," dice Michael Potter, presidente de Eden. "Yo no deseaba ver BPA en el alimento que servía a mis niños, mis nietos o mis clientes".

CONTACTOS: Ball Corporation, [www.ball.com](http://www.ball.com); Consumers Union, [www.consumersunion.org](http://www.consumersunion.org); U.S. Food and Drug Administration, [www.fda.gov](http://www.fda.gov); Eden Foods, [www.edenfoods.com](http://www.edenfoods.com).



Completely Equipped For  
**OBSTETRICS, PEDIATRICS**  
And General Medicine  
Newest Type X-Ray Equipment  
Phone 59 Day and Night Service  
**TRAWEEK HOSPITAL**  
A. C. Traweck, M. D. Albert Traweck, Jr., M. D.

# RELAY FOR LIFE APRIL 23



LAVERNE ZABIELSKI  
Donates hand dyed pink scarf for Relay For Life  
Silent Auction  
Now on display at  
Hotel Matador



# TxDOT to let bids on two off-system bridges

Grant approved to purchase a new vehicle for sheriff  
continued from page one

2009 Volunteer Report showing 311 volunteers in Motley County providing 1,934 hours of service. At \$20.25 per hour value, volunteers completed \$39,163.50 in service to Motley County.

"Volunteers play a big role in our county, and we greatly appreciate the time and effort of each and every volunteer," Martin said. For example, volunteers on the Leadership Advisory Board decide what programs are implemented in the county, Martin said. In addition, volunteers from the Ag Committee, the 4-H Youth Development Program; and the very active Youth Board,

all play a big part. "Our programs would not be possible without volunteers," Martin said, who delivered a non-negotiable check via Judge Smith to the Court for almost \$40,000, emphasizing the contribution made by volunteers.

April was designated as County Government Month 2010 by the Commissioner's Court, officially declaring the month in a Resolution signed by the court. The Resolution recognizes county government as the "oldest form of local government in the United States" where counties are "on the front line of address-

ing many of the state's and nations most critical issues."

In the final order of business, Interim Sheriff Chris Spence asked for the opinion of the Commissioner's Court on the purchase of a new vehicle for the Sheriff's Office. A grant from the South Plains Council of Governments (SPAG) was recently approved for \$23,753.38. The grant has to be spent by May 30, 2010. The court recommended a Chevrolet truck with a crew cab. "It is my opinion that the Chevrolet Crew Cab would bring a better resale price," Commissioner Alexander said.

# Whiteflat Reunion, 2010



The Whiteflat Reunion was held April 10, at the Senior Citizens Center in Matador. Back Row: Daphene (Lynn) Edwards, Earle Price, Tom Edwards, Jim Watson, Doc Cross, Herb Smallwood, Pup Price, Gail (McWilliams) King. Middle Row: Elaine (Dixon) Risser, Frances (Martin) Welling, Mary Helen (Stephens) Cross, Glynda (McWilliams) Groves, Frances Dixon, Dorothy Day. Front Row: Linda (Chambliss) Doss-Tiffin, Pete Chambliss, Carolyn (Perkins) Lucas, Evelyn Garrison-Smallwood, Raynita (Dunning) Murphy. Not pictured but in attendance earlier were Grace Laverne (Tilson) Zabielski and Beverly (Zabielski) Shorter, Debra (Garrison) Scott and Calvin and Virginia Nimmo.

# Southwest Farm Press Cotton price too much a good thing?

By Forrest Laws, Farm Press Editorial Staff

Cotton merchandisers are finding themselves in an unusual position these days. After years of having more cotton than they needed, buyers are actually having to search for supplies of the white fiber.

While that is good news for cotton producers, the scarcity of cotton doesn't mean growers should throw their marketing plans to the winds, according to speakers on today's Ag Market Network conference call.

"Last time I was here we were talking about how we always manage to find enough cotton to get a big ending stock," said Anthony Tancredi, president of Allenberg Cotton Co. "Now we can't find enough cotton, and there's not a situation that exists where we might find too much."

Tancredi, and Mike Ste-

vens, Swiss Financial Services, said that with the world economy appearing to recover faster than anyone expected, demand for textiles has sent cotton futures into levels not seen in recent years.

"There's been a lot of conversation in the trade the last five or six weeks about how upbeat the yarn people are," said Stevens. "The naysayers are skeptical about whether that yarn demand can continue, but yesterday morning when retail sales came out they were extremely impressive. Across the board, retail sales were beating estimates."

"That tells me that consumers are starting to spend money again, and they're the ones that have the final says," said Stevens, who joined Tancredi in a special Ag Market Network presentation at the Texas Cotton Ginners Association Gin Show in Lubbock. "The shirts have to come off the shelves, and these num-

bers show this is more than just inventory replacement."

But Tancredi and Stevens both cautioned growers to not get caught up in the euphoria of a rising cotton market. (As if to underscore their concerns, cotton futures sold off the day before they spoke.)

"If the price is sufficient to encourage you to expand, then it's sufficient for you to get some protection on the downside," said Stevens. "At 75 cents, it's just like a fulcrum. We're sitting right in the middle, and you can make a good case for it to go 10 cents either way."

The biggest threats to the current bullishness? Tancredi says the rest of the world may respond to the current high prices and plant more cotton than anyone expects, and the world economy may not be recovering as fast as most believe.

<http://southwestfarmpress.com/cotton/cotton-price-good-thing-0409/>

# Getting To Know Your Relay For Life Committee

Editor's Note: This is the 7th in a series of articles about the Motley County Relay For Life Committee

By Monta Marshall

This week, Shonda Elliott is the featured Relay For Life Committee Member. Shonda is the wife of Shawn Elliott who works at the Texas Department of Transportation. They have three children: Reagan, 16, who is a sophomore at Motley County School; Shelby, 12, and a 7th grader; and Bryson, who is 10 years old and in the fourth grade. Shonda parents are Steve and Beverly Barton.

Shonda and Kathy Blanco are close friends. Kathy and Pam Newman asked her if she

would be interested in beginning a Relay For Life Committee here in Motley County. She enthusiastically said "yes!"

Shonda's life has been touched by cancer. Her grandmother died with cancer when her mom, Beverly, was six years old. She has had two uncles to die with cancer and two aunts who are cancer survivors. Bud Barton, her grandfather, is now battling cancer and is doing well. He was diagnosed right before the third Motley County Relay. She has gotten Bud involved and he has attended the Relay. Kim Butler, her mother-in-law is also fighting cancer.

Shonda is the Entertainment Chair. She is in charge of all the activities that take place on the night of the Re-

lay For Life Walk that will be taking place Friday, April 23. She sees about scheduling all the details for entertainment, games, and sees that they all run smoothly.

Her favorite activity is the memorial walk with the luminarias honoring and remembering loved ones who are fighting cancer and those who have lost their battle.

Shonda expressed that it is not only the older generation who should be interested in fighting cancer but the young people also. "I know of two Motley County teens that have had cancer," she said. "It can happen to anyone at any age!" It important to get on board to help and to learn what can be done to prevent cancer. Medical check-ups, screenings and self examinations are all part of prevention.

# West Texas Boondockers, Fifth Annual Grand Prix, April 25

Prescribed by Secretary of State Sections 4.004, 83.010, 85.004, 85.007, Texas Election Code 3/2007

## NOTICE OF GENERAL ELECTION (AVISO DE ELECCION GENERAL)

To the registered voters of the City of Roaring Springs, Texas:  
(a los votantes registrados del Ciudad de Roaring Springs, Texas):

Notice is hereby given that the polling places listed below will be open from 7:00 a.m. to 7:00 p.m., on May 8th, 20 10, for voting in a general election to elect 1 mayor, and 2 council members.  
(Notifiquese, por las presente, que las casillas electorales situadas abajo se abrirán desde las 7:00 a.m. hasta las 7:00 p.m. el de May 8, de 20 10 para votar en la Elección General para elegir 1 mayor, 2 council members)

LOCATION(S) OF POLLING PLACES (DIRECCIONES DE LAS CASILLAS ELECTORALES) Rs Community Volunteers Building  
903 3rd Street  
Roaring Springs, Texas

Early voting by personal appearance will be conducted each weekday at (La votación adelantada en persona se llevará a cabo de lunes a viernes en)

City Hall 209 Broadway Roaring Springs, Texas  
(location) (sitio)

Recommended but not required

between the hours of 8 a.m. and 12 p.m. Beginning on (entre las de la mañana y las de la tarde empezando el April 26, 2010 (date) (fecha)

and ending on (y terminando el) May 4, 2010 (date) (fecha)

Applications for ballot by mail shall be mailed to: (Las solicitudes para boletas que se votarán en ausencia por correo deberán enviarse a:)

Zella Palmer  
(Name of Early Voting Clerk) (Nombre del Secretario(a) de la Votación Adelantada)  
P.O. Box 247  
(Address) (Dirección)  
Roaring Springs, Texas 79256  
(City) (Ciudad) (Zip Code) (Zona Postal)

Applications for ballots by mail must be received no later than the close of business on (Las solicitudes para boletas que se votarán en ausencia por correo deberán recibirse para el fin de las horas de negocio el)

March 31, 2010 (date) (fecha)

Issued this the 5th day of April, 20 10. (Emitted this day 5th de April, 20 10.)

Monta Marshall  
Signature of Mayor (Firma del Alcalde)

## Opening Soon The Little House in Roaring Springs

Family Reunion?  
School Reunion?

Or just wanna get away from the city and experience life in a small town?

We have a great little 2 Bedroom 2 Bath house completely updated and ready for you to rent for a day, a weekend or a week!

Hunters are welcome and hunting season will be here before you know it so reserve early!

Call 817-319-9329 or email us at littlehouseatrs@yahoo.com for information including pictures and/or reservations!

## Windmill Café

1 Year Anniversary Party  
Saturday, April 24th

Free Hors D'oeuvres Starting At 5 p.m.

Special Fillet Min Yong or Rib Eye and Shrimp Music From Kevin Rainwater & James McCleskey & Karaoke from 7 p.m.-11 p.m.

Thank You To Our Supporters & Employees!

Also New Hours:

Tuesday-Thursday 11-2:30

Friday & Saturday 11-9

Sunday 11-2

DowntownRoaring Springs, Texas 806-348-7256

The 7th Annual Texas Highway Association Highway 70 Garage Sale May 1st Spur Dickens Roaring Springs Matador Flomot and Turkey For more information call 806-348-7336.



# CLASSIFIED

email: [mctribune@gmail.com](mailto:mctribune@gmail.com)

806-347-2400

**April**  
**Subscriptions Due**  
 Motley County-\$30  
 Elsewhere-\$35  
 Email-\$25  
 Senior Discount \$1  
 PO Box 490  
 Matador, TX 79244

## EVENTS CALENDAR

April

- 13 RSCV
- 14 District 3 4-H Roundup in Vernon
- 15 M City Council
- 15 Matador Masonic Lodge, 6:30 pm
- 16 State Steer Validation tag orders due
- 16 -Library Appreciation Day Coffee, 10-12 AM at the Library.
- 17 District 3 4-H Fashion Show in Jayton
- 19 MCISD School Board, 7:30pm
- 19-20 Regional Golf - Baird Boys & Girls
- 20 Matador Lions
- 22 - District 3 4-H Horse and Livestock Judging in

### NOTICE OF ELECTION CANCELLED AND SCHOOL TRUSTEES ELECTED

The Motley County Independent School District Board of Trustees met in regular monthly meeting on March 30, 2010 and declared the three unopposed candidates elected to office for new three-year terms and cancelled the May 8, 2010, election.

The board of Trustees elected to the new 3 year term as of this date are,

- David S. Stafford
- Don Baxter, Jr.
- Lee Jones

ct16

### NEED A CAREER CHANGE?

**HACKBERRY CREEK CARE CENTER**  
 Matador

**CNA CLASSES**  
 beginning April 19

For more information call Cindy or Amy  
 806-347-2942

### Meredith Gas & Supply

348-7332

Your Locally Owned and Operated Propane Company

### Propane & Service

24 hours-7 days a week!  
 We welcome new customers!

Tanks & Supplies available  
 Propane appliance Services  
 Pressure Tests & Leak Test performed upon request

**WE ACCEPT VISA & MASTERCARD**

### Childress Veterinary Hospital

**Dr. David Fuston**

Full Service Veterinary Hospital  
 Large and Small Animal Needs

940-937-2558

109 Industrial Circle/287 West, Childress

### NEED INSURANCE?

GET GOEN!

**GOEN & GOEN INSURANCE**  
 CROP-HOME-AUTO-FARM  
 BUSINESS-LIFE-HEALTH

203 BROADWAY, ROARING SPRINGS  
 348-7531 800-288-2865

### WYLIE LP GAS

"Proud to be a part of Motley County"  
 Residential-Commercial-Parts & Acc.  
 Farm & Highway Diesel CALL 806-347-2290  
 Office still locally operated at 1021 Main-Downtown Matador  
**24 HOUR SERVICE-7 DAYS A WEEK**  
**WE APPRECIATE YOUR BUSINESS! MC & VISA**

### FOR SALE

A QUEEN size pillow top mattress set, both new in plastic plus warranty, \$175. Latex foam pillow set \$30. 806-549-3110.

Double or full size plush top mattress set, NEW!!! never used, w/ warranty. \$150. Twin size mattress set, \$110. 806-549-3110

Family friendly ultra suede sofa set, 3 pc coffee table set \$125. Never used, still boxed! \$550. 806-438-0081.

LEATHER RECLINING sofa and loveseat, brand new, warranty, includes 4 recliners, retail \$2980, Sacrifice \$1090. Come see NOW!!! 806-438-0081

KING SIZE bedroom suite, includes bed, dresser, mirror, and nightstand, brand new, \$690. 806-549-3110

LARGE HOT TUB, 2010 MODEL 5 star rated, 79x79x35 WATERFALL, 46 hydrotherapy jets Msrp 8500.00 sacrifice price 4300.00 806-535-0835

It's coming bigger and better than ever Highway 70 Garage Sale May 1, 2010 For more information call 806-348-7336

Sofa Sleeper for sale. Burgundy floral. Call 806-469-5266

For Sale: Brick home 3-2-2 (8 yr old) custom built with lots of extra's, formal dining room, office, utility room, built in entertainment center, sprinkler system, 30 x 40 insulated building, 10 x 20 storage building. Pictures available upon request. 806-347-2139 or 806-781-3018

### GRANT ENGINEERING SERVICES PUBLIC NOTICE

Matador is submitting a grant application to the Texas Department of Rural Affairs (TDRA) for water system improvements in Matador. Accordingly, the City is seeking to contract with a qualified engineer/engineering firm registered to practice in the State of Texas to prepare all necessary application materials, preliminary and final design plans and specifications, and to conduct all necessary interim and final inspections.

Please submit your proposal of services and a statement of qualifications for these proposed services to the address below:

City of Matador  
 Attn: Debra Scott  
 PO Box 367  
 Matador, Texas 79244

Proposals must be received by the City no later than 2:00 pm on the 5th day of May, 2010 to be considered. The City reserves the right to negotiate with any and all individuals, engineers or firms that submit proposals, as per the Texas Professional Services Procurement Act and the Uniform Grant and Contract Management Standards.

Matador is an Affirmative Action/Equal Opportunity Employer.

### Public Notice

The City of Matador hopes to apply for community development grant funding to make water system improvements. These improvements will benefit the entire city. However, in order to be successful we need the help of the citizens of Matador.

The employees of the City of Matador along with SPAG employees will be gathering surveys in the month of April. The surveys will gather the information we need to be able to apply for the grant. Please assist us by filling out a survey and returning it to the City of Matador by May 10th. These surveys will be used only for the purposes of qualifying and applying for the grant funding.

If you have any questions on the survey or the water project, please contact Debra Scott.



**Joey & Brenda Lee**  
 Lee's Insurance

P.O. Box 189  
 Clarendon, Texas 79226-0189  
 806/874-2130 phone  
 806/874-9394 fax  
 877/874-2130

HOME • AUTO • LIFE • COMMERCIAL

### Motley County Abstract Company

P.O. Drawer 1

Paducah, TX 79248

806-492-3573 Fax 806-492-3574

Complete Records for Abstracts & Title Insurance in Motley County, Texas  
 Nelda Hightower-Owner  
 Lisa Hightower Wood-Manager

### Tom Edwards, Attorney

806-347-2333



### PAYNE PHARMACY

200 S. Main, Floydada, TX 79235

806-983-5111 or 800-345-7961

Denise Payne, R.Ph.

M-F, 8:30-6:00 & Sat., 8:30-1:00

We will be happy to mail your prescriptions!