

MOTLEY COUNTY TRIBUNE

VOICE OF THE FOOTHILL COUNTRY

Where History is Pride

Flomot Matador Northfield Roaring Springs

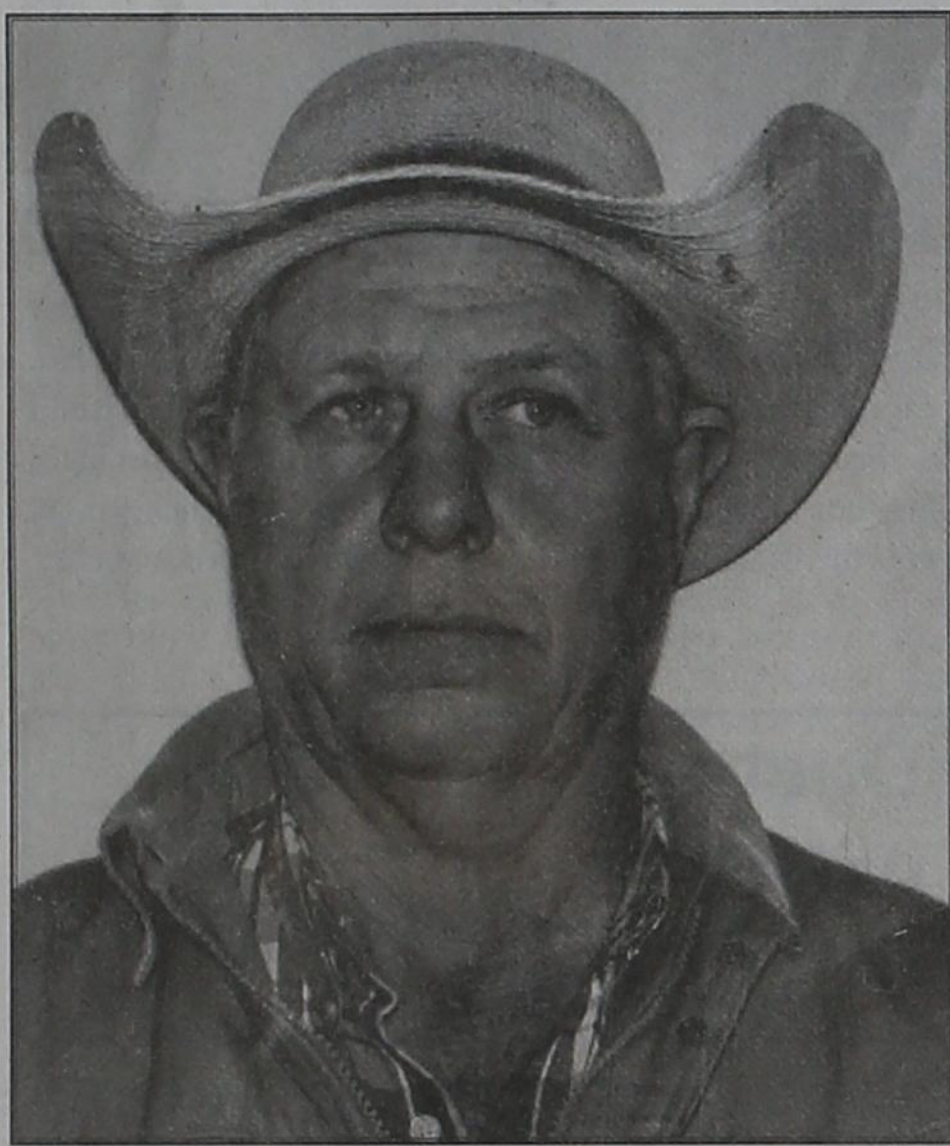
\$.75

Thursday, February 25, 2010

ESTABLISHED 1891

Volume 119 Issue No. 8

Motley County to vote for Judge on March 2



Bobby Whitaker

NAME: Bobby Whitaker opportunity to lower taxes.

FAMILY: Son of Billy J. and Beverly Whitaker; fourth generation of Motley County residents

EDUCATION: A.S., B.S. in Ag Science, Texas Tech

QUALIFICATIONS: As a lifelong resident I feel that I know the needs and desires of the people in Motley County. I have been involved in our agricultural based economy, including the financial aspects, my entire life. As an educator I know how to learn and I will work hard to learn every aspect of this job.

Reason for running for this position: Motley County is my home and I want to see it flourish by contributing to developments that would improve our future. I will make myself available to EVERY citizen.

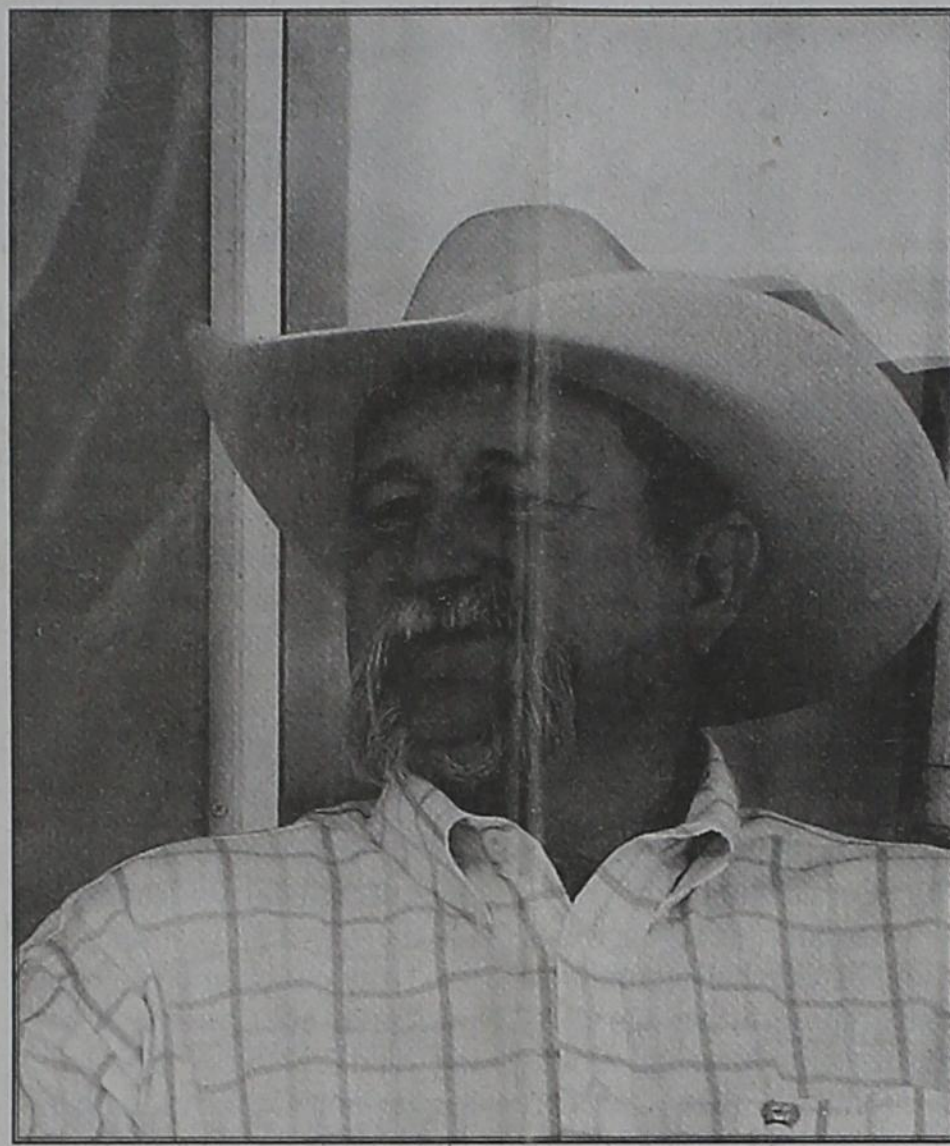
Greatest needs: Economic growth. This is reportedly the second poorest county in Texas and I am concerned about its future. I support initiatives that would broaden our tax base while lowering taxes.

We need to work diligently to attract business to the county and explore every opportunity to lower taxes.

Economic growth: Unfortunately I see no quick fix. To spur growth we must work to keep the businesses that we have and attract new ones. We should explore the possibility of enticing wind energy, gas, and oil exploration. I would look for income from grants, tourism, and other innovative avenues.

The Library, Senior Citizens Center, and youth groups: Anyone who supports the county should support these entities. Being a former instructor, I feel that support to the young and the elderly is the ethical thing to do.

I have enjoyed visiting with the people of Motley County during this campaign. I appreciate every person's different concerns with regard to the future of this county. Each concern needs to be taken under advisement and hopefully we can move in a direction most beneficial to the residents of this county. If these goals mentioned above are attained, then we can be impressed with our achievements.



Ben C. Grundy

My name is Ben C. Grundy. My wife Dvonna and I have three sons, Dayton, Cole, and Justin.

I attended Motley County ISD where I graduated in 1976.

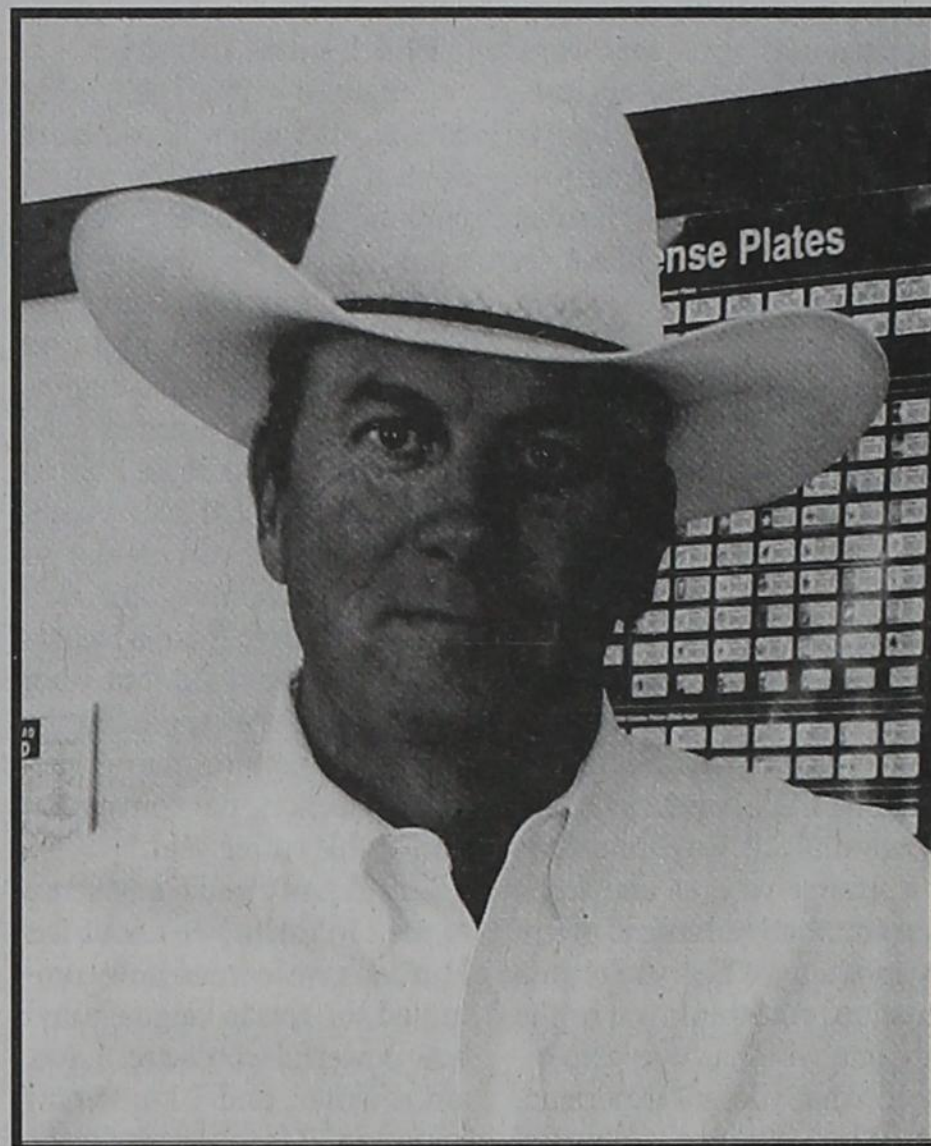
Being a land owner and life long resident, I feel that I can relate to the life and struggles of Motley County. I believe that enables me to assist in making decisions affecting our county. A County Judge is a public servant whose duty is to provide services to the citizens of that County. If elected, I will accept this responsibility and challenge.

Currently Motley County's tax base is the second lowest in the State. With no new income our situation will only get tougher. Our elected officials need to actively pursue

all options by advertising the assets of Motley County. If our county does not strongly pursue all options, other counties will. I have been involved in the Renewable Energy business for several years and feel I can be beneficial in these avenues.

In Motley County there are some things we can not do without such as our youth organizations, our County Library, and our Senior Citizens Association. I believe that continued county support to these groups and the dedicated volunteers who serve them is invaluable to our daily lives here in Motley County. It is the activities that these groups provide that make our county unique.

Thank you for this opportunity to share my views.



James B. "Jim" Meador

NAME: James B. "Jim" Meador

FAMILY: Wife, Carla Meador; son, Jeremy Jones; daughter-in-law, Whitney; two grandchildren, Morgan, 12 and Judson, 10.

EDUCATION: Graduated from Motley County High School in 1981. Graduated from SPAG Regional Law Enforcement Academy in 1994. Completed various law enforcement courses throughout the years to obtain my Basic, Intermediate and Advanced Law Enforcement Certifications and will complete my Masters Certification soon. Completed Texas Department of Public Safety Academy in 2008.

What are your qualifications for this office?

I am a lifetime resident of Motley County.

After serving as Motley County Sheriff for 15 years, I am experienced in the responsibilities of holding a public office, including preparing a yearly budget and maintaining county funds to stay within that budget.

I understand our county's tax system. I have worked closely with the County Judge's office and Commissioner's Court and I understand the duties of the Judge's office and the responsibility that position holds.

What is your reason for running for this position?

I have a deep respect and concern for Motley County and its residents. I am very interested in this county's success and prosperity. I have worked closely with the public for many years and enjoy talking and listening to the concerns of the people of this county. I would like to research ways to contribute to the betterment of Motley County.

What do you think our county's greatest needs are?

I think Motley County is in

vital need of a way to bring new business to this area, hence creating more jobs, spurring the economy and therefore making the county a more desirable place to live and raise a family. More job availability will give young people the opportunity to stay in Motley County and not feel the need to move away. I feel one of our greatest needs is to find a way to get our local medical clinic re-opened as soon as possible.

What can be done to spur economic growth in our county?

It is very important to work to maintain our presently operating businesses and promote the importance of supporting local businesses, which would naturally create a spur to our economy. More promotion of our natural resources, such as hunting, is also very important. I think we should continue to explore the possibility of bringing wind energy to our county, which would be a stimulus to the county's tax base, as would oil and gas exploration.

What is your position in regard to supporting the Library, Senior Citizens Center and youth groups?

Motley County is very fortunate to have such a vibrant and successful library and senior citizens center. We are also fortunate to have some great youth groups at our local churches, as well as an active 4-H club and various school organizations. Our son attended school in and graduated from Motley County ISD and we've always been involved and interested in our youth. All of these organizations are extremely important to our county. I will work with these organizations in any I can to support and maintain them.

Voters head to the polls for local elections

By Carol Campbell

The primary election in Motley County is set for March 2, 2010, and consists of two contested races and four uncontested races.

On the Democratic ballot for County Judge are candidates James "Jim" Meador, Ben C. Grundy, and Bobby D. Whitaker. The Commissioner's race Precinct 4, Roaring Springs, has two candidates on the Democratic ticket, consisting of incumbent Russell Alexander and J.N. Fletcher. Incumbent Kate Hurt, District and County Clerk, and Commissioner Donnie Turner, Precinct 2, are uncontested on the Democratic ballot.

On the Republican ticket are uncontested incumbents County Treasurer Eva Barkley; and Libby Cruse, Justice of the Peace.

In contested races with three or more candidates, candidates have to garner 51 percent of the vote to avoid a runoff. The runoff election is set for April 13, 2010.

On the local level, political ideology may not play as important a role as on the state or national stage. "Politics is not a big thing for me on

the local level," retiring Judge Ed D. Smith said. "I try to be everybody's Judge, whether Democrat or Republican." Interestingly, Judge Smith may have been the only Motley County judge candidate to ever run on the Republican ticket, he said.

Voters have a decision to make, Judge Smith said. If they are interested in the state Governor's race or want to vote on Republican Party propositions, then they must vote in the Republican Primary. If the local races are more important to a voter, then they must vote in the Democratic Primary. Once a voter is committed in one primary or another, they cannot vote in a different primary in runoff elections. In the General Election in November, voters can cross party lines and vote for candidates of their choice in both parties.

"Primary Elections can be really confusing," said Judge Smith. "Voters want to vote for the person rather than follow party lines, but you have to pick a party and stay with it until the November General Election where there isn't total separation."



Librarian Buffy Crutchley and Library Board President Larry Hoyle pose with the library's brand new copier. The purchase was made possible by the Friends of the Motley County Library, and grant money provided by Four Winds Resource Conservation & Development.

Foothill Country

Connections

Community, Diversity, Art
When you have history, you have pride.

By Laverne Zabielski

Last night we streamed the movie "Iris" about Iris Murdoch, a famous British writer who developed dementia and her husband tried to take care of her until it became impossible and she had to go to a home. Iris had a brilliant mind. She was a thinker, a philosopher and wrote over 25 books. In the movie she said, "Education won't make you happy. Neither will freedom. We don't become happy. Education," she suggested, "may be the means by which we *realize* we are happy. It opens our eyes and ears. Tells us where delights are lurking. Convinces us that there is only one freedom of importance, our mind, and gives us the assurance, the confidence, to walk the path our educated mind offers."

While my mother wasn't highly educated, she encouraged us to live with integrity and follow our intuition. And she always delighted hearing about our life journey when we called or visited. Watching her mind slip away and not be able to respond to our stories has been difficult. In the movie, watching Iris lose her mind was equally difficult, yet comforting, in a strange way, as one scene after another reminded me of my mother. When you're in a situation, you think you're the only one who has ever experienced what you are experiencing. When you involve yourself in the lives of others who have gone through what you are going through, you begin to recognize common characteristics. Before moving to Texas to take care of Mom, many said, "How wonderful." Others said, "Don't do it." They were of the "been there done that" group. I understand now where their feelings came from. It is very difficult to ask Mom a question several times, and then have the answer have nothing to do with what I was talking about. Or listen when she said she

didn't remember eating, or that she couldn't find the way to her bedroom.

Sometimes I look at other people's situations where their parents have been able to stay with the family until the bitter-sweet end and I wish that could have happened for our family. In our hearts, we knew it was time for her to go to a home where all her needs could be met. I now know that no one knows what goes on in any family's situation. And I now know that each family does the very best it can.

Politics and Integrity

Apparently things get more complicated when it comes to politics. Back when my grandparents, Tom and Stella Tilson, were around, the majority of Motley County was Democrat. Will that be the case again on election day? Or will a significant number of residents be forced to lie, just to be able to vote for a new judge? Voters take note. If you choose to vote in the county judge race you will declare; "I am a Democrat and understand that I am ineligible to vote or participate in another political party's primary election or convention during this voting year."

This doesn't make any sense to me. In the movie about Iris Murdoch we learned how committed she was to language and how powerful words are. I, too, am a writer, and I know how important it is to search for the right word. The phrase "I am" is very powerful. I'm not sure I could cross a party line and sign a legal document to vote in a particular race and declare I am something that I am not. Even if my best friend was running, it would go against my upbringing.

Who makes these rules? On the one hand we educate our children about integrity. On the other hand, do we teach them that in politics integrity and honesty do not apply?

WRITING COMMUNITY



Volunteers gathered at Bob's Oil Well Saturday morning to install two antique gasoline pumps. The pumps were donated by John and Jana Thacker of Abilene. John is a native of Roarings Springs. He is the son of Buzz Thacker and the late LaVoe Thacker. Jana grew up in Matador, the daughter of local resident Mary Jones and the late Bill Jones. Pictured (L-R) on the back row are Tom Edwards and Judge Ed D. Smith; Second row: Roy Hobbs, Ronnie Vandiver, and Dahl Clower; First row: Deputy Chris Spence and Bob Davis; Holding the ladder is Bobby Klodginski, and Ron Bailey is on the ladder. Also assisting was Rodney Williams (not pictured) who furnished technical advice and furnished the anchor bolts to anchor the pumps.

RS City Council meets

The Roaring Springs City Council met in regular session, February 8, 2010, in city hall conference room. Those attending were: Mayor Corky Marshall, Council Members, Alex Crowder, James McCleskey, Kelly Keltz, PK Green, Water Manager Robert Osborn, and City Secretary, Zella Palmer.

Mayor Marshall called the meeting to order, Council Member Kelly Keltz gave the invocation, and Council Member PK Green led the pledge of allegiance to the United States flag.

The January 11, 2010, regular city council meeting minutes were approved as written.

The financial statement and bills were reviewed and passed unanimously. Council approved an Or-

der of Election for the May 8, 2010, General Election to fill the mayoral position and two council positions. The positions are currently being held by Corky Marshall, Mayor, and Council Members James McCleskey and Kelly Keltz. Kelly Keltz will not seek re-election. Early voting will begin April 26, 2010, and end May 4, 2010.

There was some interest shown for the Depot Project, but no bids were received before February 5, 2010.

Water Manager Robert Osborn gave an update on the Sewer and Water Project. He stated the new manholes are completed, and the water well is ready to be pumped out.

Doctor Yourself... with Stretching

Healthy Living for a Healthy Planet
By Rainbow Vogt, PhD

"Stretching changed my life," a friend exclaimed as he stretched out after an evening of dancing. The next day, I contemplated the truth of his statement when I was in yoga class. Bhavana, our teacher, explained that the stretch we were in made us taller by elongating our spine. Ahhhh, I could feel the tension in my back muscles fade away as the muscle fibers lengthened.

The benefit of stretching is both a mechanical and a chemical phenomenon. By applying a constant force to muscles in the form of a stretch, a progressive reduction in tension occurs. On

the chemical level, stretching causes the brain to release endorphins, pain relieving compounds that result in a sense of well-being. Other activities that cause the release of these natural pain killers include exercising, deep breathing, laughing, and making love. Together, the physical and chemical response to stretching is a recipe for happiness-enjoy!

Please email any of your health questions to doctoryourself@gmail.com. This column provides strategies for human, and environmental wellness and is not meant to serve as medical advice.

MOTLEY COUNTY TRIBUNE

Laverne Zabielski & Larry Vogt, Publishers & Editors
Carol Campbell, Feature Writer
Charli Bigham, Office Manager

TASB Media Honor Roll

Houston Press Club Editorial Award Winner

West Texas Press Association Member

Texas Press Association Member



Award Winner

The Motley County Tribune, (ISSN: 0897-4322), purchased on November 29, 2007, is published weekly each Thursday, except Christmas week, at Matador, Texas. The office is located at 724 Dundee, 806.347.2400. Periodical-class postage paid at Matador, Texas, Postmaster. Send address changes to Motley county Tribune P.O. Box 490, Matador, TX 79244.

NOTICE: Any erroneous reflection upon the character, firm, or corporation, which may appear in the columns of the Motley County Tribune will gladly be corrected upon being brought to the attention of the publisher.

PUBLICATION NO. 333700

Subscription Rates: Motley County, \$30
All others, \$35 Over 60 may deduct \$1.00
Email \$25

P.O. Box 490, Matador, TX 79244

Advertising Rates: \$3.60 per col inch, in county
\$3.85 per col inch, in Texas
\$4.25 per col inch, national

Tear sheet \$2 and publisher's affidavit: additional \$3
Scanned documents additional \$5
Obituary: \$25 minimum, with photo, additional \$5
Thank you notes: \$13 minimum
Birth and Wedding Announcements:
\$25 minimum, with photos additional \$5
Classified: \$6 1st four lines paid in advance, \$7 billed

Got Questions? Suggestions? Call us anytime

Larry 859-351-8099 Laverne 859-576-4625

Office hours: Mon-wed 9-3

Charli 806-789-3484

PUBLIC NOTICE DEADLINE: FRIDAY NOON
PRIORITY DEADLINE: FRIDAY 5 PM

Wake up Wednesday mornings to the
MOTLEY COUNTY TRIBUNE

Email Subscriptions Now Available \$25

Send us your email address and we'll email you a PDF of the Motley County Tribune free for three months!

Letter to the Editor

February 20, 2010

Dear Editor,

I would like to thank Carol Campbell for her good write up about the Roaring Springs Lions Club playing bingo at with the residents at Hackberry Creek Care Center. We have as much fun as they do.

I feel I should point out one mistake she made. She listed me as Boss Lion; I am the secretary of the Roaring Springs

Lions Club. Wes Campbell is Boss Lion and is doing a good

job. This will cost me a fine next meeting; the Tail Twister will accuse me of telling Carol that I was Boss Lion when she interviewed me!

I will gladly pay the fine; it will be worth it for the good report she wrote about the Lions.

Sincerely,
Corky Marshall

Vote For BEN C. GRUNDY MOTLEY COUNTY JUDGE

"Your Vote and Influence Appreciated"

Subject to the Democratic Primary, March 2, 2010

Pol. Ad. Paid for by Ben C. Grundy

Matador
Assembly of God Church
is suspending all operations
as of February 28, 2010.

Comments and questions
may be directed to
Rev. Neal Unwin, Presbyterian
940-585-9914

Assembly of God
www.opendoorstochrist.org

Over 20 Exhibits Expected at Upcoming Wind Expo

FLOYDADA, Texas, February 19, 2010 – The fourth of March is fast approaching and the number of exhibitors that will be present at the Wind Energy Expo in Muncy, Texas, continues to grow.

Over 20 companies or groups will be taking advantage of the opportunity to set up a booth free of charge at the expo hosted by Caprock Plains Wind Energy Association. The event to be held at the Floyd County Friends Unity Center will be free and open to the public from five until eight p.m.

Exhibitors include wind companies involved with on-site wind generation for your home, farm or business as well as companies interested in developing small, mid-size and large utility scale wind developments. Hill Country Wind Power, Tri Global Energy, P&K Wind Energy and Western Wind Turbines will all have representatives available to provide attendees with information about their companies and answer any questions landowners or community members might have.

Curtis King, director of investor relations at Tri Global Energy, will be one of the representatives present at the expo and he is excited to meet more local people and share with them Tri Global's plan for developing wind and other renewable resources in the area.

"We will have a model of our newest small wind tur-

bine set up at the event for people to check out," King said. "This model, the Texas Wrangler, can help homes, ranches, farms and schools benefit from wind energy. We'll also have information about big wind and other renewable development opportunities; we hope that people will come out and talk with us about those opportunities."

Sharyland Utilities and Cross Texas Transmission who are both involved with the build out of the Competitive Renewable Energy Zones (CREZ) transmission lines will both have booths with available representatives at the event. Information will also be available from the Southwest Power Pool (SPP), the regional transmission organization which operates in the Texas panhandle and surrounding states.

Alternative Energy Institute, Texas Wind Energy Institute and Class 4 Winds will all have information important for landowners, community leaders and individuals interested in getting involved in many different aspects of the wind industry including the workforce.

Other companies that offer services within the wind industry who will be in attendance are American Wind Capital, Underwood Law Firm, Kimley-Horn and Associates, Integra Wind Services, AKL Wind Energy Scouting and Land Services, Bureau Veritas, Silver Creek Farms,

Anemometry Specialists, and Sage Oil Vac. Local entities that will be represented include the Plainview Chamber of Commerce and the Floydada Economic Development Corporation, who is a sponsor for the event. Justin Jaworski, executive director at the Floydada EDC hopes that this expo will create opportunities for the area.

"We want to do everything we can to support wind energy in Floyd County," Jaworski said. "Dollar for dollar, it will have the greatest impact on the future of our economy than any other investment. Floydada EDC has been and will continue to support initiatives that will ensure our area is a prime destination for development."

Interested parties still have time to sign up to have an information table or exhibit at the event. They can register for free by completing an exhibitor sign-up form which can be found on CPWEA's Web site (www.caprockplainswind.com).

CPWEA is a non-profit landowner association working to connect landowners with developers in the wind industry. CPWEA's goal is to recruit wind development to the region and help revitalize rural communities. Contact CPWEA by phone at (806) 983-2793 or by email at info@caprockplainswind.com.

James and Oneita Titus Educational Foundation Public Announcement

James and Oneita Titus have established an educational foundation for the purposes of providing scholarships to Motley County ISD seniors and mini-grants to teachers in MCISD.

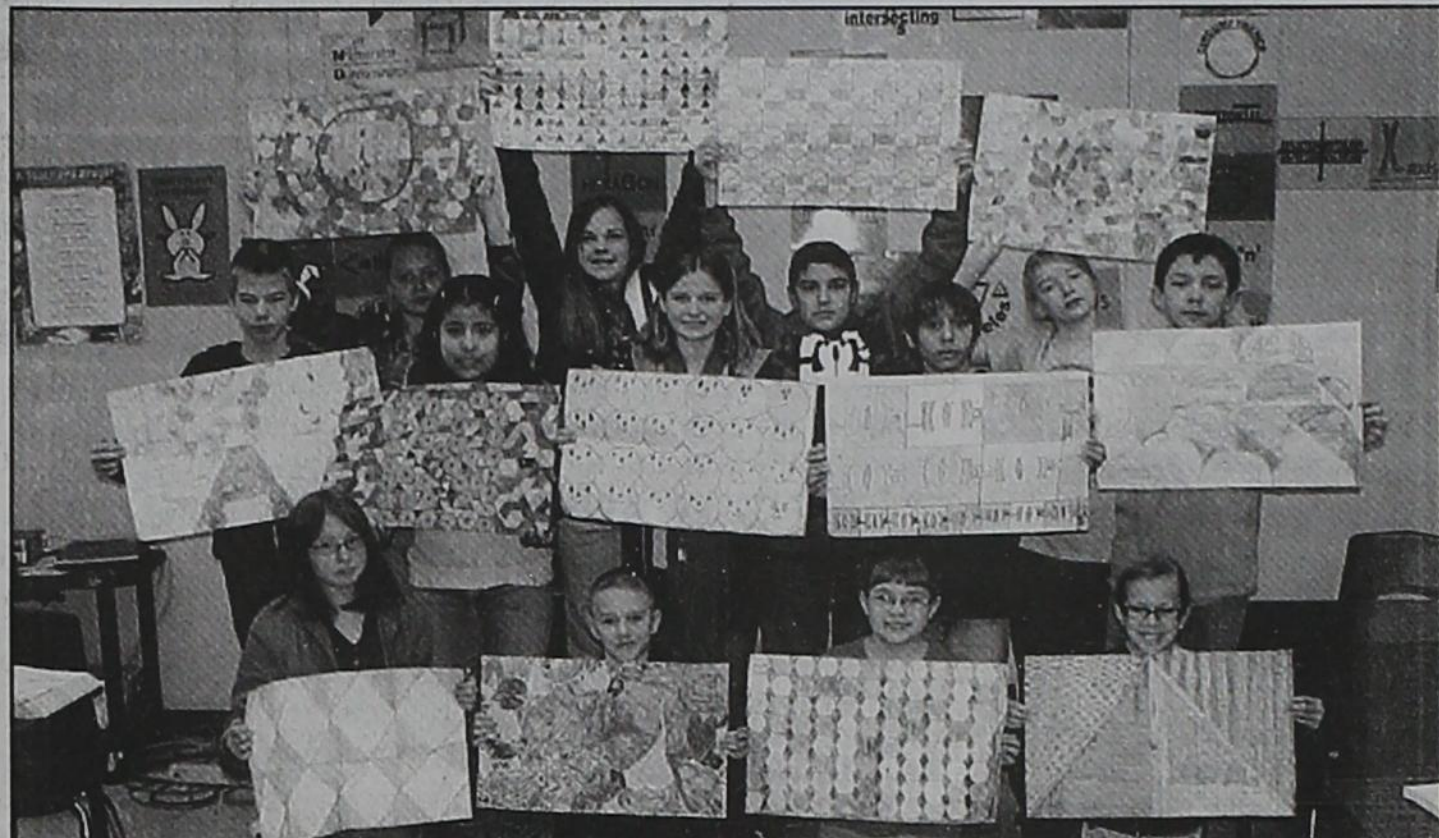
Every senior at Motley County ISD is eligible and strongly encouraged to apply. Each senior student that applies and submits all required information will receive a \$1,000.00 scholarship. Moreover, the scholarships will be available to the students in the amount of \$2,000.00 each year for four years. A total of five scholarships in the amount of \$8,000.00 (each) may be awarded. At no time will the scholarship exceed the total cost of tuition and books including other grants. Seniors of Motley County ISD must make application for a scholarship by the March 1, annual deadline.

Students are required to submit the application forms and also a hand-written essay responding to the following questions: 1) What are your career plans/long term goals? 2) How will you give back to the community? 3) Why is a scholarship important to your college goals? 4) Why should you receive this scholarship?

Each student's application will include a history of their extracurricular activities at Motley County ISD, cumulative GPA and ACT scores, leadership roles, community activity and work history. Students will also need to submit three letters of recommendation to the selection committee. The student scholarship selection committee includes two Motley County ISD faculty members Mrs. Shelley Cox, Mrs. Kathy Gillespie and one adjunct faculty member from Lubbock Christian University Dr. Cathy Morton.



Third and Fourth grade boys win 1st place at Spur Tournament this weekend. Pictured Left to Right: Standing - Vickie Garrett, Cameron Stafford, Brendon Fisk, Bryson Elliott, Brody Rankin, Case Garrett, Misty Jones, Cade Drum, Gage Baker. Kneeling - Tucker Barton, Logan Jones, and Trace Irons



6th grade class completes math project

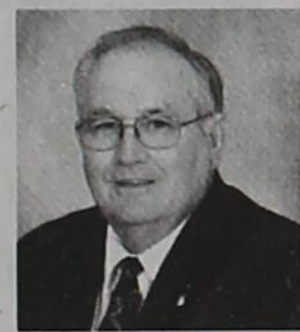
The 6th grade class completed "tessellation" projects last week. "This is their first time to complete these and they did a great job on them," instructor Cathey Turner said. A tessellation or tiling is a collection of plane figures that fills the plane with no overlaps and no gaps -- repeating patterns of distinct shapes, Turner said. "I am very proud of their hard work and the creativity that was put into this project," Turner said. "They had a great time working on these and are proud of themselves. Most of them are going to use these as book covers for their textbooks next year."

Students completed a tessellation project in class last week. Pictured with the finished product are: (L to R, bottom): Chasity Cox, Braden Pope, Hannah Mason, and Maci Marshall. Middle, (L to R) are: Duncan Aumiller, Thalia Quilimaco, Kaylee Woolsey, Joshua Martin, and Bryant Taylor. Back row, (L to R) are: Lexi Gulledege, Mattie Brooks, Marcus Ortiz and Natalie Jameson.



Hunters and producers of the Predator Pursuit television show and DVDs, Cal Ferguson of Pampa, Jeff Thomason of Weatherford, and Todd Woodall of Sunset have hunted and filmed all over the United States, Canada, and Africa. Ferguson and Woodall recently filmed in Motley County with local hunter Randy Hicks and his friend Billy Simpson of Colorado City. Predator Pursuit is aired five times a week on The Sportsman Channel.

A LIFE IS CHANGED...



Jesus Christ is the Son of God. It is amazing how people's lives are changed when acknowledging that one fact. The reality is that Jesus Christ is the Son of God no matter what is said to the contrary. But the plain truth on the matter is, that when one confesses Jesus as

the Christ, the Son of God, things change.

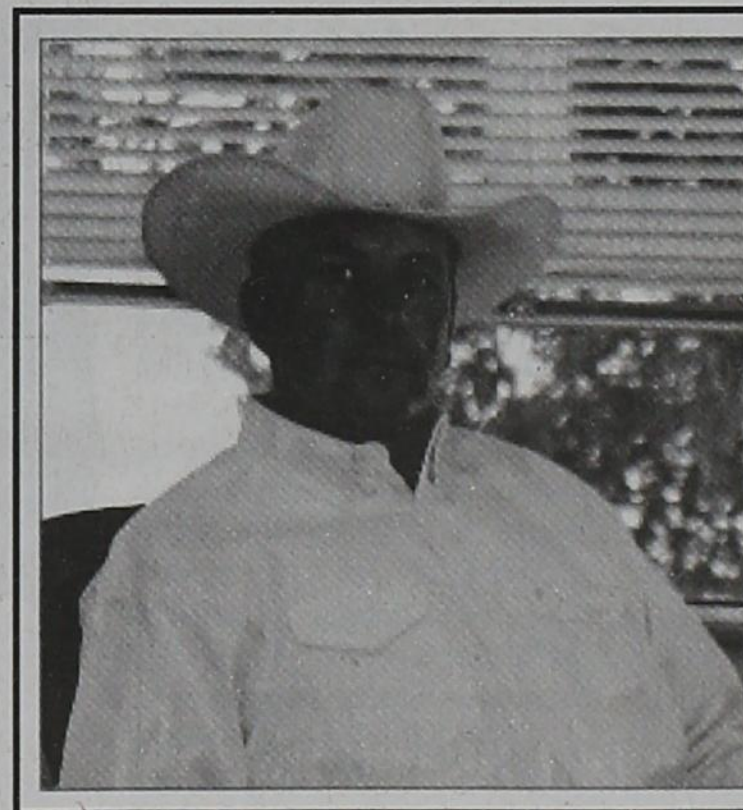
It is surprising that when one professes Jesus, or shares their faith in Him, or begins to preach in His name, things began to change. Usually the change is very rapid. Jobs are sometimes lost due to one's faith in Jesus. Families are sometimes at odds over the subject of Jesus, God's Son.

When a person has come to a conclusion in their own mind concerning the identity of Jesus, other decisions in life become easier. Having confessed Jesus as the Christ, it is no longer a difficult thing to decide what to do or how to act. Jesus was very plain when He spoke, "If you love me, you will keep my commandments." So the question comes to you...what do you believe concerning Jesus?

Michael G. Crowley, Sr.

Roaring Springs Church of Christ
Michael G. Crowley, Sr.
 BIBLE STUDY 10:00 a.m. Worship 9:00 a.m.

ELECT James "Jim" Meador MOTLEY COUNTY JUDGE



- Experience
- Dependability
- Integrity
- Honesty

To cast your vote for County Judge you must vote in the Democratic Party Election
Early Voting continues through Feb. 26
Primary Election - March 2nd

"If elected I will serve the people of Motley County with integrity, honesty and to the very best of my ability. I appreciate your support and vote!"

Not paid for by James "Jim" Meador

Notes from the Library

By Buffy Crutchley

Looking to buy a copy machine?? Well, you're in luck! The library happens to have an extra one we're needing to get rid of. We are now taking bids on a Minolta CS Pro. It still works, and comes with a very nice stand, and quite a bit of extra toner. Whether you need it for your home office, or you like to quilt and need to reproduce some patterns, now's your chance. These machines cost a fortune brand new. Place your bid today, and get it at a fraction of the cost. The last day to bid will be Friday, February 26th.

Quick reminder about our upcoming program "Landscape and Basic Horticulture", Thursday March 4th at

2:00p.m. Ryan Martin will be here to talk about preparing soil, mulching, use of pesticides, ornamental grasses and rainwater harvesting. Deanie Edwards will also give a brief talk about a new product she's found called the "Earth Box". Perfect for the lazy gardener, or people with limited space. There will also be a chance to ask any questions you might have about the upcoming gardening season. Don't miss it!

New book in this week, "The Blind Side" by Michael Lewis. Now a major movie starring Sandra Bullock & Tim McGraw, about an affluent family who adopted a young man, and watched his football career take off.

County Agent's News

by Ryan Martin, AgriLIFE EXTENSION Agent



Herbicide-resistant crops may lead to weed resistance

AMARILLO - Too much of a good thing might be a bad thing when it comes to controlling weeds, a Texas AgriLife Extension Service specialist said.

Prior to herbicide-resistant crops, producers used a variety of methods to control weeds, including herbicides, cultivation and hoeing crews, said Dr. Peter Dotray, an agronomist with AgriLife Extension and Texas AgriLife Research in Lubbock.

Dotray, speaking at the Texas High Plains Grain Elevator Workshop in Amarillo recently, told the crowd, "As we've changed the things we plant, we've changed the way we try to control weeds."

Across the U.S., he said, agriculture as a whole is controlling weeds differently using some of this "very good technology." For example, 90 percent of the cotton planted last year had resistance to glyphosate (Roundup) in it.

That has resulted in some areas of resistant weeds, especially in the states where the technology was adopted the quickest, Dotray said.

There are many benefits to Roundup Ready systems, including broad-spectrum control, convenience and simplification of weed control, he said.

Dotray said another study looked at conventional tillage, no-till and strip-till systems, along with 16 different pre-plant treatments and a variety of different application timings of residual herbicides. It showed that while tillage is a very effective tool to control weeds in conjunction with herbicides, the Roundup-only system had effective control without the use of residual herbicides.

"And the Roundup system was as profitable as any," he said.

In another study, he worked with three growers who planted 60 acres of dryland cotton each and controlled the weeds with a Roundup Ready system. A side-by-side comparison was made on each farm which had conventional fields on which cultivation and hand-hoeing crews were used to control weeds.

"Roundup Ready was every bit as good, if not better, and the inputs were the same or less, so it was more profitable," Dotray said. "That's why the technology is being adopted."

But this intense focus on one herbicide means less plowing, less cultivation, bigger application equipment and less use of herbicides with different modes of action, he said.

"We are relying more on one herbicide and we are starting to see resistant weeds developing and population shifts," Dotray said. "Weeds that prefer less tillage are becoming more problematic. It doesn't mean they've developed resistance, but it tells me we are doing something different in controlling weeds."

Resistance in weeds is not a new concern, but it is a big concern because many thought this herbicide was the answer - a silver bullet of sorts, Dotray said.

He said there are more than 340 different resistant biotypes of weeds found in more than 300,000 fields on a worldwide basis, so this is a problem worldwide. The resistance to Roundup began developing in 1998, first in rigid ryegrass and then in 2000 in mareestail and later ragweeds and Palmer amaranth.

"The problem was most apparent in states that had put the cultivator away and had early adoption of Roundup," Dotray said.

"So what's next?" he asked. "We have to try to make sure producers are aware so that they know the problem is real."

To determine if weed resistance is becoming a problem, Dotray advised producers to look at the weed patch of concern and see if there is a whole spectrum of weeds that was not controlled, or just one type of weed.

"I like to collect seed and do my own tests," he said. "We want to make sure we have thorough coverage on that area and that it wasn't a result of poor coverage or some other operator error."

Dotray said some strategies producers with resistant weeds are already using are more cover crops, deep tillage, herbicides at planting and other technologies like Liberty Link cotton.

While Texas was not one of the first states to adopt widespread use of Roundup Ready crops and was not one of the early states to see the resistant weeds, it is beginning to see reduced tillage and less use of dinitroaniline herbicides such as Treflan and Prowl, he said.

Dotray said herbicide resistance can be somewhat predictable. The weeds are generally annuals that produce a lot of seeds and have several germination flushes a year. Also, if there are a lot of different biotypes of that particular weed, it is more likely for one to develop a resistance.

He said it is possible to delay - not prevent - the development of herbicide-resistant weeds by not relying on glyphosate-only systems and incorporating tillage into the system, as well as other modes of action.

"As the trend toward herbicide resistance begins to occur here, I would like to see other means of weed control in our weed-management programs and not just relying on one herbicide during the course of the year or for several years in a row," Dotray said.

Weather and marketing seminars scheduled for Feb. 23 and Feb. 26 in Amarillo

AMARILLO - Farmers have to deal with varying weather conditions, but few know how to build that experience into a marketing plan. Two one-day courses will help producers do that, as well as use other advanced marketing tools, according to a Texas AgriLife Extension Service economist.

The two short courses, "Identifying Weather Risk and Incorporating it into Your Marketing Plan" and "Advanced Marketing Tools and Strategies for Produc-

COWPOKES[®]

By Ace Reid



"Wal, you said you couldn't loan me any more money 'til you looked at my books. I shore had a time gettin' this barn door off!"

THIS FEATURE IS SPONSORED BY THE

MATADOR BRANCH

FIRST NATIONAL BANK OF SEYMOUR

MATADOR, TEXAS

YOUR "HOMETOWN" BANK

Member FDIC

ers," will be held Feb. 23 and Feb. 26, respectively, at the Texas AgriLife Research and Extension Center in Amarillo, 6500 W. Amarillo Blvd.

"There are just two chances left to attend some of the best educational programming in risk management programs I have ever put together," said Dr. Steve Amosson, AgriLife Extension economist in Amarillo.

Both courses run from 8:30 a.m. to 3:30 p.m. The registration fee is \$75 for each course, which includes the cost of instruction, materials, lunch and breaks. Registration is limited to 50 participants on a first-come basis, so pre-registration is required, he said.

"This is a great opportunity to gain some market insights from nationally known experts," Amosson said. "They are two of the most popular speakers on the Master Marketer program. I guarantee that attendees will leave impressed and fascinated by what they have to say."

On Feb. 23, Dr. Elwynn Taylor, Iowa State University Extension climatologist, will provide insight into weather patterns and how to integrate weather expectations into marketing plans.

Weather is always a critical factor in the success of a farm operation, Amosson said. In Taylor's course, participants will gain a better understanding of how to identify long-range weather patterns and their potential effects on crop yields.

Taylor will share his unique approach to incorporating weather and market risk into a marketing strategy, Amosson said. Yield trends, a balance sheet approach and the use of

growing degree days will be discussed, as will the effect of high temperatures, low precipitation and evaluating stress impact.

"Elwynn is recognized as one of the leading climatologists dealing with agriculture," Amosson said. "I know participants will be fascinated when he explains long-run weather cycles and how you can predict weather events."

The final course offering in the Advanced Topic Series will be held on Feb. 26 and taught by a popular Master Marketer speaker, Darrell Holaday, a private marketing and management strategist from Kansas.

"In Holaday's course, you will learn some of Darrell's favorite marketing strategies and gain an understanding of how and when to utilize some advanced marketing tools such as covered calls, storage hedges, synthetic options and index-funds swaps to improve your marketing," Amosson said.

In addition, Holaday will spend time improving attendees' understanding of the intricacies of the new marketplace including money flow, participants and the impact of electronic trading, Amosson said. Finally, he will discuss flexible marketing strategies and selective hedging.

"Darrell was manager of the Kansas Ag Marketing Association for Farm Bureau before starting his own firm. He brings in a world of experience and people will be impressed with his knowledge and passion for marketing," Amosson said.

For more information and the registration brochure, go to the Master Marketer Web site, <http://mastermarketer.tamu.edu>.

Hotel Matador

... a Bed and Breakfast in downtown Matador, Texas

www.hotelmatador.com
806.347.2939

Caprock Plains Wind Energy Association

A Wind Energy Expo

Thursday, March 4
5 - 8 PM

Floyd County Friends
Unity Center
Muncy, TX
Between Floydada and Lockney

Free and Open to the Public

Over 20 Exhibitors including:
Sharyland Utilities, Cross Texas Transmission, Tri Global Energy, Hill Country Wind Power, Class 4 Winds, Texas WindEnergy Institute, P&K Wind Energy, and Alternative Energy Institute

For more info call (806) 983-2793.

Sponsored in part by the Floydada EDC.

QLF Quality Liquid Feeds

- Where Quality Comes First -

Are you looking to improve body condition scores?

LOOK NO FURTHER THAN QLF LIQUID SUPPLEMENTS!

Cattle on pasture benefit from the addition of free-choice QLF Liquid Supplements. QLF allows your cattle to more effectively utilize forage, boosting gain and profitability.

- * Adds palatability
- * Enhances dry matter intake
- * Improves forage digestibility
- * Supplies "Rapid Carbo" energy
- * Boosts gains on dry grass and hay



3M FEED

Tim Sensenig

(806)518-0024 (cel)

(806)864-3459 (home)

Ken's RV Park & Mini Storage

Matador and Roaring Springs



806-347-2290

806-347-2455

Full Hook-ups Available
Mini Storage Rooms for Rent
Golf Cart Sales

TO THE VOTERS OF DICKENS COUNTY, FOR COMMISSIONER PRECINCT #2

Most of you are aware that I am a candidate for County Commissioner of Precinct 2. I have made an effort to contact everyone in the area personally, some of you I have missed, but I am still diligently attempting to see every one.

Most of you are acquainted with my family, I was raised in Dickens, attended Patton Springs and graduated from Patton Springs High School in 1973. I began working for the Department of Transportation in Dickens after graduation and summers between college semesters. That employment provided me with an opportunity for a career with TXDOT that spanned 30 years, culminating with my retirement in August, 2008, when my wife and I moved back to Dickens to be near our families.

I became well acquainted with road maintenance, from shovel handle to maintainers and budgets, I feel I am qualified to ask for your vote and if you see fit to elect me, I will make the following promises to you the tax payers;

FIRST, I will not make any promises that I can not keep, I am well aware that some of the roads in Dickens County have problems, I will do my best to maintain the roads in my precinct equally and fairly for everyone, but I cannot promise that the roads can be made perfect, only that I will try to keep them in as good condition as is possible.


SECOND, I will, with good conscience, spend your tax money as if it were my own, as in fact it is, since I am a tax payer, having moved here when I retired and have a home in Dickens. There are many ways our tax dollars are needed to improve the quality of living in Dickens County, among these are the Volunteer Fire Departments, and the EMS, to mention only two, these I will continue to support, having served both organizations, as a para-medical and a volunteer fireman when I lived in Dickens previously, and know the services they perform.

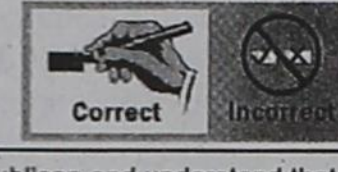
THIRD, if I am elected, I will be available to each and everyone to answer questions concerning the budgeting process of the County, complaints about road conditions or request for road repairs that could be made. My telephone number will be provided for these purposes or if you just need someone to complain or talk to, I will treat you courteously and do my best to earn your respect and trust.

Sincerely

David Warren

Sample Ballots

DEMOCRATIC PARTY <i>PARTIDO DEMOCRATICO</i> PRIMARY ELECTION <i>OFICIAL BALLOT</i> ELECCION PRIMARIA <i>BOLETA OFICIAL</i> MOTLEY COUNTY, TEXAS CONDADO DE MOTLEY, TEXAS March 02, 2010 - 02 de marzo de 2010	
Precinct <i>Precinto</i> 1	
Instruction Text: Please use a black or blue ink pen only. Completely fill in the box provided to the left of your choice. Make no stray marks on the ballot. Do not use inks that soak through the paper. <i>Por favor use solamente una pluma de tinta negra o azul. Llene completamente el espacio cuadrado a la izquierda de su selección. No haga marcas extraviadas. No use tintas que se puedan penetrar el papel.</i>	Justice, Supreme Court, Place 3 Juez, Corte Suprema, Lugar Núm. 3 <input type="checkbox"/> Jim Sharp
	Justice, Supreme Court, Place 5 Juez, Corte Suprema, Lugar Núm. 5 <input type="checkbox"/> Bill Moody
"I am a Democrat and understand that I am ineligible to vote or participate in another political party's primary election or convention during this voting year." <i>"Yo soy Demócrata y comprendo que no soy elegible para votar o participar en la elección primaria o la convención de algún otro partido político durante este año electoral."</i>	Justice, Supreme Court, Place 9 Juez, Corte Suprema, Lugar Núm. 9 <input type="checkbox"/> Blake Bailey
Governor Gobernador <input type="checkbox"/> Bill White <input type="checkbox"/> Felix (Rodríguez) Alvarado <input type="checkbox"/> Farouk Shami <input type="checkbox"/> Star Locke <input type="checkbox"/> Clement E. Glenn <input type="checkbox"/> Bill Dear <input type="checkbox"/> Alma Ludivina Aguado	Judge, Court of Criminal Appeals, Place 6 Juez, Corte de Apelaciones Criminales, Lugar Núm. 6 <input type="checkbox"/> Keith Hampton
Lieutenant Governor Gobernador Teniente <input type="checkbox"/> Linda Chavez-Thompson <input type="checkbox"/> Ronnie Earle <input type="checkbox"/> Marc Katz	County Judge Juez del Condado <input type="checkbox"/> James "Jim" Meador <input type="checkbox"/> Ben C. Grundy <input type="checkbox"/> Bobby D. Whitaker
Attorney General Procurador General <input type="checkbox"/> Barbara Ann Radnofsky	District and County Clerk Secretario del Distrito y Condado <input type="checkbox"/> Kate Hurt
Commissioner of the General Land Office Comisionado de la Oficina General de Tierras <input type="checkbox"/> Bill Burton <input type="checkbox"/> Hector Uribe	DEMOCRATIC PARTY PRIMARY ELECTION COUNTY COMMISSIONER PRECINCT 4 RUSSELL ALEXANDER J.N. FLETCHER
Commissioner of Agriculture Comisionado de Agricultura <input type="checkbox"/> Richard "Kinky" Friedman <input type="checkbox"/> Hank Gilbert	DEMOCRATIC PARTY PRIMARY ELECTION COUNTY COMMISSIONER PRECINCT 2 DONNIE TURNER
Railroad Commissioner Comisionado de Ferrocarriles <input type="checkbox"/> Jeff Weems	

REPUBLICAN PARTY <i>PARTIDO REPUBLICANO</i> PRIMARY ELECTION <i>OFICIAL BALLOT</i> ELECCION PRIMARIA <i>BOLETA OFICIAL</i> MOTLEY COUNTY, TEXAS CONDADO DE MOTLEY, TEXAS March 02, 2010 - 02 de marzo de 2010	
Precinct <i>Precinto</i> 1	
Instruction Text: Please use a black or blue ink pen only. Completely fill in the box provided to the left of your choice. Make no stray marks on the ballot. Do not use inks that soak through the paper. <i>Por favor use solamente una pluma de tinta negra o azul. Llene completamente el espacio cuadrado a la izquierda de su selección. No haga marcas extraviadas. No use tintas que se puedan penetrar el papel.</i>	Justice, Supreme Court, Place 3 Juez, Corte Suprema, Lugar Núm. 3 <input type="checkbox"/> Jeff Brown <input type="checkbox"/> Rick Green <input type="checkbox"/> Debra Lehmann <input type="checkbox"/> Jim Moseley <input type="checkbox"/> Rick Strange <input type="checkbox"/> Rebecca Simmons
	Justice, Supreme Court, Place 5 Juez, Corte Suprema, Lugar Núm. 5 <input type="checkbox"/> Paul Green
"I am a Republican and understand that I am ineligible to vote or participate in another political party's primary election or convention during this voting year." <i>"Yo soy Republicano y comprendo que no soy elegible para votar o participar en la elección primaria o la convención de algún otro partido político durante este año electoral."</i>	Justice, Supreme Court, Place 9 Juez, Corte Suprema, Lugar Núm. 9 <input type="checkbox"/> Rose Vela <input type="checkbox"/> Eva Guzman
United States Representative, District 13 Representante de los Estados Unidos, Distrito Núm. 13 <input type="checkbox"/> Mac Thornberry	Judge, Court of Criminal Appeals, Place 2 Juez, Corte de Apelaciones Criminales, Lugar Núm. 2 <input type="checkbox"/> Lawrence "Larry" Meyers
Governor Gobernador <input type="checkbox"/> Rick Perry <input type="checkbox"/> Kay Bailey Hutchison <input type="checkbox"/> Debra Medina	Judge, Court of Criminal Appeals, Place 5 Juez, Corte de Apelaciones Criminales, Lugar Núm. 5 <input type="checkbox"/> Cheryl Johnson
Lieutenant Governor Gobernador Teniente <input type="checkbox"/> David Dewhurst	Judge, Court of Criminal Appeals, Place 6 Juez, Corte de Apelaciones Criminales, Lugar Núm. 6 <input type="checkbox"/> Michael E. Keasler
Attorney General Procurador General <input type="checkbox"/> Greg Abbott	Member, State Board of Education, District 15 Miembro de la Junta Estatal de Educación Pública, Distrito Núm. 15 <input type="checkbox"/> Randy Rives <input type="checkbox"/> Bob Craig
Comptroller of Public Accounts Contralor de Cuentas Públicas <input type="checkbox"/> Susan Combs	State Representative, District 68 Representante Estatal, Distrito Núm. 68 <input type="checkbox"/> Richard L. (Rick) Hardcastle
Commissioner of the General Land Office Comisionado de la Oficina General de Tierras <input type="checkbox"/> Jerry Patterson	Justice, 7th Court of Appeals District, Place 4 Juez, Corte de Apelaciones, Distrito Núm. 7, Lugar Núm. 4 <input type="checkbox"/> Jim Campbell
Commissioner of Agriculture Comisionado de Agricultura <input type="checkbox"/> Todd Staples	District Judge, 110th Judicial District Juez del Distrito, Distrito Judicial Núm. 110 <input type="checkbox"/> William P. "Bill" Smith
Railroad Commissioner Comisionado de Ferrocarriles <input type="checkbox"/> Victor G. Carrillo <input type="checkbox"/> David Porter	County Treasurer Tesorero del Condado <input type="checkbox"/> Eva Barkley

Justice of the Peace Juez de Paz <input type="checkbox"/> Libby Cruse	Ballot Proposition #5: Sonograms The Texas Legislature should enact legislation requiring a sonogram to be performed and shown to each mother about to undergo a medically unnecessary, elective abortion. <i>Propuesta Electoral #5: Sonogramas</i> La Legislatura de Texas debería aprobar legislación que requiriese que se tomase y mostrase un sonograma a cada madre que esté a punto de someterse a un aborto no indicado médicamente, de naturaleza opcional. <input type="checkbox"/> YES SI <input type="checkbox"/> NO NO
Ballot Proposition #1: Photo ID The Texas legislature should make it a priority to protect the integrity of our election process by enacting legislation that requires voters to provide valid photo identification in order to cast a ballot in any and all elections conducted in the State of Texas. <i>Propuesta Electoral #1: Identificación con Fotografía</i> La Legislatura de Texas debería hacer prioritaria la protección de la integridad del proceso electoral mediante la aprobación de legislación que requiera que los votantes proporcionen una identificación válida con fotografía para poder ejercer el voto en cualquier contienda electoral celebrada en el Estado de Texas. <input type="checkbox"/> YES SI <input type="checkbox"/> NO NO	
Ballot Proposition #2: Controlling Government Growth Every government body in Texas should be required to limit any annual increase in its budget and spending to the combined increase of population and inflation unless it first gets voter approval to exceed the allowed annual growth or in the case of an official emergency. <i>Propuesta Electoral #2: Control del Crecimiento Gubernamental</i> Todo organismo gubernamental en Texas deberá ser requerido a limitar cualquier crecimiento anual de su presupuesto y gasto al aumento combinado de población e inflación salvo que antes obtenga aprobación de los votantes de exceder el límite anual o en caso que exista una emergencia oficial. <input type="checkbox"/> YES SI <input type="checkbox"/> NO NO	
Ballot Proposition #3: Cutting Federal Income Taxes In addition to aggressively eliminating irresponsible federal spending, Congress should empower American citizens to stimulate the economy by Congress cutting federal income taxes for all federal taxpayers, rather than spending hundreds of billions of dollars on so-called "federal economic stimulus." <i>Propuesta Electoral #3: Reducir los Impuestos Federales sobre los Ingresos</i> Además de agresivamente eliminar el gasto federal irresponsable, el Congreso debería dar el poder a los Ciudadanos Norteamericanos de estimular la economía mediante un recorte de los Impuestos Federales a todos los contribuyentes en lugar de gastar cientos de billones de dólares en los apodados "estímulos económicos federales". <input type="checkbox"/> YES SI <input type="checkbox"/> NO NO	
Ballot Proposition #4: Public Acknowledgement of God The use of the word "God", prayers, and the Ten Commandments should be allowed at public gatherings and public educational institutions, as well as be permitted on government buildings and property. <i>Propuesta Electoral #4: Reconocimiento Público de Dios</i> El uso de la palabra "Dios", las oraciones, y los Diez Mandamientos deberían ser permitidos en reuniones públicas y dentro de Instituciones Públicas de Educación así como ser permitidos en edificios y terrenos gubernamentales. <input type="checkbox"/> YES SI <input type="checkbox"/> NO NO	

NOTICE OF PUBLIC OPEN HOUSE MEETING FOR THE PROPOSED SILVERTON TO TESLA CREZ 345 KV TRANSMISSION LINE

Tuesday March 2, 2010
 Anytime between 4:00 and 7:00 PM
Silverton ISD Cafeteria
 700 Loretta St.
 Silverton, TX 79257

Cross Texas Transmission, LLC (CTT) is proposing to construct a 345 kilovolt (kV) double circuit high voltage electric transmission line as part of the Competitive Renewable Energy Zones (CREZ) initiative. The CREZ project is being developed to integrate additional renewable energy and increase system reliability throughout the Electric Reliability Council of Texas (ERCOT). CTT intends to file a Certificate of Convenience and Necessity (CCN) application in the early third quarter of 2010 requesting authorization from the Public Utility Commission of Texas (PUCT) to construct and operate the transmission line between the Silverton and Tesla Substations.

CTT's routing consultant has identified a number of preliminary alternative routes to connect the Silverton and Tesla substations. These routes, to the extent possible, were developed parallel to existing right-of-ways (ROW) and property boundaries while avoiding or minimizing impacts to environmental and physical constraints. The proposed Silverton to Tesla transmission line will connect the Silverton Substation, southwest of Silverton, and the Tesla Substation, east of Childress near Kirkland. The transmission line will be potentially located in the following counties: Briscoe, Floyd, Hall, Motley, Childress, and Cottle. The proposed line will be constructed in a ROW that is approximately 200 feet wide.

Please note that there will not be a formal presentation as part of this meeting. Detailed maps showing the preliminary alternative routes and other information will be available for individuals to review. Individuals have the opportunity to visit with us anytime between 4:00 PM and 7:00 PM in Silverton to ask questions and to provide comments to representatives and technical experts from CTT and its consultants regarding the proposed transmission line. CTT and its consultants will consider information gained during these public open house meetings into the overall routing evaluation that will be submitted as part of the CCN application.

CTT is committed to routing, constructing, and operating the proposed transmission lines in a manner consistent with the values of the local communities, and the rules and policies established by the Texas Legislature, the PUCT, and ERCOT.

For more information, please contact CTT toll free at (877) 214-8288 or locally at (806) 669-3000 or via email at info@cross-texas.com

Whiteflat Homecoming

The Whiteflat Homecoming will be held at 10 am on April 10, 2010 at the Senior Citizens Building in Matador. Please note: This is a change from the usual first Saturday in April. For info, contact Frances Dixon, 469-5347. If you know anyone who plans to come, please pass the word of the date change. As usual, there will be a covered dish lunch and great visiting. Everyone come, and let's have another good get together!

We Support Motley County Basketball 2010



Lex Herrington

WYLIE LP GAS

Timmy, Tina,

Christian and Mattie Brooks

**Conway, Lacy, Caleb, Mickey,
Kenzie, Tim and Deana**

**THACKER
JEWELRY**

HOTEL MATADOR

**MATADOR BRANCH FNB
SEYMOUR**

**SMITH SOUTHERN BANC
EQUIPMENT**

JAYBIRDS KITCHEN

Coach and Charli Bigham

**MATADOR
VARIETY**

RED BALL GIN

**Shawn, Shonda, Reagan,
Shelby and Bryson Elliott**

**CAPROCK
TELEPHONE**

NEW TO YOU

Chuck, Gail and Mandi Ream

**GOEN & GOEN
INSURANCE**

**MOTLEY MILL
AND CUBE**

**Terry, Tammy, Kyla and
Korbyn Simpson**

LIGHTHOUSE ELEC COOP

**MEREDITH GAS
AND SUPPLY**

**Alvin and Seven
Alexander**

**DEBRUCE AG
SERVICES**

**MATADOR MOTOR
AND IMPLEMENT**

**Beverly, Louis, Megan,
Jennifer,
Allison, Matthew and
Braeden**

**FIRST NAT BANK
FLOYDADA**

**Crawford, Marvina and Ethan
Mason**

**CAPROCK
CELLULAR**

**ALEXANDER FUEL
Russell and Lori
Alexander**

Carol and Lucretia Campbell

ZACHA'S

BILLIE DEANS

**MOTLEY COUNTY
TRIBUNE**

CLASSIFIED

email: mctribune@gmail.com 806-347-2400

February
Subscriptions Due
 Motley County-\$30
 Elsewhere-\$35
 Email-\$25
 Senior Discount \$1
 PO Box 490
 Matador, TX 79244

EVENTS CALENDAR

March

- 2 Matador Lions
- 3 Kids Praise
- 4 Get your garden started, 2:00 pm. Library
- 4 RS Lions
- 8 Commissioners' Court
- 8 RS City Council
- 9 RSCV
- 11 Matador City Council
- 11 Matador Chapter of the Eastern Star in Floydada.
Meal at 6:30pm meeting at 7:30 pm
- 15 MCISD School Board
- 16 Matador Lions

April

- 7 Kids Praise
- 10 Whiteflat Homecoming, 10 a.m. Senior Citizens
- 23 Relay For Life
- May

WANTED

WANTED: Swathing, Bailing, and Hauling. Round bails net wrapped twine tie. Square bails wire tie. Quality Work at competitive rates are on shares. Call Crawford Wesley at 806-668-4448 or cell 806-995-5053. David Wesley at 806-296-3255

WANTED: Old suitcases. Hard shell, all shapes and sizes. Call 347-2246 or 269-3746

FOR SALE

Now taking bids on House and 4 lots at 920 Virginia in Matador (across from football field). All reasonable bids will be considered. 817-319-9329 or 817-980-8734

House for sale 1460 square foot, three bedroom/two bathroom with 20x24 insulated metal building on 9 lots, Central heat and air.Lawn sprinkler on well. Metal roof. Fenced backyard. 5 blocks north of courthouse, 1/2 block west. 820 Comanche, Matador \$68,000 806-347-2432 ct8

HELP WANTED

HELP WANTED Hackberry Creek Care Center

Weekend RN
P/T and F/T LVN
P/T and F/T CNA
F/T Cook
F/T Dietary Aid

*Competitive Salary
Great working conditions
Please call Amy Cruz
806-347-2942
Or pick up application
at 805 Harrison Ave
Matador, Texas

FOR SALE

QUEEN plush top mattress & foundation still wrapped in plastic w/warr., CASH \$150. Feather down pillow set \$30. 806-549-3110

FULL SIZE mattress set, entirely new, \$130. TWIN set- NEW-\$100. Metal adjustable frame, \$45. 806-549-3110

ALL leather couch and loveseat. Great for families. MFG. warranty. New, never used!! \$550. 3-pc coffee table set \$100. 806-549-3110

SECTIONAL sofa set, must sell quickly, still never used, only had 2 days, built SOLID! Forfeit \$490. 806-438-0081

Children's bedroom set, really neat!! Brand new boxed for you to take. Unisex. 806-438-0081

BRAND NEW king size mattress set, plush top comfort, in factory plastic, only \$295. Can deliver. Latex memory foam pillow set \$30. 806-549-3110

King or California king pillow top mattress and foundation. BRAND NEW!!! with original tags. \$295. Feather down pillow set \$30. 806-549-3110

FULL SIZE orthopedic mattress set, major brand, never used. \$130. Delivery avail.

Twin mattress set wrapped in plastic, \$100. 806-438-0081

Matador
 Bundy Campbell
 Joel Dean Spray
 Robert Kilmer
 Vaden Hays
 Joan Patton

Roaring Springs
 Ken Abbott
 Elmer Parks
 Lupe Morales
 LW Sailsbury

Flomot
 Judy Cruse
 Wilburn Martin

Texas
 Caron Perkins, Odessa
 Mark Wason, Lubbock
 T.W. Yeats, Lubbock
 Jarrett Jameson, Tell
 Jim Potts, Floydada
 Sylvia Perkins, Amarillo
 Graddy Tunnell, Plainview
 Glen Bailey, Plainview
 Troy Smallwood, Nazareth
 Betty Hardin, Waco
 Ottis Mullin, Graham
 Majo Terry, Forney
 Ramona Farmer, Ennis

Elsewhere
 Ruby Anders, LA
 Cora Hall, WA
 Bob Harp, HI
 James Cooper, NM
 Melvin Cooper, NM

Relay For Life April 23

Relay For Life April 23

Meredith Gas & Supply

348-7332

Your Locally Owned and Operated Propane Company

Propane & Service

24 hours-7 days a week!
 We welcome new customers!

Tanks & Supplies available
 Propane appliance Services
 Pressure Tests & Leak Test performed upon request

WE ACCEPT VISA & MASTERCARD

NOTICE OF HEARING BY THE JURY OF VIEW

By the Authority of §258.002 of the Texas Transportation Code, the Commissioners' Court of Motley County, Texas has heretofore appointed a panel of NINE(9) individuals, from which a Jury of View composed of five property owners who have no interest in the outcome of the protest to serve on the Jury of View. This Jury of View shall determine, by a majority vote after public hearing and an examination of the evidence, the validity of the County's claim of the existence of a public interest in a road which has been the subject of a written protest by a person asserting a private right, title or interest in said road.

The determination of the Jury of View is binding upon the Commissioners' Court, and as a consequence of the report of the Jury of View, the Commissioners' Court shall revise the proposed county road map prepared in conformity with Chapter 258 of the Texas Transportation Code to conform to the Jury of View findings.

The Jury of View shall convene at 10:00 am on MARCH 5, 2010 at the Motley County Courthouse, Commissioners' Courtroom, 701 Dundee, Matador, Texas, to conduct its business. The Jury of View shall be sworn in, elect a Chairman, be briefed on the pending protests and the requirements of Chapter 258 of the Texas Transportation Code. A five member jury will be selected for each protest. Those persons who have previously filed an objection to the County Road Map are hereby notified to attend and be prepared to present evidence to the Jury of View respecting their claim of a private right, title or interest in the disputed road. It will be at the discretion of the Jury of View as to when they hear each case (both date & time).

NOTICE OF PUBLIC MEETING

The Matador Water District will hold a Public Meeting on Thursday, March 11, 2010 at 5:45 p.m. at City Hall to present the proposed budget for 2010/2011 fiscal year. ct9

NOTICE OF PUBLIC MEETING

The City of Matador will hold a Public Meeting on Thursday, March 11, 2010 at 6:15 p.m. at City Hall to review the proposed budget for 2010/2011 fiscal year. ct9



**GLASS
MAGIC**
 ROCK CHIP REPAIR

Fred Grant
 Call 806-346-7103 or Home Phone
 Matador, Texas.

Childress Veterinary Hospital Dr. David Fuston

Full Service Veterinary Hospital
 Large and Small Animal Needs

940-937-2558

109 Industrial Circle/287 West, Childress

NEED INSURANCE? GET GOEN!

GOEN & GOEN INSURANCE
 CROP-HOME-AUTO-FARM
 BUSINESS-LIFE-HEALTH

203 BROADWAY, ROARING SPRINGS
 348-7531 800-288-2865

Tired of waiting?

for someone to fix your vehicle or is your check engine light on or do you need a new windshield?

Call Bobby's Auto Repair

There is no waiting.

Free estimates. Matador, TX.
 806-269-0170 Owner Bobby Spence



For all your Ginning, Marketing & Planting needs

JOHNSON'S GIN

Silverton, Texas

806-823-2224 800-338-3960

Family Owned & Operated

Buy USA Grown & Made - It Matters!

WYLIE LP GAS

"Proud to be a part of Motley County"
 Residential-Commercial-Parts & Acc.
 Farm & Highway Diesel CALL 806-347-2290
 Office still locally operated at 1021 Main-Downtown Matador
24 HOUR SERVICE-7 DAYS A WEEK
WE APPRECIATE YOUR BUSINESS! MC & VISA



Joey & Brenda Lee
 Lee's Insurance

P.O. Box 189
 Clarendon, Texas 79226-0189
 806/874-2130 phone
 806/874-9394 fax
 877/874-2130

HOME • AUTO • LIFE • COMMERCIAL

Motley County Abstract Company

P.O. Drawer 1

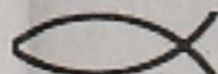
Paducah, TX 79248

806-492-3573 Fax 806-492-3574

Complete Records for Abstracts & Title Insurance in
 Motley County, Texas
 Nelda Hightower-Owner
 Lisa Hightower Wood-Manager

Tom Edwards, Attorney

806-347-2333



PAYNE PHARMACY

200 S. Main, Floydada, TX 79235
 806-983-5111 or 800-345-7961

Denise Payne, R.Ph.

M-F, 8:30-6:00 & Sat., 8:30-1:00

We will be happy to mail your prescriptions!