

MOTLEY COUNTY TRIBUNE



VOICE OF THE FOOTHILL COUNTRY

SOUTHWEST COLLECTION
Texas Tech University
LUBBOCK, TEXAS 79409

\$.75

Thursday, May 14, 2009

ESTABLISHED 1891

Volume 118 Issue No. 20

HCCC sponsors Open House



Bertha Moore, Wayland and Betty Moore, and Virgie Bannister enjoy Barbeque at the HCCC open house. photo by Carol Campbell

By Carol Campbell

To celebrate the culmination of National Nursing Home Week, Hackberry Creek Care Center opened its doors Monday, May 11, to almost 100 residents for a free barbeque dinner, live bluegrass entertainment, free hearing testing, and more than 40 door prizes, donated by local merchants and individuals.

HCCC Marketing Manager Ashley Washington and Brooke Barton, Activities Director, registered more than 90 guests for a free barbeque dinner with homemade potato salad, red beans, and cobbler and pies. The staff served the residents and guests, all decked out in matching blue-green t-shirts with the HCCC logo.

The residents joined the community in the spacious dining

room, listening to top-tapping bluegrass music, courtesy of the Pecos Valley Band. The 4-member band from New Mexico, Oklahoma, and Del Rio, staged an early arrival for the Annual Bluegrass Festival in Flomot this weekend to entertain at Hackberry

Calvert Home Health Care, locally owned and operated since 1987, set up a booth with information on available home health programs, complete with give-aways, including nail files, toothpick holders, Band-Aids, notepads and pens. Calvert works in a 2-hour radius of the Lubbock area with Matador on the further end of their eastern map.

"Our staff live in the communities that we support, and we have nurses on call 24/7 with a wide variety of programs from physical and occupational ther-

apy to telemonitors," Russell Madison said. "Our goal is to keep people in their homes and make them comfortable."

Michael Shobe, owner of Hearing Technologies Inc., Lubbock, performed hearing tests on residents and guests. His business is located at Caprock Medical Center, 5009 University Avenue. Shobe will be making courtesy calls to HCCC at least once a month, providing a full range of services for the hearing impaired.

HCCC provides skilled nursing with rehabilitation services including physical, occupational and speech therapy, social services, and respite hospice care. This state-of-the-art facility, completed in 2007, has 20 residents. Administrator Sandra Seago said the focus of marketing efforts for HCCC will be to increase the census and inform the public about what Hackberry Creek has to offer.

Merchant donations included Main Street Café, Jaybirds, Ace Hardware, Wylie L.P., Zacha Guerrero, The Glittered Pig, New to You, Thacker Jewelry, Windmill Café, Espuela's Land and Cattle Company, Matador Variety; and

Matador Ranch, Matador Floral, Hotel Matador, Graham Supply, CapRock Telephone, Lee's Insurance, Alexander Fuel, Billie Dean's, Traveler's Inn, Ashley Washington, 4R Trinkets, Moore Makers, Motley County Tribune, Diane Washington CPA, Motley County Chamber of Commerce, and Walmart. There were many other individual donations not listed.

Commissioner's Court meets TxDOT proposes picnic area closings

By Carol Campbell

The Commissioner's Court met in regular session on Monday, May 11, covering a 16-item agenda including the possible closure of three picnic areas in Motley County by TxDOT, a presentation by a representative of the South Plains Community Action Association, and approval of two resolutions.

Attending the meeting were Commissioners Russell Alexander, Franklin Jameson, Roy Gene Stephens; Donnie Turner, Ed D. Smith, County Judge, and Kate Hurt, County Clerk. Also in

attendance were Sheriff Michael Crutchley, Tom Edwards, County Attorney, and Carol Campbell, Assistant to the County Judge, Ben Kautz, TxDOT, and Larry Vogt, Motley County Tribune. Special guest was Bill Powell, Executive Director of the South Plains Community Action Association, Inc.

Judge Smith reported that he had received a map and summary from Darwin Lankford, Director of Operations at TxDOT, Childress District, proposing that three picnic areas in Motley County be closed as a cost savings, diverting the money to

"maintain roads" instead.

It is estimated that the picnic areas 1-mile south of Matador and 11 miles east of Matador on US 70, and the west picnic area on US 70, 1-mile east of Floyd County line, cost the state \$16,155 in FY2007 and \$27,966 in FY2008, averaging \$22,061 to maintain.

According to Lankford, the state spends almost \$200,000 per year maintaining picnic areas in the Childress district. He is proposing the district offices consider permanently closing 27 picnic and rest areas.

continued on page 3

Singing the blues, Flomot style

By Dianne Washington

Once again Flomot will be alive with the sound of bluegrass music on May 14-16, 2009.

The 10th Annual Washington Cattle Company Bluegrass Festival will begin at 6:00 p.m. on Thursday, May 15, with gospel music and barbeque. Friday night the stage music starts at 6:00 p.m. and will continue until 10:30 p.m. On Saturday, the music begins at 1:00 p.m. and

goes until 11:00 p.m. Please bring lawn chairs for the most comfortable seating.

Bands from Texas, New Mexico, and Oklahoma are scheduled to play during the festival. The bands scheduled to perform during the festival include Pecos Valley Bluegrass from Mayhill, New Mexico, Grassfire and Now and Again from Amarillo, Texas, Texas Country from Wicket, Texas, Hanks and Company from Seymour, Wichita

Mountain Bluegrass and From the Heartland Bluegrass from Oklahoma, and Triple L from Portales, New Mexico.

The official bands are just half of the fun. Groups will be playing and jamming at all hours on the festival grounds. Everyone who plays an instrument is welcome to come and join in the music. If you don't play you are welcome to listen to the various groups.

Brenda Browning will have continued on page 3

Motley County Tribune makes the 2009 Media Honor Roll

(Austin) The Motley County Tribune of Matador, Texas in Motley County was named to the Media Honor Roll, a program sponsored by the Texas Association of School Boards (TASB), by Dr. Andrew Seigrist and the Motley County ISD. The Media Honor Roll recognizes media representatives statewide who deserve recognition for fair and balanced reporting of news about public schools. Media representatives from newspaper, radio and television stations across Texas were honored by their local districts.

Criteria for the district selection included the media repre-

sentative's efforts to get to know the superintendent, school board and the district's mission and goals; report school news in a fair, accurate, and balanced manner; give a high profile to positive news about schools; visit the schools; and maintain a policy of no surprises by sharing information with school officials.

"Districts across Texas appreciate these reporters for their balanced and accurate approach to sharing both the challenges facing our schools and the successes achieved by local teachers, students, and school boards. Their work aids local

communities in focusing on the goal of providing the best public schools we can for every child," said Robert Seward, TASB president

Laverne Zabielski and Larry Vogt of the Motley County Tribune will be honored at the May school board meeting, May 18, 2009.

Dr. Seigrist said "having a positive and supportive newspaper such as The Motley County Tribune is a strong help in the education of our students. We deeply appreciate The Tribune and that is why we nominated them for this prestigious award."



Ashley Washington, Marketing Manager and Brooke Barton, Activities Director registered guests at the HCCC open house. photo by Carol Campbell

Roaring Springs Lions Club Meets

By Monta Marshall

The Roaring Springs Lions Club met Thursday, May 7 at the Windmill Café, enjoying a meal of chicken fried steak, and peach cobbler for dessert.

There were twelve members present and six guests.

Mary Jane Botello and Susan Poff representing the Lubbock Division for Blind Services brought a very informative program on services available

in this area for people who have vision problems. Special equipment, training, help with medical bills pertaining to the eye and even help with securing glasses were services offered.

Boss Lion Wes Campbell and wife Lynn; Lion Buzz Thacker and wife Tince; Lion Floyd Carter and wife Dianne; Lion Corky Marshall and wife Monta; Lion Ken Abbott and Lion Alex Crowder went to

Hackberry Creek Care Center and sponsored a bingo game for the residents following the meeting.

Following the bingo game the group met at the Travelers Inn for coffee and then erected a new Lions Club sign giving the time and place of the monthly meetings about a mile south of Roaring Springs on Texas Highway 70.



Matador City Superintendent Steve Barton oversees another old vacant house being demolished and burned. Also pictured is Ron Bailey, owner. The City of Matador is making every effort to encourage all owners of such properties to allow the city employees to get rid of them at no expense to the property owners. This is being done to make our city as clean and attractive as possible.

Foothill Country

Connections

Community, Diversity, Art

By Larry Vogt

What a blessing to see, feel, taste some rain showers. The pastures and hay fields are greening up and there is actually some water running in the creeks and rivers around the county. It almost feels good to have to mow the grass growing around the house.

If you were able to get some seeds of lettuce or other greens into some dirt a few weeks ago you should now be seeing some plants at least a few inches high. When you have a growing season that starts

off with some rain and warm temperatures there is a good feeling that maybe the garden will do just fine this season.

Around these parts where we appreciate every hundredth of an inch of precipitation the appearance of a cloudy sky with a feeling of rain in the air is a welcome event. We can imagine the farmers struggling through severe drought years and their joy and appreciation for every drop of rain that falls when it finally does happen. Good luck with your growing season everybody!

By Laverne Zabielski

News that TxDot wants to close three rest areas in Motley County is not good news. Larry and I use rest areas more than ever when traveling these days.

People wonder why drivers fall asleep on long trips. Part of the reason is that there are not enough rest areas. Where do you pull over for a brief rest?

TxDot says that they are under used. How could they possibly know that? Do they have surveillance cameras? Do they do random drive bys at 3:00 am? Do they look in the trash? Even if they did check the trash for evidence of use, many people today follow a green approach and dispose of it at home, not in public

trash cans.

The two new rest areas on I-40 are state of art facilities. When you stop at them you say to yourself, "Texas cares." The same is true for the one on the way to Lubbock. It is functional and visually appealing. And the ones in Motley County are quaint, charming, almost a step into the past. Doesn't Texas care about those travelers?

It will be a huge mistake for TxDot to close these smaller rest areas. We need them more than ever. Times are changing and people will be traveling more by car and picnicking as job losses increase.

TxDot says they are a hassle to keep up. The real question is how does TxDot determine which travelers are a hassle and which are not?

Notes On Gardening

Deanie Edwards gave us a few tips on compatible plants for your garden. Planting calendulas (pot marigolds) between your tomatoes helps with the nematodes. And planting Borage in with your squash helps with the squash

beetles. The Borage herb plant is also great with tomatoes. It deters hornworms, attracts bees and wasps, adds trace minerals to the soil and increases resistance to pests and disease. And the flowers are edible!

WRITING COMMUNITY

UNCLE SUD AND AUNT LIMMER STORIES

PRESTLEY'S CLOSE CALL

BY MONTA MARSHALL

Prestley and Laurie were like most old folks. They got a little bit afraid of being alone way out in the country like they were. Pres couldn't hear anything and the dogs would bark at night and Laurie would be scared that something was out there. If she tried to awaken Prestley that would scare him and he would begin yelling his head off. He always shouted when the hearing aids were off or he had forgotten he was deaf and supposed no one else could hear well either. Finally he nailed all the doors and windows shut except one so maybe no one could break in without them hearing. He kept a loaded pistol by his bed all the time. We sometimes feared that he would get excited and shoot Laurie.

Laurie had to have hand

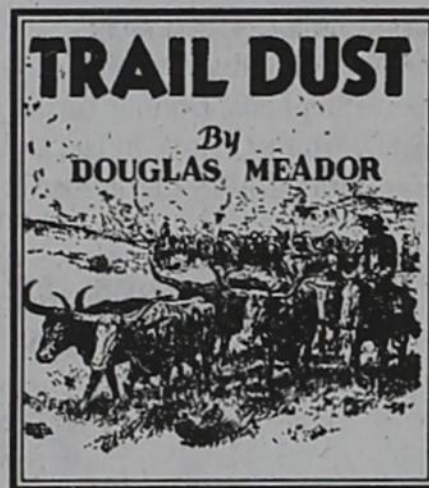
surgery and wouldn't be able to take care of herself and Prestley. Their daughter Louise and granddaughter Sissy came down to stay a week or two and help out. Oh, yes I forgot to mention that being alone so much they never closed the bathroom door. They had a few other inconveniences to old age in that they got up to go to the bathroom at least every half hour. They were up and down all night, first one and then the other. Prestley would sit on the commode and I guess he figured he's just as well stay awhile and get two times done in one. He'd fall asleep on the commode. There was only one bathroom in the house.

One night his daughter was asleep in the next room. She had heard him go in the

bathroom and went back to sleep. Prestley was noisy; he talked out loud to himself real loud. He couldn't even hear himself. Anyway he got quiet and Louise thought he had gone back to bed. She got up too and since he had all those security lights the house was never very dark; there was no need to turn on the light. Louise was pretty drowsy herself; she had been waked up so often, she stumbled into the bathroom, pulled up her gown tail and prepared to sit down. She stepped right on Prestley's foot and he let out a squall that even set the dogs to barking. She got so tickled that she laughed most of the night. Sissy would beg her to hush so they could get some sleep and she would try and then begin giggling again.

The next morning she said, "Dad, do realize what a close call you had last night?" He looked sort of confused for a moment and then grinned a sheepish sort of smile and said, "Well I guess it was pretty close at that".

He got sort of set in his ways and liked it best when his routine wasn't interrupted very often. One day a niece came by to see him. She was really feeling guilty for not having come to see him more often. She was in a hurry even then and kept apologizing for not being able to stay longer and not coming more often. Pres said, "Well, it was nice that you came but I was beginning to wonder what we could talk about if you stayed any longer!"



Matador Tribune 1970

Necessity probably gets less acclaim than any mighty force in the universe.

Our opinions are always affected by the locale in which we are present. Perhaps the street corner evangelist continues to function in certain areas of the nation but it has been many years since one has spoken in this West Texas community. As a boy I frequently paused and listened and felt a pang of sympathy for the man who wanted to deliver a message that might detour a soul from damnation. There must have been some persuasive ones,

but not on any corner where I lingered.

Another advantage a live coward has over a dead hero is the value of the running exercise.

A good pair of boots and a cigar seem to contribute more to a man's personal confidence than fine apparel and a fresh shave.

It is amazing that with all the resources of this country and the advancement in creating new insecticides, most insects continue to thrive, multiply and develop new designs for making people uncomfortable.

It has been a long time since I have observed a man with white stains of dried perspiration bordering the suspenders of his overalls.

Concern for the feelings of others is an emblem of compassion that requires no polishing to remain bright. Almost worthless advice: pressing your head into the flank of a kicking cow will often cause her to keep both hind feet on the ground until you finish milking.

Roaring Springs City Council passes Speed Limit Ordinance

The meeting was called to order at 6:30 PM Monday May 11, 2009 by Mayor Corky Marshall. In attendance were Council members P. K. Green, Kelly Keltz, Timmy Brooks, James McCleskey, and Alex Crowder. Also attending were City Secretary Zella Palmer, Water Superintendent Robert Osborn, and Larry Vogt, Motley County Tribune. One agenda item was a consideration of speed limit signs and an ordinance for certain streets. After discussion a motion was made and passed to purchase six additional

speed limit signs and draft an ordinance to make the speed limit 20 miles per hour on Argyle Street, Dundee Street, and Third Street from Broadway to the junction with Texas Highway 70.

Other items on the were the swearing in of Council Members who were unopposed but whose terms had expired; Financial review and payment of bills; discussion of the Advanced Metering System of AEP Texas; discussion of new sidewalks for the South side of Broadway. The meeting was adjourned at 7:15 PM.

Caron Perkins Wins UTPB Award

Caron Perkins of Odessa, daughter of Dorothy Russell of Matador, was named Employee of the Year for the University of Texas of the Permian Basin (UTPB) during the Staff Awards Luncheon on campus Tuesday.

After being nominated, Perkins was selected for the honor following a campus-wide vote by UTPB faculty, staff,

and students. She was chosen from a field of 75 nominees.

Perkins has worked for the university for about 2 1/2 years as Administrative Assistant for the Vice President of Business Affairs, Dr. Chris Forrest.

She is the wife of Jesse Perkins, a native of Motley County, and the couple are former residents of Matador.

Got Questions? Suggestions?

Call us anytime

Larry 859-351-8099

Laverne 859-576-4625

MOTLEY COUNTY TRIBUNE

Laverne Zabielski & Larry Vogt, Publishers & Editors

Carol Campbell, Feature Writer

Jennifer Lawler, Office Manager

Houston Press Club Editorial Award Winner
West Texas Press Association Member
Texas Press Association Member



Award Winner

The Motley County Tribune, (ISSN: 0897-4322), purchased on November 29, 2007, is published weekly each Thursday, except Christmas week, at Matador, Texas. The office is located at 724 Dundee, 806.347.2400. Periodical-class postage paid at Matador, Texas, Postmaster. Send address changes to Motley county Tribune P.O. Box 490, Matador, TX 79244.

NOTICE: Any erroneous reflection upon the character, firm, or corporation, which may appear in the columns of the Motley County Tribune will gladly be corrected upon being brought to the attention of the publisher.

PUBLICATION NO. 333700
Subscription Rates: Motley County, \$30
All others, \$35 Over 60 may deduct \$1.00
Email \$25
P.O. Box 490, Matador, TX 79244

Advertising Rates: \$3.50 per col inch, in county
\$3.75 per col inch, in Texas
\$4.00 per col inch, national

Tear sheet: \$2 Publisher's affidavit: \$3
Scanned documents additional \$5
Obituary: \$25 minimum, with photo, additional \$5
Thank you notes: \$13 minimum
Birth and Wedding Announcements:
\$25 minimum, with photos additional \$5

The Roaring Springs Full Gospel Church

would like to invite everyone to a special service on May 17, 2009. Guest speakers will be Greg and Angie Goodnight. Services will start at 10:30 a.m. with a free lunch to follow in the fellowship hall. As well as being an accomplished sculptor, Greg is also an accomplished musician. He plays guitar, harp and hammer dulcimer while his wife sings with a beautiful voice.

Relay for Life June 19

Congressman Mac Thornberry

will have a member of his staff available in Matador to assist area residents with questions or concerns related to federal issues.



Thursday, May 14, 2009

1:30 PM to 2:30 PM

Motley County Courthouse
Commissioners Court
Main and Dundee
Matador, Texas

For more information, please call 806-371-8844
<http://www.thornberry.house.gov>

Swinging for a Cure Scores Under Par for Cancer Cure

By Monta Marshall

The team Swinging for a Cure one of the Relay for Life teams raising funds for the American Cancer Society hosted a night golf tournament on Friday. The golfers teed off at 6:00 p.m. and the last teams to finish played until around 1:00 a.m!

It was a beautiful night for the event with a full moon. Players wore 'glow in the dark' items and the balls glowed; with the flag poles being partially lit with glowing tape to enable the golfers to score.

Eighty three golfers participated. There were 18 teams. Rodney Williams and Ken Young served the golfers and guests a hamburger supper after the first round. Rhonda Miller was the team coordinator.

The Swinging or a Cure team reached their fundraising goal! There are other teams working to reach their goal. The suggested goal of each team is \$1500.00. The deadline for forming a team is this week. The Relay for Life event at the Motley County ISD Stadium will take place on June 19th, beginning at 6:00 p.m.

There will be a walk to honor survivors. The walk depicts the stages of the cure for cancer. The walk begins at dusk which signifies the diagnoses; the dark hours remind one of the long days of treatment and finally the dawn represents the cure or remission. This relay is a celebration of hope for the cancer patients. Come celebrate or participate to honor someone you love who has cancer.

Singing the blues, Flomot style continued from page one

a food concession open Friday and Saturday. Everyone is invited to come to Flomot and listen to great music and eat with Brenda.

An added event this year is the Flomot version of Hardin and Turner Western Trade Day on Saturday, May 16. This event specializes in tack and other things found around the ranch. Everyone is welcome to come to buy, sale or trade.

RV parking is \$10.00 per

night and hookups are still available with festival ticket purchase. Thursday festival tickets are \$8.00 for music only and \$12.00 for music and barbeque, \$8.00 on Friday, and \$12.00 for all day Saturday. Children under 13 admitted free with an adult at all times. Children's Thursday night barbeque tickets are \$4.00.

For more information please call 806-469-5278

Motley County High School Honors Banquet set for May 21

The Motley County Parents Club is hosting the Motley County High School Honors Banquet on Thursday, May 21, 2009 at the Motley County ISD Auditorium.

Students will be recognized for their Academic efforts and accomplishments as well as for all their efforts on the playingfield, court or track.

Tickets go on sell today! Students being recognized get in free but parents, grandparents and friends must purchase a ticket by Wednesday, May 20 from D'anna Russell for \$3.00 each. She will be at the school every morning for your convenience. Don't miss this opportunity to support the kids.

THANK YOU

Three simple words, "You have cancer" can change our lives and challenge our strength. Every day someone dear to us is diagnosed, has surgery, or begins chemotherapy or radiation treatment; but because of cancer research the treatments are more effective and the chances of recovery are greatly increased. Relay for Life is a team effort to raise awareness and money to continue cancer research.

The Night Golf Relay for Life was a success because so many of you participated. It was a beautiful night, the weather was perfect and everyone had a great time. Thank you to all who entered the scramble with a donation. Thank you to those who didn't golf but came to watch and donated for the meal. Special thanks

go to the ones who donated time and energy to make the event run smoothly. Ronda Miller did an excellent job organizing the evening. Kay Bingham assembled the players, explained the rules and got the teams started. Rodney Williams and Ken Young got rave reviews for the hamburgers and hotdogs. And Roaring Springs Ranch Club generously provided the facilities at no charge and had everything looking great.

We sincerely appreciate that we have a community that continues to support our efforts to tell our survivor stories and to bring hope to those who have been or will be diagnosed. With your help we are making a difference.

Thank you!
Swinging for a Cure
Relay for Life

Obituary

Plainview - Bobby Mullins, age 67, passed away on Saturday, May 9, 2009 at Covenant Medical Center in Lubbock. Funeral services were held May 13, 2009 at Seth Ward Baptist Church. Interment followed at Roaring Springs Cemetery with Pastor Jim Ritter officiating. Services were under the direction of Lemons Funeral Home in Plainview.

Bobby Joe Mullins was born on August 14, 1941 in Hereford, Texas to L.A. Mullins and Odessa L. (Baker) Mullins. He married Marie Williams on April 6, 1981 in Plainview. He worked in the electrical field as a lineman. Bobby enjoyed playing Spades and other card games, driving in the country with Marie, taking care of his rose garden, and spending time with his family. He will be remembered for his laughter and his enjoyment of life. Bobby was a member of Seth Ward Baptist Church.



Bobby is preceded in death by his parents and his brother, Lester Mullins. He is survived by his wife of over 28 years, Marie Mullins of Plainview; his sons, Mark Mullins (Laurie), Todd Mullins (Kathy), Dene Gray (Misty); his daughters, Debby Cox, Theresa Riojas (Raul), Deana Cate (Joe); 14 grandchildren, and seven great-grandchildren; and numerous friends and relatives.

MCYO Summer T-Ball, Coach Pitch, Softball sign ups begin

It's time for baseball again! MCYO held a meeting on Monday night and elected the following officers:

President, Shonda Elliott; Vice President, Cathey Turner; Secretary/Treasurer, Cynthia Stafford; Reporter, Misty Jones; Commissioners, Shawn Elliott, David Stafford, Lee Jones and Lewis Drum.

This year's season will kick off on June 8, 2009 and will continue through June 26. On Friday the 26 we will present trophies to all kids that participated. Forms were sent home on Tuesday, May 12 and will need to be completed and turned in to Cathey Turner at MCISD by Monday, May 18. Teams will be picked on Tuesday, May 19 so it is very important for us to have all forms turned in by the deadline.

The fee this year is \$20 per child for your first two children and \$15 per child for every child thereafter in your immediate family. If you did not receive a form from your child and need one please contact Shonda at 806-983-7172 and we will gladly get a form to you. Following is the age groups for each division:

T-Ball - Child must be 4, 5, or 6 by May 1, 2009.
Coach Pitch - Child must be 7, 8, or 9 by May 1, 2009.
Minor League Softball - 10,

11, or 12 by May 1, 2009.

If your child is on the borderline of one of these age groups, you may choose to move up to an older division, but no child will be allowed to move down to a younger division. For example if your child will be 10 in September and would rather play softball than coach pitch, just note that on your form and we will include your child in the next division up.

In preparation for this year's season, we will be having our "clean up day" on Saturday, May 16 at 9:30 am at the baseball field. Your help would be greatly appreciated in the clean up of our field, so come on out and join us!

We will also be contacting sponsors to sponsor our kids again this year. If you haven't been contacted and would like to advertise your business, please contact us for prices. Sponsor's names are put on the back of the kids t-shirts as well as painted on signs that will be displayed at the baseball field.

Teams will be published in the paper as well as a schedule of the games as soon as it is completed. We will also be having a concession again this year with some great food, so come out and support our local youth during the month of June!

Commissioner's Court meets TxDOT proposes picnic area closing

continued from page one

"We have routes through the district, such as US 70 that don't have rest areas, and we still want to maintain some level of safety along those routes by providing a stopping place, but the routes that do have rest areas are certainly game," Lankford said, adding, "picnic areas just aren't used like they were 20-30 years ago and are a hassle to keep up." The state has already closed six picnic areas in the district: one at Benjamin, two at Quanah, one at Junction SH299, and two in Shamrock.

The court voted unanimously to oppose the closing of the picnic areas. The discussion revolved around safety issues, the barricading of historical markers and the expense of demolishing picnic areas and converting them back to right-of-way.

"There is hardly anytime you can go by these picnic areas that trucks or people eating lunch are not visible," Smith said. "If the parks are torn out, and the landowners that donated the land for parks had a reversionary clause, it would go back to them." In addition, Smith said, "there are at least four historical markers in the parks areas."

Judge Smith reported to the court that he would call Mr. Lankford, and then draft a letter opposing the closure of the picnic areas along with a justification for keeping them open.

Additionally, Commissioner Franklin Jameson reported to TxDOT representative Ben Kautz that the TxDOT project on "straightening out FM94 at Northfield" was receiving unfavorable comments from some of his constituents. "They said they would like to see the money spent on the highway as opposed to straightening out the road," he said. "I would like to back off (of his previous support) on the county spending money on this project." There was no action taken.

In other business, Tom Edwards, County Attorney, reported to the court that he and Judge Smith were slated to meet with Cross Texas Transmission on Wednesday, May 13, on transmission lines proposed from Cottle County to the Briscoe substation.

In the Sheriff's Report, Michael Crutchley reported to the court that South Plains Association of Government had received a large grant from the Office of the Governor, Criminal Justice Division, for a justice assistance grant to support law enforcement initiatives. Sheriff Crutchley said he had written a grant, and if approved, the county would receive \$23,753.38 to go towards the purchase of a new

vehicle. The court approved a resolution in support of the submission of the grant application.

Judge Smith reported that he had attended a meeting in San Angelo, sponsored by the West Texas Rural Counties Association (WTRCA). This association handles the building and vehicle insurance for the county courthouse. Smith said the 3- and 1/2-hour meeting focused on a discussion of the fund, and the need to hire a fund manager. Smith said there are hints from the group that underfunding by fund managers prior to the current situation may have put the fund at risk. "Some counties are talking about getting out," Smith said.

Commissioner Franklin Jameson reported that the pumping station in the Four Corners area north of Matador had placed two 27-inch tubes in the culvert, funneling all the water down the south ditch. "I want it on record that this is not going to work," Jameson said. "Four Corners is silting dirt every time it rains. There needs to be future work done on the entrance by the company that is doing these major upgrades," Jameson said.

Bill Powell, Executive Director of the South Plains Community Action Association, Inc., provided an informational briefing on the proposed merger of the Caprock Community Action Association, covering a six-county area, to the South Plains Community Action Association which includes eight counties, for a total of 14.

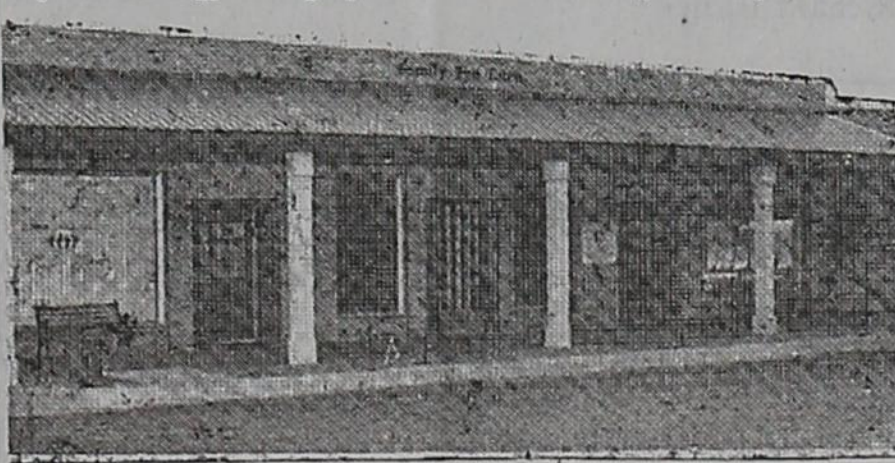
According to Powell, the South Plains group is a very active group with a \$26 million budget, compared to Caprock with a \$4- to 5-million budget. Combining these two groups will "give us more say-so in Austin," Powell said, "more representation, more resources for our communities," he added.

South Plains provides child care services, community services program, housing program, health services programs, Head Start, transportation program and website and job opportunities.

"We have a Housing Program whereby a county or city can apply where we come in and demolish 4- to 5- existing homes, clean off the lots, and rebuild new homes," he said. This program has already helped other communities in the SPCA area, including Littlefield, Muleshoe, Ropesville, and Cochran County. The court voted unanimously to support a Resolution to support the merger to better serve the public.

Family Eye Care

Blake Avera, M.D. Ophthalmology - Surgery
Amy Bishop, O.D. Therapeutic Optometrist



CLINIC FULL SERVICE OPTICAL

COMPREHENSIVE AND CONTACT LENS FITTING
TREATMENT OF EYE DISEASE AND SURGERY OF THE EYE
LOCAL CATARACT SURGERY
AFTER HOURS EMERGENCY CARE
LARGE SELECTION WITH OVER 500 DESIGNER FRAMES
SAME OR NEXT DAY SERVICE ON PRESCRIPTION EYEWEAR INCLUDING:
*SINGLE VISION
*BIFOCALS
*NO LINE PROGRESSIVE TRANSITION LENSES IN MOST CASES
LARGE VALUE COLLECTION AVAILABLE WITH MULTIPLE PAIR DISCOUNTS
PROVIDING REGIONAL EYE CARE SINCE 1994
125 AVENUE B NW CHILDRESS TEXAS (940) 937-2015

"CHURCH... A BUILDING FROM GOD."



In a discussion with a friend about the word "church" I realized just how confusing it must be to some when others of us speak of "church." The church is not the actual building but rather the church meets in the "church" building. In our manner of speech today, we often call buildings "that church on the corner." It is confusing.

Also, one of the many images the Bible gives for the church is that of a "building." As a building we understand from scripture that Jesus Christ is the corner stone. That means that Christ sets the standard for the rest of the building. Therefore whatever is built must be built in reference to Him.

In Ephesians 2: 17-22, the Bible states that we are "growing into a holy temple in the Lord." Our challenge is to never stop growing and developing in our Christianity. When we are doing our part, as a part of God's holy building, we also are strengthening the other parts that make up this building.

Also found in the book of Ephesians is the great theme of unity. The apostle Paul addresses the unity of the "building," the unity of the spirit, the unity of God and the unity of the faith. It is only through the standard set by the "cornerstone" that such unity is possible. Remember Jesus Christ brought the Jews and Gentiles together into His "building." And much can be accomplished today when Jesus Christ, the "cornerstone," becomes our standard. After all it is God's building isn't it?

Roaring Springs Church of Christ
Michael G. Crowley, Sr.
BIBLE STUDY 10:00 a.m. Worship 9:00 a.m.

Butch McBee

Fencing & Firewood Supplies

806-455-1310 or 806-346-1105

Any size Cedar Posts and Staves
Steel pipe available for corners
Mesquite & Oak Firewood
Barbed Wire and T-Posts
Mountain Cedar

NEWS AROUND MOTLEY COUNTY

Roaring Springs News

By Monta Marshall

Seems like Lil Toot has about outgrown her orneriness but kitty Fred, the adolescent blue cat has taken over the mischief. He loves diving in the middle of my plants. He has flattened my Mexican feather grass and curled up on one of my tomato plants, rolled in the little onions as if they were catnip and generally makes a nuisance of himself. I don't mind that he lies in the middle of the liriopie grass as it is growing too fast and is so hard to dig up. I have a talent for getting plants that just take over.

J. T. Swim was taken to the hospital by ambulance on Monday and treated for pneumonia. He returned home on Thursday. He is at home but still not feeling too well.

P.K. Green and Lyn Montgomery attended the opening of Ken Young's photography show at the International Cultural Center of Texas Tech University on Thursday. Carol Peterson's and Nancy Carr's watercolors were also on display. Several former Matador people enjoyed the show also. Among them were the Gerald Pipkins. Several family friends and family members of Dinah and Ken also attended the opening reception. P. K. reported that the photography is fantastic and the museum a wonderful venue for displaying Ken's work. It is certainly worth a trip to Lubbock to view the photography and to experience the feel of being in secluded beautiful places in Greece. They allow one to see small interesting villages and beaches that are off the regular tourist beaten path. The colors are very vivid and intense because of the wonderful bright sunshine of Greece.

At the Lions Club meeting and after hearing Mary Jane Botello and Susan Poff tell about all the services offered by the Division of the Blind, I would like for everyone that has a need to be aware of these wonderful services. They stressed that these services were not charity but services you have paid for with your taxes. Mary Jane is a vocational rehabilitation counselor. She can help one overcome sight problems caused by cataracts, diabetes, macular degeneration and other eye problems. Their services can make life so much easier for folks that have their sight impaired. Any Lions Club member can give you the information needed to contact this service.

A funny thing happened at the Lions Club luncheon and

meeting; Ms. Botello said that she had never had a chicken fried steak before even though she grew up in this area. She was impressed at how good it was and she saw why her nephew could eat so much chicken fried steak with so much pleasure. She thought she would want to eat steak prepared that way often!

Fourteen people from Roaring Springs participated in the Swinging for a Cure golf tournament on Friday. They were: Robert, Olivia and Jonathan Osborn; Casey Osborn; Brit Simpson; Sam Fletcher; Kevin Keltz; Russell, Lori and Hannah Alexander; Jacie Zingerman; Corky Marshall, Timmy Brooks and Matt Washington.

Visiting with the Joe Glenn Merediths and attending church with them on Mother's Day were Sherry Rose and Sean Rose. Kenneth Ashley and Carla Meador joined them for lunch. On Tuesday, Carla, Joyce and Sherry attended a concert in Lubbock to hear Morgan Jones play the cello in the Ed Irons Middle School orchestra.

Visiting with Alex and Jo Crowder on Sunday were their granddaughter, Amber Hale and great grandson Shandy from Midland, TX. Their daughter who is also Amber's mother, Denisa from Dalhart will join them on Monday and they will travel to Denton to attend the graduation of Janis Parker (another granddaughter) from Texas Woman's University who is graduating with a master's degree in speech pathology.

Visiting Pearl Patten for Mother's day and attending church with her were her children: JoAnn Reagan and grandson Bryce of Quitaque; Linda and Arnold Parker of Boyd, TX; Buddy Allen of Pampa. Son, Tommy Palmer and his wife Nancy of Lubbock joined them for lunch at the Windmill Café.

Chooch Meyer and Beau Long were home for Mother's Day as well as Matt Easter. They attended church with Boyd and Laura Long.

Zella Palmer attended the First Baptist Church with her son and daughter-in-law on Sunday, Jaron and Miranda Everett and Tinley also accompanied them. They went to Dougherty to Miranda and Jaron's home for lunch. Jan Charett and her children Sam and Sophia too were guests for lunch.

Louis and Beverly Shorter were in Roaring Springs to visit her mother, Grace Zabielski for Mother's Day.

Flomot News

By Earlyne Jameson

Overheard

On a brutally humid day, I walked past a miniature golf course and saw a dad following three small children from hole to hole. "Who's winning?" I shouted. "I am," said one kid. "Me," said another. "No, me," yelled a third. Sweat dripping down his face, the dad gasped, "Their mother is."

Cody and Mandi Barclay, Lane and Ashton of Borger, Lance and Sherrilyn Barclay, Kayla and Colton of Lubbock were weekend visitors of their parents, Sandra and Jerry Barclay. Special guests for a Mother's Day luncheon was Sandra's mother, Mrs. Erma Washington of Flomot.

Brenda and Darrell Cruse had a Mother's Day luncheon in their home Sunday. Special guests was her mother, Mrs. Marihelen Wason of Matador and his mother, Mrs. Tommie Jo Cruse of Turkey. Other guests were Leah Cruse of Amarillo, Derrick Cruse and Mrs. Keane (Laci) Cruse and Reese of Gillett, Wyoming, Charla and Bennie Marricle of Snyder. Visiting Sunday afternoon was Laci's family, Terry and Mary Ann Carson and Courtney of Borger.

Butch and Janice Hughes celebrated Mother's Day in Floydada with a luncheon in the home of son and family, Roger and Tiffany Hughes, Tara, Reagan and Brody. Other guests were Rickey, Tasha, Kendal and Kason Hughes, Gary and Pam Bennett and Nathan, Christy and Kenley Whittle, all of Floydada.

Mrs. Erma Washington attended the funeral Tuesday afternoon of her cousin, Marvene Barrow, 88, held at the Moore-Rose Funeral Home Chapel in Floydada.

Weekend visitors of Connie and Coy Franks and observing Mother's Day were son and family, Cory and Amy Franks, Hudson and Madison of Idalou. Her mother, Mrs. Erma Washington of Flomot visited

them Sunday afternoon.

Teresa and Tom Heck, Cody, Kacee and Micah of Turkey had a Mother's Day Luncheon in the home of her parents, Ruth and Orville Lee.

Sharing the joy of Mother's Day with Mrs. B. Rogers Sunday were daughter and family, Donna Sue and Stanley Degan of Calgary, Shay and Jimmy McDaniel, Seth, Luke and Kolt of Sundown, Mrs. Shawna Abernathy, Jake and Allie of Abilene and son, Donnie Rogers of Flomot.

Shonda and Roger Lee had a luncheon in Plainview Sunday for her mother, Mrs. Wanda Davey of Plainview. Other guests were Penny and Bud Taylor of Floydada and Mrs. Martha Taylor of Plainview.

Mrs. Ersie VanCleeve, grandchildren, Kimberly and Junior VanCleeve and Shellie Mortenez of Dougherty visited Johnnie Starkey, Jack and Nada Starkey Saturday.

Lori and Kevon Kleibrink, Karlee and Kyler of Clifton visited the weekend with her parents, Anna Beth and Joe Ike Clay. Joining them for a Mother's Day luncheon at the El Camino in Tulia Sunday were Tina and Pat Carson, Ryleigh, Parker and Walker, Mr. and Mrs. Billy Carson, Julie and Neal Edwards, Jaxon and Laney, all of Turkey.

Visiting Mother's Day with Mary Joe and Doyle Calvert and Glen Calvert were Mr. and Mrs. Alvia Joe Calvert of Dumas and Mr. and Mrs. Tim Mandrell and Peyton of Lubbock.

Guests for a Mother's Day luncheon in the home and Kathy and Clois Shorter Sunday were Dwain and Christi Milam, Haley and Emily of Petersburg, Kevin and Keri Sehon and Brian of Wolforth, Lynn and Judy Stark of Brady and L.E. Shorter of Flomot.

Mrs. Elisa Wigley of Lubbock visited from Saturday until Tuesday with her mother, Mrs. Aleda Ross celebrated Mother's Day.

Matador News

The Plains Consortium of Reading Coaches met for training and a luncheon last Wednesday at Hotel Matador. Presenting was Marcy Graves of Lubbock, a Texas Education Association (TEA) Reading Technical Assistant. Attending were Marilyn Hicks of Matador, Lyniece Donathan of Ralls, DeLane Brown of Valley, Cheryl McGlocklin of Chillicothe, Janie Wigley of Crosbyton, and Vivian Wallace of Lorenzo.

Dorothy and Terry Truex of Lewisville stayed at Hotel Matador last week as they toured points of interest in the area, including attending a play in Post and visiting the Palo Duro Canyon.

Sandy and Ray Pierce of El Paso, long-time friends of Marilyn and Randy Hicks, were in town Sunday and Monday. Sandy is with the Texas Agriculture Extension Service and presents the "Kids, Kows, and More" program to schools across the state. Motley County ISD students learned about the dairy and other Texas agricultural industries during the Monday program.

Also at MCISD Monday was the Southwest Mobile Dairy Classroom, an educational program that explains milk processing procedures to students and features a real dairy cow.

Jennifer Lawler hosted a Mary Kay party at Hotel Matador Saturday.

Marilynn Hicks is attending the TEA Advanced Reading Coaches Institute in Houston this week.

The La Carte Bridge Club met Tuesday at Hotel Matador for the final time before their summer break. They enjoyed a luncheon, visiting, and lots of friendly competition. Mary Jones was the hostesses.

Deanie Edwards spent the Mother's Day weekend in Dalhart with her son and family, Stephen, Lori and Haley Davis. Stephen cooked out on Saturday and Deanie had a great time visiting with old friends. She helped Lori make 110 mother's day corsages on Saturday for her church. She attended Sunday morning services with Stephen and family. Deanie stopped Friday in Amarillo to visit Carolyn Limmer who is in BSA Hospital recuperating from Back surgery.

Tom Edwards spent Saturday in Lubbock with his mother, Marge, for Mother's Day. He took her out to eat and got in a good visit with her.

Kay Bailey and Carol Campbell traveled to Amarillo Sunday, May 3, spending the night with David and Marilyn Rattan, for the back surgery of Carolyn Pohl Limmer on Monday, May 4. Carolyn is hospitalized at Baylor-St. Anthony's, and is recuperating in the rehab unit.

Medication Management Health Fair

A Medication Management Health Fair will be held at Motley County Senior Citizen's Center, 621 Stewart Street, on Thursday, May 21, 2009, from 10:30 a.m. to 1:30 p.m. The Health Fair, sponsored by the South Plains Association of Governments, Area Agency on Aging, will feature the following booths:

Medication Management, Blood Pressure, Home Safety, Bone Density Screening, Respiratory Screening, Diabetes Screening, Nutritional Screening, Cholesterol Screening, Hearing Screening, and 211 TEXAS. For more information, please contact Tommye Keith at 806-347-2496.

School Menu

May 14, Thursday-Breakfast: Jelly Biscuit, or Toast, Cereal, Applesauce, Milk. Lunch- Soft Taco, Spanish Rice, Tortilla Chips, Cookie, 1/2 Apple, Milk.

May 15, Friday, Breakfast-Waffle, Sausage, or Cereal, Toast, Fruit, Milk. Lunch-Pizza, Salad, Pineapple Chunks, Vanilla Wafers, Milk.

May 18, Monday, Breakfast- Waffle, Sausage, or Cere-

al, Toast, Juice, Milk. Lunch- Chicken Nuggets, creamed potatoes, gravy, green peas, toast, honey, milk.

May 19, Tuesday- Breakfast- Bagel or cereal, toast, fruit, milk. Lunch- Chicken Patty/ Bun, Lettuce, Tomato, Pickle Slices, Chips, of Fries, Slice Peaches, Milk

May 20, Wednesday- Breakfast- Biscuit, Scrambled, Eggs, Bacon, Juice, Milk. Lunch- Frito Pie, Salad, Corn, Crackers, Dessert, Milk.

Fairways & Rough

Scramble
May 5, 2009

1st place Randy Martin, Alvin Martin, Ray Martin, and Jim Watson.

Others playing were Tim Ward, David Taylor, Darrell Cruse, Jerry Johnson, Todd Johnson, and Kevin Keltz.

Closest to the pin- Tim Ward 23'7"

Thank You

Thank You for your calls, visits, food, and your prayers for me and my family during my trip to the hospital and my last stay in the hospital. Many thanks to the thoughtful friends that mowed our lawn.

Richard Turner

Relay for Life June 19

This Week's Local Forecast

Thursday	Friday	Saturday	Sunday	Monday	Tuesday	Wednesday
Mostly Cloudy 73/60	Mostly Cloudy 86/61	Mostly Cloudy 78/55	Partly Cloudy 77/54	Mostly Sunny 82/55	Partly Cloudy 82/54	Partly Cloudy 81/53

Weather Trivia

Which U.S. city has the most cloudy days?

Weather History

May 14, 1898 - A severe thunderstorm, with some hailstones up to 9.5 inches in circumference, pounded Kansas City, Mo. Windows were broken in nearly every house in central and eastern parts of the city, and several people were injured.

Moon Phases

Last 5/17	New 5/24	First 5/30	Full 6/7
--------------	-------------	---------------	-------------

Matador Motor and Implement
806-347-2422
Panhandle Plains Land Bank
806-296-5579

Seigler Funeral Home
806-347-2626
Alexander Fuel & Service
806-348-7958

Matador
Floral
for all your
floral needs

Tues-Fri 9-3
Saturday
9-noon
unless there is a funeral

806.347.2018
800-915-4559
Serving Motley County
Since 1995

Matador
Variety
347-2820
All
fabric
25%
off

Jaybird's Kitchen



NEW HOURS!
Tuesday-Thursday
7:30 am - 2:00pm
5:00pm - 9pm
Friday-Saturday
7:30 am - 9:00pm
Sunday
8:30 am - 2:00pm
5:00pm - 8pm
Friday Night
Fish Fry

Main St. Matador

347 2297

Notes from the Library

By Buffy Crutchley

I have had a lot of people ask me about learning how to "eBay". Well, I am pleased to announce a new addition to Motley County Library that will surely help with your desire to tackle the popular online auction site. I just bought a new book called "The Complete Idiot's Guide to eBay". This book looks to me like it can show you everything you could ever possibly want to know about buying and selling on eBay. So if that's something you've been wanting to try, I highly recommend this book.

After years, of keeping things the same, the library has decided it's time for a slight increase in the overdue fines. The current charge is 5¢ a day for late materials. Beginning June 1, this amount will increase to 10¢ per day.

I'm telling you now, so you have plenty of warning to dig around and find all those books you've been meaning to return! And you're always welcome to call or stop in, and renew your books for more time. This is a great way to keep from accruing those pesky charges.

The Friends of the Library had another successful meeting last Thursday. The best news I want to share with you today is about our lovely canvas tote bags. The Friends decided to offer the remaining bags at a reduced price. They are now only \$10! If you still haven't picked one of these up, I hope you'll take advantage of our sale. It's a great way to get a very nice bag, and support a worthwhile cause! Stop in today and pick one up!

Flomot Do Gooders Club has season of springtime

The season of springtime and Mother's Day was featured at the Do Gooders' Club of Flomot Tuesday afternoon, May 5 at the Community Center. Love was in bloom and joy blossomed with flower arrangements of spring beauty which was perfect in observance of Mother's Day.

Mrs. Erma Washington and Mrs. Doris Vinson, hostesses presided at a flower designed service and crystal appointments. The table was laid with a white lace cloth and centered with a large basket holding a bouquet of purple petunias. They served refreshments of chips and crackers with a delicious strawberry dip, decorated

ed cupcakes and cookies with fruit punch.

The hostess gift was the centerpiece that Mrs. Anna Beth Clay was pleased to take home with her when her name was drawn.

Mrs. Doris Vinson, vice president conducted the short business session. Mrs. Anna Beth Clay read the minutes of previous meeting that were approved. With a laze spring fever in the air visiting and renewing memories of their mothers was enjoyed.

Members attending were Mesdames Suzie Shannon, Doris Vinson, Waydetta Clay, Erma Washington, Anna Beth Clay and Tommie Jo Cruse.

Senior Citizens Menu

May 14, Thursday- Roast Beef Sandwich on wheat toast, Oven Fries, Lettuce, Tomato, Onions, Cherry Cobbler

May 15, Friday- Latin Pork Tenderloin, green Beans, roasted potatoes, wheat rolls, fruit salad

May 18, Monday- Beef

Stroganoff, carrot coins, biscuit banana pudding

May 19, Tuesday- Chicken spaghetti, zucchini, cucumber and tomato salad, garlic bread, gelatin and fruit.

May 20, Wednesday- Liver and Onions or Ham with pineapple, Peas and Carrots, Rolls, Tossed Salad, Mixed Fruit

FLOMOT BLUEGRASS FESTIVAL

MAY 14, 15, AND 16, 2009

FLOMOT, TEXAS on FM 599 (WATCH FOR SIGNS)

Thursday 6:00 p.m.-10:00 p.m.

Friday 6:00 p.m.-11:00 p.m.

Saturday 12:00 a.m.-11:00 p.m.

ADMISSION

Gospel Music and Barbeque Thursday Night
\$8.00 for music \$12.00 for Supper and Music
(Supper free with RV Parking)

Friday Night \$8.00 Saturday All Day \$12.00
Children under 13 free with an adult
RV parking \$10.00 per night

CALL (806) 469-5278 or (806)-269-1578
E-MAIL flomot@caprock-spur.com

BRING YOUR LAWN CHAIRS

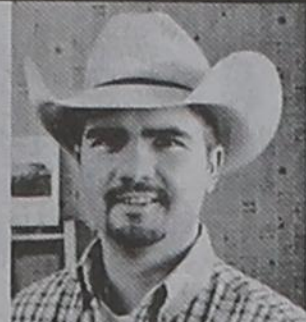
Ken's RV Park & Mini Storage Matador and Roaring Springs



806-347-2290 806-347-2455

Full Hook-ups Available
Mini Storage Rooms for Rent
Golf Cart Sales

County Agent's News



by Ryan Martin, Agri LIFE EXTENSION Agent

Private Applicators License

If you are in need of a private applicators license please contact the Extension office at 806-347-2733. In order to have a training to issue license we need several people to sign up. The training includes a video then a test administered by a representative from the Texas Department of Agriculture. A TDA representative will only make the trip if we have around 10 people sign up. Once we get enough people, a date will be set for the training.

Motley County Jr. Rodeo Buckles for sale

The Motley County Jr. Rodeo Association will be selling overstocked buckles to the public. These buckles are from past Jr. Rodeo's with dates ranging from 1979 to 2007. There are a total of 27 buckles to be sold. The small buckles are \$25 each and the larger buckles are \$50 each. The buckles are located in the Extension office, if you are interested, come by to look at them. They will be sold on a "first come first serve basis."

2008 Farm Bill Update

Is the ACRE Program Right For You?

The Texas A&M University's Agricultural Food Policy Center (AFPC) has developed a decision aid for producers considering ACRE. Available at www.afpc.tamu.edu, the ACRE Decision Aid provides producers in every county a risk based computer program for analyzing the ACRE decision.

The 2008 Farm Bill provided producers the opportunity to continue counter-cyclical payments that are triggered only by low prices or switch to a revenue based payment, referred to as the Average Crop Revenue Election (ACRE) payment, triggered by low prices, low yields or both.

Producers choosing to continue receiving CCPs would continue to receive direct payments and be eligible for loan deficiency payments and/or marketing loan gains. This choice is referred to in AFPC's Decision Aid as selecting the DCP program. Producers who select the ACRE program payment option, referred to in the Decision Aid as ACRE, must accept a 20% reduction in direct payments and a 30% reduction in loan rates. Producers can select the ACRE option in 2009, 2010, 2011, or 2012, but once the decision is made, the decision is fixed for life of the farm bill.

The ACRE/DCP election is on a farm unit basis so the decision must be made for each farm unit a producer controls. Differences in crop mix and base acre mix from farm unit to farm unit may cause the ACRE/DCP decision to differ across farms.

ACRE payments are only made if both the state revenue in a given year falls below the state benchmark revenue for that year and the farm revenue in that year also falls below the farm benchmark revenue. Farm and state benchmark yields are calculated using five year Olympic average yields and a two year moving average of national average prices.

To make the ACRE/DCP de-

cision in 2009 producers must take into consideration your yield risk, the state's yield risk, the correlation of your yields to the state's yield, and the risk of national prices for 2009-2012.

The ACRE Decision Aid developed by Agricultural and Food Policy Center faculty and staff, considers all of these factors including price and yield risk and the corresponding state and farm yield correlations. It is a web based model that allows you to enter the data for each of your farm units and view/print the results. You can save your input data and re-run the farm unit under alternative price and crop mix assumptions. The 2009 deadline to sign up for ACRE or DCP has been extended to August 14, 2009.

To learn more about the ACRE Decision Aid program, or to run it for a farm unit, visit your local county Extension office.

Landowners face decisions on conservation lands

AMARILLO – Many Conservation Reserve Program contracts are due to expire this September, and landowners need to give careful consideration as to what comes next for once highly erodible land, according to Texas AgriLife Extension Service personnel.

The land put into the federal program commonly called CRP in the mid 1980s provided permanent grassy cover on this relatively poor cropland, which was a tremendous benefit to wildlife, said Ken Cearley, AgriLife Extension wildlife specialist.

Approximately 36 million acres are currently in the program in the U.S., about 4 million acres of that in Texas, much of it in the High Plains.

"Landowners today find themselves at a crossroads because their contracts may be expiring fairly soon, and they know they can either re-enroll or break that land back out," Cearley said. "If you choose to return the land to farmland, you can expect a significant decrease in its value for wildlife."

There are a few things a landowner can do, however, to ameliorate some of the loss of wildlife habitat, he said. For example, grain farmers can leave stubble as high and as long as possible in the field for cover, as well as leave waste grain on the surface.

Cearley advised landowners to also think about leaving waterways and drainage areas in grass, as well as leaving a wide band of grass around playas and around field perimeters.

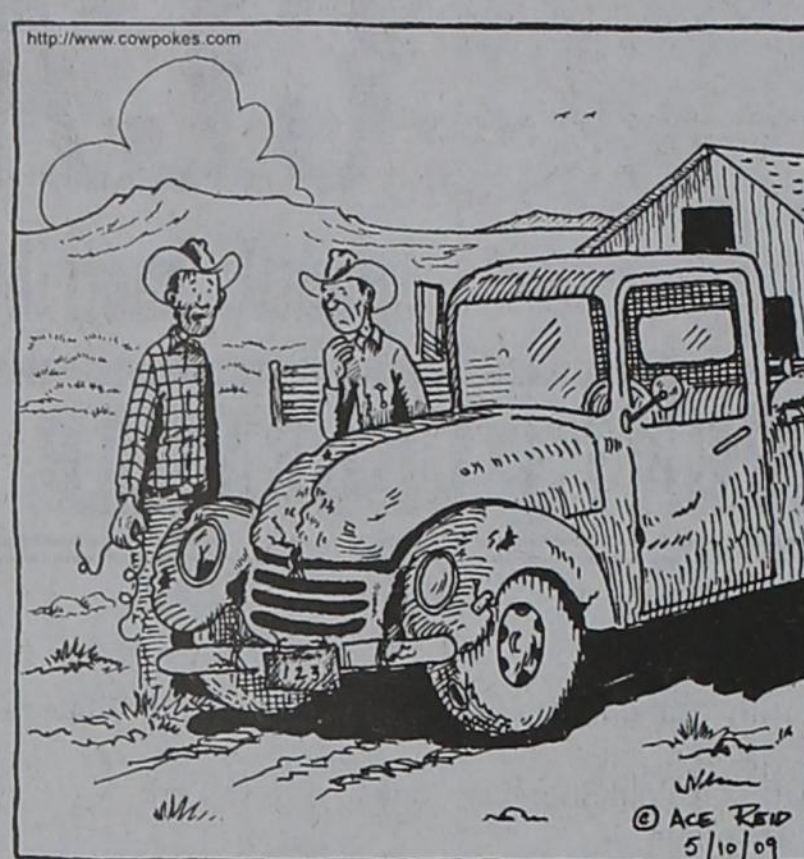
"If you keep the field in grass, you need to go through the mental exercise of deciding what your priorities are. Are you mainly interested in wildlife, livestock or a combination of the two?" he said.

If the land is grazed without any kind of modification, landowners can expect to see brush encroachment in many parts of the state, he said. Denser brush favors white-tailed deer, lesser brush favors mule deer and very little to no brush might favor pronghorns, for example.

"You can enhance the field by modifying that brush," Cearley said. "You might want to encourage some brush if your goal is to have white-tailed deer. Or you might need to control some

COW POKES®

By Ace Reid



"There's a shortage of money, the economy's fallin' apart, now there's a shortage of balin' wire and my pickup's fallin' apart!"

THIS FEATURE IS SPONSORED BY THE

MATADOR BRANCH
FIRST NATIONAL BANK OF SEYMOUR
MATADOR, TEXAS
YOUR "HOMETOWN" BANK Member FDIC

of that brush if you're thinking about quail production, because quail can get by on 10-15 percent brush cover in many areas."

DeDe Jones, AgriLife Extension risk management specialist, said landowners choosing to develop the land for wildlife enhancement could see some increased land values and additional income potential in the form of hunting and fishing leases.

AgriLife Extension recommends six practices to benefit wildlife on former CRP land: controlled grazing, interseeding of forbs and additional grass species, prescribed burning, woody plantings, invasive brush management and fall/winter strip-disking.

"It may seem a little cost prohibitive at first when you think about developing former CRP land for wildlife, however there are several government cost-share programs available," she said.

Those include the Grassland Reserve Program, Wetland Reserve Program (if there is a playa lake on the CRP land); and the Wildlife Habitat Incentive Program. Any of these programs can help offset the wildlife-development expenses, Jones said.

"There is a lot of income available out there if you develop your land for wildlife," she said.

The Texas A&M Real Estate Center estimates an additional increase of about \$75 per acre in land value if it is developed for wildlife, Jones said.

She said a Tulia hunting operation told her they would see a profit of about \$150 per gun during dove and pheasant seasons. Additionally, a Canadian ranching operation, offering a whole hunting experience to six to eight hunters a year, indicated it would net about \$10,000 a year off that hunting enterprise.

"The potential definitely exists to increase your overall land value as well as get a little bit of income off these former CRP lands that you develop for wildlife," Jones said. "Choosing to develop former CRP land for wildlife can be very beneficial to the land, the water, the wildlife and maybe even a landowner's pocketbook."

She did advise landowners to do a careful economic analysis in the form of partial budgeting to look at the benefits of developing the land versus the expenses before making any decisions.

Patrick Warminski, AgriLife Extension risk management

specialist, said one of the most important things to consider when making decisions about what to do with the land involves the economic costs associated with conversion.

If the choice has been made to put it back into a crop production, the landowner typically will be looking at a dryland wheat or grain sorghum crop in the Panhandle. "The first thing you have to do is remove the grasses, which will require the use of several different tillage trips," Warminski said.

For a dryland wheat crop, the landowner can expect to spend between \$130 and \$160 per acre; and for a dryland grain sorghum crop, the cost will be between \$190 to \$210 per acre, he said. "And that's just going to be to get the land back suitable enough to plant those two crops."

If the decision has been made to use the land for a livestock grazing operation, it may be necessary to remove the old grass and forage with a prescribed burn and apply fertilizer to encourage new growth. The expected cost of that process is about \$40 to \$60 per acre, Warminski said.

Two other aspects to consider are fence repair and possible water-well repair or water-well drilling, he said. If the fence is in bad shape, to upgrade to a five-strand barbed-wire fence will cost about \$6,400 per mile, including gates and corner posts.

For a windmill, the expected cost will range from \$20,000 to \$44,000, and a submersible pump with electricity will run in the neighborhood of \$16,000 to \$30,000, Warminski said.

"We know overall through the years CRP has been a valuable contributor to wildlife habitat in country that was formerly cropland," Cearley said. "We can see that benefit continue if we decide to keep our country in grass and manage it with good land stewardship in mind."

Landowners wanting more information on decisions concerning CRP land, as well as recommended budgets and frequency of management practices, can go to <http://agrilifebookstore.org> to find three publications in the "After the Conservation Reserve Program" series.

The publications are "Land Management with Wildlife in Mind," "Economic Decisions with Wildlife in Mind" and "Economic Decisions with Farming and Grazing in Mind."

MCJH Fajita Fundraiser

On Sunday, May 17, the Motley County Junior High Cheerleaders will be hosting a Fajita Dinner at the school cafeteria. Meals will be served from 11:30 - 2:00 p.m. You may dine in at the cafeteria or

take your plate home.

Adult meals will cost \$7.50 and will consist of two fajitas, rice, beans and dessert. Child meals will cost \$5.00 and will consist of one fajita, rice, beans and dessert. You will

have a choice of beef, chicken, or combination fajitas. Chips and homemade salsa will also be included in the meal.

You may purchase tickets prior to Sunday from any JH Cheerleader. Tickets may also

be purchased at the door on Sunday.

The proceeds will be used for the JH Cheerleading camp this summer at Wellington. Your support is greatly appreciated.

CLASSIFIED

email: mctribune@gmail.com 806-347-2400

May

Subscriptions Due
 Motley County-\$30
 Elsewhere-\$35
 Email-\$25
 Senior Discount \$1
 PO Box 490
 Matador, TX 79244

EVENTS CALENDAR

May

- 14 Matador City Council
 - 14-16 10th Annual Washington Cattle Company Bluegrass Festival, Flomot
 - 16 - District 3 Trap Shooting Contest - Iowa Park (shotgun)
 - 18 MCISD School Board, 7:30pm
 - 19 Matador Lions
 - 20 Graduating Seniors Breakfast, First Methodist Church in Matador, 8:30am
 - 21 Motley County High School Honors Banquet
 - 21 Medication Management Health Fair, Senior Citizens' Center, 10:30 a.m. to 1:30 p.m.
 - 21 Matador Masonic Lodge, 6:30 pm
 - 21 Foothills Fellowship 7:00 p. m. at the Community Center in Roaring Springs
 - 24 Baccalaureate, 6pm
 - 28 Eastern Star, 6:30pm
 - 28 Hackberry Creek Pot Luck Lunch
 - 29 Jr High Graduation 7:30
 - 30 High School Graduation 7:30
- June**
- 8 Commissioners' Court
 - 8 MCYO Season begins
 - 11 Matador City Council
 - 8-12 - Texas 4-H State Roundup - College Station
 - 14-16 - Howard College Lamb Camp - Big Spring
 - 14-19 - Texas Pork Leadership Camp - Amarillo to College Station
 - 15-17 - District 3 Teen Leader Lab - Brownwood
 - 19 Relay for Life
 - 24-27 - District 3 Horse Show - Vernon

FOR SALE

100% leather SOFA, loveseat & 3-pc table set. Lifetime warranty BRAND NEW!! \$670. 806-549-3110

PUB height table & chairs, espresso black finish. Factory direct buy. \$ 399 806-549-3110.

COMPLETE BEDROOM SUITE, 5-pc honey spruce finish, BOXED, never used \$475.806-438-3110

KING SIZE shaker bedroom suite, solid wood, list \$ 2190. Sell \$880 806-549-3110

BEAUTYREST SIMMONS classic mattress & box spring, brand new w/ warranty List \$1149, sell \$429 806-549-3110

3-pc complete KING ORTHOPEDIC mattress set, brand new!! \$265. 806-549-3110

FULL PILLOWTOP mattress set, \$125 TWIN mattress set. \$99. BOTH NEW!! 806-438-0081

Wanted

Needed: French doors. Please call 347-2939. ctf

FOR SALE

ACREAGE
 Motley County
 528 Acres
 Farm/Ranch Land

Briscoe County
 360 Acres
 Farm/Ranch Land

A.B. LYLES
 806-729-911
 PanhandleRanches.com
 Street Real Estate

Wanted

WANTED: Swathing & baling & hauling. Round or square bales. Quality work; will do at competitive rates or on shares. Good market for wheat hay right now. Call Crawford Wesley: 806-668-448 or 995-5053; or David Wesley 995-3687 or 296-3255.

Two families need housecleaning person, four hours each house, twice a month. Please call 347-2399.

HELP WANTED

HELP WANTED

Hackberry Creek Care Center

*Full time LVN
 *Full time Housekeeper
 *Dietary Aid
 *Cooks
 Please pick up applications at 805 Harrison Ave in Matador, TX or call 806-347-2942 for more information.

Hospice Hands of West Texas

RN Needed immediately full or part time

Benefits available
 Flexible, friendly work environment
 Interested applicants please contact
Tina at 806-652-3000 or fax resume to 806-652-2766

Hospice Hands of West Texas, Inc. is seeking a provider in Matador. The job consists of 6 hours a week and possibly more in the future. For more information please contact Nora Mendoza @ (806) 652-3000 or toll free @ 1-888-795-1212. ctf

Garage Sale

The Ericson Foundation will hold a garage and estate sale of the Georgia Mae Ericson Estate. The sale will be Saturday, May 16 from 8:00 am to 4:00 pm in Crosbyton at the Technology Center across from the Court House.

Wake up
 Wednesday mornings to the
MOTLEY COUNTY TRIBUNE
 Email Subscriptions Now Available \$25

MATADOR
 CD Garrison
 Ethel Smith
 Jim Watson
 Carl Pierce
 Ed D. Smith
 Louise Barton
ROARING SPRINGS
 Alex Crowder
 Joe Martinez
 Margie Payne
 Thelma Hughes
 Jerry Sedgwick

TEXAS
 Dale Smith, Quitaque
 Junior Bearden, Quitaque
 Motley Co Abstract Co
 Sam Swim, Lubbock
 Barbara Clark, Lubbock
 Grace Campbell, Lubbock
 Willena Hurt, Lubbock
 Marvin Dobbins, Lubbock
 Lynn Simmons, Lubbock
 HT Hughes, Lubbock
 Yellowhouse Machinery
 SPlains Electric Coop, Spur
 Larry Holley, Slayton
 Dorothy Lee, Muleshoe
 Jackie Maritt, Idalou
 Carolyn Redding, Floydada
 Clara Brown, Truscott
 Lee's Insurance, Clarendon
 Leo Reed, Amarillo
 Mildred Arnold, Stratford
 Buddy Allen, Pampa
 Van Bradford, Gruver
 Dickie Garrison, Red Rock
 Michelle Smith
 Mike Hodel, Lipan
 Dyron Clower
 Nelda Spray, Fort Worth
 Jim Welling, Midlothian
 Nona Williams, Granbury
 Annie Holt, Henderson
 Don Cannaday, Dallas
 Robena Duncan, Richardson

ELSEWHERE
 William Mantooth
 Lester Vogt
 John Clifton
 Dan Meador

Don's Muffler Shop

210 W. California
 Floydada
 806-983-2273
 FREE ESTIMATES

HARDIN & TURNER WESTERN TRADE DAY

MAY 16, 2009, FLOMOT, TEXAS ON FM 599
 BUY, SALE, TRADE, SPECIALIZING IN TACK &
 OTHER THINGS AROUND THE RANCH
 FOR MORE INFORMATION

CALL 806-983-1350, 806-469-5292 OR 940-937-6276

BANK DEPOSITORY FOR MOTLEY COUNTY FUNDS

Notice is herewith given that Motley County is accepting applications from banks to serve as the County's bank depository as required by 116.022 Local Government Code. Applications should be in accordance with 116.021 LGC. Applications must be submitted no later than June 3, 2009, to Motley County Judge, P.O. Box 219, Matador, Texas 79244. The applications will be considered at the regular term of Commissioners' Court on June 8, 2009. Motley County Commissioners' Court reserves the right to accept any or reject all proposals submitted.

Ed D. Smith
 Motley County Judge

ct22

Medication Management Health Fair
 Motley County Senior Citizen's Center
 Thursday, May 21, 2009, from

Hotel Matador

...a Bed and Breakfast
 in downtown Matador, Texas

www.hotelmator.com
 806.347.2939

NEED INSURANCE?

GET GOEN!

GOEN & GOEN INSURANCE

CROP-HOME-AUTO-FARM

BUSINESS-LIFE-HEALTH

203 BROADWAY, ROARING SPRINGS

348-7531 800-288-2865

For all your Ginning, Marketing & Planting needs

JOHNSON'S GIN

Silverton, Texas

806-823-2224 800-338-3960

Family Owned & Operated

Meredith Gas & Supply

348-7332

Your Locally Owned and Operated
 Propane Company

Propane & Service

24 hours-7 days a week!

We welcome new customers!

Tanks & Supplies available
 Propane appliance Services
 Pressure Tests & Leak Test performed upon request

WE ACCEPT VISA & MASTERCARD

Motley County Abstract Company

P.O. Drawer 1

Paducah, TX 79248

806-492-3573 Fax 806-492-3574

Complete Records for Abstracts & Title Insurance in
 Motley County, Texas

Nelda Hightower-Owner

Lisa Hightower Wood-Manager

WYLIE

LP GAS

"Proud to be a part of Motley County"
 Residential-Commercial-Parts & Acc.
 Farm & Highway Diesel CALL 806-347-2290
 Office still locally operated at 1021 Main-Downtown Matador
24 HOUR SERVICE-7 DAYS A WEEK
 WE APPRECIATE YOUR BUSINESS! MC & VISA

Germania INSURANCE

Joey & Brenda Lee

Lee's Insurance

P.O. Box 189

Clarendon, Texas 79226-0189

806/874-2130 phone

806/874-9394 fax

877/874-2130

HOME • AUTO • LIFE • COMMERCIAL

For quality and selections, shop right here at home...

GRAHAM SUPPLY YOUR HOMETOWN HEADQUARTERS

Furniture, Appliances, Gift Items, Artwork, Dishes,
 Flooring, Gardening & Fencing supplies, Tools,
 Hunting supplies and Much More!

Downtown Roaring Springs

806.348.7216

Tom Edwards, Attorney

806-347-2333



PAYNE PHARMACY

200 S. Main, Floudada, TX 79235

806-983-5111 or 800-345-7961

Denise Payne, R.Ph.

M-F, 8:30-6:00 & Sat., 8:30-1:00

We will be happy to mail your prescriptions!