

MOTLEY COUNTY TRIBUNE

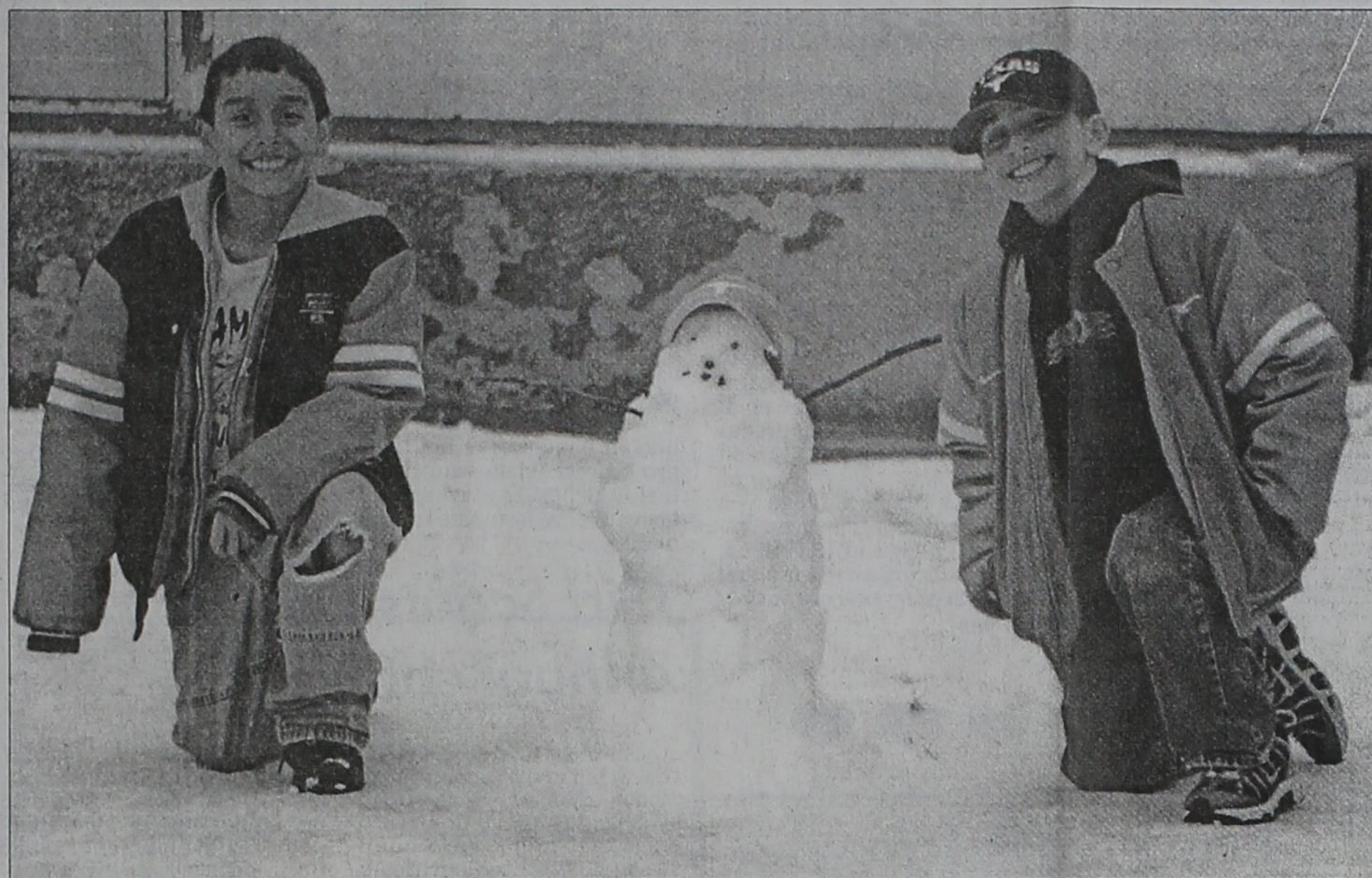
"VOICE OF THE FOOTHILLS"

.75¢

THURSDAY, JANUARY 25, 2007

ESTABLISHED 1891

ISSUE NO. 4



WINTER FUN — Joshua (left) and Michael Martin enjoyed some Winter fun this past weekend by building a snow/ice man after Motley County received rain, sleet and snowfall. Their snowman is a Texas Longhorn fan as indicated by his cap. Motley County received about 4 inches of snow Friday night and Saturday, with intermittent rainfall and sleet which made another icy weekend. Michael and Joshua are the sons of Roy and Lizabeth Estrada of Matador.

Relay for Life Kick off party Thursday night

Do you know a child who survived leukemia? Do you have a mother, sister, or aunt whose breast cancer was found early thanks to a mammogram? Do you have a friend or co-worker who quit smoking to decrease their risk of lung cancer? Each of these individuals benefitted from the American Cancer Society's research program.

research. Since 1946, they've invested approximately \$3 billion in research. The investment has paid rich dividends: the five-year survival rate has almost tripled since 1946, and diagnosis and mortality rates have declined each year since 1990.

A Relay for Life Walk is planned for Motley County June 12, 7:00 p.m. until 7:00 a.m.

A Kick-Off Party with door prizes will be held Thursday, January 25 (tonight) in the multi-purpose room. Families, businesses or anyone with an interest in finding a cure for Cancer is encouraged to be a part of this important event. Team packets will be distributed.

During the party, local survivors of cancer will be recognized. Anyone interested in volunteering to work or walk should contact Pam Newman at 348-7074 or Kathy Blanco at 347-2439.

Each day scientists supported by the American Cancer Society work to find breakthroughs that will take us one step closer to a cure. The American Cancer Society has long recognized that research holds the ultimate answers to the prevention, diagnosis, and treatment.

As the largest source of non-profit cancer research funds in the United States, the American Cancer Society devotes more than \$100 million each year to

Investigators and health professionals in universities, research institutes, and hospitals throughout the country receive grants from the American Cancer Society. Of the more than 1,400 applications received in 2003-2004, only 14 percent were funded. If the American Cancer Society had more money available for research funding, nearly 200 more applications considered outstanding could be funded.

You can help fund more of these applications by participating in the American Cancer Society Relay for Life, a team event to fight cancer. More funding means more cancer breakthroughs and more lives being saved. To learn more, call the American Cancer Society at 1-800-ACS-2345 or visit www.cancer.org.

The American Cancer Society is the nationwide, community-based, voluntary health organization dedicated to eliminating cancer as a major health problem by preventing cancer, saving lives, and diminishing suffering from cancer through research, education, advocacy and service.

MC School Board recognizes Students for All-District honors

The Motley County ISD Board of Trustees met December 14 in a regular meeting. All board members were present with the exception of Robert Fisk. Also attending the meeting were Superintendent Randy Brown, Principal Marilyn Hicks and Denise Ford.

The board recognized the All District football, Cheerleaders and the first place UIL participants.

Ted Davey gave the invocation. No one was present for open forum.

Minutes from the November meeting were approved. The board also approved the list of expenditures.

The board also approved the 2005-2006 Financial Audit.

The Technology plan was reviewed and approved.

The joint election with the City of Matador was discussed. This allows the City and the School Board to hold elections together. This was approved.

West Texas Food Service Cooperative Resolutions was reviewed and approved.

Mrs. Hicks informed the board that enrollment was at 177 and attendance was at 95.79%.

Mr. Brown informed the board of upcoming board training and gave the board copies of their current board training hours. The superintendent's evaluation was given to the board to have complete by the January board meeting.

The board met again for their regular scheduled monthly meeting January 18. All board members were

present. Also attending were Superintendent Randy Brown, Principal Marilyn Hicks and Denise Ford.

Mr. Brown gave the invocation.

The board was given plaques made by students from Motley County ISD in appreciation for School Board Recognition Month. The cafeteria staff and Jan Jones' class had prepared snacks for the board members.

No one was present for open forum.

Minutes of the previous meeting were read and approved. Financial reports were reviewed and discussed.

Mr. Brown recommended that the board continue to use Williams, Merriwether, Smith & Co. accounting firm for the school audit next year. The

board approved.

Mr. Brown is still looking into options to purchase a Type A handicap bus.

The board reviewed the local policies as prepared by TASB policy service. Mr. Brown recommended the board adopt the policies contained within the reconstructed TASB localized policy manual.

continued on page 2

Matador City Council meets City clean-up continues

Matador City Council met Thursday, January 11 for their regular monthly meeting. Council members in attendance were Terry Simpson, Lara Davey, Bert Darsey and Chuck Ream. Also present were Mayor Pat Smith, City Secretary Debra Scott, Water Superintendent Steve Barton and Mike Adams. Chuck Ream gave the invocation. Councilman Pat Seigler arrived at this time.

In the Water Superintendent's report, Steve Barton reported that the demolition and clearing of the Guerrero house was complete. He would like to demolish and clear the ICX building next. The repair to the water tower will begin in February and an extra tank will be needed to keep the city in water through the repair work. Steve proposed a revised route for the water grant. TxDOT is in the process of installing ADA ramps in town.

In the Secretary's report, Debra Scott updated council on the printer installation. She checked with SPAG about the ADA ramps and the sidewalk grant duplicating efforts. Kelli, SPAG representative, will report back to her on possible changes that can be made.

Council discussed having street lights checked and make any light replacements or repairs.

Mike Adams with OJD Engineering was in attendance to answer questions about the engineering proposals for the sidewalk grant. Council reviewed the three proposals submitted

by OJD, Oller and AND. Council voted to go with OJD Engineering.

Council approved minutes from the previous meeting and approved payment for all expenditures.

The rental of the upstairs apartment will be left to the discretion of the Chamber of Commerce and a new contract will be negotiated to state the liability of both parties.

Items for the next meeting will include dogs, excessive water bills, upstairs contract, and a stop sign ordinance.

Blood Drive set for January 29th

A Blood Drive has been set for January 29th, to be held at Motley County School from 11 a.m. until 3 p.m. in the Multipurpose Room. Donors should call Kathy Gillespie at the school to sign up for an appointment.

Remember donors have to be 17 years of age, 110 pounds, and in good health. Donors must have a picture ID and a list of any medications that they are currently taking. All donors will receive their choice of a mug, T-shirt, cap, etc.



PANCAKE CHEFS — Steve Moncrief (front) and Jim Watson, members of the Matador Lions Club, were pancake chefs for the club's annual Pancake Supper held Tuesday night at the School. Those enjoying the supper were served all the delicious pancakes and sausage they could eat by Lions Club members.

Valentine Brag page deadline nearing

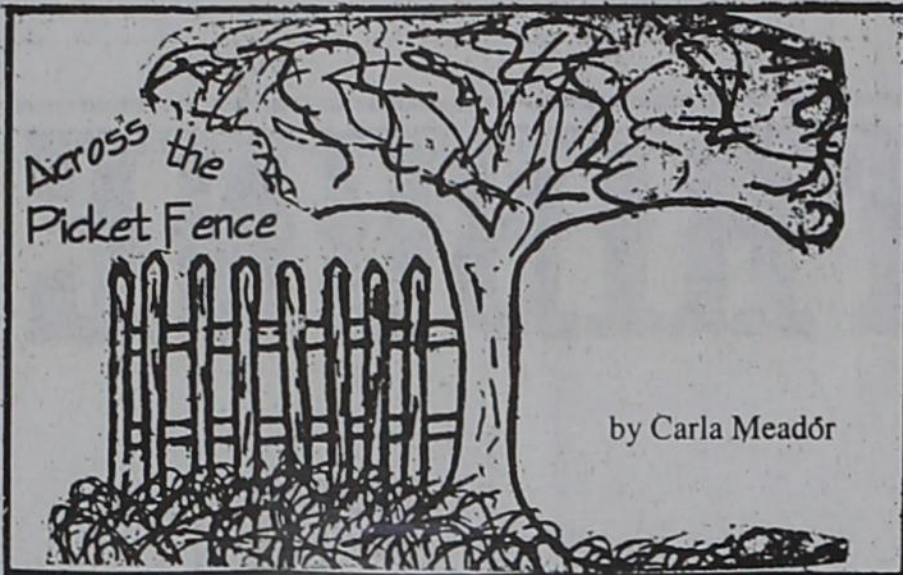
The deadline to get your photos and/or messages for the Valentine Brag pages is nearing. The Motley County Tribune will print your special Valentine feature in the February 15th issue. Pick out your favorite photo of your child, grandchild, great-grandchild, niece or nephew, friend, sweetheart, spouse or even your pet and bring it to the Tribune office as soon as possible. Or, you may print a special note/message or poem to your special Valentine. The deadline to get your picture or note in is 4:00 p.m., Thursday, February 7. The cost for a single heart is \$12.00 or \$20.00 for a double heart.

Don't miss out on your chance to show off your cutie! Photos and information can be mailed to the Motley County Tribune at P.O. Box 490, Matador, TX 79244 or e-mailed to motleytribune@yahoo.com, (if e-mailed, please call to confirm that it was received). Please send photos in jpeg format. Remember, the deadline is Thursday, February 7. For more information contact the Tribune office at 806-347-2400.

Motley County
Jr. Livestock
Show



February 24



Well, I enjoyed another cold weekend inside. And I did some baking. Warm and cozy, but bad for the waistline! The weatherman was off with his predictions for our area. I think we had about 4 inches of snow, contrary to the predicted 8-12 inches. I'm thankful for the moisture!

Our little backyard squirrel, Charlie, didn't mind the icy tree branches. He jumped from one to the other without a skip. And my little Jack Russells were keeping their eyes on him. I just knew he was going to slip on the ice and fall. But I guess his grip was good and he didn't want to miss a day playing and teasing the dogs.

January is a sloooooow month! Everyone's recovering from the hustle-bustle of November and December - Thanksgiving and Christmas. This month has always been slow at the newspaper and every other business I suppose. But here we are at the end of the month, already. Maybe February will bring some activity.

Speaking of February - if you haven't thought about a photo for the Valentine pages, start looking and bring it to the Tri-

School Board

from page 1

Legal Update 79 was reviewed and policies were accepted.

Mr. Brown informed the board that Motley County ISD policies will soon be online. Enrollment is at 180 with attendance at 97.06%. There will be board training on February 26. Lewis Drum will attend board training February 6. The Febru-

bune ASAP. This feature is one of my favorites. Everyone comments on this feature. We all enjoy looking at the cuties and who they belong to. It's been especially fun for me over the years. Some of the parents bringing photos of their little ones, were featured in one of our Valentine hearts themselves not so long ago, it seems.

February is the month of love! As we think about our Valentines, isn't it great to know that we are God's Valentines everyday!

LOVE IN EARTHEN VESSELS

by Cynthia Ulrich Tobias

We have love
Contained in an earthen vessel,
And we pour it out
With as much care
And in the greatest abundance
We can,
Even though we can't always
tell how it is received
Or the good it has done
And God,
In His infinite love
and understanding,
Keeps our earthen pitcher full,
Directs the flow of love,
And pours the contents
Directly from his own pitcher
Onto the places
We may have missed.

ary board meeting is set for the 19th at 7:30 p.m.

The board entered executive session at 8:41 p.m. and exited at 11:27 p.m.

Out of executive session, Mr. Davey made a motion to give Mr. Brown a 3% cost of living raise and a 5% job performance raise effective July 1, 2007, and to extend Mr. Brown's contract to 3 years beginning July 1, 2007 and ending June 30, 2010. The board approved.

Library Notes

By Suzanne Abbott,
Librarian



Next Thursday, February 1, there will be a meeting of the Friends of the Library at 3:00 p.m. in the library. We will discuss building use information and rules for the Annex. We need everyone's input.

Speaking of the Annex, the carpet is being laid this week. The new shelves will be shipped next week. The Annex has plumbing and will soon have tables and chairs. Things are moving right along.

New books in the library in-

clude the new novel by Richard North Patterson, *Exile*. We also have *Mathematics of Love* by Emma Darwin. Darwin is a new writer for this library.

Other new books include *Plum Lovin' A Stephanie Plum Novel* by Janet Evanovich and *Web of Evil* by J.A. Jance. These and other new books are ready for you to check out and enjoy these cold winter days.

See you at the Friends of the Library meeting next Thursday!

Matador students named to SPC honor lists

South Plains College recognized two Matador students for achieving academic excellence by naming them to the President's and Dean's Honor Lists for the fall 2006 semester.

"This is truly a great accomplishment and I commend these students on their hard work," said Darrell Grimes, vice president of academic affairs. "I am always pleased to see students achieve this honor."

Mandi Ream was named to the President's Honor List for

earning a 4.0 grade point average while being enrolled in at least 12 credit hours.

Charli Ream was named to the Dean's Honor List by earning at least a 3.25 grade point average with no failing grades while carrying at least 12 credit hours.

South Plains College is a two-year comprehensive community college in Levelland, Texas offering academic and technical programs in a variety of areas.

CHAMBER NEWS & VIEWS

By Marie-Louise Liebe-Harkort



Consider:

One kind word can warm three winter months.
- Japanese proverb

Winter is well and truly upon Motley County, and it has proven to be one where one kind word is challenged to warm us.

There are many sights that are rare - the frost on the grass, the ice on the trees, the empty shelves in the stores. Everybody is preparing for a winter storm, stocking up on groceries and batteries.

And some local residents even have had to move out of their homes, since their electricity has gone off. Good for the local hotels and motels, bad for the people who cannot stay or work in places with no heat and no light.

This is the time for hibernation, snuggling down under the covers and waiting for times when it is not dangerous to drive on the highways, for the time when one can enjoy the out-of-doors without getting frostbite.

If you can't hibernate, and human beings have not been given prerequisites for doing that, it is best to stay close to home. We are fortunate to have

shops with everything needed to hunker down and survive the cold. We have water and propane, we have food and a library full of books to read, we have the Internet and TV and E-mail. Unless, of course, the electricity goes out. If that happens, our towns will empty like a washing machine in spin cycle.

As cold as it may be, here people are preparing for the festival of kind words, of valentines and hearts and chocolates. That's right, Valentine's day is coming up on February 14th.

But wait. This preparation for Valentine's Day is premature. The next big event on the calendar is Groundhog Day, February 2nd, when we will find out how much more of this winter we will have to endure. Whether you hold with the predictions of Punxsutawney Phil, or go with the wise approach of General Beauregard Lee, or even bank on the forecast of the prairie dog from Lubbock, Groundhog Day will let us know if we are in for six more weeks of this weather.

So until Groundhog Day comes, hang in there, and keep the county warm with kind words.

Girl Scouts kick off annual cookie sale

For more than 80 years, the Girl Scouts have been raising money to fund troop activities by selling cookies - an experience that helps girls build strong skills, values and friendships. This year is no different, with Saturday, January 6th making the kick-off of the Annual Girl Scout Cookie Sale, one of America's favorite and eagerly anticipated events.

The Girl Scouts are offering everyone's favorites: Thin Mints (mint chocolate cookie coated in chocolate), Samoas (caramel and toasted coconut), All Abouts (shortbread with a rich fudge coating on the bottom), Tag-alongs (layered peanut butter and chocolate), Do-si-dos (oatmeal cookies with peanut butter filling), Trefoils (shortbread), and Cafe' Cookie (gourmet style cookie), as well as our latest addition, the Little Brownie (bite-sized chewy chocolate sugar free treat). You won't believe this luscious, chewy treat is sugar-free!

The cookie program is fun for everyone; girls enjoy the experience and consumers love the cookies. But like most things in the Girl Scout program, the benefit to girls is that selling cookies is a skill-building exercise.

"The Council's annual cookie program makes girls mini business owners, and that fosters business and entrepreneurial development," said Becky Burton, Executive Director/CEO of Caprock Girl Scout Council. "After years and years, the cookie program proves to be an excellent primer for business and financial skills girls need to develop in order to become more competitive in the workplace."

Over 4,000 Girl Scouts for the Caprock Council's thirty-one-county area are selling cookies now through March 4th. All cookies are priced at \$3 per package, with all proceeds benefiting local Girl Scouts. Cookies may be ordered via fax (806-748-0769) or phone (806-745-2855). Proceeds benefit individual troop programs and Council initiatives.

Girl Scouts of the USA is the world's largest organization dedicated to helping all girls everywhere build character and gain skills for success in the real world.

For more information, contact Girl Scouts of Caprock Council at 806-745-2855.



Traveler's Inn Bed & Breakfast

Major Credit Cards Accepted
201 Broadway ~ Roaring Springs ~ 806-348-7304
www.travelersinnbandb.com
email: edith_daniell@hotmail.com

Winter Clearance SALE!
50% - 75% off
All Clothing & Avon
25% off Purses & Wallets
New to You 806-347-2388

Valentine Brag Pages

will be printed in the February 15th issue
DON'T MISS IT!



Bring us a picture of your Special Valentine and we'll put in a Heart like the one above.

SINGLE HEART - \$12.00
DOUBLE HEART - \$20.00

Motley County Tribune

"Sirs, We Would See Jesus"



Wilbur Smith, a respected Bible scholar of the last century, wrote: "The latest Edition of the Encyclopedia Britannica gives twenty thousand words to the person, Jesus, and does not even hint that He did not exist. More words are given of Jesus than Aristotle, Alexander, Cicero, Julius Caesar, or Napoleon Bonaparte."

Even Napoleon said of Jesus: "I know men and I tell you that Jesus Christ was no mere man. Between Him and whoever else in the world there is no possible term of comparison." In all of the Bible there is nothing so captivating as the study of the Jesus and His effect upon all that came into contact with Him. His impact upon the people of His days upon the earth was such that people would ask, "We want to see Him."

The Bible portrays Jesus as the Son of Man, the Son of God. He was mistreated, finally hated, maligned, beaten and then nailed to a cross. This is the man that spent His life giving and serving. The Bible says of Him, "That He came unto His own and they that were His own received Him not." Yes, many saw Jesus and yet refused His message nor would they be identified with Him.

Would we see Jesus? Would we be willing to be identified with Him? If so, it will take exposure to God's Word, coupled with prayer and obedience to walk with Jesus. It will mean growing and maturing in the "grace and knowledge of our Lord Jesus Christ." I want to see Him in glory. I am sure that you do too.

ROARING SPRINGS CHURCH OF CHRIST

Michael G. Crowley, Sr.

BIBLE STUDY 10:00 A.M. WORSHIP 9:00 A.M.



Senior Health Properties - Texas, Inc.

A NOT FOR PROFIT CORPORATION

When you're looking for long-term care

you can count on our team of healthcare professionals to create an atmosphere of care and compassion. For over 25 years, we've been committed to helping our residents enjoy life to the fullest while maintaining their independence.

Ask us about
culture change!



Floydada Rehab & Care Center
Special Needs Unit for Alzheimers
925 W. Crockett
Floydada, TX 79235
Contact: Sandra Seago, 983-3704

Lockney Health & Rehab Center
401 N. Main St.
Lockney, TX 79241
Contact: Keri Powell
652-3375

News Around the County

Roaring Springs News

By Monta Marshall

Our second half of cold icy weather is over. I think the news media really caused a lot of pandemonium in Lubbock for almost nothing. Hearing the news I expected EVERYTHING to come to a screeching halt. I wonder if they had a little egg on their face after having the National Guard alerted, school called off for the day at LISD? I suppose city residents can't see enough of the sky to make their own assessment the way we country people can. I have been caught in a blizzard and could not reach home one time when we lived near Bovina. I would have appreciated knowing it was coming. I did see the sky and it looked unusual but it was short sleeve weather with sand blowing on the 26th of March - Easter weekend.

I think this is the first time I ever noticed icicles that did not hang plumb. The high wind a barely freezing weather caused the icicle to have definite curve toward the side of the house.

Pat Groves notified Edith Daniell that Rita Groves has been moved to the rehab center for therapy and will be there for more than a week. If you are planning to visit Rita, Pat asked that you check with Shere Dickey before visiting to

get her status and her schedule. Shere's cell number is 806-789-2009; her home number is 806-793-9331. Rita fell and broke her hip and had hip replacement surgery.

Banty and Sybil reported that Dan Brandon who has been in the VA Hospital in Amarillo is being moved to a convalescent center. Dan broke his heel and had to have surgery on it. To send Dan a card, send it to: Dan Brandon c/o VA Hospital; 6010 West Amarillo Blvd.; Amarillo, Texas 79106. I believe the convalescent center is part of the hospital.

Some of the churches have had to call off services due to the icy steps at their buildings. First Baptist at Roaring Springs has had services both Sundays and Sunday before last we had three visitors. This past week we had four. Sunday there was a large crowd for FBC Roaring Springs even though some of our regulars could not get there.

Full Gospel Church has also had services both Sundays.

Work is progressing on the cookbook that the Women on Mission are working on. Remember if you would like to contribute recipes or have an advertisement in the cookbook that mid-February will be the deadline.

Flomot News

By Earlyne Jameson

OVERHEARD

It may be Elementary, but no one went to elementary school in the 1930's-40's. We all trudged in our rubber galoshes to grammar school. That wasn't such a bad idea when you think about it since they actually taught a class called grammar. I think it has been eliminated when I hear college educated ones say, "Me and him are going to the mov-

ies" or "We ain't got nothing to do."

No visiting or visitors in Flomot this week after being cautioned to stay off highways, roads and streets. There were not any electrical outages or frozen water pipes after a reported four inches of snow and over an inch of icy moisture during the cold weekend.

Thank you for reading the Motley County Tribune!

OBITUARY

Freida Jo Maxey

Freida Jo Maxey, 78, a lifetime Paducah resident passed away January 18, 2007, at a Brownwood nursing home. Funeral services were held at 10 a.m. Tuesday, January 23, at the First Baptist Church of Paducah with Pastor Roy Keith officiating. Interment followed at Paducah Garden of Memories under the direction of Seigler Funeral Home.

Freida was born in Cottle County September 8, 1928, to Joseph Robert and Lola Mae (Ray) Meador. She graduated from Paducah High School with the class of 1946 and continued her education with three years of college at TSCW in Denton and Texas Tech in Lubbock.

Freida was a member of the First Baptist Church and enjoyed a 50 year career as a bank teller. She worked three years with the First National Bank of Lubbock and 47 years with the First National Bank of Paducah. She loved her work and fellow workers. She was especially proud of her family's Cottle County pioneer heritage.

Freida had a very long list of lifetime accomplishments. She loved her parents and cared for them until their passing and then took over managing the family ranch. She was an accomplished pianist and developed her own style of blues/jazz, and taught private piano lessons for years. She was an excellent baker, specializing in desserts and an extremely good seamstress, making all of her daughter's clothes.

In her quiet time, Freida enjoyed socializing and traveling with her family and friends. She especially enjoyed spending time with her grandsons, Nick and Chris. She loved bringing them home with her during the summers.

Freida was preceded in death by her parents, her husband of 27 years, Harold Rudolph Maxey, and a brother, Jack Graham.

She is survived by her daughter and son-in-law, Carla Jo and Dr. Robert D. Goodwin of Brownwood, Texas and two grandsons, James Nicholas Goodwin and Jon Christopher Goodwin, both of Austin, Texas.



WINTER DAMAGE — This big branch was only one of many around Motley County breaking from the weight of the ice after last weekend's winter storm bringing rain, sleet and snow. This big tree is located in the front yard of Steve and Beverly Barton of Matador.

Jordan's Carpet & Upholstery Cleaning

Barry Jordan & Matt Jordan

CALL NOW FOR "MATADOR DAY"

(806) 795-5060

Free Estimates * Emergency Water Extraction

Counter-top Refinishing

2 Rooms/Hall - \$50; 3 Rooms/Hall - \$70; 7 Rooms/Hall - \$130

(Plus Mileage Charge)

For quality and selections, shop right here at home...

GRAHAM SUPPLY

Your Hometown Headquarters

for Furniture, Appliances, Gift Items,

Artwork, Dishes, Flooring, Gardening & Fencing Supplies,

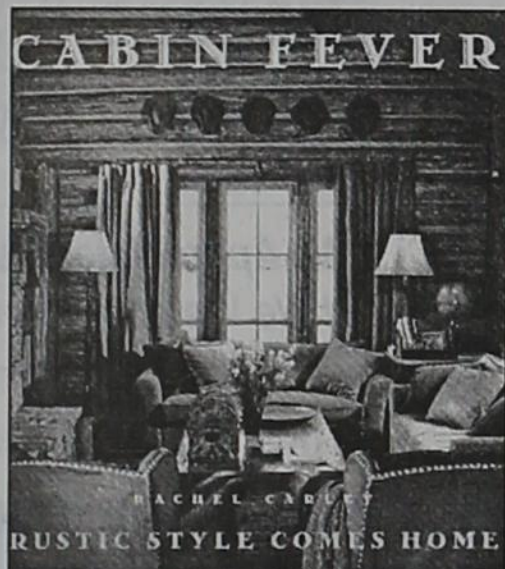
Tools, Hunting Supplies and much more!

Downtown Roaring Springs

806-348-7216

WE'VE GOT BOOKS!

Do you have



?

Need a new look for your

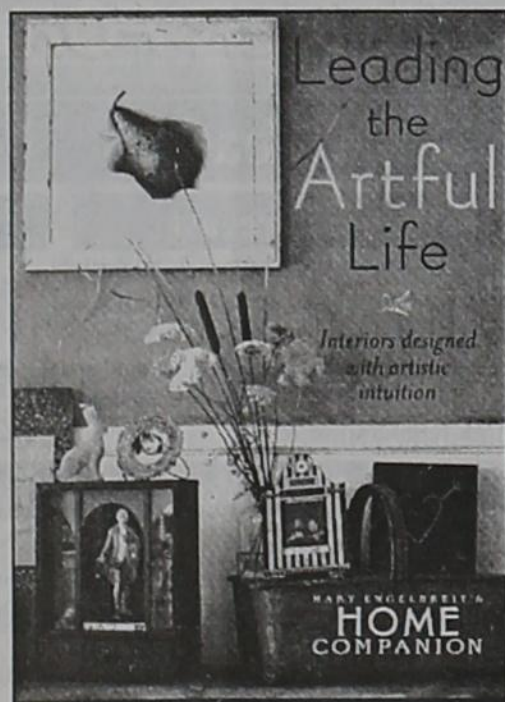


?

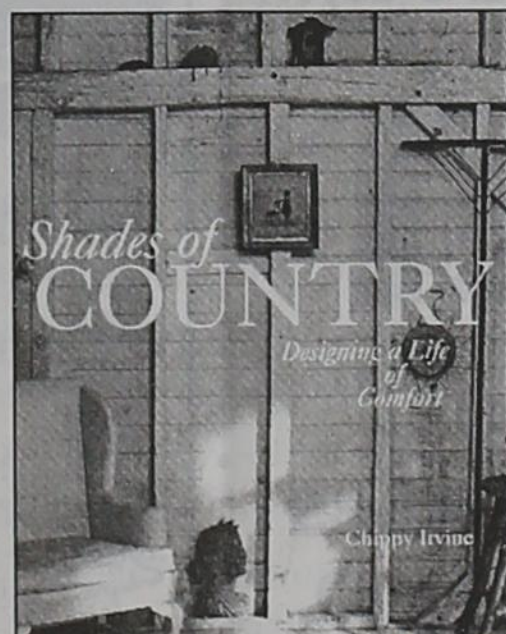
Get some



while



with



for your



If you need a new look for your home, we've got the perfect book for you!

A Great Selection of Decorating books and many, many others!

A PERFECT GIFT FOR YOUR VALENTINE!

CALL FOR TITLES, PRICES AND INFORMATION
MAIL ORDER AVAILABLE!

MOTLEY COUNTY TRIBUNE

806-347-2400

FARM SERVICE AGENCY NEWS

BY JOHN BIRD, CED



SELLING COTTON EQUITY?

According to FSA regulations, when a producer sells their equity in cotton, the cotton is immediately ineligible for loan deficiency payments ("pop" payments). When the equity is sold, you are considered to have lost beneficial interest in your crop.

If cotton has already been placed into a loan, and then the equities are sold, the loan must be immediately repaid at principal plus interest.

If there is any question about a contract, you should bring it to your local FSA office before entering in to it, if you wish to remain eligible for FSA payments.

NEW REQUIREMENT FOR PARTNERSHIPS

A new rule is in effect for partnerships that do business in the FSA office. In order to be eligible for payments in 2007, a partnership must provide us with one of the following: official articles of partnership, or your 1065 (K-1) IRS tax forms. This is a national requirement, and the purpose is to provide proof of members and their shares. Please call us for any additional information.

FOREIGN INVESTORS MUST REPORT LAND HOLDINGS

Foreign investors with an interest in agricultural lands in the United States are required

to report their holdings and any transactions to the U.S. Secretary of Agriculture.

Any foreign person who acquires or transfers any interest, other than a security interest, in agricultural land in the United States is required by law to report the transaction no later than 90 days after the date of the transaction.

Foreign investors must file Agricultural Foreign Investment Disclosure (AFIDA) Reports with the Farm Service Agency county office in which the land is located.

Failure to file a report, filing a late report or filing an inaccurate report can result in a penalty with fines up to 25 percent of the fair market value of the agricultural land.

For AFIDA purposes, agricultural land is defined as any land used for farming, ranching or timber production, if the tracts total 10 acres or more.

Disclosure reports are also required when there are changes in land use. For example, reports are required when land use changes from nonagricultural to agricultural or from agricultural to nonagricultural.

Foreign investors must also file a report when there is a change in the status of ownership such as owner changes from foreign to non-foreign, from non-foreign to foreign or from foreign to foreign.

Initial Ethanol push challenges beef market

by Kay Ledbetter
Texas Cooperative Extension

Amarillo - Like it or not, ethanol is coming, and beef producers must be prepared to weather the transitional phase and capitalize on the potentials in the future, said two speakers at the Southwest Beef Symposium in Amarillo.

"The short run is going to be tough, but in the long run, things will work out," said Dr. Steve Amosson, Texas Cooperative Extension economist.

Feed prices are being driven up by predictions of 3 billion gallons of ethanol production capacity coming online in the next year. Ethanol would require almost an 8-million acre increase in corn acreage, which equates to an additional 1.1 billion bushels of corn, Amosson said.

"I feel the corn prices will range from \$3 to \$4.25 per bushel on the board for the next couple of years, and the differential between corn and sorghum will narrow," he said.

Competition for acreage will increase, forcing other feed sources and crop prices higher.

In the short run, fed cattle prices will remain relatively unchanged, and feeder cattle and calf prices may continue to soften, Amosson said. A rule of thumb, he said, is calf prices will drop \$1.50 per hundredweight for every 10 cent rise in corn prices.

This is going to reduce the predicted expansion phase of the cattle cycle, he said. But in three to four years that reduction will have cattle producers seeing record prices.

"Cattlemen also have a potential to gain market share relative to the swine and poultry industries because cattle can be fed the distiller's grain

by-products, where the other industries can't," Amosson said.

"We just have to learn to feed those DDG's (dried distiller's grain)," he said.

Dr. Jim MacDonald, Texas Agricultural Experiment Station beef cattle nutritionist, agreed, saying "You don't have to like it, but you had better learn how to feed it."

And that, MacDonald said, is his job - helping the cattle producers learn how to feed the by-product.

While ethanol had its share of unfriendly comments during the two-day symposium, MacDonald said, "We're going to get there, we just have to manage the transition."

"A lot of concern has come with ethanol in this area," he said. "But we are better off with the plants here than not because we're not the only game in town."

Dried distiller's grains from the Midwest are being shipped into the export market, he said. So the fact that the Panhandle will produce 600 million gallons of ethanol per year soon, resulting in 1.5 million tons of distiller's grains, will help keep prices reasonable.

When corn is processed for ethanol, it breaks down to one-third ethanol, one-third carbon dioxide and one-third by-product or distiller's grain, MacDonald said.

These distiller's grains still have all the nutrient profile of corn, only the starch has been removed, he said. It has 40 to 45 percent fiber and 25 to 30 percent crude protein.

"It's going to be a cheaper protein source in the future and if used as a forage supplement, it can be used for both protein and energy supplementation," MacDonald said.

COW POKES® By Ace Reid

http://www.cowpokes.com



"Jake I promise if you wont blow any more smoke in my face, I ain't gonna spit any tobaccer juice in yores!"

THIS FEATURE IS SPONSORED BY THE MATADOR BRANCH

FIRST NATIONAL BANK OF SEYMOUR

MATADOR, TEXAS

Your "Hometown" Bank

Member FDIC

Thank you for reading the Motley County Tribune!

For all your Ginning, Marketing & Planting needs

Johnson's Gin

Silverton, Texas

806-823-2224 • 800-338-3960

Family Owned & Operated

Buy USA Grown & Made - It Matters!

Meredith Gas & Supply

348-7332

Your Local Propane Company

Propane & Service

24 hours - 7 days a week!

We Appreciate Your Business and We Welcome New Customers!

Tanks & Supplies available
Propane Appliance Services

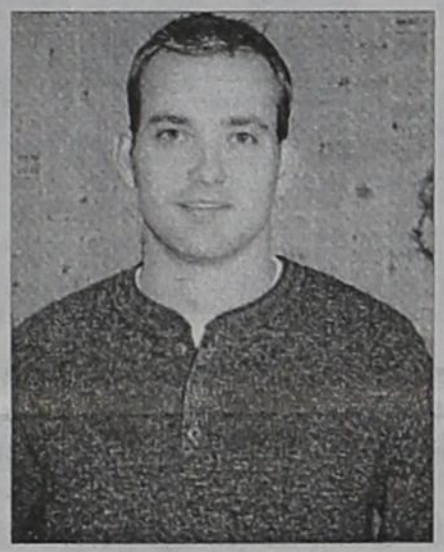
Pressure Tests & Leak Tests performed upon request

WE ACCEPT VISA & MASTERCARD!

NRCS announces new employee

The Natural Resource Conservation Service center announces a new employee. Rudolf (Rudy) E. Schiefelbein is excited to join the NRC team in Matador.

Rudy was born in Starr County, deep in South Texas. He attended Sharyland High School in Mission, Texas and graduated in May of 2002. After high school he pursued a bachelor degree in Rangeland Ecology and Management from Texas A&M University in College Station, where he received his diploma December 16, 2006.



Rudy Schiefelbein

Rudy grew up working on his father's ranch and oil and gas leases. During the weekend and holidays he enjoyed hunting and fishing and became very attached to the outdoors which led to his degree in Range.

"I enjoy my job and working hard to better the land. I hope that I can make an impact in this

county and other surrounding counties. I was taught at an early age that anything gained must be gained through hard work," Rudy said.

He comes to Matador from Plainview where he has lived and worked since receiving his degree.

YOUR ROAD TO A NEW CAREER!

- Paid CDL Training!
- No Experience Needed!
- Earn \$40 - \$75K Yearly!

Stevens Transport offers the best comprehensive training program for new drivers! Get your career rolling and enjoy exceptional earnings and great benefits from the #1 premier transportation carrier!



For more information, call 800-333-8595

www.stevenstransport.com

Farmers and Ranchers call HP FEED & SEED

FOR ALL YOUR LIVESTOCK NEEDS

"Guaranteed" Evergreen Feeds, Sunrise Feeds, Vet Supplies, Pet and Wildlife Feeds and more

We're your Local Dealer for

T&S Trip Hoppers and Gallagher Fence Chargers

We're also your BEEF CONNECTION from "Pasture to Plate"

Beef grown and finished on a grain ration by

STAFFORD CATTLE CO.

Give us a call ... We Appreciate Your Business!

806-348-7019, Store or 806-269-7514, Mobile

Roaring Springs

Brighten a cold Winter's day...



20 oz.

Candles \$3.99

Matador Variety

Fulfillment (New Testament)

And that he was buried, and that he rose again the third day according to the Scriptures:

1 Corinthians 15:4

LOCAL WEATHER FORECAST

Motley County Tribune Weather Jan. 25, 2007

7-Day Forecast	In-Depth Forecast	Moon Phases																																														
Thursday Mostly Sunny High: 50 Low: 29	Today we will see mostly sunny skies with a high temperature of 50°, humidity of 43% and an overnight low of 29°. The record high temperature for today is 85° set in 1970. Friday, skies will be mostly cloudy with a high temperature of 49°.	<table border="1"> <thead> <tr> <th>First</th> <th>Full</th> <th>Last</th> <th>New</th> </tr> </thead> <tbody> <tr> <td>1/25</td> <td>2/2</td> <td>2/10</td> <td>2/17</td> </tr> </tbody> </table>	First	Full	Last	New	1/25	2/2	2/10	2/17																																						
First	Full	Last	New																																													
1/25	2/2	2/10	2/17																																													
Friday Mostly Cloudy High: 49 Low: 27	<table border="1"> <thead> <tr> <th>Day</th> <th>High</th> <th>Low</th> <th>Normals</th> <th>Precip</th> </tr> </thead> <tbody> <tr> <td>Sunday</td> <td>25</td> <td>19</td> <td>51/26</td> <td>0.01"</td> </tr> <tr> <td>Monday</td> <td>31</td> <td>16</td> <td>52/26</td> <td>0.00"</td> </tr> <tr> <td>Tuesday</td> <td>34</td> <td>20</td> <td>52/26</td> <td>0.00"</td> </tr> <tr> <td>Wednesday</td> <td>39</td> <td>26</td> <td>52/27</td> <td>0.00"</td> </tr> <tr> <td>Thursday</td> <td>46</td> <td>29</td> <td>52/27</td> <td>0.00"</td> </tr> <tr> <td>Friday</td> <td>37</td> <td>28</td> <td>52/27</td> <td>0.23"</td> </tr> <tr> <td>Saturday</td> <td>32</td> <td>29</td> <td>52/27</td> <td>0.68"</td> </tr> </tbody> </table>	Day	High	Low	Normals	Precip	Sunday	25	19	51/26	0.01"	Monday	31	16	52/26	0.00"	Tuesday	34	20	52/26	0.00"	Wednesday	39	26	52/27	0.00"	Thursday	46	29	52/27	0.00"	Friday	37	28	52/27	0.23"	Saturday	32	29	52/27	0.68"	<table border="1"> <thead> <tr> <th>Precipitation</th> <th>Normal precipitation</th> <th>Departure from normal</th> </tr> </thead> <tbody> <tr> <td>0.92"</td> <td>0.11"</td> <td>+0.81"</td> </tr> </tbody> </table>	Precipitation	Normal precipitation	Departure from normal	0.92"	0.11"	+0.81"
Day		High	Low	Normals	Precip																																											
Sunday		25	19	51/26	0.01"																																											
Monday		31	16	52/26	0.00"																																											
Tuesday		34	20	52/26	0.00"																																											
Wednesday		39	26	52/27	0.00"																																											
Thursday		46	29	52/27	0.00"																																											
Friday	37	28	52/27	0.23"																																												
Saturday	32	29	52/27	0.68"																																												
Precipitation	Normal precipitation	Departure from normal																																														
0.92"	0.11"	+0.81"																																														
Saturday Mostly Sunny High: 44 Low: 26	<table border="1"> <thead> <tr> <th>Average temperature</th> <th>Average normal temperature</th> <th>Departure from normal</th> </tr> </thead> <tbody> <tr> <td>29.4°</td> <td>39.2°</td> <td>-9.8°</td> </tr> </tbody> </table>	Average temperature	Average normal temperature	Departure from normal	29.4°	39.2°	-9.8°	Data as reported from Childress, Texas																																								
Average temperature		Average normal temperature	Departure from normal																																													
29.4°		39.2°	-9.8°																																													
Sunday Partly Cloudy High: 39 Low: 22		<table border="1"> <thead> <tr> <th>Weather History</th> <th>Sun & Moon Times</th> </tr> </thead> <tbody> <tr> <td> Jan. 25, 1837 - At 7 p.m., a display of the northern lights danced above Burlington, Vt. Its light was equal to the full moon. Snow and other objects reflecting the light were deeply tinged with a blood red hue. Blue, yellow and white streamers were also noted. </td> <td> <table border="1"> <tbody> <tr> <td>Sunrise today</td> <td>7:44 a.m.</td> </tr> <tr> <td>Sunset tonight</td> <td>6:07 p.m.</td> </tr> <tr> <td>Moonrise today</td> <td>11:37 a.m.</td> </tr> <tr> <td>Moonset today</td> <td>12:33 a.m.</td> </tr> </tbody> </table> </td> </tr> </tbody> </table>	Weather History	Sun & Moon Times	Jan. 25, 1837 - At 7 p.m., a display of the northern lights danced above Burlington, Vt. Its light was equal to the full moon. Snow and other objects reflecting the light were deeply tinged with a blood red hue. Blue, yellow and white streamers were also noted.	<table border="1"> <tbody> <tr> <td>Sunrise today</td> <td>7:44 a.m.</td> </tr> <tr> <td>Sunset tonight</td> <td>6:07 p.m.</td> </tr> <tr> <td>Moonrise today</td> <td>11:37 a.m.</td> </tr> <tr> <td>Moonset today</td> <td>12:33 a.m.</td> </tr> </tbody> </table>	Sunrise today		7:44 a.m.	Sunset tonight	6:07 p.m.	Moonrise today	11:37 a.m.	Moonset today	12:33 a.m.																																	
Weather History		Sun & Moon Times																																														
Jan. 25, 1837 - At 7 p.m., a display of the northern lights danced above Burlington, Vt. Its light was equal to the full moon. Snow and other objects reflecting the light were deeply tinged with a blood red hue. Blue, yellow and white streamers were also noted.		<table border="1"> <tbody> <tr> <td>Sunrise today</td> <td>7:44 a.m.</td> </tr> <tr> <td>Sunset tonight</td> <td>6:07 p.m.</td> </tr> <tr> <td>Moonrise today</td> <td>11:37 a.m.</td> </tr> <tr> <td>Moonset today</td> <td>12:33 a.m.</td> </tr> </tbody> </table>	Sunrise today	7:44 a.m.	Sunset tonight	6:07 p.m.	Moonrise today		11:37 a.m.	Moonset today	12:33 a.m.																																					
Sunrise today	7:44 a.m.																																															
Sunset tonight	6:07 p.m.																																															
Moonrise today	11:37 a.m.																																															
Moonset today	12:33 a.m.																																															
Monday Partly Cloudy High: 41 Low: 25	© 2007 Accessweather.com, Inc.																																															
Tuesday Mostly Sunny High: 45 Low: 24																																																
Wednesday Partly Cloudy High: 48 Low: 30																																																
Thursday Mostly Sunny High: 50 Low: 29																																																
Friday Mostly Cloudy High: 49 Low: 27																																																

EASY RENT

RENT-TO-OWN

ELECTRONICS • FURNITURE • APPLIANCES

We Now Have **SIRIUS SATELLITE RADIO**

2209 F NW Childress
Toll Free 1-866-937-2130

Listen to your favorite music or talk show with no commercials!
RIGHT NOW - NO WAITING
FREE INSTALLATION

NO CREDIT CARD REQUIRED!

250+ CHANNELS!
STARTS \$29.99
OR Dish Network
Lowest Price Ever!

DIRECTV. \$19.99 / month!

FREE 1-4 ROOM SYSTEM!
FREE INSTALLATION!
FREE MOVIE CHANNELS!
FREE DVR OR HD RECEIVER!

Call Now 1-800-574-1938

★ AUCTION • FM RENTAL & PARTY CENTER ★

SATURDAY • FEBRUARY 3 • 9 AM
701 S. OLD ORCHARD LN. • LEWISVILLE, TX 75067

Large Nice Store! A Complete Liquidation!

Uni-Loader; Construction Equipment & Tools; Outdoor Power Equipment and Service Dept.; Trenchers; Scaffolding; Bounce Houses; Tables; Chairs; Margarita Machines; Wedding Décor & Supplies; Tents; Delivery Truck. M. Jones, CAL, GPPA, TX #6756 10% BP.

MIKE JONES AUCTION GROUP
GO TO WWW.MJACTIONS.COM ★ 972-387-1110
Learn Auctioneering ★ 972-387-4200

STOP LEG CRAMPS BEFORE THEY STOP YOU.

Calcet's triple calcium formula is designed to help stop low calcium leg cramps. Just ask your pharmacist.

Calcet
Triple Calcium
(with Vitamin D)

Mission PHARMACAL
CAL 0506 Rev 02/06 © 2006 Mission Pharmaceutical Company All rights reserved.

Panhandle-Plains LAND BANK

Loan Officers who understand Rural Real Estate Financing in the Panhandle and South Plains

Farm-Ranch-Rural Recreational Tracts

Come by or call Jeff Taylor
629 Baltimore St. Plainview, TX 806-296-5579

Call for current quote

Robert Hall Chevrolet

TEXAS AN AMERICAN REVOLUTION

www.roberthallchevy.com

TEXAS AN AMERICAN REVOLUTION

SALES DEPT. JAY HALL

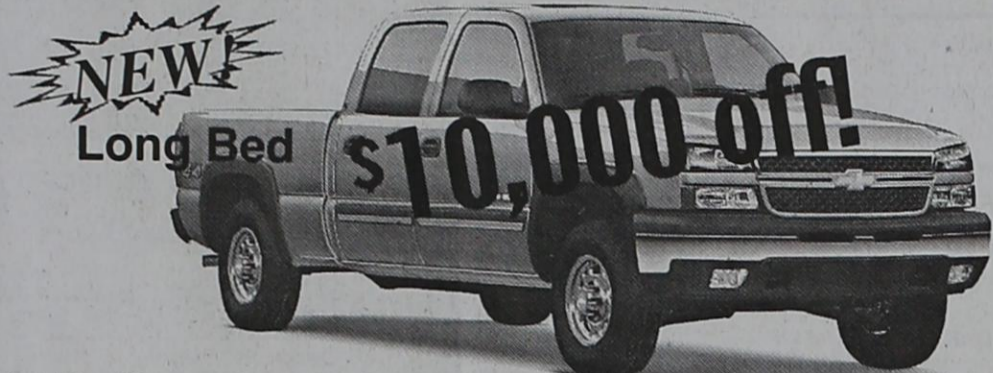
806-237-2182 • TOLL FREE 877-637-2182

E-mail: jayhall@caprock-spur.com

Jayton, Texas • Monday-Friday 8am-6pm • Closed Sat & Sun

ALL PRICES + TAX, TITLE & LICENSE, WITH APPROVED CREDIT / ART FOR ILLUSTRATION ONLY. CERTAIN RESTRICTIONS APPLY. RATES, REBATES & SALE PRICES ARE SUBJECT TO CHANGE WITHOUT NOTICE. SUBJECT TO AVAILABILITY. CALL OR SEE DEALER FOR FULL DETAILS. **MILITARY REBATE = \$500**

2006 CHEVROLET 2500HD CREW CAB 4X4



Dark Blue/Charcoal Cloth, LT1 Pkg, Big Block 8100 V8, Allison Automatic Transmission, Skid Plates, Push Button 4X4, Onstar®, XM Radio, HD Tow Pkg #5998
MSRP \$38,720
 Robert Hall Discount \$2,420
 Factory Rebate \$4,500
 Bonus Rebate \$3,080

Sale Price \$28,720

2007 CHEVROLET 1500 EXT CAB 4X4



White/Charcoal Cloth, 4.8 V8, Positrac, Skid Plates, CD, Tow Pkg #6338
MSRP \$28,257
 Robert Hall Discount \$2,032
 Factory Rebate \$3,000

Sale Price \$23,225

2007 CHEVROLET AVEO HATCHBACK LS



Yellow/Charcoal Cloth, 4 cylinder auto, rear spoiler, cruise, keyless entry, CD #6324
MSRP \$14,250
 Robert Hall Discount \$585
 Factory Rebate \$500

Sale Price \$13,165

2007 CHEVROLET 1500 EXT CAB 2WD



Silver/Charcoal Cloth, Work Truck Package, 4.8 V8 Auto, Upgraded Seat, Cruise #6115
MSRP \$23,850
 Robert Hall Discount \$1,700
 Factory Rebate \$3,000

Sale Price \$19,150

2007 CHEVROLET 2500 HD Ext Cab 4X4



White/Charcoal Cloth, 6.0 V8 Auto, Upgraded Seat, Positrac, Cruise, Skid Plates, CD #6332
MSRP \$31,160
 Robert Hall Discount \$2,320
 Factory Rebate \$2,250

Sale Price \$26,590

2007 CHEVROLET 2500 HD Crew Cab 4X4



White/Charcoal Cloth, Duramax Diesel, Allison Auto, Power Seat, XM Radio, Steering Wheel Controls, HD Tow Pkg #6335
MSRP \$42,972
 Robert Hall Discount \$4,422
 Factory Rebate \$1,250

Sale Price \$37,300

Over 100 2007 Chevrolet Pickups IN STOCK!!!

PRE-OWNED VEHICLES

Save with Pre-Owned Specials!

#4101 2000 Chevy Ext Cab Z71 4X4 black/charcoal leather, 5.3 V8 auto, 117K, LT pkg, 3rd door.....	\$8,950
#4071 2004 Chevrolet 1500 Reg Cab Short Bed 2WD red/tan cloth, V6, 5-speed, 39K, work truck pkg.....	\$11,500
#4109 2002 Chevrolet Tahoe 2WD maroon/tan leather, 5.3 V8, 76K, fully loaded.....	\$13,500
#4106 2006 Buick Rendezvous 2WD white/charcoal cloth, 3.5 V6 automatic, power seat, 12K, program vehicle.....	\$15,600
#4096 2002 Chevrolet Suburban 4X4 black/grey leather, 5.3 V8, 98K, LT pkg, loaded.....	\$13,000
#4077 2004 Jeep Wrangler 4X4 X pkg yellow/charcoal cloth, black hard top, V6 auto, 17K, AC, CD, cruise.....	Reduced to \$16,500
#4086 2005 Chevrolet Tahoe Z71 4X4 maroon/tan leather, 5.3 V8, sun roof, 35K, loaded.....	\$24,500
#4010 2003 Chevrolet Trailblazer Extended 2WD V6 auto, 49K, LS pkg, 3rd row seat, all power, tow pkg.....	Reduced to \$13,900
#4110 2004 Hyundai Elantra GLS 4-Door Sedan blue/charcoal cloth, 2.0 4-cylinder, 5-speed, power windows & locks, CD.....	\$7,950
2006 Chevrolet Impala CHOOSE FROM BLUE, SILVER & WHITE 13K-16K miles.....	Any for \$16,500
#4099 2004 Pontiac Grand Prix 4-Door Sedan white/charcoal cloth, 38K, all power, 3.8 V6.....	\$12,500
#3838 Chevy Impala 4-Door Sedan red/grey cloth, 3.4 V6, 51K, power windows & locks, cruise, CD, power seat.....	\$9,500
#4047 2005 Chevrolet Impala 4-Door Sedan sandstone/tan cloth, 3.4 V6, 35K, power windows & locks, cruise, CD, power seat.....	\$12,500
#4058 Chevrolet Malibu Sedan 2LT grey/grey cloth, 3.5 V6, 20K, loaded.....	\$13,500
#3927 2005 Buick Lacrosse 4-Door Sedan silver/grey cloth, V6, 19K, program vehicle.....	Reduced to \$13,950
#3832 2005 Pontiac Vibe gray/charcoal cloth, 1.8 9L, 4-cylinder, AC, CD, cruise.....	Reduced to \$13,500
#4117 2004 Chevrolet 1500 Ext Cab 4X4 Z71 dark gray/charcoal cloth, 5.3 V8, 41K, power seat, XM Radio, steering wheel controls, tow pkg, positrac.....	\$18,000
#4094 2004 Chevrolet 2500 Crew Cab 4X4 short bed, red/charcoal cloth, 6.0 V8, auto, 50K, LS pkg.....	\$16,000
#3799 2001 Chevrolet 2500 HD Ext Cab 4X4 hay bed, green/tan cloth, 6.0 V8, manual transmission, 130K, work truck pkg.....	\$10,500
#3570 2002 Chevrolet 1500 Reg Cab 4X4 short bed, black/charcoal cloth, V6 auto, 96K, work truck pkg.....	\$10,750
#3962 1999 Chevrolet Tahoe 2WD, pewter/grey cloth, 5.7 V8 auto, 131K, all power, LS Pkg.....	\$6,975
#4010 2003 Chevrolet Trailblazer Ext sandstone/tan cloth, V6 auto, LS pkg, 49K, loaded, 3rd row seat.....	\$14,900
#4115 1999 Cadillac Deville Sedan 4-door, white/tan leather, V8 auto, 72K, loaded, extra clean.....	\$7,950
#3919 two in stock 2005 Pontiac Grand Am white or silver, grey cloth, V8, power windows & locks, power seat, 21K.....	each \$11,300

THE CLASSIFIEDS

Phone: 806-347-2400 • Fax: 806-347-2774 • e-mail - motleytribune@yahoo.com

JANUARY
Subscriptions Due

Motley County - \$27.00
Elsewhere - \$30.00

P.O. Box 490
Matador, TX 79244

MOTLEY COUNTY

Matador:
Eugenia Barton
Richard Hamilton
Harold Campbell
Motley County FSA
Bob Kilmer
Rolling Plains Shared Services
Gale Stafford
Motley Co. Extension Office

Roaring Springs:
Charlie Long
Lester A. Mullins
Billy Hand
Robert Forbis
Onie Bell

ELSEWHERE

Lighthouse Electric, Floydada
Walter Skinner, Quitaque
Trudy Hand, Wolforth
Shirley Barton, Lubbock
Jerry Swearingen, Canyon
Roy & Gloria McMahan, Dumas
Ronald Farmer, Hale Center
Tom Hamilton, Plainview
Garland Rattan, Amarillo
Nancy Barrow, Vernon
Patti Alexander, Midland
Gerald Fugit, Odessa
Nancy Tsagaris, El Paso
Brett King, Burleson
Norman Frede, Houston
Charles Cammack, San Antonio
Harvey C. Guinn, Golden City, MO
James E (Jim) Dewbre, Shady Point, OK
Monica Leonard, Buffalo, WY
Brenda Moser, Phoenix, AZ
Janey Henley, Marana, AZ
Shelby & Betty Jackson, Albuquerque, NM
Maurine Hall, Albuquerque, NM
Frank C. Traweek, San Francisco, CA

Motley County Tribune
Carla M. Meador ~ Publisher & Editor



The Motley County Tribune, (ISSN: 0897-4332), purchased on September 3, 1996, is published weekly each Thursday, except Christmas week, at Matador, Texas. The office is located at 724 Dundee, telephone number, 806/347-2400. Periodical-class postage paid at Matador, Texas. POSTMASTER: Send address changes to Motley County Tribune, P.O. Box 490, Matador, Texas 79244.

NOTICE: Any erroneous reflection upon the character, firm or corporation, which may appear in the columns of the Motley County Tribune will gladly be corrected upon being brought to the attention of the Publisher. All articles or columns do not necessarily express the views and opinions of the Publisher/Editor. Only signed Letters to the Editor will be considered for publication.

PUBLICATION NO: 333770
SUBSCRIPTION RATES: Motley County - \$27.00
Elsewhere - \$30.00
P.O. Box 490, Matador, Texas 79244

REAL ESTATE

OWNERS - WE NEED YOUR LISTINGS on ranches and farms of any size in Texas, Oklahoma and New Mexico (especially ranches off the caprock in Texas or Oklahoma and large or small ranches in New Mexico). Please call us to set up a time to visit about or see your property.

SANTA FE, LAS VEGAS AREA - 14 section ranch, 982 deeded, balance state. Neat 2 bdrm. cabin w/ fireplace, help house, steel pens & scale, roping arena, watered by wells; pipeline & earthen dams, grama grass with cedar graced hills, beautiful canyons, on pvm.

GRAY CO. TX - 280 acres, county roads on both ends, native grass, good fences, approximately 2 miles out of town. Up to 594 acres may be available.

COLLINGSWORTH CO. - 160 acres grass with house & barn on pavement.

COLLINGSWORTH CO. - 500+ acres, 340 in CRP, big trees, running water, very scenic. Owner will carry the paper with approved credit & down payment.

CHECK OUR WEBSITE for details, on other ranches from 558 to 118,000 ac. in Texas & New Mexico; good irrigated farms, feedyards and acreages with homes.

www.scotlandcompany.com
Ben G. Scott - Broker,
800-933-9698
Gerald M. Smith - Agent,
806-292-0197

FOR SALE

SACRIFICE COMPLETE all wood Bedroom set. Beautiful \$699. Still boxed. 806-549-3110.

1tc-2

MICROFIBER sofa, loveseat. Matching table set, \$499. ALL BRAND NEW. 806-549-3110.

1tc-2

LARGE OAK DINING TABLE, 6 chairs, hutch, buffet, NEW, BOXED! List \$2990, Sell \$999. 806-549-3110.

1tc-2

MUST SELL King pillowtop mattress and box, \$210. Never used, warranty. 806-549-3110.

1tc-2

NEW MEMORY foam mattress sleep system. List \$1599. Sacrifice \$399. Warranty. 806-549-3110.

1tc-1

SELLING QUEEN pillowtop mattress set, in plastic, warranty. \$125. 806-549-3110.

HELP WANTED

DICKENS COUNTY CORRECTIONAL CENTER is now hiring Substance Abuse Counselor. Must possess a LCDC or LPC by the Texas Association of Alcohol and Drug Abuse Counselors and/or national certification, and must also hold a State Chemical Dependency Counselor's License. One year prior substance abuse counseling or one year teaching experience. Send resume' to DCCC, 2637 FM 261, Spur, TX 79370. EOE.

ARE YOU RETIRED or would you just like to supplement your income? Dickens County Correctional Center is now hiring full time and part time Correctional Officers. We will work with your schedule and if applicants from same area, we will work to get on same shifts. Also hiring full time Maintenance Technician. For applications, please call 806-271-3421 or come by 2637 FM 261, Spur, TX 79370. EOE.

2tc-4

NEED CONTRACTOR ASAP for repair of leaky foundation and walls, Museum, Matador, 269-1098.

ctfn

WANTED

WE LOST 300+ ACRES to out of town hunter. Looking for grazing acreage with accessible water to lease (any size) preferably in Motley, Dickens, or Floyd County area, but other locations may be option. Call 806-347-2250 or 806-292-8584.

2tc-5

WANTED: Antique Beauty/Barber Shop tools (i.e. curling iron, shaving razor, etc.), for donation to Hackberry Care Center. Call 347-2820.

n/c

SHOP AT HOME FIRST!

Books, Office Supplies, Rubber Stamps, Business Cards, Wedding Invitations and others, Stationary, Plaques, and much more!

Motley County Tribune
806-347-2400

SERVICES

CEDAR POSTS & STAYS: Any size, from 2" top up to corner post 6 1/2 - 7 ft; 8 ft. corner post with 7-8" tops. Also oak, mesquite and fruitwood firewood, stacked and delivered. Will also deliver posts. Call for prices, Butch McBee, 806-455-1310 home; if no answer leave message, or mobile 806-346-1105.

WANTED: Swathing and Baling, and Hauling. Round or Square Bales. Quality work. Will do at competitive rates or on shares. Good market for wheat hay now. Call Crawford W. Wesley, 806-668-4448 or 995-5053; or David Wesley, 995-3687, or 296-3255.

NOTICE

NOTICE IS HEREBY GIVEN that the West Texas Educational Purchasing Cooperative including Morton, Motley County and Presidio Independent School Districts acting by and through their Governing Boards, will receive sealed proposals for the award of a contract for Miscellaneous Vehicles (RFP No. 8257) until 2:00 p.m., Thursday, February 8, 2007, in the Lubbock I.S.D. Purchasing/Contract Services Office. Information related to vendors submitting a proposal will then be made available. The Request for Proposal package may be obtained from the Purchasing/Contract Services Office, Lubbock Independent School District, 1628 19th St., Lubbock, Texas 79401, or by downloading the documents from www.rfpdepot.com. The Lubbock Independent School District reserves the right to accept or reject any and all proposals and to waive any irregularities, technicalities, or informalities in any proposal or in the proposal process.

2tc-4

OPPORTUNITY TO ADVERTISE your business in a Cookbook sponsored by First Baptist Women on Mission of Roaring Springs. Contact Barbara Alexander at 689-2043 or Jo Trammell at 348-7565 for more information. Deadline for advertising is February 28th.

n/c

THE MOTLEY COUNTY TRIBUNE strives to present a newspaper with a variety of news and feature articles and columns. Each article does not express the views and opinions of the Publisher-Editor.

Shop at Home first!

DON'S MUFFLER SHOP
210 W. California
Floydada
FREE ESTIMATES!

A Gold Mine in Bedroom Drawers

Newswire: People are selling their old scrap gold that is gathering dust for its cash value because gold prices are so high. With the price of gold at a 25 year high, it makes sense to recycle unwanted items for cash. ScrapGold.com, a large gold recycler, offers free insured recycle kits so people may cash in their scrap with 24 hour service and guarantee satisfaction.

They accept broken and outdated items like chains, charms, rings and more. "Everyone has bits of gold just lying around which can be turned into cash," says Richard Zakroff, Founder. "Even old dental gold has value." ScrapGold.com has been in business for over 16 years and has served over 800,000 clients. Request a FREE GoldKit at 800-283-4700 or ScrapGold.com.

Enjoy The Gift Of Freedom ...
From The Folks Who Care.
freedom2go
4302 Olton Rd. 293-3322

STORAGE NOW AVAILABLE
North Side of Courthouse and 1 block East - Matador

STORAGE NOW AVAILABLE IN ROARING SPRINGS

Ken's RV Park & Mini Storage
806-347-2455 or 806-347-2290

Full Hook-ups Available
Mini Storage Rooms for Rent
Golf Cart Sales

Books, Office Supplies, Rubber Stamps, Business Cards, Wedding Invitations and others, Stationary, Plaques, and much more!

Motley County Tribune
806-347-2400

Wylie L.P. Gas, Inc.
Proud to be a part of Motley County
Call or come by for all your Propane needs
Ask about our prices

Farm Diesel & Highway Diesel

Office still locally operated at 1021 Main - Downtown Matador
Call Day or Night • 24 hr. Service • 806-347-2290

BUSINESS REVIEW

ALL TYPES OF SPRAYING
CONE AERIAL SPRAYING
Marlon Suhr
Office: 806-675-7500 Cell: 806-657-7972

Tom Edwards, Attorney
806-347-2333

New Location
Childress Veterinary Hospital
Dr. David Fuston
Full Service Veterinary Hospital
Large and Small Animal Needs
940-937-2558
109 Industrial Circle/287 West, Childress

MOTLEY COUNTY ABSTRACT COMPANY
Phone: 806-492-3483 Fax: 806-492-3574
P.O. Box 726 - Paducah, TX 79248

Complete Abstracts and Title Insurance for all of Motley County

Nelda Hightower - Owner
Kay Heatly - Owner/Operator

Document Preparation and Closing Services

NEED INSURANCE?
GET GOEN!

GOEN & GOEN INSURANCE
CROP - HOME - AUTO - FARM
BUSINESS - LIFE - HEALTH

983-3524 800-288-2865
102 E. CALIFORNIA, FLOYDADA

TURNER OUTFITTERS
Full Line of Guided Hunts
Day Leasing
Lodging for Hunters, Reunion & Get-Togethers
Can Accommodate 2-20

RILEY WAYNE TURNER
806-347-2116 or 806-983-0262

This space is available for a low monthly cost!

Call 347-2400 for details

GERMANIA INSURANCE & LEE'S INSURANCE AGENCY
"A Proud Past With a Solid Future"

Turkey Ernie Lee 423-1020
Flomot Ruth Lee 469-5370

"Serving People Like You Since 1975"

PAYNE PHARMACY
200 S. Main - Floydada, TX 79235
Ph: 983-5111 or 1-800-345-7961
Denise Payne, R.Ph.

M-F, 8:30-6:00 & Sat., 8:30-2:00
We will be happy to mail your prescriptions!