

MOTLEY COUNTY TRIBUNE

Daylight Savings Time Ends
Sunday, October 29, 2:00 a.m.
Set your clocks back one hour



"VOICE OF THE FOOTHILLS"

.50¢

THURSDAY, OCTOBER 26, 2006

ESTABLISHED 1891

ISSUE NO. 43



A FAIR SHOW ...

Lea Peacock of Roaring Springs looks over some of the displays at last Saturday's Motley County Fair. The beautiful Dutch Doll Quilt pictured was declared the "Best of Show." The quilt was handmade by Zella Palmer of Roaring Springs. In addition to handmade quilts displays included antiques, artwork and other interesting items. The Fair is sponsored by the Roaring Springs Community Volunteers.

School Board considers closing voting polls in Flomot and Northfield

Motley County I.S.D. officials will consider closing the Flomot and Northfield school board election voting locations at the November 13 school board meeting.

"The costs of holding an election have risen dramatically over the past years," said Superintendent Randy Brown.

Although school districts will not be required to use electronic voting machines for the May 2007 election, they will be

required for the May 2008 election and beyond.

"The new requirements and small voter turnout have made these locations fairly expensive per vote. We typically have five to ten voters at each location, including the election clerks," said Mr. Brown.

Anyone who would like to voice their opinion on this issue is encouraged to call Randy Brown at 347-2676, extension 2401.

Motley County School Board meets Approves purchase of attendance credits from Guthrie and Jayton

by Tina Brooks,
School Board reporter

The Motley County Board of Trustees met October 16 at 7:30 p.m. All board members were in attendance with the exception of Lewis Drum. Also present were Superintendent Randy Brown and Principal Marilyn Hicks, and Denise Ford.

The invocation was given by Mr. Brown. No one was present for open forum.

The board approved the minutes from the previous meeting, as well as all expenditures.

The board approved the Agreement for the purchase of Attendance Credits with Guthrie C.S.D. They also approved the Agreement for the purchase of Attendance Credits with Jayton I.S.D.

Mrs. Hicks informed the board that enrollment is 172. The Elementary/Jr. High UIL

meet will be held at Motley County on November 6. This will also be an early release day. The Fall Festival is scheduled to be held October 28 in the old gym.

During Mr. Brown's Superintendent Report, he informed the Board that the district had received a letter from Texas Education Agency stating the 2004-2005 Audit was accepted with no findings or corrections. Mr. Brown gave a general review of the upcoming New Disclosure Requirements that will be implemented in the near future. Board Training was discussed and board members were given an updated board training credit report. The board will meet on November 13th and December 14th for the next two regular scheduled meetings. The staff Christmas party was discussed but no date was set.

Early voting now in progress for November 7th Election

Early voting for the November 7th election began October 23 and will continue through November 3. Those wishing to vote early may do so at the County Clerk's office in Matador.

Local candidates listed on the ballot are Ed D. Smith, County Judge; Ben Thomas Edwards, County Attorney; Kate Hurt, District and County Clerk; Eva Barkley, County Treasurer; Donnie L. Turner, County Commissioner, Precinct 2; Cora Smallwood, Justice of the Peace; and Russell D. Alexander, County Commissioner Precinct 4. All candidates are unopposed.

Also listed on the ballot is Bill Smith, District Judge, 110th Judicial District.

In addition to the above mentioned local races, voters will also decide the outcome of the following offices: Presiding Judge, Court of Criminal Appeals - Sharon Keller, Rep., J.R. Molina, Dem.; Judge, Court of Criminal Appeals, Place 7 - Barbara Parker Hervey, Rep., Quanah Parker, Lib.; Judge, Court of Criminal Appeals, Place 8 - Charles Holcomb,

Rep., Dave Howard, Lib.; Member State Board of Education, District 15 - Bob Craig, Rep., Brandon Stacker, Lib.; State Representative, District 88 - Richard L. "Rick" Hardcastle, Rep.; Chief Justice, 7th Court of Appeals District (Unexpired term) - Brian Quinn, Rep.; Justice, 7th Court of Appeals District, Place 2 - Mackey K. Hancock, Rep.; Justice, 7th Court of Appeals District Place 3 - Pat Pirtle, Rep.; United States Senator - Kay Bailey Hutchison, Rep., Barbara Ann Radnoffsky, Demo., Scott Lanier Jameson, Lib.; United States Representative District 13 - Mac Thornberry, Rep., Roger J. Waun, Dem., Jim Thompson,

Lib.; Governor - Rick Perry, Rep., Chris Bell, Dem., James Werner, Lib., Richard "Kinky" Friedman, Ind., Carole Keeton Strayhorn, Ind.; Lieutenant Governor - David Dewhurst, Rep., Maria Luisa Alvarado, Dem., Judy Baker, Lib.; Attorney General - Greg Abbott, Rep., David Van Os., Dem., Jon Roland, Lib.; Comptroller of Public Accounts - Susan Combs, Rep., Fred Head, Dem., Mike

Burris, Lib.; Commissioner of the General Land Office - Jerry Patterson, Rep., Valinda Hathcox, Dem., Michael A. French, Lib.; Commissioner of Agriculture - Todd Staples, Rep., Hank Gilbert, Dem., Clay Woolam, Lib.; Railroad Commissioner - Elizabeth Ames Jones, Rep., Dale Henry, Dem., Tabitha Serrano, Lib.; Chief Justice Supreme Court, (Unexpired term) - Wallace Jefferson, Rep., Tom Oxford, Lib.; Justice, Supreme Court, Place 2 - Don Willett, Rep., William E. 'Bill'

Moody, Dem., Wade Wilson, Lib.; Justice, Supreme Court, Place 4 - David M. Medina, Rep., Jerry Adkins, Lib.; Justice, Supreme Court, Place 6 - Nathan Hecht, Rep., Todd Phillippi, Lib.; Justice, Supreme Court, Place 8 (Unexpired term) - Phil Johnson, Rep., Jay H. Cookingham, Lib.

To take a closer look at the candidates and where they stand on certain issues go to www.freemarket.org/votersguide.

Motley County qualifies for 2007 Strategic Investment Area tax credit

(Austin) -- Texas Comptroller Carole Keeton Strayhorn recently released a list of 217 counties where businesses will have one last chance to qualify for millions of dollars in state tax breaks next year.

"Each year I review the economic health of each county and designate those that are eligible for economic development franchise tax credits," Strayhorn said. "However, 2007 will be the last year taxpayers will be able to establish new tax credits."

The franchise tax credits for economic development were enacted in 1999 by the 76th legislature and include a research credit, a job credit and an investment credit. This year, Gov. Rick Perry signed into law House Bill 3, which changes the franchise tax and also repeals the research, job and investment credits, along with many others. The new law goes into effect on January 1, 2008.

Only corporations or limited liability companies that are initial franchise tax filers in 2007 with 2007 business to report under the old law will be eligible to establish new tax credits based on the 2007 list of qualified counties.

"Though these credits have been taken away starting in 2008 by House Bill 3, I encourage all business owners in counties on this year's list to see if they qualify under the law that applies until then," Strayhorn said.

"These credits saved taxpayers more than \$211 million on their franchise tax reports the past five years. That's money Texas businesses can use to continue to grow."

Motley County qualifies for limited-purpose Strategic Investment Area (SIA) designation. The SIA is a collection of counties and sub-county areas where job creation, investment and research activities by businesses can earn franchise tax credits. The SIA is determined each September by the Comptroller's Office, and the determination is effective for

business activity in the following calendar year.

Comptroller Strayhorn determined that of the state's 245 counties, 217 fall entirely or partially in the state SIA for calendar year 2007.

Of those counties, 87 qualify for full-purpose SIA designation based on their relative unemployment rate and per-capita income.

The SIA designation allows a research credit bonus and permits companies engaged in manufacturing, warehousing, wholesale distribution, agricultural processing, central admin-

istrative office, computer services or research to apply for job creation and investment credits.

Another group of 128 counties qualifies only for a limited purpose SIA designation based on population. Corporations engaged in agricultural processing in these counties can apply for the job creation and investment credits.

For more information about available tax credits and eligibility, contact the Comptroller's Franchise Tax Division at 1-800-252-1381, or visit the Comptroller's Web site at <http://www.window.state.tx.us/>.

Recent donations made by Martha Ann Cogdell Trust includes MC Ambulance Service

Connie Cogdell Clark, chairman of the board of the Martha Ann Cogdell Trust, announced recently that donations were made to the following counties: City of Turkey Ambulance Fund, City of Quitaque Ambulance Service, Silverton Voluntary Ambulance Service, Caprock Hospital District Ambulance Fund, The Wayside Emergency Team, Inc., Hall County EMS Ambulance Service, City of Lockney Ambulance Fund, W.J. Mangold Memorial Hospital, Swisher Memorial Hospital District-Tulia Rural Health Clinic, Motley County Hospital District Ambulance Service and Covenant Health System Foundation Aero Care.

For many years the Martha Ann Cogdell Trust has purchased ambulances for various cities and hospital districts in

this area, including the Caprock Hospital District Ambulance Fund, the City of Wayside Emergency Team, the City of Claude Volunteer Ambulance Service, the City of Turkey Ambulance Fund, the City of Quitaque Ambulance Service, the Silverton Voluntary Ambulance Service, the City of Lockney Ambulance Fund, and the Motley County Ambulance Service. In addition, many thousands of dollars have been made in annual gifts to these various ambulance services to assist in operation expenses. The Trust has also built clinics in Floydada, Lockney and Silverton.

The members of the board of directors of the Martha Ann Cogdell Trust are Connie Cogdell Clark, Gaylon Clark, Billy Rank Cogdell, Bette Cogdell and Norma Birdwell.

Matador VFD will host Home Fire Safety program

The Matador Fire Department will host a Home Fire Safety Awareness program Monday, October 30, at the Fire Station in Matador starting at 7 p.m. and is open to anyone who wishes to attend.

The program will be presented by Lee Newman, regional fire safety advisor for LJ Detection Systems Inc. of Ralls, Texas. The program will cover the number one killer in home fires (hint: it's not smoke), the importance of a fire escape plan, recommendations on placement of fire extinguishers and other safety tips. The program is free to the public. For additional information contact any fire department member.

Matador writer now a published author



Polly Gwinn

Polly Gwinn, of Matador, is now a published author. Her book, *Scripture Made Easy*, was recently released by Author House Publishing Co. and made available for purchase.

Payne Pharmacy in Floydada will host a book signing for Mrs. Gwinn on Tuesday, November 21 from 10:00 a.m. until 2:00 p.m.

In her book, Polly has written from the word of God and made it into story form that all may understand.

Polly was born and raised in Spur and has never strayed far from the Texas boundaries. "I gave my heart and soul to Jesus Christ at the age of 10 but it was only some 10 years ago that I gave my life entirely to God," said Mrs. Gwinn. "I am thankful for His patience and continued love for me and am honored that He has chosen me as His typist for putting His words into stories."

continued on page 6



Family and friends gathered to celebrate the life of a wonderful woman, Sunday when Mary Meason (Meme) was laid to rest alongside her beloved husband and son.

What a life to celebrate! Meme was 95. She had lived alone since the death of her husband and right up until just a few months ago, when she entered the Crosbyton Nursing Center.

I came to know Meme about 20 years ago, at the Tribune. Barbara Jameson Armstrong was the owner of the paper at that time. Having known Meme all of her life, Barbara was very close to her. In fact, Barbara's son, Jason, gave her the name "Meme" when he was a small child.

When I first came to know her I called her Mary. But it wasn't long before we grew very close and she became Meme to me, also.

Meme was the proofreader at the paper. I can still see her sitting at the wood desk in the corner with her eyes focused on the typed pages. A former teacher, she loved the responsibility of "grading papers" as she marked the mistakes on the news copy.

Meme could vividly remember events from when she was a small child. I loved to listen to recollections from her childhood - stories about her brothers, her childhood home and her parents. She most loved recalling her teaching days. She re-

membered every student, her 'kids' as she referred to them, and could describe each one so well I could picture that child in my mind. She dearly loved all of her students and told stories of playing games with them. I could just imagine her down on her knees playing jacks with the girls, or up at the plate to bat in a game of baseball with the boys.

Her memories of events from long ago in this county, the churches, schools, businesses and houses was amazing. After a little convincing she started putting those memories into stories for the paper. And then everyone had the opportunity to imagine the scenes of days gone by.

If I ever had a question about a historic event or a person's name, I could just call Meme. She usually knew the answer.

Meme had a wonderful sense of humor and loved to laugh. She was happy most of the time, thoughtful, caring and was always ready to listen if I ever needed a shoulder to cry on.

All who knew her will miss her greatly, but we are comforted in the fact that she has gone to a new and better home and has been reunited with her loved ones.

I can just picture Meme laughing in the joy of Heaven, and who knows, she may even be playing jacks or baseball with some of her 'kids.'

CHAMBER OF COMMERCE NEWS & VIEWS

by Marie-Louise Liebe-Harkort

Consider:

"Fewer and fewer Americans possess objects that have a patina, old furniture, grandparents' pots and pans, the used things, warm with generations of human touch, essential to a human landscape. Instead, we have our paper phantoms, transistorized landscapes. A featherweight portable museum."

-- Susan Sontag

That's why residents of Motley County are especially lucky - they do possess objects that have a patina, ... the used things warm with generations of human touch. Wise people with foresight gathered them, saved them from being tossed out when no longer used, and placed them in the museum for all of us to see, learn from, enjoy.

There are rooms and rooms filled with memories and objects once common, now allowing a glimpse of times gone by.

And now the season is changing, and it is time to do more things indoors.

A perfect time for the museum to be open so people can come and see and remember.

And so the Chamber of Commerce is seeing to it that you have that chance. The museum will be open Wednesday afternoons from 1 p.m. to 5 p.m. (almost every Wednesday). That will give you the chance to come by, wander from room to room, see the old things again and see what is new.

If you have never come by, do take this opportunity to come in. Granted, it is not the American Museum of Natural History or the Guggenheim, but there is a dinosaur fossil and some paintings you may enjoy. But most importantly, the items collected are local, some perhaps donated by your family in times gone by.

It is also possible to have the museum open at other times, for example if you have friends visiting and the Wednesday afternoon time does not fit their schedule. Just call (806) 347-2424, and a special showing can be arranged.

But for the most part, think about coming by Wednesday afternoons, when the Museum will be open and ready to welcome you.

Library Notes

by Suzanne Abbott Librarian



Don't forget, next Thursday, November 2, at 7:00 p.m., in the Library we will have the book discussion on *The Kite Runner*. Even if you haven't had time to read the book, you will enjoy the discussion and you are welcome to attend.

The next Thursday after that, November 9, there will be a meeting of the Friends of the Library at 4:00 p.m. at the Library. We need to plan for late night shopping and our annual book sale.

Marjoria Harper donated a treasure-trove of books to the Library. Most of the books are important to the history of Motley County. For example, Mrs. Harper sent a book in which have been reproduced the Matador High School newspapers for 1934-35. Among other things this book contains interesting photographs of the various sports teams for that school year. We notice that Allie Faye Williams was the Editor of the paper; Lucretia Estes was Reporter for the Junior Class; and Grace Keltz was Vice-President of the Spanish Club. Mrs. Harper also sent us the class roster of students and teachers, beginning with the class of 1908 through the class of 1992.

Again we had a lot of help at the library this month. We thank Pina Sturdivant, June Moss and Regina Sheffield for working on Mondays. George Kline spent another day helping Kenneth on the Annex. Betty Henry and her assistant, Marihelen Wason, spent one afternoon decorating the Library for fall. We appreciate the willingness of all of these volunteers to work at the Library.

NOTE OF THANKS

We would like to say thank you to everyone for your sincere concern during the loss of our dear loved one. We appreciate the flowers, food, phone calls, kind words and most of all your prayers. A special thank you to Johnny Morris for a wonderful service and Diana Meyer for the beautiful music. May God bless each one of you.

The family of Gail Childs
Margie Taylor
Joy Riley & family
Janice Martin & family
David Taylor & family
Leslie Taylor & family
Jim Belk & family
Tony Patterson & family
Teresa Elder & family
Teila Obashawn & family

We want to thank everyone for their prayers, phone calls, cards and being there with us during our surgeries. Thanks for all concern. We love you all.

Harold & Vee Gordon

My heartfelt thanks goes out to all of you who made a generous donation to the American Diabetes Assoc. Only when you or a loved one is stricken with this disease, do we realize the debilitating effect it has on individuals and families.

I have one more week to mail in the donations so if you have lost your addressed stamped envelope and you wish to respond, mail it to me: June K. Levell, P.O. Box 31, Matador, TX 79244. All donations are tax deductible.

You are invited to attend a
Baby Shower
honoring
Ty & Brittany Barclay
who are expecting Twin Boys!

November 4, 2006
2:00 - 3:00 p.m.

Riley Wayne Turner's
Hunting Lodge
(Old VFW building)

Thank you for reading
the Motley County Tribune

Harvest Festival 2006

First United Methodist Church
in Matador

Brother Winfield Davenport, Pastor

Sunday, October 29

10:30 a.m. ~ Special Worship Service
12:00 noon ~ Turkey & Dressing Dinner

Glendell Smith

Preaching

Chaplain, BSA Hospital Amarillo
Former Matador Coach and Teacher

Everyone is welcome to attend this celebration.
Members may bring a side dish or dessert for the dinner.

Contact Chelsea Read, 806-347-2837
or Rodney Williams 806-269-3781

"Quality Conduct"



The Apostle Paul addresses Christian conduct in First Corinthians 13. I would like for us to notice how verse 5 begins:

Love "does not act unbecomingly." The New King James Version has, "does not behave rudely." Most commentaries

have "is not rude." Another author gives, "Unmannerly." The point which the Apostle makes is ... "that love is not discourteous."

Some may find it strange that this quality is listed along with "important" things like kindness and humility. What difference does it make if we have good manners or not? Whether we are polite, nice, considerate, inoffensive - or just the opposite to these?

It makes a great deal of difference, for the root of genuine courtesy is a concern for others and their feelings. It makes a tremendous difference, for it has to do with the impression we leave on people. Christian people are to be the salt and light of the world for the glory of God. Repulsing people by our actions simply is not Christian behavior.

Love is thoughtful, considerate, respectful, mannerly, tactful and polite. These qualities may be considered by some to be old-fashioned or outdated, but the apostle Paul tells us if we are "Christian," our actions will have the qualities.

ROARING SPRINGS CHURCH OF CHRIST

Michael G. Crowley, Sr.

BIBLE STUDY 10:00 A.M. WORSHIP 9:00 A.M.

Fairways & Rough



by Geneva

GOLF SCRAMBLE (October 10)

Winners: First, with a score of 30, Kenny Barton, Liv Barton, Matt Washington and Stan Levell.

Second, with a score of 31, David Taylor, Wes Mason, Randy Martin and Garland Cartwright.

Others playing were Ken Marshall, James Ball and Dwayne Lynch. Closest to pin, Liv Barton, 14' 9".

SCRAMBLE (October 17)

First, with a score of 30, (play off on card), David Taylor, Randy Martin, Corky Marshall and Alan Bingham.

Second, with a score of 30, Ken Marshall, Jerry Collins, Brandon Moore and Garland Cartwright.

Others playing were Tommye Keith, Cody Dodson, Virginia Nunn, Conway Clary, Liv Barton, Kenny Barton, Dartha Westbrook, and Stan Levell.

Virginia Nunn got closest to pin on #6, 30 ft.

LADIES PLAYDAY (October 19)

18 hole players were Liv Barton and Louise Barton. Tied for low putts - each won a ball.

Don't forget the
**MOTLEY COUNTY
TRIBUNE**
for Plaques, Signs,
Rubber Stamps,
Business Cards,
Wedding Invitations
& MUCH, MUCH
MORE!

ROARING SPRINGS
**FULL GOSPEL
CHURCH**
PRESENTS

**Hallelujah
NIGHT**
2006

TUESDAY, OCTOBER, 31st
★ ★ ★ 6-8pm ★ ★ ★

Where at? - Roaring Springs Full Gospel Church

FREE Admission **FREE Games** **FREE Prizes** **FREE Candy**

There will also be a chilli cook off and everyone is welcome to join. There will be a five dollar entry fee and the winner will get the entry fees.

ADMISSION IS FREE BUT PLEASE BRING A NON-PERISHABLE FOOD ITEM

Come as your most creative and original Bible Character!



Sometimes You Just Need A Break

You can rest easier knowing our healthcare team is ready to fill in for you. Whether you are ready to take a well-deserved vacation or simply need a break from the daily pressures of being a caregiver, we can help! You'll find comfortable surroundings and days filled with meaningful activities, in addition to a full range of skilled nursing and rehabilitation programs.

Take that break you need.
Call today for a tour.

Senior Health Properties - Texas, Inc.

A NOT FOR PROFIT CORPORATION

Floydada Rehab & Care Center
Special Needs Unit for Alzheimer's
925 W. Crockett
Floydada, TX 79235
Contact: Sandra Seago
983-3704

Tulia Health & Rehab Center
714 S. Austin
Tulia, TX 79088
Contact: Heather Kendall
995-4810

Lockney Health & Rehab Center
401 N. Main St.
Lockney, TX 79241
Contact: Laurel English
652-3375

Motley County Matador news



Matadors suffer first loss of the season

The Motley County Matadors dropped a 46-38 decision to the Samnorwood Eagles last Friday night, losing their first game of the season. The Matadors fell from the fourth to the twelfth ranked team in the Sixman Division II rankings as a result of the loss.

"This is a very disappointing loss," said Head Coach Mike

Bigham. "We certainly didn't play up to our potential. We will work hard to correct our mistakes and get better."

The Matadors will face the sixth ranked McLean Tigers this week.

"McLean is a very good team," said Coach Bigham. "We will have to play well to have a

chance to beat them. We need to win this game to have a shot at the playoffs and the district championship. We are excited about this ballgame and the opportunity it gives us. We know

that our loyal fans will be there cheering us on, we will really need their support this week."

4-H'ers enjoy Field Trip

These Motley County 4-H'ers, participants in Food and Nutrition, recently enjoyed a Field Trip to Market Street United in Lubbock. They participated in a scavenger hunt where they tried sushi, looked at organic foods and interesting fruits and vegetables, as well as varieties of snack foods. They also compared prices of all the items. They will participate in the County Food Show November 12 and the District Show December 9th. Pictured left to right (standing) are Gabby Silva, Seth Baxter, Ashley Brackeen, Shane'a Russell, Jaci Zingerman, Parker Meredith and Hance Davey; sitting are Brett Fletcher, Logan Ferguson, Kayla Hollinsworth and Cassidy Turner. Not pictured is Angelica Meredith.



MC MA VERICKS vs. PATTON SPRINGS here, Thursday, 5:30 pm

MC MATADORS vs. MCLEAN there, Friday, 7:30 pm

Have a Halloween full of treats, not tricks

As darkness settles, the rustle of Halloween costumes and the excited laughter of trick-or-treaters fill the night air. It's Halloween in Texas and costumes range from the scary to the ridiculous; but one thing is certain - it's a dangerous night for those who roam the streets looking for goodies.

"All over Texas, children and adults hit the streets during Halloween, giving little thought to their own safety," said Col. Thomas A. Davis Jr., director of the DPS. "Drivers should slow down in neighborhoods, watch for trick-or-treaters and designate a sober driver. Everyone should pay attention to their surroundings."

By following a few tips from the Department of Public Safety, ghosts and goblins can return to their haunts safely and with a full bag of treats.

Have a safe costume:
* Avoid toy guns and knives - they could be mistaken for the real thing.
* Wear costumes that are

light in color and short enough to avoid tripping.

* Wear shoes that fit.
* Place reflective material on the costume, so drivers can see you.

* Avoid masks - use face paint instead for better visibility and peripheral vision.
* Carry a flashlight.

Keep these tips in mind:

* Look both ways before crossing roadways. Always walk, don't run.

* Cross the roadway at intersections and crosswalks when

possible.

* Travel in groups with adult supervision.

* Do not enter the cars and homes of strangers. Avoid homes without visible porch light.

* Make sure children know their home phone number and how to call 911 or their local emergency number if they have an emergency or become lost.

* Take all treats home for an adult to inspect before eating anything. Never eat unwrapped candy.



CROSS COUNTRY — Kyla Simpson and Alexis Osborn represented Motley County Jr. High very well on Monday, October 23, at the District 4-A Cross Country meet held in Plainview at the Running Water Draw Park. Out of approximately 55 runners in the two mile race, Kyla finished 6th and Lexie finished 11th. Each girl received a medal. Kyla's time was 15:04 minutes and Lexie's time was 15:29. Congratulations to these girls for their hard work and effort.

STORAGE NOW AVAILABLE

North Side of Courthouse and 1 block East - Matador

STORAGE NOW AVAILABLE IN ROARING SPRINGS

Ken's RV Park & Mini Storage

806-347-2455 or 806-347-2290

Full Hook-ups Available
Mini Storage Rooms for Rent
Golf Cart Sales



Jordan's Carpet & Upholstery Cleaning

Barry Jordan & Matt Jordan

CALL NOW FOR "MATADOR DAY"

(806) 795-5060

Free Estimates * Emergency Water Extraction
Counter-top Refinishing

2 Rooms/Hall - \$50; 3 Rooms/Hall - \$70; 7 Rooms/Hall - \$130
(Plus Mileage Charge)



Prices Good Thru 11/4/06

ASSORTED FLAVORS LAY'S STAX

2 FOR \$3



RED BULL REGULAR OR SUGAR FREE ENERGY DRINK

\$6.99

4 PACK



ALLSUPS #242
Hwy. 70 - Matador
806-347-2373

ASSORTED VARIETIES

GRANDMA COOKIES

2 \$1
FOR 1



DIET COKE, SPRITE OR

COKE

2 \$7
FOR 1

12 PACKS



BLUE BUNNY ASST. FLAVORS ICE CREAM

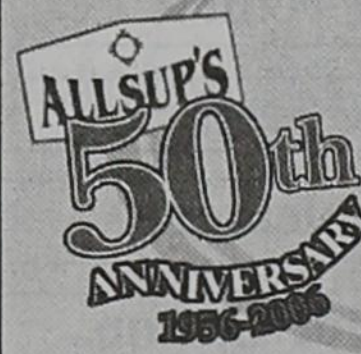
\$2.99

HALF GAL.



MORE SPECIALS

	BUY ONE GET ONE FREE!
BLUE BUNNY THE CHAMPI CONES CARAMEL OR VANILLA	2 FOR \$2.22
COKE, DIET COKE OR SPRITE 1 LITER BTL.	2 FOR \$1.49
ALLSUP'S SANDWICH BREAD 24 OZ. / 89¢ EACH OR	2 FOR \$1.69
ALLSUP'S WHEAT BREAD 24 OZ. / 99¢ EACH OR	\$2.29
ALLSUP'S HOMOGENIZED, 1% OR 2% GALLON	2 FOR \$3
ROCKSTAR ENERGY DRINK 16 OZ.	99¢
SOFT N' GENTLE BATH TISSUE 4 ROLL PKG.	59¢
50 DRI PAPER TOWELS 1 ROLL PKG. / REG. 75¢	



CELEBRATING
50 YEARS
OF SERVICE TO
YOUR HOMETOWN
Thank You

BAR-S COOKED

HAM

12 OZ. PKG.
\$2.29



COMBO MEALS

COMBO NO. 1	BACON/EGG BISCUIT & 16 OZ. COFFEE	\$1.99	COMBO NO. 6	3 TAMALES, HOWLERS & 32 OZ. TALLSUP	\$2.59
COMBO NO. 2	SAUSAGE/EGG BISCUIT & 16 OZ. COFFEE	\$1.99	COMBO NO. 7	2 HOT LINKS WITH BREAD & 32 OZ. TALLSUP	\$2.49
COMBO NO. 3	BBQ SANDWICH & 32 OZ. TALLSUP	\$1.99	COMBO NO. 8	2 CORN DOGS & 32 OZ. TALLSUP	\$2.59
COMBO NO. 4	HOMESTYLE POPCORN CHICKEN & 32 OZ. TALLSUP	\$2.69	COMBO NO. 9	CHIMICHANGA & 32 OZ. TALLSUP	\$2.39
COMBO NO. 5	SPICY POPCORN CHICKEN & 32 OZ. TALLSUP	\$2.69	COMBO NO. 10	2 BEEF & BEAN BURRITOS & 32 OZ. TALLSUP	\$2.59

ALLSUP'S "MOO"
BUY 12 GALLONS OF FRESH ALLSUP'S MILK...
GET ONE FREE!

Collect Bull Stick "Moo" Stamps Today! You Could Win FREE Milk For A Year!

MOTLEY COUNTY FOOTBALL

G O M A T A D O R S



MOTLEY COUNTY MATADORS — Pictured left to right (back) Bradley Brown, Casey Carnes, Shane Newman, Marc Henzler; (next row) Coach Mike Bigham, Gene Salazar, Justin Newman, Jacob Johannes, Jacob Blanco, Asst. Coach Randy Brown; (next row) Sam Fletcher, Eric Simpson, Stacey Perryman, Isiah Archer, Brendan Wiltshire, Mgr.; (in front) Cheerleaders - Savannah Rose, Chicagra Brown, Carrie Valdez (Mascot), Christy Smith, Courtney Alexander, Shane'a Russell and Mylissa Gilmore.



JR. HIGH MAVERICKS — Beginning at back (left to right) Austin Taylor, Chase Buckner, Augustine Chavez, Cody Martin, Paul Guitierrez, Ky Christopher, Jonathon Osborn, (middle) Coach Bigham, Britt Simpson, Schylar Tomlinson, Colby McCleskey, Christian Brooks, Keyan Kautz, Braden Mason, Asst. Coach Jim Cooper; (next row) Mark Quintero, Dominique Quilimaco, Payden Perryman, Ismael Torres, Reagan Elliott, Juan Flores; (in front) Cheerleaders - Leanne Jameson, Alyx Smith, Kyla Simpson, Lexi Osborn, and Sabra Pope.

photos by Walter Taylor

We support the Matadors

& Mavericks

- First Ag Credit
- HP Feed & Seed
- Matador Implement
- Knowles-Taylor Cotton
- Matador Branch
First National Bank of Seymour
- Thacker Jewelry
- Graham Supply
- Pay & Save
- New to You
- Flomot Gin
- Matador Variety
- Main Street Cafe
- Meredith Gas & Supply
- PolyPipe, Inc.

Lex Herrington Law Office

Billie Dean's Restaurant

Alexander Fuel & Service

Panhandle Plains
Federal Land Bank

Motley County Tribune

Anna's Mexican Restaurant

Lighthouse Electric

Wylie L.P.

Matador Floral
Designs by Vickie

Seigler Funeral Home

Caprock Cellular

Caprock TV

CapRock Telephone

James, Kathy,
Robert & Brenda Gillespie

Chuck, Gail,
Charli & Mandi Ream

Jeff & Pam Newman

Terry, Tammy & Korbyn Simpson

Gary & Lisa Simpson

David, Kathy & Hailey Blanco
& John Martin

Timmy, Tina & Mattie Brooks

Russ, Andi & Matt Henzler

Rodney & Glenda Williams

Harold & Bobbie Brown

J.D., D'anna, Colton &
Shane'a Russell

Coach Kay & Alan Bingham

OBITUARIES

Mary Meason

Mary Frances Meason, 95, of Matador, passed away Thursday, October 19, 2006, at Crosbyton Nursing Home.

Funeral services were held Sunday, October 22, at the First United Methodist Church in Matador with John Bird presiding. The obituary was read by Barbara Bird Armstrong, her "adopted" daughter. Interment followed at East Mound Cemetery, Matador.

Mary was born May 10, 1911, in Childress, Texas, the daughter of G.E. and Edna Hamilton. On November 26, 1936, she married Melvin Meason in Matador. She was a graduate of Lubbock High School and graduated from Texas Wesleyan College in Ft. Worth in 1932. Mrs. Meason was an elementary school teacher in Matador for 13 years, being much loved by her students. She worked along side her husband in the Spot Cash Grocery Store in Matador for 27 years. She was an avid golfer, a member of the Eternas Study Club, and a member of the Matador First United Methodist Church. Her love for writing was evident even during her elderly years when she wrote regular articles of historical interest for the Motley County Tribune. She will long be remembered for her keen sense of humor, her ability to recall and tell stories of human interest, and her love of family and friends.

She was predeceased by her parents; her husband Melvin, Feb. 19, 1989; one son, Harold Ritzma "Sparky" Meason, May 6, 1984; two brothers, Howard Hamilton and John Hamilton; and a sister, Helen Rebecca.

On the Hamilton side of the family she is survived by the following: a niece, Jeanne Straub and her husband Dean of Nordland, Washington; three nephews, Tom Hamilton and his wife Jan of



Plainview; Dick Hamilton and his wife Patti of Willow, Alaska; Harry Hamilton and his wife Ann of Lubbock; a niece, Jane Carter and her husband Carl of San Saba.

On the Meason side of the family, Mary is survived by four nephews, John Meason and his wife Joan of Socorro, New Mexico; Stormy Meason of Dallas; Pete Murry of Ruidoso, New Mexico; and David Murry of Houston; and one niece, Barbara Meason of Colorado.

She is also survived by Wiley T. Kennedy, a foster son, of Anaheim, California; numerous great and great-great nieces and nephews; and a host of friends.

Pallbearers were great-nephews John Hamilton, Brent Hamilton, Rob Hamilton, Charlie Hamilton, Scott Carter, and an "adopted" grandson, Jason Jameson.

The family requests that memorials be made to East Mound Cemetery Association, Motley County Library, or Motley County Museum.

Funeral services were under the direction of Seigler Funeral Home of Matador.

Alma Shorter

Alma Mae Shorter peacefully joined our Lord on October 23, 2006. Funeral services will be held at 1:00 p.m. Thursday, October 26, at the Flomot Baptist Church. Interment will follow in the Flomot Memorial Park Cemetery under the direction of Seigler Funeral Home of Matador. She was born August 25, 1924, near Broken Bow, Oklahoma to Francis Taylor and Flossie Thompson Claborn. She attended school in Madill, Oklahoma, where she met Lewis Everett Shorter. They were married June 26, 1943. After Everett returned from army service in 1946, they moved to Flomot, Texas which has been their home ever since. She was a devoted wife, mother and grandmother. She has been a member of the First Baptist Church of Flomot for 59 years. She served as W.M.U. director, taught youth Sunday School classes, and held many other positions in the church. She

was also a member and officer of the Flomot Do-Gooders Club. Alma enjoyed showing concern for others by short phone calls and encouraging cards sent over the years to people she thought needed to know she was thinking and praying for them.

Alma was preceded in death by one daughter, Alma Joyce, one granddaughter, Teresa Gail Martin, her parents, three brothers and four sisters.

She is survived by her husband, Everett Shorter of Flomot; one daughter, Judy Rhodes of Cypress, Texas; two sons, Louis Shorter and wife Beverly of Fort Worth, Texas, and Clois Shorter and wife Kathy of Flomot; 8 grandchildren and 11 great-grandchildren.

Pallbearers will be Kevin Sehon, Lynn Stark, Dwain Milam, Chad Calvert, Rick Rhodes and Russell Rhodes.

Gloria Gail Childs

Graveside services for Gloria Gail Childs, 60, of Matador were held at 4:00 p.m. Sunday, October 22, 2006, at the East Mound Cemetery in Matador. Arrangements were under the direction of Seigler Funeral Home of Matador.

Mrs. Childs passed away October 19, 2006, at University Medical Center in Lubbock. She was born March 29, 1946, in Jefferson County, Oklahoma to Leon Dove and Margie L. Brinsfield Dove Taylor. Gail was a lifelong resident of Matador before moving to Abilene a few years ago. She was a homemaker. Mrs. Childs was preceded in death by her hus-

band, Glenn E. Childs on April 16, 1994, and her step-father Raymond Taylor.

She is survived by her mother, Margie Taylor; her son, Tony Patterson; three daughters, Tonya Patterson, Telia Obashawn and Teresa Elder; two sisters, Janice Martin and Joy Riley; three brothers, Dennie Dove, David Taylor and Leslie Taylor; and by her companion, Jim Belk.

Pallbearers were Clay Martin, Ray Martin, Randy Martin, Terry Simpson, Robert Osborn and Shane Taylor.

News Around the County

Roaring Springs News

By Monta Marshall

2006 FAIR

The fair has come and gone. We were disappointed in the number of entries brought in. There were such a few culinary items that we called the judge of that category and told her she need not come. I don't think there is ever a time that there aren't too many other activities going on to have a lot of participation.

We had a good time though and the entries brought were interesting. We had more antiques this year. There were some lovely textiles from weaving to embellished wall hangings. Zella Palmer's appliqued Dutch doll quilt won Best of Show. There weren't as many photographs nor art entries as last year.

Don Dillard entered many of his glow pens on black velvet work. They were so pretty and colorful. He won several ribbons. Steve Byrd entered a beautiful puzzle he put together. Steve Smith framed the puzzle. It was called "The Invitation." It is a picture of Noah's Ark and the many animals coming to safety. Jo Trammell and Kayla Hollinsworth won ribbons on their watercolors and Ken Abbott won a ribbon on a picture of a sea lion that his son painted when he was eleven years old.

The seventh grade of Motley County School entered several nice pencil drawings. Chase Buckner won first in that division. If we ever have the fair again, I hope that the students will enter many more things.

I helped judge the fair at Guthrie last year. Their school children entered the most entries. Science projects were a big category as was art; lots of 4-H Club members also entered projects.

Don Stuckey brought a mystery antique. It was an iron oval shaped kettle that had an inside kettle that had holes in the bottom. He thought it would be good to let people guess for \$1.00 and the pot to be split between the RS Community Volunteers and the winner if anyone did guess correctly. Don was the only one who knew what it was. It looked like something to use over a campfire. We had 29 guesses, many guessing a steamer, a deep fryer, cowboy baby bottle sterilizer, veterinarian's instrument sterilizer and finally a tamale cooker. That was it!

Visiting was the main attraction of the day. The entries made for good conversation, especially the antiques. Evelyn Garrison recalled when Matador had an old gentleman who sold tamales on the street corner in Matador. She said his name was Bud Lowe and that he made very good tamales. She remembered that when the first man walked on the moon that some television newsmen interviewed him asking what he thought about a man walking on the moon. Evelyn said he had a pretty reasonable answer why he didn't believe it really happened.

Wayborn (Pug) and Bennie Mitchell spent a couple of hours visiting with folks. Other out of town fair-goers were the Montgomery family clan. This is Penny Kline's family. They congregated at the home of D.A. and Ruby McGuire. There were twenty-five people gathered for the reunion. There were three tents on the lawn for extra room. It was a chilly day and night

for the family I am sure but they were having a great time. Many of them attended the fair.

Linda Ferguson of San Angelo visited Corky and Monta Marshall. She is my niece. She attended church Sunday with us. Kevin McClaran, my son, also visited and was one of the judges at the fair.

Barbara Alexander was admitted to the Lubbock Heart Hospital Monday for tests. Please pray for Barbara. Her condition is serious.

Kaegan Keltz remains in UMC. He is being treated for pneumonia and Cystic Fibrosis. Little Kaegan and his family need your prayers also. His mom, Lesa had been with him day and night. Great grandmother, June Keltz, has been keeping little Kenzie Morgan. Kaitlyn is in preschool; Pennie and Kelly help with them in the evenings. Kevin goes back and forth to spend all the time he can with Kaegan and Lesa.

Kenneth Ashley has a new address. He is staying with his daughter, April Ballard in Temecula, California. He has been released from the convalescent center where he had been for a long while following his hospital stay. His address is c/o April Ballard, 457-55 Magnolia Place; Temecula, CA 92592. The hyphen in the house number is a necessary part of the address. Temecula is in the Los Angeles metropolitan area.

J.N. Fletcher is doing well. He was able to be at church on Sunday. They returned to Dallas Monday for a check up and dressing change.

Jeannie Adams had a busy day Saturday with her daughter, Vicki. She is doing pretty good but doesn't have much energy.

Billie Stuckey returned today from a visit with her daughter and family in Corinth, Texas.

The Women on Mission of the First Baptist Church are still working on the Operation Christmas Child Shoe Box Ministry. We will be taking the boxes to Lubbock during the week of the 13-20 of November. Anyone wishing to send their box along with ours or to join us wrapping and filling boxes is welcome. We will publish a date to take the boxes later.

The WOM ladies are also planning a cookbook. We would love to have recipes from some of the deceased members. We are also looking for a picture of the old First Baptist Church building.

There will not be a fifth Sunday dinner at either the Baptist or Methodist churches here in Roaring Springs because it conflicts with the United Methodist Harvest Dinner in Matador and several people have other plans.

Flomot News

By Earlyne Jameson

OVERHEARD

People who work the land rarely need a digital alarm or time change to get their day started or a whistle to tell them when it is over. The ever moving sun is a constant companion and a marker for the workday.

IMPORTANT ANNOUNCEMENT

The Do Gooders' Club will have a special meeting Tuesday, October 31st at 2:00 p.m. at the Community Center in Flomot. Their regular club day, Tuesday, November 6th is election day at the Community Center and final arrangements need to be made for the November 11th club's annual Fall Bazaar. Members are urged to attend this important meeting.

Tickets for the beautiful Bazaar quilt are being sold for \$1.00 each or six for \$5.00 by members of the club. Booths are continuing to be sold for \$10.00, and you can contact Mrs. Mary Jo Calvert at 806-469-5212.

CHRISTIAN WOMEN'S CONFERENCE

A Christian Women's Conference was held Saturday at the Unity Center located between Floydada and Lockney. Those attending from Flomot were Mesdames Kathy Shorter, Cally Sperry, Anna Beth Clay, Shonda Lee and the Baptist pastor's wife, Mrs. Kathy Mulder of South Plains.

Attending from Matador were Mesdames Barbara Armstrong, Carolyn Ewing, Doris Moore, Jolie Crawford, Mary Marshall and Janie Campbell.

Linda and Travis Kendall visited from Thursday until Sunday in Lake Pomme De Terre, Missouri

with her aunt and uncle, Barbara and Fred March.

Mary Ellen "Dude" Barton was in Childress, Friday for a medical checkup following shoulder surgery. She received a good report. She will begin therapy treatments in Childress next week. Accompanying her to Childress were Mrs. Judy Renfro of Matador, Mrs. Waydeta Clay and Wilburn Martin of Flomot.

Mr. and Mrs. Richard Rogers and son Jerrod of Lubbock, and Donnie Rogers of Flomot were luncheon guests Sunday of Mrs. B. Rogers.

Mrs. Aleda Ross visited overnight Tuesday in Lubbock with daughter and husband, Elisa and Stan Wigley. She had a complete medical exam and tests Wednesday.

Mr. and Mrs. Joe Ike Clay, Mrs. Julie Edwards, Jaxon and Laney visited in Panhandle Thursday with Mr. and Mrs. Larry Clay, Tanner, Kelsey and Sarah. They enjoyed the football game in which Tanner played against Stratford.

Nada and Jack Starkey were in Amarillo Thursday and Friday for Nada medical appointments. They visited in Canyon with son and wife, Mr. and Mrs. Michael Starkey.

Weekend visitors of Connie and Coy Franks were Cary Franks, Anissa Huckert, Cory and Amy Franks, Hudson and Madison of Lubbock.

Wilburn Martin visited in Borger, Sunday with daughter and husband, Marilee and Fred Cooper and his parents, Mr. and Mrs. Bob Cooper.

Shannon Vinson and son, Andrew of Lubbock visited Saturday with his grandmother, Mrs. Beverly Vinson.

Matador News

Mrs. Geneva Wilson, her sister and daughter, Mrs. Bama Oliver and Mrs. Beth Watson of Pampa visited overnight Wednesday in Abilene with Mrs. Oliver's daughter, Mrs. Linda Barton. The ladies visited in Dallas from Thursday until Sunday with Mrs. Barton's daughter, Michelle Barton. They enjoyed entertainment, tourist attractions and shopping.

Mrs. Frances Dixon and daughter, Mrs. Elaine Risser spent overnight Friday and Saturday in Wheeler and visited Mr. and Mrs. Everett Childress, daughter and family, Mrs. Kari McClusky, Hannah and Rachel of Tuttle, Oklahoma.

ATTEND BALLOON FIESTA
Dorothy Day and Lucretia and Carol Campbell recently attended the 35th annual Albuquerque International Balloon Fiesta. More than 700 balloons from 20 countries were slated to adorn the New Mexico's October skies. Due to high winds only about 200 balloons made the first Mass Ascension.

With the Sandia Mountains as a backdrop, in the early dawn of October 6, the group witnessed

spectacular special effects in balloon shapes, including a spaceship, a football, soccer ball, a dragon, a devil, a pirate, a stagecoach, an eagle, smiling flowers, bumble bees and more. The AfterGlow fireworks show was cancelled due to weather.

More than 40 food vendors served such fare as green chili pizza, breakfast burritos, cinnamon rolls, Indian Pueblo Fry Bread, funnel cake, and superior coffee and smoothies.

Free live music performances presented contemporary, country and blues, including the Watermelon Mountain Jug Band. Spectators are allowed to get "up close and personal" with the balloon crews, walking about in the fields where crews are pointing propane-fueled flames into towering silk envelopes. Not shy, the Matador group situated their field stools in the middle of the action. Following the Mass Ascension, shopping was the order of the day. Flags, pins, pendants, clothing, weaving, paintings, pottery, Indian and contemporary jewelry booths were just some of the available fare.

Did you know?

- Mac Thornberry has deep roots in our area and is the 5th generation of his family to ranch in the 13th district.
- Mac Thornberry works hard on the issues important to our area, such as agriculture, energy, and health care.
- Mac Thornberry has a 100% rating in support of private property rights. (League of Private Property Voters)
- Mac Thornberry is a fiscal conservative, not afraid to stand up and say "no" to wasteful spending, so you can keep more of the money you earn.
- Mac Thornberry plays a key role in keeping our nation safe as a senior member of the Armed Services and Intelligence committees.



Faith, family, hard work, keeping your word . . . these are the values that have made America strong and that will help us face the challenges ahead.

Working together, we will have a more secure and a more hopeful future.

Mac

Thornberry

For U.S. Congress

Paid for by Thornberry for Congress Committee P.O. Box 9392 Amarillo, Texas 79105

Here's a SPOOK of a Deal...

All Halloween items 30% off

Matador Variety

FR
FARM & RANCH HEALTHCARE

8525 CAMP BOWIE WEST
FORT WORTH, TX 76116-6204

NANCY DUNLAP
DISTRICT MANAGER
Cell: (806) 336-1043
1-800-633-6508
(817) 560-9857 FAX
(817) 244-3949

www.farmranchhealthcare.com

Representing
united american insurance company

THE HITCHHIKIN' POST

Will be Closed
October 28 - November 1

We will re-open
November 2

Thank you!

349-7205 - Roaring Springs



Lots of Fall items arriving daily!

New to You
Downtown Matador ~ 806-347-2388



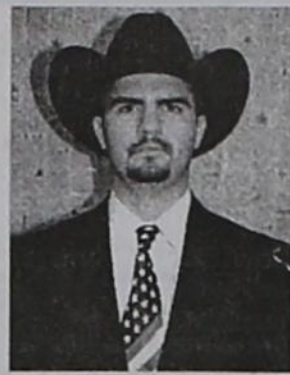
FRIEND OF 4-H — Motley County 4-H ALA President, J.D. Russell, left, presented Russell Alexander of Alexander Fuel in Roaring Springs with a "Friend of 4-H" plaque at the annual 4-H Banquet held recently.



Motley County ALA member, Craig Turner, right, presented Dr. David Fuston DVM with a "Friend of 4-H" plaque at the annual 4-H Banquet held recently.

County Agent's News

By Ryan Martin,
Motley County Extension Agent



The Texas Department of Agriculture will accept applications through November 13 from eligible livestock producers impacted by drought who qualify for payments under the federally-funded Livestock Assistance Grant Program. I do have these applications in my office or they are available on TDA's website at www.agr.state.tx.us. The applications must be postmarked by November 13, 2006, and mailed to TDA headquarters in Austin addressed to Livestock Assistance Grant Program, Texas Department of Agriculture, P.O. Box 12847, Austin, Texas 78711. Incomplete applications and applications postmarked after November 13 will not be considered. Payments will be made on a per head basis and the rate will be determined by the total number of eligible livestock

claimed. For more information on this program, please come by my office or visit TDA's website.

Regarding the Motley County 4-H program, enrollment is up from last year. At this time, we have a total of 56 children enrolled in the 4-H program. This is a great compliment to all leaders, volunteers, parents and 4-H members working to build our program. I look forward to meeting and visiting with each member and their parents and hearing their ideas and concerns for the upcoming year. I am excited about working for and with the people of Motley County and our 4-H program as these children are the future of our community and agriculture. If anyone has any questions, comments, concerns or just want to visit, please feel free to come by my office.

Proof of the Truth

by Tom Edwards

THE ATTRIBUTES OF GOD (Part 7)

In Orthodox Theism, God is both transcendent and immanent. By transcendent is meant that God exists outside of time and space - apart from the world. This is easy to understand by considering creation. As Creator of time, space, and the universe, God had to exist separately to do it, otherwise He would also be creating Himself, which is impossible! Before a being exists, it can do nothing; only when a being exists can it then do something, e.g. create. Therefore God had to separately exist apart from His creation in order to create it, and He also had to pre-exist His creation! This exposes a major fallacy behind a number of religions - the false philosophy of Monism (all of reality is one!).

If we look at God's transcendence from His creation then all reality can't be monistic (one), but must be dualistic (two), i.e., the created universe is one reality, and the mysterious realm of God is another! Monism underlies Hinduism, New Age, and much of Buddhism, in the form of Pantheism (all "is" God, e.g., rocks, trees, snakes, cows, etc.), Pantheism (all is "in" God, e.g., God is bi-polar and the

natural world is one of His poles), and a very perverse theology that is creeping even into mainline protestant denominations known as "Process Theology, and their progeny are thus false, as is the claim by a well-known TV preacher that "God lives on a distant planet!"

While transcendent, God, is also immanent, meaning that He is active within His creation sustaining it and accomplishing His will within it. This is not a spatial, but a relational thing. He is active within the world, but He is not a part of it, and the world is not a part of Him, as the above-mentioned false philosophies hold. As we will learn from His omnipresence, God is, as a spirit being, simultaneously everywhere, but He is NOT IN everything. Neither rocks, trees, snakes, cows, nor even people, are Divine-only God, and Jesus was God incarnate! (God in flesh).

The proof for God's immanence is two-fold. True science can easily demonstrate that without a sustainer, the universe would already have become unraveled, and there are legions of people who have inhabited this planet that have personally encountered God!

Thank you for reading the Motley County Tribune

NEW LOCATION

Childress Veterinary Hospital

Dr. David Fuston

~ WE'VE MOVED ~

FULL SERVICE VETERINARY HOSPITAL

Boarding for Pets and Large Animals

Now located at 109 Industrial Circle - Childress

287 N. - 940-937-2558

Local Writer

from page 1

Polly and her husband, Chig, have three grown children and three grandchildren.

Polly's book is available at Barnes & Noble in Lubbock, through the Amazon or AuthorHouse websites or at www.pollygwinbook.com.

It's Time to Start Thinking About Christmas!

The MOTLEY COUNTY TRIBUNE has a great selection of BOOKS

Here just a few: PITCHFORK COUNTRY

Photography by Bob Moorhouse

BETWEEN HEAVEN & TEXAS

Photography by Wyman Meinzer

REVEALING CHARACTER

Texas Tintypes

TEXAS SEASON

Photography by Wyman Meinzer

COWBOY

The Illustrated History

THE HISTORY OF

REMINGTON FIREARMS

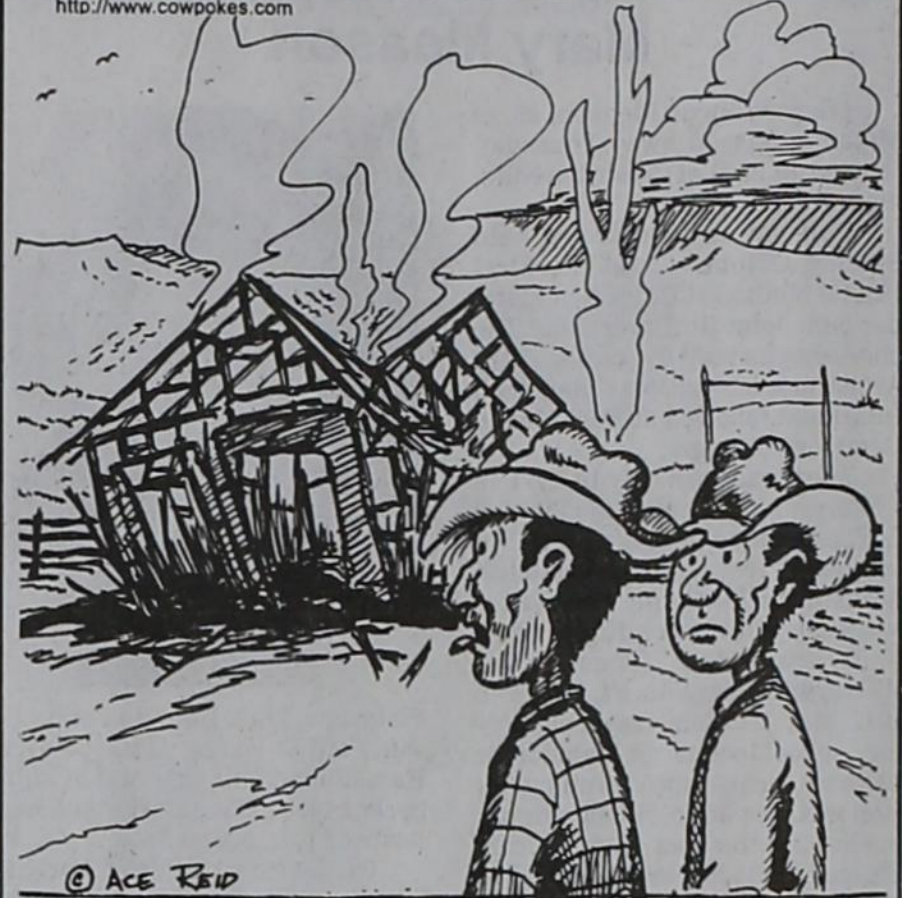
and many, many more!

Stop by and take a look!

724 Dundee • Matador
806-347-2400

COW POKES® By Ace Reid

<http://www.cowpokes.com>



© ACE REID

"Wul that wuz a heck of a shower, sixteen sprinkles and one bolt of lightning!"

THIS FEATURE IS SPONSORED BY THE

MATADOR BRANCH

FIRST NATIONAL BANK OF SEYMOUR

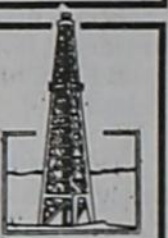
MATADOR, TEXAS

Your "Hometown" Bank

Member FDIC

OIL & GAS UPDATE

by Thomas Musser



CAUTION AND RESPECT:

PetroGlobe Energy USA Ltd. is requesting that visitors observing their drilling operations practice caution and respect. While PetroGlobe Energy USA Ltd. understands that folks are interested in following the progress of the Palo Duro Basin Exploration for gas and are interested in observing the drilling operations, there have been concerns with the number of visitors on lease roads and well locations. In order to maintain safe operations and to insure the safety of workers and visitors, PetroGlobe Energy USA Ltd. has requested that visitors observing their drilling operations practice caution around the working well drilling operations and remain off of the lease road and remain off of the well location. Please respect that these drilling operations are active work sites with not only the working rig on location but also additional truck traffic to and from the location, and safety must be first and foremost.

FLOYD COUNTY:

On Thursday, October 19, PetroGlobe Inc. issued an operational update reporting the McIntosh Lease Well #1077 had reached a total depth of 9900 feet and that while drilling through the lower Pennsylvanian Shale and Granite Wash that gas was encountered. The McIntosh Well #1077 flowed gas for approximately forty-eight hours from Monday through Wednesday of last week with the gas being flared. The McIntosh Well #1077 is now shut-in pending completion and testing.

Completion work continues on the Bankers Petroleum (US) Inc. Misener Lease Well #1. BASA Resources Inc. Fos-

ter Lease Well #1 continues pumping frac fluid back.

MOTLEY COUNTY:

On September 21, 2006, Tyner Texas Operating Company received approval from the Railroad Commission of Texas to flare gas on the R.G. Stephens Lease Well #1. This approval is for 180 days until February 28. Tyner Texas Operating Company has stated their plans to compress the gas on location, strip out the liquids, sale the liquids, and flare the gas. Tyner Texas Operating Company has stated the Stephens #1 will make approximately 18 barrels of oil per day and 150 mcf of gas per day. This period of production of oil/flaring of gas will help determine if the Stephens #1 is economical to lay a pipeline to. This operation is scheduled to begin shortly.

SWISHER COUNTY:

During the past weekend the Norton Energy Drilling Company Rig #2 rigged down off of the McIntosh Lease Well #1077 location in Floyd County and moved to the PetroGlobe Energy USA Ltd. Young Lease Well #1032 in Swisher County to begin drilling this week. The Young Lease Well #1032 is located in Section 32, Block M-14, W.R. Adams Survey 5, 7/10 miles southeast of Kress.

DON'S MUFFLER SHOP
210 W. California
Floydada

FREE ESTIMATES!

Meredith Gas & Supply

348-7332

Your Local Propane Company

Propane & Service

24 hours - 7 days a week!

We Appreciate Your Business and We Welcome New Customers!

Tanks & Supplies available
Propane Appliance Services

Pressure Tests & Leak Tests performed upon request

WE ACCEPT VISA & MASTERCARD!

For all your Ginning, Marketing & Planting needs

Johnson's Gin

Silverton, Texas

806-823-2224 • 800-338-3960

Family Owned & Operated

Buy USA Grown & Made - It Matters!

LOCAL WEATHER FORECAST

Motley County Tribune Weather

Oct. 26, 2006

7-Day Forecast

	Thursday Mostly Sunny High: 68 Low: 42
	Friday Sunny High: 71 Low: 46
	Saturday Sunny High: 73 Low: 46
	Sunday Mostly Sunny High: 72 Low: 44
	Monday Sunny High: 72 Low: 45
	Tuesday Mostly Sunny High: 75 Low: 48
	Wednesday Partly Cloudy High: 74 Low: 42

In-Depth Forecast

Today we will see mostly sunny skies with a high temperature of 68°, humidity of 26% and an overnight low of 42°. The record high temperature for today is 91° set in 1950. The record low is 27° set in 1957. Friday, skies will be sunny with a high temperature of 71°.

Moon Phases

First	Full	Last	New
10/29	11/5	11/12	11/20

Last Week's Local Almanac

Precipitation	1.95"
Normal precipitation	0.46"
Departure from normal	+1.49"
Average temperature	59.3°
Average normal temperature	62.4°
Departure from normal	-3.1°

Data as reported from Childress, Texas

Weather History

Oct. 26, 1988 - Thunderstorms moving out of northern Texas spawned five tornadoes in Louisiana during the morning hours. The thunderstorms also produced wind gusts to 75 mph at Jennings, La. A falling tree near Coushatta killed the driver of a vehicle.

Sun & Moon Times

Sunrise today	7:57 a.m.
Sunset tonight	6:57 p.m.
Moonrise today	12:25 p.m.
Moonset today	9:53 p.m.

© 2006 Accessweather.com, Inc.

Loan Officers who understand
Rural Real Estate Financing in the
Panhandle and South Plains

Farm-Ranch-Rural Recreational Tracts

Come by or call Jeff Taylor


629 Baltimore St. Plainview, TX 806-296-5579

Call for current quote

Panhandle-Plains
LAND BANK




Robert Hall Chevrolet

TEXAS  AN AMERICAN REVOLUTION
 SALES DEPT. JAY HALL
 E-mail: jayhall@caprock-spur.com
 ROBERT E. HALL

www.roberthallchevy.com

806-237-2182 • TOLL FREE 877-637-2182

Jayton, Texas • Monday-Friday 8am-6pm • Closed Sat & Sun

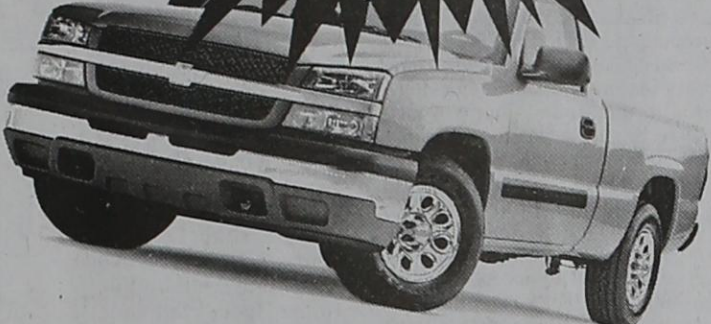
TEXAS  AN AMERICAN REVOLUTION

ALL PRICES + TAX, TITLE & LICENSE, WITH APPROVED CREDIT; ART FOR ILLUSTRATION ONLY; CERTAIN RESTRICTIONS APPLY; RATES, REBATES & SALE PRICES ARE SUBJECT TO CHANGE WITHOUT NOTICE; CALL OR SEE DEALER FOR FULL DETAILS

MILITARY REBATE = \$500

2006 Chevrolet 3500 HD 4X4

MSRP \$38,422
 Robert Hall Discount \$4,022
 Factory Rebate \$2,500
 Bonus Rebate \$1,000
Sale Price
\$30,900



Reg Cab, Duramax, Blue Granite/Charcoal Cloth, LT1 Pkg, XM Radio, Steering Wheel Controls, HD Tow Pkg, Positrac #6128

2006 Chevrolet 3500 HD 2WD

MSRP \$39,453
 Robert Hall Discount \$3,878
 Factory Rebate \$2,000
 Bonus Rebate \$1,000
Sale Price
\$32,075



Single Rear Wheel, Duramax, Allison Automatic, Red/Charcoal Cloth, LT1 Pkg, Power Seat, Tow Pkg #5965

2006 Chevrolet 2500 HD Crew Cab

MSRP \$38,720
 Robert Hall Discount \$3,150
 Factory Rebate \$4,000
 Bonus Rebate \$1,000
Sale Price
\$30,570



4x4, Dark Blue/Tan Cloth, 8.1 V8, Power Seat, Positrac, Allison Automatic, Skid Plates, Onstar, XM Radio, HD Tow Pkg #5998

2006 Chevrolet Trailblazer

MSRP \$29,360
 Robert Hall Discount \$2,022
 Factory Rebate \$4,000
 Bonus Rebate \$500
 Price Reduction \$1,680
Sale Price
\$21,158



Superior Blue/Grey Cloth, V6 Auto, Positrac, XM Radio #5826

2006 Chevrolet Colorado Z71

MSRP \$24,235
 Robert Hall Discount \$1,590
 Factory Rebate \$1,500
 Bonus Rebate \$500
Sale Price
\$20,645



Regular Cab, 4X4, Silver/Charcoal Cloth, I5, LT1 Pkg, Power Windows, Power Locks #5967

2006 Chevrolet Uplander LS

MSRP \$26,130
 Robert Hall Discount \$2,035
 Factory Rebate \$2,000
 Price Reduction \$840
Sale Price
\$21,255



Silver/Grey Cloth, V6 Auto, Rear A/C, Rear Entertainment System #5926

2006 Chevrolet Equinox LS

MSRP \$22,340
 Robert Hall Discount \$1,140
 Factory Rebate \$2,000
 Bonus Rebate \$500
Sale Price
\$18,700



Galaxy Silver/Grey Cloth, Power Windows & Locks, V6 Auto, Tow Pkg #6169

2007 Chevrolet Crew Cab Z71 4X4

MSRP \$33,415
 Robert Hall Discount \$2,375
 Factory Rebate \$2,000
 Bonus Rebate \$1,000
 Bonus Rebate \$1,000
Sale Price
\$27,040



Black/Charcoal Cloth, LT1 Pkg, Power Seat, Chrome Exterior Pkg, Positrac, Tow Pkg #6234

2007 Chevrolet Crew Cab 2LS

MSRP \$25,975
 Robert Hall Discount \$1,740
 Factory Rebate \$2,000
 Bonus Rebate \$1,000
 Bonus Rebate \$1,000
Sale Price
\$20,235



2WD, Black/Charcoal Cloth, Chrome Exterior Pkg, 4.8 V8 Auto #6213

PRE-OWNED VEHICLES

2005 BUICK LACROSSE

4 DOOR SEDAN, SILVER/GRAY CLOTH, POWER WINDOWS, POWER LOCKS, CD, 19K MILES #3927

*3.9% FOR 60 MONTHS
 GM CERTIFIED



\$15,750

CLEARANCE SPECIAL!

2002 HONDA ACCORD EX SEDAN
 SILVER/GREY LEATHER, V6 AUTO, 75K MILES, POWER WINDOWS & LOCKS, 6-DISC CD, SUNROOF

SPECIAL PRICE \$12,900

#4034 2000 Chevy 2500 HD Reg Cab long bed, 2WD, white/grey cloth, 5.3 V8 manual, 95K, work truck pkg.....	\$6,950	#1235 2002 Buick LeSabre white/dark grey cloth, 62K, power seat, aluminum wheels.....	\$9,000
#3702 2005 Chevrolet Trailblazer sandstone/tan cloth, 21K, LS, loaded, program unit.....	\$16,950	#4010 2003 Chevrolet Trailblazer Extended sandstone/tan cloth buckets, V6, auto, 49K, LS pkg, 3rd row seat.....	\$14,900
#3570 2002 Chevrolet 1500 Reg Cab 4X4 black/charcoal cloth, V6, auto, 96K, work truck pkg.....	\$10,600	#4027 2002 GMC Ext Cab Z71 4X4 blue/charcoal cloth, 79K, rhinoliner.....	\$14,500
#3689 2003 Dodge 1500 Reg Cab 2WD, white/tan cloth, V6 manual, 37K, ST pkg.....	\$11,500	#3838 2004 Chevy Impala 4-door sedan, red/grey cloth, 51K, V6 auto, all power.....	\$9,500
#3886 2005 Cadillac Deville white/tan leather, 22K, heated and cooled front seats, Onstar, fully loaded.....	\$22,950	#3861 2003 Chevy Impala 4-door sedan, light grey/grey cloth, 31K, V6 auto, all power.....	\$10,000
#3874 2006 Chevrolet Uplander LS white/grey cloth, DVD, 17K.....	\$17,500	#4040 2006 Chevy Colorado Crew 2WD, white/charcoal cloth, XM, traction control, 2LT pkg, alum wheels 8K.....	\$17,700
#3962 1999 Chevrolet Tahoe 4-door, 2WD, pewter/grey cloth, LS Pkg, 5.7 V8, 131K.....	\$7,850	#4036 2003 Chevrolet 2500 HD 4X4 ext cab, long bed, Duramax, 165K, LS pkg, gooseneck hitch, grill guard.....	\$14,500
#3975 2000 Ford Expedition Eddie Bauer pkg, white/tan leather, 4.6 V8, 86K, all power, 6-disc changer.....	\$10,250	#3823 2003 Ford Expedition XLT 4X4 silver/tan cloth, V8, loaded, one owner.....	\$17,500
#3832 2005 Pontiac Vibe grey/grey cloth, 1.8 litre, 4 cylinder.....	\$14,000	#3900 2000 GMC Suburban 2WD, white/grey cloth, 132K, SLE pkg.....	\$9,000
#3989 2004 Chevy Reg Cab 4X4 long bed, red/charcoal cloth, 5.3 V8, auto, 102K, work truck.....	\$8,995	#3670 2005 Chevrolet Trailblazer 2WD, sandstone/tan cloth, 21K, LS pkg.....	\$16,900
#3980 2005 Buick LeSabre Custom 4-door, white/grey cloth, V6, 20K, all power.....	\$14,125	#2503 2006 Chevrolet Cobalt 4-door sedan, plum/grey cloth, power sunroof, all power, 11K.....	\$13,950
#3961 2002 Buick LeSabre Custom Sedan 4-door, white/tan cloth, 56K, all power.....	\$9,500	#4044 1998 Chevrolet 1500 ext cab, 2WD, black/silver 2-tone/grey cloth buckets, 5.7 V8, 79K, 3rd door, running boards.....	\$8,500
#3965 2002 Kia Spectra GS hatchback, black/grey cloth, 1.8, 4 cylinder, 76K, cruise, CD.....	\$4,950	28' Sandpiper Gooseneck Travel Trailer microwave, large refrigerator, rear kitchen, large awning, NO HAIL DAMAGE, EXTRA NICE, EVERYTHING WORKS.....	\$7,950
#3972 2004 Chevrolet Cavalier 4-door, sport pkg, red/charcoal cloth, power windows/locks, 36K, 22-litre, 4-cyl.....	\$8,500		
#3871 2005 Pontiac Grand Am SE silver/grey cloth, 29K, all power, power seat.....	\$12,000		

THE CLASSIFIEDS

Phone: 806-347-2400 • Fax: 806-347-2774 • e-mail - motleytribune@yahoo.com

OCTOBER
Subscriptions Due
 Motley County - \$25.00
 Elsewhere - \$27.00
 P.O. Box 490
 Matador, TX 79244

Motley County Tribune

Carla M. Meador ~ Publisher & Editor



The Motley County Tribune, (ISSN: 0897-4322), purchased on September 3, 1996, is published weekly each Thursday, except Christmas week, at Matador, Texas. The office is located at 724 Dundee, telephone number, 806/347-2400. Periodical-class postage paid at Matador, Texas. POSTMASTER: Send address changes to Motley County Tribune, P.O. Box 490, Matador, Texas 79244.
 NOTICE: Any erroneous reflection upon the character, firm, or corporation, which may appear in the columns of the Motley County Tribune will gladly be corrected upon being brought to the attention of the Publisher. Only signed Letters to the Editor will be considered for publication.

PUBLICATION NO: 333770
 SUBSCRIPTION RATES: Motley County - \$25.00;
 Elsewhere - \$27.00
 P.O. Box 490, Matador, Texas 79244

REAL ESTATE

OWNERS - WE NEED YOUR LISTINGS on ranches and farms of any size in Texas, Oklahoma and New Mexico (especially ranches off the caprock in Texas or Oklahoma and large or small ranches in New Mexico). Please call us to set up a time to visit about or see your property.

SANTA FE, LAS VEGAS AREA - 14 section ranch, 982 deeded, balance state. Neat 2 bdrm. cabin w/ fireplace, help house, steel pens & scale, roping arena, watered by wells; pipeline & earthen dams, grama grass with cedar graced hills, beautiful canyons, on pvmt.

GRAY CO. TX - 280 acres, county roads on both ends, native grass, good fences, approximately 2 miles out of town. Up to 594 acres may be available.

COLLINGSWORTH CO. - 160 acres grass with house & barn on pavement.

COLLINGSWORTH CO. - 500 acres, 340 in CRP, big trees, running water, very scenic. **Owner will carry the paper with approved credit & down payment.**

CHECK OUR WEBSITE for details, on other ranches from 558 to 118,000 ac. in Texas & New Mexico; good irrigated farms, feedyards and acreages with homes.

www.scotlandcompany.com
Ben G. Scott - Broker,
 800-933-9698
Gerald M. Smith - Agent,
 806-292-0197

REAL ESTATE FOR SALE: Gerald and Penny Pipkin residence, 1610 Main St., price reduced. Four bedrooms, 3 1/2 baths, basement, central AC, fireplace, hardwood floors, large lot, detached garage. Call 807-687-6116 or 543-1342.

MATADOR HOUSING AUTHORITY

Is now accepting applications for one and two bedroom apartments. Applications can be picked up at the Farm Bureau office in Matador between the hours of 8:30 a.m. and 3:30 p.m., Monday - Friday, or for more information call 347-2941.



7 LOTS W/SHOP on Hwy. 70 East. (806) 928-8128 or (806) 577-3591. Call for more information.

FOR RENT - 2 bedroom house - by the day, week or month. 806-347-2827 or cell 806-269-2830.

Stress Relief & More!
REFLEXOLOGY
 by Diana Meyer
 806-269-2739
 Better Health
 Through Your Feet!
 "Let me help you feel better!"

HELP WANTED

Wind Options
 Located in Turkey, TX has Immediate Openings:

- *Metal Shear Operators
- *Punch Press Operators
- *Wire Welders

Willing to train the right people!

Also need:
General Laborers

Call
806-853-8428
 to apply

DICKENS COUNTY CORRECTIONAL CENTER now hiring Correctional Officers, starting pay \$8.75 per hour, Maintenance Technician \$8.75/hr, Kitchen Supervisors, \$9.00/hr, administrative clerk, \$9.00/hr. Benefits after 90 days include Blue Cross Blue Shield health insurance, dental, short term disability, life and vision. High School diploma/GED required. No criminal record. Drug Screen required. Out of town employees scheduled for same shifts. Apply in person at The Geo Group, Inc. Dickens County Correctional Center, 2637 FM 621, Spur, TX 79370. For more information call 806-271-3421. EOE.

FOR SALE

A QUEEN PILLOW-TOP mattress set. Brand new with warranty. Must sell \$175. Can deliver, 806-549-3110.

1tc-40

BRAND NAME full pillow top mattress and box. NEW. Factory warranty. Must sell \$135. Can deliver, 806-549-3110.

HANDSOME LEATHER SOFA and Love. New in original crate. WARRANTY! Great for football Sundays. Can del. Sacrifice \$699. 806-549-3110.

MUST HAVE 6 pc. bedroom set. Brand new in boxes. Must move, \$649. 806-549-3110.

1tc-41

SOLID WOOD pub counter height table and chairs. Butterfly leaf. Brand new in crate. List \$899. Sell \$379. 806-549-3110.

1tc-41

IRON CANOPY BED, Black, New in Box, \$149. 806-549-3110.

1tc-41

TWO BAR CHAIRS. Upholstery cushion seats. New in box. \$149. More available. 806-549-3110.

1tc-41

BID NOTICE

MOTLEY COUNTY IS ACCEPTING BIDS on a 986 International Tractor. It runs, has a cab and a working air-conditioner. The left rear axle seal leaks. Can be seen at Precinct #1 barn. Bids must be mailed or delivered to the Commissioners' Court by end of business on November 10, 2006. Bids will be opened during the regular court session on Monday, November 13, 2006. Motley County reserves the right to accept or reject any bids. For further information contact Judge Ed D. Smith, 806-347-2334, P.O. Box 719, Matador, Texas 79244.

MOTLEY COUNTY IS ACCEPTING SEALED BIDS on tax seizure property described as Lots 24, 25 & 26, Block 89, Original Town, Matador. Bids must be mailed or delivered to the Motley County Courthouse by end of business Friday, November 10, 2006. Bids will be opened in the regular session of Commissioners' Court, Monday, November 13, 2006. Motley County and/or the other taxing entities reserve the right to accept or reject any or all bids. For further information contact Motley County Judge Ed D. Smith, 806-347-2334. Mailing address: P.O. Box 719, Matador, Texas 79244.

MOTLEY COUNTY IS ACCEPTING SEALED BIDS on tax seizure property described as Lots 10, 11, 12, 13, 14, N22' of Lot 15 and Lots 23 through 31, Block 136, Original Town, Matador. Bids must be mailed or delivered to the Motley County Courthouse by end of business Friday, November 10, 2006. Bids will be opened in the regular session of Commissioners' Court, Monday, November 13, 2006. Motley County and/or the other taxing entities reserve the right to accept or reject any or all bids. For further information contact Motley County Judge Ed D. Smith, 806-347-2334. Mailing address: P.O. Box 719, Matador, Texas 79244.

MOTLEY COUNTY IS ACCEPTING BIDS on a Ford tractor #7000. It runs, but the PTO does not work. Can be seen at Precinct #1 barn. Bids must be mailed or delivered to the Commissioners' Court by end of business on November 10, 2006. Bids will be opened during the regular court session on Monday, November 13, 2006. Motley County reserves the right to accept or reject any bids. For further information contact Judge Ed D. Smith, 806-347-2334, P.O. Box 719, Matador, Texas 79244.

2tc-44

MOTLEY COUNTY

Matador:
 First State Bank
 Carol Campbell
 City of Matador
 Winifred Darsey

Fred Risser
 Charles Ream

Roaring Springs:
 Teresa Woolsey
 Norm DuVal
 Gilbert & Zacha Guerrero

Flomot:
 Doyle Calvert

ELSEWHERE
 Barry Hale, Dougherty
 Payne Pharmacy, Floydada

John Moss, Floydada
 Holly Lee, Wolfforth
 Laverna Price-Johnston, Lubbock
 W.T. Marshall, Lubbock
 Juana Williams, Lubbock
 Lula Jones, Panhandle
 Rollie Hyde, Plainview
 Glen Bailey, Plainview
 Jennie Lou Murphy, Abilene
 Mel Renfro, Frankston
 Elmer Ryan, Granbury
 Gladys McDonald, North Richland Hills
 Heather Haile, Stephenville
 Joyce Lynn Morton, Cleveland
 William Waybourn, Linden, VA
 Marcia Middlebrooks, Topeka, IN
 Randy Barton, Magnolia, AR
 Wayne Fletcher, Alto, NM

NAPA AUTO PARTS
 Floydada
 Delivery to Matador
 Everyday

Call 806-983-6272

ACE HARDWARE
 Floydada
 Delivery to Matador
 Everyday

Call 806-983-3000

FLOYDADA FORD MERCURY
 Pickup and delivery
 from Matador everyday

Call 806-983-3761

NOTICE

ROARING SPRINGS WOMEN ON MISSION TO COMPILE COOKBOOK

Attention all members and former members of the Roaring Springs First Baptist Church: The WOM (Women on Mission) of the church is in the process of collecting recipes for a cookbook. If you are a member or a former member of the RS First Baptist Church, please send your recipes (typed or hand printed) to Women On Mission, c/o First Baptist Church, P.O. Box 246, Roaring Springs, TX 79256. Recipes by your deceased family members who were once members of the church are also welcome. The women hope to have the cookbook ready in time to purchase before Mother's Day. For more information call 348-7516 or 348-7000.

FLOYDADA FORD MERCURY
 Home of the
\$9.95 Oil Change
 Call 806-983-3761

SERVICES

CEDAR POSTS & STAYS: Any size, from 2" top up to corner post 6 1/2 - 7 ft; 8 ft. corner post with 7-8" tops. Also oak, mesquite and fruitwood firewood, stacked and delivered. Will also deliver posts. Call for prices. Butch McBee, 806-455-1310 home; if no answer leave message, or mobile 806-346-1105.

ctfn

WANTED: Swathing and Baling and Hauling. Round or Square Bales. Quality work. Will do at competitive rates or on shares. Good market for wheat hay now. Call Crawford W. Wesley, 806-668-4448 or 995-5053, or David Wesley, 995-3687 or 296-3255.

CRITTER CARE VET CLINIC Veterinary services and Boarding for your pets. Location: Highway 83 south, Childress, Texas. 940-937-6065.

ctfn

HELP WANTED

Line Operator Immediate Opening

Leading manufacturer of PE pipe is seeking extruder operators for our Production Department. Good communication skills, high energy level and the desire to grow with the company. PolyPipe offers a competitive compensation plan, including bonus, medical/dental, and 401K with match.

PolyPipe, Inc.
 Attn: Amy Bearden
 P.O. Box 298
 Roaring Springs, TX 79256
 amy.bearden@polypipeinc.com

EOE/Drug Free Work Environment

BUSINESS REVIEW

ALL TYPES OF SPRAYING CONE AERIAL SPRAYING

Marlon Suhr

Office: 806-675-7500 Cell: 806-657-7972

Tom Edwards, Attorney

806-347-2333



For quality and selections, shop right here at home...

GRAHAM SUPPLY

Your Hometown Headquarters for Furniture, Appliances, Gift Items, Artwork, Dishes, Flooring, Gardening & Fencing Supplies, Tools, Hunting Supplies and much more!

Downtown Roaring Springs 806-348-7216

MOTLEY COUNTY ABSTRACT COMPANY

Phone: 806-492-3573 Fax: 806-492-3574
 P.O. Drawer 1 • Paducah, TX 79248

Complete Abstracts and Title Insurance for all of Motley County

Nelda Hightower - Owner
 Kay Heatly - Manager
 W.H. (Bill) Heatly & Company

Document Preparation and Closing Services

NEED INSURANCE?
 GET GOEN!

GOEN & GOEN INSURANCE

CROP - HOME - AUTO - FARM
 BUSINESS - LIFE - HEALTH

983-3524 800-288-2865
 102 E. CALIFORNIA, FLOYDADA

TURNER OUTFITTERS

Full Line of Guided Hunts
 Day Leasing

Lodging for Hunters, Reunion & Get-Togethers
 Can Accommodate 2-20

RILEY WAYNE TURNER
 806-347-2116 or 806-983-0262



Wylie L.P. Gas, Inc.

Proud to be a part of Motley County
 Call or come by for all your Propane needs
 Ask about our prices

Office still locally operated at 1021 Main
 Downtown Matador
 Call Day or Night • 24 hr. Service
 806-347-2290

GERMANIA INSURANCE & LEE'S INSURANCE AGENCY

"A Proud Past With a Solid Future"

Turkey Ernie Lee 423-1020
 Flomot Ruth Lee 469-5370

"Serving People Like You Since 1975"

PAYNE PHARMACY

200 S. Main - Floydada, TX 79235
 Ph: 983-5111 or 1-800-345-7961

Denise Payne, R.Ph.

M-F, 8:30-6:00 & Sat, 8:30-2:00
 We will be happy to mail your prescriptions!