

Sylvan Dunn, Director
Southwest Collection Texas Tech
Lubbock TX 79409

SOUTHWEST COLLECTION
Texas Tech University
Lubbock, Texas 79409

Voice of the Foothill Country

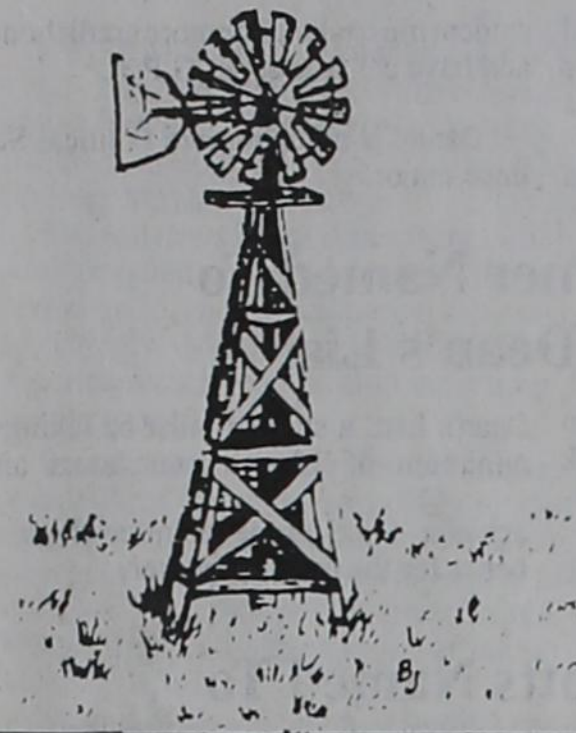
Motley Co. Tribune

50¢
PER COPY

102nd YEAR

THURSDAY, JUNE 22, 1995

ISSUE NO. 25



MEET YOUR NEIGHBOR



TROOPER JESSE VALDEZ

Motley County residents will probably be seeing a new DPS Trooper patrolling area highways soon.

Trooper Jesse Valdez reported to work in Floyd County, June 15, and will be training with Trooper Marty Lucke for 24 weeks before hitting the highways alone.

A native of Seminole, Valdez graduated Seminole High School in 1989. He attended Lubbock Christian University for one semester and then graduated South Plains College in 1991 with an Associate degree in Criminal Justice.

THOUGHT FOR THE WEEK

"If it weren't for the fact that the TV set and the refrigerator are so far apart, some of us wouldn't get any exercise at all."

— Joey Adams

Heather Turner Receives \$10,000 4-H Scholarship



Heather Turner

Heather Turner was awarded a four-year, \$10,000 Houston Livestock Show and Rodeo 4-H scholarship on Tuesday, June 6, in special ceremonies at the annual Texas 4-H Roundup in College Station, Texas.

Heather, the daughter of Johnney and Carol Ann Turner, was one of 50 recipients honored in the evening's festivities. Heather, who was actively involved in the Motley County 4-H Club for 10 years, plans on majoring in clothing and textiles at Texas Tech University.

Recipients of the 4-H scholarships were selected by the Texas 4-H Foundation. The selected students all demonstrated academic excellence and strong leadership skills throughout their high school careers.

All 4-H scholarship recipients must pursue a degree in agriculture or life sciences at a Texas college or university.

"The Houston Livestock Show and Rodeo takes immense pride in its relationship and involvement with the Texas

4-H, said Don D. Jordan, president of the Houston Livestock Show and Rodeo. "We know that all of these students are exceptional young people. They all have demonstrated success through their commitment to hard work, dedication and leadership throughout high school and through 4-H."

Jordan also noted that since its scholarship program began in 1957, the Show has provided scholarships to more than 1,000 4-H members, representing a commitment exceeding \$7.7 million.

These 50 scholarships were funded through net proceeds from the 1994

Houston Livestock Show and Rodeo and are only a part of the Show's annual educational commitment. In addition to these 50 awards, the Show also is presenting another 175 \$10,000 scholarships, 43 \$5,000 awards, 8 \$2,500 awards, 104 Hispanic scholarships totaling \$206,000,

graduate assistantships valued at \$235,000, school art scholarships worth \$70,000 and various other contributions to Texas colleges and universities. These

contributions bring the organization's 1995-96 educational commitment to more than \$3.5 million.

Motley County School Board Meets

The Motley County School Board met Wednesday, June 14 at 7:30 p.m.

Items for board action were:

* Approved minutes of previous meetings.

* Approved list of expenditures and reviewed financial statement.

* Selected the First State Bank, Matador as a depository for school funds (1995-1997)

* Approved 1995-96 school calendar.

* Renewed Worker's Compensation program with North Texas Educational Ins. Association for one year.

* Selected Bankers Life Insurance Company for student accident (athletic) insurance.

At this time the Board went into Executive Session.

Out of Executive session, the Board accepted the resignation of Dorothy Turner and Kelly Martin.

The Board hired Shelli Neely as Home-making teacher, Jane O'Pry as Computer/Math teacher, and two coaches, Boys Basketball, Mark Neely and an assistant Coach Charles O'Pry.

A local policy was accepted pertaining to taxes and financial obligations.

Superintendent George Blanch reviewed Senate Bill 1 which was recently passed.

A State Base for professional employees pay was established.

Mr. Blanch announced the TASB/TASA convention for School Board members will be the end of September in Austin.

Meeting adjourned.

Friends Meet And Renew Memories At Roaring Springs Homecoming

More than 500 friends and exes of the Roaring Springs school system met on Saturday, June 17, to renew memories and celebrate homecoming.

Devonne Carpenter Dillard, Exes Association President, welcomed everyone. Mayor Joey Thacker also welcomed everyone and gave the invocation.

J.T. Swim led the Pledge of Allegiance. Corky Marshall and Pennie Marshall Keltz led the group in the school song.

Gordon Harmon emceed the program. He recognized all former teachers and a former Superintendent Leo C. Purvis.

Pat Peacock was the only member of the last graduating class of 1972 in attendance. There were four in that class.

Classes celebrating 50 years were 1942, 43, 44, and 45. They were honored. Classes from 1920 - 1972 were recognized. Cora Phipps Mitchell was the only member present from the class of 1920.

Special awards and gifts were presented to the oldest students, Cora Phipps Mitchell and Amy Freeman Havis; largest family that were students, the Carpenter family with 12; traveling the farthest, Frances Brown Chaney, class of 1940, from Spokane, Washington.

J.N. Fletcher presented Palma Smiley Lancaster with a bouquet of red roses from the Roaring Springs Community

continued on page 3

Chamber of Commerce Banquet Set For July 1

The Motley County Chamber of Commerce met Tuesday, June 13.

President Jeff Thacker opened the meeting. Charles Keith gave a report from the brochure committee. His committee has re-done the brochures to be printed before the Roaring Springs Homecoming. Samples were handed out.

The publicity for the August 3 banquet was discussed. The speaker Reagan V. Brown, an acclaimed banquet speaker has spoken from Chicago to Cat Springs, Texas. His audience is entertained as well as inspired. Brown is a former Texas Commissioner of Agriculture.

The reports on catering the food for the banquet was next on the agenda. With a Western theme the food will be traditional barbecue brisket and all the trimmings. The Board elected to have the trimmings prepared and served by Roaring Springs Caterer, Virginia Sailsbury, with local men preparing the brisket. Civic clubs will be asked to set up tables

and clean up at the Motley County School Gym.

Also decided is to ask talented Chamber members to help decorate the tables.

To go along with the Banquet the Chamber is going to ask Motley County citizens and business people to wear western attire during the day, to remind everyone of the banquet, and also dress western for the banquet.

Tickets will be sold by merchants beginning July 1 for \$10 per person.

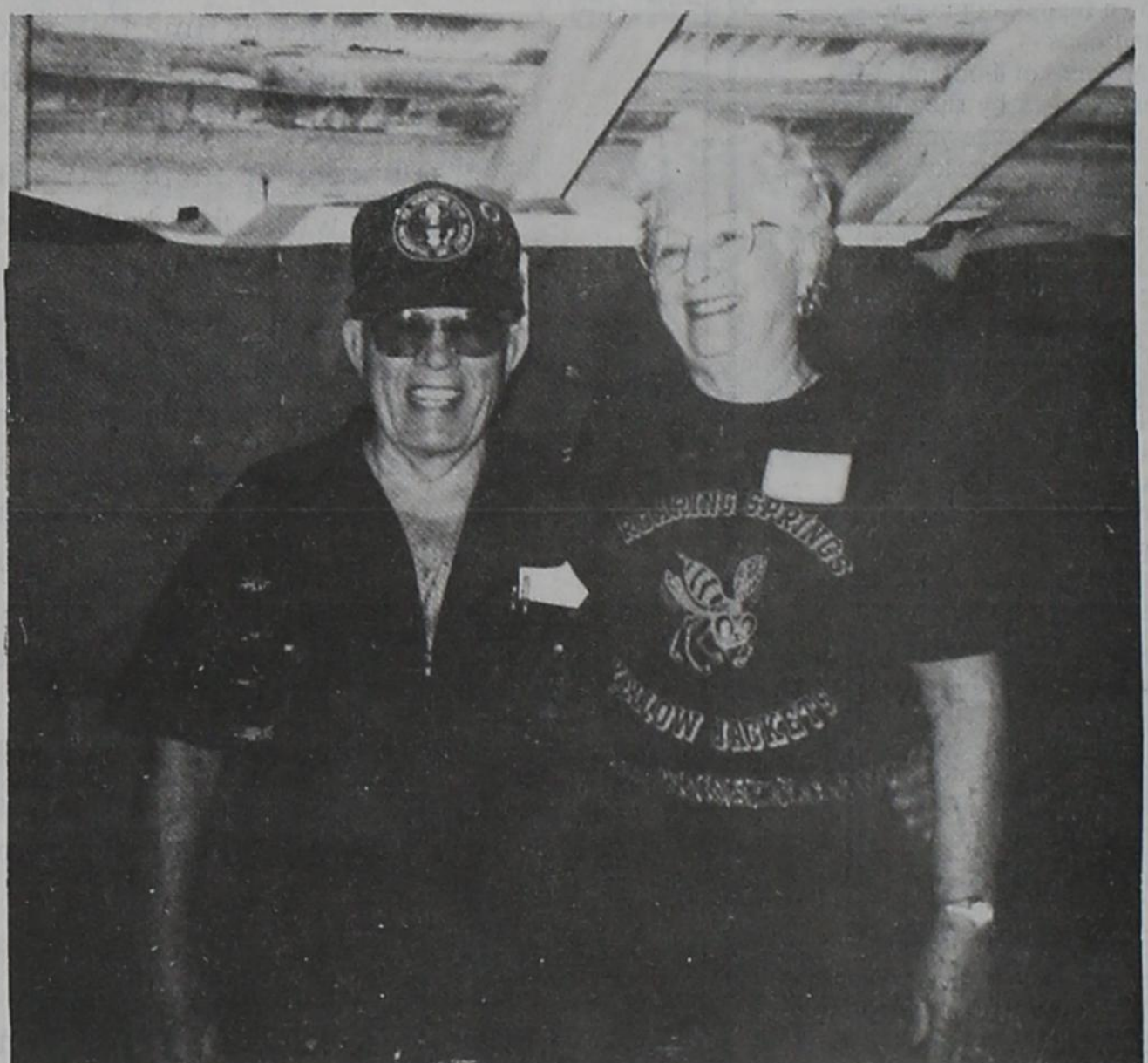
To add extra excitement to the First Annual Banquet the Board elected to give two \$100 bills along with two collector 1995 Silver Dollars. These will be drawn from the Banquet admission tickets.

Sondra Francis gave a membership report. There are still a lot of Motley County citizens and businesses not members.

Next regular meeting will be July 13. Meeting adjourned.



RECOGNIZED AT ROARING SPRINGS HOMECOMING — Former Superintendent Leo C. Purvis; two members of earliest classes, Cora Phipps Mitchell and Amy Freeman Havis; and emcee Gordon Harmon were among those recognized at Saturday's celebration.



QUILT WINNERS — Wanda J. (Miller) and Hervey Hampton from Waxahachie were the lucky winners of the beautiful quilt made by the Roaring Springs Community Volunteers. Their names were drawn at Saturday's celebration. Wanda is the daughter of former longtime second grade teacher, Emma Miller.

State Comptroller Delivers Monthly Sales Tax Rebates To Texas Cities and Counties

"The Texas economy continues to grow at a very healthy pace, although retail sales have slowed somewhat from the fast pace of recent months," State Comptroller John Sharp said today, as he delivered a total of \$125.6 million in June sales tax rebates to 1,076 cities and 111 counties, an 8.7 percent increase over payments of one year ago.

"Employment in the state continues to increase, with Austin and Dallas employment up more than 4 percent, while El Paso, Fort Worth, Houston and San Antonio maintain growth of at least 3.2 percent," Sharp said.

Texas cities received monthly sales tax rebates of \$113.7 million, 9.3 percent above the \$104 million last June, and county rebates of \$11.8 million were 3.8 percent above the \$11.4 million of June 1994. Another \$158 million in quarterly sales tax payments went to the state's

eight transit authorities, down .2 percent from the \$158.4 million due to a reduction in the San Antonio MTA tax rate in April 1994.

This month's city and county sales tax rebates include taxes collected on April sales and reported to the Comptroller in May by businesses filing monthly tax returns. The transit payments include sales taxes collected January through April and reported to the Comptroller March through May.

Tax summary for Motley County is as follows:

Matador: current rate, 1.00%; net payment this period, 1,015.59; comparable payment prior year, 1,218.13; % change, -16.62%; 1995 payments to date, 10,842.87; 1994 payments to date, 10,667.95; % change, 1.63%

Roaring Springs: current rate, 1.00%; net payment this period, 805.94; compa-

table payment prior year, 0.00; % change, U/C; 1995 payments to date, 9,557.62; 1994 payments to date, 9,563.51; % change, -0.06%

County total: net payment this period, 1,821.53; comparable payment prior year, 1,218.13; % change 10.51%; 1995 payments to date, 20,400.49; 1994 payments to date, 20,231.46; % change 0.83%.

NOTICE SUBSCRIBERS

Attention Subscribers! Please notice on the back page of the paper the Subscription list for June Subscriptions. If your name is on this list, it means your Subscription is due now.

Thank you!



Home Economically Speaking

by Beverly A. Logsdon
Home Extension Agent - Home Economics

WAYS TO SAVE MONEY ON BANKING AND CREDIT SERVICES

When it comes to saving money on banking or credit services, these tips from the Consumer Literacy Consortium may be helpful.

Checking --

— You can save more than \$100 a year in fees by selecting a checking account with a minimum balance requirement that you can, and do meet.

— Banking institutions often will drop or lower checking fees if paychecks are directly deposited by your employer. Direct deposit offers the additional advantages of convenience, security and immediate access to your money.

Savings and Investment Products --

— Before opening a savings or investment account with a bank or other financial institution, find out whether the account is insured by the federal government. An increasing number of products offered by these institutions, including mutual stock funds and annuities, are not insured.

— To earn the highest return on savings (annual percentage yield) with little or no risk, consider certificates of deposit (CDs) and treasury bills or notes.

— Once you select a type of savings or investment product, compare rates offered by different institutions. These rates can vary a lot and, over time, can significantly affect interest earnings.

Credit Cards --

— You can save as much as several hundred dollars each year in lower credit card interest charges by paying off your entire bill each month.

— If you are unable to pay off a large balance, switch to a credit card with a low annual percentage rate (APR). For a modest fee, Bankcard Holders of America (703-389-5445) and RAM Research Corp (800-344-7714) will send you a list of low-rate cards.

— You can reduce credit card fees, which may add up to more than \$100 a year, by getting rid of all but one or two cards, and by avoiding late payment and over-the-credit limit fees.

Auto Loans --

— If you have significant savings, earning a low interest rate, consider making a large down payment or even paying for the car in cash. This could save you as much as several thousand dollars in finance charges.

— You can save as much as hundreds of dollars in finance charges by shopping for the cheapest loan. Contact several banks, your credit union, and the auto manufacturer's own finance company.

First Mortgage Loans --

— You may save tens of thousands of dollars in interest charges by shopping for the shortest-term mortgage you can afford. On a \$100,000 fixed-rate loan at 8 percent annual percentage rate (APR), for example, you will pay \$90,000 less in interest on a 15-year mortgage than on a 30-year mortgage.

— You can save thousands of dollars in interest charges by shopping for the shortest-term mortgage you can afford. On a \$100,000 fixed-rate loan at 8 percent annual percentage rate (APR), for example, you will pay \$90,000 less in interest on a 15-year mortgage than on a 30-year mortgage.

— You can save thousands of dollars

in interest charges by shopping for the lowest-rate mortgage with the fewest points. On a 15-year, \$100,000 fixed-rate mortgage, just lowering the APR from 8.5 percent to 8.0 percent can save you more than \$5,000 in interest charges. On this mortgage, paying two points instead of three would save you an additional \$1,000.

— If your local newspaper does not periodically run mortgage rate surveys, call at least six lenders for information about their rates (APRs), points and fees. Then ask an accountant to compute precisely how much each mortgage option will cost and its tax implications.

— Be aware that the interest rate on most adjustable rate mortgage loans (ARMs) can vary a great deal over the lifetime of the mortgage. An increase of several percentage points might raise payments by hundreds of dollars per month.

Mortgage Refinancing --

— Consider refinancing your mortgage if you can get a rate that is at least one percentage point lower than your existing mortgage rate and plan to keep the new mortgage for several years or more. Ask an accountant to calculate precisely how much your new mortgage (including up front fees) will cost and whether, in the long run, it will cost less than your current mortgage.

Educational programs of the Texas Agricultural Extension Service are open to all citizens without regard to race, color, sex, disability, religion, age, or national origin.

THOUGHT FOR THE DAY: It could out when you stretch the truth; it watch snap back at you.

In the Rough

by Hazel



TUESDAY SCRAMBLE

June 13

First place winners with a score of 30 were Kenneth Marshall, Geneva Wilson, Bud McKay, and Dortha Grundy.

Second place with a score of 31 were Chip and Ellen Smith, Alan Bingham, and Mark Brannon.

Third place winners with a score of 32 were Buzz and LaVoe Thacker, Warner Sailsbury, and Gene Brannon.

Other playing were Billy W. Denison, Homer and Cleo Martin, Roncho Grundy,

Garland Cartwright, Alfred and Louise Barton, Royce Garrett and Howard Edmondson. LaVoe got closest to pin on #3, 32' 3".

LADIES PLAYDAY

June 15

Those playing were LaVoe Thacker, Louise Barton, Dorothy Day, Mary Lou Williams, and Geneva Wilson. Louise won the ball with low putts, 30.

Lucretia Campbell and Frances Hobbs played in the afternoon. Don't know about anyone else.

Caramel Chocolate Streusel Coffee Cake

Streusel

1/2 cup miniature semi-sweet chocolate chips
1/2 cup chopped pecans
1/4 cup sugar
1 tablespoon LAND O LAKES® Butter or Margarine, melted
1/2 teaspoon cinnamon
3/4 cup sugar
1/2 cup LAND O LAKES® Butter or Margarine, softened
2 eggs

Cake (continued)

1 1/2 cups all-purpose flour
1 cup LAND O LAKES® Light Sour Cream or No-Fat Sour Cream
1 1/4 teaspoons baking powder
1/4 teaspoon baking soda
1/4 teaspoon salt
1 teaspoon vanilla
Drizzle
14 caramels, unwrapped
2 tablespoons half-and-half or milk

Heat oven to 350°. In small bowl stir together all streusel ingredients; set aside. In large mixer bowl combine sugar and butter. Beat at medium speed, scraping bowl often, until creamy (1 to 2 minutes). Add eggs. Continue beating, scraping bowl often, until well mixed (1 to 2 minutes). Add all remaining cake ingredients. Continue beating, scraping bowl often, until well mixed (1 to 2 minutes). Spoon half of batter into greased and floured 9-inch springform pan. Sprinkle half of streusel mixture over batter in pan. Spoon remaining batter over streusel; top with remaining streusel. Bake for 45 to 55 minutes or until toothpick inserted in center comes out clean. Cool 10 minutes. Run knife along sides of pan to loosen edge. Remove side of pan. Cool at least 30 minutes. Just before serving, combine caramels and half-and-half in one quart sauce pan. Cook over medium heat, stirring occasionally, until caramels are completely melted (5 to 8 minutes). Cool slightly; drizzle warm caramel over cake. YIELD: 8 servings.

Daniel Alexander Named To McMurry University's Dean's List

Daniel Alexander, son of Mr. and Mrs. Alvin Alexander of Matador was named to McMurry University's Dean's List for the 1995 spring semester. To be selected for the Dean's List, a student must take 12 or more credit hours and have a 3.5 or better G.P.A. Daniel is a Sophomore Political Science major.

Cathy Turner Named To LCU's Dean's List

Cathy Turner of Matador, has been named to the Dean's List at Lubbock Christian University for the Spring semester of 1995. In order to be considered a part of the Dean's List, a student must be taking a minimum of 12 semester hours and achieve a 3.5 grade point average or better for the entire semester.

Marisue Potts Named To Texas Tech's Dean's List

Marisue Burleson Potts was named to the Dean's List at Texas Tech University. Students making the Dean's list must finish 12 or more hours with a grade point average of 3.5 to 3.9. Mrs. Potts' major is English.

25% off
all Spring & Summer Merchandise

Guys & Gals

Downtown Matador

Larry R. Karrh, M.D.

2222 WEST 24th STREET, STE. 1
PLAINVIEW, TEXAS 79072
Telephone (806) 293-5169

To All Our Patients and Friends:

The past few years have seen dramatic changes in the practice of medicine in this country, and Plainview certainly has been no exception. Our local hospital has undergone three changes in management. In addition, terms such as "HMO", "PPO" and "managed care" have become almost household words in recent months, dramatically changing the manner in which our office does business.

Throughout this time, our office has been able to meet the challenges brought about by change and has continued to provide each of you with the quality family health care you have come to expect from us. The changes have, however, placed an increasingly large burden upon my office staff, my family and myself. This has led us to pursue alliances with other health care institutions in order to ensure our survival in this "new market" and best position ourselves to meet your health care needs.

As a result of lengthy discussions, we are proud to announce our association with St. Mary Family Healthcare Centers effective July 1, 1995. We believe this association will ensure our ability to continue to provide health care to all our established patients as well as others whom we have not been able to serve in the past. We feel our alliance with St. Mary—one of the region's most trusted health care providers—will give our patients, my office staff, my family and myself the greatest security and assurance of continued quality medical care into the 21st century.

This change will only affect the business portion of our office operation. Daily patient care, hospital care and/or referral patterns will remain the same, and we will continue to work to strengthen and stabilize Plainview's medical community.

For the next several months we will continue to conduct business as usual at our current location at 2222 West 24th Street, Suite 1. We will, however, be moving our offices to the new St. Mary Family Healthcare Center at 3409 Olton Road this fall. We greatly appreciate your ongoing support and anxiously await the opportunity to be of continued service to you.

Sincerely,

Larry R. Karrh, M.D., D.A.B.F.P., D.A.B.Q.A.U.R.P.

Barbara's Bylines and The Foothill Country News

After all the strange Winter and Spring weather, we still have fruit. Our apricot trees, peach and plum have a good harvest of fruit. Our cherry tree also had fruit. Leanne, our granddaughter, has had more fun checking these trees, we have even found mulberries on a tree I didn't even know was a mulberry tree.

My Dad would drive all over checking fruit trees and picking some, especially mulberries. He would also bring in green grapes for a green grape pie or cobbler, m-m-m good!

If you have done any shopping in Matador in the last few months you may have noticed a lot of changes in the Variety Store. The V&S warehouse the Variety orders from has sold out to Ben Franklin company. Sondra and Shane have reorganized the store and are beginning to get in new merchandise almost daily.

Guys and Gals is beginning their summer sale, this would be a good time to get a Western or Southwest set for the 1st Annual Motley Co. Chamber of Commerce Banquet August 3.

Lets all work to join our Chamber and put our energy to good work.

Thanks to all of you who helped us to have a week off. Hope everyone has an enjoyable summer.



Jan Newman, L.V.N.
Dr. Karrh Renee Rowell, L.V.N.
Alva Gonzales, L.V.N.

Sun Exposure May Catch Up With You Later, Turning Fun And Frolic Into Cancer

It's just a little spot on your face, ear or neck. You can't remember how long you've had it -- maybe a few months or maybe a couple of years. Maybe it's nothing. Maybe it's cancer.

The bad news is that skin cancer is the most frequent cancer in young women under age 35, and its incidence is increasing rapidly. More than half a million Americans each year develop some form of skin cancer.

Innocent-looking bumps and blemishes shouldn't be ignored - especially if you have fair skin, blue eyes, blond or red hair - because these people are vulnerable to skin cancers, say the physicians at Scott & White Memorial Hospital and Clinic in Temple, Texas.

Scott & White Memorial Hospital and Clinic is one of the nation's largest medical centers, with nearly 440 physicians. Scott & White's mission is to deliver comprehensive, personalized, high-quality, health care enhanced by education and research. The institution consists of the main site in Temple, and 14 regional clinics situated throughout Central Texas.

The good news is that if skin cancer is caught early, then chances are high for a complete cure. "Ninety percent of skin cancers are small and can easily be treated. That's the best time to treat them," said Charles N. Verheyden, M.D., Ph.D., director of the Division of Plastic Surgery and professor with the Texas A&M University Health Science Center College of Medicine. "Unfortunately, when they have progressed, more extensive surgery is indicated."

"We really like to see patients when these lesions are in the precancerous stages, when these spots may have years to go before they become cancer. We like to catch them early," said Delma P. Posey, M.D., director of the Division of Dermatology and associate professor at the Texas A&M University Health Science Center College of Medicine. Earlier detection means quicker, more economical treatment with little pain and scarring, Dr. Verheyden added. Otherwise, delays can be costly, may require extensive surgery under general anesthesia and additional time for recuperation and reconstructive surgery.

Protection from sun is key

The sun hits hardest on children, who are the most vulnerable and who burn the easiest. However people don't immediately realize the long-term harm because cancers start to appear as they grow older.

"If you have had several bad sunburns as a child under age 18, you're more apt to develop skin cancer later in life," said Dr. Posey, M.D. "Medical researchers formerly believed that skin cancer was caused by an accumulation of sun exposure over a long period of time. Now we think that just one childhood severe sunburn with blisters will markedly increase your chance of melanoma and skin cancers by twofold." In other words, one sunburn in a lifetime is one too many.

People are exposed to two types of UV rays. UVA rays penetrate deeply into the skin, injuring blood vessels and destroying underlying cells, collagen and elastin. UVB radiation that tans your skin also causes sunburn and increases your risk of skin cancer. "Tanning is your body's response to radiation injury, so today's golden tan may result in cancer 20 years later," Dr. Posey added. One of every six Americans will develop some form of skin cancer.

Safe summer sun for children

Parents should be especially careful to make sure their children are protected from the harmful effects of the sun. "Eighty percent of the damage is done by the time you're 18," added Jeff Smith, M.D., pediatrician at the Scott & White Clinic, College Station, and assistant professor with the Texas A&M University Health Science Center College of Medicine. "It's extremely important that parents make sure their children are protected from the sun." Dr. Smith lists some guidelines for parents who want to assure that their children are protected from the sun:

- * The sun's harmful rays are at their peak during midday. Arrange your child's schedule so that outdoor play time is before 10 a.m. and after 4 p.m.

- * Insist that your child wear plastic sunglasses and a wide-brimmed hat or baseball cap when outdoors.

- * Use a sun block at least SPF 15,

preferably water resistant. Some manufacturers are now making sun screens formulated especially for children. Read the label on the bottle. Use a lotion that contains no PABA and is hypo-allergenic. These are safe for children older than 6 months.

- * Keep infants under 6 months out of the sun. Sun screens are no appropriate for tiny babies.

- * Apply the sun screen every two hours, even if your child is only in the back yard. If the child is playing in water or sweating, apply the sun screen more frequently.

- * Make sure your child is wearing loose-fitting clothes and a hat. Light colors will reflect the sun light. Some clothing manufacturers are now producing cotton togs that have a sun protection factor specially woven in them.

- * If your child does get sunburned, Dr. Smith recommends parents do the following:

- * If the skin looks pink, take your child out of the sun immediately.

- * Cool the area with cool water. If blisters form, don't pop them.

- * For red, irritated skin, apply a soothing ointment such as aloe vera or a medicated skin cream such as Noxzema.

- * If the child is uncomfortable, a child strength tablet of acetaminophen (such as Tylenol) may help the pain.

Tips for adults, too

Although the use of sunscreen lotions has doubled in the past decade, only one-third of adults regularly use them. Dr. Posey recommends sunscreen lotions or creams with a Sun Protection Factor of 15. The number indicates how much longer a person can stay in the sun before burning. Higher SPF numbers don't really add that much time.

"If you normally sunburn in an hour, using Sun Protection Factor 15 will allow you to stay in the sun for 15 hours without burning," he said. "If you have fair skin and red hair, you burn after 15 minutes. Using Sun Protection Factor 15 lets you stay out four hours before burning."

Apply sunscreen 30 minutes before going into the sun. Reapply every few hours, especially after swimming or if you perspire heavily. Opaque sunblockers containing zinc oxide provide extra protection to the nose, lips, and ears. These come in vibrant colors as well as white and have become a sensible fashion fad on many beaches.

If a rash develops, you might be allergic to the chemicals in the sunscreen. "There's a great variation in sunscreen formulations, so it's a good idea to buy a small amount to see if it works for your skin type. Avoid lotions containing PABA, a potential irritant," Dr. Posey said. Other smart-sun tips he advises:

- * Wear loose, long-sleeved clothing, hats, visors and sunglasses. Tightly woven cotton fabrics give some protection against the sun's rays. Most clothing offers Sun Protection Factor of about 7. New on the market this year are T-shirts and other casual wear with Sun Protection Factor 30 woven into the fabric.

- * Limit sun exposure, even when you are wearing sun screen, during the middle of the day, when the sun's rays are the strongest.

- * Some medications can increase your sensitivity to the sun, which can lead to damaged blood vessels, rashes, burns and reduced immunity. Photosensitive medications include common drugs such as antihistamines, ibuprofen and some antibiotics. Be sure to ask your doctor or

pharmacist about these drugs if you are going to be in the sun.

- * Cloudy days are no protection against UV rays. Watch out for sun rays reflected from sand, water, snow or light surfaces. Nearly 80 percent of the sun's burning rays can penetrate clouds and reach swimmers 3 feet below the surface of the water.

- * Avoid tanning parlors and sun lamps. Although some sun lamps are advertised as being safer than the sun, researchers say that they may be more dangerous because the UV rays penetrate the skin more deeply than sunlight.

- * Remember that radiation increases with altitude and tropical latitudes. So, you receive more UV rays in the mountains or on a tropical vacation.

- * Wear sunglasses. Eyes are especially sensitive to sun damage. Increased exposure to ultraviolet rays may speed up development of cataracts. Wear sunglasses with at least 95 percent blockage of UVB/UVA for outdoors. This protective coating is also available in prescription eye wear.

HONOR ROLL

HONOR ROLL

Pre-K: Bradley Brown, Whitney Browning, Leonardo Espinoza, Danielle

Ho-Gland, Gracie Ho-Gland, Brenda Mendoza, Stacy Perryman, Jasmine Porter, Savannah Rose, Christina Smith, Karrie Valdez, Makayla Warren, Scott Webb.

The Motley County Historical Museum gratefully acknowledges the Gift sent as a Tribute in memory of Opal Craven, Bessie Marshall, Allie Hart, Margaret Slover, Margie Smauley, Jud Neighbors, and Billy Joe Cooper from Bill Palmeyer Rt. 1, Box 3, Meridian, TX 76665

The support of our goals and efforts in preserving the colorful history of Motley County is appreciated.

RATTLESNAKE ROUND-UP!

ALLSUP'S

Every Ticket Can Win!



Win A 1995 Ford F-150 Super Cab XLT!

Plus Weekly Drawings To Win Free Gas For A Year!

HONEST STRAIGHT FORWARD

The way we've been doing it for 34 years!

Come by or call to experience the only way we know how to do business!!

GM PROGRAM USED VEHICLES

Just a sample - many more to choose from.

1994 MODELS		
PONTIAC	WAS	NOW
GRAND AM SE SEDAN	\$12,500	\$10,500
GRAND AM SE COUPE	\$12,600	\$10,600
GRAND PRIX SE SEDAN	\$14,300	\$12,300
BUICK		
SKYLARK CUSTOM SEDAN	\$12,400	\$10,400
REGAL CUSTOM COUPE	\$13,300	\$11,300
REGAL CUSTOM SEDAN	\$14,300	\$12,300
GMC		
SAFARI EXT. MINI-VAN	\$16,400	\$15,400
CHEVROLET		
CAVALIER SEDAN	\$18,400	\$ 8,400
CORSICA SEDAN	\$11,000	\$ 8,999
CADILLAC		
SEDAN De VILLE (16K)	\$25,400	\$23,400
1995 MODELS		
BUICK CENTURY SEDAN	\$14,400	\$13,400
REGAL CUSTOM SEDAN	\$16,000	\$13,999

City Auto, Inc.

Floydada Buick - Pontiac - GMC 983-3767

Roaring Springs Homecoming

from page 1


Volunteers for her help to their organization. He also announced the winner of the beautiful quilt, which was hand-painted and stitched by the Roaring Springs Community Volunteers. Wanda Jane Miller Hampton, class of 1943, was the winner. Several door prizes were also presented at this time.

Jane Thacker sang several big band songs and closed with a medley of gospel songs. The benediction was given by Leo C. Purvis.

New officers were elected in the business meeting for the next homecoming which will be held in the year 2000.

President and Chairman of the Board, Corky Marshall; Vice-President, Myrna Bailey Blasingame; Secretary-Treasurer, Lee Peacock; board of directors, Carla Meredith Meador, Dana Dillard Graham, Larry Clifton, J.N. Fletcher; long range planning group, Linda Parks Perryman, Bonita Hand Barton, Charlie Long.

Without God...Nothing!



We can do nothing without God. Many forget that He is the One who controls the universe and also our fragile life. Men may become unfaithful and place their confidence in human beings, but there are times in which men forsake us. When we cry for a helping hand, there is none who help; when we cry to man for blessings, we will hear only that heartbreaking silence, no answer, because we left the Lord of heaven and earth. We have become unfaithful to our first love.

Cursed is the man who trusts in man and makes flesh his arm, whose heart turns away from the Lord.

Jeremiah 17:5

When tears of despair and distress torment our soul, it is time for man to realize this: not God, but man was unfaithful; God did not abandon us, but we abandoned God. God invites us to come out of our error. We have to be sincere and honest. Man can do nothing in secret. God knows all.

Am I a God at hand, says the Lord, and not a God afar off? Can a man hide himself in secret places so that I cannot see him, says the Lord? Do I not fill heaven and earth, says the Lord?

Jeremiah 23:23-24

Roaring Springs Church of Christ

Michael G. Crowley, Sr.

Bible Study - 10:00 a.m. Worship - 9:00 a.m.

Gotta Have It

STORE LOCATION PRICES EFFECTIVE JUNE 21-28

SAVE ON PEPSI-COLA SOFT DRINKS

6 PK. 12 OZ. CANS

\$1.99

SUNNY-TIME SAVING SOLARAY SUNGLASSES

GET **\$1.00 OFF ANY PAIR!**

ALLSUP'S BREAKFAST BURRITO FOR ONLY

99¢

Ham, Egg, & Cheese or Sausage, Egg, & Cheese

ALLSUP'S CORN DOGS

299¢

ALL FLAVORS GATORADE DRINKS 16 OZ.

79¢

SAVE ON ALL FLAVORS CORN NUTS 2 OZ. BAG

299¢

WILSON MEAT FRANKS 12 OZ.

69¢

OZARKA SPRING WATER 33.8 OZ.

99¢

PEARSON'S PEANUT NUT ROLL 2.5 OZ.

299¢

GOLDEN TOAST, CHEESE, & PEANUT BUTTER FRITO-LAY® CRACKERS 4 FOR **\$1.00**

LANCE'S REG. 59¢ BIG VALUE POTATO CHIPS 2 FOR **89¢**

XTRA LIQUID LAUNDRY DETERGENT 32 OZ. **\$1.59**

VALLEY FAIR DOG FOOD 20 LB. **\$3.49**

CLEAR EYES REG OR A.C.R. EYE DROPS 1/2 OZ. **\$2.89**

\$50.00 WORTH OF GASOLINE FREE!!!

TAKE THIS COUPON TO BIG COUNTRY FORD 2400 MABRY DR. CLOVIS, NEW MEXICO 88101. IF YOU PURCHASE A NEW VEHICLE BEFORE AUGUST 19, 1995 YOU WILL RECEIVE \$50.00 WORTH OF FREE GASOLINE COURTESY OF ALLSUP'S.

No Purchase Necessary. Game begins May 28, 1995 and ends August 18, 1995. Official Rules and game piece available at participating ALLSUP'S locations or by sending a SASE to "RATTLESNAKE ROUND-UP", P.O. Box 1277, Lynnwood WA 98046-1277 by August 18, 1995. Game open to legal NM, OK and TX residents. Void where prohibited.



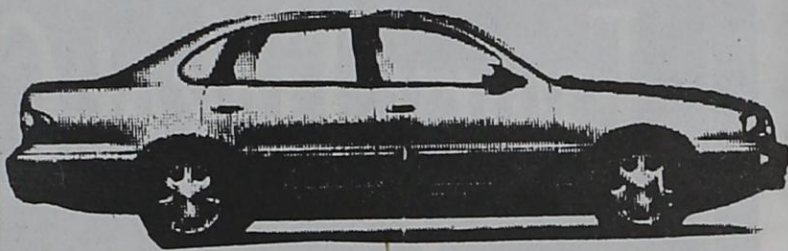
Get Your Rattlesnake Round-Up Ticket At Allsup's!

What is man in nature? Nothing in relation to the infinite, everything in relation to nothing, a mean between nothing and everything.
—Blaise Pascal

33rd Annual Roundup Sale

West Texas Only Ford, Lincoln, Mercury, Toyota Dealer

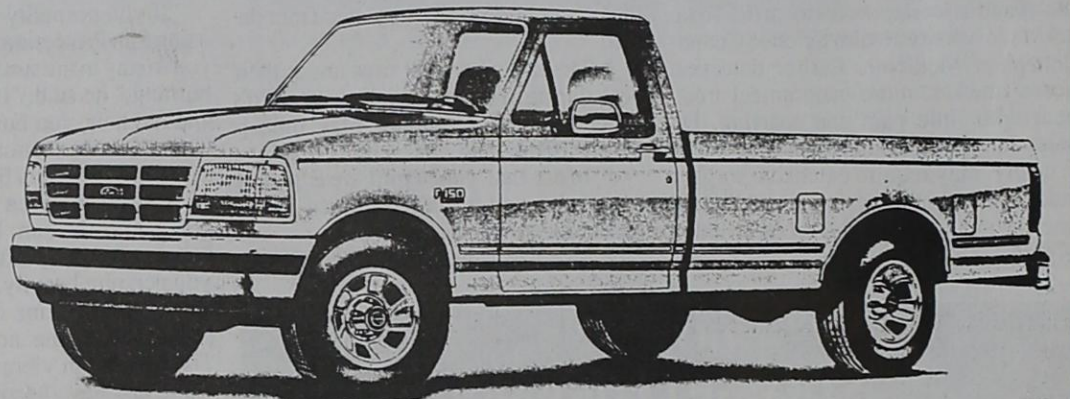
1995 CAMRY
4 DR.



\$238* Per Month

Several To Choose From

4.9%
Interest**

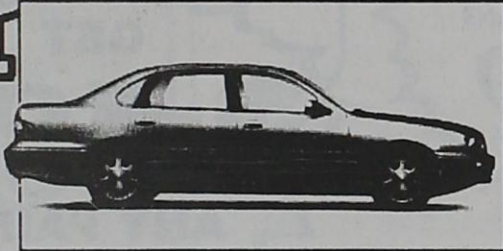


*\$2000 down plus tax, title, & license. 1st payment of \$238 and security deposit of \$250. 36 month lease, mileage limitation up to 15,000. Selling price \$18,250.

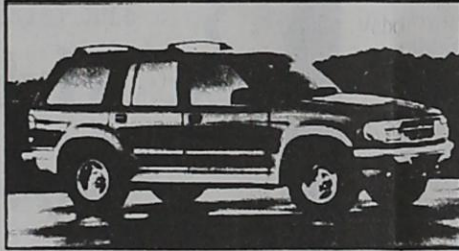
** F150 regular cab, 6 cylinder, 5 speed, up to 48 months.

Rebates As High As \$3,500**

Largest Inventory Ever! Over \$3 Million



1989 CADILLAC BROUGHAM
1991 CHEV. CAPRICE CLASSIC
1991 FORD CROWN VIC. 4 DR.
1992 FORD TEMPO GL 4 DR.
1993 FORD TAURUS GL 4 DR.
1993 FORD CROWN VIC. LX
1993 FORD TAURUS GL
1993 FORD TAURUS GL
1989 MERC. GRAND MARQUIS GS
1992 MERC. SABLE GS WAGON
1992 OLDS DELTA 88 ROYALE
1993 OLDS CUTALSS CIERA
1993 OLDS CUTALSS CIERA
1993 PONTIAC BONNEVILLE
1989 TOYOTA CRESSIDA
1992 TOYOTA CAMRY XLE
1993 FORD TAURUS GL
1993 FORD TAURUS GL



1992 MITSUBISHI GALANT
1992 FORD TEMPO LX
1991 PLYMOUTH ACCLAIM
1991 LINCOLN TOWN CAR SIGNATURE
1990 BUICK PARK AVE.
1992 BUICK REGAL CUSTOM
1992 DODGE DYNASTY
1991 FORD TEMPO GL
1994 FORD TAURUS GL
1992 MERCURY GRAND MARQUIS LS

★ GRADS' DELIGHTS ★

1993 DODGE SHADOW CPE, 5 Spd. \$ 5,995
1993 HONDA CIVIC EX CPE, Aut. \$ 11,995
1993 PONTIAC GRAND AM GT, V-6 \$ 12,995
1993 PONTIAC GRAND AM SE CPE, Auto. \$ 4,995
1986 FORD T-BIRD CPE, V-6, Loaded \$ 11,295
1993 PONTIAC GRAND AM SE CPE, Auto. \$ 11,295
1991 FORD TEMPO GL, Auto., Loaded \$ 5,995

SUPER VALUE BUYS

1988 MERC. GRAND MARQUIS LS 4 Dr., V-8, Auto., Air All Power, Extra Clean

\$5,295

1992 FORD CROWN VICTORY LX 4 DR. V-8, Auto., Leather, All The Extras, One Owner

\$9,995

1991 FORD TEMPO GL 4 DR. Auto., Air, All Power

Extra Clean, Light Blue Color

\$5,995

Tired of Fighting Those Muddy Roads? Check these Special "Round-Up" Sale Prices on 4 Wheel Drive Vehicles

1988 Ford F150 XLT...was\$8995.....now \$7995
1991 Dodge 1/2 Ton...was\$8995.....now \$7995
1991 Ford F150 XLT...was\$13,995.....now \$12,295
1991 Olds Bravada Wagon...was\$15,995.....now \$14,595
1992 Ford Bronco XLT...was\$18,495.....now \$17,495
1993 Ford Explorer XLT...was\$19,995.....now \$17,995
1993 Ford F150 XLT Supercab...was\$16,995.....now \$15,595
1995 Ford f150 XLT...was\$18,995.....now \$17,595



TED NOEL
General Manager



EASON MOORE
General Sales Mgr.



MIKE PARKER
Sales Manager



KENT ROBERTS
Used Car Mgr.



FRED HARREL
Sales



JOE RODRIGUEZ
Sales



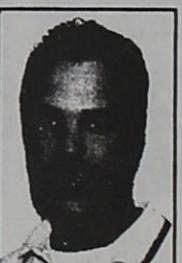
ROBBY THRASHER
Sales



JASON BYBEE
Sales



KENNETH GILL
Sales



LEE ROGERS
Sales



The Best Never Rest

JACK MORRIS FORD-LINCOLN-MERCURY-TOYOTA
OLTON HIGHWAY, INTERSTATE 27, PLAINVIEW 293-2511
"If You Trade Somewhere Else, We Both Lose..."
Come See Us, It's Worth The Drive" 1-800-489-3673

All Prices listed without TT&L.
*5.9%, 48 month available June 1, 1995 to June 14, 1995 with approved credit.
**\$3,500 Lincoln Town Car. Rebate \$2,500. Owner loyalty \$1,000.

Roaring Springs News

by Odessa Mullins & Roxie Lewis

Visiting Mrs. Roxie Lewis for the weekend and attending the Roaring Springs Homecoming were her daughters and their husbands, Dr. and Mrs. Charles D. Jordan of Gadsden and their son and wife, Mark and Martha Jordan of Lawrence, Georgia; Mr. and Mrs. Frank Capshaw of Boise, Idaho, and their daughter Sidnie Sebastian of Seattle, WA; and Mr. and Mrs. B.N. Smallwood of LaPryor, Texas. The Jordans came on Wednesday. The Capshaws and Smallwoods on Thursday.

Mrs. Dorothy Lee shopped in Plainview Wednesday afternoon.

Saturday would have been a good time to take the census here. There was a big inflow of population that day.

Mrs. Jennie Lou Murphy was the houseguest of Miss Freda Keahey the past weekend and attending the school reunion Saturday.

Mr. and Mrs. Pat Peacock, Justin, Dale and Lee Ann spent the School Reunion weekend with his parents, Mr. and Mrs. B.L. Peacock. Their other son, Mike, his wife, Tobie, and their daughter, Michelle, also visited. The Pat Peacocks of Anahuac, Texas arrived Thursday night and the Mike Peacocks came on Friday.

Buddy Allen, Jared and Darrin and

Paul Browning of Pampa were guests of Mr. and Mrs. Harry Patten the past weekend.

Guests of Mr. and Mrs. Alvin Durham and attending School Homecoming were their son, Johnny and wife, from Shallowater.

Mr. and Mrs. Corky Marshall of Lubbock spent the weekend at their home here and attended the School Reunion.

Larry and Kathy Webb of San Antonio came Monday and spent several days with his grandmother, Beth Hinson.

Mr. and Mrs. Herman McCleskey camped at Springs Ranch and attended the School Reunion.

Bess Ferguson was taken to Methodist Hospital in Plainview Friday morning by Motley County Ambulance.

Kenneth Ashley and daughters, Marilyn Ashley, and April and Michael Woods and son, Taylor, of Costa Mesa, California, and Jackie and Shirley Smith of Ruidoso, N.M. visited the weekend with their sister, Mr. and Mrs. Joe Meredith and family and their brother Mr. and Mrs. Roger Ashley and family, and other relatives in Roaring Springs and Matador. They all attended the Roaring Springs Homecoming.

inn. Daughters Merrie Goguen of North Carolina and Elizabeth Schmalstieg of Georgetown hosted the entire long weekend, and were joined by their family members Joshua and Jonathan Goguen of North Carolina, John Schmalstieg and Jack of Georgetown, Julia Halff Keith of Woodland Hills, California, and Hall and Stiffy Halff Austin. They walked through historic downtown Georgetown, consumed an enormous amount of delectables prepared by Barbara, visited the Schmalstieg home, and had a farewell supper at the historic Stagecoach Inn in Salado. The family is now eagerly awaiting the birth of Jack's new brother next month!

Matador News

The Tribune received a call from Louise Robbins who has moved to League City. Her new address is 300 Enterprise, Room 303, League City, Texas 77573.

KEITHS CELEBRATE IN GEORGETOWN

Charlie, Viola, Charles, and Joan Keith motored to Georgetown two weeks ago, with a brief dinner stop at Underwood's in Brownwood, to celebrate an early Father's Day as well as the 60th birthdays of both Charles and Joan. Hosted by their children at the historic bed & breakfast, *Right at Home* in Georgetown, they were honored at a special Sunday dinner prepared by Barbara Shepley, owner of the

SENIOR CITIZENS REPORT

by Cora Hall

The Matador Senior Citizens met Tuesday, June 13 with 17 present. Jean Cooper gave the report for the month before.

Happy Birthday was sung to Bob Jameson and Raby Webb.

Everyone signed a get well card for Nora Belle Dunning, who was in the hospital at that time.

Mrs. Blevins gave the blessing for the lunch.

We have two new signs on our front door, put up by the Green Thumb. One says, "No Smoking In Building", and the other says, "Please Carry Out All Trash and Mop Floors When Renting Building."

The Matador Senior Citizens meet every second and fourth Tuesday of each month.

Social Security Tips

by Mary Jane Shanes
Social Security Manager, Plainview

COMBATTING MEDICARE FRAUD: WHAT YOU CAN DO

Nearly 800 million claims for Medicare benefits were submitted to Medicare for payment in 1992. Some of the claims were fraudulent. As fraudulent claims were detected, some providers were warned, some were fined, some were thrown out of the Medicare program, and some were sent to prison. Despite the efforts, it is estimated that as much as \$10 billion was stolen from Medicare that year.

Each time Medicare pays a claim it shouldn't, the government is being ripped-off, and as a taxpayer so are you. When someone knowingly or willingly lies in order to get paid this is fraud, a federal crime. Such a crime happens when a provider misrepresents on the claim form what was furnished to the consumer.

When you suspect that Medicare has improperly paid a claim, contact the insurance company that paid. The company will contact the provider to investigate. If you wish, your name will not be used. If you feel comfortable doing so, you may contact the provider that submitted the claim before calling Medicare and inform the provider that Medicare paid for the item or service. Also, explain why you believe Medicare should not have paid.

If the provider made an honest mistake, it can be corrected and Medicare will get a refund. If the provider told you before you received the service that Medicare is not likely to pay for the service, you may have to pay for the service.

In many cases, you will not suspect foul play until you review the Explan-

ation of Your Part B Medicare Benefits (EOMB). These explanations include information on whether or not Medicare paid, how much, and the item/service for which Medicare paid. These statements are valuable in detecting Medicare fraud. Look for:

- Duplicate payment for the same service;
- Ambulance services you are not aware of;
- Payment for home medical equipment while you or a family member are in a Medicare-approved hospital or nursing home;
- Dates of service on the EOMB that differ from the dates you actually received the service;
- Outpatient services billed while the patient was in the hospital; and
- Items or services you do not recall getting. Remember, however, that there are some instances when you will receive bills from a provider you never saw. For example, you may have gotten services from radiologists or cardiologists who interpret test results for your personal physician. You may never meet these consultants, but they perform real, necessary services.

If you believe Medicare is being cheated, call or write the Medicare company that paid the claim. The name, address and telephone number are on the Explanation of Your Part B Medicare Benefits. If you plan to write rather than call, clearly state at the beginning of your letter that you are filing a fraud complaint. This will ensure that your complaint is processed through the mail room to the fraud unit. Address the envelope to the name and address on the explanation of Medicare benefits, attention: Medicare Fraud Unit.

O Lord, you are my God; I will exalt you and praise your name, for in perfect faithfulness you have done marvelous things, things planned long ago.

Isaiah 25:1



FROM PLAINS COTTON GROWERS, INC.

Collection of the High Plains boll weevil eradication assessment on the 1995 crop adds a new set of responsibilities for both producers and landlords.

According to Lubbock-based Plains Cotton Growers, Inc. (PCG) the recently passed assessment mechanism will take some getting used to, at least until producers get accustomed to the system and some of the guts can be worked out.

For now, PCG officials say, there are two main concerns being expressed by producers. The first is how assessments paid early will be affected by the loss of a crop before the July 15 final certification date. The second is how to inform landlords of the amount of their boll weevil assessment and when the assessment is due.

The goal of the Boll Weevil Eradication program is to eliminate the boll weevil as a threat to High Plains cotton production. In order to make the program successful it is in the best interest of everyone involved to develop whatever mechanisms will guarantee a smooth running, effective program.

"The problem that we seem to be having now is that many producers are reluctant to pay the assessment until they have a better feel for what this year's crop is going to do," explains PCG Executive Vice President Donald Johnson. "Unfortunately, this increases the chances of a producer inadvertently missing the final due date of July 15."

Johnson explains that the boll weevil

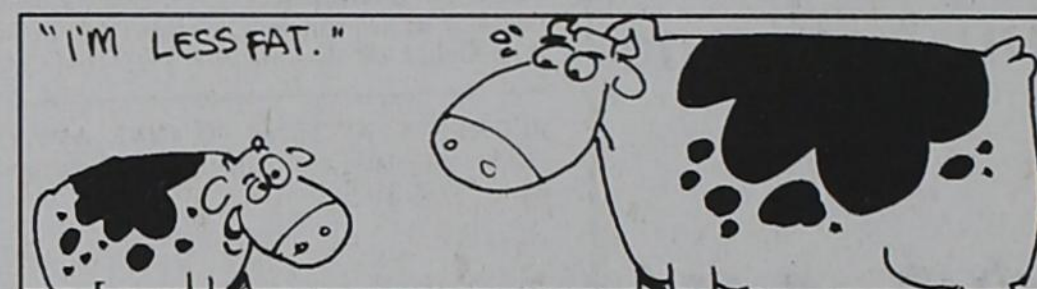
assessment is due at the time the crop is certified and is calculated according to the producers planted acreage. The last day a producer can certify 1995 cotton acres is July 15.

"The tricky part will be making sure everyone who needs to be notified of their assessment amount is informed so they can avoid missing the July 15 due date," adds Johnson.

In order to address this issue, before it becomes a significant problem for both the Texas Boll Weevil Eradication Foundation and individual producers and landlords, several alternatives are being discussed.

Producers who pay their assessment when they certify and then lose their crop before July 15 can request that their current year's assessment be carried over and credited toward their assessment the following year. All requests of this nature must be made in writing to the Texas Boll Weevil Eradication Foundation office in Abilene.

All assessments can be paid at the county Consolidated Farm Service Agency (CFSA) office at the time of certification or before July 15. Assessments can also be paid directly to the Texas Boll Weevil Eradication Foundation office in Abilene. Individuals who make their payments directly to the TBWEF should include with the payment the county from which the assessment originates as well as the appropriate CFSA farm number(s).



Veal tends to have less fat than does beef.

THE POWER OF DC!

20¢/MIN. MOBILE TO MOBILE!



As a Digital Cellular customer, you can talk to other Digital Cellular customers for just 20¢ per minute! (Both parties must be within the DC home area.) So if you own a business with multiple cellular phones, your people can talk to each other for less money per minute per phone! It's just one more way The Power of DC is making cellular phone communication easier, more efficient and more economical than ever. Contact your local Digital Cellular dealer today and put The Power of DC to work for you!



IN PADUCAH: Triangle T • P. O. Box 329 • 1-800-657-8682

Digital Cellular OF TEXAS

Box 53118 • Lubbock, Texas 79453 • 1-800-662-8805 • 806-924-5432

Business Review

Keep your shopping dollars at home!
Buy In Motley County!

FAX SERVICE AVAILABLE
at the Motley County Tribune

\$3.00 to Send for the first page, \$1 for each page thereafter
\$2.00 to receive, \$1 for each page thereafter

Check first with First National for all
your Banking needs

THE FIRST NATIONAL BANK OF FLOYDADA

P. O. BOX 590 • FLOYDADA, TEXAS 79235

806-983-3717

"Helping you change things for the better"

Member FDIC



CALL DAY OR NIGHT
FOR PROPANE & ELECTRICAL SERVICE

MARSHALL BROS.

PROPANE 347-2290 ELECTRIC

This Space
Available For Only
\$35.00 Per Month!!

Germania Insurance

Homeowners, Auto, Personal, and Farm
Liability and Life

Lee's Insurance Agency

Flomot, Texas 79234

806-469-5370

Payne **HEALTHMART** Pharmacy

200 So. Main — Floydada, TX 79235-2726 Ph: 983-5111/1-800-345-7961
Denise Payne, R.Ph.

M-F 8:30-6:00
Sat. 8:30 - 4:00

We will be happy to mail
your prescriptions

Day - 347-2346

Night - 347-2411

Matador

