

PAGE ONE

A QUICK READ OF THE NEWS

Oz-quoting parrot home

A noisy parrot that was stolen from a Tacoma, Wash., pet clinic and boarding center was recovered — and welcomed back home with a dinner of pasta and ice cream.

Bonzo's owners, Bill and Gail Brooks, were in tears after police found the unusually squawky, \$2,000 parrot at another home.

Bonzo, appearing healthy but slightly underweight, greeted his owners with one of his special sounds, an imitation of a squeaky dog toy. He also quotes lines such as "I'll get you, my pretty, and your little dog, too" from *The Wizard of Oz*.

Man, dog buried double

A man loved his drug-sniffing dog so much that he decided they should remain together after death — at a pet cemetery.

The cremated remains of Jim Crovetti and his Rottweiler, Lady, are buried in separate urns at the Loving Rest Pet Cemetery about 10 miles south of Des Moines, Iowa, in a section dedicated to service animals.

Crovetti and Lady worked for nine years with police in southern Iowa and northern Missouri.

Hazard of the trade

A 90-year-old beekeeper in Linz, Austria, is recovering after suffering 1,000 bee stings.

Hermann Danner was stung recently when he approached his two hives without protection gear.

"It was a battle that lasted about half an hour — but it was unsuccessful," Danner said. He was barely moving when a neighbor found him and alerted medics.



Drawing date: Wednesday, July 17
Winning numbers: 11-21-26-32-40-46
Estimated jackpot: \$4 million
Winners: 1 (Houston)
Next drawing: Saturday, July 20
Estimated jackpot: \$4 million

On this date in history

July 26 — San Felipe de Austin is established (1823).
Also on July 26 — Sam Houston, former president and governor of Texas, dies at Huntsville (1863).
July 27 — Texas Confederate troops capture Fort Fillmore near Mesilla, N.M. (1861).

LOCAL WEATHER

The chance of showers should be lower for a few days, but still at 20 percent Sunday and Monday, 30 percent Tuesday, 10 percent Wednesday and back up to 40 percent by Thursday afternoon. Highs should be in the low 90s until shooting up to about 96 Wednesday. Morning lows should be mainly in the mid-60s, but 71 on Tuesday.

Editor Ronn Smith can be reached at 272-4536 or ctyankee@fivearea.com

Missed your paper? Call carrier Yolanda Martínez at 272-4536 during business hours, 8:30 a.m.-5 p.m.

Two speak of their problems with police

JOURNAL STAFF REPORT

Anyone who hangs out at the local coffee shops knows it: The Muleshoe Police Department has a public relations problem.

Not many people have spoken out publicly, however. At a June 3 special meeting to discuss the city's priorities, Councilwoman Sharon Grant was the only one who mentioned "how the public views our police department."

Police Chief Don Carter said Friday he still believes all his officers are doing a

good job, and that any image problems are a result of personality conflicts. Now that patrol cars have cameras on board, he said, a different image of the department may emerge.

Two of the four young people arrested for marijuana possession in an incident April 2, 2001, say their criticism of police is definitely directed at individuals rather than the whole department.

"I think Ralph Sánchez is a great cop, and I've never had any problem with Benny Parker," said Grayson Rennels, who was charged with misdemeanor pot possession in

the incident but has not been tried.

"It's not necessarily that cops are bad, it's that the person who's a cop is bad," he said.

Chad Parker, who is appealing his May 23 conviction on the same charge, agreed that "some officers are just doing their job." But they both say certain Muleshoe officers have a pattern of harrasing people, including Parker.

Carter said his officers didn't even

see **PARKER** on page 2

Hospital district comes up with strategic plan

JOURNAL STAFF REPORT

The Muleshoe Area Hospital District board of directors heard Thursday night about the district's emerging strategic plan — from the employees who formulated it.

Employee committees studied each of five areas — customer service, financial performance, community relations, capital improvements and employee relations.

District administrator Jim Bone said, "I want to emphasize that this is their plan, not the result of any recommendation from administration."

Board members praised Monday's presentations, with Ronnie Dent saying he'd like to have quarterly reports on how the plan is carried out.

Board President Buck Campbell said "I think we'll have a better facility and better employee morale" as a result of the committees' recommendations.

The board also:

- Accepted Bone's recommendation that Durbin and Co. again be hired as the district's auditor;
- Heard Sharon Novak, the district's chief financial officer, that this year's revenue is running above budget projections (despite a downturn last month) and operating expenses are running below projections; and

• Also heard from Novak that budget projections for 2003 include a 20 percent increase in revenue from Park View. This would require six more residents than the current 57, and three of those are expected to move in almost immediately, Park View Administrator Bill Paxton said.

Perry, Combs plan High Plains visits

Gov. Rick Perry and Texas Agriculture Secretary Susan Combs both plan High Plains appearances.

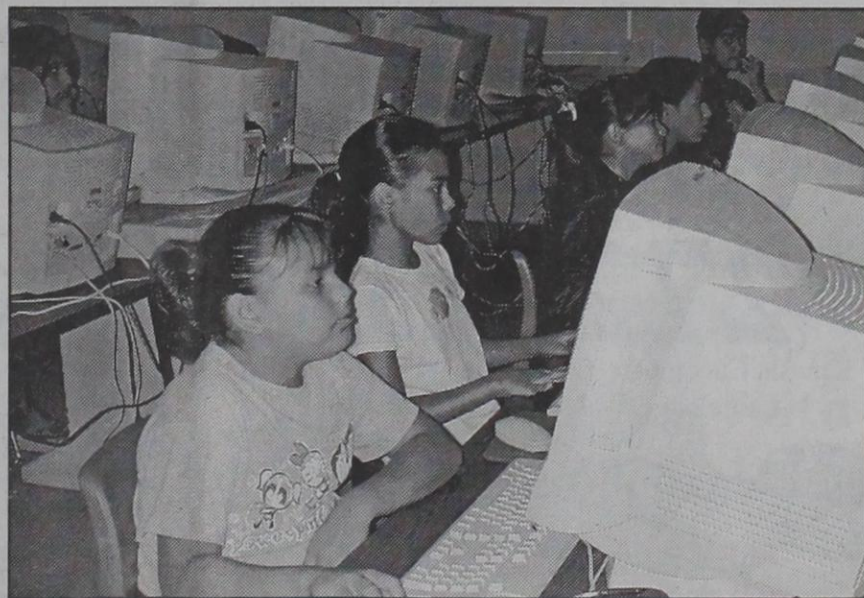
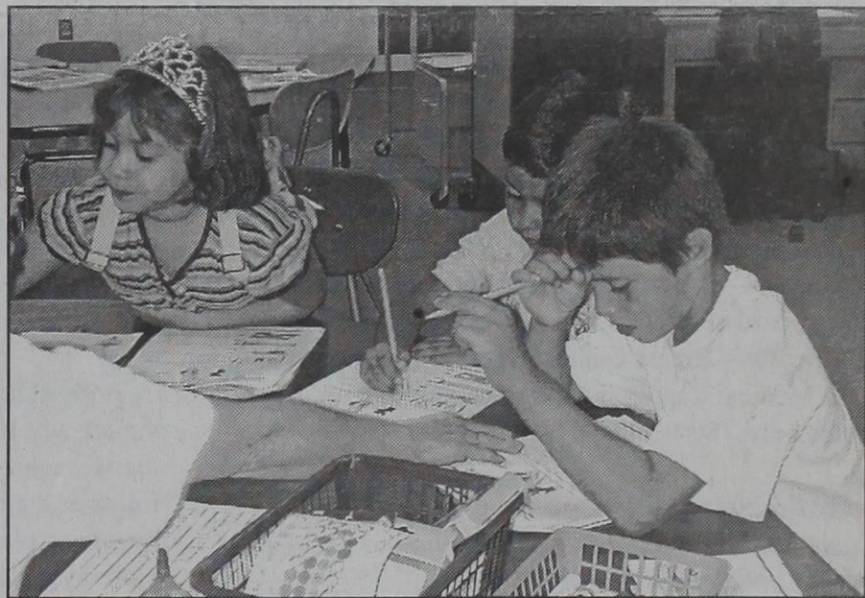
Combs will hold a roundtable on rural development at 8:30 a.m. July 22 at the Dimmitt City Hall, 200 E. Jones.

On July 24, both officials will attend a meeting on the future of agriculture policy at 9 a.m. at Farmers Co-op Compress in Lubbock.

Working with migrant children



Above, teacher Josie Guerrero of Muleshoe schools' Project Smart for migrant children plays a trivia game for second- and third-graders Thursday morning with (from left) Laura Loya, Billy Alanis and Alex Flores. At right, kindergarten and pre-kindergarten students work on multiple-choice exercises. In total concentration is Javier Martínez (right) and Eliot Reyes (center), while Brenda Alanis (left) seems more distracted.



Fourth- and fifth-graders Johanna Rangel (left), Andrea Carmona, Crystal García, Victor Rodríguez and Alex Loya work in Patricia Angeley's computer lab as part of Project Smart. The Muleshoe School District classes in Project Smart, which include bilingual instruction, are being held through July 26 at DeShazo Elementary School. Students in the center photo are in Maria García and Mary Ann Domínguez's class.

A&M's July Baseline Analysis online

SPECIAL TO THE JOURNAL
COLLEGE STATION — Texas A&M University's July 2002 Baseline Analysis went online Wednesday, the first comprehensive analysis of the effects of the new farm bill.

"The baseline shows that the economic viability of crop farmers is much improved over our last baseline," said Dr. Joe Outlaw, Texas Cooperative Extension policy specialist in A&M's Agricultural and Food Policy Center.

"Under the old farm bill, three-fourths of our representative crop farms were classified

in poor financial condition. With the new farm bill in place, about 10 percent of the representative farms are classified as poor."

While the bill provides a greater income safety net than the old bill, not all farmers are in a good financial position.

Dr. James Richardson, a professor in the policy center, pointed out that almost half the farms that the policy center tracks probably will face cash-flow deficits more often than one year in four.

The report includes 95 representative farms across the coun-

try. Of the 17 Texas crop farms included in the policy center baseline analysis, 10 are classified in good financial shape, five are classified as marginal due to cash-flow pressures, and only two are classified as poor.

Lower milk prices probably will lead to increased cash-flow pressures for dairy farmers. More than half the representative dairy farms the policy center monitors will suffer cash-flow deficits more often than one in four years.

The report is available at www.afpc.tamu.edu.

AROUND MULESHOE

Local student to study in England

Muleshoe High School student Anna Symm is among a group of American high school students selected to study at Cambridge University next summer.

The term, from July to August, is for gifted and talented students in the areas of literature, history, philosophy, art and music.

In order to go, however, she will have to raise about \$6,000. Part of her fund-raising involves selling a \$6 booklet called "Poems and Stories to Live, Laugh and Love By," a compilation of her original work.

Anyone wishing to buy the booklet or contribute to a scholarship fund that has been established for her may do so by calling (806) 825-3074.

She is the daughter of the Rev. David and Tina Symm. They live at Lariat, where he is the pastor of St. John Lutheran Church.

Health-fair planning meeting set

Muleshoe's Community Health Fair Planning Committee is scheduled to meet at 10 a.m. July 23 in the Ann Camp Meeting Room at Muleshoe Area Public Library.

Those agencies and organizations that would like to assist with screenings or educational booths are asked to send a representative to this meeting.

The health fair is being planned for August.

More information is available by calling Gail Gladden at 272-4583.

Public calendar

July 22-23 — Breast-cancer screening clinic at Parmer County Community Hospital, 1307 Cleveland Ave., Friona, if enough people make appointments. (800) 377-4673.

July 24 — Deadline for Friends of the Library softball tournament scheduled for 26-28. Class D and E; entry fee \$120 per team. Information: Nathan Hill (272-6891), Richard Orozco (272-3576), Robert Orozco (272-6774), Shorty Flores (272-5112) or the library (272-4707).

July 27 — 10:30 a.m. to 11:30 a.m. Storytime for young children at Muleshoe Area Public Library: "Bumblebees." 1 p.m. to 1:45 p.m. Storytime for elementary children: "Caps for Sale."

July 29-30 — 9 a.m. to 5 p.m. First responder/industrial course at Muleshoe Area Medical Center. Information: Margaret Heathington (272-4524), Eileen Morton (also 272-4524) or Mitzie Brockman (806-945-2246).

July 31 — 10 a.m. Bailey County Commissioners' Court, in the commission room at the courthouse.

Aug. 2 — 7 p.m. at Calvary Baptist Church. The Pensacola Boys from Pensacola, Fla., will perform. Information: 272-4012.

Aug. 5 — Breast-cancer screening clinic at Muleshoe Area Medical Center, if enough people sign up. Appointments only; (800) 377-4673.

Aug. 8 — 5 p.m. Muleshoe Economic Development Corp. board of directors, in council chambers at city hall.

Aug. 20 — Breast-cancer screening clinic at Muleshoe Area Medical Center, if enough people sign up. Appointments only; (800) 377-4673.

The deadline for items to appear in Around Muleshoe is 5 p.m. Monday for Thursday's editions and 5 p.m. Thursday for Sunday's editions.

Meeting to air livestock prices

AMARILLO — A livestock price-crisis meeting has been scheduled for 8:30 a.m. to 4 p.m. July 25 at the Clarion Hotel, 7909 I-40 East (at Lakeside) in Amarillo.

The meeting is being billed as an informational meeting on market failures with a focus on potential solutions.

All U.S. livestock producers are invited, and attendees will vote on their priorities at the end of the meeting.

SALES Braun WHEELCHAIR LIFT



SERVICE & REPAIRS ON ALL BRANDS

AMERICAN EQUIPMENT & TRAILER

3707 M.L.K. Jr. Blvd. Lubbock, TX

806-747-2991

FRESH VEGETABLES FOR SALE

(806) 272-4351

Squash, Cucumbers, Green Beans, Black-Eyed Peas, Cantaloupe, Watermelon & Much More!



Bailey County Journal USPS 040-200

Established March 31, 1963. Published by Triple S Publishing, Inc. Every Sunday at 304 W. Second, P.O. Box 449, Muleshoe, TX 79347.

Periodicals Postage paid at Muleshoe, TX.

POSTMASTER: Send address changes to the Bailey County Journal, P.O. Box 449, Muleshoe, TX 79347.

We are qualified members of:
Panhandle Press Association, National Newspaper Association, West Texas Press Association and Texas Press Association

WEST TEXAS PRESS ASSOCIATION MEMBER 2002

PPA Panhandle Press Association

TA TEXAS PRESS ASSOCIATION

Scot Stinnett, Publisher
Lisa Stinnett, Vice-President/Comptroller
Ron Smith, Editor
Beatrice Morin, Classifieds
Leah Bell, Advertising
© 1990 Yolanda Martinez, Office Assistant

SUBSCRIPTIONS: Muleshoe Journal and Bailey County Journal
By Carrier Yearly - \$22.00
Bailey County — by mail - \$24.00
Elsewhere - \$26.00
Advertising Rate Cards on Application

Advertisers should check their ad the first day of insertion. The Journals will not be liable for failure to publish an ad or for a typographical error or errors in publications except to the extent of the cost of the ad for the first day of insertion. Adjustment for errors will be limited to the cost of that portion of the ad where the error occurred.



Journal photo: Leah Bell

Rotarian of the year

Rotary President Wanda Hooten (left) congratulates George Nieman on being named the local Rotarian of the year. The award is presented to a member whose club service, participation and life demonstrate service above self. Nieman was given the Paul Harris Fellowship Award, named for the founder of Rotary International. The last local Rotarian so honored was Thurman Myers in 2000.

PARKER

from page 1

know where Chad Parker lived and had to get directions when they got a call about a party in progress at the house — because the department had not dealt with Parker since he was a juvenile.

Parker said his problems with the police department were minor until "my big deal is coming into my house without permission" to make the 2001 arrests.

Officers testified at Parker's trial that he invited them in, but he says he was telling Officer Rodney Stevens "Get out of my house!"

Rennels agreed: "I remember plainly him (Parker) telling him (Stevens) to get out of his house many times" that night.

Both Rennels and Chad Parker say that if a marijuana cigarette butt was found at the house, it must have been placed there, and both say that arriving offic-

ers went directly to where police say they found the butt.

Rennels said minor cases like this can "ruin a lot of people's lives," including his own hope of going into the Air Force.

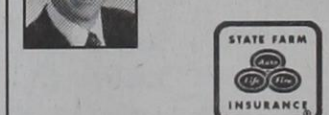
Parker's attorney, Chuck Lanehart, did not return a call seeking comment.



How many reasons do you have?

There are no better reasons to get some life insurance. Make State Farm life insurance part of your life. Call me today.

Mark Morton, Agent
101 Main Street
Muleshoe, TX
806-272-7519



State Farm is there for life.® statefarm.com
State Farm Life Insurance Company (Not licensed in NY or WI)
State Farm Life and Accident Assurance Company (Licensed in NY and WI)
Home Office: Bloomington, Illinois
P01297 04/01

Bands sign on for Clovis fair

CLOVIS — Two popular bands and many other entertainers are set for the Curry County Fair.

La Tropa F, a top Tex-Mex bands, will perform starting at 8 p.m. (Mountain time) Aug. 15, while country group Cooder Graw

will crank up at 8 p.m. Aug. 17, with openers West 84 Stanley, a rock band, plays 7 p.m. to 11 p.m. Aug. 14 and a talent show is at 7:30 p.m. Aug. 13.

A magician, a hypnotist and other acts also will perform at the fair.

DEMO SALE

2002 EXCURSION LIMITED 4X4

Stock #2T47

MSRP \$44,120.00
Ford Discount —\$545.00
Muleshoe Motor Co. Discount —\$3,852.00
Mfg. Rebate —\$2,000.00

OR choose 2.9% APR for 60 Months WAC!

Your Price \$37,723 You Save \$6,397

2002 KING RANCH SUPERCREW

Stock #2T14

MSRP \$32,675.00
Muleshoe Motor Co. Discount —\$3,610.00
Mfg. Rebate —\$1,500.00

OR choose 2.9% APR for 60 Months WAC!

Your Price \$27,565 You Save \$5,110

2002 FORD EXPEDITION XLT

Stock #2T3Q

MSRP \$36,010.00
Muleshoe Motor Co. Discount —\$3,095.00
Mfg. Rebate —\$2,500.00

OR JUST ANNOUNCED...
0.0% APR for 60 Mo.

Your Price \$30,415 You Save \$5,595

W.A.C.

Big Orange Certified

272-4251 or Toll Free 1-800-432-7617

MULESHOE MOTOR CO.

1125 W. American Blvd. • Muleshoe, Texas

GOLDEN ANNIVERSARY CELEBRATION

Recently, a small informal gathering of friends and family attended a surprise 50th Wedding Anniversary party held for Ed and Donna Nickels at the Heritage Depot.

Hosting the occasion were their children Nicky and Debbie Nickels; grandchildren, Chad and Kayla Nickels, Guy and Kimberly Nickels, and Trey Nickels; and great-grandchild Kennedy Nickels, daughter of Chad and Kayla, all of the Muleshoe area.

The family was assisted by Kayla's parents, Rich and Cindy Magby of Muleshoe and Kimberly's mother, Debbie Gallman of Bovina.

Friends of the couple Ted and Betty Harrison of Muleshoe and JR and Bobbie Johnson of Shallowater helped in the surprise by arranging a pre-gathering at the Harrison's house. Also helping were Charles and Pat King of Lubbock who were members of the Nickels' wedding party.

Approximately forty guests were served a meal, prepared by the family, of fried catfish, baked ham, pinto beans, potato and green salads, coleslaw, stuffed jalapenos, deviled eggs, fresh fruit, cornbread and a variety of cobblers and ice cream.

During the event, a power point slide-show created by Kimberly and her mother was shown. It featured photos and memorabilia of Ed and Donna's courtship and marriage. Guy and Kimberly accompanied the show singing a duet of "You Are The Wind Beneath My Wings" and "On Eagle's Wings."

A memory candle used in their wedding ceremony was lit by Kennedy and her father to commemorate the occasion.

Chad, acting as spokesperson for the grandchildren, accredited the couple as being role models by exhibiting marital and Christian values. He expressed love and appreciation "for being the kind of grandparents who are always there for you."

Special guests in attendance were Ed's sisters, Doris Reeves and Floris Gilley of Lubbock; and Evelyn Riley of Muleshoe. Also, Donna's aunt, Theron Eubanks, of Muleshoe.

Ed and Donna were married June 14, 1952 in Muleshoe at the Main Street Baptist Church. Parents of the couple are the late Guy and Bertie Nickels and the late Finis Kimbrough and Johnnie Kimbrough, a resident of the Muleshoe nursing home. They have been lifelong residents of Muleshoe. They are members of First Baptist Church where Ed is a Deacon and Donna is in the choir. Though they have retired from farming in Parmer and Bailey counties, they remain active in ownership and management of Muleshoe Pea & Bean.

The couple had previously celebrated on the day of their anniversary with their daughter and son-in-law, Patti and Dickie Hunter, and their grandson, Durrell, all of Plano, Texas.



Ed & Donna Nickels



Workers honored

Park View laundry workers Millie Piñeda (left) and Barbara Perry were honored recently during a reception marking National Laundry Week. They're holding a sign announcing the event.

NURSING HOME NEWS

The Rev. and Mrs. Randy Thomas of Lazbuddie Methodist Church presented a patriotic program for the residents Thursday morning.

Jewel Peeler was visited recently by her son and daughter-in-law, Mr. and Mrs. Buddy Peeler.

Fannie Maye Black's great-grandson visited her Wednesday morning.

Gladys Wilson was visited this week by her daughter and son-in-law, June and Wes Conway.

Herb and Betty Ramage purchased chairs for Park View's patio Wednesday. The chairs were paid for from the Volunteers Plus Memorial Fund.

Melvin and Wanda Griffin directed the bingo games Saturday afternoon.

Roland and Martha McCormick presented a slide show on Yellowstone and beyond Monday afternoon.

On Saturday, Buster Kittrell cut the men's hair and Iris Clements directed bingo.

Members of the Church of Christ directed the Communion service Sunday morning. Buster Kittrell taught Sunday school.

Glenda Jennings and Jackie Scoggins directed the sing-along Wednesday afternoon. Harold and Mary Jo Burge, Loyce Killingsworth served coffee and doughnuts to the residents Wednesday morning.

Cecil and Jackie Walters visited Ronnie Davis on Monday.

Beverly Wagon, Claudine Embry, Ruby Henderson, Linda Nowell, Eva Nell Dale, Mary Jo Burge and Pat Watson shampooed and set the women's hair Tuesday afternoon. Norma Eaves gave nail care.

Members of Trinity Baptist Church came Sunday afternoon for church services.

Members of the Farwell Church of God in Christ (Mennonite) came Friday evening for fellowship and a singing service.

Susie Whatley was surprised by a visit from her niece from North Carolina last week.

Portales tennis event set

PORTALES — The annual Portales Open Tennis Tournament is scheduled for July 26-28.

The entry deadline is 8 p.m. (Mountain time) July 24.

The tournament was not held last summer because the Eastern New Mexico University tennis courts were being resurfaced.

Entry fees for adult events are \$10 for singles and \$20 for doubles. For junior events, the fees are \$8 for singles and \$16 for doubles.

Entrants are limited to a maximum of three

events; juniors who wish to enter adult events will be eligible for three adult events.

Draws will be combined as necessary.

Trophies will go to first and second as well as consolation bracket winners.

The first 100 who check in and pay entry fees will receive a free T-shirt.

Checks should be made payable to Portales Tennis Association and mailed to 320 E. 17th Lane, Portales 88130.

Details are available by calling (505) 356-6747.

Flowers Fireworks

would like to say "Thank You" for your patronage this 4th of July season. We look forward to seeing you next year!

Tom, Joella and family



TX License #314908

PHILLIPS PEST CONTROL

"Serving ALL ornamental lawn, turf care & pest needs."

It's Time To Treat Your Lawn For Grubs, Chinch Bugs & Other Seasonal Bugs.

272-5760

OVER 25 YEARS OF EXPERIENCE

VACATION SPECIAL

INTEREST FREE LOANS

FOR NEW CUSTOMERS & FORMER BORROWERS

OFFER GOOD THRU AUGUST 20, 2002

LOANS \$100-\$495

While You Wait Or By Phone • Credit Starter Loans

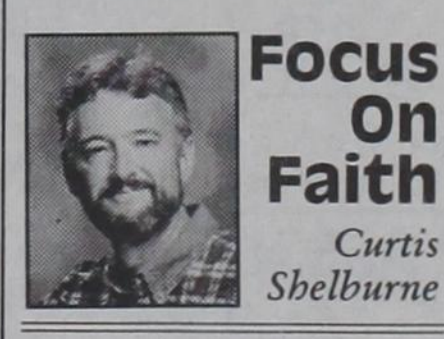
CONTINENTAL CREDIT

206 S. Main Street • Muleshoe
272-3673 • ¡Se Habla Español!

You snooze, you lose! Read the news!

Don't Be One of Job's Friends!

The Book of Job is the textbook on suffering. Open it and you'll see an extraordinarily good man undergoing extraordinarily terrible affliction. He loses his family (except his wife, and keeping her might easily be counted among his afflictions!), his wealth, and his health. He's reduced to sitting on a pile of ashes, scraping his many sores, and praying to die. He is a picture of misery.



righteous suffer?" Job's friends have a quick answer: "They don't! 'Fess up, Job! What have you done to deserve this pain? We know that the righteous always prosper; only the wicked suffer."

We do? No, it just doesn't work that way, does it? One wonders what world Job's friends had been living in. It certainly wasn't the one you and I live in.

Unfortunately, Job's friends are still around. "Turn your life over to the Lord," they preach, "and all of your troubles will be over. Life will be for you beautiful, rosy, and probably prosperous." And then, if life is *not*? "What is wrong with your faith? What sin lurks in your life?"

To add to his discomfort, Job has a visit from three "friends." Job is in such terrible shape that they don't even recognize him at first, but when they do, they break into such a frenzy of wailing and grief that one would think Job had already died.

Maybe Job's original friends had some excuse for their folly, but their modern counterparts who can read the New Testament should know better. They should hear the Apostle Paul telling persecuted believers, "We did not want any of you to lose heart at the troubles you were going through, but to realize that we Christians must expect such things." Or they should simply look at the cross and see what the world did to the best man who ever lived.

In fact, I'm told that the kind of wailing they undertake is precisely the kind that happened in that culture when the undertaker had already been called! For seven days they sit viewing the not-yet-dead body of their friend, acting as if he was already dead, and then they undertake a premature post mortem of his trouble.

They speak. They shouldn't have. These "miserable comforters" begin to debate the man they'd come to console. The question is, "Why do the

A time of trouble is a good time to pray for stronger faith. And any time is a good time for humble self-examination.

But when trouble comes, don't pay too much attention to Job's friends.

Curtis Shelburne is minister of the 16th & D Church of Christ in Muleshoe.

and Tanya Embry participated in the devotional/singspiration time Wednesday morning.

Clara Coffman, Johnnie Kimbrough, Alda Odom, Vera Neer, Christine Newsom, Bootie Tiller, Aline Locke, Susie Whatley, Mary Manriquez, Harold Awbrey, Juanita Teague and Grace Plyler painted ceramics in craft class Thursday morning.

The American Boulevard Church of Christ ladies hosted a homemade pie social for the residents Thursday afternoon. Beverly Wagon and Glenda Dale served the pastries and visited with the residents.

The Park View Residents' Council met in the day room Thursday afternoon. Sixteen residents participated.

Friday morning Pat Watson directed a music therapy session as well as a poems and reminiscing program.

The Rev. Gary and Judy Hubbard of Earth United Methodist Church directed a memorial service Tuesday morning for Florence Harvey. Judy Hubbard's granddaughters also participated.

Joe Embry and Harold Burge were among visitors Tuesday afternoon.

Guy Kendall was visited by his wife, Elsie, on Sunday. They had dinner together.

The Park View staff expresses sympathy to the family of Louisa Gonzales.

Ruby Clark went out to visit with family over the weekend.

Barbara Berry and Millie Piñeda, who work in the laundry, were honored recently during National Laundry Workers Week.

Aline Locke's daughter and granddaughter, Geneva and Jo Huckleberry of Cyril, Okla., are visiting Locke this week.

Glen Williams, Brady Ma-

OBITUARIES

JULIAN VALENZUELA

Services were held Friday at Immaculate Conception Catholic Church for Julian A. Valenzuela, 72, of Muleshoe. The Rev. Joe Augustine was the celebrant. Burial was in Bailey County Cemetery.

Ellis Funeral Home handled arrangements.

Mr. Valenzuela was born Jan. 23, 1930, in San Buenaventura, Chihuahua. He died Tuesday at University Medical Center in Lubbock.

He married Maria Paula Arras on June 20, 1958, in Banderas Dis Bravo, Chihuahua.

He moved to Muleshoe on July 10, 1969, from Mexico. He was a farm laborer and a member of Immaculate Conception.

Mr. Valenzuela is survived by his wife; two sisters, Concepción Valdez of Valle de San Buenaventura, Chihuahua, and Antonia Valenzuela of Albuquerque; and two brothers, Marcelino Valenzuela of Saragosa Dis Bravo, Chihuahua, and Felis Valenzuela of

CARRELL WILHITE

Services were held June 21 at the Horan and McConaty Reception Center in Thornton, Colo., for Carrell D. Wilhite, 58, of Denver. Burial was in Elmwood Cemetery in Brighton, Colo.

Mr. Wilhite was born March 4, 1944, in Muleshoe. He died June 18 at Hospice of Metro Denver, City Park Care Center.

He married Annette Marie Pfannenstiel on Sept. 22, 1972, in Fort Collins, Colo. He was a building contractor and enjoyed woodworking as a

hobby.

Mr. Wilhite is survived by his wife; a daughter and son-law, Lori and Michael Scott; a brother and sister-in-law, Rod and Bobbie Wilhite; and a granddaughter, Katherine Scott.

He was preceded in death by his father, H.L. Wilhite; a sister, Jera Lynn Saul; and a nephew, Randall Saul.

The family suggests memorial to Hospice of Metro Denver (2021 High St., Denver 80218).

Some information originally supplied to the *Journal* was incorrect.

FAMILY NIGHTS!

99¢ BURGERS

99¢ Single #1 & #2 Burgers
5PM - Close • Every Tuesday!

Not valid in conjunction with any other specials or offers. Offers good for a limited time, subject to change. Participating locations only

1633 American Blvd. • 272-3998

SONIC
America's Drive-In

SUMMER CLEARANCE SALE ON ARCTIC CATS!

ARCTIC CAT
MORE TO GO ON.

ATV SALE

LOWEST PRICES OF THE YEAR ON '02 MODELS!

Call or come by either location ASAP to take advantage of these special sale prices!

C&H EQUIPMENT
2501 W. American Blvd.
Muleshoe, Texas
(806) 272-5514

WOOD EQUIPMENT
5500 Mabry Drive
Clovis, New Mexico
(505) 762-4453

ATV can be hazardous to operate. For your safety always wear a helmet, eye protection, and protective clothing. Never ride on paved surfaces or public roads. Never carry passengers; never engage in stunt driving, riding and dismounting don't ride and avoid close proximity to even death. Avoid excessive speeds and be particularly careful on difficult terrain. The Arctic Cat ATV may not be ridden by anyone under 18 years of age. Arctic Cat recommends that all riders take a safety course, and that they read and understand their owner's manual before operation. For safety or liability information in the U.S. call the ATV safety hotline at (800) 887-2287. Along with concerned consumers everywhere, Arctic Cat urges you to "Read Lightly" on public and private land. Preserve your future riding opportunities by showing respect for the environment, local laws, and the rights of others when you ride. ©2002 Arctic Cat Inc. ®™ Trademarks of Arctic Cat Group Inc. Third Street Falls, Minn 56701 (218) 681-4999. Arctic Cat ATVs are world-class products from Arctic Cat Inc.

BAILEY COUNTY DEVOTIONAL PAGE

SERVING INDIVIDUAL INVESTORS SINCE 1871

• Stocks
• Mutual Funds
• Bonds • CDs • IRAs
• Government securities
• Money Market funds
• Tax-Free bonds
• and much more

Edward Jones
Locally, talk with
KATHERINE SCHRAEDER
220 S. Main St. - Muleshoe
806-272-4102 Member SIPC

Muleshoe Country Club



Hwy. 84
Muleshoe, TX
272-4203

AGRILIANCE
Manager
Bruce Bruns

RONNIE HOLT INSURANCE AGENCY
Specializing in Crop Insurance
218 Main, Muleshoe TX 272-4271

MAPLE COOP GIN
927-5501
Maple, Texas

Lowe's MARKETPLACE
401 W. American Blvd. • Muleshoe • 272-4585

minsa corporation
P.O. Box 484 272-5545
Muleshoe, TX
FAX (806) 272-5135 (800) 852-8291

MULESHOE PEA & BEAN, INC.
1680 CR 1044 272-5589
Muleshoe, TX

SAIN IRRIGATION & MACHINES
Complete Pump Service
W. American Blvd. 272-4397
Walt Sain Muleshoe, TX 272-4148

J&S Dairy
West of Muleshoe
272-7706 Muleshoe, TX

FARMERS INSURANCE GROUP
AUTO • HOME • LIFE • BUSINESS • HEALTH
104 W. 12th Street • 272-7548
Laurie Winchell, Insurance Agent Muleshoe, Texas

VIOLA'S
Mexican Food Restaurant
Open: Tues.-Sat. till 8:30 pm, Sun. till 2 pm, Closed Monday
2002 W. American Blvd. • Muleshoe • 272-3838

RTM DAIRY
Hwy. 84 & Airport Rd. • 965-3000
Muleshoe, Texas

WES-TEX FEED YARDS, INC.
Custom Cattle Feeding
272-7555 Muleshoe, TX

WESTERN DRUG
& Something Special Gifts
1411 W. American Blvd. 272-3106 Muleshoe

FARMERS CO-OP ASS'N
of ENOCHS
"Your Farmers Owned Gin"
Chemicals • Seed • Fuel & Oil • Fertilizer
806-927-5511 Wade Baker, Mgr.

MULESHOE LIVESTOCK AUCTION
Muleshoe, TX • Sale Every Saturday
Clayton, C.L. & Thurman Myers • 272-4201

BLACKWATER AGRI ASSN. INC.
West Hwy. 84
Muleshoe, Texas
272-4962

Leal's 107 E. Ash
Muleshoe, TX
Tortilla Factory, Inc. 272-5772

MV ALLEY INC.
2601 W. American Blvd.
P.O. Box 631
Muleshoe, Texas
(806) 272-4266
Mobile (806) 946-8763
mvinc@fivearea.com

Facts About The BIBLE BY JOHN LEHTI

SOME MODERN METHODS ARE AS OLD AS THE HILLS!

AMONG THE ANCIENT BIBLICAL PEOPLE, THE DANGERS OF SUNSTROKE WERE ALWAYS PRESENT BECAUSE OF THE VERY HOT CLIMATE IN THE SUMMERS AND THE FACT THAT THE PEOPLE WERE AN AGRICULTURAL PEOPLE, USED TO WORKING ALL DAY IN THE HOT SUN. SO THE STORY ABOUT THE YOUNG LAD WHO SUFFERED A SUNSTROKE (1 KINGS 4:19, 20) WAS NOT AN UNUSUAL ONE--WHAT IS UNUSUAL ABOUT IT IS THE PROPHET ELISHA'S WAY OF HANDLING THIS PREDICAMENT! NOT UNTIL THE 20TH CENTURY DID MEDICAL MEN START TO RESUSCITATE THE VICTIMS OF HEART ARREST BY USING MOUTH-TO-MOUTH BREATHING TO START THE VICTIM'S HEARTBEAT AGAIN, YET THIS IS WHAT ELISHA DID (II KINGS 4:34) MORE THAN TWO THOUSAND YEARS AGO! WHICH LEADS ONE TO SURMISE THAT THERE IS A LOT OF TRUTH IN THE OLD SAYING "THERE IS NOTHING NEW UNDER THE SUN!" ALSO, IT SHOULD BE NOTED, THAT THE FIRST THING ELISHA DID WHEN HE STEPPED INTO THE ROOM WITH THE DEAD CHILD, HE "PRAYED UNTO THE LORD"--NOT A BAD THING FOR ALL OF US TO REMEMBER, RIGHT?!



312 SAVE THIS FOR YOUR SUNDAY SCHOOL SCRAPBOOK.

This devotional & directory is made possible by these businesses who encourage all of us to attend worship services.

- | | |
|---|---|
| <p>ASSEMBLY OF GOD
FIRST ASSEMBLY OF GOD
521 South First Street • 272-3017
Jack Stone, Min. • 272-3984
S.S. 9:45 am, W.S. 11 am & 6:30 pm,
Wed. 7:30 pm</p> <p>EL BUEN PASTOR
415 E. Ave. F • Pastor Felix Cadena
S.S. 9:45 am, W.S. 11 am & 6 pm; Wed. 7 pm</p> <p>BAPTIST
CALVARY BAPTIST
1733 W. Ave. C. Rev. Jeff Coffman</p> <p>CIRCLE BACK BAPTIST
Intersection FM 3397 & FM 298
Circle Back • 946-3676</p> <p>FIRST BAPTIST
220 West Ave. E., Dr. Stacy Conner</p> <p>FIRST BAPTIST
Lazbuddie • 965-2126</p> <p>PRIMERA IGLESIA BAUTISTA
223 E. Ave. E., Rev. Greg Guzman</p> <p>PRIMITIVE BAPTIST
621 South First,
Elder Cleveland Bass, Min.</p> <p>PROGRESS BAPTIST
Progress, TX</p> <p>PROGRESS SECOND BAPTIST
Arthur Hays, Min.
1st & 3rd Sundays</p> <p>RICHLAND HILLS BAPTIST
17th & West Ave. D, Bruce Cotton, Interim Pastor</p> <p>ST. MATTHEWS BAPTIST
Corner of W. Boston & W. Birch
Floyd R. Monroe, Min.</p> <p>THREE WAY BAPTIST
927-5467</p> <p>TRINITY BAPTIST
314 E. Ave. B, Benny Wright, Min.</p> <p>CATHOLIC
IMMACULATE CONCEPTION
CATHOLIC CHURCH
805 E. Hickory, Joseph Agustine, Min.</p> <p>CHARISMATIC EPISCOPAL
ST. CLEMENTS
1536 W. American Blvd. • 272-5954
Father Sergio Leal
Sun. W.S. 10:30 am</p> <p>CHRISTIAN
TRINITY CHRISTIAN CENTER
1723 W. American Blvd. • 272-3877
Reydon Stanford, Min.</p> | <p>CHURCH OF CHRIST
LARIAT CHURCH OF CHRIST
Sam Billingsley, Min.
S.S. 10 a.m.; W.S. 11 a.m. & 6 p.m., Wed. 7 p.m.</p> <p>LAZBUDDIE CHURCH OF CHRIST
Nathan Crawford, Min.
S.S. 9:30 am; W.S. 10:20 am & 5 pm; Wed. 7 pm</p> <p>MULESHOE CHURCH OF CHRIST
22nd & W. American Blvd.
Harry Riggs, Min.
S.S. 9:30 am; W.S. 10:20 am
& 6 pm; Wed. 7:30 pm</p> <p>16th & AVE. D CHURCH OF CHRIST
Curtis Shelburne, Min. • 272-4619
S.S. 9:30 am; W.S. 10:30 am;
Growth Gr. 1:30 pm; Wed. 7:00 pm</p> <p>LUTHERAN
ST. JOHN LUTHERAN
Lariat, TX-David Symm, Min.
S.S. 10:30 am; W.S. 9:30 am</p> <p>METHODIST
FIRST UNITED METHODIST
HISPANIC MINISTRIES
E. 5th and E. Ave. D
Pastor Benito Cavazos</p> <p>FIRST UNITED METHODIST
507 W. 2nd St.
Pastor Brad Reeves</p> <p>LAZBUDDIE METHODIST
S.S. 9:30 am; W.S. 10:30 am
Rev. Randy Thomas • 965-2121</p> <p>EL DIVINO SALVADOR U.M.C.
619 E. 5th Street & Ave. G, Muleshoe
Javier Rodriguez, Pastor
272-6888</p> <p>NAZARENE
NEW VISION CHURCH OF
THE NAZARENE
814 W. Ave. C • 272-3622
Vance Roberts, Pastor-S.S. 10 &
11 am; W.S. 7 pm</p> <p>PENTECOSTAL
UNITED PENTECOSTAL LIGHTHOUSE
207 East Ave. G • 1-800-454-6051
S.S. 10 am; Thursday, Bible Study 7 pm</p> <p>INTER DENOMINATIONAL
NEW COVENANT
Plainview Hwy.
Steve Claybrook, Pastor
W.S. 10 am; Wed. 7 pm</p> |
|---|---|

Counsel is mine, and sound wisdom: I am understanding; I have strength.
-Proverbs 8:14

Antiques & Fine Things
of Muleshoe
2104 W. American Blvd. • 272-4217

FIRST AG CREDIT Muleshoe
FARM CREDIT SERVICES
272-3010 • Fax 272-5388
1601 W. American Blvd. • P.O. Box 424 • Muleshoe, TX

THE CONNECTION WAREHOUSE
RadioShack 272-5532
AND THE RENTAL PLACE - 272-4037
117 Main • Muleshoe, Texas

Little Real Estate & Appraisal Services
Residential • Commercial • Farm & Ranch
Walter B. "Jack" Little
272-4805
MOBILE: 946-7965 Muleshoe FAX: 272-3729

IRRIGATION PUMPS & POWER
ZIMMATIC CENTER-PIVOTS
W. Hwy. 84 272-4483

1315 W. American Blvd.
272-3333
Muleshoe, TX
Now open at 5:30 a.m. every day!



United Supermarkets

New Tex Truck Parts & Service
107 E. 5th St. • Muleshoe
272-4106 or 800-918-9048
4200 Mabry Drive • Clovis, NM
(505) 762-7186 or (877) 762-9112

MULESHOE MOTOR CO.
1125 W. American Blvd. 272-4251

Decorators Floral & Gifts
616 South First 272-4340
Muleshoe, TX

Boehning Dairy
DRINK MORE MILK.
Brian & Tiffany Boehning Earth, Texas

Henry Insurance Agency
"Serving You Since 1964"
111 West Avenue B 272-4581
Muleshoe, TX

Jarman Seed PIONEER. 801 W. American Blvd.
Muleshoe, TX • 272-5985

JAMES CRANE TIRE CO., INC.
107 Main 272-4594
Muleshoe, TX
Mike Hahn

PACO FEED YARD, LTD.
Commercial Cattle Feeders
P.O. Box 956 265-3281
Frona, TX
Feller Hughs-Mgr.

McCormick Seeds, Inc.
400 East Ash • Muleshoe
272-3156
Tim McCormick Roland McCormick

AG AVIATION
2 1/2 miles North on HWY 214
272-3066 FAX 272-8981
P.O. Box 68 • Muleshoe, TX

Muleshoe Feed Barn
311 W. American Blvd. HI-PRO
Muleshoe, TX
272-5626

WEST CAMP GIN, INC.
Better Ginning & Courteous Service
James & Phyllis Rt. 2 Box 1000 • 925-6681
Shepard Muleshoe, TX

1ST BANK MEMBER FDIC
202 South First 272-4515

BAILEY COUNTY ELECTRIC COOPERATIVE ASSN.
Muleshoe — 272-4504 Morton — 266-8600

"THE FIVE AREA TELEPHONE COOPERATIVE, INC."
West Plains Telecommunications, Inc.
Five Area Systems, Inc., Plateau Wireless
Five Area Long Distance - Five Area Internet
302 Uvalde Muleshoe, USA (806) 272-5533

TEXAS FARM BUREAU INSURANCE CO.
Life-Auto-Home-Crop
2601 W. American Blvd. • 272-4567 • Muleshoe

MULESHOE ANIMAL CLINIC
GENERAL PRACTICE
MULESHOE VET SUPPLY
1430 US Hwy. 84 • Muleshoe Office: 272-3061

CENTRAL COMPRESS & WAREHOUSE
SUDAN, TEXAS

WINKLES TRUCKS, INC.
Box 757 (806) 247-2724
Frona, TX

- Two locations to serve you -
1900 W. American Blvd. 272-5337
107 E. American Blvd. 272-3978
Town & Country Muleshoe, TX

ENGAGEMENT



WILLIAMS-HENRY

Mr. and Mrs. Robert E. Williams of Fort Worth announce the engagement of their daughter, Melissa Lee, to Joel Robert Henry, son of the Rev. Dr. and Mrs. E. David Henry of Marble Falls, Texas. The prospective groom is the grandson of Florene Jones and the late Robert L. Jones of Muleshoe. The bride-elect is a 2002 graduate of Texas A&M University with a bachelor of business administration degree with an emphasis in management information systems. She is a member of Kappa Alpha Theta sorority and served as chapter president last year. The prospective groom is a 2001 graduate of the University of Texas with a bachelor of science degree in mechanical engineering. He is employed by Air Liquide in Houston. He is a member of Beta Theta Pi fraternity and the Texas Cowboys Service Organization. The wedding is scheduled for Dec. 14 at the First United Methodist Church of Fort Worth. The couple plans to live in Houston after a Caribbean honeymoon.

Treatment may limit repeat surgeries

SPECIAL TO THE JOURNAL
HOUSTON — A method that may reduce repeat surgeries for a painful leg condition is under investigation at Baylor College of Medicine.

The condition, known as peripheral vascular disease, occurs when arteries in the leg narrow, blocking blood circulation. To bypass the blockage, surgeons commonly graft a healthy artery from the leg onto the diseased one.

"The procedure works well, but unfortunately nearly a quarter of all bypass procedures for peripheral vascular disease fail within a year and require another surgery," said Dr. Alan Lumsden, professor and chief of the vascular surgery section of the Michael E. DeBakey department of surgery at Baylor.

The disease makes walking painful, and also may cause numbness, tingling and weakness in the legs. In severe cases, patients may develop sores on the leg or foot that don't heal, leading to gangrene, a serious condition that may require amputation.

Lumsden's research team is analyzing whether a process called oligodeoxynucleotide transfection will result in fewer graft failures and surgeries. ODNs are small pieces of

DNA, one-thousandth the size of a typical gene.

Transfection is the process of delivering this small DNA strand to the living cells in a vein graft. The study uses a drug called CGT003.

"The drug slows or stops cells in the blood-vessel wall from growing, which we hope will reduce the narrowing that occurs in bypass grafts," Lumsden said.

A total of 1,400 subjects at 50 institutions across the United States are participating in the Phase III randomized, multi-center study, sponsored by the biotechnology company Corgentech. Baylor plans to recruit 35

subjects who will be randomly assigned to receive a placebo graft or graft treated with the drug.

After being harvested in the usual manner from the leg, the grafts are bathed in the drug solution outside the body in a pressure device for 10 minutes and then inserted into the patient by the surgeon. Subjects will be followed for a year after the surgery to see if the graft is showing signs of failure.

More information about the clinical trial for patients undergoing peripheral arterial bypass graft procedures is available from Debra Crawford at (713) 798-8968.

Phlebotomy course on tap

SPECIAL TO THE JOURNAL
LEVELLAND — A short course in basic phlebotomy is scheduled for Aug. 19-Oct. 3 at South Plains College in Levelland.

Classes will meet from 6:30 p.m. to 9:30 p.m. Mondays and Wednesdays in the Technical Arts Building, Room 101. Clinical instruction will be announced.

Tuition is \$300, plus textbook. Instructor is Georgia Mulloy.

The course covers skill development in the performance of a variety of blood collection methods using proper techniques and universal precautions.

The course includes instruction in blood culture and

specimen collection on adults, children and infants and will emphasize infection prevention, proper patient identification, labeling of specimens, quality assurance, professionalism, ethics and medical terminology.

Extensive additional clinical assignments will be required to complete ASPT pre-certification requirements.

Students must provide proof of immunization for MMR, tetanus, hepatitis B and have a current tuberculosis test.

Enrollment is limited.

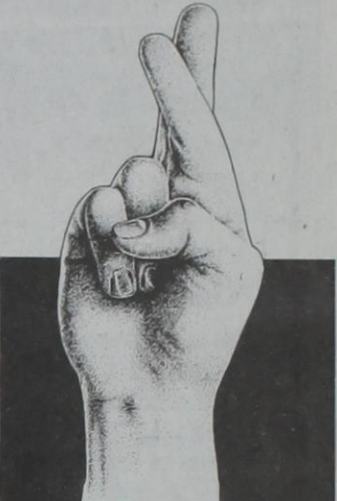
Pre-registration is available by contacting the division of continuing and distance education at (806) 894-9611, ext. 2341.

HANDMADE GREETING CARDS



For Almost Every Occasion!
by Meri Meri

See them at M&M Designs in
ANTIQUES & FINE THINGS
2104 W. American Blvd. • 272-4217



DON'T CROSS YOUR FINGERS. YOU'VE MADE THE RIGHT CHOICE.

KC Muffler & Mfg., Inc.
The Right Choice Since 1979

We're More Than Mufflers...

4" Exhaust for Diesels
Systems in-stock & ready to install on the Ford Powerstroke, Dodge Cummins & Chevrolet Duramax!

High Performance K&N Air Filters

Performance Exhaust Systems
for Domestic & Imports

425 N. 1ST
Muleshoe • 272-5333

NOTICE

The Journal publishes obituaries, engagements, weddings, showers, births, 50-plus wedding anniversaries, and first birthdays FREE OF CHARGE as a courtesy to readers. Drop by the Journal office at 304 W. Second to pick up a form and drop off accompanying pictures, or call 272-4536 for more information.

HOROSCOPES
For entertainment purposes only

JULY 21-27

LEO – July 23/August 23
You may have gotten a job by overselling your abilities, Leo, and now you're left in the lurch. Ask someone close, particularly Pisces for some help with this tricky situation.

VIRGO – Aug 24/Sept 22
You must set aside some time this week for working through an issue that has been causing you much emotional grief. It's the only way to feel more like yourself.

LIBRA – Sept 23/Oct 23
It's no secret that you're easily impressed, Libra. But remember, some things are too good to be true. Think an important decision through before you take a leap of faith.

SCORPIO – Oct 24/Nov 22
Be aware of the difference between safety and complete insulation, Scorpio. You may be greatly cutting down on your chances for fun by being overly cautious.

SAGITTARIUS – Nov 23/Dec 21
Save yourself a lot of trouble by using your energy effectively this week, Sagittarius. Even though you feel like the weekend was too short, you must dive into the work week with a firm resolve to get things done.

CAPRICORN – Dec 22/Jan 20
Common sense and a deeper wisdom instruct all of your actions this week, Capricorn. Others look to you as a rock of stability and a fountain of good advice. You can handle the pressure.

AQUARIUS – Jan 21/Feb 18
Your desire to experience something different could put you in the wrong place at the wrong time, Aquarius. Try a harmless path of self-contentment instead. Safety first!

PISCES – Feb 19/March 20
Emotional ties become very strong this week, Pisces. You stand on the edge of a very important decision with no fear of falling. Enjoy every moment of your enlightenment.

ARIES – March 21/April 20
Take a second look to revise an earlier snap judgement, Aries. You may have been too hasty when considering both sides of the equation. Look for some guidance on Tuesday.

TAURUS – April 21/May 21
Others envy you this week, Taurus, that is until they get close enough to be involved in the picture. Keep a close eye on that person at work who you don't like. Trouble's brewing.

GEMINI – May 22/June 21
The current bombardment of information coming your way is just about driving you over the edge. Retreat for a few days and get a better handle on the situation.

CANCER – June 22/July 22
You're a magnet for other people's attention this week, Cancer. Your new-found popularity has all of your desires completed with just the snap of a finger. Expect a few jealous eyes to be cast in your direction.

THE BIG EVENT Without The Tent!



<p>02 DODGE NEON AIR • AM/FM/CD • CLOTH BUCKET SEATS • & MUCH MORE! #25074</p> <p>\$10,995²</p>	<p>02 DODGE DAKOTA SPORT AIR • TILT • AM/FM/CASS • MAGNUM V-6 • CLOTH BUCKET SEATS & MUCH MORE! #25216</p> <p>\$13,995^{2,4}</p>	<p>02 DODGE RAM 1500 MAGNUM V-6 • AUTO • AIR • TILT/CRUISE • AM/FM/CD • CHROME WHEELS • FULL CARPETING • 40/20/40 • CLOTH BENCH SEATS #25182</p> <p>\$15,695¹</p>
--	--	--

0% APR* FINANCING FACTORY REBATES FROM **\$1,500 TO \$3,000****

<p>02 DODGE STRATUS SE V-6 • AUTO • AIR • TILT/CRUISE • AM/FM/CASS/CD • POWER LOCKS/WINDOWS • POWER SEAT • KEYLESS ENTRY #25185</p> <p>\$18,595²</p>	<p>02 CHRYSLER VOYAGER SE 3.3L V-6 • POWER LOCKS/WINDOWS • TILT/CRUISE • AM/FM/CD • ROOF RACK • CLOTH HI-BACK BUCKETS & MUCH MORE! #25259</p> <p>\$19,995²</p>	<p>02 DODGE RAM 2500 QUAD CAB HIGH OUTPUT TURBO DIESEL • 6 SPEED HD TRANS • AIR TILT/CRUISE • TRAILER TOW • ANTI-SPIN AXLE #25085</p> <p>\$26,495^{3,4}</p>
---	---	---

*With Chrysler Financial Approval, in lieu of Factory Rebate. **PT Cruiser, Ex Model Mirvana & Neon S Models excluded. 1. \$1,500 Factory Rebate to Dealer. 2. \$2,000 Factory Rebate to Dealer. 3. \$2,500 Factory Rebate to Dealer. 4. \$500 Farm Bureau Member Rebate to Dealer. 5. \$3,000 Factory Rebate to Dealer. All vehicles subject to prior sale.

Hot Deals

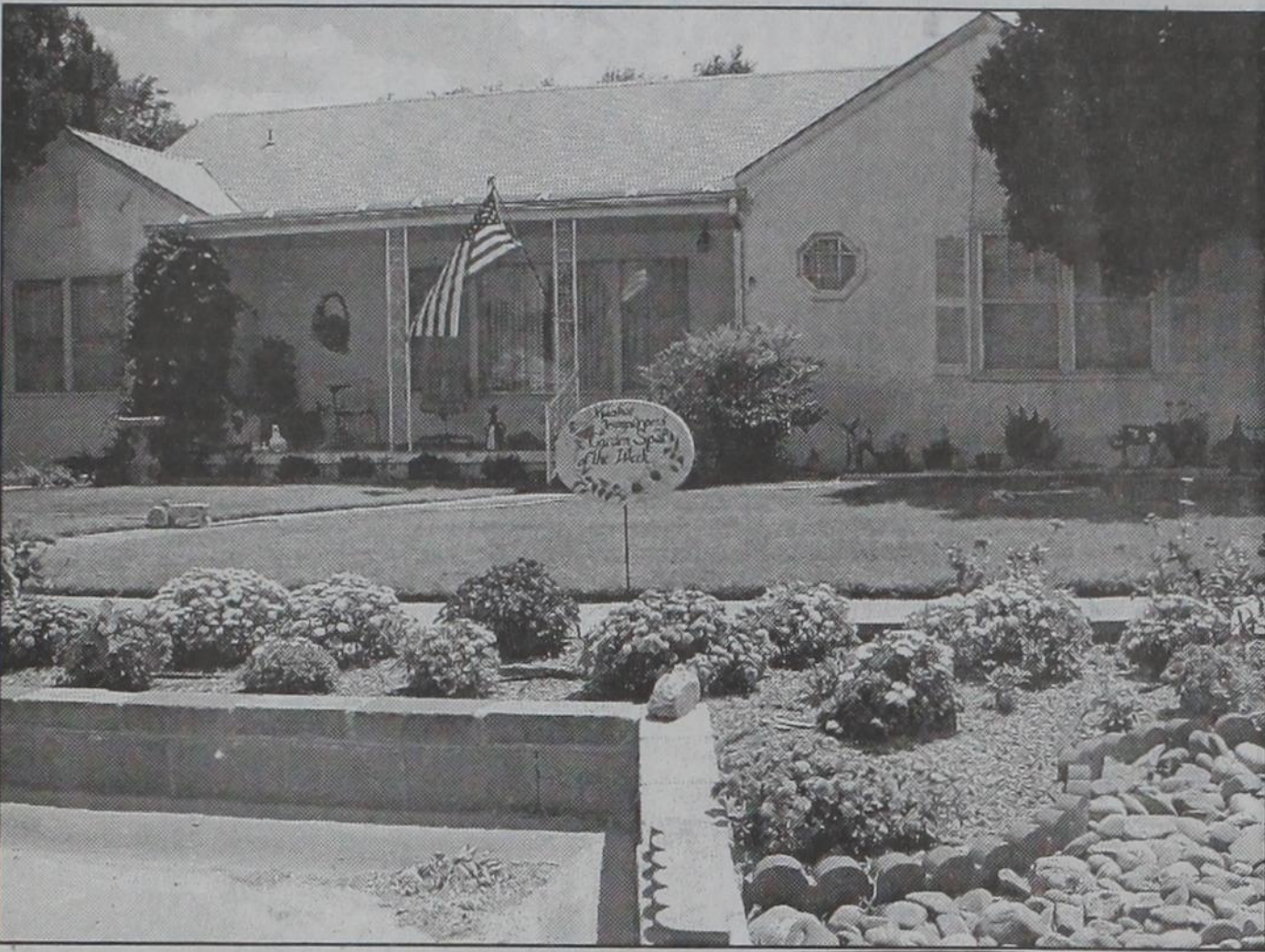
98 DODGE QUAD CAB 4X4 CUMMINS \$21,995	00 DODGE DURANGO 4X4 SLT \$18,995	97 BUICK CENTURY CUSTOM \$159 MO.	00 CHEVROLET MONTE CARLO \$231 MO.	99 CHRYSLER CONCORDE \$235 MO.
95 CHEVROLET Y-CAP SILVERADO \$8,995	01 CHEVROLET X-CAB \$19,995	01 DAEWOO LEGANZA SE \$178 MO.	01 DODGE NEON \$169 MO.	00 FORD FOCUS ZX3 \$165 MO.
01 DODGE GRAND CARAVAN SPORT \$17,995	01 FORD TAURUS \$225 MO.	99 MAZDA PROTEGE ES \$165 MO.	01 CHRYSLER P.T. CRUISER \$249 MO.	02 DODGE INTREPID \$249 MO.
98 JEEP GRAND CHEROKEE 4X4 \$14,995	00 DODGE QUAD CAB CUMMINS \$20,995			

You're going to like our family

Benders
Family of dealerships

CHRYSLER DODGE
3400 Mabry Drive, Clovis
762-4511 • 1-800-466-4513
www.benderauto.com

FOR HASSLE FREE FINANCING APPROVAL CALL 1-800-311-6273



Journal photo: Beatrice Morin

Garden spot of the week

This creative curbside planting at the home of R.L. and Doris Scott, 712 W. Avenue C, is the Jennyslippers' garden spot of the week for July 8-21.

LETTER TO THE EDITOR

Dear Editor,

The Muleshoe Area Home Health Agency is another reason for living in the Muleshoe area.

Recently, I had gynecology-type surgery at Covenant Medical Center-Lakeside in Lubbock. Prior to the scheduled surgery, I saw Dr. Kyle Sheets of Muleshoe Area Medical Center. He referred me to Dr. W. Edward Richards of Gynecologic Oology Associates of Lubbock.

On Thursday I had the surgery. On Saturday I was released to come home. RN Liz Patterson of Home Health came to register me as a patient under the care of Muleshoe Area Home Health Agency.

One week after surgery, I went back to see Dr. Richards in Lubbock. Soon after I got

home, I was in unbearable stinging pain. I called Patterson to see what to do; she quickly advised me.

I followed her advice and was soon pain-free once more.

If I would have tried to contact the doctor or his nurse, I would be referred to multiple departments and would not even get to talk to any nurse or doctor.

Home Health has a nurse on call 24 hours. According to my needs, they would check on me as often as I asked them.

Today, Patterson called to check on me and to ask if she needed to come out. I told her, "Unless you need to come out for your book records, I am doing fine on my own."

What comfort it has been to know that someone was on call any time of day or night.

I told Patterson that I could not have come home from surgery so quickly without their supervision and care.

To repeat, Muleshoe Area Home Health Agency and its services is another reason for living in the Muleshoe area.

**LaVONNE
McKILLIP
Muleshoe**

HOSPITAL NEWS

The Muleshoe Area Medical Center reports the following patient load:

July 11 —Evelene Priddy and Gladys M. Wilson.

July 12 —Micaela Jiménez, Talina Portillo, Evelene Priddy, Jerald R. Stringer and Gladys M. Wilson.

July 13 — None reported.

July 14 — None reported.

July 15 — Kaylene Dale, Lou Knowles, Gabriela

'CREATIVE LIVING'

Information on hemming pants and facial care will be featured on "Creative Living" at 1 p.m. July 23 and at 3 p.m. July 27 (All times are Central.)

"Creative Living" airs on public broadcasting station KENW-TV from Eastern New Mexico University in Portales.

Mary Roehr of Mary Roehr Books and Video in Sedona, Ariz., will show how to put a "tip" on pants hems to make the pants look as if they fit better and prevent them from looking too short.

Cindy Piccoli, a New York City fashion and beauty expert and spokesperson for Nivea Products, will demonstrate ways to care for "blemish prone" skin.

Information on home décor projects, cake decorating and couture fitting will be the topics at 10:30 p.m. July 23 at 10:30 p.m. and at 1 p.m. July 25.

Lana Bennett of Murfreesboro, Tenn., coordinator of training and education with Singer Sewing Co., will show how to create custom decorating projects that are fun to make and save money at the same time.

Nancy Siler, director of consumer affairs with Wilton Industries in Woodridge, Ill., will show how to use basic outline and star decorating techniques to create colorful cakes, cookies and more.

Sewing experts Barbara Evant of Oradell, N.J., and Edna L. Dunston of Land o' Lakes, Fla.,

will show how to use a special unitard that resembles a dress form to achieve couture fitting.

"Creative Living" is produced and hosted by Sheryl Borden of Portales.

The show is carried on more than 100 PBS stations in the United States, Canada Guam and Puerto Rico and is distributed by

Westlink of Albuquerque.

Viewers can request copies of materials offered on the show by sending a first-class stamp for each handout requested, along with name, address and booklets requested, to "Creative Living" Requests, c/o KENW-TV, 52 Broadcast Center, Portales 88130.

South Plains College

YOUR FUTURE STARTS HERE

Be a career pioneer in one of South Plains College's 75 career programs. Good-paying jobs for both men and women can be found in demand occupations such as law enforcement, nursing, electronics technology, accounting, child development and machinist trades, among others. South Plains College can help you imagine the possibilities. To learn more, call us or visit our web site.

Convenient Locations in Levelland, Lubbock & Plainview
Small Classes • Teachers Who Care • Flexible Class Schedules
Hands-On Technology & Instruction
Affordable Tuition & Fees • Financial Aid

Fall Registration Begins Aug. 21

Classes Begin Aug. 26 • Late Registration Aug. 26-30

Call 806-894-9611

ext. 2374, 2375 - Enrollment Details & Registration Permit
ext. 2366, 2368 - New Student Orientation

www.southplainscollege.edu

An Equal Opportunity Educational Institution
Grant support provided by the Texas Higher Education Coordinating Board under the federal Carl D. Perkins Vocational and Technical Education Act of 1998.

"THE GRAY PAGES" BUSINESS DIRECTORY

AUTO BODY REPAIR/PAINT

BURR'S COLLISION CENTER
Jackey W. Burr, Owner
402 North First-Muleshoe
272-3031 or 946-8655

Free Estimates
Come see us for all your auto body repair and glass needs!
Experienced Technician
I-Car Certified • PPG Certified
Auto Glass Repair & Replacement

**SHIPMAN'S
BODY SHOP, INC.**
410 North First
MULESHOE, TEXAS
272-4408 Night: 272-3318

ADVERTISING PAYS!
272-4536

AUTO REPAIR

• All Phase General Mechanical
• Electrical • A/C • Front-End • Brakes
HI-TEK AUTOMOTIVE
Complete Diagnostic & Repair Center
Foreign & Domestic
322 N. 1st • 272-3480
Joe Flores & Shawn Pejro, Owners

CONSTRUCTION

TAPIDERO CONSTRUCTION

Dirt Work • Concrete
Backhoe Service
(505) 273-4376
P.O. BOX 42 • CAUSEY, NM • FAX (505) 356-1706

ELECTRONICS

THE CONNECTION WAREHOUSE

RadioShack Dealer

Catch the Digital Wave!

- Digital Satellites • Digital Cell Phones
- Digital Cameras • DVD • Music
- Computer Access • And More!

117 Main • 272-5532 • Muleshoe
Don't forget our Appliances & Free Delivery!

"THE GRAY PAGES"

Small ad \$3.50/week*
Medium ad \$5/week*
Large ad \$7/week*
*26 week commitment Call Leah at 272-4536 for details.

FINANCIAL SERVICES

Serving Individual Investors Since 1871

Stocks	CDs
Mutual funds	Money market funds
Bonds	IRAs
Government securities	Tax-free bonds

...and much more.

Edward Jones
Locally, talk with
KATHERINE SCHRAEDER
220 S. Main St. • Muleshoe
806-272-4102

FUELS

West Texas Gas, Inc. and GASCARD®

- 24 Hour Gasoline & Diesel
- Propane
- Dripoff
- L.P.G. Motor Fuel
- BBQ & RV Bottles & Parts
- Holland BBQ Grills

Open: M-F 7:30 to 5:30, Sat. 7:30 to Noon
North 1st St., Muleshoe TX
(806) 272-3157

INSURANCE

Laurie Winchell

Insurance Agent

FARMERS

Call for a Free Quote.

• HEALTH • AUTO • LIFE
• HOME • BUSINESS

104 W. 12th St., Muleshoe
272-7548 • FAX 272-4756

IRRIGATION

LAWN SPRINKLER Repair & Installation

MULESHOE SOD FARMS

PH: 965-2310 FAX: 965-2662
Email: msfarms@fivearea.com
ROGER & REGINA CLARKSON
"20th year serving Muleshoe"

LANDSCAPE

MULESHOE SOD FARMS

COMPLETE LANDSCAPING SERVICE
TURF • FLOWERBEDS • TREES
PONDS • HARD SCAPING
We have bedding plants & Trees!
806-965-2310
FAX 965-2662 msfarms@fivearea.com
"20th year serving Muleshoe" Roger & Regina
Clarkson

Rent this spot for only
\$15.17 a month!
6 month commitment
Call 272-4536 for details.

LAWN CARE

MULESHOE SOD FARMS

"Serving this area for 20 years."

- Lawn Mowing
- Lawn Spraying
- Hedge Trimming
- Flowerbed Maintenance

Chemical Lic. # 314882
806-965-2310
FAX 806-965-2662
Email: msfarms@fivearea.com
Roger & Regina Clarkson

LONG TERM CARE FACILITY

Muleshoe Area Healthcare Center
Park View
1100 W. AVE. J • MULESHOE, TX 79347

- Long Term Care
- Respite Care
- Special Care Unit

for victims of Alzheimers
& related dementias
For Info. Contact Ruth Kitchens
(806) 272-7578
www.mahdservices.org

There are new potential
customers who would
do business with you if
they were reminded and
urged to do so!

OFFICE SUPPLIES

Williams Brothers Office Supply

FAX Service
Computer Supplies
Printer Paper
Computer Stationery
Complete Line of
Office Supplies

1405 W. American Blvd.
Muleshoe • 272-3113

PHOTOGRAPHY

Oecia Susan's Photography

Susan Kirby

806-272-5153
or **806-891-0550**

Quality • Utmost Consideration
Relaxed, Unhurried Atmosphere
Artistry in Lighting and Composition
In Studio, Home or Office
Oecia Gib: 806-385-5169

PLUMBING

RUBEN LEAL'S PLUMBING

Residential & Commercial
Full Service Plumbing

- Gas Lines
- Sewer Lines
- Water Lines
- Slab Leaks
- Drains
- Water Heaters
- Faucets/Disposals
- Toilets
- House Ropes
- Bathtubs

FREE ESTIMATES - ALL WORK GUARANTEED
307 E. Dallas - Muleshoe
272-3588

RENTALS

THE RENTAL PLACE

Furniture, Appliances,
TVs, Electronics, Etc.
FREE DELIVERY
103 MAIN ST.
272-4037 • Muleshoe

RESTAURANTS

Tammy's Kitchen

Sandwiches • Fountain Drinks
Homemade Pies
Carry-Out Available
Open: 7:00 AM - 2:00 PM Mon.-Fri.
Owned by Tammy Luevas
308 Main Street - 272-4701
Muleshoe, Texas

TIRES

GOOD YEAR

JAMES CRANE TIRE CO., INC.

107 Main Street
(806) 272-4594
Mike Hahn, Owner

TORTILLERIA

Los invitamos a que vicite
**LA TORTILLERIA
SAN FRANCISCO**

Los martes y los jueves para que
leve sus tortillas calientitas
De las 6 de la mañana hasta las 10.
De la mañana sabados y domingos
venga para que sabore el rico menudo
y la rica barbaco de cabeza para
comer aqui o para llevar.
Tambien, tenemos un gran surtido de
hierbas medicinales. ¡Los esperamos!
403 MAIN • MULESHOE
272-3502 • Sr. y Sra. Aurelio Cuevas

VEHICLE ACCESSORIES

KC MUFFLER & MFG., INC.

- ♦ 4" Exhaust for Diesel Pickups
- ♦ High Performance K&N Air Filters
- ♦ Performance Exhaust Systems
- ♦ Pickup & Car Accessories
- ♦ Chrome Tips

"Serving this area since 1979"
425 N. 1st-Muleshoe-272-5333

VIDEO RENTAL

MOVIES FOR RENT OR SALE
ENGLISH & SPANISH TITLES
If we don't have it, we'll get it for you!
Estrada's Video
303 W. 15th St. • 272-5433
10 am-10 pm DAILY Jose & Virginia Estrada, Owners

Journal Classifieds

STOP & SHOP

Deadlines are 5 p.m. Monday and Thursday

Call 272-4536

Page 7, July 21, 2002

ADOPTION

Note: It is illegal to be paid for anything beyond medical and legal expenses in Texas adoption.

A BABY TO ADOPT. We're a down to earth, fun-loving couple, enjoying life's simple pleasures. We'll surround your baby with love and laughter, family and friends, security and a bright future! Call us at home to talk! Chris and Joe, 1-866-927-9272.

AUTOMOBILES

1-800-CHARITY! DONATE YOUR vehicle directly to the original, nationally acclaimed Charity Cars. 100% charity - not used car dealer/fundraiser. 1-800-CHARITY (1-800-242-7489).

BUSINESS OPPORTUNITY

EARN INCOME AT HOME. Home-based business. Excellent \$\$ potential. Investment required. Control your own hours and income. Full training and support provided. Mail order/E-Commerce Industries (Herbalife). GLS Enterprises, 1-888-214-7037, www.fortuneinhealth.com

FREE LUXURY VACATION in Orlando, Florida with the purchase of a telecombo phone card. Looking for distributors. Call Kingstonian Hotel & Resort, 1-800-804-6801.

DRIVERS WANTED

DRIVER-ASAP! 21 OTR Drivers. Up to 38 cpm + \$40 tarp for OTR. O/O's - up to 90 cpm. Nine months OTR required. Melton Truck Lines, 1-800-635-8669 today.

DRIVER - COMPANY & Owner/Ops - Regional - Home Weekly. Pay for experience up to 31 cpm Company, 81 cpm Owner/Ops. 1-800-454-2887, Arnold Transportation.

DRIVER - COVENANT TRANSPORT. Now offering per diem pay for experienced teams, solos and trainers. O/O-Solos/Teams 83 cents. No CDL, No Problem. We school with financing available for those who qualify. Authorized by the TN Higher Education Commission. Call 1-888-MORE PAY (1-888-667-3729).

DRIVER-DRY VAN... Teams 5000+ and Solos 3000+ miles/week. \$1000 Sign On Bonus. Home regularly. CDL (A) required. Mesilla Valley Transportation, 1-888-562-4342.

DRIVERS-EXPERIENCED/INEXPERIENCED. CDL training w/meals, lodging, transportation provided. Tuition reimbursement. OTR, regional dedicated freight. Lease pur-

DRIVERS WANTED

chase. No credit, no problem. Trainer opportunities. Swift Transportation Co., Inc., 1-800-231-5209.

DRIVER - FFE TRANSPORTATION is now hiring drivers for its growing fleet. Start at 29 cents to 33 cents per mile based on experience. Call 1-800-569-9232.

DRIVERS: NORTH AMERICAN VAN LINES has openings in Household Goods, Specialized Truckload and Flatbed Fleets. Minimum of 6 months OTR experience. Tractor lease/purchase available. 1-800-348-2147, Dept. TXS.

DRIVERS: OTR DRIVERS wanted! Immediate openings. Must have Class A CDL w/Hazmat/clean MVR/23 years old. Call Shaffer today! 1-800-669-2682.

DRIVERS - SW REGIONAL, home on weekly basis. Teams start .34 cpm, OTR start 32 cpm. Six months OTR experience w/CDL-A. Ask for Harold/Bob, National Freight, 1-800-666-0380.

DRIVER - \$10,000 BONUS! Solos up to 39 cents...Teams up to 41 cents... O/O's up to 87 cents. All Condo. Contact KLLM, 1-800-925-5556 or KLLM.com. EOE.

ONE YEAR EXPERIENCE pays \$.37/mile for company drivers and more experience pays more. Owner/Operators - \$.84/mile. Make more! Heartland Express, 1-800-441-4953, www.heartlandexpress.com

EMPLOYMENT INFO.

GOVERNMENT POSTAL JOBS - Up to \$47,578 year. Free call for application/exam information. Government hire - full benefits. Now testing. 1-800-842-1622, ext.250.

FINANCIAL SERVICE

ACCIDENT VICTIM? WE advance cash against any type of future settlement. No application forms/questionnaires. Palmetto Settlement Funding, LLC. 1-800-488-9143.

BE DEBT FREE - years sooner. Low payments. Reduce interest. Stop late fees. Stop collectors. Family Credit Counseling. Non-Profit Christian Agency. Recorded message. 1-800-457-6176. Free quote, www.familycredit.org

\$\$\$CASH\$\$\$ - IMMEDIATE CASH for

FINANCIAL SERVICE

structured settlements, annuities, real estate notes, private mortgage notes, accident cases, and insurance payouts. J. G. Wentworth, 1-800-794-7310.

CREDIT CARD DEBT? Stop collection calls. Cut finance charges. Cut payments up to 50%. Debt consolidation. Fast approval. No credit check. Avoid Bankruptcy. National Consolidators, 1-800-270-9894.

UNSECURED LOANS & Free Cash Grants! Grant Search, Inc. From \$5,000-\$50,000. Never repay (if qualified), personal, business, educational, medical, etc. Fast approval, 1-800-750-7614.

FOR SALE

WOLFF TANNING BEDS - Affordable, Convenient. Tan at home. Payments from \$25/month. Free color catalog. Call today, 1-800-842-1305, www.np.etstan.com

HEALTH

ATTENTION! ARAVA USERS! Liver problems, skin disease, lymphoma, blood disorders and death. Free confidential consultation. Grossman & Waldman, 1-800-833-9121. No fees/expenses-if no recovery. Board Certified.

ATTENTION! BIRTH CONTROL pill users! Cervical Cancer. Free confidential consultation. Grossman & Waldman, 1-800-833-9121. No fees/expenses-if no recovery. Board Certified.

ATTENTION! LOTRONEX USERS! Colon problems. Attention Serzone users. Liver failure. Free confidential consultation. Grossman & Waldman, 1-800-833-9121. No fees/expenses-if no recovery. Board Certified.

ATTENTION! MERIDIA USERS! Heart problems, bleeding, organ failure, stroke and death. Free confidential consultation. Grossman & Waldman, 1-800-833-9121. No fees/expenses-if no recovery. Board Certified.

ATTENTION! PHENFEN USERS! Deadline Soon! Heart, heart valve and pulmonary conditions. Free confidential consultation. Grossman & Waldman, 1-800-833-9121. No fees/expenses-if no recovery. Board Certified.

HELP WANTED

EXCELLENT INCOME POTENTIAL! Become a medical biller. No experience needed. Computer required. Training. Toll free, ClaimCo., 1-866-MED-CLMS - 1-866-633-2567, Dept. 314.

PET SUPPLIES

WHAT'S DIFFERENT ABOUT Happy Jack's Novation Flea-Tick Collar? It works when spot-ons and systemic poisons fail. Patented release gentle to pet. At County Co-ops.

PROFESSIONAL SERVICES

VISA/MASTERCARD: UP to \$10,000 credit. Guaranteed approval! No deposit, bankruptcy/bad credit okay. 1-866-761-CARD, Guardian Credit Services.

REAL ESTATE

A FREE LIST! Affordable hunting ranches for sale. 100+ acre tracts, lowest prices. EZ terms! Texas Land & Ranches. Toll free, 1-866-899-5263.

BOW HUNTERS RARE OPPORTUNITY! High fence game ranch liquidation. 150-180 B+C whitetails, turkey, quail, and exotics. \$29,900. EZ terms. Texas Land and Ranches. Toll-free 1-866-516-4868.

436+ ACRES NEAR Sanderson, end of road. \$175/acre, 5% down. Deer, Javelina and birds. Access to water. Ranch Enterprises, 1-866-286-0199, www.westxland.com

HIGH FENCE RANCH Liquidation - Acreage available - \$29,900. Direct deeded access to game preserve. Trophy Whitetail, exotics, fishing. Great recreational opportunity. Financing available. Texas Land and Ranches. 1-888-565-7592.

LAND BARGAIN: BEAUTIFUL N.E. Texas piney wood acreage. Private lake and horse stables. As low as \$24,900. Call Texas Land and Lakes, 1-800-707-8988.

NEW MEXICO MOUNTAINS. 140 Acres - ONLY \$39,900. Gorgeous grasslands, mature tree cover, 6,500' elevation, snow-capped mountain views, year-round roads, nearby electric. Perfect for horse lovers. Great hunting property, adjacent to national forest. Excellent financing. Call today. SW Properties of NM, Inc., 1-866-350-5263.

RANCH SALE - 35 acres \$59,900. Magnificent Colorado ranch at 8,000' elevation. Mix of meadows with spring fed ponds, aspen and pines. Stunning views. Nearby Telluride. Good terms. Call Colorado Land & Ranches, 1-866-353-4809.

Put our classified section to work for you. Call Beatrice 806-272-4536.

AUTOMOBILES

AT TOWN AND COUNTRY FOOD STORES

We are looking for people that are **DEPENDABLE, HONEST, HARDWORKING**

We will teach you our business! Day and evening shifts \$5.75 starting Overnight shifts \$6.25 starting

Great Benefits & Advancement Opportunity Equal Opportunity Employer Drug Testing Required Applications available at all locations

AUTOMOBILE

'99 Chevy Tahoe 23,000 miles; \$20,000 Home 272-3761 Work 272-4515, ask for Susan

ANTIQUES

TOWN & COUNTRY ANTIQUES MALL

Call us if you have antiques for sale. We'll be in Muleshoe soon! **JAN SHANNON** 806-373-6607 2811 West 36th Ave. Amarillo, Texas E-mail: jshannon@cox-internet.com

FOR SALE

Horizontal heater 120,000 BTU. Asking \$300. Call 806-771-1406.

USED APPLIANCES FOR SALE WASHERS, DRYERS, FREEZERS, REFRIGERATORS. CALL 272-3091

HELP WANTED

Farwell Feed Yard is looking for maintenance and pen repair person. Must know how to weld. Apply in person. 1 1/2 mile south of Farwell on stateline road.

MYSTERY SHOPPERS. Project assignments. Detail/accuracy critical. Fax or e-mail preferred. Call only Tu-Th 10AM-5PM PST 800-462-8765 X113, fax 800-210-5350 or visit website www.dsgai.com

HELP WANTED

Bailey County Electric Cooperative Assn. is now accepting applications for Equipment Technician. Computer skills & knowledge of radio systems is desired. Applications must be completed at the Muleshoe office at 305 E Ave B, the job description may be picked up at this time. All interviews will be conducted after the closing date of August 2, 2002 at 5:00 p.m. Bailey County Electric Cooperative is an equal opportunity employer.

IN CONTRACT

RICHLAND HILLS - PARKRIDGE AREA

- NICE 3-3-1 Brick, Cent. built-ins, fans, 2000+ lv. area, fenced yd., patio, stor. bldg. \$97,500!!!
- NICE LOTS AVAILABLE. CALL FOR DETAILS!!!!
- VERY NICE 3-2-1 Brick, Elec. Heat Pump, built-ins, nice carpet, 1680' lv. area, fenced yd., MORE!!! \$60K!!! RH-2

HIGHLAND AREA

- NICE 2-2-1+2 carport Home, built-ins, FP, Cent. A&H, 1987' lv. area, corner lot, wkshp./storage, fenced yd., MORE!!! \$65K!!! HL-2
- LENAU - COUNTRY CLUB AREA
- 3-2-1 carport Home, Brick, Cent. A&H, built-ins, FP, 1,880' Lv. area, fenced yd., MORE!!! \$47,5K!!! L-1

HIGH SCHOOL AREA

- VERY NICE 3-1-1 Brick, built-ins, nice carpets, fenced yd., MORE!!! \$37,5K!!! HS-1
- 3-2 Home, corner lot, fl. furn. heat, fenced yd. \$25K! HS-10
- 3-1 Home, Fl. furnace, fans, storage & 2 apartments, corner lot!!! PRICE REDUCED!!! \$30K HS-3
- NICE 3-2-2 carport, Home, Cent. A&H, built-ins, guest cottage, workshop, storage, MORE!!! \$48K!!! HS-4
- 2-1 Home, corner lot, stove, refrig., fans, workshop & storage, fenced yd.!! \$23,5K!!! HS-8
- 3-1/1-2-2 carport Home, wall furn. heat, oven, cooktop, basement, shop/storage!! "AS IS"!! \$16K!!! HS-6
- EARTH-4-2-2 carport home, Heat Pump, fans, storage-workshop!!! \$35K

COMMERCIAL

- EXCELLENT BUSINESS LOCATION - Approximately 6,550 sq. ft. build-

AUTOMOBILES

Gin and Harvest Elevator Operators Needed: Apply at 500 Dallas Street Ste B. in Plainview or call 800-227-2599.

Production position available. Now accepting applications for production position at Hi-Pro Feeds. Company insurance, 401k, paid holidays. Must pass drug screen. Apply in person at Hi-Pro Feed in Friona.

SUMMER RUSH 20 Positions FT/PT Flexible Schedule 2100-FT, 1000-PT Call Now 766-7175

1000 CUSTOMERS NEEDED!! LOANS, LOANS! \$100-\$495 CALL 272-3673 CONTINENTAL CREDIT

ALCO

STORE LOSS PREVENTION PERSONNEL

Several additional positions are now available for Store Loss Prevention Personnel. Varied hours. Full comprehensive benefit package including, but not limited to:

- Paid Vacation
- Sick Pay
- Immediate Employee Discount

APPLY IN PERSON AT: ALCO DISCOUNT STORE 1401 W. Amer. Blvd Muleshoe, Texas 79347 An Equal Opportunity Employer M/F/H/V

Want Results? Advertise with the Journal Classifieds! **CALL TODAY! 272-4536**

HELP WANTED

Bailey County Electric Cooperative Assn. is now accepting applications for Equipment Technician. Computer skills & knowledge of radio systems is desired. Applications must be completed at the Muleshoe office at 305 E Ave B, the job description may be picked up at this time. All interviews will be conducted after the closing date of August 2, 2002 at 5:00 p.m. Bailey County Electric Cooperative is an equal opportunity employer.

REAL ESTATE

NOW HIRING minsa Minsa has several positions available in our Production facility. We are looking for hard-working individuals to fill these positions. If interested, please come to the main office at Minsa 1 1/2 mile east and fill out an application. EOE

Muleshoe Vet Supply Taking applications Delivery driver needed. Duties will include processing, packaging & delivering. Heavy lifting required. Salary 20-25K yearly - plus retirement. Apply in person.

SERVICE

ALL GLASS INC

SCREENS PLEXIGLASS SAFETY GLASS PLATE GLASS STORM DOORS & WINDOWS MIRRORS SHOWER DOORS STORE FRONTS

Lic#059132 505-356-0399 1-800-40-DANNY 501 N. Ave I Portales, NM

You can't make an omelet without breaking eggs!

REAL ESTATE

Vic Coker Land Co. Agricultural Real Estate

- Earth-Springlelake Area** - 160 Acres, Good Water, 1 Well, Center Pivot. Immediate Possession Possible.
- Northwest of Earth** - 200 Acres. Lays Good. Light Water, Good Soil. **SOLD**
- 307 Acres** North of Muleshoe. 2 sprinklers, three wells, very good water. On pavement
- 400 Acres** Northwest of Muleshoe. 3 sprinklers, large barn, other improvements. Near pavement
- 1800 Acres** in Bailey County. 6 oversized sprinklers, 21 wells, 470 acres in C.R.P. Possible to divide.
- 160 Acres** of dryland, Northwest of Muleshoe. Lays Good. Has Allotments. **SOLD**
- Bailey County** - Nice Brick Home on 320 Acres, Large Barn, 2 Sprinklers.
- 320 Acres** in Parmer County on pavement. 2 wells, 1 half-miler sprinkler, lays level, excellent soil.
- West Camp Area** - 480 Acres, 2 Brick Homes, 3 Center Pivot Sprinklers, Fenced. A Nice Operation.
- Earth**, 3-2-2, brick, Cent. A&H, fireplace, fans, self-cleaning oven, dishwasher, garbage disposal, nice carpets, 2 living areas, large fenced yard, separate guest room, metal storage building, extra insulation in ceiling, **GREAT BUY** at \$50,000.00
- Country Living with horse barn and roping Arena.** 3-2-2, large kitchen, 2 living areas, basement, above ground pool, Muleshoe Area.
- Great Home in Muleshoe.** 4-3-3, brick, Cent. A&H, FP, built-ins, lots of storage, tile roof, outdoor barbecue, sprinkler system front and back.
- 40 Acres near Muleshoe,** irrigated farm with side-roll sprinkler, nice barn, pens, outbuildings, 3 bedroom, 2 bath, all electric manufactured home. Nice operation.

316 Main Street - Muleshoe, Texas Office 806-272-3100 Home 806-965-2468

Nieman Realty

116 E. Ave. C • George Nieman, Broker • 272-5285 or 272-5286

IN CONTRACT

- NICE 3-3-1 Brick, Cent. built-ins, fans, 2000+ lv. area, fenced yd., patio, stor. bldg. \$97,500!!!
- NICE LOTS AVAILABLE. CALL FOR DETAILS!!!!
- VERY NICE 3-2-1 Brick, Elec. Heat Pump, built-ins, nice carpet, 1680' lv. area, fenced yd., MORE!!! \$60K!!! RH-2

HIGHLAND AREA

- NICE 2-2-1+2 carport Home, built-ins, FP, Cent. A&H, 1987' lv. area, corner lot, wkshp./storage, fenced yd., MORE!!! \$65K!!! HL-2
- LENAU - COUNTRY CLUB AREA
- 3-2-1 carport Home, Brick, Cent. A&H, built-ins, FP, 1,880' Lv. area, fenced yd., MORE!!! \$47,5K!!! L-1

HIGH SCHOOL AREA

- VERY NICE 3-1-1 Brick, built-ins, nice carpets, fenced yd., MORE!!! \$37,5K!!! HS-1
- 3-2 Home, corner lot, fl. furn. heat, fenced yd. \$25K! HS-10
- 3-1 Home, Fl. furnace, fans, storage & 2 apartments, corner lot!!! PRICE REDUCED!!! \$30K HS-3
- NICE 3-2-2 carport, Home, Cent. A&H, built-ins, guest cottage, workshop, storage, MORE!!! \$48K!!! HS-4
- 2-1 Home, corner lot, stove, refrig., fans, workshop & storage, fenced yd.!! \$23,5K!!! HS-8
- 3-1/1-2-2 carport Home, wall furn. heat, oven, cooktop, basement, shop/storage!! "AS IS"!! \$16K!!! HS-6
- EARTH-4-2-2 carport home, Heat Pump, fans, storage-workshop!!! \$35K

COMMERCIAL

- EXCELLENT BUSINESS LOCATION - Approximately 6,550 sq. ft. build-

ing, high traffic area! \$115K!!!

- NICE six unit office complex, Cent. A&H, restroom facilities, and also has a nice one bedroom and two bedroom rental units. \$39,5K!!!
- HWY. 84-150' frontage, office, warehouse, truck dock, railroad spur access, with or without fuel storage tanks!!! \$30K!!!
- GOOD INCOME PROPERTY - approx. 3490' bldg., paved parking, good net lease!! PRICED TO SELL!
- VERY NICE 2300' bldg., Cent. A&H, 175' frontage on Hwy 84 & 70!! MUCH MORE!!
- 140'X100' tract on Hwy. 84 & 70, 1760' bldg., 1500' storage, 2400' cov. area, paved parking!! \$49,5K!!!
- RANCH HOUSE CLUB/RESTAURANT!! \$70K!!
- Approximately 2,000' shop plus 450' office, cent. heat, evap. air, 250' x 100' tract on Hwy 84!! \$35K!!!

RURAL

- FIXER-UPPER - 3-2 Home on 5 acres close to town, det. garage/carpport, shop, barn, MORE!!! \$48K!!!
- EXCELLENT DAIRY LOCATION-1120 ac., 7 circles, 20 wells, very nice 3-2-3 Home w/ basement, 40 x 60 barn w/ 30 x 40 shed, 3 mil. lb. grain facility, add. 3 bdrm. home, 2 mobile homes, on pavement convenient to Muleshoe, Clovis, Portales, & 5K head permit. Could be split if needed!!
- W. of SUDAN-NICE 3-3-2 Brick Home, 5 acre tract on Hwy. 298, Cent. Air & Heat, built-ins, large Quonset Barn, MORE!!! \$95K!!!
- PRICE REDUCED - 108 acres or 7 acre tract on Hwy. 70, approx. 2100' office area, 16,900' commercial bldg. w/loading dock, 3,400' warehouse, new well, 2,800' runway!!!
- STEGALL AREA - GOOD 80 acre farm!! PRICE TO SELL!!!



Lowe's Marketplace

401 W. American Blvd. Muleshoe, Texas 272-4585

WE RESERVE THE RIGHT TO LIMIT QUANTITIES IN TEXAS

WESTERN MONEY UNION TRANSFERSM
"The fastest way to send money"

AFFILIATED FOODS INC. MEMBER STORE AT PARTICIPATING STORES



WEEKLY PRICES EFFECTIVE JULY 17-23, 2002

MEAT

THICK OR THIN SLICED BEEF SIRLOIN TIP STEAK.....	LB	\$1.99
ANY SIZE PACKAGE BEEF CUBED STEAK.....	LB	\$2.59
X-TRA SAVINGS PAK MARKET GROUND GROUND ROUND.....	LB	\$1.99
GREAT FOR BARBACOA! BEEF CHEEK MEAT.....	LB	99¢
ANY SIZE PACKAGE CHICKEN TENDERLOINS.....	LB	\$1.99
BARBECUE SEASONED CHICKEN LEG QUARTERS.....	LB	79¢
X-TRA SAVINGS PAK BONE-IN PORK STEAKS.....	LB	99¢
REG., POLISH OR CAJUN BAR S SMOKED SAUSAGE.....	12 OZ. PKG	99¢
BAR S HICKORY OR HONEY SLICED HAM.....	1 LB. PKG	\$2.99
SHURFINE CORN DOGS.....	1 LB. PKG	99¢

PRODUCE

WHITE SEEDLESS GRAPES.....	LB	77¢
BLACK ANGELINO, GREEN, PURPLE OR RED PLUMS.....	LB	97¢
WASHINGTON EXTRA FANCY RED DELICIOUS APPLES.....	LB	87¢
TANGY LEMONS.....		5/\$1
TANGY, JUICY LIMES.....		12/\$1
SWEET, TROPICAL MANGOS.....		2/\$1
RED RIPE TOMATOES.....	LB	97¢
HOT AND SPICY JALAPENO PEPPERS.....	LB	87¢
GARDEN FRESH BROCCOLI.....	LB	77¢
MILD YELLOW ONIONS.....	LBS	3/\$1
LARGE, GREEN BELL PEPPERS.....		3/\$1
GARDEN FRESH CUCUMBERS.....		2/\$1
GARDEN FRESH ROMAINE LETTUCE.....	EACH	77¢
AMERICAN, ROMAINE OR EUROPEAN BLEND DOLE SALAD.....	10 OZ. PKG	\$1.97

FROZEN & DAIRY

SHURFINE ASSTD. ROUND ICE CREAM.....	1/2 GALLONS	2/\$5
SHURFINE ICE CREAM SANDWICHES.....	12 CT.	\$2.99
ASSTD. PLAINS COTTAGE CHEESE.....	24 OZ.	2/\$4
ASSTD. PLAINS DIPS.....	12 OZ.	3/\$4
KRAFT LONGHORN CHEDDAR, COLBY OR COLBY-JACK HALFMOON CHEESE.....	10 OZ.	2/\$5
ASSTD. SHREDDED OR CUBED KRAFT CHEESE.....	7.5-8 OZ.	2/\$5
SELECT GROUP FLORIDA'S NATURAL ORANGE JUICE.....	64 OZ.	2/\$5
KRAFT REG. OR 1/3 LESS FAT PHILADELPHIA CREAM CHEESE.....	8 OZ.	3/\$5

HEALTH & BEAUTY

SELECT GROUP SAUVE HAIR CARE PRODUCTS SHAMPOO OR CONDITIONER.....	15 OZ.	89¢
4 OZ. WESTERN FAMILY SUNBLOCK OR SUNSCREEN.....	8 OZ.	\$4
CLOROX ULTRA BLEACH.....	96 OZ.	99¢
LOWE'S WHITE SANDWICH BREAD.....	24 OZ. LOAVES	2/\$1
ASSTD. SNACK RAMEN NOODLES.....	3 OZ.	10/\$1
ASSTD. SNACK CUP RAMEN.....	2.25 OZ.	3/99¢
CHICKEN OF THE SEA CHUNK LIGHT IN WATER OR OIL TUNA.....	6 OZ. CANS	2/88¢
13.5 OZ. RICE CRISPIES, 15 OZ. FROOT LOOPS, 20 OZ. FROSTED FLAKES OR 24 OZ. CORN FLAKES KELLOGG'S CEREAL.....	YOUR CHOICE	2/\$5
13.5 PZ. ASSTD. DORITOS® TORTILLA CHIPS.....	PRE-PRICED \$3.29	2/\$4
ASSTD. LOWE'S SOFT DRINKS.....	12 PK. CANS	3/\$5
6 PACK POWERADE DRINKS.....	12 OZ. BTLs	2/\$5
REFRESHING COCA-COLA, SPRITE OR DR. PEPPER.....	3 LITER BTLs.	4/\$5
REFRESHING COCA-COLA, SPRITE OR DR. PEPPER.....	6 PACK CANS	3/\$5



18 CT. PKG. EXTRA LARGE PILGRIM'S PRIDE EGGS.....
1 LB. PKG. RED RIPE STRAWBERRIES.....
WHOLE WATERMELONS.....
RED RIPE BEEF PATTIES.....
3 LB. BAG RG'S BEEF PATTIES.....
ALL VARIETIES, GAL. JUG LOWE'S OR SHURFINE MILK.....
ASSTD. 1 LB. PKG. HILLSHIRE FARM SMOKED SAUSAGE.....



6-8 CT. MRS. BAIRD'S OR RAINBO HAMBURGER OR HOT DOG BUNS.....



X-TRA SAVINGS PRICING GOOD THRU JULY 30, 2002

Use Your Reward Coupons To Save Big!

Here's How It Works!

Lowe's is giving you deep discounts on many of the items you purchase everyday! For each dollar you spend at Lowe's, we will give you a point. After 50 points (or \$50), you will receive a Lowe's X-tra Savings Reward Coupon. This coupon can then be redeemed for deep discounts on selected items. Each month, Lowe's will select from our most popular items in the store and deeply discount them for our X-tra Savings Reward Coupon holders. Present your coupon and receive incredible savings on selected items.

X-tra Savings Reward Program

- Each Dollar You Spend Is Worth ONE (1) Point.
- After you earn 50 points, you will receive a Lowe's X-tra Savings Reward Coupon
- Use your Lowe's X-tra Savings Reward Coupon to get deep discounts on one of the selected items.
- Only ONE (1) item can be purchased with each Reward Coupon. • Items will be changed monthly.

- McCormick's 13-14 oz. btl. **GRILLING SAUCES**
Pre-Priced \$2.29
- FRITOS® CORN CHIPS OR CHEE-TOS**
3 liter btl.
- COCA-COLA, SPRITE OR DR. PEPPER**
48 oz. btl. Wesson
- COOKING OIL**
7 lb.
- BAG OF ICE**
17-26 oz. jar Ragu
- SPAGHETTI SAUCE**
24 oz. American Beauty
- SPAGHETTI OR ELBO RONI**
4 lb. bag Imperial
- PURE CANE SUGAR**
Bayer 40 ct. Gecaps or
50 ct. Caplets/Tablets
- ASPIRIN**
Asstd. 13.5 oz. Pert Plus
- SHAMPOO WITH CONDITIONER**
Asstd. 6.4 oz. Colgate
- TOOTHPASTE**
4 pack Cello Wrapped
- TOMATOES**
1 lb. bag Mini, Peeled
- CARROTS**
8 oz. pkg. Cello Wrapped
- WHOLE MUSHROOMS**
128 oz. jug Langer's
- FRUIT DRINKS**
4 lb. bag Casserole
- PINTO BEANS**
32 oz. bag Comet Long Grain
- BROWN RICE**
6 ct. pkg. Asstd. Nature's Grain
- BAGELS**

- 16 oz. pkg. Johnsonville **BRATWURST**
3 lb. Orval Kent
- POTATO SALAD OR COLESLAW**
128 oz. Sunny Delight
- CITRUS PUNCH**
10 to 12 oz. box Eggo
- WAFFLES**
Select Group 8-9 oz. Michelina's
- FROZEN ENTREES**
6-8 ct. New York brand
- GARLIC TEXAS TOAST OR BREAD STICKS**
Asstd. 1/2 gal. round Shurfine
- ICE CREAM**
360 ct. Zee
- NAPKINS**
32 oz. jar Best Maid
- Hamburger Sliced
- DILL PICKLES**
16 oz. jars Pace
- PICANTE SAUCE**
Kraft 18 oz. squeeze btl.
- MAYO OR MIRACLE WHIP**
50 ct. 12 oz. Hefty
- FOAM BOWLS**
Select Group GladWare
- STORAGE CONTAINERS**
Chinet 25 ct. 9 inch or 15 ct. 10 inch
- PAPER PLATES**



THE X-TRA SAVINGS REWARD PROGRAM GOOD AT LOWE'S MULESHOE, CANYON AND TUCUMCARI STORES ONLY!
Points are not transferable between stores. No substitutions please on X-tra Savings Reward Items. Only one item may be purchased at the special deep discount per Reward Coupon.