

Sylvan Dunn, Director
Southwest Collection Texas Tech
Lubbock TX 79409



Voice of the Foothill Country

Motley Co. Tribune

50¢
PER COPY

102nd YEAR

THURSDAY, OCTOBER 13, 1994

ISSUE NO. 41

MEET YOUR NEIGHBOR



DENISE GASTINEAU

Denise Gastineau has lived in Motley County for the last four years. She graduated from Tulia High School in 1982 and from West Texas State University in 1986. She teaches 7th grade Computer Literacy, High School Computers, is the Yearbook director, and an Elementary Aide at Motley County ISD.

She and her husband, Ron, have one son, Jacob.

Her hobbies include shopping, reading, and crossstitch.

THOUGHT FOR THE WEEK

The surest way to be late is to have plenty of time.

— Leo Kennedy

Barbara's Bylines

We received a letter this week from the *Amarillo Daily News* with a letter attached from the *Kileen Daily Herald*, reading as follows:

We are joining in with numerous other businesses in a special request sent to us on behalf of Craig Shergold. Craig is seven years old and has a brain tumor and little time to live. He has turned to the Children's Make A Wish Foundation and expressed the desire to have an entry in the Guinness Book of World Records for the largest collection of business cards received by an individual.

Let's assist Craig in making his wish come true. Please send your business cards to:

Craig Shergold
Children's Make-A-Wish Foundation
3200 Perimeter Center East
Atlanta, Ga. 30346

Please hurry, as time is of the essence!

The following is from 'Out On A Limb' by Cherry Hamilton, Editor of *The Eagle Press*, Fritch.

WHAT COLOR IS LOVE?

Once in awhile, love comes along and shakes you to your very roots and you are awed by a newer, deeper understanding and a new revelation. Perhaps it has been there all along and you just opened your eyes to the renewed wonder and beauty of it all.

Love is tender with the touch of a hand, a hug, a pat, a hardy wave, sometime just a thumbs up from a distance.

Love is liquid in the shape of a tear, light in the shape of a candle at the altar, bent knee before God.

continued on page 7

Mavericks vs. Petersburg
Here, Thursday, 5:00 p.m.
☆☆☆☆☆☆

Matadors vs. Petersburg
There, Friday, 7:30 p.m.

Extension Service Unveils 1995-99 Long Range Extension Program For Motley County

After extensive planning and programming, the 1995-99 Long Range Extension Program (LREP) for Motley County has been completed. The LREP is an accumulation of a year-long, issue-identification process by key leaders and resource people dedicated to improve the quality of life in Motley County. The 1995-99 LREP will serve as a program reference guide for the Motley County Extension Service, Extension Program Council, and Program Area Committees for the next four years. In addition, the LREP can be utilized as a tool for community leaders in civic organizations to set long-range goals and to unite programming efforts.

The 1995-99 LREP planning process started at the state-level with the Texas Agricultural Extension Service identifying four state-wide goals. The four state-wide goals included: 1) Health, Safety, and Well-Being; 2) Environmental Stewardship and Natural Resources; 3) Economic Competitiveness, Viability, and Stability; and 4) Development of Life Skills and Leadership Qualities. Throughout Texas, county residents worked together to analyze these state-wide goals in order to identify critical issues impacting their life and their county. A LREP was developed for all counties in Texas

to address the individual needs and concerns of each county.

These individual LREPS will serve as a guide for program efforts of the Extension Service within the county. In addition, the collaboration of the county LREPs will serve as the driving force of the Texas Agricultural Extension Service to lead Texans into the year 2000.

In Motley County, fifty local residents, representing all sectors of the county, gathered to identify the critical issues facing Motley County and its residents. These volunteers were divided into four study groups to identify, address, and prioritize the issues pertaining to each statewide goal.

A total of twelve critical issues were identified for Motley County by the study group members. The major issues dealt with the concerns for health care services and preventative health education; promotion of environmental stewardship and water conservation; the need for community and county economic development; stability and marketability of agriculture; and a commitment to leadership and life skills development in parenting and job skills and through youth programs.

These twelve issues, their components, and their long-range objectives and de-

sired outcomes were compiled into the 1995-99 Motley County Long Range Extension Program. Copies of the 1995-99 LREP are currently being mailed to all study group participants, key community leaders, and city and county officials. Anyone interested in obtaining a copy of

the 1995-99 LREP for Motley County can come by the Motley County Extension Office.

The Motley County Extension Service is grateful to everyone who served as a LREP study group member for their enthusiasm and devotion to the 1995-99

Motley County Long Range Extension program. These individuals, along with members of the Extension Program Council, will be recognized during the Motley County Recognition Banquet to be held on

Saturday, October 15th at the School Cafeteria.

Motley County ISD Recognized As Texas Successful School

Mr. Rick Copp, School Principal, was notified recently that Motley County ISD has been received recognition from the Texas Successful Schools Award System.

Mr. Copp received a letter from Steven A. Carraker, State Senator. In the letter, Senator Carraker stated, "Your school has distinguished itself among the top schools in the state. This is a tribute to the excellence of your entire team. I would like to congratulate you, the staff, and the student body for receiving this recognition."

In recognition of this achievement, Senator Carraker also sent a Certificate of Congratulations to the school.



Fall Carnival Planned For October 29

Plans are underway for the Fall Carnival. The Carnival is scheduled for Saturday, October 29 in the old gym. The activities are as follows:

Spook Parade - 6:30 p.m.
Queen's Contest - 6:45 p.m.
Carnival Booths begin - 7:00 p.m.

Something new is being added to the Carnival line-up this year. Beginning at 8 p.m. there will be an auction of new to slightly used items. You will want to attend to see what the "Grand Finale" prize is!

The Eternas Study Club is encouraging you and your family to attend the Carnival this year. It's one you won't want to miss! If you would like to reserve a booth, please call Denise Gastineau at 347-2831 as soon as possible! As always in the past, the booths go to first come. Make plans now to attend the Carnival and enjoy the evening with your family and friends.

Voters To Decide On Separation Of Offices

The Motley County Commissioners Court has voted to bring before the voters of Motley County the separation of offices of the Sheriff and the Tax Assessor/Collector.

Motley County is one of four counties in Texas that have the Sheriff and Tax Assessor/Collector combined. It is required that all elected officials be certified for the office held. The Sheriff is not certified as a Tax Assessor/Collector. The duties of Sheriff involve his time, making it impossible to work as Tax Assessor/Collector. It is important the person doing the work of the Tax Assessor/Collector

be responsible for this office and obtain proper certification. This separation of offices will not require additional personnel as the location of these offices will remain as is now. Sheriff Jim Meador endorses the divisions of these two offices.

The separation of the offices of Sheriff from Tax Assessor/Collector will be decided by the voters of Motley County at the General Election, Tuesday, November 8, 1994. We urge you to go to the Polls and cast your vote for this important change in your county government.

Commissioners Meet For Regular Session

The Motley County Commissioners Court met Monday, October 10 for regular session.

Judge Laverna Price called the Court to order. Commissioner Butch Hughes gave the invocation. The minutes were read with one correction, and the bills were read.

The reports were read with the J.P. collecting fines for Precinct 1 Place 1, \$4340, with \$2350 for the County, and Place 2 collected \$1814, with \$1149 for the county. There was no Library report.

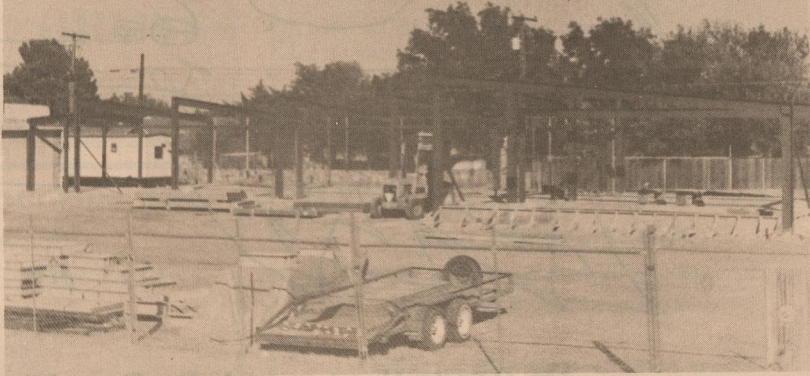
Michael Clawson, County Agent, presented a certificate of completion for

Joe Campbell, County Treasurer, for attending a Treasurer school. Clawson also reported on the latest facts about the Immigration Reform and Control Act.

Discussion of changing the polling place in Precinct 4 was tabled.

Jim Meador, Motley County Sheriff, presented a Registration and Title System (RTS) Agreement Form. The Commissioners passed and signed.

After discussion the Court elected to purchase and repair a used dumptruck out of Precinct 3 savings. Meeting adjourned.



NEW CONSTRUCTION — The Motley County School is under new construction on the Elementary side. The new addition will house Pre-K, a new computer room, and more.

Certificate of Congratulation

is Presented to

MOTLEY COUNTY SCHOOL

IN HONOR OF THEIR COMMITMENT TO
EXCELLENCE IN EDUCATION

In testimony whereof, I have hereunto signed my name and caused the Seal of the Texas Senate to be affixed at the City of Austin, this the _____ day of _____, 1994.

Steven A. Carraker

Steven A. Carraker
State Senator
District 30

Motley County Chamber of Commerce Reviews Mission, Goals

The Motley County Chamber of Commerce met for their first regular meeting, Thursday, October 6 at the First State Bank in Matador with 8 members of the 12 member board in attendance.

Michael Clawson, County Agent, called the meeting to order, welcomed everyone and asked Charles Keith to hold the meeting.

Keith reviewed the Mission Statement and Goals of a Chamber of Commerce as follows:

Mission Statement

The mission of the Motley County Chamber of Commerce is to promote, strengthen, and improve the economic development and business environment throughout the county, and to enhance the quality of life for all citizens of Motley County.

Goals

— Create job opportunities and an increased tax base through stimulation of industrial and commercial growth.

— Works for an ever-increasing population, assuring additional business customers and income.

— Seeks the improvement of county community service/support facilities to improve quality of life, i.e. streets, highways, parks, recreational facilities, medical/health facilities, human resources, and schools.

— Provides publicity and marketing resources to support county economic development and business/population growth.

The Board set a nominating committee of Brian Marshall, Michael Clawson, and Charles Keith to search out and present a slate of officers at the next meeting, November 10, 8:00 a.m. at the Bank.

Mr. Keith also presented several other Chamber by-laws and asked for a committee to select and present by-laws for the next meeting. The Committee is Brent Marshall, Larry Hoyle and Sandra Francis.

Items discussed included incorporation and chartering, to become non-profit in the future. This will be necessary Membership and dues to be set in the future. Housing is a concern and a need for the future growth in Motley County.

Mr. Keith informed the Board he had visited with Jody Barr of Dickens County who said they are trying to rebuild their Chamber of Commerce and hopefully work with King, Kent, and Motley Counties in promotion of projects and helping with each others problems.

The consensus of the Board is to keep it to a local level until formed and more stable.
Meeting adjourned.



Home Economically Speaking

by Beverly A. Logsdon
Home Extension Agent - Home Economics

IS YOUR CHILD'S SAFETY SEAT OLD, USED, OR ABUSED?

Well meaning parents may not be providing adequate crash protection for their young children.

Many of the child safety seats that parents are using are old, used, or abused and do not provide adequate protection. A child's safety is seriously compromised when vital parts are not available to explain how the safety seat should be secured to the vehicle. If a safety seat has been involved in a crash, it has done its job and should be destroyed. The straps or shell may have experienced stress and may not provide protection if involved in another crash.

Families (in Texas only) that who cannot afford a child safety seat, can contact the Texas Department of Health, SafeRiders, at 1-800-252-8255 for nearest locations of safety seat loaner programs.

To provide protection for a child, parents should:

- Select the correct safety seat for the child. Make sure it is the correct size and type (infant, convertible, or booster); it meets Federal Safety Standards; it is for use in motor vehicle; and that is has not been in a crash, has instructions and all the parts.

- Secure child in safety seats correctly. Infants should face the back of the vehicle; babies over 20 pounds and one year face forward. Straps should be secured snugly over the child's shoulders. The harness clip is used to keep straps in child's shoulders.

- When a child is too large for the safety seat, use a booster seat with the lap-shoulder belt. Use a booster seat with older children until they are least 28 inches tall in a sitting position. Secure the children according to safety seat manufacturer's instructions.

- Correctly secure safety seat to vehicle by following the vehicle instruction manual as well as safety seat instructions. Secure the convertible seat facing forward or to the rear depending on the size and age of the child. The seat should be held securely in position.

Even if you purchase a new child safety seat, be aware that occasionally parts of seats are found to be defective and the manufacturer issues a recall. If a recall occurs, the manufacturer will fix the defect at no cost to the owner.

If you have recently purchased a new child safety seat, the National Highway Traffic Safety Administration recommends that you either send in the manufacturer's registration card (if one is provided) or send your registration information to them and they will forward it to the manufacturer. (NHTSA is collecting names and addresses of individuals who want this information provided to child safety seat manufacturers, so they can be easily notified of any future recalls regarding their particular seat.) The information provided must include: your name, telephone number, address, child seat manufacturer, model name and number, date of manufacture (located on labels on your child safety seat), and a written request that you are authorizing NHTSA to provide this information to your child safety seat manufacturer. Send this information to: NHTSA Office of Defects Investigation, NEF-12 400 7th St., S.W. Washington, D.C. 20590.

If you have questions regarding child safety seats or motor vehicle safety issues, call the U.S. Department of Transportation hotline at 1-800-424-9393.

Educational programs of the Texas Agricultural Extension Service are open to all citizens without regard to race, color, sex, disability, religion, age, or national origin.

THOUGHT FOR THE DAY: No family should attempt an auto trip if the kids outnumber the windows.

attention were Kelsey Stokes, Cagen Denison, Tamara Ashley, Conner Brewer, and Kyla Simpson. Helping with the program was Mrs. Lola Pohl, which we very much appreciate. This program is for pre-schoolers and includes storytelling, reading books, watching films and singing. All children are invited to attend the next meeting which will be November 8, 1994 at 10:00 a.m.

by
Wilda Dixon

HOURS: Monday, 2-5 p.m. (open by volunteers)

Tuesday & Wednesday, 9-12 and 1-6 p.m.

Thursday & Friday, 9-12 and 1-5 p.m.

Saturday, 1:30 - 4:30 p.m. (open by volunteers)

LIBRARY SCHOOL was held October 11, 1994 at 10:00 a.m. Those in

MOTLEY COUNTY TREASURERS REPORT
QUARTERLY REPORT

Report of Joe E. CAMPBELL, County Treasurer of Motley County, Texas
Receipts and Expenditures from July 1, 1994 to September 30, 1994

FUND	BALANCE July 1, 1994	RECEIPTS	DISBURSEMENTS	BALANCE September 30, 1994
GENERAL ACCOUNT	\$ 21,415.10	\$ 107,447.95	\$ 101,108.77	\$ 27,754.28
ROAD & BRIDGE # 1	\$ 6,892.03	\$ 7,703.68	\$ 8,000.00	\$ 6,595.71
ROAD & BRIDGE # 2	\$ 6,408.64	\$ 14,582.56	\$ 14,100.14	\$ 6,891.06
ROAD & BRIDGE # 3	\$ 7,295.08	\$ 11,535.78	\$ 10,155.03	\$ 8,675.83
ROAD & BRIDGE # 4	\$ 6,141.63	\$ 10,681.89	\$ 9,802.08	\$ 6,921.44
LIBRARY	\$ 1,358.52	\$ 3,099.20	\$ 3,936.66	\$ 4,521.06
COUNTY ROAD	\$ 15,881.09	\$ 890.00	\$ 7,190.14	\$ 9,580.95
PROPERTY FINANCE	\$ 6,639.71	\$ 10,866.06	\$ 13,781.04	\$ 3,724.73
STATE COURT COST & ARREST FEES	\$ 7,804.05	\$ 6,114.00	\$ 6,817.00	\$ 7,101.05
BOND PROGRAM	\$ 884.00	\$ -0-	\$ -0-	\$ 884.00
CIT CHECK FUND	\$ 1,371.46	\$ 345.00	\$ 1.35	\$ 1,615.11
INVESTMENT ACCOUNT	\$ 280,000.00	\$ -0-	\$ 114,000.00	\$ 166,000.00
TOTALS	\$ 308,342.11	\$ 188,260.10	\$ 289,726.77	\$ 196,875.44

THE STATE OF TEXAS
COUNTY OF MOTLEY

Before me, the undersigned authority, on this day personally appeared Joe E. Campbell, County Treasurer, known to me and upon oath, says that the within and foregoing is true and correct.

Notary Public
[Signature]

Motley County Tribune

Barbara Armstrong, Publisher/Editor
Carla Meador, Associate Editor, Ad. Mgr., Typesetting, Layout & Composition
Mary Meason, Proofreading
Lindsay Williams, School Reporter, Proofreading, Composition
Davonna & Renee Atkinson, Photo Developing

MEMBER 1994 TEXAS PRESS ASSOCIATION

The Motley County Tribune, (ISSN: 0897-4322), purchased on Feb. 1, 1996, is the successor to the Matador Tribune and is published weekly each Thursday, except Christmas week at Matador, Texas. The office is located on Highway 70 East (1/2 block east of Main Street). Telephone number, 806/347-2400. Second-class postage paid at Matador, Texas. Postmaster: Send address changes to Motley County Tribune, Box 499, Matador, Texas 79244-0499.

NOTICE: Any erroneous reflection upon the character, firm or corporation, which may appear in the columns of the Motley County Tribune will gladly be corrected upon being brought to the attention of the publisher. Only signed letters to the editor will be considered for publication and should not exceed 250 words in length. (Letters PUBLICATION NO. 333790)

SUBSCRIPTION RATES: Motley County, \$15; Texas, \$17; Elsewhere, \$18; 9 Month Student, \$14; over 60, may deduct \$1.00.

P.O. Box 499 Matador, Texas

In the Rough

by Hazel

TUESDAY SCRAMBLE

October 4

Closest to the pin on #3 was Buzz Thacker, 71".

1st (27) Kenny and Olivia Barton, Homer and Cleo Martin.

2nd (29) Mark Wason, Gene Brannon, Warner Sailsbury, Gene Mayfield.

3rd (29) Ken Marshall, Alford and Louise Barton, Geneva Wilson.

Other players were Billy Wayne Denison, Roncho and Dortha Grundy, M.C. (Salty) Jones, Alan Bingham, Buzz

and LaVoe Thacker, Chip Smith, Charlie and Nancy Long, Garland and Judy Cartwright.

LADIES PLAY DAY

Thursday, October 6

Players were LaVoe Thacker, Louise Barton, Olivia Barton, Geneva Wilson, Dorothy Day, Marihelen Wason.

Geneva won the ball on having most bogeys on even holes, 6.

Marihelen and Dorothy only played 9 holes.

Poems Wanted For New Contest and Anthology

Poems are now being accepted for entry in Sparrowgrass Poetry Forum's new "Awards of Poetic Excellence" poetry contest. Cash prizes totaling \$1,000 will be awarded, including a \$500 grand prize. The contest is free to enter.

Poets may enter one poem only, 20 lines or less, on any subject, in any style. Contest closes November 30, 1994, but poets are encouraged to send their work as soon as possible. Poems entered in the contest also will be considered for publication, but is not required to enter or win

the contest. Prize winners will be notified by January 31, 1995.

"Our contest is especially for new and unpublished poets and offers a public forum that enables them to share their work," says Jerome P. Welch, Publisher. "We look for originality of ideas and poetry of all styles and themes. Many of our contest winners are new poets with new ideas."

Poems should be sent to Sparrowgrass Poetry Forum, Inc. Dept. L, 203 Diamond St., Sistersville, WV 26175.

Health News

EARLY DETECTION KEY TO BREAST CANCER SURVIVAL

Recent advances in genetic research have brought breast cancer again to the forefront of the national discussion about health and disease.

But while a true test for genetic predisposition toward breast cancer may be years away, education and early detection can greatly increase the chance of survival for breast cancer patients today.

The Society recommends that women have a screening mammogram by age 40; women 40 to 49 have a mammogram every 1-2 years; women age 50 and over have a mammogram every year.

Also, a doctor should conduct a breast examination every three years for women 20 to 40 and every year for those over 40. The society also recommends monthly breast self-examination for women 20 years and older.

Breast cancer is the most prevalent form of cancer among women, and it is second only to lung cancer in its deadli-

ness. The American Cancer Society estimates that about one of every nine American women will develop breast cancer by age 85.

An estimated 9,200 new cases of breast cancer will be diagnosed in Texas women during 1994. About 2,300 Texas women will die of the disease this year.

Ninety-three percent of women diagnosed with localized breast cancer survive five years.

For cancers that haven't spread to other parts of the body, the survival rate approaches 100 percent. Seventy-one percent of women whose breast cancers have spread regionally survive, while 18 percent of women whose cancers have spread further survive five years.

Risk factors include: age over 40; personal or family history of breast cancer; and never had children or had children late in life.

For more information on breast cancer detection and treatment, contact your local American Cancer Society office.

There are three things I always forget. Names, faces—the third I can't remember.

—Italo Svevo

Shower Selections for Mrs. Shane Harris (nee Kristi Timmons) and Joely Ewing Bride-elect of Larry Beam at The Windmill

Songbird Cafe
In Roaring Springs

IT'S BACK! FRIDAY NIGHT CATFISH
Homemade Huspuppies, Fresh Coleslaw, Crispy Fries, ALL YOU CAN EAT!

Bring this ad for \$1.00 off Thursday Mexican Lunch Buffet or Sunday Chicken Buffet. Good through Oct. 30

OPEN HOUSE
October 16
12:30 p.m. til. 3 p.m.
Bring the whole family and eat with us after church

Even an AARDVARK nose to go to the chiropractor regularly

LIFESTYLE CHIROPRACTIC
Floydada, Tx.

Dr. Randy Hunter and Dr. Dave Martin D.C.

Fall Fashion Presented At Do Gooders Club Meeting

The Do Gooders' Club met Tuesday afternoon, Oct. 4 at the Community Center in Flomot. Fall Fashions, Autumn and Halloween decor enhanced the building.

The members were impressed by the workmanship and value they discovered when Mrs. Beverly Logsdon, regional Extension Agent of Memphis, displayed her designed vests and decorative collars. She was assisted by Ms. Linda Foxall of Memphis.

Mrs. Logsdon showed the expertise of finished seams, covered buttons, natural fabrics, full linings and luxurious easy care fabrics for vests. She gave details of embroidery and whipstitching for beautifully turned collars that go well with all your basics. She presented a pattern of

each vest to those attending. Mrs. Christeen Gilbert, president, conducted a short business session preceding the program.

Mesdames Alma Shorter and Judy True presided at a Halloween designed service. The table was laid with an orange and black colored cloth centered with a jolly jack-o'-lantern filled with fall flowers and autumn leaves. They served fresh fruit and vegetables with dip, Halloween candies and orange punch.

Others attending besides those mentioned above were Mesdames Bernice Bond, Jimmie Hunter, Leona Degán, Trula Martin, Annie B. Cloyd, Barbara Payne and Mary Jo Calvert.

Arts & Crafts Club Members Learn Art of Painting Ceramic

Motley County Arts and Crafts Club spent a day of bliss Monday, October 3 at the Lazy J. Art Studio, painting and working with ceramics.

Lou Ann Jameson was teacher for the class, and tutored each on the art of painting on bisque.

Deer, resembling "Bambi" was the figurine chosen for the workshop. They came to life with color. Bright, shiny eyes, and other details. Look for these attractive little deer at the club's Bazaar, November 12.

Luncheon was a time of eating out, hamburgers with all the trimmings, was the bill of fare, and enjoyed by all.

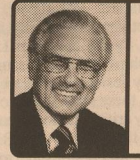
Joy Archer, club president, conducted a business meeting at 1:30 p.m. Plans were made and committees were appointed for the club's annual bazaar to be held November 12 at the old Ford garage, beginning at 9 a.m. and continuing through 5 p.m. Gift certificates will be given as door prizes, cookies and coffee will be

served to all. Many new items will be shown. Come one and all.

Club members attending the workshop were Joyce Meredith, Dorothy Meador, Lorene Lancaster, Dorothy Knight, Elsie Thacker, Pearl Rattan, Dora Watson, Betty Simpson, Bonnie Edmondson, Joy Archer, Winifred Lee, Una Simpson, Opal Pipkin, Lou Ann Jameson, Marion Woodruff, Winifred Darsey, Leola McKelvey, and Betty Henry.

Pumpkins, painted by club members are on display at the Library. They are very unusual and charming. Some wearing sunbonnets and straw hats, wigs, and all are worth the time and effort, that is if you admire creativity. Visit your Library. See you at the Bazaar!

Our next meeting will be held November 7 at the Senior Citizens Center, at 10 a.m. The program will be pine cone wreaths. Bring your glue gun. We will have a covered dish luncheon.



SEEDS FROM THE SOWER

Michael A. Guido
Metter, Georgia

An old lady asked a child, "How do you do, my dear?" "Fine, thank you," came the reply.

There was a pause, and then the lady asked, "Why don't you ask me how I am?" "Because," said the girl, "I don't really care."

That raises the question: How much do we care for others?

If you love the Lord, you'll care for those who are loved by the Lord, and if you care, you'll share the gospel with them. Sharing is the outgrowth of salvation.

Today, so many live and let live. But if you really care, you'll live and help others live for the Lord.

Do you care?

All New Fall Ladies Ready-to-Wear 25% off



Matador V&S Variety

Motley County School News

Matadors Win District Opener Against Valley, 32-0



TOUCHDOWN — Hands up to signal a Matador touchdown. The Matadors defeated the Valley Patriots, 32-0, in last Friday night's District opener.

The Motley County Matadors opened district play on a positive note as they downed the Valley Patriots 32-0 last Friday at Burleson Field. The Matadors dominated on both sides of the ball rolling for 346 yards of total offense while holding the Patriots to 31 total yards.

It was Valley who threatened to score first, but Conway Clary intercepted a Patriot pass near the Motley County goal line and returned it to the Matador 40 yard line. On the first play from that point, Brandon Blanch bolted over the right side and sprinted 57 yards to the Valley 3 yard line. Two plays later, Jeremy Jones scored the first touchdown of the game on a 2 yard run. Blanch's extra point run made the score 8-0. That's how the first quarter would end.

The second score came about after a short Valley punt gave the Matadors the ball at the Patriot 40 yard line. Seven plays later, Blanch ramblined in from 3 yards out and the Matadors led 14-0.

The first half ended with Motley County trying to push across their third score of the half, but the drive ended on the Valley one yard line as time ran out, and the Matadors settled for a 14-0 halftime lead.

Motley County did get that third touchdown early in the second half marching 74 yards in 10 plays. The big play of the drive was a 45 yard pass from quarterback Brad Thacker to Kevin Keltz. Blanch capped the drive with his second T.D. run of the night to make the score 20-0.

The next score would belong to the

defense. A short kickoff gave Valley the ball near midfield, but Keltz intercepted the ball at the Matadors and sprinted 53 yards to the touchdown. The conversion failed, but Motley County owned a 26-0 lead heading into the 4th quarter.

The final score of the night followed a fake punt by the Patriots that came up short giving the Matadors the ball at the Valley 37 yard line. Blanch culminated the 6 play drive with his third T.D. run of the game, this one from 5 yards out. Neither team mounted a serious threat after that and the game ended 32-0.

Motley County will carry their 1-0 district record to Petersburg Friday night. The Buffaloes dropped a 35-12 decision to Spur in their district opener. Kickoff is at 7:30.

Mavericks Defeated By Valley, 8-0

The Motley County Junior High Mavericks lost a tough ballgame to Valley last week 8-0. The Maverick defense played well getting fumble recoveries by Chris Guerrero and Andy Jones. Jason Barton also blocked and recovered a Valley punt. Big hits were made by Robert Gillespie and Casey Lawrence.

The offense got a 40 yard pass completion from Keane Cruse to Matt Cox in the second quarter but could not punch a touchdown across.

The Mavericks will host the Petersburg Buffaloes Thursday afternoon at 5 p.m.

Players In Progress (PIP) Organized For K-6th Grades

PIP (Players in Progress) for grades K-6th is being organized in Motley County. This is a program of practice and performance where children learn basketball skills, drills and tricks.

The sign-up date for PIP is October 11-21. Registration forms have been sent home with your children. If your child did not receive one you can check with Betty Stevens at school. The camp will be Sunday, October 30 from 1:30 - 5:30 p.m. at the School. The cost to join PIP is \$40. This includes a T-Shirt, basketball, and the PIP newsletter. If you need any more information you can call Brenda Osborn, 347-2401.



MONDAY, OCTOBER 17
Breakfast: Breakfast Burrito, Fruit, Milk
Lunch: Vegetable Beef Soup, Toasted Cheese Sandwiches, Vegetable Sticks, Cherry Cobbler, Milk.

TUESDAY, OCTOBER 18
Breakfast: Cereal, Buttered Toast, Fruit, Milk.
Lunch: Country Steak, Green Beans, New Whole Potatoes, Hot Rolls, Honey, Gelatin, Milk.

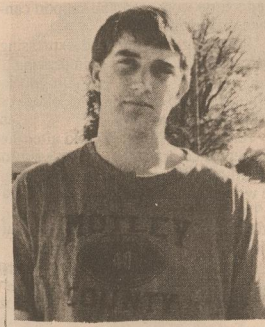
WEDNESDAY, OCTOBER 19
Breakfast: Sausage, Pancakes, Syrup, Fruit, Milk.
Lunch: Macho Nachos, Tossed Salad, Whole Kernel Corn, Unbaked Cookie, Milk.

THURSDAY, OCTOBER 20
Breakfast: Chef Salad (Ham, Egg, and Cheese), Baked Potato, Crackers, Fruit Fluff, Milk.

FRIDAY, OCTOBER 21
Breakfast: Bacon, Biscuits, Scrambled Eggs, Juice, Milk.
Lunch: Hamburgers, Lettuce, Tomato, Pickle, Onion, Potato Chips, Apple Crisp, Milk.

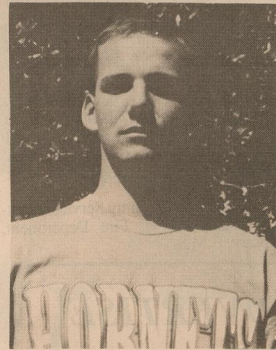
MATADOR MADNESS

by Lindsey Williams



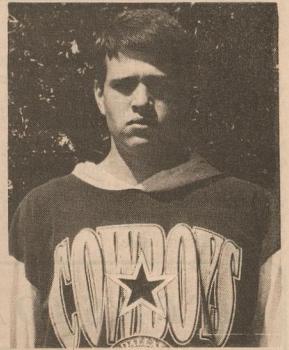
CRAWFORD MASON, #60
CAPTAIN

Offensive Guard/Defensive End
Crawford is a Senior and the son of Ray Mason and Betty Brinsfield. He is 6'1" and weighs 190 pounds. He enjoys winning in football.



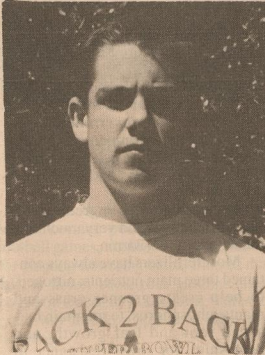
DON MARTIN, #71
CAPTAIN

Offensive Center/Nose Guard
Don is a Senior and the son of Howard and Deborah Martin of Matador. He is 5'10" and weighs 170 pounds. He just simply likes playing in football.



QUINTIN BRANDON, #62
Offensive Guard/Defensive Tackle

Quintin is a Sophomore and the son of Frances and Dan Brandon. He is 6'3" and weighs 190 pounds. He likes sacking the quarterback of the opposing team.



TALON CRUSE, #3
Running Back/Corner Back

Talon is a Sophomore and the son of Donnie and Judy Cruse of Flomot. He is 5'8" and weighs 146 pounds. He likes running the ball in football.

New Teacher Feature

by Lindsey Williams



JOANIE STEPHENS

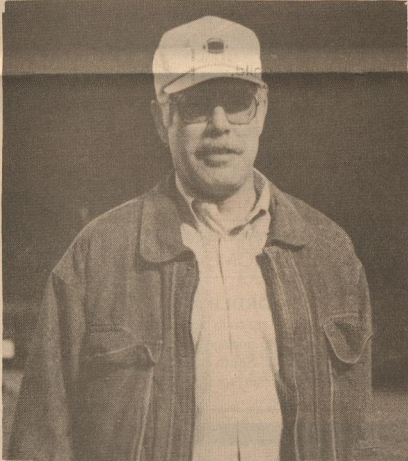
Joanie Stephens is the new teacher of a rambunctious group of Pre-K students. This is the first year for our school to offer Pre-K and it is really working out

great.
Joanie is the daughter of Alfred and Louise Barton of Matador. She graduated from Matador High School as a member of the class of 1966. She went to college at Texas Tech and graduated with an English major and Government minor in 1970. She later completed requirements for her Elementary Certificate at Wayland.

Mrs. Stephens and her husband, Roy, have two children, Amy, who lives and works in Lubbock, and Tye, who is a student at South Plains College.

Mrs. Stephens has worked at various other places. She has helped her husband operate the Midway Drive-In Theater. She also worked in a restaurant. She has worked at the ASCS office and she taught at Valley for two years.

She really enjoys teaching Pre-K and her goals for this year are to build each child's self-esteem and to work on reading and math readiness.



BOOSTER CLUB 'DAD OF THE WEEK' — Jeff Thacker was named the first Booster Club Dad of the Week at last Friday night's game. He will be allowed to stand with the team on sidelines at this week's game. Jeff is the father of Motley County Matador, Junior, Brad Thacker.



FRESHMAN CLASS OFFICERS — 1994-95 Freshman Class Officers are pictured left to right, President, Joe Mangram; Secretary/Treasurer, Rebekah Jameson; Reporter, Jill Stanley; and Vice-President, Aaron Green. Not pictured are Student Council Representatives, Ryan Martin and Tanya Barkley.

SENATOR STEVE CARRIKER Helping Older Texans

- Passed a law allowing the elderly to get care at home instead of having to go to nursing homes
- Protected the elderly by making health insurance company scams a crime
- Named Legislator of the Year by:
 - Texas Academy of Family Physicians
 - Texas Joint Conference on Aging
 - Older Women's League

Pub. Ad. Pd. by the Carriker Campaign, P.O. Box 517, Roby, TX 79643

Methodist Youth Group Meets

by Lindsey Williams

The Methodist Youth Group had another meeting on Wednesday, September 29. Some special activities were decided upon and approved. We will be joining with the Assembly of God Youth Group of Roaring Springs in collecting food items for families in need. Each of the members of the youth groups will get together and make baskets for the foods and distribute them during Christmas.

We will be collecting food for the next 10 Sundays. Anyone wishing to give food can bring it to the Methodist Church.

Plans are still underway, but we wish to put on a Christmas program during the Christmas holidays.

Ninth Graders Learn About Designing A Home

Students in Mrs. Campbell's Home-making Class visited the home of Mr. and Mrs. Charles Keith to learn about designing a home to meet their needs and wants,

new building materials, furnishings, and the latest in energy saving devices for cost conscious consumers who also want low maintenance.

BEAT PETERSBURG!

Check Us Out For Our Delicious Weekly Specials....
THURSDAY - MEXICAN DINNER
FRIDAY - FISH FRY
SATURDAY - BARBECUE BRISKET

Served All Day!
All Senior Citizens (over 65) may receive free coffee any time of the day

Billie Dean's Restaurant

TAX NEWS

by Kathleen Wason

The Motley County Appraisal District received the results from the State Comptroller for the 1994 valuation study. Motley County is in compliance and good standing with the State.

The Appraisal District researched sales on properties in Motley County and valuations did not increase for 1994 but overall valuation is down due to mineral losses. Four entities had to increase rates due to the loss in value.

It is not appealing to receive statements in the mail but we must remember what these funds are used for. Motley County I.S.D. operates on these funds and without a school you lose your community. Motley County will pay their taxes to the school where the kids are bused - it will NOT get rid of the school tax. Others that depend on these funds to operate include:

- City Services, County Services, Motley County Clinic, Fire Department, Library, E.M.S.

**IT PAYS TO ADVERTISE
IN THE
MOTLEY COUNTY TRIBUNE**

*For prices and information
call 347-2400 or 347-2774*

*The Children of
Artie Wason
invite you to help celebrate her
90th Birthday
Saturday, October 22, 1994
3:00 - 5:00 p.m.
First United Methodist Church*

No Gifts Please

Expressing Interest May Be Key To Improving A Child's Grades

The first milestone of the new school year has arrived - the report card. If grades need a little work, parental support can make a difference.

"Providing structure and expressing interest may be the keys to improving a child's grades," said Dr. Lou Ann Mock, a child psychologist at Baylor College of Medicine in Houston.

"Rather than punish a child after the first report card, parents might want to take a more positive attitude of 'how can we work together to fix this problem?'"

The first step is to talk with the teacher, and then begin to implement some change at home.

One essential at home is adequate study space with good lighting and few distractions.

"A desk in a room is fine if it isn't covered with clothes and belongings," Mock said. "Many times the dining room or kitchen table works well and makes parental supervision a little easier."

Mock also encourages parents to set a specific time in the evening for studies. "Allow some time for outside play or for an after-school snack, but make television off limits until after homework time," she said.

It might be necessary to sit with a young child just starting a homework routine, but parents should pull back as soon as possible so the child can learn to work independently.

"Let your child know you have other responsibilities to take care of, but check in occasionally," Mock said. "This provides structure, but keeps you from hovering over your child."

If grades are suffering because a child claims to have no homework, Mock suggests implementing a daily assignment sheet initiated by the teacher. This system allows parents to monitor assignments and reward their child for completing assigned work.

"A minimal reward for remembering assignments four nights out of five puts the focus on the positive, not the negative," Mock said.

There are also times when a child will need help with new concepts. In families where homework has been a previous source of conflict, Mock suggests using a tag-team approach with parents taking turns working with the child. Another option, she says, is to hire a high school student or someone else as a tutor.

And if grades do not improve?

"Meet with the teacher again, and make sure you are not expecting more than the child can deliver," she said. "Helping a child learn to put forth his or her best effort may be more important than a grade on a report card."

Autumn Care Brings Lush Lawns

(NU) - Fall may bring a reprieve from mowing grass, but there's still other lawn work to be done. Autumn is the best time to fertilize for a healthy, lush and green lawn in the spring.

However, be careful to balance that desire for healthy, attractive lawns with an awareness of the dangers of using fertilizers that contain hazardous chemicals and pesticides. New, more natural products contain ingredients that government agricultural and environmental authorities generally acknowledge can be handled, walked on and played on without danger.

Interestingly, the ingredients in these products sound very much like those in a multivitamin.

Most fertilizers have always contained three main nutrients: nitrogen, to help create greener grass and plants; phosphorus, to maintain balanced root and leaf growth; and potassium, for stress-resistance to drought and heat.

To these basic nutrients, a new "natural" line of lawn and garden fertilizers known as Toro Nurture adds calcium, sulfur, iron, chlorine, manganese, magnesium, zinc and copper.

Invented by scientists at The

Toro Company — best known for its line of lawnmowers — Nurture's ingredients are intended to supplement the soil's natural food supply without the use of any animal wastes or pesticides.

Available in dry or liquid form, the product is a bio-fertilizer, meaning it contains natural biological ingredients.

The purpose of the user-friendly fertilizer is simple: "The basis for the product line is to improve the soil, the place where plants live," says Rob Beachy, director of Toro's research and development.

The Toro Nurture mixture is the result of 18 years of research on agricultural and golf course turf, Beachy says.

Even the best fertilizer can come up short, however, if it is not spread evenly on the lawn.

Beachy has come up with a solution to those uneven lawn patches with a patented device called Mow & Feed. It is a spreader designed to attach to Toro and Lawn-Boy brand lawnmowers. The spreader allows the user to follow the cut grass as a guide.

Finally, for that last cutting of the fall, Beachy recommends not to cut the grass short, leaving it at normal length.

Arbor Day Foundation Offers Free Shade Trees

Ten free shade trees will be given to each person who joins The National Arbor Day Foundation during October 1994. The free trees are part of the nonprofit Foundation's Trees for America campaign.

The ten shade trees are Sugar Maple, Red Oak, Pin Oak, Green Ash Thornless Honeylocust, Weeping Willow, River Birch, Tuliptree, Silver Maple, and Red Maple.

"Spectacular fall colors are among the many benefits of these beautiful shade trees," John Rosenow, the Foundation's

president, said.

The trees will be shipped postpaid at the right time for planting between November 1 and December 10 with enclosed planting instructions. The six to twelve inch trees are guaranteed to grow, or they will be replaced free of charge.

To become a member of the Foundation and to receive the free trees, send a \$10 membership contribution to SHADE TREES, National Arbor Day Foundation, 100 Arbor Avenue, Nebraska City, NE 68410, by October 31, 1994.

Advice is like snow; the softer it falls, the longer it dwells upon, and the deeper it sinks into, the mind.

—Samuel Taylor Coleridge

ALOE VERA: NATURE'S MIRACLE

Enjoy Nature's Advantage

ANALGESIC LOTION | MIRACLE AID CREME

Aloe Relief Analgesic Lotion is a creamy penetrating liniment, instantly soothing to the skin. May be used for fast, temporary relief of:

This rich, soothing, moisturizing cream quickly restores and reconditions damaged skin. Experience remarkable results for:



- Joint Pain
- Arthritic Pain
- Sore Muscles
- Muscle Aches

**Best Buy
Get Both For
\$17.50**

- Dry Skin
- Sunburn
- Irritations
- Aging Skin

4 oz. Bottle... \$9.95

4 oz. Bottle... \$9.95

**EXPERIENCE THE ALOE MASTER DIFFERENCE
NO COMPROMISE FOR QUALITY**

ORDER NOW!

Send your name, address, zip code, product order and proper payment plus \$2.45 postage and handling to:

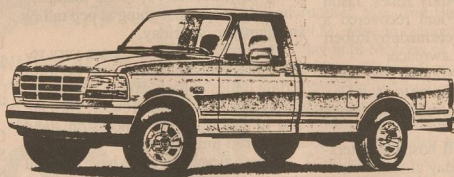
American Melody, 123 South Street, Oyster Bay, NY 11771
NY residents add appropriate sales tax. Please print clearly.

FLOYDADA FORD 1-800-945-4260

NOW THRU OCTOBER 23rd.

2.9%

4.9 Liter Manual Transmission
Regular Cab Pickups



NEW F-SERIES

USED CAR & TRUCK BARGAINS * USED CAR & TRUCK BARGAINS

87 FORD F150 RED, 60,000 MILES \$6995	91 FORD F 150 XLT SUPERCAB B 34,000 MI. \$12,995	93 MERCURY SABLE GS 4 DR., LOADED \$12,995
90 FORD SUPERCAB XLT, BLUE/WHITE, 56,000 \$11,995	93 FORD F150 XLT, GREY, RED, NICE \$14,995	90 NISSAN SENTRA XE, 4 DR., 40,000 ACTUAL \$6,500
92 FORD F150 AUTO, AIR, WHITE \$10,995	88 FORD SUPERCAB 351 XLT, NICE \$7,995	91 PONTIAC GRAND AM 4 DR., LE, BRIGHT RED \$9,495
93 RANGER XLT MOCHA, 17,000 MILES \$9,995	92 T BIRD LX RED, LOADED \$12,995	92 FORD TEMPO 2 DR., AIR \$7,995
94 CHEVY EXTENDED CAB 4X4 Z71 PKG. \$22,500	81 OLDS 98 4 DR., BLUE \$2,495	93 LINCOLN TOWNCAR SIGNATURE SERIES \$23,500

OPEN MONDAY - FRIDAY, 8 A.M. - 6 P.M.

FLOYDADA

FORD - MERCURY

Ralls Highway, Floydada

983-3761

1-800-945-4260

Crosbyton Clinic Hospital

**COMMITTED
To The People Of This Region**

Over 1,200,000 (Million) Invested In Modern Medical Equipment And Facility Additions/Renovations Over The Past 5 Years.

Over 140 Employees (Jobs).

Over 2 (Million) In Annual Payroll.

Addition Of Home Health, Physical Therapy, E.M.S., Nuclear Medicine, Fitness/Wellness Center, Speciality Clinics, Doctors To Better Meet Your Needs.

Committed To Adding Other Services In The Future. (Under Consideration Childcare, Cardiac Rehabilitation Facility).

Trade With Local Business When Possible.

By Continuing To Utilize The Services Of The Doctors At Crosbyton Clinic Hospital, You Help Insure That The Hospital Will Be Here In The Future To Serve You And Your Family.

"NEIGHBORS HELPING NEIGHBORS"

An Affiliate of
ST. MARY OF THE PLAINS HOSPITAL
A Division of Sacred Heart Hospital

675-2382

© 1994 by The Crosby County News & Chronicle

Cooking Corner

Tips To Help You

CALIFORNIA DATE-CHICKEN SALAD
2 oranges
8 cups mixed salad greens, washed
2 cooked chicken breast halves, shredded (1-3/4 cups)
3/4 cup pitted California dates, sliced
1/2 cup coarsely chopped toasted walnuts
1/3 cup crumbled blue cheese
3 Tablespoons olive oil
1 Tablespoon balsamic or red wine vinegar

Salt and black pepper, to taste

Slice peel and pith from oranges. Slice oranges cross-wise into 1/4-inch slices. Cut slices into quarters. Toss oranges in a large bowl with salad greens, chicken, dates, walnuts and blue cheese. Whisk together olive oil and vinegar. Toss salad with dressing until lightly coated. Season to taste with salt and pepper.

Makes 2 servings (4 appetizer servings).

ORANGE DRESSING
1/2 cup olive oil
1/4 cup orange juice
1/4 cup red wine vinegar
Salt and black pepper, to taste

Whisk together all ingredients until well combined.

A man must not swallow more beliefs than he can digest.

—Havelock Ellis

Fall Planting Tips for Beautiful Springtime Blossoms



HOME & GARDEN FEATURES

BULBS, GLORIOUS BULBS - Tulips and other spring-flowering bulbs give the landscape a touch of royal splendor. To protect colorful blossoms from hungry animals, spray them with Ro-Pel Bulb Protector.

Traditionally considered a time for raking leaves, carving pumpkins, hay rides, and football games, autumn is also the best time for planting flowering bulbs. Planted during fall, in flower beds, rock gardens, along a hedge or fence, or in the lawn, bulbs are a great way to add a splash of color to any landscape.

Easy to plant and cultivate, bulb blossoms will thrive next spring if they are given a hospitable growing environment and are properly groomed this fall for winter dormancy. Bulbs should also be protected from foraging animals by soaking them in a repellent, such as Ro-Pel Bulb Protector, prior to planting.

The most difficult part of planting spring-flowering bulbs is choosing from among the hundreds of species and hybrids available. Some of the most sought after varieties include:

Tulips - The most popular of all spring flowering bulbs, tulips offer gardeners a wide range of choices in height, color, shape and bloom time.

Narcissus - More commonly referred to as daffodils, this winter-hardy flower comes in many shapes and colors. These bulbs develop extensive root systems in fall and provide better flowering results in colder climates.

Muscari - Nicknamed the "Grape

Hyacinth," these tiny, bright purple flowers multiply quickly and resemble bunches of upturned grapes. Flowers stay in bloom for one to three weeks and thrive in sun or shade. They are an excellent choice for borders.

Chionodoxa - Commonly known as "Glory-of-the-Snow," this spring flower blooms in loose clusters of white, blue or pink, and can vary from three to 10 inches in height. This bulb type is an ideal plant for borders and rock gardens.

Planting Tips - Whether they are planted individually or in groups, spring-flowering bulbs will thrive and flourish if you follow these few simple planting procedures:

Prepare the Soil - Once the planting bed has been selected, turn the soil over to a depth of about 10 inches to aerate the site and give bulb roots ample room to grow. Quick to rot if left in standing water, spring-flowering bulbs flourish best in light, well-drained soil. Where necessary, condition soil with fertilizer as required.

Plant at Proper Depth - Using a bulb planter or trowel to dig holes, the general rule of thumb is to plant bulbs to a depth of three times their overall height. With the soil removed to the required depth, lightly press bulbs into place bottom side down (the flat side is the bottom), return the soil, and water thoroughly.

Remember, if bulbs are planted too

shallow the freezing and thawing of surrounding soil may interrupt their dormant phase; permanently damaging root systems and limiting your chance of bright, healthy blossoms.

Protect Against Pests - Bulbs are a tasty treat for many hungry creatures, such as mice, moles, squirrels and chipmunks. To keep these animals from making a restaurant out of your garden, soak each bulb for a minute, prior to planting, in Ro-Pel Bulb Protector, a safe and effective animal repellent that works on the principle of aversive taste. Non-hazardous and ecologically-sound, Ro-Pel will give any bulb-feasting creature a "bitter" reminder that this property is off limits.

To ensure that hungry animals don't return to feed, Ro-Pel is also formulated with a mild medicinal tag scent. After one or two visits to your garden, animals quickly associate the odor with the subsequent vile taste in their mouth. As a result, racoons, chipmunks, squirrels and other animals can be literally "trained" to leave your garden alone and move on to someone else's garden.

After bulbs have grown and flowered, spray the blossoms with Ro-Pel again to deter animals such as deer and rabbits from chewing on flowers and other foliage.

Groom With Caution - If you already have blossoms, the best way to ensure that bulbs flower again next year is to "deadhead" (remove the dying blossom) from the wilting plant at season's end, but allow foliage to wither without immediate pruning. This is crucial as stems and leaves continue to create and store food for winter dormancy and eventual use next spring.

Once in place, most bulb gardens can be left to multiply and flourish. With a little time and effort this fall, flowering bulbs will provide colorful, bright blossoms next spring and year-round.

A man must love a thing very much if he not only practices it without any hope of fame and money, but even practices it without any hope of doing it well.

—G.K. Chesterton

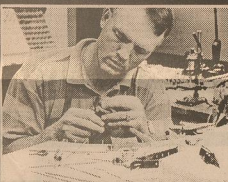
New Shipment of Fall Decorator Items
Wall & Door hangings,
Wreaths, Baskets, etc.
New selection of Windchimes
The Windmill

Our Fall Sale

is a special time when we can offer you fantastic savings on our entire inventory. Layaways and special orders are included.



We invite you to come in and take advantage of remarkable custom jewelry at the lowest prices of the year.



COMPARE OUR PRICES

Thacker is a true jewelry manufacturer and we can beat anyone's price in this area. Simply bring their quote or advertisement in for your best price.

\$5,000 SHOPPING SPREE

Register Today for a Fantastic \$5,000 Shopping Spree!

COME IN TODAY FOR DETAILS!

12th annual FALL SALE



Ladies Panda Coin Ring

1/20 th oz. 24K gold Panda coin. A twist design surrounds the coin, 14K gold ring.

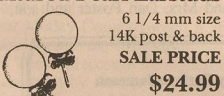
SALE PRICE \$89.00

Marquise Anniversary Band



SALE PRICE
7 MQS 1/2 ct \$549.00
7 MQS 1 ct \$999.00

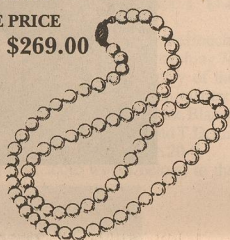
Cultured Pearl Earstuds



6 1/4 mm size
14K post & back
SALE PRICE
\$24.99

Cultured Pearl Necklace

SALE PRICE
16" \$269.00



Diamond Stud Earrings

Dazzling diamond studs in 14K gold setting. A wide variety of sizes available.



SALE PRICE
1/10ct \$59.95
1/4ct \$169.95
1/2ct \$469.95
1"ct \$1,299.00

Diamond Drop Pendant

A classic brilliant round diamond drop in a 14K gold setting. Many sizes and styles available



SALE PRICE

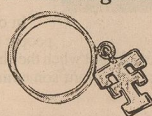
1/10ct \$64.95, 1/4 ct \$229.95
1/2 ct \$599.00

14K Gold 18" Rope Necklace



SALE PRICE
\$42.99

Ladies 14K Tech Dangle Ring



SALE PRICE
\$49.95



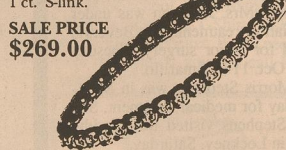
SALE PRICE
\$1,899.00

14K Gold Shrimp Earrings



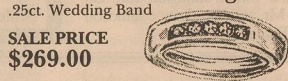
SALE PRICE
\$39.99

Tennis Bracelet



1 ct. S-link.
SALE PRICE
\$269.00

Man's 5 Diamond Ring



.25ct. Wedding Band
SALE PRICE
\$269.00

Ladies Diamond Waterfall Ring



19 Diamonds
2 ct. total weight.
SALE PRICE
\$999.00



14K Diamond Slide for wide herringbone chain. .28 ct. total weight.

SALE PRICE
\$229.00

14K Ladies Diamond Baguette Heart Pendant



1 ct. \$1,099.00



THACKER JEWELRY

LUBBOCK • 82ND & QUAKER • 806/794-7766 • HOURS: MON.-SAT. 10-6
ROARING SPRINGS • 200 BROADWAY • 806/348-7546 • 1-800-237-0918

- Color TVs
- Lawnmowers
- Computers
- Cameras
- Tools
- Silver
- Cash
- CD Players
- Hunting Rifles
- VCRs
- Bicycles
- Furniture
- Saddles
- Ski Boats
- Camcorders
- Watches
- Rings
- China
- Office Supplies
- Golf Clubs
- Toys
- Desks
- Printers
- Fax Machines

A Burglar Can Get Away With A Lot In The Dark.

Shed some light on the problem with floodlights, guard-lites and post-top lamps from West Texas Utilities. For one low monthly fee, we'll provide normal installation, maintenance, replacement components and electricity. You'll have a lighting system tailored to your needs. Call your local WTU office today (before sundown) for a FREE estimate or more information.

WTU

WEST TEXAS UTILITIES COMPANY

News Around Motley County

Roaring Springs News

by Odessa Mullins & Roxie Lewis

GUILD MEETS IN PEACOCK HOME

Mrs. Lee Peacock hosted the Guild last Wednesday evening with thirteen in addition to hostess present. Mary Kelly said the opening prayer. Mary Lumsden brought the devotional using the question, "Can You Say" to present answers Christians should give. Chelsea Read brought the lesson on the requirements of rebirth to become a Christian. Mrs. Read closed the meeting with a prayer. Others present were Suzanne Abbott, Opal Bradford, Billie Clifton, Darleen Fletcher, Freda Keahy, Debbie Martin, Pearl Patten, Imogene Swim, Lula Swim, and Grace Zabielski. ***

Mrs. Vera Mitchell spent the past weekend with her daughter and husband, Rev. and Mrs. Benny Goss where she enjoyed especially the privilege of hearing Rev. Goss preach. Her daughter came for her Friday. She and her husband brought her home and he winterized his mother-in-law's air conditioner.

Teresa Goin Completes Basic Training

U.S. Marine PVT Teresa M. Goin has completed basic training after three months. During recruit training, instruction was given in drill, weapons, map and compass courses, military justice, first aid, and Marine Corps customs and courtesies. PVT Goin graduated with honors for being the highest shooter of the M16A2 Service Rifle in the platoon. The score was an expert score, 224.

Mrs. Mamie Duren, for many years a resident of this community, is now in a new situation, where she hopes her friends here will find her in person or by mail. Her address is C9 Bivins Nursing Home, 1001 Wallace Blvd., Amarillo, Texas 79106.

Odessa Mullins accompanied Bess Ferguson to Plainview Thursday for Miss Ferguson a Dr. appointment.

Mrs. J.T. Swim and her sister-in-law, Miss Lula Swim visited her son and family, Mr. and Mrs. J.R. Swim and Emily in Abilene. The J.R. Swim's son, Edward and his wife, Kimberly, of San Angelo were also guests in his parents' home. Edward teaches in San Angelo and Kimberly is a student in San Angelo State University.

Arriving today for a long weekend visit with Mrs. Roxie Lewis are her daughter and husband, Mr. and Mrs. B.N. Smallwood of LaPryor, Texas.

Mrs. Dorothy Lee chauffeured Mr. and Mrs. W.H. Marshall to Floydada to keep a dental appointment Monday morning for Mrs. Marshall to have an achey tooth pulled.

Flomot News

by Earlyne Jameson

ARRIVAL ANNOUNCED

Mr. and Mrs. Howard Rogers are proud to announce the arrival of a great-granddaughter, Katlynn Nichole. She was born Tuesday, Oct. 4 at the Methodist Hospital in Lubbock and weighed seven pounds and six ounces.

Parents of the new arrival are Mr. and Mrs. Randy Rogers and grandparents are Mr. and Mrs. Ronnie Rogers, all of Lubbock.

Mr. and Mrs. Howard Rogers and Donnie Rogers visited the families Wednesday. ***

Mr. and Mrs. Breck Dockery and daughter, Brittany of Vernon and Kayla Johnson of Floydada visited from Friday until Sunday with their parents, Mr. and Mrs. Arnold Johnson. Also visiting during the weekend was Mrs. James May of Quitaque.

Guests of Mr. and Mrs. Gordie Washington, Sunday were Max and Gayle Washington and Anton, Laurie Washington of Lubbock, Mrs. Bruce (Melynn) Hamilton and son, Chantz of West Weber, Utah and Mr. and Mrs. Seab Washington and Mrs. Sandra Barclay, local residents. Captain Bruce Hamilton, who was unable to visit, is stationed at the Hill Air Force Base in Utah.

Donnie Cruse, Lee J. Browning and Brand Cruse recently enjoyed a ten day hunting trip to Eagle Nest, N.M.

Mr. and Mrs. Joe Edd Helms and Mr. and Mrs. Kenneth Helms helped Paula and Bobby Phillips and daughter, Au-

tumn move from Meadow to Lubbock last week.

Mr. and Mrs. Wilburn Martin and Mrs. Annie B. Cloyd visited in Amarillo, Saturday with Mrs. Leona Bell.

L.T. Starkey of Ralls visited his mother, Mrs. C.W. Starkey from Monday until Thursday. Her daughter, Mrs. Nola Mary Long of Pauls Valley, Okla. arrived Sunday to visit her this week.

George Calvert and son, Cole of Quitaque have visited during the week with his mother, Mrs. Viola Calvert.

Mrs. Connie Franks and Mrs. Sandra Barclay met their aunt, Mrs. Jimmie Ballinger of Fortuna, Calif. in Quitaque, Thursday for lunch.

Mr. and Mrs. Richard Carroll of Roswell, N.M. visited from Thursday until Sunday with his daughter and family, Mr. and Mrs. Roger Lee, Josh and Brandon.

Billy Don Hughes of Lubbock and Rickey Hughes, student at South Plains College in Levelland, visited during the weekend with their parents, Mr. and Mrs. Butch Hughes.

Mr. and Mrs. Jean Pope of Tulia and her mother, Mrs. Lucille Monk visited in Childress, Sunday with his mother, Mrs. Ethel Pope. Tuesday, Mrs. Debbie Cagle and Mrs. Monk were in Lockney for Mrs. Cagle a medical appointment and attended to business in Plainview.

Mr. and Mrs. Doyle Calvert attended to business in Lubbock, Monday and visited their children and families, Mr. and Mrs. Tim Mandrell, Dustin and Shae Lynn and Mr. and Mrs. Dan Foster and son, Keith.

Whiteflat News

by Earlyne Jameson

OVERHEARD

Pray for a good harvest, but continue to hoe. ***

RAIN AND COOL TEMPERATURES

Cold air combined with warm air blowing in from the Gulf of Mexico resulted in moisture and cooler temperatures Friday morning, Oct. 7. Tommie Jo Cruse of Flomot, NWSV, registered 0.40 inch of rain. Whiteflat residents reported 0.40 to 0.60 inch. Following the rain, nighttime temperatures this week reached only in the 50s and daytime in the 70s. The officials rainfall registered for the month of September was 2.01 inches. ***

Mr. and Mrs. Sepencer Dixon and her mother, Mrs. Ted Hester of Lovington, N.M. were in Georgetown from Thursday until Monday of last week to attend a Hester Family Reunion. They enjoyed renewing family friendships and touring historical attractions in the area.

Mrs. Juanita Cooper accompanied home, Wednesday her granddaughter, Kourtney of Amarillo, who visited her since Sunday. Mrs. Cooper remained to visit Mr. and Mrs. Ken Dunnam until Sunday. They attended a Soccer game, Sunday afternoon in which Kourtney was the goalie for her team.

Weekend visitors in the home of Mrs. Vesta Cooper were her children, Chester Cooper of Lubbock and Mr. and Mrs. Charles Stoneman of Spur.

Mr. and Mrs. Ray Holcomb of Floydada and Mr. and Mrs. James Gwinn enjoyed a vacation trip from Sept. 30 to Oct. 7 that included tourist attractions and entertainment in Eureka Springs, Arkansas and Branson, Missouri.

Mr. and Mrs. Dan Bevers of Amarillo accompanied home her mother and sister, Mrs. Malcolm Jameson and Melba who have visited in their home the past month while Mrs. Jameson was under going radiation treatments. Mr. Bevers is scheduled for major surgery, Tuesday morning, Oct. 11 in Amarillo.

Mrs. Morris Stephens was in Memphis, Friday for medical treatment. She and Mr. Stephens visited Mrs. Juddie Stephens in Lockney, Saturday.

Visiting during the weekend with Mr. and Mrs. H.R. "Skeet" Jameson were son and family, Mr. and Mrs. Lance Jameson of Wichita Falls.

Obituaries

Garland Cornell

Garland Cornell, 81, of Dallas died Tuesday, October 4, 1994 at his home in Dallas.

Graveside services were held at 2:30 p.m. at the Grove Green Cemetery in Dallas with the Rev. Ed Evans officiating.

Mr. Cornell was born in Paris, Texas October 6, 1913. He attended school in Whiteflat in the 1920's. He went into the Army in 1942 and was a Sergeant. He served on the West Coast, Germany and France. When he returned he moved to Dallas and worked as a Plumber.

He was preceded in death by his wife, Minnie, who died in 1976; two brothers, J.C. Cornell and Dorsey Cornell, and three sisters, Alma Roberts, Ethel Bishop, and Viola Mitchell.

He is survived by one daughter, Terri Lynne Bullion of Dallas; one grandson, Zachary Bullion of Dallas; two sisters, Pauline Vanderwert of Temple, and Catherine Henderson of Matador.

Matador News

C.D. Garrison returned home, Thursday from Methodist Hospital in Lubbock following surgery. With him during surgery were his wife, Evelyn and the Rev. Gaylon Cox.

But ye, brethren, be not weary in well doing.

II Thessalonians 3:13

Happy Birthday Mom



Love,
Nona & Sharon

FAITH OR MICROSCOPE?

The American poetess, Emily Dickinson, once wrote:

"Faith" is a fine invention
When Gentlemen can see
But Microscopes are prudent
In an Emergency.

In other words, faith is something that people talk about when they feel that they don't really need it. But when the chips are down and there is no visible, material help, they want something a little more tangible than "just faith."

After all, we can't live on faith, can we I mean, all that business about trusting God for everything is fine, but how far can we go with that?

But something that Emily Dickinson overlooked (and maybe we have, too) is that sometimes there's nothing left but faith, and microscopes can't answer all our questions and still all our fears. What do we do then, if we don't have faith?

The apostle Paul wrote, "We live by faith, not by sight" (II Cor. 5:7, N.I.V.)

How do you live? By faith, or with a microscope?

Roaring Springs Church of Christ

Michael G. Crowley, Sr.

Bible Study - 10:00 a.m.

Worship - 9:00 a.m.

FALL SAVINGS

Prices Effective Oct. 12-19
HWY 70 — MATADOR

SAVE ON COCA-COLA 6 PK. 12 OZ. CANS \$1.99	Enjoy AJAX LAUNDRY DETERGENT 32 OZ. \$1.29	CANADIAN BACON, EGG & BISCUIT FOR ONLY 99¢
33 oz. Glass Cleaner with Amonia Touch of Glass \$1.59	BEEF & SALSA BURRITO FOR ONLY 99¢	4 Roll Valley Fare Bath Tissue 79¢
DECKER COOKED HAM 10 OZ. PKG. \$1.99	SPEAS FARM APPLE JUICE 48 OZ. 99¢	DECKER MEAT BOLOGNA 12 OZ. PKG. 89¢

30M or 22L Fitti
Diapers \$4.99

Shurfine Zesty Original
Barbecue Sauce 99¢

SHURFINE SQUEEZE TOMATO KETCHUP 28 OZ.	99¢
SUNNY CREAM COOKIES 2 6 OZ. PKGS.	\$1.00
SPAM LUNCHEON MEAT 12 OZ.	\$1.99

**COOKED FOOD
SPECIAL
OF THE WEEK**

**ALLSUP'S
CORN DOG &
20 OZ. NR COKE**
FOR ONLY
99¢

DID YOU KNOW

THE MOTLEY COUNTY TRIBUNE

offers all this

- | | |
|-----------------------------|----------------------------|
| <i>Business Cards</i> | <i>Shower Invitations</i> |
| <i>Custom Typesetting</i> | <i>Wedding Invitations</i> |
| <i>Personalized Napkins</i> | |

and much more!

Social Security Tips

by Terry Richardson

AT SOCIAL SECURITY THE FUTURE IS NOW

Federal, State, and local governments face the challenge of delivering better service faster and at less cost at a time when demand for these services is growing and budgets are tighter. Computer and information technologies offer a number of near-term opportunities for delivering government services electronically. People who receive Social Security benefits or are just interested in learning more about Social Security services will benefit from this new technology.

New electronic technology will allow individuals to get many different kinds of Social Security information from "the information superhighway." All you need is access to a computer, connection to an Internet node (which may be obtained at an educational institution and a printer. Currently available are Social Security publications, information about pending legislation, regulations, Commissioner's statements, press releases, and statistical tables.

Within the next few years, all of Social Security's components - including field offices - will be using some of these new technologies. Field representatives will have access to electronic mail, CD-ROM (compact disc-read only memory), as well as other new technologies necessary to provide world-class service. If you are on a mountaintop or in a hospital or any place in between, your field representative will be able to bring all the information he or she needs to serve you. Your representative will just need to pack a laptop computer and he or she will have access to all the information available in your District Office.

The future is now. Information technologies will offer almost limitless opportunities for electronic delivery of Social Security services. You can be certain, however, we will make sure the electronic delivery of services accommodates all citizens - not just the affluent or computer literate - and makes the best use of scarce taxpayer dollars.



Senate approval of the conference report on a Bill combining USDA Reorganization and Federal Crop Insurance Reform paves the way for Presidential approval of the reform packages according to officials at Lubbock-based Plains Cotton Growers (PCG).

The Senate approved the conference report on the combined legislation late Tuesday. The House of Representatives approved the conference report on Monday. The following are some of the preliminary details available on the two measures.

USDA Reorganization

The Department of Agriculture Reorganization Act of 1994 promises significant change in the structure of the USDA, notes PCG Executive Vice President Donald Johnson.

Under the USDA Reorganization Plan the Secretary of Agriculture has the authority to eliminate personnel and field offices and combine farmer programs under a single agency called the Consolidated Farm Service Agency (CFSA). The CFSA will be made up of the Agricultural Stabilization and Conservation Service, the Federal Crop Insurance Corporation and the Farmers Home Administration. The law also requires the establishment of locally-elected, 3-5 member, CFSA farmer committees to administer and oversee USDA farm programs for a county or area.

"We are still a long way from knowing exactly where many USDA programs will fall within the new structure," explained Johnson. "However, it appears that all of the commodity and income price support programs, crop insurance, farm lending and the Agricultural Conservation Program and the Conservation Reserve Program will be housed under the roof of the CFSA."

The Bill also creates a new Natural Resources Conservation Commission

(NRCS) to administer all agriculture-related conservation programs, except those assigned to the CFSA.

Under the Bill producers will be permitted to appeal adverse decisions by the NRCS, including technical determinations, to the locally-elected CFSA county committee.

Federal Crop Insurance Reform

The Federal Crop Insurance Reform Act of 1994 repeals ad hoc disaster authority and replaces it with a federally funded catastrophic insurance policy for crop losses or prevented planting caused by drought, flood, or other natural disasters.

The catastrophic risk coverage covers crop losses exceeding 50 percent of normal yield at 60 percent of the expected market price beginning in 1995. To obtain the coverage producers will be required to pay a processing fee of \$50 per crop per county capped at \$200 per producer per county. For producers with more than one crop in more than one county a total limit of \$600 (no matter how many counties or crops) has been set.

Participants in FmHA farm lending programs and Federal price support programs for tobacco, rice, cotton, feed grains, wheat, peanuts, oilseeds and sugar will be required to obtain at least the catastrophic insurance coverage to remain eligible for those programs.

Producers will be able to obtain the catastrophic coverage from either private insurance providers or their local CFSA office if authorized by the Secretary of Agriculture. Producers wishing to purchase higher levels of insurance coverage will only be able to do so through private insurers. A \$10 per policy surcharge will be applied to buy-up coverage.

Additional information about the legislation will be made available as it is released.

2 CEU's To Be Offered At Fall Cotton Tour In Flomot

Two (2) CEU's for recertification of private applicator's license will be available at the Motley County Fall Cotton Tour set for Friday, October 14th. Registration for the tour will start at 7:15 a.m. at the Flomot Community Center. Breakfast will be served at 7:30 a.m.

Sponsors for the event include: Zeneca Ag Products, Flomot Gin, Stockman's Supply, and Monsanto Ag Company.

The cotton tour, which will be conducted by the Motley County Agriculture Committee and the Texas Agricultural Extension Service, will include a demonstration of the new UD cotton press at the Flomot Gin and stops at harvest-aid cotton demonstrations. Kater Hake, Extension Cotton Specialist from Lubbock, will address harvest-aid chemicals and the cotton grading system. Emory Borg, Extension Entomologist from Vernon will

give an update on the Boll Weevil Eradication Program. Michael Clawson, Motley County Extension Agent, will present a program on the Immigration Reform and Control Act.

Anyone planning to attend the Fall Cotton Tour should contact the Motley County Extension Service at (806) 347-2733.

Individuals with disabilities who require an auxiliary aid, service, or accommodations in order to participate in this event are encouraged to contact the Motley County Extension Service to determine how reasonable accommodations can be made.

Extension programs serve people of all ages regardless of socioeconomic level, race, color, sex, religion, disability or national origin.

SAFETY SENSE

Cars and Motorcycles: A Common Road

(NAPS)—Here's good news: A growing number of drivers are concerned about sharing the road with motorcyclists.

These tips from the Motorcycle Safety Foundation may help you to prevent accidents:

- Look for motorcycles in traffic consciously, especially when crossing an intersection. It's easy to think a motorcycle is farther away than it is.

- Motorcyclists may ride in the left, center or right portion of the lane to avoid oil or potholes, or to be seen. Give them the whole lane.

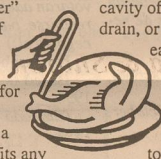
- The turn signals on most motorcycles don't cancel automatically. Don't assume that a motorcyclist is going to turn just because a signal is on.

- Remember, motorcyclists have the same rights on the highway as other vehicle operators. Please drive safely.

Introducing the amazing "TURKEY GOOSER"!

Lifts the hot, roasting turkey out of the pan in 3 seconds. Turns the turkey in 4 seconds. No drip. No burns. No mess.

The "Turkey Gooser" takes the risk out of turning a hot, dripping turkey in the pan or removing it for carving. It's solid, stainless steel with a sturdy handle and fits any size turkey. Simply insert the pointed end into the large



cavity of the turkey. Lift and drain, or lift and turn. It's that easy. Send \$9.95 plus \$2.50 s&h or order 2 for only \$18.00 plus \$4.00 s&h. Send check or money order to: "Turkey Gooser," 123 South Street, Oyster Bay, NY 11771-2281.

Makes a great gift.

Bylines

from page 1

Love is concrete with a card, a note, a flower, a little package, a tasty dish - even a morning ride in a mule buggy with your friend.

Love is dedication and unselfish work when someone has a need. Love is taking over when you have better things to do.

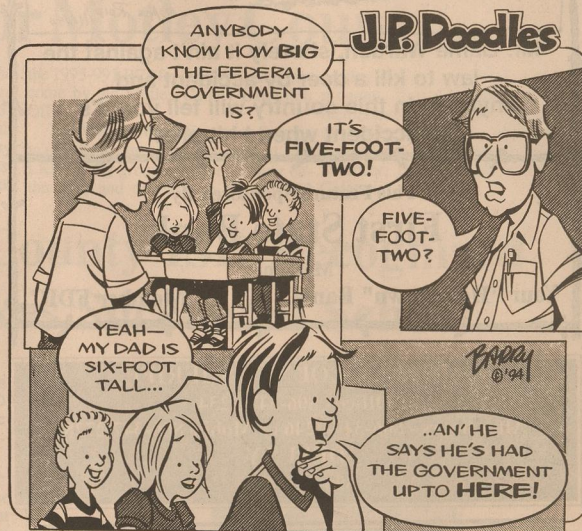
Love, too, is pain from caring too much, from wanting to protect your loved one, from insisting the one you love do something they would rather not, knowing it is for their own good.

My list is endless and I go on and on. But you have your own list.

Do remember, the ultimate love came

in the form a tiny babe born in a manger who grew up to give His life so that we would have the perfect picture of love. He's always there and He's always available. He should be the foundation for all our pictures.

To report local news
call 347-2400 or
347-2774
before noon
Tuesday



COACHES' CORNER!

Hear
MOTLEY COUNTY MATADORS'
HEAD COACH PERRY GRAVES
5 pm Friday afternoons on
KAWA - 900 AM/KFLL-95.3 FM
GO MATADORS !!!!!

Business Review

Your Vote and Influence Appreciated

VOTE FOR
LAVERNA M. PRICE
COUNTY JUDGE
MOTLEY COUNTY

Subject to General Election

This Space
Available For Only
\$35.00 Per Month!!

Friday Night Fish Fry
ALL YOU CAN EAT!!

We understand the tight schedule of some of your lunch schedules, so if you will call 347-2343 and place your order about 11:30 we will be glad to have it ready by 12:00

We will cook for special occasions!

Downtown Matador **MC CAFE** David & Sheila Womack

COOPER OIL CO.

For all your Propane needs
Gasoline, Diesel, Tires, & Oil

Call or come by!

Day - 347-2346

Night - 347-2411

Matador

Business Cards
Personalized Stationary
Shower Cards

We can set up and print many different items you may need personally or in your business
MOTLEY COUNTY TRIBUNE

Hwy. 70 E — 806-347-2400

TOMMY'S GARAGE

STATE INSPECTIONS
FULL SERVICE
AUTOMOTIVE REPAIR
LOCAL CUSTOMER TOWING
24 HR. WRECKER SERVICE
PICKUP & DELIVERY

Your Business is appreciated!

309 N. Main

Tommy & Kate Hurt

Phone: 806/347-246

CALL DAY OR NIGHT FOR PROPANE & ELECTRICAL SERVICE

MARSHALL BROS.

PROPANE 347-2290 ELECTRIC

LONG REAL ESTATE

Roaring Springs

1. 2 Bdrm. Asb. Bd. Dwg. in Roaring Springs
2. 2 Bdrm., 1 Bath, Asb. Bd. Dwg., Roaring Springs

Call 806-348-7531

Night 348-7510 or night 348-7284



Don Karr
Agent
Res. (806) 294-5423
Consultants

Brokers
Appraisers

Farm & Ranch
Real Estate

P.O. Box 5051
Ablene, TX 79608

Off. (915) 698-3374
FAX (915) 698-3381

McAdoo Flying Service, Inc.

30 Years Experience
RANGE & PASTURE SPECIALIST

All your crop needs
806-675-2313

Marvin Tidwell

Bill Tidwell

PAYNE FAMILY PHARMACY

Call 1-800-345-7961

for all your prescription orders
We will mail your prescriptions

Call us for all your prescription needs!
Floydada — 983-5111

Germania Insurance

Homeowners, Auto, Personal, and Farm
Liability and Life

Lee's Insurance Agency

Flomot, Texas 79234

(806) 469-5370

THE CLASSIFIEDS



"Mr. Game Warden, shorely it ain't against the law to kill a deer by accident and anybody in this country will tell you it's an accident when I hit one!"

This Feature Sponsored By
First State Bank
 Matador
 Your "Hometown" Bank Member FDIC

MOTLEY COUNTY SHERIFF
 Office - 806-347-2234
 After hours - 806-347-2246 or Mobile 806-347-2728
DEPUTY
 806-348-7945

THANK YOU

THANK YOU

The Brochure Committee of the Motley County Chamber of Commerce would like to say thank you to all the patrons who contributed to the preparation and printing of the brochures. The following is a list of contributors:

Joan Keith for setting them up to be printed. Ray Zabielski for printing. Those who gave monetarily are: Quail Pipe, Inc., Country Boutique Beauty Shop; Charlie Long Ins., L&L Cafe; Alexander Fuel, Walker Garage, Brannon Propane, Red Ball Gin, Thacker Supply, City Grocery, Thacker Laundry, Ray & Grace Zabielski, Farm Brueau, Jo-Barb-Dee, MC Cafe, Damron Boot Shop, Matador Thrifty Shop, Billie Dean's Restaurant & Motel, Franklin Jameson Well Service, Travis Jameson Drilling Co., Texas T's & Floral, Don's Automotive, Gary Lancaster CPA, Tommy's Garage, Guys & Gals, Lowe's Pay-N-Save, Matador V&S Variety, and Motley County Tribune.

If your business was not contacted please feel free to send a donation to Motley County Chamber of Commerce, Box 61, Matador, Texas 79244.

THANK YOU FOR READING THE MOTLEY COUNTY TRIBUNE!!

First Assembly of God Church

Rev. Royce Combs

Matador, Texas - 806-347-2771

Sunday School - 10 a.m.

Church - 11 a.m.

Sunday Night - 6 p.m.

Wednesday Night - 6:30 p.m.

Thou wilt keep him in perfect peace, whose mind is stayed on thee: because he trusteth in thee Isaiah 26:3

SPECIALITIES

DID YOU KNOW that your Farm Bureau membership entitles you to a \$500 discount on the purchase of a new Ford pickup. Call your local Farm Bureau office, 347-2880.

ctfn

SHAKLEE PRODUCTS

Peggy Probasco

983-5246

ALL TYPES OF EXHAUST WORK

DON'S MUFFLER SHOP
 210 W. Calif.
 Floydada, Texas
 983-2273
 1-800-866-3670

ctfn

Miscellaneous

DID YOU KNOW your Farm Bureau membership offers Accidental Death Benefits on your family. Call your local Farm Bureau office, 347-2880.

ctfn

WELDING: Call Ray, 347-2335 after 6:00 p.m. and on weekends.

2tp-41

OPM LIQUIDATION - We buy and sale Estates. Let us do your appraisals, large or small. Contact David Crawford, 806-271-3546.

4tp-44

GARAGE SALE

GARAGE SALE: Table and chairs, clothes, lots of items, 25¢, 50¢, 75¢. Friday, 9:00 a.m. til 7:00 p.m. Saturday, 9:00 a.m. - 12:00 noon. 303 Argyle, Roaring Springs.

1tp-41

WANTED

WANTED: Remember the movie made in Matador, "MacIntosh & T.J."? I would like to see it again, does anyone have a copy? Please call Barbara, 347-2774.

2tc-42

FARMERS & RANCHERS

FOR SALE: Concrete Stock tanks, 640 gallon, \$175. Call Bill after 7 p.m., 806-347-2774.

WORK WANTED

HOUSE CLEANING: Tammy Simpson & Naomi Lawrence, 347-2202 or 348-7576.

2tc-42

WORK WANTED: Will do any yard work, any house work, wash windows, etc., laundry and ironing. Call Connie or Larry, 347-2288.

2tc-41

First Assembly of God Church

Rev. Rickey Lawrence

Roaring Springs, Texas

"Jesus said unto hom, if thou canst believe, all things are possible to him that believeth." Mark 9:23

Church - 10:30 am; Sunday School - 9:30 am; Sunday Night - 6:00 pm
 Wednesday Prayer Meeting - 7:00 pm
 Missionettes for Girls — Royal Rangers for Boys

ANNOUNCEMENTS

CAR WASH
 The Roaring Springs Assembly of God Youth will be having a car wash this Saturday, October 15 at the Courthouse from 9:00 - 3:30 p.m. They will wash, vacuum, and clean your interior for a donation to be applied to their Spring Break trip. For free pick-up and delivery, by a licensed driver, call 347-2889, Kelli Jackson, after 4:00 p.m., before Saturday morning. Your support is greatly appreciated!

GET OUT ALL YOUR FRAMING to be done for Christmas gifts. The last day to bring in and order framing is **NOVEMBER 15** at **THE WINDMILL**.

FOR SALE

FOR SALE: Nice Ladies Coats, size 10, 12 and 14. Very good condition. 347-2412.

1tc-41

FOR SALE: Sweet Potatoes. Joe Edd Helms, 6 1/2 miles north of Flomot.

4tc-44

FOR SALE: Washer & Dryer in working condition, \$75 each. Please call after 5:00 p.m., 347-2831.

1tp-41

MINIATURE WINDMILLS FOR SALE: 17" high. All metal. Great Christmas gifts, \$18.00 + \$2.00 S&H. Latesha Morrison, HCR 2 Box 15, Afton, TX 79220, (806) 689-2460.

2tp-42

FOR SALE: Pigmy Goat, \$75.00. 1978 Ford Fairmont Station Wagon. Cellular Phone (seldom used). Call 348-7264.

1tp-41

FOR SALE: Good, nearly new Portable sewing machine, zig-zag, etc. \$100 or best offer. Call Barbara, 347-2774.

FOR SALE: Set of 4x4 Hub Caps. New. For Ford Pickup, \$150. Call after 7 p.m. Bill, 347-2774.

FOR SALE: Beautiful Westminister Chiming Mantle Clock. Works. Asking \$200. Will make a good Christmas gift. Call Barbara, 347-2774.

GETTING READY FOR WINTER: Put up Perma Rock behind your wood stove. Protects the wall and adds to the beauty of your room. For a 4x8 space, I paid \$249.00 for rock and backing wire. Will take less. Call Barbara, 347-2774.

FOR SALE: Used Maytag Washers and Dryers, rebuilt and guaranteed. THACKER SUPPLY, 348-7216.

HELP WANTED

OWNER/OPERATORS NEEDED: Bookers/Transportation needs owner/operators to pull meat loads to Texas. Our trailer ratio is 3 to 1. Most loads are drop and hook. Weekly settlements, unloading pay and tag payment programs. Our work is extremely steady and regular. Our operators make money! If you need to make a financial comeback, we can help. Call us for more details at Booker, TX 800-569-4633.

7tp-44

WANTED: Cowboy/Farmer. Ranch with house, near Post, cattle with wheat and haygrazer, P.O. Box 124, Post, Texas 79356.

2tc-41

NOTICE

NOTICE OF GENERAL ELECTION (AVISO DE ELECCION GENERAL)

To the registered voters of the County of Motley, Texas:

(a los votantes registrados del Condado de Motley, Texas):
 Notice is hereby given that the polling places listed below will be open from 7:00 a.m. to 7:00 p.m., November 8, 1994 for voting in a general election to elect Members of Congress, Members of the Legislature, and state, district, county and precinct officers;

(Notifiquese, por las presente, que las carillas electorales sitados abajo se abriran desde las 7:00 a.m. el 8th de Noviembre de 1994 para votar en la Eleccion General para elegir Miembros del Congreso, Miembros de la Legislatura, y oficiales del estado, distrito, condado y del precincto)

LOCATION(S) OF POLLING PLACES (DIRECCION(ES) DE LAS CASILLAS ELECTORALES)
 Precinct #1 - American Legion
 Precinct #2 - Flomot Community Center
 Precinct #3 - Northfield Church of Christ
 Precinct #4 - Roaring Springs Depot
 Precinct #5 - 4-H Building (VFW)
 Precinct #6 - Courthouse

Early voting by personal appearance will be conducted each weekday at:

(La votacion adelantada en persona se llevara a cabo de lunes a vienes en:)
 Motley County Clerk's Office
 between the hours of 9:00 a.m. and 5:00 p.m. beginning on October 19, 1994 (entre las 9:00 de la manana y las 5:00 de la tarde empezando el October 19, 1994) and ending on November 4, 1994. (Y terminando el November 4, 1994)

Applications for ballot by mail shall be mailed to:
 (Las solicitudes para boletas que se votaran ade lanada por correo deberan enviarse a:)
 Lucretia Campbell, Motley County Clerk P.O. Box 66
 Matador, Texas 79244

Applications for ballots by mail must be received no later than the close of business on:
 (Las solicitudes para boletas que se votaran ade lanada por correo deberan recibirse para el fin de las horas de negocio el:)
 November 1, 1994
 Issued this the 10th day of October, 1994
 (Emitada este dia 10th de October, 1994)

2tc-42

NOTICE OF SPECIAL ELECTION (AVISO DE ELECCION ESPECIAL)

To the registered voters of the County of Motley, Texas:

(a los votantes registrados del Condado de Motley, Texas):
 Notice is hereby given that the polling places listed below will be open from 7:00 a.m. to 7:00 p.m., on November 8, 1994, for voting in a special election to separate the County Sheriff from the County Tax Assessor/Collector.

(Notifiquese, por las presente, que las abriran desde las 7:00 a.m. hasta las 7:00 p.m. el 11-8, 1994 para votar en la Eleccion Especial para separarte the County Sheriff from the County Tax Assessor/Collector.)
 LOCATION(S) OF POLLING PLACES (DIRECCION(ES) DE LAS CASILLAS ELECTORALES)
 Precinct #1 - American Legion
 Precinct #2 - Flomot Community Center
 Precinct #3 - Northfield Church of Christ
 Precinct #4 - Roaring Springs Depot
 Precinct #5 - 4-H Building (VFW)
 Precinct #6 - Courthouse

Early voting by personal appearance will be conducted each weekday at:

(La votacion adelantada en persona se llevara a cabo de lunes a vienes en:)
 Motley County Clerk's Office.
 between the hours of 9:00 a.m. and 5:00 p.m. beginning on October 19, 1994 (entre las 9:00 de la manana y las 5:00 de la tarde empezando el October 19, 1994) and ending on November 4, 1994. (y terminando el November 4, 1994).

Applications for ballot by mail shall be mailed to:
 (Las solicitudes para boletas que se votaran adelantada por correo deberan enviarse a:)
 Lucretia Campbell, Motley County Clerk P.O. Box 66
 Matador, Texas 79244

Applications for ballots by mail must be received no later than the sienss on:
 (Las solicitudes para boletas que se votaran adelantada por correo deberan recibirse para el fin de las horas de negocio el:)
 November 1, 1994
 Issued this the 10th day of October, 1994
 (Emitada este dia 10th de October, 1994)

2tc-42

Laverna M. Price
 County Judge

Laverna M. Price
 County Judge

TexSCAN

Statewide Classified Advertising Network

More than 300 Texas newspapers for \$250. Call this newspaper for details.

ALTERNATIVE LIVESTOCK: EMU chicks for sale. Beautiful healthy birds. 6 mo. old. Competitive prices. After sale support. Free delivery, 1-800-938-7101.

GREAT HUNTING: LIVE oak and cedar country. Edwards County. Deer, turkey, exotics. 100, 151, 220, 260, 350 acres - other properties for sale. Terms 713-385-2543, 713-385-2470.

WEEKEND HUNTS, SAVE this ad, 3 guns min., family OK, some youth restrictions, no smokers, drinkers, Rocksprings area call now 210-683-3130, 4348 or 3230.

155.4 ACRES, MAJESTIC West Texas views, hills and canyons. Deer, javelina, quail. Rio Grande River access. 100 miles west of Del Rio. \$125/acre, terms. 210-257-5564.
80 ACRES, WYOMING range land liquidation by owners. \$95 down, \$89 per month, full price \$8,995. No credit qualifying. Call John 619-239-9139.

DRIVER-OUR PAY scales are on the move! Get home often. Assigned trucks & great benefits. \$1,000 experienced sign-on bonus. Call anytime - Burlington Motor Carriers: 1-800-JOIN-BMC. EOE.

ECK MILLER EXPANDING: Need flatbed drivers. All miles paid (new scale). Life/health, rider/bonus program. 1-800-395-3510. Owner/operators also welcomed! Call today - start tomorrow!

DRIVERS: FLATBED 48 State OTR. Assigned new conventionals. Competitive pay, benefits. \$1,000 sign on bonus, rider program. flexible time off. Call Roadrunner Trucking 1-800-876-7784.

ATTENTION DRIVER TEAMS: \$15,000 in bonus. Paid monthly, quarterly & yearly, plus top mileage pay. 401(K) plan, \$500 sign on bonus. Other paid benefits - vacation - Health & life - Dead head - motel/layover - Loading & unloading. Covenant Transport 1-800-441-4394/915-852-3357, solos and students welcome.

HAROLD IVES TRUCKING hiring drivers. Free driver training. Students welcome. Experience pay up to 28¢ per mile. 1995 conventional KW's here. Excellent benefits: 1-800-842-0853.

YOU CAN OWN your own home! No down payment on Miles materials. Ask about our limited time offer. Call Miles Homes today, 1-800-343-2884, ext. 2102.

SERIOUS COMPLICATIONS FROM Norplant Implants or breast lactation drug or failed back fusion? Call 1-800-833-9121 for free consultation. **Waldman, *Smallwood, *Grossman & *Carpenter since 1957. **Board certified personal injury trial lawyer. *Not certified as a specialist by Texas Board of Legal Specialization.

GOT A CAMPGROUND membership or timeshare? We'll take it. America's most successful resort resale clearinghouse. Call Resort Sales information toll free hotline 1-800-423-5967.

RAPID WEIGHT LOSS. "Specializing in difficult cases." Known nationwide for great results. *guaranteed *increases metabolism *boosts energy *stops hunger. Call United Pharmaceutical. Now save 20%. 1-800-733-3288.

SUNQUEST WOLFF TANNING beds new commercial-home units from \$199. Lamps, lotions, accessories. Monthly payments low as \$18. Call today, free new color catalog, 1-800-462-9197.

WE BUY NOTES secured by real estate. Have you sold property and financed the sale for the buyer? Turn your note into cash 1-800-969-1200.

FREE DEBT CONSOLIDATION. Immediate relief! Too many debts? Over due bills? Reduce monthly payment 30% to 50%. Eliminate interest. Stop collection callers. Restore credit. NCS, non-profit. 1-800-955-0412.

CASH FOR REAL estate notes up to 95% of your balance! No points or commissions. Cash in 5 days. Free quote. 1-800-879-2324. Open Saturdays too.

TRAIN TO BE a certified aircraft mechanic day and evening classes available. Rice Aviation, call now! 1-800-776-7423, North Houston Campus, 1-800-823-3540 South Houston Campus.

BECOME A PARALEGAL. Join one of America's fastest growing professions. Lawyer instructed home study. Specialty programs offered. P.C.D.I., Atlanta, Georgia. Free catalogue. 1-800-362-7070, Dept. LLL722.

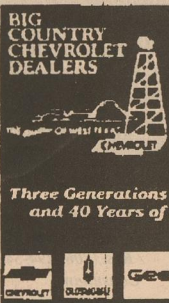
WE INVEST IN YOU! ServiceMaster invests in you. The nation's largest professional cleaning company provides the best training, equipment and support, including national advertising. Get started with about \$8,000 down plus working capital. Financing available. For free information, call: 1-800-230-2360.

ADOPTION IS a loving alternative: We long to give your baby hugs, kisses, security, education, religious values, big warm extended family. Call Susan & Jack 1-800-342-0969. It's illegal to be paid for anything beyond legal/medical expenses.

ADOPTION: LOVING, PROFESSIONAL parents eager to adopt newborn. We can provide happiness, security, much love. Legal. Confidential. Allowed expenses paid. Call our attorney: 1-800-492-2011 toll free anytime. Ask about Tom and Bonnie. (NINC) It's illegal to be paid for anything beyond legal/medical expenses.

PLEASE ANSWER OUR PRAYERS. Happily married, college educated couple wish to give love and best of everything to baby. Allowed expenses paid. Call Liz, 1-800-722-7731. It's illegal to be paid for anything beyond legal/medical expenses.

OPEN ADOPTION! BIRTHPARENTS select families and keep in touch. Waiting families from all races and religions. We care and we can help. Call now 24hrs. Winnell, Blessed Trinity Adoptions 1-800-789-5881.



Robert Hall
 Chevrolet-Olds-Geo
 Jayton, Texas

Three Generations of Excellence
 and 40 Years of Experience

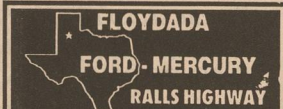


806-237-2182

1954 1994

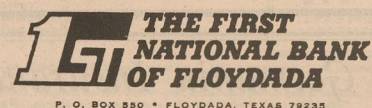
40
 YEARS OF EXCELLENCE

Robert Hall
 Chevrolet-Olds-Geo



Starting at \$19.95
 983-3761 or
 1-800-945-4260

Check first with First National for all your Banking needs



806-983-3717

"Helping you change things for the better"

Member FDIC



Bibles, Christian Books
History Books, Cookbooks
 all available at

The Motley County Tribune

FAX SERVICE AVAILABLE
 at the Motley County Tribune
 \$3.00 to Send for the first page, \$1 for each page thereafter
 \$2.00 to receive, \$1 for each page thereafter