

# Bailey County Journal

"The Community of Opportunity - Where Water Makes the Difference"

Published every Sunday at Muleshoe, Bailey County, Texas - 79347

VOL. 6 NO. 21

8 PAGES

NEWS STAND PRICE 10¢

SUNDAY, MAY 26, 1968

## Ethridge Cited as 'Outstanding Young Educator'



Wayland Ethridge

Wayland Ethridge has been named 'Outstanding Young Educator' for 1967-68.

Ethridge was presented this special award during a program held Wednesday afternoon at Muleshoe High School auditorium and conferred by Clarence Christian, president of the Jaycees, sponsoring organization. In making the presentation, Christian said "This is a special award for unique individuals. Under consideration for the honor were both male and female educators between the ages of 21 and 35 years and from this age group, we asked that educator's names and qualifications as a unique educator be submitted for consideration and today, we recognize the chosen outstanding individual."

Continuing his address, Christian added "Recently, I heard a great deal of an outstanding young man. In the last year, this young man has probably traveled more, worked harder and slept less than any young man in the world today. Yet this young man is cheerful, exuberant and enthusiastic. Recently, I heard him speak and wondered how this man has the ability to go as he does. This young man is President of the United States Jaycees, Jim Audell. I found out that makes this man tick - his philosophy that we should live life today as if there is no tomorrow.

"This is characteristic of the unique individual who deserves recognition of their achievements."

"The recipient of the 'Outstanding Young Educator' award for 1967-68 is just such a man."

Ethridge teaches High School English and social studies and in addition to his regular classroom teaching, he sponsors the 'Mule Train,' the high school

annual, 'The Mule's Tale,' which is now compiled for the Bailey County Journal as the school paper and is a Junior class sponsor.

Presently, he is serving as president of the Muleshoe Classroom Teachers Association.

He holds membership in the following professional organizations: National Educational Association, Texas State Teachers Association, Muleshoe Local Unit of Texas State Teachers Association, Texas Classroom Teachers Association and Muleshoe Classroom Teachers Association.

He is a member of the Baptist Church and has served in many places of leadership in church-related activities.

A talented musician in both vocal and instrumental music, he is now serving as organist at the First Methodist Church and is a member of the popular male quartet, the Gospel-Airs.

Those submitting his name for the special award said, "Ethridge's philosophy of teaching is: 'The purpose of education is to serve mankind, not without fellowship with one another what would be the purpose of life? God is love; love is respect, concern, determination, and a flaming desire to help fellow men.'"

"Teaching, like any profession - the ministry, the social worker, the dedicated doctor - offers opportunity to serve through influence upon early life. No other profession of service can compare with teaching, for the teacher is next to the parent in guiding young minds in their developments and future attitudes.

"Teaching is a profession for truly dedicated individuals; Cont'd, on Page 2, Col. 7

## Summer Reading Club Registration Monday

Registration for the 1968 Summer Reading Club for all boys and girls of the Muleshoe area will start at the Public Library Monday, May 27.

In keeping with Bailey County's Golden Anniversary, the club will use a western theme entitled 'Reading Round-up Time.'

To highlight the reading program for youngsters, a poster will be made and called 'Wild Horse Corral.' As each reader completes a book a different horse will be placed on the poster corral to make up the collection inside the old corral.

If more than 12 books are read by a member, a Gold Buckle award will be presented. If only 12 books are read,

the cow-poke has earned a silver saddle badge.

Texas Reading Certificates will be issued in the fall. To qualify, the reader must keep their official reading log for all books read. The log will be issued as the children register and must be returned to the Library August 20.

Librarian Anne Camp said "Children should start early so that they will have plenty of time to finish the required number of books to earn their badges and certificates. "All children under nine years of age should be accompanied by an older person when they register."

Library hours on weekdays are from 2 to 6 p.m., and Saturday from 9 a.m. to 12 noon.

## Documents Valid To Water Importation

Two study documents recently available, give added validity to water import plans in our area. The first of these is the Progress Report on West Texas and Eastern New Mexico Import Project Investigations, by the Bureau of Reclamation. This study for the first time indicates that there is a surplus of water in the Mississippi River. The amount of water which is surplus and the seasons of the year when this water can be exported is still under study by the Mississippi River Com-

mission and the U. S. Army Corps of Engineers.

The second paper is a study of Agricultural Resources Related to Water Development in Texas. This study was produced by the Texas A&M University Water Resources Institute, the Texas Agricultural Experiment Station and the Texas Agricultural Extension Service of Texas A&M University. This study is of great value to water resource planners for Texas and it is an evaluation of the effects of water availability on the future state economy. Further research relative to the impact of water availability to agriculture is underway at Texas A&M University and the results of this research will be published when available.

A potential for development such as in California and Arizona today, exists in Texas. We have the resources for both growing agriculture and industrial municipal development. The A&M University report analyzes both the agricultural potential and the resources so that they can be used in developing the state water plan.

In projecting the future water requirements of Texas agriculture an overriding consideration is mankind's need for food. The agriculture of the future must produce to meet the needs of a growing population and an improving standard of living. It must eliminate the mass malnutrition that presently exists in the world. Texas should be prepared to develop its resources to meet

Cont'd, on Page 2, Col. 8

## Three Teachers Resign: Two Hired

Board members of the Muleshoe Independent School District meeting at the regular May 20 meeting Monday accepted the resignations of Mrs. Milne Beth Gibson, Jim Gain and Byron Hardgrove and approved the employment of Jim Harvey for the position of band director of Muleshoe High School and Mrs. Barbara Jean Milburn as special education teacher at high school.

Mrs. Gibson resigned as Junior High Choir director; Gain as Junior High School band director and Hardgrove, world History teacher at high school.

Assuming duties as high school band director is Jim Harvey, a native of Lubbock. He is a graduate of Palo Duro High School, Amarillo, and attended Amarillo Junior College. Harvey received his bachelor of arts and MA degrees from Texas Technological College.

Honors include serving as drum major of Tech band 1965-1968; Outstanding Bandsman Award at Tech 1966-1967; principal hornist with concert band and orchestra at Amarillo College and at Tech, graduate teaching assistance. His wife, Judith, is a qualified elementary teacher and has taught one year in Lubbock Public Schools. They have one daughter.

The new special education teacher, Mrs. Milburn, is a graduate of Whitarral High School and she attended Hardin-Simmons College, Abilene, and Panhandle State College, Goodwell, Okla. She is a native of Tipton, Okla. Mrs. Milburn has taught in the field of special education and remedial reading at Whitarral High School, 1958 to 1962; Loveland High School, 1962 to 1965; and Walsh, Colo., Public Schools, 1965 to this year.

In other business the board selected Lewis Wayne Shafer, Bernard Phelps, Morris Douglass, Ernest Ramm and Aubrey Heathington to serve on the Equalization Board. Ken Duncan and R. L. Scott will serve as alternates.

Regarding installation of lights at the High School Tennis courts, it was reported that all materials have been purchased. The poles have been made by Ready-Mix Concrete Company. Installation will be-

gin within the next few days, the report stated.

"Gyro-Matic Safety Control" presented a demonstration of this system as a safety device for motor vehicles.

A comparison of current enrollment reports with last year's report, as of May 25, shows high school enrollment at 501, one less than the same time last year. Junior high had 496 students, eleven less; DeShazo, 431 students, 36 less; and Richland Hills Elementary,

421 students, 28 less than last year. Total enrollment for May, 1968 was 1,849 compared to 1,925 in May, 1967, a total of 76 less students.

The board also heard and studied a report from Pioneer Natural Gas Company regarding the increased gas rates at 11 1/2 percent starting September 1, 1968. The cost of the school system will be approximately \$500 more next year. The next regular meeting of the school board will be Monday, June 17 at 8 p.m.

## Team Captains

Team captains for the 1968-69 Muleshoe Mule football squad have been named, Coach Dick Stafford announced. The captains will begin activities during the summer practice sessions. They are Roger Swint, Joe Pat Riley and Charles Beamon.

For the coming year of football play, Coach Stafford said there would be eight defensive and five offensive players returning to the team.

## Grand Jury Indictments

Thirteen true bills were returned when the Grand Jury convened here for a session Thursday which concluded that day at 9:30 p.m.

Roy Martinez was indicted on charges of murder with malice aforethought in the March gunshooting of Guadalupe Gonzales. His bond was set at \$2,000.

B. J. "Bo" Robinson was indicted on an attempt murder charge which grew out of the shooting of Morris Bell. His bond was set at \$3,000.

An indictment was returned against one person (name withheld pending papers being served) on charges of auto theft of an automobile. Bond was set at \$2,000.

Melvin S. Alpha and Bobby Burk were indicted on charges of theft of a trailer and load of hay taken from W. F. Harper and bond was set at \$3,000 each.

Roy Blagg was also indicted on charges of theft, a 1965 Chevrolet Impala belonging to Ivan Tarr. His bond was set at \$2,000.

Jessie Hernandez was indicted on theft charges in connection with a stolen television, twin beds and bicycle and bond was set at \$2,000.

Samuel Salinas was indicted on charges of the theft of a calf from Don Marlow. Bond was set at \$2,000.

The remainder of the indictments were for forgery and passing.

They are against Charles Reagan with bond set at \$2,000, Patricia Jean Beat, bond set at

\$2,000; Billy Eugene Wormley, in custody in another county and Frank Smith and Jimmy Raulston charged each with forgery and passing of one check and bond set for each individual set at \$2,000, Ysidro Tovar Montoya was also indicted for forgery and passing and bond was set at \$2,000. Bond was set at \$1,000 for

Kelso Kelly after being indicted on charges of forgery and passing.

Grand jurors were Horace

Hutton, foreman, T. W. Watson, Jim Cox, Aubrey Heathington, Arvis Grogan and Truman Lindsey.

## Gonzales Arrested for Obscene Calls

After several weeks of investigation, Sammy Bryan Gonzales, Muleshoe, was arrested by Bailey County Sheriff's department on charges of obscene and profane language on the telephone.

Several women had received such calls during the past few weeks and after a number of reports and intensive investigation, the suspect was apprehended.

He has been released on a \$1,500 bond.

Also arrested by the Sheriff's department were three on charges of drunk and one juvenile was sent to Gatesville on revocation of probation. Two persons have been arrested in Houston for Bailey County authorities. They are on felony theft charges.

The City Police arrested two persons, one charged with driving while intoxicated and another for drunk.

## Dual Work Service Available To Farmer and Athlete

A service with a dual purpose is being offered for the first time this year through the cooperation of the Farm Bureau and the Athletic heads of the Muleshoe school system.

Athletes who wish to work and farmers who need young men to work may both contact the Farm Bureau for this service.

Information concerning the Department of Labor regulations may be obtained by both

the prospective employees and employer.

Assisting with the summer employment program are Coach Dick Stafford, Coach Fate Harris, Coach David Gibson, Coach Royce Barnes and Coach Bobby Graves.

This program was originated by the directors of Bailey County Farm Bureau.

Athletes who have signed up for summer employment to date are Bobby Hayes, Alford Bleeker, Keith Turner, Roy DuBoise, Mark Dillman, Leroy Medlock, Larry Mitchell, Tommy Kirven, Tyrone Clemmons, Dewayne

Cont'd, on Page 2, Col. 8

## around muleshoe with the journal staff

The Mustangs Little Leaguers had a party at the baseball field Monday night, May 20. Parents of the boys brought refreshments. Mrs. Smallwood brought the cake and Mary H. brought the punch. Johanna Gartin decorated the cups and napkins with 'Mustangs' on them. The boys surprised their coach, Charles Stewart, when they presented him a baseball with their signatures on it. After the game, since it was Charles' birthday, Don and Johanna Gartin treated the Charles Stewarts to supper in Ciovis.

Five hundred and four ice cream bars were passed out to students and teachers at Richland Hills School on Friday, the last day of school.

## Community Supper Sunday

A community-wide covered dish supper will be held at 7 p.m. Sunday, May 26, at the First Methodist Church Fellowship Hall honoring the Rev. and Mrs. J. Frank Peery and family.

Rev. Peery has been appointed to the Canyon First Methodist Church.

Church officials announce that the supper in their honor is for the general public as Rev. Peery has served in many capacities of work and endeavor in the Muleshoe area during his stay here and others with whom he has been closely associated wish to attend the gathering.

## Local Notables

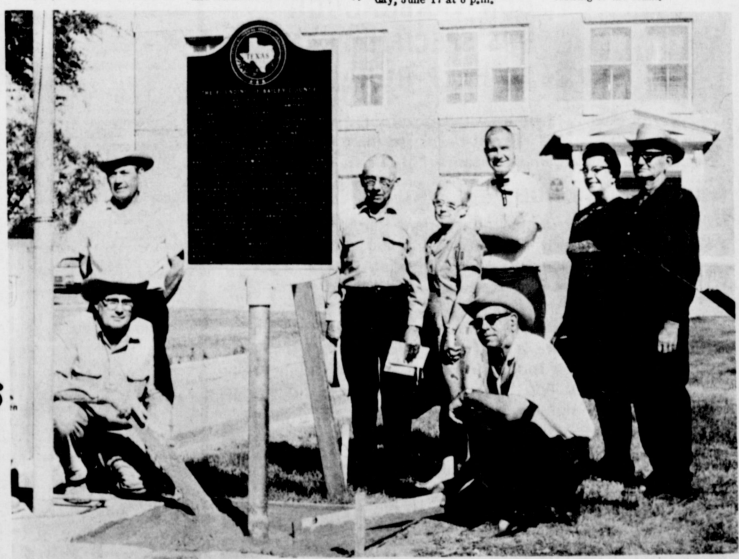
Saturday, June 1 at 8 p.m. in the High School Auditorium, the Chamber of Commerce will present "Comedy Hour" starring such notables as Larry Hall, Darlene Henry, Derrell Oliver, John Blackwell, Harmon Elliott, Max King, George Washington, Kenneth Henry, Irvin St. Clair, John Black, Muleshoe High Students, Six Dollars Combo Band, and Leland Ferris at the piano, plus several others.

Singing of teenage hit songs by your Local Merchants Glee Club, miseries facing local

citizens, skits, political gags and hilarious dance finale.

All proceeds to be used by Chamber of Commerce for Fourth of July Ceremonies.

Admission will be \$1.50 for Adults and 75 cents for children (all seats reserved). Tickets can be obtained from White's Cashway Grocery, Damon Drug, Corner Drug, Western Drug, Muleshoe State Bank and First National Bank. Rehearsals will be next week on Monday, Tuesday, and Thursday evenings at 7:30 p.m. in the High School Auditorium.



HISTORICAL MARKER--A historical marker, "The Founding of Bailey County" was erected on the lawn on the east side of the Bailey County courthouse Wednesday morning. Commissioners had granted permission for the marker to be erected during their last session. The State Historical marker will be officially dedicated during the upcoming July 4 celebration when the Golden Anniversary of Bailey County will be observed. Shown as the erection site are Cecil Davis, president of the Historical Survey Committee here, Matt Dudley, Justice Joe Vaughn, Mrs. Cecil Cole, Roy Bayless, Judge Don Cihak, Mrs. Cecil Davis and Mervin Wil- terding.

## Honor Grades Students Tie

Ten students are leaving Junior High School with top honors to enter high school next term. The top two are Johnny Hayes and Patty Murray who are tied for first place, with an average of 96, 2/3.

Two others, Marilyn Pool and Peggy Carter, tied for second place in averages and are close contenders to the first place students. Their averages are 95, 2/5.

With averages below 96 are Geraldine Gray, Martha Jane Chapman, Sue Darsey, Greta

Bamert, Lonnie Ferris, Bobba Hardaway, Lee Clodfelter, Mitzi Bass and Jimmy Lambert. All these students have an average above 92 for the year.

**CLARK ON OPEN HOUSING**  
Attorney General Ramsey Clark has asked the Supreme Court to order open housing in large subdivisions. Clark told the court segregation makes it almost impossible to provide such rights as equal schooling, equal use of community services and equal employment opportunity.

## Controls Broadleaf Weeds in GRAIN SORGHUM



## the safer, better way with CHIPMAN MCPA SODIUM SALT

### Post Emergence Weed Killer

Very selective and safe to use in sorghums, corn, small grains, and pastures. Eliminates broadleaf weed competition for increased yields and easier harvesting. Much safer to spray near cotton than 2,4-D. The better way is CHIPMAN MCPA!

Ask your Dealer or



**RHODIA INC.**  
CHIPMAN DIVISION  
Box 6272  
Bob Harris Sta.  
Pasadena, Texas 77502



**WESTERN DAY**---Along with the solemnity of the final day of school for the seniors of MHS, there was fun, too, as many of the students dressed western style to mark the "fun part" of the day. "Cowboys" dressed for the occasion were Kenneth Ragland, Rex Black and Bobby Henderson.

## Junior High Honor Roll, 92

A total of 92 students are listed on the honor roll of Muleshoe Junior High School for the final six weeks of the school term.

There are 35 from the sixth grade; 25 from the seventh grade and 32 are eighth graders. They are listed below by grades:

**SIXTH GRADE**  
Jeanie Woodall, Sherry Tyler, Laticia Rogers, Ronnie Puckett, Clifton Meyers, Don Long, Fred Locker, Viola Jackson, Cynthia King, Rejana Hardaway, Steve Block, Rosita Gutierrez, Sharon Wrinkle, Tim Wheeler, Brenda Weeks, Danita Throckmorton, Brenda St. Clair, Leesa Sanderlin and Bonnie Sain.

**SEVENTH GRADE**  
Linda Mason, Lizann Gunter, Joe Bob Fudge, Susan Foster, David Faver, Brad Davis, Ladonna Caldwell, Steve Bell, Terry Wheeler, Larry Vinson, and Marcus Puente.

**EIGHTH GRADE**  
Also Kathy Pena, Boyd McCanish, Tani Murrab, Sharon Martin, Kathleen Jennings, Donna Grimsley, Christy Ford, Jennifer Davis, Tracy Cowan, Jan Cockrell, Chris Byrd,

Also Aubrey Pitts, Sammy Mardis, Danette Mann, Mike Jones, Gayla Hooten, Donna Herring, Laquice Herman, Susan Hensley, Susan Head, David Hardgrove, Glenda Harlin, Kim Cowan, Terri Bryant, Mark Bruns, Nancy Blackstone and Jeanie Putman.

**SEVENTH GRADE**  
Linda Mason, Lizann Gunter, Joe Bob Fudge, Susan Foster, David Faver, Brad Davis, Ladonna Caldwell, Steve Bell, Terry Wheeler, Larry Vinson, and Marcus Puente.

**EIGHTH GRADE**  
Kathy Kinard, Charlotte Wedel, Mike Riley, Connie Redwine, Mark Long, Gary King, Brenda Kimbrough, Rand Baker, Vicki Copley, Margie Silguero, Jolene Rempe, Marilyn Pool, Ruby Nell Page, Debbie McDaniel, Patty Murray and Becky Milner.

Also Linda Middlebrooks, Deanna Mick, Jimmy Lambert, Johnny Hayes, Bobba Hardaway, Monica Griffiths, Geraldine Gray, Lonnie Ferris, Joann Dobbins, Sue Darsey, Lee Clodfelter, Martha Jane Chapman, Peggy Carter, Bryan Brady, Mitzi Bass and Greta Bamert.

Terry Burchel, Stephanie Bryant and Brent Blackman.

**EIGHTH GRADE**  
Kathy Kinard, Charlotte Wedel, Mike Riley, Connie Redwine, Mark Long, Gary King, Brenda Kimbrough, Rand Baker, Vicki Copley, Margie Silguero, Jolene Rempe, Marilyn Pool, Ruby Nell Page, Debbie McDaniel, Patty Murray and Becky Milner.

**SEVENTH GRADE**  
Linda Mason, Lizann Gunter, Joe Bob Fudge, Susan Foster, David Faver, Brad Davis, Ladonna Caldwell, Steve Bell, Terry Wheeler, Larry Vinson, and Marcus Puente.

**EIGHTH GRADE**  
Kathy Kinard, Jan Jinks, Eufemia Gutierrez, Adelita DeLeon, Jo Gayle Cody, Peggy Carter, Judy Calvert, Renee Caldwell, Mitzi Bass and Greta Bamert.

## Top Ten Babe Ruth Batters

With eleven games played in the 1968 Babe Ruth League season, the top ten batting averages at the present time are listed below:

NAME	TEAM	AV.
Jerry Putman	Cats	.642
Johnny Hayes	Cats	.600
Keith Turner	Cats	.500
Leroy Medlock	Cats	.461
Bucky Taylor	Colts	.429
Ricky Faver	Colts	.416
Don Heathington	Lazers	.414
Mike Casey	Lazbuddie	.395
Arthur Graves	Lazbuddie	.395
Bobby Hays	Dusters	.388

## Little League Game Results

### MAJOR RESULTS

Longhorns 5 - Cubs 14  
Cardinals 8 - Lions 7  
Sox 10 - Colts 9  
Mustangs 1 - Cubs 14  
Longhorns 5 - Lions 13  
Colts 19 - Cards 0  
Lions 9 - Mustangs 26  
Cubs 4 - Sox 14  
Colts 13 - Mustangs 12  
Cubs 7 - Lions 4  
Cardinals 12 - Sox 10  
Longhorns 8 - Colts 6  
Longhorns 9 - Sox 26  
Cardinals 12 - Cubs 7  
Mustangs 4 - Longhorns 3  
Mustangs 8 - Cardinals 5  
Sox 5 - Lions 2  
Cubs 1 - Colts 2  
Longhorns 4 - Cardinals 5  
Sox 5 - Mustangs 8  
Lions 6 - Longhorns 11

### MINOR RESULTS

Sluggers 23 - Builders 12  
Bears 7 - Shorthorns 17  
Dollar Bills 15 - Gingers 14  
U-Bars 17 - Motormen 22  
Builders - Fireballs (RO)  
Gingers 13 - Sluggers 29  
Shorthorns-U-Bars (RO)  
Dollar Bills - Motormen (RO)  
Fireballs 19 - Bears 18  
Bears 3 - Sluggers 35  
Shorthorns 14 - Dollar Bills 24  
Motormen 19 - Builders 9  
Gingers 21 - Fireballs 21  
Sluggers 24 - Shorthorns 1  
Dollar Bills 10 - U-Bars 12  
Bears 30 - Gingers 31  
Fireballs 7 - Motormen 22  
Builders 17 - U-Bars 29  
Builders 25 - Shorthorns 18  
Fireballs 7 - Sluggers 24  
Motormen 20 - Gingers 15  
Bears 14 - Dollar Bills 24  
Sluggers 9 - U-Bars 5

World's daily birth rate reported at 324,000.

## Bookmobile Schedule

**WEDNESDAY**  
Circleback 8:45-9:45  
Bula #1 10:15-11:15  
Bula #2 12:00-1:00

**THURSDAY**  
Memorial Day - Bookmobile will not run.

**FRIDAY**  
Pleasant Valley 10:00-11:00  
Sudan #1 12:00-1:00  
Sudan #2 1:00-4:00

**SATURDAY**  
Morton 9:30-12:00

the essence of life; it is itself an ecstasy."  
Ethridge is married to the former Janet Clements. They are parents of two children, a daughter, Kristi, three years and a son, Steven Royce, age three months.

**Valid...**  
Continued from Page 1  
both these future needs and its evident potential to the greatest extent possible.  
A conclusion drawn from the Texas A&M University's study is that there are areas in Texas which can produce more as water is made available at a price which will allow a profit on the irrigated farmland.

**Educator...**  
Continued from Page 1  
it must involve every possible attribute of the teacher. Students are and do become what they know. Teaching captures

**Dual...**  
Continued from Page 1  
Williams, Jimmy Lambert, Randy Field, Lee Clodfelter, Cecil Duke, Jimmy Steptoe and John Colburn.

WE WILL BE  
**CLOSED**  
Thursday, May 30th.  
**MEMORIAL DAY**  
**Muleshoe State Bank**

YES! WE CAN FILL YOUR BEEF ORDERS.  
**MULESHOE LOCKER**  
"HOME OF VANCE'S COUNTRY STYLE SAUSAGE, BACON AND HAMS."  
Bologna.....3Lb. \$1.00  
Hamburger.....Lb. 39c  
Wieners.....3 Lb. \$1.29  
Pork Steak.....Lb. 49c  
401 Main Phone 272-4703

**Farm Bureau News...**  
**ATHLETICS FARM WORK**  
**FARM BUREAU OFFERS ANOTHER Service to Farmers!**  
Employee and employer may contact the Bailey County Farm Bureau for information concerning The Department of Labor regulations. Listings available for workers.  
Athletics who need summer employment:  
Name Age Phone

Name	Age	Phone
Bobby Hayes	15	4490
Alford Bleeker	16	3696
Keith Turner	15	4640
Roy DuBoe	16	4711
Mark Dillman	15	4:02
Leroy Medlock	14	
Larry Mitchell	13	
Tommy Kirven		
Tyrone Clemmons	15	
Dewayne Williams	15	
Jimmy Lambert	13	4484
Randy Field	14	3568
Lee Clodfelter	14	3588
Cecil Duke	13	
Jimmy Steptoe	15	
John Colburn	15	4050

Please contact one of the following in case of employment:  
PHONE  
Coach Dick Stafford 4137  
Coach Fate Harris 3177  
Coach David Gibson 4041  
Coach Royce Barnes 3774  
Coach Bobby Graves 3380  
\*\*\*\*\*  
Originated by Bailey County Farm Bureau of Directors.

## Seventy-Eight Students Are Perfect Attenders

Seventy-eight students of Muleshoe Junior High School hold perfect attendance records for the 1967-68 school term. From the sixth grade the students are Tim Wheeler, Phillippe Yruegas, Perry Stockard, Ricky Smallwood, Gerald Ried, Fred Locker, James Kinard, Don Johnson, David Hardgrove, Keith Harp, Grady Lee Free, Jose Elizarrars, Tyrone Blackmon, Jeannie Woodall, Debbie West, Pauline Torres, Jeanie Putman, Danette Mann, Donna

Lambert, Donna Herring, Susan Hensley, Kim Cowan and Ronnie Davis.  
Seventh graders are Alex Ybars, Terry Wheeler, Ricky Wilcox, Terry Wagner, Vance Tucker, Kenny Taylor, Gary Merriott, Earl Ladd III, David Faver, Eddie Ellington, Brad Davis, Bill Chapman, Jackie Brun, Stephen Bell, Jearrell Bara, Felic Villa, Theresa Torres, Sharon Martin, Debbie Kerr, Andrea Hicks, Lizann Gunter, Donna Grimsley, Susan Foster and Ladonna Caldwell.  
From the eighth grade, those with perfect attendance records are: Richard Warren, Larry Shafer, Dewayne Phillips, Larry Mitchell, Johnny Hayes, Arvis Copley, David Cook, Tyrone Clemmons, Bryan Brady III, John Biekel, Kathy Wilson, Janice St. Clair, Laurie Skipworth and Kathy Schuster.  
Also Connie Redwine, Nancy Patterson, Ruby Nell Page, Judy Newman, Nanette Morris, Erlinda Lopez, Karen Locker, REAGAN SEEKS PROGRAMS  
Sacramento--Governor Ronald Reagan approved in person to the Democratic-controlled California Legislature not to "take an election year holiday" by spending its time blocking his programs.

**SINGLETON FUNERAL HOME**  
24 HOUR FUNERAL SERVICE  
PHONE 272-4574 MULESHOE

**A SAVINGS INSTITUTION DEDICATED TO THRIFT AND HOME OWNERSHIP**  
\*\*\*\*\*  
Second largest and one of the oldest Federally Chartered in New Mexico.  
\*\*\*\*\*  
**FIRST FEDERAL**  
SAVINGS & LOAN ASSOCIATION of CLOVIS  
HOME OFFICE: 8th and Pike Streets, CLOVIS, NEW MEXICO  
BRANCH OFFICE: 2nd and Abilene Street, PORTALES, NEW MEXICO

**BAILEY COUNTY JOURNAL**  
Established March 11, 1963  
Published by Mountain Publishing Co., Inc.  
Every Sunday at 3:45 Second  
11th St., Clovis, N.M.  
Janice Perry Hall, Secretary-Treasurer  
**TEXAS PRESS ASSOCIATION**  
Member Since 1968  
L.B. Hall, Publisher & Managing Editor  
Doris Kinney, News Reporter  
Kathleen Ragland, Society Reporter  
Subscription Rates:  
Zone 1--\$1.00 per year; \$4.50 per year by outside.  
Zone 2--\$1.50 per year; \$4.50 per year by outside.  
Zone 3--\$2.00 per year; \$4.50 per year by outside.  
Zone 4--\$2.50 per year; \$4.50 per year by outside.  
With The National Newspaper Guild, Inc.  
Member Since 1968  
Advertising rates upon application.  
818 1/2 N. Main Street  
CLOVIS, N.M. 88301

**“Let us recapture the pioneer spirit of cooperation to give Texas a fresh start.”**  
**DON YARBOROUGH HAS SPECIFIC PLANS TO HELP RURAL TEXAS**

Don Yarbrough will be an active governor. He can provide the strong leadership Texas needs to help the farmers, ranchers and small town businessmen of our state.

- DON YARBOROUGH WILL FIGHT FOR:**
- + Programs To Protect the Independent Family Farmer
  - + Full Parity for Texas' Farm Products and Price Protection From Foreign Imports
  - + A Statewide Water Program Based Upon Need and NOT Favoritism
  - + Programs To Develop New Markets for Texas' Products
  - + Programs To Promote Texas' Products Throughout the Nation
  - + Legislation To Halt Industrial Pollution of Our Water
  - + A Special Agency To Bring At Least One New Industry to Every Community

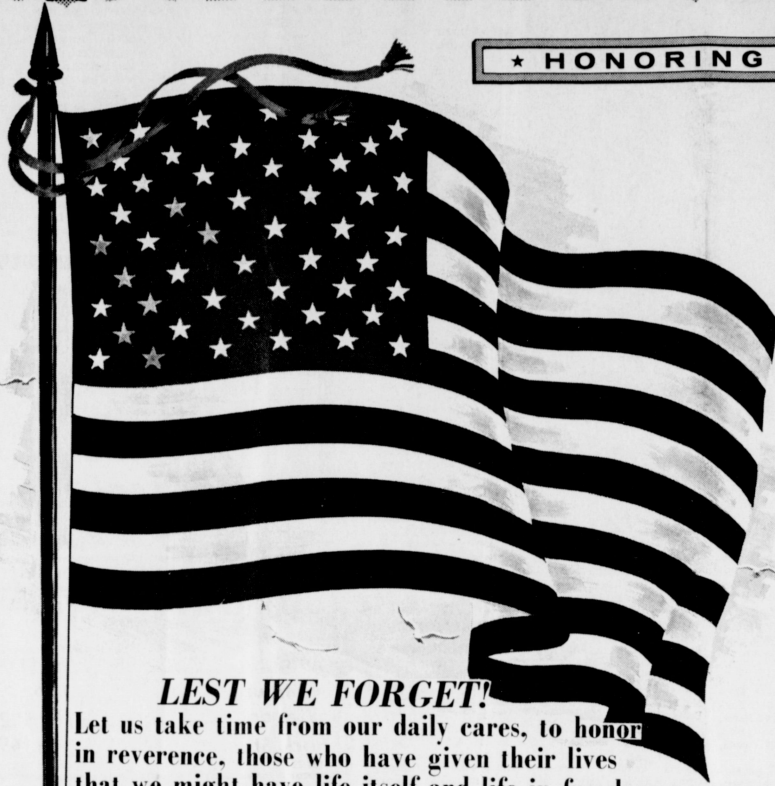
**ELECT DON YARBOROUGH GOVERNOR**  
Vote Saturday, June 1  
Paid For By Yarbrough for Governor Committee, Charla Grace Chairman

**WOULD YOU BELIEVE?**  
You can trade at home and still not make a \$300 mistake. See one of the friendly salesmen at  
**CHEVROLET THE NEW CROW CHEVROLET**  
in Muleshoe

# Memorial Day

★ HONORING OUR NATION'S HEROES ★

## MAY 30



The following firms salute our fallen heroes and urge everyone to observe Memorial Day:

### LEST WE FORGET!

Let us take time from our daily cares, to honor in reverence, those who have given their lives that we might have life itself and life in freedom. Too often, we take our freedom for granted, day by day, in this busy world. Pray we never forget our fallen heroes such as this one and many, many others.

#### The Lord's Prayer

(The following beautiful composition was found on the battlefield at Charlestown, South Carolina during the Civil War. It was written by a wounded comrade who never lived to get home.)

\*\*\*

Thou to the mercy seat our souls dost gather,  
To do our duty unto Thee. . . . .OUR FATHER

To whom all praise all honor should be given  
For Thou art the great God. . . . .WHO ART IN HEAVEN

Thou, with wisdom, rul'st the world's whole frame  
Forever therefore . . . . .HALLOWED BE THY NAME

Let nevermore delay divide us from  
Thy glorious face, but let. . . . .THY KINGDOM COME

Let Thy commands opposed be by none,  
But Thy good pleasure and . . . . .THY WILL BE DONE,

And let our promptness to obey be even  
The very same . . . . .IN EARTH AS 'TIS IN HEAVEN

Then for our souls, O Lord, we also pray,  
Thou would'st be pleased to . . . . .GIVE US THIS DAY

The food of life, wherewith our souls are fed,  
Sufficient raiment and . . . . .OUR DAILY BREAD

With every needful thing do Thou relieve us,  
And of Thy mercy, pity . . . . .AND FORGIVE US

Our misdeeds, for Him whom Thou did'st please  
To make an offering for . . . . .OUR TRESPASSES

And, forasmuch, O Lord, as we believe  
That Thou wilt pardon us . . . . .AS WE FORGIVE

Let that love teach, wherewith Thou acquaints us,  
To pardon . . . . .THOSE WHO TRESPASS AGAINST US.

And, tho sometimes, Thou find'st we have forgot  
This love for Thee, yet help . . . . .AND LEAD US NOT

Through soul or body's want to desperation,  
Nor let earth's gain drive us . . . . .INTO TEMPTATION.

Let not the soul of any true believer  
Fall in the time of trial. . . . . BUT DELIVER;

Yea, save them from the malice of the devil,  
And both in life and death, keep . . . . .US FROM EVIL.

This pray we, Lord, for that of Thee from whom  
This may be had . . . . .FOR THINE IS THE KINGDOM

This world is of Thy works its wondrous story,  
To Thee belongs . . . . .THE POWER AND THE GLORY;

And all Thy wondrous works have ended never,  
But will remain forever and . . . . .FOREVER.

Thus we, poor creatures, would confess again,  
And thus would say eternally . . . . . AMEN.

- Holts
- Cobb's
- Dari-Delite
- Swap Shop
- Ladd Pontiac
- Allison Shoes
- Western Drug
- L & H Grocery
- The Fair Store
- Bill's Drive In
- Decorator's 216
- James Glaze Co.
- White's Cashway
- Muleshoe Electric
- Plains Auto Parts
- Bud's Pay'n Save
- West 6th. Texaco
- BMG Motors, Inc.
- John's Custom Mill
- First National Bank
- Muleshoe Motor Co.
- Krebb's Real Estate
- Bob Stovall Printing
- Muleshoe Co-op Gin
- Ray Griffiths & Sons
- Richland Hills Texaco
- Johnson-Pool Tire Co.
- Muleshoe State Bank
- Brock Motor Co., Inc.
- Good Luck Laundrette
- Ray's Rocket Drive In
- Higginbotham-Bartlett
- Black Insurance Agency
- Douglass Implement Co.
- Muleshoe Publishing Co.
- Main Street Beauty Salon
- Bailey County Memorial Park
- Union Compress & Warehouse
- Montgomery Ward, Anderson Agency



# Society News

KARLENE RAGLAND Society Reporter  
Phone-272-4336



**RECEIVING GAVEL**---Mrs. Horace Blackburn, newly elected president of the Muleshoe Study Club, receives the gavel, presented by Mrs. Cecil Cole, the outgoing president, in an impressive garden luncheon, with their husbands as guests, at the home of Mr. and Mrs. T. R. White.

## Study Club has Garden Supper

The Muleshoe Study Club met Thursday evening 8 p.m. in the garden of Mr. and Mrs. Thurman White for a garden supper and installation of officers for the new year.

The tables were decorated with white linen cloths and a variety of pot plants accenting each table. Hurricane lamps were displayed throughout the garden, making a very impressive scene.

This was the last meeting of the Study Club until September, unless a called meeting is necessary.

Guests present for the supper were members and their husbands.

After the supper, Mrs. John Agee installed the following officers: President, Mrs. Horace Blackburn; First Vice President, Mrs. S. L. Benefield; Second Vice President, Mrs. G. L. Splawn; Recording Secretary, Mrs. Joe Costen; Treasurer, Mrs. J. G. Arnn; Critic, Mrs. John Farley; Historian, Mrs. Rufus Gilbreath; Parliamentarian, Mrs. T. R. White; Press Reporter, Mrs. Cecil Cole; Radio Reporter, Mrs. Doyle Turner and Federation Counselor, Mrs. O. N. Jennings.

Those present were Mr. and Mrs. John Agee, Mr. and Mrs. W. T. Andrews, Mr. and Mrs. J. G. Arnn, Mr. and Mrs. Horace Blackburn, Mrs. S. L. Benefield, Mr. and Mrs. Cecil Cole, Mr. and Mrs. Joe Costen, Mr. and Mrs. Ed Johnson, Mr. and Mrs. Thurman White and a guest, Mrs. Marjorie Platt.

## Gail Phipps Honored

Gail Phipps, bride-elect of Gilbert Dale, was presented a white Bible by the Young Woman's Auxiliary of Progress Baptist Church on Wednesday evening.

The ceremony is used just before the marriage of an active member of YWA. It points up Christian concepts of the home and the establishment of family worship.

Trema Bryant played the processional.

Rev. Sam Sowder of Portales, N.M. spoke during the ceremony, then the members formed a circle around Gail and Gilbert, each holding a white taper encircled by ivy. Each girl expressed a wish for the couple as she lit her taper.

Brenda Ellis, president, presented the white Bride's Bible. Mrs. Norma Gulley sang



**INSTALLATION SERVICE**---The following officers were installed by Mrs. John Agee in an impressive garden party of the Muleshoe Study Club. President, Mrs. Horace Blackburn; First Vice President, Mrs. S. L. Benefield; Second Vice President, Mrs. G. L. Splawn; Recording Secretary, Mrs. Joe Costen; Corresponding Secretary, Mrs. Ed Johnson; Parliamentarian, Mrs. T. R. White; Critic, Mrs. John Farley; Treasurer, Mrs. J. G. Arnn; Historian, Mrs. Rufus Gilbreath; Press Reporter, Mrs. Cecil Cole and Radio Reporter, Mrs. Doyle Turner.

"Bless This House," as she was accompanied by Becky Gulley.

## Miscellaneous Shower Honors

### Kay Richardson

Miss Linda Kay Richardson was honored with a miscellaneous pre-wedding shower, Tuesday afternoon in the Bula homemaker room by her high school friends and teachers and cooks with Elaine Tiller and Patricia Grusendorf acting as

## Piano Recital

### hostesses.

Her colors of white and blue were carried out in the room decorations. Serving table was covered in white centered with a miniature bride and groom surrounded by white roses, centered with a huge bow of blue satin, offset with white burning tapers. Refreshments of clear punch and white cake squares were served.

## Girl Scout Troop 89 Honored

Members of Girl Scout Troop 89 were honored Monday afternoon with an ice-cream party at the home of Mrs. Larry Hall, with Mrs. Wayland Harris assisting. Mrs. Harris is troop leader and Mrs. Hall is her assistant leader.

A croquet tournament was held following refreshments on the back patio. Misses Rhonda Stevenson and Vicki Redwine were champion couple.

Linda will be married June 1 in Levelland to Tommy Phillips of Morton. He is now working in Fort Worth. She will be a senior this year at Bula High School.

Refreshments of homemade cookies and punch were served to students, their families and friends who attended.

Participants in the recital included: Karen Hamilton, Gayla Hooten, Kim Milner, Sherry Wagon, Tammy Nesbitt, Ronald Powell, Judy Precure, Buford Dean, Randall Hamilton and Deborah Faust.

Also Denise Harrison, Lashelle Lewis, Susan Head, Francis Dunbar, Hope Dean, Debbie Dunbar, Robbie Nesbitt, Ellen Shaffer, Robert Shaffer and Terri Crane.

Also Tammy Hicks, Lisa Mason, Royce Hamilton, Ginger Johnson, Deborah Burchel, Marilyn Black, Bill Dean, Jeff Johnson, Karla Littlefield, Linda Head, Patti Nickels, Jeanie Putman, Becky Milner, Leesa Sanderlin, Lana Wagon, Cassie Precure and Lary Hooten.

## Student of Mrs. Bradley Recital Set

Students of Mrs. A. M. Brad-National Guild piano students ley will have their Spring Recital will be presented by Mrs. Patricia Vinson, on May 27, 8 p.m. in the Calvary Baptist Church. Public is invited to attend. Certificates of the

**FLOWERS FOR SALE**

**Potted...**  
Geraniums and many others.

**Home Grown**  
From 50¢ up.

CHESTER WILSON 310 E. ELM  
PH. 272-3309

**CRISCO**  
3 lb. Can As Low As 1¢ per can.

with each \$5.00 purchase 59¢ Can  
with each \$7.50 purchase 49¢ Can  
with each \$10.00 purchase 39¢ Can  
with each \$12.50 purchase 29¢ Can  
with each \$15.00 purchase 19¢ Can  
with each \$17.50 purchase 9¢ Can  
with each \$20.00 purchase 1¢ Can

Mon. Thru Wed.

"WHERE YOU ALWAYS BUY THE BEST FOR LESS"

**GIBSON'S DISCOUNT CENTER**

Muleshoe, Texas— Open 9A.M. to 8P.M. Weekdays

**5 PIECE PLASTIC SHOWER CURTAIN SET**

1.00 Val. **73¢** Set

6'x6' Shower and Window Curtain

**CANTRECE**  
Seamless Nylons

Popular Shades 1.19 Value

**73¢** Pr.

Soft, fitted, most sheer... to wear all around town... down to dusk. Nylons loved... don't lose children. Try them... and you'll be back for more!

**Derby Brand Pocket T-SHIRTS**

Sizes S-M-L-XL 99¢ Value

**77¢** Each

**LITTLE TOT BIRDSEYE DIAPERS**

27" x 27" 1.98 Value **\$1.57** Doz.

**44 QT. ROUND PLASTIC WASTE BASKET**

#107 GIBSON'S SPECIAL

**63¢** Ea.

**Bo Peep AMMONIA**

1/2 Gal. Size

**26¢**

**PUREX BLEACH**

Gal. Size

**47¢**

**BO PEEP new sparkling Ammonia for glass**

101 Size **13¢** glass

**GIBSON'S Health & Beauty Aids**

TOOTH PASTE... Ultra Brite 95¢ Family Size... 59¢  
MOUTH WASH... Laveris 15.5 oz, Size 1.05 Val... 64¢  
VICKS VAPORUB... 1.09 Val... 68¢  
HAIR SPRAY... Sudden Beauty 16.2 oz, Size... 57¢  
AFTER SHAVE LOTION... Aqua Velva 4 oz, Size 79¢ Val... 46¢  
DEODORANT... Mum Roll-on 75¢ Val... 44¢  
HAIR CREAM... Score Clear 4.5 oz, Size 1.09 Val... 68¢  
MILK OF MAGNESIA Phillips Tablets 75 Tablets 79¢ Val... 51¢  
ICE-O-DERM... Medicated Astringent 1.50 Val... 92¢  
TOWELETTES... H & R Hands & Face Moist 50 Cnt, 1.39 Val... 72¢

**Brillo 10's 17¢**

**Brillo SOAP PADS**

**LUNCHEON MEAT**

Swift's Premium 12 oz. Can **42¢**

**Mimi de France NEW PERMANENT PRESS BRA**

Adjustable stretch strap bra

1.79 Value

**WRINKLE FREE wash after wash**

Adjustable Stretch Straps  
Magic Uplift Interlining  
Princess Style  
Embroidered Undercupps

**\$1.19** Ea.

**NOTICE**

Dear Customer:  
Starting June 1, 1968 we will be using a new type billing system.

The new system will be COUPON BOOKS. We will mail 12 months billing to you at one time, along with 12 envelopes for your convenience.

The payment will be due on the 1st of each month just as it has always been, but there will be a late charge of 50¢ after the 10th of the month, to pay office expense in handling late accounts. There will be no late notice sent out on delinquent accounts. After the 16th of the month all delinquent accounts for that month will be cut off. The only notice you will receive if you are late, will be a cut off notice.

So please put your book where you keep your other bills and at the 1st of each month, just tear out the page, put your name and address on it and mail it in the envelope provided.

If you prefer to pay your bill at our office, be sure to bring your coupon book along.

We are starting this new system to add to our efficiency in processing your monthly payments. When you receive your packet, there will be an instruction sheet inside the cover to aid you in using the coupon book.

We certainly appreciate your business and we are willing to serve you in any way we can.

Thank you,  
Merlyn Neel, Mgr.

**Muleshoe Antenna Company**  
220 W. 2nd. P.O. Box 503 Ph. 272-3310



**COUPLE HONORED**--Mr. and Mrs. O. Barry, Sundown, were honored by their children with open house at their farm home near Sundown. Guests called between the hours of 2 and 5 p.m. A white tiered cake was topped with the numeral '59' encircled in golden leaves. A floral arrangement of gold tone roses centered with gold tapers centered the table covered with a lace cloth over gold. Presiding were granddaughters, Mrs. Bill Russell, Muleshoe; Mrs. Doug Brown, Denver City; Mrs. H. Hansen, Levelland; Mrs. Joey Deaton, Brownfield and Mrs. Jimmy Carter, Sundown. The honored couple was joined by approximately 65 relatives and attended services in a group at the First Baptist Church in Sundown Sunday morning. Hosting the event was their 11 children, Mrs. Leslie Smith, Delbert Berry, Muleshoe; Mrs. H. B. Carter, Mrs. Tommy Lance, Mrs. Loy Lewis, Eugene Barry, Sundown; Mrs. Alvin Russell, Oklahoma City; Mrs. Ray McBride, Odessa; Mrs. Joe Daton, Denver City; L. C. Barry, Levelland and Mrs. L. C. Henderson, Duncan, Okla. The children were assisted by their husbands and wives as hosts and hostesses. The couple was married in Vernon May 19, 1916, and moved to Levelland in August, 1930 and to Sundown in 1937. They have 31 grandchildren and 12 great-grandchildren.

Some Americans foresee a More Americans apply to median school.

**COMMERCIAL PRINTING**  
Business & Social CALL 272-4681  
**FOR FAST EFFICIENT SERVICE**  
*Art-Craft* PRINTING CO.  
8:30 to 5:00 105 E. Avenue D Phone 272-4681  
Muleshoe, Texas - 79347

**Progress HD Club News**

Dr. B. E. Sanderlin presented the program to the Progress Home Demonstration club Tuesday, May 22, in the home of Myrtle Wells. The program was on "Allergies" and very interesting information, as most families are concerned and have some type of allergies.

The council's "Tasting Bee" was discussed and thanks was expressed to all who helped to make it a success. The club discussed decorating a window for the July 4th Celebration. Plans were not complete. A report was given on the birthday package sent to Janice Bulard at Girlstown.

Refreshments were served to one new member, Gertie Kirk; Agent Robin Taylor; visitors, Dr. and Mrs. B. E. Sanderlin; Sharon Wells and members; Gertie Meyers, Elzada Colley, Lela Marlis, Fern Davis, Ada Murrah, Eunice Crume, Jauree Smallwood, Judy Roming, Veta Self and hostess, Myrtle Wells.

**VBS Scheduled For June 3-7**

The First Methodist Church of Muleshoe will have Vacation Church School June 3-7, from 8:30 to 11:00, Monday through Thursday, and 9:00 to 12:00 on Friday. The directors of the church school this year are Mrs. Ben Cockrell, chairman; Mrs. Buck Johnson and Mrs. Neal Dillman, co-chairmen.

Children from age 4 to 11 years will attend. Negro and Latin American children have a special invitation to attend all sessions.

A sharing day session on Friday with Mrs. J. E. McVicker as chairman will conclude the week, with a delicious meal being served to children and their families for 50 cents a plate.

Tunics are good for this season's travel. They give the impression of a suit worn over a skirt of a different color.



**SUMMER TRAINING PROGRAM**--Trevor Ford, son of Mr. and Mrs. E. T. Ford, Muleshoe, has been selected as a participant in the summer science Training program in mathematics to be held at the University of Texas in Austin beginning June 3, 1968, and continuing for six weeks. The purpose of the program in mathematics is to present the opportunity of working with basic concepts of numbers, algebra, geometry and modern math will also be presented.

The next meeting will be June 4, with Eunice Crume at 604 8th in Farwell, with the program on 4-H, Mary Alice Ramm in charge. Roll call is "What I Have Done to Help 4-H."

**Progressive Home Club Meeting**

The Progressive Home club met in the home of Mrs. Vera Engelking Thursday, May 23, 3 p.m. with nine members present and one visitor, Mrs. Cele Matthesen.

Eula Embry, president, presided at the meeting. Roll call was given, minutes were read and approved and the treasurer's report given.

A short business meeting was held after which games of bingo were played. Lola Bryant won the prize of the game, Muriel Lewis drew the hostess gift.

**Three Way**

Three Way Lions Club had a dinner Monday at the meeting of the club, Horace McQueen was the guest speaker. About 32 people attended.

L. E. Warren underwent surgery in Methodist Hospital Wednesday.

Mrs. Johnnie Wheeler visited Friday in Lovington with her son and family.

H. W. Garvin is a patient in Green Memorial Hospital for medical treatment.

Mrs. R. L. Davis and Mrs. Dutch Powell were in Lubbock Thursday shopping.

Mrs. T. D. Davis spent the past week in Canyon with her daughter-in-law, Mrs. Tommy Terrell, who was ill. Mrs. Terrell returned home with her other for a few days.

**COMMENTS BY CALVIN & LILLIE MAE**  
Remember when the kids used to threaten to run away from home? ... Now it's the parents!  
**IF SOMEONE WOULD WE COULD GO TO CALVERT'S DRIVE-IN GROCERY**  
OPEN 7 AM Till 9 PM  
**BEST SERVICE IN TOWN**  
1902 CLOVIS ROAD MULESHOE



**KINDERGARTEN GRADUATES**--The Goodwill Center's graduation exercise opened with the Pledge of Allegiance to the flag followed by the song "My Country 'Tis of Thee." The class sang songs and recited poems and the work that they have done this year. Larry Henry, pastor of Baptist Latin American church, spoke to the children on the importance of education and also to the parents. Diplomas were presented by Mrs. Ed Northcutt to 20 students. They are: Ray Washington, Rachel Chavez, Manuel Montanez, Manuel Garcia, Jessie Siquero, Catrina Rodriguez, Josie Carrion, Sylvia Cavazos, Irma Daniel, Billy Wade, Mark Northcutt, Mike Northcutt, Lauri Henry, Isabel Bara, Ricky Medlock, Juanita Reynero, Melissa Hargesheimer, Tina Vinson, Sally Castestorena and Robert Gonzales.

Riots in U.S. disquiet G.I.'s in Vietnam. Reagan's 'nonconduct' draft age to 40.

**Troop 288 Slumber Party Held Friday**

Girl Scout Troop 288 had a slumber party at the home of their leader, Mrs. Lou Ann Black, May 17-18.

The troop had a hamburger fry Friday and learned knot tying and lashing. A big bonfire was made by the girl scouts and all enjoyed singing songs. Also games, ghost stories and mid-night snacks were part of the fun for the evening.

Mrs. Travis Kelley is in a Littlefield hospital and is reported to be quite ill at this time.

Grandmother Tucker, mother of D. L. Tucker, Mrs. Fred Kelley and B. H. Tucker is in a Levelland hospital.

A delicious pot stew was cooked over a campfire for the noon meal. The troop presented their leader, Mrs. Black, with a potted plant and a girl scout doll for being such a wonderful leader.

Those present were: Donann Harmon, Sherry Brown, Donna Beller, Debbie Kenemer, Nelda Lefter, Pam Clevenger, Yvette Tanguma, Doris Barthol, Tammy Webb, Sherrell Rasco, Vicki Griffin, Susan Cardwell, Carol Brown, Janet Hoppe, Mrs. Nita Soloman and Charlene Barthol.

**TOPS News**

The Jenny TOPS club met in Bailey County Electric Community room Thursday night 7 p.m. Twenty-one members weighed in with seven 'Pigs.' Queen for the week was Evelyn Harris and she drew a gift of an earring-tree. First runner-up was Girdie Kirk and second runner-up was Mable Wolf.

After a short business session, group singing of the TOPS songs were sung which gave all the members inspiration.



- ELECTRIC AIR CONDITIONING
- MODERN ELECTRIC HEATING
- BEAUTIFUL LIGHT FOR LIVING
- FULL HOUSEPOWER WIRING
- MODERN ELECTRIC APPLIANCES



**Graduate TO A GOLD MEDALLION TOTAL ELECTRIC HOME**



**OUR SANITONE MOTHPROOFING GUARANTEED**  
WE MEAN IT. Guaranteed protection against moths during the storage season. Moth damage to garments can be open to anybody--when you least expect it. Don't take a chance. We guarantee to have any moth damage removed, or pay the depreciated value of any damaged garment. (Furs excluded.) Good time to get it for you! Good time to get it for you! off-season clothing. Call on us today.  
**CLEAN and STORE those winter garments NOW!**  
...AT **LAMBERT CLEANERS**  
123 Main Phone 272-4726

**WOULD YOU BELIEVE?**  
You can trade at home and still not make a \$300 mistake. See one of the friendly salesmen at **THE NEW CROW CHEVROLET** in Muleshoe

**Welcome to Muleshoe**  
  
Ted Franklin

Ted Franklin, 222 Date Street, is a Muleshoe Newcomer. He is associated with his father, J.W. Franklin, at Central Texaco. Franklin formerly managed the Lamb Bowling Lanes, Littlefield. He and his wife, Janie, have two children: Sheldon, 6 and Pat, 4. They attend the First Baptist Church.

The following firms extend a cordial welcome to the Franklins:

<b>CASHWAY GROCERY</b> 402 MAIN Ph. 272-4244	<b>DAMRON DRUG CO.</b> REXALL Ph. 272-4210
<b>JAMES GLAZE CO.</b> INSURANCE REAL ESTATE LOANS	<b>MULESHOE STATE BANK</b> MEMBER FDIC

# Anthony's 4 DAY 'END OF MONTH' SALE

**STARTS Monday, May 27th. thru Friday, May 31st.**

WE WILL BE CLOSED MEMORIAL DAY THURSDAY, MAY 30

Open Daily 8:30 A.M. to 6:00 P.M. Sat. 8:30 to 8 P.M.

**Ladies and Misses HIGH COLORED SHOE CLEANUP**

73 Pr. Low or Mid Heels Values to 14.99 **\$7<sup>22</sup>**

4 Day Sale Price

Group II 53 Pr. Flats, Mid Heels or High Heels also Bone and blacks. Values to 9.99 **\$5<sup>22</sup>**

30 Pr. Odds and Ends Flats, Loafers and many others Values to 5.99 **\$2<sup>22</sup>**

43 Pr. Girl's and Boy's DRESS SHOES Values to 6.99 **\$3<sup>22</sup>**

**45" Wide Colorful Printed Homespun Canvas and Hopsack OR SHEERS**

Special purchase of Values To 1.49 yard. Shop Save Now **94<sup>c</sup> yd.**

Summa's favorite fashion colors in solids or patterns. You'll want to see and see when you see this huge selection of fabrics.

400 Yards Unbleached DOMESTIC Short Length 4 Yd. FOR **\$1**

Summer Sewing FABRICS Cotton or Cotton Blends 2 FOR **\$1** Values up to 1.19

**Womens, Misses, Childrens Canvas Play Shoes**

Outstanding Values **\$1.00 PR.**

Orange White Green Yellow Mohogany Pink

**Womens, Misses, Childrens Sandles or Pixies**

Save Save Save

Fun time canvas footwear that gives proper fit and foot support. Crepe type outsole. Cushion insole built for long wear. Ladies sizes 4 1/2 to 10. Children's 5-8 and 8 1/2-12.

Colored 42 Only **BAGS** Patent or Smooth Values to \$4.98 **\$2**

**SPORT SHIRTS** Men's Cut and Sewn or Knit. Values to \$3.98 **\$1**

**BOY'S PANTS** Permanent Press from Famous Name Brand. Slim Fit Reg. \$5.00 Values **\$2 PR.**

**PETTICOATS** Special Group Nylon Reg. 1.99 **\$1**

**DRESS OR SPORT SHIRTS** Men's Long Sleeve Knits, White or Stripe Dress Shirts Reg. Values Up to 3.98 **\$2**

**LADIES' BRIEFS** 100% Nylon, Fancy or Plain Styles. Values to \$1 **3 for \$2<sup>25</sup>**

**NYLON HOSE** CLOSEOUT SPECIAL Entire Stock Over Three Months Old. Regular Seamless Sheers Knee Bend Over the Knee Values Up to \$1.35 **2 \$1 for**

**PANTS** "SPECIAL 4 DAYS ONLY" Over 400 Pair Irregular Famous Name Brand. Never Iron-Twill or Hop Sacking Irregulars of Regular \$6.50 to \$9 PANTS **\$3<sup>88</sup>**

Ladies' **Shifts or Knit Dresses** 42 Only Values to 6.98 **\$3**

**STOCKINGS** 106 Pr. Only. High Colored Sheer or Fish Net. Values to \$1 **2 for \$1**

**BATH CLOTHS** Big Thick Velour Irregulars of Regular 49c Cloth **\$1 5 for \$1**

**RUGS** Non Skid Viscose 42 Only Reg. 2.49 to 3.99 Your Choice **2 \$3 for \$3**

Men's and Boy's **Poplin Jackets** Group I Values to 5.00 **\$2<sup>88</sup>** Group II Values up to 6.98 **\$4<sup>22</sup>** Ideal for work or sport.

Men's Type IV Grey Army Twill **WORK SUITS** Regular 6.00 Value **4 Day Sale Price \$5**

Men's Lightweight or Heavy Weight CANVAS **Oxfords** Reg. 3.99 to 6.95 **\$2<sup>94</sup>**

## Obituary John Motheral

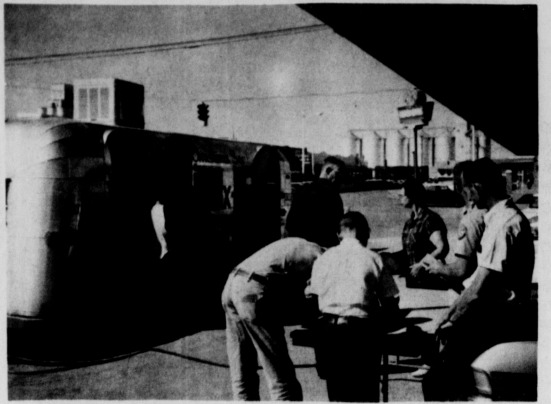
Services were held at 10 a.m. Friday, May 24, for John H. Motheral father of Avelaine Lenderson, Muleshoe.

Rev. Douglas Dubose, minister of the First Baptist Church, officiated for the service which was held in Singleton's Chapel of the Chimes. Burial was in Muleshoe Cemetery directed by Singleton Funeral Home.

Motheral died Tuesday, May 1, in a Wichita Falls hospital at the age of 82 years.

He was born in Graves County, Ky., December 6, 1885, and had resided at Sudan for the past 15 years, moving there from DeLeon. He was retired farmer and a member of the Baptist Church.

Survivors other than Mrs. Lenderson are three sisters: Mrs. Iris Edwards, Mrs. Victoria Simms and Mrs. E. P. Wheeler, Mayfield, Ky, and two brothers, Rube and Harry Motheral, also of Mayfield.



**MOBILE UNIT**—A total of 617 persons had X-rays made while the mobile unit was in Muleshoe last Wednesday. The unit, coming here for the benefit of the public, was under the sponsorship of the Jaycees, Lions and Rotary Clubs. Pete White, Jaycee, and Keith Hansen, Lion member, are pictured in the foreground as people enter the unit for X-rays to be made.

Greek Government is barring bearded tourists.

## Chemical Available for Maize Weed Control



**your sow is a pig factory**

A sow has the tremendous job of converting feed into big litters of thrifty pigs twice a year. She must supply enough milk to give her pigs a good start in life and build herself up to perform this task again.

Nature has given the sow a safety valve... the ability to resorb developing embryos if she doesn't get proper care and nutrition. Studies show 20% to 33% of all pig embryos conceived are resorbed during gestation. Pig embryos grow fast. During the last 12 weeks of gestation, each healthy embryo increases in size 800 times!

Years of continuous Purina Research have built and improved Purina Sow Chow Complete... a highly-fortified ration that gives a sow the nutrients she needs during gestation and nursing.

Sows that farrow and raise big litters will make more money for you. That's why thousands of hogmen follow Purina's Sow Feeding and Management Program to help them send eight and nine pigs per litter to market. Let us tell you more about it.

As that new crop of grain cultural oil containing enough sorghum emerges, weeds will emulsifier for complete emul- likely be springing up too unless sification of 10 to 40 gallons of pre-emergence herbicidal total carrier per acre. If weeds treatment has been used... are difficult to kill, higher rates If not, numerous herbicides of oil, water and atrazine may be available for post-emer- ed if they are under moisture tural agent. These include atrazine, diuron, 2,4-D, dicamba Sorghum should be at least (Banvel D) and MCPA. The two inches tall on silty clay type used depends primarily loam and loam soils and six inches tall on fine sandy loam soil before atrazine treatment gives good control of both small and large care- lessweeds, says Adams. At one to two pounds of oil in an per acre plus one-half percent surfactant, this herbicide will control care- lessweeds less than one inch tall. Apply it in 20 to 40 gallons of water per acre with one to two pints of surfactant. Furthermore, don't use atrazine on loamy sand and sandy soils.

Aerial application of one to two pounds of atrazine per acre in one to ten percent oil gives good weed kill, says Adams. Limit the total carrier to a minimum of one gallon for each pound of atrazine applied.

Band or broadcast treatments, either directed at the soil or over the crop, also give effective weed control. Do not feed sorghum forage to livestock until 60 days after treatment. Plant only sorghum, corn or winter wheat the year following atrazine application. Drift at the time of atrazine application is not toxic to cotton. Dicamba and 2,4-D are effective for killing small annual broadleaf weeds, points out Adams. Yields were reduced considerably last year due to improper timing of application of these herbicides. They should be applied when sorghum is 6 to 15 inches tall. Use caution with larger sorghum. Do not treat after the seedhead is beginning to emerge into the tip of the boot. Severe head blasting will occur if sorghum is sprayed over the top after this stage.

Apply dicamba at a rate of one-fourth to three-eighths pound per acre broadcast over the top of sorghum, explains Adams. Sprays directed at the base of the sorghum will likely cause lodging. Dicamba will drift if wind and application pressure is high although it is not as toxic to cotton as 2,4-D. With regards to 2,4-D, one-half pound per acre of any of the formulations offers good weed control. Do not treat wheattand parentage hybrids as serious yield reductions and lodging may occur in some of these.

Since 2,4-D formulations are highly volatile and drift easily, sensitive crops such as cotton can be seriously damaged, explains Adams. Reduce spray drift by using high gallonage (10-20 gallons per acre) and low pressure (15-20 pounds per square inch).

Diuron is another good herbicide for controlling small broadleaf weeds in 15-inch sorghum, adds Adams. Apply it as a directed spray to weeds at a rate of two-tenths to four-tenths pounds per acre in 20 to 40 gallons of water containing one-half percent surfactant. This treatment controls care- lessweed that emerge after late irrigation. Drift will not injure cotton and there will be no soil residue the following year.

MCPA is a new herbicide that is similar to 2,4-D. However, it is somewhat safer and is less toxic to cotton. Treatment and precautions with this herbicide are the same as with 2,4-D explains Adams.

**A GENTLE REMINDER BEFORE IT HAILS...**

It happens every year. The hail falls, before you get that valuable protection. See or call your Farm Bureau Insurance Agent soon. You may be able to save some money with Farm Bureau Insurance this year.

**WE HAVE A SPECIAL PROGRAM FOR SEMI-LONG STAPLE COTTON.**

**Ben Cockrell** Ph. 272-4567

**WESTERN '66' COMPANY** Muleshoe and Needmore

**PURINA CHOWS**

**TO MY FRIENDS IN PRECINCT 1 AND 1A:**

\*\*\*

Due to the short time I have before the run-off election, it is not possible to see each one personally. So I want to take this means of saying THANK YOU for your support in the past and hope for your continued support. To the ones that voted for another candidate in the first election, I will sincerely appreciate your vote and influence on Saturday, June 1st.

**Sherman Inman**

Pd. Pol. Adv.



# TRADE CLASSIFIED SELL BUY ADS LEASE

## WANT ADS PH. 272-4536

### CLASSIFIED RATES

**OPEN RATES**  
 First insertion, per word - 6¢  
 Second and additional insertions - 4¢

**NATIONAL RATES**  
 First insertion per word - 8¢  
 Second and additional insertion - 5¢

Minimum charge - 65¢  
 Card of Thanks - \$1.00 Double rate for blind ads  
 Classified Display - 85¢ per col inch  
 95¢ col. inch for reverses

**DEADLINE FOR INSERTION**  
 Thursday's Muleshoe Journal - Noon Tuesday  
 Sunday's Bailey County Journal - Noon Friday

The Journals reserve the right to classify, revise or reject any classified ad.  
 Check advertisement and report any error immediately. Journals are not responsible for error after ad has already run once.

### PERSONALS

**BRAS & GIRDLES**  
 BY PENNYRICH  
 AT MAIN STREET  
 BEAUTY SALON  
 1-195-tfc

**MOTEL**  
 MANAGEMENT  
 Men-Women-Couples  
 Ages 21-70  
 Learn Motel Operation. Study short inexpensive course at home. Two weeks on-the-job training in a modern motel in the area of your choice. Age no barrier. Free placement assistance for our graduates. Financing available. For an interview, write giving name, age, occupation and phone number to:  
**EXEC TRAINING DIV.**  
 Continental Motel Schools  
 1466 South Federal  
 Denver, Colorado 80219

**FOR RENT:** 15 and 16 foot campers. By week. Call 272-1163.  
 1-355-tfc

**meets every Tuesday at 12:00**  
**FELLOWSHIP HALL**  
 Methodist Church  
**Muleshoe Rotary Club**  
 Earl Harris, Pres.

**meets every Monday, 12 Noon**  
**L. B.'S CAFE**  
 Clarence Christian, Pres.

**meets every Wednesday, 12 Noon**  
**FELLOWSHIP HALL**  
 Methodist Church  
 Guy Kendall, Pres.

**meets every Wednesday, 12 Noon**  
**FELLOWSHIP HALL**  
 Methodist Church  
 Guy Kendall, Pres.

### LEGITIMATE TAX DEDUCTION

FOR INFORMATION on establishing a TAX FREE accumulation of your money under the KEOGH PLAN, see Robert G. Wilson, or call 272-4069, Box 147.  
 1-211-2tc

**WANTED:** Office job, typing, shorthand, bookkeeping. Part time or full time or home typing. Phone 272-3332, or write 1714 W. Ave. H, Experienced.  
 1-215-2tc

**WANTED:** Bookkeeping. Pat Wylie, Mgr. H & R Block Income Tax Office, 115 E. Ave. D, Phone 272-4644.  
 1-115-tfc

### HELP WANTED

**LADIES - Do you need vacation money? Earn it selling Luzier Cosmetics.** If interested write - Francis Moore, 1105 Thunderbird, Plainview, 3-215-3tc

**WANTED:** Beautician, Main Street Beauty Salon, Phone 272-3448.  
 3-255-tfc

**WANTED:** Farm hand. See R. B. Seaton, 6 east and 6 north of Muleshoe or call 965-2727.  
 3-211-tfc

**GOT A JOB... BUT NEED MONEY?** Add \$2,000 and more to your present income by working just a FEW hours per week. You SELECT THE HOURS. Write Rawleigh, TXe-270-759, Memphis, Tenn.  
 3-211-2tc

### HOUSES FOR RENT

**SPECIAL**  
 FOR RENT: 2 bedroom house, East 4th. Call 946-2410.  
 4-131-tfc

FOR RENT: 2 bedroom house, Ph. 272-3524.  
 4-155-tfc

**FOR RENT:** 2 and 3 bedroom brick houses. Furnished 1 bedroom apartment. Call D. L. Morrison Jr., 272-3421 or mobile phone 965-2299, 4-211-tfc

**FOR RENT:** Three room furnished house. Ph. 4080, 4-155-tfc

**FOR RENT:** 3 bedroom house with 2 baths, living room and den; 2 bedroom house. See Mrs. A. J. Lenderson, 1818 W. Ave. D, or call 272-3038, 4-201-5tc

### 5. APTS. FOR RENT

**FOR RENT:** Nice, clean furnished apartment. Adults preferred. Bills paid, Layne Apartments.  
 5-91-tfc

**FOR RENT:** 19th and 3rd, 2 bedroom apartments, \$80, 1 bedroom apartments, \$70. Smallwood Real Estate, 272-4838.  
 5-181-10tc

**FOR RENT:** Furnished apartment. See Mrs. A. J. Lenderson, 1818 W. Ave. D or call 272-3038.  
 5-201-5tc

**FOR RENT:** 1 bedroom apartment, tiled bath, carpeted, paneled and central cooling. Furnished, \$80 month. Bills not paid. 405 W. Ave E or phone 272-3102  
 5-211-tfc

Furnished apts. large or small. Briscoe Apts. Ph. 272-3465.  
 5-55-tfc

**FOR RENT:** furnished apt., 719 Ave. G, Call 763-5701, Clovis, N.M.  
 5-145-tfc

### 6. BEDROOM FOR RENT

**FOR RENT:** One nice bedroom, 410 2nd St.  
 6-21-tfc

### REAL ESTATE FOR SALE

**FOR SALE:** nice 4 room and bath, partly furnished, well located, small down payment. Nice 3 BR Brick, well located, fenced back yard. Good loan available.  
 8-81-tfc

### SMALLWOOD REAL ESTATE

See us when you want to buy or sell farms or homes.  
**SPECIAL**  
 3 bedroom brick, 2 bath, den and living room, 2 car garage. This appraised by FHA at \$130 a month.  
 Bob Blackwood, Salesman Ph. 272-4838  
 8-205-tfc

**FOR SALE:** 2 bedroom house, wall to wall carpet, central heat with 18x20 storage house. Low equity. Donald Prager, 218 E. Cedar. Ph. 272-4151 after 5, 8-181-tfc

**FOR SALE:** 2 bedroom house to be moved. Real nice, \$1250. See Ted Treider, 3/4 mile East of Clay's Corner.  
 8-191-tfc

**FOR SALE BY OWNER**  
 120 acres, improved, irrigated. John Thomson Ph. Day 272-4588  
 Night 925-3248  
 8-191-tfc

**FOR SALE:** 3 bedroom house, carpeted, 2 baths, paneled den and kitchen, double garage, Call D. L. Morrison Jr., 272-3421 or mobile phone 965-2299, 8-211-tfc

Farms, City property, ranches, Krebs Real Estate, Ph. 3191.  
 8-171-tfc

**FOR SALE:** new all-brick home, near completion, 1626 Ave. C, 1900 sq. ft. Living area. 3 BR, 1 3/4 bath, den with fireplace, double garage. You may select carpet and light fixtures. Ph. collect, J. W. Willford, 806-983-5109, Floydada, 8-71-tfc

**FOR SALE:** Three room house, 324 W. 11th, Call 4304, 8-71-tfc

692 acres for sale or trade. Dryland. Contact Ted Ratcliffe, 806-SW5-2821 or P05-9557. Good government program. Small down payment.  
 14-195-tfc

### 9 AUTOMOBILES FOR SALE

**FOR SALE:** 1960 Ford Galaxie or 1955 Pontiac. Phone 272-3131, 304 W. 20th, 9-211-2tp

**FOR SALE:** Used 14 foot Lone Star aluminum boat, 7 1/2 h. p. Johnson motor, trailer and cover. Excellent condition. \$400.00. Contact Mr. Kelley or Mr. Cook, phone 272-4581, 9-215-2tc

**NEW 1968 PICKUP LADD PONTIAC**  
**10. FARM EQUIPMENT**

**FOR SALE:** NEW TRI-MATIC sprinkler systems, used flow line, gated, and hand m o v e sprinkler pipe.  
 Chapman Supply Co., Muleshoe  
 Phone 272-3473  
 10-78-tfc

### 11. FOR SALE OR TRADE

**FOR SALE:** 1-16' ski rig, with a 75-Johnson. 1-63 model Studebaker. Air. Good tires. Good deal. Phone 272-3921.  
 11-175-tfc

**FOR SALE:** Steel building, 30' x 40', one acre land. Contact Bobby Burris, 272-3043, 320 East American Blvd.  
 11-215-8tp

### 12. HOUSEHOLD GOODS

**BE gente, be kind, to that expensive carpet, clean it with Blue Lustre. Rent electric shampooer \$1. Higginbotham-Bartlett, 215 Main.  
 12-215-tfc**

### 15 MISCELLANEOUS

**PETERSON FLOOR COVERING.** Linoleum, Carpet & Tile & Ceramic Tile. Remodels. Free Estimate. Special on carpet cleaning this week. Phone 272-4128 or 272-4622, Muleshoe.  
 15-215-2tc

Pop up with Zippies "Pep Pills" non-habit-forming. Only \$1.98. Damron Drug.  
 15-131-20tfc

Used 3 months 1968 Singer sewing machine in walnut console. Equipped with automatic zig-zagger, fancy patterns, blind hems, etc. \$24.50 cash or good credit 4 payments at \$6.56. Write Credit Department, 1114 19th St., Lubbock, Tex.  
 15-165-tfc

**For Sale, New and Used Tires,** almost all sizes, Finns L. P. Gas, phone 272-1678.  
 15-201-tfc

**NEED someone in this area** to assume small monthly payments on spinet piano. Write credit manager, Box 3035, Lubbock, Texas 79410.  
 15-201-4tc

### 17. SEED AND FEED

**FOR SALE:** Midland Bermuda grass sprigs. Contract planting. A. D. Moses, Ph. 285-2215, Olton.  
 17-138-tfc

**COTTON SEED**  
 Acid - delinted, treated first year from white sack Gregg, 10¢ pound, Jerry Roberts' place, 3 miles northwest of Muleshoe, 272-3655  
 17-201-tfc

### LEGAL NOTICE

I will not be responsible for checks, bills or other debts written or incurred by anyone other than myself after this date, May 22, 1968.  
 Jacky Stovall  
 211-3tp

## Flaniken To Appear in 1968 Special Edition

Michael Ray Flaniken of Enoch has been selected to appear in the 1968 edition of Community Leaders of America. Other recipients of this honor include Governors, United States Senators and Congressmen of the various states. The publication includes many



**YOU THINK WITH ALL THESE SUPPLIES WE BROUGHT SOMEONE WOULD HAVE THOUGHT OF A RAZOR!**

citizens such as educators, leading businessmen, members of state legislative bodies, civic and political leaders, some elected leaders of various political subdivisions, farmers, ministers, officers of various trade organizations, leading sports figures, and many other individuals who, because of past achievements and service to their community, state, and/or nation, are recognized as community leaders of America.

## TELEVISION SCHEDULE FOR THE MULESHOE AREA

WESTERN DRUG	KGNC-TV (4)	KVII-TV (7)	KFDA-TV (10)	KCBD-TV (11)	KLBK-TV (13)
	Amarillo	Muleshoe Cable 4	Muleshoe Cable 5	Muleshoe Cable 6	Muleshoe Cable 2
<b>DAYTIME</b>	<b>DAYTIME</b>	<b>DAYTIME</b>	<b>DAYTIME</b>	<b>DAYTIME</b>	<b>DAYTIME</b>
6:30-Amar, Col.	6:30-Cartoons	6:30-Amar, Col.	6:30-Amar, Col.	6:30-Headlines	6:00-Sun, Sem.
7:00-Today Show	6:40-Weather	7:00-Farm/Ranch	7:00-Farm/Ranch	7:05-Farm/Ranch	6:30-Farm/Ranch
7:25-News	7:35-Cartoons	7:35-CBS News	7:35-CBS News	7:25-Weather	7:00-Ag, Weather
7:30-Today Show	9:00-Dennis	8:00-Capt. Kang.	8:00-Capt. Kang.	7:30-Today	7:30-Morn. Show
9:00-Snap Judge	9:30-Cavett S.	9:00-Romper R.	9:00-Romper R.	8:25-Report	8:00-Capt. Kang.
9:25-News	11:00-Bewitched	9:30-Hillbillies	9:30-Hillbillies	8:30-Today	9:00-Cam, Cam.
9:30-Conea.	11:30-Treasure Is.	10:00-Andy G.	10:00-Andy G.	9:00-Snap Judge.	9:30-Hillbillies
10:00-Personality	12:00-N/W/F/R	10:30-Coffey Time	10:30-Coffey Time	9:30-Conc.	10:00-Andy G.
10:30-Holly Sp.	12:30-Wedding Party	11:00-Love of Life	11:00-Love of Life	10:00-Personality	10:30-D, Van Dyke
11:00-Jeopardy	1:00-Newlyweds	11:30-Holly Sp.	11:30-Holly Sp.	10:30-Holly Sp.	11:00-Leads of Life
11:30-Eye Guess	1:30-Baby Game	11:45-G. Light	11:45-G. Light	11:30-Eye Guess	11:30-Search
11:55-News	1:55-Child's Dr.	12:00-N/W	12:00-N/W	11:55-News	11:45-G. Light
12:00-News	2:00-General Hos.	12:30-D. Shadows	12:30-D. Shadows	12:00-News	12:00-News
12:10-Irriga. R.	2:30-D. Shadows	3:00-Dating Game	3:00-Dating Game	12:15-Community	12:15-Community
12:15-Weather	3:00-Movie	3:00-Movie	3:00-Movie	12:30-Make Deal	12:30-Make Deal
12:20-Ruth Brent	3:30-Tuggle	3:30-Tuggle	3:30-Tuggle	1:00-Days of Lives	1:00-Days of Lives
12:30-Make Deal	3:30-News	3:30-News	3:30-News	1:30-Doctors	1:30-Doctors
1:00-Days of Lives	6:00-N/W/S	6:00-N/W/S	6:00-N/W/S	2:00-Another W.	2:00-Another W.
1:30-Doctors				2:30-Don't Say	2:30-Don't Say
1:30-Another W.				3:00-Match Game	3:00-Match Game
2:30-Don't Say				3:30-D, VanDyke	3:30-D, VanDyke
3:00-Match Game				4:00-Mr. Minkin	4:00-Mr. Minkin
3:25-News				5:00-Mr. Ed	5:00-Mr. Ed
3:30-Mike Douglas				5:30-CBS News	5:30-CBS News
5:00-News				6:00-N/W/S	6:00-N/W/S
5:30-H & B News					
5:00-N/W/S					
<b>MONDAY EVENING</b>	<b>MONDAY EVENING</b>	<b>MONDAY EVENING</b>	<b>MONDAY EVENING</b>	<b>MONDAY EVENING</b>	<b>MONDAY EVENING</b>
6:30-Monkees	6:30-Cowboy in Af.	6:30-Gunsmoke	6:30-Gunsmoke	6:30-Monkees	4:30-Cartoons
7:00-Laugh-In	7:30-Lucy	7:00-Lucy	7:00-Lucy	7:00-Laugh-In	5:00-Fan, Four
8:00-Movie	8:00-Felony Squad	8:00-Andy G.	8:00-Andy G.	8:00-D. Thomas	5:30-News
10:00-News	8:30-Peyton Place	8:30-Fam. Affair	8:30-Fam. Affair	9:00-I Spys	6:00-News
10:15-Weather	9:00-Big Valley	9:00-Carol Burnett	9:00-Carol Burnett	9:30-Lucy	6:30-Daktari
10:30-Doctors	10:00-N/W	10:00-N/W	10:00-N/W	10:00-News	7:30-Lucy
10:30-Tonight	10:25-Comment	10:25-Background	10:25-Background	10:15-Weather	8:00-Griffith
12:00-Sign Off	10:30-Joey Bishop	10:30-U. Pacific	10:30-U. Pacific	10:25-Sports	9:00-B. Valley
	12:00-Events	11:00-News	11:00-News	10:30-Tonight	8:30-F. Affair
	12:10-Comedy	11:05-Movie	11:05-Movie	10:00-De Luise	10:00-De Luise
	12:25-Outer Limits			11:30-Pete Gunn	11:30-Pete Gunn
<b>TUESDAY EVENING</b>	<b>TUESDAY EVENING</b>	<b>TUESDAY EVENING</b>	<b>TUESDAY EVENING</b>	<b>TUESDAY EVENING</b>	<b>TUESDAY EVENING</b>
6:30-I Dream	6:30-Gar. Gorillas	6:30-Daktari	6:30-Daktari	4:30-Cartoons	4:30-Cartoons
7:00-Cat	7:30-It Takes	7:30-Red Skelton	7:30-Red Skelton	5:00-Fan, Four	5:00-Fan, Four
8:00-Movie	8:30-N. Y. P. D.	8:30-Morn. World	8:30-Morn. World	6:00-News	6:00-News
10:00-News	9:00-Invaders	10:00-N/W	10:00-N/W	6:30-Daktari	6:30-Daktari
10:15-Weather	10:00-N/W	10:25-Background	10:25-Background	7:30-Lucy	7:30-Lucy
10:25-Sports	10:30-Joey Bishop	10:30-Panic	10:30-Panic	8:00-Griffith	8:00-Griffith
10:30-Nebraska	12:00-Events	11:00-News	11:00-News	9:00-B. Valley	9:00-B. Valley
11:00-Tonight S.	12:10-Comedy	11:05-Movie	11:05-Movie	8:30-F. Affair	8:30-F. Affair
	12:25-Outer Limits			10:00-De Luise	10:00-De Luise
<b>WEDNESDAY EVENING</b>	<b>WEDNESDAY EVENING</b>	<b>WEDNESDAY EVENING</b>	<b>WEDNESDAY EVENING</b>	<b>WEDNESDAY EVENING</b>	<b>WEDNESDAY EVENING</b>
6:30-Virginian	6:30-Avengers	6:30-Loet in Space	6:30-Loet in Space	4:30-King Kong	4:30-King Kong
8:00-Special	7:30-Dream House	7:30-Hillbillies	7:30-Hillbillies	5:00-Beattles	5:00-Beattles
9:00-Run for Life	8:00-Movie	8:00-G. Acres	8:00-G. Acres	5:30-News	5:30-News
10:00-News	10:00-News	8:30-He & She	8:30-He & She	6:00-News	6:00-News
10:15-Weather	10:25-Sports	9:00-J. Winters	9:00-J. Winters	6:30-Hogan's	6:30-Hogan's
10:25-Sports	10:30-Tonight S.	10:25-Background	10:25-Background	7:00-Newswatch	7:00-Newswatch
12:00-Sign Off	12:00-Sign Off	10:30-Medic	10:30-Medic	7:30-Hillbillies	7:30-Hillbillies
		11:00-News	11:00-News	8:00-G. Acres	8:00-G. Acres
		11:05-Movie	11:05-Movie	8:30-2nd Hun. Yr.	8:30-2nd Hun. Yr.
				9:00-It Takes	9:00-It Takes
				10:00-News	10:00-News
				10:30-Movie	10:30-Movie
				12:00-Sign Off	12:00-Sign Off

## BUSINESS SERVICES DIRECTORY

**SEPTIC TANKS & CESSPOOL SERVICE**  
 DRILLED - REPAIRED - INSTALLED  
 Cesspools - Pier Holes  
 Boot Pits - Storm Cellars  
 We Drill Up to 9 Ft. in Diameter  
 & 45 Ft. Deep  
 Concrete Covers & Turnkey  
**WILSON DRILLING CO.**  
 Dial 272-4180  
 NIGHT PHONE: 272-3148  
 CLOVIS HWY. MULESHOE

**EXPERT T.V. REPAIR and ANTENNA INSTALLATION**  
**Gordon Wilson Appliance**  
 ZENITH  
 MAYTAG  
 TAPPAN  
 KELVINATOR  
 202 Main Ph. 272-3138

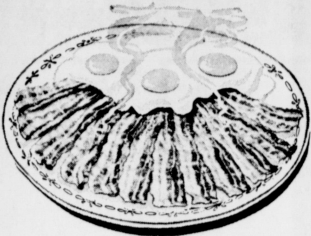
**W. Q. Casey**  
 GENERAL INSURANCE  
 Let Our Complete Coverage Take Care of All Your Insurance Problems  
 Muleshoe State Bank Bldg. Ph. 272-4571

**Save Money On Auto Parts!**  
**BRTCHER MOTOR SUPPLY**  
 107 E. Ave. B - Dial 272-4288  
**CHARLES BRATCHER, Owner**

**MEN AND MONEY:**  
 Both must be employed if our community is to prosper. If you plan to buy anything, purchase it from a local merchant.  
 If you want your job to be secure and your investment protected, then trade at home.  
 If you want a good thriving community, with good churches and good schools, one that you would be proud to be a part of, then support your local business men who are largely responsible for making all this possible.  
**POOL INSURANCE AGENCY**  
 Phone 272-4531  
 W. M. Pool, Jr. Muleshoe Lee R. Pool

**MISS YOUR PAPER?**  
 CALL CIRCULATION DEPARTMENT  
 Phone 272-4536

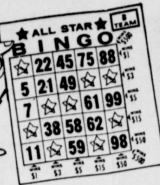
Lend Variety with Bacon



Delicious baked, barbecued, broiled or fried. Adds the crowning glory to eggs, waffles or pancakes; completes a sandwich of every sort; gives the gourmet touch when crumbled and used as a seasoning on baked potatoes, vegetables and salads; makes an appealing wrap for filets, hors d'oeuvres and canapes; adds excellence to liver, sea food and ground beef!

**BACON**  
Farmer Jones, First Quality  
Pound **69¢**

Glover, Ready to Eat, Half or Whole  
**Hams** Pound **65¢**  
Children Love Them, Happy Times  
**Corn Dogs** 5 to Package **49¢**  
**Bologna** Pound **59¢**  
Farmer Jones, All Meat  
**Franks** Pound **59¢**



# Win up to \$1,000... Play ALL STAR BINGO

PIGGLY WIGGLY'S NEW FAMILY FUN GAME! NEW STARS EACH WEEK!

This Friday at 7:30 P.M. on Channel 11

## U.S.D.A. Grade A FRYER SALE

Ready U.S.D.A. Grade A  
**FRYERS**  
Whole **33¢**  
Pound  
U.S.D.A. Cut Up **39¢**  
Pound

**FRYER THIGHS**  
Dark, Juicy and Tender  
**49¢**  
Pound

U.S.D.A. Good, Baby Beef  
**T-Bone Steak** Pound **\$1.09**  
U.S.D.A. Choice, Valo-Trimmed, Pound **\$1.29**

Arm Cut, U.S.D.A. Good Baby Beef  
**Swiss Steak** Pound **85¢**  
U.S.D.A. Choice Beef, Pound **88¢**

**GROUND CHUCK**  
Extra Lean, Dated to Assure Freshness  
**59¢**  
Pound

**FRYER BREASTS**  
100% All White Meat Frozen  
**\$1.29**  
2 Pound Box

**OLEOMARGARINE**  
Parkay, In Quarters  
Pound **29¢**

Fresh, Grade A, Large  
**EGGS** Dozen **39¢**

AA Sweet Cream  
**Bonnebelle Butter** Pound **88¢**  
Sweetmilk or Buttermilk  
**Holsum Biscuits** 3 10-Count Cans **25¢**  
Golden West, All Grinds  
**Coffee** 1-Pound Can **68¢**

Regular 69¢ Retail 36-Count Bottle  
**BUFFERIN** **57¢**

Green, Stokely, Cut, Tender  
**BEANS**  
**5 \$1**  
No. 303 Cans

Elgin Solids  
**OLEO**  
Pound Package **10¢**



Sweet, Stokely, Honey Pod  
**PEAS**  
**5 \$1**  
No. 303 Cans

Fruit, Stokely, All Flavors  
**DRINKS**  
**4 \$1**  
46-Ounce Cans

Bama, Red Plum, Grape, Peach  
**Jam or Jelly** 4 10-Ounce Glasses **\$1**  
For Salad or Sandwich, French's  
**Mustard** 24-Ounce Size **37¢**  
Geisha, Sliced  
**Pineapple** 3 No. 2 Cans **\$1**  
Scott, Deep Tone  
**Napkins** 150-Count Package **39¢**  
Fantastic  
**Spray Cleaner** 17-Oz. Size **59¢**

Friskies, Assorted Flavors  
**Cat Food** 6 6 1/2-Oz. Cans **\$1.00**  
Nestle, Quik  
**Chocolate Drink** 2-Lb. Size **89¢**  
Armour's, Treat  
**Luncheon Meat** 12-Oz. Can **57¢**  
Plain or Iodized  
**Morton Salt** 2 26-Ounce Boxes **25¢**  
Wishbone, Hickory Bits  
**Salad Dressing** 8-Oz. Bottle **39¢**

Health and Beauty Buy  
14 Oz. **AQUA NET HAIR SPRAY** **48¢**  
Reg. or Super Can

**THIS COUPON WORTH 100 FREE S & H GREEN STAMPS**  
With \$2.50 Purchase or More.  
Limit One to Family Expires 5-29-68

Bonne, in Plastic, 3¢ Off Label  
**Liquid Bleach** 1/2-Gallon **29¢**  
Scotties, Assorted Colors  
**Facial Tissue** 200-Count Box **29¢**  
Arrow, Aluminum  
**Household Foil** 25-Foot Roll **25¢**

Bakelite or Jewel  
**Shortening** 3-Pound Can **55¢**  
Bonne, Heavy Duty, 10¢ Off Label  
**Detergent** Giant Size **55¢**  
Betty Crocker, Layer Cake  
**Cake Mix** 3 Packages **\$1**

Frozen Foods for Your Freezer!

**MEAT PIES**  
Banquet, Beef, Chicken, Turkey  
**6 \$1**  
8-Oz. Pkgs.

Libby's  
**Cut Corn** 4 10-Ounce Packages **\$1.00**  
Sara Lee

**Orange Cake** 13 1/2-Ounce Package **79¢**

**STRAWBERRIES**  
Libby, Sliced EACH **35¢**



These Values Good May 27-28-29 in MULESHOE. We Reserve Right to Limit Quantities Purchased.

**DOUBLE S & H GREEN STAMPS WEDNESDAY**  
WITH A \$2.50 PURCHASE OR MORE

Piggy Wiggly Ultra Fresh Produce!



**RADISHES**.....LARGE BUNCH.. **10¢**

Serve with Cottage Cheese, Pint Box  
**Cherry Tomatoes** Each **49¢**

California, Full of Juice  
**Lemons** Pound **29¢**

Large, Crisp Bunches  
**Romaine Lettuce** Pound **19¢**

**CORN ON THE COB** Farm Fresh, Large Ears Each **5¢**