

NC  
SYLVAN DIRECTOR, SW DUNN  
COLLECTION TEXAS TECH  
BOX 4090 LUBBOCK TX  
79409+

Voice of the Foothill Country

# Motley Co. Tribune

35¢  
PER COPY

98TH YEAR

THURSDAY, MARCH 14, 1991

ISSUE NO. 11

## 51st Annual Motley County Livestock Show to be held Monday

by Diana Garza

NOTE: Research for this article, by Texas Tech journalism student, Diana Garza, was made possible by a grant from the Reader's Digest Foundation.

The Motley County 4-H Stock show has come a long way from its humble beginnings where the grand champion received a \$10 cash prize and Herefords were the only breed of cattle entered.

Entries in the first stock show March 30, 1940, included 22 calves, eight pigs and 21 record books. Approximately 700 people attended the show in which five area communities participated.

At the first stock show, Charles Russell's calf won the grand championship trophy as well as first place in the senior calf division.

In the senior calf division, winners included: Donald Reeves, second; Kenneth Simpson, third; Curtis Martin, fourth; and Thomas Bourland, fifth. In the junior calf division, Glenn Woodruff won first; Bob Rushing, second; Charles Russell, third; Leldon Bynum, fourth; and Thomas Bourland, fifth.

Thurman Irwin and Grady Glenn placed first and second respectively in the pig division. In the record books division, Kenneth Simpson took first; Thomas Bourland, second; Glenn Woodruff, third; and Donald Reeves, fourth. After competing in Motley County, some of the boys went to the Plainview Fat Stock Show to compete, and five of six calves won prizes.

At the second annual stock show, 50 years ago, M.C. Jones won grand champion and Thomas Bourland won the reserve champion trophy.

There were so many entries that year that 10 places were awarded in the senior calf division, nine in the junior calf and ten in the pig division.

Twenty boys took 30 calves and three pigs to Plainview to compete, and afterward took their animals to Kansas City for sale. They traveled with their sponsors by bus and toured the city and the zoo, and visited a packing plant.

The 1942 stock show, almost cancelled due to snow, had 34 calf and 18 pig entries. Curtis Martin took senior calf grand champion and junior calf reserve champion. Billy Joe Coopertook the grand champion and reserve champion awards in the hog division. The prizes awarded were US War Bonds and Stamps instead of cash.

Martin also won junior grand champion at the Plainview Fat Stock Show.

Herb Martin and M.C. Jones won grand champion and reserve champion respectively in the 1943 stock show. Don Mickey Sanders won reserve champion in the heavy pig division and Billy Cooper took first in the light pig division. Although the stock show was held between 1944-1946 because of World War II, it did resume in 1947.

In 1949, "reserve-seat" tickets were sold for the show to raise money for the prizes. The tickets were also used in a drawing to give away a registered Jersey heifer. That year a new "showmanship" prize was awarded.

A secret judge observed the contestants and gave the showmanship award to Wayland Moore. A crowd of 2,000 attended the show where 9-year-old Jerry

Green won grand champion in the calf division, grand champion in the fat barrow division, and first place in the breeding hog division.

Green won again the following year at the 8th annual stock show, taking first place, breeding hog; first and second place, fat hog; first place, pig; first place, light steer, as well as grand champion.

That year, rabbit entries were accepted. Reverend Marvin Brotherton took first place in the buck rabbit division; Arthur Harmon won first with his doe rabbit; and Evin Vaughn took the only place in the rabbit litter.

No awards were given in the rabbit division in 1951 because there was not a judge.

Girls first entered animals in the 1951 stock show. Kelly Ann Green, Roaring Springs, and Mary Folley, Flomot, were

the first two girls to enter animals in the stock show. Green won second place in the heavy steer and also a showmanship

award, and Folley took fifth in the heavy calf. In 1953, 11-year-old Jan Barton took the top two places in the calf division. By 1955, about ten girls entered animals. Girls won reserve champion trophies in the steer, hog and lamb divisions in 1981.

A Hereford did not win the grand champion for the first time in 1954. Marcus Sweat, Roaring Springs, won grand champion with his Black Angus steer. Sweat won again in 1955 with a Black Angus.

continued on page 2



M.C. "SALTY" JONES and his Grand Champion Calf in 1941 Stock Show. The Hereford Calf "Buster" was bred by J.C. and W.E. Burleson Motley County Ranches.



Carolyn and Joely Ewing, wife and daughter of the late Don Ewing are pictured here with a plaque which was presented by Superintendent Tom Rowland, Tuesday night, to the Ewing family in honor of the memory of Mr. Ewing. It will hang in the School lobby. The plaque reads: "In memory of our loyal and dedicated friend, Donald E. Ewing, a leader, a gentleman, a true educator. Principal Motley County High School Girls Varsity Basketball Coach and Girls Cross Country Coach, 1986-1990."

## Roaring Springs City Council Meeting Report

The Roaring Springs City Council met Monday March 11 at 6:30 p.m. with Joey Thacker, Mayor Pro-tem and Council members, Mary Webb, Charlie Long, Bill Hand, Mark Wason was absent.

Frances Walters, City Secretary, read the minutes and bills. These were approved.

Mary Webb suggested the Council appoint Venita Sedgewick as Election Judge for the May 4 Election and four clerks and four alternates. Council ac-

cepted.

Frances Walters had a request from a Senior Citizen asking if the City had agreed to give the Senior Citizens a discount on the water used at the Senior Citizens Building. Walters couldn't find it in the minutes. None of the council members remembered doing that.

Charlie Long informed the Council of the plans being formulated for the Centennial Celebration, May 25.

Council went into closed session at this time. No decisions were made.

## Hospital Board Meeting Report

The Motley County Hospital Board met with James Stanley and Ruth Lee absent, March 12 at 6:30 a.m. at Billie Dean's Restaurant.

Beverly Rector, Coordinator of SPEMS (South Plains Emergency Medical Services) gave a report on the future planning and current interest in

projects to promote rural emergency medical service. One project consists of trying to get enough interest in each county to order each county a defibrillator machine.

SPEMS has received two grants for 1991 and have hopes of three more.

continued on page 2

## Firefighters Battle Blazes At Turner Gin In Flomot

Firefighters responded to a fire at the Turner Gin in Flomot Tuesday afternoon, March 5. The fire fanned by 35 mph winds, destroyed the south part of the gin building containing gin equipment and parts. The cause of the fire has not been determined. No injuries were reported. Water and

fire damage to gin motors still was being assessed, according to Mr. and Mrs. Donnie Turner, managers of the gin.

The fire began about 4:15 p.m. Volunteer Fire Departments from Flomot, Quitaque and Matador brought the blaze under control around 5:30 p.m.

## COMMISSIONERS MEET State Closes County Bridge



SOUTH PEASE BRIDGE approximately 200 feet across South Pease River in southeast Motley County on the county road to Dumont.

Motley County Commissioners Court opened with Commissioners J.N. Fletcher giving the invocation.

Judge Boyce Hart asked for the reading of the minutes by Clerk Lucretia Campbell. Bills were read and approved.

The reports were read by the Court: Treasurers, Library and J.P. reports; Precinct I collecting \$4,005.50 and Precinct 4 collecting \$144.00.

County Agent Rocky Vinson and Extension Agent Beverly Thomas reported on their program and activities. Tax collectors report was read by Elaine Hart, Deputy Clerk.

Commissioner Franklin Jameson explained that SPAG was asking for 17¢

per capita of county residents for the study and development of a regional landfill. Court passed this.

Court approved the First State Bank of Matador for the Depository Contract.

Commissioner Fletcher informed the Court of a letter from the State Department of Highways and Public Transportation, Austin, on March 9 that the public bridge, crossing the South Pease River in the southeast corner of Motley County, must be closed. The letter stated that due to the critical condition of the bridge structure the bridge must be closed. The letter also stated there were nine piling

continued on page 5

## Centennial Plans Progressing

The Centennial plans are continuing to become more focused with each meeting of interested citizens, organizations, and committees. On Monday evening, March 11, more specific details of the celebration were discussed and finalized. Also, with each meeting, a spirit of pride and honor for our past has created greater enthusiasm to make this celebration one to be remembered. Monday, March 25, 6:00 p.m., Sr. Citizens building in Matador, will be the next meeting, and anyone interested is encouraged to attend.

A full day of activities scheduled for

Saturday, May 25, 1991, to celebrate the 100th birthday of our county is planned. Barbecue and all the trimmings will be cooked and served by the Matador Lions Club. The MCCC is asking our local and area brand bearing ranchers to contribute \$50 or more to aid in the purchase of the beef to be used for this barbecue. In appreciation of your donation, a "commemorative board" will be made bearing each contributing ranchers brand.

This celebration cannot be done without your financial support. Please make your \$50 donation (or more) payable to

the Motley County Centennial Association and mail to Lois Campbell, Box 789, Matador, Texas 79244 or call Nova Dale Turner at 347-2309 or Janie Campbell at 347-2357 if you have any further questions.

Upon receipt of your donation, the MCCC will contact you to make arrangements for your brand to be burned into the "commemorative board" which will be displayed on the celebration grounds and hopefully, later at the sight of our future museum.

Please remit ASAP.

## Project Graduation Party Plans Underway

The Motley County PTO is sponsoring an all night "Project Graduation" party to assure that none of the Class of 1991 will be injured or killed in alcohol-related accidents.

Nationally, more young people between the ages of 16 and 20 are injured or killed between the hours of 10:00 p.m. and 4:00 a.m. in May and June. We want to make sure all our Seniors have a chance to attend their 10th reunion.

This will be Motley County's first "Project Graduation", the name used across the country for chemical-free

graduation parties. It will be held at Motley County High School, which will be open to grades 9-12 only. A variety of activities have been planned for the night including a dance, movies, contests, lots of food, prizes and games.

## Pictures, Stories Sought for Special Centennial Paper

The Motley County Tribune is seeking old pictures and/or special stories for the Centennial Paper, which will be published May 23. We hope to make this special edition something to be remembered.

If you have old pictures of early day Motley County pioneers, buildings, happenings, etc., or would like to share a special story with us, please contact our office at 806-347-2400 or 347-2774 or mail them to Motley County Tribune, P.O. Box 490, Matador, Texas 79244.

Our deadline for this paper will be Monday, May 13 for all special pictures or stories.

We assure you that we will take very good care of these pictures and will return them to you as soon as possible.

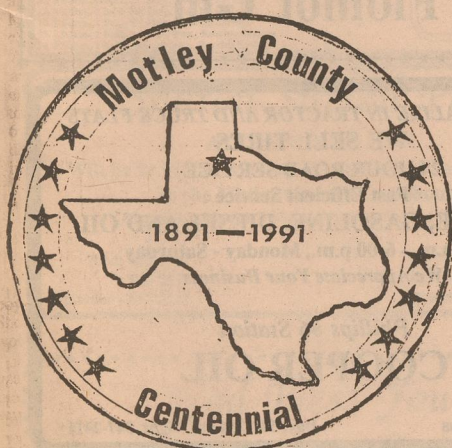
## Centennial Committee To Offer Special Commemorative Coins

The Motley County Centennial Committee is in the process of designing and ordering coins to commemorate 100 years in the "Foothill Country". A limited number of bronze coins are being ordered at this time. The cost will be \$10.00 for each bronze coin. The Centennial Committee will order silver coins if at

least 100 people are interested. The cost of the silver coins will be \$20.00 each. If you are interested in purchasing these coins, please send an order specifying either bronze or silver, or both, and how many of each to the address below. In sending your order, please include your name, address, and phone number. As

soon as the coins are received, we will send them to you. If the silver coins are not ordered due to a lack of interest, your money for the silver coins will be refunded.

Send requests to Charles Cammack, P.O. Box 425, Matador, Texas 79244



**Motley Co. Tribune**

Barbara B. Jameson, Publisher/Editor  
 Carla M. Jones, Associate Editor, Adv. Mgr., Typesetting  
 Amy Woolley, Proof Reading, School Reporter, Composition  
 Sherry Rose, Mailing Clerk  
 Jan Jones and Mary Renfro, Photo Developing

MEMBER  
**TEXAS PRESS ASSOCIATION**

The Motley County Tribune, (ISSN: 0897-4322), purchased on Feb. 1, 1986, is the successor to the Matador Tribune, and is published weekly each Thursday, except Christmas week, at Matador, Texas. The office is located on Highway 70 East (1/2 block east of Main Street). Telephone number 806/847-2400. Second-class postage paid at Matador, Texas.  
 Postmaster: Send address changes to Motley County Tribune, Box 490, Matador, Texas 79244-0490.

NOTICE: Any erroneous reflection upon the character, firm or corporation, which may appear in the columns of the Motley County Tribune, will gladly be corrected upon being brought to the attention of the publisher. Only signed letters to the editor will be considered for publication and should not exceed 250 words in length. (Letters may be subject to editing).  
 PUBLICATION NO. 333700

SUBSCRIPTION RATES: Motley \$13.00; All others, \$15.00  
 Students, 9 months, \$12.00  
 P.O. Box 490 Persons over 60 years of age may take a \$1.00 discount Matador, Texas

**MESSAGE FROM YOUR LIBRARIAN**

By  
 Wilda  
 Dixon

Tuesday, March 12 was Library School and the following were present: Timmy Bowman, Brittany A. Moore, Emily Hurt, Michael Grant, Amanda Hurt, Charissa Conner, Timothy Conner, Taylor Paul, Derrick Griggs, John Wesley Stevens, and Shelby Stokes. Mrs. Lola Pohl was in charge of the music and Mrs. Sonja Bowman was in charge of the storytelling and film. The other adults that helped out were Sarah Hurt, Jeannie Moore, Debbie Conner, and Edna Ruth Green. The film "Tempo: Baby Elephant" was enjoyed by all as well as the story *Sams Bath* by Barbro Lindgren.

The next Library School will be held March 26 at 10:00 a.m. and all preschool children age 2 and up are invited to come. Each time the children enjoy singing, films, stories and some type of handwork that they can take home.

Summer is fast approaching and that means it is time to begin collecting items that will be used in our summer reading program. The items we need may be brought to the Library and they include the following: 75 jar lids that will click (baby food jars and other similar lids); 40 small glass bottles with lids (olive oil, vanilla, etc.); and 75 egg cartons (dozen size). Our summer reading program will have the theme "CAMP WANNAREAD" and will begin on June 4 for the 2 year olds through Kindergarten and on June 6 for 1st through 6th grades.

Last Thursday, March 7, Mrs. Jo Amandes from West Texas Library System came to our Library to give a mini-workshop on shelving books and filing cards in the card catalog. Those that attended were Betty Moore, Tressie Warren, Keith Patton, Jo Scott, and Marisue Potts. In the afternoon, she also talked about repairing books or rebinding. Those that attended the afternoon session were Joan Patton, Tressie Warren, Betty Moore and myself. I would like to thank those volunteers that came in and I hope that they learned something.

# Obituaries

## Byrdie Bell (Smith) Woolsey

Byrdie Bell (Smith) Woolsey, 56, died at 12:00 a.m. Sunday morning, March 10, 1991, at Northwest Texas Hospital in Amarillo.

Survivors include her husband, Delbert; two daughters, Tara Roberts of Alabama and Candi Whipple of Amarillo; one son, Douglas Woolsey of Amarillo; two brothers, Carl Smith of San Antonio and Ken Smith of Breckenridge; two sisters, Lois Hart of Rock Springs, Wyoming and Teresa Underwood of Amarillo; her parents, Mr. and Mrs. Lester Smith of Amarillo and three grandchildren.

Funeral services will be held Thursday, March 14 at 2:00 p.m. at N.S. Griggs Funeral Home Chapel in Amarillo. Burial will be in Memorial Park Cemetery in Amarillo.

Mrs. Woolsey was born in Roaring Springs on the Davis farm, February 8, 1935.

She lived in Roaring Springs until 1940, when her family moved to Amarillo. She married Delbert Woolsey of Amarillo, February 1952.

She was a niece to Daisy Smith of Matador and Dorothy Lee of Roaring Springs.

## Mary Lou (Hespan) Parks

Mary Lou (Hespan) Parks died at 10:00 p.m. March 9, 1991 at a Breckenridge Nursing Home.

She married Charlie E. Parks at Parks, Texas in 1926. He died in 1980.

She and her husband moved from Breckenridge to Matador, March 1927, where he was a partner in the Commercial Grocery, with his uncle, Rans Moore until 1952. They returned to Breckenridge in 1956.

She is survived by several nieces and nephews and 2 cousins, Josephine Hamilton of Matador and Marge Harper of Mt. Pleasant, Iowa.

## Fred Stanley

Services for Fred M. Stanley, 56, of Mount Vernon were held at 2 p.m. Tuesday, March 12, in First Baptist Church with the Rev. Victor Gore, pastor, officiating.

The Rev. C.R. Oliver assisted, and burial was in Mount Vernon City Cemetery under direction of Sam B. Harvey Funeral Home.

Stanley died Sunday night, March 10, 1991 in East Texas Medical Center after a lengthy illness.

He had served as president of the Mount Vernon Chamber of Commerce and was a former city councilman. He was a pharmacist and member of First Baptist Church.

Survivors include his wife, Sue Teague Stanley; a daughter, Sherri Christenberry of Mount Vernon; a son, Steve of Shreveport, La.; his mother, Etoile Stanley of Mount Vernon; a brother, James of Matador; and two grandchildren.

## Luther Moore

Luther Moore, longtime Roaring Springs resident, died in Big Spring, Monday night, March 11, 1991 after a lengthy illness. Tentative funeral plans included graveside services at the Roaring Springs Cemetery at 2 o'clock Friday afternoon.

He is survived by his wife, Marie of Big Spring; a daughter, Ruby Fay (Bubbles) Hall of Big Spring; a son, Bobby Moore of Odessa; and several grandchildren.

## Verna Brown

Services for Verna Mae Brown, 48, of Plano were held at 10:00 a.m. Wednesday, March 13, in Ted Dickey Funeral Home with the Rev. Leonard General officiating.

Burial was in Plano Mutual Cemetery. She died Monday in her residence after a lengthy illness. She had been under hospice care.

She was born in Matador and was an interior decorator.

Survivors include a son, Craig of Plano; a daughter, Beth Brown of Plano; her mother, Laura Webb of Matador; a brother, David Watkins of Amarillo; and three sisters, Mary Lois Baker of Lubbock, Loretta Stubblefield of Denton and Patricia Knowles of West Bend, Wash.

The family suggests memorials to Hospice Care Inc. of Dallas.

*O Lord, you are my God; I will exalt you and praise your name, for in perfect faithfulness you have done marvelous things, things planned long ago.*  
 Isaiah 25:1

# Best Wishes for the Stock Show



## Flomot Gin

WE SPECIALIZE IN TRACTOR AND TRUCK FLATS  
 WE SELL TIRES  
 24-HOUR ROAD SERVICE  
 Fast Efficient Service  
 PROPANE, GASOLINE, DIESEL AND OIL  
 7:00 a.m. - 6:00 p.m., Monday - Saturday  
 We Appreciate Your Business

Phillips 66 Station  
**COOPER OIL**

Matador, Texas Day, 347-2346 or Night, 347-2411

# County Elections Set For May 4

Election time is May 4, 1991. Elections will be held for County and City Officials for places on the City Councils, School Board and Hospital Board.

Sign-up for these places will continue through March 20, 5:00 p.m.

Places will be for Roaring Springs City Council: Joey Thacker, Bill Hand and Charlie Long.

Matador City Council: L.B. Campbell, Travis Jameson and E.D. Lawrence.

School Board: Donnie Cruise, Leslie Jameson and Alvin Alexander.

Hospital Board: Larry Hoyle and H.C. Smith.

Candidate applications may be picked up at the City Hall offices for City Council; Superintendent's office for School Board; and Larry Hoyle for Hospital Board.

Places filed for at press time are: Roaring Springs City Council, none; Matador City Council, none; Motley County School Board, Alvin Alexander; Hospital Board, none.

# STOCK SHOW

continued from page 1

In the first years of the stock show, cattle were taken to Kansas City for sale. Most of the time, cattle were sold for more than their market value. However, in 1950, calves were sold on individual merit and were not purchased in excess of their market value as they had in the past. Some of the highest prices paid per pound for steers were in 1951 when Dayton Graham sold his grand champion steer for 40.25¢ per pound, and in 1948 when Waybourn Mitchell and Dewayne Martin sold their steers for 40¢ per pound.

The number of entries in any given year were often affected by outside influences, such as war or feed prices, and in 1953, drought conditions reduced the number of entries.

Sheep were first shown in the stock show in 1957. Douglas "Dink" Wilson took first and Benny Turner placed second.

Other grand and reserve champions during the past 51 years include:

- Pat Reeves, reserve, calf, 1951.
- Bert Green, grand, steer, 1952.
- Jerry Green, grand, calf and hog, 1956.
- Jerry Green, grand, steer, 1957.
- Cherri Barton, reserve, calf, 1957.
- Don Cox, grand, steer, 1960.

4-H and FFA members will be exhibiting 12 steers, 35 lambs, 35 hogs and 9 rabbits. Brent Crossland, County Agent from Floydada will judge the Jr. Show and Roy Walston, Hall County Extension Agent will judge the open heifers.

Delicious hamburgers, drinks, etc. will be served at the concession stand. A new concrete floor in to the concession area will help keep the dust down.

Make plans now to attend and have a fun filled day at the stock show.

\*\*\*\*\*

"To laugh often and love much; to win the respect of intelligent persons and the affection of children;...to know that even one life has breathed easier because you have lived — this is to have succeeded."

Ralph Waldo Emerson

\*\*\*\*\*

## Doris Neff Now Serving As Acting Postmaster For Roaring Springs

Doris Neff will be the acting Postmaster in Roaring Springs, Texas until Kitty McDowell, Postmaster can return from Abernathy where she is serving as acting Postmaster. Ms. Neff began her Postal career in McAdoo, Texas in 1973 and became Postmaster there in 1979. She is looking forward to serving the customers in Roaring Springs. Ms. Neff invites customers to stop by so they can discuss mailing needs. She will be glad to assist her customers in any Postal matter.

## Hospital Board

continued from page 1

They are putting together a DWI education film for high school age. A plan is being set up for a Critical Incident Stress Debriefing Clinic.

The bills were read and approved, with expenses for February being \$4,931.18, with a balance of \$24,697.37. The balance in the new Ambulance fund is \$20,126.06, with a few more expenses left on the old ambulance.

Minutes were read and approved.

Tony Rose, EMT Director, presented a brochure and prices for a portable Blood Pressure Monitor. He stated Dickens EMS had one for two years and a blood pressure can be taken while transporting the patient. The Board elected to purchase the demo with a one year warranty.

Tony Rose had three bids on the 2-Way Radio/Phone Patch System: Motorola of Plainview, \$4,300.00; Kenwood of Paducah, \$5,080.00; Midland of Plainview, \$3,885.00. This includes installation plus license fee.

Decision tabled.  
 Meeting adjourned.

**IT PAYS TO ADVERTISE IN THE MOTLEY COUNTY TRIBUNE**

# QUALITY SERVICE

Please feel free to call us anytime.

Business Customers (800) 323-7498

Residential Customers (800) 255-2498

Meet Jerry West, your district manager at GTE. Regardless of your need with GTE, Jerry will be here to make sure your telecommunications are taken care of promptly and will also ensure that you receive the highest quality service that GTE is accustomed to providing.

**GTE**

THE POWER IS ON

Praise the Lord!

## Good Luck Stock Show Participants

Taylor's  
 Pizza Box

Matador

## Good Luck Stock Show Participants

Lawrence  
 Farm Store

Roaring Springs

# Motley County School News



**SENIOR CLASS OFFICERS:** This year's senior class is headed by some great young ladies. They are President: Natalie Burkes, daughter of Mrs. Jo Ann Reagan of Quitaque; Vice President, Amy Stephens, daughter of Mr. and Mrs. Roy Stephens of Matador; Secretary/Treasurer, Brandee Spray, daughter of Mr. and Mrs. Joel Dean Spray of Matador; Reporter, Denise Crowley, daughter of Mr. and Mrs. Michael Crowley, of Matador. These young ladies are doing an excellent job!

## SCHOOL LUNCH MENU

**MONDAY, MARCH 18**  
Stock Show day.

**TUESDAY, MARCH 19**

**Breakfast:** Biscuits, Bacon, Scrambled Eggs, Juice.  
**Lunch:** Vegetable Beef Soup, Toasted Cheese Sandwich, Vegetable Sticks, Peach Cobbler.

**WEDNESDAY, MARCH 20**

**Breakfast:** Cereal, Buttered Toast, Fruit.  
**Lunch:** Combination Pizza, Tossed

Salad, Pineapple Tidbits, Vanilla Wafers.

**THURSDAY, MARCH 21**

**Breakfast:** Biscuits, Sausage, Gravy, Juice.  
**Lunch:** Corn dogs, Tater Wedges, Baked Beans, Pickle, Rice Krispie Bar.

**FRIDAY, MARCH 22**

**Breakfast:** Puffs, Cereal, Fruit.  
**Lunch:** Hamburgers, Lettuce, Tomatoes, Pickle, Onion, Chips, Chocolate Chip Cookies.

## SCHOOL CALENDAR

**March 14:** Girls golf at Wellington.  
**March 15:** Boys golf at Wellington.  
**March 16:** High School Boys and Girls Track Meet at Jayton.  
**March 18:** Stock Show - Student Holiday, (teacher workday).  
**March 19:** Boys Golf, Memphis.  
**March 22:** Jr. High Track Meet Aspermont.  
**March 23:** High School District UIL at Vernon.  
High School boys and girls track meet, Matador.

### ONE ACT PLAY DISTRICT COMPETITION

One Act Play District Zone Competition will be at Guthrie High School at 5:00 p.m.

Admission will be charged and a concession will be available.

\*\*\*\*\*

#### Fast and Pray

Confess your faults one to another, and pray one for another, that ye may be healed. The effectual fervent prayer of a righteous man availeth much.

James 5:16

## Amy's Anecdotes

by Amy Woolsey

Here lately when I watch the news, I just want to cry. It's not because I'm sad, but because I'm happy. I'm happy to see all the troops coming home and their family and friends greeting them. It all sends cold chills down my spine! To see the smiles on their faces and the tears of happiness in their eyes and to see them getting to see their families for the first time in months, makes me have a funny feeling inside.

But then, there are some that weren't so lucky. Some had to stay over there in Kuwait and some didn't come back at all.

I'll always remember those who gave their lives for me and everyone else, as well. They were my heroes and they always will be.

Like that song says, "You are the wind beneath my wings," you were and you are!

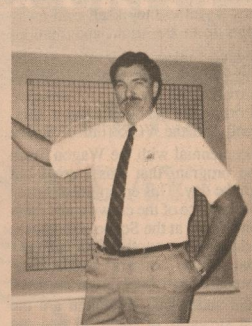
I thanked God for letting this war be over and I thanked Him for letting us have the wonderful men and women who risked their lives for us and our country. I'm glad they are getting to come home and I welcome them with pride and honor!

## Teacher Profile

by Amy Woolsey



Bettye Stevens



Walter Taylor

Mrs. Bettye Stevens is the secretary in the Administrative offices. She is also the P.E.I.M.S. coordinator, insurance clerk and responsible for computerizing the entire financial and personnel system for Motley County Schools.

She is originally from Paducah and attended most of her school years at Paducah and graduated from Hamlin High School in 1976 and South Plains College in 1982. She has also attended night classes through Vernon Jr. College.

She and her husband, Steve, have two children Ashley, 8 and John Wesley, almost 4.

When asked what she thinks of Motley County, Mrs. Stevens stated, "Since moving to Matador in 1982, Motley County has become "home" to me. I've never been treated as an "outsider" as you are when you move into a community. I love it here!"

Mrs. Stevens stated, "Motley County students are the best! I really enjoy being around them as they grow in all aspects of their lives. And hope they realize the importance a good education is in everything they do in life", when asked how she feels about Motley County students.

Her goals for the 91 school year are for the computer system in the administrative offices to be fully functional and for it to be used to its fullest in the daily operations of the school system.

Mrs. Stevens' hobbies include her children and the many activities they are involved in. A member of Motley County P.T.O., Motley County Youth Organization, Coach for Little Dribblers, loves to read when time allows.

Mrs. Stevens is a featured PTO Teacher of the Week.

Mr. Walter Taylor teaches 7th and 8th grade Math, Algebra I, Algebra II, Informal Geometry and Consumer Math.

He is originally from Quitaque and attended school there. He attended college at McMurry, Abilene and WTSU, Canyon.

He and his wife, Kathy, have three children, Christopher, Jamie and Jeremy.

When asked what he thinks of Motley County, Mr. Taylor stated, "The size of the community and school can be quite an advantage because of the chances for one on one teaching."

When asked what he thinks of students at Motley County, he stated, "It is quite an advantage having students from a small community because the parents generally care more about their children's performance."

Mr. Taylor's goals for the 91 school year are to have the students experience more of the things that can be done with numbers thus preparing them for college.

Mr. Taylor is a featured PTO Teacher of the Week.

*The only lost cause is the one you give up!*

Ernst von Feuchterleben

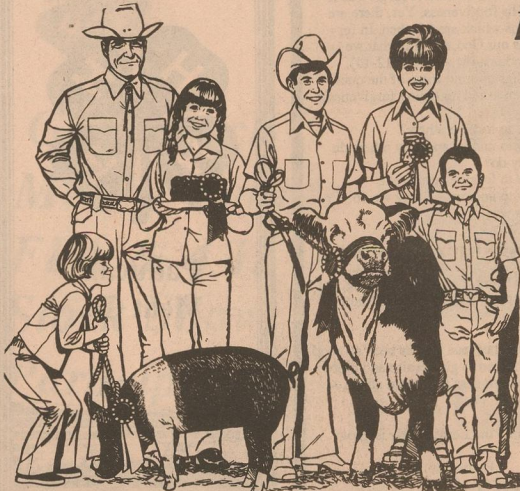
"Look to this day  
For it is life  
The very life of life  
In its brief course lie all  
The realities and verities of existence  
The bliss of growth  
The splendor of action  
The glory of power —  
Look well, therefore, to this day."

**SAY NO TO DRUGS!**

*Train up a child in the way he should go: and when he is old, he will not depart from it.*

Proverbs 22:6

**BEST OF LUCK  
IN THE  
STOCK SHOW!**



**Motley  
County  
Tribune**

Matador

## THE DODGE BIG SAVINGS SPECTACULAR

GET THESE BIG SAVINGS ON SELECT VEHICLES.

**LOW DOWN PAYMENTS! ON-THE-SPOT FINANCING! GET IMMEDIATE DELIVERY!**

**DON'T MISS THE BIG SAVINGS SPECTACULAR. GOING ON NOW.**

4. If Dealer decides to replace 3 (a.), 3 (b.), and 3 (c.), please be certain that the "\*" and the "\*" footnote is deleted as well.



**UP TO \$4,200**  
TOTAL SAVINGS ON SELECT DODGE FULL-SIZE PICKUPS\*



**UP TO \$1,400**  
TOTAL SAVINGS ON DODGE DAYTONA ES\*



**UP TO \$1,100**  
TOTAL SAVINGS ON DODGE DYNASTY LE\*



**UP TO \$1,350**  
TOTAL SAVINGS ON DODGE MONACO\*



**\$300**  
CASH BACK SAVINGS ON DODGE RAM 50\*



**UP TO \$2,700**  
PACKAGE SAVINGS ON DODGE CUMMINS TURBO DIESEL\*



**UP TO \$3,300**  
TOTAL SAVINGS ON DODGE RAMCHARGER\*



**UP TO \$4,370**  
TOTAL SAVINGS ON DODGE RAM VAN\*

**FLOYDADA**

FORD MERCURY CHRYSLER Dodge

FLOYDADA, TEXAS

# Society News

## El Progreso Meets For Conservation Program

The Senior Citizens building was the scene Thursday night, February 28, 1991 for El Progreso clubs meeting on Conservation: Environmental Education, with Mrs. Joe (Loys) Campbell, club president, presiding over the business session and welcoming guests as this was open to the public, especially farmers and ranchers.

Leader for the evening was Mrs. R.E. (Lucretia) Campbell who opened the evening reading the caption from the yearbook: 3 - For the time will come when they will not endure sound doctrine; but after their own lusts shall they heap to themselves teachers, having itching ears; 4 - And they shall turn away their ears from the truth, and shall be turned unto fables. II Timothy 4. She introduced Mrs. Harold (Grace) Campbell who provided the program for the evening. Prior to the business session, Mrs. Campbell had the VCR film of Texas Sesquicentennial with the Wagon Train and the program that was carried out through the day. This entertained those until the balance of the crowd came from the Spirit Rally at the School. She, then, proceeded to show another film from the National Cattle Raisers Association, "Cattlemen Care About Environment." The film stated that cattlemen are the original stewards of the land and are dedicated to improving that land. They

invest heavily every year through weed control, fertilizer, brush control, etc. Over 80% of wildlife "make their way" on private land. It also stated the farmer and rancher are born with love and respect for the outdoors - they are partners with the land.

Two pamphlets Mrs. Campbell handed to the group showed the medical and social benefits of livestock production where the adrenal gland provide epinephrine used to relieve some symptoms of hay fever, asthma and some allergies; blood from cattle where thrombin comes from is used in clotting and is valuable in treating wounds to inaccessible parts of the body; liver extract is sometimes combined with folic acid and injected to treat various types of anemia; and from the pancreas we derive insulin to treat diabetes. We also find many uses from swine where we find value replacement from full grown hogs being used in surgery in humans as they are more superior than mechanical valves as they don't stick (in the last 12 years, 250,000 lives have been saved through implantation of swine heart valves; skin from hogs is very similar to human skin and is used to treat massive burns and large accidental skin removal; thyroid extract is used to regu-

late the rate of metabolism in humans where another extract is used to treat low calcium and phosphate levels and regulate heartbeat; pancreas extracts are the source of insulin.)

The second pamphlet concerned twelve myths and facts about beef production.

Mrs. Campbell then proceeded to enlighten the group on the many bills introduced by the 101st Congress, many concerning the wet lands. She described the wet lands as any that may have had water on them at one time. One slogan she related that comes from an "activist" group trying to do away with public grazing land is "Graze-Free by '93."

We also have the new term "specieism" in which plants, etc. are put on the endangered list. The number of them are increasing rapidly only to rarely taken off after they have grown more abundantly, or maybe should not have been put on there at all. Another word we should be made very aware of is "terrorism". We think of that in some other land but it is very evident in this country with the Animal Rights groups where they are posing threats to Agriculture, Human Medical Science and other such important research projects. We must challenge that group and respond, not just react. Two examples of the terrorist activities involving the animal-right group

was the incident at Texas Tech when the laboratory was destroyed and one at University of California at Davis.

This program was a most important one as it concerns all of us. Mrs. Lucretia Campbell concluded the program reading an updated heavenly E.P.A. poem after which refreshments were served by

Mrs. W.N. (Opal) Pipkin and Mrs. Furman (Beverly) Vinson to members not already mentioned, Mrs. Robert (Winifred) Darsey, Mrs. Douglas (Lila) Meador, Mrs. Dale (JoEtt) Bumgardner, Mrs. Bob (Nell) Clem, Mrs. J.E. (Marge) Edwards, Mrs. W.D. (Vena) Lipscomb, Mrs. Ted (Bailey) Elliott, Mrs. E.A. (Dorothy) Day, Mrs. Frank (Lola) Pohl and Mrs. Bill (Judine) McCaghren, along with guests, Mrs. Jack (Mary Ola) Crider of Odessa, Frank Pohl, Bill McCaghren, Dale Bumgardner, Furman Vinson, J.E. Edwards, Tommie Sturdivant, Harold Campbell, W.D. Lipscomb.



## GFWC Eternas Study Club To Sponsor 53rd Annual Mother-Daughter Banquet

GFWC Eternas Study Club is sponsoring the 53rd Annual Mother-Daughter Banquet and it will be held on March 21, 1991 at 7:00 p.m. at the Motley County School. All girls and their mothers in grades 4 through 12 are cordially invited to attend. The meal will be prepared by Mrs. Betty Bearden and the menu will be Chicken Breast with sauce over rice, Green Bean Casserole, Salad bar, whole wheat rolls and Chocolate Cake-Ice Cream Delight. The cost of tickets will be \$6.50 each and there will be no tickets sold at the door. Tickets may be purchased at school from Carolyn Ewing and from Bobbie Brown and Wilda Dixon. The final day to buy tickets will be Tuesday, March 19, at 5:00 p.m.

The program has not been finalized as of this writing, however, we hope that everyone will buy your tickets and come for an enjoyable evening.

## GFWC Eternas Study Club Meets

February 19, 1991 the GFWC Eternas Study Club met for their regular monthly meeting at Seigler Funeral Home, where Mr. Pat Seigler gave a very interesting program about what can be expected at the time of a death in the family. He also talked about making arrangements ahead of time and how many different kinds of services that are available. After the program, the members went to the Library for their business meeting. These attend-

ing enjoyed refreshments furnished by hostess Bobbie Brown. The two main topics of business were the plans for the Mother-Daughter Banquet and the plans for the club's participation in the Motley County Centennial celebration.

Those attending were Bobbie Brown, Wilda Dixon, Judy Cooper, Terree Donaldson, Debbie Conner, Jeannie Moore, and Colleen Baxter.

And, behold, an hand touched me, which set me upon my knees and upon the palms of my hands.

Daniel 10:10

**DON'T MISS THE CLASSIFIEDS.....**

*You may miss a bargain!*

## Couple Announces Engagement



Jess Little and Donna Ewing

Mrs. Carolyn Ewing of Matador would like to announce the engagement of her daughter, Donna Carol to Jess Craig Little, son of Jess and Linda Little of Kermit, Texas. Donna is also the daughter of the late Don Ewing.

The wedding is set for June 15, 1991 at the First Baptist Church in Matador. Donna is a graduate of Perryton High School and Panhandle State University, Goodwell, OK. The future bridegroom is a graduate of Valley High School and a student at Howard Payne University, Brownwood.

## Ruth Garnett Receives College Honors

Ruth Garnett, a Matador High School graduate, and a student at Eastern New Mexico University at Roswell, N.M. has recently received honors.

Ruth has also been invited to join the honor society Phi Theta Kappa (Junior College level of Phi Beta Kappa.) She must attain a 3.5 or 3.9 grade average.

Dr. Lloyd Hughes, Provost of ENMU has nominated Ruth for three honors, the 1990 National Dean's Honor List and Who's Who in American Junior College.

Garnett is also currently Vice-President General and Director of Activities of Student Government of the Roswell campus.

*A gentle answer turns away wrath, but a harsh word stirs up anger.*  
Proverbs 15:1

**Good Luck!**

Motley County Livestock Show



Billie Dean's

To help us get acquainted with the fine people of Matador and Motley County, everyone is invited to an:

OPEN HOUSE

at the home of

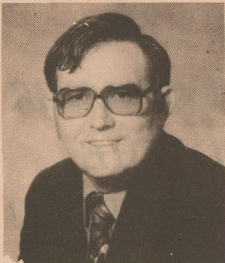
Charles & Jammie Cammack

1525 South Main Street  
Matador, Texas

From 2:00 until 4:00 p.m.

Sunday, March 24, 1991

### FORGIVENESS



Our God has promised to forgive us if we ask His forgiveness. Yes, there are conditions which are attached. In forgiving us our God ask of us that we forgive others, (Matthew 6:12-14). That brings to mind some of the questions often asked regarding forgiveness:

Is it easy to forgive others?  
Is it easy to understand why others do what they do?  
Is it easy to forgive ourselves?  
Is it easy to understand why we do what it is we do?

Think on this for a moment. You have the power yourself to forgive those who sin against you. That is right! No one else, on this earth, can forgive them but you. Therefore, it is up to you. God's great power of forgiveness is a wonderful thing, yet it awaits our willingness to forgive others. God wants us to illustrate the attribute of mercy, (Matthew 5:7).

We should desire to praise God and give thanks to Him because He has been so good to us and because of His mercy toward us. We were created to give praise and glory and honor to our God. If we fail to demonstrate the willingness to forgive others we have failed in our purpose for being.

"Praise ye the Lord. O give thanks unto the Lord; for He is good: for His mercy endureth forever."

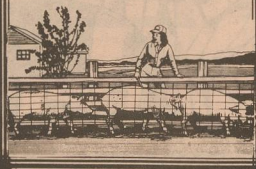
Psalms 106:1

MATADOR CHURCH OF CHRIST Michael G. Crowley, Sr.

Good Luck!



Paducah Meat Co.



K - 9 6

KSRW  
96.1 FM

KCTX  
1510 AM

AND

THE MOTLEY COUNTY TRIBUNE

Remind you to Shop at Home at one of these hometown business

CITY GROCERY  
JOE RICE AUTOMOTIVE  
THACKER JEWELRY  
HIGGINBOTHAM-BARTLETT

Listen to K-96 FM or KCTX 15.10 AM Radio - Childress for advertisement of these businesses



KSRW-FM RADIO  
The Finney Station!

Monday - Friday, 6:30 a.m.  
Dr. James Dobson  
Sunday, 8:00-10:00 a.m.  
One on One Sunday (music & teaching)  
10:00-11:00 a.m. - The Best of Dr. James Dobson

# Commissioners Court

continued from page 1



**SOUTH PEASE BRIDGE: Holes rusted at base of pilings under bridge closed by state.**

# Motley County Resident Makes Winter Home In Alaska

by Mary Meason

Can you imagine anyone past 80 years of age, with a broken back and weighing only eighty pounds going to Alaska to spend the winter? But those who know my sister-in-law, Josephine Hamilton, knows that she will not be daunted by anything!

She went to Alaska right after Thanksgiving with her son, Richard (Duck) and his wife, Pattie, and arrived just as the first winter storm struck. They found all the pipes frozen; no water for coffee, bathroom facilities and no water to drink, but there was plenty of snow to melt for water.

Other people had the same problem, so it took two days to get a plumber. When he finally arrived he drove his pickup close to the house. He had a heater in the bed of the pick-up and someone had thrown a coat on the heater. The coat and pickup caught fire and Duck called to Pattie and Josephine to get out of the house before the gas tank exploded. They ran out into the snow in nightgowns, robes and house shoes. After Duck called the fire department he ran out, picked Josephine up and carried her across the highway to a neighbors house. Fortunately, the gas tank didn't explode and no harm was done.

Pattie and Duck had lived in a mobile home ever since they first reached Alaska in 1966. Last year they bought a home in Willow, Alaska, a small town seventy miles north of Anchorage. A man had built this big, fine home and went bankrupt in the process, so Duck bought it for less than half of what the man spent building it. Josephine said she would like to meet that man's wife. She thought that lady must be very beautiful or thought she was, because every closet in the house had a mirror in its door!

Christmas week was spent in packing and moving into the new house, in time to have Christmas dinner with Patti's and Duck's sons, Richard and David and two grandchildren.

In late November or early December the sun was setting at 2:30 p.m. The sun is now rising in the southeast and going down in the northwest. But determining directions gives her the most trouble. She

thought she could always tell directions by the stars, but there the stars go around in circles. But she finally located the north star, so that is how she found her directions.

Josephine can be cold on the fourth of July, but she said that she is really enjoying the longhandles she took with her and after putting on four or five layers of clothes, it takes her at least thirty minutes to dress every morning.

The Iditarod races began on the first of March and came within twenty-six miles of Willow. The race runs from Anchorage to Nome, and every town the races pass through has a big celebration. Josephine said it reminded her of Old Settlers.

Susan Butcher is a lady musher in the race and she has won it four times, she lost the race last year, but is running again this year, hoping to win it for the fifth time. Needless to say that the male mushers are mad at her. To think that a woman can handle the dogs and sled better than they must be a blow to their male ego! Not only that, but she has been winning all the prizes!

Josephine doesn't say when she is coming home, but when garden planting time, weed chopping and mowing time gets here, you can be sure she will be home!



Josephine Hamilton is pictured here in front of a rock hillside in Willow, Alaska, while staying the winter there with her son, Richard (Duck) and wife Patti.

## Thank You

We would like to thank the Quitaque ambulance crew for your quick response to my Mother's need. Thank you to the Flomot EMT's, Diane Washington, Irma Washington and Sandra Barclay for responding so quickly and your caring professionalism. Thank you for the many different ways each of you have shown your love and concern for our family, the beautiful flowers, cards, phone calls and to those who traveled so far to attend the services. You all are a wonderful caring people. We love you.

The family of Rosa N. Paschal  
Aleda and Tom Ross  
Thomas Paschal Ross  
Aleda Elaine Ross  
Phillip Wigley

We would like to thank everyone for your support during the loss of our mother, Rose Witcher.

The family of Rose Witcher  
Bobby, Elmer and Georgia  
and families

We thank the Volunteer Fire Department in Flomot, Matador and Quitaque and local residents for the diligent work done bringing the fire under control at the Turner Gin in Flomot. We are truly appreciative of the needed and dedicated service of these men.

Linda and Donnie Turner  
Managers of Turner Gin

Thank you Lord and K-96 Radio for the blessing bestowed on me and my family.

Frank Ortiz

## Reader's Column

### God's Unconditional Love

by H. Soltwisch

The grass was as green as some folk's envy;  
The sky was as true blue as an honest man's heart;  
The thunder roared with as such displeasure as the Lord must know  
when one of his children disobeys.....

And when I hear the despair in a loved one's voice  
or see it in their eyes,  
My heart hurts, too, because I know there is  
things that I cannot change and dare not even try.  
But God can - and ONLY God can.

Tribulation worketh patience - God I want patience, but  
I really don't care for the tribulation that must precede it.  
Is there no way to avoid such? But then, You didn't avoid the  
suffering of the cross, did you? So who am I that I should think  
there must be no discomfort or a small amount of suffering as  
I go along the way?

I really wonder, Lord, have I not learned the lessons  
You have put before me so plainly?  
Have I been blinded by my own thoughts and desires?  
Show me, Lord, that you do supply my every need if only  
I will be obedient to your leading.  
Help me to have a discerning spirit and forgiving heart  
and compassion and unconditional love for those around me.

Daily, God, I think how fortunate I have been.  
You gave me the opportunity to minister to one of your own.  
And when you took him home, You gave me such peace as  
I had never known  
You are so good to allow me to know a part of your unconditional love.

Though I speak with the  
tongues of men and of angels,  
and have not charity, I am  
become as sounding brass, or  
a tinkling cymbal.

I Corinthians 13:1

**Good Luck  
at the 1991  
Livestock  
Show**

## Seigler Funeral Home

**Good Luck!  
In The Stock Show**

## Thacker Jewelry

Roaring Springs

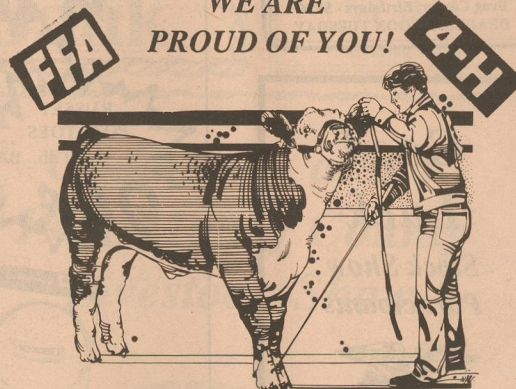


**Good Luck  
Stock Show  
Participants**



**Matador Motor & Imp.**

**WE ARE  
PROUD OF YOU!**



**Good Luck!**

**Cooper  
Oil Co.**



## Letter to Editor

Editor, Motley County Tribune:

I recently bumped into lifetime friends at the South Plains Mall and the subject presented itself whereby I was asked what my feelings were about how I would treat my children if I could raise them all over again. I'd like to publish my response.

I had already speculated, at length, on this subject. Circumstances and time were such I could not state what I really felt. I tried to communicate that I think children should be treated as if they were adult, wherein their feelings are concerned. They should help make decisions. After all, we are their care giver during their early years and the roles are reversed, oftentimes, in our golden years. It seems advisable to treat our children like we hope to be treated when we grow too old to be independent. I realize nothing is absolute. Some kids never provide for their feeble parents and seldom even visit them, although our Bible tells us clearly the manner in which we should treat our parents. Think of the guilt for all who neglect their parents!

I feel well qualified to state a few opinions on this subject, since I kept my mother ten years, in my home, with assistance from no one. That statement speaks loudly for itself. There were difficult times for each of us. It was challenging to have so many trials of my own and more responsibility than any one woman can be expected to handle. I did it without family to support me. Second hand criticism is not very reliable. It became necessary for mother to live in a nursing home and I do not feel guilty because I had done all that I could do, alone. Most human beings agree that no one should judge the decision of the person responsible for taking proper care of their parent.

Thank God for nursing homes. Mother is able to have nursing care, companionship and entertainment, daily. It was a very difficult decision to make. I visit there many hours each week. I enjoy the friendship and the love of the people who live there and their loved ones who come to visit. It is a place of great wisdom, because living has taught the residents so many valuable lessons that they share with me. We feel like a big family and love abounds all over that home. It is a

special privilege to see so many human beings come together to share our daily concerns. The camaraderie is wonderful.

It has been my pleasure to play piano and sing in several homes and I am practicing on a new electric keyboard

and a Sing-A-Long machine that I intend to utilize to entertain others to the best of my ability.

Miss Mary Keith and Demp Clifton reside in the nursing home at Crosbyton and they remember me each time I visit. They are doing remarkably well. Miss Mary's mind is sharp for her years and Demp enjoys singing as much as he did in his younger years. They are cheerful and make me happy that I saw them. I receive a special measure of love each time I see Ward Rattan. He is so kind and sweet. His memory may have dimmed but his warm, soft words and glowing countenance make a visit with him so worthwhile. He was so happy to have a little namesake. This little Andy Ward Rattan, II, has a great grandfather that he will grow up hearing stories about that will make him proud that his parents chose such a good name for him.

At Lockney Nursing Home I enjoyed visiting Mrs. Liller Garrison. She is so sweet and pretty and doing well. Hattie Snow and Jess Browning were doing as well as possible on my last visit. Mrs. Dona Browning ranks right at the top of my list and she does yours too, if you know her. I am sorry I didn't meet her when I was a child.

May 1, 1986, the Rev. A.C. Hamilton performed the marriage ceremony for Carl Chandler and I, in Plainview. Carl retired last year for the second time. He was in the U.S. Air Force 23 years. We travel down back roads of America and Canada at every opportunity we have. We spent October and November in twenty two states, Quebec and Ontario - eight thousand miles. I thought of the splendor of God as we looked at the beauty of this country. We can meet new friends and give our testimony in word and deed and song as we travel across America and have fun doing the best we can with what we have to work with. No more is expected of anyone.

Most of us subscribe to the Motley County Tribune because we want to hang onto our heritage and we sincerely want to know all about you and your family.

You can help us enjoy our paper even more by sharing any news, even if you think it is insignificant! Our editor, Barbara Jameson, would be delighted to find letters from every state of America telling news of any kind, for we would all be so interested to know about you. We all know thousands of folks who grew up and moved away and are still living, that we have heard very little about in many years. We want to know about you.

I deeply enjoy Mary Hamilton Meason writing of her experiences. She wrote about a fence that was installed around the school grounds and remarked that no one ever knew its purpose. It was a smooth fence, but the place where I jumped it to ride home with daddy had a rough place on it and I have three suture scars on my knee to help me remember that fence! It gives me my own personal ID!

At the end of our trip, whereby we had seen dozens of the highlights of America, we arrived in Arlington, Texas to find that my son, Danny Wes Byers, now 33, had started dialysis treatments while we were gone. We had all known for 26 years that his day would eventually arrive. It has been such a mental strain to try to accept what we could not change. He has had health problems so long, he has no idea what feeling well would feel like. And, I dare to complain! We are never prepared for this very serious, life threatening condition. He is sick most of the time but the majority of the time he speaks positive words and does not speak of his feelings unless asked. Dialysis means sitting in one place hooked up to a machine four hours, three days a week and a lot of this time is spent in physical pain. It is a huge commitment and restriction. We never know when a loved one will be struck down. We should stop and thank the good Lord for being as well off as we are.

Darla Beth, now 28, lives in Arlington and works as a registered nurse part time and sells real estate with her daddy and brother.

Because of my experiences with motherhood, it seems worthy of space to print a tenth grader's ideas regarding a parent-child relationship. It offers the opinion of what it takes to be a good parent, in the eyes of one intelligent, sensitive young man. Who do you care more for than your own children? No person has more value or a higher priority on this earth than our children.

The years we have our children home is such a short time. As for me, I believe I would almost treat my children like special guests if I could have them children again. I enjoyed being a mother and it has been a hard lesson to worry, wait, watch and wonder. All parents have a working knowledge of exactly what I mean.

Whiteflat Day is the first Saturday in April and it surely would be nice if more of the people in my age group would attend. There was a nice group of us baptized at one time in 1949 at the close of a revival. We didn't use a horse tank or creek, we were baptized at First Baptist Church, Matador! Wouldn't it be great if we could all make it for Whiteflat Day! Mark your calendar and make it a high priority. It is worth it.

If you think life has handed you a lemon - try and make it lemonade!

LaNelle Rattan Byers  
2525-70, Lubbock, TX 79413

And now abideth faith, hope and love, These three, but the greatest of these is love.

1 Cor. 13:13

### CLASSIFIED RATES

10¢ per word  
\$3.50 Minimum  
CARD OF THANKS  
up to 55 words - \$5.00  
55-100 words - \$10.00  
PICTURES  
Wedding, Engagement, Anniversary  
Brag Corner, Birthdays - \$5.00  
DEADLINE NOON TUESDAY

Good  
Luck  
Stock Show  
Participants



Pipkin  
Insurance

Higginbotham  
Bartlett

Matador

## Researchers Issue Severe Weather Safety Tips

As Severe Weather Awareness Week approaches, Texas Tech University researchers are telling people they can take precautions to protect themselves from the dangers of spring storms. During the week, March 10-16, officials across the state of Texas are attempting to increase safety awareness in hopes of saving lives.

Researchers with the Texas Tech Institute for Disaster Research have studied natural disasters for more than 21 years. In their studies of the causes, effects and preventative of damage from tornadoes, hurricanes, and low-level blasts, the investigators have established safety guidelines that could prevent loss of life when severe weather strikes.

-- Even persons who have limited access to broadcast storm warnings should closely observe any rapidly changing weather conditions that could signal a tornado, such as a progression from intense hail to deafening quiet.

-- When in houses, persons should seek shelter in a closet or room protected by as many interior walls as possible.

-- Individuals should avoid seeking shelter in manufactured or mobile homes because of their limited ability to withstand severe weather winds.

-- Individuals should not waste time opening windows to counteract pressure differentials. A common misconception is that buildings will explode if windows are closed, according to Richard E. Peterson, director of the atmospheric science group at Texas Tech.

-- Individuals should never remain in their cars or mobile homes. Often vehicles are picked up and smashed by tornadoes and high winds.

Most people who died in the April 1979 twister that struck Wichita Falls were killed while trying to escape the storm by driving in their automobiles, Peterson said.

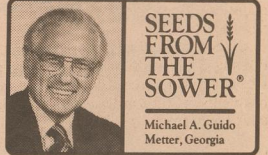
-- When outdoors, individuals should seek shelter in a depression or culvert to avoid flying debris, the cause of most damage and injuries. Persons should not take shelter in drainage ditches because of sudden flooding.

-- Individuals should be aware of tor-

nado season in their region. Tornadoes are most likely to occur in April, May and June on the South Plains, with the most tornadoes historically developing in May. Late winter is the tornadic season in the Gulf region and southern-tier states. In late March and April, tornadoes tend to strike the lower Mississippi, Tennessee and Ohio river valleys.

Texas Tech researchers with the Institute for Disaster Research are searching for ways to reduce weather-related destruction. The College of Engineering faculty members work in the fields of atmospheric sciences, wind engineering and glass testing to understand the damage caused by intense wind conditions.

Researchers from the institute have conducted field tests of natural disasters in the United States, Canada, Mexico and Australia.



SEEDS FROM THE SOWER  
Michael A. Guido  
Metter, Georgia

A successful business man was asked, "How are you able to give so much to the Lord, and still have so much?"

"Well," he answered, "as I shovel out to the Lord, He shovels in to me; and the Lord uses a bigger shovel."

Peter was a fisherman. That's how he made his living. One day the Lord Jesus needed a pulpit, and He asked Peter for the use of his boat. He gave it to the Lord, even though it meant he'd lose a day's work.

Did he lose by giving in to the Lord? Oh, no. The Lord filled two boats full of fish.

If you give to the Lord, you'll get from the Lord; and like the man said, "The Lord uses a bigger shovel."

Store #242 - Matador

MARCH 10 - MARCH 16

6 PK. 12 OZ. CANS

**ALLSUP'S BREAD**

1 1/2 lb. LOAF

**2 FOR 99¢**

Enjoy  
**Coke**

**1.99**

**TOM'S SMOKEHOUSE STYLE PORK RINDS**

reg. \$1.49

**\$1.09**

"MADE TO ORDER"

BAR-B-Q SANDWICHES

"beef or chicken"

**89¢**

**99¢**

**CHICKEN STRIPS**

"order 3 strips"

**99¢**

**RUSSET POTATOES**

10 lb. BAG

**39¢**

**LAY'S GRAB BAG**

**Cheetos**

12 oz. pkg.

**89¢**

**Decker Bologna**

12 oz. pkg.

**79¢**

**ALLSUP'S Breakfast Burritos**

COOKED FRESH 24 HRS. A DAY	HOT FOODS MENU	AVAILABLE AT ALL ALLSUP'S LOCATIONS
BARBECUE BEEF SANDWICH	99¢	8 PIECE BOX CHICKEN \$4.99
BARBECUE PORK RIBS (L.B.)	\$3.99	BEEF & CHEESE CHIMCHANGA \$1.19
BARBECUE WHOLE CHICKEN	\$3.99	(BREAD) CORN DOG 69¢
ALLSUP'S BURRITO	79¢	DELICIOUS HAMBURGER 59¢
BREAKFAST BURRITO	99¢	WILSON HOT LINKS 99¢
BURRITO BEEF & SALSA	\$1.19	SALISADE ON A STICK \$1.59
DELICIOUS CHEESEBURGER	79¢	SALISADE & BISCUIT 79¢
CHICKEN FRIED STEAK	\$1.59	SALISADE, EGG & BISCUIT \$1.09
3 COUNT CHICKEN STRIPS	\$1.49	SAUTEYA SAUSAGE \$1.09
WIPOTATO WEDGES/CHICKEN (2 PCS) BISCUIT	\$1.99	4 COUNT STEAK FINGERS \$1.00

CALL-IN ORDERS WELCOME CHECK OUR WEEKLY SPECIALS

## Sharp Says March Sales Tax Rebates Rise Moderately From One Year Ago

(AUSTIN) -- "We're sending more than \$229 million in local sales tax revenue back to local governments today, money that they can use to better serve the consumers who paid the money in the first place," State Comptroller John Sharp said today.

Statewide, monthly checks to city and county governments totaled \$81.9 million, 6.2 percent more than last March's checks. Quarterly payments to mass transit authorities added up to \$146.9 million, a 5.6 percent increase over the \$139 million forwarded to them last year at this time.

"While the state's economy continues to grow at a faster rate than the U.S. economy, Texas is feeling the slowing effect of the national recession," Sharp said. "That's why statewide sales tax allocations this month increased moderately."

The March payments to cities and counties reflect taxes collected by businesses in January.

Sharp sent local sales tax rebate checks totaling \$73.4 million to 885 cities, an increase of 5.1 percent over last March's payments of \$69.8 million. City sales tax rates range from 1 percent to 2 percent.

Houston received \$12.6 million, the largest payment in the state. Dallas received the second largest payment, \$7.2 million. San Antonio's check for \$4.2

million was the third largest in the state, and Austin followed with \$3.8 million.

Checks to county governments totaled \$8.5 million, up 16.7 percent from last March's checks of \$7.3 million.

Voters in 105 of Texas' 254 counties have approved collection of the 1/2 percent county sales tax, while voters in Uvalde County have approved an additional 1/2 percent tax for county health services. Last March, only 100 counties collected sales tax.

Totals for Motley County are as follows:

Matador: net payment this period, \$1,235.10; comparable payment prior year, \$1,015.03; % change, 21.68%; 1991 payments to date, \$5,721.67; 1990 payments to date, \$5,746.87; % change, -0.44%

Roaring Springs: net payment this period, \$1,981.88; comparable payment prior year, \$2,643.81; % change, -25.04%; 1991 payments to date, \$5,263.18; 1990 payments to date, \$6,797.03; % change, -22.57%

County Total: net payment this period, \$3,216.98; comparable payment prior year, \$3,658.84; % change, -12.08%; 1991 payments to date, \$10,984.85; 1990 payments to date, \$12,543.90; % change, -12.43%



Looking for a clear-cut answer about what will be required of producers under the 1990 Farm Bill is not as easy as it sounds. Many High Plains producers are finding that the newly implemented regulations contain several unexpected, even unappreciated, changes.

For many it boils down to a change from the way they managed their crop in 1990.

Lubbock-based Plains Cotton Growers, Inc. (PCG), the National Cotton Council and Texas Cotton Producers Association have begun an effort to get some of these new regulations changed. However, at this time it appears that these regulations are what ASCS will follow for the 1991-crop.

"The regulations being implemented by ASCS represent important changes for High Plains producers. Instead of being able to manage their operations the way they have in the past, many are going to find out that some of the things that they were allowed to do in the past are simply not going to work this year, unless the efforts underway prove successful," notes Donald Johnson, PCG Executive Vice President.

In spite of the confusion, however, program sign-up continues with many unknowns still plaguing producers trying to make management decisions regarding the 1991-crop.

Some of the changes that producers will face when making their decisions are:

- 1) Blank rows in 2: 1 cotton are no longer eligible to be counted as CU for Pay. Land designated as CU for Pay must meet the same size requirements as ACR;
- 2) Land designated as ACR of CU for Pay must meet the minimum size requirement of five acres and 66 feet wide. One exception to this rule is windstrips, or skips, that are planted in a uniform pattern across a field and are the larger of four normal rows or 150 inches plant to plant. One field per farm may still be designated as ACR and not meet the size requirements;

- 3) Terraces, even if planted in a high residue crop to comply with a conservation compliance plan, can no longer be used for ACR or CU for Pay unless they are in a uniform pattern across a field and meet the applicable size requirements;
- 4) In 1991 black-eye peas are not an approved cover crop;

- 5) Acreage tolerances have been lowered for 1991. In 1991 the maximum tolerance will be the larger of one acre or 5 percent of total acreage, not to exceed a maximum of 10 acres. The previous maximum tolerance for producers who measure the acreage themselves and certify was 50 acres. Producers who take measurement service will have no tolerance in 1991.

Farms that are found to be out of

tolerance will be ineligible for program benefits unless it is determined that reporting the acreage was done in "good faith". If a good faith determination is made the farm will still be subject to a penalty at a rate of 50 percent of the target price of the applicable crop.

One of the new regulations that producers must follow this year requires that 50 percent of the ACR be planted in an approved cover crop. Home gardens no bigger than 3 acres can be planted on ACR but they will not meet the cover crop requirement. The 50 percent cover must also be planted no later than June 1, even if it means suspending the planting of cotton or sorghum. This cover may not be disturbed until December 31. Small grains planted on ACR must be planted by December 1, producers taking this option may destroy the cover on ACR after August 1 Volunteer wheat on ACR is not considered planted and is not an approved cover.

The net result of some of the new regulations will be that many producers will have to reduce the number of cotton acres more than they would like. The reason the reduction is necessary is to fulfill their conservation compliance plan and also meet the requirements placed on ACR and CU for Pay acres.

PCG is contacting senators and representatives to voice the concerns of the High Plains producers. Primarily, attention is being focused on the disallowance of the blank row in 2: 1 cotton as eligible for CU for Pay, the elimination of terraces as eligible for ACR or CU, the new acreage tolerance levels, uniformity requirement regarding windstrips and the 50 percent cover for ACR, including the exclusion of volunteer wheat as an approved cover and the rigidity of the June 1 planting deadline. At this time, however, the outcome of these efforts is uncertain at best.

## Social Security Tips

by Mary Jane Shanes

### SURVIVORS SHOULD APPLY AS SOON AS POSSIBLE

Surviving dependents of a deceased worker should apply for Social Security benefits as soon as possible following the worker's death.

Prompt application will allow benefits to start at the earliest time. In addition, some benefits cannot be paid for more than a month before the month of application.

Social Security benefits can be paid to these survivors:

\* Unmarried children under 18, or 18-19 if a full-time elementary or secondary school student.

\* Unmarried children 18 or over who were disabled before 22 and remain disabled.

\* A widow or widower of any age (including a surviving divorced spouse) caring for a child of the worker under 16 or disabled who gets benefits.

\* Widow or widower 60 or older.  
\* Disabled widow or widower 50-60.  
\* Dependent parent 62 or older.

Benefits can also be paid to a surviving divorced spouse at 60 (50 if disabled) if the marriage to the worker lasted 10 or more years. Benefits can also be paid to grandchildren or great-grandchildren under certain circumstances.

There is a one-time sum payment that can be made to an eligible widow or widower or, if none, to a child getting benefits.

Before any benefits can be paid, the worker must have had credit for a certain amount of work covered by Social Security. In 1990, the amount ranges from 1-1/2 to 9-3/4 years depending on the worker's age at death.

More information about survivor's benefits can be obtained by calling Social Security's toll-free telephone number 1-800-234-5551 (1-800-234-5772) 7 a.m. to 7 p.m. weekdays.

He that is faithful in that which is least is faithful also in much: and he that is unjust in the least is unjust also in much.

Luke 16:10

## Used Cars

1 - 1986 Olds Delta 88 - Clean

1 - 1982 Chevrolet Caprice, 4 door - Nice Car

Cole Planter Parts Available Now

Complete Line of Forney Welding Supplies

Matador Motor & Implement

## DID YOU KNOW...

We do custom typesetting

Shower Invitations Posters  
Gift Certificate Programs

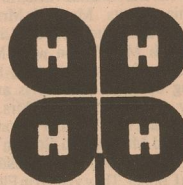
AND MORE!!

Motley County Tribune

For all your basic skin care products and glamour needs. Orders filled immediately. Call Waunel Goodwin 1-800-594-0730 Paducah

MARY KAY

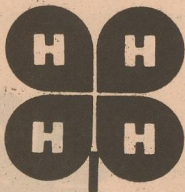
Good Luck at the Stock Show



Kountry Kitchen Cafe  
Roaring Springs

Good Luck

Motley County 4-H & FFA Stock Show Participants



Federal Land Bank

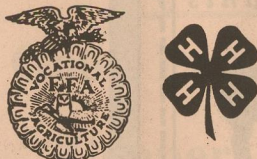


Good Luck Stock Show Participants



Thacker Supply  
Roaring Springs

Good Luck at the 1991 Motley County Livestock Show



West Texas Gin  
Matador

## First United Methodist Church

Rev. Mary Helen Cross  
Matador and Roaring Springs  
Sunday School, 10:00 a.m. and Church, 11:00 a.m. in Matador  
Church services at 9:30 a.m. in Roaring Springs  
Sunday night services at 5:00 p.m. in Matador

"Let us go into the house of the Lord"

## NEED MOBILE COMMUNICATIONS?

Mobile Phone & Two-Way Radio  
Local Number and Private Line

Call: Craig Turner  
347-2309  
— AVAILABLE NOW —

Motley County Livestock Show  
Good Luck!

Production Credit Assn.

Alan Bingham  
Matador, Texas







# Tax Tips

## Tax Bill Reduced by Home Expenses

Taxes can hit you right where you live. But if you own your home, many of your expenses can reduce your tax bill.

Real estate taxes, mortgage interest and replacing a roof are some expenses that affect your taxes by increasing your itemized deductions or reducing a gain on the sale of your home.

### Buying Your Home

**Basis:** Basis is a way of measuring your investment for tax purposes. It is important to know your basis when selling a home or figuring a loss as a result of a casualty. An explanation of "basis" may be found in Publication 551, *Basis of Assets*.

**Points:** You may deduct qualifying points if the loan is used to buy or improve your main home. The additional requirements that must be met to take this deduction may be found in IRS Publication 530, *Tax Information for Homeowners*.

**Closing Costs:** Your portion of property taxes paid at settlement is deductible.

### Owning Your Home

**Home Improvement and Repair Records:** Keep receipts for your home improvements. They will be added to your basis. Repairs for ordinary upkeep such as painting or gutter repair are not deductible.

However, if you pay these costs as part of a remodeling or restoration project, the entire cost is considered "home improvement" and is ordinarily an addition to the basis.

**Mortgage Interest:** You may deduct qualifying mortgage interest as an itemized deduction on Schedule A (Form 1040). See Publication 936, *Limits on Home Mortgage Interest Deduction*, for any restrictions that may apply to you.

**Taxes:** The qualifying assessed property tax you pay is an itemized deduction listed on Schedule A (Form 1040). Be sure the deduction is for the qualifying assessed property tax, not the amount placed in escrow by your lender to cover property tax.

**Casualty and Theft Losses:** Although limited, personal property loss due to casualty or theft may be deductible. Insurance reimbursements will affect the deduction. Publication 530, *Tax Information for Homeowners*, discusses deductible loss and how to calculate it.

### Selling Your Home

**Postponement of Tax:** Generally, paying the tax on the gain from the sale of your main home may be postponed if you buy a new home within two years before or after the sale and if the purchase price is at least as much as the adjusted sales price of the old home.

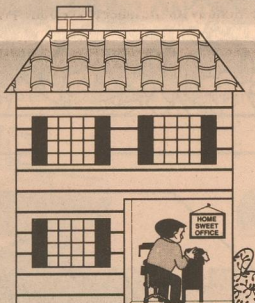
**Selling Expenses:** Selling expenses include commissions, advertising, loan charges (seller's points) and legal fees. These expenses are subtracted from the selling price of your old home in order to determine your realized gain, which is the amount you must spend on your next house in order to postpone the tax on any gain.

**Fixing-up Expenses:** Decorating and repairs done in order to sell your home may affect the amount of gain on which the tax is postponed, but the costs can't be deducted from actual profit. Publication 523, *Tax Information on Selling Your Home*, covers all the limitations to fixing-up expenses and many other tax issues related to selling your home.

Many IRS publications discuss the tax consequences of homeownership and other related issues. To order free publications and forms, call toll-free 1-800-829-3676. A few are listed below.

### Publications/Forms of Interest to the Homeowner

- Publication 523, *Tax Information on Selling Your Home*
- Publication 530, *Tax Information for Homeowners (Including Owners of Condominiums and Cooperative Apartments)*
- Publication 545, *Interest Expense*
- Publication 551, *Basis of Assets*
- Publication 587, *Business Use of Your Home*
- Publication 936, *Limits on Home Mortgage Interest Deduction*
- Form 2119, "Sale of Your Home"



## Qualifying for The Earned Income Credit

You may be able to reduce your taxes if you have a child and your earned income is less than \$20,264.

The credit may be as much as \$953, depending on your earned income. You must file a tax return on Form 1040 or Form 1040A to receive the credit, and if you don't owe any tax, you probably will be sent a refund.

The qualifications to claim the earned income credit are:

- You must have a "qualifying" child living with you for more than 6 months of the year or full year for a foster child or dependent of a qualifying widow(er).
- Your filing status on your federal tax return must be one of the following: married filing jointly, qualifying widow(er) with dependent child or head of household. There are specific requirements for each filing status.
- You must live in the United States.
- You must have earned income during the year.

**Earned income includes** wages, salaries, tips, other employee compensation, net earnings from self-employment, and union strike benefits. It also includes anything of value—money, goods or services—that you get from your employer for services you performed, whether or not it is taxable. Examples include quarters and subsistence allowances received by military personnel or the rental value of a parsonage provided to a member of the clergy.

**Earned income does not include** interest, dividends, welfare benefits, veterans' benefits, pensions or annuities, alimony, social security payments, workers' compensation, unemployment benefits, taxable scholarships or fellowships.

- Both your earned income and your adjusted gross income must be below \$20,264.
- You may not take the foreign income credit.
- Your return must be for a 12-month period.

If you think you will be eligible for the earned income credit in 1991, you may choose to get the credit in advance. The credit will be added regularly to your pay.

Further information on the earned income credit, including eligibility requirements, filing status requirements, and definition of "qualifying" child, is in Publication 17, *Your Federal Income Tax*. For a free copy of the publication, call toll-free 1-800-829-3676. If you need additional help with the earned income credit, call or visit your local IRS office.

## Proposed Law Packs A Punch: Drive Drunk, Lose Your License

by Kirk Brown  
State Chairperson, MADD

"My object all sublime, I shall achieve in time -- to make the punishment fit the crime." These words, written by Sir William Gilbert for "The Mikado," reflect why MADD supports new legislation which makes the punishment for driving while intoxicated fit that serious crime.

Administrative License Revocation (ALR) allows quick and certain suspension of driving privileges for people who choose to drive drunk.

Currently, 29 states and the District of Columbia have passed similar laws. According to the National Transportation Safety Board, ALR is "the most important step that Texas can take" to combat the carnage on our roads. In fact, if ALR had passed three years ago, 500 Texans who died in alcohol-related crashes could be alive today.

How would ALR work in Texas? If drivers fail or refuse a test to determine blood alcohol concentration, their licenses are suspended immediately. To ensure that "due process" rights are not violated, drivers are immediately issued a temporary driver's permit, valid for 40 days. This provides time to appeal the decision in court, if they choose.

If the drivers do not request a hearing or if the hearing officer upholds the revocation, the suspension takes effect when the temporary permit expires. ALR would eliminate the possibility of probation and would require license suspension of 90 days for a first DWI offense, and one year for repeat offenses. Refusal of a breath test would require license suspension of 180 days for a first offense and one year for repeat offenses.

Of course, drunken drivers would also be subject to immediate arrest and detention, along with whatever criminal penalties a judge may impose. These may include fines, community service, treatment, or jail terms.

Currently, when drivers are stopped for DWI, they may be back on the streets within hours -- with driver's licenses intact. Because of overcrowding, court action often is delayed for months. Even after a conviction, court-ordered license suspension is not mandatory. The net result is continued danger on our highways and discouragement to law enforcement officials, whose efforts seem to be in vain.

ALR not only address these shortcomings, but can actually pay for itself. License reinstatement fees, paid by offenders, help defray operating costs. In addition, passage of ALR would qualify Texas for a federal alcohol incentive grant totaling \$16 million over five years.

The proposed law is sponsored in the Texas Senate by Judith Zaffirini, and in

the House of Representatives by Hugo Berlanga and Parker McCollough. Already it has won the support of many organizations, statewide, including the Texas Police Chief's Association and the Texas District & County Attorney's Association. The Texas Department of Public Safety also supports the ALR concept. But the bill stands little chance of passage unless Texans demand it.

If you want to help get drunk drivers off our roads, write your state legislators and tell them you support Senate Bill 228 and House Bill 4. For the names and addresses of legislators - or to check the status of a bill - call the Texas Legislative Library at 800-253-9693. The few minutes you spend writing a letter could save many lives. Maybe, even your own.

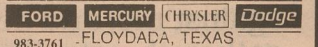
## SOCIAL SECURITY

CALL TOLL-FREE  
24 HOURS A DAY  
800-2345-SSA

## E-Z AUTO CREDIT

FLOYDADA

A SUBSIDIARY OF



983-3761 FLOYDADA, TEXAS

\*\* HWY 62 \*\*

NO CREDIT  
DIVORCE  
REPO

PROBLEM

\*\*\*CALL 983-3761\*\*\*

You have credit with us with a job and a down payment

WEEKLY - BI-WEEKLY - MONTHLY PAYMENTS

## HIGGINBOTHAM - BARTLETT Co.

"Quality and Service at the Right Price"

SALE PRICES GOOD THRU APRIL 30, 1991



**ROUND STOCK TANKS**  
Sizes available from  
3' thru 11' and 1/2 sizes.

3'	56.69
4'	73.79
5'	97.79
6'	124.49
7'	153.29
8'	185.59
9'	220.09
10'	255.89
11'	295.49

FARM & RANCH SPECIALS

\$ 1.99

6' T-POST  
#1.25 T-shaped  
resilient rail steel.

**ELECTRIC FENCE WIRE**  
14 gauge X 1/2 Mile  
galvanized wire.  
American Made.

\$28.59

\$23.99

**2-POINT BARBED WIRE**  
12 1/2 ga. galvanized wire  
5" spacing between barbs.  
American Made. 80 rod reel.

CASH AND CARRY

PLEASE COME IN AND CHECK OUT OUR IN STORE SPECIALS ON OTHER FARM AND RANCH ITEMS SUCH AS INSULATORS, 3/8 x 4' REBAR POST, CATILE AND HOG PANELS, ELECTRIC FENCE CHARGERS, AND STEEL GATES. COME IN AND BROWSE AND YOU WILL SEE WHY AT HIGGINBOTHAM-BARTLETT WE SAY WE WANT TO GIVE YOU "QUALITY AND SERVICE AT THE RIGHT PRICE".

NOT ALL ITEMS AVAILABLE AT ALL LOCATIONS.



Best Wishes  
Stock Show  
Participants

STANLEY PHARMACY



Good Luck  
Motley County  
FFA & 4-H  
Stock Show  
Participants



Turner Gin

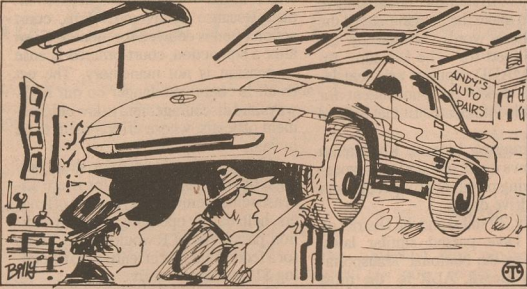
Flomot

# Car Care Corner

## Fifteen Fuel-Saving Tips Help Your Vehicle Last Longer

The way you use your car and take care of it will have a tremendous impact on fuel economy. It will also increase your enjoyment of the car and reduce your cost of operation. Here are 15 fuel saving tips from the experts at Toyota.

- Keep your tires inflated at the correct pressure. Underinflation causes tire wear and wastes fuel.
- Do not carry unneeded weight in your vehicle. Excess weight puts a heavier load on the engine, causing greater fuel consumption.
- Avoid lengthy warm-up idling. Once the engine is running smoothly, begin driving—but gently. Remember, however, that in cold winter days this may take a little longer.
- Accelerate slowly and smoothly. Avoid jackrabbit starts. Get into high gear as quickly as possible.
- Avoid long engine idling. If you have a long wait and you are not in traffic, it is better to turn off the engine and start again later.
- Avoid engine lug or overrevving. Use a gear range suitable for the road on which you are travelling.
- Use your air conditioner only when absolutely necessary. The air conditioner puts an extra load on the engine, increasing fuel consumption.
- Avoid continuous speeding up and slowing down. Stop-and-go driving wastes fuel.
- Avoid unnecessary stopping and braking. Maintain a steady pace. Try to time the traffic signals



Improper wheel alignment not only causes faster tire wear, it wastes fuel.

- so you only need to stop as little as possible or take advantage of through streets to avoid traffic lights. Keep a proper distance from other vehicles to avoid sudden braking. This will also reduce wear on your brakes.
- Avoid heavy traffic or traffic jams whenever possible.
- Do not rest your foot on the clutch or brake pedal. This causes needless wear, overheating and poor fuel economy.
- Maintain a moderate speed on highways. The faster you drive, the greater the fuel consumption. By reducing your speed, you will cut down on fuel consumption.
- Keep the front wheels in proper alignment. Avoid hitting the curb and slow down on rough roads. Im-

- proper alignment not only causes faster tire wear but also puts an extra load on the engine, which, in turn, wastes fuel.
- Keep the bottom of your vehicle free from mud, etc. This not only lessens weight but also helps prevent corrosion.
- Keep your vehicle tuned-up and in top shape. A dirty air cleaner, improper valve clearance, dirty plugs, dirty oil and grease, brakes not adjusted, etc., all lower engine performance and contribute to poor fuel economy. For longer life of all parts and lower operating costs, keep all maintenance work on schedule, and if you often drive under severe conditions, see that your vehicle receives more frequent maintenance.

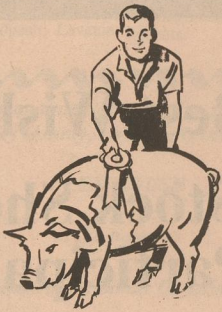
He that is not with me is against me; and he that gathereth not with me scattereth abroad.

Matthew 12:30

347-2234  
**Crime Line**  
347-2417

"Advice is seldom welcome; and those who want it most always like it least." Earl of Chesterfield

## Good Luck in the Stock Show



**Caprock Meat**

Floydada

## Good Luck In The Stock Show!



**Don's Tire & Automotive**

& Texas T's & Floral

## Best Wishes At the Stock Show!



**Dickens Electric**

## Good Luck at the 1991 Motley County Livestock Show



**Kathy's**

Flomot

# HEALTH NEWS

## THE ART OF RELAXATION

Relaxation is more than getting away from the workday grind, and it is more than the absence of stress.

Relaxation is positive and satisfying. True relaxation requires becoming sensitive to one's basic needs for peace, self-awareness, thoughtful reflection and the willingness to meet these needs rather than ignoring or dismissing them.

The pressures of everyday life take a heavy toll on the physical and mental well-being of millions of people each year. Medical research into diseases such as high blood pressure, heart disease, ulcers and headaches shows a connection between stress and the development of these ailments.

Unfortunately, some people pursue relaxation with the same concern for time, productivity and activity they show in everyday life. According to Katie Goar, continuing education coordinator at Methodist Hospital, the secret in getting the best results from attempts at relaxation is simple: find those activities which give you pleasure, and when you pursue them, commit your energies to total mental and physical well-being.

Goar offers these suggestions for learning the art of relaxation.

\* Check out various community activities available through recreation departments, adult education programs, volunteer work opportunities, college courses, etc.

\* Consider exercise such as walking around your neighborhood or in the park, bicycling, dancing, playing golf, swimming, gardening and bowling.

\* For more physically fit, more strenuous exercise can prove most relaxing. Jogging, playing tennis, basketball, handball or squash can give a feeling of wonderful relaxation after an intense workout.

\* Creative activities such as painting, drawing, pottery, carpentry, knitting and even cooking for fun also can give a sense of accomplishment as well as the peaceful relaxation of concentrating on something you wish to do.

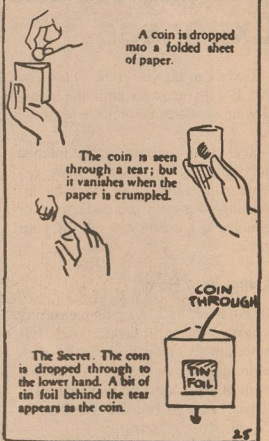
After discovering your favorite relaxation activity, plan to devote at least one-half hour per day to pursuing it. Most people accept the responsibility to meet deadlines and duties imposed on them, but it is equally important for them to meet the requirements for relaxation periods demanded by their own minds

and bodies.

Finally, the art of relaxation is to enter into activities with enthusiasm and personal commitment. Let yourself become completely involved in the relaxation activity chosen. Don't hold back physically or mentally.

## MAGIC MADE EASY

### COIN FROM PAPER



The Secret. The coin is dropped through to the lower hand. A bit of tin foil behind the tear appears as the coin.

**J.P. Doodles**

THE WAY I SEE IT, TAXES ARE A NECESSARY EVIL...

**Reedit & Wreep TAX PREPA**

DON'T BLAME ME

CASH RECEIPTS

YOU'VE GOT IT HALF RIGHT!

BARRY © '91

BANK STUFF

**FBA BEEFMASTER SEMINAR**

This seminar will give cattlemen of the area an opportunity to see top quality Beefmaster Breeding Stock.

**DATE:** MARCH 23, 1991

**PLACE:** SENIOR CITIZENS BUILDING MATADOR, TEXAS

**SCHEDULE:** REGISTRATION FOR FREE HEIFER AND CATTLE VIEWING 10:00 A.M. TO 12:00 NOON

**FREE BBQ LUNCH 12:00 TO 1:00 P.M.**

**GUEST SPEAKERS 1:00PM**

"PELVIC MEASUREMENTS"  
Dr. Ed Murray

"ENVIRONMENTAL ISSUES"  
O. C. Rampley, Silverton TX

"BEEFMASTERS"  
James Gowan, FBA President  
Montgomery, AL

"CROSSBREEDING WITH BEEFMASTERS"  
Rank Cogdell

**For more information:** GALE STAFFORD 806-347-2804 or 689-2290  
STUART DIXON 806-469-5347

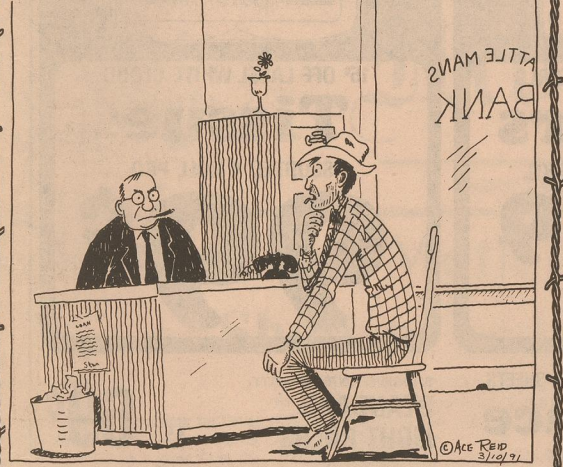
**Seminar is sponsored by:**  
PANHANDLE NEW MEXICO BEEFMASTER BREEDERS  
A satellite organization of the Foundation Beefmaster Association

**FOUNDATION BEEFMASTER ASSOCIATION**

# THE CLASSIFIEDS

## COWPOKES

By Ace Reid



"Banker, I ain't got any credit references, they have all gone broke!"

This Feature Sponsored By  
**First State Bank**

Matador

Your "Hometown" Bank Member FDIC

Mr. Farmer.....

It's time to start thinking about your Fertilizer and Chemical needs for the coming year. See us for prices on:

Fertilizer - (Dry or liquid) — Chemicals  
We also do custom application.  
**CHECK OUR PRICES BEFORE YOU BUY!**  
**LAWRENCE FARM STORE**

Roaring Springs, Texas

806-348-7271

## First Assembly of God Church

Rev. Roy Eason, Pastor

Matador, Texas

347-2771

SUNDAY SCHOOL - 10:00 A.M. CHURCH - 11:00 A.M.  
SUNDAY NIGHT - 6:00 P.M.  
WEDNESDAY NIGHT - 6:30 P.M.  
PRAYER AND BIBLE STUDY

Therefore with joy shall ye draw water out of the wells of Salvation.

## First Assembly of God Church

REV. ERNIE BROWN

Roaring Springs, Texas

Jesus Christ is the same yesterday, today and forever

(Hebrews 13:8)

Church - 11:00 a.m., Sunday School - 10:00 a.m., Sunday Night - 6:00 p.m.

Wednesday Prayer Meeting - 7:00 p.m.

Missionettes for girls

Royal Rangers for boys

## Germania Insurance

Homeowners, Auto, Personal and Farm  
Liability and Life



Lee's Insurance Agency

Flomot, TX 79234

(806) 469-5370

## LONG REAL ESTATE

Roaring Springs, Texas

1,2 Bdrm. Stucco Dwg. in Matador  
2.82 Ac W/76 Cult. 1 MI. SW Dickena.  
3.520 Ac W/146 Cult. 10 MI Spur  
4.476 Ac W/147 Cult. W/3 Bdrm. Dwg. Cross Fenced W/M Pens  
5. FR 2 Bdrm. Dwg. Roaring Springs  
6. AB 2 Bdrm. Dwg. Roaring Springs  
7. FR 1 Bdrm. Dwg. Roaring Springs  
8.2 Bdrm. Ash. Bd Dwg. in Roaring Springs  
9.2 Bdrm. Stucco Dwg. in Matador  
10.4 Bdrm. Binyl Sliding Dwg. in Matador  
11.2 Bdrm. Stucco Dwg. in Matador  
12.3 Bdrm., 2 Bath, Fr. Dwg., Roaring Springs  
13.3 Bdrm., 1 Bath, Fr. Dwg., Roaring Springs  
14.2 Bdrm., 1 Bath, Fr. Dwg., Roaring Springs  
15.2 Bdrm., 1 Bath, Ash. Bd. Dwg., Roaring Springs  
16.2 Bdrm., 1 Bath, Ash. Bd. Dwg., Roaring Springs

CALL  
806-348-7531  
Night 348-7510  
or Night  
348-7284

## Sharon Sutton Pigg

ATTORNEY AT LAW

Will be in Matador every Wednesday, 10 a.m. - 4 p.m.  
in the Motley County Courthouse  
(Also available for Private Practice during this time)

(806) 823-2520  
823-2131  
Matador - 347-2334

415 Main Street  
P.O. Box 651  
Silverton, Texas 79257

God Bless You

## Real Estate

OFFICE SPACE FOR RENT: Call James Stanley, 347-2603 or 347-2403.

ctfn

MOBILEHOME: 16' x 80', 3 bedroom, 2 bath, central heat and air. For sale to move or with 16 lots; all fenced with 2 3/8" tubing with 2 barns in Matador. Call Taylor Martin, 915-762-3875.

2tc-9

## Work Specialities

BRENT AND BRIAN MARSHALL will be available to do electrical work; VCR and TV work; Cable and Phone outlets; and tree-trimming on Saturdays. Contact Ken or Mary Marshall, 347-2455.

ctfn

ALUMINUM WELDING and repairs of all kinds. Golden Truck and Tire Co., Hwy. 287 East, Quanah. 817-663-5672.

4tp-12

CESSPOOL PUMPING: 348-7516

1tc-9

FOR ALL YOUR PLUMBING NEEDS, call Bennie Meredith, 348-7932.

## Help Wanted

EXCELLENT INCOME: Easy Work! Assemble products at home. Call now! 1-601-388-8242 Ext. H4038 24 hours.

6tp-13

## WANTED

SURROGATE MOTHERS WANTED Fee and expenses for carrying a couple's child. Must be 18-35 and previously delivered a child. Steve Litz, Attorney, (317) 257-7096.

## Garage Sale

ESTATE SALE: Saturday, 10:00 a.m. - 3:00 p.m. at the Carl Ashley home in Roaring Springs. Furniture, dishes, knick-knacs, much more.

1tc-11

TWO FAMILY GARAGE SALE: Saturday, March 16, 9:00 a.m. Ed Lawrence home, 915 Virginia, Matador.

1tp-11

GARAGE SALE: Friday and Saturday, 9:00 a.m. Inside Don's Tire & Automotive.

## For Sale

FOR SALE: 2 horse trailer, good floor, good paint, good rubber. Call 347-2336.

2tc-11

FOR SALE: 16 ft. Ski Boat with Trailer. Has 70 h.p. Evinrude motor. Excellent condition. Contact 347-2250 after 6:00 p.m.

ctfn

MESQUITE FIREWOOD FOR SALE: Cut and delivered by cord or ric. Specify dry, green or mixed. Call Jason Jameson, Matador, 347-2774.

FOR SALE: King Size Waterbed with drawers. Still in use. \$100.00. 347-2711.

1tc-11

FOR SALE: A real good butane cook stove with a clock, timer and light all across. Hardwick. R.A. Stafford, 806-347-2803.

1tp-11

## Specialities

NOW AVAILABLE AT MATADOR MOTOR AND IMPLEMENT: Professional Windshield Installers are at Matador Motor & Implement every two weeks. Guaranteed not to leak. Call 347-2422.

FOR SALE: Used Maytag washers and dryers, rebuilt and guaranteed. THACKER SUPPLY, 348-7216.

ALL THE ROADS OF TEXAS: A 172 page full color atlas based on the county maps of the Texas Department of Highways and Public Transportation. Large scale, detailed maps; great details, county and local roads, lakes, reservoirs, streams, dams, historic sites, pumping stations, golf courses, and more! \$12.95. Available at the MOTLEY COUNTY TRIBUNE.

## Shaklee Products

Peggy Probasco  
983-5246

WELDING, SANDBLASTING & PAINTING for all types of Farm and Ranch equipment. JAYTON FEED & SEED, Ross Hudson, 806-237-3604.

ctfn

ALL TYPES OF EXHAUST WORK

DON'S MUFFLER SHOP  
210 W. Calif.  
Floydada, Texas 983-2273

ctfn

## Farmers & Ranchers

BEEFMASTER BULLS coming 2 year olds. STAFFORD'S, 347-2804 or 689-2290.

ctfn

## NOTICE

### NOTICE OF TRUSTEE ELECTION (AVISO DE ELECCION TRUSTEE)

To the registered Voters of Motley County I.S.D., Texas:  
(A los votantes registrados del Condado Motley, Texas).

Notice is hereby given that the polling places listed below will be open from 7:00 a.m. to 7:00 p.m. on May 4, 1991, for voting in a Trustee election, to elect three (3) Trustees for three (3) year terms.

Notifiquese, por las presente, que las casillas electorales citadas abajo se abrian desde las 7:00 a.m. hasta las 7:00 p.m. el 4 de Mayo, 1991 para votar en la Eleccion para elegir tres miembros para el termino de tres años.)

LOCATIONS OF POLLING PLACES  
(Direccion De Las Casillas Electorales):

- 1, 5, 6: Motley County Courthouse, Matador, Texas
- 2: School Building in Flomot, Texas.
- 3: Northfield Cemetery Building, Northfield, Texas.
- 4: Depot Building in Roaring Springs, Texas.

Absentee Voting by personal  
(La votacion en ausencia en persona se llevara a cabo de lunes a viernes en) appearance will be conducted each weekday at the Office of the County Clerk of Motley County between the hours of 9:00 a.m. - 5:00 p.m. beginning on April 15, 1991.

(entre las 9:00 a.m. de la mañana y las 5:00 de la tarde del 15 de Abril, 1991) and ending on April 30, 1991.

(al 30 de Abril, 1991)

Additional absentee voting will be held at the same location as follows:

NONE  
Applications for ballot by mail shall be mailed to:  
(Las solicitudes para las boletas que se votaran por correo deberan enviarse antes del termino del dia del negocio el dia 26 de Abril, 1991 a:)

Lucretia Campbell  
Motley County Courthouse  
Matador, Texas 79244

Applications for ballots by mail must be received no later than the close of business on April 26, 1991.

Issued this the 27th day of February, 1991.

2tc-11

## NOTICE

Notice is hereby given that the Board of Trustees of Motley County Independent School District will have a drawing of names of Candidates for the Trustee Election to place such names for places on the ballots.

Drawing will be held on March 21, 1991 at 5:00 p.m. in the office of the school Superintendent, 1600 Bundy Street, Matador, Texas.

Thomas W. Rowland  
Superintendent

### NOTICE OF APPLICATION FOR FLUID INJECTION WELL PERMIT

Gilmore Oil & Gas, 110 N. Marienfeld, Suite 155, Midland, Texas 79701 is applying to the Railroad Commission of Texas for a permit to inject fluid into a formation which is productive of oil or gas.

The applicant proposes to inject fluid into the Pennsylvania, W.A. Stearns, Well Number 2. The proposed injection well is located 6 miles east of Roaring Springs, Texas, in the Roaring Springs field, in Motley County. Fluid will be injected into strata in the subsurface depth interval from 4,600 to 4,650 feet.

LEGAL AUTHORITY: Chapter 27 of the Texas Water Code, as amended, Title 3 of the Natural Resources Code, as amended, and the Statewide Rules of the Oil and Gas Division of the Railroad Commission of Texas.

Requests for a public hearing from persons who can show they are adversely affected, or requests for further information concerning any aspect of the application should be submitted in writing, within fifteen days of publication, to the Underground Injection Control Section, Oil and Gas Division, Railroad Commission of Texas, Drawer 12967, Capitol Station, Austin, Texas 78711 (Telephone 512/463-6790).

## Announcements

### MUSICAL JAMBOREE TO KICK-OFF MOTLEY COUNTY CENTENNIAL CELEBRATION

A "kick-off" Motley County Centennial Celebration will be Saturdaynight, March 30 with a Musical Jamboree at the Motley County School auditorium.

Bands from Levelland South Plains College, Plainview, Brownfield, Silverton, Spur and Lockney will begin the entertainment at 7:00 p.m. The Motley County 4-H Clubs will have a concession stand in the school cafeteria.

Mark this on your calendar and plan to attend this Centennial Jamboree!!

### MOTHER-DAUGHTER BANQUET

GFWC Eternas Study Club will sponsor the annual Mother-Daughter Banquet on March 21, 1991 at 7 p.m. More details will be announced later and tickets will go on sale March 1. For more information contact Bobbie Brown or Wilda Dixon.

### Centennial Committee looking for "Home-Grown" Entertainment

Centennial Celebration plans are being made for May 25.

The entertainment committee is looking for 'home-grown' style talent, young and old.

Anyone interested may contact Barbara Jameson or Carla Jones at the Motley County Tribune, 347-2400 or 347-2774.

### ADDRESSES REQUESTED FOR ROARING SPRINGS HOMECOMING

Anyone having addresses of Roaring Springs exes, teachers, etc., please contact Lou Vaughn Bennett or Nona Long in Roaring Springs by Saturday morning, March 16.

### GENEALOGY WORKSHOP

The Caprock Genealogical Society will hold a genealogy workshop Monday, March 18, at 1 p.m., at the Floyd County Historical Museum in Floydada, Texas. Anyone having books or resource materials to share are asked to bring them. Professional and amateur genealogists are invited to attend. Help will be available for those who would like to get started in family research.

The Caprock Genealogical Society will hold its regular monthly meeting Monday, March 18, at 7 p.m., following the afternoon workshop, at the Museum in Floydada. Jane Bean will bring the program on computer genealogy. New members and guests are always welcome.

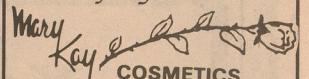
### CENTENNIAL BOOTHS AVAILABLE

The Arts & Crafts club is organizing and making available to any interested persons or businesses booths for the entire day of May 25. For reservations and information, please contact Joyce Archer, P.O. Box 542, Matador, Texas 79244 or call her at 806-347-2764.

### PTO ACCEPTING DONATIONS FOR CHEMICAL-FREE GRADUATION PARTY

The all night chemical-free graduation party that is being organized by the Motley County PTO needs your help. Donations of money, services, or merchandise for prizes are now being accepted. To find out more about making your donation, contact Kathy Shorter, 469-5279 or Brenda Cruise, 469-5395, or one of the PTO officers.

Call  
806-348-7962  
for your



Armantha Martin  
Beauty Consultant

4tc-12

### NEWS & ADVERTISING

DEADLINE

NOON TUESDAY

Thank you for cooperating!





**Coca-Cola  
Dr. Pepper**  
6 PACK 12 OZ. CANS  
**\$1.69**



TORTILLA CHIPS  
**Doritos®**  
REGULAR \$1.69  
**99¢**



DIAPERS FOR BOYS OR GIRLS  
**Pampers**  
ASSORTED SIZES-EACH PKG.  
**\$8.59**



15¢ OFF LABEL-WHITE CLOUD  
**Tissue**  
ASSORTED 4 ROLL PKG.  
**99¢**

SHURFINE DELUXE SHELLS & CHEDDAR  
**Dinner**  
12 OZ. PKG.  
**99¢**



SENECA APPLE  
**Juice**  
64 OZ. BTL.  
**\$1.59**



FABRIC SOFTENER SHEETS  
**Bounce**  
60 CT. BOX  
**\$2.89**

SHURFINE 60/75/100 WATT  
STANDARD  
LIGHT BULBS 2 CT. PKG. **69¢**

SHURFINE 50-150 WATT  
3-WAY  
LIGHT BULB 1 CT. PKG. **\$1.19**

**GROCERY SPECIALS**

REG/UNSCENTED LAUNDRY DETERGENT  
**ULTRA TIDE** \$6.89  
98 OZ. BOX

LEMON LIQUID/REG/LEMON POWDER  
**CASCADE** \$1.99  
50 OZ. BTL. OR BOX

DISH LIQUID  
**DAWN** \$1.19  
22 OZ. BTL.

ASSORTED NABISCO SNACK  
**CRACKERS** \$1.69  
7 TO 10 OZ.

ASSORTED POTATO CHIPS  
**PRINGLES** \$1.19  
6.5 TO 7.5 OZ.

ARM & HAMMER  
**BAKING SODA** 49¢  
16 OZ. BOX

SMUCKERS STRAWBERRY  
**PRESERVES** \$1.79  
18 OZ. JAR

GROUT CLEANER  
**TILEX** \$2.19  
16 OZ. BTL.

LIQUID CLEANER  
**PINESOL** \$2.29  
28 OZ. BTL.

REG. CUT/KIT. SLI. GR. BEANS/  
WK NIBLETS CORN, WK GOLD CORN,  
MED. SWEET PEAS  
**GREEN GIANT** \$2.89  
11 TO 15 OZ. CANS

ARM & HAMMER  
**ALL FABRIC BLEACH** \$1.99  
61 OZ. BOX

REYNOLD'S  
**GIANT ALUMINUM FOIL** \$4.29  
200 FT. ROLL

JOLLY TIME  
**YELLOW POPCORN** 89¢  
2 LB. BAG

QUICK CRYSTAL WEDDING  
**OATMEAL** \$1.39  
SMALL BOX

PURINA  
**KIT 'N KABOODLE CAT FOOD** \$2.89  
3 LB. BAG

DOLE  
**TROPICAL FRUITS** 79¢  
15 OZ. CAN

DOLE  
**PINEAPPLE JUICE** \$1.39  
46 OZ. CAN

NABISCO  
**100% BRAN** \$2.19  
17 OZ. BOX

*Our Best to you!*

# Spring Savings

*The Grocery Gang*

\$\$\$

**DEL MONTE SPECIALS**

DEL MONTE  
FRUIT COCKTAIL, SLICED YELLOW  
CLING PEACHES OR PEAR HALVES  
**BUFFET FRUITS** 2 \$1  
8 OZ. CANS

DEL MONTE  
CRUSHED, CHUNKS  
OR SLICED  
**PINEAPPLE IN JUICE** 2 79¢  
8 OZ. CANS

DEL MONTE  
CUT/FRENCH SLICED GREEN BEANS,  
CR. STY/WH. KERNEL GOLD CORN,  
SPINACH OR EARLY GARDEN BL. SWEET PEAS  
**BUFFET VEGETABLES** 3 \$1  
7% TO 8.5 OZ. CANS

**FROZEN FOOD & DAIRY**

ASSORTED CHILLED  
FRUIT DRINK  
**SUN SIP** 99¢  
64 OZ. CTN.

BM/BLUBRY. PANCAKE/  
CIN. FR. TOAST/  
OATBRAN FR. TOAST  
**KRUSTEAZ** \$1.49  
12 TO 19 OZ.

MRS. PAUL'S  
**FISH STICKS** \$1.09  
5.1 OZ. BOX

ASSORTED SHURFINE  
**ICE CREAM** ½ GAL. \$1.49  
SQ. CTN.

PAY-N-SAVE HOMOGENIZED  
**MILK** GAL. \$1.99  
JUG

MARGARINE QUARTERS  
**MAZOLA** 1 LB. 99¢  
PKG.

LIGHT SPREAD  
**MAZOLA** 1 LB. 99¢  
BOWL

**HEALTH & BEAUTY**

ASSORTED  
7 OZ. HAIRSPRAY,  
11 OZ. SHAMPOO OR  
CONDITIONER  
**FINESSE** \$1.89  
EACH

JR. STRENGTH  
**TYLENOL** \$3.29  
30 CT. PKG.

REGULAR  
**MYLANTA** \$3.59  
12 OZ. BTL.

DOUBLE  
STRENGTH  
**MYLANTA** \$3.99  
12 OZ. BTL.

WE SUPPORT OUR MEN AND WOMEN IN THE MIDDLE EAST

HEAVY GRAIN FED BEEF  
**Boneless Chuck Roast** \$1.88  
LB.

HEAVY GRAIN FED BEEF BONELESS  
**CHUCK STEAK** \$2.19  
LB.

AT CHECKOUT COUPON GOOD ONLY AT PAY-N-SAVE STORES.

WITH THIS COUPON  
**FREE EGGS**  
BUY ONE 12 OZ. PKG. OF  
DECKER BACON  
GET ONE DOZEN  
MEDIUM EGGS  
**FREE**

COUPON EXPIRES  
MARCH 28, 1991. LIMIT ONE (1)  
COUPON PER CUSTOMER.

GUARANTEED 81% LEAN-FAMILY PACK  
**GROUND CHUCK** LB. \$1.89

GUARANTEED 81% LEAN-SMALL PACK  
**GROUND CHUCK** LB. \$1.99

REG/SPICY PEDRO'S  
**TAMALES** "MAY BE THE BEST TAMALES YOU'VE EATEN" ONE \$3.49  
DOZEN

DECKER SLICED MEAT  
**BOLOGNA** 12 OZ. \$1.09  
PKG.

DECKER MEAT OR BEEF  
**CORN DOGS** 1 LB. \$1.79  
PKG.

DELTA PRIDE TRAY-PACK  
**FISH NUGGETS** LB. \$2.59

NEW CROP  
**Yellow Onions** 4 \$1  
LBS.

NEW CROP RUBY RED  
**GRAPEFRUIT** \$1.39  
5 LB. BAG

**PRODUCE SPECIALS**

GARDEN FRESH YEL. OR ZUCCHINI  
**SQUASH** LB. 79¢

JUICY SWEET  
**NECTARINES** LB. 99¢

FRESH HOT PEPPERS  
**JALAPENOS** LB. 89¢

**THE GOLDEN BOOK ENCYCLOPEDIA**  
Volume 9  
**\$2.99**  
FOR ONLY

Start your child's set Today!

Pay-n-Save  
QUALITY AND SERVICE  
WE RESERVE THE RIGHT TO LIMIT QUANTITIES

Prices effective Monday - Saturday, March 18-23

**GOOD LUCK AT THE STOCK SHOW!**  
PAY-N-SAVE WILL BE SERVING BREAKFAST  
AT THE LIVESTOCK SHOW!

**Money Orders Safeguard**  
Available At Our Service Counter