

# LYNN COUNTY NEWS.

VOLUME 6, NUMBER 39

TAHOKA, LYNN COUNTY, TEXAS, FRIDAY, MAY 13 1910

\$1.00 PER YEAR IN ADVANCE

H. O. CRIE, Editor

THE OFFICIAL ORGAN OF LYNN COUNTY

H. C. CRIE, Manager

**Murrah! Construction Train To Arrive To Night Or Tomorrow---Don't Neglect To Bring In Crop Samples Next First Monday.**

## LYNN COUNTY WRITE UP.

(From Semi-Weekly Farm News)

We certainly have a great country here, and the entire Plains country is soon to be supplied with railroads, this is sure to bring development, especially in the farming business. No part of the United States has better soil, a more delightful climate nor a greater underground water supply, three combinations that assure the greatness of the country with properly directed effort. But that is the one thing we especially need at the present. Someday there will be a great deal of irrigation in this country, for an inexhaustible supply of water is found at a comparatively shallow depth, irrigation is not absolutely necessary in order to successfully farm here, the farmers in this country must till their land in such a way as to conserve the moisture.

Slipshod farming is a poor business anywhere, and it is especially so here. Last year was one of the driest years we have ever had in this section some fairly good crops were made, better than were made in some famous farming sections that had even more rain than we had, and the men that had the most success were the men who farmed scientifically.

Heretofore the greatest drawback to this country has been lack of railroad facilities. Until recently Tahoka's nearest railroad point was eighty miles away and this imposed a double burden upon the people, having to haul their produce a long way to market and freight their supplies an equal distance. With everything else in his favor it took a man with considerable staying qualities to fight this inconvenience. But having this particular drawback disposed of it is my opinion that this country is to undergo rapid development.

The majority of the people coming into this country are Germans and people from Western and Northern States. A few years and there will be no more low-priced land for the poor man, and sometimes it looks to me as though the Germans and the thrifty Northern and Western farmers would have all the farms and the poor Southern will be a tenant. I want to see every young man and every poor man get a home, and I want to see him improve that land and make it productive and profitable.

Any man getting a fairly good salary, or any man with an income of any source and this applies to the common laborer or the renter can buy forty or eighty acres of land somewhere, and by cutting out useless expense soon pay for it, and then he has a home, enough land to make him a good living if he will only give it the proper attention. The trouble has been and may ever be too much speculation.

The rich, the well fixed and the poor going wild alike. Observe the German and the thrifty Northern and the Western farmers. They don't speculate much. They buy only so much and they are the winners in scramble for wealth. This is a good country for the man willing to work, but how long it will be uncertain, but surely not many years remain. This is not the only country which this can be said, but there is not a great deal of country left any where for the man of limited means, and the opportunity is hurriedly passing away all along the line.

It seems to me the State should provide some means by which every county could establish, maintain an experiment and demonstrate farm. Sub farms are especially needed in this part of the State

just at present, and it seems to me that local conditions could be best served by each county having direct supervision of its farm, and this can only be done equitably by taxation. Irregular subscription for the establishment of such institutions is neither just nor equal. It is two often the case that the man who is benefited the most contributes the least. There are a few demonstration farms on the Plains at present, and all of them, though just now coming to anything like full production are really revenue producers aside from the great educational benefits they give. More farms better farms and bigger results are what we need, and to this end more study and more means of acquiring knowledge is necessary. There is perhaps no country in the world that is less afflicted with pests both plant and insects, than is this country, and we do not need education to enable us to overcome obstacles so much as we do to enable us to get the greatest result from scientific farming and diversification.

The principle crops raised in this country so far are corn, cotton, milo, maize, Kaffir corn, June corn, millet, oats and sorghum and some fruit, and perhaps there is no limit to the varieties to which the country is adapted, but these crops must be tested out and it seems to me that demonstration farm would be proper.

## Waterways

We have 400 miles of gulf coast and 2,000 miles of inland waterways susceptible to navigation. The cost of transporting freight over the waterways is 2 mills per ton per mile.

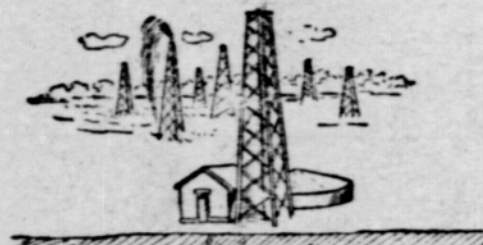


2 Mills Per Ton Per Mile.

This method of transportation is cheaper than either railroad or public highways. The principal cost of public highways is in constructing and maintaining the roadbed, and the same applies to railroads, but nature furnishes a level roadbed for the vessels and the government maintains the waterways. The improvement of our rivers and harbors will greatly lower the cost of transportation.

## Pipe Lines.

We have 1,500 miles of pipe line in transportation service leading from the oil fields to our refineries, and

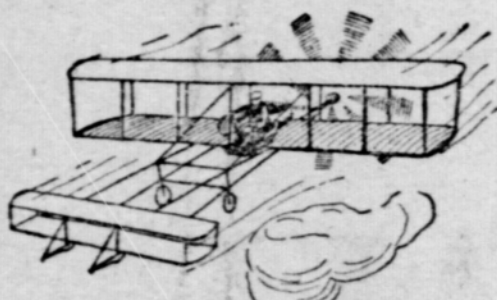


several hundred miles of pipe lines in the refinery yards.

Pipe lines are primarily city builders. The pipe lines bring the oil field to the refinery and the gas well to the city and the factory, and reduce the cost of transportation as well as provide a feasible method of distributing the product of the oil and gas wells throughout the State.

## Aerial Navigation.

We have no airships in transportation service in Texas. This character of transportation, while experimental, is nevertheless important, says the Texas Commercial Secretaries' Association.



The perfection of the airship will greatly reduce the cost of transportation. The atmosphere furnishes the roadbed for aerial navigation and affords a free and universal distribution of trackage facilities. All people are vitally interested in inventions. Robert Fulton, in giving us the steam engine, reduced the cost of transportation in Texas from 43 cents per ton per mile (public highways) to 1 cent per ton per mile on the waterways. Improved machinery reduces the cost of transportation in all lines of traffic, and consequently increases the value of production.

## AFFIDAVIT OF COMMISSIONERS' COURT TO TREASURER'S QUARTERLY REPORT.

IN THE MATTER OF COUNTY COMMISSIONERS' COURT FINANCES IN THE HANDS OF LYNN COUNTY, TEXAS, IN McMill Clayton, Treasurer of Regular Quarterly Session, May Term 1910.

WE, THE UNDERSIGNED, as County Commissioners within and for said Lynn County, and the Hon. G. W. Perryman, County Judge of said Lynn County, constituting the entire Commissioners' Court of said County, and each one of us, do hereby certify that on this, the 9th day of May A. D. 1910, at a regular term of our said Court, we have compared and examined the quarterly report of McMill Clayton, Treasurer of Lynn County, Texas, for the quarter beginning on the 1st day of February A. D. 1910, and ending on the 30th day of April A. D. 1910, and finding the same correct have caused an order to be entered upon the minutes of the Commissioners' Court of Lynn County, stating the approval of said Treasurer's Report by our said Court, which said order recites separately the amount received and paid out of each fund by said County Treasurer since his last report to this Court, and for and during the time covered by his present report, and the balance of each fund remaining in said Treasurer's hands on the said 9th day of May A. D. 1910, and have ordered the proper credits to be made in the accounts of the said County Treasurer, in accordance with said order as required by Article 867, Chapter 1, Title XXV, of the Revised Statutes of Texas, as amended by an Act of the Twenty-fifth Legislature of Texas, at its regular session, approved March 20, 1897.

And we, and each of us, further certify that we have actually and fully inspected and counted all the actual cash and assets in hands of the said Treasurer belonging to Lynn County at the close of the examination of said Treasurer's Report, on this the 9th day of May A. D. 1910, and find the same to be as follows, to wit:

| JURY FUND   |         | Dr.     | Cr.     |
|---|---------|---------|---------|
| Balance on hand as shown by Treasurer's Report on the 1st day of February 1910  |         |         | 54.64   |
| To amount received since said date  | 356.83  |         |         |
| By amount disbursed since said date   |         | 29.91   |         |
| By amount to balance  |         | 272.28  |         |
|   | TOTAL   | 356.83  | 356.83  |
| Balance to credit of said JURY FUND as actually counted by us on the 9th day of May A. D. 1910, and including the amount balance on hand by said Treasurer at the date of the filing of his report on the 1st day of May A. D. 1910, and the balance between receipts and disbursements since that day, making a total balance of       |         |         | 272.28  |
| ROAD AND BRIDGE FUND  |         | Dr.     | Cr.     |
| Balance on hand as shown by Treasurer's Report on the 1st day of February 1910  |         |         | 279.51  |
| To amount received since said date  | 1240.57 |         |         |
| By amount disbursed since said date   |         | 337.16  |         |
| By amount to balance  |         | 1182.92 |         |
|   | TOTAL   | 1520.08 | 1520.08 |
| Balance to credit of ROAD and BRIDGE FUND as actually counted by us on the 9th day of May A. D. 1910, and including the amount balance on hand by said Treasurer at the date of the filing of his report on the 1st day of May A. D. 1910, and the balance between receipts and disbursements since that day, making a total balance of |         |         | 1182.92 |
| GENERAL FUND  |         | Dr.     | Cr.     |
| Balance on hand as shown by Treasurer's Report on the 1st day of February 1910  |         |         | 514.13  |
| To amount received since said date  | 3207.81 |         |         |
| By amount disbursed since said date   |         | 2857.58 |         |
| By amount to balance  |         | 864.36  |         |
|   | TOTAL   | 3721.94 | 3721.94 |
| Balance to credit of said GENERAL FUND as actually counted by us on the 9th day of May A. D. 1910, and including the amount balance on hand by said Treasurer at the date of the filing of his report on the 1st day of May A. D. 1910, and the balance between receipts and disbursements since that day, making a total balance of    |         |         | 864.36  |

CONTINUED ON FOURTH PAGE.

mediums for this purpose. The State, has done far too little for all parts of the State and with the exception of the State experimental recently established at Lubbock it has never done anything for this great and important agricultural parts of the Union and one where agricultural education is especially important because just now stirring.

We need more scientific farming and two this end we need more agricultural colleges, more practical training in the connection with the greatest, the most important, the most essential of all industries—the proper cultivation of the soil and the proper utilization of its products—E. D. Skinner, Tahoka, Lynn Co., Tex.

Please remember that you can buy a Singer Sewing machine on terms to suit the times. Write E. W. Hancock, Lamesa Texas, and he will call at your home.

Fisher Patterson moved to the John Donalson place the first of the week.

If you have any watches or jewelry of any kind that needs repairing, let us have it done for you. All work guaranteed. —Thomas Bro. & Co's. Drug Store.

A. E. Lechty division engineer on the Santafee, had a nice twalk handed to him Friday night while returning to town from a trip up to the work camp. His mules had made about forty miles across country and were going quietly when they had to pass through a gate. The team became restless before the gate was fastened and started to go and then they got in a burry. After a walk of a mile or two Mr. Lechty found his team in front of Hall & Majors Sable waiting for some one to feed them. No damage was done to either buggy, harness or team.

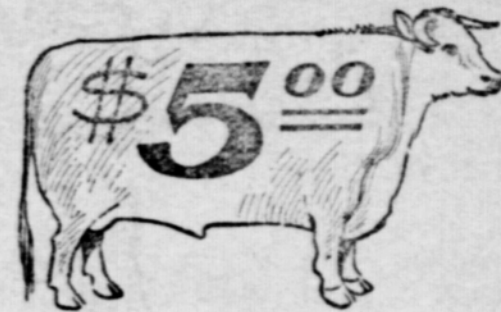
Among other things, Mr. Lechty has been collecting samples of water along the line, sealing it in jugs and sending it away to be analyzed. The quality of the water at different points will have some influence as to locating water tanks, section houses and other conveniences necessary to operating the system.

T. J. O'Donnell, our next representative, left for Lamesa in his car, Wednesday. He will be home in plenty of time to speak at the court house Saturday.

**NOTICE---If you have land in Lynn, Terry, Yoakum, Gains, or Cochran counties to trade for well improved city homes, brick buildings or stocks of merchandise, write us at Lubbock, Texas, and we will get you a trade.---Robinson Bros.**

## Factories

We have discussed methods of reducing the cost of transportation entirely, or at least reduce to a minimum the distance the freight is carried, by building factories. The factory is the farmer's market house, and he must travel at his own expense until he reaches the factory, no matter where it is located. It costs \$1 per head to ship cattle from Texas to the Chicago packing houses.

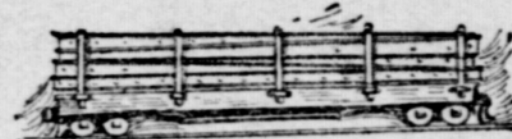


Freight \$5.00.

By bringing the packing house to Texas we will add \$5 per head to all the cattle within the State as well as to future production. We have 8,917,000 head of cattle, and by building packing houses we can add \$10,000,000 to their value. It costs approximately \$10 per bale to ship our cotton to England and return the finished product to Texas, and by building cotton mills in Texas we can add \$10 per bale to our cotton crop.

## Mines.

Opening our mines will eliminate the cost of transportation on iron, coal, brick, marble, petroleum and other minerals. It costs \$400 per car to ship iron from Pennsylvania to Texas.



Freight \$400.

We have a sufficient variety of minerals in Texas to supply all of our needs and the development of our mineral resources will save millions of dollars in freight bills annually.

## Cities.

The building of cities will eliminate the cost of transportation, as all citizens are consumers, and the Texas producer must pay the freight on shipments to the large cities of the North and East.



To reduce and eliminate our transportation expenses to the minimum we will have to improve 120,000 miles of public highway, build 50,000 miles of railroads and a network of interurbans, improve 10,000 miles of waterways, traverse the State with pipe lines, encourage aerial navigation, open our mines, invest millions of dollars in factories and build a thousand cities, and this is the work the Commercial Secretaries have undertaken to do for Texas.

## HEBREW COLONIZATION.

Fort Worth, Texas, May 6. — (Special to the News)

The favorable condition surrounding the Hebrew in Russia, the Balkin states and in other European and the eastern countries as to their enjoyment of the full rights and privileges of the native people of those lands, and as to more favorable opportunities for their industrial pursuits and political, social, home and family life, has led to much discussion for many years, not only in various local and international council of the Hebrew people and in journals of their race, but also in the secular and religious press and councils of all other civilized nations.

Much sympathy for and good will towards them has been expressed by many nations, especially United States, as a people, during their years of acute oppression in several European states and nations of southern and eastern Europe during this century, but especially as to the many barbarities suffered by them for the last few years in the uprisings in Russia.

This sympathy of the United State, together with their enjoyment of the full rights, privileges and good will accorded citizens in this country, has endeared this land to the hearts of the Hebrew race, and although colonization projects have been attempted or carried out with some measure of success in other lands this more than any other, except perhaps their homeland of Palestine, has appealed to them, as in their vision, their land of promise.

Opportunities here, of course for industrial life, not to say anything of political, social and home surroundings, are much more favorable than in Palestine, or indeed in most any other country of the earth, which is, no doubt, a strong magnet to attract a people with so great a natural God-given business and financial captivity.

For these reasons mentioned in this brief resume of conditions leading up to the proposition of American colonization, some of the great American leaders in Hebrew thought, such as Baker Jacob Schriff, Nathan Strauss and many others, have for some time been investigating various parts of the United States as to climate, natural resource, and business purpose, and as to its accessibility of location.

After such reconnaissance and investigation, all things considered especially of climate, the South more than any other section has evidently appealed to these philanthropic brethren of the Hebrew people of Europe, more especially the Southwest, because of its great progressive-ness and other more favorable conditions, among them that the "course of empire westward wends its way," and this Southwest is the most ideal part of the West.

Continued on back page

To every farmer in Lynn or an adjoining county that will bring us a dollar, we will send him The News and the Citizen-Star for a year. To every farmer who will bring \$1.50 we will send both papers for a year; we will send The News to another address out of the county for a year and also give him a nice wall map of Tex.

See my stock of Picture moulding at McGill's Drug Store.

# NOW IS THE

# NORTH

This is the choice Business and Residence portion of the town of Tahoka laying in two blocks of the square and Court House.

A nice gradual slope to the South, insuring perfect drainage.

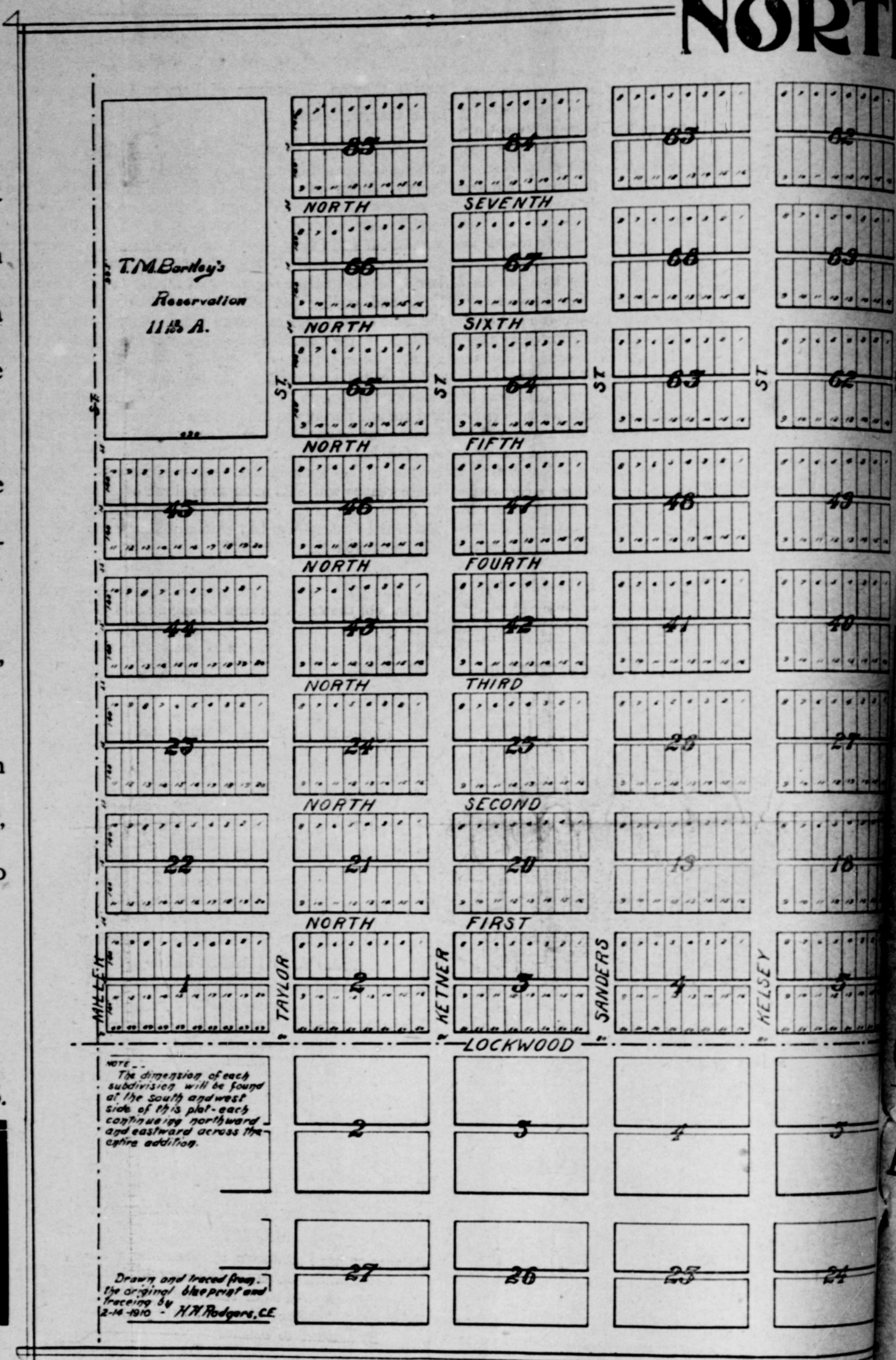
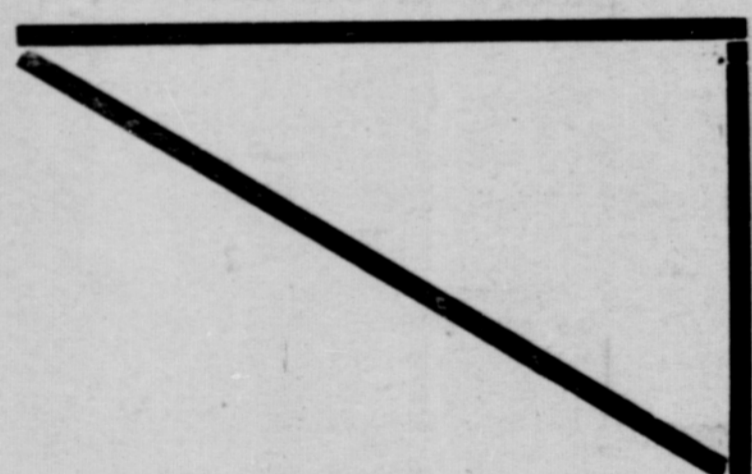
An abundance of pure, cold, soft water.

The home builder can grow all kinds of Fruit, Berries and Vegetables to perfection.

JACK ALLEY,

Land and Town Lots,

TAHOKA, TEXAS.



## Barbecue And Picnic Postponed But

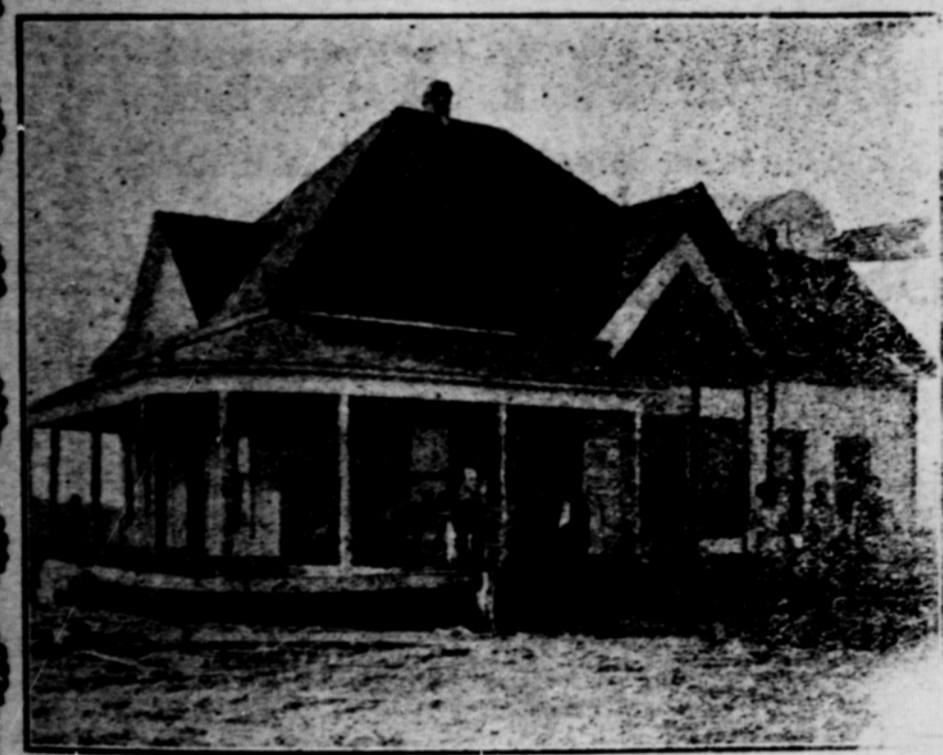
I will Post-pone My Barbecue and Picnic Advertised to take place May 25, 1910, till a this Special Sale can be handled in the

# JACK ALLEY, RO

# LAND AND TOWN LOTS,

# C. E. BROWN, The First Real - Estate Man In Tahoka, Texas.

I have the Largest and Best  
List of lands and town lots of  
any one in Lynn County.  
LET ME SELL YOU A HOME LIKE  
THE ONE SHOWN BELOW.

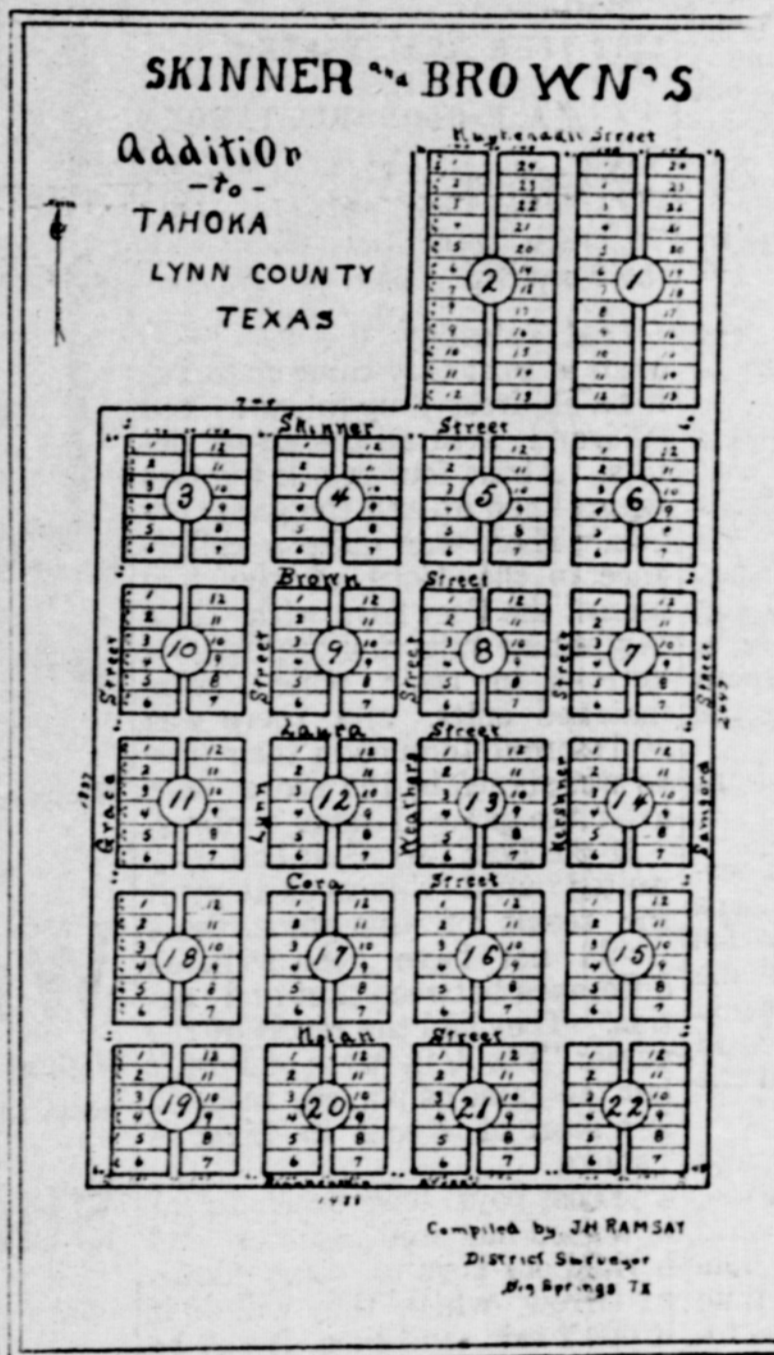


A LYNN COUNTY HOME, NEAR TAHOKA

## A Word To The Wise Is Sufficient

Lynn County now has railroad fa-  
cilities and the Values in Real Estate  
will steadily advance until Cheap Proper-  
ty will be a thing of the past in a very  
few months.  
Let me sell you some Cheap, but  
good, land "Now" that will double in  
value in a couple of months. Write for  
my list of bargains.  
E. BROWN,  
The Original Land Man

## Buy Lots In



## If You Want A Home

## A Partial List Of The Lands We Have For SALE OR EXCHANGE

### OPPORTUNITY KNOCKS ONCE AT EVERY MAN'S DOOR.

Young man improve the present opportunity. Buy you a home now. Stay with it and your fortune is made. It will make you independent for life. This is the country in which to buy, for nowhere is there a better farming country, and now is the time to buy, for never again will land be as cheap as it is at present. The Santa Fe railroad runs centrally through the county, giving it ample railroad facilities, and we know of no country where a man can buy as much good agricultural land for as little money as he can buy in Lynn county today. No country has better water or more of it. No country has better soil or better climate, nor is any country adapted to a greater variety of crops, especially cotton, corn, grain, fruits, vegetables, stockfarming, etc.

I have seen the lands in Wisconsin, Minnesota, Iowa, Nebraska, Missouri, Kansas, Oklahoma, Indian Territory and many parts of Texas, increase in value from \$1, to \$40, \$75 and \$100 per acre. In 1877 I was in Tarrant, Johnson, Hill, McLennan, Bosque, Erath, Stephens, Comanche, Hamilton, Coryell and Bell counties, and the people living in those counties at that time considered the land worthless except for grazing purposes. One Dollar an acre was above the market price of lands in any of those counties at that time, and there was no demand at any price, but they have all changed from stockraising to farming counties and the lands have advanced from \$1, to \$40, \$50 and \$75 per acre. The man that bought 160 or 320 acres of good farming land in any of the above states or counties fifteen or twenty years ago and has held it until now can live without working if he so desires.

### A FEW BARGAINS; LOOK THEM OVER.

No. 1. We have for sale a 6 or 7 Thousand dollar stock of Drygoods doing a First Class Cash Business located in Growing County Seat where the Santa Fe Railroad Company will run trains inside of 30 days. This is a good business in a fast growing town. (Present owner has other business.) A splendid opportunity for a good merchant to step in and get control of a well established cash trade.

No. 2. Is 320 acres of improved patented land with 80 acres in cultivation, house, small orchard, well and windmill, 5 miles from a railroad town. Price \$18 per acre, or will trade for a small stock of goods or small well improved farm in the East. This is first class land.

No. 3. Is 640 acres of smooth level land, fenced on three sides, to trade for good rental (Brick) property.

No. 4. Is 2080 acres of good farm land to exchange for good rental, brick buildings. Buildings must be worth the money, and well located in good town.

No. 5. Is 320 acres patented land within three miles of a railroad town. Price \$8.50 per acre with 1/4 cash, balance in 10 annual payments at 8 per cent.

No. 6. Is 4160 acres of first class farming land, three sets of improvements; a splendid proposition for colonization. Price \$13.50 per acre, good terms.

No. 7. Is 640 acres of patented land Price \$10 per acre, \$2000 cash, balance 1, 2 and 3 years at 8 per cent; or will take \$5,500 cash.

No. 8. Is 320 acres of school land; \$2 to the State. Price \$8.50 per acre cash. This is first class farm land, and lies within 6 miles of a railroad town.

No. 9. Is 320 acres, patented land, 8 miles from a railroad town, all first class farming land. Price \$11.50 per acre 1/2 cash, balance easy.

No. 10. Is 640 acres of first class farm land, 8 miles from a railroad town. Price \$14 per acre, 1/3 cash, balance in 1, 2, 3 and 4 years at 8 per cent interest.

No. 11. Is 320 acres of patented land, within 1 mile of railroad and 4 miles of a railroad town. All first class land. Price \$13.50 per acre, with \$5.50 per acre cash, balance in 1, 2 and 3 years at 8 per cent interest.

No. 12. Is 640 acres of patented land, within 4 miles of a railroad town. All first class farm land. Price \$15 per acre, 1/2 cash, balance easy.

No. 13. Is 160 acres, patented, three room house well and windmill, 35 acres in cultivation, all first class land and every foot tillable. Price \$2500 1/2 cash balance, 1 and 2 years at 8 per cent.

No. 14. Is 320 acres; one of the best improved farms in the county. 140 acres in cultivation, two dwellings, well and windmill, good young orchard, all first class farm land. Price \$20 per acre, with 1/3 cash, balance easy terms.

No. 15. Is 320 acres, improved, good house, well and windmill, 90 acres in cultivation, good orchard. Price \$20 per acre, \$2500 cash, balance easy at 8 per cent.

No. 16. Is 640 acres of patented land; every foot tillable. \$10500 cash.

No. 17. Is 640 acres of well improved farm, 80 acres in cultivation, good house, well and windmill, all first class farming land. Price \$17.50 per acre, 1/3 cash and balance easy at 8 per cent.

No. 18. Is 320 acres of patented land, all first class. Price \$13.50 per acre, \$2000 cash, balance easy.

No. 19. Is 320 acres, patented land adjoining the town of Tahoka, with 140 acres in cultivation, good improvements. Price \$60 per acre, 1/3 cash, balance easy at 8 per cent.

No. 20. 1280 acres of mixed sage and mesquite land, 100 acres in cultivation, good house and barn, lots, well and windmill, good orchard, cistern good fences, 4 acres in orchard and garden, 3 pastures. An ideal stock farm. Price \$13.50 per acre, 1/2 cash, balance in 1, 2 and 3 years at 8 per cent interest.

No. 21. 163 1/2 acres, 1 mile north east of the town of Boardman, 115 room house, barn, smoke house, chicken house, well and windmill, good fence, 70 acres in cultivation. This is a well improved and ideal home, located close to county seat, with first class school privileges. Price \$25 per acre, 1/2 cash, balance in 1 2 and 3 years at 8 per cent.

WRITE FOR FURTHER INFORMATION

**E. D. SKINNER & SON**  
Real Estate and  
Fire Insurance Agents

TAHOKA, LYNN COUNTY, TEXAS.

**ANNOUNCEMENTS**

101st District  
NELL  
ARD  
Torney, 64th District.  
M. ELLERD.  
Y.  
Tax Collector  
ARDS.  
LER.  
District Clerk.  
HOTT.  
IPP  
HATCHETT.  
Age  
RYMAN,  
tion)  
RS.  
x Assessor  
WINE,  
tion)  
essurer  
LAYTON  
tion)

**Perryman**  
Notary, and Com-  
plete. Abstract  
ty lands to date.  
vnn County, Texas.

**BENSON,**  
ENEY-AT-LAW  
a all courts of Lynn, Lub-  
bock counties,  
K. TEXAS

**P. MARRS**  
Lawyer  
the Courts.  
yances and Lann  
Titles a Specialty.  
Texas

**Ramsey, District**  
**REVEYOR**  
veyor for Lynn, Borden  
and Terry Counties.  
prings, Texas.

**WINDHAM, M. D.**  
CIAN and SURGEON.  
well & McGill Drug Store,  
Texas

**A. Womack**  
IAN and SURGEON  
OFFICE  
ros. & Co., Drug Store  
idence Phone No. 6

Weathers is coming  
Tahoka to live.  
family and household  
rived the first of the  
Mr Wethers comes to  
ge of the New furna-  
e to be opened in the  
under the Woodman  
e are always glad to  
the wanderers home.  
hers made his home in  
for sometime and made  
many friends who will  
have him back again.

**GREAT CLEARING SALE**  
he 16th of May I will  
ce selling out my entire  
of goods at cost and car-  
th five per cent for sale  
e. This Great Clearing  
ill only last thirty days.  
for circulars and prices.  
**CUR CASH STORE.**

Moore, of Winter, lately  
Winter Times, who is  
his sister, Mrs. Tunnell,  
on The News Wednesday,  
mplimented us highly on  
equalled paper we are giv-  
patrons.

Tahoka public school clos-  
Friday.  
school has made good  
ess regardless of many in-  
coniences.  
scholastic population fer-  
ta at the beginning was 118.  
nrollment for the year was  
ith 12 overs and 3 unders,  
ng a scholastic increase of  
th this steady increase Ta-  
will need an additional

**DIRECTORS**  
S. N. McDaniel,  
W. B. Slaton,  
W. D. Nevels,  
A. L. Lockwood,  
O. L. Slaton,

**OFFICERS**  
O. L. Slaton,  
President  
A. L. Lockwood,  
Vice President  
W. D. Nevels,  
Cashier  
W. B. Slaton,  
Assistant Cashier

**First National Bank**  
**TAHOKA, TEXAS**  
\$25,000.00 Capital.  
We Extend All The Accommodations  
Consistent With Business Principals.

teacher as well as a new school  
building for the next school year.  
O. T. Bryant.

T. J. O'Donnell, of Tahoka,  
was in the city the latter part of  
last week in the interest of his  
campaign for representative of  
the 101st District. O'Donnell is  
no doubt all right, but we are of  
the opinion that our man Dillard  
is the proper stuff for the place  
and O'Donnell can do the coun-  
try more good building railroads  
anyway. — Avalanche.

You bet O'Donnell is all right  
and Lynn county is glad to give  
him her support. It is an honor  
of which any town may be proud  
to have a man like O'Donnell  
for one of her citizens.

Certainly O'Donnell is a rail-  
road builder and in coming be-  
fore the people of the District in  
this capacity shows them he is a  
man of achievement.

Railroad legislation is one of  
the most important issues of the  
day and knowing the situation  
from a practical standpoint he  
can forward railroad develop-  
ment to a greater extent than  
one who knows it only from  
theory. More railroads is what  
the great Plains country needs.

Some one in Lubbock enquired  
why O'Donnell was running. Be-  
cause he will be elected. See!

**THURSDAY MAY 12, 1910.**

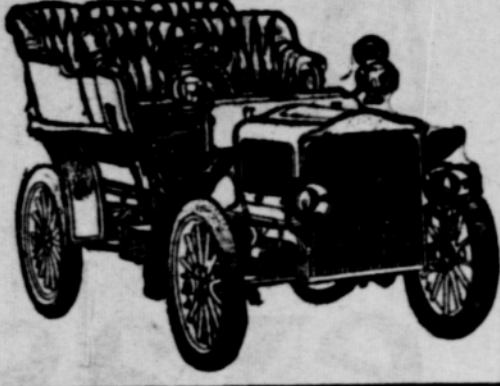
On this day came on for con-  
sideration, after having checked  
the renditions taken by F. E.  
Redwine, Tax Assessor, for the  
year 1910, the propositions of  
raising certain renditions, that  
were not in conformity with the  
average value of land and prop-  
erty of the same grade and lo-  
cation, and after duly considering  
same; It is ordered by the Court  
that the Clerk of this Court issue  
notices to the following named  
persons to appear on the 25th  
day of May A. D. 1910, shen and  
there to show cause why the val-  
uation of property rendered by  
them for taxation, for the year  
1910, for themselves or as agent,  
should not be raised by said  
Board, to wit:  
Jack Warman, W. R. Justice,  
Mrs. Mary A. Weatherbrand, J.  
R. Evans, W. J. Forrester, Mrs.  
E. Long, W. B. Ferrell, Thomas  
Taylor, William Chute, Mrs. L.  
B. Spaulding, Bartley, Swan &  
Co. Wilson McQuiston, E. M.  
Powell, J. H. Edwards, J. E.  
Hubinger, R. W. Meyers, Staked  
Plains Telephone Co. Heirs of J.  
S. Bamister, M. H. Lee.

And that said notice shall be  
given by publication in the Lynn  
County News for one issue prior  
to the 25th day of May A. D.  
1910.  
The State of Texas, } I, S. N.  
County of Lynn, } McDaniel,  
Clerk County Court, Lynn Coun-  
ty Texas, do hereby certify that  
the foregoing is a true and cor-  
rect copy of an order passed on  
the 12th day of May 1910, as the  
same appears on Vol. One, page  
274;

Witness my hand and the seal  
of the County Court Lynn Coun-  
ty, at office in Tahoka, Texas,  
this 25th day of May A. D. 1910.  
S. N. McDaniel,  
Clerk County Court,  
Lynn County, Tex.

**LOTS FOR SALE.**  
I own 19 lots in Shook's Sec-  
ond Addition to Tahoka, being  
lots 1 to 6 in block 32; all of  
block 33, being 12 lots; and lot  
10 in block 35.  
Will take \$100 each for inside  
lots, and \$120 for the corner lots;  
terms \$10 down and \$10 per  
month.  
If interested, communicate  
with me.  
John J. Knight,  
Wichita Falls, Texas.

**A BARGAIN FOR YOU**  
The Texa Land Co., has land in any sized tract you may want from 80 acres  
up to 15 sections, and on easy terms.  
1000 Town Lots at a Bargain. List your property with us and we will do the rest.  
Look here. Extra Good Plains Land Well located at from \$10. to \$12. per acre  
Come And Investigate before you buy. North of Tahoka Hotel



**Tahoka Auto Garage**  
E. T. PAYNE, Prop.  
Full Line "Model F Buick" Extras  
GAS, LUBRICATING AND ENGINE OIL. BEST, SKILLED  
WORKMEN EMPLOYED. PRICES RIGHT  
SOUTH OF SQUARE, TAHOKA, TEXAS

**EDITH ITEMS**  
Our poeple are busly engaged  
in the fields and crop prospects  
was never better.  
Mrs. T. A. Brown is still on the  
sick list and is improving slowly.  
The Primitive Baptist had  
preaching sunday morning at the  
school house; a large croud was  
present. Bro. Lewis preached for  
for Bro. Littlepage, a good many  
os the town members were out.  
Miss Mattie Dyer is spending this  
week in Tahoka.  
Mr. Cleveland of Midway at-  
tended chuach at Edith Sunday.  
Mr. Nelson and the Vaughn  
Bros. were Tahoka visitors saturday.  
Carl Sherrod and Irvia Shattuck  
attended the big ball game saturday  
evening at Tahoka.  
Mrs. Murrah and son Jessae  
spent the day with Mrs. Nelson  
sunday.  
Mr. and Mrs. Littlepage and  
children and Mr. Cleveland Miss  
Horace and Irvin Shattuck dined  
with Mr. G. P. Wormack sunday.  
The prayer service sunday af-  
ternoon was well attended and a  
good lesson was studied.  
J. V. Dyer taken dinner at the  
Vaughn home sunday.  
J. B. Reece and family, Miss  
Ma ttie and Jim Dyer were guest  
at the Sherrod home sunday noon  
Miss Beaulah Womack was a  
pleasant caller at Mrs. Browns  
saturday afternoon.  
Mr. McIntire moved his fam-  
ily out to his farm the first of  
this week.  
Miss Horace Shattuck and Sadie  
Dyer were in Tahoka Tueaday.

**Tahoka Hardware Co.**  
Builders and shelf hardware, queensware, crockery, tinware,  
and stoves. We do all kinds of pipe, tin and tank work  
let us gutter your house. Screen Screen Doors. See them  
**RACINE VEHICLES**  
We carry a full line of windmill repairs, piping, casing and  
wood rod. Exclusive agents for Star and Eclipse windmills

This, Friday, morning is nice  
and cloudy with a fine prospect  
for another good rain.

**C. M. WHIPP**  
**ABSTRACTER**  
Up to Now, Abstract of Lynn County Land Titles;  
Also Of the Town Of Tahoka Including All additions.  
**TAHOKA, TEXAS**

**DRAW LOCALS**  
Draw has had a better season  
in the late rain than she has had  
for many days, yea for many  
months. Therefore every one  
you meet is wearing that pleas-  
ing smile on his face which in-  
dicates hope of an abundant har-  
vest.  
Planting is the order of the  
day. While the ideal weather  
consinues the sun will rise and  
set too fast for the farmers of  
this community.  
Bro. Willett ably giled his reg-  
ular appointment Sunday, with  
a large croud of enthusiastic  
hearers.  
Every one reported a highly  
enjoyable time at the singing  
Sunday evening at A. J. King's.  
Little Milton Murrah spent  
the latter part of the week in the  
Draw community.  
School is progressing nicely at  
present. BILL.

**IMPORTANT!**  
To Secure The Most Satisfactory Lights And Avoid  
Smoked Lamp Chimney  
**Use EUPION OIL**  
The only safe oil for lamp and stove use. Accept no other  
FOR SALE BY THE FOLLOWING LEADING MERCHANTS  
JACK ALLEY COMPANY,  
B. H. Black & Son, R. D. Morris, J. E. Ketner  
TAHOKA, LYNN COUNTY, TEXAS

Mr. and Mrs. Doak of Snyder  
are visiting their sons in Lynn  
Co. they spent last week with  
their son Ira Doak of Tahoka.  
Last Saturday the base ball  
team of Post City came up to Ta-  
hoka all dressed up in new red  
suits and with all the air of vic-  
tors. About four o'clock the two  
teams lined up and the game be-  
gan. There was quite a differ-  
ence in the looks of the two  
teams; the Post boys with their  
bright new suits and the Tahoka  
vetrons in their soiled, miss  
matched suits, and there was  
still more difference in their play  
as was shown by the score card  
after the game of nine innings.  
If the Post City Post had only  
waited until this week to print  
the result of this game, there  
would not have been so much  
difference between fact and fic-  
tion. They had the result of the  
game: "8 to 3, in favor of Post,"  
but the game as played, resulted  
in a score of 5 to 2 in favor of  
Tahoka.  
The Post boys took their defeat  
in a good humored manner and  
invited our boys to come down  
tomorrow which they will do if  
it don't rain, and then it will be  
up to our boys to "make good"  
again.

**New Goods**  
We have just received and opened up one of the most up-to-date lines of  
Dry Goods ever shown in Tadoka.  
We invite you to come in and compare prices and quality  
**Win A Dinner Set**  
With every \$1.00 Cash purchase at our store you are entitled to a  
ticket that is good for a chance at 13, \$30.00 DINNER SETS and a  
\$30.00 CHINA CABINET, Call for your ticket.  
**Staple And Fancy Groceries**  
**J. E. KETNER**

CONTINUED FROM FIRST PAGE

|   |               |
|---|---------------|
| <b>COURT HOUSE AND JAIL FUND</b>  |               |
| Balance on hand as shown by Treasurer's Re-<br>port on the 1st day of February 1910   | 202.82        |
| To amount received since said date  | 620.28        |
| By amount disbursed since said date   |               |
| By amount to balance  | 52.68         |
|   | 770.42        |
| <b>TOTAL</b>  | <b>823.10</b> |
| Balance to credit of COURT HOUSE and JAIL<br>FUND as actually counted by us on the 9th day<br>of May A. D. 1910, and including the amount<br>balance on hand by said Treasurer at the date<br>of the filing of his report on the 1st day of May<br>A. D. 1910, and the balance between receipts<br>and disbursements since that day, making a<br>total balance of | 770.42        |
| <b>RECAPITULATION</b>   | <b>AMOUNT</b> |
| DATE  |               |
| May 9th, Balance to credit of Jury Fund on this day   | 272.28        |
| May 9, Balance to credit of Road and Bridge Fund on this day  | 1182.92       |
| May 9th, Balance to credit of General Fund on this day  | 864.36        |
| May 9th, Balance to credit of C. H. and J. Fund on this day   | 770.42        |
| Total cash on hand belonging to Lynn County in the hands of said<br>Treasurer as actually calculated by us  | 3089.98       |
| WITNESS OUR HANDS, officially, this 9th day of May A. D. 1910,<br>G. W. Perryman, County Judge; H. S. Hatchett, Commissioner<br>Precinct No. 1; J. N. LeMond, Commissioner Precinct No. 2; H.<br>T. Gooch, Commissioner Precinct No. 3.   |               |
| SWORN TO AND SUBSCRIBED before me, by G. W. Perryman,<br>County Judge, and H. S. Hatchett and J. N. LeMond and H. T.<br>Gooch, County Commissioners of said Lynn County, each respec-<br>tively, on this, the 9th day of May A. D. 1910,<br>S. N. McDaniel, Clerk,<br>County Court, Lynn County, Texas.   |               |

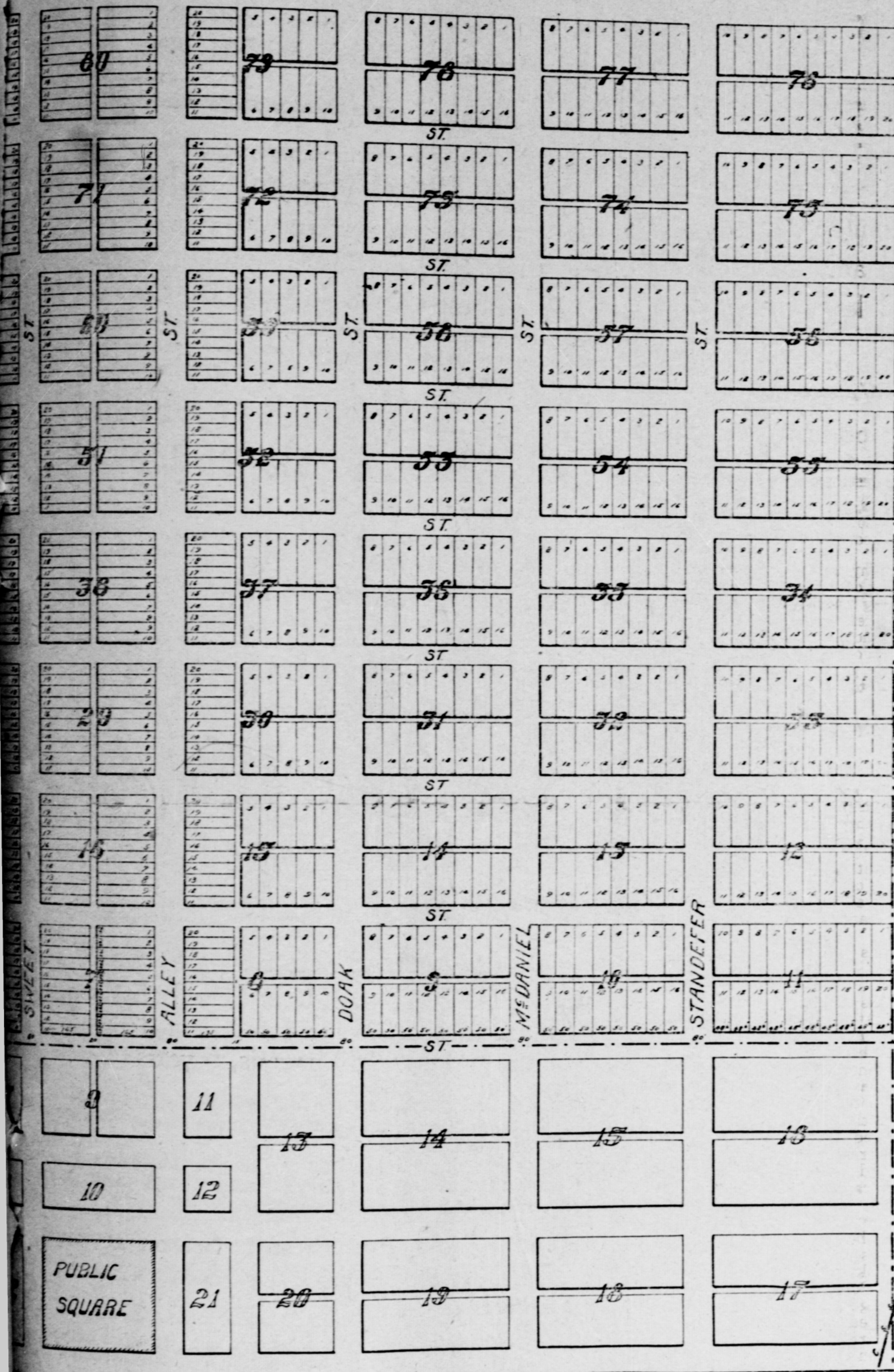
**Tahoka Saddle Shop**  
G. R. MILLIKEN Prop.  
Saddles, Harness,  
Fancy Belts Made  
Repairing Done

Your Opportunity During the months of May, June  
County News and The Semi- and Jul ywe will offer The Lynn  
months for One Dollar (\$1.00). Weekly Farm News for eight (8)  
This Opportunity closes July 31.

**A. G. McAdams Lumber Co.**  
Lumber, Bois D'Arc, Lath, Shingles, Sash  
Doors, Blinds, Mouldings and Paint  
Lim, Cement and Brick  
Rubber Roofing  
Let Us Figure Your Bills. Tahoka Texas

# TIME TO BUY

## TAHOKA



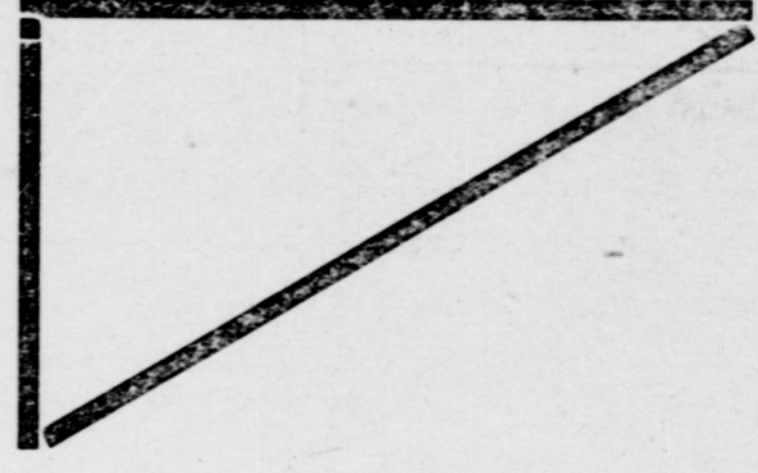
I also have some very choice improved and unimproved land in all parts of Lynn County for sale at Prices that will double in value in two years.

This is the best all around county on The Great Plains of Texas for the farmer growing Cotton, Corn, Wheat, Oats, Millet, Alfalfa, Potatoes and in fact anything you plant.

JACK ALLEY,

Land and Town Lots,

TAHOKA, TEXAS.



**Lots Continues. Watch For New Date**

trains will be running into the town of Tahoka and the Great Crowd that will attend  
 Lock for the date; then come, one and all.

**Four Alley Building.**

**TAHOKA, TEXAS.**

KEEP RIGHT ON COMING  
TO THE

## Tahoka Blacksmith Shop.

J. N. McREYNOLDS, Prop

Here Shoeing is Strictly Cash

THE SAME SHOP THE SAME MEN YOU HAVE BEEN  
USED TO AND THE SAME GOOD WORK.

Our agents make \$50.00 a week Selling new water color portraits and gold frame. Costs 30 cents complete with glass, sells for \$1.98. Samples of instructions free. Youngman in Ohio made \$22.00 in one day. We are the best picture frame house in the world. One general agent wanted in each county. Give no reference and we will extend your thirty days' credit with daily home-employment at a big income. Our business is established twenty years. We are not in the picture and frame trust. We want honorable, trustworthy representatives only. You need no capital to work for us. We teach you how to make a success. Address at once.

WILLIAMS ART CO. 2515 W TAYLOR STREET, CHICAGO, ILL.  
Answering state "Saw advertisement in" LYNN COUNTY NEWS.



The Parkhurst Paint and Paper Store will be known in the future as  
**THE TAHOKA ART STORE**

We are now prepared to attend to our retail business, and can supply your wants in any thing pertaining to the painters and paper hangers trade, including all kinds of house and roof paint, and varnishes for every class of work. We also have a good many patterns of wall paper in stock and have the exclusive agencies of the six largest wall paper houses in the United States, therefore we never fail to please the most fastidious. Our Prices Are Right. Let us meet you at  
**THE TAHOKA ART STORE**

## TOPSY

The Beautiful French Draft And Steel  
Dust Stallion Owned By Mr. M. M. Redwine Will  
Stand The season At His Place Eleven Miles South-  
east Of Tahoka.

## TOPSY

Is A Dual Purpose Horse, Weighing About 1350  
Pounds, Being 16 1/2 Hands High And A Mahogany  
Brown In Color. **SEASON \$10.00 INSURED**

**M. M. REDWINE**

11 MILES SOUTHEAST OF TAHOKA, TEXAS

## NORTH SIDE BARBER SHOP

RAZORS KEEN AND TOWELS CLEAN  
THE SWELLEST JOB YOU EVER SEEN.

J. R. HONEA,

PROP.

## TIN SHOP

South of the Public Square, Tahoka, Texas

We do all kinds of Tin, Pipe and Repair  
Work, Stove Pipe and Oven Drums.

When in need of anything in this line  
call on us. Prices that will please.

Yours for business,

**G. M. MILIKEN & SON.**

## City Bakery & Restaurant

I. P. METCALF, Proprietor

Fresh home made Bread always on hand

WE SERVE REGULAR MEALS AND

Short Orders any hour of the Day or Night

WE KEEP A STOCK OF THE BEST CIGARS

Center of the North Side of the Square

## DON PEDRO

The Famous "Kentucky Bird" Black Spanish Jack will  
be found at A. L. LOCKWOOD'S stable one mile  
north of Tahoka, for the season. We have some fine

**COLTS to SHOW YOU**

Terms \$10 to insure a living colt.

## HEBREW COLONIZATION

Continued from first page  
In the mean time, however, even the cautious and alertness of the most wide-awake people in the world as to the state promotion—the residence of Texas—have for once been caught napping, and now New Orleans has for sometime been booming their port of entry as for the only right and logical one for the immigration of the Hebrew people from Europe, as proposed by Mr. Schriff in his colonization scheme and their own state of Louisiana and their sister state Mississippi, for which latter they hope to retain New Orleans as the chief commercial and immigration port of entry, they are agreed are more than any other states, the only and right section for these Hebrew people to colonize in, very good and commendable as far as it shows their enterprising and desire to promote the interests of their own states, but here in Texas we have the same right and privilege, and we likewise believe that no other state in the union, not even our good and well beloved sister states of Louisiana and Mississippi, can even hold a candle to the advantages of our most of Galveston and our state of Texas, the most progressive of all states, and the great land of opportunities for business, health, home happiness, prosperity, natural resources, prospects, good friendly fellowship and expanse of climate, and the people of Texas are willing to demonstrate it and prove it.

What is the matter with Galveston and our other growing Gulf ports as the greatest immigration and commercial entrepôts of our republic, and of our state for commerce and all good and worthy immigrants, colonists and settlers? Yes, what is the matter with them? Why not make Galveston and Texas for port of entry and location of these proposed Hebrew colonies? Why not? If you say, "yes!" and want to land them, let us get together and boost.

(Continued next week.)

THRICE-A-WEEK-WORLD with  
out a rival in its field the

Largest, Cheapest, Best Newspaper  
Published At The  
Price, Read in  
Ever English--Speaking Country

It has invariably been the great effort of the Thrice-a-Week edition of the New York World to publish the news impartially in order that it may be an accurate reporter of what has happened. It tells the truth, irrespective of party, and for that reason it has achieved a position with the public unique among papers of its class.

The subscription season is now at hand and this is the best offer that will be made to you.

If you want the news as it really is, subscribe to the Thrice-a-Week edition of the New York World, which comes to you every other day except Sunday and is thus practically a daily at the price of a weekly.

The Thrice-a-Week World's regular subscription price is only \$1.00 per year, and this pays for 150 papers. We offer this unequal newspaper and The Lynn County News together for one year for \$1.50. The regular subscription price of the two papers is \$2.00.

Sam Henry and wife went to Floydada last week to attend a picnic. They returned to Tahoka this week.

It is better to be prepared and not have a fire than have a fire and not be prepared. Insure with McMill Clayton. His companies pay the loss.

Man comes into this world without his consent and leaves it against his will. During his stay on earth his time is spent in one continuous round of contraries and misunderstandings by the balance of our species.

In his infancy he is an angel, in his boyhood he is a devil; in his manhood he is everything from a lizard up; in his duties he is a fool; if he raises a family he is a chump; if he raises a small check he is a thief; and then the law raises the devil with him; if he is a poor man, he is a poor manager and has no sense; if he is rich he is dishonest, but considered smart; if he is in politics he is a grafter and a crook, if he is out of politics you can't please him, as he is an undesirable citizen; if he goes to church he is a hypocrite, if he stays away from church he is a sinner and damned; if he donates to foreign mission he does it for show; if he doesn't he is stingy.

When he first comes into the world everybody wants to kiss him—before he goes out they all want to kick him. If he dies young there was a great future before him; if he lives to a ripe old age he is simply in the way and living to save funeral expenses. Life is a funny road, but we all like to travel it just the same.—Ex

## OLD AGE PENSION

To The News.  
West Mountain, Tex., March 26.—In view of the fact that the citizens of West Mountain, Tex., in absolute consideration the necessity of asking our congress to work for a pension for all old people over 60 years of age who have not a sufficient amount of finances for an honorable support, John O'Byrne offered the following preamble and resolutions. Which were unanimously adopted: "Whereas, it is the policy of the United States Government to retire officers of the army and navy at the age of 62 years and give them a pension for the remainder of their lives, in compensation for their life service to the country, all of which may be right, and there is a move on foot to pension the civil service employees on age of retirement; and

Whereas The men and woman who do all work and pay the taxes to pay their pensions are left to starve or go to the poorhouse in their old age if they have not the means of support. (This is a difference in favor of people who have pay. Why not be just to all our old people, both men and woman, who have toiled and made all the wealth of the world? No matter who has it labor produced it, and the laborer and his wife ought not to starve in their old age. The burden of their support should be born by the wealth of the whole country. This is Christianity. Let us put it into by asking our Congressmen and Senators to vote for a bill that will give every man and woman in the United States who is over 65 of age, and has not a certain income of such an amount that will decently support them in their declining years pension that will do so. Therefor be it Resolved.

That we, the citizens of West Mountain Epshur County Tex., indorse the above preamble and resolution and the counties that form the third Congressional District, to take up and pass these resolution and send them to our Congressman, Hon. Gordon Russell, and our Senators, Hon. Charles A. Culberson, and Hon. Joseph Weldon Bailey, and ask that they try to pass such a law.

"Resolved further" That we send these resolution to the following newspapers and ask them to print the same:—The Dallas Morning News, Fort Worth Record, Time-Clarion, Longview, Tex., Upsher County Echo, Gilmer Tex., and Gladewater Gazette, Tex.  
M. M. BENNETT,  
W. R. MAJORS, Secretary

Parkhurst & Co. secured the contract for painting and papering two houses for L. Lonsden, of the Wilson county school land. The houses have five rooms each. K. D. Jones and Ray Weathers left Monday to begin the work. They took with them 25 gallons of oil, 200 pounds of lead, 600 yards of canvas and 25 pounds of tacks.

We like to hear of contracts of this kind being let to our home advertisers.

It speaks well for the county that so much improvement is going on and that we have the talent in our own homes to do work of all kinds.

## SEWING

The Ladies Home Mission Society of the Methodist Church will do any kind of plain sewing, prices right, give them a trial. Work neatly done.

Mr. and Mrs. Alley returned Sunday from a trip of several days to Amarillo and other points.

Lubbock recently voted bonds for a fine new jail. It's a good thing for the visitors that they haven't such a comical one there at present. During the census enumeration an unwary traveler would be in danger of being locked up until they could fill out the proper population blanks.—Plainview Herald.

The Herald promised the avalanche something over six months ago that they would be good up in the little village, if we would be quiet about them and not expose their wrong doings, but it seems that they either have a new man at the bat or else they have forgotten their allegiance to us. We rather think from the reports that are going the rounds now, that Plainview will very likely not have a place for the safe keeping of their visitors when the census enumerators come around in 1920. Lubbock has always been able to back up every statement that she makes, and the population will be fully up to all she claims.—Avalanche.

What do you mean little sister, come over with a gun, and don't evidence your petty jealousy of the growl. You will be taken class yourself pretty soon.

## Tahoka Tailoring Co.

Fred McDaniel, Prop.

We take orders for The Royal Tailors and guarantee all work  
**MEN'S and LADIES' CLOTHING.**  
Cleaning and Pressing done in the most possible manner.  
North Side Square, Tahoka, Texas.

## South Plains Wagon Yard

GEO. SMALL, Prop.

BEST ACCOMMODATIONS FOR TRAVELERS

Wholesale & Retail Feed Dealers

One Door South of Tahoka Real Estate Office

TAHOKA

TEXAS

## West Side Barber Shop

IRA DOAK, PROP.

SMOOTH, CLEAN SHAVE

Neat, Smooth and Artistic Hair Cut.

P. B. HALL

W. R. MAJORS



**Tahoka Livery, Feed  
and Sale Stable**

HALL & MAJORS, Proprietors.

PHONE No. 9

We have good teams, good rigs, and our prices are reasonable. We sell all kinds of feed and will deliver anywhere.

North of the square, Tahoka, Texas.

## JOE BUFORD



JOE BUFORD—A Deep Sorrell Stallion  
Blaze In Face, White Hind Foot, 16 hands  
high, weighs 1150 pounds, 5 years old

He Is A Beautiful Saddle And Harness Horse, Of The HALBRED  
And Shows Many Qualities Of His Well Known Ancestors,  
Which Are As Follows:  
TOM HAL, LITTE BROWN JUG, BROOKS, BREWSTER,  
MOHAWK, ALGERINE, MAURY CHIEF, STARBUCK,  
PAT MALONE And FRANK BUFORD.

He will Stand the Present Season at  
Barn on the Meyer Place 13 miles South  
east of Tahoka.

TERMS—\$15.00 to insure colt, \$12.50 per foal. If mare is  
removed from county Sierage becomes due. All  
owners risk but all care will be taken.

**P. P. BREWER**

## Tahoka Real Estate

City And Farm  
Property

## Largest List

Exclusive

Agents For The

Chamber's Addl