

Robert Alford will be president of the Muleshoe Area United Fund next year if the recommendations of the CP nominations committee is approved. Mrs. Bernard Phelps will be first vice-president and chairman of the budget and admissions committee. Jimmy Shelton has been nominated as fund campaign chairman. Inez Bobo, treasurer, and Don Harmon, chairman of public relations. Members of the nominating committee are Robert Harmon, Mrs. Tat Bobo, Kenneth Henry, Mrs. Truman White, retiring president, and Gil Lamb, campaign chairman the year.

Mrs. W. F. Davidson and Susan left Muleshoe Friday for San Angelo where Susan will compete in a piano contest. According to Mrs. Davidson, usually only teachers merit this honor. If Susan should win the contest, she would win the right to play with the San Angelo Symphony. Susan is a freshman at Texas Tech in Lubbock. The two will visit with friends also while in San Angelo.

Mrs. Mailda Stemmors and Mrs. W. F. Davidson were in Lubbock Monday.

Muleshoe Masons Lodge No. 127 AF&AM will meet at 7:30 p.m. Tuesday in the Masonic Hall here, according to the Worshipful Master, Alvin Epling.

The final session of the Mary Desha's Modern Math courses will be held from 7:30-9 p.m. tomorrow in the school's cafeteria here.

Richard Hills will begin their modern math courses for adults next Monday night, according to the president of the Richard Hills P.T.A. Mrs. Alvin Haley. The course will be given each Monday evening for seven weeks.

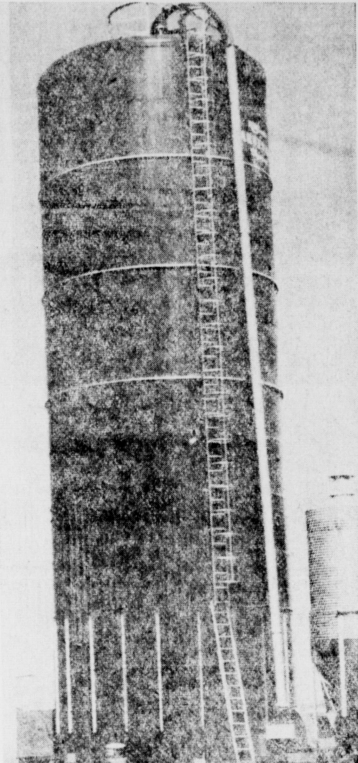
Distributive Education students from Muleshoe High School were in Odessa yesterday for area contests. In West Texas, and 10 top winners in the trials there will go to the state contest in Houston later in the spring. They were accompanied by Superintendent Neal Dillman and Fred Marild, DE instructor. Attending were Luddy Harris, Anna Lee Harrison, Sherri Smith, Hutch Green, Mike Williams, James Phipps, Dean Seiber and Zane Henderson. Sherri Smith was entered in the sweetest contest; Mike Williams in job interview; James Phipps in advertising layout; Dean Seiber in sales demonstration; and Zane Henderson in job interview.

1966 automobile tags for 1966 started at the assessor-collector's office here Tuesday, and by Friday, ten passenger car plates had been issued. Owners have until April 1 to buy their current year's plates. Inspection sticker deadline is April 15.

Muleshoe school administrators attended a banquet of districts 13 and 4 at Lamessa this week for Texas Association of School Administrators when L. P. Sturgeon, TSTA official, was the speaker. Attending from Muleshoe were Superintendent Neal Dillman and these principals: Ralph Stevenson, Bill Taylor, R. E. Everett, and Milton Oyler. Three-hundred attended the banquet.

Bailey county farmers have been invited to attend a High Plains Research Foundation meeting on ship-soil planting slated for next Thursday in the new Hale county exhibition building just south on Plainview U.S. 87. The demonstration starts at 10 a.m.

Dorothy Belding-Fell, a teacher in Muleshoe schools, was in Dallas this week as a Texas delegate to the South Central Regional conference of the National Education Association's department of classroom teachers. She also attended a meeting of the Texas Classroom Teachers Association of which she is a director. At the South Central meeting, class-



FEED "FACTORY" — This imposing structure is a modern version of the old-style silo, but it does much more than the original. This is literally a "feed factory," creating cattle feed from home crops and doing it out as needed by the cattle. It's a highly complicated process. (Journal Photo)

It's Saigon Route For Muleshoe Flier!

Six-foot, 200-pound Richard Barnett is flying a lot of airplane miles these days, and he's doing it a long way from home. In the far east, as a matter of fact, and in close range to north areas of the Viet country. But he flies it, and when school is out, his wife and four children will join him to make their home in the Saigon area. For the past several months they have been living with Mrs. Barnett's parents, the Jack Pridley, who is the former Vera Lou Pridley in Clavis, And Ricky Don, Greg, Scotty and Beverly have been going to school in Clavis.

But all are looking forward to the move to the Far East. Richard came home last week, "itching" rides that finally landed him in Muleshoe after hopping to Pakistan, Cairo, Egypt, Rome, Frankfurt, Amsterdam, Holland, Montreal, Houston and Dallas.

The country he's in is "hot," weather wise except in the king-sized mosquitoes, which he says "damn near cury a fellow off." He says those mosquitoes are "big and vicious."

But the temperature in Saigon is around 80 degrees during the daytime, and "that's not hot."

Barnett is flying for Continental, a captain in the Saigon area. He's been in that parti-

cular area for two months, and prior to that was at Vietnam, Laos. Of it he says, "It's beautiful."

Mrs. Barnett will not look for help when she reaches the far east; servants are available everywhere, and their pay "is about as much for a month as an American servant would draw for one day here."

He says he can see the fighting from Saigon, although his flight takes him up to the South China Sea coast each day.

Of course his family will not be able to live in Saigon; it's too dangerous, too close to the fighting. But they will set up residence in Bangkok and Richard will visit them frequently.

Barnett is the son of Mr. and Mrs. C. A. Barnett of Muleshoe. He finished high school here, attended Abilene Christian College and Tech, and then served in the military.

While the equipment resembles the old-fashioned upright silo, it is a relatively new type of "factory," a valuable device that stores the feed until it is needed and then is doled out automatically to 10 or 400 cattle at the same time.

The pictures on this page were taken at the Bill Jim St. Clair farm northwest of Muleshoe, and the cattle pictured were quickly eating themselves into the parking houses farther east. They had gorged themselves on feed grown right on the St. Clair farm, in this case alfalfa, cut and stored in a "Harvester" when the alfalfa had 40 percent moisture. Mixed with it, too, was other hay which had been "sweetened" down and stored in the sealed system; then was fed out over a 200-foot long feed bank system. St. Clair's system takes care of 400 cattle at a time.

With the new sealed system has come a new term, "Haylage," which is part of the secret of providing home out-let for feed via silo, sleek cattle.

The new system speeds up harvest greatly — "from forage in the fields to storage in just 20 minutes," the manufacturer claims.

St. Clair has found the feed-lack of exemption certificates makes it impossible to determine the exact number of persons who are eligible to vote. Altogether, 2158 persons paid their \$1.75 fees for poll taxes before the Jan. 21 date. Add to this some 250 to 400 who are above the \$60-year limit, and the number of qualified voters could reach 2500 or more, and that's a large number "for a

Washington's Birthday Sales Promotion To Kick Off Elaborate Series for 1966

for promotion of Muleshoe businesses in history," he says.

The "Go-go" plans were launched at a coffee Thursday morning, and will be presented to the full merchants' group at a similar meeting next Tuesday morning at 10 o'clock at Paul's Restaurant. Bass is urging all stores to have representatives at next Tuesday's meeting.

Meantime, plans for the first of a series of 1966 merchant promotions are under way. A George Washington sales event will be staged Feb. 22 with Lyndal Murray as chairman of the birthday sales event. Stores will offer many attractive prices for the Washington event.

Several other plans are in the discussion stage, and Bass has named chairmen to study other events, such as a "cotton carnival" project for a possible Halloween promotion. Olin Burrows heads the project with Earl Morris as assistant.

Two special sales events are



RICHARD BARNETT ... back to Far East

Monday is Dollar Day in Muleshoe

Bailey County Journal

"The Community of Opportunity — Where Water Makes the Difference"
VOL. 3 NO. 6 8 PAGES Published Every Sunday At Muleshoe, Bailey County, Texas — 79347 SUNDAY, FEBRUARY 6, 1966

Home Feedlots Using Local Grain, Hay Adding to Farm Income Here Marketing on Hoof Via 'Haylage' Gains

Something new is being added to the Bailey county farming program these days — and to the farming program throughout West Texas, for that matter.

It's the "grow your own livestock" program which is catching on throughout the area, offering an alternate outlet for grain and other feeds, rather than marketing those products through the usual feed channels.

A feature that has made the new program boom is a relatively new type of "factory," a valuable device that stores the feed until it is needed and then is doled out automatically to 10 or 400 cattle at the same time.

The pictures on this page were taken at the Bill Jim St. Clair farm northwest of Muleshoe, and the cattle pictured were quickly eating themselves into the parking houses farther east. They had gorged themselves on feed grown right on the St. Clair farm, in this case alfalfa, cut and stored in a "Harvester" when the alfalfa had 40 percent moisture. Mixed with it, too, was other hay which had been "sweetened" down and stored in the sealed system; then was fed out over a 200-foot long feed bank system. St. Clair's system takes care of 400 cattle at a time.

With the new sealed system has come a new term, "Haylage," which is part of the secret of providing home out-let for feed via silo, sleek cattle.

The new system speeds up harvest greatly — "from forage in the fields to storage in just 20 minutes," the manufacturer claims.

St. Clair has found the feed-lack of exemption certificates makes it impossible to determine the exact number of persons who are eligible to vote. Altogether, 2158 persons paid their \$1.75 fees for poll taxes before the Jan. 21 date. Add to this some 250 to 400 who are above the \$60-year limit, and the number of qualified voters could reach 2500 or more, and that's a large number "for a

in which were once so popular in the southwest, makers of the equipment claim it is "vastly different" in many respects. "Haylage" has grown out of the new sealed system, a term which was coined in 1949 to describe a medium moisture feed that could be stored successfully in the revolutionary new silo.

See FEEDLOTS, Page 5

2500 May Vote in This Year's Elections Here

Twenty-five hundred persons may be qualified to vote in elections this year in Bailey county, judged by the number of persons who paid poll taxes and those who are exempt because of age from paying fees.

Don Lachley, county tax assessor-collector, said Friday that it is "difficult to determine the exact number of qualified voters in Bailey county since those over 60 do not have to secure exemptions." (In counties of 10,000 population or more, those above 60 must secure exemption certificates in order to vote, but in counties of less than 10,000, they do not have to secure such certificates. "All they have to do is walk up to the polling places and say they want to vote; it's that simple," she summed up.

But by the same token, the lack of exemption certificates makes it impossible to determine the exact number of persons who are eligible to vote. Altogether, 2158 persons paid their \$1.75 fees for poll taxes before the Jan. 21 date. Add to this some 250 to 400 who are above the \$60-year limit, and the number of qualified voters could reach 2500 or more, and that's a large number "for a

Expert to Report Muleshoe's Needs

Muleshoe is considering a "comprehensive plan for future development," and at least one city planning firm has made a study of the Muleshoe situation.

That firm, the Kenneth W. Larsen & Associates firm of Albuquerque, is ready to make its report. Larsen himself will give the report of his findings at a joint meeting of the city council and city planning commission Monday night in the city hall.

Mayor Wilbur LeVaque will preside. James Jennings is chairman of the planning commission.

See REPORTS, Page 5

Jesse T. George Asks Re-Election To State Post

State Representative Jesse T. George of Brownfield has authorized the MULESHOE JOURNAL to announce his candidacy for reelection, subject to the Democratic Primary, May 2, 1966. George represents District 90, which consists of Yoakum, Terry, Hockley, and Cochran Counties. Under provisions of the Legislative Reapportionment Act of the 59th Legislature, District 90 becomes District 75 and includes the additional...

See GEORGE, Page 4

Bureau to Start Members' Drive At Luncheon

This is Farm Bureau week, and County Judge Glen Williams has so proclaimed the week in Bailey county. The Bureau will kick off its annual membership campaign Tuesday with a luncheon at Paul's restaurant when Ed McKay legislative director of the Texas Farm Bureau, will be the speaker.

The drive here will have Abolph Wittner in charge of the campaign. In discussing the drive Wittner said "the effort of this county is being matched with other counties in the state, and the goal in Texas of 100,000 members has been set. This compared with the present membership of 85,204 members.

Both Gov. Connally and Judge Williams have pointed out the importance of agriculture "to the economic well-being of this county."

Workers, in addition to Wittner, are Louis Henderson, A. M. Lachley, Morris McKillop, Kenneth Powell, Vice President, Ed Little, and W. E. Meyers. Those will have charge of the campaign in this county, it was

See LUNCHEON, Page 4

Temperatures

By J. R. Klump
Official U. S. Weatherman

	High	Low
Feb. 2	38	11
Feb. 3	50	16
Feb. 4	49	18
Feb. 5	61	21
	Sunrise	Sunset
Feb. 6	7:40	6:23
Feb. 7	7:39	6:24
Feb. 8	7:39	6:25
Feb. 9	7:38	6:26



FARM BUREAU TIME — County Judge Glen Williams (seated) has proclaimed this "Farm Bureau Week," and here signs a proclamation while Kenneth Owens and Adolph Wittner watch. (Journal Photo)

Expert to Report Muleshoe's Needs

Muleshoe is considering a "comprehensive plan for future development," and at least one city planning firm has made a study of the Muleshoe situation.

That firm, the Kenneth W. Larsen & Associates firm of Albuquerque, is ready to make its report. Larsen himself will give the report of his findings at a joint meeting of the city council and city planning commission Monday night in the city hall.

Mayor Wilbur LeVaque will preside. James Jennings is chairman of the planning commission.

See REPORTS, Page 5

Jesse T. George Asks Re-Election To State Post

State Representative Jesse T. George of Brownfield has authorized the MULESHOE JOURNAL to announce his candidacy for reelection, subject to the Democratic Primary, May 2, 1966. George represents District 90, which consists of Yoakum, Terry, Hockley, and Cochran Counties. Under provisions of the Legislative Reapportionment Act of the 59th Legislature, District 90 becomes District 75 and includes the additional...

See GEORGE, Page 4

Bureau to Start Members' Drive At Luncheon

This is Farm Bureau week, and County Judge Glen Williams has so proclaimed the week in Bailey county. The Bureau will kick off its annual membership campaign Tuesday with a luncheon at Paul's restaurant when Ed McKay legislative director of the Texas Farm Bureau, will be the speaker.

The drive here will have Abolph Wittner in charge of the campaign. In discussing the drive Wittner said "the effort of this county is being matched with other counties in the state, and the goal in Texas of 100,000 members has been set. This compared with the present membership of 85,204 members.

Both Gov. Connally and Judge Williams have pointed out the importance of agriculture "to the economic well-being of this county."

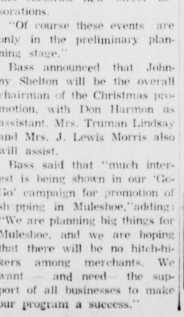
Workers, in addition to Wittner, are Louis Henderson, A. M. Lachley, Morris McKillop, Kenneth Powell, Vice President, Ed Little, and W. E. Meyers. Those will have charge of the campaign in this county, it was

See LUNCHEON, Page 4

Temperatures

By J. R. Klump
Official U. S. Weatherman

	High	Low
Feb. 2	38	11
Feb. 3	50	16
Feb. 4	49	18
Feb. 5	61	21
	Sunrise	Sunset
Feb. 6	7:40	6:23
Feb. 7	7:39	6:24
Feb. 8	7:39	6:25
Feb. 9	7:38	6:26



Jesse T. George

Marcella Williams Installed Worthy Advisor Of Muleshoe Rainbow Assembly

Marcella Williams, daughter of Mr. and Mrs. Alex Williams, was installed Worthy Advisor of the Muleshoe Assembly No. 161 Order of Rainbow For Girls at their installation ceremony here Saturday at 7:30 p.m. in the Masonic Hall.

Miss Williams chose as her theme "Service". The white carnation is her flower and her colors are gold with purple.

Marcella's emblem is the Golden Rule and she chose as her scripture "Whatever ye would that men should do to you, do ye even so to them — Matthew 7:12. Her installation was dedicated to her grandmother, Mrs. George T. Andrew who lives in New York.

Judy Elliot served as Install-

ing Officer; Mrs. Janie Brantley, Installing Chaplain; Pam Kerr, Installing Recorder; Mrs. Connie Ray, Installing Musician and Sandra Faver, Usherette.

The invocation was given by Walter Buice, music director of the First Baptist Church.

Officers installed were Marcie Williams, Worthy Advisor; Lynn Erickson, Worthy Associate Advisor; Terry Bryant, Charity; Pam St. Clair, Hope; Cindy Davis, Faith; Kerry Beddingfield, Chaplain; Pam Seymore, Drill Leader; Darla Kendall, Treasurer; Karen St. Clair, Secretary; Kathy Williams, Love; Lindy Kerr, Religion; Debbie Burrows, Nature; Sheridan Porter, Immortality; Charlotte Davis, Fidelity; Rena Lackey, Patriotism; Anette Williams, Service; Sue Plyant, Confidential Observer; Norene Green, Outer Observer; Trena Bryant, Musician and Paula Wallace, Chair Director.

Special guests introduced were several past and present Mother Advisors and Worthy Advisors and Lois Norwood, Worthy Matron of the Order of Eastern Star and the Advisory for the new year.

Marcie recognized her parents and other members of her family.

"How Great Thou Art" was beautifully rendered by Walter Buice accompanied by Mrs. Connie Ray at the piano.

A special flower drill was presented to Marcie by several

of the Rainbow Girls under the direction of Lynn Erickson, Worthy Associate Advisor.

Mrs. Bill Bickel at the violin and Mrs. Connie Ray at the piano provided the musical selection "Secheherazade".

A Past Worthy Advisor's Pin was presented to Judy Elliot.

The benediction was given by Alex Williams, Marcella's father, followed by the retiring march given by the Rainbow Girls.

The installation service was concluded by the singing of "My Rainbow" by the Rainbow Girls.

Refreshments were served in the dining room following the installation by Marsha Blackman, Nancy Lee, Brenda Tanner and Julie Williams.

Printed on Miss Williams' program book was the following poem entitled "Living The Golden Rule":

"If we could work for others Without applause or cheer; If we could smile when when things go wrong And brush away the tears; If we could say, 'I am sorry,' To a friend we've hurt and lost, And humbly bow to others' will And ever count the cost, And never count the cost, We're living near to God." "If we would never evil speak Of those who are our friends, But look for faults what we might have, And strive to make amends; If we would cherish and defend And love our fellow man, And make the Golden rule a creed, Then live it if we can, We're living near to God".



MRS. KENNETH EVINS ... the former Diann Parker



MARCELLA WILLIAMS ... Worthy Advisor of Rainbow Assembly

Mrs. J. D. Glover Speaks to Club

Mrs. Jerry Don Glover and her mother, Herford, gave a demonstration on how to make feather flowers at the Midway Variety Club's meeting Tuesday.

The meeting was held in the home of Mrs. M. C. Mason.

Mrs. Glover also showed a lovely bouquet she had made.

In appreciation of Mrs. Glover's services the club presented her with a lovely vase.

Members present were Mrs. Lacey Harland, Mrs. Lee Mason, Mrs. Varney Rannels, Mrs. E. A. Redwine, Mrs. Claud Walkins, Mrs. M. C. Mason and guests, Mrs. J. R. Harris, Mrs. Boyd Cawthron, Mrs. Cloya Cowan and daughter, Clara, Susan Glover and a new member, Mrs. Redwine.

Dorothy Ray Harbin will be the hostess for the next meeting to be held on Feb. 15, this being a workday for the club, each member is to bring whatever they want to work on.

Muleshoe Folk Visit Mexico

Mr. and Mrs. Elbert Nowell and Mr. and Mrs. L. O. Norwood returned home from Mexico this week where they spent several days sight-seeing.

The couples crossed into Mexico at Nuevo Laredo. From there they went to Monterrey, to Ciudad Victoria on to San Luis Potosi and on to Guadalajara where they spent two days visiting interesting places.

The group reported they saw century plants growing in rows which were in bloom, also cane which was brought to market by burros and also the large market is a cafeteria, they make pottery, blown glass and you can buy goats meat, which is a choice Mexican meat.

Upon leaving Guadalajara flowers blooming such as Jacaranda, Bougainvillea, Poinsettias, Roses and other flowers were viewed.

Lake Chapala which is 100 miles long and approximately five miles wide was next on the list to be visited. This lake is some 30 miles from Guadalajara. Cleaning oysters seemed to be the main interest of this particular place.

Bull fights were enjoyed by the group Sunday afternoon. According to Mrs. Norwood, they watched five bulls killed by their matador. It seems following the kill of the bulls they are quartered and butchered to be sold in the stores in Guadalajara.

From the bull fights the group went to Zanteecas and

Diann Parker and Kenneth Evins Repeat Vows In Corpus Christi

Diann Parker and Kenneth Evins were united in marriage at 7:30 p.m. in the Parkdale Baptist Church in Corpus Christi.

The bride, the daughter of Mr. and Mrs. LeRoy D. Parker, Corpus Christi, wore a gown of white peau de soie featuring a boat neckline of sequins and pearls. The full skirt designed with a layer of bonnet lace tapered to a train. Her illusion veil was accented by a peau de soie pillbox crown of sequins and pearls. She carried a cascade of white carnations.

The groom is the son of Mr. and Mrs. J. H. Evins, Muleshoe.

Miss Barbara Evins, Muleshoe, the groom's sister served the bride as maid of honor. Miss Darlene Kilsby, Corpus Christi, served as bridesmaid and Beverly Evins, sister of the groom, served as junior bridesmaid. Their dresses of turquoise peau de soie were designed with boat necklines and full skirts. Each carried nosegays of yellow

carnations.

Derrel Evins, brother of the groom, served as best man, and groomsmen were Velton Lynn, cousin of the groom, Littlefield, and Don Parker, brother of the bride.

Ushers were Jerry Pitman, Corpus Christi and Dick Chitwood, Muleshoe.

A reception followed the ceremony in the church.

Serving punch from the bride's table was Mrs. Tommy Pitman and Mrs. Jerry Pitman

served cake.

The bride is a graduate of Mary Carroll High School and is attending Durham's Business College.

The groom is a graduate of Muleshoe High School and is attending Del Mar Tech in Corpus Christi.

The couple will live in Corpus Christi.

Out of town guests attending the wedding were Mr. and Mrs. Dee Chitwood Jr. and Mr. and Mrs. Jerry Hutton, Muleshoe.

INFANTS . . . CHILDREN
AND
MATERNITY WEAR
AT
LULLABY LANE
HEADQUARTERS FOR BABY SHOWER GIFTS
THE VILLAGE CLOVIS, N. M.

BEN FRANKLIN
ROSE BUSHES
2 YR. FIELD GROWN
DELUXE SILVER SEAL
REG. \$1.55
\$1.22

DOLLAR DAY

St. Clair's
DOLLAR DAY
and
CLEAN-UP SALE
DON'T MISS THIS SALE
OF SALES

ECONO MART
CLEARANCE
ON ALL
LADIES' & CHILDREN'S
DRESSEES
1/2 PRICE
\$1.00 & UP

ROBINSON BOOT SHOP
OUR CLEARANCE SALE
IS NOW IN PROGRESS
BARGAINS
TOO NUMEROUS TO MENTION
TAKE ADVANTAGE OF THE SAVINGS!

THE FAIR STORE
LADIES DRESSES
UP TO \$10.00 VALUE **\$5.99**
LADIES' & CHILDREN'S SHOES
REG. \$3.98
2 PR. FOR \$5.00

BOVELL MOTOR SUPPLY
TRACTOR LIGHTS
\$5.25

CROSS ROADS CAFE
MEAT LOAF
ON THE
Lunch
\$1.00

Anthony's
SEW & SAVE NOW!
Sale of Spring & Summer FABRICS
Look What A Dollar Will Buy!
NEW COTTON PRINTS . . . 4 yds. for \$1.00
FABRICS FOR DRESS & SPORTSWEAR . . . 2 yds. \$1.00
WE HAVE A LARGE SELECTION TO CHOOSE FROM
SHOP EARLY!

HAYDON'S SHOES
ONE TABLE OF LADIES' SHOES
Stacked, Med. and High Heels
FAMOUS BRANDS
\$16.95 VALUE
DOLLAR DAY ONLY
\$5.00

HARVEY BASS APPLIANCE
AUTHORIZED DEALER FOR
— FRIGIDARE — SINGER
— NECCHI — RCA VICTOR
— MOTOROLA
"WE SERVICE WHAT WE SELL"

DINNER BELL CAFE
RENA'S SPECIAL
2 PIECES CHICKEN
COTTAGE CHEESE
AND PEAR HALF
DRINK . . . COFFEE OR TEA
\$1.00

Published each Sunday by the Muleshoe Publishing Co
304 West Second Street, Muleshoe, Texas

Bailey County Journal

Member of The Associated Press
Entered as second class matter at the Muleshoe Post Office under act of Congress, March 3, 1879.

SUBSCRIPTION RATES
Immediate Territory \$4.00
Outside Territory \$4.50
In combination with the Muleshoe Journal (Published each Thursday) the following rates apply
Both papers in territory \$5.50
Both papers outside territory \$6.25

(Advertising Rates on Application)
L. B. HALL Publisher
RAMON MARTIN Editor
PAT JOHNSON Woman's Editor
JAY SPAIN Mech. Supt.



TOPS Members Receive Awards

Nina Riels was pronounced queen for the month of January at Thursday night's meeting of the Jenny TOPS here. The group met at 7 p.m. in the Bailey County Community Room under the leadership of Lauranette Mason.

The regular pledge and fellowship song was observed followed by Jewell Peeler calling the roll. Mrs. Peeler is the weight recorder for the club. This was answered by 21 members. One guest was present for the meeting, she was Lorraine Gallman from Lubazduie.

Countess for the monthly title were Majorie Platt and Chris Dunlap.

Queen for the week was Mary Edminston who received a gift and will wear the crown for the week. Her Countesses were Nina Riels and Leona Evans.

During the business by-laws of the TOPS club and the fines were discussed for the benefit of the new members. Also information was passed about the club to the new members. A letter was read from the area supervisor complimenting the Muleshoe TOPS club on their 1965 year. Also three awards were sent to members. They

were sent to Jewell Peeler, first division five; Rose Sain, second in division four and Lucille Harp, first in division four for the 1965 year.

Cecile Cunningham gave the treasurers report for the month of January which was followed by the pigs entertaining with their song.

Jewell Peeler was appointed as chairman to see that the head table for Thursday night's Valentine Party is decorated. On the committee with her are Zora Beller and Girtie Kirk. Husbands and guests are to be present for the party. A salad is to be brought by each member.

It was reported that side one is ahead in the salad contest which began last week.

Clarence Mason will demonstrate family exercise at Thursday's meeting also.

Variety, Hobby Clubs to Visit

Muleshoe Hobby Club voted to visit with the Midway Variety on Feb. April 5 at their meeting. The club met in the club house at 2 p.m.

Euna Mae Oswalt led the club in playing games and Mabel Caldwell displayed a plastic top table with rocks-bugs, and



4-H NEWS
Busy Beavers 4-H club met Monday in the home of their adult leader. Due to bad weather, only two girls were present. Ruth Ramm and Jana Garrett mixed up some instant pudding. They discussed the foods show and the Progressive Awards night supper.

4-H
Progress 4-H Club had their Awards night supper Tuesday night. Each 4-H member displayed his award or prepared something to show what they had learned during the year or years.

Jana Garrett made apple-celery salad with the recipe displayed and Ruth Ramm made drop biscuits. She displayed the biscuits, showed the recipe and told on a card what she had learned about bread and its value to the daily diet.

4-H
Busy Beavers met Tuesday in the home of their adult leader for their regular meeting. They made a meat salad and fixed a cooked vegetable.

The girls were encouraged to get their foods records up to date and decided on what they intend to make for the food show. The girls will have a "Local Groups" foods show with Mrs. Clarence Mason's group on Friday at 7:30 p.m. present for the meeting were Terri Bryant, Jana Garrett, Sheryl Bass and Ruth Ramm.

4-H
Busy Girls 4-H club voted to take bedroom improvement at their meeting at Barbara Puckett's home Wednesday.

The girls made muffins, plain muffins and blueberry. They also planned to meet every Wednesday for the next few meetings to work on their snage rattles imbedded.

Zula Carlyle and Francis Bruns were hostesses for the meeting.

Jeanette Butts, Carrol Redwine United In Quanah Ceremony

An arch of greenery flanked on each side by candleabra and greenery was the setting for the double ring ceremony uniting Jeanette Ellen Butts and Carrol Gene Redwine in marriage. Miss Butts is the daughter of Mr. and Mrs. M. T. Butts, Quanah and the groom's parents are Mr. and Mrs. J. C. Redwine, Lubazduie.

The ceremony was said in the First Baptist Church at Quanah, Jan. 22 at 5 p.m. Dr. W. E. Norman performed the ceremony.

The bride was attired in a French satin and lace bodice with empire waist line pointed lace sleeves. The formal length gown was complemented in the back with a tiny satin bow and long train. She carried a white Bible topped with pink carnations and burgundy roses in the center.

Paulette Bounds, Monahons, food show.

Present for the meeting were Barbara Puckett, Karen Parks, and members, Debbie Parks, Cynthia Puckett, Melita King, Cassie Precure and Christy Ford.

Club Changes Meeting Place

Due to a change in plans the meeting of the Study Club will be held in the home of Mrs. R. O. Gregory Thursday at 4:30 p.m.

Roll call will be answered by Foreign Country I would like to visit.

A film will be shown on Unity in Diversity at the meeting Thursday, according to Mrs. Ray Martin, club president.

When you line pans in which you bake rich fruit cakes, you can leave the lining around the cakes.

The National Zoological Park in the nation's capital attracts an average of 3 million visitors a year. The park has 2,500 wild animals.

served as maid of honor. She wore a pink brocade gown trimmed in burgundy ribbon with velvet, complimented with pink net hair pieces and carried a long stemmed rose of burgundy.

Bridesmaids were Madeline Butts, Lubbock, and Marilyn Galloway, Kansas. They were dressed identical to the maid of honor.

Lisa Redwine, Muleshoe, was flower girl. She wore a pink sateen set off with a pink net and burgundy velvet head piece. She carried a pink basket of pink carnations and rosebuds.

Lee Schafer, Monahons, and Terry Darling, Lubazduie, served as candlelighters. Eddie McCurry, Littlefield, was ring bearer.

Harrol Redwine, Lubazduie, served his brother as best man and Clyde Redwine, Friona, and Melvin Butts, Quanah, both brothers of the groom served as groomsmen.

Floyd Hamby, Vernon, and brother-in-law of the bride, and Herbert Butts, Lubbock, uncle of the bride were ushers.

Following the ceremony a reception was given for the couple.

Oleta Hamby, Dollie Daughtry and Janet Roberts served from a lace table cloth which held a traditional white wedding cake and rice pockets.

The groom's table was covered with a beige crocheted cloth, handmade by the groom's grandmother, Mrs. John Counts. Chocolate cake and coffee were served from the groom's table by Terry Darling and Harrol Redwine.

The bride's mother chose a pink suit with burgundy trim and wore a corsage of tiny pink and burgundy rosebuds.

The groom's mother wore a beige lace dress complimented with brown accessories and wore a corsage of tiny pink and burgundy rosebuds.

For something new the bride wore pearls which was a gift from the groom. Something blue was a garter and a penny in her shoe was minted the year of her birth.

For traveling the bride chose a suit of burgundy nylon and mohair with black accessories. They will be at home in Canyon.

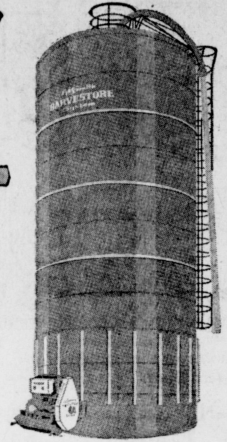
Out of town guests for the

ceremony were Mr. and Mrs. Floyd Gamb, Loeta and Tony, Clyde Redwine, Harrol Redwine, Mr. and Mrs. J. C. Redwine, Mrs. Redwine, Dallas and Billie McCurry, Eddie and De-

nese, Mr. and Mrs. Dulhan Redwine, Connie and Lisa, Lee Schaffer, Martyn Galloway, Paulet Bounds, Terry Darling and Mr. and Mrs. Gabert Butts and Mrs. dline.

Watch for the Big Blue HARVESTORES

going up in your area!



If a sign of progress... a sign that a neighbor of yours has taken the step to an insured future in diversified farming. He is diversifying with cattle feeding, one agriculture crop that has no government control and he's doing it thru the newest concept in farming... the Harvestore System. Add a Harvestore to your farm and you're adding acres of production to your land without buying or renting any actual acreage. It's a new way of life... a new way of farming. For further information call or write

BENROY Agri-Systems INC.
P. O. BOX 223
LUBBOCK, TEXAS

ST. CLAIR'S FINAL CLEAN-UP & DOLLAR DAY SALE

THESE PRICES CANNOT BE MATCHED AGAIN THIS YEAR! TAKE ADVANTAGE OF OUR FINAL CLEAN-UP SALE!

FINAL CLEAN-UP ON GROUP OF LADIES' DRESSES

SIZES... PETITE, JR., REG. HALF SIZE.

REGARDLESS OF ORIGINAL PRICE. THESE WILL GO

AT...

\$3 - \$5 - \$7

GROUP OF LADIES' KNIT SUITS AND COATS REDUCED

50%

AND OVER

ONE GROUP MEN'S SWEATERS

1/2 PRICE

MONDAY FEBRUARY 7

MEN'S

MONDAY ONLY

DRESS HATS VALUES TO \$13.95

\$3.00

MEN! IF YOUR SIZE IS IN THIS GROUP, YOU MAY PURCHASE A SUIT FOR - 1/2 PRICE . . . SUITS INCLUDE BOTANY . . . ALL WOOL

	36	37	38	39	40	42	44	46
SHORT		1		1				
REG.	1	1	1	1	1	1		1
LONG		1						

PRICES RANGE FROM \$17.50 UP

MEN'S SOCKS IN BUNDLES REG. \$1.00 PR. - 5 PAIR FOR ONLY \$1.00

ONE GROUP MEN'S SHIRTS MANHATTAN & JAYSON VAL. UP TO \$6.95 MONDAY ONLY \$2.00

CHILDREN'S DEPARTMENT INFANTS - GIRLS DRESSES & SPORTSWEAR INCLUDING

. CORDUROY COVERALLS AND PANTS
. ORLON SWEATERS
. PLEATED AND STRAIGHT SKIRTS
. 2 PIECE DRESSES . . . SCHOOL & PARTY

SOME AS LOW AS \$1.00

PRICED A FRACTION OF ORIGINAL COST!

REMEMBER! THIS IS ST. CLAIR'S FINAL CLEAN-UP

BOY'S DEPARTMENT SWEATERS

THIS GROUP CONSISTS OF OUR CATALINA & CAMPUS SWEATERS VALUES TO \$10.95 MONDAY ONLY \$4.00

GROUP OF BOY'S PANTS CASUAL & DRESS STYLES SOME NO-IRON FABRICS ORIGINAL PRICE UP TO \$8.50 MONDAY ONLY \$2.00 WHILE THEY LAST

BOY'S DENIUM JUMPERS & CORDUROY JACKETS REG. \$3.98 TO \$4.50 MONDAY ONLY \$1.00

SHOP ALL DEPARTMENTS FOR BARGAINS TOO NUMEROUS TO MENTION AT

St. Clair's

GEORGE

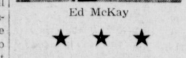
(Continued from Page 1)
 tion of Bailey County to the above mentioned four counties. Rep. George, a graduate of Brownfield High School and Sul Ross State College, has taught history and government in Midland and South Plains College, Levelland, and has served as an Administrative Assistant at Texas Technological College. He is currently serving as Manager of the Morton Area Chamber of Commerce three days each week. George was one of 36 Texans nominated for one of the Five Outstanding Young Texans of 1965 Awards. His state-

ment for re-election, as sub-JOURNAL follows:
 "Two years ago the citizens of my then four-county district honored me with an overwhelming vote of confidence when they elected me as their State Representative to Austin. During those two years, I have made every effort of which I am capable to honor that vote of confidence by striving to be the kind of representative of which they could be justly proud, both on a personal and a legislative basis.
 Through Supreme Court rulings of one-man, one-vote the Texas Legislature was forced to redistrict legislative areas. As

a result, Bailey County was added to the district I now serve. As a candidate for your State Representative, I offer you my services and solicit your support in the forthcoming elections.
 As a freshman member of the Texas Legislature I found the interest and co-operation of the citizens in our district to be invaluable qualities which I relied on in serving them during the productive and historic 59th Legislature. Our hopes for better communication and understanding on the local level of governmental issues became a reality through the efforts of four County Legislative Community Councils, which I organized in each of my counties for the purpose of grass-roots interpretation and opinion on issues facing our Great State of Texas. Should I be re-elected as your State Representative, I will be working with you in establishing the Bailey County Legislative Community Council. The councils are composed of from 20 to 30 citizens from different professions and walks of life and function as a cross-section advice and opinion gauge.

Since the adjournment of the 59th Session, I have had the privilege and opportunity of visiting and working with the fine folks of Bailey County. I have on numerous occasions spoken to your civic organizations, school groups, area organizations, and was one of the speakers at the historic Mule Memorial Daze Celebration. As a State Director in the Texas Jaycees, I have been fortunate in working with one of the most worthy civic organizations in the entire state, the Muleshoe Jaycees.
 As an ardent supporter of education for our Texas youth, I will continue to work toward upgrading our entire educational structure. During the 59th Session, as a member of the important Education Committee, I served as Assistant Floor Leader for junior college legisla-

tion, worked successfully for a teacher pay increase, and was a co-author of the Texas Student Loan Program. As a member of the House Agriculture Committee, I was a co-author of House Bill 11, which raised the gross load limit for cotton trailers, a measure vital to our West Texas farmers.
 Through the 59th Legislature was in session for only 140 days, I have continued to offer my services to you during the Interim Period. I have traveled some 30,000 miles in this five-county area and have delivered over 250 speeches in my attempt to bring the issues directly to you. Through this travel-speaking effort, I believe all of us have become more conscious and more aware of the great tasks which continue to lie ahead. I appreciate the fact that many of you have come to me with your problems, both large and small, and I hope that in some small way my efforts to serve you were efforts with which you were pleased.
 My campaign for re-election will be conducted as it was two years ago — on a personal, door-to-door basis. If I don't find you in your business, your home, in the field, or on the street, please know that I am at your service and want to continue in that capacity. I repeat a statement I used two years ago, and after having served a term in the Texas Legislature, I am more firmly convinced that it is true.
 "LET US BEGIN TO ASSUME BOTH INDIVIDUALLY AND COLLECTIVELY IN ORDER THAT WE MIGHT FIND EQUITABLE SOLUTIONS TO OUR EXISTING PROBLEMS."



Ed McKay
 ★ ★ ★
LUNCHEON
 (Continued from Page 1)

explained.
 Eight Bailey county Farm Bureau members attended the area membership kick-off in Lubbock at Holiday Inn East Monday when State FB President C. H. DeVaney was the featured speaker. Going from this county were Ben Cockrell and Joe Sooter of the county FB office staff; Morris McKilip, Ike Wilcox, Ed Little, Russell Bryant, Elvon DeVaney and Adolph Witter.
 McKay has the dual job of legislative director of Texas and is a state director.
 McKay had served as county agricultural agent in McLennan County for eight years prior to joining the staff of the TFB. He had also previously served as assistant agent in Cooke and Denton counties and as county agent in Hunt County.

members Chapter meeting Tuesday. The meeting will be held at 8 p.m. in the Muleshoe High School Agriculture Department, according to Charles Bratcher.
 Gohlke will give the results of the station at Halfway this year.
 All prospective members and interested young farmers are urged to attend this meeting.

Add a little grated lemon rind to rich baking powder biscuit dough for biscuits. Split the biscuits when they are hot from the oven and spread with a mixture of butter and honey. Rush to the table!

SHOP MULESHOE FIRST



RUSSELL BRYANT

THE BAILEY COUNTY FARM BUREAU IS HAPPY TO ANNOUNCE THE APPOINTMENT OF RUSSELL BRYANT AS SPECIAL AGENT FOR FARM BUREAU INSURANCE COMPANIES.

MR. BRYANT HAS BEEN A RESIDENT OF THIS AREA FOR 35 YEARS. HE, HIS WIFE, PEGGY, AND THEIR FOUR CHILDREN; MIKE 18, DEBBIE 16, DIANE 15 AND KIM 8, LIVE AT 1905 W. AVE. D. BRYANT HAS BEEN ENGAGED IN FARMING SINCE GRADUATING FROM MULESHOE HIGH SCHOOL. HIS FARM IS LOCATED NEAR THE PLEASANT VALLEY COMMUNITY IN LAMB COUNTY.

FOR ALL YOUR INSURANCE NEEDS CONTACT YOUR FARM BUREAU AGENT
 BEN COCKRELL PH. 272-4648 HOME 272-3216
 JOE SOOTER PH. 272-4648 HOME 272-3413
 RUSSELL BRYANT PH. 272-4648 HOME 272-4460



Im an 'Under cover' Agent!

Vitamins can add an extra cover of resistance against colds. For high potency vitamins at reasonable prices, shop at Western Drug.



Gohlke Will Speak To Young Farmers
 Dr. Arthur F. Gohlke from the High Plains Research at Halfway will be in charge of the program at the Young Farmers Chapter meeting Tuesday. The meeting will be held at 8 p.m. in the Muleshoe High School Agriculture Department, according to Charles Bratcher.
 Gohlke will give the results of the station at Halfway this year.
 All prospective members and interested young farmers are urged to attend this meeting.

COBB'S FINAL MARK-DOWN
 MONDAY, FEBRUARY 7

LADIES' DRESSES SHOP THESE EARLY!
 VALUES TO \$39.95... PRICED AT...
\$3 - \$5 - \$7 - \$8 - \$10 - \$12

LADIES' SPORTSWEAR
 VALUES TO \$30.95—PRICED FROM... **\$2 to \$10**

BOY'S Sportswear
LADIES' SUITS VALUES TO \$75.00
PRICED AT \$15 TO \$27

1/2 PRICE
LADIES' COATS CASUAL & DRESS
REDUCED TO 1/2 PRICE AND BELOW

BOY'S DRESS & CASUAL PANTS
LADIES' BRAS BROKEN SIZES
1/2 PRICE AND BELOW

VALUES TO \$8.98 PRICED AT \$2--\$3--\$4
LADIES' PLASTIC BOOTS
 REG. \$8.50... **\$3.00 PR.**

GIRLS' DRESSES
 VALUES TO \$14.98
 PRICED AT
\$2 - \$3 - \$4 - \$5

LADIES TEXTURED HOSE
 VALUES TO \$1.59... **2 pr. \$1.00**

MEN'S SPORT & DRESS SHIRTS
1/2 PRICE

GIRLS' SPORTSWEAR
 VALUES TO \$8.00
 PRICED FROM **\$1 TO \$3**

MEN'S ZIPPER FRONT SWEAT SHIRTS VAL TO \$5.99... **\$1.00 each**

MEN'S KHAKI PANTS & SHIRTS VAL. TO \$4.98... **\$2.99 each**

GIRLS' COATS
 VALUES TO \$19.98
 PRICED FROM
\$2.00 TO \$8.00

SHOP ALL DEPARTMENTS FOR OTHER BARGAINS

IS THERE A BOY SCOUT THAT YOU KNOW... AND LIKE?



THIS IS THE WEEK TO SHOW YOUR AFFECTION TOWARDS HIM BY GIVING HIM AN...

OFFICIAL BOY SCOUT GIFT

WHEN A LAD JOINS THE BOY SCOUTS OF AMERICA IT IS USUALLY BECAUSE OF HIS OWN DESIRE THAT HE TEAMS UP WITH THIS BENEVOLENT SOCIETY FOR OUR YOUTH. IT REFLECTS HIS AMBITION TO SERVE GOD AND COUNTRY AND TO HELP THOSE IN NEED.

FEBRUARY IS BOY SCOUT MONTH AND THIS WEEK, FEBRUARY 7 THROUGH 13, IS BOY SCOUT WEEK.

WE AT COBB'S DEEM IT ONLY FITTING, AND A PRIVILEGE, TO DOFF OUR HATS TO THIS FINE GROUP OF YOUNG MEN AND ALL THAT THEY STAND FOR.



SO... TO YOU... OUR SCOUTS.

CONGRATULATIONS ON WORK WE'LL DONE! WE KNOW THAT YOUR RECORDS WILL BE AN INSPIRATION TO OTHERS IN HELPING BUILD A BETTER AND STRONGER AMERICA.

Headquarters for all OFFICIAL SCOUT UNIFORMS and EQUIPMENT



MULESHOE

(Continued from Page 1) room teachers were present from Texas, Oklahoma, Louisiana, Arkansas, Missouri, Kansas and Nebraska.

Homer E. Henderson, 19, son of Mr. and Mrs. Albert L. Henderson, Enuchs, received an early promotion to Army pay grade private E-2 following successful completion of basic combat training at Fort Polk, La. Henderson attended Bala High school.

William H. Dannheim Jr. whose parents live in Farwell, was promoted to Specialist 4 in Korea where he is serving with the 2nd Infantry Division. The 21-year-old soldier is a 1952 graduate of Farwell high school.

Airman — 3 Terry D. Bass, son of Mr. and Mrs. Henry Bass, has been chosen for special training at Chanute Air Force Base, Ill. He will train to be an

FEEDLOTS

(Continued from Page 1) Harvestore.

Controlled from one central point, the completely automatic operation blends the silage and the supplement to the exact measure desired. The entire operation is performed by one man from inside a small building or from an outside panel.

The automatic operation probably will eliminate hired hands and the supplement to the exact measure desired. The entire operation is performed by one man from inside a small building or from an outside panel.

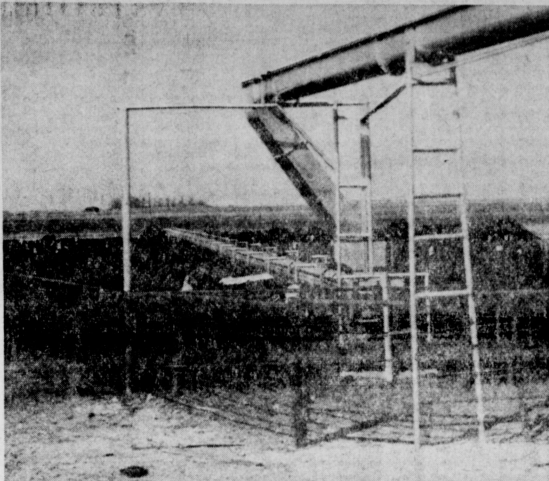
Several from Muleshoe were in Ralls Friday afternoon for a ceremony marking the first shipment of Texas-grown yarn to leave the new Ralls-Tex Mills at Ralls. In ceremonies it was pointed out that "this (the shipment) is the culmination of many months of planning and preparation and our contribution to the future economy of the South Plains area."

ELECTIONS

(Continued from Page 1) non-presidential election year.

Last year, a re-election year, only 1380 persons paid poll taxes. Keen interest in the election this year is seen in the fact that so many people paid poll taxes this year when the possibility exists that the federal courts will declare poll tax payments unnecessary as a prerequisite to voting. The matter is now before the judges for consideration, and possibly will be decided between now and the first election, May 7.

Meantime, an additional candidate had filed with party chairman here, a check made by The Journals revealed. Candidates have only through tomorrow in which to file for places on the ballot for the Democratic or Republican primaries May 7. Up until Friday only two offices had as many



HOME "COOKING" — These fat, sleek cattle are standing at the automatically-fed "table," literally eating their heads off on home-grown alfalfa and other local goodies as part of a small-scale feeding operation that is growing bigger every day. (Journal Photo)

REPORTS

(Continued from Page 1) mission.

Larsen will discuss the 11-page report which he has made in some detail tomorrow night. In that report he says: "We are pleased to transmit here, with our detailed proposal, to accomplish a comprehensive plan for Muleshoe. The scope of services has been inspected by the State Department of Health which is the state planning agency in Austin, and has been found satisfactory."

Larsen and his associates will present the commission and present commissioners with a copy of the complete program, an eight-part project which, if adopted, will be carried out by steps. Cost of each project is broken down by projects. The project will include such

things as mapping, a study of environmental factors, history and population study; population distribution at present and in the future, and a complete land use survey. In addition to the land-use survey, a neighborhood analysis will be made if the Larsen plan is accepted. The highways, transportation and the central business district all are analyzed in full.

The study which Larsen has made in the preliminary report also includes utility survey — water, sewerage, drainage, etc. Schools are given a complete study as are parks and recreational facilities.

The survey also includes a long-range capital improvement program with a financial study, budget and recommendations. Larsen also will discuss administrative controls, including zoning ordinances, and a review of sub-division regulations. And also included will be a summary of methods and amount of payment and of overall costs.

Muleshoe has been considering such a study for some time, it was explained, and Larsen met with the council and planning commission several weeks ago and made his first report. The group authorized him to proceed with a written report. Whether his firm will be hired to carry out the comprehensive plan for Muleshoe remains to be seen.

If you like to grease the slides (as well as the bottom) of cattle at Muleshoe, you'll be surprised. The bottom of the pans can, of course, be well greased.

IRRIGATION SYSTEMS

Fully Guaranteed — Prompt Service

- PLASTIC
— CONCRETE
— ASBESTOS-CEMENT
— PORTABLE ALUMINUM

Contact the Friendly Folks at STATE LINE IRRIGATION

T. L. TIMMONS, General Manager

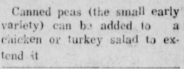
General Office and Plant — Phone 385-4487
Box 326 — 1601 Houston Ave. — Littlefield

Don Messer — Phone 762-4557
1916 W. 7th St. — Clovis, New Mexico

Muleshoe — Ph. 272-3109 — John Hammock

WALLACE THEATRE

75c Adult 25c Child
GENERAL ADMISSION
Sun., Mon., Tues.
FEB. 6-7-8



TONY LEWIS
JERRY CURTIS
WALLACE BOEING BOEING

TECHNICOLOR

WED. THUR. FRI.
FEB. 9-10-11

SWAN DAM / HERE COMES SAM!



JACK LEMMON Romy SCHNEIDER
GOOD NEIGHBOR SAM

DeWitt PROOF ME COURT
Edward G. ROBINSON

SAT. FEB. 12

TEEN-AGERS ZOOM TO SUPERSTARS AND TERRORIZE A TOWN!

By Delivery Pick-up Order — C.O.D. 48

world news in FOCUS

The Christian Science Monitor
One Norway St., Boston, Mass. 02115

Please enter my subscription to the Monitor for the period checked below. I enclose \$ (U.S. Funds)

1 YEAR \$24 6 months \$12
3 months \$6

Name
Street
City
State ZIP Code

MEET | OUR NEW MANAGER AT |
OUR MULESHOE LOCATION |
MEET | & | SERVICE REPS. |
FOR WESTERN AMMONIA CORPORATION



M. F. "Buddy" Blackman



Marshall Lee



James Meason

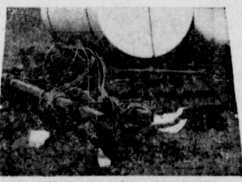
M. F. "Buddy" Blackman, an area resident for 20 years, is now offering Western Ammonia products to local and area farmers. Buddy has been in the fertilizer business for 15 years and knows how to meet your fertilizer needs. He gives you expert knowledge and full fertility service with a complete line of fertilizer and all-new equipment.

Marshall Lee assists Buddy Blackman in the Clay's Corner, Muleshoe area. Western offers a complete line of dry material, high analysis liquid fertilizers and, of course, anhydrous ammonia. In addition, Western provides the newest and best up-to-date equipment to make your application job fast and trouble-free. Stop by soon and let Buddy, Marshall and James give you the complete facts on a Western Program.

Once more Western Ammonia has assembled the best staff for your fertilizing needs. With a Western Planned Fertility Program, combined with the latest equipment and know-how, you can count on higher profits from fertilizer use. Area farmers can also depend on top agronomic assistance from Dr. Bill Bennett, head of Western's agronomic department. Proven methods and thoroughly-tested materials are your guarantee . . . from Western Ammonia Corporation.



Route 3, Muleshoe, Texas



Phone Number: 965-2633



Western Ammonia Corporation



Dr. Bill Bennett, Agronomist



JOIN THE ORGANIZED FARMERS



JOIN FARM BUREAU . . .

. . . a voluntary organization of farm and ranch families united for the purpose of analyzing their problems and working together toward solutions.

Farm Bureau works for agriculture thru . . .

- ✓ **COMMUNITY ACTIVITIES**—youth projects, crop & livestock improvement, safety projects
- ✓ **LEGISLATION**—effective representation in Austin & Washington
- ✓ **MARKETING**—contract bargaining, developing markets at home & abroad
- ✓ **FAMILY SERVICES**—complete insurance protection, pre-paid medical care, income tax & tractor gas tax service, tire program
- ✓ **EDUCATION**—citizenship seminars, information meetings & publications for members

BAILEY COUNTY FARM BUREAU

Willman Rites Held at Church

Funeral services for Lewis Dick Willman, 48, who died at his home, 1716 West Ave. D, Wednesday morning, were held at the First Methodist Church at 4:30 Thursday afternoon, conducted by the pastor, the Rev. J. Frank Peery. Burial was in Bailey County Memorial Park with Singleton Funeral Home in charge of arrangements.

Pallbearers included James Freeman, Jack Lenderson, Kelly Jo Barnett, Gid Howell, Earl Richards, Chief Jones, Herb Griffiths and Allen Halley. Honorary pallbearers were Glen Dunn, Elmo Stevens, Billy Bob Whatley, Jim Dickson,

Robert Hooten, Gil Lamb and R. O. Gregory.

Survivors include his widow, Ruby Willman; three daughters Mrs. Kenneth Hanks and Mrs. Travis Bessine, both of Muleshoe, and Mrs. J. B. Morris, Fort Worth; his parents, Mr. and Mrs. S. F. Willman, Muleshoe; two sisters, Mrs. C. E. Moore, Muleshoe, and Mrs. K. P. Green, Graham; and four grandchildren.

Willman was born in Bailey county Feb. 17, 1917, and had lived in this area all his life. Mrs. Willman is the former Ruby Grau. They were married at Grady, N.M. Sept. 16, 1934.

HOSPITAL Notes

Green Memorial Admitted

L. D. Sexton
Eula E. Smallwood
James Moore
Mrs. Gordon Murray
Joanna Mathis
Mrs. Mmie Miller
Bertie Black
Billy Jo Green
Robert Ray Richmond
Dismissed
Albert Lee
Joe Embry
Monette Everette
Patricia Ann Curry
Barney Glasscock
Mrs. Lois Brewer
Mrs. Chae Harsley
Juan Servantoz
Mrs. Marvin Mendoza
Nancy Webb
Patricia Villa
James H. Angley
Geraldine O'Dall

West Plains Admitted

Len Irvin
Mrs. Jose Garcia
Mrs. W. A. Elmore
Mrs. Jerry Tandy
W. F. Goodwin
Mrs. Thurlie Branseum
Jim Putman
Mrs. Juan Reyes

Legal Notice

NOTICE TO BIDDERS

By order of the Commissioners' Court I am instructed to give public notice, and notice is hereby given, that Bailey County is offering to sell to the highest bidder the following described road machinery and equipment:

One (1) Double Drum Sheep-foot Roller
And sealed bids for purchase of same will be received by the Commissioner's Court until 11:00 o'clock A. M. February 14, 1966. Terms of sale to be cash payable to the Bailey County Precinct No. 1 Road and Bridge Fund.

Said equipment may be inspected at the county barn near the Southeast edge of Muleshoe or by contacting Commissioner L. M. Stinson, and all interested parties are invited to bid. The Court reserves the right to reject any or all bids.

(S) Glen Williams, County Judge, Bailey County, Texas
1-58-265



Left to right, Tommy Whatley, Richard Hawkins and Andy Stovall, employees of Bovell Motor Supply.

Hogan's Rites Conducted Here

Funeral services for Lee Roy Hogan, 72, who died unexpectedly at his home, 612 W. 2nd Wednesday morning were held at the First Methodist Church at 2:30 Friday afternoon, conducted by the pastor, the Rev. J. Frank Peery. Burial was in Muleshoe cemetery with Singleton Funeral Home in charge of arrangements.

Pallbearers were Alvin All-

Mrs. C. A. Williams

Dismissed

Mrs. Jose Campos

and baby boy

Mrs. Jose Garcia

Patricia Bridges

Mrs. Herschel Parker

Adam Mendez

Mrs. Jose Garcia

Mrs. Jack Beddingfield

Bill Jim St. Clair

Baby Boy Cabrera

Mrs. Jerry Williams

Alan Wheeler

Mrs. Richard Hightower

and baby girl

Mrs. Feliz Carrion

and baby boy

Lula Jean Poik

Mrs. Hugo Espinoza

Mrs. A. W. Gore

Terry Pollard

Mrs. Eva Blair

W. O. Parker

Mrs. C. McMahon

Mrs. Simon Ynfante

Survivors include his widow, Velma Hogan; six daughters, Mrs. Lou Dell Wilhite, Fort Collins, Colo.; Mrs. Gordon Murrah, Muleshoe; Mrs. E. J. Callaway Jr., Spearman; Mrs. Jack Hicks, Muleshoe; Mrs. Earl Henry, Muleshoe, and Mrs. Doug Grimes, Spearman; three sisters, Mrs. Vera Colson, Muleshoe; Mrs. Maggie Stockton, Oklahoma City, and Mrs. Lura Rush, Mangum, Okla.; two brothers, Millard Hogan, Carthage, Mo.; and R. O. Hogan, Cookeville, Tenn.; and 10 grandchildren.

Hogan, who was a deputy sheriff here for many years, was born in Clay county, Tenn. Jan. 25, 1894 and moved here from Mangum, Okla. 36 years ago.

The official state motto of Louisiana is "Union, Justice, Confidence."

Bovell Motor Supply Has Complete Stock

When you need a part for your gas buggy, go to Bovell Motor Supply at 107 E. Ave. B and 99 times out of a hundred you will find what you want.

This firm is owned and operated by Mrs. W. T. Bovell who has been in this business a number of years and who knows what you need to repair your car.

She is assisted by Tommy Whatley, Richard Hawkins and Andy Stovall, all of whom are thoroughly familiar with this business. When they sell you a part it will be the one you need and you won't have to bring it back to exchange it.

This company handles only first class nationally advertised parts and supplies and they are guaranteed to do the job. Whether you want piston rings, bearings or a new crankshaft these men can get it for you in a hurry.

Many car owners like to do their own repair work and they can save many dollars in that manner. The men employed here can give good advice to amateur mechanics and help them solve their repair problems.

A full line of auto accessories such as horns, tires, batteries, head lights, spot lights, mirrors and many other items are carried in stock at this store.

If you want to find out about a part for your car without making a trip downtown — call 272-288 and order. They will deliver any part in stock anywhere in Muleshoe.

BUSINESS SERVICES DIRECTORY

REAL ESTATE

CONSULT OUR LISTINGS FOR

- FARMS
- RANCHES
- CITY PROPERTY
- GOOD INVESTMENTS

MULESHOE REAL ESTATE AGENCY

Monroe Lee
113 W. Ave. D.
Phone 272-3114

E. R. HART CO.

- DOMESTIC PUMPS &
- SMALL IRRIGATION WELLS
- COLMAN HEATING EQUIPMENT
- FARM SUPPLIES

212 E 3rd
Phone 272-4907

Dial 272-4536
For Classified Ads

COTTONSEED DELINTED
Phone 272-3251 — Muleshoe

WILLIAMS SEED CLEANING CO.

Filter Queen Sales - Service
Call 272-3163 after 6:00 p.m.
J. R. Ottwell
Muleshoe, Texas

INSURANCE COMPLETE SERVICE

- AUTO
- LIFE
- FIRE
- INSURANCE

Jennings Ins.
115 E Ave. D. - 272-3491

"FIRST IN FASHIONS"

Permanents — Styling
Tinting — Shaping
Revlon Cosmetics

MAIN STREET BEAUTY SALON
Bernice Holdeman
115 Main — Muleshoe
Dial 272-3448

BEAVER'S FLOWERLAND

Real and Artificial Flowers — Corsages
Pot Plants — Banquets
Funeral Designs
520 S. First St.
Ph. 272-3116—Muleshoe

MULESHOE MOTEL

- 22 UNITS
- APARTMENTS WITH KITCHEN
- TV
- PHONES

Rates DAY or WEEK
2105 W. Amer. Blvd.
Phone 272-4440
Muleshoe

HEATHINGTON LUMBER COMPANY

Lumber, Paint,
Builders Hardware
Clovis Rd.—Ph. 272-4797

FOR A CLASSIFIED AD

Ask For Polly Or
Liz. Ph. 272-4536

BERRY ELECTRIC CO.

ELECTRIC WIRING and REPAIRS

REFRIGERATION SERVICE
104 E. AVE. B
Phone 272-3375

MULESHOE COVER SHOP

SEAT COVERS

All Types Furniture Work
All Types Auto Work
All Types Canvas Work

CLOVIS ROAD
Phone 272-3586
MULESHOE, TEXAS

Phone 272-3078

— the number to call to save money on your new office, store, warehouse

Headquarters for attractive Inland steel buildings. Pre-engineered in any length, any width. Enclosed with colorful metal wall panels, glass, or other materials. Fast erection saves money.

B & C BUILDERS, INC.
217 E. Ave. B Muleshoe, Texas

A & B PLUMBING

WE DO ALL TYPES OF PLUMBING

- INSTALLATION
- REPAIR
- FREE ESTIMATES
- 24 HOUR SERVICE

WE ARE DEALERS FOR PAYNE HEATING & AIR CONDITIONERS
CALL 272-3734

202 E. CEDAR AVE.

SHOP MULESHOE FIRST

Save Money On Auto Parts!
BOVELL MOTOR SUPPLY
107 East Ave. B — Dial 272-4288
W. T. BOVELL, Owner

SINGLETON FUNERAL HOME

24 HOUR AMBULANCE SERVICE
PHONE 272-4574 MULESHOE

FOR FHA, GI and FARM LOANS AND THE

BEST INSURANCE

SEE—
POOL INSURANCE COMPANY

Phone 272-4531 Muleshoe

W. M. POOL, JR. — LEE R POOL

W. O. CASEY GENERAL INSURANCE

Let Our Complete Coverage Take Care of All Your Insurance Problems

Muleshoe State Bank Bldg. — Ph. 272-4571

SHOP MULESHOE FIRST

CASHWAY GROCERY
402 Main Phone 272-4244

DAMRON DRUG CO. REXALL
308 Main Phone 272-4210

MULESHOE STATE BANK
304 Main Phone 272-4571

WELCOME TO MULESHOE

Tony Waters

We welcome Tony Waters of 1317 Ave. B to Muleshoe. Waters and his wife, Peggy, moved from Canyon where he was associated with Southwestern Great Plains Research Center. He is with the Soil Conservation Service here. The Waters attend the First Methodist Church. The following merchants extend a cordial welcome to the Waters:

WELCOME TO MULESHOE

Tony Waters

We welcome Tony Waters of 1317 Ave. B to Muleshoe. Waters and his wife, Peggy, moved from Canyon where he was associated with Southwestern Great Plains Research Center. He is with the Soil Conservation Service here. The Waters attend the First Methodist Church. The following merchants extend a cordial welcome to the Waters:

CASHWAY GROCERY
402 Main Phone 272-4244

DAMRON DRUG CO. REXALL
308 Main Phone 272-4210

MULESHOE STATE BANK
304 Main Phone 272-4571

MULESHOE MOTOR CO.
"At The Crossroads"

TRADE CLASSIFIED ADVERTISEMENTS LEASE

WANT ADS - PH. 272-4536

1 time per word — 4c
2 times per word — 7c
After 1st issue, 3c per word each additional time.
Minimum charge 50c
Card of Thanks \$1.00

DEADLINE FOR CLASSIFIED ADVERTISING PAGE:
For Thursday's Issue: Monday, 12 Noon
For Sunday's Issue: Thursday, 12 Noon
TO...LATE...TO...CLASSIFY
Thursday Issue — Tuesday 5 P.M.
Sunday Issue — Friday 3 p.m.
Double Rate for Blind Ads.

I. Personals

1-48t-4c
FOR RENT: 15 ft. camper by day or week, call 272-3163. 1-55t-4c

Wanted baby sitting by week. Write Mrs. Ellison, Box 173. 1-5t-2c

I will not be responsible for any debt on checks made other than by myself after Feb. 3, 1966. Horace Burris. 1-6t-3p

Am interested in making loans and buying first and second lien notes secured with farm and ranch lands. J. J. Steele. Citizens Bank Building, Clovis, New Mexico. Dial: 763-4471 or 763-6455. 1-6t-4c

3. Help Wanted

3-6t-6c
Help Wanted: Car Hop/Bill's Drive In. Ph 272-4725.

4. Houses for Rent

4-8t-4c
1 bedroom house with utility for rent, call Lewis Blaylock, 946-2688 or 272-4373.

FOR RENT 1 — 3 bedroom with cellar. One 2 bedroom house. See Mrs. Jack Lenderson. Call 272-3988. 4-2t-5c

Nice 2 bedroom house, utility, fenced yard wired for all utilities. Call Lewis Stewart. Call 272-4052. 4-3t-1c

FOR RENT: 2 bedroom modern house. Call 272-4706. 4-4t-1c

FOR RENT: 2 bedroom house and garage. Call 4148. 4-4t-1c

FOR RENT: 3 room and bath furnished house. See Sam Gholson or Sam's Auto Store. 4-4t-4c

FOR RENT — Three bedroom house located on school bus route for Richland Hills school. It has been re-decorated inside and out during the past year. Wall to wall carpet throughout with drapes and curtains. Call Mrs. T. R. White — 272-3370. 4-5t-4c

5. Rooms for Rent

5-5t-1c
For Rent: 1 or 2 bedroom apt furnished or unfurnished. See Billy or D. L. Morrison at Billy's Superette. Call 4485.

5-5t-1c
For Rent: Unfurnished 3 room apt. See Spencer Beavers at Post Office.

5-5t-1c
3 room apt. for rent. Call or see Mrs. Jack Lenderson — 272-3038.

5-3t-1c
Nice quiet bedroom for rent at Rosie McKillop, 410 West Second. 6-2t-4c

Extra nice bedroom for rent. 807 West 7th Call: Day 272-4903 Night 763-3784, or contact J. V. Pruiett, at 356-6125. Porables. 8-2t-8c

6. Real Estate for Sale

6-4t-1c
FOR SALE: Southside Golf Service Station. Call 272-3571. 506 South First.

8-4t-4c
198 A in Parmer County with 10' well, 3600 feet of underground pipe, 3 bedroom modern home, good allotments. \$500.00 per acre good terms, available 240 A 2 good wells, underground pipe, well located. Priced to sell.

8-0t-4c
80 A 23A cotton allotment, 2 bedroom house, 10' well. Easy terms.

8-4t-4c
318 A 76 Acres cotton, 164 Acres grain, 3 wells \$275.00 per Acre. ½ Section dry land priced to sell.

8-4t-8c
1440 A of choice New Mexico farm land, 6 wells, underground pipe, 2 self propelled sprinkler systems, 2 Bedroom home, pumps, motors and sprinklers all go. \$175.00 per acre. This land will all row water and worth the money.

8-5t-8c
430 A in Lamb County, 155 A cotton, 212 A grain base, 5 wells, 2 bedroom home, underground pipe, wells on natural gas. Well located.

EDDIE LANE REAL ESTATE
Residence
272-4439
Eddie Lane 272-4588
Buddy Lane 272-3774
Jimmie Pitcock 272-4454
8-5t-8c

FOR SALE: 2 unit Duplex. 3 rooms to unit. Modern with basement, garage and laundry room. Call 272-4706. 8-1t-1c

FOR SALE: Brick 2 bedroom and den — 3 bedroom frame house — 2 bedroom frame house. All close to school. Call 272-3865. 8-4t-1c

FOR RENT: 3 room modern furnished house. Call 272-4080 after 3:00 p.m. 4-6t-1c

FOR RENT
or lease
3 Bedroom house, 413 E. Dallas. Carpeted. Drapes. Fenced back yard. Fruit Trees. Will rent or lease with option to buy. Contact L. B. Hall Muleshoe Journal. 4-5t-4t

5. Apts. for Rent

5-2t-1c
FOR RENT: One — 3 room apartment — 1 — 2 room apartment. Phone 272-3465.

5-2t-1c
Furnished apt. 3 rooms and bath. Layne Apt. 4496. 5-5t-1c

TOY POODLE PUPPIES
APRICOTS — BLACKS
ARC REG.
AVAILABLE FEB. 13
LOIS DEDYNE
Mulshoe Pub. Company
PHONE 272-4536
BOX 40, MULESHOE
Shown by appointment only
3-1t-1p

385A — dryland, 92 cotton, 165 milo. some native grass. \$160 per acre. \$2900 down.
1000A — dryland, native grass & cultivated land with 250 acres of allotments. \$105 per acre — \$25,000 down.
3-BR & carport, Highland Addition, central heating carpet. Fenced backyard. \$12,500, small down payment.
Four Listings Appreciated
KREBBERS REAL ESTATE CO.
210 S. 1st
Ph. 272-3191

FOR SALE: 2 bedroom house out of city limits, one 3 acre tract land also a 3 bedroom house in town. By owner. Call Ray Campbell 272-4411. 8-5t-3p

FOR SALE — to be moved, all types of houses and buildings. Also box cars. Kimer House Moving Company, 1520 Main Clovis, Ph. 763-3784, or contact J. V. Pruiett, at 356-6125. Porables. 8-2t-8c

FOR SALE: Nice three bedroom, 2 baths and den. Well located. Close to schools, town and church. Brand new. See Pool Ins. or call 272-4557. or 272-3139. 8-4t-4c

FOR SALE OR RENT: 3 bedroom house. Call 272-4424. 8-3t-1c

640 or 2-320 acres. 7 full 8" wells with pumps, underground pipe, 200 A bermuda grass, 18 A cotton, 90A grain, all fenced, handle 300 cows, houses, 10 percent down, 15 years on balance, 6 percent interest \$360 per acre, 4 miles west and one south of Mulshoe. Owner 806-PO3-5223 or PO3-7809.

Prompt Buyer on this Love Nest

Three and Den with 2 car garage, all the built ins, fenced, air conditioned, in Richland Hills, 193 Acs. F. Offered by "The Firm That Sells".
Eddie Lane Real Estate
8-5t-8c

FOR SALE: Lots 100' x 300' for exclusive residential area on Clovis highway. Near Pop Cave. See J. T. Shofner. Ph 272-4333, Route 2, Box 304. 8-1t-1c

Most Unusual Opportunity — We Need Quick Action To Settle This Estate — Livestock Farm Opportunity Of A Lifetime.

Wells pumping up to 1600 gallons per minute. Each tract has cultivated land with some native grass. These farms going for as little as NO MONEY DOWN, ON MARKET FOR SHORT TIME ONLY. 8-6t-1c

WANTED

We need listings on good irrigated farms, have had a lot of lookers during the bad weather. Listings of all kinds appreciated, and especially on small acreages.
Enmette Cross
Real Estate Broker
Off. Phone 272-3479
Mulshoe, Texas
8-6t-3c

House for Sale: Two bedrooms, wall-to-wall carpeting, fenced-in back yard. Reasonably priced, low payments. Lyndal Birch, 309 Birch. Call 272-3309. 8-6t-1c

HOUSES FOR SALE
Redi-Built or BRICK, 3-BEDROOMS, 2-BATHS, 90-FT. LOT APARTMENTS FOR RENT CALL—
BILLY MORRISON
Ph. 272-4485 or 272-2513

9. Autos for Sale

PONTIAC CATALINA
1962 — 4 Dr. — All Power
Low mileage — Priced right
Will consider trade.
Call 272-1170
9-6t-4p

FOR SALE OR RENT

3 bedroom, brick, den, fireplace, all kitchen appliances, 2 baths. 1 year old. Richland Hills. Call 2-942 after 6:00 p.m. except Friday and 2-3191 daytime except Saturday. 8-3t-1c

12. Household Goods

9-4t-4p
"To party with good credit, repossessed Singer Sewing Machine in walnut cabinet. Automatic zig-zagger, makes fancy stitches, button holes, blind hems, etc. 5 payments at \$5.20 or \$25 cash. Write credit manager, 1114 19th Street, Lubbock, Texas. 12-5t-1c

10. Farm Equip for sale

FOR SALE: Good 1950 International Farmal tractor on hump for strapper. Good tires and has been taken good care of.
No. 15 John Deere stripper ready to run. Contact Weldon Slattery 965-2140. Can see equipment 6 miles N. of Mulshoe. 10-4t-1c

15. Miscellaneous

MUST SELL HOUSE
3 bedroom brick with 2 baths. Will be moving to Brownsville. This house is priced to sell. Can be seen at 1722 West Ave. F. or call 272-3263. Raymond Hodges. 8-5t-5p

FOR "a job well done feeling" clean Blue Lastris. Rent electric shampooer \$1 Higginsbotham — Bartlett. 15-6t-1c

Count on obtaining, from a medium-size lemon, about 3 tablespoons of lemon juice and about 1 teaspoon of "grated rind".

Political Announcements

The following candidates have authorized the Journals to announce their candidacies for the offices indicated, subject to the action of the Democratic Primaries May 7, 1966. Candidates, have your card printed at the Journal.

County Treasurer
EDITH WILT

County Clerk
HAZEL GILBREATH

District Clerk
NELDA MERRIOTT

County Commissioner
Bailey County Precinct No. 4
R. P. McCALL

CHARLIE J. TILLER

Bailey County Precinct No. 2
LOYD STEPHENS

Bailey County Judge
CALVIN CALVERT
DON W. CHIAK

16. Livestock

FOR SALE: 500 laying hens in full production \$1 each. See Slim Clifton, Rt. 2, Texico. 1 mile west of Texico on Mabry Drive or call 482-3621. These are all good young healthy hens. 16-6t-2p

17. Seed & Feed

FOR SALE: Cane Bundles, Call Gene Fox, 965-2411. 17-45t-1c

FOR SALE: Alfalfa Hay: Call 965-2730 or see J. R. Johnson ½ east and 1 north of Y.L. 17-5t-5p

OTWELL'S VACUUM CLEANER REPAIR

Disposable Bags For All Makes SERVICE

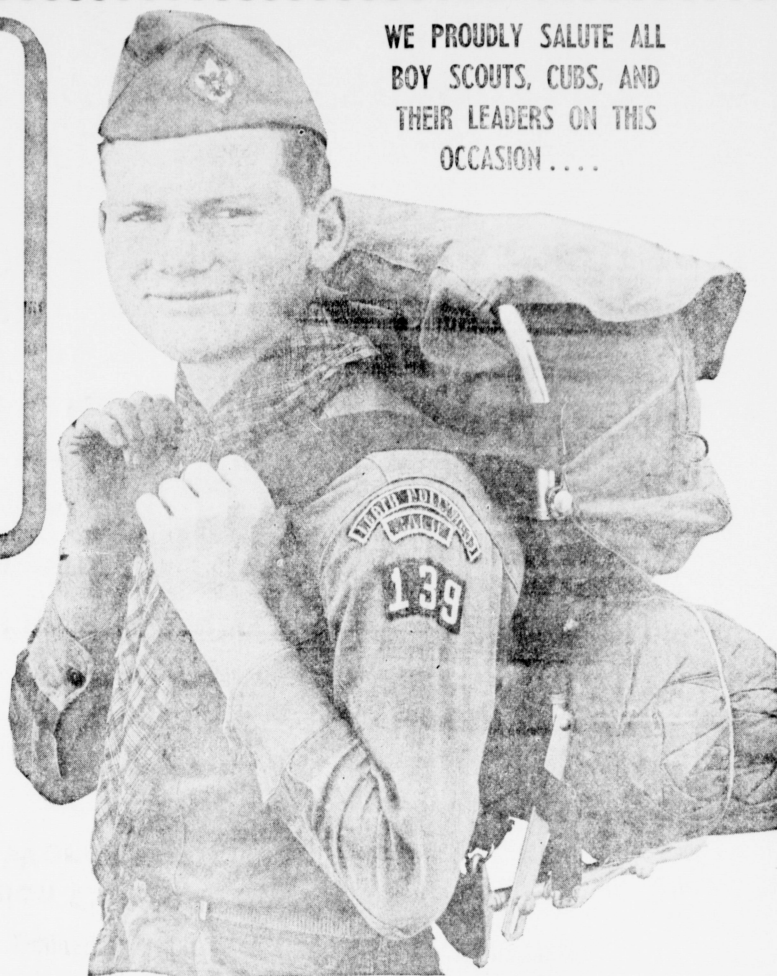
SALES All Vacuum Cleaners New and Used Repaired After 6 p.m. or before 8 a.m. Phone 272-3163 918 East Hickory

Television Schedule For Mulshoe Area

Channel	Time	Program
HG (4)	Mon, thru Fri.	Daytime Viewing
	Sat.	Daytime Viewing
KVH-TV (7)	Mon, thru Fri.	Daytime Viewing
	Sat.	Daytime Viewing
KFDA-TV (10)	Mon, thru Fri.	Daytime Viewing
	Sat.	Daytime Viewing
KCBT-TV (11)	Mon, thru Fri.	Daytime Viewing
	Sat.	Daytime Viewing
KELK-TV (13)	Mon, thru Fri.	Daytime Viewing
	Sat.	Daytime Viewing
HG (4)	6:30 - 7:00	Am. College
	7:00 - 7:25	News
KVH-TV (7)	6:30 - 7:00	Featurette
	7:00 - 7:25	News
KFDA-TV (10)	6:30 - 7:00	Sign On
	7:00 - 7:25	News
KCBT-TV (11)	6:30 - 7:00	News
	7:00 - 7:25	News
KELK-TV (13)	6:30 - 7:00	Sign On
	7:00 - 7:25	News
HG (4)	7:25 - 8:00	Today
	8:00 - 8:30	News
KVH-TV (7)	7:25 - 8:00	Today
	8:00 - 8:30	News
KFDA-TV (10)	7:25 - 8:00	Today
	8:00 - 8:30	News
KCBT-TV (11)	7:25 - 8:00	Today
	8:00 - 8:30	News
KELK-TV (13)	7:25 - 8:00	Today
	8:00 - 8:30	News
HG (4)	8:30 - 9:00	Eye Guess
	9:00 - 9:30	Eye Guess
KVH-TV (7)	8:30 - 9:00	Eye Guess
	9:00 - 9:30	Eye Guess
KFDA-TV (10)	8:30 - 9:00	Eye Guess
	9:00 - 9:30	Eye Guess
KCBT-TV (11)	8:30 - 9:00	Eye Guess
	9:00 - 9:30	Eye Guess
KELK-TV (13)	8:30 - 9:00	Eye Guess
	9:00 - 9:30	Eye Guess
HG (4)	9:30 - 10:00	Concentration
	10:00 - 10:30	Concentration
KVH-TV (7)	9:30 - 10:00	Concentration
	10:00 - 10:30	Concentration
KFDA-TV (10)	9:30 - 10:00	Concentration
	10:00 - 10:30	Concentration
KCBT-TV (11)	9:30 - 10:00	Concentration
	10:00 - 10:30	Concentration
KELK-TV (13)	9:30 - 10:00	Concentration
	10:00 - 10:30	Concentration
HG (4)	10:30 - 11:00	Par. Bay
	11:00 - 11:30	Par. Bay
KVH-TV (7)	10:30 - 11:00	Par. Bay
	11:00 - 11:30	Par. Bay
KFDA-TV (10)	10:30 - 11:00	Par. Bay
	11:00 - 11:30	Par. Bay
KCBT-TV (11)	10:30 - 11:00	Par. Bay
	11:00 - 11:30	Par. Bay
KELK-TV (13)	10:30 - 11:00	Par. Bay
	11:00 - 11:30	Par. Bay
HG (4)	11:30 - 12:00	Post Office
	12:00 - 12:30	News
KVH-TV (7)	11:30 - 12:00	Post Office
	12:00 - 12:30	News
KFDA-TV (10)	11:30 - 12:00	Post Office
	12:00 - 12:30	News
KCBT-TV (11)	11:30 - 12:00	Post Office
	12:00 - 12:30	News
KELK-TV (13)	11:30 - 12:00	Post Office
	12:00 - 12:30	News
HG (4)	12:30 - 1:00	Weather
	1:00 - 1:30	Weather
KVH-TV (7)	12:30 - 1:00	Weather
	1:00 - 1:30	Weather
KFDA-TV (10)	12:30 - 1:00	Weather
	1:00 - 1:30	Weather
KCBT-TV (11)	12:30 - 1:00	Weather
	1:00 - 1:30	Weather
KELK-TV (13)	12:30 - 1:00	Weather
	1:00 - 1:30	Weather
HG (4)	1:30 - 2:00	News
	2:00 - 2:30	News
KVH-TV (7)	1:30 - 2:00	News
	2:00 - 2:30	News
KFDA-TV (10)	1:30 - 2:00	News
	2:00 - 2:30	News
KCBT-TV (11)	1:30 - 2:00	News
	2:00 - 2:30	News
KELK-TV (13)	1:30 - 2:00	News
	2:00 - 2:30	News
HG (4)	2:30 - 3:00	Match Game
	3:00 - 3:30	Match Game
KVH-TV (7)	2:30 - 3:00	Match Game
	3:00 - 3:30	Match Game
KFDA-TV (10)	2:30 - 3:00	Match Game
	3:00 - 3:30	Match Game
KCBT-TV (11)	2:30 - 3:00	Match Game
	3:00 - 3:30	Match Game
KELK-TV (13)	2:30 - 3:00	Match Game
	3:00 - 3:30	Match Game
HG (4)	3:30 - 4:00	News
	4:00 - 4:30	News
KVH-TV (7)	3:30 - 4:00	News
	4:00 - 4:30	News
KFDA-TV (10)	3:30 - 4:00	News
	4:00 - 4:30	News
KCBT-TV (11)	3:30 - 4:00	News
	4:00 - 4:30	News
KELK-TV (13)	3:30 - 4:00	News
	4:00 - 4:30	News
HG (4)	4:30 - 5:00	Laramie
	5:00 - 5:30	Hunt-Brink
KVH-TV (7)	4:30 - 5:00	Laramie
	5:00 - 5:30	Hunt-Brink
KFDA-TV (10)	4:30 - 5:00	Laramie
	5:00 - 5:30	Hunt-Brink
KCBT-TV (11)	4:30 - 5:00	Laramie
	5:00 - 5:30	Hunt-Brink
KELK-TV (13)	4:30 - 5:00	Laramie
	5:00 - 5:30	Hunt-Brink
HG (4)	5:30 - 6:00	News
	6:00 - 6:30	News
KVH-TV (7)	5:30 - 6:00	News
	6:00 - 6:30	News
KFDA-TV (10)	5:30 - 6:00	News
	6:00 - 6:30	News
KCBT-TV (11)	5:30 - 6:00	News
	6:00 - 6:30	News
KELK-TV (13)	5:30 - 6:00	News
	6:00 - 6:30	News
HG (4)	6:30 - 7:00	News
	7:00 - 7:30	News
KVH-TV (7)	6:30 - 7:00	News
	7:00 - 7:30	News
KFDA-TV (10)	6:30 - 7:00	News
	7:00 - 7:30	News
KCBT-TV (11)	6:30 - 7:00	News
	7:00 - 7:30	News
KELK-TV (13)	6:30 - 7:00	News
	7:00 - 7:30	News
HG (4)	7:30 - 8:00	Today
	8:00 - 8:30	Today
KVH-TV (7)	7:30 - 8:00	Today
	8:00 - 8:30	Today
KFDA-TV (10)	7:30 - 8:00	Today
	8:00 - 8:30	Today
KCBT-TV (11)	7:30 - 8:00	Today
	8:00 - 8:30	Today
KELK-TV (13)	7:30 - 8:00	Today
	8:00 - 8:30	Today
HG (4)	8:30 - 9:00	Eye Guess
	9:00 - 9:30	Eye Guess
KVH-TV (7)	8:30 - 9:00	Eye Guess
	9:00 - 9:30	Eye Guess
KFDA-TV (10)	8:30 - 9:00	Eye Guess
	9:00 - 9:30	Eye Guess
KCBT-TV (11)	8:30 - 9:00	Eye Guess
	9:00 - 9:30	Eye Guess
KELK-TV (13)	8:30 - 9:00	Eye Guess
	9:00 - 9:30	Eye Guess
HG (4)	9:30 - 10:00	Concentration
	10:00 - 10:30	Concentration
KVH-TV (7)	9:30 - 10:00	Concentration
	10:00 - 10:30	Concentration
KFDA-TV (10)	9:30 - 10:00	Concentration
	10:00 - 10:30	Concentration
KCBT-TV (11)	9:30 - 10:00	Concentration
	10:00 - 10:30	Concentration
KELK-TV (13)	9:30 - 10:00	Concentration
	10:00 - 10:30	Concentration
HG (4)	10:30 - 11:00	Par. Bay
	11:00 - 11:30	Par. Bay
KVH-TV (7)	10:30 - 11:00	Par. Bay
	11:00 - 11:30	Par. Bay
KFDA-TV (10)	10:30 - 11:00	Par. Bay
	11:00 - 11:30	Par. Bay
KCBT-TV (11)	10:30 - 11:00	Par. Bay
	11:00 - 11:30	Par. Bay
KELK-TV (13)	10:30 - 11:00	Par. Bay
	11:00 - 11:30	Par. Bay
HG (4)	11:30 - 12:00	Post Office
	12:00 - 12:30	News
KVH-TV (7)	11:30 - 12:00	Post Office
	12:00 - 12:30	News
KFDA-TV (10)	11:30 - 12:00	Post Office
	12:00 - 12:30	News
KCBT-TV (11)	11:30 - 12:00	Post Office
	12:00 - 12:30	News
KELK-TV (13)	11:30 - 12:00	Post Office
	12:00 - 12:30	News
HG (4)	12:30 - 1:00	Weather
	1:00 - 1:30	Weather
KVH-TV (7)	12:30 - 1:00	Weather
	1:00 - 1:30	Weather
KFDA-TV (10)	12:30 - 1:00	Weather
	1:00 - 1:30	Weather

We salute the
BOY SCOUTS
56th ANNIVERSARY
FEB. 7 to 13

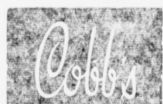
WE PROUDLY SALUTE ALL
 BOY SCOUTS, CUBS, AND
 THEIR LEADERS ON THIS
 OCCASION . . .



STRENGTHEN AMERICA'S HERITAGE

CONGRATULATIONS TO THE SCOUTS OF THIS COMMUNITY, AND TO THEIR LEADERS TOO. DURING BOY SCOUT BIRTHDAY WEEK, FEBRUARY 7th TO 13th, WE ARE PROUD TO EXPRESS A SPECIAL SALUTE IN HONOR OF SCOUTING... THAT GREAT MOVEMENT DEDICATED TO BUILDING BETTER CITIZENS, A BETTER COMMUNITY AND A BETTER WORLD. BEST WISHES, BOY SCOUTS, AND MAY YOU EVER STRENGTHEN AMERICA'S HERITAGE."

THIS TRIBUTE TO SCOUTING ON THEIR 35th ANNIVERSARY SPONSORED BY THE FOLLOWING FIRMS:



- Wagon Grocery & Market
- King Bros. Grain & Seed Co.
- Mills Machine Shop, Inc.
- Roland Gordan Farm Chem.
- Singleton Funeral Home
- Pool Insurance Agency
- Leal's Tortilla Factory
- W.Q. Casey Insurance
- White's Cashway Gro.
- Muleshoe Co-Op Gin

**Union Compress
and Warehouse Co.**

- Stovall Printing
- Lindsey Jewelry
- Perry's
- Piggly Wiggly
- Western Drug
- Fry and Cox Inc.
- L & H Grocery
- E.R. Hart Co.
- Strong Garage
- Bill's Drive In
- Cline's Studio

The Fashion Shop
OF MULESHOE

- Western Auto Store
- Sanitary Barber Shop
- West Plains Hospital
- Richland Hills Teaxco
- Wellborn Beauty Shop
- Muleshoe Locker Co.
- Dinner Bell Cafe
- Muleshoe State Bank
- First National Bank
- Bovell Motor Supply
- Brock Motor Co., Inc.

