

LYNN COUNTY NEWS.

VOLUME 6, NUMBER 44

TAHOKA, LYNN COUNTY, TEXAS, FRIDAY, JUNE 17, 1910

\$1.00 PER YEAR IN ADVANCE

Mrs. H. O. CRIE, Editor

THE OFFICIAL ORGAN OF LYNN COUNTY

H. C. CRIE, Manager

BAPTISTS CALL FOR PASTORS

GREAT DESTITUTION IN THE SOUTH PLAINS ASSOCIATION

The South Plains Association is composed of the following counties to wit:

Lynn, Lubbock, Terry, Yoakum, Chrochran, Hockley, and a part of Dawson and has in its bounds twenty or more churches. Four of which are County Seat churches to wit:

Taboka Church in Lynn County, Lubbock Church in Lubbock county, Brownfield Church in Terry county and Plains Church in Yoakum county.

Taboka and Lubbock being railroad towns. These together with all the rest, except one, are pastorless. Let the brethren and sisters who read these lines pray with us that the Lord will send more workers in to the field, for it is white unto the harvest.

From a human view-point we are in a critical condition, still when we look by faith we are not discouraged, for once the world was pastor less, except False Teachers.

And Jesus and a few disciples came and started the true pastoral work, and they were persecuted unmercifully, but their undaunted began working and has never ceased and never will cease until all the world bears the gospel.

So, to the South Plains Churches I will say. Don't be discouraged for there is a better day coming. So, again I say let us pray and work till every thing is placed right and if Christ is among us let it ought to be all things will come right.

If some preachers should read these lines who feel impressed with this work we kindly ask them to come and consider this field and then act according to their impressions.

A. L. ESTES, Missionary,
South Plains Association,
Tahoka, 6-15-10.

L. E. Medford, a Lubbock printer, came down Monday to take the place of Bob Haines on the Informer force. Bob left Friday for Amarillo where he goes to get married, after which he will make his home in Lubbock again. Bob has our best wishes for his happiness.

Baptist Meeting

The meeting at the Baptist Church began Wednesday under the management of Bro. S. W. Smith of Plainview and is assisted by Bro. Estes the Baptist Missionary and Bro. Doak of the Methodist Church Monday Night the business men were requested to close for the morning Services and the committee waited on the town and most every one closed up. The services commence at 10:00 sharp and the business men close at that hour and open at eleven.

Good deal of interest is being taken and interested audiences are in attendance. Bro. Smith is the district evangelist and a man of great power and attainments and those who miss hearing him will miss a treat.

C. W. Bartlett, of Roscoe, is here this week helping Geo. Small install the Higginbotham-Harris Lumber Co. in their new yard. A car of lumber came in for their new yard Monday.

RELIABLE INFORMATION

The Lynn County News received a letter from Mr. Geo. Pennell, of Columbus Ohio, this week requesting information as to when local trains would be running in here and what the chances for any one to make a living here.

In answer to his first question we are glad to say we already have local service here and the time table will be found elsewhere in this paper. In answer to his second question we would say that Lynn County needs lots of farmers and that she has thousands of acres of good farming land at from \$10.00 to \$20.00 per acre and a good market for every thing the farmer can raise. Taboka furnishes a good opening for several first class boarding houses, also a concrete block manufacturer, Dry goods, Grocery and Department Stores, the will be lots of work for carpenters, masons and brick layers as there will be lots of building done in the near future.

A Projection.

You can take it from me that there is no 'hot air' in the talk of the Santa Fe coming to Eldorado," declared Mr. Silliman. "A surveying corps is now in the field eight miles east of Eldorado and the engineers have already been looking out on the route west of us to Pecos City. Some of our people would like to see Eldorado the terminus, but personally I hope that they will build a through line as they are contemplating, because such a move would make Eldorado the junction point of to great transcontinental lines.

"While our home people are alive to the situation, even they do. It is a well known fact that the Santa Fe owns the Pecos Valley road. With this connection that they are now building from Lometa by the way of Brady and Eldorado to Pecos City to connect the Pecos Valley with their present connection to the transcontinental line, the Santa Fe will have the shortest route from Texas to California and a low grade all the way—San Angelo Standard.

"You may worry when you are weary,

You may worry when you are well;

You may worry when life's dreary

Or buds begin to swell;

You may worry in December

And keep worrying till May;

But in any case remember

That you can't make it pay.

Isn't there a good deal of sound common sense in that cheery rhyme? Dollars and cents too it you straightway accept the hint it gives, and make up your mind to do away with worrying once for all. Don't say you can't help worrying—you can. It may take time to eliminate the habit—how much time depend on the the persistency with which you have cultivated it and the earnestness with which you set to conquer this baneful habit, you are sure to be astonished and delighted no less—

at the progress you will have made at the end of even a month. But do not put yourself in the class with the man who joined a "Don't worry club and then spent all his spare time worrying lest he should worry/kill the worry though, the fear though, by putting an other in its place. Say to yourself when you arise in the morning, "This one day I live; this one day hour by hour, moment by moment, I will do my best at the duty or pleasure before me. To-morrow I will attend to, when it gets here. My present business is now and always with to-day, when the thought of what

A REGULAR TRAIN SERVICE ESTABLISHED.

A MIXED TRAIN EVERY DAY EXCEPT SUNDAY, ARRIVES 11:00 A. M. LEAVES 1:00 P. M.

Monday morning June 13th, at 11:00 o'clock, the first passenger coach came into Tahoka, as a part of what is known as mixed train No. 1, of the construction department of the Pecos and Northern Texas Railway Company, a part of the great Santa Fe system in Texas.

This train consisted of one passenger coach, caboose, three box cars, one cattle car engine and water car. The train was in charge of conductor D. E. Smith brakemen J. A. Goodson and H. S. Rouse, with Lee Watkins engineer and J. R. Boatman fireman.

The time had been set several times when we were to have passenger service and been put off, so when we heard the report that a train was coming down Monday morning and could not find out the time of arrival, we did not go down until the train was nearly ready to start back. There were only six or eight people down to see this the first train come in and only two or three to see it leave, with the exception of the Hall & Majors team which arrived with a passenger just after the train had started and after chasing it for a hundred yards or so the train stopped and the passenger was taken aboard and the train finally pulled out at 1:13 p. m.

On board of this train were J. T. Irvin, of Illinois, a reader of The News, and J. E. Kerr, of Renwick, Iowa, who will read The News for the next twelve months; two out of the three or four passengers.

Below we give the stations they will be established on this line:

Mr. Dennis who it was feared had contracted glanders, returned Tuesday from Stamford where he went for treatment! It developed that his case was not glanders at all. Mr. Walker who also went from here to Stamford for treatment, developed a case of glanders, but recovered under treatment. Out of twelve cases treated at that place, Mr. Walker and one other man recovered, the other ten ten died.—(Dawson County News.

This Mr. Walker was working on mile 39, the next camp to Robinson & Hart, about 17 miles south of Tahoka.

FOR SALE.

Worth the money—a first class soda fount, fixtures, stock and Etc. Write P. O. Box 178, Alvarado, Texas. 44-2t

Camp's Show came in from Post City Thursday and will give an exhibition Friday and Saturday nights at their tent, which is pitched on the northeast corner of the square, on the same spot he used when he was here two years ago. Mr. Camp called on The News yesterday and expressed astonishment at the fine growth Tahoka has made since his last visit.

South of Tahoka 7.20 miles will be Skeen, 7.37 miles south O'Donnell, 6.25 miles further Hindman, next 5.68 miles to Rice, and 5.77 miles to LaMesa, or 32.27 miles south from Tahoka.

Going north from Tahoka 5.44 miles is Dune, 5.93 miles Wilson, 4.55 miles Lofton, 5.49 miles Slaton Junction, on the Texico-Coleman Cut-off, or 21.41 miles north-east from Tahoka. Going west from Slaton Junction 1.44 miles is Slaton, 4.84 miles Posey, 5.22 miles Burris, 4.96 miles Ludbock, or 16.45 miles north-west from the Junction, or 37.86 miles from Tahoka by rail.

The schedule of train No. 1, is to leave Lubbock 8:00 a. m., Burris, 8:24; Posey, 8:49; Slaton, 9:12; Slaton Junction, 9:18; Lofton, 9:44; Wilson, 10:06; Dune, 10:35; arrives at Tahoka, 11:00.

Leaves Tahoka at 1:00 p. m. Dune, 1:25; Wilson, 1:54; Lofton, 2:16; Slaton Junction, 2:42; Slaton, 2:48; Posey, 3:11; Burris, 3:36; arriving at Lubbock at 4:00 p. m.

The tracklayer is at work on down the line and it will only be a short time now until the train service will be extended down to O'Donnell.

The trains at present stop way up in the yard, an account of the depot still being under construction. The work train comes in from the south two or three times a day and some times they spend an hour or two switching.

The capacity of the sidings here are 142 cars, and we predict that it will not be a great while until we have them all full. Watch Tahoka grow.

Look out for my ad next week for it will make you smile.—Our Cash Store. 43-1t

Mrs. Thomas, of the Deuce-of-Hearts community, brought in a lot of very nice beets, lettuce and half ripe peaches last Saturday. If Lynn county farmers would devote more time and thoughtful care to their gardens and orchards, they wouldn't have to borrow money to live on until their feed crops come in.

Frank Judkins, of Odessa, one of the three candidates for Representative of this the 101st District, came in from Post City Wednesday noon and left for Lubbock on the one o'clock train to try and mix with Dillard in his home town.

Lewis Robinson that they will likely have to do a considerable more work on the north of town. This cut is no. 1, one, only three or four feet deep.

Frank Judkins, of Odessa, one of the three candidates for Representative of this the 101st District, came in from Post City Wednesday noon and left for Lubbock on the one o'clock train to try and mix with Dillard in his home town.

APPOINTMENT OF JUDGES

At a meeting of the Executive Committee of the Democratic party of Lynn County, Texas, the following persons were appointed. Judges of the Primary Election at their respective voting boxes to be held July 23rd 1910.

Precinct No. 1. J. V. Dyer, Judge of Election to be held at the Court House, Tahoka.

Precinct No. 2. J. F. Standefer, Judge of Election to be held at Lynn School House.

Precinct No. 3. C. E. Donaldson, Judge of Election to be held at Wells School House.

Precinct No. 4. J. M. Noble, Judge of Election to be held at T-Bar Ranch.

Precinct No. 5. H. E. Baldridge, Judge of Election to be held at Glass School House.

Respectfully submitted,
J. W. D. DAVIS,
County Chairman.

Baptist Laymen

A laymans meeting of the Baptist Church was held at the home of Mr. and Mrs. C. S. Holmes Tuesday night which proved a most interesting occasion. Twenty or more were in attendance.

A couple of hours were spent in a most pleasant manner, the most delicious refreshments were served and those present declare this to have been an evening of through enjoyment to everyone there.

Dr. Burton of Stanton delivered an address which was intensely interesting and thoroughly enjoyed by all and several other speeches were made.

The Brotherhood of Laymen was organized, the object of same being the promotion of a stronger bond of fellowship among the members of the churches, getting better acquainted with each other encouraging social entertainment and the upbuilding of the churches and community. The brotherhood will meet once each month the next meeting to be with Mr. and Mrs. S. H. Morrison Thursday, July 14.

The following were elected as officers: C. S. Holmes pres., J. S. Cherry v-pres., A. E. Pool, sec and treas. Pamphlets of bylaws and rules will be prepared and sent to members before long. All are urged to attend the next meeting Big Sprig Herol.

may possibly happen to-morrow, next week, or next year presents itself, dismiss it as you would any obnoxious visitor, Say good by and good riddance! Hold fast to your motto "This one thing I do now is the only time which concerns me. The future will take care of itself if I take care of the present moment."

The A. G. McAdams Lumber Co., of this place had a car of lumber come in Monday.

When report show quite a decrease in the scholastic population in many of our neighboring cities it is a source of gratification to know that the scholastic population shows an increase here.

For the year 1909 a scholastic population of 783 was reported while the census report for this year, completed last month, show 833 or an increase of fifty. Since the majority were of the opinion that a loss would be shown the fact that we have really gained is good news to all Big Spang. Headold

Santa Fe Time Table.
Leave Lubbock at 8:00 a. m.
Arrive at Tahoka 11:00 a. m.
Leave Tahoka at 1:00 p. m.
Arrive at Lubbock 4:00 p. m.
A mixed train will be run every day except Sundays.

IMPROVEMENT WILL STOP

SANTA FE CALL OFF WORK ON ALL LINES EXCEPT THREE

Galveston Texas, June 3—The Santa Fe has giving orders that all of the improvement shall immediately cease and the officials decline to make statement as to the probability of a resumption in the near future.

The official statement comes from P. Cowley, chief clerk to General Manager F. O. Pettibone, who states as a reason for the order that: "This course is being taken because it is quite apparent that the present revenues being received by the read will not warrant any future expenditures for improvements excepting work which we are obliged to do. The recent decision by the United States circuit court and the recent reduction in rates in Texas have caused orders to be issued that every economy should be exercised in the operation of the properties."

Santa Fe has several extensions under way in various parts of the State and others have been announced as in contemplation. Work on all these is to be stopped at once with the exception of San Angelo sterling City branch, the Lometa San Saba branch and the Texico-Coleman cutoff, all of which will give shorter routes to tidewater and are therefore in the nature of economy. The grade revision on the Lampasa branch is to be continued for the reason that the contract has been carried to a point where the work can not well be stopped.

All bridge work is suspended and announced plans for the expenditure of \$2000,000 on the yards at Cleburne and the work at Temple, where about \$250,000 was to be expended in various ways are included in the plans that are not to be put through. The officials at Galveston do not give out the exact figures, but the guess is made that apparently upon the authority of the officials that nearly 1000 men will be turned loose by the road and the contractors who have been working on the Santa Fe projects.

This order is taken as a reply of the Santa Fe to the Texas commissioners rate reductions and improvement orders.

Why do they?

"Why does a young man riding his bicycle," asked a gentleman, "double himself up like a home-made doughnut the minute he begins to work the pedals?" Yes—and why does a fellow when he goes to throw a ball, first have to screw it into the palm of the right hand with his left, then hop on his right foot while he bumps his chin with his left knee, before he throws it? And why does a mare who gets a \$45 rawboned plug and a cart have to rein the pony up like a turtle treading water till he can't see the ground in front of him and goes along as if trying to read answers in the stars? Why does a girl whom nature has given a clear complexion have to paint until she can't wink for fear of cracking the enamel? And why does she hang her hair like a spitz poodle and make her head look like a floor mop?—Ex.

J. W. Kerley, of San Antonio, and O. G. Kershner, of Lubbock, came in Tuesday on the auto.

Tahoka Real Estate Co.
City And Farm
Property
Largest List
Exclusive
Agents For The
Chamber's Addition

DONT WHINE
 Alice Greenwood, writing to her sex, says: "Do, t whine.--for the love of Heaven, don, t whine! There is nothing that so completely upsets a man and makes him wish he'd bought a dog instead of a marriage license!"
 Alice is right, of course--don, t whine, but the advice is just as good for the man as the woman. Don, t whine! No matter who has taken a kick at you down town, no matter who has stuck a knife in your ribs or put burrs under your saddle or thown salt in your eyes don, t whine!
 What good does it do to whine. It's a mollycoddle trait, anyhow. If you must swear, don't, but if you must swear anyhow, swear! Don, t whine!
 Go home and make home cheerful. It's the only place in the world where the world cannot sow tacks and broken glass before your automobile. It's the only haven you have against the man who is trying to break up

STARTLING! TRUE!
 "The constant dropping water Wears away the hardest stone. The constant gnaw of Towser Masticates the toughest bone: The constant cooing lover Carries off the blushind maid, And the constant adviser Is the one who gets the trade."
 your buisness. It is your next- and when you whine you defile it! Keep it sweet and restful and comfortable. Don't whine there yourself and don, t allow anyone else to do it. If your wife persists in making home like the street, stab her with a bologna sausage and go to prison for life as a matter of choice.
 These so-called homes that are merely a rendezvous for a man and his wife to whine at each other and tell all their real and imaginary troubles, are not homes at all in the truer sense, and the sooner they are broken up the better it will be.
 Don, t whine.—Ex.

DIRECTORS
 S. H. McDaniel,
 W. B. Slaton,
 W. D. Nevels,
 A. L. Lockwood,
 O. L. Slaton.

OFFICERS
 O. L. Slaton, President
 A. L. Lockwood, Vice President
 W. D. Nevels, Cashier
 W. B. Slaton, Assistant Cashier

First National Bank
TAHOKA, TEXAS
 \$25,000.00 Capital.
 We Extend All The Accommodations Consistent With Business Principals.

TIN SHOP
 South of the Public Square, Tahoka, Texas
 do all kinds of Tin, Pipe and Repair work, Stove Pipe and Oven Drums.
 in need of anything in this line call on us. Prices that will please.
 Yours for business,
M. MILLIKEN & SON.

NORTH SIDE BARBER SHOP
 RAZORS KEEN AND TOWELS CLEAN
 THE SWELLEST JOB YOU EVER SEEN.
 J. R. HONEA, PROP.

DON PEDRO
 The Famous, "Kentucky Bred" Black Spanish Jack will be found at A. L. LOCKWOOD'S stable one mile north of Tahoka, for the season. We have some fine
COLTS to SHOW YOU
 Terms \$10 to insure a living colt.

Public Schools
 The Brownfield Mail
 W. S. Dewey and John Cordill of Big Springs, came in Tuesday and spent most of the day Wednesday here. They were here in connection with the interests of the Dewey Stage Line Co. This company has been awarded the contract to carry the mail from Big Springs to Gomez via Brownfield, for the next four years, and Mr. Dewey submitted a proposition to the people of Brownfield and Gomez which is as follows:
 "They will run an automobile mail line from Bia Springs to Brownfield and Gomez, daily except Sundays, for a guarantee of \$4. a day passenger business between Gomex and Lamesa or if the citizens of Terry county will purchase the the new automobile road to Lamesa via Lou and put it in first class condition and turn the same over to them.
 This guarantee in either event to cover the life of the mail contract they now have, beginning July 1st 1910. All over the \$4. to go to them, however, the guarantee being that the passenger busines rverage \$4. per day. The fare over said line to be \$8. between Big Springs and Brownfield and \$8.50 between Gomez and Big Springs.—Terry County Herald.

TOPSY
 The Beautiful French Draft And Steel Dust Stallion Owned By Mr. M. M. Redwine Will Stand The season At His Place Eleven Miles Southeast Of Tahoka.
TOPSY
 Is A Dual Purpose Horse, Weighing About 1350 Pounds, Being 16 1/4 Hands High And A Mahogany Brown In Color. **SEASON \$'0.00 INSURED**
M. M. REDWINE
 11 MILES SOUTHEAST OF TAHOKA, TEXAS

Scurry In Trouble
 A lawsuit of much importance to Scurry county is on trial this week at Lubbock, and County Judge Buchanan, Commissioner Lowe and Hon. Branch Isbell of Odessa are attending the trial in behalf of this county. The suit involves Scurry county's title to 17,000 acres of school land in Chrochran county which this county sold to Ohio parties in 1885. Later the purchasers fell down on the payment and Judge Isbell then county attorney for Scurry county brought suit in 1894 to set aside the sale and recover the land and he gained the suit.
 Now 16 years later one party who claims he had purchased some of the land from the Ohio parties comes in and claims that he was not cited in the recovery suit and there fore cannot be deposed. This claim involves the valdity of title to the entire tract. In the original deals the land was valued at \$1.25 an acre and is now worth \$20 an acre thus making a stake of \$340,000 for which Scurry county is contending.—Western Light.

Plains Wheat
 This weak we have met several of the wheat raiser of our county and they inform us that they expect to raise not less than 25 to 30 bushels to the acre. It will be ready to hayvest in the next few weeks and they have begun already to oil up the old harvest machines and secure twine etc that goes in the saving of the abundant crop. Wheat is going to be a good price and all will be well pleased to have sown many acres in wheat. The crop is almost sure on the plains under Campbells system of farming and soon as the farmers get the habit they will save all the work of not making good crops. We have many here who are well acquainted with the system that assures success and as soon as the experimental and demonstration farm at Drosbyton proves a success wheat will be the money crop.—Crosby to a Review.

South Plains Wagon Yard
 HENRY LINDLY, Prop.
 BEST ACCOMMODATIONS FOR TRAVELERS
Wholesale & Retail Feed Dealers
 One Door South of Tahoka Real Estate Office
 TAHOKA TEXAS



The Parkhurst Paint and Paper Store will be known in the future as **THE TAHOKA ART STORE**
 We are now prepared to attend to our retail business, and can supply your wants in any thing pertaining to the painters and paper hangers trade, encluding all kinds of house and roof paint, and varnishes for every class of work We also have a good many patterns of wall paper in stock and have the exclusive agencies of the six largest wall paper houses in the United States, therefore we never fail to please the most fastidious. Our Prices Are Right. Let us meet you at

SUNSET
 Sunset Magazine offers the readers of this paper the best opportunity of the year
 REVIEW OF REVIEWS \$3.00 ALL FOR
 SUNSET MAGAZINE 1.50
 WOMAN'S HOME COMPANION 1.25 \$3.00
 AND FREE with your order, a beautiful premium, a 72-page illustrated in four colors with 122 Western views
SUNSET MAGAZINE
 SAN FRANCISCO, CALIFORNIA

STERLING CITY LINE
 The tracklaying crew is about two miles this side of Walnut creek having crossed that bridge yesterday morning, and are laying the steel toward this place at the rate of more than a mile a day. Very little delay in tracklaying is expected until Sterling is reached. The pile drivers are today moving up to China draw about 8 miles below town.
 It is rumored that the contractors for the depots and section houses along the line has been let and that Sterling is to have a \$12,000 stone passenger depot; but the resident engineer at this place says if such is fact he has no knowledge of it. However, we hope the rumor is true and that work on these structures will begin at once and rushed to completion.—Sterling City News-Record.

HALE COUNTY WAREAT
 While returning from Hereford this week we passed the Hale county farm on which the Campbell method of farming is being put to the test. Over its waves of golden wheat where tossing in the wind to the tune of 30 bushels to the acre. A number of prospectors on the train were hugely excited and hyterically exclaimed that it was the best wheat in the United States. In the adjoining fields with the same soils and rainfall the wheat was inferior all of which goes to show that the average class of farmers are not doing justice to our fertile Hale county land.—Hale Center Live Wire

The Ladies Home Mission Society of the Methodist Church will do any kind of plain sewing, prices right, give them a trial. Work neatly done.

There are numbers of people who believe that the Quanah, Acme & Pacific railroad soon to be built through from Paducah toward the west can be induced to build through Snyder. The road is said to be making for Roswell or El Paso and prbably both place. A survey has already been made to Spur where it is said to connect with the Stamford & Northwestern, and from there it may continue its course to El Paso thus penetrating a vast region of rich country not now touched by railroads. Should that be in the minds of the promoters it is easily seen that Snyder is in almost direct line. The builders will readily see the advantages of the connections. At Snyder, which would prove valuable feeders for a north and south line. This road is considered an early probability and should be taken into count by our people.—Western Light.

Remember that you can buy a Sewing machine on terms the times. Write E. W. Lamesa Texas, and he will deliver it at your home.
 Bernice Henry and Steene, of Floydada, visited Gerard Bruner this week returned home on Tuesday Miss Beatice Henry, who that day from Milford, she had been attending Presbyterian college for Hale County Herald.

LIST YOUR REAL ESATE WITH A. F. O'DONNELL, TAHOKA
 The Western Light learns that the Oil Well contractors have closed a deal at Corsicana for a new first class rotary drill to be used in boring for oil in the Snyder field. The machinery is to be shipped in a few days and it will be only a short time till active work will begin in the oil field here in Snyder.
 Don't wait till the fire insnre Now with McMill Clayton.

\$100 Reward.
 will give \$100.00 reward for arrest and conviction of the caught shooting insulaf of the telephone line, or wise destroying the service ally near the J. N. Noble Staked Plains Telephone Tahoka, Texas. tf
 Shook left Sundry for his at Tahoka.—Roby Baner.



O.B. Shook has moved to the old hotel building east of the square.—Roby Banner.
 Uncle Frank and Elck Vaughn were in town Saturday.

LYNN COUNTY NEWS

Entered as second-class matter, July 10, 1905, at the post office at Tahoka, Texas, under the Act of Congress of March 3, 1879.

Advertising Rates

1 Col. x 1 1/4 in. Page 1 issue \$12. 2 issues \$18. 4 issues \$30. 26 issues \$175.
 1 Col. x 9/16 in. 1/2 Page 1 issue 7. 2 issues 11. 4 issues 18. 26 issues 90.
 1 Col. x 9/16 in. 1/4 Page 1 issue 4. 2 issues 6. 4 issues 10. 26 issues 50.
 1 Col. in. or 1/2 Page Once \$2.30, twice \$3.45, month \$5.25, six months \$30.00
 1 single column inches, once .60, twice 1.20, month 3.00, six months 17.00
 Locals, 10 cents a single column line, first insertion; subsequently, 5 cents.

Published Weekly By H. C. CRIE & CO., Tahoka, Texas

H. C. CRIE, Business Manager Mrs. H. C. CRIE, Editor

Subscription \$1.00 a Year in Advance.

We will greatly appreciate it if you will call us up and tell us the local news
 OFFICE PHONE NO. 3-5, RESIDENCE PHONE NO. 1-3.

Vol. 6 TAHOKA, TEXAS, FRIDAY, JUNE 17, 1910. No. 44

ANNOUNCEMENTS

For Representative 101 District
 T. J. O'DONNELL
 J. J. DILLARD

For District Attorney, 64th District.
 REUBEN M. ELLERD.
 L. C. PENRY.

For Sheriff and Tax Collector
 J. H. EDWARDS.
 W. H. MILLER.

For County and District Clerk.
 J. W. ELLIOTT.
 C. M. WHIPP
 JESSE P. HATCHETT.

For County Judge,
 G. W. PERRYMAN,
 (Re-election)
 J. P. MARRS.

For County Tax Assessor
 F. E. REDWINE,
 (Re-election)

For County Treasurer
 McMILL CLAYTON
 (Re-election)

W. D. BENSON, ATTORNEY-AT-LAW

Will practice in all courts of Lynn, Lubbock and adjoining counties.

LUBBOCK, TEXAS

JOHN P. MARRS
 Lawyer

Practice in all the Courts.
 Conveyances and Lann
 Titles a Specialty.

Tahoka, Texas

Bert Ramsey, District SURVEYOR

Official Surveyor for Lynn, Borden
 Dawson and Terry Counties.

Big Springs, Texas.

S. H. WINDHAM, M. D.

PHYSICIAN and SURGEON.
 Office Howell & McGill Drug Store,

Tahoka, Texas,

W. A. Womack

PHYSICIAN and SURGEON
 OFFICE
 Thomas Bros. & Co., Drug Store
 Residence Phone No. 6

Dr. A. F. UPTON

PHYSICIAN & SURGEON
 I FILL MY OWN PRESCRIPTIONS
 Office Phone No. 37 Residence Phone No. 57

SPECIALTIES ON
 Typhoid, Slow Fever and Pneumonia
 Diseases of Old People and Children
TAHOKA, TEXAS

E. H. INMON, M. D.

PHYSICIAN & SURGEON
 Office At McGill's Drug Store

Takoka, Texas.

DR. I. E. SMITH
 SPECIALIST

EYE, EAR, NOSE AND THROAT
 GLASSES FITTED

OFFICE IN NEW BRICK NORTH
 OF SQUARE, BIG SPRINGS, TEXAS

Mr. and Mrs. Sherrrod of
 Edith were in Tahoka visiting
 and shopping Wednesday.

Mrs. Fisher, Patterson and
 her sister Mrs. Shaffer of Mid-
 way were visitors at Tahoka
 Wednesday.

On the 23 of June the election will be held to vote whether we will issue bonds for the purpose of erecting a school building of proper dimensions to accommodate even increasing scholastic population. Tahoka is a town second to none, and must meet this issue as befits a town of her resources. We should not be behind our neighbors, and a great many of the plains towns are equipped with school buildings which would do credit to a city. Good schools enhances property values more than any one thing that can be built. People seeking homes select places where religion and educational privileges may be had. We are well supplied with religious advantages, but our school is not what it should be for a town of our size. A large scope of country lies on every side of us, from which to draw pupils and added to the number of resident pupils would swell the attendance to an amazing degree.

To procure a faculty of the best talent a town must have a suitable building and the nerve to press every advantage to its utmost for the benefit of the school.

A large school brings people to both town and community increases the volume of trade done and brings one greater demand for homes both owned and rented.

Every earnest minded citizen should take this issue to heart and work for its success.

With the railroad has come new responsibilities, the rapid development which is following its advent demands of us a great deal.

To procure the class of people required to bring a town to its highest point of prosperity, provisions must be made for the children for in them lies the promise of the future.

Educate our boys and girls and the best comes to us both now and here after.

When a good building for the school is erected and a faculty of the proper attainments installed, then our town becomes a desirable home for the man with money who wishes to provide the best advantages for the children as well as a business opening for himself.

Nothing attracts the eyes of the new comer so quick as a handsome school building.

The passerby either on the train auto, or other conveyance immediately remarks the big school house and its attendant herd of boys and girls and handsome boys fitting themselves to rule homes and hold the reins of municipal power when Tahoka is a city in deed and in truth.

The man of attainments is the man of the hour. In no other age has the trained mind and skilled hand been so much in demand.

Let us have a school that is second to none. The best is not too good for our beloved Tahoka.

Mrs. John Stokes of Gail was a visitor to Tahoka last week, and returned to her home Saturday accompanied by Mrs. J. E. Stakes.

Vote for the school bonds June 23 next.

Belton Howell is on the sick list at present.

A BARGAIN FOR YOU

The Texas Land Co., has land in any sized tract you may want from 80 acres up to 15 sections, and on easy terms.

1000 Town Lots at a Bargain. List your property with us and we will do the rest.

Look here. Extra Good Plains Land Well located at from \$10. to \$12. per acre

Come And Investigate before you buy. North of Tahoka Hotel

West Side Barber Shop

IRA DOAK, PROP.

SMOOTH, CLEAN SHAVE

Neat, Smooth and Artistic Hair Cut.

C. M. WHIPP ABTRACTER

Up to Now, Abstract of Lynn County Land Titles; Also Of the Town Of Tahoka Including All additions.

TAHOKA, TEXAS

Our Austin News Letter

Austin Texas, June 13 1910
 Last petitions were circulated in every quarter of Austin, asking for signatures providing for a submission of the prohibition issue at the primaries next month. Signers were few and far between until the State House was struck, and then goodly number was obtained. Governor Campbell refused to attach his name to the petition, saying that he did not care for newspaper notoriety. Sam Sparks gave as his reason for not signing the petition, that he was an anti prohibitionist and was against submission, which reason seemed to be satisfactory.

In an opinion furnished the railroad commission last week, Attorney General Lightfoot upheld the action of the commission in issuing an order prohibiting the so-called practice of the railroads of the state of advancing charges to shippers on inbound shipments of freight, holding that the practice is unlawful. On January 19, 1910 the commission issued an order prohibiting such practice, which caused a protest from some of the commercial organizations of the state, notably among them being the Dallas freight bureau. G. S. Maxwell representing the bureau appeared before the attorney general and presented a written argument on the subject in an effort to show that the practice was beneficial and was not a discrimination, and that the commission did not have the power to require its abolishment, but the attorney general held otherwise.

Farmers of Travis county last Saturday organized an institute of nearly a hundred members, under the direction of the State Department of Agriculture. This is the first institute which has been organized here. Special Agent Alton of the United States Department of Agriculture urged the formation of boys' corn clubs.

Other speakers were: Ed. R. Kone, Commissioner of Agriculture; Sam Dixon, chief clerk; J. W. Neill, director of farmers' institutes; F. T. Ramsey and H. Bowman, Jr.

The officers' camp of instruction for the infantry officers of the Texas National Guard closed Saturday at Camp Mabry, and all officers who will not enter the competition for places on the State rifle team left for their homes on the night trains. Brig. Gen. Albert Myer, prior to his departure for Fort Sam Houston, expressed the belief that the camp has done the militia officers an untold good and will benefit the Texas National Guard immensely. All of the officers of the regular army who have been conducting the camp, as well as the State militia authorities and officers, share in this belief and declare that the camp has been a great success.

Many of the officers will remain here for the competition for places on the State rifle team which will again take part in the

National shoot at camp Perry. This competition opens today and between 120 and 150 officers and privates of the Texas National Guard will compete for member of last year's successful team will be in the contest to hold his place.

It was evident in last Saturday's meeting of the fire rating board that trouble had developed between Governor Campbell and Commissioner of Insurance and Banking Hawkins, the latter refusing to subscribe to the statement given out by the board requesting the fire insurance companies to defer the collection of premiums under the the increased rates until after the hearing on June 21. Commissioner Hawkins maintains that the insurance companies would be violating the law and by such action, and as it is his plain duty to enforce the law, he would take immediate steps to revoke the license of any company thus attempting to comply with the request of the board. While the commissioner does not care to discuss the situation, it may be

Continued on next page

Mrs. Fred McDonel and mother Mrs. Crouch left Sunday for Fluvana where they took train for San Sana Mrs. Daniel to mark a visit to her parents and Mrs. Crouch returning from a months stay in Tahoka with her daughter.

Mr. Kurb living on the old On-sley place experience a serious accident Wednesday while working on the windmill a whirlwind struck the wheel giving it a sudden turn. Mr. Kurb was thrown off the tower and struck the ground landing on his hands, both arms were broken just above the wrist and one bone in his hand broken. His face was badly bruised and he received several cuts on different parts of his body.

Dr. Imman and Womack went out and dressed his wounds and set the broken bones.

The Woodmen sent S. N. McDaniel and D. Rodis out Thursday to bring him to town where he could receive the proper care.

At present he is doing as nicely as could be expected.



There are now 72 Call Patents sold in the United States...
 McCalls Magazine (The Queen of Fashion) has more subscribers than any other magazine in the world...
 McCalls Magazine is published weekly...
 McCalls Magazine is published by McCalls Magazine Co., New York.

60 YEARS' EXPERIENCE!

PATENTS

TRADE MARKS
 DESIGNS
 COPYRIGHTS & C.

Any one sending a sketch and description may obtain a free opinion free of charge. Our inventors are especially potent. Communications strictly confidential. HANDBOOK on Patents sent free. Direct agent for securing patents. Patents taken through Munn & Co. receive special notice, without charge, in the Scientific American.

Scientific American, published weekly. Largest circulation of any scientific journal. Terms, \$5 a year in advance. Sold by all newsdealers.

MUNN & Co. 361 Broadway, New York
 Tahoka Office, 25 F St., Washington, D. C.

DENTISTRY

Dr. Brawner will be in Tahoka aboutten or twelve days. You will please call and have your mouth examined. Yours Truly

Dr. G. J. Brawner

CLIPPER

The Hamiltonion and Steel Dust Stallion which I have at my place 10 miles south of town is 16 1/2 hands high, weighs 1250 pounds, is 4 years old, and dark brown in color. I will stand this horse at \$10.00

H. E. BALDRIDGE

10 MILES SOUTH OF TAHOKA, TEXAS

Tahoka Tailoring Co.

Fred McDaniel, Prop.

We take orders for The Royal Tailors full line, guaranteed all wool

MEN'S and LADIES' CLOTHING.

Cleaning and Pressing done in the best and neatest possible manner
 North Side Square, Tahoka, Texas.

SHOES

BUY HAMILTON BROWN

SHOES

Full line Enamelware, Tin Pans,
 Bread Pans, Bread & Cake Boxes
 Cotton batr best quality 15c per lb,

Fresh Groceries And Vegetadles
 Every Week

Give us a call, we appreciate your trade and will give you honest values

H. M. Larkin

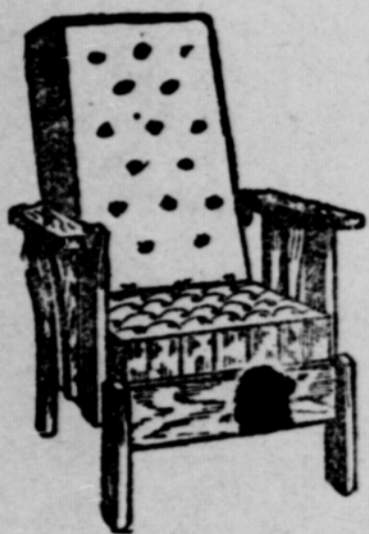
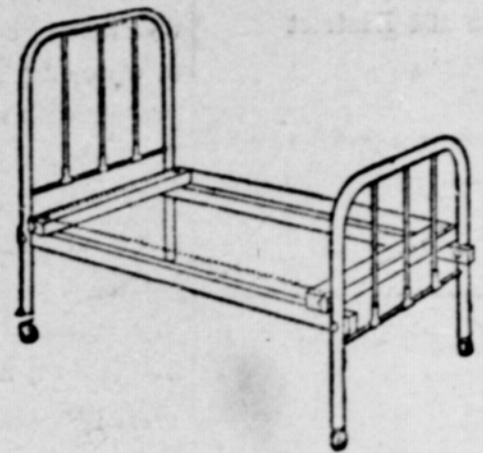
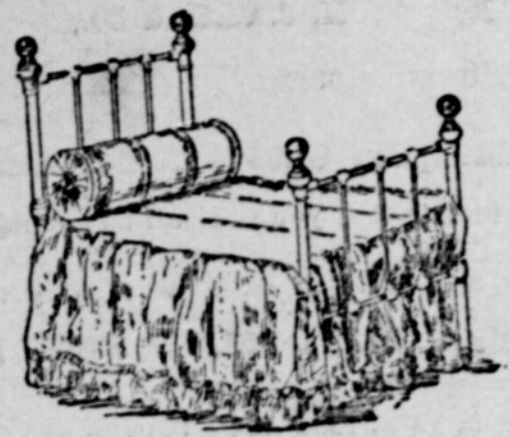
At The Fair.

Three Cars Of Furniture

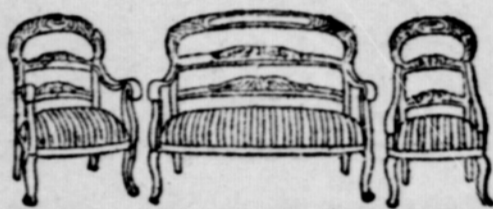
Let Us Show You

Our Fancy Line of Piano, Sewing Machines Dressers, Combination Desks, Book Cases, Kitchen Cabinets, Dining Tables, Old Mission Chairs and Center Tables, Beds, Office Tables, Chairs, Davenport, Mattresses, Etc. **Undertakers Goods**

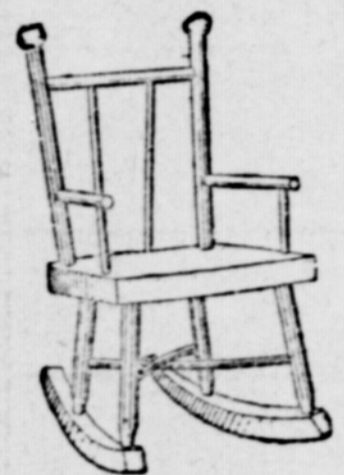
W. E. BORINSON FURNITURE CO.



LARKIN WEATHERS,
Manager.



IN THE WOODMAN
Building.



Tahoka, Texas.

HALL W. R. MAJORS

Tahoka Livery, Feed and Sale Stable

L. & MAJORS, Proprietors. PHONE No. 9.
We have good teams, good rigs, and our prices are reasonable. We sell all kinds of feed and will deliver anywhere. South of the square, Tahoka, Texas.

A. Brown of Edith Rev. Hussey and little daughter
been sick so long is not from Hemligh are visiting the
well this week. family of G. M. Clay this week.

Tahoka Blacksmith Shop

Jim MacFarlane, Manager

ARE READY AND ABLE TO DO ALL KINDS OF BLACKSMITHING AND WOOD WORKING. EXPERT HORSE SHOEING FOR CASH. GOOD WORK, COURTEOUS TREATMENT, PRICES REASONABLE. WORK FINISHED PROMPTLY.
South of Public Square
Tahoka, Texas.

New Goods

Just received and opened up one of the most up-to-date lines of Dry Goods ever shown in Tahoka. We invite you to come in and compare prices and quality.

Win A Dinner Set

By \$1.00 Cash purchase at our store you are entitled to a chance good for a chance at 13, \$30.00 DINNER SETS and a \$30.00 CHINA CABINET. Call for your ticket.

Wholesale And Fancy Groceries

J. E. KETNER

We make our own Ice Cream: It is made right. Thomas Bros. & Co.

Arthur Black attended the dance at the Black farm south of town Saturday night. He reports a fine time.

Mr. and Mrs. J. P. Ewing, who lately moved here from Emma, joined the Baptist church here Sunday night.

The W. E. Robinson Furniture Store received another car full of every thing in their line last Saturday.

W. E. Brewer, of Lamesa, and W. W. Mabray, of Scott, New Mexico, both carpenters, located here Saturday. Mr. Brewer is an old Haskell county friend of the Claytons.

One of Mr. O'Donnell's children got hold of a full of pills Sunday night and swallowed all of them. Dr. Womack was called and the youngster was soon all right again.

A. B. McLoud and Miss Clara left on the afternoon train Tuesday to attend a Christian Convention. They returned Thursday and report an very enjoyable time.

W. H. Kay, of Abilene, has been with us this week establishing an Insurance Section to the Tahoka K. of P. Lodge No. 420. He placed about \$10,000 here, and he liked Tahoka so well that he subscribed for The News for a year so as to keep posted.

Have your Abstracts made by the Lynn County Abstract Co., Tahoka, Texas.

Mr. Brinkley has rented the house just vacated by Mr. McCauley.

Geo. M. Hill and White of Crosbyton were in town this week.

J. L. Dow of the Lubbock Avalanche was in Tahoka Thursday.

DIRECTORY.

The Ladies' Home Mission Society meets at the Methodist church every first and third Monday afternoon. Mrs. D. B. Doak, Pres.

The Ladies' Aid Society of the Baptist church meets every Thursday afternoon at the homes of the members. Mrs. E. T. Payne, Pres.

The Ladies' Aid Society of the Christian church meets every Wednesday afternoon at the Christian church. Mrs. K. D. Jones, Pres.

The Embroidery Club meets every Tuesday afternoon at the homes of the members. Miss Mary Whipp, Ins't.

The Woodman Circle meets at the Woodman Hall every first and third Saturday afternoon at 3 o'clock. Mrs. T. J. Blankenship, Guardian.

List of Letters

Remaning uncalled for in this office for the week ending June 11, 1910.

Names—Ladies

Brown Mrs Lizzie.

Brown Miss Minnie.

Lansford Mrs Ada.

Name—Gentlemen

Brown Mr George.

The Letters will be sent to the dead letter office Monday June 20, 1910 if not called for before. In calling for the above please say "Advertised," giving date of list.

A. B. McLoud, P. M.

Ollin Wright is quite sick at the home of his sister Mrs. Geo. Small. While doing the chores about the farm last Sunday morning he got a fall, afterward his horse fell with him while out in the pasture, giving him a shaking up, from which he is now suffering.

However no broken bones was discovered, and it is hoped that, while his injuries are very painful they are not dangerous.

The Brownfield Rebekah Lodge came over last Saturday about strong to organize a Lodge here. They initiated 24 in the afternoon and 14 at night About half past ten, ice cream and

Your Opportunity During the months of May, June and July we will offer The Lynn County News and The Semi-Weekly Farm News for eight (8) months for One Dollar (\$1.00). This Opportunity closes July 31.

Tahoka Saddle Shop

G. R. MILLIKEN Prop.

Saddles, Harness,
Fancy Belts Made
Repairing Done



A. G. McAdams Lumber Co.

Lumber, Bois D'Arc, Lath, Shingles, Sash
Doors, Blinds, Mouldings and Paint
Lime, Cement and Brick
Rubber Roofing

Let Us Figure Your Bills. tahoka texas

Our agents make \$50.00 a week

Selling new water color portrait and gold frame. Costs 90 cents complete with glass, sells for \$1.98. Samples and instructions free. Youngmac in Ohio made \$22.00 in one day. We are the largest picture frame house in the world. One general agent wanted in each country. Give me reference and we will extend your thirty days' credit with steady honorable employment at a big income. Our business is established twenty-five years. We are not in the picture and frame trust. We want honorable, trustworthy representatives only. You need no capital to work for us. We teach you how to make a success. Address at once.

WILLIAMS ART CO. 2615 W TAYLOR STREET, CHICAGO, ILL
In answering state "Saw advertisement in" LYNN COUNTY NEWS.

cake was served to the enjoyment of all.

The officers elected were: Miss Minnie Chambers, N. G. Miss Mary Whipp, N. G. Miss Cryte Wright, Secretary; Mrs. Ethel Slaton, Treasurer, Brownfield Rebekah returned home Sunday morning under promise to return to the association meeting here in July.

Brownfield is strictly a lodge town and a more fraternal, likeable set of people it has never been an good fortune to meet.

AUSTIN NEWS LETTER.

said that he has no intention of resigning, and this leads to whether the governor will make any attempt to remove him. This would probably lead to further complications. The board, with the backing of the governor and the attorney commissioner of Insurance and Banking Hawkins has issued his pronouncement, and now it is squarely up to the insurance companies as to what shall be the next step taken.

C. E. BROWN,

The First Real -

Estate Man In

Tahoka, Texas.

have the Largest and Best
st of lands and town lots of
y one in Lynn County.

LET ME SELL YOU A HOME LIKE
THE ONE SHOWN BELOW.



A LYNN COUNTY HOME, NEAR TAHOKA

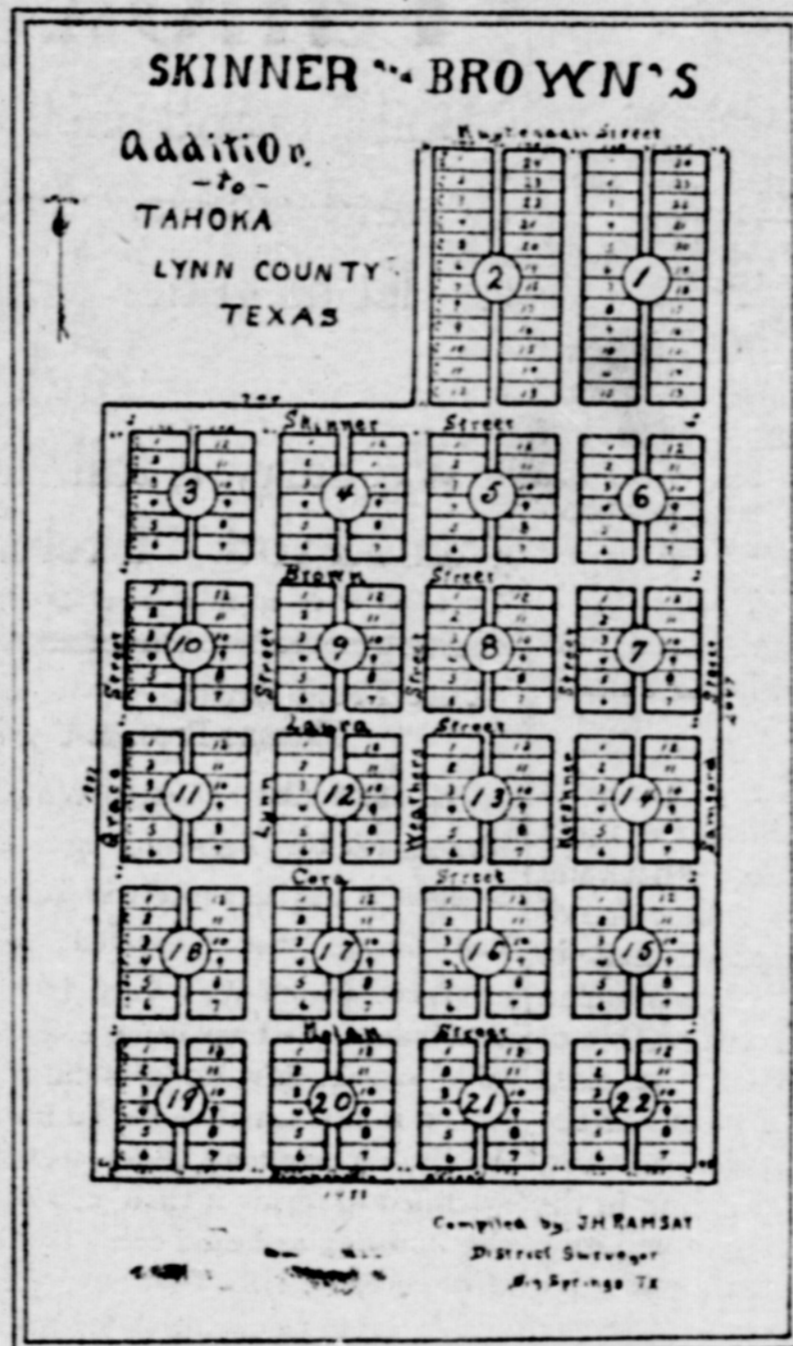
A Word To The Wise Is Sufficient

Lynn County now has railroad fa-
cilities and the Values in Real Estate
will steadily advance until Cheap Proper-
ty will be a thing of the past in a very
few months.

Let me sell you some Cheap, but
good, land "Now" that will double in
value in a couple of months. Write for
a list of bargains.

E. BROWN,
The Original Land Man

Buy Lots In



If You Want A Home

E.D. Skinner & Son

Tahoka, Tex on the



The Opportunity For Buying Land Cheap

Will never again be as good in Lynn County as it is at present. We are selling lands cheaper today than the same lands will ever sell for again- Opportunity knocks once at every mans door.

Purchase a home now while a little money will pay for it. The valley of the Nile will not surpass our Lynn County land for productiveness; nor will it produce a greater variety of crops. Few Bargains, Look them over.

480 acres First Class Farm land, 100 acres in cultivation, good improvements. To exchange for small well watered ranch.

We also have an Electric Light Plant for sale or exchange for Plains land. Plant situated in a town of 3500 people, about 900 drops, 30 street lamps, 3 arc lamps, 3 dynamos and one nearly new Corless engine. Receipts from lights about \$500 per month. Expenses about \$300 per month. Earnings could be increased to \$800 per month with but very little extra expense.

We have one of the best improved 320 acre farms in Lynn county to exchange for good mule or horse teams. Will take 4 to 8 good mule or horse teams on the first payment and good terms on balance.

No. 2. Is 320 acres of improved patented land with 80 acres in cultivation, house, small orchard, well and windmill, 5 miles from a railroad town. Price \$18 per acre, or will trade for a small stock of goods or small well improved farm in the East. This is first class land.

No. 3. Is 640 acres of smooth level land, fenced on three sides, to trade for good rental (Brick) property.

No. 4. Is 2080 acres of good farm land to exchange for good rental, brick buildings. Buildings must be worth the money, and well located in good town.

No. 5. Is 320 acres patented land within three miles of a railroad town. Price \$8.50 per acre with 1/4 cash, balance in 10 annual payments at 8 per cent.

No. 6. Is 4160 acres of first class farming land, three sets of improvements; a splendid proposition for colonization. Price \$13.50 per acre, good terms.

No. 7. Is 640 acres of patented land Price \$10 per acre, \$2000 cash, balance 1, 2 and 3 years at 8 per cent; or will take \$5,500 cash.

No. 8. Is 320 acres of school land; \$2 to the State. Price \$8.50 per acre cash. This is first class farm land, and lies within 6 miles of a railroad town.

No. 9. Is 320 acres, patented land, 8 miles from a railroad town, all first class farming land. Price \$11.50 per acre 1/2 cash, balance easy.

No. 10. Is 640 acres of first class farm land, 8 miles from a railroad town. Price \$14 per acre, 1/3 cash, balance in 1, 2, 3 and 4 years at 8 per cent interest.

No. 11. Is 320 acres of patented land, within 1 mile of railroad and 4 miles of a railroad town. All first class land. Price \$13.50 per acre, with \$5.50 per acre cash, balance in 1, 2 and 3 years at 8 per cent interest.

No. 12. Is 640 acres of patented land, within 4 miles of a railroad town. All first class farm land. Price \$15 per acre, 1/2 cash, balance easy.

No. 13. Is 160 acres, patented, three room house well and windmill, 35 acres in cultivation, all first class land and every foot tillable. Price \$2500 1/2 cash balance, 1 and 2 years at 8 per cent.

No. 14. Is 320 acres; one of the best improved farms in the county. 140 acres in cultivation, two dwellings, well and windmill, good young orchard, all first class farm land. Price \$20 per acre, with 1/3 cash, balance easy terms.

No. 15. Is 320 acres, improved, good house, well and windmill, 90 acres in cultivation, good orchard. Price \$20 per acre, \$2500 cash, balance easy at 8 per cent.

No. 16. Is 640 acres of patented land; every foot tillable. \$10500 cash.

No. 17. Is 640 acres of well improved farm, 80 acres in cultivation, good house, well and windmill, all first class farming land. Price \$17.50 per acre, 1/4 cash and balance easy at 8 per cent.

No. 18. Is 320 acres of patented land, all first class. Price \$13.50 per acre, \$2000 cash, balance easy.

No. 19. Is 320 acres, patented land adjoining the town of Tahoka, with 140 acres in cultivation, good improvements. Price \$60 per acre, 1/3 cash, balance easy at 8 per cent.

No. 20. 1280 acres of mixed sage and mesquite land, 100 acres in cultivation, good house and barn, lots, well and windmill, good orchard, cistern good fences, 4 acres in orchard and garden, 3 pastures. An ideal stock farm. Price \$13.50 per acre, 1/2 cash, balance in 1, 2 and 3 years at 8 per cent interest.

No. 21. 163 1/2 acres, 1 mile north-east of the town of Brownfield, 6 room house, barn, smoke house, chicken house, well and windmill, good fences, 70 acres in cultivation. This is a well improved and ideal home, located close to county seat, with first class school privileges. Price \$25 per acre, 1/2 cash, balance in 1 2 and 3 years at 8 per cent.

WHAT HAVE YOU FOR SALE OR EXCHANGE

Write Us. We are always on the look out for bargains and we may have exactly the property you WANT. There is no trade so small or so large that we cannot handle it. Tell us what you want and we will find it.

We have one of the best improved 320 acre farms in Lynn County to exchange for good mule or horse teams. Will take 4 to 8 good horse or mule teams on the first payment and good terms on balance.

CAMP'S GREAT TENT SHOW

Friday and Saturday Nights

15c. and 25c.

Come. For the whole show, no reserved seats, no side shows, you see everything for 15 and 25 cents each night. Come.

Wells & Welcher's The People's Store

We keep a full line of Dry Goods, Notions, Clothing, Boots, Shoes and Stetson Hats always in stock.

Our well selected stock of fresh, Staple and Fancy Groceries cannot be equaled.

South--West Corner Square

One-Seven

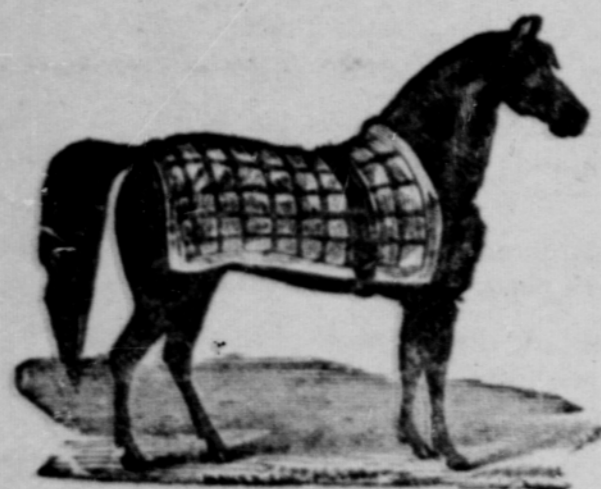
SINGER

For over half a century the Singer Sewing Machine has caused the housewife to smile instead of frown when waiting upon her husband because she is not tired down running a cheap sewing machine. There's a Difference.

E. W. HANCOCK

SELLS THEM ON TWO YEARS TIME--WRITE TO HIM AT LAMESA, TEXAS.

JOE BUFORD



JOE BUFORD--A Deep Sorrell Stallion, Blaze In Face, White Hind Foot, 16 hands high, weighs 1150 pounds, 5 years old.

A Beautiful Saddle And Harness Horse, Of The HAL FAMILY and Shows Many Qualities Of His Well Known Ancestors. Some Of Which Are As Follows:
OM HAL, LITTE BROWN JUG, BROOKS, ERNWN PILOT, HAWK, ALGERINE, MAURY CHIEF, STAR POINTER, T MALONE And FRANK BUFORD.

will Stand the Present Season at my farm on the Moyer Place 13 miles South East of Tahoka.

---\$15.00 to insure colt, \$12.50 per foal. If mare is sold or removed from county Sierage becomes due. All accidents and owners risk but all care will be taken.

P. P. BREWER

THE CITY CONFECTIONARY

J. C. HUITO
PROPRIETOR

FRESH FRUIT
COLD DRINKS

CREAM, CANDIES, CIGARS, and TOBACCOES

ORTH SIDE SQUARE, TAHOKA

Fifty Life Scholarships At Half Price Or Less

**Fifty Young Men and Women Made Prosperous
Happy and Independent for Life**

Walden's Practical Business Colleges, Austin, Texas, and Lake Charles, Louisiana, will save you from \$50 to \$100 on a Complete Business or Shorthand Course. Their special \$100 offer will make you a Bookkeeper and Stenographer--total cost. It pays board, tuition and stationery. Scholarships for both courses unlimited. No better courses anywhere, at any price. Why pay more?

They Went Like Hot Cakes!

Twenty Special Scholarships placed on sale the 15th of last August were "snapped" up in less than ten days--two weeks before the opening of the Fall Term. They went like hot cakes, and the fifty offered above will go in the same way. Why? Because this \$100 proposition represents the greatest value ever offered by a business college.

Look To Your Interest.

Young man, young woman, parent--why not investigate the above special offer?

Address either school for elegant catalogue and circulars.

Mr M.V. Brownfield reports that the loafer wolves are killing cattle in his pasture southeast of town. He offers a bounty of \$25 for each scalp taken in his pasture of young or old wolf. Brownfield Herald.

M. M. Herring joined the Baptist church by letter Sunday night.

One day recently a question concerning the devil came up in the Cameron public school, and in defining the old fellow one of the teachers explained that in a printing office it means a man who sets type and writes. One of the charming girls of the class having asked the editor of the local paper if this was correct, he was forced to answer in the negative. That no one will go a miss on the subject we will give the young scholar the proper definition.

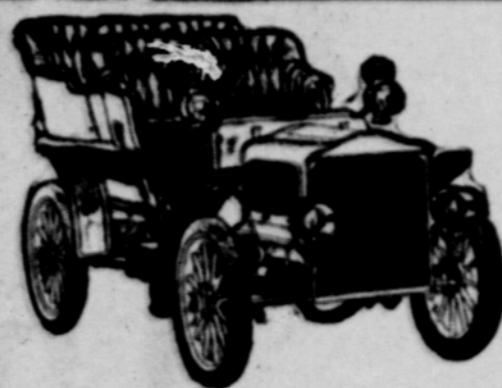
The devil is a beginner or apprentice in a print shop, and presidents over the "hell box" a box in which all the printers dump their "pi" when too tired to throw it in the case. It is the business of this "imp of darkness" to sort out the letters and place them in their proper cases and boxes, and as the p, b, p, d, are very similar he is told to mind his p, and q, s. The devil's occupation is to sweep out build the fires, smear ink all over his face, keep the printers in an uproar, "pi" cases, borrow "itolic spaces," kill type lice, and visit harness shop for "strap oil for the foreman." The foreman and all the printers feel it their especially privilege to cuss the devil and blame him for all the ills and accidents that befalls the office, and on Saturday evening after the printers have been paid off, (or stsdoff) and the editor finds himself with only one lone quarter left, he reflects that ther isthe devil to pay, and that is how the phrase originated. No, the devil is not a writer or prenter, but printers are some time the devil. --Texas Broncho.

PALACE MEAT MARKET

The Best There
Is in the way of
Choice cuts of
Fresh Meat.



Ice On Hand All
The time for sale
In large or small
Quantities.



Tahoka Auto Garage

E. T. PAYNE, Prop.

Full Line "Model F Buick" Extras
GAS, LUBRICATING AND ENGINE OIL. BEST, SKILLED
WORKMEN EMPLOYED. PRICES RIGHT
SOUTH OF SQUARE, TAHOKA, TEXAS

Tahoka Hardware Co.

Builders and shelf hardware, queensware, crockery, tinware, and stoves. We do all kinds of pipe, tin and tank work let us gutter your house. Screen Screen Doors. See them

RACINE VEHICLE

We carry a full line of windmill repairs, piping, casing and wood rod. Exclusive agents for Star and Eclipse windmills

Pure Fresh Drugs.

Thomas Bros. & Co.

The Methodist church which was struck by lightning several weeks ago has been nicely repaired. The damage was covered by insurance which was very fortunate indeed the town being considerable wreck. Mr Rodgers did the job up in his usual style he built the church originally & was better qualified to repair it than any one else knowing as he did every detail of its construction. The methodist people are to be congratulated upon getting the church fixed up so soon

Have you an old watch that won't run? We will have it repaired, or allow you a good price for it on a new one. Thomas Bros. & Co.

To every one who pays the Lynn County News up one year in advance we will give The Citizen Star a weekly farm paper one year free.

WINCHESTER



"NUBLACK"

Loaded Black Powder Shell

Shoot Strong and Evenly
Are Sure Fire,
Will Stand Reloading.

They Always Get The Game

For Sale Everywhere

YOU WILL GET

All the Local and County News,
All the State, National and Foreign News,
By subscribing to the combination of
**The Lynn County News and
The Weekly Kansas City Star**

**BOTH
ONLY
\$1.15**

The Weekly Kansas City Star is a farmer's and Stockman's weekly newspaper, the subscription price of which is 25 cents a year. It contains the entire news of the whole world, yet in so concise form as to be readily read in a few hours each week by the busiest farmer. It has market reports of accuracy and great value to farmers and stockmen. Has a practical Kansas farmer in charge of the "Farm Department." Publishes short and serial stories of interest. Has a feature for ladies called "Chatterbox," giving suggestions and advice on matters of etiquette and social usages. "Answers" takes care of inquiries. No objectional advertising, no fake schemes. Good and wholesome for every farmer's home. Send all orders for this bargain combination to the Lynn County News, Tahoka.

The South's Greatest Newspaper The Semi-Weekly Record FORT WORTH TEXAS

In addition to subscribing for your home paper, which you cannot well afford to be without, you must have a high-class general newspaper.

As a trustworthy family paper, The Semi-Weekly Fort Worth Record has no superior. It isn't for any one class of people; it's for every member of every family. If you don't find something of interest in a particular issue--well, the editor looks on that issue as a failure. In addition to printing all the news of the day in concise form, The Record has special features for each member of the family. The remarkable growth of The Record is the best evidence of its merits. Lynn County News and Fort Worth Semi-Weekly Record both at this office.